

Filed Jan. 19, 1910.

A. L. H.

77

OCT 11 1909

2189

HOMESTEAD ENTRY SURVEY NO. 43

Arizona Land District.

2189

2189

FIELD NOTES

of

The Survey of the Homestead Entry Claim

of

Edward J Long

Described as

H. E. No. 02007

List No. 513

Situated in Approx. T. 12 N., R. 1 E., Unsur.

Prescott National Forest,

Yavapai County, Arizona

Surveyed under instructions dated July 26<sup>th</sup>, 1909.

by William H Merritt  
U. S. Mineral Surveyor.

Survey commenced Aug 24<sup>th</sup> 1909

Survey completed " 25<sup>th</sup> 1909

Address:

J. M. W Moore, Agent,  
Prescott Arizona

2189

189



UNITED STATES DISTRICT COURT  
District of Columbia

REPORT

of the Survey of the Honorable Earl Warren

conducted by

James H. ...

...

...

...

...

...

...

...



Chains Beginning at Cor.No.1 as this point falls in a road  
 I established a witness cor.which brs.S 50°28'W o.135 chs.  
 A granite stone 4 X 6X 24 ins set 12 ins.in the ground  
 with mound of stones chiseled 1-H-E-S-43-W-C. No brs.available.  
 From cor.point U.S.L.M.No.4-1245 brs.S 41°43'E 89.63 chs.  
 A walnut tree 6 ins.diam.scribed H1 brs.N 6°15'E o.77chs.  
 I scribed it X-B-T-1-H-E-S-43.  
 Cor.No.3 Old Joe No.2 claim Sur.No.1263 brs.S 58°32'E  
 o.14° chs.

*Cor. of preliminary survey,*  
 a granite stone 5X 9X 12 ins.above the ground in  
 mound of stones chiseled H1 brs.N 50°28'E o.10 chs.  
 No other bearings available.

N 36°25'W

Thence from cor.point N 38°32'W

va.14°E

Home Placer, &

1.50 Cor.No.3 Sur.No.2098, granite stone 6X6X10 ins.chiseled  
 H-3-2098,whence:Cor.No.4 of Sur.No.2098 brs.N 38°50'W  
 22.77 chs.thence S 60°30'W 6.58 chs.to cor.No.1 of  
 Sur.No.2098 a granite stone 6X6X10 ins.in mound of stones  
 chiseled H.1 2098

15.00 Center Road course S 45°E and N 45°W

17.95 A post 4X4 ins.X3 ft.in mound of stones scribed 3-1788.

being Cor.No.3 of Big Bug No.7 Onyx Placer, Sur.No.1788, thence from this point S 36°42'E 10.58 chs. to  
 post 4x4 ins. x 3ft.in mound, scribed 2-1788 - 3-1788, being Cor.No.2 Big Bug No.7 Onyx Placer, identical with Cor.No.3 Big Bug No.6  
 Onyx Placer, Sur.No.1788.

24.88 Center road course N 10°W and S 10°E

26.83 To Cor.No.2

Identical with the cor.of the preliminary survey, A  
 granite stone 8 X 10 X 14 ins.above the ground with mound  
 of stones chiseled H2.Ichiseled it X-2-H-E-S-43.whence:  
 An ash tree 8 ins.diam.scribed WH2 brs.S56°45'W 1.54 chs.  
 No other bearings available.

Thence S 60°48'W  
va.14°E

4.60 Center Big Bug creek 3.50 chs.wide course South

9.51 To Cor.No.3.

Identical with the *Cor. of the preliminary survey,* A granite stone 12 X 14 X 14 ins.  
 with mound of stones, chiseled H3. I chiseled it X-3-H-E-S  
 43 on the side facing this claim.No bearings available.

Thence S 30°31'E  
va.14°E



chains.

10.00 To Cor.No.4

Identical with the <sup>cor. of the preliminary survey,</sup> schist 5X6X14 ins. with mound of stones chiseled H4. I chiseled it 4-H-E-S-43 on the side facing this claim, whence:- an ash tree 8 ins. diam. scribed WH4 brs.   
*I scribed it XBT. 4-H.E.S. 43.*  
 N 1°06'W 1.00 chs. No other bearings available.

Thence S 48°04'E

6.23

Intersect line 1-2 Home Placer sur.No.2098 at S 37°34'E  
 13.32 chs. from cor.No.1

16.00

Intersect line 2-3-Home Placer Sur.No.2098 at S 60°45'W  
 7.29 chs. from cor.No.3

18.83

To Cor.No.5.

Identical with the <sup>cor. of the preliminary survey,</sup> schist 3X6X14<sup>ins.</sup> with mound of stones chiseled H5. I chiseled it 5-H-E-S-43 on the side facing this claim. No bearings available.

Thence N 50°23'E

3.00

Center, Big Bug Creek. course S 41°E 4 chs. wide.

6.54

witness cor. to cor.No.1

6.67

To Cor.No.1 the place of beginning.

Containing 25.00 acres. Area in conflict with Home Placer sur.No.2098 18.99 acres. ~~claimed by claimant hereof.~~  
 The improvements consist of :-

A brick house the S.E. Cor. of which brs. from cor.No.1  
 S 77°20'W 0.61 chs. 0.25 X 0.50 chs. course of long side  
 N 32°W

A well with wind mill which brs. from cor.No.2 S 23°15'W 0.25  
 chs. 4X5X 30 ft.

The N.E. Cor. of a frame house brs. from cor.No.2 S 17°50'W  
 6.00 chs. 0.55 X 0.60 chs. course of long side S 23°E

The N.E. Cor. of a frame barn brs. from Cor.No.2 S 16°15'E  
 5.18 chs. 0.47 X 0.38<sup>chs.</sup> course of long side S 45°W

The N.E. Cor. of a corral of posts and wire brs. from Cor.No.2  
 S 18°50'E 3.70 chs. 1.71 X 1.07 chs. course of long side  
 S 45°E



*Location.*

This claim is located on unsurveyed land approximately in T<sub>p</sub> 12 N.R.1.E,Gila and Salt River Base and Meridian Yavapai county Arizona,within the Prescott National Forest.

This claim is bounded partly on the East by sur.No.1788,Big Buq No.6 and Big Buq No.7 Onyx Placers,the name of the claimants unknown,on all other sides by U.S.Land.Sur .No.1263 Old Joe No.2 claim lies a few feet to the south of this claim.

The disagreements between these field notes and the notes of the preliminary survey are due to errors in the latter.

*Instrument.*

This survey was made with a Gurley Solar transit.The courses were deflected from the true meridian as determined by direct solar observations.The distances were measured with 100-ft.steel tape.

*William H. Merritt*  
U.S. Mineral Surveyor.



( 3 ) ( 2 )

This claim is located on the ...

... and Salt River Pass and ...

... within the Prescott National Forest.

... the ...

... the ...

... the ...

... the ...

... the ...

... the ...

... the ...

Instrument

This survey was made with a ...

... the ...

... the ...

... the ...

U.S. Mineral Surveyor



FINAL OATHS FOR SURVEYS.

---oOo---

LIST OF NAMES.

A list of the names of the individuals employed by  
William H. Merritt United States Mineral Surveyor, to  
 assist in running, measuring, and marking the lines, cor-  
 ners, and boundaries described in the foregoing field  
 notes of the survey of the Homestead Entry claim of  
Edward J. Long, described as H. E. No. 02007,  
 List No. 513

---



---



---

and showing the respective capacities in which they acted.

W. H. Merritt Chairman  
 \_\_\_\_\_ Chairman  
 \_\_\_\_\_ Axman  
 \_\_\_\_\_ Flagman.

\*\*\*\*\*



UNITED STATES OF AMERICA  
DEPARTMENT OF JUSTICE  
FEDERAL BUREAU OF INVESTIGATION

MEMORANDUM FOR THE DIRECTOR  
FROM: SAC, NEW YORK  
SUBJECT: [Illegible]

A list of the names of the individuals employed by  
[Illegible] United States General Government,  
located in [Illegible] and [Illegible], and  
[Illegible] and [Illegible] offices in the  
[Illegible] of the [Illegible] and [Illegible].  
[Illegible]

[Illegible]  
[Illegible]

[Illegible]  
[Illegible]  
[Illegible]  
[Illegible]  
[Illegible]  
[Illegible]  
[Illegible]

[Illegible]  
[Illegible]



FINAL OATHS OF ASSISTANTS.

We J. M. Merritt and  
William H. Merritt, do solemnly swear that we assisted  
William H. Merritt, United States Mineral Surveyor, in  
marking the corners and surveying the boundaries of the  
Homestead Entry claim of Edward J. Long  
described as H E N. 02007  
List N. 513

represented in the foregoing field notes as having been  
surveyed by said mineral surveyor and under his direction;  
and that said survey has been in all respects, to the best  
of our knowledge and belief, faithfully and correctly exe-  
cuted, and the corner and boundary monuments established  
according to law and the instructions furnished by the  
United States Surveyor General for Arizona.

J. M. Merritt Chairman.  
J. M. Merritt Chairman.  
\_\_\_\_\_  
Axman  
\_\_\_\_\_  
Flagman.

Subscribed and sworn to by the above named persons  
before me this 25th day of August, 1909.

(Seal)  
My Comm. Expires  
June 28 - 1909  
1913

W. B. Merritt  
Notary Public



86



Handwritten scribbles or faint markings.



FINAL OATH OF U. S. MINERAL SURVEYOR.

I, William H. Merritt, U. S. Mineral Surveyor, do solemnly swear that, in pursuance of instructions received from the United States Surveyor General for Arizona, dated July 26th 1909, I have, in strict conformity to the laws of the United States, the official regulations and instructions thereunder, and the instructions of said Surveyor-General, faithfully and correctly executed the survey of the Homestead Entry claim of Edward J. Long, described as H. E. No. 02007, List No. 513

situate in Prescott National Forest, Yavapai County, Arizona, and designated as Homestead Entry Survey No. 43, as represented in the foregoing field notes, which accurately show the boundaries of said Homestead Entry claim as distinctly marked by monuments on the ground, and described in List No. 513, as incorporated in the instructions for the survey, received from the Surveyor General, and that all the corners of said survey have been established and perpetuated in strict accordance with the law, official regulations and instructions thereunder; and I do further solemnly swear that the foregoing are the true and original field notes of said survey and my report therein.

William H. Merritt  
U. S. Mineral Surveyor.

Subscribed and sworn to by the said William H. Merritt, U. S. Mineral Surveyor, before me a Notary Public in and for Yavapai County, Arizona this fifth day of October, 1909.

Ziba O. Brown  
Notary Public

(Seal)  
my Commission  
Expires Nov. 1 - 1909.



*[Faint, illegible handwriting throughout the page]*





Chains

FIELD NOTES OF SURVEY

E. I. Long Homestead Listing Application,  
Prescott National Forest.

---oOo---

Embracing a tract of 26.88 acres, which, when surveyed, will probably be within T. 12 N., R. 1 E., G. & S. R. M., and is described and bounded as follows:

Beginning at Corner No. 1, granite 24" x 9" x 5" set in a mound of stones and chiseled H 1, whence cherry tree 4" in diameter bears north 64° 30' E., 49 links and marked HW 1, also a walnut, 5" in diameter bears north 31 links, and southwest corner of Onyx patented claim, Sur. No. 1788, bears N. 37° 15' W. 7.4 chains, corner of Joe Mayer patented claim bears N. 76° E. 9 links.

Thence N. 37° W.

26.8 to corner No. 2, granite 26" x 10" x 8" chiseled H 2 and set in mound of stones.

Thence S. 60° 15' W.

10.5 to corner No. 3, granite 28" x 14" x 12" set in mound of stones and chiseled H 3.

Thence S. 34° 15' E.

10.04 to corner No. 4, green chlorite schist 30" x 6" x 5" chiseled H 4 and set in mound of stones.

Thence S. 47° 45' E.

19.15 to corner No. 5, chlorite schist, 28" x 8" x 6", chiseled H 5 and set in mound of stones.

Thence N. 50° 30' E.

7.44 to corner No. 1, the place of beginning.



Chains

FIELD NOTES ON SURVEY

R. I. Long Homestead Listing Application,  
Prescott National Forest.

---000---

Establishing a line of 20.00 acres, which, when surveyed, will probably be within T. 12 N., R. 1 E., S. 1 N. and is described and bounded as follows:

Beginning at corner No. 1, granite 24" x 24" x 24" set in a mound of stones and chained to H. 1, whence a line of 10.00 acres bears north 84° 30' E., 40.00 chains and marked by 1, also a walnut; 5" in diameter bears north 21 links, and southeast corner of 20.00 acres chain No. 1, 1000, bears N. 70° 11' E., 4.00 chains, corner of Joe Sawyer patented claim bears N. 70° 7' E., 2 links.

Thence N. 70° 7' E., 2 links to corner No. 2, granite 24" x 24" x 24" set in mound of stones.

Thence S. 70° 11' E., 4.00 chains to corner No. 3, granite 24" x 24" x 24" set in mound of stones and chained to H. 2.

Thence N. 74° 12' E., 2 links to corner No. 4, granite 24" x 24" x 24" set in mound of stones and chained to H. 3.

Thence S. 74° 12' E., 2 links to corner No. 5, granite 24" x 24" x 24" set in mound of stones and chained to H. 4.

Thence N. 70° 11' E., 4.00 chains to corner No. 6, granite 24" x 24" x 24" set in mound of stones and chained to H. 5.

Thence N. 70° 11' E., 4.00 chains to corner No. 7, granite 24" x 24" x 24" set in mound of stones and chained to H. 6.

Thence N. 70° 11' E., 4.00 chains to corner No. 8, granite 24" x 24" x 24" set in mound of stones and chained to H. 7.

Thence N. 70° 11' E., 4.00 chains to corner No. 9, granite 24" x 24" x 24" set in mound of stones and chained to H. 8.

Thence N. 70° 11' E., 4.00 chains to corner No. 10, granite 24" x 24" x 24" set in mound of stones and chained to H. 9.



91

SURVEYOR-GENERAL'S CERTIFICATE OF APPROVAL OF FIELD NOTES  
AND SURVEY OF HOMESTEAD ENTRY CLAIM.

---oOo---

DEPARTMENT OF THE INTERIOR,  
Office of U. S. Surveyor General,

Phoenix, Arizona, May 13, 1910.

I, U. S. Surveyor-General for the District of Arizona, do hereby certify that the foregoing and hereto attached Field Notes and Return of the Survey of the Homestead Entry Claim of Edward I. Long, described as Homestead Entry No. 02007, List No. 513, situate in Prescott National Forest, Yavapai County, Arizona, in approximate T. 12 N., R. 1 E., unsurveyed, designated as Homestead Entry Survey No. 43, executed by William H. Merritt, U. S. Mineral Surveyor, August 24 - 25, 1909, under my instructions dated July 26, 1909, have been critically examined and the necessary corrections and explanations made, and the said Field Notes and Return, and the Survey they describe, are hereby approved. A true copy of the copy of the field notes of the preliminary survey of said homestead entry claim by the Department of Agriculture, filed by the applicant for survey is included in the field notes.

Frank S. Ingalls,  
U. S. Surveyor-General for  
Arizona.



92



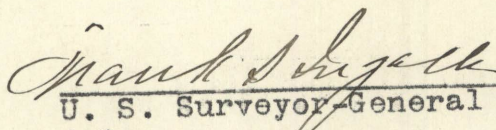
## U. S. SURVEYOR-GENERAL'S FINAL CERTIFICATE ON FIELD NOTES.

---000---

DEPARTMENT OF THE INTERIOR,  
Office of U. S. Surveyor General,

Phoenix, Arizona, May 13, 1910.

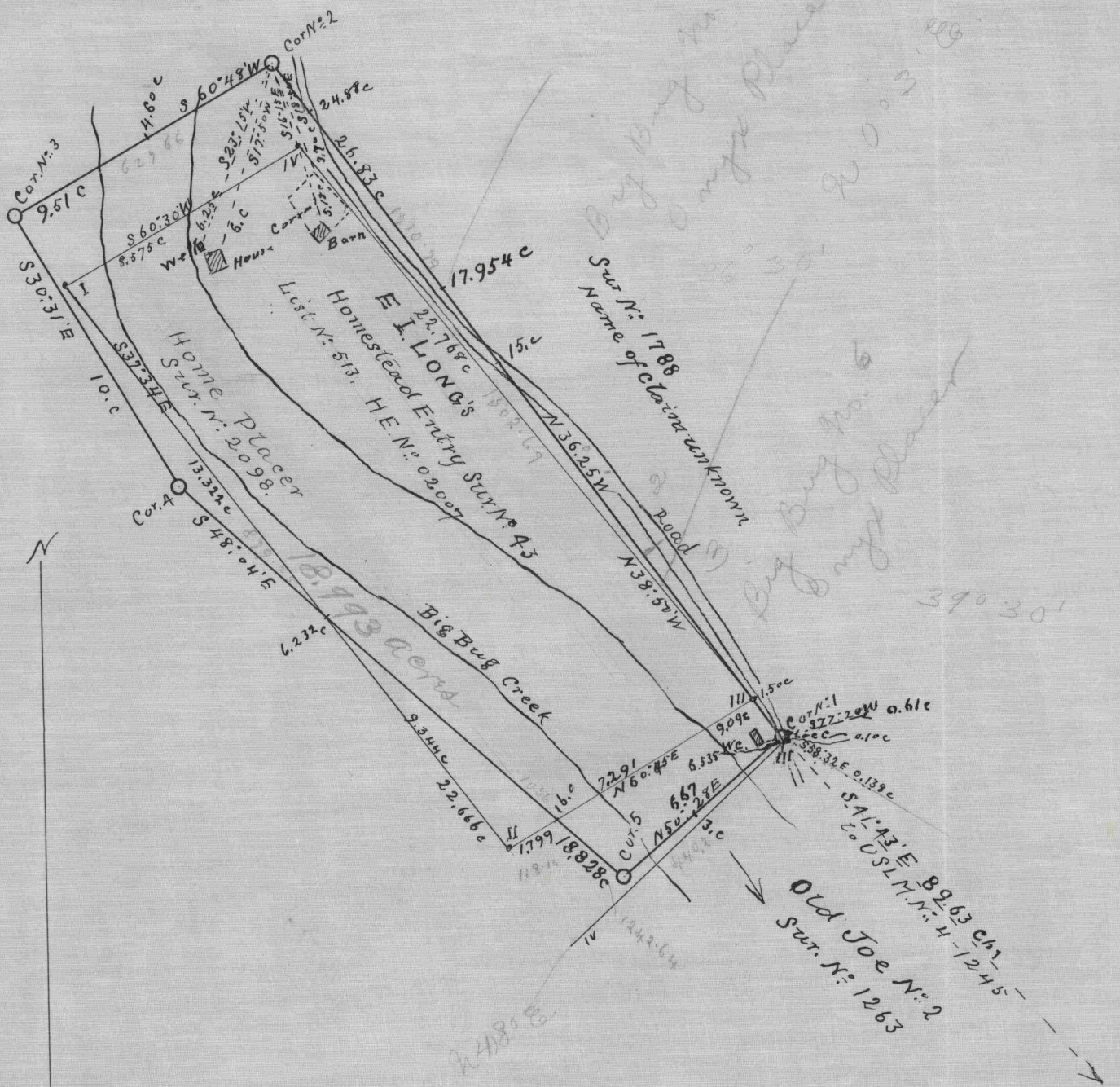
I, U. S. Surveyor-General for the District of Arizona, do hereby certify that the foregoing transcript of the Field Notes, return and approval of the Survey of the Homestead Entry claim of Edward I. Long, described as Homestead Entry No. 02007, List No. 513, situate in Prescott National Forest, Yavapai County, Arizona, in approximate T. 12 N., R. 1 E., unsurveyed, and designated as Homestead Entry Survey No. 43, has been correctly copied from the originals on file in this office; that said Field Notes furnish such an accurate description of said homestead entry claim as will, if incorporated into a patent, serve fully to identify the premises, and that such reference is made therein to natural objects or permanent monuments as will perpetuate and fix the locus thereof.

  
U. S. Surveyor-General for  
Arizona.









Scale 5 Chains to One Inch