

Platted

73

10-19-10.

2218

FL

JUL 11 1910

HOMESTEAD ENTRY SURVEY NO. 48

Arizona Land District.

2218

2218

2218

FIELD NOTES

of

The Survey of the Homestead Entry Claim

of

W.C. Colcord.

Described as

H. E. No. 014

List No. 473

Secs 23, 25, 26, T. 10 N., R. 10 E.

Tonto National Forest,

Gila County, Arizona

Surveyed under instructions dated May 16, 1910, 1909.

by Howard C. Hopkins.

U. S. Mineral Surveyor.

Survey commenced May 26, 1910.

Survey completed May 27, 1910.

Address:

W.C. Colcord,  
Payson, Arizona.

2218

2218

2218

74

HOMESTEAD ENTRY SURVEY NO.48.

Beginning at Cor. No. 1.

A diorite stone, 6x13x24 ins., set 12 ins. in the ground, chiseled 1 H.E.S.48, with mound of stone 2 ft. base, 1-1/2ft. high alongside. The Cor. Secs. 23, 24, 25 and 26, T.10 N., R 10 E., G. and S.R.Mer. bears S. 77°56'W 6.53 Chs.

A cedar tree, 18 ins. dia., blazed and scribed BT 1 HES 48, bears N. 61°32'W. 0.82 Chs.; a cedar tree 2 ft. dia., blazed and scribed B. T. 1 HES, bears N 10°56'E. 0.81 chs.

-----

chains

Thence S.81°10'E.

8.89

To Cor. NO. 2.

On the line between Secs.24 and 25, East 15.17 chs. from the Cor.of Secs.23,24,25 and 26, and West 24.83 chs. from the 1/4 Cor. between Secs. 24 and 25.

A red granite stone 6x8x24 ins., set 12 ins. in the ground, chiseled 2 HES 48 on the south face and CC on the north face, with mound of stone 2 ft. base 1-1/2ft. high alongside.

A live oak tree 20 ins. dia. blazed and scribed BT 2 HES 48,CC, bears S.22°20'W. 1.11 chs.

-----

Thence S.81°10'E.

31.11

To Cor. No.3.

A red granite stone, 6x10x24 ins., set 12 ins. in the geound chiseled 3 HES 48, with mound of stone 2 ft. base 1-1/2 ft. high alongside.

No bearings available.

-----

Thence S.13°20'W.

7.0

Intersect wire fence, course N.45°W.,S.45°E.

10.7

Witness Cor. No.4.

A red granite stone, 6x9x30 ins., set 15 ins. in the ground, chiseled WC 4 HES 48, with mound of stone 2 ft. base, 1-1/2 ft. high alongside.

No bearings available.

11.00

Gibson Creek, flows S.75°E.

11.00

To Cor: NO.4.

Not set as it falls in Gibson Creek, W.C. heretofore described, brs. N. 13° 20' E. 0.3 chs.

-----

Thence N.81°10'W.

5.00

Wire fence, course N.66°W., S.66°E.

40.00

To Cor.. No.5.

A red granite stone, 5x12x24 ins., set 12 ins. in the ground, chiseled 5 HES 48, with mound of stone 2 ft. base, 1-1/2 ft. high alongside.

A walnut tree 1 ft. dia. blazed and scribed BT 5 HES 48, bears N.37°08'E. 0.47 chs.; a juniper tree 2 ft. dia. blazed and scribed BT 5 HES 48, bears S.22°34'E 0.60chs.

-----

(2-H.E.S.48)

chains

Thence N.66°40'W.

4.08 To Cor.No.6.

On line between Secs. 25 and 26, South 7.72 chs. from Cor. Secs. 23,24,25 and 26; North 32.28 chs. from 1/4 Cor. between Secs.25 and 26.

A blue granite stone, 8x10x24 ins. set 12 ins. in the ground, chiseled 6 HES 48 on the North face, CC on the South face with mound of stone 2 ft. base, 1-1/2 ft. high alongside.

A blue granite stone, projecting 3x5x2-1/2 ft. above the ground, chiseled BR 6 HES 48 CC bears south 0.78 chs.

-----

Thence N.66°40'W.

19.49 To Cor.No.7.

On line between Secs. 23 and 26, West 17.89 chs. from Cor. Secs.23,24,25, and 26; East 22.02 chs. from 1/4 Cor. between 23 and 26.

A blue granite stone, 12x15x24 ins., set 12 ins. in the ground, chiseled 7 HES 48 on the north face, CC on the south face, with a mound of stone 2 ft. base, 1-1/2 ft. high alongside.

No bearings available.

-----

Thence N.66°40'W.

17.43 To Cor.No.8.

A red granite stone, 6x9x24 ins., set 12 ins. in the ground, chiseled 8 HES 48, with mound of stone 2 ft. base, 1-1/2 ft. high alongside, Cor. identical with Cor. No. 1 H.E. Sur. No. 52, H. S. Colcord, claimant.

A black oak tree 10 ins. dia. blazed and scribed BT 8 HES 48 bears S.79°09'W. 0.96 chs.; a cedar tree 30 ins. dia. blazed and scribed BT 8 HES 48 bears S.52°26'W. 0.13 chs.

-----

Thence N.13°20'E.

4.0 Wire fence, course S.62°E.:N.62°W.

5.0 Gibson Creek, flows S.78°E.

11.00 To Cor. No.9.

Identical with the initial monument of the Agricultural Department Survey.

A red granite stone, projecting 8x10x8 ins. above the ground, chiseled 1, to which I added 9 HES 48, with a mound of stone 2 ft. base, 1-1/2 ft high alongside, Cor. identical with Cor. No. 7 H.E. Sur. No. 52, H. S. Colcord, claimant.

The NW Cor. of Wm. C. Colcords house bears S.39°30'E. 4.75 chs.; a walnut tree 30 ins. dia., blazed and scribed W H 1, to which I added BT 9 HES 48, bears S.2°54'W. 4.18 chs. a live oak tree 22 in. dia., blazed and scribed W H 1, to which I added BT 9 HES 48, bears N. 65°21'E. 3.59 chs.

-----

Thence N.21°50'E.

26.50 To Cor.No.6, H.E.Sur.No.52, H. S. Colcord, claimant.

30.00 To Cor.No.10.

A red granite stone, 8x10x24 ins., set 12 ins. in the ground, chiseled 10 HES 48, with mound of stone 2 ft. base, 1-1/2 ft. high alongside.

No bearings available.

-----

(3-H.E.S.48)

chains

Thence S. 66°40'E.

22.17 To Cor. No.11.

On line between Secs. 23, and 24, N. 00°23'E. 36.68 chs. from Cor. Secs. 23, 24, 25 and 26, S. 00°23'W. 3.22 chs. from the 1/4 Cor. between Secs. 23 and 24.

A red granite stone, 8x10x24 ins., set 12 ins. in the ground, chiseled 11 HES 48 on the south face, CC on the north face, with mound of stone 2 ft. base, 1-1/2 ft. high alongside.

No bearings available.

-----  
Thence S. 66°40'E.

0.83 To Cor. No.12.

A red granite stone 6x12x24 ins., set 12 ins. in the ground, chiseled 12 HES 48, with mound of stone 2 ft. base, 1-1/2 ft high alongside.

A juniper tree 2 ft. dia., blazed and scribed BT 12 HES 48, bears S. 70°34'E. 0.81 chs.

-----  
Thence S. 21°50'W.

2.1 To Cor. No.13.

On line between Secs. 23 and 24, S. 00°23'W. 5.5 chs. from 1/4 Cor. between Secs. 23 and 24, N. 00°23'E. 34.40 chs. from Cor. Secs. 23, 24, 25 and 26.

A red granite stone, 10x12x24 ins., set 12 ins. in the ground, chiseled 13 HES 48, with mound of stone 2 ft. base, 1-1/2 ft. high alongside.

No bearings available.

-----  
Thence S. 21°50'W.

27.9 To Cor. No.14.

A red granite stone, 9x9x24 ins., set 12 ins. in the ground, chiseled 14 HES 48, with mound of stone 2 ft. base, 1-1/2 ft. high alongside.

A cedar tree 30 ins. dia., blazed and scribed BT 14 HES 48, bears S. 29°53'W. 0.47 chs.; A black oak tree 15 ins. dia., blazed and scribed BT 14 HES 48, bears N. 32°00'E. 0.50 chs.

-----  
Thence S. 66°40'E.

11.08 To Cor. No.15.

On line between Secs. 23 and 24, N. 00°23'E. 4.11 chs. from Cor. Secs. 23, 24, 25 and 26; S. 00°23'W. 35.79 chs. from 1/4 Cor. between Secs. 23 and 24.

A red granite stone, 6x8x24 ins., set 12 ins. in the ground, chiseled 15 HES 48, on the south face, CC on the north face, with mound of stone 2 ft. base, 1-1/2 ft. high alongside.

A live oak tree 15 ins. in dia., blazed and scribed BT 15 HES 48 CC, bears N. 28°03'E. 1.5 chs.

-----

(4-H.E.S.48)

chains

Thence S.66° 40'E.

6.92 To Cor.No.1, the place of beginning.

-----

Magnetic variation at all corners 12° 20'E.

-----

Area.

Area

157.25 acres.

-----

This survey is identical with the preliminary survey and listing.

I examined the ground carefully and could find no corner monuments or evidence of any corner monuments ever having been established except Cor. No. 9, the initial monument of the preliminary survey, and believe that they never were established by the Department of Agriculture.

This survey is located in Secs. 23, 24, 25 and 26, T.10 N., R.10 E., G. & S.R. Mer., Tonto National Forest, Gila County, Arizona Territory.

This Homestead lies along Gibson Creek, covering the bottom land.

-----

Improvements.

A frame house, 18x26 ft., course of long sides S.70° E., the northwest Cor. bears from Cor. No. 9 S.39° 30'E. 4.75chs.

A frame barn 18x20 ft., course of long sides S.70° E., the southwest corner bears N.75° E. 3.5 chs. from Cor. No. 9.

A Wire fence, beginning at a point S.30° W. 0.47 chs. from Cor. No. 14; thence S.27° W. 8.5 chs. to a fence running N.62° W. to cross line 8-9, 4 chs. from Cor. No. 8, and S.62° E. 28.6 chs., thence S.81° E. 32 chs., thence S.66° E. to cross line 4-5 5 chs. from Cor. No. 4; and, from the point of beginning, S.66° 30'E. 25.5 chs., thence S.79° E. 27 chs. thence S.45° E. to cross line 3-4 7 chs. from Cor. No. 3.

-----

Adjoining claims.

This survey is joined on the west by H.E.S. No. 52, H.S. Colcord, claimant; on all other sides by unclaimed land in the Tonto National Forest.

The Cor. of Secs. 23, 24, 25 and 26, T.10 N., R.10 E. is a sandstone chiseled 1 notch on the east face and 2 notches on the south face. Near it are 2 witness trees, blazed and scribed BT S. 23 T. 10 N. R. 10 E., BT S. 24 T. 10 N. R. 10 E.

The 1/4 Cor. between Secs. 23 and 24 is a diorite stone chiseled 1/4 on the west face. Near it are 2 bearing trees blazed and scribed BT 1/4 S. 23, BT 1/4 S. 24.

The 1/4 Cor. between Secs. 24 and 25 is a red granite stone chiseled 1/4 on the south face.

The 1/4 Cor. between Secs. 25 and 26 is a granite stone, chiseled 1/4 on the west face.

The 1/4 Cor. between Secs. 23 and 26 is a diorite stone chiseled 1/4 on the south face.

(5-H.E.S.48)

The discrepancies between these notes and the survey of T.10 N., R.10 E. and the survey of this homestead by the Department of Agriculture are due to errors in the latter.

-----

This survey was made with a Gurley Light Mountain Transit. The courses were deflected from a line, the true course of which was previously determined by direct solar observations as follows:

April 27, 1910. at 9:45 to 9:50 A.M., Mountain time.  
Latitude 34° 14' N.; Longitude 111° 18' W. from Greenwich.  
Set on the initial monument of the Agricultural Department survey, Cor. No. 9, this survey, sight to the northwest corner of Wm. C. Colcord's house and deflect to right.

329° 47', altitude 49° 03'  
330° 19', " 49° 30'

Bisecting the sun with the horizontal and vertical wires.  
Gives the bearing on the reference line:

S. 39° 30' E. for both observations.  
S. 51° 50' E. Magnetic.

Magnetic variations 12° 20' E.

Note:  
Cor. No. 10, T. 10 N., R. 10 E., is a red granite stone marked  
etc.,

--	--



FINAL OATHS FOR SURVEYS.

---oOo---

LIST OF NAMES.

A list of the names of the individuals employed by  
Howard C. Hopkins United States Mineral Surveyor, to  
 assist in running, measuring, and marking the lines, cor-  
 ners, and boundaries described in the foregoing field  
 notes of the survey of the Homestead Entry claim of  
William C. Colcord, described as H. E. No. 014,  
 List No. 473

\_\_\_\_\_  
 \_\_\_\_\_  
 \_\_\_\_\_  
 \_\_\_\_\_

and showing the respective capacities in which they acted.

- |                      |          |
|----------------------|----------|
| <u>Andrew Pyeatt</u> | Chainman |
| <u>B.F. Butler</u>   | Chainman |
| _____                | Axman    |
| _____                | Flagman. |

\*\*\*\*\*

82

FINAL OATHS OF ASSISTANTS.

We. Andrew Pyeatt and B.F. Butler,

do solemnly swear that we assisted Howard C. Hopkins, United States Mineral Surveyor, in marking the corners and surveying the boundaries of the Homestead Entry claim of William C. Colcord described as Homestead Entry Survey No. 48 of Homestead Entry No. 014, made in the Phoenix Land Office July 2, 1908, and designated as List No. 473.

represented in the foregoing field notes as having been surveyed by said mineral surveyor and under his direction; and that such survey has been in all respects, to the best of our knowledge and belief, faithfully and correctly executed, and the corner and boundary monuments established according to law and the instructions furnished by the United States Surveyor General for Arizona.

Andrew Pyeatt  
Chainman.

B. F. Butler  
Chainman.

Subscribed and sworn to by the above named persons before me

this 15th day of July, 1910.

(Seal)

George A. Randall

Notary Public.

*Commission Expires  
May 23rd 1912*

FEDERAL GOVERNMENT OF ARIZONA

vs. Andrew Everett and H. F. Butler

do solemnly swear that we assisted Howard G. Hopkins, United States  
Mineral Surveyor, in marking the corners and surveying the boundaries  
of the Homestead Entry claim of William G. Colford described as  
Homestead Entry Survey No. 49 of Homestead Entry No. 514 made in  
the Phoenix Land Office July 2, 1908, and designated as List

No. 49

represented in the foregoing field notes as having been surveyed by  
said mineral surveyor and under his direction; and that such survey  
has been in all respects to the best of our knowledge and belief,  
faithfully and correctly executed, and the corner and boundary monuments  
established according to law and the instructions furnished by the  
United States Surveyor General for Arizona.

William G. Colford  
Coclaimant

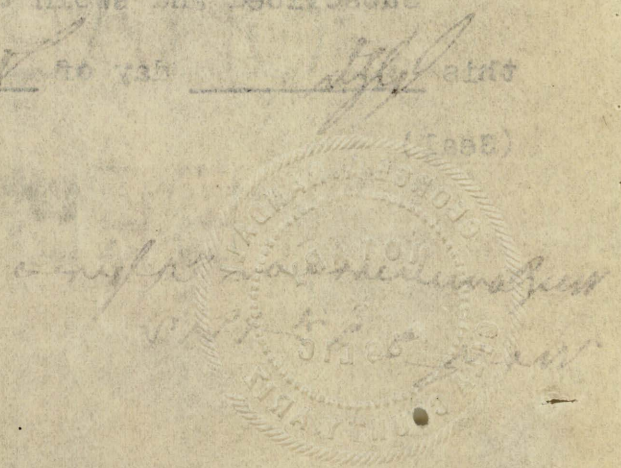
H. F. Butler  
Coclaimant

Subscribed and sworn to by the above named persons before me

this 11th day of July, 1908.

Howard G. Hopkins

Notary Public



FINAL OATH OF U. S. MINERAL SURVEYOR.

I, Howard C. Hopkins, U. S. Mineral Surveyor, do solemnly swear that, in pursuance of instructions received from the United States Surveyor General for Arizona, dated May 16, 1910, I have, in strict conformity to the laws of the United States, the official regulations and instructions thereunder, and the instructions of said Surveyor-General, faithfully and correctly executed the survey of the Homestead Entry claim of W.C. Colcord, described as H. E. No. 014, List No. 473

situate in Tonto National Forest, Gila County, Arizona, and designated as Homestead Entry Survey No. 48, as represented in the foregoing field notes, which accurately show the boundaries of said Homestead Entry claim as distinctly marked by monuments on the ground, and described in List No. 473, as incorporated in the instructions for the survey, received from the Surveyor General, and that all the corners of said survey have been established and perpetuated in strict accordance with the law, official regulations and instructions thereunder; and I do further solemnly swear that the foregoing are the true and original field notes of said survey and my report therein.

Howard C. Hopkins  
U. S. Mineral Surveyor.

Subscribed and sworn to by the said Howard C. Hopkins, U. S. Mineral Surveyor. before me W.A. Comer this 8th day of July, 1910., ~~1909~~.

My Commission Expires Sept. 19, 1912.

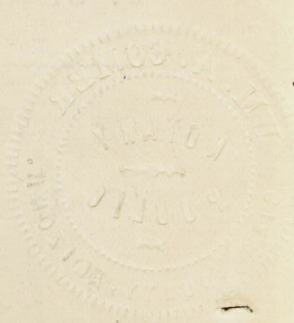
(Seal)

W.A. Comer  
Nolan P. Baker

Faint, mostly illegible text, possibly bleed-through from the reverse side of the page.

*[Handwritten signature]*

*[Faint handwritten notes or text]*



October 7, 1907.

The Honorable,

The Secretary of the Interior.

Sir:-

I have the honor to request that the following-described land (List 473), in the Tonto National Forest, Arizona, be opened to entry in accordance with the Act of June 11, 1906 (34 Stat., 233):

Unsurveyed, which when surveyed will be approximately Township 10 north, Range 10 east, G. and S. R. meridian, Sections 23, 24, 25, and 26.

BEGINNING at intitial monument, a set red granite stone 20"x10"x6" in mound of stone, from which the north-west corner of W. C. Colcord's house bears S. 53°30'E., 4.20 chains (Witness trees: A 30" walnut bears S. 5°30'W., 1.30 chains and a 22" live oak bears N. 80°30'E., 3.61 chains); extending thence S. 17°W., 11 chains; thence S. 63°E., 41 chains; thence S. 77°30'E., 40 chains; thence N. 17°E., 11 chains; thence N. 77°30'W., 40 chains; thence N. 63°W., 18 chains; thence N. 25°30'W., 31 chains; thence N. 63°W., 23 chains; thence S. 25°30'W., 31 chains to point of beginning. Variation 14°30'E.

Approximately 160 acres.

Wm. C. Colcord, Payson, Ariz., applied on February 18, 1907, for this tract.

I have the honor to be, Sir,

Very respectfully,

Your obedient servant,

(Signed) James Wilson,

Secretary.  
A.R.

W. J. M.  
G. F. P.





U. S. SURVEYOR-GENERAL'S FINAL CERTIFICATE  
ON FIELD NOTES.

--0--

DEPARTMENT OF THE INTERIOR,  
Office of U. S. Surveyor-General,

Phoenix, Arizona, Dec. 10, 1910.

I, U. S. Surveyor-General for the District of Arizona, do hereby certify that the foregoing transcript of the Field Notes, Return and Approval of the Survey of the Homestead Entry Claim of W. C. Colcord, described as Homestead Entry No. 014, List No. 473, situated in the Tonto National Forest, Gila County, Arizona, in Sections 23, 24, 25 and 26, T. 10 N., R., 10 E., G. & S. R. Mer., and designated as Homestead Entry Survey No. 48, have been correctly copied from the originals on file in this office; that said Field Notes furnish such an accurate description of said Homestead Entry Claim as will, if incorporated into a patent, serve fully to identify the premises and that such reference is made therein to natural objects or to permanent monuments as will perpetuate and fix the locus thereof.

Frank S. Ingalls,  
U. S. Surveyor-General for Arizona.

U. S. DEPARTMENT OF AGRICULTURE  
 OFFICE OF THE ASSISTANT SECRETARY  
 FOR TECHNICAL ASSISTANCE

--0--

DEPARTMENT OF THE INTERIOR  
 OFFICE OF THE ASSISTANT SECRETARY  
 FOR TECHNICAL ASSISTANCE

BUREAU OF LAND MANAGEMENT  
 DENVER, COLORADO

MAY 19 1964

MEMORANDUM FOR THE ASSISTANT SECRETARY  
 FOR TECHNICAL ASSISTANCE

SUBJECT: [Illegible]

[The following text is extremely faint and largely illegible due to bleed-through from the reverse side of the page. It appears to be a memorandum detailing technical assistance or a project report.]

Frank J. [Illegible]  
 [Illegible Title]

[Handwritten scribbles and marks at the bottom of the page, possibly initials or a signature.]

SURVEYOR-GENERAL'S CERTIFICATE OF APPROVAL  
OF  
FIELD NOTES AND SURVEY OF HOMESTEAD ENTRY CLAIM.

-----c0o-----

DEPARTMENT OF THE INTERIOR,  
Office of U. S. Surveyor-General,  
Phoenix, Arizona, Dec. 10, 1910.

I, U. S. Surveyor-General for the District of Arizona, do hereby certify that the foregoing and hereto attached Field Notes and Return of the Survey of the Homestead Entry Claim of W. C. Colcord, described as Homestead Entry No. 014, List No. 473, situated in the Tonto National Forest, Gila County,, Arizona, in Sections 23, 24, 25 and 26, T. 10 N., R. 10 E., G. & S. R. Mer., designated as Homestead Entry Survey No. 48, executed by Howard C. Hopkins, U. S. Mineral Surveyor, May 26 - 27, 1910, under my instructions dated May 16, 1910, have been critically examined and the necessary corrections and explanations made and the said Field Notes and Return and the Survey they describe are hereby approved. A true copy of the copy of the Field Notes of the preliminary survey of said Homestead Entry Claim by the Department of Agriculture is included in the Field Notes.

*Frank S. Dyer*  
U. S. Surveyor-General for Arizona.

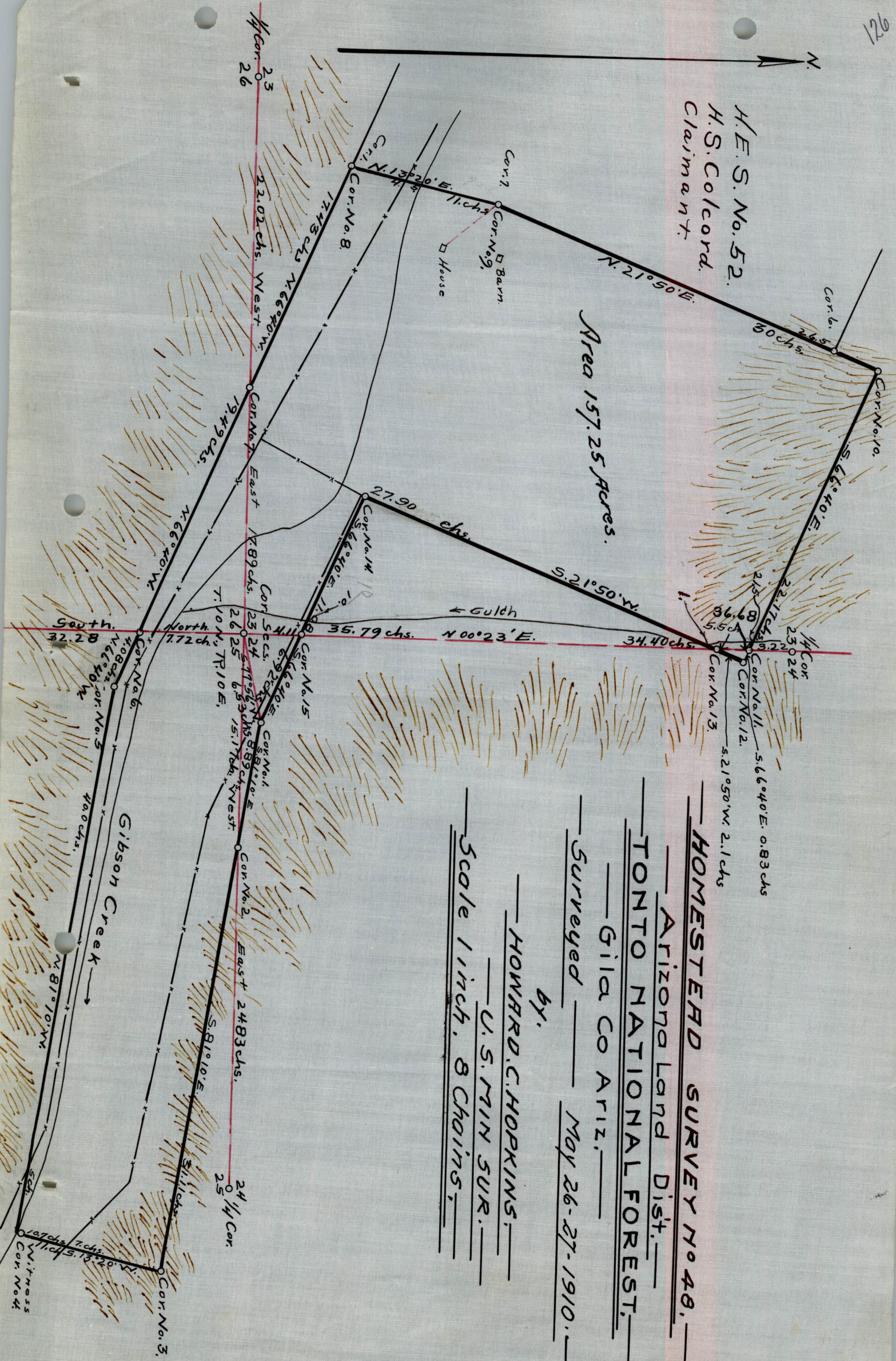
THE STATE OF ALABAMA  
 COUNTY OF [unclear]  
 I, [unclear], Clerk of the Court,  
 do hereby certify that the within and  
 foregoing is a true and correct copy  
 of the original as the same appears  
 in the files of the Court.  
 Witness my hand and the seal of the  
 Court at the City of Montgomery,  
 this [unclear] day of [unclear], 19[unclear].

[unclear]  
 [unclear]

11

H.E.S. No. 52.  
H.S. Colcord.  
Claimant.

Area 157.25 Acres.



HOMESTEAD SURVEY No 40.

Arizona Land Dist.

TONTO NATIONAL FOREST.

Gila Co ARIZ.

Surveyed May 26-27-1910.

by.

HOWARD C. HOPKINS.

U.S. MIN SUR.

Scale 1 inch. 8 Chains.

