

HES

0

0

6

4

8

ORIGINAL

171

Form 85
Sheet No. 1
(Revised July 1, 1914.)

U. S. DEPARTMENT OF AGRICULTURE
FOREST SERVICE

FIELD NOTES

OF
EXCHANGE
~~XXXXXXXXXXXXXXXXXXXX~~ SURVEY NO. 648

SITUATED IN THE CROOK NATIONAL FOREST

ADMINISTRATIVE DISTRICT NO. 3

In Section 3 , surveyed, Township 2 S., Range 12 E.

In Section 35 , surveyed, Township 1 S., Range 12 E.

and

~~Retrace~~ Retracement N/2 line between Secs. 34 & 35, T. 1 S., R. 12 E.

part of W/2 S. Bdy. Sec. 35, T. 1 S., R. 12 E.
of the

Gila & Salt River Base and Meridian.

State of
Arizona.

~~XXXXXXXXXXXXXXXXXXXX~~

~~XXXXXXXXXX~~

~~XXXXXXXXXXXXXXXXXXXXXXXXXXXXXXXXXXXXXXXXXXXXXXXXXXXXXXXXXXXX~~

~~XXXXXXXXXXXXXXXXXXXXXXXXXXXXXXXXXXXXXXXXXXXXXXXXXXXXXXXXXXXX~~

~~XXXXXXXXXXXXXXXXXXXX~~

~~XXXXXXXXXX~~

~~XXXXXXXXXXXXXXXXXXXXXXXXXXXXXXXXXXXXXXXXXXXXXXXXXXXXXXXXXXXX~~

~~XXXXXXXXXX~~

Survey executed by C. A. Long, District Engineer, Forest Service
[Forest Service Title.]

Under special instructions dated August 16 , 19 26

Survey commenced August 31, , 19 26

Survey completed September 8 , 19 26

Under Acts of March 20, 1922, and May 11, 1926.



172

OATH OF ASSISTANTS

We hereby certify that we assisted C. A. Long District Engineer, Forest Service, in surveying all those parts or portions of ~~Homestead Entry~~ Exchange Survey No. 648, in the State of Arizona which are represented in the following field notes as having been surveyed by him and under his direction; and that said survey has been in all respects, to the best of our knowledge and belief, well and faithfully surveyed, and the corner monuments established, according to the instructions furnished by the United States Surveyor General for Arizona.

Note: It would have been very expensive and inconvenient to appear before an officer to administer oaths to assistants; hence they were taken by the Surveyor.

Andronico Ramirez Chainman
Ramon my Zug Chainman

Subscribed and sworn to before me this 8th day of September, 1926

C. Long
District Engineer, Forest Service,

OATH OF SURVEYOR

I, C. A. Long, District Engineer, Forest Service [Forest Service Title.]

do solemnly swear that, in strict conformity with the special instructions of the United States Surveyor General for Office of Public Land Surveys Dated August 16, 1926, and the laws of the United States, I have well, faithfully, and truly, in my own proper person, surveyed a tract of land

~~xx No. xxxxxxxxxxxx, dated xxxxxxxxxxxx 19xxxx,~~ for Exchange the same to be known as ~~Homestead Entry~~ Exchange Survey No. 648 situated within the Crook National Forest, in surveyed Section 3, Township 2 S., Range 12 E., and surveyed Section 35, Township 1 S., Range 12 E.

of the Gila & Salt River Base & meridian, Arizona, and the related retracements and resurveys and section subdivisions, which are represented in the following field notes as having been surveyed by me; and I further solemnly swear that all the corners of said survey have been established and perpetuated in strict accordance with the stated special instructions, and in the specific manner described in the field notes, and that the following are the original field notes of such

C. Long
District Engineer, Forest Service. [Forest Service Title.]

Subscribed and sworn to before me this 30th day of September, 1926.

Bonnie M. Brewer
Notary Public.



My Commission Expires: 9/30/28

EXCHANGE
~~HOMESTEAD ENTRY~~ SURVEY NO. 648

CROOK NATIONAL FOREST

STATE OF ARIZONA

Chains

The tract of land embraced in this survey is largely occupied and improved by the Magma Copper Company, which it is proposed to grant to the said company in exchange for an equal value of timber land desired by the Forest Service.

The lands embraced in this survey are situated in Sec. 3, T. 2 S., R. 12 E., and Sec. 35, T. 1 S., R. 12 E., Gila and Salt River Base and Meridian, Crook National Forest, Arizona.

Surveyed under special instructions from the Office of Public Surveys for the State of Arizona, dated August 16, 1926, and in accordance with the Acts of March 20, 1922, and May 11, 1926.

The survey commenced August 31, 1926, and was executed with a Buff and Buff Transit No. 10802, equipped with a Smith solar attachment.

I test the adjustments of the transit and make all necessary corrections.

All distances are horizontal, and were reduced from measurements made directly on the slopes with a 500 link steel tape. The slope angles were determined with a clinometer.

August 31, 1926.

At the 1/4 section Cor. on the South boundary of Sec. 35, T. 1 S., R. 12 E., Gila and Salt River Base and Meridian, hereinafter described, in Latitude $33^{\circ}17'30''$ N., Longitude $111^{\circ}06'18''$ W. from township plat of T. 1 S., R. 12 E., Gila and Salt River Base and Meridian, accepted by the Commissioner on January 22, 1926, I observe Polaris as follows: Reference mark is to right of star.

174

EXCHANGE
HOMESTEAD ENTRY SURVEY NO. 648

CROOK NATIONAL FOREST

2.

STATE OF ARIZONA

Chains	Watch time	Telescope	Angle from Star to Right
	6h 26m 05s	Direct	41° 48' 00"
	6h 28m 30s	Reversed	41° 47' 00"
<p>My watch was compared with Western Union time today and made to read correct 105th meridian standard time, which by the difference in longitude at this point is 24m 26s fast on l.m.t. (1)</p>			
<p>G.M.T. U.C. Polaris, Aug. 31, 1926 (Civil date) 3h01m36s a.m.</p>			
	Sideral Correction		<u>01m12s</u>
			3h00m24s
	l.m.t. of first observation, plus 12 hrs.		<u>18h01m39s</u>
	Hour angle		15h01m15s
	Azimuth of star from first observation		180° 55' 54"
		Plus	<u>41° 48' 00"</u>
	Azimuth of mark	=	222° 43' 54"
		-	<u>180° 00' 00"</u>
	Bearing of mark		N. 42° 43' 54" E.
<p>(2)</p>			
<p>G.M.T. U. C. Polaris, Aug. 31, 1926 (Civil date) 3h01'36" a.m.</p>			
	Sideral Correction		<u>01'12"</u>
			3h00'24"
	l.m.t. of second obsn. plus 12 hrs.		<u>18h04'04"</u>
	Hour angle		15h03'40"
	Azimuth of star from second obsn.		180° 56' 27"
		Plus	<u>41° 47' 00"</u>
	Azimuth of mark	=	222° 43' 27"
		-	<u>180° 00' 00"</u>
	Bearing of mark		N. 42° 43' 27" E.
<p>The mean of the two observations gives the bearing of reference mark as N. 42° 43' 40" E., and from which the courses of this survey are referred.</p>			

EXCHANGE
~~HOMESTEAD ENTRY~~ SURVEY NO. 648

CROOK NATIONAL FOREST

STATE OF ARIZONA

Chains

September 2, 1926.

RETRACEMENTS

Beginning at the 1/4 Sec. Cor. on the South boundary of Sec. 35, T. 1 S., R. 12 E., Gila and Salt River Base and Meridian, which is an iron post with brass cap, marked and witnessed as described by the Office of Public Surveys of Phoenix, Arizona.

Thence N. 89°55' W.

On the record course, along South boundary of Sec. 35.

39.52 Fall 2 lks. north of the original Cor. of Secs. 34 and 35, T. 1 S., R. 12 E., ^(39.50 record) now Angle Pt. which is a trachite stone alongside of which there is an iron post with brass cap, marked and witnessed as described by the Office of Public Surveys.

True course N. 89°57'00" W. 39.52 chs.

From the 1/4 Sec. Cor. between Secs. 34 and 35, T. 1 S., R. 12 E., Gila and Salt River Base and Meridian, which is an iron post marked and witnessed as described by the Office of Public Surveys.

Thence N. 0°01'00" W.

Retracing line between Secs. 34 and 35. The Cor. of Secs. 26, 27, 34 and 35 being plainly visible.

18.60 Set temporary point for Cor. No. 1 E.S. 648.

40.03 Intersect the Cor. of Secs. 26, 27, 34 and 35, which is an iron post firmly set, marked and witnessed as described by the Office of Public Surveys.

True course N. 0°01'00" W. 40.03 chs.

September 3, 1926.

From Cor. No. 10, addition to Superior Townsite.

Which is also the NE. Cor. of the Ispeming Lode claim, alongside of which there is an iron post with

176

EXCHANGE
~~HOMESTEAD ENTRY~~ SURVEY NO. 648

CROOK NATIONAL FOREST

4.

STATE OF ARIZONA

Chains

brass cap, marked and witnessed as described by the Office of Public Surveys.

Thence S. 04°30' W.

On the record course and distance along the West boundary of addition to Superior Townsite and the East boundary of Ispeming Lode claim.

17.56 The record distance for Cor. #1 of the addition to the Townsite of Superior. This point falls in middle of street and the corner has been destroyed in grading the street. Set temporary point for Cor. No. 1 of the addition to the Townsite of Superior.

Thence N. 79°51'00" E.

On the record course from Cor. 1 - 2 of the addition to the Townsite of Superior, measuring from the temporary point previously set.

12.12 Set temporary point from which Cor. No. 2, addition to the Townsite of Superior, which is an iron post with brass cap flush with street level, marked and witnessed as described by the office of Public Surveys.

Bears N. 52°12'00" W. 4 lks. distant.

I compute the move for temporary point set for Cor. No. 1 A.S.T. as follows:

$X : 4 = 17.56 : 29.68$, hence $X = .24$ lks. I return to the temporary point set for Cor. #1 A.S.T. and move it .24 lks. N. 52°12'00" W. and set for Cor. No. 1 A.S.T. a limestone 6x14x18", marked with a / and A.S.T. on flat side and bury same 6" below the street level, over the / I set a 1" pipe 6" long showing flush with street level, whence the NW. Cor. of concrete coping around porch of adobe house bears S. 01°24'00" W. 69 lks. distant.

An electric light pole on N. side of street bears

CROOK NATIONAL FOREST

STATE OF ARIZONA

5.

Chains'

N. $48^{\circ}08'00''$ E. 54 lks. dist.

The NE. Cor. of an adobe house belonging to Jim Garrett bears S. $49^{\circ}11'00''$ W. 153 lks. dist.

The true bearing of line 10 - 1 A.S.T. is S. $04^{\circ}34'00''$ W. 17.54 chains and line 1 - 2 A.S.T. is N. $79^{\circ}47'00''$ E. 12.11 chains distant.

From the NE. Cor. of the Magma Arizona Railroad Station Grounds easement at Superior, Arizona, which is a 4x4" wooden post, 24" above ground with a tack in center. Thence N. $62^{\circ}20'$ W.

On the record course given in the easement.

6.06 Intersect the remains of a 4"x4" wooden post, marking the NW. Cor. of the Magma Arizona Railroad Station Grounds Easement. To perpetuate the Cor., I set a 2" iron post with brass cap, 26" in the ground, deposit a porphyry stone 4x4x5", marked with a /, marked M.A.R.C. in SE. quadrant of brass cap and 1926 on South rim.

Raise a mound of stone 3 ft. base 2 ft. high South of Cor., whence the original Cor. to Secs. 34 and 35, now an angle pt. bears N. $70^{\circ}33'00''$ W. 11.22 chs. (Record N. $70^{\circ}40'30''$ W. 11.25 chs.).

Thence S. $27^{\circ}40'00''$ W.

On the record course and distance along the West boundary of the Magma, Arizona Railroad Station Grounds Easement.

12.81 The record distance for point of curve to the right having a radius of 673.7 feet, and a central angle of $34^{\circ}24'30''$, I set a temporary point at this place for point of curve (call this point A). The computed bearing and distance of the long chord of given

EXCHANGE
~~HOMESTEAD~~ ENTRY SURVEY NO. 648

CROOK NATIONAL FOREST

STATE OF ARIZONA

6.

Chains

radius and central angle gives this as S. $44^{\circ}52'15''$ W.
398.5 feet.

Thence S. $44^{\circ}52'15''$ W.

On the computed bearing and distance of the long chord of a curve to the right having a radius of 673.7 feet and a central angle of $34^{\circ}24'30''$.

6.04 The record distance.

To Point of tangency of a curve of 673.7 ft. radius and a central angle of $34^{\circ}24'30''$. Set temporary point for P.T. (call this point B).

Thence S. $62^{\circ}04'30''$ W.

On the record course and distance of a tangent connecting two curves on the West boundary of the Magma Arizona Railroad Station Grounds Easement at Superior, Arizona.

0.73 The record distance to P.C. of a curve of 473.7 ft. radius and a central angle of $20^{\circ}38'30''$ set temporary point for P.C. (call this point C).

Thence S. $51^{\circ}45'15''$ W.

On the computed long chord of a curve to the left having a radius of 473.7 feet and a central angle of $20^{\circ}38'30''$.

2.57 The record distance to P.T. of a curve having a radius of 473.7 feet and central angle of $20^{\circ}38'30''$, set temporary point from which the original monument, marking this P.T., bears N. $64^{\circ}00'00''$ W. 936 Chs. distant. The original monument is a 4"x4" wooden post 2 ft. above ground and badly decayed. I restore this Cor. as follows: Set a porphyry stone 10x12x24", two-thirds in the ground, over a red granite stone 3x5x6" marked with a \swarrow , Cor. stone marked with a \swarrow on top and M.A.R.C. on SE. face. Place old post alongside. No witnesses, (call this point D). Point "D" will be

CROOK NATIONAL FOREST

STATE OF ARIZONA

7.

Chains

Cor. No. 19 of E.S. No. 648.

I compute the moves for Points A, B, and C as follows:

For Point A. $X : .036 = 12.81 : 22.15$, hence $X = .0208$ chs.For Point B. $X : .036 = 18.85 : 22.15$, hence $X = .0306$ chs.For Point C. $X : .036 = 19.58 : 22.15$, hence $X = .0318$ chs.

I move Points A, B and C, N. $64^{\circ}00'00''$ W., .0208, .0306, and .0318 chs. respectively, which by computation gives the following bearings and distances between these points.

NW. Cor to Point A	S. $27^{\circ}45'00''$ W.	12.81 chs.
Points A to B	S. $44^{\circ}55'00''$ W.	6.04 "
Points B to C	S. $62^{\circ}10'00''$ W.	0.73 "
Points C to D	S. $51^{\circ}50'00''$ W.	2.56 "

At Point "A" I deposit a sandstone $2x2x3''$, marked with a \swarrow 20" in the ground, over which set a granite stone $8x14x30''$, marked with a \swarrow on top and M.A.R.C. on SE. face. Raise mound of stone 3 ft. base, 2 ft. high W. of Cor., whence the NE. Cor. of galvanized iron scale house of the Magma Arizona Railroad bears S. $45^{\circ}20'00''$ W. 80 lks. distant

The NW. Cor. of galvanized iron freight depot of the Magma Arizona Railroad bears S. $19^{\circ}45'00''$ E. 120 lks. distant. Point "A" will be Cor. No. 16 of E. S. No. 648.

At Point "B" I deposit a red granite stone $2x3x4''$, 18" in the ground, over which I set a red quartzite stone $10x14x24''$, marked with a \swarrow on top and M.A.R.C. on SE. face. Raise mound of stone 3 ft. base, 2 ft. high NW. of Cor. No other witnesses available. Point "B" will be Cor. No. 17 of ES. No. 648.

At Point "C" I deposit a granite stone $3x3x4''$, marked with a \swarrow 18" in the ground, over which set a porphyry stone $14x12x24''$, marked with a \swarrow on top and M.A.R.C.

EXCHANGE
HOMESTEAD ENTRY SURVEY NO. 648

CROOK NATIONAL FOREST

.8.

STATE OF ARIZONA

Chains on SE. face. Raise mound of stone 3 ft. base, 2 ft. high, NW. of Cor. No other witnesses available.

Point "C" will be Cor. No. 18 of E.S. No. 648.

September 4, 1926.

Beginning at Point "D" on the West boundary of Magma Arizona Railroad Station Grounds Easement at Superior, Arizona, and what will be Cor. #19, of E. S. No. 648, here to fore described.

Thence S. 41°29'00" W.

Along West boundary Magma Arizona Railroad Station Grounds Easement at Superior, Arizona, the SW. Cor. being plainly visible.

4.98 Intersect the SW. Cor. of Magma Arizona Railroad Station Grounds Easement at Superior, Arizona, which is a 4"x4" wooden post with tack in center, firmly set in mound of stone and projecting 24" above ground.

Thence S. 48°34'00" E.

On record course along South boundary Magma Arizona Railroad Station Grounds Easement at Superior, Arizona.

9.58 Fall 3/10 lk. North of the SE. Cor. of Magma, Arizona Railroad Station Grounds Easement at Superior, Arizona, which is a 4"x4" wooden post, 24" above ground and badly decayed. I restore this Cor. by depositing a limestone 1"x4"x6", marked with a / 18 ins. in the ground, over which I set a limestone 10x12x24", marked a / on top and M.A.R.C. on North face. Raise mound of stone 3 ft. base 2 ft. high North of Cor. No other witnesses available.

True course of this line is S. 48°33'00" E. 9.58 chs.

From Cor. #3, H.E.S., 439, which is a basalt stone showing

EXCHANGE
HOMESTEAD ENTRY SURVEY NO. 648

181

CROOK NATIONAL FOREST

STATE OF ARIZONA

9.

- Chains (10x12x5" record)
5x12x16" above ground, marked and witnessed as described in the notes of that survey.
- Thence S. 57°22'00" W.
- On the record course and distance, on line 3 - 2 of HES. No. 439.
- 14.66 Fall 2-2/10 lks. S. 32°38'00" E. of Cor. No. 2 of HES. No. 439, which is a diorite stone showing 6x10x12" above ground, marked and witnessed as described in the notes of HES. No. 439.
- Thence N. 57°27'00" E.
- On a true course on line 2 - 3 of HES. No. 439.
- 7.49 Intersect the South boundary of Magma Arizona Railroad Station Grounds Easement, from which the SW. Cor. of same bears N. 48°33'00" W. 5.46 chs. and the SE. Cor. of same bears S. 48°33'00" E. 4.12 chs. distant. Set temporary point for Cor. No. 21 of ES. No. 648.
- 14.66 Cor. No. 3 of HES. No. 439, the place of beginning.
-
- From Cor. No. 2 HES. No. 439 heretofore described.
- Thence S. 32°11'00" W.
- On the record course and distance of line 2 - 1 of HES. No. 439.
- 7.24 Intersect Cor. No. 1 of HES. No. 439, which is also Cor. No. 1 of HES. 438, which is a diorite stone showing 10x8x10" above ground, marked and witnessed as described in the notes of HES. No. 438 and 439.

NOTE

The instructions for the survey specified that Sec. 35, T. 1 S., R. 12 E., will be subdivided in order to place the north boundary of this survey on the latitudinal lines through the SW. $\frac{1}{4}$ NW $\frac{1}{4}$ and the SE $\frac{1}{4}$ NW $\frac{1}{4}$. However, this was not done as it was

EXCHANGE
HOMESTEAD ENTRY SURVEY NO. 648

CROOK NATIONAL FOREST

10.

STATE OF ARIZONA

Chains

determined on the ground by the Forest Service and Magma Copper Co. that such a boundary would be undesirable.

Cor. 1 of Silver Tip Extension M.S. 3144. Corners 1, 3 and 4 of Reddy Pay M.S. 3144.

Corners 1; 2, 3 and 4 of Jumbo M.S. No. 3144, and Cor.

#9 of the addition to Superior Townsite was submerged to a depth of 10 to 30 feet in the tailings from the mill, and these lines were not retraced as it was impossible to do so; furthermore some of these mill site boundaries were retraced by Sidney E. Blout, U. S.

Surveyor in connection with the survey of Addition to Superior Townsite in June, 1917, and found to be well within limits. I therefore adopt ~~in~~ the record courses and distances in this survey for the purpose of closing the tract and assign corner numbers at the appropriate angle points without actually setting corners 3, 5 and 6 of this tract.

September 5, 1926.

BOUNDARIES OF E. S. NO. 648

(& 35

which is also a closing corner on the line bet. Secs. 34 For Cor. No. 1 of this survey, I deposit a diorite stone

3x3x4", marked with a /, 26 ins. in the ground, over which I set a 2" iron post 36" long, with brass cap, marked 1926 on South rim, CC on closing line and 1 ES 648 in SE. quadrant, and T 1 S R 12 S 34 in W. half. Raise a mound of stone 3 ft. base 2 ft. high on closing line. Pits impracticable. No other witnesses available.

The Cor. to Secs. 26 - 27, 34, and 35, T. 1 S., R. 12 E. heretofore described, bears N. 0°01'00" W. 21.43 chs. distant.

The 1/4 Cor. between Secs. 34 and 35, T. 1 S., R. 12 E.

EXCHANGE
HOMESTEAD ENTRY SURVEY NO. 648

CROOK NATIONAL FOREST

10.

STATE OF ARIZONA

Chains

determined on the ground by the Forest Service and Magma Copper Co. that such a boundary would be undesirable.

Cor. 1 of Silver Tip Extension M.S. 3144. Corners 1, 3 and 4 of Reddy Pay M.S. 3144.

Corners 1, 2, 3 and 4 of Jumbo M.S. No. 3144, and Cor.

#9 of the addition to Superior Townsite was submerged to a depth of 10 to 30 feet in the tailings from the mill, and these lines were not retraced as it was impossible to do so; furthermore some of these mill site boundaries were retraced by Sidney E. Blout, U. S.

Surveyor in connection with the survey of Addition to Superior Townsite in June, 1917, and found to be well within limits. I therefore adopt ~~in~~ the record courses and distances in this survey for the purpose of closing the tract and assign corner numbers at the appropriate angle points without actually setting corners 3, 5 and 6 of this tract.

September 5, 1926.

BOUNDARIES OF E. S. NO. 648 (& 35
which is also a closing corner on the line bet. Secs. 34
For Cor. No. 1 of this survey, I deposit a diorite stone

3x3x4", marked with a /, 26 ins. in the ground, over which I set a 2" iron post 36" long, with brass cap, marked 1926 on South rim, CC on closing line and 1 ES 648 in SE. quadrant, and T 1 S R 12 S 34 in W. half. Raise a mound of stone 3 ft. base 2 ft. high on closing line. Pits impracticable. No other witnesses available.

The Cor. to Secs. 26 - 27, 34, and 35, T. 1 S., R. 12 E. heretofore described, bears N. 0°01'00" W. 21.43 chs. distant.

The 1/4 Cor. between Secs. 34 and 35, T. 1 S., R. 12 E.

Chains

here to fore described, bears S. $0^{\circ}01'00''$ E. 18.60 chs.
distant.

Magnetic declination at 8 a.m. $15^{\circ}30'00''$ E. Mean
magnetic declination $15^{\circ}27'00''$ E.

Latitude $33^{\circ}18'08''$ N., Longitude $111^{\circ}06'49''$ W. from
Public Survey office plat of T. 1 S., R. 12 E.

Thence S. $77^{\circ}39'00''$ E.

Descend steep SE. slope over open land.

1.60 Dry wash 20 lks. wide, course S. $25^{\circ}00'00''$ W.

Ascend NW. slope.

13.00 Top of ridge bears N. $30^{\circ}00'00''$ E., and S. $30^{\circ}00'00''$ W.

Descend.

17.50 Dry wash 20 lks. wide, course S. $20^{\circ}00'00''$ W.

Ascend.

20.00 Top of ridge bears N. $20^{\circ}00'00''$ E., and S. $20^{\circ}00'00''$ W.

Descend.

22.00 Dry wash 10 lks. wide, course S. $30^{\circ}00'00''$ W.

Ascend.

25.00 Top of ridge bears N. $30^{\circ}00'00''$ E., and S. $30^{\circ}00'00''$ W.

Descend.

28.31 To Cor. No. 2, identical with Cor. No. 2 of Silver Tip

Extension M. S. #3144, which is a wooden post, 4"x4"x24"

above ground with tack in center and firmly set in

mound of stone; alongside of post to the west I set a

limestone 10x14x28" marked 2 ES 648 on SW. face.

Raise mound of stone 4 ft. base, 3 ft. high around Cor.

Pit's impracticable; no other witnesses available.

Thence S. $13^{\circ}43'00''$ E.

Adopting the record course and distance of line 2 - 1
of Silver Tip Extension M.S. No. 3144, without actually
running the line.

5.30 To Cor. No. 3, identical with Cor. No. 1 of Silver Tip

184

EXCHANGE
HOMESTEAD ENTRY SURVEY NO. 648.

CROOK NATIONAL FOREST

12.

STATE OF ARIZONA

Chains

Extension M.S. No. 3144. This point falls in tailings pond and Cor. is buried about 15 ft. deep. No Cor. set at this point for Cor. No. 3 of this survey.

Thence S. 76°03'00" W.

Adopting the record course and distance from Cor. 1 Silver Tip Extension M.S. No. 3144 to Cor. 2 Reddy Pay M.S. No. 3144, without actually running the line.

2.13 To Cor. No. 4, identical with Cor. No. 2 Reddy Pay M.S. No. 3144 and Cor. No. 4 Horseshoe M.S. No. 3144, which is a wooden post 4"x4"x24" above ground, with a tack in center, and firmly set in mound of stone. Alongside this post I set a conglomerate stone 12x16x24" in a mound of stone 4 ft. base 3 ft. high and mark the Cor. stone 4, ES 648 on NW. face. No witnesses available, pits impracticable.

Thence S. 13°58'00" E.

Adopting the record course and distance between Reddy Pay M.S. No. 3144 and Horseshoe M.S. No. 3144, without actually running the line as it is in the tailings pond.

9.417 Leave line between Reddy Pay M.S. No. 3144 and Horseshoe M.S. No. 3144, and continue on the record course between Jumbo M.S. No. 3144 and Fraction M.S. No. 3144.

18.83 To Cor. No. 5, identical with Cor. No. 1 of Jumbo M. S. No. 3144 and Fraction M.S. No. 3144. This point falls in tailings pond 30 to 40 feet deep. No Cor. set for E.S. No. 648.

Thence N. 76°03'00" E.

Adopting the record course and distance along line 1 - 4 of Jumbo M.S. No. 3144, without actually running the

EXCHANGE
HOMESTEAD ENTRY SURVEY NO. 648

CROOK NATIONAL FOREST

STATE OF ARIZONA

Chains line.

5.31 Cor. No. 4 of Junbo M.S. No. 3144, which is also Cor. No. 1 of Monarch M.S. No. 3144. Thence along line 1 - 4 of Monarch M. S. No. 3144, without actually running the line.

7.49 To Cor. No. 6, identical with Cor. No. 9 of the addition to the Townsite of Superior, which Cor. is adopted as Cor. No. 6 of this survey, without setting a corner as it is covered with tailings to a depth of about 10 ft.

Thence S. 87°06'00" E.

Adopting the record course and distance of line 9 - 10 of the addition to the Townsite of Superior, without actually running the line.

1.68 To Cor. No. 7, identical with Cor. No. 10 of the addition to the Townsite of Superior, which is also the NE. Cor. of the Ispheming Lode claim heretofore described. West and alongside of this corner I set a limestone 8x16x24" in a mound of stone and mark same 7 ES 648. No witnesses available.

September 6, 1926.

Thence S. 04°34'00" W.

Along line 10 - 1 of the Addition to the Townsite of Superior; and along the East boundary of the Ispheming Lode claim; wire fence is 1 lk. E. and bears S. 04°34'00" W.

0.30 Cross to East side of fence.

5.00 Cross to West side of fence at corner from which fence bears N. 30°00'00" E.

7.20 Dry wash 10 lks. wide, course S. 20°00'00" W.

10.15 To Cor. No. 8. Deposit a limestone 2x2x3", marked with

186

EXCHANGE
~~HOMESTEAD ENTRY~~ SURVEY NO. 648

CROOK NATIONAL FOREST

14.

STATE OF ARIZONA

Chains

a /, over which I set an iron post 36 ins. long, with brass cap, 26 ins. in the ground, marked on brass cap 8 ES 648 on West half and A.S.T. on East half and 1926 on South rim. Raise mound of stone 3 ft. base 2 ft. high West of Cor., whence a granite boulder in place showing 3 ft. x 4 ft. x 2 ft. above ground and marked 8 / ES 648 B.O. bears S. 23°10'00" E. 29 lks. distant. Cor. No. 1 of the addition to the Townsite of Superior heretofore described, bears S. 04°34'00" W. 7.39 chs. distant.

Thence S. 51°52'00" W.

13.75 To Cor. No. 9.

Deposit a limestone 3x3x4" marked with a / 26 ins. in the ground, over which I set an iron post 2" dia. 36" long, with brass cap marked 1926 on S. rim and 9 ES 648 on West side. Raise mound of stone 3 ft. base, 2 ft. high West of Cor., whence the NW. Cor. of adobe house owned by Sedillio Lopez bears S. 77°45'00" E. 37½ lks. distant. No other witnesses available, pits impracticable.

Thence S. 23°55'00" W.

1.10 Wire fence bears S. 75°00'00" W. and N. 75°00'00" E.

2.25 Wire fence bears S. 75°00'00" W. and N. 75°00'00" E.

3.40 Wire fence bears S. 75°00'00" W. and N. 75°00'00" E.

6.49 To Cor. No. 10.

Deposit a limestone 3x4x4" marked with a / 26 ins. in the ground, over which set an iron post 36" long with brass cap marked 1926 on S. rim and 10 ES 648 on W. face. Raise mound of stone 3 ft. base 2 ft. high West of Cor. Pits impracticable; no other witnesses available.

Chains
7.32 Thence S. $37^{\circ}39'00''$ W.
To Cor. No. 11 and Closing Cor. on line between Secs. 3 and 35, Tps. 1 and 2 S., R. 12 E.
Deposit a limestone $2 \times 4 \times 4''$, marked with a \swarrow 18" in the ground, over which I set a limestone $10 \times 12 \times 26$ ins., marked with a \swarrow on top, CC on closing line and 11 ES 648 on West face. Raise mound of stone 3 ft. base, 2 ft. high on closing line, whence the SW. Cor. of a square well bears N. $69^{\circ}03'00''$ East 68 lks. distant. The original Cor. to Secs. 34 and 35, T. 1 S., R. 12 E., heretofore described, which is now an angle point, bears N. $89^{\circ}57'00''$ W. 21.05 chs. The $1/4$ Sec. Cor. on-South boundary Sec. 35, heretofore described, bears S. $89^{\circ}57'00''$ E. 18.47 chs.

Thence S. $06^{\circ}47'00''$ W.
3.00 Wire fence N. $80^{\circ}00'00''$ E. and S. $80^{\circ}00'00''$ W.
3.03 To Cor. No. 12.
Deposit a limestone $2 \times 3 \times 5''$, marked with a \swarrow 28" in the ground, over which set an iron post 2" dia. 36" long, with brass cap, marked 1926 on S. rim and 12 ES 648 on West side. Raise mound of stone 3 ft. base 2 ft. high West of Cor., whence a willow 14" dia. blazed and scribed 12 \swarrow ES 648 B.T. bears N. $62^{\circ}13'00''$ W. 58 lks. distant. SE. Cor. of galvanized iron pump house owned by the Magma Copper Co. bears N. $50^{\circ}18'00''$ W. 62 lks. distant. No other witnesses available.

September 7, 1926.
Thence S. $71^{\circ}33'00''$ W.
0.85 Cor. of wire fence, whence fences bear N. $80^{\circ}00'00''$ E. and S. $71^{\circ}33'00''$ W.
3.85 To Cor. No. 13.

CROOK NATIONAL FOREST

16.

STATE OF ARIZONA

Chains Deposit a limestone 4x4x5 ins., marked with a ∇ , 18 ins. in the ground, over which set a limestone 10x12x24 ins. marked with a ∇ on top and 13 ES 648 on north face. ~~the claim.~~ Raise mound of stone 3 ft. base, 2 ft. high, West of Cor. Pits impracticable; no other witnesses available.

Thence S. $42^{\circ}21'00''$ W.

Along West side of wire fence 2 lks. distant, which bears with line.

2.56 To Cor. No. 14, on North boundary Magma Arizona Railroad Station Grounds Easement, at Superior, Arizona.

Deposit a limestone 1x2x3", marked with a ∇ 28 ins. in the ground, over which set an iron post 2 ins. dia. 36 ins. long, with brass cap, marked 1926 on South rim, M.A.R.C. on SW. and 14 ES. 648 in NW. quadrant. Raise mound of stone 3 ft. base, 2 ft. high North of Cor.

The NE. Cor. of Magma Arizona Railroad Station Grounds Easement at Superior Arizona, heretofore described, bears S. $62^{\circ}20'00''$ E. 78 lks. distant. The NW. Cor. of Magma Arizona Railroad Station Grounds Easement, heretofore described, bears N. $62^{\circ}20'00''$ W. 5.28 chs. distant. No witnesses available.

Thence N. $62^{\circ}20'00''$ W.

Along N. boundary Magma Arizona Railroad Station Grounds Easement.

2.57 Spur Railroad track to Standard Oil Co. warehouse bears NW. and SE.

5.28 To Cor. No. 15, identical with the NW. Cor. of Magma Arizona Railroad Station Grounds Easement at Superior, Arizona, which is an iron post 2 ins. dia., 36 ins. long, set 26 ins. in the ground, over a porphyry stone 4x4x5", marked with a ∇ . The brass cap is marked 1926

CROOK NATIONAL FOREST

STATE OF ARIZONA

17.

Chains

on South rim and M.A.R.C. in SE. quadrant. I mark this brass cap 15 ES 648 in NW. quadrant for Cor. No. 15 of this survey, and raise a mound of stone 3 ft. base, 2 ft. high NW. of Cor.

The original Cor. to Secs. 34 and 35, T. 1 S., R. 12 E., which is now an angle point, bears N. $70^{\circ}33'00''$ W. 11.22 chs. (Record is N. $70^{\circ}40'30''$ W. 11.25 chs.). No witnesses available, pits impracticable.

Thence S. $27^{\circ}45'00''$ W.

Over open level land along the West boundary of Magma Arizona Railroad Station Grounds Easement.

12.81 To Cor. No. 16, identical with point A heretofore described, which is a granite stone $8 \times 14 \times 30''$, set 20" in the ground, over a sandstone $2 \times 2 \times 3$ ins., marked with a \swarrow . Cor. marked with a \swarrow on top and M.A.R.C. on SE. face, I mark the same stone 16 ES 648 on NW. face and raise a mound of stone 3 ft. base, 2 ft. high W. of Cor. Pits impracticable. Whence the NE. Cor. of galvanized iron scale house of the Magma Arizona Railroad bears S. $45^{\circ}20'00''$ W. 80 lks. distant. The NW. Cor. of galvanized iron freight depot of the Magma Arizona Railroad bears S. $19^{\circ}45'00''$ E. 120 lks. distant.

Thence S. $44^{\circ}55'00''$ W.

On the long chord of a curve to the right, having a radius of 673.6 feet, and a central angle of $34^{\circ}24'30''$. The actual boundary of the claim between corners 16 and 17 is the arc of a circle of the given radius and central angle.

6.04 To Cor. No. 17, identical with Point "B" heretofore described, which is a granite stone, $10 \times 14 \times 24''$, set 18 ins. in the ground, over a red granite stone $2 \times 3 \times 4''$ marked with a \swarrow .

EXCHANGE
~~HOMESTEAD ENTRY~~ SURVEY NO. 648

CROOK NATIONAL FOREST

18.

STATE OF ARIZONA

Chains

Cor. stone marked with a $\frac{1}{2}$ on top and M.A.R.C. on SE. face and witnessed by a mound of stone 3 ft. base 2 ft. high NW. of Cor. I mark the same stone 17 ES 648 on NW. face for Cor. No. 17 of this survey. No witnesses available.

Thence S. $62^{\circ}10'00''$ W.

On a tangent marking the West boundary of the Magma Arizona Railroad Station Grounds.

0.73

To Cor. No. 18, identical with Point "C" heretofore described, which is the P.C. for a curve to the left having a radius of 473.7 feet and a central angle of $20^{\circ}38'30''$. The Cor. stone is a stone $14 \times 12 \times 24$ " set 18 ins. in the ground, over a granite stone $3 \times 3 \times 4$ ", marked with a $\frac{1}{2}$. Cor. is marked M.A.R.C. on SE. face with a $\frac{1}{2}$ on top, and mound of stone 3 ft. base and 2 ft. high NW. of Cor. I mark this same stone 18 ES 648 on NW. face for Cor. No. 18 of this survey. No witnesses available.

Thence S. $51^{\circ}50'00''$ W.

On the long chord of a curve to the left, having a radius of 473.7 feet and a central angle of $20^{\circ}38'30''$. The actual boundary of the claim is the arc of a circle of the given radius and central angle.

2.56

To Cor. No. 19, identical with Point "D" heretofore described, which is a porphyry stone $10 \times 12 \times 24$ " set two-thirds in the ground, over a red granite stone $3 \times 5 \times 6$ ", marked with a $\frac{1}{2}$. Cor. stone marked with a $\frac{1}{2}$ on top and M.A.R.C. on SE. face. I mark this same stone 19 ES 648 on NW. face for Cor. No. 19 of this survey and raise a mound of stone 3 ft. base, 2 ft. high NW. of Cor. No witnesses available, pits impracticable.

Chains

September 8, 1926.

Thence S. $41^{\circ}29'00''$ W.

Along the W. boundary of Magma Arizona Railroad Station Grounds Easement at Superior.

4.98 To Cor. No. 20, identical with the SW. Cor. of the Magma Arizona Station Grounds Easement at Superior, heretofore described. SW. and alongside this Cor. I set a porphyry stone $12 \times 14 \times 24''$ in a mound of stone 4 ft. base, 4 ft. high, and mark same 20 ES 648. Pits impracticable, no other witnesses available.

Thence S. $48^{\circ}33'00''$ E.

Along South boundary of Magma Arizona Station Grounds Easement.

2.30 Center of Phoenix-Superior Highway bears N. $40^{\circ}00'00''$ E. and S. $40^{\circ}00'00''$ W.

5.46 To Cor. No. 21, on South boundary Magma Arizona Railroad Station Grounds Easement and also on line 2 - 3 of HES. No. 439. Deposit a porphyry stone $2 \times 2 \times 6''$, marked with a $\frac{1}{4}$ 16 ins. in the ground, over which set a porphyry stone $8 \times 14 \times 24$ ins., marked a $\frac{1}{4}$ on top and 21 ES 648 on W. face. Raise mound of stone 3 ft. base, 2 ft. high W. of Cor. Pits impracticable, no other witnesses available. Cor. No. 2 HES. 439 bears S. $57^{\circ}27'00''$ W. 7.49 chs. Cor. No. 3 HES. 439 bears N. $57^{\circ}27'00''$ E. 7.17 chs.

The SE. Cor. Magma Arizona Railroad Station grounds Easement, heretofore described, bears S. $48^{\circ}33'00''$ E. 4.12 chs.

Thence S. $57^{\circ}27'00''$ W.

Along line 3 - 2 of HES. 439.

7.49 To Cor. No. 22, identical with Cor. No. 2, of HES. 439.

Chains

NW. and alongside this Cor., I set a limestone 14x18x24", 16 ins. in the ground, marked 22 ES 648 on NW. face. Raise mound of stone 3 ft. base, 2 ft. high NW. of Cor. Pits impracticable, no witnesses available.

Thence S. 32°11'00" W.

Along line 2 - 1 of HES. 439.

7.24 To Cor. No. 23, identical with Cor. No. 1 HES. 439, and Cor. No. 1 HES. 438, heretofore described. NW. and alongside this Cor., I set a porphyry stone 10x12x24", 16 ins. in the ground, marked 23 ES 648 on NW. face. Raise mound of stone 3 ft. base, 2 ft. high in claim. Pits impracticable, no witnesses available.

Thence N. 85°28'00" W.

Over open, level land.

2.04 To Cor. No. 24, and Closing Cor., identical with the 1/4 Sec. Cor. between Secs. 3 and 4, T. 2 S., R. 12 E., which is a trachite stone showing 8x10x8 ins. above ground, marked 1/4 on W. face and a 1/4 on top. East and alongside of this Cor., I set a porphyry stone 10x18x24", 16 ins. in the ground, marked CC. on E. face, and 24 ES 648 on NE. face. Raise mound of stone 3 ft. base, 2 ft. high, on closing line. Pits impracticable, no witnesses available.

Thence N. 0°02'00" W.

Between Secs. 3 and 4, T. 2S, R. 12 E. N 1/2, adopting the record courses and distances for the purpose of closing this survey without actually running the line.

38.80 The Closing Cor. of Secs. 3 and 4 on the North boundary of T. 2 S., R. 12 E.

Thence S. 89°57'00" E.

EXCHANGE
HOMESTEAD ENTRY SURVEY NO.

193

CROOK NATIONAL FOREST

STATE OF Arizona

21.

Chains Along South boundary Sec. 34, T. 1 S., R. 12 E.,
adopting the record course and distance for the purpose
of closing this survey, without actually running the
line.

13.17 The Cor. of Secs. 34 and 35 on S. boundary T. 1 S., R.12 E.

Thence N. 0°01' W.
adopting the record course and distance between Secs.
34 and 35, T. 1 S., R. 12 E., S. 1/2, without actually
running the line.

40.00 To 1/4 Cor. between Secs. 34 and 35 heretofore described.

Thence N. 0°01' W.
On line between Secs. 34 and 35, N. 1/2. This line
was actually run.

18.60 To Cor. No. 1 and closing corner on line between Secs.
34 and 35, the place of beginning.

CONFLICTS

This survey conflicts with Horseshoe and Fraction M.S.
#3144, surveyed but not patented. The Metes and Bounds
as recorded
description of these claims/is as follows:

Horseshoe M.S. #3144

Corners	1-2	S. 76° - 03' W.	350.00 ft.
"	2-3	N. 13° - 55' W.	621.50 "
"	3-4	N. 76° - 03' E.	349.50 "
"	4-1	S. 13° - 58' E.	621.50 "
			Area 4.99 acres

Fraction M.S. #3144

Corners	1-2	S. 76° - 03' W.	348.30 ft.
"	2-3	N. 14° - 07' W.	621.50 "
"	3-4	N. 76° - 03' E.	350.00 "
"	4-1	S. 13° - 58' E.	621.50 "
			Area 4.98 acres

XXXXXXXXXXXXXXXXXXXXXXXXXXXXXXXXXXXXXXXXXXXXXXXXXXXXXXXXXXXXXXXXXXXXXXXXXXXX

Corners 1 and 4 of fraction M. S. #3144 and corner 1
of Horseshoe M. S. No. 3144 are covered by tailings from
the mine.

194

Form 85.
Sheet No. 2.

EXCHANGE
HOMESTEAD ENTRY SURVEY NO.

CROOK NATIONAL FOREST

STATE OF Arizona

22.

Chains	AREA	
Area in Sec. 35, T. 1 S., R. 12 E.	170.82 A.	170.83 A.
Area in conflict with Horseshoe M.S. Survey #3144	4.99	
" " " " Fraction " " "	4.98	
Area in Sec. 3, T. 2 S., R. 12 E.	60.83 A.	60.58 A.
Total Area - - - - -	231.65 A.	231.41 A.

Survey completed September 8, 1926.


 District Engineer, Forest Service.

195 23

STATE OF ARIZONA, County of Pinal, ss

E. G. Dentzer, being duly sworn, says he is the chief engineer of the Magma Arizona Railroad Company; that the survey of the tract described as follows:- beginning at a point which bears S. 48° 34' E., 100.00 feet from engineer's sta. L 1527 1/2 of the definite location of the Magma Arizona Railroad, thence N. 41° 26' E. 328.9 feet along the main line right of way, thence continuing along the main line right of way on a curve to the right with a radius of 473.7 feet for a distance of 170.64 feet, thence N. 62° 04' 30" E., 48.4 feet along the main line right of way, thence continuing along the main line right of way on a curve to the left with a radius of 673.7 feet for a distance of 404.58 feet, thence N. 27° 40' E., 845.60 feet along the main line right of way to a point which bears S. 62° 20' E., 100.00 feet from engineer's sta. L 1545 1/2 of the definite location of said railroad, and which point bears S. 70° 40' 30" E., 742.3 feet from what will be when surveyed the southwest corner of Sec. 35, T. 1 S., R. 12 E., G & S. R. B. & M., thence S. 62° 20' E., 400.00 feet, thence S. 27° 40' W., 1571.74 feet, thence S. 41° 26' W., 328.9 feet, thence N. 48° 34' W., 632.68 feet to the place of beginning, an area of 20 acres and no more; was made by him as chief engineer of the company, and under its authority, commencing on the 1st day of October, 1914, and ending on the 18th day of October, 1914; that the survey of the said tract is accurately represented on this plat and by the accompanying field notes; that the company has occupied no other grounds for similar purposes upon public lands within the section of 10 miles, from the 20th mile to the 30th mile, for which this selection is made; that, in his belief, the said grounds are actually, and to their entire extent, required by the Company for the necessary uses contemplated by the act of Congress approved March 3, 1875, entitled "An act granting to railroads the right of way thru the public lands of the United States."

E. G. Dentzer

Chief Engineer.

Subscribed and sworn to before me
this 20th day of October, 1914.

John J. Neary
Notary Public

My commission expires July 22nd, 1917.

2912

STATE OF VERMONT, County of Rich, ss.

E. G. Hartner, being duly sworn, says he is the chief engineer of the Lake Umbagog Company; that the survey of the tract described as follows: - beginning at a point in bears S. 43° 34' E., 100.00 feet from engineer's staff, N. 18° 40' 00" E. of the center of the main line of the Vermont Railroad, thence N. 41° 24' E., 523.9 feet along the main line right of way, thence containing along the main line right of way on a curve to the right with a radius of 473.7 feet, thence of 170.04 feet, thence N. 38° 04' 30" E., 48.4 feet along the main line right of way, thence containing along the main line right of way on a curve to the left with a radius of 573.7 feet for a distance of 404.58 feet, thence N. 27° 40' E., 845.60 feet along the main line right of way to a point which bears S. 72° 30' E., 100.00 feet from engineer's staff, N. 15° 35' 00" E. the distance of said railroad, and which point bears S. 70° 40' E., 743.7 feet from what will be hereafter referred to as the southwest corner of 366.33, D. 13.1, E. 13.1, N. 13.1, R. 2. The said tract is accurately represented on this plan by the accompanying field notes; that the company has acquired no other ground for similar purposes upon public lands within the section of 10 miles from the 30th mile to the 40th mile, for which this section is made; that, in its plan, the said company has retained, and to their entire extent, required by the company for the necessary uses contemplated by the act of Congress approved March 3, 1875, entitled "An act granting to railroads the right of way from the public lands of the United States."

E. G. Hartner

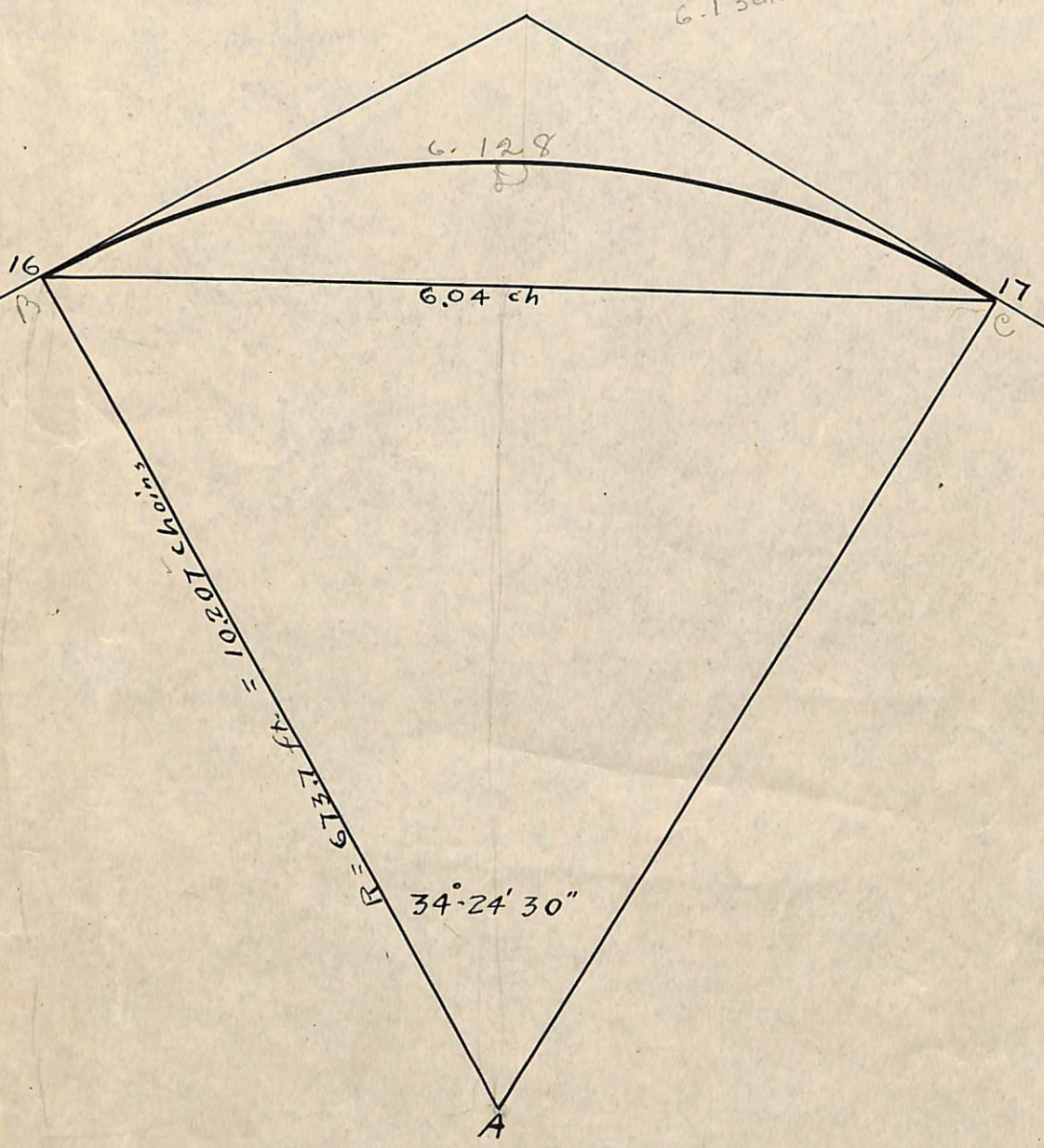
Chief Engineer

Subscribed and sworn to before me this 20th day of October, 1914.

John E. Henry
Notary Public

My commission expires July 22nd, 1915.

404.58 arc (of record)
6.13 chs.



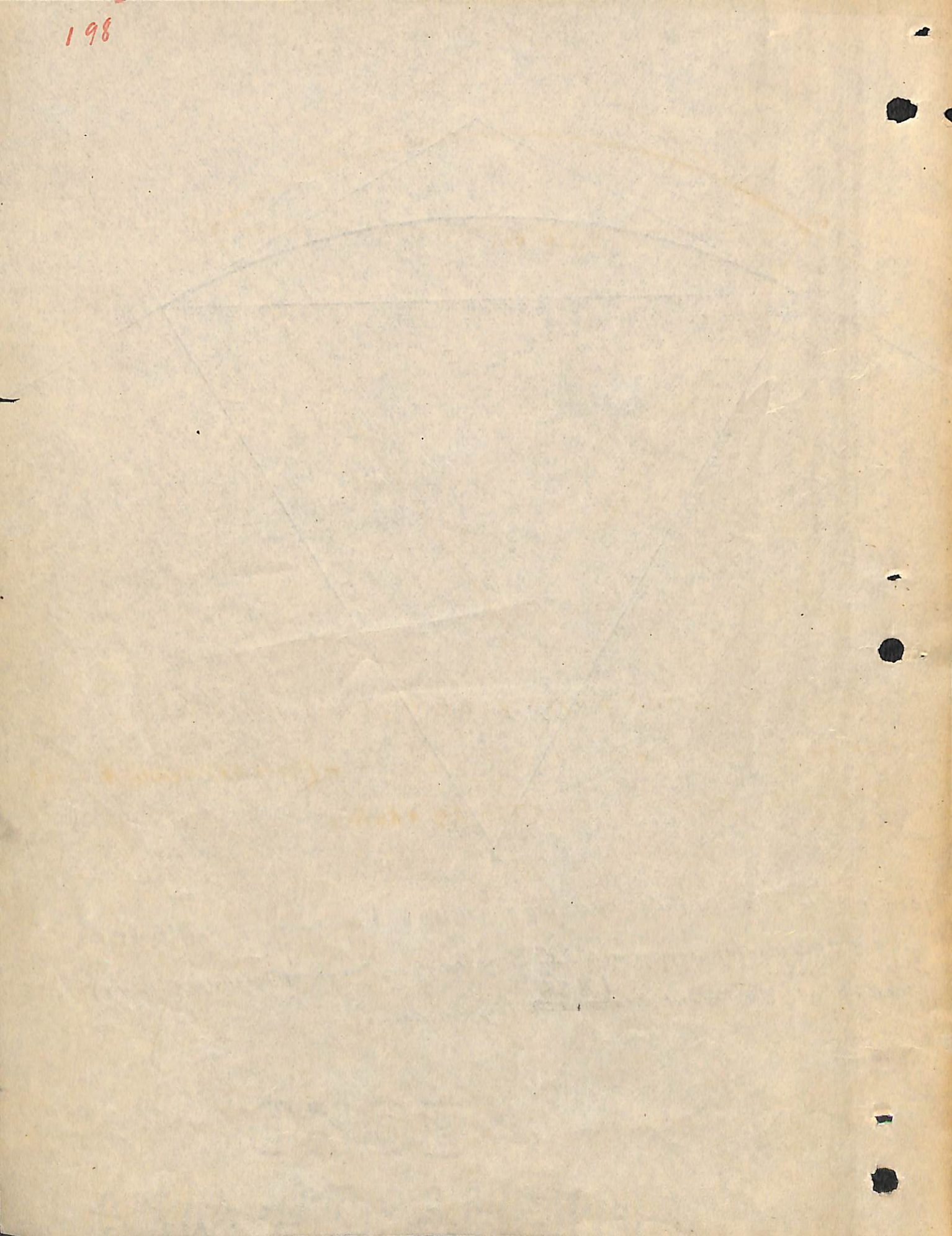
length of arc = .01745 x 10.207 x 34.408, hence arc = 6.12848 ch

Area of Circular Segment = $\frac{6.128}{2} \times 10.207 - (\text{area of Triangle A-16-17})$

area of Segment = ~~2.1177~~ 1.838 sq chains

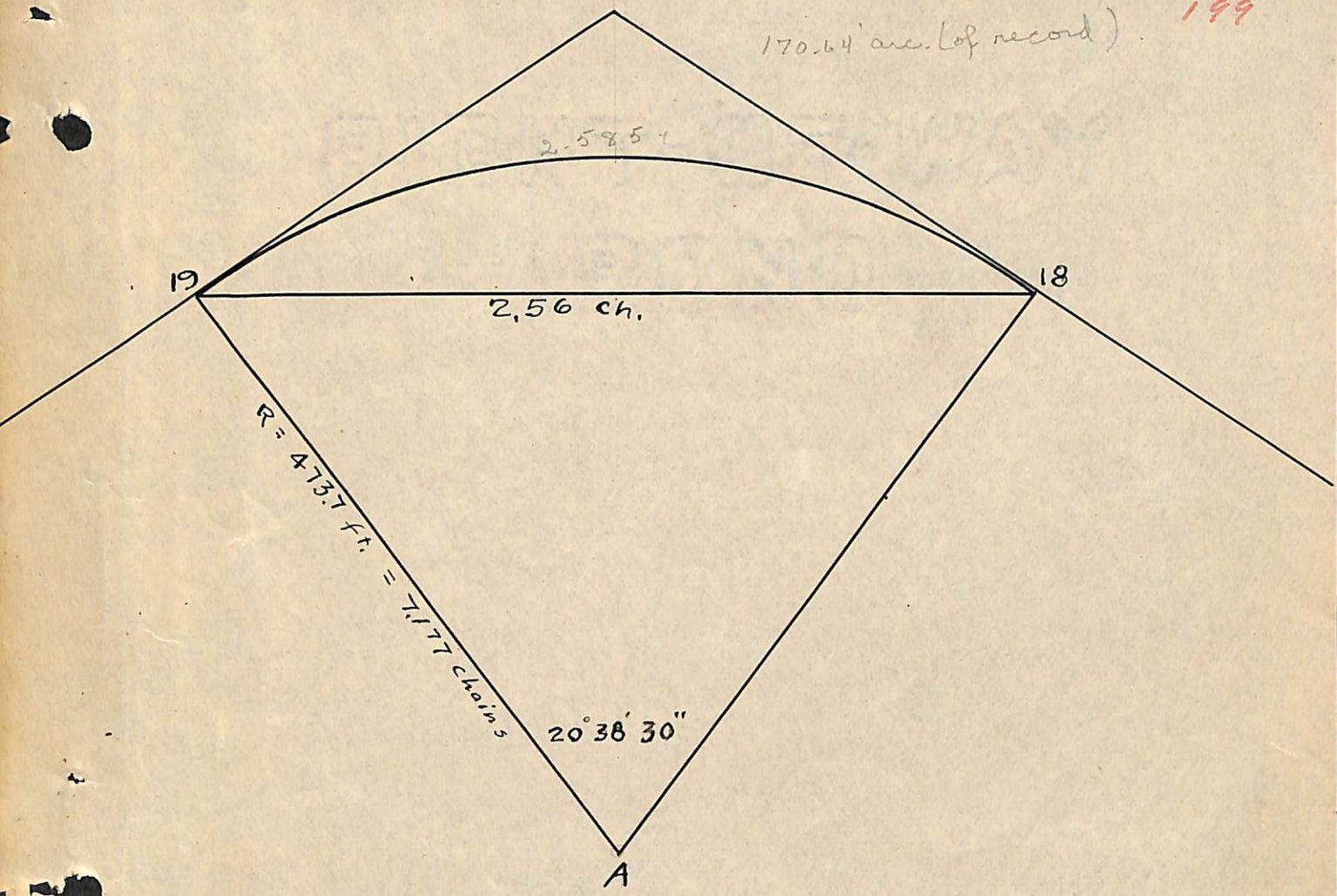
31.274 sector aCD B
29.436 Triangle aBC
BCD = 1.838 sq. ch. or .184 acs.

Area = $\frac{10.207 \times 10.207 \times \sin 34^\circ 24' 30''}{2}$



170.64' arc. (of record)

199 23



length of arc = $.01745 \times 7.177 \times 20.64^\circ$, hence arc = 2.58493 ch.

Area of circular segment = $\frac{2.585}{2} \times 7.177 - (\text{Area of Triangle A-18-19})$

Area of segment = ~~0.1079~~ 0.197 sq chains

$$\rightarrow \frac{2.585}{2} \times 7.177 = 9.276 \text{ sq. chs.}$$

$$\text{Tria} = \frac{7.177 \times 7.177 \times \sin 20^\circ 38' 30''}{2} = \frac{9.079}{0.197} \text{ " "}$$

or .020 Acres

700

WASH. STATE COLLEGE

LIBRARY

4

2

1910

DIRECTIONS.—1. Carry out calculations to two decimals only.

2. In balancing Latitudes and Departures do not obliterate or change the original figures.

Put the corrected figure or figures above in red ink. Do not change the footing of the original figures, but put below them the corrected footing in red ink.

The corrections for balancing fallings should be proportional to the lengths of the lines.

3. In calculations of fallings take result to nearest link. In calculations of N. and S. areas drop all after second decimal. Surveyors are required to use the Standard Field Tables issued by the G. L. O.

4. Only three copies of this tabulation are necessary, for the District Office, the Surveyor General, and the Commissioner.

EXCHANGE

TABLING AND CALCULATIONS OF HOMESTEAD ENTRY SURVEY NO. 648, STATE OF ARIZONA

8-2349

CORNERS.	BEARING.	DISTANCE.	LATITUDES.		DEPARTURES.		DOUBLE M. D.	N. AREAS.	S. AREAS.
			NORTH.	SOUTH.	EAST.	WEST.			
			In Sec. 3, T. 2 S., R. 12 E.						
11 - 12	S. 06° - 47' W.	3.03 ✓		3 01 ✓		5 36 ✓	69 08 ✓		208 62 ✓
12 - 13	S. 71° - 33' W.	3.85 ✓		1 22 ✓		3 65 ✓	65 07 ✓		79 39 ✓
13 - 14	S. 42° - 21' W.	2.56 ✓		1 89 ✓		1 72 ✓	59 70 ✓		113 43 ✓
14 - 15	N. 62° - 20' W.	5.28 ✓	2 45 ✓			4 68 ✓	53 30 ✓	130 05 ✓	
15 - 16	S. 27° - 45' W.	12.81 ✓		11 34 ✓		5 96 ✓	42 66 ✓		485 04 ✓
16 - 17	S. 44° - 55' W.	6.04 ✓		4 28 ✓		4 26 ✓	32 44 ✓		139 17 ✓
17 - 18	S. 62° - 10' W.	0.73 ✓		34 ✓		65 ✓	27 53 ✓		9 36 ✓
18 - 19	S. 51° - 50' W.	2.56 ✓		1 58 ✓		2 01 ✓	24 87 ✓		39 29 ✓
19 - 20	S. 41° - 29' W.	4.98 ✓		3 73 ✓		3 30 ✓	19 56 ✓		73 15 ✓
20 - 21	S. 48° - 33' E.	5.46 ✓		3 61 ✓	4 09 ✓		20 35 ✓		73 67 ✓
21 - 22	S. 57° - 27' W.	7.49 ✓		4 03 ✓		6 31 ✓	18 13 ✓		73 25 ✓
22 - 23	S. 32° - 11' W.	7.24 ✓		6 13 ✓		3 86 ✓	7 96 ✓		48 95 ✓
23 - 24	N. 85° - 28' W.	2.04 ✓	16 ✓			2 03 ✓	2 07 ✓	33 ✓	
24 - North to CC bet. Secs. 3 and 4	N. 0° - 02' W.	38.80 ✓	38 80 ✓				02 ✓	77 ✓	
CC to Cor. Secs. 34 to 35	S. 89° - 57' E.	13.17 ✓		01 ✓	13 17 ✓		13 17 ✓		13 ✓
Cor. Secs. 34 - 35 to A P	S. 89° - 57' E.	0.50 ✓			50 ✓		26 84 ✓		
A P to Cor. 11	S. 89° - 57' E.	21.05 ✓		02 ✓	21 05 ✓		48 39 ✓		97 ✓
		137.59 ✓	41 41 ✓	41 19 ✓	38 81 ✓	38 81 ✓		131 15 ✓	1344 42 ✓
			41 19						131 15
			22						20) 1213 27
Closing Error = 1/625					Area of Circular Segment	16-17			60.664
					"	"	18-19		+ .184
									60.85
									- .02
									60.83
									20) 1214 91 (60.745 acres

202

NO 1 1917 (10.1.17)

1917
 1917
 1917

NO	DATE	DESCRIPTION	AMOUNT	TOTAL
1	1917			
2	1917			
3	1917			
4	1917			
5	1917			
6	1917			
7	1917			
8	1917			
9	1917			
10	1917			
11	1917			
12	1917			
13	1917			
14	1917			
15	1917			
16	1917			
17	1917			
18	1917			
19	1917			
20	1917			
21	1917			
22	1917			
23	1917			
24	1917			
25	1917			
26	1917			
27	1917			
28	1917			
29	1917			
30	1917			
31	1917			
32	1917			
33	1917			
34	1917			
35	1917			
36	1917			
37	1917			
38	1917			
39	1917			
40	1917			
41	1917			
42	1917			
43	1917			
44	1917			
45	1917			
46	1917			
47	1917			
48	1917			
49	1917			
50	1917			

1917

DIRECTIONS.—1. Carry out calculations to two decimals only.

2. In balancing Latitudes and Departures do not obliterate or change the original figures.

Put the corrected figure or figures above in red ink. Do not change the footing of the original figures, but put below them the corrected footing in red ink. The corrections for balancing fallings should be proportional to the lengths of the lines.

3. In calculations of fallings take result to nearest link. In calculations of N. and S. areas drop all after second decimal. Surveyors are required to use the Standard Field Tables issued by the G. L. O.

4. Only three copies of this tabulation are necessary, for the District Office, the Surveyor General, and the Commissioner.

EXCHANGE
TABLING AND CALCULATIONS OF HOMESTEAD ENTRY SURVEY NO. 648, STATE OF ARIZONA

R-2340

CORNERS.	BEARING.	DISTANCE.	LATITUDES.		DEPARTURES.		DOUBLE M. D.	N. AREAS.	S. AREAS.
			NORTH.	SOUTH.	EAST.	WEST.			
			In Sec. 35, T. 1 S., R. 12 E.						
1 - 2	S. 77° - 39' E.	28.31		6 05	27 65		27 65		167 28
2 - 3	S. 13° - 43' E.	5.30		5 15	1 26		56 56		291 28
3 - 4	S. 76° - 03' W.	2.13		51		2 07	55 75		28 43
4 - 5	S. 13° - 58' E.	18.83		18 27	4 54		58 21		1064 08
5 - 6	N. 76° - 03' E.	7.49	1 81		7 27		70 01	126 72	
6 - 7	S. 87° - 06' E.	1.68		08	1 68		78 96		6 32
7 - 8	S. 04° - 34' W.	10.15		10 12		81	79 83		807 88
8 - 9	S 51° - 52' W.	13.75		8 49		10 82	68 20		579 02
9 - 10	S. 23° - 55' W.	6.49		5 93		2 63	54 75		324 67
10 - 11	S. 37° - 39' W.	7.32		5 80		4 47	47 65		276 37
11 - A P	N. 89° - 57' W.	21.05	02			21 05	22 12	44	
A P - Cor. Secs. 34-35	N. 89° - 57' W.	0.50	0			50	56		
Cor. 34-35 to 1/4 Cor	N. 0° - 01' W.	40.00	39 98 40 00			01	04	1 60	
1/4 Cor. - Cor. #1	N. 0° - 01' W.	18.60	18 60			01	01	19	
		181.60	60 43	60 40	42 41	42 37		128 95	3545 33
Closing error	1/3632		60 40		42 37				128 95
Tie from Cor. 15 to A P			03		04				20 3416 38 (170.82 acres
	N. 70° - 33' W.	11.22	3 74			10 58			
	S. 89° - 57' E.	21.05		02	21 05				
	S. 06° - 47' W.	3.03		3 01		36			
	S. 71° - 33' W.	3.85		1 22		3 65			
	S. 42° - 21' W.	2.56		1 89		1 72			
	N. 62° - 20' W.	5.28	2 44			4 68			
			6.18	6.14	21 05	20.99			

203

APPROVAL

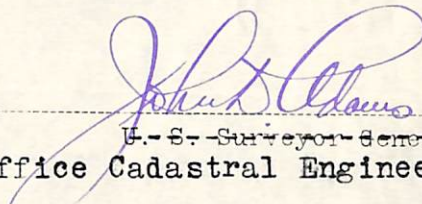
PUBLIC SURVEY OFFICE,
~~Office of the United States Surveyor General,~~

Phoenix, Arizona, November 17, 1926

The foregoing field notes of ~~Homestead Entry Survey No.~~

EXCHANGE SURVEY NO. 648

executed by C. A. Long, District Engineer,
[Forest Service Title.]
under his special instructions, dated Aug. 16, 1926, having
been critically examined, and the necessary corrections and explanations
made, the said field notes, and the surveys they describe, are hereby
approved.



U. S. Surveyor General.
Office Cadastral Engineer.

I certify that the foregoing transcript of the field notes of the
above-described survey in the State of Arizona, has been
correctly copied from the original notes on file in this office.

John D. Adams
U. S. Surveyor General.
Office Cadastral Engineer