

M

S

.

G

N

0

0

1

3

5

LOT NO. 41

Field Notes

of the survey of the

Buffalo
Mining claim.Situate in The Globe mining district,County of Pinal and in Sec. 24, Tp. 10,Range 15E, of the Gila and Salt River Meridian,

ARIZONA.

Claimed by Alex. A. McDonnell.Survey executed by A. G. Pendleton. D. S.,Under instructions dated May 14, 1879,Survey commenced May 21, 1879,Survey completed May 21, 1879.

PRELIMINARY OATHS FOR SURVEYS OF MINING CLAIMS AND MILL-SITES.

WE, G. W. Lawrence and Stephen O'Neill do solemnly swear that we will faithfully execute the duties of Chain Carriers; that we will level the chain upon uneven ground, and plumb the tally pins, whether by sticking or dropping the same; that we will report the true distance to all notable objects, and the true length of all lines that we assist in measuring, to the best of our skill and ability.

G. W. Lawrence witness A. G. Rendell
Stephen O'Neill

SWORN AND SUBSCRIBED before me this 21st

day of May 1879

G. A. Smasey
Notary Public



I, A. G. Rendell

do solemnly swear that I will well and truly perform the duties of U.S. Dept.

Surveyor according to instructions given me, and to the best of my skill and ability.

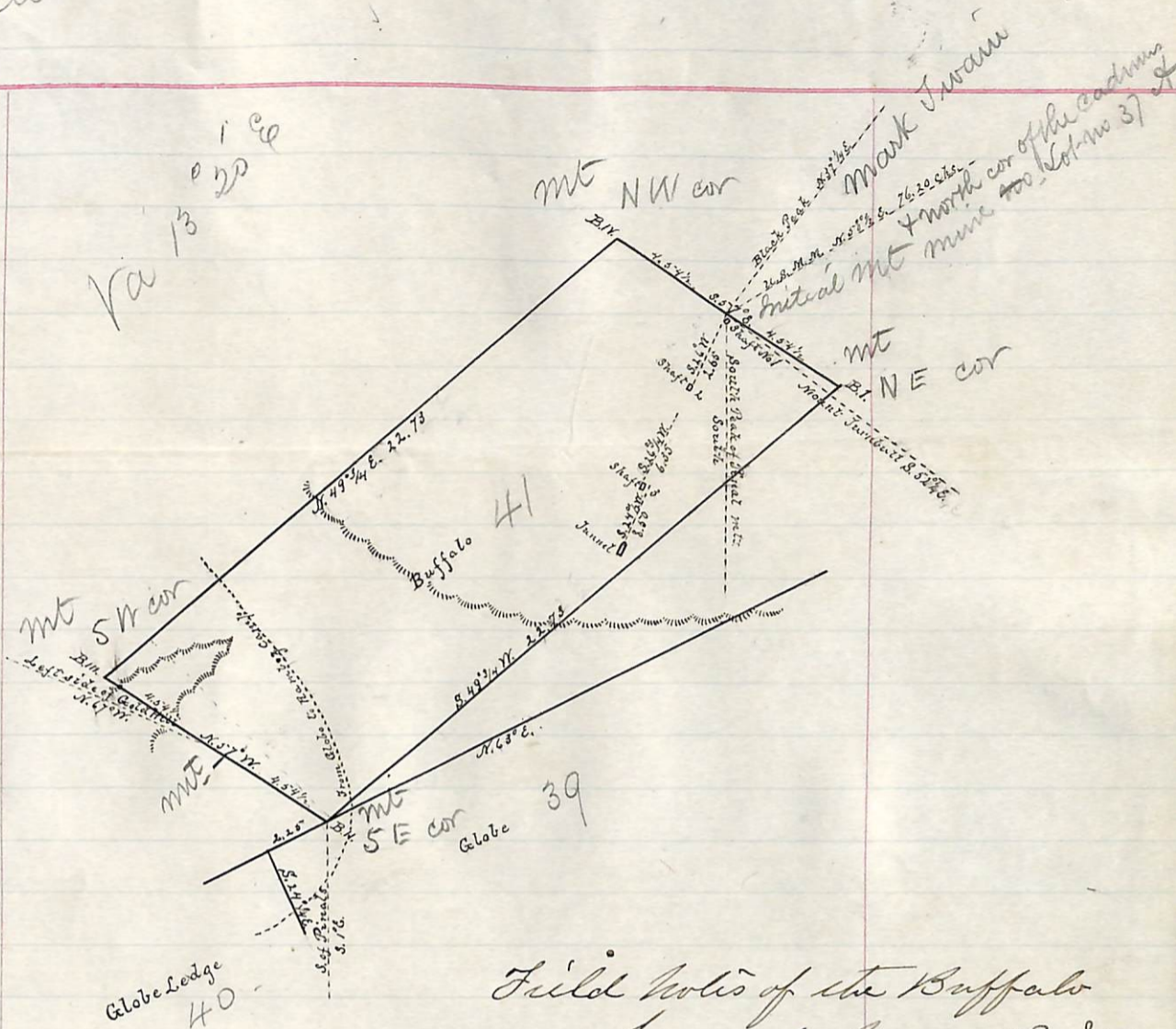
A. G. Rendell

SWORN AND SUBSCRIBED before me this 21st

day of May 1879

G. A. Smasey
Notary Public





Field Notes of the Buffalo

Surveyed May 21st 1879

Beginning at at the Initial Point which is marked by a monument of stones about four feet high situated on the south slope of the hill being also the Initial Point of the "Mark Twain" mine and N. 30° W. distance 8 feet from the discovery shaft.

Thence S. 57° E. 4.54 1/2 chains down the hill to a monument of stones three feet high marked "B. I" being the East corner of the claim.

Thence S. 49 3/4° W. 22.73 chains to a monument of stones three feet high marked "B. II" situated on the North West side line of the "Globe" mining claim for the SE cor of claim lot 39

Thence N. 57° W. 4.54 1/2 chains to a monument of stones three feet high not marked situated on a flat being the South West end center of the claim.

Thence N. 57° W. 4.54 1/2 chains across a gulch to a monument of stones three feet high marked "B. III" situated on the North West side of the gulch about 1.50 chains from the bottom being the SW corner of the claim.

Thence N. 49 3/4° E. 22.73 chains up the hill to a monument of stones three feet high marked "B. IV" situated near the top of the hill being the North W corner of the claim

Thence S. 57° E. 4.5 1/2 chains to the place of beginning
From the Initial Point to the U. S. Mineral Monument
and North corner of the Cadmus Mine is N. 58 1/2° E. 76.20 chains

The U. S. Mineral Monument is the North corner of the
Cadmus Mine and consists of a cedar post four feet high
surrounded by a mound of stones three feet high for full
description see Cadmus Mine.

From Initial Point to Black Peak N. 37 1/4° E.

From Initial Point to Mount Turnbull S. 52 1/4° E.

From Initial Point to the South Peak of Pinal Mts. South

From Initial Point to Shaft No 1 S. 30° E. 8 feet

From Initial Point to Shaft No 2 S. 26° W. 2.65 chains

From Initial Point to Shaft No 3 S. 26 3/4° W. 6.35 chains

From Initial Point to Mouth of Tunnel S. 24 1/2° W. 8.50 chains

From the South^E corner to the West^W corner of the Globe
and North^W corner of the Globe Ledge ^{lot No. 40} chains S. 65° W. 2.25 chains ^{lot No. 39}

From the South West End Center to the left side of
Gold Hill N. 67° W.

The work consists of three shafts and a tunnel the
dimensions of which are as follows Shaft No 1. 7x6 ft. 30 ft
deep all rock and cost \$10.00 per foot = \$300.00

Shaft No 2 5x7 ft. 6 ft. deep decomposed rock cost \$20.00

Shaft No. 3. 5x7 ft. 12 ft deep rock and cost \$8.00 per
foot = \$96.00. The Tunnel is 20 feet long with a cut in front
about 12 feet long and 8 feet deep when the tunnel begins
in decomposed rock and clay and cost about \$175.00 making
a total of \$601.00.

The claim is situated on the South slope of a large
hill about one mile North of Globe City in a Granite
formation.

The variation is 13° 20' East of North as determined by Polaris
The lines are run on true bearings

A. G. Penellton
Dept. U. S. Mineral Surveyor

FINAL OATHS FOR SURVEYS OF MINING CLAIMS AND MILL-SITES.

A list of the names of individuals employed to assist in running, measuring, or marking the lines and corners described in the foregoing field-notes of the survey of The Buffalo Mining Claim

located in Globe mining district
Pinal County, Arizona, showing the respective capacities in which they acted.

G. W. Lawrence Chainman.

Stephen O'Neill Chainman.

_____ Axeman.

_____ Flagman.

We hereby certify that we assisted A. G. Penclleton

U. S. Deputy surveyor, in surveying The Buffalo Mining Claim

claimed by Alex. A. Mc Donnell

located in Globe mining

district, Pinal County, and in Township No. _____ Range No. _____ of the Gila and Salt River base and meridian, Arizona, and that said Survey has been in all respects, to the best of our knowledge and belief, well and faithfully executed, and the boundary monuments planted according to the instructions furnished by the Surveyor-General.

G. W. Lawrence Chainman.

Stephen O'Neill Chainman.

_____ Axeman.

_____ Flagman.

SWORN to and subscribed before me this 30th day
of May 1879

G. A. Swasey
Notary Public

I, A. G. Penclleton U. S. Deputy Surveyor do solemnly swear that, in pursuance of instruc-

tions from John Wasson, U. S. Surveyor-General for Arizona, bearing date the 14 day of May 1879 I have well, faithfully and truly, in my own proper person, and in strict conformity with the instructions furnished by the Surveyor-

General and the laws of the United States, surveyed all those portions of The Buffalo Mining Claim

claimed by Alex. A. Mc Donnell

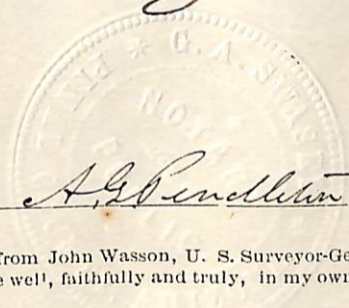
located in Globe mining

district, Pinal County, and in Township No. _____ Range No. _____ of the Gila and Salt River base and meridian, Arizona, as are represented in the foregoing field-notes as having been surveyed under my directions; and I do further solemnly swear that all the corners of said surveys have been established and perpetuated in strict accordance with the instructions furnished me, and that the foregoing are the true and original field-notes of such surveys.

A. G. Penclleton
Deputy Surveyor.

SWORN to and subscribed before me this 30th day
of May 1879

G. A. Swasey
Notary Public



AFFIDAVIT OF FIVE HUNDRED DOLLARS IMPROVEMENTS.

WE, J. P. Shanley and J. J. Newland
of lawful age, being first duly sworn according to law, depose and say that we are acquainted with
the Buffalo
mining claim, situate in Globe
Mining District, Pinal County, Arizona
Territory, for which Alex. A. Mc Donald
has made application for survey prior to application for patent under the provisions of the Act of
Congress approved May 10, 1872, and that the labor done and improvements made thereon by the
applicant and his grantor exceed Five Hundred Dollars in value, and further that we are not
personally interested in said mine.

J. P. Shanley
J. J. Newland

TERRITORY OF ARIZONA,

County of Pinal ss.

SWORN AND SUBSCRIBED before me this 20th

day of May 1879

G. A. Swasey
Notary Public



Notice of Location:

Notice is hereby given that the undersigned in compliance with the requirements of the mining act of congress, Approved May 10th 1872, have this day located and claim 1500 linear feet along the course of this lead, lode or vein of mineral bearing ore, and 300 feet on each side of said lead, lode or vein, situate in the Globe mining district, Pinal County, Arizona Territory, and described as follows, to wit: Commencing at this monument upon which this notice is posted, thence S. E. 300 feet to a stone monument, thence S. W. 1500 feet to a stone monument, thence N. W. 300 feet to a stone monument, thence N. W. 300 feet to a stone monument, thence N. E. 1500 feet to a stone monument, thence S. E. 300 feet to place of beginning. This claim is situate about 400 feet N. E. of the shaft on the Globe mine, and shall be known as the "Buffalo" Copper mine.

Located March 31st 1876.

Geo. J. Devine
 Geo. W. Anderson
 Geo. Hollingwood

Territory of Arizona }
County of Pinal } S.S.

I, Jno. J. Devine, County Recorder, in and for the said Pinal County, do hereby certify that the above and foregoing is a full, true and correct copy of the notice of location of the "Buffalo" Copper mine; as the same appears of record in my office.

In Witness Whereof, I have hereunto set my hand and affixed my official seal, this the 12th day of May A. D. 1879.

Jno. J. Devine
Recorder.

Notice of Location

Buffalo Copper Mine

U. S. Surveyor General's Office.
Tucson, A. T., July 1, 1879.

The foregoing field-notes of the Survey of the Bluffalo Mining Claim, situated in Globe Mining District, Pinal County, Arizona, claimed by Alex. A. McDowell, Survey executed by A. G. Pendleton, D. S., under instructions from this office, having been critically examined and the necessary corrections and alterations made, the said field notes and the survey they describe are hereby approved.

John Masson
Surveyor General.