

**M  
S  
-**

**0  
0  
2  
8  
7**

LOT NO. 40

Survey No. 287.

**Field Notes.**

of the survey of the

Roma Anna

Mining Claim

Cochise

Situate in ..... mining district

County of Cochise and in Sec. 35, Tp. 15 S

Range 22 E, of the Gila and Salt River Meridian.

Arizona.

Claimed by The Russell Gold & Silver Mining Co.

Survey executed by Solon M. Allis. D. S.

Under instructions dated Dec 18<sup>th</sup> 1881

Survey commenced January 4<sup>th</sup> 1881

Survey completed January 4<sup>th</sup> 1881

Field Notes  
of the  
Donna Anna  
Mining Claim

Situated in Jackson Mining Dist. County of  
Coahuila A.T.

Claimed by the Russell Gold & Silver M Co

Surveyed by Solomon M. Ellis U.S. Deft. Sur  
January 4<sup>th</sup> 1881

Under Order of Surveyor General

John Nasson

Dated Dec 18<sup>th</sup> 1880.

Donna Anna Mine.

Notice of Location. — Donna Anna Mine is marked and described as follows, Commencing at this central monument and running 750 feet north east to a monument. Thence northerly and southerly 300 feet each way to corner monuments. Thence from this monument 750 feet south west to a monument thence 300 feet both south east and north west to corner monuments. Situated on the S. East slope of Dragoon Mts. and one mile from Cottonwood Spring Cochise Dist. Pima Co. A. T. Dated on the ground Oct. 20, 1879.

W. L. Geary. R. E. Humphrey  
D. Horsfall.

Filed and recorded at request of R. E. Humphrey Nov. 26, 1879 at 4 P. M. J. W. Carpenter, Recorder By D. Kaineman. — Now to better comply with the law and and better define the locus of the above claim we this day make an amended location according to act of Congress made and provided as follows. The N. E. corner of the claim is found about 1550 feet distant from the U. S. Mineral Monument. No. 1 established on summit of large high hill a foot hill of Limestone Peak. The monument bears N. 10° E. — Amended this 4<sup>th</sup> day of January 1881 by Present owners.

Russell Siber Mining Co.

By J. S. Campbell, Agt.

4

Filed and recorded at request of S. M. Allis  
Jan'y 6<sup>th</sup> A. D. 1881 at 8<sup>45</sup> A. M.

Chas. R. Drake  
County Recorder.

TERRITORY OF ARIZONA, } ss.  
County of Pima.

I, Chas. R. Drake, County Recorder in and for the County of Pi-  
ma, do hereby certify that the above and foregoing is a full true and correct copy

of Amended Location. Notice of the Donna Anna  
Mine,

as appears of Record now in my Office in Book I, Record of Mines, Page# 651.



IN WITNESS WHEREOF, I have hereunto set my  
hand and affixed my official seal, at my office in Tucson  
this 14<sup>th</sup> day of November A. D. 1881.

*Chas. R. Drake*

County Recorder,

AFFIDAVIT OF FIVE HUNDRED DOLLARS IMPROVEMENTS.

We, Jacob G. Wall and Sam<sup>e</sup> C. Hubbs  
of lawful age, being first duly sworn according to law, depose and say that we are acquainted with  
the Donna Anna  
mining claim, situate in the Cochise  
Mining District, Pima County, Arizona  
Territory, for which J. S. Campbell  
has made application for survey prior to application for patent under the provisions of the Act of  
Congress approved May 10, 1872, and that the labor done and improvements made thereon by the  
applicant and grantor exceed Five Hundred Dollars in value, and further that we are  
not personally interested in said mine.

Jacob G. Wall  
Sam<sup>e</sup> C. Hubbs

TERRITORY OF ARIZONA, }  
County of Cochise } SS.

SWORN AND SUBSCRIBED before me this Tenth  
day of June 1881

E. P. Vossard  
Notary public.



PRELIMINARY OATHS FOR SURVEYS OF MINING CLAIMS  
AND MILL SITES.

WE, *A. E. Humphrey* and *Charles Reid*

do solemnly swear that we will faithfully execute the duties of Chain Carriers, that we will level the chain upon uneven ground, and plumb the tally pins, whether by sticking or dropping the same; that we will report the true distance to all notable objects, and the true lengths, of all lines that we assist in measuring, to the best of our skill and ability.

*R. E. Humphrey*  
*Charles Reid*

SWORN AND SUBSCRIBED before me this *Fourth*  
day of *January* 188*1*.

*Solon M. Allis*  
*Notary Public Pinal Co. A. T.*

I, *George Scherrar*

do solemnly swear that I will well and truly perform the duties of *Flagman*  
according to instructions given me, and  
to the best of my skill and ability.

*George Scherrar*

SWORN AND SUBSCRIBED before me this *Fourth*  
day of *January* 188*1*.

*Solon M. Allis*  
*Notary Public Pinal Co. A. T.*



FINAL OATHS FOR SURVEYS OF MINING CLAIMS ~~AND~~ MILL SITES.

A LIST of the names of individuals employed to assist in running, measuring, or marking the lines and corners described in the foregoing field-notes of the survey of the Donna Anna Mining Claim located in the Coachise Mining District, Pima County, Arizona, showing the respective capacities in which they acted.

- B. E. Humphrey Chainman.
- Charles Reid Chainman.
- George Scherrar Axeman.
- George Scherrar Flagman.

WE hereby certify that we assisted Solon M. Allis U. S. Deputy Surveyor, in surveying the Donna Anna Mining Claim claimed by the Russell Gold & Silver Mining Co located in the Coachise Mining District, Pima County, and in Township No \_\_\_\_\_ Range No \_\_\_\_\_ of the Gila and Salt River base and meridian, Arizona, and that said Survey has been in all respects, to the best of our knowledge and belief, well and faithfully executed, and the boundary monuments planted according to the instructions furnished by the Surveyor General.

- B. E. Humphrey Chainman.
- Charles Reid Chainman.
- George Scherrar Axeman.
- George Scherrar Flagman.

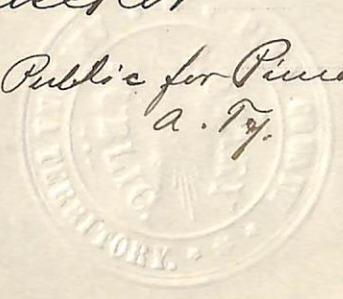
SWORN TO AND SUBSCRIBED before me this fourth day of January 1881 Solon M. Allis Notary Public Pima Co. A. T.

I, Solon M. Allis U. S. Deputy Surveyor, do solemnly swear that, in pursuance of instructions from John Wasson, U. S. Surveyor-General for Arizona, bearing date the 18<sup>th</sup> day of December 1880, I have well, faithfully and truly, in my own proper person, and in strict conformity with the instructions furnished by the Surveyor-General and the laws of the United States, surveyed all those portions of the Donna Anna Claim claimed by The Russell Gold & Silver Mining Co located in Coachise Mining District, Coachise County, Arizona, as are represented in the foregoing field-notes as having been surveyed under my directions; and I do further solemnly swear that all the corners of said surveys have been established and perpetuated in strict accordance with the instructions furnished me, and that the foregoing are the true and original field notes of such surveys.

Solon M. Allis Deputy Surveyor.

SWORN TO AND SUBSCRIBED before me this 15<sup>th</sup> day of Nov 1881 Paul Rice Per Notary Public for Pima Co. A. T.

Citizen Print.





3

# Field Notes of Survey of the Donna Anna Claim

Cachin District Cachin Co A. J.

Commenced at Initial Monument  
at center of claim where notice of  
Location was placed - and set a  
pin post  $4 \times 4$  in sq  $4$  ft  $9$  in long  
Marked D.A. No 1 and built a  
monument of stones around it  $2\frac{1}{2}$   
feet high from which a shaft bears

Var  $11^{\circ}26' E$  by Obs on

Polaris  $S 82^{\circ}26' W$  distant  $50$  ft.

From Initial Monument I ran along  
center of claim  <sup>$S 82^{\circ}26' E$</sup>   $750$  ft to center of  
East End of claim where I set a  
pin post  $4 \times 4$  in sq  $4$  ft  $9$  in high  
Marked D.A. No 2 and built a  
monument of stones around it -  $2\frac{1}{2}$  ft  
high.

Thence I ran

Var  $11^{\circ}26' E$

Along East End boundary of claim  
 $N 72^{\circ}34' W$  -  $300$  ft to N.E. corner of  
claim where I set a pin post  $4 \times 4$  in  
sq  $4$  ft  $9$  in high Marked D.A. No 3  
and built a monument of stones  
 $2\frac{1}{2}$  ft high around it from which  
U. S. Mineral Monument No 1  
bears -  $N 21^{\circ}26' E$  Dist  $1554$  ft.

Thence I ran

Var  $11^{\circ}26' E$

Along North side boundary of  
claim  $S 82^{\circ}26' W$  -  $400$  ft to S.E.

ft

Cor of Vesper claim

1000

To S.W. Cor of Vesper claim

1500

To N.W. corner of Donna Anna  
claim where I set a pin post  $4 \times 4$  in sq  
 $4$  ft  $9$  in long marked D.A. No 4  
and built a monument of stones  
around it  $2\frac{1}{2}$  ft high.

Thence I ran

Var  $11^{\circ}26' E$

$S 70^{\circ}34' E$  along West end boundary

# Field Notes of Survey of the Donna Anna Claim

Cachin Dist Cachin Co A, T.

D.A.N<sup>o</sup> 5-

140 ft to gulch running S, E.  
300 ft to West end center  
Monument when I set a pine post marked  
4x4 in sq - 4'9" long and built a  
Monument of stones around it - 2 1/2 ft high.  
Thence I ran

Var 11°26' E

Continuation of same line 300 ft  
to S.W. Cor of claim when I set a  
pine post 4x4 in sq 4'8" high  
marked D.A.N<sup>o</sup> 6 - and built a  
monument of stones 2 1/2 ft high -  
Thence I ran

Var 11°26' E

ft  
400

N 82°26' E along south side boundary of  
claim 360 ft to gulch running  
south and just below its junction  
with another running S.W.

1500

To N.W. Cor of Hero claim, which  
extends Eastward from this point  
and parallels to the Donna Anna.  
To S.E. Cor of claim when I set a  
pine post 4x4 in sq 4'9" long  
marked D.A.N<sup>o</sup> 7 and built a  
monument of stones around it - 4/2  
ft high.

Thence I ran

Var 11°26' E

N 70°34' W along East End of  
claim 300 ft to Monument No  
2 already described -

Field Notes of Donna Anna Blain  
Survey

Cachin Dist Cachin Co. A. T.

General Description

This claim lies about five miles N.W. of S.P.R.R. Depot Dragon Summit - and in a flat south of a large sloping hill extending as a foot hill from the Limestone Range and upon which U.S. Minerals Monument No. 1 is placed. and is in Cachin Dist Cachin Co. A. T.

This Claim Contains

20.66 Acres -

Improvements made by claimant consist of - one shaft 60 ft deep - 5 x 7 ft and exceeds five hundred dollars in value

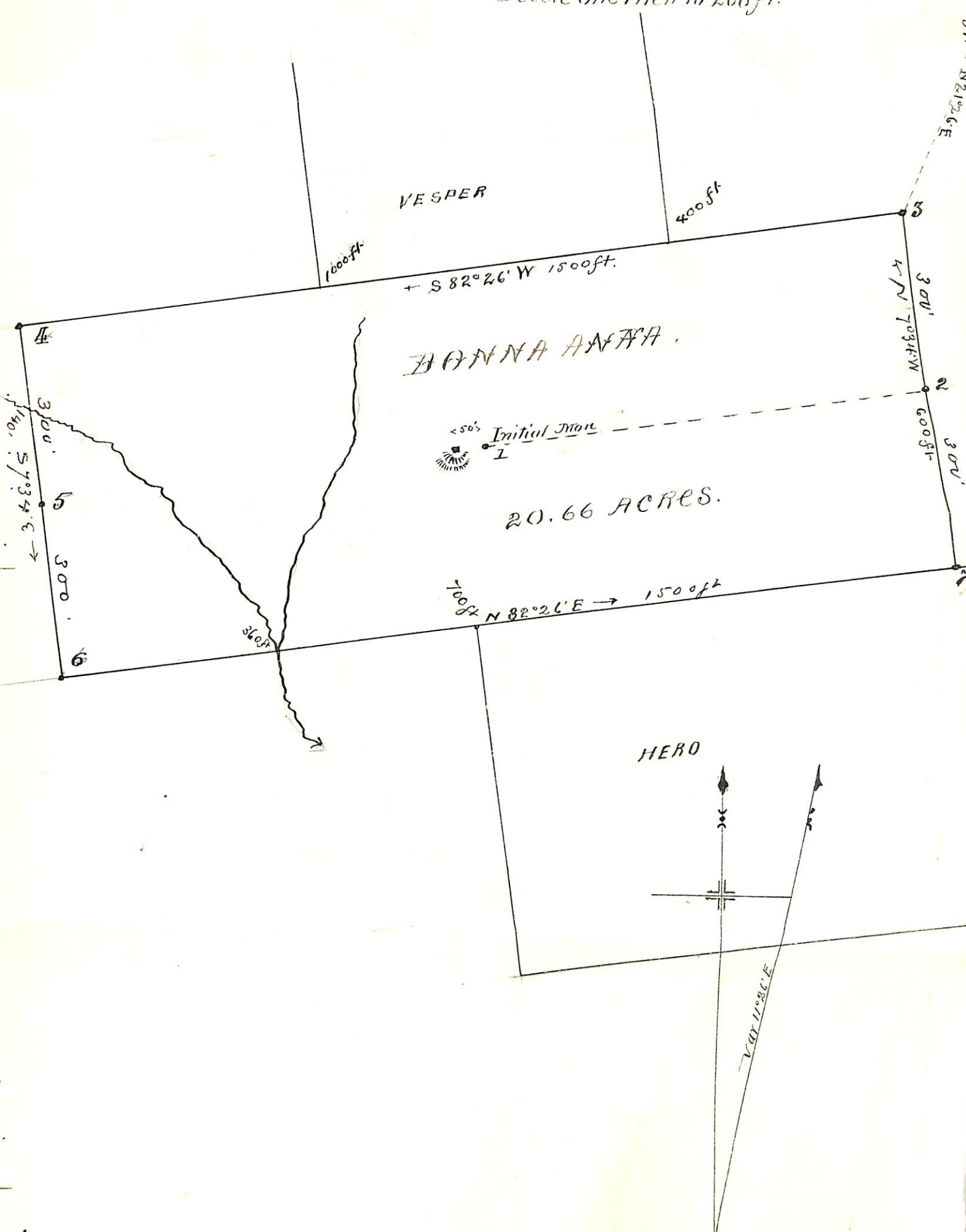
Solon M. Allen  
U.S. Dep. Surveyor.

# PLAN OF BONNA ANNA.

## CACHE COUNTY, UTAH.

Surveyed Jan 4<sup>th</sup> 1881.

Scale one inch to 200 ft.



## U. S. Surveyor General's Office.

Tucson, Arizona, *November 29*.....188*1*

The foregoing field notes of the survey of the *Donna*  
*Anna* Mining *Claim* situate in  
 the *Cochise* Mining District, *Cochise*  
 County, Arizona, claimed by *The Russell Gold*  
*& Silver Mining Co.*  
 survey executed by *Solon M. Allis* Deputy  
 Surveyor, under instructions from this office, having been critically examined  
 and the necessary corrections and alterations made, the said field notes and  
 the survey they describe are hereby approved.

*John Masson.*

Surveyor General.

Corrected  
Field Notes  
 of  
Survey of the Doona Area  
Mining Claims  
claimed by  
The Russell Gold & Silver M. Co.

Surveyed under  
Order of Surveyor General  
John Wasson -  
Dated

By  
Solon M. Allis U.S. Dep. Mineral Surveyor  
Surveyed Jan 4. 1881

20.66 Acre.

Corrected Field Notes of Survey of the  
Dona Arma Mining Claim  
Cachise Mining District Cochise Co. A. T.

These Supplementary Notes are made  
to correct certain errors discovered in  
original Notes.

Commenced at Initial Monument  
at Center of Claim where notice of  
Location was placed and set a  
pine post 4x4" sq 4'9" high  
marked D.A. N<sup>o</sup> I and built a  
monument of stones around it 2 1/2 feet  
high from which a shaft bears  
S 83° 14' E Dist 50 feet  
Var 12° 14' E

By Observation on Polaris -  
Thence Iran

N 83° 14' E

Feet Var 12° 14' E.

750

Along center of Claim where I set a  
pine post 4x4" sq 4'9" high marked  
D.A. N<sup>o</sup> 2 and built a monument of  
stones around it 2 1/2 feet high.

Thence Iran

~~200~~

N 6° 46' W

Var 12° 14' E

300

Along East end boundary of Claim  
In N. E. Corner where I set a pine post  
4x4" sq 4'9" high marked D.A. N<sup>o</sup> III  
and built a monument of stones 2 1/2 feet  
high around it from which

U. S. Mineral Monument N<sup>o</sup> 1  
Cachise Mining District bears  
N 22° 14' E Distant 1540 feet.

Thence Iran

400

S 83° 14' W

Var 12° 14' E

1000

Along North Side boundary of Claim  
In S. E. Corner of Vesper Claim  
In S. W. " " " "

Corrected Field Notes of Survey of  
the Donna Anna Mining Claim  
Cochise Mining District Cochise  
Co A.T.

Feet

1500 To N.W. Corner of Donna Anna  
Claim where I set a pine post  
4'x4' sq 4'9" high marked  
D.A.N.° III and built a monument  
of stones around it 2 1/2 feet high.  
Thence I ran

~~140~~ S 6°46' E

Var 12°14' E

140 Along West End boundary of  
Claim to gulch running S.E.

300 To West End Center Monument  
where I set a pine post 4'x4' sq  
marked D.A.N.° V and built a  
monument of stones around it 2 1/2  
feet high  
Thence I ran

~~240~~ S 6°46' E

Var 12°14' E

300 Continuation of said Line  
To S.W. Corner of Claim where I  
set a pine post 4'x4' sq 4'8"  
high marked D.A.N.° VI, and  
built a monument of stones  
around it 2 1/2 feet high.  
Thence I ran

260 N 83°14' E

Var 12°14' E

360 Along South Side Boundary of  
Claim to gulch running South and  
just below its junction with another  
running S.W.

400 To N.W. Cor of "Hero" Claim which  
extends Eastward from this point  
and parallel to the Donna Anna

1500 To S.E. Corner of Claim where I  
set a pine post 4'x4' sq 4'9" high  
marked D.A.N.° VII, and built



Corrected Field Notes of Survey  
of the Donna Anna Mining  
Claim, Cochise Mining District,  
Cochise Co. A. T.

amount of stones around it 2 1/2  
feet high -  
Feb 24<sup>th</sup> Thence I ran  
N 6° 46' W  
Var 12° 14' E  
300 Along East End boundary of  
claim to Monument No 2  
already described.

General Description.

This claim lies about five miles  
N.W. of S. P. R. R. Depot Dragon  
Summit and is in a flat south of  
a large sloping hill extending  
as a foot hill from the Simstons  
Range - upon which U. S. Mineral  
Monument No 1 Cochise Mining  
District is placed, and in Cochise  
Co. A. T.

This claim contains 20.66 Acres  
I hereby certify that the  
improvements made by the  
Claimants consist of

One Shaft 5 x 7 feet - 60 feet Deep  
and exceeding (\$500.) five hundred  
dollars in cost.

Solomon M. Ellis  
U. S. Deputy Mineral Surveyor -

Yesper

U.S. M.M. No. 1. N. 22° 14' E. 154.0 ft

Post D.A. No. 3

S. 83° 14' W. 1500 ft

Post D.A. No. 4



300 ft

S. 64° 46' E.

Post D.A. No. 5



300 ft

Post D.A. No. 6



Shaft 1 M.  
Post D.A. No. 1. N. 83° 14' E. 750 ft

LOT. No 40.

300 ft

W. 94.9° N.

300 ft

Post D.A. No. 2.

Post D.A. No. 7



N. 83° 14' E. 1500 ft

750 ft

Gull

U. S. Surveyor General's Office.

Tucson, Arizona

March 23<sup>d</sup> 1882

*supplemental*

The foregoing <sup>*supplemental*</sup> field notes of the *Donna*  
*Auca* Mining *Claim* situate in  
the *Cochise* Mining District, *Cochise*  
County, Arizona, claimed by *the Russell Gold &*  
*Silver Mining Company* ;  
survey executed by *Solon M. Allis* Deputy  
Surveyor, under instructions from this office, having been critically examined  
and the necessary corrections and alterations made, the said <sup>*supplemental*</sup> field notes and  
the survey they describe are hereby approved.

*John Masson*

Surveyor General.