

MS.

0

0

4

7

0

LOT NO. 37

Survey N<sup>o</sup> 470.

Field Notes

of the survey of the

Blue Jay

mining claim

Situate in Copper Basin mining district,

County of Yavapai and in Sec    , Tp 13 N

Range 3 W, of the Gila and Salt River Meridian.

Arizona.

Claimed by The Copper Basin Copper Co.

Survey executed by J. S. Ingalls D. S.

Under instructions dated December 12<sup>th</sup> 1883

Survey commenced     " 20<sup>th</sup> 1883

Survey completed     "     1883

## PRELIMINARY OATHS

FOR SURVEYS OF MINING CLAIMS AND MILL SITES.

WE, Cornelius Davis and Thos Randall

do solemnly swear that we will faithfully execute the duties of Chain Carriers: that we will level the chain upon uneven ground, and plumb the tally pins, whether by sticking or dropping the same; that we will report the true distance to all notable objects, and the true length of all lines that we assist in measuring, to the best of our skill and ability.

Cornelius Davis  
William Randall  
J

SWORN to and subscribed before me, this 19<sup>th</sup> day  
of December 1882

J Carpenter  
Notary Public

I, Isaac A Bradshaw

do solemnly swear that I will well and truly perform the duties of Flagman  
according to instructions given me,  
and to the best of my skill and ability.

Isaac A Bradshaw

SWORN to and subscribed before me this 19<sup>th</sup> day  
of December, 1882

J Carpenter  
Notary Public



Description of the United States Mineral Monument No. 1, Copper Basin Mining District, Yavapai County, A. T. Established December 20<sup>th</sup> 1882, by J. S. Ingalls, U. S. Deputy Mineral Surveyor, under instructions from J. W. Robbins, U. S. Surveyor General of date, December, 12<sup>th</sup> 1882, for the survey of the Blue Jay and other mining claims, situated in Copper Basin Mining District, Yavapai County, A. T. and claimed by the Copper Basin Copper Company.

A pine post, 8 x 8 inches, 9 ft long, set 3 ft in ground and built around by stone mound 7 ft at base and 4 ft high, marked with gouge U. S. M. M. (No. 1), C. B. M. D., on top of Gabarua hill (a butte, near the centre of Copper Basin) and from which Bradshaw butte bears, S 18° E, about 3/4 of a mile distant, and Copper Nugget hill bears, S 39° E.

J. S. Ingalls  
U. S. Deputy Mineral Surveyor

Field notes of the survey of the Blue Jay mining claim, situated in Copper Basin Mining District, Yavapai County, Arizona.

Claimed by the Copper Basin Copper Company, surveyed under instructions received from J. W. Robbins, U. S. Surveyor General of date, December 12<sup>th</sup> 1882.

Survey commenced December 20<sup>th</sup> /82

Survey completed, December 20<sup>th</sup> /82.

Initial point monument of location, situated on middle of outcroppings of vein at the centre of south easterly end of claim, and bearing notice of location,

Direction of vein from this monument,  $N 52^{\circ} W$ .

Magnetic variation as obtained by direct observation on the sun with Burts Solar Transit.

$14^{\circ} 20'$  east.

Beginning at the initial monument, a Juniper post  $4 \times 4$  inches, 5 ft long, set  $1\frac{1}{2}$  ft in the ground and built around by stone mound, 3 ft at base, and 2 ft high, at the centre of south easterly end of claim, marked B. T. No 1, and from which the south east corner of excavation, 50 ft long and 30 ft wide, bears  $N 34\frac{1}{4}^{\circ} E$ , 145 ft distant and run thence as follows  $N 38^{\circ} E$ .

Variation  $14^{\circ} 20'$  east,

along the south eastern end line of claim

300 ft to the north easterly corner of claim, a pine post  $4 \times 4$  inches, 5 ft long, set 2 ft in ground and built around by stone mound

2 1/4 ft at base and 1 1/2 ft high and marked B.T. No 2, no bearings obtainable. thence.

N 52° W.

Variation 14° 20' east.

410 ft to centre of ravine 30 ft wide running south.

1500 ft to north westerly corner of claim a Juniper post 4 x 4 inches, 5 ft long, set 2 ft in ground and built around by earth mound 2 1/2 ft at base and 2 ft high, marked B.T. No 3, no bearings obtainable. thence.

S. 38° W.

Variation 14° 20' east.

250 ft to centre of gulch 15 ft wide running south.

300 ft to Juniper post 4 x 5 inches, 4 ft long, set 1 1/2 ft in ground and built around by earth mound 2 1/2 ft at base and 2 ft high, marked B.T. No 4 from which a pine tree 18 inches in diameter marked B.T. No 4, B.T. bears S. 56° E. 23 ft distant, and a cut 20 ft long 5 ft wide and 4 ft deep bears S. 52° E. 550 ft distant.

600 ft to the south westerly corner of claim, a Juniper post 4 x 4 inches 5 ft long, set 2 ft in ground and built around by earth mound 3 ft at base and 2 ft high, marked B.T. No 5. and from which United States Mineral monument No 1 Copper Basin Mining District bears N 40 3/4° E 1502 ft distant, no other bearings obtainable. thence

S 52° E.

Variation 14° 20' east.

775 ft to centre of gulch 50 ft wide running south west.

1100 ft cross road, course, N. W. and S. E.  
 1500 ft to Juniper post 4x4 inches, 5 ft long, set 1½ ft in ground and built around by stone mound, 3 ft at base and 2½ ft high, marked B. J. No 6. no bearings obtainable. thence.

N 38° E.

Variation 14°. 20' east.

250 ft cross old blacksmith forge.  
 270 ft to centre of gulch 10 ft wide running south.  
 285 ft cross road, running N. W. and S. E.  
 300 ft to the place of beginning and containing 20<sup>66</sup>/<sub>100</sub> acres.

The improvements made on this claim by the claimant and his gradutors consist of an excavation for a smelter at south end of claim, 50 ft long and 30 ft wide, cut into the side hill, and about 15 ft deep at the face. Also a cut near the centre of claim, 5 ft wide, 20 ft long and 4 ft deep.

Also a road about 500 ft long running across the south east corner of the claim.

They represent in the aggregate an expenditure of \$700.

This claim is situated in Copper Basin about 10 miles west of Prescott.

The claim is covered with scrub Oak, Juniper and Pine timber with underbrush of Manzanita. There is no water running in the Copper Basin Wash, but is obtainable by digging about 30 ft. Copper is found.

both in veins and deposits.  
The formation of the country  
is granite.

J. S. Ingalls  
U. S. Deputy Mineral Surveyor.



FINAL OATHS FOR SURVEYS OF MINING CLAIMS & MILL SITES.

A LIST of names of individuals employed to assist in running, measuring, or marking the lines and corners described in the foregoing field-notes of the survey of the Bene Jay Mining claim located in Copper Basin Mining district, Yavapai County, Arizona, showing the respective capacities in which they acted.

Cornelius Davis Chainman.  
William Randall Chainman.  
Isaac A Bradshaw Axeman.  
Isaac A Bradshaw Flagman.

WE hereby certify that we assisted J. S Ingalls U. S. Deputy Surveyor, in surveying the Bene Jay Mining claim located in Copper Basin Mining District, Yavapai County, Arizona, and that said Survey has been in all respects, to the best of our knowledge and belief, well and faithfully executed, and the boundary monuments planted according to the instructions furnished by the Surveyor General.

Cornelius Davis Chainman.  
William Randall Chainman.  
Isaac A Bradshaw Axeman.  
Isaac A Bradshaw Flagman.

SWORN TO AND SUBSCRIBED before me this 29<sup>th</sup> day of December 1882

J. H Carpenter  
Notary Public

I, J. S Ingalls U. S. Deputy Surveyor, do solemnly swear that, in pursuance of instructions from the U. S. Surveyor-General for Arizona, bearing date the 12<sup>th</sup> day of December 1882, I have well, faithfully and truly, in my own proper person, and in strict conformity with the instructions furnished by the Surveyor-General and the laws of the United States, surveyed all those portions of the Bene Jay Mining claim claimed by The Copper Basin Copper Company located in Copper Basin Mining District, Yavapai County, Arizona, as are represented in the foregoing field-notes as having been surveyed under my directions; and I do further solemnly swear that all the corners of said surveys have been established and perpetuated in strict accordance with the instructions furnished me, and that the foregoing are the true and original field notes of such surveys.

J. S Ingalls Deputy Surveyor.

SWORN TO AND SUBSCRIBED before me this 14<sup>th</sup> day of March 1883

J. H Carpenter  
Notary Public



March 1881.

Witness

J. A. Bradshaw <sup>10</sup>

C. C. Beau

Recorded at request of C. C.  
Beau, April 23<sup>d</sup> 1881 at 12.50. o'clock P.M.  
in Book L. 11 of Mines, Records of Yavapai  
County, Arizona at pages 238-239

William Wilkerson

County Recorder

By H. H. Carter

Deputy.

Blue Jay  
Locations Notice

Of the Blue Jay, ledge or claims, containing  
Copper, Silver and Gold, and located as such.

The undersigned claims for mining purposes  
1500 Feet hundred feet of this lode or vein  
in length along the ledge or vein and Three  
hundred (300) feet on each side of the middle  
of the vein at the surface, together with all dips,  
springs & angles, and all valuable mineral deposits  
contained therein, and all Timbers growing with-  
in the limits of said claims, and all waters and  
water privileges thereon or appurtenant thereto,  
under and according to the provisions of an  
Act of Congress approved May 10<sup>th</sup> 1872, entitled  
"An Act to promote the development of the Min-  
ing Resources of the United States."

This claim commences at this notice, which  
is posted in a conspicuous place at the South  
east end of the claim at the North of a  
small ravine coming in from the West,  
where the Skull Valley trail crosses the main  
wash of Copper Basin, and an old Black-  
smiths forge stands in the mouth of the ravine.  
The corners are all marked with stone  
monuments, so as to include three hundred  
feet on each side of the claim; and runs  
North Westly from this notice, Fifteen hundred  
feet. Yavapai County, Territory of Arizona.

This shall be known as the Blue Jay Cop-  
per Mine.

Dated on the grounds, this First day of

Territory of Arizona }  
 County of Yavapai } 1885

I, William Wilkerson,  
 County Recorder of Yavapai County in the Ter-  
 ritory of Arizona, do hereby certify the above and  
 foregoing to be a full, true and correct copy of  
 the Location Notice of The "Blue Jay" Mining Claim  
 in Copper Basin Mining District, of said County  
 and Territory, located first day of March 1881, by  
 J.A. Bradshaw, as the same appears of record in  
 Book L. 11 of Mines pages 238 + 239, now in my  
 office

In witness whereof I have hereunto  
 set my hand and affixed my  
 official seal at Prescott, Arizona  
 this 29<sup>th</sup> day of November A.D. 1885

William Wilkerson  
 County Recorder  
 By D.S. Bechtel  
 Deputy

Location Notices

of the

"Blue Jay" Mining

Claims.

Certified Copy.

AFFIDAVIT OF FIVE HUNDRED DOLLARS IMPROVEMENTS.

We, *E. J. Holiday* and *William Randall*

of lawful age, being first duly sworn according to law, depose and say that we are acquainted with the

"*Blue Jay*" mining claim, situated in *Copper Basin* Mining District, *Yavapai* County, Arizona Territory, for which *The Copper Basin Copper Company* has made application for survey prior to application for patent under the provisions of the Act of Congress approved May 10, 1872, and that the labor done and improvements made thereon by the applicant and its grantor exceed Five Hundred Dollars in value, and further that we are not personally interested in said mine.

*E. J. Holiday*  
*Wm. Randall*

TERRITORY OF ARIZONA,  
County of *Yavapai* } SS.

SWORN to and subscribed before me, this *31<sup>st</sup>* day

of *January* 188*3*

*Jewel*  
Notary Public

Territory of Arizona }  
 County of Yavapai } 1885

I, William Wilkerson,  
 County Recorder of Yavapai County in the Ter-  
 ritory of Arizona, do hereby certify the above and  
 foregoing to be a full, true and correct copy of  
 the Location Notice of The "Blue Jay" Mining Claim  
 in Copper Basin Mining District, of said County  
 and Territory, located first day of March 1881, by  
 J. A. Bradshaw, as the same appears of record in  
 Book L. 11 of Mines pages 238 + 239, now in my  
 office

In witness whereof I have hereunto  
 set my hand and affixed my  
 official seal at Prescott, Arizona  
 this 29<sup>th</sup> day of November A.D. 1885

William Wilkerson  
 County Recorder  
 By D. S. Beckett  
 Deputy

# PLAT

OF THE

## BLUE JAY MINING CLAIM

Situated in Copper Basin Mining Dist

Garage County AT

Surveyed under instructions from

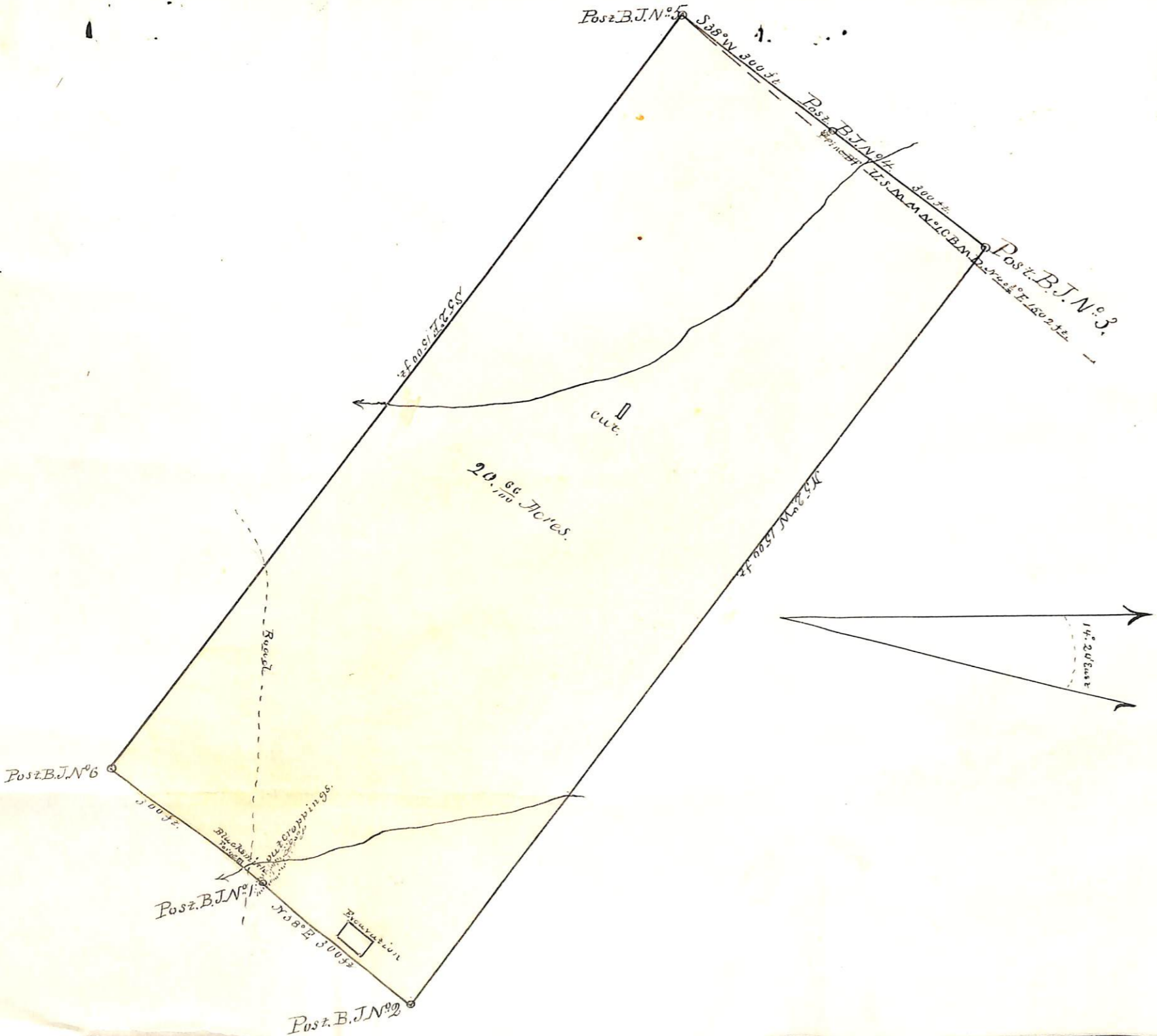
J. W. Robbins U. S. Survey General.

05 Date December 12<sup>th</sup> 1882.

By F. J. Ingalls

U. S. Dep. Mineral Sur.

Dec. 20<sup>th</sup> 1882.





U. S. Surveyor General's Office,

Tucson, Arizona, April 19<sup>th</sup> 1883

The foregoing field notes of the survey of the Blue Jay  
Mining Claim situate in  
 the Copper Basin Mining District, Yavapai  
 County, Arizona, claimed by The Copper Basin Copper  
Company  
 survey executed by F. S. Ingalls Deputy  
 Surveyor, under instructions from this office, having been critically examined  
 and the necessary corrections and alterations made, the said field notes and  
 the survey they describe are hereby approved.

J. W. Robbier

Surveyor General.

# PLAT

OF THE

**BLUE JAY MINING CLAIM**  
 Situated in Copper Basin Mining Dist.  
 Yavapai County AT  
 Surveyed under instructions from  
 J.W. Robbins U.S. Surv General.  
 of Date December 12<sup>th</sup> 1882.  
 By F.S. Ingalls  
 U.S. Dep. Mineral Surv.  
 Dec. 20<sup>th</sup> 1882.

