

MS.

0

0

6

4

1

2-Way Memo

1

Subject: Mineral Survey No. 4668

RECEIVED
BUREAU OF
LAND MANAGEMENT

1968 OCT 16 AM 11 40 5

DATE OF MESSAGE
October 15, 1968
DATE OF REPLY
INSTRUCTIONS
Use routing symbols whenever possible.
SENDER:
Forward original and one copy.
Conserve space.
RECEIVER:
Reply below the message, keep one copy, return one copy.

To:
➔

Land Office
 Att'n. Chief, Branch of Titles & Records

LAND OFFICE
 PHOENIX, ARIZONA

5027-101

USE BRIEF, INFORMAL LANGUAGE

Mineral Survey No. 4668 was approved on October 11, 1968.

In accordance with a request from the claimant, the following previously surveyed lodes were tied into Mineral Survey No. 4668:

- Peabody lode - Mineral Survey #641
- Senator lode - Mineral Survey #657
- Alta lode ---- Mineral Survey #659
- Atlanta lode - Mineral Survey #2534
- Otsego lode -- Mineral Survey #2532

Per your request, we are attaching five copies each of the Field Notes and Plat (2 sheets) for filing in the above-listed case files.



Attachments

From:

Chief, Division of Engineering

Missing

Page

Form 4-683
(January 1963)

RECEIVED
UNITED STATES BUREAU OF
DEPARTMENT OF THE INTERIOR
BUREAU OF LAND MANAGEMENT

Mineral Survey number
4668
State
Arizona
Land District

FIELD NOTES OCT 16 AM 11 41 .0

Of the Survey of the Mining Claim of (name and address of Claimant)
Magnum Mining Company
c/o Boyle, Bilby, Thompson & Shoenhair, Attorneys at Law,
9th Floor Valley National Bldg.
Tucson, Arizona 85701

Known as the (name of group, if any)

McCracken Group

CONSISTING OF LOCATIONS NAMED AND LOCATED AS FOLLOWS

NAME OF LOCATION	DATE	
	LOCATED	AMENDED
MAG-1	9/8/67	2/3/68
MAG-8	2/3/68	
MAG-9	2/3/68	
MAG 14	2/23/68	
FEB-1	2/22/68	

Mining district Owens		County Mohave	
Section s 19 & 30 24 & 25	Township 13 N.	Range 14 W 15 W	Meridian Gila & Salt River
Survey commenced Feb. 25, 1968		Survey completed April 4, 1968	Survey under order dated January 22, 1968 and March 27, 1968
			Name of Mineral Surveyor John H. Stitzer

FEET		1
	<p>This survey was made with a K & E, 6E optical reading theodolite No. 624161 reading directly to one minute of arc with interpolation to one tenth minute of arc, using a solar eyepiece with colored glass for making direct observations of the sun. The instrument was in good condition at the time of the survey and all adjustments were in good order.</p> <p>February 22, 1968 at the lode line on line 1-2 of FEB-1 lode, in latitude 34°27'05" N. and longitude 113°46'34" W. I made a series of six altitude observations upon the sun at equal time intervals, three each with the telescope in the erect and inverted positions and reading the horizontal angle from Cor. No. 1 of the FEB-1 lode. From these observations I obtain a bearing of N. 89°24'00" E.</p> <p>The lines were measured with a Lufkin steel tape, 300 ft. in length graduated every foot, there being an added foot graduated in tenths and hundredths of a foot.</p> <p>A spring balance was used to maintain proper tension on the tape and all distances were compensated for temperature.</p> <p>All lines of this survey were run by direct methods as all lines were accessible.</p> <p>The magnetic declination in the area of the survey was a uniform value of 14½° E.</p>	
	Survey No. 4668	
	<p style="text-align: center;">FEB-1 LODE</p> <p>At Cor. No. 1 of the FEB-1 lode, identical with Cor. No. 1 MAG-1 lode of this survey.</p> <p>Set an iron post, 18 ins. long, 1½ ins. diam., in a concrete base, with lead cap mkd. COR 1-FEB 1-COR 1-MAG 1-MS 4668; from which.</p>	

Survey No. 4668

FEET		2
	<p>The cor. of secs. 19 and 30, T. 13 N. R. 14 W. and secs. 24 and 25, T. 13 N., R. 15 W., G. & S. R. M., bears S. $14^{\circ}57'30''$ E., 2336.74 ft. dist.; an iron post 2 ins. diam., 12 ins. above ground, firmly set and marked as described in the official record.</p> <p>Cor. No. 1 Sur. No. 2535 Belmont lode bears N. $25^{\circ}45'25''$ W., 668.53 ft. dist.</p> <p>Cor. No. 3 Sur. No. 641 Peabody lode bears N. $36^{\circ}47'40''$ W., 746.64 ft. dist.</p> <p>Cor. No. 4 Sur. No. 2526 Grey Eagle lode bears N. $13^{\circ}16'08''$ W., 579.90 ft. dist.</p> <p>Thence S. $89^{\circ}24'00''$ W.</p>	
12.46	Intersect line 4-1 Sur. No. 2526 Grey Eagle lode at a point from which Cor. No. 4 bears N. $12^{\circ}03'46''$ W., 577.30 ft. dist.	
270.37	Intersect line 2-3 Sur. No. 641 Peabody lode at a point from which Cor. No. 3 bears N. $16^{\circ}24'12''$ W., 626.22 ft. dist.	
303.40	Lode line; discovery point bears N. $31^{\circ}36'00''$ W., 1489.15 ft. dist.	
	Set an iron post, 18 ins. long, $1\frac{1}{2}$ ins. diam., in a concrete base, with lead cap mkd. NCE-MAG 1-SCE-FEB 1-MS 4668.	
477.88	Intersect line 4-1 Sur. No. 2536 Damfino lode at a point from which Cor. No. 4 bears N. $10^{\circ}48'56''$ W., 124.13 ft. dist.	
606.80	Cor. No. 2, identical with Cor. No. 2 of the MAG-1 lode of this survey.	
	Set an iron post, 18 ins. long, $1\frac{1}{2}$ ins. diam., in a concrete base, with lead cap mkd. COR 2-FEB 1-COR 2-MAG 1-MS 4668; from which	
	Cor. No. 5 Sur. No. 641 Peabody lode bears N. $36^{\circ}53'48''$ W., 735.40 ft. dist.	

FEET		3
	<p>Cor. No. 4 Sur. No. 2536 Damfino lode bears N. 40°35'20" E., 162.33 ft. dist.</p> <p>Cor. No. 1 Sur. No. 2527 Black Prince lode bears S. 41°55'08" W., 290.51 ft. dist.</p> <p>Cor. No. 2 Sur. No. 2527 Black Prince lode bears N. 17°55'52" E., 322.84 ft. dist.</p> <p>An old bolt at N.E. cor. of old concrete mill foundation bears N. 64° W., 119.10 ft. dist., mkd. RP-4668-COR 2-M & F.</p> <p>A steel gusset plate at the N.W. cor. of the timbered collar of the Signal shaft, bears S. 15° W., 95.28 ft. dist., mkd. RP-CORS 2-M & F - 4668.</p> <p>Thence N. 31°36'00" W.</p>	
72.74	Intersect line 1-2 Sur. No. 2527 Black Prince lode at a point from which Cor. No. 2 bears N. 29°17' E., 281.13 ft. Dist.	
650.50	Intersect line 2-3 Sur. No. 2527 Black Prince lode at a point from which Cor. No. 2 bears S. 60°43' E., 504.75 ft. dist.	
692.97	Intersect line 3-5 Sur. No. 641 Peabody lode at a point from which Cor. No. 3 bears N. 88°27'42" E., 522.86 ft. dist., and Cor. No. 4 Sur. No. 2535 Belmont lode on line 3-5. Peabody lode bears N. 88°27'42" E., 79.82 ft. dist.	
1499.15	<p>Cor. No. 3</p> <p>Set an iron post 18 ins. long, 1½ ins. diam., in a concrete base, with lead cap mkd. COR 3-FEB 1-MS 4668; from which</p> <p>Cor. No. 4 Sur. No. 2535 Belmont lode bears S. 36°16'04" E., 848.98 ft. dist.</p>	

FEET		4
	Thence N. 89°24'00" E.	
303.40	Lode line; discovery point bears S. 31°36'00" E., 10.00 ft. dist. Set an iron post 18 ins. long, 1½ ins. diam., in a concrete base, with lead cap mkd. NCE-FEB 1-MS 4668.	
345.74	Intersect line 3-4 Sur. No. 2535 Belmont lode at a point from which Cor. No. 4 bears S. 12°48'48" E., 705.70 ft. dist.	
606.80	Cor. No. 4. Set an iron post 18 ins. long, 1½ ins. diam., in a concrete base, with lead cap mkd. COR 4-FEB 1-MS 4668; Thence S. 31°36'00" E.	
794.70	Intersect line 4-1 Sur. No. 2535 Belmont lode at a point from which Cor. No. 4 bears S. 88°27'42" W., 521.14 ft. dist., and Cor. No. 3 Sur. No. 641 Peabody lode on line 4-1 Belmont lode bears S. 88°27'42" W., 78.10 ft. dist.	
1275.09	Intersect line 3-4 Sur. No. 2536 Damfino lode at a point from which Cor. No. 4 bears S. 79°05'50" W., 390.80 ft. dist.	
1462.63	Intersect line 4-1 Sur. No. 2526 Grey Eagle lode at a point from which Cor. No. 4 bears N. 12°03'46" W., 545.36 ft. dist.	
1499.15	Cor. No. 1 and place of beginning.	
	MAG-1 LODE	
	Beginning at Cor. No. 1 of the MAG-1 lode, identical with Cor. No. 1 of the FEB-1 lode of this survey.	
	Thence S. 89°24'00" W.	
12.46	Intersect line 4-1 Sur. No. 2526 Grey Eagle lode at a point from which Cor. No. 1 bears S. 12°03'46" E., 925.24 ft. dist.	

FEET		5
270.37	Intersect line 2-3 Sur. No. 641 Peabody lode at a point from which Cor. No. 2 bears S. 16°24'12" E., 873.29 ft. dist.	
303.40	Lode line, discovery point bears S. 19°35'54" E., 1309.77 ft. dist.	
477.88	Intersect line 4-1 Sur. No. 2536 Damfino lode at a point from which Cor. No. 1 bears S. 10°48'56" E., 1341.01 ft. dist.	
606.80	Cor. No. 2, identical with Cor. No. 2 FEB-1 lode of this survey. Thence S. 19°35'54" E.	
830.96	Intersect line 4-1 Sur. No. 2536 Damfino lode at a point from which Cor. No. 1 bears S. 10°48'56" E., 542.65 ft. dist.	
890.28	Intersect line 6-2 Sur. No. 641 Peabody lode, identical with line 6-2 Sur. No. 659 Alta lode at a point from which Cor. No. 2, Sur. No. 641 Peabody lode, identical with Cor. No. 2 Sur. No. 659 Alta lode bears N. 89°05'48" E., 284.44 ft. dist.	
1379.99	Intersect line 1-2 Sur. No. 2536 Damfino lode, identical with line 3-4 Sur. No. 2534 Atlanta lode at a point from which Cor. No. 2 Sur. No. 2536 Damfino lode identical with Cor. No. 3 Sur. No. 2534 Atlanta lode bears N. 79°08'13" E., 516.73 ft. dist.	
1499.77	Cor. No. 3. This corner falls on a nearly vertical rock surface where a permanent corner could not be established; from this point Cor. No. 4 Sur. No. 2534, Atlanta lode, identical with Cor. No. 1 Sur. No. 2536 Damfino lode bears No. 51°36'36" W., 156.29 ft. dist., and Cor. No. 2 Sur. No. 641 Peabody lode, identical with Cor. No. 2 Sur. No. 659 Alta lode bears N. 7°52'05" E., 584.16 ft. dist.	

Survey No. 4668

FEET		6
	Thence N. 89°24'00" E.	
5.68	Witness Cor. to Cor. No. 3 Set an iron post 18 ins. long, 1½ ins. diam., in a concrete base, with lead cap mkd. WC-COR 3-MAG 1-MS 4668.	
121.29	Intersect line 2-3 Sur. No. 659 Alta lode at a point from which Cor. No. 2 bears N. 4°05'35" W., 578.87 ft. dist.	
303.40	Lode line; discovery point bears N. 19°35'54" W., 190.00 ft. dist. Set an iron post, 18 ins. long, 1½ ins. diam., in a concrete base, with lead cap mkd. SCE-MAG 1-MS 4668.	
506.11	Intersect line 4-1 MAG 14 lode of this survey.	
506.61	Intersect line 2-3 Sur. No. 2534 Atlanta lode at a point from which Cor. No. 3 identical with Cor. No. 2 Sur. No. 2536 Damfino lode bears N. 10°51'14" W., 208.66 ft. dist.	
606.80	Cor. No. 4 Set an iron post, 18 ins. long, 1½ ins. diam., in a concrete base with lead cap mkd. COR 4-MAG 1-MS 4668; from which Cor. No. 3 Sur. No. 2534 Atlanta lode, identical with Cor. No. 2 Sur. No. 2536 Damfino lode, bears N. 34°22'40" W., 247.02 ft. dist. Cor. No. 1 Sur. No. 2526 Grey Eagle lode bears N. 32°23'03" W., 601.49 ft. dist. Cor. No. 4 MAG-14 lode of this survey bears N. 24°52'39" W., 405.27 ft. dist. Thence N. 19°35'54" W.	
391.37	Intersect line 3-4 of MAG-14 lode of this survey.	

	FEET		7
	569.00	Intersect line 1-2 of Sur. No. 2526 Grey Eagle lode from which Cor. No. 1 bears S. 77°55'21" W., 134.27 ft. dist.	
	642.27	Intersect line 2-3 of Sur. No. 2536 Damfino lode at a point from which Cor. No. 2 bears S. 10°43'13" E., 408.31 ft. dist.	
	1499.77	Cor. No. 1 and place of beginning.	
MAG-14 LODE			
At Cor. No. 1 of the MAG-14 lode, on line 3-4 of the MAG-9 lode of this survey.			
Set an iron post, 18 ins. long, 1½ ins. diam. in a concrete base, with lead cap mkd. COR 1-MAG 14-MS 4668; from which			
The cor. of secs 19, 24, 25 and 30 bears N. 17°34'43" E., 85.10 ft. dist.; previously described.			
Cor. No. 4 Sur. No. 2533 Beaver lode bears N. 23°53'25" W., 472.35 ft. dist.			
Cor. No. 2 Sur. No. 2534 Atlanta lode bears S. 11°16'59" E., 358.25 ft. dist.			
Thence N. 88°30'00" E.			
	2.72	Intersect line 2-3 Sur. No. 2534 Atlanta lode at a point from which Cor. No. 3 bears N. 10°51'14" W., 1150.19 ft. dist.	
	111.77	Cor. No. 4 MAG-9 lode of this survey.	
	258.02	Intersect line 3-4 Sur. No. 2533 Beaver lode at a point from which Cor. No. 4 bears N. 46°34'44" W., 618.50 ft. dist.	
	302.50	Lode line; discovery point bears N. 10°43'13" W., 10.00 ft. dist.	
Set an iron post 18 ins. long, 1½ ins. diam., in a concrete base, with lead cap mkd. SCE-MAG 14-MS 4668.			

Survey No. 4668

FEET		8
605.00	<p>Cor. No. 2.</p> <p>Set an iron post, 18 ins. long, 1½ ins. diam., in a concrete base, with lead cap mkd. COR 2-MAG 14-MS 4668.</p> <p>No local bearing objects available.</p> <p>Thence N. 10°43'13" W.</p>	
1316.45	<p>Cor. No. 3</p> <p>Set an iron post, 18 ins. long, 1½ ins. diam., in a concrete base, with lead cap mkd. COR 3-MAG 14-MS 4668; from which</p> <p>Cor. No. 2 Sur. No. 2526 Grey Eagle bears N. 34°09'14" W., 302.11 ft. dist.</p> <p>Thence S. 88°30'00" W.</p>	
302.50	<p>Lode line; discovery point bears S. 10°43'13" E., 1306.45 ft. dist.</p> <p>Set an iron post, 18 ins. long, 1½ ins. diam., in a concrete base, with lead cap mkd. NCE-MAG 14-MS 4668.</p>	
565.77	<p>Intersect line 4-1 MAG-1 lode of this survey.</p>	
605.00	<p>Cor. No. 4, on line 2-3, Sur. No. 2536 Damfino lode.</p> <p>Set an iron post, 18 ins. long, 1½ ins. diam., in a concrete base, with lead cap mkd. COR 4-MAG 14-MS 4668; from which</p> <p>Cor. No. 1, Sur. No. 2526 Grey Eagle lode bears N. 47°14'02" W., 206.59 ft. dist.</p> <p>Thence S. 10°43'13" E.</p>	
166.70	<p>Cor. No. 2 Sur. No. 2536 Damfino lode, identical with Cor. No. 3 Sur. No. 2534 Atlanta lode.</p>	

FEET		9
375.27	Intersect line 3-4 MAG-1 lode of this survey.	
1005.42	Intersect line 3-4 Sur. No. 2533 Beaver lode at a point from which Cor. No. 4 bears N. $46^{\circ}34'44''$ W., 183.72 ft. dist.	
1316.45	Cor. No. 1 and place of beginning.	
MAG-9 LODE		
At Cor. No. 1 of MAG-9 lode; identical with Cor. No. 1 of MAG-8 lode of this survey.		
Set an iron post, 18 ins. long, $1\frac{1}{2}$ ins. diam., in a concrete base, with lead cap mkd. COR 1-MAG 9-COR 1-MAG 8-MS 4668; from which		
The cor. of secs. 19, 24, 25, and 30 bears N. $12^{\circ}10'49''$ W., 1578.10 ft. dist.		
Cor. No. 2 Sur. No. 2533 Beaver lode bears N. $16^{\circ}33'03''$ E., 444.35 ft.		
Thence S: $88^{\circ}30'00''$ W.		
302.50	Lode line; discovery point bears N. $9^{\circ}34'17''$ W., 20.00 ft. dist.	
Set an iron post, 18 ins. long, $1\frac{1}{2}$ ins. diam., in a concrete base, with lead cap mkd. SCE-MAG 9-NCE-MAG 8-MS 4668.		
318.	Center of road, bears N. 5° E., and S. 5° W.	
605.00	Cor. No. 2, identical with Cor. No. 2 MAG-8 lode of this survey, Cor. No. 2 Sur. No. 657 Senator lode and Cor. No. 1 Sur. No. 2532 Otsego lode. Found a wooden post, 4x4 ins. in size, 4 ft. long, with bottom portion badly decomposed, plainly mkd. as described in the official record. I removed the post and set an iron post, 18 ins. long, $1\frac{1}{2}$ ins. diam., in a concrete base, with lead cap mkd. COR 2-MAG 9-COR 2-MAG 8-MS 4668-COR 2-SEN-MS 657-COR 1-OTSEGO-MS 2532.	

Survey No. 4668

FEET		10
	Thence N. 9°34'17" W.	
1046.34	Intersect line 1-2 Sur. No. 2534 Atlanta lode at a point from which Cor. No. 2 bears N. 79°07'29" E., 499.17 ft. dist.	
1368.26	Intersect line 1-2 of Sur. No. 2533 Beaver lode at a point from which Cor. No. 1 bears N. 46°34'44" W., 179.81 ft. dist.	
1485.04	Cor. No. 3, identical with Cor. No. 3 Sur. No. 657 Senator lode and Cor. No. 3 Sur. No. 659 Alta lode.	
	<p>Found a wooden post, 4x4 ins. in size, 4 ft. long, badly decomposed. The original post was left in place and alongside the post set an iron post 18 ins. long, 1½ ins. diam., in concrete base, with lead cap mkd. COR 3-MAG 9-MS 4668-COR 3-ALTA-MS 659-COR 3-SEN-MS 657; from which</p>	
	<p>Cor. No. 1 Sur. No. 2533 Beaver lode bears N. 85°39'32" W., 111.50 ft. dist.</p>	
	<p>Cor. No. 1, Sur. No. 2534 Atlanta lode bears S. 3°18'31" W., 452.38 ft. dist.</p>	
	<p>U.S.M.M. No. 1, a mound of stones 4 ft. high, 2 ft. diam., with wooden stake in center, bears S. 4°35'25" E., 25.00 ft. dist.</p>	
	<p>U.S. Coast and Geodetic Survey triangulation station McCracken, a brass cap, 3½ ins. diam., set flush with surface of rock outcrop, bears S. 32°19'09" E., 30.96 ft. dist.</p>	
	Thence N. 88°30'00" E.	
302.50	Lode line; discovery point bears S. 9°34'17" E., 1465.04 ft. dist.	
	<p>Set an iron post, 18 ins. long, 1½ ins. diam. in a concrete base, with lead cap mkd. NCE-MAG 9-MS 4668.</p>	
493.23	Cor. No. 1 MAG-14 lode of this survey.	

FEET		11
495.95	Intersect line 2-3 Sur. No. 2534 Atlanta lode at a point from which Cor. No. 2 bears S. 10°51'14" E., 357.80 ft. dist.	
605.00	<p>Cor. No. 4, on line 1-2 of the MAG-14 lode of this survey.</p> <p>Set an iron post, 18 ins. long, 1½ ins. diam., in a concrete base, with lead cap mkd. COR 4-MAG 9-MS 4668; from which</p> <p>Cor. No. 4 Sur. No. 2533 Beaver lode bears N. 35°14'20" W., 525.20 ft. dist.</p> <p>The cor. of secs. 19, 24, 25 and 30 bears N. 47°43'46" W., 116.26 ft. dist.</p> <p>Cor. No. 2, Sur. No. 2534 Atlanta lode bears S. 6°42'14" W., 356.70 ft. dist.</p> <p>Thence S. 9°34'17" E.</p>	
826.52	Intersect line 1-2 Sur. No. 2533 Beaver lode at a point from which Cor. No. 2 bears S. 46°34'44" E., 325.03 ft. dist.	
1485.04	Cor. No. 1, and place of beginning.	
	<p style="text-align: center;">MAG-8 LODE</p> <p>Beginning at Cor. No. 1 of the MAG-8 lode, identical with Cor. No. 1 MAG-9 lode of this survey.</p> <p>Thence S. 88°30'00" W:</p>	
302.50	Lode line; discovery point bears S. 34°53'50" E., 20.00 ft. dist.	
318.	Center of road, bears N. 5° E., and S. 5° W.	
605.00	<p>Cor. No. 2, identical with Cor. No. 2 of the MAG-9 lode of this survey, Cor. No. 2 Sur. No. 657 Senator lode and Cor. No. 1 Sur. No. 2532 Otsego lode.</p> <p>Thence S. 34°53'50" E.</p>	
528.	Center of road, bears N. 15° E., and S. 15° W.	

Survey No. 4668

FEET		12
922.	Center of road, bears approx. westerly and easterly.	
1185.	Center of road, bears S. 45° E., and N. 45° W.	
1490.21	Cor. No. 3, identical with Cor. No. 4 Sur. No. 2532 Otsego lode and Cor. No. 1 Sur. No. 2531 Brooks lode.	
	<p>Found a wooden post, 4x4 ins. in size, 4 ft. long, badly decomposed. I removed the post and set an iron post, 18 ins. long, 1½ ins. diam., in a concrete base, with lead cap mkd. COR 3-MAG 8-MS 4668 - COR 1-BR-MS 2531-COR 4-CTS-MS 2532; from which</p> <p>Magnum mining company triang. station No. 904, a steel pin, 2 ins. above the ground, ½ ins. diam., bears S. 13°10' E., 282.84 ft. dist.</p> <p>Bearing rock for Cor. No. 4 Otsego lode bears S. 18° W., 15.10 ft. dist., mkd. B + R - COR 4-0-2532.</p> <p>Thence N. 88°30'00" E.</p>	
13.	Center of road, bears S. 20° E., N. 20° W.	
302.50	<p>Lode line, discovery point bears N. 34°53'50" W., 1470.21 ft. dist.</p> <p>Set an iron post, 18 ins. long, 1½ ins. diam., in a concrete base with lead cap mkd. SCE-MAG-8-MS 4668.</p>	
605.00	<p>Cor. No. 4.</p> <p>Set an iron post, 18 ins. long, 1½ ins. diam., in a concrete base, with lead cap mkd. COR 4-MAG-8-MS 4668.</p> <p>No bearing objects available.</p> <p>Thence N. 34°53'50" W.</p>	
8.	Center of road bears easterly and westerly.	
1490.21	Cor. No. 1, and place of beginning.	

FEET	AREAS	Acres
	Total area, FEB-1 lode	17.901
	Area in conflict with --	
	Sur. No. 2526 Grey Eagle lode	0.004
	Sur. No. 641 Peabody lode	5.926
	Sur. No. 2536 Damfino lode	1.610
	Sur. No. 2536 Damfino lode, exclusive of its conflict with Sur. No. 641 Peabody lode	0.971
	Sur. No. 2536 Damfino lode, exclusive of its conflict with Sur. No. 2526 Grey Eagle lode	1.606
	Sur. No. 2527 Black Prince lode	1.629
	Sur. No. 2527 Black Prince lode, exclusive of its conflict with Sur. No. 641 Peabody lode	0.000
	Sur. No. 2535 Belmont lode	6.181
	Total area, MAG-1 lode	19.754
	Area in conflict with --	
	Sur. No. 2526 Grey Eagle lode	1.552
	Sur. No. 641 Peabody lode	5.998
	Sur. No. 2536 Damfino lode	15.995
	Sur. No. 2536 Damfino lode, exclusive of its conflict with Sur. No. 2526 Grey Eagle lode	14.452
	Sur. No. 2536 Damfino lode, exclusive of its conflict with Sur. No. 641 Peabody lode	11.159
	Sur. No. 2536 Damfino lode, exclusive of its conflict with Sur. No. 659 Alta lode	13.711
	Sur. No. 659 Alta lode	2.689
	Sur. No. 2534 Atlanta lode	1.896
	Sur. No. 2534 Atlanta lode, exclusive of its conflict with Sur. No. 659 Alta lode	1.491

13.

Survey No. 4668

FEET	Acres
	14.
	Acres
MAG-14 lode of this survey	0.595
MAG-14 lode of this survey, exclusive of its conflict with Sur. No. 2534	
Atlanta lode	0.593
Total area, MAG-14 lode ...	18.048
Area in conflict with --	
Sur. No. 2534 Atlanta lode	0.035
Sur. No. 2533 Beaver lode	0.917
Sur. No. 2533 Beaver lode, exclusive of its conflict with Sur. No. 2534	
Atlanta lode	0.900
Total area, MAG-9 lode	20.421
Area in conflict with --	
Sur. No. 2534 Atlanta lode	4.523
Sur. No. 2533 Beaver lode	6.486
Sur. No. 2533 Beaver lode, exclusive of its conflict with Sur. No. 2534	
Atlanta lode	2.844
Total area, MAG-8 lode	17.280
LOCATION	
This survey is located in the SW $\frac{1}{4}$ SW $\frac{1}{4}$ sec. 19 and the W $\frac{1}{2}$ NW $\frac{1}{4}$, NW $\frac{1}{4}$ SW $\frac{1}{4}$ sec. 30; T. 13 N., R. 14 W., and in the E $\frac{1}{2}$ NE $\frac{1}{4}$ sec. 25; SE $\frac{1}{4}$, S $\frac{1}{2}$ NE $\frac{1}{4}$ sec. 24, T. 13 N., R. 15 W., Gila and Salt River Meridian, Arizona.	
The survey of the FEB-1, MAG-1, MAG-14, MAG-9 and MAG-8 lodes are identical with the respective locations or amended location as marked on the ground.	
EXPENDITURES	
The improvements and the value of the labor and improvements made upon or for the benefit of each of the lode locations embraced in said mining claim by the claimant or its grantors are as follows:	

FEET		
No. 1	The discovery point of the FEB-1 lode is on the lode line 10 ft. from a point on line 3-4, 303.40 ft. from Cor. 3. Value, None	15.
No. 2	The discovery cut of the FEB-1 lode, a bulldozer cut in a side hill the face of which bears N. 43°20' W., 852 ft. dist. from Cor. No. 1 FEB-1 lode; 30 ft. long bearing S. 45° E., with 10 ft. face on SW bank. Value, \$75.	
No. 1	The discovery point of the MAG-1 lode is on the lode line 190 ft. from a point on line 3-4, 303.40 ft. from Cor. 3. Value, None	
No. 2	The discovery cut of the MAG-1 lode, a cut in the bank of an excavated area, bears N. 28°50' W., 710 ft. dist. from Cor. No. 4 MAG-1 lode; 6 ft. wide, 10 ft. face; running N. 45° W., 6 ft. to face. Value, \$100.	
No. 1	The discovery point of the MAG-14 lode is on the lode line 10 ft. from a point on line 1-2, 302.50 ft. from Cor. 1. Value, None	
No. 2	The discovery cut of the MAG-14 lode, a bulldozer cut in a side hill, the face of which bears N. 72°45' E., 215 ft. dist. from Cor. No. 1 MAG-14 lode; 30 ft. long bearing N. 30° E., with 10 ft. face on the NW. bank. Value, \$75.	
No. 1	The discovery point of the MAG-9 lode is on the lode line 20 ft. from a point on line 1-2, 302.50 ft. from Cor. 1. Value, None	
No. 2	The discovery cut of the MAG-9 lode, a bulldozer cut in a side hill, the face of which bears N. 82° W., 282 ft. dist. from Cor. No. 1 MAG-9 lode; 30 ft. long bears N. 30° W., with 10 ft. face on the NE. bank. Value, \$75.	

FEET		16.
No. 1	<p>The discovery point of the MAG-8 lode is on the lode line 20 ft. from a point on line 1-2, 302.50 ft. from Cor. 1.</p> <p style="text-align: right;">Value, None</p>	
No. 2	<p>The discovery cut of the MAG-8 lode, a bulldozer cut in a side hill, the face of which bears S. 49°15' E., 375 ft. dist. from Cor. No. 2 MAG-8 lode; 30 ft. long bears N. 50° W., with 10 ft. face on SW. bank.</p> <p style="text-align: right;">Value, \$75.</p> <p>An interest in a common improvement described as follows:</p> <p>A surface drilling program to explore the unmined portion of a mineralized vein on these claims. Drilling completed at the time of survey is as follows:</p> <p>A drill hole, number 4170-1, 2 ins. diam., inclined S. 70° W. and 50° from the horizontal and 60 ft. deep, bears N. 42°39' E., 56.7 ft. dist. from Cor. 3 of MAG-1 lode.</p> <p style="text-align: right;">Value, \$228.</p> <p>A drill hole, number 4170-2, 2 ins. diam., vertical and 80 ft. deep, bears N. 40°40' E., 58.9 ft. dist. from Cor. 3 of MAG-1 lode.</p> <p style="text-align: right;">Value, \$304.</p> <p>A Drill hole, number 4220-1, 2 ins. diam., inclined S. 70° W. and 50° from the horizontal and 60 ft. deep, bears N. 16°35' E., 103.0 ft. dist. from Cor. 3 of MAG-1 lode.</p> <p style="text-align: right;">Value, \$228.</p> <p>A drill hole, number 4220-2, 2 ins. diam., vertical and 75 ft. deep, bears N. 19°02' E., 105.4 ft. dist. from Cor. 3 of MAG-1 lode.</p> <p style="text-align: right;">Value, \$285.</p> <p>A drill hole, number 4260-1, 2 ins. diam., vertical and 100 ft. deep, bears N. 19°53' E., 168.7 ft. dist. from Cor. 3 of MAG-1 lode.</p> <p style="text-align: right;">Value, \$380.</p>	

17

FEET

A drill hole, number 4260-2, 2 ins. diam., inclined S. 70° W. and 50° from the horizontal and 22 ft. deep, bears N. $39^{\circ}29'$ E., 156.0 ft. dist. from Cor. 3 of MAG-1 lode.

Value, \$83.60

A drill hole, number 4310-1, 2 ins. diam., vertical and 120 ft. deep, bears N. $12^{\circ}20'$ E., 212.6 ft. dist. from Cor. 3 of MAG-1 lode.

Value, \$456.

A drill hole, number 4360-1, 2 ins. diam., vertical and 140 ft. deep, bears N. $7^{\circ}46'$ E., 262.1 ft. dist. from Cor. 3 of MAG-1 lode.

Value, \$532.

A drill hole, number 4360-2, 2 ins. diam., inclined S. 70° W. and 70° from the horizontal and 105 ft. deep, bears N. $7^{\circ}21'$ E., 260.8 ft. dist. from Cor. 3 of MAG-1 lode.

Value, \$399.

A drill hole, number 4400-1, 2 ins. diam., vertical and 155 ft. deep, bears N. $5^{\circ}26'$ E., 310.1 ft. dist. from Cor. 3 of MAG-1 lode.

Value, \$589.

A drill hole, number 4400-2, 2 ins. diam., inclined S. 70° W. and 70° from the horizontal and 80 ft. deep, bears N. $1^{\circ}47'$ E., 300.8 ft. dist. from Cor. 3 of MAG-1 lode.

Value, \$304.

A drill hole, number 4450-2, 2 ins. diam., inclined S. 70° W. and 80° from the horizontal and 140 ft. deep, bears N. $7^{\circ}36'$ E., 337.6 ft. dist. from Cor. 3 of MAG-1 lode.

Value, \$532.

A drill hole, number 4450-1, 2 ins. diam., inclined S. 70° W. and 70° from the horizontal and 83 ft. deep, bears N. $1^{\circ}22'$ E., 353.8 ft. dist. from Cor. 3 of MAG-1 lode.

Value, \$315.40

FEET		19
	<p>A drill hole, number 4740-1, 2 ins. diam., inclined S. 70° W. and 70° from the horizontal and 127 ft. deep, bears S. 25°41' E., 873.5 ft. dist. from Cor. 2 of MAG-1 lode. Value, \$482.60</p>	
	<p>A drill hole, number 4740-2, 2 ins. diam., inclined S. 70° W. and 40° from the horizontal and 80 ft. deep, bears S. 22°06' E., 870.2 ft. dist. from Cor. 2 of MAG-1 lode. Value, \$304.</p>	
	<p>A drill hole, number 4830-1, 2 ins. diam., inclined S. 70° W. and 65° from the horizontal and 94 ft. deep, bears S. 22°43' E., 770.0 ft. dist. from Cor. 2 of MAG-1 lode. Value, \$357.20</p>	
	<p>A drill hole, number 4880-1, 2 ins. diam., vertical and 138 ft. deep, bears S. 21°56' E., 716.0 ft. dist. from Cor. 2 of MAG-1 lode. Value, \$524.40</p>	
	<p>A drill hole, number 4880-2, 2 ins. diam., inclined S. 70° W. and 50° from the horizontal and 47 ft. deep, bears S. 20°06' E., 716.9 ft. dist. from Cor. 2 of MAG-1 lode. Value, \$178.60</p>	
	<p>A drill hole, number 4930-1, 2 ins. diam., inclined S. 70° W. and 45° from the horizontal and 30 ft. deep, bears S. 19°52' E., 663.7 ft. dist. from Cor. 2 of MAG-1 lode. Value, \$114.</p>	
	<p>Value of combined surface drilling \$9,777.40</p>	
	<p>Value of one fifth (1/5) interest \$1,955.48</p>	
	<p>Five Hundred Dollars or over has been expended in these improvements in such a manner as tends to the development of each lode of the survey subsequent to its location and to the time since which common ownership and contiguity have prevailed; therefore, an undivided one fifth (1/5) interest in its value is hereby credited to each of said lodes.</p>	

FEET

20

No portion of or interest in this improvement has been credited heretofore as patent expenditure to any lode claim.

OTHER IMPROVEMENTS

A complex system of underground drifts, adits and stopes runs along the main vein of the old McCracken mine. MAG-1 and MAG-9 lodes partly overlay these workings.

OTHER CORNER DESCRIPTIONS AND SUPPLEMENTAL DATA

Sur. No. 641 Peabody Lode: Cor. No. 2 is an old post set in a mound of stones from which mouth of tunnel bears S. 30° W., 97 ft. dist. Cor. No. 3 is an old post, badly decomposed, set in a mound of stones from which a bearing rock bears S. 4° E., 31.85 ft. dist.; Cor. No. 5 is an old post set in a mound of stones from which a bearing rock bears No. 52° W., 64.7 ft. dist.; Cor. No. 6 is a mound of stones from which the post has been removed, from which bearing rock bears N. 53° E., 31.85 ft. dist.; Cor. No. 1 and its bearing rock have been destroyed. Cor. No. 4 has been destroyed and no bearing rock could be found. Line 6-2 was found to be N. 89°05'48" E., 588.54 ft., instead of S. 74°24' E., 600 ft. as approved; line 2-3 was found to be N. 16°24'12" W., 1499.51 ft. instead of N. 31°42" W., 1500 ft. as approved; line 3-5 was found to be S. 88°27'42" W., 601.30 ft. instead of N. 74°24' W., 600 ft. as approved; line 5-6 was found to be S. 16°56'27" E., 1496.55 ft. instead of S. 31°42' E., 1500 ft. as approved. From the midpoint of line 6-2 U.S.M.M. No. 1 bears S. 14°47'32" E., 1583.78 ft. instead of S. 26°50' E., 1678 ft. as approved. From the midpoint of line 6-2 the cor. of secs. 19, 24, 25 and 30, bears S. 33°06'44" E., 1686.17 ft. dist.

Sur. No. 659 Alta lode: Cor. No. 3 is an old post, badly decomposed, in a mound of stones from which a bearing rock bears

FEET		21
	<p>N. 84° E., 7.7 ft. dist.; Cor. No. 5 is an old post badly decomposed in a mound of stones from which a bearing rock bears S. 70° E., 37 ft. dist.; S.E. Cor. of 2 room stone building bears N. 75° W., 184½ ft. dist.; Cors. Nos. 1, 2 and 6 are identical with Cors. No. 1, 2 and 6 of Sur. No. 641 Peabody Lode, described above; Cor. No. 4 has been destroyed. Line 6-2 is identical with line 6-2 of Sur. No. 641 Peabody Lode, described above; line 2-3 was found to be S. 4°05'35" E., 1514.89 ft., instead of S. 18°12' E., 1500 ft. as approved; line 3-5 was found to be S. 88°48'28" W. 601.31 ft., instead of N. 74°24' W., 600 ft. as approved; line 5-6 was found to be N. 3°36'20" W., 1517.26 instead of N. 18°12' W., 1500 ft., as approved. From the midpoint of line 6-2 U.S.M.M. No. 1 bears S. 14°47'32" E., 1583.78 ft. instead of S. 26°40' E., 1708 ft. From the midpoint of line 6-2 the cor. of secs. 19, 24, 25 and 30 bears S. 33°06'44" E., 1686.17 ft. dist..</p> <p>Sur. No. 657 Senator Lode: Cor. No. 2 is an old 4" x 4" post, properly marked, in a mound of stone from which a bearing rock bears S. 21° W., 20.6 ft. dist.; Cor. No. 6 is an old 4" x 4" post properly marked, in a mound of stones from which a bearing rock bears S. 4° W., 28.4 ft. dist., another bearing rock bears S. 74° E., 6.7 ft. dist.; Cor. No. 1 has been destroyed; Cors. Nos. 3, 4 and 5 are identical with Cors. Nos. 3, 4 and 5 of Sur. No. 659 Alta lode described above.. Line 6-2 was found to be N. 88°29'47" E., 600.62 ft. instead of S. 74°24' E., 600 ft. as approved. Line 2-3 was found to be N. 9°34'17" W., 1485.04 ft. dist. instead of N. 23°54' W., 1500 ft. as approved; line 3-5 identical with line 3-5 Sur. No. 659 Alta Lode described above. Line 5-6 was found to be S. 9°34'47" E., 1488.37 ft. instead of N. 72°24' W. 1500 ft. as approved. From the midpoint of line 6-2 U.S.M.M. No. 1 bears N. 2°11'14" E., 1448.40 ft. instead of N. 13°48' W., 1296½ ft. From the midpoint of line 6-2 the cor. of secs. 19, 24, 25 and 30 bears N. 20°03'47" E., 1667.48 ft. dist.</p>	

Survey No. 4668

FEET

22

Sur. No. 2526 Grey Eagle Lode: Cors. Nos. 1, 2, 3 and 4 are 4" x 4" posts, firmly set and properly marked and witnessed. Line 1-2 was found to be N. $77^{\circ}55'21''$ E., 600.13 ft., instead of N. $77^{\circ}55'$ E., 600 ft. as approved; line 2-3 was found to be N. $12^{\circ}03'09''$ W., 1502.40 ft., instead of N. $12^{\circ}05'$ W., 1500 ft. as approved; line 3-4 was found to be S. $77^{\circ}56'08''$ W., 600.40 ft. instead of S. $77^{\circ}55'$ W., 600 ft. as approved; line 4-1 was found to be S. $12^{\circ}03'46''$ E., 1502.54 ft., instead of S. $12^{\circ}05'$ E., 1500 ft. as approved. From Cor. No. 1 U.S.M.M. No. 1 bears S. $3^{\circ}40'30''$ W., 1474.60 ft., instead of S. $3^{\circ}43'$ W., 1465.9 ft., as approved. The cor. of sec. 19, 24, 25 and 30 bears S. $17^{\circ}20'12''$ E., 1416.99 ft. dist.

Sur. No. 2527 Black Prince Lode: Cors. No. 1 and 4 are 4" x 4" posts firmly set and properly marked and witnessed; Cor. No. 2 has been destroyed; Cor. No. 3 could not be found. Line 4-1 was found to be S. $60^{\circ}43'$ E., instead of S. $60^{\circ}45'$ E., as approved; line 1-2 is shown at right angles to line 4-1 and 600 ft. long as approved; this makes line 1-2 N. $29^{\circ}17'$ E., 600.00 ft., instead of N. $29^{\circ}15'$ E., 600 ft. and line 2-3 N. $60^{\circ}43'$ W., 1500 ft., instead of N. $60^{\circ}45'$ W., 1500 ft. as approved. From Cor. No. 1 U.S.M.M. No. 1 bears S. $22^{\circ}23'13''$ E., 2329.56 ft., instead of S. $22^{\circ}51'$ E., 2361.8 ft., as approved. From Cor. No. 1 the cor. of secs. 19, 24, 25 and 30 bears S. $34^{\circ}36'08''$ E., 2472.37 ft. dist.

Sur. No. 2532 Otsego Lode: Cors. Nos. 3 and 4 are old posts badly decomposed, set in mounds of stones. Cor. No. 1 is identical with Cor. No. 2 of Sur. No. 657 Senator Lode, previously described. Cor. No. 2 is identical with Cor. No. 6 of Sur. No. 657 Senator Lode, previously described. Line 1-2 was found to be S. $88^{\circ}29'47''$ W., 600.62 ft., instead of S. $88^{\circ}29'$ W., 600 ft. as approved; line 2-3 was found to be S. $34^{\circ}54'34''$ E., 1491.33 ft., instead of S. $34^{\circ}54'$ E., 1487.7 ft. as approved; line 3-4 was

FEET

found to be N. $88^{\circ}25'24''$ E., 599.74 ft. instead of N. $88^{\circ}29'$ E., 600 ft. as approved; line 4-1 was found to be N. $34^{\circ}53'50''$ W., 1490.21 ft., instead of N. $34^{\circ}54'$ W., 1487.7 ft. as approved. From Cor. No. 1 U.S.M.M. No. 1 bears N. $9^{\circ}39'24''$ W., 1460.15 ft., instead of N. $9^{\circ}43'$ W., 1460.5 ft. as approved. From Cor. No. 1 the cor. of secs. 19, 24, 25 and 30 bears N. $9^{\circ}53'40''$ E., 1581.94 ft. dist.

Sur. No. 2531 Brooks Lode: Cor. No. 1 is identical with Cor. No. 4 Sur. No. 2532 Otsego lode described above; Cor. No. 2 is identical with Cor. No. 3 Otsego lode described above. Cors. Nos. 3 and 4 could not be found. Line 1-2, identical with line 3-4 of Sur. No. 2532 Otsego lode was found to be S. $88^{\circ}25'24''$ W., 599.74 ft. instead of S. $88^{\circ}29'$ W., 600 ft., as approved; line 2-3 is shown as S. $53^{\circ}55'36''$ E., to maintain the angular relationship as approved. Line 4-1 is shown as N. $53^{\circ}55'36''$ W. to maintain the angular relationship as approved. From Cor. No. 1 U.S.M.M. No. 1 bears N. $22^{\circ}24'28''$ W., 2879.09 ft., instead of N. $22^{\circ}25'$ W., 2877.4 ft., as approved. From Cor. No. 1 the cor. of secs. 19, 24, 25 and 30 bears N. $11^{\circ}47'47''$ W., 2840.64 ft. dist.

Sur. No. 2533 Beaver lode: Cor. No. 1 is a post firmly set and properly marked; Cor. No. 4 is a post firmly set from which a bearing rock was found N. 1° E., 12.8 ft., instead of S. $2^{\circ}50'$ W., 12.45 ft., as approved; Cor. No. 3 and the Witness Cor. for Cor. No. 2 could not be found. Line 4-1 was found to be S. $43^{\circ}25'16''$ W., 600.77 ft. instead of S. $43^{\circ}20'$ W., 600 ft. as approved; lines 1-2 and 3-4 are shown at right angles to line 4-1, and each 1500 ft. long, as approved; this makes line 2-3 N. $43^{\circ}25'16''$ E., instead of N. $43^{\circ}20'$ E. as approved, and lines 1-2 and 3-4 each S. $46^{\circ}34'44''$ E., instead of S. $46^{\circ}40'$ E., as approved. From Cor. No. 1 U.S.M.M. No. 1 bears S. $73^{\circ}34'54''$ E., 117.99 ft., instead of S. $73^{\circ}14'$ E., 117.87 ft., as approved. From Cor. No. 1 the cor. of secs. 19, 24, 25 and 30 bears S. $82^{\circ}15'42''$ E., 635.73 ft. dist.

FEET

25

657 Senator lode was found to bear N. $9^{\circ}34'17''$ W., 438.70 instead of N. $9^{\circ}37'$ W., 438.70 ft. as approved; the intersection of line 2-3 Sur. No. 659 Alta lode along line 3-4 was found to be 362.57 ft. instead of 362.51 ft. as approved, and Cor. No. 3 of Sur. No. 659 Alta lode was found to bear S. $4^{\circ}05'35''$ E., 1077.01 ft. instead of S. $4^{\circ}05'$ E., 1068.9 ft. as approved; the intersection of line 3-5 Sur. No. 657 Senator lode identical with line 3-5 Sur. No. 659 Alta lode along line 4-1 was found to be 1050.61 ft. instead of 1043.12 ft. as approved and cors. Nos. 3 were found to bear N. $88^{\circ}48'28''$ E., 112.44 ft. instead of N. $88^{\circ}29'$ E., 112.43 ft. as approved. The total area of Sur. No. 2534 Atlanta lode was found to be 20.783 acres instead of 20.661 acres as approved; the area in conflict with Sur. No. 657 Senator lode was found to be 1.090 acres instead of 1.091 acres as approved; the area in conflict with Sur. No. 659 Alta lode was found to be 4.258 acres instead of 4.222 acres as approved.

Sur. No. 2535 Bellmont lode: Cors. No. 1, 2 and 3 are pine posts, firmly set and properly marked and witnessed; Cor. No. 4 had been removed but a mound of stones was found at record bearing and dist. from a bearing rock. I reset Cor. No. 4 temporarily as a spike in the ground with a stake alongside. Line 1-2 was found to be N. $12^{\circ}48'00''$ W., 1489.74 ft., instead of N. $12^{\circ}54'$ W., 1500 ft., as approved; line 2-3 was found to be S. $88^{\circ}26'37''$ W., 600.12 ft., instead of S. $88^{\circ}29'$ W., 600 ft., as approved; line 3-4 was found to be S. $12^{\circ}48'48''$ E., 1489.52 ft., instead of S. $12^{\circ}54'$ E., 1500 ft. as approved; line 4-1 was found to be partially on line 3-5 of Sur. No. 641 Peabody lode and was N. $88^{\circ}27'42''$ E., 599.78 ft., instead of N. $88^{\circ}29'$ E., 600 ft., as approved. From Cor. No. 1 U.S.M.M. No. 1 bears S. $7^{\circ}12'42''$ E., 3002.37 ft., instead of S. $7^{\circ}15'$ E., 2990.7 ft., as approved. From Cor. No. 1 the cor. to secs. 19, 24, 25 and 30 bears S. $17^{\circ}21'16''$ E., 2996.06 ft. dist.

FEET

26

Sur. No. 2536 Damfino lode; Cors. Nos. 3 and 4 are 4" x 4" posts, firmly set and properly marked. Cors. Nos. 1 and 2 are identical with Cors. Nos. 4 and 3 of Sur. No. 2534 Atlanta lode, described above. Line 1-2 is identical with line 3-4 of Sur. No. 2534 Atlanta lode, described above; line 2-3 was found to be N. 10°43'13" W., 1465.56 ft. instead of N. 10°53' W., 1464 ft. as approved; line 3-4 was found to be S. 79°05'50" W., 603.00 ft., instead of S. 79°07' W., 600 ft., as approved; line 4-1 was found to be S. 10°48'56" E., 1465.14 ft., instead of S. 10°53' E., 1464 ft. as approved. From Cor. No. 1 U.S.M.M. No. 1 bears S. 16°30'55" E., 1099.69 ft., instead of S. 16°33' E., 1091.9 ft., as approved. From Cor. No. 1 the cor. of secs. 19, 24, 25 and 30 bears S. 41°33'45" E., 1250.11 ft. dist.

UNITED STATES
DEPARTMENT OF THE INTERIOR
BUREAU OF LAND MANAGEMENT

CERTIFICATE OF SURVEYOR

Name of Mineral Surveyor	Date
JOHN H. STITZER	May 28, 1968

I HEREBY CERTIFY That in pursuance of an order received from the Bureau of Land Management and Amended , at Phoenix, Arizona dated January 22, 1968 / March 27 , 19 68, I have carefully executed the survey of the claim of Magnum Mining Company known as the (lode, placer, or mill-site) MAG-1, MAG-8, MAG-9, MAG 14 and FEB-1 situated in Secs. 19 and 30 and Secs. 24 and 25 Township 13 N , Ranges 14 & 15 W, Gila & Salt River Meridian, in the State of Arizona

This survey, designated as number 4668 , has been executed by me and under my direction and has been made in strict conformity with said order, the Manual of Instructions for the Survey of Public Lands of the United States, and in the specific manner described in the foregoing field notes.

I FURTHER CERTIFY That the labor expended and improvements made upon and for the benefit of the (lode or placer) lode location(s) embraced in the said mining claim by claimant(s) or its grantors are fully stated in my report. The character, extent, location, and itemized value are specified in full detail. No portion of, or interest in, said labor and improvements so credited to this claim has been included in the estimate of expenditures upon any other claim.

Tucson, Arizona
(Location)

John H. Stitzer
(Signature of Mineral Surveyor)

CERTIFICATE OF APPROVAL

Bureau of Land Management
Office
Arizona State Office
Location
Phoenix, Arizona
Date
October 11, 1968

The foregoing field notes of mineral survey number 4668 , in Sections 19 and 30 and Sections 24 and 25 , surveyed unsurveyed Township 13 N. , Ranges 14 W. , Gila and Salt River Meridian, in the State of Arizona and 15 W. , executed by John H. Stitzer Mineral Surveyor, under order dated January 22 , 19 68 , having been critically examined and the necessary corrections made prior to their certification by the surveyor, the field notes and the survey therein described are hereby approved.

Fred J. Weber
Fred J. Weber (Authorized Signature)

State Director
(Title)

CERTIFICATE OF TRANSCRIPT

I CERTIFY That the foregoing transcript of field notes of the above described mineral survey number is a true copy of the original field notes.

(Authorized Signature)

(Title)

Title 18, U. S. C. section 1001, makes it a crime for any person knowingly and willfully to make to any department or agency of the United States any false, fictitious, or fraudulent statements or representations as to any matter within its jurisdiction.

LOT NO. 37.SURVEY NO. 641.

Field Notes

of the Survey of the

"Peabody"

Mining Claim

Situate in Overis Mining District.County of Mohave and in Sec. approx, T_p. 13 N 12 NRange 14 W 12 W, of the Gila and Salt River Meridian.

ARIZONA.

Claimed by The Peabody Silver
Mining Company.Survey executed by Eugene Samenberg D. S.Under instructions dated December 29. 1883.Survey commenced April 15th 1884Survey completed April 16th 1884

PRELIMINARY OATHS

FOR SURVEYS OF MINING CLAIMS AND MILL SITES.

WE, Robert Jones and John Mann

do solemnly swear that we will faithfully execute the duties of Chain Carriers: that we will level the chain upon uneven ground, and plumb the tally pins, whether by sticking or dropping the same; that we will report the true distance to all notable objects, and the true length of all lines that we assist in measuring, to the best of our skill and ability.

Robert Jones

John Mann

SWORN to and subscribed before me, this fifteenth day
of April 1884

Eugene Cassenberg
Notary Public

I,

do solemnly swear that I will well and truly perform the duties of

..... according to instructions given me,
to the best of my skill and ability.

SWORN to and subscribed before me, this..... day

of..... 188.....

Feet.

Field Notes
of the survey of the
Peabody Mining Claim.
in the Owens Mining District, Mohave County,
Arizona.

Claimed by the Peabody Silver Mining Comp.

Surveyed by Eugene Pannenberg U. S.
Deputy Mineral Surveyor, under instructions from
the Surveyor General, of date December 29th 1883.

Survey Commenced: April 15th 1884.
" Completed: April 16th 1884.

Description of Survey:

Beginning at the Initial monument, mentioned in the location ^{notice}, and marking the southerly end center of claim (which at the same time is the Initial monument and northerly end center of Alta claim), where I set a post 4 ft. long, 4 ins. dia., 1½ ft. in ground and surrounded same with mound of stones. Post marked P. I. M. No. 1.

U. S. Min. Mon. No. 1. Brs S. 26° 50' E. 1678 ft.

Large croppings, just west of Monument P. I. M. No. 1 and south end of sloping to surface, are in the south line, or better are the South line of claim.

Large granite rock, in place, marked P. I. M. No. 1. B. P. Brs. N. 74° 24' E. 19½ ft.

Thence S 74° 24' E.

Var. 14° 12' E.

300. To loc. mon., where I set a post 4 ft. long, 4 ins. dia., 1½ ft. in ground and surrounded same with mound of stones. Post marked P. No. II.

U. S. Min. Mon. No. 1. Brs. S. 18° 12' E. 1524 ft.

Mouth of tunnel, driven westerly into Alta Claim
Brs. S. 30° 50' W. 85 ft.

Feet.

Thence N. $31^{\circ}42'W$.Var. $14^{\circ}12'E$.

575. To road, brs E. and W.
 680. To road, brs E. and W.
 1500. To point, where I set a post 4 ft. long, 4×4 ins.,
 $1\frac{1}{2}$ ft. in ground and surrounded same with
 mound of stones. Post marked P. No. III.
 Original loc. mon. brs N. $31^{\circ}42'W$. 7 ft.
 Large granite rock, in place, marked P. No. III.
 B.P. brs S. $19^{\circ}20'E$, 32 ft.

Thence N. $74^{\circ}24'W$.Var. $14^{\circ}12'E$.

300. To loc. mon., where I set a post 4 ft. long, 4×4 ins.,
 $1\frac{1}{2}$ ft. in ground and surrounded same with
 mound of stones. Post marked P. No. IV.
 Large granite rock, in place, marked P. No.
 IV. B.P. brs N. $85^{\circ}21'W$. $90\frac{1}{2}$ ft.

Thence N. $74^{\circ}24'W$. (same course)Var. $14^{\circ}12'E$.

268. To center of gulch brs N. and S.
 300. To point, where I set a post 4 ft. long, $4 \times 4\frac{1}{2}$ ins.,
 $1\frac{1}{2}$ ft. in ground and surrounded same with
 mound of stones. Post marked P. No. V.
 Original loc. mon. brs N. $32^{\circ}W$. 3 ft.
 Large granite rock, in place, marked P. No. V.
 B.P. brs N. $63^{\circ}W$. 65 ft.

Thence S. $31^{\circ}42'E$.Var. $14^{\circ}12'E$.

220. To center of gulch, brs E. and W.
 1500. To loc. mon. where I set a post 4 ft. long,
 4×4 ins., $1\frac{1}{2}$ ft. in ground and surround-
 ed same with mound of stones. Post marked
 P. No. VI.
 Large granite rock, in place, marked P. No. VI.
 B.P. brs N. $52^{\circ}30'E$. $28\frac{1}{2}$ ft.

Thence S. $74^{\circ}24'E$.Var. $14^{\circ}12'E$.

300. To mon. and post P. I. M. No. I., place of beginning.

Area.

Total area of claim - - - - - ^{14.91} 28.86 acres.

Location.

This claim is located on the north side of the McCracken Mountain, partly on its north slope and extends north and across gulch. The claim abuts on the north end of the Alta claim of the Lister Mining Comp. and the posts used for monuments in this line are common to both, the Alta and Peabody claims and marked on respective sides.

Improvements.

made upon this claim by claimants or grantors consist of a shaft 5 x 5 ft. 300 ft. deep with drifts and hoisting works N. 33° W. 256 ft. from post P. I. M. No. 1. A tunnel 250 ft. long, N. 33° W. 250 ft. from Post P. I. M. No. 1. with drifts, stopings, tramway and oreshoot.

And I hereby certify that the value of said improvements exceeds the sum of five hundred dollars.

There have been no improvements made by other parties on this claim.

Instruments used, a Gurley Transit with Solar attachment and a 50 ft. steel chain.

Var. and courses taken by use of solar attachment.

Eugene Pannenberg.

U.S. Deputy Mineral Surveyor.

Priscott, A. T. July 15th 1884.

FINAL OATHS FOR SURVEYS OF MINING CLAIMS & MILL SITES.

A LIST of the names of individuals employed to assist in running, measuring, or marking the lines and corners described in the foregoing field-notes of the survey of The "Peabody" Mining Claim

located in "Twenno," Mining District, Mohave County, Arizona, showing the respective capacities in which they acted.

Robert Jones Chainman.
John Mann Chainman.
Axeman.
Flagman.

WE hereby certify that we assisted Eugene Tannenber U. S. Deputy Surveyor, in surveying The "Peabody" Mining Claim

claimed by The Peabody Silver Mining Company located in "Twenno," Mining District, Mohave County, and in Township No. Range No. of the Gila and Salt River base and meridian, Arizona, and that said survey has been in all respects, to the best of our knowledge and belief, well and faithfully executed, and the boundary monuments planted according to the instructions furnished by the Surveyor General.

Robert Jones Chainman.
John Mann Chainman.
Axeman.
Flagman.

SWORN TO AND SUBSCRIBED before me this 17th day of April 1884

Eugene Tannenber
Notary Public.

I, Eugene Tannenber U. S. Deputy Surveyor, do solemnly swear that, in pursuance of instructions from the U. S. Surveyor-General for Arizona, bearing date the 29th day of December 1883, I have well, faithfully and truly, in my own proper person, and in strict conformity with the instructions furnished by the Surveyor-General and the laws of the United States, surveyed all those portions of The "Peabody" Mining Claim

claimed by The Peabody Silver Mining Company located in "Twenno," Mining District, Mohave County, Arizona, as are represented in the foregoing field-notes as having been surveyed under my directions; and I do further solemnly swear that all the corners of said surveys have been established and perpetuated in strict accordance with the instructions furnished me, and that the foregoing are the true and original field notes of such surveys.

Eugene Tannenber Deputy Surveyor.

SWORN TO AND SUBSCRIBED before me this 1th day of July 1884

Albert A. Foot
Clerk

AFFIDAVIT OF FIVE HUNDRED DOLLARS IMPROVEMENTS.

We, *S. E. Fuller* and *W. D. McBright*

of lawful age, being first duly sworn according to law, depose and say that we are acquainted with the

"*Peabody*" mining claim, situated in the
 "*Owen*" Mining District, *Mohave* County, Arizona
 Territory, for which *The Peabody Silver and Mining Company*
 has made application for survey prior to application for patent under the provisions of the Act of
 Congress approved May 10, 1872, and that the labor done and improvements made thereon by the appli-
 cant and their grantors exceed Five Hundred Dollars in value, and further that we are not per-
 sonally interested in said mine.

S. E. Fuller
W. D. McBright

TERRITORY OF ARIZONA,

County of *Mohave* } SS.

SWORN to and subscribed before me, this *17th* day

of *April* 188*4*

Eugene Rauenberg.
 Notary Public.

Peabody

Owen Dist

Notice of location of a quartz claim.

Notice is hereby given, to all whom it may concern, that, I, Joseph P. Hargrave, citizens of the United States, over the age of twenty one years having discovered a vein or lode of quartz, or rock in place, bearing silver, within the limits of the claim hereby located, have this day under and in accordance with the revised Statutes of the United States, Chapter Six, Title Thirty Two, located fifteen hundred linear feet of this vein or lode, with surface ground six hundred feet in width, situated in Owens Mining District, County of Mohave Territory of Arizona, and known as the Peabody Quartz Mining Claim, and extending Fifteen hundred feet Northerly to a monument of stone and — feet — to, situated in the centre of the vein in a Northerly direction fifteen hundred feet from this notice at the discovery or prospect shaft, the exterior boundaries of this claim being distinctly marked by reference to some natural object or permanent monuments, and more

Peabody Mining Claim





Peabody Mining Claim.

41

attest Henry Koshland
a. G. Hubbard

Recorded at the request of Thomas
Fitch, September 24th A.D. 1879 at 4 P.M.
Baldwell Wright
County Recorder.

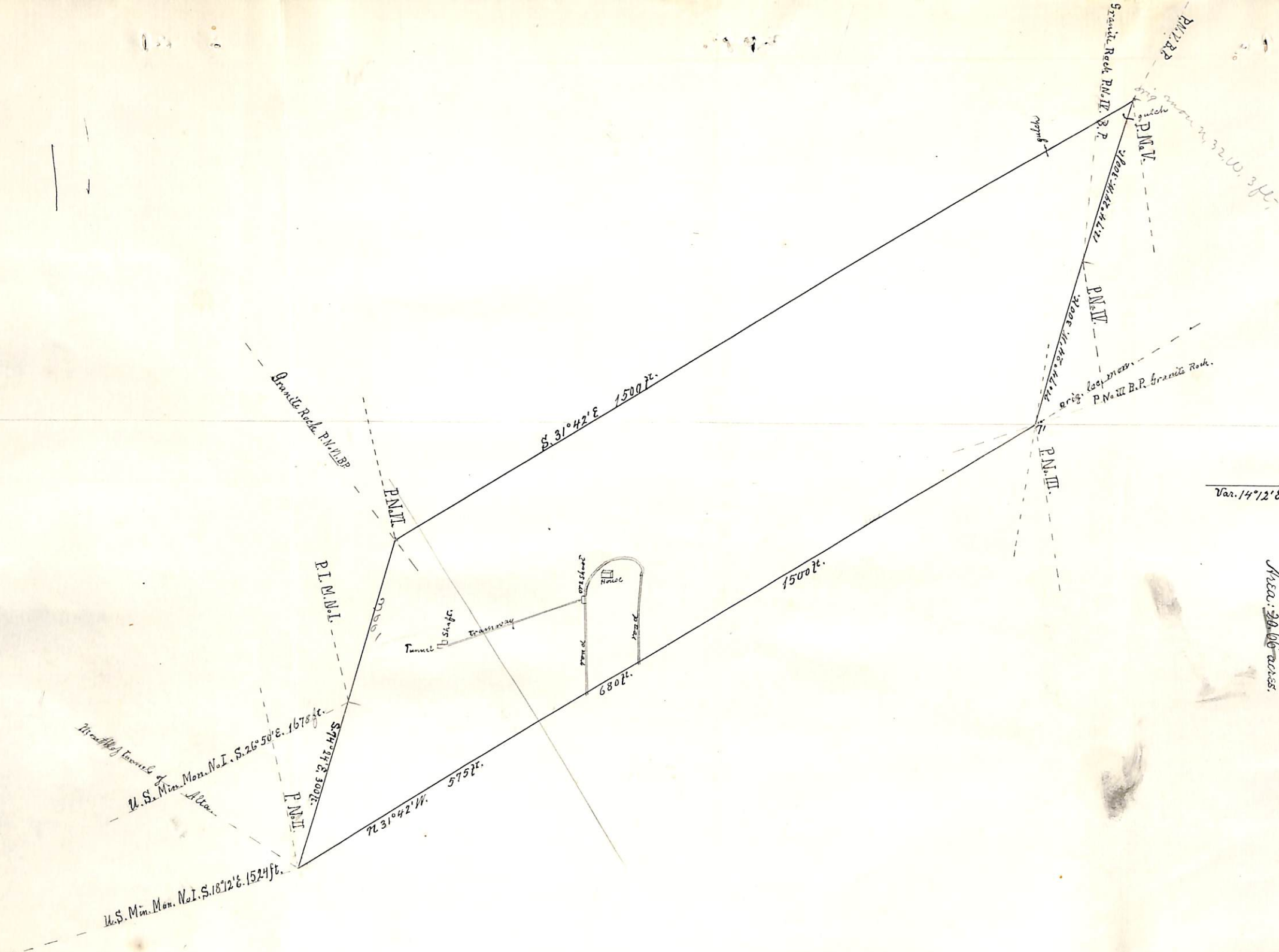
Territory of Arizona
County of Mohave

I, John K. MacKenzie, Re-
corder in and for said County of Mohave,
do hereby certify that I have compared
the foregoing copy with the original lo-
cation notice of the "Peabody" mining claim,
and the same is a full true and
correct copy of said Peabody Mining
Location Notice, Owen Mining District,
Mohave County, Arizona Territory, as
the same appears of record in my
office in Book "D" of Mining Records
at pages 544 & 545

Witness my hand and official
seal this 3^d day of November A.D. 1883

John K. MacKenzie
County Recorder.

U.S. Min. Mar. Nat. r.



Peabody Mining Claim.

U. S. Surveyor General's Office.

Tucson, Arizona, July 29, 1884

The foregoing field notes of the survey of the Peabody
 Mining Claim situate in
 the Owen's Mining District, Mohave
 County, Arizona, claimed by the Peabody
Silver Mining Company,
 survey executed by Eugen Pannenberg Deputy
 Surveyor, under instructions from this office, having been critically examined
 and the necessary corrections and alterations made, the said field notes and
 the survey they describe are hereby approved.

Royal A. Johnson
 Surveyor General.