

**M
S
-**

0

0

6

5

7

2-Way Memo

1

RECEIVED
BUREAU OF
LAND MANAGEMENT

DATE OF MESSAGE	October 15, 1968
DATE OF REPLY	
INSTRUCTIONS	
Use routing symbols whenever possible.	
SENDER:	
Forward original and one copy.	
Conserve space.	
RECEIVER:	
Reply below the message, keep one copy, return one copy.	

Subject: Mineral Survey No. 4668

1968 OCT 16 AM 11 40 .5

To: 

Land Office
 Att'n. Chief, Branch of Titles & Records

LAND OFFICE
PHOENIX, ARIZONA

5027-101

USE BRIEF, INFORMAL LANGUAGE

Mineral Survey No. 4668 was approved on October 11, 1968.

In accordance with a request from the claimant, the following previously surveyed lodes were tied into Mineral Survey No. 4668:

- Peabody lode - Mineral Survey #641
- Senator lode - Mineral Survey #657
- Alta lode ---- Mineral Survey #659
- Atlanta lode - Mineral Survey #2534
- Otsego lode -- Mineral Survey #2532

Per your request, we are attaching five copies each of the Field Notes and Plat (2 sheets) for filing in the above-listed case files.



Attachments

From: Chief, Division of Engineering

Form 4-683
(January 1963)

RECEIVED
BUREAU OF
DEPARTMENT OF THE INTERIOR
BUREAU OF LAND MANAGEMENT

FIELD NOTES 16 AM 11 40 .9

Mineral Survey number
4668
State
Arizona
Land District

Of the Survey of the Mining Claim of (name and address of Claimant)
Magnum Mining Company
c/o Boyle, Bilby, Thompson & Shoenhair, Attorneys at Law,
9th Floor Valley National Bldg.
Tucson, Arizona 85701
PHOENIX, ARIZONA

Known as the (name of group, if any)

McCracken Group

CONSISTING OF LOCATIONS NAMED AND LOCATED AS FOLLOWS

NAME OF LOCATION	DATE	
	LOCATED	AMENDED
MAG-1	9/8/67	2/3/68
MAG-8	2/3/68	
MAG-9	2/3/68	
MAG 14	2/23/68	
FEB-1	2/22/68	

Mining district Owens		County Mohave	
Section s 19 & 30 24 & 25	Township 13 N.	Range 14 W 15 W	Meridian Gila & Salt River
Survey commenced Feb. 25, 1968		Survey completed April 4, 1968	Survey under order dated January 22, 1968 and March 27, 1968
			Name of Mineral Surveyor John H. Stitzer

1

FEET

This survey was made with a K & E, 6E optical reading theodolite No. 624161 reading directly to one minute of arc with interpolation to one tenth minute of arc, using a solar eyepiece with colored glass for making direct observations of the sun. The instrument was in good condition at the time of the survey and all adjustments were in good order.

February 22, 1968 at the lode line on line 1-2 of FEB-1 lode, in latitude $34^{\circ}27'05''$ N. and longitude $113^{\circ}46'34''$ W. I made a series of six altitude observations upon the sun at equal time intervals, three each with the telescope in the erect and inverted positions and reading the horizontal angle from Cor. No. 1 of the FEB-1 lode. From these observations I obtain a bearing of $N. 89^{\circ}24'00''$ E.

The lines were measured with a Lufkin steel tape, 300 ft. in length graduated every foot, there being an added foot graduated in tenths and hundredths of a foot.

A spring balance was used to maintain proper tension on the tape and all distances were compensated for temperature.

All lines of this survey were run by direct methods as all lines were accessible.

The magnetic declination in the area of the survey was a uniform value of $14\frac{1}{2}^{\circ}$ E.

Survey No. 4668

FEB-1 LODE

At Cor. No. 1 of the FEB-1 lode, identical with Cor. No. 1 MAG-1 lode of this survey.

Set an iron post, 18 ins. long, $1\frac{1}{2}$ ins. diam., in a concrete base, with lead cap mkd. COR 1-FEB 1-COR 1-MAG 1-MS 4668; from which

Survey No. 4668

2

FEET

The cor. of secs. 19 and 30, T. 13 N. R. 14 W. and secs. 24 and 25, T. 13 N., R. 15 W., G. & S. R. M., bears S. $14^{\circ}57'30''$ E., 2336.74 ft. dist.; an iron post 2 ins. diam., 12 ins. above ground, firmly set and marked as described in the official record.

Cor. No. 1 Sur. No. 2535 Belmont lode bears N. $25^{\circ}45'25''$ W., 668.53 ft. dist.

Cor. No. 3 Sur. No. 641 Peabody lode bears N. $36^{\circ}47'40''$ W., 746.64 ft. dist.

Cor. No. 4 Sur. No. 2526 Grey Eagle lode bears N. $13^{\circ}16'08''$ W., 579.90 ft. dist.

Thence S. $89^{\circ}24'00''$ W.

12.46 Intersect line 4-1 Sur. No. 2526 Grey Eagle lode at a point from which Cor. No. 4 bears N. $12^{\circ}03'46''$ W., 577.30 ft. dist.

270.37 Intersect line 2-3 Sur. No. 641 Peabody lode at a point from which Cor. No. 3 bears N. $16^{\circ}24'12''$ W., 626.22 ft. dist.

303.40 Lode line; discovery point bears N. $31^{\circ}36'00''$ W., 1489.15 ft. dist.

Set an iron post, 18 ins. long, $1\frac{1}{2}$ ins. diam., in a concrete base, with lead cap mkd. NCE-MAG 1-SCE-FEB 1-MS 4668.

477.88 Intersect line 4-1 Sur. No. 2536 Damfino lode at a point from which Cor. No. 4 bears N. $10^{\circ}48'56''$ W., 124.13 ft. dist.

606.80 Cor. No. 2, identical with Cor. No. 2 of the MAG-1 lode of this survey.

Set an iron post, 18 ins. long, $1\frac{1}{2}$ ins. diam., in a concrete base, with lead cap mkd. COR 2-FEB 1-COR 2-MAG 1-MS 4668; from which

Cor. No. 5 Sur. No. 641 Peabody lode bears N. $36^{\circ}53'48''$ W., 735.40 ft. dist.

FEET

Cor. No. 4 Sur. No. 2536 Damfino lode bears N. $40^{\circ}35'20''$ E., 162.33 ft. dist.

Cor. No. 1 Sur. No. 2527 Black Prince lode bears S. $41^{\circ}55'08''$ W., 290.51 ft. dist.

Cor. No. 2 Sur. No. 2527 Black Prince lode bears N. $17^{\circ}55'52''$ E., 322.84 ft. dist.

An old bolt at N.E. cor. of old concrete mill foundation bears N. 64° W., 119.10 ft. dist., mkd. RP-4668-COR 2-M & F.

A steel gusset plate at the N.W. cor. of the timbered collar of the Signal shaft, bears S. 15° W., 95.28 ft. dist., mkd. RP-CORS 2-M & F - 4668.

Thence N. $31^{\circ}36'00''$ W.

72.74 Intersect line 1-2 Sur. No. 2527 Black Prince lode at a point from which Cor. No. 2 bears N. $29^{\circ}17'$ E., 281.13 ft. Dist.

650.50 Intersect line 2-3 Sur. No. 2527 Black Prince lode at a point from which Cor. No. 2 bears S. $60^{\circ}43'$ E., 504.75 ft. dist.

692.97 Intersect line 3-5 Sur. No. 641 Peabody lode at a point from which Cor. No. 3 bears N. $88^{\circ}27'42''$ E., 522.86 ft. dist., and Cor. No. 4 Sur. No. 2535 Belmont lode on line 3-5 Peabody lode bears N. $88^{\circ}27'42''$ E., 79.82 ft. dist.

1499.15 Cor. No. 3

Set an iron post 18 ins. long, $1\frac{1}{2}$ ins. diam., in a concrete base, with lead cap mkd. COR 3-FEB 1-MS 4668; from which

Cor. No. 4 Sur. No. 2535 Belmont lode bears S. $36^{\circ}16'04''$ E., 848.98 ft. dist.

Survey No. 4668

FEET		4
	Thence N. 89°24'00" E.	
303.40	Lode line; discovery point bears S. 31°36'00" E., 10.00 ft. dist. Set an iron post 18 ins. long, 1½ ins. diam., in a concrete base, with lead cap mkd. NCE-FEB 1-MS 4668.	
345.74	Intersect line 3-4 Sur. No. 2535 Bellmont lode at a point from which Cor. No. 4 bears S. 12°48'48" E., 705.70 ft. dist.	
606.80	Cor. No. 4. Set an iron post 18 ins. long, 1½ ins. diam., in a concrete base, with lead cap mkd. COR 4-FEB 1-MS 4668; Thence S. 31°36'00" E.	
794.70	Intersect line 4-1 Sur. No. 2535 Bellmont lode at a point from which Cor. No. 4 bears S. 88°27'42" W., 521.14 ft. dist., and Cor. No. 3 Sur. No. 641 Peabody lode on line 4-1 Bellmont lode bears S. 88°27'42" W., 78.10 ft. dist.	
1275.09	Intersect line 3-4 Sur. No. 2536 Damfino lode at a point from which Cor. No. 4 bears S. 79°05'50" W., 390.80 ft. dist.	
1462.63	Intersect line 4-1 Sur. No. 2526 Grey Eagle lode at a point from which Cor. No. 4 bears N. 12°03'46" W., 545.36 ft. dist.	
1499.15	Cor. No. 1 and place of beginning.	
MAG-1 LODE		
Beginning at Cor. No. 1 of the MAG-1 lode, identical with Cor. No. 1 of the FEB-1 lode of this survey.		
Thence S. 89°24'00" W.		
12.46	Intersect line 4-1 Sur. No. 2526 Grey Eagle lode at a point from which Cor. No. 1 bears S. 12°03'46" E., 925.24 ft. dist.	

FEET	
270.37	Intersect line 2-3 Sur. No. 641 Peabody lode at a point from which Cor. No. 2 bears S. 16°24'12" E., 873.29 ft. dist.
303.40	Lode line, discovery point bears S. 19°35'54" E., 1309.77 ft. dist.
477.88	Intersect line 4-1 Sur. No. 2536 Damfino lode at a point from which Cor. No. 1 bears S. 10°48'56" E., 1341.01 ft. dist.
606.80	Cor. No. 2, identical with Cor. No. 2 FEB-1 lode of this survey. Thence S. 19°35'54" E.
830.96	Intersect line 4-1 Sur. No. 2536 Damfino lode at a point from which Cor. No. 1 bears S. 10°48'56" E., 542.65 ft. dist.
890.28	Intersect line 6-2 Sur. No. 641 Peabody lode, identical with line 6-2 Sur. No. 659 Alta lode at a point from which Cor. No. 2, Sur. No. 641 Peabody lode, identical with Cor. No. 2 Sur. No. 659 Alta lode bears N. 89°05'48" E., 284.44 ft. dist.
1379.99	Intersect line 1-2 Sur. No. 2536 Damfino lode, identical with line 3-4 Sur. No. 2534 Atlanta lode at a point from which Cor. No. 2 Sur. No. 2536 Damfino lode identical with Cor. No. 3 Sur. No. 2534 Atlanta lode bears N. 79°08'13" E., 516.73 ft. dist.
1499.77	Cor. No. 3. This corner falls on a nearly vertical rock surface where a permanent corner could not be established; from this point Cor. No. 4 Sur. No. 2534, Atlanta lode, identical with Cor. No. 1 Sur. No. 2536 Damfino lode bears No. 51°36'36" W., 156.29 ft. dist., and Cor. No. 2 Sur. No. 641 Peabody lode, identical with Cor. No. 2 Sur. No. 659 Alta lode bears N. 7°52'05" E., 584.16 ft. dist.

(This form bound on left side)

Survey No. 4668

6

FEET	
	Thence N. 89°24'00" E.
5.68	Witness Cor. to Cor. No. 3 Set an iron post 18 ins. long, 1½ ins. diam., in a concrete base, with lead cap mkd. WC-COR 3-MAG 1-MS 4668.
121.29	Intersect line 2-3 Sur. No. 659 Alta lode at a point from which Cor. No. 2 bears N. 4°05'35" W., 578.87 ft. dist.
303.40	Lode line; discovery point bears N. 19°35'54" W., 190.00 ft. dist. Set an iron post, 18 ins. long, 1½ ins. diam., in a concrete base, with lead cap mkd. SCE-MAG 1-MS 4668.
506.11	Intersect line 4-1 MAG 14 lode of this survey.
506.61	Intersect line 2-3 Sur. No. 2534 Atlanta lode at a point from which Cor. No. 3 identical with Cor. No. 2 Sur. No. 2536 Damfino lode bears N. 10°51'14" W., 208.66 ft. dist.
606.80	Cor. No. 4 Set an iron post, 18 ins. long, 1½ ins. diam., in a concrete base with lead cap mkd. COR 4-MAG 1-MS 4668; from which Cor. No. 3 Sur. No. 2534 Atlanta lode, identical with Cor. No. 2 Sur. No. 2536 Damfino lode, bears N. 34°22'40" W., 247.02 ft. dist. Cor. No. 1 Sur. No. 2526 Grey Eagle lode bears N. 32°23'03" W., 601.49 ft. dist. Cor. No. 4 MAG-14 lode of this survey bears N. 24°52'39" W., 405.27 ft. dist. Thence N. 19°35'54" W.
391.37	Intersect line 3-4 of MAG-14 lode of this survey.

Survey No. 4668

FEET		7
569.00	Intersect line 1-2 of Sur. No. 2526 Grey Eagle lode from which Cor. No. 1 bears S. 77°55'21" W., 134.27 ft. dist.	
642.27	Intersect line 2-3 of Sur. No. 2536 Damfino lode at a point from which Cor. No. 2 bears S. 10°43'13" E., 408.31 ft. dist.	
1499.77	Cor. No. 1 and place of beginning.	
	<p style="text-align: center;">MAG-14 LODE</p> <p>At Cor. No. 1 of the MAG-14 lode, on line 3-4 of the MAG-9 lode of this survey.</p> <p>Set an iron post, 18 ins. long, 1½ ins. diam. in a concrete base, with lead cap mkd. COR 1-MAG 14-MS 4668; from which</p> <p style="padding-left: 40px;">The cor. of secs 19, 24, 25 and 30 bears N. 17°34'43" E., 85.10 ft. dist.; previously described.</p> <p style="padding-left: 40px;">Cor. No. 4 Sur. No. 2533 Beaver lode bears N. 23°53'25" W., 472.35 ft. dist.</p> <p style="padding-left: 40px;">Cor. No. 2 Sur. No. 2534 Atlanta lode bears S. 11°16'59" E., 358.25 ft. dist.</p> <p style="text-align: center;">Thence N. 88°30'00" E.</p>	
2.72	Intersect line 2-3 Sur. No. 2534 Atlanta lode at a point from which Cor. No. 3 bears N. 10°51'14" W., 1150.19 ft. dist.	
111.77	Cor. No. 4 MAG-9 lode of this survey.	
258.02	Intersect line 3-4 Sur. No. 2533 Beaver lode at a point from which Cor. No. 4 bears N. 46°34'44" W., 618.50 ft. dist.	
302.50	<p>Lode line; discovery point bears N. 10°43'13" W., 10.00 ft. dist.</p> <p>Set an iron post 18 ins. long, 1½ ins. diam., in a concrete base, with lead cap mkd. SCE-MAG 14-MS 4668.</p>	

Survey No. 4668

FEET		8
605.00	<p>Cor. No. 2.</p> <p>Set an iron post, 18 ins. long, 1½ ins. diam., in a concrete base, with lead cap mkd. COR 2-MAG 14-MS 4668.</p> <p>No local bearing objects available.</p> <p>Thence N. 10°43'13" W.</p>	
1316.45	<p>Cor. No. 3</p> <p>Set an iron post, 18 ins. long, 1½ ins. diam., in a concrete base, with lead cap mkd. COR 3-MAG 14-MS 4668; from which</p> <p>Cor. No. 2 Sur. No. 2526 Grey Eagle bears N. 34°09'14" W., 302.11 ft. dist.</p> <p>Thence S. 88°30'00" W.</p>	
302.50	<p>Lode line; discovery point bears S. 10°43'13" E., 1306.45 ft. dist.</p> <p>Set an iron post, 18 ins. long, 1½ ins. diam., in a concrete base, with lead cap mkd. NCE-MAG 14-MS 4668.</p>	
565.77	<p>Intersect line 4-1 MAG-1 lode of this survey.</p>	
605.00	<p>Cor. No. 4, on line 2-3, Sur. No. 2536 Damfino lode.</p> <p>Set an iron post, 18 ins. long, 1½ ins. diam., in a concrete base, with lead cap mkd. COR 4-MAG 14-MS 4668; from which</p> <p>Cor. No. 1, Sur. No. 2526 Grey Eagle lode bears N. 47°14'02" W., 206.59 ft. dist.</p> <p>Thence S. 10°43'13" E.</p>	
166.70	<p>Cor. No. 2 Sur. No. 2536 Damfino lode, identical with Cor. No. 3 Sur. No. 2534 Atlanta lode.</p>	

FEET		9
375.27	Intersect line 3-4 MAG-1 lode of this survey.	
1005.42	Intersect line 3-4 Sur. No. 2533 Beaver lode at a point from which Cor. No. 4 bears N. 46°34'44" W., 183.72 ft. dist.	
1316.45	Cor. No. 1 and place of beginning.	
MAG-9 LODE		
At Cor. No. 1 of MAG-9 lode; identical with Cor. No. 1 of MAG-8 lode of this survey.		
Set an iron post, 18 ins. long, 1½ ins. diam., in a concrete base, with lead cap mkd. COR 1-MAG 9-COR 1-MAG 8-MS 4668; from which		
The cor. of secs. 19, 24, 25, and 30 bears N. 12°10'49" W., 1578.10 ft. dist.		
Cor. No. 2 Sur. No. 2533 Beaver lode bears N. 16°33'03" E., 444.35 ft.		
Thence S: 88°30'00" W.		
302.50	Lode line; discovery point bears N. 9°34'17" W., 20.00 ft. dist.	
Set an iron post, 18 ins. long, 1½ ins. diam., in a concrete base, with lead cap mkd. SCE-MAG 9-NCE-MAG 8-MS 4668.		
318.	Center of road, bears N. 5° E., and S. 5° W.	
605.00	Cor. No. 2, identical with Cor. No. 2 MAG-8 lode of this survey, Cor. No. 2 Sur. No. 657 Senator lode and Cor. No. 1 Sur. No. 2532 Otsego lode.	
Found a wooden post, 4x4 ins. in size, 4 ft. long, with bottom portion badly decomposed, plainly mkd. as described in the official record. I removed the post and set an iron post, 18 ins. long, 1½ ins. diam., in a concrete base, with lead cap mkd. COR 2-MAG 9-COR 2-MAG 8-MS 4668-COR 2-SEN-MS 657-COR 1-OTSEGO-MS 2532.		

Survey No. 4668

FEET		10
	Thence N. $9^{\circ}34'17''$ W.	
1046.34	Intersect line 1-2 Sur. No. 2534 Atlanta lode at a point from which Cor. No. 2 bears N. $79^{\circ}07'29''$ E., 499.17 ft. dist.	
1368.26	Intersect line 1-2 of Sur. No. 2533 Beaver lode at a point from which Cor. No. 1 bears N. $46^{\circ}34'44''$ W., 179.81 ft. dist.	
1485.04	Cor. No. 3, identical with Cor. No. 3 Sur. No. 657 Senator lode and Cor. No. 3 Sur. No. 659 Alta lode.	
	Found a wooden post, 4x4 ins. in size, 4 ft. long, badly decomposed. The original post was left in place and alongside the post set an iron post 18 ins. long, $1\frac{1}{2}$ ins. diam., in concrete base, with lead cap mkd. COR 3-MAG 9-MS 4668-COR 3-ALTA-MS 659-COR 3-SEN-MS 657; from which	
	Cor. No. 1 Sur. No. 2533 Beaver lode bears N. $85^{\circ}39'32''$ W., 111.50 ft. dist.	
	Cor. No. 1, Sur. No. 2534 Atlanta lode bears S. $3^{\circ}18'31''$ W., 452.38 ft. dist.	
	U.S.M.M. No. 1, a mound of stones 4 ft. high, 2 ft. diam., with wooden stake in center, bears S. $4^{\circ}35'25''$ E., 25.00 ft. dist.	
	U.S. Coast and Geodetic Survey triangulation station McCracken, a brass cap, $3\frac{1}{2}$ ins. diam., set flush with surface of rock outcrop, bears S. $32^{\circ}19'09''$ E., 30.96 ft. dist.	
	Thence N. $88^{\circ}30'00''$ E.	
302.50	Lode line; discovery point bears S. $9^{\circ}34'17''$ E., 1465.04 ft. dist.	
	Set an iron post, 18 ins. long, $1\frac{1}{2}$ ins. diam. in a concrete base, with lead cap mkd. NCE-MAG 9-MS 4668.	
493.23	Cor. No. 1 MAG-14 lode of this survey.	

FEET		11
495.95	Intersect line 2-3 Sur. No. 2534 Atlanta lode at a point from which Cor. No. 2 bears S. 10°51'14" E., 357.80 ft. dist.	
605.00	<p>Cor. No. 4, on line 1-2 of the MAG-14 lode of this survey.</p> <p>Set an iron post, 18 ins. long, 1½ ins. diam., in a concrete base, with lead cap mkd. COR 4-MAG 9-MS 4668; from which</p> <p>Cor. No. 4 Sur. No. 2533 Beaver lode bears N. 35°14'20" W., 525.20 ft. dist.</p> <p>The cor. of secs. 19, 24, 25 and 30 bears N. 47°43'46" W., 116.26 ft. dist.</p> <p>Cor. No. 2, Sur. No. 2534 Atlanta lode bears S. 6°42'14" W., 356.70 ft. dist.</p> <p>Thence S. 9°34'17" E.</p>	
826.52	Intersect line 1-2 Sur. No. 2533 Beaver lode at a point from which Cor. No. 2 bears S. 46°34'44" E., 325.03 ft. dist.	
1485.04	Cor. No. 1, and place of beginning.	
	<p style="text-align: center;">MAG-8 LODE</p> <p>Beginning at Cor. No. 1 of the MAG-8 lode, identical with Cor. No. 1 MAG-9 lode of this survey.</p> <p>Thence S. 88°30'00" W.</p> <p>302.50 Lode line; discovery point bears S. 34°53'50" E., 20.00 ft. dist.</p> <p>318. Center of road, bears N. 5° E., and S. 5° W.</p> <p>605.00 Cor. No. 2, identical with Cor. No. 2 of the MAG-9 lode of this survey, Cor. No. 2 Sur. No. 657 Senator lode and Cor. No. 1 Sur. No. 2532 Otsego lode.</p> <p>Thence S. 34°53'50" E.</p> <p>528. Center of road, bears N. 15° E., and S. 15° W.</p>	

FEET		12
922.	Center of road, bears approx. westerly and easterly.	
1185.	Center of road, bears S. 45° E., and N. 45° W.	
1490.21	<p>Cor. No. 3, identical with Cor. No. 4 Sur. No. 2532 Otsego lode and Cor. No. 1 Sur. No. 2531 Brooks lode.</p> <p>Found a wooden post, 4x4 ins. in size, 4 ft. long, badly decomposed. I removed the post and set an iron post, 18 ins. long, 1½ ins. diam., in a concrete base, with lead cap mkd. COR 3-MAG 8-MS 4668 - COR 1-BR-MS 2531-COR 4-OTS-MS 2532; from which</p> <p>Magnum mining company triang. station No. 904, a steel pin, 2 ins. above the ground, ½ ins. diam., bears S. 13°10' E., 282.84 ft. dist.</p> <p>Bearing rock for Cor. No. 4 Otsego lode bears S. 18° W., 15.10 ft. dist., mkd. B + R - COR 4-0-2532.</p> <p>Thence N. 88°30'00" E.</p>	
13.	Center of road, bears S. 20° E., N. 20° W.	
302.50	<p>Lode line, discovery point bears N. 34°53'50" W., 1470.21 ft. dist.</p> <p>Set an iron post, 18 ins. long, 1½ ins. diam., in a concrete base with lead cap mkd. SCE-MAG-8-MS 4668.</p>	
605.00	<p>Cor. No. 4.</p> <p>Set an iron post, 18 ins. long, 1½ ins. diam., in a concrete base, with lead cap mkd. COR 4-MAG-8-MS 4668.</p> <p>No bearing objects available.</p> <p>Thence N. 34°53'50" W.</p>	
8.	Center of road bears easterly and westerly.	
1490.21	Cor. No. 1, and place of beginning.	

FEET	AREAS	Acres
	Total area, FEB-1 lode	17.901
	Area in conflict with --	
	Sur. No. 2526 Grey Eagle lode	0.004
	Sur. No. 641 Peabody lode	5.926
	Sur. No. 2536 Damfino lode	1.610
	Sur. No. 2536 Damfino lode, exclusive of its conflict with Sur. No. 641 Peabody lode	0.971
	Sur. No. 2536 Damfino lode, exclusive of its conflict with Sur. No. 2526 Grey Eagle lode	1.606
	Sur. No. 2527 Black Prince lode	1.629
	Sur. No. 2527 Black Prince lode, exclusive of its conflict with Sur. No. 641 Peabody lode	0.000
	Sur. No. 2535 Belmont lode	6.181
	Total area, MAG-1 lode	19.754
	Area in conflict with --	
	Sur. No. 2526 Grey Eagle lode	1.552
	Sur. No. 641 Peabody lode	5.998
	Sur. No. 2536 Damfino lode	15.995
	Sur. No. 2536 Damfino lode, exclusive of its conflict with Sur. No. 2526 Grey Eagle lode	14.452
	Sur. No. 2536 Damfino lode, exclusive of its conflict with Sur. No. 641 Peabody lode	11.159
	Sur. No. 2536 Damfino lode, exclusive of its conflict with Sur. No. 659 Alta lode	13.711
	Sur. No. 659 Alta lode	2.689
	Sur. No. 2534 Atlanta lode	1.896
	Sur. No. 2534 Atlanta lode, exclusive of its conflict with Sur. No. 659 Alta lode	1.491

13.

Survey No. 4668

FEET		Acres
	MAG-14 lode of this survey	0.595
	MAG-14 lode of this survey, exclusive of its conflict with Sur. No. 2534	
	Atlanta lode	0.593
	Total area, MAG-14 lode ...	18.048
	Area in conflict with --	
	Sur. No. 2534 Atlanta lode	0.035
	Sur. No. 2533 Beaver lode	0.917
	Sur. No. 2533 Beaver lode, exclusive of its conflict with Sur. No. 2534	
	Atlanta lode	0.900
	Total area, MAG-9 lode	20.421
	Area in conflict with --	
	Sur. No. 2534 Atlanta lode	4.523
	Sur. No. 2533 Beaver lode	6.486
	Sur. No. 2533 Beaver lode, exclusive of its conflict with Sur. No. 2534	
	Atlanta lode	2.844
	Total area, MAG-8 lode	17.280
	LOCATION	
	<p>This survey is located in the SW$\frac{1}{4}$ SW$\frac{1}{4}$ sec. 19 and the W$\frac{1}{2}$ NW$\frac{1}{4}$, NW$\frac{1}{4}$SW$\frac{1}{4}$ sec. 30, T. 13 N., R. 14 W., and in the E$\frac{1}{2}$ NE$\frac{1}{4}$ sec. 25, SE$\frac{1}{4}$, S$\frac{1}{2}$NE$\frac{1}{4}$ sec. 24, T. 13 N., R. 15 W., Gila and Salt River Meridian, Arizona.</p>	
	<p>The survey of the FEB-1, MAG-1, MAG-14, MAG-9 and MAG-8 lodes are identical with the respective locations or amended location as marked on the ground.</p>	
	EXPENDITURES	
	<p>The improvements and the value of the labor and improvements made upon or for the benefit of each of the lode locations embraced in said mining claim by the claimant or its grantors are as follows:</p>	

14.

FEET		15.
No. 1	The discovery point of the FEB-1 lode is on the lode line 10 ft. from a point on line 3-4, 303.40 ft. from Cor. 3. Value, None	
No. 2	The discovery cut of the FEB-1 lode, a bulldozer cut in a side hill the face of which bears N. 43°20' W., 852 ft. dist. from Cor. No. 1 FEB-1 lode; 30 ft. long bearing S. 45° E., with 10 ft. face on SW bank. Value, \$75.	
No. 1	The discovery point of the MAG-1 lode is on the lode line 190 ft. from a point on line 3-4, 303.40 ft. from Cor. 3. Value, None	
No. 2	The discovery cut of the MAG-1 lode, a cut in the bank of an excavated area, bears N. 28°50' W., 710 ft. dist. from Cor. No. 4 MAG-1 lode; 6 ft. wide, 10 ft. face; running N. 45° W., 6 ft. to face. Value, \$100.	
No. 1	The discovery point of the MAG-14 lode is on the lode line 10 ft. from a point on line 1-2, 302.50 ft. from Cor. 1. Value, None	
No. 2	The discovery cut of the MAG-14 lode, a bulldozer cut in a side hill, the face of which bears N. 72°45' E., 215 ft. dist. from Cor. No. 1 MAG-14 lode; 30 ft. long bearing N. 30° E., with 10 ft. face on the NW. bank. Value, \$75.	
No. 1	The discovery point of the MAG-9 lode is on the lode line 20 ft. from a point on line 1-2, 302.50 ft. from Cor. 1. Value, None	
No. 2	The discovery cut of the MAG-9 lode, a bulldozer cut in a side hill, the face of which bears N. 82° W., 282 ft. dist. from Cor. No. 1 MAG-9 lode; 30 ft. long bears N. 30° W., with 10 ft. face on the NE. bank. Value, \$75.	

Survey No. 4668

FEET		16.
No. 1	<p>The discovery point of the MAG-8 lode is on the lode line 20 ft. from a point on line 1-2, -302.50 ft. from Cor. 1.</p> <p style="text-align: right;">Value, None</p>	
No. 2	<p>The discovery cut of the MAG-8 lode, a bulldozer cut in a side hill, the face of which bears S. 49°15' E., 375 ft. dist. from Cor. No. 2 MAG-8 lode; 30 ft. long bears N. 50° W., with 10 ft. face on SW. bank.</p> <p style="text-align: right;">Value, \$75.</p> <p>An interest in a common improvement described as follows:</p> <p>A surface drilling program to explore the unmined portion of a mineralized vein on these claims. Drilling completed at the time of survey is as follows:</p> <p>A drill hole, number 4170-1, 2 ins. diam., inclined S. 70° W. and 50° from the horizontal and 60 ft. deep, bears N. 42°39' E., 56.7 ft. dist. from Cor. 3 of MAG-1 lode.</p> <p style="text-align: right;">Value, \$228.</p> <p>A drill hole, number 4170-2, 2 ins. diam., vertical and 80 ft. deep, bears N. 40°40' E., 58.9 ft. dist. from Cor. 3 of MAG-1 lode.</p> <p style="text-align: right;">Value, \$304.</p> <p>A Drill hole, number 4220-1, 2 ins. diam., inclined S. 70° W. and 50° from the horizontal and 60 ft. deep, bears N. 16°35' E., 103.0 ft. dist. from Cor. 3 of MAG-1 lode.</p> <p style="text-align: right;">Value, \$228.</p> <p>A drill hole, number 4220-2, 2 ins. diam., vertical and 75 ft. deep, bears N. 19°02' E., 105.4 ft. dist. from Cor. 3 of MAG-1 lode.</p> <p style="text-align: right;">Value, \$285.</p> <p>A drill hole, number 4260-1, 2 ins. diam., vertical and 100 ft. deep, bears N. 19°53' E., 168.7 ft. dist. from Cor. 3 of MAG-1 lode.</p> <p style="text-align: right;">Value, \$380.</p>	

FEET		17
	<p>A drill hole, number 4260-2, 2 ins. diam., inclined S. 70° W. and 50° from the horizontal and 22 ft. deep, bears N. 39°29' E., 156.0 ft. dist. from Cor. 3 of MAG-1 lode. Value, \$83.60</p>	
	<p>A drill hole, number 4310-1, 2 ins. diam., vertical and 120 ft. deep, bears N. 12°20' E., 212.6 ft. dist. from Cor. 3 of MAG-1 lode. Value, \$456.</p>	
	<p>A drill hole, number 4360-1, 2 ins. diam., vertical and 140 ft. deep, bears N. 7°46' E., 262.1 ft. dist. from Cor. 3 of MAG-1 lode. Value, \$532.</p>	
	<p>A drill hole, number 4360-2, 2 ins. diam., inclined S. 70° W. and 70° from the horizontal and 105 ft. deep, bears N. 7°21' E., 260.8 ft. dist. from Cor. 3 of MAG-1 lode. Value, \$399.</p>	
	<p>A drill hole, number 4400-1, 2 ins. diam., vertical and 155 ft. deep, bears N. 5°26' E., 310.1 ft. dist. from Cor. 3 of MAG-1 lode. Value, \$589.</p>	
	<p>A drill hole, number 4400-2, 2 ins. diam., inclined S. 70° W. and 70° from the horizontal and 80 ft. deep, bears N. 1°47' E., 300.8 ft. dist. from Cor. 3 of MAG-1 lode. Value, \$304.</p>	
	<p>A drill hole, number 4450-2, 2 ins. diam., inclined S. 70° W. and 80° from the horizontal and 140 ft. deep, bears N. 7°36' E., 337.6 ft. dist. from Cor. 3 of MAG-1 lode. Value, \$532.</p>	
	<p>A drill hole, number 4450-1, 2 ins. diam., inclined S. 70° W. and 70° from the horizontal and 83 ft. deep, bears N. 1°22' E., 353.8 ft. dist. from Cor. 3 of MAG-1 lode. Value, \$315.40</p>	

FEET		18
	<p>A drill hole, number 4500-1, 2 ins. diam., inclined S. 70° W. and 65° from the horizontal and 83 ft. deep, bears N. 0°14' E., 402.7 ft. dist. from Cor. 3 of MAG-1 lode. Value, \$315.40</p>	
	<p>A drill hole, number 4500-2, 2 ins. diam., inclined S. 70° W. and 60° from the horizontal and 100 ft. deep, bears N. 0°22' E., 402.7 ft. dist. from Cor. 3 of MAG-1 lode. Value, \$380.</p>	
	<p>A drill hole, number 4500-3, 2 ins. diam., inclined S. 70° W. and 80° from the horizontal and 120 ft. deep, bears N. 7°47' E., 388.3 ft. dist. from Cor. 3 of MAG-1 lode. Value, \$456.</p>	
	<p>A drill hole, number 4550-1, 2 ins. diam., inclined S. 70° W. and 70° from the horizontal and 88 ft. deep, bears N. 8°11' E., 440.2 ft. dist. from Cor. 3 of MAG-1 lode. Value, \$334.40</p>	
	<p>A drill hole, number 4600-1, 2 ins. diam., inclined S. 70° W. and 60° from the horizontal and 130 ft. deep, bears N. 9°24' E., 487.2 ft. dist. from Cor. 3 of MAG-1 lode. Value, \$494.</p>	
	<p>A drill hole, number 4650-1, 2 ins. diam., inclined S. 70° W. and 60° from the horizontal and 64 ft. deep, bears N. 17°16' E., 527.5 ft. dist. from Cor. 3 of MAG-1 lode. Value, \$243.20</p>	
	<p>A drill hole, number 4690-1, 2 ins. diam., inclined S. 70° W. and 70° from the horizontal and 190 ft. deep, bears S. 25°00' E., 923.8 ft. dist. from Cor. 2 of MAG-1 lode. Value, \$722.</p>	
	<p>A drill hole, number 4690-2, 2 ins. diam., inclined S. 70° W. and 35° from the horizontal and 62 ft. deep, bears S. 21°32' E., 924.8 ft. dist. from Cor. 2 of MAG-1 lode. Value, \$235.60</p>	

FEET

19

A drill hole, number 4740-1, 2 ins. diam., inclined S. 70° W. and 70° from the horizontal and 127 ft. deep, bears S. 25°41' E., 873.5 ft. dist. from Cor. 2 of MAG-1 lode.

Value, \$482.60

A drill hole, number 4740-2, 2 ins. diam., inclined S. 70° W. and 40° from the horizontal and 80 ft. deep, bears S. 22°06' E., 870.2 ft. dist. from Cor. 2 of MAG-1 lode.

Value, \$304.

A drill hole, number 4830-1, 2 ins. diam., inclined S. 70° W. and 65° from the horizontal and 94 ft. deep, bears S. 22°43' E., 770.0 ft. dist. from Cor. 2 of MAG-1 lode.

Value, \$357.20

A drill hole, number 4880-1, 2 ins. diam., vertical and 138 ft. deep, bears S. 21°56' E., 716.0 ft. dist. from Cor. 2 of MAG-1 lode.

Value, \$524.40

A drill hole, number 4880-2, 2 ins. diam., inclined S. 70° W. and 50° from the horizontal and 47 ft. deep, bears S. 20°06' E., 716.9 ft. dist. from Cor. 2 of MAG-1 lode.

Value, \$178.60

A drill hole, number 4930-1, 2 ins. diam., inclined S. 70° W. and 45° from the horizontal and 30 ft. deep, bears S. 19°52' E., 663.7 ft. dist. from Cor. 2 of MAG-1 lode.

Value, \$114.

Value of combined surface drilling
\$9,777.40

Value of one fifth (1/5) interest
\$1,955.48

Five Hundred Dollars or over has been expended in these improvements in such a manner as tends to the development of each lode of the survey subsequent to its location and to the time since which common ownership and contiguity have prevailed; therefore, an undivided one fifth (1/5) interest in its value is hereby credited to each of said lodes.

Survey No. 4668

FEET		20
	<p>No portion of or interest in this improvement has been credited heretofore as patent expenditure to any lode claim.</p>	
	<p style="text-align: center;">OTHER IMPROVEMENTS</p> <p>A complex system of underground drifts, adits and stopes runs along the main vein of the old McCracken mine. MAG-1 and MAG-9 lodes partly overlay these workings.</p>	
	<p style="text-align: center;">OTHER CORNER DESCRIPTIONS AND SUPPLEMENTAL DATA</p> <p>Sur. No. 641 Peabody Lode: Cor. No. 2 is an old post set in a mound of stones from which mouth of tunnel bears S. 30° W., 97 ft. dist. Cor. No. 3 is an old post, badly decomposed, set in a mound of stones from which a bearing rock bears S. 4° E., 31.85 ft. dist.; Cor. No. 5 is an old post set in a mound of stones from which a bearing rock bears No. 52° W., 64.7 ft. dist.; Cor. No. 6 is a mound of stones from which the post has been removed, from which bearing rock bears N. 53° E., 31.85 ft. dist.; Cor. No. 1 and its bearing rock have been destroyed. Cor. No. 4 has been destroyed and no bearing rock could be found. Line 6-2 was found to be N. 89°05'48" E., 588.54 ft., instead of S. 74°24' E., 600 ft. as approved; line 2-3 was found to be N. 16°24'12" W., 1499.51 ft. instead of N. 31°42" W., 1500 ft. as approved; line 3-5 was found to be S. 88°27'42" W., 601.30 ft. instead of N. 74°24' W., 600 ft. as approved; line 5-6 was found to be S. 16°56'27" E., 1496.55 ft. instead of S. 31°42' E., 1500 ft. as approved. From the midpoint of line 6-2 U.S.M.M. No. 1 bears S. 14°47'32" E., 1583.78 ft. instead of S. 26°50' E., 1678 ft. as approved. From the midpoint of line 6-2 the cor. of secs. 19, 24, 25 and 30, bears S. 33°06'44" E., 1686.17 ft. dist.</p> <p>Sur. No. 659 Alta lode: Cor. No. 3 is an old post, badly decomposed, in a mound of stones from which a bearing rock bears</p>	

	FEET	21
	<p>N. 84° E., 7.7 ft. dist.; Cor. No. 5 is an old post badly decomposed in a mound of stones from which a bearing rock bears S. 70° E., 37 ft. dist.; S.E. Cor. of 2 room stone building bears N. 75° W. 184½ ft. dist.; Cors. Nos. 1, 2 and 6 are identical with Cors. No. 1, 2 and 6 of Sur. No. 641 Peabody Lode, described above; Cor. No. 4 has been destroyed. Line 6-2 is identical with line 6-2 of Sur. No. 641 Peabody Lode, described above; line 2-3 was found to be S. 4°05'35" E., 1514.89 ft., instead of S. 18°12' E., 1500 ft. as approved; line 3-5 was found to be S. 88°48'28" W. 601.31 ft., instead of N. 74°24' W., 600 ft. as approved; line 5-6 was found to be N. 3°36'20" W., 1517.26 instead of N. 18°12' W., 1500 ft., as approved. From the midpoint of line 6-2 U.S.M.M. No. 1 bears S. 14°47'32" E., 1583.78 ft. instead of S. 26°40' E., 1708 ft. From the midpoint of line 6-2 the cor. of secs. 19, 24, 25 and 30 bears S. 33°06'44" E., 1686.17 ft. dist..</p> <p>Sur. No. 657 Senator Lode: Cor. No. 2 is an old 4" x 4" post, properly marked, in a mound of stone from which a bearing rock bears S. 21° W., 20.6 ft. dist.; Cor. No. 6 is an old 4" x 4" post properly marked, in a mound of stones from which a bearing rock bears S. 4° W., 28.4 ft. dist., another bearing rock bears S. 74° E., 6.7 ft. dist.; Cor. No. 1 has been destroyed; Cors. Nos. 3, 4 and 5 are identical with Cors. Nos. 3, 4 and 5 of Sur. No. 659 Alta lode described above.. Line 6-2 was found to be N. 88°29'47" E., 600.62 ft. instead of S. 74°24' E., 600 ft. as approved. Line 2-3 was found to be N. 9°34'17" W., 1485.04 ft. dist. instead of N. 23°54' W., 1500 ft. as approved; line 3-5 identical with line 3-5 Sur. No. 659 Alta Lode described above. Line 5-6 was found to be S. 9°34'47" E., 1488.37 ft. instead of N. 72°24' W. 1500 ft. as approved. From the midpoint of line 6-2 U.S.M.M. No. 1 bears N. 2°11'14" E., 1448.40 ft. instead of N. 13°48' W., 1296½ ft. From the midpoint of line 6-2 the cor. of secs. 19, 24, 25 and 30 bears N. 20°03'47" E., 1667.48 ft. dist.</p>	

Survey No. 4668

FEET

22

Sur. No. 2526 Grey Eagle Lode: Cors. Nos. 1, 2, 3 and 4 are 4" x 4" posts, firmly set and properly marked and witnessed. Line 1-2 was found to be N. 77°55'21" E., 600.13 ft., instead of N. 77°55' E., 600 ft. as approved; line 2-3 was found to be N. 12°03'09" W., 1502.40 ft., instead of N. 12°05' W., 1500 ft. as approved; line 3-4 was found to be S. 77°56'08" W., 600.40 ft. instead of S. 77°55' W., 600 ft. as approved; line 4-1 was found to be S. 12°03'46" E., 1502.54 ft., instead of S. 12°05' E., 1500 ft. as approved. From Cor. No. 1 U.S.M.M. No. 1 bears S. 3°40'30" W., 1474.60 ft., instead of S. 3°43' W., 1465.9 ft., as approved. The cor. of sec. 19, 24, 25 and 30 bears S. 17°20'12" E., 1416.99 ft. dist.

Sur. No. 2527 Black Prince Lode: Cors. No. 1 and 4 are 4" x 4" posts firmly set and properly marked and witnessed; Cor. No. 2 has been destroyed; Cor. No. 3 could not be found. Line 4-1 was found to be S. 60°43' E., instead of S. 60°45' E., as approved; line 1-2 is shown at right angles to line 4-1 and 600 ft. long as approved; this makes line 1-2 N. 29°17' E., 600.00 ft., instead of N. 29°15' E., 600 ft. and line 2-3 N. 60°43' W., 1500 ft., instead of N. 60°45' W., 1500 ft. as approved. From Cor. No. 1 U.S.M.M. No. 1 bears S. 22°23'13" E., 2329.56 ft., instead of S. 22°51' E., 2361.8 ft., as approved. From Cor. No. 1 the cor. of secs. 19, 24, 25 and 30 bears S. 34°36'08" E., 2472.37 ft. dist.

Sur. No. 2532 Otsego Lode: Cors. Nos. 3 and 4 are old posts badly decomposed, set in mounds of stones. Cor. No. 1 is identical with Cor. No. 2 of Sur. No. 657 Senator Lode, previously described. Cor. No. 2 is identical with Cor. No. 6 of Sur. No. 657 Senator Lode, previously described. Line 1-2 was found to be S. 88°29'47" W., 600.62 ft., instead of S. 88°29' W., 600 ft. as approved; line 2-3 was found to be S. 34°54'34" E., 1491.33 ft., instead of S. 34°54' E., 1487.7 ft. as approved; line 3-4 was

FEET

found to be N. 88°25'24" E., 599.74 ft. instead of N. 88°29' E., 600 ft. as approved; line 4-1 was found to be N. 34°53'50" W., 1490.21 ft., instead of N. 34°54' W., 1487.7 ft. as approved. From Cor. No. 1 U.S.M.M. No. 1 bears N. 9°39'24" W., 1460.15 ft., instead of N. 9°43' W., 1460.5 ft. as approved. From Cor. No. 1 the cor. of secs. 19, 24, 25 and 30 bears N. 9°53'40" E., 1581.94 ft. dist.

Sur. No. 2531 Brooks Lode: Cor. No. 1 is identical with Cor. No. 4 Sur. No. 2532 Otsego lode described above; Cor. No. 2 is identical with Cor. No. 3 Otsego lode described above. Cors. Nos. 3 and 4 could not be found. Line 1-2, identical with line 3-4 of Sur. No. 2532 Otsego lode was found to be S. 88°25'24" W., 599.74 ft. instead of S. 88°29' W., 600 ft., as approved; line 2-3 is shown as S. 53°55'36" E., to maintain the angular relationship as approved. Line 4-1 is shown as N. 53°55'36" W. to maintain the angular relationship as approved. From Cor. No. 1 U.S.M.M. No. 1 bears N. 22°24'28" W., 2879.09 ft., instead of N. 22°25' W., 2877.4 ft., as approved. From Cor. No. 1 the cor. of secs. 19, 24, 25 and 30 bears N. 11°47'47" W., 2840.64 ft. dist.

Sur. No. 2533 Beaver lode: Cor. No. 1 is a post firmly set and properly marked; Cor. No. 4 is a post firmly set from which a bearing rock was found N. 1° E., 12.8 ft., instead of S. 2°50' W., 12.45 ft., as approved; Cor. No. 3 and the Witness Cor. for Cor. No. 2 could not be found. Line 4-1 was found to be S. 43°25'16" W., 600.77 ft. instead of S. 43°20' W., 600 ft. as approved; lines 1-2 and 3-4 are shown at right angles to line 4-1, and each 1500 ft. long, as approved; this makes line 2-3 N. 43°25'16" E., instead of N. 43°20' E. as approved, and lines 1-2 and 3-4 each S. 46°34'44" E., instead of S. 46°40' E., as approved. From Cor. No. 1 U.S.M.M. No. 1 bears S. 73°34'54" E., 117.99 ft., instead of S. 73°14' E., 117.87 ft., as approved. From Cor. No. 1 the cor. of secs. 19, 24, 25 and 30 bears S. 82°15'42" E., 635.73 ft. dist.

FEET		25
	<p>657 Senator lode was found to bear N. 9°34'17" W., 438.70 instead of N. 9°37' W., 438.70 ft. as approved; the intersection of line 2-3 Sur. No. 659 Alta lode along line 3-4 was found to be 362.57 ft. instead of 362.51 ft. as approved, and Cor. No. 3 of Sur. No. 659 Alta lode was found to bear S. 4°05'35" E., 1077.01 ft. instead of S. 4°05' E., 1068.9 ft. as approved; the intersection of line 3-5 Sur. No. 657 Senator lode identical with line 3-5 Sur. No. 659 Alta lode along line 4-1 was found to be 1050.61 ft. instead of 1043.12 ft. as approved and cors. Nos. 3 were found to bear N. 88°48'28" E., 112.44 ft. instead of N. 88°29' E., 112.43 ft. as approved. The total area of Sur. No. 2534 Atlanta lode was found to be 20.783 acres instead of 20.661 acres as approved; the area in conflict with Sur. No. 657 Senator lode was found to be 1.090 acres instead of 1.091 acres as approved; the area in conflict with Sur. No. 659 Alta lode was found to be 4.258 acres instead of 4.222 acres as approved.</p> <p>Sur. No. 2535 Bellmont lode: Cors. No. 1, 2 and 3 are pine posts, firmly set and properly marked and witnessed; Cor. No. 4 had been removed but a mound of stones was found at record bearing and dist. from a bearing rock. I reset Cor. No. 4 temporarily as a spike in the ground with a stake alongside. Line 1-2 was found to be N. 12°48'00" W. 1489.74 ft., instead of N. 12°54' W., 1500 ft., as approved; line 2-3 was found to be S. 88°26'37" W., 600.12 ft., instead of S. 88°29' W., 600 ft., as approved; line 3-4 was found to be S. 12°48'48" E., 1489.52 ft., instead of S. 12°54' E., 1500 ft. as approved; line 4-1 was found to be partially on line 3-5 of Sur. No. 641 Peabody lode and was N. 88°27'42" E., 599.78 ft., instead of N. 88°29' E., 600 ft., as approved. From Cor. No. 1 U.S.M.M. No. 1 bears S. 7°12'42" E., 3002.37 ft., instead of S. 7°15' E., 2990.7 ft., as approved. From Cor. No. 1 the cor. to secs. 19, 24, 25 and 30 bears S. 17°21' 16" E., 2996.06 ft. dist.</p>	

FEET		24
	<p>Sur. No. 2534 Atlanta Lode: Cor. No. 1 is a post properly marked and witnessed; Cor. No. 2 is a post set in a mound of stones and properly marked, but the bearing rock was found to bear N. 40° E., 2.4 ft. dist., instead of S. 21°22' W., 4.65 ft., as approved. I reset Cor. No. 2 as a lead cap pipe in a concrete base in the remnants of an old rock cairn at the record bearing and distance above, from the bearing rock, mkd. Cor. No. 2 - ATLANTA - MS 2534; Cor. No. 3 is a post properly marked but set approx. S. 19°41' W., 122.3 ft. from the remnants of an old cairn found from ties to the 2 bearing rocks which were found as described in the field notes. I reset the post for Cor. No. 3 firmly in the ground and in a mound of stones at record bearing and distance from the 2 bearing rocks; Cor. No. 4 was a post properly marked, but displaced approx. S. 17° W., 146.9 ft. from remnants of an old cairn located by running the record bearing and distance from the re-established Cor. No. 3; I reset the post for Cor. No. 4 in the center of this old cairn and constructed a mound of stones around it. Line 1-2 as measured to the reestablished Cor. No. 2 was found to be N. 79°07'29" E., 600.04 ft., instead of N. 79°07' E., 600 ft., as approved; line 2-3 as measured between the reestablished corners was found to be N. 10°51'14" W., 1507.99 ft. instead of N. 10°53' W., 1500 ft., as approved; line 3-4 as measured between the reestablished corners was found to be S. 79°08'13" W., 600.56 ft., instead of S. 79°07' W., 600 ft., as approved; line 4-1 as measured from the reestablished Cor. No. 4 was found to be S. 10°52'26" E., 1508.12 ft., instead of S. 10°53' E., 1500 ft. as approved. From Cor. No. 1 U.S.M.M. No. 1 bears N. 3°46'08" E., 427.64 ft. instead of N. 3°45' E., 427.2 ft. as approved. From Cor. No. 1 the cor of secs. 19, 24, 25 and 30 bears N. 44°57'29" E., 771.13 ft. dist. The intersection of line 2-3 Sur. No. 657 Senator lode along line 1-2 was found to be at 100.87 ft. instead of 101.12 ft. as approved and Cor. No. 3 of Sur. No.</p>	

FEET

26

Sur. No. 2536 Damfino lode; Cors. Nos. 3 and 4 are 4" x 4" posts, firmly set and properly marked. Cors. Nos. 1 and 2 are identical with Cors. Nos. 4 and 3 of Sur. No. 2534 Atlanta lode, described above. Line 1-2 is identical with line 3-4 of Sur. No. 2534 Atlanta lode, described above; line 2-3 was found to be N. $10^{\circ}43'13''$ W., 1465.56 ft. instead of N. $10^{\circ}53'$ W., 1464 ft. as approved; line 3-4 was found to be S. $79^{\circ}05'50''$ W., 603.00 ft., instead of S. $79^{\circ}07'$ W., 600 ft., as approved; line 4-1 was found to be S. $10^{\circ}48'56''$ E., 1465.14 ft., instead of S. $10^{\circ}53'$ E., 1464 ft. as approved. From Cor. No. 1 U.S.M.M. No. 1 bears S. $16^{\circ}30'55''$ E., 1099.69 ft., instead of S. $16^{\circ}33'$ E., 1091.9 ft., as approved. From Cor. No. 1 the cor. of secs. 19, 24, 25 and 30 bears S. $41^{\circ}33'45''$ E., 1250.11 ft. dist.

UNITED STATES
DEPARTMENT OF THE INTERIOR
BUREAU OF LAND MANAGEMENT

CERTIFICATE OF SURVEYOR

Name of Mineral Surveyor JOHN H. STITZER	Date May 28, 1968
---	----------------------

I HEREBY CERTIFY That in pursuance of an order received from the Bureau of Land Management and Amended , at Phoenix, Arizona dated January 22, 1968 / March 27 , 19 68, I have carefully executed the survey of the claim of Magnum Mining Company , known as the (lode, placer, or mill-site) MAG-1, MAG-8, MAG-9, MAG 14 and FEB-1 , situated in Secs. 19 and 30 and Secs. 24 and 25 , Township 13 N , Ranges 14 & 15 W, Gila & Salt River Meridian, in the State of Arizona

This survey, designated as number 4668 , has been executed by me and under my direction and has been made in strict conformity with said order, the Manual of Instructions for the Survey of Public Lands of the United States, and in the specific manner described in the foregoing field notes.

I FURTHER CERTIFY That the labor expended and improvements made upon and for the benefit of the (lode or placer) lode location(s) embraced in the said mining claim by claimant(s) or its grantors are fully stated in my report. The character, extent, location, and itemized value are specified in full detail. No portion of, or interest in, said labor and improvements so credited to this claim has been included in the estimate of expenditures upon any other claim.

Tucson, Arizona
(Location)

John H. Stitzer
(Signature of Mineral Surveyor)

CERTIFICATE OF APPROVAL

Bureau of Land Management
Office
Arizona State Office
Location
Phoenix, Arizona
Date
October 11, 1968

The foregoing field notes of mineral survey number 4668 , in Sections 19 and 30 and Sections 24 and 25 , surveyed unsurveyed Township 13 N. , Ranges 14 W. , Gila and Salt River Meridian, in the State of Arizona and 15 W. , executed by John H. Stitzer Mineral Surveyor, under order dated January 22 , 19 68 , and Amended March 27 , having been critically examined and the necessary corrections made prior to their certification by the surveyor, the field notes and the survey therein described are hereby approved.

Fred J. Wesley
Fred J. Wesley (Authorized Signature) State Director (Title)

CERTIFICATE OF TRANSCRIPT

I CERTIFY That the foregoing transcript of field notes of the above described mineral survey number is a true copy of the original field notes.

(Authorized Signature) (Title)

Title 18, U. S. C. section 1001, makes it a crime for any person knowingly and willfully to make to any department or agency of the United States any false, fictitious, or fraudulent statements or representations as to any matter within its jurisdiction.

LOT NO's. 38 A. + 38 B.

SURVEY NO's. 657 + 658.

Field Notes

of the Survey of the

"Senator"

Mine and Mill-Site Claims

Situate in Open Mining District.

County of Mohave and in Sec. approx, T^p. 13 N
12 N

Range 14 W
12 W, of the Gila and Salt River Meridian.

ARIZONA.

Claimed by Pro Tester Mining Company

Survey executed by Eugene Rannenberg D. S.

Under instructions dated December 29, 1883
and June 13, 1884

Survey commenced April 17, and July 1st, 1884

Survey completed April 18, and July 1st, 1884

PRELIMINARY OATHS

FOR SURVEYS OF MINING CLAIMS AND MILL SITES.

WE, John Mann and Robert Jones.

do solemnly swear that we will faithfully execute the duties of Chain Carriers: that we will level the chain upon uneven ground, and plumb the tally pins, whether by sticking or dropping the same; that we will report the true distance to all notable objects, and the true length of all lines that we assist in measuring, to the best of our skill and ability.

John Mann
Robert Jones

SWORN to and subscribed before me, this seventeenth day

of April 1884

Eugene Pannenberg
Notary Public.

I, _____

do solemnly swear that I will well and truly perform the duties of _____

_____ according to instructions given me,
to the best of my skill and ability.

SWORN to and subscribed before me, this _____ day

of _____ 188 _____

7c.

Field Notes
of the survey of the
Senator Mining Claim.
in the Owen Mining District, Mohave Co.
Arizona.

Claimed by the Lester Mining Company.

Surveyed by Eugene Pannenberg U.S. Deputy Mineral Surveyor, under instructions from the Surveyor General, of date December 29th 1883.

Survey commenced, April 17th 1884.
Survey completed, April 18th 1884.

Description of Survey.

From the monument, situated on the high ridge of McCracken Mountain, mentioned in the location notice, I followed the vein in a southerly direction and found the Initial Monument, marking the southerly end center of claim, where I set a post 4 ft. 8 ins. long, 4 ins. dia., 1 1/2 ft. in ground and surrounded same with a mound of stones. Post marked S. J. M. No. I.

U. S. Min. Mon. No. I bears N. 13° 48' W. 129 1/2 ft. ✓

N. W. corner of Stone Cabin bears S 73° 20' W. 13 1/2 ft.

Large crossings on South point of Ridge bearing N. and S. bears S. 9° 24' W. 231 1/2 ft.

Large granite rock, in place, marked S. J. M. No. I B. P. bears N. 74° 40' W. 81 ft.

Thence S. 74° 24' E.

Var. 14° 12' E.

162 To center of gulch, bears N. and S.

300 To loc. mon., where I set a post 4' 6" long, 4 1/4 ins. dia., 1 1/2 ft. in ground, and surrounded same with mound of stones. Post marked S. No. II.

Large granite rock, in place, marked S. No. II. B. P. bears N. 13° 30' W. 98 ft.

feet.

Large granite rock, in place, marked S No. II. B.P.
bears S. $0^{\circ}26'E$. 12½ ft.

Thence N $23^{\circ}54'W$.

Var. $14^{\circ}12'E$.

1149 To center of road bears E and W.

1500 To loc. mon., where I set a post 4 ft. long, 4x4 ins.,
1½ ft. in ground and surrounded same with
mound of stones. Post marked S. No. III.

Large Granite Rock, in place, marked S No. III
B.P. bears S $12^{\circ}3'E$. 61 ft.

U.S.M.M. No. I bears S $18^{\circ}12'E$. 24 ft.

Thence N. $74^{\circ}24'W$.

Var. $14^{\circ}12'E$.

300 To location mon., where I set a post 4 ft long,
4x4 ins., 1½ ft. in ground and surrounded same
with mound of stones. Post marked S. No. IV.

Large granite rock, in place, marked S. No. IV B.P.
bears S $77^{\circ}E$. 21 ft.

Thence N. $74^{\circ}24'W$. (same course)

Var. $14^{\circ}12'E$.

60 To old Asay Office

128 To center of caved tunnel.

300 To loc. mon., where I set a post 4 ft. long, 4x4 ins.,
1½ ft. in ground and surrounded same with
mound of stones. Post marked S. No. V.

Large granite rock, in place, marked S. No. V. B.P.
bears S. $83^{\circ}43'E$. 37½ ft.

S.E. corner of old 2 room stone building N. $71^{\circ}30'W$.
182½ ft.

Thence S. $23^{\circ}54'E$.

Var. $14^{\circ}12'E$.

345 To trail SW. and NE.

580 To trail bears N. and S.

716 To center of road bears SW. and NE.

740 To center of road bears SW. and NE.

755 To tramway bears E and W.

1500 To point, where I set a post 4 ft. long, 4x4 ins.,
1½ ft. in ground and surrounded same with mound
of stones. Post marked S. No. VI.

7000.

Original Mon. b's S 23° 50' E. 8 ft.

Thence S. 74° 24' E.

Var. 14° 12' E.

300 To mon. and post S. J. M. No. I., place of beginning.

Area.

Total area of claim 15.94 acres.

Location.

This claim is located on the south slope of the McBracken Mountain abutting on the South end of the Alta Claim in Crown Mining District, Mohave County, Arizona.

Improvements.

made upon this claim by claimants or grantors consists of a shaft (airshaft) 140 ft. deep S. 24° 40' E. 553 ft. from Post S No. IV. A tunnel 187 ft long and drift 570 ft. long S 16° 45' E, 633 ft. from Post S No. IV. A tunnel 278 ft. long and drift 135 ft. long S 13° 40' E. 308 ft. from Post S No. IV. A tunnel 40 ft. long N 20° 45' W. 500 ft. from Post S No. IV.

And I hereby certify that the value of said Improvements exceeds the sum of Five Hundred Dollars.

There have been no improvements made by other parties on this claim.

Instruments used, a Gurley Transit with Solar Attachment and a 50 ft. steel chain.

Var. and courses taken by use of Solar Attachment.

Eugene Pannenberg.
U.S. Deputy Mineral Surveyor.

Prescott, A.T.
Aug. 20th 1884.

FINAL OATHS FOR SURVEYS OF MINING CLAIMS & MILL SITES.

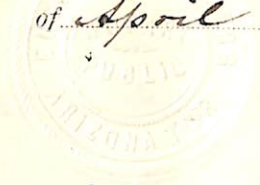
A LIST of the names of individuals employed to assist in running, measuring, or marking the lines and corners described in the foregoing field-notes of the survey of The Senator Mining Claim located in Owen Mining District, Mohave County, Arizona, showing the respective capacities in which they acted.

Robert Jones Chainman.
John Mann Chainman.
Axeman.
Flagman.

WE hereby certify that we assisted Eugene Pannenberg U. S. Deputy Surveyor, in surveying The Senator Mining Claim claimed by The Lester Mining Company located in Owen Mining District, Mohave County, and in Township No. Range No. of the Gila and Salt River base and meridian, Arizona, and that said survey has been in all respects, to the best of our knowledge and belief, well and faithfully executed, and the boundary monuments planted according to the instructions furnished by the Surveyor General.

Robert Jones Chainman.
John Mann Chainman.
Axeman.
Flagman.

SWORN TO AND SUBSCRIBED before me this 18th day of April 1884

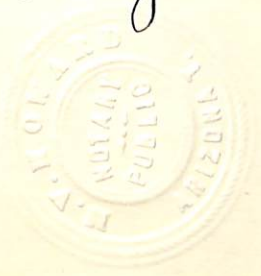


Eugene Pannenberg
Notary Public.

I, Eugene Pannenberg U. S. Deputy Surveyor, do solemnly swear that, in pursuance of instructions from the U. S. Surveyor-General for Arizona, bearing date the 29th day of December 1883, I have well, faithfully and truly, in my own proper person, and in strict conformity with the instructions furnished by the Surveyor-General and the laws of the United States, surveyed all those portions of The Senator Mining Claim claimed by The Lester Mining Company located in Owen Mining District, Mohave County, Arizona, as are represented in the foregoing field-notes as having been surveyed under my directions; and I do further solemnly swear that all the corners of said surveys have been established and perpetuated in strict accordance with the instructions furnished me, and that the foregoing are the true and original field notes of such surveys.

Eugene Pannenberg Deputy Surveyor.

SWORN TO AND SUBSCRIBED before me this 13th day of August 1884



M. W. Hayward
Notary Public
Yavapai Co. Ariz.

"Senator"

Owen District.

Notice.

I the undersigned claim Fifteen hundred feet on this vein or lode commencing at this monument and notice, which is situated on a high ridge and running fifteen hundred feet southerly to a stone monument, thence East three hundred feet to a stone monument, thence fifteen hundred feet northerly parallel with the ledge to a stone monument, thence six hundred feet west crossing the vein at right angles to a stone monument, thence fifteen hundred feet South parallel with the vein to a stone monument, thence three hundred feet East to a stone monument on the centre of said vein. This I claim with all privileges granted by the Mining Laws having jurisdiction over said claim.

This claim is situated about seven miles from a stream known as the "Big Sandy" at a point on said stream about one mile from Cummins Spring. This claim is bounded on the North by the "Alta" and on the South by the "Palmetto."

Owen District, Mohave County,
Arizona Territory.

August 17th A.D. 1874.

39A

J. McBrackin.

Recorded at the request of Jackson
McBrackin August 22nd A. D. 1874 at
9 A.M.

James C. Bull. County Recorder,
By Baldwin Wright Deputy.

Recorded in Book B. page 442 Mining
Records of Mohave County, Arizona.

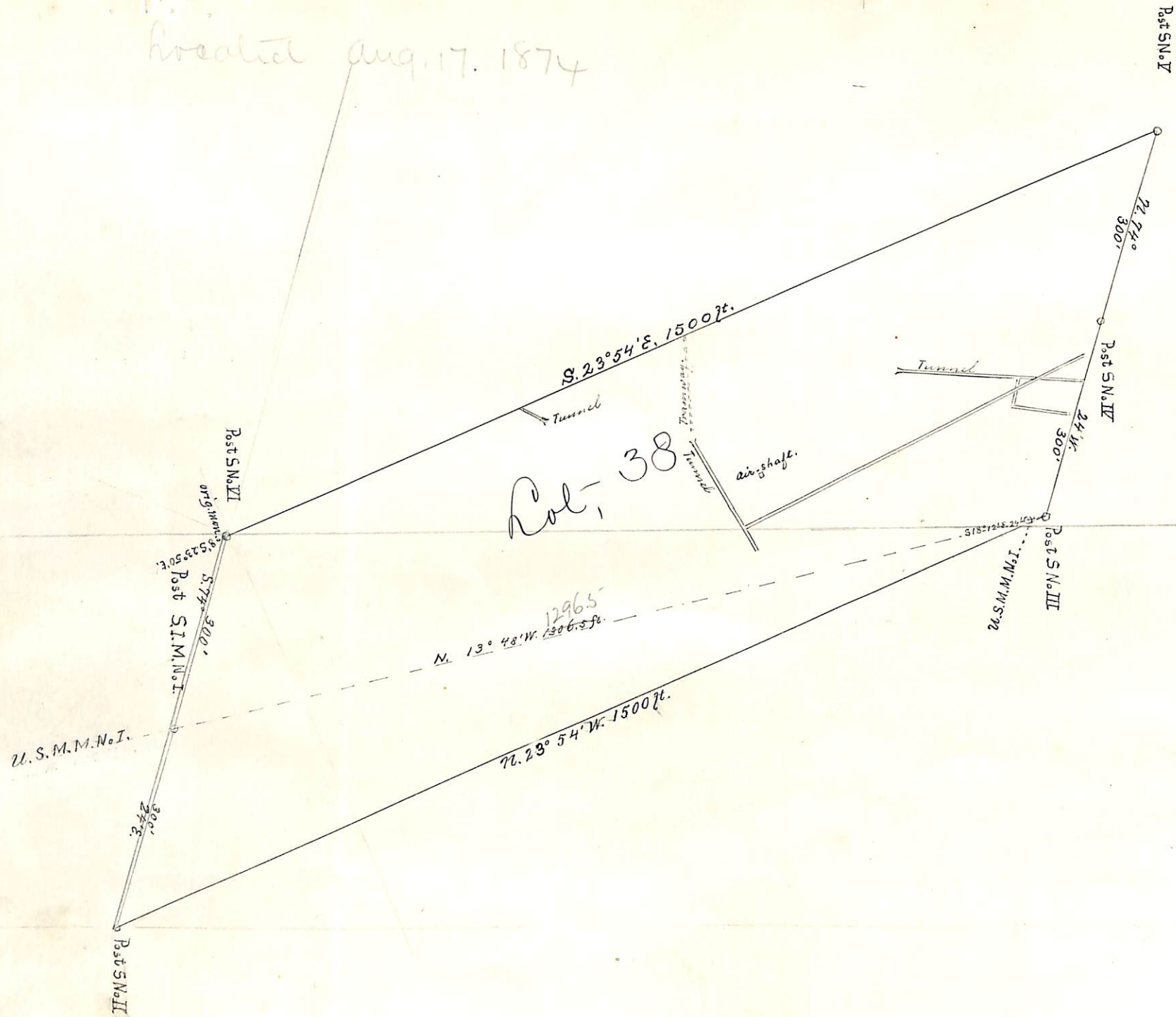
Territory of Arizona
County of Mohave

I, John K. MacKenzie,
Recorder in and for said County of Mohave
in the Territory of Arizona, do hereby certify
that I have compared the foregoing copy
with the original location notice of the
"Senator" Mining Location, Owen Mining Dis-
trict, said County and Territory, and the same
is a full true and correct copy of said
"Senator" Original Mining Location Notice
and of the whole thereof, as appears
of record in my office

Witness my hand and official
seal this 30th day of October A.D. 1883

John K. MacKenzie
County Recorder

located Aug. 17. 1874



Vol. 38

PLAT of the SENATOR

Mining Claim,
Owen Mining District,
Mohave County,
Arizona.

Claimed by the Lester Mining Company.

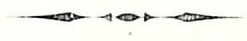
Surveyed by E. Pannenberg, U.S. M.S.
April 17 and 18, 1884.

Containing an area of 15.94 acres.

Variation $14^{\circ} 12' E.$ Scale 200 ft. = 1 inch.

PRELIMINARY OATHS,

FOR SURVEYS OF MINING CLAIMS AND MILL-SITES.



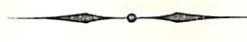
WE, George Driver and John Riley

do solemnly swear that we will faithfully execute the duties of Chain Carriers; that we will level the chain upon uneven ground, and plumb the tally pins, whether by sticking or dropping the same; that we will report the true distance to all notable objects, and the true length of all lines that we assist in measuring, to the best of our skill and ability.

George Driver
John Riley

SWORN to and subscribed before me, this first day
of July 1887

Eugene Cannerberg
Notary Public



I, _____

do solemnly swear that I will well and truly perform the duties of _____
_____ according to instructions given me,
to the best of my skill and ability.

SWORN to and subscribed before, me this _____ day
of _____ 188 _____

Feet.

Field Notes
of the survey of the
Senator Mill-Site.

in connection with the Senator Mining
Claim in Crown Mining District,

Mohave County,

Arizona.

Claimed by the Lester Mining Company.
Surveyed by E. Pannenberg, U.S. Deputy
Mineral Surveyor, under instructions from
the Surveyor General, of date June 13th 1884.

Survey commenced July 1st 1884.

Survey completed July 1st 1884.

Description of Survey.

Beginning at the Initial Monument, ment-
ioned in the Location Notice and marking the
north West corner of mill-site, where I set a post
4 ft. long, 4x4 ins., 1 1/2 ft. in ground and surround-
ed same with mound of stones. Post marked S.M.I.
M. No I.

Initial monument of Senator Mining claim,
a post marked S.I.M. No I. bears S 58° 50' W. 48059 ft.
Cor no. 38 A.

Thence S. 4° 06' E.

Var. 14° 12' E.

311.14 To loc. mon., where I set a post 4 ft. long, 4x4 ins.,
1 1/2 ft. in ground and surrounded same with mound
of stones. Post marked S No II.

Thence N 85° 54' E.

Var. 14° 12' E.

700 To loc. mon., where I set a post 4 ft. long, 4x4 ins.,
1 1/2 ft. in ground and surrounded same with
mound of stones. Post marked S No III.

Feet.

Thence N 4° 06' W.

Var. 14° 12' E.

311.14 To loc. mon., where I set a post 4 ft. long, 4x4 ins., 1 1/2 ft. in ground and surrounded same with mound of stones. Post marked S No II.

Thence S 85° 54' W.

Var. 14° 12' E.

700. To monument and post S.M. I.M. No I., the place of beginning.

There were no other objects, except the buildings mentioned under head of improvements, to better locate the corners of this mill site.

Area.

Total area of Mill-Site.. 5.00 acres.

Location.

This mill-site is located about 1/4 of a mile south of the town of Signal and 200 yards west of the Sandy River; the north side of this mill-site partially abutts on the south side of the Alta Millsite, the Initial Monument being 100 ft. east of the S.W. corner of the Alta Mill-Site.

Improvements,

made upon this Mill-Site by claimants or grantors consist of a Lodging House whose north west ^{eastern} corner bears S 43° E, 265 ft. from post SMIM No I. An Assay Office, whose N.W. corner bears S 87° 30' E, 345 ft. from post SMIM No I. A storehouse whose N.W. corner bears S 87° E, 320 ft. from post SMIM No I. A boardinghouse, whose N.W. corner bears S 64° 30' E, 350 ft. from post SMIM No I. An Office building, whose N.W. corner bears S 53° 45' E, 385 ft. from post SMIM No I.

And I hereby certify, that the value of said improvements exceeds the sum of Five Hundred Dollars and that the land claimed for such Mill-site is non-mineral land.

There have been no improvements made by other parties on this Mill-site.

Instruments used, a Gurley Transit with Solar Attachment and a 50 ft. steel chain.

Var. and courses taken by use of Solar Attachment.

Eugene Pannenberg.
U.S. Deputy Mineral Surveyor.

Prescott A. J.
August 21st 1884.

FINAL OATHS FOR SURVEYS OF MINING CLAIMS & MILL SITES.

A LIST of the names of individuals employed to assist in running, measuring, or marking the lines and corners described in the foregoing field-notes of the survey of The Senator Mill - Site, connected with the Senator Mining Claim located in Owen Mining District, Mohave County, Arizona, showing the respective capacities in which they acted.

George Driver Chainman.
John Riley Chainman.
- - - Axeman.
- - - Flagman.

WE hereby certify that we assisted E. Pannenberg U. S. Deputy Surveyor, in surveying The Senator Mill Site, connected with the Senator Mining Claim claimed by The Leaker Mining Company located in Owen Mining District, Mohave County, and in Township No _____ Range No _____ of the Gila and Salt River base and meridian, Arizona, and that said Survey has been in all respects, to the best of our knowledge and belief, well and faithfully executed, and the boundary monuments planted according to the instructions furnished by the Surveyor General.

George Driver Chainman.
John Riley Chainman.
- - - Axeman.
- - - Flagman.

SWORN TO AND SUBSCRIBED before me this first day of July 1884

Eugene Pannenberg
Notary Public.

I, Eugene Pannenberg U. S. Deputy Surveyor, do solemnly swear that, in pursuance of instructions from the U. S. Surveyor-General for Arizona, bearing date the 13th day of June 1884, I have well, faithfully and truly, in my own proper person, and in strict conformity with the instructions furnished by the Surveyor-General and the laws of the United States, surveyed all those portions of The Senator Mill Site in connection with the Senator Mining Claim claimed by The Leaker Mining Company located in Owen Mining District, Mohave County, Arizona, as are represented in the foregoing field-notes as having been surveyed under my directions; and I do further solemnly swear that all the corners of said surveys have been established and perpetuated in strict accordance with the instructions furnished me, and that the foregoing are the true and original field notes of such surveys.

Eugene Pannenberg Deputy Surveyor.

SWORN TO AND SUBSCRIBED before me this 23rd day of August 1884

M. Howard
Notary Public



NON-MINERAL AFFIDAVIT.

TERRITORY OF ARIZONA,)
 County of Mohave) ss.

N. A. Kimble and W. D. McBright of said County and Territory, being first duly sworn, each for himself and not one for the other, deposes and says that he is well acquainted with the land of the "Senator" mill-site claim situated in Owen Mining District, Gila and Salt River Meridian, in the County of Mohave and Territory of Arizona, claimed by The Lester Mining Company applicants for United States patent therefor; that he is well acquainted with the character of said described land included within the boundary lines as officially surveyed by E. Pannenberg United States Deputy Surveyor, having frequently passed over the same; that his knowledge of such land is such as to enable him to testify understandingly with regard thereto; that there is not to his knowledge within the limits thereof any vein or lode of quartz or other rock in place bearing gold, silver, cinnabar, lead, tin or copper or any deposit of coal; that there is not within the limits of said land, within his knowledge, any placer, cement, gravel or other valuable mineral deposits; that no portion of said land is claimed under the local customs or rules of miners or otherwise; that no portion of said land is worked for minerals during any part of the year by any person or persons; that said land is essentially non-mineral land, and that there is within the boundaries of said claim improvements, to-wit: A Logging House, an assay office, a store, a boarding house and Superintendants office and that he has no interest whatever in said described mill-site claim.

N. A. Kimble

W. D. McBright

SUBSCRIBED AND SWORN to before me this first day of July A. D. 1884; and I hereby certify that the foregoing affidavit was read to the said N. A. Kimble and W. D. McBright previous to their names being subscribed thereto, and that deponents are reputable persons to whose affidavits full faith and credit should be given.

Eugene Pannenberg

Notary Public.

Seuator Millsite Notice.

The undersigned hereby locates five acres of this land as a mill site, and all the water, stone, timber, rights, privileges, franchises etc. thereto belonging, or in anywise appertaining, according to law.

This claim commences at a post about 370 feet Westerly and about 200 feet southerly of the quartz mill, thence in a southerly direction 312 feet to a post and monument of stone, thence easterly 700 feet to a post and monument of stone; thence northerly 312 feet to a post and monument of stone; thence Westerly 700 feet to place of beginning, and is situated about one quarter of a mile south of the town of Signal, and about 200 yards west of the Sandy River.

Located this 20th day of May 1884, and called the "Seuator Millsite," by
 Witness: Lester Mining Co.
 By N. E. Stronach
 Agent,

Recorded at the request of M. E.
Stronach, May 23rd A.D. 1884 at
9 o'clock A.M.

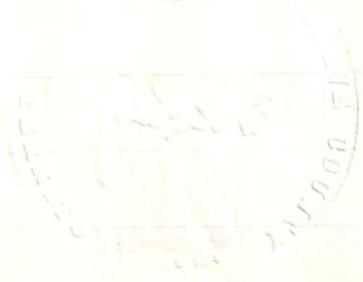
John K. Mackenzie
County Recorder
By N. H. Harris
Deputy

Territory of Arizona
County of Mohave

I, John K. Mackenzie, Recorder in and for said County of Mohave, hereby certify that I have compared the foregoing copy with the original Location notice of the Senator Millsite, and that the same is a full true and correct copy of said Senator Millsite location Notice; and of the whole thereof, as appears of record in Book No 1. page 674 Miscellaneous Records of Mohave County, Arizona Territory

In witness whereof, I have hereunto set my hand and affixed my official seal this 23rd day of May A.D. 1884

John K. Mackenzie
County Recorder



PLAT
of the
SENATOR

Mill - Site.
connected with the
Senator Mining Claim.
Owen Mining District.
Mohave County,
Arizona.

Claimed by the Lister Mining Company.

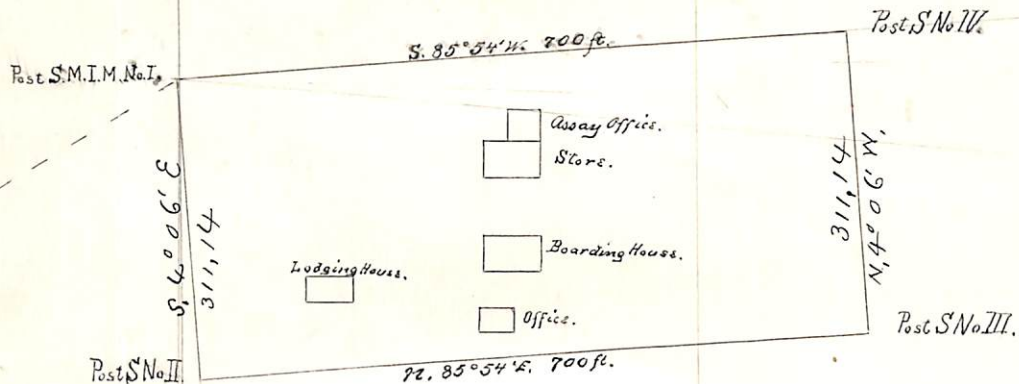
Surveyed by C. Pannenborg, U.S.D.M.S.

July 1st 1884.

Containing an area of 5²⁰/₁₀₀ acres.

Variation 14° 12' E.

Scale 200 ft. = 1 inch.



S.I.M. No. I
#8059 ft.
S. 55° 50' W.

U. S. Surveyor General's Office.

Tucson, Arizona, October 4, 1884

The foregoing field notes of the survey of the Senator
Mining and Mill Site Claims situate in
the Owen Mining District, Mohave
County, Arizona, claimed by The Pester Mining Company,
survey executed by Eugene Pammenberg Deputy
Surveyor, under instructions from this office, having been critically examined
and the necessary corrections and alterations made, the said field notes and
the survey they describe are hereby approved.

Royal A. Johnson
Surveyor General.