

**M
S
.**

0

0

6

5

9

2-Way Memo

RECEIVED
BUREAU OF
LAND MANAGEMENT

Subject: Mineral Survey No. 4668

1

DATE OF MESSAGE
October 15, 1968
DATE OF REPLY
INSTRUCTIONS
Use routing symbols whenever possible.
SENDER: Forward original and one copy. Conserve space.
RECEIVER: Reply below the message, keep one copy, return one copy.

1968 OCT 16 AM 11 40 .5

To: 

Land Office
Att'n. Chief, Branch of Titles & Records

LAND OFFICE
PHOENIX, ARIZONA

5027-101

FOLD

FOLD

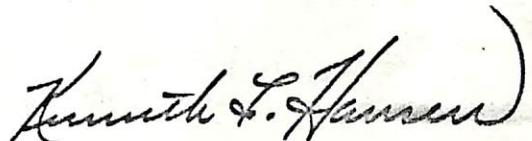
USE BRIEF, INFORMAL LANGUAGE

Mineral Survey No. 4668 was approved on October 11, 1968.

In accordance with a request from the claimant, the following previously surveyed lodes were tied into Mineral Survey No. 4668:

- Peabody lode - Mineral Survey #641
- Senator lode - Mineral Survey #657
- Alta lode ---- Mineral Survey #659
- Atlanta lode - Mineral Survey #2534
- Otsego lode -- Mineral Survey #2532

Per your request, we are attaching five copies each of the Field Notes and Plat (2 sheets) for filing in the above-listed case files.



Attachments

From:

Chief, Division of Engineering

Form 4-683
(January 1963)

RECEIVED
BUREAU OF LAND MANAGEMENT
UNITED STATES
DEPARTMENT OF THE INTERIOR
BUREAU OF LAND MANAGEMENT

Mineral Survey number
4668
State
Arizona
Land District

FIELD NOTES OCT 16 AM 11 40 .6

Of the Survey of the Mining Claim of (name and address of Claimant)
Magnum Mining Company
c/o Boyle, Bilby, Thompson & Shoenhair, Attorneys at Law,
9th Floor Valley National Bldg.
Tucson, Arizona 85701

Known as the, (name of group, if any)

McCracken Group

CONSISTING OF LOCATIONS NAMED AND LOCATED AS FOLLOWS

NAME OF LOCATION	DATE	
	LOCATED	AMENDED
MAG-1	9/8/67	2/3/68
MAG-8	2/3/68	
MAG-9	2/3/68	
MAG 14	2/23/68	
FEB-1	2/22/68	

Mining district Owens			County Mohave	
Section s 19 & 20 24 & 25	Township 13 N.	Range 14 W 15 W	Meridian Gila & Salt River	Survey under order dated January 22, 1968 and March 27, 1968
Survey commenced Feb. 25, 1968		Survey completed April 4, 1968	Name of Mineral Surveyor John H. Stitzer	

FEET

1

This survey was made with a K & E, 6E optical reading theodolite No. 624161 reading directly to one minute of arc with interpolation to one tenth minute of arc, using a solar eyepiece with colored glass for making direct observations of the sun. The instrument was in good condition at the time of the survey and all adjustments were in good order.

February 22, 1968 at the lode line on line 1-2 of FEB-1 lode, in latitude $34^{\circ}27'05''$ N. and longitude $113^{\circ}46'34''$ W. I made a series of six altitude observations upon the sun at equal time intervals, three each with the telescope in the erect and inverted positions and reading the horizontal angle from Cor. No. 1 of the FEB-1 lode. From these observations I obtain a bearing of $N. 89^{\circ}24'00''$ E.

The lines were measured with a Lufkin steel tape, 300 ft. in length graduated every foot, there being an added foot graduated in tenths and hundredths of a foot.

A spring balance was used to maintain proper tension on the tape and all distances were compensated for temperature.

All lines of this survey were run by direct methods as all lines were accessible.

The magnetic declination in the area of the survey was a uniform value of $14\frac{1}{2}^{\circ}$ E.

Survey No. 4668

FEB-1 LODE

At Cor. No. 1 of the FEB-1 lode, identical with Cor. No. 1 MAG-1 lode of this survey.

Set an iron post, 18 ins. long, $1\frac{1}{2}$ ins. diam., in a concrete base, with lead cap mkd. COR 1-FEB 1-COR 1-MAG 1-MS 4668; from which.

Survey No. 4668

FEET		2
	<p>The cor. of secs. 19 and 30, T. 13 N. R. 14 W. and secs. 24 and 25, T. 13 N., R. 15 W., G. & S. R. M., bears S. 14°57'30" E., 2336.74 ft. dist.; an iron post 2 ins. diam., 12 ins. above ground, firmly set and marked as described in the official record.</p> <p>Cor. No. 1 Sur. No. 2535 Belmont lode bears N. 25°45'25" W., 668.53 ft. dist.</p> <p>Cor. No. 3 Sur. No. 641 Peabody lode bears N. 36°47'40" W., 746.64 ft. dist.</p> <p>Cor. No. 4 Sur. No. 2526 Grey Eagle lode bears N. 13°16'08" W., 579.90 ft. dist.</p> <p>Thence S. 89°24'00" W.</p>	
12.46	Intersect line 4-1 Sur. No. 2526 Grey Eagle lode at a point from which Cor. No. 4 bears N. 12°03'46" W., 577.30 ft. dist.	
270.37	Intersect line 2-3 Sur. No. 641 Peabody lode at a point from which Cor. No. 3 bears N. 16°24'12" W., 626.22 ft. dist.	
303.40	Lode line; discovery point bears N. 31°36'00" W., 1489.15 ft. dist.	
	Set an iron post, 18 ins. long, 1½ ins. diam., in a concrete base, with lead cap mkd. NCE-MAG 1-SCE-FEB 1-MS 4668.	
477.88	Intersect line 4-1 Sur. No. 2536 Damfino lode at a point from which Cor. No. 4 bears N. 10°48'56" W., 124.13 ft. dist.	
606.80	Cor. No. 2, identical with Cor. No. 2 of the MAG-1 lode of this survey.	
	Set an iron post, 18 ins. long, 1½ ins. diam., in a concrete base, with lead cap mkd. COR 2-FEB 1-COR 2-MAG 1-MS 4668; from which	
	Cor. No. 5 Sur. No. 641 Peabody lode bears N. 36°53'48" W., 735.40 ft. dist.	

FEET

Cor. No. 4 Sur. No. 2536 Damfino lode bears N. 40°35'20" E., 162.33 ft. dist.

Cor. No. 1 Sur. No. 2527 Black Prince lode bears S. 41°55'08" W., 290.51 ft. dist.

Cor. No. 2 Sur. No. 2527 Black Prince lode bears N. 17°55'52" E., 322.84 ft. dist.

An old bolt at N.E. cor. of old concrete mill foundation bears N. 64° W., 119.10 ft. dist., mkd. RP-4668-COR 2-M & F.

A steel gusset plate at the N.W. cor. of the timbered collar of the Signal shaft, bears S. 15° W., 95.28 ft. dist., mkd. RP-CORS 2-M & F - 4668.

Thence N. 31°36'00" W.

72.74 Intersect line 1-2 Sur. No. 2527 Black Prince lode at a point from which Cor. No. 2 bears N. 29°17' E., 281.13 ft. Dist.

650.50 Intersect line 2-3 Sur. No. 2527 Black Prince lode at a point from which Cor. No. 2 bears S. 60°43' E., 504.75 ft. dist.

692.97 Intersect line 3-5 Sur. No. 641 Peabody lode at a point from which Cor. No. 3 bears N. 88°27'42" E., 522.86 ft. dist., and Cor. No. 4 Sur. No. 2535 Belmont lode on line 3-5 Peabody lode bears N. 88°27'42" E., 79.82 ft. dist.

1499.15 Cor. No. 3

Set an iron post 18 ins. long, 1½ ins. diam., in a concrete base, with lead cap mkd. COR 3-FEB 1-MS 4668; from which

Cor. No. 4 Sur. No. 2535 Belmont lode bears S. 36°16'04" E., 848.98 ft. dist.

FEET		4
	Thence N. 89°24'00" E.	
303.40	Lode line; discovery point bears S. 31°36'00" E., 10.00 ft. dist. Set an iron post 18 ins. long, 1½ ins. diam., in a concrete base, with lead cap mkd. NCE-FEB 1-MS 4668.	
345.74	Intersect line 3-4 Sur. No. 2535 Belmont lode at a point from which Cor. No. 4 bears S. 12°48'48" E., 705.70 ft. dist.	
606.80	Cor. No. 4. Set an iron post 18 ins. long, 1½ ins. diam., in a concrete base, with lead cap mkd. COR 4-FEB 1-MS 4668; Thence S. 31°36'00" E.	
794.70	Intersect line 4-1 Sur. No. 2535 Belmont lode at a point from which Cor. No. 4 bears S. 88°27'42" W., 521.14 ft. dist., and Cor. No. 3 Sur. No. 641 Peabody lode on line 4-1 Belmont lode bears S. 88°27'42" W., 78.10 ft. dist.	
1275.09	Intersect line 3-4 Sur. No. 2536 Damfino lode at a point from which Cor. No. 4 bears S. 79°05'50" W., 390.80 ft. dist.	
1462.63	Intersect line 4-1 Sur. No. 2526 Grey Eagle lode at a point from which Cor. No. 4 bears N. 12°03'46" W., 545.36 ft. dist.	
1499.15	Cor. No. 1 and place of beginning.	
	MAG-1 LODE	
	Beginning at Cor. No. 1 of the MAG-1 lode, identical with Cor. No. 1 of the FEB-1 lode of this survey. Thence S. 89°24'00" W.	
12.46	Intersect line 4-1 Sur. No. 2526 Grey Eagle lode at a point from which Cor. No. 1 bears S. 12°03'46" E., 925.24 ft. dist.	

FEET	
270.37	Intersect line 2-3 Sur. No. 641 Peabody lode at a point from which Cor. No. 2 bears S. 16°24'12" E., 873.29 ft. dist.
303.40	Lode line, discovery point bears S. 19°35'54" E., 1309.77 ft. dist.
477.88	Intersect line 4-1 Sur. No. 2536 Damfino lode at a point from which Cor. No. 1 bears S. 10°48'56" E., 1341.01 ft. dist.
606.80	Cor. No. 2, identical with Cor. No. 2 FEB-1 lode of this survey. Thence S. 19°35'54" E.
830.96	Intersect line 4-1 Sur. No. 2536 Damfino lode at a point from which Cor. No. 1 bears S. 10°48'56" E., 542.65 ft. dist.
890.28	Intersect line 6-2 Sur. No. 641 Peabody lode, identical with line 6-2 Sur. No. 659 Alta lode at a point from which Cor. No. 2, Sur. No. 641 Peabody lode, identical with Cor. No. 2 Sur. No. 659 Alta lode bears N. 89°05'48" E., 284.44 ft. dist.
1379.99	Intersect line 1-2 Sur. No. 2536 Damfino lode, identical with line 3-4 Sur. No. 2534 Atlanta lode at a point from which Cor. No. 2 Sur. No. 2536 Damfino lode identical with Cor. No. 3 Sur. No. 2534 Atlanta lode bears N. 79°08'13" E., 516.73 ft. dist.
1499.77	Cor. No. 3. This corner falls on a nearly vertical rock surface where a permanent corner could not be established; from this point Cor. No. 4 Sur. No. 2534, Atlanta lode, identical with Cor. No. 1 Sur. No. 2536 Damfino lode bears N. 51°36'36" W., 156.29 ft. dist., and Cor. No. 2 Sur. No. 641 Peabody lode, identical with Cor. No. 2 Sur. No. 659 Alta lode bears N. 7°52'05" E., 584.16 ft. dist.

(This form bound on left side)

Survey No. 4668

FEET		6
	Thence N. 89°24'00" E.	
5.68	Witness Cor. to Cor. No. 3 Set an iron post 18 ins. long, 1½ ins. diam., in a concrete base, with lead cap mkd. WC-COR 3-MAG 1-MS 4668.	
121.29	Intersect line 2-3 Sur. No. 659 Alta lode at a point from which Cor. No. 2 bears N. 4°05'35" W., 578.87 ft. dist.	
303.40	Lode line; discovery point bears N. 19°35'54" W., 190.00 ft. dist. Set an iron post, 18 ins. long, 1½ ins. diam., in a concrete base, with lead cap mkd. SCE-MAG 1-MS 4668.	
506.11	Intersect line 4-1 MAG 14 lode of this survey.	
506.61	Intersect line 2-3 Sur. No. 2534 Atlanta lode at a point from which Cor. No. 3 identical with Cor. No. 2 Sur. No. 2536 Damfino lode bears N. 10°51'14" W., 208.66 ft. dist.	
606.80	Cor. No. 4 Set an iron post, 18 ins. long, 1½ ins. diam., in a concrete base with lead cap mkd. COR 4-MAG 1-MS 4668; from which Cor. No. 3 Sur. No. 2534 Atlanta lode, identical with Cor. No. 2 Sur. No. 2536 Damfino lode, bears N. 34°22'40" W., 247.02 ft. dist. Cor. No. 1 Sur. No. 2526 Grey Eagle lode bears N. 32°23'03" W., 601.49 ft. dist. Cor. No. 4 MAG-14 lode of this survey bears N. 24°52'39" W., 405.27 ft. dist.	
	Thence N. 19°35'54" W.	
391.37	Intersect line 3-4 of MAG-14 lode of this survey.	

Survey No. 4668

FEET		7
569.00	Intersect line 1-2 of Sur. No. 2526 Grey Eagle lode from which Cor. No. 1 bears S. 77°55'21" W., 134.27 ft. dist.	
642.27	Intersect line 2-3 of Sur. No. 2536 Damfino lode at a point from which Cor. No. 2 bears S. 10°43'13" E., 408.31 ft. dist.	
1499.77	Cor. No. 1 and place of beginning.	
MAG-14 LODE		
At Cor. No. 1 of the MAG-14 lode, on line 3-4 of the MAG-9 lode of this survey.		
Set an iron post, 18 ins. long, 1½ ins. diam. in a concrete base, with lead cap mkd. COR 1-MAG 14-MS 4668; from which		
The cor. of secs 19, 24, 25 and 30 bears N. 17°34'43" E., 85.10 ft. dist.; previously described.		
Cor. No. 4 Sur. No. 2533 Beaver lode bears N. 23°53'25" W., 472.35 ft. dist.		
Cor. No. 2 Sur. No. 2534 Atlanta lode bears S. 11°16'59" E., 358.25 ft. dist.		
Thence N. 88°30'00" E.		
2.72	Intersect line 2-3 Sur. No. 2534 Atlanta lode at a point from which Cor. No. 3 bears N. 10°51'14" W., 1150.19 ft. dist.	
111.77	Cor. No. 4 MAG-9 lode of this survey.	
258.02	Intersect line 3-4 Sur. No. 2533 Beaver lode at a point from which Cor. No. 4 bears N. 46°34'44" W., 618.50 ft. dist.	
302.50	Lode line; discovery point bears N. 10°43'13" W., 10.00 ft. dist.	
Set an iron post 18 ins. long, 1½ ins. diam., in a concrete base, with lead cap mkd. SCE-MAG 14-MS 4668.		

Survey No. 4668

FEET		8
605.00	<p>Cor. No. 2.</p> <p>Set an iron post, 18 ins. long, 1½ ins. diam., in a concrete base, with lead cap mkd. COR 2-MAG 14-MS 4668.</p> <p>No local bearing objects available.</p> <p>Thence N. 10°43'13" W.</p>	
1316.45	<p>Cor. No. 3</p> <p>Set an iron post, 18 ins. long, 1½ ins. diam., in a concrete base, with lead cap mkd. COR 3-MAG 14-MS 4668; from which</p> <p>Cor. No. 2 Sur. No. 2526 Grey Eagle bears N. 34°09'14" W., 302.11 ft. dist.</p> <p>Thence S. 88°30'00" W.</p>	
302.50	<p>Lode line; discovery point bears S. 10°43'13" E., 1306.45 ft. dist.</p> <p>Set an iron post, 18 ins. long, 1½ ins. diam., in a concrete base, with lead cap mkd. NCE-MAG 14-MS 4668.</p>	
565.77	<p>Intersect line 4-1 MAG-1 lode of this survey.</p>	
605.00	<p>Cor. No. 4, on line 2-3, Sur. No. 2536 Damfino lode.</p> <p>Set an iron post, 18 ins. long, 1½ ins. diam., in a concrete base, with lead cap mkd. COR 4-MAG 14-MS 4668; from which</p> <p>Cor. No. 1, Sur. No. 2526 Grey Eagle lode bears N. 47°14'02" W., 206.59 ft. dist.</p> <p>Thence S. 10°43'13" E.</p>	
166.70	<p>Cor. No. 2 Sur. No. 2536 Damfino lode, identical with Cor. No. 3 Sur. No. 2534 Atlanta lode.</p>	

Survey No. 4668

FEET		9
375.27	Intersect line 3-4 MAG-1 lode of this survey.	
1005.42	Intersect line 3-4 Sur. No. 2533 Beaver lode at a point from which Cor. No. 4 bears N. 46°34'44" W., 183.72 ft. dist.	
1316.45	Cor. No. 1 and place of beginning.	
MAG-9 LODE		
At Cor. No. 1 of MAG-9 lode; identical with Cor. No. 1 of MAG-8 lode of this survey.		
Set an iron post, 18 ins. long, 1½ ins. diam., in a concrete base, with lead cap mkd. COR 1-MAG 9-COR 1-MAG 8-MS 4668; from which		
The cor. of secs. 19, 24, 25, and 30 bears N. 12°10'49" W., 1578.10 ft. dist.		
Cor. No. 2 Sur. No. 2533 Beaver lode bears N. 16°33'03" E., 444.35 ft.		
Thence S: 88°30'00" W.		
302.50	Lode line; discovery point bears N. 9°34'17" W., 20.00 ft. dist.	
Set an iron post, 18 ins. long, 1½ ins. diam., in a concrete base, with lead cap mkd. SCE-MAG 9-NCE-MAG 8-MS 4668.		
318.	Center of road, bears N. 5° E., and S. 5° W.	
605.00	Cor. No. 2, identical with Cor. No. 2 MAG-8 lode of this survey, Cor. No. 2 Sur. No. 657 Senator lode and Cor. No. 1 Sur. No. 2532 Otsego lode. Found a wooden post, 4x4 ins. in size, 4 ft. long, with bottom portion badly decomposed, plainly mkd. as described in the official record. I removed the post and set an iron post, 18 ins. long, 1½ ins. diam., in a concrete base, with lead cap mkd. COR 2-MAG 9-COR 2-MAG 8-MS 4668-COR 2-SEN-MS 657-COR 1-OTSEGO-MS 2532.	

Survey No. 4668

FEET		10
	Thence N. $9^{\circ}34'17''$ W.	
1046.34	Intersect line 1-2 Sur. No. 2534 Atlanta lode at a point from which Cor. No. 2 bears N. $79^{\circ}07'29''$ E., 499.17 ft. dist.	
1368.26	Intersect line 1-2 of Sur. No. 2533 Beaver lode at a point from which Cor. No. 1 bears N. $46^{\circ}34'44''$ W., 179.81 ft. dist.	
1485.04	Cor. No. 3, identical with Cor. No. 3 Sur. No. 657 Senator lode and Cor. No. 3 Sur. No. 659 Alta lode.	
	Found a wooden post, 4x4 ins. in size, 4 ft. long, badly decomposed. The original post was left in place and alongside the post set an iron post 18 ins. long, $1\frac{1}{2}$ ins. diam., in concrete base, with lead cap mkd. COR 3-MAG 9-MS 4668-COR 3-ALTA-MS 659-COR 3-SEN-MS 657; from which	
	Cor. No. 1 Sur. No. 2533 Beaver lode bears N. $85^{\circ}39'32''$ W., 111.50 ft. dist.	
	Cor. No. 1, Sur. No. 2534 Atlanta lode bears S. $3^{\circ}18'31''$ W., 452.38 ft. dist.	
	U.S.M.M. No. 1, a mound of stones 4 ft. high, 2 ft. diam., with wooden stake in center, bears S. $4^{\circ}35'25''$ E., 25.00 ft. dist.	
	U.S. Coast and Geodetic Survey triangulation station McCracken, a brass cap, $3\frac{1}{2}$ ins. diam., set flush with surface of rock outcrop, bears S. $32^{\circ}19'09''$ E., 30.96 ft. dist.	
	Thence N. $88^{\circ}30'00''$ E.	
302.50	Lode line; discovery point bears S. $9^{\circ}34'17''$ E., 1465.04 ft. dist.	
	Set an iron post, 18 ins. long, $1\frac{1}{2}$ ins. diam. in a concrete base, with lead cap mkd. NCE-MAG 9-MS 4668.	
493.23	Cor. No. 1 MAG-14 lode of this survey.	

FEET		11
495.95	Intersect line 2-3 Sur. No. 2534 Atlanta lode at a point from which Cor. No. 2 bears S. 10°51'14" E., 357.80 ft. dist.	
605.00	<p>Cor. No. 4, on line 1-2 of the MAG-14 lode of this survey.</p> <p>Set an iron post; 18 ins. long, 1½ ins. diam., in a concrete base, with lead cap mkd. COR 4-MAG 9-MS 4668; from which</p> <p>Cor. No. 4 Sur. No. 2533 Beaver lode bears N. 35°14'20" W., 525.20 ft. dist.</p> <p>The cor. of secs. 19, 24, 25 and 30 bears N. 47°43'46" W., 116.26 ft. dist.</p> <p>Cor. No. 2, Sur. No. 2534 Atlanta lode bears S. 6°42'14" W., 356.70 ft. dist.</p> <p>Thence S. 9°34'17" E.</p>	
826.52	Intersect line 1-2 Sur. No. 2533 Beaver lode at a point from which Cor. No. 2 bears S. 46°34'44" E., 325.03 ft. dist.	
1485.04	Cor. No. 1, and place of beginning.	
MAG-8 LODE		
Beginning at Cor. No. 1 of the MAG-8 lode, identical with Cor. No. 1 MAG-9 lode of this survey.		
Thence S. 88°30'00" W:		
302.50	Lode line; discovery point bears S. 34°53'50" E., 20.00 ft. dist.	
318.	Center of road, bears N. 5° E., and S. 5° W.	
605.00	Cor. No. 2, identical with Cor. No. 2 of the MAG-9 lode of this survey, Cor. No. 2 Sur. No. 657 Senator lode and Cor. No. 1 Sur. No. 2532 Otsego lode.	
Thence S. 34°53'50" E.		
528.	Center of road, bears N. 15° E., and S. 15° W.	

Survey No. 4668

FEET		12
922.	Center of road, bears approx. westerly and easterly.	
1185.	Center of road, bears S. 45° E., and N. 45° W.	
1490.21	Cor. No. 3, identical with Cor. No. 4 Sur. No. 2532 Otsego lode and Cor. No. 1 Sur. No. 2531 Brooks lode. Found a wooden post, 4x4 ins. in size, 4 ft. long, badly decomposed. I removed the post and set an iron post, 18 ins. long, 1½ ins. diam., in a concrete base, with lead cap mkd. COR 3-MAG 8-MS 4668 - COR 1-BR-MS 2531-COR 4-CTS-MS 2532; from which Magnum mining company triang. station No. 904, a steel pin, 2 ins. above the ground, ½ ins. diam., bears S. 13°10' E., 282.84 ft. dist. Bearing rock for Cor. No. 4 Otsego lode bears S. 18° W., 15.10 ft. dist., mkd. B + R - COR 4-0-2532. Thence N. 88°30'00" E.	
13.	Center of road, bears S. 20° E., N. 20° W.	
302.50	Lode line, discovery point bears N. 34°53'50" W., 1470.21 ft. dist. Set an iron post, 18 ins. long, 1½ ins. diam., in a concrete base with lead cap mkd. SCE-MAG-8-MS 4668.	
605.00	Cor. No. 4. Set an iron post, 18 ins. long, 1½ ins. diam., in a concrete base, with lead cap mkd. COR 4-MAG-8-MS 4668. No bearing objects available. Thence N. 34°53'50" W.	
8.	Center of road bears easterly and westerly.	
1490.21	Cor. No. 1, and place of beginning.	

FEET	AREAS	13.
	Acres	
	Total area, FEB-1 lode	17.901
	Area in conflict with --	
	Sur. No. 2526 Grey Eagle lode..	0.004
	Sur. No. 641 Peabody lode	5.926
	Sur. No. 2536 Damfino lode	1.610
	Sur. No. 2536 Damfino lode, exclusive of its conflict with Sur. No. 641 Peabody lode	0.971
	Sur. No. 2536 Damfino lode, exclusive of its conflict with Sur. No. 2526 Grey Eagle lode	1.606
	Sur. No. 2527 Black Prince lode.	1.629
	Sur. No. 2527 Black Prince lode, exclusive of its conflict with Sur. No. 641 Peabody lode	0.000
	Sur. No. 2535 Belmont lode ...	6.181
	Total area, MAG-1 lode	19.754
	Area in conflict with --	
	Sur. No. 2526 Grey Eagle lode .	1.552
	Sur. No. 641 Peabody lode	5.998
	Sur. No. 2536 Damfino lode	15.995
	Sur. No. 2536 Damfino lode, exclusive of its conflict with Sur. No. 2526 Grey Eagle lode	14.452
	Sur. No. 2536 Damfino lode, exclusive of its conflict with Sur. No. 641 Peabody lode	11.159
	Sur. No. 2536 Damfino lode, exclusive of its conflict with Sur. No. 659 Alta lode	13.711
	Sur. No. 659 Alta lode	2.689
	Sur. No. 2534 Atlanta lode	1.896
	Sur. No. 2534 Atlanta lode, exclusive of its conflict with Sur. No. 659 Alta lode	1.491

FEET	Acres
	14.
MAG-14 lode of this survey	0.595
MAG-14 lode of this survey, exclusive of its conflict with Sur. No. 2534	
Atlanta lode	0.593
Total area, MAG-14 lode	18.048
Area in conflict with --	
Sur. No. 2534 Atlanta lode	0.035
Sur. No. 2533 Beaver lode	0.917
Sur. No. 2533 Beaver lode, exclusive of its conflict with Sur. No. 2534	
Atlanta lode	0.900
Total area, MAG-9 lode	20.421
Area in conflict with --	
Sur. No. 2534 Atlanta lode	4.523
Sur. No. 2533 Beaver lode	6.486
Sur. No. 2533 Beaver lode, exclusive of its conflict with Sur. No. 2534	
Atlanta lode	2.844
Total area, MAG-8 lode	17.280
LOCATION	
<p>This survey is located in the SW$\frac{1}{4}$ SW$\frac{1}{4}$ sec. 19 and the W$\frac{1}{2}$ NW$\frac{1}{4}$, NW$\frac{1}{4}$SW$\frac{1}{4}$ sec. 30; T. 13 N., R. 14 W., and in the E$\frac{1}{2}$ NE$\frac{1}{4}$ sec. 25; SE$\frac{1}{4}$, S$\frac{1}{2}$NE$\frac{1}{4}$ sec. 24, T. 13 N., R. 15 W., Gila and Salt River Meridian, Arizona.</p>	
<p>The survey of the FEB-1, MAG-1, MAG-14, MAG-9 and MAG-8 lodes are identical with the respective locations or amended location as marked on the ground.</p>	
EXPENDITURES	
<p>The improvements and the value of the labor and improvements made upon or for the benefit of each of the lode locations embraced in said mining claim by the claimant or its grantors are as follows:</p>	

FEET	Acres
	14.
MAG-14 lode of this survey	0.595
MAG-14 lode of this survey, exclusive of its conflict with Sur. No. 2534	
Atlanta lode	0.593
Total area, MAG-14 lode ...	18.048
Area in conflict with --	
Sur. No. 2534 Atlanta lode	0.035
Sur. No. 2533 Beaver lode	0.917
Sur. No. 2533 Beaver lode, exclusive of its conflict with Sur. No. 2534	
Atlanta lode	0.900
Total area, MAG-9 lode	20.421
Area in conflict with --	
Sur. No. 2534 Atlanta lode	4.523
Sur. No. 2533 Beaver lode	6.486
Sur. No. 2533 Beaver lode, exclusive of its conflict with Sur. No. 2534	
Atlanta lode	2.844
Total area, MAG-8 lode	17.280
LOCATION	
<p>This survey is located in the SW$\frac{1}{4}$ SW$\frac{1}{4}$ sec. 19 and the W$\frac{1}{2}$ NW$\frac{1}{4}$, NW$\frac{1}{4}$SW$\frac{1}{4}$ sec. 30; T. 13 N., R. 14 W., and in the E$\frac{1}{2}$ NE$\frac{1}{4}$ sec. 25; SE$\frac{1}{4}$, S$\frac{1}{2}$NE$\frac{1}{4}$ sec. 24, T. 13 N., R. 15 W., Gila and Salt River Meridian, Arizona.</p>	
<p>The survey of the FEB-1, MAG-1, MAG-14, MAG-9 and MAG-8 lodes are identical with the respective locations or amended location as marked on the ground.</p>	
EXPENDITURES	
<p>The improvements and the value of the labor and improvements made upon or for the benefit of each of the lode locations embraced in said mining claim by the claimant or its grantors are as follows:</p>	

15.

FEET

No. 1 The discovery point of the FEB-1 lode is on the lode line 10 ft. from a point on line 3-4, 303.40 ft. from Cor. 3.
Value, None

No. 2 The discovery cut of the FEB-1 lode, a bulldozer cut in a side hill the face of which bears N. 43°20' W., 852 ft. dist. from Cor. No. 1 FEB-1 lode; 30 ft. long bearing S. 45° E., with 10 ft. face on SW bank.
Value, \$75.

No. 1 The discovery point of the MAG-1 lode is on the lode line 190 ft. from a point on line 3-4, 303.40 ft. from Cor. 3.
Value, None

No. 2 The discovery cut of the MAG-1 lode, a cut in the bank of an excavated area, bears N. 28°50' W., 710 ft. dist. from Cor. No. 4 MAG-1 lode; 6 ft. wide, 10 ft. face; running N. 45° W., 6 ft. to face.
Value, \$100.

No. 1 The discovery point of the MAG-14 lode is on the lode line 10 ft. from a point on line 1-2, 302.50 ft. from Cor. 1.
Value, None

No. 2 The discovery cut of the MAG-14 lode, a bulldozer cut in a side hill, the face of which bears N. 72°45' E., 215 ft. dist. from Cor. No. 1 MAG-14 lode; 30 ft. long bearing N. 30° E., with 10 ft. face on the NW. bank.
Value, \$75.

No. 1 The discovery point of the MAG-9 lode is on the lode line 20 ft. from a point on line 1-2, 302.50 ft. from Cor. 1.
Value, None

No. 2 The discovery cut of the MAG-9 lode, a bulldozer cut in a side hill, the face of which bears N. 82° W., 282 ft. dist. from Cor. No. 1 MAG-9 lode; 30 ft. long bears N. 30° W.; with 10 ft. face on the NE. bank.
Value, \$75.

FEET		16.
No. 1	<p>The discovery point of the MAG-8 lode is on the lode line 20 ft. from a point on line 1-2, -302.50 ft. from Cor. 1.</p> <p style="text-align: right;">Value, None</p>	
No. 2	<p>The discovery cut of the MAG-8 lode, a bulldozer cut in a side hill, the face of which bears S. 49°15' E., 375 ft. dist. from Cor. No. 2 MAG-8 lode; 30 ft. long bears N. 50° W., with 10 ft. face on SW. bank.</p> <p style="text-align: right;">Value, \$75.</p> <p>An interest in a common improvement described as follows:</p> <p>A surface drilling program to explore the unmined portion of a mineralized vein on these claims. Drilling completed at the time of survey is as follows:</p> <p>A drill hole, number 4170-1, 2 ins. diam., inclined S. 70° W. and 50° from the horizontal and 60 ft. deep, bears N. 42°39' E., 56.7 ft. dist. from Cor. 3 of MAG-1 lode.</p> <p style="text-align: right;">Value, \$228.</p> <p>A drill hole, number 4170-2, 2 ins. diam., vertical, and 80 ft. deep, bears N. 40°40' E., 58.9 ft. dist. from Cor. 3 of MAG-1 lode.</p> <p style="text-align: right;">Value, \$304.</p> <p>A Drill hole, number 4220-1, 2 ins. diam., inclined S. 70° W. and 50° from the horizontal and 60 ft. deep, bears N. 16°35' E., 103.0 ft. dist. from Cor. 3 of MAG-1 lode.</p> <p style="text-align: right;">Value, \$228.</p> <p>A drill hole, number 4220-2, 2 ins. diam., vertical and 75 ft. deep, bears N. 19°02' E., 105.4 ft. dist. from Cor. 3 of MAG-1 lode.</p> <p style="text-align: right;">Value, \$285.</p> <p>A drill hole, number 4260-1, 2 ins. diam., vertical and 100 ft. deep, bears N. 19°53' E., 168.7 ft. dist. from Cor. 3 of MAG-1 lode.</p> <p style="text-align: right;">Value, \$380.</p>	

FEET	17
<p>A drill hole, number 4260-2, 2 ins. diam., inclined S. 70° W. and 50° from the horizontal and 22 ft. deep, bears N. 39°29' E., 156.0 ft. dist. from Cor. 3 of MAG-1 lode. Value, \$83.60</p>	
<p>A drill hole, number 4310-1, 2 ins. diam., vertical and 120 ft. deep, bears N. 12°20' E., 212.6 ft. dist. from Cor. 3 of MAG-1 lode. Value, \$456.</p>	
<p>A drill hole, number 4360-1, 2 ins. diam., vertical and 140 ft. deep, bears N. 7°46' E., 262.1 ft. dist. from Cor. 3 of MAG-1 lode. Value, \$532.</p>	
<p>A drill hole, number 4360-2, 2 ins. diam., inclined S. 70° W. and 70° from the horizontal and 105 ft. deep, bears N. 7°21' E., 260.8 ft. dist. from Cor. 3 of MAG-1 lode. Value, \$399.</p>	
<p>A drill hole, number 4400-1, 2 ins. diam., vertical and 155 ft. deep, bears N. 5°26' E., 310.1 ft. dist. from Cor. 3 of MAG-1 lode. Value, \$589.</p>	
<p>A drill hole, number 4400-2, 2 ins. diam., inclined S. 70° W. and 70° from the horizontal and 80 ft. deep, bears N. 1°47' E., 300.8 ft. dist. from Cor. 3 of MAG-1 lode. Value, \$304.</p>	
<p>A drill hole, number 4450-2, 2 ins. diam., inclined S. 70° W. and 80° from the horizontal and 140 ft. deep, bears N. 7°36' E., 337.6 ft. dist. from Cor. 3 of MAG-1 lode. Value, \$532.</p>	
<p>A drill hole, number 4450-1, 2 ins. diam., inclined S. 70° W. and 70° from the horizontal and 83 ft. deep, bears N. 1°22' E., 353.8 ft. dist. from Cor. 3 of MAG-1 lode. Value, \$315.40</p>	

FEET		18
	<p>A drill hole, number 4500-1, 2 ins. diam., inclined S. 70° W. and 65° from the horizontal and 83 ft. deep, bears N. 0°14' E., 402.7 ft. dist. from Cor. 3 of MAG-1 lode. Value, \$315.40</p>	
	<p>A drill hole, number 4500-2, 2 ins. diam., inclined S. 70° W. and 60° from the horizontal and 100 ft. deep, bears N. 0°22' E., 402.7 ft. dist. from Cor. 3 of MAG-1 lode. Value, \$380.</p>	
	<p>A drill hole, number 4500-3, 2 ins. diam., inclined S. 70° W. and 80° from the horizontal and 120 ft. deep, bears N. 7°47' E., 388.3 ft. dist. from Cor. 3 of MAG-1 lode. Value, \$456.</p>	
	<p>A drill hole, number 4550-1, 2 ins. diam., inclined S. 70° W. and 70° from the horizontal and 88 ft. deep, bears N. 8°11' E., 440.2 ft. dist. from Cor. 3 of MAG-1 lode. Value, \$334.40</p>	
	<p>A drill hole, number 4600-1, 2 ins. diam., inclined S. 70° W. and 60° from the horizontal and 130 ft. deep, bears N. 9°24' E., 487.2 ft. dist. from Cor. 3 of MAG-1 lode. Value, \$494.</p>	
	<p>A drill hole, number 4650-1, 2 ins. diam., inclined S. 70° W. and 60° from the horizontal and 64 ft. deep, bears N. 17°16' E., 527.5 ft. dist. from Cor. 3 of MAG-1 lode. Value, \$243.20</p>	
	<p>A drill hole, number 4690-1, 2 ins. diam., inclined S. 70° W. and 70° from the horizontal and 190 ft. deep, bears S. 25°00' E., 923.8 ft. dist. from Cor. 2 of MAG-1 lode. Value, \$722.</p>	
	<p>A drill hole, number 4690-2, 2 ins. diam., inclined S. 70° W. and 35° from the horizontal and 62 ft. deep, bears S. 21°32' E., 924.8 ft. dist. from Cor. 2 of MAG-1 lode. Value, \$235.60</p>	

FEET	19
<p>A drill hole, number 4740-1, 2 ins. diam., inclined S. 70° W. and 70° from the horizontal and 127 ft. deep, bears S. 25°41' E., 873.5 ft. dist. from Cor. 2 of MAG-1 lode. Value, \$482.60</p>	
<p>A drill hole, number 4740-2, 2 ins. diam., inclined S. 70° W. and 40° from the horizontal and 80 ft. deep, bears S. 22°06' E., 870.2 ft. dist. from Cor. 2 of MAG-1 lode. Value, \$304.</p>	
<p>A drill hole, number 4830-1, 2 ins. diam., inclined S. 70° W. and 65° from the horizontal and 94 ft. deep, bears S. 22°43' E., 770.0 ft. dist. from Cor. 2 of MAG-1 lode. Value, \$357.20</p>	
<p>A drill hole, number 4880-1, 2 ins. diam., vertical and 138 ft. deep, bears S. 21°56' E., 716.0 ft. dist. from Cor. 2 of MAG-1 lode. Value, \$524.40</p>	
<p>A drill hole, number 4880-2, 2 ins. diam., inclined S. 70° W. and 50° from the horizontal and 47 ft. deep, bears S. 20°06' E., 716.9 ft. dist. from Cor. 2 of MAG-1 lode. Value, \$178.60</p>	
<p>A drill hole, number 4930-1, 2 ins. diam., inclined S. 70° W. and 45° from the horizontal and 30 ft. deep, bears S. 19°52' E., 663.7 ft. dist. from Cor. 2 of MAG-1 lode. Value, \$114.</p>	
<p>Value of combined surface drilling \$9,777.40</p>	
<p>Value of one fifth (1/5) interest \$1,955.48</p>	
<p>Five Hundred Dollars or over has been expended in these improvements in such a manner as tends to the development of each lode of the survey subsequent to its location and to the time since which common ownership and contiguity have prevailed; therefore, an undivided one fifth (1/5) interest in its value is hereby credited to each of said lodes.</p>	

FEET

20

No portion of or interest in this improvement has been credited heretofore as patent expenditure to any lode claim.

OTHER IMPROVEMENTS

A complex system of underground drifts, adits and stopes runs along the main vein of the old McCracken mine. MAG-1 and MAG-9 lodes partly overlay these workings.

OTHER CORNER DESCRIPTIONS AND SUPPLEMENTAL DATA

Sur. No. 641 Peabody Lode: Cor. No. 2 is an old post set in a mound of stones from which mouth of tunnel bears S. 30° W., 97 ft. dist. Cor. No. 3 is an old post, badly decomposed, set in a mound of stones from which a bearing rock bears S. 4° E., 31.85 ft. dist.; Cor. No. 5 is an old post set in a mound of stones from which a bearing rock bears No. 52° W., 64.7 ft. dist.; Cor. No. 6 is a mound of stones from which the post has been removed, from which bearing rock bears N. 53° E., 31.85 ft. dist.; Cor. No. 1 and its bearing rock have been destroyed. Cor. No. 4 has been destroyed and no bearing rock could be found. Line 6-2 was found to be N. 89°05'48" E., 588.54 ft., instead of S. 74°24' E., 600 ft. as approved; line 2-3 was found to be N. 16°24'12" W., 1499.51 ft. instead of N. 31°42" W., 1500 ft. as approved; line 3-5 was found to be S. 88°27'42" W., 601.30 ft. instead of N. 74°24' W., 600 ft. as approved; line 5-6 was found to be S. 16°56'27" E., 1496.55 ft. instead of S. 31°42' E., 1500 ft. as approved. From the midpoint of line 6-2 U.S.M.M. No. 1 bears S. 14°47'32" E., 1583.78 ft. instead of S. 26°50' E., 1678 ft. as approved. From the midpoint of line 6-2 the cor. of secs. 19, 24, 25 and 30, bears S. 33°06'44" E., 1686.17 ft. dist.

Sur. No. 659 Alta lode: Cor. No. 3 is an old post, badly decomposed, in a mound of stones from which a bearing rock bears

FEET		21
	<p>N. 84° E., 7.7 ft. dist.; Cor. No. 5 is an old post badly decomposed in a mound of stones from which a bearing rock bears S. 70° E., 37 ft. dist.; S.E. Cor. of 2 room stone building bears N. 75° W. 184½ ft. dist.; Cors. Nos. 1, 2 and 6 are identical with Cors. No. 1, 2 and 6 of Sur. No. 641 Peabody Lode, described above; Cor. No. 4 has been destroyed. Line 6-2 is identical with line 6-2 of Sur. No. 641 Peabody Lode, described above; line 2-3 was found to be S. 4°05'35" E., 1514.89 ft., instead of S. 18°12' E., 1500 ft. as approved; line 3-5 was found to be S. 88°48'28" W. 601.31 ft., instead of N. 74°24' W., 600 ft. as approved; line 5-6 was found to be N. 3°36'20" W., 1517.26 instead of N. 18°12' W., 1500 ft., as approved. From the midpoint of line 6-2 U.S.M.M. No. 1 bears S. 14°47'32" E., 1583.78 ft. instead of S. 26°40' E., 1708 ft. From the midpoint of line 6-2 the cor. of secs. 19, 24, 25 and 30 bears S. 33°06'44" E., 1686.17 ft. dist..</p> <p>Sur. No. 657 Senator Lode: Cor. No. 2 is an old 4" x 4" post, properly marked, in a mound of stone from which a bearing rock bears S. 21° W., 20.6 ft. dist.; Cor. No. 6 is an old 4" x 4" post properly marked, in a mound of stones from which a bearing rock bears S. 4° W., 28.4 ft. dist., another bearing rock bears S. 74° E., 6.7 ft. dist.; Cor. No. 1 has been destroyed; Cors. Nos. 3, 4 and 5 are identical with Cors. Nos. 3, 4 and 5 of Sur. No. 659 Alta lode described above. Line 6-2 was found to be N. 88°29'47" E., 600.62 ft. instead of S. 74°24' E., 600 ft. as approved. Line 2-3 was found to be N. 9°34'17" W., 1485.04 ft. dist. instead of N. 23°54' W., 1500 ft. as approved; line 3-5 identical with line 3-5 Sur. No. 659 Alta Lode described above. Line 5-6 was found to be S. 9°34'47" E., 1488.37 ft. instead of N. 72°24' W. 1500 ft. as approved. From the midpoint of line 6-2 U.S.M.M. No. 1 bears N. 2°11'14" E., 1448.40 ft. instead of N. 13°48' W., 1296½ ft. From the midpoint of line 6-2 the cor. of secs. 19, 24, 25 and 30 bears N. 20°03'47" E., 1667.48 ft. dist.</p>	

FEET

22

Sur. No. 2526 Grey Eagle Lode: Cors. Nos. 1, 2, 3 and 4 are 4" x 4" posts, firmly set and properly marked and witnessed. Line 1-2 was found to be N. 77°55'21" E., 600.13 ft., instead of N. 77°55' E., 600 ft. as approved; line 2-3 was found to be N. 12°03'09" W., 1502.40 ft., instead of N. 12°05' W., 1500 ft. as approved; line 3-4 was found to be S. 77°56'08" W., 600.40 ft. instead of S. 77°55' W., 600 ft. as approved; line 4-1 was found to be S. 12°03'46" E., 1502.54 ft., instead of S. 12°05' E., 1500 ft. as approved. From Cor. No. 1 U.S.M.M. No. 1 bears S. 3°40'30" W., 1474.60 ft., instead of S. 3°43' W., 1465.9 ft., as approved. The cor. of sec. 19, 24, 25 and 30 bears S. 17°20'12" E., 1416.99 ft. dist.

Sur. No. 2527 Black Prince Lode: Cors. No. 1 and 4 are 4" x 4" posts firmly set and properly marked and witnessed; Cor. No. 2 has been destroyed; Cor. No. 3 could not be found. Line 4-1 was found to be S. 60°43' E., instead of S. 60°45' E., as approved; line 1-2 is shown at right angles to line 4-1 and 600 ft. long as approved; this makes line 1-2 N. 29°17' E., 600.00 ft., instead of N. 29°15' E., 600 ft. and line 2-3 N. 60°43' W., 1500 ft., instead of N. 60°45' W., 1500 ft. as approved. From Cor. No. 1 U.S.M.M. No. 1 bears S. 22°23'13" E., 2329.56 ft., instead of S. 22°51' E., 2361.8 ft., as approved. From Cor. No. 1 the cor. of secs. 19, 24, 25 and 30 bears S. 34°36'08" E., 2472.37 ft. dist.

Sur. No. 2532 Otsego Lode: Cors. Nos. 3 and 4 are old posts badly decomposed, set in mounds of stones. Cor. No. 1 is identical with Cor. No. 2 of Sur. No. 657 Senator Lode, previously described. Cor. No. 2 is identical with Cor. No. 6 of Sur. No. 657 Senator Lode, previously described. Line 1-2 was found to be S. 88°29'47" W., 600.62 ft., instead of S. 88°29' W., 600 ft. as approved; line 2-3 was found to be S. 34°54'34" E., 1491.33 ft., instead of S. 34°54' E., 1487.7 ft. as approved; line 3-4 was

FEET

23

found to be N. 88°25'24" E., 599.74 ft. instead of N. 88°29' E., 600 ft. as approved; line 4-1 was found to be N. 34°53'50" W., 1490.21 ft., instead of N. 34°54' W., 1487.7 ft. as approved. From Cor. No. 1 U.S.M.M. No. 1 bears N. 9°39'24" W., 1460.15 ft., instead of N. 9°43' W., 1460.5 ft. as approved. From Cor. No. 1 the cor. of secs. 19, 24, 25 and 30 bears N. 9°53'40" E., 1581.94 ft. dist.

Sur. No. 2531 Brooks Lode: Cor. No. 1 is identical with Cor. No. 4 Sur. No. 2532 Otsego lode described above; Cor. No. 2 is identical with Cor. No. 3 Otsego lode described above. Cors. Nos. 3 and 4 could not be found. Line 1-2, identical with line 3-4 of Sur. No. 2532 Otsego lode was found to be S. 88°25'24" W., 599.74 ft. instead of S. 88°29' W., 600 ft., as approved; line 2-3 is shown as S. 53°55'36" E., to maintain the angular relationship as approved. Line 4-1 is shown as N. 53°55'36" W. to maintain the angular relationship as approved. From Cor. No. 1 U.S.M.M. No. 1 bears N. 22°24'28" W., 2879.09 ft., instead of N. 22°25' W., 2877.4 ft., as approved. From Cor. No. 1 the cor. of secs. 19, 24, 25 and 30 bears N. 11°47'47" W., 2840.64 ft. dist.

Sur. No. 2533 Beaver lode: Cor. No. 1 is a post firmly set and properly marked; Cor. No. 4 is a post firmly set from which a bearing rock was found N. 1° E., 12.8 ft., instead of S. 2°50' W., 12.45 ft., as approved; Cor. No. 3 and the Witness Cor. for Cor. No. 2 could not be found. Line 4-1 was found to be S. 43°25'16" W., 600.77 ft. instead of S. 43°20' W., 600 ft. as approved; lines 1-2 and 3-4 are shown at right angles to line 4-1, and each 1500 ft. long, as approved; this makes line 2-3 N. 43°25'16" E., instead of N. 43°20' E. as approved, and lines 1-2 and 3-4 each S. 46°34'44" E., instead of S. 46°40' E., as approved. From Cor. No. 1 U.S.M.M. No. 1 bears S. 73°34'54" E., 117.99 ft., instead of S. 73°14' E., 117.87 ft., as approved. From Cor. No. 1 the cor. of secs. 19, 24, 25 and 30 bears S. 82°15'42" E., 635.73 ft. dist.

	FEET		24
		<p>Sur. No. 2534 Atlanta Lode: Cor. No. 1 is a post properly marked and witnessed; Cor. No. 2 is a post set in a mound of stones and properly marked, but the bearing rock was found to bear N. 40° E., 2.4 ft. dist., instead of S. 21°22' W., 4.65 ft., as approved. I reset Cor. No. 2 as a lead cap pipe in a concrete base in the remnants of an old rock cairn at the record bearing and distance above, from the bearing rock, mkd. Cor. No. 2 - ATLANTA - MS 2534; Cor. No. 3 is a post properly marked but set approx. S. 19°41' W., 122.3 ft. from the remnants of an old cairn found from ties to the 2 bearing rocks which were found as described in the field notes. I reset the post for Cor. No. 3 firmly in the ground and in a mound of stones at record bearing and distance from the 2 bearing rocks; Cor. No. 4 was a post properly marked, but displaced approx. S. 17° W., 146.9 ft. from remnants of an old cairn located by running the record bearing and distance from the re-established Cor. No. 3; I reset the post for Cor. No. 4 in the center of this old cairn and constructed a mound of stones around it. Line 1-2 as measured to the reestablished Cor. No. 2 was found to be N. 79°07'29" E., 600.04 ft., instead of N. 79°07' E., 600 ft., as approved; line 2-3 as measured between the reestablished corners was found to be N. 10°51'14" W., 1507.99 ft. instead of N. 10°53' W., 1500 ft., as approved; line 3-4 as measured between the reestablished corners was found to be S. 79°08'13" W., 600.56 ft., instead of S. 79°07' W., 600 ft., as approved; line 4-1 as measured from the reestablished Cor. No. 4 was found to be S. 10°52'26" E., 1508.12 ft., instead of S. 10°53' E., 1500 ft. as approved. From Cor. No. 1 U.S.M.M. No. 1 bears N. 3°46'08" E., 427.64 ft. instead of N. 3°45' E., 427.2 ft. as approved. From Cor. No. 1 the cor of secs. 19, 24, 25 and 30 bears N. 44°57'29" E., 771.13 ft. dist. The intersection of line 2-3 Sur. No. 657 Senator lode along line 1-2 was found to be at 100.87 ft. instead of 101.12 ft. as approved and Cor. No. 3 of Sur. No.</p>	

FEET

25

657 Senator lode was found to bear N. $9^{\circ}34'17''$ W., 438.70 instead of N. $9^{\circ}37'$ W., 438.70 ft. as approved; the intersection of line 2-3 Sur. No. 659 Alta lode along line 3-4 was found to be 362.57 ft. instead of 362.51 ft. as approved, and Cor. No. 3 of Sur. No. 659 Alta lode was found to bear S. $4^{\circ}05'35''$ E., 1077.01 ft. instead of S. $4^{\circ}05'$ E., 1068.9 ft. as approved; the intersection of line 3-5 Sur. No. 657 Senator lode identical with line 3-5 Sur. No. 659 Alta lode along line 4-1 was found to be 1050.61 ft. instead of 1043.12 ft. as approved and cors. Nos. 3 were found to bear N. $88^{\circ}48'28''$ E., 112.44 ft. instead of N. $88^{\circ}29'$ E., 112.43 ft. as approved. The total area of Sur. No. 2534 Atlanta lode was found to be 20.783 acres instead of 20.661 acres as approved; the area in conflict with Sur. No. 657 Senator lode was found to be 1.090 acres instead of 1.091 acres as approved; the area in conflict with Sur. No. 659 Alta lode was found to be 4.258 acres instead of 4.222 acres as approved.

Sur. No. 2535 Bellmont lode: Cors. No. 1, 2 and 3 are pine posts, firmly set and properly marked and witnessed; Cor. No. 4 had been removed but a mound of stones was found at record bearing and dist. from a bearing rock. I reset Cor. No. 4 temporarily as a spike in the ground with a stake alongside. Line 1-2 was found to be N. $12^{\circ}48'00''$ W., 1489.74 ft., instead of N. $12^{\circ}54'$ W., 1500 ft., as approved; line 2-3 was found to be S. $88^{\circ}26'37''$ W., 600.12 ft., instead of S. $88^{\circ}29'$ W., 600 ft., as approved; line 3-4 was found to be S. $12^{\circ}48'48''$ E., 1489.52 ft., instead of S. $12^{\circ}54'$ E., 1500 ft. as approved; line 4-1 was found to be partially on line 3-5 of Sur. No. 641 Peabody lode and was N. $88^{\circ}27'42''$ E., 599.78 ft., instead of N. $88^{\circ}29'$ E., 600 ft., as approved. From Cor. No. 1 U.S.M.M. No. 1 bears S. $7^{\circ}12'42''$ E., 3002.37 ft., instead of S. $7^{\circ}15'$ E., 2990.7 ft., as approved. From Cor. No. 1 the cor. to secs. 19, 24, 25 and 30 bears S. $17^{\circ}21'16''$ E., 2996.06 ft. dist.

FEET		26
	<p>Sur. No. 2536 Damfino lode; Cors. Nos. 3 and 4 are 4" x 4" posts, firmly set and properly marked. Cors. Nos. 1 and 2 are identical with Cors. Nos. 4 and 3 of Sur. No. 2534 Atlanta lode, described above. Line 1-2 is identical with line 3-4 of Sur. No. 2534 Atlanta lode, described above; line 2-3 was found to be N. 10°43'13" w., 1465.56 ft. instead of N. 10°53' W., 1464 ft. as approved; line 3-4 was found to be S. 79°05'50" W., 603.00 ft., instead of S. 79°07' W., 600 ft., as approved; line 4-1 was found to be S. 10°48'56" E., 1465.14 ft., instead of S. 10°53' E., 1464 ft. as approved. From Cor. No. 1 U.S.M.M. No. 1 bears S. 16°30'55" E., 1099.69 ft., instead of S. 16°33' E., 1091.9 ft., as approved. From Cor. No. 1 the cor. of secs. 19, 24, 25 and 30 bears S. 41°33'45" E., 1250.11 ft. dist.</p>	

FEET		26
	<p>Sur. No. 2536 Damfino lode; Cors. Nos. 3 and 4 are 4" x 4" posts, firmly set and properly marked. Cors. Nos. 1 and 2 are identical with Cors. Nos. 4 and 3 of Sur. No. 2534 Atlanta lode, described above. Line 1-2 is identical with line 3-4 of Sur. No. 2534 Atlanta lode, described above; line 2-3 was found to be N. 10°43'13" W., 1465.56 ft. instead of N. 10°53' W., 1464 ft. as approved; line 3-4 was found to be S. 79°05'50" W., 603.00 ft., instead of S. 79°07' W., 600 ft., as approved; line 4-1 was found to be S. 10°48'56" E., 1465.14 ft., instead of S. 10°53' E., 1464 ft. as approved. From Cor. No. 1 U.S.M.M. No. 1 bears S. 16°30'55" E., 1099.69 ft., instead of S. 16°33' E., 1091.9 ft., as approved. From Cor. No. 1 the cor. of secs. 19, 24, 25 and 30 bears S. 41°33'45" E., 1250.11 ft. dist.</p>	

UNITED STATES
DEPARTMENT OF THE INTERIOR
BUREAU OF LAND MANAGEMENT

CERTIFICATE OF SURVEYOR

Name of Mineral Surveyor JOHN H. STITZER	Date May 28, 1968
--	-----------------------------

I HEREBY CERTIFY That in pursuance of an order received from the Bureau of Land Management and Amended , at Phoenix, Arizona dated January 22, 1968 / March 27 , 19 68, I have carefully executed the survey of the claim of Magnum Mining Company known as the (lode, placer, or mill-site) MAG-1, MAG-8, MAG-9, MAG 14 and FEB-1 situated in Secs. 19 and 30 and Secs. 24 and 25 Township 13 N , Ranges 14 & 15 W, Gila & Salt River Meridian, in the State of Arizona

This survey, designated as number 4668 , has been executed by me and under my direction and has been made in strict conformity with said order, the Manual of Instructions for the Survey of Public Lands of the United States, and in the specific manner described in the foregoing field notes.

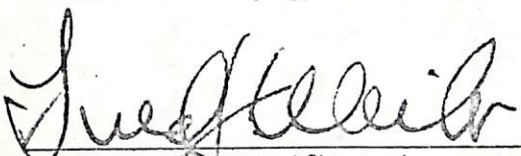
I FURTHER CERTIFY That the labor expended and improvements made upon and for the benefit of the (lode or placer) lode location(s) embraced in the said mining claim by claimant(s) or its grantors are fully stated in my report. The character, extent, location, and itemized value are specified in full detail. No portion of, or interest in, said labor and improvements so credited to this claim has been included in the estimate of expenditures upon any other claim.

Tucson, Arizona (Location)	 (Signature of Mineral Surveyor)
-------------------------------	---

CERTIFICATE OF APPROVAL

Bureau of Land Management Office Arizona State Office Location Phoenix, Arizona Date October 11, 1968

The foregoing field notes of mineral survey number 4668 , in Sections 19 and 30 and Sections 24 and 25 , surveyed unsurveyed Township 13 N. , Ranges 14 W. , Gila and Salt River Meridian, in the State of Arizona and 15 W. , executed by John H. Stitzer Mineral Surveyor, under order dated January 22 , 19 68 , and Amended March 27 , having been critically examined and the necessary corrections made prior to their certification by the surveyor, the field notes and the survey therein described are hereby approved.

 Fred J. Webster (Authorized Signature)	State Director (Title)
--	---------------------------

CERTIFICATE OF TRANSCRIPT

I CERTIFY That the foregoing transcript of field notes of the above described mineral survey number is a true copy of the original field notes.

(Authorized Signature)	(Title)
------------------------	---------

Title 18, U. S. C. section 1001, makes it a crime for any person knowingly and willfully to make to any department or agency of the United States any false, fictitious, or fraudulent statements or representations as to any matter within its jurisdiction.

LOT NO. 39 A + 39 B.

SURVEY NO. 659 + 660.

Field Notes

of the Survey of the

"Alta."

Mine and Mill-Site Claims,

Situate in Queen Mining District.

County of Mohave and in Sec. approx, T₁ 14 N
12 W

Range 14 W
12 W, of the Gila and Salt River Meridian.

ARIZONA.

Claimed by The Lester Mining Company

Survey executed by Eugene Pannenberg D. S.

Under instructions dated December 29, 1883 and June 13, 1884

Survey commenced April 18, and July 2, 1884

Survey completed April 19, and July 2, 1884

PRELIMINARY OATHS FOR SURVEYS OF MINING CLAIMS AND MILL-SITES.

WE Robert Jones and John Mann
do solemnly swear that we will faithfully execute the duties of Chain Carriers;
that we will level the chain upon uneven ground, and plumb the tally pins,
whether by sticking or dropping the same; that we will report the true distance
to all notable objects, and the true length of all lines that we assist in measur-
ing, to the best of our skill and ability.

Robert Jones

John Mann

Sworn to and subscribed before me this eighteenth day
of April, 1884

Eugene Pannenberg
Notary Public

I, _____
do solemnly swear that I will well and truly perform the duties of _____
_____ according
to instructions given me, and to the best of my skill and ability.

Sworn to and subscribed before me this _____ day
of _____, 187

Field Notes
of the survey of the
Alta Mining Claim
in the Owen Mining District, Mohave Co.,
Arizona.

Claimed by the Lester Mining Company.

Surveyed by Eugene Pannenberg U. S.

Deputy Mineral Surveyor, under instructions
from the Surveyor General, of date December 29th 1883.

Survey commenced: April 18th 1884.

Survey completed: April 19th 1884.

Description of Survey:

From a monument, marking the North end
center of the Senator Mining Claim, ^{Lot 1038 A} mentioned
in the location notice, I followed the vein in a
northerly direction and found the Initial Monu-
ment, marking the northerly end center of claim,
where I set a post 4 ft. long, 4 ins. dia., 1 1/2 ft. in
ground and surrounded same with mound of
stones. Post marked A. J. M. No. I.

U. S. Min. Mon. No. I brs. S. 26° 40' E. 1708 ft.

Large granite rock, in place, marked A. J. M. No. I
B. P. brs. N. 74° 24' E. 19 1/2 ft.

Large croppings and South end of dipping brs.
N 74° 24' E. 53 ft.

Thence S. 74° 24' E.

Var. 14° 12' E.

84 To trail brs. E. and W.

300 To loc. mon. where I set a post 4 ft. long, 4 x 4 ins.,
1 1/2 ft. in ground and surrounded same with mound
of stones. Post marked A. No. II.

feet.

Mouth of Tunnel, driven westerly into Alta Mine, bis.
S. 30° 50' W. 85 ft.

Thence S. 18° 12' E.

Var. 14° 12' E.

- 21 To trail bis E. and W.
- 58 To tramway bis E. and W. to ore shoot.
- 88 To track of working tunnel to turntable to dump.
- 1500 To point, where I set a post 4 ft. long, 4 x 4 1/2 ins., 1 1/2 ft. in ground and surrounded same with mound of stones; Post marked A. No. III.

Original Monument bears S. 18° 12' E. 4 ft.

Large granite rock, marked A. No. III. B.P. bears S. 84° 7' E. 8 ft.

U. S. M. No. I bis S. 18° 12' E. 24 ft.

Thence N. 74° 24' W.

Var. 14° 12' E.

- 300 To original monument, where I set a post 4 ft. long, 4 x 4 ins., 1 1/2 ft. in ground and surrounded same with mound of stones. Post marked A. No. IV.

Large granite rock, marked A. No. IV. B.P. bears S. 77° E. 21 ft.

Thence N. 74° 24' W. (same course)

Var. 14° 12' E.

- 60 To old Assay Office.
- 128 To center of caved tunnel.
- 300 To location Mon., where I set a post 4 ft. long, 4 x 4 ins., 1 1/2 ft. in ground and surrounded same with mound of stones. Post marked A. No. V.

Large granite rock, in place, marked A. No. V. B.P. bears S 83° 43' E. 37 1/2 ft.

S.E. corner of old 2 room stone building bis. N. 71° 30' W. 182 1/2 ft.

Thence N. 18° 12' W.

Var. 14° 12' E.

- 102 To trail bears E. and W.
- 225 To trail bis E. and W.
- 390 To center of gulch bears N.E. and S.W.
- 600 To center of gulch bears E. and W.
- 770 To cropings bears E. and W.

feet.

- 1014 Passing head of gulch, bears E. and W.
- 1210 To trail bis E. and W.
- 1476 To center of gulch bears E. and W.
- 1500 To location monument, where I set a post 4 ft. long, 4 x 4 ins., 1 1/2 ft. in ground and surrounded same with mound of stones. Post marked A. No. II.
A large granite rock, in place, marked A. No. III. B. P. bears N. 52° 30' E. 28 1/2 ft.

Thence S. 74° 24' E.
Var. 14° 12' E.

- 300 To mon. and post A. J. M. No. I place of beginning.

Area.

Total area of claim 17.17 acres.

Location.

This claim is located on the north slope of the McCracken Mountain, abutting on the south end of the Peabody Mining Claim, of the Peabody Silver Mining Company, and also abutting on the north end of the Senator Mining Claim, of the Lester Mining Company, all of which are in Owen Mining District, Mohave County, Arizona.

Improvements,

made upon this claim by claimants or grantors consist of a shaft 5 x 6 ft., 85 ft. deep. S. 6° 30' W. 95 ft. from Post A. J. M. No. I; A shaft 5 x 6', 195 ft. deep. S. 29° 30' E. 395 ft. from Post A. J. M. No. I. A tunnel 182 ft long, with drifts 70 ft. northerly 350 ft southerly S. 30° 50' W. 95 ft. from Post A. No. II. A tunnel 275 ft. long, N. 29° 15' W. 332 ft. from Post A. No. II. A tunnel 50 ft. long, N. 41° 30' W. 176 ft. from Post A. No. III.
And I hereby certify that the value of said improvements exceeds the sum of five hundred dollars.

There have been no improvements made by other parties on this claim.

Instruments used, a Gwley Transit with
Solar Attachment; and a 50 ft. steel chain.

Variations and courses taken by use of
Solar Attachment.

Eugene Pannenberg.
U.S. Deputy Mineral Surveyor.

Priscott, A. J.

FINAL OATHS FOR SURVEYS OF MINING CLAIMS & MILL SITES.

A LIST of the names of individuals employed to assist in running, measuring, or marking the lines and corners described in the foregoing field-notes of the survey of The Alta Mining Claim

located in Owen Mining District, Mohave County, Arizona, showing the respective capacities in which they acted.

Robert James Chainman.

John Mann Chainman.

Axeman.

Flagman.

WE hereby certify that we assisted Eugene Pannenberg U. S. Deputy Surveyor, in surveying The Alta Mining Claim

claimed by The Lester Mining Company

located in Owen Mining District, Mohave County, and in Township No. _____ Range No. _____ of the Gila and Salt River base and meridian, Arizona, and that said survey has been in all respects, to the best of our knowledge and belief, well and faithfully executed, and the boundary monuments planted according to the instructions furnished by the Surveyor General.

Robert James Chainman.

John Mann Chainman.

Axeman.

Flagman.

SWORN TO AND SUBSCRIBED before me this 19th day of April 1884

Eugene Pannenberg
Notary Public.

I, Eugene Pannenberg U. S. Deputy Surveyor, do solemnly swear that, in pursuance of instructions from the U. S. Surveyor-General for Arizona, bearing date the 29th day of December 1883, I have well, faithfully and truly, in my own proper person, and in strict conformity with the instructions furnished by the Surveyor-General and the laws of the United States, surveyed all those portions of The Alta Mining Claim

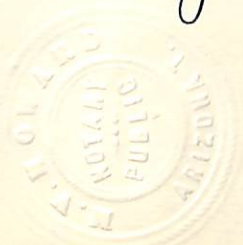
claimed by The Lester Mining Company

located in Owen Mining District, Mohave County, Arizona, as are represented in the foregoing field-notes as having been surveyed under my directions; and I do further solemnly swear that all the corners of said surveys have been established and perpetuated in strict accordance with the instructions furnished me, and that the foregoing are the true and original field notes of such surveys.

Eugene Pannenberg Deputy Surveyor.

SWORN TO AND SUBSCRIBED before me this 17th day of August 1884

Mottowood
Notary Public



AFFIDAVIT OF FIVE HUNDRED DOLLARS IMPROVEMENTS.

We, N. A. Kimble and W. S. McBright
of lawful age, being first duly sworn according to law, depose and say that we are acquainted with the
location and the works done on the
Alta mining claim, situated in
Owen Mining District, Mohave County, Arizona
Territory, for which The Lester Mining Company
have made application for survey prior to application for patent under the provisions of the Act of
Congress approved May 10, 1872, and that the labor done and improvements made thereon by the appli-
cant s and their grantor s exceed Five Hundred Dollars in value, and further that we are not per-
sonally interested in said mine.

N. A. Kimble
W. S. McBright

TERRITORY OF ARIZONA,
County of Mohave } SS.

SWORN to and subscribed before me, this nineteenth day

of April 1884

Eugene Pannenberg
Notary Public.

"Alta."

Owen District.

Notice.

I the undersigned claim fifteen hundred feet on this the "Alta" claim, commencing at the North end of the Senator claim and running northerly along the vein to a stone monument, thence east three hundred feet to a stone monument, thence fifteen hundred feet south parallel with the vein to a stone monument, thence West six hundred feet crossing the vein at right angles to a stone monument, thence fifteen hundred feet northerly parallel with the vein to a stone monument, thence east three hundred feet to a stone monument on the centre of the ledge.

This I claim with all the privileges granted by the Mining laws having jurisdiction over said claim.

This claim is bounded on the South by the "Senator" and on the North by the San Francisco claims and situated about seven miles west of a stream known as the "Big Sandy" at a point on said stream about one mile from "Cummins Spring".

Owen District, Mohave County,
Arizona Territory.

August, the 17th 1874.

H. A. Owen.

40A

Recorded at the instance and request
of Jackson McCracken August 22nd
A. D. 1874 at 9 A. M.

James P. Bull.

County Recorder.

By Baldwin Wright.

Deputy.

Recorded in Book B. pages 444 and
445 Mining Records of Mohave County,
Arizona.

Territory of Arizona
County of Mohave

I, John K. MacKenzie,
Recorder in and for said County of Mo-
have, in the Territory of Arizona, do hereby
certify that I have compared the foregoing
copy with the original Location Notice
of the "Alta" Mining Location, Owen
Mining District, said County & Territory
and that the same is a full, true
and correct copy of said "Alta" original
Mining Location^{Notice} and of the whole
thereof, as appears of Record in
my office.

witness my hand and official seal
this 30th day of October A. D. 1883.

John K. MacKenzie
County Recorder

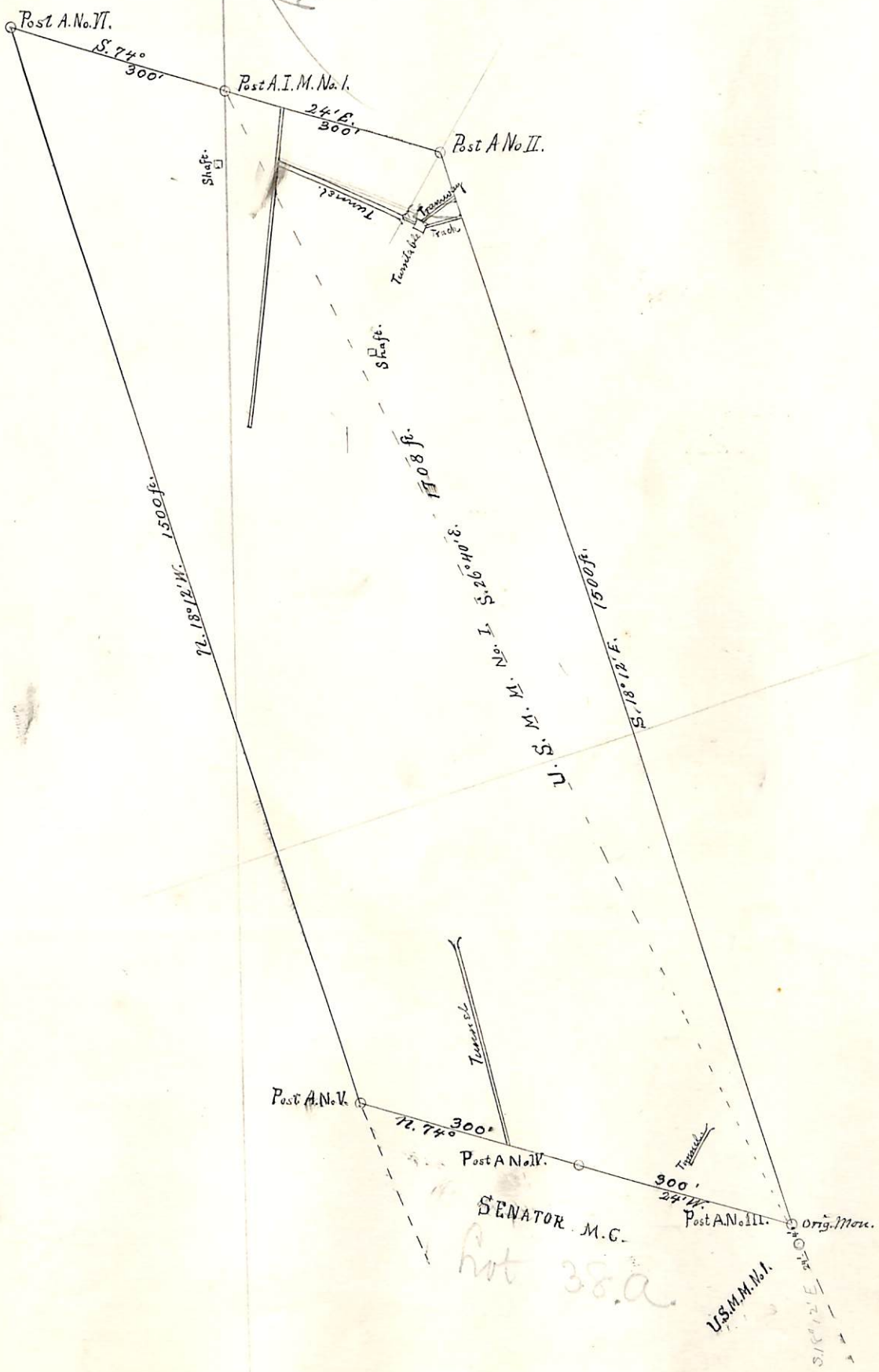
Aug, 17, 1874.

PLAT of the ALTA

Platody Mining Claim
Coburn Mining District
Twp. 10, S. 1
Mohave County
Arizona.

Claimed by the Lester Mining Company.
Surveyed by E. Panningsburg U.S.D.M.S.
April 18. and 19. 1884.

Containing an area of 179.17 acres.
Variation 14° 12' E. Scale 200ft. = 1 inch.



PRELIMINARY OATHS,

FOR SURVEYS OF MINING CLAIMS AND MILL-SITES.



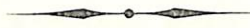
WE, George Driver and John Riley

do solemnly swear that we will faithfully execute the duties of Chain Carriers; that we will level the chain upon uneven ground, and plumb the tally pins, whether by sticking or dropping the same; that we will report the true distance to all notable objects, and the true length of all lines that we assist in measuring, to the best of our skill and ability.

George Driver
John Riley

SWORN to and subscribed before me, this second day
of July 1884

Engene Pammenberg
Notary Public



I,

do solemnly swear that I will well and truly perform the duties of

..... according to instructions given me,

to the best of my skill and ability.

.....
.....

SWORN to and subscribed before, me this.....day

of 188.....

.....
.....

Fest.

Field Notes
of the survey of the
Alta Mill-Site

in connection with the Alta Mining Claim
in Owen Mining District,
Mohave County.

Arizona.

Claimed by the Lester Mining Company.
Surveyed by E. Pannenberg, U.S. Deputy Min-
eral Surveyor, under instructions from the Sur-
veyor General, under date June 13th 1884.

Survey Commenced July 2nd 1884.
Survey Completed July 2nd 1884.

Description of Survey.

Beginning at the Initial Monument, mentioned
in the Location Notice and marking the North West
corner of the Mill-Site, where I set a post 4 ft. long,
4x4 ins., 1 1/2 ft. in ground and surrounded same
with mound of stones. Post marked A.M.I.M. No I.
Initial Monument of Alta Mining Claim, ^{Loc. No. 39 A.} a post
marked AIM No I, bears S 64° 05' W, 47519 ft.

Thence S 4° 06' E
Var. 14° 12' E.

311.14 To loc. mon., where I set a post 4 ft. long, 4x4 ins.,
1 1/2 ft. in ground and surrounded same with mound
of stones. Post marked A No II.

Thence N 85° 54' E.
Var. 14° 12' E.

700 To loc. mon., where I set a post 4 ft. long, 4x4
ins., 1 1/2 ft. in ground and surrounded same
with mound of stones. Post marked A No III.

Thence N 4° 06' W.
Var. 14° 12' E.

Feet.

311.14 To loc. mon., where I set a post 4ft. long, 4x4 ins., 1 1/2 ft. in ground and surrounded same with mound of stones. Post marked A No II.

Thence S 85° 54' W.

Var. 14° 12' E.

700. To monument and post A.M. I.M. No I, place of beginning.

Area.

Total area of Mill-site 5.00 acres.

Location.

This Mill-site is located 200 yards West of the Sandy River and about 1/4 of a mile south of the town of Signal; the south side of the Mill-site partially abutts on the north side of the Senator Mill-site.

Post A No II being 100 ft. West of the Initial Mon. of the Senator Mill-site.

Improvements,

made upon this Mill-site by claimants or grantors consist of a building 150x70 ft. with Quartz-Stamp-Mill, engine and other machinery; the north west corner of this building bears S 87° E, 164 ft. from post A M I M No I. A building containing foundry, blacksmithshop, carpentershop, whose SW corner bears S 88° 20' E, 365 ft. from post A M I M No I. An engine house containing pump and engine, whose NW corner brs S 89° E., 542 ft. from post A M I M No I. A well bears S 87° 45' E, 610 ft. from same Post. A corral and stable, SE corner corral brs S 62° E 520 ft. from same post. A bathhouse, whose NW corner brs S 66° 20' E 580 ft. from same post.

And I hereby certify, that the value of said improvements exceeds the sum of Five Hundred Dollars. And that the land claim- ed as such mill-site is non-mineral land.

There have been no improvements made by other parties on this Mill-site.

Instruments used, a Gurley Transit with Solar Attachment and a 50 ft. steel chain.

Var. and courses taken by use of solar Attachment.

Eugene Pannenberg.
U.S. Deputy Mineral Surveyor.
Prescott, A. T.
August 22nd 1884.

FINAL OATHS FOR SURVEYS OF MINING CLAIMS & MILL SITES.

A LIST of the names of individuals employed to assist in running, measuring, or marking the lines and corners described in the foregoing field-notes of the survey of The Alta Mill Site connected with The Alta Mining Claim located in Owen Mining District, Mohave County, Arizona, showing the respective capacities in which they acted.

George Driver Chainman.
John Riley Chainman.
- - - - - Axeman.
- - - - - Flagman.

WE hereby certify that we assisted E. Pannenberg U. S. Deputy Surveyor, in surveying the Alta Mill Site, connected with The Alta Mining Claim claimed by The Lester Mining Company located in Owen Mining District, Mohave County, and in Township No _____ Range No _____ of the Gila and Salt River base and meridian, Arizona, and that said Survey has been in all respects, to the best of our knowledge and belief, well and faithfully executed, and the boundary monuments planted according to the instructions furnished by the Surveyor General.

George Driver Chainman.
John Riley Chainman.
- - - - - Axeman.
- - - - - Flagman.

SWORN TO AND SUBSCRIBED before me this 2nd day of July 1884

Eugene Pannenberg.
Notary Public.

I, Eugene Pannenberg U. S. Deputy Surveyor, do solemnly swear that, in pursuance of instructions from the U. S. Surveyor-General for Arizona, bearing date the 13th day of June 1884, I have well, faithfully and truly, in my own proper person, and in strict conformity with the instructions furnished by the Surveyor-General and the laws of the United States, surveyed all those portions of the Alta Mill Site in connection with The Alta Mining Claim claimed by The Lester Mining Company located in Owen Mining District, Mohave County, Arizona, as are represented in the foregoing field-notes as having been surveyed under my directions; and I do further solemnly swear that all the corners of said surveys have been established and perpetuated in strict accordance with the instructions furnished me, and that the foregoing are the true and original field notes of such surveys.

Eugene Pannenberg Deputy Surveyor.

SWORN TO AND SUBSCRIBED before me this 23rd day of August 1884

W. H. Steward
Notary Public

NON-MINERAL AFFIDAVIT.

TERRITORY OF ARIZONA,)
County of Mohave) ss.

N. A. Kimble and W. D. McBright of said County and Territory, being first duly sworn, each for himself and not one for the other, deposes and says that he is well acquainted with the land of the "Alta" mill-site claim situated in Over Mining District Gila and Salt River Meridian, in the County of Mohave and Territory of Arizona, claimed by The Lester Mining Company applicants for United States patent therefor; that he is well acquainted with the character of said described land included within the boundary lines as officially surveyed by E. Pannenberg United States Deputy Surveyor, having frequently passed over the same; that his knowledge of such land is such as to enable him to testify understandingly with regard thereto; that there is not to his knowledge within the limits thereof any vein or lode of quartz or other rock in place bearing gold, silver, cinnabar, lead, tin or copper or any deposit of coal; that there is not within the limits of said land, within his knowledge, any placer, cement, gravel or other valuable mineral deposits; that no portion of said land is claimed under the local customs or rules of miners or otherwise; that no portion of said land is worked for minerals during any part of the year by any person or persons; that said land is essentially non-mineral land, and that there is within the boundaries of said claim improvements, to-wit: one building with Quartz Stampmill and other machinery; foundry and other shops, one pump and engine, well, Corral and Stable, Bathhouse. and that he has no interest whatever in said described mill-site claim.

N. A. Kimble
W. D. McBright

SUBSCRIBED AND SWORN to before me this first day of July A. D. 1884; and I hereby certify that the foregoing affidavit was read to the said N. A. Kimble and W. D. McBright previous to their names being subscribed thereto, and that deponents are reputable persons to whose affidavits full faith and credit should be given.

Eugene Pannenberg
Notary Public.

Atta Millsite Notice

The undersigned hereby locates five acres of this land as a mill site, and all the water, stone, timber, rights, privileges, franchises etc, thereto belonging, or in anywise appertaining, according to law.

This claim commences at a post and monument of stone, about 370 feet westerly of the quartz mill, thence 312 feet southerly to a post and monument of stone; thence 700 easterly to a post and monument of stone; thence northerly 312 feet to a post and monument of stone; thence westerly 700 feet to a post and monument of stone, the place of beginning, and is situated about one quarter of a mile south of the town of Signal and about 200 yards west of the Sandy River.

Located, this 20th day of May 1884, and called the "Atta Mill site," by

Witness

Lester Mining Co
By H. E. Stronach, agent

Recorded at the request of H. E. Stronach
May 23rd at 9. a.m. a.D 1884

49

John K. MacKenzie
County Recorder
By H. H. Watkins
Deputy.

Territory of Arizona }
County of Mohave }

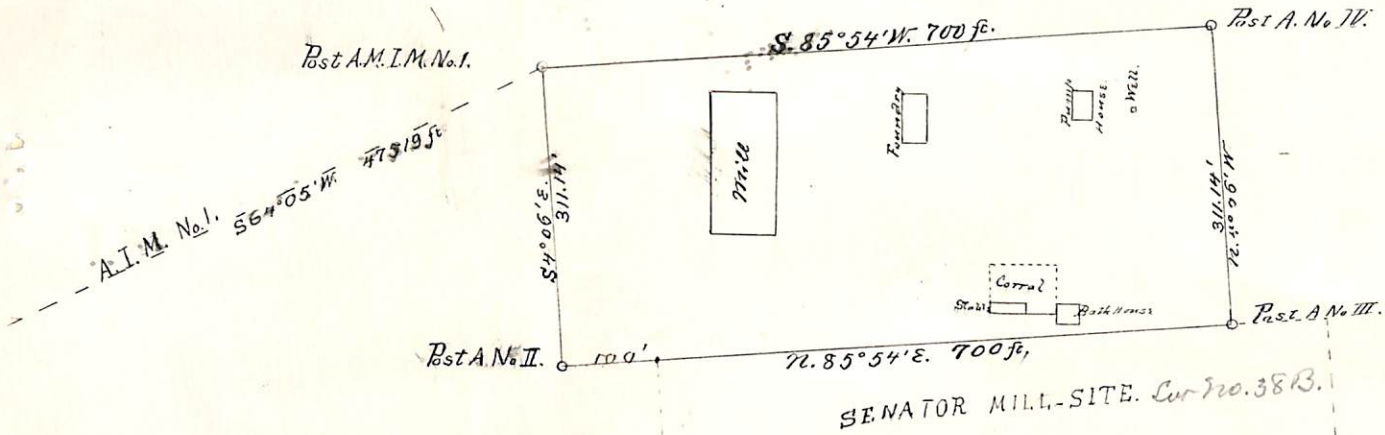
I, John K. MacKenzie
Recorder in and for said County of
Mohave, hereby certify that I have
compared the foregoing copy with the
original location notice of the Alta
Millsite, and that the same is a
full true and correct copy of the
said Alta Millsite location Notice
and of the whole thereof as appears
of Record in Book No 1. page 675
Miscellaneous Records of Mohave
County, Arizona Territory.

In witness whereof, I
have herewith set my hand and
affixed my official seal, this 23rd
day of May a.D. 1884

John K. MacKenzie
County Recorder
By H. H. Watkins
Deputy.

May 20. 1884

50



PLAT of the ALTA

Mill-Site
connected with the

Alta Mining Claim
Owen Mining District,
Mohave County,
Arizona

Claimed by the Lester Mining Company.

Surveyed by E. Pannenberg, U.S.D.M.S.

July 2nd 1884.

Containing an area of 5⁰⁰ acres.

Variation $14^{\circ} 12' E.$

Scale 200 ft. = 1 inch.

U. S. Surveyor General's Office.

Tucson, Arizona, *October 24.* 188*4.*

The foregoing field notes of the survey of the *Alta*
 Mining and Mill-Site Claims situate in
 the *Owen* Mining District, *Mohave*
 County, Arizona, claimed by *The Lester Mining*
Company.
 survey executed by *Eugene Penningberg* Deputy
 Surveyor, under instructions from this office, having been critically examined
 and the necessary corrections and alterations made, the said field notes and
 the survey they describe are hereby approved.

Royal A. Johnson
 Surveyor General.