

**M  
S  
-**

**0**

**1**

**2**

**6**

**3**

## MINERAL SURVEY NO. 1263

Claims	M & B Des. Page No.	Imps. Page No.	Loc. Notices Page No.
Bell No. 2	3	13-1	2-8
Bertie No. 2	4	13-1	4-10
Jickey No. 2	5	13-1	3-9
Mamie No. 2	7	15-2	5-11
Martie No. 2	8	13-2	6-12
Old Joe No. 2	1	13-1	1-7
Pollygon No. 2	10	13-2	-13

(4-683.)

Mineral Survey No. 1263

Lot No. ....

Prescott

Land District.

FIELD NOTES

OF THE SURVEY OF THE MINING CLAIM OF

Joe Mayer

KNOWN AS THE

Old Joe No. 2, Bull No. 2, Jockey No. 2, Bertie No. 2, Mamie No. 2, Mante No. 2

and Polygon No. 2.

Big Bug

Mining District,

Jewepui

County,

Arizona, approximately

in Section 21, Township 12 N., Range 1 E. 4 + 8 Mer.

Surveyed under instructions dated Aug 31, 1897

by J. J. Fisher

U. S. Deputy Mineral Surveyor.

Claim located March 25, 1892, & June 14, 1894

Survey commenced Sept 3, 1897.

Survey completed Sept 8, 1897

o 6-160

Address

J. G. Norris

Atty. for claimants

Prescott

Arizona.

# PRELIMINARY OATHS OF ASSISTANTS IN SURVEY OF MINING CLAIM.

WE, Dan Bourn and P.V. Caldwell,

do solemnly swear that we will well and faithfully execute the duties of chain carriers; that we will level the chain upon even and uneven ground and plumb the tally-pins, either by sticking or dropping the same; that we will report the true distance to all notable objects, and the true length of all lines that we assist in measuring, to the best of our skill and ability, and in accordance with instructions given us, in the survey of the Mining Claim of Joe Mayer

....., known as the Old Joe No. 2, Bertie No. 2, Belle No. 2, Jockey No. 2, Mamie No. 2, Martie No. 2, & Polygon No. 2 situate in Big Bay mining district, in Section Jurupai County, Arizona, Township No. 7, Range No. .....

Dan Bourn, Chainman.  
P.V. Caldwell, Chainman.

Subscribed and sworn to by the above-named persons before me this 3<sup>rd</sup> day of Sept, 1897.

*J.J. Fisher*  
My Commission expires  
May 10<sup>th</sup> 1900

J.J. Fisher  
Notary Public

I, Dan Bourn, do solemnly swear that I will well and truly perform the duties of axeman, in the establishment of corners and other duties, according to instructions given me and to the best of my skill and ability, in the survey of the Mining Claim of Joe Mayer known as the Old Joe No. 2, Bertie No. 2, Belle No. 2, Jockey No. 2, Martie No. 2, Mamie No. 2 and Polygon No. 2, more fully described in the preceding affidavit.

Dan Bourn, Axeman.

Subscribed and sworn to by the said Dan Bourn before me this 3 day of Sept, 1897.

*J.J. Fisher*  
My Commission expires  
May 10<sup>th</sup> 1900

J.J. Fisher  
Notary Public

I, P.V. Caldwell, do solemnly swear that I will well and truly perform the duties of flagman, in the establishment of corners and other duties, according to instructions given me and to the best of my skill and ability, in the survey of the Mining Claim of Joe Mayer known as the Old Joe No. 2, Bertie No. 2, Belle No. 2, Jockey No. 2, Mamie No. 2, Martie No. 2, and Polygon No. 2, more fully described in the preceding affidavit.

P.V. Caldwell, Flagman.

Subscribed and sworn to by the said P.V. Caldwell before me this 3<sup>rd</sup> day of Sept, 1897.

*J.J. Fisher*  
My Commission expires  
May 10<sup>th</sup> 1900

J.J. Fisher  
Notary Public

Feet Old Joe N<sup>o</sup> 2, Placer claim

Beginning at S. E. corner of claim  
Identical with loc. mon.

Corner N<sup>o</sup> 1, which is also cor. N<sup>o</sup> 1  
Bell N<sup>o</sup> 2, and cor. N<sup>o</sup> 4 Jockey N<sup>o</sup> 2, and  
cor. N<sup>o</sup> 4 Bertie N<sup>o</sup> 2, of this survey.  
An ash post 4" x 4" x 4' long, set  
18" in ground, and surrounded  
by mon. of stones.

Post-marked O. J. N<sup>o</sup> 2, N<sup>o</sup> 1-1263, B N<sup>o</sup> 2,  
N<sup>o</sup> 1-1263, J N<sup>o</sup> 2, N<sup>o</sup> 4-1263, and B N<sup>o</sup> 2,  
N<sup>o</sup> 4-1263.

A + on a walnut tree 6" diam, marked  
B. T. O. J. N<sup>o</sup> 2 <sup>N<sup>o</sup> 1</sup>-1263, brs N 1' 20' W 165 ft -  
No other bearings available

U. S. 2. M. N<sup>o</sup> 4-1245 B. B. D. brs S 48° E  
4860 ft -

Thence N 48° 5' E

Var. 13° 42' E

340 To wagon road, course S. E & N. W.

400 To west-bank Big Bug creek, course  
south east.

570 To east-bank Big Bug creek

628 To cor. N<sup>o</sup> 2 Identical with loc. mon.  
An ash post 4" x 4" x 4' long, set 18" in  
ground and surrounded by mon. of  
stones, Post-marked O. J. N<sup>o</sup> 2, N<sup>o</sup> 2-1263  
and on opposite side B. N<sup>o</sup> 2, N<sup>o</sup> 3-1263, for  
cor. N<sup>o</sup> 3 Bertie N<sup>o</sup> 2, of this survey.

A + on an ash tree 8" in diam, marked  
B. T. B N<sup>o</sup> 2, N<sup>o</sup> 3-1263 brs S 5° 36' W 26 ft -

A + on an ash tree 9" diam, marked  
B. T. O. J. N<sup>o</sup> 2, N<sup>o</sup> 2-1263 brs S 54° 37' W 28 ft -

Thence N 46° 47' W

Var. 13° 42' E

240 To east-bank of Big Bug creek, course S. E.

Survey N° 1263

Dist Old Joe N° 2 Placer claim  
 315 To cor, N° 2 Anyx N° 10, survey N° 1245  
 440 To east bank Big Bug creek course S.E.  
 1081 To cor, N° 3, Identical with loc, mon.  
 A walnut post 4" x 4" x 4' long, set 18"  
 in ground and surrounded by mon,  
 of stones. Post-marked O, J N° 2, N° 3  
 1263, A + on walnut tree 6" diam,  
 marked B. T. O, J. N° 2, N° 3 - 1263. brs,  
 S 48° 30' W 72 feet  
 Elliotts Peak brs N 50° W,  
 No other bearings available

Thence S 48° 5' W  
 Var 13° 42' E.

40 To wagon road, course N W & S E,  
 200 To east bank of Big Bug creek  
 356 To west bank of Big Bug creek, course  
 south east  
 628 To cor, N° 4 which is also cor, N° 4 of  
 Bell N° 2 Placer claim of this survey  
 Identical with corners of location,  
 A walnut post 4" x 4" x 4' long, set  
 18" in ground and surrounded by  
 mon, of stones. Post-marked O, J,  
 N° 2, N° 4 - 1263. same post-marked  
 on opposite side B N° 2, N° 4 - 1263 for  
 cor, N° 4 of Bell N° 2 Placer claim  
 of this survey.  
 Elliotts Peak brs N 49° W  
 No trees or bearing rocks available

Thence S 46° 47' E  
 Var 13° 42' E

1081 To cor N° 1, the place of beginning survey  
 of exterior boundaries  
 Containing 15.53 Acres

Survey N<sup>o</sup> 1263

Put

Bell N<sup>o</sup> 2 Placer claim

Beginning at NE corner of claim  
 Cor N<sup>o</sup> 1 Identical with corner of  
 the location. Corner described above  
 U.S.G.M N<sup>o</sup> 4-1245 - brs S 48° E 4860 ft -

Thence S 48° 5' W

Var 13° 42' E

- 618 Do cor N<sup>o</sup> 2 Identical with cor. of loc.  
 A walnut post - 4" x 4" x 4' long set  
 18" in ground and surrounded by  
 mon. of stones. Post marked B N<sup>o</sup> 2,  
 N<sup>o</sup> 2-1263. Same post marked J N<sup>o</sup> 2,  
 N<sup>o</sup> 3-1263 for the north west cor.  
 of the Jockey N<sup>o</sup> 2 Placer claim of  
 this survey.

Elliott's Peak brs N 48° 5' W

Boggs Smelter brs N 32° 10' W about 1 mile  
 No trees or bearing rocks available

Thence N 46° 47' W

Var 13° 42' E

- 1081 Do cor. N<sup>o</sup> 3. Identical with loc. mon.  
 A cedar post - 4" x 4" x 4' long set 18"  
 in ground and surrounded by  
 mon. of stones. Post marked  
 B N<sup>o</sup> 2, N<sup>o</sup> 3-1263

A + on quartzite rock in place  
 marked B, R. B N<sup>o</sup> 2, N<sup>o</sup> 3-1263 brs,  
 S 66° 15' W 177 ft

Elliott's Peak brs, N 48° 10' W

No other bearings available

Thence N 48° 5' E

Var 13° 42' E

- 618 Do cor N<sup>o</sup> 4, which is also cor. N<sup>o</sup> 4 Old Joe N<sup>o</sup> 2  
 Placer claim of this survey  
 Corner described above.

Survey No 1263

Sheet  
 Bell No 2 Placer claim  
 Thence S 46° 47' E  
 Var 13° 42' E  
 1081 To cor No 1, the place of beginning  
 survey of exterior boundaries  
 containing 15.28 Acres

Bertie No 2 Placer claim  
 Beginning at South ~~west~~<sup>East</sup> corner of  
 claim, Cor No 1 identical with S. ~~W.~~<sup>S.</sup>  
 cor. of the location, which is also  
 N. S. E. cor. of the Jockey No 2, the  
 N. E. cor. of Martie No 2, and the  
 S. W. cor. of Mamie No 2 Placer  
 claims of this survey.  
 A walnut post 5" x 5" x 4' long set  
 18" in ground and surrounded by  
 mon. of stones, post marked  
 B No 2, No 1 - 1263, J No 2, No 1 - 1263,  
 M. No 2, No 4 - 1263 and M. No 2, No 4 - 1263  
 Elliotts Peak brs N 49° W  
 Boggs Smelter brs N 38° W  
 U. S. L. M. No 4 - 1245 brs S 48° 3' E 3752 ft  
 No trees or bearing rocks available

Thence N 50° 45' E  
 Var 13° 42' E  
 220 To wagon road, course N. W. & S. E.  
 270 To west bank Big Bug creek, course S. E.  
 535 To east bank Big Bug creek course S. E.  
 616 To cor No 2 identical with loc, mon.,  
 A walnut post 4" x 4" x 4' long set  
 18" in ground and surrounded by mon.  
 of stones. Post marked B No 2, No 2 - 1263  
 Same post marked M No 2, No 3 - 1263 for  
 cor No 3 of Mamie No 2 Placer claim  
 of this survey.  
 No trees or bearing rocks available



- Burtie No 2 Placer claim  
 Thence  $N 46^{\circ} 47' W$   
 Var  $13^{\circ} 42' E$
- 262 To cor No 1-1 Onyx No 1 and Onyx No 3  
 survey No 1245
- 862 To cor No 1-2 Onyx No 3 and Onyx No 10  
 survey No 1245
- 1147 To cor No 3, which is also cor, No 2 of  
 Old Joe No 2 Placer claim of this  
 survey, identical with cor, of its  
 location, Corner described above,

Thence  $S 48^{\circ} 5' W$   
 Var  $13^{\circ} 42' E$

- 118 To east bank Big Bug creek, course S. E.
- 228 To west bank Big Bug creek, course S. E.
- 288 To wagon road course N. W. & S. E.
- 628 To cor No 4, identical with cor of the  
 loc, which is also cor No 1 Old Joe No 2,  
 cor, No 1 Bill No 2, and cor, No 4 Jockey  
 No 2 of this survey.  
 Corner described above

Thence  $S 47^{\circ} 32' E$   
 Var  $13^{\circ} 42' E$

- 1119.4 To corner No 1, the place of beginning  
 survey of exterior boundaries,  
 Containing 16,059 Acres

Jockey No 2 Placer claim

Beginning at ~~S.~~<sup>N.</sup> E. corner of claim, Cor, No 1  
 which is also cor, No 1 Burtie No 2, Cor No 4  
 Mamie No 2 and cor, No 4 Martie No 2, identical  
 with cor, of loc, Corner described above,  
 U.S.G.M. No 4-1245-bra  $S 48^{\circ} 3' E$  3752 ft

Survey N<sup>o</sup> 1263

Dist

Jiskey N<sup>o</sup> 2 Placer claim

Thence S 50° 45' W

Var 13° 42' E

621 Do cor N<sup>o</sup> 2, Identical with loc, mon,  
A walnut post - 4" x 4" x 4' long set  
18" in ground and surrounded by  
mon of stones, Post-marked J N<sup>o</sup> 2,  
N<sup>o</sup> 2-1263, same post-marked M N<sup>o</sup> 2,  
N<sup>o</sup> 3-1263. for ~~H.W.~~ W. cor, Marti N<sup>o</sup> 2  
Placer of this survey  
No bearing trees nor rocks available

Thence N 47° 34' W

Var 13° 42' E

1090.6 Do cor N<sup>o</sup> 3 Identical with cor, of the  
loc, which is also cor N<sup>o</sup> 2 Belle N<sup>o</sup> 2 of  
this survey.  
Corner described above.

Thence N 48° 5' E

Var 13° 42' E

618 Do cor, N<sup>o</sup> 4, Identical with cor, of the  
loc, which is also cor N<sup>o</sup> 1 Belle N<sup>o</sup> 2  
cor, N<sup>o</sup> 1 Old Joe N<sup>o</sup> 2, and cor, N<sup>o</sup> 4 Bertie  
N<sup>o</sup> 2 of this survey  
Corner described above.

Thence S 47° 32' E

Var 13° 42' E

1119.4 Do cor N<sup>o</sup> 1, the place of beginning  
survey of exterior boundaries,  
Containing 15,595 Acres

Survey N<sup>o</sup> 1263

Deed Mamie N<sup>o</sup> 2 Placer claim

Beginning at South <sup>East</sup> ~~west~~ corner of  
 claim identical with S, ~~W~~<sup>S</sup> cor, of the  
 loc, a walnut post 4" x 4" x 4' long  
 set 18" in ground and surrounded  
 by mon, of stones, Post marked  
 M, N<sup>o</sup> 2, N<sup>o</sup> 1-1263. Same post marked  
 on opposite side M, N<sup>o</sup> 2, N<sup>o</sup> 1-1263  
 for S, E. cor, of Martie N<sup>o</sup> 2 Placer  
 claim of this survey  
 Elliotts Peak brs. N 49° W  
 U.S. 2, M, N<sup>o</sup> 4-1245 brs S 46° 21' E 2205 ft -  
 No trees or bearing rocks available

Thence N 50° 45' E  
 Var 13° 42' E

- 225 Do wagon road course N.W. & S.E
- 418 Do cor N<sup>o</sup> 2 Polygon N<sup>o</sup> 2 Placer  
claim of this survey.
- 470 Do west bank of Big Bug creek, course SE
- 578 Do cor N<sup>o</sup> 2, identical with loc, mon,  
 As corner point falls in creek bed  
 and not suitable to establish a  
 corner, I run N 46° 45' W 15 ft, and  
 put in a witness corner,  
 A walnut post 4" x 4" x 4' long  
 set 18" in ground and surrounded  
 by mon, of stones, Post marked  
 W.C, M N<sup>o</sup> 2, N<sup>o</sup> 2-1263. The same point  
 is W.C. to cor N<sup>o</sup> 2 Onyx N<sup>o</sup> 4 survey  
 N<sup>o</sup> 1245;  
 A + on walnut tree 10" diam,  
 marked B.T, W.C, M N<sup>o</sup> 2; N<sup>o</sup> 2-1263 brs  
 N 25° 25' E 139.4 ft -  
 A + on an ash tree marked B.T,  
 W.C, M N<sup>o</sup> 2, N<sup>o</sup> 2-1263 brs N 11° 5' W  
 99.3 ft -  
 Elliotts Peak brs N 49° 40' W

# Survey N<sup>o</sup> 1263

Dist - Mamie N<sup>o</sup> 2 Placer claim

Thence N 46° 47' W  
Var 13° 42' E

130 From true corner point to wagon road, course East

300 To east bank Big Bug creek, course S E

600 To cor, N<sup>o</sup> 1-2 Anyx N<sup>o</sup> 4 and Anyx N<sup>o</sup> 2 Survey N<sup>o</sup> 1245

1200 To cor, N<sup>o</sup> 1-2 Anyx N<sup>o</sup> 2 and Anyx N<sup>o</sup> 1 Survey N<sup>o</sup> 1245

1536 To cor N<sup>o</sup> 3, which is also cor N<sup>o</sup> 2 Bertie N<sup>o</sup> 2 Placer claim of this survey  
Identical with cor, of location Corner described above.

Thence S 50° 45' W  
Var 13° 42' E

616 To cor, N<sup>o</sup> 4 Identical with cor, of loc, which is also cor, N<sup>o</sup> 1 Bertie N<sup>o</sup> 2 cor N<sup>o</sup> 1 Jockey N<sup>o</sup> 2 and cor N<sup>o</sup> 4 Martie N<sup>o</sup> 2 Placer claims of this survey  
Corner described above.

Thence S 50° 23' E.  
Var 13° 42' E

1552.6 To cor N<sup>o</sup> 1 the place of beginning survey of exterior boundaries  
Containing 19,821 Acres

Martie N<sup>o</sup> 2 Placer claim  
Beginning at S.E. cor of claim, Cor N<sup>o</sup> 1  
Identical with cor, of loc, which is also S.W. cor of Mamie N<sup>o</sup> 2 Placer claim of this survey  
U.S.M. N<sup>o</sup> 4-1245 brs. S 46° 21' E 2205 ft -  
Corner described above

Survey N<sup>o</sup> 1263Dist - Martie N<sup>o</sup> 2 Placer claim

Thence S 50° 45' W

Var 13° 42' E

573 To cor N<sup>o</sup> 2 Identical with loc, mon,  
A walnut-post 4" x 4" x 4' long set  
18" in ground and surrounded by  
mon, of stones, Post-marked  
M N<sup>o</sup> 2, N<sup>o</sup> 2-1263

Elliot's Peak brs N 48° 15' W

No trees or bearing rocks available.

Thence N 54° 14' W

Var 13° 42' E

1574.9 To cor N<sup>o</sup> 3, which is also cor N<sup>o</sup> 2 of  
Jockey N<sup>o</sup> 2. Placer claim of this  
survey, identical with cor of the  
location

Corner described above.

Thence N 50° 45' E

Var 13° 42' E

621 To cor, N<sup>o</sup> 4 which is also cor N<sup>o</sup> 4  
Manie N<sup>o</sup> 2, cor N<sup>o</sup> 1 Jockey N<sup>o</sup> 2,  
and cor N<sup>o</sup> 1 Bertie N<sup>o</sup> 2 Placer  
claims of this survey, identical  
with cor, of loc.

Corner described above.

Thence S 50° 23' E

Var 13° 42' E

1552.0 To cor, N<sup>o</sup> 1 the place of beginning  
survey of exterior boundaries  
Containing 19,825 Acres

Dist Polygon N<sup>o</sup> 2 Placer claim

Beginning at cor. N<sup>o</sup> 1 the south east corner of claim identical with south east corner of location  
 A cedar post 4" x 4" x 4' long set 18" in ground and surrounded by mon. of stones Post-marked P. N<sup>o</sup> 2 N<sup>o</sup> 1-1263. No trees or rocks available for bearings

Elliott's Peak brs, N 49° 50' W

U. S. L. M. N<sup>o</sup> 4-1245 brs S 23° 18' E 1385 ft

H. A. Young's house brs N 83° 50' E  
 about 1200 ft

Thence N 54° 7' W

Var 13° 42' E

- 897 To cor. N<sup>o</sup> 2 identical with loc. mon. at the intersection of line 1-2 Mamie N<sup>o</sup> 2 Placer claim of this survey at N 50° 45' E 418 ft from cor. N<sup>o</sup> 1 Mamie N<sup>o</sup> 2  
 A walnut post 4" x 4" x 4' long set 18" in ground and surrounded by mon. of stones. Post-marked P. N<sup>o</sup> 2 N<sup>o</sup> 2-1263. True corner N<sup>o</sup> 2 Mamie N<sup>o</sup> 2 Placer claim of this survey brs, N 50° 45' E 100 feet  
 Elliott's Peak brs, N 49° 40' W  
 No trees or rocks available for bearings

Thence N 15° 35' E

Var 13° 42' E

- 50 To west-bank Big Bug creek, course S. E.  
 105 To intersect line 2-3 Mamie N<sup>o</sup> 2 Placer claim of this survey, and line 1-2 of Anny N<sup>o</sup> 4 of survey N<sup>o</sup> 1245 at N 46° 47' W 32 ft from corner N<sup>o</sup> 2

Survey N<sup>o</sup> 1263

Rect Polygon N<sup>o</sup> 2 Placer claim

- 230 To east-bank Big Bug creek, course S.E.  
 380 To intersection of line 2-3 Anyx N<sup>o</sup> 4  
 Survey N<sup>o</sup> 1245 at N4° 9' E 307 ft  
 from cor, N<sup>o</sup> 2 Anyx N<sup>o</sup> 4 survey N<sup>o</sup>  
 1245 which is cor, N<sup>o</sup> 3 and  
 Initial mon. of Polygon N<sup>o</sup> 2  
 Placer claim, and also cor, N<sup>o</sup> 1  
 Anyx N<sup>o</sup> 8 of survey N<sup>o</sup> 1245  
 An onyx stone 5" x 8" x 24" set  
 15" in ground, and surrounded  
 by mon. of stones. Stone  
 marked P N<sup>o</sup> 2, N<sup>o</sup> 3-1263, same  
 stone marked on opposite side  
 Q. N<sup>o</sup> 8, 1-1245.  
 A + on quartzite rock in place  
 marked B. R. P N<sup>o</sup> 2, N<sup>o</sup> 3-1263 brs,  
 N 72° 48' E 57.2 feet  
 Winfred's Peak brs S 28° 35' E

Thence N 89° 10' E

Var 13° 42' E

- 600 Along line 1-2 Anyx N<sup>o</sup> 8 survey  
 N<sup>o</sup> 1245 to cor, N<sup>o</sup> 2 Anyx N<sup>o</sup> 8  
 813 To cor, N<sup>o</sup> 4 Identical with loc, mon.  
 A walnut post 4" x 4" x 4' long, set  
 18" in ground and surrounded  
 by mon. of stones. Post marked  
 P N<sup>o</sup> 2, N<sup>o</sup> 4-1263.  
 A + on ash tree 8" diameter  
 marked B. T. P, N<sup>o</sup> 2, N<sup>o</sup> 4 1263 brs,  
 S 9° 2' E 249 feet  
 No other bearings available

Thence S 11° 45' W

Var 13° 42' E

- 130 To wagon road course S, E. & N, W.  
 250 To east-bank Big Bug creek, course S.E.

Survey N<sup>o</sup> 1263

Dist	Polygon N <sup>o</sup> 2 Placer claim	
380	To west-bank Big Bug creek course S, E.	
923	To cor. N <sup>o</sup> 1 the place of beginning survey of exterior boundaries	
	Total area	12,099 acres
	Area in conflict with Mannie N <sup>o</sup> 2 Placer claim of this survey	.046 acres
	Area in conflict with Onyx N <sup>o</sup> 4 Placer claim of survey N <sup>o</sup> 1245	<u>1.75</u> acres <u>.222</u>
	Net area	11,877 acres

## Area:

Ald Joe N <sup>o</sup> 2 Placer	15,530 Acres
Bell N <sup>o</sup> 2 "	15,280 "
Bertie N <sup>o</sup> 2 "	16,059 "
Jockey N <sup>o</sup> 2 "	15,595 "
Mannie N <sup>o</sup> 2 "	19,821 "
Martie N <sup>o</sup> 2 "	19,825 "
Polygon N <sup>o</sup> 2 " Total area	12,099
Conflict with Mannie N <sup>o</sup> 2 Placer claim, this survey	.046
Conflict with Onyx N <sup>o</sup> 4 Survey N <sup>o</sup> 1245	<u>1.75</u> <u>.222</u>
Net area	<u>11,877</u> "
Total area Placer claim	113,987 Acres

## Location

This claim is located approximately in Sec 21, T. 12, N., R. 1, E. Gila and Salt river <sup>Base and</sup> meridian, on unsurveyed land in Big Bug mining district, Yavapai County, Arizona. The adjoining claims are on the North east onyx placer claims N<sup>o</sup> 10, N<sup>o</sup> 3, N<sup>o</sup> 1, N<sup>o</sup> 2, N<sup>o</sup> 4 and N<sup>o</sup> 8, survey N<sup>o</sup> 1245. No other adjoining claims.



13  
15  
Survey No 1263

Expenditure of Five Hundred Dollars.

I certify that the value of the labor and improvements upon this claim, placed thereon by the claimant and his grantors is not less than five hundred dollars and that said improvements consist of.

Old Joe No 2. Placer

A discovery shaft, 4x6 feet 10 feet deep, which lies from Cor No 1. N 24° E 50 feet  
Value \$50.00

Belle No 2. Placer

A discovery shaft 4x6 feet, 10 feet deep, which lies from Cor. No 1. West 20 feet  
Value \$50.00

Jockey No 2. Placer

A discovery shaft 4x6 feet 10 feet deep which lies from Cor No 4. South 40 feet  
Value \$50.00

Bertie No 2 Placer

A discovery shaft 4x6 feet, 10 feet deep which lies from Cor No 4. S 75° 57' E 40 feet  
Value \$50.00

Mattie No 2 Placer

A discovery shaft No 1. 4x6 feet 8 feet deep which lies from Cor No 2. North 395 feet.  
Value \$40.00

Shaft No 2. 4x6 feet 10 feet deep, which lies from Cor No 2. N 12° 31' W 510 feet.  
Value \$50.00

Polygon No 2 Placer

A discovery shaft 4x6 feet 10 feet deep which lies from Cor No 3. S 15° E 75 feet  
Value \$50.00

(14)

Survey No 1263  
Improvements  
Mamie No 2 Place

A discovery shaft No 1. which bes. from  
Cor. No 4. S 86° 50' E 360 feet, 4x6 feet 20 feet  
deep. Value \$1,00.

Shaft No 2, 4x6 feet 30 feet deep which bes.  
from Cor No 4. S 72° 40' E 440.  
Value \$150.

Shaft No 3. 4x6 feet, 10 feet deep which  
bes. from Cor. No 4. S 79° 30' E 630 feet.  
Value \$50.00

An open cut No 4, 15x20 feet, 12 feet  
deep. which bes. from Cor No 4. S 74°  
53' E 325 feet. Value \$150.

A diverting dam, to southernly end  
of which bes. from Cor. No 1. N 33° 30' W  
1065 feet, Dam 4 feet high, and 150 feet  
long. Value \$250.00

A blackmill-shed 18x24 feet, which bes  
from Cor. No 1. N 4° 50' W 340 feet.  
Value \$250.

A pump house & steam pump. with well  
sunk to bed rock, which bes from Cor. well depth 2  
No 1 N 10° 30' W 770 feet  
Value \$1500

A house 24x50 feet, which bes. from Cor.  
No 1. N 26° 57' W 652 feet.  
Value \$800

A water tank, which bes. from Cor. No 1  
N 29° 30' W 580 feet  
Value \$100

Survey No 1263

17

Improvements  
Mannie No 2. Phoe

A bunk house 20 x 24 feet, which lies  
from cor. No 1, N 33° 32' W 530 feet  
Value \$300

A bunk house 12 x 30 feet which lies from  
cor. No 1, N 34° 28' W 615 feet.  
Value \$200

A bunk house 12 x 20 feet, which lies  
from cor. No 1, N 33° 50' W 580 feet  
Value \$150

A barn 40 x 60 feet which lies from  
cor No 1 N 34° 51' W 675 feet.  
Value \$500

A barn 30 x 50 feet which lies from cor No 1  
N 36° 20' W 840 feet  
Value \$350.

Instrument

The survey was made with a Gurley  
Solar Transit, the courses were deflected  
from the true meridian as determined  
by solar observations.

The solar was checked on a line established  
by me in Sept. 1896 by solar and Polaris  
observations, The distances were measured  
with a 100 foot steel chain.

J. J. Fisher  
U. S. Dep. Min. Surveyor.

Concord A. Y.  
Sept. 10<sup>th</sup> 1897,

# FINAL OATHS FOR SURVEYS.

## LIST OF NAMES.

A list of the names of the individuals employed by J. J. Fisher  
 United States Deputy Mineral Surveyor, to assist in running, measuring, and marking the lines  
 corners and boundaries described in the foregoing field notes of the survey of the mining claim  
 of Joe Mayer  
 known as the Old Joe No 2, Belle No 2, Bertie No 2, Jockey No 2, Mamie No 2, Martie No 2 <sup>and Polygon No 2</sup>  
 and showing the respective capacities in which they acted.

Dan Bowen ..... , Chainman.  
P. V. Caldwell ..... , Chainman.  
Dan Bowen ..... , Axman.  
P. V. Caldwell ..... , Flagman.

## FINAL OATHS OF ASSISTANTS.

We, Dan Bowen  
 and P. V. Caldwell ..... , do solemnly swear that we assisted J. J. Fisher  
 ..... , United States Deputy Mineral Surveyor, in marking the corners and  
 surveying the boundaries of the mining claim of Joe Mayer

....., known as the Old Joe No 2, Belle No 2, Bertie No 2, Jockey No 2, Mamie No 2, Martie No 2, and Polygon No 2,  
 represented in the foregoing field notes as having been surveyed by said deputy mineral surveyor and under  
 his direction; and that said survey has been in all respects, to the best of our knowledge and  
 belief, faithfully and correctly executed, and the corner and boundary monuments established  
 according to law and the instructions furnished by the United States Surveyor-General for

Arizona

Dan Bowen ..... , Chainman.  
P. V. Caldwell ..... , Chainman.  
Dan Bowen ..... , Axman.  
P. V. Caldwell ..... , Flagman.

Subscribed and sworn to by the above-named persons before me  
 this 8<sup>th</sup> day of Sept, 1897

J. J. Fisher  
 Notary Public

My Commission Expires  
 May 10<sup>th</sup> 1900.

J. J. Fisher

(4-686.)

FINAL OATH OF U. S. DEPUTY MINERAL SURVEYOR.

I, J. J. Fisher, U. S. Deputy Mineral Surveyor, do solemnly swear that, in pursuance of instructions received from the United States Surveyor General for Arizona, dated Aug. 31<sup>st</sup>, 1897, I have, in strict conformity to the laws of the United States, the official regulations and instructions thereunder, and the instructions of said Surveyor General, faithfully and correctly executed the survey of the Mining Claim of Joe Mayer known as the Old Joe No. 2, Belle No. 2, Jockey No. 2, Bertie No. 2, Mamie No. 2, Martie No. 2 & Pollyann No. 2 Placu Claims, situate in Big Bend Mining District, Leupai County, Arizona, Approx., in Section 21, Township No. 12 N., Range No. 1 E. 4 + 5 W., and designated as Survey No. 1263, as represented in the foregoing field notes, which accurately show the boundaries of said mining claim as distinctly marked by monuments on the ground, and described in the attached copy of the location certificate, which was received by me from the Surveyor General with said instructions, and that all the corners of said survey have been established and perpetuated in strict accordance with the law, official regulations and instructions thereunder; and I do further solemnly swear that the foregoing are the true and original field notes of said survey and my report therein, and that the labor expended and improvements made upon said mining claim by claimant or his grantors are as therein fully stated, and that the character, extent, location and itemized value thereof are specified therein with particularity and full detail, and that no portion of said labor or improvements so credited to this claim has been included in the estimate of expenditures upon any other claim.

J. J. Fisher  
U. S. Deputy Mineral Surveyor.

Subscribed and sworn to by the said J. J. Fisher  
U. S. Deputy Mineral Surveyor, before me Register United States Land Office Prescott Arizona this 25th  
day of September, 1897.

Frederick C. Tiller  
Register

# Affidavit of Five Hundred Dollars Improvements.

We Doc Brown and J. V. Caldwell

of lawful age, being first duly sworn according to law, depose and say: that we are acquainted with the Old Joe No 2, Bertie No 2, Belle No 2, Jersey No 2, Mamie No 2 <sup>Mattie No 2 and Polygon No 2 Place</sup> mining claim, situated in Big Bend Mining district, Yavapai County, Arizona Territory, for which Joe Mayer

has made application for survey prior to application for patent under the provisions of the Act of Congress, approved May 10, 1872; and that the labor done and improvements made thereon by the applicant and his grantor exceed Five Hundred Dollars in value, and further that we are not personally interested in said mine.

Doc Brown  
J. V. Caldwell

TERRITORY OF ARIZONA,  
County of Yavapai } ss.

SWORN to and subscribed before me, this 8<sup>th</sup> day of Sept. 1897

J. J. Fisher

J. J. Fisher  
Notary Public

My commission expires  
May 10<sup>th</sup> 1900.

(4-694.)

TITLE PAGE TO REPORT UNDER CIRCULAR "N" OF SEPTEMBER 23, 1882.

### REPORT

Under General Land Office Circular "N" of September 23, 1882, upon the Placer Mining Claims known as the *Old Joe No 2, Belle No 2, Jockey No 2, Bertie No 2, Mami No 2, Marlie No 2 and Oregon No 2.*

....., claimed by  
*Joe Mayer*

situate in *Big Bend* Mining District,  
*Laupai* County, *Arizona*, embracing  
~~*113,897 acres*~~

*113,987 acres*  
*Approximately*  
in Sec. *21*, Town. *12 N*, Range *1 E. G + S. M.*

Examination made *Sept 8*, 1897,  
By *J. J. Fisher*  
U. S. Deputy Mineral Surveyor.

## Survey No 1263

Old Joe No 2, Belle No 2, Bertie No 2,  
 Jockey No 2, Mamie No 2, Martie No 2  
 And Polygon No 2, Placer Claims,

(a) The soil embraced in these claims consists of decomposed mineral bearing granite and amorphous sand and gravel. There are a few scattering ash and walnut trees along creek bed, and scrub oak brush and cut claw on the higher lands, very little other vegetation.

(b) The only creek passing through the claims is Big Bear Creek, which flows through Old Joe No 2, Bertie No 2, Mamie No 2 and Polygon No 2. The general course of creek being south-easterly, with varying widths of from 100 feet to 250 feet. The natural flow in the stream will only average about 10 feet in width and 6 ins. deep, for about 8 or 9 months, during the dry season the water disappears from the surface and is only found on bed rock.

(c) The character of work done upon these claims is shafts & open cut.

A discovery shaft on Old Joe No 2, 4x6 feet  
 10 feet deep, which lies from Cor No 1, N 24° E  
 50 feet Value \$50.00

A discovery shaft on Belle No 2, 4x6 feet  
 10 feet deep, which lies from Cor No 1, west  
 20 feet. Value \$50.00

A discovery shaft on Jockey No 2, 4x6 feet  
 10 feet deep, which lies from Cor No 4,  
 South 40 feet Value \$50.00

A discovery shaft on Bertie No 2, 4x6 feet  
 10 feet deep which lies from Cor No 4, S 75° 57' E 40 feet  
 Value \$50.00



## Survey No 1263

- (C) A discovery shaft No 1 on Marta No 2.  
 4 x 6 feet, 8 feet deep which bis. from cor. No 2.  
 North 395 feet. Value \$40.00
- A shaft No 2 on Marti No 2, which bis. from  
 Cor. No 2 N 12° 31' W 510 feet, 4 x 6 feet 10 feet  
 deep. Value \$50.00
- A discovery shaft on Polygon No 2.  
 4 x 6 feet 10 feet deep, which bis. from cor.  
 No 3. S 15° E 75 feet. Value \$50.00
- A discovery shaft No 1 on Mamie No 2,  
 4 x 6 feet, 20 feet deep, which bis. from cor.  
 No 4. S 86° 50' E 360 feet  
 Value \$100
- A shaft No 2. 4 x 6 feet 30 feet deep, which  
 bis. from cor. No 4. S 72° 40' E 440 feet  
 Value \$150.
- A shaft No 3. 4 x 6 feet 16 feet deep, which  
 bis. from cor. No 4. S 79° 30' E 630 feet.  
 Value \$50.00
- An open cut No 4, 15 x 20 feet 12 feet  
 deep, which bis. from cor. No 4. S 74°  
 53' E 325 feet,  
 Value \$150-
- A diverting dam, the southern end of  
 which bis. from cor. No 1. N 33° 30' W  
 1065 feet, Dam 4 feet high and 150 feet  
 long. Value \$250.00
- Also numerous buildings.

(d) The nearest post office is "Mayer" located  
 in the house of the claimant, on Mamie  
 No 2. Place claim. The nearest rail-  
 road station is Ponsote, 28 miles from  
 claims.

(e) The nearest lode claims are the Bryges  
 Lode, Henriella Lode, and Anne Lode.  
 from 2 1/2 to 5 miles in a N.W. direction  
 from claims.

## Survey No 1263

- (7) The claim is well adapted to placer mining and for 6 to 8 months of the year there is plenty of water for same. There has been sufficient water brought upon the claims to mine the same, but the ditch has been destroyed by floods. Water can be secured by storage dams in sufficient quantities for all months of the year.
- (8) The claimant has expended about \$2000 in improvements on the claims.
- (9) None exist on the claims.

(4-695.)

## OATH OF U. S. DEPUTY MINERAL SURVEYOR

Under General Land Office Circular "N" of September 23, 1882.

I, J. J. Fisher U. S. Deputy Mineral Surveyor do solemnly swear that in pursuance of an order received from the U. S. Surveyor General for Arizona, dated Aug. 31<sup>st</sup>, 1897, I have made, under the provisions of General Land Office Circular "N," approved September 23, 1882, a personal and thorough examination, upon the premises, of the placer mining claim of Joe Mayer known as the Old Joe No. 2, Bee No. 2, Bertie No. 2, Jockey No. 2, Mami No. 2, Martie No. 2, and Pollyque No. 2. situate in Big Bay Mining District, Yavapai County, Arizona, embracing 113.987 acres.

Approximately  
in Township No. 12 N., Range No. 1 E. Y + S. M., and that my report of such examination, hereto attached, is specific and in detail, and is a full and true statement of the facts upon all the points specified in said Circular.

J. J. Fisher  
U. S. Deputy Mineral Surveyor.

Subscribed and sworn to by the said J. J. Fisher  
U. S. Deputy Mineral Surveyor,

before me Register of the U. S. Land Office Prescott Ariz.  
this 10<sup>th</sup> day of September, 1897.

Frederick C. Child Jr.  
Register

CORROBORATIVE AFFIDAVIT UNDER GENERAL LAND OFFICE

CIRCULAR "N" OF SEPTEMBER 23, 1882.

County of Yavapai } ss:  
State of Arizona

Don Brown and P. V. Caldwell,

being first duly sworn, severally depose and say that he is personally and well acquainted with the placer-mining claim of Joe Mayer

, known as the Old Joe No 2, Belle No 2, Bertie No 2,

Jockey No 2, Mamie No 2, Martie No 2, & Polygon No 2, situate in

Big Boy Mining District, Yavapai

County, Arizona, embracing 113.987

Acres

Situated approximately in \_\_\_\_\_, in Township No. 12 N,

Range No. 1 E G + S. M.; and also with the character of all the land included

in said claim, and has been so acquainted for One year last

past; that his knowledge of said claim and land is derived from personal

examination of the same

and is such as to enable him to

testify understandingly with regard thereto; that he has carefully read the foregoing

report of J. J. Fisher, U. S. Deputy Mineral

Surveyor, and that to his own personal knowledge said report is in all respects true and

accurate.

Don Brown  
P. V. Caldwell

Subscribed and sworn to by the above-named persons before me

this 8<sup>th</sup> day of Sept., 1897.

J. J. Fisher  
Notary Public

S. J. Fisher

My Commission Expires  
May 10<sup>th</sup> 1900

OLD JOE.

NOTICE OF LOCATION OF THE OLD JOE PLACER MINE.

I, The undersigned do claim and have this day located 1500 feet in length by 600 feet in width of this ground lying along Big Bug creek as a placer mine commencing at this monument and notice which is placed at the north east corner of claim and running 600 feet southwesterly thence 1500 feet northwesterly thence 600 feet north-easterly thence 1500 feet southeasterly to place of beginning. All corners being marked by stone monuments, Posts & notices, I also claim all water and water privileges contained therein or thereon, also all rights granted by the laws of Arizona and the laws of the United States. This claim is situated on Big Bug creek, in Big Bug Mining District, Yavapai Co., Arizona, and joins the Bertie placer mine on the northwest and the northeasterly side line of this claim joins the southwest end lines of Placer & Onyx claims No's 10 "Fraction" and the Bob Tail", No. 10 and Fraction Placer & Onyx claims, belonging to O'Neal, Dougherty and others and the Bob Tail was located by Joe Mayer. This claim lies about 2000 feet north westerly from Joe Mayers residence and station, and shall be known as the Old Joe Placer Mine. Dated on the ground this 25 th day of Mar., A.D. 1892.

Attest: Jess Davis,  
H.A. Young.

Locator Joe Mayer.

Recorded at request of Joe Mayer, March 29th A.D. 1892, at 9 O'clock A.M. in Book 34 of mines, pages 93 & 94 Records of Yavapai County, Arizona.

(Seal) Charles H. Akers,  
County Recorder.

TERRITORY OF ARIZONA, 1  
COUNTY OF YAVAPAI. 1892.

I, W. J. JOHNSON, County Recorder in and for said county and territory, and custodian of the Records thereof do hereby certify that I have compared the above and foregoing with, and the same is a full, true and correct copy of the Location Notice of the *Old Joe Placer* Mining Claim as the same appears on the records in Book *34* of Mines, pages *93 & 94* Records of Yavapai County, Arizona.

IN WITNESS WHEREOF, I have hereunto set my hand and affixed my official seal this the *8th* day of July A.D. 1897.

*W. J. Johnson*  
County Recorder.

BELLE.

## NOTICE OF LOCATION OF THE "BELLE" PLACER MINE.

I the undersigned do claim and have this day located 1500 feet by 600 feet of this ground lying along Big Bug creek as a placer mine. Commencing at this monument and notice which is placed the northeast corner of claim and running 600 feet southwesterly, thence 1500 feet north westerly; thence 600 feet northeasterly; thence 1500 feet southeasterly to place of beginning. All corners being marked by stone monuments, posts and notices. I also claim all water and water privileges contained therein or thereon, also all rights granted by the laws of Arizona and the United States.

This claim is situated on Big Bug creek in Big Bug Mining District, Yavapai Co., Arizona, and joins on the southwest and runs parallel with the Old Joe Placer Mine and lies about 600 feet southwest of placer & Onyx claims Nos 10 & Fraction said mines being owned by Oneal, Dougherty, this claim also lies about 600 feet southwesterly from Bob Tail placer mine located by Joe Mayer, and lies about 2000 feet northwesterly from Joe Mayers residence and station. This claim shall be known as the Belle Placer Mine. Dated on the ground this 25th. day of March 1892.

Attest:

Jess Davis.  
H.A.Young.

Locator Joe Mayer.

Recorded at request of Joe Mayer March 29th. A.D. 1892, at 9 oclock A.M/  
in Book 34 of mines, pages 97 & 98, Records of Yavapai County, Arizona.

(seal) Charles H. Akers,  
County Recorder.

TERRITORY OF ARIZONA, X  
                                  X  
COUNTY OF YAVAPAI.    ISS.

I W. I. JOHNSON, County Recorder in and for said County and Territory, and Custodian of the Records thereof do hereby certify that I have compared the above and foregoing with, and the same is a full, true and correct copy of the Location Notice of the Belle Placer Mining Claim as the same appears on the Records in Book 34 of mines, pages 97 & 98, Records of Yavapai County, Arizona.

IN WITNESS WHEREOF, I have hereunto set my hand and affixed my official seal this the 8th., day of July, 1897.

*W. I. Johnson*  
.....  
County Recorder.

JICKEY.

## NOTICE OF LOCATION OF THE "JICKEY" PLACER MINE.

I the undersigned do claim and have this day located 1500 feet in length by 600 feet in width of this ground lying along Big Bug creek, as a placer mine. Commencing at this monument and notice which is placed at the northeast corner of claim and running 600 feet in a southwesterly direction; thence 1500 feet in a northwesterly direction; thence 600 feet in a northwesterly direction; thence 1500 feet in a southeasterly direction to place of beginning. All corners being marked by stone monuments, posts and notices. I also claim all water and water privileges contained therein or thereon, also all rights granted by the laws of Arizona and the laws of the United States. This claim is situated on Big Bug creek, in Big Bug Mining District, Yavapai County, Arizona, and joins on the southwest and runs parallel with the Bertie placer mine, and lies about 600 feet south west of Placer & Onyx claims Nos 1- 3 & 10 said onyx claims being owned by O'Neal, Dougherty and others, and lies about 1000 feet northwesterly from Joe Mayers residence and station. This claim shall be known as the Jiekey Placer Mine. Dated on the ground this 25th., day of March 1892.

Attest:

Jess Davis.  
H.A. Young.

Locator Joe Mayer.

Recorded at request of Joe Mayer, March 29th., A.D. 1892, at 9 oclock A.M.  
in Book 34 of mines, pages 98 & 99, Records of Yavapai County, Arizona.

(Seal)

Charles H. Akers.

County Recorder.

TERRITORY OF ARIZONA, I  
COUNTY OF YAVAPAI. I SS.

I, W. I. JOHNSON, County Recorder in and for said county and territory, and custodian of the Records thereof do hereby certify that I have compared the above and foregoing with, and the same is a full, true and correct copy of the Location Notice of the *Jickey* *Placer* Mining Claim as the same appears on the records in Book *34* of Mines, pages *98 & 99* Records of Yavapai County, Arizona.

IN WITNESS WHEREOF, I have hereunto set my hand and affixed my official seal this the *8th* day of July A. D. 1897.

*W. I. Johnson*  
County Recorder.

BERTIE.

NOTICE OF LOCATION OF THE "BERTIE PLACER MINE.

I the undersigned do claim and have this day located 1500 feet in length by 600 feet in width of this ground lying along Big Bug creek, as a placer mine. Commencing at this monument and notice which is placed at the north east corner of claim and running 600 feet southwesterly; thence 1500 feet northwesterly; thence 600 feet northeasterly; thence 1500 feet southeasterly to place of beginning. All corners being marked by stone monuments and notices. I also claim all water and water privileges contained ~~therein~~ therein or thereon, also all rights granted by the mining laws of Arizona and the laws of the United States, this claim lies on Big Bug creek in Big Bug Mining District, Yavapai Co. Arizona, and the northeast side line of this claim joins the southwest end lines of Placer & Onyx claims No's 1-31 & 10, said onyx claims are owned by O'Neal, Dougherty and others. This claim also joins the Mamie Placer Mine on the northwest and lies about 1000 feet northwesterly from Joe Mayers residence and station. This claim shall be known as the Bertie Placer Mine. Dated on the ground this 25th. day of March A.D. 1892.

Attest:  
Jess Davis.  
H.A. Young.

Locator, Joe Mayer.

Recorded at request of Joe Mayer, March 29th., A.D. 1892, at 9 o'clock A.M. in Book 34 of Mines, pages 95 & 96, Records of Yavapai county, Arizona.

(Seal) Charles H. Akers.  
County Recorder.

TERRITORY OF ARIZONA, I  
COUNTY OF YAVAPAI. ISS.

I, W. I. JOHNSON, County Recorder in and for said county and territory, and custodian of the Records thereof do hereby certify that I have compared the above and foregoing with, and the same is a full, true and correct copy of the Location Notice of the *Bertie Placer* Mining Claim as the same appears on the records in Book *34* of Mines, pages *95 & 96* Records of Yavapai County, Arizona.

IN WITNESS WHEREOF, I have hereunto set my hand and affixed my official seal this the *8th* day of July A.D. 1897.

*W. I. Johnson*  
County Recorder.



MAMIE

NOTICE OF LOCATION OF THE MAMIE PLACER MINE.

I the undersigned do claim and have this day located 1500 feet in length by 600 feet in width of this ground lying along Big Bug creek as a placer mine, commencing at this monument and notice which is placed at the north east corner of claim, and running southwesterly 600 feet thence north westerly 1500 feet thence 600 feet northeasterly- thence 1500 feet south easterly to place of beginning.

All corners being marked by stone monuments, posts and notices. I also claim all water and water privileges contained therein or thereon, also all rights granted by the mining laws of Arizona and the laws of the United States. This claim lies on Big Bug creek, in Big Bug Mining District, Yavapai County, Arizona, and is situated at the southwest ends of Placer & Onyx claims No's 1-2 & 4 said Onyx claims being owned by Dougherty, O'Neal, McCann Bro's & others. The northeast side line of their claim joins the southwest end line of the above onyx claims.

Joe Mayers houses and barns stands on the northwest end of this claim.

This claim shall be known as the Mamie Placer Mine.

Dated on the ground this 25<sup>th</sup> day of March, A.D. 1892.

Attest: Jess Davis, H.A. Young. Locator Joe Mayer.

Recorded at request of Joe Mayer, March 29th., A.D. 1892, at 9 o'clock A.M. in Book 34 of mines, pages 94-95, Records of Yavapai County, Arizona.

(Seal) Charles H. Akers. County Recorder.

TERRITORY OF ARIZONA, I COUNTY OF YAVAPAI, ISS.

I, W. I. JOHNSON, County Recorder in and for said county and territory, and custodian of the Records thereof do hereby certify that I have compared the above and foregoing with, and the same is a full, true and correct copy of the Location Notice of the Mamie Placer Mining Claim as the same appears on the records in Book 34 of Mines, pages 94-95, Records of Yavapai County, Arizona.

IN WITNESS WHEREOF, I have hereunto set my hand and affixed my official seal this the 8th day of July A.D. 1897.

W. I. Johnson County Recorder.

MARTIE.

NOTICE OF LOCATION OF THE "MARTIE" PLACER MINE.

I the undersigned do claim and have this day located 1500 feet in length by 600 feet inwidth of the ground lying on the south side of Big Bug creek as a placer mine. Commencing at this monument and notice which is placed at the northeast corner of claim and running 600 feet southwesterly thence 1500 feet northwesterly; thence 600 feet northeasterly; thence 1500 feet southeasterly to place of beginning.

All corners being marked by stone monuments, posts & notices. I also claim all water and water privileges contained therein or thereon, also all rights granted by the laws of Arizona and the laws of the United States. This claim lies on Big Bug creek, in Big Bug Mining Dietrict, Yavapai Co. Arizona. And is situated about 600 feet southwesterly from Onyx claims Nos 1-2 & 4, said onyx claims being owned by O'Neal, Dougherty and others

and joins on the southwest and runs parallel with the Mamie Placer mine located by the undersigned, This claim shall be known as the Martie placer mine, and is situated immediately southwest of Joe Mayers residence. Dated on the ground this 25th. day of March A.D. 1892.

Attest: Jess Davis. H.A. Young. Locator Joe Mayer.

Recorded at request of Joe Mayer, March 29th A.D. 1892, at 9 oclock A.M. in Book 34 of mines, pages 96 & 97, Records of Yavapai County, Arizona.

(Seal) Charles H. Akers. County Recorder.

TERRITORY OF ARIZONA, COUNTY OF YAVAPAI.

I, E. I. JOHNSON, County Recorder in and for said county and territory, and custodian of the Records thereof do hereby certify that I have compared the above and foregoing with, and the same is a full, true and correct copy of the location notice of the Martie Placer Mining claim as the same appears on the records in Book 34 of Mines, pages 96 + 97, Records of Yavapai County, Arizona.

In WITNESS WHEREOF, I have hereunto set my hand and affixed my official seal into the...

E. I. Johnson County Recorder.

Notice of Re-location of the "Old Joe" Placer Mine  
 I the undersigned do claim and have this day located 1600 in length by 600 feet in width of this ground lying along Big Bug Creek as a Placer Mine Commencing at this monument and notice which is placed at the northeast corner of claim and running 600 feet southwesterly thence 1600 feet Northwesterly thence 600 feet Northeasterly thence 1600 feet southeasterly to place of beginning all corners being marked by stone monuments stakes and notices. I also claim all water & water privileges and all timber and valuable deposits contained thereon or therein also all rights granted by the laws of this district and the laws of the United States. This claim is situated on Big Bug Creek in Big Bug Mining District Yavapai County Arizona and joins the "Bertha" Placer mine on the southwest and the southeast side lines of this claim join the southwest end lines of Placer & Quyx claims Nos 10 - "Hraction" and "Bob Tail" No. 10. Placer & Quyx claim belongs to Dougherty O'Neil & others and the "Bob Tail" was located by Joe Mayer. This claim lies about 2000 feet Northwesterly from Joe Mayers Station - and shall be known as the "Old Joe No. 2" Placer Mine. dated on the ground this first day of January. A.D. 1894.

Attest -

Jess Davis  
 H A Young

Joe Mayer  
 - Locator

Old Joe No. 2  
Joe Mayer  
Big Bug  
Jan'y 1st. 1894.

The "Old Joe" Placer Mine <sup>No. 2.</sup>

RECORDED AT REQUEST OF

Joe Mayer  
Jan'y 2nd A. D., 1894.

At 9 o'clock A. M.

In Book 409 Mines

Pages 184, 185.

Records of Yavapai County, Arizona.

Alex. O. Brodie  
County Recorder.

By J. A. Little Deputy.

Notice of relocation of the Bell Placer Mine <sup>34</sup>  
I the undersigned do claim and have this day located 1500 feet in length by 600 feet in width of this ground lying along Big Bug creek as a Placer mine commencing at this monument and notice which is placed at the southeast corner of claim and running 600 feet south westerly thence 1500 feet north westerly thence 600 feet north easterly thence 1500 feet south easterly to place of beginning, all corners being marked by stone monuments, stakes and notices, I also claim all water and water privileges, all timber, and all valuable deposits contained therein or thereon also all rights granted by the laws of this district and the laws of the United States, this claim is situated on Big Bug creek in Big Bug mining district Yavapai Co Arizona, and joins on the southwest and runs parallel with the "Old Joe" Placer Mine which lies about 600 feet southwest of Placer Quays claims No 10 & traction, the said mine being owned by Big Bug Quays Co. This claim lies about 600 feet south westerly from the "Bob Laid" Placer mine located by Joe Mayer and lies about 2000 feet north westerly from Joe Mayers residence and station this claim shall be known as the "Bell" Placer Mine, <sup>1032</sup> dated on the ground this first day of January A.D., 1894

Witness

Jess Davis

H.A. Young

Joe Mayer

Locutor

The "Bell" Placer Mine <sup>No 2</sup>

Bell. No. 2.  
Jos Mayer  
Big Bug  
Jan'y 1st. 1894

III

RECORDED AT REQUEST OF

Jos Mayer  
Jan'y 2nd A. D., 1894.

At 9 o'clock A. M.

In Book 409 Mines

Pages 183. 184

Records of Yavapai County, Arizona.

Alex O. Brodie  
County Recorder.

By J. A. Little Deputy.

Notice of The Re-location of the "Jockey" Placer Mine  
 I the undersigned do claim and have this day  
 located 1500 feet in length by 600 feet in width of  
 this ground lying along Big Bug creek as a Placer  
 mine commencing at this monument and notice  
 which is placed at the Northeast corner of claim  
 and running 600 feet in a southwesterly direction  
 thence 1500 feet in a northwesterly direction thence  
 600 feet in a northeasterly direction thence 1500 feet  
 in a southeasterly to place of beginning all corners  
 being marked by stone monuments stakes & notices  
 I also claim all water and water privileges -  
 all mineral - Timber - and all valuable deposits contain-  
 ed therein or thereon also all rights granted by  
 the laws of this district and the laws of the  
 United States. This claim is situated on Big  
 Bug Creek in Big Bug Mining District Yavapai  
 County Arizona and joins on the south  
 west and runs parallel with the "Bertie"  
 Placer mine and lies about 600 feet southwest  
 from Placer & Quartz claims Nos. 1, 3, & 10 said Quartz  
 claims being owned by Dougherty, Quail  
 and others, and lies about 1000 feet north  
 westerly from Joe Mayers residence and Station  
 This claim shall be known as the "Jockey" No 2  
 Placer mine - dated on the ground this first  
 day of January A.D. 1894.

attest -  
 J. A. Young  
 H. A. Young

Joe Mayer  
 Local

The "Jockey" Place <sup>No. 2</sup> Mine

Jockey No. 2  
Joe Mayer  
Big Run  
January 1st, 1894

RECORDED AT REQUEST OF

Joe Mayer  
January 2nd A. D., 1894  
At 9 o'clock A. M.

In Book 409 miles  
Pages 186, 187.

Records of Yavapai County, Arizona.

Alex. C. Bodie  
County Recorder.  
By J. A. Frite Deputy.



Notice of Re-Location of The Bertie Placer Mine  
 I the undersigned do claim and have this day  
 located 1500 feet in length by 600 feet in width of this ground  
 and lying along Big Bug Creek as a Placer Mine  
 Commencing at this monument and notice which  
 is placed at the Northeast corner of claim and  
 running 600 feet south westerly thence 1500 feet north  
 westerly thence 600 feet northeasterly thence 600 feet  
 southeasterly to place of beginning all corners being  
 marked by stone monuments stakes and notices I  
 also claim all water and water privileges - all timber  
 and all valuable deposits contained therein or thereon  
 also all rights granted by the laws of this District  
 and the laws of the United States. This claim lies  
 on Big Bug Creek in Bug Bug Mining District Yavapai  
 County Arizona and the North East side line of  
 this claim joins the southwest end lines of  
 Placer & Quartz claims Nos 1-3 and 10 - said Quartz claims  
 are owned by Dougherty, Abel and others. This  
 claim also joins the "Manie" Placer Mine on the  
 northwest and lies about 1000 feet northwesterly  
 from Joe Mayers residence and Station this claim  
 shall be known as The Bertie No. 2. Placer Mine  
 dated on the ground this first day of January  
 A.D. 1894.

Attest

Jess Davis  
 H. A. Young

Joe Mayer  
 Locator

The Bertie Placer Mine <sup>No. 2</sup>

Bertie No. 2.  
for Mayer  
Big Bug.  
Jan 1st 1894

RECORDED AT REQUEST OF

Jo Mayer  
Jan. 2nd A. D., 1894.  
At 9 o'clock A. M.

In Book 409 Mines  
Pages 185: 186.

Records of Yavapai County, Arizona.

Alex O. Brodie  
County Recorder,  
By J. A. Little, Deputy.

Notice of Relocation of the Mamie Placer Mine  
 I the undersigned do claim and have this  
 day located 1500 feet in length by 600 feet in width  
 of this ground lying along Big Bug Creek as a  
 Placer Mine commencing at this monument and  
 notice which is placed at the north east corner  
 of claim and running south westerly 600 feet  
 thence north westerly 1500 feet thence 600 feet north easterly  
 thence 1500 feet south easterly to place of beginning, all  
 corners being marked by stone monuments stakes  
 and notices I also claim all water and water privi-  
 -leges and all mineral and valuable deposits and  
 timber contained therein or thereon also all rights  
 granted by the laws of this district and the laws  
 of the United States. This claim lies on Big Bug Creek  
 in Big Bug Mining District - Yavapai Co Arizona and  
 is situated at the southwest end of Placer Quartz  
 Claims Nos 1-2 T.H. said Quartz Claims being owned  
 by J.W. Dougherty - Wm Q. Atail the Mc Bros. and others  
 the northeast side lines of this claim join the  
 southwest end lines of the above named claims  
 Joe Mayers. Houses and Barns stands of on the  
 southwest end of this claim - This claim shall  
 be known as The Mamie No 2, Placer Mine dated  
 on this ground this first day of January. A.D. 1894.

{ Allst }

Jess Davis }  
 H.A. Young }

} Joe Mayer  
 } -- Locator

Matine No. 2

Joe Mayer

Big Berg.

Jan'y 1st 1894.

The "Matine" Placer Mine <sup>No. 2.</sup>

111  
'

RECORDED AT REQUEST OF

Joe Mayer

Jan'y 2nd A. D., 1894.

At 9 o'clock A. M.

In Book 409 Mines

Pages 181, 182.

Records of Yavapai County, Arizona.

Alex O. Brodie

County Recorder.

By J. A. Little Deputy.

J. A. Mayer <sup>clerk</sup>

Notice of Relocation of the "Martie" Placer Mine  
 I the undersigned do claim and have this day  
 located 1500 feet in length by 600 feet in width <sup>of this</sup> Ground  
 lying along on the south side of Big Bug creek as  
 a Placer Mine commencing at this monument and  
 notice which is placed at the northeast corner of  
 claim and running 600 feet southwesterly thence  
 1500 feet northwesterly, thence 600 feet northeasterly thence  
 1500 feet southeasterly to place of beginning all corners  
 being marked by stone monuments and notices, I also  
 claim all water and water privileges, all timber and  
 all valuable deposits contained therein or thereon also  
 all rights granted by the laws of this district and the  
 laws of the United States. This claim lies on the south  
 side of Big Bug creek in Big Bug Mining District  
 Yavapai County Arizona and is situated about 600  
 feet southwesterly from Quartz claims Nos. 1 & 2. Said  
 Quartz claims being owned by the Big Bug Quartz Co.  
 This claim joins on the southwest and runs parallel  
 with the "Martie" Placer Mine, and is situated south-  
 west of Joe Mayers residence. This claim shall be  
 known as the "Martie" Placer Mine No. 2, dated on  
 the ground this first day of January, A.D. 1894

Attest—  
 Jess Davis  
 H. A. Young

Joe Mayer  
 } Locater

Mantle No. 2,  
Joe Mayer  
Big Bug  
Jan'y. 1st. 1894

<sup>No. 2</sup>  
The "Mantle" Paper Mine

RECORDED AT REQUEST OF

Joe Mayer  
Jan'y 2nd A. D., 1894  
At 9 o'clock A. M.

In Book 409 Mines  
Pages 187. 188.

Records of Yavapai County, Arizona.

Alex. O. Goodie  
County Recorder.

By J. A. Girdler Deputy.

# Notice of relocation of the Polygon Placer Mine

We the undersigned do claim and have this located, a Placer & Quartz mine which lies in a polygon shape and is described as follows. Commencing at this monument and notice which is placed at the north west corner and running 894 feet easterly thence 900 feet southerly - thence northwesterly 812 feet - thence northeasterly 350 feet - to place of beginning, all corners being marked by stakes and notices, we also claim all rights to water-timber and all valuable deposits contained therein or thereon. This claim is situated on Big Bug creek in Big Bug Mining District - Yavapai County Arizona and is described as follows, is bounded on the north by Placer and Quartz mine No. 8. Owned by the Big Bug Quartz Co, and on the south by Joe Mayer Homestead claim - on the east by H. A. Youngs Homestead claim, and on the west by Placer & Quartz mine No. 4, also belonging to the Big Bug Quartz Co, this claim shall be known <sup>as the</sup> Polygon No. 2. Placer & Quartz claim dated on the ground this first day of January A.D. 1894

Attest -  
H. A. Young

Joe Mayer  
Jesse Davis  
Locators

*M.H.I.*  
*Miss*  
The Polygon, Placer & Quartz

Polygon no. 2.  
Joe Mayer  
Craig Berg  
January 1st 1894

RECORDED AT REQUEST OF

Joe Mayer  
January 2nd A. D., 1894.

At 9 o'clock A. M.

In Book 409 Mines

Pages 188-189.

Records of Yavapai County, Arizona.

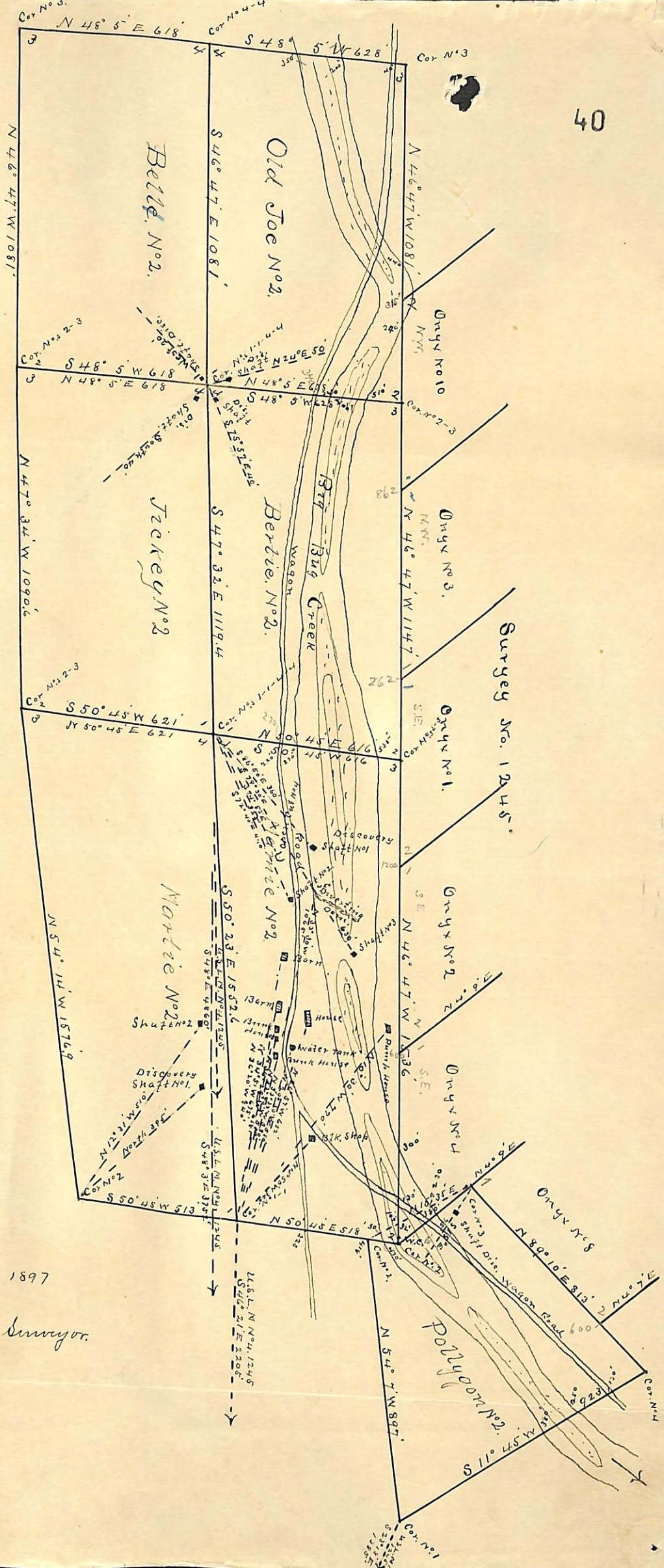
Alex. O. Brodie

County Recorder.

By J. A. Little Jr Deputy.



Survey No 1263  
Prescott Land District



Surveyed Sept. 3-8. 1897  
by J. J. Fisher  
U.S. Dep. Min. Surveyor.

(4-687.)

# Surveyor General's Certificate of Approval of Field Notes and Survey of Mining Claim.

Department of the Interior,

Office of U. S. Surveyor General,

Tucson Arizona

November 9<sup>th</sup>, 1897

I, U. S. Surveyor General for District of Arizona,

do hereby certify that the foregoing and hereto attached Field Notes and Return of the

Survey of the Mining Claim of Joe Mayer, known as the

Old Joe No 2, Bell No 2, Jockey No 2, Bertie No 2,

Mamie No 2, Martie No 2 + Polygon No 2, ~~known as the~~

situate in Big Bug mining district,

Yavapai County, Arizona,

in Section 21, Township No. 12 N., Range No. 1 E. (approximately)

, designated as Survey No. 1265

executed by J. J. Fisher, U. S. Deputy Mineral

Surveyor, Sept. 3<sup>rd</sup> 8<sup>th</sup>, 1897, under my instructions dated

August 31, 1897, have been critically examined and the

necessary corrections and explanations made, and the said Field Notes and Return, and

the Survey they describe, are hereby approved. A true copy of the copy of the location

certificate filed by the applicant for survey is included in the field notes.

George Christ

U. S. Surveyor General for Arizona.