

MS -

0

1

6

1

5

## MINERAL SURVEY NO. 1615

Claims	M & B Desc.	Improvements	Loc. Notices
Black	21	35	5
Blue Bird	18	35	7
Butte	12	35	11
Climax	29	36	16
Gold Hill	22	35	6
Iron Range	9	34	3
Last Chance	19	36	14
Lime Point	28	36	17
Lone Pine	10	34	9
Lone Pine No. 2	15	34	10
Lone Pine No. 3	13	35	15
Needle Point	1	33	13
Pinnacle	26	37	19
Red Rock	16	34	4
Rock Butte	6	33	12
Silver Cliff No. 2	8	34	2
Sullivan	4	33	8
Tufa	27	36	18
Verde King	24	37	20
Walnut Creek	3	33	1

A

*Flood.*  
*Wash on*

B

1

(4-683.)

Mineral Survey No. 1615

Lot No. \_\_\_\_\_

Prescott

Land District.

FIELD NOTES

OF THE SURVEY OF THE MINING CLAIM OF

Verde King Copper Co.

KNOWN AS THE

Verde King Group.

Verde

Mining District,

Yavapai County, Arizona

Section \_\_\_\_\_, Township 16N, Range 2E

Surveyed under instructions dated Nov 27, 1901

by J. J. Fisher

U. S. Deputy Mineral Surveyor.

Claim located see loc. certificates

Survey commenced Dec. 3, 1901

Survey completed Dec 11, 1901

o 8-160

Adams

H. M. Gibbs

att'y for claimant

Jerome

Arizona

# POOR QUALITY

**The following pages are scanned at the best possible quality setting. The original pages are of poor quality and this is the best possible reproduction.**

# PRELIMINARY OATHS OF ASSISTANTS IN SURVEY OF MINING CLAIM.

We, E. H. Draper and James B. Harrison, do solemnly swear that we will well and faithfully execute the duties of chain carriers; that we will level the chain upon even and uneven ground and plumb the tally-pins, either by sticking or dropping the same; that we will report the true distance to all notable objects, and the true length of all lines that we assist in measuring, to the best of our skill and ability, and in accordance with instructions given us, in the survey of the Mining Claim of Verde King Copper Co

known as the Walrus Creek, Silver Cliff No. 2, Iron Range, Red Rock, Black, Gold Hill, Blue Bird, Suliman, Lone Pine, Lone Pine No. 2, Bull, Rock Butte, Needle Point, East Change, Lone Pine No. 3, Climax, Lone Pine No. 1, Tuba, Pinnacle and Verde King mining district, situate in Verde County, Arizona, in Section \_\_\_\_\_, Township No. \_\_\_\_\_, Range No. \_\_\_\_\_.

E. H. Draper, Chainman.  
James B. Harrison, Chainman.

Subscribed and sworn to by the above-named persons before me this 34 day of Dec, 1801.

9 4

J. J. Fisher  
Notary Public

I, James B. Harrison, do solemnly swear that I will well and truly perform the duties of axeman, in the establishment of corners and other duties, according to instructions given me and to the best of my skill and ability, in the survey of the Mining Claim of Verde King Copper Co

known as the Walrus Creek, Silver Cliff No. 2, Iron Range, Red Rock, Black, Gold Hill, Blue Bird, Suliman, Lone Pine, Lone Pine No. 2, Bull, Rock Butte, Needle Point, East Change, Lone Pine No. 3, Climax, Lone Pine No. 1, Tuba, Pinnacle and Verde King more fully described in the preceding affidavit.

James B. Harrison, Axeman.

Subscribed and sworn to by the said James B. Harrison before me this 35 day of Dec, 1801.

9 4

J. J. Fisher  
Notary Public

I, E. H. Draper, do solemnly swear that I will well and truly perform the duties of flagman, in the establishment of corners and other duties, according to instructions given me and to the best of my skill and ability, in the survey of the Mining Claim of Verde King Copper Co

known as the Walrus Creek, Silver Cliff No. 2, Iron Range, Red Rock, Black, Gold Hill, Blue Bird, Suliman, Lone Pine, Lone Pine No. 2, Bull, Rock Butte, Needle Point, East Change, Lone Pine No. 3, Climax, Lone Pine No. 1, Tuba, Pinnacle and Verde King more fully described in the preceding affidavit.

E. H. Draper, Flagman.

Subscribed and sworn to by the said E. H. Draper before me this 3 day of Dec, 1801.

9 4

J. J. Fisher  
Notary Public

## NEEDLE POINT LODE.

Feet.

Beginning at cor. No. 1 at the intersection of line 2-3, Survey No. 1284, No. 12 Lode, at S. 86° 2' W. 152 ft. from cor. No. 3, identical with N.E. cor. of location.

A porphyry stone 4 x 8 x 24 ins, set 1 ft. in ground alongside a mon of stones 3 x 3 ft. Stone marked N.P.No. 1-1615.

A X on a porphyry rock in place marked B.R.N.P. No. 1-1615, brs. N. 21° 45' E. 28.3 ft.

A X on a porphyry rock in place, marked B.R.N.P. No. 1-1615 brs. N. 7° 15' W. 29.8 ft.

U.S.M.M.No. 1 V.D. brs. N. 28° 20' W. 1724.1 ft..

Thence S. 11° 45' E.

Var. 14° E.

714.2 To cor. No. 2, which is also cor. No. 2 of the Cleopatra Lode, survey No. 1285, and cor. No. 4 Rock Butte and cor. No. 1 Silver Cliff lodes of this Survey.

A porphyry stone 8 x 8 x 18 ins. above ground stone marked S.C.No. 1-1615, R.B.No. 4-1615, and N.P. No. 2-1615. Also marked C No. 2-1285..

A X on a porphyry rock in place marked B.R.R.B. No. 4-1615, brs. N. 23° 45' E. 22.3 ft.

A X on a porphyry rock in place marked B.R.S.C.No. 1-1615, brs. S. 83° 10' W. 21.5 ft. Identical with cor. of location.

Thence S. 51° 15' W.

Var. 14° E.

300 To S.C.E. which is also the N.C.E. of Silver Cliff Lode of this Survey.

A porphyry stone 8 x 10 x 30 ins. set 1 ft. in ground alongside a mon of stones 3 x 3 ft. Stone marked S.C.E. N.P. No. 1615 and N.C.E.S.C.No. 1615.

Feet	
600	<p>To cor.No.3, which is also cor.No.4 Silver Cliff cor.No.1 Iron Range and cor.No.2 Walnut Creek Lodes of this Survey, identical with cor.of location.</p> <p>A porphyry stone 10 x 12 x 24 ins. set 1ft. in ground alongside a mon. of stones 3 x 3 ft. Stone marked N.P.No.3-1615, W.C.No.2-1615, S.C.No.4-1615 and I.R.No.1-1615.</p> <p>A X on a porphyry rock in place marked B.R.I.R. No.1-1615, brs.S.43° 5' W. 28.8 ft.</p> <p>A X on a porphyry rock in place marked B.R.W.C. No.2-1615, brs.S.62° W.33.3 ft.</p> <p style="text-align: center;">Thence N.11° 45'W. Var.14° E.</p>
886.9	<p>To cor.No.4, original cor.of location brs. N. 11° 45'W. 172.3 ft.</p> <p>A porphyry stone 6 x 8 x 24 ins. set 1 ft. in ground alongside a mon. of stones 3 x 3 ft. Stone marked N.P.No.4-1615.</p> <p>A X on a porphyry rock in place marked B.R.N.P.No. 4-1615, brs.N.19° 8' E. 19.1 ft.</p> <p>A X on a porphyry rock in place marked B.R.N.P. No.4-1615, brs.N.75° W . 33.5 ft.</p> <p style="text-align: center;">Thence N.51° 15'E. Var.14° E.</p>
300	<p>To cor.No.5, which is also the N.C.E.of claim.</p> <p>A porphyry stone 6 x 8 x 24 ins. set 1 ft. in ground alongside a mon. of stones 3 x 3 ft. Stone marked N.P.No.5-1615.</p> <p>A X on a porphyry rock in place marked B.R.N.P. No.5-1615, brs.S.75° 25'W. 36.5 ft.</p>

SURVEY 1615.

Feet

Thence N.86° 2'E.

Var.14° E.

269.8 To cor.No.1, the place of beginning survey of exterior boundaries.

\* \* \* \*

WALNUT CREEK LODE.

Beginning at cor.No.1, identical with N.E.Cor. of location, at intersection of line 2-3, No.13 Lode, Survey No.1284, at S.86° 2'W. 91.6 ft. from cor.No.3.

A porphyry stone 6 x 8 x 24 ins set 1ft. n ground alongside a mon. of stones 3 x 3 ft. Stone marked W.C.No.1-1615 .

A X on a porphyry rock in place marked B.R.W.C.No.1-1615, brs.S.7° E.24.3 ft.

A X on a porphyry rock in place marked B.R.W.C.No.1-1615, brs.N.9° 20' W. 17.5 ft.

U.S.M.M.No.1 V.D., brs.N.10° 22'W.1578.2 ft.

Thence S.11° 45'E.

Var.14° E.

172.3 To cor.No.4, Needle Point Lode of this Survey.

1059.6 To cor.No.2, which is also cor.No. 3 Needle Point, cor.No. 4 Silver Cliff, and cor.No.1 Iron Range Lodes of this Survey. Cor. described above.

Thence S.51° 15'W.

Var.14° E.

300 To S.C.E. which is also the N.C.E. of Iron Range Lode of this Survey.

A porphyry stone 6 x 8 x 36 ins. set 1 ft. in ground alongside a mon. of stones 3 x 3 ft. Stone marked S.C.E.W.C.No1615 and N.C.E.I.R.No.1615.

600 To cor.No.3, which is also cor.No.4 Iron Range, cor.No.1 Lone Pine, and cor.No.2 Sullivan Lodes of this Survey.



SURVEY 1615.

Feet

Cut a cross for cor.point on porphyry rock in place marked W.C.No.3-1615, and I.R.No.4-1615, and L.P.No.1-1615 and S.No.2-1615 . Alongside built a mon. of stones 3 x 3 ft. Identical with cor. of location.

Thence N.11° 45'W.

Var.14° E.

700 To W.S.Mon.

1232.3 To cor.No.4, original cor.of location brs. N.11° 45'W. 172.3 ft.

A porphyry stone 4 x 12 x 24 ins. set 1 ft. in ground alongside a mon. of stones 3 x 3 ft. Stone marked W.C.No.4-1615. No brs. available.

Thence N.51° 15'E.

Var.14° E.

300 To N.C.E. which is also cor.No.5.

A porphyry stone 5 x 6 x 24 ins. set 1 ft. in ground alongside a mon. of stones 3 x 3 ft. Stone marked W.C.No.5-1615. No brs. available.

Thence N.86° 2'E.

Var.14° E.

269.8 To cor.No.1 the place of beginning survey of exterior boundaries.

\* \* \* \*

SULIVAN LODGE.

Beginning at cor. No.1, the N.E.Cor. of location. A porphyry stone 5 x 12 x 24 ins. set 1 ft. in ground alongside a mon. of stones 3 x 3 ft. Stone marked S.No.1-1615.

A X on a porphyry rock in place marked B.R.S.No.1-1615, brs.S.87° 45'W. 25.2 ft.

U.S.M.M.No.1 V.D.brs.N.9° 5'E. 1610.4 ft.

SURVEY 1615.

Feet	
	<p style="text-align: center;">Thence S.11° 45'E. Var.14° E.</p>
172.3	To cor.No.4 Walnut Creek Lode of this Survey.
705	To E.S.Mon.
1405	To cor.No.2, which is also cor.No. 3 Walnut Creek, cor.No.4 Iron Range and cor.No.1, Lone Pine Lodes of this Survey. Cor.described above.
	<p style="text-align: center;">Thence .S 51° 15'W. Var.14° E.</p>
300	To S.C.E. which is also the N.C.E. of Lone Pine Lode of this Survey.
	<p style="text-align: center;">Cut a X on porphyry rock in place for center point. Marked S.C.E.S.-1615 and N.C.E.L.P. No.1615. Alongside built mon of stones 3 x 3 ft.</p>
600	To cor.No.3 which is also Cor.No.4 Lone Pine , cor No.5 Blue Bird, and cor.No.2 Last Change Lodes of this Survey. A porphyry rock 4 x 6 x 24 ins. set 1 ft. in ground alongside a mon. of stones 3 x 3 ft. Stone marked S.No.3-1615, L.P.No.4-1615, B.B.No.5-1615 and L.CNo.2-1615.
	<p style="text-align: center;">A X on a porphyry rock in place marked B.R.L.P. No.4-1615 brs.S.3° W.15.7 ft.</p>
	<p style="text-align: center;">A X on a porphyry rock in place marked B.R.S.No.3-1615, brs.S.52° 30' W. 21.4 ft.</p>
	<p style="text-align: center;">Thence N.3° 45'W. Var.14° E.</p>
619	To cor.No.4, which is also cor.No.1 of the Last Ch-ange Lode of this Survey . A porphyry stone 6 x 10 x 24 ins. set 1 ft. in ground alongside a mon. of stones 3 x 3 ft. Stone marked S.No.4-1615, and L.C.No.1-1615.
	<p style="text-align: center;">A X on a porphyry rock in place marked B.R.S.No.4-1615 brs.N.54° 20' E.23.9 ft. A cross on a porphyry</p>

SURVEY 1615.

Feet

rock in place marked B.R.L.C.No.1-1615, brs.N.28° 20' E.13.1 ft.

Thence North

Var.14°E.

53 To cor.No.4, Lucky Boy S.Ex.Survey No.1351

956 To cor.No.5,,original cor.of location brs.N. 170 ft.

A porphyry stone 8 x 10 x 24 ins.set 1 ft. in ground alongside a mon, of stones 3 x 3 ft. Stone marked S.No.5-1615.

A X on a porphyry rock in place marked B.R.S.No.5-1615 brs.S.6° 5' W. 41.9 ft.

A X on a porphyry rock in place marked B.R.S.No.5-1615 brs.N.85° W. 29.9 ft.

Thence N.51° 15'E.

Var.14° E.

284 To cor.No.1 the place of beginning survey of exterior boundaries.

\* \* \* \*

ROCK BUTTE LODGE.

Beginning at cor.No.1 which is also cor.No.3 Cleopatra Lode, Survey No.1285. Identical with cor. of location.

A porphyry stone 10 x 15 ins. 15 ins. above ground alongside a mon. of stones 3 x 3 ft. Stone marked R.E.No.1-1615, Also C.No.3-1285 .

U.S.M.M.No.1 V.D. brs.N.36° 4'W. 2655.7 ft.

Thence S.19 ° E.

Var.14° E.

920 To cor.No.2, which is also the N.C.E.of Venture N.

No.1

## SURVEY 1615.

## Feet

Survey No. 869 . Identical with cor.of location.

Cut a cross on porphyry rock in place marked  
R.B.No.2-1615, also N.C.E.V.No.1<sup>N</sup>.

Thence S.83° 30'W.

Var.14° E.

29 To S.C.E.

329 To cor.No.3, original cor.of location hrs.S.34° 7'  
E. 260 ft.

A porphyry stone 8 x 10 x 24 ins. set 1 ft. in  
ground alongside a mon. of stones 3 x 3 ft. Stone  
marked R.B.No.3-1615.

A X on a porphyry rock in place marked B.R.R.B.No.  
3-1615, hrs.S.58° 10' E. 20.1 ft.

Thence N.34° 7'W.

Var. 14° E.

263.7 To W.S.Mon.

1013.7 To cor.No.4, which is also cor.No.1 Silver Cliff  
and cor.No.2 of Needle Point Lodes of this Survey,  
and cor.No.2 Cleopatra Lode, Survey No.1285. Identical  
with cor.of location. Cor.described above.

Thence N.83° 30'E.

Var.14° E.

300 To N.C.E. which is also the S.C.E.Cleopatra Lode,  
Survey No.1285.

600 To cor.No.1, the place of beginning survey of exterior  
boundaries.

\* \* \* \*

SURVEY NO.1615.

Feet

SILVER CLIFF<sup>No. 2</sup> LODE.

Beginning at cor.No.1, the N.E.Cor.of location, which is also cor.No.2 Needle Point, cor.No.4 Rock Butte Lodes of this Survey, and cor.No.2 Cleopatra Lode, Survey No.1285. Cor. described above.

U.S.M.M.No.1 V.D. brs.N.23° 36'W.2416.7 ft.

Thence S.34° 07'E.

Var.14° E.

700

To E.S.Mon..

1013.7

To cor.No.3, Rock Butte Lode of this Survey.

1273.7

To cor.No.2, which is also cor.No.1 101 Lode,

Survey No.1413.

A porphyry stone 6 x 8 x 24 ins.set 1 ft. in ground alongside a mon. of stones 3 x 3 ft. Stone marked S.C.No.2-1615. Same stone marked 101 No.1-1413.

A X on a porphyry rock in place marked B.R.S.C.No. 2-1615, brs.S.21° 45'E. 13.6 ft.

Thence S.51° 15'W.

Var.14° E.

300

To S.C.E.

A sandstone 5 x 14 x 36 ins. set 1 ft. in ground alongside a mon. of stones 3 x 3 ft. Stone marked S.C.E.S.C.No.1615.

600

To cor.No.3, which is also cor.No.4 101 Lode Survey No.1413.

A sandstone 3 x 12 x 12 ins. above ground marked S.C.No.3-1615. Same stone marked 101 No.4-1413. No brs. available. Identical with cor. of location.

Thence N. 34° 7' W.

Var.14° E.

523.7

To W.S.Mon.

1273'7

To cor.No.4, which is also cor.No.3 Needle Point,

SURVEY NO.1615.

Feet

Cor. 2 Walnut Creek, and cor.No.1 Iron Range Lodes of this Survey. Cor. described above.

Thence N.51° 15'E.

Var.14° E.

300 To N.C.E.which is also S.C.E Needle Point Lode of this Survey. Mon. described above.

600 To cor.No.1, the place of beginning survey of exterior boundaries.

\* \* \* \*

IRON RANGE LODE.

Beginning at cor.No.1, which is the N.E. cor.of location, identical with same, which is also cor.No.4 Silver Cliff, cor.No.3 Needle Point, and cor.No.2 Walnut Creek Lode of this Survey. Cor. described above.

U.S.M.M.No.1 V.D. brs. N.10° 55' W. 2638 ft.

Thence S.34° 7' E.

Var.14° E.

750 To E.S.Mon.

1273.7 To cor.No.3 Silver Cliff Lode of this Survey.

1428.7 To cor.No.2 at intersection of line 1-4 Crown Point Lode, Survey No.1592 at S.39° 15'W. 69 ft.

A lime stone 4 x 12 x 24 ins. set 1 ft.in ground alongside a mon of stones 3 x 3 ft. Stone marked I. R.No.2-1615

A X on a lime stone in place marked B.R.I.R.No.2-1615 brs. S.71° 45'W. 13.5 ft.

Thence S.51° 15'W.

Var.14° E.

300 To S.C.E.

SURVEY NO.1615.

Feet A lime stone 5 x 8 x 24 ins. set ft. in ground alongside a mon. of stones 3 x 3 ft. Stone marked S.C.E.I.R.No.1615.

600 To cor.No.3, which is also cor.No.2 Lone Pine and cor.No.1 Butte Lodes of this Survey, identical with cor.of location.

A lime stone 6 x 8 x 24 ins. set 1 ft, on ground alongside a mon. of stones 3 x 3 ft. Stone marked I.R.No.3-1615, and L.P. No.2-1615, and B.No.1-1615.

A X on a lime stone in place, marked B.R.I.R.No.3-1615, brs.N.86° 30'E. 10.2 ft.

A X on a lime rock in place marked B.R.B.No.1-1615 brs.N.50° 30' E. 14.7 ft.

Thence N.34° 7' W.

Var.14° E.

678.7 To W.S.Mon.

1428.7 To cor.No.4, which is also cor.No.3 Walnut Creek Cor.No.2 Sullivan, and cor.No.1 Lone Pine Lodes of this Survey. Cor. described above.

Thence N.51° 15'E.

Var.14° E.

300 To N.C.E. which is also the S.C.E Walnut Creek Lode of this Survey. Mon. described above.

600 To cor.No.1, the place of beginning survey of exterior boundaries.

\* \* \* \*

LONE PINE LODE.

Beginning at cor.No.1, the N.E. Cor. of location, which is also cor.No.4 Iron Range, cor.No.3 Walnut Creek and cor.No.2 Sullivan Lodes of this Survey. Cor.described above.

U.S.M.M.No.1 V.D. brs.N. 0° 37'W. 2966 ft.





## SURVEY NO.1615.

Feet

Thence N.51° 15'E.

Var.14° E.

300 To N.C.E. which is also the S.C.E. of the Sullivan Lode of this Survey. Mon. described above.

600 To cor.No.1, the place of beginning survey of exterior boundaries.

\* \* \* \*

## BUTTE LODE.

Beginning at cor.No.1, the N.E. cor. of location. Identical with same, which is also cor.No.3 Iron Range and cor.No.2 Lone Pine Lodes of this Survey. Cor, described above ,

U.S.M.M.No.1 V.D. brs.N.11° 22' W.4231.6 ft.

Thence S.34° 7' E.

Var.14° E.

500 To E.S.Mon.

1000 To cor.No.2, identical with cor.of location.

A line stone 4 x 12 x 24 ins. set 1 ft. in ground alongside a mon. of stones 3 x 3 ft. Stone marked B.No.2-1615.

Cor. No.1 Legal Tender Lode, Survey No.1565 brs.N. 31° 50'E.570 ft.

No brs. available.

Thence S.51° 15'W.

Var.14° E.

300 To S.C.E.

A line stone 4 x 14 x 24 ins.set 1 ft. in ground alongside a mon. of stones 3 x 3 ft. Stone marked S.C.E.B.No.1615.

600 To cor.No.3, identical with S.W.Cor.of location.

A line stone 3 x 10 x 24 ins. set 1 ft. in ground alongside a mon. of stones 3 x 3 ft. Stone marked B.No.3-1615. No brs. available.

SURVEY NO.1615.

Feet

Thence N.34° 7' W.  
Var.14° E.

290.5 To cor.No.4, Lone Pine No.3 Lode of this Survey.

590.5 To W.S.Mon.which is also the N.C.E.Lone Pine No.3 Lode of this Survey.

890.5 To cor.No.1 Lone Pine No.3, and cor.No.2 Lone Pine No.2 Lodes of this Survey.

1000 To cor.No.4, which is also cor.No.3 Lone Pine Lode of this Survey. Cor. described above.

Thence N.51° 15'E.  
Var.14° E.

300 To N.C.E. which is also the S.C.E Lone Pine Lode of this Survey. Mon. described above.

600 To cor.No.1, the place of beginning survey of exterior boundaries.

\* \* \* \*

LONE PINE NO.3 LODE.

Beginning at cor.No.1 the N.W. Cor. of location, which is also cor.No.2, Lone Pine No.2 Lode of this Survey, identical with cor. of location.

A X on a lime stone in place marked L.P.No.2, 2-1615, and L.P.No.3, 1-1615.

A X on a lime rock in place marked B.R.L.P.No.2, 2-1615 brs.N. 24° E.37 ft.

A X on a lime rock in place marked B.R.L.P.No.3, 1-1615 brs.N.33° 35'E. 58 ft. Alongside cor.point built mon. of stones 3 x 3 ft.

U.S.M.M.No.1 V.D. brs.N.5° 17' W. 4634.4 ft.

Thence S.24° 30' W.  
Var.14° E.

581 To W.S.Mon.which is also cor.No.3 Lone Pine No.2, and cor.No.2 Red Rock Lodes of this Survey.

1219 To cor.No.2, which is also cor.No 3 Red Rock Lode

## SURVEY NO.1615.

Feet and cor.No.1 Verde King Lodes of this Survey.

Identical with cor.of location.

A lime stone 6 x 8 x 24 ins. set 1 ft. in ground alongside a mon. of stones 3 x 3 ft. Stone marked L.P.No.3, 2-1615, R.R.No.3-1615 and V.K.No.1-1615.

A X on a lime stone in place marked B.R.V.K.No.1-1615, brs.S.43° 20' E.13 ft.

A X on a lime stone in place marked B.R.V.K.No.1-1615, brs.N.85° 45'W.23.7 ft.

Thence S.34° 7' E.

Var.14° E.

300 To S.C.E.

A lime stone 6 x 12 x 24 ins. set 1 ft. in ground alongside a mon of stones 3 x 3 ft. stone marked S.C.E. L.P.No.3 No.1615.

600 To cor.No.3, identical with S.E.Cor.of location.

A lime stone 8 x 10 x 24 ins. set 1 ft. in ground alongside a mon. of stones 3 x 3 ft. Stone marked L.P.No.3,3-1615.

A X on a lime stone in place marked B.R.L.P.No.3, 3-1615, brs.N.80° 10'W. 14.8 ft.

Thence N.24° 30'E.

Var.14° E.

600 To E.S.Mon.

1219 To cor.No.4, identical with N.E.Cor.of location.

A lime stone 8 x 15 x 30 ins set 1 ft on ground alongside a mon. of stones 3 x 3 ft. Stone marked L.P.No.3,4-1615.

A X on a lime stone in place marked B.R.L.P.No.3, 4-1615, brs.N.82° 20'W. 12.6 ft.

A X on a lime rock in place marked B.R.L.P.No.3, 4-1615, brs.S.25° W.6.8 ft.

SURVEY NO.1615.

Feet	Thence N.34° 7' W. Var.14° E.
300	To N.C.E. A lime stone 8 x 8 x 24 ins. set 1 ft. in ground alongside a mon. of stones 3 x 3 ft. Stone marked N.C.E.L.P.No.3 No.1615.
600	To cor.No.1 the place of beginning survey of exterior boundaries.
	* * * *
	LINE PINE NO.2 LOPE.
	Beginning at cor.No.1 the N.E.Cor.of location, which is also cor.No.1 of the Blue Bird Lode of this Survey, identical with cor.of location.
	A porphyry stone 5 x 12 x 24 ins. set 1 ft. in ground alongside a mon. of stones 3 x 3 ft. Stone marked L.P.No.2,1-1615, and B.B.No.1-1615.
	A X on a porphyry rock in place marked B.R.L.P.No.2,1-1615, brs.N.68° 25'E. 6.9 ft.
	A X on a porphyry rock in place, marked B.R.B.β. No.1-1615 brs.N. 41° 52'E. 29 ft.
	U.S.M.M.No.1 V.D. brs.N.3° 53'E. 3629.7 ft.
	Thence S.34° 7' E. Var.14° E.
600	To E.S.Mon.
1090.5	To cor.No.3 Lone Pine and cor.No.4 Butte lode of this Survey.
1200	To cor.No.2, which is also cor.No.1, Lone Pine o. 3 Lode of this Survey. Cor.described above.
	Thence S.24° 30' W. Var.14° E.
262	To S.C.E.
	A lime stone 4 x 10 x 24 ins. set 1 ft. in ground alongside a mon. of stones 3 x 3 ft. Stone marked S.C.E.L.P.No.2 No.1615.

-16-

## SURVEY NO.1615.

Feet  
581

To cor.No. 3, which is also cor.No 2 of the Red Rock Lode of this Survey, identical with S.W.Cor.of location.

A lime stone 4 x 8 x 24 ins. set 1 ft. in ground alongside a mon. of stones 3 x 3 ft. Stone marked L.P.No.2, 3-1615, and R.R.No.2-1615.

No brs.available.

Thence N.34° 7' W.

Var.14° E.

600

To W.S.Mon.

1200

To cor.No.4, which is also cor.No.1 Red Rock Lode of this Survey.

A porphyry stone 10 x 16 x 24 ins. set 1 ft. in ground alongside a mon. of stones 3 x 3 ft. Stone marked L.P.No.2,4-1615, and R.R.No.1-1615.

No brs. available.

Thence N.24° 30' E.

Var.14° E.

319

To N.C.E.

A porphyry stone 5 x 12 x 30 ins. set 1 ft. in ground alongside a mon of stones 3 x 3 ft. Stone marked N.C.E. L.P.No.2 No.1615.

581

To cor.No.1, the place of beginning survey of exterior boundaries.

\* \* \* \*

RED ROCK LODE.

Beginning at cor.No.1, the N.E.Cor.of location, which is also cor.No.4 Lone Pine No.2 lode of this Survey. Cor.described above.

U.S.M.M.No.1 V.D. brs.N.6° 41'E. 4179.5 ft.

SURVEY NO.1615.

Feet

Thence S.34° 7'E.

Var.14° E.

600

To E.S.Mon.

1200

To cor.No.2, which is also cor.No.3 Lone Pine No.2 Lode of this Survey. Cor.described above.

Thence S.24° 30'W.

Var.14° E.

319

To S.C.E.

A lime stone 8 x 10 x 24 ins. set 1 ft. in ground alongside a mon. of stones 3 x 3 ft. Stone marked S.C.E.R.R.No.1615.

638

To cor.No.3, which is also cor.No.1 Verde King and cor.No.2 Lone Pine No.3 Lodes of this Survey. Cor. described above.

Thence N.34° 7' W.

Var.14° E.

600

To W.S.Mon. which is also cor.No.1 Pinnacle and cor No.4 Verde King Lodes of this Survey.

1200

To cor.No.4, which is also cor.No.4 Pinnacle, cor. No.1 Tufa, and cor.No.2 Blue Bird Lodes of this Survey.

A lime stone 10 x 10 x 24 ins. set 1 ft. in ground alongside a mon. of stones 3 x 3 ft. Stone marked R.R.No.4-1615, P.No.4-1615, T.No.1-1615, and B.B.No.2-1615.

A X on a lime stone in place marked B.R.T.No.1-1615 brs.S.77° 5'W.10.9 ft.

No other brs available.

Thence N.24° 30'E.

Var.14° E.

319

To N.C.E.

A lime stone 2 x 10 x 24 ins. set 1 ft. in ground alongside a mon.of stones 3 x 3 ft. Stone marked

SURVEY NO. 1615.

Feet

N.C.E.R.R.No.1615.

638 To cor.No.1, the place of beginning survey of exterior boundaries.

\* \* \* \*

BLUE BIRD LODE.

Beginning at cor.No.1, the N.E.Cor.of location, which is also cor.No.1 Lone Pine No.2 Lode of this Survey. Cor.described above.

U.S.M.M.No.1 V.D. brs.N.3° 53'E.3629.7 ft.

Thence S.24° 30'W.

Var.14° E.

581 To E.S.Mon. which is also cor.No.4 Lone Pine No.2 and cor.No.1,Red Rock Lodes of this Survey.

1219 To cor.No.2, which is also cor.No.4 of Red Rock cor.No.4 Pinnacle and cor.No.1 Tufa Lodes of this Survey. Cor.described above.

Thence N.81° 15'W.

Var.14° E.

300 To S.C.E. which is also the N.C.E. of the Tufa Lode of this Survey.

A lime stone 10 x 12 x 24 ins. set 1 ft. in ground alongside a mon of stones 3 x 3 ft. Stone marked S.C.E.B.B.No.1615 and N.C.E.T.No.1615.

557 To cor.No.3, which is also cor.No.2 Black Lode and cor.No.1 Lime Point and cor.No.4 Tufa Lodes of this survey.

A lime stone 10 x 12 x 24 ins. set 1 ft. in ground alongside a mon. of stones 3 x 3 ft. Stone marked B.B.No.3-1615,B.No.2-1615,L.P.No.1-1615 and T.No.4-1615.

A X on a lime stone in place marked L.P.No.1-1615 brs.S.18° 45'W. 15.9 ft.

SURVEY NO.1615.

Feet A cross on a lime stone in place marked B.R.T.No.4 - 1615 brs.S.89° E.17.5 ft.

Thence N.24° 30'E.

Var.14° E.

726.5 To W.S.Mon.

1476.5 To cor.No.4, which is also cor.No.3, Last Change and cor.No.1 Black Lodes of this Survey. Identical with cor.of location.

A porphyry stone 6 x 8 x 24 ins. set 1 ft. in ground alongside a mon. of stones 3 x 3 ft. Stone marked B.R.No.4-1615, B.No.1-1615, and L.C.No.3-1615.

No brs. available.

Thence S.81° 15'E.

Var.14° E.

257 To cor.No.5, which is also cor.No.4 Lone Pine cor.No.3 Sullivan, and cor.No.2 Last Change Lode of this Survey. Cor. described above.

Thence S.34° 7' E.

Var.14° E.

338.2 To cor.No.1, the place of beginning survey of exterior boundaries.

\* \* \* \*

LAST CHANGE LODE.

Beginning at cor.No.1, which is also cor. No.4 Sullivan Lode of this Survey, cor.described above.

U.S.M.M.No.1 V.D. brs.N.9° 55'E. 2765 ft. Cor. of location brs.N.53 ft.



## SURVEY NO. 1615.

Feet	Thence S.3° 45'E. Var.14° E.
619	To cor.No.2, which is also cor.No.3 Sullivan cor. No. 4 Lone Pine, and cor.No.5 Blue Bird Lodes of this Survey. Cor. described above.
	Thence N 81° 15'W. Var.14° E.
257	To cor.No.3, which is also cor.No.4 Blue Bird and cor.No.1 Black Lodes of this Survey, and the S.E.Cor. of TigerLode unsurveyed. Cor. described above.
	Thence N.27° W. Var.14° E.
702.2	To cor.No.4, at intersection of line 3-4 LuckyBoy S.Ex. Survey No.1351 at E. 65.8 ft. from cor.No.3. A porphyry stone 6 x 8 x 24 ins. set 1 ft. in ground alongside a mon of stones 3 x 3 ft. Stone marked L.C.No.4-1615. A X on a porphyry rock in place marked B.R.L.C.No. 4-1615 brs.S.67° 25' E. 19.9 ft.
	Thence East Var.14 ° E.
23 2.41	To cor.No.5 which is also the S.C.E.Lucky Boy S.Ex. Survey No.1351. A porphyry stone 5 x 12 x 24 ins. set 1 ft. in ground alongside a mon. of stones 3 x 3 ft. Stone marked L.C.No.5-1615. No brs. available.
	Thence S.81° 15'E. Var.14° E.
303.5	To cor.No.1, the place of beginning survey of ex-

-21-

## SURVEY NO.1615

Feet

terior boundaries.

\* \* \* \*

## BLACK LODGE.

Beginning at cor.No.1,the N.E.Cor.of location,  
which is also cor.No.4 Blue Bird and cor.No.3 Last  
Change Lode of this Survey. Cor. described above.

U.S.M.M.No.1 V.D. brs.N.11° 48' E.3373.6 ft.

Thence S.24° 30'W.

Var.14° E.

750 To E.S.Mon.

1476.5 To cor.No.2 which is also cor.No.3 Blue Bird,cor.  
No.4 Tufa, and cor.No.1 Lime Point Lode of this Survey.  
Cor.described above.

Thence N.81° 15'W.

Var.14° E.

300 To S.C.E.which is also the N.C.E. Lime Point Lode  
of this Survey.

A lime stone 6 x 10x 24 ins. set 1 ft. in ground  
alongside a mon. of stones 3 x 3 ft. Stone marked  
S.C.E.B.No.1615,and N.C.E.L.P.No.1615.

600 To cor.No.3,which is also cor.No.4 Lime Point,  
cor.No.1 Climax, and cor No.2 Gold Hill Lodes of this  
Survey. Identical with cor.of location.

A lime stone 5 x 14 x 24 ins. set 1 ft. in ground  
alongside a mon of stones 3 x 3 ft. Stone marked  
B.No.3-1615, L.P.No.4-1615,C.No.1 1615 and G.H.No.2-  
1615.

No brs.available.

SURVEY NO.1615.

Feet Thence N. 24° 30'E.  
Var.14° E.

726.5 To W.S.Mon.

1476.5 To cor.No.4, which is also cor.No.1 Gold Hill Lode of this Survey. Identical with cor.of location.

A porphyry stone 6 x 10 x 24 ins. set 1 ft. in ground alongside amon of stones 3 x 3 ft. Stone marked B.No.4-1615 and G.H.No.1-1615.

A X oh a porphyry rock in place marked B.R.G.H.No. 1-1615, brs.N.56° 45'E. 26.5 ft.

A X on a porphyry rock in place marked B.R.B.No.4-1615 brs.N. 33° E.36.7 ft.

Thence S.81° 15'E.  
Var.14° E.

300 To N.C.F.

A granite dtone 6 x 10 x 24 ins. set 1 ft. in ground alongside a mon. of stones 3 x 3 ft. Stone marked N.C.E.B.No.1615.

600 To cor.No.1 the place of beginning survey of exterior boundaries.

\* \* \* \*

GOLD HILL LODE.

Beginning at cor.No.1,the N.E.Cor.of location, identical withnsame, which is also cor.No.4 Black Lode of this survey. Cor. described above.

U.S.M.M.No.1 V.D. brs.N.21° 47' E. 3458 ft.

Thence S.24° 30'W.  
Var.14° E.

750 To E.S.Mon.

1476.5 To cor.No.2 which is also cor.No.3 Black, Cor.No.4 Lime Point, and cor.No.1 Climax Lode of this Survey.

## SURVEY NO.1615.

Feet Cor. described above.

Thence N.81° 15'W.

Var.14° E.

300 To S.C.E. which is also the N.C.E. of the Climax Lode of this Survey.

Cut a cross on a lime stone in place, marked S.C.E. G.H.No.1615 and N.C.E.C.No.1615. Alongside a mon. of stones 3 x 3 ft.

589 To cor.No.3, which is also cor.No.4 of the Climax Lode of this Survey.

A lime stone 5 x 10 x 24 ins. set 1 ft. in ground alongside a mon. of stones 3 x 3 ft. Stone marked G.H.No.3-1615, and C.No.4-1615.

A X on a lime rock in place marked B.R.G.H.No.3-1615 hrs.N.65° 15'E. 21.4 ft.

No other hrs, available. Cor.identical with location.

Thence N.24° 30'E.

Var.14° E.

726.5 To W.S.Mon.

1476.5 To cor.No.4, which is also cor.No.1 Red Jack Lode, Survey No.1271

A porphyry stone 8 x 10 x 24 ins. above ground, marked G.H.No.4-1615, same stone marked R.J.No.1-1271

A X on a porphyry rock in place marked B.R.G.H. No.4-1615 hrs.S.35° 15'E. 12.7 ft.

Thence S.81° 15'E.

Var.14° E.

269 To N.C.E.

SURVEY NO.1615

Feet

A porphyry stone 6 x 8 x 24 ins. set 1 ft. in ground alongside a mon of stones 3 x 3 ft. Stone marked N.C.E.G.H.No.1615.

569 To cor.No.1, the place of beginning survey of exterior boundaries.

\* \* \* \*

VERDE KING LODGE.

Beginning at cor.No.1, the N.E. cor.of location, which is also cor.No.3 Red Rock and cor.No.2 Lone Pine No. 3 Lodes of this Survey. Cor. described above.

U.S.M.M.No.1 V.D.brs. N.0° 47' E. 5724.7 ft.

Thence S.28° W.

Var.14° E.

750 To E.S.Mon.

848.7 To intersect line 1-2 E.L.D.Lode Survey No.1665 at N.74° 56'E. 362.9 ft. from cor.No.2.

1342.1 To intersect line 2-3 E.L.D.Lode at S.18° 52'E. 363.3 ft. from cor.No.2.

1500 To cor.No.2, identical with S.E.Cor. of location. A lime stone 6 x 8 x 24 ins. set 1 ft. in ground alongside a mon. of stones 3 x 3 ft. Stone marked V.K. No.2-1615.

No brs.available.

Thence N.34° 7' W.

Var.14° E.

300 To S.C.E.

A lime stone 4 x 6 x 24 ins. set 1 ft. in ground alongside a mon. of stones 3 x 3 ft. Stone marked S.C.E.V.K.No.1615.

600 To cor.No.3, which is also cor.No.2 of Pinnacle Lode of this Survey. Identical with cor of location.

## SURVEY NO.1615.

Feet	<p>A lime stone 6 x 8 x 24 ins.set 1 ft. in ground alongside a mon. of stones 3 x 3 ft. Stone marked V.K.No.3-1615,and P.No.2 -1615.</p> <p>A X on a lime rock in place marked B.R.V.K.No.3-1615, brs.N.56° 25'E. 6.5 ft.</p> <p>A X on a lime rock in plade marked B.R.P.No.2-1615 brs.N.30° 30 'W. 40.7 ft.</p>
750	<p style="text-align: center;">Thence N.28° E. Var.14° E.</p> <p>To W.S.Mon.</p>
1500	<p>To cor.No.4 which is also cor.No.1 Pinnacle Lode of this Survey. Identical with cor.of location.</p> <p>A lime stone 4 x 12 x 24 ins. set 1 ft. in ground alongside a mon. of stones 3 x 3 ft. Stone marked V.K.No.4-1615,and P. No.1-1615.</p> <p>A X on a lime rock in place marked B.R.V.K.No.4-1615 brs.S.35° 35'E.14.7 ft.</p> <p>A X on a lime rock in place marked B.R.P.No.1-1615 brs.S.47° 15'W. 14.9 ft.</p>
300	<p style="text-align: center;">Thence S.34° 7' E. Var.14° E.</p> <p>To N.C.E.</p> <p>A lime stone 5 x 12 x 24 ins, set 1 ft. in ground alongside amon. of stones 3 x 3 ft. Stone marked N.C.E.V.K.No.1615.</p>
600	<p>To cor.No.1,the place of beginning survey of exterior boundaries.</p>

## SURVEY NO. 1615

Feet	PINNACLE LODE.
	Beginning at cor. No. 1, the N.E. Cor. of location, which is also cor. No. 4 of the Verde King Lode of this Survey, cor. Described above.
	U.S.M.M. No. 1 V.D., brs. N. 4° 33' E. 5244 ft.
	Thence south 28° W.
	Var. 14° E.
750	To E.S. Mon.
1500	To cor. No. 2, which is also cor. No. 3 Verde King Lode of this Survey. Cor described above.
	Thence N. 34° 7' W.
	Var. 14° E.
300	To S.C.E.
	A lime stone 3 x 8 x 24 ins. set 1 ft. in ground alongside a mon. of stones 3 x 3 ft. Stone marked S.C.E.P. No. 1615.
600	To cor. No 3 which is also cor. No. 2 of the Tufa Lode of this survey, identical with cor. of location.
	A lime stone 4 x 10 x 24 ins. set 1 ft. in ground alongside a mon. of stones 3 x 3 ft. Stone marked P. No. 3-1615, and T. No. 2-1615.
	No brs. available.
	Thence N. 28° E.
	Var. 14° E.
750	To W.S. Mon.
1500	To cor. No 4, which is also cor. No. 4 Red Rock, cor. No. 2 Blue Bird and cor. No. 1 Tufa Lodes of this Survey. Cor. described above.

SURVEY NO.1615.

Feet

Thence S. 34° 7'E

Var.14° E.

300

To N.C.E.

A lime stone 10 x 10 x 24 ins. set 1 ft. in ground alongside a mon. of stones 3 x 3 ft. Stone marked N.C.E.P.No.1615.

600

To cor.No.1, place of beginning survey of exterior boundaries.

\* \* \* \*

TUFA LODGE.

Beginning at cor.No.1,the N.E.Cor.of location which is also cor.No.4 Pinnacle, cor.No.4 Red Rock and cor.No.2 Blue Bird Lode of this Survey. Cor.described above.

U.S.M.M.No.1 V.D. brs.N.9° 2' E. 4790 ft.

Thence S. 28° W.

Var.14° E.

750

To E.S.Mon.

1500

To cor.No.2,which is also cor.No.3 of the Pinnacle Lode of this Survey. Cor.described above.

Thence N.81° 15'W.

Var.14° E.

300

To S.C.E.

A lime stone 2 x 8 x 24 ins. set 1 ft. in ground alongside a mon. of stones 3 x 3 ft. Stonemarked S.C.E.T.No.1615

557

To cor.No.3,which is also cor.No.2 Lime Point lode of this Survey. Identical with cor.of location.

A lime stone 6 x 18 x 24 ins. set 1 ft. in ground alongside a mon. of stones 3 x 3 ft.



SURVEY NO.1615.

Feet Stone marked T.No.3-1615, and L.P.No.2-1615. No brs. available.

Thence N.28° E.

Var.14° E.

750 To W.S.Mon.

1500 To cor.No.4 which is also cor.No. 3 Blue Bird, cor. No.2 Black and cor.No.1 Lime Bint Lode of this Survey. Cor.described above.

Thence S.81° 15'E.

Var.14° E.

257 To N.C.E. which is also the S.C.E. of the Blue Bird Lode of this Survey. Mon. described above.

557 To cor.No.1, the place of beginning survey of exterior boundaries.

\* \* \* \*

LIME POINT LODGE.

Beginning at cor.No.1, the N.E.Cor.of location, which is also cor.No.4 Tufa, cor.No.3 Blue Bird, and cor.No. 2 Black Lodes of this Survey. Cor.described above.

U.S.M.M.No.1 V.D. brs.N.15° 39' E. 4824.8 ft.

Thence S.28° W.

Var.14° E.

750 To E.S.Mon.

1500 To cor.No.2, which is also cor.No.3 of the Tufa Lode of this Survey. Cor.described above.

SURVEY NO.1615.

Feet

Thence N.81° 15'W.

Var.14° E.

300

To S.C.E.

A lime stone 4 x 8 x 24 ins. set 1 ft. in ground alongside a mon. of stones 3 x 3 ft. Stone marked S.C.E.L.P.No.1615.

600

To cor.No.3 , which is also cor.No.2 of Climax Lode of this Survey, identical with corner of location.

A lime stone 8 x 8 x 24 ins. set 1 ft. in ground alongside a mon. of stones 3 x 3 ft. Stone marked L.P.No.3-1615 and C.No.2-1615. No brs. available.

Thence N.28° E.

Var.14° E.

750

To W.S.Mon.

1500

To cor.No.4, which is also cor.No.3 Black Lode , cor. No.2 Gold Hill Lode, and cor.No.1, Climax Lode of this Survey. Cor. described above.

Thence S. 81° 15'E.

Var.14° E.

300

To N.C.E. which is also the S.C.E of the Black Lode of this Survey. Mon. described above.

600

To cor.No.1 the place of beginning survey of exterior boundaries.

\* \* \* \*

CLIMAX LODE.

Beginning at cor.No.1, the N.E.Cor.of location, which is also cor.No.4 Lime Point, cor.No.3 Black, and cor.No.2 of Gold Hills Lodes of this Survey. Cor. described above.

U.S.M.M.No.1 V.D.brs.N.22° 36' E. 4933.5 ft.

SURVEY NO.1615.

Feet Thence S.28° W.

Var.14° E.

750 To E.S.Mon.

1500 To cor.No.2, which is also cor.No.3 of the Lime Point Lode of this Survey . Cor. described above.

Thence N.81° 15'W.

Var.14° E.

300 To S.C.E.

A lime stone 8 x 8 x 24 ins. set 1 ft. in ground alongside a mon. of stones 3 x 3 ft. Stone marked S.C.E.C.No.1615.

569 To cor.No.3, identical with S.W.Cor.of location.

A lime stone 5 x 12 x 24 ins. set 1 ft. in ground alongside a mon. of stones 3 x 3 ft. Stone marked C.No.3-1615.

A X on a lime rock in place marked B.R.C.No.3-1615 brs.N.38° W. 8.3 ft.

A X on a lime rock in place marked B.R.C.No.3-1615 brs N.58° ~~80~~ 5' E. 11.1 ft.

Thence N.28° E.

Var.14° E.

750 To W.S.Mon.

1500 To cor.No.4, which is also cor.No.3 of the Gold Hill Lode of this Survey. Cor.described above.

Thence S.81° 15 'E

Var.14° E.

269 To N.C.E., which is also S.C.E. of the Gold Hill Lode of this Survey. Mon. described above.

569 Tocor.No.1, the place of beginning survey of exterior boundaries.

## SURVEY NO. 1615.

Feet	AREA.	
	NEEDLE POINT LODE	10.355 Acres.
	WALNUT CREEK	14.593 "
	SULIVAN	13.147 "
	LAST CHANGE	5.554 "
	SILVER CLIFF LODE <sup>71-2</sup>	17.486 "
	IRON RANGE LODE	19.614 "
	LONE PINE	19.614 "
	BLACK	19.574 "
	GOLD HILL	18.564 "
	ROCK BUTTE	9.570 "
	BUTTE	13.729 "
	CLIMAX	18.493 "
	LIME POINT	19.499 "
	BLUE BIRD	17.319 "
	TUFA	18.103 "
	RED ROCK	15.005 "
	LONE PINE NO. 2	13.678 "
	PINNACLE	18.257 "
	LONE PINE NO. 3	14.339 "
	VERDE KING	
	Gross Area	18.257 Acres
	Less area in conflict with E.L.D. Lode, Sur- vey #1365	<u>1.503 "</u>
	Net Area	<u>16.754 "</u>
	Total Area Lode Claim	313.247 "

\* \* \* \*

## LOCATION.

This claim is located approximately in Tp. 16 N. R. 2 E. G. & S. R. Base Meridian, on unsurveyed land in the Verde Mining District, Yavapai County, Arizona Territory, and is bounded on the N. by Tiger and Tiger No. 2 Lodes, unsurveyed, Lucky Boy, S. Ex. Survey No. 1351, and No. 13 and No. 12 Lodes, Survey No. 1284, and Cleopatra Lode, Survey No. 1285; on the E. by 99, survey No. 1285, Venture North, Survey No. <sup>No. 1</sup> 869, 101 Survey No. 1413, and Crown Point, Survey No. 1592; on the south

SURVEY NO.1615.

by E.L.D., Survey No.1565, and on the W. by Red Jack No. 4 and Red Jack No.3.

\* \* \* \*

VEINS.

NEEDLE POINT.

Vein extends in a northerly direction 586.9 ft. and in a southerly direction, 300 ft. from discovery shaft.

WALNUT CREEK VEIN.

Extends 482.3 ft. in a northerly direction and 750 ft. in a southerly direction from the discovery shaft.

SULIVAN VEIN.

Extends 1112.5 ft. in a northerly direction and 308 in a southerly direction from the discovery shaft.

ROCK BUTTE VEIN.

Extends 520 ft. in a northerly direction and 493.7 ft. in a southerly direction from the discovery shaft.

SILVER CLIFF VEIN.

Extends 150 ft. in a northerly direction and 1123.7 in a southerly direction from the discovery shaft.

IRON RANGE VEIN.

Extends 750 ft. in a northerly direction and 678.7 ft. in a southerly direction from the discovery shaft.

LONE PINE VEIN.

Extends 50 ft. in a northerly direction and 1378.7 ft. in a southerly direction from the discovery shaft.

LONE PINE NO.2 VEIN.

Extends 200 ft. in a northerly direction and 1000 ft. in a southerly direction from the discovery shaft.

RED ROCK VEIN.

Extends 600 ft. in a northerly direction and 600 ft in a southerly direction from the discovery shaft.

LONE PINE NO.3 VEIN.

Extends 750 ft. in a southerly direction and 469 ft. in a northerly direction from the discovery shaft .

## SURVEY NO.1615.

## BUTTE VEIN.

Extends 250ft.in a southerly direction and 750 ft.  
in a northerly direction from the discovery shaft.

## LAST CHANGE VEIN.

Extends 200 ft. in a southerly direction and 546  
ft.in a northerly direction from the discovery shaft.

## BLUE BIRD VEIN.

Extends 100 ft.in a northerly direction and 1376.5  
ft.in a southerly direction from the discovery shaft.

## BLACK VEIN

Extends 750 ft.in a northerly direction and 726.5  
ft.in a southerly direction from the discovery shaft.

## GOLD HILL, VEIN.

Extends 200 ft.in a northerly direction and 1276.5  
ft.in a southerly direction, from the discovery shaft.

## CLIMAX VEIN

Extends 150 ft.in a northerly direction and 1350  
ft.in a southerly direction from the discovery shaft.

## LIME POINT VEIN.

Extends 150 ft.in a northerly direction and 1350  
ft.in a southerly direction from the discovery shaft.

## TUFA VEIN

Extends 120 ft.in a northerly direction and 1380  
ft.in a southerly direction from the discovery shaft.

## PINNACLE VEIN

Extends 70 ft.in a northerly direction and 1430  
ft.in a southerly direction from the discovery shaft.

## VERDE KING VEIN

Extends 600 ft.in a northerly direction and 900 ft.  
in a southerly direction from the discovery shaft.

SURVEY NO.1615.

EXPENDITURE OF FIVE HUNDRED DOLLARS.

I certify that the value of the labor and improvements upon this claim, placed thereon by the claimant and its grantors, is not less than \$500.00 for each location and that said improvements consist of:

NEEDLE POINT.

Discovery shaft No.1, 4 x 6 x 10 ft. deep, brs. N.11° 45'W. 300 ft. from the S.C.E.

Value \$100.00

Cross Cut Tunnel No.2, which brs. from cor.No.3 N.9° E. 235 ft. Tunnel 4 x 6 ft., course N.50° 50'W 200 ft.

Value 2000.00

WALNUT CREEK LODE.

Discovery Shaft No.1, which brs. from S.C.E.N. 11° 45'W. 750 ft. Shaft 4 x 6 ft. 10 ft. deep.

Value 100.00

Four Hundred dollars worth of the improvements on Cross Cut Tunnel No.2, Needle Point Lode, is to be credited to Walnut Creek Lode.

SULIVAN LODE.

Discovery Shaft No.1, which brs. from the S.C.E. Mon N.11° 11'W. 308 ft. Shaft 4 x 6 ft. 10 ft. deep.

Note. Four hundred dollars of the improvements on Tunnel No.2 Needle Point Lode is to be credited to the Sullivan Lode.

ROCK BUTTE LODE.

Discovery Shaft No.1 which brs. from cor.No.4 S.56° E. 720 ft. Shaft 4 x 6 ft., 150 ft. deep.

Value 1500.00

Tunnel No.2, which brs. from cor.No.4 S.56° E. 720 ft. Tunnel 4 x 6 ft.. Course S.34° 30'E. 185 ft.

Value 1850.00

## SURVEY NO. 1615.

Tunnel No. 3, which hrs. from cor. No. 4, S. 61° 15' E.  
529 ft. Tunnel 4 x 6 ft. Course S. 37° 45' E. 200 ft

Value 2000.00

SILVER CLIFF<sup>No 2</sup> LODE.

Discovery Shaft No. 1, which hrs. from N.C.E. Mon.  
S. 34° 7' E. 150 ft. Shaft 4 x 6 ft. 10 ft. deep.

Value 100.00

Tunnel No. 2, which hrs. from cor. No. 1 S. 22° 35' W.  
225 ft. Tunnel 4 x 6 ft. Course S. 22° 56' E. 560  
ft.

Value 8400.00

IRON RANGE LODE

Discovery Shaft No. 1, which hrs. from N.C.E. Mon.  
S. 34° 7' E. 750 ft. Shaft 4 x 6 ft. 10 ft. deep.

Value 100.00

Note. Four hundred dollars of the improvements on  
Tunnel No. 2 Silver Cliff Lode, is to be credited to  
the Iron Range.

LONE PINE LODE

Discovery shaft No. 1, which hrs. from N.C.E. Mon.  
S. 34° 7' E. 50 ft. Shaft 4 x 6 ft. 10 ft. deep.

Note. Four hundred dollars worth of improvements  
on Tunnel No. 2, Silver Cliff Lode, is to be credited  
to the Lone Pine Lode.

LONE PINE NO. 2 LODE.

Discovery Shaft No. 1, which hrs. from N.C.E. Mon.  
S. 34° 7' E. 200 ft. Shaft 4 x 6 ft. 10 ft. deep.

Value 100.00

Note. Four hundred dollars worth of improvements  
on Tunnel No. 2 Silver Cliff Lode, is to be credited  
to Lone Pine No. 2 Lode.

RED ROCK LODE

Discovery Shaft No. 1, which hrs. from N.C.E. Mon.  
S. 34° 7' E. 600 ft. Shaft 4 x 6 ft. 10 ft. deep.

Value 100.00

Note. Four hundred dollars of the improvements on  
Tunnel No. 2 Silver Cliff Lode, is to be credited to  
the Red Rock Lode.



## SURVEY NO.1615.

## LONE PINE NO.3 LODE.

Discovery Shaft No.1, which brs. from the S.C.E.Mon  
N.24° 30'E. 750 ft. Shaft 4 x 6 ft. 10 ft. deep.

Value 100.00

Note. Four hundred dollars of the improvements  
on Tunnel No.2 Silver Cliff Lode, is to be credited  
to Lone Pine No.3 Lode.

## BUTTE LODE.

Discovery Shaft No.1, which brs from S.C.E.Mon.  
N.34° 7'W. 250 ft. Shaft 4 x 6 ft. 10 ft. deep.

Value 100.00

Note. Four hundred dollars worth of the improve-  
ments on Tunnel No.2 Silver Cliff Lode is to be cred-  
ited to the Butte Lode.

## GOLD HILL LODE.

Discovery Shaft No.1, which brs. from the N.C.E.Mon  
S.24° 30'W.200 ft. Shaft 4 x 6 ft. 10 ft. deep.

Value 100.00

Cross Cut Tunnel No. 2, which brs. from cor.No.4  
S.56° E.264 ft. Tunnel 4 x 6 ft.324 ft. long. Course  
S.35° E.

Value 4860.00

## BLACK LODE

Discovery Shaft No.1, which brs. from the N.C.E.Mon.  
S.24° 30' W. 750 ft. Shaft 4 x 6 ft.10 ft. deep.

Value 100.00

Tunnel No.2, which brs. from cor.No.4 S.40° E.315  
ft. Tunnel 4 x 6 ft.30 ft. long.

Value 300.00

Shaft No.3, which brs. from cor.No.4 S.34° E.225  
ft. Shaft 4 x 6 ft. 20 ft. deep.

Value 200.00

## BLUE BIRD LODE.

Discovery Shaft No.1, which brs. from N.C.E.cor.

SURVEY NO.1615.

No.5, S. 24° 30'W. 100 ft. Shaft 4 x 6 ft.20 ft. deep.

Value 200.00

Note. Three hundred dollars worth of the improvements on prospect tunnel No.2, Gold Hill Lode, is to be credited to the Blue Bird Lode.

LAST CHANGE LODE.

Discovery Shaft No.1, which brs. from Cor.No.2 N. 27° 9'W. 200 ft. Shaft 4 x 6 ft.10 ft. deep.

Value 100.00

Note. Four hundred dollars worth of the improvements on tunnel No.2 Gold Hill Lode, is to be credited to Last Change Lode.

CLIMAX LODE.

Discovery Shaft No.1, which brs. from N.C.E.Mon. S.28° W. 150 ft. Shaft 4 x 6 ft. 10 ft. deep.

Value 100.00

Note. Four hundred dollars worth of the improvements on tunnel No. 2 Gold Hill Lode is to be credited to the Climax Lode.

LIME POINT LODE.

Discovery Shaft No.1, which brs. from the N.C.E. Mon.S.28° W.150 ft. Shaft 4 x 6 ft. 10 ft. deep.

Value 100.00

Note. Four hundred dollars of the improvements on Tunnel No.2 Gold Hill Lode is to be credited to the Lime Point Lode.

TUFA LODE.

Discovery Shaft No.1, which brs. from the N.C.E.Mon S.28° W.120 ft. Shaft 4 x6 ft.10 ft. deep.

Value 100.00

Note. Four hundred dollars worth of the improvements on ~~Gold~~ Tunnel No.2 Gold Hill Lode is to be credite to the Tufa Lode.

SURVEY NO.1615.

PINNACLE LODE.

Discovery Shaft No.1, which brs. from the N.C.E.Mon.  
S.28° W.70 ft. Shaft 4 x6 ft.10 ft. deep.

Value 100.00

Note. Four hundred dollars worth of the improve-  
ments on tunnel No.2 Gold Hill Lode, is to be credited  
to the Pinnacle Lode..

VERDE KING LODE.

Discovery Shaft No.1, which brs. from the N.C.E.Mon  
S.28° W. 600 ft. Shaft 4 x 6 ft. 10 ft. deep.

Value 100.00

Note. Four hundred dollarsworth of improvements  
on No.2 tunnel Gold Hill Lode is to be credited to the  
Verde King Lode.

\* \* \* \*

INSTRUMENT.

This survey was made with a Gurley Light Mountain  
Solar Transit. The courses were deflected from the  
true meridian as determined by direct solar observations  
The distances were measured with a 50-ft. steel ta pe  
and 100-foot steel chain.

Prescott, Arizona,

Dec.20,1901.

*J. J. Fisher*  
W.S. Deputy Mineral Surveyor.

# FINAL OATHS FOR SURVEYS.

## LIST OF NAMES.

A list of the names of the individuals employed by J. J. Fisher  
 United States Deputy Mineral Surveyor, to assist in running, measuring, and marking the lines  
 corners and boundaries described in the foregoing field notes of the survey of the mining claim  
 of Nevada King Copper Co.  
 known as the Wabun Creek, Silver Cliff No. 2, Iron Range, Red Rock, Black, Gold Hill, Blue Bird,  
Sullivan, Lone Pine, Lone Pine No. 2, Butte, Rock Butte, Needle Point, East Change, Lone Pine No. 3,  
Climax, Lime Point, Oupa, Primack & Nevada King  
 and showing the respective capacities in which they acted.

- C. H. Draper ..... , Chairman.
- Jas B Harrison ..... , Chairman.
- Jas B Harrison ..... , Assn.
- C. H. Draper ..... , Flagman.

## FINAL OATHS OF ASSISTANTS.

We, C. H. Draper  
 and Jas B Harrison ..... do solemnly swear that we assisted J. J. Fisher  
Fisher ..... United States Deputy Mineral Surveyor, in marking the corners and  
 surveying the boundaries of the mining claim of Nevada King Copper Co.

..... known as the Wabun Creek, Silver Cliff No. 2,  
Black, Gold Hill, Blue Bird, Sullivan, Lone Pine, Lone Pine No. 2, Butte, Rock Butte,  
Needle Point, East Change, Lone Pine No. 3, Climax, Lime Point, Oupa, Primack & Nevada King, represented  
 in the foregoing field notes as having been surveyed by said deputy mineral surveyor and under  
 his direction; and that said survey has been in all respects, to the best of our knowledge and  
 belief, faithfully and correctly executed, and the corner and boundary monuments established  
 according to law and the instructions furnished by the United States Surveyor-General for

Arizona

- C. H. Draper ..... , Chairman.
- James B Harrison ..... , Chairman.
- James B Harrison ..... , Assn.
- C. H. Draper ..... , Flagman.

Subscribed and sworn to by the above-named persons before me  
 this 11<sup>th</sup> day of June, 1901

J. J. Fisher  
Notary Public

(4-686.)

FINAL OATH OF U. S. DEPUTY MINERAL SURVEYOR

I, J. J. Fisher, U. S. Deputy Mineral Surveyor, do solemnly swear that, in pursuance of instructions received from the United States Surveyor General for Arizona, dated November 23<sup>rd</sup> 1901, I have, in strict conformity to the laws of the United States, the official regulations and instructions thereunder, and the instructions of said Surveyor General, faithfully and correctly executed the survey of the Mining Claim of Ward King Copper Co.

Walnut Creek, Silver Cliff No. 2, Iron Range, Red Rock, Black, Gold Hill, Blue Bird, Sullivan, Lone Pine, Lone Pine No. 2, Bull, Wolf, Buckle, Needle Point, East Change, Lone Pine No. 3, Climax, Lone Pine, Copper, Summit, the Ward King situate in Yavapai Mining District, Yavapai County, Arizona, in Section \_\_\_\_\_, Township No. \_\_\_\_\_, Range No. \_\_\_\_\_, and designated as Survey No. 1615, as represented in the foregoing field notes, which accurately show the boundaries of said mining claim as distinctly marked by monuments on the ground, and described in the attached copy of the location certificate, which was received by me from the Surveyor General with said instructions, and that all the corners of said survey have been established and perpetuated in strict accordance with the law, official regulations and instructions thereunder; and I do further solemnly swear that the foregoing are the true and original field notes of said survey and my report therein, and that the labor expended and improvements made upon said mining claim by claimant or its grantors are as therein fully stated, and that the character, extent, location and itemized value thereof are specified therein with particularity and full detail, and that no portion of said labor or improvements so credited to this claim has been included in the estimate of expenditures upon any other claim.

J. J. Fisher  
U. S. Deputy Mineral Surveyor.

Subscribed and sworn to by the said J. J. Fisher  
U. S. Deputy Mineral Surveyor, before me Thomas C. Job a Notary Public in  
and for Yavapai County, Arizona Territory this twenty-first  
day of December, A. D. 1901,

Thomas C. Job  
Notary Public.

o 3-154  
My Commission Expires July 7, 1902

Thomas C. Job

Affidavit of Five Hundred Dollars Improvements.

We, E. H. Draper, and Jas B. Harrison,

of lawful age, being first duly sworn according to law, depose and say: That we are acquainted with the Walnut Creek, Silver Cliff #2, Iron Range, Red Rock, Lone Pine #2, Butte, Black, Gold Hill, Blue Bird, Sullivan Lone Pine, and Nevada mining claim, situate in Verde Mining District, Yavapai County, Arizona Territory, for which Verde King Copper Co.

has made application for survey prior to application for patent under the provisions of the Act of Congress, approved May 10, 1872; and that the labor done and improvements made thereon by the applicant and its grantor exceed Five Hundred Dollars in value, and further, that we are not personally interested in said mine.

E. H. Draper  
James B. Harrison

TERRITORY OF ARIZONA,  
County of Yavapai } ss:

Sworn to and subscribed before me, this 11<sup>th</sup>

day of Dec, 1901.

J. J. Fisher  
Notary Public

"WALNUT CREEK MINE".

## NOTICE OF MINING LOCATION.

## Quartz Claim.

To all whom it may concern; This mining claim, the name of which is the Walnut Creek Mine Mining Claim, situate on lands belonging to the United States of America, and in which there are valuable mineral deposits, was entered upon and located for the purpose of exploration and purchase by Anton Feojak, the undersigned, on the 22 day of March, 1893.

The length of this claim is 1500 feet and a claim 750 feet in a northerly direction and 750 feet in a southerly direction from the center of the discovery shaft, at which this notice is posted, lengthwise of the claim, together with 600 feet in width of the surface grounds on each side of the center of said claim. The general course of the lode deposit and premises is from the north to the south.

The claim is situated and located in the Verde Mining District, in Yavapai County in the Territory of Arizona, about a mile  $\frac{1}{2}$  in a southerly direction from United Verde Smelter.

The surface boundaries of the claim are marked upon the ground as follows; Beginning at stone monument at a point in a northern direction 750 feet from the discovery shaft (at which this notice is posted), being in the center of the north end line of said claim; thence 500 feet to a westerly monument being the north west corner of said claim; thence 750 feet to a southerly monument at the center of the west side line of said claim; thence 500 feet to a southerly monument being at the south west corner of said claim; thence 500 feet to a southerly monument at the center of the south end of said claim; thence 500 feet to a southerly monument being at the south east corner of said claim; thence 750 feet to a monument being at the center of the east side line of said claim; thence 750 feet to a monument at the north east corner of said claim; thence 500 feet to the place of beginning.

All done under the provisions of Chapter 314 of title XXXII of the Revised Statutes of the United States and of an act of the General Assembly of Arizona, entitled "An act concerning mines", approved March 20th, 1893.

Dated and posted on the ground this 22 day of March 1893.

Anton Feojak.

Filed and recorded at request of Anton Feojak April 20<sup>th</sup> A.D. 1893, at 9:52 o'clock a.m. Book 50 of Mines, page 157, records of Yavapai County, Arizona.

(Seal) W. J. Johnson,  
County Recorder.

By W. J. Johnson,  
County Recorder.

\*\*\*\*\*

"SILVER CLIFF NO. 2"

AMENDED NOTICE OF MINING LOCATION.  
Lode Claim.

To all whom it may concern:

This mining Claim, the name of which is the SILVER CLIFF NO. 2 Mining Claim, situate on lands belonging to the United States of America, and in which there are valuable mineral deposits, was entered upon and located for the purpose of exploration and purchase by Anton Pejka a citizen of the United States, the undersigned, on the 8th day of May, 1899.

The length of this claim is 1500 feet, and I claim 150 feet in a northerly direction and 1350 feet in a southerly direction from the center of the discovery shaft, at which this notice is posted, lengthwise of the claim, together with 300 feet in width of the surface grounds, on each side of the center of said claim. The general course of the lode deposit and premises is from the Northwest to the southeast.

The claim is situated and located in the Verde Mining District, in Yavapai County, in the Territory of Arizona, about one and 1/2 miles in a southerly direction from United Verde smelter works.

The surface boundaries of the claim are marked upon the ground as follows: Beginning at a stone monument at a point in a northerly direction 150 feet from the discovery shaft (at which this notice is posted), being in the center of the north end line of said claim; thence 300 feet to a stone monument being the northeast corner of said claim; thence 750 feet to a stone monument at the center of the east side line of said claim; thence 750 feet to a stone monument at the southeast corner of said claim; thence 300 feet to a stone monument at the center of the south end of said claim; thence 300 feet to a stone monument, being at the southwest corner of said claim; thence 750 feet to a stone monument being at the center of the west side line of said claim; thence 750 feet to a stone monument at the northwest corner of said claim; thence 300 feet to the place of beginning.

All done under the provisions of Chapter Six, of Title XXXII, of the Revised Statutes of the United States, and of an Act of the General Assembly of Arizona, entitled "An Act Concerning Mines", approved March 20th, 1895, and amended March 2d, 1899.

Dated and posted on the ground this 3rd day of October, 1900.

Anton Pejka.

Filed and recorded at request of H.M. Gibbes, Oct. 13<sup>th</sup> A.D. 1900, at 9 o'clock a.m., Book 53 of Mines, page 475, Records of Yavapai County, Arizona.

(Seal) W.I. Johnson,  
County Recorder.

By F.E. Walker,  
Deputy Recorder.

\*\*\*\*\*



SILVER CLIF NO.2.

NOTICE OF MINING LOCATION.  
Quartz Claim.

To all whom it may concern:

This mining claim, the name of which is the SILVER CLIF, NO. 2 claim Mining Claim, situate on lands belonging to the United States of America, and in which there are valuable mineral deposits, was entered upon and located for the purpose of exploration and purchase by Anton Pecjak, the undersigned, on the Eighth day of May 1899.

The length of this claim is 1500 feet and we claim seven hundred fifty 750 feet in a Easterly direction and 750 feet in a Westerly direction from the center of the discovery shaft, at which this notice is posted, lengthwise of the claim, together with 300 feet in width of the surface grounds, on each side of the center of said claim. The general course of the lode deposit and premises is from the East to the West.

The claim is situated and located in the Verde Mining District, in Yavapai County, in the Territory of Arizona, about 1- $\frac{1}{2}$  one and quarter mile in a Southerly direction from from United Verde Smelter Works.

The surface boundaries of the claim are marked upon the ground as follows: Beginning at stone monuments at a point in a Easterly direction 750 feet from the discovery shaft (at which this notice is posted), being in the center of the East end line of said claim; thence 300 feet to a Northerly being the North East corner of said claim; thence 750 feet to a Westerly at the center of the North side line of said claim; thence 750 feet to a Westerly being at the Northwest corner of said claim; thence 300 feet to a Southerly at the center of the West end of said claim; thence 300 feet to a Southerly, being at the Southwest corner of said claim; thence 750 feet to a Easterly being at the center of the South side line of said claim; thence 750 feet to a Easterly at the Southeast corner of said claim; thence 300 feet to the place of beginning.

All done under the provisions of Chapter Six, of Title XXXII, of the Revised Statutes of the United States, and of an Act of the General Assembly of Arizona, entitled "An Act Concerning Mines", approved March 20, 1895.

Dated and posted on the ground this 8 day of May 1899.

Anton Pecjak.

Filed and recorded at request of Anton Pecjak, May 9<sup>th</sup> A.D. 1899, at 4:30 o'clock p.m., Book 53 of Mines, page 33, Records of Yavapai County, Arizona.

By P.J. Farley,  
Deputy Recorder.

(Seal) W.I. Johnson,  
County Recorder.

\*\*\*\*\*

44

"IRON RANGE".

AMENDED NOTICE OF MINING LOCATION.  
Lode Claim.

To all whom it may concern:

This Mining Claim, the name of which is the IRON RANGE Mining Claim, situate on lands belonging to the United States of America, and in which there are valuable mineral deposits, was entered upon and located for the purpose of exploration and purchase by Anton Pejka a citizen of the United States, the undersigned, on the 10th day of May, 1899.

The length of this claim is 1500 feet, and I claim 750 feet in a northwesterly direction and 750 feet in a southeasterly direction from the center of the discovery shaft, at which this notice is posted, lengthwise of the claim, together with 300 feet in width of the surface grounds, on each side of the center of said claim. The general course of the lode deposit and premises is from the northwest to the southeast.

The claim is situated and located in the Verde Mining District, in Yavapai County, in the Territory of Arizona, about one and 1/2 miles in a southerly direction from the United Verde smelting works.

The surface boundaries of the claim are marked upon the ground as follows: Beginning at a stone monument at a point in a northerly direction 750 feet from the discovery shaft (at which this notice is posted), being in the center of the north end line of said claim; thence 300 feet to a stone monument being the northeast corner of said claim; thence 750 feet to a stone monument at the center of the east side line of said claim; thence 750 feet to a stone monument being at the southeast corner of said claim; thence 300 feet to a stone monument at the center of the south end of said claim; thence 300 feet to a stone monument, being at the southwest corner of said claim; thence 750 feet to a stone monument being at the center of the west side line of said claim; thence 750 feet to a stone monument at the northwest corner of said claim; thence 300 feet to the place of beginning.

All done under the provisions of Chapter Six, of Title XXXII, of the Revised Statutes of the United States, and of an Act of the General Assembly of Arizona, entitled "An Act Concerning Mines", approved March 20th, 1895, and amended March 2d, 1899.

Dated and posted on the ground this 4th day of October, 1900.

Anton Pejka.

Filed and recorded at request of H.M. Gibbes Oct. 18" A.D. 1900, at 9 o'clock a.m., Book 53 of Mines, page 476, Records of Yavapai County, Arizona.

(Seal) W.I. Johnson,  
County Recorder.

By F.E. Walker,  
Deputy Recorder.

\*\*\*\*\*

IRON RANGE.

NOTICE OF MINING LOCATION.  
Lode Claim.

To all whom it may concern:

This Mining Claim, the name of which is the IRON RANGE Mining Claim, situate on lands belonging to the United States of America, and in which there are valuable mineral deposits, was entered upon and located for the purpose of exploration and purchase by Anton Pecjak & Co., the undersigned, on the 10 day of May 1899.

The length of this claim is 1500 fifteen hundred feet, and we claim <sup>700</sup> seven hundred feet in a westerly direction and eight hundred 300 feet in a easterly direction from the center of the discovery shaft, at which this notice is posted, lengthwise of the claim, together with tree hundred 300 feet in width of the surface grounds, on each side of the center of said claim. The general course of the lode deposit and premises is from the East to the West.

The claim is situated and located in the Verde Mining District, in Yavapai County, in the Territory of Arizona, about two (2) mile in a southerly direction from Jerome.

The surface boundaries <sup>is posted</sup> are marked upon the ground as follows: Beginning at stone monuments at a point in a easterly direction 800 eight hundred feet from the discovery shaft (at which this notice, being in the center of the East end line of said claim; thence 300 feet to a Southerly being the South corner of said claim; thence eight hundred (300) feet to a Westerly at the center of the South side line of said claim; thence seven hundred 700 feet to a westerly being at the west corner of said claim; thence 300 tre hundred feet to a Northerly at the center of the North end of said claim; thence 300 tre hundred feet to a Northerly, being at the North corner of said claim; thence seven hundred 700 feet to a easterly being at the center of the East side line of said claim; thence eight hundred feet to a easterly at the east corner of said claim; thence tre hundred 300 feet to the place of beginning.

All done under the provisions of Chapter Six, of Title XXXII, of the Revised Statutes of the United States, and of an Act of the General Assembly of Arizona, entitled "An Act Concerning Mines", approved March 20, 1895, and amended March 2d, 1899.

Dated and posted on the ground this 10 day of May 1899.

Anton Pecjak & Co.

Filed and recorded at request of Anton Pecjak & Co June 24" A.D. 1899, at 9 o'clock a.m., Book 52 of Mines, page 136, Records of Yavapai County, Arizona.

(Seal) W.I. Johnson,  
County Recorder.

By E.C. Averyt,  
Deputy Recorder.

\*\*\*\*\*

"RED ROCK".

AMENDED NOTICE OF MINING LOCATION.  
Lode Claim.

To all whom it may concern:

This Mining Claim, the name of which is the RED ROCK Mining Claim, situate on lands belonging to the United States of America, and in which there are valuable mineral deposits, was entered upon and located for the purpose of exploration and purchase by Anton Pejck, a citizen of the United States, the undersigned, on the 30th day of April, 1899.

The length of this claim is 1500 feet, and I claim 750 feet in a northerly direction and 750 feet in a southerly direction from the center of the discovery shaft, at which this notice is posted, lengthwise of the claim, together with 300 feet in width of the surface grounds, on each side of the center of said claim. The general course of the lode deposit and premises is from the north to the south.

The claim is situated and located in the Verde Mining District, in Yavapai County, in the Territory of Arizona, about one 3/4 miles in a southerly direction from the United Verde smelting works.

The surface boundaries of the claim are marked upon the ground as follows: Beginning at a stone monument at a point in a northerly direction 750 feet from the discovery shaft (at which this notice is posted), being in the center of the north end line of said claim; thence 300 feet to a stone monument being the northeast corner of said claim; thence 750 feet to a stone monument at the center of the east side line of said claim; thence 750 feet to a stone monument being at the southeast corner of said claim; thence 300 feet to a stone monument at the center of the south end of said claim; thence 300 feet to a stone monument, being at the southwest corner of said claim; thence 750 feet to a stone monument being at the center of the west side line of said claim; thence 750 feet to a stone monument at the northwest corner of said claim; thence 300 feet to the place of beginning.

All done under the provisions of Chapter Six, of Title XXXIII, of the Revised Statutes of the United States, and of an Act of the General Assembly of Arizona, entitled "An Act Concerning Mines", approved March 20th, 1895, and amended March 2d, 1899.

Dated and posted on the ground this 17th day of July 1900.

Anton Pejck.

Filed and recorded at request of H.M. Gibbes, Oct. 18" A.D. 1900, at 9 o'clock a.m., Book 56 of Mines, page 478, Records of Yavapai County, Arizona.

(Seal) W.I. Johnson,  
County Recorder.

By F.E. Walker,  
Deputy Recorder.

\*\*\*\*\*



"RED ROCK".

NOTICE OF MINING LOCATION.  
Lode Claim.

To all whom it may concern:

This Mining Claim, the name of which is the RED ROCK Mining Claim, situate on lands belonging to the United States of America, and in which there are valuable mineral deposits, was entered upon and located for the purpose of exploration and purchase by Anton Pecjak, the undersigned, on the 30 day of April 1899.

The length of this claim is 1500 feet and we claim 750 feet in a Northerly direction and 750 feet in a Southerly direction from the center of the discovery shaft, at which this notice is posted, lengthwise of the claim, together with 300 feet in width of the surface grounds, on each side of the center of said claim. The general course of the lode deposit and premises is from the North to the South.

The claim is situated and located in the Verde...Blak Hills Mining District, in Yavapai County, in the Territory of Arizona, about 1-3/4 mile in a Southwesterly direction from Jerome.

The surface boundaries of the claim are marked upon the ground as follows: Beginning at stone monument at a point in a Northerly direction 750 feet from the discovery shaft (at which this notice is posted), being in the center of the-----end line of said claim; thence Easterly 300 feet to a-----being the North corner of said claim; thence 750 feet to a Southerly at the center of the East side line of said claim; thence 750 feet to a Southerly being at the East corner of said claim; thence 300 feet to a Westerly at the center of the West end of said claim; thence 300 feet to a Westerly, being at the South corner of said claim; thence 750 feet to a Northerly being at the center of the West side line of said claim; thence 750 feet to a Northerly at the West corner of said claim; thence 750 feet to the place of beginning.

All done under the provisions of Chapter Six, of Title XXXII, of the Revised Statutes of the United States, and of an Act of the General Assembly of Arizona, entitled "An Act Concerning Mines", approved March 20, 1895, and amended March 26, 1899.

Dated and posted on the ground this 30 day of April 1899.

Anton Pecjak.

Filed and recorded at request of Anton Pecjak, July 20<sup>th</sup> A. D. 1899, at 9 o'clock a.m. Book 52 of Mines, page 353, Records of Yavapai County, Arizona.

By E.C. Averyt,

Deputy Recorder.

(Seal)

W.I. Johnson,  
County Recorder.

\*\*\*\*\*

(6)

"BLACK", ADRIANO.

NOTICE OF CLAIM LOCATION.

Lode Claim.

To all whom it may concern; This mining claim, the name of which is the Black Mining Claim, situate on lands belonging to the United States of America and in which there are valuable mineral deposits, was entered upon and located for the purpose of exploration and purchase by Anton Pejk, a citizen of the United States, the undersigned, on the 17th day of March, 1900.

The length of this claim is 1500 feet and I claim 750 feet in a northerly direction and 750 feet in a southerly direction from the center of the discovery shaft, at which this notice is posted, lengthwise of the claim, together with 300 feet in width of the surface of the ground, on each side of the center of said claim. The general course of the lode deposit and premises is from the north to the south.

The claim is situated and located in the Verde Mining District, in Yavapai County, in the Territory of Arizona, about one and a half mile in a southerly direction from the United Verde smelter works.

The surface boundaries of the claim are marked upon the ground as follows; Beginning at a stone monument at a point in a northerly direction 750 feet from the discovery shaft (at which this notice is posted), being in the center of the north end line of said claim; thence 300 feet to a stone monument being the north east corner of said claim; thence 750 feet to a stone monument at the center of the east side line of said claim; thence 750 feet to a stone monument being at the south east corner of said claim; thence 300 feet to a stone monument at the center of the south end of said claim; thence 300 feet to a stone monument being at the south west corner of said claim; thence 750 feet to a stone monument being at the center of the west side line of said claim; thence 750 feet to a stone monument at the north west corner of said claim; thence 300 feet to the place of beginning.

All done under the provisions of Chapter Six of title XXXIII of the Revised Statutes of the United States and of an act of the General Assembly of Arizona, entitled "An Act Concerning Mines" approved March 30th, 1895 and amended March 3d, 1898.

Dated and posted on the ground this 17th day of March, 1900.

Anton Pejk,

Filed and recorded at request of Anton Pejk, April 2nd, A.M. 1900 at 9 o'clock A.M. in Book 53 of Mines, page 478, Records of Yavapai County, Arizona.

(Seal)

W.I. Johnson,  
County Recorder.

By P.J. Farley,  
Deputy Recorder.

SEE RECORDS FOR DETAILS

"BLACK MINE".

NOTICE OF MINING LOCATION.  
Quartz Claim.

To all whom it may concern:

This Mining Claim, the name of which is the BLACK MINE Mining Claim, situate on lands belonging to the United States of America, and in which there are valuable mineral deposits, was entered upon and located for the purpose of exploration and purchase by Anton Pecjak, the undersigned, on the 31 day of July 1899.

The length of this claim is 1500 feet, and we claim 1000 feet in a southerly direction and 500 feet in a northerly direction from the center of the discovery shaft, at which this notice is posted, lengthwise of the claim, together with 300 feet in width of the surface grounds, on each side of the center of said claim. The general course of the lode deposit and premises is from the southeast to the northwest.

The claim is situated and located in the Verde Mining District, Yavapai County, in the Territory of Arizona, about 1-3/4 mile in a southwesterly direction from Jerome.

The surface boundaries of the claim are marked upon the ground as follows: Beginning at stone monument at a point in a northerly direction 500 feet from the discovery shaft (at which this notice is posted), being in the center of the north end line of said claim; thence 300 feet to a westerly being the west corner of said claim; thence 750 feet to a southerly at the center of the west side line of said claim; thence southerly 750 feet to a southerly being at the south corner of said claim; thence 300 feet to a easterly at the center of the south end of said claim; thence easterly 300 feet to a easterly, being at the east corner of said claim; thence 750 feet to a northerly being at the center of the east side line of said claim; thence 750 feet to a northerly at the north corner of said claim; thence 300 feet to the place of beginning.

All done under the provisions of Chapter Six, of Title XXXII, of the Revised Statutes of the United States, and of an Act of the General Assembly of Arizona, entitled "An Act Concerning Mines", approved March 30, 1895.

Dated and posted on the ground this 31<sup>st</sup> day of July 1899.

Anton Pecjak.

Filed and recorded at request of Anton Pecjak, Sept. 21<sup>st</sup> A.D. 1899, at 9 o'clock, A.M., Book 52 of Mines, page 305, Records of Yavapai County, Arizona.

By E.C. Averyt, (Seal) W.I. Johnson,  
Deputy Recorder. County Recorder.

\*\*\*\*\*

"GOLD HILL", ANTIKLE.

## NOTICE OF MINING LOCATION.

## Lode Claim.

To all whom it may concern; This mining claim, the name of which is the Gold Hill Mining Claim, situate on lands belonging to the United States of America, and in which there are valuable mineral deposits was entered upon and located for the purpose of exploration and purchase by Anton Pejk, Chas. Cobie, Frank Tursich, the undersigned on the 21 day of March, 1900.

The length of this claim is 1500 feet and we claim 200 feet in a northerly direction and 1300 feet in a southerly direction from the center of the discovery shaft, at which this notice is posted, lengthwise of the claim, together with 300 feet in width of the surface grounds, on each side of the center of said claim. The general course of the lode deposit and premises is from the north to the south.

The claim is situated and located in the Verde Mining District, in Yavapai County, in the territory of Arizona, about one and half mile in a southwesterly direction from United Verde smelter south side on Walnut Creek.

The surface boundaries of the claim are marked upon the ground as follows; Beginning at a stone monument at a point in a northerly direction 200 feet from the discovery shaft (at which this notice is posted), being in the center of the north end line of said claim; thence 300 feet to a stone monument being the north east corner of said claim; thence 750 feet to a stone monument at the center of the east side line of said claim; thence 750 feet to a stone monument being at the southeast corner of said claim; thence 300 feet to a stone monument at the center of the south end of said claim; thence 300 feet to a stone monument being at the southwest corner of said claim; thence 750 feet to a stone monument being at the center of the west side line of said claim; thence 750 feet to a stone monument at the northwest corner of said claim; thence 300 feet to the place of beginning.

All done under the provisions of Chapter Six of title XXXII of the Revised Statutes of the United States and of an act of the General Assembly of Arizona, entitled "An Act Concerning Mines", approved March 20th, 1895 and amended March 2d, 1899.

Dated and posted on the ground this 21 day of March, 1900.

Anton Pejk,  
Chs. Cobie,  
Frank Tursich.

Recorded at Request of Frank Tursich, Mch. 23<sup>rd</sup>, A.D. 1900 at 9 o'clock A.M. in Book 53 of Mines, page 333, Records of Yavapai County, Arizona.

(Seal)

W.I. Johnson,  
County Recorder.

By P.J. Harley,  
County Recorder.



"GOLD HILL"

NOTICE OF MINING LOCATION.  
Quartz Claim.

To all whom it may concern:

This Mining Claim, the name of which is the GOLD HILL Mining Claim, situate on lands belonging to the United States of America, and in which there are valuable mineral deposits, was entered upon and located for the purpose of exploration and purchase by Anton Pecjak, Charles Kobi and Frank Tarshich the undersigned, on the 25 day of September, 1899.

The length of this claim is 1500 feet, and we claim 200 feet in a Northerly direction and 1300 feet in a Southerly direction from the center of the discovery shaft, at which this notice is posted, lengthwise of the claim, together with 50 west 550 easterly feet in width of the surface grounds, on each side of the center of said claim. The general course of the lode deposit and premises is from the North to the South.

The claim is situated and located in the Verde Mining District, in Yavapai County, in the Territory of Arizona, about 1-3/4 mile in a Southwesterly direction from United Verde works.

The surface boundaries of the claim are marked upon the ground as follows: Beginning at stone monument at a point in a North-easterly direction 200 feet from the discovery shaft (at which this notice is posted), being in the center of the North end line of said claim; thence 300 feet to a westerly being the west corner of said claim; thence 750 feet to a southerly at the center of the west side line of said claim; thence 750 feet to a southerly being at the south corner of said claim; thence 300 feet to a east at the center of the South end of said claim; thence 300 feet to a Easterly, being at the east corner of said claim; thence 750 feet to a Northerly being at the center of the east side line of said claim; thence 750 feet to a Northerly at the North corner of said claim; thence 300 feet to the place of beginning.

All done under the provisions of Chapter Six, of Title XXXII, of the Revised Statutes of the United States, and of an Act of the General Assembly of Arizona, entitled "An Act Concerning Mines", approved March 20, 1895.

Dated and posted on the ground this 25 day of September, 1899.

Anton Pecjak & Co.

Charles Kobi

Frank Tarshich

Filed and recorded at request of Anton Pecjak, Oct. 20<sup>th</sup> A. D. 1899, at 3:30 o'clock, p.m., Book 52 of Mines, page 465, Records of Yavapai County, Arizona.

By E.C. Averyt,  
Deputy Recorder.

(Seal) W.I. Johnson,  
County Recorder.

\*\*\*\*\*

7  
6

"BLUE BIRD", AMENDED.

NOTICE OF MINING LOCATION.

Lode Claim.

To all whom it may concern; This mining claim, the name of which is the Blue Bird Mining Claim, situate on lands belonging to the United States of America and in which there are valuable mineral deposits was entered upon and located for the purpose of exploration and purchase by Anton Pejk, a citizen of the United States, A. Jacklich, a citizen of the United States, the undersigned on the 17th day of March, 1900.

The length of this claim is 1500 feet and we claim 100 feet in a northerly direction and 1400 feet in a southerly direction from the center of the discovery shaft, at which this notice is posted, lengthwise of the claim, together with 500 feet in width of the surface grounds, on each side of the center of said claim. The general course of the lode deposit and premises is from the north to the south.

The claim is situated and located in the Verde Mining District, in Yavapai County, in the Territory of Arizona, about one and 3/4 mile in a southwesterly direction from the United Verde Smelting works.

The surface boundaries of the claim are marked upon the ground as follows; Beginning at a stone monument at a point in a northerly direction 100 feet from the discovery shaft, (at which this notice is posted), being in the center of the north end line of said claim; thence 500 feet to a stone monument being the northeast corner of said claim; thence 750 feet to a stone monument at the center of the east side line of said claim; thence 750 feet to a stone monument being at the southeast corner of said claim; thence 500 feet to a stone monument at the center of the south end of said claim; thence 500 feet to a stone monument being at the south west corner of said claim; thence 750 feet to a stone monument being at the center of the west sideline of said claim; thence 750 feet to a stone monument at the north west corner of said claim; thence 500 feet to the place of beginning.

All done under the provisions of Chapter Six of title XXXIII of the Revised Statutes of the United States and of an act of the General Assembly of Arizona, entitled "An act concerning Mines," approved March 20th, 1898 and amended March 2d, 1899.

Dated and posted on the ground this 17th day of March, 1900.

Anton Pejk,  
A. Jacklich,

*Filed and*

Recorded at request of Anton Pejk, April 2<sup>nd</sup>, A.D. 1900 at 9 o'clock A.M. in Book 53 of Mines, page 480, Records of Yavapai County, Arizona.

W.I. Johnson,  
County Recorder.

(Seal)

By P.J. Masley,  
Deputy Recorder.

\*\*\*\*\*

BLUE BIRD.

NOTICE OF MINING LOCATION.  
Quartz Claim.

To all whom it may concern:

This Mining Claim, the name of which is the BLUE BIRD Mining Claim, situate on lands belonging to the United States of America, and in which there are valuable mineral deposits, was entered upon and located for the purpose of exploration and purchase by Anton Pecjak & A. Taklich, the undersigned, on the 25 day of September, 1899.

The length of this claim is 1500 feet, and we claim 300 feet, in a westerly direction and 1200 feet in a Easterly direction from the center of the discovery shaft, at which this notice is posted, lengthwise of the claim, together with 300 feet in width of the surface grounds, on each side of the center of said claim. The general course of the lode deposit and premises is from the East to the West.

The claim is situated and located in the Verde Mining District, in Yavapai County, in the Territory of Arizona, about 1-3/4 mile in a Southwesterly direction from United Verde Smelter works.

The surface boundaries of the claim are marked upon the ground as follows: Beginning at stone monument at a point in a westerly direction 300 feet from the discovery shaft (at which this notice is posted), being in the center of the West end line of said claim; thence 300 feet to a Northerly being the North corner of said claim; thence 750 feet to a Easterly at the center of the East side line of said claim; thence 750 feet in a Easterly being at the East corner of said claim; thence 300 feet to a Southerly at the center of the South end of said claim; thence 300 feet to a Southerly, being at the South corner of said claim; thence 750 feet to a Westerly being at the center of the West side line of said claim; thence 750 feet to a Westerly at the West corner of said claim; thence 300 feet to the place of beginning.

All done under the provisions of of Chapter Six, of Title XXXII, of the Revised Statutes of the United States, and of an Act of the General Assembly of Arizona, entitled "An Act Concerning Mines", approved March 20, 1895.

Dated and posted on the ground this 25 day of September, 1899.

Anton Pecjak

A. Taklich

Filed and recorded at request of Anton Pejak, Nov. 10<sup>th</sup> A.D. 1899, at 9 o'clock a.m., Book 52 of Mines, page 540, Records of Yavapai County, Arizona.

By E.C. Averyt,  
Deputy Recorder.

(Seal) W.I. Johnson,  
County Recorder.

\*\*\*\*\*

"SULIVAN".

AMENDED NOTICE OF MINING LOCATION.  
Lode Claim.

To all whom it may concern:

This mining claim, the name of which is the SULIVAN Mining Claim, situate on lands belonging to the United States of America, and in which there are valuable mineral deposits, was entered upon and located for the purpose of exploration and purchase by Anton Pejka a citizen of the United State...the under signed, on the 15th day of December, 1899.

The length of this claim is 1500 feet, and I claim 1200 feet in a Northerly direction and 300 feet in a Southerly direction from the center of the discovery shaft, at which this notice is posted, lengthwise of the claim, together with 300 feet in width of the surface grounds, on each side of the center of said claim. The general course of the lode deposit and premises is from the North to the South.

The claim is situated and located in the Verde Mining District, in Yavapai County, in the Territory of Arizona, about one mile in a Southerly direction from United Verde smelter work .

The surface boundaries of the claim are marked upon the ground as follows: Beginning at stone monument at a point in a North-erly direction 1200 feet from the discovery shaft (at which this notice is posted), being in the center of the North end line of said claim; thence 300 feet to a stone monument being the North east corner of said claim; thence 750 feet to a stone monument at the center of the East side line of said claim; thence 750 feet to a stone monument being at the Southeast corner of said claim; thence 300 feet to a stone monument at the center of the South end of said claim; thence 300 feet to a stone monument, being at the Southwest corner of said claim; thence 750 feet to a stone monument being at the center of the West side line of said claim; thence 750 feet to a stone monument at the Northwest corner of said claim; thence 300 feet to the place of beginning.

All done under the provisions of Chapter Six, of Title XXXII, of the Revised Statutes of the United States, and of an Act of the General Assembly of Arizona, entitled "An Act Concerning Mines", approved March 30th, 1895, and amended March 3d, 1899.

Dated and posted on the ground this 15th day of October 1900.

Anton Pejka.

Filed and recorded at request of H.M. Gibbes, Nov. 25" A.D. 1900, at 9 o'clock a.m., Book 53 of Mines, page 570, Records of Yavapai County, Arizona.

By P.J. FARLEY, Deputy Recorder.  
(Seal) W.I. Johnson, County Recorder.

\*\*\*\*\*

"SULLIVAN."

## NOTICE OF MINING LOCATION

## Quartz Claim.

To all whom it may concern; This mining claim, the name of which is the Sullivan Mining Claim, situate on lands belonging to the United States of America and in which there are valuable mineral deposits was entered upon and located for the purpose of exploration and purchase by Anton Pejk, the undersigned, on the 1 day of October 1898.

The length of this claim is 1500 feet and we claim 500 feet in a southeasterly direction and 1000 feet in a northeasterly direction from the center of the discovery shaft, at which this notice is posted, lengthwise of the claim, together with 300 feet in width of the surface grounds on each side of the center of said claim. The general course of the lode deposit and premises is from the southeast to the northwest.

The claim is situated and located in the Verde Mining District, in Yavapai County, in the Territory of Arizona, about 2.5 miles in a southeasterly direction from Jerome.

The surface boundaries of the claim are marked upon the ground as follows; Beginning at stone monuments at a point in a southeasterly direction 500 feet from the discovery shaft (at which this notice is posted), being in the center of the southeast end line of said claim; thence 500 feet to a northeast being the east corner of said claim; thence 750 feet to northwesterly at the center of the northeast side line of said claim; thence 750 feet to a northwesterly being at the north corner of said claim; thence 300 feet to a southwesterly at the center of the northwest end of said claim; thence 300 feet to a southwesterly being at the west corner of said claim; thence 750 feet to a southeasterly being at the center of the southwest side line of said claim; thence 750 feet to a southeasterly at the south corner of said claim; thence 300 feet to the place of beginning.

All done under the provisions of Chapter Six of title XXXII of the Revised Statutes of the United States and of an act of the General Assembly of Arizona, entitled "An act concerning Mines", approved March 20th, 1895. ~~and under the laws of Arizona, 1891.~~

Dated and posted on the ground this 1 day of October, 1898.

Anton Pejk.

Filed and recorded at request of Anton Pejk, Dec. 22", A.D. 1898 at 2:40 o'clock P.M. in Book 53 of Mines, page 30, Records of Yavapai County, Arizona.

(seal)

W.I. Johnson,  
County Recorder.

By E.C. Avery, Deputy Recorder.

\*\*\*\*\*

STATE OF ARIZONA, COUNTY OF YAVAPAI.

NOTICE OF MINING LOCATION.

Lode Claim.

To all whom it may concern; This mining claim, the name of which is the Lone Pine Mining Claim, situate on lands belonging to the United States of America and in which there are valuable mineral deposits, was entered upon and located for the purpose of exploration and purchase by Anton Pejli, a citizen of the United States, and was discovered on the 17th day of March, 1900.

The length of this claim is 1500 feet and I claim 50 feet in a northerly direction and 1100 feet in a southerly direction from the center of the discovery shaft, at which this notice is posted, 1000 feet of the claim, together with 300 feet in width of the claim on each side of the center of said shaft claim. The general course of the lode deposit is easterly and the north end of the claim is at the center of it.

The claim is situated and located in the Verde Mining District, in Yavapai County, in the Territory of Arizona, about one and 1/5 mile in a southerly direction from the United Verde Smelter, Yavapai County, Arizona.

The surface boundaries of the claim are marked upon the ground as follows: Beginning at a stone monument at a point in a northerly direction 50 feet from the discovery shaft (at which this notice is posted) being in the center of the north end line of said claim; thence 500 feet to a stone monument being the north east corner of said claim; thence 750 feet to a stone monument at the center of the east side line of said claim; thence 750 feet to a stone monument being at the south east corner of said claim; thence 300 feet to a stone monument at the center of the south end of said claim; thence 400 feet to a stone monument being at the south west corner of said claim; thence 750 feet to a stone monument being at the center of the west side line of said claim; thence 750 feet to a stone monument at the north west corner of said claim; thence 300 feet to the place of beginning.

All done under the provisions of Section 2316 of title 2311 of the Revised Statutes of the United States and of an act of the General Assembly of Arizona, entitled "An Act Concerning Mines", approved March 29th, 1893 and amended March 20, 1900.

This notice is posted on the claim this 17th day of March, 1900.  
Anton Pejli.

Filed in records at request of Anton Pejli, April 2nd, A.M. 1900 at 9 o'clock A.M. in Book 53 of Mines, page 27, Records of Yavapai County, Arizona.

(Seal) W.L. Johnson,  
County Recorder.

By J.S. Kelley,  
County Recorder.

(107)

V 9

"LONE PINE".

NOTICE OF MINING LOCATION.  
Quartz Claim.

To all whom it may concern:

This Mining Claim, the name of which is the LONE PINE Mining Claim, situate on lands belonging to the United States of America, and in which there are valuable mineral deposits, was entered upon and located for the purpose of exploration and purchase by Anton Pejka, the undersigned, on the 15 day of Oktobr 1899.

The length of this claim is 1500 feet, and we claim 50 feet in a Northerly direction and 1450 feet in a Southerly direction from the center of the discovery shaft, at which this notice is posted, lengthwise of the claim, together with 300 feet in width of the surface grounds, on each side of the center of said claim. The general course of the lode deposit and premises is from the North to the South.

The claim is situated and located in the Verde Mining District, in Yavapai County, in the Territory of Arizona, about 1- $\frac{1}{2}$  mile in a Southwesterly direction from Jerome.

The surface boundaries of the claim are marked upon the ground as follows: Beginning at stone monuments at a point in a Northerly direction 50 feet from the discovery shaft (at which this notice is posted), being in the center of the North end line of said claim; thence 300 feet to a Easterly being the Northeast corner of said claim; thence 750 feet to a Southerly at the center of the East side line of said claim; thence 750 feet to a Southerly being at the Southeast corner of said claim; thence 300 feet to a Westerly at the center of the South end of said claim; thence 500 feet to a Westerly being at the Southwest corner of said claim; thence 750 feet to a Northerly being at the center of the Southwest side line of said claim; thence 750 feet to a Northerly at the West corner of said claim; thence 300 feet to the place of beginning.

All done under the provisions of Chapter Six, of Title XXXII, of the Revised Statutes of the United States, and of an Act of the General Assembly of Arizona, entitled "An Act Concerning Mines", approved March 20th, 1895.

Dated and posted on the ground this 15 day of Oktobr 1899.

Anton Pejka.

Filed and recorded at request of Anton Pejka, Dec. 22<sup>nd</sup> A.D. 1899, at 3:40 o'clock p.m., Book 53 of Mines, page 40, Records of Yavapai County, Arizona.

By F.C. Averyt, Deputy Recorder. (Seal) W.I. Johnson, County Recorder.

\*\*\*\*\*

(16)

"LONE PINE NO.2."

NOTICE OF MINING LOCATION.  
Lode Claim.

To all whom it may concern:

This Mining Claim, the name of which is the LONE PINE NO.2 Mining Claim, situate on lands belonging to the United States of America, and in which there are valuable mineral deposits, was entered upon and located for the purpose of exploration and purchase by Anton Pejck, a citizen of the United States, the undersigned, on the 2nd day of October, 1900.

The length of this claim is 1500 feet, and I claim 200 feet in a northerly direction and 1300 feet in a southerly direction from the center of the discovery shaft, at which this notice is posted, lengthwise of the claim, together with 300 feet in width of the surface grounds, on each side of the center of said claim. The general course of the lode deposit and premises is from the northwest to southeast.

The claim is situated and located in the Verde Mining District, in Yavapai County, in the Territory, about one and 3/4 miles in a southerly direction from United Verde smelter works.

The surface boundaries of the claim are marked upon the ground as follows: Beginning at a stone monument at a point in a northerly direction 200 feet from the discovery shaft (at which this notice is posted), being in the center of the north end line of said claim; thence 300 feet to a stone monument being the northeast corner of said claim; thence 750 feet to a stone monument at the center of the east side line of said claim; thence 750 feet to a stone monument being at the southeast corner of said claim; thence 300 feet to a stone monument at the center of the south end of said claim; thence 300 feet to a stone monument, being at the southwest corner of said claim; thence 750 feet to a stone monument being at the center of the west side line of said claim; thence 750 feet to a stone monument at the northwest corner of said claim; thence 300 feet to the place of beginning.

All done under the provisions of Chapter Six, of Title XXXII, of the Revised Statutes of the United States, and of an Act of the General Assembly of Arizona, entitled "An Act Concerning Mines", approved March 20th, 1895, and amended March 2d, 1899.

Dated and posted on the ground this 2nd day of October, 1900.

Anton Pejck.

Filed and recorded at request of H.M. Gibbes, Oct. 13" A.D. 1900, at 9 o'clock a.m., Book 53 of Mines, page 474, Records of Yavapai County, Arizona.

(Seal) W.I. Johnson,  
County Recorder.

By F.F. Walker,  
Deputy Recorder.

\*\*\*\*\*

(18)



"BUTTE".

NOTICE OF MINING LOCATION.  
Lode Claim.

To all whom it may concern:

This Mining Claim, the name of which is the BUTTE Mining Claim, situate on lands belonging to the United States of America, and in which there are valuable mineral deposits, was entered upon and located for the purpose of exploration and purchase by Anton Pejk, a citizen of the United States, the undersigned, on the 2nd day of October, 1900.

The length of this claim is 1500 feet, and I claim 1250 feet in a northerly direction and 250 feet in a southerly direction from the center of the discovery shaft, at which this notice is posted, lengthwise of the claim, together with 300 feet in width of the surface grounds, on each side of the center of said claim. The general course of the lode deposit and premises is from the North to the South.

The claim is situated and located in the Verde Mining District, in Yavapai County, in the Territory of Arizona, about one and 3/4 miles in a southerly direction from the United Verde Smelter works.

The surface boundaries of the claim are marked upon the ground as follows: Beginning at a stone monument at a point in a northerly direction 1250 feet from the discovery shaft (at which this notice is posted), being in the center of the north end line of said claim; thence 300 feet to stone monument being the northeast corner of said claim; thence 750 feet to a stone monument at the center of the east side line of said claim; thence 750 feet to a stone monument being at the southeast corner of said claim; thence 300 feet to a stone monument at the center of the south end of said claim; thence 300 feet to a stone monument, being at the southwest corner of said claim; thence 750 feet to a stone monument being at the center of the west side line of said claim; thence 750 feet to a stone monument at the northwest corner of said claim; thence 300 feet to the place of beginning.

All done under the provisions of Chapter Six, of Title XXXII, of the Revised Statutes of the United States, and of an Act of the General Assembly of Arizona, entitled "An Act Concerning Mines", approved March 20th, 1895, and amended March 2d, 1899.

Dated and posted on the ground this 2nd day of October, 1900.

Anton Pejk.

Filed and recorded at request of H.M. Gibbes, Oct. 13<sup>th</sup> A.D. 1900, at 9 o'clock a.m., Book 56 of Mines, page 477, Records of Yavapai County, Arizona.

(Seal) W.I. Johnson,  
County Recorder.

By F.E. Walker,  
Deputy Recorder.

\*\*\*\*\*

MINES

NOTICE OF MINING LOCATION.

MADE PUBLIC.

to all who it may concern; This mining claim, the name of which is the Rock Butte Mining Claim, situate on land belonging to the United States of America and in which there are valuable mineral deposits, was entered upon and located for the purpose of exploration and purchase by Anton Pejk, a citizen of the United States, this 23rd day of July, 1900.

The length of this claim is 150 feet and 1 claim 60 feet in a northerly direction and 900 feet in a southerly direction from the west end of the discovery shaft, at which this notice is posted, lengthwise of the claim, together with 750 feet in width of the surface grounds, on each side of the center of said claim. The general course of the lode deposit and premises is from the north west to the south east.

The claim is situated and located in the Verde Mining District, in Pinal County, in the Territory of Arizona, about one and a half mile in a southerly direction from the United Verde Smelter and Mill.

The surface boundaries of the claim are marked upon the ground as follows; Beginning at a stone monument at a point in a northerly direction 600 feet from the discovery shaft (at which this notice is posted) being in the center of the north end line of said claim; thence 500 feet to a stone monument being at the north east corner of said claim; thence 750 feet to a stone monument at the center of the east side line of said claim; thence 750 feet to a stone monument being at the south east corner of said claim; thence 500 feet to a stone monument at the center of the south end of said claim; thence 500 feet to a stone monument being at the south west corner of said claim; thence 750 feet to a stone monument being at the center of the west side line of said claim; thence 750 feet to a stone monument at the north west corner of said claim; thence 500 feet to the place of beginning.

All done under the provisions of Chapter Six of title XXIII of the Revised Statutes of the United States and of an act of the General Assembly of Arizona, entitled "An Act Concerning Mines", approved March 20th, 1895 and amended March 2d, 1898.

Dated and posted on the ground this 23rd day of July, 1900.  
Anton Pejk.

Filed and recorded at request of I. I. Gibbs, Oct. 23rd, A.D. 1900, at 9 o'clock A.M. in Book 56 of Mines, page 503, Records of Pinal County, Arizona.

(Seal)

W. I. Johnson,  
County Recorder.

By F. E. Waller, Deputy Recorder.

13  
✓  
64

NEEDL POINT.

NOTICE OF MINING LOCATION.  
LODE CLAIM.

To all whom it may concern:

This Mining Claim, the name of which is the NEEDL POINT Mining Claim, situate on lands belonging to the United States of America, and in which there are valuable mineral deposits, was entered upon and located for the purpose of exploration and purchase by Anton Pejk a citizen of the United State. the undersigned, on the 28th day of September, 1900.

The length of this claim is 1500 feet, and I claim 1200 feet in a Northerly direction and 300 feet in a Southerly direction from the center of the discovery shaft, at which this notice is posted, lengthwise of the claim, together with 300 feet in width of the surface grounds, on each side of the center of said claim. The general course of the lode deposit and premises is from the North to the South.

The claim is situated and located in the Verde Mining District, in Yavapai County, in the Territory of Arizona, about 3/4 of a mile in a Southerly direction from United Verde smelter work.

The surface boundaries of the claim are marked upon the ground as follows: Beginning at stone-----at a point in a North-erly direction 1200 feet from the discovery shaft (at which this notice is posted), being in the center of the North end line of said claim; thence 300 feet to a stone monument being the Northeast corner of said claim; thence 750 feet to a stone monument at the center of the East side line of said claim; thence 750 feet to a stone monument being at the Southeast corner of said claim; thence 300 feet to a stone monument at the center of the South end of said claim; thence 300 feet to a stone monument, being at the Southwest corner of said claim; thence 750 feet to a stone monument being at the center of the west side line of said claim; thence 750 feet to a stone monument at the Northwest corner of said claim; thence 300 feet to the place of beginning.

All done under the provisions of Chapter Six, of Title XXXII, of the Revised Statutes of the United States, and of an Act of the General Assembly of Arizona, entitled "An Act Concerning Mines", approved March 20th, 1895, and amended March 2d, 1899.

Dated and posted on the ground this 28th day of September, 1900.

Anton Pejk.

Filed and recorded at request of Anton Pejk, Nov. 16", A.D. 1900, at 9 o'clock a.m., Book 56 of Mines, page 557, Records of Yavapai County, Arizona.

(Seal) W.I. Johnson,  
County Recorder.

By P.J. Farley,  
Deputy Recorder.

\*\*\*\*\*

(21)

"LAST CHANGE".

NOTICE OF MINING LOCATION.  
Lode Claim.

To all whom it may concern:

This Mining Claim, the name of which is the LAST CHANGE Mining Claim, situate on lands belonging to the United States of America, and in which there are valuable mineral deposits, was entered upon and located for the purpose of exploration and purchase by Anton Pejck a citizen of the United State,, the undersigned, on the 15th day of Oktober, 1900.

The length of this claim is 1200 feet, and I claim 700 feet in a Northerly direction and 500 feet in a Southerly direction from the center of the discovery shaft, at which this notice is posted, lengthwise of the claim, together with 300 feet in width of the surface grounds, on each side of the center of said claim. The general course of the lode deposit and premises is from the North to the South.

The claim is situated and located in the Verde Mining District, in Yavapay County, in the Territory of Arizona, about one mile in a Southwesterly direction from United Verde Smelter works.

The surface boundaries of the claim are marked upon the ground as follows: Beginning at stone monument at a point in a North-erly direction 700 feet from the discovery shaft (at which this notice is posted); being in the center of the North end line of said claim; thence 300 feet to a stone monument being the Northeast corner of said claim; thence 300 feet to a stone monument at the center of the East side line of said claim; thence 300 feet to a stone monument being at the South East corner of said claim; thence 300 feet to a stone monument at the center of the South end of said claim; thence 300 feet to a stone monument, being at the Southwest corner of said claim; thence 300 feet to a stone monument being at the center of the west side line of said claim; thence 300 feet to a stone monument at the Northwest corner of said claim; thence 300 feet to the place of beginning.

All done under the provisions of Chapter Six, of Title XXXII, of the Revised Statutes of the United States, and of an Act of the General Assembly of Arizona, entitled "An Act Concerning Mines", approved March 30th, 1895, and amended March 2d, 1899.

Dated and posted on the ground this 15th day of Oktober, 1900.

Anton Pejck.

Filed and recorded at request of H.M.Gibbes, Nov. 23" A.D. 1900, at 9 o'clock a.m., Book 56 of Mines, page 562, Records of Yavapai County, Arizona.

By P.J.Farley, Deputy Recorder. (Seal) W.I.Johnson, County Recorder.

\*\*\*\*\*

"LONE PINE NO.3".

NOTICE OF MINING LOCATION.  
Lode Claim.

To all whom it may concern:

This Mining Claim, the name of which is the LONE PINE NO.3 Mining Claim, situate on lands belonging to the United States of America, and in which there are valuable mineral deposits, was entered upon and located for the purpose of exploration and purchase by Anton Pejk a citizen of the United State...the undersigned, on the 23<sup>th</sup> day of September, 1900.

The length of this claim is 1500 feet, and I claim 750 feet, in a Northerly direction and 750 feet in a Southerly direction from the center of the discovery shaft, at which this notice is posted, lengthwise of the claim, together with 300 feet in width of the surface grounds, on each side of the center of said claim. The general course of the lode deposit and premises is from the North to the South.

The claim is situated and located in the Verde Mining District, in Yavapai County, in the Territory of Arizona, about two miles in a Southerly direction from United Verde Smelter works.

The surface boundaries of the claim are marked upon the ground as follows: Beginning at stone monument at a point in a North-erly direction 750 feet from the discovery shaft (at which this notice is posted), being in the center of the North end line of said claim; thence 300 feet to a stone monument being the Northeast corner of said claim; thence 750 feet to a stone monument at the center of the East side line of said claim; thence 750 feet to a stone monument being at the Southeast corner of said claim; thence 300 feet to a stone monument at the center of the South end of said claim; thence 300 feet to a stone monument, being at the Southwest corner of said claim; thence 750 feet to a stone monument being at the center of the West side line of said claim; thence 750 feet to a stone monument at the Northwest corner of said claim; thence 300 feet to the place of beginning.

All done under the provisions of Chapter Six, of Title XXXII, of the Revised Statutes of the United States, and of an Act of the General Assembly of Arizona, entitled "An Act Concerning Mines", approved March 20<sup>th</sup>, 1895, and amended March 2d, 1899.

Dated and posted on the ground this 23<sup>th</sup> day of September, 1900.

Anton Pejk.

Filed and recorded at request of H.M. Gibbes, Nov. 23<sup>rd</sup> A.D. 1900, at 9 o'clock a.m., Book 53 of Mines, page 571, Records of Yavapai County, Arizona.

(Seal) W.I. Johnson,  
County Recorder.

By P.J. Farley,  
Deputy Recorder.

\*\*\*\*\*

16  
✓

"MINE LAWS"

NOTICE OF MINING LOCATION.

Iron Claim.

To all whom it may concern; This mining claim, the name of which is the Glider Mining Claim, situate on lands belonging to the United States of America, and in which there are valuable mineral deposits, was entered upon and located for the purpose of exploration and purchase by Geo. O. Ford & D. D. McDonald, citizens of the United States, the undersigned, on the 26th day of October, 1900.

The length of this claim is 1500 feet and the width 150 feet in a northerly direction and 1500 feet in a southerly direction from the center of the discovery shaft, at which this notice is posted, lengthwise of the claim, together with 300 feet in width of the surface ground, on each side of the center of said claim. The general course of the line between the premises is from the north to the south.

The claim is situated and located in the Verde Mining District, in Yavapai County, in the Territory of Arizona, about 1 1/2 miles in a westerly direction from United Verde works. It adjoins the Red Jacket No. 3 on its east side, the Golden Rule on the south end and the Blue Point on its west side.

The surface boundaries of the claim are marked upon the ground as follows: Beginning at a point in a southerly direction 150 feet from the discovery shaft (at which this notice is posted), 150 feet to the center of the north end line of said claim; thence 300 feet to a monument, post & stones being the north east corner of said claim; thence 750 feet to a monument, post & stones at the center of the east side line of said claim; thence 750 feet to a monument, post & stones being at the south east corner of said claim; thence 300 feet to a monument, post & stones at the center of the south end of said claim; thence 300 feet to a monument, post & stones being at the south west corner of said claim; thence 750 feet to a monument, post & stones being at the center of the west side line of said claim; thence 750 feet to a monument, post & stones at the northwest corner of said claim; thence 300 feet to the place of beginning.

All done under the provisions of Chapter Six of title 2311 of the Revised Statutes of the United States and of an act of the General Assembly of Arizona, entitled "An Act Concerning Mines", approved March 20th, 1895 and amended March 2d, 1897.

Dated and posted on the ground this 26th day of October, 1900.

Witness,  
J. C. Scott.

Geo. O. Ford,  
D. D. McDonald,  
Locators.

Filed and recorded at request of H. M. Gibbs, Jan. 26", A.D. 1901 at 9 o'clock A.M. in Book 57 of Mines, page 97, Records of Yavapai County, Arizona.

(Seal)

H. J. Farley,  
County Recorder.

By H. J. Gibbons, Deputy Recorder.

214

"SINE POINT".

NOTICE OF MINING LOCATION.

Node Claim.

To all whom it may concern; This mining claim, the name of which is the Sine Point Mining Claim, situate on lands belonging to the United States of America and in which there are valuable mineral deposits was entered upon and located for the purpose of exploration and purchase by Geo. O. Ford & D. McDonald, citizens of the United States, the undersigned, on the 26th day of October, 1900.

The length of this claim is 1500 feet and we claim 100 feet in a northerly direction and 1400 feet in a southerly direction from the center of the discovery shaft, at which this notice is posted, lengthwise of the claim, together with 300 feet in width of the surface grounds, on each side of the center of said claim. The general course of the lode deposit and premises is from the north to the South.

The claim is situated and located in the Verde Mining District, in Navapai County, in the Territory of Arizona, about 12 miles in a southerly direction <sup>direction</sup> from the United Verde Works.

The surface boundaries of the claim are marked upon the ground as follows; Beginning at a point in a northerly direction 100 feet from the discovery shaft (at which this notice is posted) being in the center of the north end line of said claim; thence 300 feet to a monument, tree & stones being the north west corner of said claim; thence 750 feet to a monument, post & stones at the center of the east side line of said claim; thence 750 feet to a monument, tree & stones being at the south east corner of said claim; thence 500 feet to a monument, post & stones at the center of the south end of said claim; thence 300 feet to a monument, stump & stones being at the south west corner of said claim; thence 750 feet to a monument, post & stones being at the center of the west side line of said claim; thence 750 feet to a monument, post & stones at the north west corner of said claim; thence 300 feet to the place of beginning.

All done under the provisions of Chapter Six of title XXXI of the Revised Statutes of the United States and of an act of the General Assembly of Arizona, entitled "An Act Concerning Mines", approved March 20th, 1895 and amended March 2d, 1898.

Dated and posted on the ground this 26th day of October, 1900.  
Witness,  
J. C. Scotts, Geo. O. Ford,  
D. D. McDonald,  
Locators.

Filed and recorded at request of H. N. Gibbes, Jan. 28", A.D. 1901 at 9 o'clock A.M. in Book 5<sup>th</sup> of Mines, page 23, Records of Navapai County, Arizona.

(Seal)

P. J. Farley,  
County Recorder.

By F. J. Gibbons, Deputy Recorder.

\*\*\*\*\*

"TUFU".

NOTICE OF MINING LOCATION.

Lode Claim.

To all whom it may concern; This mining claim, the name of which is the Tufa Mining Claim, situate on lands belonging to the United States of America and in which there are valuable mineral deposits was entered upon and located for the purpose of exploration and purchase by Geo.C.Ford & D.D.McDonald, citizens of the United States the undersigned, on the 26th day of October, 1900.

The length of this claim is 1500 feet and we claim 100 feet in a northerly direction and 1400 feet in a southerly direction from the center of the discovery shaft, at which this notice is posted, lengthwise of the claim, together with 500 feet in width of the surface grounds on each side of the center of said claim. The general course of the lode deposit and premises is from the north to the south. The claim is situated and located in the Verde Mining District, in Yavapai County, in the Territory of Arizona, about 12 miles in a southerly direction from United Verde Works.

The surface boundaries of the claim are marked upon the ground as follows; Beginning at a point in a northerly direction 100 feet from the discovery shaft (at which this notice is posted), being in the center of the north end line of said claim; thence 300 feet to a stump and stone monument being the north east corner of said claim; thence 750 feet to a monument at the center of the east side line of said claim; thence 750 feet to a tree & stone monument being at the south east corner of said claim; thence 500 feet to a tree monument at the center of the south end of said claim; thence 500 feet to a large stump being at the south west corner of said claim; thence 750 feet to a stump & stone monument being at the center of the west side line of said claim; thence 750 feet to a stump & stone monument at the north west corner of said claim; thence 300 feet to the place of beginning.

All done under the provisions of Chapter Six of title XXXII of the Revised Statutes of the United States and an act of the General Assembly of Arizona, entitled "An Act Concerning Mines", approved March 30th, 1895 and amended March 2d, 1899.

Dated and posted on the ground this 26th day of October, 1900.

Witness,  
J.C.Scott,

Geo.C.Ford,  
D.D.McDonald,  
Locators.

Filed and recorded at request of H.M.Gibbes, Jan. 20", A.D. 1901 at 9 o'clock A.M. in Book 57 of Mines, page 99, Records of Yavapai County, Arizona.

(Seal)  
By H.M.Gibbes,  
Deputy Recorder.

P.J.Parley,  
County Recorder.

\*\*\*\*\*



"PINNACLE".

NOTICE OF MINING LOCATION.

Lode Claim.

To all whom it may concern; This mining claim, the name of which is the Pinnacle Mining Claim, situate on lands belonging to the United States of America and in which there are valuable mineral deposits, was entered upon and located for the purpose of exploration and purchase by Geo.O.Ford & D.B.McDonald, citizens of the United States, the undersigned, on the 26th day of October, 1900.

The length of this claim is 1500 feet and we claim 50 feet in a northerly direction and 1450 feet in a southerly direction from the center of the discovery shaft, at which this notice is posted, lengthwise of the claim, together with 300 feet in width of the surface grounds, on each side of the center of said claim. The general course of the lode deposit and premises is from the north to the south.

The claim is situated and located in the Verde Mining District, in Yavapai County, in the Territory of Arizona, about 1 1/2 miles in a southerly direction from United Verde Works. It adjoins the Tufa on its east side and the Verde King on its west side.

The surface boundaries of the claim are marked upon the ground as follows; Beginning at at a point in a northerly direction 50 feet from the discovery shaft (at which this notice is posted), being in the center of the north end line of said claim; thence 300 feet to a stump & stones monument being the north east corner of said claim; thence 750 feet to a tree monument at the center of the east side line of said claim; thence 750 feet to a tree monument being at the south east corner of said claim; thence 300 feet to a post & stones monument at the center of the south end of said claim; thence 300 feet to a tree & stones being at the south west corner of said claim; thence 750 feet to a tree monument being at the center of the west side line of said claim; thence 750 feet to a monument, post & stones at the North east corner of said claim; thence 300 feet to the place of beginning.

All done under the provisions of Chapter Six of title X XII of the Revised Statutes of the United States and of an act of the General Assembly of Arizona, entitled "An Act Concerning Mines", approved March 20th, 1895 and amended March 2d, 1898.

Dated and posted on the ground this 26th day of October, 1900.

Witness,  
J.C.Scott.  
Geo.O.Ford,  
D.B.McDonald,  
Locators.

Filed and recorded at request of H.M.Gibbes, Jan. 28", A.D. 1901 at 9 o'clock A.M. in Book 57 of Mines, page 100, Records of Yavapai County, Arizona.

(Seal) P.J.Farley,  
County Recorder.

By F.J.Gibbons, Deputy Recorder.

\*\*\*\*\*

27

"VERDE KING".

NOTICE OF MINING LOCATION.

Lode Claim.

To all whom it may concern; This mining claim, the name of which is the Verde King Mining Claim, situate on lands belonging to the United States of America and in which there are valuable mineral deposits was entered upon and located for the purpose of exploration and purchase by Geo.O.Ford & D.D.McDonald, citizens of the United States, the undersigned, on the 27 day of October, 1900.

The length of this claim is 1500 feet and we claim \_\_\_ feet in a \_\_\_ direction and \_\_\_ feet in a \_\_\_ direction from the center of the discovery shaft, at which this notice is posted, lengthwise of the claim, together with 300 feet in width of the surface grounds on each side of the center of said claim. The general course of the lode deposit and premises is from the north to the south.

The claim is situated and located in the Verde Mining District, in Yavapai County, in the Territory of Arizona, about 1 1/2 miles in a southerly direction from the United Verde Works. It adjoins the pinnacle on its east side.

The surface boundaries of the claim are marked upon the ground as follows; Beginning at at a point in a \_\_\_ direction \_\_\_ feet from the discovery shaft (at which this notice is posted), being in the center of the north end line of said claim; thence 300 feet to a monument being the north east corner of said claim; thence 750 feet to a monument at the center of the east side line of said claim; thence 750 feet to a monument being at the south east corner of said claim; thence 300 feet to a monument at the center of the south end of said claim; thence 300 feet to a monument being at the southwest corner of said claim; thence 750 feet to a monument being at the center of the west side line of said claim; thence 750 feet to a monument at the northwest corner of said claim; thence 300 feet to the place of beginning.

All done under the provisions of Chapter Six of title XXXII of the Revised Statutes of the United States and of an act of the General Assembly of Arizona, entitled "An Act Concerning Mines", approved March 20th, 1895 and amended March 2d, 1896.

Dated and posted on the ground this 27th day of October, 1900.

Witness,  
J.C.Scott.

Geo.O.Ford,  
D.D.McDonald,  
Locators.

Filed and recorded at request of H.M.Gibbes, Jan. 28", A.D. 1901 at 9 o'clock A.M. in Book 57 of Mines, page 101, Records of Yavapai County, Arizona.

(Seal)  
By F.J.Gibbons, Deputy Recorder.

P.J.Farley,  
County Recorder.

\*\*\*\*\*

(28)

TERRITORY OF ARIZONA, )  
 ) SS:  
COUNTY OF YAVAPAI. )

I. P. J. FARLEY, County Recorder in and for the County of Yavapai, in the Territory of Arizona, and custodian of the records thereof, do hereby certify that I have compared the above and foregoing pages numbered from one to twenty-eight, inclusive, with the original records in my office and said twenty-eight pages contain a full, true and correct copy of the notice of location of each of the following described mining claims, and also a full, true and correct copy of the amended notice of location of certain of said claims, as the same appear from said original records, to-wit:-

WALNUT CREEK MINE mining claim, notice of location recorded in Book 50 of Mines, page 137, records of Yavapai County, Arizona:

SILVER CLIFF NO. 2 mining claim, notice of location recorded in Book 52 of Mines, page 63, records aforesaid: Also amended notice of location recorded in Book 56 of Mines, page 475, records aforesaid:

IRON RANGE mining claim, notice of location recorded in Book 52 of Mines, page 186; amended notice recorded in Book 56 of Mines, page 473, records aforesaid:

RED ROCK mining claim, notice of location recorded in Book 52 of Mines, page 253; amended notice recorded in Book 56 of Mines, page 478, records aforesaid:

BLACK MINE mining claim, notice of location recorded in Book 52 of Mines, page 393; amended notice recorded in Book 53 of Mines, page 478, records aforesaid:

GOLD HILL mining claim, notice of location recorded in Book 52 of Mines, page 465; amended notice recorded in Book 53 of Mines, page 396, records aforesaid:

BLUE BIRD mining claim, notice of location recorded in Book 52 of Mines, page 540; amended notice recorded in Book 53 of Mines, page 480, records aforesaid:

SULIVAN mining claim, notice of location recorded in Book 55 of Mines, page 39; amended notice recorded in Book 53 of Mines, page 570, records aforesaid:

LONE PINE mining claim, notice of location recorded in Book 53 of Mines, page 40; amended notice recorded in Book 53 of Mines, page 477, records aforesaid:

LONE PINE NO. 2 mining claim, notice of location recorded in Book 56 of Mines, page 474, records aforesaid:

BUTTE mining claim, notice of location recorded in Book 53 of Mines, page 477, records aforesaid:

ROCK BUTTE mining claim, notice of location recorded in Book 53 of Mines, page 503, records aforesaid:

NEEDLE POINT mining claim, notice of location recorded in Book 56 of Mines, page 557, records aforesaid:

LAST CHANGE mining claim, notice of location recorded in Book 56 of Mines, page 569, records aforesaid:

LONE PINE NO. 3 mining claim, notice of location recorded in Book 56 of Mines, page 571, records aforesaid:

CLIMAX mining claim, notice of location recorded in Book 56 of Mines, page 97, records aforesaid:

LIME POINT, TUFA, PINNACLE and VERDE KING mining claims, notice of location recorded in Book 57 of Mines, pages 98, 99, 100 and 101, records aforesaid.

IN WITNESS WHEREOF, I have hereunto set my hand and affixed my Official Seal, this 23rd day of November, A.D. 1901.

*I. P. J. Farley*  
County Recorder.



(4-687.)

# Surveyor General's Certificate of Approval of Field Notes and Survey of Mining Claim.

Department of the Interior,

Office of U. S. Surveyor General,

Tucson, Arizona,

February 17, 1902.

I, U. S. Surveyor General for Dist. of Arizona,

do hereby certify that the foregoing and hereto attached Field Notes and Return of the Survey of the Mining Claim of Verde King Copper Co.

Needl Point, Walnut Creek, Sullivan, Last Change, Silver Cliff No. 2, Iron Range, Lone Pine, Black, Gold Hill, Rock Butte, Butte, Climax, Lime Point, Blue Bird, Tufa, Red Rock, Lone Pine No. 2, Pinnacle, Lone Pine No. 3 and Verde King.

situate in Verde mining district,

Yavapai County, Arizona

in Section , Township No. , Range No.

, designated as Survey No. 1615

executed by J. J. Fisher, U. S. Deputy Mineral

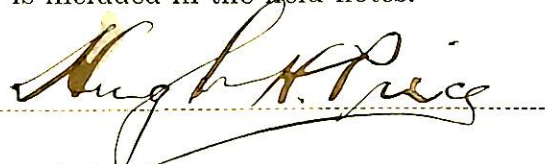
Surveyor, December 3-11th, 1901, under my instructions dated

Nov. 27th, 1901, have been critically examined and the

necessary corrections and explanations made, and the said Field Notes and Return, and

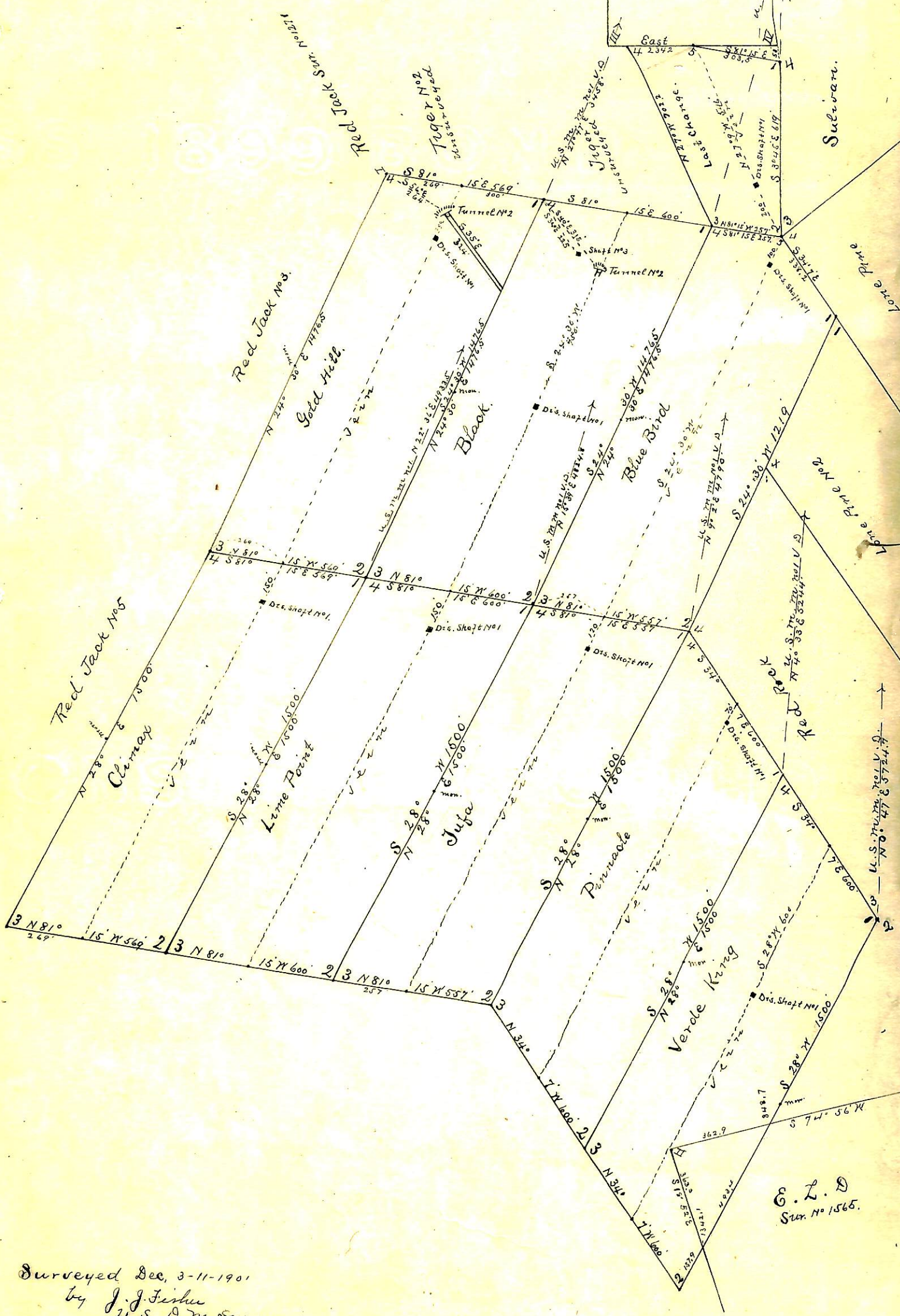
the Survey they describe, are hereby approved. A true copy of the copy of the location

certificate filed by the applicant for survey is included in the field notes.



U. S. Surveyor General for Arizona.

Survey No 1615  
 Prescott Land District  
 Sheet B.



Lucky Boys &  
 Sur. No 1351

G. L. D.  
 Sur. No 1565.

Surveyed Dec. 3-11-1901  
 by J. J. Fisher  
 U.S. D.M. Surveyor.

