

M
S
.

0

1

6

4

5

MINERAL SURVEY NO. 1645

Claims	M & B	Desc.	Improvements	Loc.	Notices
Charleston	9		15		5
Lone Jack	3		15		6
Magnet Number 2	7		15		3
Merrimac	1		14		1
Moniter	5		15		2
Olmypia	11		16		4

6/1/02

Flourish made

Revised by S.H.

Notes to James C. Jones

W.C.P.

(4-683.)

Mineral Survey No. 1645

Lot No. _____

Prescott Land District.

FIELD NOTES

OF THE SURVEY OF THE MINING CLAIM OF

J. G. Norris

KNOWN AS THE

Mercuric, Minita Olympic Character Magnet #2
Long Jack, Pick Mining District.

Yavapai County, Arizona

Section Approx Township 10 North, Range 1 West (unsurveyed)

Surveyed under instructions dated March 26, 1902

by J. J. Fisher
U. S. Deputy Mineral Surveyor

Claim located _____, 1

Survey commenced April 17th, 1902

Survey completed " 18th, 1902

6-103

Address

Stinson & Norris

Prescott

Arizona

PRELIMINARY OATHS OF ASSISTANTS IN SURVEY OF MINING CLAIM.

WE, Ed Draper and John Odell, do solemnly swear that we will well and faithfully execute the duties of chain carriers; that we will level the chain upon even and uneven ground and plumb the tally-pins, either by sticking or dropping the same; that we will report the true distance to all notable objects, and the true length of all lines that we assist in measuring, to the best of our skill and ability, and in accordance with instructions given us, in the survey of the Mining Claim of T. G. Norris

known as the Merrimac, Monitor, Olympia, Charleston, Magnet No 2 & Lone Jack situate in Peck mining district, Yavapai County, Arizona, in Section _____, Township No. _____, Range No. _____

Ed Draper Chainman.
John Odell Chainman.

Subscribed and sworn to by the above-named persons before me this 17th day of April, 1902

9 4

J. J. Fisher
Notary Public

I, John Odell, do solemnly swear that I will well and truly perform the duties of axeman, in the establishment of corners and other duties, according to instructions given me and to the best of my skill and ability, in the survey of the Mining Claim of T. G. Norris

known as the Merrimac, Monitor, Olympia, Charleston, Magnet No 2 & Lone Jack more fully described in the preceding affidavit.

John Odell Axeman.

Subscribed and sworn to by the said John Odell before me this 17th day of April, 1902

9 4

J. J. Fisher
Notary Public

I, Ed Draper, do solemnly swear that I will well and truly perform the duties of flagman, in the establishment of corners and other duties, according to instructions given me and to the best of my skill and ability, in the survey of the Mining Claim of T. G. Norris

known as the Merrimac, Monitor, Olympia, Charleston, Magnet No 2 & Lone Jack more fully described in the preceding affidavit.

Ed Draper Flagman.

Subscribed and sworn to by the said Ed Draper before me this 17th day of April, 1902

9 4

J. J. Fisher
Notary Public

CERTIFICATE OF U.S.SURVEYOR GENERAL.

as to

Expenditure reported after return of the survey on mining claim.

I, Frank S. Ingalls, U.S.Surveyor General for the District of Arizona, in consideration of the foregoing affidavit of T.G.Norris, claimant, supported by the official statement of Mr. J.J.Fisher, U.S.Dep. Min'l. Surveyor, do hereby certify that there was expended upon or for the benefit of the Monitor and Magnet No. 2 lode mining claims, embraced in mineral entry No. 521, Prescott, Arizona, not less than Five Hundred Dollars in labor and improvements, and that said expenditure was made prior to the expiration of the period of publication of notice of application for patent.

And that the working shaft on the Gladiator lode, Survey No. 1223, owned by claimant herein, and the drift at the 800 foot level in said shaft, are clearly for the development of said Monitor and Magnet No. 2 claims, as well as other claims of the group, and a portion of the value of same, can properly be credited to the Monitor and Magnet No. 2 claims.

I further certify that a stamp mill erected for the purpose of reducing the ores extracted from a group of mining claims is a mining improvement, and the value of same can properly be included within the estimated Statutory Expenditure of Five Hundred Dollars, and each claim furnishing ore for the mill is entitled to be credited with a portion of its value.

(Signed) Frank S. Ingalls.

SEAL

U.S.Surveyor General for Arizona.

Office of U.S.Surveyor General,

Phoenix, Arizona,

February 26, 1904.

S u r v e y N o . 1 6 4 5

MERRIMAC LODGE

Beginning at S. C. E. where is set a slate stone 4x14x24' set one foot in ground, surrounded by a mon. of stones, stone marked S.C.E. No. 1645;

T h e n c e S o u t h 7 0 ° 4 6 ' E a s t

Var. 14° East

300 To corner No. 1;

Identical with corner of location;

An oak post 6' in diameter marked M. No. 1-1645 and L.J. No. 4-1645, for corner No. 4 of the Lone Jack of this survey;

A cross on a granite rock in place marked B.R. M. No. 1-1645, bears S. 3°55' West 33.6 feet.

A cross on a granite rock in place marked B.R. L.J. No. 4-1645, bears N. 45°20' W. 112 feet.

U.S.M.M. No. 2, P.G.M.D., brs. S.23°40' W., 7728.8 feet.

T h e n c e N . 1 2 ° 4 5 ' E .

Var. 14 ° E.

1375 To Homeward Bound Gulch, course N.W.

1500 To corner No. 2, which is also corner No. 3 Lone Jack Lode of this Survey; *Identical with loc.*

A slate stone 3x10x24 in. set 1 foot in ground alongside mon. of stones 3 x 3 feet, stone marked M. No. 2-1645 and L.J. No. 3-1645;

A cross on an oak tree 8' in diameter marked B.T. L.J. No. 3-1645; bears S. 32°2' E., 13.6 feet;

A cross on an oak tree 5' in diameter marked B.T. M. No. 2-1645, bears N. 18° E., 11.8 feet;

Feet

Thence N.70°46' W.

Var. 14° E.

285 To Homeward Bound Gulch, course N.

300 To N.C.E.

Identical with N.C.E. of location;

A slate stone 5x14x24 in. set 1 foot in ground
 alongside a mon. of stones 3 x 3 feet, stone marked
 N.C.E. M. No. 1645;

600 To corner No. 3;

Identical with N.W. corner of location;

An oak post 5 in. in diameter marked M. No. 3-
 1645, set 1 foot in ground, surrounded by a mon.
 of stones;

A cross on a pine tree 24' in diameter, marked
 B.T. M. No. 3-1645 bears N. 71°36' W. 21 feet;

A cross on an oak tree 14" in diameter marked
 B.T. M. No. 3-1645, bears S. 71°50' E. 37.6 feet;

Thence S. 12°45' W.

Var. 14° E.

1500 To corner No. 4; which is also corner No. 3 of the
 Monitor Lode and corner No. 3 of the Olympia Lode of
 both of this survey; *Identical with location*

An oak post 4 x 4 in. 5 feet long, set 1 foot in
 ground and surrounded by a mon. of stones, post
 marked M. No. 4-1645, and M. No. 3-1645, and O. No.
 3-1645;

A cross on a fir tree 20 in. in diameter marked
 B.T. M. No. 4-1645, bears N. 80°35' W. 40.6 feet;

A cross on a fir tree marked B.T. M. No. 3-1645
 bears S. 11°45' E., 31 feet;

Feet

Thence S. 70°46' E.

Var. 14° E.

300 To S.C.E., the place of beginning survey of exterior boundaries.

* * * * *

LONE JACK LODGE

Beginning at corner No. 1,

Identical with S.E. corner of location;

A porphyry stone 6 x 12x24 in. set 1 foot in ground alongside a mon. of stones 3 x 3 feet, stone marked L.J. No. 1,-1645;

No bearings available.

U. S. M. M. No. 2, P.G.M.D., bears S. 28°4' W. 7797.1 feet;

Thence N.12°45' E.

Var. 14° E.

750
1500

To E. side mon.

To corner No. 2;

Identical with N.E. corner of location;

A slate stone 2 x 14 x 24 in. set 1 foot in ground alongside a mon. of stones 3 x 3 feet, stone marked L.J. No. 2-1645;

No bearings available;

Feet

Thence N.70°46' W.

Var. 14° E.

300 To N.C.E.;

Identical with N.C.E. of location;

A slate stone 4 x 12 x 24 in. set 1 foot in ground
 alongside a mon. of stones 3 x 3 feet; stone marked
 N.C.E. L.J. No. 1645;

500 To graded wagon road from mill;

600 To corner No. 3; which is also corner No. 2 of the
 Merrimac Lode of this Survey, corner described above.

Thence S. 12°45' W.

Var. 14° E.

125 To Homeward Bound Gulch;

750 *To W. side mon.*

1500 To corner No. 4; which is also corner No. 1 of the
 Merrimac Lode of this Survey, corner described above;
identical with cor. of location.

Thence S. 70° 46' E.

Var. 14° E.

135 To Homeward Bound Gulch, course N.

155 To graded wagon road;

300 To S.C.E.;

Identical with S.C.E. of location;

A slate stone 4x10x24 in. set 1 foot in ground
 alongside mon. of stones 3 x 3 feet, stone marked
 S.C.E. L.J. No. 1645;

600 To corner No. 1, the place of beginning survey of
 exterior boundaries.

Feet

MONITOR LODEBeginning at corner No. 1;

Identical with S.E. corner of location; which is also corner No. 7 Magnet Lode Survey No. 1223;

An oak post 6 in. in diameter 5 feet long, set 1 foot in ground, surrounded by a mon. of stones; stone marked M. No. 1-1645, same stone marked M. No. 7-1223;

A cross on a white oak tree 8 in. in diameter marked B.T. M. No. 1-1645 bears N. 12°15' E., 19 feet;

A cross on an oak tree 8 in. in diameter marked B. T. M. No. 7-1223, bears S. 50°30' E. 13 feet;

U. S. M. M. No. 2, P. G. M. D. bears S 31°08' W 72 61.2 feet

Thence N.70°46' W.

Var. 14° E.

- 585.1 To corner No. 3 Magnet No. 2 Lode of this Survey, and corner No. 8 Magnet, Survey No. 1223;
- 685 To Homeward Bound Gulch;
- 900 To corner No. 2 Magnet No. 2, and corner No. 2 Charleston Lodes of this Survey;
- 1500 To corner No. 2,
- Identical with corner of location;
- An oak post 6 in. in diameter set 1 foot in ground surrounded by a mon. of stones, post marked M. No. 2-1645; also O. No. 2-1645; and C. No. 3-1645; for corners No. 2 and 3 Olympia and Charleston Lodes of this survey;
- A cross on an oak tree 16 " in diameter marked B. T. M. No. 2-1645, bears S. 75°28' W., 47 feet;
- A cross on an oak tree 10" in diameter marked B. T. M. No. 2-1645 bears N. 1°30' E. 95.6 feet;

Feet

Thence N. 19°14' E.

Var. 14° E.

300 To W.C.E.;

Identical with W.C.E. of location;

An oak post 5 in. in diameter set 1 foot in ground surrounded by a mon. of stones, post marked W.C.E. M. No. 1645;

600 To corner No. 3, which is also corner No. 3 Olympia and corner No. 4 Merrimac Lode of this survey; corner described above;

Thence S. 70° 46' E.

Var. 14 ° E.

600 To corner No. 1 Merrimac and corner No. 4 Lone Jack Lodes of this survey;

735 To Homeward Bound Gulch;

755 To wagon road;

1200 To corner No. 1 Lone jack Lode of this survey;

1500 To corner No. 4;

Identical with N.E. corner of location;

An oak post 4 in. in diameter, five feet long, set one foot in ground, surrounded by a mon. of stones; post marked M. No. 4-1645;

A cross on an oak tree 10 in. in diameter marked B.T. M. No. 4-1645 bears S. 7°33' E. 19.8 feet;

A cross on an oak tree 6 in. in diameter marked B.T. M. No. 4-1645, bears N. 27° E. 22 feet;

Thence S. 19°14' W.

Var. 14° E.

Feet

287 To N.W. corner Gladiator Lode, survey No. 1223;

300 To E.C. End; *Identical with location*

An oak post 4 in. in diameter, 5 feet long, set one foot in ground, surrounded by a mon. of stones, post marked E.C.E. M. No. 1645;

600 To corner No. 1, the place of beginning survey of exterior boundaries.

* * * * *

MAGNET NUMBER 2.Beginning at corner No. 1, the S. W. corner of location,

A porphyry stone 6x10x24 in. set 1 foot in ground alongside mon. of stones 3 x 3 feet, stone marked M. No. 2, 1-1645; Also C. No. 1-1645; *for Cor 164 of Charleston Lode of this survey.*

A cross on an oak tree 8 in. in diameter marked B. T. M. No. 2, 1-1645 bears N. 53°45' E. 32.2 feet;

A cross on an oak tree 8 in. in diameter marked B. T. C. No. 1-1645 bears N. 11°30' E. 32 feet;
U.S.M.M.No. 2 P.G.M.D. bears S.25°10' W.5706.7 feet;

Thence N. 19°34' E.

Var. 14° E.

1429.8 To corner No. 2; which is also corner No. 2 of the Charleston Lode of this Survey; *Identical with loc.*

An oak post 4 in. in diameter 4 feet long, set 1 foot in ground, surrounded by a mon. of stones, post marked M. No. 2, 2-1645, and C. No. 2-1645;

A cross on an oak tree 8 in. in diameter, marked B. T. M. No. 2, 2-1645, bears S. 14° 35' W. 30.7 feet;

Feet

Thence S. 70°46' E.

Var. 14° E.

215 To Homeward Bound Gulch,

314.9 To corner No. 3; which is also corner No. 8 Magnet Lode, Survey No. 1223; *Identical with loc.*

A pine post 6x6 in. 8 feet long, set 4 feet in ground, surrounded by a mon. of stones, post marked M. No. 2, 3-1645, same post marked M. No. 8, -1223;

A cross on a white oak tree 18 in. in diameter marked B. T. M. No. 8-1223, bears N. 44°37' W. 21.5 feet;

A cross on a white oak tree 10 in. in diameter marked B. T. M. No. 8-1223 bears N. 63°55' E. 15.6 feet;

Thence S. 20°9' W.

Var. 14° E.

1170 To corner No. 4; original corner of location, bears S. 20°9' W., 330 feet;

A porphyry stone 8x18x24 in. set 1 foot in ground alongside a mon. of stones 3 x 3 feet; stone marked M. No. 2, 4-1645;

A cross on an oak tree 6 in. in diameter marked B. T. M. No. 2, 4-1645 bears S. 67°45' E. 16.9 feet;

A cross on an oak tree 10 in. in diameter marked B. T. M. No. 2, 4-1645 bears N. 43°15' W. 23.2 feet;

Thence N. 70° 46' W.

Var. 14 ° E.

80 To Homeward Bound Gulch;

145.4 To corner No. 5;

Feet

A porphyry stone 6x16x24 in. set 1 foot in ground
alongside a mon. of stones 3 x 3 feet; stone marked
M.No. 2, 5-1645;

No bearings available

T h e n c e S. 20°9' W.

Var. 14 ° E.

260 To corner No. 6;

A granite stone 10x12x24 in. set 1 foot in ground
alongside a mon. of stones 3 x 3 feet, stone marked
M. No. 2, 6-1645;

No bearings available;

T h e n c e N. 70°46' W.

Var. 14° E.

155 To corner No. 1, the place of beginning survey of
exterior boundaries;

* * * * *

CHARLESTON LODE

Beginning at corner No. 1, the S.E. corner of location;
which is also corner No. 1 of the Magnet No. 2 Lode
of this survey; corner described above;

T h e n c e N. 19°34' E.

Var. 14° E.

1429.8 To corner No. 2, which is also corner No. 2 of Magnet
No. 2 Lode of this survey, corner described above;

Feet

Thence N. 70°46' W.

Var. 14° E.

300 To N.C.E.;

Identical with N.C.E. of location;

A porphyry stone 5 x 8 x 24 in. set 1 foot in ground alongside mon. of stones 3 x 3 feet, stone marked N.C.E., C. No. 1645;

600 To corner No. 3, which is also corner No. 2 of Monitor and corner No. 2 Olympia Lodes of this survey; corner described above;

Thence S. 19°34' W.

Var. 14° E.

900 To corner No. 1, Olympia Lode of this survey, and to intersection of N. end line of Tip Top Lode unsurveyed; *at N 70°46' W. 228 ft from N.E. Cor.*

1429.8 To corner No. 4;

Identical with S.W. corner of location;

A slate stone 5x18x24 in. set 1 foot in ground alongside a mon. of stones 3 x 3 feet, stone marked C. No. 4-1645;

A cross on a granite rock in place marked B.R. C. No. 4-1645 bears S. 38°15' E. 35 feet;

A cross on a granite rock in place marked B.R. C. No. 4-1645 bears S. 4° W. 32.3 feet;

Thence S. 70°46' E.

Var. 14° E.

228 To intersect East side line of Tip Top Lode, at S. 19°34' W. 529.8 feet from N.E. corner;

Feet

300 To S.C.E.;

A granite stone 4x8x24 in. set 1 foot in ground alongside a mon. of stones 3 x 3 feet; stone marked S.C.E. C. No. 1645;

600 To corner No. 1, the place of beginning survey of exterior boundaries;

* * * * *

OLYMPIA LODGE

Beginning at corner No. 1;

Identical with S.E. corner of location;

A porphyry stone 8x10x24 in. set 1 foot in ground surrounded by a mon of stones 3 x 3 feet, stone marked O. No. 1-1645;

A cross on a pine tree 6 in. in diameter marked B.T. O. No. 1-1645, bears S. 11° E. 47.6 feet;

A cross on an oak tree 10 in. in diameter marked B.T. O. No. 1-1645, bears S. 46°45' E., 36.7 feet;

U.S.M.M. No. 2, P.G.M.D., bears S. 19°10' W. 6205.9 feet;

Thence N. 19°34' E.

Var. 14° E.

900 To corner No. 2; which is also corner No. 3 Charleston and corner No. 2 Monitor Lodes of this survey, corner described above; *It being also the east side mon. of claim.*

Feet

Thence N. 19°14' E.

Var. 14° E.

600 To corner No. 3; which is also corner No. 3 Monitor Lode and corner No. 4 Merrimac Lodes of this survey, corner described above;

Thence N. 70°46' W.

Var. 14° E.

296.5 To N.C. End;

Identical with N.C.E. of location;

A granite stone 3 x 10 x 24 in. set 1 foot in ground alongside mon. of stones 3 x 3 feet; stone marked N.C.E. O. No. 1645;

596.5 To corner No. 4;

Identical with N.W. corner of location;

A porphyry stone 3 x 8 x 24 in. set 1 foot in ground alongside a mon. of stones 3 x 3 feet, stone marked O. No. 4-1645;

A cross on a pine tree 24 in. in diameter marked B.T. O. No. 4-1645, bears S. 58° E. 46.7 feet;

A cross on a pine tree 10 in. in diameter marked B.T. O. No. 4-1645 bears S. 76° 30' W., 28.5 feet;

Thence S. 19°34' W.

Var. 14° E.

750 *To W. side road,*
1500 To corner No. 5;

Identical with S.W. corner of location;

A granite stone 4 x 16 x 24 in. set 1 foot in ground alongside a mon. of stones 3 x 3 feet, stone marked O. No. 5-1645;

No bearings available;

Feet

Thence S. 70°46' E.

Var. 14° E.

300 To S.C.E.;

Identical with S.C.E. of location;

A porphyry stone 5x12x24 in. set 1 foot in ground alongside a mon. of stones 3 x 3 feet; stone marked S.C.E. O. No. 1645;

600 To corner No. 1, the place of beginning survey of exterior boundaries;

* * * * *

Location

This claim is located on unsurveyed land, approximately in T.11N., R. 1 W., G. & S.R.B. & M. in Peck Mining District, Yavapai County, Arizona Territory; and is bounded

On the East by Magnet and Gladiator, Survey No.

1223; and *Red Gauntlet* unsurveyed

On the South by *Dickens Lc.* and Tip Top

Lodes, unsurveyed;

On the West by Government Land, and

On the North by Government Land.

Veins

MERRIMAC VEIN: extends Northerly 300 feet and Southerly 1200 feet from Discovery Cut;

LONE JACK VEIN: extends 1400 feet Northerly and 100 feet Southerly from the Discovery Cut.

MONITOR VEIN extends 770 feet Easterly and 730 feet Westerly from the Discovery Tunnel;
MAGNET NUMBER TWO VEIN extends 130 feet Northerly and 1320 feet Southerly from the Discovery Tunnel;
CHARLESTON VEIN extends 10 feet Southerly and 1420 feet Northerly from the Discovery shaft;
OLYMPIA VEIN extends 780 feet Northerly and 720 feet Southerly from the Discovery Shaft.

EXPENDITURE OF FIVE HUNDRED DOLLARS.

I certify that the value of the labor and improvements upon this claim, placed thereon by the claimant and his grantors, is not less than five hundred dollars, and that said improvements consist of:

MERRIMAC LODGE:

Discovery Cut No. 1, which bears from the N.C.E. Monument South $12^{\circ}45'$ W., 300 feet; Cut 4 x 15 feet, 10 foot face;

VALUE \$ 100.00

Cut No. 2, which bears from N.C.E. Monument South $12^{\circ}45'$ W., 150 feet; cut 4 x 20 feet, 10 foot face,

VALUE 100.00

Cut No. 3, which bears from corner No. 1 N. $30^{\circ}45'$ W. 575 feet; cut 4 x 20 feet, 10 foot face,

VALUE 150.00

Shaft No. 4, which bears from corner No. 1 N. 34° W. 535 feet; shaft 7x10, 6 feet deep,

VALUE 100.00

Cut No. 5, which bears from corner No. 1, N. 46° W., 455 feet; cut 4x14 feet, 10 foot face;

VALUE 100.00

LONE JACK LODE:

Discovery Cut No. 1, which bears from corner No. 4, E. 300 feet; cut 4 x 15 feet, 10 foot face;

VALUE \$ 100.00

Graded wagon road, which crosses claim from North to South,

VALUE 1500.00

MONITOR LODE:

Discovery Tunnel No. 1, which bears from corner No. 2 of the Charleston Lode, N.42°15' E., 325 feet; approach 4 x 18 feet, 12 foot face; tunnel 4 x 6 feet 7 feet under ground;

VALUE 250.00

Ten-stamp quartz mill, which bears from corner No. 2 Charleston N. 80° E. 340 feet;

VALUE 10000.00

MAGNET NUMBER TWO LODE:

Discovery tunnel No. 1, which bears from corner No. 2, S. 47° E., 294 feet; tunnel 6x7 feet, 28 feet long;

VALUE 300.00
of the value of the stamp mill on the monitor lode is to be credited to the Magnet Number 2 lode.
 Office Building, 15 x 30 feet, which bears from corner No. 2, S. 54° E., 177 feet;

VALUE 300.00

Boarding House 30 x 50 feet, 1 1/2 stories high; which bears from corner No. 2, S. 4° W., 485 feet;

VALUE 1000.00

CHARLESTON LODE:

Discovery Shaft No. 1, which bears from S.C.E. Monument, N. 19°34' E., 10 feet; shaft 4 x 6 feet, 50 feet deep,

VALUE 500.00

Cut No. 2, which bears from S.C.E. Monument
N. 19°34' E., 80 feet; cut 4 x 15 feet, 10 foot face;

VALUE \$ 100.00

Cut No. 3, which bears from S.C.E. Monument
N. 19°34' E., 150 feet; cut 4 x 15 feet, 10 foot face;

VALUE 100.00

Tunnel No. 4, which bears from *COR. NO. 1*
N. 7°28' W., 305 feet; tunnel 4 x 6 feet, 60 feet long;
Course N.W.;

VALUE 600.00

Shaft No. 5, which bears from N.C.E. Monument
S. 19°34' W. 50 feet; shaft 4 x 6 feet, 10 feet deep;

VALUE 100.00

OLYMPIA LODE:

Discovery shaft No. 1, which bears from
corner No. 2, S. 79°30' W., 354 feet; shaft 4 x 6 feet
ten feet deep;

VALUE 100.00

Cut No. 2, which bears from corner No. 2, N.
63° W., 322 feet; cut 4 x 24 feet, 10 foot face;

VALUE 150.00

Cut No. 3, which bears from corner No. 2, N.
58° 30' W., 296 feet; cut 4 x 25 feet, 15 foot face;

VALUE 200.00

Tunnel No. 4, which bears from corner No. 2
N. 44° W. 260 feet; tunnel 4 x 6 feet, 75 feet long;
at end of tunnel a winz 4 x 6 feet, 10 feet deep;

VALUE 850.00

TOTAL VALUE OF IMPROVEMENTS \$16300.00

A r e a .

MERRIMAC LODE:	20.529	acres
LONE JACK LODE:	20.529	acres
MAGNET NUMBER TWO LODE:	9.230	acres
MONITOR LODE:	20.661	acres
OLYMPIA LODE:	20.636	acres
CHARLESTON LODE:		
Gross area	19.69 A.	
Less area in conflict with TipTop Lode, Unsurveyed,	<u>2.77 A.</u>	
Net Area Charleston	16.92 A.	16.92 acres
T o t a l A c r e a g e :	108.505	acres

I n s t r u m e n t .

This Survey was made with a Gurley Light Mountain Solar Transit. The courses were deflected from the true meridian, as determined by solar observations. The distances were measured with a one-hundred foot ~~foot~~ steel chain.

J. J. Fisher
United States
Deputy Mineral Surveyor.

Prescott, Arizona,
April 28, 1902.

IN THE UNITED STATES LAND
OFFICE, Prescott,
Arizona.

In the matter of the application for patent dated October 30th. 1902 T. G. Norris, Mineral Entry Number 521 for the Monitor, Magnet No. 2. and four other mining claims.

T. G. Norris being duly sworn depose and says:

That he is a citizen of the United States and a resident of the city of Prescott and is the applicant above mentioned.

That just previous to the publication and during the application for patent there was a force of ten to twelve men continuously at work on the group of claims and on the patented claim belonging to affiant, known as the Gladiator.

During said time they were sinking a double compartment shaft at a cost of between \$40.00 to \$45.00 per foot. That said work was being done exclusively for the development of said group including the Magnet No. 2 and Monitor.

That during the period of publication there was a drift being extended toward the vein of the Monitor at a depth of over eight hundred feet from the surface at a cost of about \$30.00 per foot, which was done for the purpose of working, operating, and developing said group including the Monitor and Magnet No. 2 peculiarly tending to the development of the Monitor claim, and money actually expended during the period of publication amounted to not less than \$2000.00.

That there was a 10 stamp quartz mill situated and maintained on the Monitor claim for the purpose of the development, operation, and protection of said Monitor and Magnet No. 2., and also the other claims of the group.

In addition to the improvements on the Monitor

and Magnet No. 2 there was a track for the handling of cars from the main tunnel across the Monitor about 400 feet, and also a shaft 300 feet deep with a drift 30 feet long from the bottom of the shaft which was done before the completion of notice for patent, which track, shaft, and drift were not mentioned in the estimate of the surveyor as affiant is informed and believes.

That the 10 stamp quartz mill, said shaft and tunnel were upon the Monitor and within its boundary lines, and done wholly and solely for its improvement, development, and protection along with the other claims of the group at the time the final proof was made. That the same outside of the mill cost not less than Eight Hundred Dollars.

That on the Magnet No. 2 there is an office building and a boarding house which were placed there for the exclusive purpose of protection, use, and development of the Magnet No. 2 claim and other claims in the group and they are wholly within the side lines and on the surface grounds of the Magnet No. 2 claim.

There is also a shaft not mentioned in the Surveyor's estimate 12 feet deep which cost \$120 and a tunnel which cost something like \$300.

That the improvements upon the Magnet No. 2 and within the boundary lines thereof and done **exclusively** for its development, improvement, and protection amount to more than \$3000.

That the improvements mentioned were absolutely indispensable and necessary for the development and protection of said claims and were made for that purpose.

3.

WHEREFORE affiant prays that his application for patent be granted and allowed.

T. J. Morris,

*Subscribed and sworn to before me
this 24th day of February A.D. 1904*

*J. M. Watts
Clerk*

... North Bound with course N,
101.0 E.

... N. 8. E. 5. ...

TERRITORY OF ARIZONA)
County of Yavapai) ss.

I hereby certify that I have read the foregoing affidavit and know the contents thereof. I witnessed the operations being carried on as described in said affidavit at the time of making survey for patent.

That I am a United States deputy mineral surveyor and am the same J. J. Fisher who made the original survey upon the application for patent in Mineral Entry 521 by T. G. Norris on the Monitor, Magnet No. 2. and other claims.

I know that the work described tends to the development of the Monitor and Magnet No. 2 and to the carrying out of the general system for the extracting of the ores from said claims, and that the work described is of a value of not less than stated in the affidavit.

J. J. Fisher
U.S. Dep. Min. Sur.

FINAL OATHS FOR SURVEYS.

LIST OF NAMES.

A list of the names of the individuals employed by J. J. Fisher
 United States Deputy Mineral Surveyor, to assist in running, measuring, and marking the lines
 corners and boundaries described in the foregoing field notes of the survey of the mining claim
 of T. G. Norris
 known as the Merrimac, Monitor, Olympia, Charleston, Magnet N. 2 & Lone Jack
 and showing the respective capacities in which they acted.

- C. H. Draper , Chairman.
- John Adell , Chainman.
- John Adell , Axman.
- C. H. Draper , Flagman.

FINAL OATHS OF ASSISTANTS.

We, C. H. Draper
 and John Adell do solemnly swear that we assisted J. J. Fisher
 United States Deputy Mineral Surveyor, in marking the corners and
 surveying the boundaries of the mining claim of T. G. Norris

..... known as the Merrimac, Monitor
Olympia, Charleston, Magnet N. 2 & Lone Jack, represented
 in the foregoing field notes as having been surveyed by said deputy mineral surveyor and under
 his direction; and that said survey has been in all respects, to the best of our knowledge and
 belief, faithfully and correctly executed, and the corner and boundary monuments established
 according to law and the instructions furnished by the United States Surveyor-General for
Arizona

- C. H. Draper , Chairman.
- John Adell , Chainman.
- John Adell , Axman.
- C. H. Draper , Flagman.

Subscribed and sworn to by the above-named persons before me
 this 18th day of April, 1902

J. J. Fisher
Mayor Public

9 4

(4-686.)

FINAL OATH OF U. S. DEPUTY MINERAL SURVEYOR

I, J. J. Fisher, U. S. Deputy Mineral Surveyor, do solemnly swear that, in pursuance of instructions received from the United States Surveyor General for Arizona, dated March 26th 1902, I have, in strict conformity to the laws of the United States, the official regulations and instructions thereunder, and the instructions of said Surveyor General, faithfully and correctly executed the survey of the Mining Claim of D. G. Norris

known as the Mexicane Monitor, Olympia Charleston Magnet No. 2 & Lone Jack situate in Peck Mining District, Yavapai County, Arizona, in Section 26th, Township No. 11 N., Range No. 1 West and designated as Survey No. 1613, as represented

in the foregoing field notes, which accurately show the boundaries of said mining claim as distinctly marked by monuments on the ground, and described in the attached copy of the location certificate, which was received by me from the Surveyor General with said instructions, and that all the corners of said survey have been established and perpetuated in strict accordance with the law, official regulations and instructions thereunder; and I do further solemnly swear that the foregoing are the true and original field notes of said survey and my report therein, and that the labor expended and improvements made upon said mining claim by claimant or his grantors are as therein fully stated, and that the character, extent, location and itemized value thereof are specified therein with particularity and full detail, and that no portion of said labor or improvements so credited to this claim has been included in the estimate of expenditures upon any other claim.

J. J. Fisher
U. S. Deputy Mineral Surveyor.

Subscribed and sworn to by the said J. J. Fisher
U. S. Deputy Mineral Surveyor, before me Thomas C. Job, Notary
Public in and for Yavapai County Arizona this 28th
day of April 1902

Thomas C. Job,
Notary Public

My commission expires
July 7, 1903

Affidavit of Five Hundred Dollars Improvements.

We, E. H. Draper, and John Odell

of lawful age, being first duly sworn according to law, depose and say: that we are acquainted with the Mercuria, Monitor, Olympia Charleston, Magnet No 2 & Lone Jack mining claim, situate in Beck Mining district, Yavapai County, Arizona Territory, for which T. G. Norris

has made application for survey prior to application for patent under the provisions of the Act of Congress, approved May 10, 1872; and that the labor done and improvements made thereon by the applicant and his grantors exceed Five Hundred Dollars in value, and further that we are not personally interested in said mine.

E. H. Draper
John Odell

TERRITORY OF ARIZONA,
County of Yavapai } ss:

Sworn to and subscribed before me, this 18th
day of April, 1882

J. J. Fisher
Notary Public

POOR QUALITY

The following pages are scanned at the best possible quality setting. The original pages are of poor quality and this is the best possible reproduction.

"HERRINAC".

NOTICE OF LOCATION.

Know all men by these presents:

That I the undersigned have this day located fifteen hundred (1500) linear feet of this vein or lode bearing precious metals with all its courses, angles and variations with surface ground three hundred (300) feet on each side of the center of vein, with all mineral deposits contained therein and all Timber growing within the limits of said claim and all water and water privileges thereon or appurtenant thereto under and according to the provisions of the Mining Laws of the United States under which it is located.

This claim commences at this monument and notice placed upon the ledge and runs N. 12° 45' W. 300 feet and S. 12° 45' W. 1500 feet.

The exterior boundaries are as follows viz.

Commencing at North center end said running three hundred (300) feet in an easterly direction to monument of stone at N.E. corner of claim; thence in a southerly direction parallel with the ledge fifteen hundred (1500) feet to monument at S.E. corner of claim; thence at right angles across the ledge in a westerly direction six hundred (600) feet to monument at S.W. corner of claim; thence parallel with the ledge in a northerly direction fifteen hundred (1500) feet to monument at N.W. corner of claim; thence at right angles across the ledge in an easterly direction three hundred (300) feet to monument upon the ledge and place of beginning.

This ledge may be more generally described as situated on the west side of Homeward Bend Gulch and the southerly end line adjoins the Monitor on its northerly side line. In Peck Mining District, Yavapai County, Arizona Territory and shall be known as the Herrinac Mining Claim.

Dated on the ground this 13 day of May 1896.

H.M. Foltr
Location.

Recorded at request of H.M. Foltr July 1st A. D. 1896 at 11 o'clock a.m. in Book 44 of Mine., pages 450-451. Records of Yavapai County, Arizona.

(Seal) F.A. Frittle,
County Recorder.
by H.P. Frittle,
Deputy.

NO TOP.

NOTICE OF LOCATION.

KNOW all men by these presents:

That I the undersigned have this day located Fifteen hundred(1500)linear feet of this vein or lode, bearing precious minerals with all licks, spurs, angles and variations, with surface ground three hundred(300)feet on each side of the center of vein, with all mineral deposits contained therein and all timber growing within the limits of said claim and all water and water privileges thereon or appurtenant thereto, under and according to the provisions of the Mining Laws of the United States under which it is located.

This claim commences at this monument and notice placed upon the ledge and runs N.73° 43' W.500 Feet and S.70° 43' E.200 Feet.

The surface boundaries are as follows, viz:

Commencing at South center end mon. and running three hundred(300)feet N.10° 14' E. to monument of stone at S.E. corner of claim; thence N.73° 43' W. parallel with the ledge fifteen hundred (1500)feet to monument at N.E. corner of claim; thence at right angles across the ledge S.10° 14' W. six hundred(600)feet to monument at N.W. corner of claim; thence parallel with the lode S.70° 43' E. fifteen hundred(1500)feet to monument at S.W. corner of claim; thence at right angles across the ledge N.10° 14' E. three hundred(300)feet to monument upon its ledge and place of beginning.

This ledge may be more generally described as situated west of the Cladator mine and north of the Magnet, the southerly end line being the west side line of the Cladator.

In Pech mining District, Yavapai County, Arizona Territory and shall be known as the Monitor Mining Claim.

Dated on the ground this 12th day of May 1893.

E.H. Folts, locator.

Recorded at request of E.H. Folts July 23rd A.M. 1893 at 11 o'clock a.m. in Book 44 of Mines, pages 451-453, Records of Yavapai County, Arizona.

(Seal)

E.A. Tritle,

County Recorder.

By E.A. Tritle,

Deputy.

MAGNET NO. 2.

NOTICE OF LOCATION.

Know all men by these presents:

That I, the undersigned, have this day located 1500 linear feet of this vein or lode bearing precious metals, with all dips, spurs, angles and variations, with surface ground 300 feet wide, with all mineral deposits contained therein and all timber growing within the limits of said claim, and all water and water privileges thereon or appurtenant thereto, under and according to the provisions of the United States Mining Laws under which it is located.

This claim commences at this monument and notice and runs 1500 feet in a southerly direction.

The exterior boundaries are as follows, viz:

Commencing at a monument of stones on North West boundary corner, thence in a southerly direction parallel with the ledge 1500 feet to monument of stone at S.W. corner of claim, thence in a westerly direction at right angles across the ledge 300 feet to monument of stone at N.W. corner of claim, thence in a northerly direction parallel with the ledge 1500 feet to monument of stone at N.E. corner of claim, thence at right angles across the claim in a westerly direction 300 feet to a monument of stone at N.W. corner and place of beginning.

This claim may be more generally described as situated in and over and upon Gulch, between the Magnet mine and Charleston claim and is a strip of ground about 300 feet wide lying between those two claims or mines—in the Peck Mining District, Yavapai County, Arizona Territory and shall be known as the Magnet No. 2 Mining Claim.

Dated on the ground this 11th day of September 1897.

Byron M. Shear.

Witness:

Harrington Blauvelt.

Recorded at request of A. Falco, October 13th A.M. 1897, at 12:47 o'clock p.m. in Book 43 of mines, pages 151 and 152, 153, 154 of Yavapai County, Arizona.

By F.S. Averyt,
Deputy.

(Seal) W.I. Johnson,
County Recorder.

"OLYMPIA".

NOTICE OF MINING LOCATION.
Lode Claim.

To all whom it may concern:

This Mining Claim, the name of which is the "OLYMPIA" Mining Claim, situate on lands belonging to the United States of America, and in which there are valuable mineral deposits, was entered upon and located for the purpose of exploration and purchase by T. G. Norris the undersigned, on the First day of January 1900.

The length of this claim is Fifteen Hundred feet and I claim seven hundred and fifty feet, in a northerly direction and seven hundred and fifty feet in a southerly direction from the center of the discovery shaft, at which this notice is posted, lengthwise of the claim, together with three hundred feet in width of the surface grounds, on each side of the center of said claim. The general course of the lode deposits and premises is from the North to the South.

The claim is situated and located in the Pech Mining District, in Yavapai County, in the Territory of Arizona, about 500 yards in a southerly direction from Glalister Mine and Mill in Forward Round Gulch.

The surface boundaries of the claim are marked upon the ground as follows: Beginning at a monument of stone at a point in a southerly direction 750 feet from the discovery shaft (at which this notice is posted), being in the center of the South end line of said claim; thence 300 feet to a monument of stone being the N.W. corner of said claim; thence 750 feet to a monument of stone at the center of the West side line of said claim; thence 750 feet to a monument of stone being at the N.E. corner of said claim; thence 300 feet to a monument of stone at the center of the North end of said claim; thence 300 feet to a monument of stone, being at the S.E. corner of said claim; thence 750 feet to a monument of stone being at the center of the East sideline of said claim; thence 750 feet to a monument of stone at the S.E. corner of said claim; thence 300 feet to the place of beginning.

All done under the provisions of Chapter Six, of Title XXXIII, of the Revised Statutes of the United States, and of an Act of the General Assembly of Arizona, entitled "An Act Concerning Mines", approved March 30th, 1895, and amended March 24, 1899.

Dated and posted on the ground this 1st day of January 1900.

T. G. Norris.

Filed and recorded at request of Fred Philpott, Land. 5" A. P. 1900, at 10:43 o'clock a.m., Book 53 of Mines, page 339, Records of Yavapai County, Arizona.

(Seal) W. I. Johnston,
County Recorder.
By F. J. Farley,
Deputy Recorder.

CHARLESTON.AMENDED NOTICE OF MINING LOCATION.
Lode Claim.

To all whom it may concern:

This mining claim, the name of which is the Charleston Mining Claim, situate on lands belonging to the United States of America, and in which there are valuable mineral deposits, was entered upon and located for the purpose of exploration and purchase by T.G. Norris, the undersigned, on the 17th day of March 1902.

The length of this claim is 1430 feet, and I claim 300 feet in a northerly direction, and 300 feet in a southerly direction from the center of the discovery monument, at which this notice is posted, lengthwise of the claim, together with 300 feet in width of the surface grounds, on each side of the center of said claim. The general course of the lode deposit and premises is from the North to the South.

The claim is situated and located in the 2nd Mining District, in Yavapai County, in the Territory of Arizona, about one mile in a northerly direction from Crown King and about 1300' in a westerly direction from the Gladiator mine.

The surface boundaries of the claim are marked upon the ground as follows: Beginning at a mon. at a point in a southerly direction 300 feet from the discovery monument (at which this notice is posted), being in the center of the South end line of said claim; thence N. 70° 45' E. 300 feet to a mon., being the N.W. corner of said claim; thence N. 30° 9' E. 1430 feet to a mon. being at the N.E. corner of said claim; thence S. 70° 45' E. 300 feet to a mon. at the center of the North end of said claim; thence S. 70° 45' E. 300 feet to a mon., being at the S.W. corner of said claim; thence S. 30° 9' E. 1430 feet to a mon. at the S.E. corner of said claim; thence N. 70° 45' W. 300 feet to the place of beginning.

All done under the provisions of Chapter Six, of Title XXXII, of the Revised Statutes of the United States, and of an Act of the General Assembly of Arizona, entitled "An Act Concerning Mines", approved March 20th, 1905, and amended March 2nd, 1909.

This is an Amended Location Notice of the Charleston Mining Claim, located by R.M. Dougherty on the 1st day of April 1900, and recorded in Book 22 of Records of Mines, at page 472, in the office of the County Recorder of the aforesaid County of Yavapai to which reference is hereby made, and this Amended Location Notice is made and posted to correct errors in the description in the said original Location Notice. This additional amended loc. certificate is made to correct name of Mining District.

Given and posted on the ground this 17th day of March 1902.

T.G. Norris
BY J.J.F.

Recorded at request of J.J. Fisher, March 25th A.D. 1902, at 10:15 o'clock a.m. in Book 31 of Mines, pages _____, Records of Yavapai County, Arizona.

By Charles Mattye,
Deputy.

(Seal) P.J. FARLEY,
County Recorder.

TERRITORY OF ARIZONA.)
 : SS.
 COUNTY OF YAVAPAI.)

I, P. J. FARLEY, County Recorder in and for
 the County of Yavapai, in the Territory of Arizona, and custodian of
 the records thereof, do hereby certify that I have compared the
 above and foregoing pages numbered from one to five, inclusive, with
 the original records in my office and said five pages contain a
 full, true and correct copy of the notice of location of each of the
 following described mining claims, and also a full, true and correct *copy*
 of the Amended notice of location of the "Charleston" mining claim,
 as the same appear from said records, to-wit:-

Merrimac mining claim, notice of location thereof is of
 record in Book 44 of Mines, pages 450-451, Records of Yavapai County,
 Arizona:

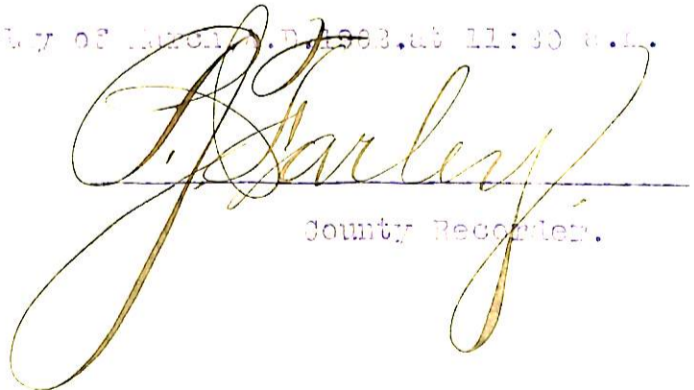
Monitor mining claim, notice of location thereof is of
 record in Book 44 of Mines, pages 451-453, records aforesaid:

Magnet No. 2 mining claim, notice of location thereof is of
 record in Book 43 of Mines, pages 232-233, records aforesaid:

Olympia Mining claim, notice of location thereof is of
 record in Book 53 of Mines, page 329, records aforesaid: and,

Charleston mining claim, amended notice of location where-
 of is of record in Book 51 of Mines, pages _____, records aforesaid.

IN WITNESS WHEREOF, I have hereunto set my hand and affixed
 my official seal, this 25th day of March, A. D. 1903, at 11:30 a. m.


 County Recorder.

"LONE JACK".

NOTICE OF MINING NOTATION.
Lone Jack.

To all whom it may concern:

This mining claim, the name of which is the LONE JACK MINING claim situate on lands belonging to the United States of America, and in which there are valuable mineral deposits, was explored and located for the purpose of exploration and purchase by John Odell, a citizen of the United States, the 14th day of February, 1901.

The length of this claim is fifteen hundred feet, and it shall be thousand feet in a westerly direction and five hundred feet in a southerly direction from the center of the discovery lode. This claim notice is posted, lengthwise of the lode, together with three hundred feet in width of the surface grounds, on each side of the center of said claim. The general course of the lode is from the North to the South.

The claim is situated and located in the Peak Mining District, in Yavapai County, in the Territory of Arizona, about one mile in a westerly direction from the Red Hill and its beyond--the Red Canyon, and the West belonging to Charles Yates, and the surface grounds thereon belonging to the Consolidated Co.

The surface boundaries of the claim are as follows: beginning at a monument of stone at a point on the westerly line of section seven hundred feet from the discovery lode (the lode has a width of 20 feet). Thence to the North end of the South end line of said claim; thence three hundred feet to a monument of stone, which is at the North West corner of said claim; thence three hundred & fifty feet to a monument at the center of the North side line of said claim; thence seven hundred & fifty feet to a monument being at the North East corner of said claim; thence three hundred feet to a monument being at the North end of said claim; thence three hundred feet to a monument, being at the Northwest corner of said claim; thence seven hundred & fifty feet to a monument of stone being at the center of the West side line of said claim; thence seven hundred & fifty feet to a monument at the South West corner of said claim; thence three hundred feet to the place of beginning.

All done under the provisions of Chapter Six, of Title XXXII, of the Revised Statutes of XXXXXX the United States, and of an Act of the General Assembly of Arizona, entitled "An Act Concerning Mines", approved March 20th, 1895, and amended March 23, 1900.

Dated and posted on the ground this 2nd day of February 1901.

John Odell.

Filed and recorded at request of John Odell on the 14th day of February, 1901, at 9 o'clock A.M., Book 57 of Mines, page 317, County of Yavapai County, Arizona.

By P.J. Gibbons,
Deputy Recorder.

(Seal) P.J. Farley,
County Recorder.

BERNARDY OF ARIZONA.)
COUNTY OF YAVAPAI.) SS:

I, P.J. FARLEY, County Recorder in and for the County of Yavapai, in the Territory of Arizona, and custodian of the records thereof, do hereby certify that I have compared the same and foregoing with, and the same is a full, true and correct copy of the notice of location of the "LONE JACK" mining claim, as the same appears of record in Book 57 of Mines, page 317, County of Yavapai County, Arizona.

IN WITNESS WHEREOF, I have hereunto set my hand and official seal, this 10th day of April, A.D. 1902.

P. J. Farley
County Recorder.

(4-687.)

Surveyor General's Certificate of Approval of Field Notes and Survey of Mining Claim.

Department of the Interior,

Office of U. S. Surveyor General,

Phoenix, Arizona

July 31st, 1902

I, U. S. Surveyor General for *the District of Arizona*, do hereby certify that the foregoing and hereto attached Field Notes and Return of the Survey of the Mining Claim of *C. G. Lewis*

....., known as the *Merimac, Merion, Olympia, Paulston, Magnet #2 & Lone Jack*.

situate in *Peck* mining district,

Yavapai County, *Arizona*

in Section *14*, Township No. *11 N*, Range No. *1 W*

....., designated as Survey No. *1645*

executed by *C. J. Fisher*, U. S. Deputy Mineral

Surveyor, *April 17th 1902*, under my instructions dated

March 26, 1902, have been critically examined and the

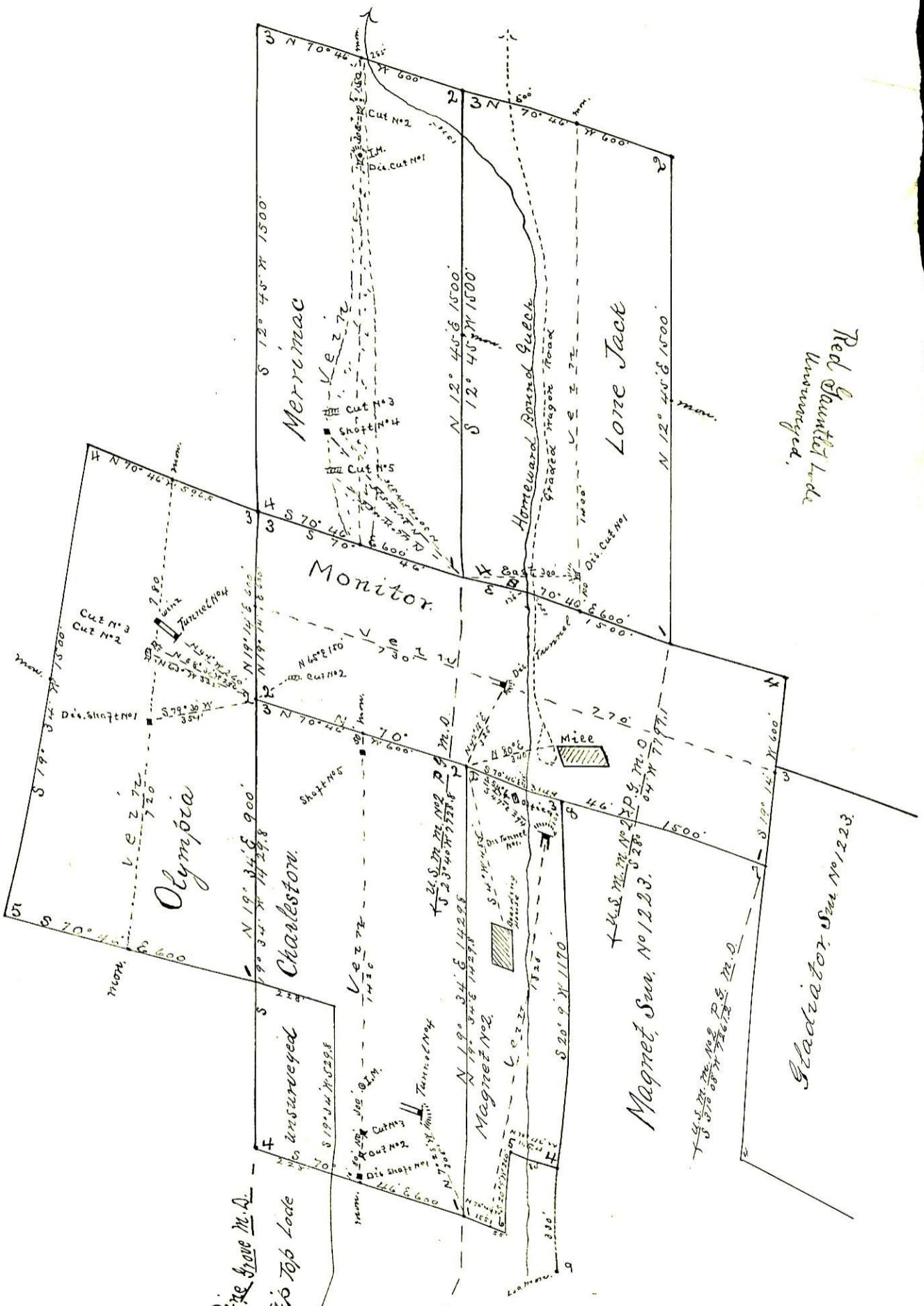
necessary corrections and explanations made, and the said Field Notes and Return, and

the Survey they describe, are hereby approved. A true copy of the copy of the location

certificate filed by the applicant for survey is included in the field notes.

August H. Price

U. S. Surveyor General for *Arizona*



Red Quantel Land
Unsurveyed.

U.S. M. No. 190 10' 62.05' 9' P. 10' 51' 00' M.A.
Tip Top Lodge

U.S. M. No. 250 10' 5706.7' P. 8' 770.0'

Magnet Sur. No. 1223.

Surveyed April 17+18, 1902
by J. Fisher
U.S.G.M.S.