

**MS**  
-

**0**

**1**

**7**

**1**

**7**

Recd. Nov. 5/02

Notes + Loc. notes and a  
portion of notes copied.  
H. C. J.

(4-683.)

Mineral Survey No. 1217

Lot No.

~~Tucson~~ Arizona Gila Land District.

### FIELD NOTES

OF THE SURVEY OF THE MINING CLAIM OF

The Black Prince Copper Company

KNOWN AS THE

Blue Bell, Blue Jacket, Clondike, Keystone, Copper Bell, Dewey

Iron Blue and Ross lodes; Cochise Mining District,

Cochise County, Arizona

Section unswamped, Township 15 S., Range 22 E. S. & S. R. 11

Surveyed under instructions dated Oct. 18<sup>th</sup> 1902, 18

by Theo L. Darby  
U. S. Deputy Mineral Surveyor

Claim located, 18

Survey commenced Oct 18<sup>th</sup> 1902, 18

Survey completed Oct 21<sup>st</sup> 1902, 18

o 6-160

Address of claimant  
Hugh Mackay, President  
1643 Champa Street  
Denver Colorado  
Robert Mackay, Agent  
Johnson Arizona

# PRELIMINARY OATHS OF ASSISTANTS IN SURVEY OF MINING CLAIM.

~~We~~, I, Robert Mackay ~~and~~  
do solemnly swear that ~~we~~ <sup>I</sup> will well and faithfully execute the duties of chain carriers; that we will level the chain upon even and uneven ground and plumb the tally-pins, either by sticking or dropping the same; that we will report the true distance to all notable objects, and the true length of all lines that we assist in measuring, to the best of our skill and ability, and in accordance with instructions given us, in the survey of the Mining Claim of The Black Prince Copper Company, known as the Blue Bell, Klondike, Keystone, Blue Jacket, Copper Bell, Dewey, True Blue & Hoos Lodes situate in Cochise mining district, Cochise County, Arizona, in Section —, Township No. —, Range No. Unsurveyed.

Robert Mackay, Chainman.  
~~Axeman & Flagman~~, ~~Chainman~~.

Subscribed and sworn to by the above-named persons before me this 29<sup>th</sup> day of September, 1902

My commission expires Dec 8<sup>th</sup> 1904 W. A. Washington  
Notary Public

I, \_\_\_\_\_, do solemnly swear that I will well and truly perform the duties of axeman, in the establishment of corners and other duties, according to instructions given me and to the best of my skill and ability, in the survey of the Mining Claim of \_\_\_\_\_

known as the \_\_\_\_\_, more fully described in the preceding affidavit.

\_\_\_\_\_, Axeman.

Subscribed and sworn to by the said \_\_\_\_\_ before me this \_\_\_\_\_ day of \_\_\_\_\_, 18 \_\_\_\_\_.

I, \_\_\_\_\_, do solemnly swear that I will well and truly perform the duties of flagman, in the establishment of corners and other duties, according to instructions given me and to the best of my skill and ability, in the survey of the Mining Claim of \_\_\_\_\_

known as the \_\_\_\_\_, more fully described in the preceding affidavit.

\_\_\_\_\_, Flagman.

Subscribed and sworn to by the said \_\_\_\_\_ before me this \_\_\_\_\_ day of \_\_\_\_\_, 18 \_\_\_\_\_.

Fest

Survey N<sup>o</sup> 1717

## Clondike Lode

Beginning at cor N<sup>o</sup> 1

Identical with N. W. cor. Magazine lode, unsurveyed  
Claimants unknown.

A pine post 4 1/2 ft long, 4 ins square set 1 ft in  
the ground with mound of stone and  
scribed 1-1717 whence,

U. S. Mineral Monument N<sup>o</sup> 1, C. D. bears  
S. 15° 21' 40" W. 5012.9 ft

The saddle between Dos Cabezos Mt bears N. 74° 45' E

A peak bears N. 6° 23' W.

Thence N. 33° 34' W.

1498. To cor N<sup>o</sup> 2

A pine post 4 1/2 ft long, 4 ins square, set 18 ins  
in ground, with mound of stone and  
scribed 2-1717 whence

The saddle between Dos Cabezos bears N. 75° 17' E

A sharp peak bears S. 32° 34' E.

Thence N. 56° 26' E.

600. To cor N<sup>o</sup> 3.

Identical with cor N<sup>o</sup> 4 Sur N<sup>o</sup> 1525 Last Chance lode  
The Dragon Mining Company Claimants

A post 4 ins square, standing 3 ft above ground  
in mound of stone and scribed 4-1525 and 3-1717, whence

The saddle between Dos Cabezos Mt bears N. 75° 22' E.

A peak bears N. 6° 20' W.

Thence S. 33° 34' E.

1498. To cor N<sup>o</sup> 4.

Identical with cor N<sup>o</sup> 1 Sur N<sup>o</sup> 1525 Last Chance lode,  
cor N<sup>o</sup> 8 Sur N<sup>o</sup> 286 Peabody lode, The Dragon Mining Co  
claimant and with N. E. cor of Magazine lode.

A pine post 4 ins square, standing 4 ft above ground  
in mound of stone and scribed 1-1525, P. VIII, & 4-1717

Thence S. 56° 26' W.

600. To cor N<sup>o</sup> 1.

The place of beginning  
All corners are identical with the location

## Blue Jacket Lode

Beginning at cor N<sup>o</sup> 1

Identical with cor N<sup>o</sup> 1, Clondike lode, of

	<p>this survey, scribed 1-1717 whence  U. S. Mineral Monument N<sup>o</sup> 1. C. D. bears S, 15° 21'  40" W. 5012.9 ft.  Thence N. 33° 34' W.</p>	2
1498	<p>To cor N<sup>o</sup> 2  Identical with cor N<sup>o</sup> 2 Clondike lode of  this survey, and scribed 2-1717  Thence S, 56° 26' W.</p>	
600.	<p>To cor N<sup>o</sup> 3.  A pine post 4 1/2 ft long, 4 ins square, set  20 ins in ground with mound of stone and scribed 3-1717  Thence S, 41° 05' E.</p>	
223.1	To cor N <sup>o</sup> 3. Blue Bell lode, of this survey	
1511.	<p>To cor N<sup>o</sup> 4  A pine post 4 1/2 ft long, 4 x 6 ins set 18 ins in  ground with mound of stone and scribed 4-1717  Thence N, 56° 26' E.</p>	
17.96	Intersect line 3-4 Blue Bell lode of this survey, at a pt. N. 41° 33' W.	
402.26	<p>207.66 ft. from cor. 3-4 Copper Bell &amp; Blue Bell respectively  To cor N<sup>o</sup> 1  The place of beginning  All corners identical with the location</p>	
	<p>Keystone Lode  Beginning at cor N<sup>o</sup> 1  Identical with cor N<sup>o</sup> 4 Blue Jacket lode, of  this survey and with cor N<sup>o</sup> 1 of location  scribed 1-1717 whence  U. S. Mineral Monument N<sup>o</sup> 1. C. D. bears S, 12° 9' W. 4717 ft  Thence S, 37° 56' E.</p>	
210.88	<p>Intersect line 3-4 and 4-1 Copper Bell and Blue  Bell lodes of this survey and 4-5 Sec N<sup>o</sup> 497  Dreadnought lode, claimant unknown, (abandoned)  at S, 51° 17' W. 32.34 ft from Cor 3+4 respectively</p>	
1504.6	<p>To cor N<sup>o</sup> 2  A post 4 1/2 ft long, 6 ins square  set on solid rock in large mound of stone  and scribed 2-1717 whence  Cor N<sup>o</sup> 2 of the location bears S, 37° 56' E.  22.1 ft.  Thence N, 56° 26' E.</p>	
234.4	Intersect line 2-3 of Copper Bell lode of this survey and line 2-3 of Dreadnought	

Feet lode at N.  $46^{\circ}40'W$ , 173 ft from cor N<sup>o</sup> 2 and at S.  $46^{\circ}40'E$ .  
 287.6 1327 ft. from loc. N<sup>o</sup> 3. Copper Bell lode of this survey.  
 To cor N<sup>o</sup> 3.

Identical with cor N<sup>o</sup> 3 of location  
 and with the S.W. cor. of Magazine lode

A pine post  $4\frac{1}{2}$  ft long, 6 ins square, set  
 6 ins in ground with large mound of stone  
 and scribed 3-1717.

Thence N.  $33^{\circ}34'W$ .

1500. To cor N<sup>o</sup> 4

Identical with cor N<sup>o</sup> 1-1 Cloudlike  
 and Blue Jacket lodes of this survey,  
 with cor N<sup>o</sup> 4 of the location and with the  
 N.W. cor. of the Magazine lode; scribed 4-1717

Thence S.  $56^{\circ}26'W$ .

384.3 Intersect line 3-4 Blue Bell lode of this survey

402.26 To cor N<sup>o</sup> 1

The place of beginning.

### Blue Bell Lode

Beginning at cor N<sup>o</sup> 1

Identical with cor N<sup>o</sup> 5, Draught lode  
 and cor N<sup>o</sup> 4 Copper Bell lode, of this survey.

A pine post 6 ins square, standing 4 ft  
 above ground in mound of stone and  
 scribed U.S.S.-D.V. and 1-1717 whence

U. S. Mineral Monument N<sup>o</sup> 1, C. D.  
 bears S.  $9^{\circ}26'W$ . 4146. ft.

A mountain peak bears N.  $33^{\circ}13'W$ .

A sharp peak bears S.  $33^{\circ}08'E$ .

Thence N.  $41^{\circ}53'W$ .

1500. To cor N<sup>o</sup> 2.

A pine post  $4\frac{1}{2}$  ft long, 4 ins square  
 set 18 ins in ground, with mound of stone  
 and scribed 2-2-1717 whence

The saddle between Dos Cabezas Mt bears N.  $75^{\circ}05'E$

A peak bears N.  $23^{\circ}49'W$ .

Thence N.  $51^{\circ}17'E$ .

600. To cor N<sup>o</sup> 3.

On line 2-3 Blue Jacket lode, of this survey

- Feet A pine post  $4\frac{1}{2}$  ft long,  $4 \times 6$  ins set 18 ins in ground  
with mound of stone and scribed 3-1717  
Thence S.  $41^{\circ}53' E$ .
- 1290.34 Intersect lines 4-1 Blue Jacket and Keystone  
lodes of this survey at 17.96 ft. from Cor. N<sup>o</sup> 1 Keystone lode  
1500. To cor. N<sup>o</sup> 4 } and cor. N<sup>o</sup> 4, Blue Jacket lode.  
Identical with cor. N<sup>o</sup> 3 Sur N<sup>o</sup> 497 Dreadnought lode  
A pine post 6 ins square, standing  $4\frac{1}{2}$  ft  
above ground in large mound of stone and  
scribed U.S.S; D. 111 and 4-1717 whence  
A peak bears N.  $64^{\circ}04' E$ .  
A peak bears N.  $6^{\circ}12' W$ .  
Thence S.  $51^{\circ}17' W$ .
- 32.34 Intersect line 1-2 Keystone lode of this survey at 210.88 ft.  
600. To cor. N<sup>o</sup> 1 } from cor. N<sup>o</sup> 1, Keystone lode of this survey.  
The place of beginning  
All corners identical with the location.

### Copper Bell Lode

Beginning at cor. N<sup>o</sup> 1

Identical with cor. N<sup>o</sup> 6 Sur N<sup>o</sup> 497  
Dreadnought lode and with the S.W. cor of location  
A pine post 6 ins square, standing 3 ft above  
ground in mound of stone and scribed D. VI.  
U.S.S. and 1-1-1717 whence

W. S. Mineral Monument N<sup>o</sup> 1, C. S. bears  
S.  $30^{\circ}03' W$ . 3535.84 ft.

A sharp peak bears S.  $32^{\circ}34' E$ .

A peak bears S.  $62^{\circ}58' W$ .

Thence N.  $51^{\circ}17' E$ .

600 To cor. N<sup>o</sup> 2

Identical with cor. N<sup>o</sup> 2 Sur N<sup>o</sup> 497, Dreadnought  
lode and with the S.E. cor of the location  
A pine post 6 ins square, standing 4 ft  
above ground, in mound of stone and  
scribed D. 11. U.S.S and 2-1717

Thence N.  $46^{\circ}40' W$ .

173 Intersect line 2-3 Keystone lode of this survey  
1500 To cor. N<sup>o</sup> 3.

- Feet Identical with cor N<sup>o</sup> 4, Blue Bell lode of this survey and with N. W. cor N<sup>o</sup> 1 of location and scribed 3-1717
- 32.34  
600. Intersect line 1-2 Keystone lode of this survey.  
To cor N<sup>o</sup> 4.  
Thence S. 51° 17' W.  
Identical with cor N<sup>o</sup> 1, Blue Bell lode, of this survey and scribed 4-1717  
Thence S. 46° 40' E.  
1500. To cor N<sup>o</sup> 1  
The place of beginning
- Dewey Lode  
Beginning at cor N<sup>o</sup> 1  
Identical with cor N<sup>o</sup> 1-4 Blue Bell and Copper Bell lodes of this survey and scribed 1-1717 whence  
U. S. Mineral Monument N<sup>o</sup> 1, C. D. bears S. 9° 26' W. 4146. ft  
Thence N. 41° 53' W.  
1500. To cor N<sup>o</sup> 2  
Identical with cor N<sup>o</sup> 2 Blue Bell lode of this survey and scribed 2-1717  
Thence S. 51° 17' W.  
600.86 To cor N<sup>o</sup> 3.  
A pine post 4 1/2 ft long, 4 ins square set 18 ins in ground, with mound of stone and scribed 3-1717  
Thence S. 41° 53' E  
1500 To cor N<sup>o</sup> 4  
A pine post 4 1/2 ft long, 4 x 6 ins set 2 ft in ground with mound of stone and scribed 4-1717 whence  
The saddle between Dos Cabezas Mt bears N. 74° 28' E  
A peak bears S. 23° 48' E.  
Thence N. 51° 17' E.  
600.86 To cor N<sup>o</sup> 1  
The place of beginning  
All corners identical with the location

5



Feet

## True Blue Lode

Beginning at cor N<sup>o</sup> 1

Identical with cor N<sup>o</sup> 1 Copper Bell lode, of this survey and with the N.E. cor. of the location, scribed 1-1717 whence.

U.S. Mineral Monument N<sup>o</sup> 1. C. D. bears S. 30° 03' W.  
3535.84 ft

Thence S. 51° 17' W.

605.82 To cor N<sup>o</sup> 2

Identical with the S.E. cor of location and with the N.E. cor. Southern Cross lode, unsurveyed, claimants unknown.

A pine post 4 1/2 ft long, 4 x 6 ins set 18 ins in ground with mound of stone and scribed 2-1717

Thence N. 46° 40' W.

1500 To cor N<sup>o</sup> 3

Identical with the S.W. cor of location and with the N.W. cor. Southern Cross lode, unsurveyed, claimants unknown

A pine post 4 1/2 ft long, 4 x 6 ins, set 20 ins in ground with mound of stone and scribed 3-1717

Thence N. 51° 17' E

4.96 To cor N<sup>o</sup> 4 Dewey lode of this survey605.82 To cor N<sup>o</sup> 4

Identical with cor N<sup>o</sup> 1-1-4 Blue Bell, Dewey and Copper Bell lodes of this survey and with the N.W. cor of location, scribed 2-1717

Thence S. 46° 40' E.

1500 To cor N<sup>o</sup> 1.

The place of beginning

## Ross Lode

Beginning at cor N<sup>o</sup> 1

Identical with cor N<sup>o</sup> 4 Dewey lode of this survey and scribed 1-1717, whence  
U.S. Mineral Monument N<sup>o</sup> 1. C. D. bears  
S. 3° 14' 49" W. 3720.1 ft

Thence N. 41° 53' W.

1500 To cor N<sup>o</sup> 2.

- Feet Identical with cor N<sup>o</sup> 3, Dewey lode of this survey and scribed 2-1717  
Thence S. 51°17' W.
- 600.86 To cor N<sup>o</sup> 3  
A pine post 4½ ft long, 4x6 ins set 18 ins in ground with mound of stone and scribed 3-1717  
Thence S. 41°53' E
900. To cor N<sup>o</sup> 4  
A pine post 4½ ft long, 4x6 ins set on solid rock in place, in large mound of stone and scribed 4-1717  
Thence S. 57°57' E.
- 634.5 To cor N<sup>o</sup> 5, &  
Identical with the N. E. cor. Arizona lode, unsurveyed, claimants unknown  
A pine post 4½ ft long, 4x6 ins, set 18 ins in ground, with mound of stone and scribed 5-1717  
Thence N. 51°17' E.
- 420.04 To cor N<sup>o</sup> 3 True Blue lode, of this survey
425. To cor N<sup>o</sup> 1

The place of beginning  
all corners identical with the location  
Variation of magnetic needle at  
all corners being 12°20' E.

### Lode Lines

So far as can be determined from present developments the lode lines of the respective locations embraced in this claim are as follows:

- Cloudike lode, 25 ft S. 33°34' E. 1473 ft N. 33°34' W. from discovery  
Blue Jacket lode, 3 ft S. 33°34' E. 1445 ft N. 33°34' W. from discovery shaft  
Keystone lode 1450 ft S. 33°34' E. 50 ft N. 33°34' W. from discovery shaft  
Blue Bell lode 20 ft S. 41°53' E. 1480 ft N. 41°53' W. from discovery shaft  
Copper Bell lode 29 ft N. 46°40' W. 1471 ft S. 46°40' E. from discovery shaft  
Dewey lode 14 ft S. 41°53' E. 1486 ft N. 41°53' W. from discovery shaft  
True Blue lode 800 ft S. 46°40' E. 700 ft N. 46°40' W. from discovery shaft  
Ross lode 500 ft S. 41°53' E. 1000 ft N. 41°53' W. from discovery shaft

## Area

Total area Blue Bell lode	20.632 acres
Less area in conflict with Blue Jacket lode of this survey	0.266 acres
Keystone lode of this survey	0.122 "
	<u>0.430</u>
Net area Blue Bell lode	20.244 acres
Total area Keystone lode	11.878 acres
Less area in conflict with Copper Bell lode of this survey	3.957 "
Net area Keystone lode	7.921 acres
Total area Copper Bell lode	20.463 acres
Area in conflict with Sur N <sup>o</sup> 497 Drednought lode	<u>20.463 acres</u>
Net area Copper Bell lode	20.463 acres
Total and net area Clondike lode	20.634 "
Total and net area Blue Jacket lode	17.233 "
Total and net area Drway lode	20.659 "
Total and net area Fine Blue lode	20.662 "
Total and net area Ross lode	19.450 "
Net area Blue Bell lode	20.244 "
Net area Keystone lode	<u>7.921 "</u>
Net area of claim	147.266 acres

## Location:

This claim is located in unsurveyed townships N<sup>o</sup> 15 South, Range 22 East, Gila and Salt River Meridian Cochise Mining District, Cochise County Arizona. There is no corner of the government surveys within two miles of this claim.

Expenditure of five hundred dollars.

I certify that the value of the labor and improvements upon this claim, placed thereon by the claimant and its grantors is not less than five hundred dollars and that said improvements consist of:

## Clondike Lode

- N<sup>o</sup> 1 The discovery shaft of the Clondike lode, on the center line 25 ft N, 33° 34' W. from the center of line 4-1. 548 ft 10 ft deep in rock  
Value \$150.
- N<sup>o</sup> 2 A shaft which bears from cor N<sup>o</sup> 4 Clondike lode N. 55° 54' W. 157 ft. 448 ft 43 ft deep; at the bottom of which a drift 3½ x 6½ ft is run S. 70° E. 27 ft  
Value of shaft and drift \$650.

N<sup>o</sup> 3 A shaft which bears from cor N<sup>o</sup> 4 Cloudike lode  
 S. 75° W. 274 ft. 5 x 6 ft 10 ft deep in rock  
 Value \$80.00

Blue Jacket lode

N<sup>o</sup> 1 The discovery shaft of the Blue Jacket lode  
 which bears from cor N<sup>o</sup> 1 S. 57° W. 300 ft.  
 4 x 8 ft 10 ft deep in rock  
 Value \$100.00

Keystone lode

N<sup>o</sup> 1 The discovery shaft of the Keystone lode, which  
 bears from cor N<sup>o</sup> 4. S. 45° 28' W. 262.5 ft. 4 x 7 1/2 ft 11 ft  
 deep in rock  
 Value \$100.00

N<sup>o</sup> 2 A shaft which bears from cor N<sup>o</sup> 3. Copper Bell lode  
 N. 81° 34' E. 135 ft. 4 x 8 ft. 12 ft deep in rock  
 Value \$100.00

N<sup>o</sup> 3 A shaft which bears from cor N<sup>o</sup> 3. Copper Bell lode  
 N. 65° 34' E. 192 ft 4 x 6 ft 11 ft deep in rock  
 Value \$100.00

N<sup>o</sup> 4 A shaft which bears from cor N<sup>o</sup> 3. Copper Bell lode  
 N. 46° 4' E. 198 ft. 4 x 7 ft 11 ft deep in rock  
 Value \$100.00

N<sup>o</sup> 5 A shaft which bears from cor. N<sup>o</sup> 3 Copper Bell lode  
 N. 42° 4' E. 195 ft. 4 x 6 ft 12 ft deep in rock  
 Value \$100.

N<sup>o</sup> 6. A shaft which bears from cor. N<sup>o</sup> 4 Keystone lode  
 S. 25° 48' E. 653 ft. 4 x 7 ft 22 ft deep in rock  
 Value \$220.

N<sup>o</sup> 7 A shaft which bears from cor N<sup>o</sup> 2 Keystone lode  
 N. 46° 40' W. 198 ft. 4 x 7 ft 16 ft deep in rock  
 Value \$150.

N<sup>o</sup> 8 A shaft which bears from cor N<sup>o</sup> 2 Keystone lode  
 N. 31° 47' W. 390 ft. 4 x 12 ft 10 ft deep in rock  
 Value \$100.

Copper Bell lode

N<sup>o</sup> 1 The discovery shaft of the Copper Bell lode  
 on the center line 29 ft N. 46° 40' E. from the center  
 of line 3-4. 4 x 7 ft 40 ft deep. Dips 45° N. 53° E  
 Value \$400.

N<sup>o</sup> 2 A shaft which bears from a point on line 2-3 Copper Bell lode  
 N. 46° 40' W 173 ft. from cor. N<sup>o</sup> 2 of said claim.  
 N. 52° 26' W. 231 ft. 4 x 7 ft 12 ft deep in rock  
 Value \$100.

- N<sup>o</sup> 3. A shaft which bears from same point,  
N. 61° 36' W. 562 ft. 5 x 12 ft 10 ft deep in rock  
Value \$1,000.
- N<sup>o</sup> 4. A shaft which bears from same point.  
N. 79° 15' W. 344 ft + 48 ft 15 ft deep; at the bottom of  
which a drift is run N. 50° W 45 ft and stopped nearly  
to the surface  
Value of shaft and drift \$450.
- N<sup>o</sup> 5. An incline shaft which bears from cor N<sup>o</sup> 3 Copper  
Bell lode S. 2° 41' W. 100 ft. 5 x 8 ft 55 ft deep in rock,  
timbered 12 ft. Dips 43° N. 54° E. At the bottom drifts 4 x 7 ft  
are run S. 35° E. 45 ft and N. 35° W. 70 ft.  
Value of shaft and drift \$1,300.  
The 70 ft drift last named is credited to the develop-  
ment of the Blue Jacket lode.
- N<sup>o</sup> 6. A shaft which bears from cor. N<sup>o</sup> 4. Copper Bell lode  
S. 57° 45' E. 305 ft. 5 x 8 ft 62 ft deep. Dips 50° N. 54° E  
Value \$600.
- N<sup>o</sup> 7. An incline shaft the mouth of which bears from cor N<sup>o</sup> 4  
Copper Bell lode, S. 50° 31' E. 330 ft. 5 x 8 ft 30 ft deep  
in rock, Dips 44° 50' N. 62° E.  
Value 300.
- N<sup>o</sup> 8. An open cut, the center of which bears from cor N<sup>o</sup> 4  
Copper Bell lode, S. 75° 15' E. 680 ft. 4 x 20 ft 10 ft deep. Course S. 45° E  
Value \$150.
- N<sup>o</sup> 9. A shaft which bears from cor N<sup>o</sup> 4 Copper Bell lode  
S. 61° 55' E. 805 ft 6 x 8 ft 10 ft deep in rock.  
Value \$90.
- N<sup>o</sup> 10. A shaft which bears from cor N<sup>o</sup> 1 Copper Bell lode  
N. 12° 10' W. 500 ft. 6 x 8 ft 14 ft deep in rock  
Value \$125.00
- N<sup>o</sup> 11. A shaft which bears from cor. N<sup>o</sup> 1 Copper Bell lode  
N. 15° 6' W. 498.5 ft 4 x 9 ft 10 ft deep in rock  
Value \$100.
- N<sup>o</sup> 12. A shaft which bears from cor N<sup>o</sup> 1 Copper Bell lode  
N. 18° 18' W. 400 ft. 5 x 8 ft 15 ft deep in rock.  
Value \$150.
- N<sup>o</sup> 13. A shaft which bears from cor N<sup>o</sup> 1 Copper  
Bell lode N. 27° 27' W 642.5 ft. 5 x 8 ft 20 ft deep  
Value \$200.
- N<sup>o</sup> 14. The Main Working shaft, the mouth of which  
bears from Cor. N<sup>o</sup> 3, Copper Bell lode S. 0° 6' E.

123 ft. 5x8 ft 156 ft deep on incline of  $44^{\circ} N. 62^{\circ} 30' E$

From the bottom of this shaft drifts  $3\frac{1}{2} \times 7$  ft have been run as follows: N.  $24^{\circ} W.$  25 ft and thence N.  $55^{\circ} W.$

25 ft to track: <sup>2nd</sup> S.  $24^{\circ} E$  28 ft to angle point N<sup>o</sup> 1

From angle point N<sup>o</sup> 1 a cross-cut  $4 \times 7$  ft is run N.  $79^{\circ} E.$  34 ft and another cross cut  $4 \times 7$  ft is run S.  $86^{\circ} 20' W.$  30.5 ft to angle point N<sup>o</sup> 2 and 43 ft to track

From angle point N<sup>o</sup> 2 a drift  $4 \times 7$  ft is run N.  $3^{\circ} 45' E.$  17.5 ft in the end of which a mine  $3\frac{1}{2} \times 7$  ft is sunk 62 ft. Also from angle point N<sup>o</sup> 2 a drift  $3\frac{1}{2} \times 7$  ft is run S.  $3^{\circ} 45' W.$  18.8 ft to angle point N<sup>o</sup> 3. from which a drift  $3.5 \times 7$  ft is run S.  $7^{\circ} 40' W.$  135 ft and a cross cut  $4 \times 7$  ft is run S.  $48^{\circ} E.$  24 ft.

Value of shaft, drifts, cross-cuts and mine \$4000.

The 50 ft drift running northerly from the bottom of this shaft is credited to the Blue Jacket lode and the cross-cut S.  $86^{\circ} 20' W.$  43 ft from angle point N<sup>o</sup> 1. and 100 ft of the drift running S.  $7^{\circ} 40' W.$  from angle point N<sup>o</sup> 3 are credited to the Dewey and Ross lodes.

N<sup>o</sup> 15 A frame dwelling the south west corner of which bears from cor N<sup>o</sup> 4, Copper Bell lode N.  $52^{\circ} 53' E.$  415 ft  $12 \times 22$  ft. Course of long side N.  $33^{\circ} E.$   
Value \$100.

N<sup>o</sup> 16 A frame blacksmith shop, the S. W. cor. of which bears from Cor N<sup>o</sup> 4 Copper Bell lode S.  $52^{\circ} 32' E.$  351 ft.  $12 \times 14$  ft. Course of long side N.  $15^{\circ} E.$   
Value \$40.

#### Blue Bell Lode

N<sup>o</sup> 1 The discovery shaft of the Blue Bell lode, on the center line 20 ft N.  $41^{\circ} 53' W.$  from the center of line 4-1.  $6 \times 8$  ft 11 ft deep in rock  
Value \$100.

N<sup>o</sup> 2 An incline shaft the mouth of which bears from Cor. N<sup>o</sup> 3. Copper Bell lode N.  $75^{\circ} 26' W.$  55 ft  $4 \times 7$  ft 35 ft deep in rock. Dips  $55^{\circ} S. 12^{\circ} 30' E.$ ; at the bottom a drift  $3\frac{1}{2} \times 6\frac{1}{2}$  ft is run N.  $40^{\circ} E.$  36 ft  
Value of shaft and drift \$600.

N<sup>o</sup> 3 An incline shaft which bears from Cor. N<sup>o</sup> 3. Copper Bell lode, S.  $82^{\circ} 50' W.$  96 ft.  $4 \times 8$  ft 142 ft deep: timbered 20 ft. Dips  $44^{\circ} N. 20^{\circ} E.$   
Value \$1400.

### True Blue Lode

- N<sup>o</sup> 1 The discovery shaft of the True Blue lode on the center line 700 ft S. 46° 40' E. from the center of line 3-4. 4x10 ft 11 ft deep  
Value \$100.
- N<sup>o</sup> 2 A shaft which bears from cor N<sup>o</sup> 4 True Blue lode S. 41° 33' E 335 ft. 5x8 ft 40 ft deep dips N. 54° E. 47°  
Value \$400.
- N<sup>o</sup> 3 A shaft which bears from cor N<sup>o</sup> 4 True Blue lode S. 36° E. 458 ft. 5x8 ft 14 ft deep in rock  
Value \$110.
- N<sup>o</sup> 4 A shaft which bears from cor N<sup>o</sup> 4 True Blue lode S. 33° 5' E 555 ft. 5x8 ft 30 ft deep in rock  
Value \$300.
- N<sup>o</sup> 5 A shaft which bears from cor N<sup>o</sup> 4 True Blue lode S. 7° 5' E. 692.5 ft. 5x8 ft 12 ft deep in earth and rock  
Value \$60.

### Dewey Lode

- N<sup>o</sup> 1 The discovery shaft of the Dewey lode, on the center line 14 ft N. 41° 53' W. from the center of line 4-1. 5x8 ft 11 ft deep in rock  
Value \$100.

### Ross Lode

- N<sup>o</sup> 1. The discovery shaft of the Ross lode, on the center line 1000 ft S. 41° 53' E. from the center of line 2-3. 4x8 ft 10 ft deep in rock  
Value \$100.

The surface embraced by this claim ascends to the southeast, south and west. The veins dip generally to the north east and the drifts and cross-cuts now being run from the Main Working shaft N<sup>o</sup> 14 on the Copper Bell lode continued in their present courses will cut the veins of the several locations at great depth; whereby by one system of workings and one plant of machinery the entire claim can be most advantageously and economically developed.

### Other Improvements

A shaft which bears from cor N<sup>o</sup> 1 Copper Bell lode N. 9° W. 502 ft. 5x8 ft 20 ft deep. Claimant unknown

An incline shaft the mouth of which bears from  
Cor. No. 1 Copper Hill lode  $N. 23^{\circ} 55' W.$  541 ft 4 x 8 ft 60 ft  
deep. Dips  $53^{\circ} 30'$   $N. 36^{\circ} W.$  Claimant unknown

### Instrument

This survey was made with a No. 6 Buff &  
Ranger Transit with Solar Attachment.

The courses were deflected from the true  
meridian as determined by direct solar  
observations. The distances were measured  
with 100 ft and 500 ft steel tapes



Keystens Lode

Log. 1500 (side line)	3 1760913
Log 287.6 (end line)	2 458789
A. C. of log. 43560	5 360912
Fraction = double area = 9.906	<u>1995714</u>

Log sin. = 85° 38'	9 998738
Log. 402.26 (end line)	2 6075068
Log. 1504.60 (side line)	3 177423
A. C. log. 43560	5 3609121
Fraction = double area = $\frac{13.850}{9.906}$	<u>211413799</u>
$\frac{2(23.756)}{11.878}$ area.	

Conflict Keystens & Blue Bell

Log. sine 90° 57'	9 999959
Log. 32.34	1 509740
Log. 210.88	2 324077
A. C. log. 43560	5 3609121
Fraction = double area = .1575	<u>191946881</u>

Log sine 81° 41'	9 995409
Log 17.96	1 257806
Log. 209.66	2 321598
A. C. log. 43560	5 360912
Fraction = double area = $\frac{0.0865}{2(1.24400)}$	<u>8.9322251</u>
.122 Acres	

Conflict Copper Bell and Keystens Lode

Log sin 85° 38'	9 998738
Log 234.4	2 369958
Log. 1293.72	3 111850
A. C. Log 43560	5 3609121
Fraction = double area = .6947	<u>208414581</u>

Log. sine. 76° 54'	9 988548
Log 1327	3 122876
Log. 32.34	1 509740
A. C. log 43560	5 3609121
Fraction = double area = $\frac{0.967}{2(7.914)}$	<u>199820761</u>
3.957 Acres.	

Areas

Clonidike Rod

Logarithm	1498 ft	3.1755118
"	" 600 "	2.7781513
Arithmetical complement of Logarithm of 43560		<u>5.3609121</u>
Area	20.6344 =	Log \$1.3145752

Blue Jacket Lode

Logarithm	1498	3.1755118
"	of 1/2 of 600 + 402.26 = 501.13	2.6999504
Arith Comp	Log 43560	<u>5.3609121</u>
Area	17.233	\$1.2363743

Keystone Lode

Log	1500 (side line)	3.1760913
Log	53.2 (End " )	1.7259116
A.C. of Log.	43560	<u>5.3609121</u>
Small fraction = Double area =	1.832 acres =	\$0.2629160
Log sine	76° 54'	9.9885482
Log	402.26 (End line)	2.6045068
Log	1540. (side line)	3.1875207
Arith Comp	Log 43560	<u>5.3609121</u>
Large fraction = Double area =	13.851	\$1.1414878
	<u>2) 15.683</u>	
area	7.842 acres	

Blue Bell Lode

Sine	86° 50'	9.9993364
Log.	600	2.7781513
Log	1500	3.1760913
A.C. of Log	43560	<u>5.3609121</u>
Total area	20.632 acres	\$1.3144911

Deduct Blue Jacket conflict

Sine	0° 48' =	8.1449532
Log	1290.34 =	3.1107042
Log	1287.9 =	3.1098821
A.C. Log	43560 =	<u>5.3609121</u>
	0.533	19.7264516
Double area, 0.533 = one half =	0.2662	✓

Deduct Keystone conflict

Sine	4° 47' =	8.9211034
Log	213. =	2.3283796
Log	209.64 =	2.3215156
A.C. Log	43560 =	<u>5.3609121</u>
Deduct area	0.085	18.9319107
Double area 0.085 = one half	<u>0.0422</u>	0.309
	0.309	
Net area Blue Bell Lode =	20.323	acres

## Areas

## Copper Bell Lode

Sine	82° 03'	9.9958059
Log	1500	3.1760913
Log	600	2.7781513
Arithmetical Complement Log.	43560 =	<u>5.3609121</u>
Area	20,463 acres =	<del>21,310,9606</del>

## Dewey Lode

Sine	86° 50'	9.9993364
Log.	1500	3.1760913
Log	600.86	2.7787733
A.C. of Log	43560.	<u>5.3609121</u>
Area	20,659 acres	<del>21,315,1131</del>

## True Blue Lode

Sine	82° 03'	9.9958059
Log	1500	3.1760913
Log	605.85	2.7823651
A.C. of Log	43560	<u>5.3609121</u>
Area	20,662 acres	<del>21,315,1744</del>

## Ross Lode

Sine	86° 50'	9.9993364
Log	1500	3.1760913
Log	600.86	2.7787733
A.C. of Log	43560	<u>5.3609121</u>
Area	20,659 acres	<del>21,315,1131</del>

## Deduct fraction

Sine	16° 04'	9.4420965
Log	634.5	2.8024316
Log	600.	2.7781513
A.C. of Log	43560	<u>5.3609121</u>
Double area	2,419 ÷ 2 =	<u>1.209</u>
Area	19,450 acres	<del>20,383,5915</del>

# REPORT.

19

Survey No. 1717

Blue Bell and other Lodes

November 1<sup>st</sup>, 1902

To the U. S. SURVEYOR-GENERAL,

Phoenix, ~~Arizona~~  
Denver, Colo.

The lines of this survey and the corners set are as the work was done in the field.

The connection to U. S. M. M. No. 1, C. D. was made direct from Cor No 1-1 Copper Bell and Fine Blue Lodes and the connections given to other corners of the survey were calculated by traverse through the above connection. The Mineral Monument is in plain view of every corner of this claim from which a connection to it is given and the bearings taken with the transit agree with the traverse within half of one minute in every instance. My transit only reads to minutes.

I have to report that line 4-1 Sur No 1525 Last Chance Lode is  $S. 33^{\circ} 34' E$  1498 ft instead of  $S. 33^{\circ} 04' E$  1500 ft as patented and that the connection from Cor 1-1525 to U. S. M. M. No 1, C. D. is  $S. 19^{\circ} 29' 13'' W$  5479.1 ft instead of  $S. 19^{\circ} 08' W$  5489.9 as patented

The monument is not visible from Cor No 1 Sur No 1525 Also that lines 2-3 + 56 Sur No 497 Dreadnought Lode are  $N. 46^{\circ} 40' W$  ( $S. 46^{\circ} 40' E$ ) 1550 ft instead of  $N 46^{\circ} 50' W$  ( $S. 46^{\circ} 50' E$ ) as reported and lines 6-1 + 35 are  $N. 51^{\circ} 17' E - S. 51^{\circ} 17' W$  600 ft instead of  $N 51^{\circ} 5' E - S. 51^{\circ} 5' W$  600 ft as reported

Thos L. Darby

U. S. Deputy Mineral Surveyor.

REPORT.

U. S. Deputy Mineral Surveyor.

Lode.

*The Black Pine Lode on the Blue Bell, Colorado  
Blue Jacket, Keystone, Dewey, Blue Bell, and other lodes*

TRAVERSES.

STATION.	COURSE.	DISTANCE.	N. LAT.	S. LAT.	E. DEP.	W. DEP.
U. S. M. M. No 1	N. 30° 03' E	3535.84	3060.58		1770.59	<del>70</del>
1- Copper Bell	N. 46° 40' W	1500.	1029.36			1091.06
Cov 1-1 Dewey & Blue Bell	S. 9° 26' W	4146.0		4089.94		679.53
To - Cov 1-1- Dewey & Blue Bell	N. 9° 26' E	4146.	<del>4089.94</del>		679.53	
Cov 1-1 Dewey & Blue Bell.	N. <del>30° 03'</del> E	650	375.28		468.15	
Cov 3 Blue Bell	N. 46° 40' W	213	146.17			154.93
Cov 1 Keystone	S. 12° 9' W	4717.		4611.39		992.75
U. S. M. M. to Cov 1-Keystone	N. 12° 9' E	4717.	4611.39		992.75	
Cov 1-Keystone Cov 1-1 Clouds	N. 56° 26' E	402.26	222.41		335.18	
Blue Jacket	S. 15° 21' 40" E	5012.9		4833.80		1327.93
U. S. M. M. to Cov 1- Dewey	N. 9° 26' E	4146.	4089.94		679.53	
Cov 1- Dewey	S. 51° 17' W.	600.86		375.82		468.82
Cov 1 Ross	S. 3° 14' 49" W	3720.1		3714.12		280.71

# FINAL OATHS FOR SURVEYS.

## LIST OF NAMES.

A list of the names of the individuals employed by Thos L. Darby

United States Deputy Mineral Surveyor, to assist in running, measuring, and marking the lines corners and boundaries described in the foregoing field notes of the survey of the mining claim of The Black Prince Copper Co., known as The Blue Bell, Clondike  
~~known as the Blue Jacket, Keystone, Copper Bell, Dewey, Fine Blue & Ross Lodes~~  
and showing the respective capacities in which they acted.

- Robert Mac Kay ..... , Chairman.
- ..... " " ..... , Chairman.
- ..... " " ..... , Arman.
- ..... " " ..... , Flagman.

## FINAL OATHS OF ASSISTANTS.

I, Robert Mac Kay

do solemnly swear that I assisted Thos L. Darby  
United States Deputy Mineral Surveyor, in marking the corners and surveying the boundaries of the mining claim of The Black Prince Copper Co. known as The Blue Bell, Clondike, Blue Jacket, Keystone Copper Bell, Dewey, ~~known as the~~ Fine Blue and Ross lodes, represented in the foregoing field notes as having been surveyed by said deputy mineral surveyor and under his direction; and that said survey has been in all respects, to the best of our knowledge and belief, faithfully and correctly executed, and the corner and boundary monuments established according to law and the instructions furnished by the United States Surveyor-General for Arizona.

- Robert Mac Kay ..... , Chairman.
- ..... " " ..... , Chairman.
- ..... " " ..... , Arman.
- ..... " " ..... , Flagman.

Subscribed and sworn to by the above-named persons before me  
this 21<sup>st</sup> day of October, 1902

Wm. H. Washington  
Notary Public

my commission expires Dec 8<sup>th</sup> 1904

(4-686.)

FINAL OATH OF U. S. DEPUTY MINERAL SURVEYOR

I, Thos L. Darby, U. S. Deputy Mineral Surveyor, do solemnly swear that, in pursuance of instructions received from the United States Surveyor General for Arizona, dated Oct 18<sup>th</sup> 1902, I have, in strict conformity to the laws of the United States, the official regulations and instructions thereunder, and the instructions of said Surveyor General, faithfully and correctly executed the survey of the Mining Claim of The Black Prince Copper Company known as The Blue Bell, Cloudlike, Blue Jacket, Keystone, ~~known as the Copper Bell, Dewey, Fine Blue and Ross Lodes~~, situate in Cochise Mining District, Cochise County, Arizona in Section ~~unsurveyed~~, Township No. 15 S, Range No. 22 E, G + St R. Meridian and designated as Survey No. 1717, as represented in the foregoing field notes, which accurately show the boundaries of said mining claim as distinctly marked by monuments on the ground, and described in the attached copy of the location certificate, which was received by me from the Surveyor General with said instructions, and that all the corners of said survey have been established and perpetuated in strict accordance with the law, official regulations and instructions thereunder; and I do further solemnly swear that the foregoing are the true and original field notes of said survey and my report therein, and that the labor expended and improvements made upon said mining claim by claimant or its grantors are as therein fully stated, and that the character, extent, location and itemized value thereof are specified therein with particularity and full detail, and that no portion of said labor or improvements so credited to this claim has been included in the estimate of expenditures upon any other claim.

Thos L. Darby

U. S. Deputy Mineral Surveyor.

Subscribed and sworn to by the said Thos L. Darby

U. S. Deputy Mineral Surveyor, before me Robert Bailey Clerk of

the United States Circuit Court this 1<sup>st</sup>

day of November 1902,

Robert Bailey

Clerk U.S. Circuit Court

Affidavit of Five Hundred Dollars Improvements.

we, T. N. Mitchell, and Geo M. Brown

of lawful age, being first duly sworn according to law, depose and say: That we  
Blue Bell, Clouds, Blue Jacket, Keystone  
are acquainted with the Copper Bell, Dewey, True Blue & Ross Lodes mining claim,  
situate in Cochise Mining district, Cochise County,  
Arizona Territory, for which The Black Prince Copper Co

has made application for survey prior to application for patent under the provisions  
of the Act of Congress, approved May 10, 1872; and that the labor done and improve-  
ments made thereon by the applicant and its grantors exceed Five Hundred  
Dollars in value, and further that we are not personally interested in said mine.

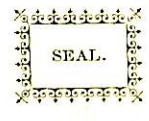
T. N. Mitchell

Geo M. Brown

TERRITORY OF ARIZONA, }  
County of Cochise } ss:

Sworn to and subscribed before me, this 21<sup>st</sup>

day of October, 1902



Wm. H. Washington

My commission expires. 8<sup>th</sup> of Dec 1902



# Notice of Mining Location.

QUARTZ CLAIM. "

To All Whom It May Concern:

This mining claim, the name of which is the Blondike  
Mining Claim, situate on lands belonging to the United States of America, and in which there  
are valuable mineral deposits, was entered upon and located for the purpose of exploration and  
purchase by A. H. Wien, J. K. Mitchell and  
A. S. Wien  
the undersigned, on the 18 day of May 1899

The length of this claim is 1500 feet,  
and the claim 15 feet  
in a South Easterly direction and 1485  
feet in a North Westerly direction from  
the center of the discovery shaft, at which this notice is posted, lengthwise of the claim, together  
with 300 feet in width of the surface grounds, on each

side of the center of said claim. The general course of the lode deposit and premises is from the  
North Easterly to the South Westerly

The claim is situated and located in the Coconino Mining District, in  
Coconino County, in the Territory of Arizona, about 300 feet  
in a North Westerly direction from the old Smelter Dump  
and is an extension of the Magazine Mine lode

The surface boundaries of the claim are marked upon the ground as follows: Beginning at  
A Monument of Stones

at a point in a South Easterly direction about 15 feet from  
the discovery shaft (at which this notice is posted), being in the center of the South Easterly  
end line of said claim; thence South Westerly 300 feet to a Monument  
of Stones, being the South West corner of said claim; thence  
North Westerly 750 feet to a Monument at the center of  
the South West side line of said claim; thence North Westerly 700  
feet to a Monument being at the North West corner of said  
claim; thence North Easterly 300 feet to a Monument  
at the center of the North West end of said claim; thence North Easterly 300  
feet to a Monument, being at the North Easterly  
corner of said claim; thence South Easterly 750 feet to a Monument  
of Stones being at the center of the North East side line of said claim;  
thence South Easterly 700 feet to a Monument at  
the South East corner of said claim; thence South Westerly 300  
feet to the place of beginning.

All done under the provisions of Chapter Six, of Title XXXII, of the Revised Statutes of  
the United States, and of an Act of the General Assembly of Arizona, entitled "An Act Concerning  
Mines," approved March 20th, 1895.

Dated and posted on the ground this 18<sup>th</sup> day of May 1899.

A. H. Wien  
J. K. Mitchell  
A. S. Wien



# Notice of Mining Location.

QUARTZ CLAIM.

To All Whom It May Concern:

This mining claim, the name of which is the Bluejacket  
Mining Claim, situate on lands belonging to the United States of America, and in which there are valuable mineral deposits, was entered upon and located for the purpose of exploration and purchase by A. A. Wien, J. K. Mitchell and A. S. Wien

the undersigned, on the 1<sup>st</sup> day of January 1899

The length of this claim is 1500 feet,  
and the claim 1500 feet  
in a Westerly direction and  
300 feet in a \_\_\_\_\_ direction from  
the center of the discovery shaft, at which this notice is posted, lengthwise of the claim, together  
with 300 feet in width of the surface grounds, on each  
side of the center of said claim. The general course of the lode deposit and premises is from the

Easterly to the Westerly  
The claim is situated and located in the Cochise Mining District, in  
Cochise County, in the Territory of Arizona, about 400 feet in  
in a Southerly direction from The old Johnsonville  
Smelter, and a relocation of the Bismark.

The surface boundaries of the claim are marked upon the ground as follows: Beginning at  
The center of the Easterly End Center of Claim  
being also the discovery monument, or  
at a point in a \_\_\_\_\_ direction \_\_\_\_\_ feet from  
the discovery shaft (at which this notice is posted), being in the center of the Easterly  
end line of said claim; thence Northerly 300 feet to a Monument  
of Stones, being the North East corner of said claim; thence  
Westerly 750 feet to a Monument of Stones at the center of  
the Northerly side line of said claim; thence Westerly 750  
feet to a Monument of Stones being at the North West corner of said  
claim; thence Southerly 300 feet to a Monument  
at the center of the Westerly end of said claim; thence Southerly 300  
feet to a Monument of Stones, being at the South West corner  
corner of said claim; thence Easterly 750 feet to a Monument  
of Stones being at the center of the Southerly side line of said claim;  
thence Easterly 750 feet to a Monument at  
the South East corner of said claim; thence Northerly 300  
feet to the place of beginning.

All done under the provisions of Chapter Six, of Title XXXII, of the Revised Statutes of the  
United States, and of an Act of the General Assembly of Arizona, entitled "An Act Concerning  
Mines," approved March 20th, 1895.

Dated and posted on the ground this 1<sup>st</sup> day of January 1899

Witness  
Mortimer Wien  
J. K. Perry

A. A. Wien  
J. K. Mitchell  
A. S. Wien

TERRITORY OF ARIZONA, } ss.  
County of.....

I, ..... County Recorder in and for the County and Territory aforesaid, do hereby certify that the within instrument was filed for record at ..... o'clock, ..... M., on this ..... day of ..... 189....., and duly recorded in Book No..... of ..... Records of ..... County, Arizona, at pages.....

WITNESS my hand and official seal the day and year first above written.

County Recorder.

Notice of Location.

QUARTZ CLAIM.

"Blue Jacket"

Dated Jan 1 1899

Filed and recorded at request of

A. H. W. Stein

March 28th A. D. 1899

at ..... M.

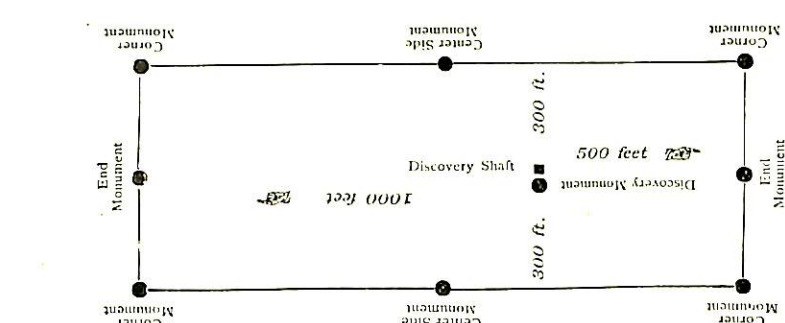
Book 60 Records of Blue

Pages 31 -

A. H. W. Stein

County Recorder.

By ..... Deputy Recorder.



This diagram is to give locator a general idea of plan of location under the new law. The Discovery Shaft can be in the center of claim or any distance from either end desired. In the diagram it is placed 500 feet from one end and 1000 feet from the other. Commence description of claim at a center end monument, giving its distance and direction from center of Discovery Shaft; thence bound the claim in either direction. In description be careful to state locality of claim with reference to some natural object, or permanent monument, as will identify the claim.

Section 1. Every notice of location of a mining claim shall contain: First, the name of the claim located; second, the name of the locator; third, the date of location; fourth, the number of feet in length of said claim and the number of feet in breadth of the claim; fifth, the general course of the lode deposit or premises located; sixth, the locality of the claim with reference to some natural object, or permanent monument, as will identify the claim; seventh, the name of the claim located; eighth, the name of the locator; ninth, the number of feet in length of the claim and the number of feet in breadth of the claim; tenth, the date of location; eleventh, the number of feet in length of said claim and the number of feet in breadth of the claim; twelfth, the general course of the lode deposit or premises located; thirteenth, the locality of the claim with reference to some natural object, or permanent monument, as will identify the claim; fourteenth, the name of the claim located; fifteenth, the name of the locator; sixteenth, the number of feet in length of the claim and the number of feet in breadth of the claim; seventeenth, the date of location; eighteenth, the number of feet in length of said claim and the number of feet in breadth of the claim; nineteenth, the general course of the lode deposit or premises located; twentieth, the locality of the claim with reference to some natural object, or permanent monument, as will identify the claim; twenty-first, the name of the claim located; twenty-second, the name of the locator; twenty-third, the number of feet in length of the claim and the number of feet in breadth of the claim; twenty-fourth, the date of location; twenty-fifth, the number of feet in length of said claim and the number of feet in breadth of the claim; twenty-sixth, the general course of the lode deposit or premises located; twenty-seventh, the locality of the claim with reference to some natural object, or permanent monument, as will identify the claim; twenty-eighth, the name of the claim located; twenty-ninth, the name of the locator; thirtieth, the number of feet in length of the claim and the number of feet in breadth of the claim; thirty-first, the date of location; thirty-second, the number of feet in length of said claim and the number of feet in breadth of the claim; thirty-third, the general course of the lode deposit or premises located; thirty-fourth, the locality of the claim with reference to some natural object, or permanent monument, as will identify the claim; thirty-fifth, the name of the claim located; thirty-sixth, the name of the locator; thirty-seventh, the number of feet in length of the claim and the number of feet in breadth of the claim; thirty-eighth, the date of location; thirty-ninth, the number of feet in length of said claim and the number of feet in breadth of the claim; fortieth, the general course of the lode deposit or premises located; forty-first, the locality of the claim with reference to some natural object, or permanent monument, as will identify the claim; forty-second, the name of the claim located; forty-third, the name of the locator; forty-fourth, the number of feet in length of the claim and the number of feet in breadth of the claim; forty-fifth, the date of location; forty-sixth, the number of feet in length of said claim and the number of feet in breadth of the claim; forty-seventh, the general course of the lode deposit or premises located; forty-eighth, the locality of the claim with reference to some natural object, or permanent monument, as will identify the claim; forty-ninth, the name of the claim located; fiftieth, the name of the locator; fifty-first, the number of feet in length of the claim and the number of feet in breadth of the claim; fifty-second, the date of location; fifty-third, the number of feet in length of said claim and the number of feet in breadth of the claim; fifty-fourth, the general course of the lode deposit or premises located; fifty-fifth, the locality of the claim with reference to some natural object, or permanent monument, as will identify the claim; fifty-sixth, the name of the claim located; fifty-seventh, the name of the locator; fifty-eighth, the number of feet in length of the claim and the number of feet in breadth of the claim; fifty-ninth, the date of location; sixtieth, the number of feet in length of said claim and the number of feet in breadth of the claim; sixty-first, the general course of the lode deposit or premises located; sixty-second, the locality of the claim with reference to some natural object, or permanent monument, as will identify the claim; sixty-third, the name of the claim located; sixty-fourth, the name of the locator; sixty-fifth, the number of feet in length of the claim and the number of feet in breadth of the claim; sixty-sixth, the date of location; sixty-seventh, the number of feet in length of said claim and the number of feet in breadth of the claim; sixty-eighth, the general course of the lode deposit or premises located; sixty-ninth, the locality of the claim with reference to some natural object, or permanent monument, as will identify the claim; seventieth, the name of the claim located; seventy-first, the name of the locator; seventy-second, the number of feet in length of the claim and the number of feet in breadth of the claim; seventy-third, the date of location; seventy-fourth, the number of feet in length of said claim and the number of feet in breadth of the claim; seventy-fifth, the general course of the lode deposit or premises located; seventy-sixth, the locality of the claim with reference to some natural object, or permanent monument, as will identify the claim; seventy-seventh, the name of the claim located; seventy-eighth, the name of the locator; seventy-ninth, the number of feet in length of the claim and the number of feet in breadth of the claim; eightieth, the date of location; eighty-first, the number of feet in length of said claim and the number of feet in breadth of the claim; eighty-second, the general course of the lode deposit or premises located; eighty-third, the locality of the claim with reference to some natural object, or permanent monument, as will identify the claim; eighty-fourth, the name of the claim located; eighty-fifth, the name of the locator; eighty-sixth, the number of feet in length of the claim and the number of feet in breadth of the claim; eighty-seventh, the date of location; eighty-eighth, the number of feet in length of said claim and the number of feet in breadth of the claim; eighty-ninth, the general course of the lode deposit or premises located; ninetieth, the locality of the claim with reference to some natural object, or permanent monument, as will identify the claim; ninetieth, the name of the claim located; ninetieth, the name of the locator; ninetieth, the number of feet in length of the claim and the number of feet in breadth of the claim; ninetieth, the date of location; ninetieth, the number of feet in length of said claim and the number of feet in breadth of the claim; ninetieth, the general course of the lode deposit or premises located; ninetieth, the locality of the claim with reference to some natural object, or permanent monument, as will identify the claim.

# Notice of Mining Location.

QUARTZ CLAIM.

To All Whom It May Concern:

This mining claim, the name of which is the Keystone  
Mining Claim, situate on lands belonging to the United States of America, and in which there are valuable mineral deposits, was entered upon and located for the purpose of exploration and purchase by A. A. Wiew J. K. Mitchell and A. S. Wiew  
the undersigned, on the 11<sup>th</sup> day of January 1899

The length of this claim is 1500 feet,  
and the claim 1450 feet  
in a Easterly direction and 50  
feet in a Westerly direction from  
the center of the discovery shaft, at which this notice is posted, lengthwise of the claim, together  
with 300 feet in width of the surface grounds, on each  
side of the center of said claim. The general course of the lode deposit and premises is from the

Easterly to the Westerly  
The claim is situated and located in the Cochise Mining District, in  
Cochise County, in the Territory of Arizona, about 2400 feet  
in a Southerly direction from The old Johnsonville  
Smelter and a relocation of the Hillside

The surface boundaries of the claim are marked upon the ground as follows: Beginning at  
A Monument of Stones at the Westerly  
end center of the Claim  
at a point in a Westerly direction about 50 feet from  
the discovery shaft (at which this notice is posted), being in the center of the Westerly  
end line of said claim; thence Southerly 300 feet to a Monument  
of Stones, being the South West corner of said claim; thence  
Easterly 750 feet to a Monument at the center of  
the Southerly side line of said claim; thence Easterly 750  
feet to a Monument being at the South Easterly corner of said  
claim; thence Northerly 300 feet to a Monument  
at the center of the Northerly end of said claim; thence Northerly 300  
feet to a Monument, being at the North Easterly  
corner of said claim; thence Westerly 750 feet to a Monument  
of Stones being at the center of the Northerly side line of said claim;  
thence Westerly 750 feet to a Monument at  
the N. W corner of said claim; thence Southerly 300  
feet to the place of beginning.

All done under the provisions of Chapter Six, of Title XXXII, of the Revised Statutes of the  
United States, and of an Act of the General Assembly of Arizona, entitled "An Act Concerning  
Mines." approved March 20th, 1895.

Dated and posted on the ground this 11<sup>th</sup> day of Jan 1899

Witness  
Mortimer Wiew  
F. K. Perry

A. A. Wiew  
J. K. Mitchell  
A. S. Wiew

I, ..... County Recorder in and for the County and Territory aforesaid, do hereby certify that the within instrument was filed for record at..... o'clock,..... M., on this..... day of..... 189....., and duly recorded in Book No..... of..... Records of..... County, Arizona, at pages.....

WITNESS my hand and official seal the day and year first above written.

County Recorder.

Notice of Location.

QUARTZ CLAIM.

vs. *Stapstone*

Dated *Jan 1* 189*9*

Filed and recorded at request of *A. A. Johnson*

*Jan 28th* A. D. 189*9*

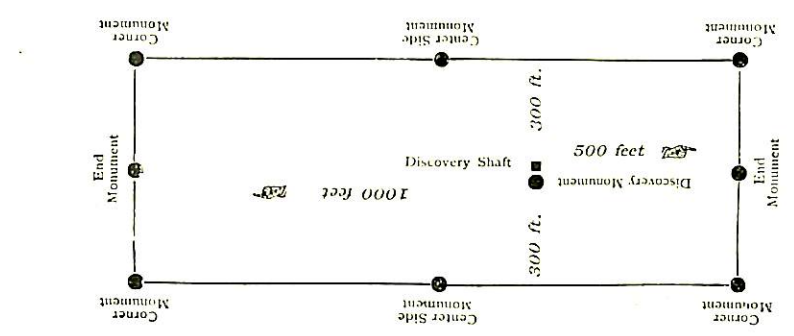
at *J. A.* M.

Book No *Records of 960*

Pages *3-7*

*Jan. 1st 1899*  
County Recorder.

By  
Deputy Recorder.



This diagram is to give locator a general idea of plan of location under the new law. The Discovery Shaft can be in the center of claim or any distance from either end desired. In the diagram it is placed 500 feet from one end and 1000 feet from the other. Commence description of claim at a center end monument, giving its distance and direction from center of Discovery Shaft; thence bound the claim in either direction. In description be careful to state locality of claim with reference to some natural object, or permanent monument, as will identify the claim.

Sec. 1. Every notice of location of a mining claim shall contain: First, the name of the locator; second, the name of the locality; third, the date of location; fourth, the number of feet in length of said claim and the number of feet claimed on each side of the center of the discovery shaft, lengthwise of the claim; fifth, the general course of the lode deposit of premises located; sixth, the locality of the claim with reference to some natural object, or permanent monument, as will identify the claim.

Sec. 2. All mining locations hereafter located, the certificate of location of which shall not contain: First, the name of the lode, or premises; second, the name of the locator, or locator; third, the date of location; fourth, the number of feet in length of the claim; fifth, the general course of the lode, or premises, as near as may be; sixth, the locality of the claim with reference to some natural object, or permanent monument, as will identify the claim.

Sec. 3. Before filing such location certificate with the County Recorder of the proper County, the discoverer shall locate his claim by: First, sinking a discovery shaft upon the premises so claimed, to a depth of at least ten feet from the point of discovery, on the surface, and deeper if necessary, until there is shown certificate; third, by marking such claim or premises on the ground, so that its boundaries can be readily traced.

Sec. 4. Any person claiming such claim or premises shall be marked by **EIGHT** substantial **STONE MONUMENTS**, at least **THREE FEET HIGH**, to-wit: One at each corner of said claim, and one at the center of each end and side line thereof.

Sec. 5. The discoverer shall have ninety days from the date of discovering the lode and the position of the notice thereon, to perform said discovery work thereon.

Sec. 6. If at any time the locator of any mining claim hereafter located, or his assigns, shall learn that his original certificate was defective, or that the requirements of the law had not been complied with before filing, or shall be desirous of changing his surface boundaries, or of taking in any additional ground which is adjacent to location, or in case the original certificate was made prior to the passage of this law, and he shall be desirous of securing the completion of the location as herebefore provided, and the time for doing the same shall be as provided by the laws of the United States.

Sec. 7. The amount of assessment, or representation, work or improvements to be done or made during each year, after the completion of the location as herebefore provided, within three months after the expiration of the period of time fixed for the performance of annual labor or the making of improvements upon any mining claim or premises, the person on whose behalf such work or improvement was made, or some person for him, knowing the facts, may make and record in the office of the County Recorder of the county wherein such claim is situated an affidavit in substance as follows:

County Recorder of the Territory of Arizona, } ss.  
County, }  
being duly sworn deposes and says, that he is a citizen of the United States, and more than 21 years of age, and resides at..... mining claim or lode, situated in..... County, Arizona Territory, and is personally acquainted with the mining claim and premises located and known as..... notice of location of which premises were recorded in the office of the County Recorder of said county, in Book..... of Records of Mines, at page..... that between the..... day of..... A. D. 189..... and the..... day of..... A. D. 189..... owners of said premises for the purpose of complying with the law of the United States pertaining to assessments of annual labor or improvements to be done or made during each year, after the completion of the location as herebefore provided, and who have done and who have performed upon said premises, and said work so done upon said premises is described as follows, to-wit: (Here describe the work done.)

Subscribed and sworn to before me..... this..... day of..... 189.....  
Notary Public.....

Sec. 10. Such affidavit when so recorded shall be prima facie evidence of the performance of such labor or the making of such improvements, and said original affidavit after it has been recorded, or a certified copy of record of same, shall be treated as evidence according to the laws of this Territory.

Sec. 11. The location of forfeited or abandoned lode claims shall only be sink the original discovery shaft and there new boundaries in the same manner and to same extent as is required in making a new location, or the locator may sink the original discovery shaft ten feet deeper than it was at date of commencement of such relocation, and said certificate of location shall be the same as if the old monument or monument located as abandoned property.

Sec. 12. The locator shall take effect and be in force from and after July 1st, 1893.

Sec. 13. All Acts and parts of Acts in conflict with this Act are hereby repealed.

# Notice of Mining Location.

## QUARTZ CLAIM.

To All Whom It May Concern:

This mining claim, the name of which is the Blue Bell  
Mining Claim, situate on lands belonging to the United States of America, and in which there are valuable mineral deposits, was entered upon and located for the purpose of exploration and purchase by A. H. Hien & L. K. Mitchell

the undersigned, on the 25 day of January 1897  
The length of this claim is 1500 feet,  
and the claim 1500 feet  
in a Westerly direction and \_\_\_\_\_  
feet in a \_\_\_\_\_ direction from

the center of the discovery shaft, at which this notice is posted, lengthwise of the claim, together with 300 feet in width of the surface grounds, on each side of the center of said claim. The general course of the lode deposit and premises is from the

Easterly to the Westerly

The claim is situated and located in Cochise Mining District, in Cochise County, in the Territory of Arizona, about 1/4 of a mile in a Westerly direction from The old Johnsonville Smelter, and is an extension of The Old Breadnaugh Mine

The surface boundaries of the claim are marked upon the ground as follows: Beginning at This Monument of Stones

at a point in a \_\_\_\_\_ direction \_\_\_\_\_ feet from the discovery shaft (at which this notice is posted), being in the center of the Easterly end line of said claim; thence Southerly 300 feet to a Monument of Stones, being the South East corner of said claim; thence Westerly 750 to a Monument at the center of the South side line of said claim; thence Westerly 750 feet to a Monument being at the South West corner of said claim; thence Notherly 300 feet to a Monument at the center of the West end of said claim; thence Notherly 300 feet to a Monument, being at the North West corner of said claim; thence Easterly 750 feet to a Monument of Stones being at the center of the North side line of said claim; thence Easterly 750 feet to a Monument at the North East corner of said claim; thence Southerly 300 feet to the place of beginning.

All done under the provisions of Chapter Six, of Title XXXII, of the Revised Statutes of the United States, and of an Act of the General Assembly of Arizona, entitled "An Act Concerning Mines," approved March 20th, 1895.

Dated and posted on the ground this 25 day of January 1897

A. H. Hien  
L. K. Mitchell

Be it Enacted by the Legislative Assembly of the Territory of Arizona:

- Sec. 1. Every notice of location of a mining claim shall contain: First, the name of the claim located; second, the name of the locator; third, the date of location; fourth, the number of feet in length of said claim and the number of feet claimed on each side of the center of the discovery shaft, lengthwise of the claim; fifth, the general course of the lode deposit of premises located; sixth, the locality of the claim with reference to some natural object, or permanent monument, as will identify the claim.
- Sec. 2. All mining locations hereafter located, the certificate of location of which shall not contain: First, the name of the lode, or premises; second, the name of the locator, or locators; third, the date of location; fourth, the number of feet in length of said claim and the number of feet claimed on each side of the center of the discovery shaft, lengthwise of the claim; fifth, the general course of the lode, or premises, as near as may be; sixth, the locality of the claim with reference to some natural object, or permanent monument, as will identify the claim, shall be void.
- Sec. 3. Before filing such location certificate with the County Recorder of the proper County, the discoverer shall locate his claim by: First, sinking a discovery shaft upon the premises so claimed, to a depth of at least ten feet from the lowest part of the rim of such shaft at the surface, and deeper if necessary, until there is shown by such work a lode deposit of mineral in place; second, by posting at the point of discovery, on the surface, a plain sign or notice substantially conforming to the location certificate; third, by marking such claim or premises on the ground, so that its boundaries can be readily traced. Such surface boundaries shall be marked by **EIGHT POSTS**, projecting at least **THREE FEET ABOVE THE SURFACE OF THE GROUND**, or by substantial **STONE MONUMENTS**, at least **THREE FEET HIGH**, to-wit: One at each corner of said claim, and one at the center of each end and side line thereof.
- Sec. 4. Any open-cut, cross-cut, adit or tunnel which shall be made as above provided for, as a part of the location of a mining claim, and which shall be equal in amount of work to a shaft ten feet deep and four feet wide by six feet long, and which shall cut a lode or mineral in place at the depth of ten feet from the surface, shall be equivalent, as a discovery work, to a shaft sunk from the surface.
- Sec. 5. The discoverer shall have ninety days from the date of discovering the lode and the posting of the notice thereon, to perform said discovery work thereon.
- Sec. 6. If at any time the locator of any mining claim heretofore or hereafter located, or his assigns, shall learn that his original certificate was defective, or that the requirements of the law had not been complied with before filing, or shall be desirous of changing his surface boundaries, or of taking in any additional ground which is subject to location, or in case the original certificate was made prior to the passage of this law, and he shall be desirous of securing the benefits of this Act, such locator, or his assigns, may file an amended certificate of location subject to the provisions of this Act, regarding the making of new locations.
- Sec. 7. The amount of assessment, or representation, work or improvements to be done or made during each year, after the completion of the location as heretofore provided, and the time for doing the same, shall be as provided by the laws of the United States.
- Sec. 8. Within three months after the expiration of the period of time fixed for the performance of annual labor or the making of improvements upon any mining claim or premises, the person on whose behalf such work or improvement was made, or some person for him, knowing the facts, may make and record in the office of the County Recorder of the county wherein such claim is situate an affidavit in substance as follows:

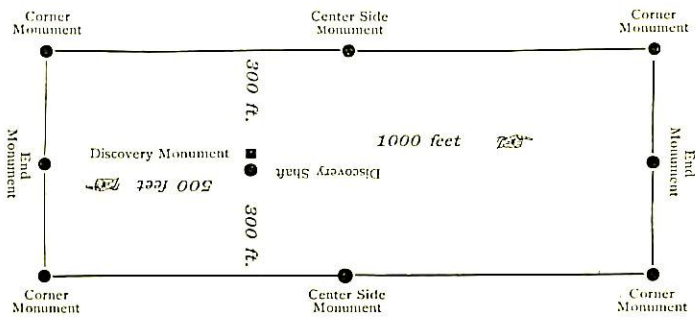
TERRITORY OF ARIZONA, } ss.  
 County, }  
 being duly sworn deposes and says, that he is a citizen of the United States, and more than 21 years of age, and resides at \_\_\_\_\_, County, Arizona Territory, and is personally acquainted with the mining claim and premises located and known as \_\_\_\_\_, Mining District, County of \_\_\_\_\_, Arizona Territory, the notice of location of which premises is recorded in the office of the County Recorder of said county, in Book \_\_\_\_\_ of Records of Mines, at page \_\_\_\_\_; that between the \_\_\_\_\_ day of \_\_\_\_\_, A. D. 189\_\_\_\_, and the \_\_\_\_\_ day of \_\_\_\_\_, A. D. 189\_\_\_\_, at least \_\_\_\_\_ dollars worth of work and improvements were done and performed upon said premises or lode, not including the location work of said claim. Such work and improvements were made by and at the expense of \_\_\_\_\_ owners of said premises for the purpose of complying with the law of the United States pertaining to assessments or annual work, and (here name the miners or men who worked upon the claim in doing the work) were the men employed by said owner and who labored upon said premises, and who did said work and improvements, and said work so done upon said premises is described as follows, to-wit: (Here describe the work done.)

Subscribed and sworn to before me, \_\_\_\_\_, this \_\_\_\_\_ day of \_\_\_\_\_, 189\_\_\_\_.

[SEAL] Notary Public.

- Sec. 10. Such affidavit when so recorded shall be prima facie evidence of the performance of such labor or the making of such improvements, and said original affidavit after it has been recorded, or a certified copy of record of same, shall be received as evidence accordingly by all the Courts of this Territory.
- Sec. 11. The relocation of forfeited or abandoned lode claims shall only be made by sinking a new discovery shaft and fixing new boundaries in the same manner and to same extent as is required in making a new location; or the locator may sink the original discovery shaft ten feet deeper than it was at date of commencement of such relocation, and shall erect new or make the old monuments the same as originally required. In either case a new location monument shall be erected, and the location certificate shall state if the whole or any part of the new location is located as abandoned property.
- Sec. 12. This Act shall take effect and be in force from and after July 1st, 1895.
- Sec. 13. All Acts and parts of Acts in conflict with this Act are hereby repealed.

This diagram is to give locator a general idea of plan of location under the new law. The Discovery Shaft can be in the center of claim or any distance from either end desired. In the diagram it is placed 500 feet from one end and 1000 feet from the other. Commence description of claim at a center end monument, giving its distance and direction from center of Discovery Shaft; thence bound the claim in either direction. In description be careful to state locality of claim with reference to some natural object, or permanent monument, as will identify the claim.



**Notice of Location.**  
**QUARTZ CLAIM.**

Filed and recorded at request of  
*Allen & Mitchell*

Dated \_\_\_\_\_ 189\_\_\_\_

*Allen Bell Cole*

at \_\_\_\_\_ April 18<sup>th</sup> 1897  
 A.M.

Book 14 Record of Mines  
 Pages 212  
*Wm. J. Brown*  
 County Recorder.

By \_\_\_\_\_ Deputy Recorder.

THE H. H. MCNEIL CO., PRINTERS, PHOENIX, ARIZ.

I, \_\_\_\_\_ County Recorder in and for the County and Territory aforesaid, do hereby certify that the within instrument was filed for record at \_\_\_\_\_ o'clock, \_\_\_\_\_ M., on this \_\_\_\_\_ day of \_\_\_\_\_, 189\_\_\_\_, and duly recorded in Book No. \_\_\_\_\_ of \_\_\_\_\_ Records of \_\_\_\_\_ County, Arizona, at pages \_\_\_\_\_ of \_\_\_\_\_.

WITNESS my hand and official seal the day and year first above written.

County Recorder.

TERRITORY OF ARIZONA, } ss.  
 County of \_\_\_\_\_ }



# Notice of Mining Location.

32

## QUARTZ CLAIM.

To All Whom It May Concern:

This mining claim, the name of which is the Copper Bell Mining Claim, situate on lands belonging to the United States of America, and in which there are valuable mineral deposits, was entered upon and located for the purpose of exploration and purchase by A. H. Hiew & S. K. Mitchell

the undersigned, on the 25 day of January 1897

The length of this claim is 1500 feet, and the claim is 1500 feet in an Easterly direction and is 1500 feet in a \_\_\_\_\_ direction from

the center of the discovery shaft, at which this notice is posted, lengthwise of the claim, together with 300 feet in width of the surface grounds, on each side of the center of said claim. The general course of the lode deposit and premises is from the East to the West

The claim is situated and located in Cochise Mining District, in Cochise County, in the Territory of Arizona, about 1/4 of a mile in a Southerly direction from the old Johnsonville Smelter and is a relocation of the old Dreadnaugh Mine

The surface boundaries of the claim are marked upon the ground as follows: Beginning at this Monument of Stones

at a point in a \_\_\_\_\_ direction \_\_\_\_\_ feet from the discovery shaft (at which this notice is posted), being in the center of the West end line of said claim; thence Northerly 300 feet to a Monument of Stones, being the North East corner of said claim; thence Easterly 750 to a Monument at the center of the North side line of said claim; thence Easterly 750 feet to a Monument being at the North East corner of said claim; thence Southerly 300 feet to a Monument at the center of the East end of said claim; thence Southerly 300 feet to a Monument, being at the South East corner of said claim; thence Westerly 750 feet to a Monument of Stones being at the center of the South side line of said claim; thence Westerly 750 feet to a Monument at the North West corner of said claim; thence Northerly 300 feet to the place of beginning.

All done under the provisions of Chapter Six, of Title XXXII, of the Revised Statutes of the United States, and of an Act of the General Assembly of Arizona, entitled "An Act Concerning Mines," approved March 20th, 1895.

Dated and posted on the ground this 25 day of January 1897

A. H. Hiew  
S. K. Mitchell

# An Act Concerning Mines.

Be It Enacted by the Legislative Assembly of the Territory of Arizona:

Sec. 1. Every notice of location of a mining claim shall contain: First, the name of the claim located; second, the name of the locator; third, the date of location; fourth, the number of feet in length of said claim and the number of feet claimed on each side of the center of the discovery shaft, lengthwise of the claim; fifth, the general course of the lode deposit of premises located; sixth, the locality of the claim with reference to some natural object, or permanent monument, as will identify the claim.

Sec. 2. All mining locations hereafter located, the certificate of location of which shall not contain: First, the name of the lode, or premises; second, the name of the locator, or locators; third, the date of location; fourth, the number of feet in length of said claim and the number of feet claimed on each side of the center of the discovery shaft, lengthwise of the claim; fifth, the general course of the lode, or premises, as near as may be; sixth, the locality of the claim with reference to some natural object, or permanent monument, as will identify the claim, shall be void.

Sec. 3. Before filing such location certificate with the County Recorder of the proper County, the discoverer shall locate his claim by: First, sinking a discovery shaft upon the premises so claimed, to a depth of at least ten feet from the lowest part of the rim of such shaft at the surface, and deeper if necessary, until there is shown by such work a lode deposit of mineral in place; second, by posting at the point of discovery, on the surface, a plain sign or notice substantially conforming to the location certificate; third, by marking such claim or premises on the ground, so that its boundaries can be readily traced. Such surface boundaries shall be marked by **EIGHT** substantial **POSTS**, projecting at least **THREE FEET ABOVE THE SURFACE OF THE GROUND**, or by substantial **STONE MONUMENTS**, at least **THREE FEET HIGH**, to-wit: One at each corner of said claim, and one at the center of each end and side line thereof.

Sec. 5. Any open-cut, cross-cut, adit or tunnel which shall be made as above provided for, as a part of the location of a mining claim, and which shall be equal in amount of work to a shaft ten feet deep and four feet wide by six feet long, and which shall cut a lode or mineral in place at the depth of ten feet from the surface, shall be equivalent, as a discovery work, to a shaft sunk from the surface.

Sec. 6. The discoverer shall have ninety days from the date of discovering the lode and the posting of the notice thereon, to perform said discovery work thereon.

Sec. 7. If at any time the locator of any mining claim heretofore or hereafter located, or his assigns, shall learn that his original certificate was defective, or that the requirements of the law had not been complied with before filing, or shall be desirous of changing his surface boundaries, or of taking in any additional ground which is subject to location, or in case the original certificate was made prior to the passage of this law, and he shall be desirous of securing the benefits of this Act, such locator, or his assigns, may file an amended certificate of location subject to the provisions of this Act, regarding the making of new locations.

Sec. 8. The amount of assessment, or representation, work or improvements to be done or made during each year, after the completion of the location as heretofore provided, and the time for doing the same, shall be as provided by the laws of the United States.

Sec. 9. Within three months after the expiration of the period of time fixed for the performance of annual labor or the making of improvements upon any mining claim or premises, the person on whose behalf such work or improvement was made, or some person for him, knowing the facts, may make and record in the office of the County Recorder of the county wherein such claim is situate an affidavit in substance as follows:

TERRITORY OF ARIZONA, } ss.  
County, }  
I, \_\_\_\_\_, being duly sworn deposes and says, that he is a citizen of the United States, and more than 21 years of age, and resides at \_\_\_\_\_ in \_\_\_\_\_ County, Arizona Territory, and is personally acquainted with the mining claim and premises located and known as \_\_\_\_\_ mining claim or lode, situate in \_\_\_\_\_ Mining District, County of \_\_\_\_\_, Arizona Territory, the notice of location of which premises is recorded in the office of the County Recorder of said county, in Book \_\_\_\_\_ of Records of Mines, at page \_\_\_\_\_, that between the \_\_\_\_\_ day of \_\_\_\_\_, A. D. 189\_\_\_\_, and the \_\_\_\_\_ day of \_\_\_\_\_, A. D. 189\_\_\_\_, at least \_\_\_\_\_ dollars worth of work and improvements were done and performed upon said premises or lode, not including the location work of said claim. Such work and improvements were made by and at the expense of \_\_\_\_\_ owners of said premises for the purpose of complying with the law of the United States pertaining to assessments or annual work, and (here name the miners or men who worked upon the claim in doing the work) were the men employed by said owner and who labored upon said premises, and who did said work and improvements, and said work so done upon said premises is described as follows, to-wit: (Here describe the work done.)  
\_\_\_\_\_  
(Signature.)

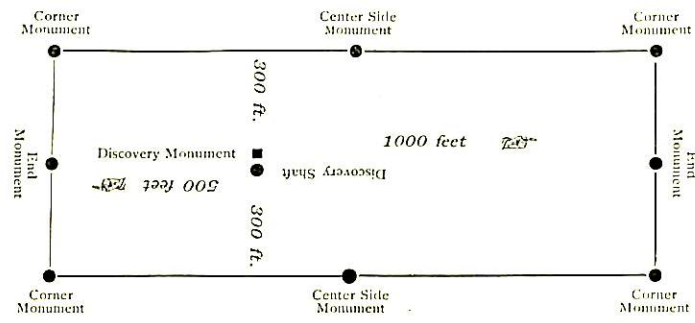
Subscribed and sworn to before me \_\_\_\_\_ this \_\_\_\_\_ day of \_\_\_\_\_, 189\_\_\_\_.  
Notary Public.

Sec. 10. Such affidavit when so recorded shall be *prima facie* evidence of the performance of such labor or the making of such improvements, and said original affidavit after it has been recorded, or a certified copy of record of same, shall be received as evidence accordingly by all the Courts of this Territory.

Sec. 11. The relocation of forfeited or abandoned lode claims shall only be made by sinking a new discovery shaft and fixing new boundaries in the same manner and to same extent as is required in making a new location; or the locator may sink the original discovery shaft ten feet deeper than it was at date of commencement of such relocation, and shall erect new or make the old monuments the same as originally required. In either case a new location monument shall be erected, and the location certificate shall state if the whole or any part of the new location is located as abandoned property.

Sec. 12. This Act shall take effect and be in force from and after July 1st, 1895.  
Sec. 13. All Acts and parts of Acts in conflict with this Act are hereby repealed.

This diagram is to give locator a general idea of plan of location under the new law. The Discovery Shaft can be in the center of claim or any distance from either end desired. In the diagram it is placed 500 feet from one end and 1000 feet from the other. Commence description of claim at a center end monument, giving its distance and direction from center of Discovery Shaft; thence bound the claim in either direction. In description be careful to state locality of claim with reference to some natural object, or permanent monument, as will identify the claim.



Notice of Location.  
QUARTZ CLAIM.  
Dorcas Belle Kohn  
Dated \_\_\_\_\_ 189\_\_\_\_  
Filed and recorded at request of  
Winn & Mitchell  
at \_\_\_\_\_ April 18<sup>th</sup> 1897  
Book 14 Record of Mines  
Pages 211  
M. J. Brewer  
County Recorder.  
By \_\_\_\_\_ Deputy Recorder.  
THE H. H. MCNEIL CO., PRINTERS, PHOENIX, ARIZ.

I, \_\_\_\_\_ County Recorder in and for the County and Territory aforesaid, do hereby certify that the within instrument was filed for record at \_\_\_\_\_ o'clock, \_\_\_\_\_ M., on this \_\_\_\_\_ day of \_\_\_\_\_, 189\_\_\_\_, and duly recorded in Book No. \_\_\_\_\_ of \_\_\_\_\_ County, Arizona, at pages \_\_\_\_\_ of \_\_\_\_\_  
WITNESS my hand and official seal the day and year first above written.  
County Recorder.

# Notice of Mining Location.

## QUARTZ CLAIM.

To All Whom It May Concern:

This mining claim, the name of which is the Lewey Mining Claim, situate on lands belonging to the United States of America, and in which there are valuable mineral deposits, was entered upon and located for the purpose of exploration and purchase by A. H. Wien, J. K. Mitchell and H. S. Wier

the undersigned, on the 1<sup>st</sup> day of March 1899

The length of this claim is 1500 feet, and 1500 claim 1500 feet in a North westerly direction and \_\_\_\_\_ feet in a \_\_\_\_\_ direction from

the center of the discovery shaft, at which this notice is posted, lengthwise of the claim, together with 500 feet in width of the surface grounds, on each side of the center of said claim. The general course of the lode deposit and premises is from the North West to the South East

The claim is situated and located in the Cochise Mining District, in Cochise County, in the Territory of Arizona, about 1000 feet in a W direction from Old Silver Mine & on a extension of the True Blue

The surface boundaries of the claim are marked upon the ground as follows: Beginning at

~~at a point in a~~ \_\_\_\_\_ direction \_\_\_\_\_ feet from the discovery shaft (at which this notice is posted), being in the center of the East end line of said claim; thence East 500 feet to a marked station, being the SE corner of said claim; thence North 950 feet to a marked station at the center of the East side line of said claim; thence North 500 feet to a marked station being at the NE corner of said claim; thence West 500 feet to a marked station at the center of the North end of said claim; thence West 500 feet to a marked station, being at the NW corner of said claim; thence South 950 feet to a marked station being at the center of the West side line of said claim; thence South 950 feet to a marked station at the SW corner of said claim; thence East 500 feet to the place of beginning.

All done under the provisions of Chapter Six, of Title XXXII, of the Revised Statutes of the United States, and of an Act of the General Assembly of Arizona, entitled "An Act Concerning Mines," approved March 20th, 1895.

Dated and posted on the ground this 1<sup>st</sup> day of March 1899

A. H. Wien  
J. K. Mitchell  
H. S. Wier

TERRITORY OF ARIZONA, }  
35

County of..... } ss.

I..... County Recorder in and for the County and Territory aforesaid, do hereby certify that the within instrument was filed for record at.....o'clock,.....M., on this.....day of.....189....., and duly recorded in Book No..... of.....Records of.....County, Arizona, at pages.....

WITNESS my hand and official seal the day and year first above written.

.....  
County Recorder

Notice of Location.

QUARTZ CLAIM.

Drew

Dated Mex 1 189 9

Filed and recorded at request of  
Court Greder

Meyers A. D. 189 9  
at g a M.

Book 16 Records of M

Pages 117  
Frank Hare  
County Recorder.

By .....  
Deputy Recorder.

# Notice of Mining Location.

## QUARTZ CLAIM.

To All Whom It May Concern:

This mining claim, the name of which is the True Blue Mining Claim, situate on lands belonging to the United States of America, and in which there are valuable mineral deposits, was entered upon and located for the purpose of exploration and purchase by A. A. Wien and T. K. Mitchell

the undersigned, on the 25 day of April 1897

The length of this claim is 1500 feet, and 1/2 claim 800 feet in a Easterly direction and Westerly 700 feet in a Westerly direction from the center of the discovery shaft, at which this notice is posted, lengthwise of the claim, together with 300 feet in width of the surface grounds, on each

side of the center of said claim. The general course of the lode deposit and premises is from the Easterly to the Westerly

The claim is situated and located in Cochise Mining District, in Cochise County, in the Territory of Arizona, about 1/4 of a mile in a Southerly direction from The Old Johnsonville Smelter

The surface boundaries of the claim are marked upon the ground as follows: Beginning at This Monument of Stones

at a point in a Westerly direction 700 feet from the discovery shaft (at which this notice is posted), being in the center of the West end line of said claim; thence North 300 feet to a Monument of Stones, being the North West corner of said claim; thence Easterly, 750 feet to a Monument of Stones at the center of the North side line of said claim; thence Easterly, 750 feet to a Monument of Stones being at the North East corner of said claim; thence Southerly, 300 feet to a Monument of Stones at the center of the East end of said claim; thence Southerly, 300 feet to a Monument of Stones, being at the South East corner of said claim; thence Westerly, 750 feet to a Monument of Stones being at the center of the South side line of said claim; thence Westerly, 750 feet to a Monument of Stones at the South West corner of said claim; thence North 300 feet to the place of beginning.

All done under the provisions of Chapter Six, of Title XXXII, of the Revised Statutes of the United States, and of an Act of the General Assembly of Arizona, entitled "An Act Concerning Mines," approved March 20th, 1895.

Dated and posted on the ground this 25 day of April 1897

A. A. Wien  
T. K. Mitchell

An Act Concerning Mines.

Be it Enacted by the Legislative Assembly of the Territory of Arizona:

SECTION 1. Every notice of location of a mining claim shall contain: First, the name of the claim located; second, the name of the locator; third, the date of location; fourth, the number of feet in length of said claim and the number of feet claimed on each side of the center of the discovery shaft, lengthwise of the claim; fifth, the general course of the lode deposit of premises located; sixth, the locality of the claim with reference to some natural object, or permanent monument, as will identify the claim.

SEC. 2. All mining locations hereafter located, the certificate of location of which shall not contain: First, the name of the lode, or premises; second, the name of the locator, or locators; third, the date of location; fourth, the number of feet in length of said claim and the number of feet claimed on each side of the center of the discovery shaft, lengthwise of the claim; fifth, the general course of the lode, or premises, as near as may be; sixth, the locality of the claim with reference to some natural object, or permanent monument, as will identify the claim, shall be void.

SEC. 3. Before filing such location certificate with the County Recorder of the proper County, the discoverer shall locate his claim by: First, sinking a discovery shaft upon the premises so claimed, to a depth of at least ten feet from the lowest part of the rim of such shaft at the surface, and deeper if necessary, until there is shown by such work a lode deposit of mineral in place; second, by posting at the point of discovery, on the surface, a plain sign or notice substantially conforming to the location certificate; third, by marking such claim or premises on the ground, so that its boundaries can be readily traced.

Such surface boundaries shall be marked by EIGHT substantial POSTS, projecting at least THREE FEET ABOVE THE SURFACE OF THE GROUND, or by substantial STONE MONUMENTS, at least THREE FEET HIGH, to-wit: One at each corner of said claim, and one at the center of each end and side line thereof.

SEC. 5. Any open-cut, cross-cut, adit or tunnel which shall be made as above provided for, as a part of the location of a mining claim, and which shall be equal in amount of work to a shaft ten feet deep and four feet wide by six feet long, and which shall cut a lode or mineral in place at the depth of ten feet from the surface, shall be equivalent, as a discovery work, to a shaft sunk from the surface.

SEC. 6. The discoverer shall have ninety days from the date of discovering the lode and the posting of the notice thereon, to perform said discovery work thereon. SEC. 7. If at any time the locator of any mining claim heretofore or hereafter located, or his assigns, shall learn that his original certificate was defective, or that the requirements of the law had not been complied with before filing, or shall be desirous of changing his surface boundaries, or of taking in any additional ground which is subject to location, or in case the original certificate of location was made prior to the passage of this law, and he shall be desirous of securing the benefits of this Act, such locator, or his assigns, may file an amended certificate of location subject to the provisions of this Act, regarding the making of new locations.

SEC. 8. The amount of assessments, or reparation, work or improvements to be done or made during each year, after the completion of the location as heretofore provided, and the time for doing the same, shall be as provided by the laws of the United States.

SEC. 9. Within three months after the expiration of the period of time fixed for the performance of annual labor or the making of improvements upon any mining claim or premises, the person on whose behalf such work or improvement was made, or some person for him, knowing the facts, may make and record in the office of the County Recorder of the county wherein such claim is situate an affidavit in substance as follows:

TERRITORY OF ARIZONA, } ss.
County, }

being duly sworn deposes and says, that he is a citizen of the United States, and more than 21 years of age, and resides at... In... County, Arizona Territory, and is personally acquainted with the mining claim and premises located and known as... mining claim or lode, situate in... Mining District, County of... Arizona Territory, the notice of location of which premises is recorded in the office of the County Recorder of said county, in Book... of Records of Mines, at page... that between the... day of... A. D. 189... and the... day of... A. D. 189... at least... dollars worth of work and improvements were done and performed upon said premises or lode, not including the location work of said claim. Such work and improvements were made by and at the expense of... owners of said premises for the purpose of complying with the law of the United States pertaining to assessments or annual work, and (here name the miners or men who worked upon the claim in doing the work) were the men employed by said owner and who labored upon said premises, and who did said work and improvements, and said work so done upon said premises is described as follows, to-wit: (Here describe the work done.)

Subscribed and sworn to before me... this... day of... 189...

Notary Public.

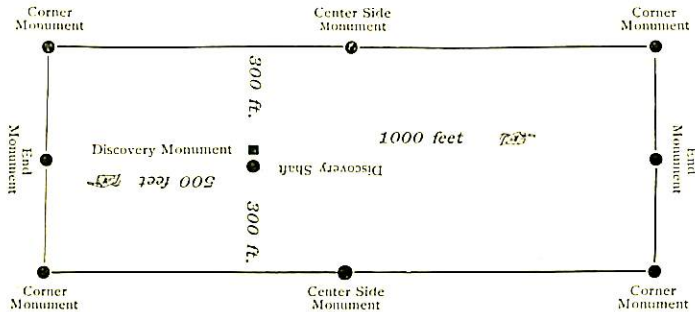
SEC. 10. Such affidavit when so recorded shall be prima facie evidence of the performance of such labor or the making of such improvements, and said original affidavit after it has been recorded, or a certified copy of record of same, shall be received as evidence accordingly by all the Courts of this Territory.

SEC. 11. The relocation of forfeited or abandoned lode claims shall only be made by sinking a new discovery shaft and fixing new boundaries in the same manner and to same extent as is required in making a new location; or the relocater may sink the original discovery shaft ten feet deeper than it was at date of commencement of such relocation, and shall erect new or make the old monuments the same as originally required. In either case a new location monument shall be erected, and the location certificate shall state if the whole or any part of the new location is located as abandoned property.

SEC. 12. This Act shall take effect and be in force from and after July 1st, 1895.

SEC. 13. All Acts and parts of Acts in conflict with this Act are hereby repealed.

This diagram is to give locator a general idea of plan of location under the new law. The Discovery Shaft can be in the center of claim or any distance from either end and side. In the diagram it is placed 500 feet from one end and 1000 feet from the other. Commence description of claim at a center end monument, giving its distance and direction from center of Discovery Shaft; thence bound the claim in either direction. In description be careful to state locality of claim with reference to some natural object, or permanent monument, as will identify the claim.



Yance Blue

Notice of Location.

QUARTZ CLAIM.

One Alice Sola

Dated 1897

Filed and recorded at request of

Wm and Mitchell

at July 19 1897 P. M.

Book 14 Record of Mines

Pages 288

M. J. Brown County Recorder.

By Deputy Recorder.

THE H. H. McNEIL CO., PRINTERS, PHOENIX, ARIZ.

TERRITORY OF ARIZONA, } ss.
County of...
I, County Recorder in and for the County and...
Territory aforesaid, do hereby certify that the within instrument was filed for record at... o'clock, M.
on this... day of... 189... and duly recorded in Book No...
of... County, Arizona, at pages...
WITNESS my hand and official seal the day and year first above written.

# Notice of Mining Location.

## LODE CLAIM.

To All Whom It May Concern:

This mining claim, the name of which is the Ross Lode Mining Claim, situate on lands belonging to the United States of America, and in which there are valuable mineral deposits, was entered upon and located for the purpose of exploration and purchase by Hugh Mac Kay

(Locator must insert either "a citizen of the United States," or, "who has declared his intention to become a citizen of the United States.") the undersigned, on the 24<sup>th</sup> day of September 1902

The length of this claim is 1500 feet, and 9 claim One Thousand (1000) feet in a North Westerly direction, and five hundred feet in a South Easterly direction from the center of the discovery shaft, at which this notice is posted, lengthwise of the claim, together with 300 feet in width of the surface grounds, on each

side of the center of said claim. The general course of the lode deposit and premises is from the South East to the North West

The claim is situated and located in the Cochise Mining District, in Cochise County, in the Territory of Arizona, about one half a mile in a westerly direction from The Peabody Mine

The surface boundaries of the claim are marked upon the ground as follows: Beginning at monument

at a point in a South East direction 500 feet from the discovery shaft (at which this notice is posted), being in the center of the S. E. end line of said claim; thence North Easterly 350 feet to a post in a mound of stone, being the N. E. N<sup>o</sup> 1 corner of said claim; thence North Westerly 1500 feet to a post in mound of stone, being at the N. W. N<sup>o</sup> 2 corner of said claim; thence South Westerly 300.5 feet to a monument at the center of the N. W. end of said claim; thence South Westerly 300.5 feet to a post in mound of stone being at the South West N<sup>o</sup> 3 corner of said claim; thence South Easterly 900 feet to a post in mound of stone at the N<sup>o</sup> 4 corner of said claim; thence South Easterly 8635.2 feet to a post in mound being Cor N<sup>o</sup> 5 North Easterly 125 feet to the place of beginning.

All done under the provisions of Chapter Six, of Title XXXII, of the Revised Statutes of the United States, and of an Act of the General Assembly of Arizona, entitled "An Act to Revise and Codify the Laws of the Territory of Arizona," approved March 16th, 1901.

Dated and posted on the ground this 24<sup>th</sup> day of September 1902

Hugh Mac Kay

TERRITORY OF ARIZONA, }  
County of..... } ss

I,....., County Recorder in and for the County and Territory aforesaid, do hereby certify that the within instrument was filed for record at.....o'clock,..... M., on this.....day of.....190..., and duly recorded in Book No..... of.....Records of.....County, Arizona, at pages.....

WITNESS my hand and official seal the day and year first above written.

.....  
County Recorder.

Notice of Location.

LODE CLAIM.

Ross Lode

Dated Sept 20<sup>th</sup> 1902

Filed and recorded at request of

Robt MacKay, Agent

OCT 11 1902 A. D. 1902

at 11- A M.

Book 22 Record of Minio.

Pages 154

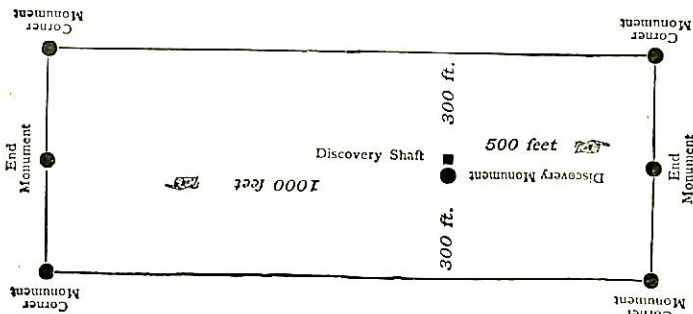
Shaw & Ware  
County Recorder.

By [Signature] Deputy Recorder.

The H. H. McNeil Co., Printers, Phoenix, Arizona.

524 Mining Exped

Answer Calo



This diagram is to give locator a general idea of plan of location under the new law. The Discovery Shaft can be in the center of claim or any distance from either end desired. In the diagram it is placed 500 feet from one end and 1000 feet from the other. Commence description of claim at a center end monument, giving its distance and direction from center of Discovery Shaft; thence bound the claim in either direction. In description be careful to state locality of claim with reference to some natural object, or permanent monument, as will identify the claim.



(4-687.)

# Surveyor General's Certificate of Approval of Field Notes and Survey of Mining Claim.

Department of the Interior,

Office of U. S. Surveyor General,

*Phoenix, Arizona*

*April 21<sup>st</sup>, 1903.*

I, U. S. Surveyor General for *Dist. of Arizona*,

do hereby certify that the foregoing and hereto attached Field Notes and Return of the Survey of the Mining Claim of *The Black Prince Copper Co.*

known as the *Blue Bell, Blue Jacket, Clondike, Keystone, Copper Bell*  
*Survey, True Blue and Ross Lodes*

situate in *Cochise* mining district,

*Cochise* County, *Arizona*,

in Section \_\_\_\_\_, Township No. \_\_\_\_\_, Range No. \_\_\_\_\_

designated as Survey No. *1717*

executed by *Thos. L. Darby*, U. S. Deputy Mineral

Surveyor, *Oct. 18-21<sup>st</sup>, 1902*, ~~18~~, under my instructions dated

*Oct. 18<sup>th</sup>, 1902*, ~~18~~, have been critically examined and the

necessary corrections and explanations made, and the said Field Notes and Return, and

the Survey they describe, are hereby approved. A true copy of the copy of the location

certificate filed by the applicant for survey is included in the field notes.

*Hugh H. Price*

U. S. Surveyor General for *Arizona*

COR N° 3

S. 33° 34' E 1498 ft

N. 56° 26' E 600 ft

LODE CLONDIKE LINE

COR N° 2-2

N. 33° 34' W 1498 ft  
S. 33° 34' E 1498 ft

S. 56° 26' W 600 ft

LODE BLUE JACKET LINE

COR N° 3

S. 41° 53' E 1500 ft  
S. 41° 05' E 1511 ft

223.1 ft COR N° 3

LODE BLUE BELL LINE

N. 51° 17' E 600 ft

COR N° 2-2

N. 41° 53' W 1500 ft

S. 51° 17' W 600.86 ft

LODE DEWEY LINE

COR N° 3

S. 41° 53' E 1500 ft  
N. 41° 53' W 1500

COR N° 2

0.86 ft

ROSS DISCOVERY

1000

N. 33° 34' W 1498 ft  
S. 33° 34' E 1498 ft

S. 56° 26' W 600 ft

LODE - BLUE JACKET - LINE

COR No 3

S. 41° 53' E 1500 ft  
S. 41° 05' E 1511 ft

223.1 ft

COR No 3

LODE - BLUE BELL -

S. 51° 17' E 600 ft

COR No 2-2

N. 41° 53' W 1500 ft

LODE - DEWEY -

S. 51° 17' W 600.86 ft

COR No 3

S. 41° 53' E 1500 ft  
N. 41° 53' W 1500

COR No 2

LODE 1000 - ROSS - DISCOVERY

S. 51° 17' W 600.86 ft

COR No 3

S. 41° 53' E 900 ft

Arizona

42 SURVEY No 1  
TUCSON LAND  
Surveyed October

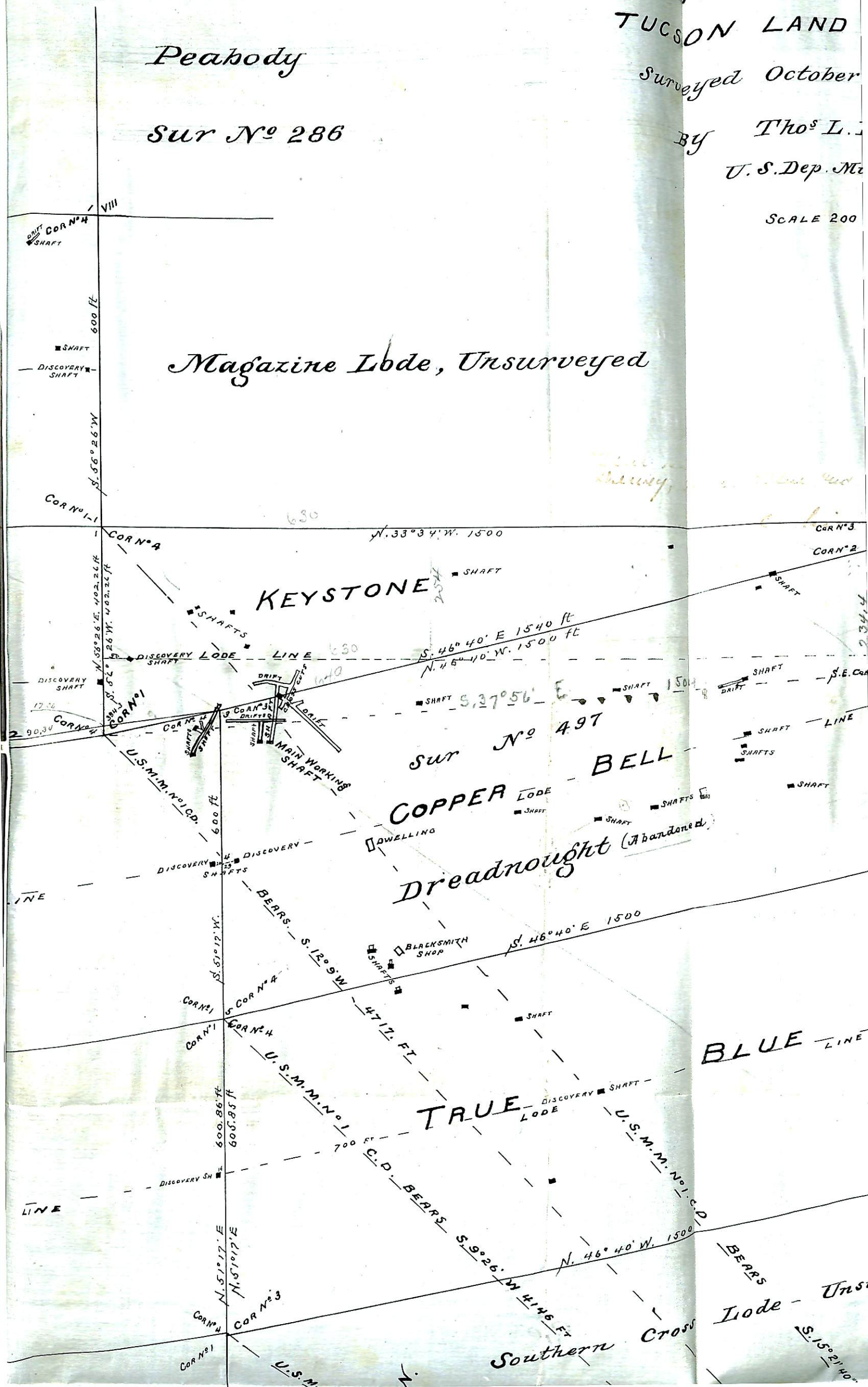
Peabody

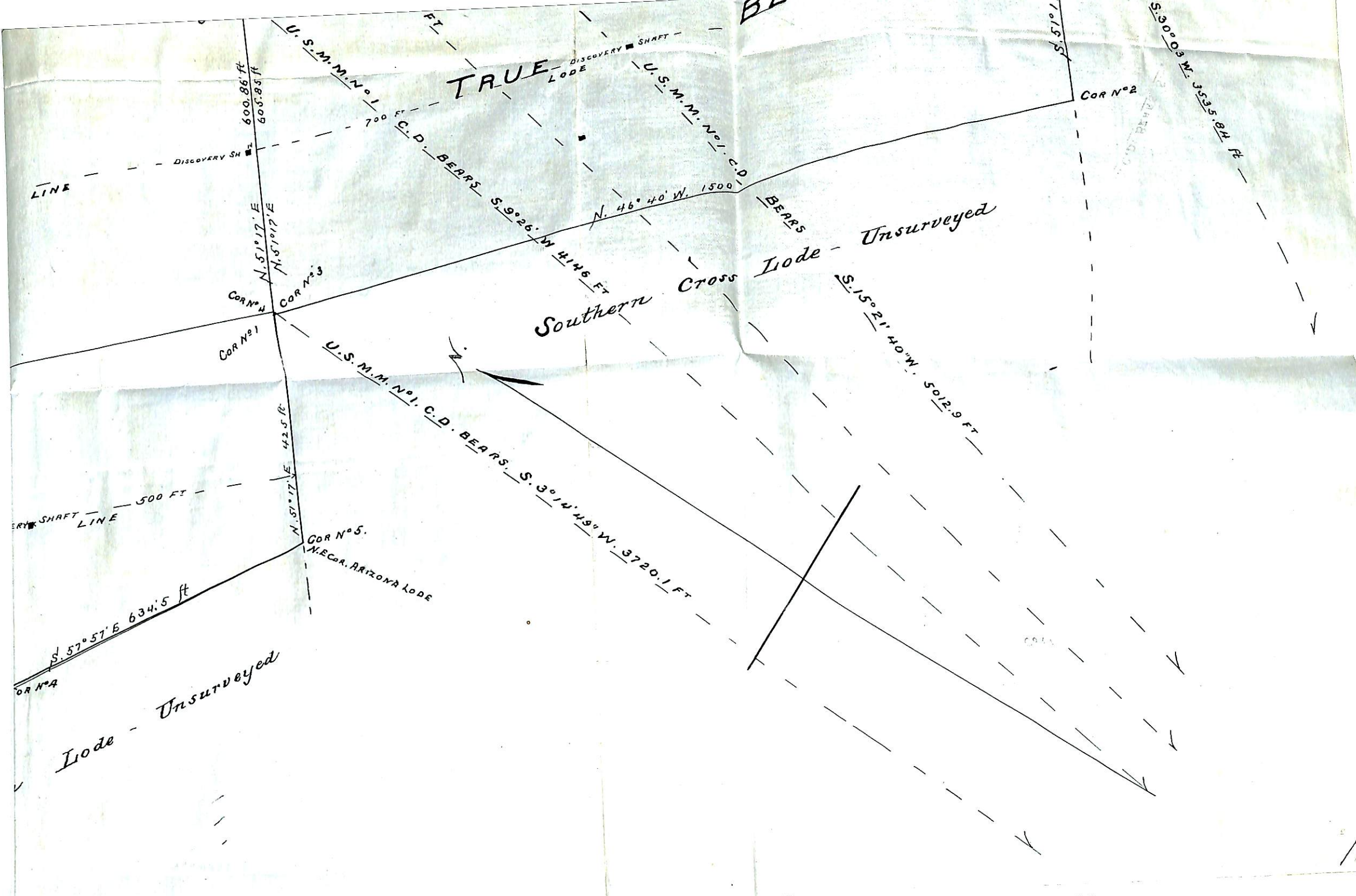
SUR No 286

By Tho<sup>s</sup> L.  
U.S. Dep. Ma

SCALE 200

Magazine Lode, Unsurveyed





TRUE

DISCOVERY SHAF  
LODE

U.S.M.M. No. 1  
C.D. BEARS

Southern Cross Lode - Unsurveyed

S. 15° 21' 40" W. 5012.9 FT

U.S.M.M. No. 1  
C.D. BEARS  
S. 3° 14' 49" W. 3720.1 FT

COR N° 5  
M.E. CO. ARIZONA LODE

COR N° 2

COR N° 3

COR N° 1

COR N° 4

Lode - Unsurveyed

500 FT

600.86 FT  
603.83 FT

N. 51° 17' E  
N. 51° 17' E

N. 51° 17' E  
42.5 FT

S. 57° 57' E 634.5 ft

N. 46° 40' W. 1500

S. 30° 03' W. 3335.84 FT

S. 51° 17'

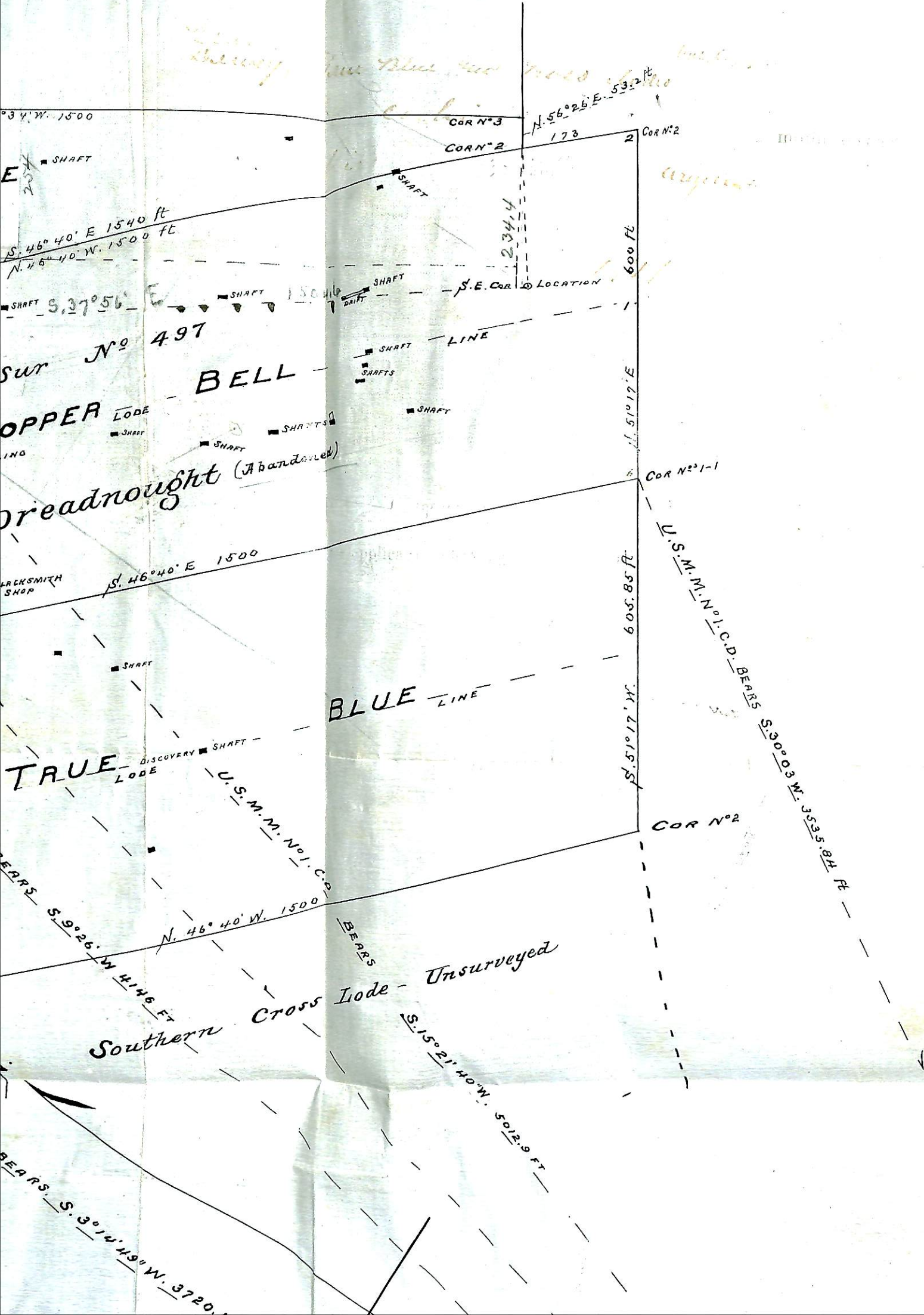
FT

LINE

DISCOVERY SHAF  
LINE

1500  
1296.80  
209.66

Unsurveyed



TUCSON LAND DISTRICT.

Surveyed October 18 to 21<sup>st</sup> 1902

By Tho<sup>s</sup> L. Darby

U. S. Dep. Min. Surveyor

SCALE 200 FT TO 1. INCH

Peabody

Sur N<sup>o</sup> 286

Magazine Lode, Unsurveyed

1500  
1296.31  
209.66

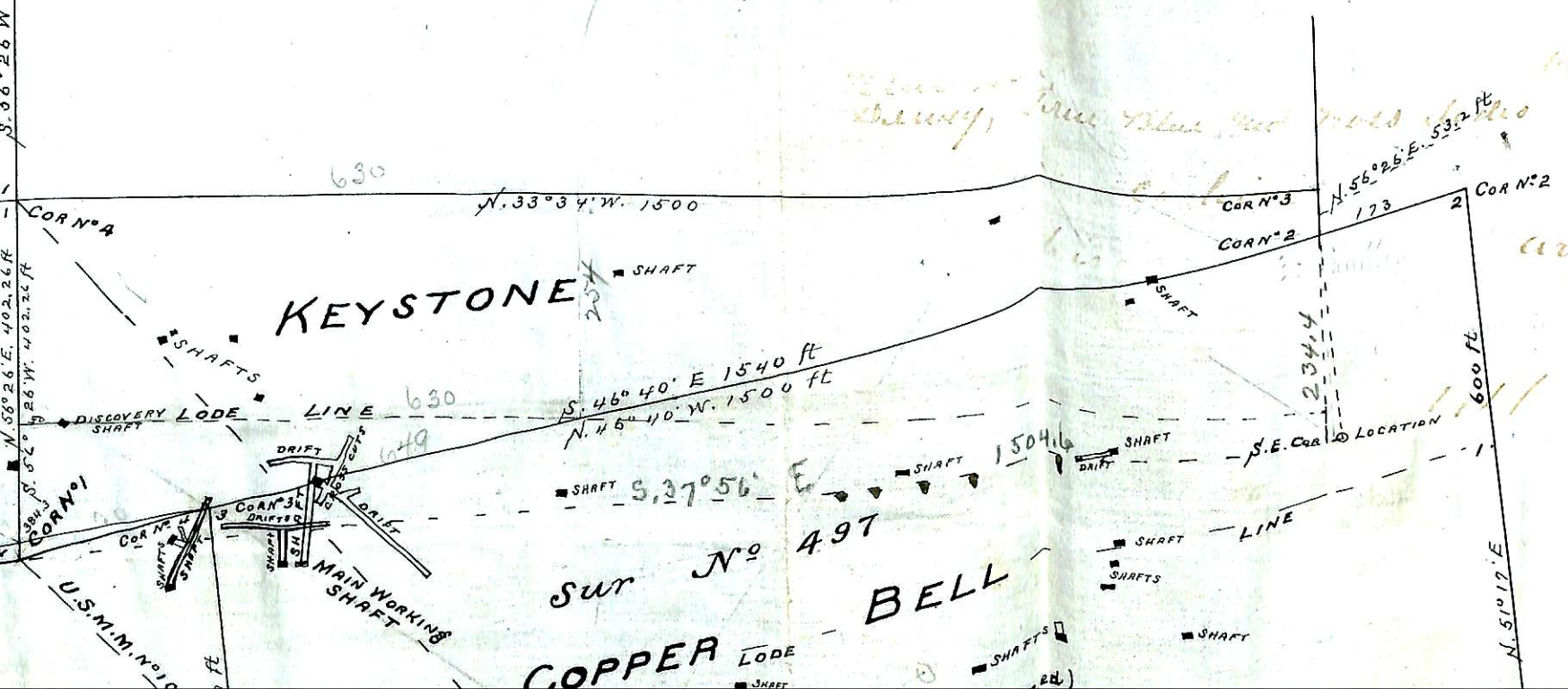
VIII

600

3.06° 26' W

N. 56° 26' E. 402.26 ft

U.S.M.M. No. 1



630

630

649

1504 ft

173

234.4

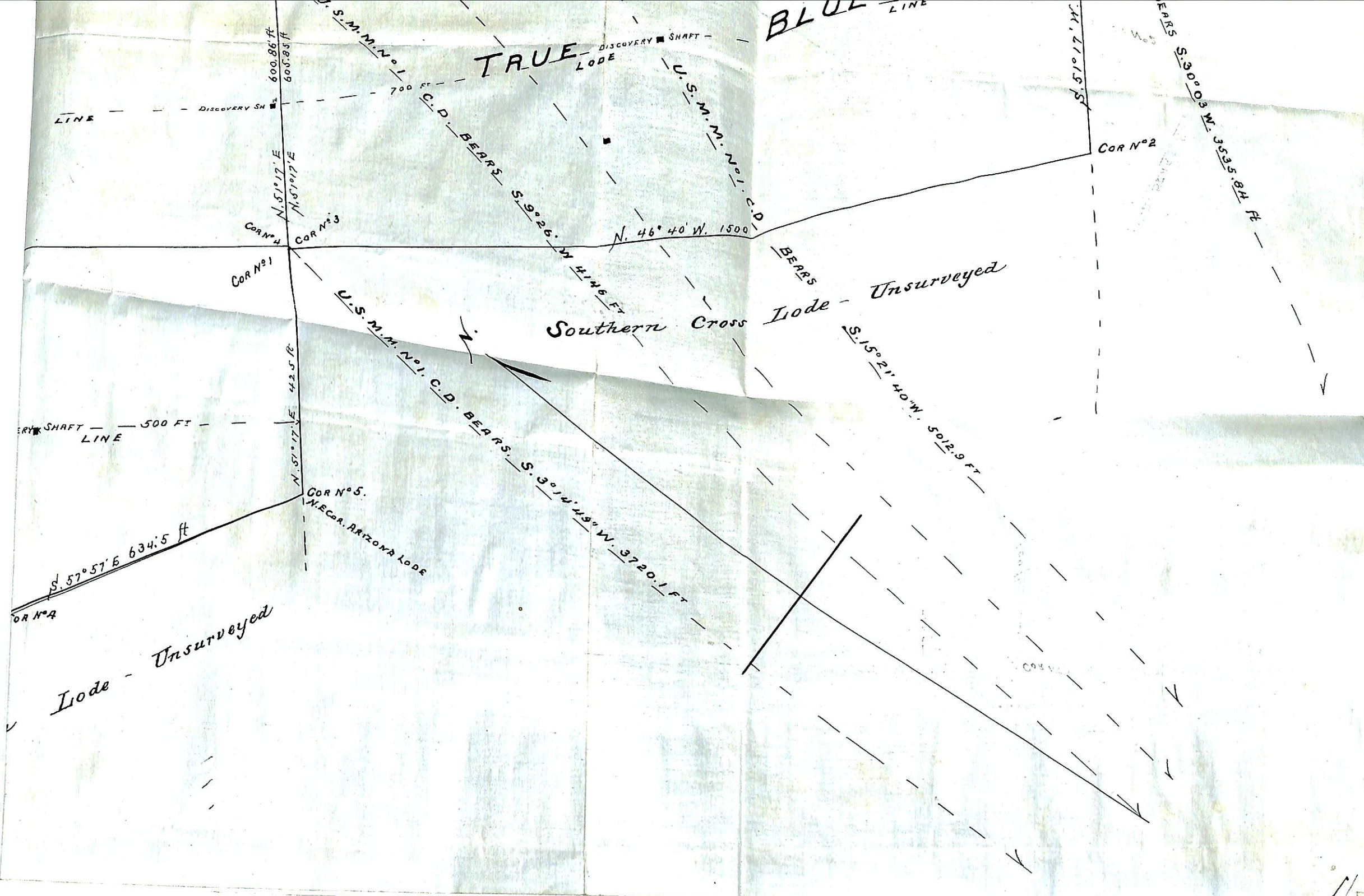
600 ft

N. 51° 17' E

No. 1-1







LARGE

MAP

INSERT

---

---