

**M
S
-**

0

1

7

2

8

Mineral Survey No. 1728

Claims	M & B Desc.	Improvements	Loc. Notices
	Pg.	Pg.	Pg.
Good Luck	9	15	6
Last Chance	1	14	1
Last Chance No.1	3	15	2
Last Chance No.2	4	15	3
Last Chance No.3	6	15	4
Last Chance No.4	7	15	5
North Good Luck	10	16	7
South Good Luck	12	16	8

1/21/03

copied 3/24/03

platted May 21/03

(4-683.)

Mineral Survey No. 1728.

Lot No.

Gila Land District.

FIELD NOTES

OF THE SURVEY OF THE MINING CLAIM OF

The Desert Queen Gold Co.

Last KNOWN AS THE Last Chance, Last Chance Nos. 1, 2, 3, and 4, Good Luck North Good Luck and South Good Luck. Plomosa Mining District, Yuma County, Arizona Section, Township 3 N., Range 17 W.

Surveyed under instructions dated January 7, 1903 by Francis B. Jacobs, U. S. Deputy Mineral Surveyor.

Claim located (sic hoc loc) June 12, 1901, 1 Survey commenced January 7, 1903, 1 Survey completed January 15, 1903, 1

o 6-180

Address John J. Wyatt, Manager, Quartzite, Yuma Co. Ariz.

Feet.

SURVEY No. 1728.Last Cahnce Lode.

Beginning at the Initial Monument.

Identical with the N. end center of the location.

A Porphyry stone 24x10x6 ins. set 12 ins. in the
I.M.
ground, chiseled L.C. 1728.

and raise a mound of stone 2 ft. base 1 1/2 ft.
high N. of the stone.

No bearings available.

Thence S. 70° 00' W.

Ascend very abrupt.

245. Top of high ridge bears S.E. and N.W.

Descend.

300. To Cor. No. 1.

A Porphyry stone 30x12x8 ins. set 12 ins. in the
ground and surrounded with a mound of stone,
chiseled L.C. 1 1728. whence

U.S.L.M. No. 1728 bears S. 74° 20' E. 73 ft.

A Paloverde 6 ins. in diam. bears S. 25° 30' E. 97 ft.
marked L.C. 1 1728 B.T.

Thence S. 20° 00' E.

Along the west side of a high ridge

400. Descend.

750. Head of Gulch course W.

Ascend.

1420. Top of high ridge bears N. and S.

1500. To Cor. No. 2.

The point for corner falls on a Porphyry bluff
6 ft. high facing east. I chisel a X at the exact
corner point and L.C. 2 1728.

And raise a mound of stone 2 ft. base 1 1/2 ft high
on top of bluff W. of the Cor.

Feet.

No bearings available.

Thence N.70°00'E.

Descend very steep mountain.

600. To Cor.No.3.

A Porphyry stone 24x12x5 ins.set 12 ins.in the ground, chiseled L.C.3 1728.

I raise a mound of stone 2 ft.base 1 1/2 ft.high S.E.of the stone. No bearings available.

Thence N.20°00'W.

5. A Gulch 10 ft.wide course E.

15. Ascend.

115. Ridge slopes E.

Descend.

690. Bottom of descent Ascend.

1315. Ridge slopes E.

Descend.

1415. A Gulch 10 ft.wide course S.E.

Ascend.

1500. To Cor.No.4.

A Porphyry stone 24x8x5 ins.set 12 ins.in the ground, chiseled L.C.4 1728.

I raise a mound of stone 2 ft.base 1 1/2 ft.high N.E.of the stone, whence

A paloverde 5 ins.in diam.bears S.50°30'W.71.6 ft. marked L.C.4 1728 B.T.
The portal of Tunnel No.2 bears S.23°40'E.655 ft.

Thence S.70°00'W.

Ascend along S.slope of ridge.

110. A Gulch 5 ft.wide course S.E.

Ascend steep mountain.

300. To the Initial Monument, the place of beginning.

The survey of the Last Chance lode is identical with the location.

Feet.

LAST CHANCE No. 1 Lode.

Beginning at Cor.No.1.

Identical with the N.W.Cor.of the location and with Cor.No.2, Last Chance lode this survey.

I chisel L.C.1 1 1728 on the rock in place S.E. of the X at the Cor.point. whence

U.S.L.M. No. 1728 bears N.17°36'W. 1458 ft.

Thence S.30°00'E.

Along east slope of high ridge near the summit.

1370. To Cor.No.2.

Identical with the S:W.Cor.of the location.

A ~~S~~ granite rock in place 15x10x4 ft.above ground. I chisel a X at the exact corner point and L.C.1 2 1728 and raise a mound of stone 1 1/2 ft.high on the rock S.W.of the markings.

No bearings available.

Thence N.70°00'E.

Descend very steep mountain.

300. The location monument at the S.E.end center.

515. A Gulch 5 ft.wide course N.E.

520. Ascend.

600. To Cor.No.3.

A Porphyry stone 18x10x6 ins.set 12 ins.in the ground, chiseled L.C.1 3 1728.

I raise a mound of stone 2 ft.base 1 1/2 ft.high S.E.of the stone.

The S.E.corner of the location bears S.40°E.22 ft.

No bearings available.

Thence N.30°00'W.

Descend.

210. The S.W.Cor.location monument Last Chance No.4 lode this survey.

4.

- Feet.
230. A Gulch 10 ft.wide course N.E.
240. Ascend.along east slope of high mountain.
1265. Descend.
1370. To Cor.No.4.
- Identical with the N.E.corner of the location.
and with Cor.No.3 Last Chance lode this survey.
- I chisel L.C. 1 4 1728 on the S.W.face of the
stone already set.
- Thence S.70°00'W.
600. To Cor.No.1,the place of beginning.
-
- L A S T C H A N C E No. 2 Lode.
- Beginning at the initian monument.
Identical with the S.E.and center of the location.
and with the Initial monument of Last Chance lode
this survey.
- I chisel I.M. L.C.2 1728 on the N.f ace of
the stone already set.
- Thence S.70°00'W.
300. To the Cor.No.1.
- Identical with the S.W.Cor.of the location and
with Cor.No.1 of Last Chance lode this suevey.
- I chisel L.C.2 1 1728 on the N.E.face of the
stone already set. whence
- U.S.L.M. No.1728 bears S.74°20'E. 73 ft.
- Thence N.31 10'W.
45. Descend.
360. Descent very abrupt.
925. Bottom of descent.
- Ascend.
1150. To Cor.No.2.

Feet.

Identical with the N.W.Cor.of the location.

A S granite stone 24x10x8 ins.set 12 ins.in the ground, chiseled L.C.2 2 1728.

I raise a mound of stone 2 ft.base 1 1/2 ft.high N.W.of the stone.

No bearings available.

Thence N.70°00'E.

Descend.

300. Bottom of descent and N.end center location mon.

Enter wash course N.

600. To Cor.No.3.

Identical with the N.E.Cor.of the location.

A S granite stone 20x15x12 ins.set 12 ins.in the ground, chiseled L.C.2 3 1728.

I raise a mound of stone 2 ft.base 1 1/2 ft high N.of the stone. No bearings available.

Thence S.31°10'E.

120. Leave wash course N.W.

Ascend.

850. Ridge slopes N.E.

Descend.

1150. To Cor.No.4.

Identical with the S.E.corner of the location. and with Cor.No.4 last Chance lode this survey.

I chisel L.C.2 4 1728 on the N.W.face of the stone already set. I raise a mound of stone 2 ft base 1 1/2 ft high N.W.of the stone. No bearings available.

Thence S.70°00'W.

Ascend.

300. To the Initial Mon.the place of beginning.

Feet.

L A S T C H A N C E No. 3 Lode.

Beginning at the Initial Monument.

Identical with the S.end center of the location.

A Granite stone 18x10x6 ins.set 12 ins.in the ground, chiseled I.M. L.C.3 1728.

I raise a mound of stone 2 1/2 ft. base 2 ft. high S. of the stone. No bearings available.

Thence S.70°00'W.

25. Leave wash course N. Ascend.

194. To Cor.No.1.

On line 3-4 the Last Chance lode this survey

A Slate stone 30x14x5 ins.set 12 ins.in the ground, chiseled L.C.3 1 1728. surrounded by a mound of stone. whence

The S.W.Cor.of the location bears S.70°W.131 ft.

A X₁ on a brown Porphyry rock in place 7 ft.high bears N.60°30'W.5.5 ft. chiseled L.C.3 1 1728 B.S.

Cor.No.3 Last Chance lode this survey bears S.20°E. 335 ft.

U.S.L.M. No. 1728 bears N.45°40'W. 1244 ft.

Thence N.20°00'W.

1165. To Cor.No.2.

Identical with Cor.No.4 Last Chance lode and Cor.No.4 Last Chance No.2 lode this survey. I chisel L.C.3 2 1728 on the stone already set.

Thence N.31°10'W.

341.5 To Cor.No.3.

A Porphyry stone 18x12x6 ins.set 12 ins.in the ground, chiseled L.C.3 3 1728.

I raise a mound of stone 2 ft. base 1 1/2 ft high N.W.of the stone.

7.

- Feet.
- No bearings available.
The N.W.Cor.of the location bears W.87ft.
Thence N.70°00'E.
- Descend
315. Road Tysons Well to Camp bears N.and S.
Bottom of descent.
560. To Cor.No.4.
A Blue Slate stone 30x14x8 ins.set 15 ins.in the ground, chiseled L.C.3 4 1728, whence
An Ironwood 6 ins.in diam.bears N.24° E. 100 ft.
marked L.C. 3 - 4 1728 B.T.
A Paloverde 6 ins.in diam.bears S.11° 10'W.41 ft.
marked L.C.3 4 - 1728 B.T.
The N.E.Cor.of the location bears N.55° E. 11 ft.
Thence S.20° 00'E.
145. A Wash 30 ft.wide course N.
175. Ascend along the W.slope of a high mountain.
1500. To Cor.No .5.
A Porphyry stone 18x8x6 ins.set 12 ins.in the ground, chiseled L.C.3 5 1728, whence
The S.E.Cor.of the location bears S.40° E.63 ft.
No bearings available.
Thence S.70° 00'W.
- Descend.
220. Enter Wash course N.
300. To the Initial Monument the place of beginning.
-
- L A S T C H A N C E No.4 Lode.
- Beginning at the Initial Mon.
Identical with the N.W.end center of the location and with the Initial Mon.of Last Chance No.3 lode this survey.
Thence S.70° 00'W.
194. To Cor.No.1 Last Chance No.3 lode this survey

Feet.

And intersection of l^one 3-4-Last Chance lode
this survey at 335 ft. N.20°W. from Cor.No.3 and
1165 ft. S.20°E. from Cor.No.4.

254. To Cor.No.1.

Identical with the N.W. Cor. of the location.
A Porphyry stone 20x8x6 ins. set 12 ins. in the
ground, chiseled L.C.4 1 1728.

I raise a mound of stone 2 ft. base 1 1/2 ft. high
N.W. of the stone. whence
U.S.L.M. No.1728 bears N. 43° 07' W. 1229 ft.
No bearings available.

Thence S.30° 00' E.

Descend.

340. To Cor.No.3 Last Chance lode and Cor.No.4 Last
Chance No.1 lode this survey.

1500. To Cor.No.2.

Identical with the S.W. Cor. of the location.
A Porphyry stone 20x12x8 ins. set 12 ins. in the
ground, chiseled L.C.4 2 1728.

I raise a mound of stones 2 ft. base 1 1/2 ft.
high S.W. of the stone, whence

The Cor.No.3 Last Chance No.1 lode this survey bears
S.30° E. 210 ft. No other bearings available.

Thence N.70° 00' E.

Ascend.

160. A sharp Ridge Slopes N.

Descend.

254. To the S.E. end center of the location.

554. To Cor.No.3.

A Granite stone 24x10x8 ins. set 12 ins. in the
ground, chiseled L.C.4 3 1728.

I raise a mound of stone 2 ft. base 1 1/2 ft.
high S.E. of the stone. No bearings available.

Feet .

Thence N.30° 00' W.

Along the west slope of a high mountain.

1500. To Cor.No.4.

Identical with Cor.No.5 Last Chance No.3 lode
this survey. I chisel L.C.4 4 1728 on the
S.W.face of the stone already set.

Thence S.70° 00' W.

300. To the Initial Monument the place of beginning.

G O O D L U C K Lode.

Beginning at the initial monument.

Identical with the N.W.and center of the location.

A Sandstone 30x16x6 ins.set 15 ins.in the
ground, chiseled I.M. G.L. 1728.

and raise a mound of stone around the Cor.stone.

No bearings available.

Thence N.70° 00' E.

Ascend very steep mountain.

300. To Cor.No.1.

Identical with Cors.No.1 Last Chance, and
Last Chance No.1 lodes. this survey.

I chisel G.L. 1 on the S.W.face of the stone already
set. whence

U.S.L.M. No.1728 bears S.74 20'E. 73 ft.

Thence S.20° 00' E.

1500. To Cor.No.2.

Identical with Cors.No.2 Last Chance lode
and No.1 Last Chance No.1 lode this survey.

I chisel G.L.2 on the rock N.W.of the X.

Thence S.70° 00' W.

Descend a very steep mountain.

- Feet.
7. Top of high ridge bears N.30°W. and S.30° E.
Descend very abruptly.
1300. To S. end center of the location.
Gulch 6 ft. wide course N.W.
Ascend
- 500 Ridge slopes N W
Descend.
- 600 To Cor No 3.
A Porphyry stone 24x12x6 ins set 12 ins in the
ground, chiseled G.L.3 1728.
I raise a mound of stone 2 1/2 ft. base 2 ft. high
S.W. of the stone. No bearings available.

Thence N.20° 00' W.

- Along the W. slope of a high mountain.
425. A Gulch 10 ft. wide course N.W.
1500. To Cor. No. 4.
A Porphyry stone 30x18x5 ins. set 15 ins. in the
ground, chiseled G.L. 4 1728.
and raise a mound of stone around the stone.
No bearings available.

Thence N.70° 00' E.

- Ascend very steep mountain.
300. To the Initial Monument the place of beginning.

N O R T H G O O D L U C K Lode.

Beginning at the Initial monument.
Identical with the S.E. end center of the location.
and the Initial Monument of Good Luck lode this
survey.

I.M.
I chisel N.G.L. on the N. face of the stone

11.

Feet.

al ready set.

Thence N.70°00'E.

300. To Cor.No.1

Identical with Cots.No.1 of the Last Chance,
No.2
Last Chance, and Good Luck lodes this survey.

I chisel N.G.L. 1 on the N.W. face of the
stone already set. *Whence*

U.S.L.M. No.1728 bears S.74°20'E. 73 ft.

Thence N.31°10'W.

1150. To Cor.No.2 of the Last Chance No.2 lode this survey.

1200. Descend.

1420. A Gulch 8 ft.wide course E.

1500. To Cor.No.2.

A Slate stone 36x15x6 ins.set 15 ins.in the
ground, chiseled N.G.L.2 1728. and raise a mound of
stone around the Cor.stone.

No bearings available.

Thence S.70°00'W.

Ascend over N.slope of high mountain.

300. To N.W.end center of the location.

450. Descend.

600. To Cor.No.3.

A Slate stone 24x16x5 ins.set 12 ins.in the
ground, chiseled N.G.L.3 1728.

I raise a mound of stones 2 ft.base 1 1/2 ft.
high N.W.of the stone.

No bearings available.

Thence S.31°10'E.

Ascend along W.slope of high mountain.

500. Top of ascent.

Feet.

1150. Descend.

1500. To Cor.No.4.

Identical with Cor.No.4 Good Luck lode this survey.

I chisel N.G.L. 4 on the N.E.face of the stone already set.

Thence N.70°00'E.

300. To the Initial Monument the place of beginning.

S O U T H G O O D L U C K Lode.

Beginning at the Initial Monument.

Identical with the N.W. end center of the location and the S.end center location of the Good Luck lode this survey.

A Porphyry stone 24x12x6 ins.set 12 ins.in the ground, chiseled I.M.S.G.L. 1728.

and raise a mound of stone 2 ft.base 1 1/2 ft. high N. of the stone.

No bearings available.

Thence N.70°00'E.

300. To Cor.No.1.

Identical with Cor.No.2 Last Chance, and Good Luck No.1 and Cor.No.1 Last Chance, lodes this survey.

I chisel S.G.L. 1 on the rock S.W.of the X.whence U.S.L.M. No.1728 bears N. 17 36'W. 1458 ft.

Thence S.30°00'E.

1370. To Cor.No.2 Last Chance No.1 lode this survey.

1425. Descend.

1500. To Cor No.2.

A Porphyry rock in place 30x20 ins.above ground facing south I chisel S.G.L. 2 1728, and a X at the exact corner point.

13.

Feet.

No bearings available.

Thence S.70°00'W.

Along south slope of high ridge.

300. To the S.E. end center of the location.

350. Descend.

430. Head of Gulch course S.

Ascend.

600. To Cor.No.3.

A Synite Rock in place 6x6x5 ft. above ground,
 1 chisel a X at the exact corner point and S.G.L.
 3 1728 on S.W. of rock and raise a mound of
 stone 1 1/2 ft. high on top of rock.

No bearings available.

Thence N.30°00'W.

Ascend.

75. Top of high ridge bears E. and W.

Descend.

825. A Gulch 12 ft. wide course N.W.

Thence along W. slope of mountain.

1500. To Cor.No.4.

Identical with Cor.3 Good Luck lode this survey.
 I chisel S.G.L 4 1728 on the S.E. face of the
 stone already set.

Thence N.70°00'E.300. To the Initial Monument, the place of beginning.Variation at all corners 14°15'E.

The survey of the Good Luck, North Good Luck,
 South Good Luck, Last Chance No.2 and Last Chance
 No.4 are identical with the respective locations.

14.

LOCATION.

This claim is located on unsurveyed land and is S.65° E. 7 miles from the town of Quartzsite formerly known as Tyson's Well. *Plomosa Mining District, Yuma County, Arizona*

LEDGES.

The Last Chance ledge runs, from the S.end center N.20° W.1500 ft. to the N.end center.

The Last Chance No.1 ledge runs, from the S.E.end center N.30° W.1370 ft. to the N.W.end center.

The Last Chance No.2 ledge runs, from the S.E.end center N.31° 10' W.1150 ft. to the N.W.end center

The Last Chance No.3 ledge runs, from the S.end center N.20° W.1500 ft. to the N.end center.

The Last Chance No.4 ledge runs, from the S.E.end center N.30° W.1500 ft. to the N.W.end center.

The Good Luck ledge runs, from the S.end center N.20° W.1500 ft. to the N.end center.

The North Good Luck ledge runs, from the S.E.end center N.31° 10' W.1500 ft. to the N.W.end center.

The South Good Luck ledge runs, from the S.E.end center N.30° W.1500 ft. to the N.W.end center.

EXPENDITURE OF FIVE HUNDRED DOLLARS.

I certify that the value of the labor and improvements upon this claim, placed thereon by the claimants and their grantors, is not less than five hundred dollars, ^{per claim} and that said improvements consist of:

No. 1 The discovery cut of the Last Chance lode, which bears from
The Initial Mon. S.20° E. 735 ft., 6 ft. wide, 12 ft. face.

Value \$75.00

No. 2 A Shaft which bears from the Initial Mon.

15.

Last Chance lode S.22^EW 740ft., 5x8 ft.50 ft.deep.
Value..... \$600,00

No 3- A Tunnel, the mouth of which bears from Cor.No.
4 Last Chance lode, S.1° 30'W.725ft., 5x7 ft., running
S.78°W.200 ft.to brest.
Value ... \$2,400,00

No-1 The discovery shaft of the Last Chance No.1 lode,
No INT Mon. ~~South End lode~~ which bears from the ~~Initial Mon.~~ ^{10 ft} N.30° W. ~~1350 ft.~~
~~S.E.E.C. Mon.~~
4x6 ft.10 ft.deep.
Value.... / \$100,00

No-1- The discovery shaft of the Last Chance No.2 lode,
which bears from the Initial Mon.N.31° 10'W.250 ft.
4x6 ft.10 ft.deep
Value\$100,00

Note; Forty feet of the tunnel on the Last Chance lode
is to be credited to the Last Chance No.2 lode.
Value..... \$480,00.

Note; Forty feet of the tunnel on the Last Chance
lode is credited to the Last Chance No.1 lode.
Value..... \$480,00.

A2-1 The discovery shaft of the Last Chance No.3 lode
which bears from the Initial Mon. ~~N~~.20° ~~W~~.750 ft.
5x7 ft.10 ft.deep
Value..... \$100,00

No-2- A Tunnel the mouth of which bears from Cor.No.2
Last Chance No.3 lode S.23° 40'E.655 ft.7x7 ft.,
running S.75°W.230 ft.to brest.
Value...\$3,450,00

No-1 The discovery cut on the Last Chance No.4 lode
which bears from the Initial Mon.S.30°E.1400.ft.
5 ft.wide 15 ft.deep at face.
Value..... \$75,00

Note: forty feet of the tunnel on the Last Chance
No.3 lode is credited to the Last Chance No.4 lode.
Value..... \$600,00

No-1 The Good Luck lode, the discovery shaft, which bears
from the Initial Mon.S.20°E.400 ft.4x6 ft.11 ft.deep.
Value..... \$100,00

Note: Forty feet of the Tunnel on the Last Chance No.3 lode is credited to the Good Luck lode.
Value..... \$600.

No-1
The Discovery cut on the North Good Luck, which bears from the Initial Mon. N. 31° 10' W. 850 ft.
4 ft. wide 10 ft. deep at face.
Value \$75,00

Note: Forty feet of the tunnel on the Last Chance No.3 lode is credited to the North Good Luck lode.
Value..... \$600,00

No-1
The discovery cut on the South Good Luck lode, which bears from the Initial Mon. S. 30° E. 1200 ft.
4 ft. wide 12 ft. deep at face.
Value..... \$75,00

Note: Forty feet of the tunnel on the Last Chance No.3 lode is credited to the South Good Luck lode.
Value..... \$600,00

OTHER IMPROVEMENTS.

A forty horse^{power} gasoline engine and compressor located just north of the mouth of the tunnel on the Last Chance No.3 lode.

Note: The power drills were being put in place when this survey was made, and the tunnel on the Last Chance No.3 lode was being driven by two shifts of men.

I N S T R U M E N T.

This survey was made with a Gurkey Light Mountain Transit, with Solar Attachment.

The courses were deflected from the true meridian as determined by direct solar observations.

The distances were measured with a 50 ft. steel tape.

17.

A R E A.

Total Area Last Chance lode..... 20.66 Acres.
 Area in conflict with
 Last Chance No.4 lode this survey... .23 "

Net Area Last Chance lode.....20.66, "

Net area Last Chance No.1 lode.... 18.58 "

Net area Last Chance No.2 lode.....15.54 ✓ "

Net area Last Chance No.3 lode.....17.26 ✓ "

Total area Last Chance No.4 lode 18.79
 Less area in conflict with
 Last Chance lode this survey... .23

Net area Last Chance No.4 lode.....18.56 "

Net area Good Luck lode.....20.66 "

Net area North Good Luck.....20.27 "

Net area South Good Luck.....20.35 "

Net area claim..... 151.88 acres. ✓

11/11/03

Field Notes of

United States Location Monument. No. 1728.

Plomosa Mining District.

Y U M A C O U N T Y .

A R I Z O N A .

Established on the summit of a high mountain peak at the S.W. point of the Plomosa range of Mountains.

There was a Sahuara 12 ins. in diam. 10 ft. high on the summit of the peak, I raise a mound of stone 7 ft. base, 5 ft. high around this Sahuara.

I set a Slate stone 36 x 20 x 5 ins. 15 ins. in the ground, to bed rock, surrounded by a mound of stones 2 1/2 ft. E. of the monument, marked with a X and U.S.L.M. 1728.0 on south face.

B E A R I N G S .

A lone Sahuara about 6 ft. high, on a sharp mountain peak bears N.13°15'E. about 3 1/2 miles.

A lone stubby Sahuara on a high mountain peak bears S.46°50'E. about 1 mile.

The mouth of the Tunnel on Last Chance No.3 lode bears S.66°10'E. 849 ft.

A stone monument on a high peak bears S.41°00'W. about 3,000 ft.

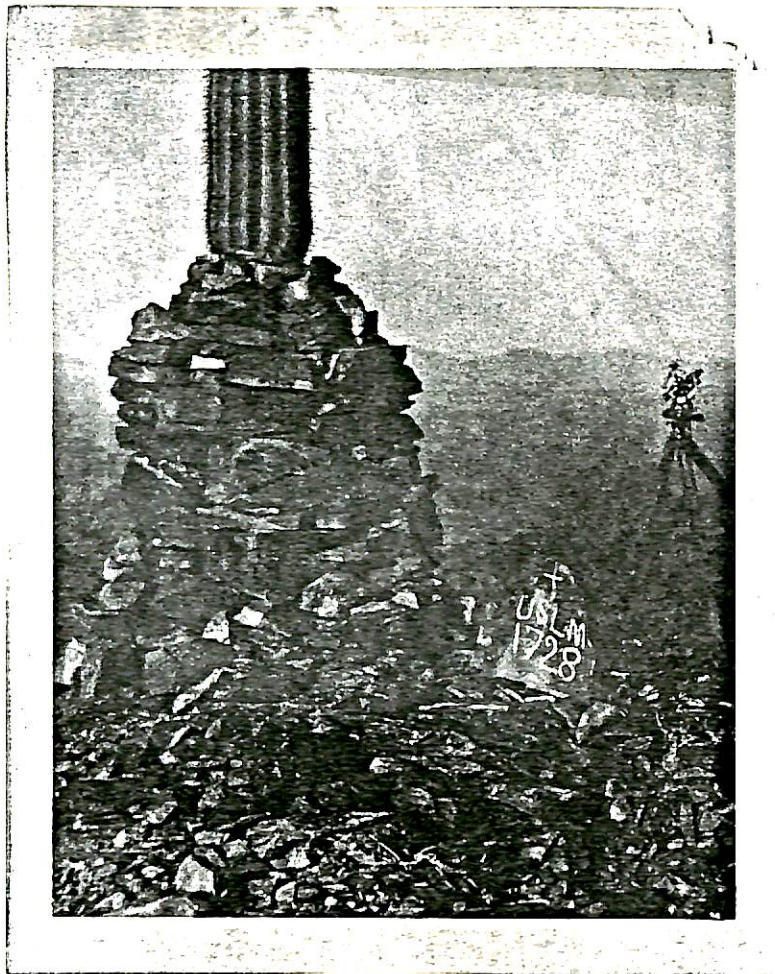
The Wind Mill over Tyson's Well bears N.65°10'W. 6 miles 5190 ft.

A Paloverde 6 ins. in diam. bears S.21°30'W. 74 ft. marked L.C.1 - 1728 B.T.

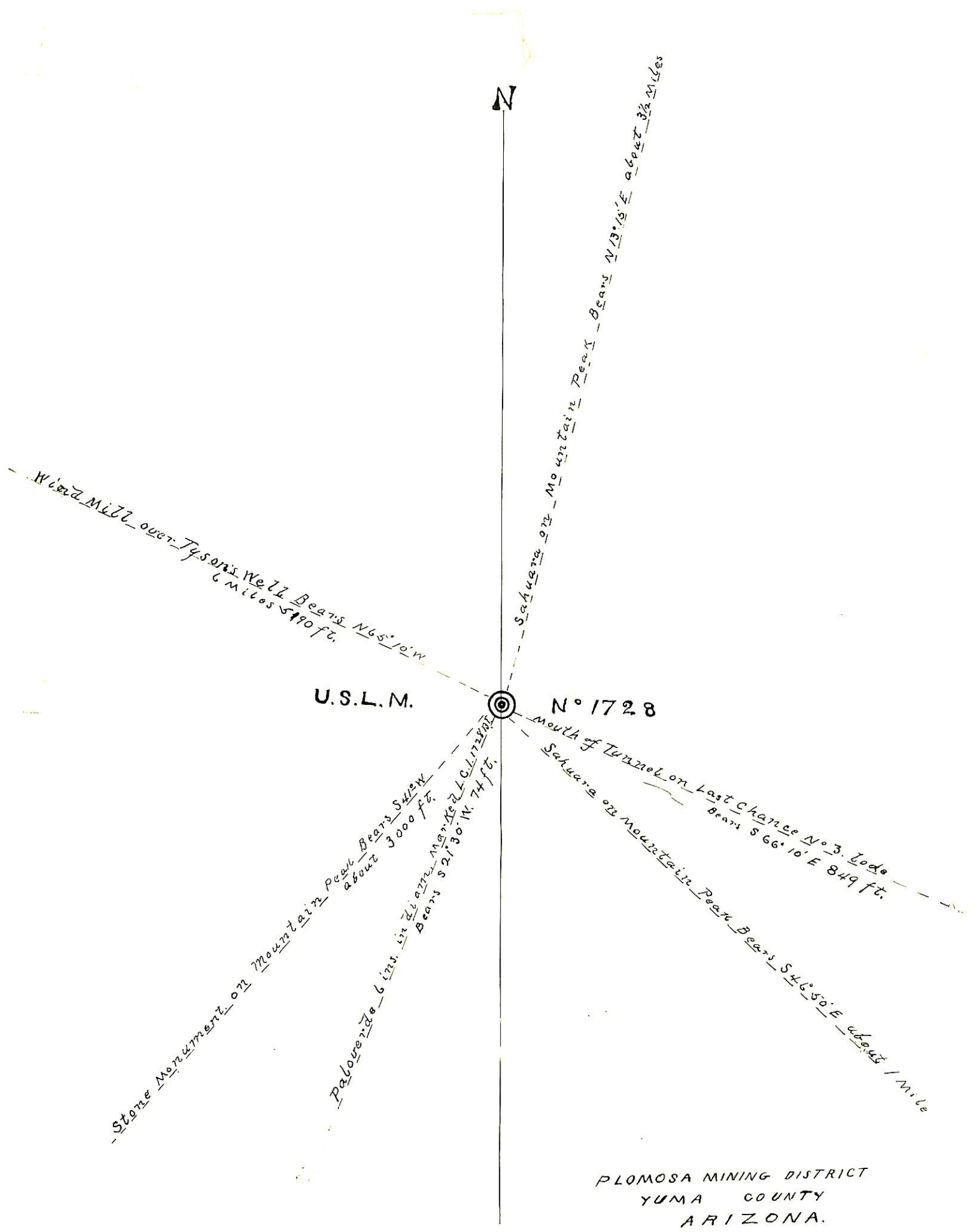
Established *January 7th 1903.*

Edward Simpson,) *Francis Jacobs*
Hannibal Shreve,) (U.S. Deputy Mineral Surveyor.
(Assistants.)

STATION 100
MIRANDA



STATION 100



PLOMOSA MINING DISTRICT
YUMA COUNTY
ARIZONA.

U.S. GEOLOGICAL SURVEY

FINAL OATHS FOR SURVEYS.

LIST OF NAMES.

A list of the names of the individuals employed by Francis Jacobs
 United States Deputy Mineral Surveyor, to assist in running, measuring, and marking the lines
 corners and boundaries described in the foregoing field notes of the survey of the mining claim
 of The Desert Queen Gold Co
 known as the Switchever Last chance no 1 Last chance no 2 Last chance no 3 Last chance no 4 Good Luck North Good Luck and South Good Luck
 and showing the respective capacities in which they acted.

- Edward Simpson, Chairman.
- Hannibal Shreve, Chairman.
- Edward Simpson, Axman.
- Hannibal Shreve, Flagman.

FINAL OATHS OF ASSISTANTS.

We, Edward Simpson
 and Hannibal Shreve, do solemnly swear that we assisted Francis
B. Jacobs, United States Deputy Mineral Surveyor, in marking the corners and
 surveying the boundaries of the mining claim of

The Desert Queen Gold Co
 known as the Switchever Last chance no 1 Last chance no 2 Last chance no 3 Last chance no 4 Good Luck North Good Luck and South Good Luck, represented
 in the foregoing field notes as having been surveyed by said deputy mineral surveyor and under
 his direction; and that said survey has been in all respects, to the best of our knowledge and
 belief; faithfully and correctly executed, and the corner and boundary monuments established
 according to law and the instructions furnished by the United States Surveyor-General for
Arizona

- Edward Simpson, Chairman.
- Hannibal Shreve, Chairman.
- Edward Simpson, Axman.
- Hannibal Shreve, Flagman.

Subscribed and sworn to by the above-named persons before me
 this 18th day of January, 1903

Francis Jacobs
 Notary Public
 My Commission Expires March 2^o 1904

FINAL OATH OF U. S. DEPUTY MINERAL SURVEYOR

I, Francis B Jacobs, U. S. Deputy Mineral Surveyor, do solemnly swear that, in pursuance of instructions received from the United States Surveyor General for Arizona, dated January 7th 1908, I have, in strict conformity to the laws of the United States, the official regulations and instructions thereunder, and the instructions of said Surveyor General, faithfully and correctly executed the survey of the Mining Claim of The Desert Queen Lode Co., known as the Last chance no¹ Last chance no² Last chance no³ Last chance no⁴ Good Luck Good Luck Good Luck, situate in Flomosa Mining District, Yuma County, Arizona, in Section Township No. , Range No. , and designated as Survey No. 1728, as represented in the foregoing field notes, which accurately show the boundaries of said mining claim as distinctly marked by monuments on the ground, and described in the attached copy of the location certificate, which was received by me from the Surveyor General with said instructions, and that all the corners of said survey have been established and perpetuated in strict accordance with the law, official regulations and instructions thereunder; and I do further solemnly swear that the foregoing are the true and original field notes of said survey and my report therein, and that the labor expended and improvements made upon said mining claim by claimant or its grantors are as therein fully stated, and that the character, extent, location and itemized value thereof are specified therein with particularity and full detail, and that no portion of said labor or improvements so credited to this claim has been included in the estimate of expenditures upon any other claim.

Francis B Jacobs
U. S. Deputy Mineral Surveyor

Subscribed and sworn to by the said Francis B Jacobs,
U. S. Deputy Mineral Surveyor, before me a Notary Public
for Maricopa County Arizona this twenty first
day of January 1908

Lloyd B Christy
Notary Public
My Commission Expires May 31, 1908.

Affidavit of Five Hundred Dollars Improvements.

We, Edward Simpson, and Hannibal Shreve

of lawful age, being first duly sworn according to law, depose and say: That we

are acquainted with the Last Chance group of mining claims

situate in Pleurosa Mining district, Yuma County,

Arizona Territory, for which The Desert Queen

Gold Co.

has made application for survey prior to application for patent under the provisions

of the Act of Congress, approved May 10, 1872; and that the labor done and improve-

ments made thereon by the applicant and its grantors exceed Five Hundred

for each claim

Dollars in value, and further that we are not personally interested in said mine.

Edward Simpson

Hannibal Shreve

TERRITORY OF ARIZONA,

County of Yuma

} ss:

Sworn to and subscribed before me, this 7th

day of January, 1903



Francis J. [Signature]

Notary Public

My commission expires March 2^d 1904

TERRITORY OF ARIZONA, }
COUNTY OF YUMA. } ss.

I, ~~W. E. Marvin~~, County Recorder in and for said county, do hereby certify that I have compared the within and foregoing instrument, and the same is a full, true and correct copy of Location Notice of Lost
Chas. Rode Mining Claim
as the same appears of record in Book 80 of Mines
page 506 et seq. _____
in records of Yuma County, Arizona.

In witness whereof I have hereunto set my hand and affixed my official seal this 3d day of November 1902

W. E. Marvin

County Recorder.

By W. E. Bonderson
Deputy.

Notice of Mining Location.

Lode
QUARTZ CLAIM.



TO ALL WHOM IT MAY CONCERN:

This mining claim, the name of which is the *Last Chance* Mining Claim, situated on lands belonging to the United States of America, and in which there are valuable mineral deposits, was entered upon and located for the purpose of exploration and purchase by *Charles A Funk* a citizen of the United States the undersigned, on the *13* day of *June* 189*9*.

The length of this claim is *1500* feet, and *0* claim *750* feet in a *northward* direction and *750* feet in a *southward* direction from the center of the discovery shaft, at which this notice is posted, lengthwise of the claim, together with *300* feet in width of the surface grounds, on each side of the center of said claim. The general course of the lode deposit and premises is from the *North* to the *South*

The claim is situated and located in the *Clomosa* Mining District, in *Yuma* County, in the Territory of Arizona, about *2* miles in a *westerly* direction from *Good Enough* Group of Mines & about *2* miles south of the *Marquada* *Blala* Road.

The surface boundaries of the claim are marked upon the ground as follows: Beginning at *North end* monument ~~of stone~~ at a point in a *northward* direction *750* feet from the discovery shaft (at which this notice is posted), being in the center of the *North* end line of said claim; thence *300* feet to a monument ~~of stone~~, being the *North west* corner of said claim; thence *750* feet to a monument ~~of stone~~ at the center of the *West* side line of said claim; thence *750* feet to a monument ~~of stone~~, being at the *South west* corner of said claim; thence *300* feet to a monument ~~of stone~~ at the center of the *South* end of said claim; thence *300* feet to a monument ~~of stone~~, being at the *South east* corner of said claim; thence *750* feet to a monument ~~of stone~~ being at the center of the *East* side line of said claim; thence *750* feet to a monument ~~of stone~~ at the *North east* corner of said claim; thence *300* feet to the place of beginning.

All done under the provisions of Chapter Six, of Title XXXII, of the Revised Statutes of the United States, and of an Act of the General Assembly of Arizona, entitled "An Act Concerning Mines," approved March 20th, 1895, *and Amended March 2nd, 1899*

Dated and posted on the ground this *13* day of *June* 1901

Charles A Funk

AN ACT CONCERNING MINES.

BE IT ENACTED BY THE LEGISLATIVE ASSEMBLY OF THE TERRITORY OF ARIZONA:

Section 1. Every notice of location of a mining claim shall contain: First, the name of the claim located; second, the name of the locator; third, the date of location; fourth, the number of feet in length of said claim and the number of feet claimed on each side of the center of the discovery shaft, lengthwise of the claim; fifth, the general course of the lode deposit of premises located; sixth, the locality of the claim with reference to some natural object, or permanent monument, as will identify the claim.

Sec. 2. All mining locations hereafter located, the certificate of location of which shall not contain: First, the name of the lode, or premises; second, the name of the locator, or locators; third, the date of location; fourth, the number of feet in length of said claim and the number of feet claimed on each side of the center of the discovery shaft, lengthwise of the claim; fifth, the general course of the lode, or premises, as near as may be; sixth, the locality of the claim with reference to some natural object, or permanent monument, as will identify the claim, shall be void.

Sec. 3. Before filing such location certificate with the County Recorder of the proper County, the discoverer shall locate his claim by: First, sinking a discovery shaft upon the premises so claimed, to a depth of at least ten feet from the lowest part of the rim of such shaft at the surface, and deeper if necessary, until there is shown by such work a lode deposit of mineral in place; second, by posting at the point of discovery, on the surface, a plain sign or notice substantially conforming to the location certificate; third, by marking such claim or premises on the ground, so that its boundaries can be readily traced.

Sec. 4. Such surface boundaries shall be marked by eight substantial posts, projecting at least three feet above the surface of the ground, or by substantial stone monuments, at least three feet high, to-wit: One at each corner of said claim, and one at the center of each end and side line thereof.

Sec. 5. Any open-cut, cross-cut, adit or tunnel which shall be made as above provided for, as a part of the location of a mining claim, and which shall be equal in amount of work to a shaft ten feet deep and four feet wide by six feet long, and which shall cut a lode or mineral in place at the depth of ten feet from the surface, shall be equivalent, as a discovery work, to a shaft sunk from the surface.

Sec. 6. The discoverer shall have ninety days from the date of discovering the lode and the posting of the notice thereon, to perform said discovery work.

Sec. 7. If at any time the locator of any mining claim heretofore or hereafter located, or his assigns, shall learn that his original certificate was defective, or that the requirements of the law had not been complied with before filing, or shall be desirous of changing his surface boundaries, or of taking in any additional ground which is subject to location, or in case the original certificate was made prior to the passage of this law, and he shall be desirous of securing the benefits of this Act, such locator, or his assigns, may file an amended certificate of location subject to the provisions of this Act, regarding new locations.

Sec. 8. The amount of assessment, or representation, work or improvements to be done or made during each year, after the completion of the location as heretofore provided, and the time for doing the same, shall be as provided by the laws of the United States.

Sec. 9. Within three months after the expiration of the period of time fixed for the performance of annual labor or the making of improvements upon any mining claim or premises, the person on whose behalf such work or improvement was made, or some person for him, knowing the facts, may make and record in the office of the County Recorder of the county wherein such claim is situate, an affidavit in substance as follows:

TERRITORY OF ARIZONA, } ss.

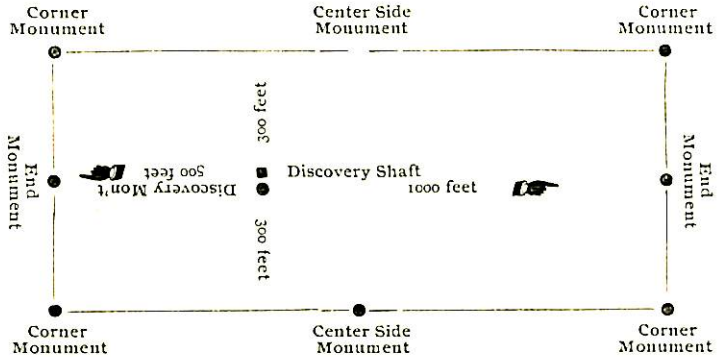
County, } ss.

.....being duly sworn, deposes and says, that he is a citizen of the United States, and more than 21 years of age, and resides at.....County Arizona Territory, and is personally acquainted with the mining claim and premises located and known as.....mining claim, in lode, situate in.....Mining District, County of.....Arizona Territory, the notice of location of which premises is recorded in the office of the County Recorder of said county, in Book.....of Records of Mines, at page.....that between the.....day of.....A. D. 189.....and the.....day of.....A. D. 189.....at least.....dollars worth of work and improvements were done and performed upon said premises or lode not including the location work of said claim. Such work and improvements were made by and at the expense of.....owners of said premises, for the purpose of complying with the law of the United States pertaining to assessments or annual work, and.....were the men employed by said owner and who labored upon said premises, and who did said work and improvements, and said work so done upon said premises is described as follows, to-wit: (Here describe the work done.).....(Signature.)

Subscribed and sworn to before me.....this.....day of.....189.....Notary Public.

Sec. 10. Such affidavit when so recorded shall be prima facie evidence of the performance of such labor or the making of such improvements, and said original affidavit after it has been recorded, or a certified copy of record of same, shall be received as evidence accordingly by all the Courts of this Territory.

Sec. 11. The relocation of forfeited or abandoned lode claims shall only be made by sinking a new discovery shaft and fixing new boundaries in the same manner and to same extent as is required in making a new location; or the locator may sink the original discovery shaft ten feet deeper than it was at date of commencement of such relocation, and shall erect new or make the old monuments the same as originally required. In either case a new location monument shall be erected, and the location certificate shall state if the whole or any part of the new location is located as abandoned property.



This diagram is to give locator a general idea of plan of location under the new law. The Discovery Shaft can be in the center of claim or any distance from either end desired. In the diagram it is placed 500 feet from one end and 1000 feet from the other. Center description of claim at a center end monument, giving its distance and direction from center of Discovery Shaft; thence bound the claim in either direction. In description be careful to state locality of claim with reference to some natural object, or permanent monument, as will identify the claim.

NOTICE OF LOCATION QUARTZ CLAIM.

By *Frank A. Thomas*
"Certified Copy"
Frank A. Thomas

Dated, 189.....

Filed and recorded at request of

J. J. Bryant

at *July 1 - A. D. 1901*
Q. A. M.

Book

Pages

J. C. Brown
County Recorder.

By *W. P. Wiley*
Deputy Recorder.

Notice of Mining Location.

Lode
~~QUARTZ CLAIM.~~



TO ALL WHOM IT MAY CONCERN:

This mining claim, the name of which is the *Least Chance No. 1.* Mining Claim, situated on lands belonging to the United States of America, and in which there are valuable mineral deposits, was entered upon and located for the purpose of exploration and purchase by *Charles A. Funk* a citizen of the United States the undersigned, on the *13th* day of *June* 189*9*.

The length of this claim is *1500* feet, and *2* claim *1500* feet in a *Northerly* direction and *300* feet in a *North* direction from the center of the discovery shaft, at which this notice is posted, lengthwise of the claim, together with *300* feet in width of the surface grounds, on each side of the center of said claim. The general course of the lode deposit and premises is from the *North* to the *South*.

The claim is situated and located in the *Blomosa* Mining District, in *Yuma* County, in the Territory of Arizona, about *2* miles in a *Westerly* direction from *the Good Enough Group of mines and about 2 miles south of the Harqua Hala Road.*

The surface boundaries of the claim are marked upon the ground as follows: Beginning at *the north* ~~End center~~ monument ~~of stone~~ at a point in a *Northerly* direction *1500* feet from the discovery shaft (at which this notice is posted), being in the center of the *north* end line of said claim; thence *300* feet to a monument ~~of stone~~, being the *N.W.* corner of said claim; thence *750* feet to a monument ~~of stone~~ at the center of the *West* side line of said claim; thence *750* feet to a monument ~~of stone~~, being at the *S.W.* corner of said claim; thence *300* feet to a monument ~~of stone~~ at the center of the *South* end of said claim; thence *300* feet to a monument ~~of stone~~, being at the *S.E.* corner of said claim; thence *750* feet to a monument ~~of stone~~ being at the center of the *East* side line of said claim; thence *750* feet to a monument ~~of stone~~ at the *N.E.* corner of said claim; thence *300* feet to the place of beginning.

All done under the provisions of Chapter Six, of Title XXXII, of the Revised Statutes of the United States, and of an Act of the General Assembly of Arizona, entitled "An Act Concerning Mines," approved March 20th, 1895. *and amended March 7nd, 1899.*

Dated and posted on the ground this *13th* day of *June* 1901. 189*9*
Charles A. Funk

TERRITORY OF ARIZONA, }
COUNTY OF YUMA. } SS.
C. J. Brown

I, *W. E. Marvin*, County Recorder in and for said county, do hereby certify that I have compared the within and foregoing instrument, and the same is a full, true and correct copy of *Location Notes of Least Chance*

This mining claim, the name of which is the Last Chance No. 1.
Mining Claim, situated on lands belonging to the United States of America, and in which there are valuable
mineral deposits, was entered upon and located for the purpose of exploration and purchase by
Charles A. Funk a citizen of the United States
the undersigned, on the 13th day of June 1901

The length of this claim is 1500 feet, and 8 claim 1500
feet in a Northerly direction and _____ feet in a _____ direction
from the center of the discovery shaft, at which this notice is posted, lengthwise of the claim, together with
300 feet in width of the surface grounds, on each side of the center of said claim. The
general course of the lode deposit and premises is from the North to the South

The claim is situated and located in the Plomosa Mining District,
in Yuma County, in the Territory of Arizona, about 2 miles
in a Westerly direction from the Good Enough Group of mines and
about 2 miles south of the Harqua Hala Road.

The surface boundaries of the claim are marked upon the ground as follows: Beginning at the north
End center monument ~~of stone~~ at a point in a Northerly direction 1500 feet from the discovery shaft (at which
this notice is posted), being in the center of the north end line of said claim; thence 300
feet to a monument ~~of stone~~, being the N.W. corner of said claim; thence 750 feet to
a monument ~~of stone~~ at the center of the West side line of said claim; thence 750 feet to
a monument ~~of stone~~, being at the P.W. corner of said claim; thence 300 feet to
a monument ~~of stone~~ at the center of the South end of said claim; thence 300 feet
to a monument ~~of stone~~, being at the O.E. corner of said claim; thence 750
feet to a monument ~~of stone~~ being at the center of the East side line of said claim; thence
750 feet to a monument ~~of stone~~ at the N.E. corner of said claim; thence 300
feet to the place of beginning.

All done under the provisions of Chapter Six, of Title XXXII, of the Revised Statutes of the United
States, and of an Act of the General Assembly of Arizona, entitled "An Act Concerning Mines," approved
March 20th, 1895. and Amended March 7th, 1899.

Dated and posted on the ground this 13th day of June 1901
Charles A. Funk

TERRITORY OF ARIZONA, }
COUNTY OF YUMA } SS.

I, W. E. Marvin, County Recorder in and for said county, do hereby certify
that I have compared the within and foregoing instrument, and the same is a full,
true and correct copy of Location Notice of Last Chance
No. 1. Lode Mining Claim
as the same appears of record in Book L of Mines
page 508 et seq.
in records of Yuma County, Arizona.

In witness whereof I have hereunto set my hand and affixed my official
seal this 3d day of November 1902
W. E. Marvin
County Recorder.

By W. E. Marvin
Deputy

AN ACT CONCERNING MINES.

BE IT ENACTED BY THE LEGISLATIVE ASSEMBLY OF THE TERRITORY OF ARIZONA:

Section 1. Every notice of location of a mining claim shall contain: First, the name of the claim located; second, the name of the locator; third, the date of location; fourth, the number of feet in length of said claim and the number of feet claimed on each side of the center of the discovery shaft, lengthwise of the claim; fifth, the general course of the lode deposit of premises located; sixth, the locality of the claim with reference to some natural object, or permanent monument, as will identify the claim.

Sec. 2. All mining locations hereafter located, the certificate of location of which shall not contain: First, the name of the lode, or premises; second, the name of the locator, or locators; third, the date of location; fourth, the number of feet in length of said claim and the number of feet claimed on each side of the center of the discovery shaft, lengthwise of the claim; fifth, the general course of the lode, or premises, as near as may be; sixth, the locality of the claim with reference to some natural object, or permanent monument, as will identify the claim, shall be void.

Sec. 3. Before filing such location certificate with the County Recorder of the proper County, the discoverer shall locate his claim by: First, sinking a discovery shaft upon the premises so claimed, to a depth of at least ten feet from the lowest part of the rim of such shaft at the surface, and deeper if necessary, until there is shown by such work a lode deposit of mineral in place; second, by posting at the point of discovery, on the surface, a plain sign or notice substantially conforming to the location certificate; third, by marking such claim or premises on the ground, so that its boundaries can be readily traced.

Sec. 4. Such surface boundaries shall be marked by eight substantial posts, projecting at least three feet above the surface of the ground, and by substantial stone monuments, at least three feet high, to-wit: One at each corner of said claim, and one at the centre of each end and side line thereof.

Sec. 5. Any open-cut, cross-cut, adit or tunnel which shall be made as above provided for, as a part of the location of a mining claim, and which shall be equal in amount of work to a shaft ten feet deep and four feet wide by six feet long, and which shall cut a lode or mineral in place at the depth of ten feet from the surface, shall be equivalent, as a discovery work, to a shaft sunk from the surface.

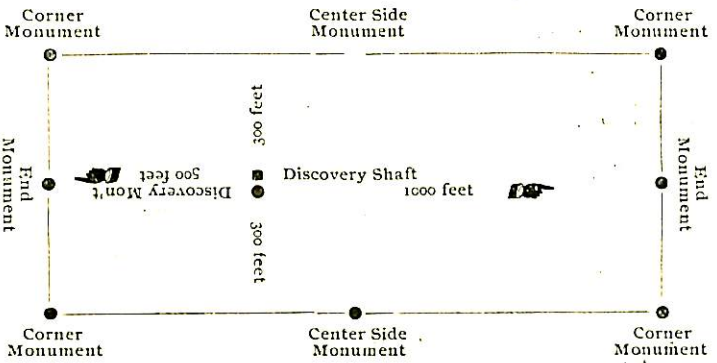
Sec. 6. The discoverer shall have ninety days from the date of discovering the lode and the posting of the notice thereon, to perform said discovery work. Sec. 7. If at any time the locator of any mining claim heretofore or hereafter located, or his assigns, shall learn that his original certificate was defective, or that the requirements of the law had not been complied with before filing, or shall be desirous of changing his surface boundaries, or of taking in any additional ground which is subject to location, or in case the original certificate was made prior to the passage of this law, and he shall be desirous of securing the benefits of this Act, such locator, or his assigns, may file an amended certificate of location subject to the provisions of this Act, regarding new locations.

Sec. 8. The amount of assessment, or representation, work or improvements to be done or made during each year, after the completion of the location as heretofore provided, and the time for doing the same, shall be as provided by the laws of the United States. Sec. 9. Within three months after the expiration of the period of time fixed for the performance of annual labor or the making of improvements upon any mining claim or premises, the person on whose behalf such work or improvement was made, or some person for him, knowing the facts, may make and record in the office of the County Recorder of the county wherein such claim is situate, an affidavit in substance as follows:

TERRITORY OF ARIZONA, } ss.
County, }
being duly sworn, deposes and says, that he is a citizen of the United States, and more than 21 years of age, and resides at ... in ... County Arizona Territory, and is personally acquainted with the mining claim and premises located and known as ... mining claim or lode, situate in ... Mining District, County of ... Arizona Territory, the notice of location of which premises is recorded in the office of the County Recorder of said county, in Book ... of Records of Mines, at page ...; that between the ... day of ... A. D. 189... and the ... day of ... A. D. 189..., at least ... dollars worth of work and improvements were done and performed upon said premises or lode, not including the location work of said claim. Such work and improvements were made by and at the expense of ... owners of said premises, for the purpose of complying with the law of the United States pertaining to assessments or annual work, and ... were the men employed by said owner and who labored upon said premises, and who did said work and improvements, and said work so done upon said premises is described as follows, to-wit: (Here describe the work done.)
Subscribed and sworn to before me ... this ... day of ... 189... Notary Public.

Sec. 10. Such affidavit when so recorded shall be prima facie evidence of the performance of such labor or the making of such improvements, and said original affidavit after it has been recorded, or a certified copy of record of same, shall be received as evidence accordingly by all the Courts of this Territory. Sec. 11. The relocation of forfeited or abandoned lode claims shall only be made by sinking a new discovery shaft and fixing new boundaries in the same manner and to same extent as is required in making a new location; or the relocater may sink the original discovery shaft ten feet deeper than it was at date of commencement of such relocation, and shall erect new or make the old monuments the same as originally required. In either case a new location monument shall be erected, and the location certificate shall state if the whole or any part of the new location is located as abandoned property.

This diagram is to give locator a general idea of plan of location under the new law. The Discovery Shaft can be in the center of claim or any distance from either end desired. In the diagram it is placed 500 feet from one end and 1000 feet from the other. Commence description of claim at a center end monument, giving its distance and direction from center of Discovery Shaft; thence bound the claim in either direction. In description be careful to state locality of claim with reference to some natural object, or permanent monument, as will identify the claim.



NOTICE OF LOCATION CLAIM.

By Richard A. Funder "Heretford Copper"

Dated, 189

Filed and recorded at request of

S. S. Hyatt

July 1st, 1901 A. D. 1901

at 9 a. M.

Book

Pages

W. C. Brown

By W. J. Riley County Recorder. Deputy Recorder.



Amended
Notice of Mining Location.
Lode claim.

To all Whom It May Concern:
This mining claim, the name of which is the East Chance No. 2 Mining claim, situate on lands belonging to the United States of America, and in which there are valuable mineral deposits, was entered upon and located for the purpose of exploration and purchase by the Desert Queen Gold Co, a corporation organized under the laws of the United States the undersigned, on the 10th day of December 1902
The length of this claim is Eleven Hundred and fifty feet, and We claim 250 feet in a South Easterly direction, and 900 feet in a North Westerly direction from the center of the discovery shaft, at which this notice is posted, lengthwise of the claim, together with 300 feet in width of the surface grounds, on each

side of the discovery monument of said claim. The general course of the lode deposit and premises is ~~from the~~ $\text{D. } 31^{\circ} 10' \text{ E}$ and ~~to the~~ $\text{N } 31^{\circ} 10' \text{ N}$.

The claim is situated and located in the Plomosa Mining District, in Yuma County, in the Territory of Arizona, about 7 miles ~~in a~~ $\text{D } 65^{\circ} \text{ E}$ direction from Lyson's Well and lying N.W. of and adjoining the East Chance lode claim.

The surface boundaries of the claim are marked upon the ground as follows; Beginning at a monument of stone at a point ~~in a~~ $\text{D } 31^{\circ} 10' \text{ E}$ direction 250 feet from the discovery shaft (at which this notice is posted), being in the center of the D. E. end line of said claim; thence $\text{D. } 70^{\circ} \text{ N}$. 300 feet to a monument of stone, being the D. N. corner of said claim; thence $\text{N } 31^{\circ} 10' \text{ N}$. 1150 feet to a monument of stone, being at the N. N. corner of said claim.

Thence N. 70° E. 300 feet to a
 monument of stone at the
 center of the N.W. end of said
 claim; thence same course 300
 feet to a monument of stone,
 being at the N.E. corner of said
 claim; thence @ 31° 10' E. 1150
 feet to a monument of stone
 at the S.E. corner of said claim;
 thence @ 70° N. 300 feet to
 the place of beginning.

All done under the pro-
 visions of Chapter Six, of Title
 xxxii, of the Revised Statutes
 of the United States, and of
 an Act of the General Assembly
 of Arizona, entitled "An Act to
 Revisy and Codify the Laws
 of the Territory of Arizona".
 Approved March 16, 1901.

This is an amended Lo-
 cation Notice of the Last
 Chance No. 2. Mining claim
 located by Charles A. Frank
 on the 13th day of June 1901,
 and recorded in Book L. of re-
 cords of mines, at page 510,
 in the office of the County

TERRITORY OF ARIZONA, }
COUNTY OF YUMA. } SS.

I, ~~W. E. Marvin~~, County Recorder in and for said county, do hereby certify

that I have compared the within and foregoing instrument, and the same is a full,
true and correct copy of Last Chance No. 2
Gold Mining Claim Granted Location
as the same appears of record in Book N. of Mines
page _____ et seq. _____

in records of Yuma County, Arizona.

In witness whereof I have hereunto set my hand and affixed my official

seal this 5th day of Dec. 1902.

C. P. Cronin

County Recorder.

By O. O. Bondesson
D. J. July

County Recorder

Notice of Mining Location.

Lode
~~QUARTZ CLAIM.~~

TO ALL WHOM IT MAY CONCERN:

This mining claim, the name of which is the East Chance No. 3
 Mining Claim, situated on lands belonging to the United States of America, and in which there are valuable
 mineral deposits, was entered upon and located for the purpose of exploration and purchase by
John J. Kyatt
 the undersigned, on the 13th day of Dec. ~~189~~ 1901

The length of this claim is fifteen hundred feet, and 8 claim 750
 feet in a N.W. direction and 750 feet in a S.E. direction
 from the center of the discovery shaft, at which this notice is posted, lengthwise of the claim, together with
300 feet in width of the surface grounds, on each side of the center of said claim. The
 general course of the lode deposit and premises is from the North to the South

The claim is situated and located in the Plomosa Mining District,
 in Yuma County, in the Territory of Arizona, about 8 miles
 in a S.E. direction from Lynons Wells and 2 1/2 to 3 miles
westerly from Dipping Springs

The surface boundaries of the claim are marked upon the ground as follows: Beginning at a
~~monument of stone at a~~ point in a North direction 750 feet from the discovery shaft (at which
 this notice is posted), being in the center of the North end line of said claim; thence 300
 feet to a monument ~~of stone~~, being the N.W. corner of said claim; thence 1500 feet to
 a monument ~~of stone at the center of the~~ ~~side line of said claim~~; thence ~~feet to~~
~~a monument of stone~~, being ~~at the~~ S.W. corner of said claim; thence 300 feet to
 a monument ~~of stone~~ at the center of the South end of said claim; thence 300 feet
 to a monument ~~of stone~~, being at the S.E. corner of said claim; thence 1500
 feet to a monument ~~of stone being at the center of the~~ ~~side line of said claim~~; thence
~~feet to a monument of stone~~ at the N.E. corner of said claim; thence 300
 feet to the place of beginning.

All done under the provisions of Chapter Six, of Title XXXII, of the Revised Statutes of the United
 States, and of an Act of the General Assembly of Arizona, entitled "An Act Concerning Mines," approved
~~March 22th, 1895.~~ to codify and revise the Laws of the Territory of
Arizona, Approved March 16th, 1901.

Da

BE IT ENACTED BY THE LEGISLATIVE ASSEMBLY OF THE TERRITORY OF ARIZONA:

Section 1. Every notice of location of a mining claim shall contain: First, the name of the claim located; second, the name of the locator; third, the date of location; fourth, the number of feet in length of said claim and the number of feet claimed on each side of the center of the discovery shaft, lengthwise of the claim; fifth, the general course of the lode deposit of premises located; sixth, the locality of the claim with reference to some natural object, or permanent monument, as will identify the claim.

Sec. 2. All mining locations hereafter located, the certificate of location of which shall not contain: First, the name of the lode, or premises; second, the name of the locator, or locators; third, the date of location; fourth, the number of feet in length of said claim and the number of feet claimed on each side of the center of the discovery shaft, lengthwise of the claim; fifth, the general course of the lode, or premises, as near as may be; sixth, the locality of the claim with reference to some natural object, or permanent monument, as will identify the claim, shall be void.

Sec. 3. Before filing such location certificate with the County Recorder of the proper County, the discoverer shall locate his claim by: First, sinking a discovery shaft upon the premises so claimed, to a depth of at least ten feet from the lowest part of the rim of such shaft at the surface, and deeper if necessary, until there is shown by such work a lode deposit of mineral in place; second, by posting at the point of discovery, on the surface, a plain sign or notice substantially conforming to the location certificate; third, by marking such claim or premises on the ground, so that its boundaries can be readily traced.

Sec. 4. Such surface boundaries shall be marked by eight substantial posts, projecting at least three feet above the surface of the ground, or by substantial stone monuments, at least three feet high, to-wit: One at each corner of said claim, and one at the centre of each end and side line thereof.

Sec. 5. Any open-cut, cross-cut, adit or tunnel which shall be made as above provided for, as a part of the location of a mining claim, and which shall be equal in amount of work to a shaft ten feet deep and four feet wide by six feet long, and which shall cut a lode or mineral in place at the depth of ten feet from the surface, shall be equivalent, as a discovery work, to a shaft sunk from the surface.

Sec. 6. The discoverer shall have ninety days from the date of discovering the lode and the posting of the notice thereon, to perform said discovery work. Sec. 7. If at any time the locator of any mining claim heretofore or hereafter located, or his assigns, shall learn that his original certificate was defective, or that the requirements of the law had not been complied with before filing, or shall be desirous of changing his surface boundaries, or of taking in any additional ground which is subject to location, or in case the original certificate was made prior to the passage of this law, and he shall be desirous of securing the benefits of this Act, such locator, or his assigns, may file an amended certificate of location subject to the provisions of this Act, regarding new locations.

Sec. 8. The amount of assessment, or representation, work or improvements to be done or made during each year, after the completion of the location as heretofore provided, and the time for doing the same, shall be as provided by the laws of the United States.

Sec. 9. Within three months after the expiration of the period of time fixed for the performance of annual labor or the making of improvements upon any mining claim or premises, the person on whose behalf such work or improvement was made, or some person for him, knowing the facts, may make and record in the office of the County Recorder of the county wherein such claim is situate, an affidavit in substance as follows:

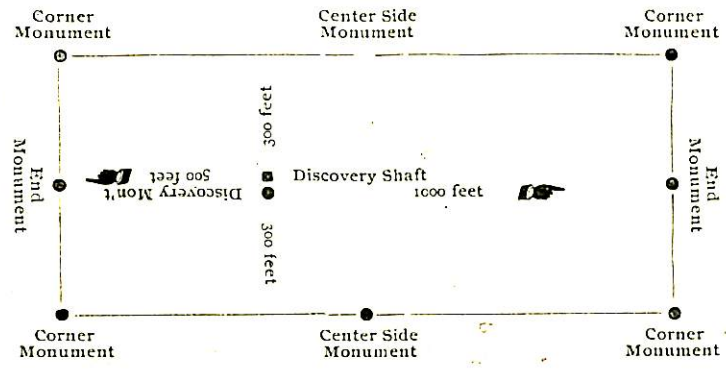
TERRITORY OF ARIZONA, ss. County, ss. being duly sworn, deposes and says, that he is a citizen of the United States, and more than 21 years of age, and resides at mining claim or lode, situate in County Arizona Territory, and is personally acquainted with the mining claim and premises located and known as recorded in the office of the County Recorder of said county, in Book of Records of Mines, at page that between the day of A. D. 189 and the day of A. D. 189, at least dollars worth of work and improvements were done and performed upon said premises or lode not including the location work of said claim. Such work and improvements were made by and at the expense of owners of said premises, for the purpose of complying with the law of the United States pertaining to assessments or annual work, and were the men employed by said owner and who labored upon said premises, and who did said work and improvements, and said work so done upon said premises is described as follows, to-wit: (Here describe the work done.) this day of 189 (Signature.)

Subscribed and sworn to before me this day of 189 Notary Public. [SEAL]

Sec. 10. Such affidavit when so recorded shall be prima facie evidence of the performance of such labor or the making of such improvements, and said original affidavit after it has been recorded, or a certified copy of record of same, shall be received as evidence accordingly by all the Courts of this Territory.

Sec. 11. The relocation of forfeited or abandoned lode claims shall only be made by sinking a new discovery shaft and fixing new boundaries in the same manner and to same extent as is required in making a new location; or the locator may sink the original discovery shaft ten feet deeper than it was at date of commencement of such relocation, and shall erect new or make the old monuments the same as originally required. In either case a new location monument shall be erected, and the location certificate shall state if the whole or any part of the new location is located as abandoned property.

This diagram is to give locator a general idea of plan of location under the new law. The Discovery Shaft can be in the center of claim or any distance from either end desired. In the diagram it is placed 500 feet from one end and 1000 feet from the other. Commence description of claim at a center end monument, giving its distance and direction from center of Discovery Shaft; thence bound the claim in either direction. In description be careful to state locality of claim with reference to some natural object, or permanent monument, as will identify the claim.



NOTICE OF LOCATION QUARTZ CLAIM.

Road between No. 3. Lode between beautiful lode

Dated 189

Filed and recorded at request of

John S. Wyatt

Dec 6th 1899 A. D. 1899

at 9a. M.

Book

Pages

W. P. Lawrence County Recorder

By Deputy Re orde



The length of this claim is 750 feet in a N.W. direction and 750 feet in a P.E. direction from the center of the discovery shaft, at which this notice is posted, lengthwise of the claim, together with 300 feet in width of the surface grounds, on each side of the center of said claim. The general course of the lode deposit and premises is from the North to the South.

The claim is situated and located in the Plomosa Mining District, in Yuma County, in the Territory of Arizona, about 8 miles in a P.E. direction from Lynons Wells and 2 1/2 to 3 miles westerly from Dripping Springs.

The surface boundaries of the claim are marked upon the ground as follows: Beginning at a ~~monument of stone at a~~ point in a North direction 750 feet from the discovery shaft (at which this notice is posted), being in the center of the North end line of said claim; thence 300 feet to a monument of ~~stone~~, being the N.W. corner of said claim; thence 1500 feet to a monument of ~~stone at the center of the~~ side line of said claim; thence 300 feet to a monument of ~~stone~~, being the P.W. corner of said claim; thence 300 feet to a monument of ~~stone~~ at the center of the South end of said claim; thence 300 feet to a monument of ~~stone~~, being at the P.E. corner of said claim; thence 1500 feet to a monument of ~~stone being at the center of the~~ side line of said claim; thence 300 feet to a monument of ~~stone~~ at the N.E. corner of said claim; thence 300 feet to the place of beginning.

All done under the provisions of Chapter Six, of Title XXXII, of the Revised Statutes of the United States, and of an Act of the General Assembly of Arizona, entitled "An Act Concerning Mines," approved ~~March 22nd, 1895.~~ To codify and revise the laws of the Territory of Arizona; approved March 16th, 1901.

Dated and posted on the ground this 13 day of Dec, 1901.

John J. Hyatt

TERRITORY OF ARIZONA, }
COUNTY OF YUMA, } SS.

B. O. Brown
W. E. Marvin, County Recorder in and for said county, do hereby certify compared the within and foregoing instrument, and the same is a full correct copy of Location Notice of Lode under No. 3 Lode Mining Claim appears of record in Book M of Mines 7 et seq.

Records of Yuma County, Arizona.

In witness whereof I have hereunto set my hand and affixed my official seal this 3d day of November

B. O. Brown
County Recorder.

By B. O. Bonderson
Deputy.

Notice of Mining Location

LODE CLAIM

To All Whom it May Concern:

This Mining Claim, the name of which is the Last Chance No. 4 Mining Claim, situate on lands belonging to the United States of America, and in which there are valuable mineral deposits, was entered upon and located for the purposes of exploration and purchase by The Desert Lumber Gold Co. a corporation organized under the laws of the United States (Locator must insert either "a citizen of the United States," or, "who has declared his intention to become a citizen of the United States")

the undersigned, on the 15th day of November 1902

The length of this claim is Fifteen Hundred feet, and We claim 1400 feet, in a North Westerly direction and 100 feet in a South Easterly direction from

the center of the discovery shaft, at which this notice is posted, lengthwise of the claim, together with 300 feet in width of the surface grounds, on each side of the center of said claim. The general course of the lode deposit and premises is from the N 30° W and to the S 30° E

The claim is situated and located in the Plomosa Mining District, in Yuma County, in the Territory of Arizona, about 7 1/2 miles in a S 65° E direction from Tyson's Well and lying S.E. and adjoining the Last Chance No. 3

The surface boundaries of the claim are marked upon the ground as follows: Beginning at A monument of stone

at a point in a N 30° W direction 1400 feet from the discovery shaft (at which this notice is posted), being in the center of the N.W. end line of said claim; thence S 70° W 300 feet to a Monument

thence
at the
0 feet
claim;
at the
00
claim;
tutes of
Act to

TERRITORY OF ARIZONA, }
COUNTY OF YUMA. } ss.

I, W. E. Marvin, County Recorder in and for said county, do hereby certify that I have compared the within and foregoing instrument, and the same is a full, true and correct copy of Last Chance No. 4 Mining Location as the same appears of record in Book N. of Mines page et seq. in records of Yuma County, Arizona.

In witness whereof I have hereunto set my hand and affixed my official seal this 5th day of Dec. 1902

C. F. Cronin
County Recorder.
By C. P. Bonidesson
Deputy.

TERRITORY OF ARIZONA, }
County of..... } ss.

I....., County Recorder in and for the County and Territory aforesaid, do hereby certify that the within instrument was filed for record at.....o'clock,..... M., on this..... day of..... 190..., and duly recorded in Book No..... of..... Records of..... County, Arizona, at pages.....

WITNESS my hand and official seal the day and year first above written.

.....
County Recorder.

Notice of Location

LODE CLAIM

East Chance No. 1

The Des Moines Lumber Gold Co.

Dated *Nov. 15th* 190*2*

Filed and recorded at request of

F. B. Jacobs

at *Johns* 5 - 190*3*

at *9 A.M.*

Book

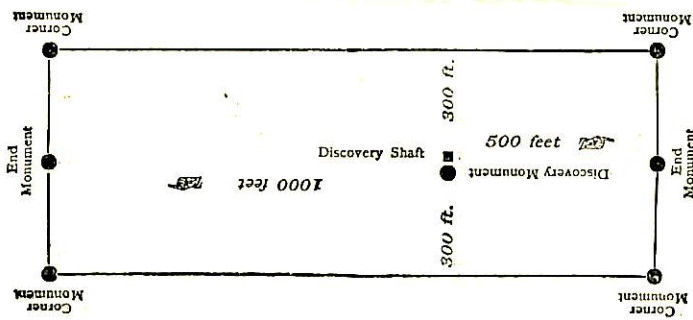
Pages

W. O. Brown
County Recorder.

By

Deputy Recorder.

THE H. H. MCNEIL CO., PRINTERS, PHOENIX, AR .



This diagram is to give locator a general idea of plan of location under the new law. The Discovery Shaft can be in the center of claim or any distance from either end desired. In the diagram it is placed 500 feet from one end and 1000 feet from the other. Commence description of claim at a center end monument, giving its distance and direction from center of Discovery Shaft; thence bound the claim in either direction. In description be careful to state locality of claim with reference to some natural object, or permanent monument, as will identify the claim

1424

Amended

39

Notice of Mining Location.
Good Luck Claim.

To All Whom It May Concern:

This mining claim, the name of which is the Good Luck Mining Claim, situate on lands belonging to the United States of America, and in which there are valuable mineral deposits, was entered upon and located for the purpose of exploration and purchase by The Desert Queen Gold Co. a corporation organized under the laws of the United States the undersigned, on the 10th day of December 1902.

The length of this claim is Fifteen Hundred feet, and the claim 400 feet in a northerly direction, and 1100 feet in a southerly direction from the center of the discovery shaft, at which this notice is posted, lengthwise of the claim, together with 300 feet in width of the surface grounds,

4
on each side of the discovery
monument of said claim. The
general course of the lode de-
posit and promises is ~~from the~~
N. 20° W. and to the S. 70° E.

The claim is situated and
located in the Plomosa Mining
District, in Yuma County, in the
Territory of Arizona, about 7 1/2
miles ~~in a~~ S 64° E direction
from Lyson's Well and lying
west of, and adjoining the Last
Chance Lode claim.

The surface boundaries
of the claim are marked upon
the ground as follows: Beginning
at a monument of stone at a
point ~~in a~~ N 20° W. direction
400 feet from the discovery
shaft (at which this notice is
posted), being in the center of
the end line of said claim;
thence N. 70° E. 300 feet to a
monument of stone, being the N.E.
corner of said claim; thence
S. 70° E. 1500 feet to a monument
of stone, being at the S.E. corner
of said claim; thence S 70° W. 300

feet to a monument of stone, at the center of the South end of said claim; thence same direction 300 feet to a monument of stone, being at the S.W. corner of said claim; thence N. 20° W. 1500 feet to a monument of stone at the N.W. corner of said claim; thence N. 70° E 300 feet to the place of beginning.

All done under the provisions of Chapter Six, of Title xxxii, of the Revised Statutes of the United States, and of an Act of the General Assembly of Arizona, entitled "An Act to Revise and Codify the Laws of the Territory of Arizona" approved March 16, 1901.

This is an Amended Location notice of the Good Luck Mining Claim, located by John J. Ryatt on the 28th day of April 1902, and recorded in Book "M" of Records of Mines, at page 642, in the office of the County Recorder of the aforesaid County of Yuma to which reference is hereby made, and this Amended Location

Notice is made and posted
to correct errors in the descrip-
tion in the said original loca-
tion Notice.

Dated and posted on the
ground this 10th day of Decem-
ber 1902

The Desert Queen Gold Co.

By John J. Nyath

Recorded at request of

F. B. Jacobs (For J. J. Nyath)

Jan 5-1903 A.M. at 9 A.M.

C. O. Brown
County Recorder

as
page
in re

Certified copy
of amended
Mining location
Good Luck
Mining Claim

TERRITORY OF ARIZONA, }
COUNTY OF YUMA. } SS.

I, ~~W. E. Marvin~~, County Recorder in and for said county, do hereby certify

that I have compared the within and foregoing instrument, and the same is a full,
true and correct copy of Good Luck Lodge

Mining Claim Amended Location
as the same appears of record in Book N. of Yuma
page _____ et seq. _____

in records of Yuma County, Arizona.

In witness whereof I have hereunto set my hand and affixed my official
seal this 5th day of Dec 1903

C. O. Brown
County Recorder.

By O. O. Bondesson Deputy.

TERRITORY OF ARIZONA, }
COUNTY OF YUMA. } SS.

I, ~~W. H. Marvin~~ ^{C. P. Cronin}, County Recorder in and for said county, do hereby certify

that I have compared the within and foregoing instrument, and the same is a full, true and correct copy of North Good Luck

Mining Location
as the same appears of record in Book N. of Mines

page _____ et seq. _____

in records of Yuma County, Arizona.

In witness whereof I have hereunto set my hand and affixed my official seal this 5th day of Dec 1902

C. P. Cronin
County Recorder.

By O. O. Bondesson
Deputy.

Notice of Mining Location.

45

LODE CLAIM.

To All Whom It May Concern:

This mining claim, the name of which is the North Good Luck Mining Claim, situate on lands belonging to the United States of America, and in which there are valuable mineral deposits, was entered upon and located for the purpose of exploration and purchase by The Desert Queen Gold Co. a Corporation Organized under the laws of the United States (Locator must insert either "a citizen of the United States," or, "who has declared his intention to become a citizen of the United States.")

the undersigned, on the 16th day of November 1902

The length of this claim is Fifteen Hundred feet, and we claim 850 feet in a South Eastern direction, and 650 feet in a North Westerly direction from the center of the discovery shaft, at which this notice is posted, lengthwise of the claim, together with 300 feet in width of the surface grounds, on each side of the center of said claim. The general course of the lode deposit and premises is ~~from the~~ @ 31° 10' E. and to the N 31° 10' W

The claim is situated and located in the Plomosa Mining District, in Yuma County, in the Territory of Arizona, about 7 miles in a @ 64° E direction from Syons Well and lying north of and adjoining the Good Luck lode claim.

The surface boundaries of the claim are marked upon the ground as follows: Beginning at a monument of stone

at a point in a @ 31° 10' E direction 850 feet from the discovery shaft (at which this notice is posted), being in the center of the @ E end line of said claim; thence N 70° E 300 feet to a Monument of stone, being the @ E corner of said claim; thence N 31° 10' W. 1500 feet to a Monument of stone, being at the N. E. corner of said claim; thence @ 70° W. 300 feet to a Monument of stone at the center of the N. W. end of said claim; thence same direction 300 feet to a Monument of stone, being at the N. W. corner of said claim; thence @ 31° 10' E. 1500 feet to a Monument of stone at the @ W. corner of said claim; thence N. 70° E. 300 feet to the place of beginning.

All done under the provisions of Chapter Six, of Title XXXII, of the Revised Statutes of the United States, and of an Act of the General Assembly of Arizona, entitled "An Act to Revise and Codify the Laws of the Territory of Arizona," approved March 16th, 1901.

Dated and posted on the ground this 16th day of November 1902

The Desert Queen Gold Co.
By John J. Wyatt
Manager

TERRITORY OF ARIZONA, } ss
County of.....

I,....., County Recorder in and for the County and Territory aforesaid, do hereby certify that the within instrument was filed for record at.....o'clock,..... M., on this.....day of.....190..., and duly recorded in Book No..... of.....Records of.....County, Arizona, at pages.....

WITNESS my hand and official seal the day and year first above written.

.....
County Recorder.

Notice of Location.

LODE CLAIM.

North Good Luck

The Deseret & Western Gold Co.

Dated *Nov. 16th* 190*2*

Filed and recorded at request of

J. B. Jacobs

Jan. 5- A. D. 190*3*
at *9 a. m.*

Book

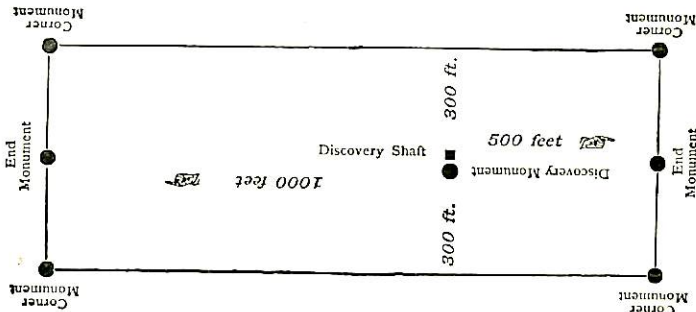
Pages

L. O. Brown
County Recorder.

By

Deputy Recorder.

The H. H. McNeil Co., Printers, Phoenix, Arizona.



This diagram is to give locator a general idea of plan of location under the new law. The Discovery Shaft can be in the center of claim or any distance from either end desired. In the diagram it is placed 500 feet from one end and 1000 feet from the other. Commence description of claim at a center end monument, giving its distance and direction from center of Discovery Shaft; thence bound the claim in either direction. In description be careful to state locality of claim with reference to some natural object, or permanent monument, as will identify the claim.

TERRITORY OF ARIZONA, } SS.

COUNTY OF YUMA. } *B. P. Brown*

I, ~~W. E. Marvin~~, County Recorder in and for said county, do hereby certify that I have compared the within and foregoing instrument, and the same is a full, true and correct copy of *South Good Luck Mining Location* as the same appears of record in Book *N. of Mines* page _____ et seq. _____ in records of Yuma County, Arizona.

In witness whereof I have hereunto set my hand and affixed my official seal this *5th* day of *Dec. 1902*

B. P. Brown
County Recorder.

By *B. O. Bondasson*
Deputy

Notice of Mining Location.

LODE CLAIM.

To All Whom It May Concern:

This mining claim, the name of which is the South Good Luck Mining Claim, situate on lands belonging to the United States of America, and in which there are valuable mineral deposits, was entered upon and located for the purpose of exploration and purchase by The Desert Queen Gold Co. a corporation organized under the laws of the United States.

(Locator must insert either "a citizen of the United States," or, "who has declared his intention to become a citizen of the United States.") the undersigned, on the 16th day of November 1902

The length of this claim is fifteen hundred feet, and the claim 300 feet in a South Easterly direction, and 1200 feet in a North Westerly direction from the center of the discovery shaft, at which this notice is posted, lengthwise of the claim, together with 300 feet in width of the surface grounds, on each side of the center of said claim.

The general course of the lode deposit and premises is from the S 30° E and to the N 30° W.

The claim is situated and located in the Plomosa Mining District, in Yuma County, in the Territory of Arizona, about 7 1/2 miles S 64° E direction from Lypsons Wells and adjoining the Good Luck Lode claim on N. W. End.

The surface boundaries of the claim are marked upon the ground as follows: Beginning at a monument of stone

at a point in a S 30° E direction 300 feet from the discovery shaft (at which this notice is posted), being in the center of the S. E. end line of said claim; thence N 70° E 300 feet to a monument of stone, being the S. E. corner of said claim; thence N 30° W 1500 feet to a monument of stone, being at the N. E. corner of said claim; thence S 70° W 300 feet to a monument of stone at the center of the N. W. end of said claim; thence same direction 300 ft feet to a monument of stone, being at the N. W. corner of said claim; thence S 30° E 1500 feet to a monument of stone at the S. W. corner of said claim; thence N 70° E 300 feet to the place of beginning.

All done under the provisions of Chapter Six, of Title XXXII, of the Revised Statutes of the United States, and of an Act of the General Assembly of Arizona, entitled "An Act to Revise and Codify the Laws of the Territory of Arizona," approved March 16th, 1901.

Dated and posted on the ground this 16th day of November 1902

The Desert Queen Gold Co
By John J. Wyatt
Manager

TERRITORY OF ARIZONA, } ss
County of.....

I,....., County Recorder in and for the County and Territory aforesaid, do hereby certify that the within instrument was filed for record at.....o'clock,..... M., on this.....day of.....190..., and duly recorded in Book No..... of.....Records of.....County, Arizona, at pages.....

WITNESS my hand and official seal the day and year first above written.

.....
County Recorder.

Notice of Location.

LODE CLAIM.

South Good Luck

The Denver & Rio Grande Gold Co

Dated *Nov 16th* 190*2*

Filed and recorded at request of

F B Jacobs

Jan. 5 A. D. 190*3*
at *Jan 9th* M.

Book

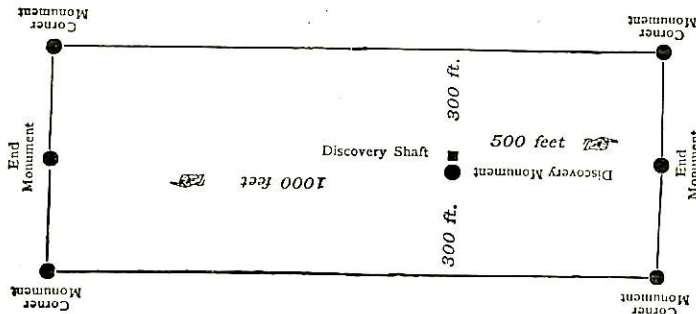
Pages

L. P. Brown
County Recorder.

By

Deputy Recorder.

The H. H. McNeil Co., Printers, Phoenix, Arizona.



This diagram is to give locator a general idea of plan of location under the new law. The Discovery Shaft can be in the center of claim or any distance from either end desired. In the diagram it is placed 500 feet from one end and 1000 feet from the other. Commence description of claim at a center end monument, giving its distance and direction from center of Discovery Shaft; thence bound the claim in either direction. In description be careful to state locality of claim with reference to some natural object, or permanent monument, as will identify the claim.

(4-687.)

Surveyor General's Certificate of Approval of Field Notes and Survey of Mining Claim.

Department of the Interior,

Office of U. S. Surveyor General,

Phoenix, Arizona

May 28 - 1903, 18

I, U. S. Surveyor General for *the District of Arizona*, do hereby certify that the foregoing and hereto attached Field Notes and Return of the Survey of the Mining Claim of *The Resort Queen Gold Co.*

....., known as the *Last Chance*
Last Chance 10th, 2, 3, 4, Good Luck, North Good Luck & South Good Luck.

situate in *Plomosa* mining district,

Yuma County, *Arizona*,

in Section, Township No., Range No.

....., designated as Survey No. *1928*

executed by *Francis B. Jacobs*, U. S. Deputy Mineral

Surveyor, *Jan 7th to 15th 1903*, ~~18~~, under my instructions dated

Jan 7th 1903, ~~18~~, have been critically examined and the

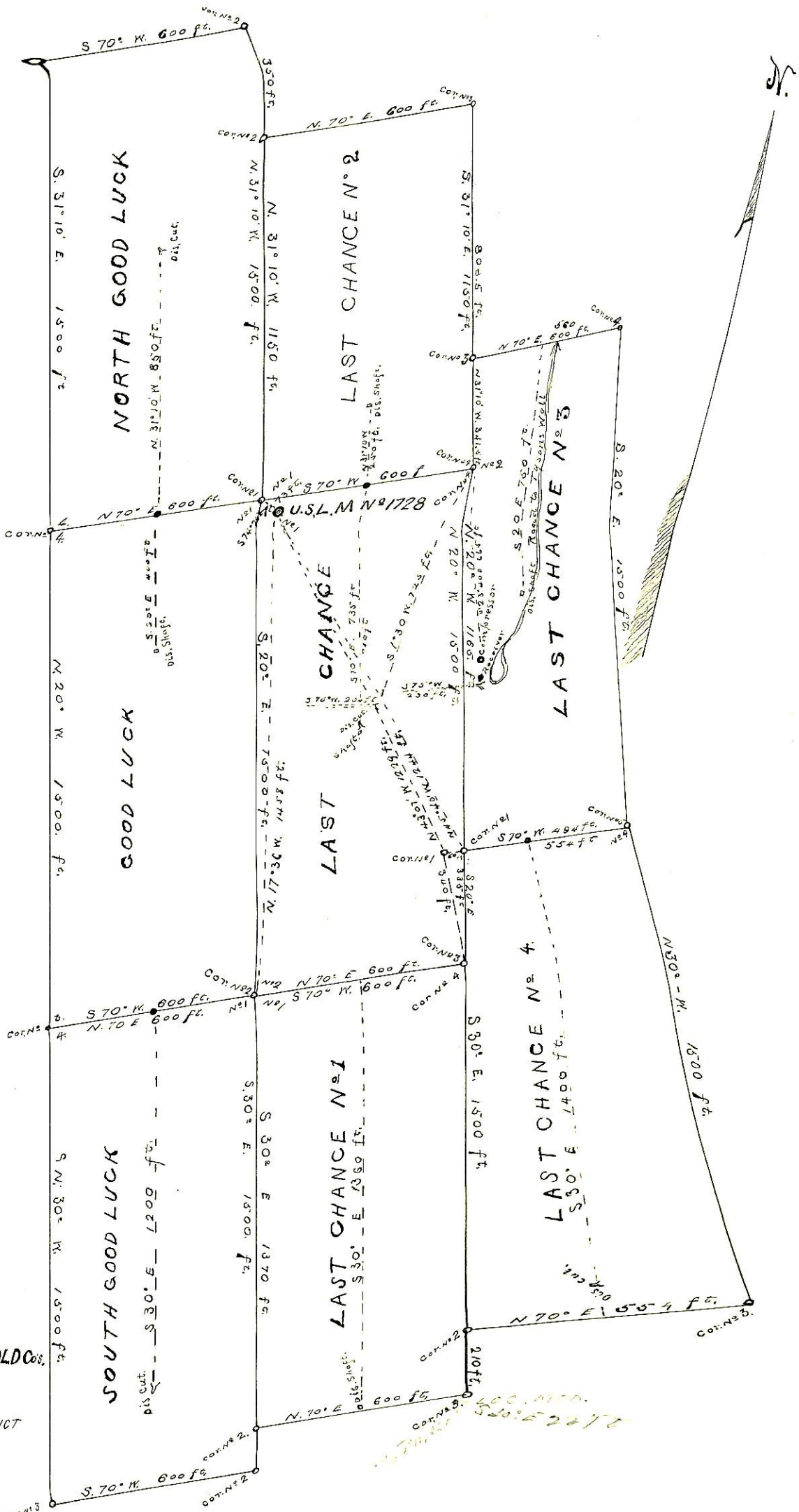
necessary corrections and explanations made, and the said Field Notes and Return, and

the Survey they describe, are hereby approved. A true copy of the copy of the location

certificate filed by the applicant for survey is included in the field notes.

Hugh H. Price

U. S. Surveyor General for *Arizona*



THE DESERT QUEEN GOLD CO'S.
 GROUP OF CLAIMS
 PLOMOYA MINING DISTRICT
 YUMA COUNTY
 ARIZONA.

Surveyed by
Francis Jacoby
 U.S.D.M.S.

UNITED STATES DEPARTMENT OF THE INTERIOR 9605 (956)
BUREAU OF LAND MANAGEMENT M.S. 1728
ARIZONA STATE OFFICE

NOTICE OF CANCELLATION OF MINERAL SURVEY

The Last Chance, Last Chance No. 1, Last Chance No. 2, Last Chance No. 3, Last Chance No. 4, Good Luck, North Good Luck and South Good Luck lodes, Mineral Survey No. 1728, located in sections 3, 4, 9 and 10, Township 3 North, Range 18 West, Gila and Salt River Meridian, Arizona, are hereby canceled.

These claims have not been filed with the Arizona State Office, Bureau of Land Management, in accordance with Section 314, 90 STAT. 2769, (43 U.S.C. 1744).

This cancellation was necessitated to clear the record.

The Mineral Survey Plat should be noted as follows:

"Last Chance, Last Chance No. 1, Last Chance No. 2, Last Chance No. 3, Last Chance No. 4, Good Luck, North Good Luck and South Good Luck lodes, M.S. 1728, were canceled March 11, 2002, by memo 9605 (956) M.S. 1728, which is now a part of the original field notes."

March 11, 2002
Date



Chief Cadastral Surveyor of Arizona