

**M  
S  
-**

**0**

**1**

**8**

**8**

**8**

AUG 30 1904

Copied by  
a. Patch William Williams

Prusack

(4-683.)

Mineral Survey No. 1888

Lot No. ....

~~Tusson~~ Prusack Land District.

FIELD NOTES

OF THE SURVEY OF THE MINING CLAIM OF

Yellowbird Gold Mining Co.

KNOWN AS THE

Mendota, Venture, Coronet and Security Placer  
Edsworth Mining District,

Yuma County, Arizona

Section Unsurveyed, Township 5 N, Range 14 W. 49 N. B.M.

Surveyed under instructions dated March 8, 1904

by William H. Elliott,  
U. S. Deputy Mineral Surveyor.

Claim located ~~19<sup>th</sup> Dec. 1903 to Feb. 15<sup>th</sup> 1904~~ <sup>See Notices</sup>, 1904

Survey commenced June 24<sup>th</sup>, 1904

Survey completed June 28, 1904

o 6-100

Post Office address of Atty - in - fact.

Too Areas OK  
Lusack

Paul Jungling  
Harrisburg, Yuma Co., Ariz.

# PRELIMINARY OATHS OF ASSISTANTS IN SURVEY OF MINING CLAIM.

WE, William A. Patch and William Wilkinson,  
do solemnly swear that we will well and faithfully execute the duties of chain carriers;  
that we will level the chain upon even and uneven ground and plumb the tally-pins,  
either by sticking or dropping the same; that we will report the true distance to all  
notable objects, and the true length of all lines that we assist in measuring, to the best  
of our skill and ability, and in accordance with instructions given us, in the survey of  
the Mining Claim of Yellowbird Gold Mining Co.

known as the Mendota, Ventura, Coronet & Security Placer  
situate in Ellsworth mining district,  
Yuma County, Arizona,  
in Unsurveyed Section, Township No. 5 N., Range No. 14 W S. B. R. B. & M

William A. Patch, Chairman.  
William Wilkinson, Chairman.

Subscribed and sworn to by the above-named persons before  
me this 10<sup>th</sup> day of June, 1904

I, \_\_\_\_\_, do solemnly swear that I will well and  
truly perform the duties of axeman, in the establishment of corners and other duties,  
according to instructions given me and to the best of my skill and ability, in the survey  
of the Mining Claim of \_\_\_\_\_

known as the \_\_\_\_\_,  
more fully described in the preceding affidavit.

\_\_\_\_\_, Axeman.  
Subscribed and sworn to by the said Wm A Patch  
and Wm Wilkinson before me this 29<sup>th</sup> day of  
June, 1904

John B. Machin  
my Commission expires May 17<sup>th</sup> 1908 Notary Public

I, \_\_\_\_\_, do solemnly swear that I will  
well and truly perform the duties of flagman, in the establishment of corners and other  
duties, according to instructions given me and to the best of my skill and ability, in the  
survey of the Mining Claim of \_\_\_\_\_

known as the \_\_\_\_\_,  
more fully described in the preceding affidavit.

\_\_\_\_\_, Flagman.  
Subscribed and sworn to by the said \_\_\_\_\_  
before me this \_\_\_\_\_ day of  
\_\_\_\_\_, 18 \_\_\_\_\_

YELLOW BIRD GROUP.

Mendota Lode.

Beginning at Cor. No.1, A Quartzsite stone, 26x8x6 inches set 14 inches in ground, with mound of stone chiseled *N. 64° 30' E*  
1888 M.1, from which U.S.L.M. No. 1888 bears ~~N. 81° 32' E.~~  
*1238.*  
1700.5 ft. distant. No other bearings obtainable.

Thence ~~N~~ 80° 30' W.

300 To south end center of lode, Amount of stone, 3ft. base and 3ft. high,

600 To Cor. No.2, A Quartzsite stone, 30x8x6 inches, set 18 inches in ground, with mound of stone, chiseled 1888 M.2  
No bearings obtainable.

Thence N. 9° 40' E.

*180.*  
1485.4 To Cor. No.3, A Syenite Stone, 28x12x8 inches, set 16 in. in ground, with mound of stone chiseled 1888 M.3.  
No bearings obtainable.

Thence S. 80° 30' E.

300 To north end center of lode, Amount of stone, 3ft. base and 3ft. high,

600 To Cor. No.4, A Syenite Stone, 30x8x4 inches, set 18 inches in ground, with mound of stone chiseled 1888 M.4.  
No bearings obtainable.

Thence S. 9° 40' W.

*51. Mendota Cor 3 corner of this survey*  
1485.4 To Cor. No.1, The place of beginning.

All corners identical with corners of location.

Variations at all Cors. 15° 35' E.

## CORONET LODE.

Feet	Beginning at Cor. No.1, A Schist Stone, 24x6x6 inches, set 14 inches in ground, with mound of stone chiseled 1888 C.1, from which U. S. L. M. No. 1888 bears N. 45° 19'E. 931.7 ft. distant. No other bearings available. Thence N. 80° 30' W.
300	To south end center of lode, A mound of stone, 3ft. base and 3 ft. high.
473	To Cor. No.2, A Schist Stone, 28x14x6 inches, set <del>20</del> <sup>16</sup> inches in ground, with mound of stone chiseled 1888 C.2 Thence N. 9° 40'E.
51	To Cor. No.1 of Mendota lode of this survey.
1485.4	To Cor. No.3, A Syenite Stone, 36x8x4 inches, set 20 inches in ground, with mound of stone, chiseled 1888 C.3. No bearings obtainable. Thence S. 80° 30'E.
173	To north end center of lode, A mound of stone, 3ft. base and 3ft. high.
473	To Cor. No.4, A Quartz Stone, 24x12x8 inches, set 14 inches in ground, with mound of stone chiseled 1888 C.4. No bearings obtainable. Thence S. 9° 40'W.
1485.4	To Cor. No.1, the place of beginning. All corners identical with corners of location. Variation at all corners 13° 35'E.

Feet	Venture Lode.
	Beginning at Cor. No.1, identical with Cor.No.1 of Coronet Lode this survey, A Schist Stone, 24x6x6 inches, set 14 inches in ground with mound of stone chiseled 1888 V.1, from which U.S.L.M. <sup>No 1888</sup> bears N.45° 19'E., 931.7ft. distant. No other bearings available.
	Thence S.9° 30'W.
1500	To Cor. No.2, A Quartzsite Stone, 20x12x5 inches, set 12 inches in the ground, with mound of stone chiseled 1888 V.2. No bearings obtainable.
	Thence N. 80° 30'W.
300	To south end center of lode, A mound of stone 3ft/ base and 3ft. high
473	To Cor. No.3, A Schist Stone, 20x6x6 inches ,set 12 in. in ground, with mound of stone chiseled 1888 V.3, from which an Iron Wood tree, 10 inches in diameter scribed 1888 V. No.3 B.T., bears S.25° 25'E. ,6ft. distant.
	Thence N. 9° 30'E.
1500	To Cor. No.4, identical with Cor. No.2 ,Coronet Lode, this survey, A Schist Stone, 28x14x6 inches, set 16 inches in ground with mound of stone chiseled 1888 V. 4. No bearings obtainable.
	Thence S. 80° 30'E.
173	To north end center of lode, a mound of stone, 3ft/base and 3ft/ high
473	To Cor. No.1, the place of beginning. All corners identical with Cors. of location. Variation at <sup>all</sup> Cors. 13° 35' <sup>D.</sup>

LODE LINES.

The presumed course of lode lines is as follows:

Mendota Lode

From Discovery shaft No.1 N.9° 40'E. 750 ft. and ~~75~~<sup>S. 9° 30'</sup>  
40'W., 735.4ft.

Coronet lode

From discovery shaft No.1 N.9° 40'E., 750 ft. and S.  
9° 40'W., 735.4 ft.

Venture Lode.

From discovery shaft No. 1 N. 9° 30' E. 10 ft. and S.  
9° 30' W. ,1490 ft.

Survey 1888

7

Areas

Total and Net Area Mendota Lodge ✓ 20,460 acres  
Total and Net Area Corouit Lodge ✓ 16,130 acres  
Total and Net Area Venture Lodge ✓ 16,288 acres  
Total and Net Area Security Places ✓ 19,779 acres  
Total and Net Area of Eldon ✓ 72,657 acres



## SECURITY PLACER

Beginning at Cor. No.1, on line 2-3 Mendota lode this survey, A Quartzsite Stone, 20x6x6 inches set 12 inches in ground, with mound of stone chiseled 1888 S.1, from which U.S.L.M. No.1888 bears N. 81° 32' E. 1700.5 ft. distant. Cor.No.2 Mendota Lode this survey, bears ~~N.~~<sup>S.</sup> 9° 40' W. 180.0 ft. distant. No other bearings obtainable.

Thence N. 80° 30' W.

660 To Cor. No.2, A Schist Stone, 32x12 x6 inches set 18 in. in ground, with mound of stone chiseled 1888S.2, from which an Iron Wood tree, 8 inches in diameter scribed 1888S.2 B.T/ bears S. 9° 25'E., 23ft. distant.

Thence N. 9° 40'E

700 Wash 20ft. wide, course S.W.

1305.4 To Cor. No.3, A Schist Stone, 24x12x6 inches, set 16 in. in ground with mound of stone chiseled 1888 S.3. No bearings obtainable.

Thence S. 80° 30' E.

420 Wash 20 ft. wide, Course S.W.

660 To Cor. No. 4, identical with Cor. No.3, Mendota Lode/ this survey, A Syenite Stone 28x12x8 inches, set 16 in. in ground, with mound of stone chiseled 1888 S.4. No bearings obtainable.

Thence S. 9° 40' W.

1305.4 To Cor. No.1, the place of beginning.

All Cors. identical with corners of location.

Var. at all Cors. 13° 35' E.

EXPENDITURE OF FIVE HUNDRED DOLLARS

I certify that the value of labor and improvements upon this claim, placed thereon by the claimants and its grantors is not less than five hundred dollars, and that said improvements consist of:

MENDOTA LODE.

The discovery shaft No.1, which bears from north end center S.9°40'W., 750 ft. and is 250 ft. deep in rock, with drifts at 125 that run N. 10°E., 138 ft. and S.10° W. 60 ft. Also drifts at 200ft. that run N. 10°E. 294ft. and S. 10°W. 80ft. Also drifts at bottom of shaft that run S. 80° E., 83ft. N. 10°E. 50ft., N. 80°W. 60ft. and N. 10°E. 80ft.

Total value of shaft and drifts .....\$11000.

A shaft No.2, that bears from Cor. No. 2 of Mendota Lode N. 81° 15'E. 80FT. and is 6x4ft. by 10ft. deep

Value .....\$ 100.

Total value improvements.....\$11100.

CORONET LODE.

Discovery shaft No.1 that bears from north end center of lode S. 9° 40' W. 750ft. and is 6x4ft by 10ft. deep

Value .....\$100.

Venture Lode.

Discovery shaft No.1 that bears from north end center of lode S. 9° 30'W. 10ft. and is 6x4ft. by 10ft. deep

Value .....\$ 100.

SECURITY PLACER.

Shaft No.1 that bears from Cor. No.4 S. 49° 50'W. 680ft. and is 7x5ft. by 47.5 ft. in gravel

Value .....\$400.

Cut No.2 that bears from Cor. No. 4 S. 33° 40'W., 360ft.  
and is 15x12ft. by 10ft. deep in gravel

Value .....\$ 65.00

Tunnel <sup>No 3</sup>, the face of which bears from Cor. No.4 S. 57°  
05 W/ 726ft. running S. 35°W. 16ft. N.55° W. 15ft. , thence  
N. 35° E.10ft.

Value .....\$200.00

\$665.00

Total value of improvements.

Mendota Lode .....\$11100.00

Coronet Lode .....\$ 100.00

Venture Lode .....\$ 100.00

Security Placer.....\$ 665.00

\$ 11965.00

Deduct from Mendota Lode to be added to Coronet Lode,  
drift at bottom of shaft that runs S. 80°W. 38ft.

Value .....\$ 880.00

Deduct from Mendota Lode and add to Venture Lode , drift  
at 200ft. level that runs S. 80°W. 80ft.

Value .....\$800.00

Location.

This claim is located in unsurveyed public land in approximately ,Twp. 5N. R. 14 W. G&S.R.B.&M., in Ellsworth Mining District, Yuma County, Arizona.

There are no adjoining claims.

INSTRUMENT.

This survey was made with a Stackpole and Bros. transit No. 1269. Courses were deflected from the true Meridian by direct solar observation , checked by an observation on Polaris.

Distances were measured with a 300 ft. and a 100 ft. steel tape.

# FINAL OATHS FOR SURVEYS.

## LIST OF NAMES.

A list of the names of the individuals employed by William H. Elliott  
 United States Deputy Mineral Surveyor, to assist in running, measuring, and marking the lines  
 corners and boundaries described in the foregoing field notes of the survey of the mining claim  
 of Yellowbird Gold Mining Co.  
 known as the Mendota, Venture, Coronet & Security Places,  
 and showing the respective capacities in which they acted.

William A. Patch, Chairman.  
William Wilkinson, Chairman.  
 \_\_\_\_\_, Axman.  
 \_\_\_\_\_, Flagman.

## FINAL OATHS OF ASSISTANTS.

We, William A. Patch  
 and William Wilkinson, do solemnly swear that we assisted William  
H. Elliott, United States Deputy Mineral Surveyor, in marking the corners and  
 surveying the boundaries of the mining claim of Yellowbird Gold Mining  
Co.  
 \_\_\_\_\_, known as the Mendota,  
Venture, Coronet & Security Places, \_\_\_\_\_, represented  
 in the foregoing field notes as having been surveyed by said deputy mineral surveyor and under  
 his direction; and that said survey has been in all respects, to the best of our knowledge and  
 belief, faithfully and correctly executed, and the corner and boundary monuments established  
 according to law and the instructions furnished by the United States Surveyor-General for  
Arizona.

William A. Patch, Chairman.  
William Wilkinson, Chairman.  
 \_\_\_\_\_, Axman .  
 \_\_\_\_\_, Flagman.

Subscribed and sworn to by the above-named persons before me  
 this 29th day of June, 1904

John B. Martin  
 Notary Public

My Commission Expires May 17th 1908

FINAL OATH OF U. S. DEPUTY MINERAL SURVEYOR

I, William H. Elliott, U. S. Deputy Mineral Surveyor, do solemnly swear that, in pursuance of instructions received from the United States Surveyor General for Arizona, dated March 8 - 1904, I have, in strict conformity to the laws of the United States, the official regulations and instructions thereunder, and the instructions of said Surveyor General, faithfully and correctly executed the survey of the Mining Claim of Yellow Bird Gold Mining Co. known as the Mendota, Coronet, Venture and Security Placer, situate in Ellsworth Mining District, Yuma County, Arizona, in Section Unsurveyed, Township No. 5 N., Range No. 14 W. 9 & SR. B 9 M. and designated as Survey No. 1888, as represented in the foregoing field notes, which accurately show the boundaries of said mining claim as distinctly marked by monuments on the ground, and described in the attached copy of the location certificate, which was received by me from the Surveyor General with said instructions, and that all the corners of said survey have been established and perpetuated in strict accordance with the law, official regulations and instructions thereunder; and I do further solemnly swear that the foregoing are the true and original field notes of said survey and my report therein, and that the labor expended and improvements made upon said mining claim by claimant or its grantors are as therein fully stated, and that the character, extent, location and itemized value thereof are specified therein with particularity and full detail, and that no portion of said labor or improvements so credited to this claim has been included in the estimate of expenditures upon any other claim.

William H. Elliott  
U. S. Deputy Mineral Surveyor.

Subscribed and sworn to by the said William H. Elliott,

U. S. Deputy Mineral Surveyor, before me Wm. Robertson this 22<sup>nd</sup> day of August - 1904.

My commission expires February 11, 1908. Wm. Robertson

Notary Public

my Commission Expires

Affidavit of Five Hundred Dollars Improvements.

We, J. F. Wilson, and John B. Martin

of lawful age, being first duly sworn according to law, depose and say: That we <sup>Placer</sup> are acquainted with the Mendota, Comet, Ventura <sup>and Security</sup> mining claim, <sup>S</sup> situate in Ellsworth Mining district, Yuma County, Arizona Territory, for which Yucca Bird Gold Mining Company of Phoenix Arizona has made application for survey prior to application for patent under the provisions of the Act of Congress, approved May 10, 1872; and that the labor done and improvements made thereon by the applicant and its grantors exceed Five Hundred Dollars in value <sup>for each claim</sup> and further that we are not personally interested in said mine.

J. F. Wilson

John B. Martin

TERRITORY OF ARIZONA, }  
County of Yuma } ss:

Sworn to and subscribed before me, this 8th

day of January, 1907



[Signature] Notary Public  
my Comm. Exp. Oct. 23th 1907

4-694.

Title Page to Report under Paragraph 62, Mining Circular, Approved June 24, 1899.

## REPORT

Under paragraph 62, General Mining Circular, approved June 24, 1899, upon the Placer Mining Claim known as the *Security Placer*claimed by  
*Yellowbird Gold Mining Company*situate in *Collaworth* Mining District,  
*Yuma* County, *Arizona*, embracing  
*19,779 acres*in Sec. *Unsurveyed*, Town. *5N*, Range *R. 14 W. 9 S. A. 1300.*

Examination made \_\_\_\_\_, 190\_\_\_\_

By *William H. Elliott*  
U. S. Deputy Mineral Surveyor.



SECURITY PLACER.

(a) The soil embraced in this claim consists of a decomposed quartz and schist and is cut by a wash that crosses the north line in a southwesterly direction to about the center of the west line. This wash is about 12 ft. deep thru sand and gravel with bottom partly filled with boulders.

Scattering Iron wood and desert brush is the only vegetation.

(b) A frame house 12x24 ft. , with addition on the side of 12x20 ft., the long side of which runs N. 50° E. bears from Cor. No.4, S. 72° 35' W. 360ft.

(c) The surface and underground working on this claim consist of :

A Tunnel, the mouth of which bears from Cor. No.4 S. 57° 05' W., 726ft. S 35°W. 16ft. thence N55° W. 15ft. thence N. 35° E., 10ft.

A Shaft 7x5ft. by 47.5 deep, that bears from Cor. No.4 S. 49° 50' W.--680 ft.

A cut which bears from Cor. No.4 S. 33° 40' W., 360 ft.

(d) The nearest post office is Harrisburg, a village of about 50 population, about 18 miles in a southeasterly direction. Nearest railroad is either at Congress Junction or Aztec, the former about 80 miles in a northeasterly direction, and the latter about the same distance, a little east of south.

(e) There are no known lode deposits in the vicinity, other than the Mendota and others belonging to this group.

(f) This claim is adapted for placer mining inasmuch as it can be worked from the low part of the gulch or wash on the west line , the ground sloping up very rapidly towards the east.

(g) The work and expenditures made by the claimants for the development of the claim consists of the placer working described under § c of this report.

(h) There are no ~~wells~~, salt licks, salt springs or <sup>mill</sup> seats upon this claim.

United States Location Monument.

United States Location Monument No. 1888, Ellsworth Mining District, Yuma County, Arizona.

This Monument is situated in unsurveyed Tp. 5N. R. 14 W. G&S.R.B.&M, on top of conical hill and is plainly visible for a long distance. A Quartz Stone 36x16 x12 inches, set 18 inches in ground chiseled U.S.L.M. No. 1888 with .1 on top and mound of stone 4ft. base and 5ft. high alongside, in the bottom of which and facing monument is a Schist Stone 20x14x12 inches chiseled U.S.L.M. 1888.

A . . on rock in place, the exposed surface of which is 4ft. x 3ft. chiseled B.R. U.S.L.M. 1888 bears S. 15° 03' W. 24ft.

A very high peak bears S. 54° 55' E. about 1/2 mile. Desert Station bears S. 30° 32' W., about 8 miles.

U.S.L.M. No. 1220 bears S. 53° 52' E 12772 ft. distant

(4-695.)

# OATH OF U. S. DEPUTY MINERAL SURVEYOR

Under General Land Office Circular "N" of September 23, 1882.

I, William H. Elliott, U. S. Deputy Mineral

Surveyor, do solemnly swear that in pursuance of an order received from the U. S.

Surveyor General for Arizona, dated March 8<sup>th</sup>

1904

~~18~~, I have made, under the provisions of General Land Office Circular "N," approved September 23, 1882, a personal and thorough examination, upon the premises,

of the placer mining claim of Yellowbird Gold Mining  
Company

known as the Security Placer

situate in Ellsworth Mining Mining District,

Yuma County County, Arizona, embracing

19,779 acres

Unsurveyed  
in Township No. 5 N, Range No. 14 W. 9, T.S.A. B94, and that my report of such examination, hereto attached, is specific and in detail, and is a full and true statement of the facts upon all the points specified in said Circular.

William H. Elliott  
U. S. Deputy Mineral Surveyor.

Subscribed and sworn to by the said William H.

Elliott, U. S. Deputy Mineral Surveyor,

before me Peter Robinson a Notary  
Public in and for Yuma County - Arizona Governing  
this 5<sup>th</sup> day of October, 1904

Peter Robinson  
Notary Public

CORROBORATIVE AFFIDAVIT UNDER GENERAL LAND OFFICE  
CIRCULAR "N" OF SEPTEMBER 23, 1882.

Territory of Arizona }  
County of Yuma } ss.

W. Turner and Thomas Treadwell,

being first duly sworn, severally depose and say that he is personally and well acquainted  
with the placer-mining claim of Yellowbird Gold Mining

Company, known as the Security Placer

, situate in Edgewater Mining District,

Yuma County, Arizona, embracing  
19.779 acres

Unsurveyed, in Township No. 5-14,

Range No. 14 W. 9. 2 S. A. 1800, and also with the character of all the land included  
in said claim, and has been so acquainted for \_\_\_\_\_ year last

past; that his knowledge of said claim and land is derived from Working  
on the property

and is such as to enable him to  
testify understandingly with regard thereto; that he has carefully read the foregoing

report of William H. Elliott, U. S. Deputy Mineral  
Surveyor, and that to his own personal knowledge said report is in all respects true and  
accurate.

Wm. Turner  
Thomas Treadwell

Subscribed and sworn to by the above-named persons before me

this 7<sup>th</sup> day of October, 18 1904

Frank J. Ingalls  
U. S. Sur. General

## Lode Claim.

To all Whom it May Concern: This Mining Claim the name of which is the Coronet Mining Claim, situate on lands belonging to the United States of America, and in which there are valuable mineral deposits, was entered upon and located for the purpose of exploration and purchase by O.E. Rumer, a citizen of the United States the undersigned, on the 14th, day of January 1901. The length of this claim is Fifteen hundred feet, and I claim seven hundred & fifty feet, in a northerly direction, and seven hundred & fifty feet in a southerly direction from the center of the discovery shaft, at which this notice is posted, lengthwise of the claim together with 300 feet in width of the surface grounds, on each side of the center of said claim. The general course of the lode deposit and premises is from the North to the south. The claim is situated and located in the Ellsworth Mining District, in Yuma County in the Territory of Arizona, about 18 miles in a northwesterly direction from Harrisburg, about 4 miles north from the Golden Mound Mill, and adjoins the Mendota Mining Claim on the east. The surface boundaries of the claim are marked upon the ground as follows: Beginning at a mound of stone at a point in a southerly direction 750 feet from the discovery shaft (at which this notice is posted) being in the center of the southern end line of said claim; thence 300 feet to a mound of stone, being the southwest corner of said claim; thence 750 feet to a monument of stone at the center of the westerly side line of said claim; thence 750 feet to a mound of stone, being at the northwest corner of said claim; thence 300 feet to a mound of stone at the center of the northerly end of said claim; thence 300 feet to ~~the~~ a mound of stone being at the northeast corner ~~of~~ of said claim; thence 750 feet to a mound of stone being at the center of the easterly side line of said claim; thence 750 feet to a mound of stone at the south east corner of said claim; thence 300 feet to the place of beginning. All done under the provisions of Chapter Six.,

of Title XXXII, of the Revised Statutes of the United States, and of an Act of the General Assembly of Arizona, entitled "An Act Concerning Mines," approved March 20th, 1895, and amended March 2d, 1899.

Dated and posted on the ground this 14<sup>th</sup>, day of January 1901.

Witness:

O.E.Rumer.

T.H.Finnigan.

Recorded at request of O.E.Rumer, March 18, A.D. 1901,  
at 9 A.M.

C.P.Cronin,

by

County Recorder.

Lillian E.Cronin, Deputy.

TERRITORY OF ARIZONA, } ss.  
 County of Yuma.

I, C. P. CRONIN, COUNTY RECORDER in and for the County of Yuma, Territory of Arizona, do hereby CERTIFY that the foregoing is a true, full and correct copy of Location Notice of the CORONET Mining Claim as filed for record in my office on the 18th day of March, A. D. 1901, and as appears of record in Book K of Mines, Page 411, et seq., Records of Yuma County aforesaid.

In Witness Whereof, I have hereunto set my hand and affixed my seal of office this 2nd day of December, A. D. 1903.

C. P. Cronin  
 County Recorder, Yuma County, Arizona Territory.

## Notice of Mining Location.

## Lode Claim.

To All Whom It May Concern: This Mining Claim, the name of which is the Venture Mining Claim, situate on lands belonging to the United States of America, and in which there are valuable mineral deposits, was entered upon and located for the purpose of exploration and purchase by O.E. Rumer A Citizen of the United States, the undersigned, on the 15th. day of February 1901. The length of this claim is 1500 feet, and I claim 1490 feet in a southerly direction, and 10 feet in a northerly direction from the center of the discovery shaft, at which this notice is posted, lengthwise of the claim, together with 300 feet in width of the surface grounds, on each side of the center of said claim. The general course of the lode deposit and premises is from the northerly to the southerly. and located The claim is situated in the Ellsworth Mining District, in Yuma County, in the Territory of Arizona, about 18 miles in a north-westerly direction from Harrisburg Post Office and four miles north of the Golden Mound Mill in the Granite Wash Mts. The adjoining claims are the Mendota, the Kankakee, & the Hudson. The surface boundaries of the claim are marked upon the ground as follows: Beginning at a mount of stone at a point in a northerly direction 10 feet from the discovery shaft (at which this notice is posted), being in the center of the north end line of said claim; thence 300 feet to a mount of stone, being the northeast corner of said claim; thence 750 feet to a mount of stone at the center of the easterly side line of said claim; thence 750 feet to a mount of stone, being at the south east corner of said claim; thence 300 feet to a mount of stone at the center of the southerly end of said claim; thence 300 feet to a mount of stone, being at the south west corner of said claim; thence 750 feet to a mount of stone being at the center of the westerly side line of said claim; thence 750 feet to a mount of stone at the northwest corner of said claim; thence 300 feet to the place of beginning.



All done under the provisions of Chapter Six, of Title XXXII., of the Revised Statutes of the United States, and of an Act of the General Assembly of Arizona, entitled "An Act Concerning Mines", approved March 20th, 1895, and amended March 2, 1899,

Dated and posted on the ground this 15th day of February 1901.

O.E.Rumer.

Witness:

T.H.Finnigan.

Recorded at request of O.E.Rumer, March 18, A.D. 1901.

at 9 A.M.

by

Lillian E.Cronin, Deputy.

C.P.Cronin,

County Recorder.

TERRITORY OF ARIZONA, } ss.  
 County of Yuma.

I, C. F. CRONIN, COUNTY RECORDER in and for the County of Yuma, Territory of Arizona, do hereby CERTIFY that the foregoing is a true, full and correct copy of  
Location Notice of the VENTURE Mining Claim  
 as filed for record in my office on the 18th day of March, A. D. 1901, and as appears of record in Book K of Mines, Page 406, et seq., Records of Yuma County aforesaid.

In Witness Whereof, I have hereunto set my hand and affixed my seal of office this 2nd day of December, A. D. 1903.

  
 County Recorder, Yuma County, Arizona Territory.

## Notice of Mining Location.

## Lode Claim.

To All Whom It May Concern: This Mining Claim, the name of which is the Mendota Mining Claim, situate on lands belonging to the United States of America, and in which there are valuable mineral deposits, was entered upon and located for the purpose of exploration and purchase by O.E. Rumer a citizen of the United States, the undersigned, on the 19 day of December, 1900. The length of this claim is 1500 feet, and I claim 750 feet in a northerly direction, and 750 feet in a southerly direction from the center of the discovery shaft, at which this notice is posted, lengthwise of the claim, together with 300 feet in width of the surface grounds on each side of the center of said claim. The general course of the lode deposit and premises is from northerly to the southerly. The claim is situated and located in the Ellsworth Mining District, in Yuma County, in the Territory of Arizona, about 18 miles in a northwesterly direction from Harrisburg in the Granite Wash Mts. and 4 miles north of the Golden Mound Mill. The surface boundaries of the claim are marked upon the ground as follows:- Beginning at a mount or stone at a point in a southerly direction 750 feet from the discovery shaft (at which this notice is posted), being in the center of the southerly end line of said claim, thence 300 feet to a mount of stone, being the south east corner of said claim; thence 750 feet to a mount of stone at the center of the easterly side line of said claim; thence 750 feet to a mount of stone, being at the northeast corner of said claim; thence 300 feet to a mount of stone at the center of the northerly end of said claim; thence 300 feet to a mount of stone, being at the northwest corner of said claim; thence 750 feet to a mount of stone being at the center of the westerly side line of said claim; thence 750 feet to a mount of stone at the southwest corner of said claim; thence 300 feet to the place of beginning. All done under the provisions of Chapter Six, of Title XXXII, of the Revised Statutes of the United States

And of an Act of the General Assembly of Arizona, entitled  
"An Act Concerning Mines", Approved March 20th. 1895, and amended  
March 2d. 1899.

Dated and posted on the ground this 19th. day of December  
1900.

Witness Wm. Cavell.

O. E. Rumer.

Filed at request of O. E. Rumer at 9 o'clock A. M. Dec. 27th.  
1900, and entered on books Jan. 14, 1901.

C. P. Cronin,

By

Co., Recorder.

L. E. Cronin, Deputy.

TERRITORY OF ARIZONA, }  
 County of Yuma. }

I, C. P. EMMER, COUNTY RECORDER in and for the County of Yuma, Territory of Arizona, do hereby certify that the foregoing is a true, full and correct copy of  
Location Notice of the MENDOTA Mining Claim  
 as filed for record in my office on the 27th day of December, A. D. 1903 and as appears  
 of record in Book K of Mines, Page 237, et seq., Records  
 of Yuma County aforesaid.

In Witness Whereof, I have hereunto set my hand and affixed my seal  
 of office this 2nd day of December, A. D. 1903.

  
 County Recorder, Yuma County, Arizona Territory.

## Notice of Location.

## Placer Claim.

Notice is hereby given that in compliance with an Act of Congress approved May 10th, 1872, and the Act amendatory thereof and supplementary thereto, the undersigned have this day located and claim Twenty acres of surface, placer ground. Said claim commencing at a monument of stone at northeast corner of claim, and running 1320 feet in a southerly direction to a monument of stone at the southeast corner of said claim; thence in a westerly direction 660 feet to a monument of stone at southwest corner of said claim; thence in a northerly direction 1320 feet to a monument of stone at southwest corner of claim; thence in an easterly direction 660 feet to a monument of stone and place of beginning. This claim may be more generally described as situated 18 miles in a north westerly direction from Harrisburg Post Office and 4 miles north of the Golden Mound well and in the Granite Wash Mountains and adjoins the Mendota lode mining claim, In Ellsworth Mining District, Yuma County, Territory of Arizona, and shall be known as the Security Placer Mining Claim.

Dated on the ground, this 16th. day of January, 1901.

O. E. Rumer, Locator.

Witness:

T. H. Finnigan.

Recorded at request of O. E. Rumer, March 18, A. D. 1901

at 9 A. M.

by

C. P. Cronin,

Lillian E. Poole, Deputy.

County Recorder

TERRITORY OF ARIZONA,  
County of Yuma

I, W. J. DOLAN, COUNTY RECORDER in and for the County of Yuma,  
Territory of Arizona, do hereby CERTIFY that the foregoing is a true, full and correct copy of  
Location Notice of the SECURITY Placer Claim  
as filed for record in my office on the 18th day of March, 1903, as appears  
of record in Book K of Mines, Page 404, of my Records  
of Yuma County aforesaid.

In Witness Whereof, I have hereunto set my hand and affixed my seal  
of office this 2nd day of December, A. D. 1903.

W. J. Dolan  
County Recorder, Yuma County, Arizona Territory.

4-687.

SURVEYOR-GENERAL'S CERTIFICATE OF APPROVAL OF FIELD NOTES AND SURVEY OF MINING CLAIM.

Department of the Interior,

Office of U. S. Surveyor-General,

Phoenix, Arizona.

Oct 5, 1904

I, U. S. Surveyor-General for the district of Arizona.

do hereby certify that the foregoing and hereto attached Field Notes and Return of the Survey of the Mining Claim of Yellowbird Gold Mining Co.,

known as the Mendota, Coronet, Venture and Security Placer.

situate in Ellsworth, Mining District, Yuma County, Arizona.

in Section unsurveyed, Township No. 5 N., Range No. 14 W., designated as Survey No. 1888

executed by William H. Elliott, U. S. Deputy Mineral Surveyor, June 24th to 28th 1904, 1904, under my instructions dated

March 8 1904, 1904, have been critically examined and the necessary corrections and explanations made, and the said Field Notes and Return, and the Survey they describe,

are hereby approved. A true copy of the copy of the location certificate filed by the applicant for survey is included in the field notes.

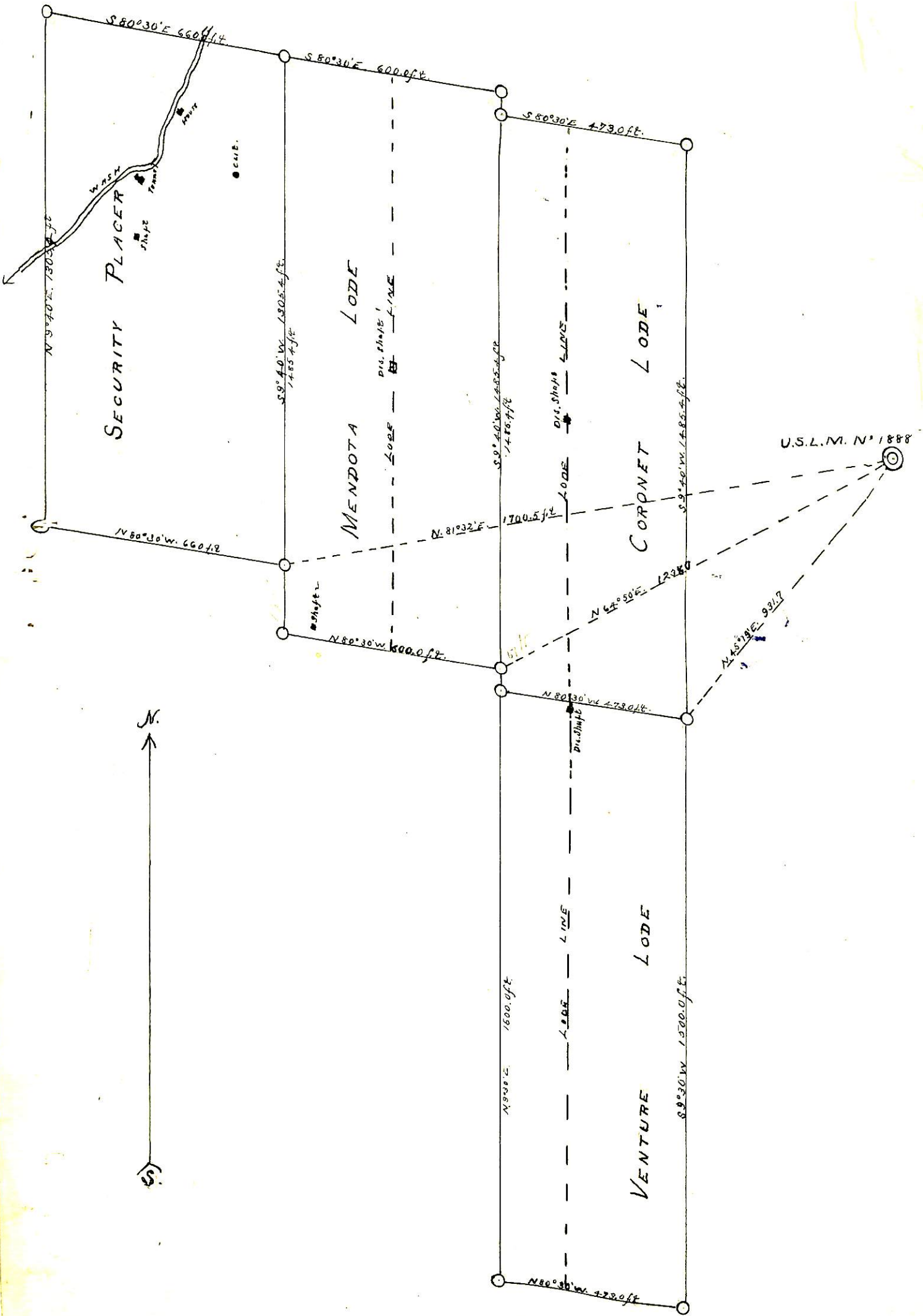
Frank S. Ingalls

U. S. Surveyor-General for Arizona.



SURVEY

1888



UNITED STATES DEPARTMENT OF THE INTERIOR 9605 (956)  
BUREAU OF LAND MANAGEMENT M.S. 1888  
ARIZONA STATE OFFICE

---

NOTICE OF CANCELLATION OF MINERAL SURVEY

The Venture lode, Mineral Survey No. 1888, located in section 6, Township 5 North, Range 14 West, Gila and Salt River Meridian, Arizona, is hereby canceled.

This claim has not been filed with the Arizona State Office, Bureau of Land Management, in accordance with Section 314, 90 STAT. 2769, (43 U.S.C. 1744).

This cancellation was necessitated to clear the record.

The Mineral Survey Plat should be noted as follows:

"Venture lode, M.S. 1888, was canceled March 18, 2002, by memo 9605 (956) M.S. 1888, which is now a part of the original field notes."

March 18, 2002  
Date

  
\_\_\_\_\_  
Chief Cadastral Surveyor of Arizona