

M
S
-

0

1

9

9

6

Platted J. 2

OCT 21 1904

(4-683.)

Mineral Survey No. 1994

Lot No.

Prescott

Land District.

FIELD NOTES

OF THE SURVEY OF THE MINING CLAIM OF

Gold & Copper Consolidated Mining and Milling Company

KNOWN AS THE

Swamp, Malino, Lion, Treasury, Comstock, Brooklyn, Porphyry, Granite & Quartz

Hassayampa

Mining District,

Yavapai

County,

Arizona

Section Approx., Township 12 N., Range 1 N. (unsurveyed)

Surveyed under instructions dated Oct 11th, 1904

Claim located June 16th 1894, July 2nd 1895, July 30th 1894, Sept 3rd 1896, Aug 30th 1896, April 19th 1897, Sept 3rd 1894, " " Aug 5th 1864 by William H. Merrill U. S. Deputy Mineral Surveyor.

Claim located 1

Survey commenced Oct 15th, 1904, 1904

Survey completed Oct 18th, 1904, 1904

o 6-100

Address of Claimants
Herndon & Norris Attys.
Prescott Arizona

PRELIMINARY OATHS OF ASSISTANTS IN SURVEY OF MINING CLAIM.

We, R A Merritt and _____,
do solemnly swear that we will well and faithfully execute the duties of chain carriers; that we will level the chain upon even and uneven ground and plumb the tally-pins, either by sticking or dropping the same; that we will report the true distance to all notable objects, and the true length of all lines that we assist in measuring, to the best of our skill and ability, and in accordance with instructions given us, in the survey of the Mining Claim of Gold & Copper, Consolidated
Mining and Milling Company
known as the Surprise, Malaga, Lerou, Inceasing, Conestock
Branches, Copper, Granite & Plumb
situate in Hassayampau mining district
Yavapai County, Arizona
in Section _____, Township No. _____, Range No. _____.

Prot Merritt _____, Chairman.
_____, Chairman.

Subscribed and sworn to by the above-named persons before me this
12th day of October, 1904.

*my commission Expires
July 15th 1905.*

W C Merritt
Notary Public

I, _____, do solemnly swear that I will well and truly perform the duties of axman, in the establishment of corners and other duties, according to instructions given me and to the best of my skill and ability, in the survey of the Mining Claim of _____

known as the _____
more fully described in the preceding affidavit.

_____, Axman.

Subscribed and sworn to by the said _____
_____ before me this _____ day of _____,
190____.

I, _____, do solemnly swear that I will well and truly perform the duties of flagman, in the establishment of corners and other duties, according to instructions given me and to the best of my skill and ability, in the survey of the Mining Claim of _____

known as the _____
more fully described in the preceding affidavit.

_____, Flagman.

Subscribed and sworn to by the said _____
_____ before me this _____ day of _____,
190____.

Surprise Lode Sur.No.1996

Feet

Beginning et Cor. No.1
Identical with the S.W.Cor of the loc.and with Cor.No.4
of Malino lode of this Sur.
A Porphyry stone 10X12X 26 ins,set 14 ins in the ground with
mound of stones ,chiseled S-1-M-4-1996. Whence:
U.S.M.M.No.1 brs.S 28°.33'W 2569.3 feet.
X-B-R-S-1.M-2-1996 chiseled on rock in place brs.S 20°.00'W
10.4 feet
X-B-R--S-1.M-4-1996 chiseled on rock in place brs.N 36°.39'W
25.8 feet
Location Cor.a monument of atones 3 ft.base and 3 ft.high.

Thence N 28°.30'E
Va.14°.E

994
1500

Cor.No.3 Malino lode of this Sur.
To Cor.No.2.
Identical with Cor.of the loc.
A granite stone 6X14X 26 ins.set 14 ins.in the ground with
mound of stones ,chiseled ,S-2-1996. No bearings available.
Location Cor.a monument of stones 3.5 ft.base and 3 ft.high.

Thence S 58°.30'E
Va.14°.E

300
600

N.E.C.
To Cor.No.3.
Identical with the loc.and with Cor.No.2 Jumbo lode of this
Sur.Loc.Cor.a mound of stones 3 ft.base and 3 ft.high.
A granite stone 5X8X24 ins.set 12 ins.in the ground ,with
mound of stones ,chiseled ,S-3-J-2-1996.Whence:
A Pine tree 10 ins.diam.scribed X-B-T-S-3.J-2-1996 brs.
S 26°.15'E 13.6 ft.
A Pine tree 18 ins.diam scribed X-B-T-S-3.J-2-1996 brs.
S 35°.00'W 14.4 ft.

Thence S 28°.30'W
Va 14°.E

1500

To Cor.No.4.
Identical with the loc.and with Cor.No.1 Jumbo lode of
this Sur.
A Granite stone 5X7X24 ins.set 12 ins. in the ground with
mound of stones ,chiseled S-4-J-1-1996.
No bearings available.
Location Cor.a monument of stones 3 ft.base and 3 ft.high.

Thence N 58°.30'W
Va. 14°.E

300

S.E.C.
Identical with Cor.No.5 Malino lode of this Sur.and with
Cor.No.2 Sur.No.1556 Hassayampa lode.A granite stone
4X8X10 ins.above the ground chiseled H-2-1556.and S,EC.1996
on the side facing this lode ,and H-5-1996 on the side facing
Malino lode of this sur.with post 4X6ins.X.4 ft.high in mound
of stones.

600

To Cor.No.1 the place of beginning.

JUMBO LODE.

Beginning at Cor.No.1
Identical with the S.W.Cor.of the loc.and with Cor.No.4 Sur-
Surprise lode of this Sur.hereinbefore described. Whence:
U.S.M.M.No.1 brs. S41°.50'W 2608.3 feet.

Thence N 28°.30'E
Va. 14°.E

1500

To Cor.No.2.
Identical with the loc.and with Cor.No.3 Surprise lode of
this Sur.hereinbefore described.

Survey No.1996 Jumbo lode.

Feet. Thence S 58° .30' E
Va.14° E

300 N.E.C.
600 To Cor.No.3.
Identical with the loc.and with Cor.No.2.Comstock,4 Lion and
1 of Brooklyn lodes of this Sur.
A Granite stone 5X10X24 ins,set.12 ins.in the ground,with
mound of stones, chiseled J-3.C-2-L-4.B-1-1996.Whence:
A Pine tree 11 ins.diam.scribed B-T-J-3.C-2-L-4.B-1-1996
brs.N 26°.45'W 31.6 feet.
No other bearings available.
Location Cor.a monument of atones 3.5ft,base and 3 ft.high.

Thence S 28° .30' W
Va.14° E

1500 To Cor.No.4.
Identical with the loc.and with Cor.No.1 Comstock lode of
this Sur.and with the N.E.C.Ranch lod Sur.No.1556.Chiseled
N.C.E.R.1556 on the side facing Ranch lode and J-4.C-1-1996
on the sides facing this lode and Comstock lode
A Lime stone 4X10X12 ins.above the ground,with mound of
stones.
Location Cor.monument of stones 3 ft.high and 3 ft.base.

Thence N 58° .30' W
Va.14° E

300 To S.E.C.
Identical with Cor.No.3 Hassayampa and Cor.No.2 Ranch lodes
of Sur.No.1556 a line stone 4X12X12 ins.above the ground
with mound of stones 3 ft.hase,3 ft.high chiseled H-3.R-2-
1556 and S.C.E.-1996
600 To Cor.No.1 the place of beginning.

COMSTOCK LODGE.

Beginning at Cor.No.1
Identical with the S.W.Cor.of the loc.and with Cor.No.4
Jumbo lode of this Sur.hereinbefore described.Whence:
U.S.M.M.NO.1 brs.S 54°.06'W 2778.9 feet.

Thence N 28° .30' E
Va.14° E

1500 To Cor.No.2.
Identical with the loc.and with cors.No.3 Jumbo,4 Lion
and 1 Brooklyn lodes of this Sur.hereinbefore described.

Thence S 58° .30' E
Va.14° E

300 N.E.C.
600 To Cor.No.3.
Identical with the loc, and with Cor.No.4 Brooklyn lode of
this Sur.
A Porphyry stone 6X10X26 ins.set 14 ins.in the ground with
mound of stones, chiseled C-3.B-4-1996.Whence:
A Pine tree 9 ins.diam.scribed X-B-T-C-3.B-1-1996.brs.
S 42°.40'W 16 feet.
A Pine tree 8 ins.diam.scribed X-B-T-C-3.B-1-1996 brs.
S 38°.50'E 36.7 feet.
Location cor.a monument of stones 3 ft.base and 3 ft.high.

Thence S 28° .30' W
Va.14° E

1500 To Cor.No.4.
Identical with the loc.
A Porphyry stone 8X10X24 ins,set 12 ins.in the ground with
mound of stones, chiseled C-4-1996.No bearings available.
Location Cor.a monument of stones 3 ft.base and 3 ft.high

SURVEY No.1996

Thence N 58°.30'W
Va.14°.E

300 To S.E.C.
Identical with Cors.3.Ranch and 2 Water Fall lodes of Sur. No.1556 A Porphyry stone 4X10X12 ins.above the ground,with mound of stones, chiseled R-3-W-2-1556, and S.C.E.1996 on the side facing this lode.

600 To Cor.No.1 the place of beginning.

LION LODE.

Beginning at Cor.No.1.
Identical with the S.W.Cor.of the loc.
A Porphyry stone 8X10X22 ins.set 12 ins.in the ground with mound of stones, chiseled L-L-1996.Whence:
U.S.M.M.No.1 brs.S 24°.20'W 4095.7 feet.
No bearings available.
Location cor.a monument of stones 3.5 ft.base 3 ft.high.

Thence N 28°.30'E
Va.14°.E.

300 N.E.C.
600 To Cor.No.2
Identical with the loc, and with the S.E.C.Treasury lode of this Sur..
A Porphyry stone 5X12X26 ins.set.14 ins.in the ground, with mound of stones, chiseled, L-2-1996 and S.E.C.T-1996
Whence:
An Oak tree 8 ins.diam.scribed X-B-T-L-2-1996 brs.
N 47°.50'E 37.6 feet.No other brs,available.
Location Cor.a monument of stones 3.5 ft.base 3 ft.high.

Thence S 58°.30'E
Va.14°.E

300 To Cors.No.4 Treasury and 1 Granite lodes of this Sur.
900 To Cor.No.4 Granite and 1 Porphry,lodes of this Sur.
1500 To Cor.No.3.
Identical with the loc.and with Cor.No.4 Porphry.lode of this Sur.
A Porphyry stone 6X10X26 ins.set 14 ins.in the ground,with mound of stones, chiseled, L-3.P-4-1996.
No bearings available.
Location Cor.a monument of stones 2.5 ft.base 3 ft.high.

Thence S 28°.30'W
14°.E

300 E.E.C.
600 To Cor.No.4,
Identical with the loc.and with cors.1 Brooklyn, 2 Comstock 3 Jumbo of this Sur.hereinbefore described.

Thence N 58°.30'W
Va.14°E

600 Cor.2 Jumbo and 3 Surprise lodes of this Sur.
1200 Cor.No.2 Surprise lode of this Sur.
1500 To Cor.No.1 the place of beginning.

Brooklyn Lode.

Beginning at Cor.No.1.
Identical with the S.W.Cor.of the loc.and with 2 Comstock, 3 Jumbo and 4 of Lion lodes of this Sur.hereinbefore described.Whence:
U.S.M.M.No.1 brs.S 45°11'W 4182.3 feet.

Thence N 28°30'E
Va.14°E

Survey No. 1996

Feet.
600
1270

Cor.No.3 Lion and 4 Porphyry lodes of this Sur.
To Cor.No.2.
Identical with the loc.
A Porphyry stone 8X10X26 ins.set 14 ins.in the ground,with mound of stones, chiseled, 2-B-1996. Whence
A Pine tree 14 ins.diam.scribed X-B-T-B-2-1996 brs.
N 85°.30'W 21.2 feet.No other barings available.
Location Cor.a monument of stones 3 ft base 3 ft.high.

Thence S 58°.30' E.
Va.14°.E

88.78 Intersect line 3-4-Sur.1631 Ninety Seven lode.at S 40°.00'W.
214 28 ft.from Cor.No.4.A granite stone 8X8X12 ins.above the ground with mound of stones.Chiseled N-S-4-1631.
300 N.E.C.

464.56 Intersect line 2-3 Sur.No.1631 Ninety Seven lode at N 36°.10'E 122.79 ft.from Cor.No.3 a granite stone 5X5X12 ins.above the ground in mound of stones, chiseled N.S.3-1631
600 To Cor.No.3.

Identical with the Cor.of the loc.
A Porphyry stone 5X8X26 ins.set 14ins.in the ground with mound of stones, chiseled B-3-1996. Whence:
An Oak tree 8 ins.diam.scribed X-B-T-B-3-1996 brs.
S 60°.00'W 32. feet.
An Oak tree 5 ins.diam.scribed X-B-T-B-3-1996 brs.
N 3°.00'W 12 feet.
Location Cor.a monument of stones 3.5 ft.base 3.5 ft.high.

Thence S 28°.30'W
Va.14°.E

1270 To Cor.No.4.
Identical with the loc.and with Cor.No.3 Comstock lode of this Sur.hereinbefore described.

Thence N 58.30'W
Va 14°.E

300 S.E.C.
600 To Cor.No.1 the place of beginning.

PORPHYRY LODGE.

Beginning at Cor.No.1
Identical with the S.W.Cor.of the loc.and with Cor.No.4 of Granite lode of this Sur.
A Porphyry stone 8X8X24 ins.set 12 ins.in the ground with mound of stones, chiseled P-1.G-4-1996. Whence:
U.S.M.M.No.1.brs.S 35°.53'W 4676.4 feet.
A Pine tree 16 ins.diam.scribed X-B-T-P-1.G-4-1996 brs.
N 29°.00'E 33.6 feet.No other bearings available.
Location Cor.a monument of stones 3 ft.base 3 ft.high.

Thence N 28°.30'E
Va.14°.E

1500 To Cor.No.2
Identical with the Cor.of loc.and with Cor.No.3 Granite lode of this Sur.
A Porphyry stone 10X14X26 ins set 14 ins.in the ground, with mound of stones, chiseled P-2.G-3-1996. Whence:
An Oak tree 7 ins.diam.scribed X-B-T-P-2.G-3-1996 brs.
S 24°00'E 37.8 ft.
A Pine tree 16 ins.diam.scribed X-B-T-P-2.G.3-1996.brs.
S 67°.00'E 26.8 feet.
Location Cor.A monument of stones 2.5 ft.base 3 ft.high.

Survey No.1996

Feet.	Thence S 58°30'E Va.14°E
300	N.E.C.
594.3	Intersect line 4-1 Sur.No.1631 Ninety Seven lode.at N 36° 10'E 764.23 ft.from Cor.No.4.
600	To Cor.No.3. Identical with the loc. A Porphyry stone 6X12X 26 ins.set 13 ins.in the ground with mound of stones, chiseled P-3-1996. No bearings available. Location Cor.a monument of stones 3.5 ft.base 3.5 ft.high.
799.72	Thence S 28°30'W Va 14°E
830	Intersect line 3-4-Sur.No.1631 Ninety Seven lode at S 40°.00'E 115.81 ft.from Cor.No.4
1500	Cor.No.2 Brooklyn lode of this Sur. To Cor.No.4. Identical with the Cor of loc.and with Cor.3 Lion lode of this Sur.herein before described.
300	Thence N 58°.30'W Va.14°E
600	S.E.C. To Cor.No.1 the place of beginning.
	GRANITE LODGE.
	Beginning at Cor.No.1. Identical with the S.W.Cor.of loc.and with Cor.4 Treasury lode of this Sur. A Porphyry stone 5X12X24 ins.set 12 ins.in the ground with mound of stones, chiseled G-1.T-4-1996.Whence: U.S.M.M.No.1 brs. S 28°.32'W 4669.6 ft. An Oak tree 8 ins.diam.scribed X-B-T-G-1.T-4-1996 brs. S 50.15'W 8.3 feet..No other bearings available. Location Cor.a monument of stones 3 ft.base 3 ft.high.
1500	Thence N 28°30'E. Va 14°E
	To Cor.No.2. Identical with the Cor.of loc.and with Cor.No.3 Granite lode of this Sur. X-G-2.T-3-1996 chiseled on granite rock in place showing 3X4X1.5 ft.above the ground,with mound of stones.Whence: An Oak tree 6 ins.diam.scribed X-B-T-G-2.T-3-1996 brs. N 72°.55E 20.4 ft. AN Oak tree 10 ins.diam.scribed X-B-T-G-2.T-3-1996 brs. S 21°00'E 11.8 feet. Location Cor.a monument of stones 2.5 ft.base 3 ft.high.
300	Thence S 58°.30'E Va.14°E
600	N.E.C. To Cor.No.3 Identical with the Cor of loc ,and with Cor.No.2 Porphyry lode of this Sur.hereinbefore described.
1500	Thence S 28°.30'W. Va.14°E
	To Cor.No.4. Identical with the Cor.of loc.and with Cor.No.1.Porphyry lode of this Sur.hereinbefore described.

Survey No.1996

Feet.	Thence N 58° .30 'W Va.14° E
300 600	S.E.C. To Cor.No.1 the place of beginning.
TREASURY LODGE.	
Beginning at Cor.No.1. Identical with the S.W.Cor.of the loc. A Porphyry stone 8X12X24 ins.set 12 ins.in the ground ,with mound of stones ,chiseled T-1-1996:Whence: U.S.M.M.No.1 brs. S 21° ,16'W 4738.5 feet. An Oak tree 8 ins.diam.scribed X-B-T-P-1-1996.brs. N 9° .25'W 36.7 ft. An Oak tree 10 ins.diam.scribed X-B-T-T-1-1996 brs. N 48° .30'E 21 ft. Location Cor.a monument of stones 3 ft.base and 3 ft. high.	
Thence N 28° .30'E Va.14° E	
1500	To Cor.No.2. Identical with the Cor.of the loc. A Porphyry stone 8X10X26 ins.set.14 ins.in the ground with mound of stones ,chiseled T-2-1996,Whence: A Pine tree 18 ins.diam.scribed X-B-T-T-2-1996 brs. S 17° .30'E 16.8 ft. A Pine tree 16 ins.diam.scribed X-B-T-T-2-1996 brs. N 43° 30'E 41.6 ft. Location Cor.a monument of stones 3 ft.base. and 3 ft.high.
Thence S 58° 30'E Va.14° E	
300. 600	N.E.C. To Cor.No.3. Identical with the Cor.of the loc.and with Cor.No.2 Granite lode of this Sur.hereinbefore described.
Thence S 28° 30'W Va.14° E	
1500	To Cor.No.4. Identical with the loc.and with Cor.No.1 Granite lode of this Sur.hereinbefore described.
Thence N 58° 30'W Va.14° E	
300 600	S.E.C. Identical with Cor.No.2 Lion lode of this Sur. To Cor.No.1 the place of beginning.
MALINO LODGE.	
Beginning at Cor.No.1. Identical with the S.W.Cor.of the loc. A Porphyry stone 7X14X28 ins set 15 ins.in the ground ,with Mound of stones chiseled.M-1-1996.Whence: U.S.M.M.No.1 brs.S 20° .22'W 2100.2 feet. X-B-R-M-1-1996 chiseled on rock in place 18 ins.above the ground brs.S 31° .15'E 13.7 feet. An Oak tree 10 ins.diam.scribed X-B-T-M-1-1996 brs. N 65° .00'E 47.4 ft. Location Cor.a monument of stones 3 ft.base and 3 ft.high.	
Thence N 28° .30'E Va.14° E	

Survey No.1996

79.36	Intersect line 1-2 Sur.No.1461 MC Kinley lode at S 33°00'W 335.59 ft.from Cor.No.2.A granite stone 5X8X26 ins.in mound of stones, chiseled M-2-1461
464.15	Intersect line 2-3 Sur.No.1461 McKinley lode at N 60°.45'W 30.25 ft.from Cor.No.2
1500	To Cor.No.2. Identical with Cor.of the loc. A Porphyry stone 3X10X24 ins set 12 ins.in the ground with mound of stones, chiseled M-2-1996 Whence: A Pine tree 7 ins.diam.scribed X-B-T-M-2-1996 brs. S 55:00'W 23.5 ft. A Pine tree 13 ins.diam.scribed X-B-T-M-2-1996 brs. N 63°.00'W 25.3 ft. Location in Cor.mon of stones 3 ft base and 3 ft.high
	Thence S 58°30'E Va.14°.E
300	To Cor.No.3. Identical with Cor.of the loc. A Porphyry stone 4X12X24 ins.set 12 ins.in the ground with mound of stones, chiseled M-3-1996. No Bearings available. Location in Cor.monument of stones 3 ft.base and 3 ft high.
	Thence S 28°.30W. Va.14°E
994	To Cor.No.4. Identical with the Cor.of the loc.and with Cor.No.1 Surprise lode of this Sur.hereinbefore described.
	Thence S 58°30'E Va.14°.E
300	To Cor.No.5. Identical with the Cor.of the loc.and with Cor.No.2 Sur.No.1556 Hassayampa lode and with the S.E.C Surprise lode of this Sur.hereinbefore described.
	Thence S 28°30'W Va.14°.E
506	To Cor.No.6 Identical with the loc. A Porphyry stone 8X12X26 ins.set 14 ins.in the ground with mound of stones, chiseled.M-6-1996.Whence: An Oak tree 7 ins.in diam.scribed X-B-T-M-6-1996 brs. N 37°45'W 24.3 feet. An Oak tree 9 ins.diam.scribed X-B-T-M-6-1996 brs. S 4°.00'W 54.6 feet. Location Cor.a monument of stones.3.5 ft.base and 3.5 ft.high
	Thence N 58°30'W Va.14°.E
300	S.E.C.
600	To Cor.No.1 the place of beginning.

AREA.

Surprise lode total and net area.....	20.632 Acres.
Jumbo " " " " " "	20.632 "
Comstock " " " " " "	20.632 "
Brooklyn " total area. 17.468 acres	
less area in conflict with Sur.1631	
Ninety Seven lode.....	0.527 acres
Net area Brooklyn lode.....	16.941
Porphyry lode total area.....	20.632
less area in conflict with Sur.No.1631	
Ninety Seven lode.....	1.039
Net area Porphyry lode.....	19.593 "

Survey No. 1996

Granite lode. Total and net area.....20,632 Acres.
 Treasury " " " " ".....20,632
 Lion " " " " ".....20,632 .."
 Malino lode. " area....13,796
 less area in conflict with Sur.No.1461
 Mc.Kinley lode..... 0.110
 Net area Molino lode.....~~13,688~~^{.662} "
 Total net area of lode claim 173,988 "

LOCATION.

This claim is located on unurveyed land in T.12 N.R.1.W. Hassayampa mining district, Yavapai County, Arizona.

ADJOINING CLAIMS.

This claim is bounded on the North by U.S. land and Sur. No.1631 Ninety Seven lode, on the East by Sur.No.1631 Ninty Seven lode and U.S. land, on the South by Sur.No.1556 Hassayampa Ranch and Water Fall lodes and U.S land, and on the West by Sur.No.1461 McKinley lode and U.S. land.

LEDGES.

The ledge on Surprise lode brs. N 28° 30' E 1500' from S.E.C.
 " " " Jumbo " " N 28° 30' E 1500' from S.E.C.
 " " " Comstock " " N 28° 30' E 1500' from S.E.C.
 " " " Brooklyn " " N 28° 30' E 1270' " S.E.C.
 " " " Porphyry " " N 28° 30' E 1500' " S.E.C.
 " " " Granite " " N 28° 30' E 1500' " S.E.C.
 " " " Treasury " " N 28° 30' E 1500' " S.E.C.
 " " " Lion " " S 58° 30' E 1500' " W.E.C.
 " " " Malino " " N 28° 30' E 1500' " S.E.C.

EXPENDITURE OF FIVE HUNDRED DOLLARS.

I certify that the value of the labor and improvements upon this claim, placed thereon by the claimants and their grantors, is not less than five hundred dollars for each lode, and that said improvements consist of:

Surprise lode.
 No.1 dis. shaft which brs N 28° 30' E 188 ft. from S.E.C. 4X8X150 ft. timbered.....value.....\$3750.00
 No.2 Tunnel which brs. N 28° 30' E 138 ft. from S.E.C. 5X7X50 ft. course N 28° E value\$400.00
 Jumbo lode.
 No.1 dis. tunnel which brs. N 7° .35' E 710 ft. from Cor.No.4 5X7X150 ft. course. N 63° W value.....\$1200.00
 Comstock lode.
 No.1 dis. shaft which brs. N 2° .35' E 230 ft. from Cor.No.4 4X6X70 ft. deep timberedvalue ...\$1400.00
 Brooklyn lode.
 No.1 dis. shaft which brs. S 59° .15' W 440 ft. from Cor.No.3 4X6X10 ft. deep ... value\$50.00
 \$450.00 of the work in No.3 tunnel Lion lode is credited to this lode.
 Porphyry lode.
 No.1 dis. shaft which brs. N 10° .W 442 ft. from Cor.No.4 4X6X10 ft...value..... \$50.00
 No.3 shaft which brs. N 5° .E 430 ft. from Cor.No.4. 4X6X10 ft..... value.....\$50.00
 No.3 shaft which brs. N 43° 20' E 475 ft. from Cor.No.1 4X6X10 ft. ..value..... \$50.00
 \$350.00 of the work in shaft No.3 Granite lode is credited to this lode.
 Granite lode.
 No.1 dis. shaft. which brs. N 28° 30' E 10 ft. from S.E.C. 4X6X100 ft. deep value\$1000.00
 No.2 tunnel which brs. S 53° .00' W 664 ft. from Cor.No.3 4X7X20 ft. long course N 25° .00' W value ..\$140.00
 No.3 shaft which brs. S 85° .00' E 84 ft from S.E.C. 4X6X80 ft. value\$960.00

Survey No. 1996

Treasury lode.

No. 1 dis. tunnel which hrs. N $22^{\circ}15'E$ 630 ft. from Cor. No. 4
 5X7X60 ft. ^{course} value \$480.00

No. 2 shaft which hrs. N $19^{\circ}30'E$ 185 ft. from Cor. No. 4
 4X6X10 ft. ..value....\$50.00

Lion lode.

No. 1 dis. shaft which hrs. S $24^{\circ}30'E$ 385 ft. from Cor. No. 2
 4X6X10 ft.value.....\$50.00

No. 2 shaft which hrs. S $27^{\circ}40'E$ 57 ft. from S.E.C. of Granite
 lode of this Sur. 4X6X80 ft.value\$960.00

No. 3 tunnel which hrs. N $4^{\circ}40'E$ 410 ft. from Cor. No. 4
 5X7X100 ft. course. N $76^{\circ}E$. value\$800.00

Malino lode

No. 1 dis. shaft which hrs. S $62^{\circ}10'W$ 492 ft. from Cor. No. 5
 4X6X10 ft.value\$50.00

No. 2 tunnel which hrs. S $62^{\circ}10'W$ 390 ft. from Cor. No. 5.
 5X7X50 ft. course. S $70^{\circ}W$ value.....\$400.00

No. 3 tunnel which hrs. S $75^{\circ}15'W$ 375 ft. from Cor. No. 5
 5X7X30 ft.value\$210.00

Note:

The ledges are all traceable on the surface.
 It is the intention of the owners of working
 the claim as a group.

Other Improvements.

From S.E.C. of Surprise lode N $24^{\circ}30'W$ 108 ft. to S.E. Cor.
 of quartz mill 30X 50 ft. course of long side N $31^{\circ}E$
 value \$25000.00

INSTRUMENT.

This survey was made with a Gurley Light Mountsin Solar
 Transit. The courses were deflected from the true meridian
 as determined by direct solar observations. The distances
 were measured with 100-ft. and 500-ft. steel tapes.

William D. Merritt
 U.S. Deputy Mineral Surveyor.

FINAL OATHS FOR SURVEYS.

LIST OF NAMES.

A list of the names of the individuals employed by William H Merritt
 United States Deputy Mineral Surveyor, to assist in running, measuring, and marking the lines
 corners and boundaries described in the foregoing field notes of the survey of the mining claim
 of Gold and Copper Consolidated Mining & Milling Company
 known as the Surprise, Malina, Lion Treasury, Constock, Brooklyn
Porphyry, Granite and Granite
 and showing the respective capacities in which they acted.

R. A. Merritt, Chairman.
 _____, Chainman.
 _____, Axman.
 _____, Flagman.

FINAL OATHS OF ASSISTANTS.

R. A. Merritt
 and _____, do solemnly swear that we assisted William
H Merritt, United States Deputy Mineral Surveyor, in marking the corners and
 surveying the boundaries of the mining claim of Gold & Copper Consolidated
Mining and Milling Company
 _____, known as the Surprise Malina
Lion, Treasury, Constock Brooklyn, Porphyry Granite Granite, represented
 in the foregoing field notes as having been surveyed by said deputy mineral surveyor and under
 his direction; and that said survey has been in all respects, to the best of our knowledge and
 belief, faithfully and correctly executed, and the corner and boundary monuments established
 according to law and the instructions furnished by the United States Surveyor-General for
Arizona.

R. A. Merritt, Chairman.
 _____, Chainman.
 _____, Axman .
 _____, Flagman.

Subscribed and sworn to by the above-named persons before me

this 19th day of October, 1904

W. H. Merritt
 Notary Public

My Comm. Expires
July 15th 1905

(4-686.)

FINAL OATH OF U. S. DEPUTY MINERAL SURVEYOR

I, William H. Merritt, U. S. Deputy Mineral Surveyor, do solemnly swear that, in pursuance of instructions received from the United States Surveyor General for Arizona, dated Oct 11th 1904, I have, in strict conformity to the laws of the United States, the official regulations and instructions thereunder, and the instructions of said Surveyor General, faithfully and correctly executed the survey of the Mining Claim of Gold and Copper consolidated Mining and Smelting Company, known as the Superior, Machete, Liza, Gregory Constock Brooklyn Porphyry Granitic and Spanish, situate in Yavapai Mining District, Yavapai County, Arizona, in Section 4, Township No. 13 N., Range No. 17 W. (unsurveyed) and designated as Survey No. 1996, as represented in the foregoing field notes, which accurately show the boundaries of said mining claim as distinctly marked by monuments on the ground, and described in the attached copy of the location certificate, which was received by me from the Surveyor General with said instructions, and that all the corners of said survey have been established and perpetuated in strict accordance with the law, official regulations and instructions thereunder; and I do further solemnly swear that the foregoing are the true and original field notes of said survey and my report therein, and that the labor expended and improvements made upon said mining claim by claimant or their grantors are as therein fully stated, and that the character, extent, location and itemized value thereof are specified therein with particularity and full detail, and that no portion of said labor or improvements so credited to this claim has been included in the estimate of expenditures upon any other claim.

William H. Merritt
U. S. Deputy Mineral Surveyor.

Subscribed and sworn to by the said William H. Merritt
U. S. Deputy Mineral Surveyor, before me a Notary Public in and for Yavapai County, Arizona this 19th
day of October 1904.

Ziba O. Brown
Notary Public

My Commission Expires Dec. 1-1905.
o 3-154

Affidavit of Five Hundred Dollars Improvements.

We, W. W. Cook, and Fritz Verthaler

of lawful age, being first duly sworn according to law, depose and say: That we
are acquainted with the Surprise, Malino, Lavin, Treasury Comstock,
Brooklyn Porphyry, Granite ^{quartz} mining claim,

situate in Hassayampa Mining district, Yavapai County,

Arizona Territory, for which Gold & Copper Consolidated Mining
& Milling Company

has made application for survey prior to application for patent under the provisions
of the Act of Congress, approved May 10, 1872; and that the labor done and improve-
ments made thereon by the applicant and their grantor exceed Five Hundred
Dollars in value, for each claim and further that we are not personally interested in said mine.

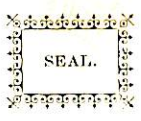
W. W. Cook
Fritz Verthaler

TERRITORY OF ARIZONA, }
County of Yavapai } ss:

Sworn to and subscribed before me, this 19th

day of October, 1904

W. W. Merrill
Notary Public



My Comm. Expires
July 15th 1905

"Brooklyn"

Notice of Location

Know All Men By These Presents: That we the undersigned have this day located Fifteen Hundred (1500) linear feet of this vein or lode, bearing precious metals, with all dips, spurs, angles and variations, with surface ground Three Hundred (300) feet on each side of the center of vein, with all mineral deposits contained therein, and all timber growing within the limits of said claim, and all water and water privileges thereon or appurtenant thereto under and according to the provisions of the United States Mining Laws, under which it is located.

This claim commences at this monument and notice placed upon the ledge, and runs 1200 feet in a Northerly direction and 300 feet in a Southerly direction along the ledge.

The exterior boundaries are as follows, viz:

Commencing at a monument of stone on West boundary line, distant three hundred (300) feet in a Westerly direction from discovery monument; thence in a northerly direction parallel with the ledge 1200 feet to monument of stone at N.W. corner of claim; thence in an easterly direction at right angles across the ledge six hundred (600) feet to monument of stone at N.E. corner of claim; thence in a southerly direction parallel with the ledge fifteen hundred (1500) feet to monument of stone at S.E. corner of claim; thence at right angles across the ledge in a westerly direction six hundred (600) feet to monument of stone at S.W. corner of claim; thence in a northerly direction parallel with the ledge 300 feet to monument on west boundary and place of beginning.

This ledge may be more generally described as situated on the head waters of the Hassayampa River and about 1500 feet northerly from the Jeff Davis ranch, in Hassayampa Mining District Yavapai County, Arizona Territory, and shall be known as the Brooklyn Mining Claim.

Dated on the ground this first day of April 1897.

Chicago Gold Mining Co.

By A. J. Pickrell - Mgr.

Recorded at request of S. P. Hulbert, May 27th A. D. 1897, at 11.25 o'clock A. M., in Book 43 of Mines, page 511, Records of Yavapai County Arizona.

(Seal)

W. I. Johnson

County Recorder.

By E. C. Averyt
Deputy.

"Lion"

Notice of Location.

Know All Men By These Presents: That we the undersigned, have this day located fifteen hundred (1500) linear feet of this vein or lode, bearing precious metals, with all dips, spurs, angles and variations, with surface ground three hundred (300) feet on each side of the center of vein, with all mineral deposits contained therein, and all timber growing within the limits of said claim, with all water and water privileges thereon or appurtenant thereto, under and according to the provisions of the United States Mining Laws, under which it is located.

This claim commences at this monument and notice placed upon the ledge and runs seven hundred and fifty feet in a easterly direction and seven hundred and fifty feet in a westerly direction along the ledge.

The exterior boundaries are as follows, viz:

Commencing at a monument of stone, on north boundary line distant three hundred (300) feet in a northerly direction from discovery monument; thence in a easterly direction parallel with the ledge, seven hundred and fifty feet to monument of stone at N.E. corner of claim; thence in an southerly direction at right angles across the ledge six hundred (600) feet to monument of stone at S.E. corner of claim; thence in a westerly direction parallel with the ledge fifteen hundred (1500) feet to monument of stone at S.W. corner of claim; thence at right angles across the ledge in a northerly direction six hundred (600) feet to monument of stone at N.W. corner of claim; thence in a easterly direction parallel with the ledge seven hundred and fifty feet to monument on west boundary and place of beginning.

This ledge may be more generally described as situated one half mile Northeast of the Davis Ranch and one mile east of the Senator Mill, in Hassayampa Mining District, Yavapai County, Arizona Territory, and shall be known as the Lion Mining Claim.

Dated on the ground this 30th day of July 1894.

J.N. Finley $\frac{1}{3}$ Interest,
W.C. Kent $\frac{1}{4}$ "
F.U. Parsons $\frac{1}{4}$ "

Recorded at request of J.N. Finley, Sept. 23rd A.D. 1894, at 10.30 o'clock A.M., in Book 41 of Mines, pages 206 - 7 - 8, Records of Yavapai County, Arizona.

(L.S.)

Alex O. Brodie
County Recorder.

By M.O. Archibald
Deputy

"Malino"

Notice of Location.

Know All Men By These Presents: That we the undersigned, have this day located Fifteen Hundred (1500) linear feet of this vein or lode, bearing precious metals, with all dips, spurs, angles and variations, with surface ground Three Hundred (300) feet on each side of the center of vein, with all mineral deposits contained therein, and all timber growing within the limits of said claim, and all water and water privileges thereon or appurtenant thereto, under and according to the provisions of the Mining Laws of the United States, under which it is located.

This claim commences at this monument and notice placed upon the ledge, and runs Fifteen Hundred (1500) feet in a Northerly direction along the ledge.

The exterior boundaries are as follows, viz:

Commencing at this monument and notice, and running Three Hundred (300) feet in an easterly direction to monument at S.E. corner of claim; thence in a northerly direction parallel with the ledge Fifteen Hundred (1500) feet to monument at N.E. corner of claim; thence in a westerly direction at right angles across the ledge Six Hundred (600) feet to monument at N.W. corner of claim; thence parallel with the lode in a southerly direction Fifteen Hundred (1500) feet to monument at S.W. corner of claim; thence at right angles across the ledge in an easterly direction Three Hundred (300) feet to monument upon the ledge and place of beginning.

This ledge may be more generally described as situated on the West of the Jeff Davis Ranch, and I mile east of the Senator Mill in Hassayampa Mining District, Yavapai County, Arizona Territory, and shall be known as the Malino Mining Claim.

Dated on the ground, this 2nd day of January 1895.

F.U. Parsons

W.C. Kent.

Recorded at request of W.C. Kent, Jan'y 4" A.D. 1895, at 11.30 o'clock A.M. in Book 37 of Mines, page 395, Records of Yavapai County Arizona.

(L.S.)

F.A. Tritle
County Recorder.

By M.O. Archibald
Deputy.

TERRITORY OF ARIZONA, |
 County of Yavapai | ss.

I, P. J. Farley, County Recorder in and for the County of Yavapai, Territory of Arizona, and custodian of the records thereof do hereby certify that I have compared the within and foregoing with and the same is a full, true and correct copy of the Notice of Location of each of the following described mining claims, as the same appears from the records of my office as follows, to-wit:

"Brooklyn" Mining Claim, notice of location whereof is of record in Book 43 of Mines, page 511, Records of Yavapai County, Arizona;

"Lion" Mining Claim, notice of location whereof is of record in Book 41 of Mines, pages 206-7-8, records aforesaid;

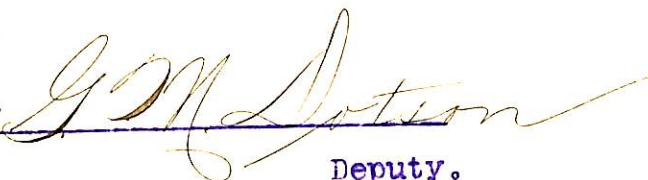
"Malino" Mining Claim, notice of location whereof is of record in Book 37 of Mines, page 295, records aforesaid.

IN WITNESS WHEREOF, I have hereunto set my hand and affixed my official seal this 8th day of October A.D. 1904.



County Recorder.

BY



Deputy.

NOTICE OF LOCATION.

Know all Men by these Presents:

That we the undersigned, have this day Located Fifteen Hundred (1500) linear feet of this vein or lode, bearing precious metals, with all dips, spurs, angles and variations, with surface ground Three Hundred (300) feet on each side of the centre of vein, with all Mineral Deposits contained therein, and all Timber growing within the limits of said claim, and all Water and Water Privileges thereon or appurtenant thereto, under and according to the provisions of the Mining Laws of the United States, under which it is Located.

This claim commences at this Monument and Notice placed upon the ledge, and runs Fifteen Hundred (1500) feet in a Northerly direction along the ledge.

The Exterior boundaries are as follows, viz:—

Commencing at this Monument and Notice, and running Three Hundred (300) feet in an easterly direction to monument at S. E. corner of claim; thence in a northerly direction parallel with the ledge Fifteen Hundred (1500) feet to monument at N. E. corner of claim; thence in a westerly direction at right angles across the ledge Six Hundred (600) feet to monument at N. W. corner of claim; thence parallel with the lode in a southerly direction Fifteen Hundred (1500) feet to monument at S. W. corner of claim; thence at right angles across the ledge in an easterly direction Three Hundred (300) feet to monument upon the ledge and place of beginning.

This ledge may be more generally described as situated

*One Mile East from the Greater
Mine and North of Jeff Davis
Ranch*

in Maricopa Mining District,
Yavapai County,
ARIZONA TERRITORY,

and shall be known as the Surprise
Mining Claim.

DATED ON THE GROUND, this 6th day of

June 1894

W. C. Kent

J. U. Parsons

W. H. Wade

LOCATION NOTICE.

CLAIMANT

W. H. Wade
W. H. Parsons

Superior

Navajumpa Mining District,
Yavapai County,

Dated *June 6th* *1894*

Recorded at ~~the~~ Request of

W. H. Wade

July 7th A. D. *1894*

at *130* ~~minutes past~~ *o'clock*

P. M., in Book *37*

of ~~Mineral~~ *Records*, page *236*

Records of Yavapai County, Arizona.

W. H. Wade
County Recorder.

W. H. Wade

Secretary

8 1-6-1)

FOR CENTER OF CLAIM, NORTHERLY AND SOUTHERLY

NOTICE OF LOCATION.

KNOW ALL MEN BY THESE PRESENTS:

That I, the undersigned, have this day located fifteen hundred (1500) linear feet of this vein or lode, bearing precious metals, with all dips, spurs, angles and variations, with surface ground three hundred (300) feet on each side of the center of vein, with all mineral deposits contained therein, and all timber growing within the limits of said claim, and all water and water privileges thereon or appurtenant thereto, under and according to the provisions of the of the United States Mining Laws, under which it is located.

This claim commences at this Monument and Notice placed upon the ledge, and runs *1350* feet in a Northerly direction and *150* feet in a southerly direction along the ledge, from discovery shaft.

The exterior boundaries are as follows, viz: Commencing at a monument of stone on West boundary line, distant three hundred (300) feet in a westerly direction from discovery monument; thence in a northerly direction parallel with the ledge *1350* feet to monument of stone at N. W. corner of claim; thence in an easterly direction at right angles across the ledge six hundred (600) feet to monument of stone at N.E. corner of claim; thence in a southerly direction parallel with the ledge fifteen hundred (1500) feet to monument of stone at S. E. corner of claim; thence at right angles across the ledge, in a westerly direction six hundred (600) feet to monument of stone at S. W. corner of claim; thence in a northerly direction parallel with the ledge *150* feet to monument on West boundary and place of beginning.

This ledge may be more generally described as situated. *On the head waters of the Hearsayampa river and about 3000 feet north of the Jeff Davis ranch and the South end of this claim joins on to the north side of the Lion Mining Claim near the west end of the Lion Lode*

in *Hearsayampa* Mining District, Yavapai County, Arizona Territory, and shall be known as the *Treasury Lode* Mining claim

Dated on the ground this *3rd* day of *September* 189*6*.

A. J. Pickrell

Treasurer's Book
A. J. Picknell
Hassayampa
Sept 3d. 1896.

RECORDED AT REQUEST OF

A. J. Picknell
Sept 12th A. D. 1896

At 10^o clock A. M.

In Book 49 y Mines

Pages 346

Records of Yavapai County, Arizona.

J. A. Dille
County Recorder.

By J. A. Dille Deputy.

FOR CENTER OF CLAIM, NORTHERLY AND SOUTHERLY

NOTICE OF LOCATION.

KNOW ALL MEN BY THESE PRESENTS:

That *A* the undersigned, have this day located fifteen hundred (1500) linear feet of this vein or lode, bearing precious metals, with all dips, spurs, angles and variations, with surface ground three hundred (300) feet on each side of the center of vein, with all mineral deposits contained therein, and all timber growing within the limits of said claim, and all water and water privileges thereon or appurtenant thereto, under and according to the provisions of the of the United States Mining Laws, under which it is located.

This claim commences at this Monument and Notice placed upon the ledge, and runs *1100* feet in a Northerly direction and *400* feet in a southerly direction along the ledge, from discovery shaft.

The exterior boundaries are as follows, viz: Commencing at a monument of stone on West boundary line, distant three hundred (300) feet in a westerly direction from discovery monument; thence in a northerly direction parallel with the ledge *1100* feet to monument of stone at N. W. corner of claim; thence in an easterly direction at right angles across the ledge six hundred (600) feet to monument of stone at N.E. corner of claim; thence in a southerly direction parallel with the ledge fifteen hundred (1500) feet to monument of stone at S. E. corner of claim; thence at right angles across the ledge, in a westerly direction six hundred (600) feet to monument of stone at S. W. corner of claim; thence in a northerly direction parallel with the ledge *400* feet to monument on West boundary and place of beginning.

This ledge may be more generally described as situated. *on north side of Hassayampa River and Jeff Davis Ranch one mile East of Sengier Mine, and East of and parallel to Jumbo Mine.*

in *Hassayampa* Mining District, Yavapai County, Arizona Territory, and shall be known as the *Cometoek* Mining claim

Dated on the ground this *thirtieth* day of *August* 189*6*

N. C. Kent

↓
To Custock
W. C. Kent.
Hassayampa
Aug. 30th 1896.

Box 40 Prescott
A. J. Pittrell

RECORDED AT REQUEST OF

W. C. Kent
8 ft 5" A. D., 1896
At 11⁴⁰ o'clock A. M.
In Book 43 of Mines
Page 338
Records of Yavapai County, Arizona.

J. A. Fittle
County Recorder.
P. J. A. Fittle Deputy.

8 1-6-1)

FOR CENTER OF CLAIM, NORTHERLY AND SOUTHERLY

NOTICE OF LOCATION.

KNOW ALL MEN BY THESE PRESENTS:

That *S* the undersigned, have this day located fifteen hundred (1500) linear feet of this vein or lode, bearing precious metals, with all dips, spurs, angles and variations, with surface ground three hundred (300) feet on each side of the center of vein, with all mineral deposits contained therein, and all timber growing within the limits of said claim, and all water and water privileges thereon or appurtenant thereto, under and according to the provisions of the of the United States Mining Laws, under which it is located.

This claim commences at this Monument and Notice placed upon the ledge, and runs... *900* ... feet in a Northerly direction and *600* feet in a southerly direction along the ledge, from discovery shaft.

The exterior boundaries are as follows, viz: Commencing at a monument of stone on West boundary line, distant three hundred (300) feet in a westerly direction from discovery monument; thence in a

northerly direction parallel with the ledge *900* feet to monument of stone at N. W. corner of claim; thence in an easterly direction at right angles across the ledge six hundred (600) feet to monument of stone at N.E. corner of claim; thence in a southerly direction parallel with the ledge fifteen hundred (1500) feet to monument of stone at S. E. corner of claim; thence at right angles across the ledge, in a westerly direction six hundred (600) feet to monument of stone at S. W. corner of claim; thence in a northerly direction parallel with the ledge *600* feet to monument on West boundary and place of beginning.

This ledge may be more generally described as situated *North of the River and just North of the Jeff Davis Ranch and one mile East of the Anator Mine and ad-joining the Desperado Mine on the East and running parallel to it.*

in *Havasayampa* Mining District, Yavapai County, Arizona Territory,

and shall be known as the *Jumbo* Mining claim

Dated on the ground this *Fifth* day of *August* 189*6*

W. C. Keet

Juni 6
W. C. Kent

Hasayanfa
August 5th 1896

Box 40
Prescott

RECORDED AT REQUEST OF

A. J. Pickrell
Sept 5th A. D., 1896.
At 11:40 o'clock A. M.
In Book 18 of ~~Maps~~
Page 37
Records of Yavapai County, Arizona.

J. A. Little
County Recorder.

By: J. A. Little Deputy.
26

8 1-6-11

FOR CENTER OF CLAIM, NORTHERLY AND SOUTHERLY

NOTICE OF LOCATION.

KNOW ALL MEN BY THESE PRESENTS:

That I, the undersigned, have this day located fifteen hundred (1500) linear feet of this vein or lode, bearing precious metals, with all dips, spurs, angles and variations, with surface ground three hundred (300) feet on each side of the center of vein, with all mineral deposits contained therein, and all timber growing within the limits of said claim, and all water and water privileges thereon or appurtenant thereto, under and according to the provisions of the of the United States Mining Laws, under which it is located.

This claim commences at this Monument and Notice placed upon the ledge, and runs 1350 feet in a Northerly direction and 150 feet in a southerly direction along the ledge, from discovery shaft.

The exterior boundaries are as follows, viz: Commencing at a monument of stone on West boundary line, distant three hundred (300) feet in a westerly direction from discovery monument; thence in a northerly direction parallel with the ledge 1350 feet to monument of stone at N. W. corner of claim; thence in an easterly direction at right angles across the ledge six hundred (600) feet to monument of stone at N.E. corner of claim; thence in a southerly direction parallel with the ledge fifteen hundred (1500) feet to monument of stone at S. E. corner of claim; thence at right angles across the ledge, in a westerly direction six hundred (600) feet to monument of stone at S. W. corner of claim; thence in a northerly direction parallel with the ledge 150 feet to monument on West boundary and place of beginning.

This ledge may be more generally described as situated on the headwaters of the Huarosapa vein, and about 300 feet from Jeff Davis in a westerly direction, west side of this claim joins the east side of the Treasure Mining Claim, and east side of this claim is bounded by west side of the Porphyry Mining Claim.

in Huarosapa Mining District, Yavapai County, Arizona Territory, and shall be known as the Granite Lode Mining claim

Dated on the ground this 3rd day of September 1896.

A. J. Pickens

15
↓
Granite Road
A. J. Pickrell
Flagstaff
Sept 3d. 1896.

RECORDED AT REQUEST OF

A. J. Pickrell
Sept 12th A. D., 1896.

At 10⁵⁵ o'clock A. M.

In Book 43 of Mines

Pages 347

Records of Yavapai County, Arizona.

J. A. Fille
County Recorder.

By J. A. Fille Deputy.

8 1-6-10

FOR CENTER OF CLAIM, NORTHERLY AND SOUTHERLY

NOTICE OF LOCATION.

KNOW ALL MEN BY THESE PRESENTS:

That *I* the undersigned, have this day located fifteen hundred (1500) linear feet of this vein or lode, bearing precious metals, with all dips, spurs, angles and variations, with surface ground three hundred (300) feet on each side of the center of vein, with all mineral deposits contained therein, and all timber growing within the limits of said claim, and all water and water privileges thereon or appurtenant thereto, under and according to the provisions of the of the United States Mining Laws, under which it is located.

This claim commences at this Monument and Notice placed upon the ledge, and runs *1500* feet in a Northerly direction and *150* feet in a southerly direction along the ledge, from discovery shaft.

The exterior boundaries are as follows, viz: Commencing at a monument of stone on West boundary line, distant three hundred (300) feet in a westerly direction from discovery monument; thence in a northerly direction parallel with the ledge *1350* feet to monument of stone at N. W. corner of claim; thence in an easterly direction at right angles across the ledge six hundred (600) feet to monument of stone at N.E. corner of claim; thence in a southerly direction parallel with the ledge fifteen hundred (1500) feet to monument of stone at S. E. corner of claim; thence at right angles across the ledge, in a westerly direction six hundred (600) feet to monument of stone at S. W. corner of claim; thence in a northerly direction parallel with the ledge *150* feet to monument on West boundary and place of beginning.

This ledge may be more generally described as situated *on the head waters of the Hassayampa river and about 3000 feet north from the J. J. Davis ranch west side of this claim from the east side of the Granite Mining claims*

in *Hassayampa* Mining District, Yavapai County, Arizona Territory, and shall be known as the *Popper* Lode Mining claim

Dated on the ground this *3rd* day of *September* 189*6*.

A. J. Pickrell

10

5-901

Parfling Lode
A. J. Pickrell
~~etal~~
Hassayampa
Sept 3d. 1896

RECORDED AT REQUEST OF

A. J. Pickrell
Sep 12th A. D., 1896.
At 10⁵⁵ o'clock A. M.
In Book 43 of Mines
Pages 348

Records of Yavapai County, Arizona.

J. A. Fittle
County Recorder.
By J. A. Fittle Deputy.

4-687.

SURVEYOR-GENERAL'S CERTIFICATE OF APPROVAL OF FIELD
NOTES AND SURVEY OF MINING CLAIM.

Department of the Interior,

Office of U. S. Surveyor-General,

Phoenix, Arizona.

Nov. 18th, 1904.

I, U. S. Surveyor-General for the District of Arizona

do hereby certify that the foregoing and hereto attached Field Notes and Return of the Survey of the
Mining Claim of Gold & Copper Consolidated Mining and Milling Company

....., known as the
Surprise, Malino, Lion, Treasury, Comstock, Brooklyn, Porphyry,
Granite & Jumbo,

situate in Hassayampa Mining District,

Yavapai County, Arizona

in Section Approx., Township No. 12 N, Range No. 1 W (unsurveyed)

....., designated as Survey No. 1996

executed by William H. Merritt, U. S. Deputy Mineral

Surveyor, October 15th-18th, 1904, under my instructions dated

October 11th, 1904, have been critically examined and the necessary cor-

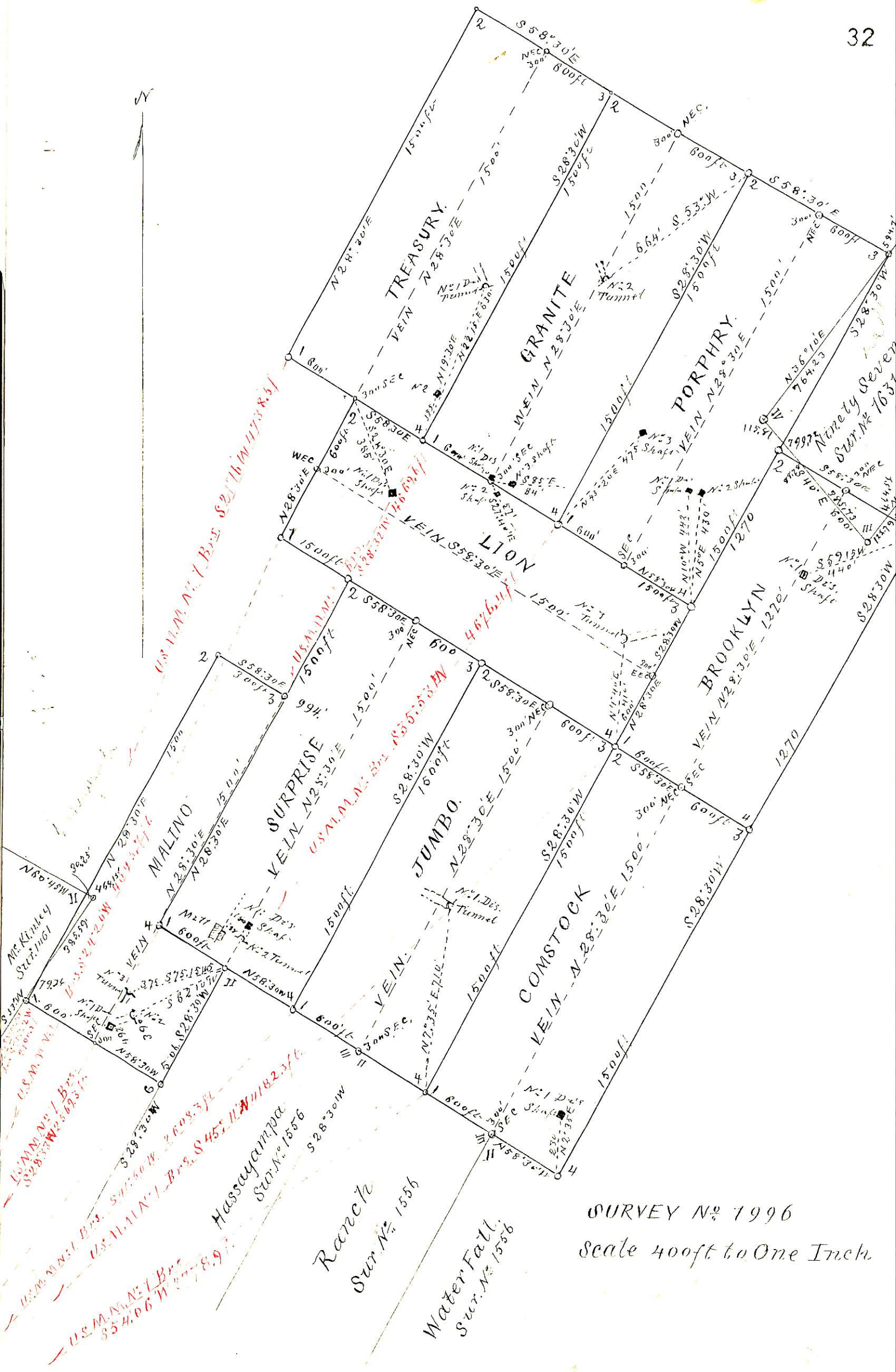
rections and explanations made, and the said Field Notes and Return, and the Survey they describe,

are hereby approved. A true copy of the copy of the location certificate filed by the applicant for

survey is included in the field notes.

Frank S. Lyell

U. S. Surveyor-General for Arizona



SURVEY NO 1996
 scale 400ft to One Inch