

**M  
S  
-**

**0**

**2**

**0**

**3**

**7**



JUL 22 1905

(4-683.)

Mineral Survey No. 2107

Lot No. \_\_\_\_\_

Gila Land District.

FIELD NOTES

OF THE SURVEY OF THE MINING CLAIM OF

Augustine Mining & Reduction Co

KNOWN AS THE

Wondike - Contact & Montezuma  
Patagonia Mining District,

Santa Cruz County, Arizona

Section \_\_\_\_\_, Township 24 S, Range 16 E / unsurveyed

Surveyed under instructions dated Feb. 27<sup>th</sup>, 1905

by Philip Conzen,  
U. S. Deputy Mineral Surveyor.

Claim located (see location notes)

Survey commenced March 9<sup>th</sup>, 1905

Survey completed March 9<sup>th</sup>, 1905

o 6-180

Hereford & Hazard  
Attorneys for Claimants  
Tucson, Ariz.

# **POOR QUALITY**

**The following pages are scanned at the best possible quality setting. The original pages are of poor quality and this is the best possible reproduction.**



## Klondike.

## SURVEY No. 2037.

Beginning at Cor. No. 1

A sandstone 24 X 10 X 10 ins. set 12 ins. in the ground, with mound of stone, chiseled 1 - 2037; whence,

U. S. Mineral Monument No. 1 brs. S. 48° 8' E. 2355.9 ft.

An oak 10 ins. diam., blazed and scribed 1-3-4-2037 B. T. brs. S. 63° 30' W. 19.2 ft. ~~dist.~~

An oak 6 ins. diam., blazed and scribed 1-3-4-2037 B.T. brs. N. 37° 15' W. - 20.1 ft. ~~dist.~~

Location cor., which is a mound of stone 2-1/2 ft. base 2-1/2 ft. high brs. S. 15° 18' E. 89 ft. ~~dist.~~

Thence N. 15° 18' W.

Va. 12° 15' E.

100 West end center monument. Identical with the location, which is a mound of stone 2-1/2 ft. base 2 ft high.

400 To Cor. No. 2

Identical with the location, which is a mound of stone 2-1/2 ft base, 2-1/2 ft. high.

A porphyry stone 24 X 12 X 10 ins. set 12 ins. in the ground with mound of stone , chiseled 2-2037; whence

An oak 8 ins. diam., blazed and scribed 2-2037 B.T. brs. N. 70° 30' E. 36.5 ft. ~~dist.~~

An oak 12 ins. diam., blazed and scribed 2-2037 B. T. brs. S. 36° 30' W., 13.9 ft. ~~dist.~~

Thence N. 74° 25' E.

Va. 12° 15' E.

400 Duquesne Gulch, course S.E.

601.1 Intersect Line. 2 - 3 of the Seven Oaks, Sur. No. 1407, abandoned, at a point N. 11° 11' E. <sup>205.9 ft</sup> of Cor. No. 2.

741 N. S. Line Mon. Identical with the location, which is a mound of stone 2 ft. base, 2 ft high.

1146.3 Intersect line 1-4 of the Seven Oaks, Sur. No. 1407, abandoned, at a point N. 11° 11' E. 436.9 from Cor. No. 2.

1444. To Cor. No. 3.

Identical with the location, which is a mound of stone 1.

## KLONDIKE, SUR. NO. 2037.

2-1/2 ft. base, 2-1/2 ft. high.

A limestone 24 X 10 X 4 ins. set 12 ins. in the ground with mound of stone, chiseled 3-2037; whence

A cross (X) and B.R. 3-2037 chiseled on a limestone, showing 18 X 10 X 3 ins. above the ground, brs. N. 40° 30' E. 7.7 ft. ~~dist.~~

A cross (X) and B. R. 3 - 2037 chiseled on a limestone, showing 4 X 4 X 4 ft. above the ground brs. S. 76° 35' W. 32.4 ft. ~~dist.~~

Cor. No. 1 of the Seven Oaks, Sur. No. 1407 (abandoned) brs. S. 36° 9' W. 629.7 ft. ~~dist.~~

Thence S. 15° 18' E.

Va. 12° 15' E.

250 East end center monument.

Identical with the location, which is a mound of stone 2-1/2 ft. base, 2-1/2 ft. high.

500 To Cor. No. 4,

Identical with the location, which is a mound of stone 2-1/2 ft. base, 2-1/2 ft. high.

A limestone 24 X 10 X 10 ins., set 12 ins. in the ground, chiseled 4-2037 B.T., with a mound of stone; whence

An oak 20 ins. diam., blazed and chiseled 4-2037 B.T. brs. S. 20° E. 68.8 ft.

A juniper 15 ins. diam., blazed and scribed 4-2037 B.T. brs. N. 74° 30' E. 36.6 ft.

Thence S. 75° 50' W.

Va. 12° 15' E.

575 Duquesne Gulch, course S.E.

702. S. S. line monument, which is a mound of stone 2-1/2 ft. base, 2-1/2 ft. high.

975.4 To Cor. No. 5,

A granite stone, 24 X 8 X 8 ins., set 12 ins. in the ground with mound of stone, chiseled 5-2037; whence

An oak 8 ins. diam., blazed and scribe 5-2037 B. T.



brs. S. 32° W. 16.6 ft.

An oak 20 ins. in diam. blazed and scribed 5-5-2037 B.T.

brs. N. 27° E. 2.9 ft.

Thence N. 61° 58' W.

Va. 12° 15' E.

257 To Cor. No. 6,

A quartzite stone 24 X 10 X 8 ins., set 12 ins. in the ground with mound of stone, chiseled 6-2037; whence

An oak 20 ins. diam., blazed and scribe 4-6-2037 B.T.

brs. S. 55° 30' E. 54.6 ft.

An oak 18 ins. diam., blazed and scribed 4-6-2037 B.T.

brs. N. 39° W. 58.2 ft.

Thence S. 54° 40' W.

Va. 12° 15' E.

300 To Cor. No. 1, the place of beginning.

C O N T A C T.

Beginning at Cor. No. 1,

Identical with the location, which is a juniper post in mound of stone.

A granite stone 30 X 14 X 14 ins., set 15 ins. in the ground with mound of stone, chiseled 1-2037; whence

U. S. Mineral Monument No. 1 brs. S. 49° 7' E. 880.4 ft.

A juniper 24 ins. diam., blazed and scribed 1-2037 B.T.

brs. S. 30° 45' E. 14.6 ft.

An oak 8 ins. diam., blazed and scribed 1-2037 B.T.

brs. N. 71° W. 16.7 ft.

Cor. No. 1, Belmont Lode Lot 38 A. brs. N. 54° 40' E.

200 ft. ~~dist.~~

Thence S. 54° 40' W.

Va. 12° 15' E.

200' S. end center monument,

Identical with the location, which is a mound of stone 2-1/2 ft. base, 2-1/2 ft. high.

400' To. Cor. No. 2,

Identical with the location, and Cor. No. 2, Belmont Lode, Lot No. 38 A., which is a mound of stone 3 ft. base 2-1/2 ft. high.

A granite stone 30 X 14 X 14 ins., set 15 ins. in the ground with mound of stone, chiseled 2-2037; whence An oak 12 ins. diam., blazed and scribed 1-2-2037 B.T. brs. S. 19° E. 60.5 ft. ~~dist.~~

An oak 12 ins. diam., blazed and scribed 1-2-2037 B.T. brs. S. 8° E. 62.2 ft. ~~dist.~~

Thence N. 31° 51' W.

Va. 12° 15' E.

- 305 Montezuma Gulch, course S.E.  
740 E. side line monument of Montezuma Lode of this survey.  
1445 To Cor. No. 3,  
Identical with the location and Cor. No. 1 of the Klondike Lode of this survey. I mark stone 3-2037.

Thence N. 54° 40' E.

Va. 12° 15' E.

- 300 To Cor. No. 4,  
Identical with the North end center monument and Cor. No. 6 of the Klondike Lode of this survey. I mark stone 4-2037, Whence, location corner, which is a post in mound of stone, brs. N. 54° 40' E. 184 ft.

Thence S. 61° 58' E.

Va. 12° 15' E.

- 257 To Cor. No. 5.

Identical with Cor. No. 5 of the ~~Klondike Lode of this~~

Klondike lode of this survey, and cor. No. 5 of the Comet, Sur. No. 2032.

Thence S. 15° 13' E.

Var. 12° 15' E.

- 500 To Cor. No. 6, identical with Cor. 1-3 Comet and Mohawk lode, Survey No. 2032.

Thence S. ~~30° 45'~~<sup>40' 35'</sup> E.

- 496 Montezuma Gulch, course S.E.  
746 To Cor. No., the place of beginning.

# **POOR QUALITY**

The following pages are scanned at the best possible quality setting. The original pages are of poor quality and this is the best possible reproduction.



## M O N T E Z U M A

Beginning at Cor. No. 1,

Identical with the location and Co.r No. 2, Contact Lode of this Survey, and Cor. No. 2, Belmont Lode Lot No. 38 A I mark stone 1-2037; whence

U. S. Mineral Monument No. 1 brs. S. 70° 49' E. 1050.2 ft.

Thence S. 54° 40' W.

Va. 12° 15' E.

300 S. end center monument,

Identical with the location, which is a mound of stone 2-1/2 ft. base, 2-1/2 ft. high.

490 Wash, course S.E.

600 To corner No. 2,

Identical with the location, which is a mound of stone 2-1/2 ft. base, 2-1/2 ft. high.

A granite stone 24 X 12 X 12 ins., set 12 ins. in the ground with mound of stone, chiseled 2-2037; whence

An oak 12 ins. diam., blazed and scribed 2-2037 B.T. brs. S. 14° 15' E. 43 ft. dist.

An oak 24 ins. diam., blazed and scribed 2-2037 B.T. brs. N. 67° 45' W. 82.9 ft.

Thence N. 31° 51' W.

Va 12° 15' E.

120 Wash, course S.E.

700 West side line monument,

Identical with the location, which is a mound of stone 2-1/2 ft. base, 2-1/2 ft. high

1350 Wash, course S.E.

1445 To Cor. No. 3,

Identical with the location.

A granite stone 24 X 14 X 10 ins. set 12 ins. in the ground, chiseled 3-2037; whence

An oak 6 ins. diam. blazed and scribed 3-2037 B.T. brs.

S. 64° 15' W. 29.6 ft. dist.

An oak 12 ins. diam., blazed and scribed 3-2037 B.T.  
brs. N. 41° 45' W. 20.1 ft. dist.

Thence N. 54° 40' E.

Va 12° 15' E.

300 To North end center monument,  
Identical with the location, which is a mound of stone  
2-1/2 ft. base, 2-1/2 ft. high.

600 To Cor. No. 4,  
Identical with corner of location, and Cor. No. 1, Klondike Lode, and Cor. No. 3, of Contact Lode, of this survey. I mark stone 4-2037.

Thence S. 31° 51' E.

Va 12° 15' E.

705 E. side line monument  
Identical with the location, which is a mound of stone  
2-1/2 ft. base, 2-1/2 ft. high.

1140 Montezuma Gulch, course S.E.

1445 To Cor. No. 1, the place of beginning.

A R E A

Klondike . . . . .	15.992 Acres.
Contact . . . . .	11.636 "
Montezuma . . . . .	<u>19.866</u> "
Net Area . . . . .	47.494 / "

L O C A T I O N

This claim is located in T. 24 S., R. 16 E. (un-surveyed) in Patagonia Mining District, Santa Cruz, County, Arizona.

A D J O I N I N G C L A I M S

The Klondike Lode is bounded on the North by the Alaska Lode, unsurveyed, on the East by the Lauretta Lode, Survey No. 2032, on the South by the Comet Lode, Survey No. 2032. The Contact lode is bounded on the East



by the Comet and Mohawk Lodes, Survey No. 2032; on the South by the Belmont Lode, Lot No. 38 A. The Montezuma Lode is bounded on the South by the Joe Wheeler lode, unsurveyed.

#### C O U R S E of V E I N.

The presumed course of the vein of the Montezuma Lode is N. 31° 51' W. 1445 ft. from the S. end center monument.

The presumed course of the vein of the Contact Lode is N. 27° 55' W. 1454.51 ft. from the S. end center monument.

The presumed course of the vein of the Klondike Lode is N. 72° 26' E. 1445.12 ft. from the W. end center monument.

#### I M P R O V E M E N T S .

I certify that the value of the labor and improvements upon this claim, placed thereon by the claimants and its grantors is not less than five hundred dollars, and that said improvements consist of:

##### KLONDIKE.

From Cor No. 5 Discovery Cut No. 1, 4 X 6 ft., 15 ft. long, brs. N. 43° 45' E. 400 ft.	Value	\$100.00
From Cor. No. 6, Tunnel No. 2, 4 X 6 ft. 90 ft. long, course South brs S. 76° E. 120 ft.	Value	\$540.00
Tunnel No. 3, 4 X 6 ft. 160 ft. long, course S. 20° E. brs N. 18° E, 200 ft.	Value	\$1000.00
Tunnel No. 4, 4 X 6 ft. 30 ft. long, course S. 10° E. brs. N. 26° E. 245 ft.	Value	\$200.00

##### CONTACT.

From Cor. No. 6, Discovery Cut No. 1, 4 X 6 ft. 10 ft. long, brs. S. 85° W. 75 ft.	Value	\$50.00
Shaft No. 2, 4 X 6 ft. 10 ft. deep, bears S. 85° W. 270 ft.	Value	\$100.00

Shaft No. 3, 4 X 6 ft., 10 ft. deep, brs. N. 76° W.  
 240 ft. Value \$50.00  
 Shaft No. 4, 4 X 6 ft., 10 ft. deep, brs. N. 68° W.  
 410 ft. Value \$100.00  
 Shaft No. 5, 4 X 6 ft., 10 ft. deep, brs. N. 60° W.  
 410 ft. Value \$100.00  
 Shaft No. 6, 4 X 6 ft., 50 ft. deep, brs N. 56° 30' W.  
 365 ft. Value \$400.00

MONTEZUMA.

From S. end center monument,  
 Discovery shaft No. 1, 4 X 6 ft., 10 ft. deep, brs. N.  
 21° W. 225 ft. Value \$100.00  
 Shaft No. 2, 4 X 6 ft., 10 ft. deep, brs. N. 16° W.  
 200 ft. Value \$100.00  
 Tunnel No. 3, 4 X 6 ft., 50 ft. long, course N. 67° W.  
 brs. North 186 ft. Value \$300.00  
 Shaft No. 4, 4 X 6 ft., 10 ft. deep, brs. N. 5° E.  
 200 ft. Value \$100.00  
 Shaft No. 5, 4 X 6 ft., 10 ft. deep, brs. N. 31° W.  
 133 ft. Value \$100.00  
 Shaft No. 6, 4 X 6 ft., 10 ft. deep, brs. N. 8° W.  
 125 ft. Value \$100.00  
 Shaft No. 7, 4 X 6 ft., 10 ft. deep brs. N. 20° 30' W.  
 975 ft. Value \$100.00

I N S T R U M E N T .

This survey was made with a Young & Sons Light  
 Mountain Transit. The courses were determined by direct  
 solar observations, and checked by a polaris observation.  
 The distances were measured with 50 ft. and 100 ft.  
 steel tapes.

P O L A R I S O B S E R V A T I O N .

March 8, 1905 At 8h 16m P.M. l.m.t. I observed polaris  
 at western elongation at Cor. No. 1 of the Klondike Lode.

254



and marked the line by an iron bolt 18ins. long driven in the ground.

March 9, 1905. At 7h 30m A.M. l.m.t. I deflected  $1^{\circ} 26'$  to the East. From the line thus determined I checked lines determined by solar observations, which agreed within one minute.

NOTE: The disagreement between courses in lines of old surveys is due to errors in same.

*Philip Cantzen*  
U. S. Deputy Mineral Surveyor.

# FINAL OATHS FOR SURVEYS.

## LIST OF NAMES.

A list of the names of the individuals employed by Philip Cantzen  
 United States Deputy Mineral Surveyor, to assist in running, measuring, and marking the lines  
 corners and boundaries described in the foregoing field notes of the survey of the mining claim  
 of Duquesne Mining & Reduction Co.  
 known as the Klondike-Contact - Montezuma  
 and showing the respective capacities in which they acted.

- W. S. Kengla ..... , Chairman.
- Henry W. Huggins ..... , Chairman.
- Leon Wood ..... , Axman.
- Leon Wood ..... , Flagman.

## FINAL OATHS OF ASSISTANTS.

We, W. S. Kengla, Henry W. Huggins  
 and Leon Wood ..... , do solemnly swear that we assisted Philip  
Cantzen ..... , United States Deputy Mineral Surveyor, in marking the corners and  
 surveying the boundaries of the mining claim of Duquesne Mining  
and Reduction Co. ..... , known as the Klondike  
Contact - Montezuma ..... , represented  
 in the foregoing field notes as having been surveyed by said deputy mineral surveyor and under  
 his direction; and that said survey has been in all respects, to the best of our knowledge and  
 belief, faithfully and correctly executed, and the corner and boundary monuments established  
 according to law and the instructions furnished by the United States Surveyor-General for  
Arizona .....

- W. S. Kengla ..... , Chairman.
- Henry W. Huggins ..... , Chairman.
- Leon Wood ..... , Axman .
- Leon Wood ..... , Flagman.

Subscribed and sworn to by the above-named persons before me  
 this 18<sup>th</sup> day of March , 1905

H. G. Power  
 Notary Public  
 My commission expires  
 April 27<sup>th</sup> 1908





(4-686.)

## FINAL OATH OF U. S. DEPUTY MINERAL SURVEYOR

I, Philip Coutzen, U. S. Deputy Mineral Surveyor, do solemnly swear that, in pursuance of instructions received from the United States Surveyor General for Arizona, dated February 27, 1905. I have, in strict conformity to the laws of the United States, the official regulations and instructions thereunder, and the instructions of said Surveyor General, faithfully and correctly executed the survey of the Mining Claim of Duquesne Mining and Reduction Co., known as the Contact - Montezuma - Klondike situate in Patagonia Mining District, Santa Cruz County, Arizona, in Section \_\_\_\_\_, Township No. 24<sup>d</sup>, Range No. 16<sup>E</sup> (unsurveyed) and designated as Survey No. 2037, as represented in the foregoing field notes, which accurately show the boundaries of said mining claim as distinctly marked by monuments on the ground, and described in the attached copy of the location certificate, which was received by me from the Surveyor General with said instructions, and that all the corners of said survey have been established and perpetuated in strict accordance with the law, official regulations and instructions thereunder; and I do further solemnly swear that the foregoing are the true and original field notes of said survey and my report therein, and that the labor expended and improvements made upon said mining claim by claimant or its grantors are as therein fully stated, and that the character, extent, location and itemized value thereof are specified therein with particularity and full detail, and that no portion of said labor or improvements so credited to this claim has been included in the estimate of expenditures upon any other claim.

Philip Coutzen  
U. S. Deputy Mineral Surveyor.

Subscribed and sworn to by the said Philip Coutzen  
U. S. Deputy Mineral Surveyor, before me \_\_\_\_\_  
this 18<sup>th</sup>  
day of March, 1905.

H. G. Power  
Notary Public, Pima County, Arizona Territory.  
My Commission Expires April 27th, 1908.



Affidavit of Five Hundred Dollars Improvements.

We, Henry W. Huggins and W. S. Kenzla

of lawful age, being first duly sworn according to law, depose and say: That we are acquainted with the

Alondike - Contact of Montezuma mining claim, situate in Patagonia

mining district, Santa Cruz County, Arizona Territory, for which Duquesne

Mining & Reduction Co.

has made application for survey prior to application for patent under the provisions of the Act of Congress

approved May 10, 1872; and that the labor done and improvements made thereon by the applicant and

its grantor exceed five hundred dollars in value, <sup>for each claim</sup> and further that we are not personally interested

in said mine.

Henry W. Huggins  
W. S. Kenzla

TERRITORY OF ARIZONA,

COUNTY OF Pima } ss:

Sworn to and subscribed before me this 18<sup>th</sup> day

of March, 1905

[SEAL.]

11786b400-2-04

H. G. Power  
Notary Public

My Commission Expires April 27<sup>th</sup> 1908



AMENDED  
NOTICE OF MINING LOCATION.

Lode Claim.

TO ALL WHOM IT MAY CONCERN:-

This mining claim, the name of which is the Klondike mining claim, situate on lands belonging to the United States of America, and in which there are valuable mineral deposits, was entered upon and located for the purpose of exploration and purchase by Dennis Coughlin, a citizen of the United States of America, on the twelfth day of May, 1899.

The length of this claim is fourteen hundred and ninety feet and we claim seven hundred and forty feet in a westerly direction and seven hundred and fifty feet in an easterly direction from the center of the discovery shaft, at which this notice is posted, lengthwise of the claim, together with three hundred feet in width of the surface grounds, on each side of the discovery monument of said claim. The general course of the lode deposit and premises is from the west to the east.

The claim is situated and located in the Patagonia Mining district, in Santa Cruz County, in the Territory of Arizona, about 4000 feet in a southerly direction from what is known as Washington Camp. Joins on to the Contact Mine on the North and on the south joins the Ella No. 2.

The surface boundaries of the claim are marked upon the ground as follows:- Beginning at a post and monument at a point in a westerly direction seven hundred and forty feet from the discovery shaft (at which this notice is posted) being in the center of the west end line of said claim; thence north three hundred feet to a post and monument being the north west corner of said claim; thence east 745 feet to a post and monument, at the center of the north side line of said claim; thence east 745 feet to a post and monument, being at the northeast corner of said claim; thence south 300 feet to a post and monument at

the center of the east end of said claim; thence south 300 feet to a post and monument, being at the southeast corner, of said claim; thence west 745 feet to a post and monument being at the center of the south side line of said claim; thence 745 feet west to a post and monument at the south west corner of said claim; thence north 300 feet to the place of beginning.

All done under the provisions of the Revised Statutes of the United States, and the laws of the Territory of Arizona.

This is an amended location notice of the Klondike mining claim, located by Dennis Coughlin, on the 12th day of May, 1899, and recorded in Book 1 of Mining Locations, at page 151, in the office of the County Recorder of the aforesaid county of Santa Cruz, to which reference is hereby made, and this amended location notice is made and posted to correct errors in the description in the said original location notice, by the undersigned, the owner of said claim.

Dated and posted on the ground this 14 day of July, 1904.

The Copper Century                    2/3 Interest.

Dennis Coughlin,                    1/3 Interest.

Filed and recorded at request of Geo. A. Lonsbery July 15, A. D. 1904 at 10;15 A. M.

Phil Herold, County Recorder.

1-626



A M E N D E D  
N O T I C E O F M I N I N G L O C A T I O N.  
Lode Claim

TO ALL WHOM IT MAY CONCERN:-

This mining claim, the name of which is the Montezuma mining claim, situate on lands belonging to the United States of America, and in which there are valuable mineral deposits, was entered upon and located for the purpose of exploration and purchase by S. F. Borland, & George A. Lonsbery, a citizen of the United States of America, on the first day of May, A. D. 1901.

The length of this claim is fifteen hundred feet, and we claim two hundred and fifty feet in a southerly direction and twelve hundred and fifty feet in a northerly direction from the center of the discovery shaft, at which this notice is posted, lengthwise of the claim, together with three hundred feet in width of the surface grounds on each side of the discovery monument of said claim; The general course of the lode deposit and premises is from the north to the south.

The claim is situated and located in the Patagonia Mining district, in Santa Cruz County, in the Territory of Arizona, about one mile in a westerly direction from Duquesne, Arizona. Joins the Belmont Mine (Patented) on the west.

The surface boundaries of the claim are marked upon the ground as follows:- Beginning at a monument at a point in a southerly direction two hundred and fifty feet from the discovery shaft ( at which this notice is posted), being in the center of the southerly end line of said claim; thence easterly 300 feet to a monument being the southeast corner of said claim; thence northerly 750 feet to a monument at the center of the east side line of said claim; thence northerly 750 feet to a monument being at the north east corner of said claim; thence westerly 300 feet to a monument at the center of the north end of said claim; thence westerly 300 feet to a monument being at the

northwest corner of said claim; thence southerly 750 feet to a monument being at the center of the west side line of said claim; thence southerly 750 to a monument at the southwest corner of said claim; thence easterly 300 feet to the place of beginning.

All done under the provisions of the Revised Statutes of the United States, and the laws of the Territory of Arizona.

This is an amended location notice of the Montezuma Mining Claim, located by S. F. Borland & George A. Lonsbery on the 1st day of May, A. D. 1901, and recorded in Book 2, Mining Locations, at page 195, in the office of the County Recorder of the aforesaid county of Santa Cruz, to which reference is hereby made, and this amended location is made and posted to correct errors in the description in the original location notice, by the undersigned, the owner of said claim.

Dated and posted on the ground this 14 day of July, 1904.

The Copper Century

by Geo. A. Lonsbery

Filed and recorded at request of Geo. A. Lonsbery July 15, A. D. 1904 at 10:15 A. M.

Phil Herold County Recorder.



## NOTICE OF MINING LOCATION.

## Quartz Claim.

TO ALL WHOM IT MAY CONCERN:-

This mining claim, the name of which is the CONTACT mining claim, situate on lands belonging to the United States of America, and in which there are valuable mineral deposits, was entered upon and located for the purpose of exploration and purchase by George A. Lonsbery, a citizen of the United States of America, by the undersigned, on the \_\_\_ day of July, 1904.

The length of this claim is fifteen hundred feet and I claim seven hundred feet in a northerly direction and seven hundred and fifty feet in a southerly direction from the center of the discovery shaft, at which this notice is posted, lengthwise of the claim, together with three hundred feet in width of the surface grounds on each side of the center of said claim. The general course of the lode deposit and premises is from the north to the south.

The claim is situated and located in the Patagonia Mining District, in Santa Cruz County, in the Territory of Arizona, about  $3/4$  of a mile south west of Washington Camp Post Office, was formerly known as the Contact and in a \_\_\_ direction from \_\_\_ before that as the Mazzeppo. It lies close by and north and west from the U. S. Pat. Mine Belmont.

It is all located as abandoned property.

The surface boundaries of the claim are marked upon the ground as follows:- Beginning at a monument of stones at a point in a northerly direction seven hundred & fifty feet from the discovery shaft (at which this notice is posted), being in the center of the north end line of said claim; thence 300 feet to a monument being the northwest corner of said claim; thence 1500 feet to a monument being at the south west corner of said claim; thence 300 feet to a monument being the center of the south end of said claim; thence 300 feet to a monument being at the south east corner of said claim

thence 1500 feet to a monument at the north east corner of said claim;  
thence 300 feet to the place of beginning.

All done under the provisions of Chapter Six of Title  
XXXII of the Revised Statutes of the United States and of an Act of  
the General Assembly of Arizona, entitled "An Act to Codify and  
Revise the Laws of the Territory of Arizona", approved March 16th,  
1901.

Dated and posted on the ground this 14 day of July, 1904.

George A . Lonsbery.

Witness.

E. E. Bethell.

Dennis Coughlin.

Filed and recorded at request of Geo. A. Lonsbery, July  
15, A. D. 1904 at 10:15 A. M.

Phil Herold, County Recorder.



Territory of Arizona,) )  
County of Santa Cruz) ) ss.

I, Phil Herold County Recorder in and for the County and Territory aforesaid, do hereby certify that the foregoing is a full, true and correct copy of location notice of CONTACT mining claim, situated in the Patagonia Mining District, Santa Cruz County, Territory of Arizona, as the same appears of record in my office in Book 4 of Mining Locations at page 625 et seq.

Witness my hand and seal of office this 26th day of January, A. D. 1905.

  
\_\_\_\_\_  
County Recorder.

4-687.

**SURVEYOR-GENERAL'S CERTIFICATE OF APPROVAL OF FIELD  
NOTES AND SURVEY OF MINING CLAIM.**

**Department of the Interior,**

*Office of U. S. Surveyor-General,*

Phoenix, Arizona.....

*Aug 9<sup>th</sup>*, 1905

I, U. S. Surveyor-General for the district of Arizona.

do hereby certify that the foregoing and hereto attached Field Notes and Return of the Survey of the  
Mining Claim of Duquesne Mining and Reduction Co.

....., known as the  
Klonlike, Contact and Montezuma.

situate in Patagonia, Mining District,  
Santa Cruz County, Arizona.

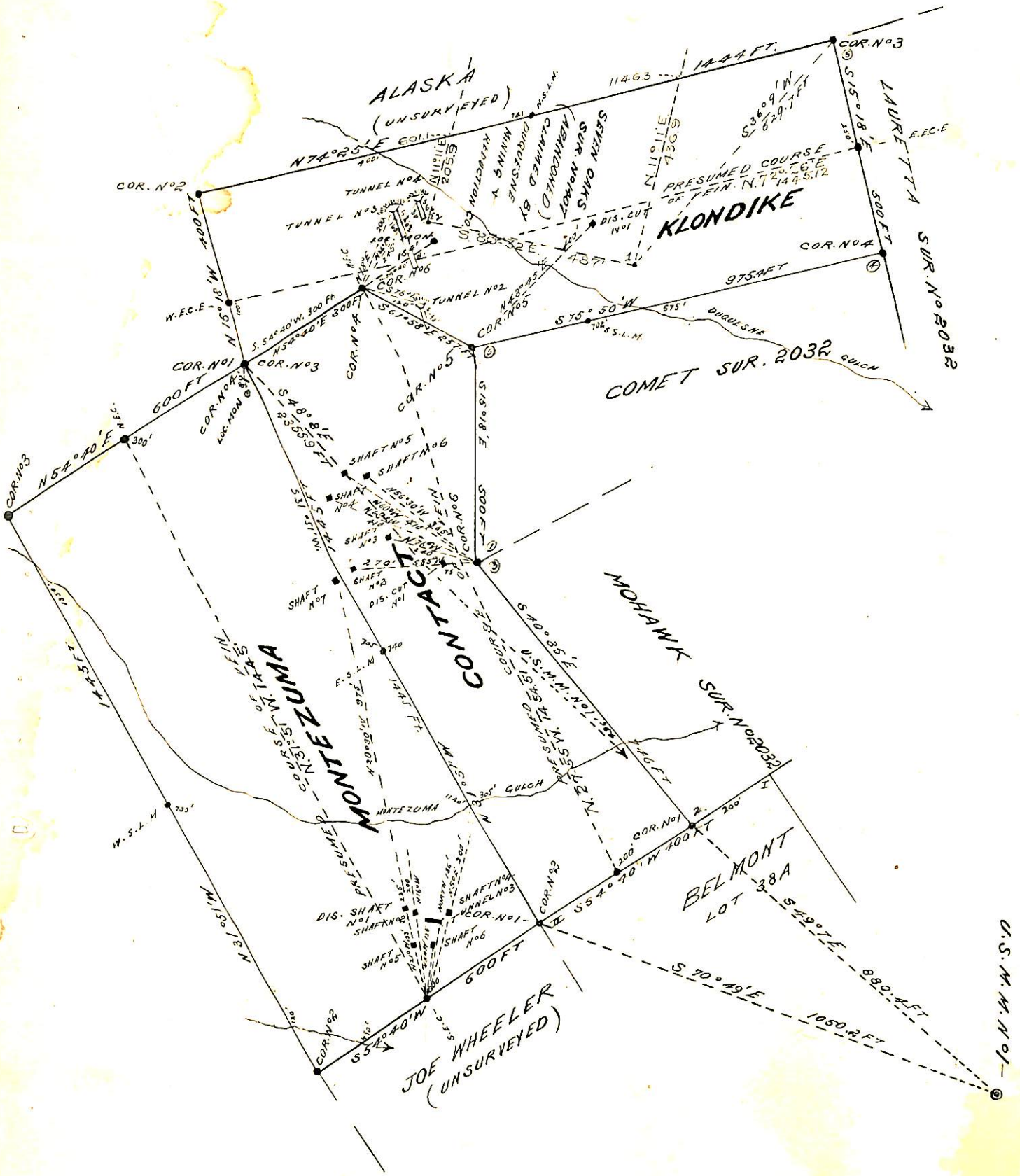
in Section -----, Township No. 24 S., Range No 16 E. unsurveyed.  
-----, designated as Survey No. 2037

executed by Philip Gontzen, U. S. Deputy Mineral  
Surveyor, March 9th 1905., 1905, under my instructions dated  
Feb. 27th 1905., 1905, have been critically examined and the necessary cor-  
rections and explanations made, and the said Field Notes and Return, and the Survey they describe,  
are hereby approved. A true copy of the copy of the location certificate filed by the applicant for  
survey is included in the field notes.

*Frank S. Ingalls*

U. S. Surveyor-General for Arizona.





SURVEY No 2037  
 GILA LAND DISTRICT  
 SURVEYED MAR. 8-10, 1905  
 by  
*Philip Coutzen*  
 U.S. DEP. MINERAL SUR.

U.S.M.M.N. 01-