

MS

0

2

0

9

2

JUL 1 - 1905

*copied by amt
7/13/05*

(4-683.)

Mineral Survey No. 2092

Lot No.

Gila Land District.

FIELD NOTES

OF THE SURVEY OF THE MINING CLAIM OF

La Fortuna Mining Company

KNOWN AS THE

*Oregon Alta New Year La Fortuna,
Chapulina 4th; Half Mountain ~~Arizona~~
La Fortuna* Mining District,

Yuma County, *Arizona*

Section ~~Unsurveyed~~ Township *10 S*, Range *20 W*, *unsurveyed*

Surveyed under instructions dated *June 5th*, 1905,

by *William H. Elliott*,

U. S. Deputy Mineral Surveyor.

Claim located *See notices Aug 21 1904*
~~Dec 11 1904~~, 1

Survey commenced *June 13th*, 1905

Survey completed *June 20th*, 1905

o 6-100

address

*Trust
Robert
river
area*

P. T. Robertson - Atty.

Yuma - Ariz

SURVEY 2092.

Alta Lode.

- Feet. Beginning at cor. No. 1, identical with Cor. No. 1, of location, a schist stone 18X8X6 inches set 12 inches in ground, with mound of stone 3ft. base, 3ft. high alongside, chiseled 2092 A.1. from which U.S.L.M.No. 2092 bears S.43°18'W. 1029.82ft. Cor. No. 2, New Years lode, this survey, bears S.70°21' W. 899.5 ft. No other bearings available.
- Thence N.16°59' W.
- 250.7 to west end of lode line, a schist stone 20X6X4 inches set 14 inches in ground, with mound of stone 3ft. base and 3ft. high, alongside, chiseled 2092 W.E.C. 2092 A.
- 350.0 Road from Blaisdell to mine bears S.30°E. & N.35°W.
- 535.7 to Cor. No. 2, from which Cor. No. 2, of location bears N.16° 59'W. 65 ft., a schist stone 20X10X9 inches set 12 inches in ground with mound of stone 3ft. high 3ft. base, alongside, chiseled 2092 A. 2. No bearings available.
- Thence N.72° 15' E.
- 1369.06 to Cor. No. 3, a schist stone 18X10X6 inches set 12 inches in ground with mound of stone 3ft. base and 3ft. high alongside, chiseled 2092 A.3. from which Cor.No. 4, of location bears N.16° 59' W. 65. ft. No bearings available.
- Thence S.16°59' E.
- 227.8 to top of ridge east and west, and east end centre of lode, a schist stone 18X6X6 set 12 inches in ground with mound of stone 3ft. base and 3ft. high, alongside, chiseled 2092 E.E.C. A.
- 527.3 to Cor. No. 4. identical with Cor. No.5 of location, a schist stone 18X6X5 inches set 12 inches in ground with mound of stone 4 ft. base and 4 ft. high, alongside, chiseled 2092 A. 4. No bearings available.
- Thence S.72°48' W.
- 863.53 to Cor. No. 5. a schist stone 20X8X8 inches set 12 inches in ground, with mound of stone 3 ft. base, 3 ft. high, alongside, chiseled 2092 A. 5. No bearings available.
- Thence S.70° 21' W.
- 400.0 Road from Blaisdell to mine bears S.30° E. and N30° W.
- 506.0 to Cor. No. 1 the place of beginning.

Variation at all corners 14° 10' East.

New Years Lode.

- Beginning at Cor. No. 1, identical with Cor.No.2, of location, a pine post 4 ft. long and 4 inches square set 2 ft. in ground, with mound of stone, scribed 2092 N.Y.No. 1, from which U.S.L.M.No.2092 bears N.67°51'W. 168.72 feet. No other bearings available.
- Thence N.30°07'W.
- 298.16 to west end centre of lode, a pine post 4 ft. long and 4 inches square, set 2ft. in ground, with mound of stone, scribed 2092 W.E.C.N.Y.
- 591.26 to Cor. No.2, identical with Cor.No.3. of location, a pine post 4 ft. long 4 inches square, set 2 ft. in ground with mound of stone, scribed 2092 N.Y.No. 2 No bearings available.
- Thence N70°21'E.
- 899.50 to Cor. No. 1. Alta Lode this survey.
- 1005.50 Road from Blaisdell to mine bears S.30° E. and N.30° W.
- 1405.50 to Cor.No.3. identical with Cor.No.4. of location and Cor.No.5. Alta Lode, this survey, a schist stone 20X8X8 inches set 12 inches in ground with mound of stone 3ft. base, 3ft. high alongside, chiseled 2092 N.Y.3

Feet. New Years Lode. contind.

A.5 No bearings available.

Thence S.30°07'E.

305.0 to east end centre of lode, a pine post, 4 ft. long
4 inches square, set 2 ft. in ground, with mound of stone
scribed 2092 E.E.C.N.Y.

603.0 to Cor. No. 4. identical with Cor.No.1 of location,
a pine post 4 ft. long, 4 inches square, set 2 ft. in
ground with mound of stone, scribed 2092 N.Y.No.4.
No bearings available.

Thence S.70°49' W.

1407.7 to Cor. No.1. the place of beginning.

Variation at all corners 14°10' East.

Christmas Gift Lode.

Beginning at Cor. No. 1. identical with Cor. No.2, of
location, and Cor. No. 3. New Years Lode and Cor. No.5
Alta Lode, this survey, a schist stone 20X8X8 inches
set 12 inches in ground, with mound of stone 3 ft. base
and 3 ft. high, alongside, chiseled 2092 C.G. 1 N.Y.3
A.5 from which U.S.L.M.No.2092 bears S.52°08'W.1498.15ft.
No other bearings available.

Thence N72°48'E.

863.53 to Cor.No.4, Alta Lode, this survey.

1471.5 to Cor. No.2, identical with Cor.No.3, of location,
a schist stone 18X8X5 inches set 12 inches in ground
with mound of stone 3ft. base and 3ft. high alongside,
chiseled 2092 C.G.2. No bearings available.

Thence S.30°07' E.

306.78 to east end centre of lode, a schist stone, 16X12X5 ins.
set 10 inches in ground, with mound of stone 3ft. base
3ft. high, alongside, chiseled 2092 E.E.C.C.G.

610.28 to Cor.No.3. identical with Cor.No.4. of location, a
pine post 4ft. ~~long~~, 4 inches square, set 2ft. in ground,
with mound of stone scribed 2092 C.G. No.3
No bearings available.

Thence S.73°05' W.

1473.08 to Cor.No.4, identical with Cor.No.1 of location and
No.4. of New Years Lode, this survey, a pine post 4ft.
long, 4 inches square, set 2ft. in ground, with mound of
stone scribed 2092 C.G.No.4, N.Y.No.4.
No bearings available.

Thence N.30°07'W.

298.0 to west end centre of lode, identical with east end
centre of New Years Lode, this survey, a pine post 4ft.
long, 4 inches square, set 2ft. in ground with mound of
stone, scribed 2092 W.E.C.C.G.E.E.C.N.Y.

603.0 to Cor.No.1 the place of beginning.

Variation at all corners 14°10' East.

SURVEY 2092. Half Moon Lode.

Feet.	Beginning at Cor.No.I.identical with the N. W. Cor.of location and with Cor.No.I.New Years Lode,this survey, a pine post 4ft.long,4inches square,set 2ft.in ground, with mound of stone,scribed 2092H.M.No.I H.Y.No.I from which U.S.L.M.No.2092.bears N.67°31'W.168.72ft. No other bearings available.
I407.7	Thence N.70°49'E. to Cor.No.2.identical with the Cor.of location and with Cor.No.4.New Years Lode and Cor.No.4.Christmas Gift Lode,this survey,a pine post 4ft.long 4inches square,set2ft.in ground with mound of stone,scribed 2092 H.M.No.2 H.Y.No.4 C.G.No.4.No other bearings available.
297.75	Thence S.30°07'E. to east end centre of lode,a pine post 4ft.long 4 inches square set 2ft.in ground,with mound of stone scribed 2092 E.E.C.H.M.
595.5	to Cor.No.3.identical with S.W.Cor.of location,a pine post 4ft.long,4inches square,set 2ft.in ground with mound of stone,scribed 2092.H.M.No.3 No bearings available.
I407.4	Thence S.70°46'W. to Cor.No.4.From which the S.W.Cor.of location bears S.70°46'W. 8.5ft. a granite stone 20X16X8inches,set 12inches in ground,with mound of stone 3ft.base and 3ft.high,chiseled 2092.H.M.4. No bearings available.
304.5	Thence N.30°07'W. to west end centre of lode,a pine post,4ft.long 4ins. square set 2ft.in ground,with mound of stone scribed 2092 W.E.C.H.M.
596.8	to Cor.No.I.the place of beginning.

Variation at all corners 14° 10' East.

La Fortuna Lode.

	Beginning at Cor.No.I identical with Cor.No.3,Half Moon Lode,Cor.No.4,New Years Lode and Cor.No.4Christmas Gift Lode,a pine post 4ft.long 4ins.square set 2ft.in ground with mound of stone,scribed 2092.F.No.I H.M.No.2 H.Y.No.4 C.G.No.4,from which U.S.L.M.2092,bears S.75°W. 1537.82ft No other bearings available.
I473.08	Thence N.73°05'E. to Cor.No.2,identical with Cor.No.3.Christmas Gift Lode this survey,a pine post 4ft.long 4ins.square set 2ft.in ground with mound of stone scribed 2092.F.No.2 C.G.No.3. No bearings available.
307.3	Thence S.30°07'E. to east end centre of lode,a schist stone 24X16X6ins. set 14ins.in ground with mound of stone 3ft.base and 3ft.high alongside,chiseled 2092.E.E.C.F.
607.0	to Cor.No.3.a pine post 4ft.long 4ins.square,set 2ft. in ground with mound of stone,scribed 2092.F.No.3. No bearings available.
I475.75	Thence S.73°31'W. to Cor.No.4.identical with Cor.No.3,Half Moon Lode, this survey,a pine post,4ft.long 4ins.square set 2ft.in ground with mound of stone,scribed 2092.F.No.4. H.M.No.3. No bearings available.
297.75	Thence N.30°07'W. to west end centre of lode,identical with east end

La Fortuna, continued.

595.5 centre of Half Moon Lode, this survey, a pine post, 4ft. long 4ins. square, set 2ft. in ground with mound of stone, scribed 2092.W.E.C.F. and E.E.C.H.M. to Cor.No.1. the place of beginning.

All corners identical with corners of location.
Variation at all corners $14^{\circ}10'$ East.

Arizona Lode.

Beginning at Cor.No.1, identical with Cor.No.4, of Half Moon Lode, this survey, a granite stone 20X18X8 inches set 12ins. in ground with mound of stone 3ft. base and 3ft. high, alongside, chiseled 2092.A.I.H.M. 4. A Cor. of location bears $S.70^{\circ}46'W.$ 8.3ft. U.S.L.M. No.2092. bears $N.38^{\circ}06'W.$ 738.0ft.

No other bearings available.

1407.4 Thence $N.70^{\circ}46'E.$ to Cor.No.2, identical with a corner of location and identical with Cor.No.3. Half Moon and Cor.No.4. La Fortuna lodes, this survey, a pine post 4ft. long 4ins. square set 2ft. in ground with mound of stone, scribed 2092A.No.2 H.M.No.3.F.No.4

297.75 Thence $S.30^{\circ}07'E.$ to east end centre of lode a pine post 4ft. long 4inches square, set 2ft. in ground, with mound of stone scribed E.E.C.A.

595.5 to Cor.No.3, identical with Cor. of location, a pine post 4ft. long 4ins. square set 2ft. in ground with mound of stone, scribed 2092.A.No.3
No bearings available.

1419.4 Thence $S.73^{\circ}03'W.$ to cor.No.4. identical with a Cor. of location, a pine post 4ft. long 4ins. square, set 2ft. in ground with mound of stone, scribed 2092.A.4. No bearings available.

300.0 Thence $N.30^{\circ}07'W.$ to west end centre of lode, a pine post 4ft. long 4ins. square, set 2ft. in ground with mound of stone, scribed 2092.W.E.C.A.

538.0 to Cor.No.1, the place of beginning.
Variation at all corners $14^{\circ}10'$ East.

Oregon Lode.

Beginning at Cor.No.1, identical with a Cor. of location and with Cors.No.2. of Arizona Lode, No.3. of Half Moon and No.4, La Fortuna Lodes, this survey, U.S.L.M.No.2092 bears $N.86^{\circ}15'W.$ 1788.05ft.

No other bearings available.

1475.75 Thence $N.73^{\circ}31'E.$ to Cor.No.2, identical with a corner of location and with Cor.No.3, La Fortuna Lode, this survey, a pine post 4ft. long 4ins. square set 2ft. in ground with mound of stone, scribed 2092.O.No.1 F.No.3.

No bearings available.

300.2 Thence $S.30^{\circ}07'E.$ to east end centre of lode, a schist stone 20X12X5ins. set 12ins. in ground with mound of stone 3ft. base and 3ft. high alongside, chiseled 2092.E.E.C.O.

596.4 to Cor.No.3, from which a Cor. of location, bears $N.73^{\circ}35'E$ 13.4ft. a schist stone 20X8X8inches set 12ins. in

SURVEY 2092. Oregon Lode.contd.

Feet. ground with mound of stone 3ft base and 3ft. high
alongside, chiseled 2092. 0.5. No bearings available.

Thence S.73°33'W.

1476.00 to Cor.No.4, identical with the corner of location and
Cor.No.3, Arizona Lode, this survey, a pine post 4ft. /
long, 4ins. square, set 2ft. in ground with mound of stone
scribed 2092 ONo.4 A.No.3. No bearings available.

Thence N.30°07'W.

297.75 to west end centre of lode, identical with east end
centre of Arizona Lode, this survey, a pine post 4ft. long
4ins. square, set 2ft. in ground with mound of stone,
scribed 2092 W.E.C.O. E.F.C.A.

595.50 to Cor. No.1. the place of beginning.
Variation at all corners 14°10' East.

ADJOINING CLAIMS.

The King of Kings lode joins the Arizona on the south
and Gold of Ophir lode and King of Kings lode joins
the Oregon on the south these claims were located
by Henry Blume and are unsurveyed.

The Aleman joins the La Fortuna on the east and the
Gringo joins the Oregon on the east. These claims
were located by Fred Martin et. al. and are unsurveyed.

Lode locations claimed by Wm. Graham joins the Arizona
and Half Moon on the west. Name unknown and are
unsurveyed. No other known claims adjoining.

AREAS.

SURVEY 2092.

Acres.

Total and net area Alta Lode - - - - -	I6.489 ✓
Total and net area New Years Lode - - - - -	I8.947 ✓
Total and net area Christmas Gift Lode - - -	I9.974 ✓
Total and net area Half Moon Lode - - - - -	I8.915 ✓
Total and net area La Fortuna Lode - - - - -	I9.796 ✓
Total and net area Arizona Lode - - - - -	I7.982 ✓
Total and net area Oregon Lode - - - - -	<u>I9.621</u> ✓
Total and net area of claim - - - - -	<u>I31.734</u> ✓

LODE LINES.

Alta Lode. The presumed course of lode line is N.65°19'E 396.6ft. and S.72°40'W. 978.ft. from discovery tunnel.

New Years Lode. The presumed course of lode line is S.70°52'W. 110.ft. and N.70°52'E. 1297.9ft. from discovery shaft.

Christmas Gift Lode. The presumed course of lode line is S.72°52'W. 481ft. and N.72°52'E. 989.9ft. from discovery shaft.

Half Moon Lode. The presumed course of lode line is N.70°10'E. 395.0ft. and S.71°31'W. 1022.4 ft. from discovery shaft.

La Fortuna Lode. The presumed course of lode line is S.73°27'W. 460 ft. and N.73°27'E. 1015.3 ft. from discovery cut.

Arizona Lode. The presumed course of lode line is N.73°08'E. 550. ft. and S.73°08'W. 869.9 ft. from discovery cut.

Oregon Lode. The presumed course of lode line is S.73°37'W. 235. ft. and N.73°37'E. 1241.5 ft. from discovery cut.

LOCATION.

This claim is located on unsurveyed public lands in Yuma County, Arizona. Approximately in the southeastern part of Tp. 10 S. R. 20 W. G.&S.R.B.&M. in La Fortuna mining district.

8

I hereby certify that the value of the labor and improvements upon the claims embraced in this survey, placed thereon by claimant or its grantors, is not less than \$500 for each location embraced in survey, and that said improvements consist of:

Old Mine Lode. Discovery shaft No. 1 6 ft. by 4 ft. by 12 ft. deep, partly excavation out of solid rock and partly stone, laid in cement, the S.W. Cor. of which bears from East End Centre N. 83° 30' W. 395.0 ft.

Value - - - \$1500.0

Total value of improvements - - - - - \$2100.0

New Years Lode. Discovery shaft No. 1 6 ft. by 4 ft. by 12 ft. deep, in rock, which bears from West End Centre N. 70° 52' E. 110.0 ft.

Value - - - \$100.0

A shaft No. 2 6 ft. by 6 ft. by 10 ft. deep, in rock, which bears from West End Centre N. 24° E. 40 ft.

Value - - - \$100.0

A shaft No. 3 6 ft. by 4 ft. by 10 ft. deep, in rock which which bears from West End Centre N 34° E. 280. ft.

Value - - - \$100.0

A tunnel No. 4. 4 ft. wide and 6 ft. high, the mouth of which bears from Cor. No. 4 N. 83° W. 490.0 ft. Course of tunnel N. 64° W. 50. ft. in rock.

Value - - - \$400.0

Total value of improvements - - - - - \$700.0

Christmas Gift Lode. Discovery shaft No. 1 6 ft. by 4 ft. by 10 ft. deep, in rock, which bears from West End Centre N. 72° 52' E. 481 ft.

Value - - - \$100.0

A tunnel No. 2. 4 ft. wide and 6 $\frac{1}{2}$ ft. high, the mouth of which bears from West End Centre N. 64° 10' E. 584. ft. Course of tunnel N. 75° E. 80. ft. thence N. 62° E. 130. ft. At 55 ft. on course of N. 62° E. is a shaft 8 ft. by 6 ft. by 100 ft. deep, on incline of 45° and course S 22° E.

Value of tunnel and shaft - \$3500.0

Total value of improvements - - - - - \$3600.0

Half Moon Lode. Discovery shaft No. 1. 4 ft. by 6 ft. by 30 ft. deep in rock, and earth, which bears from East End Centre S. 70° 10' W. 395 ft.

Value - - - 300.00

A shaft No. 2. 6 ft. by 4 ft. by 110 ft. deep, in rock which bears from Cor. No. 4 N. 25° 30' E. 254 ft.

Value - - - 1100.00

A shaft No. 3. 6 ft. by 4 ft. by 40 ft. deep, in rock, which bears from Cor. No. 4 N. 1° 40' W. 290. ft. with drift 4 ft. wide by 6 ft. high at 40 ft. the course of which is S. 62° 45' E. 130. ft. and connects with shaft No. 2

Value of shaft and drift 1500.00

Total value of improvements - - - - - \$2900.00

La Fortuna Lode. Discovery cut No. 1 50 ft. long, 20 ft. wide and 10 ft. deep, in rock, course N. 73° 30' E. which bears from West End Centre N. 73° 27' E. 460. ft.

Value - - \$1000.00

An incline shaft No. 2 that bears from Cor. No. 1 S. 53° 45' E. 497. ft. 12 ft. by 6 ft. and is 350 ft deep, in rock. Incline 60° Course N 34° 35' E. at the bottom of which are drifts 4 ft. wide and 6 $\frac{1}{2}$ ft. high, one of which bears S. 13° E. 85 ft. thence S. 35° 30' E. 75 ft. thence S. 86° 45' E. 162. ft. thence N 88° E. 600. ft.

AREAS.

SURVEY 2092.

	Acres.
Total and net area Alta Lode - - - - -	16.489 ✓
Total and net area New Years Lode - - - - -	18.947 ✓
Total and net area Christmas Gift Lode - - - - -	19.974 ✓
Total and net area Half Moon Lode - - - - -	18.915 ✓
Total and net area La Fortuna Lode - - - - -	19.796 ✓
Total and net area Arizona Lode - - - - -	17.982 ✓
Total and net area Oregon Lode - - - - -	19.621 ✓
Total and net area of claim - - - - -	131.724 ✓

LODE LINES.

Alta Lode. The presumed course of lode line is N.63°19'E 396.6ft. and S.72°40'W. 978.ft. from discovery tunnel.

New Years Lode. The presumed course of lode line is S.70°52'W. 110.ft. and N.70°52'E. 1297.9ft. from discovery shaft.

Christmas Gift Lode. The presumed course of lode line is S.72°52'W. 481ft. and N.72°52'E. 989.9ft. from discovery shaft.

Half Moon Lode. The presumed course of lode line is N.70°10'E. 395.0ft. and S.71°31'W. 1022.4 ft. from discovery shaft.

La Fortuna Lode. The presumed course of lode line is S.73°27'W. 460 ft. and N.73°27'E. 1015.3 ft. from discovery cut.

Arizona Lode. The presumed course of lode line is N.73°08'E. 550. ft. and S.73°08'W. 869.9 ft. from discovery cut.

Oregon Lode. The presumed course of lode line is S.73°37'W. 235. ft. and N.73°37'E. 1241.5 ft. from discovery cut.

LOCATION.

This claim is located on unsurveyed public lands in Yuma County, Arizona. Approximately in the southeastern part of Tp. 10 S. R. 20 W. G.&S.R.B.&M. in La Fortuna mining district.

EXPENDITURES.

Alta Lode. Discovery tunnel No. I 4ft wide and 6 $\frac{1}{2}$ ft. high the mouth of which bears from East End Centre S.63°19'W. 396.6ft. Course of tunnel N.73°E. 23. ft. thence N.48°E. 23.ft. with 19.ft. of approach.

Value of tunnel and approach - - - \$ 500.0

A shaft No.2 6ft. by 4ft. by 10ft. deep, in rock which bears from East End Centre S.64°45'W. 380.ft.

Value - - - \$ 100.0

A Reservoir No.3 50.ft N. and S. by 25ft. E. and W. and 15ft. deep, partly excavated out of solid rock and partly stone, laid in cement, the S.W. Cor. of which bears from East End Centre N.83°30'W. 395.0ft.

Value - - - \$1500.0

Total value of improvements - - - - - \$2100.0

New Years Lode. Discovery shaft No. I 6ft by 4ft. by 12ft. deep, in rock, which bears from West End Centre N.70°52'E. 110.0ft

Value - - - \$100.0

A shaft No.2 6ft. by 6ft. by 10ft. deep, in rock, which bears from West End Centre N.24°E. 40 ft.

Value - - - \$100.0

A shaft No.3 6 ft. by 4 ft. by 10 ft. deep, in rock which bears from West End Centre N34°E. 280. ft.

Value - - - \$100.0

A tunnel No.4. 4 ft. wide and 6 ft. high, the mouth of which bears from Cor. No. 4 N.83°W. 490.0 ft. Course of tunnel N.64°W. 50. ft. in rock.

Value - - - \$400.0

Total value of improvements - - - - - \$700.0

Christmas Gift Lode. Discovery shaft No. I 6 ft. by 4 ft by 10 ft. deep, in rock, which bears from West End Centre N.72°52'E. 481 ft.

Value - - - \$100.0

A tunnel No. 2. 4 ft. wide and 6 $\frac{1}{2}$ ft. high, the mouth of which bears from West End Centre N.64°10'E. 584. ft. Course of tunnel N.75°E. 80. ft. thence N.62°E. 130.ft. At 55 ft. on course of N.62°E. is a shaft 8 ft. by 6 ft. by 100 ft. deep, on incline of 45° and course S22°E.

Value of tunnel and shaft - \$3500.0

Total value of improvements - - - - - \$3600.0

Half Moon Lode. Discovery shaft No. I. 4 ft. by 6 ft. by 30 ft. deep in rock, and earth, which bears from East End Centre S.70°10'W. 395 ft.

Value - - - 300.00

A shaft No.2. 6 ft. by 4 ft. by 110ft. deep, in rock which bears from Cor. No. 4 N.25°30'E. 254 ft.

Value - - - 1100.00

A shaft No. 3. 6 ft. by 4 ft. by 40ft. deep, in rock, which bears from Cor. No. 4 N.1°40'W. 290. ft. with drift 4 ft. wide by 6 ft. high at 40 ft. the course of which is S.62°45'E. 130. ft. and connects with shaft No. 2

Value of shaft and drift 1500.00

Total value of improvements - - - - - \$2900.00

La Fortuna Lode. Discovery cut No. I 50 ft. long, 20 ft. wide and 10 ft. deep, in rock, course N.73°30'E. which bears from West End Centre N.73°27'E. 460. ft.

Value - - \$1000.00

An incline shaft No. 2 that bears from Cor. No. I S.55°45'E. 497. ft. 12 ft. by 6 ft. and is 350 ft deep, in rock. Incline 60° Course N34°35'E. at the bottom of which are drifts 4 ft. wide and 6 $\frac{1}{2}$ ft. high, one of which bears S.13°E. 85 ft. thence S.35°30'E. 75 ft. thence S.86°45'E. 162. ft. thence N88°E. 600. ft.

EXPENDITURES.

La Fortuna continued-

Total length of drift 922. ft. Also a drift
 from bottom of shaft that runs N. 5° 15' W. 240 ft.
 Value of shaft - - - - - \$5250.00
 Value of drifts - - - - - \$11620.00
 An incline shaft No. 3. that bears from Cor. No.
 I S. 77° 40' E. 700. ft. and is 12 ft. by 6 ft.
 by 1000. ft deep, in rock; incline 58°. Course
 S. 54° 30' E. Value - - - - - \$20000.00
 Total value of improvements - - - - - \$37870.00

Arizona Lode. Discovery cut No I which bears
 from East End Centre S. 73° 08' W. 550 ft and is
 4 ft. wide and 12 ft. long and 10 ft. face and
 bears N. 70° 46' E. Value - - - - - 100.00
 No 2 A tunnel the approach to which bears from West
 End Centre N. 8° 25' E. 129. ft. 51 ft. of approach
 and 31 ft. of tunnel. Course N. 5° W.
 Value - - - - - 300.00
 An incline shaft No. 3~~2~~ which bears from West
 End Centre N. 36° 40' E. 180. ft. and is 4 ft. by 6 ft.
 by 20 ft. in rock on incline of 60° thence on
 incline of 20° for 40 ft. Course of incline S.
 Value - - - - - 600.00
 Total value of improvements - - - - - \$ 1000.00

Oregon Lode. Discovery cut No. I ~~6 ft. by 4 ft.~~
~~by 20 ft. deep, in rock~~ which bears from West
 End Centre N. 73° 30' E. 235. ft. and is 4 ft. wide 14
 ft. long and 11 ft. face. Course of cut S. 73° 30' W.
 Value - - - - - 100.00
 No 2 A tunnel the mouth of which bears from West End
 Centre N. 65° 30' E. 520. ft. ^{48 ft. in rock} runs S. 28° W.
 23 ft. N. 62° W. 9 ft. and S. 28° W. 18 ft.
 Value - - - - - 500.00
 Total value of improvements - - - - - \$ 600.00

INSTRUMENT.

This survey was made with a Stackpole and Bros. Transit
 No. 1269. The course was deflected from the true
 meridian as determined by direct observation checked
 by an observation on Polaris.

The measurements were made with a 100. ft. and a 300 ft.
 steel tape.

On the morning of June 16th. 1905 at 1.30 A.M. L.M.T.

I set transit over point and observe Polaris, following
 it to its eastern elongation. I set point on this
 line and at daylight turn an angle of 1° 25' 30" ~~left~~
 for true meridian. By transit line with angles, I
 connect this line with Cor. No. I La Fortuna Lode,
 and check solar observation, which I find to be correct.

U.S.L.M. No. 2092.

There being no U.S.L.M. or Corner of Government survey within 2 miles of claim I locate U.S.L.M. on a hill about 80 ft. above the rest of the ground in the near vicinity. A schist stone 36X16X10 inches set 18 inches in ground, chiseled U.S.L.M. 2092, the exact point being marked by a + chiseled in top. A mound of stone 6 ft. base and 5 ft. high built alongside. A schist stone 12X12 inch face in bottom of mound chiseled U.S.L.M. 2092. A rock the exposed face of which is 4 ft. X 6 ft. on which is chiseled a + 6 inches high and U.S.L.M. 2092. B.R., bears N. 25° 06' W. 18.1 ft. Picacho in California bears N. 33° 06' W. The centre one of the three high peaks that are known as the guide to Fortuna, bears S. 69° 08' E. about 5 miles distant.

U.S.L.M. No. 2092. is located on unsurveyed Government land in approximately the southeastern part of Tp. 10S. R. 20W. G. & S. R. B. & M. Yuma County Arizona.

I know of no other U.S.L.M. within 15 miles.

FINAL OATHS FOR SURVEYS.

LIST OF NAMES.

A list of the names of the individuals employed by William H. Elliott
 United States Deputy Mineral Surveyor, to assist in running, measuring, and marking the lines, corners, and
 boundaries described in the foregoing field notes of the survey of the mining claim of La Fortuna
Mining Company
 known as the Oregon, Altu, New Year, La Fortuna, Christmas Gift
Half Moon and Arizona
 and showing the respective capacities in which they acted.

Albert C. Byrnes....., Chairman.
Robert Maggetti....., Chairman.
 Arman.
 Flagman.

FINAL OATHS OF ASSISTANTS.

We, Albert C. Byrnes
 and Robert Maggetti....., do solemnly swear that we assisted William
H. Elliott....., United States Deputy Mineral Surveyor, in marking the corners and surveying
 the boundaries of the mining claim of the La Fortuna Mining Company
 known as the Oregon, Altu, New Year, La Fortuna, Christmas Gift
Half Moon & Alt Arizona
 represented in the foregoing field notes as having been surveyed by said deputy mineral surveyor and under his
 direction; and that said survey has been in all respects, to the best of our knowledge and belief, faithfully and
 correctly executed, and the corner and boundary monuments established according to law and the instructions
 furnished by the United States Surveyor-General for Arizona.....

Albert C. Byrnes....., Chairman.
Robert Maggetti....., Chairman.
 Arman.
 Flagman.

Subscribed and sworn to by the above-named persons before me this 30th

day of June....., 1905.

Frank Baxter
Notary Public

My commission expires July 10th 1907.

(4-686.)

FINAL OATH OF U. S. DEPUTY MINERAL SURVEYOR

I, William H. Elliott, U. S. Deputy Mineral Surveyor, do solemnly swear that, in pursuance of instructions received from the United States Surveyor General for Arizona, dated June 5th 1905, I have, in strict conformity to the laws of the United States, the official regulations and instructions thereunder, and the instructions of said Surveyor General, faithfully and correctly executed the survey of the Mining Claim of Lea Fortuna Mining Company, known as the Oregon, Alta, New Year, Lea Fortuna, Calistoga Gift, situate in Lea Fortuna ^{Hot Morn and Arizona} Mining District, Yuma County, Arizona in Section ~~unnumbered~~, Township No. 10 S., Range No. 20 W., ^{unsurveyed} ~~9 S. 10 W.~~ and designated as Survey No. 2092, as represented in the foregoing field notes, which accurately show the boundaries of said mining claim as distinctly marked by monuments on the ground, and described in the attached copy of the location certificate, which was received by me from the Surveyor General with said instructions, and that all the corners of said survey have been established and perpetuated in strict accordance with the law, official regulations and instructions thereunder; and I do further solemnly swear that the foregoing are the true and original field notes of said survey and my report therein, and that the labor expended and improvements made upon said mining claim by claimant or its grantors are as therein fully stated, and that the character, extent, location and itemized value thereof are specified therein with particularity and full detail, and that no portion of said labor or improvements so credited to this claim has been included in the estimate of expenditures upon any other claim.

William H. Elliott
U. S. Deputy Mineral Surveyor.

Subscribed and sworn to by the said William H. Elliott
U. S. Deputy Mineral Surveyor, before me Frank Baxter
a Notary Public of Yuma Co. A. T. this 30th
day of June 1905.

Frank Baxter
Notary Public

My commission expires July 10th 1907

Affidavit of Five Hundred Dollars Improvements.

We, John M. Speere and Jasper Parvin

of lawful age, being first duly sworn according to law, depose and say: That we are acquainted with the

*Oregon
Idaho
New Mexico
La Fortuna
Abundance
Hoffmann
and Arizona*

mining claim, situate in La Fortuna

mining district, Yuma County, Arizona Territory, for which the La Fortuna Mining

Company, by Peter T. Anderson, Atty.

has made application for survey prior to application for patent under the provisions of the Act of Congress

approved May 10, 1872; and that the labor done and improvements made thereon by the applicant and

its grantor^s exceed five hundred dollars in value, ^{for each claim} and further that we are not personally interested in said mine.

John M. Speere
Jasper Parvin

TERRITORY OF ARIZONA,
COUNTY OF Yuma } ss:

Sworn to and subscribed before me this 30th day

[SEAL.]

of June, 1905

Frank Baxter
Notary Public

11786400-2-04

My commission expires July 10 1907.

ADDITIONAL AND AMENDED LOCATION CERTIFICATE.

KNOW ALL MEN BY THESE PRESENTS, That the La Fortuna Mining Company, by F. J. Martin its superintendent the undersigned has this 31st, day of August 1904. amended located, and claimed and by these presents does amend, locate, and claim by right of the original discovery of this amended and additional location certificate in compliance with the Mining Acts of Congress Approved May, 10th, 1872. and all subsequent Acts and with local customs, laws, and regulations, 1500 linear feet and horizontal measurement on the Alta lode, vein ledge or deposit along the vein thereof, with all its dips, angles, and variations, as allowed by law together with 300 feet on each side of the middle of the said vein at the surface, so far as can be determined from presents developments, and all lodes, veins, ledges, or deposits, and surface ground within the lines of said claim 300 feet running N. 73° E. and 600 feet running S. 73° W. thence 600 feet running S. 70° W. from center of discovery shaft, said discovery shaft being located on said lode vein, ledge, or deposit, and within the lines of said claim, in La Fortuna, Mining District, County of Yuma, Territory of Arizona described by metes and bounds as follows, to-wit:

Beginning at Corner No. 1, the S. W. Corner, and on line 3--4 New Years lode thence N. 17° E. 600 feet to Corner No. 2, thence N. 70° E. 600 feet to Corner No. 3, thence N. 73° E. 900 feet to Corner No. 4, thence S. 17° W. 600 feet to Corner No. 5, thence S. 73° W. 900 feet to Corner No. 6, identical with Corner No. 2, Christmas Gift, lode and Corner No. 4, New Years lode, thence S. 70° W. 600 feet to Corner ⁷⁰¹ to place of beginning variation of Needle 14° E.

This being the ~~same~~ lode originally located on the 1st. day of January, 1895. and recorded on the 19th, day of February 1895. in book G of Mines page 392, in the office of the Recorder of Yuma County, Arizona,

This further and additional amended certificate of location is made without waiver of any previously acquired rights, but for the purpose

of correcting any errors in the original location, description or record, and of taking in and acquiring all forfeited or abandoned overlapping ground, and in taking in any part of any overlapping claim which has been abandoned,

The Fortuna Mining Company,

By F.J. Martin,

Superintendent,

Recorded at request of F.J. Martin Sept. 6th, at 9A.M. 1904.

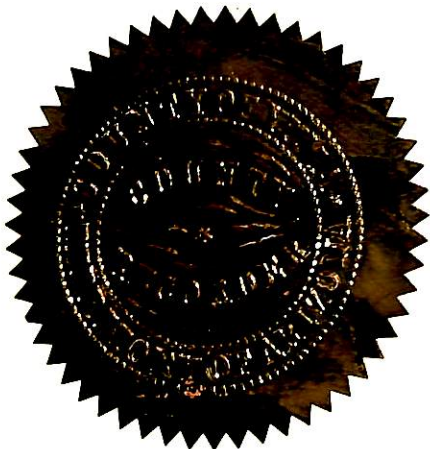
C.P. Cronin

County Recorder,

TERRITORY OF ARIZONA)
County of Yuma,) ss.
)

I, J.M. Polhamus, County Recorder, in and for the County of Yuma Territory of Arizona, do hereby certify that the foregoing is a true full and correct copy of the Additional and Amended Location Certificate, as filed for record in my office on the 6th, day of Sept. A.D. 1904. and as appears of record in Book "S" of Mines, Page 10, et, seq, records of Yuma County, aforesaid.

IN WITNESS WHEREOF, I have hereunto set my hand and affixed my seal of office this 29th, day of May, 1905.



J.M. Polhamus
County Recorder, Yuma, County,

ADDITIONAL AND AMENDED LOCATION Certificate.

Know all men by these presents, That the La Fortuna Mining Company, by F.J. Martin its superintendent the undersigned has this 31st. day of August 1904. amended located, and claimed, and by this these presents does amend locate and claim, by right of the original discovery, of the additional and amended location certificate of location in compliance with the Mining acts of Congress approved May 10th, 1872. and all subsequent acts and with local customs laws, and regulations, 1500 linear feet, and horizontal measurement on the Christmas, Gift lode vein ledge or deposit along the vein thereof. with all its dips angles, and variations, as allowed by law, together with 300 feet on each side of the middle of the said vein at the surface so far as can be determined from present developments, and all lodes veins ledges, or deposits, and surface ground within the lines of said claim 500 feet running S. 73° W. and 1000 feet running N. 73° E. from center of discovery shaft said discovery shaft being located on said vein ledge or deposit and within the lines of said claim in La Fortuna Mining District County of Yuma and Territory of Arizona, described by metes and bounds as follows to-wit:

Beginning at Cor. No. 1, the S.W. Cor. identical with a Cor. of La Fortuna Half Moon and New Years lode thence N. 30° W. 609.7 feet to Cor. No. 2, identical, with Cor. No. 4, of New Years lode thence N. 73° E. 1500 feet to Cor. No. 3, thence S. 30° W 609.7 feet to Cor. No. 4, identical with Cor. of Fortuna lode thence S. 73° W. 1500 feet to Cor. No. 1, the place of beginning variations of Needle 14° E.

This being the same location lode originally located December 25th 1894. and recorded January 16th, 1895. in Book "G" of Mines page 359 in the office of the Recorder of Yuma County, Arizona.

This further and additional amended certificate of location is made without waiver of any previously acquired rights but for the purpose of correcting any errors in the original location description or record and of taking in and acquiring all forfeited or abandoned overlapping ground and in taking in any part of any overlapping claim which has been abandoned.

La Fortuna Mining Company.

by F.J.Martin,

Superintendent,

Recorded at request of F.J.Martin, Sept.6th,1904.at 9A.M.

C.P.Cronin

County Recorder,

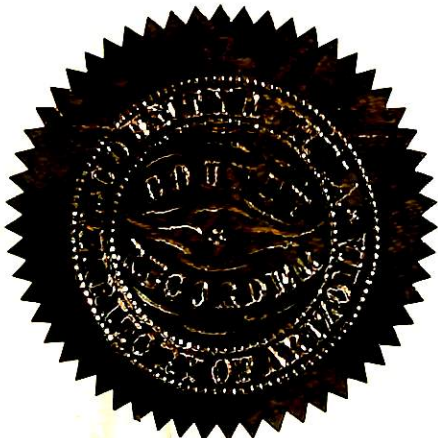
Territory of Arizona)
)ss.
 County of Yuma,)

I, J.M.Polhamus County Recorder in and for the County of Yuma Territory of Arizona do hereby certify that the foregoing is a true, full and correct copy of the additional and amended location certificate as filed for record in my office on the 6th, day of Sept. A.D. 1904. at 9A.M. and appears of record in Book "S" of Mines Page 14 et, seq, records of Yuma County aforesaid.

IN WITNESS WHEREOF: I have hereunto set my hand and affixed my seal of office this 29th, day of May, A.D.1905.

J.M.Polhamus

 County Recorder, Yuma County,



LOCATION NOTICE.

NOTICE IS HEREBY GIVEN, That we the undersigned, have this day located and do claim under the Mining Laws of the United States, 1500 feet in length, by 600 feet in width on this lead, lode or vein of mineral bearing quartz or rock. This claim begins at this the notice monument and runs thence in N. W. Direction 300 feet to N. W. Corner mon.; thence 1500 ft. in N. E. direction to N. E. corner mon.; thence 300 feet to the east center end mon.; thence 300 ft. to S. E. corner mon. thence 1500 ft to S. W. corner mon. thence 300 feet to west center end monument the notice mon. The Boundaries of this claim are distinctly marked by the notice, opposite end and four corner monuments. This claim is situated in ----- District, Yuma County, Arizona Territory, about fifteen miles S. E. of the Station of Blaisdell on the S. P. R. R. and in the Gila City or Cuvetas range of mts. and shall be known as the half moon mining claim.

Dated on the Ground, this 22 day of December, 1894.

Witnesses

Laurent Albert,

C. W. Thomas,

Peter Farrell,

W. H. Halbert,

Recorded at the request of C. W. Thomas at 2:00 o'clock,
P. M., January 16th, 1895.

M. L. Pool,

County Recorder.

TERRITORY OF ARIZONA,)
County of Yuma,) ss.

I, J. M. Polhamus, County Recorder in and for the County of Yuma, Territory of Arizona do hereby certify that the foregoing is a true full and correct copy of Location Notice of the Half Moon Mining Claim as filed for record in my office on the 16th day of January, A. D., 1905, and as appears of record in Book "C" of Mines, Page 358 et seq., records of Yuma County aforesaid.

IN WITNESS WHEREOF, I have hereunto set my hand and affixed my seal of office this 24th day of May, A. D., 1905.



J. M. Polhamus
County Recorder, Yuma County,

per *Thos. M. Mollay*
Deputy Recorder.

ADDITIONAL AND AMENDED LOCATION CERTIFICATE.

Territory of Arizona)
 County of Yuma,)ss.

KNOW ALL MEN BY THESE PRESENTS. That the La Fortuna Mining Company by F. J. Martin, its superintendent the undersigned, has this 31st. day of August, 1904. amended, located, and claimed, and by these presents does amend, locate, and claim, by right of the original discovery of this additional and amended location certificate, in compliance with the Mining acts of Congress approved May, 10th, 1872. and all subsequent acts, and with local customs, laws and regulations, 1500 linear feet and horizontal measurement on the New Years lode, vein, ledge, or deposit along the vein thereof, with all its dips angles, and variations as allowed, by law, together with 300 feet on each side of the middle of said vein, at the surface, so far as can be determined from presents developments, and all veins, lodes, ledges, or deposits and surface ground within the lines of said claim 250 feet running S. 70° W. and 1250 running N. 70° E. from center of discovery shaft, said discovery shaft being located on said lode, vein, ledge, or deposit and within the lines of said claim, in La Fortuna, Mining District, County of Yuma, and Territory of Arizona, described by metes and bounds as follows, to wit: Beginning at Cor. No. 1, the S. E. Cor. identical with a Cor. of La Fortuna, Half Moon, and Christmas Gift lode, thence S. 70° W. 1500 feet to Cor. No. 2, identical with a Cor. of Half Moon, lode, thence N. 30° W. 609⁶⁰⁷ feet to Cor. No. 3, thence N. 70° E. 1500 feet to Cor. No. 4, thence S. 30° E. 609.7 feet to Cor. No. 1, the place of beginning, variations of Needle 14° E.

This being the same lode originally located on the 1st. day of January 1895. and recorded on the 19th, day of February 1895. in Book "G" of Mines, page 390, in the office of the Recorder of Yuma County Arizona,

This futher and additional amended certificate of location is made without waiver of any previously acquired rights but for the purpose of correcting any errors in the original location,description or record and acquiring all for feited or abandoned overlapping ground and in taking in any part of any overlapping claim which has been abandoned.

La Fortuna Mining Company,
by F.J.Martin,
Supertintendent,

Recorded at request of F.J.Martin, Sept. 6th, 1904. at 9A.M.

C.P.Cronin

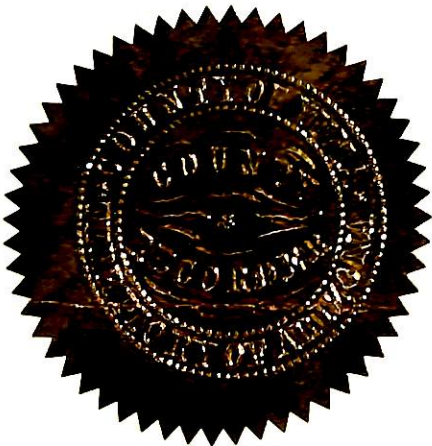
TERRITORY OF ARIZONA,)
County of Yuma,)ss.
)

County Recorder,

I, J.M.Polhamus, County Recorder in and for the County of Yuma a Territory of Arizona ,do hereby certifythat the foregoing is a true full and correct copy of the additional and amended Location certificate,as filed for record in my office on the 6th, day of Sept.A.D' 1904. at 9A.M. and as appears of record in Book "S" of Mines Page 12 et,seq, records of Yuma County aforesaid,

IN WITNESS WHEREOF: I have hereunto set my hand and affixed my seal of office this 29th,day of May, A.D.1905.

J.M. Polhamus
County Recorder, Yuma County,



Location Notice.

Notice is hereby given that the undersigned, having complied with the requirements of Chapter 32, Title 67, of the Mining Laws of the United States, and the local laws and regulations, have this day located and claim 1500 feet in length along the course of this lead, lode or vein of mineral bearing quartz and 300 feet along each side of the center of said lead, lode or vein, situated in the unknown Mining District, County of Yuma, Arizona Ter. and more particularly described as follows: Commencing at this monument of stones, being the center of the easterly end of claim and on which this notice is posted; thence 300 feet to a monument of stones; thence 1500 feet to a monument of stones; thence 300 feet to a monument of stones, being the the center of the westerly end of claim; thence 300 feet to a monument of stones; thence 1500 feet to a monument of stones; thence 300 feet to place of beginning. This claim runs parallel with and adjoins the La Fortuna southerly and situated in the Gila City or Las Cuvetas range of mountains, 15 miles S. E. of Blaisdell Station on the S. P. R. R. and shall be known as the Arizona Gold Mine.

Located this 10 day of Jan. 1895.

Peter Farrell,
W. H. Halbert,
C. W. Thomas,
Laurant Albert,

Recorded at the request of C. W. Thomas at 2:00 o'clock,
P. M., Jan 16th, 1895.

M. L. Pool,
County Recorder.

TERRITORY OF ARIZONA,)
County of Yuma,)ss.

I, J. M. Polhamus, County Recorder in and for the County of Yuma, Territory of Arizona do hereby certify that the foregoing is a true, full and correct copy of the Location Notice of the Arizona Gold Mine as filed for record in my office on the 16th day of January, A. D., 1895, and as appears of record in Book "G" of Mines, Page 356, et seq., records of Yuma County aforesaid.

IN WITNESS WHEREOF, I have hereunto set my hand and affixed my seal of office this 24th day of May, A. D., 1905.



J. M. Polhamus
County Recorder, Yuma County,

per *W. D. Mollor*
Deputy Recorder.

LOCATION NOTICE. QUARTZ CLAIM.

The undersigned citizens of the United States having complied with the U. S. Mining Laws hereby claim and locate 1500 linear feet along the course of this mineral bearing ledge, lead or vein and 300 feet on each side of center of vein together with all dips, spurs and angles and better described as fol. to-wit:

Commencing at this monument, thence Northerly 300 feet; thence Easterly 1500 feet; thence Southerly 600 feet; thence Westerly 1500 feet; thence Northerly 300 feet to place of beginning. This claim is situated in a spur of the San Alvaro Mountains, Gila Range, about 16 miles Southerly from Blaisdell Station, S. P. R. R. and adjoins the Fortuna Mining Claim on the South and the Arizona on east in Yuma County, A. T. and shall be known as the "Oregon" Mining Claim.

Located this 23rd day of May, 1895

Locators.	(Max Cohn	$\frac{1}{2}$
	(Chas Gallagher	$\frac{1}{2}$

Recorded at request of Max Cohn at 20 mins. past 1 o'clock,
P. M. Dec. 7th, 1895.

M. L. Pool,
County Recorder.

TERRITORY OF ARIZONA,)
County of Yuma,) ss.

I, J. M. Polhamus, County Recorder in and for the County of Yuma, Territory of Arizona, do hereby certify that the foregoing is a true, full and correct copy of the Location Notice of the Oregon Mining Claim as filed for record in my office on the 7th day of December, A. D., 1895 and as appears of record in Book "H" of Mines, Page 13, records of Yuma County aforesaid.

IN WITNESS WHEREOF, I have hereunto set my hand and affixed my seal of office this 24th day of May, A. D., 1905.



J. M. Polhamus
County Recorder, Yuma County.

By *Thos. D. Mollay*
Deputy.

LOCATION NOTICE.

Notice is hereby given that the undersigned, having complied with the requirements of Chapter 32, Title 67, of the Mining Laws of the United States, and the local laws and regulations, have this day located and claim 1500 feet in length along the course of this lead, lode or vein of mineral bearing quartz, and 300 feet along each side of the center of said lead, lode or vein, situated in the -----Mining District, County of Yuma, Arizona Ter. and more particularly described as follows: Commencing at this monument of stones, being the center of the westerly end of claim and on which this notice is posted; thence 300 feet to a monument of stones; thence 1500 feet to a monument of stones; thence 300 feet to a monument of stones; thence 300 feet to a monument of stones, being the center of the easterly end of claim; thence 300 feet to a monument of stones; thence 1500 feet to a monument of stones; thence 300 feet to place of beginning. This claim is situated about 15 miles Southeast of Blaisdell Station (which is on the S. P. R. R.) and in the Gila City or Las Cuvetas range of mts. and shall be known as the La Fortuna Mine.

Located this 22 day of December, 1894.

C. W. Thomas,
Laurent Albert,
W. H. Halbert,

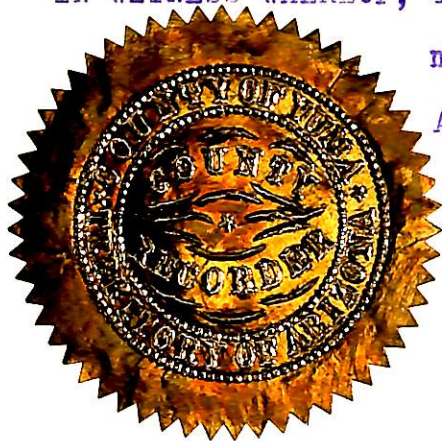
Recorded at the request of C. W. Thomas, at 2 o'clock, P. M.,
Jan. 16th, 1895.

M. L. Pool,
County Recorder.

TERRITORY OF ARIZONA,)
)
 County of Yuma,)

I, J. M. Polhamus, County Recorder in and for the County of Yuma, Territory of Arizona, do hereby certify that the foregoing is a true full and correct copy of Location Notice of the La Fortuna Mina as filed for record in this office on the 16th day of January, A. D., 1895 and as appears of record in Book "G" of Mines, Page 357 et seq., records of Yuma County aforesaid.

IN WITNESS WHEREOF, I have hereunto set my hand and affixed my seal of office this 23rd day of May, A. D. 1905.



J. M. Polhamus
 County Recorder, Yuma County,

per

Thomas M. Mollay
 Deputy Recorder.

4-688.

U. S. SURVEYOR-GENERAL'S FINAL CERTIFICATE ON FIELD NOTES.

Department of the Interior,

OFFICE OF U. S. SURVEYOR-GENERAL,

Phoenix, Arizona.

July 31 " 1905.

I, U. S. Surveyor-General for the district of Arizona do hereby certify that the foregoing transcript of the Field Notes, return and approval of the survey of the mining claim of La Fortuna Mining Company.

known as the Oregon, Alta, New Years, La Fortuna, Christmas Gift, Half Moon and Arizona situate in La Fortuna.

Mining District, Yuma County, Arizona.

in Section, Township No. 10 S., Range No. 20 W. unsurveyed; and designated as Survey No. 3092, has been correctly copied from the originals on file in

this office; that said Field Notes furnish such an accurate description of said mining claim as will, if incorporated into a patent, serve fully to identify the premises, and that such reference is made therein to natural objects or permanent monuments as will perpetuate and fix the locus thereof.

And I further certify that five hundred dollars' worth of labor has been expended or improvements made upon each of said mining claim by claimant or its grantors, and that said improvements consist of 12 shafts, 5 cuts, 5 tunnels, 1292 ft. of drifts, and 1 reservoir, total value \$48770.00



and that no portion of said labor or improvements has been included in the estimate of expenditures upon any other claim.

I further certify that the plat thereof, filed in the U. S. Land Office at Tucson, Arizona is correct and in conformity with the foregoing Field Notes.

(Signed) Frank S. Ingalls,

United States Surveyor-General for Arizona.

4-688.

U. S. SURVEYOR-GENERAL'S FINAL CERTIFICATE ON FIELD NOTES.

Department of the Interior,

OFFICE OF U. S. SURVEYOR-GENERAL,

Phoenix, Arizona.

July 31, 1905

I, U. S. Surveyor-General for the district of Arizona. do hereby certify that the foregoing transcript of the Field Notes, return and approval of the survey of the mining claim of La Fortuna Mining Company.

known as the Oregon, Alta, New Years, La Fortuna, Christmas Gift, Half Moon and Arizona. situate in La Fortuna. Mining District, Yuma County, Arizona.

in Section, Township No. 10 S., Range No. 20 W. unsurveyed and designated as Survey No. 2092, has been correctly copied from the originals on file in this office; that said Field Notes furnish such an accurate description of said mining claim as will, if incorporated into a patent, serve fully to identify the premises, and that such reference is made therein to natural objects or permanent monuments as will perpetuate and fix the locus thereof.

And I further certify that five hundred dollars' worth of labor has been expended or improvements made upon ^{each of} said mining claims by claimant or its grantors, and that said improvements consist of 12 shafts, 5 cuts, 5 tunnels, 1293 ft of drifts and 1 reservoir, total value \$48770.00

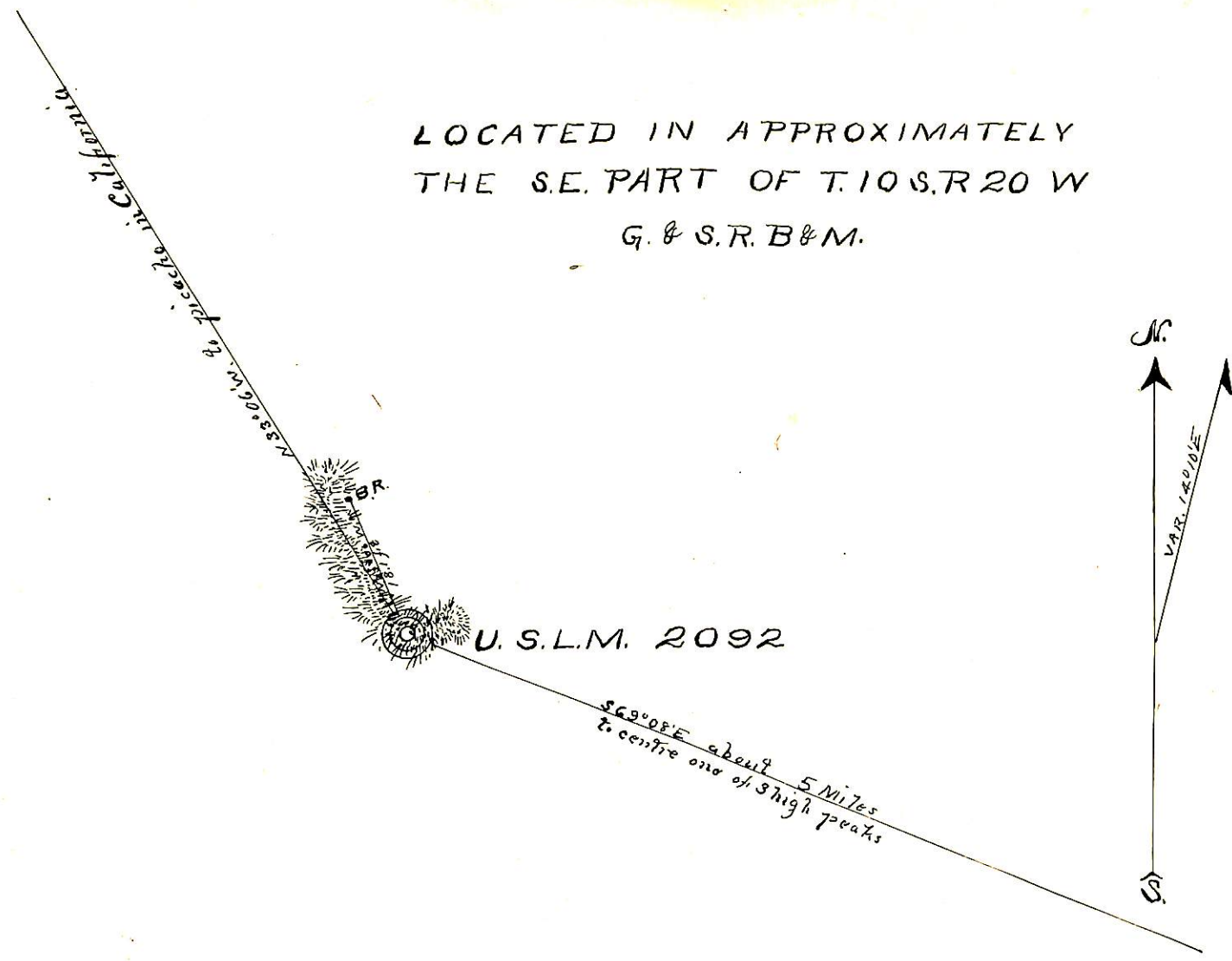
and that no portion of said labor or improvements has been included in the estimate of expenditures upon any other claim.

I further certify that the plat thereof, filed in the U. S. Land Office at Tucson, Arizona. is correct and in conformity with the foregoing Field Notes.

Handwritten signature of Frank A. Bigelow

United States Surveyor-General for Arizona.

LOCATED IN APPROXIMATELY
THE S.E. PART OF T. 10 S. R. 20 W
G. & S. R. B & M.



large
map