

MS -

0

2

1

5

6

Copied 11-4-07
H.S.

AUG. 31. 1907
OCT. 21. 1907

(4-683.)

Mineral Survey No. 2156

Lot No. _____

Phoenix Land District.
Arizona

FIELD NOTES

OF THE SURVEY OF THE MINING CLAIM OF

The Gytec Furquise Company

KNOWN AS THE

Queen Furquise - Doty - John Elroy -
Monte Christie and Ninety Nine Hundred Furquise

Yavapai Mining District,

Mohave County, Arizona

Section 19, Township 28 N., Range 17 W. unurveyed
Aug. 22, 1905, and amended instructions dated
Surveyed under instructions dated April 26, 1907

by O. F. Kummer,
U. S. Deputy Mineral Surveyor

Claim located March 15 - 1901 - August 8 - 1901 - Nov. 8 - 1905 - July 31 - 1901
Oct. 19 - 1900 - Sept 25 - 1900 - April 23 - 1904
Survey commenced July 10 - Nov. 15, 1907.
Survey completed Aug 2nd, 1907.

o 6-120

Claimants address:

Address of claimant's Atty., The Gytec Furquise Company,
Ross H. Blakely,
Kingman, Ariz. Chloride
Mohave Co
Arizona

Feet.

Survey No. 2156.

Surveyed under instructions dated Aug. 22, 1905.

Survey commenced Nov. 15, 1905.

Survey completed Aug. 2, 1907.

Queen Turquoise Lode.

Beginning at cor. No. 1, identical with N.E. cor. of location, a pine post 4 ins. square, 4 ft. long, 18 ins. in ground, with mound of stone, scribed 1 - 2156 - QT. whence x B. B. 1 - 2156 - QT., chiseled in granite reef, 4 feet above ground, bears S. 72° 30' E., 87 feet.

Cor. No. 1 Doty lode, this survey, bears S. 2° 25-1/2' E., 1191.99 feet.

Cor. No. 1 John Elsey lode, this survey, bears S. 1° 16' W - 1505.57 feet.

Cor. No. 1 Montie Christie lode, this survey, bears S. 4° 44-3/4' E., 1530.02 feet.

Cor. No. 1 Ninteen Hundred Turquoise lode, this survey, bears S. 7° 00-1/2' E., 1911.70 feet.

Cor. No. III, S.W. cor. Ithica lode, surveyed, Lot No. 37 A, (could not find survey number; was surveyed under order bearing date Aug. 27, 1879) bears S. 1° 18' E., 1182.68 feet.

Cor. common to Secs. 13, 18, 19, 24, Tp. 23 N., Rgs. 17 and 18 W. Gila and Salt River base and meridian, bears N. 12° 58' W., 2606.35 feet.

Thence S. 74° W.

descend

40 to center of gulch, 10 feet wide, flows N. and ascend
300 to north end center, a granite rock 25 by 20 by 18 ins.,
chiseled N.E.C.-2156 - Q.T. set in ground with mound of
stones;

3
101

2

Feet.

339 to cor. No. 2, identical with N.W. cor. of location, a pine post 4 ins. square, 4 feet long, 20 ins. in ground, with mound of stones; scribed 2 - 2156 - Q.T., whence: x B.R. 2 - 2156 - Q.T., chiseled in granite reef, 4 feet above ground, bears S. 0° 20' W., 89.25 feet.

Thence S. 0° 25' 07" W.

ascend

150 to top of hill, bears E. and W., and descend

325 to center of gulch, 25 feet wide, flows N. W.

ascend

530 to top of ridge, bears N.W. and S.E., and descend

781.88 to cor. No. 3 on west side line, identical with the location; a post 4 ins. square, 4 feet long, 18 ins. in ground, with mound of stone, scribed 3 - 2156 - Q.T., whence: x B.R. 3 - 2156 - Q.T. chiseled in granite cliff, 3 feet above ground, bears S. 84° 30' E., 12.50 feet.

Initial location mon., a pine post 4 ins. square, 3-1/2 feet long, 18 ins. in ground, with mound of stone, scribed I.L.M. 2156 - Q.T., bears N. 74° E., 260 feet.

Thence S. 20° 55' E.

descend

352 to center of gulch, 20 feet wide, flows S.W., and ascend

604 to top of granite ledge, bears S.W. and N.E.; descend

650 to cor. No. 4, identical with S.W. cor. of location, a pine post 4 ins. square, 4 feet long, 18 inches in ground, with mound of stones, scribed 4 - 2156 - Q.T. - whence: x B.R. 4 - 2156 - Q.T., chiseled in granite ledge, 7 feet above ground bears N. 20° 55' W., 46 feet.

Thence N. 74° E.

ascend

Feet	
204.29	<p>to South end center; a mark x S.E.C., 2156 Q.T., chiseled in cliff of granite rock, with stone monument alongside of x; whence:</p> <p>Initial location mon. above described bears N. 16° W., 647.61 feet.</p>
235.95	<p>to cor. No. 5, on west end line of Doty claim, this survey, - at N. 18°44-1/4' W., 118.42 feet from cor. 5 Doty lode, this survey - identical with S.E. corner of location - x - 5 - 2156 - Q.T., chiseled near top of almost inaccessible granite cliff with stone monument alongside of x; (no bearings taken from this cor., being inaccessible with the instrument.)</p> <p style="text-align: center;"><u>Thence N. 18°44-1/4' W.</u></p> <p>along top of cliff</p>
58.56	<p>to West end center Doty lode; this survey, a mark x WEC - 2156 D, chiseled in granite cliff with stone monument alongside of x.</p>
180	<p>to edge of cliff and descend.</p>
239.19	<p>to cor. No. 6, at Ithica south side line - Lot No. 37 A, surveyed; at S. 70° E., 25 feet from cor. No. III Ithica claim, Lot No. 37 A, identical with location and with cor. 1 N.W. cor. Doty lode, this survey. A pine post 4 ins. square, 3-1/2 feet long, 20 ins. in ground, with mound of stones, scribed 6 - 2156 - Q.T. on west side, and 1 - 2156 D on east side; whence:</p> <p>x - BR - 6-QT - 1 D - 2156 chiseled in granite cliff, 5 feet above ground, bears S. 5° E., 59 feet.</p> <p style="text-align: center;"><u>Thence N. 70° W.</u></p>
25	<p>along south side line of Ithica lode, surveyed, Lot No. 37 A, to cor. No. 7, identical with location and with cor. No. III. S.W. cor. Ithica lode, surveyed, Lot No. 37 A, a pine post 4 ins. square, 3-1/2 feet long, 18 inches in</p>

5

Feet.

ground, with mound of stones, scribed 7 - 2156 - Q.T. on west side, and "III - I" on east side. (I found the old Ithica monument but no post, and after verifying the monument as being the S.W. cor. of Ithica, put the post in center of old monument, and marked the east side of it as above described.)

whence: x - BR - 7-2156 - Q.T., chiseled in flat granite boulder, 3 by 3 by 2 feet, 12 ins. above ground, bears S. 13° W. - 11.50 feet.

Thence N. 20° E.

ascend along west end line of Ithica lode, surveyed; Lot No. 37 A;

300 to west end center cor. No. IV Ithica lode, surveyed; Lot No. 37 A

487.01 to cor. No. 8, on west end line of Ithica lode, surveyed, Lot No. 37 A, S. 20° W. - 112.99 feet from cor. No. V, Ithica lode, surveyed. Lot No. 37 A - identical with location. x - 8 - 2156 - Q.T., chiseled on granite cliff with stone mon. alongside of x; whence x B.R. - 8 - 2156 Q.T. chiseled in same cliff and on top of it, bears E. 19° W., 11 feet.

Thence N. 14° 57' W.

descend

750.13 to cor. No. 1 and place of beginning. Course of vein from I. L. M.: N. 16° W., 750 Feet, and S. 16° E., 647.61 feet.

Doty Lode.

Beginning at cor. No. 1, identical with N.W. cor. of location and with cor. No. 6, Queen Turquoise lode, this survey: Cor. No. 1 John Elsey lode, this survey, bears

Feet

S. 14° 54' W. - 325.21 feet.

Cor. No. 1, Montie Christie lode, this survey, bears S. 12° 49'-1/4' E., 342.40 feet.

Corner No. 1, Ninteen Hundred Turquoise lode, this survey bears S. 14° 30'-1/4' E., 729.76 feet.

Cor. to Secs. 13, 18, 19, 24, Tp. 23 N., rgs. 17 and 18 W., Gila and Salt River Base and Meridian, bears N. 9° 40' W. - 3784.52 feet.

Thence S. 70° E.

along south side line II - III of Ithica lode, surveyed, Lot No. 37 A.

1313.19 to cor. No. 2, the N.E. cor. of Survey, identical with location, a pine post 3-1/2 feet long, 4 inches square, 18 inches in ground with mound of stone, scribed 2 - 2156 - D - , whence:

x - B.R. - 2 - 2156 - D - , chiseled in granite cliff, 5 feet above ground, bears S. 40° 05' E., 39.11 feet.

Thence S. 18° 44'-1/4' E.

descend

72.27 to east end center, a pine post, 4 ins. square, 4 ft. long, 18 ins. in ground, with mound of stone, scribed E.W.C. - 2156 - D, bears S. 68° 27' E.; distant 14.90 feet.

The Initial Location Monument, a granite stone 14 x 16 x 12 inches - marked x on top and I.L.M. - 2156 - D -, bears N. 68° 27' W., distant 440.16 feet.

141.83 to cor. No. 3, identical with S.E. cor. location and with cor. No. 3, N.E. cor. Montie Christie lode, this survey, x - 3 - 2156 - D - MC -, chiseled in solid rock with monument alongside of x - whence:

x - B.R. - 3 - 2156 - D - MC -, chiseled in granite cliff, 4 ft. above ground, bears N. 1° 10' W., 24 feet.

7

X

2

Feet	<u>Thence N. 73°30' W.</u>
57.60	ascend to trail, N. & S. from mineral Park to Montie Christie lode
230	to top of ridge, bears N. & S., and descend to cor. No. 4
339.60	cor. No. 4, identical with location and with cor. No. 2 Montie Christie lode, this survey; a pine post, 4 ins. square, 3-1/2 ft. long, 20 ins. in ground, with mound of stone, scribed 4 - 2156 - D - on North side and 2 - 2156 M.C. on South side - whence: x - B.R. - 4 - 2156 - D - 2 - 2156 - M.C., chiseled in granite reef, 5 ft. above ground, bears S. 12°12' E., 88.60 feet.
	<u>Thence N. 83° W.</u>
	descend
486	to ravine, 15 ft. wide, flows S.
656	to cor. No. 5, identical with the S.W. cor. of location and with cor. No. 6, the N.E. cor. of the John Elsey Lode, this Survey. x - 5 D - 6 J.E. - 2156 - chiseled in solid rock with monument alongside of x, whence: x - B.R. - 5 D - 6 J.E. - 2156 - chiseled in bedrock, even with surface, bears N. 11° W., 20.50 feet. Cor. No. 1, the Northwest cor. of the Montie Christie Lode, this Survey, bears N. 83° W., 39.21 feet.
	<u>Thence N. 18°44-1/4' W.</u>
	ascend
118.42	to cor. No. 5, Queen Turquoise lode, this survey,
177	to W.E.C. Doty, whence: Initial location mon., a granite stone, described above, bears S. 79°03' E., 613.02 feet.
357.61	to cor. No. 1 and place of beginning.

Feet

Course of vein from Initial location mon.

S. 68° 27' E., 440.16 feet - N. 79° 03' W., 613.02 feet.

John Elsey Lode.

Beginning at cor. No. 1, identical with N.W. cor. of location, a pine post, 4 inches square, 3-1/2 ft. long, 18 ins. in ground, with mound of stone, scribed 1 - 2156 J.E., whence:

x - B.R. - 1 - 2156 - J.E., chiseled in granite boulder, 8 x 10 x 6 ft., 3 ft. above ground, bears N. 53° 30' W., 45.40 feet.

Initial Location Mon., Homestake lode, unsurveyed, claimed by W. Robinson, bears N. 87° W., 361 feet.

Cor. No. 1 Montie Christie lode, this survey, bears S. 83° E., 160.79 feet.

Cor. No. 1 Ninteen Hundred Turquoise lode, this survey, bears S. 34° 11' E., 474.14 feet.

Cor. to secs. 13-18-19-24 Tp. 23 N., Rgs. 17 & 18 E., Gila & Salt River Base and Meridian, bears N. 7° 46' E., 4082.55 feet.

Thence S. 7° 55-1/2' E.

857.0 to cor. No. 2, the southwest corner of survey, identical with location, a mark x - 2 - 2156 - J.E. - chiseled in granite bedrock, 20 inches above ground with monument of stone, 3 feet high, alongside of x -, whence x B.R. - 2 - 2156 - J.E. - chiseled in granite ledge, 6 feet above ground, bears N. 35° 45' E., 3.89 feet.

Initial Location Mon. "None X. L.", unsurveyed, claimed by H. L. Wamstedt, bears N. 51° 18-1/2' W., 375.93 feet.

Thence S. 83° E.

ascend

87.46 to south end center; N. 83° W., distant 6.93 feet from

X

9

Feet. corner No. 3.

The Initial Location Monument of the lode, a mark x - I.L.M. - J.E. - 2156 - chiseled on top of boulder, 6 x 5 x 5 feet, with stone monument alongside of mark, bears N. 16°09' 30" W., - distant 314.47 feet.

94.39 to cor. No. 3, identical with S.E. cor., marked by a 4 x 6 inch pine post, x - 3 - 2156 - J.E., from which a mark x B.R. 3 - 2156 - J.E., chiseled in cliff, 2 feet above ground, bears N. 22°30' E., 32 feet.

Thence N. 3°E.

ascend

207.20 to cor. No. 4, identical with location and with cor. No. 8, the west end center Nineteen Hundred Turquoise lode, this survey, x - 4 - J.E. - W.E.C., N. H. T. - 2156, chiseled in solid bedrock, with stone monument alongside of x, whence:
x - B.R. - 4 - J.E. - 2156, chiseled in bedrock, 1 ft. above ground, bears N. 29° W., 56.30 feet.

Thence N. 3°W.

along west side of hill

295 to cor. No. 5 identical with location, and with cor. No. 7, the southwest cor. of the Montie Christie Lode, this survey, and from which cor. No. 1 Nineteen Hundred Turquoise Lode, bears S. 60°30' E., 67.95 feet. This corner is fixed by a x - 5 J.E. - 7 M. C. - 2156, chiseled on granite reef, whence:
x - B.R. - 5 J.E. - 7 M.C. - 2156, chiseled in granite cliff, 8 ft. above ground, bears N. 58°30' E., 45.60 feet. The x at cor. has stone monument alongside.

Thence N. 1° 30' W.

descend

240 to center of gulch, 60 ft. wide, flows S.W. and ascend

Feet	
334.50	<p>to cor. No. 6, identical with N.E. cor. of location and with cor. No. 5 Doty^{Lode}, and from which cor. No. 1 Montie Christie lode, this survey, bears W. 83° W., 39.21 feet. A x - B.R. - 6 J.E. - 5 D - 2156, chiseled in bedrock, even with surface, bears N. 11° W., 20.50 feet.</p> <p style="text-align: center;"><u>Thence N. 83° W.</u></p> <p>descend</p>
100	<p>to North end center x - N.E.C. - J.E. - 2156, chiseled in granite cliff, 15 feet above ground, whence: Initial Location Monument described above, bears S. 1° 55' E., 545.51 feet.</p>
200	<p>to cor. No. 1, the place of beginning.</p> <p style="text-align: center;"><u>Course of vein from Initial Location Mon.</u></p> <p>S. 16° 09-1/2' E., 314.47 feet, and N. 1° 55' W., 545.51 feet.</p> <p style="text-align: center;"><u>Montie Christie Lode.</u></p> <p>Beginning at cor. No. 1, at the N.W. cor. of this survey, identical with location, and from which cor. No. 5, the S.W. cor. of the Doty Lode, and cor. No. 6, the N.E. cor. of the John Elsey Lode, which are identical, bear S. 83° E., distance 39.21 feet.</p> <p>x - B.R. - 1 M.C. - 2156, chiseled in bedrock, even with surface, bears N. 66° 19-3/4' E., 38.22 feet.</p> <p>Cor. 1, Ninteen Hundred Turquoise Lode, this survey, bears S. 15° 59-3/4' E., 387.62 feet.</p> <p>Cor. to secs. 13-18-19-24, Tp. 23 N., Rgs. 17 and 18 W., Gila and Salt River Base and Meridian, bears N. 9° 55-1/4' W., 4126.45 feet.</p> <p style="text-align: center;"><u>Thence S. 83° E.</u></p>
695.21	<p>to cor. No. 2, identical with location and with cor. No. 4 Doty Lode, this survey.</p>

11

Feet	<u>Thence S. 73° 30' E.</u>
339.60	to cor. No. 3, identical with N. E. cor. location and with cor. No. 3 Doty Lode, this survey.
	<u>Thence S. 8° E.</u>
132.00	to Initial Location Mon., Toltec lode, unsurveyed, claimed by Chas. Sherman.
300	to cor. No. 4, identical with location and with the east end center, a granite stone, 30 x 20 x 16 inches, set in ground and in mound of stone, chiseled x 4 - E.E.C. - M.C. - 2156 - , whence a granite stone, 3 x 2 feet, 12 inches above the ground, chiseled x B.R. - 4 - 2156 - M.C., bears N. 12° E., distance 39 feet.
	Initial Location Mon., x-I.L.M. - M.C. - 2156 -, chiseled in solid rock with mound of stone alongside of x, bears N. 77° W., 638 feet.
	<u>Thence S. 2° 16-1/4' W.</u>
	ascend
10	to top of cliff and descend
220.15	to cor. No. 5, identical with S.E. cor. of location and with cor. No. 3 Nineteen Hundred Turquoise Lode, this survey, a pine post, 4 ins. square, 4 ft. long, 18 ins. in ground with mound of stone, scribed 5 - M.C. - 2156 - on north side, and 3 - N.H.T. - 2156 - on south side, whence: x - B.R. - 5 M.C. - 3 N.H.T. - 2156, chiseled in granite cliff, 7 ft. above ground, bears N. 1° E., 81.70 feet.
	<u>Thence N. 77° 30' W.</u>
	descend
320	to center of ravine, 20' wide, flows S., and ascend
495	to top of cliff, N. & S., and descend
540	to gulch 10' wide, flows S., and ascend
567	to top of cliff, S.E. and N.W., and along top of cliff,
617	to cor. No. 6, identical with location and with cor.

Feet. No. 2 Nineteen Hundred Turquoise Lode, this survey, a pine post, 4 ins. square, 3-1/2 ft. long, 18 ins. in ground, with mound of stone, scribed 6 - M.C. - 2156 on north side, and 2 - N.H.T. - 2156 on south side, whence: x - B.R. - 6 - M.C. - 2 N.H.T. - 2156, chiseled in granite cliff, 6 ft. above ground, bears N. 86° 35' E., 51 feet.

Thence N. 60° 30' W.

along top of cliff

70 to Northwest end of cliff and descend

390.05 to cor. No. 1 Nineteen Hundred Turquoise Lode, this survey,

458 to cor. No. 7, the S.W. cor., which is identical with location and with cor. No. 5 of the John Elsey Lode, this survey, and which is fixed by a x - 7 M.C. - 5 J.E. - 2156, chiseled in granite reef, whence: x - E.R. - 7 M.C. - 5 J.E. - 2156, chiseled in granite cliff, 8 feet above the ground, bears N. 58° 30' E., 45.60 feet. The x at cor. has stone monument alongside.

Thence N. 8° 00' W.

114.68 to west end center, a pine post 4 inches square, 3-1/2 feet long, 18 inches in ground, with mound of stone, scribed M.C. - W.E.C. - 2156 - whence: x - B.R. - W.E.C. - 2156 - M.C., chiseled in granite boulder, 17 x 19 x 30 inches, 14 inches above the ground bears N. 2° 50-1/2' E., 33.80 feet.

The Initial Location Monument above described bears S. 74° 53' E., distant 418.52 feet.

342.5 to cor. No. 1 and place of beginning.

Course of vein from Initial Location Mon.

S. 77° E., 638 feet and N. 74° 53' W., 418.52 feet.

Feet.

Nineteen Hundred TurquoiseLode.

Beginning at cor. No. 1, the northwest cor. of the survey, identical with location, a pine post 3-1/2 feet long, 4 inches square, 18 inches in ground, with mound of stone, scribed 1 - 2156 - N.H.T. - whence: x - B.R. - 1 - 2156 - N.H.T., chiseled in granite boulder 16 x 12 x 12 inches, 10 inches above ground, bears N. 85° W., 34 feet.

Cor. to secs. 13-18-19-24 Tp. 23 N., Rgs. 17 & 18 W., Gila and Salt River Base and Meridian bears N. 10° 26-1/2' W., distance 4512.09 feet.

Thence S. 60° 30' E.

390.05 to cor. No. 2, identical with location and with cor. No. 6 Montie Christie Lode, this survey,

Thence S. 77° 30' E.

617 to cor. No. 3, identical with N.E. cor. of location and with cor. No. 5 Montie Christie Lode, this survey,

Thence S. 9° 30' W.

descend

278 to foot of hill, bears N.W. and S.E.

300 to cor. No. 4, which is identical with the east end center of the location. A granite stone 24 x 14 x 30 inches, chiseled 4 - E.E.C. - N.H.T. - 2156 - set in ground and in mound of stone, from which another granite stone 2 x 2 feet, 1 foot above the ground, chiseled x - B.R. - 4 - 2156 - N.H.T., bears S. 8° 10' E., distance 27 feet.

The Initial Location Mon., a pine post, 4 inches square, 3-1/2 feet long, 18 inches in ground, with mound of stone, scribed I.L.M. - N.H.T. - 2156 - bears N. 72° 27' W., 336.55 feet.

14

Feet Thence S. 3° W.

179 to cor. No. 5, identical with S.E. cor. of location,
 x - 5 - 2156 - N.H.T., chiseled in granite bedrock, with
 stone monument alongside of x - whence:
 x - B.R. - 5 - 2156 - N.H.T., chiseled in granite cliff,
 3 feet above ground, bears N. 6° E., 18.40 feet.

Thence N. 72° W.

descend

360 to cor. No. 6, identical with location, a pine post,
 4 ins. square, 4 ft. long, 18 ins. in ground, with mound
 of stone, scribed 6 - 2156 - N.H.T. - whence:
 x - B.R. - 6 - 2156 - N.H.T., chiseled in granite reef,
 4.50 feet above ground, bears N. 78°30' E., 59.50 feet.

Initial Location Mon. "Lucky Find" Lode, unsurveyed,
 bears S. 33°30' W., 431 ft., claimed by John Kay.

Thence N. 71°19' W.

descend

470 to foot of cliff, bears N.W. and S.E., and ascend

629.31 to cor. No. 7, identical with S.W. cor. location, from
 which cor. No. 3, John Elsey lode, this survey, bears
 N. 3° E., 19.40 feet.

Thence N. 3° E.

226.60 to cor. No. 8, identical with west end center of location
 and with cor. No. 4, John Elsey Lode, this survey, from
 which a granite stone 18 x 16 inches, 10 inches above the
 ground, chiseled x - B.R. - 8 - 2156 - N.H.T., bears
 N. 4°W., 21 feet distance.

The Initial Location Monument above described, bears
 S. 67°11' E., 667.42 feet.

Thence N. 9°30' E.

264.77 to cor. No. 1, the place of beginning.

The course of the veins from Initial Location Mon.

S. 72° 27' E., 336.55 feet, and N. 67° 11' W., 667.42 feet.

Variation at all corners of the

Queen Turquoise - Doty - John Elsey - Montie Christie and Ninteen Hundred Turquoise Lodes, 13° 57' E.

The Surveys of the Queen Turquoise, Doty, John Elsey, Montie Christie and Ninteen Hundred Turquoise Lodes are identical with the respective locations.

AREAS.

Total area of Queen Turquoise Lode,	12.512 acres
" " " Doty " ,	4.556 "
" " " John Elsey " ,	2.904 "
" " " Montie Christie " ,	11.191 "
<i>less area in conflict with the John Elsey Lode of this survey</i>	<i>.149</i>
Total " " Ninteen Hundred) <i>net area</i>	11.042
Turquoise Lode)	10.033 "
<hr/>	
Total and Net Area of Lode Claims,	41.047 "

LOCATION.

This lode claim is located in the S.W. 1/4 and N.W. 1/4 of Sec. 19, Tp. 23 N., R. 17 W., Unsurveyed, Gila and Salt River Base & Meridian in Wallapai Mining District, Mohave County, Arizona Territory.

Expenditure of five hundred dollars.

I certify that the value of the labor and improvements upon this claim placed thereon, by the claimant and its grantors, is not less than Five Hundred (500) Dollars for each of the five mining claims, contained in this lode claim, and that said improvements consist of:

Queen Turquoise Lode.

1. Discovery shaft, 5 x 8 ft. - 10 ft. deep in rock, adjoining Initial location mon. on the east. Value \$50.
2. Open cut, 14 ft. wide, 17 ft. face, 26 ft. long in rock, mouth bears S. 4° W., 9 ft. from I.L.M. cut bears S. 3° W. Value \$250.00
3. Tunnel 8 x 7 ft. - 21 ft. long in rock, mouth bears N. 15° W., 62 ft. from I.L.M. - Tunnel bears S. 71° E. Value \$150.00
4. Open cut, 11 x 11 ft. - 14 ft. long, in rock, mouth bears N. 33° W., 35 ft. from I.L.M. - cut bears N. 52° E. Value \$125.00
5. Open cut, 5 x 8 ft. - 19 ft. long, in rock, mouth bears N. 27° W., 125 ft. from I.L.M. - cut bears S. 75° E. Value \$100.00

Doty Lode.

Dis.

1. Open cut 8 x 7 ft. - 16 ft. long, in rock, with shaft 14 x 14 ft. - 16 ft. deep, in rock, at S.W. end of cut, mouth bears S. 50° W., 27 ft. from I.L.M. cut bears S. 40° W. Value \$350.00
2. Cut 6 x 7 ft. - 16 ft. long, in rock, with shaft 12 x 12 ft. 15 ft. deep, in rock, at N.E. end of cut, mouth bears N. 47° E., 27 ft. from I.L.M., cut bears N. 42° E. Value \$300.00
3. Open cut, 5 x 10 ft. - 14 ft. long, in rock, mouth bears N. 82° 30' W., 470 ft. from cor. No. 4, cut bears N. 86° E. Value \$100.00
4. Open cut 6 x 16 ft. - 24 ft. long, in rock, mouth bears N. 60° W., 56 ft. from cor. No. 3, cut bears North. Value \$150.00

John Elsey Lode.

- No. 1, discovery shaft 4 x 6 x 10 ft., brs. N. 53° E. 52 ft. from I.L.M. Value, \$100.00
2. Open cut 6 x 7 ft. - 10 ft. long, in rock, mouth

- rock, mouth bears N. 49° W., 385 ft. from cor. No. 5,
cut bears N. 18° E. Value \$350.00
9. Open cut 18 ft. wide, 20 ft. face, 24 ft. long, in
rock, mouth bears N. 51° W., 410 ft. from cor. No. 5,
cut bears N. 18° E. Value \$400.00
10. Tunnel 5 x 8 ft. - 50 ft. long, in rock, mouth
bears N. 57° W., 380 ft. from cor. No. 5, tunnel
bears N. 47° W. Value \$500.00
11. Open cut 5 ft. wide, 12 ft. face, 23 ft. long, in
rock, mouth bears N. 56° W., 399 ft. from cor. No. 5,
cut bears N. 40° W. Value \$200.00

Nineteen Hundred Turquoise Lode.

1. ^{Dis.} Open cut 13 ft. wide, 14 ft. face, 15 ft. long, in
rock, mouth bears S. 82° W., 18 ft. from I.L.M., cut
bears N. 12° E. Value \$150.00
2. Open cut 8 ft. wide, 10 ft. face, 19 ft. long, in
rock, mouth bears N. 57° W., 128 ft. from corner No.
4 identical with the E.E.C., cut bears N. 2° E.
Value \$175.00
3. Open cut 5 ft. wide, 8 ft. face, 10 ft. long, in
rock, mouth bears N. 41° E., 356 ft. from cor. No. 6,
cut bears North. Value \$60.00
4. Open cut 4 ft. wide, 15 ft. face, 28 ft. long, in
rock, mouth bears N. $46^{\circ}20'$ W., 240 ft. from cor.
No. 6, cut bears N. 34° E. Value \$150.00
5. Open cut 8 ft. wide, 9 ft. face, 10 ft. long, in
rock, mouth bears N. 72° W., 325 ft. from cor. No. 6,
cut bears N. 2° E. Value \$75.00

There are no other improvements upon the claim.

The adjoining claims are:-

The Homestake lode, unsurveyed, claimed by W. Robinson

19

and the "None X L" lode, unsurveyed, claimed by H. L. ~~Wanstedt~~ on the west; "The Lucky Find" lode, unsurveyed, claimed by John Kay on the south.

The Toltec lode, unsurveyed, claimed by Chas. Sherman and the Ithica lode, Lot No. 37 A, owned by Jas. ~~Macomber~~ on the east.

There are no other adjoining claims.

Instrument.

This survey was made with a Heller and Brightley transit with solar attachment, which was used in ~~directing~~ directing the courses.

The distances were measured with a 50-ft. and a ~~100~~ 100-ft. steel tape.

(NOTE). On the plat, I omitted the connecting lines between the cors. No. 1 of the different claims, as well as connecting lines from cors. No. 1 to sec. cor., and from corners to the different improvements, on account of the small size of the different claims, making an unintelligible net work of lines.

Kingman

August 28. 1907

O. F. Kuencer
U.S. Deputy Mineral Surveyor.

FINAL OATHS FOR SURVEYS.

LIST OF NAMES.

A list of the names of the individuals employed by O. J. Kummer

United States Deputy Mineral Surveyor, to assist in running, measuring, and marking the lines, corners, and boundaries described in the foregoing field notes of the survey of the mining claim of

The Aztec Surquoise Co

known as the "Mountie Christie," "Queen Surquoise," "Nineteen Hundred Surquoise," "Waty" and John Elsey,

and showing the respective capacities in which they acted.

- James Flood , Chainman.
- Frank Gross , Chainman.
- Thomas Burdge , Axman.
- Thomas Burdge , Flagman.

FINAL OATHS OF ASSISTANTS.

We, James Flood, Frank Gross,

and Thomas Burdge , do solemnly swear that we assisted

O. J. Kummer , United States Deputy Mineral Surveyor, in marking the corners and surveying

the boundaries of the mining claim of The Aztec Surquoise Co

known as the "Mountie Christie," "Queen Surquoise," "Nineteen Hundred Surquoise," "Waty" and John Elsey,

represented in the foregoing field notes as having been surveyed by said deputy mineral surveyor and under his direction; and that said survey has been in all respects, to the best of our knowledge and belief, faithfully and correctly executed, and the corner and boundary monuments established according to law and the instructions furnished by the United States Surveyor-General for Arizona

- James Flood , Chainman.
- Frank Gross , Chainman.
- Thomas Burke , Axman.
- Thomas Burke , Flagman.

Subscribed and sworn to by the above-named persons before me this 2

day of Aug , 1907

Alfred Conkey
Notary Public

FINAL OATH OF U. S. DEPUTY MINERAL SURVEYOR

I, O. F. Kuencer, U. S. Deputy Mineral Surveyor, do solemnly swear that, in pursuance of instructions received from the United States Surveyor General for Arizona, dated Aug. 22, 1905, and amended instruction dated April 26 - 1907, I have, in strict conformity to the laws of the United States, the official regulations and instructions thereunder, and the instructions of said Surveyor General, faithfully and correctly executed the survey of the Mining Claim of The Gteco Finqueroe Company, known as the Queen Finqueroe - Bots - John Elroy - Monte Christie - Privatzen Hundred Finqueroe situate in Waller Mining District, Mohave County, Arizona, in Section 19, Township No. 23. N., Range No. 17. W. Unsur., and designated as Survey No. 2156, as represented in the foregoing field notes, which accurately show the boundaries of said mining claim as distinctly marked by monuments on the ground, and described in the attached copy of the location certificate, which was received by me from the Surveyor General with said instructions, and that all the corners of said survey have been established and perpetuated in strict accordance with the law, official regulations and instructions thereunder; and I do further solemnly swear that the foregoing are the true and original field notes of said survey and my report therein, and that the labor expended and improvements made upon said mining claim by claimant or its grantors are as therein fully stated, and that the character, extent, location and itemized value thereof are specified therein with particularity and full detail, and that no portion of said labor or improvements so credited to this claim has been included in the estimate of expenditures upon any other claim.

O. F. Kuencer
U. S. Deputy Mineral Surveyor.

Subscribed and sworn to by the said O. F. Kuencer
U. S. Deputy Mineral Surveyor, before me M. H. Baneywell
Notary Public this 28th
day of August 1907,

M. H. Baneywell

Affidavit of Five Hundred Dollars Improvements.

We, James Flood, and Thomas Burdette

of lawful age, being first duly sworn according to law, depose and say: That we are acquainted with the "Montie Christie", "Duma Turquoise", "Five Hundred Turquoise", "Loaty" and "John Elsey" mining claims situate in Wallapai Mining district, Mohave County, Arizona Territory, for which The Aztec Turquoise Co

have made application for survey prior to application for patent under the provisions of the act of Congress, approved May 10, 1872; and that the labor done and improvements made thereon by the applicant and ^{its} grantors exceed Five Hundred Dollars in value, for each claim embraced in survey 2156 and further that we are not personally interested in said mine.

James Flood

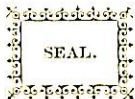
Thomas Burdette

TERRITORY OF ARIZONA,
County of Mohave } 88:

Sworn to and subscribed before me, this 2

day of Aug, 1907

Alfred Conkey



N O T I C E O F M I N I N G L O C A T I O N .

QUARTZ CLAIM .

TO ALL WHOM IT MAY CONCERN:

This mining claim, the name of which is the Nineteen Hundred Turquoise Mining Claim, situate on lands belonging to the United States of America, and in which there are valuable mineral deposits of Turquoise was entered upon and located for the purpose of exploration and purchase by Mrs. Minnie Sherman, the undersigned, on the 25th day of September 1900

The length of this claim is Fifteen Hundred feet, and I claim Five Hundred feet in a South East direction, and One Thousand feet in a North West direction from the center of the discovery shaft, at which this notice is posted, lengthwise of the claim, together with Three hundred feet in width of the surface grounds, on each side of the center of said claim. The general course of the lode deposit and premises is from the South East to the North West

The claim is situated and located in the Wallapai Mining District, in Mohave County, in the Territory of Arizona, about 1/3 of a mile in a Southerly direction from the Ithica Mine and Peak on its Southern Slope

The surface boundaries of the claim are marked upon the ground as follows: Beginning at--at a point in a South East direction (500) feet from the discovery shaft (at which this notice is posted), being in the center of the S. East end line of said claim; thence (300) feet to a monument of stone, being the East corner of said claim; thence (750) feet to a monument at the center of the North East side line of said claim; thence (750) feet to a monument being at the North corner of said claim; thence (300) feet to a monument at the center of the N.W. end of said claim; thence (300) feet to a monument being at the West corner of said claim; thence (750) feet to a monument being at the center of the South W. side line of said claim; thence (750) feet to a monument at the South corner of said claim; thence (300) feet to the place of beginning.

All done under the provisions of Chapter Six, of Title XXXII, of the Revised Statutes of the United States, and of an Act of the General Assembly of Arizona, entitled "An Act Concerning Mines," approved March 20th, 1895.

Dated and posted on the ground this 25th day of Sept 1900

C. E. Sherman

Mrs Minnie Sherman

Witness.

Locator

Filed and recorded at request of C. E. Sherman Nov, 20th
A.D. 1900 at 20 min past 9 A.M. Book "0" Page 618.

Jno P. Feeny,

County Recorder.

24

TERRITORY OF ARIZONA,)
) ss.
 COUNTY OF MOHAVE.)

I, Thos. McNeely, Recorder of Mohave County, Territory of Arizona, do hereby certify that I have compared the foregoing copy of Location Notice of the Nineteen Hundred Turquoise Mining Claim and of the endorsement thereupon with the original records of the same on file in this office, and that the same are correct ~~xx~~ transcripts therefrom and of the whole of said original records.

WITNESS my hand and the seal of said office,
 this 15th day of August 1905.



Thos. McNeely
 Recorder of Mohave County.

25

27

Amended
Notice of Mining Location
Lode Claim

To All Whom it May Concern:

This Mining Claim, the name of which is the Doty Mining Claim, situate on lands belonging to the United States of America, and in which there are valuable mineral deposits of Turquoise, was entered upon and located for the purpose of exploration and purchase by Joseph G. Doty, on the 8th day of August 1901.

The length of this claim is 1400 feet and extends 600 feet in a South-Easterly direction and 800 feet in a North-Westerly direction from the location monument at which this notice is posted, together with 200 feet in width of the surface grounds on each side of the centre of said claim. The general course of the lode deposit and premises is from the Northwest to the Southeast.

The claim is situated and located in the Wallapai Mining District in Mohave County in the Territory of Arizona, about one mile in a South Easterly direction from the town of Mineral Park, it being on the West side of Ithaca Peak.

This location is for Turquoise and other precious gems.

The surface boundaries of the claim are marked upon the ground as follows: Beginning at a monument of stone at the North West corner of location, on the South side line of the Ithaca, and about 25 feet from the South West corner of the Ithaca, thence in a South Easterly direction 1250 feet to a monument of stone at the North East corner of location, thence in a Southerly direction 125 feet to a monument of stone, at the South East corner of location identical with the North East corner of the Montie Christie, thence westerly 350 feet to a monument of stone on South side line of location, identical with corner on North side line of Montie Christie, from where the initial location monument a stone monument in which this location notice is placed bears a North Westerly direction about one hundred and ninety feet, thence in a Westerly direction 660 feet

26

TERRITORY OF ARIZONA, }
County of Mohave. } ss.

I, *Thos. McNeely*, Recorder of

Mohave County, Territory of Arizona, do hereby certify that I have compared the foregoing copy of Amended Notice of Location of Doty Mining Claim and of the endorsements thereupon with the original records of the same on file in this office and that the same are correct transcripts therefrom and of the whole of said original records.



WITNESS my hand and the seal of said office this *11th* day of *November* 190*5*

Thos. McNeely
Recorder of Mohave County.

Amended

Notice of Mining Location

Lode Claim

To All Whom it May Concern:

This Mining Claim, the name of which is the Doty Mining Claim, situate on lands belonging to the United States of America, and in which there are valuable mineral deposits of Turquoise, was entered upon and located for the purpose of exploration and purchase by Joseph G. Doty, on the 8th day of August 1901.

The length of this claim is 1400 feet and extends 600 feet in a South-Easterly direction and 800 feet in a North-Westerly direction from the location monument at which this notice is posted, together with 200 feet in width of the surface grounds on each side of the centre of said claim. The general course of the lode deposit and premises is from the Northwest to the Southeast.

The claim is situated and located in the Wallapai Mining District in Mohave County in the Territory of Arizona, about one mile in a South Easterly direction from the town of Mineral Park, it being on the West side of Ithaca Peak.

This location is for Turquoise and other precious gems.

The surface boundaries of the claim are marked upon the ground as follows: Beginning at a monument of stone at the North West corner of location, on the South side line of the Ithaca, and about 25 feet from the South West corner of the Ithaca, thence in a South Easterly direction 1250 feet to a monument of stone at the North East corner of location, thence in a Southerly direction 125 feet to a monument of stone, at the South East corner of location identical with the North East corner of the Montie Christie, thence westerly 350 feet to a monument of stone on South side line of location, identical with corner on North side line of Montie Christie, from where the initial location monument a stone monument in which this location notice is placed bears a North Westerly direction about one hundred and ninety feet, thence in a Westerly direction 660 feet to a stone monument at South West corner of location identical with North West corner of Montie Christie, thence in a Northerly direction to place of beginning. Covering all the vacant ground between the Ithaca claim on the North and the Montie Christie on the South.

All done under the provisions of Chapter Six, of Title XXXII, of the Revised Statutes of the United States, and of an Act of the General Assembly of Arizona, entitled "An Act to Revise and Codify the Laws of the Territory of Arizona," approved March 16, 1901.

This is an Amended Location Notice of the Doty Mining Claim, located by Joseph G. Doty, a citizen of the United States on the 8th day of August 1901, and recorded in Book "P", Page 243, of Records of Mines in the office of the County Recorder of the aforesaid County of Mohave to which reference is hereby made, and this Amended Location Notice is made and posted to correct errors in the description in the said original Location Notice.

Dated and posted on the ground this 8th day of November 1905.

Aztec Turquoise Company,
By E. J. McNulty, Attorney in fact.

Recorded at request of Wm G. Blakely, November 10th A.D. 1905 at 3 o'clock P.M., in Book "X", Pages 66 - 67 and 68 of Mining Records of Mohave County, Arizona Territory.

Thos. McNeely,
County Recorder.

Notice.

To Whom it may Concern:-- That I, John Elsey a Citizen of the United States, have this day located and I claim: this Fraction of a Mining Claim which is called the John Elsey: and is situated in Wallapai Mining district, Mohave County Arizona, and is Bounded as follows: Commencing at this Monument at which this notice is Posted, and runs in a westerly direction 100 feet to a Monument at the center of the West side line of said claim, and adjoins the Anaconda Mine: thence 750 feet to a monument at the south west corner of said claim, thence 200 feet to a monument at the South East Corner of said claim, thence 1500 feet to a monument at the North East Corner of said claim, thence 200 feet to a monument at the North West Corner of said claim, thence 750 ft to the monument on the Center west side line, thence 100 ft to place of beginning, this claim adjoins the Anaconda and Homestake Mines on the West and the "Doty", Monle Christo & "1900" on the East.

Dated and posted on the Ground, this 31st day of July 1901.

John Elsey

Locator

Witness:

Jas W. Haas

"Carl Theis

Filed and Recorded at request of J. W. Haas, Oct. 12th A.D., 1901 at 10 minutes past 4 o'clock, p M. in Book P page 242 Records of Mohave County, Arizona Territory. Jno.P.Feeny County Recorder.

Notice.

To Whom it may Concern:- That I, John Elsey a Citizen of the United States, have this day located and I claim: this Fraction of a Mining Claim which is called the John Elsey: and is situated in Wallapai Mining district, Mohave County Arizona, and is Bounded as follows: Commencing at this Monument at which this notice is Posted, and runs in a westerly direction 100 feet to a Monument at the center of the West side line of said claim, and adjoins the Anaconda Mine: thence 750 feet to a monument at the south west corner of said claim, thence 200 feet to a monument at the South East Corner of said claim, thence 1500 feet to a monument at the North East Corner of said claim, thence 200 feet to a monument at the North West Corner of said claim, thence 750 ft to the monument on the Center west side line, thence 100 ft to place of beginning, this claim adjoins the Anaconda and Homestake Mines on the West and the "Doty", Monle Christo & "1900" on the East.

Dated and posted on the Ground, this 31st day of July 1901.

John Elsey

Locator

Witness:

Jas W. Haas

"Carl Theis

Filed and Recorded at request of J. W. Haas, Oct. 12th A.D., 1901

at 10 minutes past 4 o'clock, p M. in Book P page 242 Records of

Mohave County, Arizona Territory.

Jno.P.Feeny County Recorder.

28

AMENDED NOTICE OF MINING LOCATION
LODE CLAIM.

###

TO ALL WHOM IT MAY CONCERN:

This Mining Claim, the name of which is the "MONTIE CHRISTIE" Mining Claim, situate on lands belonging to the United States of America, and in which there are valuable mineral deposits, was entered upon and located for the purpose of exploration and purchase by Mrs. Minnie Sherman, a citizen of the United States of America, on the 19th day of October, 1900, and was thereafter conveyed by said Mrs. Minnie Sherman to the undersigned; and the undersigned, Aztec Turquoise Company, a corporation, duly organized and existing under and by virtue of the laws of the State of West Virginia, and doing business in the County of Mohave, Territory of Arizona, by its Attorney in Fact, E. J. McNulty, doth on this 23rd day of April, 1907, make this amended location of the said "MONTIE CHRISTIE" Mining Claim for the sole and only purpose of correcting certain errors in the description and boundary lines as set forth in the original notice of location, duly recorded in Book "P" of Mining Records, at page 152, Records of said County of Mohave, Territory of Arizona, to which reference is hereby had and made; it being expressly understood however, that nothing herein shall be deemed or taken as a waiver on the part of said Aztec Turquoise Company of any right or interest in said mining claim, or any part or parcel thereof; and the said Aztec Turquoise Company doth hereby specifically reserve, retain and maintain all of its right, title, interest, estate, claim and demand whatsoever, of, in and to said premises, and every portion thereof.

The general course of the lode deposit and premises is from the Northwest to the Southeast.

The claim is located and situated in the Wallapai Mining District, in the County of Mohave, Territory of Arizona, about One and One-fourth miles Southeasterly from the town of Mineral Park, and being on the South side of the Ithica Mountain.

The surface boundaries are marked upon the ground as follows;

Beginning at Corner No. 1, at which this notice is posted, being the N.W. Corner of said claim; running thence ~~South~~ $83^{\circ} 00' E.$ 695.21 feet along the Southern side line of the "Dety" mining claim, to Corner No. 2; thence $S. 73^{\circ} 30' E.$ 339.6 feet, along said Southern side line of said "Dety" mining claim, to Corner No. 3., being the N.E. Corner of said claim; thence $S. 8^{\circ} 00' E.$ 300 feet to Corner No. 4, being the Eastern end center of said claim; thence $S. 2^{\circ} 16' 15" W.$ 220.15 feet to Corner No. 5, being the S.E. Corner of said claim; thence $N. 77^{\circ} 30' W.$ 617 feet along the Northern ~~boundary~~ side line of the "Nineteen Hundred Turquoise" mining claim, to Corner No. 6; thence $N. 60^{\circ} 30' W.$ 458 feet to Corner No. 7, being the S.W. Corner of said claim; thence $N. 8^{\circ} 00' W.$ 342.5 feet to Corner No. 1, and place of beginning.

All done under the provisions of Chapter Six, of Title XXXII, of the Revised Statutes, and of an Act of the General Assembly of Arizona entitled "An Act to Revise and Codify the Laws of the Territory of Arizona", Approved March 16, 1901, and all Amendments thereto.

Dated and posted on the Ground this 23rd day of April, 1907.

AZTEC TURQUOISE COMPANY,
By E. J. McNulty, Attorney in Fact.

29

Filed and Recorded at request of Ross H. Blakely, April 23rd A. D. 1907, at 10 minutes past 9 O'clock A. M. in Book "X" pages 409-410, of Mining Records of Mohave County, Arizona Territory.

Thos McNeely,
County Recorder.

#####

TERRITORY OF ARIZONA, :
 : ss.
COUNTY OF MOHAVE. :

I, Thos McNeely, Recorder of Mohave County, Territory of Arizona, do hereby certify that I have compared the foregoing copy of "AMENDED LOCATION NOTICE OF MONTIE CHRISTIE," Lode Mining Claim and of the endorsements thereupon with the original records of the same on file in this office and that the same are correct transcripts therefrom and the whole of said original records.

WITNESS MY HAND, and the seal of said office this 23rd day of April 1907.

Thos. McNeely
Recorder of Mohave County.



Notice of Mining Location.

30

MINERAL LOPE.

To All Whom It May Concern:

This mining claim, the name of which is the Queen Turquoise Mining Claim, situate on lands belonging to the United States of America, and in which there are valuable mineral deposits, was entered upon and located for the purpose of exploration and purchase by ~~(name scratched out)~~
Isaac Conkey & James Rawl

the undersigned, citizen of the United States of America, on the 15 day of March 1901.

The length of this claim is fifteen hundred (1500) feet, and ~~1112~~ 750 feet in a Northwesterly direction and 750 feet in a Southeasterly direction from the center of the discovery shaft at which this notice is posted, lengthwise of the claim, together with three hundred (300) feet in width of the surface grounds, on each side of the center of said claim. The general course of the lode deposit and premises is from the Northwest to the Southeast.

The claim is situated and located in the Mollapai Mining District, in Mohave County, in the Territory of Arizona, about one mile in a South Easterly direction, from the town of Mineral Park and on the west side of Lathrop Peak.
This location is for Turquoise and other precious gems

The surface boundaries of the claim are marked upon the ground as follows: Beginning at a monument of stone at a point in a Northwesterly direction 750 feet from the discovery shaft (at which this notice is posted), being in the center of the Northwest end line of said claim; thence Northeasterly three hundred (300) feet to a monument of stone, being the Northeasterly corner of said claim; thence Southeasterly, seven hundred and fifty (750) feet to a monument of stone at the center of the Northeasterly side line of said claim; thence Southeasterly, seven hundred and fifty (750) feet to a monument of stone being at the Southeasterly corner of said claim; thence Southwesterly, three hundred (300) feet to a monument of stone at the center of the Southeasterly end of said claim; thence Southwesterly, three hundred (300) feet to a monument of stone, being at the Southwesterly corner of said claim; thence Northwesterly, seven hundred and fifty (750) feet to a monument of stone, being at the center of the Southwesterly side line of said claim; thence Northwesterly, seven hundred and fifty (750) feet to a monument of stone at the Northwesterly corner of said claim; thence Northeasterly, three hundred (300) feet to the place of beginning.

All done under the provisions of Chapter Six, of Title XXXII, of the Revised Statutes of the United States, and of an Act of the General Assembly of Arizona, entitled "An Act Concerning Mines," approved March 2nd, 1899.

Dated and posted on the ground this 15 day of March 1901, at 5 min. past 8 o'clock A. M.

Witness
N. H. Hall

Isaac Conkey
James Rawl

Filed and recorded at request of Isaac Conkey May 8 A.M. 1901
at 30 minutes past 4 o'clock P.M. in Book 2 page 106
Records of Mohave County, Arizona Territory.

Jno. P. Feeny
County Recorder

31

TERRITORY OF ARIZONA,)
) ss.
COUNTY OF MOHAVE.)

I, Thos. McNeely, Recorder of Mohave County, Territory of Arizona, do hereby certify that I have compared the foregoing copy of Location Notice of the "Queen Turquoise" Mining Claim and of the endorsement thereupon with the original records of the same on file in this office, and that the same are correct in transcripts therefrom and of the whole of said original records.

WITNESS my hand and the seal of said office, this 15th day of August 1905.

Thos. McNeely
Recorder of Mohave County.



32

U. S. SURVEYOR-GENERAL'S FINAL CERTIFICATE ON FIELD NOTES.

Department of the Interior,

OFFICE OF U. S. SURVEYOR-GENERAL,

Phoenix, Arizona

February 7, 1908.

I, U. S. Surveyor-General for District of Arizona

do hereby certify that the foregoing transcript of the Field Notes, return and approval of the survey of the mining claim of The Aztec Turquoise Company

QUINN TURQUOISE, DOTY, JOHN ELSEY,

known as the MONTIE CHRISTIE and NINETEEN HUNDRED TURQUOISE

situate in Wallapai

Mining District, Mohave County, Arizona

in Section 19, Township No. 23 N., Range No. 17 W. Unsur., and designated as Survey No. 2156, has been correctly copied from the originals on file in this office; that said Field Notes furnish such an accurate description of said mining claim as will, if incorporated into a patent, serve fully to identify the premises, and that such reference is made therein to natural objects or permanent monuments as will perpetuate and fix the locus thereof.

And I further certify that five hundred dollars' worth of labor has been expended or improvements made upon ^{each of} said mining claim^s by claimant or its grantors, and that said improvements consist of 3 shafts, 19 open cuts, 5 tunnels, 1 open cut and shaft, and 1 cut and shaft, total value \$7145.00

and that no portion of said labor or improvements has been included in the estimate of expenditures upon any other claim.

I further certify that the plat thereof, filed in the U. S. Land Office at Phoenix Arizona is correct and in conformity with the foregoing Field Notes.

Frank S. Ingalls

United States Surveyor-General for Arizona

33

4-687.

SURVEYOR-GENERAL'S CERTIFICATE OF APPROVAL OF FIELD NOTES AND SURVEY OF MINING CLAIM.

Department of the Interior,

Office of U. S. Surveyor-General,

PHOENIX, Arizona

February 7, 1908.

I, U. S. Surveyor-General for District of Arizona

do hereby certify that the foregoing and hereto attached Field Notes and Return of the Survey of the Mining Claim of The Aztec Turquoise Company

known as the QUEEN TURQUOISE, BOY, JOHN WLSBY, MONTIE CHRISTIE, and NINETEEN HUNDRED TURQUOISE

situate in Wallapai Mining District,

Mahave County, Arizona

in Section 19, Township No. 23 N., Range No. 17 W. Unsur.

designated as Survey No. 2156

executed by O. F. Kuencer, U. S. Deputy Mineral

Surveyor, November 15, 1905, - August 2, 1907, under my instructions dated instructions dated April 26, 1907, Aug. 22, 1905, and amended, 1907, have been critically examined and the necessary

corrections and explanations made, and the said Field Notes and Return, and the Survey they describe, are hereby approved. A true copy of the copy of the location certificate filed by the applicant for survey is included in the field notes.



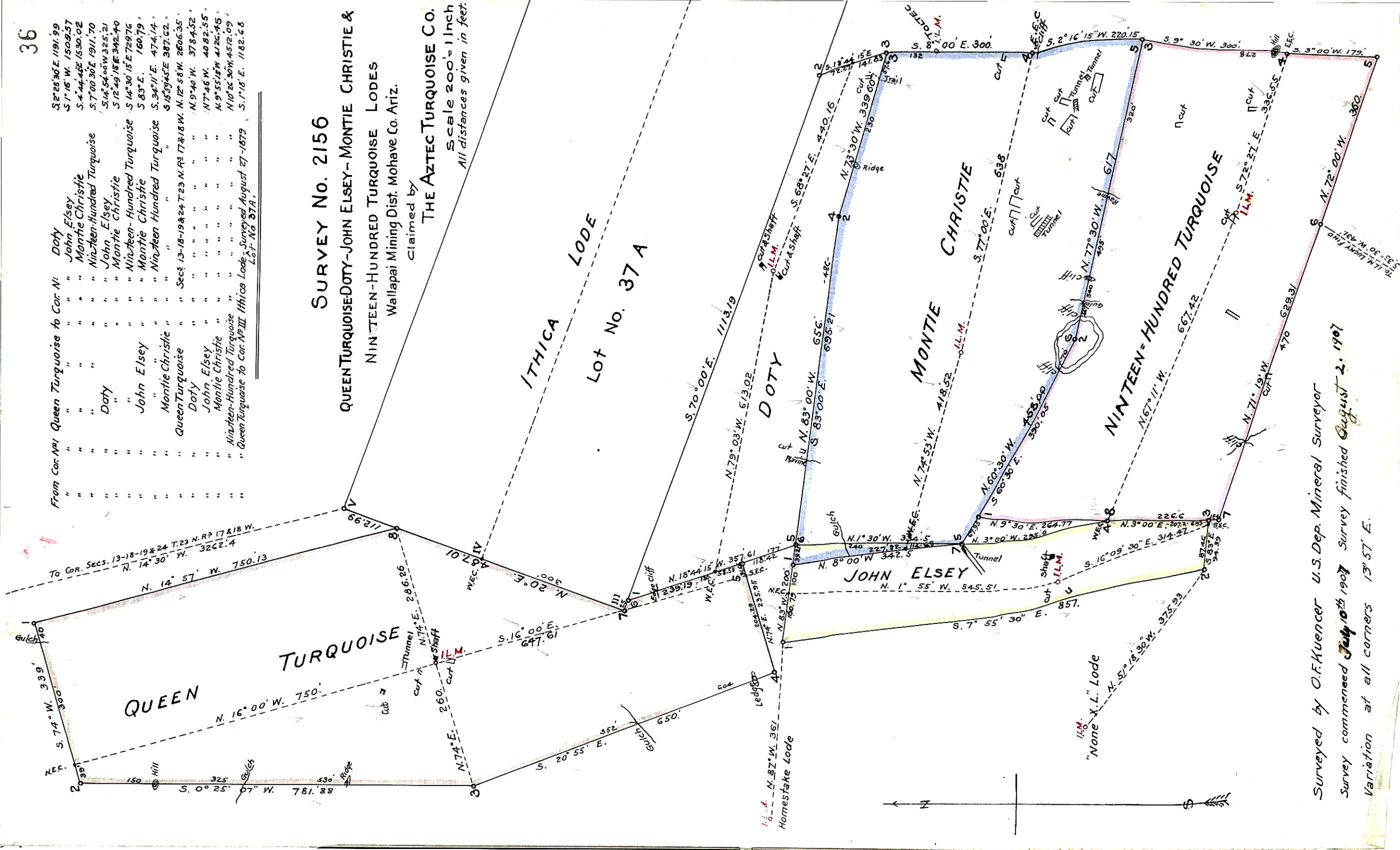
U. S. Surveyor-General for Arizona

From Cor. No. 1 Queen Turquoise to Cor. No. 1	Doty	S. 2° 25' 30" E. 1191.99
" " " " " "	John Elsey	S. 1° 16' W. 1509.57
" " " " " "	Montie Christie	S. 4° 44' 45" E. 1530.02
" " " " " "	Nineteen-Hundred Turquoise	S. 7° 00' 30" E. 1911.70
" " " " " "	Doty	S. 14° 54' 00" W. 325.21
" " " " " "	John Elsey	S. 12° 49' 18" E. 342.40
" " " " " "	Montie Christie	S. 14° 30' 15" E. 729.76
" " " " " "	Nineteen-Hundred Turquoise	S. 8° 3' E. 160.79
" " " " " "	Montie Christie	S. 3° 47' 11" E. 474.14
" " " " " "	Nineteen Hundred Turquoise	S. 15° 59' 45" E. 387.62
" " " " " "	Queen Turquoise	Secs. 13-18-19 & 24 T. 23 N. R. 3 W. 17 & 18 W. N. 12° 58' W. 2606.35
" " " " " "	Doty	N. 9° 40' W. 3784.52
" " " " " "	John Elsey	N. 7° 45' W. 4082.55
" " " " " "	Montie Christie	N. 9° 55' 18" W. 4126.45
" " " " " "	Nineteen-Hundred Turquoise	N. 10° 26' 30" W. 4512.09
" " " " " "	Queen Turquoise to Cor. No. III	Office Lode, Surveyed August 27-1879
" " " " " "	Lot No. 37A	S. 1° 18' E. 1182.68

SURVEY NO. 2156

QUEEN TURQUOISE-DOTY-JOHN ELSEY-MONTIE CHRISTIE & NINETEEN-HUNDRED TURQUOISE LODES
 Wallapai Mining Dist. Mohave Co. Ariz.

Claimed by
THE AZTEC TURQUOISE CO.
 scale 200' = 1 inch
 All distances given in feet.



Surveyed by O.F. Kuencer U.S. Dep. Mineral Surveyor
 Survey commenced July 10th 1907 Survey finished August 2, 1907
 Variation at all corners 13° 57' E.

