

MS -

0

2

4

9

9

Copied 2-6-08.
H. S. I.

JAN 27 1908
1

(4-683.)

Mineral Survey No. 2499

Lot No.

Arizona Land District.

FIELD NOTES

OF THE SURVEY OF THE MINING CLAIM OF

Warrior Copper Company.

KNOWN AS THE

Diamond H No. 5, Diamond H No. 2 and Diamond H No. 9

Globe Mining District,

Gila County, Arizona

Section approx., Township 1 N. 14, Range 14 E. G. & S. R. B. & M
Unsur.

Surveyed under instructions dated November 15, 1907.

by D. E. Curry
U. S. Deputy Mineral Surveyor

Claim located see location notices 1

Survey commenced November 16, 1907. 1

Survey completed November 17, 1907. 1

6-159

Postoffice address of claimant's agent,

E. M. White,
Black Warrior,
Arizona.

920

Feet.

Diamond H. No. 5.

Beginning at Cor. No. 1, the S. E. Cor., identical with location and with Cor. No. 1 Diamond \diamond No. 2 lode of this survey, a pine post 4 ft. long 4 in. sq. set 18 in. in the ground in a mound of stones and scribed 1-2499 D. H. 5₁, whence a limestone rock in place 30 x 12 x 24 in. high scribed \times 1-D.H.5-2499^{B.R.} brs. N. 27 deg. 7 min. E. 19.6 ft., and a second limestone rock in place 18 x 24 x 18 in. high chiseled \times 1-D.H.5-2499^{B.R.} brs S. 70 deg. 56 min. E. 14.6 ft., no bearing monuments available, and U.S.L.M. No. 2499 Globe Mining District brs. N. 39 deg. 51 min. W. 90.1 ft.

Thence S. 64 deg. 13 min. W.

1496.8 to Cor. No. 2, the S.W. Cor., identical with location, a pine post 4 ft. long 4 in. sq. set 18 in. in the ground in a mound of stones and scribed 2-2499 D.H.5₂, whence a dacite rock in place 18 x 18 x 10 in. high chiseled \times 2-D.H.5-2499^{B.R.} brs. S. 74 deg. 31 min. E. 5.8 ft, and a second dacite rock 24 x 16 x 8 in. high with same scribing, brs S. 31 deg. 2 min. W. 15 ft., no bearing monuments available;

Thence N. 25 deg. 47 min. W.

300 to original location for W.E.C.

596.0 same bearing to Cor. No. 3, the N.W. Cor., identical with location, a pine post 4 ft. long 4 in. sq. set 18 in. in the ground in a mound of stones and scribed 3-2499 D.H.5 L., whence a dacite rock in place 24 x 36 x 30 in. high, chiseled \times 3-D.H.5-2499^{B.R.} brs N. 50 deg. 9 min. E. 3 ft., and a second dacite rock in place 24 x 48 x 36 in. high, with same scribing, brs. S. 25 deg. 47 min. E. 6 ft., no bearing monuments available.

Thence N. 64 deg. 12 min. E.

1496.8 to Cor. No. 4, the N.E. Cor., identical with location and with Cor. No. 2, Diamond \diamond No. 2. lode of this survey, a pine post 4 ft. long 4 in. sq., set 18 in.

Feet. in the ground in a mound of stones and scribed 4-2499 D.H.5 L., whence a limestone rock in place 12 x 18 x 24 in. high, chiseled ~~x4~~-D.H.5-2499^{B.R.} brs. N. 24 deg. 19 min. E. 33.6 ft., and a second limestone rock in place 36 x 30 x 36 in. high, with same scribing brs. S. 44 deg. 39 min. E. 37.0 ft., no bearing monuments available.

Thence S. 25 deg. 47 min. E.

296.3 to original location for E.E.C.

596.3 same bearing to Cor. No. 1, the place of the beginning.

LEDGE.

The presumed course of the vein on this claim is from the W.E.C. N. 64 deg. 13 min. E. 1496.8 ft.

Diamond (H) No. 2 lode.

Beginning at Cor. No. 1, the S.W. Cor., identical with location, and with Cor. No. 1 Diamond (H) No. 5 lode of this survey, a pine post 4 ft. long 4 in sq. set 18 in. in the ground in a mound of stones and scribed 1-2499 D.H. 2 L., bearing rocks same as for Cor. No. 1 Diamond (H) No. 5^{lode} of this survey. U.S.L.M. No.2499 Globe Mining District brs. N. 39 deg. 51 min. W. 90.1 ft.

Thence N. 25 deg. 47 min. W.

300.0 to original location for W.E.C.

596.3 same bearing to Cor. No. 2, the N.W. Cor. identical with location and with Cor. No. 4 Diamond (H) No. 5 lode of this survey, a pine post 4 ft. long 4 in. sq. set 18 in. in the ground in a mound of stones and scribed 2-2499 D.H.2 L., bearing rocks same as for Cor. No. 4 Diamond (H) No. 5 lode of this survey.

Thence N. 64 deg. 5min. E.

1500.0 to Cor. No. 3, the N.E. Cor., identical with location, a pine post 4 ft. long 4 in. sq., set 18 in. in the ground in a mound of stones and scribed 3-2499 D.H.2 L. whence a limestone rock in place 8 x 12 x 6 in. high,

- Feet. chiseled^{BR.} ~~x3~~-D.H. 2-2499, ^{BR.} brs. N. 40 deg. 8 min. W. 54.7 ft., and a second limestone rock in place 12 x 18 x 12 in. high with same scribing; brs. N. 8 deg. 1 min. W. 101.8 ft., no bearing monuments available.
- Thence S. 25 deg. 47 min. E.
- 300.0 to original location for E.E.C.
- 600.0 same bearing, to Cor. No. 4, the S.E. Cor., identical with location and with Cor. No. 2 Diamond H. No. 9 lode of this survey, a pine post 4 ft. long 4 in. sq., set 18 in. in the ground in a mound of stones and scribed 4-2499 D.H. 2 L., whence a dacite rock in place 24 x 18 x 12 in. high, chiseled^{BR.} ~~x4~~-D.H. 2-2499, ^{BR.} brs N. 30 deg. 9 min. W. 19 ft., and a second granite rock in place 24 x 30 x 12 in. high, with same scribing brs. N. 26 deg. 55 min. E. 18.5 ft., no bearing monuments available.
- Thence S. 64 deg. 13 min. W.
- 1200.0 to Cor. No. 1, and the N.E. Cor. respectively of Diamond H. No. 9 lode of this survey and Diamond ~~H.~~ No. 1 lode unsurveyed.
- 1500.0 same bearing to Cor. No. 1, the place of the beginning.

LEDGE.

The presumed course of the vein on this claim is from the W.E.C. location N. 64 deg. 13 min. E. 1500 ft.

Diamond H. No. 9.

Beginning at Cor. No. 1, the N.W. Cor., identical with location and situated on line 1-4 Diamond ~~H.~~ No. 2 lode of this survey, at N. 64 deg. 13 min. E. 300 ft. from Cor. No. 1, a pine post 4 ft. long 4 in. sq., set 18 in. in the ground in a mound of stones and scribed 1-2499 D.H. 9 L., whence a limestone rock in place 12 x 8 x 6 in. high, chiseled^{BR.} ~~x1~~-D.H. 9-2499, ^{BR.} brs. N. 21 deg. 6 min. W. 30.5 ft.; and a second limestone rock in place 18 x 24 x 12 in. high, with same scribing, brs. S. 33

	<p>deg. 56 min. E., 3.4 ft., no bearing monuments available, and U.S.L.M. No. 2499 Globe Mining District, brs. S. 79 deg. 24 min. W. 333.6 ft.</p> <p>Thence N. 64 deg. 13 min, E.</p>
1200.0	<p>to Cor. No. 2, the N.E. Cor., identical with location and with Cor. No. 4 Diamond \diamond No. 2 lode of this survey, a pine post 4 ft. long 4 in. sq., set 18 in. in the ground in a mound of stones and scribed 2-2499 D.H. 9 L., bearing rocks same as for Cor. No. 4 Diamond \diamond No. 2 lode of this survey.</p> <p>Thence S. 18 deg. 9 min. E.</p>
299.6	<p>to original location for N.E.E.C.</p>
478.3	<p>same bearing to the intersection of wagon road to Black Warrior postoffice.</p>
598.2	<p>same bearing to Cor. No. 3, the S.E. Cor., identical with location, a pine post 4 ft. long 4 in. sq., set 18 in. in the ground in a mound of stones and scribed 3-2499 D.H. 9 L., whence a dacite rock in place 36 x 36 x 24 in. high, chiseled 3- D.H. 9-2499^{BR}, brs N. 7 deg. 41 min. E. 61.0 ft., and a second dacite rock in place 30 x 36 x 18 in. high, with same scribing, brs. S. 42 deg. 54 min. W. 63.2 ft., no bearing monuments available.</p> <p>Thence S. 64 deg. 13 min. W.</p>
1200.0	<p>to Cor.No. 4, the S.W. Cor., identical with location a pine post 4 ft. long 4 in. sq., set 18 in. in the ground in a mound of stones and scribed 4-2499 D.H. 9 L. whence a dacite rock in place 12 x 30 x 18 in. high, chiseled 4-D.H. 9-2499^{BR}, brs N. 81 deg. 19 min. E. 38.0 ft., and a second dacite rock in place 18x18 x 12 in. high, with same scribing, brs. S. 47 deg. 37 min. W. 24 ft., no bearing monuments available.</p> <p>Thence N. 18 deg. 9 min. W.</p>
301.7	<p>to original location for W.E.C.</p>
498.0	<p>same bearing, to the intersection of wagon road to Black Warrior postoffice.</p>

Feet.

598.2 same bearing, to Cor. No. 1, the place of the beginning.

LEDGE.

The presumed course of the vein on this claim is from the S. W. E. C. location N. 64 deg. 22 min. E. 1199.6 ft.

AREAS.

Total and net area of Diamond H. No. 5 lode,	20.485 A.
Total and net area of Diamond H. No. 2 lode,	20.597 A.
Total and net area of Diamond H. No. 9 lode,	<u>16.333 A.</u>
Total and net area of group,	57.415 A.

IMPROVEMENTS.

I hereby certify that the value of the labor and improvements on this group, placed thereon by the claimant or its grantors, is not less than five hundred dollars for each location thereof, and that said improvements are as follows:

DIAMOND H. NO. 5.

No. 1, discovery open cut, 4 x 15 x 10 ft. face, bearing N. 60 deg. E., the mouth of which hrs. from W.E.C. location N. 64 deg. 13 min. E. 942.0 ft.

Value \$ 50.00

No. 2, open cut 4 x 15 x 8 ft. face, with tunnel 4 x 6 x 7 ft. long, brg. N. 25 deg. W.; the mouth of open cut hrs. from Cor. No. 2 N. 55 deg. 45 min. E. 740 ft.

Value 50.00

No. 3, trench 3 x 4 x 30 ft. long, brg. N. 45 deg. W., with tunnel 4 x $4\frac{1}{2}$ x 6 ft. long, brg. N. 0 deg. E.; the mouth of trench hrs. from Cor. No. 2 N. 57 deg. 35 min. E. 810 ft.

Value 50.00

No. 4, open cut 4 x 10 x 8 ft. face, with tunnel 4 x 5 x 15 ft. long, brg. N. 20 deg. W.; the mouth of open cut hrs. from Cor. No. 2 N. 58 deg. 40 min. E. 978 ft.

Value 135.00

Survey No. 2499.

7.

Feet.

No. 5, open cut 4 x 10 x 10 ft. face, with tunnel 4 x 6 x 60 ft.,^{long} brg. N. 21 deg. W.; the mouth of open cut brs. from cor. No. 2 N. 59 deg. 55 min. E., 885.0 ft. Value \$ 500.00

No. 6, shaft 6 x 10 x 10 ft. deep, with shaft at bottom 5 x 6 x 17 ft.,^{deep} brs from Cor. No. 1 S. 69 deg. 13 min. W. 422.0 ft. Value 250.00

Total improvements on claim, \$1025.00

Diamond H. No. 2.

No. 1, discovery open cut 12 x 10 x 25 ft. face, with tunnel 4 x 6 x 6 ft. long, and shaft 4 x 6 x 17 ft. deep, in bottom of, open cut. Tunnel and open cut br N. 0 deg. E. The mouth of open cut brs from W.E.C. location N. 64 deg. 13 min. E. 470 ft. Value 200.00

No. 2, tunnel 4 x 7 ft., brg S. 45 deg. W. 15 ft., N. 45 deg. W. 20 ft., and S. 60 deg. W. 20 ft. The mouth of tunnel brs. from Cor. No. 1 N. 41 deg. E. 508 ft. Value 440.00

No. 3, open cut 4 x 15 x 10 ft. face, brg. N. 90 deg. W. The mouth of open cut brs from Cor. No. 1 N. 46 deg. 50 min. E. 505.0 ft. Value 30.00

No. 4, open cut 4 x 20 x 10 ft. face, with tunnel 4 x 6 x 10 ft. long, brg. N. 70 deg. W. The mouth of open cut brs from Cor. No. 1 N. 50 deg. 2 min. E. 520 ft. Value 100.00

No. 5, open cut 20 x 20 x 20 ft. face, brg N. 0 deg. E., with shaft 8 x 10 x 45 ft. deep at bottom. The mouth of open cut brs from Cor. No. 1 N. 51 deg. 18 min. E. 672 ft. Value 800.00

No. 6, open cut 4 x 20 x 8 ft. face, brg. N. 40 deg. W. The mouth of open cut brs from Cor. No. 1 N. 57 deg. 55 min. E. 780 ft. Value 30.00

No. 7, open cut 4 x 20 x 10 ft. face, with tunnel 4 x 6 x 86 ft. long, with 232 ft. of drifting.

Survey No. 2499.

Open cut ^{and} ~~in~~ main tunnel brs N. 3 deg. W. *The mouth of open cut brs from Cor. No. 1. Nbr 30 E 62.50 ft.* Value \$2450.00

No. 8, 73 ft. of tunnel No. 2 on Diamond H. No.

9 claim allotted to this claim. Value 584.00

Total improvements on claim, \$4634.00

Diamond H. No. 9.

discovery
No. 1, shaft 4 1/2 x 4 1/2 x 40 ft. deep, brs from S.W.E.C. location N. 64 deg. 22 min. E. 680 ft.

Value 320.00

No. 2, open cut 4 x 20 x 8 ft. face, with tunnel 4 x 6 x 190 ft. long, brg. N. 26 deg. 30 min. W. The mouth of open cut brs from Cor. No. 1 S. 87 deg. 2 min. E. 285 ft. Value of open cut, \$40.00; value of tunnel, \$1520.00. 73 ft. of this tunnel being situated on Diamond (H) No. 2 claim, has been allotted to that claim. 117 ft. of the tunnel and the open cut has been allotted to the Diamond H. No. 9 claim. Value of 117 ft. of tunnel,

and open cut allotted to this claim, 976.00

Total improvements on claim, \$1296.00

Total improvements on group, - \$6955.00

OTHER IMPROVEMENTS.

Frame house, 1 story, 40 x 25 ft., situated on Diamond H. No. 9 claim; the N.W. Cor. of the frame house brs. from Cor. No. 1 S. 76 deg. 20 min. E. 428 ft.

Frame house, 1 story, 20 x 18 ft., situated on Diamond H. No. 9 claim; the N. W. Cor. brs. from Cor. No. 1 S. 62 deg. 45 min. E. 296 ft.

ADJOINING CLAIMS.

North, unsurveyed ground, claims and claimants unknown.

East, Diamond (H) No. 6 lode, unsurveyed, owned by the applicant herein;

South, unsurveyed ground, owned by the Kasser Gold Mining Co. Diamond (H) No. 1 and Diamond (H) No.

8, unsurveyed, owned by the applicant herein.

West, unsurveyed ground, claims and claimants unknown.

LOCATION.

This group is situated and located about 4 miles up Lost Gulch Creek, in a northwesterly direction from Black Warrior postoffice, in the Globe Mining District, Gila county, Territory of Arizona, on unsurveyed lands, approximately in Tp. 1 N., R. 14 E. G. & N.S.R.B. & M.

INSTRUMENT.

This survey was made with a C. L. Berger & Sons No. 1 C transit. The courses were deflected from the true meridian as determined by solar observation, checked by an observation on Polaris. The distances were measured with a 300 foot steel tape, Magnetic variation, 12 deg. 30 min. E. at all corners.


U. S. Deputy Mineral Surveyor.

Dated at Bisbee, Arizona,
January 23rd, 1908.

NOTES ON THE ESTABLISHMENT OF U.S.L.M. NO. 2499.

It was found upon examining the location of the group of claims in Sur. No. 2499, which I received instructions to survey under date of November 9th, 1907, that said claims are situated in the Globe Mining District, Gila County, Arizona, and about 4 miles in a northwesterly direction up Lost Gulch from the Black Warrior postoffice.

The claims of this survey are more than 2 miles from any monument of the public survey, ~~land survey~~ or any United States mineral monument.

A hill situated in the S.E. Cor. of the Diamond 

No. 5 claim of this survey, was selected for the site of U.S.L.M. No. 2499. This location commands a great area and is easy of access for direct measurements. A large limestone rock in place $3\frac{1}{2}$ x 4 x 8 ft. high was selected for the location of said monument. Upon the top of this a cross ^(X) was chiseled, marking the exact location, and alongside was chiseled U.S.L.M.No. 2499. A monument of stones 5 ft. high and 6 ft. in diameter at the base was built alongside said U.S.L.M. 2499.

The following description will locate said monument:

It is situated about 190 ft. N. of Lost Gulch road, - a very prominent landmark, - about 4 miles northwesterly from Black Warrior postoffice and about 2 miles northwesterly from Kasser stamp mill. Warrior postoffice and Kasser stamp mill, both being situated in Lost Gulch, are invisible from said monument, so bearings could not be taken.

The following bearings were taken: for U.S.L.M. No. 2499:

Rock House Spring brs. S. 64 deg. 45 min. W. 670.3 ft.

The mouth of Diamond H. No. 9 tunnel brs S. 82 deg. 55 min. E. 617.2 ft.

FINAL OATHS FOR SURVEYS.

LIST OF NAMES.

A list of the names of the individuals employed by D. E. Curry
 United States Deputy Mineral Surveyor, to assist in running, measuring, and marking the lines, corners, and
 boundaries described in the foregoing field notes of the survey of the mining claim of
Warrior Copper Co., by ~~E. M. White, Supt.~~
 known as the Diamond H. No. 5, Diamond H. No. 2, Diamond H. No. 9.
 and showing the respective capacities in which they acted.

C. Taylor , Chainman.
W. H. Ferrin , Chainman.
 , Axman.
 , Flagman.

FINAL OATHS OF ASSISTANTS.

We, C. Taylor
 and W. H. Ferrin , do solemnly swear that we assisted D. E. Curry
 , United States Deputy Mineral Surveyor, in marking the corners and surveying
 the boundaries of the mining claim of Warrior Copper co.

 known as the Didmond H. No. 5, Diamond H. No. 2, Diamond H. No. 9.
 represented in the foregoing field notes as having been surveyed by said deputy mineral surveyor and under his
 direction; and that said survey has been in all respects, to the best of our knowledge and belief, faithfully and
 correctly executed, and the corner and boundary monuments established according to law and the instructions
 furnished by the United States Surveyor-General for Arizona

C. Taylor , Chainman.
W. H. Ferrin , Chainman.
 , Axman.
 , Flagman.

Subscribed and sworn to by the above-named ~~persons~~ W. H. Ferrin before me this 12
 day of December , 1907.

J. Halliday
 Notary Public, Gila Co. Ariz
 My Commission expires Feb 13/1911

Subscribed and sworn to by the above named C. Taylor
 this 5th day of December, 1907.

J. M. Reynolds
 Notary Public in and for Cochise County, Arizona
 My Commission expires October 20th, 1909.

FINAL OATH OF U. S. DEPUTY MINERAL SURVEYOR

I, D. E. Curry, U. S. Deputy Mineral Surveyor, do solemnly swear that, in pursuance of instructions received from the United States Surveyor General for Arizona, dated November, 15, 1907, I have, in strict conformity to the laws of the United States, the official regulations and instructions thereunder, and the instructions of said Surveyor General, faithfully and correctly executed the survey of the Mining Claim of Warrior Copper Company, known as the Diamond H No.5, Diamond H No.2, and Diamond H No.9, situate in Globe Mining District, Gila County, Arizona, in Section approx., Township No. 1 N.; Range No. 14 E. G. & S.R.E. & M. Unsur. and designated as Survey No. 2499, as represented in the foregoing field notes, which accurately show the boundaries of said mining claim as distinctly marked by monuments on the ground, and described in the attached copy of the location certificate, which was received by me from the Surveyor General with said instructions, and that all the corners of said survey have been established and perpetuated in strict accordance with the law, official regulations and instructions thereunder; and I do further solemnly swear that the foregoing are the true and original field notes of said survey and my report therein, and that the labor expended and improvements made upon said mining claim by claimant or its grantors are as therein fully stated, and that the character, extent, location and itemized value thereof are specified therein with particularity and full detail, and that no portion of said labor or improvements so credited to this claim has been included in the estimate of expenditures upon any other claim.

D. E. Curry
U. S. Deputy Mineral Surveyor.

Subscribed and sworn to by the said D. E. Curry
U. S. Deputy Mineral Surveyor, before me
R. C. Stamford, Notary Public this 24th.
day of January 1908.

R. C. Stamford
Notary Public

Commission Expires June 9, 1909.

Affidavit of Five Hundred Dollars Improvements.

We, C. Taylor and W. H. Ferrin

of lawful age, being first duly sworn according to law, depose and say: That we are acquainted with the Diamond H. No. 5, Diamond H. No. 2 Diamond H. No. 9 mining claim, situate in Globe

mining district, Gila County, Arizona Territory, for which

Warrior Copper Co., by F. M. White, Supt.,

has made application for survey prior to application for patent under the provisions of the Act of Congress approved May 10, 1872; and that the labor done and improvements made thereon by the applicant and

its grantor exceed five hundred dollars in value, ^(for each location thereof) and further that we are not personally interested in said mine.

C Taylor
W. H. Ferrin

TERRITORY OF ARIZONA,
COUNTY OF Gila } ss:

(By W.H. Ferrin)
Sworn to and subscribed before me this 12 day

[SEAL.] of December, 1907
my commission expires Dec 13, 1911

11786400-2-04

J. J. Collins
Notary Public
Gila County, Ariz

TERRITORY OF ARIZONA
County of Cochise } ss:

Sworn to and subscribed by C. Taylor
before me this 5th day of December, 1907.

W. M. Reynolds

Notary Public in and for the County
of Cochise, Territory of Arizona.
My Commission expires Oct. 20th, 1909

L O C A T I O N N O T I C E.

NOTICE IS HEREBY GIVEN that the undersigned, in compliance with the requirements of the Mining Act of Congress, approved May 10, 1872, and all Acts amendatory thereof, have this day located and claim 1500 linear feet along the course of this lead, lode or vein of mineral-bearing quartz, and 300 feet in width, on each side of middle of said lead, lode or vein, situated in the Globe Mining District, County of Gila, Arizona, and more particularly described as follows, to-wit:

COMMENCING at this monument of stones, being the center of the West end of claim, and upon which this notice is posted; thence north West 300 feet to a monument of stones; thence N. East 1500 feet to a monument of stones; thence S. E. 300 feet to a monument of stones, being the center of East end of claim; thence S. E. 300 feet to a monument of stones; thence S. W. 1500 feet to a monument of stones; thence N. W. 300 feet to the place of beginning.

THIS CLAIM is situated on Lost Gulch about 500 yds East of the rock Cabin springs and occupys most of the ground formerly included in the Old Hortense Mine, and shall be known as the Diamond \diamond No. 2 Mine.

Located Sept. 20th 1893.

Witness: - - - - -

Locators: R. E. Humphrey
C. H. Hill.

This claim is a relocation of the same ground made 1st January 1893, and is slightly changed so as to follow the ledge as definitely ascertained now.

Filed and recorded at the request of R. E. Humphrey, at - - minutes past 5 o'clock P. M., Sept. 27, A. D., 1893.

Chas. T. Martin,
County Recorder.

TERRITORY OF ARIZONA, }
COUNTY OF GILA } ss

I, E. T. STEWART, County Recorder in and for the County of Gila, Territory of Arizona, do hereby certify that the above and foregoing contain and constitute a full, true and correct copy of the Location Notice of the

TERRITORY OF ARIZONA, }
COUNTY OF GILA } SS

I, E. T. STEWART, County Recorder in and for the County of Gila, Territory of Arizona, do hereby certify that the above and foregoing contain and constitute a full, true and correct copy of..... the Location Notice of the
"DIAMOND H NO.2" Mining Claim,
.....
as the same appears of record in my office in Book..... 4, Records of Mines,
at page..... 281,.....; that I have compared the same with the original record, and that the same is a true transcript and of the whole thereof.


Given under my hand and seal of office this..... 2nd.day of
November,....., A. D. 1907.

E. T. Stewart
.....
County Recorder, Gila County, A. T.

L O C A T I O N N O T I C E .

NOTICE IS HEREBY GIVEN that the undersigned, in compliance with the requirements of the Mining Act of Congress, approved May 10, 1872, and all Acts amendatory thereof, have this day located and claim 1500 linear feet along the course of this lead, lode or vein of mineral-bearing quartz, and 300 feet in width, on each side of the middle of said lead, lode or vein, situated in the Globe Mining District, County of Gila, Arizona, and more particularly described as follows, to-wit:

COMMENCING at this monument of stones, being the center of the East end of claim, and upon which this notice is posted; thence N.E. 300 feet to a monument of stones; thence N.W. 1500 feet to a monument of stones; thence S.W. 300 feet to a monument of stones, being the center of of West end of claim, thence S.W. 300 feet to a monument of stones; thence S.E. 1500 feet to a monument of stones; thence N.E. 300 feet to the place of beginning.

THIS CLAIM is situated and is the westerly extension of of claim Diamond H ,No.4 formerly the Hortense mine and has the Rock House springs on the ground, and shall be known as the Diamond  No.5 Mine.

Located Oct. 1st. 1894.

Witness: - - - - -

Locators:
R. E. Humphrey
C. H. Hill.

This claim was located early in the spring but by some oversight was not recorded at the same time as the others located by the same parties.

Filed and recorded at the request of H.M. Schlesinger, at - - minutes-past 2 o'clock P.M. Nov. 1st. A.D. 1894.

Chas. T. Martin, County Recorder.

TERRITORY OF ARIZONA,)
COUNTY OF GILA)^{SS}

I, E. T. STEWART, County Recorder in and for the County of Gila, Territory of Arizona, do hereby certify that the above and foregoing contain and constitute a full, true and correct copy of.....the Location Notice of the "DIAMOND H. NO. 5" Mining Claim,..... as the same appears of record in my office in Book..... 4, Records of Mines,..... at page..... 339,.....; that I have compared the same with the original record, and that the same is a true transcript and of the whole thereof.

Given under my hand and seal of office this..... 2nd..... day of

TERRITORY OF ARIZONA,)
COUNTY OF GILA)

I, E. T. STEWART, County Recorder in and for the County of Gila, Territory of Arizona, do hereby certify that the above and foregoing contain and constitute a full, true and correct copy of.....the Location Notice of the
"DIAMOND H. NO. 5" Mining Claim,
as the same appears of record in my office in Book.....4, Records of Mines,
at page.....339,.....; that I have compared the same with the original record, and that the same is a true transcript and of the whole thereof.

Given under my hand and seal of office this.....2nd.....day of

November,....., A. D. 1907...

E. T. Stewart

County Recorder, Gila County, A. T.

L O C A T I O N N O T I C E .

NOTICE IS HEREBY GIVEN that the Diamond H.No.9 Mining Claim, containing mineral-bearing quartz, earth or rock in place, located by R.E.Humphrey and C.H.Hill on this 10th day of May, 1896, has been located for mining purposes. Said claim is 1500 feet in length, and we claim 300 feet on each side of the center of discovery shaft, for full length of claim. The general course of this lode, deposit or premises, is North Easterly. This claim is situated in Globe Mining District, Gila County, Territory of Arizona, about 8 miles north-westerly in a general direction from the Town of Globe and is situated about 1 mile N.W. of Kasser Mill and on Lost Gulch.

This claim is bounded and marked as follows:^{to-wit:} Beginning at the N.W.center end post or monument, being about 1000 feet from the of the center of discovery shaft upon which the notice is posted; thence 300 feet in a Northerly direction to a post or monument; thence 750 feet in a Northeasterly direction to a post or monument at the center of the - - side line of claim; thence 750 feet in a Northeasterly direction to a post or monument; thence 300 feet in a southeasterly direction to a post or monument, being the center end post or monument of N.Easterly end of said claim and 500 feet north easterly from the center of discovery shaft; thence 300 feet in a southeasterly direction to a post or monument; thence 750 feet in a southwesterly direction to a post or monument, being the center of the southwesterly side line of claim; thence 750 feet in a Southwesterly direction to a post or monument; thence 300 feet in a northwesterly direction to the place of beginning.

Done under and by virtue of the laws of the United States, and the laws of the Territory of Arizona.

R.E.Humphrey
C.H.Hill.
Locators.

Filed and recorded at the request of R.E.Humphrey, at - -
~~minutes-past~~ 1 o'clock P.M., Aug. 4th., A.D., 1896.

G.M.Allison, County Recorder.

TERRITORY OF ARIZONA, }
COUNTY OF GILA } SS

I, E. T. STEWART, County Recorder in and for the County of Gila, Territory of Arizona, do hereby certify that the above and foregoing contain and constitute a full, true and correct copy of.....the Location Notice of the.....
"DIAMOND H. NO. 9" Mining Claim,

as the same appears of record in my office in Book.....6, Records of Mines,.....
at page.....73.....; that I have compared the same with the original record, and that the same is a true transcript and of the whole thereof.

Given under my hand and seal of office this.....2nd.....day of
November,....., A. D. 1907.

E. T. Stewart

County Recorder, Gila County, A. T.

U. S. SURVEYOR GENERAL'S FINAL CERTIFICATE ON
FIELD NOTES.

DEPARTMENT OF THE INTERIOR,

OFFICE OF U. S. SURVEYOR GENERAL,

Phoenix, Arizona

February 26, 1908.

I, U. S. Surveyor General for District of Arizona, do hereby certify that the foregoing transcript of the Field Notes, return and approval of the Survey of the mining claim of

Warrior Copper Company

, known as the DIAMOND NO. 5, DIAMOND and DIAMOND NO. 9, situate in Globe

Mining District, Gila County, Arizona, in Section approx., Township No. 1 N.,

Range No. 14 E. G. & S. R. R. & M. Unsur., and designated as Survey No. 2499,

has been correctly copied from the originals on file in this office; that said Field Notes furnish such an accurate description of said mining claim as will, if incorporated into a patent, serve fully to identify the premises, and that such reference is made therein to natural objects or permanent monuments as will perpetuate and fix the locus thereof.

And I further certify that five hundred dollars' worth of labor has been expended each of or improvements made upon said mining claim^s by claimant or its grantors, and that said improvements consist of 11 cuts, 1 trench, 5 shafts, 9 tunnels, and 232 ft. of drifting, total value \$6955.

and that no portion of said labor or improvements has been included in the estimate of expenditures upon any other claim.

I further certify that the plat thereof, filed in the U. S. Land Office at Phoenix, Arizona is correct and in conformity with the foregoing Field Notes.

Frank S. Ingalls

United States Surveyor General for Arizona.

4-687.

**SURVEYOR-GENERAL'S CERTIFICATE OF APPROVAL OF FIELD
NOTES AND SURVEY OF MINING CLAIM.**

Department of the Interior,

Office of U. S. Surveyor-General,

Phoenix, Arizona.

February 26, 1908.

I, U. S. Surveyor-General for District of Arizona

do hereby certify that the foregoing and hereto attached Field Notes and Return of the Survey of the
Mining Claim of

Warrior Copper Company

known as the

DIAMOND \diamond NO. 5, DIAMOND \diamond NO. 2 and DIAMOND H. NO. 9

situate in Globe Mining District,

Gila County, Arizona

in Section approx., Township No. 1 N., Range No. 14 E. G. & S. R. B. & M. Unsur.

designated as Survey No. 2499

executed by D. E. Curry, U. S. Deputy Mineral

Surveyor, November 16, 17, 1907, under my instructions dated

November, 15, 1907, have been critically examined and the necessary

corrections and explanations made, and the said Field Notes and Return, and the Survey they describe,

are hereby approved. A true copy of the copy of the location certificate filed by the applicant for

survey is included in the field notes.

Frank S. Ingalls

U. S. Surveyor-General for Arizona.

SURVEY NO 2499

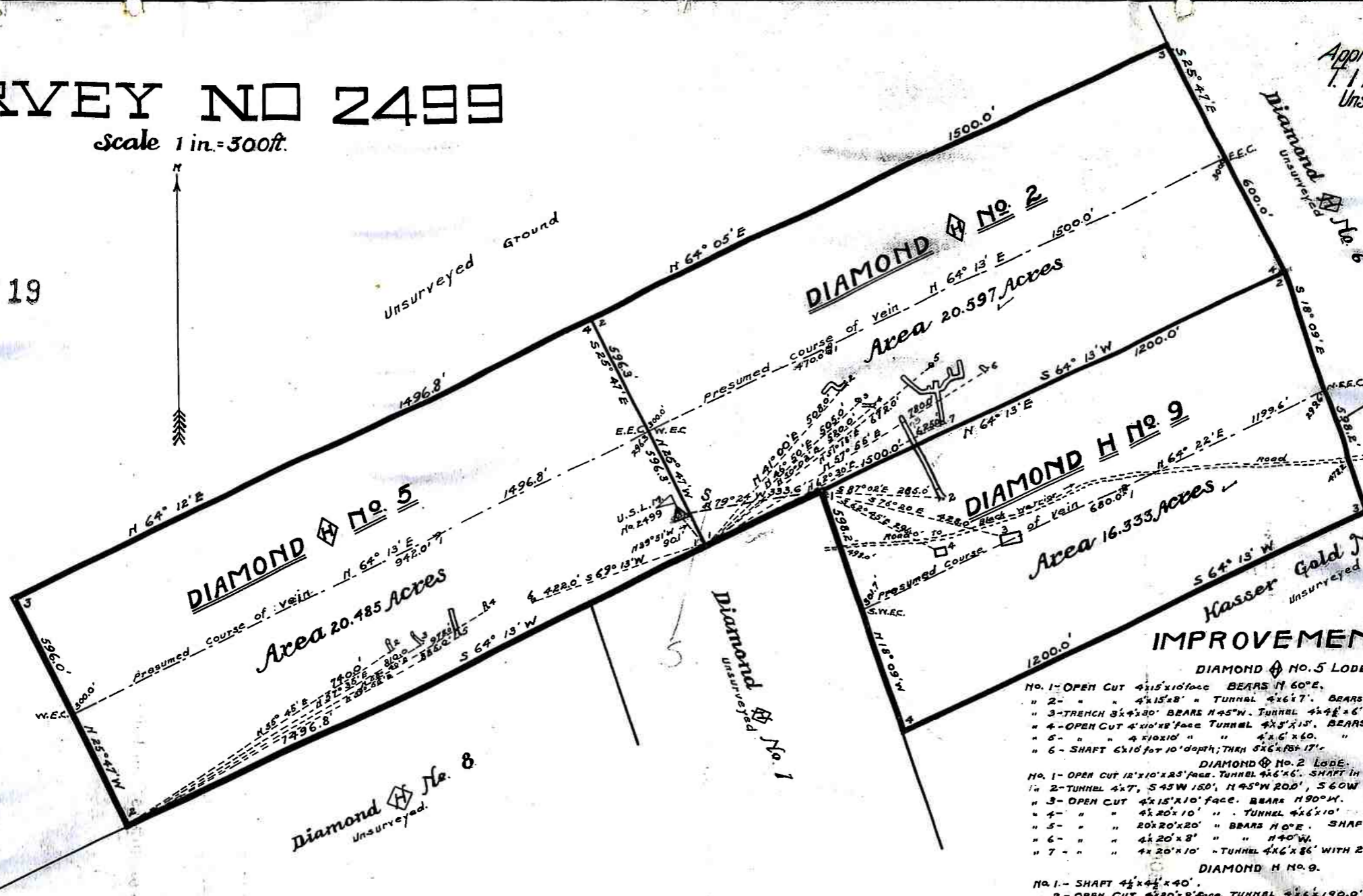
Scale 1 in. = 300ft.

19



Unsurveyed Ground

Approximately
1.1 N. R. 14 E.
Unsurveyed



IMPROVEMENTS.

- DIAMOND No. 5 LORE**
- No. 1 - OPEN CUT 4x15'x10' face BEARS N 60° E.
 - " 2 - " " 4x15'x8' " TUNNEL 4x6'x7' BEARS N 25° W.
 - " 3 - TRENCH 3x4'x30' BEARS N 45° W. TUNNEL 4x4'x6' BEARS N 0° E.
 - " 4 - OPEN CUT 4'x10'x8' face TUNNEL 4x3'x15' BEARS N 20° W.
 - " 5 - " " 4'x10'x10' " " 4'x6'x6.0' " N 21° W.
 - " 6 - SHAFT 6'x10' for 10' depth; TREN 5'x6'x15'x17'
- DIAMOND No. 2 LORE**
- No. 1 - OPEN CUT 15'x10'x25' face. TUNNEL 4x6'x6'. SHAFT in O.C. 4'x6'x17'. TUN. & C. BR. NO. 1.
 - " 2 - TUNNEL 4x7', 5'45" W 150', N 45° W 20.0', S 60° W 20.0'.
 - " 3 - OPEN CUT 4x15'x10' face. BEARS N 90° W.
 - " 4 - " " 4x20'x10' " " TUNNEL 4x6'x10' BEARS N 70° W.
 - " 5 - " " 20x20'x20' " BEARS N 0° E. SHAFT 8'x10'x45'.
 - " 6 - " " 4x20'x8' " " N 40° W.
 - " 7 - " " 4x20'x10' " TUNNEL 4x6'x86' WITH 232.0' OF DRIFT.
- DIAMOND H No. 9.**
- No. 1 - SHAFT 4 1/2'x4 1/2'x40'.
 - " 2 - OPEN CUT 4x20'x8' face. TUNNEL 4x2x190.0' BEARS N 26° 30' W.
 - " 3 - FRAME HOUSE 40' FRONT 20' DEEP.
 - " 4 - " " 20' " 18' " "

TOTAL AND NET AREA OF GROUP 57.415 ACRES.