

M  
S  
-

0

2

5

0

0

1  
7 July 12-06  
July 3-1908

4-683.

MINERAL SURVEY No. 2500

LOT No.

Arizona Land District.

### FIELD NOTES

OF THE SURVEY OF THE MINING CLAIM OF

Warrior Copper Company

KNOWN AS THE

Warrior, Ford, Skull and Flemming

Globe Mining District,

Gila County, Arizona

Section 18 Unsur. & 19, Township 1 N, Range 15 E., G. & S. R. E. & M.

Surveyed under instructions dated November 16th, 1907

by D. F. Curry  
U. S. Mineral Surveyor.

Claim located See location notices, 19

Survey commenced November 18th, 1907

Survey completed November 22nd, 1907

6-322

Postoffice address of claimant's agent

E. M. White,  
Black Warrior, Arizona.

Feet.	WARRIOR LODE.
	<p>Beginning at Cor. No. 1, the S.W. Cor., identical with location and situated on line 4-1 Flemming lode of this survey at N. 65 deg. 26 min. W., 7.2 ft. from Cor. No. 1, a pine post 4 ft. long, 4 in. sq., set 18 in. in the ground in a mound of stones and scribed 1-2500 WL; whence a schist rock in place 30 x 30 x 12 in. high, chiseled X BR 1-2500, brs N. 21 deg. 23 min. E. 5.3 ft., and a second schist rock in place 24 x 36 x 6 in. high, with same scribing, brs N. 58 deg. 14 min. E. 11.3 ft., and the N. <math>\frac{1}{4}</math> Cor. Sec. 19, Tp. 1 N., R. 15 E., G. &amp; S.R.B. &amp; M., brs N. 5 deg. 4 min. E. 72.0 ft., no bearing monuments available.</p> <p style="text-align: center;">Thence N. 15 deg. 37 min. E.</p>
74.3	<p>to the intersection of the N. line of the N.E. <math>\frac{1}{4}</math> Sec. 19, Tp. 1 N., R. 15 E., G. &amp; S.R.B. &amp; M., at N. 89 deg. 25 min. W., 2705.8 ft. from the N.E. Cor., and S. 89 deg. 25 min. E. 13.6 ft. from the N.W. Cor.</p>
1500.00	<p>same bearing to Cor. No. 2, the N.W. Cor., identical with location, a pine post 4 ft. long 4 in. sq., set 18 in. in the ground in a mound of stones and scribed 2-2500 WL; whence a schist rock in place 24 x 36 x 24 in. high, chiseled X BR 2-2500, brs N. 47 deg. 20 min W. 23.4 ft., and a second schist rock in place 18 x 36 x 2 in. high, with same scribing, brs N. 8 deg. 6 min. E. 34.5 ft., no bearing monuments available.</p> <p style="text-align: center;">Thence S. 65 deg. 26 min. E.</p>
303.6	<p>to original location for N.E. C.</p>
607.2	<p>same bearing to Cor. No. 3, the N.E. Cor., identical with location, a pine post 4 ft. long, 4 in. sq., set 18 in. in the ground in a mound of stones and scribed 3-2500 WL; whence a granite rock in place 12 x 12 x 4 in. high, chiseled X BR 3-2500, brs S. 36 deg. 5 min. E. 10.2 ft., and a second rhyolite rock in place 12 x 12 x 6 in. high, with same scribing, brs N. 9</p>

3

feet. deg. 30 min. W. 29.3 ft., no bearing monuments available.

Thence S. 15 deg. 37 min. W.

1170.1 to the intersection of N. line of the N.E.  $\frac{1}{4}$  Sec. 19 Tp. 1 N., R. 15 E., G. & S.R.B. & M., at N. 89 deg. 25 min. W. 2084.7 ft. from the N.E. Cor., and S. 89 deg. 25 min. E. 634.7 ft. from the N.W. Cor.

1500.0 same bearing to Cor. No. 4, the S.E. Cor., identical with location and with Cor. No. 1, Cor. No. 2 and the S.W. Cor. respectively of Ford lode, Skull lode, of this survey, and September lode unsurveyed, a pine post 4 ft. long 4 in. sq., set 18 in. in the ground in a mound of stones and scribed 4-2500 WL; whence a dacite rock in place 30 x 18 x 12 in. high, chiseled X BR 4-2500, brs N. 16 deg. 18 min. E. 11.6 ft., and a second dacite rock 18 x 24 x 8 in. high, with same scribing, brs S. 22 deg. 56 min. E. 6.5 ft., no bearing monuments available.

Thence N. 65 deg. 26 min. W.

305.6 to original location for S.E.C.

600.0 same bearing to Cor. No. 1 and 1 respectively of Skull and Flemming lodes of this survey.

607.2 same bearing to Cor. No. 1, the place of beginning.

LEDGE.

The presumed course of the vein on this claim is from the N.E.C. location S. 15 deg. 37 min. W. 1500 ft.

FORD LODE.

Beginning at Cor. No. 1, the N.W. Cor., identical with location and with Cor. No. 2, Cor. No. 4 and the S.W. Cor. respectively of Skull lode, warrior lode, of this survey, and September lode unsurveyed, a pine post 4 ft. long 4 in. sq., set 18 in. in the ground in a mound of stones and scribed 1-2500 FL; whence a dacite rock in place 30 x 18 x 12 in. high,

	<p>feet. chiseled X BR 1-2500, brs N. 16 deg. 18 min. E. 11.6 ft., and a second dacite rock in place 18 x 24 x 8 in high, with same scribing, brs N. 22 deg. 36 min. E. 6.5 ft., and the N. <math>\frac{1}{4}</math> Cor., Sec. 19, Tp. 1 N., R. 15 E., G. &amp; S.R.B. &amp; M., brs N. 59 deg. 18 min. W. 654.9 ft., no bearing monuments available.</p> <p style="text-align: center;">Thence S. 46 deg. 11 min. E.</p>
281.7	to original location for N.E.C.
568.3	<p>same bearing to Cor. No. 2, the N.E. Cor., identical with location and with Cor. No. 3 Susetta lode, Sur. No. 2498, a pine post 4 ft. long 4 in. sq., set 18 in. in the ground in a mound of stones and scribed 2-2500 FL; whence a dacite rock in place 24 x 36 x 12 in. high, chiseled X BR 2-2500, brs N. 23 deg. 55 min. W. 9.5 ft., and a second dacite rock in place 12 x 12 x 12 in. high, chiseled X BR 2-2500, brs S. 57 deg. 20 min. E. 10.0 ft., no bearing monuments available.</p> <p style="text-align: center;">Thence S. 24 deg. 20 min. W.</p>
634.9	to Cors. Nos. 2 and 4 respectively of Susetta and Wednesday lodes, Sur. No. 2498.
753.9	same bearing to the intersection of wagon road leading to Globe.
1263.9	<p>same bearing to Cor. No. 3, the S.E. Cor., identical with location and with Cor. No. 3 Wednesday lode, Sur. No. 2498, a pine post 4 ft. long 4 in. sq., set 18 in. in the ground in a mound of stones and scribed 3-2500 FL; whence a granite rock in place 18 x 24 x 10 in. high, chiseled X BR 3-2500, brs S. 11 deg. 30 min. E. 9 ft., and a second granite rock in place 12 x 12 x 6 in. high with same scribing, brs N. 54 deg. 15 min. W. 12.3 ft., no bearing monuments available.</p> <p style="text-align: center;">Thence N. 46 deg. 11 min. W.</p>
294.0	to original location for S.E.C.
575.7	same bearing to Cor. No. 4, the S.W. Cor., identical with location and with the N.W. Cor. of Tuesday lode

feet  
 unsurveyed and situated on line 2-3 Skull lode of this survey at N. 24 deg. 39 min. E., 238.5 ft. from Cor. No. 3, a pine post 4 ft. long 4 in. sq., set 18 in. in the ground in a mound of stones and scribed 4-2500 FL; whence a granite rock in place 36 x 12 x 12 in. high, chiseled X BR 4-2500, brs N. 26 deg. 5 min. E., 11.7 ft., and a second granite rock in place 30 x 8 x 6 in. high, with same scribing, brs S. 37 deg. 45 min. E. 12.6 ft., no bearing monuments available.

Thence N. 24 deg. 39 min. E.

231.5 to intersection of wagon road from Pinto Creek to mine.

563.5 same bearing to the intersection of same wagon road.

1261.5 same bearing to Cor. No. 1, the place of the beginning.

#### LEDGE.

The presumed course of the vein on this claim is from the N.E.C. location S. 24 deg. 39 min. W. 1261.5 ft.



#### SKULL LODGE.

Beginning at Cor. No. 1, the N.W. Cor., identical with location and with Cor. No. 1 Flemming lode of this survey, situated on line 4-1 Warrior lode of this survey at S. 65 deg. 26 min. E. 7.2 ft. from Cor. No. 1, a pine post 4 ft. long 4 in. sq., set 18 in. in the ground in a mound of stones and scribed 1-2500 SL; whence a schist rock in place 30 x 30 x 12 in. high, chiseled X BR 1-2500 brs N. 32 deg. 55 min. W. 9.6 ft., and a second schist rock in place with same scribing brs N. 15 deg. 25 min. E. 9.7 ft., and the N.  $\frac{1}{4}$  Cor. Sec. 19, Tp. 1 N., R. 15 E., G. & S.R. B. & M., brs N. 0 deg. 9 min. W. 74.73 ft., no bearing monuments available.

Feet.	
	Thence S. 65 deg. 26 min. E.
300.0	to original location for N.E.C.
600.0	same bearing to Cor. No. 2, the N.E. Cor., identical with location and with Cors, Nos. 1, 4 and the S.W. Cor. respectively of Ford lode, Warrior lode, of this survey, and September lode unsurveyed, a pine post 4 ft. long 4 in. sq., set 18 in. in the ground in a mound of stones and scribed 2-2500 SL, brg. monuments the same as for Cor. No. 1 and Cor. No. 4 respectively of Ford and Warrior lodes of this survey.
	Thence S. 24 deg. 39 min. W.
695.0	to the intersection of wagon road from Pinto Creek to mine.
1000.0	same bearing to intersection of the same wagon road.
1261.5	same bearing to Cor. No. 4, and the N.W. Cor. respectively of Ford lode of this survey, and Tuesday lode unsurveyed.
1500.0	same bearing to Cor. No. 3, the S.E. Cor., identical with location and situated on West End Line of Tuesday lode unsurveyed, a pine post 4 ft. long 4 in. sq., set 18 in. in the ground in a mound of stones and scribed 3-2500 SL, whence a granite rock in place 18 x 36 x 12 in. high, chiseled X BR 3-2500, brs S. 63 deg. 25 min. E. 6.2 ft., and a second granite rock in place 12 x 18 x 8 in. high, with same scribing, brs S. 19 deg. 33 min. W. 31.7 ft., no bearing monuments available.
	Thence N. 65 deg. 26 min. W.
120.0	to the intersection of wagon road from Pinto Creek to mine.
300.0	same bearing to original location for S.E.C.
600.0	same bearing to Cor. No. 4, the S.W. Cor., identical with location and with Cor, No. 2 Flemming lode of this survey, a pine post 4 ft. long 4 in. sq., set 18 in. in the ground in a mound of stones and scribed

feet.

4-2500 SL; whence a schist rock in place 24 x 12 x 12 in. high, chiseled X BR 4-2500, brs N. 14 deg. 43 min W. 19.5 ft., and a second schist rock in place 36 x 24 x 24 in. high, with same scribing, brs S. 53 deg. 5 min. W. 17 ft., no bearing monuments available.

Thence N. 24 deg. 39 min. E.

692.0 to the intersection of the south side of sulphuric acid plant.

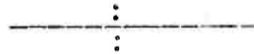
900.0 same bearing to the intersection of tram, from mine to mill.

1150.0 same bearing to the intersection of wagon road from Pinto Creek to Mine.

1500.0 same bearing to Cor. No. 1, the place of the beginning

#### LEDGE:

The presumed course of the vein on this claim is from the S.E.C. N. 24 deg. 39 min. E. 1500 ft.



#### FLEMMING LODE.

Beginning at Cor. No. 1, the N.E. Cor., identical with location and with Cor. No. 1 Skull lode of this survey, and situated on line 4-1 Warrior lode of this survey, at S. 65 deg. 28 min. E. 7.2 ft. from Cor. No. 1, a pine post 4 ft. long 4 in. sq., set 18 in. in the ground in a mound of stones and scribed 1-2500 FL; brg rocks same as for Cor. No. 1 Skull lode of this survey.

The N.  $\frac{1}{4}$  Cor. Sec. 19, Tp. 1 N., R. 15 E., G. & S.R.B. & M., brs N. 0 deg. 9 min. W. 74.73 ft., no bearing monuments available.

Thence S. 24 deg. 39 min. W.

350.0 to the intersection of wagon road from Pinto Creek to mine.

600.0 same bearing to the intersection of tram from mine to mill.

700.0 same bearing to the intersection of the east side of sulphuric acid plant.



Feet.  
1500.0 same bearing to Cor. No. 2, the S.E. Cor., identical with location and with Cor. No. 4 Skull lode of this survey, a pine post 4 ft. long 4 in. sq., set 18 in, in the ground in a mound of stones and scribed 2-2500 FL; brg. rocks same as for Cor. No. 4 Skull lode of this survey.

Thence N. 65 deg. 26 min. W.

300.0 to original location for S.E.C.

600.0 same bearing to Cor. No. 3, the S.W. Cor., identical with location, a pine post 4 ft. long 4 in. sq., set 18 in. in the ground in a mound of stones and scribed 3-2500 FL; whence a schist rock in place 48 x 24 x 6 in. high, chiseled X BR 3-2500, brs N. 61 deg. 37 min. E. 21.6 ft., and a second schist rock in place, 12 x 12 x 12 in. high, with same scribing, brs S. 54 deg. 55 min. W. 13.5 ft., no bearing monuments available.

Thence N. 24 deg. 39 min. E.

1105.0 to the intersection of tram from mine to mill.

1308.4 same bearing to the intersection of the north line of the N.W.  $\frac{1}{4}$  Sec. 19 Tp. 1 N., R. 15 E., G. & S.R.B. & M., at N. 89 deg. 57 min. W. 625.4 ft. from the the N.W. Cor. N.E. Cor. and S. 89 deg. 57 min. E. 2001.4 ft. from,

1350.0 same bearing to the intersection of wagon road from Pinto Creek to Mine.

1500.0 same bearing to Cor. No. 4, the N.W. Cor., identical with location, a pine post 4 ft. long 4 in. sq., set 18 in. in the ground in a mound of stones and scribed 4-2500 FL; whence a schist rock in place 18 x 16 x 12 in. high, chiseled X BR 4-2500, brs N. 37 deg. 15 min. W. 18 ft., and a second schist rock in place 18 x 12 x 12 in. high, with same scribing, brs S. 68 deg. E. 23 ft., no bearing monuments available.

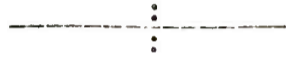
Thence S. 65 deg. 26 min. E.

300.0 to original location for N.E.C.

419.9 same bearing to the intersection of the north line of the N.W.  $\frac{1}{4}$  Sec. 19, Tp. 1 N., R. 15 E., G. & S.R.B.&M.

feet  
 at N. 89 deg. 57 min. W. 163.6 ft. from the N.E. Cor.  
 and S. 89 deg. 57 min. E. 2433.2 ft. from the N.W.  
 Cor.  
 592.8 same bearing to Cor. No. 1 Warrior lode of this sur-  
 vey.  
 600.0 same bearing to Cor. No. 1, the place of the beginning  
 LEDGE.

The presumed course of the vein on this claim  
 is from the S.E.C. location N. 24 deg. 39 min. E.  
 1500 ft.



#### A R E A.

Total and net area of Warrior lode,	20.655 Acres.
Total and net area of Ford lode,	15.647 "
Total and net area of Skull lode,	20.331 "
Total and net area of Flemming lode,	<u>20.331 "</u>
Total and net area of group,	77.624 Acres.



#### IMPROVEMENTS.

I hereby certify that the value of the labor  
 and improvements on this group, placed thereon by the  
 claimant or its grantors, is not less than five  
 hundred dollars for each location thereof, and that  
 said improvements are as follows:

#### WARRIOR LODGE.

No. 1, discovery shaft 4 x 6 x 35 ft. deep, timbered  
 for 15 ft., the mouth of which hrs from S.E.C. loca-  
 tion N. 15 deg. 37 min. E. 150 ft. Value \$420.00  
 No. 2, open cut 5 x 15 x 10 ft. face, the mouth of  
 which hrs from Cor. No. 4 N. 33 deg. 10 min. W. 448.0  
 ft. Value \$ 50.00  
 No. 3, open cut 5½ x 14 x 6 ft. face, the mouth of  
 which hrs from Cor. No. 4 N. 20 deg. 10 min. W. 950  
 ft. Value \$ 50.00

Feet.  
1500.0 same bearing to Cor. No. 2, the S.E. Cor., identical with location and with Cor. No. 4 Skull lode of this survey, a pine post 4 ft. long 4 in. sq., set 18 in. in the ground in a mound of stones and scribed 2-2500 FL; brg. rocks same as for Cor. No. 4 Skull lode of this survey.

Thence N. 65 deg. 26 min. W.

300.0 to original location for S.E.C.

600.0 same bearing to Cor. No. 3, the S.W. Cor., identical with location, a pine post 4 ft. long 4 in. sq., set 18 in. in the ground in a mound of stones and scribed 3-2500 FL; whence a schist rock in place 48 x 24 x 8 in. high, chiseled X BR 3-2500, brs N. 61 deg. 37 min. E. 21.6 ft., and a second schist rock in place, 12 x 18 x 12 in. high, with same scribing, brs S. 54 deg. 55 min. W. 13.5 ft., no bearing monuments available.

Thence N. 24 deg. 39 min. E.

1105.0 to the intersection of tram from mine to mill.

1308.4 same bearing to the intersection of the north line of the N.W.  $\frac{1}{4}$  Sec. 19 Tp. 1 N., R. 15 E., G. & S.R.B. & M., at N. 89 deg. 57 min. W. 625.4 ft. from the the N.W. Cor. N.E. Cor. and S. 89 deg. 57 min. E. 2001.4 ft. from.

1350.0 same bearing to the intersection of wagon road from Pinto Creek to Mine.

1500.0 same bearing to Cor. No. 4, the N.W. Cor., identical with location, a pine post 4 ft. long 4 in. sq., set 18 in. in the ground in a mound of stones and scribed 4-2500 FL; whence a schist rock in place 18 x 16 x 12 in. high, chiseled X BR 4-2500, brs N. 27 deg. 15 min. W. 18 ft., and a second schist rock in place 18 x 12 x 12 in. high, with same scribing, brs S. 68 deg. E. 23 ft., no bearing monuments available.

Thence S. 65 deg. 26 min. E.

300.0 to original location for N.E.C.

419.9 same bearing to the intersection of the north line of the N.W.  $\frac{1}{4}$  Sec. 19, Tp. 1 N., R. 15 E., G. & S.R.B.&M.

feet

No. 4, open cut 5 x 20 x 6 ft. face, the mouth of which brs from Cor. No. 4 N. 17 deg. 55 min. W., 752 ft. Value \$ 60.00

No. 5, incline open cut 6 x 14 x 14 ft. face, the mouth of which brs from Cor. No. 4, N. 11 deg. 5 min. W. 862 ft. Value \$ 50.00

Total improvements on claim, - \$630.00

-----  
:  
-----  
:

FORD LODE.

No. 1 discovery tunnel 6 x 7 x 50 ft. long, with shaft at this point 4 x 5 x 35 ft. deep, timbered, and drift at bottom of shaft 4 x 6 x 60 ft. long; drift and tunnel brg S. 24 deg. 39 min. W. The mouth of tunnel brs from the N.E.C. location S. 24 deg. 39 min. W. 929 ft. Value \$1580.00

No. 2, tunnel 4 x 6 x 6 ft. long, with chamber at end 14 x 6 x 15 ft. high, and drift 8 x 7 x 26 ft. long, connecting with tunnel No. 1. The mouth of tunnel brs from Cor. No. 4, N. 68 deg. 45 min. E. 342 ft. Value \$ 422.00

No. 3, tunnel 4 x 6 x 9 ft. long, thence 10 x 6 x 11 ft long, brg S. 10 deg. W., the mouth of which brs from Cor. No. 4 N. 50 deg. 35 min. E. 263 ft. Value \$160.00

Total improvements on claim, - \$2168.00

SKULL LODE.

No. 1, discovery shaft 5½ x 5½ x 87 ft. deep, timbered , brs from S.E.C. location N. 24 deg. 39 min. E. 800 ft. Value \$1740.00

No. 2, open cut 4 x 10 x 8 ft. face, with tunnel 4 x 6 x 115 ft. long, brg N. 68 deg. W. The mouth of open cut brs from Cor. No. 4 N. 39 deg. 40 min. E. 276 ft. Value of open cut \$40.00. Value of tunnel, \$1150.00. 43.4 ft. of this tunnel and open cut are situated on this claim, and 71.6 ft. of this tunnel are situated

feet

on the Flemming lode of this survey and have been allotted to the Flemming lode.

Value allotted to this claim,	\$ 474.00
Total improvements on claim,-	\$2214.00

FLEMMING LODE.

No. 1, discovery shaft 6 x 7 x 57 ft. deep, timbered, with drift 4 x 6 x 15 ft. long at bottom, brg. N.

Shaft brs. from Cor. No. 1 S. 61 deg. 55 min. W. 495 ft.

Value       \$ 1290.00

No. 2, open cut 4 x 20 x 15 ft. face, and a tunnel 4 x 6 x 125 ft. long, brg. S. 10 deg. W., with drift 4 x 6 x 25 ft. long, brg. S. 30 deg. W. Mouth of open cut brs from Cor. No. 1 S. 44 deg. 25 min. W. 384 ft.

Value       \$ 2000.00

Value of portion of No. 2 tunnel on Skull lode

716.00

Total improvements on claim,       \$ 4006.00

Total improvements on group,       \$ 9018.00

OTHER IMPROVEMENTS.

ON FLEMMING LODE.

No. 1, leaching plant, the N.E. Cor. of which brs. from Cor. No. 1, S. 32 deg. 58 min. W. 447 ft.

No. 2, tank brs. from Cor. No. 1, S. 30 deg. 58 min W. 438 ft.

No. 3, tank, brs. from same point S. 30 deg. 40 min. W. 450 ft.

No. 4, tank, brs. from same point S. 27 deg. 35 min. W. 458 ft.

No. 5, tank, brs. from same point S. 27 deg. W. 476 ft.

No. 6, tank, brs. from same point S. 25 deg. 40 min. W. 495 ft.

No. 7, tank house, the N.W. Cor. brs. from same point S. 27 deg. 30 min. W. 516 ft.

feet

No. 8, laboratory, the N.E. Cor. of which brs from same point S. 31 deg. 5 min. W. 520 ft.

No. 9, shed, the N.E. Cor. of which brs from same point S. 33 deg. 58 min. W. 605 ft.

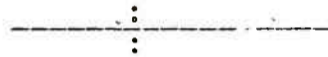
No. 10, sulphuric acid plant, the N.E. Cor. of which brs from same point, S. 28 deg. 30 min. W. 590 ft.

No. 11, sulphuric acid plant, the point of intersection on east side wall, marked X, brs S. 24 deg. 39 min. W. 700 ft.

No. 12, tank, brs from same point , S. 26 deg. 5 min. W. 571 ft.

No. 13, tank, brs from same point S. 25 deg. 20 min. W. 567 ft.

No. 14, scale house, the N.E. Cor. of which brs from same point S. 26 deg. 10 min. W. 572 ft.



SKULL LODGE.

No. 1, tank, brs from Cor. No. 1 S. 23 deg. 40 min. W. 443 ft.

No. 2, tank, brs from same point S. 25 deg. 50 min. W. 469 ft.

No. 3, shed, the N.E. Cor. of which brs from same point S. 3 deg. 13 min. W. 454 ft.

No. 4, mill, the N.E. Cor. of leaching mill brs from same point S. 20 deg. 15 min. W. 465 ft.

No. 5, roasting plant, the N.E. Cor of which brs from same point S. 7 deg. E. 610 ft.

No. 6, frame house, the N.W. Cor. of which brs from same point S. 10 deg. 45 min. E. 881 ft.

No. 7, a frame house, the N.E. Cor. of which brs from same point, S. 7 deg. E. 990 ft.



FORD LODGE.

No. 1, a frame house, the N.E. Cor. of which brs from Cor. No. 2 S. 39 deg. 30 min. W. 175 ft.

feet.

- No. 2, a frame house, the N.E. Cor. of which brs from same point S. 59 deg. 20 min. W. 183 ft.
- No. 3, a frame house, the S.W. Cor. of which brs from Cor. No. 4 N. 30 deg. 50 min. E. 488 ft.
- No. 4, a frame house, the S.W. Cor. of which brs from same point N. 30 deg. 40 min. E. 474 ft.
- No. 5, a frame house, the S.W. Cor. of which brs from same point N. 30 deg. 48 min. E. 456 ft.
- No. 6, a frame house, the S.W. Cor. of which brs from same point, N. 25 deg. E. 318 ft.
- No. 7, a frame house, the S.W. Cor. of which brs from same point N. 39 deg. 35 min. E. 390 ft.
- No. 8, a frame house, the S.W. Cor. of which brs from same point, N. 43 deg. 30 min. E. 395 ft.
- No. 9, a frame house, the S.W. Cor. of which brs from same point, N. 46 deg. 42 min. E. 403 ft.
- No. 10, a frame house, the S.W. Cor. of which brs from same point N. 50 deg. 25 min. E. 412 ft.
- No. 11, a frame house, the S.W. Cor. of which brs from same point N. 53 deg. E. 451 ft.
- No. 12, a frame house, the S.W. Cor. of which brs from same point N. 54 deg. 50 min. E. 429 ft.
- No. 13, a frame house, the S.W. Cor. of which brs from same point N. 48 deg. 56 min. E. 570 ft.
- No. 14, a frame house, the S.W. Cor. of which brs from same point, N. 51 deg. 40 min. E. 536 ft.
- No. 15, a frame house, the S.W. Cor. of which brs from same point N. 53 deg. 32 min. E. 489 ft.
- No. 16, a warehouse, the S.W. Cor. of which brs from same point N. 58 deg. 5 min. E. 433 ft.
- No. 17, a frame house, the S.W. Cor. of which brs from same point N. 62 deg. 12 min. E. 436 ft.
- No. 18, a frame house, the S.W. Cor. of which brs from same point N. 67 deg. 25 min. E. 487 ft.
- No. 19, a frame house, the S.W. Cor. of which brs from same point N. 62 deg. 18 min. E. 580 ft.

feet

No. 20, a frame house, the S.V. Cor. of which brs from same point N. 69 deg. 40 min. E. 511 ft.

No. 21, a frame house, the S.W. Cor. of which brs from same point N. 70 deg. E. 555 ft.

No. 22, a frame house, the S.W. Cor. of which brs from same point N. 73 deg. 5 min. E. 573 ft.

No. 23, a frame house, the S.W. Cor. of which brs from same point N. 73 deg. 35 min. E. 565 ft.

No. 24, a frame house, the S.W. Cor. of which brs from same point N. 77 deg. 45 min. E. 539 ft.

No. 25, a frame house, the S.W. Cor. of which brs from same point N. 38 deg. 5 min. E. 318 ft.

No. 26, a frame house, the S.W. Cor. of which brs from same point N. 39 deg. 40 min. E. 252 ft.



ADJOINING CLAIMS.

North, unsurveyed claims, claims and claimants unknown.

East, - November, September, Tuesday lode, unsurveyed; Susetta and Wednesday lodes, Sur. No. 2498, all owned by the claimant herein.

South and West, claims and claimants unknown.



LOCATION.

This group is situated at and west of the Black Warrior postoffice, in the Globe Mining District, Gila County, Territory of Arizona, in Secs. 18 Unsur. and 19, Tp. 1 N., R. 15 E., G. & S.R.B. & M.



INSTRUMENT.

This survey was made with a C. L. Berger & Sons No. 1 C. Transit. The courses were deflected from the true meridian, as determined by a Solar observation checked by an observation on Polaris. The distances



were measured with a 300 ft. steel tape. Magnetic  
Variation 12 deg. 30 min. E.

*A. C. Curry*

U.S. Deputy Mineral Surveyor

Dated at Bisbee, Arizona.

January 30th, 1908.

NOTE: The N.W. Cor. of Sec. 19, Tp. 1 N., R. 15 E.,  
G. & S.P.B. & M., is herewith reported missing,  
and the intersections given in the foregoing notes  
are made with the theoretical corner.

# FINAL OATHS FOR SURVEYS.

## LIST OF NAMES.

A list of the names of the individuals employed by D. E. Curry

United States Deputy Mineral Surveyor, to assist in running, measuring, and marking the lines, corners, and boundaries described in the foregoing field notes of the survey of the mining claim of

Warrior Copper Co.

known as the Flemming, Skull, Ford & Warrior

and showing the respective capacities in which they acted.

C. Taylor, Chainman.

W. H. Ferrin, Chainman.

Arman.

Flagman.

## FINAL OATHS OF ASSISTANTS.

We, C. Taylor

and W. H. Ferrin, do solemnly swear that we assisted D. E. Curry

United States Deputy Mineral Surveyor, in marking the corners and surveying

the boundaries of the mining claim of Warrior Copper Co.

known as the Flemming, Skull, Ford and Warrior

represented in the foregoing field notes as having been surveyed by said deputy mineral surveyor and under his

direction; and that said survey has been in all respects, to the best of our knowledge and belief, faithfully and

correctly executed, and the corner and boundary monuments established according to law and the instructions

furnished by the United States Surveyor-General for Arizona

C Taylor, Chainman.

W H Ferrin, Chainman.

Arman.

Flagman.

Subscribed and sworn to by the above-named persons before me this 12th 6th

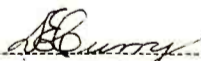
day of December ~~June~~, 1908.

J. Stankovic  
Notary Public  
My Commission expires 3/26-1910.

9489b5m8-03  
Subscribed and sworn to by the above named C. Taylor this 5th day of December, 1907. W. H. Ferrin Notary Public in and for Cochise County, Arizona. My commission expires October 20th, 1909. (SEAL)

## FINAL OATH OF U. S. DEPUTY MINERAL SURVEYOR

I, D. E. Curry, U. S. Deputy Mineral Surveyor, do solemnly swear that, in pursuance of instructions received from the United States Surveyor General for Arizona, dated November 10th, 1907, I have, in strict conformity to the laws of the United States, the official regulations and instructions thereunder, and the instructions of said Surveyor General, faithfully and correctly executed the survey of the Mining Claim of Warrior Copper Company, known as the Warrior, Ford, Skull and Flemming, situate in Clebs Mining District, Gila County, Arizona, in Section 18 Unsur. 219 Township No. 1 N., Range No. 15 E., G. & S. R. B. & M., and designated as Survey No. 2500, as represented in the foregoing field notes, which accurately show the boundaries of said mining claim as distinctly marked by monuments on the ground, and described in the attached copy of the location certificate, which was received by me from the Surveyor General with said instructions, and that all the corners of said survey have been established and perpetuated in strict accordance with the law, official regulations and instructions thereunder; and I do further solemnly swear that the foregoing are the true and original field notes of said survey and my report therein, and that the labor expended and improvements made upon said mining claim by claimant or its grantors are as therein fully stated, and that the character, extent, location and itemized value thereof are specified therein with particularity and full detail, and that no portion of said labor or improvements so credited to this claim has been included in the estimate of expenditures upon any other claim.



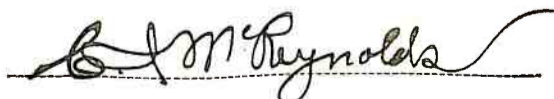
U. S. Deputy Mineral Surveyor.

Subscribed and sworn to by the said D. E. Curry

U. S. Deputy Mineral Surveyor, before me \_\_\_\_\_

Notary Public this 30th

day of January 1908,



Notary Public in and for the County of  
Cochise, Territory of Arizona.

My commission expires Oct. 20th, 1909

Affidavit of Five Hundred Dollars Improvements.

We, C. Taylor, and W. H. Ferrin

of lawful age, being first duly sworn according to law, depose and say: That we are acquainted with the Flenning, Skull, Ford and Warrior mining claim, situate in Globe Mining district, Gila County, Arizona Territory, for which

Warrior Copper Co.

has made application for survey prior to application for patent under the provisions of the act of Congress, approved May 10, 1872; and that the labor done and improvements made thereon by the applicant and its grantor exceed Five Hundred Dollars in value, and further that we are not personally interested in said mine.

C Taylor

W H Ferrin

TERRITORY OF ARIZONA, County of Gila ss:

(by W.H. Ferrin) Sworn to and subscribed before me, this 6th

day of December, 1908



W. H. Ferrin Notary Public, My commission expires 2/26-1910.

14396b400-8-04 TERRITORY OF ARIZONA) COUNTY OF COCHISE ) SS:

Sworn to and subscribed by C. Taylor before me this 5th day of December 1907.

W. H. Ferrin Notary Public in and for the

County of Cochise, Territory of Arizona, My commission expires Oct. 20th, 1909. (Seal)

AMENDED  
Notice of Mining Location

LODE CLAIM

To All Whom It May Concern:

This Mining Claim, the name of which is the Skull  
Mining Claim, situate on lands belonging to the United States of America, and in which there  
are valuable mineral deposits, was entered upon and located for the purposes of exploration and  
purchase by the Warrior Copper Company

a corporation,  
(Locator must insert either "a citizen of the United States," or, "who has declared his intention to become a citizen of the United States.")

the undersigned, on the 9th day of November 1907

The length of this claim is 1500 feet,  
and we claim 750 feet,  
in a northerly direction and 750  
feet in a southerly direction from  
the center of the discovery shaft, at which this notice is posted, lengthwise of the claim, together  
with 300 feet in width of the surface grounds, on each  
side of the center of said claim. The general course of the lode deposit and premises is from the  
south to the north

The claim is situated and located in the Globe Mining District, in  
Gila County, in the Territory of Arizona, about 500 feet  
in a northwesterly direction from the Black  
Warrior post office, and is bounded  
on the north end by the Warrior lode  
and on the east side by the God-Tuesday lode.

The surface boundaries of the claim are marked upon the ground as follows: Beginning at  
a post and monument

at a point in a northerly direction 750 feet from  
the discovery shaft (at which this notice is posted,) being in the center of the north  
end line of said claim; thence easterly 300 feet to a post and  
monument, being the northeast corner of said claim; thence  
southerly 1500 feet to a post and monument, being at the  
southeast corner of said claim; thence westerly 300 feet  
to a post and monument at the center of the south end of said claim;  
thence westerly 300 feet to a post and monu, being at the  
southwest corner of said claim; thence northerly 1500  
feet to a post and monument at the northwest corner of said claim;  
thence easterly 300 feet to the place of beginning.

All done under the provisions of Chapter Six, of Title XXXII, of the Revised Statutes of  
the United States, and of an Act of the General Assembly of Arizona, entitled "An Act to Revise  
and Codify the Laws of the Territory of Arizona," approved March 16, 1901.

This is an Amended Location Notice of the Skull  
Mining Claim, located by James A. Fleming and  
J. M. Ford on the 4th day of  
September 1906, and recorded in Book 6 of Records of Mines, at  
page 99, in the office of the County Recorder of the aforesaid County of -----  
to which reference is hereby made, and this Amended Location Notice is made and posted to  
correct errors in the description in the said original Location Notice.

Dated and posted on the ground this 9th day of November 1907

Warrior  
C. Taylor  
Warrior Copper Company  
by E. M. White, Supt.

Filed and recorded at the request of D. E. Curry, at 50 minutes past 10 o'clock A. M. on the 12 day of November, A. D. 1907.

E. T. Stewart County Recorder.

TERRITORY OF ARIZONA, }  
COUNTY OF GILA } ss

I, E. T. STEWART, County Recorder in and for the County of Gila, Territory of Arizona, do hereby certify that the above and foregoing contain and constitute a full, true and correct copy of.....

Amended Location Notice of the

SKULL, Mining Claim,

as the same appears of record in my office in Book 15, Records of Mines,

at page 154; that I have compared the same with the original record, and that the same is a true transcript and of the whole thereof.

Given under my hand and seal of office this 12th day of

November

, A. D. 1907.

*E. T. Stewart*

County Recorder, Gila County, A. T.

TERRITORY OF ARIZONA,  
 County of..... } ss.

I,....., County Recorder in and for the County and Territory aforesaid, do hereby certify that the within instrument was filed for record at.....o'clock,.....M., on this.....day of.....190..., and duly recorded in Book No..... of.....Records of.....County, Arizona, at pages.....

WITNESS my hand and official seal the day and year first above written.

.....  
 County Recorder.

AMENDED  
**Notice of Location.**  
 LODE CLAIM.

Dated.....190.....

Filed and Recorded at request of.....

A. D. 190.....

at.....M.

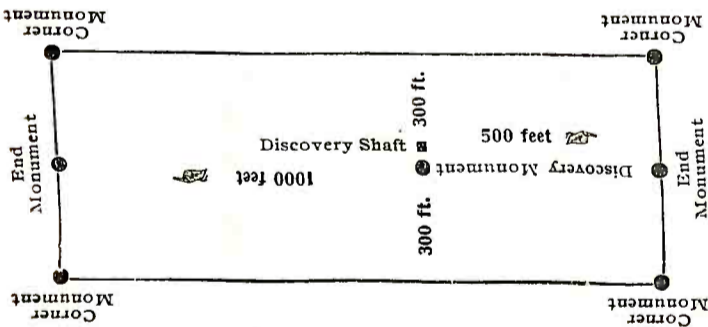
Book.....

Pages.....

County Recorder.

By.....  
 Deputy Recorder.

THE H. H. MCNEIL CO., PRINTERS, PHOENIX, ARIZ.



This diagram is to give locator a general idea of plan of location under the new law. The Discovery Shaft can be in the center of claim or any distance from either end desired. In the diagram it is placed 500 feet from one end and 1000 feet from the other. Commence description of claim at a center end monument, giving its distance and direction from center of Discovery Shaft; thence bound the claim in either direction. In description be careful to state locality of claim with reference to some natural object, or permanent monument, as will identify the claim.

AMENDED  
Notice of Mining Location

LODE CLAIM

To All Whom It May Concern:

This Mining Claim, the name of which is the Hemming  
Mining Claim, situate on lands belonging to the United States of America, and in which there  
are valuable mineral deposits, was entered upon and located for the purposes of exploration and  
purchase by the Warrior Copper Company,

a corporation  
(Locator must insert either "a citizen of the United States," or, "who has declared his intention to become a citizen of the United States.")

the undersigned, on the 9<sup>th</sup> day of November 1907.

The length of this claim is 1500 feet,  
and we claim 400 feet,  
in a northwesterly direction and 1100  
feet in a southeasterly direction from

the center of the discovery shaft, at which this notice is posted, lengthwise of the claim, together  
with 300 feet in width of the surface grounds, on each  
side of the center of said claim. The general course of the lode deposit and premises is from the  
south to the north

The claim is situated and located in the Globe Mining District, in  
Gila County, in the Territory of Arizona, about 1000 feet  
in a northwesterly direction from the Black  
Warrior Post Office, and is bounded  
on the east side by the Skull  
lode.

The surface boundaries of the claim are marked upon the ground as follows: Beginning at  
a post and monument

at a point in a northwesterly direction 400 feet from  
the discovery shaft (at which this notice is posted,) being in the center of the north  
end line of said claim; thence easterly 300 feet to a post and  
monument, being the northwest corner of said claim; thence  
southwesterly 1500 feet to a post and monument, being at the  
southwest corner of said claim; thence westerly 300 feet  
to a post and monument at the center of the south end of said claim;  
thence southeasterly 10 feet to a post and monument, being at the  
south corner of said claim; thence northwesterly 1500  
feet to a post and monument at the northwest corner of said claim;  
thence northwesterly 500 feet to the place of beginning.

All done under the provisions of Chapter Six, of Title XXXII, of the Revised Statutes of  
the United States, and of an Act of the General Assembly of Arizona, entitled "An Act to Revise  
and Codify the Laws of the Territory of Arizona," approved March 16, 1901.

This is an Amended Location Notice of the Hemming  
Mining Claim, located by James A. Hemming and  
J. W. Ford on the 4<sup>th</sup> day of  
September 1906, and recorded in Book 6 of Records of Mines, at  
page 11, in the office of the County Recorder of the aforesaid County of Gila  
to which reference is hereby made, and this Amended Location Notice is made and posted to  
correct errors in the description in the said original Location Notice.

Dated and posted on the ground this 7<sup>th</sup> day of November 1907

Witness  
C. Taylor

Warrior Copper Company  
by E. H. White Esq.



Filed and recorded at the request of D. E. Curry at 50 minutes past 10 o'clock A. M., on the 12 day of November A. D. 1907.

E. T. Stewart County Recorder.

TERRITORY OF ARIZONA, }  
COUNTY OF GILA } SS

I, E. T. STEWART, County Recorder in and for the County of Gila, Territory of Arizona, do hereby certify that the above and foregoing contain and constitute a full, true and correct copy of Amended Location Notice of the  
FLEMMING, Mining Claim,  
as the same appears of record in my office in Book 15, Records of Mines,  
at page 155; that I have compared the same with the original record, and that the same is a true transcript and of the whole thereof.

Given under my hand and seal of office this 12th day of

November, A. D. 1907.



County Recorder, Gila County, A. T.

AMENDED  
NOTICE OF MINING LOCATION  
LODE CLAIM.

TO ALL WHOM IT MAY CONCERN:

This Mining Claim, the name of which is the Ford Mining Claim, situate on lands belonging to the United States of America, and in which there are valuable mineral deposits, was entered upon and located for the purposes of exploration and purchase by Warrior Copper Co., a corporation the undersigned, on the 5th day of September 1907.

The length of this claim is Thirteen hundred (1300) feet, and We claim Two hundred (200) feet, in a southwesterly direction and Eleven hundred (1100) feet in a northeasterly direction from the center of the discovery shaft, at which this notice is posted, lengthwise of the claim together with Three hundred 300 feet in width of the surface grounds, on each side of the center of said claim. The general course of the lode deposit and premises is from the northeast to the southwest.

The claim is situated and located in the Globe Mining District, in Gila County, in the Territory of Arizona, about Six miles in a westerly direction from Globe, at Black Warrior Camp and is bounded on the N. W. by the Skull the N. E. by the September the S. E. by the Susetta and Wednesday and on the S. W. by the Tuesday Mining Claims.

The surface boundaries of the claim are marked upon the ground as follows: Beginning at a pine post 4 ft high and 4 inches square set in a monument of stones at a point in a southwesterly direction 200 feet from the discovery shaft (at which this notice is posted,) being in the center of the southwest end line of said claim; thence northwesterly 300.0 feet to a pine post, being the northwest corner of said claim; thence north-easterly 1300.0 feet to a pine post, being at the northeast corner of said claim; thence southeasterly 300. feet to a pine post at the center of the northeast end of said claim; thence southeasterly 300.0 feet to a pine post, being at the southeast corner of said claim; thence southwesterly 1300. feet to a pine post at the southwest corner of said claim; thence northwesterly 300.0 feet to the place of beginning.

All done under the provisions of Chapter Six, of Title XXXII, of the Revised Statutes of the United States, and of an Act of the General Assembly of Arizona, entitled "An Act to Revise and Codify the Laws of the Territory of Arizona," approved March 16, 1901.

This is an Amended Location Notice of the Ford Placer Mining Claim, located by J. M. Ford and J. A. Fleming on the 4th day of September 1896, and recorded in Book 5 of Records of Mines, at page 315, in the office of the County Recorder of the aforesaid County of Gila, to which reference is hereby made, and this Amended Location Notice is made and posted to correct errors in the description in the said original Location Notice.

Dated and posted on the ground this 5th day of September 1907.

Warrior Copper Co.  
By E. M. White, Supt.

Filed and recorded at the request of E. M. White on the 5 day of September A. D. 1907 at 10 minutes past 11 o'clock A. M.

E. T. Stewart County Recorder.  
By Belle Maldonado Deputy Recorder.

TERRITORY OF ARIZONA, }  
COUNTY OF GILA }<sup>ss</sup>

I, E. T. STEWART, County Recorder in and for the County of Gila, Territory of Arizona, do hereby certify that the above and foregoing contain and constitute a full, true and correct copy of..... Amended Location Notice of the "FORD" Mining Claim,.....

as the same appears of record in my office in Book..... 15, Records of Mines,..... at page..... 142.....; that I have compared the same with the original record, and that the same is a true transcript and of the whole thereof.

Given under my hand and seal of office this..... 5th..... day of

..... September....., A. D. 1907.....

E. T. Stewart

TERRITORY OF ARIZONA, }  
COUNTY OF GILA } SS

I, E. T. STEWART, County Recorder in and for the County of Gila, Territory of Arizona, do hereby certify that the above and foregoing contain and constitute a full, true and correct copy of..... Amended Location Notice of the "FORD" Mining Claim, ..... as the same appears of record in my office in Book..... 15, Records of Mines, ..... at page..... 142.....; that I have compared the same with the original record, and that the same is a true transcript and of the whole thereof.

Given under my hand and seal of office this..... 5th ..... day of ..... September ..... , A. D. 1907..

E. T. Stewart  
County Recorder, Gila County, A. T.  
By Belle <sup>h</sup>malcolm <sup>h</sup>adair, Deputy Recorder.

NOTICE OF MINING LOCATION.

LODE CLAIM.

TO ALL WHOM IT MAY CONCERN.

This Mining Claim, the name of which is the Warrior Mining Claim, situate on lands belonging to the United States of America, and in which there are valuable mineral deposits, was entered upon and located for the purposes of exploration and purchase by Warrior Copper Co, a corporation of the State of Delaware U.S.A. by E.M.White Supt. a citizen of the U.S. the undersigned, on the 30th day of July 1906.

The length of this claim is 1500 feet, and We claim 75 feet, in a South Westerly direction and 1425 feet, in a North Easterly direction from the center of the discovery shaft, at which this notice is posted, length-wise of the claim, together with 300 feet in width of the surface grounds, on each side of the center of said claim. The general course of the lode deposit and premises is from the North Easterly to the South Westerly.

The claim is situated and located in the Globe Mining District, in Gila County, in the Territory of Arizona, about 6 1/2 Miles in a West direction from Globe City. This claim lies immediately north of and against the North End of the Warrior Copper Co's "Skull" claim.

The surface boundaries of the claim are marked upon the ground as follows: Beginning at - - - at a point in a Southerly direction 75 feet from the discovery shaft (at which this notice is posted) being in the center of the Southerly end line of said claim; Thence 300 feet to a Stake, being the South West corner of said claim; thence 1500 feet to a Monument, being at the North West corner of said claim; thence 300 feet to a Monument at the center of the Northerly end of said claim; thence 300 feet to a Stake being at the North East corner of said claim; thence 1500 feet to a Stake at the South East corner of said claim; thence 300 feet to the place of beginning.

All done under the provisions of Chapter Six, of Title XXXII of the Revised Statutes of the United States, and of an Act of the General Assembly of Arizona, entitled "An Act to Revise and Codify the Laws of the Territory of Arizona", approved March 16, 1901.

Dated and posted on the ground this 30th day of July 1906.

Witness:

L.C.Wagner.

Warrior Copper Co.  
By E.M.White, Supt.

Filed and recorded at the request of E.M.White on the 26 day of October, A.D.1906 at 45 minutes past 2 o'clock,P.M.

W.D.Fisk County Recorder.  
By Richard Fleming, Deputy Recorder.

TERRITORY OF ARIZONA, }  
COUNTY OF GILA } ss

I, E. T. STEWART, County Recorder in and for the County of Gila, Territory of Arizona, do hereby certify that the above and foregoing contain and constitute a full, true and correct copy of the Location Notice of the "WARRIOR" Mining Claim, as the same appears of record in my office in Book 12, Records of Mines, at page 415; that I have compared the same with the original record, and that the same is a true transcript and of the whole thereof.

Given under my hand and seal of office this 2nd day of

October, A. D. 1907.

*E. T. Stewart*

County Recorder, County, A. T.

TERRITORY OF ARIZONA, }  
COUNTY OF GILA } ss

I, E. T. STEWART, County Recorder in and for the County of Gila, Territory of Arizona, do hereby certify that the above and foregoing contain and constitute a full, true and correct copy of the Location Notice of the  
"WARRIOR" Mining Claim,  
as the same appears of record in my office in Book 12, Records of Mines,  
at page 415; that I have compared the same with the original record, and that the same is a true transcript and of the whole thereof.

Given under my hand and seal of office this 2nd day of  
October, , A. D. 1907.

*E. T. Stewart*

County Recorder, County, A. T.

U. S. SURVEYOR GENERAL'S FINAL CERTIFICATE ON  
FIELD NOTES.

DEPARTMENT OF THE INTERIOR,  
OFFICE OF U. S. SURVEYOR GENERAL,

Phoenix, Arizona

June 9, 1908.

I, U. S. Surveyor General for District of Arizona,  
do hereby certify that the foregoing transcript of the Field Notes, return and approval  
of the Survey of the mining claim of

Warrior Copper Company

, known as the WARRIOR, FORD, SKULL AND FLEMING

, situate in Globe

Mining District, Gila County,

Arizona, in Section 18 Unsur. & 19, Township No. 1 N.,

Range No. 15 E., G. & S. R. B. & M., and designated as Survey  
No. 2500, has been correctly copied from the originals on

file in this office; that said Field Notes furnish such an accurate description of said  
mining claim as will, if incorporated into a patent, serve fully to identify the premises,  
and that such reference is made therein to natural objects or permanent monuments as  
will perpetuate and fix the locus thereof.

And I further certify that five hundred dollars' worth of labor has been expended  
or improvements made upon <sup>each of</sup> said mining claim<sup>s</sup> by claimant or its grantors, and  
that said improvements consist of 4 shafts, 6 cuts, 5 tunnels, 4 drifts  
and 1 chamber, total value \$9018.00

and that no portion of said labor or improvements has been included in the estimate of  
expenditures upon any other claim.

I further certify that the plat thereof, filed in the U. S. Land Office at Phoenix,  
Arizona is correct and in conformity with the foregoing Field Notes.

Frank S. Ingalls

United States Surveyor General for Arizona.

SURVEYOR-GENERAL'S CERTIFICATE OF APPROVAL OF FIELD NOTES AND SURVEY OF MINING CLAIM.

Department of the Interior,

Office of U. S. Surveyor-General,

Phoenix, Arizona

June 9, 1908

I, U. S. Surveyor-General for District of Arizona

do hereby certify that the foregoing and hereto attached Field Notes and Return of the Survey of the Mining Claim of

Warrior Copper Co.

known as the

WARRIOR, FORD, SKULL AND FLEMMING

situate in Globe Mining District,

Gila County, Arizona

in Section 18 Unsur. & 19, Township No. 1 N., Range No. 15 E., G. & S. R. B.

& M., designated as Survey No. 2500

executed by D. E. Curry, U. S. Deputy Mineral

Surveyor, November 18, - 22, 1907, under my instructions dated

November 16, 1907, have been critically examined and the necessary

corrections and explanations made, and the said Field Notes and Return, and the Survey they describe,

are hereby approved. A true copy of the copy of the location certificate filed by the applicant for

survey is included in the field notes.

Handwritten signature of Frank S. Depew

U. S. Surveyor-General for Arizona

# SURVEY NO. 2500.

Scale 1 in = 300 ft.

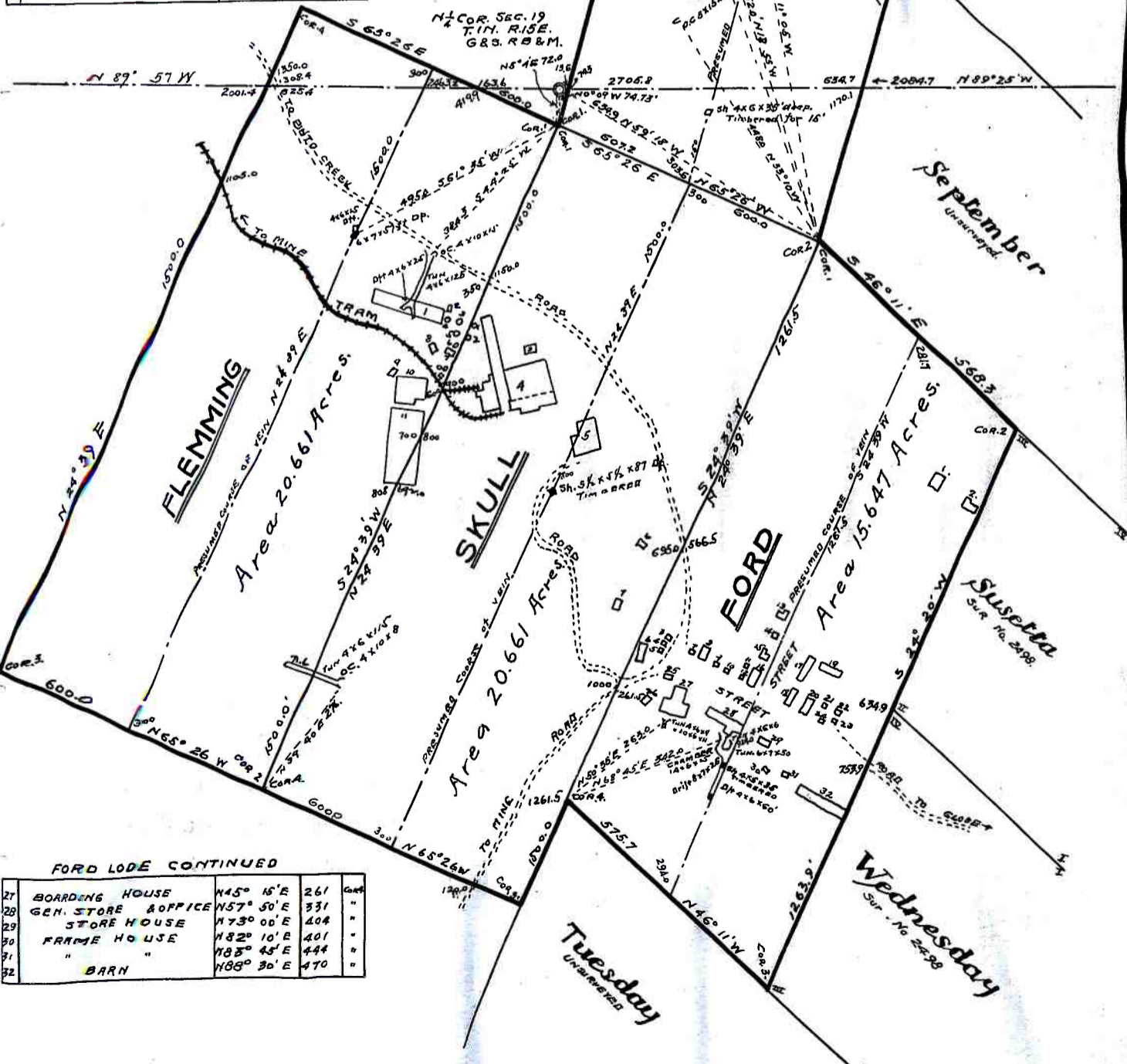
SEC. 19, T. 1N, R. 15E.

25

FLEMING LODE			
1	LEACHING PLANT	S 32° 38' W	447
2	TANK	S 30° 56' W	436
3	"	S 30° 40' W	450
4	"	S 27° 35' W	456
5	"	S 27° 00' W	476
6	"	S 25° 40' W	495
7	TANK HOUSE	S 27° 30' W	516
8	LABORATORY	S 31° 05' W	520
9	SHED	S 33° 38' W	606
10	SULPHURIC ACID PLANT	S 28° 30' W	590
11	"	S 24° 59' W	700
12	TANK	S 26° 05' W	471
13	"	S 25° 20' W	567
14	SCALE HOUSE	S 26° 10' W	572

SKULL LODE			
1	TANK	S 23° 40' W	446
2	"	S 23° 50' W	469
3	SHED	S 6° 12' W	454
4	MILL	S 20° 15' W	465
5	ROASTING PLANT	S 7° 00' E	610
6	FRAME HOUSE	S 10° 45' E	881
7	"	S 7° 00' E	990

FORD LODE			
1	FRAME HOUSE	S 59° 30' W	175
2	"	S 59° 20' W	193
3	"	N 30° 50' E	488
4	"	N 30° 40' E	474
5	"	N 30° 48' E	456
6	"	N 25° 00' E	318
7	"	N 39° 35' E	390
8	"	N 43° 30' E	395
9	"	N 46° 42' E	406
10	"	N 50° 25' E	412
11	"	N 53° 00' E	451
12	"	N 54° 50' E	429
13	"	N 48° 56' E	670
14	"	N 38° 40' E	536
15	"	N 53° 32' E	489
16	WARE HOUSE	N 53° 05' E	433
17	FRAME HOUSE	N 62° 12' E	436
18	"	N 67° 23' E	487
19	"	N 62° 13' E	580
20	"	N 69° 40' E	511
21	"	N 70° 00' E	566
22	"	N 73° 05' E	576
23	"	N 73° 35' E	565
24	"	N 77° 45' E	539
25	"	N 38° 05' E	318
26	"	N 39° 40' E	252



FORD LODE CONTINUED			
27	BOARDING HOUSE	N 45° 15' E	261
28	GEN. STORE & OFFICE	N 57° 50' E	331
29	STORE HOUSE	N 73° 00' E	404
30	FRAME HOUSE	N 82° 10' E	401
31	"	N 85° 45' E	444
32	BARN	N 80° 30' E	470