

MS.

0

2

5

4

1

1

4-683.

MINERAL SURVEY No. 2541

LOT No. _____

Arizona Land District.

FIELD NOTES

OF THE SURVEY OF THE MINING CLAIMS OF

S. J. Wright

KNOWN AS THE

El Paso-Bonnybel-Gumbo-Texas-Adelaide-Minnehaha-Maclin

Agua Fria Mining District,

Yavapai County, ARIZ.

APPROXIMATELY,
Sections 6 & 31, Township 13. & 14 N, Range 2. E. UNSUR.

Surveyed under instructions dated April 20th, 1908

by Gark. W. Latimer
U. S. Mineral Surveyor.

Minnehaha	Aug. 23 rd	1903.	} Respective See location notices , 19
Gumbo.	June 15 th	1906.	
Adelaide	May 3 rd	1906.	
Maclin	Aug. 3 rd	1906.	
Texas	June 30 th	1906.	
Bonnybel	July 29 th	1901.	
El-Paso.	July 25 th	1901.	

Survey commenced April 25th, 1908.

Survey completed May 2nd, 1908.

6-822

Address:

John J. Hawkins, Atty.
Prescott, Ariz.

Feet.

MINERAL SURVEY NO. 2541.Bonnybel Lode.

- Beginning at Cor. No. 1, which is identical with Cor. No. 1 of El Paso Lode of this survey, a granite stone 6 X 10 X 20 in., set 12 in. in ground, raised mound of stone on N. side, marked B - 1 - 2541, on N. W. face and E. - 1 - 2541 on S. W. Face, with X on top for exact Cor. pt., from which U. S. L. M. No. 2541 brs. N. 29° 55' W. 532.5 ft.. No other bearings available.
- Thence N. 4° W.
- 398.3 To Cor. No. 5, of the Texas Lode. of this survey.
305. To Top small Peak.
1500. To Cor. No. 2, A slate rock, 10 X 14 X 28 in. set 16 in. in the ground, marked B - 2 - 2541 on S. W. face, with X on top for exact Cor. pt., raised mound of stone, 4 ft. base, 3 ft. high on South side. No bearings available.
- Thence S. 86° W.
- 300 The N. End Cen. on top of ridge brs. N. 4° W.
- 600 To Cor. No. 3. A granite stone, 6 X 10 X 24 in. set 12 in. in the ground, marked B, - 3 - 2541, on S. E. face, with X on top for exact Cor. pt., raised mound of stone 4-ft. base, 3 ft. high on N. Side. No bearings available..
- Thence S. 4° E..
- 160.. Cross small wash. Course, west.
1500. To Cor. No. 4, identical with Cor. No. 4, of El Paso Lode of this survey. A granite stone 8 X 12 X 30 in., set 12 in. in the ground, marked B. - 4 - 2541, on N. E. face, and E. - 4 - 2541 on S. E. face, with an X on top for exact Cor. pt., raised mound of stone, 4 ft. base, 3 ft. high on West side. No bearings available.
- Thence N. 86° E.
- 300 A monument of stone the S. End Cen.
- 600 To Cor. No. 1, the place of beginning.
- All corners are identical with their respective

Feet.

locations.

Mean magnetic declination $14^{\circ} 30' E.$ El Paso Lode.

Beginning at Cor. No. 1, from which U. S. L. M. No. 2541 brs. N. $28^{\circ} 55' W.$ 532.5 ft. Cor. heretofore described.

Thence S. $4^{\circ} E.$

- 75 Gen. of Wash. 40 ft. wide brs. West.
- 110 Wagon road from Dewey to Camp Verde brs. E. & W.
- 1500 To Cor. No. 2, identical with Cor. No. 1, of Gumbo Lode of this survey. A Hematite stone 10 X 14 X 30 in., set 18 in. in the ground, marked E.- 2 - 2541 on N. E. face and G.- 1 - 2541 on S. W. face, with X on top for exact Cor. pt., raised mound of stone 4 ft. base, 3 ft. high on South side. No bearings available.

Thence S. $86^{\circ} W.$

- 250 Top of large cropping brs. N. & S.
- 300 A monument of stone the S. End Gen.
- 600 To Cor. No. 3, identical with Cor. No. 4, of Gumbo Lode of this survey. A Diorite stone, 6 X 8 X 20 in. set 16 in. in the ground, marked E.- 3 - 2541 on N. E. face, and G.- 4 - 2541 on S. E. face, with X on top for exact Cor. pt., raised mound of stone 4 ft. base, 3 ft. high on South side. No bearings available.

Thence N. $4^{\circ} W.$

- 1320 Gen. of Wash. 40 ft. wide flows West.
- 1440 Wagon road from Dewey to Camp Verde brs. N. $10^{\circ} W.$
- 1500 To Cor. No. 4, Cor. heretofore described.

Thence N. $86^{\circ} E.$

- 300 To a monument of stone the N. End Gen.
- 600 Cor. No. 1, the place of beginning.

All corners are identical with their respective location,

Mean Magnetic declination, $14^{\circ} 30' E.$

Feet.

Gumbo Lode.

Beginning at Cor. No. 1 from which U. S. L. M. No. 2541 brs. N. $10^{\circ} 27'$ W. 1995.6 ft. Cor. heretofore described.

Thence S. $12^{\circ} 40'$ W.

640 Gulch 25 ft. wide brs. N. W. & S. E.

1050 To Cor. No. 2, A Diorite stone, 6 X 12 X 28 in. set 18 in. in the ground, marked G.- 2 - 2541 on N. W. face; with X on top for exact Cor. pt., raised a mound of stone 4 ft. base, 3 ft. high on South side. No bearings available.

Thence S. 86° W.

265 Top of ridge brs. N. 6° W.

300 A monument of stone the South End Cen.

600 To Cor. No. 3, A Granite stone, 10 X 16 X 32 in. set 20 in. in the ground, marked G.- 3 - 2541 on N. E. face, with X on top for exact Cor. pt., raised a mound of stone 4 ft. base, 3 ft. high on South side. No bearings available.

Thence N. $12^{\circ} 40'$ E.

90 Top of ridge brs. E. & W.

810 Cen. of Wash. 30 ft. wide flows West.

1050 To Cor. No. 4. Cor. heretofore described.

Thence N. 86° E.

300 To monument of stone the N. End Cen.

600 To Cor. No. 1, the place of beginning.

All corners are identical with their respective locations.

Mean magnetic declination $14^{\circ} 30'$ E.

Texas Lode.

Beginning at Cor. No. 1 on line 1 - 2 - 246 ft. S. 4° E. from Cor. No. 1, of El-Paso Lode of this survey, set a Granite Schist stone 20 X 30 X 50 in. set 12 in. in the ground, surrounded by a substantial mound of stone, marked T.- 1 - 2541 on N. E. face, with an X on top for exact Cor. pt., from

which U. S. L. M. No. 2541 brs. N. $21^{\circ} 06' W.$ 762.76 ft. No other bearings available.

Thence S. $82^{\circ} E.$

137 To Cor. No. 2, identical with Cor. No. 1 of the Adelaide Lode of this survey, set a Granite Schist stone, 10 X 12 X 26 in. set 16 in. in the ground, marked T.- 2 - 2541 on N. W. face and A.- 1 - 2541 on N. E. face with X on top for exact Cor. pt., raised a mound of stone 4 ft. base, 3 ft. high on South side. No bearings available.

Thence N. $23^{\circ} 45' E.$

190 Wagon road from Dewey to Camp Verde brs. N. E. & S. W.

1000 Wash. 20 ft. wide flows S. W.

1500 To Cor. No. 3, which is identical with Cor. No. 2 of the Adelaide Lode of this survey, set a Granite stone 6 X 10 X 22 in. set 12 in. in the ground, marked T.- 3 - 2541 on S. W. face and A.- 2 - 2541 on S. E. face with X on top for exact Cor. pt. and raise a mound of stone 4 ft. base, 3 ft. high on the East side. No bearings available.

Thence N. $82^{\circ} W.$

40 Cen. of Wash. 30 ft. wide flows S. $30' W.$

137 A monument of stone (the N. End Cen.)

437 To Cor. No. 4, set a Granite Schist stone, 5 X 10 X 28 in. set 16 in. in the ground, marked T.- 4 - 2541 on S. E. face, with X on top for exact Cor. pt. Raise a mound of stone 4 ft. base, 3 ft. high on East side. No bearings available.

Thence S. $24^{\circ} 31' W.$

848.38 To Cor. No. 5 on line 1 - 2. 308.3 ft. N. $4^{\circ} W.$ from Cor. No. 1 of the Bennybel Lode of this survey, set a Porphyry stone 10 X 10 X 24 in. set 14 in. in the ground, marked T.- 5 - 2541 on East face, and raise a mound of stone 4 ft. base, 3 ft. high on North side. No bearings available.

Feet.	
	Thence S. 4° E.
398.3	To Cor. No. 1 of the Bonnybel and Cor. No. 1 of the El Paso Lodes, both of this survey.
644.3	To Cor. No. 1; the place of beginning. All corners are identical with their respective locations. Mean magnetic declination 14° 30' E.
	<u>Adelaide Lode.</u>
	Beginning at Cor. No. 1, which is identical with Cor. No. 3 of the Texas Lode of this survey, from which U. S. L. M. No. 2541 brs. N. 29° 19' W. 837.8 ft. Cor. heretofore described.
	Thence N. 23° 45' E.
190	Wagon road from Dewey to Camp Verde brs. N. E. & S. W.
1000	Center of Wash 20 ft. wide flows S. W.
1500	To Cor. No. 2, identical with Cor. No. 3 of the Texas Lode of this survey. Cor. heretofore described.
	Thence S. 82° E.
300	A monument of stone the N. End Cor.
392	To Cor. No. 3 on line 1 - 2, 392 ft. S. 23° 45' W, from Cor. No. 2 of the Minnehaha Lode of this survey, set a Diorite stone, 8 X 10 X 24 in. set 14 in. in the ground, marked A.- 3 - 2541 on S. W. face with X on top for exact Cor. pt. and raise a mound of stone, 4 ft. base, 3 ft. high on South side. No bearings available.
	Thence S. 23° 45' W.
178	Gen. of Wash. 20 ft. wide brs. N. E. & S. W.
518	Gen. of Wash. 15 ft. wide brs. N. E. & S. W.
742	Wagon road from Dewey to Camp Verde brs. N. E. & S. W.
838	To Cor. No. 1 of Minnehaha Lode and Cor. No. 1 of Mad In Lode, both of this survey.
1500	To Cor. No. 4, set a Porphyry stone 10 X 12 X 28 in. set 16 in. in the ground, marked A.- 4 - 2541 on N. W. face with X on top for exact Cor. pt., and raise a

Feet.

mound of stone 4 ft. base, 3 ft. High on East side.

No bearings available.

Thence N. 82° W.

92 A monument of stone the S. End Cen.

392 To Cor. No. 1, the place of beginning.

All corners are identical with their respective locations.

Mean magnetic declination $14^{\circ} 50'$ E.

Macl in Lode.

Beginning at Cor. No. 1, identical with Cor. No.

1 of the Minnehaha Lode and on line 3 - 4, N. $25^{\circ} 45'$ E. 612 Ft. from Cor. No. 4, of the Adelaide Lode, both of this survey, set a Granite

stone, 6 X 10 X 24 in. set 14 in. in the ground,

marked M.- 1 - 2541 on S. E. face and M.- 1 - 2541 with X on top for exact Cor. pt.

on N. E. face and raise a mound of stone on the East

side from which U. S. L. M. No. 2541 brs. N. $77^{\circ} 51'$

W. 1068.9 ft. No other bearings available.

Thence S. $25^{\circ} 45'$ W.

612 To Cor. No. 4 of the Adelaide Lode of this survey.

1100 To Cor. No. 2, A Porphyry stone, 8 X 14 X 50 in. set

18 in. in the ground, marked M.- 2 - 2541 on N. E.

face with X on top for exact Cor. pt., and raise a

mound of stone, 4 ft. base, 3 ft high on East side.

No bearings available.

Thence S. $66^{\circ} 15'$ E.

300 A monument of stone the South End Cen.

600 To Cor. No. 3, A Diabase stone, 6 X 8 X 24 in. set on N. W. face.

14 in. in the ground, marked M.- 3 - 2541 with X on top for exact Cor. pt., and raise a mound of stone

4 ft. base, 3 ft. high on South side.

No bearings available.

Thence N. $25^{\circ} 45'$ E.

1100 To Cor. No. 4, identical with Cor. No. 4 of the

Fect.

Minnehaha Lode of this survey. A Granite stone 12 X 18 X 26 in. set 16 in. in the ground, marked M.- 4 - 2541 on S. W. face, and M.- 4 - 2541 on N. W. face with X on top for exact Cor. pt., and raise a mound of stone 4 ft. base, 3 ft. high on N. Side.

No bearings available.

Thence N. $64^{\circ} 15'$ W.

- 140 Dewey and Camp Verde road brs. E. & W.
 224 Dewey and Camp Verde road brs. S. E. & N. W.
 300 A monument of stone the N. End Cen.
 600 To Cor. No. 1, the place of beginning.

All corners are identical with their respective locations.

Mean magnetic declination $14^{\circ} 30'$ E.

Minnehaha Lode.

Beginning at Cor. No. 1 from which U. S. L. M. No. 2541 brs. N. $77^{\circ} 51'$ W. 1068.0 ft. Cor. heretofore described.

Thence N. $23^{\circ} 45'$ E.

- 143 Dewey and Camp Verde road brs. N. E. & S. W.
 370 Cen. of Wash. 15 ft. wide brs. N. E. & S. W.
 710 Cen. of Wash. 20 ft. wide brs. N. E. & S. W.
 888 To Cor. No. 3 of the Adelaide Lode. of this survey.
 1125 Cen. of Wash. 40 ft. wide flows N. 20° W.
 1280 To Cor. No. 2, A Granite stone 8 X 12 X 22 in. set 12 in. in the ground, marked M.- 2 - 2541 on S. E. face. with X on top for exact Cor. pt., raise a mound of stone 4 ft. base 3 ft. high on South side.

No bearings available.

Thence S. $66^{\circ} 15'$ E.

- 300 A monument of stone the N. End Cen.
 540 Cen. of Wash. 35 ft. wide flows S. 70° W.

Feet.

600 To Cor. No. 3, A Porphyry stone 10 X 12 X 24 in.
set 12 in. in the ground, marked M.- 3 - 2541^{on N. W. face.} with
X on top for exact Cor. pt., raise a mound of
stone on the N. side, 4 ft. base, 3 ft. high.
No bearings available.

Thence S. 23° 45' W.

1220 Dewey and Camp Verde road brs. E. & W.

1280 To Cor. No. 4, heretofore described.

Thence N. 66° 15' W.

140 Dewey and Camp Verde road brs. E. & W.

284 Dewey and Camp Verde road brs. S. E. & N. W.

300 A monument of stone the S. End Cen.

600 To Cor. No. 1, the place of beginning.

All corners are identical with their respective
locations.

Mean magnetic declination 14° 30' E.

Ledges.

The presumed courses of the ledges, as near as
can be traced upon the ground, are as follows:

Bonnybel Lode.

Course of ledge is from a point on line 1 - 4
300 ft. S. 86° W. from Cor. No. 1, N. 4° W. 1500 ft.
to intersection of line 2 - 3.

El Paso Lode.

Course of ledge is from a point on line 1 - 4
500 ft. S. 86° W. from Cor. No. 1, N. 4° W. 1500 ft.
to intersection of line 2 - 3.

Gumbo Lode.

Course of ledge is from a point on line 1 - 4
300 ft. S. 86° W. from Cor. No. 1, S. 12° 40' W. 1050 ft.
to intersection of line 2 - 3.

Texas Lode.

Course of ledge is from Cor. No. 1, N. 25° 45' E.
1500 ft. to intersection of line 3 - 4.

Feet.

Adelaide Lode.

Course of ledge is from a point on line 1 - 4, 300 ft. S. 82° E. from Cor. No. 1, N. 23° 45' E. 1500 ft. to intersection of line 2 - 3.

Maclin Lode.

Course of ledge is from a point on line 1 - 4, 300 ft. S. 66° 15' E. from Cor. No. 1, S. 25° 45' W. 1100 ft. to intersection of line 2 - 3.

Minnehaha Lode.

Course of ledge is from a point on line 1 - 4, 300 ft. S. 66° 15' E. from Cor. No. 1, N. 25° 45' E. 1280 ft. to intersection of line 2 - 3.

Improvements.

I certify that the value of labor and improvements upon these claims, placed thereon by the claimant and his executors, is not less than five hundred (\$500.00) dollars for each claim, and that said improvements consist of,

El Paso Lode.

No. 1. Discovery tunnel, 4 X 7 X 25 ft. brs S. 4° E. with winze at breast 20 ft. deep which brs. from Cor. No. 1 S. 52° 19' W. 360 ft.

Value ----- \$ 500.00.

No. 2. A shaft 4 X 7 X 50 ft. deep with cross cuts at bottom brs. East 100 ft. and West 6 ft. which brs. from Cor. No. 1, S. 60° W. 418 ft.

Value, ----- 1770.00

No. 3. A tunnel 4 X 7 X 230 ft. brs. S. 3° E. From a point in tunnel 206 ft. from mouth, a cross cut brs. N. 88° E. 60 ft; from same point a cross cut brs. S. 86° W. 43 ft.

Mouth of tunnel brs. from Cor. No. 1,
S. 55° 30' W. 390 ft.

Value, - - - - - \$3990.00.

A 1/7 interest credited to this lode, value \$ 570.00
Bonnybel Lode.

No. 1. Discovery Cut 4 X 10 X 20 ft. brs.

N. 4° W., which brs. from Cor. No. 1,

N. 30° 52' W. 308 ft.

Value, - - - - - 200.00.

No. 2. An open cut 4 X 7 X 12 ft. which brs.

from Cor. No. 1, N. 80° 50' W. 265 Ft.

Value, - - - - - 100.00.

To be accredited to this claim an
undivided 1-7 interest in tunnel No.

3, on El Paso Lode.

Value, - - - - - 570.00.

Gumbo Lode.

No. 1. Discovery Cut 4 X 10 X 15 ft. which

brs. from Cor. No. 1, S. 57° 48' W.

405 ft.

Value, - - - - - 130.00.

To be accredited to this claim an un-
divided 1-7 interest in Tunnel No. 3,
on El Paso Lode.

Value, - - - - - 570.00.

Texas Lode.

No. 1. Discovery shaft, 4 X 10 X 14 ft. which brs.

from Cor. No. 1, N. 23° 45' E. 1000 ft.

Value, - - - - - 140.00.

To be accredited to this claim an un-
divided 1-7 interest in Tunnel No. 3,
on El Paso Lode.

Value, - - - - - 570.00.

Adelaide Lode.

No. 1. Discovery shaft, 4 X 7 X 15 ft. which brs.

from Cor. No. 4, N. 6° 40' E. 310 feet.

Value, - - - - - 150.00.

To be accredited to this claim
an undivided 1-7 interest in tunnel
No. 3 on El Paso Lode.

Value, - - - - - \$570.00

Maclin Lode.

No. 1 Discovery shaft 4 x 10 x 11 ft. which brs.
from Cor. No. 1 S. 47° 49' E. 316 ft.

Value, - - - - - 110.00

To be accredited to this claim an
undivided 1-7 interest in tunnel
No. 3 on El Paso Lode.

Value, - - - - - 570.00

Minnehaha Lode.

No. 1 Discovery shaft 4 x 6 x 10 ft. which brs.
from Cor. No. 2, S. 32° 34' E. 360 ft.

Value, - - - - - 100.00

No. 2 An open cut, 4 x 5 x 20 ft. which brs.
from Cor. No. 2, S. 49° 15' E. 390 ft.

Value, - - - - - 120.00

To be accredited to this claim an un-
divided 1-7 interest in tunnel No. 3
on El Paso Lode.

Value, - - - - - 570.00

Other Improvements.

Boarding House, 18 x 40 ft. with porch on
S. and W. sides brs. from Cor. No. 1
of Bonnybel Lode N. 80° W. 120 ft.

Value, - - - - - 1200.00

An old shaft 4 x 6 x 25 ft. which brs.
S. 3° 15' E. 590 ft. from Cor. No. 1 of
the Maclin Lode of this survey.

This shaft was not put there by the
claimant.

Area.

Total and net area of Bonnybel, - - - -	20.661 Acres.
Total and net area of El Paso, - - - -	20.661 "
Total and net area of Gumbo, - - - -	13.855 "
Total and net area of Texas, - - - -	12.506 "
Total and net area of Adelaide, - - - -	12.991 "
Total and net area of Maclin, - - - -	15.151 "
Total and net area of Minnehaha, - - -	<u>17.631</u> "
Net area of Lode Claims, - - - - -	113.456 "

Location.

These claims are located on unsurveyed land, approximately in Sections ⁶ and 31, Townships 13 and 14 N., R. 2 E., in the Agua Fria Mining District, Yavapai County, Arizona; *partly in Prescott Forest Reserve*

Instrument.

This survey was made with C. L. Berger & Sons' Transit, No. 1 C. The courses were deflected from the true meridian by direct solar observation, checked on Polaris. The distances were measured with a 100 and 600 ft. steel tape.

Adjoining Claims.

There are no known claims adjoining this group, the same being Public Domain and subject to entry.

Note. It is intended that all claims in this Survey shall be developed in the following manner:

From Tunnel No. 3 of the El Paso Lode it is intended to prospect an ore chute which begins at the crosscut shown on accompanying preliminary plat, by

sinking a winze on same; after depth has been obtained it is intended that drifts will be run from this winze along the El Paso, Gambo and Bonnybel Lodes, and from the latter a crosscut will be run tapping the various ledges of the Texas, Adelaide, Maclin and Minnehaha Lodes, thereby gaining a greater depth.

While these claims lie just off of surveyed ground, I established and tied to U.S. L.M. No. 2541, for the reason that no sec. or $\frac{1}{4}$ sec. cor. could be found within two miles of any corner of this survey. I set over Cor. 10, 11, 14, 15, Tp. 13 N. R. 1 E. and ran N. $0^{\circ} 1' W.$ 160.20 chns. I found a mound of stone but no marked corner, which I supposed was corner of secs. 2, 3, 34 and 35, Tps. 13 and 14 N. R. 1 E. I then ran East 160 chns. without finding a corner; here I set a pt. from which Cor. 4 of El Paso and Cor. 4 of Bonnybel brs. N. $18^{\circ} 53' E.$ 813 ft. From this point I also ran East 160 chns. and after diligent search was unable to find a Public Land Survey Cor. within two miles of any cor. of Survey 2541.

I also ran all lines of Secs. 1, 2, 11 and 12, Tp. 13 N. R. 1 E. and find all corners have been destroyed.



U. S. Deputy Mineral Surveyor.

Description of U. S. L. M. No. 2541.

Which is a monument of stone, six feet base and six feet high, situated on a small prominent peak about three and a half miles easterly from Cherry Station on the Bradshaw Mountain Railroad, and about 600 feet North of the Dewey and Camp Verde wagon road. In the center of this stone monument I placed a stone 40 X 16 X 8 inches which projects above the monument 18 inches, marked with X on top for exact corner point, and U. S. L. M. No. 2541 on the South side, from which a shaft on El Paso Lode brs. S. $5^{\circ} 30'$ W. 685 ft.

A tunnel on side of mountain brs. S. $25^{\circ} 30'$ E. about two miles.

Top of prominent peak brs. S. $25^{\circ} 20'$ E. about 2 1-4 miles.

Top of prominent peak brs. S. $2^{\circ} 10'$ E. about 3 miles.

Big cropping on peak brs. S. $20^{\circ} 43'$ W. about 5 miles.

Top of round high peak brs. S. $55^{\circ} 41'$ W. about 10 miles.

Highest point on Granite Mountain brs. N. $72^{\circ} 20'$ W. about 25 miles.

No other bearings available.

Park W. Latimer

U. S. Deputy Mineral Surveyor.

#6.75

"El Paso"

Notice of Mining Location.
Lode Claim

To All Whom it May Concern:

This Mining Claim, the name of which is the El Paso Mining Claim, situate on lands belonging to the United States of America, and in which there valuable mineral deposits, was entered upon and located for the purpose of exploration and purchase by S.J.Wright, R.D.Bowen, W.H.Atkinson and all citizens of the United States, the undersigned, on the 25th day of July, 1901.

The length of this claim is 1500 feet, and we claim 250 feet, in a North direction and 1250 feet in a South direction from the center of the discovery shaft, at which this notice is posted, lengthwise of the claim, together with 300 feet in width of the surface grounds, on each side of the center of said claim. The general course of the lode deposit and premises is from the North to the South

The claim is situated and located in the Agua Fria Mining District, in Yavapai County, in the Territory of Arizona, about 3 miles in an Eastern direction from Cherry Creek station on the Prescott & Eastern Rl Road-on the verde Stage road and it is located as abandoned property

The surface boundaries of the claim are marked upon the ground as follows: Beginning at a monument, or mound of Rocks 4 1/2 feet high at a point in a north direction 250 feet from the discovery shaft (at which this notice is posted), being in the center of the north end line of said claim; thence east 300 feet to a mound of rocks, it being the north east corner of said claim; thence south 1500 feet to a mound of rocks it being at the south east corner of said claim; thence west 300 feet to a mound of rocks at the center of the south end of said claim; thence 300 feet to a mound of rocks, being at the south west corner of said claim; thence north 1500 feet to a mound of rocks, it being the north west corner of said claim; thence 300 feet to the place of beginning.

All done under the provisions of Chapter Six, of Title XXXII, of the Revised Statutes of the United States and of an Act of the General Assembly of Arizona, entitled "An Act Concerning Mines," approved March 20th 1895, and amended March 2d, 1899.

Dated and posted on the ground, this 25th day of July 1901.

Attest as witnesses
Jno Milligan
Harry Milligan

S.J.Wright
R.D.Bowen
W.H.Atkinson

Filed and recorded at request of S.J.Wright, July 30th, A.D. 1901, at 2:20 o'clock P.M., Book 59 of Mines, Page 409, Records of Yavapai County, Arizona.

By C.R.Dicus,
Deputy Recorder.

(Seal) P.J.Farley,
County Recorder.

"Bamybel

Notice of Mining Location.
Lode Claim

To All Whom it May Concern:

This Mining Claim, the name of which is the Bamybel, Mining Claim, situated on lands belonging to the United States of America, and in which there are valuable mineral deposits, was entered upon and located for the purpose of exploration and purchase by S.J.Wright, J.R.Kennedy, Gus Shaw, All citizens of the United States. the undersigned, on the 29th day of July, 1901.

The length of this claim is 1500 feet, and we claim (70) seventy feet, in a South direction and 1450 feet in a Northern direction from the center of the discovery shaft, at which this notice is posted, lengthwise of the claim, together with 300 feet in width of the surface grounds, on each side of the center of said claim. The general course of the lode deposit and premises is from the South east to the north west

The claim is situated and located in the Agua Fria Mining District, in Yavapai County, in the Territory of Arizona, about 3 miles in an eastern direction from Dewey P.O. Cherry Creek Station on P. & Eastern Rl Road and on the Verde river stage road and opposite the Elpaso tiqnl 300 feet distant.

The surface boundaries of the claim are marked upon the ground as follows: Beginning at a monument or mound of rocks. at a point in a South-erly direction 70 feet from the discovery shaft (at which this notice is posted), being in the center of the south end line of said claim; thence 300 feet to a mound of rocks, it being the southeast corner of said claim; thence 1500 feet to a mound of rocks, it being at the south west corner of said claim; thence 300 feet to a mound of rocks at the center of the north end of said claim; thence 300 feet to a mound of rocks, being at the north west corner of said claim; thence 1500 feet to a mound of rocks at the south west corner of said claim; thence 300 feet to the place of beginning.

All done under the provisions of Chapter Six, of Title XXXII, of the Revised Statutes of the United States and of an Act of the General Assembly of Arizona, entitled "An Act Concerning Mines," approved March 20th, 1895, and amended March 2d, 1899.

Dated and posted on the ground, this 29th day of July, 1901.

Attest as witness,
C.Milligan
D.Milligan

S.J.Wright,
J.R.Kennedy
Gus Shaw,

Filed and recorded at request of S.J.Wright, July 30, A.D. 1901, at 2:20 o'clock P.M., Book 59 of Mines, Page 410, Records of Yavapai County, Arizona.

(Seal) P.J.Farley,
County Recorder.

By C.R.Dicus,
Deputy Recorder.

COPY

18

BONNYBEL
AFFIDAVIT CORRECTING RECORD.

Territory of Arizona,)
County Of Yavapai.) ss.

S. J. Wright, being duly sworn, according to law, deposes and says he is now the owner of that certain mining claim in Augua Fria Mining District, of record in Book 59 of Mines at page 410, Records of Yavapai County, Arizona, and recorded as "Bamybel"; that said record is incorrect, in that said name should be Bonnybel".

Affiant is making application for patent of said mine, with others, and desires same to be patented under the name of Bonnybel, and files this affidavit to correct the record of said location.

-SIGNED- S. J. Wright

Subscribed and sworn to this first day of
May, 1908.

-SIGNED- Jno. J. Hawkins

(Notarial Seal)

Notary Public.

My commission Expires August 2nd, 1910.

E N D O R S E D .

Filed and recorded at request of
Jno. J. Hawkins,
May 2, A.D., 1908,
at 4.20 o'clock P.M.,
Book 19 Promiscuous,
pages 300 - 301,
Records of Yavapai County, Arizona,
J. C. Bradbury,
County Recorder.
By John J. Reddick,
Deputy Recorder.
(COUNTY SEAL)

"Gumbo."

Notice of Mining Location.
Lode Claim.

To All Whom It May Concern:

This Mining Claim, the name of which is the Mining Claim, situate on lands belonging to the United States of America, and in which there are valuable mineral deposits, was entered upon and located for the purposes of exploration and purchase by S.J.Wright and George T.Wright, the undersigned, on the 15 day of June 1906.

The length of this claim is 1500 feet, and we claim 285 feet, in a North direction and 1215 feet in a South direction from the center of the discovery shaft, at which this notice is posted, lengthwise of the claim, together with 300 feet in width of the surface grounds, on each side of the center of said claim. The general course of the lode deposit and premises is from the North to the South.

The claim is situated and located in the Agua Fria Mining District, in Yavapai County, in the Territory of Arizona, about 3 miles in a east direction from Dewey P.O. on the P. & E. R^l Rd and south of the Verde Stage road also, South of and contiguous to the Elpaso Claim.

The surface boundaries of the claim are marked upon the ground as follows: Beginning at a monument of stones at a point in a North direction 285 feet from the discovery shaft (at which this notice is posted), being in the center of the north end line of said claim, thence 300 feet to a monument of stones, being the north west corner of said claim; thence 1500 feet to a monument of stones, being at the south west corner of said claim; thence 300 feet to a monument of stones at the center of the south end of said claim; thence 300 feet to a monument of stones, being at the south east corner of said claim; thence 1500 feet to a monument of stones at the north east corner of said claim; thence 300 feet to the place of beginning.

All done under the provisions of Chapter Six, of Title XXXII, of the Revised Statutes of the United States, and of an Act of the General Assembly of Arizona, entitled "An Act to Revise and Codify the Laws of the Territory of Arizona," approved March 16, 1901.

Dated and posted on the ground this 15th day of June 1906.

Witness
Lee Henry.
David Chase.

S.J.Wright.
Geo.T.Wright.

Notice of Location
Lode Claim.

Gumbo

Dated June 15th 1906.

Filed and recorded at request of S.J.Wright, June 25th A.D. 1906, at 2:45 o'clock P.M., Book 74 of Mines, Pages 510-511, Records of Yavapai County, Arizona.

(Seal) Roland Fesher,
County Recorder.

By E.L.Hendricks,
Deputy Recorder.

Notice of Mining Location.

Lode Claim.

To All Whom it May Concern:

This Mining Claim, the name of which is the Texas Mining Claim, situate on lands belonging to the United States of America, and in which there are valuable mineral deposits, was entered upon and located for the purposes of exploration and purchase by S.J. Wright a citizen of the United States the undersigned, on the 30 day of June, 1906

The length of this claim is 1500 feet, and I claim 500 feet, in a Northerly direction and 1000 feet in a Southerly direction from the center of the discovery shaft, at which this notice is posted, lengthwise of the claim, together with 300 feet in width of the surface grounds, on each side of the center of said claim. The general course of the lode deposit and premises is from the North to the South

The claim is situated and located in the Black Hills Mining District, in Yavapai County, in the Territory of Arizona, about 3 miles in an East direction from Dewey P.O. and Cherry Creek station on the P & E R.R. and lies across the Verde Stage road and adjoins the Bonniel claim on the East

The surface boundaries of the claim are marked upon the ground as follows: Beginning at a monument of stones at a point in a northerly direction 500 feet from the discovery shaft (at which this notice is posted), being in the center of the north end line of said claim; thence east 300 feet to a monument of stones, being the north east corner of said claim; thence south 1500 feet to a monument of stones, being at the south east corner of said claim; thence west 300 feet to a monument of stones at the center of the south end of said claim; thence west 300 feet to a monument of stones, being at the south west corner of said claim; thence north 1500 feet to a monument of stones at the north west corner of said claim; thence east 300 feet to the place of beginning.

All done under the provisions of Chapter Six, of Title XXXII, of the Revised Statutes of the United States, and of an Act of the General Assembly of Arizona, entitled "An Act to Revise and Codify the Laws of the Territory of Arizona," approved March 16, 1901

Dated and posted on the ground this 30 day of June 1906

Witness

Lee Henry
Eugene Milligan

S.J. Wright

Filed and recorded at request of S.J. Wright July 3^d A.D. 1906 at 2:20 o'clock P.M., Book 76 of Mines, Page 286, Records of Yavapai County, Arizona.

(Seal)

Roland Mosher
County Recorder.

By F.H. Baldwin
Deputy Recorder.

Notice of Mining Location.

Lode Claim.

To All Whom it May Concern:

This Mining Claim, the name of which is the Adelaide Mining Claim, situate on lands belonging to the United States of America, and in which there are valuable mineral deposits, was entered upon and located for the purposes of exploration and purchase by S.J.Wright, a citizen of the U.S. the undersigned, on the 3d day of May, 1906

The length of this claim is 1500 feet, and I claim 300-Three Hundred feet, in a south direction and 1200 Twelve Hundred feet in a northerly direction from the center of the discovery shaft, at which this notice is posted, lengthwise of the claim, together with 300 feet in width of the surface grounds, on each side of the center of said claim. The general course of the lode deposit and premises is from the North to the South

The claim is situated and located near the Agua Fria in the Black Hills Mining District, in Yavapai County, in the Territory of Arizona, about 4 Miles in an east direction from Dewey P.O. on R.Rd and on the Verde stage road and it is relocated as abandoned mine or property

The surface boundaries of the claim are marked upon the ground as follows: Beginning at a monument of Rocks at a point in a southerly direction 300 feet from the discovery shaft (at which this notice is posted), being in the center of the south end line of said claim; thence west 300 feet to a monument of rocks, being the south west corner of said claim; thence north 1500 feet to a monument of rocks, being at the north west corner of said claim; thence east 300 feet to a stone monument at the center of the north end of said claim; thence east 300 feet to a stone monument, being at the north east corner of said claim; thence south 1500 feet to a monument of rocks at the south east corner of said claim; thence west 300 feet to the place of beginning.

All done under the provisions of Chapter Six, of Title XXXII, of the Revised Statutes of the United States, and of An Act of the General Assembly of Arizona, entitled "An Act to Revise and Codify the Laws of the Territory of Arizona," approved March 16, 1901.

Dated and posted on the ground this 3d day of May 1906

Witness

John Cox

S.J.Wright.

Filed and recorded at request of S.J.Wright, May 7", A.D. 1906 at 9:00 o'clock A.M., Book 76 of Mines, Page 49, Records of Yavapai County, Arizona.

(Seal)

Roland Noshier.

County Recorder.

By E.L.Hendricks,

Deputy Recorder.

Notice of Mining Location.
Lode Claim.

To All Whom it May Concern:

This Mining Claim, the name of which is the Minnehaha Mining Claim, situate on lands belonging to the United States of America, and in which there are valuable mineral deposits, was entered upon and located for the purposes of exploration and purchase by S.J.Wright, a citizen of the United States the undersigned, on the 23d day of August, 1905.

The length of this claim is Fifteen Hundred feet, and I claim 200 feet, in a North direction and 1300 feet in a South direction from the center of the discovery shaft, at which this notice is posted, lengthwise of the claim, together with 300 feet in width of the surface grounds, on each side of the center of said claim. The general course of the lode deposit and promises is from the North to the South

The claim is situated and located in the Agua Fria Mining District, in Yavapai County, in the Territory of Arizona, about 4 miles in an eastern direction from Cherry Creek station and Dewey P.O. on the Prescott and Eastern R'l R'd. and about 1500 ft north of the Verde Stage road, and I claim the right to all water within these boundaries for mill purposes and other uses at my El Paso and Bonnybel mines-3000 feet distant south west.

The surface boundaries of the claim are marked upon the ground as follows: Beginning at a monument of stones 3 feet or more high at a point in a north direction 200 feet from the discovery shaft (at which this notice is posted), being in the center of the North end line of said claim; thence east 300 feet to a stone monument being the north east corner of said claim; thence south 1500 feet to a stone monument, being at the south east corner of said claim; thence west 300 feet to a stone monument, being at the south west corner of said claim; thence north 1500 feet to a stone monument at the north west corner of said claim; thence east 300 feet to the place of beginning.

All done under the provisions of Chapter Six, of Title XXXII, of the Revised Statutes of the United States, and of an Act of the General Assembly of Arizona, entitled "An Act to Revise and Codify the Laws of the Territory of Arizona," approved March 16, 1901.

Dated and posted on the ground this 23d day of August 1905.

Witness

Eugene Milligan.

S.J.Wright.

Filed and recorded at request of S.J.Wright, Oct. 9th A.D 1905 at 9:00 o'clock A.M., Book 75 of Mines, Page 16, Records of Yavapai County, Arizona.

(Seal) Roland Mosher
County Recorder.

By E.C.Averyt
Deputy Recorder.

Naclin

Notice of Mining Location
Quartz Claim

To all Whom it may Concern:

This Mining Claim, the name of which is the Naclin Mining Claim, situate on lands belonging to the United States of America, and in which there are valuable mineral deposits, was entered upon and located for the purpose of exploration and purchase by S.J.Wright the undersigned, on the 3d day of Aug 1906.

The length of this claim is 1500 feet and I claim 1000 feet in a southerly direction and 500 feet in a northerly direction from the center of the discovery shaft at which this notice is posted, lengthwise of the claim, together with 300 feet in width of the surface grounds on each side of the center of said claim, The general course of the lode deposit and premises is from the north to the south.

The claim is situated and located in the Agua Fria or Black Hills Mining District, in County, in the Territory of Arizona, about 4 1/2 miles in a east direction from Dewey of Rail Rd and on the Verde stage road

The surface boundaries of the claim are marked upon the ground as follows:

Beginning at monument of rocks at a point in a south direction 1000 south feet from the discovery shaft (at which this notice is posted) being in the center of the south end line of said claim; thence 300 west feet to a monument of stones being the south west corner of said claim; thence 750 to a monument of rocks at the center of the west side line of said claim; thence 750 feet to a pile of rocks being at the north west corner of said claim; thence 300 feet to a monument of stones at the center of the north end of said claim; thence 300 east feet to a monument of stones being at the northwest corner of said claim; thence 750 south feet to a monument of rocks, being at the center of the east side line of said claim; thence 750 south feet to a monument of stones at the south east corner of said claim; thence 300 feet to the place of beginning.

All done under the provisions of Chapter Six, of Title XXXII, of the Revised Statutes of the United States, and of an Act of the General Assembly of Arizona, entitled "An Act Concerning Mines," approved March 20th, 1895

Dated and posted on the ground this 3d day of Aug 1906

Witness

Lee Henry
John Cox

S.J.Wright

Filed and recorded at request of S.J.Wright Aug 4" A.D. 1906 At 9:00 O'clock A.M. Book 77 of Mines Pages 68-70 Records of Yavapai County Arizona.

(Seal)

By F.H.Baldwin
Deputy Recorder

Roland Mosher
County Recorder

FINAL OATHS FOR SURVEYS.

LIST OF NAMES.

A list of the names of the individuals employed by Park W. Latimer

United States Deputy Mineral Surveyor, to assist in running, measuring, and marking the lines, corners, and boundaries described in the foregoing field notes of the survey of the mining claim of

S. J. Wright

known as the El Paso-Bonnybel-Gumbo-Texas-Adelaide-Minnehaha & Maclin

and showing the respective capacities in which they acted.

W. G. McNulty, Chainman.

....., Chainman.

....., Axman.

....., Flagman.

FINAL OATHS OF ASSISTANTS.

~~We, I~~ W. G. McNulty

and, do solemnly swear that ~~we~~ ^I assisted Park W.

Latimer, United States Deputy Mineral Surveyor, in marking the corners and surveying

the boundaries of the mining claim of S. J. Wright

known as the El Paso-Bonnybel-Gumbo-Texas-Adelaide-Minnehaha & Maclin

represented in the foregoing field notes as having been surveyed by said deputy mineral surveyor and under his direction; and that said survey has been in all respects, to the best of our knowledge and belief, faithfully and correctly executed, and the corner and boundary monuments established according to law and the instructions furnished by the United States Surveyor-General for

William G. Macomber, Chainman.

....., Chainman.

....., Axman.

....., Flagman.

Subscribed and sworn to by the above-named persons before me this 21st

day of May, 1908

My Commission Expires March 26th, 1911

L. B. Lanier
Notary Public

FINAL OATH OF U. S. MINERAL SURVEYOR.

I, Park W. Latimer, U. S. Mineral Surveyor, do solemnly swear that, in pursuance of instructions received from the United States Surveyor General for Arizona Territory, dated April 20th 1908, I have, in strict conformity to the laws of the United States, the official regulations and instructions thereunder, and the instructions of said Surveyor General, faithfully and correctly executed the survey of the Mining Claim of S. J. Wright, known as the El Paso Bonnybel Gumbo Texas Adelaide Minnehaha & Maclin situate in Agua Fria Mining District, Yavapai County, Approximately, in Sections 6 & 31, Townships No. 13 & 14, Range No. 2 E, UNSUR, and designated as Survey No. 2541, as represented in the foregoing field notes, which accurately show the boundaries of said mining claim as distinctly marked by monuments on the ground, and described in the attached copy of the location certificate, which was received by me from the Surveyor General with said instructions, and that all the corners of said survey have been established and perpetuated in strict accordance with the law, official regulations and instructions thereunder; and I do further solemnly swear that the foregoing are the true and original field notes of said survey and my report therein, and that the labor expended and improvements made upon said mining claims by claimant or his grantors are as therein fully stated, and that the character, extent, location, and itemized value thereof are specified therein with particularity and full detail, and that no portion of said labor or improvements so credited to ^{these} ~~this~~ claims has been included in the estimate of expenditures upon any other claim.s

Park W. Latimer
U. S. Mineral Surveyor.

Subscribed and sworn to by the said Park W. Latimer

U. S. Mineral Surveyor, before me J. M. Watts, Clerk District Court

at Prescott Arizona this 21st

day of May, 1908

J. M. Watts
Clerk

Affidavit of Five Hundred Dollars Improvements.

We, E. W. Stephens and William G. MacVulley

of lawful age, being first duly sworn according to law, depose and say: That we are acquainted with the El Paso-Bonnybel-Gumbo-Texas-Adelaide-Minnehaha mining claim, situate in Agua Fria Mining district, Yavapai County, Arizona Territory, for which S. J. Wright

has made application for survey prior to application for patent under the provisions of the act of Congress, approved May 10, 1872; and that the labor done and improvements made thereon by the applicant and his grantor exceed Five Hundred Dollars in value, and further that we are not personally interested in said mine.

William G. MacVulley
E. W. Stephens

TERRITORY OF ARIZONA,
County of Yavapai } ss:

Sworn to and subscribed before me, this 21st

day of May, 1908

L. B. Larimer
Notary Public



My Commission Expires March 26th, 1911

U. S. SURVEYOR GENERAL'S FINAL CERTIFICATE ON
FIELD NOTES.

DEPARTMENT OF THE INTERIOR,

OFFICE OF U. S. SURVEYOR GENERAL,

Phoenix, Arizona,

September 19, 1908.

I, U. S. Surveyor General for District of Arizona,
do hereby certify that the foregoing transcript of the Field Notes, return and approval
of the Survey of the mining claim of

S. J. Wright

, known as the El Paso, Bonnybel, Gumbo, Texas, Adelaide,

Minnehaha, Maclin, situate in Agua Fria

Mining District, Yavapai County,

Arizona, in Section Approx. 31 14 N.
6, Township No. 13 N.

Range No. 2 E., Unsur., and designated as Survey

No. 2541, has been correctly copied from the originals on

file in this office; that said Field Notes furnish such an accurate description of said
mining claim as will, if incorporated into a patent, serve fully to identify the premises,
and that such reference is made therein to natural objects or permanent monuments as
will perpetuate and fix the locus thereof.

And I further certify that five hundred dollars' worth of labor has been expended
or improvements made upon said mining claim^s by claimant or his grantors, and
that said improvements consist of 2 tunnels, 5 shafts, 4 cuts, 1 winze
and 209 ft. of cross-cuts, total value \$7290. Tunnel No. 3
on the El Paso lode, value \$3990, being a common improvement
for the development of all the claims of this survey, a one-
seventh interest therein, valued at \$570, is properly credited
to each of the seven claims of this survey.

and that no portion of said labor or improvements has been included in the estimate of
expenditures upon any other claim.

I further certify that the plat thereof, filed in the U. S. Land Office at Phoenix,
Arizona, is correct and in conformity with the foregoing Field Notes.

Frank S. Ingalls,

United States Surveyor General for Arizona.

4-687.

**SURVEYOR-GENERAL'S CERTIFICATE OF APPROVAL OF FIELD
NOTES AND SURVEY OF MINING CLAIM.**

Department of the Interior,

Office of U. S. Surveyor-General,

Phoenix, Arizona,

September 19, 1908

I, U. S. Surveyor-General for _____ District of Arizona,

do hereby certify that the foregoing and hereto attached Field Notes and Return of the Survey of the
Mining Claim of _____

S. J. Wright

_____ , known as the

El Paso, Bonnybel, Gunbo, Texas, Adelaide, Minnehaha, Maclin

situate in _____ Agua Fria _____ Mining District,

_____ Yavapai _____ County, _____ Arizona

in Section Approx. 31 14 N. 6, Township No. 13 N. _____, Range No. 2 E., Unsur.

_____, designated as Survey No. 2541

executed by _____ Park W. Latimer _____, U. S. Deputy Mineral


Surveyor, _____ April 25 - May 2 _____, 1908, under my instructions dated

_____ April 20, _____, 1908, have been critically examined and the necessary

corrections and explanations made, and the said Field Notes and Return, and the Survey they describe,

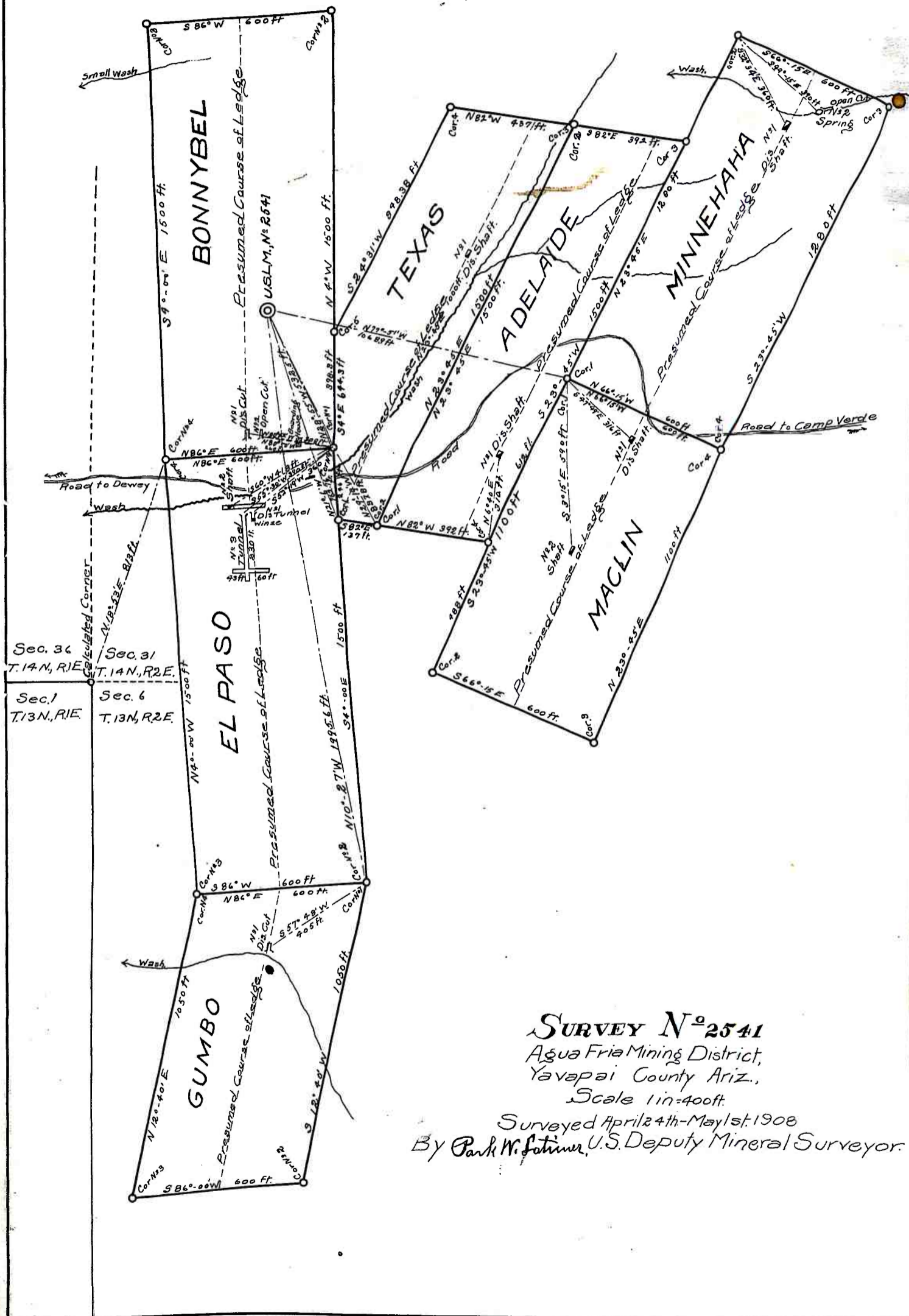
are hereby approved. A true copy of the copy of the location certificate filed by the applicant.. for

survey is included in the field notes.



U. S. Surveyor-General for _____ Arizona.

Approximately
Sections 31 & 6
T.13 & 14 N., R.2 E.
Unsurveyed.



SURVEY N^o 2541
 Agua Fria Mining District,
 Yavapai County Ariz.,
 Scale 1 in = 400 ft.
 Surveyed April 24th - May 1st, 1908
 By Park W. Fatimer, U.S. Deputy Mineral Surveyor.