

M
S
.

0

2

6

0

2

NOV 14 1908
Jan. 18, 1909

4-683.

MINERAL SURVEY No. 2602

LOT No. _____

Arizona Land District.

FIELD NOTES

OF THE SURVEY OF THE MINING CLAIM OF

Copper Butte Mines,

KNOWN AS THE

Copper Butte No 1 - Copper Butte No 2 - Copper Butte No 3 - Copper Butte No 4
Copper Butte No 5 - Copper Butte No 6 Cochise & June Bldg -
Mineral Creek Mining District,

Yavapai County, Arizona

approx 24 & 25 Sections 12 E.
12 & 30, Township 3 S., Range 13 E. Unsur.

Surveyed under instructions dated Oct. 16th, 1908

by Earl H. Parker
U. S. Mineral Surveyor.

Claim located See location notices, 1908

Survey commenced Oct 22nd, 1908

Survey completed Oct 28th, 1908

6-822

Address,
P. P. Parker, Agent,
Phoenix, Ariz.

feet

SURVEY NO. 2602.

JUNE BUG LODGE

Beginning at Cor. No. 1, Identical with the location a lava stone 4x6x20 ins., set 12 ins. in the ground, x on top chiseled J.B.-1-2602, with mound of stone 3x3x3 feet. Whence U.S.L.M. No. 2602, Bears N. 4° 19' W. 1006.96 feet. Whence a x, B.R. chiseled on a rock in place, 3x4 feet 2 feet above ground, bears S. 34° 56' E. 45.8 feet.

Thence S. 28° 22' W.
Va. 14° 15' E.

- 300.0 To East End Center, Identical with the location, a lava stone 4x6x18 ins., set 10 ins. in the ground, x on top-chiseled F.E.C. J.B. 2602. with mound of stones 3x3x3 feet.
- 380.0 To Road, bears N. 48° 40' W.
- 600.0 To Cor. No. 2, Identical with the location, lava stone 4x6x20 ins., set 12 ins. in the ground, x on top, chiseled J.B. 2-2602, with mound of stones 3x3x3 feet. Whence a x, B.R. chiseled on a rock in place, 4x5 feet, 2 feet above ground. bears S. 81° 04' E. 8.3 feet.

Thence N. 61° 38' W.
Va. 14° 15' E.

- 60.0 To wash, bears S. 15° 00' W.
- 140.0 To Road, bears N. 5° 00' E.
- 1500.0 To Cor. No. 3, Identical with the location, lava stone, 4x6x20 ins., set 12 ins. in the ground, x on top, chiseled J.B.-3-2602, with mound of stones 3x3x3 feet, Whence a X, B.R. chiseled on a rock in place, 4x5 ft. 2 feet above ground, bears S. 28° 22' W. 21.8 feet.

Thence N. 28° 22' E.
Va. 14° 15' E.

- 500.0 To West End Center, Identical with the location, lava stone 4x6x18 ins., set 10 ins. in the ground, chiseled- J.B. W.T.C. 2602. with mound of stones 3x3x3 feet.
- 600.0 To Cor. No. 4, Identical with the location, lava stone 4x6x20 ins. set 12 ins. in the ground, x on top, chiseled J.B.-4-2602, with mound of stones 3x3x3 feet. Whence a X B.R. chiseled on a rock in place, 3x4 feet, 2 feet above ground, bears N. 3° 42' W. 15.5 feet.

Thence S. 61° 38' E.
Va. 14° 15' E.

- 400.0 To Quarry, 10x20x100 feet.
- 530.0 To shaft, 4x6x15 feet.
- 800.0 To Wagon Road, bears N. 34° 00' W.
- 1500.0 To Cor. No. 1, Place of beginning.

feet

SURVEY NO. 2602.

COCHISE LODGE

Beginning at Cor. No. 1, Identical with the location, a lava stone 6x8 x 20 ins., set 12 ins. in the ground, x on top, chiseled -C-1-2602, with mound of stones 3x3x3 ft. Whence U.S.L.M. No. 2602, bears N.37° 09' W. 597.27 ft. Whence a X B.R. chiseled on a rock in place, 3x5 ft. 2 feet above ground, bears N.50° 55' W. 14.2 feet.

Thence S. 28° 22' W.

Va. 14° 15' E.

- 101.5 To Cor. No. 2 of Copper Butte No. 6 lode claim, of this survey.
300.0 To East End Center, Identical with the location, lava stone 4x7x18 ins., set 12 ins. in the ground, chiseled -E.F.C.-C-2602, with mound of stones 5x3x3 feet.
- 600.0 To Cor. No. 2, Identical with the location, and Cor. No. 1, of June Bug Lode Claim, Survey No. 2602, lava stone 4x6x20, ins., set 12 ins. in the ground, x on top, chiseled J.B.-1-C-2-2602.
- Thence ⁴⁻ 61° 58' E.
Va. 14° 15' E.
- 700.0 To Wagon Road, bears N. 34° 00' W.
970.0 To shaft, 4x6x15 feet.
1100.0 To quarry, 10.x20x100 feet.
1500.0 To Cor. No. 3, Identical with the location, and Cor. No. 4 of June Bug Lode Claim, Survey No. 2602, lava stone 4x6x20 ins., set 12 ins. in the ground, x on top, chiseled J-B-4-C-3-2602.
- Thence N. 28° 22' E.
Va. 14° 15' E.
- 300.0 To West End Center, Identical with the location, lava stone 4x5x20 ins., set 12 ins. in the ground, chiseled W-E-C-C-2602, with mound of stones 3x3x3 feet.
600.0 To Cor. No. 4, Identical with the location, lava stone 4x6x20 ins. set 12 ins. in the ground, x on top, chiseled, C-4-2602, with mound of stones 5x3x3 feet. Whence a X B.R. chiseled on a rock in place, 5x6 ft., 2 feet above ground, bears S. 61° 38' E. 35.1 feet.
- Thence S 61° 38' E.
Va. 14° 15' E.
- 300.0 To South End Center, of
Copper Butte No. 1 Lode Claim, this survey.
600.0 To Cor. No. 1, Copper Butte No. 1 and Cor. No. 4 Copper Butte No. 2 lode claims, of this survey.
900.0 To South End Center, Copper Butte No. 2 Lode Claim, of this survey.
1200.0 To Cor. No. 1, Copper Butte, No. 2 and Cor. No. 1 Copper Butte No. 3 lode claims, of this survey.
1500.0 To Cor. No. 1, Place of beginning, and South End Center Copper Butte No. 3 Lode Claim Survey No. 2602.

feet

SURVEY NO. 2602.

COPPER BUTTE NO. 1 LODGE CLAIM.

Beginning at Cor. No. 1, Identical with the location, lava stone 4x6x18 ins., set 12 ins. in the ground, x on top, chiseled C.B.L.-1-2602, with mound of stones 3x3x3 feet. Whence U.S.L.M. No. 2602, bears N. 83° 36' E. 433.87 feet Whence a X.B.R. chiseled on a rock in place 4x5 ft, 2 feet above ground.

Thence N. 61° 38' W.
Va. 14° 15' E.

- 300.0 To South End Center; Identical with the location, lava stone 4x6x20 ins., set 12 ins. in the ground, chiseled S.E.C.-C.B.L.-2602, with mound of stones 5x3x3 feet.
- 300.0 To Cor. No. 2, Identical with the location, and Cor. No. 4 of Coopise Lodge Claim of this survey, lava stone 4x6x20 ins. set 12 ins. in the ground, x on top, chiseled C-4--C.B.L.-2-2602, with mound of stones 3x3x3 feet.

Thence N. 28° 22' E.
Va. 14° 15' E.

- 1500.0 To Cor. No. 3, Identical with the location, a lava stone 4x4x18 ins., set 12 ins. in the ground, x on top, chiseled C.B.L.-3-2602, with mound of stones 3x3x3 feet, Whence a X B.R. chiseled on a rock in place, 4x5 ft. 2 feet above ground, bears N. 61° 38' W. 11.2 feet.

Thence S. 61° 38' E.
Va. 14° 15' E.

- 300.0 To North End Center, Identical with the location, lava stone 4x6x20 ins., set 12 ins. in the ground, chiseled N.E.C. C.B.L.-2602, with mound of stones 3x3x3 feet.
- 600.0 To Cor. No. 4, Identical with the location, a granite stone 6x6x18 ins. set 12 ins. in the ground, x on top, chiseled C.B.L.-4-2602 with mound of stones 3x3x3 feet. Whence B.T. with tack, in Mesquit Tree, bears S. 70° 53' E. 40.2'

Thence S 28° 22' W.
Va. 14° 15' E.

- 600.0 To tunnel 5x7x300 feet bears S. 81° 40' E. 200' an N. 81° 40' W 100 feet.
- 1500.0 To Cor. No. 1, Place of beginning.

feet

SURVEY NO. 2602.
COPPER BUTTE NO. 2 LODGE CLAIM.

Beginning at Cor. No. 1, Identical with the location, a lava stone 4x6x18 ins., set 12 ins. in the ground, x on top, chiseled C.B.2.-1-2602, with mound of stones 3x3x3ft. Whence U.S.L.M. No. 2602, bears N. 16° 11' W. 347.27 ft., Whence a X.B.R. chiseled on a granite rock in place 3x6 feet, 2 feet above ground, bears N.19° 24' W. 52 feet.

Thence N. 28° 22' E.
Va. 14° 15' E.

1500.0 To Cor. No. 2, Identical with the location, a granite stone 4x4x16 ins, set 10 ins. in the ground, x on top, chiseled C.B.2.-2-2602, with mound of stones 3x3x3 feet. Whence a X.B.R. chiseled on a granite rock in place 4x6 ft. 2 feet above ground, bears N.82° 38' W. 15 feet.

Thence N.61° 38' W.
Va. 14° 15' E.

300.0 To North End Center, Identical with the location, a granite stone 4x4x18 ins., set 12 ins. in the ground, x on top, chiseled N.E.C.-C.B.2-2602, with mound of stones 3x3x3 feet

600.0 To Cor. No. 3, Identical with the location and Cor. No. 4 of Copper Butte No.1 Lodge Claim of this survey, a granite stone 6x6x18 ins., set 12 ins. in the ground, x on top, chiseled C.B.1.-4-C.B.2.-3-2602.

Thence S 28° 22' W.
Va. 14° 15' E.

600.0 To tunnel 5x7x300 ft. bears S. 81° 40' E. 200 ft. and N.82° 40' W. 100 ft.

1500.0 To Cor. No.4, Identical with the location and Cor. No. 1 of Copper Butte No. 1 Lodge Claim of this survey, a lava stone 4x6x18 ins., set 12 ins. in the ground, x on top, chiseled C.B.1.-1-C.B.2.-4-2602.

Thence S. 61° 38' E.
Va. 14° 15' E.

300.0 To South End Center, Identical with the location, a granite stone 4x6x18 ins., set 10 ins. in the ground, x on top, chiseled S.E.C. C.B.2.-2602, with mound of stones 3x3x3ft.

600.0 To Cor. No. 1, Place of beginning.

feet

SURVEY NO. 2602.

COPPER BUTTE NO. 3 LODGE

Beginning at Cor. No. 1, Identical with the location, and Cor. No. 1 of Copper Butte No. 2 Lode Claim of this survey, a lava stone 4x6x18 ins., set 12 ins. in the ground, x o on top, chiseled C.B.2.-1-C.B.3.-1-2602, with mound of stones 3x3x3 ft. Whence U.S.L.M. No. 2602 bears N.16° 11' W. 347.27 ft. Whence A X.B.R. chiseled on a granite rock in place 4x6 ft., 2 ft. above ground, bears N.19° 24' W. 32 feet.

Thence S.61° 38' E.

Va. 14° 15' E.

300.0 To South End Center, Identical with the location and Cor. No. 1 of Cochise Lode Claim Survey No. 2602, and intersects line 1-2 of Copper Butte No. 6 Lode, of this survey, at S.28° 22' W. 498.5 ft. from Cor. No. 1, a granite stone 4x6x18 ins., set 12 ins. in the ground, x on top, chiseled C.1-S.E.C.-C.B.3.-2602, with mound of stones 3x3x3 feet.

600.0 To Cor. No. 2, Identical with the location. lava stone 4x6x18 ins., set 10 ins. in the ground, x on top, chiseled C.B.3.-2-2602, with mound of stones 3x3x3 ft. a X.B.R. chiseled on a granite rock in place 4x7 ft. 2 feet above ground, bears N. 10° 55' W. 16.7 feet.

Thence E.28° 22' E.

Va. 14° 15' E.

498.5 To intersect line 1-4 of Copper Butte No. 6 Lode Claim of this survey, at S.61° 38' E. 300 ft. from Cor. No. 1.

1500.0 To Cor. No. 3, Identical with the location, a granite stone 4x5x18 ins., set 10 ins. in the ground, x on top, chiseled C.B.3.-3-2602, with mound of stones 3x3x3 feet a X.B.R. chiseled on a granite rock in place, 3x5ft. 2 feet above ground, bears N.44° 44' W. 19.4 feet.

Thence N. 61° 38' W.

Va. 14° 15' E.

300.0 To North End Center, Identical with the location, a granite stone 4x6x18 ins., set 10 ins in the ground, x o top, chiseled N.E.C.-C.B.3.-2602, with mound of stones 3x3x3 feet.

600.0 To Cor. No. 4, Identical with the location and Cor. No. 2 of Copper Butte No. 2 Lode Claim Survey No. 2602, a granite stone 4x4x16 ins., set 10 ins. in the ground, x on top, chiseled C.B.2.-2-C.B.3.-4-2602.

Thence S. 28° 22' W.

Va. 14° 15' E.

1500.0 To Cor. No. 1, Place of beginning.

feet

SURVEY NO. 2602.

COPPER BUTTE NO. 4 LODGE

Beginning at Cor. No.1, Identical with the location and Cor. No. 4 of Copper Butte No. 1 Lode Claim, of this survey, and Cor. No. 3, of Copper Butte No. 2 Lode Claim of this survey a granite stone 6x6x18 ins., set 12 ins. in the ground, x on top, chiseled C.B.1.-4--C.B.2.-3--C.B.4.-1-2602, Whence U.S. L.M. No.2602, bears S. 12° 29' W. 1302.33 ft. Whence B.T. Tack in a Mesquit Tree, bears S.70° 53' E. 40.2 feet.

Thence N. 61° 38' W.
Va. 14° 15' E.

300.0 To South End Center, Identical with the location, and North End Center of Copper Butte No.1 Lode of this survey, heretofore described, to which I add S.E.C.-C.B.4

600.0 To Cor. No. 2, Identical with the location and Cor. No. 3 of Copper Butte No 1 Lode Claim Survey No. 2602, lava stone 4x4x16 ins., set 12 ins. in the ground, x on top chiseled C.B.1.-3-- C.B.4.-2-2602

Thence N.28° 22' E.
Va. 14° 15' E.

1500.0 To Cor. No. 3, Identical with the location, lava stone 4x4x16 ins., set 12 ins. in the ground, x on top, chiseled C.B.4.-3-2602, with mound of stones 3x3x3 feet, a X.B.R. chiseled on a granite rock in place 3x5 ft., 2 feet above ground, bears S.35° 33' E. 12.7 feet.

Thence S. 61° 38' E.
Va. 14° 15' E.

300.0 To North End Center, Identical with the location, a granite stone 4x5x15 ins., set 10 ins. in the ground, x on top, chiseled N.E.C.-C.B.4.-2602 with mound of stones 3x3x3 feet.

600.0 To Cor. No 4, Identical with the location, a lava stone 4x6x16 ins., set 10 ins. in the ground, x on top, chiseled C.B.4.-4-2602, Mesquit Post for mon. 6x6x60 ins., a X.B.R chiseled on granite rock in place 3x5 ft., 2 ft. above ground, bears N. 00° 05' W. 31 feet.

Thence S. 28° 22' W.
Va. 14° 15' E.

1500.0 To Cor. No. 1, Place of beginning.

feet

SURVEY NO. 2602.

COPPER BUTTE NO.5 LODE

Beginning at Cor. No. 1, Identical with the location, a granite stone 5x5x14 ins., set 10 ins. in the ground, x on top, chiseled C.B.5.-1-2602, with mound of stones 3x3x3 ft. Whence U.S.L.M. No. 2602, bears S. 39° 33' W. 2806.23 feet. A X.B.R chiseled on a granite rock in place 3x5 ft., 2 feet above ground, bears S. 61° 38' E. 11.5 ft

Thence N. 28° 22' E.

Va. 14° 15' E.

100.0 To wash, bears S. 63° 00' E.

300.0 To East End Center, Identical with the location, a granite stone 4x4x16 ins., set 10 ins. in the ground, x on top, chiseled E.E.C. C.B.5.-2602, with mound of stones 3x3x3 ft.

600.0 To Cor. No. 2, Identical with the location, a lava stone 3x6x14 ins. set 10 ins. in the ground, x on top, chiseled C.B.5.-2-2602, with mound of stones 3x3x3 ft. A X.B.R. chiseled on a granite rock in place, 3x6 ft. 2 feet above ground, bears N. 5° 50' W. 12.9 feet.

Thence N. 61° 38' W.

Va. 14° 15' E.

1500.0 To Cor. No. 3, Identical with the location, a granite stone 6x6x18 ins., set 10 ins. in the ground, x on top, chiseled C.B.5.-3-2602, with mound of stones 3x3x3 ft. A X.B.R chiseled on a granite rock in place, 4x6 ft. 2 ft. above ground, bears S. 5° 53' E. 17.2 feet.

Thence S. 28° 22' W.

Va. 14° 15' E.

300.0 To West End Center, Identical with the location, a granite stone 4x4x 15 ins., set 10 ins. in the ground, chiseled W.F.C.-C.B.5.-2602, with mound of stones 3x3x3 feet.

600.0 To Cor. No. 4, Identical with the location, and Cor No. 3 of Copper Butte No. 4 Lode Claim Survey No. 2602, a granite stone 4x4x16 ins., set 12 ins. in the ground, chiseled C.B.4.-3-C.B.5.-4-2602.

Thence S. 61° 38' E.

Va. 14° 15' E.

300.0 To North End Center of Copper Butte No. 4 Lode Claim of this survey.

600.0 To Cor. No. 4 of Copper Butte No. 4 Lode Claim, of this survey.

1500.0 To Cor. No. 1, Place of beginning.

SURVEY NO. 2602.

COPPER BUTTE NO. 6 LODGE

- feet Beginning at Cor. No. 1, Identical with the location, a lava stone in place 4x3x2 ft. x on top, chiseled C.B.6. 1-2602 with mound of stones 3x3x3 ft. Whence U.S.L.M. No. 2602, bears N. 86° 24' W. 593.71 feet, A X.B.R chiseled on a granite rock in place, 4x6 ft. 2 feet above ground, bears S. 25° 20' E. 56.8 feet.
- Thence S. 28° 22' W.
Va. 14° 15' E.
- 300.0 To West End Center, Identical with the location, a granite stone 4x5x16 ins., set 10 ins. in the ground, chiseled W.F.C. C.B.6.-2602, with mound of stones 3x3x3 ft.
- 498.5 To Cor. No. 1 Cochise lode, of this survey, and intersect line 1-2 Copper Butte No. 3 lode, of this survey, from which point Cor. No. 2, Copper Butte No. 3 lode brs. S. 61° 58' E. 300 ft.
- Along line 1-2 Cochise lode of this survey,
- 600.0 To Cor. No. 2, Identical with the location, x on top of granite rock in place 3x4x3 feet, chiseled C.B.6.-2-2602 with mound of stones 3x3x3 ft. A X.B.R chiseled on a granite rock in place, 3x6 ft., 2 feet above ground, bears S. 28° 22' W. 7.6 feet.
- Thence S. 61° 38' E.
Va. 14° 15' E.
- 1500.0 To Cor. No. 3, Identical with the location, x on top of granite rock in place 5x4x2 feet above ground, chiseled C.B.6.-3-2602, with mound of stones 3x3x3 feet. A X.B.R chiseled on a granite rock in place 3x4 ft. 2 feet above ground, bears S. 28° 22' W. 14.8 feet
- Thence N. 28° 22' E.
Va. 14° 15' E.
- 300.0 To East End Center, Identical with the location, a granite rock 4x4x17 ins., set 12 ins. in the ground, chiseled E.E.C.- C.B.6.-2602 with mound of stones 3x3x3 ft.
- 600.0 To Cor. No. 4, Identical with the location, a lava stone 4x6x18 ins., set 10 ins. in the ground, chiseled, x on top, chiseled C.B.6.-4-2602, with mound of stones 3x3x3 ft. A X.B.R chiseled on granite rock in place 3x6 ft. 2 feet above ground, bears S. 20° 57' W. 18.6 feet.
- Thence N. 61° 38' W.
Va. 14° 15' E.
- 1200.0 To intersect line 2-3 of Copper Butte No. 3 Lode Claim - this survey, Whence Cor. No. 2 Copper Butte No. 3 Lode Claim of this survey, bears S 28° 22' W. 498.5 feet.
- 1500.0 To Cor. No. 1, Place of beginning.

LOCATION.

These claims are on unsurveyed lands, approximately in Sections 24-25-19 & 30 T 3S, R 12 & 13 E. Mineral Creek Mining District, Pinal County, Territory of Arizona, and are surrounded by vacant land.

INSTRUMENT.

This survey was made with a Gurley Transit, with Shattuck Solar Attachment, The courses were deflected from the meridian as determined by direct solar observations. The distances were measured with 100 and 500 ft. steel tapes.

DESCRIPTION OF U.S.L.M. NO. 2602.

Pine Post 6 inches in diameter and 8 feet high, marked U.S.L.M.-2602--M.C.M.D., with a mound of stones 4x4x4 feet. Whence a U.S.G.S. triangulation point on Grayback Mountain bears S. 25°08' W. 28299.00 feet. Whence a X.B.R. chiseled on a granite rock in place 4x6 ft. 1 foot above ground, bears S. 33°52' E.

AREAS..

	Acres.
June Bug Lode Claim	20.661
Cochise "	20.661
Copper Butte No. 1 "	20.661
Copper Butte No. 2 "	20.661
Copper Butte No. 3 "	20.661
Copper Butte No. 4 "	20.661
Copper Butte No. 5 "	20.661
Copper Butte No. 6 "	20.661
Total area,	20.661,
Less area in conflict with Copper Butte No. 3 lode of this survey,	<u>3.433</u>
Net area,	<u>17.228</u>
Total net area of lode claims,	161.855

IMPROVEMENTS.

"I certify that the value of the labor and improvements upon these claims, placed thereon by the claimant and its grantors, is not less than five hundred dollars for each location, and that said improvements consist of:"

SURVEY NO. 3110.

The Improvements on June Bug Lode Claim, consist of:-

No.1.	Discovery Shaft, bears S. 79° 09' E. 996 ft. from Cor No.3. 4x6x50 feet.	value	\$ 500.00
No.2.	Open cut, bears S. 82° 12' E. 855 ft. from Cor. No.3. 8X6X15 feet.	Value.....	\$ 135.00
No.3.	Open cut, bears S. 78° 01' E. 881 ft. from Cor. No.3. 18X18X6 feet.	Value	\$ 360.00
No.4.	Shaft, bears S. 73° 28' E. 1389 ft. from Cor.No.3. 8X12X480 feet. \$9600.00: value of 1/8 interest, credited to this lode,	Value	\$1200.00
No.5.	Tunnel, bears S. 74° 30' E. 1380 feet from Cor.No.3. 5X7X250 feet. \$2500.00: 1/8 interest credited to this lode,	Value	\$ 312.50
No.6.	Quarry, bears S. 61° 38' E. 400 ft. from Cor.No.4 10X20X100 ft. Total value \$3700.00. This quarry is located 1/2 on the June Bug and 1/2 on the Cochise lodes. 1/2 the value thereof is credited to each. Value of portion situated on this lode		\$1850.00
No.7.	Shaft, bears S. 61° 38' E. 530 ft. from Cor.No.4. 4x6x15 feet.	Value	\$ 150.00
No.8.	Tunnel, bears S. 56° 32' E. 570 ft. from Cor.No.4. 5x7x125 ft.	Value	\$1250.00
	Note: A 1/8 interest in tunnel No.3 on Copper Butte No.2 lode, is credited to this claim.	Value	\$ 375.00
		Total value . .	\$6132.50

LEDGE.

The ledge extends from West End, the full width of claim S.61° 38' E. 1500 feet, known as a blanket ledge.

-----oOo-----

IMPROVEMENTS ON COCHISE LODGE CLAIM CONSIST OF:-

No.1.	Discovery Shaft, bears S. 79° 42' E. 970 ft. from Cor. No.3. 4x6x10 feet.	Value	\$ 100.00
No.2.	Shaft, bears N.67° 30' E. 270 ft. from Cor.No.3. 4x6x150 feet.	Value	\$1500.00
No.3.	Shaft, bears S. 74° 24' E. 540 ft. from Cor. No.3. 4x6x10 feet.	Value	\$ 100.00
No.4.	Open cut, bears S. 73° 16' E. 535 ft. from Cor.No.3 6x8x75 feet.	Value	\$ 665.00
No.5.	Shaft, bears S. 72° 00' E. 610 ft. from Cor.No.3 4x6x15 feet.	Value	\$ 150.00
No.6.	Shaft, bears S. 83° 12' E. 210 ft. from Cor.No.3. 4x6x10 feet.	Value	\$ 100.00
No.7.	Quarry, bears S.61° 38' E. 400 ft. from Cor.No.3.		

Handwritten marks at the bottom left corner.

10x20x100 ft. Total value \$3700.00. 1/2 of which is located on, and therefore credited to, this claim, Value \$1850.00

Note:- A 1/8 interest in shaft No.4 on the June Bug Lode, value \$1200.00, in Tunnel No.5 on the June Bug Lode, value \$312.50, and in Tunnel No.3 on the Copper Butte No.2 Lode, value \$375.00 is credited to this Lode, Value \$1887.50
Total value \$6352.50

LEDGE.

Ledge extends from West End Center S. 61° 38' E. 1500 feet to East end center.

-----o0o-----

IMPROVEMENTS ON COPPER BUTTE NO. 1 LODE CLAIM. CONSIST OF

No.1. Discovery Shaft, bears S. 43° 12' E. 310 ft. from Cor. No.3. 4x6x8 feet. Value \$ 80.00

Note:- A 1/8 interest in shaft No.4 on the June Bug Lode, value \$1200.00, in Tunnel No.5 on the June Bug Lode, value \$312.50, and in Tunnel No.3 on the Copper Butte No.2 Lode, value \$375.00, is credited to this Lode, Value ... \$1887.50
Total value \$1967.50

LEDGE.

Ledge extends from North End Center, S. 28° 22' W. 1500 ft. to South end center.

-----o0o-----

IMPROVEMENTS ON COPPER BUTTE NO. 2 LODE CLAIM CONSIST OF:

No.1. Discovery Shaft, bears S. 35° 50' E. 330 ft. from Cor. No.3. 4x6x8 feet. Value \$ 80.00

No.2. Open Cut, bears S. 30° 20' W. 880 ft. from Cor. No.2. 6x15x35 feet. Value \$ 585.00

No.3. Tunnel, ^{5x7 1/2} the mouth of which bears S. 8° 54' W. 563.68 ft. from corner No.3 Copper Butte No2. Lode Claim and runs N. 81° 40' W. 300 ft. crossing line 1-4 of Copper Butte No.1 Lode Claim 600 ft. from corner No.4. The last 100 feet being on Copper Butte No.1 Lode Claim. Value \$3000. Value of 1/8 interest credited to this Claim, Value \$ 375.00

Note:- 1/8 interest in shaft No.4 on June Bug Lode Claim value \$1200.00, and 1/8 interest in Tunnel No.5 on June Bug Lode Claim value \$312.50 is credited to this claim. Value \$1512.50
Total value \$2552.50

LEDGE.

Ledge extends from North End Center S. 28° 22' W. 1500 ft. to South end center.

-----e0o-----

IMPROVEMENTS ON COPPER BUTTE NO.3 LODE CLAIM CONSIST OF:-

No.1. Discovery shaft, bears S. 54° 56' W. 680 ft. from Cor. No.3. 4x6x8 feet. Value \$ 80.00

Note:- A 1/8 interest in shaft No.4 on the June Bug Lode Claim, value \$1200.00, in Tunnel No.5 on the June Bug Lode Claim, value \$312.50, and Tunnel No.3 on the Copper Butte No.2 Lode claim, value \$375.00 is credited to this Lode. Value \$1887.50
Total value \$1967.50

LEDGE.

Ledge extends from North End Center S. 28° 22' W. 1500 feet to South end center.

-----oOo-----

IMPROVEMENTS ON COPPER BUTTE NO.4 LODE CLAIM CONSIST OF:-

No.1. Discovery Shaft, bears N. 57° 48' W. 305 ft. from Cor. No.1. 4x6x8 feet. Value \$ 80.00

Note:- A 1/8 interest in shaft No.4 on the June Bug Lode Claim, value \$1200.00, in Tunnel No.5 on the June Bug Lode Claim, value \$312.50, and Tunnel No.3 on the Copper Butte No.2 Lode Claim, value \$375.00, is credited to this Lode. Value ... \$1887.50
Total value \$1967.50

LEDGE.

Ledge extends from South end center N. 28° 22' ^E 1500 feet to North end center.

-----oOo-----

IMPROVEMENTS ON COPPER BUTTE NO. 5 LODE CLAIM CONSIST OF:-

No.1. Discovery Shaft, bears N. 9° 56' E. 315 ft. from Cor. No.1. 4x6x8 feet. Value \$ 80.00

Note:- A 1/8 interest in shaft No.4 on the June Bug Lode Claim, value \$1200.00, in Tunnel No.5 on the June Bug Lode Claim, value \$312.50, and in Tunnel No.3 on the Copper Butte No.2 Lode Claim, value \$375.00, is credited to this Lode. Value \$1887.50
Total value \$1967.50

LEDGE.

Ledge extends from East End Center N. 61° 38' W. 1500.00 feet to West end center.

-----oOo-----

IMPROVEMENTS ON COPPER BUTTE NO. 6 LODE CLAIM CONSIST OF:-

No.1. Discovery Open Cut, bears N. 1° 10' W. 335 ft. from Cor. No.3. 10x12x20 feet. Value \$ 450.00

No. 2. Tunnel, bears N. 7° 16' E. 365 ft. from Cor.No.3. 5x7x25 feet. Value \$ 250.00

Note:- A 1/8 interest in shaft No.4 on the June Bug Lode Claim, value \$1200.00, in Tunnel No.5 on the June Bug Lode Claim, value \$312.50, and in Tunnel No.3 on the Copper Butte No.2 Lode Claim, value \$375.00, is credited to this Lode. Value \$1887.50
Total value \$2587.50

LEDGE.

Ledge extends from East end center N. 61° 38' W. 1500 feet to West end center.

Note:

Shaft No. 4 and Tunnel No.5 on the June Bug Lode Claim and Tunnel No.3 on the Copper Butte No.2 Lode Claim are considered as common improvements and are credited $1/8$ interest to each of the eight claims for the reason that in each case they go to prove that an immense deposit of carbonate and oxide ores extend through the mountain and is a continuous body from one end of the Group to the other. The ore bodies on the six Copper Butte Lode Claims can be traced to, and are a part of, the ore body shown by the shaft and tunnels on the June Bug, Cochise and Copper Butte No. 6 lode claims, ^{in this group} can be most advantageously and economically developed by means of a system of underground workings; of which the above mentioned improvements are the basis, and therefore the above improvements are termed common improvements for the benefit and development of the eight claims in this group.

Earl A. Parker
U. S. Mineral Surveyor.

FINAL OATHS FOR SURVEYS.

LIST OF NAMES.

A list of the names of the individuals employed by Carl H. Parker
 United States Mineral Surveyor, to assist in running, measuring, and marking the lines, corners, and
 boundaries described in the foregoing field notes of the survey of the mining claim of Copper Butte
Minis

known as the Copper Butte No 1 - Copper Butte No 2 - Copper Butte No 3 - Copper Butte No 4
Copper Butte No 5 - Copper Butte No 6 - Cochise & June Bug.
 and showing the respective capacities in which they acted.

....., Chairman.
Edw. F. Tuttle....., Chairman.
 Axman.
 Flagman.

FINAL OATHS OF ASSISTANTS.

We, H. F. Tuttle
 and, do solemnly swear that ² we assisted Carl H. Parker
, United States Mineral Surveyor, in marking the corners and surveying
 the boundaries of the mining claim of Copper Butte Minis

known as the Copper Butte No 1 - Copper Butte No 2 - Copper Butte No 3 - Copper Butte No 4
Copper Butte No 5 - Copper Butte No 6 - Cochise & June Bug
 represented in the foregoing field notes as having been surveyed by said mineral surveyor and under his
 direction; and that said survey has been in all respects, to the best of our knowledge and belief, faithfully
 and correctly executed, and the corner and boundary monuments established according to law and the instruc-
 tions furnished by the United States Surveyor-General for Arizona

H. F. Tuttle....., Chairman.
 Chairman.
 Axman.
 Flagman

Subscribed and sworn to by the above-named persons before me this 13th
 day of November, 1908
L. O. ...
Notary Public

FINAL OATH OF U. S. MINERAL SURVEYOR.

I, Earl H. Parker, U. S. Mineral Surveyor,
do solemnly swear that, in pursuance of instructions received from the United States
Surveyor General for Arizona, dated
October 16th 1908, I have, in strict conformity to the laws of the
United States, the official regulations and instructions thereunder, and the instructions
of said Surveyor General, faithfully and correctly executed the survey of the Mining
Claims of Copper Butte Mines,

known as the
Copper Butte No. 1 - Copper Butte No. 2 - Copper Butte No. 3 - Copper Butte No. 4 -
Copper Butte No. 5 - Copper Butte No. 6 - Cochise & June Bug
situate in Mineral Creek Mining District,

Pinal County, Arizona, in Section 5
approximately 24425
17930, Township No. 3 S, Range No. 12 E 13 E Unsurv.

and designated as Survey No. 2602, as represented
in the foregoing field notes, which accurately show the boundaries of said mining claim
as distinctly marked by monuments on the ground, and described in the attached copy
of the location certificate, which was received by me from the Surveyor General with
said instructions, and that all the corners of said survey have been established and per-
petuated in strict accordance with the law, official regulations and instructions there-
under; and I do further solemnly swear that the foregoing are the true and original
field notes of said survey and my report therein, and that the labor expended and
improvements made upon said mining claim by claimant or its grantors
are as therein fully stated, and that the character, extent, location, and itemized value
thereof are specified therein with particularity and full detail, and that no portion of
said labor or improvements so credited to this claim has been included in the estimate
of expenditures upon any other claim.

Earl H. Parker
U. S. Mineral Surveyor.

Subscribed and sworn to by the said Earl H. Parker
U. S. Mineral Surveyor, before me L O Trueman a
Natural Public this 13th
day of November, 1908

L O Trueman
Natural Public

Affidavit of Five Hundred Dollars Improvements.

We, R. F. Wilson and Peter Van Haren

of lawful age, being first duly sworn according to law, depose and say: That we are acquainted with the Copper Butte mining claim, situate in Mineral Creek Mining district, Pinal County, Arizona Territory, for which Copper Butte Mines

has made application for survey prior to application for patent under the provisions of the act of Congress, approved May 10, 1872; and that the labor done and improvements made thereon by the applicant and his grantors exceed Five Hundred Dollars in value, and further that we are not personally interested in said mine.

x Peter Van Haren

x R. F. Wilson

TERRITORY OF ARIZONA, }
County of Maricopa } ss:

Sworn to and subscribed before me, this 18th

day of December, 1908

David P. Kitch
Notary Public



My commission expires February 10, 1911

27669b1m2-07

Notice of Mining Location

LODE CLAIM

To All Whom It May Concern:

This Mining Claim, the name of which is the Copper Butte No-1 Mining Claim, situate on lands belonging to the United States of America, and in which there are valuable mineral deposits, was entered upon and located for the purposes of exploration and purchase by Copper Butte Miners. A Corporation duly organized and incorporated under the laws of Arizona (Locator must insert either "a citizen of the United States," or, "who has declared his intention to become a citizen of the United States.") the undersigned, on the 30th day of September 1908.

The length of this claim is 1500 feet, and 1 claim 800 feet, in a Northerly direction and 700 feet in a Southerly direction from the center of the discovery shaft, at which this notice is posted, lengthwise of the claim, together with 300 feet in width of the surface grounds, on each side of the center of said claim. The general course of the lode deposit and premises is from the North to the South.

The claim is situated and located in the Mineral Creek Mining District, in Pinal County, in the Territory of Arizona, about one & three fourth miles in a Northerly direction from The Gila River and Butte Siding on the P & E. Railroad.

The surface boundaries of the claim are marked upon the ground as follows: Beginning at Monument

at a point in a Southerly direction 700 feet from the discovery shaft (at which this notice is posted), being in the center of the Southern end line of said claim; thence Easterly 300 feet to a monument, being the South Eastern corner of said claim; thence Northerly 1500 feet to a monument, being at the North Eastern corner of said claim; thence Westerly 300 feet to a monument at the center of the Northern end of said claim; thence Westerly 300 feet to a monument, being at the North Western corner of said claim; thence Southerly 1500 feet to a monument at the South Western corner of said claim; thence Easterly 300 feet to the place of beginning.

All done under the provisions of Chapter Six, of Title XXXII, of the Revised Statutes of the United States, and of an Act of the General Assembly of Arizona, entitled "An Act to Revise and Codify the Laws of the Territory of Arizona," approved March 16, 1901.

This is an Amended Location Notice of the Copper Butte No-1 Mining Claim, located by A. G. Wilson, A. C. Sheldon and P. P. Parker on the 20th day of June 1901, and recorded in Book 19 of Records of Mines, at pages 84 & 85, in the office of the County Recorder of the aforesaid County of Pinal to which reference is hereby made, and this Amended Location Notice is made and posted to correct errors in the description in the said original Location Notice, without waiving or

Dated and posted on the ground this 30th day of September 1908.

Copper Butte Miners by P. P. Parker agent

intersecting to warn any right-whatsoever under said

TERRITORY OF ARIZONA,
County of Pinal- } ss.

I, G. F. Watson-

County Recorder in and for the County and Territory aforesaid, do hereby certify that the within instrument was filed for record at 3 o'clock, P. M., on this 13th day of Oct. 1908, and duly recorded in Book No. 1- of Mines Amended Records of Pinal- County, Arizona, at pages 137.

WITNESS my hand and official seal the day and year first above written.

G. F. Watson
County Recorder.

By Deputy N. N. Wells

AMENDED
Notice of Location.
LODE CLAIM.

Copper Butte No. 1.

Dated September 30th 1908

Filed and Recorded at request of

P. P. Parker

Oct. 13th A. D. 1908
at 3 o'clock P. M.

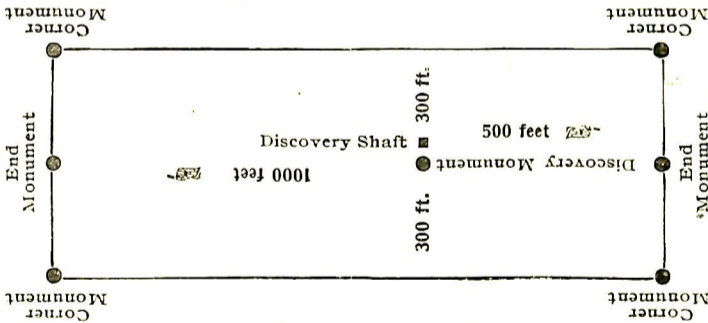
Book 1- of Mines Amended

Pages 137-137

G. F. Watson.
County Recorder.

By N. N. Wells-
Deputy Recorder.

The H. H. McNeil Co., Printers, Phoenix



This diagram is to give locator a general idea of plan of location under the new law. The Discovery Shaft can be in the center of claim or any distance from either end desired. In the diagram it is placed 500 feet from one end and 1000 feet from the other. Commence description of claim at a center end monument, giving its distance and direction from center of Discovery Shaft; thence bound the claim in either direction. In description be careful to state locality of claim with reference to some natural object, or permanent monument, as will identify the claim.

AMENDED

Notice of Mining Location

LODE CLAIM

To All Whom It May Concern:

This Mining Claim, the name of which is the Copper Butte No-2 Mining Claim, situate on lands belonging to the United States of America, and in which there are valuable mineral deposits, was entered upon and located for the purposes of exploration and purchase by Copper Butte Mines. A Corporation organized and incorporated under the laws of Arizona - (Locator must insert either "a citizen of the United States," or, "who has declared his intention to become a citizen of the United States.") the undersigned, on the 300 day of September 1908.

The length of this claim is 1500 feet, and 900 claim 900 feet, in a Northerly direction and 600 feet in a Southerly direction from the center of the discovery shaft, at which this notice is posted, lengthwise of the claim, together with 300 feet in width of the surface grounds, on each side of the center of said claim. The general course of the lode deposit and premises is from the North to the South.

The claim is situated and located in the Mineral Creek Mining District, in Pinel County, in the Territory of Arizona, about over three fourths miles in a Northerly direction from The Gila River and Butte Siding on the P. & E. Railroad.

The surface boundaries of the claim are marked upon the ground as follows: Beginning at Monument

at a point in a Southerly direction 600 feet from the discovery shaft (at which this notice is posted), being in the center of the Southerly end line of said claim; thence Easterly 300 feet to a Monument, being the South Easterly corner of said claim; thence Southerly 1500 feet to a Monument, being at the North Easterly corner of said claim; thence Westerly 300 feet to a Monument at the center of the Northerly end of said claim; thence Westerly 300 feet to a Monument, being at the North Westerly corner of said claim; thence Southerly 1500 feet to a Monument at the South Westerly corner of said claim; thence Easterly 300 feet to the place of beginning.

All done under the provisions of Chapter Six, of Title XXXII, of the Revised Statutes of the United States, and of an Act of the General Assembly of Arizona, entitled "An Act to Revise and Codify the Laws of the Territory of Arizona," approved March 16, 1901. without waiving or

This is an Amended Location Notice of the Copper Butte No-2 Mining Claim, located by A. G. Wilson, A. C. Sheldon and P. P. Parker on the 20th day of June 1901, and recorded in Book 19 of Records of Mines, at page 86, in the office of the County Recorder of the aforesaid County of Pinel to which reference is hereby made, and this Amended Location Notice is made and posted to correct errors in the description in the said original Location Notice.

Dated and posted on the ground this 30th day of September 1908.

Copper Butte Mines. By P. P. Parker Agent

intending to waive any right whatsoever under said original notice of location

TERRITORY OF ARIZONA,
County of Pinal- } ss.

I, G. F. Watson- County Recorder in and for the County and

Territory aforesaid, do hereby certify that the within instrument was filed for record at 3 o'clock, P.M.,
on this 13th day of Oct. 1908, and duly recorded in Book No. 138
of Mines Amended Records of Pinal County, Arizona, at pages 138

WITNESS my hand and official seal the day and year first above written.

G. F. Watson
County Recorder.

By Deputy N. N. Wells

AMENDED
Notice of Location.
LODE CLAIM.

Copper Butte No. 2-

Dated September 30th 1908

Filed and Recorded at request of

P. P. Parker

Oct. 13th A. D. 1908

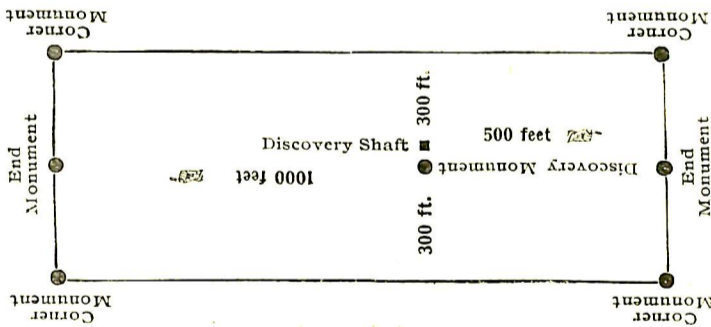
at 3 o'clock P. M.

Book 138 of Mines Amended

Pages 138

G. F. Watson-
County Recorder.

N. N. Wells-
Deputy Recorder.



This diagram is to give locator a general idea of plan of location under the new law. The Discovery Shaft can be in the center of claim or any distance from either end desired. In the diagram it is placed 500 feet from one end and 1000 feet from the other. Commence description of claim at a center end monument, giving its distance and direction from center of Discovery Shaft; thence bound the claim in either direction. In description be careful to state locality of claim with reference to some natural object, or permanent monument, as will identify the claim.

File

AMENDED

22

Notice of Mining Location

LODE CLAIM

To All Whom It May Concern:

This Mining Claim, the name of which is the Copper Butte No. 3 Mining Claim, situate on lands belonging to the United States of America, and in which there are valuable mineral deposits, was entered upon and located for the purposes of exploration and purchase by Copper Butte Minis. a Corporation duly organized and incorporated under the laws of Arizona (Locator must insert either "a citizen of the United States," or, "who has declared his intention to become a citizen of the United States.") the undersigned, on the 30th day of September 1908

The length of this claim is 1500 feet, and 1 claim 800 feet, in a Southerly direction and 700 feet in a Northerly direction from the center of the discovery shaft, at which this notice is posted, lengthwise of the claim, together with 300 feet in width of the surface grounds, on each side of the center of said claim. The general course of the lode deposit and premises is from the North to the South

The claim is situated and located in the Mineral Creek Mining District, in Pinal County, in the Territory of Arizona, about one and three fourth miles in a Northerly direction from The Gila River and Butte siding on the P. & E. Railroad

The surface boundaries of the claim are marked upon the ground as follows: Beginning at Monument

at a point in a Southerly direction 800 feet from the discovery shaft (at which this notice is posted), being in the center of the Southern end line of said claim; thence Easterly 300 feet to a monument, being the South Eastern corner of said claim; thence Northerly 1500 feet to a monument, being at the North Eastern corner of said claim; thence Westerly 300 feet to a monument at the center of the Northern end of said claim; thence Westerly 300 feet to a monument, being at the North Western corner of said claim; thence Southerly 1500 feet to a monument at the South Western corner of said claim; thence Easterly 300 feet to the place of beginning.

All done under the provisions of Chapter Six, of Title XXXII, of the Revised Statutes of the United States, and of an Act of the General Assembly of Arizona, entitled "An Act to Revise and Codify the Laws of the Territory of Arizona," approved March 16, 1901.

This is an Amended Location Notice of the Copper Butte No. 3 Mining Claim, located by A. G. Wilson A. C. Sheldon and P. P. Parker on the 20th day of June 1901, and recorded in Book 17 of Records of Mines, at pages 87, 88 & 89, in the office of the County Recorder of the aforesaid County of Pinal

to which reference is hereby made, and this Amended Location Notice is made and posted to correct errors in the description in the said original Location Notice, without Waiving or

Dated and posted on the ground this 30th day of September 1908

Copper Butte Minis by P. P. Parker agent

intending to waive any right whatsoever under said original notice of location

TERRITORY OF ARIZONA, }
County of Pinal- } ss.

I, G. F. Watson- County Recorder in and for the County and

Territory aforesaid, do hereby certify that the within instrument was filed for record at -3- o'clock, P.M.,

on this -- 15th day of Oct. 1908, and duly recorded in Book No. -1-

of Mines Amended Pinal- County, Arizona, at pages 139

WITNESS my hand and official seal the day and year first above written.

G. F. Watson

County Recorder.

By Deputy N. N. Wells

AMENDED
Notice of Location.
LODE CLAIM.

Copper Butte No. 3

Dated September 30th 1908

Filed and Recorded at request of

P. F. Parker-

Oct. 15th A. D. 1908

at - 3- O'Clock P. M.

Book -1- of Mines Amended

Pages 139

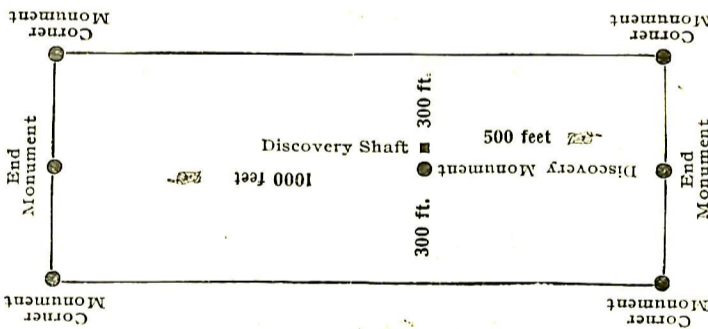
G. F. Watson-

County Recorder

By N. N. Wells-

Deputy Recorder.

The H. H. McNeil Co., Printers, Phoenix



This diagram is to give locator a general idea of plan of location under the new law. The Discovery Shaft can be in the center of claim or any distance from either end desired. In the diagram it is placed 500 feet from one end and 1000 feet from the other. Commence description of claim at a center end monument, giving its distance and direction from center of Discovery Shaft; thence bound the claim in either direction. In description be careful to state locality of claim with reference to some natural object, or permanent monument, as will identify the claim.

Notice of Mining Location

LODE CLAIM

To All Whom It May Concern:

This Mining Claim, the name of which is the Copper Butte No. 4 Mining Claim, situate on lands belonging to the United States of America, and in which there are valuable mineral deposits, was entered upon and located for the purposes of exploration and purchase by Copper Butte Miners Corporation duly organized and incorporated under the laws of Arizona (Locutor must insert either "a citizen of the United States," or, "who has declared his intention to become a citizen of the United States.") the undersigned, on the 3rd day of October 1908

The length of this claim is 1500 feet, and I claim 300 feet, in a Northerly direction and 1200 feet in a Southerly direction from the center of the discovery shaft, at which this notice is posted, lengthwise of the claim, together with 300 feet in width of the surface grounds, on each side of the center of said claim. The general course of the lode deposit and premises is from the North to the South

The claim is situated and located in the Mineral Creek Mining District, in Pinal County, in the Territory of Arizona, about one and three fourths miles in a Northerly direction from The Pila River and Butte Sliding on the P. & E. Railroad

The surface boundaries of the claim are marked upon the ground as follows: Beginning at Monument

at a point in a Southerly direction 1200 feet from the discovery shaft (at which this notice is posted), being in the center of the Southern end line of said claim; thence Easterly 300 feet to a Monument, being the South Eastern corner of said claim; thence Northerly 1500 feet to a Monument, being at the North Eastern corner of said claim; thence Westerly 300 feet to a Monument at the center of the Northern end of said claim; thence Westerly 300 feet to a Monument, being at the North Western corner of said claim; thence Southerly 1500 feet to a Monument at the South Western corner of said claim; thence Easterly 300 feet to the place of beginning.

All done under the provisions of Chapter Six, of Title XXXII, of the Revised Statutes of the United States, and of an Act of the General Assembly of Arizona, entitled "An Act to Revise and Codify the Laws of the Territory of Arizona," approved March 16, 1901.

This is an Amended Location Notice of the Copper Butte No. 4 Mining Claim, located by A. G. Wilson, A. C. Sheldon and L. P. Parker on the 20th day of June 1901, and recorded in Book 19 of Records of Mines, at page 87+90, in the office of the County Recorder of the aforesaid County of Pinal to which reference is hereby made, and this Amended Location Notice is made and posted to correct errors in the description in the said original Location Notice, without waiving or

Dated and posted on the ground this 3rd day of October 1908

Copper Butte Miners - by L. P. Parker Agent

intending to waive any rights whatsoever under said original notice of location

TERRITORY OF ARIZONA,
County of... -- Pinal- } ss.

I,..... G. F. Watson-

....., County Recorder in and for the County and Territory aforesaid, do hereby certify that the within instrument was filed for record at..... --3-- o'clock, P. M., on this..... 13th..... day of..... Oct..... 1908, and duly recorded in Book No..... 1- of..... Mines. Amended Records of..... Pinal..... County, Arizona, at pages..... - 140 -

WITNESS my hand and official seal the day and year first above written

G. F. Watson
County Recorder.

By Deputy..... *N. N. Wells*.....

AMENDED
Notice of Location.
LODE CLAIM.

Copper Butte No. 4-

Dated Oct. 2nd - 1908

Filed and Recorded at request of

P. P. Parker-

Oct. 13th A. D. 1908-

at --3-- O'Clock P. M.

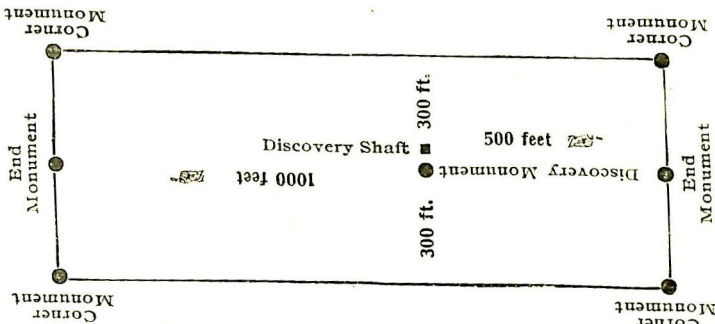
Book -- 1- of Lines Amended

Pages - 140 -

G. F. Watson -
County Recorder.

N. N. Wells -

By Deputy Recorder.



This diagram is to give locator a general idea of plan of location under the new law. The Discovery Shaft can be in the center of claim or any distance from either end desired. In the diagram it is placed 500 feet from one end and 1000 feet from the other. Commence description of claim at a center end monument, giving its distance and direction from center of Discovery Shaft; thence bound the claim in either direction. In description be careful to state locality of claim with reference to some natural object, or permanent monument, as will identify the claim.

AMENDED

Notice of Mining Location

LODE CLAIM

To All Whom It May Concern:

This Mining Claim, the name of which is the Copper Butte No. 5- Mining Claim, situate on lands belonging to the United States of America, and in which there are valuable mineral deposits, was entered upon and located for the purposes of exploration and purchase by Copper Butte Minis. a Corporation duly organized and incorporated under the laws of Arizona (Locator must insert either "a citizen of the United States," or, "who has declared his intention to become a citizen of the United States.") the undersigned, on the 3rd day of October 1908.

The length of this claim is 1500 feet, and I claim 1400 feet, in a Westerly direction and 100 feet in an Easterly direction from the center of the discovery shaft, at which this notice is posted, lengthwise of the claim, together with 300 feet in width of the surface grounds, on each side of the center of said claim. The general course of the lode deposit and premises is from the West to the East.

The claim is situated and located in the Mineral Creek Mining District, in Pinal County, in the Territory of Arizona, about two miles in a Northerly direction from The Gila River and Butte Siding on the P. & E. Railroad.

The surface boundaries of the claim are marked upon the ground as follows: Beginning at Monument

at a point in an Easterly direction 100 feet from the discovery shaft (at which this notice is posted), being in the center of the Easterly end line of said claim; thence Northerly 300 feet to a monument, being the North Easterly corner of said claim; thence Westerly 1500 feet to a monument, being at the North Westerly corner of said claim; thence Southerly 300 feet to a monument at the center of the Westerly end of said claim; thence Southerly 300 feet to a monument, being at the South Westerly corner of said claim; thence Easterly 1500 feet to a monument at the South Easterly corner of said claim; thence Northerly 300 feet to the place of beginning.

All done under the provisions of Chapter Six, of Title XXXII, of the Revised Statutes of the United States, and of an Act of the General Assembly of Arizona, entitled "An Act to Revise and Codify the Laws of the Territory of Arizona," approved March 16, 1901.

This is an Amended Location Notice of the Copper Butte No. 5- Mining Claim, located by A. G. Wilson, A. C. Sheldon and R. P. Parker on the 20th day of June 1901, and recorded in Book 19 of Records of Mines, at pages 90, 91, & 92, in the office of the County Recorder of the aforesaid County of Pinal to which reference is hereby made, and this Amended Location Notice is made and posted to correct errors in the description in the said original Location Notice without claiming or

Dated and posted on the ground this 3rd day of October 1908

Copper Butte Mines, By R. P. Parker agent

27

TERRITORY OF ARIZONA,

County of Pinal- } ss.

I, G. F. Watson-

Territory aforesaid, do hereby certify that the within instrument was filed for record at --3-- o'clock, P. M., on this 13th day of October 1908 and duly recorded in Book No. --1-- of Mines Amended Records of --Pinal-- County, Arizona, at pages --141--

WITNESS my hand and official seal the day and year first above written.

By Deputy

N. N. Wells

G. F. Watson
County Recorder.

AMENDED
Notice of Location.

LODE CLAIM.

Copper Butte No. 15-

Dated October 3rd. 1908

Filed, and Recorded at request of

P. P. Parker-

Oct. 13th A. D. 1908
at -- 5- 0'Clock P. M.

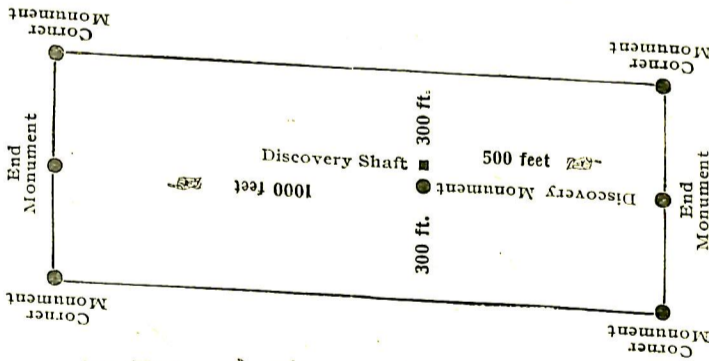
Book --1-- of Mines Amended

Pages 141-141-

G. F. Watson-
County Recorder.

By N. N. Wells-
Deputy Recorder.

The H. H. McNeil Co., Printers, Phoenix



This diagram is to give locator a general idea of plan of location under the new law. The Discovery Shaft can be in the center of claim or any distance from either end desired. In the diagram it is placed 500 feet from one end and 1000 feet from the other. Commence description of claim at a center end monument, giving its distance and direction from center of Discovery Shaft; thence bound the claim in either direction. In description be careful to state locality of claim with reference to some natural object, or permanent monument, as will identify the claim.

AMENDED

Notice of Mining Location

LODE CLAIM

To All Whom It May Concern:

This Mining Claim, the name of which is the Copper Butte No-6 Mining Claim, situate on lands belonging to the United States of America, and in which there are valuable mineral deposits, was entered upon and located for the purposes of exploration and purchase by Copper Butte Mines a Corporation duly organized and incorporated under the laws of Arizona

(Locator must insert either "a citizen of the United States," or, "who has declared his intention to become a citizen of the United States.")
the undersigned, on the 3rd day of October 1908

The length of this claim is 1500 feet,
and 1 claim 150 feet,
in an East direction and 1350

feet in a Westerly direction from
the center of the discovery shaft, at which this notice is posted, lengthwise of the claim, together
with 300 feet in width of the surface grounds, on each
side of the center of said claim. The general course of the lode deposit and premises is from the
East to the West

The claim is situated and located in the Mineral Creek Mining District, in
Pinal County, in the Territory of Arizona, about one & three fourths miles
in a northerly direction from the Gila River and
Butte siding on the P & E. Railroad

The surface boundaries of the claim are marked upon the ground as follows: Beginning at
Monument

at a point in an East direction 150 feet from
the discovery shaft (at which this notice is posted), being in the center of the Eastern
end line of said claim; thence Northerly 300 feet to a Monument
, being the North Eastern corner of said claim; thence
Westerly 1500 feet to a Monument, being at the
North Western corner of said claim; thence Southerly 300 feet
to a Monument at the center of the Western end of said claim;
thence Southerly 300 feet to a Monument, being at the
South Western corner of said claim; thence Easterly 1500
feet to a Monument at the South Eastern corner of said claim;
thence Northerly 300 feet to the place of beginning.

All done under the provisions of Chapter Six, of Title XXXII, of the Revised Statutes of the United States, and of an Act of the General Assembly of Arizona, entitled "An Act to Revise and Codify the Laws of the Territory of Arizona," approved March 16, 1901.

This is an Amended Location Notice of the Copper Butte No-6 Mining Claim, located by A. G. Wilson A. C. Sheldon and P. P. Parker on the 21st day of June 1901, and recorded in Book 19 of Records of Mines, at pages 92, 93 & 94, in the office of the County Recorder of the aforesaid County of Pinal to which reference is hereby made, and this Amended Location Notice is made, and posted to correct errors in the description in the said original Location Notice, without waiving or

Dated and posted on the ground this 3rd day of October 1908

Copper Butte Mines - by
P. P. Parker - agent

TERRITORY OF ARIZONA,
County of - Pinal- } ss.

I, G. F. Watson-

Territory aforesaid, do hereby certify that the within instrument was filed for record at County Recorder in and for the County and
on this 13th day of - October- 1908 and duly recorded in Book No. - 1 -
of Mines. Amended Records of - Pinal- County, Arizona, at pages 142 -

WITNESS my hand and official seal the day and year first above written.

G. F. Watson
County Recorder.

By Deputy *N. N. Wells*

AMENDED
Notice of Location.

LODE CLAIM.

Copper Butte No. 6-

Dated -- Oct. 3rd - 1908 -

Filed and Recorded at request of

P. P. Parker-

Oct. - 15th A. D. 1908 -

at -- 5- O'CLOCK P. M.

Book - 1- Of Mines Amended

Pages 142. - 142 -

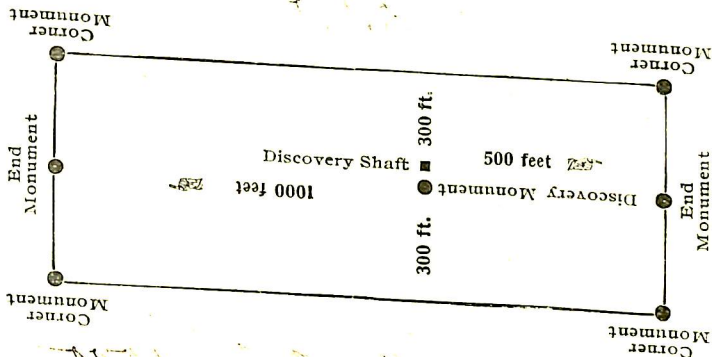
G. F. Watson-

County Recorder,

T. N. Wells-

By Deputy Recorder.

The H. H. McNeil Co., Printers, Phoenix



This diagram is to give locator a general idea of plan of location under the new law. The Discovery Shaft can be in the center of claim or any distance from either end desired. In the diagram it is placed 500 feet from one end and 1000 feet from the other. Commence description of claim at a center end monument, giving its distance and direction from center of Discovery Shaft; thence bound the claim in either direction. In description be careful to state locality of claim with reference to some natural object, or permanent monument, as will identify the claim,

File-

AMENDED Notice of Mining Location

LODE CLAIM

To All Whom It May Concern:

This Mining Claim, the name of which is the Cochise Mining Claim, situate on lands belonging to the United States of America, and in which there are valuable mineral deposits, was entered upon and located for the purposes of exploration and purchase by Copper Butte Mines, a Corporation duly organized and incorporated under the laws of Arizona (Locator must insert either "a citizen of the United States," or, "who has declared his intention to become a citizen of the United States.") the undersigned, on the 29th day of September 1908.

The length of this claim is 1500 feet, and 1 claim 850 feet, in a Westerly direction and 550 feet in an Easterly direction from the center of the discovery shaft, at which this notice is posted, lengthwise of the claim, together with 300 feet in width of the surface grounds, on each side of the center of said claim. The general course of the lode deposit and premises is from the East to the West.

The claim is situated and located in the Mineral Creek Mining District, in Pinal County, in the Territory of Arizona, about one and one half miles in a Northerly direction from The Gila River and Butte Sidling on the P. & E. R.R.

The surface boundaries of the claim are marked upon the ground as follows: Beginning at Monument

at a point in an Easterly direction 550 feet from the discovery shaft (at which this notice is posted), being in the center of the Easterly end line of said claim; thence Northerly 300 feet to a Monument, being the North Easterly corner of said claim; thence Westerly 1500 feet to a Monument, being at the South Easterly corner of said claim; thence Southerly 300 feet to a Monument at the center of the Westerly end of said claim; thence Southerly 300 feet to a Monument, being at the South Easterly corner of said claim; thence Easterly 1500 feet to a Monument at the South Easterly corner of said claim; thence Northerly 300 feet to the place of beginning.

All done under the provisions of Chapter Six, of Title XXXII, of the Revised Statutes of the United States, and of an Act of the General Assembly of Arizona, entitled "An Act to Revise and Codify the Laws of the Territory of Arizona," approved, March 16, 1901.

This is an Amended Location Notice of the Cochise Mining Claim, located by W. Charles McCarthy & Robert Stewart on the 9th day of March 1899 ~~190~~, and recorded in Book 15 of Records of Mines, at page 53 ⁵³² in the office of the County Recorder of the aforesaid County of Pinal to which reference is hereby made, and this Amended Location Notice is made and posted to correct errors in the description in the said original Location Notice. Without waiving on

Dated and posted on the ground this 29th day of September 1908
Copper Butte Mines by R. D. Parker agent

interceding to wair any right whatsoever under said mineral rights

TERRITORY OF ARIZONA, }
County of --Pinal-- } ss.

I, G. F. Watson-

County Recorder in and for the County and Territory aforesaid, do hereby certify that the within instrument was filed for record at 3- o'clock, P. M., on this 13th day of Oct. 1908, and duly recorded in Book No. 1- of Mines. Amended Records of Pinal- County, Arizona, at pages 144

WITNESS my hand and official seal the day and year first above written.

G. F. Watson
County Recorder.

By Deputy N. N. Wells

AMENDED
Notice of Location.

LODE CLAIM.

Cochise-

Dated Sept. 29th 1908-

Filed and Recorded at request of

P. P. Parker-

Oct. 13th A. D. 1908-

at 3-0'clock P. M.

Book 1- of Mines Amended

Pages 144 144

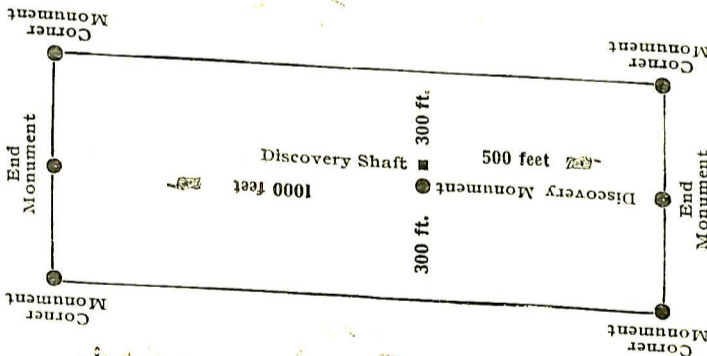
G. F. Watson-

County Recorder.

I. N. Wells-

By Deputy Recorder.

The H. H. McNeil Co., Printers, Phoenix



This diagram is to give locator a general idea of plan of location under the new law. The Discovery Shaft can be in the center of claim or any distance from either end desired. In the diagram it is placed 500 feet from one end and 1000 feet from the other. Commence description of claim at a center end monument, giving its distance and direction from center of Discovery Shaft; thence bound the claim in either direction. In description be careful to state locality of claim with reference to some natural object, or permanent monument, as will identify the claim.

File

AMENDED

Notice of Mining Location

LODE CLAIM

To All Whom It May Concern:

This Mining Claim, the name of which is the June Bug Mining Claim, situate on lands belonging to the United States of America, and in which there are valuable mineral deposits, was entered upon and located for the purposes of exploration and purchase by Copper Butte Minis. a Corporation duly organized and incorporated under the laws of Arizona

(Locator must insert either "a citizen of the United States," or, "who has declared his intention to become a citizen of the United States.")

the undersigned, on the 29th day of September 1908.

The length of this claim is 1500 feet,

and 1 claim 850 feet,

in a Westerly direction and 650

feet in an Easterly direction from

the center of the discovery shaft, at which this notice is posted, lengthwise of the claim, together

with 300 feet in width of the surface grounds, on each

side of the center of said claim. The general course of the lode deposit and premises is from the

East to the West

The claim is situated and located in the Mineral Creek Mining District, in

Pinal County, in the Territory of Arizona, about over one half miles

in a Northerly direction from the Gila River and

Butte Siding on the P. & E. R.R

The surface boundaries of the claim are marked upon the ground as follows: Beginning at

Monument

at a point in an Easterly direction 650 feet from

the discovery shaft (at which this notice is posted), being in the center of the Easterly

end line of said claim; thence Northerly 300 feet to a monument

, being the South Easterly corner of said claim; thence

Westerly 1500 feet to a Monument, being at the

North Westerly corner of said claim; thence Southerly 300 feet

to a Monument at the center of the Westerly end of said claim;

(thence Southerly 300 feet to a Monument), being at the

South Westerly corner of said claim; thence Easterly 1500

feet to a Monument at the South Easterly corner of said claim;

thence Northerly 300 feet to the place of beginning.

All done under the provisions of Chapter Six, of Title XXXII, of the Revised Statutes of

the United States, and of an Act of the General Assembly of Arizona, entitled "An Act to Revise

and Codify the Laws of the Territory of Arizona," approved March 16, 1901.

This is an Amended Location Notice of the June Bug

Mining Claim, located by M. M. Enright, Chas. McWharty and

Robert Stewart on the 20th day of

June 1899, and recorded in Book 191 of Records of Mines, at

pages 253 & 254 in the office of the County Recorder of the aforesaid County of Pinal

to which reference is hereby made, and this Amended Location Notice is made and posted to

correct errors in the description in the said original Location Notice. without waiving or

Dated and posted on the ground this 29th day of September 1908

Copper Butte Minis Coy
P. B. Parker Agent

intending to waive any right-whatsoever under said original Notice of Location

I, G. F. Watson,

County Recorder in and for the County and Territory aforesaid, do hereby certify that the within instrument was filed for record at 3 o'clock, P. M., on this 13th day of Oct. 1908, and duly recorded in Book No. 1 of Mines Amended Records of Pinal County, Arizona, at pages 143

WITNESS my hand and official seal the day and year first above written.

G. F. Watson
County Recorder.

By Deputy... M. N. Wells.

AMENDED
Notice of Location.
LODE CLAIM.

June Bug.

Dated -- Sept. 29th 1908 -

Filed and Recorded at request of

P. P. Parker

Oct. 13th A. D. 1908 -

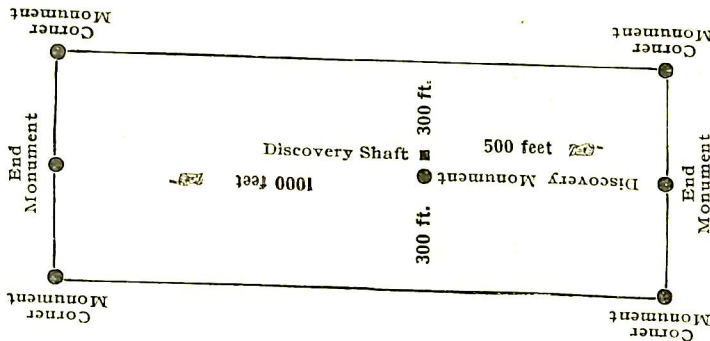
at 3 o'clock P. M.

Book -- 1 -- of Mines Amended

Pages 143 - 143 -

G. F. Watson -
County Recorder.

By M. N. Wells -
Deputy Recorder.



This diagram is to give locator a general idea of plan of location under the new law. The Discovery Shaft can be in the center of claim or any distance from either end desired. In the diagram it is placed 500 feet from one end and 1000 feet from the other. Commence description of claim at a center end monument, giving its distance and direction from center of Discovery Shaft; thence bound the claim in either direction. In description be careful to state locality of claim with reference to some natural object, or permanent monument, as will identify the claim.

U. S. SURVEYOR-GENERAL'S FINAL CERTIFICATE ON FIELD NOTES.

Department of the Interior,

OFFICE OF U. S. SURVEYOR-GENERAL,

Phoenix, Arizona

March 16, 1909.

I, U. S. Surveyor-General for District of Arizona

do hereby certify that the foregoing transcript of the Field Notes, return and approval of the survey

of the mining claim of Copper Butte Mines Known as the Copper Butte No. 1, Copper Butte No. 2, Copper Butte No. 3, Copper Butte No. 4, Copper Butte No. 5, Copper Butte No. 6, Cochise and June Bug. known as the

situate in Mineral Creek

Mining District, Pinal County, Arizona

Approx 24 & 25 in Sections 19 & 30, Township No. 3 S., Range No. 13 E. Unsur., and

designated as Survey No. 2602, has been correctly copied from the originals on file in

this office; that said Field Notes furnish such an accurate description of said mining claim as will, if incorporated into a patent, serve fully to identify the premises, and that such reference is made therein to natural objects or permanent monuments as will perpetuate and fix the locus thereof.

not less than And I further certify that five hundred dollars' worth of labor has been expended or improvements made upon said mining claim by claimant or its grantors, and that said improvements consist of 13 shafts, 3 tunnels, 5 cuts and 1 quarry, total value \$25,495.00. Shaft No. 4, value \$9600, and tunnel No. 5, value \$2500, on the June Bug lode, together with tunnel No. 3 on the Copper Butte No. 2 lode, value \$3000, being common improvements for the benefit and development of all of the claims in this survey, a 1/8 interest, value \$1887.50, in such improvements, is properly credited to each claim in this group.

and that no portion of said labor or improvements has been included in the estimate of expenditures upon any other claim.

I further certify that the plat thereof, filed in the U. S. Land Office at Phoenix, Arizona is correct and in conformity with the foregoing Field Notes.

Frank S. Ingalls,

United States Surveyor-General for Arizona.

SURVEYOR-GENERAL'S CERTIFICATE OF APPROVAL OF FIELD NOTES AND SURVEY OF MINING CLAIM.

Department of the Interior,

OFFICE OF U. S. SURVEYOR-GENERAL,

Phoenix, Arizona,

March 16, 1909.

I, U. S. Surveyor-General for District of Arizona

do hereby certify that the foregoing and hereto attached Field Notes and Return of the Survey of the Mining Claim of Copper Butte Mines

known as the Copper Butte No. 1, Copper Butte No. 2, Copper Butte No. 3, Copper Butte No. 4, Copper Butte No. 5, Copper Butte No. 6, Cochise and June Bug.

situate in Mineral Creek mining district,

Pinal County, Arizona

Approx, 24 & 25 in Sections 19 & 30, Township No. 3 S., Range No. 12 E. 13 E. Unsur.

designated as Survey No. 2602

executed by Earl H. Parker, U. S. Deputy Mineral

Surveyor, October 22-28, 1908, under my instructions dated

October 16, 1908, have been critically examined and the necessary cor-

rections and explanations made, and the said Field Notes and Return, and the Survey they describe,

are hereby approved. A true copy of the copy of the location certificate filed by the applicant for

survey is included in the field notes.

Frank S. Lyall

U. S. Surveyor-General for Arizona

Large
Map