

FEB 16 1911

2

MAR 25 1911

4-683.

MINERAL SURVEY No. 2887

LOT No. ....

Arizona Land District.

### FIELD NOTES

OF THE SURVEY OF THE MINING CLAIM OF

The Arizona Copper Company,

KNOWN AS THE

Oposura, East Bassett, Lampasas, Republic, Navajo, National,  
Meadow Lark, Ibex, Deacon, Portland, Ajax, Martha, and Utah.  
Greenlee Gold Mtn. and Copper Mtn. Mining Districts,

Greenlee County, Arizona.

uns.,

Sections 15, 16, 21 & 22, Township 4 S., Range 29 E.

Surveyed under instructions dated Jan. 30, 1911

by Lamar Cobb  
U. S. Mineral Surveyor.

Claim located see location notices, 19

Survey commenced Feb. 1, 1911

Survey completed Feb. 11, 1911

8-822

Address of Claimant's Atty.,

J. R. Hampton,  
Clifton, Arizona.

feet

Utah

Beginning at Cor. No. 1.

A pine post in place, 4 x 6 ins. 3.5 ft. above ground with mound of stone scribed U 1 - 2887, whence, Cors. to Secs. 13, 14, 23 and 24, Tp. 4 S. R. 29 E. bears S. 66° 16' 40" E. 9520.2 ft.

A cross (x) and B R 1 - 2887 chiseled on porphyry bed rock 4 x 6 ft. facing West, bears N. 55° 53' E. 7.2 ft.

---

Thence S. 61° 30' W.

205. Intersect Coronado R. R. in tunnel.
360. Intersect Chase Creek, 50 ft. wide.
610. Intersect Shannon-Arizona R. R.
- 1180.05 Intersect ~~West end of~~ Policy No. 2 lode, unsurveyed, and line 4-1, Martha lode of this survey, at S. 43° 15' E. 47.59 ft. from N.W. cor. 3, and S. 82° 36' E. 112.94 ft. from Cor. No. 4 respectively.
- 1379.90 To Cor. No. 2.
- On line 15-16, Sur. No. 1127, *Longfellow N. Ex.* lode.
- Identical with Cors. Nos. 3 and 1, Martha lode, of this survey, and Sur. No. 2886, Ione lode respectively.
- A pine post 4 ins. square, 4.5 ft. long, set on bedrock, with mound of stone scribed M. 3, U 2-2887, Whence,
- A cross (x) and B R 3-2-2887 chiseled on Porphyry bed rock 8 x 8 ft., facing S.E., bears S. 52° 43' W. 15.5 ft.
- Cor. No. 4, Martha lode of this survey, bears N. 30° 04' E. 127. ft.
- 
- Thence N. 30° 53' W.
- 224.40 S. W. End center of the location.
- 544.40 To Cor. No. 3.
- On line 4-1, Sur. No. 2886, Ione lode.
- Identical with Cor. No. 2, Sur. No. 1710, Medler lode.

Feet A pine post in place, 4 x 6 ins., 3.5 ft. above ground, with mound of stone, scribed U 3-2887, whence,  
 A cross (x) and B R 3-2887 chiseled on porphyry bed rock bears S. 47° 23' W. 6.4 ft.

Thence N. 82° 19' E.

- 780.00 Intersect Shannon-Arizona R.R.
- 900. Intersect Yankee Gulch, course from N.W. to S. E.
- 1265. Intersect Chase Creek, course from North to South, 50 ft. wide.
- 1336. Intersect Coronado R. R.
- 1500. To Cor. No. 4,  
 Identical with Cor. No. 3, Sur. No. 1710, Medler lode.  
 A pine post in place, 4 x 6 ins., 3.5 ft. above ground, scribed U 4-2887, whence,  
 A cross (x) and B R 4-2887 chiseled on porphyry bed rock, exposed 6 x 6 ft., bears N. 24° 20' E. 22.7 ft.  
 Thence S. 30° 53' E.
- 2.33 Intersect the North side line, Policy No. 2 lode, un-surveyed, at N. 63° 18' E. 1192.39 ft. from the N.W. Cor.
- 5.40 N. E. end center of the location.
- 10.8 To Cor. No. 1, the place of beginning.

-----  
 Martha

Beginning at Cor. No. 1, on line 3-4, Ajax lode of this survey.

On the South side line, Policy No. 2 lode, un-surveyed, at N. 63° 18' E. 479.99 ft. from the S.W. Cor.

A pine post in place 4 ins. square, 3.5 ft. above ground, with mound of stone scribed M 1-2887, whence,

Cor. to Secs. 13-14-23-24, Tp. 4 S. R. 29 E.  
 bears S. 70° 38' 40" E. 9574.3 ft.

Feet

No bearings available.

-----  
Thence S. 30° 04' W.

274.36 S. E. End center of the location.

297.36 To Cor. No. 2.

On Line 4-1, Portland lode of this survey.

On line 3-4, Ajax lode of this survey.

A cross (x) at Cor. point, and M 2-2887 chiseled on porphyry slope, facing E. (Impracticable to build mound of stone). Whence,

A pine post 4 ins. square, 4.5 ft. long, set on bed rock with mound of stone, scribed B P - M 2- 2887, bears N. 30° 04' E. 18.1 ft.

-----  
Thence N. 71° 06' W.

228.13 Intersect the South side line, Policy No. 2 lode, un-surveyed, at N. 63° 18' E. 71.64 ft. from the S. W. Cor.

375.13 Intersect the West end line, Policy No. 2 lode, un-surveyed, at N. 43° 15' W. 109.56 ft. from the S.W. Cor.

612.19 Cors. Nos. 4 and 16, Portland lode of this survey, and Sur. No. 1127, Longfellow N. Ex. lode respectively.

788.8 To Cor. No. 3.

On line 15-16, Sur. No. 1127, Longfellow N. Ex. lode.

Identical with Cors. Nos. 2 and 1, Utah lode of this survey, and Sur. No. 2886, Ione lode, respectively.

-----  
Thence N. 30° 04' E.

23.00 N. W. end center of the location.

127. To Cor. No. 4.

A pine post in place 4 ins. square, 3.5 ft. above ground, with mound of stone scribed M 4-2887, whence,

A cross (x) and B R 4-2887 chiseled on quartz porphyry bed rock, exposed 3 x 3 ft., bears S. 24° E. 21 ft.

-----  
Thence S. 82° 36' E.

Feet.  
 112.94 Intersect line 1-2, Utah lode of this survey, and the West end line Policy No. 2 lode, unsurveyed, at N. 61° 30' E. 199.85 ft. from Cor. No. 2, and N. 43° 15' W. 424.46 ft. from S. W. Cor., respectively.

838.63 To Cor. No. 1, the place of beginning.

-----  
 Ajax

Beginning at Cor. No. 1,

A pine post in place 4 x 6 ins., 3.5# above ground, with mound of stone scribed A 1 - 2887, whence,

Cor. to Secs. 13-14-23-24, Tp. 4 S. R. 29 E. bears S. 72° 27' 10" E. 8100.3 ft.

No bearings available.

-----  
 Thence S. 30° 04' W.

300. S. E. end center of the location in Chase Creek, 30 ft. wide, course from N. W. to S. E.

331.3 Intersect Coronado R.R., course from N. W. to S. E.

599.3 To Cor. No. 2.

A pine post in place, 4 ins. square, 3.5 ft. above ground, with mound of stone scribed A 2-2887.

No bearings available.

-----  
 Thence N. 59° 51' W.

234.36 Intersect line 1-2, National lode of this survey, at S. 18° 54' W. 60.27 ft. from Cor. No. 1.

330. Intersect Shannon Arizona R. R.

500 Intersect gulch, course from S. W. to N. E.

543.3 Intersect line 1-2, Portland lode of this survey, and line 4-1, National lode of this survey, at S. 18° 54' W. 457.7 ft. from Cor. No. 1, and at N. 71° 06' W. 303 ft. from Cor. No. 1 respectively.

798. Intersect Longfellow incline, course N. 87° E.

Feet.  
1500.00

To Cor. No. 3.

Impracticable to establish corner at this point, as it is in a deep gulch, course from W. to E.

Witness corner, hereafter described, bears N. 30° 04' E. 36.7 ft.

-----  
Thence N. 30° 04' E.

36.7 To witness corner to Cor. No. 3.

A pine post 4 x 6 ins., 4.5 ft. long, set on bed rock with mound of stone, scribed W C - A 3 - 2887, Whence,

A cross (x) and B R W C - 3 - 2887 chiseled on quartzite bluff 8 ft. high, facing S., bears N. 60° W. 0.8 ft.

276.4 Intersect line 4-1, Portland lode of this survey, at N. 71° 06' W. 884.81 ft. from Cor. No. 1.

299.3 N. W. end center of the location.

573.76 Cor. No. 1, Martha lode of this survey.

599.3 To Cor. No. 4.

A pine post in place, 4 x 6 ins., 3.5 ft. above ground, with mound of stone scribed A 4 - 2887, whence,

A cross (x) and B R 4 - 2887 chiseled on quartz porphyry face, 5 x 6 ft., facing S., bears N. 68° 28' W. 12.6 ft.

-----  
Thence S. 59° 51' E.

44. Intersect Shannon--Arizona R. R.

123. Intersect Coronado R. R. in tunnel.

225. Intersect Chase Creek, 20 ft. wide, course from N. E. to S. W.

1500 To Cor. No. 1, the place of beginning.

-----  
Portland Lode.

Beginning at Cor. No. 1.

A pine post in place, 4 ins. square, 3.5 ft. high, with mound of stone scribed P 1 - 2887, Whence,

Feet.

Cor. to Secs. 13-14-23-24, Tp. 4 S. R. 29 E.

Bears S. 72° 30' 40" E. 8749.5 ft.

No bearings available.

-----  
Thence S. 18° 54' W.

- 21. Intersect Coronado R. R., course N. W. to S. E.,
- 299.3 S. E. end center of the location.
- 307.3 Intersect Longfellow Incline, course N. 87° E.
- 322.3 Intersect Shannon-Arizona R. R., course from N. W. to S. E.
- 457.7 Intersect line 2-3, Ajax lode, and line 4-1, National lode at S. 59° 51' E. 956.7 ft. from Cor. No. 3, and at S. 71° 06' E. 297. ft. from Cor. No. 4 respectively.
- 599.3 To Cor. No. 2.

A pine post in place, 4 x 6 ins., 3.5 ft. high, with mound of stone, scribed P 2--2887, Whence,

A cross (x) and B R 2--2887 chiseled on quartzite bed rock, facing S., bears N. 71° 06' W. 9.3 ft.

-----  
Thence N. 71° 06' W.

- 297. Cor. No. 1, Republic lode of this survey, and Intersect line 3-4, National lode of this survey, at S. 18° 54' W. 141.6 ft. from Cor. No. 4.
- 726.1 Intersect Longfellow Incline, course N. 87° E.
- 897. Cors. Nos. 4--1, Republic and East Bassett lodes respectively of this survey.
- 1497. To Cor. No. 3,  
Identical with Cors. Nos. 4--11 and 13, East Bassett lode of this survey, Sur. No. 1127, Bassett lode, and Sur. No. 1127, Longfellow N. Ex. lode respectively.  
A pine post in place, 4 x 6 ins., 3.5 ft. high, with mound of stone scribed E B 4, P 3 - 2887, whence

Feet.

A cross (x) and B R 4 - 3 - 2887 chiseled on quartz porphyry bed rock, facing east; bears N. 17° 15' E. 56.9 ft.

-----  
Thence N. 18° 54' E.

25. Intersect gulch, course from West to East,  
300 N. W. end center of the location.  
599.3 To Cor. No. 4.

On line 2-3, Martha lode of this survey.  
Identical with Cor. No. 16, Sur. 1127, Long-  
fellow N. Ex. lode.

A pine Post in place, 4 x 6 ins., 3.5 ft. high  
with mound of stone scribed P 4 - 2887, whence,

A cross (x) and B R 4 - 2887 chiseled on quartzite  
wall facing South bears N. 11° 10' E. 42.9 ft.

-----  
Thence S. 71° 06' E.

237.06 Intersect the West end line, Policy No. 2 lode unsurveyed, at N. 43° 15' W. 109.56 ft. from the S. W. Cor.

384.06 Intersect the South side line, Policy No. 2 lode unsurveyed, at N. 63° 18' E. 71.64 ft. from the S. W. Cor.

612.19 Intersect line 3-4, Ajax lode of this survey, at N. 30° 04' E. 276.4 ft. from Cor. No. 3.

700. Intersect Shannon-Arizona R. R.

1452.5 Intersect Coronado R. R.

1497. To Cor. No. 1, the place of beginning.

-----  
East Bassett Lode.

Beginning at Cor. No. 1,

On line 2-3 Portland lode of this survey.

Identical with Cor. No. 4, Republic lode of this Survey.

A pine post in place, 4 x 6 ins., 3.5 ft. high,  
with mound of stone scribed R 4, E B 1 - 2887, whence,

A cross (x) and B R 4 - 1 - 2887 chiseled on  
quartzite face, 1 x 2 ft. facing East, bears N. 70° 36'



Feet. W. 27 ft.

Cor. to Secs. 13-14-23-24, Tp. 4 S. R. 29 E.  
bears S. 75° 55' 50" E..9678.2 ft.

-----

Thence S. 18° 54' W.

68.7 Intersect Longfellow Incline, course N. 87° E.

990. Intersect gulch, course from N. E. to S. W.

1350. To Cor. No. 2.

Identical with Cors. Nos. 3, 4 and 1, Republic, Lam-  
pasas and Oposura lodes respectively of this survey.

A pine post in place, 4 x 6 ins., 3.5 ft. high  
with mound of stone scribed R 3, L 4, O 1, E B 2-2887,  
whence,

A cross (x) and B R 3 - 4 - 1 - 2 - 2887 chiseled  
on limestone bed rock exposed 2.5 x 3.5 ft., facing N.,  
bears S. 55° 37' E. 41.3 ft.

-----

Thence N. 71° 06' W.

300. S. W. end center of the location.

330. Intersect gulch, course from N. E. to S. W.

600. To Cor. No. 3.

Identical with Cors. Nos. 4, 7 and 12, Oposura  
lode of this survey, Sur. No. 1127, Emma and Bassett  
lodes respectively.

A pine post in place, 4 ins. square, 3.5 ft. high  
with mound of stone, scribed O 4, E B 3 - 2887.

No bearings available.

-----

Thence N. 18° 54' E.

1040. Intersect Longfellow Incline, course N. 87° E.

1350 To Cor. No. 4.

Identical with Cors. Nos. 11, 13 and 3 Sur. No.  
1127, Bassett and Longfellow N. Ex. lodes, and  
Portland lode of this Survey respectively.

-----

Feet.

Thence S. 71° 06' E.

- 300 N. E. end center of the location.
- 600 To Cor. No. 1, the place of beginning.

-----  
Republic

Beginning at Cor. No. 1,

On line 2-3, Portland lode, and line 3-4, National lodes respectively of this survey.

A pine post in place, 4 ins. square, 3.5 ft. high, with mound of stone scribed R.1 - 2887, whence,

Cor. to Secs. 13-14-23-24, Tp. 4 S. R. 29 E. bears S. 76° 14' 50" E. 9080.5 ft.

No bearings available.  
-----

Thence S. 18° 54' W.

- 370. Intersect gulch, course from S. W. to N. E.
- 1350 To Cor. No. 2.

Identical with Cors. Nos. 3, 4, and 1 National, Navajo and Lampasas lodes respectively of this survey.

A pine post in place, 4 x 6 ins., 3.5 ft. high, with mound of stone scribed N 3, N 4, L 1, R 2 - 2887, Whence,

A cross (x) and B R 3 - 4 - 1 - 2 - 2887, chiseled on Limestone bed rock, exposed 1 x 2.5 ft., facing N., bears S. 16° 36' W. 14.7 ft.  
-----

Thence N. 71° 06' W.

- 300. S. W. end center of the location.
- 600. To Cor. No. 3.

Identical with Cors. Nos. 4, 1 and 2, Lampasas, Oposura and East Bassett lodes respectively of this survey, heretofore described.  
-----

Thence N. 18° 54' E.

- 360. Intersect gulch, course N. E. to S. W.
- 1281.3 Intersect Longfellow Incline.

Feet.  
1350.

To Cor. No. 4.

On line 2-3 Portland lode of this survey.

Identical with Cor. No. 1, East Bassett lode of this survey, heretofore described.

-----  
Thence S. 71° 06' E.

170.9 Intersect Longfellow Incline.

300. Northeast end center of the location.

600. To Cor. No. 1, the place of beginning.

-----  
National

Beginning at Cor. No. 1,

Impracticable to build monument at Cor. point as it is too near a switch tract of the Coronado R. R.

Witness Cor. hereafter described, bears S. 18° 54' W. 5.0 ft.

Cor. to Secs. 13, 14, 23 & 24, T. 4 S., R. 29 E. bears S. 75° 39' 30" E. 8470.7 ft.

-----  
Thence S. 18° 54' W.

5.00 To Witness Cor. to Cor. No. 1.

A pine post, 4 x 6 ins., 4.5 ft. long, set on bed rock, with mound of stone scribed W C - M 1 - 2887.

No bearings available.

60.27 Intersect line 2-3, Ajax lode of this survey, at N. 59° 51' W. 234.36 ft. from Cor. No. 2.

88. Intersect Shannon-Arizona R. R.

981.6 Cor. No. 4, Ibex lode of this survey.

1491.6 To Cor. No. 2.

Identical with Cors. Nos. 3, 4 and 1, Ibex, Meadow Lark and Navajo lodes respectively of this survey.

A pine post in place, 4 x 6 ins., 3.5 ft. high, with mound of stone scribed I 3 M L 4, N 1 N 2 - 2887, whence, A cross (X) and B R 3 - 4 - 1 - 2 - 2887 chiseled on limestone bedrock, exposed 2 x 4 ft., facing East,

Feet. bears S. 48° 05' W. 47. ft.

-----  
Thence N. 71° 06' W.

300. S. W. end center of the location.

600. To Cor. No. 3.

Identical with Cors. Nos. 4, 1 and 2, Navajo, Lampasas and Republic lodes respectively of this survey.

-----  
Thence N. 18° 54' E.

980. Intersect gulch, course from S. W. to N. E.

1350 Cor. No. 1, Republic lode of this survey, and intersect line 2-3, Portland lode of this survey, at N. 71° 06' W. 297. ft. to Cor. No. 2.

1491.6 To Cor. No. 4.

A pine post in place, 4 ins. square, 3.5 ft. high, with mound of stone scribed N. 4 - 2887.

No bearings available.

-----  
Thence S. 71° 06' E.

297. Intersect line 1-2, Portland lode, and line 2-3, Ajax lode, both of this survey, at N. 18° 54' E. 141.6 ft. from Cor. No. 2, and at N. 59° 51' W. 543.3 ft. from Cors. No. 2 respectively.

300. N. E. end center of the location.

340. Intersect gulch, course from N. E. to S. W.

450. Intersect Shannon-Arizona R. R.

600 Cor. No. 1, the place of beginning.

-----  
Ibex

Beginning at Cor. No. 1,

A cross (x) at corner point and I 1 - 2887 chiseled on quartzite bed rock at edge of bluff 60 ft. high, with mound of stone alongside, whence,

Cor. to Secs. 13, 14, 23 and 24 Tp. 4, S. R. 29 E. bears S. 83° 59' 50" E. 8148.8 ft.

A cross (x) and B R 1 - 2887 chiseled on quartzite bed rock, 1 x 3 ft. facing N., bears S. 18° 54' W. 8.6 ft.

Feet.

Thence S. 18° 54' W.

136. S. E. end center of the location.

346. To Cor. No. 2.

On line 4-1 Meadow Lark lode of this survey.

A pine post in place, 4 ins. square, 3.5 ft. high, with mound of stone scribed I 2 - 2887.

No bearings available.

Thence N. 71° 06' W.

500.6 To Cor. No. 3.

Identical with Cors. Nos. 1 and 2, Meadow Lark, Navajo and National lodes, respectively, of this survey, heretofore described.

Thence N. 18° 54' E.

210. N. W. end center of the location.

510 To Cor. No. 4.

On line 1-2, National lode of this survey.

A pine post in place, 4 ins. square, 3.5 ft. high, with mound of stone scribed I 4 - 2887, whence

A cross (x) and B-R 4 - 2887 chiseled on quartz porphyry bed rock, 1 x 1 ft. facing N., bears S. 84° 16' E. 14.8 ft.

Thence S. 52° 57' E.

526.8 To Cor. No. 1, the place of beginning.

Oposura

Beginning at Cor. No. 1,

Identical with Cors. Nos. 2, 3, and 4, East Bassett Republic and Lampasas lodes respectively of this survey.

Whence,

Cor. to Secs. 13, 14, 23 and 24, Tp. 4 S. R. 29 E. bears S. 83° 45' 10" E. 9883.8 ft.

Feet

Thence S. 18° 54' W.

1078.17 Intersect the Northerly end line, Desprecio lode unsurveyed, at S. 40° 09' E. 40.87 ft. from the N. Cor.

1470 To Cor. No. 2.

Identical with Cor. No. 3, Lampasas lode of this survey.

A pine post in place, 4 ins. square, 3.5 ft. high, with mound of stone scribed L 3, Ø 2 - 2887.

No bearings available.

-----  
Thence N. 71° 06' W.

179.5 Cor. No. 3, Sur. No. 1706, Last Chance lode, and intersect the westerly side line, Desprecio lode, unsurveyed, at S. 38° 11' W. 437.4 ft. from the N. Cor.

300 S. W. end center of the location.

600 To Cor. No. 3.

Identical with Cors. Nos. 3 and 8, Sur. No. 1822, Black Cat lode, and Sur. No. 1127, Emma lode, respectively.

A pine post in place, 4 x 6 ins., 3.5 ft. high, with mound of stone scribed O 3 - 2887, whence,

A cross (x) and B R 3 - 2887 chiseled on porphyry bed rock bears N. 39° 14' W. 24.7 ft.

-----  
Thence N. 18° 54' E.

252.66 Intersect line 2-3, Sur. No. 1706, at N. 40° 06' W. 490.57 ft. from Cor. No. 3.

1470 To Cor. No. 4.

Identical with Cors. Nos. 7, 12 and 3, Sur. No. 1127, Emma and Bassett lodes, and East Bassett lode of this survey respectively, heretofore described.

-----  
Thence S. 71° 06' E.

270. Intersect gulch, course from S. W. to N. E.

300 N. E. end center of the location.

600 To Cor. No. 1, the place of beginning.  
-----

Feet.

Lampasas Lode.

Beginning at Cor. No. 1,

Identical with Cors. Nos. 2, 3 and 4, Republic, National and Navajo lodes respectively of this survey, heretofore described, whence,

Cor. to Secs. 13, 14, 23 and 24 Tp. 4 S. R. 29 E. bears S. 84° 33' 40" E. 9299.4 ft.

-----  
Thence S. 18° 54' W.

1470. To Cor. No. 2.

Identical with Cor. No. 3, Navajo lode of this survey.

A pine post in place, 4 ins. square, 3.5 ft. high, with mound of stone scribed N 3, L 2 - 2887, whence,

A cross (x) and B R 3 - 2 - 2887 chiseled on limestone bed rock, exposed 1 x 1 ft. facing N., bears S. 61° 08' E. 19.2 ft.

-----  
Thence N. 71° 06' W.

155.04 Intersect the Easterly side line, Desprecio lode unsurveyed, at S. 38° 11' W. 109.44 ft. from the East Cor.

300. S. W. end center of the location.

600 To Cor. No. 3.

Identical with Cor. No. 2, Oposura lode of this survey.

-----  
Thence N. 18° 54' E.

391.83 Intersect the northerly end line, Desprecio lode unsurveyed, at N. 40° 09' W. 561 ft. from the East Cor.

1470. To Cor. No. 4.

Identical with Cors. Nos. 1, 2 and 3 Oposura lode, East Bassett lode and Republic lode respectively of this survey, heretofore described.

-----

Feet.

Thence S. 71° 06' E.

300 N. E. end center of the location.

600 To Cor. No. 1, the place of beginning.

-----  
Navajo

Beginning at Cor. No. 1,

Identical with Cors. Nos. 2, 3 and 4, National, Ibex and Meadow Lark lodes respectively of this survey, heretofore described, whence,

Cor. to Secs. 13, 14, 23 and 24, Tp. 4 S. R. 29 E. bears S. 85° 28' 50" E. 8716.9 ft.

-----  
Thence S. 18° 54' W.

1470. To Cor. No. 2.

Identical with Cor. No. 3, Meadow Lark lode of this survey.

A pine post in place, 4 ins. square, 3.5 ft. high, with mound of stone scribed M L 3, N 2 - 2887, whence,

A cross (x) and B R 3 - 2 - 2887 chiseled on limestone bed rock exposed 2 x 2 ft. facing south, bears N. 55° 12' E. 23.5 ft.

-----  
Thence N. 71° 06' W.

300. S. W. end center of the location.

600 To Cor. No. 3.

Identical with Cor. No. 2, Lampasas lode of this survey, heretofore described.

-----  
Thence N. 18° 54' E.

1470. To Cor. No. 4.

Identical with Cors. Nos. 1, 2 and 3, Lampasas, Republic and National lodes respectively of this survey.

-----  
Thence S. 71° 06' E.

300. N. E. end center of the location.

600 To Cor. No. 1, the place of beginning.  
-----



Feet.

Meadow Lark lode.

Beginning at Cor. No. 1,

Identical with Cor. No. 4, Deacon lode of this survey.

A pine post in place, 4 ins. square, 3.5 ft. high, with mound of stone scribed D 4, M L 1 - 2887, whence,

Cor. to Secs. 13, 14, 23 and 24, Tp. 4 S. R. 29 E. bears S. 86° 31' 40" E. 8137.1 ft.

No Bearings available.

-----  
Thence S. 18° 54' W.

1470. To Cor. No. 2.

Identical with Cor. No. 3, Deacon lode of this survey.

A pine post in place, 4 ins. square, 3.5 ft. high, with mound of stone scribed D 3 M L 2 - 2887, whence,

A cross ( x ) and B R 3 - 2 - 2887, chiseled on limestone bed rock, exposed 3 x 3 ft., bears N. 82° 42' E. 28.8 ft.

-----  
Thence N. 71° 06' W.

300 S. W. end center of the location.

600 To Cor. No. 3.

Identical with Cor. No. 2, Navajo lode of this survey.

-----  
Thence N. 18° 54' E.

1470 To Cor. No. 4.

Identical with Cors. Nos. 1, 2 and 3, Navajo, National and Ibex lodes respectively of this survey, heretofore described.

-----  
Thence S. 71° 06' E.

300 N. E. end center of the location.

- Feet.  
500.6 Cor. No. 2, Ibex lode of this survey.
600. To Cor. No. 1, the place of beginning.
- 
- Deacon 1887.
- Beginning at Cor. No. 1,
- A pine post in place, 4 ins. square, 3.5 ft. high, with mound of stone scribed D 1 - 2887, whence,
- A cross (x) and B R 1 - 2887 chiseled on quartz porphyry bed rock, exposed 4 x 5 ft. facing N., bears S. 10° 40' W. 24.2 ft.
- Cor. to Secs. 13, 14, 23 and 24, Tp. 4 S. R. 29 E. bears S. 88° 44' 10" E. 7801.2 ft.
- 
- Thence S. 26° 21' W.
1394. To Cor. No. 2.
- A pine post in place, 4 ins. square, 3.5 ft. high, with mound of stone scribed D 2 - 2887, whence,
- A cross (x) and B R 2 - 2887 chiseled on limestone bed rock, exposed 2 x 3 ft., bears N. 7° 40' W. 16 ft.
- 
- Thence N. 45° 12' W.
7. S. W. end center of the location.
254. To Cor. No. 3.
- Identical with Cor. No. 2, Meadow Lark lode of this survey, heretofore described.
- 
- Thence N. 18° 54' E.
1470. To Cor. No. 4.
- Identical with Cor. No. 1, Meadow Lark lode of this survey, heretofore described.
- 
- Thence S. 45° 12' E.
247. N. E. end center of the location.
455. To Cor. No. 1, the place of beginning.
- 
- Variation at all corners 13° E.
-

## Lode Lines.

As near as can be determined from present developments the veins of the several locations embraced in this claim extend as follows from their respective discovery points to the end centers of their respective locations:

Utah lode,	280.0 ft. S.70°27'W. and 1126.1 ft. N.70°27'E.
Martha lode,	778.8 ft. N.71°06'W. and 10.0 ft. S.71°06'E.
Ajax lode,	1500.00 ft. S.59°51'E.
Portland lode,	1497.00 ft. S.71°06'E.
East Bassett lode,	1350.00 ft. N.18°54' E.
Republic lode,	1350.00 ft. N.18°54'E.
National lode,	1491.6 ft. N.18°54'E.
Ibex lode,	147.00 ft. N.71°06'W. and 353.6 ft. S.71°06'E.
Oposura lode,	1460.00 ft. S.18°54'W. and 10.00 ft. N.18°54'E.
Lampasas lode,	1460.00 ft. S.18°54'W. and 10.00 ft. N.18°54'E.
Navajo lode,	1460.00 ft. S.18°54'W. and 10.00 ft. N.18°54'E.
Meadow Lark lode,	400.00 ft. S.18°54'W. and 1070.00 ft. N.18°54'E.
Deacon lode,	1470.00 ft. S.18°54'W.

	A R E A.	Acres	Acres.
Total area Utah lode,			8.786
Area in conflict with--			
Policy No. 2 lode unsurveyed,		0.739	
Total area Martha lode,			3.770
Area in conflict with--			
Utah lode of this survey,		0.152	
Policy No. 2 lode unsurveyed,		2.155	
Total area Ajax lode,			20.637
Total area Portland lode,			20.596
Area in conflict with			
Ajax lode of this survey,		7.684	
National lode of this survey,		0.097	

	Acres.	Acres.
Policy No. 2 lode unsurveyed,	0.086	
Total area East Bassett lode,		18.595
Total area Republic lode,		18.595
Total area National lode,		20.545
Area in conflict with--		
Ajax lode of this survey,	0.210	
Total area Ibex lode of this survey,		4.918
Total area Opostra lode,		20.248
Area in conflict with--		
Desprecio lode, unsurveyed,	1.008	
Sur. No. 1706, Last Chance, lode	1.220	
Total area Lampasas lode,		20.248
Area in conflict with--		
Desprecio lode, unsurveyed,	2.691	
Total area Navajo lode,		20.248
Total area Meadow Lark lode,		20.248
Total area Deacon lode,		10.762

-----

consists of:

The survey of each lode of this location is identical with the respective amended locations, as staked on the ground.

-----

**Adjoining Claims.**

This claim is bounded as follows:-

On the West by Sur. No. 1127, Emma and Bassett and Longfellow N. Ex. lodes and Sur. No. 2886, Ione lode, claimant herein; On the North by Sur. No. 1710, Medler lode, New England and Clifton Copper Co. claimant; Kingbolt lode, unsurveyed, Arizona Copper Co. claimant; Policy No. 2 and Dark horse lodes, unsurveyed, Julius Leszynsky, claimant; and the Teller lode, unsurveyed, Chase Creek Copper Co. claimant; On the East by the Teller, Dark Horse and Policy No. 2 lodes, unsurveyed, aforementioned; Arrow Head lode, unsurveyed, I. N. Stevens et al. claimants, the Copper Rail lode, unsurveyed, J. Leszynsky, claimant, and the Buffalo Bill and Napoleon lodes, unsurveyed, Walter Doudna, et al, claimants; On the South by

Sur. No. 1706, Last Chance lode, Paul Becker, claimant, and the Desprecio lode, unsurveyed, Detroit Copper mining Co. claimant.

-----  
LOCATION.

This survey is located in Secs. 15, 16, 21 & 22, unsurveyed, Tp. 4 S. R. 29 E., in the Copper Mountain Mining District, and the Greenlee Gold Mountain Mining District, Greenlee County (formerly Graham), Arizona.

-----  
EXPENDITURE OF FIVE HUNDRED DOLLARS.

I certify that the value of the labor and improvements made upon or for the benefit of each of the locations embraced in said mining claim by the claimant or its grantors is not less than five hundred dollars; and that said improvements consist of:

Utah Lode.

No. 1. The discovery tunnel, the mouth of open cut approach to which is on the lode line, 280 ft. from S. W. E. C., thence S. 24° E. 12 ft. in open cut, 58 ft. in tunnel, 5 x 6 ft. Value \$580.00

Martha Lode.

No. 1. The discovery point, showing mineral in place in the outcrop which is on the lode line 10 ft. from the S. E. end center of the location.

No. 2. A shaft which bears from a point on line 2-3, 176.61 ft. from Cor. No. 3, N. 42° 10' W. 50 ft., 5 x 7 ft. 8 ft. deep. Value \$80.00

No. 3. A shaft which bears from a point on line 2-3, 176.62 ft. from Cor. No. 3, N. 28° W. 88 ft., 5 x 7 ft. 8 ft. deep. Value \$80.00

No. 4. A tunnel, the mouth of open cut approach to which bears from a point on line 2-3, 176.61 ft. from Cor. No. 3 N. 27° 32' W. 66 ft., running N. W. 10 ft. in open cut 6 ft. in tunnel 5 x 6 ft. Value, \$60.00

Note: A  $\frac{1}{3}$  interest in the cross cut tunnel from No. 3 tunnel on the Portland lode is accredited to this lode. Value  $\frac{1}{3}$  interest, \$310.00

Note: A  $\frac{1}{3}$  interest in the cross cut tunnel from

No. 3 tunnel on the Portland lode is accredited to this

lode.

Value  $\frac{1}{3}$  interest \$310.00

Ajax Lode.

No. 1. The discovery, showing mineral in place in the outcrop, which is on the lode line at the N.W. end center of the location.

No. 2. A shaft which bears from Cor. No. 1, N. 63° 45' W. 802 ft., 6 x 6 ft. 65 ft. deep. Value \$650.00

Portland Lode.

No. 1. The discovery, showing mineral in place in the outcrop which is on the lode line at the N.W. end center of the location.

No. 2. A tunnel, the mouth of which bears from Cor. No. 4 S. 27° 40' E. 169. ft., running N. 78° 30' W. 120 ft., 5 x 7 ft. Value \$1200.00

No. 3. A tunnel, the mouth of which bears from Cor. No. 3, N. 71° 56' E. 603.6 ft., running N. 53° 21' W. 300 ft. Value \$3,000.00

A cross cut tunnel from this No. 3 tunnel, beginning 150 ft. from the mouth, and running N.E. 62 ft., 5 x 7 ft., total value \$620.00

Value 1/2 interest \$310.00

Note: An undivided 1/2 interest in this crosscut is accredited to the Martha lode hereinafter explained.

East Bassett Lode.

No. 1 The discovery, showing mineral in place in the outcrop, which is on the lode line at the S.W. end center of the location.

No. 2. A tunnel, the mouth of which is on line 4-1, 84 ft. from Cor. No. 4, running S. 19° 10' W. 187 ft., 5 x 7 ft. Value \$1870.00

Republic Lode.

No. 1. The discovery, showing mineral in place in the outcrop, which is on the lode line at the S.W. end center of the location.

No. 2. A tunnel, the mouth of which bears from the center of line 2-3, N. 08° 15' W. 131 ft., running S. 26° W. 40 ft.; thence S. 15° E. 36 ft., 5 x 6 ft.

Value \$760.00

No. 3. The first 25 ft. in a tunnel, the mouth of which bears from the center of line 2-3 N. 19° 20' W. 33 ft., running S. 31° 50' W. 100 ft. (the last 75 ft. of this tunnel is on the Lampasas lode), tunnel 5 x 6 ft.

Value \$250.00

National Lode.

No. 1. The discovery, showing mineral in place in the outcrop, which is on the lode line at the S.W. end center of the location.

No. 2. A tunnel, the mouth of open cut approach to which bears from Cor. No. 4, S. 21° 20' E. 373 ft., running S. 22° 10' E., 23 ft. in open cut, and 227 ft. in tunnel, 5 x 7 ft.

Value \$2270.00

Ibex Lode.

No. 1. The discovery shaft, which is on the lode line, 147 ft. from the N.W. end center of the location, 4 x 6 ft. 24 ft. deep

Value \$240.00

Note: An undivided  $\frac{1}{4}$  interest in No. 3 working on the Navajo lode is accredited to this lode.

Value  $\frac{1}{4}$  interest \$217.50

Note: An undivided  $\frac{1}{4}$  interest in No. 2 working on the Navajo lode is accredited to this lode.

Value  $\frac{1}{4}$  interest \$202.50

Oposura Lode.

No. 1. The discovery, showing mineral in place in the outcrop, which is on the lode line 10 ft. from the N.E. end center of the location.

No. 2. A shaft which bears from a point on line 3-4, 271.5 ft. from Cor. No. 3, N. 58° 03' E. 94 ft., 4 x 6 ft. 22 ft. deep.

Value \$220.00

No. 3. A tunnel, the mouth of open cut approach to which bears from a point on line 3-4, 271.5 ft. from Cor. No. 3, S. 82° 45' E. 179 ft., running N. 61° E. 19 ft. in open cut, 55 ft. in tunnel, 5 x 6 ft.

Value \$550.00

Lampasas Lode.

No. 1. The discovery showing mineral in place in the outcrop, which is on the lode line 10 ft. from the N. E. end center of the location.

No. 2. The last 75 ft. of a tunnel, the mouth of which is on the Republic lode of this survey and is described as No. 3 working on said lode; also a shaft at the end of said tunnel, 8 x 8 ft. 19 ft. deep.

Value \$940.00

No. 3. A tunnel, the mouth of open cut approach to which bears from the center of line 4-1 S. 62° W. 11 ft., running S. 62° W. 13 ft. in open cut, and 14 ft. in tunnel 4 x 5 ft.

Value \$140.00

Navajo Lode.

No. 1. The discovery, showing mineral in place in the outcrop, which is on the lode line 10 ft. from the N. E. end center of the location.

No. 2. A tunnel, the mouth of which bears from the center of line 4-1, S. 47° 20' W. 222 ft., running S. 42° 45' E. 81 ft. to breast, 4 x 6 ft., total value \$810.00

Value of 1/4 interest \$202.50

Note: An undivided 1/4 interest in this working is accredited to each the Ibox, Navajo, Meadow Lark and Deacon lodes, as hereinafter explained.

No. 3. A shaft which is in the above tunnel, 10 ft. from the breast, 87 ft. deep, 4 x 6 ft., total value \$870.00

Value 1/4 interest \$217.50.

Note: An undivided 1/4 interest in No. 3 working on this lode is accredited to each the Navajo, Meadow Lark, Deacon and Ibox lodes, as hereinafter explained.

Meadow Lark Lode.

No. 1. The discovery, showing mineral in place in the outcrop, which is on the lode line, 400 ft. from the S.W. end center of the location.



No. 2. A shaft which bears from Cor. No. 2 N. 15° 45' W. 489 ft., 4 x 6 ft. 10 ft. deep.

Value \$100.00

No. 3. A shaft which bears from Cor. No. 3 N. 45° 20' E. 373 ft., 4 x 6 ft. 25 ft. deep.

Value \$250.00

Note: An undivided 1/2 interest in No. 2 working on the Navajo lode is accredited to this lode.

Value 1/2 interest \$202.50

Note: An undivided 1/2 interest in the No. 3 working on the Navajo lode is accredited to this lode.

Value 1/2 interest \$217.50

No. 1 The discovery, showing mineral in place in the outcrop, which is on the lode line at the N. E. end center of the location.

No. 2. A shaft, the S. W. end of which bears from Cor. No. 3, N. 40° 35' E. 368 ft., 5 x 30 ft., 7 ft. deep. Course of lode side N. 44° E.

Value \$300.00

Note: An undivided 1/4 interest in No. 2 working on the Navajo lode is accredited to this lode.

Value of 1/4 interest \$202.50

Note: An undivided 1/2 interest in No. 3 working on the Navajo lode is accredited to this lode.

Value of 1/2 interest \$217.50

Note: The Navajo, Meadow Lark, Deacon and Ibex lodes were purchased by the claimant in the latter part of the year 1910 from the common owner and locator. After the purchase 17 ft. were sunk in No. 3 working on the Navajo lode by claimant herein. With the exception of this 17 ft. all of No. 2. and No. 3 workings on the

Navajo lode were constructed at the expense of the original locator and common owner. By an inspection of the accompanying map entitled "Contour Map Sur. No. 2887" it will be seen that No. 2 working, continued in its present course will develop the Navajo, Meadow Lark and Deacon lodes at several hundred feet in depth, and by cross-cutting the Ibex lode can be developed to approximately the same depth. In connection with No. 3 working on the Navajo lode this working will enable the claimant to develop the Navajo, Deacon, Meadow Lark and Ibex lodes at considerable depth. No. 2 and No. 3 workings aforesaid are conveniently situated to develop the said four lodes economically by one system of working.

The cross cut from No. 3 working on the Portland lode, a  $\frac{1}{2}$  interest in which is accredited to the Martha lode, if continued in its present course will develop the Martha lode several hundred feet in depth.

INSTRUMENT.

This survey was made with a Buff and Buff and a Buff and Berger Light Mountain transit. The courses were deflected from the true meridian as determined by Polaris observations. The distances were measured with 5 ft., 100 ft. and 500 ft. steel tapes.

REPORT.

The Corner to Secs. 13, 14, 23 and 24, Tp. 4 S. R. 29 E. is a stone properly set and marked.

Sur. No. 1706, Last Chance Lode:  
 Cors. Nos. 2 and 3 are pine posts properly set and scribed.

Sur. No. 1127, Emma, Bassett and Longfellow N. Ex Lodes:  
 Cors. Nos. 7 and 8, 11 and 12, 13 and 16 of these lodes respectively are pine posts properly set and scribed. Cor. No. 15, Longfellow N. Ex. has been obliterated, and as the line between the corners above mentioned and other lines of this survey are in error by 6 minutes I have so corrected the bearing of line 15--16 of this lode.

Sur. No. 2886, Ione lode:  
 Cor. No. 1 is a pine post properly set and scribed. Witness corner for Cor. No. 4 is a cross at corner point at foot of bluff 100 ft. high.

Sur. No. 1710, Medler lode:  
 Cors. Nos. 2 and 3 are pine posts properly set and scribed.

Policy No. 2 lode, unsurveyed:  
 All corners are pine posts properly set and scribed.

Desprecio lode, unsurveyed:  
 All corners are pine posts properly set and scribed.

Sur. No. 1822, Black Cat lode:  
 Cor. No. 3 is a pine post properly set and scribed. The differences between these field notes and the location certificates are due to errors in the latter. The differences between these field notes and the returns of prior surveys are due to errors in the latter.

The end center monuments of all the locations embraced in this claim are mounds of stone.

*J. W. ...*

U. S. Mineral Surveyor,

# FINAL OATHS FOR SURVEYS.

## LIST OF NAMES.

A list of the names of the individuals employed by Lamar Cobb

United States Mineral Surveyor, to assist in running, measuring, and marking the lines, corners, and boundaries described in the foregoing field notes of the survey of the mining claim of \_\_\_\_\_

The Arizona Copper Company

Oposura, East Bassett, Lampasas, Republic, Navajo, National, Meadow Lark, Ibex, Deacon, Portland, Ajax, Martha, Utah

and showing the respective capacities in which they acted.

George Collier \_\_\_\_\_, *Chairman.*

J. L. Awalt \_\_\_\_\_, *Chairman.*

\_\_\_\_\_, *Arman.*

\_\_\_\_\_, *Flagman.*

## FINAL OATHS OF ASSISTANTS.

We, George Collier \_\_\_\_\_

and J. L. Awalt \_\_\_\_\_, do solemnly swear that we assisted Lamar Cobb

\_\_\_\_\_, United States Mineral Surveyor, in marking the corners and surveying

the boundaries of the mining claim of The Arizona Copper Company

Oposura, East Bassett, Lampasas, Republic, Navajo, National, Meadow Lark, Ibex, Deacon, Portland, Ajax, Martha, and Utah

represented in the foregoing field notes as having been surveyed by said mineral surveyor and under his

direction; and that said survey has been in all respects, to the best of our knowledge and belief, faithfully

and correctly executed, and the corner and boundary monuments established according to law and the instruc-

tions furnished by the United States Surveyor-General for Arizona.

George Collier \_\_\_\_\_, *Chairman.*

J. L. Awalt \_\_\_\_\_, *Chairman.*

\_\_\_\_\_, *Arman.*

\_\_\_\_\_, *Flagman*

Subscribed and sworn to by the above-named persons before me this 14<sup>th</sup>

day of February \_\_\_\_\_, 1911.

John R. Hawthorn  
Notary Public

*My commission expires  
July 8, 1911.*

FINAL OATH OF U. S. MINERAL SURVEYOR.

I, Lamar Cobb, U. S. Mineral Surveyor, do solemnly swear that, in pursuance of instructions received from the United States Surveyor General for Arizona, dated Jan. 30, 1911, I have, in strict conformity to the laws of the United States, the official regulations and instructions thereunder, and the instructions of said Surveyor General, faithfully and correctly executed the survey of the Mining Claim of The Arizona Copper Company.

known as the Oposura, East Bassett, Lampasas, Republic, Navajo, National, Meadow Lark, Ibex, Deacon, Portland, Ajax, Martha, and Utah, situate in Greenlee Gold Mtn. and Copper Mtn. Mining District, Greenlee County, Arizona, in Sections 15, 16, 21, & 22 Township No. 4 S., Range No. 29 E. unsurveyed, and designated as Survey No. 2887, as represented in the foregoing field notes, which accurately show the boundaries of said mining claim as distinctly marked by monuments on the ground, and described in the attached copy of the location certificate, which was received by me from the Surveyor General with said instructions, and that all the corners of said survey have been established and perpetuated in strict accordance with the law, official regulations and instructions thereunder; and I do further solemnly swear that the foregoing are the true and original field notes of said survey and my report therein, and that the labor expended and improvements made upon said mining claim by claimant or its grantors are as therein fully stated, and that the character, extent, location, and itemized value thereof are specified therein with particularity and full detail, and that no portion of said labor or improvements so credited to this claim has been included in the estimate of expenditures upon any other claim.

Lamar Cobb
U. S. Mineral Surveyor.

Subscribed and sworn to by the said Lamar Cobb
U. S. Mineral Surveyor, before me John R. Dawson, a
Notary Public this 14th
day of February, 1911.

my commission expires July 8, 1911.
John R. Dawson
Notary Public

# AMENDED NOTICE OF LOCATION—Lode Claim

31

To all Whom it may Concern:

This mining claim, the name of which is the Oposura  
Mining Claim, situate on lands belonging to the United States of America, and in which there are  
valuable mineral deposits, was entered upon and amended for the purpose of exploration and purchase by  
The Arizona Copper Company

the undersigned on the 21 st. day of Jan. 19011

The length of the claim is 1470 feet, and it claims 1470  
feet in a S.18°54'W. direction, and 300 feet in a South  
direction from the center of the discovery -- at which this notice is posted, lengthwise of the claim  
together with 300 feet in width of the surface grounds, on each side of the  
center of said claim. The general course of the lode deposit and premises is from the  
Northeast to the Southwest

The claim is situated and located in the Copper Mountain  
Mining District, in Greenlee (formerly Graham) County, Territory of Arizona, about 1 1/2  
miles South direction from  
The North Cor. of this claim is identical with Cor. No. 12 Sur. No. 11  
27 Bassett lode

The surface boundaries of the claim are marked upon the ground as follows: beginning at  
a monument of stone at

at a point in a South direction 300 feet from  
the discovery --- (at which this notice is posted), being in the center of the Northeasterly  
end line of said claim; thence S.71°06'E. 300 feet to a  
pine post, being the East  
corner of said claim; thence S.18°54'W. 1470 feet to a  
pine post, being at the South  
corner of said claim; thence N.71°06'W. 300 feet to a  
monument of stone being the center of the Southwesterly  
end of said claim; thence N.71°06'W 300 feet to a  
pine post being at the West  
corner of said claim; thence N.18°54'E. 1470 feet to a  
pine post at the North  
corner of said claim; thence S.71°06'E. 300 feet to  
the place of beginning.

All done under the provisions of Chapter Six, of Title XXXII, of the revised Statutes of the United States, and of  
an act of the General Assembly of the Territory of Arizona, entitled "An Act to Codify and Revise the Laws of the  
Territory of Arizona," approved March 16th, 1901.

This is an Amended Location Notice of the Oposura  
mining Claim, located by Jas Colquhoun

on the 16 th.  
day of March 1895 ~~1901~~, and recorded in Book 8 of Records of Mines at  
page 416, in the office of the County Recorder of the Greenlee County of Graham  
to which reference is hereby made.

Dated and posted on the ground this 21 st. day of Jan. 19011

The Arizona Copper Company  
Jas Colquhoun

TERRITORY OF ARIZONA,

County of Graham

ss.

County Recorder in and for the County and Territory aforesaid, do hereby certify that the within instrument was filed for record at.....

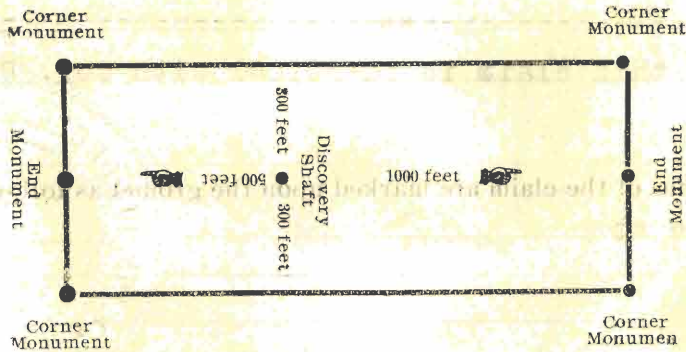
o'clock..... M, on this..... day of..... 190....., and

duly recorded in Book No..... of..... Records of Graham County

Arizona, at pages.....

Witness my hand and seal the day and year first above written,

County Recorder



The above diagram is to give the locator a general idea of the plan of location under the new law. Your discovery shaft may be in the center of claim, or any distance from either end you desire. In the diagram we have placed it 500 feet from one end and 1000 feet from the other. In description be careful to state locality of claim with reference to some natural object, or permanent monument, so as to identify the claim.

# 217

JAN 30 1911

Amended Notice of Location LODGE CLAIM

*Osborne*

Dated

January 21<sup>st</sup> 1901

Filed and recorded at request of

*[Redacted Name]*

*J. D. Cooper*

January 23<sup>rd</sup> A. D. 1901

at 3 O'clock P. M.

Book # 1 Min Locations

Pages 32 and 33

*Geo. D. Purcell*  
County Recorder.

*W. S. Bradford*  
Deputy Recorder.

AMENDED NOTICE OF LOCATION—Lode Claim

To all Whom it may Concern:

This mining claim, the name of which is the East Bassett Mining Claim, situate on lands belonging to the United States of America, and in which there are valuable mineral deposits, was entered upon and amended for the purpose of exploration and purchase by The Arizona Copper Company

the undersigned on the 21 st. day of Jan. 1901

The length of the claim is 1350 feet, and it claims 1350 feet in a N.18°54'E. direction, and 300 feet in a Southwest direction from the center of the discovery at which this notice is posted, lengthwise of the claim together with 300 feet in width of the surface grounds, on each side of the center of said claim. The general course of the lode deposit and premises is from the Northeast to the Southwest

The claim is situated and located in the Copper Mountain Mining District, in Greenlee County, Territory of Arizona, about The West Cor. of this claim is identical with Cor. No. 12 Sur. No. 1127 Bassett lode.

The surface boundaries of the claim are marked upon the ground as follows: beginning at a monument of stone at

at a point in a Southwesterly direction 300 feet from the discovery -- (at which this notice is posted), being in the center of the Southwesterly end line of said claim; thence N.71°06'W. 300 feet to a pine post, being the West corner of said claim; thence N.18°54'E. 1350 feet to a pine post, being at the North corner of said claim; thence S.71°06'E. 300 feet to a monument of stone being the center of the Northwesterly end of said claim; thence S.71°06'E. 300 feet to a pine post being at the East corner of said claim; thence S.18°54'W. 1350 feet to a pine post at the South corner of said claim; thence N.71°06'W. 300 feet to the place of beginning.

All done under the provisions of Chapter Six, of Title XXXII, of the revised Statues of the United States, and of an act of the General Assembly of the Territory of Arizona, entitled "An Act to Codify and Revise the Laws of the Territory of Arizona," approved March 16th, 1901.

This is an Amended Location Notice of the East Bassett Mine mining Claim, located by Jas. Colquhoun

on the 1 st. day of Jan. 1895, and recorded in Book 8 of Records of Mines at page 351, in the office of the County Recorder of the Graham County of Graham to which reference is hereby made.

Dated and posted on the ground this 21 st. day of Jan. 1901

The Arizona Copper Company.  
J. Colquhoun



34 TERRITORY OF ARIZONA,

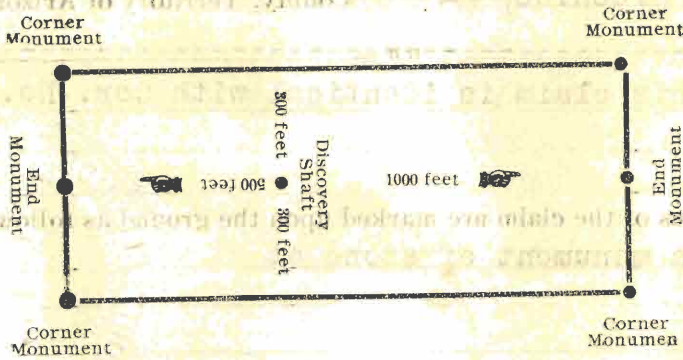
ss.

County of Graham

I, \_\_\_\_\_ County Recorder in and for the County and Territory aforesaid, do hereby certify that the within instrument was filed for record at \_\_\_\_\_ o'clock \_\_\_\_\_ M, on this \_\_\_\_\_ day of \_\_\_\_\_ 190\_\_\_\_, and duly recorded in Book No \_\_\_\_\_ of \_\_\_\_\_ Records of Graham County Arizona, at pages \_\_\_\_\_

Witness my hand and seal the day and year first above written,

County Recorder



The above diagram is to give the locator a general idea of the plan of location under the new law. Your discovery shaft may be in the center of claim, or any distance from either end you desire. In the diagram we have placed it 500 feet from one end and 1000 feet from the other. In description be careful to state locality of claim with reference to some natural object, or permanent monument, so as to identify the claim.

# 218 JAN 30 1911

**Amended  
Notice of Location**  
LODE CLAIM

*East Barrett*

Dated *Jan. 21st 1901*

Filed and recorded at request of

*J. G. Cooper*  
Grant 23rd A. D. 1901  
at *3 O'Clock* P. M.

Book #1 Mine Location

Pages 34 and 35

*Geo. V. Burdick*  
County Recorder.

By *W. S. Bradfield*  
Deputy Recorder.

AMENDED NOTICE OF LOCATION—Lode Claim

To all Whom it may Concern:

This mining claim, the name of which is the Lampasas Mining Claim, situate on lands belonging to the United States of America, and in which there are valuable mineral deposits, was entered upon and amended for the purpose of exploration and purchase by The Arizona Copper Company

the undersigned on the 21 st. day of Jan. 1901

The length of the claim is 1470 feet, and it claims 1470 feet in a S.18°54'W. direction, and --- feet in a --- direction from the center of the discovery --- at which this notice is posted, lengthwise of the claim together with 300 feet in width of the surface grounds, on each side of the center of said claim. The general course of the lode deposit and premises is from the Northeast to the Southwest

The claim is situated and located in the Copper Mountain Mining District, in Greenlee (formerly Graham) County, Territory of Arizona, about --- in a --- direction from

From the North Cor. of this claim Cor. No. 12 Sur. No. 1127 Bassett lode bears N.71°06'W. 600 ft.

The surface boundaries of the claim are marked upon the ground as follows: beginning at a monument of stone at

at a point in a --- direction --- feet from the discovery --- (at which this notice is posted), being in the center of the Northeasterly end line of said claim; thence S.71°06'E. 300 feet to a pine post, being the East corner of said claim; thence S.18°54'W. 1470 feet to a pine post, being at the South corner of said claim; thence N.71°06'W. 300 feet to a monument of stone being the center of the Southwesterly end of said claim; thence N.71°06'W. 300 feet to a pine post being at the West corner of said claim; thence N.18°54'E. 1470 feet to a pine post at the North corner of said claim; thence S.71°06'E. 300 feet to the place of beginning.

All done under the provisions of Chapter Six, of Title XXXII, of the revised Statutes of the United States, and of an act of the General Assembly of the Territory of Arizona, entitled "An Act to Codify and Revise the Laws of the Territory of Arizona," approved March 16th, 1901.

This is an Amended Location Notice of the Lampasas mining Claim, located by James Coquhoun

on the 16th day of March 1895, and recorded in Book 8 of Records of Mines at page 421, in the office of the County Recorder of the aforesaid County of Graham to which reference is hereby made.

Dated and posted on the ground this 21 st. day of Jan 1901

The Arizona Copper Company by J. Thompson

36 TERRITORY OF ARIZONA,

County of Graham

ss.

I, Tom Fasse County Recorder in and for the County and Territory aforesaid, do hereby certify that the within instrument was filed for record at.....

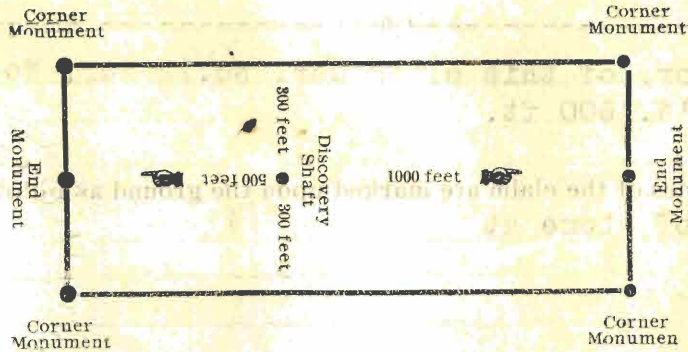
o'clock..... M, on this..... day of..... 190....., and

duly recorded in Book No..... of..... Records of Graham County

Arizona, at pages.....

Witness my hand and seal the day and year first above written,

County Recorder



The above diagram is to give the locator a general idea of the plan of location under the new law. Your discovery shaft may be in the center of claim, or any distance from either end you desire. In the diagram we have placed it 500 feet from one end and 1000 feet from the other. In description be careful to state locality of claim with reference to some natural object, or permanent monument, so as to identify the claim.

# 411

# Amended Notice of Location

LODE CLAIM

*Tom Fasse*

Dated *Jan. 31st* 1911

Filed and recorded at request of

*Tom Fasse*

at *3 o'clock* P. M. *January 23rd* A. D. 1911

Book # *1* *Miner's Location*

Pages *20 and 21*

*Tom Fasse*  
County Recorder.

*W. S. Bradstreet*  
Deputy Recorder.

JAN 30 1911

AMENDED NOTICE OF LOCATION—Lode Claim

To all Whom it may Concern:

This mining claim, the name of which is the Republic Mining Claim, situate on lands belonging to the United States of America, and in which there are valuable mineral deposits, was entered upon and amended for the purpose of exploration and purchase by The Arizona Copper Company

the undersigned on the 21 st. day of Jan 1901

The length of the claim is 1350 feet, and it claims 1350 feet in a N.18°54'E. direction, and ---feet in a ---direction from the center of the discovery ---at which this notice is posted, lengthwise of the claim together with 300 feet in width of the surface grounds, on each side of the center of said claim. The general course of the lode deposit and premises is from the Northeast to the Southwest

The claim is situated and located in the Copper Mountain Mining District, in Greenlee (formerly Graham) County, Territory of Arizona, about ---direction from From the West Cor. of this claim Cor. No. 12 Sur. No. 1127 Bassett lode bears N.71°06'W. 600 ft.

The surface boundaries of the claim are marked upon the ground as follows: beginning at a monument of stone at

at a point in a ---direction ---feet from the discovery --- (at which this notice is posted), being in the center of the Southwesterly end line of said claim; thence N.71°06'W. 300 feet to a pine post, being the West corner of said claim; thence N.18°54'E. 1350 feet to a pine post, being at the North corner of said claim; thence S.71°06'E. 300 feet to a monument of stone being the center of the Northeasterly end of said claim; thence S.71°06'E. 300 feet to a pine post being at the East corner of said claim; thence S.18°54'W. 1350 feet to a Pine post at the South corner of said claim; thence N.71°06'W. 300 feet to the place of beginning.

All done under the provisions of Chapter SIX, of Title XXXII, of the revised Statues of the United States, and of an act of the General Assembly of the Territory of Arizona, entitled "An Act to Codify and Revise the Laws of the Territory of Arizona," approved March 16th, 1901.

This is an Amended Location Notice of the Republic mining Claim, located by The Arizona Copper Company

on the 24 th. day of August 1900, and recorded in Book 13 of Records of Mines at page 61, in the office of the County Recorder of the aforesaid County of Graham to which reference is hereby made.

Dated and posted on the ground this 21 st. day of Jan. 1901

The Arizona Copper Company [Signature]

TERRITORY OF ARIZONA,

County of Graham

ss.

County Recorder in and for the County and

Territory aforesaid, do hereby certify that the within instrument was filed for record at

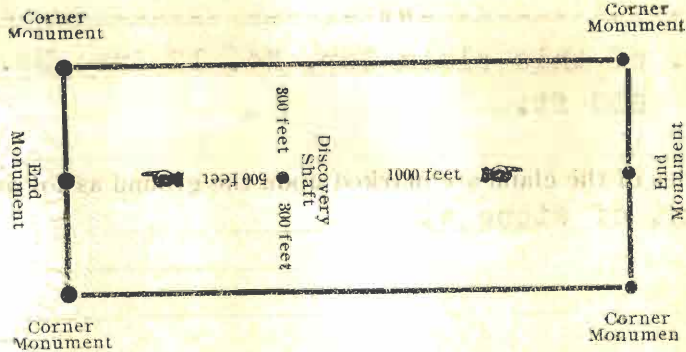
o'clock M, on this day of 190, and

duly recorded in Book No of Records of Graham County

Arizona, at pages

Witness my hand and seal the day and year first above written,

County Recorder



The above diagram is to give the locator a general idea of the plan of location under the new law. Your discovery shaft may be in the center of claim, or any distance from either end you desire. In the diagram we have placed it 500 feet from one end and 1000 feet from the other. In description be careful to state locality of claim with reference to some natural object, or permanent monument, so as to identify the claim.

# 219 JAN 30 1901

# Amended Notice of Location

LODE CLAIM

*Republic*

Dated January 21 1901

Filed and recorded at request of *James C. Pratt*

*J. C. Cooper*,  
January 23<sup>rd</sup> A. D. 1901

at 3 O'clock P.M.

Book # *1 Mine Location*

Pages 36 - 37 =

*Geo. D. Buntz*  
County Recorder.

By *W. S. Goodfield*  
Deputy Recorder.

AMENDED NOTICE OF LOCATION—Lode Claim

To all Whom it may Concern:

This mining claim, the name of which is the Navajo Mining Claim, situate on lands belonging to the United States of America, and in which there are valuable mineral deposits, was entered upon and amended for the purpose of exploration and purchase by The Arizona Copper Company

the undersigned on the 21 st. day of Jan. 1911 The length of the claim is 1470 feet, and it claims 1470 feet in a S. 18° 54' W. direction, and --- feet in a --- direction from the center of the discovery --- at which this notice is posted, lengthwise of the claim together with 300 feet in width of the surface grounds, on each side of the center of said claim. The general course of the lode deposit and premises is from the Northeast to the Southwest

The claim is situated and located in the Copper Mountain Mining District, in Greenlee County, Territory of Arizona, about --- From the North Cor. of this claim Cor. No. 12 Sur. No. 1127 Bassett lode bears N. 71° 06' W. 1200

The surface boundaries of the claim are marked upon the ground as follows: beginning at a monument of stone at

at a point in a --- direction --- feet from the discovery --- (at which this notice is posted), being in the center of the Northeasterly end line of said claim; thence S. 71° 06' E. 300 feet to a monument of stone, being the East corner of said claim; thence S. 18° 54' W. 1470 feet to a pine post, being at the South corner of said claim; thence N. 71° 06' W. 300 feet to a monument of stone being the center of the Southwesterly end of said claim; thence N. 71° 06' W. 300 feet to a pine post being at the West corner of said claim; thence N. 18° 54' E. 1470 feet to a pine post at the North corner of said claim; thence S. 71° 06' E. 300 feet to the place of beginning.

All done under the provisions of Chapter Six, of Title XXXII, of the revised Statutes of the United States, and of an act of the General Assembly of the Territory of Arizona, entitled "An Act to Codify and Revise the Laws of the Territory of Arizona," approved March 16th, 1901.

This is an Amended Location Notice of the Navajo mining Claim, located by J.T. Alexander on the 2 nd. day of Jan. 1904, and recorded in Book 17 of Records of Mines at page 214, in the office of the County Recorder of the aforesaid County of Graham to which reference is hereby made. Original location Oct. 6/1908, and recorded in Book 16, page 252 in the office of the county recorder of Graham Co.

Dated and posted on the ground this 21 st. day of Jan. 1911

The Arizona Copper Company

by J. H. Johnson

140 TERRITORY OF ARIZONA,

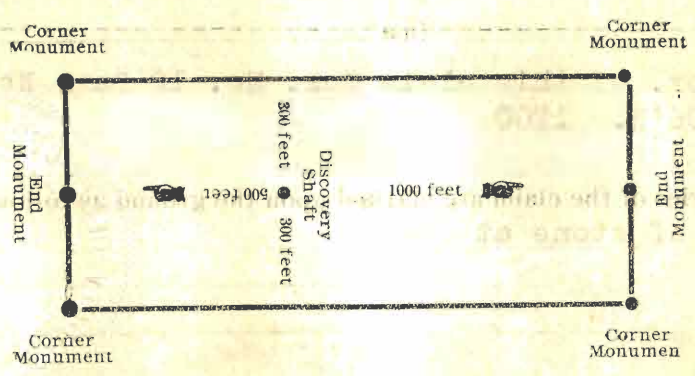
County of Graham

ss.

I, County Recorder in and for the County and Territory aforesaid, do hereby certify that the within instrument was filed for record at \_\_\_\_\_ o'clock \_\_\_\_\_ M, on this \_\_\_\_\_ day of \_\_\_\_\_ 190\_\_\_\_, and duly recorded in Book No \_\_\_\_\_ of \_\_\_\_\_ Records of Graham County Arizona, at pages \_\_\_\_\_

Witness my hand and seal the day and year first above written,

County Recorder



The above diagram is to give the locator a general idea of the plan of location under the new law. Your discovery shaft may be in the center of claim, or any distance from either end you desire. In the diagram we have placed it 500 feet from one end and 1000 feet from the other. In description be careful to state locality of claim with reference to some natural object, or permanent monument, so as to identify the claim.

# 216 JAN 30 1911

# Amended Notice of Location

LODE CLAIM

*Morgan*

Dated Jan'y 21st 1901

Filed and recorded at request of

Leah M. D. Clark

*J. O. Cooper*

Jan'y 23rd A. D. 1901

at 3 O'Clock P.M.

Book #1 Location of mine

Pages 30-31

*Geo. H. Bunker*  
County Recorder.

By *W. S. Bradford*  
Deputy Recorder.

AMENDED NOTICE OF LOCATION—Lode Claim

041

To all Whom it may Concern:

This mining claim, the name of which is the National Mining Claim, situate on lands belonging to the United States of America, and in which there are valuable mineral deposits, was entered upon and amended for the purpose of exploration and purchase by The Arizona Copper Company

the undersigned on the 21 st. day of Jan. 1911

The length of the claim is 1491.6 feet, and it claims 1491.6 feet in a N.18°54'E direction, and 300 feet in a Southwesterly direction from the center of the discovery at which this notice is posted, lengthwise of the claim together with 300 feet in width of the surface grounds, on each side of the center of said claim. The general course of the lode deposit and premises is from the Northeast to the Southwest

The claim is situated and located in the Copper Mountain Mining District, in Greenlee (formerly Graham) County, Territory of Arizona, about 1200 ft. Southwesterly direction from From the West Cor. of this claim Cor. No.12 Sur. No.1127 Bassett lode bears N. 71°06'W.

The surface boundaries of the claim are marked upon the ground as follows: beginning at a monument of stone at

at a point in a Southwesterly direction 300 feet from the discovery at which this notice is posted, being in the center of the Southwesterly end line of said claim; thence N.71°06'W. 300 feet to a pine post, being the West corner of said claim; thence N.18°54'E. 1491.6 feet to a pine post, being at the North corner of said claim; thence S.71°06'E. 300 feet to a monument of stone being the center of the Northeasterly end of said claim; thence S.71°06'E. 300 feet to a pine post being at the East corner of said claim; thence S.18°54'W. 1491.6 feet to a Pine post at the South corner of said claim; thence N.71°06'W. 300 feet to the place of beginning.

All done under the provisions of Chapter Six, of Title XXXII, of the revised Statues of the United States, and of an act of the General Assembly of the Territory of Arizona, entitled "An Act to Codify and Revise the Laws of the Territory of Arizona," approved March 16th, 1901.

This is an Amended Location Notice of the National mining Claim, located by The Arizona Copper Company

on the 24 th. day of August 1900, and recorded in Book 13 of Records of Mines at pages 59 & 60, in the office of the County Recorder of the Greenlee County of Graham to which reference is hereby made.

Dated and posted on the ground this 21 st. day of Jan. 1911

The Arizona Copper Company.  
By J. J. Johnson



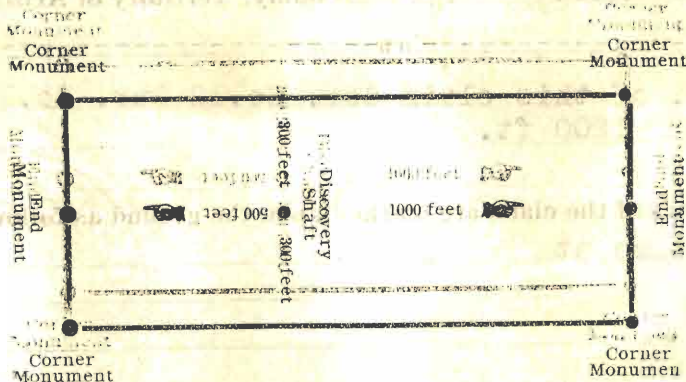
TERRITORY OF ARIZONA,  
TERRITORY OF ARIZONA,  
COUNTY OF GRAHAM

ss.

I, \_\_\_\_\_ County Recorder in and for the County and Territory aforesaid, do hereby certify that the within instrument was filed for record at \_\_\_\_\_ o'clock \_\_\_\_\_ M, on this \_\_\_\_\_ day of \_\_\_\_\_ 190\_\_\_\_, and \_\_\_\_\_ o'clock \_\_\_\_\_ M, on this \_\_\_\_\_ day of \_\_\_\_\_ 190\_\_\_\_, and duly recorded in Book No \_\_\_\_\_ of \_\_\_\_\_ Records of Graham County Arizona, at pages \_\_\_\_\_

Witness my hand and seal the day and year first above written,  
Witness my hand and seal the day and year first above written,

County Recorder  
County Recorder



The above diagram is to give the locator a general idea of the plan or location under the new law. Your discovery shaft may be in the center of claim, or any distance from either end you desire. In the diagram we have placed it 500 feet from one end and 1000 feet from the other. This notice is to give the locator a general idea of the plan or location under the new law. Your discovery shaft may be in the center of claim, or any distance from either end you desire. In the diagram we have placed it 500 feet from one end and 1000 feet from the other. In description be careful to state locality of claim with reference to some natural object, or permanent monument, so as to identify the claim.

# 2 2 2 JAN 30 1911

**Amended  
Notice of location  
LODGE CLAIM**

*National*

Dated *January 21<sup>st</sup> 1901*

Filed and recorded at request of  
*Jessie Cottle*

*J. S. Cooper*  
January 13<sup>th</sup> A. D. 1901

at *3 O'clock P.M.*  
#1 Record of mine

Pages *42-43 =*  
*J. S. Cooper*  
County Recorder.

*W. S. Bradford*  
Deputy Recorder.

# AMENDED NOTICE OF LOCATION—Lode Claim

43

To all Whom it may Concern:

This mining claim, the name of which is the Utah Mining Claim, situate on lands belonging to the United States of America, and in which there are valuable mineral deposits, was entered upon and amended for the purpose of exploration and purchase by The Arizona Copper Company

the undersigned on the 21 st. day of Jan. 1901  
The length of the claim is 1410 feet, and it claims 280 feet in a southwesterly direction, and 1130 feet in a southeasterly direction from the center of the discovery cut at which this notice is posted, lengthwise of the claim together with 300 feet in width of the surface grounds, on each side of the center of said claim. The general course of the lode deposit and premises is from the Northeast to the Southwest

The claim is situated and located in the Copper Mtn. and Greenlee Gold Mtn. Mining District, in Greenlee (formerly Graham) County, Territory of Arizona, ~~about~~ in a direction from The Northeast Cor. of this claim is identical with Cor. No. 3 Sur. No. 1710 Medler lode.

The surface boundaries of the claim are marked upon the ground as follows: beginning at a mound of stone

at a point in a southwesterly direction 280 feet from the discovery cut (at which this notice is posted), being in the center of the Southwesterly end line of said claim; thence N.30°53'W. 320 feet to a Pine post, being the Northwest corner of said claim; thence N;82°19'E. 1500 feet to a pine post, being at the Northeast corner of said claim; thence .S.30°53'E. 5.4 feet to a monument of stone being the center of the Northeasterly end of said claim; thence S.30°53'E. 5.4 feet to a pine post being at the Southeast corner of said claim; thence S.61°30'W. 1380 feet to a pine post at the Southwest corner of said claim; thence N.30°53'W. 224.4 feet to the place of beginning.

All done under the provisions of Chapter SIX, of Title XXXII, of the revised Statutes of the United States, and of an act of the General Assembly of the Territory of Arizona, entitled "An Act to Codify and Revise the Laws of the Territory of Arizona," approved March 16th, 1901.

This is an Amended Location Notice of the Utah mining Claim, located by R. J. Young

on the 1 st. day of March 1900, and recorded in Book 12 of Records of Mines at page 355, in the office of the County Recorder of the aforsaid County of Graham to which reference is hereby made. Original location amended Feb. 27/1903 and recorded in Book 15, page 491 in the office of the County Recorder of Graham County.

Dated and posted on the ground this 21 st. day of Jan. 1901

The Arizona Copper Company.

*[Handwritten signature]*

44

TERRITORY OF ARIZONA,

County of Graham

ss.

County Recorder in and for the County and

Territory aforesaid, do hereby certify that the within instrument was filed for record at

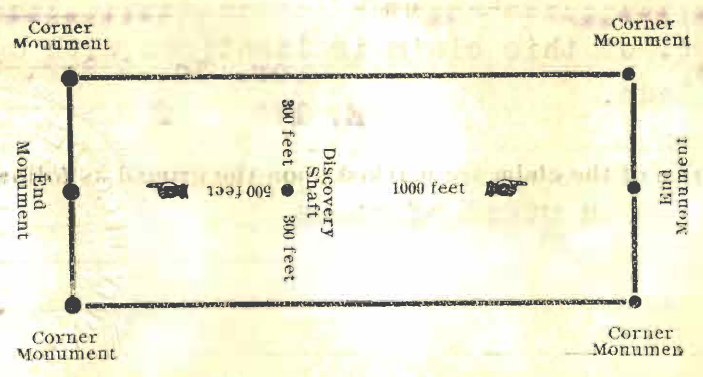
o'clock..... M, on this..... day of..... 190....., and

duly recorded in Book No..... of..... Records of Graham County

Arizona, at pages.....

Witness my hand and seal the day and year first above written,

County Recorder



The above diagram is to give the locator a general idea of the plan of location under the new law. Your discovery shaft may be in the center of claim, or any distance from either end you desire. In the diagram we have placed it 500 feet from one end and 1000 feet from the other. In description be careful to state locality of claim with reference to some, natural object, or permanent monument, so as to identify the claim.

Map # 214, JAN 30, 1911

**Amended  
Notice of Location**  
LODE CLAIM

Utah

Dated January 1-1st 1901

Filed and recorded at request of  
James C. Cook

J. A. Cooper  
January 13<sup>th</sup> A. D. 1901

at 3 O'Leary P. M.  
Book # 1 Min. Locations

Pages 26-27  
James C. Cook  
County Recorder.

By W. S. Baughman  
Deputy Recorder.

AMENDED NOTICE OF LOCATION—Lode Claim

45

To all Whom it may Concern:

This mining claim, the name of which is the Martha Mining Claim, situate on lands belonging to the United States of America, and in which there are valuable mineral deposits, was entered upon and amended for the purpose of exploration and purchase by The Arizona Copper Company

the undersigned on the 21 day of Jan. 1901

The length of the claim is 788.8 feet, and it claims 788.8 feet in a N.71°06'W. direction, and 300 feet in width of the surface grounds, on each side of the center of said claim. The general course of the lode deposit and premises is from the Northwest to the Southeast

The claim is situated and located in the Copper Mountain Mining District, in Greenlee (formerly Graham) County, Territory of Arizona, about From the Southwest Cor. of this claim Cor. No. 16 Sur. No. 1127 Long-fellow N. Extn. lode bears S.71°06'E. 176.62 ft.

The surface boundaries of the claim are marked upon the ground as follows: beginning at a monument of stone at

a point in a direction feet from the discovery -- (at which this notice is posted), being in the center of the Southeasterly end line of said claim; thence S.30°04'W. 21 feet to a monument of stone, being the Southeast corner of said claim; thence N.71°06'W 788.8 feet to a pine post, being at the Southwest corner of said claim; thence N.30°04'E. 21 feet to a monument of stone being the center of the Northwesterly end of said claim; thence N.30°04'E. 106 feet to a monument of stone being at the Northwest corner of said claim; thence S.82°35'50"E. 838.63 feet to a monument of stone at the Northeast corner of said claim; thence S.30°04'W. 274.36 feet to the place of beginning.

All done under the provisions of Chapter SIX, of Title XXXII, of the revised Statues of the United States, and of an act of the General Assembly of the Territory of Arizona, entitled "An Act to Codify and Revise the Laws of the Territory of Arizona," approved March 16th, 1901.

This is an Amended Location Notice of the Martha mining Claim, located by The Arizona Copper Company

on the 14 day of March 1903, and recorded in Book 15 of Records of Mines at page 490, in the office of the County Recorder of the aforesaid County of Graham to which reference is hereby made.

Dated and posted on the ground this 21 day of Jan. 1901

The Arizona Copper Company

by J. S. Johnson

TERRITORY OF ARIZONA,

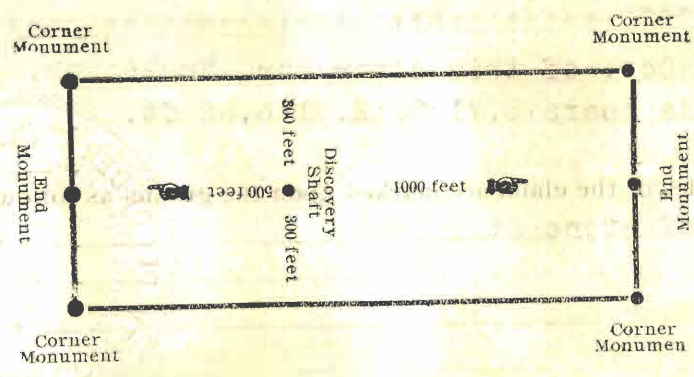
County of Graham

ss.

I, \_\_\_\_\_ County Recorder in and for the County and Territory aforesaid, do hereby certify that the within instrument was filed for record at \_\_\_\_\_ o'clock \_\_\_\_\_ M, on this \_\_\_\_\_ day of \_\_\_\_\_ 190\_\_\_\_\_, and duly recorded in Book No \_\_\_\_\_ of \_\_\_\_\_ Records of Graham County Arizona, at pages \_\_\_\_\_

Witness my hand and seal the day and year first above written,

County Recorder



The above diagram is to give the locator a general idea of the plan of location under the new law. Your discovery shaft may be in the center of claim, or any distance from either end you desire. In the diagram we have placed it 500 feet from one end and 1000 feet from the other. In description be careful to state locality of claim with reference to some natural object, or permanent monument, so as to identify the claim.

# 215. JAN 30 1911

# Amended Notice of Location

LODE CLAIM

*Martha*

Dated *January 21<sup>st</sup>* 190*1*

Filed and recorded at request of  
*Lawrence East*

*J. E. Chapman*,  
January 23<sup>rd</sup> A. D. 1901

at *3 O'Leary* Q. M.  
Book # *1* Mine *Locatoin*

Pages # *28-29*  
*Geo F Bunk*  
County Recorder.

By \_\_\_\_\_ Deputy Recorder.

AMENDED NOTICE OF LOCATION—Lode Claim

47

To all Whom it may Concern:

This mining claim, the name of which is the Ajax Mining Claim, situate on lands belonging to the United States of America, and in which there are valuable mineral deposits, was entered upon and amended for the purpose of exploration and purchase by The Arizona Copper Company

the undersigned on the 21 day of Jan. 1901

The length of the claim is 1500 feet, and it claims 1500 feet in N. 59° 51' W. direction, and 300 feet in a Northwest direction from the center of the discovery at which this notice is posted, lengthwise of the claim together with 300 feet in width of the surface grounds, on each side of the center of said claim. The general course of the lode deposit and premises is from the Northwest to the Southeast

The claim is situated and located in the Copper Mtn. & Greenlee Gold Mtn. Mining District in Greenlee (formerly Graham) County, Territory of Arizona, about 1/2 mile North direction from From the West Cor. of this claim Cor. No. 16 Sur. No. 1127 Longfellow N. Extn. lode bears S. 78° 28' W. 648 ft.

The surface boundaries of the claim are marked upon the ground as follows: beginning at a monument of stone at

at a point in a North direction 1500 feet from the discovery at (at which this notice is posted), being in the center of the Northwesterly end line of said claim; thence N. 30° 04' E. 300 feet to a pine post, being the North corner of said claim; thence S. 59° 51' E. 1500 feet to a pine post, being at the East corner of said claim; thence S. 30° 04' W. 300 feet to a monument of stone being the center of the Southeasterly end of said claim; thence S. 30° 04' W. 300 feet to a pine post being at the South corner of said claim; thence N. 59° 51' W. 1500 feet to a pine post at the West corner of said claim; thence N. 30° 04' E. 300 feet to the place of beginning.

All done under the provisions of Chapter SIX, of Title XXXII, of the revised Statutes of the United States, and of an act of the General Assembly of the Territory of Arizona, entitled "An Act to Codify and Revise the Laws of the Territory of Arizona," approved March 16th, 1901.

This is an Amended Location Notice of the Ajax mining Claim, located by The Arizona Copper Company

on the 28 th. day of July 1897, and recorded in Book 9 of Records of Mines at page s 318&319, in the office of the County Recorder of the aforsaid County of Graham to which reference is hereby made, Original location amended July 20/99, and recorded in Book 11, page 409 in the office of the County Recorder of Graham County.

Dated and posted on the ground this 21 day of Jan. 1901

The Arizona Copper Company

A. Johnson

48

TERRITORY OF ARIZONA,

County of Graham

ss.

County Recorder in and for the County and

Territory aforesaid, do hereby certify that the within instrument was filed for record at

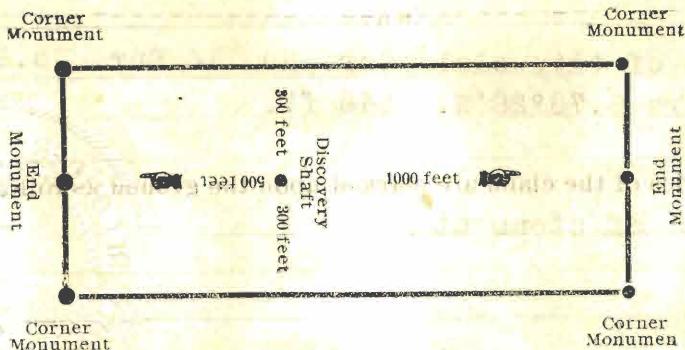
o'clock M, on this day of 190, and

duly recorded in Book No of Records of Graham County

Arizona, at pages

Witness my hand and seal the day and year first above written,

County Recorder



The above diagram is to give the locator a general idea of the plan of location under the new law. Your discovery shaft may be in the center of claim, or any distance from either end you desire. In the diagram we have placed it 500 feet from one end and 1000 feet from the other. In description be careful to state locality of claim with reference to some natural object, or permanent monument, so as to identify the claim.

# 2210. JAN 30, 1911

Amended Notice of Location

LODE CLAIM

*Gyax*

Dated January 21st 190

Filed and recorded at request of

*James C. Clark*

*J. D. Cooper*  
January 23rd A. D. 1901

at 3 O'clock P.M.

Book #1 Record of Mines

Pages 38-39

*Paul J. Dwyer*  
County Recorder.

By *W. S. Bradford*  
Deputy Recorder.

AMENDED NOTICE OF LOCATION—Lode Claim

To all Whom it may Concern:

This mining claim, the name of which is the Portland Mining Claim, situate on lands belonging to the United States of America, and in which there are valuable mineral deposits, was entered upon and amended for the purpose of exploration and purchase by The Arizona Copper Company

the undersigned on the 21 st. day of Jan. 1911

The length of the claim is 1497 feet, and it claim S 1497 feet in a S71°06'E direction, and 300 feet in a Northwest direction from the center of the discovery -- at which this notice is posted, lengthwise of the claim together with 300 feet in width of the surface grounds, on each side of the center of said claim. The general course of the lode deposit and premises is from the Northwest to the Southeast

The claim is situated and located in the Copper Mtn. and Greenlee Gold Mtn. Mining District, in Greenlee (formerly Graham) County, Territory of Arizona, about

direction from  
The West Cor. of this claim is identical with Cor. No. 11 Sur. No. 1127 Bassett lode

The surface boundaries of the claim are marked upon the ground as follows: beginning at a monument of stone

at a point in a Northwesterly direction 299.3 feet from the discovery (at which this notice is posted), being in the center of the Northwesterly end line of said claim; thence N.18°54'E. 299.3 feet to a pine post, being the North corner of said claim; thence S.71°06'E. 1497 feet to a pine post, being at the East corner of said claim; thence S.18°54'W. 299.3 feet to a monument of stone being the center of the Southeasterly end of said claim; thence S.18°54'W. 300 feet to a pine post being at the South corner of said claim; thence N.71°06'W. 1497 feet to a pine post at the West. corner of said claim; thence N.18°54'E. 300 feet to the place of beginning.

All done under the provisions of Chapter SIX, of Title XXXII, of the revised Statues of the United States, and of an act of the General Assembly of the Territory of Arizona, entitled "An Act to Codify and Revise the Laws of the Territory of Arizona," approved March 16th, 1901.

This is an Amended Location Notice of the Portland mining Claim, located by The Arizona Copper Company

on the 24 th. day of August 190, and recorded in Book 13 of Records of Mines at page 60, in the office of the County Recorder of the aforsaid County of Graham to which reference is hereby made.

Dated and posted on the ground this 21 st. day of Jan. 1911

The Arizona Copper Company.  
by A. Johnson



50 TERRITORY OF ARIZONA,

County of Graham

ss.

I, \_\_\_\_\_ County Recorder in and for the County and Territory aforesaid, do hereby certify that the within instrument was filed for record at \_\_\_\_\_

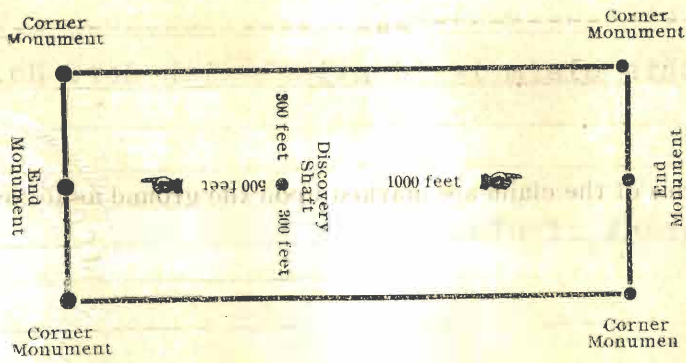
o'clock \_\_\_\_\_ M, on this \_\_\_\_\_ day of \_\_\_\_\_ 190\_\_\_\_\_, and

duly recorded in Book No \_\_\_\_\_ of \_\_\_\_\_ Records of Graham County

Arizona, at pages \_\_\_\_\_

Witness my hand and seal the day and year first above written,

County Recorder



The above diagram is to give the locator a general idea of the plan of location under the new law. Your discovery shaft may be in the center of claim, or any distance from either end you desire. In the diagram we have placed it 500 feet from one end and 1000 feet from the other. In description be careful to state locality of claim with reference to some natural object, or permanent monument, so as to identify the claim.

# NW 5

Jan 30, 1911

# Amended Notice of Location

LODE CLAIM

Portland

Dated January 21<sup>st</sup> 1911

Filed and recorded at request of

*James D. Cooper*

at *Portland* A. D. 1911

Book # *11* Recd of *mine*

Pages # *48-49* =

*James D. Cooper*  
County Recorder.

*W. S. Bradfield*  
Deputy Recorder.

AMENDED NOTICE OF LOCATION—Lode Claim

To all Whom it may Concern:

This mining claim, the name of which is the Deacon Mining Claim, situate on lands belonging to the United States of America, and in which there are valuable mineral deposits, was entered upon and amended for the purpose of exploration and purchase by The Arizona Copper Company

the undersigned on the 21 st. day of Jan. 1901

The length of the claim is 1470 feet, and it claims 1470 feet in a S.18°54'W. direction, and direction from the center of the discovery at which this notice is posted, lengthwise of the claim together with 300 feet in width of the surface grounds, on each side of the center of said claim. The general course of the lode deposit and premises is from the Northeast to the Southwest

The claim is situated and located in the Copper Mountain Mining District, in Greenlee (formerly Graham) County, Territory of Arizona, about From the North Cor. of this claim Cor. No. 12 Sur. No. 1127 Bassett lode bears N.71°06'W. 2400 ft.

The surface boundaries of the claim are marked upon the ground as follows: beginning at a monument of stone at

at a point in a direction feet from the discovery (at which this notice is posted), being in the center of the Northeasterly end line of said claim; thence S.45°12'E. 208 feet to a pine post, being the East corner of said claim; thence S26°21'W 1394 feet to a monument of stone, being at the South corner of said claim; thence N.45°12'W. 7.1 feet to a pine post being the center of the Southwesterly end of said claim; thence N.45°12'W. 247 feet to a pine post being at the West corner of said claim; thence N.18°54'E. 1470 feet to a pine post at the North corner of said claim; thence S.45°12'E. 247 feet to the place of beginning.

All done under the provisions of Chapter Six, of Title XXXII, of the revised Statutes of the United States, and of an act of the General Assembly of the Territory of Arizona, entitled "An Act to Codify and Revise the Laws of the Territory of Arizona," approved March 16th, 1901.

This is an Amended Location Notice of the Deacon mining Claim, located by J.T.Alexander

on the 17 th. day of July 1905, and recorded in Book 16 of Records of Mines at page 123, in the office of the County Recorder of the County of Graham to which reference is hereby made, Original location amended Sept.26/08, and recorded in Book 16, page 252 in the office of the County Recorder of Graham County.

Dated and posted on the ground this 21 st. day of Jan. 1901

The Arizona Copper Company

by J. Thompson

TERRITORY OF ARIZONA,

County of Graham

ss.

I, \_\_\_\_\_ County Recorder in and for the County and Territory aforesaid, do hereby certify that the within instrument was filed for record at \_\_\_\_\_

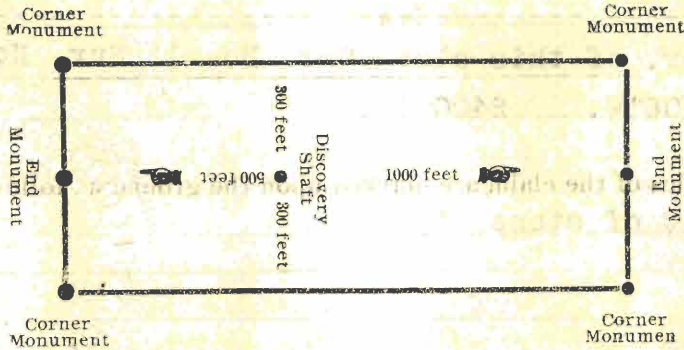
o'clock \_\_\_\_\_ M, on this \_\_\_\_\_ day of \_\_\_\_\_ 190\_\_\_\_\_, and

duly recorded in Book No \_\_\_\_\_ of \_\_\_\_\_ Records of Graham County

Arizona, at pages \_\_\_\_\_

Witness my hand and seal the day and year first above written,

County Recorder



The above diagram is to give the locator a general idea of the plan of location under the new law. Your discovery shaft may be in the center of claim, or any distance from either end you desire. In the diagram we have placed it 500 feet from one end and 1000 feet from the other. In description be careful to state locality of claim with reference to some natural object, or permanent monument, so as to identify the claim.

*Handwritten initials*

JAN 30 1911

**Amended  
Notice of Location**

LODE CLAIM

*Reason*

Dated *January 21<sup>st</sup>* 1911

Filed and recorded at request of

*Samuel O. Bell*

*J. Cooper*

January 23<sup>rd</sup> A. D. 1911

at *3 O'Leary* G. M.

Book #1 *Records of Mines*

Pages *46 and 47*

*Ang T. Dunbar*  
County Recorder.

*W. S. Bradford*  
Deputy Recorder.

AMENDED NOTICE OF LOCATION—Lode Claim

To all Whom it may Concern:

This mining claim, the name of which is the Ibex Mining Claim, situate on lands belonging to the United States of America, and in which there are valuable mineral deposits, was entered upon and amended for the purpose of exploration and purchase by The Arizona Copper Company

the undersigned on the 21 st. day of Jan. 11 1901

The length of the claim is 500.6 feet, and it claims 147 feet in a N.71°06'W. direction, and 353.6 feet in a S.71°06'E. direction from the center of the discovery shaft at which this notice is posted, lengthwise of the claim together with 300 feet in width of the surface grounds, on each side of the center of said claim. The general course of the lode deposit and premises is from the Northwest to the Southeast

The claim is situated and located in the Copper Mountain Mining District, in Greenlee (formerly Graham) County, Territory of Arizona, about ----- direction from From the West Cor. of this claim Cor. No.12 Sur. No.1127 Bassett lode bears N.71°06'W.1800 ft.

The surface boundaries of the claim are marked upon the ground as follows: beginning at a monument of stone

at a point in a N.71°06'W. direction 147 feet from the discovery shaft (at which this notice is posted), being in the center of the Northwesterly end line of said claim; thence N.18°54'E. 300 feet to a pine post, being the North corner of said claim; thence S.52°57'E. 526.8 feet to a pin Monument of Stones, being at the East corner of said claim; thence S.18°54'W. 136.8 feet to a monument of stone being the center of the Southeasterly end of said claim; thence S.18°54'W. 300 210 feet to a pine post being at the South corner of said claim; thence N.71°06'W; 500.6 feet to a pine post at the West corner of said claim; thence N.18°54'E. 210 feet to the place of beginning.

All done under the provisions of Chapter Six, of Title XXXII, of the revised Statutes of the United States, and of an act of the General Assembly of the Territory of Arizona, entitled "An Act to Codify and Revise the Laws of the Territory of Arizona," approved March 16th, 1901.

This is an Amended Location Notice of the Ibex mining Claim, located by J.T.Alexander

on the 19 th. day of Jan 1909, and recorded in Book 20 of Records of Mines at page 430, in the office of the County Recorder of the aforesaid County of Graham to which reference is hereby made.

Dated and posted on the ground this 21 st. day of Jan. 1901

The Arizona Copper Company  
by J. Thomson

54

TERRITORY OF ARIZONA,

County of Graham

ss.

I, \_\_\_\_\_ County Recorder in and for the County and Territory aforesaid, do hereby certify that the within instrument was filed for record at \_\_\_\_\_

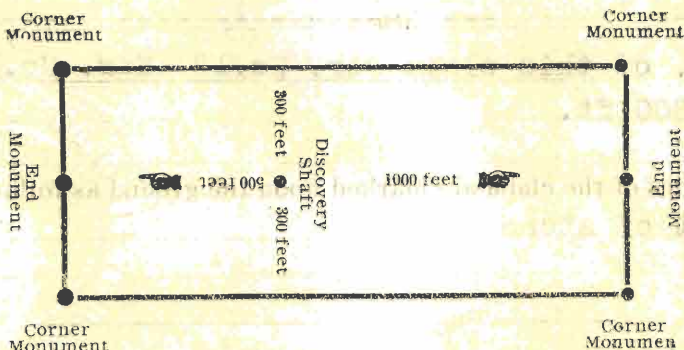
o'clock \_\_\_\_\_ M, on this \_\_\_\_\_ day of \_\_\_\_\_ 190\_\_\_\_\_, and

duly recorded in Book No \_\_\_\_\_ of \_\_\_\_\_ Records of Graham County

Arizona, at pages \_\_\_\_\_

Witness my hand and seal the day and year first above written,

County Recorder



The above diagram is to give the locator a general idea of the plan of location under the new law. Your discovery shaft may be in the center of claim, or any distance from either end you desire. In the diagram we have placed it 500 feet from one end and 1000 feet from the other. In description be careful to state locality of claim with reference to some natural object, or permanent monument, so as to identify the claim.

# 2223

JAN 30 1911

**Amended  
Notice of Location**

LODE CLAIM

*Shay*

Dated *January 21<sup>st</sup>* 190*1*

Filed and recorded at request of

*James O. Shay*

*J. A. Cooper*

*January 23<sup>rd</sup>* A. D. 190*1*

at *3 Oldham* O. M.

Book #*1* Books of Mines

Pages *44 and 45*

*Geo. W. Burtch*  
County Recorder.

*W. S. Bradfield*  
Deputy Recorder.

13  
AMENDED NOTICE OF LOCATION—Lode Claim

To all Whom it may Concern:

55

This mining claim, the name of which is the Meadow Lark Mining Claim, situate on lands belonging to the United States of America, and in which there are valuable mineral deposits, was entered upon and amended for the purpose of exploration and purchase by The Arizona Copper Company

the undersigned on the 21 st. day of Jan. 1911  
The length of the claim is 1470 feet, and it claims 1470 feet in a S.18°54'W. direction, and 300 feet in a ----- direction from the center of the discovery ----- at which this notice is posted, lengthwise of the claim together with 300 feet in width of the surface grounds, on each side of the center of said claim. The general course of the lode deposit and premises is from the Northeast to the Southwest

The claim is situated and located in the Copper Mountain Mining District, in Greenlee ~~County~~ Greenlee County, Territory of Arizona, about ----- direction from From the North Cor. of this claim Cor. No. 12 Sur. No. 1127 Bassett lode bears N.71°06'W. 1800 ft.

The surface boundaries of the claim are marked upon the ground as follows: beginning at a monument of stone

at a point in a ----- direction ----- feet from the discovery ----- (at which this notice is posted), being in the center of the Northeasterly end line of said claim; thence S.71°06'E. 300 feet to a pine post, being the East corner of said claim; thence S.18°54'W. 1470 feet to a pine post, being at the South corner of said claim; thence N.71°06'W 300 feet to a monument of stone being the center of the Southwesterly end of said claim; thence N.71°06'W. 300 feet to a pine post being at the West corner of said claim; thence N.18°54'E. 1470 feet to a pine post at the North corner of said claim; thence S.71°06'E. 300 feet to the place of beginning.

All done under the provisions of Chapter Six, of Title XXXII, of the revised Statutes of the United States, and of an act of the General Assembly of the Territory of Arizona, entitled "An Act to Codify and Revise the Laws of the Territory of Arizona," approved March 16th, 1901.

This is an Amended Location Notice of the Meadow Lark mining Claim, located by J.T.Alexander

on the 1 st. day of Jan. 1904, and recorded in Book 17 of Records of Mines at page 215, in the office of the County Recorder of the ~~aforsaid~~ County of Graham to which reference is hereby made, Original location amended July 16/05 and Sept 26/08; recorded in Book 16, page 120, and in Book 16, page 251, respectively, in the office of the county recorder of Graham County.

Dated and posted on the ground this 21 st. day of Jan. 1911

The Arizona Copper Company.

J. T. Alexander

TERRITORY OF ARIZONA,

County of Graham

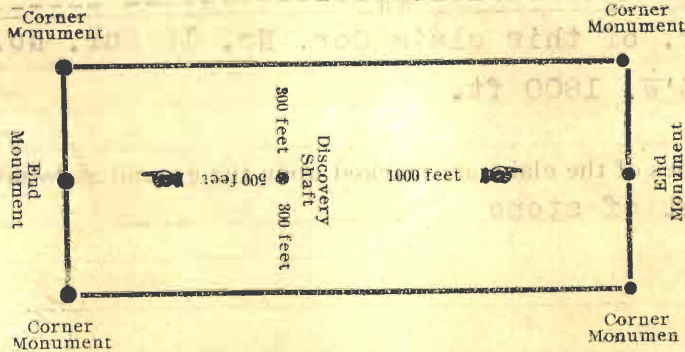
ss.

County Recorder in and for the County and

Territory aforesaid, do hereby certify that the within instrument was filed for record at... o'clock... M, on this... day of... 190..., and duly recorded in Book No... of... Records of Graham County Arizona, at pages...

Witness my hand and seal the day and year first above written,

County Recorder



The above diagram is to give the locator a general idea of the plan of location under the new law. Your discovery shaft may be in the center of claim, or any distance from either end you desire. In the diagram we have placed it 500 feet from one end and 1000 feet from the other. In description be careful to state locality of claim with reference to some natural object, or permanent monument, so as to identify the claim.

# 22 / JAN 30 1911

Amended

Notice of Location

LODE CLAIM

Madame Sark

Dated January 21st 1911

Filed and recorded at request of

James East

J. E. Cooper, January 23rd A. D. 1911

at 3 O'clock P.M.

Book #11 Recs of Mines

Pages 40-41 =

Geo. S. Bunker County Recorder.

By W. S. Bradford Deputy Recorder.

## U. S. SURVEYOR GENERAL'S FINAL CERTIFICATE ON FIELD NOTES.

DEPARTMENT OF THE INTERIOR,  
Office of U. S. Surveyor General,  
Phoenix, Arizona, May 24, 1911.

I, U. S. SURVEYOR GENERAL FOR ARIZONA, do hereby certify that the foregoing transcript of the Field Notes, return and approval of the survey of the mining claim of The Arizona Copper Company, known as the OPOSURA, EAST BASSETT, LAMPASAS, REPUBLIC, NAVAJO, NATIONAL, MEADOW LARK, IBEX, DEACON, PORTLAND, AJAX, MARTHA, UTAH, situate in Greenlee Gold Mountain and Copper Mountain Mining Districts, Greenlee County, Arizona, in Secs. 15, 16, 21 & 22, Uns., T. 4 S., R. 29 E., and designated as Survey No. 2887, has been correctly copied from the originals on file in this office; that said Field Notes furnish such an accurate description of said mining claim as will, if incorporated into a patent, serve fully to identify the premises, and that such reference is made therein to natural objects or permanent monuments as will perpetuate and fix the locus thereof.

And I further certify that five hundred dollars' worth of labor has been expended or improvements made upon or for each the Oposura, East Bassett, Lampasas, Republic, National, Meadow Lark, Ibex, Deacon, Portland, Ajax, Martha and Utah lodes, and that less than five hundred dollars' worth of labor has been expended or improvements made upon or for the Navajo lode, by claimant or its grantors, and that said improvements, at time of survey, consist of 5 cuts, 11 tunnels, 1 crosscut, and 10 shafts, total value \$15840.00 The crosscut from tunnel No. 3 on the Portland lode being of common benefit to the Portland and Martha lodes, an undivided one-half interest therein, value \$310, is properly credited to each said Martha and Portland lodes. Tunnel No. 2 and shaft No. 3 on the Navajo lodes being common improvements for the benefit and development of the Navajo, Meadow Lark, Deacon and Ibex lodes



of this survey, and being so situated that it can not develop the other claims in this group, an undivided one-fourth interest therein, value \$202.50, and \$217.50, respectively, is properly credited to each of the said four claims.

And I further certify that no portion of said labor or improvements has been included in the estimate of expenditures upon any other claim, and that the plat thereof, filed in the U. S. Land Office, at Phoenix, Arizona, is correct and in conformity with the foregoing Field Notes.

Frank S. Ingalls,  
United States Surveyor-General for  
Arizona.

4-687.

SURVEYOR-GENERAL'S CERTIFICATE OF APPROVAL OF FIELD  
NOTES AND SURVEY OF MINING CLAIM.

**Department of the Interior,**

Office of U. S. Surveyor-General,

Phoenix, Arizona,

May 24, 1911., 190

I, U. S. Surveyor-General for Arizona,

do hereby certify that the foregoing and hereto attached Field Notes and Return of the Survey of the  
Mining Claim of

The Arizona Copper Company,

known as the  
OPOSURA, EAST BASSETT, LAMPASAS, REPUBLIC, NAVAJO, NATIONAL,  
MEADOW LARK, IBEX, DEACON, PORTLAND, AJAX, MARTHA, UTAH,

situate in Greenlee Gold Mountain and Copper Mountain Mining District,

Greenlee County, Arizona,

in Sections 15, 16, 21 & 22 Township No. 4 S., Range No. 29 E., Unsur.

, designated as Survey No. 2887,

executed by Lamar Cobb, U. S. Deputy Mineral

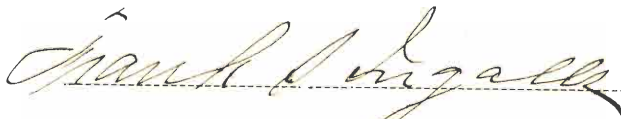
Surveyor, February 1 - 11, 1911., ~~1908~~, under my instructions dated

January 30, 1911., ~~1908~~, have been critically examined and the necessary cor-

rections and explanations made, and the said Field Notes and Return, and the Survey they describe,

are hereby approved. A true copy of the copy of the location certificate filed by the applicant for

survey is included in the field notes.



U. S. Surveyor-General for Arizona,

CERTIFICATE OF U. S. SURVEYOR GENERAL AS TO EXPENDITURES  
REPORTED AFTER RETURN OF SURVEY OF MINING CLAIM.

\*\*\*\*\*

DEPARTMENT OF THE INTERIOR,  
Office of U. S. Surveyor General,  
Phoenix, Arizona, May 11, 1912.

I, U. S. Surveyor-General for the District of Arizona, do hereby certify that Seven hundred and fifty dollars and fifty cents, (\$757.50) worth of labor has been expended or improvements made, by claimant or its grantors, upon or for the benefit of the Navajo lode, embraced with others in Mineral Survey No. 2887, The Arizona Copper Company, claimant, and that said improvements, in addition to those reported at time of survey, value \$420, consist of a 15-foot extension in tunnel No. 2, and 30 ft. of drift, extending northwesterly from shaft No. 3, and that said work was done between May 15, 1911 and September 1, 1911.

I further certify that tunnel No. 2 on said Navajo lode, from the returns of survey thereof, and my certificate dated May 24, 1911, appears to be a common improvement for the benefit and development of the Navajo, Meadow Lark, Deacon and Ibex lodes, all included in Survey No. 2887, and therefore the value of the 15-foot extension, \$150, is properly distributed among said claims, \$37.50 being allotted to each of said claims, and that the 30-foot drift northwesterly from shaft No. 3 extends away from the said Meadow Lark, Deacon and Ibex lodes and should not be considered with said shaft No. 3 as a common improvement for their benefit, but the entire value \$300, of said drift is properly allotted solely to the Navajo lode.

I further certify that no portion of said labor or improvements has been included in the estimate of expenditures upon any other claim. A copy of the report of Lamar Cobb, U. S. Mineral Surveyor, dated May 3, 1912, is hereto attached.

*Frank S. Sigall*  
U. S. Surveyor-General for Arizona.

MAY 9- 1912

STATE OF ARIZONA, )  
 ) SS.  
 COUNTY OF GREENLEE.)

Lamar Cobb of the above county and State being first duly sworn according to law deposes on oath and states that he is the mineral surveyor who made Survey No. 2887 of the Oposura and twelve other lode mining claims, situate in the Greenlee Gold Mountain and Copper Mountain Mining Districts, County of Greenlee, State of Arizona; that the Navajo lode mining claim is one of the claims embraced in said survey; that between May 15, 1911, and September 1, 1911, the following work was done on said Navajo lode, towit, Tunnel No. 2 on said lode was extended fifteen (15) feet to a total length of ninety-four (94) feet also a drift was driven from the shaft <sup>No. 3</sup> in said No. 2 Tunnel running in a northwesterly direction thirty (30) feet; that the value of the work so done on said lode is <sup>\$150 and \$300, respectively,</sup> Four Hundred Fifty and no/100 Dollars (\$450.); that said work was done subsequent to the survey of said claim made by this deponent and was not included in the report made by him to the U. S. Surveyor General for Arizona.

*Lamar Cobb*

U. S. Mineral Surveyor.

Subscribed and sworn to before me this 3rd day of May, A. D. 1912.

*Wade Hampton*  
 Notary Public.

My Commission expires February 23, 1916.