

MINERAL SURVEY NO. 2965

Claims	M & B Desc.	Improvements	Loc. Notices
American	10	32	25 (Red)
Anchor	7	32	17
Arizona	23	34	15
Blue Bell	27	34	2
Blue Bell No. 1	24	34	11
Blue Bird	11	32	27
Bull Frog	25	34	5
Bona Fide	16	33	24
California	28	34	10
Carbonate	26	34	14
Copper King	21	34	9
Copper Queen	22	34	8
Dump	12	32	29
Dutch	14	33	26
Good Enough	15	33	30
Good Luck	5	31	18
Home	1	31	19
Honest	13	32	28
Last Chance	7	32	1
Logan	8	32	6
Reliance	18	33	20
Richelue	19	33	12
Richelue No. 1	17	33	13
Rose Bud	20	33	3
Rose Bud No. 1	20	33	4
Stegman No. 1	4	31	21
Stegman No. 2	3	31	22
Stegman No. 3	2	31	23
Summit	9	32	7
The Flat	6	31	16

Feet

Beginning at Cor.No.1.

Identical with the loc. and with cor.No.3 Stegman No.3, and Cor.No.3 Stegman No.2 lodes of this sur.

A Porphyry stone 6X6X24 ins. set 12 ins. in the ground, with mound of stones, chiseled 1-H.2-S.No.3.3-S.No.2-2965.

Whence U.S.L.M.No.2965 brs. S 86°04'W 2856.08 ft.

1200

An Oak tree 12 ins. diam. scribed X-B-T-1-H.2-S-No.3.3-S-No.

2-2965 brs. S 85°35'W 35 feet.

X-B-R-1-H.2-S-No.3.3-S-No.2-2965, brs. N 23°W 27.2 ft. *Chiseled on rock in place*

Loc. cor. mound of stones 3X3 ft.

Thence N 20°10'E

800

To cor. No. 2 Va. 14°10'E

1500

To Cor.No.2

200

Identical with the loc.

20

A Porphyry stone 6X12X30 ins, set 15 ins. in the ground

with mound of stones chiseled 3-H-2965. No bearings available. Location cor. mound of stones 3X3 ft.

Thence S 33°40'E Va. 14°10'E

300

E.C.E. Identical with the loc. a mound of stones 3X3 ft.

1200

430

Cross wash 20 ft. wide course N 15°E

600

To Cor.No.3.

Identical with the loc.

A Porphyry stone 4X5X24 ins. set 12 ins. in the ground with

mound of stones chiseled 3-H-2965. No bearings available.

Loc. cor. mound of stones 3X3 ft.

Thence S 20°10'W Va. 14°10'E

300

Cross road course N 54°E & S 54°W

1500

To Cor.No.4.

Identical with the loc. and with Cor.No.3 Stegman No.3

800

lode of this sur. a Porphyry stone 4X6X24 ins. set 12 ins.

220

in the ground with mound of stones chiseled 4-H.3-S-No.3

-2965. No bearings available. Loc. cor. mound of stones 3X3 ft.

200

Thence N 33°40'W

200

Va. 14°10'E

Feet.
300

W.C.E. Identical with the loc. and with the E.C.E. of
Stegman No. 3 lode of this sur. a mound of stones 3X3 ft.

550

Cross wash 20 ft. wide course N 43° E

600

To Cor. No. 1 the place of beginning.

1200

Beginning at Cor. No. 1.

200

Identical with the loc. and with cor. No. 2 Dump, 3 Blue Bird,
and 4 Stegman No. 2 lodes of this sur.

Porphyry stone 10X12X24 ins. set 12 ins. in the ground

with mound of stones chiseled 1-S. No. 3, 2-D, 3-B-B, 4-S-

No. 2-2965. No bearings available. Loc. cor. mound of stones

3 X 3 ft. Whence U.S.L.M. No. 2965 brs. N 63° 57' W 2012.77 ft.

600

Thence N 43° 57' E

Va. 14° 10' E

1200

To Cor. No. 2.

1500

Identical with the loc. and with cor. No. 3 Stegman No. 2,
and cor. No. 1 Home lodes of this sur. hereinbefore described.

Thence S 33° 40' E

Va. 14° 10' E

50

Cross wash 20 ft. wide course N 43° E

300

E.C.E. identical with the loc. and with the W.C.E. of Home

1200

lode of this sur. hereinbefore described.

600

To Cor. No. 3.

Identical with the loc. and with Cor. No. 4 Home lode of this
sur. hereinbefore described.

Thence S 43° 57' W

Va. 14° 10' E

1500

To Cor. No. 4. Is the dump lode of X-B-W-I-H' 3-2-102' 2-3-40'

Identical with the loc. and with cor. No. 3 Dump lode of this
sur. X-4-S. No. 3, 3-D-2965 chiseled on porphyry stone in place

12 X 12 X 18 ins. above the ground, with mound of stones.

Loc. cor. mound of stones 3X3 ft. No bearings available.

Thence N 33° 40' W

Va. 14° 10' E

1200

Feet. 300 W.C.E. Identical with the loc. and with the E.C.E. of Dump lode of this sur. a mound of stones 3X3 ft.

530 Cross wash. 20 ft. wide course. N 46°E

600 To Cor. No. 1 the place of beginning.

STEGMAN No. 2

Beginning at Cor. No. 1.

Identical with the loc. and with cor. No. 3 Blue Bird, 3 American, 4 Stegman No. 1 lodes of this sur.

X-1-S, No. 2. 2-B-B. 3-A. 4-S. No. 1-2965 chiseled on porphyry stone in place 12X18X12 ins. above the ground, with mound of stones 3X3 ft. Loc. cor. mound of stones 3X3 ft. Whence:-

U.S.L.M. No. 2965 brs. N 75°35'W 1534.81 ft. 382'

No bearings available.

Thence N 43°57'E
Va. 14°10'E

1500 To Cor. No. 2.

Identical with the loc. and with cor. No. 3 Stegman No. 1 lode of this sur.

A porphyry stone 8X8X26 ins. set 14 ins. in the ground with mound of stones chiseled 2-S. No. 2. 3-S. No. 1-2965. whence X-B-R-2-S. No. 2. 3-S. No. 1-2965 chiseled on rock in place brs. S 65°E 6 feet. No other bearings available.

Loc. cor. mound of stones 3X3 ft.

Thence S 33°40'E
Va. 14°10'E

300 E.C.E. Identical with the loc. a mound of stones 3X3 ft.

600 To Cor. No. 3.

Identical with the loc. and with Cor. No. 1 Home and 2 Stegman No. 3 lodes of this sur. hereinbefore described.

Thence S 43°57'W
Va. 14°10'E

1500 To Cor. No. 4.

Identical with the loc. and with cor. No. 1 Stegman No. 3,

Feet.

2. Dump, and 3 Blue Bird lodes of this sur. hereinbefore described.

1200

Thence N 33°40'W
Va. 14°10'E

300

W.C.E. Identical with the loc. and with the E.C.E. of Blue Bird lode of this sur. a mound of stones 3X3 ft.

600

To Cor. No. 1 the place of beginning.

800

STEGMAN No. 1 lode.

200

Beginning at Cor. No. 1.

Identical with the loc. and with cor. No. 3 American, 3.

Summit and 4 Good Luck lodes of this sur.

Porphyry stone 8X10X24 ins. set 12 ins. in the ground with mound of stones chiseled 1-S-No. 1, 2-A, 3-S, 4-G-L-2965.

Whence: U.S.L.M. No. 2965 brs. S 84°15'W 1148.85 ft.

No bearings available. Loc. cor. mound of stones 3X3 ft.

Thence N 43°57'E
Va. 14°10'E

1500

To Cor. No. 2.

Identical with the loc. and with cor. No. 3 Good Luck lode of this sur.

Porphyry stone 8X10X24 ins. set 12 ins. in the ground with mound of stones chiseled 2-S-No. 1, 3-G-L-2965.

No bearings available. Loc. cor. mound of stones 3X3 ft.

Thence S 33°40'E
Va. 14°10'E

300

E.C.E. Identical with the loc. a mound of stones 3X3 ft.

600

To Cor. No. 3.

Identical with the loc. and with cor. No. 2 Stegman No. 2 lode of this sur. hereinbefore described.

Thence S 43°57'W
Va. 14°10'E

800

To Cor. No. 4.

1500

Identical with the loc. and with Cor. No. 1 Stegman No. 2,

200

2 Blue Bird and 3 American lodes of this sur. hereinbefore described.

Feet.	<p>Thence N 33°40'W Va. 14°10'E</p>
300	<p>W.C.E. Identical with the loc. and with the E.C.E. of American lode of this sur. a mound of stones 3X3 ft.</p>
600	<p>To Cor. No. 1 the place of beginning. GOOD LUCK 1007. Beginning at Cor. No. 1. Identical with the loc. and with cor. No. 2 Summit, 2 Logan and 1 The Flat lodes of this sur.</p>
1200	<p>A granite stone 8X8X24 ins. set 12 ins. in the ground with mound of stones chiseled 1-G-L. 2-S. 2-L. 1-T-F-2965. Whence: U.S.L.M. No. 2965 brs. S 52°50'W 1017.05 ft. No bearings available. Loc. cor. mound of stones 3X3 ft. Thence N 43°57'E Va. 14°10'E</p>
1500	<p>To Cor. No. 2. Identical with the loc. and with cor. No. 2 The Flat lode of this sur.</p>
300	<p>Porphyry stone 10X14X24 ins. set 12 ins. in the ground with mound of stones chiseled 2-G-L. 2-T-F-2965. No bearings available. Loc. cor. mound of stones 3X3 ft.</p>
1200	<p>Thence S 33°40'E Va. 14°10'E</p>
300	<p>E.C.E. Identical with the loc. a mound of stones 3X3 ft.</p>
600	<p>To Cor. No. 3. Identical with the loc. and with cor. No. 2 Stegman No. 1 lode of this sur. hereinbefore described.</p>
1500	<p>Thence S 43°57'W Va. 14°10'E To Cor. No. 4.</p>
600	<p>Identical with the loc. and with cor. No. 1 Stegman No. 1, 2 American and 3 Summit lodes of this sur. hereinbefore described.</p>
300	<p>Thence N 33°40'W Va. 14°10'E</p>

Feet
300

W.C.E. Identical with the loc. and with the E.C.E. of Summit lode of this sur. a mound of stones 3X3 ft.

600

To Cor. No. 1 the place of beginning.

1200

THE FLAT LODE.

Beginning at Cor. No. 1.

Identical with the loc. and with cors. 1 Good Luck, 2 Summit and Logan lodes of this sur. hereinbefore described. Whence:- U.S.L.M. No. 2965 brs. S 52°50'W 1017.05 ft.

810

Thence N 43°57'E

Va. 14°10'W

1500

To Cor. No. 2.

Identical with the loc. and with cor. No. 2 Good Luck lode of this sur. hereinbefore described.

Thence N 33°40'W

Va. 14°10'E

300

E.C.E. Identical with the loc. a mound of stones 3X3 ft.

600

To Cor. No. 3.

Identical with the loc. and with cor. No. 2 Last Chance lode of this sur.

Porphyry stone 10X12X24 ins. set 12 ins. in the ground with mound of stones chiseled 3-T-F-2-L-C-2965.

No bearings available. Loc. cor. mound of stones 3X3 ft.

Thence S 43°57'W

Va. 14°10'E

1500

To Cor. No. 4.

Identical with the loc. and with cors. 3 Logan, 2 Anchor and 1 Last Chance lodes of this sur.

Porphyry stone 3X8X24 ins. set 12 ins. in the ground with mound of stones chiseled 4-T-F-3-L-2-A and 1-L-C-2965.

No bearings available. Loc. cor. mound of stones 3X3 ft.

Thence S 33°40'E

Va. 14°10'E

1170

Across road course N 87°E

300

W.C.E. Identical with the loc. and with the E.C.E. of

120

Logan lode of this sur. a mound of stones 3X3 ft.

600

To Cor. No. 1 the place of beginning.

Feet.

LAST CHANCE LODE.

Beginning at Cor. No. 1.

Identical with the loc. and with cors. No. 4 The Flat, 3 Logan and 2 Anchor lodes of this sur. hereinbefore described

Whence: U.S.L.M. No. 2965 brs. S 23° 14' W 1212.11 ft.

Thence N 43° 57' E
Va. 14° 10' E

1500

To Cor. No. 2.

Identical with the loc. and with cor. No. 3 The Flat lode of this sur. hereinbefore described.

Thence N 33° 40' W
Va. 14° 10' E

300

E.C.E. Identical with the loc. a mound of stones 3X3 ft.

600

To Cor. No. 3.

Identical with the loc.

Porphyry stone 8X14X24 ins. set 12 ins. in the ground with mound of stones chiseled 3-L-C-2965. No bearings available.

Loc. cor. mound of stones 3X3 ft.

Thence S 43° 57' W
Va. 14° 10' E

1500

To Cor. No. 4.

Identical with the loc. and with cor. No. 3 Anchor lode of this sur.

Porphyry stone 6X8X26 ins. set 14 ins. in the ground with mound of stones chiseled 4-L-C.3-A-2965. No bearings

available. Loc. cor. mound of stones 3X3 ft.

Thence S 33° 40' E
Va. 14° 10' E

300

W.C.E. Identical with the loc. and with the E.C.E. of

Anchor lode of this sur. a mound of stones 3X3 ft.

600

To Cor. No. 1 the place of beginning.

ANCHOR

Beginning at Cor. No. 1.

Identical with the loc. and with cors. No. 4 Logan and

Richelue No. 1 and 1 of Reliance lodes of this sur.

Feet. Porphyry stone 5X12X24 ins. set 13 ins. in the ground with mound of stones chiseled 1-A.4-R-No.1.1-R-2965.
 Whence: U.S.L.M.No.2965 brs. S 69°53'E 820.62 ft.
 No bearings available. Loc. cor. mound of stones 3X3 ft.

Thence N 56°20'E
 Va. 14°10'E

1430 Cross road course N 44°W & S 44°E

1500 To Cor.No.2.

Identical with the loc. and with cors.No.1 Last Chance, 4 The Flat and 3 Logan lodes of this sur. hereinbefore described.

Thence N 33°40'W
 Va. 14°10'E

300 E.C.E. Identical with the loc. and with the W.C.E. Last Chance lode of this sur. hereinbefore described.

600 To Cor.No.3.

Identical with the loc. and with cor.No.4 Last Chance lode of this sur. hereinbefore described.

Thence S 56°20'W
 Va. 14°10'E

1500 To Cor.No.4.

Identical with the loc. and with cor.No.4 Reliance lode of this sur.

Porphyry stone 10X12X24 ins. set 12 ins. in the ground with mound of stones chiseled 4-A.4-R-2965. No bearings available. Loc. cor. mound of stones 3X3 ft.

Thence S 33°40'E
 Va. 14°10'E

280 Cross road course N 45°E & S 45°W

300 W.C.E. Identical with the loc. and with the E.C.E. of Reliance lode of this sur. a mound of stones 3X3 ft.

600 To Cor.No.1 the place of beginning.

LOGAN

Beginning at Cor.No.1.

Identical with the loc. and with cors.No.1 Summit, Bona Fide and Richelue No.1. lodes of this survey.

Thence N 56°20'E

154

1200
Feet

Porphyry stone 6X10X26 ins. set 113 ins. in the ground
with mound of stones chiseled 1-L.1-S.1-B-F. and 1-R-No.1-
2965. Whence: U.S.L.M. No. 2965 brs. N 63°38'E 488.8 ft.
No bearings available. Loc. cor. mound of stones 3X3 ft.
Thence N 56°20'E
Va. 14°10'E

1500

To Cor. No. 2.

800

Identical with the loc. and with cor. No. 1 The Flat and *Good Luck* +
2 Summit lodes of this sur. hereinbefore described.

200

Thence N 33°40'W
Va. 14°10'E

300

E.C.E. Identical with the loc. and with the W.C.E. of The
Flat lode of this sur. hereinbefore described.

430

Cross road course N 87°E & S 87°W

600

To Cor. No. 3.

Identical with the loc. and with cors. No. 2 Anchor, 1
Last Chance and 4 The Flat lodes of this sur. hereinbefore-
described.

1200

Thence S 56°20'W
Va. 14°10'E

70

Cross road course N 44°W & S 44°E
described.

1500

To Cor. No. 4.

Identical with the loc. and with cors. No. 4 Richelue No. 1
and 1 of Reliance and Anchor lodes of this sur. herein-
before described.

800

Thence S 33°40'E

200

Va. 14°10'E

300

W.C.E. Identical with the loc. and with the E.C.E. of
Richelue No. 1 lode of this sur. a mound of stones 3X3 ft.

600

To Cor. No. 1 the place of beginning.

1200

Beginning at Cor. No. 1.

Identical with the loc. and with cors. No. 1 of Bona Fide,
Richelue No. 1 and Logan lodes of this sur. hereinbefore
described. Whence:-

800

Whence N 28°30'E

(10)

Feet.	<p>U.S.L.M.No.2965 brs. N 63°38'E 488.8 ft. Thence N 56°20'E Va.14°10'E</p>
1500	<p>To Cor.No.2. Identical with the loc.and with cors.No.2.Logan and 1 of The Flat and Good Enough lodes of this sur.herein- before described.</p>
300	<p>Thence S 33°40'E Va.14°10'E</p>
300	<p>E.C.E. Identical with the loc.and with the W.C.E. of Good Luck lode of this sur.hereinbefore described.</p>
600	<p>To Cor.No.3. Identical with the loc.and with cors.No.4 Good Luck,1 Stegman No.1 and 2 American lodes of this sur.hereinbefore described.</p>
1500	<p>Thence S 56°20'W Va.14°10'E To Cor.No.4.</p>
900	<p>Identical with the loc.and with cors.No.1 American and Good Enough and 4 of Bona Fide lodes of this sur. X-4-S.1-A.1-G-E.4-B-F-2965 chiseled on porphyry stone in place 12X12X16 ins.with mound of stones.No bearings available.Loc.cor.mound of stones 3X3 ft.</p>
300	<p>Thence N 33°40'W Va.14°10'E</p>
300	<p>W.C.E. Identical with the loc.and with the E.C.E. of Bona Fide lode of this sur.a mound of stones 3X3 ft.</p>
600	<p>To Cor.No.1 the place of beginning.</p>
1500	<p>AMERICAN LODE. Beginnig at Cor. No.1. Identical with the loc.and with cors.No.1 Good Enough, 4 of Bona Fide and Summit lodes of this sur.hereinbefor described.Whence: U.S.L.M.No.2965 brs.N 8°22'E 724.14 ft. Thence N 56°20'E Va.14°10'E</p>
1500	<p>To Cor.No.2.</p>

Feet. Identical with the loc.and with cors.No.3 Summit,4 Good Luck and 1 Stegman No.1 lodes of this sur.hereinbefore described.
 Thence S 33°40'E
 Va.14°10'E

300 E.C.E. Identical with the loc.and with the W.C.E.of Stegman No.1 lode of this sur.hereinbefore described.

600 To Cor.No.3.
 Identical with the loc.and with cors.No.4 Stegman No.1, 1 Stegman No.2 and 2 Blue Bird lodes of this sur.hereinbefore described.
 Thence S 56°20'W
 Va.14°10'E

1500 To Cor.No.4.
 Identical with the loc.and with cors.No.1 Blue Bird and Dutch and 4 of Good Enough lodes of this sur.
 Porphyry stone 6X8X24 ins.set 12 ins.in the ground with mound of stones chiseled 4-A.1-B-B.1-D.4-G-E-2965.
 No bearings available.Loc.cor.mound of stones 3X3 ft.
 Thence N 33°40'W
 Va.14°10'E

300 W.C.E. Identical with the loc.and with the E.C.E.of Good Enough lode of this sur.a mound of stones 3X3 ft.

600 To Cor. No.1 the place of beginning.
BLUE BIRD
 Beginning at Cor.No.1.
 Identical with the loc.and with cors.No.1 Dutch,4 of Good Enough and American lodes of this sur.hereinbefore Described.Whence: U.S.L.M.No.2965,hrs.N 10°35'W 1236.83 ft.
 Thence N 56°20'E
 Va.14°10'E

1500 To Cor.No.2.
 Identical with the loc.and with cors.No.3 American,4 Stegman No.1 and 1 Stegman No.2 lodes of this sur.hereinbefore described.

Feet

Thence S 33°40'E

Va. 14°10'E

300

E.C.E. Identical with the loc. and with the W.C.E. of Stegman No. 2. lode of this sur. hereinbefore described.

600

To Cor. No. 3.

Identical with the loc. and with cor. No. 4 Stegman No. 2.

1 Stegman No. 3 and 2 Dump. lodes of this sur. hereinbefore described.

Thence S 56°20'W

Va. 14°10'E

1500

To Cor. No. 4.

Identical with the loc. and with cors. No. 1 Dump and Honest and 4 of Dutch lodes of this sur.

800

Porphyry stone 6X10X26 ins. set 13 ins. in the ground with mound of stones chiseled 4-B-D.1-D.1-H.4-D-2965.

300

No bearings available. Loc. cor. mound of stones 3X3 ft.

Thence N 33°40'W

Va. 14°10'E

300

W.C.E. Identical with the loc. and with the E.C.E. of Dutch lode of this survey a mound of stones 3X3 ft.

600

To Cor. No. 1 the place of beginning.

DUMP

1200

Beginning at Cor. No. 1.

Identical with the loc. and with cor. No. 1 Honest, 4 of Dutch and Blue Bird lodes of this sur. hereinbefore

described, Whence: U.S.L.M. No. 2965 hrs. N 18°05'W 1804.72 ft.

Thence N 56°20'E

Va. 14°10'E

1500

To Cor. No. 2.

Identical with the loc. and with cors. No. 4 Stegman No. 2, 1 Stegman No. 3 and 3 of Blue Bird lodes of this sur. hereinbefore described.

Thence S 33°40'E

Va. 14°10'E

Foot

Feet.

270

Cross wash 20 ft. wide course N 46° 00' E

300

E.C.E. Identical with the loc. and with the W.C.E. of Stegman No. 3 lode of this sur. hereinbefore described.

600

To Cor. No. 3. Identical with the loc. and with cor. No. 4 Stegman No. 3 lode of this sur. hereinbefore described.

1500

To cor. No. 4. Identical with the loc. and with cor. No. 4 Honest Lode of this sur. Porphyry stone 6X8X24 ins. set 12 ins. in the ground with mound of stones chiseled 4-D-4-H-2965. No bearings available. Loc. cor. mound of stones 3X3 ft.

Thence S 56° 20' W
Va. 14° 10' E

Thence N 33° 40' W
Va. 14° 10' E

300

W.C.E. Identical with the loc. and with the E.C.E. of Honest lode of this sur. a mound of stones 3X3 ft.

600

To Cor. No. 1 the place of beginning.

HONEST LODE

Beginning at Cor. No. 1.

1200

Identical with the loc. and with cors. No. 4 Dutch and Blue Bird and 1 of Dump lodes of this sur. hereinbefore described. Whence: U.S.L.M. No. 2965 brs. N 18° 05' W 1804.72 ft.

Thence S 56° 20' W
Va. 14° 10' E

1500

To Cor. No. 2. Identical with the loc. and with cors. No. 4 Copper King and 3 Dutch lodes of this sur. X-H-2.4-C-K.3-D-2965 chiseled on porphyry stone in place

800

5X7X1 ft. above the ground with mound of stones. whence:

200

X-B-R-2-H.4-C-K-3-D-2965 chiseled on rock in place brs. S 52° W 11.4 ft. No other bearings available. Loc. cor.

1500

mound of stones 3X3 ft.

Feet. 300
 600
 1500
 300
 600
 1500

Thence S 33°40'E
 Va. 14°10'E
 W.C.E. Identical with the loc. a mound of stones 3X3 ft.
 To Cor.No.3.
 Identical with the loc.
 Porphyry stone 6X6X24 ins. set 12 ins. in the ground with
 mound of stones chiseled 3-H-2965. Whence:-
 X-B-R-3-2965 chiseled on rock in place brs. S 80°W 6.ft.
 No other bearings available. Loc. cor. mound of stones 3X3 ft.
 Thence N 56°20'E
 Va. 14°10'E
 To Cor.No.4.
 Identical with the loc. and with cor.No.4. Dump lode of this
 sur. hereinbefore described.
 Thence N 33°40'W
 Va. 14°10'E
 E.C.E. Identical with the loc. and with the W.C.E. of
 Dump lode of this sur. hereinbefore described.
 To Cor.No.1 the place of beginning.
 DUTCH 1897.
 Beginning at Cor.No.1.
 Identical with the loc. and with cors.No.4 Good Enough
 and American and 1 of Blue Bird lodes of this sur. hereinbefore
 described. Whence: U.S.L.M. No. 2965' brs. S 10°35'W
 1236.83 ft.
 Thence S 56°20'W
 Va. 14°10'E
 To Cor.No.2.
 Identical with the loc. and with cors.No.1 Copper King,
 4 Rose Bud No.1 and 3 of *Good Enough* lodes of this sur.
 Porphyry stone 10X12X 26 ins. set 13 ins. in the ground
 with mound of stones, chiseled 2-D.1-C-K.4 R-E-No.1.3 G-E-
 2965. No bearings available. Loc. cor. mound of stones 3X3 ft.
 Thence S 33°40'E
 Va. 14°10'E

Feet
300

W.C.E. Identical with the loc. and with the E.C.E. of
Copper King lode of this sur. a mound of stones 3X3 ft.

600

To Cor. No. 3.

900

Identical with the loc. and with cors. No. 2 Honest and 4
Copper King lodes of this sur. hereinbefore described.

1200

Thence N 56°20'E
Va. 14°10'E

1500

To Cor. No. 4.

Identical with the loc. and with cor. No. 4 Blue Bird, 1 of
Dump and Honest lodes of this sur. hereinbefore described.

Thence N 33°40'W
Va. 14°10'E

300

E.C.E. Identical with the loc. and with the W.C.E. Blue Bird

1200

Lode of this sur. hereinbefore described.

600

To Cor. No. 1 the place of beginning.

GOOD ENOUGH

Beginning at Cor. No. 1

Identical with the loc. and with cors. 4 of Bona Fide and
Summit and 1 of American lodes of this sur. hereinbefore
described. Whence:--U.S.L.M. No. 2965 brs. N 8°23'E 724.14 ft.

Thence S 56°20'W
Va. 14°10'E

750

N.C.S. Identical with the loc. and with the S.C.S of Bona
Fide lode of this sur. a mound of stones 3X3 ft.

1500

To Cor. No. 2.

2000

Identical with the loc. and with cor. No. 1 Rose Bud No. 1,
4 of Rose Bud and 3 of Bona Fide lodes of this sur.

Porphyry stone 12X12X26 ins. set 13 ins. in the ground with
mound of stones chiseled 2-G-E. 1-R-B-No. 1. 4-R-B-3-B-F-2965.

1200

No bearings available. Loc. cor. mound of stones 3X3 ft.

1800

Thence S 33°40'E
Va. 14°10'E

300

W.C.E. Identical with the loc. and with the E.C.E. of Rose

600

Bud No. 1 lode of this sur. a mound of stones 3X3 ft.

600

To Cor. No. 3.

Identical with the loc. and with cors. No. 2 Dutch, 1-Copper
King and 4 Rose Bud No. 1 lodes of this sur. hereinbefore

Feet. described. **750 S.C.S.** Identical with the loc. a mound of stones 3X3 ft.
 Thence N 56°20'E
 Va. 14°10'E
1500 To Cor. No. 4. Identical with the loc. and with cors. No. 4 American, 1 of
 Blue Bird and Dutch lodes of this sur. hereinbefore described.
 Thence N 33°40'W
 Va. 14°10'E
300 E.C.E. Identical with the loc. and with the W.C.E. of
 American lode of this sur. hereinbefore described.
600 To Cor. No. 1 the place of beginning.
BONA FIDE
 Beginning at Cor. No. 1.
 Identical with the loc. and with cors. No. 1 Richelue No. 1
 Logan and Summit lodes of this sur. hereinbefore described.
 Whence: U.S.L.M. No. 2965 brs. N 63.38'E 488.8 ft.
 Thence S 56°20'W
 Va. 14°10'E
750 N.C.S. Identical with the loc. a mound of stones 3X3 ft.
1500 To Cor. No. 2. Identical with the loc. and with cors. No. 1 Rose Bud and
 Richelue and 2 of Richelue No. 1 lodes of this sur. hereinbefore
 Porphyry stone. 4X10X24 ins. set 12 ins. in the ground with
 mound of stones chiseled 2-B-F. 1-R-B. 1-R. 2-R-No. 1-2965.
 No bearings available. Loc. cor. mound of stones 3X3 ft.
 Thence S 33°40'E
 Va. 14°10'E
300 W.C.E. Identical with the loc. and with the E.C.E. of Rose
 Bud lode of this sur. a mound of stones 3X3 ft.
600 To Cor. No. 3. Identical with the loc. and with cors. No. 2 Good Enough, 1
 Rose Bud No. 1 and 4 of Rose Bud lodes of this sur. hereinbefore
 described.
 Thence N 56°20'E
 Va. 14°10'E
750 S.C.S. Identical with the loc. and with the E.C.E. of Good
 Enough lode of this sur. hereinbefore

Feet.
750

S.C.S. Identical with the loc. and with the N.C.S. of Good Enough lode of this sur. hereinbefore described.

1500

To Cor. No. 4. Identical with the loc. and with cors. No. 4 Summit, 1 of American and Good Enough lodes of this sur. hereinbefore described.

Thence N 33°40'W

200

Va. 14°10'E

300

E.C.E. Identical with the loc. and with the W.C.E. of Summit lode of this sur. hereinbefore described.

600

To Cor. No. 1 the place of beginning.

RICHELUE No. 1

Beginning at Cor. No. 1.

800

Identical with the loc. and with cor. No. 1 Logan, Summit and Bona Fide lodes of this sur. hereinbefore described.

800

Bona Fide lodes of this sur. hereinbefore described.

Whence U.S.L.M. No. 2965 brs. N 63°38'E 488.8 ft.

Thence S 56°20'W

1500

To Cor. No. 2. Identical with the loc. and with cors. No. 2 Bona Fide, 1 of

1200

Rose Bud and Richelue lodes of this sur. hereinbefore

400

described.

Thence N 33°40'W

Va. 14°10'E

300

W.C.E. Identical with the loc. and with the E.C.E. of

Richelue lode of this sur. a mound of stones 3X3 ft.

600

To Cor. No. 3. Identical with the loc. and with cors. No. 3

Identical with the loc. and with cors. No. 4 Richelue and 2 Reliance lodes of this sur.

800

Quartzite 10X10X24 ins. set 12 ins. in the ground with

mound of stones chiseled 3-R-No. 1-4-R. 2-R-2965. No

bearings available. Loc. cor. mound of stones 3X3 ft.

1200

Thence N 56°20'E

Va. 14°10'E

1500

To Cor. No. 4.

Identical with the loc. and with cors. No. 1 Reliance and

Anchor and 4 of Logan lodes of this sur. hereinbefore.

Feet.	<p>described.</p> <p>Thence S 33° 40' E Va. 14° 10' E</p>
300	<p>E.C.E. Identical with the loc. and with the W.C.E. of Logan lode of this sur. hereinbefore described.</p>
600	<p>To Cor. No. 1 the place of beginning.</p>
900	<p>Identical with the loc. and with cor. No. 1 Anchor and 4 of Logan and Richelue No. 1 lodes of this sur. hereinbefore described. Whence: U.S.L.M. No. 2965 brs. S 69° 53' E 820.62 ft.</p> <p>Thence S 56° 20' W Va. 14° 10' E</p>
750	<p>S.C.S. Identical with the loc. a mound of stones 3X3 ft.</p>
1500	<p>To Cor. No. 2.</p>
1200	<p>Identical with the loc. and with cors. No. 4 Richelue and 3 Richelue No. 1 lodes of this sur. hereinbefore described.</p> <p>Thence N 33° 40' W Va. 14° 10' E</p>
300	<p>W.C.E. Identical with the loc. a mound of stones 3X3 ft.</p>
600	<p>To Cor. No. 3.</p> <p>Identical with the loc.</p> <p>Porphyry stone 7X8X24 ins. set 12 ins. in the ground with mound of stones chiseled 3-R-2965. No bearings available.</p>
900	<p>Loc. cor. mound of stones 3X3 ft.</p> <p>Thence N 56° 20' E Va. 14° 10' E</p>
750	<p>N.C.S. Identical with the location a mound of stones 3X3 ft.</p>
1150	<p>Cross road course N 53° W & S 53° E</p>
1500	<p>To Cor. No. 4.</p> <p>Identical with the loc. and with cor. No. 4 Anchor lode of this sur. hereinbefore described.</p> <p>Thence S 33° 40' E Va. 14° 10' E</p>
280 1300	<p>Cross road course N 45° E & S 45° W</p> <p>E.C.E. Identical with the loc. and with the W.C.E. of Anchor lode of this sur. hereinbefore described.</p>

Feet.
600

To Cor.No.1 the place of beginning.

RICHELUE

800

Beginning at Cor.No.1.

80

Identical with the loc.and with cors.No.2 Richelue No.1 and Bona Fide and 1 of Rose Bud lodes of this sur.

hereinbefore described.Whence: U.S.L.M.No.2965 brs.

N 58°08'E 1985.64 ft.

Thence S 56°20'W
Va.14°10'E

1500

To Cor.No.2.

120

Identical with the loc.and with cors.No.1 Blue Bell No.1 and Bull Frog and 2 of Rose Bud lodes of this sur.

Porphyry stone 5X8X24 ins.set 12 ins.in the ground with mound of stones chiseled 2-R.2-R-B-1-E-B-No.1.1-B-F-2965.

No bearings available.Loc.cor.mound of stones 3X3 ft.

Thence N 33°40'W
Va.14°10'E

300

W.C.E. Identical with the loc.and with the E.C.E.of Bull Frog lode of this sur.a mound of stones 3X3 ft.

600

To Cor.No.3.

Identical with the loc.and with cor.No.4 Bull Frog lode of this sur.

Porphyry stone 6X8X24 ins.set 12 ins.in the ground with mound of stones chiseled 3-R.4-B-F-2965. No bearings

available.Loc.cor.mound of stones 3X3 ft.

Thence N 56°20'E
Va.14°10'E

1500

To Cor.No.4.

Identical with the loc.and with cors.2 Reliance and 3 Richelue No.1 lodes of this sur.hereinbefore described.

Thence S 33°40'E
Va.14°10'E

300

E.C.E. Identical with the loc.and with the W.C.E.of Richelue No1 lode of this sur hereinbefore described.

600

To Cor.No.1 the place of beginning.

Feet

ROSEBUD.

200

Beginning at Cor.No.1.

Identical with the loc.and with cor.No.1^{Richelue} and 2 of Richelue No.1 and Bona Fide lodes of this sur.hereinbefore described
Whence : U.S.L.M.No.2965 brs.N 58°08'E 1985.64 ft.

1200

Thence S 56°20'W
Va.14°10'E

1500

To Cor.No.2.

Identical with the loc.and with cors.No.1 Blue Bell No.1 and Bull Frog and 2 of Richelue lodes of this sur.hereinbefore described.

Thence S 33°40'E
Va.14°10'E

300

W.C.E. Identical with the loc.and with the E.C.E.of Blue Bell No.1 lode of this sur. a mound of stones 3X3 ft.

600

To Cor.No.3.

Identical with the loc.and with cors.No.2 Rose Bud No.1 and 1 of Arizona and 4 of Blue Bell No.1 lodes of this sur. Porphyry stone 4X12X24 ins.set 12 ins.in the ground with mound of stones chiseled 3-R-B.2-R-B-No.1.1-A.4-B-R-No.1-2965.No bearings available.Loc.cor.mound of stones 3X3 ft.

Thence N 56°20'E
Va.14°10'E

1500

To Cor.No.4.

1200

Identical with the loc.and with cors.No.3 Bona Fide,2 Good Enough and 1 Rose Bud No.1 lodes of this sur.hereinbefore described.

Thence N 33°40'W
Va.14°10'E

300

E.C.E Identical with the loc.and with the W.C.E.of Bona Fide lode of this sur.hereinbefore described.

600

To cor.No.1 the place of beginning.

ROSE BUD No.1.Lode.

200

Beginning at Cor.No.1

Feet.

Identical with the loc. and with cors. No. 4 Rose Bud, 3 Bona Fide and 2 Good Enough lodes of this sur. hereinbefore described. Whence: U.S.L.M. No. 2965 brs; N 41°10'E 2056.29 ft.

Thence S 56°30'W

Va. 14°10'E

1500

To Cor. No. 2. Identical with the loc. and with cors. No. 1 Arizona, 4 of Blue Bell No. 1 and 3 of Rose Bud lodes of this sur. hereinbefore described.

Thence S 33°40'E

Va. 14°10'E

300

W.C.E. Identical with the loc. and with the E.C.E. of Arizona lode of this sur. a mound of stones 3X3 ft.

600

To Cor. No. 3. Identical with the loc. and with cors. No. 2 Copper King, 1 Copper Queen and 4 of Arizona lodes of this sur. Porphyry stone 8X8X24 ins. set 12 ins. in the ground with mound of stones chiseled 3-R-B-No. 12-O-K.1-G-Q.4-A-2965. No bearings available. Loc. cor. mound of stones 3X3 ft,

Thence N 56°30'E

Va. 14°10'E

1500

To Cor. No. 4. Identical with the loc. and with cors. No. 3 Good Enough, 2 Dutch and 1 of Copper King lodes of this sur. hereinbefore described.

Thence N 33°40'W

Va. 14°10'E

300

E.C.E. Identical with the loc. and with the W.C.E. of Good Enough lode of this sur. hereinbefore described.

600

To Cor. No. 1 the place of beginning.

COPPER KING LODE.

Beginning at Cor. No. 1.

1200

Identical with the loc. and with cors. No. 4 Rose Bud No. 1, 3 Good Enough and 2 Dutch lodes of this sur. hereinbefore described. Whence: U.S.L.M. No. 2965 brs. N 26°30'E 2287.71 ft.

Feet.

1500

Thence S 56°20'W
Va.14°10'E
To Cor.No.2.
Identical with the loc.and with cors.No.1 Copper Queen,4 of
Arizona and 3 of Rose Bud No.1 lodes of this sur.
hereinbefore described.

300

Thence S 33°40'E
Va.14°10'E
W.C.E. Identical with the loc.and with the E.C.E.of
Copper Queen lode of this sur.a mound of stones 3X3 ft.

600

To Cor.No.3.
Identical with the loc.and with cor.No.4 Copper Queen
lode of this sur.
Porphyry stone 10X10X22 ins.set 12 ins.in the ground with
mound of stones chiseled 3-C-K,4-C-Q-2965.No bearings
available.Loc.cor.mound of stones 3X3 ft.

1500

Thence N 56°20'E
Va.14°10'E
To Cor.No.4.
Identical with the loc.and with cors.No.3 Dutch and 2
Honest lodes of this sur.hereinbefore described.

300

Thence N 33°40'W
Va.14°10'E
E.C.E. Identical with the loc.and with the W.C.E.of
Dutch lode of this sur.hereinbefore described.

600

To Cor.No.1 the place of beginning.

1200

COPPER QUEEN
Beginning at Cor.No.1.
Identical with the loc.and with cors.No.4 Arizona,3
Rose Bud No.1 and 2 Copper King lodes of this sur.
hereinbefore described.Whence:U.S.L.M.No.2965 brs.
N 38°15'E 3665.86 ft.

1500

Thence S 56°20'W
Va.14°10'E

Feet
1500

To Cor. No. 2.

Identical with the loc. and with cers. No. 4 California and 5 of Arizona lodes of this sur.

Porphyry stone 4X6X24 ins. set 12 ins. in the ground with mound of stones chiseled 2-C-Q. 4-C. 3-A-2965. No bearings available. Loc. cor. mound of stones 3X3 ft.

Thence S 33°40'E

Va. 14°10'E

300

W.C.E. Identical with the loc. a mound of stones 3X3 ft.

600

To Cor. No. 3.

Identical with the loc.

Porphyry stone 4X6X24 ins. set 12 ins. in the ground with mound of stones chiseled 3-C-Q-2965. No bearings available. Loc. cor. mound of stones 3X3 ft.

Thence N 56°20'E

Va. 14°10'E

1500

To Cor. No. 4.

Identical with the loc. and with cers. 3 Copper King lode of this sur. hereinbefore described.

Thence N 33°40'W

Va. 14°10'E

300

E.C.E. Identical with the loc. and with the W.C.E. of Copper King lode of this sur. hereinbefore described.

600

To Cor. No. 1 the place of beginning.

ARIZONA

Beginning at Cor. No. 1.

Identical with the loc. and with cers. No. 4 Blue Bell No. 1 3 Rose Bud and 2 Rose Bud No. 1 lodes of this sur. hereinbefore described. Whence: U.S.L.M. No. 2965 brs. N 47°33'E

3526.61 ft.

Thence S 56°20'W

Va. 14°10'E

1500

To Cor. No. 2.

Identical with the loc. and with cers. No. 1 California, 4

ARIZONA

(24)

Feet. Blue Bell and 5 of Blue Bell No. 1 lodes of this sur.
 Perphyry stone 8X8X24 ins. set 12 ins. in the ground with
 mound of stones chiseled 2-A.1-C.4-B-B.3-B-B-No. 1-2965.
 Whence: U.S.L.M. No. 2965 hrs. N 57°21'E 3485.58 ft.
 No bearings available. Loc. cor. mound of stones 3X3 ft.

Thence S 33°40'W
 Va. 14°10'E

300 W.C.E. Identical with the loc. and with the E.C.E. of
 California lode of this sur. a mound of stones 3X3 ft.

600 To Cor. No. 3.
 Identical with the loc. and with cors. No. 2 Copper Queen and
 4 of California lodes of this sur. hereinbefore described.

Thence N 56°20'E
 Va. 14°10'E

1500 To Cor. No. 4.
 Identical with, *the location and* cors. No. 3 Rose Bud No. 1, 2 Copper King and
 1 Copper Queen lodes of this sur. hereinbefore described.

Thence N 33°40'W
 va. 14°10'E

300 E.C.E. Identical with the loc. and with the W.C.E. of
 Rose Bud No. 1 lode of this sur. hereinbefore described.

600 To Cor. No. 1 the place of beginning.
 Beginning at Cor. No. 1.

800 Identical with the loc. and with cors. No. 1 Bull Frog, 2 of
 Richelieu and Rose Bud lodes of this sur. hereinbefore
 described. Whence: U.S.L.M. No. 2965 hrs. N 57°21'E 3485.58 ft.

Thence S 56°20'W
 Va. 14°10'E

1500 To Cor. No. 3.
 Identical with the loc. and with cors. No. 1 Blue Bell and
 Carbonate and 2 of Bull Frog lodes of this sur.
 Perphyry stone 6X12X28 ins. set 14 ins. in the ground with
 mound of stones chiseled 2-B-B-No. 1. 1-B-B.1-C.2-B-F-2965.
 No bearings available. Loc. cor. mound of stones 3X3 ft.

Feet.

Thence S 33°40'E
Va.14°10'E

300 W.C.E. Identical with the loc.and with the E.C.E.of
Blue Bell lode of this sur. a mound of stones 3X3 ft.

600 To Cor.No.3.
Identical with the loc.and with cors.No.2 Arizona,1
California and 4 of Blue Bell lodes of this sur.herein-
before described.

1200

Thence N 56°20'E
Va.14°10'E

1500

To Cor.No.4.

Identical with the loc.and with cors.No.3 Rose Bud,2
Rose Bud No.1 and 1 Arizona lodes of this sur.hereinbefore
described.

Thence N 33°40'W
Va.14°10'E

300

E.C.E. Identical with the loc.and with the W.C.E.of
Rose Bud lode of this sur.hereinbefore described.

600

To Cor.No.1 the place of beginning.

900

Beginning at Cor.No.1.
Identical with the loc.and with cors.No.2 Richelue and
Rose Bud and 1 Blue Bell No.1.lodes of this sur.herein-
before described. Whence: U.S.L.M.No.8965 brs. N 57°21'E

3485.58 ft.

1200

Thence S 56°20'W
Va.14°10'E

1500

To Cor.No.2.

1400

Identical with the loc.and with cors.No.2 Blue Bell No.1,
1 of Blue Bell and Carbonate lodes of this sur.herein-
before described.

Thence N 33°40'W
Va.14°10'E

300

W.C.E. Identical with the loc.and with the E.C.E.of
Carbonate lode of this sur.a mound of stones 3X3 ft.

600

To Cor.No.3.

Feet. Identical with the loc. and with Cor. No. 4 Carbonate ledge of this sur.

300 Perphyry stone 5X8X24 ins. set 12 ins. in the ground with mound of stones chiseled 3-E-F-4-0-2965. No bearings available. Loc. cor. mound of stones 3X3 ft.

Thence N 56°20'E
Va. 14°10'E

1400 Cross wash 10 ft. wide course N 30°E

1200 To Cor. No. 3

1430 Cross road course N 30°E & S 30°W

1500 To Cor. No. 4.

Identical with the loc. and with cor. No. 3 Richelue ledge of this sur. hereinbefore described.

Thence S 33°40'E
Va. 14°10'E

300 E.C.E. Identical with the loc. and with the W.C.E. of Richelue ledge of this sur. hereinbefore described.

600 To Cor. No. 1 the place of beginning.

CARBONATE LEDGE

Beginning at Cor. No. 1.

Identical with the loc. and with cor. No. 2 Bull Frog and Blue Bell No. 1 and 1 of Blue Bell ledge of this sur. hereinbefore described. Whence: U.S.L.M. No. 2965. brs.

N 57°02'E 4986.0 ft.

Thence S 56°20'W
Va. 14°10'E

1500 To Cor. No. 2.

Identical with the loc. and with cor. No. 2. Blue Bell ledge of this sur.

Sand stone 8X12X36 ins. set 18 ins. in the ground with mound of stones chiseled 2-C-2-B-B-2965. No bearings available. Loc. cor. mound of stones 3X3 ft.

Thence N 33°40'W
Va. 14°10'E

300 W.C.E. Identical with the loc a mound of stones 3X3 ft.

Feet.
600

To Cor. No. 3.

1200

Sand stone 5X6X26 ins. set 13 ins. in the ground with mound of stones chiseled 3-0-2965. No bearings available. Loc. Cer. mound of stones 3X3 ft.

Thence N 56°20'E

Va. 14°10'E

1500

To Cor. No. 4.

600

Identical with the loc. and with cor. No. 3 Bull Frog lode

200

of this sur. hereinbefore described.

Thence S 33°40'E

Va. 14°10'E

300

E.C.E. Identical with the loc. and with the W.C.E. of Bull Frog lode of this sur. hereinbefore described.

600

To Cor. No. 1 the place of beginning.

BLUE BELL LODE.

Beginning at Cor. No. 1.

Identical with the loc. and with cor. No. 2 Bull Frog and Blue Bell No. 1 and 2 of various lodes of this sur. hereinbefore described. Whence: U.S.L.M. No. 2965 brs.

N 57°03'E 4986.0 ft.

Thence S 56°20'W

800

to cor. No. 1 the place of beginning. Va. 14°10'E

1500

To Cor. No. 2: Identical with the loc. and with cor. No. 2. Carbonate lode of this sur. hereinbefore described.

Thence S 33°40'E

Va. 14°10'E

300

W.C.E. Identical with the loc. a mound of stones 3X3 ft.

1200

To Cor. No. 3:

Identical with the loc. and with cor. No. 2 California lode of this sur.

Sand stone 8X12X36 ins. set 13 ins. in the ground with

mound of stones chiseled 3-B-R. 2-C-2965. No bearings available.

Feet. **Lod. cor. mound of stones 3X3 ft.** in the ground with
 of this sur.
 Thence N 56°20'E
 Va. 14°10'E

1500 **To Cor. No. 4:**
 300 **Identical with the loc. and with cors. No. 3 Blue Bell No. 1**
 2 Arizona and 1 of California lodes of this sur. herein-
 before described.
 Thence N 33°40'W
 Va. 14°10'E

300 **E.C.E. Identical with the loc. and with the W.C.E. of**
 1200 **Blue Bell No. 1 lode of this sur. hereinbefore describe.**

600 **To Cor. No. 1 the place of beginning,**
 CALIFORNIA LODE.
 Beginning at Cor. No. 1.
 Identical with the loc. and with cors. No. 4 Blue Bell, 3
 Blue Bell No. 1 and 2 of Arizona lodes of this sur. herein-
 before described. Whence U.S.L.M. No. 2965 brs. N 50°10'E
 5014.38 ft.
 Thence S 56°20'W
 Va. 14°10'E

1500 **To Cor. No. 2 the place of beginning**
 Identical with the loc. and with cor. No. 3 Blue Bell lode
 of this sur. hereinbefore described.
 Thence S 33°40'E
 Va. 14°10'E

300 **W.C.E. Identical with the loc. a mound of stones 3X3 ft.**

600 **To Cor. No. 3**
 1200 **Identical with the loc.**
 Quartzite stone 8X12X26 ins. set 13 ins. in the ground with
 mound of stones chiseled 3-C-2965. No bearings available.
Lod. cor. mound of stones 3X3 ft.
 Thence N 56°20'E
 Va. 14°10'E

1500 **To Cor. No. 4.**
 Identical with the loc. and with cors. No. 3 Arizona and 2
 Copper Queen lodes of this sur. hereinbefore described.
 Thence N 33°40'W Va. 14°10'E

300 **E.C.E. Identical with the loc. and with the W.C.E. of Arizona**
 lode of this sur. hereinbefore described.

600 **To Cor. No. 1 the place of beginning.**

AREA.

HOME	"	LODE Total area.....	16.679 Acres.
STEGMAN No.3	"	1200 " " 20.180	20.180
STEGMAN No.2	"	1200 " " 20.180	20.180
STEGMAN No.1	"	1200 " " 20.180	20.180
GOOD LUCK	"	1200 " " 20.180	20.180
THE FLAT	"	1200 " " 20.180	20.180
LAST CHANCE	"	1200 " " 20.180	20.180
ANCHOR	"	1200 " " 20.661	20.661
LOGAN	"	1200 " " 20.661	20.661
SUMMIT	"	1200 " " 20.661	20.661
AMERICAN	"	1200 " " 20.661	20.661
BLUE BIRD	"	1200 " " 20.661	20.661
DUMP	"	1200 " " 20.661	20.661
HONEST	"	1200 " " 20.661	20.661
DUTCH	"	1200 " " 20.661	20.661
GOOD ENOUGH	"	1200 " " 20.661	20.661
BONA FIDE	"	1200 " " 20.661	20.661
RICHELUE No.1	"	1200 " " 20.661	20.661
RELIANCE	"	1200 " " 20.661	20.661
RICHELUE	"	1200 " " 20.661	20.661
ROSE BUD	"	1200 " " 20.661	20.661
ROSE BUD No.1	"	1200 " " 20.661	20.661
COPPER KING	"	1200 " " 20.661	20.661
COPPER QUEEN	"	1200 " " 20.661	20.661
ARIZONA	"	1200 " " 20.661	20.661
BLUE BELL No.1	"	1200 " " 20.661	20.661
BULL FROG	"	1200 " " 20.661	20.661
CARBONATE	"	1200 " " 20.661	20.661
BLUE BELL	"	1200 " " 20.661	20.661
CALIFORNIA	"	1200 " " 20.661	20.661

STAMP EXTEND BY COLLAS AND PHOTO. LEADERSHIP AND CONTROL
 THE AREA OF THE MOUNTAIN PROPERTY EXPRESSED IN THIS
 IS NOT BE CAN BE CONFIRMED FROM PRESENT RECORDS

LODE LINES.

As near as can be determined from present developments the veins of the several locations embraced in this claim extend as follows from their respective end centers.

Home lode	1500 ft.	N20°10'E	from W.C.E. to E.C.E.
Stegman No. 3 lode	1500 "	N 43°57'E	" W.C.E. " E.C.E.
Stegman No. 2	" 1500 "	N 43°57'E	" W.C.E. " E.C.E.
Stegman No. 1	" 1500 "	N 43°57'E	" W.C.E. " E.C.E.
Good Luck	" 1500 "	N 43°57'E	" W.C.E. " E.C.E.
The Flat	" 1500 "	N 43°57'E	" W.C.E. " E.C.E.
Last Chance	" 1500 "	N 43°57'E	" W.C.E. " E.C.E.
Anchor	" 1500 "	N 56°20'E	" W.C.E. " E.C.E.
Logan	" 1500 "	N 56°20'E	" W.C.E. " E.C.E.
Summit	" 1500 "	N 56°20'E	" W.C.E. " E.C.E.
American	" 1500 "	N 56°20'E	" W.C.E. " E.C.E.
Blue Bird	" 1500 "	N 56°20'E	" W.C.E. " E.C.E.
Dump	" 1500 "	N 56°20'E	" W.C.E. " E.C.E.
Honest	" 1500 "	N 56°20'E	" W.C.E. " E.C.E.
Dutch	" 1500 "	N 56°20'E	" W.C.E. " E.C.E.
Good Enough	" 1500m	N 56°20'E	" W.C.E. " E.C.E.
Bona Fide	" 1500 "	N 56°20'E	" W.C.E. " E.C.E.
Richelue No. 1	" 1500 "	N 56°20'E	" W.C.E. " E.C.E.
Reliance	" 1500 "	N 56°20'E	" W.C.E. " E.C.E.
Richelue	" 1500 "	N 56°20'E	" W.C.E. " E.C.E.
Rose Bud	" 1500 "	N 56°20'E	" W.C.E. " E.C.E.
Rose Bud No. 1	" 1500 "	N 56°20'E	" W.C.E. " E.C.E.
Copper King	" 1500 "	N 56°20'E	" W.C.E. " E.C.E.
Copper Queen	" 1500 "	N 56°20'E	" W.C.E. " E.C.E.
Arizona	" 1500 "	N 56°20'E	" W.C.E. " E.C.E.
Blue Bell No. 1	" 1500 "	N 56°20'E	" W.C.E. " E.C.E.
Bull Frog	" 1500 "	N 56°20'E	" W.C.E. " E.C.E.
Carbonate	" 1500 "	N 56°20'E	" W.C.E. " E.C.E.
Blue Bell	" 1500 "	N 56°20'E	" W.C.E. " E.C.E.
California	" 1500 "	N 56°20'E	" W.C.E. " E.C.E.

LOCATION.

This claim is located on unsurveyed land, approximately
 Secs. 13, 23 & 24
 in T. 10 N. R. 8 E. Mazatzal or Green Valley Mining District,
 Gila County, Arizona. Tonto National Forest

ADJOINING CLAIMS.

This claim is bounded on all sides by U.S. Land.

EXPENDITURE OF FIVE HUNDRED DOLLARS.

I certify that the value of the labor and improvements made upon, or for the benefit of, each of the locations embraced in said claim by the claimant or its grantors is not less than five hundred dollars, and that said improvements consist of:

HOME LODE.

No. 1 dis. cut which is on the lode line 595 ft. from the W.C.E. 5X12X13 ft. value \$60.00

Note: 1/30 the work, \$190.00 in No. 1 tunnel Last Chance lode and 1/30 of the work, \$358.00 in No. 2 shaft Bull Frog lode is credited to this lode.

STEGMAN No. 3 LODE.

No. 1 dis cut which is on the lode line 125 ft. from the E.C.E. 4X18X10 ft. value \$50.00

Note: 1/30 of the work, \$190.00 in No. 1 tunnel Last Chance lode and 1/30 the work, \$358.00 in No. 2 shaft Bull Frog lodes are credited to this lode.

STEGMAN No. 2 Lode.

No. 1 dis cut which is on the lode line 500 ft. from the E.C.E. 4X18X12 ft. value \$50.00

Note: 1/30 of the work, \$190.00 in No. 1 tunnel Last Chance lode and 1/30 of the work, \$358.00 in No. 2 shaft Bull Frog lode is credited to this lode.

STEGMAN No. 1 LODE.

No. 1 dis cut which is on the lode line 750 ft. from the E.C.E. 4X18X12 ft. value \$50.00

Note: 1/30 of the work, \$190.00 in No. 1 tunnel Last Chance lode and 1/30 of the work, \$358.00 in No. 2 shaft Bull Frog lode is credited to this lode.

GOOD LUCK LODE.

No. 1 dis cut which is on the lode line 700 ft. from the W.C.E. 4X18X10 ft. value \$50.00

Note: 1/30 of the work, \$190.00 in No. 1 tunnel Last Chance lode, and 1/30 the work, \$358.00 in No. 2 shaft Bull Frog lode is credited to this lode.

THE FLAT LODE.

No. 1 dis. shaft which is on the lode line 450 ft. from the W.C.E. 4X6X10 ft. value \$100.00

Note: 1/30 of the work, \$190.00 in No. 1 tunnel Last Chance lode and 1/30 of the work, \$358.00 in No. 2 shaft Bull Frog lode is credited to this lode.

LAST CHANCE LODE.

No 1 dis tunnel which is on the lode line 250 ft. from the W.C.E. 5X7X380 ft. course S 44°00'W value \$5700.00

Note: 1/30 of this work, is credited to each lode in this claim.
1/30 of the work, \$358.00 in No. 2 shaft Bull Frog lode is credited to this lode.

ANCHOR LODE.

No 1 dis. shaft which is on the lode line 600 ft. from E.C.E 4X6X10 ft. value \$100.00

Note: 1/30 of the work, \$190.00 in No. 1 tunnel Last Chance lode and 1/30 of the work, \$358.00 in No. 2 shaft Bull Frog lode is credited to this lode.

LOGAN LODE.

No. 1 dis. tunnel which is on the lode line 450 ft. from the E.C.E. 4X6X10 ft. course S 56°W value \$ 80.00

Note: 1/30 of the work, \$190.00 in No. 1 tunnel Last Chance lode and 1/30 of the work, \$358.00 in No. 2 shaft Bull Frog lode is credited to this lode.

SUMMIT LODE.

No. 1 dis. out which is on the lode line 450 ft. from the W.C.E. 4X18X11 ft. value \$50.00

Note: 1/30 of the work, \$190.00 in No. 1 tunnel Last Chance lode and 1/30 of the work, \$358.00 in No. 2 shaft Bull Frog lode is credited to this lode.

AMERICAN LODE.

No. 1 dis. out which is on the lode line 700 ft. from the E.C.E. 4X18X10 ft. value \$50.00

Note: 1/30 of the work, \$190.00 in No. 1 tunnel Last Chance lode and 1/30 of the work, \$358.00 in No. 2 shaft Bull Frog lode, is credited to this lode.

BLUE BIRD LODE.

No. 1 dis. shaft which is on the lode line 500 ft. from the E.C.E. 4X6X12 ft. value \$100.00

No. 2 tunnel which brs. from cor. No. 3 S 61°W 225 ft. 4X6X400 ft. course N 70°W North of the face of this tunnel

there is a winze 60 ft. deep 4X6 ft. value \$4900.00

Note: 1/30 of the work, \$190.00 in No. 1 tunnel Last Chance lode and 1/30 of the work, \$358.00 in No. 2 shaft Bull Frog lode is credited to this lode.

DUMP LODE.

No. 1 dis. tunnel which is on the lode line 300 ft. from the E.C.E. 4X6X40 ft. course West. value \$480.00

Note: 1/30 of the work, \$190.00 in No. 1 tunnel Last Chance lode and 1/30 of the work, \$358.00 in No. 2 shaft Bull Frog lode is credited to this lode.

HONEST LODE.

No. 1 dis. out which is on the lode line 450 ft. from the E.C.E. 4X18X11 ft. value \$50.00

Note: 1/30 of the work, \$190.00 in No. 1 tunnel Last Chance lode and 1/30 of the work in No. 2 shaft Bull frog lode \$358.00 is credited to this lode.

DUTCH LODGE. No. 1 dis. tunnel which is on the lode line 700 ft. from the E.C.E. 4X6X 80 ft. course S 56°W value \$960.00
 No. 2 shaft which hrs. from cor. No. 2 N 85°E 225 ft. 4X6X 80 ft. value \$860.00

Note: 1/30 of the work, \$190.00 in No. 1 tunnel Last Chance lode and 1/30 of the work, \$358.00 in No. 2 shaft Bull Frog lode is credited to this lode.

GOOD ENOUGH LODGE.

No. 1 dis. out which is on the lode line 400 ft. from the E.C.E. 4X20X10 ft. value \$50.00

Note: 1/30 of the work, \$190.00 in No. 1 tunnel Last Chance lode and 1/30 of the work, \$358.00 in No. 2 shaft Bull Frog lode is credited to this lode.

BONA FIDE LODGE.

No. 1 dis. shaft which is on the lode line 750 ft. from the E.C.E. 4X6X10 ft. value \$100.00

Note: 1/30 of the work, \$190.00 in No. 2 tunnel Last Chance lode and 1/30 of the work, \$358.00 in No. 2 shaft Bull Frog lode is credited to this lode.

RICHELUE No. 1 LODGE.

No. 1 dis. shaft which is on the lode line 350 ft. from the E.C.E. 4X6X10 ft. value \$100.00

Note: 1/30 of the work, \$190.00 in No. 1 tunnel Last Chance lode and 1/30 of the work, \$358.00 in No. 2 shaft Bull Frog lode is credited to this lode.

RELIANCE LODGE.

No. 1 dis. tunnel which is on the lode line 600 ft. from the E.C.E. 4X6X10 ft. course S 56°W value \$80.00

Note: 1/30 of the work, \$190.00 in No. 1 tunnel Last Chance lode and 1/30 of the work, \$358.00 in No. 2 shaft Bull Frog lode is credited to this lode.

RICHELUE LODGE.

No. 1 dis. out which is on the lode line 750 ft. from the E.C.E. 4X18X10 ft. value \$50.00

Note: 1/30 of the work, \$190.00 in No. 1 tunnel Last Chance lode and 1/30 of the work, \$358.00 in No. 2 shaft Bull Frog lode is credited to this lode.

ROSE BUD LODGE.

No. 1 dis. out which is on the lode line 750 ft. from the E.C.E. 4X18X10 ft. value \$50.00

Note: 1/30 of the work, \$190.00 in No. 1 tunnel Last Chance lode and 1/30 of the work, \$358.00 in No. 2 shaft Bull Frog lode is credited to this lode.

ROSE BUD No. 1 LODGE.

No. 1 dis. shaft which is on the lode line 750 ft. from the E.C.E. 4X6X10 ft. value \$100.00

Note: 1/30 of the work, \$190.00 in No. 1 tunnel Last Chance lode and 1/30 of the work, \$358.00 in No. 2 shaft Bull Frog lode is credited to this lode

No. 2 tunnel which from cor. No. 2 S 69°W 300 ft. 4X6X 435 ft. course N 34°W value \$3480.00

COPPER KING LODE.

No. 1 dis. shaft which is on the lode line 750 ft. from the E.C.E. 4X6X10 ft. value \$100.00

Note: 1/30 of the work, \$190.00 in No. 1 tunnel Last Chance lode and 1/30 of the work, \$358.00 in No. 2 shaft Bull Frog lode is credited to this lode.

COPPER QUEEN LODE.

No. 1 dis. out which is on the lode line 750 ft. from the E.C.E. 4X16X10 ft. value \$50.00

Note: 1/30 of the work, \$190.00 in No. 1 tunnel Last Chance lode and 1/30 of the work, \$358.00 in No. 2 shaft Bull Frog lode is credited to this lode.

ARIZONA LODE.

No. 1 dis. out which is on the lode line 150 ft. from the W.C.E. 4X18X10 ft. value \$50.00

Note: 1/30 of the work, \$190.00 in No. 1 tunnel Last Chance lode and 1/30 of the work, \$358.00 in No. 2 shaft Bull Frog lode is credited to this lode.

BLUE BELL No. 1 LODE.

No. 1 dis. shaft which is on the lode line 325 ft. from the W.C.E. 4X6X25 ft. value \$250.00

Note: 1/30 of the work, \$190.00 in No. 1 tunnel Last Chance lode and 1/30 of the work, \$358.00 in No. 2 shaft Bull Frog lode is credited to this lode.

BULL FROG LODE.

No. 1 dis. tunnel which is on the lode line 700 ft. from the E.C.E. 4X6X80 ft. course N 56° E value \$800.00

Note: No. 2 tunnel which hrs. from cor. No. 4 S 32° W 430 ft. 5X7X 428 ft. thence S 56° W 135 ft. at 50 ft. on this last course on the east side of drift there is a winze 5X7 X 64 ft. timbered and at the bottom of the winze there is a drift 4X6X 32 ft. north value \$10740.00, 1/30 of this work, \$358.00 is credited to each lode in this claim. 1/30 of the work, \$190.00 in No. 1 tunnel Last Chance lode is credited to this lode.

CARBONATE LODE.

No. 1 dis. tunnel which is on the lode line 500 ft. from the E.C.E. 4X6X80 ft. course S 56° W value \$800.00

Note: 1/30 of the work, \$190.00 in No. 1 tunnel Last Chance lode and 1/30 of the work, \$358.00 in No. 2 shaft Bull Frog lode is credited to this lode.

BLUE BELL LODE.

No. 1 dis. shaft which is on the lode line 250 ft. from the E.C.E. 4X6X50 ft. value \$500.00

Note: 1/30 of the work, \$190.00 in No. 1 tunnel Last Chance lode and 1/30 of the work, \$358.00 in No. 2 shaft Bull Frog lode is credited to this lode.

CALIFORNIA LODE.

No. 1 dis. tunnel which is on the lode line 750 ft. from the E.C.E. 4X6X15 ft. course N 56° E value \$120.00

Note: 1/30 of the work, \$190.00 in No. 1 tunnel Last Chance lode and 1/30 of the work, \$358.00 in No. 2 shaft Bull Frog lode is credited to this lode.

INSTRUMENT.

This survey was made with a Gurley Solar Transit, The courses were deflected from the true meridian as determined by direct solar observations. The distances were measured with 100-ft. and 500-ft. steel tapes.

Note: From tunnel No. 1 Last Chance lode the surface rises rapidly to the south, and from tunnel No. 2 Bull Frog lode, the surface rises rapidly to the South and East, these common improvements are so located, that by drifts and cross cuts the surface ore can be extracted, then by sinking in the winze in No. 2 tunnel on the Bull Frog lode and drifting and crosscuts every lode in this group can be developed with economy. The difference between these notes and the location notices of the Last Chance, Rose Bud and Blue Bell No. 1 lodes is due to errors in the latter.

Other Improvements.

HOME LODE.

From Cor. No. 1 the N.W. cor. of the Boarding house
 brs. N 43°45'E 540 ft. 28 X 30 ft. course of long
 side N 54°E

William H. Merritt
 U.S. Mineral Surveyor.

U.S.L.M.No.2965

As there are no corners of the public survey and no monuments within the prescribed limits, I established U.S.L.M.No.2965 by chiseling X-U.S.L.M.No. 2965 on porphyry rock in place 2 X 3 X 3 ft. above the ground with mound of stones, whence:

X-B-R-U.S.L.M.No.2965 chiseled on rock in place
brs. S 79°49'W 12.5 ft.

X-B-R-U-S-L-M-No.2965 chiseled on rock in place
brs. S 40°22'E 17.ft.

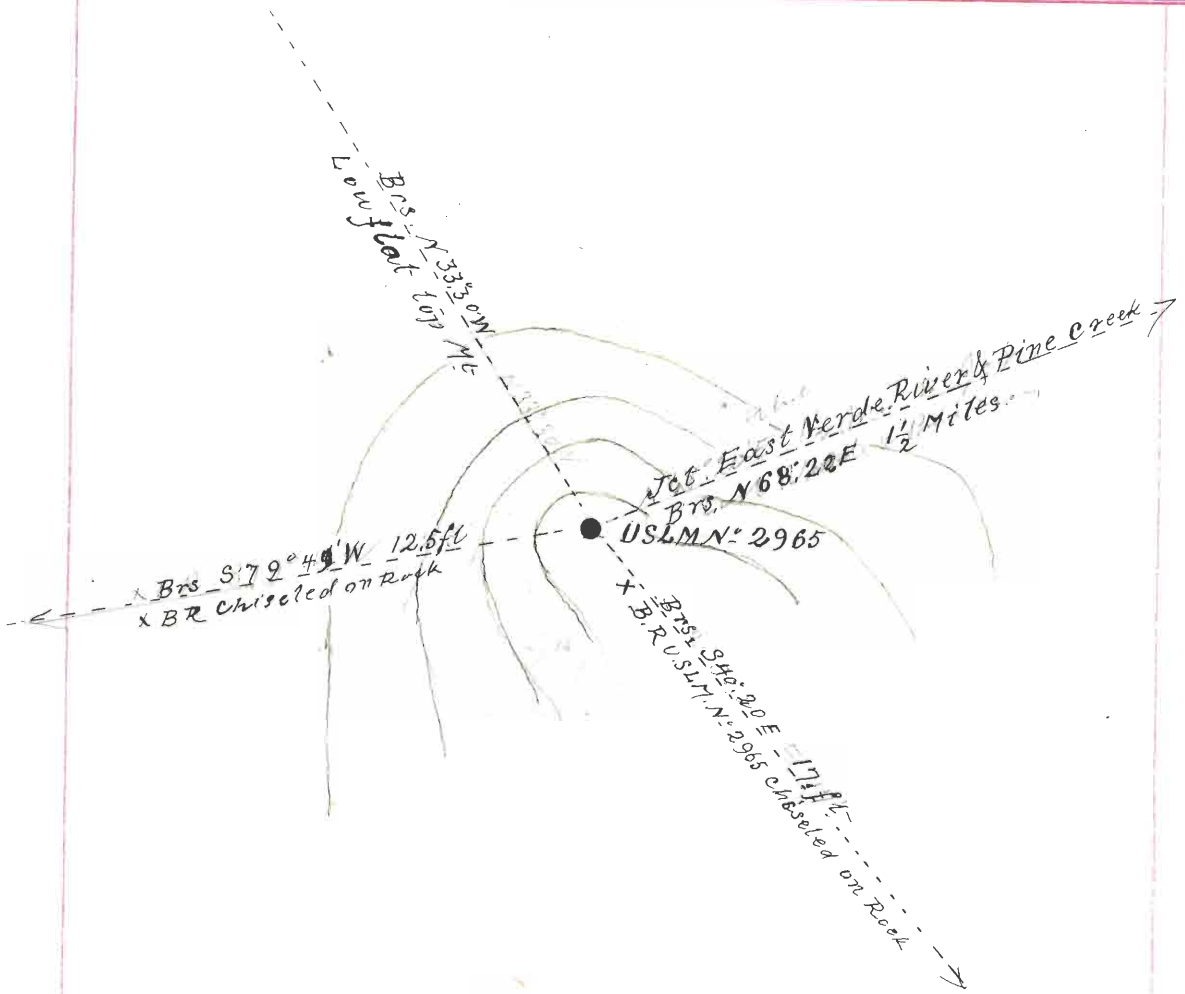
Low flat top mountain brs. N 33°30'W

Junct of East Verde river and Pine creek brs,
N 68°22'E one and a half miles.

This monument is located on the north point of a high ridge, unsurveyed land approximately in sec. 24 E. 10 N. R. 8. E. Mazatzal or Green Valley Mining District, Gila County, Arizona, Tonto National Forest.

William H. Murphree
U.S. Mineral surveyor

*Probably in sec. 15, T. 10N., R. 8E.
unsurveyed. see Protraction Diagram No. 55
see U.S.G.S. Quad. "Turret Peak" "T-16"*



FINAL OATH OF U. S. DEPUTY MINERAL SURVEYOR

I, William H. Merritt, U. S. Deputy Mineral Surveyor, do solemnly swear that, in pursuance of instructions received from the United States Surveyor General for Arizona, dated Jan 24 - 1912, I have, in strict conformity to the laws of the United States, the official regulations and instructions thereunder, and the instructions of said Surveyor General, faithfully and correctly executed the survey of the Mining Claim of Mazatzal Copper Co., known as the Mazatzal, situate in Mazatzal or Green Valley Mining District, Gila County, Arizona, in Section 13, Township No. 10 N., Range No. 8 E Qu and designated as Survey No. 2965, as represented in the foregoing field notes, which accurately show the boundaries of said mining claim as distinctly marked by monuments on the ground, and described in the attached copy of the location certificate, which was received by me from the Surveyor General with said instructions, and that all the corners of said survey have been established and perpetuated in strict accordance with the law, official regulations and instructions thereunder; and I do further solemnly swear that the foregoing are the true and original field notes of said survey and my report therein, and that the labor expended and improvements made upon said mining claim by claimant or ME grantors are as therein fully stated, and that the character, extent, location and itemized value thereof are specified therein with particularity and full detail, and that no portion of said labor or improvements so credited to this claim has been included in the estimate of expenditures upon any other claim.

William H. Merritt
U. S. Deputy Mineral Surveyor.

Subscribed and sworn to by the said William H. Merritt
U. S. Deputy Mineral Surveyor, before me J. C. Bradbury
Notary Public, Yavapai Co. this eight
day of February 1912,

My Commission Expires Dec. 2, 1914

J. C. Bradbury
Notary Public.

JAN. 10. 1912

2965

NOTICE OF MINING LOCATION
LODE CLAIM.

TO ALL WHOM IT MAY CONCERN:

This Mining Claim, the name of which is the Last Chance Mining Claim, situate on lands belonging to the United States of America, and in which there are valuable mineral deposits, was entered upon and located for the purposes of exploration and purchase by J.W. Boardman and R.T. Taylor, citizens of the United States, the undersigned, on the 1st day of January, 1906.

The length of this claim is 1500 feet, and we claim 1400 feet in a South westerly direction and 100 feet in a North easterly direction from the center of the discovery shaft, at which this notice is posted, lengthwise of the claim, together with 300 feet in width of the surface grounds, on each side of the center of said claim. The general course of the lode deposit and premises is from the North east to the South west.

The claim is situated and located in the Mazatzal Mining District, in Gila County, in the Territory of Arizona, about one and one half miles in a Southerly direction from the East Fork of the Verde River and about three miles north-westerly direction from the North Peak & located as abandoned property formerly known as Mazatzal No. 3.

The surface boundaries of the claim are marked upon the ground as follows: Beginning at South west center end monument at a point in a South westerly direction 1400 feet from the discovery shaft (at which this notice is posted), being in the center of the South west end line of said claim; thence 300 feet to a Monument of stone, being the South west corner of said claim; thence 1500 feet to a monument of stone, being at the North west corner of said claim; thence 300 feet to a monument at the center of the North east end of said claim; thence 300 feet to a monument of stone, being at the North west corner of said claim; thence 1500 feet to a monument of stone, at the South east corner of said claim; thence West 300 feet to the place of beginning.

All done under the provisions of Chapter Six, of Title XXXII, of the Revised Statutes of the United States, and of an Act of the General Assembly of Arizona, entitled "An Act to Revise and Codify the Laws of the Territory of Arizona," approved March 16, 1901.

Dated and posted on the ground this 1st day of January, 1906.

J.W. Boardman
R.T. Taylor.

Filed and recorded at the request of J.W. Boardman, on the 30th day of March, A.D. 1906, at -- ~~minutes~~ past 9 o'clock A.M.

W.D. Fisk, County Recorder,
By Richard Fleming,
Deputy Recorder.

NOTICE OF MINING LOCATION
LODE CLAIM.

TO ALL WHOM IT MAY CONCERN:

This Mining Claim, the name of which is the Blue Bell Mining Claim, situate on lands belonging to the United States of America, and in which there are valuable mineral deposits, was entered upon and located for the purposes of exploration and purchase by J.A.Boardman and R.T.Taylor, citizens of the United States, the undersigned, on the 1 day of January, 1906.

The length of this claim is 1500 feet, and we claim 900 feet in a Southwesterly direction and 600 feet in a North Easterly direction from the center of the discovery shaft, at which this notice is posted, lengthwise of the claim, together with 300 feet in width of the surface grounds, oneach side of the center of said claim. The general course of the lode deposit and premises is from the North East to the South west.

The claim is situated and located in the Mazatzal Mining District, in Gila County, in the Territory of Arizona, about one and one half miles in a Southerly direction from the East Fork of the Verde River and about three miles north west from the North Peak & Located as Abandoned property, formerly known as (name unknown)

The surface boundaries of the claim are marked upon on the ground as follows: Beginning at South west center end monument at a point in a South westerly direction 900 feet from the discovery shaft (at which this notice is posted), being in the center of the South west end line of said claim; thence 300 feet to a Monument of stone, being the Southwest corner of said claim; thence 1500 feet to a monument of stohe, being at the North west corner of said claim; thence 300 feet to a Monument of stone at the center of the North east end of said claim; thence 300 feet to a Monument of stone, being at the Northeast corner of said claim; thence 1500 feet to a monument of stone, at the Southeast corner of said claim; thence West 300 feet to the place of beginning.

All done under the provisions of Chapter Six, of Title XXXII, of the Revised Statutes of the United States, and of an Act of the General Assembly of Arizona, entitled "An Act to Revise and Codify the Laws of the Territory of Arizona," approved March 16, 1901.

Dated and posted on the ground this 1st day of January, 1906.

J.W.Boardman
R.T.Taylor.

Filed and recorded at the request of J.W.Boardman, on the 30th day of March, A.D. 1906, at - - minutes-past 9 o'clock A.M.

W.D.Fisk, County Recorder,
by Richard Fleming,
Deputy Recorder.

NOTICE OF MINING LOCATION
LODE CLAIM.

TO ALL WHOM IT MAY CONCERN:

This Mining Claim, the name of which is the Rose Bud Mining Claim, situate on lands belonging to the United States of America, and in which there are valuable mineral deposits, was entered upon and located for the purposes of exploration and purchase by R.T.Taylor and J.W.Boardman, citizens of the United States, the undersigned, on the 1st day of January, 1906.

The length of this claim is 1500 feet, and we claim 200 feet, in a South westerly direction and 1300 feet in a North easterly direction from the center of the discovery shaft, at which this notice is posted, lengthwise of the claim, together with 300 feet, in width of the surface grounds on each side of the center of said claim. The general course of the lode, deposit and premises is from the Northeast to the Southwest.

The claim is situated and located in the Mazatzal Mining District, in Gila County, in the Territory of Arizona, about one and one half miles in a Southerly direction from the East Fork of the Verde River and about three miles in a northwesterly direction from the north Peak. Located as abandoned property, formerly called the Wild Bill.

The surface boundaries of the claim are marked upon the ground as follows: Beginning at South west center end monument at a point in a South westerly direction 200 feet from the discovery shaft (at which this notice is posted), being in the center of the South west end line of said claim; thence 300 feet to a Monument of stone, being the South west corner of said claim; thence 1500 feet to a monument of stone, being at the North west corner of said claim; thence 300 feet to a monument of stone at the center of the Northeast corner of said claim; thence 300 feet to a Monument of stone, being at the North east corner of said claim; thence 1500 feet to a monument of stone at the South east corner of said claim; thence West 300 feet to the place of beginning.

All done under the provisions of Chapter Six, of Title XXII, of the Revised Statutes of the United States, and of an Act of the General Assembly of Arizona, entitled "An Act to Revise and Codify the Laws of the Territory of Arizona," approved March 16, 1901.

Dated and posted on the ground this 1st day of January 1906.

R.T.Taylor
J.W.Boardman.

Filed and recorded at the request of J.W.Boardman, on the 30th day of March, A.D. 1906, at - - minutes-past 9 o'clock A.M.

W.D.Fisk, County Recorder,
By Richard Fleming,
Deputy Recorder.

NOTICE OF MINING LOCATION
LODE CLAIM.

TO ALL WHOM IT MAY CONCERN:

This Mining Claim, the name of which is the Rose Bud No.1 Mining Claim, situate on lands belonging to the United States of America, and in which there are valuable mineral deposits, was entered upon and located for the purposes of exploration and purchase by R.T.Taylor and J.W.Boardman, citizens of the United States, the undersigned, on the 1st day of January, 1906.

The length of this claim is 1500feet, and we claim 1300 feet in a South westerly direction and 200 feet in a North easterly direction from the center of the discovery shaft, at which this notice is posted, lengthwise of the claim, together with 300 feet in width of the surface grounds, on each side of the center of said claim. The general course of the lode, deposit and premises is from the North east to the South west.

The claim is situated and located in the Mazatzal Mining District, in Gila County, in the Territory of Arizona, about one and one half miles in a Northerly direction from the East Fork of the Verde River and about three miles in a northerly direction from the North Peak. Located as abandoned property formerly known as Sunshine.

The surface boundaries of the claim are marked upon the ground as follows: Beginning at the South west center end monument, at a point in a South westerly direction 1300 feet from the discovery shaft (at which this notice is posted), being in the center of the South west end line of said claim; thence 300 feet to a monument of stone, being the South west corner of said claim; thence 1500 feet to a monument of stone, being at the North west corner of said claim; thence 300 feet to a monument of stone at the center of the North east end of said claim; thence 300 feet to a Monument of stone being at the North east corner of said claim; thence 1500 feet to a monument of stone at the South east corner of said claim; thence West 300 feet to the place of beginning.

All done under the provisions of Chapter Six, of Title XXXII, of the Revised Statutes of the United States, and of an Act of the General Assembly of Arizona, entitled "An Act to Revise and Codify the Laws of the Territory of Arizona," approved March 16, 1901.

Dated and posted on the ground this 1st day of January, 1906.

R.T.Taylor
J.W.Boardman.

Filed and recorded at the request of J.W.Boardman, on the 30th day of March, A.D. 1906, at - - ~~minutes-past~~ 9 o'clock A.M.

W.D.Fisk, County Recorder,
By Richard Fleming,
Deputy Recorder.

NOTICE OF MINING LOCATION
LODE CLAIM.

TO ALL WHOM IT MAY CONCERN:

This Mining Claim, the name of which is the Bull Frog Mining Claim, situate on lands belonging to the United States of America, and in which there are valuable mineral deposits, was entered upon and located for the purposes of exploration and purchase by J.W.Boardman and R.T.Taylor, citizens of the United States, the undersigned, on the 1st day of January, 1906.

The length of this claim is 1500 feet, and we claim 900 feet, in a South westerly direction and 600 feet, in a North easterly direction from the center of the discovery shaft, at which this notice is posted, lengthwise of the claim, together with 300 feet in width of the surface grounds, on each side of the center of said claim. The general course of the lode deposit and premises is from the North east to the South west.

The claim is situated and located in the Mazatzal Mining District, in Gila County, in the Territory of Arizona, about one and one half miles in a southerly direction from the East Fork of the Verde River and about three miles in North westerly direction from the North Peak, Located as abandoned property (name unknown)

The surface boundaries of the claim are marked upon the ground as follows: Beginning at the South west center end monument at a point in a South westerly direction 900 feet from the discovery shaft (at which this notice is posted), being in the center of the South west end line of said claim; thence 300 feet to a Monument of stone, being the South west corner of said claim; thence 1500 feet to a monument of stone, being at the North west corner of said claim; thence 300 feet to a monument of stone at the center of the North east end of said claim; thence 300 feet to a monument of stone, being at the Northeast corner of said claim; thence 1500 feet to a monument of stone at the South east corner of said claim; thence West 300 feet to the place of beginning.

All done under the provisions of Chapter Six, of Title XXXII, of the Revised Statutes of the United States, and of an Act of the General Assembly of Arizona, entitled "An Act to Revise and Codify the Laws of the Territory of Arizona," approved March 16, 1901.

Dated and posted on the ground this 1st day of January, 1906.

J.W.Boardman
R.T.Taylor.

Filed and recorded at the request of J.W.Boardman on the 30th day of March, A.D. 1906, at - - minutes-past 9 o'clock A.M.

W.D.Fisk, County Recorder,
By Richard Fleming, Deputy Recorder.

NOTICE OF MINING LOCATION
LODE CLAIM.

TO ALL WHOM IT MAY CONCERN:

This Mining Claim, the name of which is the Logan Mining Claim, situate on lands belonging to the United States of America, and in which there are valuable mineral deposits, was entered upon and located for the purposes of exploration and purchase by J.W.Boardman and R.T.Taylor, Citizens of the United States, the undersigned, on the 1st day of March, 1906.

The length of this claim is 1500 feet, and we claim 1000 feet in a South westerly direction and 500 feet, in a north easterly direction from the center of the discovery shaft, at which this notice is posted, lengthwise of the claim, together with 300 feet in width of the surface grounds, on each side of the center of said claim. The general course of the lode deposit and premises is from the Northeast to the South west.

The claim is situated and located in the Mazatzal Mining District, in Gila County, in the Territory of Arizona, about Three miles in a Northerly direction from The North Peak and about $1\frac{1}{2}$ miles south of the East Fork of the Verda River and joins the Last Chance Mining Claim on the south west end Located as abandoned property name not known.

The surface boundaries of the claim are marked upon the ground as follows: Beginning at South west center end monument at a point in a southwesterly direction 1000 feet from the discovery shaft (at which this notice is posted), being in the center of the south west end line of said claim; thence North west 300 feet to a monument of stone, being the South west corner of said claim; thence North easterly 1500 feet to a monument of stone, being at the North west corner of said claim; thence south easterly 300 feet to a monument of stone at the center of the north east end of said claim; thence South easterly 300 feet to a monument of stone, being at the North east corner of said claim; thence South westerly 1500 feet to a monument of stone at the South east corner of said claim; thence North westerly 300 feet to the place of beginning.

All done under the provisions of Chapter Six, of Title XXXII, of the Revised Statutes of the United States and of an Act of the General Assembly of Arizona, entitled "An Act to Revise and Codify the Laws of the Territory of Arizona," approved March 16, 1901.

Dated and posted on the ground this 1st day of March 1906.

J.W.Boardman
R.T.Taylor.

Filed and recorded at the request of J.W.Boardman on the 25 day of May, A.D. 1906, at -- minutes past 10 o'clock A.M.

W.D.Fisk, County Recorder,
By Richard Fleming,
Deputy Recorder.

7
47

NOTICE OF MINING LOCATION
LODE CLAIM.

TO ALL WHOM IT MAY CONCERN:

This Mining Claim, the name of which is the Summit Mining Claim, situate on lands belonging to the United States of America, and in which there are valuable mineral deposits, was entered upon and located for the purposes of exploration and purchase by J.W.Boardman and R.T.Taylor, citizens of the United States, the undersigned, on the 1st day of March, 1906.

The length of this claim is 1500 feet, and we claim 500 feet, in a South westerly direction and 1000 feet in a North easterly direction from the center of the discovery shaft at which this notice is posted, lengthwise of the claim, together with 300 feet in width of the surface grounds, on each side of the center of said claim. The general course of the lode deposit and premises is from the Northeasterly to the South westerly.

The claim is situated and located in the Mazatzal Mining District, in Gila County, in the Territory of Arizona, about Three miles in a Northerly direction from the North Peak and about $1\frac{1}{2}$ miles south from the East Fork of the Verde River and joins the Logan Mining claim on the south east Located as abandoned property name not known.

The surface boundaries of the claim are marked upon the ground as follows: Beginning at South west center end monument at a point in a Southwesterly direction 500 feet from the discovery shaft (at which this notice is posted), being in the center of the South west end line of said claim; thence north westerly 300 feet to a monument of stones, being the south west corner of said claim; thence north easterly 1500 feet to a monument of stone, being at the North west corner of said claim; thence North east 300 feet to a monument of stone, at the center of the North east end of said claim; thence North east 300 feet to a monument of stone, being at the north east corner of said claim; thence south westerly 1500 feet to a monument of stone at the South east corner of said claim; thence north westerly 300 feet to the place of beginning.

All done under the provisions of Chapter Six, of Title XXXII, of the Revised Statutes of the United States, and of An Act of the General Assembly of Arizona, entitled "An Act to Revise and Codify the Laws of the Territory of Arizona," approved March 16, 1901.

Dated and posted on the ground this 1st day of March, 1906.

J.W.Boardman
R.T.Taylor.

Filed and recorded at the request of J.W.Boardman on the 25 day of May, A.D. 1906, at -- minutes past 10 o'clock A.M.

W.D.Fisk, County Recorder,
By Richard Fleming,
Deputy Recorder.

NOTICE OF MINING LOCATION
LODE CLAIM.

TO ALL WHOM IT MAY CONCERN:

This Mining Claim, the name of which is the Copper Queen Mining Claim, situate on lands belonging to the United States of America, and in which there are valuable mineral deposits, was entered upon and located for the purposes of exploration and purchase by J.W.Boardman and R.T.Taylor, citizens of the United States, the undersigned, on the 1st day of March, 1906.

The length of this claim is 1500 feet, and we claim 750 feet in a North easterly direction and 750 feet, in a South westerly direction from the center of the discovery shaft, at which this notice is posted, lengthwise of the claim, together with 300 feet in width of the surface grounds, on each side of the center of said claim. The general course of the lode deposit and premises is from the Northeast to the South west.

The claim is situated and located in the - - - - - Mining District, in Gila County, in the Territory of Arizona, about Three miles in a Northerly direction from The North Peak and about $1\frac{1}{2}$ miles south from the East Fork of the Verde River and joins the Copper King on the South west end. Located as abandoned property. Formerly known as the "Iron Reef".

The surface boundaries of the claim are marked upon the ground as follows: Beginning at South west center end monument at a point in a South westerly direction 750 feet from the discovery shaft (at wh&ch this notice is posted), being in the center of the South west end line of said claim; thence Northwesterly 300 feet to a Monument of stone, being the south west corner of said claim; thence Northeasterly 1500 feet to a monument of stone, being at the Northwest corner of said claim; thence Southeasterly 300 feet to a Monument of stone at the center of the North east end of said claim; thence South easterly 300 feet to a Monument of stone, being at the North east corner of said claim; thence South westerly 1500 feet to a monument of stone at the South east corner of said claim; thence north westerly 300 feet to the place of beginning.

All done under the provisions of Chapter Six, of Title XXXII, of the Revised Statutes of the United States and of an Act of the General Assembly of Arizona, entitled "An Act to Revise and codify the Laws of the Territory of Arizona," approved March 16, 1901.

Dated and posted on the ground this 1st day of March, 1906.

J.W.Boardman
R.T.Taylor.

Filed and recorded at the request of J.W.Boardman on the 25 day of May, A.D. 1906, at - - minutes past 10 o'clock A.M.
W.D.Fisk, County Recorder,
By Richard Fleming,
Deputy Recorder.

NOTICE OF MINING LOCATION
LODE CLAIM.

TO ALL WHOM IT MAY CONCERN:

This Mining Claim, the name of which is the Copper King Mining Claim, situate on lands belonging to the United States of America, and in which there are valuable mineral deposits, was entered upon and located for the purposes of exploration and purchase by J.W.Boardman and R.T.Taylor, Citizens of the United States, the undersigned, on the 1st day of March, 1906.

The length of this claim is 1500 feet, and we claim 900 feet, in a North easterly direction and 600 feet in a South westerly direction from the center of the discovery shaft, at which this notice is posted, lengthwise of the claim, together with 300 feet in width of the surface grounds, on each side of the center of said claim. The general course of the lode deposit and premises is from the North east to the South west.

The claim is situated and located in the Mazatzal Mining District, in Gila County, in the Territory of Arizona, about Three miles in a Northerly direction from The North Peak and about 1½ miles south from the East Fork of the Verde River and joins the Rose Bud No.1 mining claim on the east side. Located as abandoned property name unknown.

The surface boundaries of the claim are marked upon the ground as follows: Beginning at South west center end monument at a point in a South westerly direction 600 feet from the discovery shaft (at which this notice is posted), being in the center of the South west end line of said claim; thence Northwesterly 300 feet to a monument of stone, being the South west corner of said claim; thence North easterly 1500 feet to a monument of stone, being at the North west corner of said claim; thence South easterly 300 feet to a monument of stone at the center of the North east end of said claim; thence South easterly 300 feet to a monument of stone, being at the North east corner of said claim; thence South west 1500 feet to a monument of stone at the South east corner of said claim; thence North westerly 300 feet to the place of beginning.

All done under the provisions of Chapter Six, of Title XXXII, of the Revised Statutes of the United States, and of an Act of the General Assembly of Arizona, entitled "An Act to Revise and Codify the Laws of the Territory of Arizona," approved March 16, 1901.

Dated and posted on the ground this 1st day of March, 1906.

J.W.Boardman
R.T.Taylor.

Filed and recorded at the request of J.W.Boardman on the 25 day of May, A.D. 1906, at -- minutes past 10 o'clock A.M.

W.D.Fisk, County Recorder,
By Richard Fleming,
Deputy Recorder.

NOTICE OF MINING LOCATION
LODE CLAIM.

TO ALL WHOM IT MAY CONCERN:

This Mining Claim, the name of which is the California Mining Claim, situate on lands belonging to the United States of America, and in which there are valuable mineral deposits, was entered upon and located for the purposes of exploration and purchase by J.W.Boardman and R.T.Taylor, Citizens of the United States, the undersigned, on the 1st day of March, 1906.

The length of this claim is 1500 feet, and we claim 750 feet in a South westerly direction, and 750 feet in a North easterly direction from the center of the discovery shaft, at which this notice is posted, lengthwise of the claim, together with 300 feet in width of the surface grounds, on each side of the center of said claim. The general course of the lode deposit and premises is from the North east to the South west.

The claim is situated and located in the Mazatzal Mining District, in Gila County, in the Territory of Arizona, about Three miles in a Northerly direction from The North Peak and about $1\frac{1}{2}$ miles in a southerly direction from the East Fork of the Verde River and adjoins the Arizona Mining Claim on the south west end. Located as abandoned property name unknown.

The surface boundaries of the claim are marked upon the ground as follows: Beginning at The South west center end monument at a point in a South westerly direction 750 feet from the discovery shaft (at which this notice is posted), being in the center of the South west end line of said claim; thence North westerly 300 feet to a Monument of stone, being the South west corner of said claim; thence North easterly 1500 feet to a monument of stone, being at the North west corner of said claim; thence south easterly 300 feet to a monument of stone at the center of the north east end of said claim; thence South easterly 300 feet to a monument of stone, being at the north east corner of said claim; thence south westerly 1500 feet to a monument of stone at the south east corner of said claim; thence North westerly 300 feet to the place of beginning.

All done under the provisions of Chapter Six, of Title XXXII, of the Revised Statutes of the United States, and of an Act of the General Assembly of Arizona, entitled "An Act to Revise and Codify the Laws of the Territory of Arizona," approved March 16, 1901.

Dated and posted on the ground this 1st day of March 1906.

J.W.Boardman
R.T.Taylor.

Filed and recorded at the request of J.W.Boardman, on the 25 day of May, A.D. 1906, at - - minutes past 10 o'clock A.M.

W.D.Fisk, County Recorder,
By Richard Fleming,
Deputy Recorder.

Notice of Mining Location
LODE CLAIM.

TO ALL WHOM IT MAY CONCERN:

This Mining Claim, the name of which is the Blue Bell No.1 Mining Claim, situate on lands belonging to the United States of America, and in which there are valuable mineral deposits, was entered upon and located for the purposes of exploration and purchase by J.W.Boardman and R.T. Taylor, Citizens of the United States, the undersigned, on the 1st day of March, 1906.

The length of this claim is 1500 feet, and we claim 900 feet, in a South westerly direction, and 600 feet in a north easterly direction from the center of the discovery shaft, at which this notice is posted, lengthwise of the claim, together with 300 feet in width of the surface grounds, on each side of the center of said claim. The general course of the lode deposit and premises is from the North east to the South west.

The claim is situated and located in the Mazatzal Mining District, in Gila County, in the Territory of Arizona, about Three miles in a Northerly direction from The North Peak, and about $1\frac{1}{2}$ miles in a southerly direction from the East Fork of the Verde River and adjoins the Blue Bell on the North east end. Located as abandoned property name unknown.

The surface boundaries of the claim are marked upon the ground as follows: Beginning at The Southwest center end monument at a point in a south westerly direction 900 feet from the discovery shaft (at which this notice is posted), being in the center of the South west end line of said claim; thence north westerly 300 feet to a monument of stone, being the South west corner of said claim; thence North easterly 1500 feet to a monument of stone, being at the North west corner of said claim; thence south easterly 300 feet to a Monument of stone at the center of the North east end of said claim; thence south easterly 300 feet to a Monument of Stone, being at the Northeast corner of said claim; thence South Westerly 1500 feet to a Monument of Stone at the South east corner of said claim; thence north westerly 300 feet to the place of beginning.

All done under the provisions of Chapter Six, of Title XXXII, of the Revised Statutes of the United States and of an Act of the General Assembly of Arizona, entitled, "An Act to Revise and Codify the Laws of the Territory of Arizona," approved March 16, 1901.

Dated and posted on the ground this 1st day of March, 1906.

J.W.Boardman
R.T.Taylor.

Filed and recorded at the request of J.W.Boardman, on the 25 day of May, A.D. 1906, at -- minutes past 10 o'clock A.M.
W.D.Fisk, County Recorder,
By Richard Fleming, Deputy Recorder.

NOTICE OF MINING LOCATION
LODE CLAIM.

TO ALL WHOM IT MAY CONCERN:

This Mining Claim, the name of which is the Richelue Mining Claim, situate on lands belonging to the United States of America, and in which there are valuable mineral deposits, was entered upon and located for the purposes of exploration and purchase^{by} J.W.Boardman and R.T.Taylor, Citizens of the United States, the undersigned, on the 1st day of March, 1906.

The length of this claim is 1500 feet, and we claim 750 feet, in a South westerly direction and 750 feet, in a North easterly direction from the center of the discovery shaft, at which this notice is posted, lengthwise of the claim, together with 300 feet in width of the surface grounds, on each side of the center of said claim. The general course of the lode deposit and premises is from the North east to the South west.

The claim is situated and located in the Mazatzal Mining District, in Gila County, in the Territory of Arizona, about Three miles in a Northerly direction from The North Peak and about one and one half miles south from the East Fork of the Verde River and adjoins the Bull Frog mining claim on the north end. Located as abandoned property name unknown.

The surface boundaries of the claim are marked upon the ground as follows: Beginning at The southwest center end monument at a point in a South westerly direction 750 feet from the discovery shaft (at which this notice is posted), being in the center of the South west end line of said claim; thence west 300 feet to a monument of stone, being the South west corner of said claim; thence North easterly 1500 feet to a monument of stone, being at the North east corner of said claim; thence north east 300 feet to a Monument of stone at the center of the north east end of said claim; thence Northeast 300 feet to a monument of stone, being at the north east corner of said claim; thence South west 1500 feet to a monument of stone at the South east corner of said claim; thence northwest 300 feet to the place of beginning.

All done under the provisions of Chapter Six, of Title XXXII, of the Revised Statutes of the United States and of an Act of the General Assembly of Arizona, entitled "An Act to Revise and Codify the Laws of the Territory of Arizona," approved March 16, 1901.

Dated and posted on the ground this 1st day of March, 1906.

J.W.Boardman
R.T.Taylor.

Filed and recorded at the request of J.W.Boardman, on the 25 day of May, A.D. 1906, at - - minutes past 10 o'clock A.M.

W.D.Fisk, County Recorder,
By Richard Fleming,
Deputy Recorder.

NOTICE OF MINING LOCATION
LODE CLAIM.

TO ALL WHOM IT MAY CONCERN:

This Mining Claim, the name of which is the Richelue No.1 Mining Claim, situate on lands belonging to the United States of America, and in which there are valuable mineral deposits, was entered upon and located for the purposes of exploration, and purchase by J.W.Boardman and R.T.Taylor, Citizens of the United States, the undersigned, on the 1st day of March, 1906.

The length of this claim is 1500 feet, and we claim 750 feet, in a South westerly direction and 750 feet, in a North easterly direction from the center of the discovery shaft, at which this notice is posted, lengthwise of the claim, together with 300 feet, in width of the surface grounds, on each side of the center of said claim. The general course of the lode deposit and premises is from the North east to the South west.

The claim is situated and located in the Mazatzal Mining District, in Gila County, in the Territory of Arizona, about Three miles in a Northerly direction from The North Peak about one and one half miles in a Southerly direction from the East Fork of the Verde River and adjoins the Richelue on the North east end Located as abandoned property name unknown.

The surface boundaries of the claim are marked upon the ground as follows: Beginning at The South west center end monument at a point in a South westerly direction 750 feet from the discovery shaft (at which this notice is posted,) being in the center of the South west end line of said claim; thence Northwest 300 feet to a Monument of stone, being the South west corner of said claim; thence North east 1500 feet to a Monument of stone, being at the north west corner of said claim; thence south east 300 feet to a monument of stone at the center of the North east end of said claim; thence South east 300 feet to a monument of stone, being at the North east corner of said claim; thence south west 1500 feet to a monument of stone at the south east corner of said claim; thence North west 300 feet to the place of beginning.

All done under the provisions of Chapter Six, of Title XXXII, of the Revised Statutes of the United States, and of an Act of the General Assembly of Arizona, entitled "An Act to Revise and Codify the Laws of the Territory of Arizona," approved March 16, 1901.

Dated and posted on the ground this 1st day of March, 1906.

J.W.Boardman
R.T.Taylor.

Filed and recorded at the request of J.W.Boardman, on the 25 day of May, A.D. 1906, at -- minutes past 10 o'clock A.M.
W.D.Fisk, County Recorder,
By Richard Fleming,
Deputy Recorder.

NOTICE OF MINING LOCATION
LODE CLAIM.

TO ALL WHOM IT MAY CONCERN:

This Mining Claim, the name of which is the Carbonate Mining Claim, situate on lands belonging to the United States of America, and in which there are valuable mineral deposits, was entered upon and located for the purposes of exploration and purchase by J.W.Boardman and R.T.Taylor, Citizens of the United States, the undersigned, on the 15 day of March, 1906.

The length of this claim is 1500 feet, and we claim 750 feet in a South easterly direction and 750 feet in a North westerly direction from the center of the discovery shaft, at which this notice is posted, lengthwise of the claim, together with 300 feet in width of the surface grounds, on each side of the center of said claim. The general course of the lode deposit and premises is from the Northeast to the Southwest.

The claim is situated and located in the Mazatzal Mining District, in Gila County, in the Territory of Arizona, about Three miles in a Northerly direction from the North Peak and about $1\frac{1}{2}$ miles in a southerly direction from the East Fork of the Verde River Located as abandoned property name unknown and adjoins the Bull Frog mining claim on the south west end.

The surface boundaries of the claim are marked upon the ground as follows: Beginning at The south west center end monument at a point in a South west direction 750 feet from the discovery shaft (at which this notice is posted), being in the center of the south west end line of said claim; thence West 300 feet to a Monument of stone, being the Southwest corner of said claim; thence North east 1500 feet to a monument of stone, being at the North west corner of said claim; thence East 300 feet to a Monument of stone at the center of the North east end of said claim; thence East 300 feet to a Monument of stone, being at the North east corner of said claim; thence South 1500 feet to a monument of stone at the South east corner of said claim; thence West 300 feet to the place of beginning.

All done under the provisions of Chapter Six, of Title XXXII, of the Revised Statutes of the United States and of an Act of the General Assembly of Arizona, entitled "An Act to Revise and Codify the Laws of the Territory of Arizona," approved March 16, 1901.

Dated and posted on the ground this 15 day of April, 1906.

J.W.Boardman
R.T.Taylor.

Filed and recorded at the request of J.W.Boardman, on the 25 day of May, A.D. 1906, at -- minutes past 10 o'clock A.M.

W.D.Fisk, County Recorder,
By Richard Fleming,
Deputy Recorder.

NOTICE OF MINING LOCATION
LODE CLAIM.

TO ALL WHOM IT MAY CONCERN:

This Mining Claim, the name of which is the Arizona Mining Claim, situate on lands belonging to the United States of America, and in which there are valuable mineral deposits, was entered upon and located for the purposes of exploration and purchase by J.W.Boardman and R.T.Taylor, Citizens of the United States, the undersigned, on the 1st day of March, 1906,

The length of this claim is 1500 feet, and we claim 750 feet, in a South westerly direction and 750 feet, in a North easterly direction from the center of the discovery shaft at which this notice is posted, lengthwise of the claim, together with 300 feet in width of the surface grounds, on each side of the center of said claim. The general course of the lode deposit and premises is from the North east to the South west.

The claim is situated and located in the Mazatzal Mining District, in Gila County, in the Territory of Arizona, about Three miles in a Northerly direction from The North Peak and about $1\frac{1}{2}$ miles south from the East Fork of the Verde River and adjoins the Rose Bud No.1 mining claim on the south west end Located as abandoned property name unknown.

The surface boundaries of the claim are marked upon the ground as follows; Beginning at South west center end monument at a point in a South westerly direction 750 feet from the discovery shaft (at which this notice is posted,) being in the center of the South west end line of said claim; thence North westerly 300 feet to a Monument of stone, being the South west corner of said claim; thence North easterly 1500 feet to a monument of stone, being at the North west corner of said claim; thence South easterly 300 feet to a Monument of stone at the center of the Northeast end of said claim; thence south easterly 300 feet to a monument, being at the Northeast corner of said claim; thence South easterly 1500 feet to a Monument of stone at the South east corner of said claim; thence Northwesterly 300 feet to the place of beginning.

All done under the provisions of Chapter Six, of Title XXXII, of the Revised Statutes of the United States and of an Act of the General Assembly of Arizona, entitled "An Act to Revise and Codify the Laws of the Territory of Arizona," approved March 16, 1901.

Dated and posted on the ground this 1st day of March 1906.

J.W.Boardman
R.T.Taylor.

Filed and recorded at the request of J.W.Boardman, on the 25 day of May, A.D. 1906, at -- minutes past 10 o'clock A.M.
W.D.Fisk, County Recorder,
By Richard Fleming, Deputy Recorder.

NOTICE OF MINING LOCATION

LODE CLAIM.

TO ALL WHOM IT MAY CONCERN:

This Mining Claim, the name of which is The Flat Mining Claim, situate on lands belonging to the United States of America, and in which there are valuable mineral deposits, was entered upon and located for the purposes of exploration and purchase by J.W.Boardman and R.T.Taylor, Citizens of the United States, the undersigned, on the 21st day of March, 1906,

The length of this claim is 1500 feet, and we claim 750 feet in a South westerly direction and 750 feet, in a North easterly direction from the center of the discovery shaft, at which this notice is posted, lengthwise of the claim, together with 300 feet in width of the surface grounds, on each side of the center of said claim. The general course of the lode deposit and premises is from the North east to the South west.

The claim is situated and located in the Mazatzal Mining District, in Gila County, in the Territory of Arizona, about Three miles in a Northerly direction from The North Peak and about 1½ miles south from the East Fork of the Verde River and joins the Last Chance mining claim on the East side. Located as an abandoned claim name not known.

The surface boundaries of the claim are marked upon the ground as follows: Beginning at South west center end monument at a point in a South westerly direction 750 feet from the discovery shaft (at which this notice is posted), being in the center of the South west end line of said claim; thence North westerly 300 feet to a Monument of stone, being the South west corner of said claim; thence 1500 feet to a monument of stone, being at the North westerly corner of said claim; thence southeast 300 feet to a monument of stone at the center of the Northeast end of said claim; thence southeasterly 300 feet to a monument of stone, being at the Northeast corner of said claim; thence South west 1500 feet to a monument of stone at the Southeast corner of said claim; thence Northwest 300 feet to the place of beginning.

All done under the provisions of Chapter Six, of Title XXXII, of the Revised Statutes of the United States and of an Act of the General Assembly of Arizona, entitled "An Act to Revise and Codify the Laws of the Territory of Arizona," approved March 16, 1901.

Dated and posted on the ground this 21st day of March, 1906.

J.W.Boardman
R.T.Taylor.

Filed and recorded at the request of J.W.Boardman, on the 25 day of May, A.D. 1906, at -- minutes past 10 o'clock A.M.

W.D.Fisk, County Recorder,
By Richard Fleming,
Deputy Recorder.

NOTICE OF MINING LOCATION
LODE CLAIM.

TO ALL WHOM IT MAY CONCERN:

This Mining Claim, the name of which is the Anchor Mining Claim, situate on lands belonging to the United States of America, and in which there are valuable mineral deposits, was entered upon and located for the purposes of exploration and purchase by Jos. J. Shaw, a Citizen of the U. St., the undersigned, on the 29 day of March, 1907,

The length of this claim is 1500 feet, and I claim 750 feet, in a S. Westernly direction and 750 feet in a N. Easternly direction from the center of the discovery shaft, at which this notice is posted, lengthwise of the claim, together with 300 feet in width of the surface grounds, on each side of the center of said claim. The general course of the lode deposit and premises is from the N. E. to the S. W.

The claim is situated and located in the Mazatzal Mining District, in Gila County, in the Territory of Arizona, about 4 miles in a N. Westernly direction from the north Peak and joins the Reliance & Morning Star.

The surface boundaries of the claim are marked upon the ground as follows: Beginning at the initial monument thence at a point in a S. Westerly direction 750 feet from the discovery shaft (at which this notice is posted), being in the center of the S. W. end line of said claim; thence 300 feet to a monement being the S. W. corner of said claim; thence 1500 feet to a monement being at the N. W. corner of said claim; thence 300 feet to a monement at the center of the N. E. end of said claim; thence 300 feet to a monement being at the N. E. corner of said claim; thence 1500 feet to a monement at the S. E. corner of said claim; thence 300 feet to the place of beginning.

All done under the provisions of Chapter Six, of Title XXXII, of the Revised Statutes of the United States, and of an Act of the General Assembly of Arizona, entitled "An Act to Revise and Codify the Laws of the Territory of Arizona," approved March 16, 1901.

Dated and posted on the ground this 29 day of March, 1907.

Jos. J. Shaw.

Filed and recorded at the request of J. W. Boardman, on the 14 day of June, A. D. 1907, at 25 minutes past 9 o'clock A. M.

E. T. Stewart, County Recorder,
By L. M. Brookner, Deputy Recorder.

NOTICE OF MINING LOCATION
LODE CLAIM.

TO ALL WHOM IT MAY CONCERN:

This Mining Claim, the name of which is the Good Luck Mining Claim, situate on lands belonging to the United States of America, and in which there are valuable mineral deposits, was entered upon and located for the purposes of exploration and purchase by Jos. J. Shaw, a Citizen of the U. St., the undersigned, on the 29 day of March, 1907.

The length of this claim is 1500 feet, and I claim 750 feet, in a S. Westernly direction and 750 feet in a N. Easternly direction from the center of the discovery shaft, at which this notice is posted, lengthwise of the claim, together with 300 feet in width of the surface grounds, on each side of the center of said claim. The general course of the lode deposit and premises is from the N.E. to the S.W.

The claim is situated and located in the Mazatzal Mining District, in Gila County, in the Territory of Arizona, about 4 miles in a N. Westerly direction from the North Peak this claim Joines side lines with the last chance on the S.

The surface boundaries of the claim are marked upon the ground as follows: Beginning at the initial monement thence at a point in a S. Westerly direction 750 feet from the discovery shaft (at which this notice is posted), being in the center of the S.W. end line of said claim; thence 300 feet to a monement, being the S.W. corner of said claim; thence 1500 feet to a monement being at the N.W. corner of said claim; thence 300 feet to a monement at the center of the N.E. end of said claim; thence 300 feet to a monement being at the N.E. corner of said claim; thence 1500 feet to a monement at the S.E. corner of said claim; thence 300 feet to the place of beginning.

All done under the provisions of Chapter Six, of Title XXXII, of the Revised Statutes of the United States, and of an Act of the General Assembly of Arizona, entitled "An Act to Revise and Codify the Laws of the Territory of Arizona," approved March 16, 1901.

Dated and posted on the ground this 29 day of March 1907.

Jos. J. Shaw.

Filed and recorded at the request of J.W. Boardman on the 14 day of June, A.D. 1907, at 25 minutes past 9 o'clock A.M.

E.T. Stewart, County Recorder,
By L.M. Brookner,
Deputy Recorder.

NOTICE OF MINING LOCATION
LODE CLAIM.

TO ALL WHOM IT MAY CONCERN:

This Mining Claim, the name of which is the Home Mining Claim, situate on lands belonging to the United States of America, and in which there are valuable mineral deposits was entered upon and located for the purposes of exploration and purchase by Jos. J. Shaw, a Citizen of the U. St., the undersigned, on the 28 day of March, 1907.

The length of this claim is 1500 feet and I claim 750 feet in a Southerly direction and 750 feet in a Northerly direction from the center of the discovery shaft, at which this notice is posted, lengthwise of the claim, together with 300 feet in width of the surface grounds, on each side of the center of said claim. The general course of the lode deposit and premises is from the South to the north.

The claim is situated and located in the Mazatzal Mining District, in Gila County, in the Territory of Arizona, about $1\frac{1}{4}$ miles in a Southerly direction from East Verde River and about 4 miles from the north peak.

The surface boundaries of the claim are marked upon the ground as follows: Beginning at the initial monement thence at a point in a Southerly direction 750 feet from the discovery shaft (at which this notice is posted), being in the center of the - - - end line of said claim; thence 300 feet to a monement being the South East corner of said claim; thence northerly 1500 feet to a monement being at the North east corner of said claim; thence West 300 feet to a monement at the center of the north end of said claim; thence west 300 feet to a monement being at the North West corner of said claim; thence Southerly 1500 feet to a monement at the South West corner of said claim; thence East 300 feet to the place of beginning.

All done under the provisions of Chapter Six, of Title XXXII, of the Revised Statutes of the United States, and of an Act of the General Assembly of Arizona, entitled "An Act to Revise and Codify the Laws of the Territory of Arizona," approved March 16, 1901.

Dated and posted on the ground this 28 day of March, 1907.

A. Stegman, Wittnes

Jos. J. Shaw, Locator.

Filed and recorded at the request of J. W. Boardman on the 14 day of June, A. D. 1907, at 25 minutes past 9 o'clock A. M.

E. T. Stewart, County Recorder,
By L. M. Brookner, Deputy Recorder.

NOTICE OF MINING LOCATION
LODE CLAIM.

TO ALL WHOM IT MAY CONCERN:

This Mining Claim, the name of which is the Reliance Mining Claim, situate on lands belonging to the United States of America, and in which there are valuable mineral deposits, was entered upon and located for the purposes of exploration and purchase by Jos. J. Shaw, a Citizen of the United States, the undersigned, on the 29 day of March, 1907.

The length of this claim is 1500 feet, and I claim 750 feet, in a N. Easterly direction and 750 feet, in a S. Westerly direction from the center of discovery shaft, at which this notice is posted, lengthwise of the claim, together with 300 feet in width of the surface grounds, on each side of the center of said claim. The general course of the lode deposit and premises is from the N.E. to the S.W.

The claim is situated and located in the Mazatzal Mining District, in Gila County, in the Territory of Arizona, about 4 miles in a N. Westerly direction from the North Peak and East of Copper Creek 800 feet and laying across the big horse shoe the trail makes on route to Bullfrog tunnel this claim joins with the Anchor, Hopful & Eveing Star.

The surface boundaries of the claim are marked upon the ground as follows: Beginning at the Location monument thence at a point in a S. Westerly direction 750 feet from the discovery shaft (at which this notice is posted), being in the center of the - - end line of said claim; thence 300 feet to a monument being the S.W. corner of said claim; thence 750 feet to a monument being at the center of the W. side line corner of said claim; thence 750 feet to a monument being at the center of the N.W. corner end of said claim; thence 300 feet to a monument being at the center of the N.E. end corner of said claim; thence 300 feet to a monument at the N.E. corner of said claim; thence 750 feet to a monument ~~feet-to-the-place~~ ~~of-beginning-~~ being at the center of the E. side line of said claim, thence 750 feet to a monument at the S.E. corner of said claim, thence N. Westerly 300 feet to the place of beginning.

All done under the provisions of Chapter Six, of Title XXXII, of the Revised Statutes of the United States, and of an Act of the General Assembly of Arizona, entitled "An Act to Revise and Codify the Laws of the Territory of Arizona," approved March 16, 1901.

Dated and posted on the ground this 29 day of March 1907.

Jos. J. Shaw.

Filed and recorded at the request of J.W. Boardman, on the 14 day of June, A.D. 1907, at 25 minutes past 9 o'clock A.M.

E.T. Stewart, County Recorder,
By L.M. Brookner, Deputy Recorder.

NOTICE OF MINING LOCATION
LODE CLAIM.

TO ALL WHOM IT MAY CONCERN:

This Mining Claim, the name of which is the Stegman No.1 Mining Claim, situate on lands belonging to the United States of America, and in which there are valuable mineral deposits, was entered upon and located for the purposes of exploration and purchase by Jos. J. Shaw, a citizen of U. S., the undersigned, on the 15 day of October, 1907.

The length of this claim is 1500 feet, and I claim 750 feet in a S. Westerly direction and 750 feet in a N. Easterly direction from the center of the discovery shaft, at which this notice is posted, lengthwise of the claim, together with 300 feet in width of the surface grounds, on each side of the center of said claim. The general course of the lode deposit and premises is from the N.E. to the S.W.

The claim is situated and located in the Mazatzal Mining District, in Gila County, in the Territory of Arizona, about 4 miles in a N. Westerly direction from the North Peak. This claim joins side line with the Good Luck and end lines with Extra & Stegman No. 4.

The surface boundaries of the claim are marked upon the ground as follows: Beginning at the initial monument thence at a point in a S. Westerly direction 750 feet from the discovery shaft (at which this notice is posted), being in the center of the S.W. end line of said claim; thence 300 feet to a monument, being the S.W. corner of said claim; thence 1500 feet to a monument being at the N.W. corner of said claim; thence 300 feet to a monument at the center of the N.E. end of said claim; thence 300 feet to a monument being at the N.E. corner of said claim; thence 1500 feet to a monument at the S.E. corner of said claim; thence 300 feet to the place of beginning.

All done under the provisions of Chapter Six, of Title XXXII, of the Revised Statutes of the United States, and of an Act of the General Assembly of Arizona, entitled "An Act to Revise and Codify the Laws of the Territory of Arizona," approved March 16, 1901.

Dated and posted on the ground this 15 day of October, 1907.

A Stegman)
Witness)

Jos. J. Shaw.

Filed and recorded at the request of J.W. Boardman on the 13 day of December, A.D. 1907, at 20 minutes past 9 o'clock A.M.

E.T. Stewart, County Recorder.

NOTICE OF MINING LOCATION
LODE CLAIM.

TO ALL WHOM IT MAY CONCERN:

THIS Mining Claim, the name of which is the Stegman No.3 Mining Claim, situate on lands belonging to the United States of America, and in which there are valuable mineral deposits, was entered upon and located for the purposes of exploration and purchase by Jos.J.Shaw, a Citizen of the U. St., the undersigned, on the 15 day of October, 1907.

The length of this claim is 1500 feet, and I claim 750 feet in a S. Westerly direction and 750 feet in a N. Easterly direction from the center of the discovery shaft, at which this notice is posted, lengthwise of the claim, together with 300 feet in width of the surface grounds, on each side of the center of said claim. The general course of the lode deposit and premises is from the N.E. to the S.W.

The claim is situated and located in the Mazatzal Mining District, in Gila County, in the Territory of Arizona, about 4 miles in a N. Westerly direction from the North Peak. This claim joins side lines with Stegman No.1 and Wonder and end lines with Stegman No.3.

The surface boundaries of the claim are marked upon the ground as follows: Beginning at the initial monument at a point in a S. Westerly direction 750 feet from the discovery shaft (at which this notice is posted), being in the center of the S.W. end line of said claim; thence 300 feet to a monument being the S.W. corner of said claim; thence 1500 feet to a monument being at the N.W. corner of said claim; thence 300 feet to a monument at the center of the N.E. end of said claim; thence 300 feet to a monument, being at the N.E. corner of said claim; thence 1500 feet to a monument at the S.E. corner of said claim; thence 300 feet to the place of beginning.

All done under the provisions of Chapter Six, of Title XXXII, of the Revised Statutes of the United States, and of an Act of the General Assembly of Arizona, entitled "An Act to Revise and Codify the Laws of the Territory of Arizona," approved March 16, 1901.

Dated and posted on the ground this 15 day of October, 1907.

Jos.J.Shaw

A.Stegman)
Witness.)

Filed and recorded at the request of J.W.Boardman on the 13 day of December, A.D. 1907, at 20 minutes past 9 o'clock A.M.

E.T.Stewart, County Recorder.

NOTICE OF MINING LOCATION
LODE CLAIM.

TO ALL WHOM IT MAY CONCERN:

This Mining Claim, the name of which is the Stegman No.3 Mining Claim, situate on lands belonging to the United States of America, and in which there are valuable mineral deposits, was entered upon and located for the purposes of exploration and purchase by Jos.J.Shaw a citizen of the U.St., the undersigned, on the 1 day of June, 1907.

The length of this claim is 1500 feet, and I claim 750 feet, in a S. Westerly direction and 750 feet in a N. Easterly direction from the center of the discovery shaft, at which this notice is posted, lengthwise of the claim, together with 300 feet in width of the surface grounds, on each side of the center of said claim. The general course of the lode deposit and premises is from the N.E. to the S.W.

The claim is situated and located in the Mazatzal Mining District, in Gila County, in the Territory of Arizona, about 4 miles in a N. Westerly direction from the North Peak this claim joins side line with Home on the W.

The surface boundaries of the claim are marked upon the ground as follows: Beginning at this initial monement thence at a point in a S. Westerly direction 750 feet from the discovery shaft (at which this notice is posted), being in the center of the - - end line of said claim; thence 300 feet to a monement, being the S.W. corner of said claim; thence 1500 feet to a monement being at the N.W. corner of said claim; thence 300 feet to a monement at the center of the N.E. end of said claim; thence 300 feet to a monement, being at the N.E. corner of said claim; thence 1500 feet to a monement at the S.E. corner of said claim; thence 300 feet to the place of beginning.

All done under the provisions of Chapter Six, of Title XXXII, of the Revised Statutes of the United States, and of an Act of the General Assembly of Arizona, entitled "An Act to Revise and Codify the Laws of the Territory of Arizona," approved March 16, 1901.

Dated and posted on the ground this 1 day of June, 1907.

Jos.J.Shaw.

Filed and recorded at the request of J.W.Boardman on the 13 day of December, A.D. 1907, at 20 minutes past 9 o'clock A.M.

E.T.Stewart, County Recorder.

NOTICE OF MINING LOCATION

LODE CLAIM.

TO ALLWHOM IT MAY CONCERN:

This Mining Claim, the name of which is the Bona Fide Mining Claim, situate on lands belonging to the United States of America, and in which there are valuable mineral deposits, was entered upon and located for the purposes of exploration and purchase by Jos.J.Shaw, a Citizen of the U.St., the undersigned, on the 15 day of October, 1907.

The length of this claim is 1500 feet, and I claim 750 feet, in a N. Easterly direction and 750 feet in a S. Westerly direction from the center of the discovery shaft, at which this notice is posted, lengthwise of the claim, together with 300 feet in width of the surface grounds, on each side of the center of said claim. The general course of the lode deposit and premises is from the N.E. to the S.W.

The claim is situated and located in the Mazatzal Mining District, in Gila County, in the Territory of Arizona, about 4 miles in a N.W. direction from North Peak, this claim joins side line with Richelue No.1 and end lines with Rose Bud and Summit.

The surface boundaries of the claim are marked upon the ground as follows: Beginning at the initial monement thence at a point in a S.W. direction 750 feet from the discovery shaft (at which this notice is posted), being in the center of the - - - end line of said claim; thence 300 feet to a monement being the S.W. corner of said claim; thence 750feet to a monement being- at the center of the W. side line corner of said claim; thence 750 feet to a monement being at the ~~center-of-the-~~ N.W. coner ~~end~~ of said claim; thence 300 feet to a monement, being at the N.E. end corner of said claim; thence 300 feet to a monement at the N.E. corner of said claim; thence 750 feet to ~~the-place-of-beginning~~ a monement, ^{be. 750} at the center of the E. side line of said claim, thence 750 feet to a monement S.E.Coner of said claim, thence 300 f_ N. Westerly to beginning.

All done under the provisions of Chapter Six, of Title XXXII, of the Revised Statutes of the United States, and of an Act of the General Assembly of Arizona, entitled "An Act to Revise and Codify the Laws of the Territory of Arizona," approved March 16, 1901.

Dated and posted on the ground this 15 day of October, 1907.

A. Stegman
Wittness

Jos. J. Shaw.

Filed and recorded at the request of J.W. Boardman on the 13 day of December, A.D. 1907, at 20 minutes past 9 o'clock A.M.

E.T. Stewart, County Recorder.

NOTICE OF MINING LOCATION
LODE CLAIM.

TO ALL WHOM IT MAY CONCERN:

This Mining Claim, the name of which is the Dutch Mining Claim, situate on lands belonging to the United States of America, and in which there are valuable mineral deposits, was entered upon and located for the purposes of exploration and purchase by August Stegman, a citizen of the United States, the undersigned, on the 10th day of December, 1908.

The length of this claim is 1500 feet, and I claim seven Hundred and fifty feet, in a North Easterly direction and seven hundred and fifty feet in a South westerly direction from the center of the discovery shaft, at which this notice is posted, lengthwise of the claim, together with 300 feet in width of the surface grounds, on each side of the center of said claim. The general course of the lode deposit and premises is from the North East to the South West.

The claim is situated and located in the Green Valley Mining District, in Gila County, in the Territory of Arizona, about $3\frac{1}{2}$ miles in a northerly direction from North Peak of the Mazatzal Range on the Easterly side of Kinney Gulch and adjoins the Good Enough claim of the Mazatzal Copper Company on the South Easterly side of said claim.

The surface boundaries of the claim are marked upon the ground as follows: Beginning at a monument of stone at a point in a North Easterly direction 750 feet from the discovery shaft (at which this notice is posted), being in the center of the northerly & Easterly end line of said claim; thence westerly 300 feet to a monument same, being the north west corner of said claim; thence S.W. 1500 feet to a monument, being at the South west corner of said claim; thence S. Easterly 300 feet to a monument at the center of the southerly end of said claim; thence S. Easterly 300 feet to a monument being at the South Easterly corner of said claim; thence North Easterly 1500 feet to a monument at the North Easterly corner of said claim; thence westerly 300 feet to the place of beginning.

All done under the provisions of Chapter Six, of Title XXXII, of the Revised Statutes of the United States, and of an Act of the General Assembly of Arizona, entitled "An Act to Revise and Codify the Laws of the Territory of Arizona," approved March 16, 1901.

Dated and posted on the ground this 10th day of December, 1908.

Witness

Geo. A. Millard.

Locator A. Stegman.

Filed and recorded at the request of W. H. Hilligass on the 15 day of January, A. D. 1909, at 20 minutes past 9 o'clock A. M.

E. T. Stewart, County Recorder.

NOTICE OF MINING LOCATION
LODE CLAIM.

TO ALL WHOM IT MAY CONCERN:

This Mining Claim, the name of which is the Blue Bird Mining Claim, situate on lands belonging to the United States of America, and in which there are valuable mineral deposits was entered upon and located for the purposes of exploration and purchase by George A. Millard, a citizen of the United States of America, the undersigned, on the 11th day of November, 1908.

The length of this claim is Fifteen hundred feet and I claim seven hundred and fifty feet, in a North Easterly direction and seven hundred and fifty feet in a South westerly direction from the center of the discovery shaft, at which this notice is posted, lengthwise of the claim, together with Three hundred feet in width of the surface grounds, on each side of the center of said claim. The general course of the lode deposit and premises is from the North East to the South west.

The claim is situated and located in the Green Valley Mining District, in Gila County, in the Territory of Arizona, about 3½ miles in a North westerly direction from North Peak of the Mazatzal Range and lays contiguous to and upon the South Easterly side of the mining claim known as the American.

The surface boundaries of the claim are marked upon the ground as follows: Beginning at a monument of stone at a point in a North Easterly direction 750 feet from the discovery shaft (at which this notice is posted), being in the center of the North East end line of said claim; thence northerly 300 feet to a monument same, being the North westerly corner of said claim; thence South westerly 1500 feet to a monument same, being at the South westerly corner of said claim; thence southerly 300 feet to a monument at the center of the south west end of said claim; thence Southerly 300 feet to a monument, being at the South easterly corner of said claim; thence northeasterly 1500 feet to a monument at the North Easterly corner of said claim; thence northerly 300 feet to the place of beginning.

All done under the provisions of Chapter Six, of Title XXXII, of the Revised Statutes of the United States, and of an Act of the General Assembly of Arizona, entitled "An Act to Revise and Codify the Laws of the Territory of Arizona," approved March 16, 1901.

Dated and posted on the ground this 11th day of November, 1908.

Geo.A.Millard.

Filed and recorded at the request of W.H.Hilligass on the 15 day of January, A.D. 1909, at 20 minutes past 9 o'clock A.M.

E.T.Stewart, County Recorder.

NOTICE OF MINING LOCATION
LODE CLAIM.

TO ALL WHOM IT MAY CONCERN:

This Mining Claim, the name of which is the Honest Mining Claim, situate on lands belonging to the United States of America, and in which there are valuable mineral deposits, was entered upon and located for the purposes of exploration and purchase by August Stegman, a citizen of the United States, the undersigned, on the 10th day of December, 1908.

The length of this claim is 1500 feet, and I claim 750 feet, in a North Easterly direction and 750 South feet, in a South westerly direction from the center of the discovery shaft, at which this notice is posted, lengthwise of the claim, together with 300 feet in width of the surface grounds, on each side of the center of said claim. The general course of the lode deposit and premises is from the Northeast to the South west.

The claim is situated and located in the Green Valley Mining District, in Gila County, in the Territory of Arizona, about $3\frac{1}{2}$ miles in a northerly direction from North Peak of the Mazatzal Range and upon the Easterly slope of Kinney Gulch and this claim adjoins the Dutch on the South Easterly side.

The surface boundaries of the claim are marked upon the ground as follows: Beginning at a monument of stone at a point in a South^{erly} & westerly direction 750 feet from the discovery shaft (at which this notice is posted), being in the center of the South westerly end line of said claim; thence South easterly 300 feet to a monument same, being the South easterly corner of said claim; thence N.E. 1500 feet to a monument, being at the North Easterly corner of said claim; thence northerly & w. 300 feet to a monument at the center of the Northerly end of said claim; thence Northerly 300 feet to a monument, being at the Northwesterly corner of said claim; thence 1500 feet to a monument at the south westerly corner of said claim; thence south easterly 300 feet to the place of beginning.

All done under the provisions of Chapter Six, of Title XXXII, of the Revised Statutes of the United States, and of an Act of the General Assembly of Arizona, entitled "An Act to Revise and Codify the Laws of the Territory of Arizona," approved March 16, 1901.

Dated and posted on the ground this 10 day of December, 1908.

Witness
Geo. A. Millard.

Locator A. Stegman

Filed and recorded at the request of W.H. Hilligass on the 15 day of January, A.D. 1909, at 20 minutes past 9 o'clock A.M.

E.T. Stewart, County Recorder.

NOTICE OF MINING LOCATION
LODE CLAIM.

TO ALL WHOM IT MAY CONCERN:

This Mining Claim, the name of which is the Dump Mining Claim, situate on lands belonging to the United States of America, and in which there are valuable mineral deposits, was entered upon and located for the purposes of exploration and purchase by Jos. J. Shaw, a citizen of the United States, the undersigned, on the 15th day of Sep. 1909.

The length of this claim is 1500 feet, and I claim 750 feet in a south westerly direction and 750 feet in a north easterly direction from the center of the discovery shaft, at which this notice is posted, lengthwise of this claim, together with 300 feet in width of the surface grounds, on each side of the center of said claim. The general course of the lode deposit and premises is from the northeast to the southwest.

The claim is situated and located in the Mazatzal Mining District, in Gila County, in the Territory of Arizona, about $2\frac{1}{2}$ miles in a northeasterly direction from North Peak of Mazatzal Range and adjoining the Blue Bird claim on the westerly side line.

The surface boundaries of the claim are marked upon the ground as follows: Beginning at a stone monument at a point in a south westerly direction 750 feet from the discovery shaft (at which this notice is posted), being in the center of the south end line of said claim; thence 300 feet to a stone monument, being the southwest corner of said claim; thence 1500 feet to a stone monument, being at the northwest corner of said claim; thence 300 feet to a stone monument at the center of the north end of said claim; thence 300 feet to a stone monument, being at the northeast corner of said claim; thence 1500 feet to a stone monument at the south east corner of said claim; thence 300 feet to the place of beginning.

All done under the provisions of Chapter Six, of Title XXXII, of the Revised Statutes of the United States, and an Act of the General Assembly of Arizona, entitled "An Act to Revise and Codify the Laws of the Territory of Arizona," approved March 16, 1901.

Dated and posted on the ground this 15th day of Sep. 1909.

Witness

A. Stegman.

Jos. J. Shaw.

Filed and recorded at the request of A. A. MacPherson on the 2 day of December, A. D. 1909, at 10 minutes past 9 o'clock A. M.

E. T. Stewart, County Recorder.

TERRITORY OF ARIZONA,)
) SS
 County of GILA.)

I, E.T. STEWART, County Recorder in and for the County of Gila, Territory of Arizona, do hereby certify that the foregoing ⁻²⁹⁻ ~~(30)~~ pages contain and constitute full, true and correct copies of the Location Notices of the following named mining claims, the notices of location of which are recorded in my office in Records of Mines, in the books and at the pages as set out opposite each said claim as follows, to-wit:

Name of Claim	Book	Page
LAST CHANCE, <i>Mahomet District</i>	11,	363,
BLUE BELL,	11,	364,
ROSE BUD NO.1,	11,	365,
BULL FROG,	11,	366,
ROSE BUD,	11,	367,
LOGAN,	11,	616,
SUMMIT,	11,	617,
COPPER QUEEN,	11,	618,
COPPER KING,	11,	619,
CALIFORNIA,	11,	620,
BLUE BELL NO.1,	11,	621,
RICHELUE NO.1,	11,	622,
RICHELUE ,	11,	623,
CARBONATE,	11,	624,
ARIZONA,	11,	625,
THE FLAT,	11,	626,
ANCHOR,	14,	199,
GOOD LUCK,	14,	200,
RELIANCE,	14,	201,
HOME,	14,	205,
HOPEFUL,	14,	207,
STEGMAN NO.1,	14,	561,
STEGMAN NO.2,	14,	562,
STEGMAN NO.3,	14,	563,
BONA FIDE,	14,	567,
AMERICAN, <i>Green Valley</i>	18,	83,
DUTCH, <i>"</i>	18,	84,
BLUE BIRD, <i>"</i>	18,	85,
HONEST, <i>"</i>	18,	86,
DUMP, <i>Mahomet</i>	20,	210;

that I have compared the same with the original records, and that the same are true transcripts, and of the whole thereof.

GIVEN under my hand and seal of office, this 28th. day of December, A.D. 1911.

E.T. STEWART, County Recorder,
 by L.M. Proctor
 Deputy Recorder.

NOTICE OF MINING LOCATION

JAN 24 1912

LODE CLAIM.

TO ALL WHOM IT MAY CONCERN:

This Mining Claim, the name of which is the Good Enough Mining Claim, situate on lands belonging to the United States of America, and in which there are valuable mineral deposits was entered upon and located for the purposes of exploration and purchase by Jos. J. Shaw, a citizen of the U. St., the undersigned, on the 15 day of October, 1907.

The length of this claim is 1500 feet, and I claim 750 feet in a N. Easterly direction and 750 feet in a S. Westerly direction from the center of the discovery shaft, at which this notice is posted, lengthwise of the claim, together with 300 feet in width of the surface grounds, on each side of the center of said claim. The general course of the lode deposit and premises is from the N. E. to the S. W.

The claim is situated and located in the Mazatzal Mining District, in Gila County, in the Territory of Arizona, about 4 miles in a N. W. direction from North Peak, this claim joins side line with Bona Fide and End lines with Rose Bud No. 1 and Extra.

The surface boundaries of the claim are marked upon the ground as follows: Beginning at the initial monement thence at a point in a S. W. direction 750 feet from the discovery shaft (at which this notice is posted), being in the center of the - - end line of said claim; thence 300 feet to a monement being the S. W. corner of said claim; thence 750 feet to a monement being at the center of the W. side line corner of said claim; thence 750 feet to a monement being at the center of the N. W. coner end of said claim; thence 300 feet to a monement being at the N. E. end corner of said claim; thence 300 feet to a monement at the N. E. corner of said claim; thence 750 feet to the place of beginning a monement being at the center of the E. side line of said claim; thence 750 feet to a monement at S. E. corner of said claim; thence 300 f_ N. Westerly to beging.

All done under the provisions of Chapter Six, of Title XXXII, of the Revised Statutes of the United States, and of an Act of the General Assembly of Arizona, entitled "An Act to Revise and Codify the Laws of the Territory of Arizona," approved March 16, 1901.

Dated and posted on the ground this 15 day of October, 1907.

A. Stegman,
Wittness

Jos. J. Shaw.

Filed and recorded at the request of J. W. Boardman, on the 13 day of December, A. D. 1907, at 20 minutes past 9 o'clock A. M.

E. T. Stewart, County Recorder.

TERRITORY OF ARIZONA,)
County of Gila.) : SS

I, E.T. Stewart, County Recorder in and for the County of Gila, Territory of Arizona, do hereby certify that the foregoing is a full, true and correct copy of the Location Notice of the GOOD ENOUGH Mining Claim, as the same appears of record in my office in Book 14, Records of Mines, at page 566; that I have compared the same with the original record, and that the same is a true transcript, and of the whole thereof.

GIVEN under my hand and seal of office, this 20th day of January, A.D. 1912.

E. T. Stewart
County Recorder.

U. S. SURVEYOR-GENERAL'S FINAL CERTIFICATE ON FIELD NOTES.

Department of the Interior,

OFFICE OF U. S. SURVEYOR-GENERAL,

Phoenix, Arizona,

April 8, 1912.

I, U. S. Surveyor-General for District of Arizona

do hereby certify that the foregoing transcript of the Field Notes, return and approval of the survey of the mining claim of Mazatzal Copper Company, known as the LAST CHANCE, BLUE BELL, ROSE BUD, ROSE BUD NO. 1, BULL FROG, LOGAN, SUMMIT, COPPER QUEEN, COPPER KING, CALIFORNIA, BLUE BELL NO. 1, RICHELUE, RICHELUE NO. 1, CARBONATE, ARIZONA, THE FLAT, ANCHOR, GOOD LUCK, HOME, RELIANCE, GOOD ENOUGH, STEGMAN NO. 1, STEGMAN NO. 2, STEGMAN NO. 3, BONA FIDE, AMERICAN, DUTCH, BLUE BIRD, HONEST, DUMP, situate in Mazatzal or Green Valley

Mining District, Gila County, Arizona, Approx.

in Section ~~13, 23 &~~ 24, Township No. 10 N., Range No. 8 E., Unsur., and

designated as Survey No. 2965, has been correctly copied from the originals on file in

this office; that said Field Notes furnish such an accurate description of said mining claim as will, if incorporated into a patent, serve fully to identify the premises, and that such reference is made therein to natural objects or permanent monuments as will perpetuate and fix the *locus* thereof.

And I further certify that five hundred dollars' worth of labor has been expended or improvements made upon ^{or for each of} said mining claims by claimant or its grantors, and that said improvements consist of 13 cuts, 10 shafts, 11 tunnels, 2 winzes and 1 drift, total value \$31,050.00. Tunnel No. 1 Last Chance lode, and tunnel No. 2 Bull Frog lode being so situated that by drifts and crosscuts and other workings therefrom, every lode in this group can be developed with economy, are properly termed common improvements and their value equally distributed among the thirty claims in this survey, \$190 and \$358, 1/30 interests therein, being apportioned to each of said claims.

and that no portion of said labor or improvements has been included in the estimate of expenditures upon any other claim.

I further certify that the plat thereof, filed in the U. S. Land Office at Phoenix, Arizona, is correct and in conformity with the foregoing Field Notes.

Frank S. Ingalls,

United States Surveyor-General for Arizona.

SURVEYOR-GENERAL'S CERTIFICATE OF APPROVAL OF FIELD
NOTES AND SURVEY OF MINING CLAIM.

Department of the Interior,

OFFICE OF U. S. SURVEYOR-GENERAL,

Phoenix, Arizona,

April 8, 1912.

I, U. S. Surveyor-General for District of Arizona

do hereby certify that the foregoing and hereto attached Field Notes and Return of the Survey of the
Mining Claim of MAZATZAL COPPER COMPANY, known as the

LAST CHANCE, BLUE BELL, ROSE BUD, ROSE BUD NO. 1, BULL FROG,
LOGAN, SUMMIT, COPPER QUEEN, COPPER KING, CALIFORNIA, BLUE BELL
NO. 1, RICHELUE, RICHELUE NO. 1, CARBONATE, ARIZONA, THE FLAT,
ANCHOR, GOOD LUCK, HOME, RELIANCE, GOOD ENOUGH, STEGMAN NO. 1,
STEGMAN NO. 2, STEGMAN NO. 3, BONA FIDE, AMERICAN, DUTCH,
BLUE BIRD, HONEST, DUMP, -----
situate in Mazatzal or Green Valley mining district,

Gila County, Arizona

Approx.

in Section 13, 23 & 24, Township No. 10 N., Range No. 8 E., Uns.

, designated as Survey No. 2965

executed by William H. Merritt, U. S. ~~Deputy~~ Mineral

Surveyor, January 26 - February 5, 1912, under my instructions dated

January 24, 1912, have been critically examined and the necessary cor-

rections and explanations made, and the said Field Notes and Return, and the Survey they describe,

are hereby approved. A true copy of the copy of the location certificate filed by the applicant for

survey is included in the field notes.

Frank S. Ingalls

U. S. Surveyor-General for Arizona.

UNITED STATES DEPARTMENT OF THE INTERIOR 9605 (956)
BUREAU OF LAND MANAGEMENT M.S. 2965
ARIZONA STATE OFFICE

NOTICE OF CANCELLATION OF MINERAL SURVEY

The American, Anchor, Arizona, Blue Bell, Blue Bell No. 1, Blue Bird, Bull Frog, Bona Fide, California, Carbonate, Copper King, Copper Queen, Dump, Dutch, Good Enough, Good Luck, Home, Honest, Last Chance, Logan, Reliance, Richelue, Richelue No. 1, Rose Bud, Rose Bud No. 1, Stegman No. 1, Stegman No. 2, Stegman No. 3, Summit and The Flat lodes, Mineral Survey No. 2965, located in protracted sections 15, 16, 21 and 22, Township 10 North, Range 8 East, Gila and Salt River Meridian, Arizona, are hereby cancelled.

These claims have not been filed with the Arizona State Office, Bureau of Land Management, in accordance with Section 314, 90 STAT. 2769, (43 U.S.C. 1744).

This cancellation was necessitated to clear the record.

The Mineral Survey Plat should be noted as follows:

American, Anchor, Arizona, Blue Bell, Blue Bell No. 1, Blue Bird, Bull Frog, Bona Fide, California, Carbonate, Copper King, Copper Queen, Dump, Dutch, Good Enough, Good Luck, Home, Honest, Last Chance, Logan, Reliance, Richelue, Richelue No. 1, Rose Bud, Rose Bud No. 1, Stegman No. 1, Stegman No. 2, Stegman No. 3, Summit and The Flat lodes, M.S. 2965, were cancelled December 8, 2005, by memo 9605 (956) M.S. 2965, which is now a part of the original field notes."

December 8, 2005
Date

Stephen H. Hansen
Chief Cadastral Surveyor of Arizona