

Claims	M & M Desc.	Improvements	Loc. Notices
	Pg.	Pg.	<u>Red</u> Pg.
Afterthought	4	38	3
Azure	16	43	14
Barnett	22	45	21
Broncho	12	41	11
Copperopolis	11	41	9
Copper Mountain	5	38	4
Diamond	31	48	28
Gem	14	42	12
Golden Rose 2	21	44	20
Green 2	21	45	19
John L.	19	43	17
June	1	37	1
Kress	27	47	26
Lilly 2	25	46	24
Little Verde	28	48	30
Lloyd 2	26	47	25
Maid of Erin 2	23	45	22
Maverick 2	24	46	23
May	2	37	2
Robert Emmet	20	44	18
Ruth	17	42	16
Shamrock	7	38	5
Talisman	10	41	7
Tom Sharkey	9	40	6
Topaz	29	48	27
White Hope	15	42	13

MAR 1 - 1917

FEB 19 1917

Platted

4-683

MAR 15 1917

-1917

MINERAL SURVEY No. 3348

LOT No.

ARIZONA. Land District.

FIELD NOTES

OF THE SURVEY OF THE MINING CLAIM OF

ARKANSAS AND ARIZONA COPPER COMPANY

KNOWN AS THE

June, May, After Thought, Copper Mountain, Shamrock, Tom Sharkey, Talisman, Copperopolis, Broncho, Gem, White Hope, Azure, Ruth, John L, Robert Emmet, Green 2, Golden Rose 2, Barnett, Maid of Erin 2, Maverick 2, Lilly 2, Lloyd 2, Kress, Little Verde, Topaz, Diamond.

VERDE Mining District,

YAVAPAI County, ARIZONA

Sections 9, 10, 14, 5 & 16 unsur., Township 16 N., Range 2 E.

Surveyed under instructions dated Oct. 28, 1916, 19

by J. WILLIAM WAARA U. S. Mineral Surveyor.

Claim located See location notices, 19

Survey commenced Dec. 17, 1916

Survey completed Jan. 18, 1917

Address of claimant Chalmers, Kent & Stahl, Attys. Phoenix Arizona.

DATES OF AMENDED LOCATIONS.

see location notices

cf. rewritten notes submitted return also these originals.



MAR 1 - 1917

FEB 19 1917

MAR 10 1917

2

MINERAL SURVEY NO. 3348

JUNE LODE.

Beginning at Cor. No.1, being the point for corner, where it was impracticable to set a stone for corner due to bed rock being close to the surface, so I established a witness corner N.89°-50'W. 27.8 feet, a limestone reef two feet exposed and chiseled W C-J 1, 3348 with cross for exact corner point; and drove an iron rod twelve inches long and five eighths inches in diameter, flush with the ground at the point for corner, with a substantial mound of stone alongside. From the point for corner, The corner to sections 14-15-22-23, T.16 N.R.2 E. of the Gila and Salt River Base and Meridian, brs. S.3°-13'-10"E. 1371.3 feet. A limestone reef 0.3 feet exposed and chiseled BxR J 1-3348, brs. S.31°-15'W. 12.7 feet. No other bearings available. Thence N.89°-50'W. from true corner point 27.8. Witness Corner to Cor. No.1, above described

295.2 Intersect line 1-5 Union Jack lode identical with line 4-5 Red Chief lode both of Sur.No.2811, S.51°-58'E. 321.3 feet from Corners No.5 of the respective lodes.

300.00 South Center End, a mound of stone.

600.0 TO Cor. No.2, identical with Cor. No.1 May lode of this survey, and point for cor.No.7 Red Chief lode Sur.No.2811, a limestone reef four feet high, chiseled J 2, M 1, 3348 with cross for exact corner point, from which point, A limestone bluff twenty feet high and chiseled BxR J 2, 3348, brs. N.20°-34'W. 12.1 feet. A limestone bluff 20 feet high and chiseled BxR R C 7 2811, J 2 3348, brs. S. 65°-42'E. 9.6 feet. Thence N.00°-30'W.

8.0 Cross gulch, flows northeasterly.

135.3 Cor.No.6 Red Chief lode Sur.No. 2811, whence Cor.No.5 of said lode identical with Cor.No.5 Union Jack lode, brs.



whence/  
 N.40°-34'E. 81.3 feet, ~~xxx~~ Cor.No.4 of said Union Jack  
 lode, brs. N.40°-34'E. 224.7 feet.

240.0 Cross Gulch flows southeasterly.

1481.7 TO COR. NO. 3, identical with Cor. No.1 White Hope lode,  
 Cor.No.2 May lode and Cor. No.2 Gem lode all of this survey,  
 a malpais stone 10 x 12 x 24 inches long set twelve inches  
 in the ground with a substantial mound of stone alongside,  
 chiseled J 3 3348, M2, W H 1, G 2 with cross on top for  
 exact corner point, whence,  
 A sandstone boulder 3x 4 x 1.5 feet exposed and  
 chiseled BxR M 2 3348, brs. *S 14° 27' E 96.0 ft.*  
 Thence S.89°-50'E.

300.0 NORTH CENTER END, identical with South Center End, Gem lode  
 of this survey, a mound of stone.

600.0 TO COR. NO. 4, on line 1-2 Broncho lode of this survey,  
 S.00°-30'E. 519.8 feet from Cor. No.2; and identical with  
 Cor. No.1 Gem lode of this survey, a sandstone 6 x 8 x 24  
 inches long, set twelve inches in the ground with a sub  
 stantial mound of stone alongside; chiseled J 4, G 1 3348  
 with cross on top for exact corner point, whence,  
 A malpais boulder 3x 2 x 1.5 feet exposed and  
 chiseled BxR J 4 3348, brs. S.00°-30'E. 2.0 feet.  
 A malpais boulder 3 x 2 x 1 foot exposed and chi-  
 seled BxR G 1 3348, brs. N.15°-02'E. 24.7 feet.  
 Thence S.00°-30'E.

970.83 Intersect line 3-4 Union Jack Lode Sur. No. 2811, N.70°-  
 21'E. 421.73 feet, from Cor. No.4 and S.70°-21'W. 12.37  
 feet from Cor. No.3.

980.2 Cor. No.1 Broncho lode, of this survey.

1230.0 Cross Gulch, flows easterly.

1481.7 TO THE PLACE OF BEGINNING. All corners are identical with  
 their respective locations.. variation at all corners 15° E.

MAY LODGE,  
 Beginning at cor. No.1 identical with Cor. No.2  
 June lode of this survey, previously described, whence,  
 The corner to sections 14-15-22-23, T.16 N.R.2 E.



24

brs. S.26°-17'-40"E. 1528.3 feet.  
 Thence N.00°-30'W.

8.0 Cross gulch, flows northeasterly.

135.3 Cor. No. 6 Red Chief lode Sur.No.2811, previously described.

240.0 Cross gulch, flows southeasterly.

1481.7 TO COR. NO.2 identical with Cor.No.3 June lode, Cor.No.1  
 White Hope lode and Cor. No.2 Gem lode all of this survey,  
 previously described.  
 Thence N.89°-50'W.

300.0 NORTH CENTER END, identical with South Center End White  
 Hope lode of this survey, a mound of stone.

574.15 Intersect line 3-4 Kanuck lode Sur.No.2278, S.00°-30'W.  
 6.63 feet from Cor. No.3, and N.00°-30'E. 1481.62 feet  
 from Cor. No.4.

586.9 TO COR. NO. 3, identical with Cor. No. 2 After Thought lode,  
 Cor. No.1 Azure lode, and Cor. No.2 White Hope lode, all of  
 of this survey, a malpais stone 6 x 8 x 20 inches long set  
 twelve inches in the ground with a substantial mound of  
 stone alongside; chiseled A 1 3348, W H 2, M 3, A T 2 with  
 cross on top for exact corner point, whence  
 Corner No.3 Kanuck lode, identical with Cor.No.4  
 Sids Hope lode, both of Sur.No.2278, brs. N.62°-45'E.14.4  
 feet.  
 No other bearings available.  
 Thence S.00°-01'W.

911.6 Cross gulch, flows easterly.

1481.6 TO COR. NO.4, identical with Cor. No. 1 After Thought lode  
 of this survey, and Cor. No.4 Kanuck lode Sur.No.2278,  
 located on line 3-4 Topaz lode of this survey, a limestone  
 10 x 16 x 8 inches exposed and chiseled K 4 2278, M 4, A T  
 1 3348 with cross on top for exact corner point, whence,  
 A limestone boulder 3 x 1.5 x 1 foot exposed and  
 chiseled BxR M 4 3348 brs. N.80°-03'E. 95.8 ft.  
 No other bearings available. Var. 14°-10'E.  
 Thence S.89°-50'E.

300.0 SOUTH CENTER END, a mound of stone.



424.1 Witness corner to Cor. No.4 Topaz lode of this survey, hereinafter described.

480.0 In gulch, flows easterly.

484.0 <sup>True point for</sup> Cor.No.4 Topaz lode of this survey, hereinafter described.

580.0 In gulch, flows northeasterly.

600.0 TO THE PLACE OF BEGINNING. All corners are identical with their respective locations, variation at all corners 15°-00'E. except where otherwise mentioned.

AFTER THOUGHT' LODE

Beginning at Cor. No.1, located on line 3-4 Topaz lode of this survey, and identical with Cor. No.4 May lode of this survey, and Cor.No.4 Kanuck lode Sur.No.2278, previously described, whence,

The corner to sections 14-15-22-23 , T.16 N.R.2 E. brs. S.42°-57'E. 1874.2 feet.

Thence N.00°-01'E.

570.0 Cross Gulch, flows easterly.

1481.6 TO COR. NO.2 identical with cor.No.1 Azure lode, Cor. No.2 White Hope lode, and Cor. No.3 May lode all of this survey, previously described.

Thence N.89°-50'W.

300.0 NORTH CENTER END; identical with South Center End Azure lode of this survey, a mound of stone.

599.995 Intersect lines 1-2 Kanuck and Irene lodes Sur.No.2278, N.00°-14'-59"W. 1481.6 ft. from Cor.Nos.1 respectively.

600.0 TO COR. NO.3 identical with Cor. NO.2 Azure lode, Cor.No.2 Copper Mountain lode, Cor. No.1 Ruth lode, all of this survey; a malpais stone 6 x 10 x 24 inches long set twelve inches in the ground with a substantial mound of stone alongside; chiseled R 1 3348, C M 2, A T 3, A 2 with cross on top for exact corner point, whence,

A malpais reef two feet high and chiseled BxR R 1 3348, brs. S.56°-01'E. 16.7 feet.

A malpais boulder 4 x 5 x 5 feet exposed and chiseled BxR A T 3 3348, brs. S.00°-15'E. 5.8 feet.

variation 14°-30'E.



hence S.00°-15'E.

661.6 Cross Gulch, flows easterly.  
 1481.6 TO COR. NO. 4, identical with Cor. No.1 Copper Mountain lode, of this survey, Cor. No.1 Kanuck lode and Cor. No.1 Irene lode both of Sur.No. 2278, and located on line 3-4 Topaz lode of this survey, at S.89°-50'E. 423.0 ft. from Cor. No.3; a malpais stone 6 x 12 x 12 inches exposed with a substantial mound of stone alongside; chiseled A T-4-3348, C M 1, I 1 2278, K 1 2278 with cross on top for exact corner point, whence,

A malpais boulder 6 x 5 x 3 feet exposed and chiseled BxR I - 2278, brs. N.66°-42'W. 17.0 feet (No other markings *practicable*)

A malpais boulder 2 x 3 x 2 feet exposed and chiseled BxR K 1 2278, A T 4 3348, brs. S.31°-40'E. 29.7 feet.

Thence S.89°-50'E.

292.8 SOUTH CENTER END, identical with south center end Kanuck Lode Sur. No. 2278, a malpais stone 8 x 12 x 8 inches exposed with a substantial mound of stone alongside, chiseled S C E- K.

593.0 TO THE PLACE OF BEGINNING. All corners are identical with their respective locations. Variation 15°-00'E, except where otherwise mentioned.

#### COPPER MOUNTAIN LODE.

Beginning at Cor. No.1, located on line 3-4 Topaz lode of this survey, and identical with Cor. No.4 After-Thought lode of this survey, Cors. No.1 Kanuck and Irene lodes Sur. No. 2278, previously described, whence,

The corner to sections 14-15-22-23, T.16 N.R.2 E., brs. S.53°-42'-10"E. 2320.4 feet.

Thence N.00°-15'W.

870.0 Cross Gulch flows easterly.

1481.6 TO COR. NO.2, identical with Cor. No.1 Ruth lode, Cor. No.2 Azure lode, and Cor. No.3 After Thought lode, all of this survey, previously described., whence ~~the~~ corner NO.2



- Irene lode, identical with Cor. No. 2 Kanuck lode, Cor. No. 1 Sids Hope lode and Cor. No. 1 Verde King lode, all of Sur. No. 2278, brs. N.00°-03'W. 1.6 feet.
- thence N.89°-50'W.
- 300.0 NORTH CENTER END, identical with south center end Ruth lode of this survey, a mound of stone.
- 600.0 TO COR. NO. 3, identical with Cor. No. 2 Ruth lode of this survey, and located on line 1-2 Shamrock lode of this survey, also identical with Cor. No. 3 Irene lode and Cor. No. 4 Verde King lode both Sur. No. 2278, a malpais stone 4 x 6 x 12 inches exposed with a substantial mound of stone alongside; chiseled V. K 4, "N E", I 3 2278, R 2, C M 3 3348, with cross on top for exact corner point, whence,
- A malpais rock in place 2 x 3 x 2 feet exposed and chiseled BxR R 2 3348, brs. N.50°-58'E. 21.5 feet.
- Cor. No. 2 Shamrock, identical with Cor. No. 1 John L lode, both of this survey, hereinafter described, brs. N.00°-35'W. 14.3 feet.
- Point for Cor. No. 4 Irene lode brs. S.00°-16'E. 1481.7 feet.  
No other bearings available. Variation 10°-20'E.
- Thence S.00°-35'E.
- 555.1 Cross gulch, flows easterly.
- 1264.1 Intersect line 4-1 Diamond lode of this survey, S.38°-03'E. 277.3 feet from <sup>point for</sup> Cor. No. 4, (~~and N.38°-03'W. 277.0 feet from its intersection with line 4-1 of this lode.~~)
- 1481.7 TO COR. NO. 4, a malpais stone 5 x 15 x 24 inches long set twelve inches in the ground with a substantial mound of stone alongside; chiseled C M 4 3348 with cross on top for exact corner point, whence,
- The point for Cor. No. 4 Irene lode Sur. 2278, brs. N.89°-50'W. 8.5 feet.
- Cor. No. 1 Shamrock lode of this survey, hereinafter described, brs. S.00°-35'E. 3.4 feet.
- No other bearing available. Variation 20°-28'E.
- Thence S.89°-50'E.
- 168.5 Cor. No. 3 Topaz lode of this survey, located on line 4-1 Diamond lode of this survey, S.38°-03'E. 554.3 feet from



Cor. No.4

296.2 SOUTH CENTER END, identical with South Center End Irene lode Sur.No.2278, a malpais stone 6 x 12 x 12 inches exposed with a substantial mound of stone alongside; chiseled S C E I 2278.

591.5 TO THE PLACE OF BEGINNING. All corners are identical with their respective locations. variation at all corners 15°-00'E except where otherwise mentioned.

SHAMROCK LODE

Beginning at Cor. No.1, a malpais stone 5 x 12 x 27 inches long set twelve inches in the ground with a substantial mound of stone alongside; chiseled Sh 1 3348 with cross on top for exact corner point, whence,

The corner to sections 14-15-22-23, T.16 N.R.2 E.brs. S.60°-52'-10"E. 2818.0 ft. No other bearings available.

thence N.00°-35'W.

3.4 Cor.No.4 Copper mountain lode of this survey, previously described, and intersect line 4-1 Irene lode Sur.No.2278, S.89°-50'E. 8.5 feet from point for Cor.No.4

221.0 Intersect line 4-1 Diamond lode of this survey. S.38°-03'E. 277.3 feet from <sup>point for</sup> Cor. No. 4 and 11.9 feet from its intersection with line 3-4 Irene lode Sur.No.2278, N.00°-16'W. 226.9 feet from point for cor.No.4

930.0 Cross gulch, flows easterly.

1485.1 Cor.No.3 Copper Mountain lode, identical with Cor.No. 2 Ruth lode, both of this survey and Cor.No.3 Irene lode <sup>Cor.No.4 Verde King lode</sup> Sur.No.2278, previously described, whence point for Cor. No.4 said Irene lode brs. S.00°-16'E. 1481.7 feet.

1499.4 TO COR. NO.2, identical with Cor. No.1 John L lode of this survey, a malpais stone 5 x 10 x 22 inches long set twelve inches in the ground with a substantial mound of stone alongside; chiseled Sh 2, J L 1 3348 with cross on top for exact corner point, whence,

A malpais boulder 3 x 1 x 0.5 feet exposed and chiseled BxR V K 4, J L 1, 3348 brs. N.52°-11'E. 6.2 ft.

A malpais rock in place 3 x 2 x 2 feet exposed and chiseled BxR J L 1 3348, brs. N.40°-13'W. 29.0 ft.

variation N.10°-20'E. (Discrepancy noted at the time of observation and presumed to be caused by local attraction)



Thence S.89°-57'W.

284.5 South Center End John L lode of this survey, a mound of stone.

300.0 NORTH CENTER END, a mound of stone.

584.5 TO COR. NO.3 identical with Cor. No.2 Tom Sharkey lode, Cor.No.1 Robert Emmet lode, Cor. No.2 John L Lode, all of this survey, a malpais stone 10 x 12 x 22 inches long set twelve inches in the ground with a substantial mound of stone alongside; chiseled R E 1 3348, T S 2, Sh 3, J L 2 with cross on top for exact corner point, whence,

A malpais rock in place 4 x 4 x 0.5 feet exposed and chiseled BxR R E 1 3348, brs. N.3°-09'W. 28.5 feet.

A malpais rock in place 2 x 3 x 1 foot exposed and chiseled BxR Sh 3 3348, brs. S.89°-23'E. 48.1 feet.

variation 12°-40'E.

Thence S.00°-01'W.

399.3 Cross gulch, flows easterly.

1432.08 Intersect line 2-3 Topaz lode Sur.No.1377, S.38°-03'E.

143.8 feet from Cor. No.3.

1475.0 Cross road brs. northeast to southwest.

1499.3 TO COR. NO.4 identical with Cor. No.1 Tom Sharkey lode of this survey, a malpais stone 6 x 8 x 24 inches long set twelve inches in the ground with a substantial mound of

stone alongside; chiseled Sh 4, T S 1 3348 with cross on top for exact corner point, whence,

A malpais boulder 1 x 1.5 x 1 foot exposed and chiseled BxR Sh 4 3348, brs. N.88°-30'E. 26.5 feet.

No other bearings available. Variation 14°-10'E.

Thence N.89°-57'E.

52.6 Cor.No.3 Diamond lode of this survey, located on line 2-3

Topaz lode Sur.No.1377, S.38°-03'E. 229.1 feet from Cor.

No.3.

300.0 SOUTH CENTER END, a mound of stone.

600.0 TO THE PLACE OF BEGINNING. All corners are identical with their respective locations.



TOM SHARKEY LODE.

Beginning at Cor. No.1 identical with Cor, No. 4 Shamrock lode of this survey, previously described, whence,

The corner to sections 14-15-22-23, T.16 N.R.2 E. brs. S. 65°-52'-20"E. 3354.7 feet.

thence N. 00°-01'E.

24.3 Cross road, brs. northeast to southwest.

67.22 Intersect line 2-3 Topaz lode Sur.No.1377, S.38°-03'E. 143.8 feet from Cor. No. 3.

1100.0 Cross gulch flows easterly.

1499.3 TO COR. NO. 2, identical with Cor. No. 1 Robert Emmet lode Cor. No. 2 John L lode, Cor. No. 3 Shamrock lode all of this survey, previously described.

thence S. 89°-57'W.

300.0 NORTH CENTER END, identical with South Center End Robert Emmet lode of this survey, a mound of stone.

600.0 TO COR. NO.3, identical with Cor. No. 2 Talisman lode, Cor. No. 1 Golden Rose<sup>2</sup> lode, Cor. No. 2 Robert Emmet lode all of this survey, a malpais stone 10 x 12 x 24 inches long set twelve inches in the ground with a substantial mound of stone alongside; chiseled G R 1 3348, R E 2, TS 3, T 2, with cross on top for exact corner point, whence, A malpais boulder 3 x 1 x 2 feet exposed and chiseled BxR T 2 3348, brs. S.15°-56'W. 24.2 feet.

No other bearings available.

Thence S.00°-01'W.

229.3 Cross gulch, flows easterly.

1499.3 TO COR. NO. 4, identical with Cor. No. 1 Talisman lode, of this survey, on Line 4-5 Acquisition Lode Sur.No 2812, S89°-57'W 321.8 ft from Cor.No.5, a malpais stone 6 x 9 x 27 inches long set twelve inches in the ground with a substantial mound of stone alongside; chiseled TS 4, T 1 3348, with cross on top for exact corner point, whence,

A malpais reef ten feet high and chiseled BxR TS 4 3348, brs. N.89°-57'E. 49.2 feet.

No other bearings available.



thence N.89°-57'E.

- 300.0 SOUTH CENTER END, a mound of stone.
- 321.8 Cor. No.5 Acquisition lode Sur. No. 2812, located on line 3-4 Topaz lode Sur. No. 1377, S.46°-22'W. 261.9 feet from Cor. No. 3.
- 570 Cross road, brs. northeast to southwest.
- 600.0 TO THE PLACE OF BEGINNING. All corners are identical with their respective locations. Variation 15°-00'E except where otherwise mentioned.

TALISMAN LODE

Beginning at Cor. No.1, identical with Cor. No. 4 *Tom* Sharkey lode of this survey, previously described, whence The corner to sections 14-15-22-23 T.16 N.R.2 E , brs. S. 69°-28'-30"E. 3909.8 feet.

thence N.00°-01'E.

- 1270.0 Cross Gulch, flows easterly.
- 1499.3 TO COR. NO. 2, identical with Cor. No. 2 Robert Emmet lode, Cor. No. <sup>*Tom*</sup>3, Sharkey lode, Cor. No. 1 Golden Rose 2 lode, all of this survey, previously described.

thence S. 89°-57'W.

- 300.0 NORTH CENTER END, identical with South Center End Golden Rose 2 lode, of this survey, a mound of stone.
- 600.0 TO COR, NO.3 identical with cor. No. 2 Copperopolis lode, Cor. No.1 green 2 lode, Cor. No. 2 Golden Rose 2 lode, all of this survey, a limestone 6 x 8 x 24 inches long set twelve inches in the ground with a substantial mound of stone alongside; chiseled G 1 3348, C 2, T 3, G R 2, with cross on top for exact corner point, whence,
- A limestone reef two feet exposed and chiseled BxR G 1 3348, brs. N.67°-36'W. 48.5 feet.
- A limestone reef 2 x 3 x 0.2 feet exposed and chiseled pxR T 3 3348, brs. S.74°-43'E. 44.4 feet.
- Variation 15°-20'E.

thence S. 00°-01'W.

- 399.3 Cross gulch, flows easterly.
- 1499.3 TO COR. NO. 4, identical with Cor. No. 1 Copperopolis lode of this survey, located on line 4-5 Acquisition lode,



Sur. No. 2812 , S.89°-57'W. 921.8 feet from Cor. No.5  
~~xxxxxxx~~, a limestone 6 x 12 x 22 inches long set  
 twelve inches in the ground with a substantial mound of  
 stone alongside; chiseled C 1, T 4 3348 with cross on  
 top for exact corner point, whence,

A limestone reef 2 x 4 x 1 foot exposed and chi-  
 seled BxR T 4 3348, brs. S.82°-46'W. 15.0 ft.

No other bearings available, variation 16°-00'E.

Thence N.89°-57'E.

300.0 SOUTH CENTER END, a mound of stone.

600.0 TO THE PLACE OF BEGINNING. All corners are identical  
 with their respective locations.

#### COPPEROPOLIS LODE

Beginning at cor. No.1, identical with Cor. No.4  
 Talisman lode, of this survey, previously described,  
 whence,

The corner to sections -14-15-22-23 T.16 N.R.2 E.  
 brs. S. 72°-10'-30"E. 4476.5 feet.

Thence N. 00°-01'E.

1100.0 Cross gulch, flows easterly.

1499.3 TO COR. NO. 2, identical with Cor. No. 1 Green 2 lode,  
 Cor. No. 2 Golden Rose 2 lode, Cor. No. 3 Talisman lode,  
 all of this survey, previously described,

Thence S.89°-57'W.

300.0 NORTH CENTER END, a mound of stone, identical with south  
 center end Green 2 lode of this survey.

600.0 TO COR. NO. 3, identical with Cor. No.1 Barnett lode,  
 Cor. No. 2 Green 2 lode, both of this survey, a limestone  
 3 x 8 x 20 inches long set twelve inches in the ground  
 with a substantial mound of stone alongside; chiseled  
 C 3, B 1, G 2, 3348 with cross on top for exact corner point,  
 whence,

A limestone boulder 3 x 1 x 0.5 feet exposed and  
 chiseled BxR C 3 3348, brs. N.10°-39'W. 23.0 feet.

No other bearings available, variation 15°-20'E.



Thence S. 00°-01'W.

85.7 Cor. No. 3 plattsburg lode Sur. No. 2812,

999.3 Cross gulch, flows northeasterly.

1467.9 Witness corner to Cor. No. 4 this lode, hereinafter described  
1499.3 TO POINT FOR COR. NO. 4, on line 2-3 Plattsburg Lode Sur. 2812  
N.0°-01'E. 87.3 ft. from Cor. No. 2 of said lode; where it  
was impracticable to set stone & stone for ~~xxxxxxx~~  
corner due to steep slope and bed rock being close to the

surface, so I established a witness corner N.00°-01'E.

31.4 feet, a limestone reef five feet high, chiseled W C  
C 4 3348 with cross for exact corner point. From the true  
point for corner, surrounded by a mound of stone,

A limestone reef 3 x 5 x 0.5 feet exposed and  
chiseled BxR C 4 3348, brs. N.53°-50'E. 28.6 feet.

A limestone reef 6 x 2 x 2 feet exposed and chi-  
seled BxR C 4 3348, brs. N.79°-34'W. 24.2 feet.

variation 16°-00'E.

thence N.89°-57'E.

105.9 Cor. No. 4 Acquisition lode Sur. No. 2812.

300.0 SOUTH CENTER END, a mound of stone.

600.0 TO THE PLACE OF BEGINNING. All corners are identical with  
their respective locations.

#### BRONCHO LODGE.

beginning at Cor. No. 1, on line 1-4 June lode of  
this survey, N.00°-30'W. 501.5 feet from Cor. No. 1, a  
limestone 6 x 12 x 22 inches long set twelve inches in the  
ground with a substantial mound of stone alongside; chi-  
seled B 1 3348 with cross on top for exact corner point,  
whence,

The corner to sections 14-15-22-23, T.16 N.R.2 E.  
brs. S. 2°-29'-40" E. 1871.6 feet.

A limestone reef three feet high and chiseled BxR  
B 1 3348, brs. N.23°-21'W. 26.2 feet.

A limestone reef five feet exposed and chiseled  
BxR B 1 3348, brs. S.89°-36'E. 24.6 feet.

variation 15°-00'E.

thence N.00°-30'W.

9.37 Intersect line 3-4 Union Jack Lode Sur. No. 2811, S.70°-



- 21'W. 12.37 feet. from Cor. No. 3.
- 980.2 Cor. No. 4 June Lode of this survey, previously described.  
 identical with Cor. No. 1 Gem lode of this survey.
- 1500.0 TO COR. NO. 2, a malpais stone 6 x 8 x 20 inches long  
 set twelve inches in the ground with a substantial mound  
 of stone alongside; chiseled B 2 3348 with cross on top  
 for exact corner point, whence,  
 A malpais boulder 2 x 2 x 1 foot exposed and  
 chiseled BxR B 2 3348, brs. S.7°-38'E. 36.1 feet.  
 A malpais boulder 3 x 2 x 1 foot exposed and  
 chiseled BxR B 2 3348, brs. S.65°-45'E. 26.4 feet.  
 Variation 14°-30' E.  
 Thence N. 40°-32'E.
- 6.27 Intersect line 4-1 Gem lode of this survey, N.00°-03'W.  
 524.55 feet from Cor. No.1.
- 454.0 NORTH CENTER END, a mound of stone, whence the location  
 monument having three foot base, and two feet high, brs.  
 N. 35° E. 165 feet.
- 908.0 TO COR. NO. 3, a limestone 8 x 14 x 27 inches long set  
 twelve inches in the ground with a substantial mound of  
 stone alongside; chiseled B 3 3348 with cross on top for  
 exact corner point, whence,  
 The location monument having three foot base  
 and partly down, brs. N. 31°-29'E. 138.7 feet.  
 A limestone reef 0.5 feet exposed and chiseled  
 BxR B 3 3348, brs. N.57°-51'E. 34.0 feet.  
 No other bearings available. Variation 15°-20'E.  
 Thence S.00°-30'E.
- 1500.0 TO COR. NO. 4 on line 3-4 Republic lode, Sur. No. 2811,  
 S.40°-32'W. 15.4 feet from the north center end, a lime-  
 stone 8 x 10 x 24 inches long set twelve inches in the  
 ground with a substantial mound of stone alongside; chi-  
 seled B 4 3348 with cross on top for exact corner point,  
 whence,  
 The location monument being a mound of stone  
 three foot base and two feet high, brs. N.42°-30'E. 90.0



feet.

A limestone boulder 2 x 1 x 2 feet exposed and  
chiseled BxR B 4 3348, brs. S. 23°-33'W. 37.3 feet.

A sandstone boulder 1 x 2 x 0.5 feet exposed and  
chiseled BxR N C E, (no other markings possible) brs.  
N. 3°-32'E. 39.2 feet.

variation 15°-00'E.

Thence S. 40°-32'W.

293.3 Cor. No. 4 Republic lode, identical with Cor. No. 3 Turra  
Blanco lode, Sur. No. 2811.

454.0 SOUTH CENTER END, a mound of stone, whence Location Monu-  
ment three foot base and two ft. high, brs. N. 60° E. 73. ft.

590.2 North Center end Turra Blanco lode Sur. No. 2811.

890.2 Cor. No. 4 Turra Blanco lode, identical with Cor. No. 3  
Union Jack lode, Sur. No. 2811.

908.0 TO THE PLACE OF BEGINNING. All corners are identical with  
their respective locations except where otherwise mention-  
ed.

GEM LODE.

beginning at Cor. No. 1, identical with Cor. No. 4

June lode of this survey, previously described, whence

the corner to sections 14-15-22-23, T. 16 N. R. 2 E.  
brs. S. 1°-48'-20"E. 2852.6 feet.

Thence N. 89°-50'W.

300.0 SOUTH CENTER END, identical with North Center End June  
lode of this survey; a mound of stone.

600.0 TO COR. NO. 2; identical with Cor. No. 2 May lode, Cor. No.  
1 White Hope lode, Cor. No. 3 June lode, all of this sur-  
vey, previously described.

Thence N. 00°-03'W.

1500.0 TO COR. NO. 3, identical with Cor. No. 4 White Hope lode  
of this survey, a malpais stone 6 x 12 x 24 inches long  
set twelve inches in the ground with a substantial mound  
of stone alongside; chiseled G 3 W H 4 3348 with cross on  
top for exact corner point, whence,

A malpais rock in place 2 x 3 x 2 feet exposed  
and chiseled BxR G 3 3348, brs. S. 89°-50'E. 10.4 ft.



Variation  $14^{\circ}-35'E$ . No other bearings available.

Thence  $S.89^{\circ}-50'E$ .

300.0 NORTH CENTER END, a mound of stone.

600.0 TO COR. NO.4, a malpais stone 6 x 14 x 20 inches long set twelve inches in the ground with a substantial mound of stone alongside; chiseled G 4 3348 with cross on top for exact corner point, whence,

The location monument being a mound of stone, partly destroyed, three foot base, brs. East 38.0 feet.

A malpais boulder 1 x 1 x 0.5 feet exposed and chiseled BxR G 4 3348, brs.  $S.34^{\circ}-04'E$ . 41.5 feet.

No other bearings available. Variation  $14^{\circ}-25'E$ .

Thence  $S.00^{\circ}-03'E$ .

975.45 intersect line 2-3 broncho lode of this survey,  $N.40^{\circ}-32'E$ . 6.27 feet from Cor. No.2.

1500.0 TO THE PLACE OF BEGINNING. All corners are identical with their respective locations except where otherwise mentioned. WHITE HOPE LODE.

Beginning at Cor.No.1 identical with Cor.No.2 Gem lode, Cor.No.2 May lode, Cor.No.3 June lode, all of this survey, previously described, whence,

The corner to sections 14-15-22-23, T.16 N.R.2 E. of the Gila and Salt River Base and Meridian, brs.  $S.13^{\circ}-35'-30"E$ . 2935.1 feet.

Thence  $N.89^{\circ}-50'W$ .

300.0 SOUTH CENTER END, identical with North Center End May lode of this survey, a mound of stone.

574.15 Intersect line 3-4 Kanuck lode Sur.No.2278,  $S.00^{\circ}-30'W$ . 6.63 feet from Cor. No.3.

586.9 TO COR. NO.2 identical with Cor.No.3 May lode, Cor.No.2 After Thought lode, Cor.No.1 Azure lode all of this survey, previously described.

Thence  $N.00^{\circ}-03'W$ .

6.53 Intersect line 2-3 Kanuck lode, identical with line 1-4 Sids Hope lode Sur.No.2278,  $S.89^{\circ}-42'W$ . 12.81 ft. from Cors.No. 3 and 4 respectively.

1463.0 Intersect line 2-3 Sids Hope lode, identical with line 1-4 Black Jack lode, both Sur.No. 2278,  $N.89^{\circ}-58'W$ . 4.47 feet from Cors.No.3 and 4 respectively. Cor.No.4 Sids Hope lode brs.  $S.00^{\circ}-23'E$ . 1456.4 ft. from Cor.No.3 thereof.

1490.6 Witness Corner to Cor.No.3, identical with witness Cor. to



- Cor.No.4 Azure lode, this survey, hereinafter described.
- 1500.0 POINT FOR COR.NO.3 which fell in creek bed, where it was impracticable to set stone for corner so I established a witness corner S.00°-03'E. 9.4 feet, a limestone reef ten feet high, chiseled W C A 4, W H 3 3348 with cross for exact corner point, from true point for corner,
- A limestone boulder 3 x 2 x 1 foot exposed and chiseled BxR B J 4, A 4 3348, brs. S.18°-21'E. 37.1 feet.
- Cor.No.3 Sids Hope lode Sur.No.2278, brs.S.6°-56'E. 37.3 feet. No other bearings available.Var. 14°-30'E.
- Thence S.89°-50'E.
- 4.50 Intersect line 3-4 Black Jack lode Sur.No.2278, North 37.0 ft. from Cor. No.4.
- 286.9 NORTH CENTER END, a mound of stone.
- 586.9 TO COR. NO.4 identical with Cor.No.3 Gem lode of this survey, previously described.
- Thence S.00°-03'E.
- ✓ 1500.0 TO THE PLACE OF BEGINNING. All corners are identical with their respective locations.
- AZURE LODE.
- Beginning at Cor. No.1 identical with Cor.No.2 White Hope lode, Cor.No.3 May lode, Cor.No.2 After Thought lode, all of this survey, previously described, whence
- The corner to sections 14-15-22-23, T.16 N.R.2 E. brs. S.24°-05'-20"E. 3128.0 feet.
- Thence N.89°-50'W.
- 300.0 SOUTH CENTER END, identical with north center end After thought lode of this survey, a mound of stone.
- 599.995 Intersect lines 1-2 Kanuck and Irene lodes Sur.No.2278, S.00°-14,-59"E. 1.6 ft. from Cor.Nos 2 respectively.
- 600.0 TO COR. NO.2, identical with Cor.No.3 After Thought lode, Cor.No.2 Copper Mountain lode, Cor.No.1 Ruth lode, all of this survey, previously described.
- Thence N.00°-03'W.
- 1.6 Cor.No.1 Sids Hope lode, identical with Cor.No.2 Kanuck lode, Cor.No.2 Irené lode, and Cor. No.1 verde King lode all Sur.No. 2278.
- 1380.0 Cross gulch, flows easterly.
- 1461.57 Intersect line 2-3 verde King Lode, identical with line.



- 1-4 Garibaldi Lode both Sur.No.2278, N.89°-35'W. 2.06 feet from Cor.Nos. 2 and 1 respectively. Cor.Nos.1 Sids Hope and verde King lodes brs. S.00°-02'W.1460.0 ft. from Cor.Nos.2 of said lodes.
- 1500.0 TO COR. NO.3, identical with Cor.No.4 Ruth lode of this survey, a malpais stone 8 x 10 x27 inches long set twelve inches in the ground with a substantial mound of stone alongside; chiseled R.4 3348, A 3, with cross on top for exact corner point, whence,
- A malpais boulder 2 x 1 x 0.5 feet exposed and chiseled BxR A 3 3348,, brs. N.77°-55'E. 7.1 feet.
- A limestone reef five feet high and chiseled BxR A 3 3348, B J 1 2278, brs. S.50°-51'E. 52.2 feet.
- Cor.No.2 Verde King lode, identical with Cor.No.2 Sids Hope lode, Cor.No.1 garibaldi lode and Cor.No.1 Black Jack lode all Sur.No.2278, brs.S.3°-07'E. 38.5 feet.
- Variation 15°-00'E.
- Thence S.89°-50'E.
- 2.10 Intersect line 1-2 Garibaldi lode, identical with line 1-2 Black Jack lode, North 38.43 feet from Cor.Nos.1 of the respective lodes.
- 300.0 NORTH CENTER END, a mound of stone.
- 600.0 TO COR. NO.4, identical with Cor.No.3 White Hope lode of this survey, previously described.
- Thence S.00°-03'E.
- 9.4 Witness Corner to Cor.No.4 this lode, identical with witness corner to Cor.No.3 White Hope lode, this survey, previously described.
- 37.0 Intersect line 2-3 Sids Hope lode, identical with line 1-4 Black Jack lode, S.89°-58'E. 597.93 feet from Cor.Nos. 2 and 1 respectively.
- 1493.47 Intersect line 1-4 Sids Hope lode, identical with line 2-3 Kanuck lode both Sur.No.2278, N.89°-42'E. 599.99 feet from Cor.Nos.1 and 2 respectively.
- 1500.0 TO THE PLACE OF BEGINNING. All corners are identical with their respective locations.
- RUTH LODE.
- beginning at Cor. No.1, identical with Cor.No.3 Azure lode, Cor.No.3 After Thought lode, Cor.No.2 Copper Mountain lode, all of this survey, previously described, whence,



- The corner to sections 14-15-22-23, T.16 N.R.2 E. brs. S.33°-17'-50"E. 3418.4 feet.
- Thence N.89°-50'W.
- 300.0 SOUTH CENTER END, identical with North Center end Copper Mountain lode, of this survey, a mound of stone.
- 600.0 TO COR.NO.2, identical with Cor.No.3 Copper Mountain lode of this survey, Cor.No.3 Irene lode and Cor.No.4 Verde King lode both Sur.No.2278. previously described, whence Cor.Nos.2 and 1 of the last named lodes brs. S.89°-59'E. 6000 ft.
- Thence N.00°-03'W.
- 1321.3 Cross gulch, flows easterly.
- 1464.2 Cor.No.3 Verde King lode, identical with Cor.No.4 Garibaldi lode, both of Sur.No.2278.
- 1500.0 TO COR. NO. 3, on line 1-4 John L lode of this survey, S.00°-02'50"E. 1.7 feet from Cor.No.4, a malpais stone 6 x 8 x 27 inches long set twelve inches in the ground with a substantial mound of stone alongside; chiseled R 3 3348 with cross on top for exact corner point.
- No bearings available. Variation 15°-00'E.
- Thence S.89°-50'E.
- 0.53 Intersect line 3-4 Garibaldi lode Sur.No.2278, N.00°-47'-45"E. 35.8 feet from Cor.No.4.
- 300.0 NORTH CENTER END, a mound of stone.
- 600.0 TO COR. NO.4 identical with Cor.No.3 Azure lode of this survey, previously described.
- Thence S.00°-03'E.
- 38.43 Intersect line 2-3 verde king lode, identical with line 4-1 Garibaldi lode both Sur.No.2278, S.89°-35'E. 600.04 feet from Cor.Nos.3 and 4.
- 120.0 Cross gulch, flows easterly.
- 1498.4 Cor.No.1 Verde King lode, identical with Cor.No.1 Sids Hope lode, Cor.No.2 Kanuck lode, Cor.No.2 Irene lode, all Sur. No.2278.
- 1500.0 TO THE PLACE OF BEGINNING. All corners are identical with their respective locations.



JOHN L. LODE

Beginning at Cor. No. 1, identical with Cor. No. 2 Shamrock lode of this survey, whence,

The corner to sections 14-15-22-23; T.16 N.R.2 E, brs. S.40°-46'-50"E. 3791.7 feet.

Thence S.89°-57'W.,

284.5 SOUTH CENTER END, a mound of stone.

300.0 NORTH CENTER END Shamrock lode, previously described.

584.5 TO COR. NO. 2, identical with Cor. no. 3 Shamrock lode, Cor. No. 2, <sup>Tom</sup>Sharkey lode, Cor. No. 1 Robert Emmet lode, all of this survey, previously described.

Thence N. 00°-39'W.

1487.5 TO COR. NO. 3, identical with Cor. No.4 Robert Emmet lode Cor. No.1 Maverick lode, Cor. no. 2 Maid of Erin lode all of this survey, a malpais stone 8 x 8 x 27 inches long set twelve inches in the ground with a substantial mound of stone alongside; chiseled M E 2 3348, M 1, R E 4, J L 3, with cross on top for exact corner point, whence

A malpais boulder 3 x 3 x 1.5 feet exposed and chiseled BxR M 1 3348, brs. S.00°-39'E. 3.0 feet.

No other bearing available. Variation 15°-00'E.

Thence N.89°-57'E.

300.0 NORTH CENTER END, identical with South Center End, Maid of Erin lode of this survey, a mound of stone.

600.0 TO COR. NO.4, identical with Cor.No.1 Maid of Erin lode, of this survey, a malpais stone 6 x 8 x 27 inches long set twelve inches in the ground with a substantial mound of stone alongside; chiseled M E 1, J L 4 3348 with cross on top for exact corner point, whence,

A malpais boulder 5 x 3 x 3 feet exposed and chiseled BxR J L 4 3348, brs. N.83°-31'E. 57.5 feet.

No other bearings available. Variation 15°-00'E.

Thence S.00°-02'-50"E

1.7 Cor. No. 3 Ruth lode of this survey, previously described.

37.5 Cor. No. 3 verde King lode identical with Cor. No.4

Garibaldi lode, Sur. No. 2278.

180.4 Cross gulch, flows easterly.



1487.4 TO THE PLACE OF BEGINNING. All corners are identical with their respective locations.

ROBERT EMMET LODE.

Beginning at Cor. no.1 identical with Cor. No. 2 John L lode, Cor. No. 3 Shamrock lode, Cor. No. 2 Tom Sharkey lode, all of this survey, previously described, whence,

The corner to sections 14-15-22-23, T.16 N.R.2 E. brs. S.46°-50'-20"E. 4196.6 feet.

Thence S.89°-57'W.

300.0 SOUTH CENTER END, identical with North Center End, Tom Sharkey lode of this survey, a mound of stone.

600.0 TO COR, NO.2, identical with Cor. No. <sup>Tom</sup>3, Sharkey lode, Cor. No. 2 Talisman lode, Cor. No. 1 Golden Rose 2 lode, all of this survey, previously described.

Thence N.00°-39'W.

1487.5 TO COR. NO. 3, identical with Cor. No.4 Golden Rose 2 lode Cor. No.1 Lilly 2 lode, Cor. No. 2 Maverick Klode, all of this survey, a malpais rock in reef, 8 x 10 x 12 inches exposed with a substantial mound of stone alongside; chiseled G R 4, L 1, M2 3348, R E 3, with cross for exact corner point, whence,

A malpais boulder 3 x 2 x 1 foot exposed and chiseled BxR L 1 3348, brs. S.44°-17'W. 18.4 feet.

No other bearings available. Variation 13°-00'E.

Thence N.89°-57'E.

300.0 NORTH CENTER END, identical with South Center End, Maverick lode of this survey, a mound of stone.

600.0 TO COR. NO. 4, identical with Cor. No. 1 Maverick Klode, Cor. No. 2 maid of Erin Klode, Cor. No. 3 John L lode, all of this survey, previously described.

Thence S.00°-39'E.

1487.5 TO THE PLACE OF BEGINNING. All corners are identical with their respective locations.



GOLDEN ROSE 2 LODE

Beginning at Cor. No. 1, identical with Cor. No 2 Robert Emmet lode, Cor. No. 3<sup>Tom</sup> Sharkey lode; Cor. No. 2 Talisman lode; all of this survey, previously described, whence

The corner to sections 14-15-22-23, T.16 N.R.2 E. brs. S. 51°-54'-20"E. 4652.0 feet.

Thence S.89°-57'W.

- 300.0 SOUTH CENTER END, identical with North Center End, talisman lode of this survey, a mound of stone.
  - 600.0 TO COR. NO. 2, identical with Cor. No. 3. Talisman lode, Cor. No. 2 Copperopolis lode, Cor. No. 1 Green 2 lode, all of this survey, previously described.
- whence N. 00°-39'W.

- 1487.5 TO COR. NO. 3, identical with Cor. No. 4 Green 2 lode, Cor. No. 1 Lloyd 2 lode, Cor. No. 2 Lilly<sup>2</sup> lode, all of this survey, a malpais stone 7 x 12 x 20 inches long set twelve inches in the ground with a substantial mound of stone alongside; chiseled G R 3, G 4 3348, L1 1, L 2 with cross on top for exact corner point, whence,

A malpais boulder 2 x 1 x 1 foot exposed and chiseled BxR L1 1 3348, brs. S.55°-59'E. 27.3 feet.

No other bearings available. variation 17°-30'E.

Thence N.89°-57'E.

- 300.0 NORTH CENTER END identical with South center End, Lilly 2 lode of this survey, a mound of stone.
  - 600.0 TO COR. NO.4, identical with Cor. no. 1 Lilly 2 lode, Cor. No.2 Maverick lode, Cor. No. 3 Robert Emmet lode, all of this survey, previously described.
- Thence S.00°-39'E.

- 1487.5 TO THE PLACE OF BEGINNING. All corners are identical with their respective locations.

GREEN 2 LODE

Beginning at cor. No.1 identical with Cor. No. 2 Golden Rose 2 lode, Cor. No. 3 Talisman lode, Cor. No.2 Copperopolis lode, all of this survey, previously des-



cribed, whence,

The corner to sections 14-15-22-23, T.16 N.R.2 E. brs. S.  $56^{\circ}-02'-30''$ E. 5137.3 feet.

Thence S.  $89^{\circ}-57'$ W.

300.0 SOUTH CENTER END, identical with North Center End

Copperopolis lode of this survey, a mound of stone.

600.0 TO COR. NO. 2, identical with Cor. No. 3 Copperopolis lode, Cor. No. 1 Barnett lode all of this survey, previously described.

Thence N.  $00^{\circ}-01'$ E.

1487.4 TO COR. NO. 3, identical with Cor. No. 4 Barnett lode, Cor. No. 1 Kress lode, Cor. No. 2 Lloyd 2 lode all of this survey, a limestone 6 x 10 x 24 inches long set twelve inches in the ground with a substantial mound of stone alongside, chiseled B 4 3348, K 1, L1 2, G 3 with cross on top for exact corner point.

No bearings available. variation  $15^{\circ}-10'$ E.

Thence N.  $89^{\circ}-57'$ E.

382.6 South Center End Lloyd 2 lode, a mound of stone.

300.0 NORTH CENTER END, a mound of stone.

582.6 TO COR. NO. 4, identical with Cor. No. 1 Lloyd 2 lode, Cor. No. 2 Lilly 2 lode, Cor. No. 3 Golden Rose 2 lode, all of this survey, previously described.

Thence S.  $00^{\circ}-39'$ E.

1487.5 TO THE PLACE OF BEGINNING. All corners are identical with their respective locations.

#### BARNETT LODE

Beginning at Cor. No. 1, identical with Cor. No. 3 Copperopolis lode, Cor. No. 2 green 2 lode, both of this survey, previously described, whence,

The corner to sections 14-15-22-23, T.16 N.R.2 E. brs. S.  $59^{\circ}-27'$ E. 5644.7 feet.

Thence S.  $89^{\circ}-57'$ W.

300.0 SOUTH CENTER END, a mound of stone.

600.0 TO COR. NO. 2, a limestone 6 x 10 x 18 inches long set twelve inches in the ground with a substantial mound of



stone alongside; chiseled B 2 3348, with cross on top for exact corner point, whence,

A limestone reef 1 x 2 x 0.3 feet exposed and chiseled BxR B 2 3348, brs. N. 89°-57'E. 25.3 feet.

A limestone boulder 1 x 1 x 0.1 feet exposed and chiseled BxR B 2 3348, brs. N, 22°-34'E. 10.8 feet.

Variation 15°-25'E.

The location monument being a 6" x 8" post four feet long set in the ground, brs. S. 49°-52'W. 86 feet.

whence N.00°-01'E.

1487.4 TO COR.. NO. 3, identical with Cor. no. 2 Kress lode of this survey, a limestone 4 x 10 x 26 inches long set twelve inches in the ground with a substantial mound of stone alongside; chiseled K 2 3348, B 3 with cross on top for exact corner point, whence,

A limestone reef two feet exposed and chiseled BxR K 2 3348, brs. N.89°-57'E. 9.6 feet.

No other bearings available. Variation 14°-50'E.

Thence N.89°-57'E.

300.0 NORTH CENTER END, identical with South Center end Kress lode of this survey, a mound of stone.

600.0 TO COR. NO. 4, identical with Cor. No.1 Kress Lode, Cor. No. 2 <sup>2</sup>loyd<sub>A</sub> lode, Cor. No. 3 green 2 lode all of this survey, previously described.

Thence g.00°-01'W.

1487.4 TO THE PLACE OF BEGINNING. All corners are identical with their respective locations except where otherwise mentioned.

MAID OF ERIN LODE

beginning at Cor, No.1, identical with Cor. No.4 John L lode of this survey, previously described, whence

The corner to sections 14 -15-22-23, T.16 N.R.2 E. brs. S.29°-37'E. 5014.2 feet.

Thence S.89°-57'W.

300.0 SOUTH CENTER END identical with North Center End, John L lode of this survey, a mound of stone.



- 600.0 TO COR. NO. 2, identical with Cor. no. 3 John L lode, Cor. No. 4 Robert Emmet Lode, Cor. No. 1 Maverick<sup>2</sup> lode, all of this survey, previously described.
- Thence N. 00° - 49' E.
- 1439.8 TO COR. NO. 3, identical with Cor. no. 4 Maverick<sup>2</sup> lode, of this survey, a malpais stone 5 x 10 x 18 inches long set twelve inches in the ground with a substantial mound of stone alongside; chiseled M E 3, M 4 3348 with cross on top for exact corner point, whence,
- A limestone reef three feet high and chiseled BxR M 4 3348, brs. S. 12° - 29' W. 37.3 feet.
- No other bearings available. Variation 14° - 30' E.
- whence N. 89° - 57' E.
- 300.0 NORTH CENTER END, a mound of stone.
- 600.0 TO COR. NO. 4, identical with Cor. No. 3 Garibaldi lode sur. No. 2278, a malpais boulder or reef 4 x 6 x 4 feet high, with a post 6" x 8" x four feet long set in the ground alongside; chiseled - G 3 2278, M E 4 3348 with cross on top for exact corner point, whence,
- A malpais reef six feet high and chiseled BxR M E 4 3348, brs. S. 45° - 04' W. 12.4 feet.
- No other bearings available. variation 14° - 30' E.
- whence S. 00° - 49' W.
- 1439.8 TO THE PLACE OF BEGINNING. All corners are identical with their respective locations.
- MAVERICK<sup>2</sup>LODE,
- Beginning at Cor. No. 1 identical with Cor, No. 2 Maid of prin<sup>a</sup> Lode, Cor. No. 3 John L Lode, Cor. No. 4 Robert Emmet Lode, all of this survey, previously described, whence,
- the corner to sections 14-15-32-23, T. 16 N. R. 2 E. brs. S. 35° - 14' E. 5335.5 feet.
- whence S. 89° - 57' W.
- 300.0 SOUTH CENTER END identical with North center End Robert Emmet Lode, of this survey, a mound of stone.
- 600.0 TO COR. NO. 2, identical with Cor. No. 3 Robert Emmet lode,



Cor. No. 4 Golden Rose 2 lode, Cor. No.1 Lilly 2 lode, all of this survey, previously described.

Thence N.00°-49'E.

1439.8 TO COR. NO.3, identical with Cor. No. 4 Lilly 2 lode of this survey, a limestone 9 x 12 x 27 inches long set twelve inches in the ground with a substantial mound of stone alongside; chiseled M 3, L 4 3348 with cross on top for exact corner point, whence,

No bearings available. Variation 14°-30'E.

Thence N.89°-57'E.

150.0 Cross Gulch flows southeasterly.

300.0 NORTH CENTER END, a mound of stone.

450.0 cross same gulch, flows northeasterly.

600.0 TO COR. NO. 4, identical with Cor. No. 3 Maid of Erin 2 lode of this survey, previously described.

Thence S.00°-49'W.

1439.8 TO THE PLACE OF BEGINNING. All corners are identical with their respective locations.

LILLY 2 LODE

Beginning at Cor. No.1 identical with Cor. No.3 Maverick<sup>2</sup> lode, Cor. No.3 Robert Emmet lode, Cor. No. 4 Golden Rose<sup>1</sup> lode, all of this survey, previously described, whence,

The corner to sections 14-15-22-23, T.16 N.R. 2 E. brs. S. 40°-10'E. 5702.3 feet.

Thence S.89°-57'W.

300.0 SOUTH CENTER END, identical with North Center End Golden Rose<sup>2</sup> lode/ of this survey, previously described, a mound of stone.

600.0 TO COR. NO. 2, identical with Cor. No. 3 Golden Rose 2 lode, Cor. No. 4 Green 2 lode, Cor. No.1 Lloyd 2 lode, previously described.

Thence N.00°-49'E.

1239.8 Cross gulch, flows northeasterly.

1439.8 TO COR. NO.3, identical with Cor. No. 4 Lloyd<sup>2</sup> lode of this survey, a malpais stone 6 x 12 x 30 inches long



set twelve inches in the ground with a substantial mound of stone alongside; chiseled L1 4 3348, L 3 with cross on top for exact corner point, whence,

A limestone rock in place 2 x 1.5 x 1.5 feet exposed and chiseled BxR L 3 3348, brs. S.54°-59'E. 11.5 ft.

No other bearings available, Variation 14°-30'E.

Thence N.89°-57'E.

260.0 Cross gulch, flows northeasterly.

300.0 NORTH CENTER END, a mound of stone.

600.0 TO COR. NO. 4, identical with Cor. No. 3 Maverick<sup>2</sup>Lode of this survey, previously described.

Thence S.00°-49'W.

1439.8 TO THE PLACE OF BEGINNING. All corners are identical with their respective locations.

LLOYD 2 LODE.

beginning at Cor. No.1, identical with Cor. No.2 Lilly 2 lode, Cor. No. 3 Golden Rose 2 Lode, Cor. No. 4 Green 2 lode, all of this survey, previously described, whence,

The Corner to sections 14-15-22-23, T.16 N.R.2 E. brs. S. 44°-28'-30"E. 6106.2 feet.

Thence S. 89°-57'W.

282.6 North center End Green 2 lode, previously described.

300.0 SOUTH CENTER END, a mound of stone.

582.6 TO COR. NO. 2, identical with Cor. No. 3 Green 2 lode, Cor. No.4 Barnett lode, Cor. No. 1 Kress lode, all of this survey, previously described.

Thence N.00°-07'E.

1000.0 cross gulch flows northeasterly.

1439.5 TO COR. NO.3, identical with Cor. No. 4 Kress lode of this survey, a limestone 5 x 12 x 20 inches long set twelve inches in the ground with a substantial mound of stone alongside; chiseled K 4 3348, L1 3 with cross on top for exact corner point,

No bearings available, Variation 14°-30'E.

Thence N.89°-57'E.



300.0 NORTH CENTER END, a mound of stone.  
600.0 TO COR. NO. 4, identical with Cor. No. 3 Lilly 2 lode of this survey, previously described.

Thence S. 00° - 49' W.

200.0 Cross gulch, flows northeasterly.

1439.8 TO THE PLACE OF BEGINNING. All corners are identical with their respective locations.

KRESS LODGE

beginning at Cor. No. 1 identical with Cor. No. 2 Lloyd 2 lode, Cor. No. 3 Green 2 lode, and Cor. No. 4 Barnett lode, all of this survey, previously described,

whence,

The corner to sections 14-15-22-23, T. 16 N. R. 2 E. brs. S. 48° - 08' E. 6527.3 feet.

Thence S. 89° - 57' W.

300.0 SOUTH CENTER END, identical with North Center End, Barnett lode of this survey, previously described, a mound of stone.

600.0 TO COR. NO. 2, identical with Cor. No. 3 Barnett lode of this survey, previously described.

Thence N. 00° - 07' E.

715.0 Cross Gulch, flows northeasterly.

1439.5 TO COR. NO. 3, a limestone 6 x 10 x 24 inches long set twelve inches in the ground with a substantial mound of

limestone alongside; chiseled K 3 3348 with cross on top

for exact corner point, whence,

A limestone boulder 2 x 2 x 2 feet exposed and

chiseled BxR K 3 3348, brs. N 24° - 06' E. 44.3 feet.

A limestone rock in place 2 x 1 x 0.5 feet ex-

posed and chiseled BxR K 3 3348, brs. S. 46° - 48' E. 67.8 ft.

The location monument being a mound of stone three foot base and two feet high, brs. West 70 feet.

variation 14° - 30' E.

Thence N. 89° - 57' E.

300.0 NORTH CENTER END, a mound of stone.

600.0 TO COR. NO. 4 identical with Cor. No. 3 Lloyd 2 lode of



this survey, previously described.

To show a valley S. on line Thence S.  $00^{\circ}-07'W.$

- 439.5 Cross gulch, flows northeasterly.
- 1439.5 TO THE PLACE OF BEGINNING. All corners are identical with their respective locations except where otherwise mentioned.
- LITTLE VERDE LODGE.

Beginning at Cor. No. 1, a diorite stone 6 x 9 x 18 inches long set twelve inches in the ground with a substantial mound of stone alongside; chiseled L V 1 3348, with cross on top for exact corner point, whence, The corner to sections 14-15-22-23, T. 16 N. R. 2 E. brs. S  $52^{\circ}-56'00'' E.$  1092.3 feet.

No other bearings available. Var.  $15^{\circ} E$

Thence N.  $89^{\circ}-50'W.$

- 524.3 Cor. No. 4 Gray Copper lode Sur. No. 2811, on line 2-3 Mountain Boy lode same survey, S.  $49^{\circ}-37'E.$  234.0 feet from Cor. No. 3 of said lode. Cor. No. 4 said Mountain Boy lode brs. S.  $89^{\circ}59'W.$  316.8 ft. from Cor. No. 3 thereof.
- 1140.0 In creek bed, flows northeasterly.
- 1146.7 Intersect line 4-5 Mountain Boy lode Sur. No. 2811, identical with line 1-2 Diamond lode of this survey, S.  $40^{\circ}-23'W.$  196.5 and 229.0 feet respectively from Cor. Nos. 4 and 1 of said lodes.
- 1203.0 TO COR. NO. 2, a limestone 8 x 8 x 22 inches long set twelve inches in the ground with a substantial mound of stone alongside; chiseled L V 2 3348 with cross on top for exact corner point, whence, A limestone boulder 3 x 2 x 1 foot exposed and chiseled BxR L V 2 3348, brs. S.  $33^{\circ}-46'W.$  9.8 feet.
- No other bearings available. Variation  $14^{\circ}-10'E.$  Sur. No. 977
- Cor. No. 3 Smoke House Mill-site, brs. S.  $74^{\circ}-36'W.$  75.5 feet.
- Thence N.  $31^{\circ}-08'W.$
- 347.1 WEST CENTER END, a mound of stone.
- 422.1 TO COR. NO. 3, identical with Cor. No. 2 Topaz lode of this survey, a malpais stone 8 x 8 x 18 inches long set



twelve inches in the ground with a substantial mound of stone alongside; chiseled T 2 3348, L V 3 with cross on top for exact corner point.

No bearings available Variation 14°-10'E.

Thence S.89°-50'E.

277.2 Intersect line 4-1 Diamond lode of this survey, N.38°-03' W. 236.4 feet from Cor. No.1, and S.38°-03'E. 1001.8 feet from Cor. No. 4.

800.0 Cross creek, flows northeasterly.

1203.0 TO POINT FOR COR.NO.4, located on line 3-4 Gray Copper lode Sur.No. 2811, N.40°-23'E. 472.3 feet from Cor. No. 4, and S.40°-23'W. 128.0 feet from Cor. No.3, also on line 1-2 Topaz lode of this survey, N.89°-50'W. 297.0 feet from Cor. No.1; where it was impracticable to set stone for corner due to point falling in water course, so I established a witness corner S.31°-08'E. 9.3 feet, a diorite stone 6 x 10 x 18 inches long set twelve inches in the ground with a substantial mound of stone alongside, chiseled/L V 4 3348 with cross on top for exact corner point.

No bearings available. Var. 15° 10' E.

Thence S.31°-08'E.

9.3 Witness corner to corner No. 4 previously described.

75.0 EAST CENTER END, a mound of stone.

422.1 TO THE PLACE OF BEGINNING. All corners are identical with their respective locations.

TOPAZ LODGE

Beginning at Cor. No.1, a limestone 10 x 10 x 20 inches long set twelve inches in the ground with a substantial mound of stone alongside; chiseled T 1 3348 with cross on top for exact corner point, whence,

No bearings available.

The corner to sections 14-15-22-23 T.16 N.R.2 E.

brs. S.37°-53'-30"E. 1291.0 feet.

The location monument being mound of stone 3 ft.

base, partly down, brs. S.2°-43'E. 243 feet, Var. 15° E.

Thence N.89°-50'W

92.0

Intersect Line 2-3 Gray Copper lode, identical with Line 1-2 and Chief lode both Sur.No 2811 S.5°13'E 156.6 ft from Cor.s.No. 3 and 9 respectively.

297.0

Cor. No. 4 Little verde lode of this survey, located on

line 3-4 Gray Copper lode Sur. No. 2811, S.40°-23'W.128.0



- feet from Cor. No.3.
- 700.0 cross creek, flows northeasterly.
- 1222.8 Intersect line 4-1 Diamond lode of this survey, S.38°-03'E.  
1001.8 feet from Cor. No. 4, and N.38°-03'W. 236.4 feet  
from Cor. No.1.
- 1500.0 To Cor. No. 2 identical with Cor. No. 3 Little verde lode of  
this survey, previously described.
- Thence N.00°-14'E.
- 51.6 WEST CENTER END, a mound of stone.
- 351.6 TO COR. NO.3, on line 4-1 Diamond lode of this survey,  
S.38°-03'E. 554.3 feet from <sup>point for</sup> Cor. No.4, and on line 4-1  
Copper Mountain lode of this survey, N.89°-50'W. 423.0  
feet from Cor. No.1; a malpais stone 6 x 10 x 22 inches  
long set twelve inches in the ground with a substantial  
mound of stone alongside; chiseled T 3 3348 with cross on  
top for exact corner point, whence,
- A malpais boulder 8 x 5 x 6 feet exposed and  
chiseled BxR T3 3348, brs. N.78°-04'E. 85.2 feet.
- No other bearings available. Variation 20°-20'E.  
Thence S.89°-50'E.
- 127.7 South Center End Copper Mountain lode, previously described.
- 423.0 Cor. No.1 Copper Mountain lode, identical with Cor. No.4  
After Thought lode, both of this survey, previously  
described.
- 715.8 South Center End After Thought lode of this survey, pre-  
viously described.
- 1016.0 Cor. No. 4 May lode, identical with Cor. No. 1 After  
Thought lode, both of this survey, previously described.
- 1316.0 South Center End May lode of this survey, previously  
described.
- 1440.1 Witness Corner to Cor No.4 of this lode, hereinafter des-  
cribed.
- 1496.0 Cross gulch, flows easterly:
- 1500.0 TO POINT FOR COR. NO. 4, identical with point for Cor. No.  
8 Red Chief Lode Sur. No. 2811, where it was impracticable  
to set stone for corner due to point falling in a creek bed,  
so I established a witness corner N.89°-50'W. 59.9 feet,



a limestone bluff twenty-five feet high, chiseled W C T 4 3348 with cross for exact corner point. From the point for corner,

A limestone cliff 25 feet high and chiseled BxR T 4 3348, brs: N:56°-03'W. 18.5 feet.

A rock in place chiseled BxR R C 8 2811, brs. N.27°-05'E. 8.3 feet.

Cor.No.9. Red Chief lode, Sur. No. 2811, brs. S.40°23'W. 332.6ft.

No other bearings available. Variation 15°-20'E.

Thence S.00°-14'W.

300.0 EAST CENTER END, a mound of stone.

351.6 TO THE PLACE OF BEGINNING. All corners are identical with their respective locations except where otherwise mentioned.

DIAMOND LODE.

Beginning at Cor. No.1, a malpais stone 6 x 10 x 20 inches long set twelve inches in the ground with a substantial mound of stone alongside, chiseled D 1 3348, with cross on top for exact corner point, whence ,

The corner to sections 14-15-22-23 T.16 N.R.2 E brs. S65°-54'-30"E. 2048.4 feet.

No other bearings available. Var. 14° 30' E.

Thence S,40°-23'W.

32.5 Cor.No. 4 Mountain Boy lode, Sur. No. 2811.

229.0 Intersect line 1-2 Little Verde lode of this survey, S.89°-50'E. 56.3 feet. from Cor. No.2,

297.2 SOUTH CENTER END, a mound of stone.

336.7 Intersect line 3-4 Smoke House Mill-site, <sup>Sur. No. 977,</sup> S.43°-38'E.85.9 feet from Cor. No. 3.

425.7 Cor. No. 5 Mountain Boy lode, identical with Cor, No. 3 Rat lode, both Sur. No. 2811.

577.5 TO COR. NO. 2, located on line 3-4 Rat lode, <sup>Sur.No. 2811</sup> and line 2-3 Topaz lode Sur. No. 1377, N,38°-03'W. 15.37 feet from point for Cor. No.2.where it was impracticable to set stone for corner due to point falling in creek bed, so I established a witness Corner N.38°-03'W. 94.2 feet, a diorite stone 5 x 12 x 24 inches long set twelve inches in



the ground with a substantial mound of stone alongside; chiseled W C D 2 3348 with cross on top for exact corner point. From the true point for corner,

A rock in place 4 x 5 x 3 feet exposed and chiseled BxR T 2 1377, D 2 3348 brs. S.73°-47'E. 35.8 feet.

No other bearings available. Variation 14°-40'E.

Thence N.38°-03'W,

75.1 Intersect line 2-3 Smoke House Mill-site, <sup>Sur. No. 977,</sup> S.37°-30'W. 235.0 feet from Cor. No. 3.

94.2 Witness Corner to Cor.No.2 of this lode.

1238.2 TO COR. NO. 3, located on line 4-1 Shamrock lode of this survey, S.89°-57'W. 547.4 feet from Cor. No.1, and on line 2-3 Topaz lode Sur. No. 1377, S.38°-03'E. 229.1 feet from Cor. No. 3, a malpais stone 8 x 10 x 24 inches long set twelve inches in the ground with a substantial mound of stone alongside; chiseled D 3 3348 with cross on top for exact corner point, whence,

A malpais boulder 2 x 2 x 2 feet exposed and chiseled BxR D 3 3348, brs. N.63°-39'E. 59.4 feet.

No other bearings available, variation 14°-10'E.

Thence N.40°-23'E.

170.0 Cross road, brs. northeast to southwest.

280.3 NORTH CENTER END, a mound of stone.

569.9 Witness Corner to Cor. No. 4, this lode, *hereafter described*

577.5 TO POINT FOR COR. NO.4, where it was impracticable to set stone for corner due to point falling on edge of roadway, so I established a witness corner S.40°-23'W. 7.6 feet, a malpais stone 4 x 12 x 24 inches long set twelve inches in the ground with a substantial mound of stone alongside; chiseled W C D 4 3348 with cross on top for exact corner point.

No bearings available. Var. 16°30' E

Thence S.38°-03'E.

265.4 Intersect lines 3-4 Irene lode Sur. No 2278 N0°-16'W 226.9 ft from pt. for Cor. No 4

277.3 Intersect line 1-2 Shamrock lode, identical with line 3-4 Copper Mountain, lode both of this survey, N.00°-35'W, 221.0 and 217.6 feet respectively from Cor.Nos.1 and 4.



- 554.3 Intersect line 4-1 Copper Mountain lode, ~~at~~ corner No. 3 Topaz lode, both of this survey, S.89°-50'E. 168.5 feet from Cor.No.4. *said Copper Mountain Lode.*
- 1001.8 Intersect line 1-2 Topaz lode identical with line 3-4 Little verde lode, both of this survey, S.89°-50'E. 277.2 feet from Cor.Nos. 2 and 3 respectively.
- 1238.2 TO THE PLACE OF BEGINNING. All corners are identical with their respective locations except where otherwise mentioned.

LODE LINES.

As near as can be determined from present developments, the veins on the respective lodes extend as follows from their discoveries.

JUNE LODE  
feet,  
S.00°-30'E. 1381.7/ and N.00°-30'W. 100 feet.

MAY LODE  
S.00°-30'E. 450.0 feet and N,00°-30'W. 1031.7 feet.

AFTER THOUGHT LODE,  
S.00°-01'W. 1000.0 feet and N.00°-01'E. 481.6 feet.

COPPER MOUNTAIN LODE,  
S.00°-27'E. 981.7 feet and N.00°-27'W. 500.0 feet.

SHAMROCK LODE  
S.00°-35'E. 836.4 feet and N.00°-35'W. 663.0 feet.

TOM SHARKEY LODE  
S.00°-01'W. 1498.3 feet and N.00°-01'E. 111.0 feet

TALISMAN LODE.  
S.00°-01'W. 90.0 feet and N.00°-01'E. 1409.3 feet.

COPPEROPOLIS LODE.  
S.00°-01'W. 225.0 feet and N.00°-01'E. 1274.3 feet.

BRONCHO LODE  
S.00°-30'E. 150.0 feet and N.00°-30'W. 1350.0 feet

GEM LODE  
S.00°-03'E. 100.0 feet and N.00°-03'W. 1400.0 feet

WHITE HOPE LODE  
S.00°-03'E. 96 feet and N.00°-03'W. 1404.0 feet.



- AZURE LODE.  
S.00°-03'E. 130.0 feet and N.00°-03'W. 1370 feet. ✓
- RUTH LODE.  
S.00°-03'E. 100.0 feet and N.00°-03'W. 1400 feet. ✓
- JOHN L LODE  
S.00°-39'E. 300.0 feet and N.00°-39'W. 1187.5 feet. ✓
- ROBERT EMMET LODE  
S.00°-39'E. 1479.5 feet and N.00°-39'W. 8.0 feet. ✓
- GOLDEN ROSE<sup>2</sup> LODE.  
S.00°-39'E. 783.0 feet and N.00°-39'W. 704.5 feet. ✓
- GREEN 2 LODE  
S.00°-01'W. 773.0 feet and N.00°-01'E. 714.4 feet. ✓
- BARNETT LODE  
S.00°-01'W. 490.0 feet and N.00°-01'E. 997.4 feet. ✓
- MAID OF ERIN LODE  
S.00°-49'W. 675.0 feet and N.00°-49'E. 764.8 feet. ✓
- MAVERICK LODE  
S.00°-49'W. 675.0 feet and N.00°-49'E. 764.8 feet. ✓
- LILLY 2 LODE  
S.00°-49'W. 675.0 feet and N.00°-49'E. 764.8 feet. ✓
- LLOYD 2 LODE  
S.00°-49'W. 675.0 feet and N.00°-49'E. 764.8 feet. ✓
- KRESS LODE  
S.00°-07'W. 675.0 feet and N.00°-07'E. 764.5 feet. ✓
- LITTLE VERDE LODE.  
S.89°-50'E. 1123.0 feet and N:89°-50'W. 80.0 feet. ✓
- TOPAZ LODE  
S.89°-50'E. 940.0 feet and N.89°-50'W. 560 feet. ✓
- DIAMOND LODE  
S.38°-03'E. 780 feet and N.38°-03'W. 458.2 feet. ✓

AREAS

JUNE LODE		Acres	Acres
Total area	-----		20.407 ✓
Area in conflict with			
Union Jack lode Sur. No. 2811		4.418	413
Red Chief Lode Sur. No. 2811		0.773 ✓	

MAY LODE			
Total area	-----		20.184 ✓



	Acres	Acres
Area in conflict with Kanuck lode Sur. No. 2278	0.217	
<b>AFTER THOUGHT LODE</b>		
Total area		20.290
Area in conflict with Kanuck lode Sur. No. 2278 Irene lode Sur. No. 2278	20.290 0.000+	
<b>COPPER MOUNTAIN LODE</b>		
Total area		20.263
Area in conflict with Irene lode Sur. No. 2278 Kanuck lode, Sur. No. 2278	20.263 .000+	
<b>SHAMROCK LODE</b>		
Total area		20.385 ✓
Area in conflict with Irene Lode Sur. No. 2278 Topaz lode Sur. No. 1377 Common conflicts with Irene Lode Sur. No. 2278 and <i>Diamond Lode, this survey</i>	0.145 0.040 0.040	
<b>TOM SHARKEY LODE</b>		
Total area		20.651 ✓
Area in conflict with Topaz Lode Sur. No. 1377	0.645 ✓	
<b>TALISMAN LODE</b>		
Total area		20.651 ✓
<b>COPPEROPOLIS LODE</b>		
Total area		20.651 ✓
<b>BRONCHO LODE</b>		
Total area		20.526 ✓
Area in conflict with Gem lode of this survey Union Jack lode Sur. No. 2811	0.025 ✓ 0.001 ✓	
<b>GEM LODE</b>		
Total area		20.661 ✓
<b>WHITE HOPE LODE</b>		
Total area		20.209 ✓
Area in conflict with Kanuck lode Sur. No. 2278 Sids Hope Lode Sur. No. 2278 Black Jack Lode Sur. No. 2278	0.001 ✓ 0.290 ✓ 0.004 ✓	
<b>AZURE LODE</b>		
Total area		20.661 ✓
Area in conflict with Sids Hope lode Sur. No. 2278 Kanuck lode " " " " Black Jack lode " " " " Verde king lode " " " " Garibaldi " " " " Irene lode, Sur. No. 2278	20.052 ✓ 0.055 ✓ 0.518 ✓ 0.035 ✓ 0.001 ✓ 0.000+	
<b>RUTH LODE</b>		
Total area		20.661 ✓
Area in conflict with Verde King lode Sur. No. 2278 Irene lode " " " " Garibaldi lode " " " "	20.139 ✓ 0.001 ✓ 0.511 ✓	
<b>JOHN L. LODE</b>		
Total area		20.223 ✓



	Acres	Acres
ROBERT EMMET LODE. Total area	-----	20.487 ✓
GOLDEN ROSE 2 LODE Total area	-----	20.487 ✓
GREEN 2 LODE Total area	-----	20.190 ✓
BARNETT LODE Total area	-----	20.487 ✓
MAID OF ERIN LODE Total area	-----	19.829 ✓
MAVERICK LODE Total area	-----	19.829 ✓
LILLY 2 LODE Total area	-----	19.829 ✓
LLOYD 2 LODE Total area	-----	19.545 ✓
KRESS LODE Total area	-----	19.827 ✓
LITTLE VERDE LODE Total area	-----	9.959 ✓
Area in conflict with		
Gray Copper Lode Sur.No. 2811.	2.171	
Mountain Boy lode " " " "	1.623	✓
TOPAZ LODE Total area	-----	12.107 ✓
Area in conflict with		
Gray Copper lode Sur. No. 2811	0.230	✓
Red Chief lode " " " "	0.968	✓
Diamond lode of this survey	1.118	✓
DIAMOND LODE Total area	-----	16.081 ✓
Area in conflict with		
Copper Mountain Lode Sur.No.	0.424	
Shamrock lode	3.189	✓
Smoke House M. S. Sur.No. 977	0.432	
Little Verde Lode	1.989	✓
Irene Lode Sur.No. 2278.	0.460	
<del>Common conflict with</del>		
<del>Irene Lode Sur.No. 2278 and</del>		
<del>Shamrock lode.</del>		

LOCATION

This survey is located in sections 9, 10, 14, 15 & 16, unsurveyed, T. 16 N. R. 2 E. of the Gila and Salt River Base and Meridian, in the Prescott National Forest, Verde Mining District, Yavapai County, State of Arizona.

EXPENDITURE OF FIVE HUNDRED DOLLARS

I hereby certify that the value of the labor and improvements made upon or for the benefit of each location embraced in said mining claim, by the claimant or his grantors is not less than five hundred dollars, and that



more than five hundred dollars worth of work<sup>in the common improvement</sup> has been performed for each lode added after the partial construction of the<sup>said</sup> improvement, and that said improvement consists of :

#### JUNE LODGE

No.1 Discovery shaft, the center of which brs S.00° - 30'E. 100 feet , from the north center end, 4 x 6 x 8 ft. deep caved.

Value \$80.00

No.2 shaft, the center of which brs. S.54° E. 54 ft. from the north center end, 4 x 6 x 8 ft. deep, caved.

Value \$80.00

To be accredited to this lode is an equal undivided 1/26 th. interest in the workings of improvement No.1 Shamrock lode, as set forth under heading "Common Improvements

value \$3622.30

To be accredited to this lode is an equal undivided 1/26 th interest in the machinery and mine equipment as set forth under heading "Common Improvements"

value \$3,515.38

#### MAY LODGE

No.1 Discovery cut, the center of which brs. N.00° - 30'W. 450 feet from the south center end, 5 x 10 x 8 ft. face.

Value \$80.00

No.2 cut, the face of which brs. S.32° W. 785 feet from Cor. No. 2, 5 x 25 x 10 foot face.

Value \$200.00

No.3 cut, the face of which brs. S.17° W. 785 feet from Cor. No.2, 5 x 20 x 9 foot face.

Value \$150.00

To be accredited to this lode is an equal undivided 1/26 th. interest in the workings of improvement No. 1 Shamrock lode as set forth under heading "Common Improvements"

Value \$3622.30

To be accredited to this lode is an equal undivided 1/26 th interest in the machinery and mine equipment as set forth under heading "Common Improvements"

value \$3515.38



AFTER THOUGHT LODE

No.1 Discovery cut, the center of which brs. S.00° - 01'W. 481.6 ft. from the north center end, 4 x 19 x 9 foot face. value \$125.00

No.2 cut, the face of which brs. N.24° W. 495 ft. from Cor. No.1, 5 x 20 x 10 foot face. value \$200.00

No.3 cut caved, the mouth of which brs. N.2° -10'W. 850 ft. from the south center end, 5 x 13 x 7 foot face. Value \$60.00

To be accredited to this lode is an equal undivided 1/26 th interest in the workings of improvement No.1

Shamrock lode, as set forth under heading "Common Improvements". value \$3622.30

To be accredited to this lode is an equal undivided 1/26 th. interest in the machinery and mine equipment as set forth under heading "Common Improvements" Value \$3515.38

COPPER MOUNTAIN LODE

No1. Discovery cut, the center of which brs. S.00° - 27'E. 500 feet from the north center end, 5 x 15 x 8 foot face. Value \$100.00

To be accredited to this lode is an equal undivided 1/26 th interest in the workings of improvement No.1

Shamrock lode as set forth under heading "Common Improvements" value \$3622.30

To be accredited to this lode is an equal undivided 1/26 th interest in the machinery and mine equipment as set forth under heading "Common Improvements" value \$3515.38

SHAMROCK LODE

No.1 Discovery and main working shaft, the center of which brs. S.00° -35'E. 663 feet from the north center end, 5 x 10 x 1650 feet deep, from the center of which have been run the following workings:



1100 foot level

A cross-cut 4 x 6 running from center of shaft, S.6°-41'E. 11.5 ft. to sta. 0; thence S.45°-16'E. 46.87 ft. to sta. 1; thence S.27°-27'W. 26.58 feet to sta. 2; thence S.61°-25'W. 98.75 feet to sta. 3; thence S.89°-42'W. 82.82 feet to sta. 4; thence S.70°-26'W. 250.85 ft. to sta. 5; thence S.66°-40'W. 111.60 ft. to sta. 6; thence S.71°-21'W. 65.40 ft. to sta. 7; thence S.74°-53'W. 140.72 ft. to sta. 8; thence S.69°-50'W. 20.98 feet to sta. 9; thence S.80°-09'W. 96.98 feet to sta. 10; thence N.3°-36'W. 47.00 ft. to sta. 11; also S.80°-09'W. 16.5 feet to timbers at cave-in; also S.16°-37'W. 16.0 ft. to sta. 12; thence from sta. 11 N.3°-38'E. 59.01 ft. to sta. 13; thence N.27°-10'E. 43 feet to face. from Sta. 12, S.48°-00'W. 32.5 ft. to face; also from Sta. 12 S.4°-30'E. 20.8 ft. to face, a total length of cross-cut of 1187.86 feet.

1650 foot level

A cross cut 4 x 6 running from center of shaft, S.9°-00'W. 31.32 feet to sta. 0; thence S.69°-28'E. 24.74 ft. to sta. 1E; also from sta. 0 N.83°-52'W. 23.50 feet to sta. 1W; thence from sta. 1E, N.89°-06'E. 56.92 feet to sta. 2; thence S.77°-18'E. 109.64 ft. to sta. 3; thence S.65°-58'E. 27.13 feet to sta. 4; thence N.85°-02'E. 67.97 ft. to sta. 5; thence N.50°-33'E 59.44 ft. to sta. 6; thence N.22°-34'E. 37.45 feet to sta. 7; thence N.36°-05'E. 35.62 ft. to sta. 8; thence N.53°-23'-30"E. 26.38 ft. to sta. 9; thence N.14°-48'-30"E. 26.96 ft. to sta. 10; thence N.31°-11'E. 44.92 ft. to sta. 11; thence N.12°-04'-30"E. 34.05 ft. to sta. 12; thence N.32°-27'-30"E. 55.56 feet to sta. 13; thence N.57°-11'E. 15.96 feet to sta. 14; thence N.29°-10'E. 31.0 feet to face, a total length of 708.46 ft. from center of shaft

Also from sta. 1W, S.73°-38'W. 29.06 feet to sta. 2; thence S.82°-18'W. 321.04 ft. to sta. 3; thence S.56°-00'W. 30.17 ft to sta. 4; thence S.31°-07'W. 46.5 feet to sta. 5; thence S.19°-32'W. 49.75 feet to sta. 6; thence S.30°-28'W. 23.8 feet to sta. 6A; thence S.69°-54'W. 139.5 feet to sta. 7;



thence N.79°-06'W. 18.4 feet to sta. 8; thence N.63°-04'W. 31.8 feet to sta. 9; also from sta. 8 S.80°-17'W. 26.36 ft. to sta. 9S; thence S.88°-21'W. 45.3 feet to face. Also from sta. 9, N.46°-09'W. 60 feet to point 10; thence westerly 100 ft. to face. (caved from point <sup>10</sup> westerly and inaccessible) a total length of 921.68 feet from station 0.

Depth of shaft	1650 feet	Value	\$66,000.00
	1187.86 feet of cross-cut	1100 foot level-	11,878.60
	708.46 feet of cross-cut	1650 foot level-	7,084.60
	921.68 feet of cross-cut	1650 foot level-	9,216.80
		Total	\$ 94,180.00

To be accredited to this lode is an equal undivided 1/26 th interest in the workings of the above mentioned improvement as set forth under heading "Common Improvements"

Value \$3622.30

To be accredited to this lode is an equal undivided 1/26 th interest in the machinery and mine equipment as set forth under heading "Common Improvements"

Value \$3515.38

#### TOM SHARKEY LODGE

No.1 Discovery cut, the center of which hrs. S.00°-01'W. 1.0 feet from the north center end, 5 x 13 x 8 foot face.

value \$80.00

No.2 cut and tunnel, the mouth of cut, hrs. S.32°-50'E. 270 feet from the North center end, cut 5 x 18 x 9 foot face; tunnel 4 x 6 x 60 feet.

value \$700.00

To be accredited to this lode is an equal undivided 1/26 th interest in the workings of improvement No. 1 Shamrock lode as set forth under heading "Common Improvements"

Value \$3622.30

To be accredited to this lode is an equal undivided 1/26 th interest in the machinery and mine equipment as set forth under heading "Common Improvements"

Value \$3515.38



TALISMAN ✓

No.1 Discovery cut, the center of which brs. N.00°-01'E. 90 feet from the south center end, 5 x 13 x 9 foot face. Value \$80.00

No.2 cut, the face of which brs. N.73°-32'E. 287 feet from Cor. No.4, 4 x 15 x 8 foot face. value \$80.00

To be accredited to this lode is an equal undivided 1/26 th interest in the workings of improvement No. 1 Shamrock lode as set forth under heading "Common Improvements" value \$3622.30

To be accredited to this lode is an equal undivided 1/26 th interest in the machinery and mine equipment as set forth under heading "Common improvements" Value \$3515.38

COPPEROPOLIS

No.1 discovery cut, the center of which brs. N.00°-01'E. 225 feet from the south center end, 5 x 15 x 7 foot face. Value \$80.00

No.2 cut, the face of which brs. N.44°-42'E. 375 feet from <sup>point for</sup> Cor. No.4, 4 x 16 x 8 foot face. Value \$100.00

To be accredited to this lode is an equal undivided 1/26 th interest in the workings of improvement No.1 Shamrock lode as set forth under heading "Common improvements" Value \$3622.30

To be accredited to this lode is an equal undivided 1/26 th interest in the machinery and mine equipment as set forth under heading "Common Improvements" Value \$3515.38

BRONCHO LODE

No.1 Discovery shaft, the center of which brs. N.00°-30'W. 150 ft. from the south center end, 4 x 6 x 8 feet deep value \$80.00

No.2 cut, the face of which brs. N.52°-48'W. 275 feet from Cor. No.4, 5 1/2 x 17 x 10 foot face (partly old work ) (41)



New work- - Value \$80.00

To be accredited to this lode is an equal undivided 1/26 th interest in the workings of improvement No. 1 Shamrock lode as set forth under heading "Common Improvements"

value \$3622.30

To be accredited to this lode is an equal undivided 1/26 th interest in the machinery and mine equipment as set forth under heading "Common Improvements"

Value \$3515.38

GEM LODE

No.1 discovery Shaft, the center of which brs. N.00° - 03'W. 100 feet from the south center end, 4 x 6 x 8 ft. deep

value \$80.00

No.2 shaft, the center of which brs. N.11° -10'E. 175 feet from the south center end. 4 x 6 x 7 feet deep

Value \$70.00

To be accredited to this lode is an equal undivided 1/26 th interest in the workings of improvement No. 1 Shamrock lode as set forth under heading "Common Improvements"

value \$3622.30

To be accredited to this lode is an equal undivided 1/26 th interest in the machinery and mine equipment as set forth under heading "Common Improvements"

Value \$3515.38

WHITE HOPE LODE

No.1 discovery shaft, the center of which brs. N.00° - 03'W. 96 feet from the south center end, 4 x 6 x 8 feet deep.

Value \$80.00

To be accredited to this lode is an equal undivided 1/26 th interest in the workings of improvement No.1 Shamrock lode as set forth under heading "Common Improvements."

Value \$3622.30

To be accredited to this lode is an equal undivided 1/26 th interest in the machinery and mine equipment as set forth under heading "Common Improvements"

value \$3515.38.



AZURE LODGE

No.1 discovery cut, the center of which brs. N.00° - 03'W. 130 feet from the south center end, 4 x 16 x 9 feet face. value \$100.00

No.2 cut and tunnel, the mouth of cut brs. S.4° -30'E. 415 ft. from Cor. No.3, cut 6 x 20 x 12 foot face, and tunnel 4 x 6 x 5 feet Value \$250.00

No.3 cut and tunnel, the mouth of cut, brs. S.26° - 27'W. 445 feet from Cor. No.4, cut 5 x 30 x 10 foot face, tunnel 4 x 6 x 3 feet Value \$300.00

No.4 cut, the face of which brs. N.67° E. 310 ft. from Cor. No.2, 4 x 15 x 10 foot face, tunnel 4 x 6 x 10 ft. value \$200.00

To be accredited to this lode is an equal undivided 1/26 th interest in the workings of improvement No.1 Shamrock lode as set forth under heading "Common Improvements". Value \$3622.30

To be accredited to this lode is an equal undivided 1/26 th interest in the machinery and mine equipment as set forth under heading "Common Improvements" Value \$3515.38

RUTH LODGE

No.1 discovery cut, the center of which brs. N.00° - 03'W. 100 feet from the south center end, 5 x 19 x 8 foot face. value \$150.00

To be accredited to this lode is an equal undivided 1/26 th interest in the workings of improvement No.1 Shamrock lode as set forth under heading "Common Improvements". Value \$3622.30

To be accredited to this lode is an equal undivided 1/26 th interest in the machinery and mine equipment as set forth under heading "Common Improvements" Value \$3515.38

JOHN L LODGE.

No.1 discovery shaft, the center of which brs. N.00° -



39'W. 300 ft. from the south center end,  $3\frac{1}{2}$  x  $5\frac{1}{2}$  x 8 ft. deep.

value \$75.00

No.2 cut, the face of which brs. S.3°-25'E. 516 ft. from the north center end. 5 x 12 x 9 foot face.

Value \$100.00

To be accredited to this lode is an equal undivided 1/26 th interest in the workings of improvement No.1 Shamrock Lode as set forth under heading "Common Improvements"

value \$3622.30

To be accredited to this lode is an equal undivided 1/26 th interest in the machinery and mine equipment as set forth under heading "Common Improvements"

Value \$3515.38

#### ROBERT EMMET LODGE

No.1 discovery cut, the center of which brs. S.00°-39'E. 8 feet from the north center end, cut; 5 x 19 x 8 foot face.

Value \$100.00

No.2 cut, the face of which brs. N.18°-08'W. 725 feet from Cor. No.1, 5 x 21 x 10 foot face

Value \$150.00

To be accredited to this lode is an equal undivided 1/26 th interest in the workings of improvement No. 1 Shamrock lode as set forth under heading "Common Improvements"

value \$3622.30

To be accredited to this lode is an equal undivided 1/26 th interest in the machinery and mine equipment as set forth under heading "Common Improvements"

Value \$3515.38

#### GOLDEN ROSE<sup>R</sup> LODGE

No.1 discovery cut, the center of which brs. N.00°-39'W.783 ft. from the south center end, 4 x 18 x 7 foot face.

value \$100.00

No.2 cut, the face of which brs. N.34°-42'E. 515 ft. from Cor. No. 2, 5 x 12 x 8 foot face.

value \$100.00



To be accredited to this lode is an equal undivided 1/26 th interest in the workings of improvement No. 1 Shamrock lode as set forth under heading "Common Improvements" Value \$3622.30

To be accredited to this lode is an equal undivided 1 / 26<sup>th</sup> interest in the machinery and mine equipment as set forth under heading "Common Improvements".

Value \$3515.38

#### GREEN 2 LODE

No.1 discovery shaft, the center of which brs. N.00°-01'E. 773 feet from the south center end. 4 x 6 x 7 feet deep. Value \$70.00

No. 2 cut, the face of which brs. N.18°-08'W. 640 ft. from Cor. No.1, 5 x 12 x 9.5 foot face. Value \$100.00

No. 3 cut, the face of which brs. N.18°-08'W 595 ft from Cor. No.1, 4 x 16 x 10 foot face. Value \$100.00

To be accredited to this lode is an equal undivided 1/26 th interest in the workings of improvement No. 1 Shamrock lode as set forth under heading "Common improvements". Value \$3622.30

To be accredited to this lode is an equal undivided 1/26 th interest in the machinery and mine equipment as set forth under heading "Common Improvements"

Value \$3515.38

#### BARNETT LODE

No.1 discovery cut, the center of which brs. N.00°-01'E. 490 ft. from the south center end, 6 x 22 x 9 foot face. Value \$200.00

To be accredited to this lode is an equal undivided 1/26 th interest in the workings of improvement No.1 Shamrock lode as set forth under heading "Common Improvements"

value \$3622.30

To be accredited to this lode is an equal undivided 1/26 th interest in the machinery and mine equipment as set forth under heading "Common Improvements"

Value \$3515.38

#### MAID OF ERIN 2 LODE



No.1 discovery shaft, the center of which brs. N.00°-49'E. 675 feet from the south center end, 4 x 6 x 8 feet deep.

Value \$80.00

No.2 cut, the face of which brs. N.21°-23'W. 917 ft. from Cor. No.1 5 x 15 x 10 foot face.

value \$100.00

To be accredited to this lode is an equal undivided 1/26 th interest in the workings of improvement No.1 Shamrock lode as set forth under heading "Common Improvements"

Value \$3622.30

To be accredited to this lode is an equal undivided 1/26 th interest in the machinery and mine equipment as set forth under heading "Common Improvements"

Value \$3515.38

#### MAVERICK 2 LODE

No.1 discovery cut, the center of which brs. N.00°-49'E. 675 feet from the south center end, 5 x 14 x 8 foot face.

Value \$100.00

No.2 cut, the face of which brs. N.19°-18'W. 728 feet from Cor. No. 1, 5 x 14 x 7 foot face.

value \$100.00

To be accredited to this lode is an equal undivided 1/26 th interest in the workings of Improvement No.1 Shamrock Lode as set forth under heading "Common Improvements"

value \$3622.30

To be accredited to this lode is an equal undivided 1/26 th interest in the machinery and mine equipment as set forth under heading "Common Improvements"

value \$3515.38

#### LILLY 2 LODE

No.1 discovery shaft, the center of which brs. N.00°-49'E. 675 ft. from the south center end, 4 x 6 x 8 feet deep,

Value \$80.00

No.2 cut, the face of which brs. N.72°-25'E. 160 feet from Cor. No.2, 4 x 25 x 8 foot face.

Value \$150.00



To be accredited to this lode is an equal undivided 1/26 th interest in the workings of improvement No.1 Shamrock lode as set forth under heading "Common Improvements".

Value	\$3622.30
-------	-----------

To be accredited to this lode is an equal undivided 1/26 th interest in the machinery and mine equipment as set forth under heading "Common Improvements"

value	\$3515.38
-------	-----------

#### LLOYD 2 LODE

No.1 discovery cut, the center of which brs. N.00°-49'E. 675 ft. from the south center end, 4 x 9 x 8 foot face.

Value	\$50.00
-------	---------

No.2 cut, the face of which brs. N.34°-27'E. 515 feet from Cor. No.2, 5 x 20 x 8 foot face.

Value	\$150.00
-------	----------

To be accredited to this lode is an equal undivided 1/26 th interest in the workings of improvement No.1 Shamrock lode as set forth under heading "Common improvements"

Value	\$3622.30
-------	-----------

To be accredited to this lode is an equal undivided 1/26 th interest in the machinery and mine equipment as set forth under heading "Common Improvements"

Value	\$3515.38
-------	-----------

#### KRESS LODE

No.1 discovery cut, the center of which brs. N.00°-07'E. 675 feet from the south center end, 6 x 14 x 8 foot face.

Value	\$100.00
-------	----------

No.2 cut, the face of which brs. N.37°-03'W. 390 ft. from Cor. No.1, 5 x 12 x 10 foot face.

Value	\$100.00
-------	----------

To be accredited to this lode is an equal undivided 1/26 th interest in the workings of improvement No.1 Shamrock lode as set forth under heading "Common Improvements"

Value	\$3622.30
-------	-----------

To be accredited to this lode is an equal undivided 1/26 th interest in the machinery and mine equipment as set



forth under heading "Common Improvements"

Value \$3515.38

#### LITTLE VERDE LODE

No.1 discovery cut and tunnel, the face of cut brs. S.89°-50'E. 80 feet from the west center end, cut 4 x 20 x 12 foot face, tunnel 4 x 6 x 40 ft. long.

value cut \$100.00  
Tunnel 400.00

No.2 cut, the mouth of which brs. S.86°-15'E. 430 feet from Cor. No.3, 4 x 30 x 12 foot face.

Value \$200.00

To be accredited to this lode is an equal undivided 1/26 th interest in the workings of improvement No.1 Shamrock lode as set forth under heading "Common Improvements"

Value \$3622.30

To be accredited to this lode is an equal undivided 1/26 th interest in the machinery and mine equipment as set forth under heading "Common Improvements"

Value \$3515.38

#### TOPAZ

No.1 discovery cut, the center of which brs. S.89°-50'E. 560 feet from the west center end, 4 x 30 x 10 foot face.

Value \$250.00

No.2 cut, the mouth of which brs. S.71°-20'E. 912 feet from Cor. No.3, 4 x 12 x 8 foot face.

Value \$75.00

To be accredited to this lode is an equal undivided 1/26 th interest in the workings of improvement No. 1 Shamrock lode as set forth under heading "Common Improvements"

Value \$3622.30

To be accredited to this lode is an equal undivided 1/26 th interest in the machinery and mine equipment as set forth under heading "Common Improvements"

Value \$3515.38

#### DIAMOND LODE

No.1 discovery cut and tunnel, the center of cut brs. N.38°-03'W. 780 feet from the south center end, cut 4 x 34



x 9 foot face, tunnel 4 x 6 x 5 feet long.

Value cut \$200.00  
tunnel 50.00

No.2 cut and tunnel, the mouth of cut, brs. N.38°-03'W. 480 feet from the south center end, cut 4 x 15 x 10 foot face, tunnel 4 x 6 x 25 feet long, caved.

Value cut \$100.00  
tunnel 250.00

No.3 cut, the mouth of which brs. N.20°W. 305 ft. from Cor. No.2, 4 x 15 x 8 foot face.

Value \$80.00

To be accredited to this lode is an equal undivided 1/26 th interest in the workings of improvement No.1 Shamrock lode as set forth under heading "Common Improvements"

value \$3622.30

To be accredited to this lode is an equal undivided 1/26 th interest in the machinery and mine equipment as set forth under heading "Common Improvements"

Value \$3515.38

COMMON IMPROVEMENTS

Improvement no.1 Shamrock lode was sunk originally to develop the fourteen lodes owned by the company prior to 1916. These lodes are the Shamrock, Talisman, Copperopolis, John L, Robert Emmet, Green 2, Barnett, Maid of Erin 2, Maverick 2, Lilly 2, Lloyd 2, Kress, Tom Sharkey and Golden Rose 2. During 1916, the company purchased the following lodes, June, May, After thought, Copper Mountain, Ruth, Azure, White Hope, Gem, Little Verde, Topaz, Diamond, and Broncho, consolidating the above named lodes into one group or claim. Since the consolidation, the mining development work has been carried on in the deep levels of the main working shaft. This shaft is located nearly in the center of the group, at the lowest favorable point for a shaft centrally located. cross cuts have been run in a westerly and easterly direction to develop and intersect the veins of the respective lodes, and their extensions. All the lodes of this group can be developed from this main working shaft,



and I consider said improvement to be a common improvement, and of such character as to redound to the benefit of the several lodes mentioned above,. As 1209.0 lineal feet of cross cuts have been run since the consolidation of the group, said work being valued at \$12090.00, or more than \$1000.00 for each lode added, all the lodes should share equally in the assignment of credits.

Total value of Improvement No.1 Shamrock lode as mentioned above. \$94,180.00

value of 1/23 th equal undivided interest \$3622.30

I have included in my estimate "Machinery and mining equipment" as "Common Improvement" due to the fact that said machinery and equipment, as herein mentioned are actually associated with the excavation, in the main working shaft, and are essential to the practical development of and actually facilitate the extraction of mineral from the claim.

The development work is being done on the 1100 and 1650 foot levels, and the two hoisting plants, steam and electric are used in the necessary mining operations to carry on said development work. The steam plant was originally used for all power necessary to operate the mine, and the electric plant has been lately installed to reduce operation costs, thus making the steam plant an emergency unit.

The pumps installed on the different levels, and stations are used to take care of the heavy flow of water encountered in the development of the mine.

The compressors are used in the operation of air drills, to facilitate the extraction of mineral and development work.

The buildings mentioned, shelter the different units and are necessary for the proper care of above mentioned equipment. The blacksmith and machine shop are necessary for the proper care and operation of the above mentioned equipment, and the sharpening of the tools used in the actual excavation of tunnels etc.

Principal items of Machinery and Mine equipment.

50' x 40' Hoist building, the northeast corner of which brs.



N.21°-55'W. 800 ft. from Cor. No.1.

	value	\$2000.00
18 x 36 Allis Chalmers double drum steam hoist and accessories.	value	\$53,000.00
150 H.P. Jeffrey Mfg. Co. Electric Hoist and motor, with controller and resistance.	value	\$3,000.00
52' x 65' Boiler and Compressor building, the southwest corner of which brs. N.20°-25'W. 797 feet from Cor. No.1	Value	\$2,000.00
16 x 14 x 16 Ingersoll-Rand belt driven Air Compressor and 150 H.P. Motor.	value	\$3,500.00
3- 50 K.W. Transformers complete	value	\$2,100.00
2- 100 K V A Allis Chalmers Transformers	value	\$1,300.00
3- 150 H.P. Horizontal Tubular Boilers, and setting and accessories, complete	value	\$10,000.00
1- 12 x 14 x 10 Ingersoll Rand Co. single stage, Steam actuated air compressor.	Value	\$1,000.00
24' x 60' Machine & Blacksmith Shop, the southwest corner of which brs. N.15°-20'W. 797.0 feet from Cor. No.1.	value	\$1500.00
Machine and Blacksmith Shop equipment	Value	\$2,000.00
4 electric Mine Pumps and motors	value	\$6,000.00
8 steam mine pumps	value	\$4,000.00
	Total value	\$91,400.00
value 1/26 th. equal undivided interest		\$3,515.38

OTHER IMPROVEMENTS

JUNE LODGE

A cut and tunnel, the mouth of cut brs. N.4°-30'W. 650 feet from Cor. No.1, cut 5 x 20 x 7 foot face, tunnel 4 x 6 x 45 feet long.



## MAY LODGE

A cut and tunnel, the mouth of tunnel brs. N.9° W. 795 feet from Cor. No.1, cut 5 x 8 x 10 foot face, tunnel 4 x 6 x 55 feet long.

A cut and tunnel, the mouth of tunnel brs. N.10°-15'W. 605 feet from the south center end, cut 5 x 20 x 10 (foot face, tunnel 4 x 6 x 20 feet long.

## AFTER THOUGHT LODGE

A shaft, the center of which brs. N.13°-15'W. 555 feet from Cor. No.1, 4 x 7 x 300 feet deep.

A cut, the face of which brs. N.6°-20'E. 620 feet from the south center end, 5 x 15 x 10 foot face.

## COPPER MOUNTAIN LODGE

A cut and tunnel, the mouth of cut, brs. N.16°-15'E. 670 feet from Cor. No.4, inaccessible.

## BRONCHO LODGE

A cut and tunnel, the mouth of tunnel brs. N.32°-20'E. 145 feet from Cor. No.1 cut, 4 x 22 x 7 foot face, tunnel 4 x 6 x 96 feet long.

## WHITE HOPE LODGE

A hole, the center of which brs. S.20°-42'W. 805 feet from Cor. No.4, 4 x 6 x 6 feet deep.

A hole, the center of which brs. S.13°-17'W. 632 feet from Cor. No.4, 4 x 6 x 2 feet deep.

## SHAMROCK LODGE

A building 20 x 78, the southwest corner of which brs. N.11°-26'W. 622 feet from Cor. No.1.

A building, 10 x 18, the northwest corner of which brs. N.10°-50'W. 604 feet from Cor. No.1.

A building 14 x 26, the southwest corner of which brs. N.17°-20'W. 540 feet from Cor. No.1.

A building 11 x 38, the southwest corner of which brs. N.31°-55'W. 658 feet from Cor. No.1.

A building 60 x 70, the southeast corner of which brs. N.30°-30'W. 445 feet from Cor. No.1.

A building, 12 x 32, the northeast corner of which brs.



N.36°-30'W. 403 feet from Cor. No.1.

A building, 16 x 30, the southeast corner of which brs.

N.23°-30'W. 357 feet from Cor. No.1.

A building 7 x 16, the southeast corner of which brs.

N.26°-25'W. 332 feet from Cor. No.1

A building 13 x 34, the northwest corner of which brs.

N.17°-20'W. 333 feet from Cor. No.1

A building 23 x 24, the northeast corner of which brs.

N.45°-16'W. 324 feet. from Cor. No.1

A building 12 x 16 , the northgable of which brs. N.38°-35'W. 323 feet from Cor. No.1

A building 16 x 32 , the southeast corner of which brs.

N.12°-27'W. 832 feet from Cor.No.1

A building , 12 x 16 , the southwest corner of which brs. N.19°- 26 'W. 398 feet from Cor. No.1.

#### ADJOINING CLAIMS.

This survey is bounded on the west by United Verde Copper Company's Plattsburg lode Sur. No. 2812, and Jerome Superior group unsurveyed, on the north by the Jerome Daisy Mining Company's group unsurveyed, and Jerome Superior Mining Company's group unsurveyed, on the east by the Jerome Superior Mining Company's group, which includes Garibaldi and Black Jack lodes Sur.No. 2278, and on the south by United Republic, Turra Blanco, Union Jack, Red Chief, Gray Copper, Mountain Boy and Rat lodes, verde Copper Company's groups, Sur.No. 2811, Topaz Lode and the Smoke House Millsite, Sur.No.977. Names of locations unknown except where otherwise mentioned. This survey also conflicts with the Kanuck, Irene, Sids Hope and Verde King lodes, Sur. No. 2278.

#### INSTRUMENT

This survey was made with a Lietz Light Mountain transit-theodolite, No.13-5929. The courses were deflected from the meridian as determined by polaris observations, and by use of the Saegmuller Solar attachment. The distances were measured with a 500 foot steel tape.

#### REPORT

The section corner referred to in this survey, is an iron pipe properly set and marked with the number of sections as described in the field notes of said section.

Sur. No. 2811, I do not agree with the courses and distances of lines adjoining this survey. The corners are



stones properly set and chiseled with number of corner and survey, or witnessed by bearing rocks properly marked.

Sur. No. 2812, I do not agree with courses and distances of lines adjoining this survey. The corners are stones properly set and chiseled with number of corner and survey.

Sur. No. 1377, I do not agree with courses and distances of lines adjoining this survey. The corners 1 and 2 were not in place but the points for corner were established from the calls in the official records of said survey.

Sur. No. 977, I do not agree with the courses of lines adjoining this survey. The corner adjoining this survey is a stone properly set and chiseled with number of corner.

Sur. No. 2278, I do not agree with the courses and distances of lines conflicting with this survey. The corners are stones properly set and chiseled with number of corner and survey. Point for Cor. No. 4 Irene lode was established from the calls in the official records of said survey.

The two lodes "Caroline" and "Reubel" which were included in the order for survey, were located separate from the group as surveyed, and no definite information can be obtained as to their exact location. The officials of the company advised me that in view of the above conditions, they were satisfied the lodes had been abandoned by the company, but through some error had been included in the record of transfer.

The discrepancies found existing between the lodes as marked by location monuments and as described in the location notices are due to errors in the location notices.

The discrepancies between the lines of this survey and prior approved surveys are due to errors in the latter.

*William Wagon*  
U. S. MINERAL SURVEYOR



# FINAL OATHS FOR SURVEYS.

May 1917

## LIST OF NAMES.

A list of the names of the individuals employed by J. William Waara

United States ~~Deputy~~ Mineral Surveyor, to assist in running, measuring, and marking the lines, corners, and

boundaries described in the foregoing field notes of the survey of the mining claim of Arkansas and Arizona Copper Company, known as the Kress, Lloyd 2, Lilly 2, Maverick 2, Golden Rose 2, Green 2, Maid of Erin, Copperopolis, Talisman, Little Verde, 1, Copper Mountain, Afterthought, May, June, White Hope, Topaz, Diamond, Azure, Gem, Ruth, Broncho, Tom Sharkey, Robert Emmet, John L, Shamrock, Barnett, lodes

and showing the respective capacities in which they acted.

J. B. Hamilton ..... , Chairman.  
E. H. Lulloff ..... , Chairman.  
A. E. May ..... , Axman.  
..... , Flagman.

## FINAL OATHS OF ASSISTANTS.

We, J. B. Hamilton, E. H. Lulloff, A. E. May

and ..... , do solemnly swear that we assisted J. William

Waara ..... , United States ~~Deputy~~ Mineral Surveyor, in marking the corners and surveying

the boundaries of the mining claim of Arkansas and Arizona Copper Company, known as the Kress, Lloyd 2, Lilly 2, Maverick 2, Golden Rose 2, Green 2, Maid of Erin 2, Copperopolis, Talisman, Little Verde, Copper Mountain, Afterthought, May, June, White Hope, Topaz, Diamond, Azure, Gem, Ruth, Broncho, Tom Sharkey, Robert Emmet, John L, Shamrock, Barnett, lodes

xxxxxxxxxx

represented in the foregoing field notes as having been surveyed by said ~~deputy~~ mineral surveyor and under his direction; and that said survey has been in all respects, to the best of our knowledge and belief, faithfully and correctly executed, and the corner and boundary monuments established according to law and the instructions furnished by the United States Surveyor-General for ARIZONA

J. B. Hamilton ..... , Chairman.  
E. H. Lulloff ..... , Chairman.  
A. E. May ..... , Axman.  
..... , Flagman.

Subscribed and sworn to by the above-named persons before me this 20

day of Jan ..... , 19 17

*[Signature]*  
Notary Public



FEB 20 1917

(4-686.)

FINAL OATH OF U. S. DEPUTY MINERAL SURVEYOR

I, J. WILLIAM WAARA, U. S. Deputy Mineral Surveyor, do solemnly swear that, in pursuance of instructions received from the United States Surveyor General for ARIZONA, dated Oct. 28, 1916, I have, in strict conformity to the laws of the United States, the official regulations and instructions thereunder, and the instructions of said Surveyor General, faithfully and correctly executed the survey of the Mining Claim of the Arkansas and Arizona Copper Company, known as the June, May, After Thought, Copper Mountain, Shamrock, Tom Sharkey, Talisman, Copperopolis, Broncho, Gem, White Hope, Azure, Ruth, John L. Robert Emmet, Green 2 Golden Rose 2 Barnett, Maid of, Erin 2, Maverick 2, Lilly 2, Lloyd 2, Kress, Little Verde, Topaz, Diamond Lodes situate in Verde Mining District, Yavapai County, Arizona, in Sections 9, 10, 14, 15, 16 <sup>unsurveyed</sup> Township No. 16 N., Range No. 2 E. and designated as Survey No. 3348, as represented in the foregoing field notes, which accurately show the boundaries of said mining claim as distinctly marked by monuments on the ground, and described in the attached copy of the location certificate, which was received by me from the Surveyor General with said instructions, and that all the corners of said survey have been established and perpetuated in strict accordance with the law, official regulations and instructions thereunder; and I do further solemnly swear that the foregoing are the true and original field notes of said survey and my report therein, and that the labor expended and improvements made upon said mining claim by claimant or its grantors are as therein fully stated, and that the character, extent, location and itemized value thereof are specified therein with particularity and full detail, and that no portion of said labor or improvements so credited to this claim has been included in the estimate of expenditures upon any other claim.

J. William Waara  
U. S. Deputy Mineral Surveyor.

Subscribed and sworn to by the said J. William Waara,  
U. S. Deputy Mineral Surveyor, before me a Notary Public in  
for Yavapai County, Ariz. this 20<sup>th</sup>  
day of Feb. 1917.

J. Brown  
Notary Public

My Com. expires 2/19/20.



# Notice of Mining Location

## LODE CLAIM

TO ALL WHOM IT MAY CONCERN:

This Mining Claim, the name of which is the June

Mining Claim, situate on lands belonging to the United States of America, and in which there are valuable mineral deposits, was entered upon and located for the purposes of exploration and purchase by

John W. Anderson  
a Citizen of the United States  
(Locator must insert either "a citizen of the United States," or "who has declared his intention to become a citizen of the United States.")

the undersigned, on the 1st day of January, 1916.

The length of this claim is 1500 feet,  
and 1 claim 100 feet,  
in a Northerly direction and 1400  
feet in a Southerly direction from  
the center of the discovery shaft, at which this notice is posted, lengthwise of the claim, together with

300 feet in width of the surface grounds, on each side of the center of said claim. The general course of the lode deposit and premises is from the North to the South

The claim is situated and located in the Verde Mining District.

in Yavapai County, in the State of Arizona, about 1/2 mile  
in a northeasterly direction from the Arkansas and Arizona main shaft and adjoins the May lode unsurveyed on its east side line

The surface boundaries of the claim are marked upon the ground as follows: Beginning at monument

at a point in a Northerly direction 100 feet from the discovery shaft (at which this notice is posted), being in the center of the North end line of said claim; thence 300 feet to a monument, being the Northeast corner of said claim; thence 1500 feet to a monument, being at the Southeast corner of said claim; thence 300 feet to a monument at the center of the South end of said claim; thence 300 feet to a monument, being at the Southwest corner of said claim; thence 1500 feet to a monument at the Northwest corner of said claim; thence 300 feet to the place of the beginning.

All done under the provisions of Chapter Six, of Title XXXII, of the Revised Statutes of the United States, and of an Act of the General Assembly of Arizona, entitled "An Act to Revise and Codify the Laws of the Territory of Arizona," approved March 16, 1901.

Dated and posted on the ground this 1st day of January, 1916

Witness  
J. C. Hoyt

John W. Anderson



ss.

County of.....

I, ..... County Recorder in and for the County and State aforesaid, do hereby certify that the within instrument was filed for record at.....o'clock.....M, on this.....day of....., 191....., and duly recorded in Book No..... of.....Records of.....County, Arizona, at pages.....

Witness my hand and official seal the day and year first above written.

County Recorder

# Notice of Location

## LODE CLAIM

Dated....., 191.....  
Filed and Recorded at request of

*J. W. Anderson*  
*March 31st*, A. D. 191*6*

at *9:00 O'clock*, A. M.

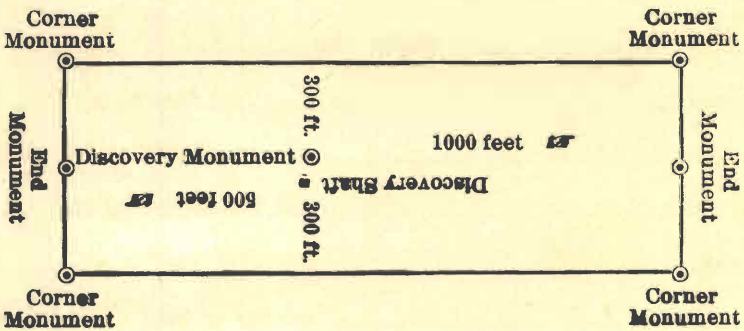
Book *98 of Mines*

Page *474*  
RECORDS OF YAVAPAI COUNTY, ARIZONA

*E. S. Colwell*  
*Recorder*  
County Recorder

By *James W. Boyne*  
Deputy Recorder

PRINTED BY  PRESCOTT COURIER



This diagram is to give the locator a general idea of plan of location under the new law. The Discovery Shaft can be in the center of claim or any distance from either end desired. In the diagram it is placed 500 feet from one end and 1000 feet from the other. Commence description of claim at a center end monument, giving its distance and direction from center of Discovery Shaft; thence bound the claim in either direction. In description be careful to state locality of claim with reference to some natural object, or permanent monument, as will identify the claim.



# Notice of Mining Location

60

## LODE CLAIM

### TO ALL WHOM IT MAY CONCERN:

This Mining Claim, the name of which is the May

Mining Claim, situate on lands belonging to the United States of America, and in which there are valuable mineral deposits, was entered upon and located for the purposes of exploration and purchase by

J. F. Nowles citizen

(Locator must insert either "a citizen of the United States," or "who has declared his intention to become a citizen of the United States.")

the undersigned, on the 10 day of Nov, 1913.

The length of this claim is 1500 feet,  
and 1 claim 800 feet,  
in a Southerly direction and 700  
feet in a North direction from  
the center of the discovery shaft, at which this notice is posted, lengthwise of the claim, together with

300 feet in width of the surface grounds, on each side of the center of said claim. The general course of the lode deposit and premises is from the

North to the South

The claim is situated and located in the Verde Mining District.

in Yavapai County, in the State of Arizona, about 1000

in a East direction from Arkvariz Shaft

The surface boundaries of the claim are marked upon the ground as follows: Beginning at

Stone Mount  
at a point in a South direction 800 feet from  
the discovery shaft (at which this notice is posted), being in the center of the South  
end line of said claim; thence 300 feet to a stone  
mount, being the South West corner of said claim;  
thence 1500 feet to a stone mount, being at the  
North West corner of said claim; thence 300 feet  
to a stone mount at the center of the North end of said claim;  
thence 300 feet to a stone mount, being at the  
North East corner of said claim; thence 1500  
feet to a stone mount at the South East corner of  
said claim; thence 300 feet to the place of the beginning.

All done under the provisions of Chapter Six, of Title XXXII, of the Revised Statutes of the United States, and of an Act of the General Assembly of Arizona, entitled "An Act to Revise and Codify the Laws of the Territory of Arizona," approved March 16, 1901.

Dated and posted on the ground this 10 day of November, 1913

Witness

John W. Anderson

J. F. Nowles



ss.

County of \_\_\_\_\_

I, \_\_\_\_\_, County Recorder in and for the County and

State aforesaid, do hereby certify that the within instrument was filed for record at \_\_\_\_\_ o'clock \_\_\_\_\_ M.,

on this \_\_\_\_\_ day of \_\_\_\_\_ 191\_\_\_\_\_, and duly recorded in Book No. \_\_\_\_\_

of \_\_\_\_\_ Records of \_\_\_\_\_ County, Arizona, at pages \_\_\_\_\_

Witness my hand and official seal the day and year first above written.

County Recorder

# Notice of Location

## LODE CLAIM

Dated \_\_\_\_\_, 191\_\_\_\_\_  
Filed and Recorded at request of

*J. S. Howell*

Book 13, A. D. 1913

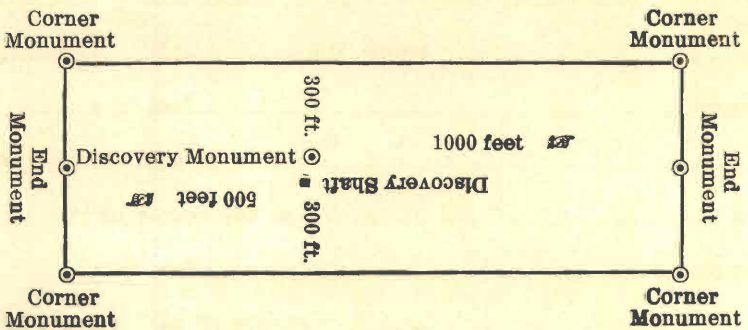
at 9:10 o'clock, A. M.

Book 95 of Mineral

Pages 529  
RECORDS OF YAVAPAI COUNTY, ARIZONA

*L. S. D. Howell*  
County Recorder

By *Benny Brewer*  
Deputy Recorder



This diagram is to give locator a general idea of plan of location under the new law. The Discovery Shaft can be in the center of claim or any distance from either end desired. In the diagram it is placed 500 feet from one end and 1000 feet from the other. Commence description of claim at a center end monument, giving its distance and direction from center of Discovery Shaft; thence bound the claim in either direction. In description be careful to state locality of claim with reference to some natural object, or permanent monument, as will identify the claim.



# Notice of Mining Location

62

## LODE CLAIM

### TO ALL WHOM IT MAY CONCERN:

This Mining Claim, the name of which is the Afterthought

Mining Claim, situate on lands belonging to the United States of America, and in which there are valuable mineral deposits, was entered upon and located for the purposes of exploration and purchase by

W. M. Bracken & John W. Anderson  
abandoned property citizens

(Locator must insert either "a citizen of the United States," or "who has declared his intention to become a citizen of the United States.")

the undersigned, on the first day of Jan, 1913.

The length of this claim is 1500 feet,

and We claim one thousand feet,

in a South direction and Five

Hundred feet in a North direction from

the center of the discovery shaft, at which this notice is posted, lengthwise of the claim, together with

300 feet in width of the surface grounds, on each side of the center of said claim. The general course of the lode deposit and premises is from the

North to the South

The claim is situated and located in the Verde Mining District,

in Yavapai County, in the State of Arizona, about 900 feet

in a East direction from Arkansas & Ariz

shaft in a East direction and joins the

Diamond claim on the South and parallels the

Copper Mountain claim on the West

The surface boundaries of the claim are marked upon the ground as follows: Beginning at

monument  
at a point in a South direction 1000 feet from

the discovery shaft (at which this notice is posted), being in the center of the South

end line of said claim; thence 300 feet to a stone

mount, being the South West corner of said claim;

thence 1500 feet to a stone monument, being at the

North West corner of said claim; thence 300 feet

to a stone monument at the center of the North end of said claim;

thence 300 feet to a stone monument, being at the

North East corner of said claim; thence 1500

feet to a stone monument at the South East corner of

said claim; thence 300 feet to the place of the beginning.

All done under the provisions of Chapter Six, of Title XXXII, of the Revised Statutes of the United States, and of an Act of the General Assembly of Arizona, entitled "An Act to Revise and Codify the Laws of the Territory of Arizona," approved March 16, 1901.

Dated and posted on the ground this first day of January, 1913

Witness  
J. F. Mowles  
Ben J. Turner  
Chas Martin

W. M. Bracken  
John W. Anderson



County of \_\_\_\_\_

ss.

I, \_\_\_\_\_, County Recorder in and for the County and

State aforesaid, do hereby certify that the within instrument was filed for record at \_\_\_\_\_ o'clock \_\_\_\_\_ M.,

on this \_\_\_\_\_ day of \_\_\_\_\_ 191\_\_\_\_, and duly recorded in Book No. \_\_\_\_\_

of \_\_\_\_\_ Records of \_\_\_\_\_ County, Arizona, at pages \_\_\_\_\_

Witness my hand and official seal the day and year first above written.

County Recorder

# Notice of Location

## LODE CLAIM

Dated \_\_\_\_\_, 191\_\_\_\_

Filed and Recorded at request of

*Wm Proctor*

*Jan 6*, A. D. 1913

at *9:00 o'clock* A. M.

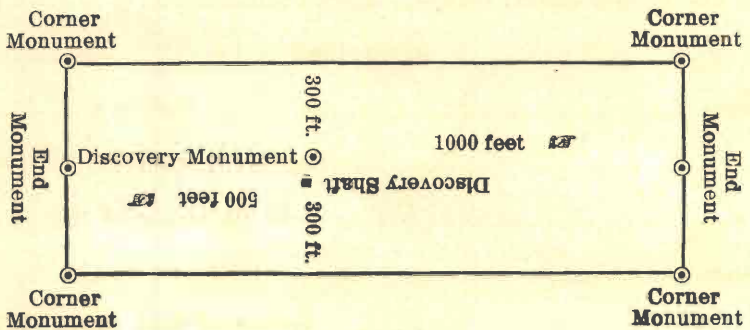
Book *92 of Mines*

Pages *584*  
RECORDS OF YAVAPAI COUNTY, ARIZONA

*L. S. Balmer*  
County Recorder

By *W. J. King*  
Deputy Recorder

PRINTED BY \_\_\_\_\_ PRESCOTT COURIER



This diagram is to give locator a general idea of plan of location under the new law. The Discovery Shaft can be in the center of claim or any distance from either end desired. In the diagram it is placed 500 feet from one end and 1000 feet from the other. Commence description of claim at a center end monument, giving its distance and direction from center of Discovery Shaft; thence bound the claim in either direction. In description be careful to state locality of claim with reference to some natural object, or permanent monument, as will identify the claim.



# Notice of Mining Location

64

## LODE CLAIM

### TO ALL WHOM IT MAY CONCERN:

This Mining Claim, the name of which is the Copper Mountain

Mining Claim, situate on lands belonging to the United States of America, and in which there are valuable mineral deposits, was entered upon and located for the purposes of exploration and purchase by

W. M. Bracken & John W. Anderson  
abandoned Property Citizens  
(Locator must insert either "a citizen of the United States," or "who has declared his intention to become a citizen of the United States.")

the undersigned, on the first day of Jan, 1913.

The length of this claim is 1500 feet,

and We claim one thousand feet,

in a South direction and 500

feet in a North direction from

the center of the discovery shaft, at which this notice is posted, lengthwise of the claim, together with

300 feet in width of the surface grounds, on each side of the center of said claim. The general course of the lode deposit and premises is from the

North to the South

The claim is situated and located in the Verde Mining District.

in Yavapai County, in the Territory State of Arizona, about 900

in a East direction from Arb & Ariz shaft

and parallel the copper sham rock claim on the West and joins the Diamond claim on the south

The surface boundaries of the claim are marked upon the ground as follows: Beginning at

Stone monument  
at a point in a South direction 1000 feet from

the discovery shaft (at which this notice is posted), being in the center of the South

end line of said claim; thence 300 feet to a Stone

monument, being the South West corner of said claim;

thence 1500 feet to a Stone mount, being at the

North West corner of said claim; thence 300 feet

to a Stone mount at the center of the North end of said claim;

thence 300 feet to a Stone mount, being at the

North East corner of said claim; thence 1500

feet to a Stone mount at the South East corner of

said claim; thence 300 feet to the place of the beginning.

All done under the provisions of Chapter Six, of Title XXXII, of the Revised Statutes of the United States, and of an Act of the General Assembly of Arizona, entitled "An Act to Revise and Codify the Laws of the Territory of Arizona," approved March 16, 1901.

Dated and posted on the ground this first day of January, 1913.

Witness

J. F. Mowles  
Ben Towner  
Chas Martin

W. M. Bracken

John W. Anderson



County of \_\_\_\_\_

ss.

I, \_\_\_\_\_, County Recorder in and for the County and State aforesaid, do hereby certify that the within instrument was filed for record at \_\_\_\_\_ o'clock \_\_\_\_\_ M., on this \_\_\_\_\_ day of \_\_\_\_\_, 191\_\_\_\_, and duly recorded in Book No. \_\_\_\_\_ of \_\_\_\_\_ Records of \_\_\_\_\_ County, Arizona, at pages \_\_\_\_\_

Witness my hand and official seal the day and year first above written.

County Recorder

# Notice of Location

## LODE CLAIM

Dated \_\_\_\_\_, 191\_\_\_\_  
Filed and Recorded at request of

*Wm. Brocken*

*Janck*, A. D. 1913

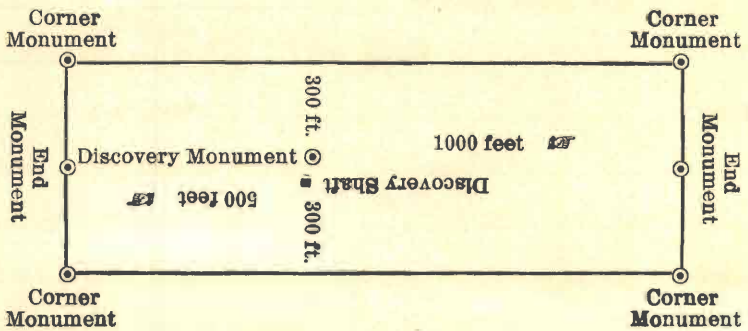
at *9:00 O'clock, P. M.*

Book *92 of Mines*

Pages *583*  
RECORDS OF YAVAPAI COUNTY, ARIZONA

*L. S. Blueell*  
County Recorder

By *W. J. King*  
Deputy Recorder



This diagram is to give locator a general idea of plan of location under the new law. The Discovery Shaft can be in the center of claim or any distance from either end desired. In the diagram it is placed 500 feet from one end and 1000 feet from the other. Commence description of claim at a center end monument, giving its distance and direction from center of Discovery Shaft; thence bound the claim in either direction. In description be careful to state locality of claim with reference to some natural object, or permanent monument, as will identify the claim.



Shamrock

# Notice of Mining Location

## LODE CLAIM

66

### TO ALL WHOM IT MAY CONCERN:

This Mining Claim, the name of which is the Shamrock

Mining Claim, situate on lands belonging to the United States of America, and in which there are valuable mineral deposits, was entered upon and located for the purposes of exploration and purchase by

Dennis Harrington J. M. Sullivan  
Sidney P. De Long  
(Locator must insert either "a citizen of the United States," or "who has declared his intention to become a citizen of the United States.")

the undersigned, on the 23 day of Jan, 1903, 191

The length of this claim is 1500 feet,  
and we claim 900 feet,  
in a Southerly direction and 600  
feet in a Northerly direction from  
the center of the discovery shaft, at which this notice is posted, lengthwise of the claim, together with

300 feet in width of the surface grounds, on each side of the center of said claim. The general course of the lode deposit and premises is from the North to the South

The claim is situated and located in the Verde Mining District.

in Yavapai County, in the Territory State of Arizona, about

in a Northerly direction from U. Verde Smelter and joins the east side line of Quercus mining claim and part of east side line of Sofay and the north side of the pearl mining claims all of the above claims belong to the United Verde mines.

The surface boundaries of the claim are marked upon the ground as follows: Beginning at

North Center End Stone Monument

at a point in a Northerly direction 600 feet from the discovery shaft (at which this notice is posted), being in the center of the North end line of said claim; thence Easterly 300 feet to a Stone monument, being the North East corner of said claim; thence Southerly 1500 feet to a Stone monument, being at the South East corner of said claim; thence Westerly 300 feet to a Stone monument at the center of the South end of said claim; thence Westerly 300 feet to a Stone monu, being at the South West corner of said claim; thence Northerly 1500 feet to a Stone monument at the North West corner of said claim; thence Easterly 300 feet to the place of the beginning.

All done under the provisions of Chapter Six, of Title XXXII, of the Revised Statutes of the United States, and of an Act of the General Assembly of Arizona, entitled "An Act to Revise and Codify the Laws of the Territory of Arizona," approved March 16, 1901.

Dated and posted on the ground this 23rd day of Jan, 1903, 191

Dennis Harrington  
J. M. Sullivan  
Sidney P. De Long



County of.....

I, ....., County Recorder in and for the County and State aforesaid, do hereby certify that the within instrument was filed for record at.....o'clock.....M., on this.....day of....., 191....., and duly recorded in Book No..... of.....Records of.....County, Arizona, at pages.....

Witness my hand and official seal the day and year first above written.

County Recorder

# Notice of Location

## LODE CLAIM

Dated....., 191.....  
Filed and Recorded at request of

*R. S. Harrington*

*Discovery*, A. D. 1903

at 9:00 O'clock P. M.

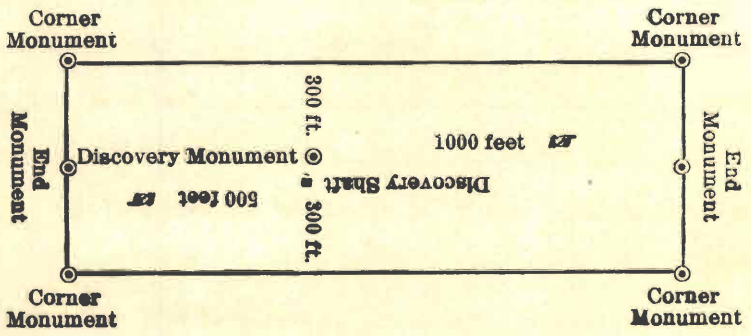
Book *67 of Mines*

Pages *399*  
RECORDS OF MINES COUNTY, ARIZONA

*G. J. Darley*  
County Recorder

By *M. A. Lawler*  
Deputy Recorder

PRINTED BY  PRESCOTT COURIER



This diagram is to give the locator a general idea of plan of location under the new law. The Discovery Shaft can be in the center of claim or any distance from either end desired. In the diagram it is placed 500 feet from one end and 1000 feet from the other. Commence description of claim at a center end monument, giving its distance and direction from center of Discovery Shaft; thence bound the claim in either direction. In description be careful to state locality of claim with reference to some natural object, or permanent monument, as will identify the claim.



Tom Sharkey

6  
3348  
68

# Notice of Mining Location

## LODE CLAIM

### TO ALL WHOM IT MAY CONCERN:

This Mining Claim, the name of which is the Tom Sharkey

Mining Claim, situate on lands belonging to the United States of America, and in which there are valuable mineral deposits, was entered upon and located for the purposes of exploration and purchase by

Dennis Harrington & M. Sullivan

Sidney P. De Long

(Locator must insert either "a citizen of the United States," or "who has declared his intention to become a citizen of the United States.")

the undersigned, on the 17<sup>th</sup> day of Feb, 1903, 191

The length of this claim is 1500 feet,  
and We claim 1450 feet,  
in a Southerly direction and 50

feet in a Northerly direction from  
the center of the discovery shaft, at which this notice is posted, lengthwise of the claim, together with  
300 feet in width of the surface grounds, on each

side of the center of said claim. The general course of the lode deposit and premises is from the

North to the South

The claim is situated and located in the Verde Mining District,

in Yavapai County, in the Territory State of Arizona, about

in a Northerly direction from United Verde

Smelter and joins the United Verde

mining claim called the Turquoise at north

end of said claim and the south end line of Robert Emmitt

The surface boundaries of the claim are marked upon the ground as follows: Beginning at

North center end line stone monument

at a point in a Northerly direction 50 feet from

the discovery shaft (at which this notice is posted), being in the center of the North

end line of said claim; thence Easterly 300 feet to a stone

monument, being the North East corner of said claim;

thence Southerly 1500 feet to a stone monument, being at the

South east corner of said claim; thence Westerly 300 feet

to a stone monument at the center of the South end of said claim;

thence Westerly 300 feet to a stone monument, being at the

South West corner of said claim; thence Northerly 1500

feet to a stone monument at the North West corner of

said claim; thence Easterly 300 feet to the place of the beginning.

All done under the provisions of Chapter Six, of Title XXXII, of the Revised Statutes of the

United States, and of an Act of the General Assembly of Arizona, entitled "An Act to Revise and

Codify the Laws of the Territory of Arizona," approved March 16, 1901.

Dated and posted on the ground this 17<sup>th</sup> day of Feb, 1903, 191

Dennis Harrington  
G. M. Sullivan  
Sidney P. De Long



County of.....

I, ....., County Recorder in and for the County and

State aforesaid, do hereby certify that the within instrument was filed for record at.....o'clock.....M.,

on this.....day of....., 191....., and duly recorded in Book No.....

of.....Records of.....County, Arizona, at pages.....

Witness my hand and official seal the day and year first above written.

County Recorder

# Notice of Location

## LODE CLAIM

Dated....., 191.....  
Filed and Recorded at request of

*D. S. Harrington*

....., A. D. 190.....

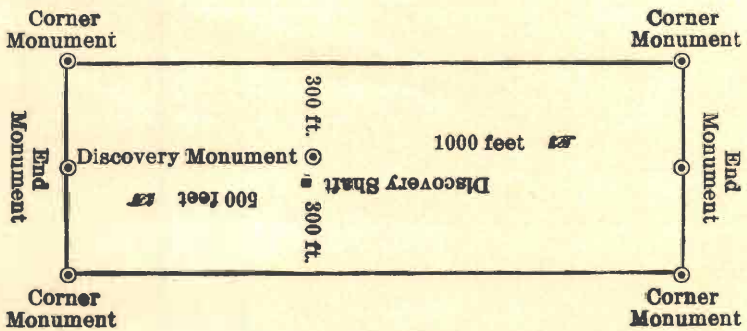
at 9:00 o'clock A. M.

Book 67 of *Mineral*

Pages 395  
RECORDS OF YAVAPAI COUNTY, ARIZO

*P. J. Barber*  
County Recorder  
*Isaacs*

By *Mr. A. Sawyer*  
Deputy Recorder



This diagram is to give the locator a general idea of plan of location under the new law. The Discovery Shaft can be in the center of claim or any distance from either end desired. In the diagram it is placed 500 feet from one end and 1000 feet from the other. Commence description of claim at a center end monument, giving its distance and direction from center of Discovery Shaft; thence bound the claim in either direction. In description be careful to state locality of claim with reference to some natural object, or permanent monument, as will identify the claim.



Certificate of Amended Location

To All Whom It May Concern, This mining claim the name of which is the "Talisman" mining claim was amended, relocated and claimed by right of discovery and amended location by the undersigned C. V. Hopkins and H. W. Nichols citizens of the United States on the 16<sup>th</sup> day of April A. D. 1907, the length of which claim is 1500 feet and we claim 1400 feet in a northerly direction and 100 feet in a southerly direction from the center of the discovery shaft, at which this notice is posted lengthwise of the claim, together with 300 feet of the surface of said claim on each side of the center of said claim.

The general course of the lode, deposit and premises is from the north to the south. This mining claim is situated on public lands of the United States in which there are valuable minerals of gold, silver and copper, and is located in the Verde Mining District, Yavapai County, Arizona, about 1800 feet in a north westerly direction from the mouth of the United Verde Company's 500 foot tunnel, adjoins Robert Emmett on west.

The surface boundaries of the claim are marked on the ground as follows: Beginning at a stone monument at a point in a southerly direction 100 feet from the discovery shaft at which this notice is posted, being the center of the south end line of said claim, thence 300 feet in a due westerly direction to a stone monument, being the south west corner of said claim; thence 1500 feet in a due northerly



direction to the north west corner monument of the claim; thence 300 feet in a due easterly direction to a stone monument, being the center of the north end line of said claim; thence 300 feet in a due easterly direction to a stone monument, being the north east corner of said claim; thence 1500 feet in a due southerly direction to a stone monument, being the south east corner of said claim; thence 300 feet in a due westerly direction to the center end monument of said claim; the place of beginning.

This lode being the same originally located by the undersigned on the fourteenth day of October 1906, and recorded in Book 78 of Mines, at page 85, of the records of Yavapai County, Arizona

This further and amended certificate of location is made without waiver of any previous rights but to correct any error in the prior location or record to extend boundaries to secure all abandoned overlapping claims, and to secure all the benefits of Act 42, an Act concerning Mines, approved March 20th, A. D. 1905, Laws of the Territory of Arizona. We further certify that we have done the necessary work required by said act for this amended location.

Dated and posted on the ground this 16th day of April A. D. 1907

Date of location October 14, 1906	} C. V. Hopkins
Date of amended certificate April 16, 1907	

Recorded at Request of C. V. Hopkins, May 7 A. D. 1907, at 9:14 o'clock A. M. In Book 77 of Mines Pages 484-485, Records of Yavapai County Arizona  
 By H. E. Aston Deputy {Seal} J. C. Bradbury County Recorder



Certificate of Amended Location

To all Whom It May Concern: This mining claim the name of which is the Copperopolis mining claim was amended, relocated and claimed by right of discovery and amended location by the undersigned C. V. Hopkins & H. W. Nichols citizens of the United States on the 16th day of April A. D. 1907, the length of which claim is 1500 feet and we claim 1275 feet in a northerly direction, and 225 feet in a southerly direction from the center of the discovery shaft, at which this notice is posted lengthwise of the claim, together with 300 feet of the surface of said claim on each side of the center of said claim.

The general course of the lode, deposit and premises is from the north to the south. This mining claim is situated on public lands of the United States in which there are valuable minerals of gold, silver and copper, and is located in the Verde Mining District, Yavapai County, Arizona, about 2200 in a northwesterly direction from the mouth of the United Verde Co's 500 ft. tunnel and adjoins the Talisman on the west.

The surface boundaries of the claim are marked on the ground as follows: Beginning at a stone monument at a point in a southerly direction 225 ft. from the discovery shaft at which this notice is posted being the center of the south end line of said claim, thence 300 feet in a due west direction to a stone monument, being the south



west corner of said claim; thence 1500 feet in a due north direction to the north west corner monument of the claim; thence 300 feet in a due east direction to a stone monument, being the center of the north end line of said claim; thence 300 feet in a due east direction to a stone monument being the northeast corner of said claim; thence 1500 feet in a due south direction to a stone monument being the southeast corner of said claim thence 300 feet in a due west direction to the S. center end monument of said claim, the place of beginning.

This lode being the same originally located by the undersigned on the 25th day of October 1906, and recorded in Book 78 of Mines, at page 84, of the records of Yavapai County, Arizona.

This further and amended certificate of location is made without waiver of any previous rights but to correct any error in the prior location or record to extend boundaries, to secure all abandoned overlapping claims, and to secure all the benefits of Act 42, an Act covering Mines approved March 20th, A. D. 1895, Laws of the Territory of Arizona. We further certify that we have done the necessary work required by said act for this amended location.

Dated and posted on the ground, this 16th day of April A. D. 1907.

Date of location, October 25-1906. }  
 Date of amended certificate April 16-1907 }  
 C. V. Hopkins  
 Henry W. Nichols

Recorded at Request of C. V. Hopkins, May 7, A. D. 1907 At 9:13 O'clock, A. M. In Book 77 of Mines, Pages 482-484, Records of Yavapai County, Arizona  
 By H. E. Aston Deputy {Seal} J. C. Bradbury County Recorder



AMENDED  
Notice of Mining Location  
LODE CLAIM

TO ALL WHOM IT MAY CONCERN:

This Mining Claim, the name of which is the Broncho  
Mining Claim, situate on lands belonging to the United States of America, and in which there are valu-  
able mineral deposits, was entered upon and located for the purposes of exploration and purchase by  
John W. Anderson, a citizen of the  
United States

(Locator must insert either "a citizen of the United States," or "who has declared his intention to become a citizen of the United States.")

the undersigned, on the first day of January 1916

The length of this claim is 1500 feet,  
and the undersigned claim 5 1350 feet,  
in a northerly direction and 150  
feet in a Southerly direction from  
the center of the discovery shaft, at which this notice is posted, lengthwise of the claim, together with  
300 feet in width of the surface grounds, on each  
side of the center of said claim. The general course of the lode deposit and premises is from the

northerly to the Southerly  
The claim is situated and located in the Verde Mining District, in  
Yavapai County, in the State of Arizona, about 5/8 of a mile  
in a northwesterly direction from Arkansas & Ariz  
ona Copper Company shaft.

The surface boundaries of the claim are marked upon the ground as follows: Beginning at  
at a monument of stones

at a point in a Southerly direction 150 feet from  
the discovery shaft (at which this notice is posted,) being in the center of the Southerly  
end line of said claim; thence easterly 300 feet to a like  
monument, being the Southeast corner of said claim;  
thence northerly 1500 feet to a like monument, being at the  
northeast corner of said claim; thence westerly 300 feet  
to a like monument at the center of the northerly end of said claim;  
thence westerly 300 feet to a like monument, being at the  
northwest corner of said claim; thence Southerly 1500  
feet to a like monument at the Southwest corner of said claim;  
thence easterly 300 feet to the place of the beginning.

All done under the provisions of Chapter Six, of Title XXXII, of the Revised Statutes of the United  
States, and ~~of an Act of the General Assembly of Arizona, entitled "An Act to Revise and Codify the~~  
~~Laws of the Territory of Arizona," approved March 16, 1901.~~ Revised Statutes of  
Arizona, 1913.

This is an Amended Location Notice of the Broncho  
Mining Claim, located by John W. Anderson  
on the first day of  
January 1916, and recorded in Book 98 of Records of Mines, at  
page 473, ~~and amended notice thereof recorded in Book 86 of Mines page 597~~  
in the office of the County Recorder of the aforesaid County of Yavapai

to which reference is hereby made, and this Amended Location Notice is made and posted to correct errors  
in the description in the said Original Location Notice.

Dated and posted on the ground this 21<sup>st</sup> day of September 1916  
Arkansas & Arizona Copper Company



County of.....

I, ....., County Recorder in and for the County and State aforesaid, do hereby certify that the within instrument was filed for record at.....o'clock.....M., on this.....day of....., 191....., and duly recorded in Book No..... of.....Records of.....County, Arizona, at pages.....

Witness my hand and official seal the day and year first above written.

County Recorder.

AMENDED  
Notice of Location  
LODE CLAIM

Dated ..... 191  
Filed and Recorded at request of

*Arkansas Mining Corporation*

*Sept. 30th A. D. 1916*

at *1:25 O'clock P. M.*

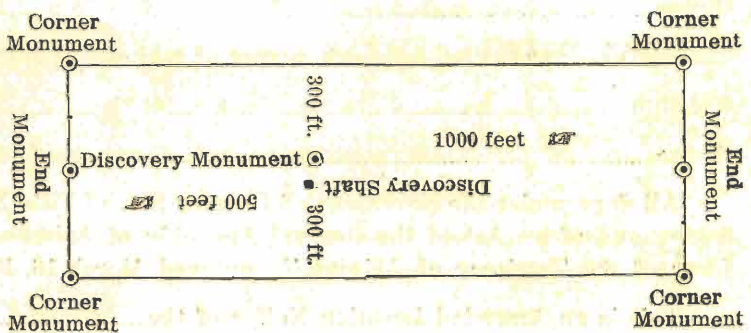
Book *99 of Mineral*

Page# *87*  
RECORDS OF YAVAPAI COUNTY, ARIZONA

*H. S. Colwell*  
County Recorder

By *Chas. O. Thomas*  
Deputy Recorder

Printed and for sale by Prescott Courier



This diagram is to give locator a general idea of plan of location under the new law. The Discovery Shaft can be in the center of claim or any distance from either end desired. In the diagram it is placed 500 feet from one end and 1000 feet from the other. Commence description of claim at a center end monument, giving its distance and direction from center of Discovery Shaft; thence bound the claim in either direction. In description be careful to state locality of claim with reference to some natural object, or permanent monument, as will identify the claim.



AMENDED  
Notice of Mining Location  
LODE CLAIM

TO ALL WHOM IT MAY CONCERN:

This Mining Claim, the name of which is the Gem  
Mining Claim, situate on lands belonging to the United States of America, and in which there are valuable mineral deposits, was entered upon and located for the purposes of exploration and purchase by John W. Anderson, a citizen of the United States

(Locator must insert either "a citizen of the United States," or "who has declared his intention to become a citizen of the United States.")

the undersigned, on the first day of January 1916

The length of this claim is 1500 feet,  
and the undersigned claims 1400 feet,  
in a northerly direction and 100  
feet in a southerly direction from  
the center of the discovery shaft, at which this notice is posted, lengthwise of the claim, together with  
300 feet in width of the surface grounds, on each  
side of the center of said claim. The general course of the lode deposit and premises is from the  
northerly to the southerly

The claim is situated and located in the Verde Mining District, in  
Yavapai County, in the State of Arizona, about 5/8 of a mile  
in a Northwesterly direction from Arkansas & Arizona  
Copper Company Shaft

The surface boundaries of the claim are marked upon the ground as follows: Beginning at  
a monument of Stones

at a point in a southerly direction 100 feet from  
the discovery shaft (at which this notice is posted,) being in the center of the southerly  
end line of said claim; thence Easterly 300 feet to a like  
monument, being the southeast corner of said claim;  
thence northerly 1500 feet to a like monument, being at the  
northeast corner of said claim; thence Westerly 300 feet  
to a like monument at the center of the northerly end of said claim;  
thence Westerly 300 feet to a like monument, being at the  
northwest corner of said claim; thence southerly 1500  
feet to a like monument at the southwest corner of said claim;  
thence Easterly 300 feet to the place of the beginning.

All done under the provisions of Chapter Six, of Title XXXII, of the Revised Statutes of the United States, and ~~of an Act of the General Assembly of Arizona, entitled "An Act to Revise and Codify the Laws of the Territory of Arizona," approved March 16, 1901.~~ Revised Statutes of Arizona 1913.

This is an Amended Location Notice of the Gem  
Mining Claim, located by John W. Anderson  
on the first day of  
January 1916, and recorded in Book 98 of Records of Mines, at  
page 472, in the office of the County Recorder of the aforesaid County of Yavapai  
to which reference is hereby made, and this Amended Location Notice is made and posted to correct errors  
in the description in the said Original Location Notice.

Dated and posted on the ground this 21st day of September 1916  
Arkansas & Arizona Copper Company



County of.....

I, ....., County Recorder in and for the County and State aforesaid, do hereby certify that the within instrument was filed for record at.....o'clock.....M., on this.....day of....., 191....., and duly recorded in Book No..... of.....Records of.....County, Arizona, at pages.....

Witness my hand and official seal the day and year first above written.

County Recorder.

AMENDED  
Notice of Location  
LODE CLAIM

Dated.....191.....  
Filed and Recorded at request of.....

*Artemasus Aug Coppearts*

*Sept 30<sup>th</sup> A. D. 1916*

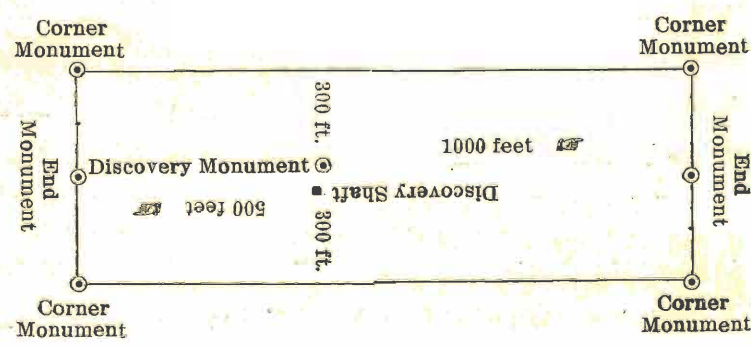
at *1:35 O'clock P. M.*

Book *99 of Mines*

Page *85*  
RECORDS OF YAVAPAI COUNTY, ARIZONA

*L. S. Colwell*  
County Recorder

By *Chas. P. ...*  
Deputy Recorder



This diagram is to give locator a general idea of plan of location under the new law. The Discovery Shaft can be in the center of claim or any distance from either end desired. In the diagram it is placed 500 feet from one end and 1000 feet from the other. Commence description of claim at a center end monument, giving its distance and direction from center of Discovery Shaft; thence bound the claim in either direction. In description be careful to state locality of claim with reference to some natural object, or permanent monument, as will identify the claim.



AMENDED  
**Notice of Mining Location**  
**LODE CLAIM**

TO ALL WHOM IT MAY CONCERN:

This Mining Claim, the name of which is the WHITE HOPE  
Mining Claim, situate on lands belonging to the United States of America, and in which there are  
valuable mineral deposits, was entered upon and located for the purposes of exploration and purchase  
by John W. Anderson, a citizen of the United States.

(Locator must insert either "a citizen of the United States," or "who has declared his intention to become a citizen of the United States.")

~~extended~~, on the 1st day of January, 1916.

The length of this claim is 1500 feet,  
and the undersigned claim s 100 feet,  
in a Southerly direction and 1400  
feet in a Northerly direction from  
the center of the discovery shaft, at which this notice is posted, lengthwise of the claim, together with  
300 feet in width of the surface grounds, on each side  
of the center of said claim. The general course of the lode deposit and premises is from the  
North to the South.

The claim is situated and located in the Verde Mining District, in  
Yavapai County in the State of Arizona, about 1/2 mile  
in a Northeasterly direction from Arkansas and Arizona  
main shaft and adjoining the May lode unsurveyed on the North end  
line.

The surface boundaries of the claim are marked upon the ground as follows: Beginning at  
monument

at a point in a Southerly direction 100 feet from  
the discovery shaft (at which this notice is posted), being in the center of the South  
end line of said claim; thence West 300 feet to a monument  
of stone, being the Southwest corner of said claim; thence  
North 1500 feet to a monument of stone being at the  
Northwest corner of said claim; thence East 300 feet  
to a monument of stone at the center of the North end of said claim;  
thence East 300 feet to a monument being at the  
Northeast corner of said claim; thence South 1500 feet  
to a monument at the Southeast corner of said claim;  
thence West 300 feet to the place of beginning.

All done under the provisions of the laws of the United States, and of the State of Arizona.

This is an Amended Location Notice of the WHITE HOPE  
Mining Claim, located by John W. Anderson,

on the 1st day of  
January, 1916, and recorded in Book 98 of Records of Mines, at  
page 475, in the office of the County Recorder of the aforesaid County of Yavapai  
to which reference is hereby made, and this amended Location Notice is made and posted to correct  
errors in the description in the said original Location Notice.

Dated and posted on the ground this eighth day of October, 1916.

Arkansas & Arizona Copper Company,

By, - W.H. Galligan, Supt.



STATE OF ARIZONA,

County of ..... } ss.

I, ....., County Recorder in and for the County and State aforesaid, do hereby certify that the within instrument was filed for record at ..... o'clock ..... M., on this ..... day of ....., 19....., and duly recorded in Book No. .... of ..... Records of ..... County, Arizona, at pages .....

WITNESS my hand and official seal the day and year first above written.

..... County Recorder.

3948.

AMENDED

Notice of Location  
LODE CLAIM

Dated ....., 19.....

Filed and Recorded at request of

Ark. & Ariz. Copper Co.,

October 9th. A. D. 1916.

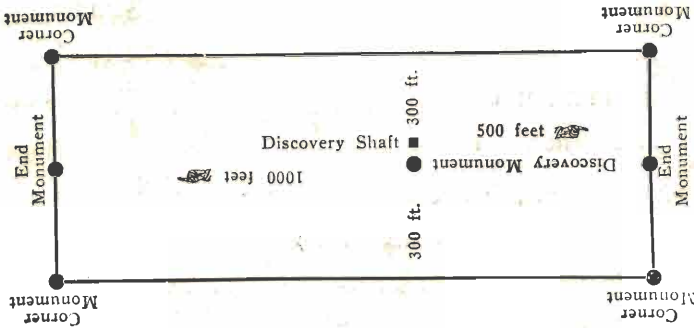
at 11:56- O'clock A. M.,

Book 99 of Mines,

Page# 88; Records of Yavapai County, Arizona.

(SEAL.) I. S. Colwell  
County Recorder.

By Chas. R. Jaing,  
Deputy Recorder.



This diagram is to give locator a general idea of plan of location under the new law. The Discovery Shaft can be in the center of claim or any distance from either end desired. In the diagram it is placed 500 feet from one end and 1000 feet from the other. Commence description of claim at a center end monument, giving its distance and direction from center of Discovery Shaft; thence bound the claim in either direction. In description be careful to state locality of claim with reference to some natural object, or permanent monument, as will identify the claim.



AMENDED NOTICE OF MINING LOCATION  
LODE CLAIM.

---

TO ALL WHOM IT MAY CONCERN:

This Mining Claim, the name of which is the AZURE Mining Claim, situate on lands belonging to the United States of America, and in which there are valuable mineral deposits, was entered upon and located for the purposes of exploration and purchase by J. F. Mowles and Geo. Wilkins, citizens of the United States, on the 10th day of December, 1912.

The length of this claim is 1500 feet, and the undersigned claims 1400 feet in a Northerly direction and 100 feet in a Southerly direction from the center of the discovery shaft, at which this Notice is posted, lengthwise of the claim, together with 300 feet in width of the surface grounds, on each side of the center of said claim. The general course of the lode deposit and premises is from the North to the South.

The claim is situated and located in the Verde Mining District, in Yavapai County, in the State of Arizona, about 1000 feet in a Northerly direction from Arkansas & Arizona Copper Company's shaft.

The surface boundaries of the claim are marked upon the ground as follows: Beginning at a monument of stones at a point in a southerly direction 100 feet from the discovery shaft (at which this notice is posted,) being in the center of the Southerly end line of said claim; thence easterly 300 feet to a like monument, being the Southeast corner of said claim, thence Northerly 1500 feet to a like monument, being at the Northeast corner of said claim; thence Westerly 300 feet to a like monument at the center of the Northerly end of said claim; thence Westerly 300 feet to a like monument, being at the Northwest corner of said claim; thence Southerly 1500 feet to a like monument at the Southwest corner of



said claim; thence Easterly 300 feet to the place of the beginning.

All done under the provisions of Chapter Six, of Title XXXII of the Revised Statutes of the United States, and the Revised Statutes of Arizona, 1913.

This is an Amended Location Notice of the AZURE Mining Claim, located by J. F. Nowles and Geo. Wilkins on the 10th day of December, 1912, and recorded in Book 92 of Records of Mines, at page 582, in the office of the County Recorder of the aforesaid County of Yavapai, said Location having been amended on the 21st day of September, 1916, said Amended Location Notice being recorded in Book 99 of Records of Mines, at page 84, in the office of the County Recorder of said Yavapai County, to which reference is hereby made, and this Amended Location Notice is made and posted to correct errors in the description in the said Original Location Notice and in said Amended Location Notice.

Dated and posted on the ground this eighth day of October, 1916.

Arkansas & Arizona Copper Company,

By, - W.H.Galligan, Supt.,



3949.

Filed and Recorded at Request of

Ark., & Ariz., Copper Co.,

October 9th., A.D., 1916.

at 11:56 - 0'clock A.M.,

Book 93 of Mines;

Pages 671-672; Records of

Yavapai County, Arizona.

( SEAL. ) L.S. Colwell,

County Recorder,

BY, - Chas. R. Laing,  
Deputy Recorder.

ATKINSON & WILSON COPPER COMPANY,

BY - W.H. Galligan, Supt.



AMENDED  
Notice of Mining Location  
LODE CLAIM

TO ALL WHOM IT MAY CONCERN:

This Mining Claim, the name of which is the Ruth  
Mining Claim, situate on lands belonging to the United States of America, and in which there are valuable mineral deposits, was entered upon and located for the purposes of exploration and purchase by J. F. Nowles & Geo Wilkin, citizens of the United States

(Locator must insert either "a citizen of the United States," or "who has declared his intention to become a citizen of the United States.")  
the undersigned, on the 10th day of December 1912.

The length of this claim is 1500 feet,  
and the undersigned claims 1400 feet,  
in a northerly direction and 100  
feet in a southerly direction from  
the center of the discovery shaft, at which this notice is posted, lengthwise of the claim, together with  
300 feet in width of the surface grounds, on each  
side of the center of said claim. The general course of the lode deposit and premises is from the

northerly to the southerly  
The claim is situated and located in the Verde Mining District, in  
Yavapai County, in the State of Arizona, about 1000 feet  
in a northeasterly direction from Arkansas & Arizona Copper Company Shaft

The surface boundaries of the claim are marked upon the ground as follows: Beginning at  
a monument of stones  
at a point in a southerly direction 100 feet from  
the discovery shaft (at which this notice is posted,) being in the center of the southerly  
end line of said claim; thence easterly 300 feet to a like  
monument, being the southeast corner of said claim,  
thence northerly 1500 feet to a like monument, being at the  
northeast corner of said claim; thence westerly 300 feet  
to a like monument at the center of the northerly end of said claim;  
thence westerly 300 feet to a like monument, being at the  
northwest corner of said claim; thence southerly 1500  
feet to a like monument at the southwest corner of said claim;  
thence easterly 300 feet to the place of the beginning.

All done under the provisions of Chapter Six, of Title XXXII, of the Revised Statutes of the United States, and of an Act of the General Assembly of Arizona, entitled "~~An Act to Revise and Codify the Laws of the Territory of Arizona,~~" approved March 16, 1901. Revised Statutes of Arizona 1913

This is an Amended Location Notice of the Ruth  
Mining Claim, located by J. F. Nowles & Geo Wilkin  
on the 10th day of  
December 1912, and recorded in Book 92 of Records of Mines, at  
page 581, in the office of the County Recorder of the aforesaid County of Yavapai  
to which reference is hereby made, and this Amended Location Notice is made and posted to correct errors  
in the description in the said Original Location Notice.

Dated and posted on the ground this 21st day of September 1916  
Arkansas & Arizona Copper Company



County of Yavapai

I, \_\_\_\_\_, County Recorder in and for the County and State aforesaid, do hereby certify that the within instrument was filed for record at \_\_\_\_\_ o'clock \_\_\_\_\_ M, on this \_\_\_\_\_ day of \_\_\_\_\_, 191\_\_\_\_, and duly recorded in Book No. \_\_\_\_\_ of \_\_\_\_\_ Records of \_\_\_\_\_ County, Arizona, at pages \_\_\_\_\_

Witness my hand and official seal the day and year first above written.

\_\_\_\_\_  
County Recorder.

**AMENDED**  
**Notice of Location**  
**LODE CLAIM**

Dated \_\_\_\_\_ 191\_\_\_\_  
Filed and Recorded at request of \_\_\_\_\_

*Arkansas & King & Co.*

*Sept 30th A. D. 1916*

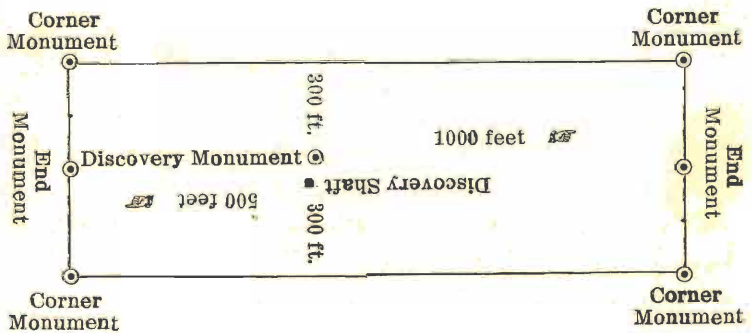
at *1:25 O'clock, P. M.*

Book *99 of Mineral*

Page# *86*  
RECORDS OF YAVAPAI COUNTY, ARIZONA

*L. S. Colwell*  
County Recorder

By *Chas. R. Starnes*  
Deputy Recorder



This diagram is to give locator a general idea of plan of location under the new law. The Discovery Shaft can be in the center of claim or any distance from either end desired. In the diagram it is placed 500 feet from one end and 1000 feet from the other. Commence description of claim at a center end monument, giving its distance and direction from center of Discovery Shaft; thence bound the claim in either direction. In description be careful to state locality of claim with reference to some natural object, or permanent monument, as will identify the claim.



"John L"

# Notice of Mining Location

## LODE CLAIM

TO ALL WHOM IT MAY CONCERN:

This Mining Claim, the name of which is the John L

Mining Claim, situate on lands belonging to the United States of America, and in which there are valuable mineral deposits, was entered upon and located for the purposes of exploration and purchase by Dennis Harrington, J. M. Sullivan  
Sidney P. DeLong  
(Locator must insert either "a citizen of the United States," or "who has declared his intention to become a citizen of the United States.")

the undersigned, on the 17<sup>th</sup> day of Feb, 1903, 191

The length of this claim is 1500 feet,  
and We claim 300 feet,

in a Southerly direction and 1200  
feet in a Northerly direction from  
the center of the discovery shaft, at which this notice is posted, lengthwise of the claim, together with

300 feet in width of the surface grounds, on each  
side of the center of said claim. The general course of the lode deposit and premises is from the  
North to the South

The claim is situated and located in the Verde Mining District,

in Yavapai County, in the Territory State of Arizona, about 1 mile

in a Northerly direction from United Verde Smelter  
and joins north end line of the Shamrock  
lode claim and the south end line of  
Maid of Erin lode claim

The surface boundaries of the claim are marked upon the ground as follows: Beginning at  
North Center End Stone Monument

at a point in a Northerly direction 1200 feet from

the discovery shaft (at which this notice is posted), being in the center of the North  
end line of said claim; thence Easterly 300 feet to a stone  
monument, being the North East corner of said claim;

thence Southerly 1500 feet to a stone monument, being at the  
South East corner of said claim; thence Westerly 300 feet

to a Stone monument at the center of the South end of said claim;

thence Westerly 300 feet to a Stone monument, being at the  
South West corner of said claim; thence Northerly 1500

feet to a Stone monument at the North West corner of  
said claim; thence Easterly 300 feet to the place of the beginning.

All done under the provisions of Chapter Six, of Title XXXII, of the Revised Statutes of the United States, and of an Act of the General Assembly of Arizona, entitled "An Act to Revise and Codify the Laws of the Territory of Arizona," approved March 16, 1901.

Dated and posted on the ground this 17<sup>th</sup> day of Feb, 1903, 191

Dennis Harrington  
J. M. Sullivan  
Sidney P. DeLong



ss.

County of.....

I, ....., County Recorder in and for the County and State aforesaid, do hereby certify that the within instrument was filed for record at..... o'clock..... M., on this..... day of....., 191....., and duly recorded in Book No..... of..... Records of..... County, Arizona, at pages.....

Witness my hand and official seal the day and year first above written.

County Recorder

# Notice of Location

## LODE CLAIM

Dated....., 191.....  
Filed and Recorded at request of.....

*R. D. Harrington*

*April 17, A. D. 1903*

at *9.00 o'clock, A. M.*

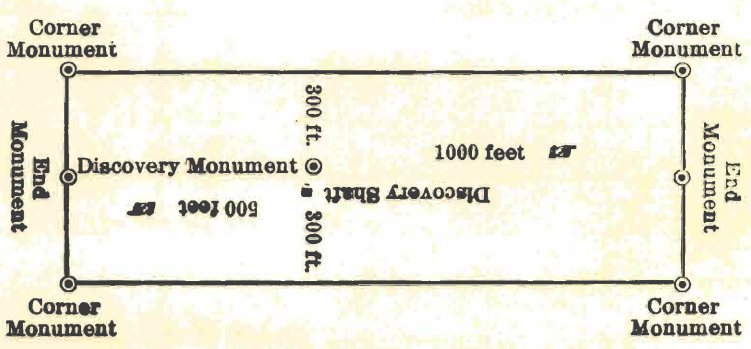
Book *67 of Mines*

Page *397*  
RECORDS OF MINERAL INTERESTS, ARIZONA

*G. J. Starbuck*  
County Recorder

By *M. A. Sewler*  
Deputy Recorder

PRINTED BY PRESOTT COURIER



This diagram is to give the locator a general idea of plan of location under the new law. The Discovery Shaft can be in the center of claim or any distance from either end desired. In the diagram it is placed 500 feet from one end and 1000 feet from the other. Commence description of claim at a center end monument, giving its distance and direction from center of Discovery Shaft; thence bound the claim in either direction. In description be careful to state locality of claim with reference to some natural object, or permanent monument, as will identify the claim.



Robert Emmet

# Notice of Mining Location

87

## LODE CLAIM

TO ALL WHOM IT MAY CONCERN:

This Mining Claim, the name of which is the Robert Emmet

Mining Claim, situate on lands belonging to the United States of America, and in which there are valuable mineral deposits, was entered upon and located for the purposes of exploration and purchase by

Dennis Harrington, J. M. Sullivan

Sidney P. De Long

(Locator must insert either "a citizen of the United States," or "who has declared his intention to become a citizen of the United States.")

the undersigned, on the 17<sup>th</sup> day of Feb., 1903, 191

The length of this claim is 1500 feet,

and We claim 1450 feet,

in a Southerly direction and 50

feet in a Northerly direction from

the center of the discovery shaft, at which this notice is posted, lengthwise of the claim, together with

300 feet in width of the surface grounds, on each side of the center of said claim. The general course of the lode deposit and premises is from the

North to the South

The claim is situated and located in the Verde Mining District,

in Yavapai County, in the Territory State of Arizona, about 1 1/2 miles

in a Northerly direction from United Verde Smel-

ter and joins the North end line of Tom

Sharkey and South end line of the

Maverick

The surface boundaries of the claim are marked upon the ground as follows: Beginning at

North Center End Stone Monument

at a point in a Northerly direction 50 feet from

the discovery shaft (at which this notice is posted), being in the center of the North

end line of said claim; thence Easterly 300 feet to a Stone

monument, being the North East corner of said claim;

thence Southerly 1500 feet to a Stone monument, being at the

South East corner of said claim; thence Westerly 300 feet

to a Stone monument at the center of the South end of said claim;

thence Westerly 300 feet to a Stone monument, being at the

South West corner of said claim; thence Northerly 1500

feet to a Stone monument at the North West corner of

said claim; thence Easterly 300 feet to the place of the beginning.

All done under the provisions of Chapter Six, of Title XXXII, of the Revised Statutes of the United States, and of an Act of the General Assembly of Arizona, entitled "An Act to Revise and Codify the Laws of the Territory of Arizona," approved March 16, 1901.

Dated and posted on the ground this 17<sup>th</sup> day of Feb., 1903, 191

Dennis Harrington

J. M. Sullivan

Sidney P. De Long



ss.

County of.....

I, ....., County Recorder in and for the County and State aforesaid, do hereby certify that the within instrument was filed for record at.....o'clock.....M., on this.....day of....., 191....., and duly recorded in Book No..... of..... Records of..... County, Arizona, at pages.....

Witness my hand and official seal the day and year first above written.

County Recorder

**Notice of Location**  
LODE CLAIM

Dated....., 191.....  
Filed and Recorded at request of

*B. B. Harrington*

*April 17, A. D. 1913*

at *9:00 o'clock A. M.*

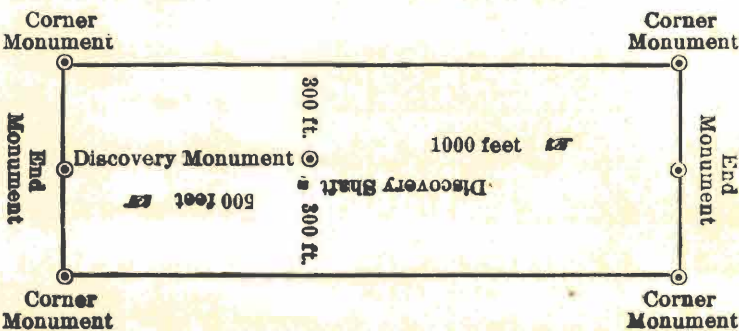
Book *67 of Mineral*

Pages *396*  
RECORDS OF YAVAPAI COUNTY, ARIZONA

*W. G. Farley*  
County Recorder

By *M. A. Sawyer*  
Deputy Recorder

PRINTED BY PRESCOTT COURIER



This diagram is to give the locator a general idea of plan of location under the new law. The Discovery Shaft can be in the center of claim or any distance from either end desired. In the diagram it is placed 500 feet from one end and 1000 feet from the other. Commence description of claim at a center end monument, giving its distance and direction from center of Discovery Shaft; thence bound the claim in either direction. In description be careful to state locality of claim with reference to some natural object, or permanent monument, as will identify the claim.



# Notice of Mining Location

## LODE CLAIM

TO ALL WHOM IT MAY CONCERN:

This Mining Claim, the name of which is the Green 2

Mining Claim, situate on lands belonging to the United States of America, and in which there are valuable mineral deposits, was entered upon and located for the purposes of exploration and purchase by G. E. Leeper, Citizen of the United States

(Locator must insert either "a citizen of the United States," or "who has declared his intention to become a citizen of the United States.")

the undersigned, on the 4<sup>th</sup> day of May, 1907, 191

The length of this claim is 1500 feet,  
and We claim 750 feet,

in a Southerly direction and 750  
feet in a Northerly direction from

the center of the discovery shaft, at which this notice is posted, lengthwise of the claim, together with 300 feet in width of the surface grounds, on each side of the center of said claim. The general course of the lode deposit and premises is from the North to the South

The claim is situated and located in the Verde Mining District,

in Yavapai County, in the Territory State of Arizona, about one mile

in a Northwesterly direction from Jerome and joins the West side line of the Golden Rose, and the South end line of the Lloyd, and is a re-location of the Green which has been abandoned.

The surface boundaries of the claim are marked upon the ground as follows: Beginning a monument of Stones

at a point in a Southerly direction 750 feet from the discovery shaft (at which this notice is posted), being in the center of the South

end line of said claim; thence East 300 feet to a monument of Stone, being the Southeast corner of said claim;

thence North 1500 feet to a monument, being at the Northeast corner of said claim; thence West 300 feet

to a monument at the center of the North end of said claim; thence West 300 feet to a monument, being at the

Northwest corner of said claim; thence South 1500 feet to a monument at the Southwest corner of

said claim; thence East feet to the place of the beginning.

All done under the provisions of Chapter Six, of Title XXXII, of the Revised Statutes of the United States, and of an Act of the General Assembly of Arizona, entitled "An Act to Revise and Codify the Laws of the Territory of Arizona," approved March 16, 1901.

Dated and posted on the ground this 4<sup>th</sup> day of May, 1907, 191

G. E. Leeper

Witness: \_\_\_\_\_



STATE OF ARIZONA,

ss.

County of.....

I, ....., County Recorder in and for the County and

State aforesaid, do hereby certify that the within instrument was filed for record at.....o'clock.....M.,

on this.....day of....., 191....., and duly recorded in Book No.....

of.....Records of.....County, Arizona, at pages.....

Witness my hand and official seal the day and year first above written.

County Recorder

# Notice of Location LODE CLAIM

Dated....., 191.....  
Filed and Recorded at request of

*W B Milliken*

*May 8*, A. D. 191*7*

at *10:16 O'clock* *A. M.*

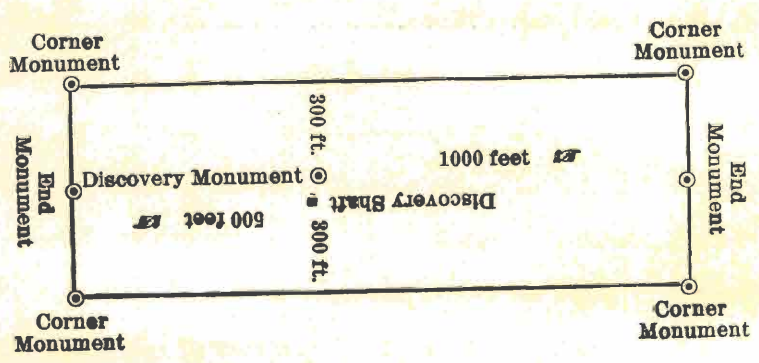
Book *80 of Mineral*

Pages *380*  
RECORDS OF YAVAPAI COUNTY, ARIZ.

*J B Bradburn*  
County Recorder

By *H E Eaton*  
Deputy Recorder

PRINTED BY PRESCOTT COURIER



This diagram is to give the locator a general idea of plan of location under the new law. The Discovery Shaft can be in the center of claim or any distance from either end desired. In the diagram it is placed 500 feet from one end and 1000 feet from the other. Commence description of claim at a center end monument, giving its distance and direction from center of Discovery Shaft; thence bound the claim in either direction. In description be careful to state locality of claim with reference to some natural object, or permanent monument, as will identify the claim.



# Notice of Mining Location

## LODE CLAIM

TO ALL WHOM IT MAY CONCERN:

This Mining Claim, the name of which is the Golden Rose

Mining Claim, situate on lands belonging to the United States of America, and in which there are valuable mineral deposits, was entered upon and located for the purposes of exploration and purchase by J. E. Leeper a Citizen of the United States

(Locator must insert either "a citizen of the United States," or "who has declared his intention to become a citizen of the United States.")

the undersigned, on the 4<sup>th</sup> day of May, 1907, 191

The length of this claim is Fifteen Hundred (1500) feet,  
and We claim Seven Hundred Fifty (750) feet,  
in a Southerly direction and 750  
feet in a Northerly direction from  
the center of the discovery shaft, at which this notice is posted, lengthwise of the claim, together with

300 feet in width of the surface grounds, on each side of the center of said claim. The general course of the lode deposit and premises is from the North to the South

The claim is situated and located in the Verde Mining District,

in Yavapai County, in the Territory State of Arizona, about one mile

in a Northwesterly direction from Jerome, and joins the West side line of the Robert Emmet and the South end line of the Lilly, and is a relocation of the Golden Rose, which has been abandoned

The surface boundaries of the claim are marked upon the ground as follows: Beginning at

a monument of stones

at a point in a Southerly direction 750 feet from the discovery shaft (at which this notice is posted), being in the center of the South end line of said claim; thence East 300 feet to a monument

of stones, being the Southeast corner of said claim;

thence North 1500 feet to a monument, being at the Northeast corner of said claim; thence West 300 feet

to a monument at the center of the North end of said claim;

thence West 300 feet to a monument, being at the Northwest corner of said claim; thence South 1500

feet to a monument at the Southwest corner of said claim; thence East 300 feet to the place of the beginning.

All done under the provisions of Chapter Six, of Title XXXII, of the Revised Statutes of the United States, and of an Act of the General Assembly of Arizona, entitled "An Act to Revise and Codify the Laws of the Territory of Arizona," approved March 16, 1901.

Dated and posted on the ground this 4<sup>th</sup> day of May, 1907, 191

J. E. Leeper

Witness: \_\_\_\_\_



STATE OF ARIZONA,

sa.

County of.....

I, ....., County Recorder in and for the County and

State aforesaid, do hereby certify that the within instrument was filed for record at.....o'clock.....M.,

on this.....day of....., 191....., and duly recorded in Book No.....

of.....Records of.....County, Arizona, at pages.....

Witness my hand and official seal the day and year first above written.

County Recorder

# Notice of Location LODE CLAIM

Dated....., 191.....  
Filed and Recorded at request of

*W. E. Miller*

*Mary S.*, A. D. 1907

at 10:15 O'clock, P. M.

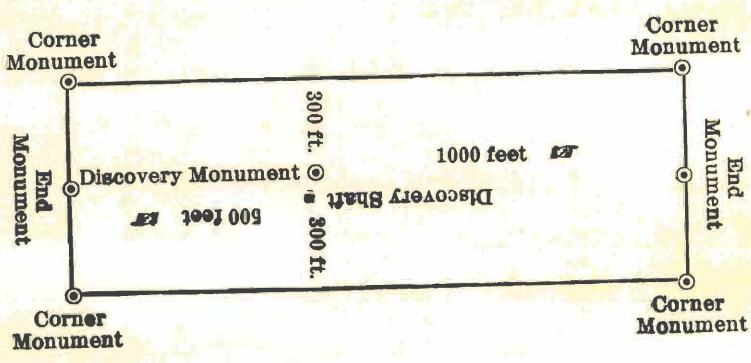
Book *80 of Mineral*

Pages *379*  
RECORDS OF YAVAPAI COUNTY, ARIZ.

*J. E. Bradbury*  
County Recorder

By *H. S. Oatman*  
Deputy Recorder

PRINTED BY PRESCOTT COURIER



This diagram is to give the locator a general idea of plan of location under the new law. The Discovery Shaft can be in the center of claim or any distance from either end desired. In the diagram it is placed 500 feet from one end and 1000 feet from the other. Commence description of claim at a center end monument, giving its distance and direction from center of Discovery Shaft; thence bound the claim in either direction. In description be careful to state locality of claim with reference to some natural object or permanent monument, as will identify the claim.



# Notice of Mining Location

21  
93

## LODE CLAIM

TO ALL WHOM IT MAY CONCERN:

This Mining Claim, the name of which is the Barnett

Mining Claim, situate on lands belonging to the United States of America, and in which there are valuable mineral deposits, was entered upon and located for the purposes of exploration and purchase by

Chas J. Lynch

(Locator must insert either "a citizen of the United States," or "who has declared his intention to become a citizen of the United States.")

the undersigned, on the 15<sup>th</sup> day of February, 1919

The length of this claim is 1500 feet,  
and 9 claim 600 feet,  
in a Southerly direction and 900  
feet in a Northerly direction from  
the center of the discovery shaft, at which this notice is posted, lengthwise of the claim, together with

300 feet in width of the surface grounds, on each side of the center of said claim. The general course of the lode deposit and premises is from the

North to the South

The claim is situated and located in the Verde Mining District,

in Yavapia County, in the Territory State of Arizona, about 1/2 mile

in a Westerly direction from Arizona and  
Arkansas Shaft

The surface boundaries of the claim are marked upon the ground as follows: Beginning at

a monument of stone

at a point in a Southerly direction 600 feet from  
the discovery shaft (at which this notice is posted), being in the center of the South  
end line of said claim; thence 300 feet to a monument

of stone, being the South East corner of said claim;  
thence 1500 feet to a monument of stone, being at the

North East corner of said claim; thence 300 feet

to a monument of stone at the center of the North end of said claim;

thence 300 feet to a monument of stone, being at the

North West corner of said claim; thence 1500

feet to a monument of stone at the South West corner of

said claim; thence 300 feet to the place of the beginning.

All done under the provisions of Chapter Six, of Title XXXII, of the Revised Statutes of the United States, and of an Act of the General Assembly of Arizona, entitled "An Act to Revise and Codify the Laws of the Territory of Arizona," approved March 16, 1901.

Dated and posted on the ground this 15 day of February, 1919

Chas J. Lynch

Witness {

W. E. Campbell



ss.

County of.....

I, ....., County Recorder in and for the County and State aforesaid, do hereby certify that the within instrument was filed for record at.....o'clock.....M., on this.....day of....., 191....., and duly recorded in Book No.....of.....Records of.....County, Arizona, at pages.....

Witness my hand and official seal the day and year first above written.

County Recorder

Notice of Location
LODE CLAIM

Dated....., 191.....
Filed and Recorded at request of

W E Miller
Mary S., A. D. 1927

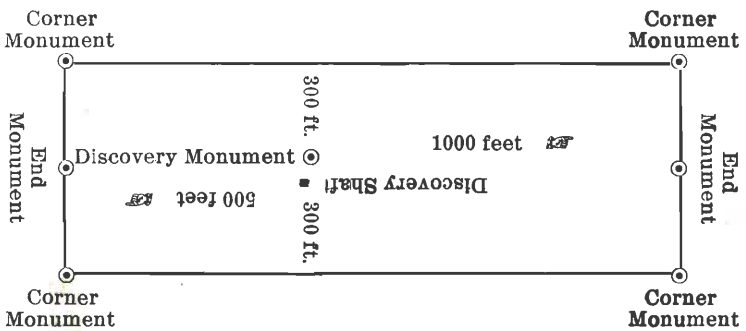
at 10:10 O'clock, A. M.

Book 80 of Mineral

Pages 374
RECORDS OF YAVAPAI COUNTY, ARIZONA

J E Bradbury
County Recorder
(Seal)

By Deputy Recorder



This diagram is to give locator a general idea of plan of location under the new law. The Discovery Shaft can be in the center of claim or any distance from either end desired. In the diagram it is placed 500 feet from one end and 1000 feet from the other. Commence description of claim at a center end monument, giving its distance and direction from center of Discovery Shaft; thence bound the claim in either direction. In description be careful to state locality of claim with reference to some natural object, or permanent monument, as will identify the claim.



# Notice of Mining Location

95

## LODE CLAIM

TO ALL WHOM IT MAY CONCERN:

This Mining Claim, the name of which is the Maid Of Erin

Mining Claim, situate on lands belonging to the United States of America, and in which there are valuable mineral deposits, was entered upon and located for the purposes of exploration and purchase by J. C. Leeper, A. Citizen of The United States

(Locator must insert either "a citizen of the United States," or "who has declared his intention to become a citizen of the United States.")

the undersigned, on the 4<sup>th</sup> day of May, 1907, 191

The length of this claim is 1500 feet,  
and the claim 750 feet,  
in a Southerly direction and 750  
feet in a Northerly direction from  
the center of the discovery shaft, at which this notice is posted, lengthwise of the claim, together with

300 feet in width of the surface grounds, on each side of the center of said claim. The general course of the lode deposit and premises is from the North to the South

The claim is situated and located in the Verde Mining District,

in Yavapai County, in the Territory State of Arizona, about one mile North

in a Northerly direction from Jerome, and joins the North end line of the John L and the East side line of the Maverick, and is a re-location of the Maid Of Erin, which has been abandoned

The surface boundaries of the claim are marked upon the ground as follows: Beginning a monument of Stone

at a point in a Southerly direction 750 feet from the discovery shaft (at which this notice is posted), being in the center of the South

end line of said claim; thence East 300 feet to a monument of Stone, being the Southeast corner of said claim;

thence North 1500 feet to a monument, being at the Northeast corner of said claim; thence West 300 feet

to a monument at the center of the North end of said claim; thence West 300 feet to a monument, being at the

Northwest corner of said claim; thence South 1500 feet to a monument at the Southwest corner of

said claim; thence East 300 feet to the place of the beginning.

All done under the provisions of Chapter Six, of Title XXXII, of the Revised Statutes of the United States, and of an Act of the General Assembly of Arizona, entitled "An Act to Revise and Codify the Laws of the Territory of Arizona," approved March 16, 1901.

Dated and posted on the ground this 4<sup>th</sup> day of May, 1907, 191

J. C. Leeper  
Witness: -



ss.

County of .....

I, ....., County Recorder in and for the County and

State aforesaid, do hereby certify that the within instrument was filed for record at ..... o'clock ..... M.,

on this ..... day of ....., 191....., and duly recorded in Book No. ....

of ..... Records of ..... County, Arizona, at pages .....

Witness my hand and official seal the day and year first above written.

County Recorder

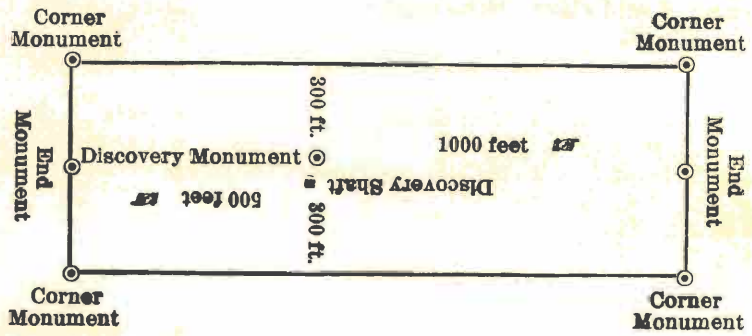
# Notice of Location

LODE CLAIM

Filed and Recorded at request of  
Dated ..... 191.....  
W. E. Mueller  
May 5, A. D. 1907  
at 10:17 O'clock P. M.  
Book 80 of Mineral  
Pages 381  
RECORDS OF YAVAPAI COUNTY, ARIZONA

By *J. E. Bradburn*  
County Recorder  
*H. E. Eaton*  
Deputy Recorder

PRINTED BY PRESCOTT COURIER



This diagram is to give the locator a general idea of plan of location under the new law. The Discovery Shaft can be in the center of claim or any distance from either end desired. In the diagram it is placed 500 feet from one end and 1000 feet from the other. Commence description of claim at a center end monument, giving its distance and direction from center of Discovery Shaft; thence bound the claim in either direction. In description be careful to state locality of claim with reference to some natural object, or permanent monument, as will identify the claim.



# Notice of Mining Location

## LODE CLAIM

23  
97

### TO ALL WHOM IT MAY CONCERN:

This Mining Claim, the name of which is the Maverick

Mining Claim, situate on lands belonging to the United States of America, and in which there are valuable mineral deposits, was entered upon and located for the purposes of exploration and purchase by

J. E. Seper, a Citizen of The United States

(Locator must insert either "a citizen of the United States," or "who has declared his intention to become a citizen of the United States.")

the undersigned, on the 4<sup>th</sup> day of May, 1907, 191

The length of this claim is 1500 feet,

and We claim 750 feet,

in a Southerly direction and 750

feet in a Northerly direction from

the center of the discovery shaft, at which this notice is posted, lengthwise of the claim, together with

300 feet in width of the surface grounds, on each side of the center of said claim. The general course of the lode deposit and premises is from the

North to the South

The claim is situated and located in the Verde Mining District,

in Yavapai County, in the Territory State of Arizona, about one mile North

in a Northerly direction from Jerome, and joins

the North end line of the Robert Emmet

2, and the West Side line of the Maid of

Erin 2 and is a re-location of the Maverick

which has been abandoned.

The surface boundaries of the claim are marked upon the ground as follows: Beginning a

monument of stone

at a point in a Southerly direction 750 feet from

the discovery shaft (at which this notice is posted), being in the center of the South

end line of said claim; thence East 300 feet to a monument

of stone, being the Southeast corner of said claim;

thence North 1500 feet to a monument, being at the

North east corner of said claim; thence West 300 feet

to a monument at the center of the North end of said claim;

thence West 300 feet to a monument, being at the

North West corner of said claim; thence South 1500

feet to a monument at the South West corner of

said claim; thence East feet to the place of the beginning.

All done under the provisions of Chapter Six, of Title XXXII, of the Revised Statutes of the

United States, and of an Act of the General Assembly of Arizona, entitled "An Act to Revise and

Codify the Laws of the Territory of Arizona," approved March 16, 1901.

Dated and posted on the ground this 4<sup>th</sup> day of May, 1907, 191

J. E. Seper

Witness:-



ss.

County of .....

I, ..... County Recorder in and for the County and State aforesaid, do hereby certify that the within instrument was filed for record at ..... o'clock ..... M., on this ..... day of ....., 191 ....., and duly recorded in Book No. .... of ..... Records of ..... County, Arizona, at pages .....

Witness my hand and official seal the day and year first above written.

County Recorder

Notice of Location

LODE CLAIM

Dated ..... 191 ..... Filed and Recorded at request of

W. O. Miller

May 8, A. D. 1907

at 10:13 O'clock, P. M.

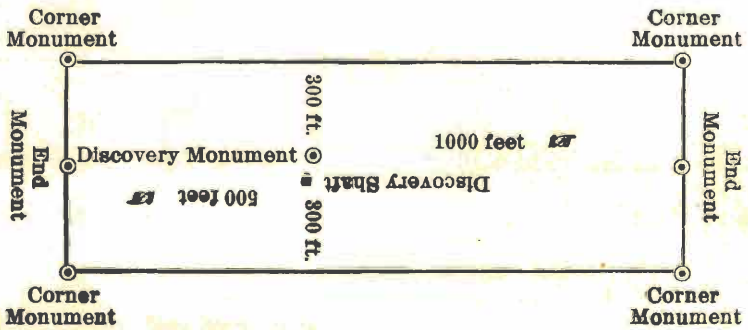
Book 80 of Mines

Page 377 RECORDS OF YAVAPAI COUNTY, ARIZ.

G. B. Bradbury County Recorder

(Seal)

By ..... Deputy Recorder



This diagram is to give the locator a general idea of plan of location under the new law. The Discovery Shaft can be in the center of claim or any distance from either end desired. In the diagram it is placed 500 feet from one end and 1000 feet from the other. Commence description of claim at a center end monument, giving its distance and direction from center of Discovery Shaft; thence bound the claim in either direction. In description be careful to state locality of claim with reference to some natural object, or permanent monument, as will identify the claim.



# Notice of Mining Location

## LODE CLAIM

### TO ALL WHOM IT MAY CONCERN:

This Mining Claim, the name of which is the Lloyd 2

Mining Claim, situate on lands belonging to the United States of America, and in which there are valuable mineral deposits, was entered upon and located for the purposes of exploration and purchase by J. E. Leeper a citizen of the United States

(Locator must insert either "a citizen of the United States," or "who has declared his intention to become a citizen of the United States.")

the undersigned, on the 4th day of May, 1907, 191

The length of this claim is 1500 feet,  
and we claim 750 feet,  
in a Southerly direction and 750  
feet in a Northerly direction from  
the center of the discovery shaft, at which this notice is posted, lengthwise of the claim, together with

300 feet in width of the surface grounds, on each side of the center of said claim. The general course of the lode deposit and premises is from the North to the South

The claim is situated and located in the Verde Mining District,

in Yavapai County, in the Territory State of Arizona, about one-half mile  
in a Northwesterly direction from the A. & A. Copper Company Shaft and joins the North end line of the Green 2 and the West side line of the Lilly and the East side line of the of the Kress and is a relocation of the Lloyd which has been abandoned.

The surface boundaries of the claim are marked upon the ground as follows: Beginning at

monument of Stone  
at a point in a Southerly direction 750 feet from  
the discovery shaft (at which this notice is posted), being in the center of the South  
end line of said claim; thence East 300 feet to a monument  
of Stone, being the Southeast corner of said claim;  
thence North 1500 feet to a monument, being at the  
Northeast corner of said claim; thence West 300 feet  
to a monument at the center of the North end of said claim;  
thence West 300 feet to a monument, being at the  
NorthWest corner of said claim; thence South 1500  
feet to a monument at the South West corner of  
said claim; thence East 300 feet to the place of the beginning.

All done under the provisions of Chapter Six, of Title XXXII, of the Revised Statutes of the United States, and of an Act of the General Assembly of Arizona, entitled "An Act to Revise and Codify the Laws of the Territory of Arizona," approved March 16, 1901.

Dated and posted on the ground this 4th day of May, 1907, 191

J. E. Leeper

Witness: \_\_\_\_\_



County of \_\_\_\_\_

ss.

I, \_\_\_\_\_, County Recorder in and for the County and State aforesaid, do hereby certify that the within instrument was filed for record at \_\_\_\_\_ o'clock \_\_\_\_\_ M., on this \_\_\_\_\_ day of \_\_\_\_\_ 191\_\_\_\_, and duly recorded in Book No. \_\_\_\_\_ of \_\_\_\_\_ Records of \_\_\_\_\_ County, Arizona, at pages \_\_\_\_\_

Witness my hand and official seal the day and year first above written.

County Recorder

# Notice of Location

## LODE CLAIM

Dated \_\_\_\_\_, 191\_\_\_\_  
Filed and Recorded at request of

*W. E. Miller*

*Mary S.*, A. D. 1907

at *1012 O. Street* F. M.

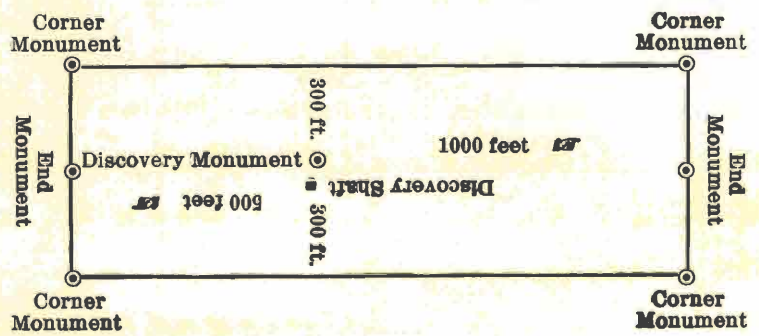
Book *80 of Miller*

Page *376*  
RECORDS OF YAVAPI COUNTY, ARIZONA

*J. L. Bradbury*  
County Recorder  
*(Seal)*

By \_\_\_\_\_ Deputy Recorder

PRINTED BY PRESCOTT COURIER



This diagram is to give locator a general idea of plan of location under the new law. The Discovery Shaft can be in the center of claim or any distance from either end desired. In the diagram it is placed 500 feet from one end and 1000 feet from the other. Commence description of claim at a center end monument, giving its distance and direction from center of Discovery Shaft; thence bound the claim in either direction. In description be careful to state locality of claim with reference to some natural object, or permanent monument, as will identify the claim.



# Notice of Mining Location

26  
103

## LODE CLAIM

TO ALL WHOM IT MAY CONCERN:

This Mining Claim, the name of which is the

*Kress*

Mining Claim, situate on lands belonging to the United States of America, and in which there are valuable mineral deposits, was entered upon and located for the purposes of exploration and purchase by

*Chas. J. Lynch*

(Locator must insert either "a citizen of the United States," or "who has declared his intention to become a citizen of the United States.")

the undersigned, on the

*15* day of

*February*, 190*7*.

The length of this claim is

*1500* feet,

and

*1*

claim

*750* feet,

in a

*Southerly*

direction and

*750*

feet in a

*Northerly*

direction from

the center of the discovery shaft, at which this notice is posted, lengthwise of the claim, together with

*300* feet in width of the surface grounds, on each side of the center of said claim. The general course of the lode deposit and premises is from the

*North* to the

*South*

The claim is situated and located in the

*Verde*

Mining District,

in

*Yavapai*

County, in the

*Territory*

State of Arizona, about

*1 mile*

in a

*North Westerly* direction from

*the Arizona and Arkansas Shaft. On the East side line*

*by the Loyde claim, on the south end line by Barnette claim*

The surface boundaries of the claim are marked upon the ground as follows: Beginning at

*Monument of Stone*

at a point in a

*South*

direction

*750* feet from

the discovery shaft (at which this notice is posted), being in the center of the

*South*

end line of said claim; thence

*300* feet to a

*Monument of Stone*,

being the

*South East*

corner of said claim;

thence

*1500* feet to a

*Monument*,

being at the

*North East*

corner of said claim; thence

*300* feet

to a

*Monument of Stone*

at the center of the

*North*

end of said claim;

thence

*300* feet to a

*Monument of Stone*,

being at the

*North West*

corner of said claim; thence

*1500*

feet to a

*Monument of Stone*

at the

*South West*

corner of

said claim; thence

*300* feet to the place of the beginning.

All done under the provisions of Chapter Six, of Title XXXII, of the Revised Statutes of the United States, and of an Act of the General Assembly of Arizona, entitled "An Act to Revise and Codify the Laws of the Territory of Arizona," approved March 16, 1901.

Dated and posted on the ground this

*15* day of

*February*, 190*7*.

*Chas. J. Lynch*

Witness

*W. E. Campbell*



ss.

County of .....

I, ....., County Recorder in and for the County and State aforesaid, do hereby certify that the within instrument was filed for record at.....o'clock.....M., on this.....day of....., 191....., and duly recorded in Book No.....of .....Records of.....County, Arizona, at pages.....

Witness my hand and official seal the day and year first above written.

County Recorder

# Notice of Location

LODE CLAIM

Dated....., 191.....  
Filed and Recorded at request of

*W. B. Miller*

*Mary S.*, A. D. 1907

at 10:11 O'clock A. M.

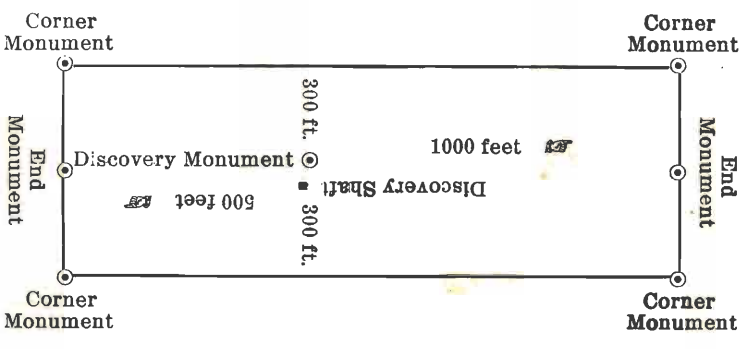
Book *80 of Mines*

Pages *375*  
RECORDS OF YAVAPAI COUNTY, ARIZONA

*J. E. Bradbury*  
County Recorder  
(Seal)

By ..... Deputy Recorder

PRINTED BY ..... PRESCOTT COURIER



This diagram is to give locator a general idea of plan of location under the new law. The Discovery Shaft can be in the center of claim or any distance from either end desired. In the diagram it is placed 500 feet from one end and 1000 feet from the other. Commence description of claim at a center end monument, giving its distance and direction from center of Discovery Shaft; thence bound the claim in either direction. In description be careful to state locality of claim with reference to some natural object, or permanent monument, as will identify the claim.



AMENDED  
Notice of Mining Location  
LODE CLAIM

TO ALL WHOM IT MAY CONCERN:

This Mining Claim, the name of which is the Topak  
Mining Claim, situate on lands belonging to the United States of America, and in which there are valuable mineral deposits, was entered upon and located for the purposes of exploration and purchase by

William Bracken, a citizen of the  
United States

(Locator must insert either "a citizen of the United States," or "who has declared his intention to become a citizen of the United States.")

the undersigned, on the first day of January 1911

The length of this claim is 1200 feet,  
and the undersigned claim 100 feet,

in a westerly direction and 1100  
feet in an easterly direction from

the center of the discovery shaft, at which this notice is posted, lengthwise of the claim, together with  
300 feet in width of the surface grounds, on each

side of the center of said claim. The general course of the lode deposit and premises is from the  
westerly to the easterly

The claim is situated and located in the Verde Mining District, in  
Yavapai County, in the State of Arizona, about 1500 feet

in a northeasterly direction from United Verde Copper  
Company, five hundred, tunnel

The surface boundaries of the claim are marked upon the ground as follows: Beginning at  
a monument of Stones

at a point in a westerly direction 100 feet from  
the discovery shaft (at which this notice is posted,) being in the center of the westerly

end line of said claim; thence northerly 300 feet to a like  
monument, being the Northwest corner of said claim;

thence Easterly 1200 feet to a like monument, being at the  
northeast corner of said claim; thence Southerly 300 feet

to a like monument at the center of the easterly end of said claim;

thence Southerly 300 feet to a like monument, being at the  
Southeast corner of said claim; thence westerly 1200

feet to a like monument at the Southwest corner of said claim;

thence northerly 300 feet to the place of the beginning.

All done under the provisions of Chapter Six, of Title XXXII, of the Revised Statutes of the United  
States, and of an Act of the General Assembly of Arizona, entitled "~~An Act to Revise and Codify the~~  
~~Laws of the Territory of Arizona,~~" approved March 16, 1901. Revised Statutes of Arizona 1913

This is an Amended Location Notice of the Topak  
Mining Claim, located by William Bracken

on the first day of  
January 1911, and recorded in Book 89 of Records of Mines, at  
page 279, in the office of the County Recorder of the aforesaid County of Yavapai

to which reference is hereby made, and this Amended Location Notice is made and posted to correct errors  
in the description in the said Original Location Notice.

Dated and posted on the ground this 21st day of September 1916

Arkansas & Arizona  
Copper Company



County of.....

I, ..... County Recorder in and for the County and State aforesaid, do hereby certify that the within instrument was filed for record at.....o'clock.....M, on this.....day of....., 191....., and duly recorded in Book No..... of.....Records of.....County, Arizona, at pages.....

Witness my hand and official seal the day and year first above written.

..... County Recorder.

AMENDED  
Notice of Location  
LODE CLAIM

Dated..... 191.....  
Filed and Recorded at request of

*Arkansas Ruby Corporation*

*Sept 30<sup>th</sup> A. D. 1916*

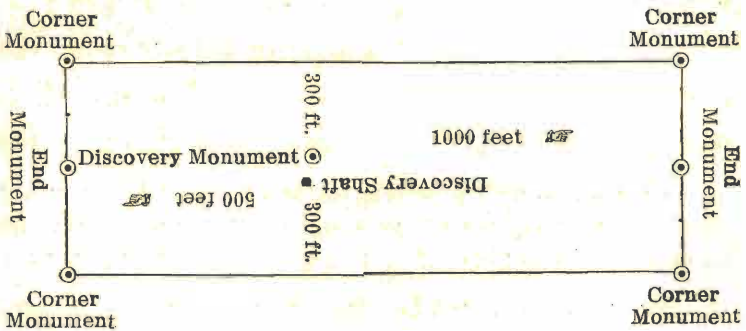
at *1:25 O'clock P. M.*

Book *99 of Mineral*

Pages *82*  
RECORDS OF YAVAPAI COUNTY, ARIZONA

*L. S. Colwell*  
County Recorder

By *Chas O'Leary*  
Deputy Recorder



This diagram is to give locator a general idea of plan of location under the new law. The Discovery Shaft can be in the center of claim or any distance from either end desired. In the diagram it is placed 500 feet from one end and 1000 feet from the other. Commence description of claim at a center end monument, giving its distance and direction from center of Discovery Shaft; thence bound the claim in either direction. In description be careful to state locality of claim with reference to some natural object, or permanent monument, as will identify the claim.



50

107

**AMENDED**  
**Notice of Mining Location**  
**LODE CLAIM**

**TO ALL WHOM IT MAY CONCERN:**

This Mining Claim, the name of which is the Diamond  
Mining Claim, situate on lands belonging to the United States of America, and in which there are valuable mineral deposits, was entered upon and located for the purposes of exploration and purchase by William Bracken, a citizen of the United States

(Locator must insert either "a citizen of the United States," or "who has declared his intention to become a citizen of the United States.")  
the undersigned, on the first day of January 1911

The length of this claim is 1500 feet,  
and the undersigned claims 600 feet,  
in a Northerly direction and 900  
feet in a Southerly direction from  
the center of the discovery shaft, at which this notice is posted, lengthwise of the claim, together with  
300 feet in width of the surface grounds, on each  
side of the center of said claim. The general course of the lode deposit and premises is from the

northerly to the Southerly  
The claim is situated and located in the Verde Mining District, in  
Yavapai County, in the State of Arizona, about 1/4 of a mile  
in a Northerly direction from the United Verde  
Copper Company Smelter

The surface boundaries of the claim are marked upon the ground as follows: Beginning at  
at a monument of stones

at a point in a Southerly direction 900 feet from  
the discovery shaft (at which this notice is posted,) being in the center of the Southerly  
end line of said claim; thence westerly 300 feet to a like  
monument, being the Southwest corner of said claim;  
thence Northerly 1500 feet to a like monument, being at the  
Northwest corner of said claim; thence easterly 300 feet  
to a like monument at the center of the Northerly end of said claim;  
thence easterly feet to a like monument, being at the  
Northeast corner of said claim; thence Southerly 1500  
feet to a like monument at the Southeast corner of said claim;  
thence westerly 300 feet to the place of the beginning.

All done under the provisions of Chapter Six, of Title XXXII, of the Revised Statutes of the United States, and of an Act of the General Assembly of Arizona, entitled "~~An Act to Revise and Codify the Laws of the Territory of Arizona,~~" approved March 16, 1901. Revised Statutes of Arizona 1913

This is an Amended Location Notice of the Diamond  
Mining Claim, located by William Bracken  
on the first day of  
January 1911, and recorded in Book 89 of Records of Mines, at  
page 278, in the office of the County Recorder of the aforesaid County of Yavapai  
to which reference is hereby made, and this Amended Location Notice is made and posted to correct errors  
in the description in the said Original Location Notice.

Dated and posted on the ground this 21st day of September 1916  
Arkansas & Arizona Copper Company



County of.....

I, ..... County Recorder in and for the County and State aforesaid, do hereby certify that the within instrument was filed for record at.....o'clock.....M., on this.....day of....., 191....., and duly recorded in Book No..... of.....Records of.....County, Arizona, at pages.....

Witness my hand and official seal the day and year first above written.

County Recorder.

AMENDED  
Notice of Location  
LODE CLAIM

Dated.....191.....  
Filed and Recorded at request of

*Anderson Aug Coppola*

*Sept 30th A. D. 1916*

at *1:25 O'clock P. M.*

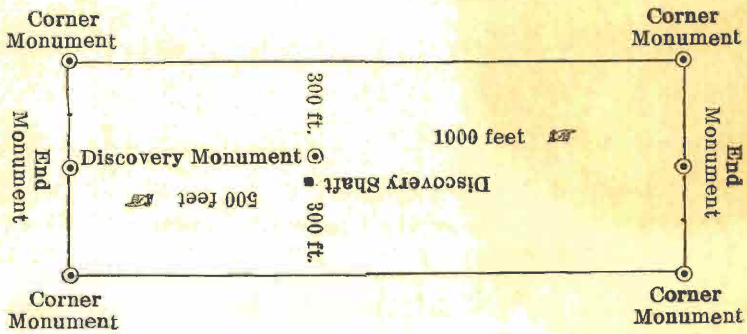
Book *99 of Mineral*

Pages *83*  
RECORDS OF YAVAPI COUNTY, ARIZONA

*L. S. Colwell*  
County Recorder

By *Chas. R. Ham*  
Deputy Recorder

Printed and for sale by Prescott Courier



This diagram is to give locator a general idea of plan of location under the new law. The Discovery Shaft can be in the center of claim or any distance from either end desired. In the diagram it is placed 500 feet from one end and 1000 feet from the other. Commence description of claim at a center end monument, giving its distance and direction from center of Discovery Shaft; thence bound the claim in either direction. In description be careful to state locality of claim with reference to some natural object, or permanent monument, as will identify the claim.



STATE OF ARIZONA, )  
 )  
 - COUNTY OF YAVAPAI. ) S S :-

*diminished from summary*

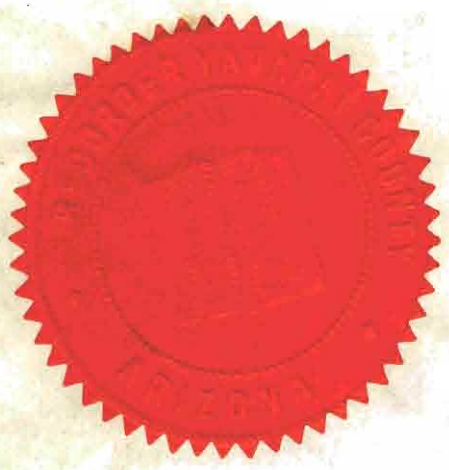
I, L. S. Colwell, County Recorder, in and for the County of Yavapai, State of Arizona, and Custodian of the Records of such Office, DO HEREBY CERTIFY, - that I have Compared the foregoing Copies with, and, that the same are full, true and correct Copies of the Original Mining Location Notices, of the following Mines and Mining Claims; - VIZ :-

Tom Sharkey, - Robert Emmet, - John L., - Shamrock, - Barnett, - Kress, - Lloyd 2, - Lilly 2, - Maverick 2, - Golden Rose 2, - Green 2, - Maid Of Erin, - 2, - Copperopolis, - Talisman, - Diamond, - Broncho, - Topaz, - Ruth, - Azure, - Copper Mountain, - After Thought, - May, - Gem., - June, - White Hope, - - - - - Caroline, and Reubel Mining Claims.

( Twenty-Seven (27) Mining Claims. )

And as the same appears of Record in my said Office, in the Books of Mines, and at the Pages, as set forth in the foregoing COPIES; and of the whole thereof.

IN WITNESS WHEREOF, I have hereunto set my hand and affixed my OFFICIAL SEAL, this 9th., day of OCTOBER, -A.D., 1916.



*L. S. Colwell*  
 \_\_\_\_\_  
 COUNTY RECORDER, YAVAPAI COUNTY,  
 STATE OF ARIZONA.



30  
110  
AMENDED

# Notice of Mining Location

LODE CLAIM

TO ALL WHOM IT MAY CONCERN:

This Mining Claim, the name of which is the LITTLE VERDE Mining Claim, situate on lands belonging to the United States of America, and in which there are valuable mineral deposits, was entered upon and located for the purposes of exploration and purchase by J.F.Mowles, a citizen of the United States

(Locator must insert either "A citizen of the United States," or, "Who has declared his intention to become a citizen of the United States.")

~~the undersigned~~, on the 21st day of July 1910

The length of this claim is 1200 feet  
~~the undersigned claims~~ 80 feet in a Westerly  
and claim 1120 feet in a an Easterly  
direction and 1120 feet in a an Easterly  
direction from the center of the discovery ~~site~~ <sup>cut</sup> at which this notice is posted, lengthwise of the claim,  
together with 300 feet in width of the surface grounds, on each side of the center  
of said claim. The general course of the lode deposit and premises is from the East  
to the West

The claim is situated and located in the Verde Mining District,  
in Yavapai County, in the State of Arizona, about 3600 Feet  
in a North East direction from United Verde Copper  
Company's smelter and about 1500 feet from the portal of the 500 ft.  
tunnel of the United Verde Copper Company

The surface boundaries of the claim are marked upon the ground as follows:

Beginning at A stone monument

at a point in a Westerly direction 80 feet  
from the discovery ~~site~~ <sup>cut</sup> (at which this notice is posted), being in the center of the West  
end line of said claim; thence South 300 feet to a stone monument  
being the South West corner of said claim; thence East 1200  
feet to a stone monument being at the South East  
corner of said claim; thence North 300 feet to a stone monument  
at the center of the East end of said claim; thence North 110  
feet to a stone monument being at the North East corner of said  
claim; thence West 1200 feet to a stone monument  
at the North West corner of said claim; thence South 110  
feet to the place of beginning.

All done under the provisions of Chapter Six, of Title XXXII, of the Revised Statutes of the United States, and of an act of the General Assembly of Arizona, entitled "An Act to Revise and Codify the Laws of the Territory of Arizona," approved March 16, 1901.

This is an amended location notice of the LITTLE VERDE Mining Claim,  
located by J.F.Mowles

on the 21st day of July 1910  
and recorded in Book 89 of records of Mines, at page 103, in the office of the County

Recorder of the aforesaid County of Yavapai, to which reference is hereby made; and this **Amended Location Notice** is made and posted to correct errors in the description in the said original location notice.

Dated and posted on the ground this 25th day of October 1916

ARKANSAS & ARIZONA COPPER COMPANY

By W H Collins Supt.



Filed and recorded at request of  
Arkansas & Ariz., Cop., Co.,

Oct. 26th. - A. D. 1916,

at 9:00 o'clock A. M.,

Book 99 of Mines

page# 92.

Records of Yavapai County, Arizona.

( SEAL. ) L.S. Colwell,  
County Recorder.

By James W. Coym,  
Deputy Recorder.



J12

Filed and recorded at request of Arkansas and Arizona Copper Company,

October 26th., A. D., 1916, at 9:00 o'clock

A.M., Book \_\_\_\_\_ page# 92;

Records of Yavapai County, Arizona.

(SEAL)

L. S. COLWELL,  
County Recorder,

By James W. Coyne,  
Deputy Recorder.

STATE OF ARIZONA, }  
COUNTY OF YAVAPAI. } ss.

I, L. S. Colwell, County Recorder in and for the County of Yavapai, State of Arizona, and custodian of the records of such office, do hereby certify that I have compared the foregoing copy with, and that the same is a full, true and correct copy of Original Amended Notice of Mining Location, of Lode Claim, - known as the "LITTLE VERDE" Mining Claim, located by the Arkansas and Arizona Copper Company, and, - filed for record on Oct., 26th., A.D., 1916, at 9:00-0'clock <sup>A.M.,</sup> and as the same appears of record in my office in Book 99 of MINES; at page# 92, and of the whole thereof.

IN WITNESS WHEREOF, I have hereunto set my hand and affixed my Official Seal this 26th. day of --- OCTOBER ---, A. D., 1916.

L. S. Colwell  
County Recorder.





U. S. SURVEYOR-GENERAL'S FINAL CERTIFICATE ON FIELD NOTES.

Department of the Interior,

OFFICE OF U. S. SURVEYOR-GENERAL,

Phoenix, Arizona,

August 8, 1917.

I, U. S. Surveyor-General for District of Arizona

do hereby certify that the foregoing transcript of the Field Notes, return and approval of the survey

of the mining claim of ARKANSAS AND ARIZONA COPPER COMPANY known as the JUNE, MAY, AFTERTHOUGHT, COPPER MOUNTAIN, SHAMROCK, TOM SHARKEY, TALISMAN, COPPEROPOLIS, BRONCHO, GEM, WHITE HOPE, AZURE, RUTH, JOHN L, ROBERT EMMET, GREEN 2, GOLDEN ROSE 2, BARNETT, MAID OF ERIN 2, MAVERICK 2, LILLY 2, LLOYD 2, KRBS, LITTLE VERDE, TOPAZ, DIAMOND, LODES. situate in VERDE

Mining District, YAVAPAI County, ARIZONA

in Section 9, 10, 14, 15 & 16, uns. Township No. 16 N., Range No. 2 E., and

designated as Survey No. 3348, has been correctly copied from the originals on file in

this office; that said Field Notes furnish such an accurate description of said mining claim as will, if incorporated into a patent, serve fully to identify the premises, and that such reference is made therein to natural objects or permanent monuments as will perpetuate and fix the locus thereof.

And I further certify that five hundred dollars' worth of labor has been expended or improvements made upon said mining claim by claimant or its grantors, and that said improvements consist of 11 shafts, 42 cuts, 7 tunnels and 2818 ft. of crosscut, total value \$96,765. Also machinery and mining equipment, value \$91,400.

A 1/26 interest in improvement No. 1 Shamrock lode and workings therefrom, value \$3,622.30, is properly credited to each lode in this survey, as said improvement is a common improvement for the benefit and development of the entire group. A 1/26 interest in the machinery and mining equipment, value \$3,515.38, is also properly credited to each claim in this survey. and that no portion of said labor or improvements has been included in the estimate of expenditures upon any other claim.

I further certify that the plat thereof, filed in the U. S. Land Office at Phoenix,

Arizona, is correct and in conformity with the foregoing Field Notes.

Frank P. Trott,

United States Surveyor-General for Arizona.



4-687.

SURVEYOR-GENERAL'S CERTIFICATE OF APPROVAL OF FIELD NOTES AND SURVEY OF MINING CLAIM.

Department of the Interior,

Office of U. S. Surveyor-General,

Phoenix, Arizona,

August 8, 1917.

I, U. S. Surveyor-General for District of Arizona

do hereby certify that the foregoing and hereto attached Field Notes and Return of the Survey of the Mining Claim of ARKANSAS AND ARIZONA COPPER COMPANY, known as the

JUNE, MAY, AFTERTHOUGHT, COPPER MOUNTAIN, SHAMROCK, TOM SHARKEY, TALISMAN, COPPEROPOLIS, BRONCHO, GEM, WHITE HOPE, AZURE, RUTH, JOHN L, ROBERT EMMET, GREEN 2, GOLDEN ROSE 2, BARNETT, MAID OF ERIN 2, MAVERICK 2, LILLY 2, LLOYD 2, KRESS, LITTLE VERDE, TOPAZ, DIAMOND, LODES.

situate in VERDE Mining District,

YAVAPAI County, ARIZONA.

16 uns.

in Sections 9, 10, 14, 15, & Township No. 16 N., Range No. 2 E.

, designated as Survey No. 3348

executed by J. William Waara, U. S. Deputy Mineral

Surveyor, Dec. 17, 1916--Jan. 18, 1917, under my instructions dated

October 28, 1916, have been critically examined and the necessary cor-

rections and explanations made, and the said Field Notes and Return, and the Survey they describe,

are hereby approved. A true copy of the copy of the location certificate filed by the applicant for

survey is included in the field notes.

Frank D. Frost

U. S. Surveyor-General for Arizona.