

Copied 10-8-17 ET

12-9-1917

1

Plotted
4-683

AUG-8-1917

MINERAL SURVEY No. 3350

LOT No.

Arizona Land District.

FIELD NOTES

OF THE SURVEY OF THE MINING CLAIM OF

W. E. Defty

KNOWN AS THE

No 1, No 4, No 5, No 6 and No 8 Leads

Verde Mining District,

Yavapai County, Arizona

Unsur. Section 13 & 24, Township 16 N, Range 2 E

within Prescott National Forest.

Surveyed under instructions dated Oct 24, 1916

by William G. Merritt
U. S. Mineral Surveyor.

Claim located See Location Notices, 19

Survey commenced Nov 20, 1916

Survey completed Nov 26, 1916

Address of claimant John J. Hawkins Atty
Prescott Arizona

DATES OF AMENDED LOCATIONS.

July 10-1916

Mineral Survey No: 3350

No. 6 lode.

Beginning at Cor. No. 1.

The N.E. Cor. identical with the loc.

A limestone 6X10X30 ins. set 15 ins. in the ground with mound of stones chiseled X-1-No-6-3350. Whence:-
1/4 Cor. between secs. 13 & 24 T. 16 N.R. 2 E. brs. N 24°22'E
465. feet.

No bearings available. Loc. cor. mound of stones 3X3 ft.

Feet Thence S. 36.°12'W Va. 14°E.

1180 Cross road course S 14°W & N 14°E

1500 To Cor. No. 2. Identical with the loc.

A schist stone 6X12X30 ins. set 15 ins. in the ground with mound of stones chiseled X-2-No. 6-3350. No bearings available.
Loc. cor. mound of stones 3X3 ft.

Thence N. 28°41'W. Va. 14°E

37.2 Cor. No. 4, Sur. No. 3197 Custer lode.

331.3 W.C.E. Identical with the location a mound of stones 3X3 ft.

633.7 Cor. No. 3 Sur. No. 3197 Custer lode.

662.6 To Cor. No. 3.

Identical with the loc. and with Cor. No. 5 No. 8 lode this Sur.

A Schist stone 8X12X24 ins. set 12 ins. in the ground with mound of stones chiseled X-3 No. 6.5 No. 8-3350

Cor. No. 3 Sur. No. 3315 Leo lode brs. N 68°43'E 184 ft.

No bearings available. Loc. cor. mound of stones 3 X 3 ft.

Thence N 36°12'E Va. 14°E.

25.2 Intersect line 3-2-Sur. No. 3315 Leo lode at S 73°28'30" W

163.35 ft. from Cor. No. 3

279.33 Intersect line 3-4 Sur. No. 3315 Leo lode at N 2°21'W 158.75 feet from Cor. No. 3

1306.16 Intersect sec. line between secs. 13 & 24 T. 16 N.R. 2 E. at S 89°53'E 624.34 ft. to 1/4 sec. cor. and N 89°53'W 2026.16 ft. to sec. cor.

1500 To Cor. No. 4

Identical with the loc. and with cor. No. 1 No. 8 lode this sur.

Survey No. 3350 No. 6 lode continued.

Feet

A Limestone 8X12X30 ins, set 15 ins. in the ground with mound of stones chiseled X-4-No. 6.1-No. 8-3350. No bearings available. Loc. cor. mound of stones 3X3 ft.

Thence S 28°41'E Va. 14°E

178.77 Intersect sec. line between secs. 13 and 24 T. 16 N. R. 2 E. at S 89°43'E 424.05 ft. to 1/4 cor. and N 89°53'W 2226.45 ft. to sec. cor.

272.4 Cor. No. 1 No. 5 lode of this sur.

331.6 E.C.E. Identical with the loc. a mound of stones 3X3 ft.

662.6 To Cor. No. 1 the place of beginning.

No. 8 lode, beginning at cor. No. 1

Identical with the N.E. Cor. of the loc. and with cor. No. 4 No. 6 lode of this sur. hereinbefore described. Whence:-

1/4 sec. cor. between secs. 13 and 24 T. 16 N. R. 2. E brs.

S 72°49'E, 533.68 ft.

Thence N 28°41'W Va. 14°E

27.7 W.C.E. No. 5 lode of this survey.

187.5 E.C.E. Identical with the loc. a mound of stones 3X3 ft.

241.7 Intersect line 3-4 sur. No. 3315 Diamond lode at N 44°02'E 1263.2 ft. from cor. No. 4. and 1144.1 ft. from intersection of said line with line 1-4 Leo lode sur. No. 3315.

327.8 To Cor. No. 2.

Identical with the loc. and with cor. No. 2 No. 5 lode of this sur.

A schist stone 5X10X30 ins. set 15 ins. in the ground with mound of stones chiseled X-2-No. 8.-2. No. -5-3350. No bearings available. Loc. cor. mound of stones 3X3 ft.

Thence S. 64°20'W Va. 14°E

366.9 To Cor. No. 3

Identical with the loc.

A schist stone 8X8X24 ins. set 12 ins. in the ground with mound of stones chiseled X-3-No. 8-3350.

Sur, No. 3350 No. 8 lode, continued.

Feet.

Thence S. 31° 33' W Va. 14° E

333.25 Intersect sec. line between secs. 13 and 24 T. 16 N. R. 2. E at S. 89° 53' E 1172.29 ft. to 1/4 cor. and N 89° 53' W 1478.21 ft. to sec. cor.

880.45 Intersect line 4-1 sur. No. 3315 Leo lode at S 73° 13' W 219.92 ft. from cor. No. 4 and 38.73 ft. from intersection of said line with line 3-4 Diamond lode sur. No. 3315.

967.8 Cor. No. 4 Diamond lode sur. No. 3315

1142.4 To Cor. No. 4

Identical with the loc.

A limestone 8X14X24 ins. set 12 ins. in the ground with mound of stones chiseled X-4-No. 8-3350 No bearings available.

Loc. Cor. mound of stones 3X3 ft.

Thence S 28° 41' E Va. 14° E

229.4 W.C.E. identical with the loc. a mound of stones 3X3 ft.

402.33 Cor. No. 4 Twilight Fraction ^{lode,} sur. No. 3315 intersection of line 3-2 Leo lode sur. No. 3315 at S 73° 28' 30" W 186.26 ft. from cor. No. 3

416.9 To Cor. No. 5. Identical with the loc. and with cor. No. 3

Identical with the loc. and with cor. No. 3 No. 6 lode of this sur. hereinbefore described.

Thence N 36° 12' E Va. 14° E

25.20 Intersect line 3-2 Leo lode sur. No. 3315 at S 73° 28' 30" W 163.35 ft. from cor. No. 3

279.33 Intersect line 3-4 Leo lode sur. 3315 at S 2° 21' E 428.45 ft. from cor. No. 4

1306.16 Intersect section line between secs. 13 and 24 T. 16 N. R. 2 E. at S 89° 53' E 624.34 ft. to 1/4 sec. cor. and N 89° 53' W 2026.16 ft. to sec. cor.

1500. To Cor. No. 1 the place of beginning.

Sur.No.3350 No.5.Lode.

Beginning at Cor.No.1.

Identical with the S.W.Cer. of the loc.

A limestone 6X6X24 ins.set 12 ins.in the ground with mound of stones chiseled X-1-No.5-3350. Whence:-

1/4 sec.cor.between secs.13 & 24 T.16.N.R.2.E.brs.N.77°54'E

387.73 ft.No bearings available.Loc.cor.mound of stones 3 X 3 ft.

Feet.

Thence N 28°41'W Va.14°E

93.63 Intersect section line between secs.13 and 24 T.16 N.R.2.E.

at S 89°53'E 424.05 ft.to 1/4 sec.cor and N 89°53'W

2226.45 ft.to section cor.

272.4 Cor.No.1 No.8 lode and cor.No.4.No.6 lode, both of this survey.

300.1 W.C.E. Identical with the loc.a mound of stones 3X3 ft.

459.9 E.C.E.No.8 lode of this sur.

514.1 Intersect line 3-4 Diamond lode sur.No.3315 at S 44°02'W

262.3 ft.from cor.No.3

600.2 To Cor.No.2.

Identical with the loc.and with cor.No.2.No.8 lode of this survey hereinbefore described.Whence:+ Cor.No.1 No.4 lode

of this sur.brs.S 87°40'E 571.42 ft.

Thence N 62°54'E Va. 14°E

211.37 Intersect line 4-1 No.4 lode of this sur.at N 72°39'W

400.98 ft.from cor.No.1.and.15.52 ft.from intersection of

said line with line 3-4 Diamond lode sur.No.3315.

249.44 Intersect line 2-3 Diamond lode.sur.No.3315.at N 69°42'W

1.7 ft.from cor.No.3.

597.05 Intersect line 1-2 No.4 lode of this sur. at N 7°36'W

297.9 ft from cor.No.1

710

Cross read course S 54°E and N 54°W.

970

Cross wash course S 70°E 40 ft wide

1500

To Cor.No.3.

Identical with the loc.and with cor.No.No.6 No.1 lode of this survey

(5)

Survey No. 3350 No. 5 lode continued.

Feet A schist stone 6X12X30 ins. set 15 ins. in the ground with mound of stones chiseled X-3-No. 5.6-No. 1-3350. No bearings available. Loc. cor. mound of stones 3X3 ft.

Thence S 28°41'E Va. 14°E

270 Cross wash 40 ft. wide course N 80°E

300.1 E.C.E. identical with the loc. and with the W.C.E. of No. 1 lode of this sur. a mound of stones 3X3 ft.

370 Cross road course N 81°E and S 81°W

600.2 To Cor. No. 4.

Identical with the loc. and with cor. No. 1. No. 1 lode of this sur.

A schist stone 4X8X24 ins. set 12 ins. in the ground with mound of stones chiseled X-4-No. 5.1-No. 1-3350. No bearings available. Loc. cor. a mound of stones 3X3 ft.

Thence S 62°54'W Va. 14°E

1320.6 Intersect section line between secs. 13 and 24 T. 16. N. R. 2 E. at S 89°53'E 219.41 ft. to 1/4 sec. cor. and N 89°53'W 2431.09 ft. to section cor.

1500 To Cor. No. 1 the place of beginning.

No. 1 lode.

Beginning at Cor. No. 1.

Identical with the S.W. Cor. of the loc. and with cor. No. 4 of No. 5 lode of this sur. hereinbefore described. Whence:--
1/4 sec. cor. between secs. 13 and 24 T. 16. N. R. 2. E. brs.
S 57°48'W 1130. ft.

Thence N 62°54'E Va. 14°E

149.9 To Cor. No. 2.

Identical with the loc.

A schist stone 6X12X26 ins. set 13 ins. in the ground with mound of stones chiseled X-2-No. 1-3350. No bearings available. Loc. cor. mound of stones 3X3 ft.

Thence N 78°12'E Va. 14°E

371.2 S.W. Cor. Jimmy lode unsurveyed.

680.87 To Cor. No. 3

Survey No. 3350 No. 1 lode continued.

Feet Identical with the loc.
A schist stone 4X8X24 ins. set 12 ins. in the ground with mound of stones chiseled X-3-No. 1-3350. No bearings available. Loc. cor. mound of stones 3X3 ft.

Thence N 28°41'W Va. 14°E

150 Cross road course N 71°E and S 71°W
313.5 E.C.E. Identical with the loc. a mound of stones 3X3 ft.
325 Cross wash 40 ft. wide course N 65°E
627. To Cor. No. 4.

Identical with the loc. on the W. side line of Jimmy lode ^{unsurveyed}
N 0°12'E 613.38 ft. from the S.W. Cor.

A schist stone 8X12X24 ins. set 12 ins. in the ground with mound of stones chiseled X-4-No. 1-3350. No bearings available. Loc. cor. mound of stones 3X3 ft.

Thence S 78°14'W Va. 14°E

578.1 To Cor. No. 5.
Identical with the loc.
A schist stone 8X10X26 ins. set 13 ins. in the ground with mound of stones chiseled X-5-No. 1-3350. No bearings available. Loc. cor. mound of stones 3X3 ft.

Thence S 62°54'W Va. 14°E

245. Cross wash 10 ft. wide course S 68°E.
248.4 To Cor. No. 6.
Identical with the loc. and with cor. No. 3. No. 5 lode of this sur. hereinbefore described.

Thence S 28°41'E Va. 14°E

270 Cross wash 40 ft. wide course N 80°E
300.1 W.C.E. identical with the loc. and with E.C.E. of No. 5 lode of this sur. hereinbefore described.
370 Cross road course N 81°E and S 81°W
600.2 To Cor. No. 1 the place of beginning.

No. 4 lode.

Beginning at Cor. No. 1

Survey No. 3350. No. 4 lode continued.

Identical with the S.E. Cor. of the loc.
 A schist stone 5X8X24 ins. set 12 ins. in the ground with mound of stones chiseled X-1-No. 4-3350. Whence:-
 1/4 sec. cor. between secs. 13 and 24 T. 16 N. R. 2. E. brs.
 S 12°51'E 432.77 ft. No bearings available. Loc. cor. mound of stones 3X3 ft.

Thence N 7°36'W Va. 14°E

297.9 Intersect line 2-3 No. 5 lode of this sur. at N 62°54'E 597.05 ft. from cor. No. 2

330.45 E.C.E. identical with the loc. a mound of stones 3X3 ft.

360 Cross road course N 87°E and S 87°W

480 Cross wash 50 ft. wide course S 80°E

660.9 To Cor. No. 2.

Identical with the loc.
 A schist stone 6X10X30 ins. set 15 ins. in the ground with mound of stones chiseled X-2-No. 4-3350. No bearings available. Loc. cor. mound of stones 3X3 ft.

Thence N 72°39'W Va. 14°E

1500 To point for Cor. No. 3.
 Identical with the loc. a mound of stones 3X3 ft., as this point falls in a wash 60 ft. wide course S 50°E. I established a witness cor. S 7°36'E 90.35 ft.

Thence from true Cor. point S 7°36'E Va. 14°E

90.35 W.C. a limestone 6X8X30 ins. set 15 ins. in the ground with mound of stones chiseled X-3-No. 4. W.C.-3350.
 No bearings available.

270 Cross road Course N 72°W and S 72°E

330.45 W.C.E. identical with the loc. a mound of stones 3X3 ft.

481.7 Cor. No. 4 Spur lode sur. No. 3315

647.4 Cor. No. 5 Spur lode sur. No. 3315 and intersection of line 3-4

Antelope lode sur. No. 3315 at N 77°58'W 505.6 ft. from ^{Cor.} No. 3

660.9 To Cor. No. 4. Identical with the loc.
 A schist stone 6X10X24 ins. set 12 ins. in the ground with mound of stones chiseled X-4-No. 4-3350. Whence: Cor. No. 3

Survey No. 3350 No. 4 lode continued.

Antelope lode and 2 Diamond lode sur. No. 3315 brs. S 79:25'E

501.23 ft. No bearings available. Loc. cor. mound of stones
3X3 ft.

Thence S 72:39'E Va. 14: E

^{484.81}
~~480.41~~ Intersect line 1-2 Diamond lode sur. No. 3315 at S 29:42'W
60.43 ft. from cor. No. 2

494.47 Intersect line 3-2 Antelope lode sur. No. 3315 at S 20:31'W
59.13 ft. from cor. No. 3

1099.02 Intersect line 2-3 No. 5 lode of this sur. at N 62:54'E
211.37 ft. from cor. No. 2

1114.54 Intersect line 3-4 Diamond lode sur. No. 3315 at S 44:02'W
29.74 ft. from cor. No. 3

1500 To Cor. No. 1 the place of beginning.

AREA.

Total area, No. 6 lode.....20.659 acres

Area in conflict with sur. No. 3315 Leo lode 0.288 "

Total area, No. 8 lode.....14.214 acres.

Area in conflict with-

Sur. No. 3315 Leo lode..... 3.412

Sur. No. 3315 Diamond lode..... 3.399

Sur. No. 3315 Leo lode (exclusive of

its conflict with Sur. No. 3315

Diamond lode..... 3.386

Total area No. 5 lode.....20.660 acres.

Area in conflict with-

Sur. No. 3315 Diamond lode..... 0.251

Diamond lode:
Sur. No. 3315 exclusive of its conflict

with No. 4 lode this sur..... 0.246

with No. 4 lode of this sur..... 1.243

Total area No. 1 lode.....11.415 acres.

Area in conflict with-

Jimmy lode unsurveyed..... 2.132

Survey No. 3350 continued.

Total area No. 4 lode.....20.634..acres.

Area in conflict with-

- Sur.No.3315 Antelope lode.....0.409
- Sur.No.3315 Antelope lode(exclu-
sive of its conflict with sur.No.
3315 Diamond lode.....0.402
- Sur. No.3315 Diamond lode.0.624
- ~~Sur. No.3315 Diamond lode(exclu-
sive of its conflict with Sur.No.
3315 Antelope lode..... 0.618~~
- ~~Sur. No.3315 Diamond lode(exclu-
sive of its conflict with No.5
lode of this sur.....0.619~~
- ~~No.5 lode of this sur..... 1.243~~
- ~~No.5 lode of this sur.(exclu-
sive of its conflict with sur.No.
3315 Diamond lode..... 1.238~~

LODE LINES.

As near as can be determined from present developments the veins of the locations in this claim extend as follows.

- No. 6 lode, N 36:12'E 1500 ft. from W.C.E. to the E.C.E.
- No. 8 " N 36:12'E 1500 " " W.C.E. " " E.C.E.
- No. 5 " N 62:54'E 1500 " " W.C.E. " " E.C.E.
- No. 4 " S 72:39'E 1500 " " W.C.E. " " E.C.E.
- No. 1 " from W.C.E. N 62:54'E 198.6 ft. thence N 78:14'E
630 ft. to the E.C.E.

LOCATION

This claim is located in sec. 13 unsurveyed and sec. 24
T. 16 N. R. 2. E. Yavapai County Arizona, within the Prescott
National Forest.

ADJOINING CLAIMS.

This claim is bounded on the North by Mocking Bird lode
unsurveyed and U.S. Land, on the East by Jimmy, Jerry, Indian
Camp and Lime Kiln lodes unsurveyed, on the South by Sur. No.
3197 Custer lode, and on the West by Sur. No. 3315 Leo, Dia-
mond, Antelope, Spur, lodes and Revere lode unsurveyed.

Survey No.3350 continued.

EXPENDITURE OF FIVE HUNDRED DOLLARS.

I certify that the value of the labor and improvements made upon this claim by the claimant or his grantors, is not less than five hundred dollars for each lode and said improvements consist of:

No.6 lode.

No.1 dis.cut which is on the lode line 565 ft. from

W.C.E. 4X15X10 ft. value.....\$50.00

1/4 the value (\$450.) of the common improvement No.5 tunnel on No.5 lode is credited to this lode.

Total improvements credited to this lode.. \$500.00

No.8 lode.

No.1 dis.tunnel which is on the lode line 705 ft. from

the E.C.E. 4X6X20 ft. course S. 54°E value \$160.00

1/4 of the value (\$450.) of the common improvement No.5 tunnel on No.5 lode is credited to this lode.

Total improvements credited to this lode \$610.00

No.5 lode.

No.1 dis.cut which is on the lode line 650 ft. from the

E.C.E. 4X15X10 ft. value \$50.00

No.2 cut which is on the lode line 100 ft. from the W.C.E.

4X12X10 ft. value \$45.00

No.3 tunnel which brs. from E.C.E. S 50°45'W 580 ft.

4X6X20 ft. course S 59°W value \$160.00

No.4 cut which brs. from the E.C.E. S 42°30'W 425 ft.

4 X 15 X 10 ft. value \$50.00

No.5 tunnel which brs. from E.C.E. S 42°30'W 720 ft.

5X7X185 ft. course S 63°W value \$1800. this being a

common improvement 1/4 of its value (\$450.) is credited to No.6, No.8, and No.4 lod^{of this survey,}es as well as to this lode.

Total value credited to this lode ..\$755.00

Survey No. 3350 continued.

No. 4 lode.

No. 1 dis. tunnel which is on the lode line 535 ft. from the E.C.E. 4X6X20 ft. course S 35°E value \$160.00 1/4 the value (\$450.) of the common improvement No. 5 tunnel on No. 5 lode is credited to this lode.

Total improvements credited to this lode..... \$610.00

No. 1 lode.

No. 1 dis cut and tunnel which is on the lode line 360 ft. from the E.C.E. cut is 4X12X25 ft, tunnel 4X6X10 ft. course N 30°W value.....\$125.00

No. 2 cut which brs. from the W.C.E. N 14°30'E 50 ft. 4X15X11 ft.....value... \$60.00

No. 3 cut which brs. from cor. No. 4 S 70°30'W 300 ft. 4X18X12 ft.....value.....\$60.00

No. 4 cut which brs. from cor. No. 4 S 61°W 330 ft. 4X15X10 ft. value.....\$60.00

No. 5 cut which is on the lode line 180 ft. from the W.C.E. 6X25X9 ft. value.....\$75.00

No. 6 tunnel which is on the lode line 90 ft. from the W.C.E. 4X6X12 ft. value.....\$120.00

Total value of the improvements ^{credited} to this lode \$500.00

REPORT.

The lode lines of each location of this claim was run directly upon the ground, and the several corners established by means of offsets from the lode lines. All tie lines were run directly upon the ground.

From the common improvement No. 5 tunnel on No. 5 lode the surface ascends to South and West and descends East.

This tunnel is so situated that by continuing it and crosscutting, No. 6, No. 8, and No. 4. lodes will also be developed.

No. 1 lode is lower than this common improvement, tunnel No. 5 on No. 5 lode, said tunnel extends in a direction away from No. 1 lode and therefor does not tend to develop said lode.

Survey No. 3350 continued.

Cor. to secs. 13, 14, 23, and 24 and 1/4 cor. between secs. 13 and 24 T. 16 N. R. 2. E. are pipes properly marked.

Sur. No. 3315 Leo lode.

Cor. No. 1 Diorite stone 6X14X15 ins. chiseled X-L-1-3315

" " 2 schist " 6X12X12 " " X-L-2-3315

" " 3 Malpai " 5X12X12 " " X-L-3-3315

" " 4 schist " 6X12X12 " " X-L-4-3315

Sur. No. 3315 Diamond lode.

Cor. No. 1 Limestone 10X12X12 ins. " X-D-1-3315

" " 2 Diorite stone 6X12X13 " " X-2-D-3-A-3315

" " 3 schist " 6X9X13 " " X-3-D-3315

" " 4 Diorite " 8X12X13 " " X-4-D-3315

Sur. No. 3197 Guster lode.

Cor. No. 3 schist stone 8X10X12 " " X-3-C-3197

" " 4 Limestone 6X10X12 " " X-4-C-3197

Sur. No. 3315 Spur lode.

Cor. No. 5 sandstone 6X10X14 " " X-5-S-3315

Sur. No. 3315 Twilight Fraction lode.

Cor. No. 4 schist stone 4X12X16 " " X-T-F4-3315

INSTRUMENT.

This survey was made with a Gurley Solar transit. The courses were deflected from the meridian as determined by direct solar observations. The distances were measured with 100-ft. and 500-ft. steel tapes.

William H. Meritt
U.S. Mineral Surveyor

Aug-1917

FINAL OATHS FOR SURVEYS.

AUG. 8-1917

LIST OF NAMES.

A list of the names of the individuals employed by William H. Merritt
 United States ~~Deputy~~ Mineral Surveyor, to assist in running, measuring, and marking the lines, corners, and
 boundaries described in the foregoing field notes of the survey of the mining claim of.....
W. E. Defty
 known as the N^o 1, N^o 4, N^o 5, N^o 6, N^o 8 lodes
 and showing the respective capacities in which they acted.

....., Chainman.
J. M. Merritt, Chainman.
, Axman.
, Flagman.

FINAL OATHS OF ASSISTANTS.

We, I J. M. Merritt
 and....., do solemnly swear that ^Iwe assisted William
H. Merritt, United States ~~Deputy~~ Mineral Surveyor, in marking the corners and surveying
 the boundaries of the mining claim of W. E. Defty,
N^o 1, N^o 4, N^o 5, N^o 6, N^o 8 lodes
 known as the.....
 represented in the foregoing field notes as having been surveyed by said ~~deputy~~ mineral surveyor and under his
 direction; and that said survey has been in all respects, to the best of ^{my}our knowledge and belief, faithfully and
 correctly executed, and the corner and boundary monuments established according to law and the instructions
 furnished by the United States Surveyor-General for Arizona.

....., Chainman.
J. M. Merritt, Chainman.
, Axman.
, Flagman.

Subscribed and sworn to by the above-named persons before me this 7th
 day of February, 1917.

J. M. Merritt
 Notary Public

15
FEB 9 - 1917

(4-686.)

FINAL OATH OF U. S. ~~DEPUTY~~ MINERAL SURVEYOR AUG 8 - 1917

I, William H. Merritt, U. S. ~~Deputy~~ Mineral Surveyor, do solemnly swear that, in pursuance of instructions received from the United States Surveyor General for Arizona, dated Oct 24 - 1916, I have, in strict conformity to the laws of the United States, the official regulations and instructions thereunder, and the instructions of said Surveyor General, faithfully and correctly executed the survey of the Mining Claim of W. E. Defty, known as the No. 1, No. 4, No. 5, No. 6, No. 8 Leases, situate in Verde Mining District, Yavapai County, Ariz, in Section 13 & 24, Township No. 14 N, Range No. 2 E, and designated as Survey No. 3350, as represented in the foregoing field notes, which accurately show the boundaries of said mining claim as distinctly marked by monuments on the ground, and described in the attached copy of the location certificate, which was received by me from the Surveyor General with said instructions, and that all the corners of said survey have been established and perpetuated in strict accordance with the law, official regulations and instructions thereunder; and I do further solemnly swear that the foregoing are the true and original field notes of said survey and my report therein, and that the labor expended and improvements made upon said mining claim by claimant or his grantors are as therein fully stated, and that the character, extent, location and itemized value thereof are specified therein with particularity and full detail, and that no portion of said labor or improvements so credited to this claim has been included in the estimate of expenditures upon any other claim.

William H. Merritt
U. S. ~~Deputy~~ Mineral Surveyor.

Subscribed and sworn to by the said William H. Merritt
U. S. ~~Deputy~~ Mineral Surveyor, before me Fred C. Moon, Notary Public
in and for Yavapai County, Ariz this 7th
day of February, 1917
Fred C. Moon
Notary Public

7/9 1870

Notice of Mining Location

LODE CLAIM

OCT. 21. 1916

TO ALL WHOM IT MAY CONCERN:

This Mining Claim, the name of which is the No. 7.
Mining Claim, situate on lands belonging to the United States of America, and in which there are valuable mineral deposits, was entered upon and located for the purposes of exploration and purchase by

The Jerome Tunnel Co.

(Locator must insert either "a citizen of the United States," or "who has declared his intention to become a citizen of the United States.")

the undersigned, on the 10th day of July 1916.

The length of this claim is 830.5 feet,
and W claim 365.5 feet,

in a Easterly direction and 465.0
feet in a westerly direction from
the center of the discovery shaft, at which this notice is posted, lengthwise of the claim, together with
300.0 feet in width of the surface grounds, on each

side of the center of said claim. The general course of the lode deposit and premises is from the
Southwest to the Northeast

The claim is situated and located in the Verde Mining District, in
Yavapai County, in the State of Arizona, about 5000 feet
in a Northeasterly direction from 1/4 corner between
Secs. 23 and 24 T. 16 N. - R. 2 E. and adjoins
the No. 5 Lode on its easterly end line.

The surface boundaries of the claim are marked upon the ground as follows: Beginning at

Monument of Stones

at a point in a Easterly direction 365.5 feet from
the discovery shaft (at which this notice is posted,) being in the center of the Easterly

end line of said claim; thence S. 28° 41' E. - 313.5 feet to a monument

being the most easterly corner of said claim;
thence S. 78° 14' W. 680.1 to a monument; thence S. 62° 54' W. 149.9 feet to a monument

being at the most southerly corner of said claim; thence N. 28° 41' W. 300.1 feet
to a monument at the center of the westerly end of said claim;

thence N. 28° 41' W. - 300.1 feet to a monument being at the
most westerly corner of said claim; thence N. 62° 54' E. 248.4; thence

N. 78° 14' E. - 578.1 feet to a monument at the most northerly corner of said claim;
thence S. 28° 41' E. 313.5 feet to the place of the beginning.

All done under the provisions of Chapter Six, of Title XXXII, of the Revised Statutes of the United States, and of an Act of the General Assembly of Arizona, entitled "An Act to Revise and Codify the Laws of the Territory of Arizona," approved March 16, 1901.

This is an Amended Location Notice of the No. 7.
Mining Claim, located by Alex Lyons, P. Rothermel

on the 2nd day of
June 1916, and recorded in Book 91 of Records of Mines, at
page 250, in the office of the County Recorder of the aforesaid County of Yavapai

to which reference is hereby made, and this Amended Location Notice is made and posted to correct errors in the description in the said Original Location Notice.

Dated and posted on the ground this 10th day of July 1916.

The Jerome Tunnel Co.
By S. F. Denison,
agent.

81
17

STATE OF ARIZONA,

ss.

County of _____

I, _____, County Recorder in and for the County and State aforesaid, do hereby certify that the within instrument was filed for record at _____ o'clock _____ M., on this _____ day of _____, 191____, and duly recorded in Book No. _____ of _____ Records of _____ County, Arizona, at pages _____

Witness my hand and official seal the day and year first above written.

County Recorder.

AMENDED
Notice of Location
LODE CLAIM

Dated _____ 191____
Filed and Recorded at request of _____

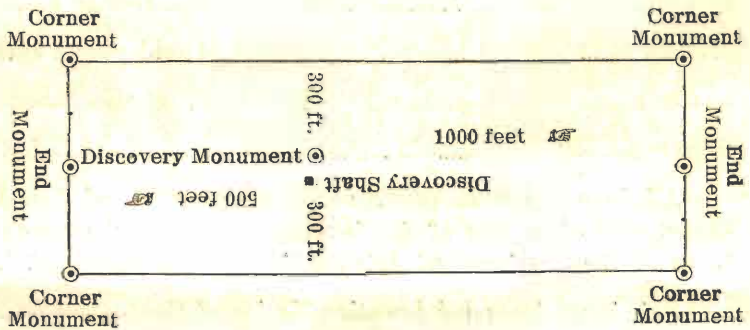
S. J. Newman

July 14th, A. D. 1916.
at *9:00 O'clock A.M.*

Book *99 of Miners'.*

Page *12.* Recorder of
Yavapai County Arizona
Seal. T. E. Sealwell
County Recorder

By *James W. Spence*
Deputy Recorder
Printed and for sale by Prescott Courier



This diagram is to give locator a general idea of plan of location under the new law. The Discovery Shaft can be in the center of claim or any distance from either end desired. In the diagram it is placed 500 feet from one end and 1000 feet from the other. Commence description of claim at a center end monument, giving its distance and direction from center of Discovery Shaft; thence bound the claim in either direction. In description be careful to state locality of claim with reference to some natural object, or permanent monument, as will identify the claim.

AMENDED

18

Notice of Mining Location

LODE CLAIM

TO ALL WHOM IT MAY CONCERN:

This Mining Claim, the name of which is the No 4 Mining Claim, situate on lands belonging to the United States of America, and in which there are valuable mineral deposits, was entered upon and located for the purposes of exploration and purchase by

the Jerome Tunnel Co.,

(Locator must insert either "a citizen of the United States," or "who has declared his intention to become a citizen of the United States.")

the undersigned, on the 10 day of July 1916.

The length of this claim is 1500 feet,

and We claim 528.0 feet,

in a Southeasterly direction and 972

feet in a Northwesterly direction from

the center of the discovery shaft, at which this notice is posted, lengthwise of the claim, together with

300 feet in width of the surface grounds, on each

side of the center of said claim. The general course of the lode deposit and premises is from the

West to the East

The claim is situated and located in the Verde Mining District, in

Yavapai County, in the State of Arizona, about 3000 feet in

in a Northwesterly direction from the 1/4 corner between

Secs. 23 and 24 T. 16, N. R. - 2 E. G. & S. R. M., and

adjoins the Antelope and Diamond Lodes on

their northerly end lines.

The surface boundaries of the claim are marked upon the ground as follows: Beginning at

Monument of Stone

at a point in a Southeasterly direction 528.0 feet from

the discovery shaft (at which this notice is posted,) being in the center of the Easterly

end line of said claim; thence S. 7° 27' E. - 330.5 feet to a monument

being the Southeast corner of said claim;

thence N. 72° 39' W. - 1500 feet to a monument, being at the

Southwest corner of said claim; thence N. 7° 27' W. - 330.5 feet

to a monument at the center of the Westerly end of said claim;

thence N. 7° 27' W. 330.5 feet to a monument, being at the

Northwest corner of said claim; thence S. 72° 39' E. - 1500

feet to a monument at the Northeast corner of said claim;

thence S. 7° 27' E. - 330.5 feet to the place of the beginning.

All done under the provisions of Chapter Six, of Title XXXII, of the Revised Statutes of the United States, and of an Act of the General Assembly of Arizona, entitled "An Act to Revise and Codify the Laws of the Territory of Arizona," approved March 16, 1901.

This is an Amended Location Notice of the No. 4

Mining Claim, located by Alex Lyons, - R. Rothermel

on the 28th day of

May 1911, and recorded in Book 91 of Records of Mines, at

page 253, in the office of the County Recorder of the aforesaid County of

to which reference is hereby made, and this Amended Location Notice is made and posted to correct errors

in the description in the said Original Location Notice.

Dated and posted on the ground this 10 day of July 1916.

The Jerome Tunnel Co.
By S. J. Denison, Agent.

County of _____

I, _____, County Recorder in and for the County and

State aforesaid, do hereby certify that the within instrument was filed for record at _____ o'clock _____ M.,

on this _____ day of _____, 191____, and duly recorded in Book No. _____

of _____ Records of _____ County, Arizona, at pages _____

Witness my hand and official seal the day and year first above written.

County Recorder.

AMENDED
Notice of Location
LODE CLAIM

Dated _____ 191____
Filed and Recorded at request of

S. J. Dennis

July 17th, A. D. 191____

at _____
900 Steele St. W. M.

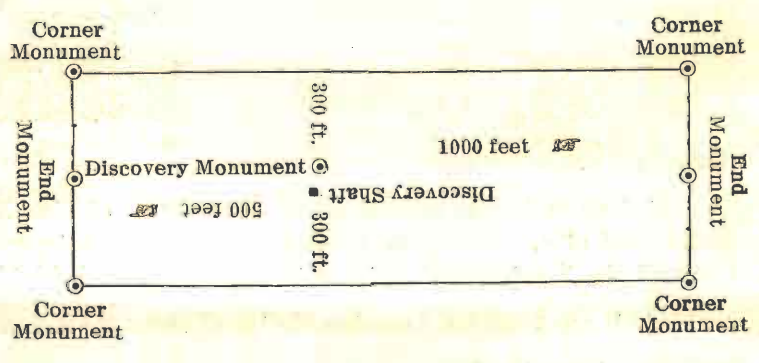
Book *99 of mine*

Page *13.*
RECORDS OF YAVAPAI COUNTY, ARIZONA

Hunt
W. S. Caldwell
County Recorder

By *James Mc Coyne*
Deputy Recorder

Printed and for sale by Prescott Courier



This diagram is to give locator a general idea of plan of location under the new law. The Discovery Shaft can be in the center of claim or any distance from either end desired. In the diagram it is placed 500 feet from one end and 1000 feet from the other. Commence description of claim at a center end monument, giving its distance and direction from center of Discovery Shaft; thence bound the claim in either direction. In description be careful to state locality of claim with reference to some natural object, or permanent monument, as will identify the claim.

AMENDED

Notice of Mining Location

11-20

LODE CLAIM

TO ALL WHOM IT MAY CONCERN:

This Mining Claim, the name of which is the No. 5 Mining Claim, situate on lands belonging to the United States of America, and in which there are valuable mineral deposits, was entered upon and located for the purposes of exploration and purchase by

The Jerome Tunnel Co.,

(Locator must insert either "a citizen of the United States," or "who has declared his intention to become a citizen of the United States.")

the undersigned, on the 10th day of July 1916.

The length of this claim is 1500 feet,

and the claim 125.0 feet,

in a Southwesterly direction and 1375.0

feet in a Northeasterly direction from

the center of the discovery shaft, at which this notice is posted, lengthwise of the claim, together with

300.0 feet in width of the surface grounds, on each

side of the center of said claim. The general course of the lode deposit and premises is from the

Southwest to the Northeast

The claim is situated and located in the Verde Mining District, in

Yavapai County, in the State of Arizona, about 3500 feet

in a Northeasterly direction from 1/4 corner between

Secs. 23 and 24 T. 16 N. R. 2 E. S. 1 R

meridian, and adjoins the No. 6 and No. 8

lodes, on their easterly end lines.

The surface boundaries of the claim are marked upon the ground as follows: Beginning at

Monument of Stones

at a point in a Southwesterly direction 125.0 feet from

the discovery shaft (at which this notice is posted,) being in the center of the Westerly

end line of said claim; thence N. 28° 41' W. 300.1 feet to a Monument

, being the most westerly corner of said claim;

thence N. 62° 54' E. - 1500 feet to a Monument, being at the

most northerly corner of said claim; thence S. 28° 41' E. 300.1 feet

to a Monument at the center of the Easterly end of said claim;

thence S. 28° 41' E. 300.1 feet to a Monument, being at the

most easterly corner of said claim; thence S. 62° 54' W. 1500

feet to a Monument at the most southerly corner of said claim;

thence N. 28° 41' W. 300.1 feet to the place of the beginning.

All done under the provisions of Chapter Six, of Title XXXII, of the Revised Statutes of the United States, and of an Act of the General Assembly of Arizona, entitled "An Act to Revise and Codify the Laws of the Territory of Arizona," approved March 16, 1901.

This is an Amended Location Notice of the No. 5

Mining Claim, located by L. H. Rutherford - a Rothermel,

Mrs. A. Lyons, G. W. Hull, - on the 15th day of

May 1914, and recorded in Book 93 of Records of Mines, at

pages 236-237 in the office of the County Recorder of the aforesaid County of Yavapai

to which reference is hereby made, and this Amended Location Notice is made and posted to correct errors in the description in the said Original Location Notice.

Dated and posted on the ground this 10th day of July 1916.

The Jerome Tunnel Co.,
By, S. F. Denison, Agent.

County of.....

I, County Recorder in and for the County and State aforesaid, do hereby certify that the within instrument was filed for record at.....o'clock.....M, on this.....day of....., 191....., and duly recorded in Book No..... of.....Records of.....County, Arizona, at pages.....

Witness my hand and official seal the day and year first above written.

County Recorder.

AMENDED
Notice of Location
LODE CLAIM

Dated 191.....
Filed and Recorded at request of

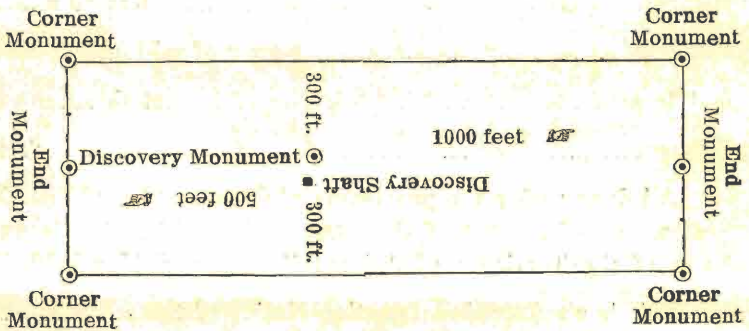
S. J. Stevenson

July 14th, A. D. 1916,
at *9:00 O'Clock P. M.*

Book *9901 Miner*
Page *147.*
RECORDS OF YAVAPI COUNTY, ARIZONA

Seal of S. S. Caldwell
County Recorder

By *James M. Payne*
Deputy Recorder
Printed and for sale by Prescott Courier



This diagram is to give locator a general idea of plan of location under the new law. The Discovery Shaft can be in the center of claim or any distance from either end desired. In the diagram it is placed 500 feet from one end and 1000 feet from the other. Commence description of claim at a center end monument, giving its distance and direction from center of Discovery Shaft; thence bound the claim in either direction. In description be careful to state locality of claim with reference to some natural object, or permanent monument, as will identify the claim.

AMENDED

Notice of Mining Location

22

LODE CLAIM

TO ALL WHOM IT MAY CONCERN:

This Mining Claim, the name of which is the No. 6 Mining Claim, situate on lands belonging to the United States of America, and in which there are valuable mineral deposits, was entered upon and located for the purposes of exploration and purchase by

The Jerome Tunnel Co. -

(Locator must insert either "a citizen of the United States," or "who has declared his intention to become a citizen of the United States.")

the undersigned, on the 10th day of July 1916.

The length of this claim is 1500 feet, and the claim 562.0 feet,

in a Southwesterly direction and 938 feet in a Northeasterly direction from

the center of the discovery shaft, at which this notice is posted, lengthwise of the claim, together with 300 feet in width of the surface grounds, on each

side of the center of said claim. The general course of the lode deposit and premises is from the Southwest to the Northeast

The claim is situated and located in the Verde Mining District, in Yavapai County, in the State of Arizona, about " " "

in a " " " direction from " " "

and adjoins the Custer - Mineral Survey No. 3197, on its easterly end line.

The surface boundaries of the claim are marked upon the ground as follows: Beginning at

Monument of Stones

at a point in a Southwesterly direction 562 feet from

the discovery shaft (at which this notice is posted,) being in the center of the Westerly end line of said claim; thence N. 28° 41' W. 331.3 feet to a Monument

being the most westerly corner of said claim; thence N. 36° 12' E. - 1500 feet to a Monument, being at the

most northerly corner of said claim; thence S. 28° 41' E. - 331.3 feet to a Monument at the center of the easterly end of said claim;

thence S. 28° 41' E. - 331.3 feet to a Monument, being at the most easterly corner of said claim; thence S. 36° - 12' W. 1500

feet to a Monument at the most southerly corner of said claim; thence N. 28° 41' W. - 331.3 feet to the place of the beginning.

All done under the provisions of Chapter Six, of Title XXXII, of the Revised Statutes of the United States, and of an Act of the General Assembly of Arizona, entitled "An Act to Revise and Codify the Laws of the Territory of Arizona," approved March 16, 1901.

This is an Amended Location Notice of the No. 6 Mining Claim, located by R. Rothermel, - G. W. Hull, G. F. Rutherford.

on the 8th day of April 1912, and recorded in Book 92 of Records of Mines, at

page 169, in the office of the County Recorder of the aforesaid County of Yavapai

to which reference is hereby made, and this Amended Location Notice is made and posted to correct errors in the description in the said Original Location Notice.

Dated and posted on the ground this 10th day of July 1916.

The Jerome Tunnel Co. -
By, S. F. Denison,
Agent.

County of _____

I, _____, County Recorder in and for the County and State aforesaid, do hereby certify that the within instrument was filed for record at _____ o'clock _____ M., on this _____ day of _____, 191____, and duly recorded in Book No. _____ of _____ Records of _____ County, Arizona, at pages _____

Witness my hand and official seal the day and year first above written.

County Recorder.

AMENDED
Notice of Location
LODE CLAIM

Dated _____ 191____
Filed and Recorded at request of _____

St. Aronian

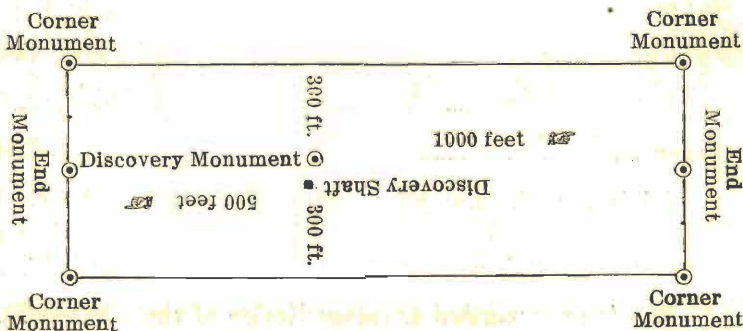
July 14th, A. D. 1916.
at *9:00 O'clock P. M.*

Book *99 of Mixed.*
Page *15* RECORDS OF YAVAPAI COUNTY, ARIZONA

Seal of S. Stubbins
County Recorder

By *Janeal M. Boyne*
Deputy Recorder

Printed and for sale by Prescott Courier



This diagram is to give locator a general idea of plan of location under the new law. The Discovery Shaft can be in the center of claim or any distance from either end desired. In the diagram it is placed 500 feet from one end and 1000 feet from the other. Commence description of claim at a center end monument, giving its distance and direction from center of Discovery Shaft; thence bound the claim in either direction. In description be careful to state locality of claim with reference to some natural object, or permanent monument, as will identify the claim.

AMENDED
Notice of Mining Location
LODE CLAIM

24

TO ALL WHOM IT MAY CONCERN:

This Mining Claim, the name of which is the No. 8
Mining Claim, situate on lands belonging to the United States of America, and in which there are valuable mineral deposits, was entered upon and located for the purposes of exploration and purchase by

The Jerome Tunnel Co.

(Locator must insert either "a citizen of the United States," or "who has declared his intention to become a citizen of the United States.")
the undersigned, on the 10th day of July 1916:

The length of this claim is 1500 feet,
and the claim 794.0 feet,
in a westerly direction and 706.0

feet in a easterly direction from
the center of the discovery shaft, at which this notice is posted, lengthwise of the claim, together with
300.0 feet in width of the surface grounds, on each
side of the center of said claim. The general course of the lode deposit and premises is from the

Southwest to the Northeast
The claim is situated and located in the Verde Mining District, in

Yavapai County, in the State of Arizona, about 2000 feet
in a northeasterly direction from 1/4 corner between
Secs. 23 and 24, T. 16 N. - R. 2 E. and adjoins
the No. 6 Lode (unsurveyed) on its north-
westerly side line.

The surface boundaries of the claim are marked upon the ground as follows: Beginning at

Monument of Stones
at a point in a Southwesterly direction 794 feet from

the discovery shaft (at which this notice is posted,) being in the center of the
end line of said claim; thence N. 28° 41' N. - 229.4 feet to a monument

, being the most westerly corner of said claim;
thence N. 31° 33' E. - 1142.4 feet; thence N. 64° 20' E. - 366.9 feet to a monument, being at the

most northerly corner of said claim; thence S. 28° 41' E. - 1140.3 feet
to a monument at the center of the easterly end of said claim;

thence S. 28° 41' E. - 187.5 feet to a monument, being at the
most easterly corner of said claim; thence S. 36° 12' N. - 1500

feet to a monument at the most southerly corner of said claim;
thence N. 28° - 41' N. - 187.5 feet to the place of the beginning.

All done under the provisions of Chapter Six, of Title XXXII, of the Revised Statutes of the United States, and of an Act of the General Assembly of Arizona, entitled "An Act to Revise and Codify the Laws of the Territory of Arizona," approved March 16, 1901.

This is an Amended Location Notice of the No. 8 Fraction
Mining Claim, located by R. Rothermel, - G. W. Hull & H.
Rutherford, on the 13th day of

April 1912, and recorded in Book 92 of Records of Mines, at
page 168, in the office of the County Recorder of the aforesaid County of Yavapai

to which reference is hereby made, and this Amended Location Notice is made and posted to correct errors
in the description in the said Original Location Notice.

Dated and posted on the ground this 10th day of July 1916,

The Jerome Tunnel Co.
By S. J. Denison, Agent.

ss.

County of _____

I, _____, County Recorder in and for the County and State aforesaid, do hereby certify that the within instrument was filed for record at _____ o'clock _____ M., on this _____ day of _____, 191____, and duly recorded in Book No. _____ of _____ Records of _____ County, Arizona, at pages _____

Witness my hand and official seal the day and year first above written.

County Recorder.

AMENDED
Notice of Location
LODE CLAIM

Dated _____ 191____
Filed and Recorded at request of

S. J. Demian

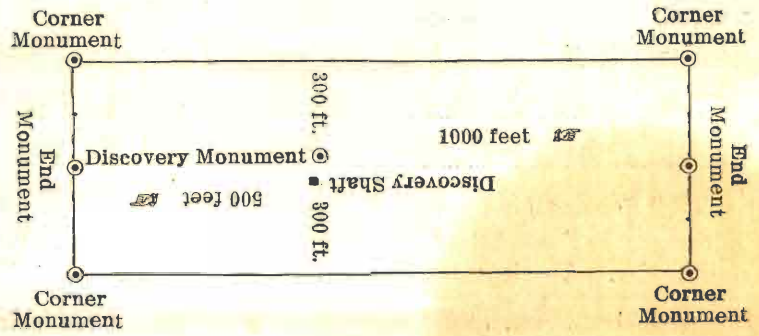
July 14th, A. D. 1916.
at *9:00 O'clock P. M.*

Book *99 of Merrill*
Records of YAVAPI COUNTY, ARIZONA
Page *16*

Seal of S. J. Demian
County Recorder

By *Samuel D. Boyne*
Deputy Recorder

Printed and for sale by Prescott Courier



This diagram is to give locator a general idea of plan of location under the new law. The Discovery Shaft can be in the center of claim or any distance from either end desired. In the diagram it is placed 500 feet from one end and 1000 feet from the other. Commence description of claim at a center end monument, giving its distance and direction from center of Discovery Shaft; thence bound the claim in either direction. In description be careful to state locality of claim with reference to some natural object, or permanent monument, as will identify the claim.

Filed and recorded at request of S.F. Denison,

July 14th.,

A. D., 1916, at 9:00 o'clock

A.M., Book 99 of Mines

page s. 12-16;

Records of Yavapai County, Arizona.

(SEAL)

L. S. COLWELL,
County Recorder,

By James W. Coyne.

Deputy Recorder.

STATE OF ARIZONA, }
COUNTY OF YAVAPAI. } ss.

I, L. S. Colwell, County Recorder in and for the County of Yavapai, State of Arizona, and
custodian of the records of such office, do hereby certify that I have compared the foregoing ~~###~~ **copies**
are and that the same ~~###~~ full, true and correct **copies of the following Location Notices;**
VIZ.- NO., 1.- NO., 4.-NO., 5.-NO., - 6.- NO., -8. Located by R. Rothermel,
G.W. Hull, C.H. Rutherford, and Alex Lyons and Mrs. A. Lyons;- and, -
filed for record on July 14th., A.D., 1916, at 9:00-0'clock/ **A.M.,** and as the same appears of
record in my office in Book 99, of **MINES;**
at pages 12-16;--- and of the whole thereof.

IN WITNESS WHEREOF, I have hereunto set my
hand and affixed my Official Seal this 19th. day
of -- OCTOBER, ---, A. D., 1916.

L. S. Colwell,

County Recorder.



U. S. SURVEYOR-GENERAL'S FINAL CERTIFICATE ON FIELD NOTES.

Department of the Interior,

OFFICE OF U. S. SURVEYOR-GENERAL,

Phoenix, Arizona,

October 10, 1917.

I, U. S. Surveyor-General for District of Arizona,

do hereby certify that the foregoing transcript of the Field Notes, return and approval of the survey of the mining claim of

W. E. Defty

known as the No. 1, No. 4, No. 5, No. 6, No. 8 lodes

situate in Verde

Mining District, Yavapai County, Arizona

in Section s 13 Uns. & 24, Township No. 16 N, Range No. 2 E., and

designated as Survey No. 3350, has been correctly copied from the originals on file in this office; that said Field Notes furnish such an accurate description of said mining claim as will, if incorporated into a patent, serve fully to identify the premises, and that such reference is made therein to natural objects or permanent monuments as will perpetuate and fix the locus thereof.

And I further certify that five hundred dollars' worth of labor has been expended or improved for each of

ments made upon said mining claims by claimant or his grantors, and that said improvements consist of 9 cuts and 6 tunnels, total value \$2975.00. As tunnel No. 5 on the No. 5 lode is a common improvement for the benefit and development of the No. 5, No. 4, No. 6 and No. 8 lodes of this survey, an undivided one-fourth interest therein, value \$450, is properly credited to each of said claims. As No. 1 lode is lower than said improvement which is extended in a direction away from said claim, it does not receive any benefit from the common improvement.

and that no portion of said labor or improvements has been included in the estimate of expenditures upon any other claim.

I further certify that the plat thereof, filed in the U. S. Land Office at Phoenix, Arizona is correct and in conformity with the foregoing Field Notes.

Frank P. Trott

United States Surveyor-General for Arizona.

SURVEYOR-GENERAL'S CERTIFICATE OF APPROVAL OF FIELD NOTES AND SURVEY OF MINING CLAIM.

Department of the Interior,

OFFICE OF U. S. SURVEYOR-GENERAL,

Phoenix, Arizona,

October 10, 1917.

I, U. S. Surveyor-General for District of Arizona,

do hereby certify that the foregoing and hereto attached Field Notes and Return of the Survey of the Mining Claim of

W. E. Defty

, known as the

No. 1, No. 4, No. 5, No. 6, No. 8 lodes

situate in Verde mining district,

Yavapai County, Arizona

in Sections 13, 24, Township No. 16 N., Range No. 2 E.

, designated as Survey No. 3350

executed by William H. Merritt, United States Mineral

Surveyor, November 20-26, 1917, under my instructions dated

October 24, 1916, have been critically examined and the necessary cor-

rections and explanations made, and the said Field Notes and Return, and the Survey they describe,

are hereby approved. A true copy of the copy of the location certificate filed by the applicant for

survey is included in the field notes.

[Handwritten signature]

U. S. Surveyor-General for Arizona

Feet	Amendment to Field Notes of Mineral Survey No. 3350.
	Description of Conflict between No. 8 lode, Sur. No. 3350, and Tract A, Sur. No. 3315.
	Beginning at the point of intersection of line 1-2 No. 8 lode, Sur. No. 3350, and line 3-4 Diamond lode, Sur. No. 3315, which point is N. 28° 41' E. 241.7 ft. from Cor. No. 1 said No. 8 lode, and S. 44° 02' E. 262.3 ft. from Cor. No. 3 said Diamond lode.
	Thence N. 28° 41' W.
	along said line 1-2 No. 8 lode.
84.19	to the intersection of said line 1-2 and the west line of a certain tract, described as Tract A in Sur. No. 3315.
	Thence S. 62° 45' W.
	along the west line of said Tract A.
3.06	to a point, being Cor. A of said Tract A.
	Thence S. 60° 15' W.
74.40	to a point, being Cor. B of said Tract A.
	Thence S. 47° 12' W.
189.60	to a point, being Cor. C of said Tract A.
	Thence S. 86° 33' W.
124.72	to the intersection of said west line of Tract A with line 3-4 No. 8 lode, which is S. 31° 33' W. 1.95 ft. from Cor. No. 3 said No. 8 lode, and S. 86° 33' E. 4.78 ft. from Cor. D of Tract A.
	Thence S. 31° 33' W.
878.50	along line 3-4 No. 8 lode, to the intersection of line 3-4 No. 8 lode with line 4-1 Leo lode, Sur. No. 3315.
	Thence N. 73° 13' E.
38.72	along said line 1-4 Leo lode, to the intersection of said line 1-4 Leo lode and line 3-4 Diamond lode, Sur. No. 3315.
	Thence N. 44° 02' E.
1144.10	along line 4-3 said Diamond lode, to the place of beginning, containing 3.062 acres. Area No. 8 lode in conflict with Diamond lode, Sur. No. 3315, exclusive of its conflict with Tract A, .337 Acres.

Description of conflict between No. 5 lode, Sur. No. 3350, and Tract A, Sur. No. 3315.

Beginning at point of intersection of line 1-2 No. 5 lode, Sur. No. 3350, and line 3-4 Diamond lode, Sur. No. 3315, being N. 28° 41' W. 514.1 ft. from Cor. No. 1 No. 5 lode, and S. 44° 02' W. 262.3 ft. from Cor. No. 3 Diamond lode.

Thence N. 44° 02' E.

along line 4-1 said Diamond lode.

232.56 to an intersection with line 1-4 No. 4 lode, Sur. No. 3350, which is N. 72° 39' W. 385.46 ft. from cor. No. 1.

262.30 To cor. No. 3 said Diamond lode.

Thence S. 62° 45' W.

along the west side of Tract A.

37.84 to an intersection with line 1-4 No. 4 lode, Sur. No. 3350, which is N. 72° 39' W. 399.05 ft. from Cor. No. 1.

250.54 to an intersection with line 1-2 said No. 5 lode, which is S. 28° 41' E. 1.91 ft. from cor. No. 2.

Thence S. 28° 41' E.

along line 2-1 said No. 5 lode.

84.19 to the place of beginning, containing .242 acres, of which .004 acres is in conflict with the No. 4 lode, Sur. No. 3350.

Area of No. 5 lode, in conflict with Diamond lode, Sur. No. 3315, exclusive of its conflict with Tract A, .009 Acres.

Office of U. S. Surveyor General,

Phoenix, Arizona,
August 31, 1920.

I, U. S. Surveyor General for the District of Arizona, do hereby certify that the above and foregoing correctly describes the conflict between the No. 5 and the No. 8 lodes, respectively, of Sur. No. 3350, and Tract A of Sur. No. 3315, and that the plats of said Survey 3350 have been amended, in red, to show such conflicts.

This amendment is made in accordance with G.L.O. letter "N" (Phoenix 038354), dated August 13, 1920.

Howard P. Patton
Surveyor General for
Arizona.