

1 mg

UNITED STATES  
DEPARTMENT OF THE INTERIOR  
BUREAU OF LAND MANAGEMENT

MINERAL SURVEY NO. 4346

Arizona Land District.

FIELD NOTES

Of The Survey Of The Mining Claim Of

Frank Hyde

Known As The

Carida Mia, Llano, Lapann, Jessie and Promotor lode claims

Humbug Mining District,

Yavapai County, Arizona

Sections 1, 2, 11 & 12, Township 8 N., Range 1 W.

Surveyed under order dated May 23, 1950.

by Harlow D. Phelps  
Mineral Surveyor.

Claim located July 14, 1933, Mar. 20, 1917, and ~~as~~  
Jen. 8, 1924

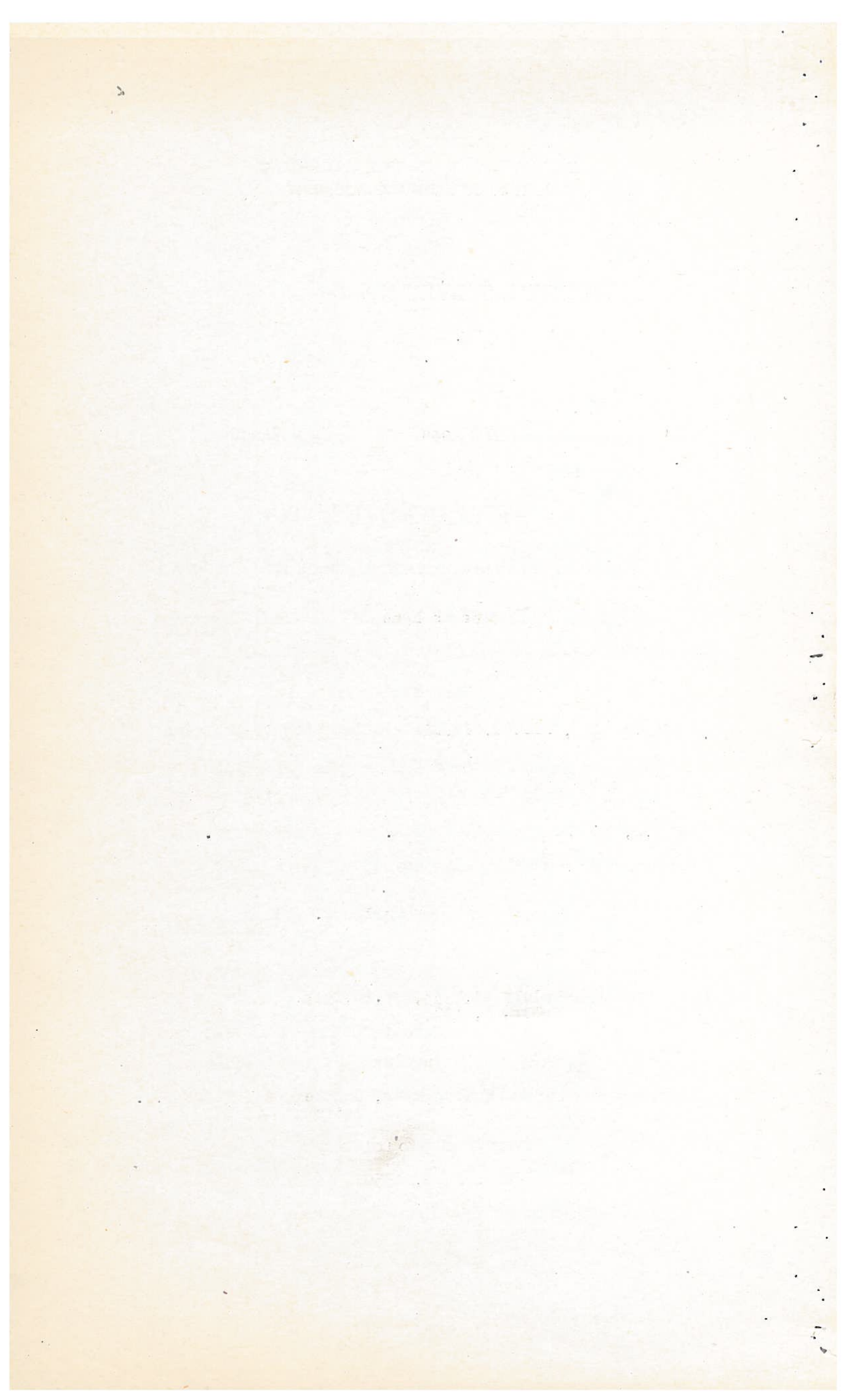
Survey commenced June 14, 1950

Survey completed June 29, 1950

Address of claimant Humbug Mine, Castle Hot Springs P.O.  
Arizona

DATES OF AMENDED LOCATIONS

January 18, 1950



## Survey No. 4346

1.

This survey was made with a Gurley No. 92 Precise transit No. 241014 with horizontal limb 5.65 ins. diam., having two double opposite verniers and full vertical circle 5 ins. diam., having one double vernier; the verniers read to one minute of arc; also two attachable eye pieces, both equipped with colored glass shade set in the dust shutter and one equipped with a prism, for making direct observation upon the sun. The instrument was in good condition at the time of the survey and all adjustments were in good order.

All azimuths in this record were determined by the method of deflection angles referred to the meridian determined by the following observations:

June 25, 1950, at Cor. No. 2 of the Promotor lode, in latitude  $34^{\circ} 01' 55''$  N., and longitude  $112^{\circ} 19' 05''$  W., I make a series of 8 altitude observations upon the sun for azimuth at approximately equal time intervals, four each with telescope in direct and reversed positions, observing opposite limbs of the sun and reading the horizontal angle from a reference point on the easterly end line of the Promotor lode, W-N-E. to the sun.

Mean time of observation, 105th meridian standard time = 7h 59m A.M.

Declination of sun at mean time of observation =  $23^{\circ} 24' 09''$  N.

Mean observed vertical angle to sun's center =  $30^{\circ} 52' 00''$

Mean horizontal angle from reference point to sun's center =  $284^{\circ} 36' 22''$  W-N-E

True bearing to reference point = S.  $23^{\circ} 31'$  E.

The lines were measured with a Lufkin steel tape 500 ft. in length, graduated every foot for the entire length, each end foot being graduated to tenths and hundredths; the tape was compared with a Lufkin standard at a time before the beginning of the survey and found to be correct.

All lines and connections of the survey were run by direct methods.

The magnetic declination observed at each corner of the survey gave a uniform value of  $14^{\circ} 00'$  E.

Feet:

## CARIDA MIA LODE

At Cor. No. 1 of the Carida Mia lode of this survey.

Set a galvanized iron post, 3 ft. long, 1 in. diam., 26 ins. in the ground and in mound of stone, with brass cap mkd. U.S.M.S. X C M-1-4346; from which

The cor. of secs. 1, 2, 11 and 12, T. 8 N., R. 1 W., G. & S.R.M., Arizona, bears N.  $67^{\circ} 55'$  E., 570.1 ft. dist.; an iron post, firmly set and marked as described in the official record.

A point on a granite rock ledge, 3 x 5 ft., level with the ground, bears S.  $54^{\circ} 30'$  E., 26.3 ft. dist., mkd. X B R C M-1-4346.

Thence N.  $66^{\circ} 29'$  E.

780

Humbug Creek, 60 ft. wide, course S.  $30^{\circ}$  E.

1500.0

Cor. No. 2.



Feet	
	Set a galvanized iron post, 3 ft. long, 1 in. diam., 26 ins. in the ground, and in mound of stone, with brass cap mkd. U.S.M.S. X C M-2-4346.
	A point on porphyry bed rock, 18 x 24 ins., 6 ins. above ground, bears S. 19° 30' E., 19.7 ft. dist., mkd. X B R C M-2-4346.
	Thence S. 23° 31' E.
125	Wash, 15 ft. wide, course S. 65° W.
300.0	Point on lode line, marked by mound of stone, 3 ft. high, 3 ft. base. Discovery point bears S. 66° 29' W., 210 ft. dist.
600.0	Cor. No. 3, identical with Cor. No. 2 Llano lode of this survey.
	Set a galvanized iron post, 3 ft. long, 1 in. diam., 24 ins. in the ground and in mound of stone, with brass cap mkd. U.S.M.S. X C M-3-L-2-4346.
	A point on granite rock ledge, 16 x 16 ins., 24 ins. above ground, bears S. 76° 56' W., 9.9 ft. dist., mkd. X B R C M-3-L-2-4346.
	Thence S. 66° 29' W.
765	Humbug Creek, 40 ft. wide, course S. 20° E.
1500.0	Cor. No. 4, identical with Cor. No. 1 Llano lode of this survey.
	Set a galvanized iron post, 3 ft. long, 1 in. diam., 24 ins. in ground and in mound of stone, with brass cap mkd. U.S.M.S. X C M-4-L-1-4346.
	No local bearing objects or bearing trees available. Thence N. 23° 31' W.
300.0	Point on lode line, marked by mound of stone 3 ft. high, 3 ft. base, Discovery point bears N. 66° 29' E., 1290 ft. dist.
600.0	Cor. No. 1 and place of beginning.
	<b>LLANO LODE</b>
	Beginning at Cor. No. 1 of the Llano lode, identical with Cor. No. 4 Carida Mia lode of this survey; from which
	The cor. of secs. 1, 2, 11 and 12, T. 8 N., R. 1 W., G. & S.R.M., Arizona, bears N. 20° 42' E., 817.2 ft. dist., previously described.
	Thence N. 66° 29' E.
735	Humbug Creek.
1500.0	Cor. No. 2, identical with Cor. No. 3 Carida Mia lode of this survey.



## Survey No. 4346

Feet	
	Thence S. 23° 31' E.
300.0	Point on lode line, marked by mound of stone 3 ft. high, 3 ft. base. Discovery point bears S. 66° 29' W., 960 ft. dist.
600.0	Cor. No. 3, identical with Cor. No. 3 Lapann lode of this survey.
	Set a galvanized iron post, 3 ft. long, 1 in. diam., 24 ins. in ground and in mound of stone, with brass cap mkd. U.S.M.S. X L-3-La-3-4346.
	No local bearing object or bearing trees available.
	Thence S. 66° 29' W.
850	Humbug Creek, 40 ft. wide, course S. 20° E.
1500.0	Cor. No. 4, identical with Cor. No. 2 Lapann lode of this survey.
	Set a galvanized iron post, 3 ft. long, 1 in. diam., 24 ins. in ground and in mound of stone, with brass cap mkd. U.S.M.S. X-L-4-La-2-4346.
	No bearing objects or bearing trees available.
	Thence N. 23° 31' W.
300.0	Point on lode line, marked by mound of stone, 3 ft. high, 3 ft. base. Discovery point bears N. 66° 29' E., 540 ft. dist.
600.0	Cor. No. 1 and place of beginning.

## LAPANN LODGE

At Cor. No. 1 of the Lapann lode, identical with Cor. No. 2 Jessie lode of this survey.

Set a galvanized iron post, 3 ft. long, 1 in. diam., 24 ins. in ground and in mound of stone with brass cap mkd. U.S.M.S. X-La-1-J-2-4346; from which

The 4 sec. cor. of secs. 11 and 12, T. 8 N., R. 1 W., G. & S.R.M., Arizona, bears S. 13° 55' W., 803.4 ft. dist.; an iron post, firmly set and marked as described in the official records.

A point on the flat face of a granite bed rock, 2 x 4 ft., flush with ground, bears N. 73° 45' E., 15.85 ft. dist., mkd. X B R-La-1-J-2-4346.

Thence N. 23° 31' W.

300.0 Point on lode line, marked by mound of stone, 3 ft. high, 3 ft. base. Discovery point bears N. 66° 29' E., 1410 ft. dist.

600.0 Cor. No. 2, identical with Cor. No. 4, Llano lode, of this survey.

Thence N. 66° 29' E.

5.

4-

## Survey No. 4346

Feet	
650	Humbug Creek.
1500.0	Cor. No. 3, identical with Cor. No. 3, Llano lode of this survey.
	Thence S. 23° 31' E.
300.0	Point on lode line, marked by mound of stone, 3 ft. high, 3 ft. base. Discovery point bears S. 66° 29' W., 90 ft. dist.
530	Road, bears N. 70° W. and S. 70° E.
600.0	Cor. No. 4, identical with Cor. No. 3 Jessie lode of this survey.
	Set a galvanized iron post, 3 ft. long, 1 in. diam., 24 ins. in ground and in mound of stone, with brass cap mkd. U.S.M.S. X La-4-J-3-4346.
	A point on schist bed rock, 12 x 24 ins., 12 ins. above ground, bears S. 81° 30' E., 12.8 ft. dist., mkd. X B R La-4-J-3-4346.
	Thence S. 66° 29' W.
120	Road, bears S. 60° E. and N. 60° W.
730	Humbug Creek, 45 ft. wide, course S. 40° E.
820	Road, bears S. 45° E. and N. 45° W.
1500.0	Cor. No. 1 and place of beginning.

## JESSIE LODGE

	At Cor. No. 1 of the Jessie lode, identical with Cor. No. 1 Promotor lode of this survey.
	Set a galvanized iron post, 3 ft. long, 1 in. diam., 22 ins. in ground and in mound of stone, with brass cap mkd. U.S.M.S. X J-1-P-1-4346; from which
	The $\frac{1}{4}$ sec. cor. of secs. 11 and 12, T. 8 N., R. 1 W., G. & S.R.M., bears S. 62° 02' 30" W., 489.8 ft. dist., as previously described.
	A point on a porphyry lode outcrop 16 x 24 ins., 24 ins. above ground, bears S. 84° 35' E., 14.9 ft. dist., mkd. X B R J-1-P-1-4346.
	Thence N. 23° 31' W.
300.0	Point on lode line, marked by mound of stone, 3 ft. high, 3 ft. base. Discovery point bears N. 66° 29' E., 1120 ft. dist.
600.0	Cor. No. 2, identical with Cor. No. 1 Lapann lode of this survey.
	Thence N. 66° 29' E.
680	Road.

## Survey No. 4346

Feet	
770	Humbug Creek.
1380	Road.
1500.0	Cor. No. 3, identical with Cor. No. 4 Lapann lode of this survey. Thence S. 23° 31' E.
30	Road, bears S. 55° W. and N. 55° E.
300.0	Point on lode line, marked by mound of stone, 3 ft. high, 3 ft. base. Discovery point bears S. 66° 29' W., 380 ft. dist.
560	Road, bears S. 64° E. and N. 64° W.
600.0	Cor. No. 4, identical with Cor. No. 2 Promotor lode of this survey. Set a galvanized iron post, 3 ft. long, 1 in. diam., 26 ins. in ground and in mound of stone with brass cap mkd. U.S.M.S. X J-4-P-2-4346. A point on granite ledge, 18 x 30 ins., 3½ ft. above ground, bears S. 43° 16' E., 54.7 ft. dist., mkd. X B.R. J-4-P-2-4346. Thence S. 66° 29' W.
610	Humbug Creek, 45 ft. wide, course S. 30° E.
755	Road, bears N. 10° W. and S. 10° E.
1500.0	Cor. No. 1 and place of beginning.
PROMOTOR LODE	
	Beginning at Cor. No. 1 of the Promotor lode, identical with Cor. No. 1 of the Jessie lode of this survey. Thence N. 66° 29' E.
745	Road.
890	Humbug Creek.
1500.0	Cor. No. 2, identical with Cor. No. 4 Jessie lode of this survey. Thence S. 23° 31' E.
300.0	Point on lode line, marked by mound of stone, 3 ft. high, 3 ft. base. Discovery point bears S. 66° 29' W., 50 ft. dist.
600.0	Cor. No. 3. A galvanized iron post, 3 ft. long, 1 in. diam., 22 ins. in ground and in mound of stone, with brass cap mkd. U.S.M.S. X P-1-4346. Cor. No. 2, Sur. No. 1647 Crescent lode, bears N. 32° 10' E., 207.5 ft. dist.



Survey No. 4346

6.

Feet	
	A point on a granite rock in place, 18 x 32 ins., 18 ins. above ground, bears N. 12° 30' W., 3.7 ft. dist.
	Thence S. 66° 29' W.
595	Humbug Creek, course S. 60° E.
990.	Road, bears north and south.
1490.	Road, bears S. 68° E. and N. 68° W.
1500.0	Cor. No. 4. Set a galvanized iron post, 3 ft. long, 1 in. diam., 18 ins. in ground to bed rock and in mound of stone to top, with brass cap mkd. U.S.M.S. X P-4-4346. A red ferruginous gneiss ledge outcrop 24 ins. above ground, bears S. 36° 20' W., 8.63 ft. dist. Thence N. 23° 31' W.
10	Road, bears S. 68° E. and N. 68° W.
300.0	Point on lode line, marked by mound of stone, 3 ft. high, 3 ft. base. Discovery point bears N. 66° 29' E., 1450 ft. dist.
600.0	Cor. No. 1 and place of beginning.

AREAS

	Acres.
Total area, Carida Mia lode	20.661
Total area, Llano lode	20.661
Total area, Lapann lode	20.661
Total area, Jessie lode	20.661
Total area, Promotor lode	20.661

LOCATION

This survey is located in the NW $\frac{1}{4}$  Sec. 12, SW $\frac{1}{4}$  Sec. 12, NE $\frac{1}{4}$  Sec. 11, SW $\frac{1}{4}$  Sec. 1 and the SE $\frac{1}{4}$  Sec. 2 of T. 8 N., R. 1 W., of the G. & S.R.M., Arizona.

The survey of the five lodes is identical with the respective amended location as marked on the ground.



## Survey No. 4346

## EXPENDITURES

The improvements and the value of the labor and improvements made upon or for the benefit of each of the lode locations embraced in said mining claim by the claimant or its grantors are as follows:

- No. 1 The discovery cut of the Carida Mia lode, the face of which being the discovery point, is on the lode line, S. 66° 29' W., 210 ft. from the center of line 2-3, 8 ft. wide, 10 ft. face; runs N. 72° E., 27 ft. to face.  
Value, \$250.00
- No. 2 A cut, 4 ft. wide, the face of which bears west, 280 ft. from Cor. No. 3 Carida Mia lode; runs N. 40° E., 20 ft. to 10 ft. face; partly caved.  
Value, \$150.00
- No. 3 A shaft, the center of which bears S. 84° W., 325 ft. from Cor. No. 3 Carida Mia lode; 5 x 7 ft., 8 ft. deep; partly wash filled.  
Value, \$200.00
- No. 4 A cut, 4 ft. wide, the face of which bears S. 46° 30' W., 270 ft. from Cor. No. 2 Carida Mia lode; runs N. 40° E., 10 ft. to 8 ft. face; partly caved.  
Value, \$100.00
- No. 5 A shaft, the center of which bears S. 36° W., 260 ft. from Cor. No. 2 Carida Mia lode; 4 x 5 ft., 6 ft. deep. Filled with water.  
Value, \$150.00
- No. 6 A cut, the face of which bears S. 8° 30' W., 235 ft. from Cor. No. 2 Carida Mia lode, 4 ft. wide, 8 to 10 ft. face, runs S. 23° E.; partly caved.  
Value, \$100.00
- No. 1 The discovery monument of the Llano lode, being a mound of stone, 3 ft. base, 3 ft. high, on the lode line; N. 66° 29' E., 540 ft. from the center of line 4-1.  
No value.
- No. 2 The discovery tunnel, 4 x 7 ft. in size, the portal of which bears N. 24° W., 25 ft. from the discovery monument of the Llano lode, and runs S. 70° W., 20 ft. to a stope with winze, raise and drift therefrom. These workings from the stope are caved and inaccessible. The winze is estimated to be 50 ft. in depth, the raise, 20 ft. and the drifts a total of 100 ft.  
Value of tunnel, stope, winze, raise and drifts, \$4,000.00
- No. 3 Described under common improvement.
- No. 4 A tunnel, 5 x 7 ft. in size, the portal of which bears N. 40½° E., 575 ft. from Cor. No. 4 Llano lode, and runs S. 60° W., 20 ft. to intersect raise from No. 2 discovery tunnel. Partly caved.  
Value, \$400.00

- No. 5 A tunnel, 3 x 5 ft. in size, the portal of which bears N.  $44\frac{1}{2}^{\circ}$  E., 445 ft. from Cor. No. 4 Llano lode, and runs N.  $55^{\circ}$  W., 34 ft. to drift on vein, thence S.  $45^{\circ}$  W., 40 ft. to caved stope, broken thru to surface. Value, \$500.00
- No. 6 A trench, the southwest end of which bears N.  $44\frac{1}{2}^{\circ}$  E., 285 ft. from Cor. No. 4 Llano lode; 4 ft. wide, 8 ft. deep, running N.  $35^{\circ}$  E., 40 ft. Partly caved. Value, \$400.00
- No. 7 A cut, 4 ft. wide, the face of which bears N.  $52^{\circ} 30'$  E., 290 ft. from Cor. No. 4 Llano lode, runs south 10 ft. to 8 ft. face. Partly caved. Value, \$100.00
- No. 8 A tunnel, 5 x 7 ft. in size, the portal of which bears N.  $39^{\circ}$  W., 225 ft. from Cor. No. 3 Llano lode, and runs N.  $65^{\circ}$  E., 60 ft. to line 2-3 Llano lode. Value, \$200.00
- No. 1 The discovery cut and shaft of the Lapann lode. The center of the shaft in the middle floor of the cut, being the discovery point is on the lode line, S.  $66^{\circ} 29'$  W., 90 ft. from the center of line 3-4; 4 x 6 ft., 5 ft. deep. Partly wash filled. The cut is 6 ft. wide, runs south, 12 ft. to 8 ft. face. Partly caved. Value, of cut and shaft, \$200.00
- No. 2 A tunnel, 5 x 7 ft. in size, the portal of which bears N.  $42^{\circ}$  E., 365 ft. from Cor. No. 1, Lapann lode, and runs S.  $35^{\circ}$  W., 60 ft. to breast; partly caved. Value, \$1200.00
- No. 3 A cut, 4 ft. wide, the face of which bears N.  $46^{\circ}$  E., 275 ft. from Cor. No. 1 Lapann lode; runs south, 15 ft. to 10 ft. face; partly caved. Value, \$150.00
- No. 4 A cut, 4 ft. wide, the face of which bears N.  $45^{\circ}$  E., 165 ft. from Cor. No. 1 Lapann lode; runs south 12 ft. to 10 ft. face. Largely caved. Value, \$120.00
- No. 5 A cut, 6 ft. wide, the face of which bears N.  $39^{\circ}$  E., 100 ft. from Cor. No. 1 Lapann lode, runs S.  $23^{\circ}$  E., 180 ft. to 20 ft. face. Largely caved. At a point S.  $23^{\circ}$  E., 100 ft. from start of cut, a tunnel ran S.  $80^{\circ}$  E., 90 ft. to breast and intersection of Buena Vista vein. Entirely caved. Value of cut and tunnel, \$2000.00
- No. 1 The discovery cut of the Jessie lode, the face of which being the discovery point, is on the lode line, S.  $66^{\circ} 29'$  W., 380 ft. from the center of line 3-4, 6 ft. wide,  $10\frac{1}{2}$  ft. face, runs S.  $63^{\circ}$  E., 24 ft. to face. Value, \$300.00
- No. 2 A cut, 5 ft. wide, and tunnel 5 x  $6\frac{1}{2}$  ft. in size. The 10 ft. face of cut being at the portal of the tunnel, bears N.  $80\frac{1}{2}^{\circ}$  E., 740 ft. from Cor. No. 2 Jessie lode, runs S.  $50^{\circ}$  W., 15 ft. to face. The tunnel runs S.  $50^{\circ}$  W., 6 ft. to breast. Used for a cap magazine, with padlocked door at portal. Value, \$250.00



## Survey No. 4346

019

- No. 1 A discovery shaft of the Promotor lode, the center of which being the discovery point is on the lode line S. 66° 29' W., 50 ft. from the center of line 2-3, 4 x 10 ft., 8 ft. deep. Partly caved.  
Value, \$200.00
- No. 2 A cut, 10 ft. wide, the face of which bears N. 55° E., 690 ft. from Cor. No. 4 Promotor lode; runs S. 60° W., 20 ft. to 15 ft. face. Largely caved.  
Value, \$200.00
- No. 3 A tunnel, 5 x 6 ft. in size, the portal of which bears N. 55° E., 770.0 ft. from cor. No. 4 Promotor lode, runs S. 85° W., 25 ft. to a stope, which is caved to the surface. Entirely caved.  
Value, \$500.00
- No. 4 A tunnel, 5 x 6 ft. in size, the portal of which bears N. 61° 30' E., 515 ft. from Cor. No. 4 Promotor lode; runs S. 55° W., 25 ft. to breast. Used as a powder magazine, with padlocked door at portal.  
Value, \$500.00

An interest in a common improvement.

No. 3 of the Llano lode.

A shaft, the center of which bears N. 79° E., 655 ft. from Cor. No. 1 Llano lode, 5 x 8 ft., 25 ft. deep, all timbered and having a concrete collar and plank platform. Equipped with windless.

Value, \$1500.00

Value of one-fifth interest \$300.00

This improvement was in the course of construction for the development of the five lode claims of this survey at the time operations were discontinued by Government Order L 208 closing all gold mines during World War II. They are all the contiguous lode claims owned in common within the range of benefit of said shaft.

Five hundred dollars or over has been expended in this improvement in such a manner as tends to the development of each lode of this survey subsequent to its location and to the time since which common ownership and contiguity have prevailed; therefore an undivided one-fifth interest in its value is hereby credited to each of the lodes of this survey.

#### OTHER IMPROVEMENTS

A stucco office and residence, the SE. corner of which bears S. 84° W., 575 ft. from Cor. No. 3 Llano lode; 20 x 53 ft. in size; the long side of which bears N. 20° W. Claimant herein.

A stucco mess hall, the SE. cor. of which bears S. 68° 30' W., 560 ft. from Cor. No. 3 Llano lode; 14 x 33 ft. in size, the long side of which bears N. 20° W. Claimant herein.

A stucco bunk house, the SE. corner of which bears S. 67° 30' W., 640 ft. from Cor. No. 3 Llano lode; 20 x 80 ft. in size; the long side of which bears N. 25° W., Claimant herein.

A frame bunk house, the NE. corner of which bears S. 66° W., 740 ft. from Cor. No. 3 Lapann lode; 16 x 40 ft. in size; the long side of which bears S. 63° W.  
Claimant herein.

An adobe bunk house, the NE. corner of which bears S. 57° W., 690 ft. from Cor. No. 3 Lapann lode; 20 x 34 ft. in size; the long side of which bears S. 65° W.  
Claimant herein.

A corrugated iron barn, the NE. corner of which bears S. 58° 30' W., 795 ft. from Cor. No. 3 Lapann lode; 12 x 42 ft. in size; the long side of which bears S. 40° E.  
Claimant herein.

A well and pump house, the NE. corner of which bears S. 44° W., 755 ft. from Cor. No. 3 Lapann lode, 20 x 42 ft. in size; the long side of which bears S. 25° E.  
Claimant herein.

An assay office, the SE. corner of which bears S. 68° 30' W., 520 ft. from Cor. No. 4 Lapann lode; 12 x 24 ft. in size; the long side of which bears N. 30° W.  
Claimant herein.

A concrete mill foundation, the SE. corner of which bears N. 74° W., 235 ft. from Cor. No. 4 Lapann lode; 43 x 96 ft. in size; the long side of which bears S. 60° W.  
Claimant herein.

A plank ore bin, the SE. corner of which bears N. 52° W., 203 ft. from Cor. No. 4 Lapann lode, 8 x 10 ft. in size; the long side of which bears S. 40° W.  
Claimant herein.

A row of three galvanized water tanks, the south side of the most southerly tank bears N. 45° W., 170 ft. from Cor. No. 4 Lapann lode, each tank, 10 ft. diam., by 11 ft. high; bearing N. 30° W.  
Claimant herein.

A plank 4 compartment ore bin, the SW. corner of which bears N. 47½° W., 215 ft. from Cor. No. 4 Lapann lode; 12 x 37 ft. in size; the long side of which bears N. 60° E.  
Claimant herein.

A stucco dwelling, the NE. corner of which bears S. 53° W., 565 ft. from Cor. No. 3 Jessie lode; 12 x 24 ft. in size; the long side of which bears S. 30° E.  
Claimant herein.

#### OTHER CORNER DESCRIPTIONS

Sur. No. 1647 Crescent lode: Cor. No. 2 is a 4 x 4 ft. post, in mound of rock, with marking still legible.

#### FIELD ASSISTANTS

Name	Capacity
Jack Woods	Chainman
Newton White	Chainman
Pete Evhon	Axeman



UNITED STATES  
DEPARTMENT OF THE INTERIOR  
BUREAU OF LAND MANAGEMENT



CERTIFICATE OF SURVEYOR

I, Harlow D. Phelps, Mineral Surveyor,  
 hereby certify upon honor that in pursuance of an order received from the  
Office Cadastral Engineer, at Phoenix, Arizona,  
 dated May 23, 1950, I have faithfully and correctly executed the survey  
 of the mining claim of Frank Hyde  
 known as the Carida Mia, Llano, Lepann, Jessie and  
Promotor lodes (lode, placer, or millsite)  
 situate in Humbug Mining District  
Yavapai County, Arizona in Secs. 1, 2, 11 and 12 T. 8 N., R. 1 W.,  
G. & S. R. Meridian, Arizona (State), and designated  
 as Survey No. 1346, which is represented in the fore-  
 going field notes as having been executed by me and under my direction, and that said  
 survey has been made in strict conformity with said order, the Manual of Instructions  
 for the Survey of the Public Lands of the United States, and in the specific manner  
 described in the foregoing field notes, and I do further certify that the labor ex-  
 pended and improvements made upon or for the benefit of the lode  
 location<sup>s</sup> embraced in the said mining claim by claimant— or his grantors  
 are fully stated in my report therein, and that the character, extent, location, and  
 itemized value thereof are specified therein with particularity and full detail, and  
 that no portion of, or interest in, said labor and improvements so credited to this  
 claim has been included in the estimate of expenditures upon any other claim.

Tucson, Arizona  
(Place)

*Harlow D. Phelps*  
(Mineral Surveyor)

October 16, 1950.  
(Date)





CERTIFICATE OF APPROVAL OF FIELD NOTES AND SURVEY OF  
MINING CLAIM

UNITED STATES  
DEPARTMENT OF THE INTERIOR

~~GENERAL LAND OFFICE~~

~~PUBLIC SURVEY OFFICE~~

Bureau of Land Management  
Division of Engineering  
1009 W. Tijeras Ave.,  
Albuquerque, N. M.

At \_\_\_\_\_

October 23, 19 50

I, \_\_\_\_\_ Office Cadastral Engineer at \_\_\_\_\_ Albuquerque, New Mexico \_\_\_\_\_

do hereby certify that the foregoing and hereto attached Field Notes and Return of the Survey of the  
Mining Claim of \_\_\_\_\_ Frank Hyde \_\_\_\_\_

\_\_\_\_\_, known as the  
Carida Mia, Llano, Lapann, Jessie and Promotor lodes

situate in \_\_\_\_\_ Humbug \_\_\_\_\_ mining district,

\_\_\_\_\_  
Yavapai County, Arizona

in Sections 1, 2, 11 & 12 \_\_\_\_\_, Township No. 8 N. \_\_\_\_\_, Range No. 1 W. \_\_\_\_\_

G&SRM \_\_\_\_\_, designated as Survey No. 4346

executed by \_\_\_\_\_ Harlow D. Phelps \_\_\_\_\_, Mineral

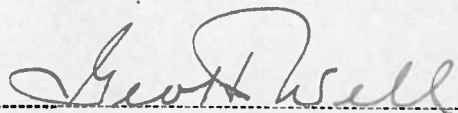
Surveyor, June 14 to 29, 1950 \_\_\_\_\_, 19 \_\_\_\_\_, under my instructions dated

May 23, 1950 \_\_\_\_\_, 19 \_\_\_\_\_, have been critically examined and the necessary

corrections and explanations made, and the said Field Notes and Return, and the Survey they describe,

are hereby approved. The certified copy of the location certificate filed by the applicant for survey is

included and made a part of these field notes.



Office Cadastral Engineer.

CERTIFICATE OF APPROVAL OF FIELD NOTES AND SURVEY OF MINING CLAIM

UNITED STATES DEPARTMENT OF THE INTERIOR

Faint, mostly illegible text and lines, likely representing a form or survey details. Includes phrases like 'I hereby certify that...' and 'The above described...'.