

UNITED STATES
DEPARTMENT OF THE INTERIOR
BUREAU OF LAND MANAGEMENT

MINERAL SURVEY NO. 4371

Arizona

Arizona Land District.

FIELD NOTES

Of The Survey Of The Mining Claim Of

Pima Mining Company

Known As The

Union No. 1, Union No. 2, Alpha No. 3, Alpha No. 4, Herrick No. 1, and

Herrick No. 2 Lodes, Pima Mining District,

Pima County, Arizona

Sections 1 and 6, Townships 17 S., Ranges 12 and 13 E.

Surveyed under order dated August 6, 1952.

by Harlow D. Phelps
Mineral Surveyor.

Union No. 1 and Union No. 2, Nov. 3, 1950.

Alpha No. 3 and Alpha No. 4, June 1, 1951.

Claims located Herrick No. 1 and Herrick No. 2, May 26, 1952.

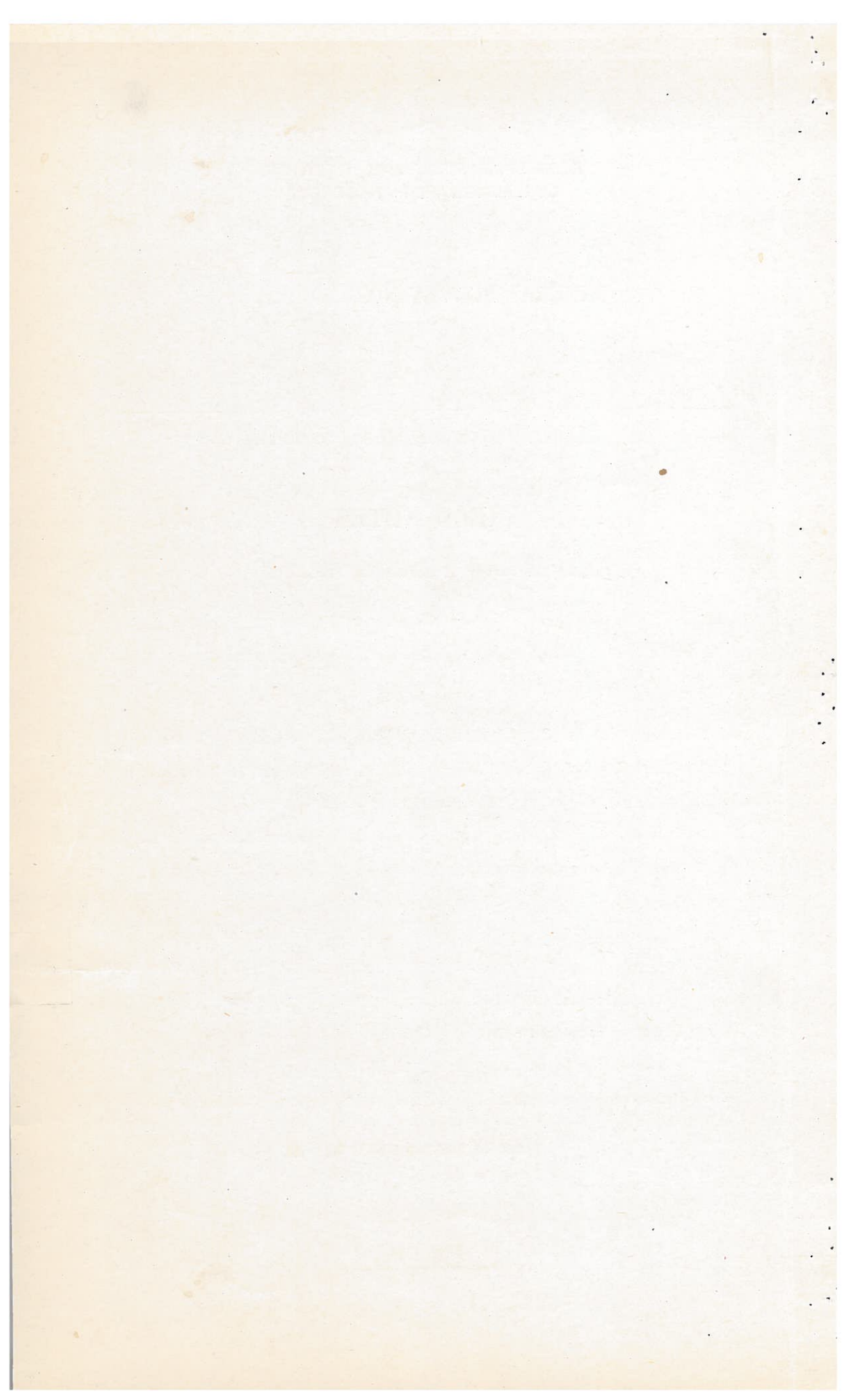
Survey commenced August 11, 1952

Survey completed August 22, 1952

Address of claimant Tucson, Arizona.

DATES OF AMENDED LOCATIONS

All amended June 16, 1952.



This survey was made with a Gurley No. 92 Precise transit No. 241014 with horizontal limb 5.65 ins. diam., having two double opposite verniers and full vertical circle 5 ins. diam., having one double vernier; the verniers read to one minute of arc; also two attachable eye pieces, both equipped with colored glass shade set in the dust shutter and one equipped with a prism, for making direct observation upon the sun. The instrument was in good condition at the time of the survey and all adjustments were in good order.

All azimuths in this record were determined by the method of deflection angles referred to the meridian determined by the following observations:

May 23, 1952, at Cor. No. 1 of the Union No. 1 lode in latitude $31^{\circ} 59' 18''$ N., and longitude $111^{\circ} 04' 30''$ W., I made a series of 8 altitude observations upon the sun for azimuth at approximately equal time intervals, four each with telescope in direct and reversed positions, observing opposite limbs of the sun and reading the horizontal angle from a reference point at Cor. No. 1 Surprise lode mineral survey No. 1649, E-N-E. to the sun.

Mean time of observation, 105th meridian standard time = 7h 46m 15s

Declination of sun at mean time of observation = $20^{\circ} 28' 48''$

Mean observed vertical angle to sun's center = $28^{\circ} 19' 11''$

Mean observed horizontal angle from reference point to sun's center = $93^{\circ} 47' 37''$

True bearing to reference point = N. $11^{\circ} 36'$ W.

The lines were measured with a Lufkin steel tape 500 ft. in length, graduated every foot for the entire length, each end foot being graduated to tenths and hundredths; the tape was compared with a Lufkin standard at a time before the beginning of the survey and found to be correct.

All lines and connections of the survey were run by direct methods.

The magnetic declination observed at each corner of the survey gave a uniform value of $14^{\circ} 30'$ E.

Feet

UNION NO. 1

At Cor. No. 1 of the Union No. 1 lode of this survey.

Set a galvanized iron post, 3 ft. long, 1 in. diam., 24 ins. in ground and with 14 x 14 in. concrete base, 1 in. to top, with brass cap mkd. U.S.M.S. X U1-1-4371; from which

The cor. of secs. 1, 2, 35 and 36, T. 16-17 S., R. 12 E., G. & S.R.M., Arizona, bears N. $89^{\circ} 41'$ W., 1330.4 ft. dist.; a limestone rock, set in concrete, with mound of rock, and marked as described in the office of records.

No local bearing objects or bearing trees available.

Thence S. $89^{\circ} 41'$ E.

Feet	
1500.0	<p>Cor. No. 2, identical with Cor. No. 4 Alpha No. 4 lode of this survey.</p> <p>Set a galvanized iron post, 3 ft. long, 1 in. diam., 24 ins. in ground and with 14 x 14 in. concrete base, 1 in. to top, with brass cap mkd. U.S.M.S. X U1-2-A4-4-4371.</p> <p>No local bearing objects or bearing trees available.</p> <p>Thence S. 11° 36' E.</p>
306.61	<p>Point on lode line, marked by 4 x 4 in. post standing 4 ft. above ground. Discovery point bears N. 89° 41' W., 750 ft. dist.</p>
613.22	<p>Cor. No. 3, identical with Cor. No. 2 Union No. 2 lode, Cor. No. 3 Alpha No. 4 lode, and Cor. No. 4 Alpha No. 3 lode of this survey.</p> <p>Set a galvanized iron post, 3 ft. long, 1 in. diam., 24 ins. in ground and with 14 x 14 in. concrete base, 1 in. to top, with brass cap mkd. U.S.M.S. X U1-3-A4-3-A3-4-U2-2-4371.</p> <p>No local bearing objects or bearing trees available.</p> <p>Thence N. 89° 41' W.</p>
1120	<p>Road and Transmission line, bears N. 50° W. and S. 50° E.</p>
1500.0	<p>Cor. No. 4, identical with Cor. No. 1 Union No. 2 lode of this survey.</p> <p>Set a galvanized iron post, 3 ft. long, 1 in. diam., 24 ins. in ground and with 14 x 14 in. concrete base, 1 in. to top, with brass cap mkd. U.S.M.S. X U1-4-U2-1-4371.</p> <p>No local bearing objects or bearing trees available.</p> <p>Thence N. 11° 36' W.</p>
80	<p>Along line 1-2 of Sur. No. 1649 Surprise lode: Road, bears N. 30° E. and S. 30° W.</p>
306.61	<p>Point on lode line, marked by 4 x 4 in. post standing 4 ft. above ground. Discovery point bears S. 89° 41' E., 750 ft. dist.</p>
380	<p>Road and Transmission line, bears N. 50° W. and S. 50° E.</p>
613.22	<p>Cor. No. 1 and place of beginning.</p>
<p>UNION NO. 2</p>	
<p>At Cor. No. 1 of the Union No. 2 lode, identical with Cor. No. 4 Union No. 1 lode of this survey; from which</p>	
<p>The cor. of secs. 1, 2, 35 and 36, T. 16-17 S., R. 12 E., G. & S.R.B.M., Arizona, bears N. 67° 18' W., 1575.7 ft. dist., previously described.</p>	

Feet	
	Thence S. 89° 41' E.
380	Road and Transmission line, bears N.50°W. and S.50°E.
1500.0	Cor. No. 2, identical with Cor. No. 3 Union No. 1 lode, Cor. No. 3 Alpha No. 4 lode, and Cor. No. 4 Alpha No. 3 lode of this survey.
	Thence S. 11° 36' E.
306.61	Point on lode line, marked by 4 x 4 in. post standing 4 ft. above ground. Discovery point bears N. 89° 41' W., 750 ft. dist.
613.22	Cor. No. 3, identical with Cor. No. 3 Alpha No. 3 lode of this survey.
	Set a galvanized iron post, 3 ft. long, 1 in. diam., 24 ins. in ground and with 14 x 14 in. concrete base, 1 in. to top, with brass cap mkd. U.S.M.S. X U2-3-A3-3-4371.
	No local bearing objects or bearing trees available.
	Thence N. 89° 41' W.
490	Road and Transmission line, bears N.50°W. and S.50°E.
1449.8	Intersect line 3-4 Sur. No. 3726 Plumed Knight No. 2 lode at a point from which Cor. No. 4 bears N. 00° 48' W., 264.09 ft. dist.
1495	Road, bears N. 76° W. and S. 76° E.
1500.	Cor. No. 4.
	This corner falls in road where a permanent monument cannot be established; from this point Cor. No. 4 Sur. No. 3726 Plumed Knight No. 2 lode bears N. 10° 00' E.; 267.85 ft. dist.
	No local bearing objects or bearing trees available.
	Thence N. 11° 36' W.
17.21	Set a galvanized iron post, 3 ft. long, 1 in. diam., 24 ins. in ground and with 14 x 14 in. concrete base, 1 in. to top, for witness Cor. No. 4, with brass cap mkd. U.S.M.S. X W.C. U2-4-4371.
306.61	Point on lode line marked by a 4 x 4 in. post standing 4 ft. above ground. Discovery point bears S. 89° 41' E., 750 ft. dist.
309.07	Intersect line 1-4 Sur. No. 3726 Plumed Knight No. 2 lode at a point from which Cor. No. 4 bears S. 70° 16' E., 115.44 ft. dist.
427.02	Cor. No. 2 Sur. No. 1649 Surprise lode.
613.22	Thence along line 1-2 of Sur. No. 1649 Surprise lode. Cor. No. 1 and place of beginning.

Feet

ALPHA NO. 3

At Cor. No. 1 of the Alpha No. 3 lode, identical with Cor. No. 2 Alpha No. 4 lode, Cor. No. 3 Herrick No. 1 lode, and Cor. No. 4 Herrick No. 2 lode of this survey:

Set a galvanized iron post, 3 ft. long, 1 in. diam., 24 ins. in ground and with 14 x 14 in. concrete base, 1 in. to top, with brass cap mkd. U.S.M.S. X A3-1-A4-2-H1-3-H2-4-4371; from which

The cor. of secs. 1; 6, 31 and 36; T. 16-17 S. and R. 12-13 E.; G. & S.R.B.M.; Arizona, bears N. 53° 52' E., 1010.0 ft. dist.; an iron post firmly set and marked as described in the official records.

No local bearing objects or bearing trees available.

Thence S. 11° 36' E.

306.61 Point on lode line, marked by a 4 x 4 in. post, standing 4 ft. above ground. Discovery point bears N. 89° 41' W., 1050 ft. dist.

520 Red hill wash, 70 ft. wide, course N. 70° E.

613.22 Cor. No. 2, identical with Cor. No. 3 Herrick No. 2 lode of this survey:

Set a galvanized iron post, 3 ft. long, 1 in. diam., 24 ins. in ground and with 14 x 14 in. concrete base, 1 in. to top, with brass cap mkd. U.S.M.S. X A3-2-H2-3-4371.

No local bearing objects or bearing trees available.

Thence N. 89° 41' W.

80 Red hill wash.

1500.0 Cor. No. 3, identical with Cor. No. 3 Union No. 2 lode of this survey.

Thence N. 11° 36' W.

306.61 Point on lode line, marked by a 4 x 4 in. post, standing 4 ft. above ground. Discovery point bears S. 89° 41' E., 450 ft. dist.

613.22 Cor. No. 4, identical with Cor. No. 2 Union No. 2 lode, Cor. No. 3 Union No. 1 lode, and Cor. No. 3 Alpha No. 4 lode of this survey.

Thence S. 89° 41' E.

1500.0 Cor. No. 1 and place of beginning.

Feet	ALPHA NO. 4
	<p>At Cor. No. 1 of the Alpha No. 4 lode, identical with Cor. No. 4 Herrick No. 1 lode of this survey.</p> <p>Set a galvanized iron post, 3 ft. long, 1 in. diam., 24 ins. in ground and with 14 x 14 in. concrete base, 1 in. to top, and brass cap mkd. U.S.M.S. X A4-1-H1-4-4371; from which</p> <p>The cor. of secs. 1, 6, 31 and 36, T. 16-17 S. and R. 12-13 E., G. & S.R.B.M. Arizona, bears S. 89° 41' E., 938.95 ft. dist.</p> <p>No local bearing objects or bearing trees available.</p> <p>Thence S. 11° 36' E.</p>
306.61	Point on lode line marked by a 4 x 4 in. post, standing 4 ft. above ground. Discovery point bears N. 89° 41' W., 870 ft. dist.
613.22	Cor. No. 2, identical with Cor. No. 3 Herrick No. 1 lode, Cor. No. 4 Herrick No. 2 lode, and Cor. No. 1 Alpha No. 3 lode of this survey.
	Thence N. 89° 41' W.
1500.0	Cor. No. 3, identical with Cor. No. 4 Alpha No. 3; Cor. No. 2 Union No. 2, and Cor. No. 3 Union No. 1 of this survey.
	Thence N. 11° 36' W.
306.61	Point on lode line, marked by 4 x 4 in. post, standing 4 ft. above ground. Discovery point bears S 89° 41' E., 630 ft. dist.
613.22	Cor. No. 4, identical with Cor. No. 2 Union No. 1 lode of this survey.
	Thence S. 89° 41' E.
1500.0	Cor. No. 1 and place of beginning.
	<p>HERRICK NO. 1</p> <p>At Cor. No. 1 of the Herrick No. 1 lode of this survey.</p> <p>Set a galvanized iron pipe, 3 ft. long, 1 in. diam., 24 ins. in ground and with 14 x 14 in. concrete base, 1 in. to top, with brass cap mkd. U.S.M.S. X H1-1-4371, from which</p> <p>The cor. of secs. 1, 6, 31 and 36, T. 16-17 S., R. 12-13 E., G. & S.R.B.M., Arizona, bears N. 89° 41' W., 561.05 ft. dist.</p> <p>No local bearing objects or bearing trees available.</p> <p>Thence S. 11° 36' E.</p>

Feet	
306.61	Point on lode line, marked by 4 x 4 in. post standing 4 ft. above ground. Discovery point bears N. 89° 41' W., 287 ft. dist.
493	Red hill wash, 90 ft. wide, bears N. 65° E.
613.22	Cor. No. 2, identical with Cor. No. 1 Herrick No. 2 lode of this survey. Set a galvanized iron post, 3 ft. long, 1 in. diam., 24 ins. in ground and with 14 x 14 in. concrete base, 1 in. to top, with brass cap mkd. U.S.M.S. X H1-2-H2-1-4371. No local bearing objects or bearing trees available. Thence N. 89° 41' W.
75	Red hill wash.
1500.0	Cor. No. 3, identical with Cor. No. 4 Herrick No. 2 lode, Cor. No. 1 Alpha No. 3 lode, and Cor. No. 2 Alpha No. 4 lode of this survey. Thence N. 11° 36' W.
306.61	Point on lode line, marked by a 4 x 4 in. post standing 4 ft. above ground. Discovery point bears S. 89° 41' E., 1213 ft. dist.
613.22	Cor. No. 4, identical with Cor. No. 1 Alpha No. 4 lode of this survey. Thence S. 89° 41' E.
938.95	The cor. of secs. 1, 6, 31 and 36, Ts. 16 and 17 S., Rs. 12 and 13 E., G. and S. R. Mer.
1500.0	Cor. No. 1 and place of beginning.

HERRICK NO. 2

Beginning at Cor. No. 1, identical with Cor. No. 2 Herrick No. 1 lode of this survey.

The cor. of secs. 1, 6, 31 and 36, T. 16-17 S., R. 12-13 E., G. & S.R.B.M., Arizona, bears N. 48° 35' W., 912.6 ft. dist.

Thence S. 11° 36' E.

306.61 Point on lode line, marked by a 4 x 4 in. post standing 4 ft. above ground. Discovery point bears N. 89° 41' W., 182 ft. dist.

Feet 613.22	Cor. No. 2 Set a galvanized iron post, 3 ft. long, 1 in. diam., 24 ins. in ground and with 14 x 14 in. concrete base, 1 in. to top, with brass cap mkd. U.S.M.S. X H2-2-4371. No local bearing objects or bearing trees available. Thence N. 89° 41' W.
1500.0	Cor. No. 3, identical with Cor. No. 2 Alpha No. 3 lode of this survey. Thence N. 11° 36' W.
23	Red hill wash.
306.61	Point on lode line, marked by 4 x 4 in. post standing 4 ft. above ground. Discovery point bears S. 89° 41' E., 1318 ft. dist.
613.22	Cor. No. 4, identical with Cor. No. 1 Alpha No. 3 lode, Cor. No. 2 Alpha No. 4 lode, and Cor. No. 3 Herrick No. 1 lode of this survey. Thence S. 89° 41' E.
1260	Red hill wash.
1500.0	Cor. No. 1 and place of beginning.

AREAS

	Acres
Total area, Union No. 1 lode	20.661
Total area, Union No. 2 lode	20.661
Area in conflict with--	
Sur. No. 3726, Plumed Knight No. 2 lode	0.502
Total area, Alpha No. 3 lode	20.661
Total area, Alpha No. 4 lode	20.661
Total area, Herrick No. 1 lode	20.661
Total area, Herrick No. 2 lode	20.661

LOCATION

This survey is located in the NW 1/4 and the NE 1/4 sec. 1 of T. 17 S., R. 12 E., and the NW 1/4 sec. 6 of T. 17 S., R. 13 E., of the G. & S.R.B.M., Arizona.

The survey of the six lodes is identical with the respective amended locations as marked on the ground.

EXPENDITURES

The improvements and the value of the labor and improvements made upon or for the benefit of each of the lode locations embraced in said mining claim by the claimant or its grantors are as follows:

- | | |
|--------|---|
| No. 1 | The discovery point of the Union No. 1 lode, being a 4 x 4 in. post, 4 ft. above ground; on the lode line, S. 89° 41' E., 750 ft. from the center of line 1-4.
No value. |
| No. 2 | The discovery shaft, 4 x 6 ft., 8 ft. deep, the center of which bears North, 12 ft. from the discovery point of the Union No. 1 lode.
Value, \$100.00. |
| No. 3 | A core drill hole, the center of which bears S. 85° E., 545 ft. from Cor. No. 1 Union No. 1 lode; 3 ins. diam., 197 ft. deep.
Value, \$985.00. |
| No. 4 | A core drill hole, the center of which bears S. 82° 30' E., 545 ft. from Cor. No. 1 Union No. 1 lode; 3 ins. diam., 345 ft. deep.
Value, \$1725.00. |
| No. 5 | A core drill hole, the center of which bears S. 85° E., 600 ft. from Cor. No. 1 Union No. 1 lode; 3 in. diam., 235 ft. deep.
Value, \$1170.00. |
| No. 6 | A core drill hole, the center of which bears S. 80° 30' E., 602 ft. from Cor. No. 1 Union No. 1 lode; 3" to 2" diam., 455 ft. deep.
Value, \$2275.00. |
| No. 7 | A core drill hole, the center of which bears S. 76° E., 605 ft. from Cor. No. 1 Union No. 1 lode; 2 ins. diam., 455 ft. deep.
Value, \$2160.00. |
| No. 8 | A core drill hole, the center of which bears S. 80° 30' E., 695 ft. from Cor. No. 1 Union No. 1 lode; 2 ins. diam., 265 ft. deep.
Value, \$1260.00. |
| No. 9 | A core drill hole, the center of which bears S. 75° 30' E., 425 ft. from Cor. No. 1 Union No. 1 lode; 2 ins. diam., 366 ft. deep.
Value \$1740.00. |
| No. 10 | A core drill hole, the center of which bears S. 66° E., 325 ft. from Cor. No. 1 Union No. 1 lode; 2 ins. diam., 402 ft. deep.
Value, \$1900.00. |
| No. 11 | A core drill hole, the center of which bears S. 60° E., 210 ft. from Cor. No. 1 Union No. 1 lode; 2 ins. diam., 337 ft. deep.
Value \$1600.00. |
| No. 12 | A core drill hole, the center of which bears S. 81° 30' E., 870 ft. from Cor. No. 1 Union No. 1 lode; 2 ins. diam., 320 ft. deep.
Value \$1500.00. |
| No. 13 | Described under common improvements. |

- | | |
|-------|---|
| No. 1 | The discovery point of the Union No. 2 lode, being a 4 x 4 in. post, 4 ft. above ground, on the lode line, S. 89° 41' E., 750 ft. from the center of line 1-4.
No value. |
| No. 2 | The discovery bulldozer pit, 10 x 20 ft., 8 ft. deep, the center of which bears North, 18 ft. from the discovery point of the Union No. 2 lode.
Value, \$100.00. |
| No. 1 | The discovery point of Alpha No. 3 lode, being a 4 x 4 in. post, 4 ft. above ground, on the lode line S. 89° 41' E., 450 ft. from the center of line 3-4.
No value. |
| No. 2 | The discovery bulldozer pit, 10 x 20 ft., 8 ft. deep, the center of which bears North, 10 ft. from the discovery monument of the Alpha No. 3 lode.
Value, \$100.00. |
| No. 3 | A core drill hole, the center of which bears S. 85° E., 41 ft. from Cor. No. 4 Alpha No. 3 lode; 2 ins. diam., 320 ft. deep.
Value, \$1520.00. |
| No. 1 | The discovery point of the Alpha No. 4 lode, being a 4 x 4 in. post, 4 ft. above ground, on the lode line, S. 89° 41' E., 630 ft. from the center of line 3-4.
No value. |
| No. 2 | The discovery bulldozer pit, 10 x 20 ft., 8 ft. deep, the center of which bears North, 40 ft. from the discovery point of the Alpha No. 4 lode.
Value \$100.00. |
| No. 3 | A core drill hole, the center of which bears S. 89° 41' E., 575 ft. from the center of line 3-4, 2 ins. diam. at top, 2 ins. diam. at bottom, 315 ft. deep.
Value \$1500.00. |
| No. 1 | The discovery point of the Herrick No. 1 lode, being a 4 x 4 in. post, 4 ft. above ground, on the lode line, N. 89° 41' W., 287 ft. from the center of line 1-2.
No value. |
| No. 2 | The discovery shaft, the center of which bears N. 60° W., 45 ft. from the discovery point of the Herrick No. 1 lode; 6 x 10 ft., 20 ft. deep.
Value \$100.00. |
| No. 1 | The discovery point of the Herrick No. 2 lode, being a 4 x 4 in. post, 4 ft. above ground, on lode line, N. 89° 41' W., 182 ft. from the center of line 1-2.
No value. |
| No. 2 | The discovery shaft, the center of which bears North, 15 ft. from the discovery point of the Herrick No. 2 lode; 4 x 6 ft., 8 ft. deep.
Value \$100.00. |

0111

10

Survey No. 4371

An interest in a common improvement, No. 13, Union No. 1 lode, described as follows:

A shaft, the center of which bears S. 75° 20' E., 592 ft. from Cor. No. 1 Union No. 1 lode, 7 x 12 ft., 400 ft. deep, all timbered and having a concrete collar; with steel head frame and loading bin. Equipped with electric hoist, steel cable, water and air lines.

Value of shaft, head frame and equipment,

\$135,000.00

Value of one-sixth interest, \$ 22,500.00

OTHER IMPROVEMENTS.

A shaft, 4 x 6 ft., 25 ft. deep, which bears N. 20° E., 35 ft. from the discovery point, Herrick No. 1 lode.

A shaft, 4 x 6 ft., 6 ft. deep, the center of which bears N. 77° W., 72 ft. from the discovery point, Herrick No. 1 lode.

A shaft, 5 x 14 ft., 6 ft. deep, the center of which bears N. 78° W., 575 ft. from Cor. No. 2, Herrick No. 1 lode.

A shaft, 5 x 12 ft., 6 ft. deep, the center of which bears N. 79° W., 550 ft. from Cor. No. 2, Herrick No. 1 lode.

Claimant of each unknown.

A metal water tank, the center of which bears S. 58° E., 555 ft. from Cor. No. 1 Union No. 1 lode; 10 ft. diam., 8 ft. high.

Claimant herein.

A frame office building, the NW corner of which bears S. 60° E., 520 feet from Cor. No. 1 Union No. 1 lode; 20 x 30 ft. in size; the long side of which bears East.

Claimant herein.

A sheet metal generator shed; the NW corner of which bears S. 62° E., 575 ft. from Cor. No. 1 Union No. 1 lode; 8 x 24 ft. in size, the long side of which bears East.

Claimant herein.

A sheet metal hoist house, the NW corner of which bears S. 69° E., 585 ft. from Cor. No. 1 Union No. 1 lode; 18 x 30 ft. in size, the long side of which bears East.

Claimant herein.

A sheet metal machine shop, the NW corner of which bears S. 84° E., 550 ft. from Cor. No. 1 Union No. 1 lode; 20 x 40 ft. in size, the long side of which bears North.

Claimant herein.

A rock wall powder house, the center of which bears S. 89° 41' E., 975 ft. from Cor. No. 1 Union No. 1 lode; 4 x 8 ft. in size, the long side of which bears N. 30° E.

Claimant herein.

OTHER CORNER DESCRIPTIONS

Sur. No. 1649 Surprise Lode: Cor. No. 2 is a limestone rock firmly set and properly marked. Line 1-2 Surprise Lode is identical with line 1-4 Union No. 1 lode of this survey, and the bearing found to be N. 11° 36' E. instead of N. 11° 35' E.

Sur. No. 3726 Plumed Knight No. 2 Lode: Cor. No. 4 is an iron pipe slightly bent, with square-headed brass cap properly marked. The bearing and ties were found to be approximately correct.

The North 1/4 cor. of sec. 1, T. 17 S., R. 12 E., G. & S.R.B.M., Arizona, could not be found after a diligent search.

FIELD ASSISTANTS

Name	Capacity
Lee Wildman	Chainman
Robert Lock	Chainman and Axeman

12

11

Survey No. 4371

OTHER CONTROL DESCRIPTIONS

Sur. No. 4371 Surprise Lobe: Cor. No. 2 is a lime-
stone rock firmly set and properly marked. Line 1-2
Surprise Lobe is identical with line 1-2. Station No. 1
lobe of this survey, and the bearing found to be
N. 11° 58' E. instead of N. 11° 55' E.

Sur. No. 3725 Pinned Point No. 2 Lobe: Cor. No. 4
is an iron pipe slightly bent, with square-headed
brass cap properly marked. The bearing and tie were
found to be approximately correct.

The North 1/4 cor. of sec. 1, T. 17 S., R. 12 E.,
S. & G. R. T. Co., Arizona, could not be found after a
different search.

FIELD ASSISTANTS

Capacity	Name
Chairman	Lee Wilman
Chairman	Robert Cook
and Axeman	

UNITED STATES
DEPARTMENT OF THE INTERIOR
BUREAU OF LAND MANAGEMENT

CERTIFICATE OF SURVEYOR

I, Harlow D. Phelps, Mineral Surveyor,
 hereby certify upon honor that in pursuance of an order received from the
Bureau of Land Management, at Albuquerque, N. M.,
 dated Aug. 6, 1952., I have faithfully and correctly executed the survey
 of the mining claim of the Pima Mining Co.
known as the Union Nos. 1 & 2, Alpha Nos. 3 & 4,
and Herrick Nos. 1 & 2 lodes (lode, placer, or millsite)
situate in the Pima Mining District
Sections 1 and 6 T. 17 S., R. 12 & 13, E.
G. & S. R. Meridian, Arizona, and designated
 as Survey No. 4371 (State)
 which is represented in the fore-
 going field notes as having been executed by me and under my direction, and that said
 survey has been made in strict conformity with said order, the Manual of Instructions
 for the Survey of the Public Lands of the United States, and in the specific manner
 described in the foregoing field notes, and I do further certify that the labor ex-
 pended and improvements made upon or for the benefit of the lode
 location^s embraced in the said mining claim by claimant— or his grantors
 are fully stated in my report therein, and that the character, extent, location, and
 itemized value thereof are specified therein with particularity and full detail, and
 that no portion of, or interest in, said labor and improvements so credited to this
 claim has been included in the estimate of expenditures upon any other claim.

Tucson, Arizona
(Place)

Nov. 1, 1952.
(Date)

Harlow D. Phelps
(Mineral Surveyor)

DEPARTMENT OF THE INTERIOR
BUREAU OF LAND MANAGEMENT

CERTIFICATE OF SURVEY

I, the undersigned, being a duly qualified Surveyor of the Bureau of Land Management, do hereby certify that the above described land is the same as that shown on the map or maps filed in the office of the Surveyor General for the Territory of New Mexico, and that the same is situated in the County of Santa Fe, State of New Mexico, and that the same is bounded and contained as follows:

Beginning at the corner of the Section 36, Township 36 North, Range 21 East, Meridian 10N, 21E, and running North 89 degrees 00' 00" West, 1/4 mile to a point, and thence North 89 degrees 00' 00" West, 1/4 mile to a point, and thence North 01 degree 00' 00" East, 1/4 mile to a point, and thence South 89 degrees 00' 00" East, 1/4 mile to the corner of the Section 36, Township 36 North, Range 21 East, Meridian 10N, 21E, containing 1/4 acre, more or less, as shown on the map or maps filed in the office of the Surveyor General for the Territory of New Mexico, and that the same is bounded and contained as follows:

Beginning at the corner of the Section 36, Township 36 North, Range 21 East, Meridian 10N, 21E, and running North 89 degrees 00' 00" West, 1/4 mile to a point, and thence North 89 degrees 00' 00" West, 1/4 mile to a point, and thence North 01 degree 00' 00" East, 1/4 mile to a point, and thence South 89 degrees 00' 00" East, 1/4 mile to the corner of the Section 36, Township 36 North, Range 21 East, Meridian 10N, 21E, containing 1/4 acre, more or less, as shown on the map or maps filed in the office of the Surveyor General for the Territory of New Mexico, and that the same is bounded and contained as follows:

Beginning at the corner of the Section 36, Township 36 North, Range 21 East, Meridian 10N, 21E, and running North 89 degrees 00' 00" West, 1/4 mile to a point, and thence North 89 degrees 00' 00" West, 1/4 mile to a point, and thence North 01 degree 00' 00" East, 1/4 mile to a point, and thence South 89 degrees 00' 00" East, 1/4 mile to the corner of the Section 36, Township 36 North, Range 21 East, Meridian 10N, 21E, containing 1/4 acre, more or less, as shown on the map or maps filed in the office of the Surveyor General for the Territory of New Mexico, and that the same is bounded and contained as follows:

Witness my hand and the seal of the Bureau of Land Management at Santa Fe, New Mexico, this 1st day of January, 1900.

[Signature]
 Surveyor General

**CERTIFICATE OF APPROVAL OF FIELD NOTES AND SURVEY OF
MINING CLAIM**

**UNITED STATES
DEPARTMENT OF THE INTERIOR**

~~GENERAL LAND OFFICE~~
~~PUBLIC SURVEY OFFICE~~

BUREAU OF LAND MANAGEMENT
Division of Cadastral Engineering

At Albuquerque, New Mexico

February 24, 19 53

I, Office Cadastral Engineer at Albuquerque, New Mexico

do hereby certify that the foregoing and hereto attached Field Notes and Return of the Survey of the
Mining Claim of Pima Mining Company

Union No. 1, Union No. 2, Alpha No. 3, Alpha No. 4, Herrick No. 1, and
Herrick No. 2 lodes, known as the

situate in Pima mining district,

Pima County, Arizona

in Section s. 1 and 6, Townships No. 17 South, Range No. 12 and 13 East,

G&SRM, Arizona, designated as Survey No. 4371

executed by Harlow D. Phelps, Mineral

Surveyor, August 11 to August 22, 1952, 19 52, under my instructions dated

August 6, 1952, 19 52, have been critically examined and the necessary

corrections and explanations made, and the said Field Notes and Return, and the Survey they describe,

are hereby approved. The certified copy of the amended location certificate filed by the applicant for survey is

included and made a part of these field notes.

E. H. Kimmell
E.H. Kimmell, Acting Office Cadastral Engineer.

CENTRAL BUREAU OF METEOROLOGY AND AERONAUTICS
- MINING CLAIM -

UNITED STATES
DEPARTMENT OF THE INTERIOR
BUREAU OF LAND MANAGEMENT

MINING CLAIM

Section 30, Township 36N, Range 12E, T13N, R12E, S4E, 4th Meridian, Montana

Section 30, Township 36N, Range 12E, T13N, R12E, S4E, 4th Meridian, Montana

Section 30, Township 36N, Range 12E, T13N, R12E, S4E, 4th Meridian, Montana

Section 30, Township 36N, Range 12E, T13N, R12E, S4E, 4th Meridian, Montana

Section 30, Township 36N, Range 12E, T13N, R12E, S4E, 4th Meridian, Montana

Section 30, Township 36N, Range 12E, T13N, R12E, S4E, 4th Meridian, Montana

Section 30, Township 36N, Range 12E, T13N, R12E, S4E, 4th Meridian, Montana