

No-17

Subdivision.

T. 4 N. R. 3. E.

4-671

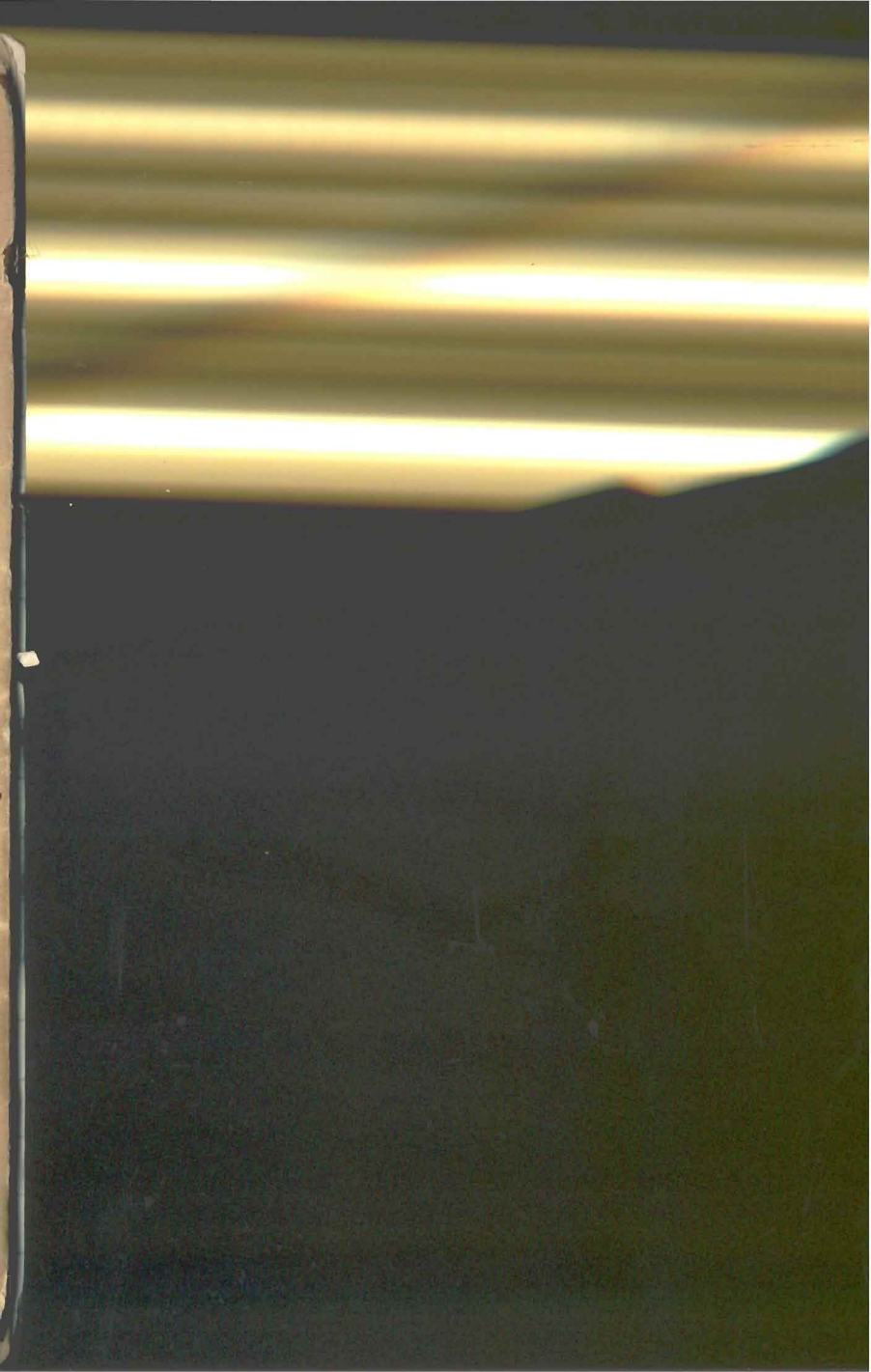
**FIELD NOTES**

**GENERAL LAND OFFICE.**

No. 1.

17

No-17



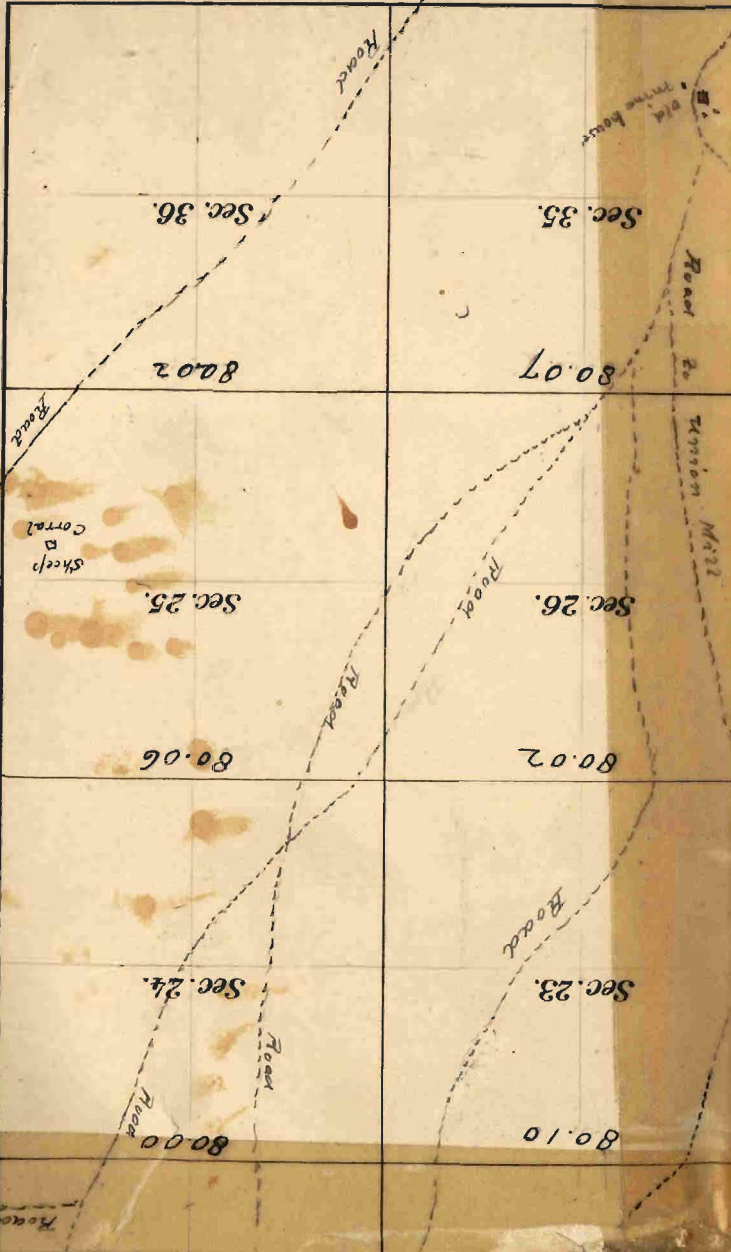
Scale 40 Chains to an Inch.

80  
60  
40  
20  
0

T S S T

True Meridian.

t  
U  
u  
A  
v  
W



Sec. 36.

80.02

Road

Sheep  
Corral

Sec. 25.

80.06

Sec. 24.

80.00

Road

River

Sec. 35.

80.07

Sec. 26.

80.02

Sec. 23.

80.10

Road

Road

Road

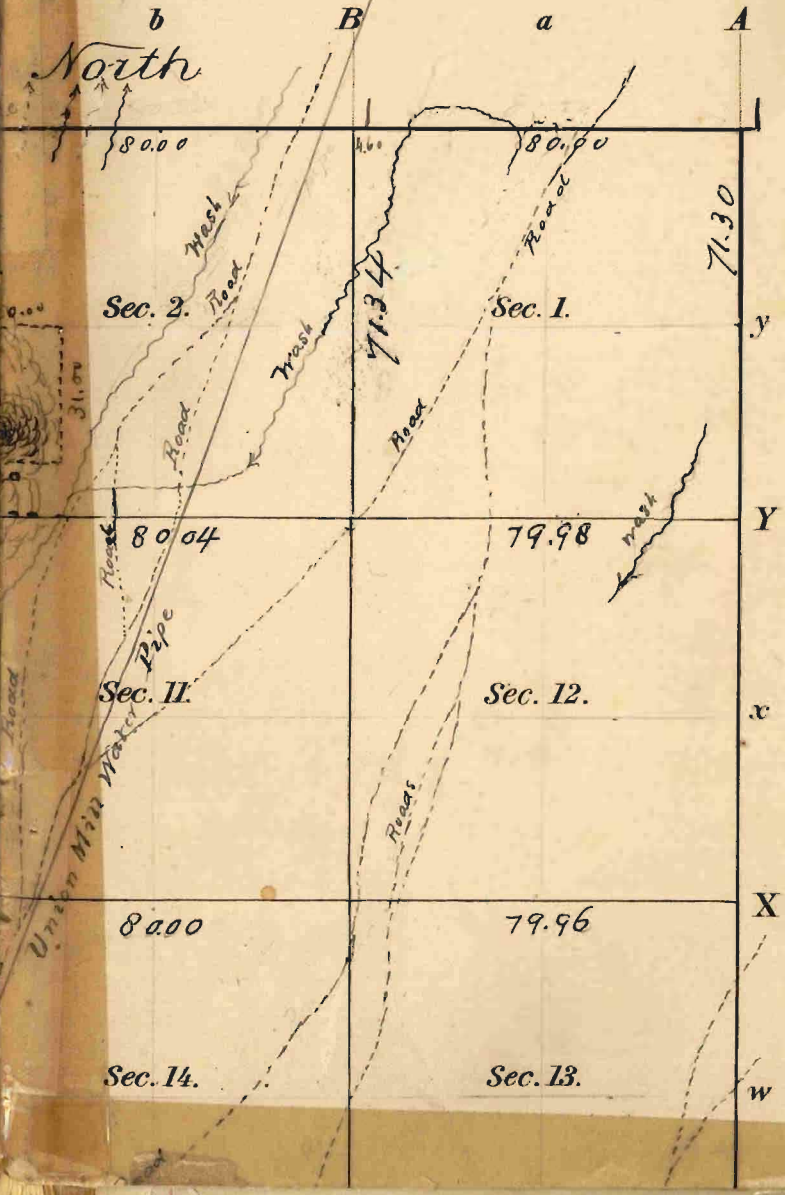
Road

Road to  
Union Mill

Old  
lime house

# S. R. Meridian

1





No-17

1A

Field Notes of the  
Survey of the

Subdivision Lines

of  
T. 4 N. - R. 3 E.

of the  
Principal Base and Meridian  
in the

Territory of Arizona  
as surveyed by

James H. Martin

U. S. Deputy Surveyor

under his Contract No. 30

Dated June 21 1893

Survey commenced Jan. 26. 1894.

Survey completed Feb. 5. 1894

Index

T. 4 N. - R. 3 E.

Index for Books 17 and 18

6	87	5	64	4	46	3	29	2	14	1
85	84	62	44	27	13					
7	82	8	61	9	42	10	26	11	11	12
81	79	59	41	24	10					
18	78	17	57	16	39	15	23	14	9	13
76	75	55	37	22	7					
19	74	20	54	21	36	22	21	23	6	24
72	71	52	34	20	5					
30	69	29	51	28	33	27	18	26	3	25
68	66	49	32	17	2					
31	65	32	48	33	30	34	16	35	1	36

Subdivision, T. 4 N., R. 3 E.

Survey commenced.

January 26<sup>th</sup> 1894

From the cor. to Secs. 35 & 36  
on South Boundary I run

North  $0^{\circ} 1' W.$  bet. Secs. 35 & 36

to  $13^{\circ} 40' E.$

Over level land.

6.50 Road, bears S. W. & N. E.

40.00 Set a stone  $12 \times 10 \times 4$  <sup>ins</sup> <sup>8 ins</sup>  
in the ground for  $\frac{1}{4}$  Sec. cor.  
mkd.  $\frac{1}{4}$  on W. face, dug pits  
 $18 \times 18 \times 12$  <sup>ins</sup> N. & S. of Stone  
 $5\frac{1}{2}$  ft. dist. and raised a  
mound of earth  $1\frac{1}{2}$  ft high  
 $3\frac{1}{2}$  ft base alongside.

80.00 Set a stone  $15 \times 8 \times 6$  <sup>ins</sup> <sup>10 ins</sup>

# Sub division

in the ground for Cor. to Secs.  
 25, 26, 35, 36, mkd. with 1  
 notch on S. and 1 notch on N.  
 edges, dug pits  $18 \times 18 \times 12$  <sup>ins</sup>  
 in each Sec.  $5\frac{1}{2}$  ft. dist. &  
 raised a mound of earth  $2\frac{1}{2}$   
 ft. high 4 feet base alongside.

Land level

Soil 1<sup>st</sup> rate

No timber

East on random line bet.

Secs. 25 & 36

Var.  $13^{\circ} 40' E.$

Over level land

4000 Set temp.  $\frac{1}{4}$  Sec. Cor.

80.02 Intersect the N. & S. line at

Cor. to Secs. 25, 30, 31, 36



T. 4 N. R. 3 E.

Three Town

West on true line bet.  
Secs. 25 & 36

Va.  $13^{\circ}40'8''$

15.00

Road, bears n. E. & S. W.

40.01

Set a stone  $18 \times 10 \times 7$  ins  $12$  ins

in the ground for  $\frac{1}{4}$  sec. cor.  
mkd.  $\frac{1}{4}$  on N. face. dug pits

$18 \times 18 \times 12$  ins E. & W. of stone

$5\frac{1}{2}$  ft. dist. and raised a  
mound of earth  $1\frac{1}{2}$  ft high  
 $3\frac{1}{2}$  ft base alongside.

80.02

The Cor. to Secs. 25, 26, 35-  
36.

Land level

Soil 1<sup>st</sup> rate

No timber

N.  $0^{\circ}1'W$ . bet. Secs. 25 & 26

Va.  $13^{\circ}40'8''$

## BOOK 17 Subdivision

over level land

- 40.20 Set a stone  $14 \times 10 \times 5$  ins  $9$  ins in the ground for  $\frac{1}{4}$  sec, cor, mkd,  $\frac{1}{4}$  in W. face, dug pits  $18 \times 18 \times 12$  ins, N. & S. of stone  $5\frac{1}{2}$  ft dist, and raised a mound of earth  $1\frac{1}{2}$  ft high  $3\frac{1}{2}$  ft base alongside.
- 42.35 A road, bears N. E.
- 70.36 A road, bears N. E.
- 80.20 Set a stone  $15 \times 7 \times 6$  ins  $10$  ins in the ground for cor. to secs, 23, 24, 25, 26, mkd, 2 notches on S, and 1 notch on E. edges, dug pits  $18 \times 18 \times 12$  ins in each sec,  $5\frac{1}{2}$  ft dist, and raised a mound of earth 2 ft high  $4\frac{1}{2}$  ft base alongside.
- Land level  
Soil 1<sup>st</sup> rate

T. H. R. &amp; E.

No timber

East on random line

bet. Secs. 24 &amp; 25

Va.  $13^{\circ}40'E$ .40.00 Set temp.  $\frac{1}{4}$  Sec. Cor80.06 Intersect N. & S. line 8 lks. N.  
of Cor, to Secs. 19, 24, 25, 30

Thence I run

N.  $89^{\circ}56'W$ . on true line

bet. Secs. 24 &amp; 25

Va.  $13^{\circ}40'E$ .

Over level land

40.03 Set a stone  $14 \times 16 \times 5$  ins gins  
in the ground for  $\frac{1}{4}$  Sec. Cor.  
Marked  $\frac{1}{4}$  on N. face, dug pits  
 $18 \times 18 \times 12$  ins E. & W. of stone  
 $5\frac{1}{2}$  ft. dist, and raised a

## Subdivision

mound of earth  $1\frac{1}{2}$  ft high  
 $3\frac{1}{2}$  ft. base alongside

62.70  
 74.00  
 80.06

Road, bears N. E.

Road, bears N. E.

The Cor. to Secs. 23, 24, 25, 26

Land level

Soil 1<sup>st</sup> rate

no timber.

N.  $0^{\circ} 1' W.$  bet. Secs. 23 & 24

N.  $13^{\circ} 40' E.$

Over level land

4000 Set a stone  $12 \times 11 \times 7$  <sup>ins</sup> <sub>ins</sub> & <sup>ins</sup> <sub>ins</sub>

in the ground for  $\frac{1}{4}$  sec. Cor.

Mkd.  $\frac{1}{4}$  on W. face, dug pits

$18 \times 18 \times 12$  <sup>ins</sup> N. & S. of stone

$5\frac{1}{2}$  ft. dist. and raised a

mound of earth  $1\frac{1}{2}$  ft high

$3\frac{1}{2}$  ft. base alongside

8000 Set a stone  $11 \times 10 \times 7$  <sup>ins</sup> <sub>ins</sub> & <sup>ins</sup> <sub>ins</sub>



J. H. N. R. 3 E.

in the ground for cor, to Secs.  
13, 14, 23, 24 onkd, with 3 notches  
on S. and <sup>notch</sup> on E. edges, dug pits  
18x18x12<sup>ins</sup> in each sec, 5 1/2  
ft. dist, and raised a mound  
of earth 2 ft high 4 1/2 ft base  
alongside.

Land level

Soil 1<sup>st</sup> rate

No timber January 26<sup>th</sup> 1894

on random line Secs.  
N. 89° 56' E, bet. 13 & 24

Wa. 13° 40' E.

40.00 Set temp. 1/4 Sec. Cor.

80.00 Antiseet N. & S. line 5 Cks

S. of Cor. to Secs 13, 18, 19, 24.

Thence I run

BOOK 17  
 1st division

S.  $89^{\circ}54'$  W. on true line  
 bet. Secs. 13 & 24

Va.  $13^{\circ}40'$  E.

Over level land & dense brush.

22.60 Road bears N. E.

40.00 Set a stone  $17 \times 9 \times 7$  ins  $11$  ins  
 in the ground for  $\frac{1}{4}$  sec. cor.  
 on  $\frac{1}{4}$  on N. face, dug pits  
 $18 \times 18 \times 12$  ins E. & W. of stone  
 $5\frac{1}{2}$  ft dist, and raised a  
 mound of earth  $1\frac{1}{2}$  ft high  
 $3\frac{1}{2}$  ft base alongside.

54.05 Road, bears North

80.00 The cor. to Secs. 13, 14, 23  
 24,

Land level

Soil 1<sup>st</sup> rate

No timber

J. 4 N. R. 3 E.

N.  $0^{\circ} 1' W.$  bet. Secs. 13 & 14

N.  $13^{\circ} 40' E.$

Over level land

40.00 Set a stone  $15 \times 9 \times 8$  ins  $10$  ins  
in the ground for  $\frac{1}{4}$  Sec. Cor.  
Mkd.  $\frac{1}{4}$  on W. face, dig pits  
 $18 \times 18 \times 12$  ins N. & S. of stone  $5\frac{1}{2}$   
ft. dist. and raised a mound  
of earth  $1\frac{1}{2}$  ft high  $3\frac{1}{2}$  ft base  
alongside.

40.70 Road, bears N. E.

68.50 Road, bears, N. E.

80.00 Set a stone  $12 \times 10 \times 7$  ins  $8$  ins  
in the ground for cor. to Secs.  
11, 12, 13, 14, mkd. with 4  
notches on S. and 1 notch on  
E. edges, dig pits  $18 \times 18 \times 12$  ins  
in each Sec.  $5\frac{1}{2}$  ft dist.

## Subdivision

and raised a mound of  
earth 2 ft high  $4\frac{1}{2}$  ft base  
alongside.

Land level

Soil 2<sup>nd</sup> rate

No timber

---

N.  $89^{\circ}54'$  E. on random line  
bet. Secs. 12 & 13

Va.  $13^{\circ}40'$  E.

60.20 Set temp.  $\frac{1}{4}$  Sec. cor.

79.96 Intersect N. & S. line, 15 lbs.

✓ N. of cor. to sections 7, 12, 13, 18

Thence I run

West on a true line  
bet. Secs. 12 & 13

Va.  $13^{\circ}40'$  E.

Over level land



J. H. N. R. 3 E.

39.98 Set a stone  $14 \times 10 \times 6$  ins  $9$  ins  
 in the ground for  $\frac{1}{4}$  sec. cor.  
 mtd.  $\frac{1}{4}$  on N. face, dug pits  
 $18 \times 18 \times 12$  ins E. & W. of stone  
 $5\frac{1}{2}$  ft dist, and raised a  
 mound of earth  $1\frac{1}{2}$  ft. high  
 $3\frac{1}{2}$  ft base along side

~~xx. xx~~ Road, bears N. E.

72.06 Road, bears N. E.

78.71 Road, bears N. E.

79.96 The cor. to Secs. 11, 12, 13, 14

Land level

Soil  $1^{\text{st}}$  rate

No timber

N.  $0^{\circ} 1' W$ , bet. Secs. 11 & 12

N.  $13^{\circ} 40' E$ .

Over level land

## Subdivisions

- 25.00 Enter dense undergrowth.
- 40.00 Set a stone  $13 \times 9 \times 9$  ins plus in the ground for  $\frac{1}{4}$  Sec. Cor. Mkd.  $\frac{1}{4}$  on W. face, dig pits  $18 \times 18 \times 12$  ins N. & S. of Stone  $5\frac{1}{2}$  ft dist, and raised a mound of stones earth  $1\frac{1}{2}$  ft high  $3\frac{1}{2}$  ft base alongside.
- 75.00 Leave dense brush.
- 77.95 Road, bears N. E.
- 80.00 Set a stone  $12 \times 8 \times 6$  ins plus in the ground for Cor. to Sec. 1, 2, 11, 12, mkd, with 5 notches on S. and 1 notch on E. edges, dig pits  $18 \times 18 \times 12$  ins, in each Sec.  $5\frac{1}{2}$  ft dist, and raised a mound of earth 2 ft high  $4\frac{1}{2}$  ft base alongside.

J. H. N. R. &amp; E.

13

Land level

Soil 1<sup>st</sup> rate  
no timber

Dense undergrowth 55.00 Chs.

East on a random line  
bet. Secs. 1 & 12Va.  $13^{\circ}40'E$ .4000 Set temp.  $\frac{1}{4}$  sec. cor.79.98 Intersect N & S. line, 7  
Chs. S. of cor. to Secs. 6, 7, 12

, Thence I run

S.  $89^{\circ}57'W$ . on a true line  
bet. Secs. 1 & 12Va.  $13^{\circ}40'E$ .Low level land and in  
Dense undergrowth,

13.98 Dry wash, course S.W.

39.99 Set a stone  $12 \times 8 \times 7$  ins8 ins. in the ground for  $\frac{1}{4}$  sec.

BOOK 17  
 Subdivision

cor. mkd.  $\frac{1}{4}$  on N. face,  
 dug pits  $18 \times 18 \times 12$  <sup>ins</sup> E. & W.  
 of Stone  $5\frac{1}{2}$  ft. dist, and  
 raised a mound of earth  
 $1\frac{1}{2}$  ft high  $3\frac{1}{2}$  ft base  
 alongside.

5148  
 78.00  
 79.98

Road bears N.  
 Road bears N. E. & S. W.  
 The cor. to Secs. 1, 2, 11, 12

Land level

Soil 1<sup>st</sup> rate

no timber

Dense undergrowth 79.98 chs.

N.  $0^{\circ} 1^{\circ} W.$  on a true line  
 bet. Secs. 1 & 2

N.  $13^{\circ} 40' E.$

4000 Set a stone  $12 \times 11 \times 6$  <sup>ins</sup>  $8$  <sup>ins</sup> in  
 the ground for  $\frac{1}{4}$  sec. cor. mkd.  
 $\frac{1}{4}$  on N. face, dug pits  $18 \times 18$   
 $\times 12$  <sup>ins</sup> N. & S. of Stone  $5\frac{1}{2}$  ft. dist.



J. 4 N. R. 3 E.

and raised a mound of earth  $1\frac{1}{2}$  ft high  $3\frac{1}{2}$  ft base alongside

50.85 A dry wash, course. S. W.

71.34 Interset N. Boundary  
6.60 Chs. west of Standard  
cor. to Secs. 35, 36 in T. 3 N.

R. 3 E. Set a stone  $18 \times 9 \times 8$  in  
12 in in the ground for closing  
Cor. to Secs. 1 & 2, mtd 5 on the  
on N. & 1 on E. faces, and C. C. on  
S. face, dug pits  $18 \times 18 \times 12$  in E.  
N. & S. 6 ft dist and raised a  
mound of earth 2 ft high  $4\frac{1}{2}$  ft base  
alongside.

Land level - Soil 1 strata  
no timber. Dense brush 71.34  
January 27, 1894

From the cor. to Secs. 2, 3

34, 35 on S. Boundary  
I run

BOOK 17  
Subdivision

No. 1' W. bet. Secs. 34 & 35-

Na.  $13^{\circ} 40' E.$

Over level land

22.00 Old mine building about 8 ch. E.

35.00 Enter dense undergrowth

40.00 Set a stone  $13 \times 8 \times 8$  <sup>ins</sup>  $\times$  <sup>ins</sup>  $8$  <sup>ins</sup>  
in the ground for  $\frac{1}{4}$  sec. Cor.  
Mkd.  $\frac{1}{4}$  on W. face, dug pits  
 $18 \times 18 \times 12$  <sup>ins</sup> N. & S. of stone  $5\frac{1}{2}$   
ft dist, and raised a mound  
of earth  $1\frac{1}{2}$  ft high  $3\frac{1}{2}$  ft. base  
alongside.

44.30 Road to Union mine, clear N. W.

55.00 Leave dense brush

80.00 Set a stone  $18 \times 10 \times 10$  <sup>ins</sup>  $\times$  <sup>ins</sup>  $12$  <sup>ins</sup>  
in the ground for cor. to sec.

26, 27, 34, 35, mkd. with 1 notch  
on S. and 2 notches on E. edges,

S. 4 N. R. 3 E.

dig pits,  $18 \times 18 \times 12$  ins in each  
Sec.  $5\frac{1}{2}$  ft. dist, and raised  
a mound of earth 2 ft high  
 $4\frac{1}{2}$  ft base alongside

Land ascends gently North

Soil 1<sup>st</sup> and 2<sup>d</sup> rate

no timber

Dense undergrowth 20.00 Chs.

East in random line

bet. Secs. 26 & 35

Var.  $13^{\circ}40'E$ .

40.00 Set temp.  $\frac{1}{4}$  Sec. cor.

80.07 Intersect N. & S. line at cor. to

Secs. 25, 30, 31, 36. Thinned down

West on true line bet. <sup>Secs.</sup> 26 & 35

Var.  $13^{\circ}40'E$ .

Over level land

40.03 Set a stone  $13 \times 9 \times 8$  ins  $\&$  ins



BOOK II  
Subdivision

in the ground for  $\frac{1}{4}$  sec. cor.  
mkd.  $\frac{1}{4}$  on N. face, dry pits  
18 x 18 x 12 ins E. & W. of Stone  
5  $\frac{1}{2}$  ft dist. and raised a  
mound of earth 1  $\frac{1}{2}$  ft high  
3  $\frac{1}{2}$  ft base alongside.

45.30 Road, bears N.E.

51.45 Road bears North

59.20 Road, bears North

80.07 The cor. to Secs. 26, 27, 34, 35

Land level

Soil 2<sup>nd</sup> rate  
No Timber

N. 0° 1' W. bet. Secs. 26 & 27

Na. 13° 40' E.

Over gently ascending land.

40.00 Set a Stone 18 x 12 x 8 ins 10 ins

in the ground for  $\frac{1}{4}$  sec. cor.

mkd.  $\frac{1}{4}$  on N. face, dry pits



J. 4 N. R. 3 E.

18 x 18 x 12 <sup>ins</sup> N. W. S. of Stone 5 1/2  
ft. dist. and raised a mound  
of earth 1 1/2 ft high 3 1/2 ft  
base alongside.

57.00 foot of steep point of mountain.

62.00 Top of same, bears E. 100 ft. high.

65.00 foot of same, thence gradual  
slope N.E.

80.00 Set a stone 18 x 12 x 7 <sup>ins</sup> - 12 <sup>ins</sup>  
in the ground for cor. to sees. 22, 23  
26, 27, mkd. with 2 notches on S.  
and 2 on E. edges, dug pits 18 x 18  
x 12 <sup>ins</sup> in each see 5 1/2 ft dist.  
and raised a mound of earth  
2 ft high 4 1/2 ft base alongside.

Land level

Soil 2<sup>nd</sup> rate

no timber.

Mountainous S. or Chs.

## Subdivision

East on random line bet.

Secs. 23 & 26

Va.  $13^{\circ}40'E$ .

40.00 Set temp.  $\frac{1}{4}$  Sec. Cor.

80.02 Intersect N. & S. line 5 chs S.

of cor. to Secs. 23, 24, 26, 27

Thence I run

S.  $89^{\circ}58'W$ . on true line bet.

Secs. 23 and 26

Va.  $13^{\circ}40'E$ .

40.01 Set a stone  $11 \times 8 \times 7$  ins gins  
in the ground for  $\frac{1}{4}$  Sec. Cor.

mkd.  $\frac{1}{4}$  on N. face, dug pits

$18 \times 18 \times 12$  ins E. & W. of stone

$5\frac{1}{2}$  ft dist. and raised a

round of earth  $1\frac{1}{2}$  ft high

$3\frac{1}{2}$  ft base alongside.

56.20 Road, bears North

75.60 Road, bears N.W.

T. H. N. R. S. E.

85.72 The Cor. to Secs. 22, 23, 26, 27  
 Land lives  
 Soil 1<sup>st</sup> rate  
 No timber

N.  $0^{\circ} 1' W$ , bet. Secs. 22, & 23  
 Va.  $13^{\circ} 40' E$ .

Over rolling ground

24.80 Road bears N. E.

40.00 Set Stone  $11 \times 10 \times 10$  <sup>lbs</sup> pins in  
 the ground for  $\frac{1}{4}$  Sec. Cor. mkd.  
 $\frac{1}{4}$  on W. face, dug pits  $18 \times 18 \times$   
 $12$  <sup>ins</sup> N. & S. of Stone  $5\frac{1}{2}$  ft. dist.  
 and raised a mound of earth  
 $1\frac{1}{2}$  ft high  $3\frac{1}{2}$  ft base alongside.

49.90 Road bears North west

80.00 Set Stone  $13 \times 12 \times 9$  <sup>lbs</sup> pins in  
 the ground for Cor. to Secs. 14, 15-  
 22, 23, mkd, with 3 notches on S. &  
 2 notches on E. edges, dug pits  $18 \times$

BOOK 17  
 Subdivision

18 x 12 <sup>ins</sup> in each sec. 5 1/2 ft  
 dist. and raised a mound of  
 earth 2 ft high 4 1/2 ft base  
 alongside.

Land level

Soil 1<sup>st</sup> rate

No timber

N. 89° 58' E. on random line  
 bet. Secs. 14 & 23

Va. 13° 40' E.

4.000 Set temp. 1/4 sec cor.

80.10 Intersect N. & S. line 7 cks. N.  
 of cor. to Secs. 13, 14, 23, 24  
 Thence I run

N. 89° 59' W. on a true line  
 bet. Secs. 14 & 23

Va. 13° 40' E.

11.60 Road bears N, E.

40.22 Set a stone 10 x 9 x 9 <sup>ins</sup> pins



J. 4 N, R, 3 E.

in the ground for  $\frac{1}{4}$  sec. cor. mkt.  
 $\frac{1}{4}$  on N. face, dug pits  $18 \times 18 \times$   
 $12$  ins E. & W. of Stone  $5\frac{1}{2}$  ft.  
 dist. and raised a mound of  
 earth  $1\frac{1}{2}$  ft. high  $3\frac{1}{2}$  ft base  
 alongside.

63.50 Road bears N. E.

80.00 The cor. to Sec. 14, 15, 22, 23

Land level

Soil 2<sup>nd</sup> rate  
 No timber

N.  $0^{\circ} 11'$  W. bet. Sec. 14 & 15

Va.  $13^{\circ} 40'$  E.

Low level land

40.00 Set a stone  $12 \times 10 \times 7$  ins  $8$  ins in  
 the ground for  $\frac{1}{4}$  sec cor. mkt.  
 $\frac{1}{4}$  on N. face, dug pits  $18 \times 18 \times 12$  in  
 N. & S. of Stone  $5\frac{1}{2}$  ft dist.  
 and raised a mound of earth

## Sub-division

1 1/2 ft. high 3 1/2 ft base  
alongside.

42.50 Water pipe to union mill. N.E.

45.00 Road, bears N.E. along pipe line

59.80 foot of mountain 3 or feet high

79.00 Top of same, and descend

80.00 Set a stone 18 x 12 x 9 <sup>ins</sup> in a  
mound of stones for Cor. to Sec.

10, 11, 14, 15, mkd. 4 notches on S.  
and 2 notches on E. edges. ~~Set~~

and raised a mound of stones  
1 1/2 ft high 2 ft base alongside.

Land generally level

Soil, on bottoms, 2<sup>nd</sup> rate  
<sup>no timber.</sup>

Mountainous 20.00 Chs

S. 89° 50' E. on random  
line bet. Secs. 11 & 14

Na. 13° 40' E.

J. H. R. 3 E.

- 40.00 Set temp.  $\frac{1}{4}$  Sec. Cor.
- 80.00 Intersect the N. & S. line 18<sup>th</sup>  
N. of Cor. to Secs. 11, 12, 13, 14.  
Thence I run  
N.  $89^{\circ} 57' W.$  on true line  
bet. Secs. 11 & 14  
Va.  $13^{\circ} 40' E.$
- 40.00 Set a stone  $13 \times 11 \times 7$  ins  $8$  ins in  
the ground for  $\frac{1}{4}$  Sec. Cor. mkd.  
 $\frac{1}{4}$  on N. face, dug pits  $18 \times 18 \times$   
 $12$  ins E. & W. of Stone  $5\frac{1}{2}$  ft.  
dist. and raised a mound  
of earth  $1\frac{1}{2}$  ft high  $3\frac{1}{2}$  ft. base  
alongside.
- 64.70 Pipe to Union Mills, N. E & S. W.
- 64.90 Road, bears N. E.
- 69.60 Road bears N. W.
- 74.00 foot of hill, and ascend
- 80.00 The cor. to Secs. 10, 11, 14, 15



## Sub-division

Land level

Soil 2<sup>nd</sup> rate  
no timberN.  $0^{\circ}1'W$ . bet. Sec. 10 & 11Va.  $13^{\circ}40'E$ .

Over land generally level.

Desand

- 7.00 foot of hill, then level
- 4.00 Set a stone  $12 \times 9 \times 6$  <sup>ins</sup> <sub>ins</sub> <sup>ins</sup> <sub>ins</sub>  
in the ground for  $\frac{1}{4}$  sec. cor.  
Marked  $\frac{1}{4}$  on W. face, dug pits  
 $18 \times 18 \times 12$  <sup>ins</sup> N. & S. of stone  $5\frac{1}{2}$   
ft. dist. and raised a mound  
of earth  $1\frac{1}{2}$  ft high  $3\frac{1}{2}$  ft base  
alongside.
- 54.50 Dry wash, course S.W.
- 61.60 Dry wash, course S.W. around  
S. slope of mountain
- 80.00 Set a stone



S. 4 N. R. 3 E.

17 x 8 x 9 <sup>ins</sup> 12 <sup>ins</sup> in the ground  
 for. cor. to Secs. 2, 3, 10, 11,  
 and 5 <sup>notches</sup> notches on S, and 2 on E,  
 edges, and raised a mound of  
 stones 1 1/2 ft high 2 ft base  
 alongside. On S. slope of mt.  
 Land partly mountainous  
 Soil 2<sup>d</sup> and 3<sup>d</sup> rate.  
 No timber.  
 26.00 Chs. mountainous

S. 89° 51' E. on random  
 line bet. Secs. 2 & 11

N. 13° 40' E.

4000 Set temp. 1/4 sec. cor.

80.04 Intersect N. & S. line 20 Chs. S.  
 of Cor. to Secs. 1, 2, 11, 12  
 Thence I run

West on a true line bet.  
 Secs. 2 and 11

## Subdivision

Va.  $13^{\circ}40'8''$ .

- 3.00 Enter dense undergrowth  
 36.50 Union Mill water pipe, N. E. & S. W.  
 36.85 Wagon road, bears N. E. & S. W.  
 40.02 Set a Stone  $12 \times 11 \times 9$  <sup>ins</sup>  $\varnothing$  <sup>ins</sup> in  
 the ground for  $\frac{1}{4}$  Sec. cor, mtd.  
 $\frac{1}{2}$  on W. face, dug pits  $18 \times 18 \times$   
 $12$  ins. E. & W. of Stone  $5\frac{1}{2}$  ft.  
 dist. and raised <sup>a</sup> mound of  
 earth  $1\frac{1}{2}$  ft high  $3\frac{1}{2}$  ft base  
 along side.  
 48.65 Road, bears N.  
 58.30 Road bears N. E.  
 58.70 Dry wash, course S. W.,  
 66.00 foot of mountain, and ascend.  
 70.00 leave dense undergrowth  
 80.04 The cor. W Secs. 2, 3, 10, 11  
 Land partly mountainous  
 Soil in bottoms 2<sup>d</sup> rate.  
 No timber

T. 4 N. R. 3 E

Dense undergrowth 67.00 Chs.

N.  $0^{\circ} 1' W$ . on a true line  
bet. Secs. 2 & 3.Va.  $13^{\circ} 40' E$ .

Ascend Mountain Slope.

9.00 foot of steep ascent of mt. 500  
ft high. Here I offset to E.  
20.00 Chs; thence N.  $0^{\circ} 1' W$ . 31.00

Chs., thence West 20.00 Chs. to

40.00 Set a stone  $12 \times 11 \times 10$  <sup>ins</sup> <sub>ins</sub> pins  
in the ground, in a mound of  
stones for  $\frac{1}{4}$  sec cor, mkd  $\frac{1}{4}$   
on N. face, and raised a Md.  
of stones  $1\frac{1}{2}$  ft high 2 ft base  
alongside. Pits impracticable.

Descend N. Slope of mt.

45.00 foot of descent, thence level,  
and dense undergrowth



## Subdivision

71.37

Set a stone 12 x 10 x 9 ins. 8 in. in  
the ground for Closing Cor. Inkd. In the center of E  
1/4 on W. face and C.C. on S. face. depth 16  
18 x 16 x 12 in E, W, & S. and raised a mound  
of earth 2 ft high to get base always in.

Intersect 1<sup>st</sup> Standard Paral-  
lel North 6.65 Chs. W. of  
Standard cor. to Secs. 34 & 35  
T. 5 N., R. 3 E. →

Land level

Soil on bottoms 1<sup>st</sup> rate

no timber

Dense undergrowth &amp; mountainous

71.37 Chs.

January 29, 1894

From the cor. to Secs. 33 &amp; 34

on S. Boundary I run

N. 0° 2' W. bet. Secs. 33, &amp; 34

N. 13° 40' E.

Over level land

4222 Set a stone 16 x 14 x 8 ins 10 in  
in the ground for 1/4 Sec  
Cor. Inkd. 1/4 on W. face



T. H. N. P. 3 E.

dig pits  $18 \times 18 \times 12$  <sup>ins</sup> N. & S.  
of Stone  $5\frac{1}{2}$  ft dist. and  
raised a mound of earth  
 $1\frac{1}{2}$  ft high  $3\frac{1}{2}$  ft base  
alongside. Ascend gently

66.00 Top of flat ridge about  
100 ft high bears E. & W. Descend.

80.00 Set a Stone  $18 \times 8 \times 8$  <sup>ins</sup>  $12$  <sup>ins</sup>  
in the ground for cor. to Secs  
27. 28. 33. 34 mkd. 1 notch on S  
and 3 notches on E. edges,  
dig pits  $18 \times 18 \times 12$  <sup>ins</sup> in  
each Sec.  $5\frac{1}{2}$  ft dist. and  
raised a mound of <sup>Stone</sup> earth  
2 ft high  $4\frac{1}{2}$  ft base  
alongside.

Land rolling

Soil 1<sup>st</sup> and 2<sup>nd</sup> rate

No timber

## Subdivisions

East on random line

bet. Secs. 27. & 34

Na.  $13^{\circ}40' E.$

Over level ~~land~~

40.00 Set trip.  $\frac{1}{4}$  sec. cor.

80.04 Intersect N. & S. line at

cor. W Secs. 26, 27, 34, 35

Thence I run

West on true line

bet. Secs. 27 & 34

Na.  $13^{\circ}40' E.$

16.00 Road to Union mine bears N. 10 W.

40.02 Set a stone  $13 \times 9 \times 7$  ins stone

in the ground for  $\frac{1}{4}$  sec. cor

marked.  $\frac{1}{2}$  on N. face, dug

pits  $18 \times 18 \times 12$  ins E. & W. of

stone.  $5\frac{1}{2}$  ft. dist, and

raised a mound of earth

$\frac{1}{2}$  ft high  $3\frac{1}{2}$  ft base

alongside.

T. 4 N., R. 3 E.

80.04 The cor. to Secs. 27, 28, 33, 34  
 Land nearly level  
 Soil 1<sup>st</sup> rate  
 No timber

N.  $0^{\circ}2'$  W. bet. Secs. 27 & 28  
 Va.  $13^{\circ}40'$  E.

- 40.00 Set a stone  $20 \times 10 \times 4$  ins,  
 $15$  ins in the ground for  $\frac{1}{4}$   
 Sec. Cor. Inted.  $\frac{1}{4}$  on W.  
 face, dig pits  $18 \times 18 \times$   
 $12$  ins N. & S. of stone  $5\frac{1}{2}$   
 ft. dist. and raised a  
 mound of earth  $1\frac{1}{2}$  ft  
 high  $3\frac{1}{2}$  ft base along side.
- 4335 Road bears N. W.,
- 65.00 Road to Phoenix bears N. E.,
- 80.00 Set a stone  $16 \times 9 \times 5$  ins  
 $11$  ins in the ground for cor.

## Subdivision

to Secs. 21, 22, 27, 28

Mkd. with 2 notches on  
S. and 3 notches on E. edges.  
dug pits  $18 \times 18 \times 18^{\text{ins}}$  in  
each sec.  $5\frac{1}{2}$  ft. dist.  
and raised a mound  
of earth 2 ft high  $4\frac{1}{2}$  ft  
base alongside.

Land rolling

Soil 2<sup>nd</sup> rate

No timber

---

East on a random  
line bet. Secs. 22 & 27

Var.  $13^{\circ} 40'$  E.

5000 Set temp.  $\frac{1}{4}$  Sec. Cor.

82.09 Intersect N. & S. line

9 cks. N. of Cor. to Secs.



J. H. R. S. Co.

22, 23, 26, 27 Thence Iron  
N.  $89^{\circ} 56' W.$  on true  
line bet. Secs. 22 & 27  
Va.  $13^{\circ} 40' E.$

40.04 Set a stone  $13 \times 9 \times 8$  ins  
 $8$  ins in the ground for  $\frac{1}{4}$   
Ac. Cor. MK'd  $\frac{1}{4}$  on N. face,  
dug pits  $18 \times 18 \times 12$  ins E. &  
W. of Stone  $5\frac{1}{2}$  ft dist.  
and raised a mound  
of earth  $1\frac{1}{2}$  ft high  $3\frac{1}{2}$  ft  
base alongside

46.65 Road to Phoenix, bears S. E.

59.85 Road, bears S. W. from Union  
Mine to Phoenix.

80.09 The cor. to Secs. 21, 22, 27  
28.

Land level

Soil 2<sup>nd</sup> rate  
no timber

BOOK 17  
Subdivision

N.  $0^{\circ}2'$  W, bet. sees. 21 & 22

Va.,  $13^{\circ}40'$  E.

- 16.40 Road to Union Mill
- 19.10 Dry wash course N. W.
- 21.10 Road, bears E.
- 22.20 Road, bears S. E.
- 25.00 Water pipe to mine. S. E.
- 26.56 Road, bears N. E.
- 28.00 Union Mine and Stamp mill  
about 8.00 Chs. W.
- 40.00 Set a stone  $15 \times 10 \times 6$  <sup>ins</sup>  $10$  <sup>in</sup>  
in the ground for  $\frac{1}{4}$  sec.  
Cor. marked  $\frac{1}{4}$  on W. face,  
dug pits  $18 \times 18 \times 18$  <sup>ins</sup>  
N. & S. of stone  $5\frac{1}{2}$  ft.  
dist. and raised a  
mound of stones  $1\frac{1}{2}$  ft  
high 2 ft base along side.  
Pits impracticable.

J. H. N. & S. E.

Ascend mt ridge 250 ft high  
 61.00 Top of ridge bears W. Descend  
 80.00 Set a stone 13 x 12 x 9 <sup>ins</sup> in  
 a mound of stones for cor. to  
 Accs. 15, 16, 21, 22, mtd.  
 3 notches on S. and 3 on E.  
 edges, and raised a mound  
 of stones 1 1/2 ft high 2 ft base  
 alongside. Pits impracticable.  
 Land 1<sup>st</sup> 20 chs, 3<sup>d</sup> rate  
 Last 50 chs, rocky & poor  
 50.00 chs. mountainous  
 No timber.

S. 89° 56' E. on random  
 line bet. Accs. 15 & 22  
 Va. 13° 40' E.

Over mountainous land  
 120.00 Set temp. 1/4 sec. cor.



BOOK 17  
Subdivision

80.16 Intersect N. & S. line 10 Chs  
S. of Cor. to Secs. 14, 15, 22, 23.

Thence Iron

West on a true line bet.

Secs. 15 and 22

N.  $13^{\circ} 40' E.$

In dense undergrowth. Ascend.

16.05 Union Mine water pipe & road, <sup>beats S. M.</sup>

40.08 Set a stone 16 x 10 x 9 <sup>lbs</sup>

11 <sup>ins</sup> in the ground for  $\frac{1}{4}$

Sec. Cor. Mk'd.  $\frac{1}{4}$  on N. of au

and raised a mound of

stones  $1\frac{1}{2}$  ft high 2 ft

base along side. Pits

impracticable. At foot

of high mountain, Thoma

over North point of same

62.00 Top of ridge beats N. and descend.

80.16 The Cor. to Secs. 15, 16.



T. 4 N., R. 3 E.

21, 22. On N. Slope of mountain.

Land mountainous 40 Chs

Soil 3<sup>d</sup> rate

no timber.

Dense undergrowth & mountainous

80, 16 Chs.

N.  $0^{\circ} 2' W.$  bet. Secs. 15 & 16

Var.  $13^{\circ} 40' E.$

Descend rough mountain

11.00 foot of mountain. Hence  
gradual descent

13.40 Wood road bears N. E.

40.00 Set a stone  $14 \times 10 \times 8$  ins  $10$  in

in the ground for  $\frac{1}{4}$  sec. cor.

mkd.  $\frac{1}{2}$  on W. face, dug

pits  $18 \times 18 \times 12$  ins N. & S. of

stone  $5\frac{1}{2}$  ft dist. and

BOOK 17  
Subdivision

raised a mound of earth  
1 1/2 ft high 3 1/2 ft base  
alongside.

73.00 Left bank of dry wash  
Course S. W. Entwined under-  
growth.

77.00 Left bank of same wash.

80.00 Set a stone 15 x 8 x 8 ins, 10 ins

in the ground for cor. W  
Secs. 9, 10, 15, 16, mtd.

4 notches on S. and 3 notches  
on E. edges. Dug pits 18 x 18  
x 12 ins in each sec. 5 1/2 ft  
dist. and raised a mound  
of earth 2 ft high 4 1/2 ft  
base alongside.

Land very broken

Soil 4<sup>th</sup> rate - Stony

No timber.

Dense undergrowth & moun-  
tainous 18.00 chs

## T. 4 N. R. 3 E

East on random line  
bet. Secs. 10 & 15

Var.  $13^{\circ}40'E$ .

40.00 Set temp.  $\frac{1}{4}$  Sec. Cor.

50.20 Intersect N. & S. line 18 cks.

N. of cor. to Secs. 10, 11, 14, 15

Thence I run

N.  $89^{\circ}52'W$ , on a true line  
bet. Secs. 10 & 15

Var.  $13^{\circ}40'E$ .

Descend Mountain

38.00 Foot of Mountain, Enter brush.

40.10 Set a stone  $11 \times 10 \times 9$  ins  $9$  ins

in the ground for  $\frac{1}{4}$  Sec. Cor.

marked  $\frac{1}{4}$  on N. face, and

raised a mound of stones  $1\frac{1}{2}$   
ft high 2 ft base alongside.

## Subdivision

Pits impracticable, ascend.

- 45.00 foot of mountain 300 ft high  
 I here offset  $S. 20.00^{\circ} E$  Chs to avoid  
 precipitous rocks; thence  $N 89^{\circ} 52' W$   
 30 Chs.; thence North 20.00  
 75.00 Chs. to line at foot of mt.  
 80.20 Thence over to Secs. 9, 10, 15  
 16.

Land mountainous

Soil poor

no timber

Mountainous and dense  
 undergrowth 80.20 Chs.

January 30, 1894

$N. 0^{\circ} 2' W$ , bet Secs. 9 & 10

$Va. 13^{\circ} 40' 8$ .

In dense undergrowth



## T. 4 N. R. 3 E.

- 2.00 ~~Right~~ <sup>Left</sup> bank of wash, banks  
5 ft. high. Course S. W.
- 16.00 Left bank, some wash, 150  
ft. wide. Ascend rocky ridge  
bears W. from Pit on East.
- 22.00 Top of ridge and descend
- 27.00 Bottom of some, and Left  
bank of wash
- 32.50 Right bank of wash, dense brush.
- 40.00 Set a stone 15 x 11 x 9 ins 10 ins  
in the ground for  $\frac{1}{4}$  sec. cor.  
mkd.  $\frac{1}{4}$  on W. face, deep pits  
and raised a mound of  
stones  $d\frac{1}{2}$  ft high 2 ft base  
along side. Pits impracticable.  
Three in dense thorny brush
- 80.00 Set a stone 12 x 9, x 9 ins  
8 ins in the ground for cor.

## Subdivision

to Secs. 3, 4, 9, 10, mked,  
 5 notches on S. and 3  
 notches on E. edges, dug  
 pits  $18 \times 18 \times 12$  <sup>ins</sup> in each  
 Sec.  $5\frac{1}{2}$  ft dist. and  
 raised a mound of earth  
 2 ft high  $4\frac{1}{2}$  ft base  
 alongside.

Land mountainous  
 and broken

Soil 3<sup>d</sup> & 5<sup>th</sup> rate  
 No timber.  
 Mountainous and dense  
 undergrowth 80.00 Chs.

S.  $89^{\circ} 52'$  E. on random  
 line bet. Secs. 3 & 10  
 Va.  $13^{\circ} 40'$  E.

T. 4 N. R. 3 E.

Over mountainous land

40.02 Set temp.  $\frac{1}{4}$  sec. cor.

40.14 Intersect N. & S. line 17 lks.

S. of cor. to Sec. 2, 3, 10, 11

Thence I run

N.  $89^{\circ}59'$  W. on true line

bet. Secs. 3 & 10

Var.  $13^{\circ}40'$  E.

Ascend

18.50 Top of ridge 200 ft high,  
bears S. from Mt. on N.

Descend.

40.07 Set a stone  $18 \times 10 \times 8$  ins  
 $12$  ins in the ground for  $\frac{1}{4}$   
sec. cor. Mk'd.  $\frac{1}{4}$  on N. face  
and raised a mound of  
stones  $1\frac{1}{2}$  ft high 2 ft base  
alongside. Pits imprac<sup>e</sup>

## Subdivision

- 69.20 Left bank of dry wash  
banks 10 ft high, course  
nearly South.
- 72.75 Right bank, same wash
- 80.14 The cor, W. Sec. 3, 4, 9, 10  
Low mountains  
S. 4<sup>th</sup> rate - Stony  
<sup>no timber</sup>  
mountains 80.14 Chs.

North  $0^{\circ} 2' W$ , on true  
line bet. Sec. 3 & 4

(Va.  $13^{\circ} 40' E$ ,

Over mountainous land

3.00 foot of mountain, bears  
E. Thence along E. slope.

40.00 Set a stone  $10 \times 10 \times 8$  ins  
in a mound of stones, for



J. H. R. R. 3 E

$\frac{1}{4}$  Sec. Cor. Mk'd  $\frac{1}{4}$  on W. face, and raised a mound of stones  $1\frac{1}{2}$  ft high 2 ft base along side. Pits impracticable.

61.00 Wash. corner S.E.

71.38

Intersect N. boundary or 1<sup>st</sup> Standard Parallel North 6.67 Chs. W. of Standard cor. to Sec. 33 & 34 Tps. 5 N. R. 3 E. Set a stone 12 x 10 x 9 in for closing cor. Mk'd. G.C. with 3 notches on E. & W. faces, and dig pits 18 x 18 x 12 ins. E. W. & S. of stone  $5\frac{1}{2}$  ft. dirt, and raised a mound of earth 2 ft high  $4\frac{1}{4}$  ft base along side.

Land mountainous 71.38 Chs.

Soil 5<sup>th</sup> rate - Stony.

no timber.

January 31, 1894

## Subdivision

From cor. to Secs. 32 & 33  
 on South Boundary Spur  
 N.  $0^{\circ}2'W$ . bet. Secs. 32 & 33  
 Va.  $13^{\circ}40'E$ .

- 8.00 Road, bears E. & S. W.  
 4.00 Set a stone  $20 \times 9 \times 9$  <sup>ins</sup>,  $15$  <sup>ins</sup>  
 in the ground for  $\frac{1}{4}$  sec. cor.  
 mtd.  $\frac{1}{4}$  on N. face, dug pits  
 $18 \times 18 \times 12$  <sup>ins</sup> N. & S. of  
 stone  $5\frac{1}{2}$  ft dist. and  
 raised a mound of  
 earth  $1\frac{1}{2}$  ft high  $3\frac{1}{2}$  ft  
 base alongside
- 77.20 Old road, bears N.  $20^{\circ}E$ .
- 80.00 Set a stone  $18 \times 10 \times 8$  <sup>ins</sup>  
 $12$  <sup>ins</sup> in the ground for  
 cor. to Secs. 28, 29, 32, 33  
 mtd. 1 notch on S. and 4

F. H. R. P. 3 E.

notches on E. edges, Dug pits  
 $18 \times 18 \times 12$  ins in each sec,  $5\frac{1}{2}$   
 ft. dist, and raised a  
 mound of earth 2 ft high  
 $4\frac{1}{2}$  ft base alongside.

Land level

Soil 1<sup>st</sup> rate

No timber

East on a random line  
 bet. Secs. 28 & 33

Na.  $13^{\circ}40'E$ ,

Over level land.

4000 Set temp.  $\frac{1}{4}$  Sec. Cor.

7997 Intersect N. & S. line at the  
 cor. to Secs. 27, 28, 33, 34

Thence I run

West on a true line bet.

## Subdivisions

Acres. 28 x 33

Va.  $13^{\circ}40'E.$ 

40.00 Set a Stone  $12 \times 6 \times 6$  <sup>ins</sup> <sup>ins</sup> <sup>ins</sup>  
 in the ground for  $\frac{1}{4}$  Sec  
 Cor. Mkcd.  $\frac{1}{4}$  on N. face  
 dug pits  $18 \times 18 \times 12$  <sup>ins</sup> E &  
 W. of Stone  $5\frac{1}{2}$  ft. dist.  
 and raised a mound  
 of earth  $1\frac{1}{2}$  ft high  $3\frac{1}{2}$   
 ft. base alongside.

41.60 a road, to mine, bears N.  $20^{\circ}E.$ 79.65 old road, bears N.  $12^{\circ}E.$ 79.97 The Cor. to Acres. 28, 29,  
32, 33,

Land rolling

Soil 2<sup>nd</sup> rate

No timber



F. 4 N. R. 3 E.

N.  $0^{\circ} 2' W$ , bet. Secs. 28 & 29

W.  $13^{\circ} 40' E$ .

In dense undergrowth

- 0.40 Road bears N.  $25^{\circ} E$ . (N. branch)
- 4000 Set a stone  $10 \times 8 \times 8$  ins  $7$  ins in the ground for  $\frac{1}{4}$  sec. Cor. Mkd. 4 on N. face, dig pits  $18 \times 18 \times 12$  ins N. & S. of stone  $5\frac{1}{2}$  ft dist, and raised a mound of earth  $1\frac{1}{2}$  ft high  $3\frac{1}{2}$  ft base alongside.
- 8000 Stone  $15 \times 9 \times 6$  ins  $10$  ins in the ground for cor. to Secs. 20, 21, 28, 29, Mkd. 2 notches on S. and 4 notches on E. edges, dig pits  $18 \times 18 \times 12$  ins, in each sec.  $5\frac{1}{2}$  ft.

## Subdivision

dist. and raised a  
mound of earth 2 ft high  
4 1/2 ft. base alongside.

Land level

Soil, 1<sup>st</sup> rate.

No timber

Dense undergrowth 80.00 Ch.

East on random line  
bet. Secs. 21 & 28

Va,  $13^{\circ}40'E$ .

Over broken land. Descend.

40.00 Set temp. 1/4 Sec. Cor.

80.00 Intersect the N. & S. line

15 Chs. S. of Cor. to Secs. 21  
22, 27, 28.

Thence I run

S.  $89^{\circ}54'W$ . on true line

T. H. N. R. 3 Co.

lect. Secs. 21 &amp; 28

Va.  $13^{\circ}40' E.$ 

In dense undergrowth.

40.00 Set a stone  $14 \times 10 \times 7$  <sup>ins</sup>  $9$  <sup>ins</sup>in the ground for  $\frac{1}{4}$  sec.Cor. mkd.  $\frac{1}{4}$  on N. face,dig pits  $18 \times 18 \times 12$  <sup>ins</sup> E. &W. of stone  $5\frac{1}{2}$  ft. dist.

and raised a mound of

earth  $1\frac{1}{2}$  ft high  $3\frac{1}{2}$  ft.

base alongside.

47.35 Dry wash, course S. W.

62.45 Road, bears N. E.

80.00 The Cor. to Secs 20, 21, 28, 29

Land broken &amp; mountainous

Soil, 3<sup>rd</sup> rate - Stony

no timber

mountainous &amp; dense undergrowth.

80.00 Chains.

Concluded, Book 18



Concluded, Book 18.

21