

Boyle
Platted Compared
~~Book No.~~

A. P. Fitzgerald Deputy Surveyor.

T. *10 N.* **R.** *30 E.*

Gila and Salt River Meridian.

No 44

Field Notes

OF

THE SUBDIVISION LINES OF

Township *10 N.* Range *30 E.*

Gila and Salt River Meridian.

BY

A. P. Fitzgerald Deputy Surveyor.

44

Under his Contract of *July 13* 188*0*

Survey Commenced *June 27* 188*3*

Survey Completed *July 5* 188*3*

Platted,
Copied for Washington,
Copied for Register,

No-44

W. R. Fitzgerald Deputy Surveyor.

T. *6 N* **R.** *30 E*

Gila and Salt River Meridian.

No - 44

Field Notes

OF

THE SUBDIVISION LINES OF

Township *6 N* Range *30 E*

Gila and Salt River Meridian.

BY

W. R. Fitzgerald Deputy Surveyor.

Under his Contract of *July 22* 188*2*

Survey Commenced *June 27* 188*3*

Survey Completed *July 5* 188

*Platted,
Copied for Washington,
Copied for Register,*

1A

hip.....

Township 6 North, Range 30 E.

S 2 S R 30 E Meridian.

INDEX.

6	60	5	44	4	33	3	22	2	11	1
59		58		43		32		21		10
7	57	8	42	9	31	10	20	11	9	12
56		55		41		30		19		8
18	54	17	40	16	29	15	18	14	7	
53		52		39		28		17		
19	51	20	38	21	27	22	16	23	5	24
50		49		37		26		15		4
30	48	29	36	28	25	27	14	26	3	25
47		46		35		24		13		2
31	45	32	34	33	23	34	12	35	1	36

O.K.

Township..... Range.....
..... Meridian.

No-44

For preliminary notes
see book No 1

Survey made with Burt's Patent Improved Solar
Compass, nearly new, and in first rate order. Made
by Otto Fennel of Cassel
Germany in 1881

10

Township 6 N Range 31 E(See previous **BOOK** 44)

Gila and Salt River Meridian.

Chains

From the Corner to Sections 1, 2, 35 & 36 on the South boundary
previously set by me.

I run

North, between Sections 35 and 36.

Variation $11^{\circ} 15'$ East.

Ascend.

40.00 Set a Sand stone $30 \times 30 \times 12$ ins., 27
ins. in the ground, for $\frac{1}{2}$ Sec. Cor., marked $\frac{1}{2}$ on W.
face, and raised a mound of stone alongside. **Pits**

impracticable. from which

A Pine 8 ins, diam. bears $N. 20^{\circ} W.$ 12 lks. dist.
marked $\frac{1}{2}$ S. B. T.

A Pine 48 ins, diam. bears $S. 50^{\circ} E.$ 29 lks. dist.
marked $\frac{1}{2}$ S. B. T.

60.00 Top of Hill bears E. & W. and descend.

80.00

Set a Sand stone $14 \times 11 \times 8$ ins. 10 ins. in
the ground for Cor. to Secs. 25, 26, 35, 36 marked
with 1 notch on S. and 1 notch on E. edges and
raised a mound of stone alongside. **Pits impracticable.**

A Pine 48 ins, diam. bears $N. 35^{\circ} W.$ 80 lks. dist.
marked T. & N. R. 20 E. S., 20 B. T. from which

A Fir 30 ins. diam. bears $S. 40^{\circ} W.$ 20 lks. dist.
marked T. & N. R. 30 E. S., 30 B. T.

No other trees within limits.

Land mountainous

Soil poor rateTimber of pine, fir & oakVegetation. grass.

Township C N Range 31 E

Gila and Salt River Meridian. **BOOK 44**

Chains East, on a random line between Sections 25 and 36.
Variation 11° 15' East.

Ascend.

40.00 Set temporary $\frac{1}{4}$ Sec. Cor.

60.00 Top of M. wave N. & S.

77.84 Intersect C. B. of Tp. 31 lks. N. of cor. to secs.

25.30.31 ^{previously set by me.} from which corner, I run

N. 89° 45' W. on a true line, between sections 20 & 30

Variation 14° 15' East.

34.92 Set a lund stone 11 x 9 x 8 ins., 8 ins. in the ground, for $\frac{1}{4}$ Sec. Cor., marked $\frac{1}{4}$ on N. face, and raised a mound of stone alongside. Pits unpracticable.

79.84 The corner to sections 25, 20, 35 & 30

Land mountainous

Soil 2nd & 3rd rate

Timber of pine, oak, fir & cedar.

Vegetation. grass.

Township 60 N Range 30 E

BOOK 44 Gila and Salt River Meridian.

Chains North, between Sections 25 and 26. Variation 14° 15' East.

Descend.

5.00 Cross Wash, 7 lks. wide, Course W. and ascend.

14.00 Top of Spur, bears E 2 W. and descend.

18.16 Cross Brook. 3 lks. wide, Course S. 50° W.

46.00 Set a Sand stone 10 x 11 x 9 ins., 10 ins. in the ground, for $\frac{1}{4}$ Sec. Cor., marked $\frac{1}{4}$ on W. face, and raised a mound of stone alongside. Pits impracticable.

from which
A Pine 20 ins, diam. bears S 30° E, 20 lks. dist. marked $\frac{1}{4}$ S. B. T. No other trees within limits.

46.00 Top of Spur, bears S. 70° W. and N. 70° E and descend.

80.00 Set a Sand stone 11 x 9 x 8 ins. 8 ins. in the ground for Cor. to Secs. 24, 25 & 26 marked with 1 notch on S. and 1 notch on E. edges and raised a mound of stone alongside. Pits impracticable.

from which
A Fir 30 ins. diam. bears S. 45° E. 50 lks. dist: marked T. 6 N. R. 30 E. S., 25 B. T.

A Fir 30 ins. diam. bears N. 30° W. 20 lks. dist: marked T. 6 N. R. 30 E. S., 23 B. T.

No other trees within limits.

Land mountainous

Soil, 3rd rate

Timber of pine, fir & oak.

Vegetation grass.

Township 6 N Range 30 E

Gila and Salt River Meridian

BOOK 44

Chains

East, on a random line between Sections 24 and 25.

Variation 11° 15' East.

Ascend.

40.00 Set temporary $\frac{1}{4}$ Sec. Cor.

65.00 Top of Bridge, bears N. W. $\frac{1}{2}$ E and descend.

79.68 Intersect E. B. of Tp. 7 lks. S. of cor. to secs.

precisely set by me.
19.24.25 from which corner, I run

189° 07' W. on a true line, between sections 24 & 25

Variation 11° 15' East.

3784. Set a Sand stone 18 x 14 x 0 ins., 12

ins. in the ground, for $\frac{1}{4}$ Sec. Cor., marked $\frac{1}{4}$ on N.

face, and raised a mound of stone alongside. Pits

unpracticable. from which

A Fir 18 ins. diam. bears N. 30° E. 49 lks. dist:

marked $\frac{1}{4}$ S. B. T. No other trees within limits.

79.68 The corner to sections 24. 25 & 20

Land mountainous

Soil 1st, 2nd & 3rd rate

Timber of pine, fir, oak & aspen.

Vegetation grass.

Township 6 N. Range 30 E.

BOOK 44 Gila and Salt River Meridian.

Chains

North, between Sections 23 and 24.

Variation $141^{\circ} 15'$ East.*Ascend.*

40.00

Set a sand stone $10 \times 11 \times 9$ ins., 10 ins. in the ground, for $\frac{1}{4}$ Sec. Cor., marked $\frac{1}{4}$ on face, and raised a mound of stone alongside. Pits impracticable.

A Pine 20 ins, diam. bears $N. 20^{\circ} E.$ 91 kls. dist. marked $\frac{1}{4}$ S. B. T.

No other trees within limits.

70.00

Slope of Mountain bears $E. \& W.$

80.00

Set a post 4 ft. long, 4 ins. square, with marked stone 12 ins. in the ground, for Cor. to Secs, 13, 14, 23, 24 marked T. N. S. 13, on N, E, R, 30 E, S. 24 on S, E, S, 23 on S, W, and S, 14 on N, W, face with 2 notches on S, and 1 notch on E, edges, dug pits $18 \times 18 \times 12$ ins, in each Sec., $5\frac{1}{2}$ ft, dist., and raised a mound of earth 2 ft, high, $4\frac{1}{2}$ ft, base around post.

from which

A Pine 18 ins, diam. bears $N. 30^{\circ} E.$ 40 kls. dist. marked T. N. R. 30 E, S., 13 B. T.

No other trees within limits.

Land mountainous

Soil 2^{nd} & 3^{rd} rate

Timber of pine, fir, oak, cedar.

Vegetation. grass.

Township Range

Gila and Salt River Meridian. **BOOK 44**

Chains

East, on a random line between Sections 13 and 24.

Variation $141^{\circ} 15'$ East.

along N slope of ridge.

40.00 Set temporary $\frac{1}{4}$ Sec. Cor.

7992 Intersect S. B. of Tp. 25 lks. W, of cor. to secs. previously set by me.

13, 18, 19 & 21 from which corner, I run

S. 89^{\circ} 19' W. on a true line, between sections 13 & 21

Variation $141^{\circ} 15'$ East.

2790 Set a Sand stone 10 x 12 x ins., 10

ins. in the ground, for $\frac{1}{4}$ Sec. Cor., marked $\frac{1}{4}$ on N.

face, and raised a mound of stone alongside. Pits

impracticable.

from which

A Yellow Pine 8 ins diam. bears S. 20^{\circ} W. 60 lks. dist.

marked $\frac{1}{4}$ S. B. T.

No other trees within limits.

7992 The corner to sections 13, 14, 23 & 24

Land mountainous

Soil 1^{\text{st}} & 3^{\text{rd}} rate

Timber of pine, fir, oak & cedar.

Vegetation. grass.

Township 0 N Range 30 E

BOOK 44

Gila and Salt River Meridian.

Chains

North, between Sections 13 and 14.

Variation 14° 15' East.

Descend.

40.00

Set a sand stone 14 x 11 x 6 ins., 10 ins. in the ground, for $\frac{1}{2}$ Sec. Cor., marked $\frac{1}{2}$ on N.W. face, and raised a mound of stone alongside. Pits impracticable.

80.00

Set a lava stone 20 x 10 x 3 ins. 15 ins. in the ground for Cor. to Secs. 11, 12, 13 & 14 marked with 1/2 notches on S. and 1 notch on E. edges and raised a mound of stone alongside. Pits impracticable.

from which

A Yellow Pine 40 ins diam. bears N. 15° E. 37 lks. dist. marked T. 0 N. R. 30 E. S., 12 B. T.

A Fir 7 ins. diam. bears S. 10° W. 34 lks. dist: marked T. 0 N. R. 30 E. S., 14 B. T.

No other trees within limits.

Land mountainous

Soil 7th, 2nd, 3rd rate

Timber of pine, oak & cedar

Vegetation grass.

Township C N Range 31 E

Gila and Salt River Meridian

BOOK 44

Chains

East, on a random line between Sections 12 and 13.

Variation 14° 15' East.

Ascend.

40.00 Set temporary $\frac{1}{4}$ Sec. Cor.

09.00 Cross Brook. 10 lks. wide, Course N. 110° W.

50.15 Intersect C. B. of Tp. 18 lks. N, of cor. to secs.

7. 12. 13 & 18 ^{previously set by me.} from which corner, I run

11. 59° 52' on a true line, between sections 12 & 13

Variation 14° 15' East.

40.07 Set a lava stone 21 x 10 x 5 ins., 18

ins. in the ground, for $\frac{1}{4}$ Sec. Cor., marked $\frac{1}{4}$ on N. face, and raised a mound of stone alongside. Pits impracticable.

80.15 The corner to sections 11, 12, 13 & 14

Lana rolling.

Soil 1st, 2nd & 3rd rate

Timber of fern, oak & cedar.

Vegetation. grass.

Township 6 N Range 30 E

BOOK 44

Gila and Salt River Meridian.

Chains

North, between Sections 11 and 12.

Variation

14° 15' East.

Descend.

0.00 Cross Brook. 10 lks. wide, Course N. W. and ascend4000 Set a Java stone 10 x 4 x 4 ins., 6 ins. in the ground, for $\frac{1}{4}$ Sec. Cor., marked $\frac{1}{4}$ on N. face, and raised a mound of stone alongside. Pits

impracticable.

from which

A Yellow Pine 12 ins diam. bears S. 10° W. 17 lks. dist. marked $\frac{1}{4}$ S. B. T. No other trees within limits.71.00 Top of Ridge, bears S. 60° W. & N. 60° E. and descend.80.00 Set a Java stone 11 x 10 x 11 ins. 8 ins. in the ground for Cor. to Secs. 1, 2, 11 & 12; marked with 5 notches on S. and 1 notch on E. edges and raised a mound of stone alongside. Pits impracticable.

from which

A Fir 24 ins. diam. bears S. 30° W. 37 lks. dist: marked T. 6 N. R. 30 E. S., 11 B. T.A Fir 20 ins. diam. bears N. 10° E. 49 lks. dist: marked T. 6 N. R. 30 E. S., 1 B. T.

No other trees within limits.

Land mountainous

Soil 2nd & 3rd rateTimber of pine, & oak.Vegetation grass.

June 27 1883

Township: C. N. Range: 3Gila and Salt River Meridian. **BOOK 44**

Chains

East, on a random line between Sections 1 and 12.

Variation

14° 15'

East.

*Ascend.*13.00 Top of Ridge, bears N. E. 2 1/2 W and descend.40.00 Set temporary $\frac{1}{2}$ Sec. Cor.7790 Intersect C. B. of Tp. 12 lks. N. of cor. to secs.1. C. 12 ^{previously set by me.} from which corner, I runN. 89° 3/4 W on a true line, between sections 1 & 12

Variation

14° 15'

East.

3495 Set a lava stone 14 x 10 x 5 ins., 10 ins. in the ground, for $\frac{1}{2}$ Sec. Cor., marked $\frac{1}{2}$ on N. face, and raised a mound of stone alongside. Pits impracticable.7990 The corner to sections 1, 2, 11 & 12

Land mountainous

Soil 2nd & 3rd rateTimber of pine, oak & cedar.Vegetation. grass.

Township 6 N Range 30 E~~BOOK~~ 44 Gila and Salt River Meridian.

Chains

North, on a random line between Sections 1 and 2.

Variation $14^{\circ} 15'$ East.*Ascend.*36.00 Top of Spur, bears $N. 10^{\circ} E.$ and descend.40.00 Set temporary $\frac{1}{4}$ Sec. Cor.79.53 Intersect $N. B.$ of Tp. 31 $1\frac{1}{2}$ mls. $E.$ of cor. to secs.2.35 $E. 60'$ ^{previously set by me.}
from which corner, I runS. $10^{\circ} E.$ on a true line, between sections 1 & 2Variation $14^{\circ} 15'$ East.

39.53

Set a post 3 ft. long. 3 ins. diam. with marked stone

12 ins. in the ground, for $\frac{1}{4}$ Sec. Cor., marked $\frac{1}{4}$ S. on $N.$ face, dug pits, $18 \times 18 \times 12$ ins., $N.$ and $S.$ of
post $5\frac{1}{2}$ ft. dist., and raised a mound of earth $1\frac{1}{2}$ ft.high, $3\frac{1}{2}$ ft. base around post. from whichA Fir 24 ins. diam. bears $N. 10^{\circ} E.$ $21\frac{1}{2}$ mls. dist:marked $\frac{1}{4}$ S. B. T. No other trees within limits.

79.53

The corner to sections 1, 2, 11 & 12

Land mountainous

Soil 3° rate

Timber of pine, oak & cedar.

Vegetation grass.

Township C. N. Range BOOK 44Gila and Salt River Meridian.

Chains

From the Corner to Sections 2, 3, 34 & 35 on the South boundary
previously set by me.

I run

North, between Sections 34 and 35.

Variation $11^{\circ} 15'$ East.*Ascend.*

110.00 Set a Sand stone 20 x 15 x 15 ins., 15 ins. in the ground, for $\frac{1}{4}$ Sec. Cor., marked $\frac{1}{2}$ on W. face, and raised a mound of stone alongside. Pits

impracticable.

from which

A Yellow Pine 10 ins diam. bears $N. 20^{\circ} W.$ 1.25 lks. dist. marked $\frac{1}{4}$ S. B. T. No other trees within limits.

Top of Hill bears $E + W$ and descend.

02.00 Cross Canon, 1 ~~ft.~~ wide, Course W. and ascend

72.00 Top of Hill bears $E + W$ and descend.

80.00 Set a Sand stone 14 x 12 x 10 ins. 10 ins. in the ground for Cor. to Secs. 20, 27, 34, 35 marked with 1 notch on S. and 2 notches on E. edges and raised a mound of stone alongside. Pits impracticable.

A Yellow Pine 20 ins diam. bears $S. 10^{\circ} E.$ 0.9 lks. dist. marked T. & N. R. 30 E. S., 35 B. T.

No other trees within limits.

Land mountainous

Soil 2nd & 3rd rateTimber of pine oak & cedar.Vegetation. grass.

Township 9 N Range 36 EBOOK 44Gila and Salt River Meridian.

Chains

East, on a random line between Sections 26 and 35.

Variation $11^{\circ} 15'$ East.*Ascend.*6.00 Top of Spur, bears *N. W. & N. E.* and descend.Cross Brook. 10 fks. wide, Course *N. W.*40.00 Set temporary $\frac{1}{4}$ Sec. Cor.60.00 Cross Brook 24 fks. wide, Course *S. W.*79.66 Intersect *N. & S.* line, 10 fks. *S.* of cor. to secs.

25.26.35.36 from which corner, I run

 $187^{\circ} 58'$ W. on a true line between sections 26 & 35Variation $11^{\circ} 15'$ East37.83 Set a *limestone* 10 x 11 x 4 ins., 10 ins. in the ground, for $\frac{1}{4}$ Sec. Cor., marked $\frac{1}{4}$ on *N.* face, and raised a mound of stone alongside. **Pits** impracticable.

79.66 The corner to sections 26. 27. 34 & 35.

Land mountainous

Soil *good* & *3rd* rateTimber of *pine oak & cedar.*Vegetation *grass.*

Township C N Range 30 **BOOK 44**Gila and Salt River Meridian.

Chains

North, between Sections 26 and 27.

Variation 14° 15' East.*Descend.*

40.00

Set a Sand stone 11 x 9 x 8 ins., 8 ins. in the ground, for $\frac{1}{4}$ Sec. Cor., marked $\frac{1}{4}$ on W. face, and raised a mound of stone alongside. Pits impracticable.

215.00

Cross Creek 1 lks. wide, Course 120° W and ascend.

49.00

Cross Road, bears N. 20° E. & S. 20° W.

80.00

Set a Sand stone 18 x 11 x 6 ins. 12 ins. in the ground for Cor. to Secs. 22, 23, 24, 27 marked with 2 notches on S. and 2 notches on E. edges and raised a mound of stone alongside. Pits impracticable.

from which

An Oak 8 ins. diam. bears S. 50° W. 10 lks. dist. marked T. & N. R. 20° E. S., 27 B. T.

No other trees within limits.

Land mountainous

Soil 1/2 2nd & 3rd rateTimber of pine, fir, oak & cedar.Vegetation grass.

Chains

East, on a random line between Sections 23 and 26.

Variation

14° 15'

East.

Descend.

23.20 Cross Road, bears, N. & S.

27.30 Cross Brook. 5 lks. wide, Course S. and ascend

40.00 Set temporary $\frac{1}{4}$ Sec. Cor.

75.00 Cross Brook. 2 lks. wide, Course N. 80° W.

80.63 Intersect N. & S. line, 30 lks. S. of cor. to secs.

22.24.26.20 from which corner, I run

S. 89° 47' W. on a true line between sections 23 & 20

Variation

14° 15'

East

40.61 Set a Lava stone 11 x 9 x 8 ins., 8 ins. in the ground, for $\frac{1}{4}$ Sec. Cor., marked $\frac{1}{4}$ on N. face, and raised a mound of stone alongside. Pits

impracticable. from which

A Pine 30 ins, diam. bears N. 85° W. 30 lks. dist.

marked $\frac{1}{4}$ S. B. T.

No other trees within limits.

80.03 The corner to sections 22, 23, 20 & 27

Land mountainous

Soil $\frac{1}{2}$ - $\frac{2}{3}$ - $\frac{3}{4}$ rate

Timber of pine, fir & oak.

Vegetation grass.

Township 10 N Range 10 EGila and Salt River Meridian.

BOOK 4A

Chains

North, between Sections 22 and 23.

Variation 11° 15' East.*Ascend.*

40.00

Set a Sand stone $10 \times 9 \times 5$ ins., 10 ins. in the ground, for $\frac{1}{2}$ Sec. Cor., marked $\frac{1}{2}$ on W. face, and raised a mound of stone alongside. Pits impracticable.

from which

A Yellow Pine 10 ins diam. bears N. 35° E. 18 lks. dist. marked $\frac{1}{2}$ S. B. T. No other trees within limits.

62.00

Top of Ridge, bears E. & W. and descend.

80.00

Set a Sand stone $13 \times 12 \times 8$ ins. 8 ins. in the ground for Cor. to Secs. 14, 15, 22 & 23 marked with 3 notches on S. and 2 notch on E. edges and raised a mound of stone alongside. Pits impracticable.

from which

A Yellow Pine 13 ins diam. bears S. 50° W. 1.80 lks. dist. marked T. O. N. R. 30 E. S., 22 B. T.

No other trees within limits.

Land mountainous

Soil 1st 2nd & 3rd rate

Timber of pine, fir, oak & cedar.

Vegetation grass

Township 0 7 N. Range 30 E.**BOOK 44** Gila and Salt River Meridian.

Chains

East, on a random line between Sections 14 and 23.

Variation $14^{\circ} 15'$ East.*Over high surface along N. E. slope.*40.00 Set temporary $\frac{1}{4}$ Sec. Cor.

77.81 Intersect N. & S. line, 11 lks. N. of cor. to secs.

*14, 23, 24 from which corner, I run*C.A. $87^{\circ} 55' W.$ on a true line between sections 14 & 23Variation $14^{\circ} 15'$ East39.90 Set a sand stone $10 \times 9 \times 5$ ins., 10 ins. in the ground, for $\frac{1}{4}$ Sec. Cor., marked $\frac{1}{4}$ on N. face, and raised a mound of stone alongside. Pitsimpracticable. from which
A Fir 8 ins. diam. bears S. $13\frac{1}{2}^{\circ} W.$ 56 lks. dist:
marked $\frac{1}{4}$ S. B. T. No other trees within limits.77.8 The corner to sections 14, 15, 22 & 23
lands rolling.Soil $1^{\circ} 22' 31''$ rate

Timber of pine, fir, oak & cedar.

Vegetation. grass.

*I carefully examined the adjustments of my solar
compass to-day, particularly the latitude and revers-
ing apparatus, and found them correct.**June 28, 1883*

Township 10 N. Range 20 E.Gila and Salt River Meridian. **BOOK**

Chains

North, between Sections 14 and 15.

Variation 17° 15' East.*Descend.*

44.00 Set a post 3 ft. long, 3 ins. diam. with marked stone 12 ins. in the ground, for $\frac{1}{2}$ Sec. Cor., marked $\frac{1}{2}$ S. on N. face, dug pits, 18 x 18 x 12 ins., N. and S. of post $5\frac{1}{2}$ ft. dist., and raised a mound of earth $1\frac{1}{2}$ ft. high, $3\frac{1}{2}$ ft. base around post. from which
A Yellow Pine 8 ins diam. bears S. 15° W. 12 lks. dist. marked $\frac{1}{2}$ S. B. T. No other trees within limits.

80.00 Set a lava stone 20 x 11 x 11 ins. 15 ins. in the ground for Cor. to Secs. 10, 11, 14 & 15 marked with 1 notch on S. and 2 notches on E. edges and raised a mound of stone alongside. Pits impracticable.

from which

A Yellow Pine 24 ins diam. bears S. 20° W. 11 lks. dist. marked T. O. N. R. 30 E. S., 15 B. T.

An Oak 24 ins. diam. bears S. 70° E. 2 1/2 lks. dist. marked T. O. N. R. 30 E. S., 14 B. T.

No other trees within limits.

Land mountainous

Soil 2nd & 3rd rateTimber of pine, fir & oak.Vegetation. grass.

Township

Range

BOOI

44

Gila and Salt River

Meridian.

Chains

East, on a random line between Sections 11 and 14.

Variation

11° 15'

East.

Descend.

31.00
40.00Cross Brook, 10 lks. wide, Course N. W.
Set temporary $\frac{1}{2}$ Sec. Cor.

Cross Brook. 6 lks. wide, Course

75.00

Cross Brook. 5 lks. wide, Course S. and ascend

74.74

Intersect N. & S. line, 20 lks. N. of cor. to secs.

11.12.13.14 from which corner, I run

N. 89° 29' W. on a true line between sections 11 & 14

Variation

11° 15'

East

37.87

Set a post 3 ft. long, 3 ins. diam. with marked stone

12 ins. in the ground, for $\frac{1}{2}$ Sec. Cor., marked $\frac{1}{2}$ S. on

N. face, dug pits, 18 x 18 x 12 ins., E. and W. of

post 5 $\frac{1}{2}$ ft. dist., and raised a mound of earth 1 $\frac{1}{2}$ ft.high, 3 $\frac{1}{2}$ ft. base around post.

from which

A Yellow Pine 40 ins diam. bears S. 15° W. 38 lks. dist.

marked $\frac{1}{2}$ S. B. T.

No other trees within limits.

79.74

The corner to sections 10. 11. 14 & 15

Land mountainous

Soil 3rd rate

Timber of pine fir cedar & oak

Vegetation. grass

Township Range **BOOK 49**
 Gila and Salt River Meridian.

Chains North, between Sections 10 and 11.
Variation 11° 15' East.

Descend.

24.00 Cross Brook. 10 lks wide. Course S. W.
216.00 Set a post 3 ft. long. 3 ins. diam. with marked stone
12 ins. in the ground, for $\frac{1}{4}$ Sec. Cor., marked $\frac{1}{4}$ S. on
W. face, dug pits, 18 x 18 x 12 ins., N. and S. of
post $5\frac{1}{2}$ ft. dist., and raised a mound of earth $1\frac{1}{2}$ ft.
high, $3\frac{1}{2}$ ft. base around post. from which
A Yellow Pine 24 ins diam. bears N. 10° W. 22 lks. dist.
marked $\frac{1}{4}$ S. B. T. No other trees within limits.

50.00 Top of Spur, bears E. W. and descend.

75.00 Cross Brook. 8 lks wide, Course S. W.
80.00 Set a post 4 ft. long. 4 ins. square, with marked stone
12 ins. in the ground, for Cor. to Secs. 2, 3, 10 & 11
marked T, N. S. 2, on N, E, R, 30 E. S. 11
on S, E, S, 10 on S, W, and S, 3 on N, W, face
with 5 notches on S, and 2 notch on E, edges,
dug pits 18 x 18 x 12 ins, in each Sec., $5\frac{1}{2}$ ft. dist.,
and raised a mound of earth 2 ft, high, $4\frac{1}{2}$ ft. base
around post. from which

A Yellow Pine 40 ins diam. bears N. 70° W. 37 lks. dist.
marked T. N. R. 30 E. S., 3 B. T.

A Yellow Pine 40 ins diam. bears S. 40° E. 50 lks. dist.
marked T. N. R. 3 E. S., 11 B. T.

No other trees within limits.

Land mountainous
Soil 1/4" 2" rate
Timber of Yonic oak, cedar,
Vegetation. grass.

Chains

East, on a random line between Sections 2 and 11.

Variation $14^{\circ} 15'$ East.*Descend.*

8.00 Cross Brook. 8 lks. wide, Course S. W.

40.00 Set temporary $\frac{1}{2}$ Sec. Cor.

80.14 Intersect N. & S. line, 5 lks. N. of cor. to secs.

1, 2, 11 & 12 from which corner, I run

N. $89^{\circ} 58' W.$ on a true line between sections 2 & 11Variation $14^{\circ} 15'$ East40.07 Set a lava stone $11 \times 10 \times 4$ ins., 8 ins. in the ground, for $\frac{1}{2}$ Sec. Cor., marked $\frac{1}{2}$ on N. face, and raised a mound of stone alongside. Pits impracticable.

80.14 The corner to sections 2, 3, 10 & 11

L. is rolling.

Soil 2nd & 3rd rate

Timber of pine, oak & cedar.

Vegetation. grass.

Township C. N. Range 30

BOOK

Gila and Salt River Meridian.

Chains

North, on a random line between Sections 2 and 3.

Variation 11° 15' East.

Ascend.

30.00 Top of Ridge, bears E. & W. and descend.40.00 Set temporary $\frac{1}{4}$ Sec. Cor.72.00 Cross Creek 8 lks. wide, Course N. W. and ascend.79.40 Intersect N. B. of Tp. 9 lks. W. of cor. to secs. previously set by me.2. 3. 31 & 35 from which corner, I runS. 21' W. on a true line, between sections 2 & 3Variation 11° 15' East.79.40 Set a lava stone 14 x 9 x 2 1/2 ins., 10ins. in the ground, for $\frac{1}{4}$ Sec. Cor., marked $\frac{1}{4}$ on W.

face, and raised a mound of stone alongside. Pits

unproductive.

from which

A Yellow Pine 24 ins diam. bears N. 20° E. 3 1/2 lks. dist.marked $\frac{1}{4}$ S. B. T. No other trees within limits.79.40 The corner to sections 2, 3, 10 & 11is mountainousSoil 2nd & 3rd rateTimber of pine, oak, cedar & fir.Vegetation. grass.

Township 0 N Range 31 EBOOK 44 Gila and Salt River Meridian.Chains From the Corner to Sections 3, 4, 33 & 34 on the South boundary *of J*
previously set by me.
I run

North, between Sections 33 and 34.

Variation $14^{\circ} 15'$ East.*Descend.**21.00* Cross Creek 7 lks. wide, Course *S. W.* and ascend.*40.00* Set a *Sand* stone $12 \times 6 \times 6$ ins., 8
ins. in the ground, for $\frac{1}{4}$ Sec. Cor., marked $\frac{1}{4}$ on *W.*
face, and raised a mound of stone alongside. Pits
impracticable.*80.00* A Yellow Pine 20 ins diam. which I marked
T. & N. S. 27 , on N. E. R. 30 & S. 31 on
S. E. S. 32 , on S. W. and S. 33 on N. W. faces,
with 1 notch on S. and 2 notches on E. edges,
dug pits $18 \times 18 \times 12$ ins. in each sec. $5\frac{1}{2}$ ft. dist. and
raised a mound of earth around tree, for cor. to secs.*27, 28, 33, 34,* from which
A Yellow Pine 12 ins diam. bears $N. 45^{\circ} W.$ 65 lks. dist.
marked T. & N. R. 30 E. S., 28 B. T.

No other trees within limits.

Land rolling.

Soil 2^{nd} & 3^{rd} rateTimber of *pine, oak, cedar,*Vegetation. *grass.*

Township Range **BOOK 44**
 Gila and Salt River Meridian.

Chains East, on a random line between Sections 27 and 34.
Variation 141° 15' East.

Ascend.

55.00 Cross Road, bears, N. S.

55.50 Cross Creek lks. wide, Course S.

40.00 Set temporary $\frac{1}{2}$ Sec. Cor.

80.37 Intersect N. & S. line, 28 lks. N. of cor. to secs.

27, 34, 33 From which corner, I run

N. 89° 48' W. on a true line between sections 27 & 34
Variation 141° 15' East

40.18 Set a Lava stone 12 x 10 x 4 ins., 8
ins. in the ground, for $\frac{1}{2}$ Sec. Cor., marked $\frac{1}{2}$ on N.
face, and raised a mound of stone alongside. Pits
unpracticable. from which

An Oak 10 ins. diam. bears N. 45° W. 18 lks. dist.
marked $\frac{1}{2}$ S. B. T. No other trees within limits.

80.37 The corner to sections 27, 28, 33, 34

Land mountainous

Soil & rate

Timber of pine, oak & cedar.

Vegetation. grass.

Township **BOOK** *N.* Range *30 E.*

44

Gila and Salt River Meridian.

Chains

North, between Sections 27 and 28.

Variation *14° 15'* East.*Ascend.**40.00*

Set a *Sand* stone *12 x 9 x 8 ins.*, *8*
ins. in the ground, for $\frac{1}{2}$ Sec. Cor., marked $\frac{1}{2}$ on *W.*
face, and raised a mound of stone alongside. *Pits*
impracticable.

71.00

Top of Ridge, bears *N. E. S. W.*, and descend.

80.00

Set a *Java* stone *12 x 8 x 4 ins.*, *8 ins.* in
 the ground for Cor. to Secs. *21. 22. 23 & 24* marked
 with *2 notches* on *S.* and *3 notches* on *E.* edges and
 raised a mound of stone alongside. *Pits impracticable.*

from which

A *Fir* *6 ins.* diam. bears *N. 10° E.* *30 lks.* dist:
 marked *T. O. N. R. 30 E. S., 22 B. T.*

*No other trees within limits.**Land mountainous**Soil 2nd & 3rd rate**Timber of pine, fir, aspen & oak**Vegetation. grass**June 29. 1883*

Chains

East, on a random line between Sections 22 and 27.

Variation

111° 15'

East.

*Descend.*40.00 Set temporary $\frac{1}{4}$ Sec. Cor.

80.19 Intersect N. & S. line, 571 lks. N, of cor. to secs.

22, 23, 26, 27 from which corner, I run

N. 89° 3' W. on a true line between sections 22 & 27

Variation

111° 15' East

110.04 Set a lava stone 12 x 12 x 11 ins., 8
ins. in the ground, for $\frac{1}{4}$ Sec. Cor., marked $\frac{1}{4}$ on N.
face, and raised a mound of stone alongside. Pits

impracticable.

from which

1. Aspen 6 ins. diam. bears N. 10° E. 8 lks. dist.
marked $\frac{1}{4}$ S. B. T.2. " " 6 ins. diam. bears S. 40° W. 3 lks. dist.
marked $\frac{1}{4}$ S. B. T.

80.19 The corner to sections 21, 22, 27, & 28

Lava rolling.

Soil 2nd & 3rd rate

Timber of pine, fir, aspen & oak.

Vegetation: grass.

Township 30 N Range 30 E

BOOK 44 Gila and Salt River Meridian.

Chains North, between Sections 21 and 22.

Variation 111° 15' East.

Descend.

46.00 Set a sand stone 11 x 10 x 8 ins., 8
ins. in the ground, for $\frac{1}{4}$ Sec. Cor., marked $\frac{1}{4}$ on
face, and raised a mound of stone alongside. Pits
impracticable. from which

A Pine 12 ins, diam. bears N. 20° W. 10 lks. dist.
marked $\frac{1}{4}$ S. B. T. No other trees within limits.

80.00 Set a sand stone 11 x 9 x 8 ins. 8 ins. in
the ground for Cor. to Secs. 15, 16, 21 & 22 marked
with 3 notches on S. and 3 notches on E. edges and
raised a mound of stone alongside. Pits impracticable.
from which

An Oak 18 ins, diam. bears S. 50° W. 20 lks. dist.
marked T. 6 N. R. 30 E. S., 21 B. T.

An Oak 12 ins. diam. bears N. 70° W. 4 1/2 lks. dist.
marked T. 6 N. R. 30 E. S., 10 B. T.

No other trees within limits.

Lana rolling.

Soil 2^m & 3^m rate.

Timber of pine, fir, oak, & aspen,

Vegetation. grass.

Township 0 N. Range 30 E.Gila and Salt River Meridian. **BOOK 44**

Chains	East, on a random line between Sections 15 and 22.	Variation $141^{\circ} 15'$	East.
	<i>Descend.</i>		
29.50	Cross Break. 3 lks. wide, Course N. E. and ascend		
33.00	Top of Spur, bears N. E. & W. and descend.		
40.00	Set temporary $\frac{1}{2}$ Sec. Cor.		
42.00	Cross Creek 3 lks. wide, Course N. 20° W. and ascend.		
43.50	Cross Road, bears N. 20° W. & S. 20° E.		
79.75	Intersect N. & S. line. 141 lks. N. of cor. to secs.		
	141.15. 22 & 23 from which corner, I run		
	N. 89° 54' W. on a true line between sections 15 & 22		
	Variation $141^{\circ} 15'$ East		
39.87	Set a post 3 ft. long, 3 ins. diam 24 ins. in the ground, for $\frac{1}{2}$ Sec. Cor., marked $\frac{1}{2}$ S. on N. face; from which		
	Willow 10 ins, diam. bears $4'$ E 10 lks. dist. marked $\frac{1}{2}$ S. B. T.		
	Willow 8 ins, diam. bears N. 5° W. 14 lks. dist. marked $\frac{1}{2}$ S. B. T.		
79.75	The corner to sections 15, 16, 21 & 22		
	Land mountainous		
	Soil 1, 2, & 3 rd rate		
	Timber of pine, oak, cedar &		
	Vegetation. grass.		

Township 0 N. 0 E. Range 30 E.

BOC 44 Gila and Salt River Meridian.

Chains North, between Sections 15 and 16.
Variation 14° 15' East.

Descend.

38.00 Cross Creek 8 lks. wide. Course NW.
40.00 Set a Sand stone 18 x 7 x 6 ins., 12
ins. in the ground, for $\frac{1}{2}$ Sec. Cor., marked $\frac{1}{2}$ on NW
face, and raised a mound of stone alongside. Pits
impracticable. from which
A Yellow Pine, 3 ins diam. bears N. 17° W. 96 lks. dist.
marked $\frac{1}{2}$ S. B. T. No other trees within limits.

80.00 Set a post 4 ft. long, 4 ins. square, with marked stone
12 ins. in the ground, for Cor. to Secs. 9, 10, 15 & 16
marked T. 6 N. S. 10, on N, E, R, 30 E. S. 15
on S, E, S, 16 on S, W, and S, 9 on N, W, face
with 4 notches on S, and 3 notches on E, edges,
dig pits 18 x 18 x 12 ins, in each Sec., 5 1/2 ft, dist.,
and raised a mound of earth 2 ft, high, 4 1/2 ft, base
around post.

Top of Spur, bears NW. & SE and Ascend.

Land rolling.

Soil loam rate.

Timber of pine, oak, cedar.

Vegetation. grass.

Township 00 N Range 30 E

Gila and Salt River Meridian.

BOOK 44

Chains East, on a random line between Sections 10 and 15.
Variation $41^{\circ} 15'$ East.

Descend.

40.00 Set temporary $\frac{1}{4}$ Sec. Cor.

80.22 Intersect N. & S. line. 3 lks. S. of cor. to secs.

W. 11. $14^{\circ} 15'$ from which corner, I run

$257^{\circ} 59'$ W. on a true line between sections 10 & 15

Variation $41^{\circ} 15'$ East

40.11 Set a Lava stone $11 \times 10 \times 11$ ins., 10

ins. in the ground, for $\frac{1}{4}$ Sec. Cor., marked $\frac{1}{2}$ on N.

face, and raised a mound of stone alongside. Pits, impracticable. from which

A Yellow Pine 20 ins diam. bears $N. 10^{\circ} E.$ 2 lks. dist. marked $\frac{1}{4}$ S. B. T.

A Yellow Pine 11 ins diam. bears $S. 12^{\circ} W.$ 8 lks. dist. marked $\frac{1}{4}$ S. B. T.

50.22 The corner to sections 9, 10, 15 & 10

Land rolling.

Soil 3° rate

Timber of pine, oak, cedar &c.

Vegetation grass,

Township 6 N Range 30 E**BOOK 44** Gila and Salt River Meridian.

Chains North, between Sections 9 and 10.

Variation 14° 15' East.

Descend.

20.00 Cross Brook. 8 lks. wide, Course N. W.40.00 Set a post 3 ft. long. 3 ins. diam. with marked stone
12 ins. in the ground, for $\frac{1}{2}$ Sec. Cor., marked $\frac{1}{2}$ S. on
W. face, dug pits, 18 x 18 x 12 ins., N. and S. of
post $5\frac{1}{2}$ ft. dist., and raised a mound of earth $1\frac{1}{2}$ ft.
high, $3\frac{1}{2}$ ft. base around post. from whichA Yellow Pine 11 ins diam. bears S. 70° W. 1.37 lks. dist.
marked $\frac{1}{2}$ S. B. T. No other trees within limits.40.40 Cross Brook. 10 lks. wide, Course E.44.50 Cross Road, bears, N. 40° W. S. 40° E. and ascend70.00 Cross Brook. 10 lks. wide, Course N. W.80.00 Set a lava stone 11 x 10 x 4 ins. 8 ins. in
the ground for Cor. to Secs. 5, 21, 9, 10 marked
with 5 notches on S. and 3 notches on E. edges and
raised a mound of stone alongside. Pits impracticable.A Yellow Pine 30 ins diam. bears S. 70° E. 1.7 lks. dist.
marked T & N. R. 30° E. S., 10° B. T.A Yellow Pine 30 ins diam. bears N. 40° W. 32 lks. dist.
marked T & N. R. 30° E. S., 9 B. T.

No other trees within limits.

Land rolling.

Soil for 2° rateTimber of pine oak cedarVegetation. grass

Township 44 Range 30 E.

Gila and Salt River Meridian.

Chains

East, on a random line between Sections 3 and 10.

Variation $11^{\circ} 15'$ East.*Ascend.*20.00 Top of Spur, bears $N. 25^{\circ} E.$ and descend.40.00 Set temporary $\frac{1}{2}$ Sec. Cor.

77.97 Intersect N. & S. line, 25 lks. S. of cor. to secs.

2, 3, 10 & 11 from which corner, I run

 $187^{\circ} 21' W.$ on a true line between sections 3 & 10Variation $11^{\circ} 15'$ East

39.78

Set a post 3 ft. long, 3 ins. diam. with marked stone
12 ins. in the ground, for $\frac{1}{2}$ Sec. Cor., marked $\frac{1}{2}$ S. on
N. face, dug pits, 18 x 18 x 12 ins., E. and W. of
post $5\frac{1}{2}$ ft. dist., and raised a mound of earth $1\frac{1}{2}$ ft.

high, $3\frac{1}{2}$ ft. base around post. from which

A Yellow Pine 20 ins diam. bears $N. 40^{\circ} W.$ 214 lks. dist.
marked $\frac{1}{2}$ S. B. T.

No other trees within limits.

79.97

The corner to sections 3, 11, 9 & 10

Land mountainous

Soil 2^{nd} & 3^{rd} rate

Timber of Pine, oak, cedar.

Vegetation grass.

Chains

North, on a random line between Sections 3 and 4.

Variation $11^{\circ} 15'$ East.*Ascend.*32.00 Top of Spur, bears $N. 1/2 E.$ and descend.40.00 Set temporary $\frac{1}{4}$ Sec. Cor.76.00 Cross Creek S lks. wide. Course $S. 20^{\circ} W.$ 77.18 Intersect $N. B.$ of Tp. 20 lks. $N.$ of cor. to secs.
previously set by me.

3. 4. 30 & 34 from which corner, I run

 $S. 9^{\circ} W.$ on a true line, between sections 3 & 4Variation $14^{\circ} 15'$ East.39.18 Set a lava stone $20 \times 24 \times 24$ ins., 15
ins. in the ground, for $\frac{1}{4}$ Sec. Cor., marked $\frac{1}{2}$ on $W.$
face, and raised a mound of stone alongside. Pits
impracticable. from whichA Yellow Pine 20 ins diam. bears $S. 10^{\circ} W.$ 34 lks. dist.
marked $\frac{1}{2}$ S. B. T.

No other trees within limits.

77.18 The corner to sections 3. 4. 9 & 10

Land mountainous

Soil 3^{rd} rate

Timber of pine, oak, cedar &c.

Vegetation. grass

I carefully examined the adjustments of my solar
compass to-day, particularly the latitude and revers-
ing apparatus, and found them correct.

June 30. 1883.

Township 1 N Range 30 E

BOOK 44

Gila and Salt River Meridian.

Chains

From the Corner to Sections 4, 5, 32 & 33 on the South boundary *JP*
previously set by me.

I run

North, between Sections 32 and 33.

Variation *N 15'* East.

Ascend.

40.00

Set a *lava* stone *12 x 10 x 11* ins., 8
ins. in the ground, for $\frac{1}{4}$ Sec. Cor., marked $\frac{1}{4}$ on
face, and raised a mound of stone alongside. Pits
impracticable.

80.00

Set a *Sanct* stone *20 x 22 x 8* ins. in
the ground for Cor. to Secs. *28, 29, 32, 33* marked
with 1 notch on S. and 11 notches on E. edges and
raised a mound of stone alongside. Pits impracticable.

from which

A Yellow Pine *20* ins diam. bears *N. 10 E.* *50* lks. dist.
marked T. N. R. *30 E. S.*, *28* B. T.

A Yellow Pine *30* ins diam. bears *S. 50 W.* *100* lks. dist.
marked T. N. R. *30 E. S.*, *32* B. T.

No other trees within limits.

Land rolling.

Soil *2nd & 3rd* rate

Timber of *pine, oak, cedar, etc.*

Vegetation. *grass*

Township 65 N Range 30 E

BOOK 44 Gila and Salt River Meridian.

Chains

East, on a random line between Sections 28 and 33.

Variation $11^{\circ} 15'$ East.*Ascend.*8.00 Top of Spur, bears $S. 40^{\circ} N.$ and descend.40.00 Set temporary $\frac{1}{2}$ Sec. Cor.

79.96 Int. bet N. & S. line, 117 lks. N. of cor. to secs.

 $72^{\circ} 35' 22''$ from which corner, I run $N. 89^{\circ} 40' W.$ on a true line between sections 28 & 33Variation $11^{\circ} 15'$ East

84.98

Set a round stone $210 \times 40 \times 19$ ins.,ins. in the ground, for $\frac{1}{2}$ Sec. Cor., marked $\frac{1}{2}$ on N.

face, and raised a mound of stone alongside. Pits

impracticable.

from which

A Yellow Pine $2\frac{1}{2}$ ins diam. bears $N. 17^{\circ} W.$ 15 lks. dist.marked $\frac{1}{2}$ S. B. T. No other trees within limits.

79.96

The corner to sections 28, 29, 32 & 33

Land mountainous

Soil 2^{nd} & 3^{rd} rate

Timber of Pine, oak, cedar, fir, etc.

Vegetation. grass.

Township 0 1

Range 30 E

Gila and Salt River Meridian.

BOOK 44

Chains

North, between Sections 28 and 29.

Variation

11° 15'

East.

Ascend.

30.00

Top of Ridge, bears N. 5. 1. N. and descend.

40.00

Set a limestone 12 x 12 x 1 ins., 8 ins. in the ground, for $\frac{1}{4}$ Sec. Cor., marked $\frac{1}{4}$ on face, and raised a mound of stone alongside. Pits impracticable.

80.00

Set a limestone 10 x 10 x 2 ins. 6 ins. in the ground for Cor. to Secs. 20-21-28-29 marked with 2 notches on S. and 1 notch on E. edges and raised a mound of stone alongside. Pits impracticable.

Land mountainous

Soil 2nd rate

Timber of pine, oak, cedar, etc.

Vegetation. grass

Township 0 N Range 30BOOK 44 Gila and Salt River Meridian.

Chains

East, on a random line between Sections 21 and 28.

Variation $11^{\circ} 15'$ East.*Over high mountainous surface.*40.00 Set temporary $\frac{1}{2}$ Sec. Cor.

79.67 Intersect N. & S. line, 10 lks. N, of cor. to secs.

21, 22, 27, 28 from which corner, I run

 $N. 87^{\circ} 50' W.$ on a true line between sections 21, 25Variation $11^{\circ} 15'$ East37.83 Set a *lind* stone $14 \times 9 \times 6$ ins.,ins. in the ground, for $\frac{1}{2}$ Sec. Cor., marked $\frac{1}{2}$ on N.

face, and raised a mound of stone alongside. Pits

impracticable.

from which

A Yellow Pine 10 ins diam. bears $N. 20^{\circ} W.$ 68 lks. dist.marked $\frac{1}{2}$ S. B. T.

No other trees within limits.

79.67 The corner to sections 20, 21, 28 & 29

Land mountainous

Soil 2nd & 3rd rate

Timber of pine & fir

Vegetation grass.

Township 0 N Range 30 E

Gila and Salt River Meridian.

Chains

North, between Sections 20 and 21.

Variation 11° 15' East.

Ascend. along E. slope of Mt.

40.00 Set a lime stone 30 x 30 x 16 ins., 2'
ins. in the ground, for $\frac{1}{4}$ Sec. Cor., marked $\frac{1}{4}$ on W.
face, and raised a mound of stone alongside. Pits
impracticable.

80.00 Set a lime stone 30 x 28 x 22 ins. 2' ins. in
the ground for Cor. to Secs. 10-11, 20-21 marked
with 3 notches on S. and 1 notches on E. edges and
raised a mound of stone alongside. Pits impracticable.

from which

A Pine 10 ins. diam. bears N. 87° W. 30 fms. dist.
marked T. & N. R. 30 E. S., 17 B. T.

No other trees within limits.

Land mountainous

Soil 2nd & 3rd rateTimber of pine, fir, aspen &Vegetation. grass

Township 05N Range 30E

BOOK 44 Gila and Salt River Meridian.

Chains

East, on a random line between Sections 16 and 21.

Variation $14^{\circ} 15'$ East.*Descend.*32.00 Cross Ravine. Course N. and ascend40.00 Set temporary $\frac{1}{2}$ Sec. Cor.

79.98 Intersect N. & S. line, 21 lks. of cor. to secs.

15.10.21-22 from which corner, I run

S. $89^{\circ} 51' W.$ on a true line between sections 16 & 21Variation $14^{\circ} 15'$ East

89.99 Set a sand stone 15 x 11 x 4 ins., 11

ins. in the ground, for $\frac{1}{2}$ Sec. Cor., marked $\frac{1}{2}$ on N.
face, and raised a mound of stone alongside. Pits

impracticable.

from which

a Yellow Pine 10 ins diam. bears $11.20 W.$ 85 lks. dist.
marked $\frac{1}{2}$ S. B. T.

No other trees within limits.

79.98 The corner to sections 16. 17. 20 & 21

Land mountainous

Soil 2^{nd} & 3^{rd} rate

Timber of pine, oak, cedar

Vegetation grass.

Township C. A. Range 30 E.BOOK 44

Gila and Salt River Meridian.

Chains

North, between Sections 16 and 17.

Variation 11° 15' East.*Descend.*40.00

A Yellow Pine 26 ins diam. which I marked $\frac{1}{4}$ S. on W. face, for $\frac{1}{4}$ c. cor., dug pits, $18 \times 18 \times 12$ ins. N. and S of tree. $5\frac{1}{2}$ ft. dist. and raised a mound of earth around tree. from which

A Yellow Pine 24 ins diam. bears S. B. T. 21 kts. dist. marked $\frac{1}{4}$ S. B. T. No other trees within limits.

80.00

Set a Sand stone $10 \times 10 \times 10$ ins. 10 ins. in the ground for Cor. to Secs. 8. 9. 10 - 17 marked with 4 notches on S. and 4 notches on E. edges and raised a mound of stone alongside. Pits impracticable.

Land mountainous

Soil 2nd & 3rd rateTimber of pine, fir, cedar, oakVegetation. grass.

July 2. 1883

Township Range

BOOK 44 Gila and Salt River Meridian.

Chains

East, on a random line between Sections 9 and 16.

Variation

141° 15'

East.

31.50

Ascend.

Cross gulch corner N.W.

33.00

Cross Road, bears, N. W. S. E.

40.00

Set temporary $\frac{1}{4}$ Sec. Cor.

80.43

Intersect N. & S. line, 12 lks. N. of cor. to secs.

9, 10, 15 & 16 from which corner, I run

N. 51° 55' W. on a true line between sections 9 & 18

Variation

141° 15'

East

40.21

Set a Sand stone 20 x 14 x 10 ins., 15

ins. in the ground, for $\frac{1}{4}$ Sec. Cor., marked $\frac{1}{4}$ on N.

face, and raised a mound of stone alongside. Pits

impracticable.

80.43

The corner to sections 8, 9, 10 & 17

land mountainous

Soil 90% & 3% rate

Timber of pine oak, fir, aspen &c.

Vegetation grass.

Township N Range 30 EBOOK 44 Gila and Salt River Meridian.

Chains

North, between Sections 8 and 9.

Variation 11° 15' East.*Descend.*

46.00

Set a Sand stone 30 x 30 x 2 1/2 ins., 22 ins. in the ground, for $\frac{1}{4}$ Sec. Cor., marked $\frac{1}{2}$ on face, and raised a mound of stone alongside. Pits impracticable. from which

A Yellow Pine 12 ins diam. bears S. 57° W. 16 lks. dist. marked $\frac{1}{4}$ S. B. T.

A Yellow Pine 15 ins diam. bears N. 87° E. 7 lks. dist. marked $\frac{1}{4}$ S. B. T.

58.00

Cross Brook. 1 lks. wide, Course N. E.

80.00

Set a Sand stone 14 x 16 x 7 ins. 10 ins. in the ground for Cor. to Secs. 4, 5, 8, 9 marked with 5 notches on S. and 1 notch on E. edges and raised a mound of stone alongside. Pits impracticable.

from which

A Yellow Pine 30 ins diam. bears S. 12° W. 30 lks. dist. marked T. & N. R. 30 E. S., 5 B. T.

A Yellow Pine 12 ins diam. bears N. 20° E. 89 lks. dist. marked T. & N. R. 30 E. S., 1 B. T.

No other trees within limits.

Land mountainous

Soil 2" & 3" rateTimber of pine, oak, fir, aspen.Vegetation. grass.

Township

0 1 N

Range

30 0

BOOK 44

Gila and Salt River Meridian.

Chains

East, on a random line between Sections 4 and 9.

Variation

11° 15'

East.

Descend.

- 20.70 Cross Brook. 8 lks. wide, Course N. W.
- 30.00 Top of Spur, bears N. W. 1/2 E. and descend.
- 40.00 Set temporary 1/2 Sec. Cor.
- 54.00 Cross Road, bears N. 15° E. 3.18° W.
- 55.28 Cross Brook. 10 lks. wide, Course N.
- 80.17 Intersect N. & S. line, 22 lks. N. of cor. to secs.
3. 4. 9 & 10 from which corner, I run
N 89° 46' W. on a true line between sections 21 & 22
Variation 11° 15' East
- 40.08 Set a *swind* stone 20 x 10 x 24 ins., 15
ins. in the ground, for 1/2 Sec. Cor., marked 1/2 on N.
face, and raised a mound of stone alongside. **Pits**
impracticable.
- 80.17 The corner to sections 4, 5, 8 & 9
Land mountainous
Soil 1/2 2nd & 3rd rate
Timber of *pine, oak, cedar &*
Vegetation. *grass.*

Township Range

Gila and Salt River Meridian.

Chains

North, on a random line between Sections 4 and 5.

Variation $14^{\circ} 15'$ East.

Descend.

32.00 Cross Creek 8 lks. wide, Course $N. 50^{\circ} W.$ and ascend.40.00 Set temporary $\frac{1}{4}$ Sec. Cor.78.80 Intersect N. B. of Tp. 5 lks. W. of cor. to sec.
previously set by me.

21.3 32 203 from which corner, I run

1.2' W. on a true line, between sections 21 203

Variation $11^{\circ} 15'$ East.38.80 Set a sand stone $11 \times 12 \times 6$ ins., 10
ins. in the ground, for $\frac{1}{4}$ Sec. Cor., marked $\frac{1}{4}$ on
face, and raised a mound of stone alongside. Pits
impracticable.

from which

2. Gulch House bears W. 75 lks. dist.

78.80 The corner to sections 11. 0. 8 + 9

Land mountainous

Soil 1, 2, 3rd rate

Timber of fern, etc, cedar, etc.

Vegetation. grass.

Township C. N. Range 30 E.

Gila and Salt River Meridian.

BOOK 44

Chains

From the Corner to Sections 5, 6, 31 & 32 on the South boundary
previously set by me.

I run

North, between Sections 31 and 32.

Variation 14° 10' East.*Ascend.*

40.00 Set a lava stone 12 x 3 x 3 ins., 5
ins. in the ground, for $\frac{1}{4}$ Sec. Cor., marked $\frac{1}{4}$ on W.
face, and raised a mound of stone alongside. Pits
impracticable.

80.00 Set a limestone stone 12 x 3 x 3 ins. 1/2 ins. in
the ground for Cor. to Secs. 29, 30, 31 & 32 marked
with 1 notch on S. and 3 notches on E. edges and
raised a mound of stone alongside. Pits impracticable.

from which

A Yellow Pine 30 ins diam. bears N. 50° E. 13 lks. dist.
marked T. & N. R. 30 E. S., 29 B. T.

A Yellow Pine 8 ins diam. bears S. 15° W. 16 lks. dist.
marked T. & N. R. 30 E. S., 31 B. T.

*No other trees within limits.**Land rolling.**Soil fine rate**Timber of pine, oak, cedar.**Vegetation. grass.*

Township 61 N Range 30 E

Gila and Salt River Meridian.

Chains

East, on a random line between Sections 29 and 32.

Variation 11° 15' East.*Ascend.*40.00 Set temporary $\frac{1}{4}$ Sec. Cor.50.20 Intersect N. & S. line, 13 lks. N. of cor. to secs.28, 29, 31, 32 from which corner, I runN. 54° W. on a true line between sections 29 & 32Variation 11° 15' East40.10 Set a lava stone 18 x 18 x 6 ins., 1°ins. in the ground, for $\frac{1}{4}$ Sec. Cor., marked $\frac{1}{4}$ on N.line, and raised a mound of stone alongside. Pits

unpracticable.

from which

A Yellow Pine 30 ins diam. bears S. 24° E. 32 lks. dist.marked $\frac{1}{4}$ S. B. T.

No other trees within limits.

80.20

The corner to sections 29, 30, 31 & 32

land rolling.

Soil 2nd rateTimber of pine, fir, oak, cedar &c.Vegetation. grass.

Township 6 N Range 30 E

BOOK 44

Gila and Salt River Meridian.

Chains West, on a random line between Sections 30 and 31.
Variation $11^{\circ} 15'$ East.

*Ascend.*40.00 Set temporary $\frac{1}{4}$ Sec. Cor.7948 Intersect N. B. of Tp. 24 lks. N. of cor. to secs.
previously set by me.

25. 30. 31 & 32 from which corner, I run

 $N. 89^{\circ} 20' E.$ on a true line, between sections 30 & 31Variation $121^{\circ} 15'$ East.8948 Set a ~~lava~~ stone $20 \times 20 \times 4$ ins. 15
ins. in the ground, for $\frac{1}{4}$ Sec. Cor., marked $\frac{1}{4}$ on N.
face, and raised a mound of stone alongside. Pits
impracticable.7948 The corner to sections 29. 30. 31 & 32

Land mountainous

Soil 2^{nd} & 3^{rd} rateTimber of *pine* for *cut*Vegetation. *grass*

Township 12 N Range 30 E

Gila and Salt River Meridian.

Chains

North, between Sections 29 and 30.

Variation 11° 15' East.*Ascend.*Top of Ridge, bears S. 80° E. 1000 and descend.

A Aspen 4 ins. diam. which I marked $\frac{1}{2}$ S. on N. face, for $\frac{1}{4}$ sec. cor., dug pits, $18 \times 18 \times 12$ ins. N. and S. of tree, $5\frac{1}{2}$ ft. dist. and raised a mound of earth around tree.

A Yellow Pine 20 ins diam. which I marked T. & N. S. 30, on N. E. R. 30 E, S. 29 on S. E. S. 30, on S. W. and S. 19 on N. W. faces, with 2 notches on S. and 3 notches on E. edges, dug pits $18 \times 18 \times 12$ ins. in each sec. $5\frac{1}{2}$ ft. dist. and raised a mound of earth around tree, for cor. to secs.

19 20 29 + 30 from which
An Oak 7 ins. diam. bears N. 40° E. 6 lks. dist.

marked T. & N. R. 30 E S., 20 B. T.
An Oak 10 ins. diam. bears S. 80° E. 17 lks. dist.
marked T. & N. R. 30 E S., 29 B. T.

No other trees within limits.

Land mountainous

Soil Fst rateTimber of pine, aspen, fir, oak &c.

Vegetation grass
I carefully examined the adjustments of my solar compass to-day, particularly the latitude and reversing apparatus, and found them correct. July, 3, 1883

Township 0 N Range 20 E

Gila and Salt River Meridian.

BOOK 44

Chains East, on a random line between Sections 20 and 29.
Variation $121^{\circ} 15'$ East.

Ascend.

40.00 Set temporary $\frac{1}{4}$ Sec. Cor.

80.02/ Intersect N. & S. line. 8 lks. S. of cor. to secs.

20.21.28 $24'$ from which corner, I run

$89^{\circ} 07'$ W. on a true line between sections 20 & 29

Variation $121^{\circ} 15'$ East

40.02 Set a lava stone $18 \times 10 \times 10$ ins., 15

ins. in the ground, for $\frac{1}{4}$ Sec. Cor., marked $\frac{1}{4}$ on

face, and raised a mound of stone alongside. Pits

unpracticable.

80.04/ The corner to sections 19, 20, 29, 30

Land mountainous

Soil 2^{nd} & 3^{rd} rate

Timber of pine, fir, oak, aspen &

Vegetation. grass.

Township

Range

Gila and Salt River Meridian.

BOOK 44

Chains

West, on a random line between Sections 19 and 30.

Variation $11^{\circ} 15'$ East.

Ascend.

Top of Ridge, bears and descend.

40.00 Set temporary $\frac{1}{2}$ Sec. Cor.

Intersect. W. B. of Tp. 19 $1\frac{1}{2}$ lks. N. of cor. to sec.

previously set by me. from which corner, I run

$N. 59^{\circ} 32' E.$ on a true line, between sections $19, 20, 29, 30$

Variation $11^{\circ} 15'$ East.

Set a *round* stone $10 \times 3 \times 3$ ins., 6 ins. in the ground, for $\frac{1}{2}$ Sec. Cor., marked $\frac{1}{2}$ on $N.$ and raised a mound of stone alongside. Pits

in suitable.

The corner to sections 19, 20, 29, 30

Land mountainous

Soil 2^{nd} & 3^{rd} rate

Timber of *ponderosa*, *oak*, *aspen* &

Vegetation. *grass*.

39.12

79.12

Township *0 N* Range *30 E***BOOK 44** Gila and Salt River Meridian.

Chains

North, between Sections 19 and 20.

Variation *11° 10'* East.*Descend. along E. slope.**40.00*

Set a *Sand* stone *10 x 9 x 8 ins.*, *11*
ins. in the ground, for 1/2 Sec. Cor., marked 1/2 on
face, and raised a mound of stone alongside. Pits
impracticable.

*42.00*Cross Ravine, Course *N. 75° W.* and ascend*30.00*

Set a post 4 ft. long, 4 ins. square, with marked stone
 12 ins. in the ground, for Cor. to Secs. *17, 18, 19, 20*
 marked *T, 0 N, S, 17*, on *N, E, R, 30° E, S, 20*
 on *S, E, S, 19* on *S, W, and S, 18* on *N, W, face*
 with *3* notch *1* on *S*, and *3* notch *2* on *E*, edges,
 dug pits *18 x 18 x 12 ins.*, in each Sec., *5 1/2 ft.* dist.,
 and raised a mound of earth *2 ft.* high, *4 1/2 ft.* base
 around post.

Land mountainous

Soil *2^{int} & 3^{int}* rateTimber of *pine & fir*Vegetation. *grass*

Township ~~10~~ ¹¹ N. Range ~~20~~ ²¹ E.

Gila and Salt River Meridian.

Chains

East, on a random line between Sections 17 and 20.

Variation $14^{\circ} 15'$ East.

Ascend.

~~Top of Spur, bears~~ ~~and descend.~~

40.00 Set temporary $\frac{1}{2}$ Sec. Cor.

~~Top of Spur~~ ~~bears~~ $N. 10^{\circ} W. \pm S. 10^{\circ} E.$ ~~and descend~~
80.52 Intersect N. & S. line, 38 lks. ~~E.~~ of cor. to secs.

16.1' ~~20.2'~~ from which corner, I run

$S. 87^{\circ} 11' W.$ on a true line between sections 17 & 20

Variation $14^{\circ} 15'$ East

470.22 Set a ~~land~~ stone $21 \times 20 \times 10$ ins., 18

ins. in the ground, for $\frac{1}{2}$ Sec. Cor., marked $\frac{1}{2}$ on Λ .

face, and raised a mound of stone alongside. Pits

unpracticable.

from which

A Yellow Pine 127 ins diam. bears $S. 10^{\circ} E.$ 100 lks. dist.
marked $\frac{1}{2}$ S. B. T.

No other trees within limits.

80.53 The corner to sections 17, 18, 19 & 20

Land mountainous

Soil 2° & 3° rate

Timber of pine, fir, oak, aspen &c.

Vegetation. Grass.

Township C C N Range 30 E**BOOK 44** Gila and Salt River Meridian.

Chains West, on a random line between Sections 18 and 19.
Variation $141^{\circ} 15'$ East.

Descend.

7.00 Cross Creek 1/2 lks. wide, Course N. and ascend.

40.00 Set temporary 1/4 Sec. Cor.

79.36 Intersect W. B. of Tp. 10 lks. S. of cor. to sec.
previously set by me.
13. 18. 19. 20 from which corner, I run

$89^{\circ} 56'$ E. on a true line, between sections 18 & 19

Variation $141^{\circ} 15'$ East.

79.36 Set a Sand stone $12 \times 10 \times 4$ ins., 5
ins. in the ground, for 1/4 Sec. Cor., marked 1/4 on
face, and raised a mound of stone alongside. Pits
impracticable.

79.36 The corner to sections 17, 18, 19 & 20

Land mountainous

Soil $1/2$ 2nd 3rd rate

Timber of Pine, Oak, Cedar &

Vegetation. grass.

Township 30 N Range 30 E

44 Gila and Salt River Meridian.

Chains

North, between Sections 17 and 18.

Variation 11° 15' East.

Descend. along N. slope.

47.50

A Yellow Pine 20 ins diam. which I marked $\frac{1}{2}$ S. on N. face, for $\frac{1}{2}$ sec. cor., dug pits, 18 x 18 x 12 ins. N. and S of tree, 5 $\frac{1}{2}$ ft. dist. and raised a mound of earth around tree.

from which A Yellow Pine 31 ins diam. bears S. 15° W. 31/2 kls. dist. marked $\frac{1}{2}$ S. B. T. No other trees within limits.

67.20

Cross Creek 21 kls. wide, Course N. 10° E and ascend.

80.00

Set a Sand stone 30 x 20 x 11 ins. 22 ins. in the ground for Cor. to Secs. 7, 8, 17 & 18 marked with H notches on S. and S notches on E. edges and raised a mound of stone alongside. Pits impracticable.

soil abundant

Soil 2m x 3m rats

Timber of pine, fir, oak, aspen &c.

Vegetation grass.

July 4. 1883

Township 0 N Range 30 E**BOOK 44** Gila and Salt-River Meridian.**Chains**

East, on a random line between Sections 8 and 17.

Variation 14° 15' East.*Descend.*12.00 Cross Creek 4 lks. wide, Course N. 10° E and ascend.36.00 Top of Spur, bears c. N. & S, and descend.40.00 Set temporary $\frac{1}{4}$ Sec. Cor.79.90 Intersect N. & S. line, 14 lks. S of cor. to secs.8, 9, 10 $\pm 1'$ from which corner, I runS. 89° 54' W. on a true line between sections 8 $\pm 1'$ Variation 14° 15' East39.97 Set a Java stone 12 x 10 x 7 ins., 5
ins. in the ground, for $\frac{1}{4}$ Sec. Cor., marked $\frac{1}{4}$ on N
face, and raised a mound of stone alongside, **Pits**
impracticable.79.95 The corner to sections 7, 8, 17, 14Land mountainousSoil 2nd & 3rd rateTimber of pine, fir, Aspen, oak &c.Vegetation. grass.

Township 0 0 N Range 30 E

Gila and Salt River Meridian.

Chains

West, on a random line between Sections 7 and 18.

Variation

11° 15'

East.

Ascend.

30.00 Top of Spur, bears N. 20° E. 5.20 and descend.

40.00 Set temporary $\frac{1}{4}$ Sec. Cor.79.41 Intersect W. B. of Tp. 30 lks. N. of cor. to sec.
previously set by me.

7. 12. 13. 18 from which corner, I run

N. 89° 49' E. on a true line, between sections 7 & 18

Variation 14° 15' East.

89.41 Set a Sandstone stone 12 x 10 x 6 ins., 8

ins. in the ground, for $\frac{1}{4}$ Sec. Cor., marked $\frac{1}{4}$ on N.

face, and raised a mound of stone alongside. Pits

impracticable.

79.41 The corner to sections 7. 8. 17. 18.

Land mountainous

Soil 2nd & 3rd rate

Timber of pine, fir, oak, &c.

Vegetation. grass.

Township 0 0 N Range 30 0**BOOK 44** Gila and Salt River Meridian.

Chains

North, between Sections 7 and 8.

Variation 14° 15' East.*Ascend.*

40.00

Set a Lava stone 12 x 6 x 6 ins., 5
 ins. in the ground, for $\frac{1}{2}$ Sec. Cor., marked $\frac{1}{2}$ on V
 face, and raised a mound of stone alongside. Pits
 impracticable.

80.00

Set a Sand stone 18 x 7 x 7 ins. 12 ins. in
 the ground for Cor. to Secs. 5, 6, 7, 8 marked
 with 5 notch on S. and 5 notch on E. edges and
 raised a mound of stone alongside. Pits impracticable.

from which

A Yellow Pine 10 ins diam. bears 12° W. 7 lks. dist.
 marked T. 6 N. R. 30 E. S., 7 B. T.

A Yellow Pine 10 ins diam. bears S. 50° E. 10 lks. dist.
 marked T. 6 N. R. 30 E. S., 8 B. T.

No other trees within limits. inTop of Spur, bears N. and descend.

Land mountainous

Soil 2" + 3" rateTimber of pine, oak, cedar,Vegetation. grass

Township 0 1 N Range 90 E

Gila and Salt River Meridian.

BOOK 44

Chains

East, on a random line between Sections 5 and 8.

Variation

14° 15'

East.

Descend.

40.00 Set temporary $\frac{1}{4}$ Sec. Cor.

79.71 Intersect N. & S. line, 11 lks. N. of cor. to secs.

N. 52° 53' W. from which corner, I run

N. 89° 53' W. on a true line between sections 5 & 8

Variation

14° 15'

East

37.80

Set a lava stone 20 x 12 x 3 ins., 15

ins. in the ground, for $\frac{1}{4}$ Sec. Cor., marked $\frac{1}{4}$ on N.

face, and raised a mound of stone alongside.

Pits

un. racticable.

from which

A Yellow Pine 24 ins diam. bears N. 40° E. 15 lks. dist.

marked $\frac{1}{4}$ S. B. T.

No other trees within limits.

79.76

The corner to sections 5, 6, 7 & 8

is on mountainous

Soil 2nd & 3rd rate

Timber of pine, oak, fir, cedar &c.

Vegetation. grass.

BOOK 44 Gila and Salt River Meridian.

Chains West, on a random line between Sections 6 and 7.

Variation 14° 15' East.

Descend.

40.00 Set temporary $\frac{1}{2}$ Sec. Cor.

79.65 Intersect W. B. of Tp. 30 lks. S of cor. to secs.
previously set by me.
1.6 from which corner, I run

S. 89° 45' E on a true line, between sections 6 & 7
Variation 14° 15' East.

29.65 Set a limestone stone 12 x 5 x 3 ins., 5
ins. in the ground; for $\frac{1}{2}$ Sec. Cor., marked $\frac{1}{2}$ on N.
face, and raised a mound of stone alongside. Pits
in vicinity.

9.65 The corner to sections 5, 6, 7, & 8

Land mountainous

Soil 2nd & 3rd rate.

Timber of pine, oak, cedar

Vegetation grass

Township W. N. Range 30 E

~~COR. 44~~ Gila and Salt River Meridian.

Chains

North, on a random line between Sections 5 and 6.

Variation 11° 15' East.

Descend.

74.00 Enter Valley, bears 115° E

40.00 Cross Fence bears, S. E.

40.00 Set temporary $\frac{1}{2}$ Sec. Cor.

78.21 Intersect N. B. of Tp. 30 lks. N. of cor. to secs.

S. C. 31 ^{previously described by me} from which corner, I run

21.90 on a true line, between sections 5 & 6

Variation 11° 15' East.

38.21 Set a post 3 ft. long, 3 ins. diam. with marked stone 12 ins. in the ground, for $\frac{1}{2}$ Sec. Cor., marked $\frac{1}{2}$ S. on W. face, dug pits; 18 x 18 x 12 ins. N. and S. of post $5\frac{1}{2}$ ft. dist., and raised a mound of earth $1\frac{1}{2}$ ft. high, $3\frac{1}{2}$ ft. base around post.

78.21 The corner to sections S. C. 7 & 8

Land rolling.

Soil 1st, 2nd & 3rd rate

Timber of pine, oak, fir, cedar.

Vegetation. grass.

July 5. 1883

BOOK 44
GENERAL DESCRIPTION.

This Sp. is a good, rich
of fine mesh, rolling, and maintains
solid, interposed with thin, veins
and grains.

The soil is rich dark loam
adapted to agriculture when there
is not an excessive outcrop of
stone formation, which consists
of Gault, Tullahoma, Sandstone, etc.

There is a heavy growth of
the surface in various cases
Sci. Hemlock, Oak, Pecan, etc.

The soil is rich with some
springs of pure water, and
heat and other excellent rich
minerals.

The ground is fertile in
silica and silica; a

It is accessible with some
dissemination. Strong indications
of copper, and the iron-precipitated
minerals in this Sp.

will give a goodly.

For final notes see
book No. 18

U. S. Surveyor-General's Office.

Tucson, Arizona.

June 16, 1884.

The foregoing Field Notes of the surveys of

Subdivision lines of
Township 6 North,
Range 30 East
Gila and Salt River Meridian

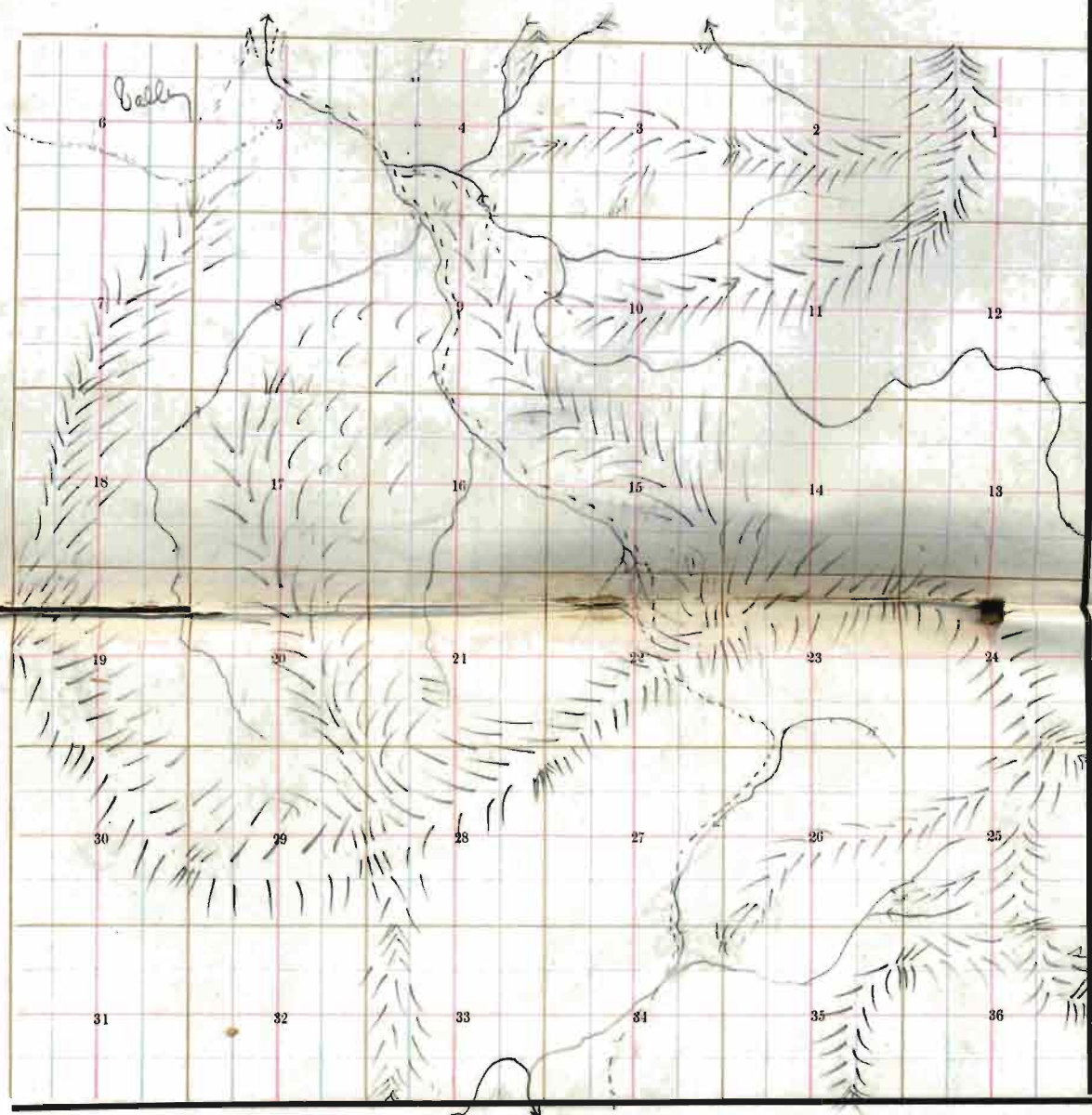
executed by W. R. Fitzgerald
U. S. Deputy Surveyor, under his contract dated
July 22, 1882,

having been critically examined, the necessary
corrections and explanations made, the said Field
Notes and the surveys they describe are hereby
approved.

Royall Johnson
U. S. Surveyor-General

For Arizona.

63



- TOWNSHIP PLOT.
- Meridian Line,*
 - Base Line,*
 - Standard Line,*
 - Township Lines,*
 - Section Lines,*
 - Meander Lines,*
 - Office Work,*