

*Compared Book No. 5 Copied*  
*dated*  
*T*  
*Wheeler* Deputy Surveyor.  
*R.* 21 E  
Gila and Salt River Meridian.

*No-59*

# FIELD NOTES

OF

THE SUBDIVISION LINES OF

Township *9 N.* Range *21 E.*  
Gila and Salt River Meridian.

59

BY

*Wheeler* Deputy Surveyor.

Under his Contract of *July 17<sup>th</sup> 1882*  
Survey Commenced *February 10<sup>th</sup> 1883*  
Survey Completed *February 19<sup>th</sup> 1883*

*No-59*

Platted,  
Copied for Washington,  
Copied for Register,

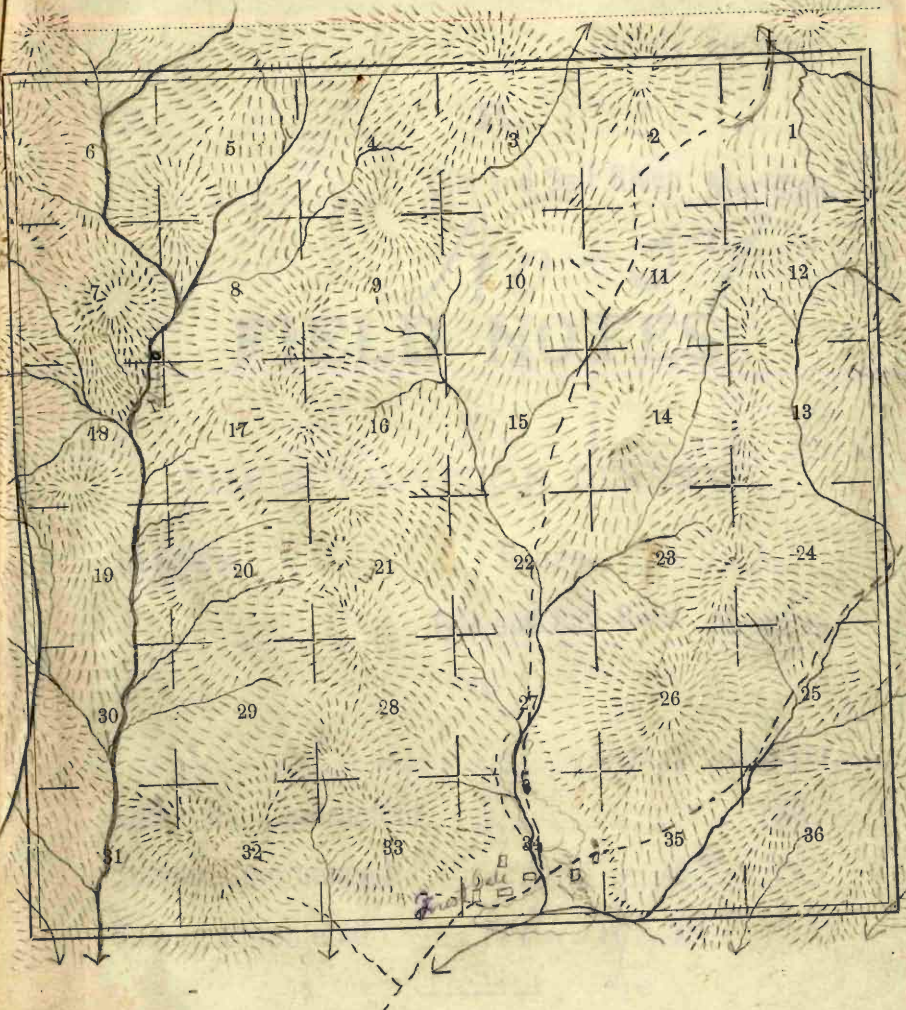
Edward Denny & Co., Stationers & Printers, S. F. Cal.

*Copyright Secured,*

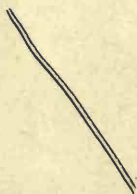
Entered according to Act of Congress, in the Clerk's Office of the Librarian of Congress at Washington, D. C., in the year 1880.

Township 9 N - Range 21 E M.

1 A



13 16  
13 32  
71  
36 3



*O. D. Wheeler* Deputy Surveyor.

**T.** *9 N* **R.** *21 E*

Gila and Salt River Meridian.

*No-59*

# FIELD NOTES

OF

THE SUBDIVISION LINES OF

Township *9 N* Range *21 E*

Gila and Salt River Meridian.

BY

*O. D. Wheeler* Deputy Surveyor.

Under his Contract of *July 17* 188*2*

Survey Commenced *February 10<sup>th</sup>* 188*3*

Survey Completed *February 19<sup>th</sup>* 188*3*

*Platted,  
Copied for Washington,  
Copied for Register,*

1B

Township 9 N. Range 21 E.  
S. & S. R. B. L. C. Meridian.

6	60	5	44	4	33	3	22	2	11	1
59		58		43		32		21		10
7	57	8	42	9	31	10	20	11	9	12
53		55		41		30		19		8
18	54	17	40	16	29	15	18	14	7	13
53		52		39		28		17		6
19	51	20	38	21	27	22	16	23	5	24
50		49		37		26		15		4
30	48	29	36	28	25	27	14	26	3	25
47		46		35		24		13		2
31	45	32	34	33	23	34	12	35	1	36

OK

Edward Denny & Co., Stationers & Printers, S. F., Cal.

Copyright Secured,

Entered according to Act of Congress, in the Clerk's Office of the Librarian of Congress at Washington, D. C., in the year 1880.

Township.....Range.....

.....Meridian.

For preliminary notes  
and description of  
instrument used  
see Book No. 1.

Survey made with Burt's Patent Improved Solar  
Compass, nearly new, and in first rate order. Made  
by Otto Fennel of Cassel  
Germany in 1881

1 D Township  
(See previous page.)

9 A

Range 21 E

Gila and Salt River Meridian.

~~BOOK 59~~

Chains

Standard  
From the corner to Sections 35, 36, ~~1 and 2~~ on the South boundary, *of 1/2 Sec.*  
previously set by me. *grun*  
North, between Sections 35 and 36

Variation  $13^{\circ} 30'$  East.

Ascend.

35.10  
40.00Top of Spur, bears  $N. 34^{\circ} E. 234'$  and descend.

Set a Sand stone  $21 \times 13 \times 9$  ins., 15  
ins. in the ground, for  $\frac{1}{4}$  Sec. Cor., marked  $\frac{1}{4}$  on  
face, and raised a mound of stone alongside. Pits  
impracticable.

68.26  
78.26  
80.00Cross Creek 114 lks. wide, Course  $S. 34^{\circ} W$  and ascend.Cross Road, bears  $N. 37^{\circ} E. 237'$ 

Set a Sand stone  $24 \times 10 \times 7$  ins. 18 ins. in  
the ground for Cor. to Secs. 25, 26, 35, 36 marked  
with 1 notch on S. and 1 notch on E. edges and  
raised a mound of stone alongside. Pits impracticable.

from which

A Yellow Pine 28 ins diam. bears  $N. 41^{\circ} E. 160$  lks. dist.  
marked T. 9 N. R. 21 E. S., 25 B. T.

A Yellow Pine 36 ins diam. bears  $S. 42^{\circ} E. 170$  lks. dist.  
marked T. 9 N. R. 21 E. S., 30 B. T.

No other trees within limits.

Land mountainous

Soil 3<sup>rd</sup> rate

Timber of pine &amp; juniper

Vegetation. grass.

Township 9 N Range 21 E

Gila and Salt River Meridian.

Chains

East, on a random line between Sections 25 and 36.

Variation 13° 30' East.*Descend.*1.00 Cross Road, bears, N. 32° E. 1.32 W.10.80 Cross Creek 16 lks. wide, Course S. 43° W. and ascend.40.00 Set temporary  $\frac{1}{4}$  Sec. Cor.79.87 Intersect E. B. of Tp. 17 lks. S. of cor. to secs. previously set by me.25. 30. 31. 36 from which corner, I runS. 89° 53' W. on a true line, between sections 25 & 36Variation 13° 33' East.

3993 Set a post 3 ft. long. 3 ins. diam. with marked stone 12 ins. in the ground, for  $\frac{1}{4}$  Sec. Cor., marked  $\frac{1}{4}$  S. on N. face, dug pits, 18 x 18 x 12 ins., E and W. of post 5 $\frac{1}{2}$  ft. dist., and raised a mound of earth 1 $\frac{1}{2}$  ft. high, 3 $\frac{1}{2}$  ft. base around post.

79.87 The corner to sections 25. 26. 30. 36*Lana rolling.*Soil SP rateTimber of Juniper & oak.Vegetation. grass.

Township

9

Range

21. E

Gila and Salt River Meridian.

Chains

North, between Sections 25 and 26.

Variation  $13^{\circ} 30'$  East.*Ascend.*

40.00

Set a Sand stone  $26 \times 17 \times 5$  ins., 18 ins. in the ground, for  $\frac{1}{4}$  Sec. Cor., marked  $\frac{1}{4}$  on W. face, and raised a mound of stone alongside. Pits impracticable.

49.83

Top of Spur, bears  $E. \& W.$  and descend.

80.00

Set a Sand stone  $20 \times 15 \times 6$  ins. 15 ins. in the ground for Cor. to Secs. 23, 24, 25, 26 marked with 2 notches on S. and 1 notch on E. edges and raised a mound of stone alongside. Pits impracticable.

from which

A Yellow Pine 20 ins diam. bears  $N. 65^{\circ} W.$  17 lks. dist. marked T. 9 N. R. 21 E. S., 23 B. T.

A Yellow Pine 16 ins diam. bears  $S. 65^{\circ} E.$  48 lks. dist. marked T. 9 N. R. 21 E. S., 25 B. T.

A Yellow Pine 10 ins diam. bears  $S. 42^{\circ} W.$  47 lks. dist. marked T. 9 N. R. 21 E. S., 26 B. T.

No other trees within limits.

Land mountainous

Soil  $3^{\circ}$  rate

Timber of *Yuni, oak & juniper.*

Vegetation. *grass.*



Township

9 N

Range

21 E

Gila and Salt River Meridian.

Chains

East, on a random line between Sections 24 and 25.

Variation 13° 15' East.

Descend.

11.80 Cross Wash, 10 lks. wide, Course S. 37° E and ascend.

28.10 Top of Spur, bears N. e S. and descend.

40.00 Set temporary 1/4 Sec. Cor.

52.16 Cross Road, bears N. 48° E. e S. 48° W.

55.00 Cross Creek 19 lks. wide, Course S. 29° W and ascend.

79.73 Intersect E. B. of Tp. 9 lks. S. of cor. to secs.  
previously set by me.

19.24. 25. 30 from which corner, I run

S. 89° 56' W. on a true line, between sections 24 e 25

Variation 13° 20' East.

39.86 Set a post 3 ft. long. 3 ins. diam. with marked stone  
12 ins. in the ground, for 1/4 Sec. Cor., marked 1/4 S. on  
N. face, dug pits, 18 x 18 x 12 ins., E. and W. of  
post 5 1/2 ft. dist., and raised a mound of earth 1 1/2 ft.  
high, 3 1/2 ft. base around post.

79.73 The corner to sections 23. 24. 25. 26

Land mountainous

Soil 3<sup>rd</sup> rate

Timber of Juniper &amp; Manzanita

Vegetation. grass.

Township 9 BOOK 59 Range 21 E  
 Gila and Salt River Meridian.

Chains

North, between Sections 23 and 24.

Variation 13° 15' East.*Ascend.*

36.86 Top of Hill bears N. 32° E. & S. 32° W. and descend.

40.00 Set a Sand stone 17 x 11 x 9 ins., 12 ins. in the ground, for  $\frac{1}{4}$  Sec. Cor., marked  $\frac{1}{4}$  on W. face, and raised a mound of stone alongside. Pits impracticable. from which

A Yellow Pine 12 ins diam. bears S. 50° E. 87 lks. dist. marked  $\frac{1}{4}$  S. B. T.

A Yellow Pine 13 ins diam. bears S. 20° W. 81 lks. dist. marked  $\frac{1}{4}$  S. B. T.

47.60 *Ascend.*

78.42 Top of Hill bears N. 4° E. & S. 4° W. and descend.

80.00 Set a Sand stone 18 x 10 x 7 ins., 12 ins. in the ground for Cor. to Secs. 13. 14. 23. 24 marked with 3 notches on S. and 1 notch on E. edges and raised a mound of stone alongside. Pits impracticable. from which

A Yellow Pine 12 ins diam. bears S. 34° W. 27 lks. dist. marked T. 9 N. R. 21 E. S., 23 B. T.

A Yellow Pine 8 ins diam. bears S. 45° E. 24 lks. dist. marked T. 9 N. R. 21 E. S., 24 B. T.

A Yellow Pine 14 ins diam. bears N. 78° E. 24 lks. dist. marked T. 9 N. R. 21 E. S., 13 B. T.  
 No other trees within limits.

Land hilly.

Soil 3<sup>d</sup> rateVegetation grass.  
Heavy timber of pine.

Township 9 N Range 24 E

Gila and Salt River Meridian.

Chains

East, on a random line between Sections 13 and 24.

Variation  $13^{\circ} 19'$  East.

Ascend.

7.50 Top of Ridge, bears  $N. 5^{\circ} E. \& S. 5^{\circ} W$  and descend.40.00 Set temporary  $\frac{1}{4}$  Sec. Cor.

42.17 Cross Wash, 11 lks. wide, Course S. and ascend.

79.51 Intersect E. B. of Tp. lks. at of cor. to secs.

previously set by me.  
13. 18. 19. 24 from which corner, I run

West on a true line, between sections 13 &amp; 24

Variation  $13^{\circ} 18'$  East.39.75 Set a Sand stone  $24 \times 13 \times 8$  ins., 18ins. in the ground, for  $\frac{1}{4}$  Sec. Cor., marked  $\frac{1}{4}$  on N.

face, and raised a mound of stone alongside. Pits

impracticable. from which

A Yellow Pine 33 ins diam. bears  $S. 46^{\circ} W.$  20 lks. dist.marked  $\frac{1}{4}$  S. B. T.

No other trees within limits.

79.51 The corner to sections 13. 14. 23. 24

Land mountainous

Soil  $3^{\circ}$  rate

Timber of Pine, oak &amp; juniper.

Vegetation. grass.

Township

BOOK 59

Range

21 E

Gila and Salt River Meridian.

Chains

North, between Sections 13 and 14.

Variation 13° 19' East.

10.00 Ascend.

40.00 Set a Sand stone 19 x 12 x 5 ins., 12 ins. in the ground, for  $\frac{1}{4}$  Sec. Cor., marked  $\frac{1}{4}$  on W. face, and raised a mound of stone alongside. Pits impracticable.

41.16 Top of Spur, bears E. &amp; W. and descend.

80.00 Set a Sand stone 17 x 14 x 6 ins. 12 ins. in the ground for Cor. to Secs. 11, 12, 13, 14 marked with 4 notches on S. and 1 notch on E. edges and raised a mound of stone alongside. Pits impracticable.

from which

A Yellow Pine 20 ins diam. bears S. 10° E. 37 lks. dist. marked T. 9 N. R. 21 E. S., 13 B. T.

A Yellow Pine 13 ins diam. bears S. 55° W. 48 lks. dist. marked T. 9 N. R. 21 E. S., 14 B. T.

A Yellow Pine 14 ins diam. bears N. 27° W. 12 lks. dist. marked T. 9 N. R. 21 E. S., 11 B. T.

An Oak 7 ins. diam. bears N. 37° E. 9 lks. dist. marked T. 9 N. R. 21 E. S., 12 B. T.

Land mountainous

Soil 2<sup>nd</sup> rate

Heavy timber of oak, pine,

Vegetation. grass.

Township

9 N.

Range

27 E.

Gila and Salt River

Meridian.

Chains

East, on a random line between Sections 12 and 13.

Variation

13° 30'

East.

Ascend.

10.70 Top of Ridge, bears N. 4° W. &amp; S. 4° E. and descend.

38.79 Cross Wash, 12 lks. wide, Course S. and ascend.

40.00 Set temporary  $\frac{1}{4}$  Sec. Cor.79.64 Intersect E. B. of Tp. 10 lks. S. of cor. to secs.  
previously set by me.

7. 12. 13. 18 ^ from which corner, I run

S. 89° 56' W. on a true line, between sections 12 &amp; 13

Variation

13° 12'

East.

39.82 Set a Sand stone 18 x 114 x 9 ins., 12

ins. in the ground, for  $\frac{1}{4}$  Sec. Cor., marked  $\frac{1}{4}$  on N.

face, and raised a mound of stone alongside. Pits

impracticable.

79.64 The corner to sections 11. 12. 13. 14

Land mountainous.

Soil 2<sup>nd</sup> rate

Timber of pine.

Vegetation. Grass

Chains

North, between Sections 11 and 12.

Variation  $13^{\circ} 30'$  East.

Descend.

- 35.57 Head of Ravine, Course  $S. 19^{\circ} W.$  and ascend
- 40.00 Set a sand stone  $23 \times 13 \times 5$  ins., 18 ins. in the ground, for  $\frac{1}{4}$  Sec. Cor., marked  $\frac{1}{4}$  on W. face, and raised a mound of stone alongside. Pits impracticable.
- A Yellow Pine 11 ins diam. bears  $N. 44^{\circ} W.$  4 lks. dist. marked  $\frac{1}{4}$  S. B. T.
- A Yellow Pine 12 ins diam. bears  $S. 20^{\circ} E.$  23 lks. dist. marked  $\frac{1}{4}$  S. B. T.
- 63.10 Top of Spur, bears  $N. 88^{\circ} W. S. 88^{\circ} E.$  and descend.
- 80.00 Set a sand stone  $25 \times 16 \times 7$  ins. 18 ins. in the ground for Cor. to Secs. 1. 2. 11. 12 marked with 5 notches on S. and 1 notch on E. edges and raised a mound of stone alongside. Pits impracticable.
- A Yellow Pine 8 ins diam. bears  $N. 50^{\circ} W.$  from which 48 lks. dist. marked T. 9 N. R. 21 E. S., 2 B. T.
- A Yellow Pine 13 ins diam. bears  $S. 55^{\circ} W.$  18 lks. dist. marked T. 9 N. R. 21 E. S., 11 B. T.
- A Yellow Pine 30 ins diam. bears  $N. 36^{\circ} E.$  18 lks. dist. marked T. 9 N. R. 21 E. S., 1 B. T.
- No other trees within limits.  
Land mountainous

Soil 2<sup>nd</sup> rate

Heavy timber offene.

Vegetation. grass.

Feb. 10. 1883

Township 9 N Range 21 E

Gila and Salt River Meridian.

Chains

East, on a random line between Sections 1 and 12.

Variation 13° 15' East.

Ascend.

40.00 Set temporary 1/4 Sec. Cor.

41.75 Top of Spur, bears N. 2 S. and descend.

60.80 Crosshead of wash, Course N. 7° W. & ascend.

79.92 Intersect E. B. of Tp. 17 lks. N. of cor. to secs. previously set by me.

1. 6. 7. 12 from which corner, I run

N. 89° 33' W. on a true line, between sections 1 & 12

Variation 13° 00' East.

39.96 Set a post 3 ft. long. 3 ins. diam. with marked stone 12 ins. in the ground, for 1/4 Sec. Cor., marked 1/4 S. on N. face, dug pits, 18 x 18 x 12 ins., E. and W. of post 5 1/2 ft. dist., and raised a mound of earth 1 1/2 ft. high, 3 1/2 ft. base around post.

79.92 The corner to sections 1. 2. 11. 12

Land mountainous

Soil 2<sup>nd</sup> rate

Timber of Pine.

Vegetation. grass.

Township

9 N

Range

21 E

Gila and Salt River Meridian.

Chains

North, on a random line between Sections 1 and 2.

Variation  $13^{\circ} 10'$  East.*Descend.*40.00 Set temporary  $\frac{1}{4}$  Sec. Cor.53.67 Cross Road, bears, N.  $46^{\circ}$  E. 2 S.  $46^{\circ}$  W.

53.911 Cross low Sag and ascend.

79.84 Intersect N. B. of Tp. 53 lks. E. of cor. to secs.  
previously set by me.  
1. 2. 35. 36 from which corner, I runS.  $23^{\circ}$  E on a true line, between sections 1 & 2.Variation  $13^{\circ} 15'$  East.39.84 Set a post 3 ft. long, 3 ins. diam 24 ins. in the ground,  
for  $\frac{1}{4}$  Sec. Cor., marked  $\frac{1}{4}$  S. on W. face; from which  
A Yellow Pine 10 ins diam. bears N.  $88^{\circ}$  W. 53 lks. dist.  
marked  $\frac{1}{4}$  S. B. T.A Yellow Pine 7 ins diam. bears S.  $87^{\circ}$  E. 90 lks. dist.  
marked  $\frac{1}{4}$  S. B. T.

79.84 The corner to sections 1. 2. 11. 12

*Land rolling.*Soil 2<sup>nd</sup> rateTimber of *pine*Vegetation. *grass*



Township

9 N

Range

21 E

Standard

Gila and Salt River

Meridian.

From the corner to sections, 34 &amp; 35, previously set by me.

Chains <sup>Iron</sup> North, between Sections 34 and 35.

Variation 13° 30' East.

Descend.

- 32.12 Cross Road, bears N. 67° E. & S. 67° W.
- 35.17 Crookston's House bears West: 9.06 lks, dist.
- 39.60 A Spring, bears West: 11.0 lks. dist.
- 39.90 Foot of hill, bears N. 40° W. and ascend
- 40.00 Set a Sand stone 28 x 12 x 6 ins., 18 ins. in the ground, for  $\frac{1}{4}$  Sec. Cor., marked  $\frac{1}{4}$  on W. face, and raised a mound of stone alongside. Pits impracticable.
- 80.00 Set a Sand stone 18 x 14 x 6 ins. 12 ins. in the ground for Cor. to Secs. 26. 27. 34. 35 marked with 1 notch on S. and 2 notches on E. edges and raised a mound of stone alongside. Pits impracticable.
- A Yellow Pine 29 ins diam. bears N. 50° W. <sup>from which</sup> 123 lks. dist. marked T. 9 N. R. 21 E. S., 27 B. T.
- A Yellow Pine 25 ins diam. bears S. 60° E. 88 lks. dist. marked T. 9 N. R. 21 E. S., 35 B. T.
- A Yellow Pine 21 ins diam. bears S. 71° W. 60 lks. dist. marked T. 9 N. R. 21 E. S., 34 B. T.

No other trees within limits.

Land rolling.

Soil <sup>4<sup>th</sup></sup> rate

Heavy timber of pine.

Vegetation, grass.

Chains

East, on a random line between Sections 26 and 35.

Variation  $13^{\circ} 20'$  East.*Ascend.*

29.97 Top of Spur, bears N. &amp; S. and descend.

40.00 Set temporary  $\frac{1}{4}$  Sec. Cor.

79.91 Intersect N. &amp; S. line, 11 lks. N. of cor. to secs.

25, 26, 35, 36 from which corner, I run

N.  $59^{\circ} 55' W.$  on a true line between sections 26 & 35Variation  $13^{\circ} 30'$  East39.96 Set a Sand stone  $22 \times 12 \times 7$  ins., 18ins. in the ground, for  $\frac{1}{4}$  Sec. Cor., marked  $\frac{1}{4}$  on N. face, and raised a mound of stone alongside. Pits

impracticable.

from which

A Yellow Pine 12 ins diam. bears S.  $39^{\circ} W.$  11 lks. dist. marked  $\frac{1}{4}$  S. B. T.A Yellow Pine 10 ins diam. bears N.  $36^{\circ} W.$  40 lks. dist. marked  $\frac{1}{4}$  S. B. T.

79.91 The corner to sections 26, 27, 34, 35

Land mountainous

Soil 3<sup>d</sup> rate

Timber of Yerne.

Vegetation. grass.

Township

BOOK 59

Range

21 E

Gila and Salt River Meridian.

Chains

North, between Sections 26 and 27.

Variation

13° 20'

East.

*Ascend.*

40.00

Set a Sand stone 29 x 11 x 5 ins., 21 ins. in the ground, for  $\frac{1}{4}$  Sec. Cor., marked  $\frac{1}{4}$  on W. face, and raised a mound of stone alongside. Pits impracticable.

from which

A Yellow Pine 14 ins diam. bears N. 30° E. 50 lks. dist. marked  $\frac{1}{4}$  S. B. T.

A Yellow Pine 10. ins diam. bears S. 28° W. 18 lks. dist. marked  $\frac{1}{4}$  S. B. T.

46.50

Top of Spur, bears E. &amp; W. and descend.

80.00

Set a Sand stone 17 x 6 x 5 ins. 12 ins. in the ground for Cor. to Secs. 22, 23, 26, 27 marked with 2 notches on S. and 2 notches on E. edges and raised a mound of stone alongside. Pits impracticable.

Land mountainous

Soil 3<sup>d</sup> rateTimber of *Juniper*.Vegetation. *Grass*.

Township

BOOK 459

Range

21 C.

Gila and Salt River Meridian.

Chains

East, on a random line between Sections 23 and 26.

Variation  $13^{\circ} 22'$  East.*Ascend.*40.00 Set temporary  $\frac{1}{4}$  Sec. Cor.52.60 Top of Ridge, bears  $N. 31^{\circ} E.$  &  $S. 31^{\circ} W.$  and descend.

80.09 Intersect N. &amp; S. line, 16 lks. S. of cor. to secs.

 $23. 24. 25. 26$  from which corner, I run $S. 89^{\circ} 53' W.$  on a true line between sections 23 & 26Variation  $13^{\circ} 15'$  East40.04 Set a Sand stone  $16 \times 12 \times 7$  ins., 10ins. in the ground, for  $\frac{1}{4}$  Sec. Cor., marked  $\frac{1}{4}$  on N.

face, and raised a mound of stone alongside. Pits

impracticable.

from which

A Yellow Pine 21 ins diam. bears  $S. 20^{\circ} W.$  35 lks. dist.marked  $\frac{1}{4}$  S. B. T.A Yellow Pine 13 ins diam. bears  $N. 26^{\circ} E.$  57 lks. dist.marked  $\frac{1}{4}$  S. B. T.

80.09 The corner to sections 22. 23. 26. 27

Land mountainous

Soil 3<sup>rd</sup> rate

Timber of pine.

Vegetation. grass.

Township 9 N. Range 21 E.

Gila and Salt River Meridian.

Chains

North, between Sections 22 and 23.

Variation 13° 22' East.

Descend.

39.25 Cross Wash, 14 lks. wide, Course S. 44° W and ascend.

40.00 Set a Sand stone 21 x 19 x 6 ins., 16 ins. in the ground, for  $\frac{1}{4}$  Sec. Cor., marked  $\frac{1}{4}$  on W. face, and raised a mound of stone alongside. Pits impracticable.A Yellow Pine 26 ins diam. bears N. 89° W. 59 lks. dist. marked  $\frac{1}{4}$  S. B. T. from which

No other trees within limits.

78.67 Top of Spur, bears N. 42° E. S. 42° W and descend.

80.00 Set a Sand stone 27 x 16 x 8 ins. 21 ins. in the ground for Cor. to Secs. 14. 15. 22. 23 marked with 3 notches on S. and 2 notches on E. edges and raised a mound of stone alongside. Pits impracticable.

A Yellow Pine 28 ins diam. bears S. 40° E. 50 lks. dist. marked T. 9 N. R. 21 E. S., 23 B. T. from which

A Yellow Pine 24 ins diam. bears N. 42° W. 56 lks. dist. marked T. 9 N. R. 21 E. S., 15 B. T.

A Yellow Pine 21 ins diam. bears S. 41° W. 63 lks. dist. marked T. 9 N. R. 21 E. S., 22 B. T.

No other trees within limits.  
Land mountainousSoil 3<sup>rd</sup> rate

Timber of pine.

Vegetation, grass.

Chains

East, on a random line between Sections 14 and 23.

Variation  $13^{\circ} 56'$  East.*Ascend.*3.60 Top of Spur, bears  $N. 29^{\circ} E. \& S. 29^{\circ} W$  and descend.38.85 Cross Wash, 10 lks. wide, Course  $S. 35^{\circ} W$  and ascend.40.00 Set temporary  $\frac{1}{4}$  Sec. Cor.

80.36 Intersect N. &amp; S. line, 8 lks. N. of cor. to secs.

 $B. 14. 23.$  24 from which corner, I run $N. 89^{\circ} 57' W.$  on a true line between sections 14 & 23Variation  $13^{\circ} 19'$  East40.18 Set a Sand stone  $19 \times 12 \times 6$  ins., 12ins. in the ground, for  $\frac{1}{4}$  Sec. Cor., marked  $\frac{1}{4}$  on N.

face, and raised a mound of stone alongside. Pits

impracticable.

from which

A Yellow Pine 12 ins diam. bears  $S. 12^{\circ} W.$  25 lks. dist.  
marked  $\frac{1}{4}$  S. B. T.

No other trees within limits.

80.36 The corner to sections 14. 15. 22. 23

Land mountainous

Soil 3<sup>rd</sup> rate

Timber of pine.

Vegetation. grass.

Township

9 N.

Range

21 E.

Gila and Salt River Meridian.

Chains

North, between Sections 14 and 15.

Variation 13° 56' East.

Ascend.

36.63 Top of Spur, bears N. 26° E. &amp; 26° W and descend.

40.00 Set a Sand stone 21 x 13 x 7 ins., 1/5  
ins. in the ground, for 1/4 Sec. Cor., marked 1/4 on W.  
face, and raised a mound of stone alongside. Pits  
impracticable. from which

A Yellow Pine 20 ins diam. bears S. 36° W. 144 lks. dist.  
marked 1/4 S. B. T.

An Oak 18 ins. diam. bears S. 51° E. 81 lks. dist.  
marked 1/4 S. B. T.

77.90 Cross Wash, 9 lks. wide, Course S. 45° W and ascend.

78.00 Cross Road, bears, N. 26° E. &amp; S. 26° W.

80.00 Set a Sand stone 25 x 15 x 9 ins. 18 ins. in  
the ground for Cor. to Secs. 10. 11. 14. 15 - marked  
with 4 notches on S. and 2 notches on E. edges and  
raised a mound of stone alongside. Pits impracticable.

from which  
A Yellow Pine 34 ins diam. bears S. 55° W. 44 lks. dist.  
marked T. 9 N. R. 21 E. S., 15 B. T.

A Yellow Pine 29 ins diam. bears N. 54° E. 41 lks. dist.  
marked T. 9 N. R. 21 E. S., 11 B. T.

A Yellow Pine 12 ins diam. bears S. 42° E. 1.16 lks. dist.  
marked T. 9 N. R. 21 E. S., 14 B. T.

No other trees within limits.

Land mountainous

Soil 3<sup>rd</sup> rate

Heavy timber of pine.

Vegetation. grass.

Feb. 12. 1883

Township

9

Range

21

E

Gila and Salt River Meridian.

Chains

East, on a random line between Sections 11 and 14.

Variation

13° 30'

East.

Descend.

- 1.41 Cross Road, bears N. 21° E. S. 21° W.
- 3.50 Cross Wash, 10 lks. wide, Course S. 41° W. and ascend.
- 11.33 A Yellow Pine 20 ins diam.
- 40.00 Set temporary  $\frac{1}{2}$  Sec. Cor.
- 41.73 Top of Spur, bears N. 46° E. S. 46° W. and descend.
- 70.00 Cross Wash, 11 lks. wide, Course S. 14° W. and ascend.
- 80.20 Intersect N. & S. line, 29 lks. N. of cor. to secs.  
11, 12, 13, 14 from which corner, I run  
N. 89° 45' W. on a true line between sections 11 & 14  
Variation 13° 30' East
- 110.10 Set a Sand stone 24 x 13 x 6 ins., 18  
ins. in the ground, for  $\frac{1}{2}$  Sec. Cor., marked  $\frac{1}{2}$  on N.  
face, and raised a mound of stone alongside. Pits  
impracticable. from which
- A Yellow Pine 17 ins diam. bears N. 50° W. 2.0 lks. dist.  
marked  $\frac{1}{2}$  S. B. T.
- A Yellow Pine 13 ins diam. bears S. 35° W. 3.6 lks. dist.  
marked  $\frac{1}{2}$  S. B. T.
- 80.20 The corner to sections 10, 11, 14, 15  
Land mountainous  
Soil 2<sup>nd</sup> rate, 1,  
Timber of pine.  
Vegetation. grass.



Township 9 *M* Range 21 *E*  
Gila and Salt River Meridian.

Chains

North, between Sections 10 and 11.

Variation 13° 30' East.

*Ascend.*

40.00

Set a Sand stone 17 x 7 x 5 ins., 12 ins. in the ground, for  $\frac{1}{4}$  Sec. Cor., marked  $\frac{1}{4}$  on W. face, and raised a mound of stone alongside. Pits impracticable.

from which

1 Yellow Pine 13 ins diam. bears N. 80° W. 39 lks. dist. marked  $\frac{1}{4}$  S. B. T.

2 Live Oak 8 ins. diam. bears S. 87° E. 52 lks. dist. marked  $\frac{1}{4}$  S. B. T.

59.86

Top of Spur, bears N. 81° W. & S. 81° E. and descend.

80.00

Set a Basalt stone 20 x 11 x 5 ins. 15 ins. in the ground for Cor. to Secs. 2, 3, 10, 11 marked with 5 notches on S. and 2 notches on E. edges and raised a mound of stone alongside. Pits impracticable.

1 Yellow Pine 20 ins diam. bears N. 30° W. 83 lks. dist. marked T. 9 N. R. 21 E. S., 3 B. T.

1 Yellow Pine 16 ins diam. bears S. 32° E. 21 lks. dist. marked T. 9 N. R. 21 E. S., 11 B. T.

1 Yellow Pine 14 ins diam. bears S. 34° W. 94 lks. dist. marked T. 9 N. R. 21 E. S., 10 B. T.  
No other trees within limits.

Land mountainous

Soil 3<sup>rd</sup> rate

Heavy timber of pine.

Vegetation. grass.

Chains

East, on a random line between Sections 2 and 11.

Variation  $13^{\circ} 00'$  East.*Descend.*31.19 Cross Road, bears,  $N. 6^{\circ} E. \& S. 6^{\circ} W.$ 40.00 Set temporary  $\frac{1}{2}$  Sec. Cor.43.50 *Ascend.*79.89 Intersect N. & S. line, 52 lks. *N.* of cor. to secs.

1. 2. 11 &amp; 12 from which corner, I run

 $N. 89^{\circ} 38' W.$  on a true line between sections 2 & 11Variation  $13^{\circ} 15'$  East

39.94 Set a post 3 ft. long, 3 ins. diam 24 ins. in the ground,  
for  $\frac{1}{2}$  Sec. Cor., marked  $\frac{1}{2}$  S. on *N.* face; from which  
A Yellow Pine 10 ins diam. bears  $N. 3^{\circ} E.$  38 lks. dist.  
marked  $\frac{1}{2}$  S. B. T.

A Live Oak 12 ins. diam. bears  $S. 45^{\circ} W.$  42 lks. dist.  
marked  $\frac{1}{2}$  S. B. T.

79.89 The corner to sections 2. 3. 10. 11

Land mountainous

Soil  $2^{nd}$  rate

Timber of pine &amp; oak.

Vegetation. grass.

Township, 9 N Range 21 E

Gila and Salt River Meridian.

Chains

North, on a random line between Sections 2 and 3.

Variation  $13^{\circ} 00'$  East.

Descend.

40.00 Set temporary  $\frac{1}{4}$  Sec. Cor.

79.53 Intersect N.B. of Tp. 14 lks. E of cor. to secs.

2, 3, 34 & 35 <sup>previously set by me.</sup> from which corner, I run

S. 6' E. on a true line, between sections 2 &amp; 3

Variation  $13^{\circ} 00'$  East.

39.53 Set a Sand stone 24 x 9 x 9 ins., 18

ins. in the ground, for  $\frac{1}{4}$  Sec. Cor., marked  $\frac{1}{4}$  on W.

face, and raised a mound of stone alongside. Pits

impracticable.

79.53 The corner to sections 2, 3, 10, 11

Land rolling.

Soil 3<sup>rd</sup> rate

Vegetation grass.

Timber of pine &amp; juniper.

Township

BOOK 59

Range

21 E

Gila and Salt River Meridian.

Standard

From the corner to sections, 33 &amp; 34, previously set by me.

Chains. <sup>1000</sup> North, between Sections 33 and 34.

Variation 13° 30' East.

- 5  
21.77  
40.00
- Ascend.  
Cross Road Curve N.E.  
(A grave. (no name))
- Set a Sand stone 21 x 10 x 6 ins., 15 ins. in the ground, for  $\frac{1}{4}$  Sec. Cor., marked  $\frac{1}{4}$  on W. face, and raised a mound of stone alongside. Pits impracticable. from which
- A Yellow Pine 13 ins diam. bears S. 65° E. 1.00 lks. dist. marked  $\frac{1}{4}$  S. B. T.
- A Yellow Pine 11 ins diam. bears N. 87° W. 27 lks. dist. marked  $\frac{1}{4}$  S. B. T.
- 47.06 Top of Spur, bears N. 87° W. & S. 87° E and descend.
- 72.91 Cross Wash, 10 lks. wide, Course S. 86° E and ascend.
- 77.09 A Yellow Pine 16 ins diam.
- 80.00 Set a Sand stone 23 x 12 x 7 ins. 18 ins. in the ground for Cor. to Secs. 27. 29. 33. 34 marked with 1 notch on S. and 3 notches on E. edges and raised a mound of stone alongside. Pits impracticable. from which
- A Yellow Pine 16 ins diam. bears S. 49° E. 96 lks. dist. marked T. 9 N. R. 21 E. S., 34 B. T.
- A Yellow Pine 11 ins diam. bears S. 65° W. 19 lks. dist. marked T. 9 N. R. 21 E. S., 33 B. T.
- A Yellow Pine 11 ins diam. bears N. 33° W. 1.03 lks. dist. marked T. 9 N. R. 21 E. S., 28 B. T.
- A Yellow Pine 7 ins diam. bears N. 48° E. 1.37 lks. dist. marked T. 9 N. R. 21 E. S., 27 B. T.
- Land mountainous

Soil 2<sup>nd</sup> rate

Heavy timber of pine.

Vegetation. grass

Township 9 N Range 21 E  
Gila and Salt River Meridian.

Chains East, on a random line between Sections 27 and 34.  
Variation  $13^{\circ} 30'$  East.

*Descend.*

22.21 Cross Road, bears, N. & S.

33.19 Cross Brook. 21 lks. wide, Course S.

38.12 Cross Road, bears, N.  $3^{\circ}$  E. & S.  $3^{\circ}$  W.

40.00 Set temporary  $\frac{1}{4}$  Sec. Cor.

51.16 Foot of hill, bears N.  $34^{\circ}$  W. and ascend

80.26 Intersect N. & S. line, 33 lks. N. of cor. to secs.

26.27.34.35 from which corner, I run

N.  $89^{\circ} 46'$  W. on a true line between sections 27 & 34

Variation  $13^{\circ} 20'$  East

40.12 Set a Sand stone  $30 \times 11 \times 7$  ins., 22

ins. in the ground, for  $\frac{1}{4}$  Sec. Cor., marked  $\frac{1}{4}$  on N.

face, and raised a mound of stone alongside. Pits

impracticable.

from which

A Yellow Pine 10 ins diam. bears N.  $60^{\circ}$  W. 60 lks. dist.

marked  $\frac{1}{4}$  S. B. T.

A Yellow Pine 7 ins diam. bears S.  $34^{\circ}$  E. 42 lks. dist.

marked  $\frac{1}{4}$  S. B. T.

80.25 The corner to sections 27. 28. 33. 34

Land mountainous

Soil 3<sup>rd</sup> rate

Timber of Pine.

Vegetation. Grass.

Township

Range

21 E

Gila and Salt River Meridian.

Chains

North, between Sections 27 and 28.

Variation

13° 30'

East.

Ascend.

40.00

Set a Sand stone  $24 \times 12 \times 7$  ins., 18 ins. in the ground, for  $\frac{1}{4}$  Sec. Cor., marked  $\frac{1}{4}$  on W. face, dug pits  $18 \times 18 \times 12$  ins., N. and S. of stone  $5\frac{1}{2}$  ft. dist., and raised a mound of earth  $1\frac{1}{2}$  ft. high,  $3\frac{1}{2}$  ft. base alongside.

46.19

Top of Spur, bears N.  $52^{\circ}$  W.  $52^{\circ}$  E. and descend.

80.00

Set a Sand stone  $21 \times 17 \times 9$  ins. 15 ins. in the ground for Cor. to Secs. 21. 22. 27. 28 marked with 2 notches on S. and 3 notches on E. edges and raised a mound of stone alongside. Pits impracticable.

from which

A Yellow Pine 23 ins diam. bears N.  $15^{\circ}$  W. 22 lks. dist. marked T. 9 N. R. 21 E. S., 21 B. T.

A Yellow Pine 6 ins diam. bears S.  $23^{\circ}$  W. 76 lks. dist. marked T. 9 N. R. 21 E. S., 28 B. T.

A Live Oak 7 ins. diam. bears S.  $44^{\circ}$  E. 56 lks. dist. marked T. 9 N. R. 21 E. S., 27 B. T.

No other trees within limits.

Land mountainous

Soil 3<sup>rd</sup> rate

Timber of pine &amp; oak.

Vegetation. grass.

Township

9 N

Range

21 E

Gila and Salt River

Meridian.

Chains

East, on a random line between Sections 22 and 27.

Variation

13° 17'

East.

Descend.

2.23 Cross Wash, 10 lks. wide, Course S. 47° E and ascend.

33.11 Top of Spur, bears N. 13° W. &amp; S. 13° E and descend.

40.00 Set temporary  $\frac{1}{4}$  Sec. Cor.

41.60 Cross Road, bears N. &amp; S.

43.40 Cross Creek 60 lks. wide, Course S. and ascend.

79.88 Intersect N. &amp; S. line, 47 lks. N. of cor. to secs.

22-23-26-27 from which corner, I run

N. 89° 40' W. on a true line between sections 22 &amp; 27

Variation

13° 22'

East

39.94 Set a Sand stone 18 x 12 x 10 ins., 12 ins. in the ground, for  $\frac{1}{4}$  Sec. Cor., marked  $\frac{1}{2}$  on N. face, and raised a mound of stone alongside. Pits impracticable.

79.88 The corner to sections 21. 22. 27. 28

Land mountainous

Soil

2<sup>nd</sup>

rate

Timber of *Yucca manzanita* & *juniper*.

Vegetation. grass.

I carefully examined the adjustments of my solar compass to-day, particularly the latitude and reversing apparatus, and found them correct.

Feb. 13. 1883

Chains

North, between Sections 21 and 22.

Variation  $13^{\circ} 17'$  East.*Descend.*4.39 Cross Wash, 14 lks. wide, Course  $S. 36^{\circ} E$  and ascend.40.00 Set a Sand stone  $13 \times 10 \times 6$  ins., 8 ins. in the ground, for  $\frac{1}{4}$  Sec. Cor., marked  $\frac{1}{4}$  on W face, and raised a mound of stone alongside. Pits impracticable.80.00 Set a Sand stone  $27 \times 14 \times 13$  ins. 21 ins. in the ground for Cor. to Secs. 15. 16. 21. 22 marked with 3 notches on S. and 3 notches on E. edges and raised a mound of stone alongside. Pits impracticable.*Land rolling.*Soil 3<sup>rd</sup> rate

Timber of pine.

Vegetation. grass.



Township,

9 BOOK 59

Range

21 E

Gila and Salt River Meridian.

Chains

East, on a random line between Sections 15 and 22.

Variation 13° 24' East.

Descend.

27.06 Cross Brook. 14 lks. wide, Course S. 17° E.

40.00 Set temporary 1/4 Sec. Cor.

43.67 Cross Road, bears, N. 11° E. & S. 11° W.

79.62 Intersect N. & S. line, 19 lks. N. of cor. to secs.

14. 15. 21. 22 from which corner, I run

N. 89° 52' W. on a true line between sections 15 & 22

Variation 13° 56' East

39.81 Set a post 3 ft. long, 3 ins. diam. with marked stone 12 ins. in the ground, for 1/4 Sec. Cor., marked 1/4 S. on N. face, dug pits, 18 x 18 x 12 ins., E. and W. of post 5 1/2 ft. dist., and raised a mound of earth 1 1/2 ft. high, 3 1/2 ft. base around post.

79.62 The corner to sections 15. 16. 21. 22

Land rolling.

Soil 2<sup>nd</sup> rate

Timber of Fernie.

Vegetation. Grass.

Township

9 N

Range

21 E

Gila and Salt River Meridian.

Chains

North, between Sections 15 and 16.

Variation

13° 24' East.

*Ascend.*

5.70 Top of Spur, bears E. &amp; W. and descend.

40.00 Set a Sand stone 17 x 13 x 5 ins., 12 ins. in the ground, for  $\frac{1}{4}$  Sec. Cor., marked  $\frac{1}{4}$  on W. face, and raised a mound of stone alongside. Pits impracticable.

60.57 Cross Wash, 10 lks. wide, Course S. 19° E. and ascend.

80.00 Set a Sand stone 29 x 12 x 8 ins. 21 ins. in the ground for Cor. to Secs. 9. 10. 15. 16 marked with 4 notches on S. and 3 notches on E. edges and raised a mound of stone alongside. Pits impracticable.

from which

A Juniper 8 ins. diam. bears N. 10° W. 4 lks. dist. marked T. 9 N. R. 21 E. S., 9 B. T.

A White Oak 14 ins. diam. bears S. 60° E. 62 lks. dist. marked T. 9 N. R. 21 E. S., 15 B. T.

No other trees within limits.

Land mountainous

Soil 2<sup>nd</sup> rate

Timber of Juniper &amp; oak.

Vegetation. grass.

Township 9 N Range 21 E

Gila and Salt River Meridian.

Chains East, on a random line between Sections 10 and 15.

Variation 13° 19' East.

*Ascend.*

38.86 Top of Spur, bears N. 15° E. &amp; S. 15° W. and descend.

40.00 Set temporary  $\frac{1}{4}$  Sec. Cor.

79.84 Intersect N. &amp; S. line, 15 lks. N. of cor. to secs.

10. 11. 14 &amp; 15 from which corner, I run

N. 89° 57' W. on a true line between sections 10 &amp; 15

Variation 13° 30' East

39.92 Set a Sand stone 15 x 12 x 9 ins., 10  
 ins. in the ground, for  $\frac{1}{4}$  Sec. Cor., marked  $\frac{1}{4}$  on N.  
 face, and raised a mound of stone alongside. Pits  
 impracticable.

79.84 The corner to sections 9. 10. 15. 16

Land mountainous

Soil 3<sup>rd</sup> rate

Timber of pine.

Vegetation. grass.

Chains

North, between Sections 9 and 10.

Variation  $13^{\circ} 19'$  East.

Continue to ascend.

27.20 Cross Wash, 9 lks. wide, Course S. 9. W. and ascend.

46.00 Set a Sand stone  $18 \times 10 \times 9$  ins., 12 ins. in the ground, for  $\frac{1}{4}$  Sec. Cor., marked  $\frac{1}{4}$  on W. face, and raised a mound of stone alongside. Pits impracticable.A Live Oak 12 ins. diam. bears N. 50. W. 71 lks. dist. marked  $\frac{1}{4}$  S. B. T.A Yellow Pine 30 ins diam. bears S. 85. E. 24 lks. dist. marked  $\frac{1}{4}$  S. B. T.

71.36 Top of Ridge, bears N. 63. W. 3. E. and descend.

80.00 Set a Sand stone  $27 \times 12 \times 6$  ins. 21 ins. in the ground for Cor. to Secs. 3, 4, 9 & 10 marked with 5 notches on S. and 3 notches on E. edges and raised a mound of stone alongside. Pits impracticable.

from which

A Yellow Pine 36 ins diam. bears N. 45. E. 38 lks. dist. marked T. 9 N. R. 21 E. S., 3 B. T.

A Live Oak 13 ins. diam. bears N. 33. W. 55 lks. dist. marked T. 9 N. R. 21 E. S., 4 B. T.

A Juniper 10 ins. diam. bears S. 74. W. 41 lks. dist. marked T. 9 N. R. 21 E. S., 4 B. T.

No other trees within limits.

Land mountainous Heavy timber of pine &amp; juniper.

Soil rate Vegetation. grass.

Township 9 N Range 21 E

Gila and Salt River Meridian.

Chains

East, on a random line between Sections 3 and 10.

Variation  $13^{\circ} 40'$  East.

Descend.

40.00 Set temporary  $\frac{1}{4}$  Sec. Cor.

80.08 Intersect N. &amp; S. line, 21 lks. S. of cor. to secs.

2, 3, 10 &amp; 11 from which corner, I run

S.  $89^{\circ} 50'$  W. on a true line between sections 3 & 10Variation  $18^{\circ} 00'$  East40.04 Set a Sand stone  $26 \times 11 \times 8$  ins., 21ins. in the ground, for  $\frac{1}{4}$  Sec. Cor., marked  $\frac{1}{4}$  on N.

face, and raised a mound of stone alongside. Pits

impracticable.

80.08 The corner to sections 3, 4, 9, &amp; 10

Land rolling.

Soil 3<sup>d</sup> rate

Vegetation grass.

Timber of pine.

Township

BOOK 59

Range

21 E

Gila and Salt River Meridian.

Chains

North, on a random line between Sections 3 and 4.

Variation  $13^{\circ} 00'$  East.

Descend.

23.59 Ascend.

40.00 Set temporary  $\frac{1}{4}$  Sec. Cor.79.96 Intersect N. B. of Tp. 10 lks. W. of cor. to secs.  
previously set by me.  
3, 4, 33 & 34 from which corner, I run

S. 4. W. on a true line, between sections 3 &amp; 4

Variation  $13^{\circ} 40'$  East.39.90 Set a Sand stone  $16 \times 12 \times 7$  ins., 10  
ins. in the ground, for  $\frac{1}{4}$  Sec. Cor., marked  $\frac{1}{4}$  on  
face, and raised a mound of stone alongside. Pits  
impracticable.

79.96 The corner to sections 3, 4, 9 &amp; 10

Land rolling.

Soil 3<sup>rd</sup> rate

Vegetation grass.

Timber of

pine.

Feb. 14. 1883

Township 9 N Range 21 E

Standard Gila and Salt River Meridian.

From the corner to sections, 32 & 33 previously set by me.  
Chains 1/2 m North, between Sections 32 and 33.

Variation 13° 30' East.

Ascend.

4.30 Cross Road, bears N. 15° W. & S. 15° E.

30.00 Cross Wash, 13 lks. wide, Course S. 21° E.

40.00 Set a Sand stone 17 x 13 x 6 ins., 12 ins. in the ground, for 1/4 Sec. Cor., marked 1/4 on face, and raised a mound of stone alongside. Pits impracticable. from which

A Yellow Pine 14 ins diam. bears S. 61° E. 38 lks. dist. marked 1/4 S. B. T.

A Yellow Pine 12 ins diam. bears S. 21° W. 40 lks. dist. marked 1/4 S. B. T.

67.20 Cross Wash, 9 lks. wide, Course S. 12° W. and ascend.

80.00 Set a nest 4 ft. long, 4 ins. square, 24 ins. in the ground, for Cor. to Secs. 28, 29, 32 & 33 marked T. 9 N. S. 28 on N. E., R. 21 E., S. 33 on S. E., S. 32 on S. W., and S. 29 on N. W. faces, with 1 notch on S. and 4 notches on E. edges, from which

A Yellow Pine 16 ins diam. bears S. 17° W. 66 lks. dist. marked T. 9 N. R. 21 E. S., 32 B. T.

A Yellow Pine 13 ins diam. bears S. 26° E. 68 lks. dist. marked T. 9 N. R. 21 E. S., 33 B. T.

A Yellow Pine 19 ins diam. bears N. 22° W. 62 lks. dist. marked T. 9 N. R. 21 E. S., 29 B. T.

A Yellow Pine 10 ins diam. bears N. 62° E. 1.27 lks. dist. marked T. 9 N. R. 21 E. S., 25 B. T.

Land mountainous

Soil 3<sup>rd</sup> rate

Heavy timber of pine. Vegetation. grass.

Chains

East, on a random line between Sections 28 and 33.

Variation  $13^{\circ} 19'$  East.

Descend.

7.40 Cross Wash, 8 lks. wide, Course S. and ascend.

29.12 Top of Ridge, bears N.  $50^{\circ}$  W. & S.  $50^{\circ}$  E. and descend.40.00 Set temporary  $\frac{1}{4}$  Sec. Cor.

79.78 Intersect N. &amp; S. line, 24 lks. S. of cor. to secs.

27.28.32 &amp; 34 from which corner, I run

S.  $89^{\circ} 50'$  W. on a true line between sections 28 & 33Variation  $13^{\circ} 30'$  East39.89 Set a Sand stone  $16 \times 12 \times 7$  ins., 10 ins. in the ground, for  $\frac{1}{4}$  Sec. Cor., marked  $\frac{1}{4}$  on N. face, and raised a mound of stone alongside. Pitsimpracticable. from which  
A Juniper 5 ins. diam. bears S.  $34^{\circ}$  W. 52 lks. dist.  
marked  $\frac{1}{4}$  S. B. T.A Yellow Pine 12 ins diam. bears N.  $5^{\circ}$  W. 89 lks. dist.  
marked  $\frac{1}{4}$  S. B. T.

79.78 The corner to sections 28, 29, 32 &amp; 33

Land mountainous

Soil 3<sup>rd</sup> rate

Timber of pine &amp; juniper.

Vegetation. grass.



Township 9 N Range 21 E

Gila and Salt River Meridian.

Chains North, between Sections 28 and 29.

Variation 13° 19' East.

Ascend.

27.52 Top of Spur, bears N. 48° W. 48' and descend.

40.00 Set a Sand stone 16 x 13 x 7 ins., 10 ins. in the ground, for  $\frac{1}{2}$  Sec. Cor., marked  $\frac{1}{2}$  on face, and raised a mound of stone alongside. Pits impracticable.

from which

A Yellow Pine 12 ins diam. bears N. 86° E. 82 lks. dist. marked  $\frac{1}{2}$  S. B. T.

A Yellow Pine 13 ins diam. bears S. 88° W. 58 lks. dist. marked  $\frac{1}{2}$  S. B. T.

46.13 Ascend.

80.00 Set a Sand stone 26 x 10 x 5 ins. 18 ins. in the ground for Cor. to Secs. 20. 21. 28 & 29 marked with 2 notches on S. and 4 notches on E. edges and raised a mound of stone alongside. Pits impracticable.

from which

A Yellow Pine 18 ins diam. bears S. 16° W. 41 lks. dist. marked T. 9 N. R. 21 E. S., 29 B. T.

A Yellow Pine 12 ins diam. bears S. 33° W. 29 lks. dist. marked T. 9 N. R. 21 E. S., 29 B. T.

A Yellow Pine 10 ins diam. bears N. 34° E. 30 lks. dist. marked T. 9 N. R. 21 E. S., 29 B. T.

No other trees within limits.

Land mountainous

Soil 3<sup>rd</sup> rate

Timber of pine & juniper Vegetation. grass.

Township

9 N.

Range

21 E

Gila and Salt River Meridian.

Chains

East, on a random line between Sections 21 and 28.

Variation 13° 40' East.

Ascend.

23.70 Top of Ridge, bears N. 14° W. & S. 14° E and descend.

40.00 Set temporary 1/4 Sec. Cor.

80.21 Intersect N. & S. line, 11 lks. N. of cor. to secs.

21, 22, 27 & 28 from which corner, I run

N. 89° 53' W. on a true line between sections 21 & 28

Variation 13° 17' East

40.11 Set a Sand stone 15 x 9 x 7 ins., 10 ins. in the ground, for 1/4 Sec. Cor., marked 1/4 on N. face, and raised a mound of stone alongside. Pits impracticable.

80.21 The corner to sections 20, 21, 28 & 29

Land mountainous

Soil 3<sup>rd</sup> rate

Timber of Fernie.

Vegetation. grass.

Township 9 N Range 31 E

Gila and Salt River Meridian.

Chains

North, between Sections 20 and 21.

Variation  $13^{\circ} 40'$  East.*Ascend.*

40.00 Set a post 3 ft. long, 3 ins. diam. with marked stone  
12 ins. in the ground, for  $\frac{1}{4}$  Sec. Cor., marked  $\frac{1}{4}$  S. on  
W. face, and raised a mound of stone  $1\frac{1}{2}$  ft. high,

$3\frac{1}{2}$  ft. base around post. Pits impracticable.

46.10 Top of Spur, bears  $\text{C. \& W.}$  and descend.

79.12 *Ascend.*

80.00 Set a Sand stone  $20 \times 12 \times 6$  ins.  $16$  ins. in  
the ground for Cor. to Secs. 16, 17, 20 & 21 marked  
with 3 notches on S. and 4 notches on E. edges and  
raised a mound of stone alongside. Pits impracticable.

from which

A Yellow Pine 11 ins diam. bears  $\text{N } 8^{\circ} \text{ E.}$  11 lks. dist.  
marked T. 9 N. R. 21 E. S., 16 B. T.

A Yellow Pine 8 ins diam. bears  $\text{S. } 45^{\circ} \text{ E.}$  12 lks. dist.  
marked T. 9 N. R. 21 E. S., 21 B. T.

No other trees within limits.

Land mountainous

Soil 3<sup>rd</sup> rate

Timber of pine.

Vegetation. Grass.

Township

9 N

Range

21 E

Gila and Salt River Meridian.

Chains

East, on a random line between Sections 16 and 21.

Variation 13° 27' East.

Ascend.

32.53 Top of Ridge, bears N. 43° W. or S. 43° E and descend.

40.00 Set temporary 1/4 Sec. Cor.

80.49 Intersect N. & S. line, 32 lks. S of cor. to secs.

15. 16. 21. 22 from which corner, I run

S 89° 46' W. on a true line between sections 16 & 21

Variation 13° 24' East

40.24 Set a Sand stone 19 x 13 x 9 ins., 12 ins. in the ground, for 1/4 Sec. Cor., marked 1/4 on N. face, and raised a mound of stone alongside. Pits impracticable.

80.49 The corner to sections 16. 17. 20 & 21

Land mountainous

Soil 3<sup>rd</sup> rate

Timber of pine.

Vegetation. grass.

Township

9 BOOK 59

Range

21 E

40

Gila and Salt River Meridian.

Chains

North, between Sections 16 and 17.

Variation

13° 27'

East.

Ascend.

37.28 Top of Ridge, bears N. 46° W. S. 46° E. (and descend.

40.00 Set a sand stone 16 x 12 x 5 ins., 10 ins. in the ground, for  $\frac{1}{4}$  Sec. Cor., marked  $\frac{1}{4}$  on W. face, and raised a mound of stone alongside. Pits impracticable.

76.50 Ascend.

80.00 Set a sand stone 23 x 10 x 7 ins. 18 ins. in the ground for Cor. to Secs. 8. 9. 16. 17 marked with 4 notches on S. and 4 notches on E. edges and raised a mound of stone alongside. Pits impracticable.

from which

A Yellow Pine 17 ins diam. bears N. 67° E. 36 lks. dist. marked T. 9 N. R. 21 E. S., 9 B. T.

A Yellow Pine 25 ins diam. bears N. 42° W. 46 lks. dist. marked T. 9 N. R. 21 E. S., 8 B. T.

A Yellow Pine 20 ins diam. bears S. 65° W. 36 lks. dist. marked T. 9 N. R. 21 E. S., 17 B. T.

No other trees within limits.

Land mountainous

Soil 3<sup>rd</sup> rate

Heavy timber of pine.

Vegetation. grass.

Feb. 15. 1883

Chains

East, on a random line between Sections 9 and 16.

Variation  $13^{\circ} 30'$  East.

Descend.

40.00 Set temporary  $\frac{1}{4}$  Sec. Cor.79.88 Cross Wash, 12 lks. wide, Course  $S. 9^{\circ} E$  and ascend.

80.12 Intersect N. &amp; S. line, 13 lks. N. of cor. to secs.

9, 10, 15 &amp; 16 from which corner, I run

 $N. 89^{\circ} 52' W.$  on a true line between sections 9 & 16Variation  $13^{\circ} 19'$  East

40.00 Set a Sand stone  $17 \times 9 \times 6$  ins., 12  
 ins. in the ground, for  $\frac{1}{4}$  Sec. Cor., marked  $\frac{1}{4}$  on N.  
 face, and raised a mound of stone alongside. Pits  
 impracticable. from which

A Yellow Pine 12 ins diam. bears  $N. 12^{\circ} E$ . 63 lks. dist.  
 marked  $\frac{1}{4}$  S. B. T.

A Live Oak 7 ins. diam. bears  $S. 3^{\circ} E$ . 15 lks. dist.  
 marked  $\frac{1}{4}$  S. B. T.

80.12 The corner to sections 8, 9, 16, 17

Land mountainous

Soil  $3^{\circ}$  rateTimber of *Yerri oak*.Vegetation. *grass*

Township 9 N Range 21 E  
Gila and Salt River Meridian.

Chains

North, between Sections 8 and 9.

Variation 13° 30' East.

*Ascend.*

20.15 Top of Ridge, bears N. 43° E. &amp; S. 43° W. and descend.

40.00 Set a Basalt stone 16 x 13 x 7 ins., 10  
ins. in the ground, for  $\frac{1}{4}$  Sec. Cor., marked  $\frac{1}{4}$  on W.  
face, and raised a mound of stone alongside. Pits  
impracticable.

67.80 Cross Wash, 13 lks. wide, Course S. 54° W. and ascend.

80.00 Set a Sand stone 19 x 13 x 7 ins. 12 ins. in  
the ground for Cor. to Secs. 4, 5, 8 & 9 marked  
with 8 notches on S. and 4 notches on E. edges and  
raised a mound of stone alongside. Pits impracticable.

from which

A Yellow Pine 10 ins diam. bears N. 4° E. 60 lks. dist.  
marked T. 9 N. R. 21 E. S., 4 B. T.

A Yellow Pine 6 ins diam. bears S. 50° W. 32 lks. dist.  
marked T. 9 N. R. 21 E. S., 8 B. T.

No other trees within limits.

Land mountainous

Soil 3<sup>rd</sup> rate

Timber of pine.

Vegetation. grass.

Township

9 N.

Range

21 E.

Gila and Salt River Meridian.

Chains

East, on a random line between Sections 4 and 9.

Variation 13° 20' East.

Descend.

7.20 Cross Wash, 9 lks. wide, Course S. 48° W and ascend.  
 40.00 Set temporary 1/4 Sec. Cor.  
 42.11 Top of Ridge, bears N. 3° W. & S. 3° E and descend.

79.81 Intersect N. & S. line, 6 lks. S. of cor. to secs.

3.4. 9. 10 from which corner, I run

S. 89° 57' W. on a true line between sections 4 & 9

Variation 13° 40' East

39.91 Set a Basalt stone 15 x 10 x 5 ins., 10  
 ins. in the ground, for 1/4 Sec. Cor., marked 1/4 on N  
 face, and raised a mound of stone alongside. Pits  
 impracticable.

79.81 The corner to sections 4. 5. 8. & 9

Land mountainous

Soil 3<sup>rd</sup> rate

Timber of Pine.

Vegetation. Grass.



Township, 9 N Range 21 E

Gila and Salt River Meridian.

Chains

North, on a random line between Sections 4 and 5.

Variation  $13^{\circ} 00'$  East.*Ascend.*14.75 Top of Spur, bears  $N. 23^{\circ} E. 23'$  and descend.40.00 Set temporary  $\frac{1}{2}$  Sec. Cor.49.84 Cross Wash, 11 lks. wide, Course  $S. 46^{\circ} W.$  and ascend.80.20 Intersect N.B. of Tp. 26 lks. E. of cor. to secs.  
previously set by me.

45.32 &amp; 33 from which corner, I run

S.  $11^{\circ} E.$  on a true line, between sections 4 & 5Variation  $13^{\circ} 20'$  East.40.20 Set a Sand stone  $28 \times 14 \times 5$  ins., 21  
ins. in the ground, for  $\frac{1}{2}$  Sec. Cor., marked  $\frac{1}{2}$  on W.  
face, and raised a mound of stone alongside. Pits  
impracticable.

80.20 The corner to sections 4, 5, 8 &amp; 9

Land mountainous

Soil 3<sup>rd</sup> rate

Timber of pine.

Vegetation. grass.

Township

BOOK 59

Range

21 E

Gila and Salt River Meridian.

Standard

From the corner to sections, 31 &amp; 32

previously set by me.

Chains

In North, between Sections 31 and 32. //

Variation

13° 30'

East.

Ascend.

40.00

Set a post 3 ft. long, 3 ins. diam. with marked stone  
12 ins. in the ground, for  $\frac{1}{2}$  Sec. Cor., marked  $\frac{1}{2}$  S. on  
W. face, and raised a mound of stone  $1\frac{1}{2}$  ft. high,  
 $3\frac{1}{2}$  ft. base around post. Pits impracticable.

64.82

Top of Spur, bears N. 55° W. & S. 55° E. and descend.

80.00

Set a sand stone 31 x 11 x 5 ins. 24 ins. in  
the ground for Cor. to Secs. 29, 30, 31 & 32 marked  
with 1 notch on S. and 5 notches on E. edges and  
raised a mound of stone alongside. Pits impracticable.

from which

A Yellow Pine 28 ins diam. bears S. 36° E. 82 kts. dist.  
marked T. 9 N. R. 21 E. S., 32 B. T.

A Yellow Pine 16 ins diam. bears N. 10° W. 72 kts. dist.  
marked T. 9 N. R. 21 E. S., 30 B. T.

A Yellow Pine 9 ins diam. bears N. 38° E. 26 kts. dist.  
marked T. 9 N. R. 21 E. S., 29 B. T.

No other trees within limits.

Land mountainous

Soil 3<sup>rd</sup> rate

Timber of pine.

Vegetation. grass.

Township 9 N. Range 27 E.  
Gila and Salt River Meridian.

Chains East, on a random line between Sections 29 and 32.  
Variation  $13^{\circ} 19'$  East.

*Ascend.*

40.00 Set temporary  $\frac{1}{4}$  Sec. Cor.

64.70 Top of Ridge, bears  $N. 41^{\circ} E. 3.41'$  and descend.

80.22 Intersect N. & S. line, 18 lks. S. of cor. to secs.

28, 29, 32 & 33 from which corner, I run

$S. 89^{\circ} 52' W.$  on a true line between sections 29 & 32

Variation  $13^{\circ} 19'$  East

40.11 Set a Sand stone  $21 \times 10 \times 5$  ins., 15-  
ins. in the ground, for  $\frac{1}{4}$  Sec. Cor., marked  $\frac{1}{4}$  on N.  
face, and raised a mound of stone alongside. Pits  
impracticable.

80.22 The corner to sections 29, 30, 31, 32

Land mountainous

Soil 3<sup>rd</sup> rate

Timber of Juniper.

Vegetation. grass.

Township 9 BOOK 59 Range 21 E

Gila and Salt River Meridian.

Chains West, on a random line between Sections 30 and 31.  
Variation 13° 19' East.

Descend.

37.85 Cross dry bed of Cottonwood Creek  
23 lks wide, Course S. and Ascend.

40.00 Set temporary  $\frac{1}{4}$  Sec. Cor.

79.86 Intersect W. B. of Tp. 36 lks. N. of cor. to secs.  
26, 30, 31 & 36 from which corner, I run  
previously set by me.

N. 89° 45' E on a true line, between sections 30 & 31  
Variation 13° 00' East.

39.86 Set a Sand stone 17 x 9 x 8 ins., 12  
ins. in the ground, for  $\frac{1}{4}$  Sec. Cor., marked  $\frac{1}{4}$  on N.  
face, and raised a mound of stone alongside. Pits  
impracticable.

79.86 The corner to sections 29, 30, 31 & 32

Land mountainous

Soil 3<sup>rd</sup> rate

Timber of Pine.

Vegetation. grass.

Township 9 N Range 21 E

Gila and Salt River Meridian.

Chains North, between Sections 29 and 30.

Variation 13° 19' East.*Descend.*

40.00 Set a Sand stone 14 x 10 x 9 ins., 10 ins. in the ground, for  $\frac{1}{4}$  Sec. Cor., marked  $\frac{1}{4}$  on W. face, and raised a mound of stone alongside. Pits impracticable. from which

▲ Yellow Pine 50 ins diam. bears N. 20° E. 38 lks. dist. marked  $\frac{1}{4}$  S. B. T.

▲ Yellow Pine 32 ins diam. bears S. 50° W. 1.04 lks. dist. marked  $\frac{1}{4}$  S. B. T.

46.00 Cross Wash, 11 lks. wide, Course S. 81° W and ascend.

69.32 Top of Spur, bears N. 61° E. & S. 61° W and descend.

79.98 Cross Wash, 10 lks. wide, Course S. 46° W and ascend.

80.00 Set a Sand stone 25 x 10 x 5 ins. 18 ins. in the ground for Cor. to Secs. 19, 20, 29 & 30 marked with 2 notches on S. and 5 notches on E. edges and raised a mound of stone alongside. Pits impracticable.

Quaking Ash 26 ins diam. bears S. 19° E. 90 lks. dist. marked T. 9N. R. 21 E. S., 29 B. T. from which

Quaking Ash 11 ins diam. bears S. 33° W. 111 lks. dist. marked T. 9N. R. 21 E. S., 30 B. T.

▲ Cottonwood 10 ins. diam. bears N. 81° E. 68 lks. dist. marked T. 9N. R. 21 E. S., 20 B. T.

No other trees within limits

Land mountainous

Soil

rate

rate

Heavy timber of pine & ash.

Vegetation. grass.

Township

9 N

Range

21 E

Gila and Salt River Meridian.

Chains

East, on a random line between Sections 20 and 29.

Variation

13° 42'

East.

Descend.

1.41 Cross Wash, 10 lks. wide, Course S. W. and ascend.

40.00 Set temporary  $\frac{1}{4}$  Sec. Cor.

80.42 Intersect N. &amp; S. line, 13 lks. N. of cor. to secs.

20. 21. 28. 29 from which corner, I run

N. 89° 54' W. on a true line between sections 20 &amp; 29

Variation

13° 40'

East

40.21 Set a Sand stone 16 x 13 x 5 ins., 10 ins. in the ground, for  $\frac{1}{4}$  Sec. Cor., marked  $\frac{1}{4}$  on N. face, and raised a mound of stone alongside. Pits impracticable.

80.42 The corner to sections 19. 20. 29 &amp; 30

Land mountainous

Soil 3<sup>rd</sup> rate

Timber of Pine.

Vegetation. grass.

I carefully examined the adjustments of my solar compass to-day, particularly the latitude and reversing apparatus, and found them correct.

Feb. 16. 1883

Township 4 N Range 21 E

Gila and Salt River Meridian.

Chains

West, on a random line between Sections 19 and 30.

Variation  $13^{\circ} 42'$  East.

Descend.

31.20 Cross Creek 45 lks. wide, Course S. and ascend.

40.00 Set temporary  $\frac{1}{4}$  Sec. Cor.

41.59 Top of Spur, bears N. &amp; S. and descend.

63.81 Cross Creek 12 lks. wide, Course S. and ascend.

79.40 Intersect W. B. of Tp. 9 lks. N. of cor. to secs.  
previously set by me.

19.24.25 &amp; 30 from which corner, I run

N.  $89^{\circ} 56'$  E. on a true line, between sections 19 & 30Variation  $13^{\circ} 00'$  East.39.40 Set a Sand stone  $21 \times 12 \times 5$  ins., 15  
ins. in the ground, for  $\frac{1}{4}$  Sec. Cor., marked  $\frac{1}{4}$  on N.  
face, and raised a mound of stone alongside. Pits  
impracticable.

79.40 The corner to sections 19.20.29 &amp; 30

Land mountainous

Soil 3<sup>rd</sup> rate

Timber of pine.

Vegetation. grass.

Chains

North, between Sections 19 and 20.

Variation  $13^{\circ} 42'$  East.*Ascend.*

- 23.47 Top of Spur, bears  $N. 68^{\circ} E. \& S. 65^{\circ} W$  and descend.
- 30.88 Cross Wash, 9 lks. wide, Course  $S. 40^{\circ} W$  and ascend.
- 40.00 Set a Sand stone  $19 \times 13 \times 7$  ins., 12 ins. in the ground, for  $\frac{1}{4}$  Sec. Cor., marked  $\frac{1}{4}$  on W. face, and raised a mound of stone alongside. Pits impracticable.
- 54.33 Top of Spur, bears  $N. 56^{\circ} E. \& S. 56^{\circ} W$  and descend.
- 68.19 Cross Wash, 9 lks. wide, Course  $S. 83^{\circ} W$  and ascend.
- 80.00 Set a Sand stone  $33 \times 16 \times 5$  ins. 24 ins. in the ground for Cor. to Secs. 17. 18. 19. 20 marked with 3 notches on S. and 5 notches on E. edges and raised a mound of stone alongside. Pits impracticable.

Land mountainous

Soil 3<sup>rd</sup> rate

Timber of Pine.

Vegetation. grass.



Township 9 Range 21 E  
Gila and Salt River Meridian.

Chains East, on a random line between Sections 17 and 20.  
Variation 13° 00' East.

Ascend.

40.00 Set temporary 1/4 Sec. Cor.

79.89 Intersect N. & S. line, 48 lbs. N. of cor. to sec.

16. 17. 20 & 21 from which corner, I run

N. 89° 39' W. on a true line between sections 17 & 20

Variation 13° 27' East

39.94 Set a Sand stone 18 x 13 x 6 ins., 12  
ins. in the ground, for 1/4 Sec. Cor., marked 1/4 on N.  
face, and raised a mound of stone alongside. Pits  
impracticable.

79.89 The corner to sections 17. 18. 19. 20

Land mountainous

Soil 3<sup>rd</sup> rate

Timber of pine.

Vegetation. grass.

Township 9 BOOK 59 Range 21 E

Gila and Salt River Meridian.

Chains

West, on a random line between Sections 18 and 19.

Variation 13° 00' East.

Descend.

27.95 <sup>Cottonwood</sup> Cross Creek 19 lks. wide, Course S. and ascend.

40.00 Set temporary  $\frac{1}{4}$  Sec. Cor.

79.65 Intersect W. B. of Tp. 17 lks. S. of cor. to secs.  
previously set by me.

18. 18. 19. 24 from which corner, I run

S 89° 53' E on a true line, between sections 18 & 19

Variation 13° 00' East.

39.65 Set a Sand stone 26 x 14 x 9 ins., 2'  
ins. in the ground, for  $\frac{1}{4}$  Sec. Cor., marked  $\frac{1}{4}$  on N.  
face, and raised a mound of stone alongside. Pits  
impracticable.

79.65 The corner to sections 17. 18. 19. 20

Land mountainous.

Soil 3<sup>d</sup> rate

Timber of pine.

Vegetation. grass.

Township

9 N.

Range

21 E.

Gila and Salt River

Meridian.

Chains

North, between Sections 17 and 18.

Variation

13° 00'

East.

*Ascend.*

- 5.07 Top of Spur, bears N. 72° E. 72' and descend.
- 28.44 Cross Wash, 8 lks. wide, Course S. 47° W. and ascend.
- 40.00 Set a Sand stone 16 x 14 x 9 ins., 10 ins. in the ground, for  $\frac{1}{4}$  Sec. Cor., marked  $\frac{1}{4}$  on W. face, and raised a mound of stone alongside. Pits impracticable.
- 42.15 Top of Spur, bears N. 46° E. 46' and descend.
- 80.00 Set a Sand stone 17 x 9 x 6 ins. 12 ins. in the ground for Cor. to Secs. 7, 8, 17, 18 marked with 4 notches on S. and 5 notches on E. edges and raised a mound of stone alongside. Pits impracticable.
- A Yellow Pine 24 ins diam. bears N. 11° E. <sup>from which</sup> 12 lks. dist. marked T. 9 N. R. 21 E. S., 8 B. T.
- A Yellow Pine 20 ins diam. bears S. 12° W. 6 7/8 lks. dist. marked T. 9 N. R. 21 E. S., 18 B. T.
- A Yellow Pine 24 ins diam. bears S. 63° E. 1.10 lks. dist. marked T. 9 N. R. 21 E. S., 17 B. T.

No other trees within limits.

Land mountainous

Soil 3<sup>rd</sup> rate

Timber of pine.

Vegetation. grass.

Township

BOOK 59

Range

21 E

Gila and Salt River Meridian.

Chains

East, on a random line between Sections 8 and 17.

Variation  $13^{\circ} 11'$  East.

Ascend.

40.00 Set temporary  $\frac{1}{4}$  Sec. Cor.56.51 Top of Ridge, bears  $N. 45^{\circ} E. 54.46'$  and descend.

80.27 Intersect N. &amp; S. line, 8 lks. S. of cor. to secs.

8. 9. 16. 17 from which corner, I run

 $S. 89^{\circ} 57' W.$  on a true line between sections 8 & 17Variation  $13^{\circ} 30'$  East40.13 Set a Sand stone  $18 \times 16 \times 7$  ins., 12ins. in the ground, for  $\frac{1}{4}$  Sec. Cor., marked  $\frac{1}{4}$  on N. face, and raised a mound of stone alongside. Pits

impracticable.

80.27 The corner to sections 7. 8. 17. 18

Land mountainous

Soil  $3^{\text{rd}}$  rate

Timber of pine.

Vegetation. grass.

Township

9 N

Range

24 E

Gila and Salt River

Meridian.

Chains

West, on a random line between Sections 7 and 18.

Variation

13° 11'

East.

Ascend.

- 7.09 A Spring, bears N. 1.00 lks. dist.  
 7.52 Cross Creek 15 lks. wide, Course 9° W and ascend.  
 10.94 Top of Spur, bears N. & S. and descend.  
 18.90 Cross Wash, 10 lks. wide, Course 19° E and ascend.  
 26.07 A Spring, bears S. 36 lks. dist.  
 40.00 Set temporary  $\frac{1}{4}$  Sec. Cor.  
 41.00 Top of Spur, bears N. 31° W. & S. 31° E and descend.  
 49.88 Cross Wash, 12 lks. wide, Course 52° E and ascend.  
 79.48 Intersect W. B. of Tp. 32 lks. N. of cor. to secs.  
 previously set by me.  
 7. 12. 15 & 18 from which corner, I run  
 N. 89° 46' E on a true line, between sections 7 & 18  
 Variation 12° 00' East.  
 39.48 Set a Sand stone 76 x 10 x 7 ins., 10  
 ins. in the ground, for  $\frac{1}{4}$  Sec. Cor., marked  $\frac{1}{4}$  on N.  
 face, and raised a mound of stone alongside. Pits  
 impracticable. from which  
 A Yellow Pine 6 ins diam. bears S. 110° W. 44 lks. dist.  
 marked  $\frac{1}{4}$  S. B. T.  
 A Yellow Pine 7 ins diam. bears N. 30° E. 51 lks. dist.  
 marked  $\frac{1}{4}$  S. B. T. S  
 79.48 The corner to sections 7, 8, 17 & 18  
 Land mountainous  
 Soil 3<sup>rd</sup> rate of  
 Timber of Pine Vegetation. grass.

Township

Range

Gila and Salt River Meridian.

Chains

North, between Sections 7 and 8.

Variation  $13^{\circ} 11'$  East.

Descend.

24.30 <sup>Colony</sup> Cross Creek 20 lks. wide, Course  $S. 12^{\circ} W$  and ascend.  
 36.40 Top of Spur, bears  $E. \& W.$  and descend.  
 40.00 Set a Sand stone  $16 \times 7 \times 7$  ins., 10 ins. in the ground, for  $\frac{1}{4}$  Sec. Cor., marked  $\frac{1}{4}$  on face, and raised a mound of stone alongside. Pits impracticable.

49.18 Cross Creek 24 lks. wide, Course  $S. E.$  and ascend.  
 80.00 Set a Sand stone  $18 \times 14 \times 9$  ins. 12 ins. in the ground for Cor. to Secs. 5, 6, 7, 8 marked with 5 notches on S. and 5 notches on E. edges and raised a mound of stone alongside. Pits impracticable.

from which

A Yellow Pine 8 ins diam. bears  $N. 61^{\circ} E$  52 lks. dist. marked T. 9 N. R. 21 E. S., 5 B. T.

A White Oak 5 ins. diam. bears  $N. 18^{\circ} W$  21 lks. dist. marked T. 9 N. R. 21 E. S., 6 B. T.

No other trees within limits.

Land mountainous

Soil 3<sup>rd</sup> rate

Timber of pine &amp; oak.

Vegetation. grass.

Feb. 17. 1883

Township 9 N Range 21 E  
Gila and Salt River Meridian.

Chains

East, on a random line between Sections 5 and 8.

Variation  $13^{\circ} 10'$  East.*Ascend.*

- 10.33 Top of Hill bears  $N. 13^{\circ} W.$  &  $S. 13^{\circ} E.$  and descend.
- 24.89 Cross Wash, 15 lks. wide, Course  $S. 15^{\circ} W.$  and ascend.
- 40.00 Set temporary  $\frac{1}{2}$  Sec. Cor.
- 73.45 Top of Spur, bears  $N. 26^{\circ} E.$  &  $S. 26^{\circ} W.$  and descend.
- 80.12 Intersect N. & S. line, 13 lks. N. of cor. to secs.  
4.5. 8 & 9 from which corner, I run  
 $N. 89^{\circ} 54' W.$  on a true line between sections 5 & 8  
Variation  $13^{\circ} 20'$  East
- 110.00 Marked a Sand stone  $90 \times 50 \times 5$  ins., 60  
ins. in the ground, for  $\frac{1}{2}$  Sec. Cor., marked  $\frac{1}{2}$  on N.  
face; and raised a mound of stone alongside. Pits  
impracticable. from which
- A Yellow Pine 8 ins diam. bears  $S. 40^{\circ} W.$  35 lks. dist.  
marked  $\frac{1}{2}$  S. B. T.
- A Yellow Pine 14 ins diam. bears  $N. 12^{\circ} W.$  31 lks. dist.  
marked  $\frac{1}{2}$  S. B. T.
- 80.12 The corner to sections 5. 6. 7 & 8  
Land mountainous  
Soil  $3^{\text{rd}}$  rate  
Timber of pine.  
Vegetation. grass.

Township

9 N.

Range

21 E.

Gila and Salt River Meridian.

Chains

West, on a random line between Sections 6 and 7.

Variation  $13^{\circ} 10'$  East.

Descend.

<sup>Cottonwood</sup>32.07 Cross Creek 17 lks. wide, Course  $S. 70^{\circ} E$  and ascend.40.00 Set temporary  $\frac{1}{4}$  Sec. Cor.75.11 Top of Ridge, bears  $N. 33^{\circ} W.$  &  $S. 33^{\circ} E$  and descend.79.27 Intersect W. B. of Tp. 21 lks. N. of cor. to secs.  
1. 6. 7. & 12 <sup>previously set by me,</sup> from which corner, I run $N. 89^{\circ} 57' E$  on a true line, between sections 6 & 7  
Variation  $13^{\circ} 00'$  East.39.27 Set a Sand stone  $17 \times 10 \times 6$  ins., 12  
ins. in the ground, for  $\frac{1}{4}$  Sec. Cor., marked  $\frac{1}{4}$  on N.  
face, and raised a mound of stone alongside. Pits  
impracticable.79.27 The corner to sections 6. 6. 7. 8  
Land mountainousSoil 3<sup>rd</sup> rate

Timber of manzanita &amp; juniper

Vegetation. grass.



Township 9 N., Range 21 E.

Gila and Salt River Meridian.

Chains North, on a random line between Sections 5 and 6.  
Variation  $13^{\circ} 00'$  East.

*Ascend.*16.90 Top of Hill bears *N. 64° W.* and descend.40.00 Set temporary  $\frac{1}{4}$  Sec. Cor.79.87 Intersect *N. B. of Tp. 20* lks. *W.* of cor. to secs.  
*previously set by me.*  
*S. 6. 67. 32* from which corner, I run*S. 9° W.* on a true line, between sections *5 & 6.*  
Variation  $13^{\circ} 10'$  East.89.87 Set a *Sand* stone  $18 \times 11 \times 6$  ins.,  $12$   
ins. in the ground, for  $\frac{1}{4}$  Sec. Cor., marked  $\frac{1}{4}$  on *W.*  
face, and raised a mound of stone alongside. Pits  
impracticable.79.87 The corner to sections *S. 6. 7. 8*

Land rolling.

Soil *3<sup>rd</sup>* rateTimber of *pine.*Vegetation. *grass.*

I carefully examined the adjustments of my solar  
compass to-day, particularly the latitude and revers-  
ing apparatus, and found them correct.

Feb. 19. 1883

## GENERAL DESCRIPTION.

The land in this Tp. is generally mountainous.

The soil can be classed as 2<sup>nd</sup> & 3<sup>rd</sup> rate.

Good grass can be found in most places.

Timber of yellow pine and oak in nearly all parts of the Tp. Juniper and walnut in less quantities. Underbrush of Manzanita oak and other varieties.

A settlement called Forest Dale, in Sec. 34.

A spring in Sec. 7.

For final notes  
see book No. 19

U. S. Surveyor General's Office,

Tucson, Arizona, June 17, 1884.

The foregoing Field Notes of the Survey of the

Subdivision Lines of  
Township 9 North  
Range 31 East

Of the Gila and Salt River Base and Meridian, Arizona, execu-  
ted by O. D. Wheeler

Deputy Surveyor, under his contract of the 14<sup>th</sup>

day of July, 1882, having been  
critically examined and the necessary corrections and explana-

tions made, the said Field Notes and the surveys they describe  
are hereby approved

Royal A. Johnson  
Surveyor General.