

Platted
Meridian

Compare

Book No. ~~76~~ BOOK 76

C. D. Wheeler Deputy Surveyor.

T. *10 N* R. *21 E*

Gila and Salt River Meridian.

No-76

FIELD NOTES

OF

THE SUBDIVISION LINES OF

Township *10 N* Range *21 E*

Gila and Salt River Meridian.

76

BY

C. D. Wheeler Deputy Surveyor.

Under his Contract of *July 14th* 188*3*

Survey Commenced *March 14th* 188*3*

Survey Completed *March 21st* 188*3*

No-76

Platted,
Copied for Washington,
Copied for Register,

Edward Denny & Co., Stationers & Printers, S. F. Cal.

Copyright Secured.

Entered according to Act of Congress, in the Clerk's Office of the Librarian of Congress at Washington, D. C., in the year 1880.

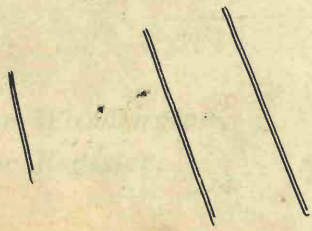
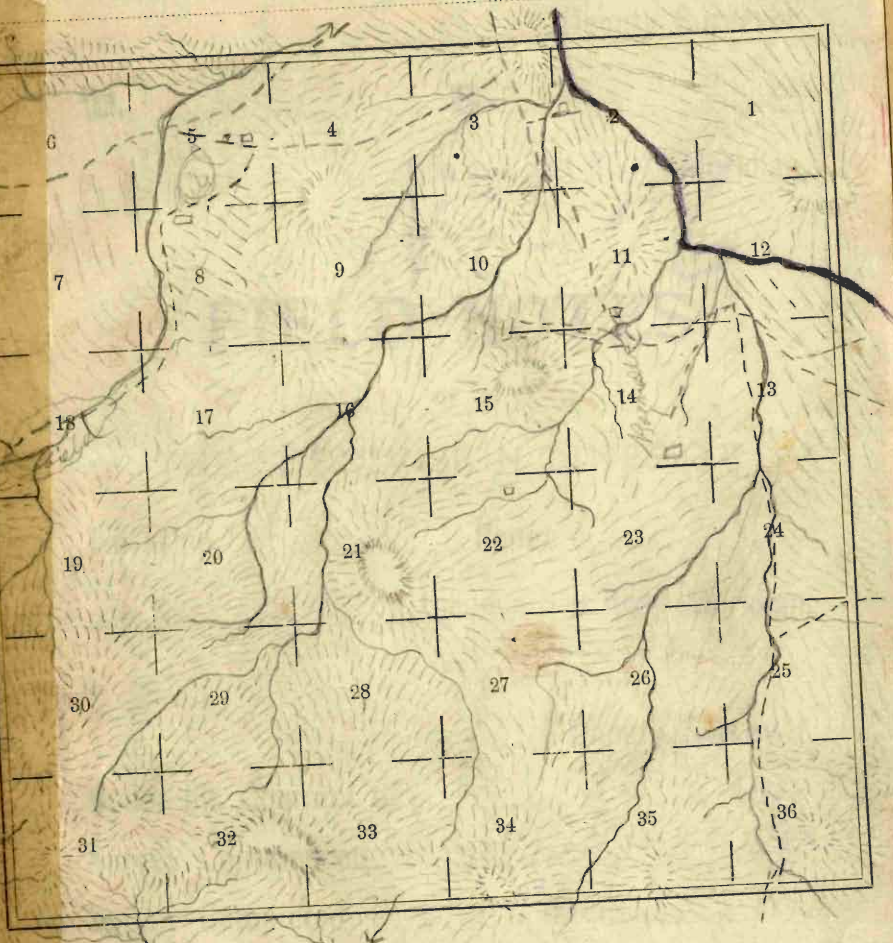
BOOK-76

BOOK 76

Township 10. N

Range 21. E

M.



O. D. Wheeler Deputy Surveyor.

T. *10 N* R. *21 E*

Gila and Salt River Meridian.

No-76

FIELD NOTES

OF

THE SUBDIVISION LINES OF

Township *10 N* Range *21 E*

Gila and Salt River Meridian.

BY

O. D. Wheeler Deputy Surveyor.

Under his Contract of *July 17* 188*2*

Survey Commenced *March 14* 1883

Survey Completed *March 21* 1883

Platted,

Copied for Washington,

Copied for Register,

1B

BOOK 76

Township *10 North* Range *21 East*
G. & S. R. B. & C. Meridia

6	60	5	44	4	33	3	22	2	11	1
59		58		43		32		21		10
7	57	8	42	9	31	10	20	11	9	19
56		55		41		30		19		8
18	54	17	40	16	29	15	18	14	7	13
53		52		39		28		17		6
19	51	20	38	21	27	22	16	23	5	24
50		49		37		26		15		4
30	48	29	36	28	25	27	14	26	3	25
47		46		35		24		13		2
31	45	32	34	33	23	34	12	35	1	36

Ed.

Edward Denny & Co., Stationers & Printers, S. F., Cal.

Copyright Secured,

Entered according to Act of Congress, in the Clerk's Office of the Librarian of Congress at Washington, D. C., in the year 1880.

10

70

ridi

Packs

Surface

ed

F

gr

1B

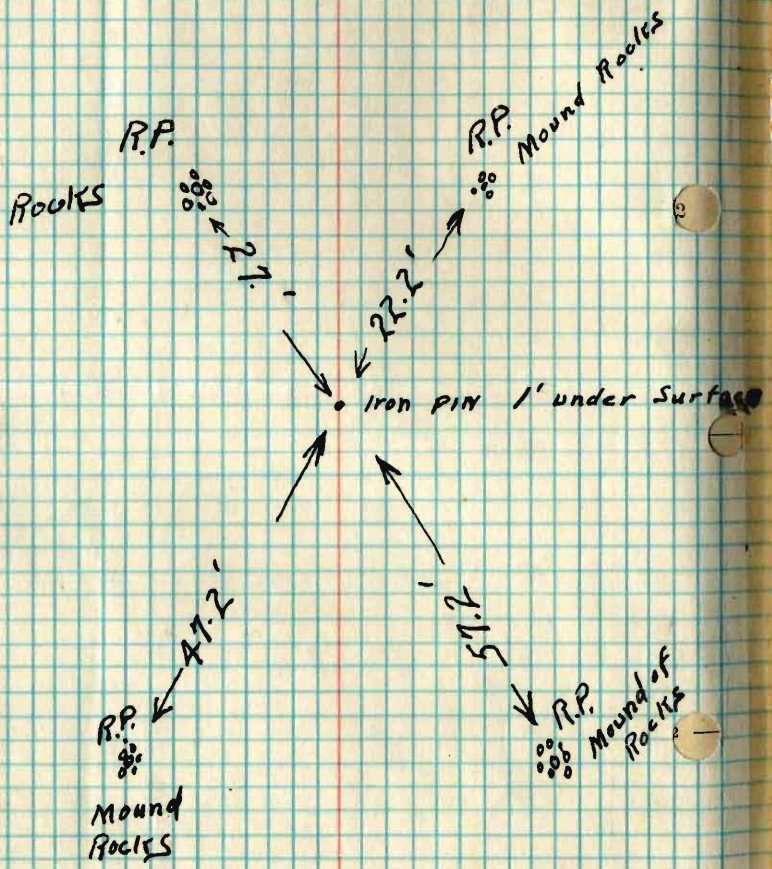
10

Town

Sec $\frac{1}{4}$ Cor
4-9

BOOK 76

T10N R21E



each Mound Marked

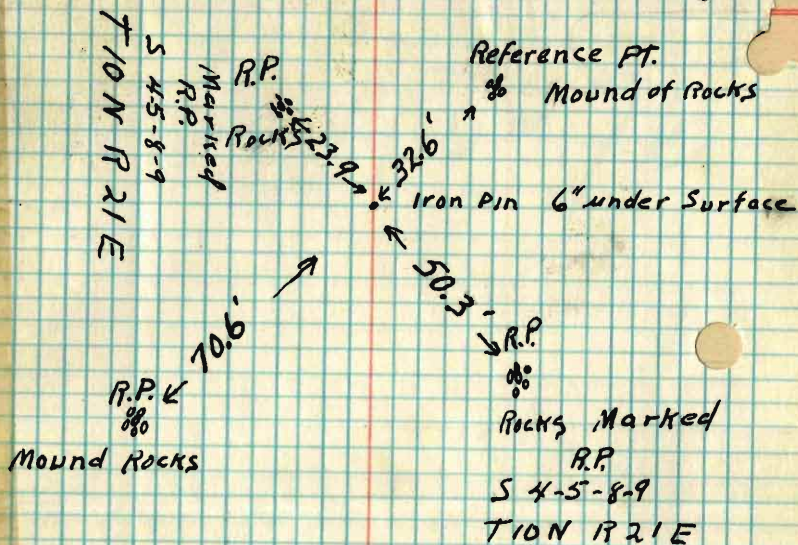
R.P.

$\frac{1}{4}$

Cor. Sec. 4-5-8-9
T-10-N R-21-E.

BOOK 10
76

ridi



Reestablishment by County Engr
see letter of Aug. 21-1929 from
Field Division - Paul J. Fe
also letter from Engr Price
of Aug. 19-1930

RECEIVED
MAY 7 - 1928
GENERAL LANDS OFFICE
FIELD DIVISION
SANTA FE, NEW MEXICO

Township

Range

Meridian.

For preliminary notes and description of instrument used see book 71 - 1

Survey made with Burt's Patent Improved Solar Compass, nearly new, and in first rate order. Made by Otto Fennel of Cassel Germany in 1881

¹ Township 10 N. Range 21 E.
 Gila and Salt River Meridian.

Chains

From the corner to Sections 35, 36, 1 and 2 on the South boundary, I run,
 North, ^{3' E.} between Sections 35 and 36

Variation 13° 00' East.

Descend.

40.00 Set a Sand stone 16 x 10 x 6 ins., 10
 ins. in the ground, for $\frac{1}{4}$ Sec. Cor., marked $\frac{1}{4}$ on
 face, and raised a mound of stone alongside. Pits
 impracticable. from which
 A Yellow Pine 10 ins diam. bears S. 80° W. 80 lks. dist.
 marked $\frac{1}{4}$ S. B. T.

No other trees within limits.

45.15 Cross Wash, 15 lks. wide, Course E. and ascend.

80.00 Set a Sand stone 18 x 8 x 6 ins. 12 ins. in
 the ground for Cor. to Secs. 25, 26, 35 & 36 marked
 with | notch on S. and | notch on E. edges and
 raised a mound of stone alongside. Pits impracticable.

from which

A White Oak 17 ins. diam. bears S. 50° W. 61 lks. dist.
 marked T. 10 N. R. 21 E. S. 35 B. T.
 A Yellow Pine 10 ins diam. bears N. 60° W. 35 lks. dist.
 marked T. 10 N. R. 21 E. S. 26 B. T.
 A Yellow Pine 10 ins diam. bears N. 40° E. 32 lks. dist.
 marked T. 10 N. R. 21 E. S. 25 B. T.

No other trees within limits.

Land mountainous

Soil good rate

Heavy timber of pine & oak.

Vegetation. grass.

Township

10 54 N 8 E

Range

21 10 E 10 W 10 T

Gila and Salt River Meridian.

Chains

East, on a random line between Sections 25 and 36.

Variation $13^{\circ} 31'$ East.

Descend.

23.00 Cross Wash, 10 lks. wide, Course N. and ascend.

23.70 Cross Road, bears N. & S.

40.00 Set temporary $\frac{1}{4}$ Sec. Cor.

79.84 Intersect C. B. of Tp. 33 lks. N. of cor. to secs.

previously set by me.

25. 30. 31 & 36 from which corner, I run

N. $89^{\circ} 46'$ W. on a true line, between sections 25 & 36Variation $13^{\circ} 30'$ East.

2992 Set a post 3 ft. long. 3 ins. diam. with marked stone

12 ins. in the ground, for $\frac{1}{4}$ Sec. Cor., marked $\frac{1}{4}$ S. on

N. face, dug pits, 18 x 18 x 12 ins., E. and W. of

post $5\frac{1}{2}$ ft. dist., and raised a mound of earth $1\frac{1}{2}$ ft.high, $3\frac{1}{2}$ ft. base around post.

from which

A Yellow Pine 10 ins diam. bears N. 41° E. 12 lks. dist.marked $\frac{1}{4}$ S. B. T.

No other trees within limits.

79.84 The corner to sections 25. 26. 35 & 36

Land rolling.

Soil 3rd rate

Heavy timber of pine & oak.

Vegetation. grass.

Township

10 N.

Range

21 E.

Gila and Salt River Meridian.

Chains

North, ^{3° E.} between Sections 25 and 26.

Variation

13° 31'

East.

Descend.

16.00 Cross Wash, 10 lks. wide, Course \odot and ascend.
 30.28 Top of Spur, bears \odot & \odot and descend.
 40.00 Set a Sand stone 16 x 10 x 6 ins., 10
 ins. in the ground, for $\frac{1}{4}$ Sec. Cor., marked $\frac{1}{4}$ on \odot
 face, and raised a mound of stone alongside. Pits
 impracticable.

80.00 Set a Sand stone 21 x 19 x 5 ins. 15 ins. in
 the ground for Cor. to Secs. 23, 24, 25 & 26 marked
 with 2 notches on S. and 1 notch on E. edges and
 raised a mound of stone alongside. Pits impracticable.
 from which

A Yellow Pine 20 ins diam. bears \odot 67 lks. dist.
 marked T. 10 N. R. 21 E. S., 23 B. T.

A Yellow Pine 15 ins diam. bears \odot 85 lks. dist.
 marked T. 10 N. R. 21 E. S., 26 B. T.

No other trees within limits.

Land mountainous

Soil 2nd rate

Heavy timber of *Yem.*

Vegetation. *grass.*

Township

10 N.

Range

21

E.

Gila and Salt River Meridian.

Chains

East, on a random line between Sections 24 and 25.

Variation $13^{\circ} 3'$ East.

Descend.

37.60 Cross Wash, 10 lks. wide, Course $N 10^{\circ} E$ and ascend.39.90 Cross Road, bears $N 2^{\circ} E$.40.00 Set temporary $\frac{1}{4}$ Sec. Cor.80.31 Intersect \odot B. of Tp. 14 lks. S of cor. to secs. \odot previously set by me.
19.24.25 & 30 from which corner, I run $S 89^{\circ} 54' W$. on a true line, between sections 24 & 26Variation $13^{\circ} 36'$ East.40.15 Set a sand stone $18 \times 7 \times 6$ ins., 12 ins.in the ground, for $\frac{1}{4}$ Sec. Cor., marked $\frac{1}{4}$ on N face,dug pits $18 \times 18 \times 12$ ins., \odot and W . of stone $5\frac{1}{2}$ ft. dist., and raised a mound of earth $1\frac{1}{2}$ ft. high, $3\frac{1}{2}$

ft. base alongside.

from which

A Yellow Pine 20 ins diam. bears S 14 lks. dist.marked $\frac{1}{4}$ S. B. T.A Yellow Pine 21 ins diam. bears $N 50^{\circ} W$ 79 lks. dist.marked $\frac{1}{4}$ S. B. T.

80.31 The corner to sections 23. 24. 25 & 26

Land rolling.

Soil 2nd rate

Heavy timber of pine.

Vegetation. grass.

Township

10 N

Range

21 E

Gila and Salt River Meridian.

Chains

North, ^{3° E.} between Sections 23 and 24.

Variation

13° 3'

East.

Descend.

34.40

Cross Wash, 20 fks. wide, Course N.E. and ascend.

40.00

Set a Sand stone 20 x 19 x 4 ins., 15 ins. in the ground, for $\frac{1}{4}$ Sec. Cor., marked $\frac{1}{4}$ on W. face, and raised a mound of stone alongside. Pits impracticable.

52.93

Top of Spur, bears N.E. & S.W. and descend.

80.00

Set a Lime stone 14 x 8 x 4 ins. 10 ins. in the ground for Cor. to Secs. 13, 14, 23 & 24 marked with 3 notches on S. and 1 notch on E. edges and raised a mound of stone alongside. Pits impracticable.

Land mountainous

Soil 2nd rate

Timber of pine.

Vegetation. grass.

Township 10 N Range 21 E

Gila and Salt River Meridian.

Chains

East, on a random line between Sections 13 and 24.

Variation $13^{\circ} 00'$ East.

Descend.

29.50 Cross Road, Settlers bears $N. 20^{\circ} E$ & $S. 20^{\circ} W$.33.00 Cross Wash, 50 lks. wide, Course $N. W.$ and ascend.40.00 Set temporary $\frac{1}{4}$ Sec. Cor.67.00 Top of Spur, bears $N. e S.$ and descend.80.12 Intersect $\frac{1}{4}$ B. of Tp. 42 lks. $N.$ of cor. to secs.
previously set by me.

13, 18, 19 & 24, from which corner, I run

 $N. 89^{\circ} 42' W.$ on a true line, between sections 13 & 24Variation $13^{\circ} 00'$ East.40.06 Set a Sand stone $16 \times 12 \times 8$ ins., 10ins. in the ground, for $\frac{1}{4}$ Sec. Cor., marked $\frac{1}{4}$ on $N.$

face, and raised a mound of stone alongside. Pits

impracticable. from which

A Yellow Pine 20 ins diam. bears $N. 30^{\circ} E.$ 70 lks. dist.
marked $\frac{1}{4}$ S. B. T.A Yellow Pine 20 ins diam. bears $S. 40^{\circ} W.$ 33 lks. dist.
marked $\frac{1}{4}$ S. B. T.

80.12 The corner to sections 13, 14, 23 & 24

Land mountainous

Soil 2nd rate

Heavy timber of pine.

Vegetation. grass.

Township

10 N

Range

21 E

Gila and Salt River Meridian.

Chains

North, ^{S.E.} between Sections 13 and 14.

Variation

13° 00'

East.

Descend.

40.00

Set a Basalt-stone 16 x 12 x 5 ins., 10 ins. in the ground, for $\frac{1}{4}$ Sec. Cor., marked $\frac{1}{4}$ on W. face, and raised a mound of stone alongside. Pits

impracticable.

from which

A Juniper 9 ins. diam. bears S. 30° E. 22 lks. dist. marked $\frac{1}{4}$ S. B. T.

A Yellow Pine 7 ins diam. bears S. 89° W. 1.51 lks. dist. marked $\frac{1}{4}$ S. B. T.

72.00

Cross Wash, .06 lks. wide, Course N. 24° E and ascend.

74.60

Cross Road, to Whipple's ranch bears N. 25° E. 2.22 lks.

80.00

Set a Basalt-stone 14 x 12 x 7 ins. 10 ins. in the ground for Cor. to Secs. 11, 12, 13 & 14 marked with 4 notches on S. and 1 notch on E. edges and raised a mound of stone alongside. Pits impracticable.

Land rolling.

Soil

g.rd

rate

Timber of

pine & juniper.

Vegetation.

grass.

Township 10 N. Range 2 E.

Gila and Salt River Meridian.

Chains

East, on a random line between Sections 12 and 13.

Variation 13° 00' East.

Descend.

- 7.30 Cross Road, to Whipple's ranch bears N. 70° E. & S. 70° W.
- 9.00 Cross Wash, .07 lks. wide, Course N.
- 20.00 Cabin bears N. 20 chs.
- 26.80 Cross Road, bears, N. 60° W. & S. 60° E.
- 30.70 Cross Wash, 10 lks. wide, Course N.W. and ascend.
- 32.50 Log Cabin bears 15 chs. N.
- 40.00 Set temporary $\frac{1}{4}$ Sec. Cor.
- 79.88 Intersect E. B. of Tp. 22 lks. N. of cor. to secs. previously set by me.
7.12 13 & 18 from which corner, I run
N. 89° 51' W. on a true line, between sections 12 & 13
Variation 13° 00' East.
- 39.94 Set a Sand stone 21 x 16 x 8 ins., 15 ins. in the ground, for $\frac{1}{4}$ Sec. Cor., marked $\frac{1}{4}$ on N. face, and raised a mound of stone alongside. Pits impracticable. from which
- A Yellow Pine 10 ins diam. bears S. 38° E. 1.60 lks. dist. marked $\frac{1}{4}$ S. B. T.
- A Yellow Pine 13 ins diam. bears S. 12° W. 77 lks. dist. marked $\frac{1}{4}$ S. B. T.
- 77.88 The corner to sections 11, 12, 13 & 14
Land rolling.
Soil 3rd rate
Heavy timber of spruce
Vegetation grass.

March 14. 1883

Township 10 N. Range 21 E.

Gila and Salt River Meridian.

Chains

^{3.8} North, between Sections 11 and 12.

Variation 13° 00' East.

2.00 Cross Road, Snowflake & Apache bears E. & W.

17.00 Top of Spur, bears N. 15° E. & S. 15° W. and descend.

40.00 Set a Sand stone 21 x 12 x 9 ins., 15-
ins. in the ground, for 1/4 Sec. Cor., marked 1/4 on W,
face, and raised a mound of stone alongside. Pits
impracticable. from which

Basalt rock 108-84-72 bears N. 20° W. 57 lbs. dist.

Basalt rock 120-100-84 bears N. 65° E. 78 lbs. dist.

41.00 Cross Creek 30 lks. wide, Course N 80° W and ascend.

50.00 Set a Basalt stone 40 x 20 x 5 ins. 30 ins. in
the ground for Cor. to Secs. 1, 2, 11 & 12, marked
with 5 notches on S. and 1 notch on E. edges and
raised a mound of stone alongside. Pits impracticable.

from which

A Juniper 1 1/2 ins. diam. bears S. 50° W. .05 lks. dist.

marked T. 10 N. R. 21 E. S., 11 B. T.

No other trees within limits.

Land mountainous

Soil 3rd rate

Timber of juniper

Vegetation. grass

Township

10 N

Range

21 E

Gila and Salt River Meridian.

Chains

East, on a random line between Sections 1 and 12.

Variation $18^{\circ} 00'$ East.*Ascend.*

3.79

Top of bluff bears $N. 50^{\circ} W.$ & ascend gradually.

40.00

Set temporary $\frac{1}{4}$ Sec. Cor.

79.97

Intersect E. B. of Tp. 30 lks. S. of cor. to secs.
previously set by me.

1.6. 7 & 12 from which corner, I run

 $S. 89^{\circ} 47' W.$ on a true line, between sections 1 & 12Variation $13^{\circ} 00'$ East.

39.98

Set a Basalt-stone $18 \times 12 \times 6$ ins., 12
ins. in the ground, for $\frac{1}{4}$ Sec. Cor., marked $\frac{1}{4}$ on N.
face, and raised a mound of stone alongside. Pits

impracticable. from which

A Pine 9 ins, diam. bears $N. 16^{\circ} W.$ 46 lks. dist.
marked $\frac{1}{4}$ S. B. T.A Pine 6 ins, diam. bears $S. 89^{\circ} W.$ 27 lks. dist.
marked $\frac{1}{4}$ S. B. T.

79.97

The corner to sections 1, 2, 11 & 12.

Land rolling.

Soil 3rd rateHeavy timber of *pine*.Vegetation. *grass.*

Township 10 N. Range 21 E.

Gila and Salt River Meridian.

Chains

North, ^{3.6} on a random line between Sections 1 and 2.

Variation 13° 00' East.

Ascend.

8.00 Top of bluff bears N. 49° W. and descend

40.00 Set temporary $\frac{1}{4}$ Sec. Cor.

60.00 Ascend.

78.75 Intersect N. B. of Tp. 26 lks. E. of cor. to secs.

1, 2, 35 & 36 previously set by me. from which corner, I run

S. 8' E. on a true line, between sections 1 & 2

Variation 13° 00' East.

38.78 Set a Basalt stone 16 x 13 x 7 ins., 10 ins. in the ground, for $\frac{1}{4}$ Sec. Cor., marked $\frac{1}{4}$ on W. face, and raised a mound of stone alongside. Pits impracticable.

78.78 The corner to sections 1, 2, 11 & 12

Land rolling.

Soil 3rd rate

Vegetation grass

Timber of Yucca & Juniper

Township 10 N Range 21 E

Gila and Salt River Meridian.

From the corner to sections, 2, 3, 34 & 35 previously set by me.
 Chains ^{Iron} _{3 & 4} North, ^{3 & 4} between Sections 34 and 35.

Variation 13° 00' East.

Descend.

20.00 Cross Wash, 16 lks. wide, Course N. E. and ascend.

40.00 Set a Sand stone 16 x 15 x 10 ins., 10 ins. in the ground, for $\frac{1}{4}$ Sec. Cor., marked $\frac{1}{4}$ on W. face, and raised a mound of stone alongside. Pits impracticable. from which

A Yellow Pine 15 ins diam. bears S. 30° W. 47 lks. dist. marked $\frac{1}{4}$ S. B. T.

A Yellow Pine 13 ins diam. bears N. 30° E. 37 lks. dist. marked $\frac{1}{4}$ S. B. T.

45.00 Top of Spur, bears E. & W. and descend.

80.00 Set a post 4 ft. long, 4 ins. square, with marked stone 12 ins. in the ground, for Cor. to Secs, 26, 27, 34 & 35 marked T, 10 N. S., 26, on N, E, R, 21 E., S. 35 on S, E, S, 34 on S, W, and S, 27 on N, W, face with 1 notch on S, and 2 notches on E, edges, dug pits 18 x 18 x 12 ins, in each Sec., 5 1/2 ft, dist., and raised a mound of earth 2 ft, high, 4 1/2 ft, base around post.

A Yellow Pine 12 ins diam. bears S. 53° W. from which 86 lks. dist. marked T. 10 N. R., 21 E. S., 34 B. T.

A Yellow Pine 13 ins diam. bears N. 85° E. 73 lks. dist. marked T. 10 N. R., 21 E. S., 36 B. T.

A White Oak 12 ins. diam. bears S. 70° E. 33 lks. dist. marked T. 10 N. R., 21 E. S., 35 B. T.

No other trees within limits.

Land mountainous Heavy timber of Yernie oak

Soil 2 mo rate Vegetation. grass

Township

10 N.

Range

21 E.

Gila and Salt River Meridian.

Chains

East, on a random line between Sections 26 and 35.

Variation

13° 30'

East.

Descend.

40.00 Set temporary $\frac{1}{4}$ Sec. Cor.

41.00 Cross Wash, 20 lks. wide, Course N. and ascend.

60.00 Top of Spur, bears N. & S. and descend.

80.26 Intersect N. & S. line, 26 lks. N. of cor. to secs.

26, 26, 36 & 36 from which corner, I run

N. 89° 49' W. on a true line between sections 26 & 35

Variation

13° 31'

East

40.13

Set a Sand stone 18 x 7 x 6 ins., 12
 ins. in the ground, for $\frac{1}{4}$ Sec. Cor., marked $\frac{1}{4}$ on N.
 face, and raised a mound of stone alongside. Pits
 impracticable.

80.26

The corner to sections 26, 27, 34 & 35
 Land rolling.

Soil 2nd rate

Vegetation grass.

Timber of pine.

Township 10 N Range 21 E

Gila and Salt River Meridian.

Chains	<p>S. E. North, between Sections 26 and 27.</p> <p>Variation 13° 30' East.</p> <p>Descend.</p> <p>40.00 Set a Sand stone 14 x 8 x 8 ins., 10 ins. in the ground, for 1/4 Sec. Cor., marked 1/4 on W. face, and raised a mound of stone alongside. Pits impracticable. from which</p> <p>A White Oak 18 ins. diam. bears W. 31 lks. dist. marked 1/4 S. B. T.</p> <p>No other trees within limits.</p> <p>47.00 Cross Wash, 10 lks. wide, Course S. 70° E. and ascend.</p> <p>48.60 A Yellow Pine 25 ins diam.</p> <p>54.47 Top of Spur, bears E. & W. and descend.</p> <p>65.99 A Yellow Pine 23 ins diam.</p> <p>80.00 Set a Sand stone 14 x 6 x 4 ins. 10 ins. in the ground for Cor. to Secs. 22, 23, 26 & 27 marked with 2 notches on S. and 2 notches on E. edges and raised a mound of stone alongside. Pits impracticable. from which</p> <p>A Yellow Pine 23 ins diam. bears N. 70° W. 61 lks. dist. marked T. 10 N. R. 21 E. S., 22 B. T.</p> <p>A Yellow Pine 20 ins diam. bears S. 69° W. 44 lks. dist. marked T. 10 N. R. 21 E. S., 27 B. T.</p> <p>A Yellow Pine 10 ins diam. bears S. 88° E. 2 lks. dist. marked T. 10 N. R. 21 E. S., 26 B. T.</p> <p>No other trees within limits.</p> <p>Land mountainous</p> <p>Soil 2nd rate</p> <p>Heavy timber of pine.</p> <p>Vegetation. grass.</p>
--------	--

Township

10 N

Range

21 E

Gila and Salt River Meridian.

Chains

East, on a random line between Sections 23 and 26.

Variation

13° 10'

East.

Descend.

34.40 Cross Wash, 19 lks. wide, Course N. E. and ascend.

40.00 Set temporary $\frac{1}{4}$ Sec. Cor.

57.93 Top of Spur, bears N. E. & S. W. and descend.

80.14 Intersect N. & S. line, 18 lks. N. of cor. to secs.

23, 24, 25 & 26 from which corner, I run

N. 59° 52' W. on a true line between sections 23 & 26

Variation

13° 3'

East

40.07

Set a Sand stone 20 x 19 x 14 ins., 15 ins. in the ground, for $\frac{1}{4}$ Sec. Cor., marked $\frac{1}{4}$ on N. face, and raised a mound of stone alongside. Pits impracticable.

80.14

The corner to sections 22, 23, 26 & 27

Land rolling.

Soil 2nd rate

Vegetation grass.

Timber of pine.

Township

10 N.

Range

21 E.

Gila and Salt River Meridian.

Chains

8' E.
North, between Sections 22 and 23.

Variation 13° 10' East.

Descend.

40.00

Set a Sand stone 18 x 10 x 8 ins., 12 ins. in the ground, for $\frac{1}{4}$ Sec. Cor., marked $\frac{1}{4}$ on W. face, and raised a mound of stone alongside. Pits impracticable.

70.00

Cross Wash, 10 lks. wide, Course N.W. and ascend.

80.00

Set a Sand stone 18 x 13 x 6 ins. 12 ins. in the ground for Cor. to Secs. 14, 15, 22 & 23 marked with 3 notches on S. and 2 notches on E. edges and raised a mound of stone alongside. Pits impracticable.

Land rolling.

Soil 2nd rate

Timber of fernie.

Vegetation. grass.

Township

10 N

Range

21 E

Gila and Salt River Meridian.

Chains

East, on a random line between Sections 14 and 23.

Variation

13° 00'

East.

Ascend.

20.00 Top of Spur, bears N. & S. and descend.

40.00 Set temporary $\frac{1}{2}$ Sec. Cor.

44.90 Enter plowed ground.

54.90 Leave plowed ground.

56.00 A Whipple's Ranch 14 66 N.

79.86 Intersect N. & S. line, 26 lks. N. of cor. to secs.

B. 14 23 & 24 from which corner, I run

N. 89° 49' W. on a true line between sections 14 & 23

Variation

13° 00'

East

39.93

Set a post 3 ft. long. 3 ins. diam. with marked stone

12 ins. in the ground, for $\frac{1}{2}$ Sec. Cor., marked $\frac{1}{2}$ S. on

N. face, dug pits, 18 x 18 x 12 ins., E. and W. of

post 5 $\frac{1}{2}$ ft. dist., and raised a mound of earth 1 $\frac{1}{2}$ ft.high, 3 $\frac{1}{2}$ ft. base around post.

79.86

The corner to sections 14. 16. 22 & 23

Land mountainous.

Soil 2nd rate

Vegetation grass.

Timber of pine.

Township 10 N Range 21 E

Gila and Salt River Meridian.

Chains 3^c E.
 North, ^A between Sections 14 and 15.
 Variation 13° 00' East.

Descend.

37.17 Cross Wash, 16 lks. wide, Course N. 40° E and ascend.
40.00 Set a Sand stone 18 x 10 x 4 ins., 12
 ins. in the ground, for $\frac{1}{4}$ Sec. Cor., marked $\frac{1}{4}$ on W.
 face, and raised a mound of stone alongside. Pits
 impracticable. from which
 A Yellow Pine 15 ins diam. bears S. E. 49 lks. dist.
 marked $\frac{1}{4}$ S. B. T.

A Yellow Pine 10 ins diam. bears N. 29° W. 49 lks. dist.
 marked $\frac{1}{4}$ S. B. T.

71.50 Top of Spur, bears N. E. & S. W. and descend.

72.00 Cross Road, bears, N. E. & S. W.

80.00 Set a Sand stone 20 x 12 x 6 ins. 18 ins. in
 the ground for Cor. to Secs. 10. 11. 14. & 15 marked
 with 4 notches on S. and 2 notches on E. edges and
 raised a mound of stone alongside. Pits impracticable.

Land mountainous

Soil 2nd rateTimber of pineVegetation. grass

I carefully examined the adjustments of my solar
 compass to-day, particularly the latitude and revers-
 ing apparatus, and found them correct.

March 15. 1883

Township

10 N

Range

21 E

Gila and Salt River Meridian.

Chains

East, on a random line between Sections 11 and 14.

Variation 13° 00' East.

Ascend.

- 1.60 Cross Road, bears N. 70° W. & S. 70° E.
- 14.00 Top of Spur, bears N. & S. and descend.
- 34.99 Cross Road, to Snowflake bears N. 30° W. & S. 30° E.
- 37.60 Cross Creek 10 lks. wide, Course N. 10° E. and ascend.
- 40.00 Set temporary 1/4 Sec. Cor.
- 76.80 Cross Road, Snowflake bears N. 60° E. & S. 60° W.
- 70.00 Top of Ridge, bears N. & S. and descend.
- 80.22 Intersect N. & S. line, 8 lks. N. of cor. to secs.
11.12 13 & 14 from which corner, I run
N. 89° 57' W. on a true line between sections 11 & 14
Variation 13° 00' East
- 40.11 A Yellow Pine 16 ins diam. which I marked 1/4 S.
on N. face, for 1/4 sec. cor., dug pits, 18 x 18 x 12 ins.
O. and W. of tree, 5 1/2 ft. dist. and raised a mound
of earth around tree. from which
- A Yellow Pine 14 ins diam. bears S. 37° E. 15 lks. dist.
marked 1/4 S. B. T.
- A Yellow Pine 17 ins diam. bears N. 17° E. 1.30 lks. dist.
marked 1/4 S. B. T.
- 80.22 The corner to sections 10, 11, 14 & 15
Land mountainous
Soil 3rd rate
Heavy timber of pine.
Vegetation. grass.

Township 10 N. Range 21 E.

Gila and Salt River Meridian.

Chains

3' E.
North, between Sections 10 and 11.

Variation 13° 00' East.

Descend.

40.00

Set a Sand stone 17 x 13 x 6 ins., 12 ins. in the ground, for $\frac{1}{4}$ Sec. Cor., marked $\frac{1}{4}$ on W. face, and raised a mound of stone alongside. Pits impracticable.

A Yellow Pine 17 ins diam. bears N. 81° E. 2.57 lks. dist. marked $\frac{1}{4}$ S. B. T.

A Yellow Pine 12 ins diam. bears S. 35° E. 1.04 lks. dist. marked $\frac{1}{4}$ S. B. T.

62.20 Cross Wash, .06 lks. wide, Course N. 21° W. and ascend.

80.00 Set a Lime stone 24 x 13 x 8 ins. 18 ins. in the ground for Cor. to Secs. 9, 3, 10 & 11 marked with 5 notches on S. and 2 notches on E. edges and raised a mound of stone alongside. Pits impracticable.

A Yellow Pine 21 ins diam. bears N. 30° W. 1.36 lks. dist. marked T. 10 N. R. 21 E. S., 3 B. T.

A Yellow Pine 10 ins diam. bears S. 50° E. 1.44 lks. dist. marked T. 10 N. R. 21 E. S., 11 B. T.

No other trees within limits.

Land mountainous

Soil 3% rate

Heavy timber of pine

Vegetation. grass.

21

Township 10 N Range 21 E

Gila and Salt River Meridian.

Chains East, on a random line between Sections 2 and 11. Variation 13° 00' East.

Ascend.

- 1.60 Cross Road, to Snowflake bears N. 50° W. & S. 50° E.
- 22.60 Top of Spur, bears N. W. & S. E., and descend.
- 40.00 Set temporary 1/4 Sec. Cor.
- 66.50 Cross Creek 16 lks. wide, Course N.W. and ascend.
- 80.64 Intersect N. & S. line, 21 lks. S. of cor. to secs.

1. 2. 11 & 12 from which corner, I run S. 87° 51' W. on a true line between sections 2 & 11

Variation 13° 00' East

40.22 Set a Basalt-stone 23 x 9 x 10 ins., 18 ins. in the ground, for 1/4 Sec. Cor., marked 1/4 on N. face, and raised a mound of stone alongside. Pits impracticable.

from which A Juniper 12 ins. diam. bears N. 48° W. 55 lks. dist. marked 1/4 S. B. T.

A Juniper 6 ins. diam. bears S. 2° E. 29 lks. dist. marked 1/4 S. B. T.

80.64 The corner to sections 2, 3, 10 & 11 Land mountainous

Soil 3rd rate Heavy timber of Juniper. Vegetation. Grass.

Township

10 N

Range

21 E

Gila and Salt River Meridian.

Chains

3' 8.
North, on a random line between Sections 2 and 3.

Variation

13° 00'

East.

Descend.

1.170

Cross Road,

Snowflake and Camp Apache bears N.W. & S.E.

40.00

Set temporary $\frac{1}{4}$ Sec. Cor.

41.66

Cross Road,

to ranch bears E. & W.

42.60

Settlers fence bears E. & W.

44.00

J. H. Millis ranche bears E. 5.47 cha.

48.20

Cross Wash,

10 lks. wide, Course N. 30° E and ascend.

54.70

Settlers fence bears N.E. & S.W.

79.14

Intersect N. B. of Tp. 46 lks. W. of cor. to secs. previously set by me.

S. 3. 34 & 35 from which corner, I run

S. 23' W. on a true line, between sections 2 & 3

Variation 13° 00'

East.

39.14

Set a

Basalt-

stone 19 x 12 x 6 ins., 12

ins. in the ground, for $\frac{1}{4}$ Sec. Cor., marked $\frac{1}{4}$ on W.

face, and raised a mound of stone alongside.

Pits

impracticable.

79.14

The corner to sections 3. 3. 10 & 11

Land rolling.

Soil 3rd rate

Vegetation Grass.

Heavy timber of pine.

Township 10 N.

Range 21 E.

Gila and Salt River Meridian.

~~From the corner to sections, 3, 4, 5, 34, 35, previously set by me.~~

Chains *Ann* North, between Sections 33 and 34.

Variation 13° 00' East.

Ascend.

- 20.13 Top of Spur, bears N. E. & S. W. and descend.
- 35.73 Cross Wash, 30 lks. wide, Course N. E. and ascend.
- 40.00 Set a Sand stone 14 x 6 x 4 ins., 10 ins. in the ground, for 1/4 Sec. Cor., marked 1/4 on W. face, and raised a mound of stone alongside. Pits impracticable. from which
- A Yellow Pine 15 ins diam. bears N. 88° E. 83 lks. dist. marked 1/4 S. B. T.
- A Yellow Pine 18 ins diam. bears W. 44 lks. dist. marked 1/4 S. B. T.
- 66.21 Top of Spur, bears N. E. & S. W. and descend.
- 80.00 Set a Sand stone 24 x 16 x 6 ins. 18 ins. in the ground for Cor. to Secs. 27, 28, 33 & 34 marked with 1 notch on S. and 3 notches on E. edges and raised a mound of stone alongside. Pits impracticable. from which
- A Yellow Pine 12 ins diam. bears N. 38° E. 83 lks. dist. marked T. 10 N. R. 21 E. S., 27 B. T.
- A Yellow Pine 13 ins diam. bears N. 55° W. 56 lks. dist. marked T. 10 N. R. 21 E. S., 28 B. T.
- A Yellow Pine 14 ins diam. bears S. 13° W. 50 lks. dist. marked T. 10 N. R. 21 E. S., 33 B. T.

No other trees within limits.

Land mountainous

Soil 3rd rate

Heavy timber of pine

Vegetation. grass.

Township 10 N Range 21 E

Gila and Salt River Meridian.

Chains East, on a random line between Sections 27 and 34.
Variation 13° 00' East.

Descend.

20.80 Cross Wash, 20 lks. wide, Course N. and ascend.

40.00 Set temporary $\frac{1}{2}$ Sec. Cor. on

Top of Spur, bears N. & S. and descend.

56.90 Cross Wash, 14 lks. wide, Course N. E. and ascend.

80.42 Intersect N. & S. line, 44 lks. S. of cor. to secs.

26.27. 34 & 35 from which corner, I run

S. 89° 41' W. on a true line between sections 27 & 34

Variation 13° 30' East

110.21 Set a sand stone 14 x 6 x 2 ins., 10 ins. in the ground, for $\frac{1}{2}$ Sec. Cor., marked $\frac{1}{2}$ on N. face, dug pits 18 x 18 x 12 ins., E. and W. of stone 5 $\frac{1}{2}$ ft. dist., and raised a mound of earth 1 $\frac{1}{2}$ ft. high, 3 $\frac{1}{2}$ ft. base alongside.

80.42 The corner to sections 27. 28. 33 & 34

Land mountainous

Soil 2nd rate

Timber of pine, juniper & cedar.

Vegetation. grass.

Township

10 N.

Range

21 E.

Gila and Salt River Meridian.

Chains

North, ^{3° E.} between Sections 27 and 28.

Variation 13° 00' East.

Descend.

40.00 Set a Sand stone 16 x 8 x 6 ins., 10 ins. in the ground, for $\frac{1}{4}$ Sec. Cor., marked $\frac{1}{4}$ on face, and raised a mound of stone alongside. Pits impracticable.

A Yellow Pine 12 ins diam. bears N. 20° W. 70 lks. dist. marked $\frac{1}{4}$ S. B. T. from which

A Yellow Pine 12 ins diam. bears S. 40° E. 13 lks. dist. marked $\frac{1}{4}$ S. B. T.

46.00 Cross Wash, 21 lks. wide, Course N.W. and ascend.

80.00 Set a Sand stone 19 x 10 x 8 ins. 12 ins. in the ground for Cor. to Secs. 21, 22, 27 & 28 marked with 2 notches on S. and 3 notches on E. edges and raised a mound of stone alongside. Pits impracticable.

A Yellow Pine 20 ins diam. bears N. 31° E. 55 lks. dist. marked T. 10 N. R. 21 E. S., 22 B. T. from which

A Yellow Pine 19 ins diam. bears S. 34° E. 8 lks. dist. marked T. 10 N. R. 21 E. S., 27 B. T.

A White Oak 13 ins. diam. bears S. 34° W. 45 lks. dist. marked T. 10 N. R. 21 E. S., 28 B. T.

No other trees within limits.

Land mountainous

Soil 2nd rate

Heavy timber of pine & oak.

Vegetation. Grass.

Township 10 N Range 21 E

Gila and Salt River Meridian.

Chains East, on a random line between Sections 22 and 27.
Variation 13° 00' East.

Descend.

40.00 Set temporary 1/4 Sec. Cor.

79.90 Intersect N. & S. line, 26 lks. S. of cor. to secs.

22, 23, 26 & 27 from which corner, I run

S. 89° 49' W. on a true line between sections 22 & 27

Variation 13° 10' East

39.95 Set a Sand stone 17 x 9 x 9 ins., 12 ins. in the ground, for 1/4 Sec. Cor., marked 1/4 on N. face, dug pits 18 x 18 x 12 ins., E. and W. of stone 5 1/2 ft dist., and raised a mound of earth 1 1/2 ft. high, 3 1/2 ft base alongside.

79.90 The corner to sections 21, 22, 27 & 28

Land rolling.

Soil 3rd rate

Vegetation grass.

Township

10 N

Range

21 E

Gila and Salt River Meridian.

Chains

3' E.
North, between Sections 21 and 22.

Variation 13° 00' East.

Ascend.

31.01 Top of Spur, bears N. E. & S. W. and descend.
40.00 Set a Sand stone 14 x 6 x 5 ins., 10 ins. in the ground, for 1/4 Sec. Cor., marked 1/4 on W. face, and raised a mound of stone alongside. Pits impracticable.

42.00 Cross Wash, 20 lks. wide, Course N. E. and ascend.

54.20 Top of Spur, bears N. E. & S. W. and descend.

80.00 Set a Limestone stone 16 x 14 x 10 ins. 10 ins. in the ground for Cor. to Secs. 15, 16, 21 & 22 marked with 3 notches on S. and 3 notches on E. edges and raised a mound of stone alongside. Pits impracticable.

A Yellow Pine 13 ins diam. bears S. 50° W. from which 57 lks. dist. marked T. 10 N. R. 21 E. S., 21 B. T.

A Yellow Pine 14 ins diam. bears N. 60° W. 38 lks. dist. marked T. 10 N. R. 21 E. S., 16 B. T.

A Yellow Pine 16 ins diam. bears N. 30° E. 8 lks. dist. marked T. 10 N. R. 21 E. S., 16 B. T.

No other trees within limits.

Land mountainous

Soil 2nd rate

Heavy timber of pine.

Vegetation. grass

March 16 1883

Township

10 N

Range

21 E

Gila and Salt River Meridian.

Chains

East, on a random line between Sections 15 and 22.

Variation 13° 30' East.

Ascend.

10.00 Top of Spur, bears N. 15° E. S. 15° W. and descend.

40.00 Set temporary $\frac{1}{4}$ Sec. Cor.

48.15 Ranch bears 23.25 S.

66.50 Cross Wash, 20 lks. wide, Course N. 20° E. and ascend.

79.72 Intersect N. & S. line, 53 lks. S of cor. to secs.

Pt. 15.22 & 23 from which corner, I run

S. 89° 37' W. on a true line between sections 15 & 22

Variation 13° 00' East

39.86 Set a post 3 ft. long, 3 ins. diam. with marked stone
12 ins. in the ground, for $\frac{1}{4}$ Sec. Cor., marked $\frac{1}{2}$ S. on
N. face, dug pits, 18 x 18 x 12 ins., E. and W. of
post 5 $\frac{1}{2}$ ft. dist., and raised a mound of earth 1 $\frac{1}{2}$ ft.
high, 3 $\frac{1}{2}$ ft. base around post.

79.72 The corner to sections 15, 16, 21 & 22

Land mountainous

Soil 2nd rate

Timber of pine & oak.

Vegetation. grass.

Township

10 N.

Range

21 E.

Gila and Salt River Meridian.

Chains

North, ^{3' E.} between Sections 15 and 16.

Variation

13° 30'

East.

Descend.

8.80 Cross Wash, 15 lks. wide, Course N. E. and ascend.

40.00 Set a post 3 ft. long, 3 ins. diam. with marked stone
12 ins. in the ground, for $\frac{1}{4}$ Sec. Cor., marked $\frac{1}{4}$ S. on
W. face, dug pits, 18 x 18 x 12 ins., N. and S. of
post $5\frac{1}{2}$ ft. dist., and raised a mound of earth $1\frac{1}{2}$ ft.
high, $3\frac{1}{2}$ ft. base around post.

80.00 Set a sand stone 24 x 10 x 9 ins. 18 ins. in
the ground for Cor. to Secs. 9, 10, 15 & 16 marked
with 4 notches on S. and 3 notches on E. edges and
raised a mound of stone alongside. Pits impracticable.

A Yellow Pine 6 ins diam. bears S. 10° E. ^{from which} 52 lks. dist.
marked T. 10 N. R. 21 E. S., 15 B. T.

A Yellow Pine 5 ins diam. bears S. 61° W. 111 lks. dist.
marked T. 10 N. R. 21 E. S., 16 B. T.

A Yellow Pine 30 ins diam. bears N. 34° W. 174 lks. dist.
marked T. 10 N. R. 21 E. S., 9 B. T.

No other trees within limits.

Land rolling.

Soil 3rd rate

Heavy timber of pine.

Vegetation. grass.

Township

10 N.

BOOK 76

Range

31 E

30

Gila and Salt River Meridian.

Chains

East, on a random line between Sections 10 and 15.

Variation

18° 00'

East.

*Descend.*40.00 Set temporary $\frac{1}{4}$ Sec. Cor.

119.50 Cross Wash, .07 lks. wide, Course N. 10° E and ascend.

80.04 Intersect N. & S. line, 17 lks. S. of cor. to secs.

10, 11, 14 & 15 from which corner, I run

S. 89° 53' W. on a true line between sections 10 & 15

Variation

13° 00'

East

40.02 Set a Sand stone 17 x 11 x 6 ins., 12

ins. in the ground, for $\frac{1}{4}$ Sec. Cor., marked $\frac{1}{4}$ on N.

face, and raised a mound of stone alongside.

Pits

impracticable.

80.04 The corner to sections 9, 10, 15 & 16

Land rolling.

Soil 3rd rate

Timber of pine

Vegetation. grass.

Township 10 N Range 31 E

Gila and Salt River Meridian.

Chains

North, ^{3.8} between Sections 9 and 10.

Variation 13° 00' East.

Descend.

12.40 Cross Wash, .09 lks. wide, Course N 88° E and ascend.

40.00 Set a Sand stone 18 x 10 x 8 ins., 12 ins. in the ground, for $\frac{1}{4}$ Sec. Cor., marked $\frac{1}{4}$ on W. face, and raised a mound of stone alongside. Pits impracticable.

47.20 Top of Ridge, bears N. E. & S. W. and descend.

80.00 Set a Sand stone 19 x 13 x 6 ins. 12 ins. in the ground for Cor. to Secs. 3, 4, 9 & 10 marked with 5 notches on S. and 3 notches on E. edges and raised a mound of stone alongside. Pits impracticable.

A Yellow Pine 24 ins diam. bears S. 57° W. ^{from which} 71 lks. dist. marked T. 10 N. R. 21 E. S., 9 B. T.

A Yellow Pine 15 ins diam. bears N. 79° E. 64 lks. dist. marked T. 10 N. R. 21 E. S., 3 B. T.

No other trees within limits.

Land mountainous

Soil 3rd rate

Heavy timber of pine.

Vegetation. grass.

Township

10 N.

Range

21 E.

Gila and Salt River Meridian.

Chains

East, on a random line between Sections 3 and 10.

Variation

13° 00'

East.

Ascend.

40.00 Set temporary $\frac{1}{4}$ Sec. Cor.

47.63 Top of Hill bears N. 10° W. & S. 10° E. and descend.

69.40 Cross Wash, 10 lks. wide, Course N.

77.00 Cross Wash, .05 lks. wide, Course N. 13° W. and ascend.

80.16 Intersect N. & S. line, 28 lks. N. of cor. to secs.

23.10 & 11' from which corner, I run

N. 89° 48' W. on a true line between sections 3 & 10

Variation

13° 00'

East

40.08 Set a sand stone 15 x 12 x 9 ins., 10

ins. in the ground, for $\frac{1}{4}$ Sec. Cor., marked $\frac{1}{4}$ on N.

face, and raised a mound of stone alongside. Pits

impracticable.

from which

A Yellow Pine 13 ins diam. bears N. 35° E. 64 lks. dist.
marked $\frac{1}{4}$ S. B. T.A Yellow Pine 16 ins diam. bears S. 40° W. 94 lks. dist.
marked $\frac{1}{4}$ S. B. T.

80.16 The corner to sections 3, 4, 9 & 10

Land hilly.

Soil 3rd rateHeavy timber of *Juniper*Vegetation. *Grass*

Township

10 N

Range

21 E

Gila and Salt River Meridian.

Chains

North, on a random line between Sections 3 and 4.

Variation 13° 00' East.

Descend.

20.89 Cross Wash, .08 lks. wide, Course N 12° E.

40.00 Set temporary 1/4 Sec. Cor.

40.10 Cross Road, to Settlement bears N 75° E. S. 75° W.

57.72 Cross Wash, .06 lks. wide, Course E. and ascend.

79.40 Intersect N. B. of Tp. 35 lks. W. of cor. to secs.
previously set by me.

S. 4. 33 & 34 from which corner, I run

S. 18' W. on a true line, between sections 3 & 4

Variation 13° 00' East.

29.40 Set a Sand stone 24 x 14 x 7 ins., 18

ins. in the ground, for 1/4 Sec. Cor., marked 1/4 on W.

face, and raised a mound of stone alongside. Pits

impracticable. from which

A Yellow Pine 20 ins diam. bears N 49° E. 204 lks. dist.

marked 1/4 S. B. T.

A Yellow Pine 14 ins diam. bears N 52° W. 1.8 lks. dist.

marked 1/4 S. B. T.

79.40 The corner to sections 3, 4, 9 & 10

Land rolling.

Soil 3" rate

Heavy timber of pine.

Vegetation. grass.

Township 10 N. Range 21 E.

Gila and Salt River Meridian.

From the corner to sections, 4, 5, 32 & 33, previously set by me.

Chains ^{Iron} North, between Sections 32 and 33.

Variation 13° 00' East.

Ascend.

30.50 Top of Spur, bears E. & W. and descend.

40.00 Set a Sand stone 18 x 10 x 8 ins., 12 ins. in the ground, for 1/4 Sec. Cor., marked 1/4 on W. face, and raised a mound of stone alongside. Pits impracticable.

from which

A Yellow Pine 16 ins diam. bears S. 70° E. 28 lks. dist. marked 1/4 S. B. T.

A Yellow Pine 13 ins diam. bears S. 53° E. 37 lks. dist. marked 1/4 S. B. T.

80.00 Set a post 4 ft. long, 4 ins. square, with marked stone 12 ins. in the ground, for Cor. to Secs, 28, 29, 32 & 33 marked T, 10 N. S., 28, on N, E, R, 21 E., S. 33 on S, E, S, 32 on S, W, and S, 29 on N, W, face with 1 notch on S, and 11 notches on E, edges, dug pits 18 x 18 x 12 ins, in each Sec., 5 1/2 ft, dist., and raised a mound of earth 2 ft, high, 4 1/2 ft, base around post.

from which

A Yellow Pine 27 ins diam. bears N. 25° W. 19 lks. dist. marked T. 10 N. R. 21 E. S., 29 B. T.

A Yellow Pine 25 ins diam. bears S. 15° W. 1.23 lks. dist. marked T. 10 N. R. 21 E. S., 32 B. T.

A Yellow Pine 13 ins diam. bears S. 53° E. 37 lks. dist. marked T. 10 N. R. 21 E. S., 33 B. T.

No other trees within limits.

Land mountainous

Soil 2nd rate Vegetation. Grass. Heavy timber of pine.

Township

10 N.

Range

21 E

Gila and Salt River Meridian.

Chains

East, on a random line between Sections 28 and 33.

Variation 13° 29' East.

Ascend.

40.00 Set temporary $\frac{1}{4}$ Sec. Cor.

41.00 Top of Ridge, bears N. & S. and descend.

80.13 Intersect N. & S. line, 16 lks. S. of cor. to secs.

27, 28, 32 & 34 from which corner, I run

S. 89° 53' W. on a true line between sections 28 & 33

Variation 13° 00' East

40.06 Set a Sand stone 14 x 8 x 4 ins., 10 ins. in the ground, for $\frac{1}{4}$ Sec. Cor., marked $\frac{1}{2}$ on N. face, and raised a mound of stone alongside. Pits impracticable.

80.13 The corner to sections 28, 29, 32 & 33

Land mountainous

Soil 2nd rate

Timber of pine.

Vegetation. grass.

Township 10 N Range 21 E

Gila and Salt River Meridian.

Chains

3rd E.
North, between Sections 28 and 29.

Variation 13° 29' East.

Descend.

40.00

Set a Sand stone 17 x 10 x 7 ins., 12 ins. in the ground, for $\frac{1}{4}$ Sec. Cor., marked $\frac{1}{4}$ on W. face, and raised a mound of stone alongside. Pits impracticable.

from which

A Yellow Pine 15 ins diam. bears N. 10° W. 10 lks. dist. marked $\frac{1}{4}$ S. B. T.

A Yellow Pine 15 ins diam. bears N. 12° E. 11 lks. dist. marked $\frac{1}{4}$ S. B. T.

70.99

Cross Wash, 50 lks. wide, Course N. 70° E. and ascend.

80.00

Set a Sand stone 18 x 16 x 8 ins. 12 ins. in the ground for Cor. to Secs. 20, 21, 28 & 29 marked with 2 notches on S. and 4 notches on E. edges and raised a mound of stone alongside. Pits impracticable.

Land rolling.

Soil 2nd rate

Heavy timber of Yerne.

Vegetation. Grass.

Township

10

N.

Range

21

E.

Gila and Salt River Meridian.

Chains

East, on a random line between Sections 21 and 28.

Variation $13^{\circ} 00'$ East.

Descend.

18.21 Cross Wash, 12 lks. wide, Course N. and ascend.

27.00 Descend.

37.60 Cross Wash, 10 lks. wide, Course N. 10° W. and ascend.

40.00 Set temporary $\frac{1}{4}$ Sec. Cor.

79.66 Intersect N. & S. line, 31 lks. S. of cor. to secs.

21, 22, 27 & 28 from which corner, I run

S. $89^{\circ} 47' W.$ on a true line between sections 21 & 28Variation $13^{\circ} 00'$ East

39.83 Set a Sand stone 18 x 10 x 9 ins., 12

ins. in the ground, for $\frac{1}{4}$ Sec. Cor., marked $\frac{1}{4}$ on N.

face, and raised a mound of stone alongside. Pits

impracticable.

from which

A Yellow Pine 10 ins diam. bears N. 8° E. 46 lks. dist.

marked $\frac{1}{4}$ S. B. T.

A Yellow Pine 9 ins diam. bears S. 61° W. 62 lks. dist.

marked $\frac{1}{4}$ S. B. T.

79.66 The corner to sections 20, 21, 28 & 29

Land rolling.

Soil 3rd rate

Heavy timber of pine.

Vegetation. grass.

Township 10 N. Range 21 E.

Gila and Salt River Meridian.

Chains

3' E.
North, between Sections 20 and 21.

Variation 18° 00' East.

Ascend.

40.00

Set a Sand stone 14 x 14 x 10 ins., 10 ins. in the ground, for $\frac{1}{4}$ Sec. Cor., marked $\frac{1}{4}$ on W. face, and raised a mound of stone alongside. Pits impracticable.

from which

A Yellow Pine 15 ins diam. bears N. 57° W. 27 lks. dist. marked $\frac{1}{4}$ S. B. T.

A Yellow Pine 12 ins diam. bears N. 67° E. 57 lks. dist. marked $\frac{1}{4}$ S. B. T.

49.80

Top of Spur, bears N. E. & S. W. and descend.

80.00

Set a Sand stone 16 x 10 x 10 ins. 10 ins. in the ground for Cor. to Secs. 16, 17, 20 & 21 marked with 3 notches on S. and 4 notches on E. edges and raised a mound of stone alongside. Pits impracticable.

A Yellow Pine 15 ins diam. bears N. 65° E. 49 lks. dist. from which marked T. 10 N. R. 21 E. S., 16 B. T.

A Yellow Pine 14 ins diam. bears S. 8° W. 27 lks. dist. marked T. 10 N. R. 21 E. S., 20 B. T.

A Yellow Pine 9 ins diam. bears N. 45° W. 80 lks. dist. marked T. 10 N. R. 21 E. S., 17 B. T.

No other trees within limits.
Land mountainous

Soil 2nd rate

Heavy timber of pine.

Vegetation. grass.

March 17, 1883

Township 10 N. Range 91 E.

Gila and Salt River Meridian.

Chains East, on a random line between Sections 16 and 21.
 Variation 13° 27' East.

Descend.

4.12 Cross Wash, 10 lks. wide, Course N. and ascend.

9.00 Top of Spur, bears N. 15° E. 15' and descend.

29.00 Cross Wash, 15 lks. wide, Course N. 10° E. and ascend.

40.00 Set temporary $\frac{1}{4}$ Sec. Cor.

79.97 Intersect N. & S. line, 12 lks. N. of cor. to secs.

15, 16, 21 & 22 from which corner, I run

N. 89° 55' W. on a true line between sections 16 & 21

Variation 13° 30' East

3998 Set a Sand stone 18 x 7 x 6 ins., 12

ins. in the ground, for $\frac{1}{4}$ Sec. Cor., marked $\frac{1}{4}$ on N.

face, and raised a mound of stone alongside. Pits

impracticable. from which

A White Oak 10 ins. diam. bears S. W. 17 lks. dist.

marked $\frac{1}{4}$ S. B. T.

A White Oak 11 ins. diam. bears N. 29° W. 43 lks. dist.

marked $\frac{1}{4}$ S. B. T.

79.97 The corner to sections 16, 17, 20 & 21

Land mountainous

Soil 2nd rate

Heavy timber of oak.

Vegetation. grass.

Township 10 N Range 21 E

Gila and Salt River Meridian.

Chains

North, ^{3' E.} between Sections 16 and 17.

Variation 13° 27' East.

Descend.

- 12.15 Cross Wash, 20 lks. wide, Course N.E. and ascend.
- 32.50 Top of Spur, bears N.E. & S.W. and descend.
- 38.50 Cross Wash, 70 lks. wide, Course E. and ascend.
- 46.00 Set a Sand stone 19 x 17 x 10 ins., 12 ins. in the ground, for $\frac{1}{4}$ Sec. Cor., marked $\frac{1}{4}$ on W. fare, and raised a mound of stone alongside. Pits impracticable. from which
- 2 Yellow Pine 13 ins diam. bears S. 38° W. 45 lks. dist. marked $\frac{1}{4}$ S. B. T.
- 2 White Oak 16 ins. diam. bears N. E. 87 lks. dist. marked $\frac{1}{4}$ S. B. T.
- 80.00 Set a Sand stone 26 x 11 x 10 ins. 18 ins. in the ground for Cor. to Secs. 8, 9, 16 & 17 marked with 4 notches on S. and 4 notches on E. edges and raised a mound of stone alongside. Pits impracticable. from which
- 1 Yellow Pine 9 ins diam. bears S. 57° W. 82 lks. dist. marked T. 10 N. R. 21 E. S. 17 B. T.
- 1 Juniper 7 ins. diam. bears S. 25° E. 67 lks. dist. marked T. 10 N. R. 21 E. S. 16 B. T.
- 1 White Oak 8 ins. diam. bears N. 66½° E. 40 lks. dist. marked T. 10 N. R. 21 E. S. 9 B. T.
- No other trees within limits.

Land mountainous

Soil 3rd rate

Heavy timber of pine, oak & juniper.

Vegetation. grass.

Township

10 N.

Range

21 E.

Gila and Salt River Meridian.

Chains

East, on a random line between Sections 9 and 16.

Variation $13^{\circ} 00'$ East.*Ascend.*7.00 Top of Ridge, bears $N. 10^{\circ} W. 2.10'$ and descend.40.00 Set temporary $\frac{1}{4}$ Sec. Cor.64.25 Cross Wash, 10 lks. wide, Course $N. 29^{\circ}$ and ascend.80.15 Intersect N. & S. line, 33 lks. $N.$ of cor. to secs.

9.10. 15 & 16 from which corner, I run

 $N. 89^{\circ} 46' W.$ on a true line between sections 9 & 16.Variation $13^{\circ} 00'$ East40.07 Set a Sand stone $16 \times 8 \times 7$ ins., 10
ins. in the ground, for $\frac{1}{4}$ Sec. Cor., marked $\frac{1}{2}$ on $N.$
face, and raised a mound of stone alongside. Pits

impracticable.

from which

A Juniper 10 ins. diam. bears $N. 48^{\circ} E.$ 14 lks. dist.
marked $\frac{1}{4}$ S. B. T.A Juniper 16 ins. diam. bears $S. 52^{\circ} W.$ 22 lks. dist.
marked $\frac{1}{4}$ S. B. T.

80.15 The corner to sections 8, 9, 16 & 17

Land mountainous

Soil 3rd rate

Heavy timber of Juniper.

Vegetation. Grass.

Township

10 N.

Range

21 E.

Gila and Salt River Meridian.

Chains

3^d E.
North, between Sections 8 and 9.

Variation 13° 00' East.

Over rolling land.

40.00

Set a post 3 ft. long. 3 ins. diam. with marked stone 12 ins. in the ground, for $\frac{1}{4}$ Sec. Cor., marked $\frac{1}{4}$ S. on W. face, dug pits, 18 x 18 x 12 ins., N and S. of post $5\frac{1}{2}$ ft. dist., and raised a mound of earth $1\frac{1}{2}$ ft. high, $3\frac{1}{2}$ ft. base around post.

80.00

Set a Sand stone 12 x 12 x 6 ins. 8 ins. in the ground for Cor. to Secs. 4. 5. 8 & 9 marked with 5 notches on S. and 4 notches on E. edges and raised a mound of stone alongside. Pits impracticable.

1 Yellow Pine 14 ins diam. bears N. 67° W. ^{from which} 73 lks. dist. marked T. 10 N. R. 21 E. S., 5 B. T.

1 Yellow Pine 11 ins diam. bears S. 46° E. 1.23 lks. dist. marked T. 10 N. R. 21 E. S., 9 B. T.

1 Yellow Pine 10 ins diam. bears S. 18° W. 1.41 lks. dist. marked T. 10 N. R. 21 E. S., 8 B. T.

No other trees within limits.

Land rolling.

Soil 3rd rate

Heavy timber of Pine.

Vegetation. Grass.

Township 10 N. Range 21 E.

Gila and Salt River Meridian.

Chains

East, on a random line between Sections 4 and 9.

Variation $13^{\circ} 00'$ East.*Ascend.*29.74 Top of Hill bears $N. 27^{\circ} E.$ & $S. 27^{\circ} W.$ and descend.40.00 Set temporary $\frac{1}{4}$ Sec. Cor.69.19 Cross Wash, 16 lks. wide, Course $N. 41^{\circ} E.$ and ascend.79.76 Intersect ~~N. & S.~~ line, 16 lks. S. of cor. to secs.

3, 4, 9 & 10 from which corner, I run

 $S. 89^{\circ} 53' W.$ on a true line between sections 4 & 9Variation $13^{\circ} 00'$ East39.87 Set a Sand stone $30 \times 12 \times 6$ ins., 22ins. in the ground, for $\frac{1}{4}$ Sec. Cor., marked $\frac{1}{4}$ on N.

face, and raised a mound of stone alongside. Pits

impracticable.

79.76 The corner to sections 4, 5, 8 & 9

Land hilly.

Soil 3° rateTimber of *pine*.Vegetation. *grass.*

Township 10 N Range 21 E

Gila and Salt River Meridian.

Chains. ^{3° E.} North, on a random line between Sections 4 and 5.
Variation 13° 00' East.

Descend.

31.90 Cross Road, 1st Settlement bears E. & W.

40.00 Set temporary $\frac{1}{2}$ Sec. Cor.

73.00 Cross Road, 1st Settlement bears N. 17° E. & S. 17° W.

79.50 A House bears S. 40 $\frac{1}{2}$ ° W. same ^{chains} ~~line~~ dist.

79.66 Intersect N. B. of Tp. 6 lks. E. of cor. to secs. previously set by me.

4.5. 32 & 33 from which corner, I run

S. 3° E. on a true line, between sections 4 & 5
Variation 13° 00' East.

39.66 Set a Sand stone 22 x 10 x 6 ins., 15 ins. in the ground, for $\frac{1}{2}$ Sec. Cor., marked $\frac{1}{2}$ on W. face, and raised a mound of stone alongside. Pits impracticable. from which

A Pine 10 ins, diam. bears S. 50° W. 50 lks. dist. marked $\frac{1}{2}$ S. B. T.

A Juniper 14 ins. diam. bears N. 87° W. 70 lks. dist. marked $\frac{1}{2}$ S. B. T.

79.66 The corner to sections 4, 5, 8 & 9

Land rolling.

Soil 3rd rate

Heavy timber of pine & juniper.

Vegetation, grass
I carefully examined the adjustments of my solar compass to-day, particularly the latitude and reversing apparatus, and found them correct. Mar. 19. 1883

Township

10

Range

21

0

Gila and Salt River Meridian.

From the corner to sections, 5, 6, 31 & 32, previously set by me.

Chains ^{3, E.} ~~run~~ North, between Sections 31 and 32.Variation $13^{\circ} 00'$ East.

Descend.

2.50 Cross Wash, 29 lks. wide, Course S.W. and ascend.

40.00 Set a post 3 ft. long, 3 ins. diam. with marked stone
12 ins. in the ground, for $\frac{1}{4}$ Sec. Cor., marked $\frac{1}{4}$ S. on
W. face, dug pits, 18 x 18 x 12 ins., N. and S. of
post $5\frac{1}{2}$ ft. dist., and raised a mound of earth $1\frac{1}{2}$ ft.
high, $3\frac{1}{2}$ ft. base around post. from which

A Yellow Pine 16 ins diam. bears N. 20° W. 18 lks. dist.
marked $\frac{1}{4}$ S. B. T.

No other trees within limits.

43.50 Top of Spur, bears E. & W. and descend.

80.00 Set a post 4 ft. long, 4 ins. square, with marked stone
12 ins. in the ground, for Cor. to Secs, 29, 30, 31 & 32
marked T, 10 N. S, 29, on N, E, R, 21 E., S. 32
on S, E, S, 31 on S, W, and S, 30 on N, W, face
with 1 notch on S, and 5 notches on E, edges,
dug pits 18 x 18 x 12 ins, in each Sec., $5\frac{1}{2}$ ft, dist.,
and raised a mound of earth 2 ft, high, $4\frac{1}{2}$ ft, base
around post.

A Yellow Pine 28 ins diam. bears N.W. from which
marked T, 10 N. R. 21 E. S., 30 B. T. 61 lks. dist.

A Yellow Pine 20 ins diam. bears N.E. 10 lks. dist.
marked T, 10 N. R. 21 E. S., 29 B. T.

A White Oak 16 ins. diam. bears S. 70° E. 78 lks. dist.
marked T, 10 N. R. 21 E. S., 32 B. T.

No other trees within limits.

Land mountainous Heavy timber of pine & oak.

Soil 2^{nd} rate Vegetation. grass.

Township 10 N Range 21 E

Gila and Salt River Meridian.

Chains East, on a random line between Sections 29 and 32.
Variation 13° 20' East.

Descend.

40.00 Set temporary 1/4 Sec. Cor.

64.20 Cross Wash, 20 lks. wide, Course N. 10° E and ascend.

79.64 Intersect N. & S. line, 38 lks. N. of cor. to secs.

28, 29, 32 & 33 from which corner, I run

N. 89° 44' W. on a true line between sections 29 & 32

Variation 13° 29' East

39.82 Set a Sand stone 17 x 10 x 4 ins., 12 ins. in the ground, for 1/4 Sec. Cor., marked 1/4 on N. face, and raised a mound of stone alongside. Pits impracticable.

from which

A Yellow Pine 27 ins diam. bears N. 10° E 84 lks. dist. marked 1/4 S. B. T.

A Yellow Pine 26 ins diam. bears S. 27° W. 60 lks. dist. marked 1/4 S. B. T.

79.64 The corner to sections 29, 30, 31 & 32

Land rolling.

Soil 2nd rate

Heavy timber of pine.

Vegetation. Grass.

Township

10 N.

Range

21 E.

Gila and Salt River Meridian.

Chains

West, on a random line between Sections 30 and 31.

Variation

13° 20'

East.

Ascend.

15.15 Top of Spur, bears N. 25° E. & S. 25° W. and descend.

30.00 Cross Wash, 23 lks. wide, Course N. 10° E. and ascend.

40.00 Set temporary $\frac{1}{4}$ Sec. Cor.

65.15 Top of Spur, bears N. 20° W. & S. 20° E. and descend.

79.56 Intersect W. B. of Tp. 25 lks. S. of cor. to secs.
previously set by me.

26.30.31 & 30 ^ from which corner, I run

S. 89° 49' E. on a true line, between sections 30 & 31

Variation 13° 00' East.

39.00 Set a post 3 ft. long, 3 ins. diam. with marked stone
12 ins. in the ground, for $\frac{1}{4}$ Sec. Cor., marked $\frac{1}{4}$ S. on
N. face, dug pits, 18 x 18 x 12 ins., E. and W. of
post 5 $\frac{1}{2}$ ft. dist., and raised a mound of earth 1 $\frac{1}{2}$ ft.
high, 3 $\frac{1}{2}$ ft. base around post.

79.00 The corner to sections 29, 30, 31 & 32

Land mountainous

Soil 2nd rate

Timber of Pine & Juniper.

Vegetation. Grass.

Township

10 N.

Range

21 E.

Gila and Salt River Meridian.

Chains

North, between Sections 29 and 30.

Variation $13^{\circ} 20'$ East.

Descend.

37.41 Cross Wash, 27 lks. wide, Course N. E. and ascend.

40.00 A Yellow Pine 15 ins diam. which I marked $\frac{1}{4}$ S. onN. face, for $\frac{1}{4}$ Sec. Cor.; from whichA Yellow Pine 16 ins diam. bears N. 21° W. 21 lks. dist.
marked $\frac{1}{4}$ S. B. T.A Yellow Pine 12 ins diam. bears N. 43° E. 21 lks. dist.
marked $\frac{1}{4}$ S. B. T.80.00 Set a sand stone $30 \times 16 \times 12$ ins. 22 ins. in
the ground for Cor. to Secs. 19, 20, 29 & 30. marked
with 2 notches on S. and 5 notches on E. edges and
raised a mound of stone alongside. Pits impracticable.A Yellow Pine 34 ins diam. bears N. 15° W. 75 lks. dist. ^{from which}
marked T. 10 N, R. 21 E, S., 19 B. T.A Juniper 20 ins. diam. bears N. 42° E. 42 lks. dist.
marked T. 10 N, R. 21 E, S., 20 B. T.A White Oak 12 ins. diam. bears S. 25° E. 85 lks. dist.
marked T. 10 N, R. 21 E, S., 29 B. T.A White Oak 10 ins. diam. bears S. 15° W. 75 lks. dist.
marked T. 10 N, R. 21 E, S., 30 B. T.

Land rolling.

Soil 2nd rate

Heavy timber of Pine, Juniper & oak.

Vegetation. grass.

Township 10 N. Range 21 E.

Gila and Salt River Meridian.

Chains East, on a random line between Sections 20 and 29.
 Variation $13^{\circ} 00'$ East.

Descend.

40.00 Set temporary $\frac{1}{4}$ Sec. Cor.

59.84 Cross Wash, .06 lks. wide, Course $S. 80^{\circ} E.$

79.88 Intersect N. & S. line, 19 lks. N. of cor. to secs.

20. 21. 28 & 29 from which corner, I run

$N. 89^{\circ} 52' W.$ on a true line between sections 20 & 29.

Variation $13^{\circ} 00'$ East

39.94 Set a Sand stone $26 \times 14 \times 8$ ins., 18 ins.
 in the ground, for $\frac{1}{4}$ Sec. Cor., marked $\frac{1}{4}$ on N. face,
 dug pits $18 \times 18 \times 12$ ins., E. and W. of stone $5\frac{1}{2}$
 ft. dist., and raised a mound of earth $1\frac{1}{2}$ ft. high, $3\frac{1}{2}$
 ft. base alongside. from which

A White Oak 13 ins. diam. bears $N. 18^{\circ} W.$ 98 lks. dist.
 marked $\frac{1}{4}$ S. B. T.

A White Oak 10 ins. diam. bears $S. 65^{\circ} E.$ 10 lks. dist.
 marked $\frac{1}{4}$ S. B. T.

79.88 The corner to sections 19. 20. 29. & 30

Land rolling.

Soil 3° rate

Heavy timber of oak.

Vegetation. grass.

Township

10 N

BOOK
Range

76

E

50

Gila and Salt River Meridian.

Chains

West, on a random line between Sections 19 and 30.

Variation $13^{\circ} 00'$ East.

Ascend.

30.00 Top of Spur, bears N. & S. and descend.

40.00 Set temporary $\frac{1}{4}$ Sec. Cor.

52.10 Cross Wash, 10 lks. wide, Course N. and ascend.

74.00 Top of Spur, bears N. & S. and descend.

79.35 Intersect W. B. of Tp. 12 lks. S. of cor. to secs.
previously set by me.
19, 24, 25 & 30, from which corner, I run $S. 89^{\circ} 55' E$ on a true line, between sections 19 & 30
Variation $13^{\circ} 00'$ East.89.35 Set a sand stone $17 \times 13 \times 10$ ins., 12
ins. in the ground, for $\frac{1}{4}$ Sec. Cor., marked $\frac{1}{4}$ on N.
face, and raised a mound of stone alongside. Pits
impracticable. from whichA Yellow Pine 10 ins diam. bears $S. 27^{\circ} W$ 10 lks. dist.
marked $\frac{1}{4}$ S. B. T.A Yellow Pine 12 ins diam. bears $N. 9^{\circ} E$ 65 lks. dist.
marked $\frac{1}{4}$ S. B. T.79.35 The corner to sections 19, 20, 29 & 30.
Land mountainousSoil 3rd rate

Heavy timber of pine.

Vegetation. grass.

Township

10 N.

Range

21 E.

Gila and Salt River Meridian.

Chains

3' E.
North, between Sections 19 and 20.

Variation

18° 00'

East.

Descend.

40.00 Set a sand stone 14 x 8 x 4 ins., 10 ins. in the ground, for $\frac{1}{4}$ Sec. Cor., marked $\frac{1}{4}$ on W. face, and raised a mound of stone alongside. Pits impracticable.

53.02 Cross Wash, 60 lks. wide, Course N. E. and ascend.

66.07 Top of Spur, bears N. E. & S. W. and descend.

80.00 Set a sand stone 25 x 20 x 6 ins. 18 ins. in the ground for Cor. to Secs. 17, 18, 19 & 20 marked with 3 notches on S. and 5 notches on E. edges and raised a mound of stone alongside. Pits impracticable.

from which

A Yellow Pine 20 ins diam. bears S. 41° E. 70 lks. dist. marked T. 10 N. R. 21 E. S., 20 B. T.

A Yellow Pine 20 ins diam. bears N. 35° W. 87 lks. dist. marked T. 10 N. R. 21 E. S., 18 B. T.

A Juniper 21 ins. diam. bears S. 25° E. 39 lks. dist. marked T. 10 N. R. 21 E. S., 20 B. T.

No other trees within limits.

Land mountainous

Soil 2nd rate

Heavy timber of pine & juniper.

Vegetation. grass.

Township

10 N.

Range

21 E.

Gila and Salt River Meridian.

Chains

East, on a random line between Sections 17 and 20.

Variation $13^{\circ} 00'$ East.*Ascend.*40.00 Set temporary $\frac{1}{4}$ Sec. Cor.A Yellow Pine 16 ins diam. bears $N. 40^{\circ} W.$ 70 lbs. dist.50.00 Top of Spur, bears $N. E. \& S. W.$ and descend.69.00 Cross Wash, 15 lks. wide, Course $N. E.$ and ascend.80.42 Intersect N. & S. line, 24 lks. S. of cor. to secs.
16. 17. 20 & 21 from which corner, I run $S. 89^{\circ} 50' W.$ on a true line between sections 17 & 20.Variation $13^{\circ} 27'$ East40.21 Set a sand stone $18 \times 7 \times 7$ ins., 12
ins. in the ground, for $\frac{1}{4}$ Sec. Cor., marked $\frac{1}{4}$ on $N.$
face, and raised a mound of stone alongside. Pits
impracticable.80.42 The corner to sections 17. 18. 19 & 20
Land mountainousSoil 2nd rate

Timber of pine.

Vegetation. grass.

Township 10 N. Range 21 E.

Gila and Salt River Meridian.

Chains

West, on a random line between Sections 18 and 19.

Variation 13° 00' East.*Descend.*40.00 Set temporary $\frac{1}{4}$ Sec. Cor.55.80 Cross Wash, 17 lks. wide, Course *N.* and ascend.78.89 Intersect *W. B. of Tp.* 38 lks. *N.* of cor. to secs.
previously set by me.
B. 18. 19 & 24, from which corner, I run*N. 89° 44' E* on a true line, between sections 18 & 19Variation 13° 00' East.38.89 Set a post 3 ft. long. 3 ins. diam. with marked stone
12 ins. in the ground, for $\frac{1}{4}$ Sec. Cor., marked $\frac{1}{2}$ S. on
N. face, dug pits, 18 x 18 x 12 ins., *E.* and *W.* of
post $5\frac{1}{2}$ ft. dist., and raised a mound of earth $1\frac{1}{2}$ ft.
high, $3\frac{1}{2}$ ft. base around post.

78.89 The corner to sections 17. 18. 19 & 20

Land rolling.

Soil 2nd rateTimber of *Yucca.*Vegetation. *grass.*

Township

10 N.

BOOK 76

Range

31 E.

54

Gila and Salt River Meridian.

Chains

North, ^{3' E.} between Sections 17 and 18.

Variation

13° 00'

East.

Descend.

40.00

Set a Sand stone 18 x 18 x 12 ins., 12 ins. in the ground, for $\frac{1}{4}$ Sec. Cor., marked $\frac{1}{4}$ on W. face, and raised a mound of stone alongside. Pits

impracticable.

from which

A Yellow Pine 12 ins diam. bears S. 75° E. 31 lks. dist. marked $\frac{1}{4}$ S. B. T.

A White Oak 16 ins. diam. bears N. 32° W. 12 lks. dist. marked $\frac{1}{4}$ S. B. T.

62.80

Cross Road, bears, N. 36° E. & S. 36° W.

71.10

Cross Wash, 20 lks. wide, Course N. 16° E. and ascend.

80.00

Set a Sand stone 16 x 14 x 9 ins. 10 ins. in the ground for Cor. to Secs. 7, 8, 17 & 18 marked with 4 notches on S. and 5 notches on E. edges and raised a mound of stone alongside. Pits impracticable.

Land rolling.

Soil 2nd rate

Heavy timber of pine & oak.

Vegetation. grass.

Township 10 N. Range 21 E.

Gila and Salt River Meridian.

Chains

East, on a random line between Sections 8 and 17.

Variation $13^{\circ} 00'$ East.

Descend.

11.77 Cross Wash, 14 lks. wide, Course $N. 9^{\circ} E.$ and ascend.

12.13 Cross Road, bears, $N. e S.$

40.00 Set temporary $\frac{1}{4}$ Sec. Cor.

79.79 Intersect N. & S. line, 11 lks. $S.$ of cor. to secs.

8.9.16 & 17 from which corner, I run

$S. 89^{\circ} 55' W.$ on a true line between sections 8 & 17

Variation $13^{\circ} 00'$ East

39.89 Set a Sand stone $25 \times 17 \times 6$ ins., 15 ins. in the ground, for $\frac{1}{4}$ Sec. Cor., marked $\frac{1}{4}$ on $N.$ face, and raised a mound of stone alongside. Pits impracticable.

from which

A Yellow Pine 28 ins diam. bears $S. 48^{\circ} W.$ 7 lks. dist. marked $\frac{1}{4}$ S. B. T.

No other trees within limits.

79.79 The corner to sections 7. 8. 17 & 18

Land rolling.

Soil 2nd rate

Timber of pine & juniper.

Vegetation. grass.

March 20. 1883

Township

10

Range

21

10

Gila and Salt River Meridian.

Chains

West, on a random line between Sections 7 and 18.

Variation

13° 00'

East.

*Ascend.*40.00 Set temporary $\frac{1}{4}$ Sec. Cor.78.81 Intersect *W. B. of Tp. 22* lks. *N. of cor. to secs.*
previously set by me.

7. 12. 13 & 18, from which corner, I run

N. 89° 51' Con a true line, between sections 7 & 18

Variation

13° 30'

East.

38.81 Set a post 3 ft. long, 3 ins. diam 24 ins. in the ground,
for $\frac{1}{4}$ Sec. Cor., marked $\frac{1}{4}$ S. on *N.* face; from whichA Yellow Pine 12 ins diam. bears *N. 20° E.* 37 lks. dist.
marked $\frac{1}{4}$ S. B. T.A Yellow Pine 14 ins diam. bears *S. 20° E.* 1.70 lks. dist.
marked $\frac{1}{4}$ S. B. T.

78.81 The corner to sections 7. 8. 17. 18

Land rolling.

Soil *2nd* rateHeavy timber of *Yew*.Vegetation. *grass.*

Township

10

Range

91

Gila and Salt River Meridian.

Gila and Salt River Meridian.

Chains

North, ^{3. E} between Sections 7 and 8.

Variation 13° 00' East.

Descend.

40.00

Set a sand stone 16 x 8 x 4 ins., 16 ins. in the ground, for $\frac{1}{4}$ Sec. Cor., marked $\frac{1}{4}$ on ~~N~~ W face, and raised a mound of stone alongside. Pits impracticable.

80.00

Set a post 4 ft. long, 4 ins. square, with marked stone 12 ins. in the ground, for Cor. to Secs, 5, 6, 7 & 8 marked T, 10 N. S. 5', on N, E, R, 2 E, S. 8 on S, E, S, 7 on S, W, and S, 6 on N, W, face with 5 notches on S, and 5 notches on E, edges, dug pits 18 x 18 x 12 ins, in each Sec., 5½ ft. dist., and raised a mound of earth 2 ft. high, 4½ ft. base around post.

*Land rolling.*Soil 2nd rate

Vegetation grass.

Township

10 N

Range

21 E

Gila and Salt River Meridian.

Chains

East, on a random line between Sections 5 and 8.

Variation 13° 00' East.

Descend.

2.13 Cross Wash, 16 lks. wide, Course N. 5° E and ascend.

16.29 Cross Road, bears, N. 70° E. & S. 70° W.

40.00 Set temporary 1/2 Sec. Cor.

80.07 Intersect N. & S. line, 31 lks. N. of cor. to secs.

4. 5. 6. 7 from which corner, I run

N. 39° 47' W. on a true line between sections 5 & 8

Variation 13° 00' East

40.03 Set a sand stone 22 x 12 x 7 ins., 15 ins. in the ground, for 1/2 Sec. Cor., marked 1/2 on N. face, and raised a mound of stone alongside. Pits

impracticable.

80.07 The ea. 1/2 sec., 5. 6. 7 & 8 Land rolling.

Soil 3rd rate

Vegetation grass.

Township

11 N.

Range

21 E

Gila and Salt River Meridian.

Chains

West, on a random line between Sections 6 and 7.

Variation $13^{\circ} 00'$ East.*Ascend.*40.00 Set temporary $\frac{1}{4}$ Sec. Cor.78.65 Intersect *W. B. of Tp. 26* lks. *S.* of cor. to secs.
previously set by me.
1.6. 7. & 12 \wedge from which corner, I run $S. 89^{\circ} 49' E.$ on a true line, between sections 6 & 7Variation $13^{\circ} 00'$ East.38.65 Set a post 3 ft. long. 3 ins. diam. with marked stone
12 ins. in the ground, for $\frac{1}{4}$ Sec. Cor., marked $\frac{1}{2}$ S. on
N. face, dug pits, 18 x 18 x 12 ins., E. and W. of
post $5\frac{1}{2}$ ft. dist., and raised a mound of earth $1\frac{1}{2}$ ft.
high, $3\frac{1}{2}$ ft. base around post.78.65 The corner to sections 5. 6. 7 & 8
Land rolling.Soil 3rd rate

Vegetation grass.

Township 10 N. Range 21 E.

Gila and Salt River Meridian.

Chains

North, ^{3' E.} on a random line between Sections 5 and 6.

Variation 13° 00' East.

Descend.

40.00 Set temporary $\frac{1}{4}$ Sec. Cor.

42.00 Cross Road, N. 60° E. & S. 60° W.

70.80 Cross Wash, 21 lks. wide, Course \odot and ascend.79.92 Intersect N. B. of Tp. 28 lks. \odot of cor. to secs.5. 6. 31 & 32 ^{previously set by me.} from which corner, I runS. 9' \odot on a true line, between sections 5 6 6

Variation 13° 00' East.

39.92 Set a Sand stone 14 x 6 x 4 ins., 10
ins. in the ground, for $\frac{1}{4}$ Sec. Cor., marked $\frac{1}{4}$ on \odot
face, and raised a mound of stone alongside. Pits
impracticable.

79.92 The corner to sections 5. 6. 7 & 8

Land rolling.

Soil 3rd rate

Vegetation Grass.

I carefully examined the adjustments of my solar
compass to-day, particularly the latitude and revers-
ing apparatus, and found them correct.

March 21, 1883

GENERAL DESCRIPTION.

This Tp. is mountainous nearly all of it being rolling timber land.

Heavy Yellow Pine in the southern and western parts. Less pine and more juniper and Cedar in other places.

Shawlow Creek runs along the N. E. part of this Tp.

A small settlement on Secs. 11 & 14 and one on Secs. 5 & 8. Several fields in other parts of the Tp.

Good growth of grass in most all parts.

Soil 2nd & 8th rate.

For final outlines see book 21-19

U. S. Surveyor General's Office,

Tucson, Arizona, June 17, 1884.

The foregoing Field Notes of the Survey of the

Subdivision lines of
Township 10 North
Range 21 East

Of the Gila and Salt River Base and Meridian, Arizona, executed by O. B. Wheeler

Deputy Surveyor, under his contract of the 17th

day of July, 1882, having been

critically examined and the necessary corrections and explanations made, the said Field Notes and the surveys they describe

are hereby approved

Royal Johnson
Surveyor General.