

Book No. ~~7~~

BOOK 91

BOOK 91

Deputy Surveyor.

R.

Gila and Salt River Meridian.

FIELD NOTES

OF

THE SUBDIVISION LINES OF

Township

Range

Gila and Salt River Meridian.

91

BY

Deputy Surveyor.

Under his Contract of

July 25, 1882.

Survey Commenced

Apr. 24, 1883.

Survey Completed

Apr. 30, 1883.

Platted,

Copied for Washington,

Copied for Register,

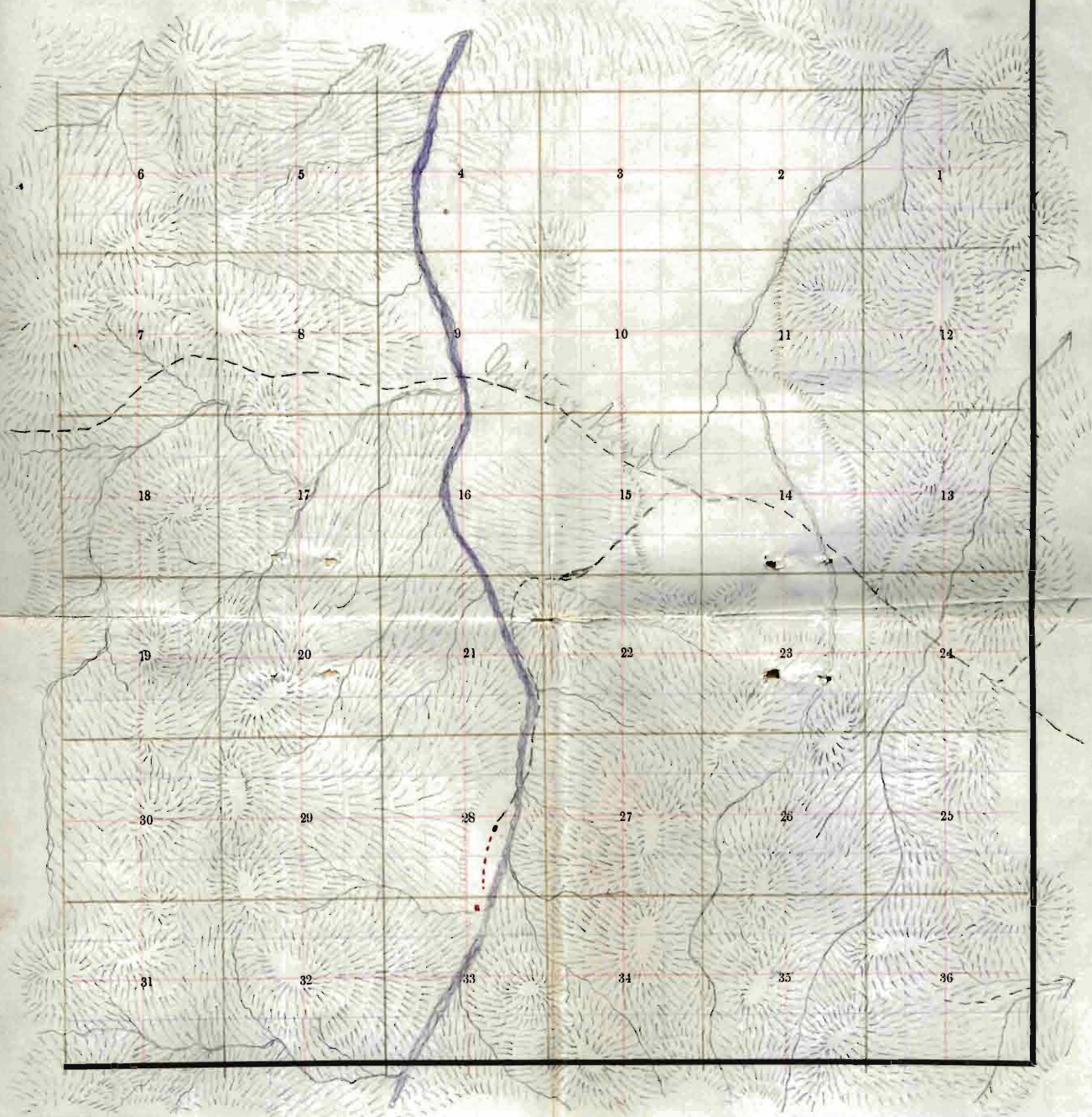
Edward Denny & Co., Stationers & Printers, S. F. Cal.

Copyright Secured,

Entered according to Act of Congress, in the Clerk's Office of the Librarian of Congress at Washington, D. C., in the year 1880.

Township No. 11 N Range No. 18 E 6th Main Meridian.

BOOK 91



TOWNSHIP PLOT

- Meridian Line,*
- Base Line,*
- Standard Line,*
- Township Lines,*
- Section Lines,*
- Meander Lines,*
- Office Work.*

BOOK 91

H. A. Coe, Deputy Surveyor.
T. *11 North,* **R.** *19 East,*
 Gila and Salt River Meridian.

150-91
FIELD NOTES

OF

THE SUBDIVISION LINES OF
 Township *11 N,* Range *19 E,*
 Gila and Salt River Meridian.

BY

H. A. Coe, Deputy Surveyor.
 Under his Contract of *July 25,* 1882,
 Survey Commenced *Apr. 24,* 1883.
 Survey Completed *Apr. 30,* 1883.

*Platted,
 Copied for Washington,
 Copied for Register,*

Township *11 North*, Range *19 East*,
G. & S. R. D. & Meridian.

6	60	5	44	4	33	3	22	2	11	1
59		58		43		32		21		10
7	57	8	42	9	31	10	20	11	9	13
56		55		41		30		19		8
18	54	17	40	16	29	15	18	14	7	13
53		52		39		28		17		6
19	51	20	38	21	27	22	16	23	5	24
50		49		37		26		15		4
30	48	29	36	28	25	27	14	26	3	25
47		46		35		24		13		2
31	45	32	34	33	23	34	12	35	1	36

OK.

Edward Denny & Co., Stationers & Printers, S. F., Cal.

Copyright Secured.

Entered according to Act of Congress, in the Clerk's Office of the Librarian of Congress at Washington, D. C., in the year 1880.

Township

Range

10

Meridian.

For preliminary notes
and description of
instrument used
see book No. 1-

Survey made with Burt's Patent Improved Solar
Compass, nearly new, and in first rate order. Made
by *Otto Samuel* of *Cassel*
Germany in 1881

Before proceeding to subdivide this Tp., I made a
change of 5 minutes in the latitude arc of my
solar compass by subtracting same from
the reading previously given, and at noon verified
and corrected same by observation on the sun. I also
further tested instrument by reversing.

1 D
Township

(See previous page.)

11 N.

Range

19 E.

Gila and Salt River Meridian.

Chains *previously set by me.* *Sp.*
From the corner to Sections 35, 36, 1 and 2 on the South boundary, 1 run,
North, between Sections 35 and 36 ¹ ¹
Variation $14^{\circ}10'$ East.

Ascend.

40.00 Set a post 3 ft. long, 3 ins. diam. with marked stone
12 ins. in the ground, for $\frac{1}{4}$ Sec. Cor., marked $\frac{1}{4}$ S. on
N. face, dug pits, 18 x 18 x 12 ins., N and S. of
post $5\frac{1}{2}$ ft. dist., and raised a mound of earth $1\frac{1}{2}$ ft.
high, $3\frac{1}{2}$ ft. base around post.

53.84 Top of Hill bears E. and W. and descend.

68.13 Cross Wash, 14 lks. wide, Course N. E., and ascend.

80.00 Set a sand stone $14 \times 13 \times 8$ ins. in
the ground for Cor. to Secs. 25-26-35-36 marked
with / notch on S. and / notch on E. edges and
raised a mound of stone alongside. Pits impracticable.

A Pine 8 ins, diam. bears N. $18^{\circ} E$, 47 lks. dist. ^{from which}
marked T. 11 N., R. 19 E., S., 25 B. T.

A Pine 9 ins, diam. bears S. $73^{\circ} E$, 34 lks. dist.
marked T. 11 N., R. 19 E., S., 36 B. T.

A Pine 11 ins, diam. bears S. $49^{\circ} W$, 34 lks. dist.
marked T. 11 N., R. 19 E., S., 35 B. T.

A Pine 5 ins, diam. bears N. $62^{\circ} W$, 20 lks. dist.
marked T. 11 N., R. 19 E., S., 26 B. T.

Land hilly.

Soil 3rd rateVegetation, Bunchgrass, Oak & Juniper,
Heavy timber of Pine

Township

11 N.

Range

19 E.

Gila and Salt River

Meridian.

Chains

East, on a random line between Sections 25 and 36.

Variation

13° 30'

East.

Descend.

13.53 Cross Wash, 15 lks. wide, Course N. 4° E. and ascend.

32.00 Top of Spur, bears N. & S. and descend.

40.00 Set temporary $\frac{1}{4}$ Sec. Cor.

44.30 Cross Wash, 20 lks. wide, Course North and ascend.

73.90 Top of Ridge, bears N. 9° 17' E. and descend.

79.84 Intersect C. B. of Tp. 26 lks. South of cor. to secs.
previously set by me.

25-30-31-36, from which corner, I run

S. 89° 49' 17" on a true line, between sections 36-25.

Variation 13° 30' East.

89.92 Set a Sand stone 18 x 10 x 6 ins., 12

ins. in the ground, for $\frac{1}{4}$ Sec. Cor., marked $\frac{1}{4}$ on N

face, and raised a mound of stone alongside. Pits

impracticable.

from which

A Yellow Pine 14 ins diam. bears N. 34° W, 39 lks. dist.

marked $\frac{1}{4}$ S. B. T.

A Yellow Pine 12 ins diam. bears S. 36° W, 44 lks. dist.

marked $\frac{1}{4}$ S. B. T.

79.84 The corner to sections 25-26-35-36.

Land mountainous

Soil 3rd rate

Timber of

Pine, Oak and Juniper.

Vegetation.,

Bunchgrass.

Township

11 N.

BOOK 91

Range

19 E.

Gila and Salt River Meridian.

Chains

North, between Sections 25 and 26.

Variation

13° 30'

East.

Ascend.

- 38.06 Top of Spur, bears N. 22° E. 70.22' and descend.
- 40.00 Set a Sand stone 16 x 10 x 6 ins.!!
ins. in the ground, for $\frac{1}{4}$ Sec. Cor., marked $\frac{1}{4}$ on N,
face, and raised a mound of stone alongside. Pits
impracticable. from which
- A Yellow Pine 23 ins diam. bears N. 88° W, 78 lks. dist.
marked $\frac{1}{4}$ S. B. T.
- A Live Oak 7 ins. diam. bears N. 85° E., 10 lks. dist.
marked $\frac{1}{4}$ S. B. T.
- 63.11 Cross Wash, 16 lks. wide, Course N. 15° E.
- 80.00 Set a Sand stone 23 x 11 x 9 ins. 16 ins.
in the ground for Cor. to Secs. 23-24-25-26 marked
with 2 notches on S. and 1 notch on E. edges,
dug pits 18 x 18 x 12 ins. in each Sec., 5 $\frac{1}{2}$ ft. dist. and
raised a mound of earth 2 ft. high, 4 $\frac{1}{2}$ ft. base. alongside.
from which
- A Yellow Pine 10 ins diam. bears N. 50° E., 17 lks. dist.
marked T. 11 N., R. 19 E., S., 24 B. T.
- A Juniper 14 ins. diam. bears S. 60° E., 84 lks. dist.
marked T. 11 N., R. 19 E., S., 25 B. T.
- A Yellow Pine 20 ins diam. bears S. 40° W, 28 lks. dist.
marked T. 11 N., R. 19 E., S., 26 B. T.
- A Juniper 18 ins. diam. bears N. 55° W, 20 lks. dist.
marked T. 11 N., R. 19 E., S., 23 B. T.
- Land rolling.
- Soil ^{3rd}
Vegetation. Bunch grass, ^{rose} heavy timber of Pine & Juniper.

Township

11 N.

Range

19 E.

Gila and Salt River Meridian.

Chains

East, on a random line between Sections 24 and 25.

Variation $13^{\circ}30'$ East

Descend.

S. 10 Cross Wash, 14 lks. wide, Course $N. 23^{\circ} E$ and ascend.40.00 Set temporary $\frac{1}{2}$ Sec. Cor.S. 17 Top of Ridge, bears $N. 21^{\circ} E$ & $S. 21^{\circ} W$ descend.S. 08 Intersect N. & S. line, 19 lks. North of cor. to secs.
previously set by me.

19-24-25-30 from which corner, I run

 $N. 89^{\circ} 52' W$ on a true line between sections 24-25.Variation $13^{\circ}30'$ East40.04 Set a Sand stone $14 \times 9 \times 5$ ins.,
ins. in the ground, for $\frac{1}{2}$ Sec. Cor., marked $\frac{1}{2}$ on N.
face, and raised a mound of stone alongside. Pits

impracticable. from which

A Juniper 11 ins. diam. bears $S. 49^{\circ} W$, 88 lks. dist.
marked $\frac{1}{2}$ S. B. T.A Juniper 10 ins. diam. bears $N. 50^{\circ} W$, 43 lks. dist.
marked $\frac{1}{2}$ S. B. T.

S. 08 The corner to sections 23-24-25-26.

Land mountainous

Soil 2nd & 3rd rate

Timber of Pine and Juniper.

Vegetation, Bunchgrass.

Township

11 N.

BOOK 91

Range

19 E.

Gila and Salt River Meridian.

Chains

North, between Sections 23 and 24.

Variation

13° 30'

East.

Ascend.

17.30 Top of Spur, bears N. 6° 4 S. W. and descend.

40.00 Set a *SAND* stone 17 x 12 x 8 ins., 11 ins. in the ground, for $\frac{1}{4}$ Sec. Cor., marked $\frac{1}{4}$ on W. face, and raised a mound of stone alongside. Pits impracticable.

from which

A Juniper 7 ins. diam. bears S. 21° E., 43 lks. dist. marked $\frac{1}{4}$ S. B. T.

A Pine 12 ins. diam. bears N. 28° E., 67 lks. dist. marked $\frac{1}{4}$ S. B. T.

74.23 Cross Road, bears N. 34° W. & S. 34° E.

80.00 Set a post 4 ft. long. 4 ins. square, with marked stone 12 ins. in the ground, for Cor. to Secs, 13-14-23-24 marked T. 11 N. S. 13, on N, E, R. 19 E., S. 24 on S, E, S, 23 on S, W, and S, 14 on N, W, face with 3 notches on S, and 1 notch on E, edges, dug pits 18 x 18 x 12 ins, in each Sec., 5 $\frac{1}{2}$ ft. dist., and raised a mound of earth 2 ft. high, 4 $\frac{1}{2}$ ft. base around post.

from which

A Yellow Pine 24 ins diam. bears N. 52° E., 150 lks. dist. marked T. 11 N. R. 19 E. S., 13 B. T.

A White Oak 8 ins. diam. bears S. 20° E., 151 lks. dist. marked T. 11 N. R. 19 E. S., 24 B. T.

No other trees within limits.

Land rolling.

Soil

3 $\frac{1}{2}$ rate

Vegetation,

Timber of Pine, Oak & Juniper, Bunchgrass,

Township

11 N.

Range

19 E.

Gila and Salt River

Meridian.

Chains

East, on a random line between Sections 13 and 24.

Variation

13°30'

East.

Ascend.

19.00 Top of Ridge, bears N. 42° E. 98.42' and descend.

40.00 Set temporary $\frac{1}{4}$ Sec. Cor.

44.21 Cross Wash, 15 lks. wide, Course N. 22° E. and ascend.

79.78 Intersect $\frac{1}{4}$ C. B. of Tp. 14 lks. N. of cor. to secs. previously set by me.

13-18-19-24 from which corner, I run

N 89° 54' W a true line, between sections 13-24.

Variation 13°30' East.

39.89 Set a post 3 ft. long. 3 ins. diam. with marked stone
12 ins. in the ground, for $\frac{1}{4}$ Sec. Cor., marked $\frac{1}{4}$ S. on
N. face, dug pits, 18 x 18 x 12 ins., E. and W. of
post $5\frac{1}{2}$ ft. dist., and raised a mound of earth $1\frac{1}{2}$ ft.
high, $3\frac{1}{2}$ ft. base around post.

79.78 The corner to sections 13-14-23-24.

Land mountainous

Soil 3rd rate

Timber of Juniper.

Vegetation., Bunchgrass.

Township

11 N.

BOOK 91

Range

19 E.

Gila and Salt River Meridian.

Chains

North, between Sections 13 and 14.

Variation

13° 30'

East.

Descend.

38.14 Ascend.

40.00 Set a sand stone 18 x 18 x 9 ins., 12 ins. in the ground, for $\frac{1}{4}$ Sec. Cor., marked $\frac{1}{4}$ on N. face, and raised a mound of stone alongside. Pits impracticable.

80.00 Set a post 4 ft. long, 4 ins. square, with marked stone 12 ins. in the ground, for Cor. to Secs, 11-12-13-14, marked T, 11 N, S, 12, on N, E, R, 19 E, S, 13 on S, E, S, 14 on S, W, and S, 11 on N, W, face with 4 notch ~~es~~ on S, and 1 notch on E, edges, dug pits 18 x 18 x 12 ins, in each Sec., 5 $\frac{1}{2}$ ft, dist., and raised a mound of earth 2 ft, high, 4 $\frac{1}{2}$ ft, base

from which

A Juniper 11 ins. diam. bears N. 30 E, 28 lks. dist. marked T, 11 N, R, 19 E, S., 12 B. T.

A Juniper 10 ins. diam. bears S. 55 E, 90 lks. dist. marked T, 11 N, R, 19 E, S., 13 B. T.

A Juniper 10 ins. diam. bears N. 40 W, 40 lks. dist. marked T, 11 N, R, 19 E, S., 11 B. T.

No other trees within limits.

Land rolling.

Soil 2nd & 3rd rate.

Timber of

Pine & Juniper.

Vegetation,

Bunchgrass.

Township

11 N.

Range

19 E.

Gila and Salt River Meridian.

Chains

East, on a random line between Sections 12 and 13.

Variation

13°30'

East.

*Ascend.*40.00 Set temporary $\frac{1}{4}$ Sec. Cor.41.00 Top of Ridge, bears N. ∇ S. and descend.80.14 Intersect C. B. of Tp. 30 *South* of cor. to secs.7-12-13-18 ^{previously set by me,} from which corner, I run

S. 89°47' W, on a true line, between sections 12-13.

Variation 13°30' East.

40.07 A Juniper 12 ins. diam. which I marked $\frac{1}{4}$ S. onN. face, for $\frac{1}{4}$ Sec. Cor.; from whichA Juniper 7 ins. diam. bears N. 60° E, 28 lks. dist.
marked $\frac{1}{4}$ S. B. T.A Juniper 10 ins. diam. bears S. 46° W, 29 lks. dist.
marked $\frac{1}{4}$ S. B. T.

80.14 The corner to sections 11-12-13-14.

Land mountainous

Soil

3rd rate

Timber of

Vegetation.,

Pine and Juniper.
Bunchgrass.

Township

11 N.

Range

19 E.

Gila and Salt River Meridian.

Chains North, between Sections 11 and 12.

Variation $13^{\circ}30'$ East.

Ascend.

40.00 Set a sand stone $23 \times 10 \times 6$ ins., 17 ins. in the ground, for $\frac{1}{4}$ Sec. Cor., marked $\frac{1}{4}$ on W face, dug pits $18 \times 18 \times 12$ ins., N and S. of stone $5\frac{1}{2}$ ft. dist., and raised a mound of earth $1\frac{1}{2}$ ft. high, $3\frac{1}{2}$ ft. base

from which

A Pine 10 ins. diam. bears $S. 55^{\circ} E.$, 35 lks. dist. marked $\frac{1}{4}$ S. B. T.

A Juniper 12 ins. diam. bears $S. 58^{\circ} W.$, 50 lks. dist. marked $\frac{1}{4}$ S. B. T.

64.73 Top of Spur, bears $E. 9 W.$ and descend.

80.00 Set a post 4 ft. long, 4 ins. square, with marked stone 12 ins. in the ground, for Cor. to Secs, 1-2-11-12, marked T/11 N. S. 1, on N, E, R, 19 E, S. 12 on S, E, S, 11 on S, W, and S, 2 on N, W, face with 5 notch on S, and 1 notch on E, edges, dug pits $18 \times 18 \times 12$ ins, in each Sec., $5\frac{1}{2}$ ft. dist., and raised a mound of earth 2 ft. high, $4\frac{1}{2}$ ft. base around post.

from which

A Juniper 13 ins. diam. bears $N. 48^{\circ} E.$, 14 lks. dist. marked T. 11 N. R. 19 E, S.

A Juniper 9 ins. diam. bears $N. 60^{\circ} W.$, 30 lks. dist. marked T. 11 N. R. 19 E, S., 2 B. T.

No other trees within limits.

Land rolling.

Soil

3rd rate

Vegetation

Bunchgrasses.

Heavy timber of Pine & Juniper

Township

11 N.

BOOK 91

Range

19 E.

Gila and Salt River Meridian.

Chains

East, on a random line between Sections 1 and 12.

Variation

13° 30'

East.

*Ascend.*40.00 Set temporary $\frac{1}{4}$ Sec. Cor.

56.33 Top of Ridge, bears N. & S. and descend.

80.14 Intersect C. B. of Tp. 25 lks. South of cor. to secs.
previously set by me.

1-6-7-12 from which corner, I run

S. 89° 49' W. on a true line, between sections 1-12,

Variation 13° 30' East.

40.10 Set a pest 3 ft. long, 3 ins. diam 24 ins. in the ground
for $\frac{1}{4}$ Sec. Cor., marked $\frac{1}{4}$ S. on N. face; from which
A Pine 8 ins, diam. bears N. 23° E., 68 lks. dist.
marked $\frac{1}{4}$ S. B. T.A Pine 9 ins, diam. bears S. 10° W., 12 lks. dist.
marked $\frac{1}{4}$ S. B. T.

80.14 The corner to sections 1-2-11-12.

Land mountainous

Soil

3rd rate

Timber of

Pine & Juniper.

Vegetation,

Bunchgrass.

Township

11 N.

Range

19 E.

Gila and Salt River Meridian.

Chains

North, on a random line between Sections 1 and 2.

Variation

13° 30'

East.

Descend.

22.71 Enter Valley, bears N. 68° E. & S. 68° W.

40.00 Set temporary $\frac{1}{4}$ Sec. Cor.

112.21 Cross Wash, 17 lks. wide, Course N. 43° E.

76.11 Leave Valley, bears E. & W. and ascend.

80.40 Intersect N. B. of Tp. 27 lks. West of cor. to secs.
previously set by me.
1-2-35-36, from which corner, I run

S. 12° W., on a true line, between sections 1-2,

Variation 13° 45' East.

40.40 Set a post 3 ft. long. 3 ins. diam. with marked stone
12 ins. in the ground, for $\frac{1}{4}$ Sec. Cor., marked $\frac{1}{4}$ S. on
W. face, dug pits, 18 x 18 x 12 ins., N and S. of
post 5 $\frac{1}{2}$ ft. dist., and raised a mound of earth 1 $\frac{1}{2}$ ft.
high, 3 $\frac{1}{2}$ ft. base around post.

80.40 The corner to sections 1-2-11-12,

Land level. & rolling.

Soil 2nd & 3rd rate

Vegetation, Bunchgrass.

Timber of Juniper.

I carefully examined the adjustments of my solar
compass to-day, particularly the latitude and revers-
ing apparatus, and found them correct.

Apr. 24, 1883.

Township

11 N.

Range

19 E.

Gila and Salt River Meridian.

Chains

From Cor. to Secs. 2-3-34-35 ^{on S. 1/2 Sec. 35} previously set by me.

Run North, between Sections 34 and 35.

Variation

14° 15'

East.

Descend.

40.00 Set a sand stone $23 \times 12 \times 10$ ins., 17 ins. in the ground, for $\frac{1}{4}$ Sec. Cor., marked $\frac{1}{4}$ on N face, dug pits $18 \times 18 \times 12$ ins., and \checkmark of stone $5\frac{1}{2}$ ft. dist., and raised a mound of earth $1\frac{1}{2}$ ft. high, $3\frac{1}{2}$ ft. base alongside.

42.49 Cross Wash, 13 lks. wide, Course N. 24° W.

74.27 Cross Wash, 15 lks. wide, Course N. 19° E. and ascend.

80.00 Set a sand stone $16 \times 12 \times 7$ ins. 11 ins. in the ground for Cor. to Secs. 26-27-34-35 marked with / notch on S. and 2 notch ~~es~~ on E. edges and raised a mound of stone alongside. Pits impracticable.

* Yellow Pine 10 ins diam. bears ^{from which} N. 22° E., 74 lks. dist. marked T. 11 N., R. 19 E., S., 26 B. T.

* Yellow Pine 9 ins diam. bears S. 24° E., 34 lks. dist. marked T. 11 N., R. 19 E., S., 35 B. T.

* Yellow Pine 15 ins diam. bears S. 41° N., 45 lks. dist. marked T. 11 N., R. 19 E., S., 34 B. T.

* Yellow Pine 11 ins diam. bears N. 37° N., 9 lks. dist. marked T. 11 N., R. 19 E., S., 27 B. T.

Land rolling.
Soil 2nd & 3rd rate

Timber of Pine.

Vegetation., Bunchgrass.

Township

11N

Range

19E

Gila and Salt River Meridian.

Chains

East, on a random line between Sections 26 and 35.

Variation 13°30' East.

Descend.

5.49 Cross Wash, 12 lks. wide, Course N. 27° E and ascend.

36.07 Top of Ridge, bears N. 10° N. W. 20° E and descend.

40.00 Set temporary 1/4 Sec. Cor.

80.30 Intersect N. & S. line, 7 lks. South of cor. to secs.

25-26-35-36 from which corner, I run

S. 89° 57' W. on a true line between sections 26-35.

Variation 13°30' East

40.15 Set a sand stone 19 x 11 x 9 ins., 14

ins. in the ground, for 1/4 Sec. Cor., marked 1/4 on N,

face, and raised a mound of stone alongside. Pits

impracticable.

from which

A Juniper 30 ins. diam. bears S. 48° E, 72 lks. dist.

marked 1/4 S. B. T.

A Yellow Pine 8 ins diam. bears N. 36° W, 46 lks. dist.

marked 1/4 S. B. T.

80.30 The corner to sections 26-27-34-35.

Land mountainous

Soil 2nd & 3rd rate

Timber of Pine & Juniper.

Vegetation, Bunchgrass.

Township

11 N.

Range

19 E.

Gila and Salt River Meridian.

Chains

North, between Sections 26 and 27.

Variation

13° 30'

East.

Ascend.

40.00 A White Oak 7 ins. diam. which I marked $\frac{1}{4}$ S. on N.face, for $\frac{1}{4}$ Sec. Cor.; from whichA White Oak 14 ins. diam. bears S. 50° E., 34 lks. dist.
marked $\frac{1}{4}$ S. B. T.A White Oak 12 ins. diam. bears S. 65° W., 25 lks. dist.
marked $\frac{1}{4}$ S. B. T.

58.05 Top of Ridge, bears N. 26° E. 70 S. 26° W. and descend.

80.00 Set a sand stone 19 x 14 x 9 ins. 14 ins. in
the ground for Cor. to Secs. 22-23-26-27 marked
with 2 notches on S. and 2 notches on E. edges and
raised a mound of stone alongside. Pits impracticable.An Oak, 7 ins. diam. bears N. 40° E., 75 lks. dist. ^{from which}
marked T. 11 N., R. 19 E., S., 23 B. T.A Juniper, 10 ins. diam. bears S. 70° E., 90 lks. dist.
marked T. 11 N., R. 19 E., S., 26 B. T.A Pine, 16 ins. diam. bears N. 27° W., 67 lks. dist.
marked T. 11 N., R. 19 E., S., 22 B. T.

No other trees within limits.

Land mountainous.

Soil 2nd & 3rd rate

Vegetation, Bunchgrass.

Heavy timber of Pine, Oak & Juniper.

Township

11 N,

Range 19 E,

Gila and Salt River Meridian.

Chains

East, on a random line between Sections 23 and 26.

Variation

13° 30'

East.

Ascend.

28.24 Top of Hill bears N. 32° E. 9 S. 32° W. and descend.

40.00 Set temporary $\frac{1}{4}$ Sec. Cor.

42.75 Cross Wash, 15 lks. wide, Course N. 18° E. and ascend.

71.10 Top of Ridge, bears N. 28° E. 9 S. 28° W. and descend.

79.89 Intersect N. & S. line, 28 lks. North of cor. to secs.

23-24-25-26 from which corner, I run

N 89° 48' W. on a true line between sections 23-26,

Variation 13° 30' East

39.95 Set a sand stone 15 x 11 x 10 ins., 10

ins. in the ground, for $\frac{1}{4}$ Sec. Cor., marked $\frac{1}{4}$ on N,

face, and raised a mound of stone alongside. Pits

impracticable.

A White Oak 6 ins. diam. bears N. 77° E. 112 lks. dist. from which
marked $\frac{1}{4}$ S. B. T.A Yellow Pine 12 ins diam. bears S. 50° E. 127 lks. dist.
marked $\frac{1}{4}$ S. B. T.

79.89 The corner to sections 22-23-26-27.

Land mountainous

Soil 2nd & 3rd rate

Timber of Pine, Oak & Juniper.

Vegetation, Bunchgrass.

Township

11 N.

BOOK 91

Range

19 E.

16

Gila and Salt River Meridian.

Chains

North, between Sections 22 and 23.

Variation

13° 30'

East.

Descend.

40.00 Set a *same* stone 18 x 14 x 7 ins., 12 ins. in the ground, for $\frac{1}{2}$ Sec. Cor., marked $\frac{1}{2}$ on *N.* face, and raised a mound of stone alongside. Pits impracticable.

41.31 Cross Wash, 11 lks. wide, Course $N 62^{\circ} W$ and ascend.

58.16 Top of Hill bears $E. 9 W.$ and descend.

69.80 Foot of same and enter valley.

80.00 Set a post 4 ft. long, 4 ins. square, with marked stone 12 ins. in the ground, for Cor. to Secs, 14-15-22-23, marked T, 11 N, S, 14, on N, E, R, 19 E, S, 23 on S, E, S, 22 on S, W, and S, 15 on N, W, face with 3 notches on S, and 2 notches on E, edges, dug pits 18 x 18 x 12 ins, in each Sec., 5 $\frac{1}{2}$ ft. dist., and raised a mound of earth 2 ft. high, 4 $\frac{1}{2}$ ft. base around post.

from which

A Yellow Pine 25 ins diam. bears $N. 78^{\circ} E.$, 13 lks. dist. marked T, 11 N, R, 19 E, S., 14 B. T.

A Yellow Pine 18 ins diam. bears $S. 20^{\circ} W.$, 75 lks. dist. marked T, 11 N, R, 19 E, S., 23 B. T.

No other trees within limits.

Land rolling.

Soil *2nd & 3rd* rateTimber of *Pine & Juniper.*Vegetation. *Bunchgrass.*

Township

11 N.

Range

19 E.

Gila and Salt River Meridian.

Chains

East, on a random line between Sections 14 and 23.

Variation

13° 30'

East.

Over rolling land.

40.00 Set temporary $\frac{1}{4}$ Sec. Cor.

67.74 Cross Wash, 17 lks. wide, Course N 12° W, and ascend.

78.23 Cross Road, (New Crook's) to. N 30° W. 9 S 30° E.

79.94 Intersect N. & S. line, 9 lks. South of cor. to secs.

13-14-23-24 from which corner, I run

S 89° 56' W. on a true line between sections 14-23,

Variation 13° 30' East

39.97 Set a sand stone 17 x 10 x 9 ins., 11 ins.
 in the ground, for $\frac{1}{4}$ Sec. Cor., marked $\frac{1}{4}$ on N face,
 dug pits 18 x 18 x 12 ins., E and W. of stone 5 $\frac{1}{2}$
 ft. dist., and raised a mound of earth 1 $\frac{1}{2}$ ft. high, 3 $\frac{1}{2}$
 ft. base alongside.

79.94 The corner to sections 22-23-14-15

Land rolling.

Soil 2nd rate

Vegetation, Bunchgrass.

Timber of

Pine & Juniper.

Township

11 N.

Range

19 E.

Gila and Salt River

Meridian.

Chains

North, between Sections 14 and 15.

Variation

10°30'

East.

Over rolling land.

Gen. Hooker's Cross Road,

bears N. 50° W. 9 S. 50° E.

39.64
40.00

Set a post 3 ft. long. 3 ins. diam. with marked stone

12 ins. in the ground, for 1/4 Sec. Cor., marked 1/4 S. on

W. face, dug pits, 18 x 18 x 12 ins. N and S. of

post 5 1/2 ft. dist., and raised a mound of earth 1 1/2 ft.

high, 3 1/2 ft. base around post.

from which

a Juniper 16 ins. diam. bears N. 41° W. 28 1/2 lks. dist.

marked 1/4 S. B. T.

No other trees within limits.

70.30

Cross Wash, 13 lks. wide, Course N. 27° E and ascend.

80.00

Set a sand stone 23 x 13 x 10 ins. 1 1/2 ins.

in the ground for Cor. to Secs. 10-11-14-15 marked

with 4 notches on S. and 2 notches on E. edges,

dug pits 18 x 18 x 12 ins. in each Sec., 5 1/2 ft. dist. and

raised a mound of earth 2 ft. high, 4 1/2 ft. base. alongside.

Land rolling.

Soil 2nd rate

Timber of Juniper.

Vegetation, Bunchgrass.

Township

11 N,

Range

14 E,

Gila and Salt River Meridian.

Chains

East, on a random line between Sections 11 and 14.

Variation

13°30'

East.

Over rolling land.

4.53 Cross Wash, 11 lks. wide, Course N. 20° E.
 23.16 Cross Wash, 12 lks. wide, Course North.

40.00 Set temporary $\frac{1}{4}$ Sec. Cor.

58.00 Ascend.

80.18 Intersect N. & S. line, 21 lks. South of cor. to secs.
 11-12-13-14 from which corner, I run

S 89° 51' W. on a true line between sections 11-14,
 Variation 13°30' East

40.09 Set a sand stone 18 x 10 x 6 ins., 12 ins.
 in the ground, for $\frac{1}{4}$ Sec. Cor., marked $\frac{1}{4}$ on N face,
 dug pits 18 x 18 x 12 ins., E and W. of stone 5 $\frac{1}{2}$
 ft. dist., and raised a mound of earth 1 $\frac{1}{2}$ ft. high, 3 $\frac{1}{2}$
 ft. base alongside.

80.18 The corner to sections 10-11-14-15.

Land rolling.

Soil 2nd rate

Vegetation, Bunchgrass.

Timber of Juniper.

Township

11 N.

Range

19 E.

Gila and Salt River Meridian.

Chains

North, between Sections 10 and 11.

Variation

13° 30'

East.

Over level land

40.00 Set a sand stone 17 x 8 x 5 ins., 11 ins. in the ground, for $\frac{1}{4}$ Sec. Cor., marked $\frac{1}{4}$ on W face, dug pits 18 x 18 x 12 ins., N and S. of stone $5\frac{1}{2}$ ft. dist., and raised a mound of earth $1\frac{1}{2}$ ft. high, $3\frac{1}{2}$ ft. base. alongside.

80.00

Set a post 4 ft. long, 4 ins. square, with marked stone 12 ins. in the ground, for Cor. to Secs, 2-3-10-11, marked T. 11 N, S. 2, on N, E, R. 19 E., S. 11 on S, E, S, 10 on S, W, and S, 3 on N, W, face with 5 notches on S, and 2 notches on E, edges, dug pits 18 x 18 x 12 ins, in each Sec., $5\frac{1}{2}$ ft. dist., and raised a mound of earth 2 ft. high, $4\frac{1}{2}$ ft. base around post.

from which

A Pine, 8 ins. diam. bears N. 45° E., 28 kts. dist. marked T. 11 N, R. 19 E., S., 2 B. T.

A Juniper, 9 ins. diam. bears S. 43° E., 22 kts. dist. marked T. 11 N, R. 19 E., S., 11 B. T.

A Pine 4 ins. diam. bears N. 48° W., 43 kts. dist. marked T. 11 N, R. 19 E., S., 3 B. T.

No other trees within limits.

Land level.

Soil

2nd and 3rd rate

Vegetation

Bunchgrass.

Timber of

Pine & Juniper.

Township

11 N.

Range

19 E.

Gila and Salt River Meridian.

Chains

East, on a random line between Sections 2 and 11.

Variation

13° 30'

East.

Descend.

40.00 Set temporary $\frac{1}{2}$ Sec. Cor.

41.85 Cross Wash, 20 lks. wide, Course N. E. and ascend.

80.31 Intersect N. & S. line, 14 lks. North of cor. to secs.

1-2-11-12 from which corner, I run

N 89° 54' W. on a true line between sections 2-11.

Variation 13° 30' East

40.16 Set a post 3 ft. long. 3 ins. diam. with marked stone
12 ins. in the ground, for $\frac{1}{2}$ Sec. Cor., marked $\frac{1}{2}$ S. on
N. face, dug pits, 18 x 18 x 12 ins., E. and W. of
post 5 $\frac{1}{2}$ ft. dist., and raised a mound of earth 1 $\frac{1}{2}$ ft.
high, 3 $\frac{1}{2}$ ft. base around post.

80.31 The corner to sections 2-3-10-11.

Land rolling.

Soil 2nd & 3rd rate

Vegetation, Bunchgrass.

Timber of Juniper.

Township

11 N,

Range

19 E,

Gila and Salt River Meridian.

Chains

North, on a random line between Sections 2 and 3.

Variation

13°30'

East.

Over level land

40.00 Set temporary $\frac{1}{4}$ Sec. Cor.St. 13 Intersect N. B. of Tp. 41 $\frac{1}{4}$ Sec. West of cor. to secs.previously set by me.
2-3-34-35, from which corner, I run

S. 18° W, on a true line, between sections 2-3,

Variation 13°30' East.

40.13 Set a sand stone 14 x 9 x 5 ins., 9

ins. in the ground, for $\frac{1}{4}$ Sec. Cor., marked $\frac{1}{4}$ on N.

face, and raised a mound of stone alongside. Pits

impracticable.

St. 13 The corner to sections 2-3-10-11.

Land level.

Soil 2nd & 3rd rate

Vegetation, Bunchgrass

Timber of Juniper.

Apr. 25, 1883.

Township

11 N.

Range

19 E.

Gila and Salt River Meridian.

Chains

From North, between Sections 33 and 34.

Variation

14°

East.

Ascend.

37.46 Top of Spur, bears E. & W. and descend.

40.00 Set a post 3 ft. long, 3 ins. diam. with marked stone
12 ins. in the ground, for $\frac{1}{4}$ Sec. Cor., marked $\frac{1}{4}$ S. on
N. face, and raised a mound of stone $1\frac{1}{2}$ ft. high, $3\frac{1}{2}$ ft. base around post. Pits impracticable.

54.90 Cross Wash, 13 lks. wide, Course N. 27° W.

44.
80.00 Set a "sand" stone $2\frac{1}{2} \times 11 \times 8$ ins. 18 ins. in
the ground for Cor. to Secs 27-28-33-34 marked
with notch on S. and 3 notches on E. edges and
raised a mound of stone alongside. Pits impracticable.A Yellow Pine 18 ins diam. bears N. 67° E. ^{from which} 148 lks. dist.
marked T. 11 N., R. 19 E., S., 27 B. T.A Yellow Pine 14 ins diam. bears S. 34° E., 49 lks. dist.
marked T. 11 N., R. 19 E., S., 34 B. T.A Yellow Pine 36 ins diam. bears S. 46° W., 218 lks. dist.
marked T. 11 N., R. 19 E., S., 33 B. T.A Yellow Pine 40 ins diam. bears N. 17° W., 150 lks. dist.
marked T. 11 N., R. 19 E., S., 28 B. T.

Land rolling.

Soil 3rd rate

Vegetation, Bunchgrass

Heavy timber of Pine, Oak & Juniper.

Township

11 N.

Range

19 E.

Gila and Salt River

Meridian.

Chains

East, on a random line between Sections 27 and 34.

Variation

13° 30'

East.

Descend.

- 6.40 Cross Wash, 10 lks. wide, Course S. 84° W.
- 19.93 Cross Wash, 10 lks. wide, Course N. 80° W.
- 29.00 Cross Wash, 8 lks. wide, Course S. 86° W. and ascend.
- 40.00 Set temporary $\frac{1}{4}$ Sec. Cor.
- 59.88 Top of Ridge, bears N. & S. and descend.
- 79.95 Intersect N. & S. line, 46 lks. North of cor. to secs. 26-27-34-35 from which corner, I run N 89° 40' W. on a true line between sections 27-34. Variation 13° 30' East
- 39.98 Set a sand stone 24 x 12 x 10 ins., 18 ins. in the ground, for $\frac{1}{4}$ Sec. Cor., marked $\frac{1}{4}$ on N. face, and raised a mound of stone alongside. Pits impracticable. from which
- A Yellow Pine 11 ins diam. bears N. 81° E., 125 lks. dist. marked $\frac{1}{4}$ S. B. T.
- A Yellow Pine 28 ins diam. bears S. 7° E., 229 lks. dist. marked $\frac{1}{4}$ S. B. T.
- 79.95 The corner to sections 27-28-33-34. Land mountainous Soil 2nd & 3rd rate Timber of Pine, Oak & Juniper. Vegetation, Bluegrass.

Township

11 N.

BOOK 91

Range

19 E.

Gila and Salt River Meridian.

Chains

North, between Sections 27 and 28.

Variation

13° 30'

East.

Ascend.

21.50 Top of Spur, bears E. & W. and descend.

40.00 Set a sand stone 18 x 12 x 7 ins. 12 ins. in the ground, for $\frac{1}{4}$ Sec. Cor., marked $\frac{1}{4}$ on N. face, and raised a mound of stone alongside. Pits impracticable.A Yellow Pine 13 ins diam. bears S. 80° E., 34 lks. dist. marked $\frac{1}{4}$ S. B. T. ^{from which}A Yellow Pine 24 ins diam. bears S. 78° W., 106 lks. dist. marked $\frac{1}{4}$ S. B. T.

44.26 Cross Wash, 12 lks. wide, Course N. W.

30.00 Set a sand stone 23 x 15 x 7 ins. 7 ins. in the ground for Cor. to Secs. 21-22-27-28 marked with 2 notches on S. and 3 notches on E. edges and raised a mound of stone alongside. Pits impracticable.

A Yellow Pine 9 ins diam. bears N. 50° E., 113 lks. dist. marked T. 11 N., R. 19 E., S., 22 B. T. ^{from which}

A Yellow Pine 20 ins diam. bears S. 50° E., 44 lks. dist. marked T. 11 N., R. 19 E., S., 27 B. T.

A Yellow Pine 14 ins diam. bears S. 80° W., 53 lks. dist. marked T. 11 N., R. 19 E., S., 28 B. T.

A Yellow Pine 15 ins diam. bears N. 35° W., 56 lks. dist. marked T. 11 N., R. 19 E., S., 21 B. T.

Land rolling.

Soil

3rd rate

Vegetation, Bunchgrass.

Heavy timber of Pine and Juniper.

Township

11 N.

BOOK

91 Range

19 E.

20

Gila and Salt River Meridian.

Chains

East, on a random line between Sections 22 and 27.

Variation $13^{\circ}30'$ East.

Ascend.

40.00 Set temporary $\frac{1}{4}$ Sec. Cor.

74.67 Intersect N. & S. line, 13 *North* *13* lks. of cor. to secs.

22-23-26-27 from which corner, I run

$N.89^{\circ}54'W.$ on a true line between sections 22-27,

Variation $13^{\circ}30'$ East

39.84 Set a post 3 ft. long, 3 ins. diam 24 ins. in the ground, for $\frac{1}{4}$ Sec. Cor., marked $\frac{1}{4}$ S. on *N* face; from which

X Yellow Pine 12 ins diam. bears $S. 20^{\circ}W.$, 33 lks. dist. marked $\frac{1}{4}$ S. B. T.

X Yellow Pine 23 ins diam. bears $N.62^{\circ}W.$, 35 lks. dist. marked $\frac{1}{4}$ S. B. T.

74.67 The corner to sections 21-22-27-28.

Land rolling.

Soil *3rd* rate

Vegetation, *Bunchgrass.*

Heavy timber of *Pine, Oak & Juniper.*

Township

11 N.

Range

19 E.

Gila and Salt River Meridian.

Chains

North, between Sections 21 and 22.

Variation $13^{\circ}30'$ East.

Descend.

23.11 Cross Wash, 12 lks. wide, Course West and ascend.

40.00 Set a sand stone $14 \times 10 \times 7$ ins., 14 ins. in the ground, for $\frac{1}{4}$ Sec. Cor., marked $\frac{1}{4}$ on W. face, and raised a mound of stone alongside. Pits impracticable.

A Yellow Pine 30 ins diam. bears $S. 60^{\circ} E.$, 34 lks. dist. marked $\frac{1}{4}$ S. B. T. from which

No other trees within limits.

64.00 Top of Hill bears $E. \& W.$ and descend.

79.70 Cross Wash, 10 lks. wide, Course $N. 64^{\circ} W.$ and ascend.

79.91 Cross Road, bears $E. \& W.$

80.00 Set a sand stone $22 \times 14 \times 8$ ins. 16 ins. in the ground for Cor. to Secs. 15-16-21-22 marked with 3 notches on S. and 3 notches on E. edges and raised a mound of stone alongside. Pits impracticable.

A Yellow Pine 19 ins diam. bears $N. 73^{\circ} E.$, 312 lks. dist. marked T. 11 N., R. 19 E., S., 15 B. T.

A Yellow Pine 17 ins diam. bears $S. 37^{\circ} E.$, 148 lks. dist. marked T. 11 N., R. 19 E., S., 22 B. T.

A Yellow Pine 30 ins diam. bears $S. 15^{\circ} W.$, 82 lks. dist. marked T. 11 N., R. 19 E., S., 21 B. T.

A Yellow Pine 26 ins diam. bears $N. 88^{\circ} W.$, 47 lks. dist. marked T. 11 N., R. 19 E., S., 16 B. T.

Land hilly.

Soil 3rd rate

Vegetation, Bunchgrass.

Heavy timber of Pine & Juniper.

Chains

East, on a random line between Sections 15 and 22.

Variation 13° 30' East.

Ascend.

17.00 Cross Road, bears, N. 60° E. & S. 60° W.

40.00 Set temporary $\frac{1}{4}$ Sec. Cor.

43.19 Along level mesa,

80.08 Intersect N. & S. line, 20 lks. South of cor. to secs.

14-15-22-23 from which corner, I run

S. 89° 51' W. on a true line between sections 15-22,

Variation 13° 30' East

40.04 Set a sand stone 16 x 14 x 9 ins. //

ins. in the ground, for $\frac{1}{4}$ Sec. Cor., marked $\frac{1}{4}$ on N,

face, and raised a mound of stone alongside. Pits

impracticable. from which

A Yellow Pine 11 ins diam. bears N. E., 79 lks. dist.
marked $\frac{1}{4}$ S. B. T.A Yellow Pine 13 ins diam. bears S. 30° E., 31 lks. dist.
marked $\frac{1}{4}$ S. B. T.

80.08 The corner to sections 15-16-21-22,

Land rolling & level.

Soil 2nd & 3rd rate

Timber of Pine and Juniper.

Vegetation, Bunchgrass.

Township

11 N.,

Range

19 E.,

Gila and Salt River Meridian.

Chains

North, between Sections 15 and 16.

Variation

13° 30' East.

Over rolling land.

40.00 A Juniper 7 ins. diam. which I marked $\frac{1}{4}$ S.
on W face, for $\frac{1}{4}$ sec. cor., dug pits, 18 x 18 x 12 ins.
N and S of tree, 5 $\frac{1}{2}$ ft. dist. and raised a mound
of earth around tree. from which

A Juniper 12 ins. diam. bears S. 57° E., 16 lks. dist.
marked $\frac{1}{4}$ S. B. T.

A Juniper 8 ins. diam. bears N. 80° W., 39 lks. dist.
marked $\frac{1}{4}$ S. B. T.

80.00

Set a post 4 ft. long, 4 ins. square, with marked stone
12 ins. in the ground, for Cor. to Secs, 9-10-15-16,
marked T. 11 N., S. 10, on N, E, R. 19 E., S. 15
on S, E, S, 16 on S, W, and S, 9 on N, W, face
with 4 notches on S, and 3 notches on E, edges,
dug pits 18 x 18 x 12 ins, in each Sec., 5 $\frac{1}{2}$ ft. dist.,
and raised a mound of earth 2 ft. high, 4 $\frac{1}{2}$ ft. base
around post.

from which
A Juniper 7 ins. diam. bears N. 67° E., 77 lks. dist.
marked T. 11 N. R. 19 E., S. 10 B. T.

No other trees within limits.

Land rolling.

Soil

3rd rate

Timber of

Pine & Juniper

Vegetation,

Bunchgrass.

Township

11 N.

Range

19 E.

Gila and Salt River Meridian.

Chains

East, on a random line between Sections 10 and 15.

Variation

13°30'

East.

Descend.

9.90 Cross Road, (Gen. Crook's) bears N. 71° N. 9 S. 71° E.

40.00 Set temporary $\frac{1}{4}$ Sec. Cor.

40.60 Enter Valley.

79.90 Intersect N. & S. line, 11 lks. South of cor. to secs.

10-11-14-15 from which corner, I run

S. 89° 55' W. on a true line between sections 10-15,

Variation

13°30'

East

39.95 Set a Sand stone 16 x 9 x 5 ins., 11

ins. in the ground, for $\frac{1}{4}$ Sec. Cor., marked $\frac{1}{4}$ on N,

face, and raised a mound of stone alongside. Pits

impracticable.

79.90 The corner to sections 9-10-15-16.

Land rolling.

Soil

2nd rate

Vegetation, Bunchgrass.

Township

11 N.

Range

19 E.

Gila and Salt River Meridian.

Chains

North, between Sections 9 and 10.

Variation

13° 30'

East.

Descend. gradually.

40.08 Cross Road, (Gen. Crook's) bears N. 70° W. 75.70 E.

40.00 Set a post 3 ft. long. 3 ins. diam. with marked stone 12 ins. in the ground, for 1/4 Sec. Cor., marked 1/4 S. on N. face, dug pits, 18 x 18 x 12 ins., N and S. of post 5 1/2 ft. dist., and raised a mound of earth 1 1/2 ft. high, 3 1/2 ft. base around post.

63.00 Ascend,

75.00 Top of Spur, bears E. & W. and descend.

80.00 Set a post 4 ft. long. 4 ins. square, with marked stone 12 ins. in the ground, for Cor. to Secs, 3-4-9-10, marked T. 11 N. S. 3, on N, E, R. 19 E, S. 11 on S, E, S, 10 on S, W, and S, 4 on N, W, face with 5 notches on S, and 3 notches on E, edges, dug pits 18 x 18 x 12 ins, in each Sec., 5 1/2 ft. dist., and raised a mound of earth 2 ft. high, 4 1/2 ft. base around post.

A Juniper 8 ins. diam. bears S. 46 E., 7 lks. dist. marked T. 11 N. R. 19 E, S., 10 B. T.

A Juniper 10 ins. diam. bears S. 58 W., 6 1/2 lks. dist. marked T. 11 N., R. 19 E, S., 9 B. T.

A Pine 6 ins. diam. bears N. 17 W., 2 1/2 lks. dist. marked T. 11 N., R. 19 E, S., 4 B. T.

No other trees within limits.

Land rolling. Soil 2nd rate

Vegetation. Bushy grass, Pine & Juniper. Heavy timber of

from which

Township

11 N,

Range

19 E,

Gila and Salt River Meridian.

Chains

East, on a random line between Sections 3 and 10.

Variation $13^{\circ}30'$ East.*Ascend. gradually.*

4.25 Descend.

14.27 Foot of Hill, bears N.E. & S.W.

40.00 Set temporary $\frac{1}{4}$ Sec. Cor.

79.86 Intersect N. & S. line, 38 lks. South of cor. to secs.

2-3-10-11 from which corner, I run

 $S89^{\circ}44'W$. on a true line between sections 3-10,Variation $13^{\circ}30'$ East

39.93 Set a post 3 ft. long, 3 ins. diam 24 ins. in the ground,
for $\frac{1}{4}$ Sec. Cor., marked $\frac{1}{4}$ S. on N face; from which
A Yellow Pine 9 ins diam. bears $S.65^{\circ}E$, 27 lks. dist.
marked $\frac{1}{4}$ S. B. T.

A Pine 16 ins, diam. bears $S.70^{\circ}W$, 34 lks. dist.
marked $\frac{1}{4}$ S. B. T.

79.86 The corner to sections 3-4-9-10.

Land rolling.

Soil 3rd rate

Vegetation, Bunchgrass.

Timber of Pine and Juniper.

Township

11 N,

Range

19 E,

Gila and Salt River Meridian.

Chains

North, on a random line between Sections 3 and 4.

Variation $13^{\circ}30'$ East.

Descend.

9.00 Center Mesa.

40.00 Set temporary $\frac{1}{4}$ Sec. Cor.80.32 Intersect N. B. of Tp. 14 lks. East of cor. to secs.
previously set by me.

34-33-34 from which corner, I run

S. $6^{\circ}E$, on a true line, between sections 3-4.Variation $13^{\circ}45'$ East.

40.32 Set a post 3 ft. long. 3 ins. diam. with marked stone
12 ins. in the ground, for $\frac{1}{4}$ Sec. Cor., marked $\frac{1}{4}$ S. on
N. face, dug pits, 18 x 18 x 12 ins. N. and S. of
post $5\frac{1}{2}$ ft. dist., and raised a mound of earth $1\frac{1}{2}$ ft.
high, $3\frac{1}{2}$ ft. base around post. from which
A Juniper 10 ins. diam. bears N. $71^{\circ}E$, 69 lks. dist.
marked $\frac{1}{4}$ S. B. T.

No other trees within limits.

80.32 The corner to sections 3-4-9-10.

Land rolling.

Soil 2nd rate

Vegetation, Bunchgrass.

Timber of Juniper.

I carefully examined the adjustments of my solar
compass to-day, particularly the latitude and revers-
ing apparatus, and found them correct.

Apr. 26, 1883.

Township

11 N,

Range

19 E,

Gila and Salt River Meridian.

From cor. to secs. 45 32 33, on 8th B. T. ^{previously set by me.}

Chains ^{from} North, between Sections 32 and 33.

Variation 14° 30' East.

Ascend.

40.00 Set a sand stone 17 x 14 x 11 ins., 11 ins. in the ground, for 1/4 Sec. Cor., marked 1/4 on W face, dug pits 18 x 18 x 12 ins., Wand S. of stone 5 1/2 ft. dist., and raised a mound of earth 1 1/2 ft. high, 3 1/2 ft. base alongside.

A Live Oak 10 ins. diam. bears N. 46° E, 82 lks. dist. marked 1/4 S. B. T.

A Live Oak 17 ins. diam. bears N. 14° W, 10 lks. dist.

41.67 ^{marked 1/4 S. B. T.} Top of Spur, bears N. 83° E. 7 S. 83° W. 7 descend, 30.00 Set a post 4 ft. long, 4 ins. square, with marked stone

12 ins. in the ground, for Cor. to Secs, 28-29-32-33, marked T, 11 N, S, 28, on N, E, R, 19 E, S. 33 on S, E, S, 32 on S, W, and S, 29 on N, W, face with 1 notch on S, and 4 notches on E, edges, dug pits 18 x 18 x 12 ins, in each Sec., 5 1/2 ft, dist., and raised a mound of earth 2 ft, high, 4 1/2 ft, base around post.

from which
A Live Oak 17 ins. diam. bears N. 66° E, 20 1/2 lks. dist. marked T, 11 N, R, 19 E, S., 28 B. T.

A Yellow Pine 40 ins. diam. bears S. 75° E, 86 lks. dist.

marked T, 11 N, R, 19 E, S., 33 B. T.

A Yellow Pine 22 ins. diam. bears S. 42° W, 76 lks. dist.

marked T, 11 N, R, 19 E, S., 32 B. T.

A Yellow Pine 47 ins. diam. bears N. 17° W, 78 lks. dist. marked T, 11 N, R, 19 E, S., 29 B. T.

Land rolling.

Soil 2nd 3rd rate Heavy timber of Pine, Oak & Juniper

Township *11 N.*, BOOK 91 Range *19 E.*

Gila and Salt River Meridian.

Chains

East, on a random line between Sections 28 and 33.

Variation *13° 30'* East.

Descend.

9.95 Cross Wash, *15* lks. wide, Course *S. 61° E.**40.00* Set temporary $\frac{1}{4}$ Sec. Cor.*41.00* Enter valley,*46.00* A log cabin, bears South *137* lks. dist.*55.60* Cross Wash, *100* lks. wide, Course *N. 26° E.**70.40* Cross Wash, *10* lks. wide, Course *N. W.**76.00* Cross Wash, *10* lks. wide, Course *N. 57° W.* and ascend.*80.12* Intersect N. & S. line, *19* lks. *North* of cor. to secs.*27-28-33-34* from which corner, I run*N. 89° 52' W.* on a true line between sections *28-33*.Variation *13° 30'* East*40.06* Set a sand stone *30 x 24 x 10* ins., *22*ins. in the ground, for $\frac{1}{4}$ Sec. Cor., marked $\frac{1}{4}$ on *N.*

face, and raised a mound of stone alongside. Pits

impracticable.

from which

A Yellow Pine *12* ins diam. bears *S. 50° E.*, *99* lks. dist.marked $\frac{1}{4}$ S. B. T.A Yellow Pine *6* ins diam. bears *N. 15° W.*, *147* lks. dist.marked $\frac{1}{4}$ S. B. T.*80.12* The corner to sections *28-29-32-33*.

Land rolling.

Soil *2nd* rateVegetation *Bunchgrass*
Heavy timber of *Pine & Juniper*.

Township

11 N,

Range

19 E,

Gila and Salt River Meridian.

Chains

North, between Sections 28 and 29.

Variation

13°30'

East.

Descend.

- 13.40 Cross Wash, 8 lks. wide, Course S. 50° E. and ascend.
- 24.00 Top of Spur, bears E. & W., and descend.
- 40.00 Set a post 3 ft. long, 3 ins. diam 24 ins. in the ground, for $\frac{1}{2}$ Sec. Cor., marked $\frac{1}{2}$ S. on N. face; from which
- A Yellow Pine 12 ins diam. bears N. 46° E., 94 lks. dist. marked $\frac{1}{2}$ S. B. T.
- A Yellow Pine 6 ins diam. bears S. 36° W., 122 lks. dist. marked $\frac{1}{2}$ S. B. T.
- 79.00 Cross Wash, 14 lks. wide, Course N. 23° E. and ascend.
- 80.00 Marked Sandstone, 48 x 32 x 29 ins. in the ground for Cor. to Secs. 20-21-28-29 marked with 2 notches on S. and 4 notches on E. edges and raised a mound of stone alongside. Pits impracticable.
- A Yellow Pine 20 ins diam. bears N. 29° E., 100 lks. dist. marked T. 11 N., R. 19 E., S., 21 B. T.
- A White Oak 8 ins. diam. bears S. 48° E., 25 lks. dist. marked T. 11 N., R. 9 E., S., 28 B. T.
- A Yellow Pine 16 ins. diam. bears S. 37° W., 105 lks. dist. marked T. 11 N., R. 19 E., S., 29 B. T.
- A Yellow Pine 28 ins. diam. bears N. 14° W., 41 lks. dist. marked T. 11 N., R. 19 E., S., 20 B. T.

Land rolling.

Soil 2nd & 3rd rate

Vegetation, Pimegrass.

Heavy timber of Pine & Juniper.

Township

11 N,

Range

19 E,

Gila and Salt River Meridian.

Chains

East, on a random line between Sections 21 and 28.

Variation

13° 30'

East.

Descend.

4.19 Cross Wash, 11 lks. wide, Course N. 40° E. and ascend.

40.00 Set temporary $\frac{1}{4}$ Sec. Cor.

43.00 Top of Spur, bears N. 6° 4' S. W., and descend.

71.15 Cross Creek $\frac{7}{10}$ lks. wide, Course North and ascend.

76.25 Cross Road, bears, N. 16° E. & S. 16° W.

80.26 Intersect N. & S. line, 32 lks. South of cor. to secs.

21-22-27-28 From which corner, I run

S. 89° 46' W. on a true line between sections 21-28,

Variation

13° 30'

East

40.13 Set a Sand stone 26 x 12 x 9 ins., 19

ins. in the ground, for $\frac{1}{4}$ Sec. Cor., marked $\frac{1}{4}$ on N,

face, and raised a mound of stone alongside. Pits

impracticable.

from which

A Yellow Pine 19 ins diam. bears N. 30° E., 30 lks. dist.

marked $\frac{1}{4}$ S. B. T.

A Yellow Pine 12 ins diam. bears S. 50° W., 70 lks. dist.

marked $\frac{1}{4}$ S. B. T.

80.26 The corner to sections 20-21-28-29.

Land rolling.

Soil 2nd & 3rd rate

Vegetation

Bunchgrass.

Heavy timber of

Pine and Juniper.

Township

11 N,

Range

19 E,

38

Gila and Salt River Meridian.

Chains

North, between Sections 20 and 21.

Variation

13° 30'

East.

Ascend.

27.00 Top of Spur, bears N. 6° & S. W. and descend.

40.00 Set a sand stone 24 x 20 x 4 ins., 18 ins. in the ground, for $\frac{1}{4}$ Sec. Cor., marked $\frac{1}{4}$ on N. face, and raised a mound of stone alongside. PitsA Yellow Pine 6 ins diam. bears N. 41° E, 35 lks. dist. marked $\frac{1}{4}$ S. B. T. from whichA Yellow Pine 10 ins diam. bears N. 31° W, 40 lks. dist. marked $\frac{1}{4}$ S. B. T.

44.50 Cross Wash, 10 lks. wide, Course N. 30° E and ascend.

80.00 Set a sand stone 28 x 20 x 2 ins. 2 ins. in the ground for Cor. to Secs. 16-17-20-21 marked with 3 notches on S. and 4 notches on E. edges and raised a mound of stone alongside. Pits impracticable.

A Pine 10 ins, diam. bears N. 84° E, 76 lks. dist. marked T. 11 N, R. 19 E, S., 16 B. T. from which

A Pine 10 ins, diam. bears S. 12° W, 140 lks. dist. marked T. 11 N, R. 19 E, S., 20 B. T.

A Yellow Pine 12 ins diam. bears N. 24° W, 12 lks. dist. marked T. 11 N, R. 19 E, S., 17 B. T. No other trees within limits.

Land rolling.

Soil

3rd rate

Vegetation

Heavy timber of

Brushgrass & juniper.

Township

11 N,

Range

19 E,

Gila and Salt River Meridian.

Chains

East, on a random line between Sections 16 and 21.

Variation

13° 30'

East.

Descend.

17.10 Cross Wash, 11 lks. wide, Course N. 16° E and ascend.

33.49 Top of Spur, bears N. 30° E. 9.50 N and descend.

40.00 Set temporary $\frac{1}{4}$ Sec. Cor.

65.22 Cross Wash, 49 lks. wide, Course N. 10° E.

78.06 Cross Wash, 11 lks. wide, Course N. 72° W and ascend.

80.41 Intersect N. & S. line, 47 lks. South of cor. to secs.

15-16-21-22 from which corner, I run

89° 40' W. on a true line between sections 16-21.

Variation 13° 30' East

40.21 Set a sand stone 21 x 12 x 7 ins., 16 ins. in the ground, for $\frac{1}{4}$ Sec. Cor., marked $\frac{1}{4}$ on N, face, and raised a mound of stone alongside. Pits

unpracticable. from which

A Yellow Pine 18 ins diam. bears S. 80° W, 70 lks. dist. marked $\frac{1}{4}$ S. B. T.

No other trees within limits.

80.41 The corner to sections 16-17-20-21.

Land rolling.

Soil 2nd 73rd rate

Vegetation, Bluegrass.

Timber of Pine and Oak.

Township

11 N.

BOOK

Range

91, 19 E.

Gila and Salt River Meridian.

Chains

North, between Sections 16 and 17.

Variation

13° 30'

East.

Descend.

- 40.00 To a *Pine*, *Sm's dia*, which I marked $\frac{1}{4}$ S. on *H* face, for $\frac{1}{4}$ Sec. Cor.; from which
 - A Yellow Pine 20 ins diam. bears N. 48° E., 14 lks. dist. marked $\frac{1}{4}$ S. B. T.
 - A Yellow Pine 10 ins diam. bears S. 35° W., 15 lks. dist. marked $\frac{1}{4}$ S. B. T.

42.20 Cross Wash, 10 lks. wide, Course N. 10° E.

80.00 Set a *lava* stone 23 x 12 x 9 ins. 17 ins. in the ground for Cor. to Secs. 8-9-16-17 marked with 4 notches on S. and 4 notches on E. edges and raised a mound of stone alongside. Pits impracticable.

from which

- A Yellow Pine 5 ins diam. bears N. 68° E., 84 lks. dist. marked T. 11 N. R. 19 E., S., 9 B. T.
- A Yellow Pine 30 ins diam. bears S. 79° W., 133 lks. dist. marked T. 11 N. R. 19 E., S., 17 B. T.

No other trees within limits.

Land rolling.

Soil *3rd* rate

Vegetation, *Bunchgrass*.

Heavy timber of *Pine*, *Oak* & *Juniper*.

Township

11 N,

Range

19 E,

Gila and Salt River Meridian.

Chains

East, on a random line between Sections 9 and 16.

Variation

13° 30'

East.

Descend.

4.33 Cross Wash, 9 lks. wide, Course *N. 10° E* and ascend.14.12 Top of Spur, bears *N. 20° E, 9 S. 20° W* and descend.40.00 Set temporary $\frac{1}{4}$ Sec. Cor.44.40 Cross Wash, 60 lks. wide, Course *N. 10° E* and ascend.80.13 Intersect N. & S. line, 22 lks. *North* of cor. to secs.

9-10-15-16 from which corner, I run

N. 89° 51' W. on a true line between sections 9-16,

Variation 13° 30' East

40.07 Set a sand stone 20 x 10 x 8 ins., 15

ins. in the ground, for $\frac{1}{4}$ Sec. Cor., marked $\frac{1}{4}$ on *N.*
face, and raised a mound of stone alongside. Pits

impracticable.

from which

A Yellow Pine 14 ins diam. bears *N. 54° E, 20 lks. dist.*
marked $\frac{1}{4}$ S. B. T.A Yellow Pine 12 ins diam. bears *S. 6° E, 23 lks. dist.*
marked $\frac{1}{4}$ S. B. T.

80.13 The corner to sections 9-9-16-17.

Land rolling.

Soil *2nd 3rd rate*Vegetation, *Bunchgrass.*Heavy timber of *Pine and Oak.*

Township

11 N.

Range

19 E.

Gila and Salt River Meridian.

Chains

North, between Sections 8 and 9.

Variation

13° 30'

East.

Descend.

2.85 Cross Wash, 75 lks. wide, Course N. 65° E. and ascend.

14.33 Cross Road, (Gen. Crocker's) bro. N. 70° W. & S. 70° E.

37.10 Top of Spur, bears E. & W. and descend.

40.00 Set a sand stone 19 x 10 x 5 ins., 14 ins. in the ground, for $\frac{1}{4}$ Sec. Cor., marked $\frac{1}{4}$ on N. face, dug pits 18 x 18 x 12 ins., N and S. of stone 5 $\frac{1}{2}$ ft. dist., and raised a mound of earth 1 $\frac{1}{2}$ ft. high, 3 $\frac{1}{2}$ ft. base alongside.

A Yellow Pine 14 ins diam. bears N. 3° E., 73 lks. dist. marked $\frac{1}{4}$ S. B. T. from which

A Yellow Pine 23 ins diam. bears N. 35° W., 74 lks. dist. marked $\frac{1}{4}$ S. B. T.

59.37 Cross Wash, 10 lks. wide, Course E. & ascend.

80.00 Set a sand stone 24 x 10 x 3 ins. 18 ins. in the ground for Cor. to Secs. 4-5-8-9 marked with 3 notches on S. and 4 notches on E. edges and raised a mound of stone alongside. Pits impracticable.

A Yellow Pine 24 ins diam. bears N. 60° E., 132 lks. dist. marked T. 11 N., R. 19 E., S. 4 B. T. from which

A Yellow Pine 12 ins diam. bears S. 65° E., 152 lks. dist. marked T. 11 N., R. 19 E., S. 9 B. T.

A Yellow Pine 14 ins diam. bears S. 80° W., 39 lks. dist. marked T. 11 N., R. 19 E., S. 8 B. T.

A Yellow Pine 16 ins diam. bears N. 19° W., 93 lks. dist. marked T. 11 N., R. 19 E., S. 5 B. T.

Land rolling.

Soil

3rd rate

Vegetation

Heavy timber of

Bunchgrass, Pine & Juniper.

Township

11 N.

Range

19 E.

Gila and Salt River Meridian.

Chains

East, on a random line between Sections 4 and 9.

Variation $13^{\circ}30'$ East.

Descend.

10.30 Foot of Hill, bears $N.22^{\circ}W.$ & $S.22^{\circ}E.$ 24.30 Cross Wash, 150 lks. wide, Course $N.10^{\circ}W.$ and ascend.40.00 Set temporary $\frac{1}{4}$ Sec. Cor.

79.72 Intersect N. & S. line, 10 lks. North of cor. to secs.

3-4-9-10 from which corner, I run

 $N.89^{\circ}56'W.$ on a true line between sections 4-9.Variation $13^{\circ}30'$ East39.86 Set a sand stone $28 \times 10 \times 7$ ins., 21 ins. in the ground, for $\frac{1}{4}$ Sec. Cor., marked $\frac{1}{4}$ on N, face, and raised a mound of stone alongside. Pits impracticable.A Yellow Pine 12 ins diam. bears $S.60^{\circ}W.$, 73 lks. dist. marked $\frac{1}{4}$ S. B. T. from whichA Yellow Pine 13 ins diam. bears $N.51^{\circ}W.$, 116 lks. dist. marked $\frac{1}{4}$ S. B. T.

79.72 The corner to sections 4-5-8-9.

Land rolling.

Soil

2nd rate

Vegetation

Bunchgrass

Timber of

Pine and Juniper.

Township

11 N.

Range

19 E.

Gila and Salt River Meridian.

Chains

North, on a random line between Sections 4 and 5.

Variation 13° 30' East.

Ascend.

13.05 Top of Spur, bears E. & W. and descend.

40.00 Set temporary 1/4 Sec. Cor.

44.16 Cross Wash, 10 lks. wide, Course N. 72 E. and ascend.

79.41 Intersect N. B. of Twp. 28 lks. East of cor. to secs. previously set by me.

4-5-32-33 from which corner, I run

S. 10' E., on a true line, between sections 4-5.

Variation 13° 50' East.

39.41 Set a sand stone 17 x 12 x 6 ins., 11 ins. in the ground, for 1/4 Sec. Cor., marked 1/4 on W. face, and raised a mound of stone alongside. Pits impracticable.

79.41 The corner to sections 4-5-8-9.

Land rolling.

Soil 3rd rate

Vegetation, Bunchgrass.

Timber of Pine and Juniper.

Apr. 27, 1883.

Township 11 N,

Range 19 E,

Gila and Salt River Meridian.

~~From cor. to Secs 5-6-31-32 on S. 13th Sp.~~
/ previously set by me.

Chains

North, between Sections 31 and 32.

Variation

14° 15'

East.

Descend.

325 Cross Wash, 25 lks. wide, Course S. 80° E and ascend.

10.00 Set a sand stone 26 x 25 x 7 ins., 19
ins. in the ground, for $\frac{1}{4}$ Sec. Cor., marked $\frac{1}{4}$ on N,
face, and raised a mound of stone alongside. Pits

impracticable.

from which

A Yellow Pine 22 ins diam. bears N. 67° W., 18 lks. dist.
marked $\frac{1}{4}$ S. B. T.A White Oak 4 ins. diam. bears S. 25° E., 35 lks. dist.
marked $\frac{1}{4}$ S. B. T.10.00 Set a sand stone 24 x 16 x 8 ins. 18 ins. in
the ground for Cor. to Secs. 24-30-31-32 marked
with / notch on S. and 5 notches on E. edges and
raised a mound of stone alongside. Pits impracticable.A Yellow Pine 8 ins diam. bears N. 24° E., 34 lks. dist.
marked T. 11 N., R. 19 E., S., 29 B. T.An Oak 4 ins diam. bears S. 45° E., 31 lks. dist.
marked T. 11 N., R. 19 E., S., 32 B. T.A Pine, 20 ins. diam. bears N. 64° W., 7 lks. dist.
marked T. 11 N., R. 19 E., S., 30 B. T.

No other trees within limits.

Land rolling.

Soil

2nd rateVegetation, Bunchgrass,
Heavy timber of Pine, Oak & Juniper.

Township

11 N,

Range

19 E,

Gila and Salt River Meridian.

Chains

East, on a random line between Sections 29 and 32.

Variation

13° 30'

East.

Ascend.

24.14 Top of Ridge, bears N. N. & S. E. and descend.

40.00 Set temporary $\frac{1}{4}$ Sec. Cor.

56.19 Cross Wash, 16 lks. wide, Course N. 60° E.

80.23 Intersect N. & S. line, 6 lks. North of cor. to secs.

28-29-32-33 from which corner, I run

N. 89° 57' W. on a true line between sections 29-32.

Variation

13° 30'

East

40.12 Set a Sand stone 17 x 10 x 4 ins., 11

ins. in the ground, for $\frac{1}{4}$ Sec. Cor., marked $\frac{1}{4}$ on N,

face, and raised a mound of stone alongside. Pits

impracticable. from which

A Yellow Pine 16 ins diam. bears N. 32° E, 47 lks. dist.
marked $\frac{1}{4}$ S. B. T.A Yellow Pine 14 ins diam. bears S. 56° W, 32 lks. dist.
marked $\frac{1}{4}$ S. B. T.

80.23 The corner to sections 29-30-31-32.

Land mountainous.

Soil 3rd rate

Vegetation, Bunchgrass.

Timber of

Pine & Juniper.

Township

11 N.

Range

14 E.

Gila and Salt River Meridian.

Chains

West, on a random line between Sections 30 and 31.

Variation

13° 30'

East.

Ascend.

12.87 Top of Ridge, bears N. 20° E. 78.20' and descend.

40.00 Set temporary $\frac{1}{4}$ Sec. Cor.78.83 Intersect. N. B. of Tp. 23 $\frac{1}{2}$ m. N. of cor. to secs.
previously set by me.

25-30-31-36 from which corner, I run

N. 89° 50' E., on a true line, between sections 30-31.

Variation

13° 30'

East.

38.83 Set a post 3 ft. long. 3 ins. diam. with marked stone
12 ins. in the ground, for $\frac{1}{4}$ Sec. Cor., marked $\frac{1}{4}$ S. on
N. face, dug pits, 18 x 18 x 12 ins., E. and W. of
post 5 $\frac{1}{2}$ ft. dist., and raised a mound of earth 1 $\frac{1}{2}$ ft.
high, 3 $\frac{1}{2}$ ft. base around post.

78.83 The corner to sections 29-30-31-32.

Land mountainous

Soil

3rd rate

Timber of

Juniper & Pine.

Vegetation,

Bunchgrass.

Township

11 N,

Range

19 E,

Gila and Salt River

Meridian.

Chains

North, between Sections 29 and 30.

Variation

13° 30'

East.

Ascend.

17.50 Top of Ridge, bears N. 20° W. 9 S. 20 E. and descend.

40.00 Set a Sand stone 18 x 8 x 6 ins., 12 ins. in the ground, for $\frac{1}{4}$ Sec. Cor., marked $\frac{1}{4}$ on N. face, and raised a mound of stone alongside. Pits impracticable.

A Yellow Pine 21 ins diam. bears N. 9° E, 100 lks. dist. from which marked $\frac{1}{4}$ S. B. T.

A Yellow Pine 17 ins diam. bears S. 57° W, 138 lks. dist. marked $\frac{1}{4}$ S. B. T.

80.00 Set a Sand stone 25 x 10 x 10 ins. 19 ins. in the ground for Cor. to Secs. 19-20-29-30 marked with 2 notches on S. and 3 notches on E. edges and raised a mound of stone alongside. Pits impracticable.

A White Oak 20 ins. diam. bears S. 70° E, 86 lks. dist. from which marked T. 11 N, R. 19 E, S., 29 B. T.

A Yellow Pine 25 ins diam. bears S. 78° W, 105 lks. dist. marked T. 11 N, R. 19 E, S., 30 B. T.

No other trees within limits.

Land mountainous.

Soil

3rd rate

Vegetation

Bunchgrass.

Heavy timber of

Pine and Oak.

Township

11 N.

Range

19 E.

Gila and Salt River Meridian.

Chains

East, on a random line between Sections 20 and 29.

Variation

13°30'

East.

Ascend.

13.73 Top of Ridge, bears N. 33° E. 2.33 and descend.

40.00 Set temporary 1/4 Sec. Cor.

49.61 Cross Wash, 17 lks. wide, Course N. 37° E. and ascend.

50.11 Intersect N. & S. line, 20 lks. South of cor. to secs.

20-21-28-29 from which corner, I run

S. 89° 51' W. on a true line between sections 20-29.

Variation

13°30'

East

40.06 Set a sand stone 24 x 16 x 12 ins., 18

ins. in the ground, for 1/4 Sec. Cor., marked 1/4 on N.

face, and raised a mound of stone alongside. Pits

impracticable.

from which

A Yellow Pine 8 ins diam. bears N. 58° E., 57 lks. dist. marked 1/4 S. B. T.

A Yellow Pine 20 ins diam. bears S. 56° E., 82 lks. dist. marked 1/4 S. B. T.

50.11 The corner to sections 19-20-29-30.

Land mountainous

Soil

3rd rate

Timber of

Pine & Juniper.

Vegetation,

Bunchgrass.

Township

11 N,

Range

19 E,

Gila and Salt River Meridian.

Chains

West, on a random line between Sections 19 and 30.

Variation

13° 30'

East.

Descend.

- 2.10 Cross Wash, 12 lks. wide, Course $N. 39^{\circ} E$ and ascend.
- 23.20 Top of Ridge, bears $N. 21^{\circ} E$ & $S. 21^{\circ} W$ and descend.
- 40.00 Set temporary $\frac{1}{2}$ Sec. Cor.
- 79.16 Intersect $N. B.$ of Tp. 14 lks. ^{South} of cor. to secs.
 previously set by me.
 19-24-25-30 from which corner, I run
 $S. 89^{\circ} 54' E$ on a true line, between sections 19-30.
 Variation 13° 30' East.
- (39.16) Set a post 3 ft. long, 3 ins. diam 24 ins. in the ground,
 for $\frac{1}{2}$ Sec. Cor., marked $\frac{1}{4}$ S. on $N.$ face; from which
 A Yellow Pine 15 ins diam. bears $N. 78^{\circ} E$, 48 lks. dist.
 marked $\frac{1}{4}$ S. B. T.
- A Yellow Pine 16 ins diam. bears $S. 40^{\circ} W$, 20 lks. dist.
 marked $\frac{1}{4}$ S. B. T.
- 79.16 The corner to sections 19-20-29-30.
 Land mountainous
 Soil ^{3rd} rate
 Timber of Pine & Juniper.
 Vegetation, Bunchgrass.

Township

11 N,

Range

19 E,

Gila and Salt River Meridian.

Chains

North, between Sections 19 and 20.

Variation

13° 30'

East.

Descend.

- 4.30 Cross Wash, 20 lks. wide, Course N.E. and ascend.
- 40.00 Set a sand stone 20 x 10 x 6 ins., 15 ins. in the ground, for $\frac{1}{4}$ Sec. Cor., marked $\frac{1}{4}$ on N, face, and raised a mound of stone alongside. Pits impracticable. from which
- A Yellow Pine 25 ins diam. bears N. 53° E, 39 lks. dist. marked $\frac{1}{4}$ S. B. T.
- A Yellow Pine 19 ins diam. bears N. 59° W, 34 lks. dist. marked $\frac{1}{4}$ S. B. T.
- 48.14 Top of Spur, bears N. 40° E. & S. 40° W and descend.
- 63.50 Cross Wash, 28 lks. wide, Course N.E. and ascend.
- 80.00 Set a sand stone 25 x 20 x 8 ins. 19 ins. in the ground for Cor. to Secs. 17-18-19-20 marked with 3 notches on S. and 5 notches on E. edges and raised a mound of stone alongside. Pits impracticable. from which
- A Yellow Pine 12 ins diam. bears N. 61° E, 90 lks. dist. marked T. 11 N. R. 19 E, S., 17 B. T.
- A Yellow Pine 20 ins diam. bears S. 57° E, 100 lks. dist. marked T. 11 N. R. 19 E, S., 20 B. T.
- A Yellow Pine 15 ins diam. bears S. 47° W, 67 lks. dist. marked T. 11 N. R. 19 E, S., 19 B. T.
- A Yellow Pine 10 ins diam. bears N. 47° W, 40 lks. dist. marked T. 11 N. R. 19 E, S., 18 B. T.
- Land rolling.
- Soil 3rd rate
- Vegetation, Bunchgrass.
- Heavy timber of Pine & Juniper.

Township

11 N.

BOOK 91

Range

19 E.

Gila and Salt River Meridian.

Chains

East, on a random line between Sections 17 and 20.

Variation

13° 30'

East.

Descend.

8.60 Cross Wash, 13 lks. wide, Course N. 67° E.

21.32 Cross Wash, 17 lks. wide, Course N. 26° E. and ascend.

40.00 Set temporary 1/4 Sec. Cor.

42.90 Top of Spur, bears N. 38° E. & S. 38° W. and descend.

68.07 Head of Ravine, Course N. 7° E. and ascend

79.73 Intersect N. & S. line, 16 lks. N. W. of cor. to secs.

16-17-20-21 from which corner, I run

N. 89° 53' W. on a true line between sections 17-20.

Variation

13° 30'

East

39.87

Set a post 3 ft. long, 3 ins. diam 24 ins. in the ground, for 1/4 Sec. Cor., marked 1/4 S. on N. face; from which

A Yellow Pine 11 ins diam. bears N. 50° W., 88 lks. dist.

marked 1/4 S. B. T.

A Cedar 8 ins, diam, bears N. 77° E., 99 lks, dist,

marked 1/4 S. B. T.

79.73

The corner to sections 17-18-19-20.

Land mountainous

Soil

3rd rate

Timber of,

Pine and Juniper.

Vegetation,

Bunchgrass.

Chains

West, on a random line between Sections 18 and 19.

Variation

13° 30'

East.

Ascend.

31.11 Top of Ridge, bears North & South and descend.

40.00 Set temporary $\frac{1}{4}$ Sec. Cor.

58.35 Cross Wash, 12 lks. wide, Course N. 61° W and ascend.

78.96 Intersect N.B. of Tp. 5 lks South of cor. to secs.
previously set by me.

13-18-19-20 from which corner, I run

S. 89° 55' E, on a true line, between sections 18-19,

Variation 13° 30' East.

38.96 Set a post 3 ft. long, 3 ins. diam 24 ins. in the ground,
for $\frac{1}{4}$ Sec. Cor., marked $\frac{1}{4}$ S. on N. face; from whichA Yellow Pine 12 ins diam. bears S. 20° E, 54 lks. dist.
marked $\frac{1}{4}$ S. B. T.A Yellow Pine 10 ins diam. bears N. 35° W, 50 lks. dist.
marked $\frac{1}{4}$ S. B. T.

78.96 The corner to sections 17-18-19-20.

Land mountainous

Soil 3rd rate

Timber of Pine & Juniper.

Vegetation, Bluegrass.

I carefully examined the adjustments of my solar
compass to-day, particularly the latitude ... revers-
ing apparatus, and found them correct.

Apr. 28, 1883.

Township

11 N,

Range

19 E,

Gila and Salt River Meridian.

Chains

North, between Sections 17 and 18.

Variation

13° 30'

East.

Descend.

- 5.46 Cross Wash, 15 lks. wide, Course S. 55° E and ascend.
- 36.71 Top of Spur, bears E. & N. and descend.
- 40.00 Set a sand stone 23 x 11 x 7 ins., 17 ins. in the ground, for $\frac{1}{2}$ Sec. Cor., marked $\frac{1}{2}$ on N. face, and raised a mound of stone alongside. Pits impracticable.
- A Yellow Pine 5 ins diam. bears N. 70° E, 57 lks. dist. from which marked $\frac{1}{2}$ S. B. T.
- A Juniper 12 ins. diam. bears S. 40° W, 155 lks. dist. marked $\frac{1}{2}$ S. B. T.
- 80.00 Set a sand stone 22 x 17 x 5 ins. 16 ins. in the ground for Cor. to Secs. 7-8-17-18 marked with notches on S. and 5 notches on E. edges and raised a mound of stone alongside. Pits impracticable.
- A Yellow Pine 16 ins diam. bears S. 30° W, 67 lks. dist. from which marked T. 11 N. R. 19 E, S., 18 B. T.
- A Yellow Pine 20 ins diam. bears N. 68° W, 93 lks. dist. marked T. 11 N. R. 19 E, S., 7 B. T.
- No other trees within limits.
- Land rolling.
- Soil 3rd rate
- Vegetation, Bunchgrass.
- Heavy timber of Pine & Juniper.

Chains

East, on a random line between Sections 8 and 17.

Variation $13^{\circ}30'$ East.

Descend.

2.37 Cross Wash, 21 lks. wide, Course $S. 32^{\circ} E$ and ascend.31.00 Top of Hill bears $N. 28^{\circ} E$, 9 $S. 28^{\circ} W$ and descend.40.00 Set temporary $\frac{1}{4}$ Sec. Cor.77.60 Cross Wash, 40 lks. wide, Course $N. E$.79.96 Intersect N. & S. line, S lks. N of cor. to secs. $S-9-16-17$ from which corner, I run $N. 89^{\circ} 57'$ W. on a true line between sections $S-17$.Variation $13^{\circ}30'$ East39.98 Set a sand stone $21 \times 12 \times 8$ ins., 16ins. in the ground, for $\frac{1}{4}$ Sec. Cor., marked $\frac{1}{4}$ on N.

face, and raised a mound of stone alongside. Pits

impracticable. from which

A Pine 12 ins, diam. bears $N. 6^{\circ} W$, 35 lks. dist.marked $\frac{1}{4}$ S. B. T.

No other trees within limits.

79.96 The corner to sections 7-8-17-18.

Land hilly.

Soil 3^{rd} rate

Vegetation, Bunchgrass

Heavy timber of Pine & Juniper.

Township

11 N,

Range

19 E,

Gila and Salt River

Meridian.

Chains

West, on a random line between Sections 7 and 18.

Variation

13°30'

East.

Descend.

6.87 Cross Wash, 21 lks. wide, Course N. 62° E and ascend.

40.00 Set temporary 1/4 Sec. Cor.

57.80 Cross Road, (Gen. Crook's) bearing S. 79° W. 7 N. 79° E.

78.79 Intersect N. B. of Tp. 13 lks. North of cor. to sec. previously set by me.

7-12-13-18 from which corner, I run

N. 89° 54' E on a true line, between sections 7-18,

Variation

13°30'

East.

38.79 Set a sand stone 21 x 18 x 9 ins., 16 ins. in the ground, for 1/4 Sec. Cor., marked 1/2 on N, face, and raised a mound of stone alongside. Pits impracticable.

78.79 The corner to sections 7-8-17-18.

Land rolling.

Soil 3rd rate

Vegetation Bunchgrass.

Timber of Pine & Juniper.

Township 11 N,

Range 19 E,

Gila and Salt River Meridian.

Chains

North, between Sections 7 and 8.

Variation

13° 30'

East.

Descend.

- 7.89 Cross Wash, 7 yds. wide, Course East and ascend.
- 24.43 Cross Road, (Gen. Crooks') bears N 70° W. 7 S. 70° E.
- 40.00 Set a sand stone 16 x 9 x 7 ins. 11 ins. in the ground, for $\frac{1}{4}$ Sec. Cor., marked $\frac{1}{4}$ on W. face, and raised a mound of stone alongside. Pits impracticable.
- A Yellow Pine 10 ins diam. bears N 17° E, 32 yds. dist. marked $\frac{1}{4}$ S. B. T. from which
- A Yellow Pine 12 ins diam. bears N 20° W, 49 yds. dist. marked $\frac{1}{4}$ S. B. T.
- 41.50 Top of Ridge, bears N 73° E. 7 S. 73° W and descend.
- 79.60 Cross Wash, 11 yds. wide, Course East and ascend.
- 80.00 Set a sand stone 21 x 12 x 10 ins. 16 ins. in the ground for Cor. to Secs. 5-6-7-8 marked with 3 notches on S. and 5 notches on E. edges and raised a mound of stone alongside. Pits impracticable.
- A Juniper 5 ins. diam. bears S. 55° E. 8 yds. dist. marked T 11 N. R. 19 E. S. B. T. from which
- A Pine 7 ins. diam. bears S. 37° W, 10 yds. dist. marked T 11 N. R. 19 E. S. B. T.
- A Pine 6 ins. diam. bears N. 20° W, 11 yds. dist. marked T 11 N. R. 19 E. S. B. T.
- No other trees within limits.
- Land mountainous.
- Soil 3rd rate
- Vegetation, Bluegrass,
- Heavy timber of Pine & Juniper.

Township

11 N,

Range

19 E,

Gila and Salt River Meridian.

Chains

East, on a random line between Sections 5 and 8.

Variation

13°30'

East.

Descend.

40.00 Set temporary $\frac{1}{4}$ Sec. Cor.80.40 Intersect N. & S. line. 29 lks. ^{North} of cor. to secs.

4-5-8-9 from which corner, I run

N89°48' W. on a true line between sections 5-8,

Variation 13°30' East

40.20 Set a sand stone 14 x 8 x 4 ins., 14

ins. in the ground, for $\frac{1}{4}$ Sec. Cor., marked $\frac{1}{4}$ on N,

face, and raised a mound of stone alongside. Pits

impracticable.

from which

A Pine 7 ins. diam. bears S. 25° E, 46 lks. dist.

marked $\frac{1}{4}$ S. B. T.

A Juniper 10 ins. diam. bears N. 20° W, 40 lks. dist.

marked $\frac{1}{4}$ S. B. T.

80.40 The corner to sections 5-6-7-8.

Land rolling.

Soil

3rd rate

Timber of

Pine & Juniper

Vegetation,

Bunchgrass.

Township

11 N.

Range

19 E.

Gila and Salt River Meridian.

Chains

West, on a random line between Sections 6 and 7.

Variation $13^{\circ}30'$ East.

Ascend.

40.00 Set temporary $\frac{1}{4}$ Sec. Cor.46.60 Top of Ridge, bears N.E. $\&$ S.W. and descend.78.40 Intersect N.B. of Tp. 42 Ws. North of cor. to secs.
previously set by me.
1-6-7-12 from which corner, I run

789.42 On a true line, between sections 6-7,

Variation $13^{\circ}46'$ East.38.40 Set a sand stone $16 \times 8 \times 4$ ins., 11
ins. in the ground, for $\frac{1}{4}$ Sec. Cor., marked $\frac{1}{4}$ on N,
face, and raised a mound of stone alongside. Pits
impracticable.

78.40 The corner to sections 5-6-7-8.

Land mountainous.

Soil $37a$ rate

Vegetation, Bunchgrass.

Township

11 N,

Range

19 E,

Gila and Salt River Meridian.

Chains

North, on a random line between Sections 5 and 6.

Variation

13° 30'

East.

Ascend.

40.00 Set temporary $\frac{1}{4}$ Sec. Cor.

41.68 Top of Ridge, bears N. 46° E. 9 S. 46° W. and descend.

79.69 Intersect N.B. of Tp. 10 ^{previously set by me.} 10 lks. West of cor. to secs.

5-6-31-32 from which corner, I run

S. 4° W, on a true line, between sections 5-6.

Variation

14°

East.

39.69 Set a sand stone 17 x 9 x 5 ins., 11
ins. in the ground, for $\frac{1}{4}$ Sec. Cor., marked $\frac{1}{4}$ on N,
face, and raised a mound of stone alongside. Pits
impracticable.

79.69 The corner to sections 5-6-7-8.

Land mountainous.

Soil

3rd rate

Vegetation,

Bunchgrass.

Apr. 30, 1883.

GENERAL DESCRIPTION.

T. 11 N., R. 19 E., includes level rolling and mountainous land crossed by numerous washes; chief among these is Snowflake wash which runs through the Tp. in a northerly direction. It is covered with Pine, Oak Juniper and Cedar timber. Bunchgrass grows abundantly in places, furnishing good grazing land. The Soil is 2nd and 3rd rate. Gen. Crocker's Military Road passes through this Township.

For final notes
see Book No. 14

Final Oaths for Surveys.

LIST OF NAMES.

A list of the names of the individuals employed by

Henry A. Coe, United States

Deputy Surveyor, to assist in running, measuring, and marking the lines and corners described in the foregoing field-notes of the survey of *the exterior lines of Tps 11+12 N. R. 18+19 E, T. 10 N. R. 18 E, T. 13 N. R. 18 E, T. 10 N. R. 24 E and T. 17 N. R. 24+25 E, Retracings of a portion of the exterior of Tps 13 N. R. 18+19 E, T. 12 N. R. 20 E, T. 13 N. R. 25 E and T. 17 N. R. 22 E and the subdivisions of Tps 11+12 N. R. 18+19 E, T. 10 N. R. 18+24 E, T. 12 N. R. 27 E, T. 13 N. R. 25 E, T. 15 N. R. 24+25 E and T. 17 N. R. 22 E 23, 24+25 E G. & H. T. N.*

showing the respective capacities in which they acted.

....., Compassman.

Henry Herold, Chainman.

Thomas Donohue, Chainman.

....., Chainman.

....., Chainman.

....., Axeman.

John Phelan, Axeman.

Geo B. Coleman, Flagman.



Final Oaths of Assistants.

I hereby certify that we assisted Henry A. Coe, United States Deputy Surveyor,
 in surveying all those parts or portions of the exterior lines
of Tps 11+12 N. Rs 18+19 E. T. 10 N. R. 18 E. T. 13 N.
R. 18 E. T. 10 N. R. 24 E. + T. 17 N. R. 24+25 E.
Retracings of a portion of the Exterior of Tps
13 N. R. 18+19 E. T. 12 N. R. 27 E. T. 13 N. R. 25 E
T. 17 N. R. 22 E and the subdivisions of Tps 11+12
N. R. 27 E. T. 13 N. R. 25 E. T. 15 N. R. 24+25 E. T. 17 N
R. 21, 20, 24+25 E
 of the Gila Salt River base and Meridian, Territory of Arizona, as are
 represented in the foregoing field-notes as having been surveyed by
 him and under his direction; and that said survey has been in all
 respects, to the best of our knowledge and belief, well and faith-
 fully surveyed, and the corner monuments established according
 to the instructions furnished by the United States Surveyor-Gen-
 eral for Arizona

Henry H. Arnold, Compassman.
Thomas Donohue, Chainman.
 _____, Chainman.
 _____, Chainman.
John Phelan, Axeman.
 _____, Axeman.
Geo. B. Coleman, Flagman.

Subscribed and sworn to before me this 3rd
 day of June, 1883

A. E. Staemacher

U. S. Commissioner, 3d Judicial District,
 Arizona Territory

Final Oath of United States Deputy Surveyor.

I, Henry A. Coe,

United States Deputy Surveyor, do solemnly swear that in pursuance of instructions received from John

Wasson, United States Surveyor-General

for Arizona, bearing date of the

25th day of July, 1882

I have well, faithfully, and truly, in my own proper person, and in strict conformity with the instructions furnished by the United States Surveyor-General for Arizona,

the surveying manual, and the laws of the United States, sur-

veyed all those parts or portions of the exterior lines

of Tps 11 & 12 N R 18 & 19 E, T. 10 N R 18 E, T. 13 N R 18 & 19 E, T. 10 N R 24 E, T. 17 N R 24 & 25 E

tracings of a portion of the exterior lines of Tps 13 N R 18 & 19 E, T. 12 N R 27 E, T. 13 N R 25 E, T. 17 N R 22 E, and the subdivisions of Tps

11 & 12 N R 18 & 19 E, T. 10 N R 18 & 24 E, T. 12 N R 27 E, T. 13 N R 25 E, T. 15 N R 24 & 25 E + T. 17 N R 22, 23, 24 & 25 E.

of the Gila Salt River base and

Meridian in the Territory of Arizona,

as represented in the foregoing field-notes as having been surveyed

by me and under my directions; and I do further solemnly swear

that all the corners of said survey have been established and perpetuated in strict accordance with the surveying manual, printed instructions, the special written instructions of the United States Surveyor-General for Arizona, and in the specific manner described in the field-notes, and that the foregoing are the true field-notes of such survey; and, should any fraud be detected, I will suffer the penalty of perjury, under the provisions of an Act of Congress, approved August 8, 1846.

Henry A. Bol

United States Deputy Surveyor.

Subscribed and sworn to before me this 2nd
day of June, 1883

A. E. Shoemaker

U. S. Commissioner, 3d. Judicial District,
Arizona Territory.



BOOK 91

U. S. Surveyor General's Office,

Tucson, Arizona, July 31, 1883

The foregoing Field Notes of the Survey of the

Subdivision Lines of
 Township 11 North, Range 19 East

Of the Gila and Salt River Base and Meridian, Arizona, executed by A. A. Love

Deputy Surveyor, under his contract of the 20th
 day of July, 1882, having been

critically examined and the necessary corrections and explanations made, the said Field Notes and the surveys they describe are hereby approved

J. W. Robbins
 Surveyor General.