

BOOK 92

~~Book No. VI~~

ted

A. E. Shoemaker, Deputy Surveyor.

T. 11 North, R. 20 East,

Gila and Salt River Meridian.

No-92

FIELD NOTES BOOK 92

92

OF

THE SUBDIVISION LINES OF

Township 11 N., Range 20 E.,

Gila and Salt River Meridian.

BY

A. E. Shoemaker, Deputy Surveyor.

Under his Contract of Aug. 5, 1882,

Survey Commenced Aug. 9, 1883.

Survey Completed Aug. 17, 1883.

No-92

Platted,
Copied for Washington,
Copied for Register,

Shoemaker

A. C. Shoemaker, Deputy Surveyor.

T. *11 North*, R. *20 East*,

Gila and Salt River Meridian.

No 92

FIELD NOTES

OF

THE SUBDIVISION LINES OF

Township *11 N.*, Range *20 E.*,

Gila and Salt River Meridian.

BY

A. C. Shoemaker, Deputy Surveyor.

Under his Contract of *Aug. 5,* 1882.

Survey Commenced *Aug. 9,* 1883

Survey Completed *Aug. 17,* 1883.

*Platted,
Copied for Washington,
Copied for Register,*

1 A

BOOK 92

Township 11 North, Range 20 East,
Gila and Salt River Base and Meridian.

6	60	5	44	4	33	3	22	2	11	1
59		58		43		32		21		10
7	57	8	42	9	31	10	20	11	9	12
56		55		41		30		19		8
18	54	17	40	16	29	15	18	14	7	13
53		52		39		28		17		6
19	51	20	38	21	27	22	16	23	5	24
50		49		37		26		15		4
30	48	29	36	28	25	27	14	26	3	25
47		46		35		24		13		2
31	45	32	34	33	23	34	12	35	1	36

O.K.

Edward Denny & Co., Stationers & Printers, S. F., Cal.

Copyright Secured,

Entered according to Act of Congress, in the Clerk's Office of the Librarian of Congress at Washington, D. C., in the year 1880.

Township

Range

BOOK 92

1B

Meridian.

No-92

For preliminary notes
and description of
instrument see Book
No 1.

Township.)

11 N,

Range

20 E,

Gila and Salt River Meridian.

Chains

From the corner to Sections 35, 36, 1 and 2 on the South boundary, I run,
North, between Sections 35 and 36

Variation $13^{\circ}30'$ East.

previously set by me.

Ascend.

40.00 Set a post 3 ft. long, 3 ins. diam. with marked stone
12 ins. in the ground, for $\frac{1}{4}$ Sec. Cor., marked $\frac{1}{4}$ S. on
N. face, dug pits, 18 x 18 x 12 ins., N. and S. of
post $5\frac{1}{2}$ ft. dist., and raised a mound of earth $1\frac{1}{2}$ ft.
high, $3\frac{1}{2}$ ft. base around post.

57.00 Top of Ridge, bears $N. 70^{\circ} E. 27$ S. W. and descend.

72.00 Cross Wash, 16 lks. wide, Course $N. 56^{\circ} E.$ and ascend.

80.00 Set a post 4 ft. long, 4 ins. square, with marked stone
12 ins. in the ground, for Cor. to Secs, 25-26-35-36,
marked T, 11 N, S, 25, on N, E, R, 20 E, S, 36
on S, E, S, 35 on S, W, and S, 26 on N, W, face
with / notch on S, and / notch on E, edges,
dug pits 18 x 18 x 12 ins, in each Sec., $5\frac{1}{2}$ ft, dist.,
and raised a mound of earth 2 ft, high, $4\frac{1}{2}$ ft, base
around post.

from which

A Cedar 8 ins, diam, bears $N. 79^{\circ} E.$, 34 lks, dist,
marked T, 11 N., R. 20 E. S., 25 B. T.

A Cedar 8 ins, diam, bears $S. 17^{\circ} E.$, 22 lks, dist,
marked T, 11 N., R. 20 E., S., 36 B. T.

A Cedar 16 ins, diam, bears $N. 21^{\circ} W.$, 22 lks, dist,
marked T, 11 N., R. 20 E. S., 26 B. T.

Land mountainous No other trees within limits.

Soil 2" rate

Timber of Pine & Juniper.

Vegetation Grass.

Township

11 N,

BOOK 92
Range

20 E,

2

Gila and Salt River Meridian.

Chains

East, on a random line between Sections 25 and 36.

Variation $13^{\circ}30'$ East.

Descend.

11.16 Cross Wash, 17⁰ fms. wide, Course $N.60^{\circ}E$ and ascend.

38.16 Top of Spur, bears $N. \ 9 \ S.$ and descend.

40.00 Set temporary $\frac{1}{4}$ Sec. Cor.

80.13 Intersect $E. \ B.$ of Tp. 26 fms. South of cor. to secs.

previously set by me.
25-30-31-36 from which corner, I run

$S.89^{\circ}49' \ W.$ a true line, between sections 25-36,

Variation 13° East.

40.07 Set a post 3 ft. long. 3 ins. diam. with marked stone

12 ins. in the ground, for $\frac{1}{4}$ Sec. Cor., marked $\frac{1}{4}$ S. on

$N.$ face, dug pits, 18 x 18 x 12 ins., $E.$ and $W.$ of

post $5\frac{1}{2}$ ft. dist., and raised a mound of earth $1\frac{1}{2}$ ft.

high, $3\frac{1}{2}$ ft. base around post.

80.13 The corner to sections 25-36-26-35.

Land mountainous

Soil 2" rate

Timber of Pine & Juniper.

Vegetation., Grass.

Township

11 N.,

Range

20 E.,

Gila and Salt River Meridian.

Chains

North, between Sections 25 and 26.

Variation

13° 30'

East.

Ascend.

40.00 Set a Sand stone 20 x 16 x 6 ins., 15 ins. in the ground, for $\frac{1}{4}$ Sec. Cor., marked $\frac{1}{4}$ on W. face, and raised a mound of stone alongside. Pits impracticable.

A Cedar 8 ins, diam, bears S. W., 36 lks, dist, marked $\frac{1}{4}$ S. B. T.

A Cedar 12 ins, diam, bears N. 39 E., 38 lks, dist, marked $\frac{1}{4}$ S. B. T.

57.00 Top of Spur, bears N. 70 E. & S. 70 W. and descend.

80.00 Set a post 4 ft. long, 4 ins. square, with marked stone 12 ins. in the ground, for Cor. to Secs, 23-24-25-26, marked T. 11 N, S. 24, on N, E, R. 20 E, S. 25 on S, E, S, 26 on S, W, and S, 23 on N, W, face with 2 notch es on S, and 1 notch on E, edges, dug pits 18 x 18 x 12 ins, in each Sec., 5 $\frac{1}{2}$ ft, dist., and raised a mound of earth 2 ft, high, 4 $\frac{1}{2}$ ft, base around post.

A Cedar 10 ins, diam, bears N. 36 E., 62 lks, dist, marked T. 11 N, R. 20 E, S. 24 B. T.

A Pine 6 ins, diam, bears S. 60 E., 40 lks, dist, marked T. 11 N, R. 20 E, S. 25 B. T.

A Cedar 8 ins, diam, bears N. 39 W., 51 lks. dist. marked T. 11 N, R. 20 E, S. 23 B. T.

Land mountainous No other trees within limits.

Soil 3" rate

Timber of Pine, Oak & Juniper.

Vegetation., Grass.

Township

11 N,

Range

20 E,

Gila and Salt River Meridian.

Chains

East, on a random line between Sections 24 and 25.

Variation

13° 30'

East.

Descend. gradually.

40.00 Set temporary $\frac{1}{2}$ Sec. Cor.

42.16 Enter Valley, bears N.E. & S.W.

S.O. 49 Intersect E. B. of Tp. 15 lks. N. of cor. to secs.

19-24-25-30 from which corner, I run

N. 89° 52' 17" on a true line, between sections 24-25.

Variation

13°

East.

46.25 Set a post 3 ft. long. 3 ins. diam. with marked stone

12 ins. in the ground, for $\frac{1}{2}$ Sec. Cor., marked $\frac{1}{2}$ S. onN. face, dug pits, 18 x 18 x 12 ins., E. and W. of
post $5\frac{1}{2}$ ft. dist., and raised a mound of earth $1\frac{1}{2}$ ft.
high, $3\frac{1}{2}$ ft. base around post.

S.O. 49 The corner to sections 23-24-25-26.

Land rolling and level.

Soil 1" 9 2" rate

Timber of

Pine and Juniper.

Vegetation.,

Grass.

Township

11 N,

Range

20 E,

Gila and Salt River Meridian.

Chains

North, between Sections 23 and 24.

Variation

13° 30'

East.

Descend.

7.33 Cross Creek 6 lks. wide, Course N. 37° E and ascend.

40.00 Set a post 3 ft. long, 3 ins. diam 24 ins. in the ground, for $\frac{1}{4}$ Sec. Cor., marked $\frac{1}{4}$ S. on W. face; from whichA Pine 8 ins. diam. bears S. 6° E, 38 lks. dist. marked $\frac{1}{4}$ S. B. T.A Juniper 3 ins. diam. bears S. 85° W, 3 lks. dist. marked $\frac{1}{4}$ S. B. T.

80.00 Set a Sand stone 16 x 9 x 4 ins. 11 ins. in the ground for Cor. to Secs. 13-14-23-24 marked with 3 notches on S. and 1 notch on E. edges and raised a mound of stone alongside. Pits impracticable.

from which

A Pine 8 ins. diam. bears S. 9° W, 48 lks. dist. marked T. 11 N, R. 20 E, S., 23 B. T.

A Pine 9 ins. diam. bears N. 75° E, 41 lks. dist. marked T. 11 N, R. 20 E, S., 13 B. T.

A Juniper 8 ins. diam. bears S. 65° E, 61 lks. dist. marked T. 11 N, R. 20 E, S., 24 B. T.

No other trees within limits.

Land rolling.

Soil

2" rate

Timber of

Pine & Juniper

Vegetation.,

Grass.

Township 11 N. Range 20 E.

Gila and Salt River Meridian.

Chains

East, on a random line between Sections 13 and 24.

Variation

 $13^{\circ} 30'$

East.

Descend.

St. 00 Enter Valley, bears N. & S.

40.00 Set temporary $\frac{1}{4}$ Sec. Cor.St. 11 Intersect C. B. of Tn. 4 lks. S. of cor. to secs.
13-18-14-24 ^{previously set by me.}
from which corner, I runS. $89^{\circ} 58'$ on a true line, between sections 13-24.Variation $13^{\circ} 02'$ East.40.06 Set a Granite stone $14 \times 7 \times 5$ ins., 9
ins. in the ground, for $\frac{1}{4}$ Sec. Cor., marked $\frac{1}{4}$ on N.
face, and raised a mound of stone alongside. Pits
impracticable.A Juniper 8 ins. diam. bears S. $17^{\circ} N$, 33 lks. dist.
marked $\frac{1}{4}$ S. B. T. from whichA Juniper 9 ins. diam. bears N. $72^{\circ} E$, 40 lks. dist.
marked $\frac{1}{4}$ S. B. T.

St. 11 The corner to sections 13-14-23-24.

Land rolling and level.

Soil 2" rate

Timber of Pine & Juniper.

Vegetation, Grass.

Township

11 N,

Range

20 E,

Gila and Salt River Meridian.

Chains

North, between Sections 13 and 14.

Variation

13° 30'

East.

Ascend.

- 7.00 Top of Ridge, bears N. 34° E. & S. 34° W. and descend.
- 40.00 Set a post 3 ft. long. 3 ins. diam. with marked stone 12 ins. in the ground, for $\frac{1}{4}$ Sec. Cor., marked $\frac{1}{4}$ S. on W. face, dug pits, 18 x 18 x 12 ins. N and S. of post $5\frac{1}{2}$ ft. dist., and raised a mound of earth $1\frac{1}{2}$ ft. high, $3\frac{1}{2}$ ft. base around post.
- 63.25 Cross Wash, 16 lks. wide, Course N. 50° E. and ascend.
- 72.00 Leave Valley, bears N. 50° E. & S. 50° W.
- 80.00 Set a Sand stone $16 \times 11 \times 4$ ins. 11 ins. in the ground for Cor. to Secs. 11-12-13-14 marked with 4 notches on S. and 1 notch on E. edges and raised a mound of stone alongside. Pits impracticable.
- from which
- A Juniper 15 ins. diam. bears S. 70° E., 200 lks. dist. marked T. 11 N, R. 20 E, S., 13 B. T.
- A Juniper 10 ins. diam. bears S. 20° W., 150 lks. dist. marked T. 11 N, R. 20 E, S., 14 B. T.
- No other trees within limits.
- Land mountainous
- Soil 2" rate
- Timber of Juniper.
- Vegetation., Grass.

I carefully examined the adjustments of my solar compass to-day, particularly the latitude and reversing apparatus, and found them correct. Aug. 9, 1883.

Township

11 N;

Range

20 E;

8

Gila and Salt River Meridian.

Chains

East, on a random line between Sections 12 and 13.

Variation

13° 33'

East.

Descend.

8.09 Enter Valley, bears N. 34° E. 9 S. 34° W.

39.75 Cross Wash, 10 lks. wide, Course N. 40° E. and ascend.

40.00 Set temporary $\frac{1}{4}$ Sec. Cor.

80.20 Intersect C. B. of Tp. 28 lks. N. of cor. to secs.

7-12-13-14 ^{previously set by me.}
from which corner, I run

N. 89° 48' W. on a true line, between sections - 12 - 13.

Variation

13°

East.

40.10 Set a Sand stone 16 x 10 x 4 ins., 11
ins. in the ground, for $\frac{1}{4}$ Sec. Cor., marked $\frac{1}{4}$ on N,
face, and raised a mound of stone alongside. Pits
impracticable.

80.20 The corner to sections 11-12-13-14.

Land level and rolling.

Soil 2" rate

Vegetation Grass.

9 Township

11 N,

Range 20 E,

Gila and Salt River Meridian.

Chains North, between Sections 11 and 12.

Variation 13° 33' East.

Ascend.

20.00 Top of Spur, bears N. 60° W. 70 S. 60° E. and descend.

31.16 Cross Road, bears, N. 50° E. 9 S. 50° W.

40.00 Set a post 3 ft. long. 3 ins. diam. with marked stone 12 ins. in the ground, for 1/4 Sec. Cor., marked 1/4 S. on W. face, dug pits, 18 x 18 x 12 ins., N. and S. of post 5 1/2 ft. dist., and raised a mound of earth 1 1/2 ft. high, 3 1/2 ft. base around post.

44.15 Cross Wash, 20 lks. wide, Course S. 70° E. and ascend.

80.00 Set a post 4 ft. long. 4 ins. square, with marked stone 12 ins. in the ground, for Cor. to Secs; 1-2-11-12 marked T. 11 N. S. 1 on N, E, R, 20 E, S. 12 on S, E, S, 11 on S, W, and S, 2 on N, W, face with 5 notches on S, and 1 notch on E, edges, dug pits 18 x 18 x 12 ins. in each Sec., 5 1/2 ft. dist., and raised a mound of earth 2 ft. high, 4 1/2 ft. base around post.

from which

2 Juniper 10 ins. diam. bears S. 17° W., 35 lks. dist. marked T. 11 N, R. 20 E, S., 11 B. T.

2 Juniper 12 ins. diam. bears N. 38° W., 7 lks. dist. marked T. 11 N, R. 20 E, S., 2 B. T.

Land mountainous No other trees within limits.

Soil 2" rate

Timber of Pine & Juniper, Vegetation, Grass,

Township

11 N,

Range

20 E,

Gila and Salt River Meridian.

Chains

East, on a random line between Sections 1 and 12.

Variation

13° 30'

East.

Over level land

40.00 Set temporary $\frac{1}{2}$ Sec. Cor.

48.13 Cross Road, bears, N. 47° E. & S. 47° W.

79.97 Intersect C. B. of Tp. 25 N. of cor. to secs.

previously set by me.
1-6-7-12 from which corner, I run

N. 89° 49' N on a true line, between sections 1-12,

Variation

13°

East.

39.99 Set a post 3 ft. long. 3 ins. diam. with marked stone

12 ins. in the ground, for $\frac{1}{2}$ Sec. Cor., marked $\frac{1}{2}$ S. onN face, dug pits, 18 x 18 x 12 ins. E. and W of
post 5 $\frac{1}{2}$ ft. dist., and raised a mound of earth 1 $\frac{1}{2}$ ft.
high, 3 $\frac{1}{2}$ ft. base around post.

79.97 The corner to sections 1-2-11-12,

Land level.

Soil

2" rate

Timber of

Vegetation,

Pine & Juniper.
Grass.

Township

11 N,

Range

20 E,

Gila and Salt River Meridian.

Chains

North, on a ~~random~~^{true.} line between Sections 1 and 2.

Variation

13° 30'

East.

Descend.

40.00 Set a post 3 ft. long, 3 ins. diam. with marked stone
 12 s. in the ground, for $\frac{1}{4}$ Sec. Cor., marked $\frac{1}{4}$ S. on
 W. face, dug pits, 18 x 18 x 12 ins. N. and S. of
 post $5\frac{1}{2}$ ft. dist., and raised a mound of earth $1\frac{1}{2}$ ft.
 high, $3\frac{1}{2}$ ft. base around post. from which
 A Pine 5 ins. diam. bears N. 54° E, 20 lks. dist.
 marked $\frac{1}{4}$ S. B. T. No other trees within limits.

67.40 Cross Wash, 30 lks. wide, Course N. 50° E.
 South Boundary S. 12° N. R. 20 E,

81.45 Intersect the ~~Standard Parallel~~^{Standard Parallel} at a
 point 10.73 chs. East of the ~~Standard~~^{1/4 Sec.} Cor. to on
 Secs. S. B. and of 4 Sec. 35 R. at which
 point I.

Set a post, 4 ft. long, 4 ins. square, 12 ins. in the
 ground, for ~~Chasing~~ Cor. to Secs. 1 and 2 marked C.C.,
 T. 11 N. R. 20 E., on S. 1 on E and S. 2 on
 W faces, with 1 notch on E and 5 notches
 on W faces, dug pits 18 x 18 x 12 ins. S. E. W of post,
 $5\frac{1}{2}$ ft. dist. and raised a mound of earth 2 ft. high, $4\frac{1}{2}$
 ft. base around post.

Land rolling.

Soil

2"

rate

Timber of

Pine and Juniper

Vegetation,

Grass.

Township

11 N,

Range

20 E,

Gila and Salt River Meridian.

From the corner to sections, 2, 3, 34 & 35 previously set by me.

Chains Run North, between Sections 34 and 35.

Variation

13° 45'

East.

Ascend.

5.60 Cross Road, bears, N. 37° W. 9 S. 37° E.

40.00 Set a post 3 ft. long, 3 ins. diam 24 ins. in the ground,
for ½ Sec. Cor., marked ½ S. on W. face; from whichA Live Oak 12 ins. diam. bears S. 56° E, 39 lks. dist.
marked ½ S. B. T.A Juniper 20 ins. diam. bears N. 76° W, 70 lks. dist.
marked ½ S. B. T.80.00 Set a post 4 ft. long, 4 ins. square, with marked stone
12 ins. in the ground, for Cor. to Secs, 26-27-34-35,
marked T. 11 N, S, 26, on N, E, R, 20 E, S. 35
on S, E, S, 34 on S, W, and S, 27 on N, W, face
with 1 notch on S, and 2 notches on E, edges,
dug pits 18 x 18 x 12 ins, in each Sec., 5½ ft. dist.,
and raised a mound of earth 2 ft. high, 4 ½ ft. base
around post.

from which

A Pine 8 ins, diam. bears N. 81° W, 39 lks. dist.
marked T. 11 N, R. 20 E, S., 27 B. T.A Pine 6 ins, diam. bears N. E., 46 lks. dist.
marked T. 11 N, R. 20 E, S., 26 B. T.A White Oak 5 ins. diam. bears S. 33° W, 57 lks. dist.
marked T. 11 N, R. 20 E, S., 34 B. T.
No other trees within limits.

Land rolling.

Soil

3"

rate

Timber of

Vegetation, Grass. Pine, Oak & Juniper.

Township

11 N.

Range

20 E.

Gila and Salt River Meridian.

Chains

East, on a random line between Sections 26 and 35.

Variation $13^{\circ}15'$ East.*Ascend.*9.50 Top of Ridge, bears $N. 22^{\circ} W. 92.22$ and descend.40.00 Set temporary $\frac{1}{2}$ Sec. Cor.

79.43 Intersect N. & S. line, 19 lks. S. of cor. to secs.

25-26-35-36 from which corner, I run

S $89^{\circ}52' W.$ on a true line between sections 26-35,Variation $13^{\circ}30'$ East39.47 Set a post 3 ft. long, 3 ins. diam 24 ins. in the ground,
for $\frac{1}{2}$ Sec. Cor., marked $\frac{1}{2}$ S. on N. face; from whichA Cedar 16 ins, diam, bears $S. 29^{\circ} W. 71$ lks, dist,
marked $\frac{1}{2}$ S. B. T.A Pine 6 ins, diam. bears $N. 7^{\circ} E. 99$ lks. dist.
marked $\frac{1}{2}$ S. B. T.

79.43 The corner to sections 26-27-34-35,

Land mountainous

Soil 2" rate

Timber of Pine, Oak & Cedar,

Vegetation, Grass.

Township

11 N,

Range

20 E,

Gila and Salt River Meridian.

Chains

North, between Sections 26 and 27.

Variation

13° 15' East.

Ascend.

12.40 Top of Ridge, bears N. 22° W. N. 22° E. descend.

40.00 Set a Sand stone 16 x 8 x 6 ins., 11 ins. in the ground, for $\frac{1}{4}$ Sec. Cor., marked $\frac{1}{4}$ on W, face, and raised a mound of stone alongside. Pits impracticable.

80.00 To a Pine, 6 ins. dia., which I marked T. 11 N. S. 23, on N. E. R. 20 E. S. 26 on S. E. S. 27, on S. W. and S. 22 on N. W. faces, with 2 notches on S. and 2 notches on E. edges, dug pits 18 x 18 x 12 ins. in each sec. 5 $\frac{1}{2}$ ft. dist. and raised a mound of earth around tree, for cor. to secs.

22-23-26-27,

from which

A Pine 7 ins, diam. bears N. 8° W, 51 kts. dist. marked T. 11 N, R. 20 E, S., 22 B. T.

A Pine 8 ins, diam. bears S. 43° W, 74 kts. dist. marked T. 11 N, R. 20 E, S., 27 B. T.

A Cedar 8 ins, diam, bears S. 42° E, 88 kts, dist, marked T. 11 N, R. 20 E, S., 26 B. T.

No other trees within limits.

Land mountainous

Soil

3" rate

Timber of

Pine & Cedar,

Vegetation.

Grass.

Township

11 N,

Range

20 E,

Gila and Salt River Meridian.

Chains

East, on a random line between Sections 23 and 26.

Variation $13^{\circ}30'$ East.

Descend.

7.30 Cross Wash, 10 lks. wide, Course N. 10 E.

40.00 Set temporary $\frac{1}{2}$ Sec. Cor.

Sv. 30 Intersect N. & S. line, 40 lks. S. of cor. to secs.

23-24-25-26 from which corner, I run

S. 89.43' W. on a true line between sections 23-26.

Variation $13^{\circ}30'$ East40.15 Set a post 3 ft. long, 3 ins. diam 24 ins. in the ground,
for $\frac{1}{2}$ Sec. Cor., marked $\frac{1}{2}$ S. on N. face; from whichA Pine 8 ins. diam. bears S. 61 E, 38 lks. dist.
marked $\frac{1}{2}$ S. B. T.A Juniper 3 ins. diam. bears S. 15 W, 3 lks. dist.
marked $\frac{1}{2}$ S. B. T.

Sv. 30 The corner to sections 22-23-26-27,

Land mountainous

Soil 2" rate

Timber of Pine & Juniper,

Vegetation, Grass.

Township

11 N,

Range

20 E,

Gila and Salt River Meridian.

Chains

North, between Sections 22 and 23.

Variation

13° 30'

East.

Descend.

31.2 Head of Ravine, Course East and ascend

40.00 Set a Sand stone 15 x 9 x 3 ins., 10
ins. in the ground, for $\frac{1}{4}$ Sec. Cor., marked $\frac{1}{4}$ on N.
face, and raised a mound of stone alongside. Pits
impracticable.

62.13 Top of Spur, bears N. E. 9 S. W. and descend.

80.00 To a Juniper, 10 m's. dia, which I marked
T. 11 N. S. 14, on N. E. R. 20 E. S. 23 on
S. E. S. 22, on S. W. and S. 15 on N. W. faces,
with 3 notch es on S. and 2 notch es on E. edges,
dug pits 18 x 18 x 12 ins. in each sec. 5 $\frac{1}{2}$ ft. dist. and
raised a mound of earth around tree, for cor. to secs.

14-15-22-23,

from which

2 Live Oak 8 ins. diam. bears S. 50° W, 82 lks. dist.
marked T. 11 N, R. 20 E, S., 22 B. T.

A Pine 9 ins. diam. bears N. 60° W, 88 lks. dist.
marked T. 11 N, R. 20 E, S., 15 B. T.

No other trees within limits.

Land mountainous

Soil 3" rate

Timber of Pine, Oak & Juniper.

Vegetation, Grass. Aug. 10, 1883.

Township

11 N,

Range

20 E,

Gila and Salt River Meridian.

Chains

East, on a random line between Sections 14 and 23.

Variation $13^{\circ}31'$ East.

Descend.

40.00 Set temporary $\frac{1}{4}$ Sec. Cor.46.15 Cross Wash, 20 lks. wide, Course $N. 44^{\circ} E.$ and ascend.64.00 Top of Spur, bears $N. 50^{\circ} E. 9 S. 50^{\circ} W.$ and descend.

79.96 Intersect N. & S. line, 31 lks. S. of cor. to secs.

13-14 23-24 from which corner, I run

 $S. 89^{\circ} 47' W.$ on a true line between sections 14-23.Variation $13^{\circ}30'$ East

39.98 Set a Sand stone $17 \times 9 \times 3$ ins., 11
 ins. in the ground, for $\frac{1}{4}$ Sec. Cor., marked $\frac{1}{4}$ on N,
 face, and raised a mound of stone alongside. Pits
 impracticable.

79.96 The corner to sections 14-15-22-23.

Land mountainous

Soil $3''$ rate

Timber of Pine and Juniper.

Vegetation, Grass.

Township

11 N.

Range

20 E.

Gila and Salt River Meridian.

Chains

North, between Sections 14 and 15.

Variation

13° 31'

East.

Descend.

12.00 Cross Wash, 20 lks. wide, Course $N. 73^{\circ} E.$ and ascend.

40.00 Set a post 3 ft. long, 3 ins. diam. with marked stone
12 ins. in the ground, for $\frac{1}{4}$ Sec. Cor., marked $\frac{1}{4}$ S. on
W. face, dug pits, 18 x 18 x 12 ins., N. and S. of
post $5\frac{1}{2}$ ft. dist., and raised a mound of earth $1\frac{1}{2}$ ft.
high, $3\frac{1}{2}$ ft. base around post.

43.45 Cross Road, bears, $N. 44^{\circ} E.$ & $S. 44^{\circ} W.$

80.00 Set a Sand stone $16 \times 10 \times 4$ ins. in
the ground for Cor. to Secs. 10-11-14-15 marked
with Notches on S. and 2 notches on E. edges and
raised a mound of stone alongside. Pits impracticable.

from which

A Juniper 9 ins. diam. bears $N. 79^{\circ} E.$, 24 lks. dist.
marked T/11 N., R. 20 E., S., 11 B. T.

A Juniper 8 ins. diam. bears $S. 60^{\circ} E.$, 45 lks. dist.
marked T/11 N., R. 20 E., S., 14 B. T.

A Juniper 10 ins. diam. bears $N. 80^{\circ} W.$, 78 lks. dist.
marked T/11 N., R. 20 E., S., 10 B. T.

No other trees within limits.

Land mountainous

Soil 3" rate

Timber of Juniper.

Vegetation., Grass.

19 Township

11 N,

Range

20 E;

Gila and Salt River Meridian.

Chains

East, on a random line between Sections 11 and 14.

Variation

13°30'

East.

Descend.

14.13

Head of Ravine, Course

N. 7° E.

37.82

Cross Road, bears,

N. 48° E.

9 S. 48° W.

40.00

Set temporary 1/4 Sec. Cor.

80.12

Intersect N. & S. line,

11

lks.

N. of cor. to secs.

11-12-13-14 from which corner, I run

N. 89° 55' W. on a true line between sections 11-14,

Variation

13°33'

East

40.06

Set a post 3 ft. long, 3 ins. diam 24 ins. in the ground, for 1/4 Sec. Cor., marked 1/4 S. on N. face; from which

A Juniper 10 ins. diam. bears N. 60° E., 135 lks. dist. marked 1/4 S. B. T.

A Pine 4 ins. diam. bears S. 40° E., 98 lks. dist. marked 1/4 S. B. T.

80.12

The corner to sections 10-11-14-15,

Land rolling.

Soil

3"

rate

Timber of

Pine & Juniper.

Vegetation,

Grass.

Township

11 N,

Range

20 E,

Gila and Salt River Meridian.

Chains

North, between Sections 10 and 11.

Variation

13° 30'

East.

Ascend.

40.00 Set a post 3 ft. long, 3 ins. diam. with marked stone 12 ins. in the ground, for $\frac{1}{4}$ Sec. Cor., marked $\frac{1}{4}$ S. on N. face, dug pits, 18 x 18 x 12 ins. N. and S. of post $5\frac{1}{2}$ ft. dist., and raised a mound of earth $1\frac{1}{2}$ ft. high, $3\frac{1}{2}$ ft. base around post.

78.50 Top of Ridge, bears N. 60° W. & S. 60° E and descend.

80.00 Set a post 4 ft. long, 4 ins. square, with marked stone 12 ins. in the ground, for Cor. to Secs, 2-3-10-11 marked T. 11 N, S. 2, on N, E, R, 20 E, S. 11 on S, E, S, 10 on S, W, and S, 3 on N, W, face with 5 notches on S, and 2 notches on E, edges, dug pits 18 x 18 x 12 ins, in each Sec., $5\frac{1}{2}$ ft. dist., and raised a mound of earth 2 ft. high, $4\frac{1}{2}$ ft. base around post.

A Juniper 12 ins. diam. bears S. E., 50 lks. dist. from which marked T. 11 N, R. 20 E S., 11 B. T.

A Juniper 8 ins. diam. bears N. 52° W, 39 lks. dist. marked T. 11 N, R. 20 E S., 3 B. T.

No other trees within limits.

Land mountainous

Soil 3" rate

Timber of Pine and Juniper.

Vegetation, Grass.

Township

11 N,

Range

20 E,

Gila and Salt River Meridian.

Chains

East, on a random line between Sections 2 and 11.

Variation

13°30'

East.

Descend.

21.11 Cross Wash, 23 lks. wide, Course N. W. and ascend.

35.13 Top of Spur, bears N. 10° W. & S. 10° E, and descend.

40.00 Set temporary $\frac{1}{4}$ Sec. Cor.

79.57 Intersect N. & S. line, 16 lks. N. of cor. to secs.

1-2-11-12 from which corner, I run

N. 89° 53' W. on a true line between sections 2-11.

Variation

13°30'

East

39.44 Set a post 3 ft. long, 3 ins. diam 24 ins. in the ground,
for $\frac{1}{4}$ Sec. Cor., marked $\frac{1}{4}$ S. on N. face; from whichA Pine 8 ins, diam. bears S. 43° W, 92 lks. dist.
marked $\frac{1}{4}$ S. B. T.A Pine 6 ins, diam. bears N. 12° W, 50 lks. dist.
marked $\frac{1}{4}$ S. B. T.

79.87 The corner to sections 2-3-10-11.

Land mountainous

Soil

3"

rate

Timber of

Pine & Juniper.

Vegetation, Grass.

Township

11 N,

Range

20 E,

Gila and Salt River Meridian.

Chains

North, on a ^{true.} ~~random~~ line between Sections 2 and 3.

Variation

1° 30'

East.

Descend.

25.15 Cross Wash, 18 lks. wide, Course N. 43° W and ascend.

40.00 Set a post 3 ft. long, 3 ins. diam. with marked stone
12 ins. in the ground, for $\frac{1}{4}$ Sec. Cor., marked $\frac{1}{4}$ S. on
W. face, dug pits, 18 x 18 x 12 ins. N. and V. of
post 5 $\frac{1}{2}$ ft. dist., and raised a mound of earth 1 $\frac{1}{2}$ ft.
high, 3 $\frac{1}{2}$ ft. base around post.

S. 6. 91

Intersect the ^{South Boundary T. 12 N. R. 20 E,}
~~Standard Parallel~~ at a
point 10.46 chs. East of the ^{1/4 Sec.} ~~Standard~~ Cor. to on
Secs. S. B. and of $\frac{1}{4}$ Sec. R. 35 at which
point I

Set a Sand stone 14 x 9 x 4 ins. 9 ins. in
the ground for Closing Cor. to Secs. 2 and 3

marked C. C. with 2 notches on E. and 4 notches on
W. edges and raised a mound of stone. ^{alongside,} ~~Pits imprac-~~
ticable. ^{from which}

A Pine 10 ins, diam. bears N. 22° E, 42 lks. dist.
marked T. 12 N. R. 20 E. S., 35 B. T.

A Juniper 6 ins. diam. bears N. 70° W, 7 lks. dist.
marked T. 12 N. R. 20 E, S., 34 B. T.

No other trees within limits.

Land mountainous

Soil 3" rate

Timber of Pmi & Juniper.

Vegetation. Grass.

Township

11 N,

Range

20 E,

Gila and Salt River Meridian.

~~From the corner to sections, 3, 4, 33 & 34 previously set by me.~~Chains *run* North, between Sections 33 and 34.Variation $13^{\circ} 45'$ East.

Descend.

40.00 Set a Sand stone $20 \times 16 \times 6$ ins., 15 ins. in the ground, for $\frac{1}{4}$ Sec. Cor., marked $\frac{1}{4}$ on N. face, and raised a mound of stone alongside. Pits impracticable.

A Yellow Pine 18 ins diam. bears S. $50^{\circ} E$, 34 lks. dist. marked $\frac{1}{4}$ S. B. T. from which

A Yellow Pine 16 ins diam. bears N. $74^{\circ} W$, 97 lks. dist. marked $\frac{1}{4}$ S. B. T.

63.70 Cross Road, bears, N. $60^{\circ} W$ & S. $60^{\circ} E$.

73.60 Cross Wash, 18 lks. wide, Course N. $30^{\circ} W$ and ascend.

80.00 Set a Sand stone $24 \times 12 \times 4$ ins. 18 ins. in the ground for Cor. to Secs 27-28-33-34 marked with 1 notch on S. and 3 notches on E. edges and raised a mound of stone alongside. Pits impracticable.

A Yellow Pine 11 ins diam. bears S. $32^{\circ} E$, 67 lks. dist. marked T. 11 N, R. 20 E, S., 34 B. T. from which

A Yellow Pine 9 ins diam. bears S. $34^{\circ} W$, 30 lks. dist. marked T. 11 N, R. 20 S., 33 B. T.

A Yellow Pine 6 ins diam. bears N. $60^{\circ} W$, 94 lks. dist. marked T. 11 N, R. 20 E, S., 28 B. T.

No other trees within limits.

Land mountainous

Soil 3" rate

Timber of Pine.

Vegetation, Grass.

Chains

East, on a random line between Sections 27 and 34.

Variation

13° 30'

East.

Ascend.

40.00 Set temporary $\frac{1}{4}$ Sec. Cor.

St. 27 Intersect N. & S. line, 31 lks. S. of cor. to secs.

26-27-34-35 from which corner, I run

S. 89° 47' W. on a true line between sections 27-34,

Variation 13° 15' East

40.14 Set a Sand stone 18 x 10 x 9 ins., 12 ins.

in the ground, for $\frac{1}{4}$ Sec. Cor., marked $\frac{1}{4}$ on N. face,

dug pits 18 x 18 x 12 ins., E and W. of stone 5 $\frac{1}{2}$

ft. dist., and raised a mound of earth 1 $\frac{1}{2}$ ft. high, 3 $\frac{1}{2}$

ft. base alongside.

from which

A Yellow Pine 8 ins diam. bears N. 5° W., 92 lks. dist.

marked $\frac{1}{4}$ S. B. T.

A Cedar 20 ins, diam, bears S. 52° W., 67 lks, dist,

marked $\frac{1}{4}$ S. B. T.

St. 27 The corner to sections 27-28-33-34,

Land rolling.

Soil 3" ^{rate}

Timber of Pine & Cedar.

Vegetation., Grass.

I carefully examined the adjustments of my solar compass to-day, particularly the latitude and reversing apparatus, and found them correct.

Aug. 11, 1883

Township

11 N.

Range

20 E.

Gila and Salt River Meridian.

Chains

North, between Sections 27 and 28.

Variation

13° 30'

East.

Ascend.

30.00 Top of Spur, bears N. 80° W. 2 S. 80° E. and descend.

39.00 Cross Wash, 16 lks. wide, Course West.

40.00 Set a Sand stone 16 x 12 x 10 ins., 11

ins. in the ground, for $\frac{1}{4}$ Sec. Cor., marked $\frac{1}{4}$ on W.

face, and raised a mound of stone alongside. Pits

impracticable.

A Yellow Pine 6 ins diam. bears S. 10° E., 60 lks. dist. ^{from which}
marked $\frac{1}{4}$ S. B. T.

No other trees within limits.

52.00 Cross Wash, 15 lks. wide, Course W. and ascend.

80.00 Set a post 4 ft. long, 4 ins. square, with marked stone
12 ins. in the ground, for Cor. to Secs. 21-22-27-28,
marked T, 11 N. S. 22, on N, E, R, 20 E, S. 27
on S, E, S, 28 on S, W, and S, 21 on N, W, face
with 2 notch es on S, and 3 notches on E, edges,
dug pits 18 x 18 x 12 ins, in each Sec., 5 $\frac{1}{2}$ ft. dist.,
and raised a mound of earth 2 ft. high, 4 $\frac{1}{2}$ ft. base
around post.

Land mountainous

Soil 3" rate

Timber of Pine.

Vegetation, Grass.

Township

11 N,

Range

20 E,

Gila and Salt River Meridian.

Chains

East, on a random line between Sections 22 and 27.

Variation 13° 30' East.

*Ascend.*40.00 Set temporary $\frac{1}{4}$ Sec. Cor.51.50 Top of Ridge, bears N. W. $\frac{1}{2}$ S. E. and descend.

79.91 Intersect N. & S. line, 18 lks. N. of cor. to secs.

22-23-26-27 from which corner, I run

N. 89° 52' W. on a true line between sections 22-27,

Variation 13° 30' East

39.96 Set a post 3 ft. long, 3 ins. diam 24 ins. in the ground, for $\frac{1}{4}$ Sec. Cor., marked $\frac{1}{4}$ S. on N. face; from whichA Yellow Pine 6 ins diam. bears N. 53° W, 53 lks. dist. marked $\frac{1}{4}$ S. B. T.A Yellow Pine 4 ins diam. bears S. 28° W, 70 lks. dist. marked $\frac{1}{4}$ S. B. T.

79.91 The corner to sections 21-22-27-28,

Land mountainous

Soil 3" rate

Timber of Pine & Juniper.

Vegetation. / Grass.

Township

11 N,

Range

20 E,

Gila and Salt River Meridian.

Chains

North, between Sections 21 and 22.

Variation

13° 30'

East.

Descend.

19.55 Cross Road, bears, N. 20° E. & S. 20° W.

22.00 Cross Wash, 15 lks. wide, Course W. and ascend.

40.00 Set a Sand stone 16 x 8 x 3 ins.,

ins. in the ground, for $\frac{1}{4}$ Sec. Cor., marked $\frac{1}{4}$ on W.

face, and raised a mound of stone alongside. Pits

impracticable.

from which

A Yellow Pine 8 ins diam. bears N. 51° E., 66 lks. dist.

marked $\frac{1}{4}$ S. B. T.

A Yellow Pine 18 ins diam. bears N. 70° W., 208 lks. dist.

marked $\frac{1}{4}$ S. B. T.

77.05 Cross Road, bears, N. 84° E. & S. 84° W.

80.00

Set a Sand stone 8 x 12 x 4 ins. 12 ins.

in the ground for Cor. to Secs. 15-16-21-22 marked

with 3 notches on S. and 3 notches on E. edges,

dug pits 18 x 18 x 12 ins. in each Sec., $5\frac{1}{2}$ ft. dist. andraised a mound of earth 2 ft. high, $4\frac{1}{2}$ ft. base. alongside.

Land rolling.

Soil

3"

rate

Timber of

Pine & Juniper.

Vegetation.,

Grass.

Gila and Salt River Meridian.

Chains East, on a random line between Sections 15 and 22.
 Variation 13° 30' East.

Ascend.

12.15 Cross Road, bears, N. 80° E. & S. 80° W.

26.10 Cross Road, bears, N. 40° E. & S. 40° W.

40.00 Set temporary $\frac{1}{4}$ Sec. Cor.

60.00 Top of Ridge, bears N. & S. and descend.

72.00 Cross Wash, 16 lks. wide, Course N. 60° E.

80.12 Intersect N. & S. line, 11 lks. S. of cor. to secs.

11-15-22-2 from which corner, I run

S. 89° 55' W. on a true line between sections 15-22,

Variation 13° 30' East

140.06 Set a Sand stone 16 x 12 x 4 ins., 11
 ins. in the ground, for $\frac{1}{4}$ Sec. Cor., marked $\frac{1}{4}$ on N.
 face, and raised a mound of stone alongside. Pits
 impracticable. *from which*

A Juniper 8 ins. diam. bears S. 12° W., 8 lks. dist.
 marked $\frac{1}{4}$ S. B. T.

A Pine 7 ins. diam. bears N. 70° W., 8 lks. dist.
 marked $\frac{1}{4}$ S. B. T.

80.12 The corner to sections 15-16-21-22,

Land mountainous

Soil 3 rate

Timber of Pine & Juniper.

Vegetation., Grass.

Township

11 N,

Range

20 E,

Gila and Salt River Meridian.

Chains

North, between Sections 15 and 16.

Variation

13° 30'

East.

Ascend.

- 22.11 Top of Spur, bears $N 73^{\circ} W$, 70.73 E, and descend.
- 36.20 Cross Wash, 15 lks. wide, Course $N 70^{\circ} W$ and ascend.
- 40.00 Set a Sand stone $17 \times 8 \times 4$ ins., 11 ins. in the ground, for $\frac{1}{4}$ Sec. Cor., marked $\frac{1}{4}$ on N , face, and raised a mound of stone alongside. Pits impracticable.
- 80.00 Set a Sand stone $19 \times 18 \times 14$ ins. 4 ins. in the ground for Cor. to Secs. 9-10-15-16 marked with 4 notches on S. and 3 notches on E. edges and raised a mound of stone alongside. Pits impracticable.
- A Yellow Pine 10 ins diam. bears $N 30^{\circ} E$, 10.3 lks. dist. marked T. 11 N, R. 20 E, S., 10 B. T. ^{from which}
- A Yellow Pine 10 ins diam. bears $S. 20^{\circ} E$, 40 lks. dist. marked T. 11 N, R. 20 E, S., 15 B. T.
- A Yellow Pine 13 ins diam. bears $S. 28^{\circ} W$, 64 lks. dist. marked T. 11 N, R. 20 E, S., 16 B. T.
- A Yellow Pine 16 ins diam. bears $N. 40^{\circ} W$, 88 lks. dist. marked T. 11 N, R. 20 E, S., 9 B. T.

Land mountainous

Soil

3"

rate

Timber of

Pine & Juniper.

Vegetation.,

Grass.

Township 11 N., Range 20 E.

Gila and Salt River Meridian.

Chains East, on a random line between Sections 10 and 15.

Variation 13°30' East.*Ascend.*40.00 Set temporary $\frac{1}{4}$ Sec. Cor.58.18 Top of Ridge, bears N. & S. and descend.79.71 Intersect N. & S. line, 24 lks. N. of cor. to secs.10-11-14-15 from which corner, I runN. 89°50' W. on a true line between sections 10-15,Variation 13°30' East39.86 Set a Sand stone 15 x 8 x 3 ins., 10
ins. in the ground, for $\frac{1}{4}$ Sec. Cor., marked $\frac{1}{4}$ on N.
face, and raised a mound of stone alongside. Pits
impracticable. from whichA Juniper 18 ins. diam. bears S. 44° E., 104 lks. dist.
marked $\frac{1}{4}$ S. B. T.A Juniper 12 ins. diam. bears N. 30° W., 98 lks. dist.
marked $\frac{1}{4}$ S. B. T.79.71 The corner to sections 9-10-15-16,

Land mountainous

Soil 2" rateTimber of Juniper.Vegetation. Grass.

Township

11 N,

Range

20 E,

Gila and Salt River Meridian.

Chains

North, between Sections 9 and 10.

Variation

13° 30'

East.

Descend.

40.00 Set a Sand stone 18 x 12 x 10 ins., 12 ins. in the ground, for $\frac{1}{4}$ Sec. Cor., marked $\frac{1}{4}$ on N. face, and raised a mound of stone alongside. Pits impracticable.

145.00 Cross Creek 80 lks. wide, Course N. 32° E.

72.130 Cross Creek 81 lks. wide, Course N. 27° W.

30.00 Set a Sand stone 18 x 12 x 6 ins. 12 ins. in the ground for Cor. to Secs. 3-4-9-10 marked with 5 notches on S. and 3 notches on E. edges and raised a mound of stone alongside. Pits impracticable.

from which

A Pine 18 ins, diam. bears N. 36° E., 122 lks. dist. marked T. 11 N, R. 20 E, S., 3 B. T.

A Pine 10 ins, diam. bears N. 15° W., 76 lks. dist. marked T. 11 N, R. 20 E, S., 4 B. T.

No other trees within limits.

Land rolling.

Soil 3' rate

Timber of Pine.

Vegetation, Grass.

Township

11 N.

Range

20 E.

Gila and Salt River Meridian.

Chains

East, on a random line between Sections 3 and 10.

Variation $13^{\circ}30'$ East.*Ascend.*

19.19 Top of Spur, bears N. & S., and descend.

36.51 Cross Wash, 19 lks. wide, Course $N.40^{\circ}W.$, and ascend.40.00 Set temporary $\frac{1}{4}$ Sec. Cor.53.52 Top of Spur, bears $N.4^{\circ}W.$ & $S.4^{\circ}E.$, and descend.62.55 Cross Wash, 21 lks. wide, Course $N.31^{\circ}W.$ and ascend.

79.00 Top of Hill bears N. W. & S. E., and descend.

79.63 Intersect N. & S. line, 46 lks. N. of cor. to secs.

2-3-10-11 from which corner, I run

 $N.89^{\circ}40'W.$ on a true line between sections 3-10,Variation $13^{\circ}30'$ East

39.82 Set a post 3 ft. long, 3 ins. diam 24 ins. in the ground,

for $\frac{1}{4}$ Sec. Cor., marked $\frac{1}{4}$ S. on N. face; from whichA Pine 10 ins, diam. bears $S.63^{\circ}E.$, 21 lks. dist.marked $\frac{1}{4}$ S. B. T.A Pine 8 ins, diam. bears $N.50^{\circ}W.$, 51 lks. dist.marked $\frac{1}{4}$ S. B. T.

79.63 The corner to sections 3-4-9-10.

Land mountainous

Soil 3" rate

Timber of Pine & Juniper.

Vegetation., Grass.

Township

11 N.

Range

20 E.

Gila and Salt River Meridian.

true.

Chains

North, on a ~~random~~ line between Sections 3 and 4.

Variation

13° 30'

East.

Descend.

3.75 Cross Wash, 80 lks. wide, Course N. 80° E. and ascend.

27.65 Top of Spur, bears N. 80° E. & S. 80° W. and descend.

37.50 Cross Wash, 20 lks. wide, Course E. and ascend.

40.00 Set a Sand stone 36 x 16 x 15 ins., 27 ins. in the ground, for $\frac{1}{4}$ Sec. Cor., marked $\frac{1}{4}$ on N. face, and raised a mound of stone alongside. Pits impracticable.

45.10 Top of Spur, bears E. & W. and descend.

59.09 Cross Wash, 40 lks. wide, Course E. and ascend.

66.84 Top of Spur, bears N. 76° W. & S. 76° E. and descend.

74.52 Cross Wash, 20 lks. wide, Course S. 50° E. and ascend.

80.11 Intersect the South Boundary of T. 12 N. R. 20 E. at a point 10.85 chs. East of the Standard Cor. to on Secs. S. B. and of $\frac{1}{4}$ Sec. R. 34 at which point I

Set a Sand stone 17 x 8 x 3 ins. 11 ins. in the ground for Closing Cor. to Secs. 3 and 4 marked C. C. with 3 notches on E. and 3 notch on W. edges and raised a mound of stone alongside. Pits impracticable.

Land mountainous

Soil

3" rate

Timber of

Pine & Juniper.

Vegetation.

Grass. Aug. 13, 1880.

Township 11 N, Range 20 E;

Gila and Salt River Meridian.

Chains *Iron* From the corner to sections, 45, 32 & 33 previously set by me. North, between Sections 32 and 33.

Variation 13° 45' East.

Descend.

- 9.73 Cross Road, bears, N. 63° W. & S. 63° E.
 - 14.00 Cross Wash, 20 lks. wide, Course N. 50° E and ascend.
 - 39.00 Top of Spur, bears N. 6° & S. W. and descend.
 - 40.00 Set a Sand stone 16 x 9 x 5 ins., 11 ins. in the ground, for 1/4 Sec. Cor., marked 1/4 on W. face, and raised a mound of stone alongside. Pits impracticable. from which
 - A Yellow Pine 6 ins diam. bears S. 41° W, 90 lks. dist. marked 1/4 S. B. T.
 - A Yellow Pine 8 ins diam. bears S. 86° E, 62 lks. dist. marked 1/4 S. B. T.
 - 60.88 Cross Wash, 17 lks. wide, Course E. and ascend.
 - 62.70 Cross Road, bears, E. & W.
 - 80.00 Set a post 4 ft. long, 4 ins. square, with marked same 12 ins. in the ground, for Cor. to Secs, 28-29-32-33, marked T. 11 N, S, 28, on N, E, R, 20 E, S. 33 on S, E, S, 32 on S, W, and S, 29 on N, W, face with / notch on S, and 4 notches on E, edges, dug pits 18 x 18 x 12 ins, in each Sec., 5 1/2 ft, dist., and raised a mound of earth 2 ft, high, 4 1/2 ft, base around post. from which
 - Yellow Pine 6 ins diam. bears S. 42° E, 222 lks. dist. marked T. 11 N. R. 20 E, S., 33 B. T.
- No other trees within limits.

Land mountainous
 Soil 2 rate
 Timber of Pine,
 Vegetation, Grass.

Chains

East, on a random line between Sections 28 and 33.

Variation

13° 45'

East.

Ascend.

- 10.00 Top of Spur, bears N. 20° W. 7 S. 200 E. and descend.
- 26.57 Enter Valley, bears N. E. & S. W.
from Danish Settlement to Snowflake,
- 28.55 Cross Road, bears N. 30° E. & S. 30° W.
- 36.70 Cross Creek 10 lks. wide, Course N. E.
- 39.00 Leave Valley, bears N. E. & S. W. and ascend.
- 40.00 Set temporary $\frac{1}{4}$ Sec. Cor.
- 47.10 Top of Spur, bears N. 30° W. & S. 30° E. and descend.
- 67.40 Cross Wash, 16 lks. wide, Course N. 41° W. and ascend.
- 80.46 Intersect N. & S. line, 17 lks. N. of cor. to secs.
2728-33-34 from which corner, I run
N. 89° 53' W. on a true line between sections 28-33.
Variation 13° 30' East
- 40.23 Set a Sand stone 20 x 12 x 7 ins., 15
ins. in the ground, for $\frac{1}{4}$ Sec. Cor., marked $\frac{1}{4}$ on N.
face, and raised a mound of stone alongside. Pits
impracticable. from which
- A Yellow Pine 14 ins diam. bears S. 59° W., 94 lks. dist.
marked $\frac{1}{4}$ S. B. T.
- A Yellow Pine 16 ins diam. bears N. 72° E., 139 lks. dist.
marked $\frac{1}{4}$ S. B. T.
- 80.46 The corner to sections 28-29-32-33,
Land mountainous Timber of Pine,
Soil 3" rate Vegetation, Grass.

Township

11 N.,

Range

21 E.;

Gila and Salt River Meridian.

Chains

North, between Sections 28 and 29.

Variation

13° 45' East.

Ascend.

27.16 Top of Hill bears N. 70° N. 9 S 70° E, and descend.

46.00 Set a post 3 ft. long, 3 ins. diam. with marked stone
 12 ins. in the ground, for $\frac{1}{2}$ Sec. Cor., marked $\frac{1}{2}$ S. on
 N. face, dug pits, 18 x 18 x 12 ins. N. and S. of
 post $5\frac{1}{2}$ ft. dist., and raised a mound of earth $1\frac{1}{2}$ ft.
 high, $3\frac{1}{2}$ ft. base around post.

30.00

Set a Sand stone $2\frac{1}{2} \times 10 \times 4$ ins. 18 ins. in
 the ground for Cor. to Secs. 20-21-28-29 marked
 with 2 notches on S. and 2 notches on E. edges and
 raised a mound of stone alongside. Pits impracticable.

from which

A Yellow Pine 10 ins diam. bears N. 10° E, 100 lks. dist.
 marked T. 11 N., R. 20 E., S., 21 B. T.

A Yellow Pine 26 ins diam. bears S. 42° E, 265 lks. dist.
 marked T. 11 N., R. 20 E., S., 28 B. T.

No other trees within limits.

Land hilly.

Soil

2" rate

Timber of

Pine.

Vegetation,

Grass.

Township

11 N.

Range

20 E.

Gila and Salt River Meridian.

Chains

East, on a random line between Sections 21 and 28.

Variation

13° 33'

East.

Descend.

20.16 Cross Wash, 10 lks. wide, Course S. 32° E.

40.00 Set temporary $\frac{1}{4}$ Sec. Cor.44.00 Cross Road from Ranch to Snowflake, bears N. 10° E.
& S. 10° W.
Cross Wash, 10 lks. wide, Course N. 10° E.

52.70 Cross Creek 50 lks. wide, Course North and ascend.

74.30 Cross Road, from Danish settlement to
Snowflake, bears N. 10° E. & S. 10° W.

80.27 Intersect N. & S. line, 21 lks. S. of cor. to secs.

21-22-27-28 from which corner, I run

S. 89° 51' W. on a true line between sections 21-28.

Variation 13° 30' East

40.14 Set a Sand stone 24 x 16 x 8 ins., 18
ins. in the ground, for $\frac{1}{4}$ Sec. Cor., marked $\frac{1}{4}$ on N.
face, and raised a mound of stone alongside. Pits

impracticable.

80.27 The corner to sections 20-21-28-29.

Land rolling.

Soil 2" rate

Timber of Juniper.

Vegetation, Grass.

Township

11 N,

Range

20 E,

Gila and Salt River Meridian.

Chains

North, between Sections 20 and 21.

Variation

13° 30'

East.

Descend.

- 85 Cross Wash, 25 lks. wide, Course E, and ascend.
- 37.00 Top of Ridge, bears E. & W. and descend.
- 40.00 Set a Sand stone 18 x 12 x 4 ins., 12 ins. in the ground, for 1/4 Sec. Cor., marked 1/4 on N. face, dug pits 18 x 18 x 12 ins., N and S. of stone 5 1/2 ft. dist., and raised a mound of earth 1 1/2 ft. high, 3 1/2 ft. base alongside. from which
- A Juniper 18 ins. diam. bears N. 50° W., 135 lks. dist. marked 1/4 S. B. T.
- A Yellow Pine 7 ins diam. bears N. 75° E., 40 lks. dist. marked 1/4 S. B. T.
- 63.30 Cross Wash, 15 lks. wide, Course E, and ascend.
- 75.40 Top of Spur, bears E. & W. and descend.
- 80.00 Set a Sand stone 17 x 10 x 2 ins. 11 ins. in the ground for Cor. to Secs. 16-17-20-21 marked with 3 notches on S. and 4 notches on E. edges, dug pits 18 x 18 x 12 ins. in each Sec., 5 1/2 ft. dist. and raised a mound of earth 2 ft. high, 4 1/2 ft. base. alongside. from which
- A Juniper 5 ins. diam. bears N. 23° E., 10 lks. dist. marked T. 11 N, R. 20 E. S., 16 B. T.
- A Pine 5 ins, diam. bears S. 35° W., 70 lks. dist. marked T. 11 N, R. 20 E. S., 20 B. T.
- A Pine 6 ins, diam. bears N. 67° W., 20 lks. dist. marked T. 11 N, R. 20 E. S., 17 B. T.
- No other trees within limits.

Land mountainous

Soil 3" rate

Timber of Pine & Juniper.

Vegetation. Grass.

Township

11 N,

Range

20 E.

Gila and Salt River Meridian.

Chains

East, on a random line between Sections 16 and 21.

Variation

13° 20'

East.

Descend.

22.00 Cross Wash, 12 lks. wide. Course S. 16 E. enter Valley.

40.00 Set temporary $\frac{1}{4}$ Sec. Cor.

51.50 Cross Creek 125 lks. wide. Course North.

55.55 Cross Road, bears N. & S.

56.30 Leave Valley, bears N. & S., and ascend.

67.72 Cross Road, bears N. 85° W. & S. 85° E.

80.41 Intersect N. & S. line, 18 lks. N., of cor. to secs.

N-16-21-22 from which corner, I run

N. 89° 52' W. on a true line between sections 16-21.

Variation

13° 30' East

40.21 Set a Sand stone 24 x 11 x 4 ins., 18 ins. in the ground, for $\frac{1}{4}$ Sec. Cor., marked $\frac{1}{4}$ on N. face, and raised a mound of stone alongside. Pits impracticable. from which

A Yellow Pine 24 ins diam. bears S. 59 E., 85 lks. dist. marked $\frac{1}{4}$ S. B. T.

A Yellow Pine 7 ins diam. bears N. 23 E., 105 lks. dist. marked $\frac{1}{4}$ S. B. T.

80.41 The corner to sections 16-17-20-21.

Land mountainous

Soil 3" rate

Timber of Pine & Juniper.

Vegetation., Grass.

Township

11 N,

Range

20 E,

Gila and Salt River Meridian.

Chains

North, between Sections 16 and 17.

Variation

13° 20'

East.

Descend.

15.00 Cross Wash, 16 lks. wide, Course S. 70° E and ascend.

40.00 Set a post 3 ft. long, 3 ins. diam. with marked stone

12 ins. in the ground, for $\frac{1}{4}$ Sec. Cor., marked $\frac{1}{4}$ S. on

N. face, dug pits, 18 x 18 x 12 ins., N. and S. of

post $5\frac{1}{2}$ ft. dist., and raised a mound of earth $1\frac{1}{2}$ ft.high, $3\frac{1}{2}$ ft. base around post.

from which

A Juniper 10 ins. diam. bears S. 29° E, 28 lks. dist.

marked $\frac{1}{4}$ S. B. T.

No other trees within limits.

61.50 Top of Ridge, bears N. 60° E. & S. 60° W. and descend.

80.00

Set a post 4 ft. long, 4 ins. square, with marked stone

12 ins. in the ground, for Cor. to Secs, S. 9-16-17,

marked T. 117, S. 9, on N, E, R. 20 E., S. 16

on S, E, S, 17 on S, W, and S, S on N, W, face

with notches on S, and notches on E, edges,

dug pits 18 x 18 x 12 ins, in each Sec., $5\frac{1}{2}$ ft. dist.,and raised a mound of earth 2 ft, high, $4\frac{1}{2}$ ft, base

around post.

from which

A Pine 10 ins, diam. bears S. W., 19 lks. dist.

marked T. 117, R. 20 E. S., 17 B. T.

No other trees within limits.

Land mountainous

Soil 2" rate

Timber of

Pine & Juniper.

Vegetation.,

Grass Aug. 14, 1883.

Township

11 N,

Range

20 E,

Gila and Salt River Meridian.

Chains

East, on a random line between Sections 9 and 16.

Variation

13°30'

East.

Ascend.

40.00 Set temporary $\frac{1}{4}$ Sec. Cor.

41.00 Top of Ridge, bears N 28° E & S 28° W and descend.

62.10 Cross Wash, 60 lks. wide, Course N. and ascend.

80.23 Intersect N. & S. line, 41 lks. S. of cor. to secs.

9-10-15-16 from which corner, I run

S. 89°42' W. on a true line between sections 9-16,

Variation 13°30' East

40.12 Set a Sand stone $11\frac{1}{2} \times 10 \times 3$ ins., 9
ins. in the ground, for $\frac{1}{4}$ Sec. Cor., marked $\frac{1}{4}$ on N,
face, and raised a mound of stone alongside. Pits
impracticable. from which

A Yellow Pine 6 ins diam. bears N. 20° W, 25 lks. dist.
marked $\frac{1}{4}$ S. B. T.

A Yellow Pine 9 ins diam. bears S. 5° E, 65 lks. dist.
marked $\frac{1}{4}$ S. B. T.

80.23 The corner to sections 8-9-16-17.

Land mountainous

Soil 2" rate

Timber of Pine & Juniper.

Vegetation, Grass.

Township

11 N,

Range

20 E,

Gila and Salt River Meridian.

Chains

North, between Sections 8 and 9.

Variation

13° 30'

East.

Descend.

- 7.25 Cross Wash, 20 lks. wide, Course N. 68° E and ascend.
- 20.56 Top of Ridge, bears N. 60° E. & S. 60° W and descend.
- 40.00 Set a post 3 ft. long, 3 ins. diam 24 ins. in the ground, for $\frac{1}{4}$ Sec. Cor., marked $\frac{1}{4}$ S. on W. face; from which
- A Pine 4 ins, diam. bears N. 87° W, 20 lks. dist. marked $\frac{1}{4}$ S. B. T.
- A Pine 6 ins, diam. bears N. 33° E, 21 lks. dist. marked $\frac{1}{4}$ S. B. T.
- 62.05 Cross Wash, 30 lks. wide, Course N. 40° E and ascend.
- 71.60 Cross Road, bears, N. 40° E. & S. 40° W.
- 80.00 Set a Sand stone 16 x 10 x 7 ins. 11 ins. in the ground for Cor. to Secs. 4-5-8-9 marked with 3 notches on S. and 4 notches on E. edges and raised a mound of stone alongside. Pits impracticable.
- A Juniper 12 ins. diam. bears S. W., 70^{from which} lks. dist. marked T. 11 N, R. 20 E, S., 8 B. T.
- A Juniper 11 ins. diam. bears N. 46° W, 82 lks. dist. marked T. 11 N, R. 20 E, S., 5 B. T.
- No other trees within limits.

Land mountainous

Soil

2"

rate

Timber of

Pine & Juniper.

Vegetation.,

Grass.

Township

11 N,

Range

20 E,

Gila and Salt River Meridian.

Chains

East, on a random line between Sections 4 and 9.

Variation

13°30'

East.

Descend.

- 7.64 Cross Road, bears, N. 36° E. 9 S. 36° W.
- 8.25 Cross Wash, 60 lks. wide, Course N. 39° E. and ascend.
- 29.70 Top of Ridge, bears N. 25° E. 25° W. and descend.
- 40.00 Set temporary $\frac{1}{4}$ Sec. Cor.
- 76.94 Cross Creek 60 lks. wide Course N. E., and ascend.
- 80.49 Intersect N. & S. line, 19 lks. S. of cor. to secs. 3-4-9-10 from which corner, I run S. 89° 52' W. on a true line between sections 4-9. Variation 13°30' East
- 40.25 Set a Sand stone 18 x 12 x 5 ins., 12 ins. in the ground, for $\frac{1}{4}$ Sec. Cor., marked $\frac{1}{4}$ on N face, and raised a mound of stone alongside. Pits impracticable. from which
- A Juniper 12 ins. diam. bears S. 30° W., 38 lks. dist. marked $\frac{1}{4}$ S. B. T.
- No other trees within limits.
- 80.49 The corner to sections 4-5-8-9. Land mountainous
Soil 2" rate
Timber of Pine and Juniper.
Vegetation, Grass.

Township

11 N.

Range

20 E.

Gila and Salt River Meridian.

Chains

North, on a ^{true.} ~~random~~ line between Sections 4 and 5.Variation $13^{\circ}30'$ East.*Ascend.*

40.00 Set a post 3 ft. long, 3 ins. diam. with marked stone
 12 ins. in the ground, for $\frac{1}{4}$ Sec. Cor., marked $\frac{1}{4}$ S. on
 N. face, dug pits, 18 x 18 x 12 ins. N and S. of
 post $5\frac{1}{2}$ ft. dist., and raised a mound of earth $1\frac{1}{2}$ ft.
 high, $3\frac{1}{2}$ ft. base around post. from which
 a Juniper 14 ins. diam. bears S. 34° E., 32 lks. dist.
 marked $\frac{1}{4}$ S. B. T.

A Pine 10 ins. diam. bears S. 54° W., 36 lks. dist.
 marked $\frac{1}{4}$ S. B. T.

49.37 Top of Ridge, bears N. 71° E. 9 S. 71° W. and descend.
 South Boundary S. 12 N. R. 20 E.
 50.25 Intersect the ~~Standard Parallel~~ at a
 point 10.51 chs. East of the ~~Standard~~ Cor. to on
 Secs. S.B. and of Sec. N. 33 at which
 point I

Set a Sand stone $18 \times 10 \times 4$ ins. 12 ins. in
 the ground for Closing Cor. to Secs. 4 and 5
 marked C. C. with 4 notches on E. and 2 notches on
 W. edges and raised a mound of stone. Pits imprac-
 ticable.

Land mountainous

Soil 2" rate

Timber of

Vegetation,

Pine & Juniper.
Grass.

Township

11 N,

Range

20 E;

Gila and Salt River Meridian.

From the corner to sections, 5, 6, 31 & 32 previously set by me.

Chains *Run* North, between Sections 31 and 32.Variation $13^{\circ}45'$ East.

Descend.

40.00 Set a Sand stone $16 \times 11 \times 3$ ins., 11 ins. in the ground, for $\frac{1}{4}$ Sec. Cor., marked $\frac{1}{4}$ on *N* face, dug pits $18 \times 18 \times 12$ ins., *N* and *S*. of stone $5\frac{1}{2}$ ft. dist., and raised a mound of earth $1\frac{1}{2}$ ft. high, $3\frac{1}{2}$ ft. base alongside.

from which

A Yellow Pine 28 ins diam. bears *S. 60° W. 69* lks. dist. marked $\frac{1}{4}$ S. B. T.

A Yellow Pine 18 ins diam. bears *S. 65° E. 72* lks. dist. marked $\frac{1}{4}$ S. B. T.

53.25 Cross Creek 20 lks. wide, Course *E.* and ascend.

56.85 Cross Road, bears *N. 65° E. & S. 65° W.*

64.00 Top of Spur, bears *E. & W.* and descend.

80.00 Set a post 4 ft. long, 4 ins. square, with marked stone 12 ins. in the ground, for Cor. to Secs, 29-30-31-32, marked T, 11 N, S, 29, on N, E, R, 20 E, S, 32 on S, E, S, 31 on S, W, and S, 30 on N, W, face with / notch on S, and 5 notches on E, edges, dug pits $18 \times 18 \times 12$ ins, in each Sec., $5\frac{1}{2}$ ft. dist., and raised a mound of earth 2 ft. high, $4\frac{1}{2}$ ft. base around post.

A Yellow Pine 19 ins diam. bears *S. 40° E.*, 30 lks. dist. marked T, 11 N, R, 20 E, S, 32 B. T.

A Juniper 13 ins. diam. bears *S. 60° W.*, 107 lks. dist. marked T, 11 N, R, 20 E, S, 31 B. T.

A Juniper 10 ins. diam. bears *N. 20° E.*, 113 lks. dist. marked T, 11 N, R, 20 E, S, 29 B. T.

Land mountainous No other trees within limits.

Soil 2" rate

Vegetation Grass.

Timber of *Pine & Juniper.*

Township

11 N.

Range

20 E.

Gila and Salt River Meridian.

Chains

East, on a random line between Sections 29 and 32.

Variation

13°30'

East.

Over level land

38.47 Cross Road, bears, N. 37° E. & S. 37° W.

40.00 Set temporary $\frac{1}{4}$ Sec. Cor.

80.11 Intersect N. & S. line, 29 lks. N., of cor. to secs.

28-29-32-33 from which corner, I run

N. 89° 48' W. on a true line between sections 29-32,

Variation 13° 45' East

40.06 Set a post 3 ft. long, 3 ins. diam 24 ins. in the ground,
for $\frac{1}{4}$ Sec. Cor., marked $\frac{1}{4}$ S. on N. face; from whichA Yellow Pine 17 ins diam. bears N. 71° E., 46 lks. dist.
marked $\frac{1}{4}$ S. B. T.A Yellow Pine 26 ins diam. bears S. W., 53 lks. dist.
marked $\frac{1}{4}$ S. B. T.

80.11 The corner to sections 29-30-31-32,

*Land level.**Soil*

2"

Timber of

Pine,

Vegetation.,

Grass.

Township

11 N.

Range

20 E.

Gila and Salt River Meridian.

Chains

West, on a random line between Sections 30 and 31.

Variation

13° 30'

East.

Ascend.

40.00 Set temporary 1/4 Sec. Cor.

44.70 Head of Ravine, Course N. 44° E. and ascend

54.00 Top of Spur, bears N. 30° E. 90.30 W. and descend.

67.44 Cross Wash, 20 fks. wide, Course N. 23° E. and ascend.

78.72 Intersect W.B. of Tp. 48 fks. S. of cor. to secs.

25-30-31-36 which is a Sandstone 16x10x4 ins., set 11 ins. in the ground marked with Snotch on N. and notch on S. edges, with stone mound alongside, from which bears

A Pine 20 ins. diam. bears S. 69° E., 33 fks. dist. marked T. 117. R. 20 E., S., 31 B. T.

A Pine 10 ins. diam. bears S. 51° W., 60 fks. dist. marked T. 117. R. 19 E., S., 36 B. T.

A Juniper 12 ins. diam. bears N. 42° W., 23 fks. dist. marked T. 117. R. 19 E., S., 25 B. T.

from which corner, I run

S. 89° 39' E., on a true line, between sections 30 - 31.

Variation 13° 30' East.

38.72 Set a Sand stone 18 x 12 x 10 ins., 12

ins. in the ground, for 1/4 Sec. Cor., marked 1/4 on N. face, and raised a mound of stone alongside. Pits

impracticable.

from which

A Yellow Pine 10 ins diam. bears N. 42° E., 28 fks. dist. marked 1/4 S. B. T.

A Yellow Pine 12 ins diam. bears S. 28° W., 46 fks. dist. marked 1/4 S. B. T.

The corner to sections 24-30-31-32.

Land mountainous
Soil 2" Pine.
Vegetation. Yucca.

Township

11 N,

Range

20 E,

Gila and Salt River Meridian.

Chains

North, between Sections 29 and 30.

Variation

13° 30'

East.

Descend.

40.00 Set a Sand stone 14 x 9 x 4 ins., 9 ins. in the ground, for $\frac{1}{4}$ Sec. Cor., marked $\frac{1}{4}$ on N. face, and raised a mound of stone alongside. Pits impracticable.

A Yellow Pine 18 ins diam. bears S. 46° E, 33 lks. dist. marked $\frac{1}{4}$ S. B. T.

A Yellow Pine 16 ins diam. bears N. 20° W, 54 lks. dist. marked $\frac{1}{4}$ S. B. T.

41.70 Cross Road, bears, N. 50° W. & S. 50° E.

67.50 Cross Wash, 15 lks. wide, Course E, and ascend.

80.00 Set a Sand stone 14 x 8 x 4 ins. 9 ins. in the ground for Cor. to Secs. 19-20-29-30 marked with 2 notches on S. and 3 notches on E. edges and raised a mound of stone alongside. Pits impracticable.

A Yellow Pine 10 ins diam. bears S. 2° E, 13 lks. dist. marked T. 11 N, R. 20 E, S., 29 B. T.

A Live Oak 6 ins. diam. bears N. 67° W, 26 lks. dist. marked T. 11 N, R. 20 E, S., 19 B. T.

A Juniper 24 ins. diam. bears N. 64° E, 19 lks. dist. marked T. 11 N, R. 20 E, S., 20 B. T.

No other trees within limits.

Land mountainous

Soil 2" rate

Timber of Pine, Oak & Juniper.

Vegetation, Grass. Aug. 15, 1883.

Township

11 N.

Range

20 E.

Gila and Salt River Meridian.

Chains

East, on a random line between Sections 20 and 29.

Variation

13° 30'

East.

*Descend.*40.00 Set temporary $\frac{1}{4}$ Sec. Cor.

76.20 Cross Wash, 16 lks. wide, Course N. 70° E.

79.50 Intersect N. & S. line, 41 lks. N. of cor. to secs.

20-21-28-29 from which corner, I run

N. 89° 42' W. on a true line between sections 20-29.

Variation 13° 33' East

39.90 Set a Sand stone 18 x 12 x 4 ins., 12

ins. in the ground, for $\frac{1}{4}$ Sec. Cor., marked $\frac{1}{4}$ on N,

face, and raised a mound of stone alongside. Pits

impracticable.

79.80 The corner to sections 19-20-29-30.

Land rolling.

Soil 2" rate

Timber of Pine & Juniper

Vegetation., Grass.

Township

11 N

Range

20 E

Gila and Salt River Meridian.

Chains

West, on a random line between Sections 19 and 30.

Variation

13° 30'

East.

Descend.

16.00 Enter Valley, bears N. 63° W. & S. 63° E.

22.40 Cross Wash, 14 lks. wide, Course S. 44° E.

40.00 Set temporary 1/4 Sec. Cor.

51.53 Cross Road, bears, N. W. and S. E.

78.80 Intersect N. B. of Tp. 18 lks. S. of cor. to secs.

19-24-25-30 which is a Sandstone 16x12x3 ins, set 11 ins. in the ground, marked with 4 notches on N. & 2 notches on S. edges, with earth mound alongside, from which

A Pine 28 ins. diam. bears S. 19° E, 105 lks. dist. marked T. 11 N. R. 20 E, S., 30 B. T.

A Pine 30 ins. diam. bears S. 57° W, 231 lks. dist. marked T. 11 N. R. 19 E, S., 25 B. T.

A Pine 18 ins. diam. bears N. 32° E, 278 lks. dist. marked T. 11 N. R. 20 E, S., 19 B. T.

from which corner, I run S. 89° 52' E on a true line, between sections 19-30.

Variation 13° 30' East.

38.80 Set a Sand stone 16x12x3 ins., 11 ins.

in the ground, for 1/4 Sec. Cor., marked 1/4 on N. face,

dug pits 18 x 18 x 12 ins., E and W. of stone 5 1/2

ft. dist., and raised a mound of earth 1 1/2 ft. high, 3 1/2

ft. base alongside, from which

A Yellow Pine 16 ins diam. bears N. 25° W, 120 lks. dist. marked 1/4 S. B. T.

A Yellow Pine 8 ins diam. bears S. 40° E, 136 lks. dist. marked 1/4 S. B. T.

The corner to sections

19-20-29-30

Land rolling. 2 rate Gravel Pine & Juniper Vegetation. Timber of

Township

11 N.

Range

20 E.

Gila and Salt River Meridian.

Chains

North, between Sections 19 and 20.

Variation

13° 30'

East.

Ascend.

39.00 Top of Ridge, bears E. & W. and descend.

40.00 Set a Sand stone 20 x 11 x 3 ins., 15 ins. in the ground, for $\frac{1}{4}$ Sec. Cor., marked $\frac{1}{4}$ on N. face, and raised a mound of stone alongside. Pits impracticable.

80.00 Set a Sand stone 18 x 13 x 4 ins. 2 ins. in the ground for Cor. to Secs. 17-18-19-20 marked with 3 notches on S. and 5 notches on E. edges and raised a mound of stone alongside. Pits impracticable.

A Yellow Pine 12 ins diam. bears ^{from which} N. 73° E., 48 lks. dist. marked T. 11 N., R. 20 E., S., 17 B. T.

A Yellow Pine 14 ins diam. bears S. E., 46 lks. dist. marked T. 11 N., R. 20 E., S., 20 B. T.

A Yellow Pine 16 ins diam. bears S. 70° W., 46 lks. dist. marked T. 11 N., R. 20 E., S., 19 B. T.

A Yellow Pine 20 ins diam. bears N. 87° W., 24 lks. dist. marked T. 11 N., R. 20 E., S., 18 B. T.

Land mountainous

Soil 2" rate

Timber of Pine, Oak & Juniper
Vegetation, Grass.

Township 11 N, Range 20 E,

Gila and Salt River Meridian.

Chains East, on a random line between Sections 17 and 20.
Variation 13° 30' East.

Ascend.

26.00 Top of Ridge, bears N. 86° E. 7 S. 8 W. and descend.40.00 Set temporary $\frac{1}{4}$ Sec. Cor.79.91 Intersect N. & S. line, 22 lks. S. of cor. to secs.16-17-20-21 from which corner, I runS. 89° 51' W. on a true line between sections 17-20.Variation 13° 20' East39.96 Set a Sand stone 15 x 9 x 4 ins., 10ins. in the ground, for $\frac{1}{4}$ Sec. Cor., marked $\frac{1}{4}$ on N.

face, and raised a mound of stone alongside. Pits

impracticable.

79.91 The corner to sections 17-18-19-20.

Land mountainous

Soil 3" rateTimber of Pine & Juniper.Vegetation., Grass.

Township

11 N.

Range

20 E.

Gila and Salt River Meridian.

Chains

West, on a random line between Sections 18 and 19.

Variation

13° 30'

East.

Descend.

- 1.25 Cross Wash, 10 lks. wide, Course N. 12° W. and ascend.
- 18.10 Top of Spur, bears N. & S. and descend.
- 35.90 Cross Wash, 15 lks. wide, Course N. & ascend.
- 40.00 Set temporary 1/4 Sec. Cor.

56.00 Cross Road, bears, N. 27° E. & S. 27° W.

76.50 Top of Ridge, bears N. 10° E. & S. 10° W. and descend.

79.18 Intersect N. B. of Tp. 21 lks. S. of cor. to secs.

13-18-19-24, which is a Sandstone, 21 x 13 x 5 ins. Set 16 ins. in the ground, marked with 3 notches on N. & S. edges, with stone mound alongside, from which

A Pine 14 ins. diam. bears S. 68° E., 29 lks. dist. marked T. 11 N. R. 20 E., S., 19 B. T.

A Juniper 6 ins. diam. bears S. 26° W., 28 lks. dist. marked T. 11 N. R. 19 E., S., 24 B. T.

A Juniper 8 ins. diam. bears N. 20° W., 26 lks. dist. marked T. 11 N. R. 19 E., S., 13 B. T.

from which corner, I run

S. 89° 51' E., on a true line, between sections 18-19.

Variation 13° 30' East.

Set a Sand stone 14 x 10 x 7 ins., 9 ins. in the ground, for 1/4 Sec. Cor., marked 1/4 on N.

face, and raised a mound of stone alongside. Pits impracticable.

The corner to sections 17-18-19-20

Land mountainous
2" rate
Tinder of
Vegetation, Chaparral

Township 11 N, Range 20 E,

Gila and Salt River Meridian.

Chains North, between Sections 17 and 18. Variation 13° 30' East.

Ascend.

27.50 Top of Spur, bears N. 60 E. & S. 60 W. and descend.

40.00 Set a post 3 ft. long, 3 ins. diam 24 ins. in the ground, for 1/4 Sec. Cor., marked 1/4 S. on N. face; from which

A Pine 18 ins, diam. bears S. 70 E., 65 lks. dist. marked 1/4 S. B. T.

A Pine 12 ins, diam. bears N. 73 W., 112 lks. dist. marked 1/4 S. B. T.

61.21 Cross Wash, 40 lks. wide, Course N. 60 E. and ascend.

65.60 Cross Road, bears, N. 48 E. & S. 48 W.

80.00 Set a post 4 ft. long, 4 ins. square, with marked stone 12 ins. in the ground, for Cor. to Secs, 7-8-17-18, marked T, 11 N, S, P, on N, E, R, 20 E, S, 17 on S, E, S, 18 on S, W, and S, 7 on N, W, face with 4 notches on S, and 3 notches on E, edges, dug pits 18 x 18 x 12 ins, in each Sec., 5 1/2 ft, dist., and raised a mound of earth 2 ft, high, 4 1/2 ft, base around post.

from which A Juniper 10 ins. diam. bears S. 6 E., 52 lks. dist. marked T, 11 N, R, 20 E, S., 17 B. T.

A Juniper 16 ins. diam. bears N. 37 W., 54 lks. dist. marked T, 11 N, R, 20 E, S., 7 B. T.

No other trees within limits.

Land mountainous Timber of Pine & Juniper.

Soil 2" rate Vegetation. Grass. Aug 1880

Township

11 N., Range 20 E.

Gila and Salt River Meridian.

Chains

East, on a random line between Sections 8 and 17.

Variation $13^{\circ}30'$ East*Descend. gradually*16.25 Cross Road, bears, $N. 39^{\circ} E.$ & $S. 39^{\circ} W.$ 19.10 Cross Wash, 36 lks. wide, Course $N. 42^{\circ} E.$ and ascend.40.00 Set temporary $\frac{1}{4}$ Sec. Cor.80.42 Intersect N. & S. line, 34 lks. *North* of cor. to secs. $S. 9-16-17$ from which corner, I run $N. 89^{\circ} 45' W.$ on a true line between sections $S-17,$ Variation $13^{\circ}30'$ East

40.21 Set a post 3 ft. long, 3 ins. diam. with marked stone
 12 ins. in the ground, for $\frac{1}{4}$ Sec. Cor., marked $\frac{1}{4}$ S. on
 N. face, dug pits, 18 x 18 x 12 ins., $E.$ and $W.$ of
 post $5\frac{1}{2}$ ft. dist., and raised a mound of earth $1\frac{1}{2}$ ft.
 high, $3\frac{1}{2}$ ft. base around post.

80.42 The corner to sections 7-8-17-18,

Land mountainous

Soil 2" ^{rate}

Timber of

Pine & Juniper

Vegetation, Grass.

Township

11 N.

Range

20 E.

Gila and Salt River Meridian.

Chains

West, on a random line between Sections 7 and 18.

Variation

13° 30'

East.

Ascend.

17.00 Top of Ridge, bears N 48° E. 9 S. 48° W. and descend.

40.00 Set temporary $\frac{1}{4}$ Sec. Cor.

79.90 Intersect W. B. of Tp. 16 lks. S. of cor. to secs.

7-12-13-18, which is a post, 14 ft. long, 4 ins. square, set firmly in the ground, marked S. 117. S. 7 on N.E., R. 206. S. 18 on S.E., R. 196. S. 13 on S.W. and S. 12 on N.W. faces, with 2 notches on N. & 4 notches on S. sides, from which

A Pine 26 ins. diam. bears S 60° W. 91 lks. dist. marked T. 117. R. 196. S. 13 B. T.

A Pine 6 ins. diam. bears N 43° W. 108 lks. dist. marked T. 117. R. 196. S. 12 B. T.

A Pine 8 ins. diam. bears N 64° E. 90 lks. dist. marked T. 117. R. 206. S. 18 B. T.

A Pine 10 ins. diam. bears S 34° E. 159 lks. dist. marked T. 117. R. 206. S. 18 B. T.

from which corner, I run

S. 89° 53' E. on a true line, between sections 7-18.

Variation

13° 30'

East.

39.40 Set a post 3 ft. long. 3 ins. diam. with marked stone

12 ins. in the ground, for $\frac{1}{4}$ Sec. Cor., marked $\frac{1}{4}$ S. on

N. face, dug pits, 18 x 18 x 12 ins., E. and W. of

post 5 $\frac{1}{2}$ ft. dist., and raised a mound of earth 1 $\frac{1}{2}$ ft.

high, 3 $\frac{1}{2}$ ft. base around post.

79.90 The corner to sections 7-8-17-18.

Land mountainous

Soil 2" rate

Timber of Pine & Juniper.

Vegetation, Grass.

Township

11 N,

Range

20 E,

Gila and Salt River Meridian.

Chains

North, between Sections 7 and 8.

Variation

13° 30'

East.

Ascend.

22.10 Top of Ridge, bears N 38° E. & S 38° W and descend.

40.00 Set a post 3 ft. long, 3 ins. diam. with marked stone
12 ins. in the ground, for $\frac{1}{4}$ Sec. Cor., marked $\frac{1}{4}$ S. on
N. face, dug pits, 18 x 18 x 12 ins., N and S. of
post 5 $\frac{1}{2}$ ft. dist., and raised a mound of earth 1 $\frac{1}{2}$ ft.
high, 3 $\frac{1}{2}$ ft. base around post.

70.00 *Ascend.*

80.00 Set a post 4 ft. long, 4 ins. square, with marked stone
12 ins. in the ground, for Cor. to Secs, 5-6-7-8
marked T. 11 N, S. 5, on N, E, R 20 E, S. 8
on S, E, S, 7 on S, W, and S, 6 on N, W, face
with 5 notches on S, and 5 notches on E, edges,
dug pits 18 x 18 x 12 ins, in each Sec., 5 $\frac{1}{2}$ ft. dist.,
and raised a mound of earth 2 ft, high, 4 $\frac{1}{2}$ ft, base
around post.

Land mountainous

Soil

2"

rate

Timber of

Pine & Juniper.

Vegetation,

Grass.

Township

11 N.,

Range

20 E.,

Gila and Salt River Meridian.

Chains

East, on a random line between Sections 5 and 8.

Variation

13° 30'

East.

*Ascend.*40.00 Set temporary $\frac{1}{4}$ Sec. Cor.

56.23 Top of Ridge, bears N. 43° E. 95.43' and descend.

80.30 Intersect N. & S. line, 28 lks. N. of cor. to sess.

4-5-8-9 from which corner, I run

N. 89° 48' W. on a true line between sections 5-8,

Variation 13° 30' East

46.15 Set a post 3 ft. long, 3 ins. diam. with marked stone
 12 ins. in the ground, for $\frac{1}{4}$ Sec. Cor., marked $\frac{1}{4}$ S. on
 N. face, dug pits, 18 x 18 x 12 ins., E. and W. of
 post 5 $\frac{1}{2}$ ft. dist., and raised a mound of earth 1 $\frac{1}{2}$ ft.
 high, 3 $\frac{1}{2}$ ft. base around post.

80.30 The corner to sections 5-6-7-8,

Land mountainous

Soil 2" rate

Timber of

Pine and Juniper,

Vegetation.,

Grass.

Chains

West, on a random line between Sections 6 and 7.

Variation

13°30'

East.

Ascend.

34.20 Top of Ridge, bears N. 40° E. 2 S. 40° W. and descend.

40.00 Set temporary $\frac{1}{4}$ Sec. Cor.

69.90 Cross Wash, 30 lks. wide, Course N. 41° E. and ascend.

80.10 Intersect W. B. of Td. 9 lks. S. of cor. to secs.

167-12, which is a Sandstone,
20 x 14 x 3 ins. Set 15 ins. in the ground
marked with 1 notch on N. & 5 notches
on S. edges, with stone mound alongside,
from which

A Pine 4 ins. diam. bears S. 70° E. 80 lks. dist.
marked T. 117. R. 20 E. S. 7 B. T.

A Pine 7 ins. diam. bears S. 48° W. 94 lks. dist.
marked T. 117. R. 19 E. S. 12 B. T.

A Pine 4 ins. diam. bears N. 79° E. 41 lks. dist.
marked T. 117. R. 20 E. S. 6 B. T.

from which corner, I run

S. 89° 36' E., on a true line, between sections 6-7.

Variation

13°30'

East.

40.10 Set a post 3 ft. long, 3 ins. diam 24 ins. in the ground,
for $\frac{1}{4}$ Sec. Cor., marked $\frac{1}{4}$ S. on N. face; from which

A Juniper 24 ins. diam. bears S. E., 45 lks. dist.
marked $\frac{1}{4}$ S. B. T.

A Pine 5 ins. diam. bears N. 47° W., 25 lks. dist.
marked $\frac{1}{4}$ S. B. T.

80.10 The corner to sections 5-6-7-8,
Land mountainous

Soil

2"

rate

Timber of

Pine & Juniper.

Vegetation.

Grass.

Township

11 N.

Range

20 E.

Gila and Salt River Meridian.

Chains

North, on a ^{true} ~~random~~ line between Sections 5 and 6.

Variation

13° 30'

East.

Ascend.

140.00 Set a Sand stone 14 x 11 x 6 ins., 9 ins. in the ground, for $\frac{1}{4}$ Sec. Cor., marked $\frac{1}{4}$ on N. face, and raised a mound of stone alongside. Pits impracticable.

from which

A Pine 4 ins. diam. bears N. 57° W., 5 yds. dist. marked $\frac{1}{4}$ S. B. T. No other trees within limits.

55.10 Top of Ridge, bears N. 43° E., N. 43° W. and descend.

80.30 Intersect the S. B. of T. 12 N., R. 20 E., at a point 10.49 chs. East of the Standard Cor. to on Secs. S. B. and Sec. 32 T. 12 N. R. 20 E. at which point I.

Set a post, 4 ft. long, 4 ins. square, 12 ins. in the ground, for *Abing* Cor. to Secs. 5 and 6, marked C. C. T. 11 N., R. 20 E. on S., S. 5 on E., and S. 6 on W. faces, with 5 notches on E., and 1 notch on W. faces, and raised a mound of stone 2 ft. high, 4 $\frac{1}{2}$ ft. base around post. Pits impracticable.

Land mountainous

Soil

2" rate

Timber of

Pine & Juniper.

Vegetation

Grass.

I carefully examined the adjustments of my solar compass to-day, particularly the latitude and reversing apparatus, and found them correct. Aug. 17, 1883.

GENERAL DESCRIPTION.

The land in this Township is generally rolling. There is good timber of Pine and Oak in southern part, and Pine and Juniper in other portions of the Tp.

Good grass is abundant in most places, furnishing excellent grazing facilities. The soil is 2nd and 3rd rate. There is a settlement in Sec. 32, and a Military Road to Camp Verdi, runs through the Tp. For final facts, see Book 13.

U. S. Surveyor General's Office,

Tucson, Arizona, July 26, 1884

The foregoing Field Notes of the Survey of the

Subdivisions Lines of
 Township 11 North
 Range 20 East

Of the Gila and Salt River Base and Meridian, Arizona, execu-

ted by A. E. Shoemaker

Deputy Surveyor, under his contract of the 5th

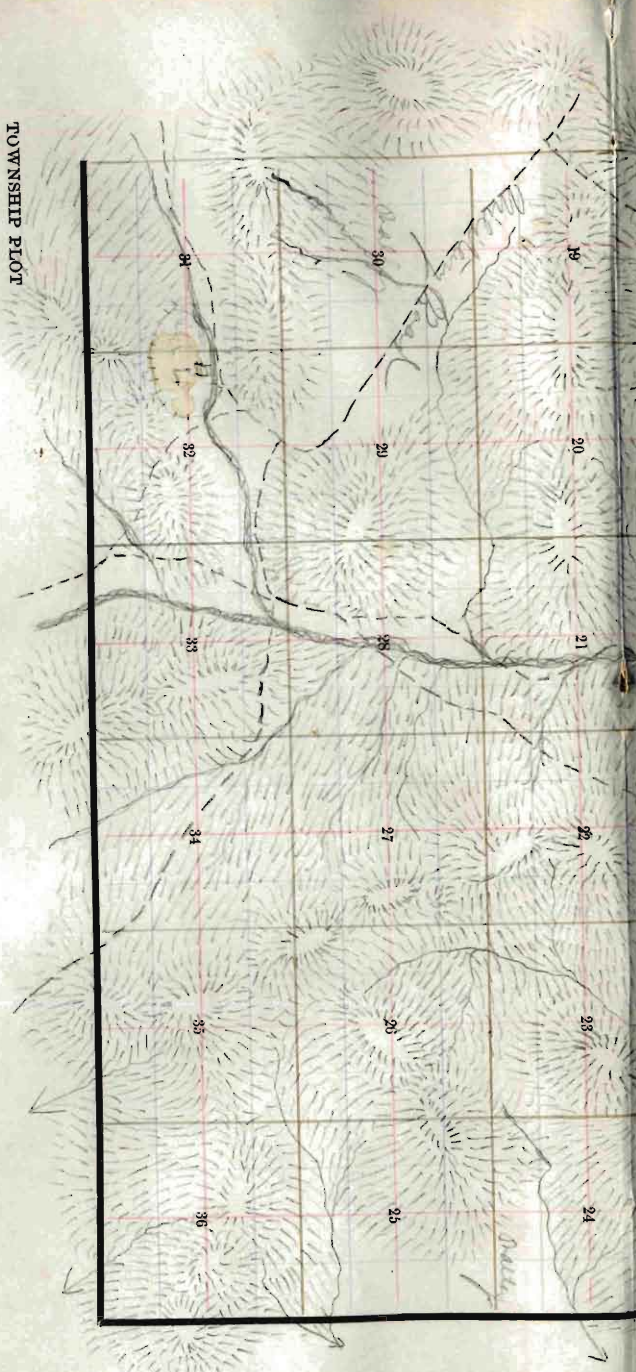
day of August, 1882, having been

critically examined and the necessary corrections and explana-

tions made, the said Field Notes and the surveys they describe

are hereby approved

Raphael Johnson
 Surveyor General.

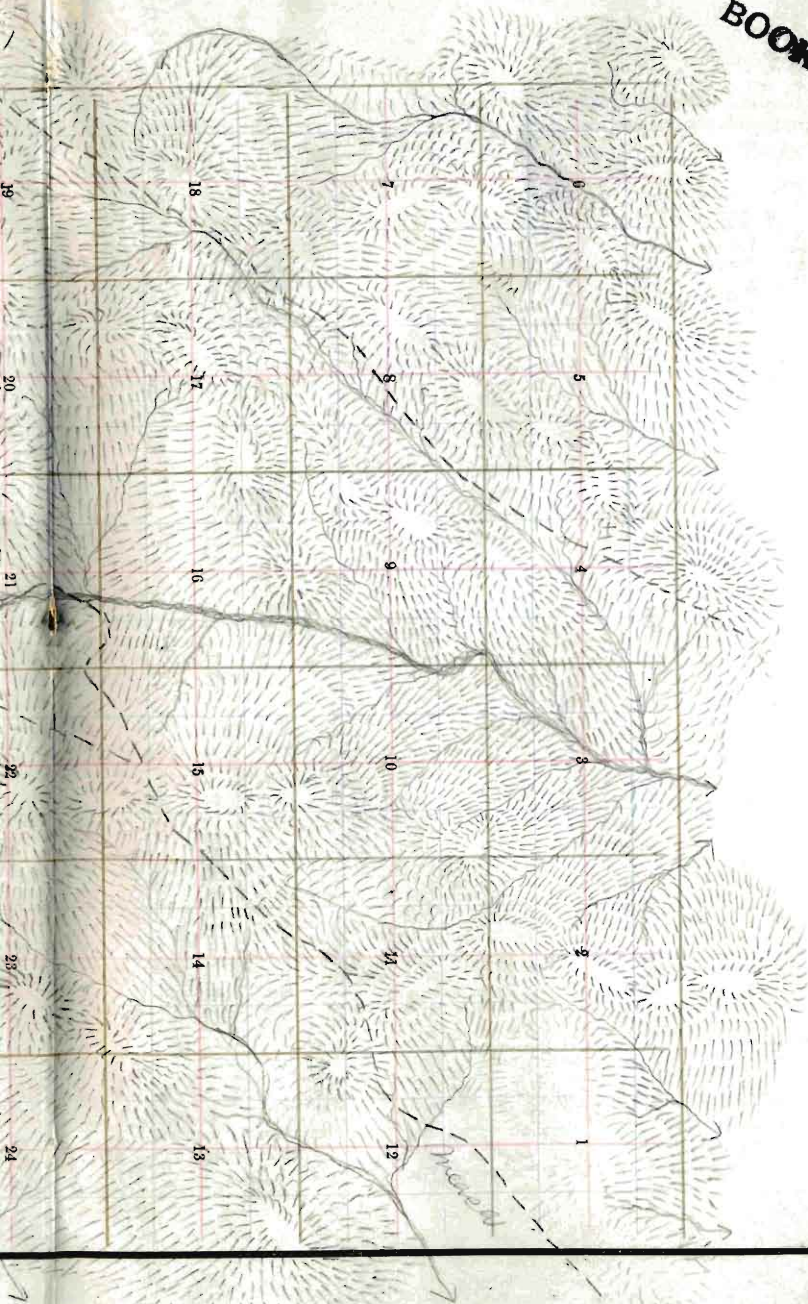


TOWNSHIP PLOT

- Meridian Line,**
- Base Line,**
- Standard Line,**
- Township Lines,**
- Section Lines,**
- Meander Lines,**
- Office Work.**

BOOK 92

Township No. 11 N Range No. 28 E 5th Principal Meridian.



19 20 21 22 23 24