

Original
Platted
Compared
June 6 1883

No 108
Book No 6

108

Field Notes

OF THE SURVEY OF THE

SUBDIVISION LINES

-OF-

Township 12 N. Range 20 E

Gila and Salt River Base and Meridian

ARIZONA.

By M. N. Grant D. S.

under contract dated Aug 7th 1882.

Survey commenced May 24th 1883.

Survey completed May 26th 1883.

No-108

1A

BOOK 108

INDEX DIAGRAM.

Township 12. N.
Range 20 E.

6	88	5	64	4	48	3	32	2	17	1
87		86		63		47		31		15
7	84	8	61	9	45	10	30	11	14	12
85		82		60		44		29		12
18	81	17	59	16	43	15	27	14	11	13
79		58		54		42		26		9
19	76	20	56	21	41	22	24	23	7	24
74		73		55		39		23		6
30	71	29	53	28	38	27	22	26	4	25
70		68		52		36		20		5
31	66	32	50	33	35	34	19	35	1	36

Gila and Salt River, Arizona.

ARIZONA.

For description of instrument
and preliminary notes see
Book No 1.

No - 108

Survey commenced, May 4th 1883

Survey completed, May 26th 1883

43

§ 12 N. R 20 E

Chis G and S. R. W.,

From the cor to sec 12.35
and 26. on the South
Boundary of the T.P.
recently established
by me. I run
North 10' N bet sec 85 ^{and 26}
to 139.35' E

- 151.82 Descend gradually
Grass wash 30 lbs mid 60
N. 60° N. and ascend
- 40.00 Set a sandstone 18+12+5 ins
12 ins in the ground for
1/4 sec cor. marked 1/4 on
W face and raised a
mound of stone along side
It's impracticable from which
A Pinon 8 ins diam bears N 77° W.
14 lbs dist marked 5/4 S.B.T.
- 42.50 Top of Spur 200 ft high
bears N 60° N. and ascend

T12 N. R 20 E

chs G ^{and} S. R. M.

52.40 Cross wash 16 lks wide to
N. 70° W. and continue to descend

80.00 Set a Sand stone 16 + 10 + 6 in
11 in on the ground for the
con loess 25, 26-35 ^{and} 36,
marked, with 1 notch on E
and S. edges and raised
a mound of stone alongside
Pit - impracticable.

from which

A Pinus resinosa leaves N 45° E
39 lbs dist. Marked T12 N
R. 20 E S. 25 B. T.

A Juniper 9 in diam leaves
S 71° E. 20 lbs dist. marked
T12 N. R 20 E. S. 36 B. T.

A Juniper 10 in diam leaves
S 45° W. 26 lbs dist marked
T12 N. R 20 E S. 35 B. T.
Sand Rolling

T 12 N. R 20 E

Chs. G. and S. R. M.

Soil. 2nd rate
 Timber Dense pines
 Brush

East on a true line to
 see 26th 36-

to $13^{\circ} 20' E$

Ascend, gradually

3313

Top of spur 150 ft high has
 $N 10^{\circ} E$. and descend,

40 00

Set a post 3 ft. long 3 ins. diam with marked
 stone, 12 ins, in the ground for $\frac{1}{4}$ Sec, Cor,
 marked $\frac{1}{4}$ S. on N face, dug pits 18 x 18 x 12
 ins. S and W. of post $5\frac{1}{2}$ ft. dist. and raised
 a mound of earth $1\frac{1}{2}$ ft. high. $3\frac{1}{2}$ ft. base. around
 post.

79.64

Intersect 3rd Auxiliary
 Meridian S. 12:35th South
 of the 14th sec cor. on N. B. B. B.
 see 20 recently re-established

T 12 N. R 20 E

chs G^{and} S. R. M.

by one,

Set a Sandstone 21+13+4 in
 15' in on the ground for the
 blowing box. to see 25^{and} 36.
 marked b.b. with 1 notch on
 J^{and} 5' notches on N edges
 and raised a mound of stone
 alongside. Pit's impracticable
 Sand Sec 36 is Slighter
 Rolling.

Soil. 8^{to} 7^{to} rate. grass fair
 Timber. Juniper & Pinon Bush

N. 10' W to see 25^{and} 26.

to 13' 31' E.

Descend, gradually

27.21. Cross wash, so the m^{is}
 to N. 80° E. and ascend gradually
 cover

T12 N. R 20 E

Ch. G and S.R. M.

40.00

Set a post 3 ft. long 3 ins. diam with marked stone, 12 ins, in the ground for $\frac{1}{4}$ Sec, Cor, marked $\frac{1}{4}$ S. on W face, dug pits 18 x 18 x 12 ins. N and S of post $5\frac{1}{2}$ ft. dist. and raised a mound of earth $1\frac{1}{2}$ ft. high $3\frac{1}{2}$ ft. base around post.

42.16

Reach top of mesa 200 ft high, has E and W. ✓

80.00

Set a post 4 ft. long 4 ins. square, with marked stone, 12 ins, in the ground for Cor, to Secs, 23-24, 25-26 marked T. 12 N S. 24 on N. E. R. 20 S. 25 on S. E, S, 26 on S, W, and S, 23 on N, W, face, with 2 notches on S, and 1 notch on E. edges, dug pits 18 x 18 x 12 ins. in each Sec., $5\frac{1}{2}$ ft. dist. and raised a mound of earth 2 ft. high $4\frac{1}{2}$ ft. base. around post.

Land Rolling, and broken Soil, see note.

Timber Scattering from

T 12 N. R 20 E

Chis G^{and} S. R. M.East, on a true line bet.
secs 24^{and} 25,

Lat 13° 30' E

Cross level, mesd

35.14 clear, mesd, and descend
bars 100,40.00 Set a Sandstone 18+10+6^{ins}
12 ins in the ground for
1/4 sec cor marked 'N
M. Jaci' and raised a
mound of stone along it
It's impracticable72.10 Cross wash 24 lks with
N 17° E. and ascend?79.89 Interest, 3rd Auxiliary
Meridian E 15.00. lks South
of 1/4 sec cor on N 13th sec
19., recently re-established
by me.Set a Sandstone 24+13+4^{ins}

P 12 N. R 218

Ch's G and S. P. M

18 ins in the ground for
the closing level to sees
24^{and} 25, marked C.C.

with 2 notches on S. and
4 notches on N. edges and
and raised a mound of
stone alongside pits im-
practicable. ✓

Sand See 25- is level at
the N. & W. remainder.

Rolling

Soil, 2nd and 3rd rate good grass

Timber Scattered Bundles
of Juniper and Pinus Bark

North 10' N. to sees 23^{and} 24

In 139 30' E

Over level near

T₁₂ N. R 20 ECh. E ^{and} S. R. M

- 40.00 Set a post 3 ft. long 3 ins. diam. with marked stone, 12 ins, in the ground for $\frac{1}{4}$ Sec. Cor. marked $\frac{1}{4}$ S. on W face, dug pits 18 x 18 x 12 ins. N and S of post $5\frac{1}{2}$ ft. dist. and raised a mound of earth $1\frac{1}{2}$ ft. high. $3\frac{1}{2}$ ft. base. around post.
- 41.19 Descend from mesa base E ^{and} W.
- 48.40 Cross Road base N 41° E
- 49.30 Cross wash. 180 lbs. with base N 40° E and ascend.
- 50.00 Set a Sandstone $17+10+5$ ins 11 ins in the ground for the cor to sees 13-14-23 ^{and} 24 marked, with, 3 notches on S and 1 notch on E. edges and raised a mound of stone alongside. Pits impracticable.
Sand, Rolling.
Soil, 2nd rate.

T 12 N. R 20 E
 Chs G^{4th} S. R. M

Trunks Scattered Juniper

East on a true line N.
 Secs 13^{4th} 24,

to 13° 30' E

Descent,

.60

Cross Wash 23 lbs m^{ts}
 to N. 45° E. and ascent to

.75-

Cross Road. bears N 46° E

23.12

Top of Divide bears N 60° E
 168 ft high and descent

40.00

Set a post 3 ft. long 3 ins. diam with marked
 stone, 12 ins. in the ground for $\frac{1}{4}$ Sec. Cor,
 marked $\frac{1}{4}$ S. on N face, dug pits 18 x 18 x 12
 ins. E and W of post 5 $\frac{1}{2}$ ft. dist. and raised
 a mound of earth 1 $\frac{1}{2}$ ft. high. 3 $\frac{1}{2}$ ft. base around
 post.

80.40

Intersect 6th Auxiliary
 Meridian E. 13.38 Chs
 South of the 14 sec cor

T. 12 N. R. 20 E.
S. and S. R. M.

on the N. 13th see 18,
recently re-established
by one corner.

Set a Post 4 ft long 4 in
square. 12 in on the ground
of the closing bar to sees
13^{and} 24, marked L.C.

T. 12 N. R. 20 E. on N. See
13 on N. and S. 24 on S.
faces, with 3 notches on N
and S. faces, dug pits

18+18+12 ins. W. N. E. of
Post 5 1/2 ft dia and

raised a mound of earth

2 ft high 4 1/4 ft base around
post, - - - - -

Land, S 1/4 of sec 34 is level
mesa, remainder rolling
Soil, 2nd & 3rd rates, good grass
Tritic. ~~Beets~~ Bunches of

T 12 N. R 20 E

Chs S^{and} S. R. M

Juniper ^{and} pinon Brush

North 10' West between Secs 13 & 14
Twp. 13° 30' E.

Ascend

25.10

Top of divide by N. 40° W 400ft high
Descend

40.00

Set a granite stone 14x7x5 ins
9 ins in the ground for 1/4 Rec. Cor.
marked 4 on N. face. and raised
a mound of stone along side
Pits impracticable

80.00

Set a sand stone 18x10x4 ins
12 ins in the ground for Cor to
Secs. 11-12-13 ^{and} N marked
with 4 notches on S and 1 notch
on E. edges and raised a mound
of stone along side.
Pits impracticable

T12 N. R20 E

Chs L^{and},

A Juniper 12 ins in diam
 bears S. 61° N. 116 miles dist
 marked T12 N. R20 E. S. 14 B. J.
 No other trees within limits
 Land rolling
 Soil 2nd & 3rd rate
 Grass good

East on a true line but Dec. 12/13
 Ascend gradually on 13° 40' E

7.00 Top of spur hrs N
 descend gradually

12.50 Cross wash 15 miles wide Course N.
 Ascend gradually

40.00 At post 4 ft long 4 ins square
 for 1/4 Dec. Co. marked 1/4 S. on N.
 face. And raised a mound of
 stone around post Pits impracticable

40.79 Grass wash 16 miles wide Course
 N. 12° E.
 Ascend

T 12 N R 20 E

chs Genl D. P. M.

58.10 Top of spur hrs N. 18° E

Descend

58.65 Cross road hrs N. 30° E.

79.93 Intersect 5 Auxiliary Meridians.

E. 13.70 chs P. of 4' Rec Cor on
N. By of Rec 7 recently re-
established by me

At Post 4 ft long by 4 in sq
12 in in the ground for
Closing Cor to Secs 12 and 13
Marked C.C. T. 12 N. R. 20 E on N
face Sec 12 on N. face and Sec
13 on S. face. dug pits 18x8x12
ins W. N. & S of post 5 1/2 ft dist
and raised a mound of earth
2 ft high 4 1/2 ft base around
post

Sand falling

Soil 3rd rate

Good grass

Some bunches of Juniper

T. 12 N. R. 20 E.

chs Grand I. R. M

North 10' West bet. Secs 11 & 12
Cor. 13° 40' E.

Descend along side of spur

40.00

Set a post 3 ft. long 3 ins. diam with marked
stone, 12 ins, in the ground for $\frac{1}{4}$ Sec. Cor,
marked $\frac{1}{4}$ S. on N face, dug pits 18 x 18 x 12
ins. N and S of post 5 $\frac{1}{2}$ ft. dist. and raised
a mound of earth 1 $\frac{1}{2}$ ft. high. 3 $\frac{1}{2}$ ft. base. around
post. from whichA Juniper 4 ins in diam brs
N. 78° E. 12 links dist marked
 $\frac{1}{4}$ S. B. JA Juniper 8 ins in diam brs
N. 66° N. 57 links dist marked
 $\frac{1}{4}$ S. B. J.

56.30

Cross Snowflake wash 60 links
wide Course N. 76° E.
Enter valley

80.00

Set sandstone 15 x 8 x 6 ins 10 ins
in the ground for Cor to Secs
1-2-11 & 12 marked with

S. 12 N. R. 20 E.

chs.

Grand O. R. M

5 notches on S. and 1 notch
 on E. edges and raised a
 mound of stone alongside
 Pits intractable
 Sand rolling $\frac{1}{2}$ level
 Soil 2nd & 3rd rate
 Grass good

East on a true line bet
 sec 1 ⁴/₁₂

to 13° 45' E

Our level valley lands

40.00

Set a post 3 ft. long 3 ins. diam with marked
 stone, 12 ins, in the ground for $\frac{1}{4}$ Sec. Cor
 marked $\frac{1}{4}$ S. on N face, dug pits 18 x 18 x 12
 ins. E and W of post 5 $\frac{1}{2}$ ft. dist. and raised
 a mound of earth 1 $\frac{1}{2}$ ft, high. 3 $\frac{1}{2}$ ft. base. around
 post.

52.00

Cross Snowflake mesh 70
 lbs rise to N.

T12 N. R 20 E

G^{ms} O R. M.

7931

Intersect. 5th Auxiliary
 Meridian 6' 13. 61. Ch's South
 of the '14 see cor on N. Side see
 to recently re-established
 by me.

Set a Post 4 ft long 4 in
 square 12 in in the ground
 for the closing cor to.
 see 1st and 12. Marked C. 6
 T12 N. R 20 E. on N. S 1 on
 N. and S 12 on S. faces.
 with 5 notches on S and 1
 notch on N edges and dug
 pits 18+18+12 ins. N. S. & W.
 of post. 5 1/2 ft dirt and
 raised a mound of earth 2
 ft high 4 1/2 ft base around
 post.

Land. See 12 level valley on N. Rolling on South
 Soil. 2nd + 8th rates, fine grazing

T 12 N. R 20 E

Chs G^{and} S. R. M.

Impr. Scattering Juniper Bush

N 10' W on a true line let sees
1^{and} 2.

Dip 13° 45' E

Over level valley,

14.00 Foot of Hill bears E^{and} Wausau.40.00 Set a Sandstone 16+10+6 ins
11 ins in the ground for 14 see
cor marked: 14 on. N faceand raised: a mound of stone
alongside. Ditch impracticable,50.00 Top of ridge 240 ft high bears E 1 W
and descends.50 14 Intersect 3rd Standard Parallel
North. 5.7 lbs E. of the 14 Standard
cor on the south Boundary
see 35; T 13 N. R 20 E. recently
re-established by me

T. 2 N. R. 20 E

chs G^{and} S. R. M.

Set a Post 4 ft long 4 ins square 12 ins in the ground for the c.c. to see 1^{and} 2, marked c.c. T. 2 N. R. 20 E. on S. S. 1 on E. and S. 2 on N. faces, with 1 notch on E and 5 notches on N. faces, dug pits 18 + 18 + 2 ins S. E^{and} N. of post 5 1/2 ft dist and caused amount of earth 2 ft high 4 1/2 ft base around post.

Land, S. 1 is nearly all valley land, S. 2 being more rolling.

Soil. 2nd and 3rd rate,

Took some Juniper Brush in N. W. part.

I carefully examined the adjustments of my solar compass today, particularly

T12 N. R 20 E

chs G^{and} S. R. M.

the latitudes and reversing
 apparatus and found
 them correct.

M. W. Grant,

May 24th 1888

From the cor to see 2.3.34^{and} 35; on S Biny Jf.
 recently established by me, from

North 10' N. to see 34^{and} 35 -

to 13° 30' E

Descend,

32.53

Cross wash 12 lks wide Co

N 39° W, and continue to

descend.

40.00

Set a post 3 ft. long 3 ins. diam with marked
 stone, 12 ins, in the ground for $\frac{1}{4}$ See, Cor,
 marked $\frac{1}{4}$ S. on N face, dug pits 18 x 18 x 12
 ins. N and S of post 5 $\frac{1}{2}$ ft. dist. and raised
 a mound of earth 1 $\frac{1}{2}$ ft. high. 3 $\frac{1}{2}$ ft. base. around
 post.

54.18

Cross head^d of wash. Co. N.
 and ascend.

T12 N. R 20 E

Chs G^{and} S. R. M.

80.00 Set a post 4 ft. long 4 ins. square, with marked stone, 12 ins. in the ground for Cor. to Secs. 26-27-34^{and} 35 marked T12 N S. 26 on N. E. R. 20 E. S. 35 on S. E. S. 34 on S. W. and S. 27 on N. W. face, with 1 notch on S, and 2 notches on E. edges. Dig pits 18 x 18 x 12 ins. in each Sec. 3 1/2 ft dist and raised a mound of earth 2 ft. high 1 1/2 ft. base. around post.

Land, Rolling

Soil, 8th rate. good grazing
Timber. Scattering Juniper.

East on a random line bet
secs 26^{and} 35 -

to 13° 30' E

Ascend

25.00 Top of Divide bears N 15 250
ft high and descend.

40.00 Set a temporary 1/4 sec cor

T 12 N. R 20 E

Chs G^{and} S R M

55.30 Cross wash 16 chs mid coil
39° E. about ascend.

80.43 Intersect N^{and} S line 19
chs N. of cor to sees 25.26
35^{and} 36. Thence I run
N. 89° 51' W on a true line bet
sees 26^{and} 35. same as

40.21 Set a post 3 ft. long 3 ins. diam with marked
stone, 12 ins, in the ground for $\frac{1}{4}$ Sec. Cor.
marked $\frac{1}{4}$ S. on N face, dug pits 18 x 18 x 12
ins. E and W of post 5 $\frac{1}{2}$ ft. dist. and raised
a mound of earth 1 $\frac{1}{2}$ ft. high. 3 $\frac{1}{2}$ ft. base. around
post.

80.43 To con to sees 26 27, 34^{and} 35 -
Land. See 35 is Rolling
Soil. 2nd rate. grazing fine
Timber ~~thick~~^{poor} Juniper & poorer
Brush

T12 N. R 20 E

ch's by ^{and} S. R. W.

N 10' W on a true line sec 26 ^{and 27}
 on 13° 30' E

Ascend gradually

40.00

Set a post 3 ft. long 3 ins. diam with marked stone, 12 ins, in the ground for $\frac{1}{4}$ Sec. Cor, marked $\frac{1}{4}$ S. on W face, dug pits 18 x 18 x 12 ins. N and S of post $5\frac{1}{2}$ ft. dist. and raised a mound of earth $1\frac{1}{2}$ ft. high. $3\frac{1}{2}$ ft. base. around post.

42.60

Descend to road

48.12

Cross Road bears N 51° E and ascend.

50.00

Set a post 4 ft. long 4 ins. square, with marked stone, 12 ins, in the ground for Cor, to Secs, 22, 23, 26 ⁺ 27 marked T. 12 N. S. 23 on N. E. R. 20 E S. 26 on S. E. S, 27 on S, W, and S, 22 on N, W, face, with 2 notch es on S, and 2 notch es on E. edges. dug pits 18 x 18 x 12 ins. in each Sec. $5\frac{1}{2}$ ft. dist. and raised a mound of earth 2 ft. high. $4\frac{1}{2}$ ft. base. around post.

Land, Collier

T 12 N. R 20 E

Chs G^{and} S. R. M.Soil. 3rd rate -

Timber. Dense Juniper Bush

East on a random line to
see 23^{and} 26.

Pa 13° 30' E

Ascend,

12.26 Top of low ridge 250 ft high
bears N.E. and descend

31.17 Cross Road bears N 48° E

31.59 Cross wash. 19 lbs wide bed
N 40° E, and ascend,

40.00 Set a temporary 1/4 sec cor.

41.00 Top of level mesa. 260 ft high
bears N^{and} S80.14 Intersect 21^{and} 8 line27 lbs N of cor to see 23-24
25^{and} 26. Thence true
N 89° 48' N on true line to

T₁₂ N. R 20 E

chs G^{and} S R. M.

40.07

secs 23^{and} 26 same ed
Set a post 3 ft. long 3 ins. diam with marked
stone, 12 ins, in the ground for $\frac{1}{4}$ Sec, Cor.
marked $\frac{1}{4}$ S. on N face, dug pits 18 x 18 x 12
ins. E and W of post 5 $\frac{1}{2}$ ft. dist. and raised
a mound of earth $1\frac{1}{2}$ ft. high. 3 $\frac{1}{2}$ ft. base. around
post, level to Sec 22 23 26 + 27

80 14

Land. See 26, w' rolling m's
and N. part level near m's.
Soil. 2nd & 3rd rate good grazing
Timber. Dense Juniper & prairie
brush.

N 10' W bet secs 22^{and} 23.

ca 13° 30' E

Descend.

2.70

cross wash 28 lks wide to N 35°
E. and ascend.

20.00

Top of Divide bears N 26° E 160
ft high and descend.

T12 N. R 20 E

Chs: G^{and} S. R. M.

40.00

Set a post 3 ft. long 3 ins. diam with marked stone, 12 ins, in the ground for $\frac{1}{4}$ Sec, Cor, marked $\frac{1}{4}$ S. on *N* face, dug pits 18 x 18 x 12 ins. *N* and *S* of post 5 $\frac{1}{2}$ ft. dist. and raised a mound of earth 1 $\frac{1}{2}$ ft, high. 3 $\frac{1}{2}$ ft. base. around post.

80.00

Set a post 4 ft. long 4 ins. square, with marked stone, 12 ins, in the ground for Cor, to Secs, 14, 15, 22 & 23 marked T. 12 *N* S. 14 on N. E. R. 20 E S, 23 on S. E, S, 22 on S, W, and S, 15 on N, W, face, with 3 notches on S, and 2 notches on E. edges, dug pits 18 x 18 x 12 ins. in each Sec., 5 $\frac{1}{2}$ ft. dist. and raised a mound of earth 2 ft, high. 4 $\frac{1}{2}$ ft. base. around post.

Sand, Rolling

Soil. 3rd rate good grazing

Timber. Scattered Juniper.

T12 N. R 20 E

Ch's G^{and} S. R. M.

East on a random line bet
sees 17^{and} 23.

to 13° 30' E

Ascend.

- 18.48 Top of Divide 292 ft high
bears N. 14° E. and descend
- 40.00 Set a temporary 1/4 sec
cor.
- 53.54 Cross wash. to N 17° E. and
ascend.
- 74.14 Top of Divide 190 ft high
bears N. 10° E. and descend
- 79.91 Intersect N^{and} S line 30 lbs
S of the cor to sees 13.14
23^{and} 24. Thence I run
S 89° 47' W on a true line
bet sees 14^{and} 23. same cor
39.95 Set a sandstone ^{granite} 16 + 10 + 6 in
11 in in the ground for
1/4 sec cor. marked 1/4 sec

T 12 N. R 20 E

Chs by S. R. M.

N face and raised a mound
of stone alongside. Pits im-
practicable.

79.91

To cor to see's 14-15, 22 ^{Aug 23}
Sand. See 23 is rough
and rocky, in W. part
Soil. 2nd + 4th rate.

Timber. Thick bunches of
Juniper. Brush.

N 10' W bet see's 14 ^{Aug 15} 15 -
to 13° 30' E

Descent, gradually

40.00

Set a post 3 ft. long 3 ins. diam with marked
stone, 12 ins, in the ground for 1/4 Sec, Cor.
marked 1/2 S on W face. Aug pil. 18 x 18 x 12
ins. N and S of post 5 1/2 ft. dirt and raised
a mound of earth 1 1/4 ft. high. 3 1/4 ft. base around
post.

70.12

Cross wash. 30 lbs more Co

T12 N R 20 E

Chs G⁴ S.R.M.

E. and. ascend. →

80.00

Set a Sandstone 16+11+4 in
 11 in in the ground for the
 cor to sec 10.11.14^{and} 15;
 marked, with 4 notches on
 S and. 2 notches on E. edges
 and raised a mound of stone
 alongside. Pits impracticable
 from which.

A Pinon 8 in beam bears N30°E.
 28 lbs dist. Marked. T.12 N
 R. 20 E. S. 11. B. T.

No other trees in line
 Land rough ^{and} rolling
 Soil - 8th rate stony
 Timber, Dense Bunches
 of Juniper

T 12 N. R 20 E

Ch. G. & S. R. M.

East on a random line bet
secs 11 ^{and} 14.Ea. $13^{\circ} 45' E$

Descend.

15.44 Cross wash 50 lks wide Co
 $N 9^{\circ} E$. and ascend40.00 Set a temporary $1/4$ sec
con.53.50 Top of spur 265 ft high
trans $N 48^{\circ}$ and descend62.85 Cross wash 15 lks wide
Co $N 8^{\circ} E$. and ascend79.78 Intersect $N 48$ line 16 lks
✓ S of con. to secs 11, 12, 13 ^{and} 14 ✓

Thence run

 $S 89^{\circ} 53' N$ on a true line
bet secs 11 ^{and} 14, same ea89.89 Set a post 3 ft. long 3 ins. diam with marked
stone, 12 ins. in the ground for $1/4$ Sec. Con.
marked $1/4$ S. on N face and post 12 ft. x 12
ins. E° and W of post 5 ft. high and raised
a mound of earth 1 1/2 ft. high on the ground

T12 N. R 20 E

Chs G ^{and} S. R. M

post.

79.78 To cor trees 10.11.14 ^{and} 15-
Land. See 14 is rough and rocky
Soil. 4th rate good grass,
Timber. Thick bunches of
Juniper Bush.

N. 10' W to trees 10 ^{and} 11
to 15° 45' E

Descent.

26.40 Cross Snowflake wash. 70
lbs nit. to E. and ascent

40.00 Set a post 3 ft. long 3 ins. diam with marked
stone, 12 ins, in the ground for 1/4 Sec. Cor.
marked 1/2 S. on W face, dug pits 18 x 18 x 12
ins. N and S of post 5 1/2 ft. dia. and raised
a mound of earth 1 1/2 ft. high 3 1/2 ft. base. around
post.

65.09 Top of low ridge bears E + W
and descent.

T12 N. R 20

Chis G^{and} S. R. M.

80.00 ✓ Set a Sandstone 18+10+5" in
 12 ins in the ground for
 the cor trees 2.3.10^{and} 11 ✓
 marked with 5 notches
 on S. and 2 notches on E
 edges and, raised a mound
 of stone alongside. Ditto in-
 practicable

Land, See 11 is Rough & holling
 on South level valley in W
 Soil. 4th rate. fair grass
 Timber - Dense Juniper
 and Pinon Brush -

East on a random line to see
 2^{and} 11.

ca 18° 30' E

Ascents Gradual

38.00 Top of ridge 280 ft high

T12 N. R 26 E

Chs G^{and} S. R. M.

- bears N^{and} S. and descended
 40.00 Set a temporary 1/4 sec cor
 49.00 Leave foot of hill bears N.E.
 and S.W. and enter valley
 80.42 Intersect N^{and} S line 60
 lks S of the cor to sec's 1.2.11
^{and} 12. Place Iron.
 S 89:34' W on a true line Set
 sec's 2^{and} 11. same as
 4021 Set a sandstone 18+10+4 in
 12 ins in the ground for 1/4
 sec cor. marked 1/4 on N
 face and raised a mound
 of stone along side. Pt's
 impracticable.
 80.42 The cor to sec's 2.3.10^{and} 11
 Land. Sec 11 is rolling
 hills and level valley
 Soil. 2nd + 3rd rates
 Timber. Some Juniper Bush

T 12 N. R 20 E

chs G and S. R. M.

North on a true line set
see's 2^{and} 3.

W 13° 30' E

Descent gradually
over rolling hills.

40.00 Set a post 3 ft. long 3 ins. diam. with marked
stone, 12 ins. in the ground for a corner
marked $\frac{1}{2}$ S. on W. from the corner 12
ins. N and E of post. A mound of earth 1 1/2 ft. high 2 1/2 ft. base around
post.

45.35 Cross Road bears N 60° E

49.50 Intersect B²⁰ Standard
Parallel. N. at 1.35 - ~~1/2~~
east of the Standard 44 sec
cor. on S B¹⁹ see @ 34. T 13
N. R 20 E. recently re-established
by me.

Set a Sandstone 19x12x6 ins
12 ins; in the ground for the
closing cor to see's 2^{and} 3.

T 2 N. R 20 E

Chs G⁴ S. R. M.

marked to G. with 2 notches
on E and 4 notches on N,
edges and raised a mound
of stone alongside.

It's impracticable.

Sand, High and Rolling
Soil. 2nd & 3rd 25 rods. good grazing
Timber Scattering Juniper
and Pinon Bush.

Carefully examined the
adjustments of my solar
compass today particularly
the latitude and reversing
apparatus and found them
correct.

A. H. Arnold, Compass man
May 24th 1883

T 12 N. R 20 E

Chas. C. and S. R. M.

From the cot to see's ³⁴ 33 and 34
 on the south side of the
 Sp recently established
 by me. Down
 710° N on a true line bet
 see's 33 and 34.

Ea 14:00 E

Ascend gradually.

33.77 Cross Spur bars 7148° E
 and descend.

40.00 Set a sandstone 25+18+6
 in 18 in in the ground for
 1/4 sec cot. marked. 1/4 m
 N fall and raised a mound
 of stone along side. It's
 impracticable.

43.15 Cross mark 16 lbs mid Co
 7120° E. and ascend.

61.11 Top of spur. 80 ft high bars
 7122° E. and descend.

T12 N. R 20 E

Chs G^{and} S. R. M.

80.00 Set a Sandstone 16+10+4 ins
11 ins in the ground for the
corn to sees 27, 28, 33^{and} 34
marked, with 2 notches on
S. and 3 notches on E
edges and raised a mound
of stone alongside. It's
impracticable,
Sand, Rolling,
Soil, 3rd rate,
Timber. Scattering Juniper,

East on a random line set
sees 27^{and} 34.

Ea 13° 30' E

Descend,

10.16. Cross wash 17 lbs ribs Es
N 15° E, and ascend,

45.00 Set a temporary 14 see cor

T12 N. R 20 E

Chs' G^{and} S. R. M.

- 46.00 Top of divide 270 ft high
trans N. 1/2 S. and descends.
- 50.05 Cross Road. bears N. 20° E.
+ S 20° W.
- 59.20 Cross wash 15' lks wide Co N.
N° E. and ascends.
- 79.86 Intersect N^{and} S. line 46
lks N. of con. to sees 26 27.
34^{and} 35; Thence run
N. 89° 40' W on a true line to
sees 27^{and} 34. same val.
- 89.93 Set a post 3 ft. long 3 ins. diam with marked
stone, 12 ins, in the ground for 1/2 sec. (1/2
marked 1/2 S. on N face, dug pits 18 x 18 x 12
ins. E and W of post 5 1/2 ft. d. and raised
a mound of earth 1 1/2 ft. high 3 1/2 ft. base around
post.
- 79.86 To con to sees 27. 28. 33^{and} 34
Sand. See 35. Broken^{and} rocky
Soil. 3rd^{and} 4th rate,
Timber. Dense bunches of

T12 N. R 20 E

Chs Gnd S. R. M

Juniper Bush.

N 10' W to see's 27th 28
 Va 13° 30' E.

Descend.

65.40 Cross mark 24 lbs wide to
 N. E and ascend.

40.00 Set a post 3 ft. long 3 ins. diam with marked
 stone, 12 ins, in the ground. The S. side
 marked 1/2 S. on N face of post. The N & E
 ins. N and S of post 3/4 ft. high. A mound
 of earth 1 1/2 ft. high. 3/4 ft. diam around
 post.

65.18 Top of spur 80 ft high bears
 N 36° E. and descend.

80.00 Set a Sandstone 18 x 12 x 5 in
 12 ins in the ground for the
 con to see's 21. 22. 27th 28
 marked with 2 notches on
 S. and 3 notches on E edge

T 12 N. R. 20 E

chs by ^{west} S. R. M.

and raised a mound of stone
along side. Pits impracticable
from which

A Juniper, 10 or 12 years
S 70° E. 80 lbs dist. Marker
T 12 N. R. 20 E. S 27. B. T.
No other trees ^{seen} ~~seen~~
Land. Rolling ^{to} ~~to~~ Broken
Soil. Stony ^{at} ~~at~~ water
Timber. Scattered Juniper

East on a random line to
see 22 ^{1/2} 27.
to 13° 30' E

Ascend gradually,

12.12.

Top of Spur. 75 ft high. Pass
N 32° E. ^{and} descend,

24.81

cross wash. 40 lbs wide to
N 15° E and ascend.

40.00

Set a temporary ^{1/4} sec cor

T12 N. R 20 E.

Ch's S⁴⁹ S. R. M.

- 59.13 Top of Divide 260 ft high
trans N 40° E. and descend,
- 79.10 Cross wash 30 lks wide, C.M.
29° E. and ascend,
- 80.03 Intersect N. ^{and} S' line 10 lks
N of con. 22.23.26 ^{and} 27.
Thence I run
N. 89° 56' N on a true line
let sees 22 ^{and} 27. same ea
- 40.03 Set a Sandstone 24+18+10
ins. 18 ins in' the ground.
for 1/4 sec con. marked. '4
on N. face. and raised a
mound of stone alongside
Pit, impracticable,
- 80.03 To con to sees 21.22.27 ^{and} 28
Land. See 27. Rough ^{and} Rocky
Soil. 2nd + 3rd rate.
Timber. Juniper ^{and} Pinon Oak.

T 12 N. R 20 E

chs G^{and} S^R M.

N 10' W. bet sec's 21^{and} 22
 on 13° 30' E

13.5' Descend. Gradually.
 Cross wash. 17 lks wide Co
 N. 33° E. and ascend.

40.00 Set a post 3 ft. long 3 ins. diam with marked
 stone, 12 ins, in the ground for 1/4 Sec. Cor,
 marked 1/2 S. on W face. Post 12
 ins. N and S of post 12 ins. raised
 a mound of earth 1 1/2 ft. high. 5 1/2 ft. across around
 post.

58.16 Top of Divide 275' ft high
 bears N. E^{and} Descend. →

80.00 Set a Line Stone 18+11+6 in
 12 ins in the ground for
 the cor to sec's. 15, 16, 21^{and} 22,
 marked with 3 notches on
 S^{and} E edges and raised
 a mound of stone alongside
 Pitts impracticable
 Land Rolling.

T12 N. R 20 E.

chs. by ^{and} S. R. M.

Soil. 3rd rate.

Timber Scattered Juniper

East on a random line to
secs 15^{and} 22.

To 13° 30' E.

Ascend.

21.11

Top of Spur. 48 ft high bears
N 38° E. and. Descend.

40.00

Set a temporary 74 sec cor.

42.10

Cross wash. 40 ft high wide
to N 16° E.

80.32

Intersect N^{and} S line 19 lbs

N of cor to secs 14, 15, 22, ^{and}

23. Thence Iron.

N 89° 52' N. on a true line

to secs 15^{and} 22. same va

40.16

Set a Fine Stone 18+16+12
ins 12 ins in the ground

T 12 N. R 20 E
 Chs G and S. R. M.

for 1/4 sec cor. marked 74
 on N. face and raised a
 mound of stone alongside
 of it. *Pr. impracticable*

80 32 ^{15 16 21 22} ~~low to base~~ _{Rolling so}

Soil - 2nd rate.

Timber scattering Juniper
 Bush

N 10' W ~~at~~ sec 15 ^{and} 16.

lat 13° 30' E

Descent.

1.50

cross wash 25' lks wide to
 N.E. and ascend gradually

40.00

hit a Limestone 14 + 7 + 5' in
 9' in in the ground for 1/4 sec
 cor. marked 74 on N face
 and raised a mound of
 stone alongside. *Pr. impracticable*

T12 N. R 20 E

Chs L and S R M.

34.16 Top of divide 200 ft high
 bears $N60^{\circ}E$. and descends

80.00 Set a sandstone 18+10+6 ins
 12 ins in the ground for the
 cor to see's 9.10.15 ^{and} 16,
 marked with 4 notches on
 S and 3 notches on E
 edges and raised a mound
 of stone along side. Pts
 impracticable.
 Sand. Rolling
 Soil. 8° rate.
 Timber Scattered Juniper.

East on a random line
 hit see's 10 ^{and} 15.
 La 18: 30 'E
 Descends gradually

40.00 Set a temporary '14 see cor

T 12 N. R 20 E

Chis by ^{and} S. R. M.

80-20 Intersect N ^{and} S line & lks
 Sof cor to sees 10-11, 14 ^{and} 15-
 Thence down.

S 89.57' N. on a true line
 to sees 10 ^{and} 15 same as.

40-10 Set a Sandstone 17+8+5 ins
 11 ins in the ground for 1/4
 see cor marked 1/4 in N face
 and raised a mound of stone
 along side. It's impracticable

80-20 To cor to sees 9-10-15 ^{and} 16.
 Land. Rolling slopes N.E.
 Soil, 3rd rate, fine grass
 Timber - Some juniper Bush.

N 10' N to sees 9 ^{and} 10

La 150° 30' E

Descent.

T 12 N. R 20 E

Ch G^{and} S. R. M.

- 9.80 Cross wash 16 lbs wide
to $N 57^{\circ} E$. and ascend.
- 19.00 Top of spur 30 ft high bears
 $N 50^{\circ} E$ and descend,
- 36.55 Cross Snowflake wash.
89 lbs wide to $N. E.$ and
ascend.
- 40.00 Set a post 3 ft. long 3 ins. diam with marked
stone, 12 ins, in the ground for $\frac{1}{2}$ Sec. Cor.
marked $\frac{1}{2}$ S. on N face, dug pits 18 x 18 x 12
ins. N and S of post $5\frac{1}{2}$ ft. dist. and raised
a mound of earth $1\frac{1}{2}$ ft. high. $3\frac{1}{2}$ ft. base. around
post.
- 73.00 Top of divide 300 ft high
bears E ^{and} W . and descend
- 80.00 Set a post 4 ft. long 4 ins. square, with marked
stone, 12 ins, in the ground for Cor. to Secs.
3. 4. 9^{and} 10 marked T. 12 N S. 3 on
 $N. E. R. 20^{\circ} S. 10$ on $S. E. S.$ 9 on
 $S, W,$ and $S.$ 4 on $N, W,$ face, with 8 notch
es on $S,$ and 3 notch es on $E.$ edge, dug
pits 18 x 18 x 12 ins. in each Sec., $5\frac{1}{2}$ ft. dist.
and raised a mound of earth 2 ft. high. $4\frac{1}{2}$ ft.

T12 N. R. 20 E

Chs Snd S. R. M

base. around post.

Land. Rolling

Soil. ~~Co~~ rate.

Timber scattering Juniper

East on a random line to
see 3rd 10.

at 13° 30' E 10

Descend, gradually

40.00

Set a temporary 1/4 sec cor

46.19

cross draw 10 chs wide Co

S. and ascend.

64.50

Top of low spur bears N & S

and descend.

79.81

Intersect Nnd & S line 3/4

chs S of cor to see 2, 3, 10th 11

Thence down

S 89° 47' W on a true line

to see 3rd 10. same as

T12 N. R 20 E

Chs 4th S. R M

39.90

Set a post 3 ft. long 3 ins. diam. with marked stone, 12 ins, in the ground for 1st Sec. 1 marked 1/2 S. on W face, dug pits 18 x 18 x 12 ins. E and W of post 5 1/2 ft. dist. and raised a mound of earth 1 1/2 ft. high. 3 1/2 ft. base. around post.

79.81

To cor to secs 3-4-9 ^{and 10}
Land, Sec 10 is Rough ^{and Rocky}
terrain in N. rolling in S.
Soil, 2nd + 4th rate, grass fair
Timber - Some Juniper ^{and Pinon}
brush

N 10' W on a true line to secs
3 ^{and} 4.

Pa 139, 30' E

Over rolling land

29.31.

Cross Road bears N. 87° E.

40.00

Set a post 3 ft. long 3 ins. diam with marked stone, 12 ins, in the ground for 1st Sec. Cor. marked 1/2 S. on W face, dug pits 18 x 18 x 12

T 12 N. R 20 E

chs
G^{and} S. R. M.

ins. 71 and 8 of post... raised
a mound of earth 2 ft. high... around
post.

48.20 Intersect 8th standard Parallel
North 2.33 chs East of the
Standard ^{1/4 Sec.} ^{Bdy of} Cor to see 33. 4/13
M R 21
recently re-established by
me.

Set a post 4 ft long 4 ins sq
with marked stone 2 ins in
the ground for closing Cor to Res
304 marked

C. C. T 12 N. R 20 E on S

S. 3 on E. and

S 4 on N. faces with 3 notches
NE and 3 notches on N. face

Dug pits 18x18x12 ins P. E. 4 ft
of post 5 1/2 ft. dist and
raised a mound of earth
2 ft. high 4 1/2 ft. high around post

T12 N. R 2d E
 ch 4 and S. R. M

Land rolling

Soil 2nd & 3rd rate

Grass good

Timber scattering Juniper & Birch

I carefully examined the adjustments of my solar compass to-day particularly the latitude and leveling apparatus and found them correct

W. H. Grant

May 25th 1883

From the Ar to Recs 32 & 33
 on the D. Ry of the Tp recently
 established by me I run
 N. 18' W on a true line bet
 Recs 32 and 33

Var 14° E

T. 12 N., R. 20 E.

cls Geo S. R. M

40.00

Set sand stone 14x9x3 ins
9 ins in the ground for $\frac{1}{4}$ Rec Co
marked $\frac{1}{4}$ on N. face and
raised a mound of stone
along side. Pits impracticable

79.15

Cross Wash 16 LKs wide Course
N 13° E and ascues

80.00

Set sand stone 18x10x4 ins
12 ins in the ground for
Cor to Secs 28-29-32 and 33
marked with 1 notch on S
and 4 notches on E edges
and raised a mound of stone
along side. Pits impracticable

Land rolling

Soil 3rd rate

Grass fair

Timber Juniper + Pine brush

T. 12 N. R. 20 E.

cho G and S. R. M

East on a random line bet
Secs 28 and 33
Var $13^{\circ} 45' E.$

Descend gradually

- 7.55 Cross wash 19 ths wide
Course N. and ascend
- 13.00 Point of spur to N. and descend
- 16.35 Cross head of wash 12 ths wide
Course N. and ascend
- 35.25 Top of divide to N. $22^{\circ} E.$ 200 ft.
high and descend
- 40.00 Set temporary $\frac{1}{4}$ Sec. Cor.
- 71.35 Cross wash 10 ths wide course
N. 40 E. and ascend
- 80.37 Intersect N and S. line
26 ths S. of the Cor to Secs
27-28-33 and 34 Thence I run:
S. $89^{\circ} 49' N$ on a true line
bet Secs 28 and 33 same to
- 40.18 Set a sand stone 6x10x4 in

T. 12 N. R. 20 E.

chs G and S. R. M

11 ins in the ground for 1/2 Sec
 Cor marked 4 on N face and
 raised a mound of stone
 along side. Pits inapproachable
 from which a Juniper
 5 ins diam brs $S 15^{\circ} E$. 32 lks dist
 marked 4 S. B. T.

A Juniper 5 ins diam brs
 $S 45^{\circ} E$. 44 lks. dist marked
 4 S. B. T.

D. 37

The Cor to Secs 28-29-32^{1/2}/33
 Land selling

Oil 3rd rate

Juniper dense Juniper ⁴/₅ Onion brush

North 10' N lat Secs 28^{and} 29
 Var $13^{\circ} 45' E$.

Ascend gradually
 Top of divide brs N. $20^{\circ} E$

16.00

T. 12 N. R. 20 E.

cls G and S. R. M

195 ft high
descend gradually

40.00

Set a post 3 ft. long 3 ins. diam with marked stone, 12 ins, in the ground for 1 Sec. Cor, marked 1 S. on W face. On a pile of a 18 x 12 ins. N and S of post 1/4 ft. dist and raised a mound of earth 14 ft. high 20 ft. base, around post. from which a Juniper 5 ins in diam brs S. 70° N 49

links dist marked 1/4 S. B. T
No other trees within limits

80.00

Set a post 4 ft. long 4 ins. square, with marked stone, 12 ins, in the ground for Cor. to Secs. 20-21-28 & 29 marked T. 12 N S. 21 on N. E. R. 20 E S. 28 on E. S. 29 on S, W, and S, 20 on N, W, face, with 2 notches on S, and 4 notches on E. edges, dug pits 18 x 18 x 12 ins. in each sec. 5 1/2 ft. dist. and raised a mound of earth 14 ft. high 20 ft. base. around post. from which

a Prairie pine 8 ins diam brs N. 22 E
37 links dist marked T 12 N R 20
E. S 21 B. T

T. 12 N. R. 20 E.

Sec 29
Grand J. R. M

A Pinon Pine 4 in diam. trs
S. 40° W. 18 links dist marked
T. 12 N. R. 20 E. S. 29 B.T.
water trap, within 4 inits
Land falling
Soil 3rd rate
Dense Juniper & Pinon Brush

East on a random line but
Recs 21⁴⁴ 28
Tor 13° 30' E.

Ascend

- 7.00 Top of spur trs 7.5° E 30 ft
length and descend
- 11.21 Cross wash 16 links wide
course 7.5° E and ascend
- 31.17 Top of spur trs 7. E. 146 ft high
descend
- 40.00 Ret temporary 1/4 Rec Cor
- 72.19 Cross wash 26 links wide

T. 12 N. R. 20 E
S. 4th S. R. 7th

les

9.93 course N. 70 E and ascend
Intersect N. 4th S. line 49 lbs
S. of the Cor to Secs: 21-22-27-28
Thence I run S. 89° 39' N on a
true line bet Secs 21^{4th} & 28 same vk.

9.96 **Set a post 3 ft. long 3 ins. diam with marked
stone, 12 ins, in the ground for 1/4 Sec, Cor,
marked 1/4 S. on N face, two pits 18 x 18 x 12
ins. E and N of post 5 1/2 ft. dist. and raised
a mound of earth 1 1/2 ft. high 3 1/2 ft. base. around
post.**

9.93 The Cor to Secs 20-21-28 and 29
Sand broken and rocky
Soil 3rd and 4th rate
Grass poor
Smaller Juniper and Pinon brush

North 10' West bet Secs 20^{4th} & 21
Var 13° 30' E

17 Cross creek 40 lbs wide Course N. 40° E

T. 12 N. R. 20 E.

cls Grand P. R. M

40.00

~~78 ft. high and around~~

Set a post 3 ft. long 3 ins. diam with marked stone, 12 ins, in the ground for $\frac{1}{4}$ Sec, Cor, marked $\frac{1}{4}$ S. on \mathcal{N} face, dug pits 18 x 18 x 12 ins. \mathcal{N} and \mathcal{S} of post $5\frac{1}{2}$ ft. dist. and raised a mound of earth $1\frac{1}{2}$ ft. high. $3\frac{1}{4}$ ft. base. around post.

80.00

Set a post 4 ft. long 4 ins. square, with marked stone, 12 ins, in the ground for Cor. to Secs, 16-17-20 & 21 marked T/12 N S. 16 on N. E. R. 20 E S. 21 on S. E, S, 20 on S, W, and S, 17 on N, W, face, with 3 notches on S, and 4 notches on E. edges. dug pits 18 x 18 x 12 ins. in each Sec., $5\frac{1}{2}$ ft. dist. and raised a mound of earth 2 ft. high. $4\frac{1}{2}$ ft. base. around post.

Land ralling

Soil 3rd rateThick bunches of Juniper & Prairie
brush

T. 12 N. R. 20 E

also

Gravel P. R. M

Custom a random line
bet Secs 16⁴/₄ & 21

Yor. 13° 30' E.

Descend gradually

40.00

Set temporary 1/4 Rec Cor.
Descend

29.90

Grass wash 25' the wide course
N. 30° E. and ascend

0.13

Intersect N²/₂ S. line 34' below
P. of the Cor to Secs 15-16-21⁴/₄ & 22
thence I run S. 89° 45' W. on a
true line bet Secs 16⁴/₄ & 21 same T

40.06

Set a post 3 ft. long 3 ins. diam with marka
stone, 12 ins, in the ground for 1/4 Sec. Cor,
marked 1/4 S. on N face, dug pits 18 x 18 x 12
ins. E and W of post 3 1/2 ft. dist. and raised
a mound of earth 1 1/2 ft. high. 8 1/2 ft. base. around
post.

0.13

1/4 the Cor to Recs 16-17-20⁴/₄ and 21
Sand roughly and rocky
Soil 3rd rate

T. 12. N. R. 20 E

clus.

Gard. S. R. M.

Grass fair

Dense Juniper and Piñon brush

North 10th N. bet Secs 16th & 17

Twp 13° 30' E

Ascend gradually

22.95

Top of ridge bet N. 66° E 200 ft
high and descend

40.00

Set a post 3 ft. long 3 ins. diam with marked
stone, 12 ins, in the ground for $\frac{1}{4}$ Sec, Cor,
marked $\frac{1}{4}$ S. on N face, dug pits 18 x 18 x 12
ins. N and S of post 5 $\frac{1}{2}$ ft. dist. and raised
a mound of earth 1 $\frac{1}{2}$ ft. high 3 $\frac{1}{2}$ ft. base around
post.

80.00

Set a sand stone 18 x 11 x 6 ins
12 ins in the ground for Cor
to Secs 8-9-16th & 17 marked
with 4 notches on S and
4 notches on E. edges and
raised a mound of earth
along side. Pits impracticable

T. 12. N. R. 20 E

also Gandy D. R. M

Level rough and rocky
 Soil 3rd grade
 Grass fair
 Dense Juniper and Piñon brush

East on a road and line
 but Recs 9 and 16
 for $13^{\circ} 40' E$.

Descend

7.40 Grass wash 11 lks wide
 course N. N. and contour
 Descend

46.00 Set temporary 4th Rec. Cr.
 59.12 Top of spur to N. E. 40 ft high
 Descend

74.20 Grass wash 18 lks
 wide course N $10^{\circ} E$
 and ascend gradually

79.96 Intersect N and S line

T. 12 N. R. 20 E.

cls G and S. R. M

11 miles N of the Cor to Secs
9-10-15 and 16 from which
Drew N. $89^{\circ} 55'$ N. on a
true line bet. Secs 9 and 16
with same var

49.98

Set a line stone $18 \times 10 \times 5$ ins
12 ins in the ground for
4 Sec Cor. marked how N face
and raised a mound of
stone alongside into impenetrable

79.96

The Cor to Secs 8-9-16 and 17
Sand rolling and rocky
Soil 3rd rate

Grass fair

Scattering Juniper and Onion brush

North 10° N bet Secs 8 and 9
Var. $13^{\circ} 40'$ E

Descend gradually

10.24

Grass wash 15 lbs wide course

T. 12 N. R. 20 E.

dis Gnd S. R. M

- 27.17 N 40° N, and ascend;
Top of spur hrs N. 40° N,
D. ascend
- 37.85 Cross snow flat wash 40 lbs
wide course S. 78 E. and ascend
- 40.00 Set Paul stone 14 x 9 x 4 ins
9 ins in the ground for 1/4 Sec
Cor. marked "4 on N. face
and raised a mound of
stone alongside. Pits
impracticable
- 50.00 Set a post 4 ft. long 4 ins. square, with marked
stone, 12 ins. in the ground for Cor. to Secs,
4-5-8-9 marked T. 12 N S. 4 on
N. E. R. 20 E. S. 9 on S. E, S, 8 on
S, W, and S, 5 on N, W, face; with 5 notches
on S, and 4 notches on E. edges, and
pits 18 x 18 x 12 ins. in each Sec., 5 1/2 ft. dist.
and raised a mound of earth 2 ft. high, 4 1/2 ft
base. around post. from which
a Pine 12 ins diam bears S 77° W.

T 12 N. R 20 E

Chs. G^{and} S R. M

34 lbs test marked T 12 N
 R 20 E. S 8 B. T.
 Sand, Rolling, ^{and} Roeser
 Soil 3rd rate grass field
 Timber - Some Juniper pine
 and fir on brush

East on a random line to
 sees 4^{and} 9.

W 13° 45' E

Ascend gradually

40.00

Set a temporary 1/4 sec cor
 and descend gradually

79.70

Intersect N^{and} S line 20 lbs

N of cor to sees 3-4. 9^{and} 10

Thence down

N 89° 51' W on a true line to

sees 3 and 10. same W

T12 N. R 20 E

S. and S. R. M.

79.75- Set a post 3 ft. long 3 ins. diam with marked stone, 12 ins, in the ground for $\frac{1}{4}$ Sec, Cor. marked $\frac{1}{4}$ S. on N face, dug pits 18 x 18 x 12 ins. E and W of post 5 $\frac{1}{2}$ ft. dist. and raised a mound of earth 1 $\frac{1}{2}$ ft. high. 3 $\frac{1}{4}$ ft. base. around post.

79.70 T. con to sec's, 4, 8, 8 and 9.
Land. Rolling
Soil - 2nd $\frac{1}{8}$ rate. grass good
Timber Some Juniper and Pines
or Bush

N 10' W on a true line to sec's
4 and 6.

Lat 13:45' E

Ascend gradually.

1604 Cross Road near N 89° E

4000 Set a post 3 ft. long 3 ins. diam with marked stone, 12 ins, in the ground for $\frac{1}{4}$ Sec, Cor. marked $\frac{1}{4}$ S. on W face, dug pits 18 x 18 x 12 ins. N and S of post 5 $\frac{1}{2}$ ft. dist. and raised

T 12 N. R 20 E

ch. by ^{Aug} S. R. W

47.46

a mound of earth $1\frac{1}{2}$ ft high $3\frac{1}{2}$ ft base along its Intersect $32\frac{1}{2}$ Standard Parallel North at 3.50 ch. S of the $\frac{1}{4}$ standard cor on S. South Boy sec. 32. T 12 N. R 20 E. recently re-established by me.

Set a post 4 ft long 4 in square with marked stone 12 in in the ground for the closing cor. to see ^{Aug} 5' marked. C. C. T 12 N. R. 20 E on S. S. 4 on E. and 8 5' on W faces with 4 notches on E. ^{Aug} and 2 notches on W. edges and dug pits 18 + 18 + 12 in, S. E. and W of post 5' 7" ft high and raised a mound of earth 2 ft high $4\frac{1}{2}$ ft base around

T 13 N. R 20 E

Obs G ^{and} S. R. M

post.
 Sand. Rolling.
 Soil. 8th rate. good grass.
 Timber some Juniper Bush
 A H Arnold Compass Man
 May 25th 1883.

From the cor to see's 26.21 ^{and}
 32 on the South Boundary
 of the T₁ sec. 21, 22
 established by me

see I run

210' W of see's 31 ^{and} 32.

In 14° 00' E.

400 Descend along side of hill
 Set a sandstone 17+8+4 in
 9 in in the ground for 14
 see cor. marked. 14 on W face
 and raised a mound of stone

T 13 N. R 20 E

Chs. G^{and} S. R. M.

alongside. Pit's impracticable
from which

A Yellow pine 10 ins diam
truss N 60° E. 77 lbs dist
marked 14 S. B. F.

A Juniper 8 ins diam truss
S 89° W 30 lbs dist. Marked
14 S. B. F.

20.00

Set a Sandstone 18x10x8 ins
12 ins in the ground for the
cor to sees^s 29.30.31 ^{and} 32, marked
with 2 notch on S. and 5' notches
on E edges and raised a mound
of stone alongside. Pit's impracticable
from which

A Juniper 8 ins diam truss
S 53° N. 92 lbs dist marked,
T 13 N. R 20 E. S 31. B. F.

A Yellow pine 24 ins diam
truss N 30° E. 1.17 lbs dist

T 12 N. R 20 E
 Chs. by ^{and} S. R. M.,

marked T 12 N. R 20 E.
 S. 29 B. T.

No other trees in limits

Low Rolling

Soil 2nd Fort rate

Timber - Dense Juniper
 and Union Bush a few
 pine

East, on a random line but
 sees 29 ^{and} 32.

Lat 13° 45' E

Ascend gradually,

- 24.11 Top of Spur bears N. and descends,
 21.25- cross wash.
 31.25- Cross wash. 15' lks wide to
 N and ascend,
 40.00 Set a temporary 1/4 sec cor.
 52.52 Top of divide 235 ft high

T 12 N. R 20 E

Chs G^{and} S. R. M

80.21 trans N. 24° E. ^{and} descend,
 Intersect N^{and} S line 10 lks
 Sof cor to see 28.29.32^{and} 33
 Placed Iron

40.00 S 89°. 56' N. on a true line
 bet sees 29^{and} 32 same rd
 Set a Sandstone 14 + 9 + 4 ins
 9 ins in the ground for 14 sec
 cor marked 14 in N face
 and raised a mound of stone

80 21 ~~along with~~ Pits impracticable
~~lay to see~~ 29 30 ^{and} 31 ^{and} 32
 Sand? Broken ^{and} Rocky
 Soil. 7th rate grass grain
 Timber Dense Juniper and
 Pinon Birch, a few yellow
 pine
 M N. Grant

May 26th 1883

T 12 N. R 20 E

Chs G⁴ S. R. W

Nest on a random line bet
secs 30 and 31.

DW 13° 45' E

Described,

3-24 Cross wash, 18 lbs wide bed
N. 8. and, ascend, 7

29-38 Intersert N Bdy of Tp. 17 lbs
S of the cor to secs 25, 30, 31
and 36, which is

✓ A Post 4 ins square, firmly
set in the ground, properly
marked and notched, with
pits dug in each sec 5 1/2 ft
dist and mounds of earth raised
around post, from which
a Pine tree beam bears S 39° 8' 105'
lbs dist. Marked T 12 N. R. 20
E S. 31 B T. A Juniper 4 ins
beam bears N. 10° W. 86 lbs dist
Marked. T 12 N. R 20 E. S. 25 B T.

T 12 N. R 20 E

Chs G^{ms} S. R. M

Thence down

S 89° 41' E on true line to sec 31
31 ^{ms} 31. same ev.29.58 To cor to sec 31 29.30.31 ^{ms} 32.Land. Rocky ^{ms} broken.Soil. 8th rate. grass fair.Timber. 10 use Juniper ^{ms} Pinus

Brush. a few yellow pines

A. H. Arnold Comptroller

May 26th 1883N 10' N of sec 31 29 ^{ms} 30

on 139° 45' E

Desert.

85-

Grass wash 20 lbs more

Co N 40° E and ascent

37.19

Tip of Divide 325 ft high

bears N. 45° E. and descent.

40.00

T 12 N. R 20 E.

Ch^s G^y S. R. M

41.00

Set a post 3 ft. long 3 ins. diam with marked stone, 12 ins, in the ground for $\frac{1}{4}$ Sec. Cor. marked $\frac{1}{4}$ S. on N face, dig pits 18 x 18 x 12 ins. N and S of post $5\frac{1}{2}$ ft. dist. and raised a mound of earth $1\frac{1}{2}$ ft. high. $3\frac{1}{2}$ ft. base. around post.

80.00

Set a post 4 ft. long 4 ins. square, with marked stone, 12 ins, in the ground for cor. to Secs 19-20-29-30 marked T. 12 N S. 20 on N. E. R. 20 S. 29 on S. E. S. 30 on S. W. and S. 19 on N. W. faces with 2 notch-
es on S, and 5 notch es on E. edge. dig pits 18 x 18 x 12 ins. in each Sec., $5\frac{1}{2}$ ft. dist. and raised a mound of earth 2 ft. high. $4\frac{1}{2}$ ft. base. around post.

Land: Rocky and broken
Soil. 3rd rate, grass fair
Timber: Deuce Juniper and
pinon Bush.

u u u

✓

T 12 N. R 20 E

Ch. G^{and} S. R. M

Cast on a random line bet
secs 20^{and} 29.

✓ 4

Lat. 14° 45' 18"

ascend gradually.

15.00

Top of ridge 200 ft high
bars N^{and} S^{and} and descend.

44.00

Set a temporary 1/4 sec cor

68.16

lines mark 20 lbs m^{ts} Co
N. 21° E and ascend.

80.52

Intersect N^{and} S line. 15 ft
N of cor to secs 20-21. 28^{and} 29
Thence downN 89° 54' W on a true line bet
secs 20^{and} 29 same lat.

40.26

Set a sandstone 16 + 10 + 3 ins
✓ 11 ins in the ground for 1/4 sec cor
marked W on N. face and raised
a mound of stone alongside. Pitt
impracticable.

80.52

To cor to secs 19-28, 29^{and} 30

T 12 N. R 20 E

Ch. G^{and} S. R. M.

Land, Rolling,

Soil. 2nd and 3rd rate, good grass
Trunks. Some Juniper ^{and} Pine
M M Grants.May 26th 1883Went on a random line to see
19^{and} 30.D^a 14° 45' E

Descent gradually,

29.25 Intersect West Boundary of T^p
8 lbs S of cor to see, 19.24.25th 30; which is ^{set firmly up the ground}
A Post 4 in square properly.marked and notched, with pile
dug in each see. 5' 12 ft deep
and mound of earth raised around
post, from which

A Pine 10 in diam bears N 78° E 28 lbs

T 12 N. R 20 E

Chs' G^{us} S. R. 'MMarked T 12 N R 20 E. S.
19. B. T.A Juniper. pine beam base NW. W.
26. lks dist. Marked T 12 N
R 19 E. S 24 B. T.
No other trees in limits

Thence I run

S. 89° 52' E on a true line at
sees 19th & 20. same val.29.25- Toco & sees 19.28, 29^{and} 30Land. Rolling ^{and} Level✓ Soil, 2nd into good grazing
Trunks some Juniper Bush.
a few pine.A. H. Arnold Compassman
May 26th 1885

T 19 N. R 20 E

Chs 1st and S. R 170210' N bet sees 19^{and 20}.

Pa 14°. 45' E

Descend gradually.

40.00

Set a post 3 ft. long 3 ins. diam with marked stone, 12 ins, in the ground for $\frac{1}{2}$ Sec. Cor marked $\frac{1}{2}$ S. on N face; dug pits 18 x 18 x ins. N and S of post $5\frac{1}{2}$ ft. dist. and raised a mound of earth $1\frac{1}{2}$ ft. high. $3\frac{1}{2}$ ft. base. around post.

64.10

brass mark. 20 lbs wide to N 85° E and continue to descend.

80.00

Set a post 4 ft. long 4 ins. square, with marked stone, 12 ins, in the ground for Cor. to sees 17, 18, 19^{and 20} marked T. 12 N S. 17 on N. E. R. 20 S. 20 on S. E, S, 19 on S, W, and S, 18 on N, W, face, with 3 notches on S, and 5 notches on E. edges, dug pits 18 x 18 x 12 ins. in each Sec., $5\frac{1}{2}$ ft. dist. and raised a mound of earth 2 ft. high. $4\frac{1}{2}$ ft. base. around post.

Land. Rolling and Level

Soil. good rate. good grazing

page 77
does not exist

G. 2 N. R. 20 E

Chs.

G. 2 S. R. 20 W

Strike Some Juniper Brush
a few line.

East on a random line set
secs 17^{and} 20.

On 13° 45' E

Descend gradually. ✓

7.35 - Cross wash. 16 lbs mid's co.

N. 24° E. and ascend gradually

40.00 Set a temporary 14 sec cor

42.17 Top of Divisadero bears N 23° E.

275 ft high and enter table
land.

79.87 Intersect N^{and} S line 7 lbs

N. of cor to sec 16, 17, 20^{and} 21

Thence down

N 89.5° W. on a true line set
secs 17^{and} 20. Same as

✓ 39.93 Set a Sandstone 18710 + 3 ins 12

Fig N R 20 E

Ch G^{and} S. R. M

is in the ground for 1/4 sec con-
marked 1/4 in 1/2 sec, and
raised a mound of stone alongside
Pits impracticable.

79.87 To cor h sees, 17, 18, 19 ^{and} 20
Lans Rolling ^{and} level
Soil, 2nd rate. fine gravelly
Foster Some Juniper Bush
M. N Grant, May 26th 1883

Nest on a random line bet sees
18 ^{and} 19.

Va 130. 45' E

Access gradually.

21.00 Top of Spur 150 ft high near
N 10° W. and dressed gradually.

29.30 Intersect N Boultans Sp.
41 lbs of cor h sees, 13, 18, 19
and 24, which is a Sandstone

T 12 N. R 20 E

chs by ^{and} S. R. M

17 + 4 is firmly set in the ground properly, notched with pits dug in each, see 5 1/2 ft distant. mound of earth raised alongside from which

A Pine 5 in diam has N 30° E, 119 lbs test marked. T 12 N R 20 E. S. 18 B T.

No other trees in limits

Thence I run

S 89° 42' E on a true line to sec 18 ^{and} 19, same val.

2930 T. cor to sec 17, 18, 19 ^{and} 20

Land. Rolling and level

Soil. 2 nd ⁴ th ^{of} ⁸ rd ^{rate}, good grazing.

Timber Some Juniper Bush.

A H Arnold Compassman
May 26th 1883

T12 N. R 20, E

Chs by ^{Aug} S. R. M.N 10' W. ~~At~~ sees 17^{2nd} 18.

In 13° 45' E

Ascend gradually.

40,00 Set a sand stone, 14 x 8 x 4 ins., 9 ins. in the ground for $\frac{1}{2}$ Sec, Cor, marked $\frac{1}{2}$ on W face, dug pits 18 x 18 x 12 ins. N and E of stone 5 $\frac{1}{2}$ ft. dist. and raised a mound of earth 1 $\frac{1}{2}$ ft. high. 3 $\frac{1}{2}$ ft. base. alongside.

This corner sets on line

250 ft high, base N. E and descent.

80,00 Set a post 4 ft. long 4 ins. square, with marked stone, 12 ins. in the ground for Cor, to Sees,

7, 8, 17^{2nd} 18 marked T. 12 N S. E on N. E. R. 20 E S. 17 on S. E, S, 18 on S, W, and S, 7 on N, W, face, with 4 notches on S, and 5 notches on E. edges, dug pits 18 x 18 x 12 ins. in each Sec., 5 $\frac{1}{2}$ ft. dist. and raised a mound of earth 2 ft. high. 4 $\frac{1}{2}$ ft. base. around post.

Sand. Rolling.

Soil - 2nd & 3rd runs

58R

G. 2 N R 20 E

Chs 6^{and} S. R. M

Good puzzling
Strike some Juniper Bush

East on a random line to
secs 8^{and} 17.

To 13° 45' E

Ascend gradually

28.16 Top of Spur. 230 ft high leave
N. and descend gradually.

40.00 Set a temporary 1/4 sec cor

56.51 Cross wash. 13 lbs with loc N.
and ascend.

79.69 Intersect N^{and} S line 22 lbs

Set cor to secs. 8, 9, 16^{and} 17.

Thence down

S 89° 51' N on a true line to secs
8^{and} 17. same cor,

39.84 Set a sandstone @ 4+13+8 vis
18 vis in the ground for 1/4 sec

T 2 N R 20 E

chs

G and S R. M.

79.69. cor. marked 14 N face and
raised a mound of stone
along side it's impracticable
To cor to sec's 7.8.17^{and} 18.

Land: Rolling

Soil. 3rd rate: grass good.

Timber: Some Juniper Bush

M. N. Grant May 26th 1883.

West on a random line to sec's
7^{and} 18.

N 13° 45' E

Ascend gradually

28.60 Top of hill bears N 70° W. 50 ft
high and descend.

29.75 Intersect. N B'ry of T^h 12 ch
N of cor to sec's 7.12.13^{and} 18.
which is.

A sandstone 13 + 7 ins firmly
set in the ground properly

T 12 N. R 20 E

Chs C^{and} S. R. M

notched with pits dug in each
see 5' 10" dist and mound
of earth raised along side
Fence & run.

N 89° 48' E on a line with
see's, 8th 17. same val

29.75 To cor to see's 7, 8, 17th 18.

Land, slightly rolling
Soil. 8th rate good grazing
Timber scattering Juniper
A H Arnold - Compassman
May 26th 1883

N 10' W bet see's 7th & 8.

va 13° 45' E

Descend gradually.

20.11 across wash 2.3 lbs. mile to

N 32° E. and ascend

31.50 Top of spur 100 ft high near

T12 N. R 24 E

chs G⁴ S. R. M

- 40.00 N 35° E. and descend.
Set a post 3 ft. long 3 ins. diam with marked stone, 12 ins, in the ground for $\frac{1}{4}$ Sec. Cor. marked: $\frac{1}{4}$ S. on W face, dug pits 18 x 18 x 12 ins. N and S of post 5 $\frac{1}{2}$ ft. dist. and raised a mound of earth 1 $\frac{1}{2}$ ft. high. 3 $\frac{1}{2}$ ft. base. around post.
- 58.23! Cross Snowflake Wash 47.
lks mid: lks S 71° E. and ascend.
- 80.00 Set a sand stone 16 + 9 + 4 ins
11 ins in the ground for the
cor to sees 5: 6, 7, 8. marked
with 5 notches on S⁴ E.
edges and raised a mound of
stone along side. Peterson
- practicable.
Sand. Rolling
Soil, 3rd site.
Scattered Juniper timber

T 12 N. R 20 E

chs L^{and} S. R. M

Set on a random line bet
sees 6^{and} 8.

ba 13° 45' E

Descend over rolling hills

40.00

Set a temporary 1/4 sec cor.

80.22

Intersect N^{and} S line 56 lbs

S of cor to sees 4, 5, 8^{and} 9.

Thence I run

S 89° 36' West on true line bet

sees 5^{and} 8. Same as

40.11

Set a post 3 ft. long 3 ins. diam with marked
stone, 12 ins. in the ground for 1/4 Sec. Cor.
marked 1/4 S. on N face, dug pits 18 x 18 x 12
ins. E and W of post 5 1/2 ft. dist. and raised
a mound of earth 1 1/2 ft. high. 3 1/2 ft. base. around
post.

80.22

To cor to sees 5, 6, 7, 8. :

Land. Rolling^{and} hilly

Soil. 3rd rate. good grass

Timber. Some Juniper Bush

M. M. Grant. May 26th 1883

T. 2 N. R. 20 E

Chs G and S. R. M

West on a random line bet
see's 6 and 7.

Pa 13° 45' E

Ascend gradually.

29.46 Intersect ~~at~~ Big Sp. 18 lbs N
of cor trees 1, 6, 7, and 12, which is
a Sandstone 10+3 in from top
set in the ground properly
marked and notched, with
pits 6x4 in each see 5 1/2 ft
dist ^{and} mound of earth 2 ft high
4 1/2 ft base alongside.

Thence down,

N 89° 40' E on a true line
bet see's 6 and 7, same so

29.46 To cor trees 5, 6, 7, and 8.

Sand. Rolling

Soil. 3rd rate, good magnesia
Timber Scattering juniper

T 12 N R 20 E

Chs by ^{and} S. R. M

N 10' W on a true line at
see's 5^{and} 6.

Bal 13° 45' E

Ascend gradually.

19.18

Cross road, bears E ^{and} W

25:00

Top of Hill bears E ^{and} W
235 ft high and enter level
table land.

40.00

Set a post 3 ft. long 3 ins. diam with marked
stone, 12 ins, in the ground for $\frac{1}{2}$ Sec. Cor.
marked $\frac{1}{2}$ S. on W face, dug pits 18 x 18 x 12
ins. N and S of post 5 $\frac{1}{2}$ ft. dist. and raised
a mound of earth 1 $\frac{1}{2}$ ft. high. 3 $\frac{1}{2}$ ft. base. around
post.

47.00

Intersect 8th Standard Parallel
North at 4.42 Chs E of 14 Standard
Cor on the S B by see 31^{and} 20 E
re-established by me.
Set a post 4 ft long 4 ins square
with marked stone 12 ins in
the ground for the closing

T 12 N. R 20 E

Chs G^{sup} S. R. M

Coax to see 5⁴⁵⁶. marked:
 C. C. T 12 N. R 20 E on S
 S 6 on E and S 6 on W.
 Gages with .5 notches on E.
 and .1 notch on W side and
 dug pits 18 + 18 1/2 in S. E +
 W of post 5 1/2 ft distant
 and raised a mound of earth
 2 ft high 4 1/2 ft base
 along side.

Land: Rolling.

Soil. 2nd and 3rd rate; good grass
 Timber some Juniper Brush
 Carefully examined the
 adjustments of my solar
 compass to day; particularly
 the latitude and rising
 apparatus and found them
 correct

A H Arnold Compassman
 May 26th 1883

89
90

BOOK 108

T 12 N. R 20 E

General Description

This Township is principally rolling and Rocky except some places along the Snowflake wash when there is a little valley land.

There is but little agricultural land in the Tp, but some very good grazing.

The soil is from 2nd to 4th rate - no water was observed in this Tp.

There is plenty of Juniper and Pinon Bush in all parts - some fine live Oak and Yellow pine in the south part.

For serial oaths specimens
Book No. 18.

BOOK 108

BOOK 108

BOOK 108 97
113

U. S. Surveyor General's Office,

Tucson, Arizona, July 17, 1884,

The foregoing Field Notes of the Survey of the

Subdivision Lines of
Township 12 North
Range 20 East

Of the Gila and Salt River Base and Meridian, Arizona, execu-
ted by

M. V. Grant

Deputy Surveyor, under his contract of the

Seventh

day of

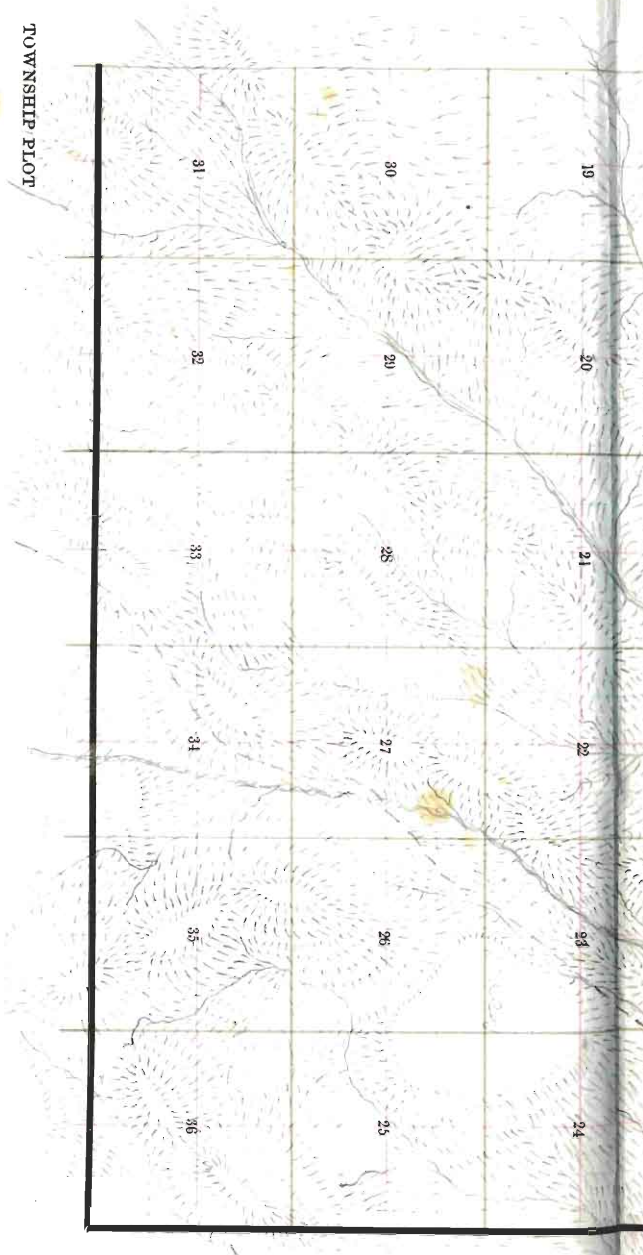
August

, 1884, having been

critically examined and the necessary corrections and explana-
tions made, the said Field Notes and the surveys they describe

are hereby approved

Royal Johnson
Surveyor General.



TOWNSHIP PLOT

Meridian Line,

Base Line,

Standard Line,

Township Lines,

Section Lines,

Meander Lines,

Office Work.

Township No. 12 N Range No. 21 E 6th & Salt River Meridian.

