

Index

Book 1

No. III -

Indexed

Field Notes

OF THE SURVEY OF THE

Subdivision Lines

-OF-

Township *18 N.* Range *20 E.*

Gila and Salt River Base and Meridian

ARIZONA.

By *A. P. Johnson*, D.S.

Under contract dated *July 17th 1882*

Survey commenced *Dec 28th 1882*

Survey completed *Dec 31st 1882*

No. III

1A

BOOK III

INDEX DIAGRAM.

Township..... 12 *N.*
 Range..... 23. *E.*

6	82	5	60	4	44	3	29	2	15	1
80		79		58		43		28		13
7	78	8	57	9	42	10	27	11	12	12
76		75		56		40		26		11
18	74	17	54	16	39	15	24	14	9	13
72		51		53		38		23		8
19	70	20	51	21	36	22	21	23	6	24
68		67		50		35		20		5
30	66	29	49	28	34	27	19	26	4	25
64		63		48		33		18		2
31	62	32	47	33	31	34	17	35	1	36

Gila and Salt River, Arizona.

ARIZONA.

No 111

BOOK 111

For description of instrument
and preliminary trials; see Book 1.

Survey commenced. Dec 28th 1882

Survey completed. Dec. 30th 1882

Before proceeding to subdivide
this Sp. m made a change
of 5-minutes in the latitude's
arc of our solar compass
by subtracting same from
the reading previously given; and
at noon verified and corrected
same by observation on the sun.
I also further tested instrument
by reversing.

T12. N. R 23 E G & S R M

chs

From the cor to sec's 1, 2
25th & 26. on the south-
boundary of T¹² recently
re-established by me.

From

North 2nd sec's 25th & 26

to 134° 28' E

Ascend

40.00

Set a post 3 ft. long 3 ins. diam with marked
stone, 12 ins, in the ground for $\frac{1}{4}$ Sec. Cor,
marked $\frac{1}{4}$ S. on N face, dug pits 18 x 18 x 12
ins. N and S of post 5 $\frac{1}{2}$ ft. dist. and raised
a mound of earth 1 $\frac{1}{2}$ ft. high. 3 $\frac{1}{2}$ ft. base. around
post.

78.18

Cross wash 10 chs wide Cor. N.
and ascend

80.00

Set a post 4 ft. long 4 ins. square, with marked
stone, 12 ins, in the ground for Cor. to Secs,
25. 26 35th & 36 marked T. 12 N S. 25th on
N. E. R. 23rd S. 26 on S. E, S, 35th on
S, W, and S, 26 on N, W, face, with 1 notch
on S, and 1 notch on E. edges, dug

T12. N. R 23 E G & S E M

chs'

pits 18 x 18 x 12 ins. in each Sec., 5 1/2 ft. dist.
and raised a mound of earth 2 ft, high, 4 1/2 ft.
base. around post.

Sand. Rolling

Soil. 1st - vale; good grazing
Timber. Scattered Juniper

East on a random line bet
secs 25^{and} 26

to 13° 14' E

2620 Cross creek 1 1/2 lbs. n. l. l. s.
S 80° W. and ascend gradually.

40.00 Set a temporary 1/4 sec cor

80.10 Intersect E Biny off P 2 2 lbs
South of cor to sec's 25 30.31^{and} 26
which is

A Sandstone 10+3 ins. firmly
set in the ground. properly

T12. N. R 23 E G & S R M

Ch^o

notched with pits dug in each
 sec. $5\frac{1}{2}$ ft dist. and mound of
 earth raised alongside
 Thence 2 mi

S $89^{\circ} 5' 1''$ W on a true line
 to sees 25 ²⁴ 36. same 20

40.08

Set a post 3 ft. long 3 ins. diam with marked
 stone, 12 ins, in the ground for $\frac{1}{4}$ Sec. Cor,
 marked $\frac{1}{4}$ S. on N face, dug pits 18 x 18 x 12
 ins. E and W of post $5\frac{1}{2}$ ft. dist. and raised
 a mound of earth $1\frac{1}{2}$ ft. high. $3\frac{1}{2}$ ft. base. around
 post.

80/16

To cor to sees 25. 26. 35 ²⁴ 36
 Sand. Rolling, good paying
 Soil 1st rate.
 Timbers scattered Juniper

T12. N. R. 23 E G & S R M

Chs.

North lot sees 25 ^{July} 26
20 13. 14' E

40.00 Aced over rolling hills
Set a Sandstone 24 1/2 + 4
ins. 18 ins in the ground
for 1/4 sec cor. marked
1/4 on W face and raised
a mound stone along side
It's impracticable
from which

A Pinon 10 ins diam bears S 52° 30' E
33 lbs dist. Marked 1/4 S. B. P.

A Pinon 6 ins diam bears S 41° W
18 lbs dist. Marked 1/4 S. B. P.

80.00 Set a post 4 ft. long 4 ins. square, with marked
stone, 12 ins, in the ground for Cor, to Secs,
23. 24. 25 ^{July} 26 marked T. 12 N S. 24 on
N. E. R. 23 E S. 25 - on S. E. S, 26 on
S, W, and S, 23 on N, W, face, with 2 notch
even S, and 1 notch on E. edges, dug
11 1/2 x 13 x 12 ins. in each Sec., 5 1/2 ft. dist.

T12. N. R. 23 E G & S R M

Chs

and raised a mound of earth 2 ft, high. $4\frac{1}{2}$ ft.
base. around post.

Laud. Rolling; good for $\frac{1}{3}$ mi
Soil. 1st rate.
Timbr. Some Juniper

Easton (a random line)

ht sees 24 ^{and} 25

to 13° 16' E

Ascend gradually.

40.00 Set a temporary $\frac{1}{4}$ sec cor.

79.92 Intersect @ Point P 13 lbs

South of cor to sees 19.24

25 ^{and} 20. which is

A Sandstone 12+8 in. fossils
set in the ground. properly
worked, with. pits dug in each
see $5\frac{1}{2}$ ft. dist. and mound of
earth raised alongside

T12. N. R 23 E G & S. 1. M

Obs

Phenac Drum

S 89° 34' N ma true line at -
sees 24 ^{and} 25 same ra.

39.96 Set a Sand stone, 20 x 10 x 7 ins., 15 ins.
in the ground for $\frac{1}{4}$ Sec, Cor, marked $\frac{1}{4}$. on No.
face, dug pits 18 x 18 x 12 ins. E and W
of stone 5 $\frac{1}{2}$ ft. dist. and raised a mound of earth
1 $\frac{1}{2}$ ft. high, 3 $\frac{1}{2}$ ft. base. alongside.

79.98. N cor to sees 23-24-25 ^{and} 26
Sand. Rolling.
Soil. & straw. Good for
Timber. Scattered juniper

North lat sees 23 ^{and} 24
ra 15.16' E

Ascend

19.94 Top of ridge 25 ft high east of M.
& descend

T12. N. R. 23 E G & S R M

Ch.

33.00

Grass wash 10 lbs with 60 ft.

40.00

Set a sand stone 14 x 12 x 7 in -
10 in in the ground for

1/4 sec cor; marked 1/4 on

W face. and raised a mound
of stone alongside. Pits
impracticable

80.00

Set a sand stone 18 x 10 x 7 ins, 12 ins. in
the ground for Cor. to Secs. 13, 14, 23 & 24 marked
with 3 notches on S. and 1 notch on E. edges,
dug pits 18 x 18 x 12 ins. in each Sec., 5 1/2 ft.
dist. and raised a mound of earth 2 ft, high.
4 1/2 ft. base. alongside.

Sand. Rolling.

Soil. 24. 24. 24.

Timber Scattering Jumps

T12. N. R 23 E G & S R M

Chs'

Past on a random line
 at sees 13^{and} 24

7a 13° 18' E

Accred.

35.00 To top of mesa & across same

40.00 Set a ~~marker~~ 1/4 see cor

59.86 Intercept of Ridge T 28 lbs

S of cor to sees 13, 18, 19^{and} 24
 which is

A Sandstone 9+6 in. firmly
 set in the ground. Quad properly
 notched, with pits dug in each
 see 5 1/2 ft dist and mounds of earth
 raised alongside.

Thence I run

South 89° 48' W on a true line

at sees 13^{and} 24 same as.

39.93 Set a sandstone 14+8+7 in

9 in. in the ground for 1/4 see

T12. N. R 23 E G. & S R M

Chs.

cor. marked $\frac{1}{4}$ on N face
 and raised a mound stone
 alongside Pit's impracticable
 4986 See cor to sees 13, 14, 23 and 24
 Ascend. Rolling
 Soil. 17th male. good grazing
 Timber: Scattered Juniper

North sees 13 and 14
 Sta 13. 18th E

Ascend
 37.70 Cross Canyon 100 ft deep
 to N. E. and ascend.
 40.00 Set a Granite stone 18 + 10 + 8 in
 12 in in the ground for N
 see cor. marked $\frac{1}{4}$ on N
 face. and raised a mound
 stone alongside; Pit's
 impracticable.

T12. N. R 23 E G & S R M

cli

- 45:30 Top of spur 70 ft. high
bear S 47° E. and descend
- 64:20 Cross road 20 lbs. wide
to N. W. and ascend
- 80:00 Set a Granite Stone
18+12+8 in 12 in in the
ground for the east side
11, 12, 13 and 14, marked with
4 notches on S. and 1 notch
on E. edges and raised
a mound stone along it.
Pits impracticable.
Soil: Rough and Rocky
Sail: 3rd rate.
Tiber: Scattered juniper
Scant Vegetation

T12. N. R 23 E G & S R M

chs

- East on a random line
 Set sees 12^{and} 13.
 In 13° 15' E
- Ascend
 39.00 Top of Ridge has N W S E, S,
 and Ascend
- 40.00 Set a temporary 1/4 see cor
 79.60 Intersect E Ridge N of 10 lbs
 South of cor to sees 7, 12, 13^{and} 14
 which is
 A limestone 10+4 ins firmly set
 in the ground, ^{and} properly, notched
 with dug in each sees 8 1/2 ft dist- and
 many of earth raised along side
 There of Drum
- Set 89° 56' W on a true line
 Set sees 12^{and} 13, same 200
- 39.80 Set a Sandstone 14+10+7 ins
 9 ins in the ground for 1/4
 see cor marked 1/4 on N of see

T12. N. R 23 E G & S R M

Ch's

and raised a mound stone
 along side. It is impracticable
 59.60 To cor to sees 11, 12, 13 and 14
 Ascend. Rolling
 Soil, 3rd rate.
 Timber Scattering juniper
 Vegetation, scant.

North let sees 11 and 12
 to 13° 15' 8"

Ascend
 30.00 Top of Spur soft high
 trace N.W. and descend
 44.00 Set a Sandstone 40 + 141
 this 30 was in the ground for
 1/4 see cor. marked 14 on A
 face and raised a mound
 of stone along side
 It is impracticable

T12. N. R. 23 E G & S R M

Chs

58.20 Cross mark Co N W + ascend

80.00

Set a post 4 ft. long 4 ins. square, with marked stone, 12 ins, in the ground for Cor, to Secs, 1, 2, 11 and 12 marked T. 12 N S. 1 on N. E. R. 23 S. 12 on S. E, S, 11 on S, W, and S, 2 on N, W, face, with 5 notches on S, and 1 notch on E. edges, dug pits 18 x 18 x 12 ins. in each Sec., 5 1/2 ft. dist. and raised a mound of earth 2 ft, high. 4 1/2 ft. base. around post.

Land, Rough and Rocky Soil; 4th mile Timber Scattered Juniper

East on a random line
at sec 1 and 12.

W 15: 12' E

Ascend

27.12

Top of Ridge 60ft high base N. W. and S. E and descend

T12. N. R. 23 E G & S R M

Chs

- 40.00 Set a temporary $\frac{1}{4}$ sec cor.
- 51.30 Cross mark 15 lks mid: cor N W. and descend
- 79.30 In contact. 8 Rivin Dip 8 lks To cor to see's 1, 6, 7 and 12, which is
A Basalt stone 9+4 ins firmly set in the ground, $\frac{9}{16}$ properly notched, with pits dug in each sec, $5\frac{1}{2}$ ft dist and mound of earth raised along side.
Thence down
S 89.5° W 1/2 m a true line bet. see's 1 and 12 same as
- 39.65 Set a sand stone 18+12+7 ins 12 ins in the ground for $\frac{1}{4}$ sec cor. marked $\frac{1}{4}$ m N face and raised a mound stone along side. This unpracticable.
- 79.30 To cor to 1, 2, 11 and 12.

T12. N. R 23 E G & S 1 M

Chs

Land Polling.
Soil, 2nd run -
Tombs scattering Jumper

Walk on a tree line
to see's 1 ⁴/₂ 2.

Lat 13° 13' E

40.00

Set a Sandstone 18x8+6 ins 12 ins in the
ground for 1/4 recor, marked 1/4 on W. face
and raised a mound stone along side. Dis-
infractiles

41.13

Top of Ridge, 30 ft high
Leas NWTS. 8, 4th decend

64.41

Intersect 2nd Standard Parallel
North, 6.84 chs N. of the Standard
Cor to see's 75 ⁴/₂ 36, recently
re-established by me.

Set a Post 4 ft long 4 ins square
with marked stone
12 ins in the ground for the
closing Cor to see's 1 ⁴/₂ 2.

T12. N. R 23 E G & S R M

Obs

marked C.C. T12 N. R 23 E. on S
S1 on E. and see 2 on W face;
with 1 notch on E and 5 notches
on W. face; dug pits 18+18+12 in
S. E. and W. of post, 5 1/2 ft. dia.,
and raised a mound of earth
2 ft. high 4 1/2 ft. base, crossed
post.

Land Rough and Rocky.

Soil ~~and~~ rare. poor grass.

Spikes - Scattered juniper

I carefully examined the
adjustments of my solar
compass to day, particularly
the latitude and verifying
azimuths and found them
correct.

A. Johnson. Dec 28th

1882

T12. N. R 23 E G & S R M

Chs

From the Cor. to Secs 2-3-34 & 35 on S. Ry
 of Tp. recently established by un-
 derwritten
 North lot sees 34 and 35 -
 Jan 13. 84 '8

Ascend

40.00 Set a sand stone, 18 x 10 x 9 ins., 12 ins.
 in the ground for $\frac{1}{4}$ Sec, Cor, marked $\frac{1}{4}$. on N
 face, dug pits 18 x 18 x 12 ins. N and S.
 of stone $5\frac{1}{2}$ ft. dist. and raised a mound of earth
 $1\frac{1}{2}$ ft. high, $3\frac{1}{2}$ ft. base. alongside.

43.10 Top of Ridge 35 ft. high across
 S & N. and descend

80.00 Set a sand stone 24 x 4 x 4 ins., 18 ins. in
 the ground for Cor, to Secs 26-27-34 & 35 marked
 with 1 notch on S. and 2 notches on E. edges,
 dug pits 18 x 18 x 12 ins. in each Sec., $5\frac{1}{2}$ ft.
 dist. and raised a mound of earth 2 ft. high.
 $4\frac{1}{2}$ ft. base. alongside.

Sand Rolling
 Soil, 2nd rate

T12. N. R 23 E G & S R M

ch

East on a random line
 lat sees 26 ^{and 35}
 to 13° 56' E

Ascent

4.15- Cross mark 15 lbs mid^s Co
 N 46° W.

26.10 Cross mark 19 lbs mid^s Co
 S 38° W.

40.00 Set a temporary 1/4 sec cor

53.21 Cross mark 20 lbs mid^s Co
 N 47° W.

80.36 Intersect N & S line 14 lbs
 N of cor to sees 25.26.35 ⁴³ 36

Three ^{DP} run

N 89° 54' W on a true line lat.
 sees 26 ^{and 35}, same as

40.18

Set a post 3 ft. long 3 ins. diam with marked
 stone, 12 ins, in the ground for 1/2 Sec. Cor.
 marked 1/2 S. on N face, dug pits 18 x 18 x 12
 ins. E and W. of post 5 1/2 ft. dist. and raised
 a mound of earth 1 1/2 ft, high. 3 1/2 ft. base. around
 post.

T12. N. R 23 E G & S R M

chs

8028 To cor to sees 26.27.37 ⁴⁴35-
Land. nearly level
Soil. 8th rate

North to sees 26 and 27
20.15: 56'E

Descend

85- Cross mark to the Ovis Co
West, and ascend

4000 Set a Sand stone, 8 x 10 x 7 ins., 12 ins.
in the ground for $\frac{1}{4}$ Sec, Cor, marked $\frac{1}{4}$. on N
face, dug pits 18 x 18 x 12 ins. N and S
of stone $5\frac{1}{2}$ ft. dist. and raised a mound of earth.
 $1\frac{1}{2}$ ft. high. $3\frac{1}{2}$ ft. base. alongside.

80,00 Set a Sand stone 2 $\frac{1}{2}$ x 10 x 9 ins., 18 ins. in
the ground for Cor, to Sees, 22-23-26 ⁴² marked
with 2 notches on S. and 2 notches on E. edges,
dug pits 18 x 18 x 12 ins. in each Sec., $5\frac{1}{2}$ ft.
dist. and raised a mound of earth 2 ft. high,
 $4\frac{1}{2}$ ft. base. alongside. from which

T12. N. R 23 E G & S R M

cho

A P. 10
 A P. 10 10 10 10 10 10
 21 47° N. 43 lbs diet
 Marked T. 12 N. R 23 E S 22 B. G.
 No other trees in limits
 Sand rolling & level
 Soil, red soil.
 Scattered juniper timber

East on a random line
 see's 23^{and} 26.

ca 13° 14' E

Ascend over rolling hills

40.00

Set a temporary 1/4 sec cor

99.86

Intersect N & S line 26 lbs

S. of cor to see's 23 24 25^{and} 26

Three 1 run

S 89° 49' N on a true line

bet. see's 23^{and} 26 same run

39.93

Set a sand stone 16 + 9 + 7 run

T12. N. R. 23 E G & S R M

Chs

10 vis in the ground for
 1/4 sec. cor; marked 1/4 on
 N face. and raised a
 mound stone along side
 Pits impracticable
 79.86 To cor to sec's 22-23-26 ^{and 27}
 Land. Rolling & level
 Soil - ~~not~~ -

North Pit sec's 22 ^{and 23}
 Ca 13:14' E
 33.00 ~~Green~~ Gradual slope
~~Green~~ ^{Green} ~~gradual~~ ^{gradual} ~~slope~~ ^{slope}
 Top of red qtz 200 ft high
 base: E. & W. and descend
 40.00 Beba Sandstone 16 + 60 + 4
 vis. 10 vis in the ground
 for 1/4 sec cor marked
 1/4 on N face and raised a
 mound stone along side

T12. N. R. 23 E G & S R M

chs

It is impracticable from which
A Pinon 10 in diam bears
S 82° W. 56 lbs dist.
Marked 74 S. B. T.

50 00

No other trees in vicinity -
Set a sandstone 18+16+6 in
12 in in the ground for the
root to see 14. 16. 22 and 23.

Marked with 3 notches on
A and 2 notches on C
edges and raised a mound
stone alongside. It is
impracticable from which
A Pinon 8 in diam bears S 67° W
1.14 chs dist. Marked S. 12 N
R 20 B S 22 B T

A Juniper 10 in diam bears 784° E
46 lbs dist. Marked. S. 12 N. R
23 B. S. 14 B. T.

No other trees in vicinity

T12. N. R. 23 E G & S R M

Chs

Land Rolling & Rocky
Soil. 2nd rule -
Furber. Dense Juniper Bush

East on a random line 21
secs 14^{and} 23
In 13° 00' E

18110 Dressed
Cross road 20 ft ^{wide} ~~deep~~
to N 46° W. and ascend

40.00 Set a temporary 1/4 sec
cor.

99.96 Intersect. N. T. S. line 8 lks
N of cor to secs 13. 14. 23^{and} 24

Third run
N 89° 57' W on a true line
bet secs 14^{and} 23 same as

89.98 Set a Sandstone 14 + 10 + 7 mi.
9 ins with ground for 1/4 sec

T12. N. R. 23 E G & S R M

chs

cor, marked "14 on N face
and raised a mound
stone along side.

Pits impracticable

79.96

To cor to see's 14, 15, 22^{and} 23

Sand. Rolling

Sail - 200 scale

Trunks - dense Juniper Brush

North of see's 14^{and} 15 -

ca 13:00' E

Recessed

10.00

low rock 30 ft ^{wide} ~~deep~~ les

N 30° W.

40.00

Set a sandstone 161816

in 10 ins into the ground for

"14 see cor marked "14 on N

face, and raised a mound

stone along side. Pits
impracticable

T12. N. R 23 E G. & S R M

Ch

- 48.14 Top of ridge 3.5 ft high base
E. + W. and descend
- 80.00 Set a sandstone 16+12+5-
ins. 10 ins in the ground
for the cor trees 10.11.14
May 15 marked with 4 notches
on S and 2 notches on
E edge and raised a
ground stone alongside
its impracticable.
- from which
- A Juniper 12 ins diam base
S 54° E. 72 lbs dist.
- Marked T. 12 N. R 23 E. S. 14 B. S.
- A Pinon 10 ins diam base S
64° W. 27 lbs dist.
- Marked T. 12 N. R 23 E. S. 15 B. S.
- A Juniper 12 ins diam base
N 6° W. 54 lbs dist.
- Marked T. 12 N. R 23 E. S. 10 B. S.
No other trees within limits.

T12. N. R. 23 E G & S R M

chs

Saved. Rough & broken
Sail, 3rd time -
Tinker. Veneer Jumper Bush

East on a random line
lat sees 11 and 14

Lat 13° 14' E

Decided

40.00 Set a temporary 1/4 see cor

77.30 Cross mark 15 lbs mid & to N. W.
and back

79.74 Intersect N. O. S line 21

lbs N of cor to sees 11, 12, 13 and 14

Then I run

N 89° 51' W on a true line 21
sees 11 and 14. same cor.

39.87 Set a sandstone. 17 x 10 x 6 in

12 in in the ground for 1/4

see cor marked 1/4 on N face

T12. N. R 23 E G & S R M

Chs.

79-74

and raised a mound slove
along side of P. to impracticable

Co. cor trees 10, 11, 14 and 15 -

Land. Rolling

Sail. ~~and~~ rail -

Timber - Deerjumper Bush

North trees 10 and 11

In 13° 14' E

Descent

35-40

Cross track 15 lbs side

Co. N. 47° W. and ascend

40, or

Set a post 3 ft. long 3 ins. diam with marked
stone, 12 ins, in the ground for $\frac{1}{2}$ Sec, Cor,
marked $\frac{1}{2}$ S. on W face, dug pits 18 x 18 x 12
ins. N and S of post $5\frac{1}{2}$ ft. dist. and raised
a mound of earth $1\frac{1}{2}$ ft. high. $3\frac{1}{2}$ ft. base. around
post. from which

A Juniper 8 ins diam near 2186° E

25 lbs dist marked 142 135.
no other trees in limits

T12. N. R 23 E G & S R M.

ch

8000 Set a Sandstone 20² 11⁴
 vis .22 vis in the ground
 for the cor to see 2.3.10^{and} 11
 marked with 6 notches on
 S. and 2 notches on E edges
 and raised a mound stone
 alongside. It is impracticable
 to trace limits.

A Sandstone bluff has $\approx 3^{\circ}$ W.

4 ch list

Sand. Rolling

Sail. 3rd rule

Timber 10 ease jumps
 Brush

East on a random line at
 sees 2^{and} 11.

ca 18.14 E

Decend.

T12. N. R 23 E G. & S R M

Ch's

40.00 Set a temporary $\frac{1}{4}$ sec cor32.60 Cross mark 15th mile to
N.W. ^{and} accend.79.26 Intersect 41 & 8 line
34th mile South of cor to sec's
2.2.11 ^{and} 12.

Thuse dms.

S. $89^{\circ}45'N$ on a true lineat sec's 2 ^{and} 11. Same as

39.63 Set a sand stone 14 + 7 + 3 in

9 in in the ground for

 $\frac{1}{4}$ sec cor. marked $\frac{1}{4}$ on

N face and raised a mound

stone a long side 3 feet

impracticable

79.26 To cor to sec's 2.3.10 ^{and} 11

Land. Rolling

Soil; not salt

Timber 10 or 12 Jumper Bush

T12. N. R 23 E G & S R M

Chs

North on a true line 21
secs 2nd & 3.

SW 13:14 E

- 25.50 Top of poplar 175-ft-high
Leaves E + W. ^{2nd} & 3rd ground, gradually
- 25.15 Cross road 18 lbs m² lbs W
- 40.00 Set a Sandstone 18+10+7 in
12 in in the ground for ¹/₄
see cor, marked ¹/₄ on W
face and raised a
ground stone alongside
Top impracticable.
- 62.72 Intersect 8th standard
Parallel North 4.60 Chs
W of standard cor to secs
3 4th & 3 5: recently re-established
by me.
Set a Sandstone 18+12+6 in
12 in in the ground for
the blowing cor to see

T12. N. R 23 E G & S R M

Obs

34, ^{and} 35 - marked C. C. with
 2 notches on E and 4
 notches on W. edges and
 raised a mound of stone
 along side C. Fits imper-
 tible
 Sand Hulling & Rocky.
 Soil, 200 feet
 Timber - Dense Juniper Bush
 G. M. Carson Comptroller
 Dec 25th 1882

From the cor to see 3. 4. 33 ^{and} 34
 on the south Bony of the Sp
 recently re-established by me
 Iron
 North of see 33 ^{and} 34
 In 14° 20' E
 Ascent

T12. N. R 23 E G & S R M

Chs

4000 Set a post 3 ft. long 3 ins. diam with marked stone, 12 ins, in the ground for 1/4 Sec. marked 1/4 S. on N face, dug pits 18 x 18 x 12 ins. N and S of post 5 1/2 ft. dist. and raised a mound of earth 1 1/2 ft, high. 3 1/2 ft. base. around post.

8000 Set a post 4 ft. long 4 ins. square, with marked stone, 12 ins, in the ground for Cor, to Secs, 2728-33 3/4 34 marked T. 12 N S. 27 on N. E. R. 23 S. 34 on S. E, S, 33 on S, W, and S, 27 on N, W, face, with 1 notch on S, and 3 notches on E. edges, dug pits 18 x 18 x 12 ins. in each Sec., 5 1/2 ft. dist. and raised a mound of earth 2 ft, high. 4 1/2 ft. base. around post.

Land, Rolling and broken
Soil, 3/4 sale
Timber Scattered Juniper
Birch

T12. N. R. 23 E G & S R M

Ch's

- East on a random line
 bet sees 27^{and} 34
 Ia 129° 45' E
 Ascend gradually.
 2600 Top of Spur 125 ft high
 has N.T.S and descend
 gradually.
 4000 Set a temporary 1/4 sec cor
 79.64 Intersect N.T.S line 35 lbs
 N of cor to sees 26 29. 34^{and} 35
 Thence run
 789° 45' W on a true line
 bet sees. 27^{and} 34 same as
 39.82 Set a Sand stone, 90 x 12 x 9 ins., 22 ins.
 in the ground for 1/4 Sec, Cor, marked 1/4 on N
 face, dug pits 18 x 18 x 12 ins. E and W
 of stone 5 1/2 ft. dist. and raised a mound of earth
 1 1/2 ft. high. 3 1/2 ft. base. alongside.
 79.64 S, cor to sees 27. 28. 33^{and} 34
 Sand Rolling.

T12. N. R 23 E G & S R M

chs

Soil, ~~red~~ note
 Timber. Scattered Juniper
 brush.

North lat sees 27^{and} 28
 Pa 12° 45' E

Ascend

2.28 Top of Spire 45 ft high
 Pass N 79° W and S 79° E.
 and descend,

34.51 Cross wash 18 lbs mix of cast
 and ascend

40.00 Set a post 3 ft. long 3 ins. diam with mark of
 stone, 12 ins, in the ground for $\frac{1}{4}$ Sec. Cor.
 marked $\frac{1}{4}$ S. on W face, dug pits 18 x 18 x 12
 ins. E and W of post $5\frac{1}{2}$ ft. dist. and raised
 a mound of earth $1\frac{1}{2}$ ft, high. $3\frac{1}{2}$ ft. base. around
 post.

48.00 Stone pass N. about 30 ch - dist

T12. N. R. 23 E G & S R M

his

80.00

Set a post 4 ft. long 4 ins. square, with marked stone, 12 ins. in the ground for Cor. to Secs, 21. 2 2. 27 ⁴²⁸ marked T. 127 S. 22 on N. E. R. 238 S. 27 on S. E, S, 28 on S, W, and S, 21 on N, W, face, with 2 notch ~~on~~ S, and 3 notch ~~on~~ on E. edges, dug pits 18 x 18 x 12 ins. in each Sec., 5 1/2 ft. dist. and raised a mound of earth 2 ft. high. 4 1/2 ft. base. around post.

Sand Rollers

Sail, 2nd role

Timber. Scatterung jumps

Brush

East on a random line

at sec's 22 and 27.

at 18:00 E

Ascend gradually

40.00

Set a temporary 1/4 sec cor

79.72

Intersect N 23 line & line to

T12. N. R. 23 E G & S R M

Obs

3 of cor to see's 22, 23, 26 ^{and 27}
 Thence down

3989° 57' W on a true line

between 22 ^{and 27}, same as

39.86

Set a post 3 ft. long 3 ins. diam with marked
 stone, 12 ins. in the ground for $\frac{1}{4}$ Sec. Cor.
 marked $\frac{1}{4}$ S. on N face, dug pits 18 x 18 x 12
 ins. E and W of post 5 $\frac{1}{2}$ ft. dist. and raised
 a mound of earth 1 $\frac{1}{2}$ ft. high. 3 $\frac{1}{2}$ ft. base. around
 post.

79.72

To cor to see's 21, 22, 27 ^{and 28}
 Sand Rolling.

Soil, red silt

Timber. Scattered Juniper ~~brush~~

North of see's 21 ^{and 22}.

ba. 13° 00' E

Ascend

40.00

Set a sand stone 20 x 12 x 4 in
 15 ins in the ground for 1/4 sec

T12. N. R 23 E G & S R M

ch's

cor. marked $\frac{1}{4}$ on N face
and raised a mound of
stone along side
It is impracticable
from which

A Pinon 6 in diameter

S 44° E. 23 lbs dist

marked $\frac{1}{4}$ S.P.T.

A Pinon 8 in diameter

28 lbs dist - marked $\frac{1}{4}$ B.P.

68.12 Top of spur 85 ft high has N
10° W. ^{and base}

80.00 Set a sand stone $8 \times 6 \times 4$ ins, $\frac{1}{2}$ ins. in
the ground for Cor, to Secs, 15716121²02 marked
with 3 notches on S. and 3 notches on E. edges,
dug pits 18 x 18 x 12 ins. in each Sec., 5½ ft.
dist. and raised a mound of earth 2 ft, high.
4½ ft. base. alongside. from which

A Pinon 10 in diameter

S 11° W. 24 lbs dist, marked

T12. N. R 23 E G & S N M

Chs

T12 N. R 23 E. S. 21 B. B.

A Pinon Swiss drain base
N 64° W. 38 lbs & cat.

Marked T. 12 N. R 23 E. S 16 B. B.

No other trees in limits
Sage Roller'sSoil. 3rd. soil Good grazing
Bence Juniper BushEast on a random line
lat sec's 15th 22

Ta / 13° 14' E

Decreased gradually

40.00 Det a temporary 1/4 sec cor

80.14 Intersect N. V. S line 44 lbs

South of cor to sec's 14, 15, 22²²

Thence down

S 89° 41' W on a true line lat-

15th 22 same as

T12. N. R 23 E G & S R M

Chs

40.07 Set a Sand stone, $36 \times 16 \times 4$ ins., 27 ins. in the ground for $\frac{1}{4}$ Sec, Cor, marked $\frac{1}{4}$. on N face, dug pits $18 \times 18 \times 12$ ins. E and W of stone $5\frac{1}{2}$ ft. dist. and raised a mound of earth $1\frac{1}{2}$ ft. high. $3\frac{1}{2}$ ft. base. alongside.

80.14 To cor to see's 15 & 16. 21 ^{and 22}
Sand ralling
Soil. 2nd rate. good grazing
Pine scattered Juniper

North to see's 15 ^{and} 16
Q 13:14 'E

Recent

40.00 Set a Sand stone 18×10
 $\times 5$ ins, 12 ins in the ground
for $\frac{1}{4}$ sec cor. marked
 $\frac{1}{4}$ on W face & raised
a mound stone alongside
It is impracticable

T12. N. R 23 E G & S R M

cks

50.00 Cross wash 25 lbs mid & low
N 45° W. and ascend

80.00 Set a Sand Stone 18+100

7 ins 12 ins in the ground
for three to see's 9, 10, 15-
and 16 marked with 4 notches
on S. and 3 notches on
E edges, and raised
a mound about along each
it's impracticable.

Low-Rollins

Sail, 220 sail

Timber: Pense Jumper
Pencil

East on a random line

at see's 10 and 15-

2W 13° 14' E

Descend gradually

T12. N. R. 23 E. G & S. R. M

Chs

- 36.15 Cross creek 20 chs wide
Co N 45° W. and ascends gradually
- 40.00 Set a temporary $\frac{1}{4}$ sec cor
- 57.00 Top of bluff bears N 40° W
and traces
- 80.70 Intersect N. T. S line 13 chs
N of cor to sees 10, 11, 14 ^{and 15} -
Thence down
N 89° 54' W on a true line
bet sees 10 ^{and 15}, same 20
- 40.05 Set a Sandstone 18+12+10 in
12 in in the ground for $\frac{1}{4}$
sec cor, marked $\frac{1}{4}$ on N
face and raised a mound
stone along side. This
impracticable.
- 80.10 To cor to sees 9, 10, 15 ^{and 16}
Sand Broken ^{and} Rocky
Soil, no rail
Timber, dense juniper Bush

T12. N. R 23 E G & S R M

Obs

North to sees 9 and 10

to 13:14'E

Ascend

40.00 Set a sand stone, 14 x 10 x 4 ins., 9 ins. in the ground for $\frac{1}{4}$ Sec, Cor, marked $\frac{1}{4}$. on W face, dug pits 18 x 18 x 12 ins. N and S of stone $5\frac{1}{2}$ ft. dist. and raised a mound of earth $1\frac{1}{2}$ ft. high. $3\frac{1}{2}$ ft. base. alongside. from which

A Pinon Louis diam brass 716321

6.7 lbs. set marked 74 S. B.S.

54.60 Top of ridge bears 71 42° N and S 42° E and ascend

63.00 cross mark 25-lbs ridge to 71 46° N. and ascend.

80.00 Set a post 4 ft. long 4 ins. square, with marked stone, 12 ins, in the ground for Cor, to Sees 3.4.9 and 10 marked T12 N S. 3 on N. E. R. 23 E S. 10 on S. E, S, 9 on S, W, and S, 4 on N, W, face, with 5-notch es on S, and 3 notch es on E. edges, dug pits 18 x 18 x 12 ins. in each Sec., $5\frac{1}{2}$ ft. dist.

T12. N. R 23 E G & S R M

Ch's

and raised a mound of earth 2 ft, high. $4\frac{1}{2}$ ft.
base. around post.

Sand Rolling

Soil, 8th row

Timber. Scattering Juniper

East on a random line bet.
secs 8th and 10.

to $13^{\circ} 14' E$

Ascend Gradually

22.00 Top of Spur 180 ft high base N
& S. and descend gradually.

40.00 Set a temporary 14 sec cor

50.13 Cross mark 16 lbs midy lcs
N $43^{\circ} W$.

79.50 Intersect N & S line 22
lbs South of cor to sec 23
10th 11.

Thence I run

T12. N. R. 23 E G & S R M

chs

$289^{\circ} 51'$ N on a true timber-
see's 3rd 10. same as

89.75 Set a post 3 ft. long 3 ins. diam with marked
stone, 12 ins. in the ground for $\frac{1}{4}$ Sec, Cor,
marked $\frac{1}{4}$ S. on N face, dug pits 18 x 18 x 12
ins. E and W of post $5\frac{1}{2}$ ft. dist. and raised
a mound of earth $1\frac{1}{2}$ ft. high. $3\frac{1}{2}$ ft. base. around
post.

79.50

To cor to see's 3, 4, 9 and 10.

Sand Rolling

Soil; 2nd salm - Good grazing

Pink. Scattering Juniper

North on a true line bet
see's 3rd and 4.

$13^{\circ} 14'$ E

Ascent

80.22

Top of spur 45 ft. high bears
N.W. and S.E. and descends

(over)

T12. N. R 23 E G & S R M

Obs

- 4,000 **Set a post 3 ft. long 3 ins. diam with marked stone, 12 ins, in the ground for $\frac{1}{4}$ Sec, Cor, marked $\frac{1}{4}$ S. on W face, dug pits 18 x 18 x 12 ins. N and O of post $5\frac{1}{2}$ ft. dist. and raised a mound of earth $1\frac{1}{2}$ ft, high. $3\frac{1}{2}$ ft. base. around post.**
- 60.10 **Cross mark 12 lbs rivets
N 22° W.**
- 60.93 **Intersect 3rd. Standard Parallel
N. 2. 61. Obs one of the
Standard corner sees 33-^{and} 34
recently, reestablished by
me.
Set a Post 4 ft-long 4 ins
square with marked stone
12 ins in the ground for the
closing cor. to sees 3^{and} 4
Marked C. C. T. 12 N. R 23 E.
on S. S. 3 on E and see 4
on W. faces. with 3 notches
on east and west faces.**

T12. N. R. 23 E G & S R M

als

dug pits 18 x 18 x 12 in. S. 87 W
 of post $5\frac{1}{2}$ ft. dist; and raised
 a mound of earth 2 ft high $4\frac{1}{2}$
 ft. diam. around post.

Ground nearly level.

Soil. 2nd run.

Timber; Some Juniper Brush

I carefully examined
 the adjustments of my solar
 compass to day. Particularly
 the latitude and running
 apparatus and found
 them correct.

A. P. Johnson

Dec 29th 1882

T12. N. R. 23 E G & S R M

Chs

East on a random line

Int see's 28^{Aug} 33

Ra 12° 15' E

Ascend gradually.

5-28

Top of Spun 200 ft high
base N.T.S. and descend

28.50

Cross mark 28 lbs mid Co 2145.00
and ascend

40.00

Set a temporary 1/4 see cor

7982

Intersect N.T.S. line 9 lbs

South of cor to see's 27.28.33^{Aug/33}

Thence I run

S 89° 56' W on a true line

Int see's 28^{Aug} 33. Same ra

39.91

Set a post 3 ft. long 3 ins. diam. with marked
stone, 12 ins, in the ground for $\frac{1}{4}$ See Cor
marked $\frac{1}{4}$ S. on N face, dug pits 18 x 18 x 12
ins. E and W of post 5 $\frac{1}{2}$ ft. dist. and raised
a mound of earth 1 $\frac{1}{2}$ ft. high. 3 $\frac{1}{2}$ ft. base. around
post.

7982

To cor to see's 28.29.32^{Aug/33}

T12. N. R. 23 E. G. & S. R. M.

chs-

Land Rolling
Soil, 3rd run. Good grazing

North lot sees 28^{and} 29.
In 12° 15' E

Descent.

30.18 Cross Wash 16 lbs with Co N46° W
and ascent

40.00 Set a Post 3 ft. long 3 ins. square
2 4 ins in the ground for 1/4 seen
marked 1/4 S on N face.

from which

A Pinon 9 ins diam bears N43^E 27
lbs dist. Marked 1/4 S. B. T.

A Pinon 8 ins diam bears N80° W
37 lbs dist. Marked 1/4 S. B. T.

80.00 Set a post 4 ft. long 4 ins. square, with marked
stone, 12 ins, in the ground for Cor, to Secs,
20-21. 28^{and} 29 marked T. 12 N S. 21 on
N. E. R. 23 E S. 28 on S. E. S, 29 on

T12. N. R 23 E G & S R M

chs-

S, W, and S, 20 on N, W, face, with 2 notches on S, and 4 notches on E. edges, dug pits 18 x 18 x 12 ins. in each Sec., 2 1/2' dist and raised a mound of earth 2 ft, high. 1 1/2 ft. base. around post.

Sand Rolling.

Soil. 2 no soil, good grass
Timber. Scattered Juniper.

East on a random line between 21 and 22.

at 13° 15' E

Descend gradually.

1.00 Cross wash line 21. 45° N.

4.3 3 Cross same wash. to S 23° N.

10.71 Cross same wash line 21 64° N.

and descend gradually.

40.00 Set temporary 1/4 sec corner

80138 Intersect N. T. S line 39 lbs

T12. N. R 23 E G. & S R M

chs

- North of cor to sees 21, 22,
27^{and} 28.
- Three Drive
- 40.19; N. 89° 45' W on a true line
bet sees 21^{and} 28. same as
Set a Sandstone 30+16+4 in
22 in in the ground. for 1/4
see cor; marked 1/4 on N face
and raised a mound stone
alongside. Pit impracticable
- 80.38 To cor to sees 20, 21, 28^{and} 29
Sand Rolling
Soil. 3rd rate; good grainy
-
- North bet sees 20^{and} 21
Ea 13° 15' E
- 36- Cross mark 20 chs with led 21 48° W
and ascend.

T12. N. R 23 E G & S R M

Chs

40.00 Set a Sand stone, $18 \times 16 \times 8$ ins., 2 ins. in the ground for $\frac{1}{4}$ Sec, Cor, marked $\frac{1}{4}$. on N face, dug pits $18 \times 18 \times 12$ ins. N and S . of stone $5\frac{1}{2}$ ft. dist. and raised a mound of earth $1\frac{1}{2}$ ft. high. $3\frac{1}{2}$ ft. base. alongside. from which

A Pinon 10 ins diam base $S 18^{\circ} E$
 34 lbs dist. Marked 14 S. B. U.

80.00 Set a Sand stone $24 \times 14 \times 4$ ins, 18 ins. in the ground for Cor, to Secs, $16, 17, 20$ & 21 marked with 3 notches on S . and 4 notches on E . edges, dug pits $18 \times 18 \times 12$ ins. in each Sec., $5\frac{1}{2}$ ft. dist. and raised a mound of earth 2 ft, high. $4\frac{1}{2}$ ft. base. alongside.

Sand Broken and Rocky.

Soil, ~~not~~ rich.

Timber & some juniper

Bush

T12, N. R 23 E G & S R M

Ch's

- East on a random line bet-
secs 16^{and} 21.
In $13^{\circ} 14' E$
- Ascend
- 28.12 Top of Spur Pass N^{and} S. 45 ft-
high ^{low} ascend
- 40.00 Set a temporary 1/4 sec cor
- 70.00 Cross canon 25 ft. deep
to S. and ascend
- 74.00 Top of Spur 20 ft high Pass
N. to S. and descend.
- 80.24 Intersect. N. to S line 50 ft
North of cor 15:16.20^{and} 22.
Three Iron
N $89^{\circ} 35' W$ on a true line bet-
secs 16^{and} 21. same cor.
- 70.12 Set a Sandstone 16 + 10 + 8 in
10 in in the ground for 1/4 sec
cor, marked 1/4 on N face
and raised a mound stone

T12. N. R. 23 E G & S. 1. M

Ch's

along side. Pit's impracticable
from which

A Pinus 4 in diameter base S 20° E
13 lbs dist. Marked 1/4 S.B.S.

No other trees in limits

Land. Rolling and Rocky
Soil; 3rd sale.

Timber. Dense Juniper Bush.

North set sees 16 and 19.

Pa 13:14' E

Asced

21.16 Top of ridge base E + W. 30ft
high and descended.

40.00 Set a sandstone 14 + 10 + 7 in
9 ins in the ground for 1/4 sec
cor. marked 1/4 on west
face. and raised a mound
stone along side Pit's impracticable

T12. N. R 23 E G & S R M

Ch's

80.00

Set a sandstone 24 + 14 + 4 in
 18 in in the ground for the
 post to trees 8, 9, 16 and 17. marked
 with 4 notches on S and E
 edges and saved a
 mound stone alongside
 P's impracticable
 from which

A Pinon 12 in diam base
 N 43° E. 90' the dist.

Marked T. 12 N. R 23 E S. 989.

A Pinon 12 in ^{diam} base N 42° W. 114

Ch's dist. Marked T. 12 N.

R 23 E. S. & B. T

No other trees in limits.

Sand. Rolling.

Soil; 8th sale

Pinon. Scattering Juniper

T12. N. R 23 E G & S R M

Obs-

East on a random line let
see's 9th & 16.

To 13°. 14' E

Descend Gradually.

34.26 Cross wash 16 lbs mid & let
N.W. ^{and} ascend

40.00 Set a temporary 1/4 sec cor

77.00 Top of Spur 200 ft high
bear's N 45° W.

and descend gradually

79.88 Intersect N & S line 30 lbs
N of cor to see's 9, 10, 15 ^{and} 16

Thence I run,

N 89. 42' W on a true line let
see's 9th & 16 same w.

39.94 Set a Sandstone 30+10+6 in

22 in in the ground
for 1/4 sec cor marked
1/4 on N face and raised
a mound stone all together.

T12. N. R. 23 E G. & S R M

Chis

Pits impracticable.
 Sand Rolling
 Soil, 3rd row, good grazing
 Timber Scattered Juniper B.

North lat-secs 8^{and} 9.

lat 13° 14' E

Descend

1.25 Cross wash 10 lbs mid E Co 71. E

16.20 Cross wash 10 lbs mid E Co 71 7° E

and along e slope of ridge

40.00 Set a Sandstone 14 1/4 ft

9 in in the ground for 1/4

see cor. marked 1/4 on N.

face and raised a mound
stone alongside.

Pit impracticable

T12. N. R 23 E G. & S R M

BOOK III

chs

80.00

Set a Sand Stone 30+12+5 in
 2 2 in in' the ground for the
 cor to sec's 4, 5, 8, ^{and} 9. marked
 with 5 notches on S and 4
 notches on E edges and raised
 a mound stone along side
 This is impracticable
 from which

A Pinon tree in drain bears S 25° E
 49 lbs dist.

marked S. 12 4. R 23 E. S. 9 B. 5.
 No other trees in limits
 Sand, Slightly, Rolling
 Soil; 2 no water - good grazing
 Timber - Occasional Juniper Bush

East on a random line
 lat sec's 4 ^{and} 9.

Pa 13° 14' E

T12. N. R 23 E G & S R M

Chs

- 38.00 Descent Gradually.
 Cross wash 15 lks wide lks
 N60° E and ascend
- 40.00 Set a temporary 1/4 sec cor
- 46.00 Top of spur 70 ft high has
 N and descend
- 74.50 Cross wash 10 lks wide
 lks N55° N. and ascend
- 79.36 Intersect N. 1.8 mile 12
 lks N of cor to sec's 3-4. 9⁴⁴/₁₀
 Thence down
 N89° 65' N on a small line
 at sec's 4 and 9. same cor
- 39.68 Set a sandstone 15 x 10 x 9 in
 10 in in the ground for
 1/4 sec cor - marked N
 on N face. from which
 a Pinon 10 in drain bears
 N13° N. 20 lks dist. Marked 1.800
 A Pinon 9 in drain bears N86° E

T12. N. R. 23 E G & S R M

Ch⁵

7926

12 lbs dest. marked $\frac{1}{4}$ S.P.P.
 To cor to see's 4.518 and 9.
 Sand Rolling,
 Soil, 800 yds
 Timber - Scattering Jumper
 Brush

North on a true line
 bet see's 4^{and} 5 -

In 13:14' E

40,000

Descend gradually
 Set a sandstone 14+10+6 in
 9 in in the ground for
 $\frac{1}{4}$ see cor. marked $\frac{1}{4}$ on
 N face, and raised a
 mound stone alongside
 It's impracticable
 No trees in limits

T12. N. R 23 E G & S R M.

Chs-

59. 06 Intersect on Standard
Parallel. north 44 lks W
of the standard cor to sec
32 ²⁴ 33. recently re-established
by me.

Set a post 4 ft long 4 in
square, ^{with marble stone 1/2} 24 in in the ground
for the closing cor to sec
4. 5. marked C. C. P. 12 N.
R. 23 E. on S. 1/4 on E. and
S. 5 on W. faces. with 4 notches
on east and 2 notches on
West side. dug pits - 18 + 18 + 12
in; S. E. ²⁴ W. of stone 5 1/2 ft.
dist and raised mound
of earth 2 ft high 4 1/2 ft
base around post.
Land E 1/2 of sec 4 in and
W 1/2 broken + stony
Soil. 2 rd of good soil

T12. N. R. 23 E G & S R M

chs

Similar Decker Juniper
Brush.

G. M. Carson Comptroller Dec 29th 1882

From the cor to sees 31
and 32, on the south side
of the T₁₂ recently established
by me. I run
North to sees 31 and 32
in 13° 15' E

Ascent

4000 Set a Blue Limestone, 16+10+6
ins. 17 ins in the ground for
1/4 sec cor, marked 1/4 on
N face and raised a mound
stone alongside.

72.00 Top of ridge has ^{top impracticable} N. 13° W 13.13° E
and descent

80.00 Set a Basalt Stone
18+14+6 ins, 12 ins on the

T12. N. R. 23 E G & S R M

chs

ground for the cor trees
 29.30.31^W 32. marked
 with 1 notch on S and 5-
 notches on E edges and
 raised a round stone
 along side to P. imprinted
 Sand Rolling.
 Soil. on sand.
 Quite Southern Jumper

East on a random line
 between 29^W 32.
 to 13:15' E

Described

- 40.00 Set a temporary 1/4 sec cor
 72.00 Cross track 25-lbs wire box
 80.24 Intersect N.E. line 21 lbs
 South of cor trees 28-29
 32^W 33.

T12. N. R 23 E G & S R M

chs

40.12

Thence down
 S 89° 31' W on a true line
 between 29^{and} 32. some 20
 Set a post 3 ft. long 3 ins. diam with marked
 stone, 12 ins. in the ground for $\frac{1}{4}$ Sec. Cor.
 marked $\frac{1}{2}$ S. on W face, dug pits 18 x 18 x 12
 ins. E and W of post 5 $\frac{1}{2}$ ft. dist. and raised
 a mound of earth 1 $\frac{1}{2}$ ft. high. 3 $\frac{1}{2}$ ft. base. around
 post.

80.24

Cor trees 29. 30. 31 ^{and} 32.
 Sand Rolling
 Soil; - no sale.
 Timber. Scattering juniper
 A. P. Johnson Dec 30th 1882

West on a random line
 between 30^{and} 31
 to 13° 15' E

7.30

Ascend
 Top of ridge 60 ft high. base 11 x 11
 descend.

T12. N. R. 23 E G. & S R M

chs-

- 40.00 Set a temporary $\frac{1}{4}$ sec cor
- 82.96 Intersect NBing Tp 16 lks
 N of cor to sees 28.30.31 ^{and} 36
 recently established by me
 Thence down
 N 89.53' E on a true line
 set sees 30 ^{and} 31. same ra
- 42.96 Set a blue limestone
 25+12+10 ins. 18 ins in the
 ground for $\frac{1}{4}$ sec cor
 marked $\frac{1}{4}$ on N face
 and raised a mound stone
 alongside. Ditto. impracticable.
- 82.96 To cor to sees 29-30-31 ^{and} 32
 Land Rolling
 Soil, 2nd rate - Good grazing
 Ditch Scattering Juniper
 G. M. Carson. Comptroller
 Dec. 30th 1882

T12. N. R. 23 E G & S R M

chs

North lat sees 29 and 30
 lat 13:10' E

Descend

40.00 Set a post 3 ft. long 3 ins. diam with marked
 stone, 12 ins, in the ground for $\frac{1}{4}$ Sec, Cor,
 marked $\frac{1}{4}$ S. on \swarrow face, dug pits 18 x 18 x 12
 ins. \swarrow and \searrow of post $5\frac{1}{2}$ ft. dist. and raised
 a mound of earth $1\frac{1}{2}$ ft, high. $3\frac{1}{2}$ ft. base. around
 post.

80.00 Set a post 4 ft. long 4 ins. square, with marked
 stone, 12 ins, in the ground for Cor, to Secs,
 19-20-29²⁰30 marked T. 12 \swarrow S. 20 on
 N. E. R. 23 E S. 29 on S. E, S, 30 on
 S, W, and S, 19 on N, W, face, with 2 notch
~~es~~ on S, and 5-notch ~~es~~ on E. edges, dug
 pits 18 x 18 x 12 ins. in each Sec., $5\frac{1}{2}$ ft. dist.
 and raised a mound of earth 2 ft, high. $4\frac{1}{2}$ ft.
 base. around post.

Land Rolling

Soil; 3²⁰ rate

Timber-Scattering Juniper

T12. N. R 23 E G & S R M

Chs

- East on a random line
 to see's 20^{and} 29.
 Ia 13°. 08' E
- Descend gradually
- 40.00 Set a temporary $\frac{1}{4}$ sec cor
- 65.10 Cross wash 15' lks wide bottom
 and ascend
- 74.80 Begin to ascend, abruptly,
- 80.06 Intersect N. R. S line. 16 lks
 South. of cor to see's 20-21
 28^{and} 29.
- Thence down
 S 89°. 53' W, on a true line
 to see's 20^{and} 29. same as
- 40.03 Set a post 3 ft. long 3 ins. diam with marked
 stone, 12 ins, in the ground for $\frac{1}{4}$ Sec. Cor.
 marked $\frac{1}{4}$ S. on N face, dug pits 18 x 18 x 12
 ins. E and W of post 5 $\frac{1}{2}$ ft. dist. and raised
 a mound of earth 1 $\frac{1}{2}$ ft. high. 3 $\frac{1}{2}$ ft. base. around
 post.
- 80.06 To cor to see's 19-20. 29^{and} 30

T12. N. R 23 E G & S R M

Chs

Laid Rollins
 Soil; 3rd rate, good grazing
 Timber. Scattering Juniper.
 A. P. Johnson
 Dec. 80th 1882

West on a random line 2nd sec - 19th & 30.
 Lat 13° 18' E

- 81.50 Cross wash 17 lbs wide bed N. 89° W. and ascend.
- 18.50 Top of spur 90 ft high bears N 41° W. and ascend gradually.
- 40.00 Set a temporary 1/4 sec cor
- 60.00 Cross wash 18 lbs wide bed N and ascend
- 64.00 Top of spur 75 ft high bears N N E. S. E. and ascend

T12. N. R. 23 E G & S R M

gls

- 78.30 Cross mark 15 lbs with
Co N.W. and around
- 82.60 Intersect W B'ry Sp' 24
lbs N of cor to sees. 19. 24.
25; ⁴/₃₀. recently established
by me.
Thence I run
N 89° 50' E on a true line
bet sees 19 and 30 same cor.
- 42.60 Set a post 3 ft. long 3 ins. diam with marked
stone, 12 ins, in the ground for $\frac{1}{4}$ Sec, Cor,
marked $\frac{1}{4}$ S. on N. face, dug pits 18 x 18 x 12
ins. E and W of post $5\frac{1}{2}$ ft. dist. and raised
a mound of earth $1\frac{1}{2}$ ft, high. $3\frac{1}{2}$ ft. base. around
post.
- 89.60 To cor to sees 19-21, 29 ^{and} 30
Sand Rolling
Soil, 3rd rate
Timber Scattering Jumper
E. M. Carson Compassman
Dec 30th 1882

T12. N. R 23 E G & S R M

chs

North at sec 19^{and} 20
 In 130. 08' E

Descent

25.30

Cross mark 20 lbs with
 to N. and ascent

40.00

Set a post 3 ft. long 3 ins. diam with marked
 stone, 12 ins. in the ground for 1/4 Sec, Cor,
 marked 1/4 S. on N face, dug pits 18 x 18 x 12
 ins. N and S of post 5 1/2 ft. dist. and raised
 a mound of earth 1 1/2 ft, high. 3 1/2 ft. base. around
 post.

80.00

Set a Sand stone 30 x 4 x 4 ins, 2 2 ins. in
 the ground for Cor, to Secs, 17, 18, 19, 20 marked
 with 3 notches on S. and 5 notches on E. edges,
 dug pits 18 x 18 x 12 ins. in each Sec., 5 1/2 ft.
 dist. and raised a mound of earth 2 ft, high.
 4 1/2 ft. base. alongside. from which
 a Pinon 10 is down from N 71° W
 14 lbs dist. Marked S, 1/2 N, R 23 E, S, 1/8
 B. T.
 Whether by or within limits
 Sand rolling
 Soil. out rate,

T12. N. R. 23 E G & S R M

chis

Timber Scattering Jumper

East on a random line

bet sees 17^{and} 20D₁₃:14' E

Ascent

21.14 Top of spur 40 ft high bears
N^{and} S. and descent

40.00 Set a temporary 1/4 sec cor

68.12 Cross wash 12 lbs mid^s Co S 30^W
and ascent79.68 Intersect N + S line 33 lbs
South of cor bet sees^E 16:17
20^{and} 21.

Thence down

S 89° 46' W. on a true line

bet sees 17^{and} 20. same ra89.84 Set a sandstone 20 + 11 + 12 in
15 in in the ground for 74

T12. N. R 23 E G & S R M

chs

see cor. marked 14
 on N. face and raised
 a mound about along side.
 Pit impuncturable from which
 A Pinon dies same base 245' 8"
 14 lbs dist. Marked 14 S, B, F, M
 no other trees in limits
 5968 see cor to see 17, 18, 19 and 20

Good Rolling
 Soil - 3' - 4' - 5' - 6' - 7' - 8' - 9' - 10' - 11' - 12' - 13' - 14' - 15' - 16' - 17' - 18' - 19' - 20'
 Pinon - Scattering Juniper
 A. P. Johnson

See 30th 1882

Weston a random line bet
 sees 18th and 19

to 13: 14' 8"

No ascent

4.20

Cross mark 15 - then rise to S.
 and ascent

T12. N. R 23 E G & S R M

chs

- 40.00 Set a temporary $\frac{1}{4}$ sec cor
- 82.46 Intersect N B¹ in T¹ P 13 lks
South of cor to sees 13.18.
19th & 24. recently established
by me
Thence Smer.
S 89° 5' 4" E on a true line
to sees 18th and 19. same as
- 42.46 Set a Sand stone, 11 x 10 x 6 ins., 8 ins.
in the ground for $\frac{1}{4}$ Sec, Cor, marked $\frac{1}{4}$. on N
face. dug pits 18 x 18 x 12 ins. S and W
of stone 5 $\frac{1}{2}$ ft. dist. and raised a mound of earth
1 $\frac{1}{2}$ ft. high, 3 $\frac{1}{2}$ ft. base. alongside.
- 82.46 To cor to sees 17, 18, 19 and 20
Sand Rolling
Soil. 8th run
Scattering Juniper Bush
- G. M. Carson Compassman
Dec 30th 1882

T12. N. R. 23 E G & S R M

chs

North lot sees 17^{and} 18

In 130.14' E

Ascend over rolling land

40.00

Set a Sandstone 14+10+3 in
9 in in the ground for 14 sec-
cor: marked 14 on W face and
raised a mound stone along side
It's impracticable.

70.20

Top of ridge 400 ft high bears
S 12 N. 712' E. and descend

80.00

Set a Sandstone 20+12+4 in
15 in in the ground for the
cor to sees 7, 8, 17^{and} 18. marked
with 4 notches on S and 3-
notches on E edge and
raised a mound stone along
-side. It's impracticable.
From which

A Pinon 9 in diam bears N 72° W.

28. This dist. Marked T. 12 N. R. 23 E. S. 70 S.
No other trees in limits

T12. N. R. 23 E G & S R M

Obs.

Land Rolling ^{and} Rocky
Soil. 8th row. Good grazing
Timber. Scattering Juniper

East on a random line
at sees 8 ^{and} 17.

to 13:10' E

Descend gradually

40.00 Set a temporary 1/4 sec cor

79.10 Cross cañon 75 ft deep to N 41° E
and ascend gradually.

79.76 Intersect N 1.8 line 9 lbs N

of cor to sees 8, 9, 16 ^{and} 17.

Three drums

N 89.56' W on a true line

at sees 8 ^{and} 17. same cor

89.88 Set a sandstone 19+12+4 vis

12 vis in the ground for 1/4 sec

cor. marked 1/4 on 21 face

T12. N. R 23 E G & S R M

Chs-

from which.
 A Pinion Pine drain across 71.46°
 66 lbs test Marked 1/4 S.B.S.
 A Pinion Pine drain across
 80° E 51' lbs dist Marked
 1/4 S.B.S.P.

59.76 To cor to see 7. 8. 17 and 18
 Sced Rollins.
 Soil, 3rd run.
 Timber. Dense Juniper
 Brush
 A.P. Johnson Dec 30th 1882

West on a random line bet.
 see's 7^{and} 18.
 In 13° 10' E

Decent
 40.00 Set a temporary 1/4 see cor
 50.20 Cross wash 17 lbs mid & cor S
 82 03 Interest. N. B. Biny Sp 4 6 lbs

T12. N. R. 23 E G & S R M

cks

- N. of cor to sec 5 7. 12. 13^{and 18}
 recently established mine
 Thence I run
 N. 89° 40' E on a true line
 to sec 7^{and 18} same 20
 42.05 - Set a Sandstone 18 + 12 + 4
 ins. 12 ins in the ground
 for 74 sec cor. marked
 74 on N. face. From which
 A Pinon 6 ins diam bears
 S 70° E. 28 lbs dist. marked 74 S. B. S.
 A Pinon 10 ins diam bears N 18° W
 41. lbs dist. marked 74 S. B. S.
 82.06 - To cor to sec 5 7. 8. 17^{and 18}
 Sand Rolling
 Soil, 2nd rule
 Timber. Dead Juniper.
 Brush
 G. M. Carson Comptroller
 Dec 30th 1882

T12. N. R 23 E G & S R M

chs

North Jetsee's 7 Aug 8.

Pa 13° 14' E

Deceun

4000 Set a post 3 ft. long 3 ins. diam with marked stone, 12 ins, in the ground for $\frac{1}{4}$ Sec. Cor. marked $\frac{1}{4}$ S. on W face, dug pits 18 x 18 x 12 ins. N and S of post 5 $\frac{1}{2}$ ft. dist. and raised a mound of earth 1 $\frac{1}{2}$ ft. high. 3 $\frac{1}{2}$ ft. base. around post.

8000 Set a sand stone 24 + 16 + 8 in 18 in in the ground for the cor trees's s.b. 7 Aug 8. marked with 5 notches on S and E edges. and raised a mound stones along side. Dis. impenetrable. from which.

A Pinon Quis drain near S. 37° 3' E 24. the dist. marked T. 12 x. R 23 E. S 8 B. G. No other bars in limit Sand rough & rocky

T12. N. R 23 E G & S R M

Ch's

Soil. 3rd sale -Thicket. Dense Juniper
BrushEast on a random line to
see's 5th & 8.

Ea 13° 14' 8.

Descent

4.40 Cross Cañon 100 ft deep
N. 43° W. and ascent

40.00 Set a temporary 14 see cor

46.00 Top of ridge bears N 53° W. and
Descent.79.42 Intersect N. S line - 15 -
the N of cor to see's 4, 5, 8th & 9
Thence down

N 89° 5' 4" W on a true line

Set see's 5th & 8. same ea

89.71 Set a Post 3 ft long 3 in

T12. N. R. 23 E G & S R M

chs

square 24 ins in the ground
 for $\frac{1}{4}$ sec cor. marked
 $\frac{1}{4}$ on N. face, from which
 A. Pinon 5 ins diam bears
 S 22° E. 42 lbs dist
 marked $\frac{1}{4}$ S. B. T.

A. Pinon 8 ins diam bears
 N 38° E. 69 lbs dist
 marked $\frac{1}{4}$ S. B. T.

79.42 To cor to sees 5, 6, 7 and 8,

Land Pulling & Rocky
 Soil, out rock -

Timber. Dense Juniper
 Brush

A. S. Johnson

Dec 21st 1882

Heel on a random line

at sees - 6 and 7. Cal $139^{\circ} 14' E$

T12. N. R 23 E G & S R M

chs

- 3.00 Top of Spur 125 ft high
kass N 30° W. and descend
- 17.25 Cross wash to the north
to N 44° E. and ascend
- 40.00 Set a temporary 1/4 sec cor
- 81.70 Intersect N B by Pp 8 the
S of cor to sees 1, 6, 7 and 12
recently established
by me.
- Three Inm
S 89° 07' E on a true line
Set sees. 6 and 7 same as
- 41.70 Set a Sand stone, 20 x 10 x 8 ins., 15 ins.
in the ground for 1/4 Sec, Cor, marked 1/4 on N
face, dug pits 18 x 18 x 12 ins. E and W
of one 1/2 ft. dist. and raised a mound of earth
1 1/2 ft. high, 3 1/2 ft. base. alongside.
- 81.70 To cor to sees 5: 6, 7 and 8
Sand Rocky and Broken
Soil, Stony 4th rail.

T12. N. R 23 E G & S R M

chs

Timber. & several Juniper
Brush.

North on a true line but
see's 5 ⁹/₁₆ 6.

W 13° 14' 8

Descend

8.08

Cross Cañon 120 ft deep
Go N 30° W. and continue to
descend

40.00

Set a Sandstone 14 x 10 x 6
ins. pins in the ground for
1/4 sec cor; marked 1/4 on W
face. and raised a mound
stone alongside. Pin
impracticable

57.41

Intersect 3rd standard
Parallel. North, 1.63 chs
East of the Standard cor.

T12. N. R 23 E G. & S R M

Ch^s

to sees 31 ^{and} 32, recently
 re-established by me
 Set a post 4 ft long 4 in
 square ^{with marked stone} 12 in in the ground
 for the closing corner
 sees 6. ^{and} 6. marked 6 6,
 T12 N. R 23 E. on S.

S. 5' on E ^{and} see 6 on W.
 faces, with 6 notches on E
 and 1 notch on W faces

dig pits 18+18+12 in
 S. E ^{and} W. of post, 5 1/2 ft dist-
 and raised a mound of earth
 2 ft high 4 1/2 ft base around
 post.

Land Rough ^{and} Rocky

Soil, 2nd soil

Timber. Dense Juniper
 Bush.

T12. N. R 23 E G. & S R M

Ch

I carefully examined
 the adjustments of my
 solar compass to day
 particularly the latitude
 and reversing apparatus
 and found them correct
 G. M. Carson Comptroller
 Dec 31st 1882

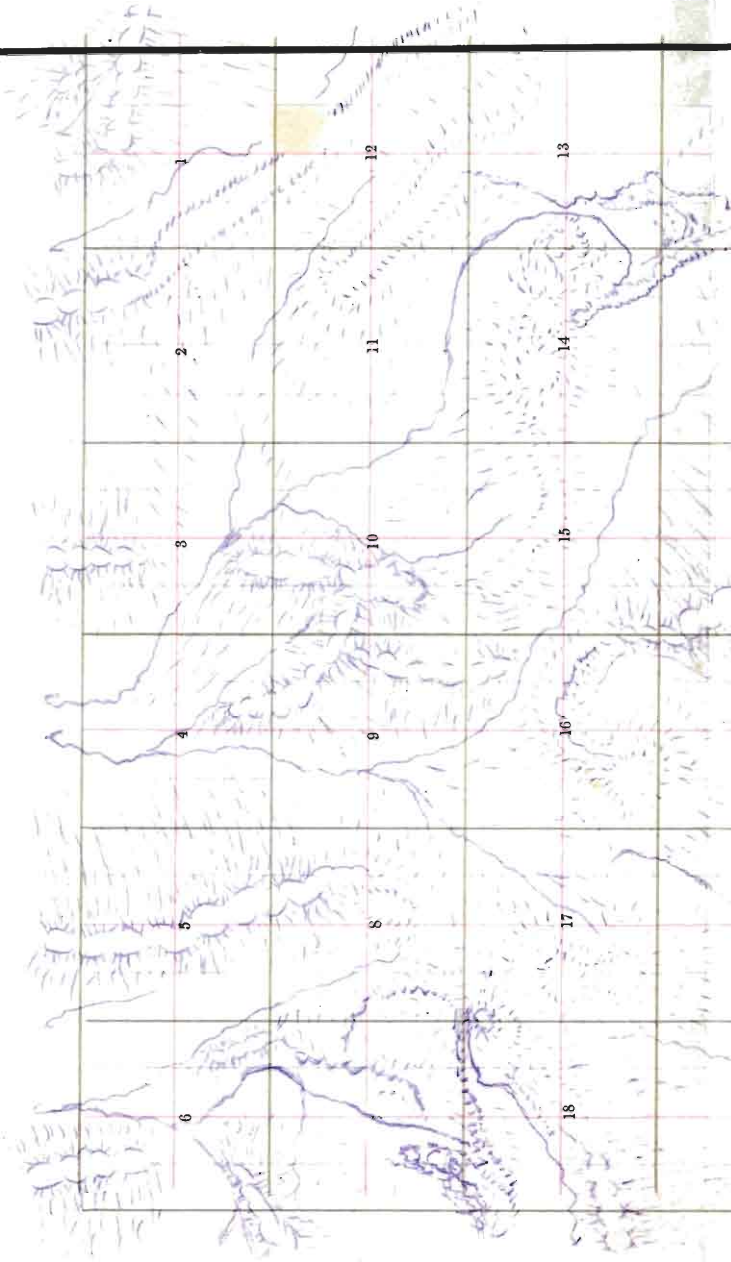
Edward Denny & Co., Stationers and Printers, Drawing Material, etc. 512 Sac to. St., S. F.

85

Township No. 12 Range No.

73

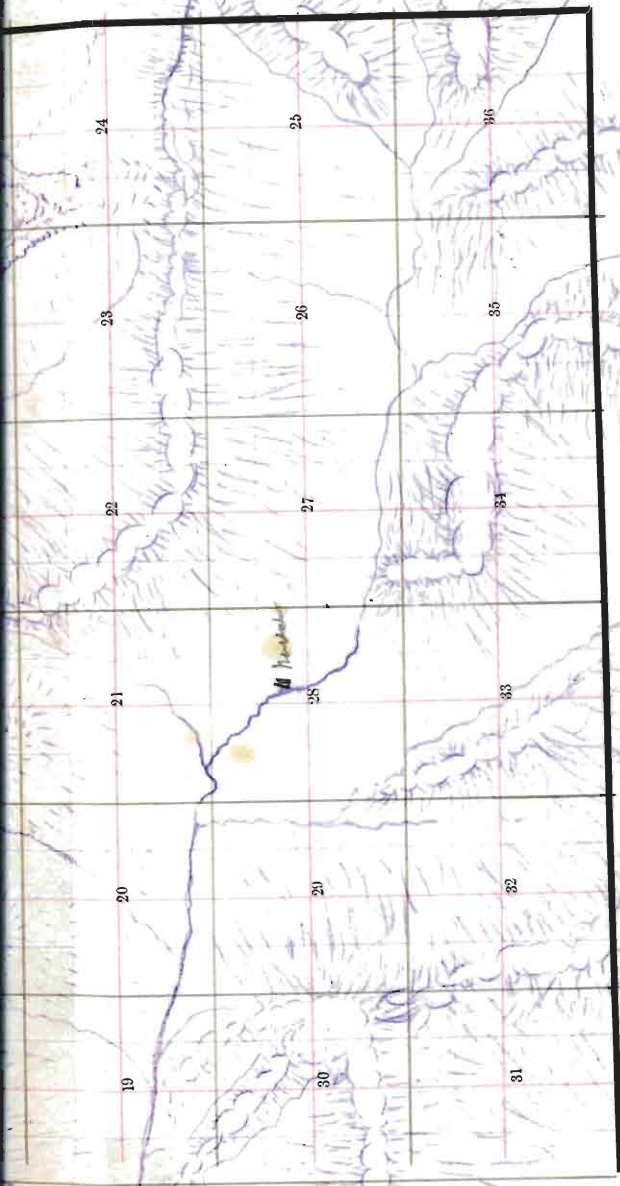
Meridian.



BOOK III

BOOK III

BOOK III



TOWNSHIP PLOT.

Meridian Line,

Base Line,

Standard Line,

Township Lines,

Section Lines,

Meander Lines,

Office Work.

Final Oaths for Surveys. ¹¹¹

LIST OF NAMES.

A list of the names of the individuals employed by
A. P. Johnson , United States
 Deputy Surveyor, to assist in running, measuring, and marking
 the lines and corners described in the foregoing field-notes of the
 survey of *a portion of the exterior and*
retracings and the subdivision lines of Tps
9 & R 24 & 25 E. Tp 10 & R 25 E. Tps 12
& R 23 & 28 E. Tp 13 & R 27 E. Tps 13 & 14 &
R 22 & 23 E and Tps 15 & R 23, 27 & 28
E
G. & A. R. Mer

showing the respective capacities in which they acted.

G. M. Carson , Compassman.
J. H. Arnold , Chainman.
Willis D. Bissna , Chainman.
G. W. Sidner , Chainman.
H. L. Conklin , Chainman.
Robert Mitchell , Axeman.
G. H. Peckhow , Axeman.
 , Flagman.

90

BOOK 111

that all the corners of said survey have been established and perpetuated in strict accordance with the surveying manual, printed instructions, the special written instructions of the United States Surveyor-General for Arizona, and in the specific manner described in the field-notes, and that the foregoing are the true field-notes of such survey; and, should any fraud be detected, I will suffer the penalty of perjury, under the provisions of an Act of Congress, approved August 8, 1846.

A. P. Johnson,
United States Deputy Surveyor.

Subscribed and sworn to before me this 13th
day of January, 1883



A. S. Shoemaker
U. S. Commissioner, 3d Judicial District,
Arizona Territory.

U. S. Surveyor General's Office,

Tucson, Arizona, November 10, 1883,

The foregoing Field Notes of the Survey of the

Subdivision Lines of
Township 12 North
Range 23 East

Of the Gila and Salt River Base and Meridian, Arizona, executed by D. P. Johnson

Deputy Surveyor, under his contract of the 1st of

day of July, 1882, having been

critically examined and the necessary corrections and explanations made, the said Field Notes and the surveys they describe are hereby approved

J. W. Robbins
Surveyor General.