

113

p. 1

F I E L D N O T E S

O F T H E S U R V E Y O F T H E

S U B D I V I S I O N L I N E S

O F

Township 12 North, Range 25 East.

Gila and Salt River Base and
Meridian,

ARIZONA.

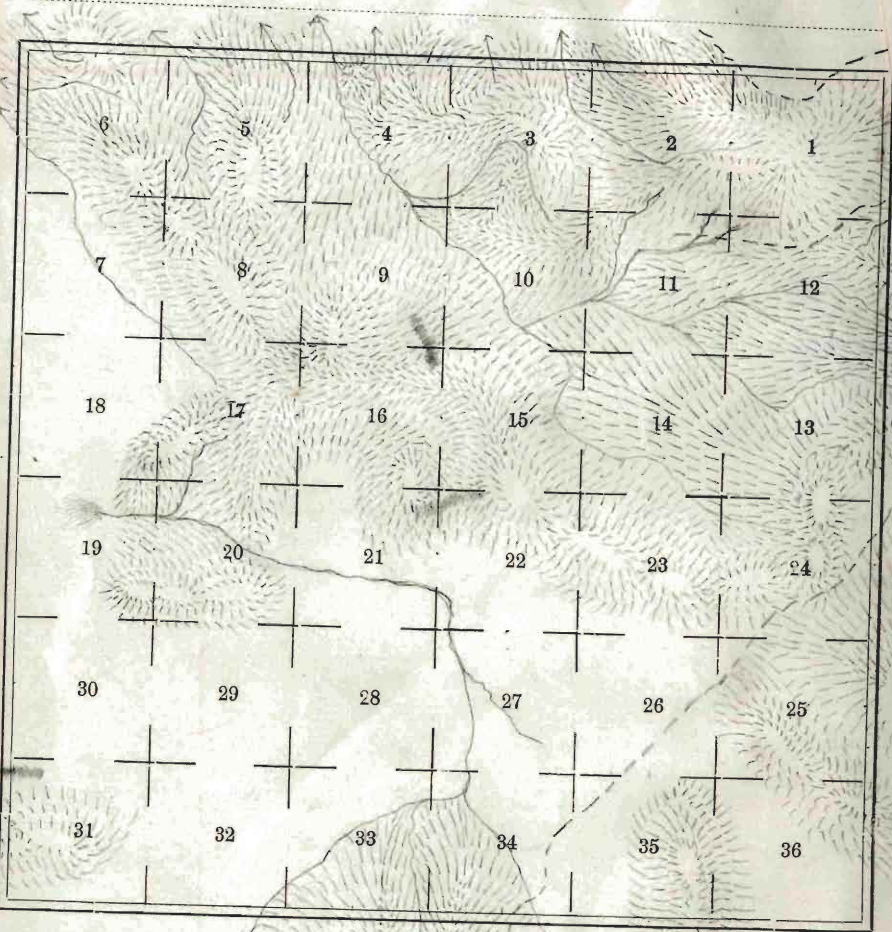
By O. D. Wheeler, D. S., under
Contract dated May 31, 1882.
Survey commenced Aug. 19, 1882.
Survey completed Aug. 22, 1882.

113

Township 12 N

Range 23 E

M.



To be compared with water

INDEX DIAGRAM.

Township 12 N. No-113
Range 25 E.

6	96.	5	71	4	53.	3	35	2	17	1
95		93		69		52		34		15
7	92	8	68.	9	51.	10	32	11	14	12
90		89		66		49.		31		12
18	88	17	65	16	47.	15	29	14	10	13
85		84		64		46		27		9
19	82	20	62	21	44	22	26	23	7	24
80		79		60		43.		24		6
30	77.	29	59	28	41.	27	23	26	4	25
76		75		58		40		21		2
31	73	32	56	33	38	34	20	35	1	36

Gila and Salt River Meridian.

ARIZONA.


T₁₂ N. R₂₅ E. G. & S. R. M.

Blaine

Survey commenced -
 Aug 19 - 1882

Survey made with
 Burt's Patent improved
 Solar Compass, nearly
 new and in first rate order,
 Made by Otto Feibel of
 Basel Germany in 1881.

From the Cor. to Secs
 1-2-35+36 which is a
 sand stone 10 x 24 ins -
 set firmly in the ground
 properly notched &
 with a mound of
 stone along side



Thence S run 2° 12' W. to
 Secs - 35 + 36 -

B + 2 U, R 2.5 E

Obs -

ba 13° 30' E

(as observation on the sun)

Band rolling

40.00 Set a basalt stone 18 x 10
x 4 ins 12 ins in the
ground for 1/4 sec Cor.

marked 1/4 on W face -
& raised a mound of stone
alongside. Pits unpredictable.


80.00 Set a basalt stone 18
x 12 x 10 ins 12 ins in
the ground for Cor-
to Sides. 25-26-35 & 36 -
marked with 1 notch

on S & E edges & dug
pits 18 x 18 x 12 ins in
each Sec 5 1/2 ft. dia.
& raised a mound of
earth 2 ft. high 4 1/2

T, 2 N, R 25-E

Chs

fl. base along side -
 Sand rolling
 Soil 2 nd rate
 Good grazing



East on a random line
 bet. Secs 25 & 36

ba 13° 35' E

ascend,

40.00 Set a temporary 1/4 Sec
 cor.

48.00 Top of ridge bet N 5-00 W -
 + described -

79.72 Intersect the E By
 of Tp. 9 N S of Cor. of
 Secs 25-30-34-36 which is a
 limestone set firmly
 in the ground -

5:2 Ch. R 25-E

Chs

properly notched and
with pits & mounds
in each Sec - -

from which Cor. I run -
S 89° 56' W on a true line
bet. Secs - 25-36 -

to 13° 35' E.

39.72

Set a basalt stone
14 x 10 x 6 ins 12 ins in
the ground - for 1/4 Sec
Cor. - marked 1/4 on N
face, and raised a
mound of stone alongside
Pits impracticable.

79.72

Set Cor. to Secs - 25-26 -
35-36.

Land rolling
Soil 2nd state.

Good grazing

T, 2 U, R 25-E

Obs

N 2° 12' W bet. Secs- 25+26

to 13° 35' E.

Over rolling land-

40.00 Set a basalt stone 18x12x
9 ins 12 ins in the ground
for 1/4 Sec cor. marked 1/4
In W face + raised a
mound of stone alongside
Pit unfractured.

50.60 Cross road, bet. St. E,

80.00 Set a basalt stone 18x10x7
ins 12 ins in the ground for
cor to Secs 23-24-25+26-

marked with 2 notches
on S + 1 notch on E edges
+ raised a mound of stone
alongside, Pit unfractured
Behind rolling
Soil 2nd rate
Good grass

T-12 N, R-25 E

Obs.

East on a random line
bet. Secs 24 + 25 -

ba 14° 30' E

Band rolling

18,64

cross road bet. St. E.

40.00

Set temporary 1/4 Sec Cor.

80,21

Intersect E of By of Sp.

19 lbs. St. of bar to Secs

19-24-25+30 which is a

volcanic stone

set firmly in the

ground - properly

notched & with

mound of slope on

S side

from which Cor. Iron-

St. 89° 52' W on a true line

bet. Secs 24 + 25.

ba 14° 30' E

T12 N. R 25-E

Obs

- 40.10 Set a basalt stone $20 \times 12 \times 8$ ins 15 ins in the ground for $\frac{1}{4}$ Sec Cor, marked $\frac{1}{4}$ on N. face - & raised a mound of stone alongside, Pit's intractable
8021. The Cor. to Secs - 23-24-25 & 26.
 Band rolling
 Soil 2nd rate
 Good grazing

At $20^{\circ} 12'$ W. bet. Secs 23 & 24
 Va $140^{\circ} 30'$ E.

Over rolling land.

- 40.00 Set a basalt stone $18 \times 10 \times 7$ ins 12 ins in the ground for $\frac{1}{4}$ Sec Cor, marked $\frac{1}{4}$ on W. face
 Dry pits $18 \times 18 \times 12$ ins

T 12, N, R 25 E

Obs-

80,00

N + S of stone $5\frac{1}{2}$ ft.
 dist. + raised a mound
 of earth $1\frac{1}{2}$ ft. high
 $3\frac{1}{2}$ ft. base along side
 but a blue lined stone
 $14 \times 8 \times 7$ ins 10 ins in
 the ground for Co-
 to Secs 13-14-23 + 24-
 marked with 3 notches
 on S + 1 notch on E edges
 Dug pits $18 \times 18 \times 12$ ins.
 in each Sec $5\frac{1}{2}$ ft.
 dist. + raised a mound
 of earth 2 ft. high $4\frac{1}{2}$
 ft. base along side -
 band solidly
 soil 2nd ratif
 Fair gray mg

T. 2. N. R. 25-E

Chs

East on a random
line bet. Secs 13 + 24

to 12045' E,

Ascend gradually

40.00


Set temporary $\frac{1}{4}$ Sec Cor.

50.15

Top of ridge 160 ft. high
bet W + S + descend

80.34

Enter ~~at~~ E boundary
of Tp 13 lks S of Cor to
Secs 13-18-19+24, which is a
Post set firmly in the
ground - with marks of earth
around base - properly
notches & with pins
in each Sec -



from which Cor. Iron
S 89054' W on a true line

T_{1.2} N. R 25 E

chs-

bet. Secs 13 & 24

Tr_a 120° 45' E.

40,17

Set a basalt stone 20 x
12 x 10 ins 15 ins in the
ground for $\frac{1}{4}$ Sec cor-
marked $\frac{1}{4}$ on N. face
& raised a mound of
stone alongside, P's
impracticable.

80,34

The Cor. to Secs 13-14-23 & 24

Land rolling
Soil 2nd rate

Good grazing

North 20 12' W bet,
Secs - 13 & 14 -

Tr_a 120° 45' E

Descend.

T₁₂ U, R 25-E

Chs.

- 40.00 Set a blue lime stone
 $14 \times 10 \times 6$ ins 8 ins in the
ground for $\frac{1}{4}$ Sec Cor,
marked $\frac{1}{4}$ on W face
Dug pits $18 \times 18 \times 12$ ins
N + S of stone $5\frac{1}{2}$ ft,
dist. raised a mound
of earth $1\frac{1}{2}$ ft. high $3\frac{1}{2}$
ft. base alongside
- 74.10 Cross wash 16 lbs wide
course N. W + ascend.
- 80.00 Set a blue lime stone
 $14 \times 10 \times 7$ ins 10 ins in
the ground for Cor to
bees 11-12-13 + 14 -
marked with 4 notches
on S + 1 notch on E
edges + raised mound
of stone alongside

T_{1,2} N:R 25°12' E

Chs

✓ Pits unpracticable
 • Band rolling
 Soil 2nd rate
 Good grazing
 Timber scattered juniper

East on a random line
 bet. Secs 12 & 13

b-a 12° 55' E

Over rolling land,

40.00

Set temporary 1/4 Sec Cor.

79.91

Intersect E. By of T₁

2 1/2 lbs S of Cor to Secs -

7-12-13 & 18 which is a

limestone set firmly
 in the ground

14' x 4' ins - marked

with 2 volutes

T₁₂N R₂₅-E

Chs

on N + 4 notches on S
edges + mound of stone
alongside
from which Cor. Iron
89°51' on a true line
bet. Secs. 12 + 13

ba 120°55' E.

39.95 Set a blue line stone
18 x 10 x 7 ins 12 ins in
the ground for 1/4 Sec
Cor. marked 1/4 on N
face + raised a mound
of stone alongside. Pits
dipracticable

79.91 The Cor. to Secs. 11-12-13 + 14
Band rolling
Soil 2nd rate
Good grazing

T 5 2⁴ N, R 25 E

Chs

- North 20 12' W. bet.
Secs 11 & 12
Va 120 5-5' E,
Descend.
- 33.16 Cross head of wash -
21 lbs wide Course 77 10' W
& ascend.
- 40.00 Hit a basalt stone 16
x 9 x 6 ins 12 ins in the
ground for 1/4 sec bor.
Labeled 1/4 on W face
& raised a mound of stone
along side, Pits unobtainable
- 53.00 Top of spur 30 ft. high
bet. E & W & descend.
- 64.10 Cross road course
E & W.
- 68.11 Cross wash 25-lbs
wide, course 86 50' W

T, 2 N, R 25-E

Obs

and ascend

20.00 Set a granite stone 18
 x 12 x 4 ins 12 ins in the
 ground for Cor. to Secs
 11-2-11 + 12. marked with
 5 notches on S + 1 notch
 on E edges + raised a
 mound of stone alongside
 Pits infracturable -
 Band rolling + rocky
 Soil 3rd rate.
 Timber scattering juniper

East on a random
 line bet. Secs 1 + 12

ba 130° - E

ascend gradually.

24.00 Top of spur 100 ft high

T₁₂ N, R₂₅ E

Obs-

- | | |
|-------|--|
| | bro N + S + descend. |
| 40,00 | Set a temporary $\frac{1}{4}$ Sec
Cor. |
| 61,50 | Cross road bro N 45° E |
| 63,15 | Cross wash 20 lks wide
course N 40° E. |
| 79,63 | Intersect E By of T ₁₂
15 lks S of Cor. to Sec 1
1-6-7 + 12 which is a
sand stone 18 x 10 ins set
firmly in the ground - marked
with 1 notch on 4 + 5 notches
on S edges - 7 mound of
stones along side

from which Con Iron
S 89° 5-4' W on a true
line bet. Secs 1 + 12

Ta 13° E. |

T₁₂ N. R 25 E

Obs

39.81

Set a basalt stone 16
x 10 x 3 ins 12 ins in the
ground for 1/4 Sec Cor,
marked 1/4 on the face
& raised a mound of stone
alongside, Pits unreflectable

79.63

Stip Cor. to Secs 1-2-11+12-
Sand rolling & rocky
Soil 3rd rate
Timber scattering juniper

N 20 12' W - - - - -
- - - bet. Secs 1 + 2.
- - - 130 - E.

Ascent.

28,00

Top of ridge 20 ft. high
bet E + W descent.

38,00

Cross wash 35 lbs wide

T. P. 2. N. 1. R. 25. E.

Chs -

Course N 84° W +
ascend

40.00 Set a granite stone
18 x 13 x 7 ins 12 ins in
the ground for $\frac{1}{4}$ Sec Cor.
marked $\frac{1}{4}$ on W face
& raised a mound of
stone alongside, Pits
unpracticable.

56.20 Top of spur 100 ft. high
brs N 80° W + descend.

79.32 Duberiet the 3^d standard
Parallel North 18-33
chs. W of the standard
 $\frac{1}{4}$ Sec Cor. on S. By of
Sec 35 which is 2
Post set firmly in the
ground properly
marked & notched & with pits
E + W of stone

T, 2 N, R 25-E

Obs

at which point I set
a granite stone $17 \times 10 \times 4$
in 12 ins in the ground
for ~~Standard~~ ^{Closure} Cov. to Sec-
1 + 2, marked C. C with
1 notch on E + 5 notches
on W edges & raised a
mound of stone alongside
Pit's unpracticable.

Band rolling & rocky
Soil 3^d rate,

Fair grazing -

I carefully examined the
adjustments of my Solar Compass
today, particularly the latitude
and reversing apparatus &
found them correct.

Aug 19 1882.

T, 2, N, R 25 E

Chs-

From the cor. to Secs
2-3-34+35 on S. By of Sp
which is a Basalt
stone 10 x 3 ins set firmly
in the ground properly
notched & with mound
of stone along side

Thence Drive N 2° 12' W
bet. Secs 34+35
to 14° 10' E

Over rolling land,

40.00 Set a blue limestone
15 x 7 x 6 ins 10 ins in
the ground for 1/4 Sec
Cor. marked 1/4 on
W face & raised a
mound of stone along side

S, 2 N, R 25 E

cls

40.00

Pits impracticable
 Set a blue line stone 187
 10 x 8 ins 12 ins in the
 ground for Cor. to Secs
 26-27 234 + 35 marked
 with 1 notch on S + 2
 notches on E edges +
 raised a mound of stone
 along side, Pits impracticable.

Land rolling
 Soil 2nd rate
 Timber scattering juniper -

East on a random line
 bet. Secs 26 + 35 -

ba 15° 30' E,

Over rolling land,

29.40 Cross road thro' N. E.

T 1.2. N. R 25. E

Obs-

- 40.00 Set temporary $\frac{1}{4}$ Sec Cor.
 40.23 Intersect Off + Shire -
 17 lbs S of Cor. to Secs -
 25-26-35+36 from
 which Cor I then
 S $89^{\circ} 53'$ W on a true
 line bet. Secs 26 + 35 -
 to $15^{\circ} 30'$ E.
- 40.11 Set a basalt stone $12 \times$
 10×6 ins 8 ins in the
 ground for $\frac{1}{4}$ Sec Cor -
 marked $\frac{1}{4}$ on N. face -
 Dug pits $18 \times 18 \times 12$ ins
 E + W of stone $5\frac{1}{2}$ ft.
 dist, + raised a mound
 of earth $1\frac{1}{2}$ ft. high
 $3\frac{1}{2}$ ft. base along side
- 40.23 The Cor to Secs - 26-27-34+35
 band rolling -
 soil 2nd rate

T₁₂ N, R₂₅ E

Obs

Timber scattering juniper -

N. 2° 12' W. bet. Secs
26 + 27

to 15° 30' E,

Over rolling land,

4000

Set a basalt stone 14 x 7
x 7 ins & ins in the ground
for 1/4 Sec Cor. marked
1/4 on W face & raised
a mound of stone alongside
Pits impracticable -

8000

Set a post 4 ft. long
4 ins sq. for Cor to
secs 22-23-26+27
marked T₁₂ N, S₂₃ on
N. E. R₂₅ E, S₂₆ on S. E,
S₂₇ on S W +
S₂₂ on N. W faces

S 112. N. 1. R 25 E

Obs-

with 2 noletus and
 + 2 noletus on E edges
 Dug pits 18 x 18 x 12 in
 in each Sec 5 1/2 ft. disk
 + raised a mound of earth
 2 ft. high 4 1/2 ft. base
 around post

Band rolling

Soil 2nd rate

Good grazing

Timber scattering juniper

East on a random
 line bet. Secs 23 + 24

Ta 140 10' E

Over rolling land:

4000

Set a temporary 1/4 section

7994

Intersect the S. S.

T, 2 N, R 25 E

chs

excavated 39 lbs of Cor,
to Secs. 23-24-25+26,
from which Cor. Iron
D 89043' W on a line
bet. Secs 23+26

to 140 10' E,

39.97

Set a basalt stone
16 x 10 x 7 ins 12 ins W
the ground for 1/4 Sec
Cor. marked 1/4 on the
face Dug pits 18 x 18 x
12 ins E + W of stone
5 1/2 ft. dia. + raised a
mound of earth 1 1/2 ft.
high 3 1/2 ft. base alongside

79.94

Set Cor to Secs 22-23 26+27
Round rolling
Soil 2nd rate
Good grazing

S 12 N, R 25 E

Obs.

At 20 12' W bet. Secs
22 + 23,

Tr 140 10' E,

Ascend gradually,
40,00 Set a blue line stake
12 x 10 x 6 ins 8 ins in
the ground for $\frac{1}{4}$ Sec Cor,
marked from W face
Dug pits 18 x 18 x 12 ins
N + S of stone 5 $\frac{1}{2}$ ft. dist.
+ raised a mound of
earth $\frac{1}{2}$ ft. high
3 $\frac{1}{2}$ ft. base along side
55,12 Top of ridge bet -
At W + deskend,

80,00 Set a basalt stone
18 x 10 x 7 ins 12 ins in
the ground for Cor,
to Secs 14 - 15 - 22 + 23

S, 2 N, R 25 E

Obs

marked with 3 notches
on S + 2 notches on E
edges + raised a mound
of stone alongside, Pits
impracticable.

from which

a cedar 8 ms diam hrs
S 71° E, 55 lbs disk marked
S 12 N, R 25 E, S. 23. B. 5

a pine 8 ms diam hrs
N 86° W to 60 lbs disk, marked
S 12 N, R 25 E, S 15. B. 5.

land broken + rocky
soil 2nd rate.

Timber scattering juniper
cedar + pine

East on a random
line between 14 + 23

S₁₂ N, R₂₅ E

Chs-

- ba 13° 15' E,
- Descend,
- 40,00 Set temporary $\frac{1}{4}$ Sec Cor,
- 64,52 Cross wash $\frac{1}{2}$ - 5 lbs W
Course N. W + ascend,
- 80,16 Intersect N + S line
11 lbs N of Cor. to Secs
13-14-23 & 24 from
which Cor. I run -
N. 89° 55' W on a true line
bet. Secs - 14 & 23,
- ba 13° 15' E,
- 40,08 Set a basalt stone 20
x 10 x 7 ins 16 ins in the
ground for $\frac{1}{4}$ Sec Cor,
marked $\frac{1}{4}$ on N face.
Dug pits 18 x 18 x 12 ins
E + W of stone $5\frac{1}{2}$ ft,
dist. & raised a mound
of earth $1\frac{1}{2}$ ft. high

S₁₂ N, R₂₅ E

lbs

80.16 3 1/2 fl. base alongside
 Full cov. to Decs 14-15-22
 + 23,
 Sand rolling & broken
 Soil 2nd after
 Timber scattering juniper
 + pine

N 20 12' W. bet. Decs 14
 + 15-

va 13° 15-12.

Decend.

31.40 Cross wash 16 lbs wide
 Course N. W. ascend.

40.00 Set a sand stone
 24 x 12 x 6 ins 16 ins in
 the ground for 1/4 Dec
 Cov. marked 1/4 on W face

S. 2 N. R. 25. E

Obs -

and raised a mound
of stone along side, Pits
impracticable from which
a pine 12 ins diam has
S 35° E 48 lbs dist. marked
1/4 S. B. S.

80,000

Set a sand stone 36 x 12
x 6 ins 20 ins in the
ground for Cor. to Secs-
10-11-14 + 15 marked with
4 notches on S + 2 notches
on E edges + raised a
mound of stone along side
Pits impracticable
Sand rolling + rocky
Soil 2nd after
Timber scattering juniper

D 1.2 N, R 25 E

Chs

East on a random line
bet. Secs 11 + 14

ba 120 45' E,

Descend.

40.00

Set a temporary $\frac{1}{4}$ Sec Cor.

63.50

Cross wash 11 lks wide
Course N. W + ascend,

79.75

Intersect N + S line -
28 lks N of Cor. to Secs -
11 - 12 - 13 + 14 from which
Cor. I run.

N 89° 48' W on a true
line bet. Secs - 11 + 14,

ba 120 45' E,

39.89

Set a post 3 ft. long
4 ins sq with marked
stone 12 ins in the
ground for $\frac{1}{4}$ Sec Cor.
marked $\frac{1}{4}$ S on N face

T 2 N 1 R 2 5 E

Obs-

Dug pits 15 x 25 x 12
ins & W of post 5 1/2
ft. dist, & raised a mound
of earth 1 1/2 ft. high 8 1/2
ft. base around post.

79.78

The Cor. to Secs 10-11-14 & 15
found rolling
soil 2nd rate
Good grazing
Timber scattered juniper

N 2° 12' W bet Secs 10 & 11
to 12° 45' E,

Descend

81.15-

Cross wash 20 lbs -
wide hrs S 80° W ascend
gradually

4000

hit on basalt stone

S, 2 N, R 25 E

Obs

- 17 x 10 x 3 ms 12 ms in the ground for 1/4 Sec. Cor. marked 14 on W face + raised a mound of stone alongside, Pit impracticable
- 68.18 Top of spur 127 ft. high hrs N 33° E + descend.
- 80.00 Set a basalt stone 16 x 10 x 4 ms 12 ms in the ground for Cor. to Sec 2-3-10 + 1 marked with 5 notches on S + 2 notches on E edges + raised a mound of stone alongside Pit impracticable.
- Band broken + rocky.
Soil 3^d rate. ✓
Timber scrub-juniper

T. 12 N. 1 R. 25-2

Chs

East on a random line
bet. Secs 2 + 11 -

ba 130° E,

12.11

Top of spur 60 ft. high bet.
N 5-30° E + descent,

34.16

Cross wash 15-lks wide
course S 40° W + ascend

40.00

Set temporary 1/4 Sec Cor.

47.17

Top of spur bet. N 35° E
+ descent

72.10

Cross head of wash, course
S 46° W + ascend,

79.48

Intersect N + S line
10 lks N of Cor. to Secs
1-2-11 + 12. from which
Cor. drawn,

N 89° 58' W on a true
line bet. Secs - 2 + 11

ba 130° E

T, 2 N, R 25 E

Obs

39.74

Set a basalt stone 14
 x 9 x 4 ins 10 ins in the
 ground for $\frac{1}{4}$ Sec Cor.
 marked $\frac{1}{4}$ on N face &
 raised a mound of stone
 along side, Pits impracticable

79.48

The Cor. to Secs. 2-3-10 & 11
 Low broken hills
 Soil 2nd rate
 Timber scrub, juniper.

N 20° 12' W bet. Secs -
 2 & 3,

to 130° E,

Descend -

40.00

Set a granite stone
 18 x 11 x 9 ins 12 ins in
 the ground for $\frac{1}{4}$ Sec

T. 2 N. R. 25. E

Chs

53.23 Cor. marked $\frac{1}{4}$ on W face
raised a mound of stone
along side. Pile impracticable.
Cross wash 25-lbs
wide course $\approx 17^\circ$ W +
ascend.

78.43 Intersect 3^2 Standard
Parallel North 14.12
chs. W of Standard $\frac{1}{4}$ Sec
Cor. on S. B. of Sec 34 -
which is a post properly
marked - set in mound
of earth & with pile
E + W of post -

at which point
I set a basket stone
16 x 10 x 4 ins 12 ins in
the ground for ~~Standard~~
closing

S. 2 N. R 25 E

Obs-

Cov. to Secs. 2 & 3, marked
D. C. with 2 notches on E
& 4 notches on W edges -
& raised a mound of
stone along side, Pitts
impracticable.

Land broken & rocky
Soil 3^d rate

Timber scattering juniper -

I carefully examined
the adjustments of my
solar compass to day
particularly the latitude
& reversing apparatus
& found them correct

Aug 19th 1882

T. 2 N. R. 25 E

Chs-

From the cor. to Secs
 3-4-33 & 34 on S. By of
 T_p which is a
 basalt stone set firmly
 in the ground - 14 x 4 ins
 properly notched & with
 pits & marks in each
 Sec 5 1/2 ft. dist.

Thence Run N 20 12' W
 bet. Secs 33 & 34,

to 13030' E,

Over rolling land.

40.00

Set a post 3 ft long
 3 ins sq, with marks
 stone 12 ins in the
 ground for 1/4 Sec Cor,
 marked 1/4 S on W face
 Dry pits 18 x 18 x 12 ins

S, 2 N, R 25 E

Obs -

N + S of post 5 1/2 ft. dist.
 & raised a mound of earth
 1 1/2 ft. high 3 1/2 ft. base around
 post.

80,00

Set a post 4 ft. long
 4 ins sq. with markings
 about 1/2 ins in the ground
 for cor. to Secs - 27-28-33
 & 34 marked S, 2 N, S 27
 on N. E. R 25 - E. S 34 on S E
 S 33 on S. W +
 S 28 on N. W. faces with
 1 notch on S + 3 notches
 on E edges. Dry pits
 18 x 18 x 12 ins in each
 Sec 5 1/2 ft. dist. & raised
 a mound of earth 2 ft.
 high 4 1/2 ft. base around
 post

T. 12 N., R. 25 E

Chs -

Band rolling
Soil 2nd raft

Good grazing

East on a random line
bet. Sees 27+34

to 13018' E,

Over rolling land,

40.00 Set a temporary 1/4 Sec Cor,

79.95 Intersect A & B line 13

lbs of Cor. to Sees -

26-27-34+35 from

which Cor. I run -

A & B 5-4' W on a true

line bet. Sees - 27+34

to 13018' E,

39.97 Set a post 3 ft. long,

4 mis sq. with marked

T₁₂ N. R 25-E

Obs

stone 12 ins in the ground
for 1/4 Sec Cor. marked
1/4 S on N. face. Dry pits
18 x 18 x 12 ins E & W of post
5 1/2 ft. dist, & raised a
mound of earth 1 1/2 ft.
high 3 1/2 ft. base around post

7995

The Cor. to Secs. 27-28-33 & 34.

Band rolling
Soil 2 = net
Good grazing

At 20 12' W bet. Secs.
27 + 28.

to 130 18' E.

Band rolling,
40.00 Set a post 3 ft. long
4 ins sq. with marks

512 N. R. 25 E

Obs-

stone 12 ins in the ground
for $\frac{1}{4}$ Sec Cor. marked $\frac{1}{4}$ S
on W face, Dug pits 18
 \times 18 \times 12 ins N + S of post
 $5\frac{1}{2}$ ft. dia. & raised a
mound of earth $1\frac{1}{2}$
ft. high $3\frac{1}{2}$ ft. base
around post.

80,000

Set a basalt stone 24
 \times 16 \times 10 ins 18 ins in the
ground for Cor to Secs
21-22-27 & 28 marked
with 2 notches on S
& 3 notches on E edges
& raised a mound of
stone along side, Pits
unpracticable
Sand rolling
Soil 2nd rate

T. 2. N. R. 25-E

Obs

Good grazing
Timber scattered juniper

East on a random line
bet. Secs 22 + 27,
ba 130° E,
Descend,

7.05 Cross wash 10 lbs wide
course N + ascend

40.00 Set a temporary 1/4 Sec Cor.

79.76 Intersect N + S line 31
lbs N of Cor to Secs 22-23
- 26 + 27 from which Cor,
Down

N 89 47. W on a true line
bet. Secs 22 + 27
ba 130° E,

3988 Set a post 3 ft. long

Ty 2 N. R 25-E

Obs-

4 mis sq with marked
slope 1/2 mis in the ground
for 1/4 Sec Cor., marked
1/4 Sec N. face. Dug pits
18 x 18 x 12 mis E + W of
post 5 1/2 ft. dia. & raised
a mound of earth 1 1/2 ft.
high 3 1/2 ft. base around
post

7976

The Cor. to Secs 21-22-27+28

to and rolling

Soil 2 \rightarrow rath

Good grazing

At 2012, W. bet. Secs-
21+22.

to 13° E,

ascend gradually.

T₁₂ N, R₂₅-E

Chs

40.00 Set a blue lime stone
 18 x 10 x 7 ins 12 ins in the
 ground for $\frac{1}{4}$ Sec Cor. marked
 $\frac{1}{4}$ on W face, + raised a
 mound of stone alongside
 Pits impracticable

69.85- Top of bluff 140 ft. high
 brk at 100' E + descend

80.00 Set a basalt stone 18
 x 10 x 4 ins 12 ins in the
 ground for Cor to Secs
 15-16-21 + 22 marked
 with 3 notches on
 S + E edges + raised
 a mound of stone
 alongside, Pits
 impracticable
 Road broken + rocky
 Soil 3^d rate

T 12 N, R 25-E

Obs-

Fair grazing

East on a random line bet. Secs 15 + 22, to a 130° 30' E.

40.00

Over rolling land - set a temporary 1/4 Sec Cor.

79.81

Intersect N + S line 15-lks N of Cor to Secs 14-15-22 + 23 from which Cor. I run -

N 89° 54' W on a true line bet. Secs 15 + 22 to a 130° 30' E.

39.90

Set a blue line stone 14 x 10 x 7 ins 70 ins in the ground

T₁₂ N, R 25 E

Obs -

for 1/4 Sec Cor. marked
"B" on W face, & raised
a mound of stone alongside
Pits unfracturable.

79.81

The Cor. to Secs 15-16-21
+ 22,

Loam broken & rocky
Soil 2nd rate
Fair grazing

At 2012' W bet. Secs 15+16
to 130 30' E.

40.00

Ascend gradually,
Set a height stone 17
x 9 x 3 ins 12 ins in the
ground for 1/4 Sec Cor.
Marked 1/4 on W face
Dug pits 18 x 18 x 12 ins

S. 12. N. R. 25 E

Obs -

N + S of stone $5\frac{1}{2}$ ft.
 dist. + raised a mound
 of earth $1\frac{1}{2}$ ft. high $3\frac{1}{2}$
 ft. base along side.

56.16

Top of spur 280 ft high
 bed E + W + descend

79.00

Edge of bluff, descend
 abruptly -

80.00

Set a basalt stone
 $21 \times 16 \times 4$ ins 15 ins in
 the ground for Cor. to
 Secs 9-10-15 + 16 marked
 with 4 nolets on S
 + 3 nolets on E edges
 + raised a mound of
 stone along side, Pits
 impracticable from which
 a juniper 10 ins diam
 bed N 46° E. 20 lbs

S₁₂ N, R₂₅ - E

Chs

dist. marked S₁₂ N, R₂₅ E,
S 10 B. S.

A juniper 15 m² diam base
S 140 E. 56 lbs dist. marked
S₁₂ N, R₂₅ E. S 15 B. S.

Landrolling

Soil 2nd rate

Good greening

Timber, bettering juniper,

East on a random line
bet. Secs 10 + 15

T. a 130 - E.

Descend gradually,
Set temporary 1/4 Sec
Cor.

40,000

62,500

Cross Wash 10 lbs wide
Course N, W + ascend

5 1/2 Cr, R. 25 E

chs-

80.14

Intersect N + S line
 14 lbs S of Cor. to bees -
 10-11-14 + 15 from which
 Cor. I run
 S 89° 5-4' W on a true
 line bet. bees 10 + 15
 va 13° E,

40.07

Set a basalt stone
 18 x 10 x 7 in 12 ins in the
 ground for 1/4 Sec Cor.
 marked 1/4 on N. face
 + raised a mound of
 stone alongside, Pits
 insignificant

80.14

The Cor. to bees - 9-10-15 + 16
 Round rolling
 Soil 2nd rate
 Good grazing

T, 2 N, R 25 E

Obs -

C.

At 20' 12' W. bet. Secs
9 + 10

To a 150 E,

40.00

Set a line stave 18 x
10 x 3 ins 12 ins in the
ground for $\frac{1}{4}$ Sec Cor. -
marked $\frac{1}{4}$ on W face
& raised a mound of
stave alongside, Pits
infractible -

68.30

Cross wash 35 lbs wide
Course N. W + ascend

72.00

Top of spur 60 ft. high
has E + W + descend.

80.00

Set a sand stave 24 x 13
x 4 ins 16 ins in the ground
for Cor to Secs - 3-4-9 + 10
Marked with 3 notches
on E + 5 notches on Sedges

S, 2 N, R 25-E

Obs -

raised a mound of
stone alongside, Plts
impracticable -

Soil broken + rocky
Soil 3^d rate,
Timber scattering juniper.

East on a random line bet.
Secs 3 + 10

to a 130° 32' E.

Ascend.

24.5-1

Top of spur 100 ft. high
bet N 34° E + descent -

40.00

Set a temporary 1/4 sec. cor.

49.80

Cross head of wash 20 lbs
wide, course N 100° W +
ascend.

79.70

Intersect N + line 23

T 12 N, R 25 E

Obs -

Uks S of Cor. to Secs - 2-3-10+11
from which Cor. I run.
S 89° 50' W on a line line
bet. Secs - 3+10

to a 130 32' E,

3 9.85 set a granite stone 18
x 10 x 4 into 12 ins in the
ground for 1/4 Sec Cor. marked
1/4 on N. face & raised a
mound of stone alongside
Pits unpedestalled.

7 9.70 The Cor. to Secs 3-4-9+10
Sand rolling & rocky
Soil 3" rather
Timber scattering juniper.

At 2° 12' W bet. Secs
3+4

to a 130 32' E

S, 20 N. R 25 E

Chs

Descend.

1,35

Cross wash 18 lbs
wide course & 700 W
& ascend.

40.00

Hit a basalt stone
14 x 12 x 10 ins & rest in the
ground for $\frac{1}{4}$ Sec Cor.
Marked $\frac{1}{4}$ on W face
& raised a mound of stone
along side. Pits impracticable

42.13

Top of ridge 120 ft. high
hrs E & W descend.

77.80

Intersect 3^d standard
parallel North 12.85
Chs. W of the standard $\frac{1}{4}$
Sec Cor on S. By of Sec
33, which is a thin
stone set firmly in the ground
properly marked & with mound
of stone along side

T 12 N. R 25 E

Obs.

at which point I set
a basalt stone 16 x 9
x 4 ins 10 ins in the
ground for ~~standard~~
for to bees 3 & 4, marked
D. C. with 3 notches on
E & W faces - & raised
a mound of stone
along side, Pt. impracticable
band broken & rocky hills -
Soil 3^d rate

Very little grass.

Timber scrub juniper -
I carefully examined
the adjustment of my
Solar Compass to day
particularly the latitude
and reversing apparatus
& found them correct.
Aug 21 - 1882

S. 2 N. R. 25 E

Chs.

From the Cor. to Secs -
 4-5-32 & 33 on S. By of Sp-
 which is a Basalt
 stone 14 x 19. mis set firmly
 in the ground - marked
 with 2 notches on W +
 4 notches on E edges +
 with mounds of earth
 + pits in each Sec -
 Thence Run N 20 12' W.
 bet. Secs 32 & 33

ba. 15° 36' E.

Over rolling land.

40.00

Set a basalt stone 18 x
 12 x 10 mis 12 mis in the
 ground for $\frac{1}{4}$ Sec Cor. marked
 $\frac{1}{4}$ on W face + raised a
 mound of stone alongside
 Pits unperfected

80.00

Set a post 4 ft. long

T, 2 N, R 25 E

Chs

4 mis sq. with marked
stone 12 mis in the
ground for Cor. to Secs
28-29-32+33. marked
T, 2 N, S 28 on N. E. R
25 E, S 33 on S. E. S 32
on S. W + S 29 on N. W faces
with 1 notch on S + 4
notches on E edges. Dug
pits 18 x 18 x 12 ins in
each Sec 5 1/2 ft. dist.
+ raised a mound of
earth 2 ft. high 4 1/2 ft.
base around post
Sand rolling
Soil 2nd rate
Fair grazing

T. D. & N. Res. E

Obs-

East on a random line
bet. Secs 28 + 33.

to 13025' E

40,000

79.71

Over rolling land,
Set a temporary $\frac{1}{4}$ Sec Cor.
Intersect N + W line 5000
S of Cor. to Secs 27-28-33 + 34
from which Cor. I run
S 89° 39' W on a true line
bet. Secs 28 + 33.

to 13025' E

39,85

Set a post 3 ft. long
4 ins sq with marked
stone 12 ins in the
ground for $\frac{1}{4}$ Sec Cor.
Marked $\frac{1}{4}$ S on N face
Dig pits 18 x 18 x 12 ins
E + W of post 5 $\frac{1}{2}$ ft. dist.
& raised a mound of

T, 2 N. R 2 5 E

Obs

7971

earth $1\frac{1}{2}$ ft. high $3\frac{1}{2}$
ft. base around post,
The Cor. to Secs 28-29-32+33.

Land rolling
Soil 2nd rate

Fair grazing

N 20 12' W bet. Secs -
28 + 29.

to 130 25' E,

Over rolling land.

40.00 Set a post 3 ft. long 4 ins. sq.
with marked stakes 12
ins. in the ground for
 $\frac{1}{4}$ Sec Cor marked $\frac{1}{4}$
down W face, Dug
pits - 18 x 18 x 12 ins. W of
of post $5\frac{1}{2}$ ft. dist.

T. 12 N. R. 25 E.

Obs-

80,000

and raised a mound
of earth $1\frac{1}{2}$ ft. high $3\frac{1}{2}$
ft. base around post.
Set a basalt stone
 $16 \times 12 \times 8$ ins 10 ins in the
ground for Cor. to Dec-
20-21-28 & 29 marked
with 2 notches on S &
4 notches on E edges-
& raised a mound of
stone alongside Pitts
infractible -
Sand rolling
Soil 2nd after
Fair grazing
Timber scattering juniper

East on a random line

T 12 N, R 25-E

Obs

bet. Secs 21 & 28.

T_a 120 14' E.

Sand rolling -

40.00 Set temporary $\frac{1}{4}$ Sec Cor.

80.09 Intersect N & S line -

24 lbs S of Cor. to Secs -

21-22-27+28 from which

Cor. Run

S 89° 50' W on a true line
bet. Secs. 21 & 28.T_a 120 14' E.

40.04 Set a basalt stone 14

x 7 x 7 ins 10 ins in the

ground for $\frac{1}{4}$ Sec Cor,marked $\frac{1}{4}$ on N. face

+ raised a mound

of stone alongside -

Dits impracticable

80.09 The Cor. to Secs. 20-

21-28+29

612

S 1 2 N. R 2.5 E

Obs-

Band rolling
Soil 2nd rate
Fair grazing

At 2012' W. h. Sec
20421
to 2014' E.

ascend.

6.50
40.00

Top of mesa bro E + W,
set a post 3 ft. long
4 ins sq. with marks
stone 12 ins in the ground
for 1/4 Sec Cor. marked
1/4 S on W face. Dug pits
18 x 18 x 12 ins N + S of post
5 1/2 ft. dia. + raised a
mound of earth 1 1/2 ft.
high 4 1/2 ft. base around post

T₁₂ N, R₂₅ E

Obs-

80.00 Set a post 4 ft. long -
 4 ins sq. with marked stone
 12 ins in the ground foot.
 Con to Secs. 16-17-20 & 21 -
 marked - T₁₂ N, S₁₆ on
 N. E., R₂₅ - E., S₂₁ on S. E.,
 S₂₀ on S. W. + S₁₇ on N. W.
 faces with 3 notches on
 S + 4 notches on E edges -
 Dug pits 18 x 18 x 12 ins
 in each Sec 5 1/2 ft. dia.
 and raised a mound of
 earth 2 ft. high 4 1/2 ft.
 base around post.
 Sand broken -
 Soil 3^d rate.
 Fair grazing -
 Fumbr. - scaberrima juniper

D 12 N, R 25-E

Obs-

East on a random
line bet. Secs 16 & 21

ba 130° E,

ascend.

40.00 Set temporary $\frac{1}{4}$ sec cor.

69.19 Top of ridge 4 to 5 ft. high
here. It descends.

80.21 Intersect N & S line 22
Obs S of cor. to Secs 15-16-
21 & 22. from which cor.
I run

S 89° 51' W on a
true line bet. Secs 16 &
21-

ba 130° E,

40.10 Set a basalt stone
16 x 10 x 4 ins 12 ins in
the ground for $\frac{1}{4}$ sec cor.
marked $\frac{1}{4}$ on N. face

T, 2 N, R 25-E

Obs -

↑ raised a mound of
stone alongside, Pits
impracticable -

40.21 The Cor. to Secs 16-17-20+21
Land broken & rocky,
Soil 3^d rate
Timber scattering juniper

At 20.12 W - bet. Secs 16+17
ba 13° - E.

Ascend -

40.00 Set a basalt stone 14 x 9 x
5 ins 10 ins in the ground
for $\frac{1}{4}$ Sec Cor. marked $\frac{1}{4}$
In W face ↑ raised a
mound of stone alongside
Pits impracticable.

64.24 Top of spur 385 ft. high bro-

T. 12 N. R. 25 E

Obs-

80.00

N 70° W + descend,
 Set a basalt stone
 14 x 10 x 3 ins 10 ins in
 the ground for. Cor. to
 Secs 8-9-16+17 marked
 with 4 stakes on S + E
 edges + raised a mound
 of stone alongside, Pits
 impracticable.
 Sand rough + broken
 Soil 2nd + 3rd rate
 Fair grazing

East on a random
 line bet. Secs 9 + 16.
 to 13° 10' E,

ascend,

12.14

Top of ridge 420 ft. high

S, 2 N. R 25 E,

Obs -

- 40,000 hrs N + S + descend,
 ditto temporary $\frac{1}{4}$ sec cor,
- 76.26 Top of bluff 200 ft. high
 hrs N + 20 W + descend -
- 79.83 Intersect N + S line
 31 lbs N of cor. to Secs -
 9-10-15 + 16 - from which
 cor. down -
- N 89° 47' W on a true
 line bet. Secs 9 + 16,
 to a 13° 10' E,
- 39.91 ditto basalt stone 20 x
 10 x 3 ins 16 ins in the
 ground for $\frac{1}{4}$ sec cor,
 marked $\frac{1}{4}$ on N face, dry
 pits 18 x 18 x 12 ins E + W
 of stone $5\frac{1}{2}$ ft. dist. + raised
 a mound of earth $1\frac{1}{2}$
 ft. high $3\frac{1}{2}$ ft. base elongated.

T. 12. N., R. 25. E

Obs

79.83 The Cor. to Secs - 8-9-16 +
17.

Road broken & rocky -
Soil 3rd rate.

Timber scattering juniper

North 12° 12' W. to Sec -
Secs 8 + 9.

to 13° 10' ~~W~~ E.

Ascent

40.00 Set a post 3 ft. long 4 ins
sq with marked slot
12 ins in the ground for
1/4 Sec Cor. marked 1/4 S
on W face. Dug pits
18 x 18 x 12 ins N + S of post
5 1/2 ft. dia. & raised
a mound of earth 1/2 ft.

T₁₂ N. R₂₅ E

Obs

80.00

high 3 1/2 ft. base around
posts.

Hit a blue lime stone ✓
 18 x 10 x 7 ins 12 ins in
 the ground for Cor. to
 becs - 4 - 5 - 8 + 9 marked
 with 5 notches on S
 + 4 notches on E edges
 + raised a mound of stone
 alongside. Pits impracticable
 Hand broken & rocky -
 Soil 2nd rate,
 Good grazing

East on a random line
 bet. becs 4 + 9.

Tra 13° 45' E

Band rolling

S 1.2 N, R 25 E

Chs-

- 40.00 Set temporary 1/4 Sec Cor.
- 61.87 Cross-walk 35 ft wide
course N 16° W + ascend.
- 79.54 Intersect A + D line -
18 lbs S of Cor. to Secs -
3-4-9 + 10 from which
Cor. D run,
S 89° 5-2' W on a true line
bet. Secs 4 + 9.
ba 130° 45' E.
- 39.77 Set a sand stone 16 x
10 x 4 ins 12 ins in the
ground for 1/4 Sec Cor.
marked 1/4 on N face
+ raised a mound of
stone alongside. Pits
impracticable -
- 79.54 Set Cor. to Secs 4-5-8+9
Sand rolling

D, 2 N, R 25 E

Chs

Soil 3^d rate

Fair grazing

Timber of juniper

At 2° 12' W. bet. Secs
4 & 5.

To a 13° 45' E.

Descend gradually.

40.00

Set a sand stone 23 x 18
x 6 ins 15-ins in the
ground for $\frac{1}{4}$ Sec Cor.
marked $\frac{1}{4}$ on W face
& raised a mound of
stone alongside. Pkts
impracticable

77.06

Intersect the 3^d Standard
Parallel N. at a point
12.14 chs W of the Standard
 $\frac{1}{4}$ Sec Cor on S. By of

S₁₂ N, R₂₅ E

Obs

Sec 32 which is a sand
stone 12 x 8 ms set firmly
in the ground properly marked
with stone mound alongside

at which point I
set a basalt stone
15 x 10 x 7 ms 10 ms in
the ground for ^{clearing} ~~standing~~
Cor. Ho Secs - 4 & 5 marked
C.C. with 2 notches on
W & 4 notches on E edges
& raised a mound of stone
alongside, Pits unextractable
Bald rolling
Soil 2nd rate
Fair grazing.
I carefully examined
the adjacent of my

T 12 N. R 25 E

Obs -

Solar Compass. to day
particularly the latitude
& reversing apparatus
& found them correct
Aug 21-1882

From the Cor to Secs
5-6-31 & 32 on S. Bay of Sp.
which is a basalt stone pit
family in the
earth - properly
& notched & with rounds
& pits in each Sec.

Thence Down N 2° 12' W
bet. Secs 31 & 32

To a 13° 35' E.

Over rolling land.

T. 2. N. R. 2. 5 E

Obs

40.00 Set a sand stone 18 x
10 x 7 mis 12 mis in the
ground for $\frac{1}{4}$ Dec cor. marked
 $\frac{1}{4}$ on W face & raised a
mound of stone alongside
Pits impracticable

80.00 Set a basalt stone 20 x 12
x 9 mis 15 mis in the
ground for cor. to Decs
29-30-31 & 32 marked
with 1 notch on S &
5 notches on E edges
& raised a mound of
stone alongside, Pits
impracticable.
Band rolling & rocky,
Soil 2nd rite,
Good grazing
Timber scattering Juniper

T, 2 N, R. 2.5 E

Chs -

East on a random line
bet. Secs 29 + 32.

Via $13^{\circ} 36' E$.

Over rolling land.

40.00 Set a temporary $\frac{1}{4}$ Sec Cor

80.15- Intersect N + blife 22 lbs

N of Cor. to Secs 28-29-32 +

33 from which Cor. True

N $89^{\circ} 51' W$ on a true line

bet. Secs - 29 + 32.

Via $13^{\circ} 36' E$.

40.07 Set a basalt stone 20×12

$\times 10$ ins 15 ins in the ground

for $\frac{1}{4}$ Sec Cor. marked $\frac{1}{4}$

in $\frac{1}{4}$ face + raised a

mound of stone alongside

Pits unfracturable.


80.15- The Cor. to Secs - 29-30-31 + 32

Land rough + rocky

T 12 N, R 25 E

Chs-

Soil 2nd rate
 Fairgraying



Went on a random
 line bet. Secs 30 & 31 -
 to 130° 36' E,

Over rolling land,
 40.00 Set temporary 1/4 Sec Cor.
 64.73 Intersect W. Bdy of T₁₂
 13 lks N of Cor. to Secs -
 25 - 30 - 31 & 36 which is a
 basalt stone 9 x 4 ins
 11 ins in the ground
 properly marked &
 with mound of
 stone alongside
 ↓
 from which Cor. Drun

Site N. K 25 E

Obs -

N 89° 5-4' E on a true
line bet. Secs 20 + 31 -

to 13° 36' E.

24.73

Set a basalt stone
18 x 10 x 7 ins ~ 12 ins
in the ground for $\frac{1}{4}$ Sec
Cor. marked $\frac{1}{4}$ on N
face + Dig pits 18 x 18
x 12 ins E + W of stone
5 $\frac{1}{2}$ ft. dist. + raised a
mound of earth $\frac{1}{2}$ ft.
high 3 $\frac{1}{2}$ ft. base along side

64.73

The Cor. to Secs - 29 - 30 - 31 + 32

Land rolling & rocky
soil 2nd rate

Fair grazing

N 2° 12' W bet. Secs. 29 + 30

T₁₂ N₁ R₂₅-E

Obs -

ba 130 36' E.

Over rolling land.

40,00

Set a post 4 ft. long 4 ins sq. with marked stone 12 ins in the ground for 1/4 sec cor. marked 1/4 S on W face. Dig pits 18 x 18 x 12 ins N + S of post 5 1/2 ft. dia. + raised a mound of earth 1 1/2 ft. high 3 1/2 ft. base around post

80,00

Set a basalt stone 14 x 9 x 7 ins 10 ins in the ground for cor. to Secs 19-20-29 + 30 marked with 2 notches on S + 5 notches on E edges + Dig pits 18 x 18 x 12 ins in each Sec 5 1/2 ft. dia. + raised

T 12 N. R 25 E

Obs -

a mound of earth 2 ft.
high $4\frac{1}{2}$ ft. base alongside
Band rolling
Soil 2nd after
Good grazing
Timber scattered juniper

East on a random line bet.
Secs 20 & 29
Tra $110^{\circ}45'E$,

Over rolling land.

40.00

Set temporary $\frac{1}{4}$ Sec Cor.

80.03

Intersect A + B line 8
lbs S of Cor. to Secs 20-21-
28 + 29 from which Cor.
I run

S $89^{\circ}57'W$ on a true line
bet. Secs - 20 + 29

Tra $110^{\circ}45'E$

T. 2 N. R. 25 E

Obs-

40,01

Set a basalt stone 14 x 7
x 6 ins 10 ins in the ground
for 1/4 sec cor marked 1/4
on N. face. Dug pits 18 x 18
x 12 and E + W of stone 5 1/2
ft. dia. & raised a mound
of earth 1 1/2 ft. high 3 1/2 ft.
base alongside -

80,03

The cor. to secs 19-20-29+30
Land rolling
Soil 2nd rate.
Fair grazing

West on a random line
bet. Secs. 19 + 20³⁰
to 110 45' E

40,00

Over rolling land.
Set temporary 1/4 sector.

T 12 N. R 25 E.

Obs —

61.10 Intersect W. By of Sp 40
 lks S of Cor. to Secs 19-24 & 25
 + 30 which is a basalt
 stone 14 x 10 ins set firmly
 in the ground - properly
 notched + with mound of
 stone around it - with
 bearing trees N. E + S. W properly
 marked —————

from which Cor. Run
 S 89° 43' E on a true line
 bet. Secs 19 + 30.

to a 11° 45' E,

21.10 Sit a basalt stone 19 x
 9 x 7 ins 12 ins in the
 ground for $\frac{1}{4}$ Sec Cor.
 marked $\frac{1}{4}$ on N. face
 Dug pits 18 x 18 x 12 ins
 E + W of stone $5\frac{1}{2}$ ft. dist.

T₁ 2 N₁ R₁ 2 S-E

Obs-

61.10

and raised a mound
of earth 1 1/2 ft. high
3/2 ft. base along side
The Cor. to Secs 19-20-29+

30-
Band rolling -
Soil 2nd rate
Fair grazing

At 2° 12' W bet. Secs
19 + 20.
to a 11° 45' E.

21.13

Ascend.
Top of ridge 400 ft.
high bet E + W + descend

40.00

Sht a blue lime stone
20 x 10 x 8 ins 15-ins in
the ground for 1/4 Sec

T, 2 A, R 25-E

U.S. -

Cor. marked $\frac{1}{4}$ on W face
 & raised a mound of stone
 alongside, Pit impracticable
 from which -

A juniper 10 ins diam
 bed S 38° E 33 lbs dist,
 marked $\frac{1}{4}$ S. B. T.

A pine 4 ins diam base -
 Ar 190 W - 27 lbs dist,
 marked $\frac{1}{4}$ S. B. T.

53,30 Cross - wash 12 lbs
 wide course W & ascnd

80,00 Set a blue line stone
 24 x 12 x 11 ins 16 ins in
 the ground for Cor to
 bed - 17 - 18 - 19 & 20 marked
 with 3 notches on S &
 5 notches on E edges
 & raised a mound of
 stone alongside, Pit impracticable

T_{1,2} N, R_{2,5}: E

Chs-

Sand broken & rocky,
 Soil 2nd rate
 Good grazing
 Timber scattering Spruce & Pine

East on a random line bet.
 Secs 17 + 20
 to 130° 17' E,

Descend.

13.26 cross wash 16 lbs wide
course S + ascend.

40.00 hit temporary 1/4 sec cor.

52.55 Top of spur 8 1/2 ft. high
bet N + S + descend.

79.89 Intersect N + S line
 32 lbs N of cor to Secs
 16-17-20 + 21 from which
 cor. I run

N 89° 46' W on a true

T, 2 N, R 25-E

Chs -

line bet. Secs 17 + 20

T_a 13° 17' E.

39.94

Set a sand stone 24 x
12 x 10 ins 14 ins in the
ground for 1/4 Sec Cor,
marked 1/4 on N. face
& raised a mound of
stone alongside. All is
unpracticable.

79.89

The Cor. to Secs 17-18-19+20

Land broken & rocky
Soil 2nd rate

Good grazing
Siberian Scatting juniper

West on a random
line bet. Secs 18 + 19

T_a 13° 17' E

S, 2 N, R 25-E

Chs-

Ascend.

2.20

Top of ridge 65 ft high
bes A + S + descend

40.00

Set temporary 1/4 sec cor.

5-7.29

Intersect W. By of Sp-
14 lbs N of Cor to Secs-
13-18-19 + 24 which is a
post set firmly in a mound
of earth - properly marked +
notched - with pits in each sec-
+ bearing trees N. E. S. E + S. W.
properly marked

from which Cor - Iron
at 89° 54' E on a true
line bet. Secs 18 + 19

to 13017'E

17.29

Set a post 3 ft. long
4 in sq. with marked

T, 2 N, R 25 E

Chs -

1

stone 12 ins in the
ground for $\frac{1}{4}$ Sec Cor,
marked $\frac{1}{4}$ S on Y. face
Dug pits 18 x 18 x 12 ins
E + W of post $5\frac{1}{2}$ ft.
diam. & raised a mound
of earth $1\frac{1}{2}$ ft. high $3\frac{1}{2}$
ft. base around post,
from which.

A yellow pine 5-in diam
broken 5-30-30' E 40 lbs diam,
marked $\frac{1}{4}$ S. B. T.

5-7-29

The Cor. to Secs - 17-18-19 & 20

Land broken & rocky
soil 2nd rate

Fair grazing
Timber consisting Pine
and Juniper

S 12 N, R 25 E

Chs -

N 20 12' W. bet. Secs 17 + 18.
to 13 17' E.

ascend -

6.0 6 Top of ridge 70 ft. high
bet N. E + descend -

40.0 0 Hit a basalt stone 14 x 10 x
7 ins 10 ins in the ground
for 1/4 sec cor. marked 1/4
on W. face + raised a mound
of stone alongside, Pits
unpracticable

80.0 0 Hit a sandstone 18 x 12 x
4 ins 12 ins in the ground
for cor. to Secs 7-8-17+18
marked with 4 notches
on S + 5 notches on E
edges - Dug pits 18 x 12 x
12 ins in each Sec 5 1/2
ft. dia., + raised a mound
of earth 2 ft. high 4 1/2

T. 2 N. R. 25 E

Chs -

fl. base alongside -
 Band broken rocky
 Soil 2nd rate
 Fair grazing

East on a random bet.
 Secs 8 + 17
 to 130° 30' E.

Over rolling land.

06 Cross wash 30 lbs wide
 Course at 46° W + ascend

40.00 Hit temporary 1/4 sec cor.

74.15 Top of ridge 200 ft. high
 bet at 37° W + descend.

79.94 Intersect at 1/4 line of
 lbs at of cor to Secs
 8-9-16 + 17, from which
 cor. I run,

at 89° 56' W on a true

T, 2 A, R 25-2

Obs -

line bet. Secs - 8 + 17.

ba 130° 30' E,

39.97

Set a line stone 16 x 10
 + 4 ins 12 ins in the ground
 for $\frac{1}{4}$ Sec. Cor. marked $\frac{1}{4}$
 on N. face + raised a
 mound of stone alongside
 Pits impracticable.

✓ 79.94

The Cor. to Secs - 7-8-17+18.

Land broken + rocky
 Soil 3^d rate.

Timber scattering juniper-

Went on a random line
 bet. Secs 7 + 18.

ba 130° 30' E

40.00

Over rolling land.
 Set temporary $\frac{1}{4}$ Sec Cor.

T 12 N, R 25 E

Obs -

5-3, 61 Intersect W. By of Sp
 17 lbs N of Cor. to Sec-
 7-12-13+18 which is a
 sand stone 12 x 3 ins set
 firmly in the ground properly
 notched + with a mound
 of stone alongside.

from which Cor. I run
 N 89° 53' E on a true line
 bet. Secs 7+18
 to 13° 30' E.

13.61 Set a sand stone 18 x 10 x
 4 ins 12 ins in the ground
 for 1/4 Sec Cor. marked
 1/4 on N. face. Dug pits
 18 x 18 x 12 ins E + W of stone
 5 1/2 ft. diam. + raised a mound
 of earth 1 1/2 ft. high 3 1/2 ft.

T. 12 N. R. 25 E

Obs -

base alongside from which -
a juniper 8 in diam
height 40 E, 55 lbs dist,
marked $\frac{1}{4}$ S. B. T.

a juniper 16 in diam base
S 28° E, 43 lbs dist, marked
 $\frac{1}{4}$ S. B. T.

53.6 1

The Cor. to Secs. 7-8-17+18.

Land slightly rolling valley
Soil 2nd rate

Good grazing

Timber scrub juniper -

At 20 12' W bet. Secs 7+8 -
to a 13° 30' E,

Over rolling land.

40.00

Set a basalt stone 15 x 10
x 7 in 10 in in the ground

T, 2 N, R 25 E

U.S.

for $\frac{1}{4}$ Sec Cor. marked $\frac{1}{4}$ on
 NW face + raised a mound
 of stone alongside, Pits
 impracticable.

80.00

Set a blue lime stone
 $18 \times 12 \times 9$ ins 12 ins in
 the ground for Cor. to Secs
 5-6-7+8 marked with
 5 notches on S + E edges
 + raised a mound of stone
 alongside, Pits impracticable.

Land rolling

Soil 3^d rate

Fair grazing

East on a random line
 bet. Secs 5+8-

to 130 9' E

T 12 N. R 25 E

Chs-

- Over rolling land.
- 40.00 Set temporary $\frac{1}{4}$ Sec Cor.
- 79.60 Intersect N & S line 26 lbs
S of Cor. to Secs 4-5-8+9 -
from which Cor. I run
S 89° 49' W on a true line
bet. Secs 5+8,
to a 130 9' E,
- 39.80 Set a blue line stone
16 x 9 x 5 - ins 12 ins in
the ground for $\frac{1}{4}$ Sec Cor.,
marked $\frac{1}{4}$ on N. face
& raised a mound of
stone alongside, Pit
unpracticable.
- 79.60 The Cor. to Secs. 5-6-7+8.
Land rolling
Soil \Rightarrow ratf
Fair grazing

T₁₂ N. R 25 E

Obs

West on a random line
bet. Secs 6 + 7.

ba 130 9' E

Over rolling land.

40,00

Set a temporary $\frac{1}{4}$ Sec Cor.

50,23

Intersect the W. By. of
Sp. 30 lbs of Cor. to
Secs - 1-6-7 + 12 which is a
basalt stone 10 x 4 ins

set firmly in the
ground - properly notched
with mound of stone
alongside

from which Cor. Iron -
It 890 47' E on a true
line bet. Secs - 6 + 7

ba 130 9' E

10,23

Set a blue limestone
18 x 10 x 7 ins 12 ins in the

T₁₂ N. R. 25-E

Obs-

ground for $\frac{1}{4}$ Sec Cor.
 marked $\frac{1}{4}$ on N face
 & raised a mound of stone
 alongside, Pits impracticable.
 50.23 The Cor. to Secs 5-6-7-8.

Band rolling

Soil 2nd rate

Timber scattering Juniper

At 20, 12' W bet. Secs
 5 + 6.

to 130 9' E

Over rolling land.

40.00 Set a blue pine stone
 21 x 13 x 5 - ins 15 ins in the
 ground for $\frac{1}{4}$ Sec Cor.
 marked $\frac{1}{4}$ on W face
 & raised a mound of

T₁₂ N. R_{25E}

cls -

stone alongside, Pits
impracticable -

76.28

Intersect the 3^d standard
Parallel North at a point
10.81 ch. W of standard $\frac{1}{4}$ Sec
Cor. on S.B. of Sec 31 -
which is a volcanic
stone - 10 x 6 ins set firmly
in the ground properly
marked - with pits &
mounds E & W of
stone

at which point I set
a blue lime stone 14 x 10 x 7
ins 10 ins in the ground
for ~~standard~~ ^{Closing} cor. of Secs
5 + 6 - marked D. C.,
with 5 notches on E

T. 2 N. R. 25 E

Obs -

and 1 notch on Wedges
+ raised a mound of stone
alongside - Pits impracticable -

Bad rolling
soil 2nd rate

Fair grazing -

Timber - feathering juniper

I carefully examined the
adjustment of my solar
Compass to day - particularly
the latitude & reversing -
apparatus + found them
correct.

Aug 22 - 1882

General Description -

The south half of the Tp. is rolling or nearly level - North half broken.

Good grazing in all parts of the Tp. -

A heavy growth of Juniper covers the Western & Southern part of the Tp. -

Soil 2nd & 3rd rate.

Stone of sand and basaltic formation.

A house and spring in Sec - 32 - fencing & c. - claimed by E. Bode valued at \$4000

U. S. Surveyor General's Office,
Tucson, Arizona, February 7, 1883.

The foregoing Field Notes of the survey of the

Subdivision Lines

of

Township 12 North,

Range 25 East

of the Gila and Salt River Base and Meridian, Arizona,
executed by O. W. Wheeler,

D. S., under his contract of the 31st, day of
May, 1882, having been critically ex-

amined and the necessary corrections and explanations
made, the said Field Notes and the surveys they de-
scribe, are hereby approved.

J. M. Robinson
Surveyor General.