

Henry Meyrick Jr. Deputy Surveyor.

T. 13 N. R. 17 E.

Gila and Salt River Meridian.

No-131

FIELD NOTES

OF

THE SUBDIVISION LINES OF

Township 13 N. Range 17 E.

Gila and Salt River Meridian.

BY

Henry Meyrick Jr. Deputy Surveyor.

Under his Contract of July 28th 1882

Survey Commenced April 20th 1883

Survey Completed April 23rd 1883

Platted,
Copied for Washington,
Copied for Register,

Edward Denny & Co., Stationers & Printers, S. F. Cal.

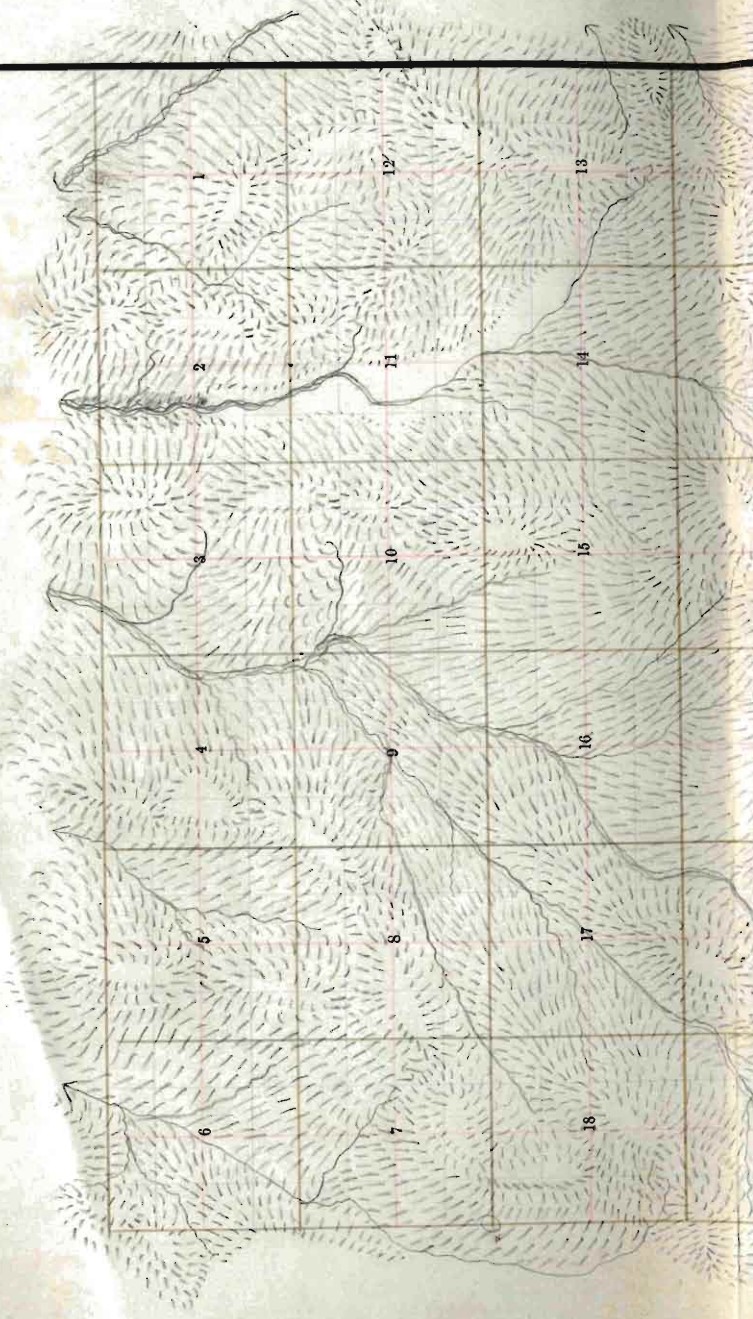
Copyright Secured,

Entered according to Act of Congress, in the Clerk's Office of the Librarian of Congress at Washington, D. C., in the year 1880.

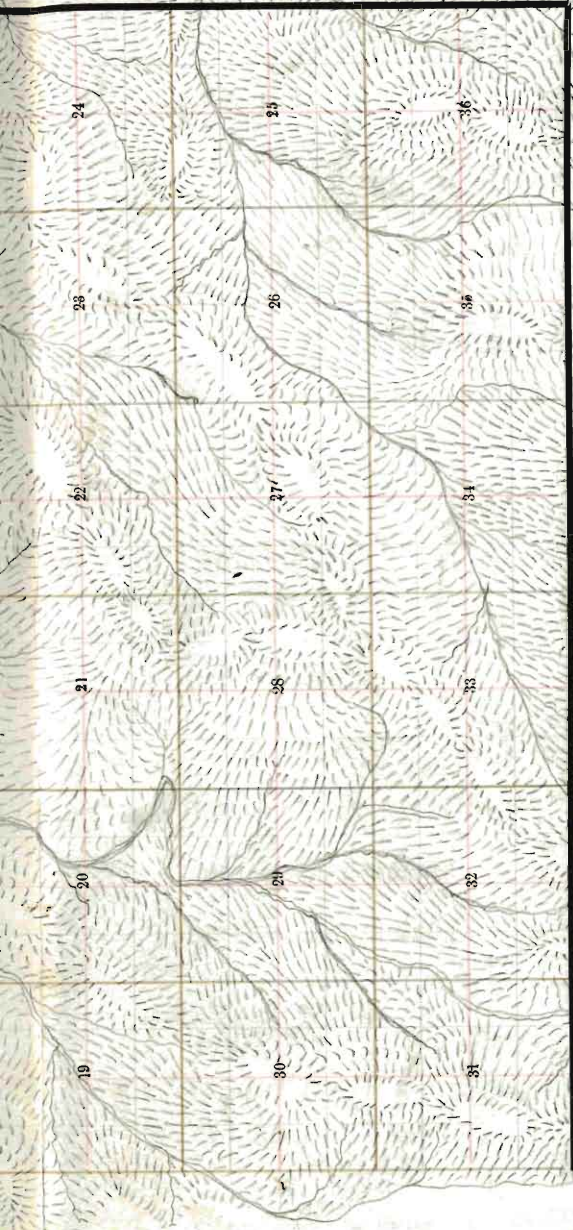
Edward Deuy & Co., Stationers and Printers, Drawing Material, Etc. 512 So. W. St., St. S. F.

Township No. 13 N Range No. 17 E 9th & 10th Meridian.

1



3912



195.60
23.91
 191.69
 202.20

 393.89
 13.65

 407.54
38.2
25
50

 367.54

BOOK 131

TOWNSHIP PLOT

Meridian Line,

Base Line,

Standard Line,

Township Lines,

Section Lines,

Meander Lines,

Office Work.

13

BOOK 131

Township 13 North, Range 17 East,
Gila and Salt River Basins Meridian.

6	60	5	44	4	33	3	22	2	11	1
59		58		43		32		21		10
7	57	8	42	9	31	10	20	11	9	12
56		55		41		30		19		8
18	54	17	40	16	29	15	18	14	7	13
53		52		39		28		17		6
19	51	20	38	21	27	22	16	23	5	24
50		49		37		26		15		4
30	48	29	36	28	25	27	14	26	3	25
47		46		35		24		13		2
31	45	32	34	33	23	34	12	35	1	36

O.K.

Edward Denny & Co., Stationers & Printers, S. F., Cal.

Copyright Secured,

Entered according to Act of Congress, in the Clerk's Office of the Librarian of Congress
 at Washington, D. C., in the year 1880.

Township..... Range.....

1c

Meridian.

No-131

For Preliminary Data
and description of instrument
see book No. 1.

Survey made with Burt's Patent Improved Solar
Compass, ^{is} nearly new, and in first rate order. Made
by Otto Fennel of Cassel
Germany in 1881

Before proceeding to subdivide this Tp., I made a
change of 5 minutes in the latitude arc of my
solar compass by subtracting same from
the reading previously given, and at noon verified
and corrected same by observation on the sun. I also
further tested instrument by reversing.

Chains

Standard
 From the corner to Sections 35, 36, ~~1 and 2~~ on the South boundary, *sp*
previously described same
 North, between Sections 35 and 36

Variation *13° 15'* East.

Descend.

26.87 Cross Wash, *17* lks. wide, Course *N. 18° W.*

40.00 Set a post 3 ft. long, 3 ins. diam. with marked stone
 12 ins. in the ground, for $\frac{1}{2}$ Sec. Cor., marked $\frac{1}{2}$ S. on
 W. face, dug pits, 18 x 18 x 12 ins., N. and S. of
 post $5\frac{1}{2}$ ft. dist., and raised a mound of earth $1\frac{1}{2}$ ft.
 high, $3\frac{1}{2}$ ft. base around post.

80.00 Set a *lime* stone 23 x 10 x 10 ins. 18 ins. in
 the ground for Cor. to Secs. 25, 26, 35 & 36 marked
 with / notch on S. and / notch on E. edges and
 raised a mound of stone alongside. Pits impracticable.

A Pine 11 ins, diam. bears *S. 85° W.* *6* lks. dist. *from which*
 marked T. 13 N. R. 17 E S., 35 B. T.

A Pine 12 ins, diam. bears *N. 25° W.* 30 lks. dist.
 marked T. 13 N. R. 17 E S., 26 B. T.

A Pine 8 ins, diam. bears *N. E.* 40 lks. dist.
 marked T. 13 N. R. 17 E S., 25 B. T.

No other trees within limits.

Land rolling.

Soil 3rd rate.

Heavy timber of juniper & pine
Undergrowth of juniper

Township 13 N Range 17 E
BOOK 131 Gila and Salt River Meridian.

Chains

East, on a random line between Sections 25 and 36.

Variation 13° 30' East.

Descend gradually.

5.82 Cross Wash, 20 lks. wide, Course N. and ascend.

25.88 Top of Spur, bears N 26° E and descend.

40.00 Set temporary $\frac{1}{2}$ Sec. Cor.

79.00 Cross Creek 20 lks. wide, Course N 20° E and ascend.

80.30 Intersect E. B. of Tp. 90 lks. S. of cor. to secs.

25. 30. 31 & 30 T. 13 N. R. 17 E.

Which is a sand stone
22 x 12 x 4 ins. 15 ins. in
the ground, marked with
1 notch on S and 5 notches
on N. edge, and a
mound of stone
along side.
from which corner, I run

S 89° 21' W. on a true line, between sections 25 & 30

Variation 13° 30' East.

40.15 Set a post 3 ft. long. 3 ins. diam. with marked stone
12 ins. in the ground, for $\frac{1}{2}$ Sec. Cor., marked $\frac{1}{2}$ S. on
N. face, dug pits, 18 x 18 x 12 ins., E. and W. of
post $5\frac{1}{2}$ ft. dist., and raised a mound of earth $1\frac{1}{2}$ ft.
high, $3\frac{1}{2}$ ft. base around post.

80.30 The corner to sections 20. 26. 35 & 30

Land mountainous Heavy timber of juniper.

Soil 3rd rate. Undergrowth of juniper.

Township 13 N. Range 17 E.

Gila and Salt River Meridian.

BOOK 181

Chains North, between Sections 25 and 26.

Variation 13° 30' East.

Descend.

11.33 Cross Wash, 14 lks. wide, Course N. 23° E. and ascend.

20.00 Top of Spur, bears N. E. & S. W. and descend.

40.00 Set a Limestone stone 18 x 12 x 8 ins., 12 ins. in the ground, for 1/2 Sec. Cor., marked 1/2 on W. face, dug pits 18 x 18 x 12 ins., N and S, of stone 5 1/2 ft. dist., and raised a mound of earth 1 1/2 ft. high, 3 1/2 ft. base alongside.

50.35 Cross Wash, 24 lks. wide, Course E, and ascend.

80.00 Set a Sandstone 24 x 18 x 6 ins. 18 ins. in the ground for Cor. to Secs. 23, 24, 25 & 26 marked with 2 notches on S. and 1 notch on E. edges, dug pits 18 x 18 x 12 ins. in each Sec., 5 1/2 ft. dist. and raised a mound of earth 2 ft. high, 4 1/2 ft. base. alongside.

A Juniper 10 ins. diam. bears S. 85° E. 24 lks. dist. from which marked T. 13 N. R. 17 E. S., 25 - B. T.

A Juniper 8 ins. diam. bears N. 15° W. 19 lks. dist. marked T. 13 N. R. 17 E. S., 23 B. T.

No other trees within limits.

Land rolling.

Soil 3rd rate

Timber of juniper & pine.

Dense undergrowth of Juniper

Township 13 N. Range 17 E.

BOOK 137

Gila and Salt River Meridian.

Chains East, on a random line between Sections 24 and 25.
Variation 13° 30' East.

Ascend.

20.33 Top of Hill bears N. 77° W. & S. 77° E. and descend.

~~20.77~~ *Ascend.*

40.00 Set temporary $\frac{1}{4}$ Sec. Cor.

80.64 Intersect E. B. of Tp. 08 Wks. S. of cor. to secs.
19. 24. 25 & 30 T. 13 N. R. 17 E.

Which is a sand stone
22 x 12 x 4 ins. 15 ins. in the
ground marked with 2 notches
on S. and 4 notches on N.
edges and a mound of stone alongside.
from which.

A Juniper 3 ins. diam. bears S. 25° W. 4 1/2 wks. dist.
marked T. 13 N. R. 17 E. S. 30 B. T.
A Juniper 6 ins. diam. bears N. 70° E. 34 wks. dist.
marked T. 13 N. R. 17 E. S. 24 B. T.
from which corner, I run

S. 89° 31' W. on a true line, between sections 24 & 25
Variation 13° 30' East.

40.32 Set a post 3 ft. long. 3 ins. diam. with marked stone
12 ins. in the ground, for $\frac{1}{4}$ Sec. Cor., marked $\frac{1}{4}$ S. on
N. face, dug pits, 18 x 18 x 12 ins., E. and W. of
post $5\frac{1}{2}$ ft. dist., and raised a mound of earth $1\frac{1}{2}$ ft.
high, $3\frac{1}{2}$ ft. base around post.

80.64 The corner to sections 23. 24. 25 & 20

Land hilly.

Soil 3rd rate Dense undergrowth of Juniper

Timber of Juniper.

Township 13 N. Range 17 E.

BOOK 181 Gila and Salt River Meridian.

Chains North, between Sections 23 and 24. Variation 13° 30' East.

Ascend gradually.

40.00

A pine 3 ins. diam. which I marked 1/4 S. on W. face, for 1/4 sec. cor., dug pits, 18 x 18 x 12 ins. N. and S. of tree, 5 1/2 ft. dist. and raised a mound of earth around tree. from which

A Pine 4 ins, diam. bears N 85° W. 39 lks. dist. marked 1/4 S. B. T. No other trees within limits.

61.83

Top of Ridge, bears N. E. & S. W. and descend.

80.00

Set a lime stone 15 x 8 x 6 ins. 10 ins. in the ground for Cor. to Secs. 13, 14, 23 & 24 marked with 3 notches on S. and 1 notch on E. edges and raised a mound of stone alongside. Pits impracticable. from which

A Pine 8 ins, diam. bears S. 85° W. 22 lks. dist. marked T. 13 N. R. 17 E, S., 23 B. T.

A Pine 6 ins, diam. bears S. 35° E. 37 lks. dist. marked T. 13 N. R. 17 E, S., 24 B. T.

A Pine 5 ins, diam. bears N. 60° E. 15 lks. dist. marked T. 13 N. R. 17 E, S., 14 B. T.

No other trees within limits.

Land mountainous

Soil 3rd rate.

Heavy timber of pine. Undergrowth of juniper.

BOOK 131 Gila and Salt River Meridian.

Chains East, on a random line between Sections 13 and 24.
Variation 13° 30' East.

Ascend.

40.00 Set temporary $\frac{1}{4}$ Sec. Cor.

62.41 Top of Ridge, bears N. 57° E. 57' and descend.

80.70 Intersect E. B. of Tp. 97 lks. S. of cor. to secs.

13. 18. 19 & 24 T. 13 N. R. 17 E.

Which is a sand stone
28 x 18 x 8 ins. 21 ins. in the ground marked
with 3 notches on S. and 3 notches
on N. edges and a mound of stone along side
from which

A Pine 5 ins. diam. bears S. E. 31 lks. dist.
marked T. 13 N. R. 18 E. S. 19 B. T.

A Pine 8 ins. diam. bears N. 30° E. 31 lks. dist.
marked T. 13 N. R. 18 E. S. 18 B. T.

A Pine 7 ins. diam. bears N. 38° W. 31 lks. dist.
marked T. 13 N. R. 18 E. S. 18 B. T.
from which corner, I run

89.18 W. on a true line, between sections 13 & 24
Variation 13° 30' East.

40.35 Set a post 3 ft. long. 3 ins. diam. with marked stone
12 ins. in the ground, for $\frac{1}{4}$ Sec. Cor., marked $\frac{1}{4}$ S. on
N. face, dug pits, 18 x 18 x 12 ins., E. and W. of
post 5 $\frac{1}{2}$ ft. dist., and raised a mound of earth 1 $\frac{1}{2}$ ft.
high, 3 $\frac{1}{2}$ ft. base around post.

80.70 The corner to sections 13. 14. 23 & 24
Land mountainous

Soil g^o rate
Timber of juniper
Dense undergrowth of juniper

Township 13 N. Range 17 E.BOOK 131 Gila and Salt River Meridian.

Chains

North, between Sections 13 and 14.

Variation 13° 30' East.*Descend. gradually.*38.11 Cross Wash, 10 lks. wide, Course N.E. and ascend.40.00 Set a lime stone 20 x 10 x 6 ins., 15 ins. in the ground, for $\frac{1}{4}$ Sec. Cor., marked $\frac{1}{4}$ on W. face, dug pits 18 x 18 x 12 ins., N. and S. of stone 5 $\frac{1}{2}$ ft. dist., and raised a mound of earth 1 $\frac{1}{2}$ ft. high, 3 $\frac{1}{2}$ ft. base all side.20.00 Set a post 4 ft. long, 4 ins. square, with marked stone 12 ins. in the ground, for Cor. to Secs, 11, 12, 13 & 14 marked T, 13 N. S. 12, on N, E, R, 17 E., S. 13 on S, E, S, 14 on S, W, and S, 11 on N, W, face with 1/2 notches on S, and 1 notch on E, edges, dug pits 18 x 18 x 12 ins, in each Sec., 5 $\frac{1}{2}$ ft. dist., and raised a mound of earth 2 ft. high, 4 $\frac{1}{2}$ ft. base around post.

Land rolling.

Soil 3rd rateTimber of juniper.Dense undergrowth of juniper.

Township 13 N Range 17 E
BOOK 131 Gila and Salt River Meridian.

Chains

East, on a random line between Sections 12 and 13.

Variation 13° 30' East.

Ascend.

40.00 Set temporary 1/4 Sec. Cor.

48.13 Top of Ridge, bears N. 30° E. 1/2 Sec. and descend.

80.74 Intersect E. B. of Tp. 131 lks. S. of cor. to secs.

7. 12. 13 & 18 T. 13 N. R. 17 E.

Which is a sand stone 30 x 20 x 10 ins. 22 ins. in the ground marked with 4 notches on S. and 2 notches on N. edge, and a mound of stone alongside.

1 Pine 5 ins. diam. bears N. 30° E. 24 lks. dist. marked T. 13 N. R. 13 E. S. 7 B. T.

1 Pine 4 ins. diam. bears S. 42° W. 66 lks. dist. marked T. 13 N. R. 17 E. S. 13 B. T. from which corner, I run

189° 4' W. on a true line, between sections 12 & 13
Variation 13° 30' East.

40.37 Set a lime stone 14 x 8 x 8 ins., 10 ins. in the ground, for 1/4 Sec. Cor., marked 1/4 on N. face, and raised a mound of stone alongside. Pits

impracticable. from which

1 Pine 10 ins. diam. bears S. 35° E. 41 lks. dist. marked 1/4 S. B. T.

1 Pine 12 ins. diam. bears N. 60° E. 30 lks. dist. marked 1/4 S. B. T.

The corner to sections 11. 12. 13 & 14

Land mountainous
Soil 3" rate
Timber of juniper.
Dense undergrowth of juniper.

Township 13 N. Range 17 E.BOOK 131 Gila and Salt River Meridian.

Chains

North, between Sections 11 and 12.

Variation 13° 30' East.*Ascend.*31.44 Top of Ridge, bears N. 31° W. S. 31° E. and descend.40.00 Set a post 3 ft. long, 3 ins. diam. with marked stone 12 ins. in the ground, for $\frac{1}{4}$ Sec. Cor., marked $\frac{1}{4}$ S. on W. face, dug pits, 18 x 18 x 12 ins., N. and S. of post $5\frac{1}{2}$ ft. dist., and raised a mound of earth $1\frac{1}{2}$ ft. high, $3\frac{1}{2}$ ft. base around post.80.00 Set a post 4 ft. long, 4 ins. square, with marked stone 12 ins. in the ground, for Cor. to Secs. 1, 2, 11 & 12 marked T. 13 N. S. 1, on N. E., R. 17 E., S. 12 on S. E., S. 11 on S. W., and S. 2 on N. W. face, with 5 notches on S. and 1 notch on E. edges; and raised a mound of stone 2 ft. high, $4\frac{1}{2}$ ft. base around post. Pits impracticable.

Land mountainous

Soil 3rd rateTimber of juniper & pine.Dense undergrowth of juniper.

Township 13 N. Range 17 E.
BOOK 131 Gila and Salt River Meridian.

Chains East, on a random line between Sections 1 and 12.
 Variation 13° 30' East.

Descend.

17.92 Cross Wash, 15 lks. wide, Course N.W. and ascend.

40.00 Set temporary $\frac{1}{4}$ Sec. Cor.

42.30 Top of Ridge, bears N. & S. and descend.

80.18 Intersect E. B. of Tp. 74 lks. S., of cor. to secs.

1. 6. 7 & 12 T. 13 N. R. 17 E.

Which is a lime stone
 27 x 20 x 4 ins. 21 ins. in the
 ground marked with 5
 notches on S. and
 1 notch on N. edges,
 and a mound of stone
 alongside.

from which corner, I run

S. 89° 28' W. on a true line, between sections 1 & 12

Variation 13° 30' East.

40.09 Set a post 3 ft. long, 3 ins. diam. with marked stone.
 12 ins. in the ground, for $\frac{1}{4}$ Sec. Cor., marked $\frac{1}{4}$ S. on
 N. face, and raised a mound of stone $1\frac{1}{2}$ ft. high,
 $3\frac{1}{2}$ ft. base around post. Pits impracticable.

80.18 The corner to sections 1, 2, 11, 12.

Land mountainous

Soil 3rd rate

Timber of juniper.

Dense undergrowth of juniper.

Township 13 N. Range 17 E.
 BOOK 131 Gila and Salt River Meridian.

Chains North, on a random line between Sections 1 and 2.
 Variation 13° 45' East.

Descend.

22.13 Cross Wash, 14 lks. wide, Course N.W.

40.00 Set temporary $\frac{1}{4}$ Sec. Cor.

41.50 Cross Wash, 23 lks. wide, Course N. 26° E and ascend.

80.20 Intersect N. B. of Tp. 17 lks. E. of cor. to secs.

^{previously set by me.}
 1.2.35 & 36 \wedge from which corner, I run

S. 7° E. on a true line, between sections 1 & 2

Variation 13° 30' East.

40.20 Set a sand stone 24 x 12 x 7 ins., 18
 ins. in the ground, for $\frac{1}{4}$ Sec. Cor., marked $\frac{1}{4}$ on W.
 face, and raised a mound of stone alongside. Pits
 impracticable.

80.20 The corner to sections 1, 2, 11 & 12

Land rolling.

Soil 3rd rate

Timber of juniper

Dense undergrowth of juniper

Henry Merfick April 20. 1883

Township 13 N. Range 17 E.

BOOK 131

Gila and Salt River Meridian.

From the corner to sections, 34 & 35 m. S. by Sp.
meridians described by me

Chains Iron North, between Sections 34 and 35. —

Variation 13° 50' East.

Descend.

6.50 Cross Wash, 15' lks. wide, Course N. 7° E.
40.00 Set a Sand stone 14 x 10 x 4 ins., 10
ins. in the ground, for $\frac{1}{4}$ Sec. Cor., marked $\frac{1}{4}$ on W.
face, and raised a mound of stone alongside. Pits
impracticable.

42.21 Cross Wash, 18' lks. wide, Course N. 12° W.
80.00 Set a June stone 25 x 8 x 4 ins. 18 ins. in
the ground for Cor. to Secs. 26, 27, 34 & 35 marked
with 1 notch on S. and 2 notches on E. edges and
raised a mound of stone alongside. Pits impracticable.

A Pine 6 ins, diam. bears N. 50° W. 58 lks. dist.
marked T. 13 N. R. 17 E. S., 27 B. T.

A Pine 7 ins, diam. bears N. 30° E. 41 lks. dist.
marked T. 13 N. R. 17 E. S., 26 B. T.

A Pine 4 ins, diam. bears S. 13° W. 38 lks. dist.
marked T. 13 N. R. 17 E. S., 34 B. T.

No other trees within limits.

Land rolling.

Soil 3' rate

Timber of Juniper

Dense undergrowth of Juniper.

Township 13 N Range 17 E

BOOK 131

Gila and Salt River Meridian.

Chains

East, on a random line between Sections 26 and 35.

Variation $13^{\circ} 30'$ East.*Ascend.*15.00 Top of Spur, bears $N. 10^{\circ} E. \& S. 10^{\circ} W.$ and descend.38.00 Cross Wash, 10 fks. wide, Course $N. E.$ and ascend.40.00 Set temporary $\frac{1}{4}$ Sec. Cor.62.00 Top of Spur, bears $N. E. \& S. W.$ and descend.69.12 Cross Wash, .08 fks. wide, Course $N. E.$ and ascend.

80.78 Intersect N. & S. line, 21 fks. S. of cor. to secs.

25.20 35 & 36 from which corner, I run

 $S. 89^{\circ} 51' W.$ on a true line between sections 26 & 35Variation $13^{\circ} 30'$ East40.39 Set a *lime* stone $18 \times 10 \times 4$ ins., 12 ins. in the ground, for $\frac{1}{4}$ Sec. Cor., marked $\frac{1}{4}$ on *N*face, and raised a mound of stone alongside. *Pits**impracticable.**from which*A Pine 9 ins. diam. bears $N. 70^{\circ} W.$ 33 fks. dist. marked $\frac{1}{4}$ S. B. T.A Pine 6 ins. diam. bears $S. 35^{\circ} W.$ 10 fks. dist. marked $\frac{1}{4}$ S. B. T.

80.78 The corner to sections 26, 27, 34 & 35

Land mountainous

Soil 3^{rd} rateTimber of *Yew*Dense undergrowth of *Juniper*.

BOOK 131

Gila and Salt River Meridian.

Chains

North, between Sections 26 and 27.

Variation $13^{\circ} 30'$ East.

Descend gradually.

12.31 Cross Wash, 12 lks. wide, Course $N. 20^{\circ} E$ and ascend.240.00 A Juniper 14 ins. diam. which I marked $\frac{1}{4}$ S. on W. face, for $\frac{1}{4}$ Sec. Cor.; from whichA Juniper 14 ins. diam. bears $N. 85^{\circ} W.$ 28 lks. dist. marked $\frac{1}{4}$ S. B. T.A Pine 5 ins, diam. bears $N. 28^{\circ} E.$ 6 lks. dist. marked $\frac{1}{4}$ S. B. T.51.50 Top of Ridge, bears $N. E. \text{ \& } S. W.$ and descend.77.31 Cross Wash, 20 lks. wide, Course $N. E.$ and ascend.80.00 Set a sand stone $18 \times 12 \times 8$ ins. 12 ins. in the ground for Cor. to Secs. 22, 23, 26 & 27 marked with notch on S. and notch on E. edges and raised a mound of stone alongside. Pits impracticable.A Pine 6 ins, diam. bears $S. E.$ from which 17 lks. dist. marked T. 13 N. R. 17 E. S., 26 B. T.A Pine 9 ins, diam. bears $S. 87^{\circ} E.$ 27 lks. dist. marked T. 13 N. R. 17 E. S., 26 B. T.A Pine 12 ins, diam. bears $N. 60^{\circ} E.$ 41 lks. dist. marked T. 13 N. R. 17 E. S., 23 B. T.

No other trees within limits.

Land mountainous

Soil 3rd rate.

Heavy timber of pine.

Undergrowth of juniper.

Township 13 N. Range 17 E.BOOK 181

Gila and Salt River Meridian.

Chains

East, on a random line between Sections 23 and 26.

Variation 13° 30' East.*Descend.*1.17 Cross Wash, 20 lks. wide, Course N. E., and ascend.30.00 Top of Ridge, bears N. E. & S. W. and descend.40.00 Set temporary $\frac{1}{4}$ Sec. Cor.40.21 Head of Ravine, Course S. E. and ascend80.63 Intersect N. & S. line, 18 lks. N. of cor. to secs.23, 24, 25 & 26 from which corner, I runN. 89° 52' W. on a true line between sections 23 & 26Variation 13° 30' East40.31 Set a Sand stone 14 x 8 x 4 ins., 10ins. in the ground, for $\frac{1}{4}$ Sec. Cor., marked $\frac{1}{4}$ on N.

face, and raised a mound of stone alongside. Pits

impracticable.

80.63 The corner to sections 22, 23, 26 & 27Land mountainousSoil 3rd rateTimber of YewDense undergrowth of Juniper.

Township 13 N Range 17 EBOOK 181 Gila and Salt River Meridian.

Chains North, between Sections 22 and 23.

Variation 13° 30' East.*Ascend.*20.00 Top of Spur, bears N. E. & S. W. and descend.40.00 Set a post 3 ft. long, 3 ins. diam. with marked stone 12 ins. in the ground, for $\frac{1}{4}$ Sec. Cor., marked $\frac{1}{4}$ S. on W. face, and raised a mound of stone $1\frac{1}{2}$ ft. high, $3\frac{1}{2}$ ft. base around post. *Pits impracticable.*42.00 Cross Wash, 10 lks. wide, Course N. E. and ascend.72.19 Top of Spur, bears N. 14° E. & S. 14° W. and descend.80.00 Set a post 4 ft. long, 4 ins. square, with marked stone 12 ins. in the ground, for Cor. to Secs, 14, 15, 22 & 23 marked T, 13 N. S, 14, on N, E, R, 17 E., S. 23 on S, E, S, 22 on S, W, and S, 15 on N, W, face with 3 notches on S, and 2 notches on E, edges, dug pits 18 x 18 x 12 ins, in each Sec., 5 $\frac{1}{2}$ ft, dist., and raised a mound of earth 2 ft, high, 4 $\frac{1}{2}$ ft, base around post.on Spur bears N. E. & S. W.

Land mountainous

Soil 3rd rateTimber of pine.Dense undergrowth of juniper.

Township 13 N Range 17 EBOOK 131

Gila and Salt River Meridian.

Chains

East, on a random line between Sections 14 and 23.

Variation 13° 30' East.*Ascend.*4.79 Top of Spur, bears N. 21° E. 21 and descend.38.66 Cross Wash, 23 lks. wide, Course N. 4° E and ascend.40.00 Set temporary $\frac{1}{2}$ Sec. Cor.80.49 Intersect N. & S. line, lks. at of cor. to secs.13, 14, 23 & 24 from which corner, I runW. on a true line between sections 14 & 23Variation 13° 30' East

40.24 Set a post 3 ft. long, 3 ins. diam. with marked stone

12 ins. in the ground, for $\frac{1}{2}$ Sec. Cor., marked $\frac{1}{2}$ S. onN. face, and raised a mound of stone 1 $\frac{1}{2}$ ft. high,3 $\frac{1}{2}$ ft. base around post. Pits impracticable.80.49 The corner to sections 14, 15, 22 & 23

Land rolling.

Soil 3rd rateTimber of YumaDense undergrowth of juniper.

Township 13 N Range 17 E
BOOK 131 Gila and Salt River Meridian.

Chains

North, between Sections 14 and 15.

Variation 18° 30' East.

Descend.

34.12 Cross Wash, 13 lks. wide, Course 0 and ascend.

40.00 Set a post 3 ft. long, 3 ins. diam. with marked stone
 13 ins. in the ground, for $\frac{1}{4}$ Sec. Cor., marked $\frac{1}{4}$ S. on
 W. face, and raised a mound of stone $1\frac{1}{2}$ ft. high,
 $3\frac{1}{2}$ ft. base around post. Pits impracticable.

80.00 Set a sand stone $30 \times 16 \times 7$ ins. 21 ins. in
 the ground for Cor. to Secs. 10, 11, 14 & 15 marked
 with 4 notches on S. and 2 notches on E. edges and
 raised a mound of stone alongside. Pits impracticable.

Land rolling.

Soil 3rd rate

Timber of pine

Dense undergrowth of juniper.

Township 13 N. Range 17 E.BOOK 131

Gila and Salt River Meridian.

Chains

East, on a random line between Sections 11 and 14.

Variation 13° 30' East.*Descend.*27.00 Cross Wash, 16⁻ lks. wide, Course N. and ascend.35.00 Top of Spur, bears N. & S. and descend.40.00 Set temporary $\frac{1}{4}$ Sec. Cor.43.10 Cross Wash, 17 lks. wide, Course N. 26° W. and ascend.57.41 Leave Valley bears N. 20° W. & S. 20° E.80.17 Intersect N. & S. line, 29 lks. N. of cor. to secs.

11, 12, 13 & 14 from which corner, I run

N. 89° 45' W. on a true line between sections 11 & 14Variation 13° 30' East

110.08 Set a post 3 ft. long, 3 ins. diam. with marked stone

12 ins. in the ground, for $\frac{1}{4}$ Sec. Cor., marked $\frac{1}{4}$ S. onN. face, and raised a mound of stone $1\frac{1}{2}$ ft. high, $3\frac{1}{2}$ ft. base around post. Pits impracticable.

80.17 The corner to sections 10, 11, 14 & 15

Land mountainous

Soil 2nd rateTimber of pine.Undergrowth of juniper.

Township

BOOK 131

Range

17 E.

20

Gila and Salt River Meridian.

Chains

North, between Sections 10 and 11.

Variation

13° 30'

East.

Descend.

40.00

Set a post 3 ft. long, 3 ins. diam. with marked stone 12 ins. in the ground, for $\frac{1}{4}$ Sec. Cor., marked $\frac{1}{4}$ S. on W. face, dug pits, 18 x 18 x 12 ins., N. and S. of post $5\frac{1}{2}$ ft. dist., and raised a mound of earth $1\frac{1}{2}$ ft. high, $3\frac{1}{2}$ ft. base around post.

80.00

Set a post 4 ft. long, 4 ins. square, 24 ins. in the ground, for Cor. to Secs. 2 3. 10 & 11 marked T. 13 N. S. 2 on N. E., R. 17 E., S. 11 on S. E., S. 10 on S. W. and S. 3 on N. W. faces, with 5 notches on S. and 2 notches on E. edges, from which

A Pine 9 ins, diam. bears S. 35° E. 38 lks. dist. marked T. 13 N. R. 17 E. S., 11 B. T.

A Pine 7 ins, diam. bears N. 31° W. 83 lks. dist. marked T. 13 N. R. 17 E. S., 3 B. T.

A Pine 8 ins, diam. bears N. 9° E. 94 lks. dist. marked T. 13 N. R. 17 E. S., 2 B. T.

A Pine 7 ins, diam. bears S. 44° W. 70 lks. dist. marked T. 13 N. R. 17 E. S., 10 B. T.

Land rolling.

Soil 3rd run.

Heavy timber of pine

Undergrowth of juniper.

Township

13 N

Range

17 E

Gila and Salt River Meridian.

BOOK 131

Chains

East, on a random line between Sections 2 and 11.

Variation

13° 30'

East.

Descend.

17.40 Enter Valley, bears N. & S.

21.20 A cabin 30.44 chs. N. of line.

23.14 Cross Wash, 20 lks. wide, Course N. 5° W.

32.00 Leave Valley, bears N. 7° W. S. 7° E. and ascend.

40.00 Set temporary $\frac{1}{4}$ Sec. Cor.

58.33 Top of Ridge, bears N. & S. and descend.

79.95 Intersect N. & S. line, 30 lks. S. of cor. to secs.

1. 2. 1/4 12 from which corner, I run

S 89° 47' W. on a true line between sections 2 & 11

Variation

13° 30'

East

39.97 Set a post 3 ft. long, 3 ins. diam 24 ins. in the ground,
for $\frac{1}{4}$ Sec. Cor., marked $\frac{1}{4}$ S. on N. face; from which
A Pine 12 ins, diam. bears N. 17° W. 33 lks. dist.
marked $\frac{1}{4}$ S. B. T.

A Pine 5 ins, diam. bears S. 7° W. 23 lks. dist.
marked $\frac{1}{4}$ S. B. T.

79.95 The corner to sections 2, 3, 10 & 11

Land mountainous level.

Soil 3rd rate

Timber of pine

Dense undergrowth of juniper.

Township

BOOK 131

Range

17 E.

Gila and Salt River Meridian.

Chains

North, on a random line between Sections 2 and 3.

Variation 13° 45' East.

Descend.

40.00 Set temporary 1/4 Sec. Cor.

80.08 Intersect N. B. of Tp. 40 lks. E. of cor. to secs. 2, 3, 34 & 35 previously set by me. from which corner, I run

S. 17' E. on a true line, between sections 2 & 3

Variation 13° 30' East.

40.08 Set a sand stone 22 x 14 x 7 ins., 15 ins. in the ground, for 1/4 Sec. Cor., marked 1/4 on face, and raised a mound of stone alongside. impracticable. Pits

80.08 The corner to sections 2, 3, 10 & 11.

Land rolling.

Soil 3rd rate

Vegetation grass.

G. W. Pearson. Compassman. April 20. 1883

Township 13 N Range 17 E

Gila and Salt River Meridian.

BOOK 21

From the corner to sections, described by section North, between Sections 33 and 34.

Variation 13° 45' East.

Descend.

36.17 Cross Wash, 32 lks. wide, Course N. 73° E and ascend.

40.00 Set a post 3 ft. long. 3 ins. diam. with marked stone 12 ins. in the ground, for 1/4 Sec. Cor., marked 1/4 S. on W. face, dug pits, 18 x 18 x 12 ins., N. and S. of post 5 1/2 ft. dist., and raised a mound of earth 1 1/2 ft. high, 3 1/2 ft. base around post.

80.00 Set a sand stone 23 x 10 x 6 ins. 18 ins. in the ground for Cor. to Secs. 27, 28, 33 & 34 marked with | notch on S. and 3 notches on E. edges and raised a mound of stone alongside. Pits impracticable.

A Pine 7 ins, diam. bears S. 10° W. 32 lks. dist. from which marked T. 13 N. R. 17 E. S., 33 B. T.

A Juniper 8 ins. diam. bears N. 87° E. 38 lks. dist. marked T. 13 N. R. 17 E. S., 28 B. T.

No other trees within limits.

Land rolling.

Soil 3rd rate

Timber of pine & juniper

Undergrowth of juniper.

Township 13 N. Range 17 E.

BOOK 131 Gila and Salt River Meridian.

Chains

East, on a random line between Sections 27 and 34.

Variation 13° 30' East.

Descend.

40.00 Set temporary 1/4 Sec. Cor.

69.00 Cross Wash, .18 lks. wide, Course N. E. and ascend.

80.48 Intersect N. & S. line, .02 lks. S. of cor. to secs.

36.27.34-35 from which corner, I run

A 89° 33' W. on a true line between sections 27 & 34

Variation 13° 30' East

40.24 Set a post 3 ft. long. 3 ins. diam. with marked stone 12 ins. in the ground, for 1/4 Sec. Cor., marked 1/4 S. on N. face, dug pits, 18 x 18 x 12 ins., E. and W. of post 5 1/2 ft. dist., and raised a mound of earth 1 1/2 ft. high, 3 1/2 ft. base around post.

80.48 The corner to sections 27, 28, 33 & 34

Land rolling.

Soil 3rd rate

Timber of pine.

Undergrowth of juniper.

Township

13 N

Range

17 E

BOOK 131

Gila and Salt River Meridian.

Chains

North, between Sections 27 and 28.

Variation $13^{\circ} 30'$

East.

*Ascend.*18.23 Top of Ridge, bears $N 58^{\circ} W$ & $S 58^{\circ} E$ and descend.40.00 Set a sand stone $19 \times 13 \times 7$ ins., 12 ins. in the ground, for $\frac{1}{4}$ Sec. Cor., marked $\frac{1}{4}$ on W. face, and raised a mound of stone alongside. Pits

impracticable.

from which

A Pine 8 ins, diam. bears $N 7^{\circ} E$. 40 lks. dist. marked $\frac{1}{4}$ S. B. T.A Pine 5 ins, diam. bears $N 52^{\circ} W$. 43 lks. dist. marked $\frac{1}{4}$ S. B. T.72.25 Cross Wash, 23 lks. wide, Course $N 55^{\circ} E$ and ascend.

80.00 Set a post 4 ft. long, 4 ins. square, 24 ins. in the ground, for Cor. to Secs. 21, 22, 27 & 28 marked T. 13 N. S. 22 on N. E., R. 17 E., S. 27 on S. E., S. 28 on S. W., and S. 21 on N. W. faces, with 2 notches on S. and 3 notches on E. edges, from which

A Pine 0 ins, diam. bears $N 19^{\circ} E$. 38 lks. dist. marked T. 13 N. R. 17 E. S. 22 B. T.A Pine 12 ins, diam. bears $S 54^{\circ} W$. 42 lks. dist. marked T. 13 N. R. 17 E. S. 28 B. T.A Pine 5 ins, diam. bears $N 52^{\circ} W$. 34 lks. dist. marked T. 13 N. R. 17 E. S. 21 B. T.A Juniper 0 ins. diam. bears $S 72^{\circ} E$. 18 lks. dist. marked T. 13 N. R. 17 E. S. 27 B. T.

Land mountainous

Soil 3rd rate.

Heavy timber of pine.

Undergrowth of juniper.

Township 13 N. Range 17 E.
BOOK 137 Gila and Salt River Meridian.

Chains East, on a random line between Sections 22 and 27.
 Variation 13° 30' East.

Descend.

9.18 Cross Wash, 14 lks. wide, Course N 75° E and ascend.

40.00 Set temporary $\frac{1}{4}$ Sec. Cor.

44.94 Top of Spur, bears N 49° E & S 49° W and descend.

80.34 Intersect N. & S. line, 81 lks. S. of cor. to secs.

22, 23, 26 & 27 from which corner, I run

189° 25' W. on a true line between sections 22 & 27

Variation 13° 30' East

46.17 Set a Sand stone 17 x 10 x 9 ins., 12
 ins. in the ground, for $\frac{1}{4}$ Sec. Cor., marked $\frac{1}{4}$ on N.
 face, and raised a mound of stone alongside. Pits
 impracticable.

80.34 The corner to sections 21, 22, 27 & 28

Land rolling.

Soil 3rd rate

Timber of pine.

Undergrowth of juniper.

Township

13

N.

Range

17

E.

BOOK 181

Gila and Salt River Meridian.

Chains

North, between Sections 21 and 22.

Variation $13^{\circ} 30'$ East.*Ascend.*

22.77
40.00
Top of Ridge, bears $N. 59^{\circ} E. S. 59^{\circ} W$ and descend.

A Juniper 7 ins. diam. which I marked $\frac{1}{2}$ S. on W. face, for $\frac{1}{4}$ Sec. Cor.; from which

A Juniper 7 ins. diam. bears $N. 37^{\circ} E. 11$ lks. dist. marked $\frac{1}{2}$ S. B. T.

A Juniper 5 ins. diam. bears $S. 82^{\circ} W. 15$ lks. dist. marked $\frac{1}{2}$ S. B. T.

80.00

Set a sand stone $18 \times 12 \times 9$ ins. 12 ins. in the ground for Cor. to Secs. 15, 16, 21 & 22 marked with 3 notches on S. and 3 notches on E. edges and raised a mound of stone alongside. Pits impracticable.

A Pine 9 ins. diam. bears $N. 45^{\circ} W. 16$ lks. dist. ^{from which} marked T. 13 N. R. 17 E. S., 16 B. T.

A Pine 10 ins. diam. bears $S. 30^{\circ} E. 90$ lks. dist. marked T. 13 N. R. 17 E. S., 15 B. T.

No other trees within limits.

Land mountainous

Soil 3rd rate.

Heavy timber of juniper & pine.

Undergrowth of juniper.

Township 13 N. Range 17 E.
BOOK 131 Gila and Salt River Meridian.

Chains

East, on a random line between Sections 15 and 22.

Variation $13^{\circ} 30'$ East.*Descend.*4.07 Cross Wash, 15 lks. wide, Course $N. 34^{\circ} W.$ and ascend.40.00 Set temporary $\frac{1}{2}$ Sec. Cor.

80.70 Intersect N. & S. line, 110 lks. S. of cor. to secs.

 $14. 15. 22 \& 23$ from which corner, I run $S. 89^{\circ} 13' W.$ on a true line between sections 15 & 22Variation $13^{\circ} 30'$ East

46.38 Set a post 3 ft. long, 3 ins. diam. with marked stone
 12 ins. in the ground, for $\frac{1}{2}$ Sec. Cor., marked $\frac{1}{2}$ S. on
 N. face, dug pits, 18 x 18 x 12 ins., E. and W. of
 post $5\frac{1}{2}$ ft. dist., and raised a mound of earth $1\frac{1}{2}$ ft.
 high, $3\frac{1}{2}$ ft. base around post.

80.70 The corner to sections 15. 10. 21 & 22

Land rolling.

Soil 3rd rateTimber of *Yew*.Undergrowth of *Juniper*.

Township

13 N

Range

17 E

BOOK 131

Gila and Salt River Meridian.

Chains

North, between Sections 15 and 16.

Variation

13° 30'

East.

Descend.

4.62

Cross Wash, 7 lks. wide, Course N. 30° W.

40.00

Set a post 3 ft. long, 3 ins. diam. with marked stone 12 ins. in the ground, for $\frac{1}{4}$ Sec. Cor., marked $\frac{1}{4}$ S. on W. face, dug pits, 18 x 18 x 12 ins., N. and S. of post $5\frac{1}{2}$ ft. dist., and raised a mound of earth $1\frac{1}{2}$ ft. high, $3\frac{1}{2}$ ft. base around post.

80.00

Set a Sand stone 18 x 18 x 5 ins. 12 ins. in the ground for Cor. to Secs. 9, 10, 15 & 16 marked with 4 notches on S. and 3 notches on E. edges and raised a mound of stone alongside. Pits impracticable.

A Juniper 6 ins. diam. bears N. 35° W. 45 lks. dist. ^{from which} marked T. 13 N. R. 17 E. S., 9 B. T.

A Juniper 8 ins. diam. bears S. 55° W. 80 lks. dist. marked T. 13 N. R. 17 E. S., 10 B. T.

A Juniper 9 ins. diam. bears S. 60° W. 45 lks. dist. marked T. 13 N. R. 17 E. S., 15 B. T.

No other trees within limits.

Land rolling.

Soil 3rd rate

Timber of juniper

Undergrowth of juniper

Township 13 N Range 17 E
BOOK 131 Gila and Salt River Meridian.

30

Chains East, on a random line between Sections 10 and 15.
Variation $13^{\circ} 30'$ East.

Ascend.

3.15 Top of Spur, bears NW & S. E. and descend.

30.70 Cross Wash, 30 lks. wide, Course NW and ascend.

40.00 Set temporary $\frac{1}{4}$ Sec. Cor.

45.10 Top of Ridge, bears N. & S. and descend.

80.30 Intersect N. & S. line, 77 lks. S. of cor. to secs.

10. 11. 14 & 15 from which corner, I run

889.27' W. on a true line between sections 10 & 15
Variation $13^{\circ} 30'$ East

40.15 Set a sand stone $15 \times 12 \times 8$ ins., 10
ins. in the ground, for $\frac{1}{4}$ Sec. Cor., marked $\frac{1}{4}$ on N.
face, and raised a mound of stone alongside. Pits
impracticable. from which

A Pine 11 ins, diam. bears $S 12^{\circ} E$ 50 lks. dist.
marked $\frac{1}{4}$ S. B. T.

A Pine 5 ins, diam. bears $N 30^{\circ} E$ 30 lks. dist.
marked $\frac{1}{4}$ S. B. T.

80.30 The corner to sections 9, 10, 15 & 10

Land mountainous.

Soil 3rd rate

Timber of pine.

Undergrowth of juniper.

Township 13 N. Range 17 E.

BOOK 131

Gila and Salt River Meridian--

Chains North, between Sections 9 and 10.

Variation 13° 30' East.

Descend.

46.00

Set a sand stone 19 x 15 x 7 ins., 12 ins. in the ground, for 1/4 Sec. Cor., marked 1/4 on face, and raised a mound of stone alongside. Pits impracticable.

48.20

Cross bed of creek 50 lbs. wide, Course N. 16° E.

73.20

Cross bed of creek 50 lbs. wide, Course N. 16° W. and ascend.

80.00

Set a post 4 ft. long, 4 ins. square, with marked stone 12 ins. in the ground, for Cor. to Secs, 3, 11, 9, 10 marked T, 1/3 N. S. 3, on N, E, R, 17 E., S. 10 on S, E, S, 9 on S, W, and S, 11 on N, W, face with 5 notches on S, and 3 notches on E, edges, dug pits 18 x 18 x 12 ins, in each Sec., 5 1/2 ft. dist., and raised a mound of earth 2 ft, high, 4 1/2 ft, base around post.

Land hilly.

Soil 3rd rate

Timber of pine

Dense undergrowth of juniper.

Township 13 N Range 17 E
BOOK 137 Gila and Salt River Meridian.

Chains East, on a random line between Sections 3 and 10.
Variation 13° 30' East.

Ascend.

40.00 Set temporary $\frac{1}{4}$ Sec. Cor.

63.00 Top of Ridge, bears N. & S. and descend.

80.40 Intersect N. & S. line, 118 lks. S. of cor. to secs.

2, 3, 10 & 11 from which corner, I run

S. 89° 39' W. on a true line between sections 3 & 10

Variation 13° 30' East

40.20 Set a post 3 ft. long, 3 ins. diam 24 ins. in the ground.

for $\frac{1}{4}$ Sec. Cor., marked $\frac{1}{4}$ S. on N. face; from which

A Pine 8 ins, diam. bears S. 40° W. 63 lks. dist.

marked $\frac{1}{4}$ S. B. T.

A Pine 7 ins, diam. bears S. 9° E 68 lks. dist.

marked $\frac{1}{4}$ S. B. T.

80.40 The corner to sections 3, 4, 9 & 10

Land mountainous

Soil 3rd rate

Timber of pine.

Dense undergrowth of juniper.

Township

13 N

Range

17 E

BOOK 131

Gila and Salt River Meridian.

Chains

North, on a random line between Sections 3 and 4.

Variation $13^{\circ} 45'$ East.

Descend.

40.00 Set temporary $\frac{1}{2}$ Sec. Cor.54.96 Cross bed of creek ^{with} 50 ^{N. 44° E} ^{and ascend}71.98 Top of Spur, bears $E. \& W.$ and descend.80.31 Intersect ^{N. B. of Tp. 5} ^{previously set by me.} 5 ^{lks. W. of cor. to secs.}3. 4. 33 & 34 ^{from which corner, I run}S. $2'$ W. on a true line, between sections 3 & 4.Variation $13^{\circ} 30'$ East.40.31 Set a post 3 ft. long, 3 ins. diam 24 ins. in the ground, for $\frac{1}{2}$ Sec. Cor., marked $\frac{1}{2}$ S. on W. face; from whichA Pine 7 ins, diam. bears S. 37° W. 7 lks. dist. marked $\frac{1}{2}$ S. B. T.A Pine 12 ins, diam. bears S. 67° E. 2 lks. dist. marked $\frac{1}{2}$ S. B. T.

80.31 The corner to sections 3, 4, 9 & 10

Land mountainous

Soil 3^{rd} rateTimber of *pine*.Dense undergrowth of *juniper*.

I carefully examined the adjustments of my solar compass to-day, particularly the latitude and reversing apparatus, and found them correct.

Henry Meyrick April 21. 1883.

Township 13 N Range 17 E

BOOK 137

Gila and Salt River Meridian.

Standard

From the corner to sections, 32 & 33 minutely described

Chains *Iron* North, between Sections 32 and 33.

Variation 13° 45' East.

Descend.

- 7.90 Cross Wash, 16 fks. wide, Course N. 72° E and ascend.
- 30.77 Top of Ridge, bears N. 80° E. S. 80° W. and descend.
- 40.00 Set a Sand stone 27 x 10 x 8 ins., 21 ins. in the ground, for $\frac{1}{4}$ Sec. Cor., marked $\frac{1}{4}$ on W. face, and raised a mound of stone alongside. Pits impracticable.
- 80.00 Set a Lime stone 30 x 20 x 10 ins. 22 ins. in the ground for Cor. to Secs. 28. 29. 32 & 33 marked with 1 notch on S. and 4 notches on E. edges and raised a mound of stone alongside. Pits impracticable.
- from which
A Cottonwood 14 ins, diam. bears N. 14° W. 16 fks. dist. marked T. 13 N. R. 17 E. S., 29 B. T.
- No other trees within limits.
- Land mountainous
- Soil 3rd rate
- Timber of Cottonwood
- Undergrowth of Juniper.

Township

13 N

Range

17 E

BOOK 131

Gila and Salt River Meridian.

Chains

East, on a random line between Sections 28 and 33.

Variation $13^{\circ} 30'$ East.

Descend.

11.50 Cross Gulch, 60 lks. wide, Course N. E. and ascend.

16.00 Top of Spur, bears N. & S. and descend.

21.80 Cross Gulch, 50 lks. wide, Course S. W. and ascend.

40.00 Set temporary $\frac{1}{4}$ Sec. Cor.

46.15 Top of Ridge, bears N. E. & S. W. and descend.

80.58 Intersect N. & S. line, 114 lks. S. of cor. to secs.

27.28.33 & 34 from which corner, I run

S 89° 11' W. on a true line between sections 28 & 33

Variation $13^{\circ} 30'$ East

40.29 Set a post 3 ft. long, 3 ins. diam 24 ins. in the ground,
 for $\frac{1}{4}$ Sec. Cor., marked $\frac{1}{4}$ S. on N. face; from which
 A Juniper 3 ins. diam. bears N. 22° E, 17 lks. dist.
 marked $\frac{1}{4}$ S. B. T.

A Pine 10 ins. diam. bears S. 33° W. 72 lks. dist.
 marked $\frac{1}{4}$ S. B. T.

80.58 The corner to sections 28, 29, 32 & 33

Land mountainous

Soil 3rd rate

Timber of pine & juniper.

Undergrowth of juniper.

Township 13 N Range 17 E
BOOK 137 Gila and Salt River Meridian.

Chains

North, between Sections 28 and 29.

Variation $13^{\circ} 30'$ East.

Descend.

1.57 Cross Gulch, 50 lks. wide, Course N.W. and ascend.
 21.08 Top of Spur, bears N.W. & S.E. and descend.
 40.00 Set a *Jerrie* stone $14 \times 8 \times 4$ ins., 10
 ins. in the ground, for $\frac{1}{4}$ Sec. Cor., marked $\frac{1}{4}$ on W.
 face, and raised a mound of stone alongside. Pits
 impracticable.

41.00 Cross Gulch, 50 lks. wide, Course N.W. and ascend.

59.82 Top of Spur, bears N.W. & S.E. and descend.

80.00 Marked a Stone $6 \times 8 \times 4$ ins. above
 ground for Cor. to Secs. 20, 21, 28 & 29 marked
 with 2 notches on S. and 4 notches on E. edges and
 raised a mound of stone alongside. Pits impracticable.

Land mountainous

Soil 3^{rd} rateTimber of *Jerrie*Undergrowth of *Juniper*.

Township

13 N

Range

17 E

BOOK 131

Gila and Salt River Meridian

Chains

East, on a random line between Sections 21 and 28.

Variation

13° 30'

East.

Ascend. abruptly.

12 Perpendicular cliff bears N. & S.
 25.00 Cross Gulch, 60 lks. wide, Course N.W. and ascend.
 40.00 Set temporary $\frac{1}{4}$ Sec. Cor.

60.00 Top of Ridge, bears N. & S. and descend.

80.38 Intersect N. & S. line, 98 lks. S. of cor. to secs.

21, 22, 27, 28 from which corner, I run

$\angle 89^{\circ} 18'$ W. on a true line between sections 21 & 28

Variation

13° 30'

East

40.19

Set a post 3 ft. long, 3 ins. diam. with marked stone
 42 ins. in the ground, for $\frac{1}{4}$ Sec. Cor., marked $\frac{1}{4}$ S. on
 N. face, dug pits, 18 x 18 x 12 ins., E. and W. of
 post $5\frac{1}{2}$ ft. dist., and raised a mound of earth $1\frac{1}{2}$ ft.
 high, $3\frac{1}{2}$ ft. base around post.

80.38

The corner to sections 20, 21, 28 & 29

Land mountainous

Soil 3rd rate

Timber of pine

Dense undergrowth of juniper

Township

13 N.

Range

17 E.

38

BOOK 131

Gila and Salt River Meridian.

Chains

North, between Sections 20 and 21.

Variation

13° 30'

East.

Descend.

4.80 Cross Creek 20 lks. wide, Course E.

7.02 Cross Creek 20 lks. wide, Course W. and ascend.

4000 Set a Sand stone 20 x 10 x 8 ins., 15 ins. in the ground, for $\frac{1}{4}$ Sec. Cor., marked $\frac{1}{4}$ on W. face, and raised a mound of stone alongside. Pits impracticable.

Top of Spur, bears E. & W. and descend.

80.00

Set a Sand stone 20 x 18 x 10 ins. 15 ins. in the ground for Cor. to Secs. 16, 17, 20 & 21 marked with 3 notches on S. and 4 notches on E. edges and raised a mound of stone alongside. Pits impracticable.

A Pine 6 ins, diam. bears N. 70° E. 60 lks. dist. ^{from which}
marked T. 13 N. R. 17 E. S. 10 B. T.

A Pine 7 ins, diam. bears S. 68° E. 38 lks. dist.
marked T. 13 N. R. 17 E. S. 22 B. T.

A Pine 8 ins, diam. bears S. 80° W. 19 lks. dist.
marked T. 13 N. R. 17 E. S. 21 B. T.

No other trees within limits
Land mountainous

Soil 3rd rate

Timber of pine.

Undergrowth of juniper.

Township

13 N

Range

17 E

BOOK 131

Gila and Salt River Meridian.

Chains

East, on a random line between Sections 16 and 21.

Variation

13° 30'

East.

Ascend.

24.15 Top of Spur, bears N. 20° W. & S. 20° E and descend.

40.00 Set temporary $\frac{1}{4}$ Sec. Cor.

54.33 Cross Gulch, 18 lks. wide, Course N. 38° W and ascend.

80.60 Intersect N. & S. line, 53 lks. S. of cor. to secs.

16. 16. 21. 22 from which corner, I run

S. 89° 37' W. on a true line between sections 16 & 21

Variation 13° 30' East

40.30 Set a Sand stone 18 x 10 x 8 ins., 12 ins. in the ground, for $\frac{1}{4}$ Sec. Cor., marked $\frac{1}{4}$ on N. face, and raised a mound of stone alongside. Pits impracticable.

from which

A Pine 13 ins, diam. bears N. 66° E. 43 lks. dist. marked $\frac{1}{4}$ S. B. T.

A Pine 10 ins, diam. bears S. 50° E. 47 lks. dist. marked $\frac{1}{4}$ S. B. T.

80.60 The corner to sections 16, 17, 20 & 21

Land mountainous

Soil 3rd rateTimber of *Yew*.Undergrowth of *Juniper*.

Township 13 N Range 17 E
BOOK 131 Gila and Salt River Meridian.

40

Chains

North, between Sections 16 and 17.

Variation 13° 30' East.

Descend.

32.51 Cross Creek 50 fks. wide, Course N. E. and ascend.

40.00 Set a Sand stone 14 x 10 x 6 ins., 10 ins. in the ground, for $\frac{1}{4}$ Sec. Cor., marked $\frac{1}{4}$ on N. face, and raised a mound of stone alongside. Pits impracticable.

60.24 Top of Spur, bears N 44° E & S 44° W and descend.

80.00 Set a Sand stone 23 x 13 x 7 ins. 18 ins. in the ground for Cor. to Secs. 8, 9, 16 & 17 marked with 4 notches on S. and 4 notches on E. edges and raised a mound of stone alongside. Pits impracticable.

Land rolling.

Soil 3rd rate

Timber of pine.

Undergrowth of juniper.

Township 13 N Range 17 EBOOK 181

Gila and Salt River Meridian.

Chains

East, on a random line between Sections 9 and 16.

Variation 13° 30' East.*Ascend.*8.15 Top of Spur, bears *N.W. & S.E.* and descend.40.00 Set temporary $\frac{1}{4}$ Sec. Cor.44.62 Cross Creek 50 lks. wide, Course *N.E.* and ascend.80.31 Intersect N. & S. line, 42 lks. *S.* of cor. to secs.

9, 10, 15 & 10 from which corner, I run

S 89° 42' W. on a true line between sections 9 & 16Variation 13° 30' East

44.15 Set a Sand stone $17 \times 10 \times 9$ ins., 12
 ins. in the ground, for $\frac{1}{4}$ Sec. Cor., marked $\frac{1}{4}$ on *N*
 face, and raised a mound of stone alongside. Pits
 impracticable.

80.31 The corner to sections 8, 9, 10 & 17

Land rolling.

Soil 3^{rd} rateTimber of *pine*.Undergrowth of *juniper*.

Township 13 N Range 17 E

43

BOOK 187

Gila and Salt River Meridian.

Chains

North, between Sections 8 and 9.

Variation $13^{\circ} 30'$ East.

Descend.

- 1.50 Cross Wash, 50 lks. wide, Course N. E.,
- 11.00 Cross Wash, 20 lks. wide, Course E. and ascend.
- 26.00 Top of Spur, bears N. W. & S. E. and descend.
- 39.80 Cross Wash, 20 lks. wide, Course N. E. and ascend.
- 40.00 Set a Sandstone stone 15 x 14 x 3 ins. 10 ins. in the ground, for $\frac{1}{2}$ Sec. Cor., marked $\frac{1}{2}$ on W. face, and raised a mound of stone alongside. Pits impracticable.
- 70.33 Top of Ridge, bears N. E. & S. W. and descend.
- 80.00 Set a Sand stone 20 x 7 x 7 ins. 15 ins. in the ground for Cor. to Secs. 4, 5, 8 & 9 marked with 5 notches on S. and 4 notches on E. edges. dug pits 18 x 18 x 12 ins. in each Sec., $5\frac{1}{2}$ ft. dist. and raised a mound of earth 2 ft. high, $4\frac{1}{2}$ ft. base. alongside. from which
- A Pine 10 ins, diam. bears S. 20° E. 59 lks. dist. marked T. 13 N. R. 17 E. S., 9 B. T.
- A Pine 8 ins, diam. bears N. 18° W. 60 lks. dist. marked T. 13 N. R. 17 E. S., 5 B. T.
- No other trees within limits.
- Land mountainous
- Soil 3rd rate
- Timber of pine.
- Dense undergrowth of juniper.

Township 13 N. Range 17 E.

BOOK 131

Gila and Salt River Meridian.

Chains

East, on a random line between Sections 4 and 9.

Variation $13^{\circ} 30'$ East.*Ascend.*7.93 Top of Ridge, bears $N. 22^{\circ} E.$ & $S. 22^{\circ} W.$ and descend.40.00 Set temporary $\frac{1}{4}$ Sec. Cor.

75.00 cross creek course North

80.20 Intersect N. & S. line, 13 lks. S. of cor. to secs.

34.9 & 10 from which corner, I run

 $S 89^{\circ} 54' W.$ on a true line between sections 4 & 9Variation $13^{\circ} 30'$ East40.13 Set a Sand stone $32 \times 14 \times 7$ ins., 21ins. in the ground, for $\frac{1}{4}$ Sec. Cor., marked $\frac{1}{2}$ on N.

face, and raised a mound of stone alongside. Pits

impracticable.

80.20 The corner to sections 4, 5, 8 & 9

Land mountainous

Soil 3^{rd} rate

Timber of pine.

Dense undergrowth of juniper.

Township

13 N

Range

17 E

44

BOOK 131

Gila and Salt River Meridian.

Chains

North, on a random line between Sections 4 and 5.

Variation $13^{\circ} 30'$ East.*Descend.*40.00 Set temporary $\frac{1}{4}$ Sec. Cor.

78.21 Cross Wash, 24 lks. wide, Course N. and ascend.

79.91 Intersect N. B. of Tp. 19^o lks. W. of cor. to secs.
previously set by me.

4. 5. 32 & 33 from which corner, I run

S. 8' W. on a true line, between sections 4 & 5

Variation $13^{\circ} 30'$ East.89.91 Set a Sand stone $17 \times 12 \times 5$ ins., 12
ins. in the ground, for $\frac{1}{4}$ Sec. Cor., marked $\frac{1}{4}$ on W.
face, and raised a mound of stone alongside. Pits
impracticable.

79.91 The corner to sections 4. 5. 8 & 9

Land rolling.

Soil 3^o rate

Undergrowth of juniper.

I carefully examined the adjustments of my solar
compass to-day, particularly the latitude and revers-
ing apparatus, and found them correct.

G. W. Pearson Compassman April 21. 1883

Township 13 N. Range 17 E.

BOOK 31 Standard

Gila and Salt River Meridian.

From the corner to sections, 31 & 32 ^{on 2nd Sp.} previously described by me

Chains ^{from} North, between Sections 31 and 32.

Variation 13° 45' East.

Descend.

46.00

Set a sand stone 18 x 10 x 9 ins., 12 ins. in the ground, for 1/4 Sec. Cor., marked 1/4 on face, and raised a mound of stone alongside. Pits impracticable.

48.38

~~Top of~~ of creek 50 ft wide Course ^{N. 17° E.} and ascend

79.12

Top of Spur, bears N. 34° E. S. 34° W and descend.

80.00

Set a sand stone 29 x 28 x 10 ins. 21 ins. in the ground for Cor. to Secs. 29, 30, 31 & 32 marked with 1 notch on S. and 5 notches on E. edges and raised a mound of stone alongside. Pits impracticable.

Land mountainous

Soil 3rd rate

Timber of pine

Dense undergrowth of juniper.

Township 13 N Range 17 E

BOOK 131 Gila and Salt River Meridian.

Chains East, on a random line between Sections 29 and 32. Variation 13° 30' East.

Ascend.

2.50 Top of Spur, bears N. 31° E. & S. 31° W. and descend.

13.44 Cross Creek 45 lks. wide, Course N. 26° E. and ascend.

30.60 Top of Spur, bears N. 10° E. & S. 10° W. and descend.

40.00 Set temporary 1/4 Sec. Cor.

54.25 Cross Gulch, 20 lks. wide, Course N.E. and ascend.

63.00 Top of Spur, bears N. E. & S. W. and descend.

78.40 Cross Gulch, 20 lks. wide, Course N. 50° W. and ascend.

80.53 Intersect N. & S. line, 50 lks. S. of cor. to secs.

28.29.32 & 33 from which corner, I run

S 89° 39' W. on a true line between sections 29 & 32

Variation 13° 30' East

40.20 Set a Sand stone 3' x 12 x 12 ins., 27

ins. in the ground, for 1/4 Sec. Cor., marked 1/4 on N,

face, and raised a mound of stone alongside. Pits

impracticable. from which

A Pine 11 ins, diam. bears N. 10° E. 6/1 lks. dist.

marked 1/4 S. B. T. No other trees within limits.

80.53 The corner to sections 29, 30, 31 & 32

Land mountainous

Soil 3rd rate

Timber of pine

Dense undergrowth of juniper.

Henry Meyrick April 28, 1883

Township

13 N

Range

17 E

Gila and Salt River Meridian.

BOOK 181

Chains

West, on a random line between Sections 30 and 31.

Variation

13° 30'

East.

Descend.

11.87 Cross Wash, 25 lks. wide, Course N. 48° E and ascend.

40.00 Set temporary $\frac{1}{4}$ Sec. Cor.

48.05 Top of Ridge, bears N. 11° E. S. 11° W and descend.

83.19 Intersect W. B. of Tp. 128 lks. N. of cor. to secs.
previously set by me.

25.30.31 & 30 from which corner, I run

N. 89° 7' E. on a true line, between sections 30 & 31

Variation 13° 30' East.

43.19 Set a Sand stone 10 x 13 x 7 ins., 10
ins. in the ground, for $\frac{1}{4}$ Sec. Cor., marked $\frac{1}{4}$ on N.
face, and raised a mound of stone alongside. Pits
impracticable.

83.19 The corner to sections 29, 30, 31 & 32.

Land mountainous

Soil 3rd rate

Timber of pine.

Dense undergrowth of juniper.

G. W. Pearson Compassion April 28, 1883

Township 13 N Range 17 EBOOK 137 Gila and Salt River Meridian.

Chains North, between Sections 29 and 30.

Variation 13° 30' East.Descend. gradually.8.25 Cross Wash, 10 lks. wide, Course N. E. and ascend.38.15 Top of Spur, bears N. E. & S. W. and descend.40.00 Set a Sand stone 14 x 10 x 11 ins., 10 ins. in the ground, for $\frac{1}{4}$ Sec. Cor., marked $\frac{1}{4}$ on W face, and raised a mound of stone alongside. Pits impracticable. from whichA Pine 11 ins, diam. bears S. 55° W. 96 lks. dist. marked $\frac{1}{4}$ S. B. T.A Pine 5 ins, diam. bears N. 85° E. 16 lks. dist. marked $\frac{1}{4}$ S. B. T.49.12 Cross Wash, 18 lks. wide, Course N. E. and ascend.80.00 Set a Sand stone 23 x 20 x 10 ins. 18 ins. in the ground for Cor. to Secs. 19. 20. 29. 30 marked with 2 notches on S. and 5 notches on E. edges and raised a mound of stone alongside. Pits impracticable. from whichA Pine 10 ins, diam. bears S. 5° W. 57 lks. dist. marked T. 13 N. R. 17 E. S., 30 B. T.A Pine 11 ins, diam. bears S. 40° E. 40 lks. dist. marked T. 13 N. R. 17 E. S., 29 B. T.

No other trees within limits.

Land mountainous

Soil 3rd rateTimber of pine.Dense undergrowth of juniper.

Township 13 N Range 17 E

BOOK 181

Gila and Salt River Meridian.

Chains East, on a random line between Sections 20 and 29.
 Variation 13° 30' East.
 Descend. gradually.

36.18 Cross Gulch, 25 lks. wide, Course N. E.

40.00 Set temporary $\frac{1}{4}$ Sec. Cor.

41.33 Cross Creek 117 lks. wide, Course N. and ascend.

80.80 Intersect N. & S. line, 814 lks. S. of cor. to secs.
20, 21, 28, 29 from which corner, I run
S. 89° 24' W. on a true line between sections 20 & 29
 Variation 13° 30' East

410.40 Set a stone stone 19 x 12 x 10 ins., 12
 ins. in the ground, for $\frac{1}{4}$ Sec. Cor., marked $\frac{1}{4}$ on N.
 face, and raised a mound of stone alongside. Pits
 impracticable. from which

A Pine 10 ins, diam. bears S. 40° W. 22 lks. dist.
 marked $\frac{1}{4}$ S. B. T.

A Pine 8 ins, diam. bears N. 10° E. 30 lks. dist.
 marked $\frac{1}{4}$ S. B. T.

80.80 The corner to sections 19, 20, 29, 30
 Land rolling.
 Soil 3rd rate
 Timber of pine.
 Dense undergrowth of Juniper.
Henry Meyrick April 23. 1883.

Township 13 N Range 17 E
BOOK 181 Gila and Salt River Meridian.

50

Chains

West, on a random line between Sections 19 and 30.

Variation 13° 30' East.

Ascend.

22.15 Top of Ridge, bears N. E. & S. W. and descend.

34.51 Cross Wash, 15 lks. wide, Course N. 30° E and ascend.

40.00 Set temporary $\frac{1}{4}$ Sec. Cor.

57.29 Top of Spur, bears N. & S. and descend.

77.80 Cross Wash, 30 lks. wide, Course N. 26° E and ascend.

83.90 Intersect W. B. of Tp. 82 lks. N. of cor. to secs.
previously set by me.
19. 24. 25 & 30 from which corner, I run

N. 89° 26' E on a true line, between sections 19 & 30

Variation 13° 30' East.

12.90 Set a post 3 ft. long. 3 ins. diam. with marked stone
12 ins. in the ground, for $\frac{1}{4}$ Sec. Cor., marked $\frac{1}{4}$ S. on
N. face, dug pits, 18 x 18 x 12 ins., E. and W. of
post 5 $\frac{1}{2}$ ft. dist., and raised a mound of earth 1 $\frac{1}{2}$ ft.
high, 3 $\frac{1}{2}$ ft. base around post.

83.90 The corner to sections 19. 20. 29 & 30

Land mountainous

Soil 3rd rate

Timber of pine

Dense undergrowth of juniper.

G. W. Parson Compassman April 28, 1883

Township

13 N.

Range

17 E.

BOOK 131

Gila and Salt River Meridian.

Chains

North, between Sections 19 and 20.

Variation $13^{\circ} 30'$

East.

Ascend.

32.00

Top of Ridge, bears $N. 20^{\circ} E. 20^{\circ} E$ and descend.

40.00

Set a post 3 ft. long, 3 ins. diam. with marked stone 12 ins. in the ground, for $\frac{1}{4}$ Sec. Cor., marked $\frac{1}{4}$ S. on W. face, dug pits, 18 x 18 x 12 ins., N. and S. of post $5\frac{1}{2}$ ft. dist., and raised a mound of earth $1\frac{1}{2}$ ft. high, $3\frac{1}{2}$ ft. base around post.

63.02

Cross Wash, 15 lks. wide, Course $N. 20^{\circ} E$ and ascend.

80.00

Set a Sand stone $20 \times 16 \times 4$ ins. 16 ins. in the ground for Cor. to Secs. 17, 18, 19, 20 marked with 3 notches on S. and 5 notches on E. edges, dug pits 18 x 18 x 12 ins. in each Sec., $5\frac{1}{2}$ ft. dist. and raised a mound of earth 2 ft. high, $4\frac{1}{2}$ ft. base. alongside.

A Pine 11 ins. diam. bears $N. 50^{\circ} E. 63$ lks. dist. marked T. 13 N. R. 17 E. S., 17 B. T.

A Pine 12 ins. diam. bears $N. 58^{\circ} E. 48$ lks. dist. marked T. 13 N. R. 17 E. S., 17 B. T.

A Juniper 8 ins. diam. bears $S. 50^{\circ} E. 40$ lks. dist. marked T. 13 N. R. 17 E. S., 20 B. T.

No other trees within limits.

Land mountainous

Soil 3rd rate

Timber of *Pinus*.

Dense undergrowth of *Juniper*

Township 13 N Range 17 E
BOOK 107
Gila and Salt River Meridian.

Chains

East, on a random line between Sections 17 and 20.

Variation 13° 30' East.

Descend.

8.00 Cross Wash, 50 lks. wide, Course N. 42° E and ascend.

34.51 Top of Hill bears N. 23° E. & S. 23° W. and descend.

40.00 Set temporary $\frac{1}{4}$ Sec. Cor.

67.88 Cross Creek 70 lks wide. Course N. and ascend.

80.79 Intersect N. & S. line, 1.12 lks. S. of cor. to secs.

16.17, 20 & 21 from which corner, I run

S. 89° 12' W. on a true line between sections 17 & 20

Variation 13° 30' East

110.39 Set a Sand stone 33 x 14 x 8 ins., 24

ins. in the ground, for $\frac{1}{4}$ Sec. Cor., marked $\frac{1}{4}$ on N.

face, and raised a mound of stone alongside. Pits

impracticable.

80.79 The corner to sections 17, 18, 19 & 20

Land hilly.

Soil 30° rate

Timber of Juniper

Dense undergrowth of Juniper

Henry Meyrick April 23. 1883

Township 13 N Range 17 EBOOK 131

Gila and Salt River Meridian.

Chains

West, on a random line between Sections 18 and 19.

Variation 13° 30' East.*Ascend.*40.00 Set temporary $\frac{1}{4}$ Sec. Cor.57.85 Top of Ridge, bears N. & S. and descend.85.20 Intersect W. B. of Tp. 104 lks. N. of cor. to secs.
previously set by me.

13. 18. 19 & 21 from which corner, I run

N. 89° 18' E. on a true line, between sections 18 & 19Variation 13° 30' East.45.20 Set a sand stone 17 x 13 x 9 ins., 12ins. in the ground, for $\frac{1}{4}$ Sec. Cor., marked $\frac{1}{4}$ on N.
face, and raised a mound of stone alongside. Pits

impracticable.

85.20 The corner to sections 17. 18. 19 & 20

Land mountainous

Soil 3^d rateTimber of pineDense undergrowth of juniper.G. W. Carson Compassman April 23, 1883

Township 13 N Range 17 E
BOOK 137 Gila and Salt River Meridian.

54

Chains North, between Sections 17 and 18.

Variation 13° 30' East.

Ascend gradually.

22.00 Top of Spur, bears N.E. & S.W. and descend.

40.00 Set a Sand stone $10 \times 8 \times 6$ ins., 10 ins. in the ground, for $\frac{1}{4}$ Sec. Cor., marked $\frac{1}{4}$ on W face, and raised a mound of stone alongside. Pits impracticable.

40.77 Cross Wash, 50 lks. wide, Course E, and ascend.

63.00 Top of Spur, bears N.E. & S.W. and descend.

80.00 Set a Sand stone $18 \times 10 \times 7$ ins. 12 ins. in the ground for Cor. to Secs. 7, 8, 17 & 18 marked with 4 notches on S. and 5 notches on E. edges and raised a mound of stone alongside. Pits impracticable.

from which

A Juniper 15 ins. diam. bears S.W. 15 lks. dist. marked T. 13 N. R. 17 E. S., 18 B. T.

No other trees within limits.

Land mountainous

Soil 3rd rate

Timber of Juniper.

Dense undergrowth of Juniper.

Township

13 N

Range

17 E

BOOK 181

Gila and Salt River Meridian.

Chains

East, on a random line between Sections 8 and 17.

Variation

13° 30'

East.

Ascend gradually.

35.10 Top of Spur, bears N.E. & S.W. and descend.

40.00 Set temporary $\frac{1}{4}$ Sec. Cor.

74.42 Cross Wash, 50 lks. wide, Course N. 46° E and ascend.

80.58 Intersect N. & S. line, 121 lks. S. of cor. to secs.

8.9.16 & 17 from which corner, I run

S. 89° 8' W. on a true line between sections 8 & 17

Variation 13° 30' East

40.29 Set a post 3 ft. long, 3 ins. diam. with marked stone
12 ins. in the ground, for $\frac{1}{4}$ Sec. Cor., marked $\frac{1}{4}$ S. on
N. face, dug pits, 18 x 18 x 12 ins., E. and W. of
post 5 $\frac{1}{2}$ ft. dist., and raised a mound of earth 1 $\frac{1}{2}$ ft.
high, 3 $\frac{1}{2}$ ft. base around post.

80.58 The corner to sections 7, 8, 17 & 18

Land mountainous

Soil 3rd rate

Timber of pine

Dense undergrowth of juniper.

Henry Meyrick April 23, 1883

Township

13 N

Range

17 E

56

EOK

187

Gila and Salt River

Meridian.

Chains

West, on a random line between Sections 7 and 18.

Variation

13° 30'

East.

Descend gradually.

8.00 Cross Wash, 10 lks. wide, Course N.E. and ascend.

40.00 Set temporary $\frac{1}{4}$ Sec. Cor.

56.85 Top of Ridge, bears N. & S. and descend.

85.84 Intersect W. B. of Tp. 67 lks. N. of cor. to secs.

previously set by me.
7. 12. 13 = 18 from which corner, I run

N. 89° 33' E on a true line, between sections 7 & 18

Variation

13° 30'

East.

46.84 Set a Sand stone 10 x 15 x 5 ins., 10
ins. in the ground, for $\frac{1}{4}$ Sec. Cor., marked $\frac{1}{4}$ on N.
face, and raised a mound of stone alongside. Pits
impracticable.

85.84 The corner to sections 7, 8, 17 & 18.

Land mountainous

Soil 3rd rate

Timber of pine

Dense undergrowth of juniper

G. W. Pearson Compassman April 23, 1883

Township 13 N. Range 17 E.

BOOK 181

Gila and Salt River Meridian.

Chains

North, between Sections 7 and 8.

Variation $13^{\circ} 30'$ East.

Descend gradually.

7.60 Cross Wash, 15-20 yds. wide, Course $N. 88^{\circ} E$ and ascend.21.12 Top of Ridge, bears $N. E. \& S. W.$ and descend.

40.00 Set a sand stone $30 \times 15 \times 6$ ins., \mathcal{R}
 ins. in the ground, for $\frac{1}{4}$ Sec. Cor., marked $\frac{1}{4}$ on \mathcal{W}
 face, and raised a mound of stone alongside. Pits
 impracticable.

80.00 Set a sand stone $25 \times 16 \times 8$ ins. 18 ins. in
 the ground for Cor. to Secs. 5, 6, 7 & 8 marked
 with 5 notches on S. and 5 notches on E. edges and
 raised a mound of stone alongside. Pits impracticable.

Land mountainous

Soil 3° rate

Timber of pine.

Dense undergrowth of juniper.

Township

13 N.

Range

17 E.

58

BOOK 1187

Gila and Salt River Meridian.

Chains

East, on a random line between Sections 5 and 8.

Variation $13^{\circ} 30'$ East.*Ascend gradually.*

20.54 Top of Ridge, bears N.E. & S.W. and descend.

40.00 Set temporary $\frac{1}{4}$ Sec. Cor.

47.00 Cross Wash, 15 lks. wide, Course N. E. and ascend.

80.37 Intersect N. & S. line, 55 lks. S. of cor. to secs.

4, 5, 8 & 9 from which corner, I run

 $S. 89^{\circ} 36' W.$ on a true line between sections 5 & 8.Variation $13^{\circ} 30'$ East

40.18 Set a Sand stone $18 \times 10 \times 9$ ins., 12 ins. in the ground, for $\frac{1}{4}$ Sec. Cor., marked $\frac{1}{4}$ on N. face, and raised a mound of stone alongside. Pits impracticable.

80.37 The corner to sections 5, 6, 7 & 8

Land mountainous

Soil 3° rate

Timber of pine

Dense undergrowth of juniper

I carefully examined the adjustments of my solar compass to-day, particularly the latitude and reversing apparatus, and found them correct.

Henry Meyrick April 23. 1883

Township

13 N

Range

17 E

BOOK 131

Gila and Salt River Meridian.

Chains

West, on a random line between Sections 6 and 7.

Variation $13^{\circ} 30'$ East.

Descend.

40.00 Set temporary $\frac{1}{4}$ Sec. Cor.67.89 Cross Wash, 18 lks. wide, Course $N. 32^{\circ} E$ and ascend.86.53 Intersect W. B. of Tp. 81 lks. N. of cor. to secs.
previously set by me.J. C. 7 & 12 from which corner, I run
 $N. 84^{\circ} 28' E$ on a true line, between sections 6 & 7
Variation $13^{\circ} 30'$ East.40.53 Set a post 3 ft. long. 3 ins. diam. with marked stone
12 ins. in the ground, for $\frac{1}{4}$ Sec. Cor., marked $\frac{1}{4}$ S. on
N. face, dug pits, 18 x 18 x 12 ins., E. and W. of
post $5\frac{1}{2}$ ft. dist., and raised a mound of earth $1\frac{1}{2}$ ft.
high, $3\frac{1}{2}$ ft. base around post.

86.53 The corner to sections 5. C. 7 & 8

Land mountainous

Soil 3rd rate

Timber of pine.

Dense undergrowth of juniper.

Township 13 N Range 17 E

BOOK 131

Gila and Salt River Meridian.

Chains North, on a random line between Sections 5 and 6.
Variation 13° 30' East.

Descend.

40.00 Set temporary $\frac{1}{4}$ Sec. Cor.

80.11 Intersect N. B. of Tp. 01 Tks. W. of cor. to secs. ^{previously set by me.}
5. 6. 31 & 32 from which corner, I run

126' W. on a true line, between sections 5 & 6
Variation 13° 30' East.

40.11 Set a Sand stone 18 x 10 x 9 ins., 12 ins. in the ground, for $\frac{1}{4}$ Sec. Cor., marked $\frac{1}{4}$ on face, and raised a mound of stone alongside. Pits impracticable.

80.11 The corner to sections 5. 6. 7 & 8

Land rolling.

Soil 3rd rate

Timber of pine

Dense undergrowth of juniper.

I carefully examined the adjustments of my solar compass to-day, particularly the latitude and reversing apparatus, and found them correct.

G. W. Pearson Compassman April 23, 1858

GENERAL DESCRIPTION.

The whole of this Tp. is high rough mountainous land.

The surface in many places is very rocky with but little soil upon it.

In all parts there is a very heavy growth of juniper. Scattering grass in most parts.

Soil 2nd & 3rd rate.

The east branch of Cheyenne Fork runs through this Tp. - a deep rocky cañon all the way.

The water in the cañon sinks & rises alternately.

A cabin on Sec. 2.

For Final Details see
Book No. 19.

U. S. Surveyor General's Office,

Tucson, Arizona, July 5, 1884

The foregoing Field Notes of the Survey of the

Subdivision lines of
T₂P, 13 North
Range 17 East

Of the Gila and Salt River Base and Meridian, Arizona, execu-
ted by Henry Alleyrich Jr,

Deputy Surveyor, under his contract of the 25th

day of July, 1882, having been

critically examined and the necessary corrections and explana-
tions made, the said Field Notes and the surveys they describe

are hereby approved

Royal Johnson
Surveyor General.