

H. A. Coe, Deputy Surveyor.
T. *13 North*, R. *18 East*,
Gila and Salt River Meridian.

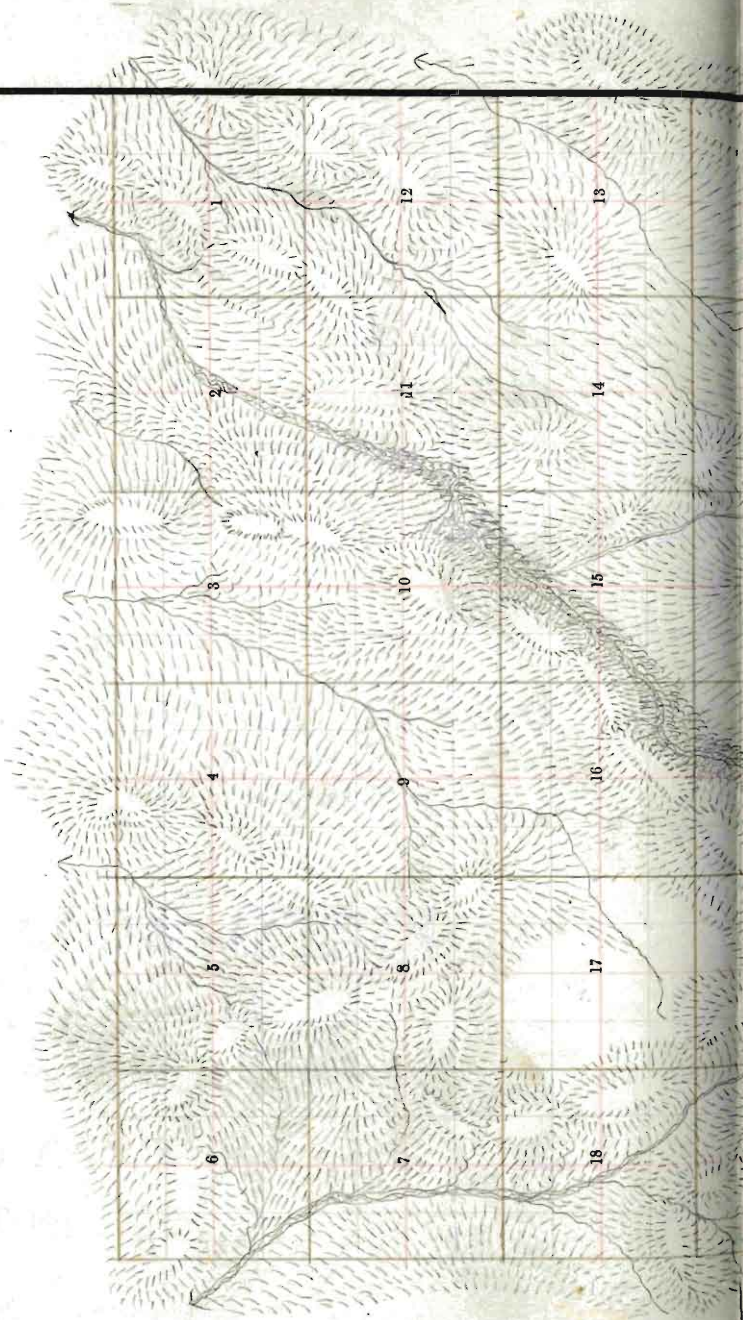
No. 132
FIELD NOTES

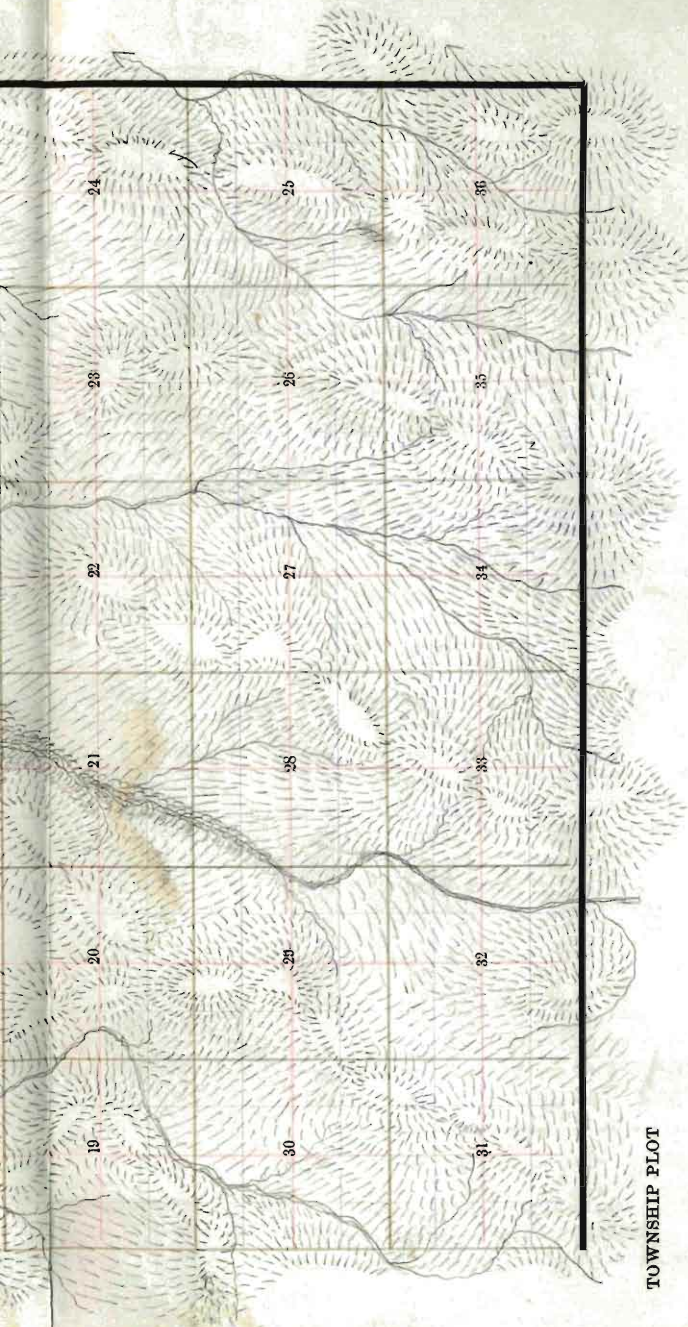
OF
THE SUBDIVISION LINES OF
Township *13 North*, Range *18 East*,
Gila and Salt River Meridian.

BY
H. A. Coe, Deputy Surveyor.
Under his Contract of *July 25, 1882*,
Survey Commenced *Apr. 10, 1882*.
Survey Completed *Apr. 16, 1883*.

Platted,
Copied for Washington,
Copied for Register,

Township No. 13 N Range No. 18 E Salt River Meridian. 1





TOWNSHIP PLOT

Meridian Line,

Base Line,

Standard Line,

Township Lines,

Section Lines,

Meander Lines,

Office Work.

13

BOOK 132

Township 13 North, Range 18 East,
Gila and Salt River Baseline Meridian.

6	60	5	44	4	33	3	22	2	11	1
59		58		43		32		21		10
7	57	8	42	9	31	10	20	11	9	12
53		55		41		30		19		8
18	54	17	40	16	29	15	18	14	7	13
53		52		39		28		17		6
19	51	20	38	21	27	22	16	23	5	24
50		49		37		26		15		4
30	48	29	36	28	25	27	14	26	3	25
47		46		35		24		13		2
31	45	32	34	33	23	34	12	35	1	36

O/T.

Edward Denny & Co., Stationers & Printers, S. F., Cal.

Copyright Secured,

Entered according to Act of Congress, in the Clerk's Office of the Librarian of Congress at Washington, D. C., in the year 1880.

10

Township.....Range.....

Meridian.

No - 132

For preliminary notes
and description of
instrument used see
book No. 1,

Survey made with Burt's Patent Improved Solar
Compass, nearly new, and in first rate order. Made
by Otto Lommel of Cassel
Germany in 1881,

^{1D} Township
(See previous page.)

13 N,
BOOK 132

Range 18 E,

Gila and Salt River Meridian.

Chains

Stations previously described by me,
From the corner to Sections 35, 36, 1 and 2 on the South boundary, 1 run,
North, between Sections 35 and 36

Variation 13° 45' East.

Descend. gradually.

40.00

Set a post 3 ft. long, 3 ins. diam. with marked stone
12 ins. in the ground, for $\frac{1}{4}$ Sec. Cor., marked $\frac{1}{4}$ S. on
N. face, dug pits, 18 x 18 x 12 ins., N and S. of
post $5\frac{1}{2}$ ft. dist., and raised a mound of earth $1\frac{1}{2}$ ft.
high, $3\frac{1}{2}$ ft. base around post.

50.00

Cross Wash, 20 fts. wide, Course N. 21° W and ascend.

80.00

Set a post 4 ft. long, 4 ins. square, with marked stone
12 ins. in the ground, for Cor. to Secs, 25-26-35-36,
marked T, 137° S, 25°, on N, E, R, 18 E, S. 36
on S, E, S, 35 on S, W, and S, 26 on N, W, face
with / notch on S, and / notch on E, edges,
dug pits 18 x 18 x 12 ins, in each Sec., $5\frac{1}{2}$ ft, dist.,
and raised a mound of earth 2 ft, high, $4\frac{1}{2}$ ft, base
around post.

Land rolling.

Soil 3rd rate

Vegetation, Bunchgrass.

Timber of Juniper.

Township

13 N.

Range

18 E.

2

BOOK 132

Gila and Salt River

Meridian.

Chains

East, on a random line between Sections 25 and 36.

Variation

13° 30'

East.

39.42 Descend. gradually.

40.00 Set temporary $\frac{1}{4}$ Sec. Cor.

65.72 Cross Wash, 15 lks. wide, Course N27° E and ascend.

80.29 Intersect C. B. of Tp. 46 lks. South of cor. to sec. previous set by me.

25-30-31-36 from which corner, I run

S. 89° 40' W on a true line, between sections 25-36.

Variation

14°

East.

40.15 Set a lime stone 35 x 13 x 4 ins., 26 ins. in the ground, for $\frac{1}{4}$ Sec. Cor., marked $\frac{1}{4}$ on N. face, and raised a mound of stone alongside. Pits impracticable.

80.29 The corner to sections 25-26-35-36.

Land rolling.

Soil 3rd rate

Vegetation, Bunchgrass.

Timber of Juniper.

Township

13 N,

Range

18 E,

Gila and Salt River Meridian.

BOOK 132

Chains

North, between Sections 25 and 26.

Variation

13° 30'

East.

Descend. gradually.

34.00 Cross Wash, course N. E. & continue descent.

40.00 Set a post 3 ft. long, 3 ins. diam. with marked stone
12 ins. in the ground, for $\frac{1}{4}$ Sec. Cor., marked $\frac{1}{4}$ S. on
N. face, dug pits, 18 x 18 x 12 ins., N and S. of
post $5\frac{1}{2}$ ft. dist., and raised a mound of earth $1\frac{1}{2}$ ft.
high, $3\frac{1}{2}$ ft. base around post. from which

A Pine 8 ins, diam. bears N. 32 E, 133 lks. dist.
marked $\frac{1}{4}$ S. B. T.

No other trees within limits.

80.00 Set a post 4 ft. long, 4 ins. square, with marked stone
12 ins. in the ground, for Cor. to Secs. 23-24-25-26,
marked T 13 N, S, 24, on N, E, R, 18 E, S. 25
on S, E, S, 26 on S, W, and S, 23 on N, W, face
with 2 notches on S, and 1 notch on E, edges,
dug pits 18 x 18 x 12 ins, in each Sec., $5\frac{1}{2}$ ft. dist.,
and raised a mound of earth 2 ft, high, $4\frac{1}{2}$ ft, base
around post.

from which

A Pine 11 ins, diam. bears N. 70 W, 61 lks. dist.
marked T 13 N. R. 18 E, S., 23 B. T.

No other trees within limits.

Land ~~reclaiming~~.

Soil 3rd rate

Timber of Juniper,

Vegetation, Bunchgrass.

Township

13 N.

Range

18 E.

BOOK 132

Gila and Salt River Meridian.

Chains

East, on a random line between Sections 24 and 25.

Variation

13°30'

East.

Over rolling land.

40.00 Set temporary 1/4 Sec. Cor.

44.50 Cross Wash, 10 lks. wide, Course N. E., and ascend.

50.40 Intersect C. B. of Tp. 10 lks. South of cor. to secs. previously set by me.

19-24-25-30 from which corner, I run

S. 89°56' N on a true line, between sections 24 - 25.

Variation 13°45' East.

40.20 Set a post 3 ft. long. 3 ins. diam. with marked stone

12 ins. in the ground, for 1/4 Sec. Cor., marked 1/4 S. on

N. face, dug pits, 18 x 18 x 12 ins., E. and W. of

post 5 1/2 ft. dist., and raised a mound of earth 1 1/2 ft.

high, 3 1/2 ft. base around post.

from which

A Pine 10 ins. diam. bears N. 8° E., 29 lks. dist.

marked 1/4 S. B. T.

No other trees within limits.

50.40 The corner to sections 23-24-25-26.

Land rolling.

Soil 3rd rate

Timber of Juniper.

Vegetation, Bunchgrass.

Township

13 N.

Range

18 E.

BOOK 132

Gila and Salt River Meridian.

Chains

North, between Sections 23 and 24.

Variation

13° 30'

East.

Ascend gradually.

40.00

Set a post 3 ft. long, 3 ins. diam. with marked stone 12 ins. in the ground, for $\frac{1}{4}$ Sec. Cor., marked $\frac{1}{4}$ S. on N. face, dug pits, 18 x 18 x 12 ins., N. and S. of post $5\frac{1}{2}$ ft. dist., and raised a mound of earth $1\frac{1}{2}$ ft. high, $3\frac{1}{2}$ ft. base around post. and

Descend gradually.

79.64

Cross Wash, 11 lks. wide, Course N. 56° E.

80.00

Set a post 4 ft. long, 4 ins. square, with marked stone 12 ins. in the ground, for Cor. to Secs, 13-14-23-24, marked T. 13 N. S. 13, on N, E, R, 18 E, S. 24, on S, E, S, 23 on S, W, and S, 14 on N, W, face with 3 notches on S, and 1 notch on E, edges, dug pits 18 x 18 x 12 ins, in each Sec., $5\frac{1}{2}$ ft. dist., and raised a mound of earth 2 ft. high, $4\frac{1}{2}$ ft. base around post.

*Land rolling.*Soil 2nd and 3rd rate

Vegetation, Bunchgrass.

Timber of Cedar.

Township 13 N., Range 18 E.

Gila and Salt River Meridian.

BOOK 133

Chains

East, on a random line between Sections 13 and 24.

Variation 13°30' East.

Descend. *gradually.*

1.20 Cross Wash, 11 lks. wide, Course N57 E and ascend.

40.00 Set temporary $\frac{1}{4}$ Sec. Cor.

73.00 Top of Ridge, bears N.50 E & S.50 W and descend.

80.12 Intersect C. B. of Tp. 18 lks. South of cor. to secs.
previously set by me.

13-18-19-24 from which corner, I run

S.89°52' W a true line, between sections 13-24.

Variation 13°30' East.

40.06 Set a post 3 ft. long, 3 ins. diam. with marked stone
12 ins. in the ground, for $\frac{1}{4}$ Sec. Cor., marked $\frac{1}{4}$ S. on
N. face, dug pits, 18 x 18 x 12 ins., E and W of
post $5\frac{1}{2}$ ft. dist., and raised a mound of earth $1\frac{1}{2}$ ft.
high, $3\frac{1}{2}$ ft. base around post.

80.12 The corner to sections 13-14-23-24.

Land mountainous

Soil 2nd & 3rd rate

Timber of Juniper & Cedar.

Vegetation., Bunchgrass.

Township

13 N.

Range

18 E.

Gila and Salt River Meridian.

BOOK 132

Chains

North, between Sections 13 and 14.

Variation

13° 30'

East.

Ascend. gradually.

40.00

Set a post 3 ft. long, 3 ins. diam. with marked stone 12 ins. in the ground, for 1/2 Sec. Cor., marked 1/2 S. on N. face, dug pits, 18 x 18 x 12 ins., N. and S. of post 5 1/2 ft. dist., and raised a mound of earth 1 1/2 ft. high, 3 1/2 ft. base around post.

42.50

Top of Spur, bears N. 60° S. W. and descend. gradually.

80.00

Set a post 4 ft. long, 4 ins. square, with marked stone 12 ins. in the ground, for Cor. to Secs, 11-12-13-14, marked T, 13 N, S, 12, on N, E, R, 18 E, S, 13 on S, E, S, 14 on S, W, and S, 11 on N, W, face with 4 notches on S, and 1 notch on E, edges, dug pits 18 x 18 x 12 ins, in each Sec., 5 1/2 ft, dist,, and raised a mound of earth 2 ft, high, 4 1/2 ft, base around post.

Land rolling.

Soil 2nd & 3rd rate

Vegetation, Bunchgrass.

Township

13 N.

Range

18 E.

8

BOOK 132

Gila and Salt River Meridian.

Chains

East, on a random line between Sections 12 and 13.

Variation

13°30'

East.

Ascend.

38.75 Top of Ridge, bears N 38° E. & S 38° W and descend.

40.00 Set temporary $\frac{1}{4}$ Sec. Cor.

74.93 Cross Wash, 22 lks. wide, Course N 55° E and ascend.

80.49 Intersect C. B. of Tp. 33 lks. South of cor. to secs.
previously set by me.

7-12-13-18 from which corner, I run

S. 89° 46' W, on a true line, between sections 12-13,

Variation 13°50' East.

40.25 Set a post 3 ft. long. 3 ins. diam. with marked stone

12 ins. in the ground, for $\frac{1}{4}$ Sec. Cor., marked $\frac{1}{4}$ S. onN. face, dug pits, 18 x 18 x 12 ins., E. and W. of
post 5 $\frac{1}{2}$ ft. dist., and raised a mound of earth 1 $\frac{1}{2}$ ft.
high, 3 $\frac{1}{2}$ ft. base around post.

80.49 The corner to sections 11-12-13-14.

Land mountainous

Soil 2nd rate

Timber of Juniper

Vegetation, Bunchgrass.

Township

13N,

Range

18E,

Gila and Salt River Meridian.

BOOK 132

Chains

North, between Sections 11 and 12.

Variation

13°30'

East.

Descend.

3.00 Cross Wash, 20 ft. wide, Course N. 20° E.

31.00 Cross Wash, 30 lks. wide, Course N 1/2 E and ascend.

40.00 Set a post 3 ft. long, 3 ins. diam. with marked stone
12 ins. in the ground, for 1/2 Sec. Cor., marked 1/2 S. on
W. face, dug pits, 18 x 18 x 12 ins., N. and S. of
post 5 1/2 ft. dist., and raised a mound of earth 1 1/2 ft.
high, 3 1/2 ft. base around post.

65.25 Top of Ridge, bears N. 21° E. S. 21° W. and descend.

80.00 Set a post 4 ft. long, 4 ins. square, with marked stone
12 ins. in the ground, for Cor. to Secs, 1-2-11-12,
marked T/13N S, 1, on N, E, R, 18E, S. 12
on S, E, S, 11 on S, W, and S, 2 on N, W, face
with 5 notches on S, and 1 notch on E, edges,
dug pits 18 x 18 x 12 ins, in each Sec., 5 1/2 ft. dist.,
and raised a mound of earth 2 ft. high, 4 1/2 ft. base
around post.

Land mountainous

Soil 2nd & 3rd rate

Timber of Juniper & Cedar.

Vegetation., Bunchgrass.

Township 13 N. Range 18 E.BOOK 132 Gila and Salt River Meridian.

Chains

East, on a random line between Sections 1 and 12.

Variation

13° 30'

East.

*Ascend.*11.50 Top of Ridge, bears N. 26° E. 7 S. 26° W. and descend.37.00 bears north 40 lks. more to 21 &39.00 Cross low Sag and ascend.40.00 Set temporary $\frac{1}{2}$ Sec. Cor.69.72 Top of Ridge, bears N. 37° E. 9 S. 37° W. and descend.80.26 Intersect E. B. of Tp. 46 lks. South of cor. to secs.*previously set by me.*
1-6-7-12 from which corner, I runS. 89° 40' W. on a true line, between sections 1-12.

Variation

14°

East.

40.13 Set a post 3 ft. long. 3 ins. diam. with marked stone
12 ins. in the ground, for $\frac{1}{2}$ Sec. Cor., marked $\frac{1}{2}$ S. on
N. face, dug pits, 18 x 18 x 12 ins., E. and W. of
post $5\frac{1}{2}$ ft. dist., and raised a mound of earth $1\frac{1}{2}$ ft.
high, $3\frac{1}{2}$ ft. base around post.

80.26 The corner to sections 1-2-11-12.

Land mountainous.

Soil 2nd and 3rd rateVegetation, Bunchgrass.

Township

13 N,

Range

18 E,

Gila and Salt River Meridian.

BOOK 132

Chains

North, on a random line between Sections 1 and 2.

Variation

13° 30'

East.

Descend.

dry bed of

X 57.25 Cross Creek 50 lks. wide, Course N.E. and ascend.

40.00 Set temporary $\frac{1}{4}$ Sec. Cor.

80.47 Intersect N.B. of T_p 34 lks. East of cor. to sec.
previously set by me.

1-2 35-36 from which corner, I run

S. 15° E, on a true line, between sections 1-2.

Variation

14°

East.

40.47 Set a post 3 ft. long. 3 ins. diam. with marked stone
12 ins. in the ground, for $\frac{1}{4}$ Sec. Cor., marked $\frac{1}{4}$ S. on
W. face, dug pits, 18 x 18 x 12 ins. N. and S. of
post 5 $\frac{1}{2}$ ft. dist., and raised a mound of earth 1 $\frac{1}{2}$ ft.
high, 3 $\frac{1}{2}$ ft. base around post.

80.47 The corner to sections 1-2-11-12.

Land rolling.

Soil 2nd or 3rd rate

Vegetation, Bunchgrass.

I carefully examined the adjustments of my solar
compass to-day, particularly the latitude and revers-
ing apparatus, and found them correct.

Apr. 10, 1883.

Township 13 N. Range 18 E.

Gila and Salt River Meridian.

Chains

Standard
from com. Secs. 23-34-35 as previously described
by me, Drum
North, between Sections 34 and 35.Variation 13° 50' East.

Ascend.

19.53 Top of Ridge, bears N. 27° E. 9 S. 27° W. and descend.40.00 Set a post 3 ft. long, 3 ins. diam. with marked stone
12 ins. in the ground, for $\frac{1}{4}$ Sec. Cor., marked $\frac{1}{4}$ S. on
N. face, dug pits, 18 x 18 x 12 ins., N and S. of
post $5\frac{1}{2}$ ft. dist., and raised a mound of earth $1\frac{1}{2}$ ft.
high, $3\frac{1}{2}$ ft. base around post.80.00 Set a post 4 ft. long, 4 ins. square, with marked stone
12 ins. in the ground, for Cor. to Secs, 26-27-34-35,
marked T, 13 N. S. 26, on N, E, R, 18 E., S. 35
on S, E, S, 34 on S, W, and S, 27 on N, W, face
with / notch on S, and 2 notches on E, edges,
dug pits 18 x 18 x 12 ins, in each Sec., $5\frac{1}{2}$ ft, dist.,
and raised a mound of earth 2 ft, high, $4\frac{1}{2}$ ft, base
around post.

Land mountainous.

Soil 3rd rateVegetation, Bunchgrass.Timber of Juniper.

Township

13N,

Range

18E,

Gila and Salt River Meridian.

BOOK 132

Chains

East, on a random line between Sections 26 and 35.

Variation $13^{\circ}30'$ East.

Descend.

7.84 Cross Wash, 16 lks. wide, Course *North* and ascend.35.20 Top of Ridge, bears $N. 23^{\circ} E.$ & $S. 23^{\circ} W.$ and descend.40.00 Set temporary $\frac{1}{4}$ Sec. Cor.69.10 Cross Wash, 24 lks. wide, Course *North* and ascend.86.45 Intersect N. & S. line, 14 lks. *South* of cor. to secs.

25-26-35-36 from which corner, I run

 $S. 89^{\circ} 54' W.$ on a true line between sections 26-35.Variation $13^{\circ}30'$ East

40.23 Set a post 3 ft. long. 3 ins. diam. with marked stone
 12 ins. in the ground, for $\frac{1}{4}$ Sec. Cor., marked $\frac{1}{4}$ S. on
 N. face, dug pits, 18 x 18 x 12 ins., E. and W. of
 post $5\frac{1}{2}$ ft. dist., and raised a mound of earth $1\frac{1}{2}$ ft.
 high, $3\frac{1}{2}$ ft. base around post.

80.45 The corner to sections 26-27-34-35.

Land mountainous.

Soil *3rd* rateVegetation, *Bunchgrass.*

Township 13 N., Range 18 E.
 BOOK 132 Gila and Salt River Meridian.

Chains

North, between Sections 26 and 27.

Variation

13° 30'

East.

Descend gradually.

40.00 Set a post 3 ft. long, 3 ins. diam. with marked stone
 12 ins. in the ground, for $\frac{1}{2}$ Sec. Cor., marked $\frac{1}{2}$ S. on
 N. face, dug pits, 18 x 18 x 12 ins., N and S. of
 post $5\frac{1}{2}$ ft. dist., and raised a mound of earth $1\frac{1}{2}$ ft.
 high, $3\frac{1}{2}$ ft. base around post.

78.02 Cross Wash, 15 lks. wide, Course $N 16^{\circ} W$ and ascend.

80.00 Set a Sand stone $48 \times 14 \times 4$ ins. 36 ins.
 in the ground for Cor. to Secs. 22-23-26-27 marked
 with 2 notches on S. and 2 notches on E. edges,
 dug pits 18 x 18 x 12 ins. in each Sec., $5\frac{1}{2}$ ft. dist. and
 raised a mound of earth 2 ft. high, $4\frac{1}{2}$ ft. base. alongside.

A Juniper 10 ins. diam. bears $S. 20^{\circ} E.$ from which
 marked T. 13 N., R. 18 E., S., 26 B. T., 180 lks. dist.

No other trees within limits.

Land rolling.

Soil 3^{rd} rate

Vegetation "Bunchgrass."

Timber of Juniper.

Township

13 N.

Range

18 E.

Gila and Salt River Meridian.

BOOK 132

Chains

East, on a random line between Sections 23 and 26.

Variation

13° 30'

East.

Ascend.

30.00 Top of Ridge, bears N. 30° W. 1/2 S. 30 E. and descend.

40.00 Set temporary 1/4 Sec. Cor.

50.41 Intersect N. & S. line, 22 lks South of cor. to secs.

23-24-25-26 from which corner, I run

S. 89° 51' W. on a true line between sections 23-26,

Variation

13° 30'

East

40.21 Set a post 3 ft. long. 3 ins. diam. with marked stone

12 ins. in the ground, for 1/4 Sec. Cor., marked 1/4 S. on

N. face, dug pits, 18 x 18 x 12 ins., E. and W. of

post 5 1/2 ft. dist., and raised a mound of earth 1 1/2 ft.

high, 3 1/2 ft. base around post.

from which

A Juniper 10 ins. diam. bears N. 55° W., 23 lks. dist.

marked 1/4 S. B. T.

No other trees within limits.

50.41 The corner to sections 22-23-26-27.

Land mountainous

Soil 3rd rate

Timber of Juniper,

Vegetation., Bunchgrass.

Township

13 N,

Range

18 E,

BOOK

132

Gila and Salt River Meridian.

Chains

North, between Sections 22 and 23.

Variation

13° 30'

East.

Descend. gradually.

40.00 Set a post 3 ft. long. 3 ins. diam. with marked stone 12 ins. in the ground, for $\frac{1}{4}$ Sec. Cor., marked $\frac{1}{4}$ S. on N. face, dug pits, 18 x 18 x 12 ins., N and S. of post $5\frac{1}{2}$ ft. dist., and raised a mound of earth $1\frac{1}{2}$ ft. high, $3\frac{1}{2}$ ft. base around post.

80.00

Set a sand stone $2\frac{1}{2} \times 16 \times 7$ ins. 18 ins. in the ground for Cor. to Secs. 14-15-22-23 marked with 3 notches on S. and 2 notches on E. edges and raised a mound of stone alongside. Pits impracticable.

Land rolling.

Soil

3rd rate

Vegetation,

Bunchgrass.

Timber of

Juniper.

Township

13 N,

Range

18 E,

BOOK 132

Gila and Salt River Meridian.

Chains

East, on a random line between Sections 14 and 23.

Variation

13° 30'

East.

Ascend.

- 16.00 Top of Ridge, bears N. 11.° E. & S. 6., and descend.
- 36.50 Head of Ravine, Course N. 30° E., and ascend
- 40.00 Set temporary $\frac{1}{2}$ Sec. Cor.
- 43.00 Top of Spur, bears N. 6.° E. & S. 11.° and descend.
- 80.60 Intersect N. & S. line, 14 *1/2* *North* of cor. to secs.
1314-23-24 from which corner, I run
N. 89° 54' W. on a true line between sections 14 - 23.
Variation 13° 30' East
- 40.30 Set a post 3 ft. long, 3 ins. diam. with marked stone
12 ins. in the ground, for $\frac{1}{2}$ Sec. Cor., marked $\frac{1}{2}$ S. on
N. face, dug pits, 18 x 18 x 12 ins. E. and W. of
post 5 $\frac{1}{2}$ ft. dist., and raised a mound of earth 1 $\frac{1}{2}$ ft.
high, 3 $\frac{1}{2}$ ft. base around post.
- 80.60 The corner to sections 14-15-22-23.
Land mountainous
Soil 3rd rate
Timber of Juniper & Cedar.
Vegetation, Bunchgrass.

Township 13 N. Range 18 E.BOOK 132 Gila and Salt River Meridian.

Chains

North, between Sections 14 and 15.

Variation

13° 30'

East.

*Ascend.*15.50 Top of Ridge, bears N. 65° W. 90 S. 65 E. and descend.40.00 Set a post 3 ft. long. 3 ins. diam. with marked stone 12 ins. in the ground, for $\frac{1}{2}$ Sec. Cor., marked $\frac{1}{2}$ S. on W. face, dug pits, 18 x 18 x 12 ins., N and S. of post $5\frac{1}{2}$ ft. dist., and raised a mound of earth $1\frac{1}{2}$ ft. high, $3\frac{1}{2}$ ft. base around post.80.00 Set a sand stone $20 \times 16 \times 4$ ins. 15 ins. in the ground for Cor. to Secs. 10-11-14-15 marked with 4 notch on S. and 2 notches on E. edges and raised a mound of stone alongside. Pits impracticable.

Land mountainous

Soil 3rd rateTimber of JuniperVegetation, Bunchgrass.

19 Township 13 N,

Range 18 E,
Gila and Salt River Meridian.

BOOK 132

Chains East, on a random line between Sections 11 and 14.
Variation 13° 30' East.

Ascend.

26.50 Top of Ridge, bears N 1/2° E, 78 1/2° W and descend.

40.00 Set temporary 1/4 Sec. Cor.

42.30 Cross Wash, 20 lks. wide, Course N, 50° E.

80.11 Intersect N. & S. line, 43 lks. North of cor. to secs.

11-12-13-14 from which corner, I run

789° 42' W. on a true line between sections 11-14,

Variation 13° 30' East

40.06 Set a post 3 ft. long, 3 ins. diam. with marked stone
12 ins. in the ground, for 1/4 Sec. Cor., marked 1/4 S. on
N. face, dug pits, 18 x 18 x 12 ins., E and W. of
post 5 1/2 ft. dist., and raised a mound of earth 1 1/2 ft.
high, 3 1/2 ft. base around post.

80.11 The corner to sections 10-11-14-15.

Land mountainous

Soil 3rd rate

Timber of Juniper.

Vegetation, Bunchgrass.

Township 13 N. Range 18 E.
BOOK 133 Gila and Salt River Meridian.

Chains North, between Sections 10 and 11.
Variation 13° 30' East.

Descend.

19.80 Cross Creek 25 lks. wide, Course N 70° E and ascend.

40.00 Set a post 3 ft. long, 3 ins. diam. with marked stone
12 ins. in the ground, for $\frac{1}{4}$ Sec. Cor., marked $\frac{1}{4}$ S. on
N. face, dug pits, 18 x 18 x 12 ins., N and S of
post $5\frac{1}{2}$ ft. dist., and raised a mound of earth $1\frac{1}{2}$ ft.
high, $3\frac{1}{2}$ ft. base around post.

80.00 Set a post 4 ft. long, 4 ins. square, with marked stone
12 ins. in the ground, for Cor. to Secs, 2-3-10-11,
marked T, 13 N. S. 2, on N, E, R, 18 E., S. 11
on S, E, S, 10 on S, W, and S, 3 on N, W, face
with 1 notch on S, and 2 notches on E, edges,
dug pits 18 x 18 x 12 ins, in each Sec., $5\frac{1}{2}$ ft. dist.,
and raised a mound of earth 2 ft, high, $4\frac{1}{2}$ ft, base
around post.

Land rolling.

Soil 3rd rate

Timber of Cedar.

Vegetation. Junegrass.

Township 13 N., Range 18 E.
 BOOK 132 Gila and Salt River Meridian.

Chains

East, on a random line between Sections 2 and 11.

Variation

13°30'

East.

Descend.

26.50 Cross Creek 25 lks. wide, Course N 1/2 E, and ascend.

31.00 Top of Ridge, bears N. and S., and descend.

40.00 Set temporary $\frac{1}{4}$ Sec. Cor.

60.33 *Ascend.*

80.30 Intersect N. & S. line, 22 lks. North of cor. to secs.

1-2-11-12 from which corner, I run

N 89° 51' W. on a true line between sections 2-11,

Variation 13°30' East

40.15 Set a post 3 ft. long. 3 ins. diam. with marked stone
 12 ins. in the ground, for $\frac{1}{4}$ Sec. Cor., marked $\frac{1}{4}$ S. on
N. face, dug pits, 18 x 18 x 12 ins., E. and W. of
 post $5\frac{1}{2}$ ft. dist., and raised a mound of earth $1\frac{1}{2}$ ft.
 high, $3\frac{1}{2}$ ft. base around post.

80.30 The corner to sections 2-3-10-11.

Land mountainous.

Soil 2nd & 3rd rate

Vegetation, Bunchgrass.

Township 13 N. Range 18 E.
BOOK 132 Gila and Salt River Meridian.

Chains North, on a random line between Sections 2 and 3.
Variation 13°30' East.

Ascend.

32.00 Top of Spur, bears N.E. & S.W. and descend.

40.00 Set temporary $\frac{1}{4}$ Sec. Cor.

44.60 Cross Wash, 18 fms. wide, Course N7E and ascend.

79.90 Intersect N.B. of Twp. 8 fms. West of cor. to secs. 2-3-34-35 previously set by me.

S. 3' W. from which corner, I run
on a true line, between sections 2-3.
Variation 14° East.

39.90 Set a post 3 ft. long, 3 ins. diam. with marked stone
12 ins. in the ground, for $\frac{1}{4}$ Sec. Cor., marked $\frac{1}{4}$ S. on
W. face, dug pits, 18 x 18 x 12 ins., N. and S. of
post $5\frac{1}{2}$ ft. dist., and raised a mound of earth $1\frac{1}{2}$ ft.
high, $3\frac{1}{2}$ ft. base around post.

79.90 The corner to sections 2-3-10-11.

Land mountainous.

Soil 2nd rate

Vegetation, Bunchgrass.
Apr. 11, 1882.

Township 13 N, Range 18 E, Meridian. Gila and Salt River

BOOK 132 Standard
Chains North between Sections 33 and 34. on S. B. 27. as previously des-

Variation 13° 40' East.

Descend.

8.50 Cross Wash, 13 lks. wide, Course N. 31° E.

19.84 Cross Wash, 14 lks. wide, Course N. 58° E. and ascend.

40.00 Set a post 3 ft. long, 3 ins. diam. with marked stone
12 ins. in the ground, for $\frac{1}{4}$ Sec. Cor., marked $\frac{1}{4}$ S. on
N. face, dug pits, 18 x 18 x 12 ins. N and V. of
post $5\frac{1}{2}$ ft. dist., and raised a mound of earth $1\frac{1}{2}$ ft.
high, $3\frac{1}{2}$ ft. base around post.

80.00 Set a post 4 ft. long, 4 ins. square, with marked stone
12 ins. in the ground, for Cor. to Secs, 27-28-33-34,
marked T 13 N, S, 27, on N, E, R, 18 E, S. 34
on S, E, S, 33 on S, W, and S, 28 on N, W, face
with / notch on S, and 3 notches on E, edges,
dug pits 18 x 18 x 12 ins, in each Sec., $5\frac{1}{2}$ ft. dist.,
and raised a mound of earth 2 ft, high, $4\frac{1}{2}$ ft, base
around post.

Land rolling.

Soil 2nd & 3rd rate

Vegetation, Bunchgrass.

Township

13 N,

Range

18 E,

BOOK 133

Gila and Salt River

Meridian.

Chains

East, on a random line between Sections 27 and 34.

Variation

13°30'

East.

Descend.40.00 Set temporary $\frac{1}{4}$ Sec. Cor.

52.10 Cross Wash, 17 lks. wide, Course N. 35° E.

59.40 Cross Wash, 20 lks. wide, Course N. 7° E and ascend.

71.90 Top of Spur, bears N. and S. and descend.

80.91 Intersect N. & S. line, 17 lks. South of cor. to secs.

26-27-34-35 from which corner, I run

S 89° 53' W. on a true line between sections 27-34,

Variation 13°30' East

40.46 Set a post 3 ft. long. 3 ins. diam. with marked stone
12 i. s. i. the ground, for $\frac{1}{4}$ Sec. Cor., marked $\frac{1}{4}$ S. on
N. face, dug pits, 18 x 18 x 12 ins., E. and W. of
post 5 $\frac{1}{2}$ ft. dist., and raised a mound of earth 1 $\frac{1}{2}$ ft.
high, 3 $\frac{1}{2}$ ft. base around post.

80.91 The corner to sections 27-28-33-34.

Land mountainous.

Soil 2nd & 3rd rate

Vegetation, bunchgrass.

Township

13 N.

Range

18 E.

BOOK 132

Gila and Salt River Meridian.

Chains

North, between Sections 27 and 28.

Variation

13° 30'

East.

Ascend.

29.16 Top of Ridge, bears N. E. & S. W. and descend.

40.00 Set a post 3 ft. long, 3 ins. diam. with marked stone
12 ins. in the ground, for $\frac{1}{2}$ Sec. Cor., marked $\frac{1}{2}$ S. on
W. face, dug pits, 18 x 18 x 12 ins., N and S. of
post $5\frac{1}{2}$ ft. dist., and raised a mound of earth $1\frac{1}{2}$ ft.
high, $3\frac{1}{2}$ ft. base around post.

80.00 Set a post 4 ft. long, 4 ins. square, with marked stone
12 ins. in the ground, for Cor. to Secs, 21-22-27-28,
marked T/13N, S. 22, on N, E, R, 18E, S. 27
on S, E, S, 28 on S, W, and S, 21 on N, W, face
with 2 notches on S, and 3 notches on E, edges,
dug pits 18 x 18 x 12 ins, in each Sec., $5\frac{1}{2}$ ft, dist.,
and raised a mound of earth 2 ft, high, $4\frac{1}{2}$ ft, base
around post.

Land mountainous.

Soil 2nd and 3rd rate

Vegetation, Bunchgrass.

Chains East, on a random line between Sections 22 and 27.
 Variation 13°30' East.

Ascend.

- 15.00 Top of Ridge, bears N. 10° W. 7 S. 10° E and descend.
- 40.00 Set temporary $\frac{1}{4}$ Sec. Cor.
- 49.85 Cross Wash, 10 lks. wide, Course N. E. and ascend.
- 57.50 Top of Spur, bears N. 10° E. 7 S. 10° W and descend.
- 78.40 Cross Wash, 5'0 lks. wide, Course N. 18° W and ascend.
- 80.51 Intersect N. & S. line, 40 lks. North of cor. to secs.

22-23-26-27 from which corner, I run
N 89° 43' W. on a true line between sections 22 - 27.
 Variation 13°30' East

40.26 Set a post 3 ft. long. 3 ins. diam. with marked stone
 12 ins. in the ground, for $\frac{1}{4}$ Sec. Cor., marked $\frac{1}{4}$ S. on
N. face, dug pits, 18 x 18 x 12 ins., E. and W. of
 post $5\frac{1}{2}$ ft. dist., and raised a mound of earth $1\frac{1}{2}$ ft.
 high, $3\frac{1}{2}$ ft. base around post.

80.51 The corner to sections 21-22-27-28.
 Land mountainous
 Soil 2nd rate
 Timber of Juniper.
 Vegetation, Bunchgrass.

Township

13 N.

Range

18 E.

Gila and Salt River Meridian.

BOOK 132

Chains

North, between Sections 21 and 22.

Variation $10^{\circ} 30'$ East.*Descend. gradually.*

40.00 Set a post 3 ft. long. 3 ins. diam. with marked stone 12 ins. in the ground, for $\frac{1}{2}$ Sec. Cor., marked $\frac{1}{2}$ S. on W. face, dug pits, 18 x 18 x 12 ins., N and S. of post $5\frac{1}{2}$ ft. dist., and raised a mound of earth $1\frac{1}{2}$ ft. high, $3\frac{1}{2}$ ft. base around post.

80.00 Set a sand stone $16 \times 10 \times 4$ ins. // ins. in the ground for Cor. to Secs. 15-16-21-22 marked with 3 notches on S. and 3 notches on E. edges and raised a mound of stone alongside. Pits impracticable.

Land rolling.

Soil 2nd rate

Vegetation, Bunchgrass.

Township

13 N.

Range

18 E.

28

BOOK 132

Gila and Salt River Meridian.

Chains

East, on a random line between Sections 15 and 22.

Variation

13° 30'

East.

Ascend.

35.00 Top of Spur, bears N. and S. and descend.

40.00 Set temporary $\frac{1}{2}$ Sec. Cor.

63.80 Cross Wash, 48 lks. wide, Course N 18° W and ascend.

80.20 Intersect N. & S. line. 20 lks. North of cor. to secs.

14-15-22-23 from which corner, I run

N 89° 51' W. on a true line between sections 15-22,

Variation

13° 30' East

40.10 Set a post 3 ft. long, 3 ins. diam. with marked stone
12 ins. in the ground, for $\frac{1}{2}$ Sec. Cor., marked $\frac{1}{2}$ S. on
N. face, dug pits, 18 x 18 x 12 ins., E and W. of
post 5 $\frac{1}{2}$ ft. dist., and raised a mound of earth 1 $\frac{1}{2}$ ft.
high, 3 $\frac{1}{2}$ ft. base around post.

80.20 The corner to sections 15-16-21-22.

Land mountainous

Soil 3rd rate

Timber of Juniper, and Cedar.

Vegetation, Bunchgrass.

Township 13N; Range 18E;

Gila and Salt River Meridian.

BOOK 132

Chains North, between Sections 15 and 16.

Variation 13° 30' East.

Descend.

21.90 ^{dry bed} Cross Creek 70 lks. wide, Course N. 40° E. and ascend.

40.00 Set a post 3 ft. long, 3 ins. diam. with marked stone 12 ins. in the ground, for $\frac{1}{4}$ Sec. Cor., marked $\frac{1}{4}$ S. on N. face, dug pits, 18 x 18 x 12 ins., N and S. of post $5\frac{1}{2}$ ft. dist., and raised a mound of earth $1\frac{1}{2}$ ft. high, $3\frac{1}{2}$ ft. base around post.

40.73 Top of Ridge, bears N. 53° E. & S. 53° W. and descend.

80.00 Set a sand stone 24 x 17 x 12 ins. 18 ins. in the ground for Cor. to Secs. 9-10-15-16 marked with 4 notches on S. and 3 notches on E. edges and raised a mound of stone alongside. Pits impracticable.

Land mountainous

Soil 2nd & 3rd rate

Timber of Juniper.

Vegetation, Bunchgrass.

Township 13 N. Range 18 E.
BOOK 132 Gila and Salt River Meridian.

Chains

East, on a random line between Sections 10 and 15.

Variation 13°30' East.

Ascend.

34.16 Top of Spur, bears N. 6 E. & S. 8 W. and descend.

40.00 Set temporary $\frac{1}{4}$ Sec. Cor.

49.71 ^{dry bed of} Cross Creek 100 lks. wide, Course N. 67 E. and ascend.

79.91 Intersect N. & S. line, 11 lks. South of cor. to secs.

10-11-14-15 from which corner, I run

S. 89° 55' W. on a true line between sections 10-15.

Variation 13°30' East

39.96 Set a Sand stone 7 x 12 x 9 ins., 11 ins.

in the ground, for $\frac{1}{4}$ Sec. Cor., marked $\frac{1}{4}$ on N face,

dug pits 18 x 18 x 12 ins., E and W. of stone 5 $\frac{1}{2}$

ft. dist., and raised a mound of earth 1 $\frac{1}{2}$ ft. high, 3 $\frac{1}{2}$

ft. base alongside.

79.91 The corner to sections 9-10-15-16,

Land mountainous

Soil 3rd rate

Timber of Juniper,

Vegetation, Bunchgrass.

Township

13 N.

Range

18 E.

Gila and Salt River Meridian.

Chains

BOOK

132

North, between Sections 9 and 10.

Variation

13° 30'

East.

Descend.

40.00 Set a post 3 ft. long, 3 ins. diam. with marked stone 12 i. s. in the ground, for $\frac{1}{4}$ Sec. Cor., marked $\frac{1}{4}$ S. on N. face, dug pits, 18 x 18 x 12 ins. N. and S. of post $5\frac{1}{2}$ ft. dist., and raised a mound of earth $1\frac{1}{2}$ ft. high, $3\frac{1}{2}$ ft. base around post.

71.67 Cross Wash, 25 lks. wide, Course N. 19° E. and ascend.

80.00 Set a *lime* stone $24 \times 16 \times 8$ ins. 18 ins. in the ground for Cor. to Secs. 3-4-9-10 marked with 5 notches on S. and 3 notches on E. edges and raised a mound of stone alongside. Pits impracticable.

Land rolling.

Soil

3rd rate

Vegetation,

Bunchgrass.

Township

13 N.

Range

18 E.

32

BOOK

133

Gila and Salt River

Meridian.

Chains

East, on a random line between Sections 3 and 10.

Variation

13° 30'

East.

Descend.

- 3.30 Cross Wash, 13 lks. wide, Course N. 15° E. and ascend.
- 26.00 Top of Spur, bears N. 16° E. 9 S. 16° W. and descend.
- 32.00 Cross Wash, 20 lks. wide, Course North and ascend.
- 40.00 Set temporary $\frac{1}{2}$ Sec. Cor.
- 67.00 Top of Ridge, bears N. 27° E. 9 S. 27° W. and descend.
- 80.18 Intersect N. & S. line, 39 lks. South of cor. to secs. 3-10-11 from which corner, I run S. 89° 43' W. on a true line between sections 3-10.
- Variation 13° 30' East
- 40.09 Set a post 3 ft. long, 3 ins. diam. with marked stone 12 ins. in the ground, for $\frac{1}{2}$ Sec. Cor., marked $\frac{1}{2}$ S. on N. face, dug pits, 18 x 18 x 12 ins. E. and W. of post 5 $\frac{1}{2}$ ft. dist., and raised a mound of earth 1 $\frac{1}{2}$ ft. high, 3 $\frac{1}{2}$ ft. base around post.
- 80.18 The corner to sections 3-4-9-10.
- Land mountainous
- Soil 3rd rate
- Timber of Juniper & Cedar.
- Vegetation, Bunchgrass.

Township

13 N.,

Range

18 E.,

Gila and Salt River Meridian.

Chains

BOOK 132

on a random line between Sections 3 and 4.

Variation

13° 30'

East.

*Ascend.*40.00 Set temporary $\frac{1}{4}$ Sec. Cor.80.11 Intersect N. B. of Tn. 23 $\frac{1}{2}$ m. East of cor. to sec.
previously set by me.

3-4-33-34 from which corner, I run

S. 10' E., on a true line, between sections 3-4.

Variation 13° 50' East.

40.11 Set a sand stone 16 x 12 x 10 ins., 11

ins. in the ground, for $\frac{1}{4}$ Sec. Cor., marked $\frac{1}{4}$ on N,

face, and raised a mound of stone alongside. Pits

impracticable.

80.11 The corner to sections 3-4-9-10.

Land mountainous

Soil 3rd rate

Timber of Juniper & Cedar.

Vegetation, Bunchgrass.

I carefully examined the adjustments of my solar
compass to-day, particularly the latitude and revers-
ing apparatus, and found them correct.

Apr. 12, 1883.

BOOK 82 13 N, Range 18 E,

Stantaw Co Gila and Salt River Meridian.
from Cor. to Secs. 28-32-33 as previously
described by me, June 1871.

Chains North, between Sections 32 and 33.
Variation 13° 45' East.

Ascend.

21.75 Descend.

40.00 Set a *lime* stone 20 x 12 x 8 ins., 15
ins. in the ground, for 1/4 Sec. Cor., marked 1/4 on N.
face, and raised a mound of stone alongside. Pits
impracticable. from which

A Pine 9 ins. diam. bears S. 9° E., 13 lks. dist.
marked 1/4 S. B. T.

A Juniper 13 ins. diam. bears N. E., 24 lks. dist.
marked 1/4 S. B. T.

72.60 ~~dry~~ Cross Creek 40 lks. wide. Course N. 21° E.

80.00 Set a *sand* stone 28 x 13 x 5 ins. 2 1/2 ins. in
the ground for Cor. to Secs. 28-29-32-33 marked
with 1 notch on S. and 4 notches on E. edges and
raised a mound of stone alongside. Pits impracticable.

A Cottonwood 7 ins. diam. bears S. 16° E., 30 lks. dist. from which
marked T. 13 N., R. 18 E., S., 33 B. T.

A Pine 7 ins. diam. bears S. 89° W., 60 lks. dist.
marked T. 13 N., R. 18 E., S., 32 B. T.

No other trees within limits.

Land mountainous

Soil 3rd rate

Timber of Pine & Juniper.

Vegetation, Bunchgrass.

Township

13 N.

Range

18 E.

Gila and Salt River Meridian.

BOOK

132

Chains

East, on a random line between Sections 28 and 33.

Variation

13° 30'

East.

Descend.

1.40 Cross Creek 63 lks. wide, Course North and ascend.

40.00 Set temporary $\frac{1}{4}$ Sec. Cor.

49.33 Top of Ridge, bears N. 6° 9' S. W. and descend.

81.31 Intersect N. & S. line, 68 lks. South of cor. to secs.

27-28-33-34 from which corner, I run

S. 84° 31' W. on a true line between sections 28-33.

Variation 13° 30' East

40.66 Set a post 3 ft. long, 3 ins. diam 24 ins. in the ground,
for $\frac{1}{4}$ Sec. Cor., marked $\frac{1}{4}$ S. on N. face; from which
A Pine 9 ins, diam. bears N. 38° W., 52 lks. dist.
marked $\frac{1}{4}$ S. B. T.

A Pine 5 ins, diam. bears S. 31 $\frac{1}{2}$ ° E., 11 lks. dist.
marked $\frac{1}{4}$ S. B. T.

81.31 The corner to sections 28-29-32-33.

Land mountainous

Soil 3rd rate

Timber of Pine and Juniper.

Vegetation, Bunchgrass.

Chains

North, between Sections 28 and 29.

Variation

13° 30'

East.

Descend.
dry bed
17.05 Cross Creek 50 lks. wide, Course N. 24° W.

40.00 Set a post 3 ft. long, 3 ins. diam. with marked stone
12 ins. in the ground, for $\frac{1}{4}$ Sec. Cor., marked $\frac{1}{4}$ S. on
W. face, dug pits, 18 x 18 x 12 ins., N and S. of
post $5\frac{1}{2}$ ft. dist., and raised a mound of earth $1\frac{1}{2}$ ft.
high, $3\frac{1}{2}$ ft. base around post.

46.53 Cross Creek 65 lks. wide, Course N. E.

80.00 Set a post 4 ft. long, 4 ins. square, with marked stone
12 ins. in the ground, for Cor. to Secs, 20-21-28-29,
marked T, 13 N, S, 21, on N, E, R, 18 E, S, 28
on S, E, S, 29 on S, W, and S, 20 on N, W, face
with 2 notches on S, and 4 notches on E, edges,
dug pits 18 x 18 x 12 ins, in each Sec., $5\frac{1}{2}$ ft, dist.,
and raised a mound of earth 2 ft, high, $4\frac{1}{2}$ ft, base
around post.

from which

A Pine 7 ins, diam, bears N. 80° E. 70 lks. dist.
marked T, 13 N, R, 18 E, S., 21 B. T.
A Pine 10 ins, diam, bears S. 40° E. 65 lks. dist.
marked T, 13 N, R, 18 E, S., 28 B. T.
A Pine 9 ins, diam, bears S. 30° W. 40 lks. dist.
marked T, 13 N, R, 18 E, S., 29 B. T.

No other trees within limits.

Land rolling.

Soil

2nd rate

Timber of

Pine and Juniper.

Vegetation,

Bunchgrass.

Township

13 N,

Range

18 E,

Gila and Salt River Meridian.

Chains

BOOK 132

East, on a random line between Sections 21 and 28.

Variation

13° 30'

East.

Descend.

20.81 Cross Creek 20 lks. wide, Course N 10 E, and ascend.

40.00 Set temporary $\frac{1}{2}$ Sec. Cor.

41.90 Cross Wash, 10 lks. wide, Course N 13 E, and ascend.

41.24 Intersect N. & S. line, 22 lks. South of cor. to secs.

21-22-27-28 from which corner, I run

S. 89° 51' W. on a true line between sections 21-28.

Variation 13° 30' East

40.62 Set a post 3 ft. long. 3 ins. diam. with marked stone

12 ins. in the ground, for $\frac{1}{2}$ Sec. Cor., marked $\frac{1}{2}$ S. on

N. face, dug pits, 18 x 18 x 12 ins., E and W. of

post 5 $\frac{1}{2}$ ft. dist., and raised a mound of earth 1 $\frac{1}{2}$ ft.high, 3 $\frac{1}{2}$ ft. base around post.

41.24 The corner to sections 20-21-28-29.

Land rolling.

Soil

374 rate

Vegetation,

Bunchgrass.

Township

13 N,

Range

18 E,

38

BOOK 32

Gila and Salt River Meridian.

Chains

North, between Sections 20 and 21.

Variation

13° 30'

East.

Ascend.

40.00 Set a *lime* stone 26 x 19 x 10 ins., 19 ins. in the ground, for $\frac{1}{4}$ Sec. Cor., marked $\frac{1}{4}$ on N, face, and raised a mound of stone alongside. Pits impracticable.

57.16 Top of Ridge, bears N.E. & S.W. and descend.

80.00 Set a *lime* stone 20 x 20 x 15 ins. 15 ins. in the ground for Cor. to Secs. 16-17-20-21 marked with 3 notches on S. and 4 notches on E. edges and raised a mound of stone alongside. Pits impracticable.

from which

A Pine 12 ins, diam. bears S. 80° E., 26 lks. dist. marked T. 13 N, R. 18 E, S., 21 B. T.

A Pine 15 ins, diam. bears S. 30° W., 65 lks. dist. marked T. 13 N, R. 18 E, S., 20 B. T.

No other trees within limits.

Land mountainous

Soil 2nd & 3rd rate

Timber of

Pine and Juniper.

Vegetation,

Bunchgrass.

Township 13 N, Range 18 E,
Gila and Salt River Meridian.

BOOK 132
Chains

East, on a random line between Sections 16 and 21.

Variation 13° 30' East.

Over rolling land.

8.73 Ascend.

29.74 Top of Ridge, bears N. 53° E. 9 S. 53° N and descend.

40.00 Set temporary $\frac{1}{4}$ Sec. Cor.

52.20 Cross Creek 60 lks. wide, Course N. E. and ascend.

80.69 Intersect N. & S. line, 13 lks. South of cor. to secs.

15-16-21-22 from which corner, I run

S 89° 54' W. on a true line between sections 16-21,

Variation 13° 30' East

40.35 Set a post 3 ft. long. 3 ins. diam. with marked stone
12 ins. in the ground, for $\frac{1}{4}$ Sec. Cor., marked $\frac{1}{4}$ S. on
N face, dug pits, 18 x 18 x 12 ins., E. and W. of
post 5 $\frac{1}{2}$ ft. dist., and raised a mound of earth 1 $\frac{1}{2}$ ft.
high, 3 $\frac{1}{2}$ ft. base around post.

80.69 The corner to sections 16-17-20-21,

Land mountainous

Soil 3rd rate

Timber of Juniper & Cedar,

Vegetation, Bunchgrass.

Township 13 N. Range 18 E.
BOOK 32 Gila and Salt River Meridian.

Chains

North, between Sections 16 and 17.

Variation 13° 30' East.

Descend.

23.00 Foot of Hill and descend gradually

40.00 Set a post 3 ft. long, 3 ins. diam. with marked stone
12 ins. in the ground, for $\frac{1}{4}$ Sec. Cor., marked $\frac{1}{4}$ S. on
N. face, dug pits, 18 x 18 x 12 ins. N. and S. of
post $5\frac{1}{2}$ ft. dist., and raised a mound of earth $1\frac{1}{2}$ ft.
high, $3\frac{1}{2}$ ft. base around post.

44.40 Cross Wash, 10 lks. wide, Course N 63° E and ascend.

80.00 Set a post 4 ft. long, 4 ins. square, with marked stone
12 ins. in the ground, for Cor. to Secs, S-9-16-17,
marked T. 13 N. S. 9, on N, E, R, 18 E, S. 16
on S, E, S, 17 on S, W, and S, 8 on N, W, face
with 4 notches on S, and 4 notches on E, edges,
dug pits 18 x 18 x 12 ins, in each Sec., $5\frac{1}{2}$ ft. dist.,
and raised a mound of earth 2 ft, high, $4\frac{1}{2}$ ft, base
around post.

Land rolling.

Soil 2nd & 3rd rate

Vegetation, Bunchgrass,
Sinclair, Juniper.

Township 13 N, Range 18 E,
Gila and Salt River Meridian.

BOOK 132

Chains East, on a random line between Sections 9 and 16.
Variation 13° 30' East.

Ascend.

4.60 Top of Spur, bears N. 14° N. 9. S. 14 E. and descend.
26.77 Cross Wash, 14 lks. wide, Course N. 5 E. and ascend.

40.00 Set temporary $\frac{1}{4}$ Sec. Cor.

PV. 11 Intersect N. & S. line, 30 lks. North of cor. to secs.
9-10-15-16 from which corner, I run

N. 89° 47' W. on a true line between sections 9-16.
Variation 13° 30' East

40.56 Set a sand stone 26 x 14 x 3 ins. 14
ins. in the ground, for $\frac{1}{4}$ Sec. Cor., marked $\frac{1}{4}$ on N.
face, and raised a mound of stone alongside. Pits
impracticable. from which

A Pine 13 ins, diam. bears S. 80 E., 31 lks. dist.
marked $\frac{1}{4}$ S. B. T.

A Pine 9 ins, diam. bears N. 35 E., 21 lks. dist.
marked $\frac{1}{4}$ S. B. T.

P1. 11 The corner to sections 8-9-16-17.

Land mountainous

Soil 3rd rate

Timber of Pine and Juniper.
Vegetation, Bunchgrass.



Township

13 N.

Range

18 E.

42

BOOK 132

Gila and Salt River Meridian.

Chains

North, between Sections 8 and 9.

Variation

13° 30'

East.

Ascend.

17.00 Top of Ridge, bears N. 27° W. 270. and descend.

39.50 Head of Ravine, Course East and ascend

40.00 Set a post 3 ft. long, 3 ins. diam. with marked stone 12 ins. in the ground, for $\frac{1}{2}$ Sec. Cor., marked $\frac{1}{2}$ S. on N. face, dug pits, 18 x 18 x 12 ins., N and S. of post $5\frac{1}{2}$ ft. dist., and raised a mound of earth $1\frac{1}{2}$ ft. high, $3\frac{1}{2}$ ft. base around post.

80.00

Set a post 4 ft. long, 4 ins. square, with marked stone 12 ins. in the ground, for Cor. to Secs, 4-5-8-9, marked T/3NS, 4, on N, E, R, 18 E, S. 9 on S, E, S, 8 on S, W, and S, 5 on N, W, face with 3 notches on S, and 4 notches on E, edges, dug pits 18 x 18 x 12 ins. in each Sec., $5\frac{1}{2}$ ft. dist., and raised a mound of earth 2 ft. high, $4\frac{1}{2}$ ft. base around post.

Land mountainous.

Soil

370 rate

Vegetation,

Bunchgrass.

Township

13 N,

Range

18 E,

Gila and Salt River Meridian.

Chains

BOOK 132

East, on a random line between Sections 4 and 9.

Variation

13°30'

East.

Descend. gradually,

40.00 Set temporary $\frac{1}{4}$ Sec. Cor.

S. 94 Intersect N. & S. line, 13 lks. North of cor. to sec.

3-4-9-10 from which corner, I run

N 89°54' W. on a true line between sections 4-9.

Variation 13°30' East

40.47 Set a Sand stone 16 x 10 x 6 ins. //

ins. in the ground, for $\frac{1}{4}$ Sec. Cor., marked $\frac{1}{4}$ on N.

face, and raised a mound of stone alongside. Pits

impracticable.

from which

A Pine 6 ins, diam. bears N. 75° W, 57 lks. dist.

marked $\frac{1}{4}$ S. B. T.

A Cedar 6 ins, diam, bears S. 23° E, 76 lks, dist,

marked $\frac{1}{4}$ S. B. T.

S. 94 The corner to sections 4-5-8-9.

Land rolling.

Soil

3rd rate

Timber of

Pine, Juniper & Cedar.

Vegetation,

Bunchgrass.

Township 13 N. Range 18 E.
BOOK 132 Gila and Salt River Meridian.

Chains North, on a random line between Sections 4 and 5.
Variation 13° 30' East.

Ascend.

12.50 Top of Ridge, bears N.E. & S.W. and descend.

40.00 Set temporary $\frac{1}{4}$ Sec. Cor.

73.50 Cross Wash, 24 lks. wide, Course N. 15° E and ascend.

79.88 Intersect N.R. of Tp. 42 lks. West of cor. to secs. previously set by me.

4-5-32-33 from which corner, I run
S. 18' W. on a true line, between sections 4-5,
Variation 13° 50' East.

39.88 Set a post 3 ft. long. 3 ins. diam. with marked stone
12 s. in the ground, for $\frac{1}{4}$ Sec. Cor., marked $\frac{1}{4}$ S. on
W. face, dug pits, 18 x 18 x 12 ins, N. and S. of
post 5 $\frac{1}{2}$ ft. dist., and raised a mound of earth 1 $\frac{1}{2}$ ft.
high, 3 $\frac{1}{2}$ ft. base around post.

79.88 The corner to sections 4-5-8-9.

Land mountainous

Soil 2nd & 3rd rate

Timber of Juniper & Cedar.

Vegetation, Bunchgrass

Apr. 13, 1883.

Township 13 N., Range 18 E.,

BOOK 132 Standard Gila and Salt River Meridian.

Chains

Mon. Cor. to Secs. 31 & 32 in S.B.P. described by me from 66 previously

North, between Sections 31 and 32.

Variation 13° 40' East.

Ascend.

40.00 Set a post 3 ft. long, 3 ins. diam. with marked stone 12 ins. in the ground, for 1/2 Sec. Cor., marked 1/2 S. on N. face, dug pits, 18 x 18 x 12 ins., N and S. of post 5 1/2 ft. dist., and raised a mound of earth 1 1/2 ft. high, 3 1/2 ft. base around post.

A Juniper 5 ins. diam. bears N. 29° E., 26 lks. dist. marked 1/2 S. B. T. from which

No other trees within limits.

80.00 Set a SAND stone 2 1/2 x 10 x 6 ins. 1/6 ins. in the ground for Cor. to Secs. 29-30-31-32 marked with / notch on S. and 5 notches on E. edges, dug pits 18 x 18 x 12 ins. in each Sec., 5 1/2 ft. dist. and raised a mound of earth 2 ft. high, 4 1/2 ft. base. alongside.

A Pine 7 ins, diam. bears N. 38° E., 17 lks. dist. marked T13N, R. 18E, S., 29 B. T. from which

A Pine 8 ins, diam. bears S. 8° E., 19 lks. dist. marked T13N, R. 18E, S., 32 B. T.

A Pine 12 ins, diam. bears N. 46° W., 47 lks. dist. marked T13N, R. 18E, S., 30 B. T.

No other trees within limits.

Land rolling.

Soil 3rd rate

Vegetation, Bunchgrass, Heavy timber of Pine & Juniper.

Township

13 N.

Range

18 E.

46

Gila and Salt River

Meridian.

BOOK 132

Chains

East, on a random line between Sections 29 and 32.

Variation

 $13^{\circ}30'$

East.

Descend.

40.00

Set temporary $\frac{1}{4}$ Sec. Cor.

S0.63

Intersect N. & S. line,

71

lks. South of cor. to secs.

28-29-32-33 from which corner, I run

S. $89^{\circ}30'$ W. on a true line between sections 29-32.

Variation

 $13^{\circ}30'$

East

40.32

Set a post 3 ft. long, 3 ins. diam 24 ins. in the ground,
for $\frac{1}{4}$ Sec. Cor., marked $\frac{1}{4}$ S. on N face; from whichA Juniper 20 ins. diam. bears S. $28^{\circ}E$, 44 lks. dist.
marked $\frac{1}{4}$ S. B. T.A Juniper 10 ins. diam. bears N. $80^{\circ}W$, 100 lks. dist.
marked $\frac{1}{4}$ S. B. T.

S0.63

The corner to sections 29-30-31-32.

Land rolling.

Soil 2nd & 3rd rate

Vegetation, Bunchgrass.

Heavy timber of Juniper.

47 Township 13 N, Range 18 E,

Gila and Salt River Meridian

BOOK 132

Chains

West, on a random line between Sections 30 and 31.

Variation 13° 30' East.

Ascend.

16.44 Top of Ridge, bears N. 36° E. 2.36 and descend.

40.00 Set temporary $\frac{1}{2}$ Sec. Cor.

81.56 Intersect N. B. of Tp. 42 1/2 mls. North of cor. to secs. previously set by me.

25-30-31-36 from which corner, I run

N. 89° 42' E, on a true line, between sections 30-31.

Variation 13° 30' East.

41.56 Set a post 3 ft. long, 3 ins. diam 24 ins. in the ground, for $\frac{1}{2}$ Sec. Cor., marked $\frac{1}{2}$ S. on N. face; from which

A Pine 14 ins. diam. bears S. 60° E., 34 mls. dist. marked $\frac{1}{2}$ S. B. T.

A Pine 10 ins. diam. bears N. 30° W., 67 mls. dist. marked $\frac{1}{2}$ S. B. T.

81.56 The corner to sections 29-30-31-32.

Land mountainous

Soil 3rd rate

Timber of Juniper and Pine.

Vegetation, Bunchgrass.

Township

13 N,

Range

18 E,

48

BOOK

132

Gila and Salt River

Meridian.

Chains

North, between Sections 29 and 30.

Variation

13° 30'

East.

Ascend.

19.86 Top of Ridge, bears N. 52° E. N. 52° W. and descend.

40.00 Set a Sand stone 30 x 16 x 9 ins., 22
ins. in the ground, for $\frac{1}{4}$ Sec. Cor., marked $\frac{1}{4}$ on W.
face, and raised a mound of stone alongside. Pits
impracticable.

80.00 Set a Sand stone 25 x 12 x 8 ins. 19 ins. in
the ground for Cor. to Secs. 19-20-24-30 marked
with 2 notches on S. and 3 notches on E. edges and
raised a mound of stone alongside. Pits impracticable.

from which

A Pine 11 ins, diam. bears S. 22° E., 40ks. dist.
marked T 13 N, R. 18 E, S., 29 B. T.

A Pine 10 ins, diam. bears S. 82° W., 37ks. dist.
marked T 13 N, R. 18 E, S., 30 B. T.

No other trees within limits.

Land mountainous

Soil 2nd & 3rd rate

Timber of Pine and Juniper,
Vegetation, Bunchgrass.

Township 13 N., Range 18 E.,

BOOK 132 Gila and Salt River Meridian.

Chains East, on a random line between Sections 20 and 29.
Variation 13° 30' East.

Ascend.

31.16 Top of Ridge, bears N. & S. and descend.

40.00 Set temporary 1/4 Sec. Cor.

80.75 Intersect N. & S. line, 58 lbs South of cor. to secs.

20-21-28-29 from which corner, I run

S. 89° 35' W. on a true line between sections 20-29.

Variation 13° 30' East

40.38 Set a post 3 ft. long, 3 ins. diam. with marked stone
12 ins. in the ground, for 1/4 Sec. Cor., marked 1/4 S. on
N. face, dug pits, 18 x 18 x 12 ins., E. and W. of
post 5 1/2 ft. dist., and raised a mound of earth 1 1/2 ft.
high, 3 1/2 ft. base around post.

80.75 The corner to sections 19-20-29-30.

Land mountainous

Soil 2nd & 3rd rate

Timber of Juniper.

Vegetation, Bunchgrass.

Township

13 N.

Range

18 E.

BOOK

132

Gila and Salt River

Meridian.

Chains

West, on a random line between Sections 19 and 30.

Variation

13°30'

East.

Descend.

40.00 Set temporary 1/4 Sec. Cor.

44.83 Cross Creek 50 lks. wide. Course N. 41° E. and ascend.

68.40 Top of Hill bears N. 56° E. 78.56 lks. and descend.

82.30 Intersect N. B. of Tp. 14 lks. North of cor. to secs. previously set by me.

19-24-25-30 from which corner, I run

N. 89° 54' E. 1/4 a true line, between sections 19-30.

Variation

13°30'

East.

42.30 Set a post 3 ft. long. 3 ins. diam. with marked stone

12 ins. in the ground, for 1/4 Sec. Cor., marked 1/4 S. on

N. face; dug pits, 18 x 18 x 12 ins., E. and W. of

post 5 1/2 ft. dist., and raised a mound of earth 1 1/2 ft.

high, 3 1/2 ft. base around post.

82.30 The corner to sections 19-20-29-30.

Land hilly.

Soil 2nd & 3rd rate

Vegetation, Bunchgrass.

Township

13 N,

Range

18 E,

BOOK

134

Gila and Salt River Meridian.

Chains

North, between Sections 19 and 20.

Variation

13° 30'

East.

Descend.

30.00 Cross Wash, 17 lks. wide, Course N.E. and ascend.

40.00 Set a Lime stone 24 x 14 x 7 ins., 18 ins. in the ground, for $\frac{1}{4}$ Sec. Cor., marked $\frac{1}{4}$ on N. face, and raised a mound of stone alongside. Pits impracticable. and descend

56.90 Cross Wash, 30 lks. wide, Course N30°W and ascend.

30.00 Set a Sand stone 26 x 20 x 5 ins. 19 ins. in the ground for Cor. to Secs. 17-18-19-20 marked with 3 notches on S. and 5 notches on E. edges and raised a mound of stone alongside. Pits impracticable.

Land rolling.

Soil 3rd rate

Vegetation,

Bunchgrass.

Township 13 N. Range 18 E.
 BOOK 182 Gila and Salt River Meridian.

Chains East, on a random line between Sections 17 and 20.
 Variation 13° 30' East.

Ascend.

6.70 Top of Ridge, bears N. 32° W. 9 S. 32° E. and descend.

40.00 Set temporary $\frac{1}{4}$ Sec. Cor.

63.01 *Ascend.*

80.48 Intersect N. & S. line, 41 lks South of cor. to secs.

16-17-20-21 from which corner, I run

S. 89° 42' W. on a true line between sections 17-20,

Variation 13° 30' East

40.24 Set a post 3 ft. long. 3 ins. diam. with marked stone
 12 ins. in the ground, for $\frac{1}{4}$ Sec. Cor., marked $\frac{1}{4}$ S. on
 N. face, dug pits, 18 x 18 x 12 ins., E. and W. of
 post $5\frac{1}{2}$ ft. dist., and raised a mound of earth $1\frac{1}{2}$ ft.
 high, $3\frac{1}{2}$ ft. base around post.

80.48 The corner to sections 17-18-19-20.

Land mountainous

Soil 3rd rate

Timber of, Juniper

Vegetation, Bunchgrass.

Township

13 N.

Range

18 E.

Gila and Salt River Meridian.

BOOK 132

Chains

West, on a random line between Sections 18 and 19.

Variation

13° 30'

East.

Descend.

17.26 Cross Creek 37 lks. wide, Course N. 50° W. and ascend.

40.00 Set temporary $\frac{1}{4}$ Sec. Cor.

51.06 Top of Hill bears N. & S. & descend.

62.51 Cross Wash, 20 lks. wide, Course N. 18° E. and ascend.

82.91 Intersect N. B. of Tp. 30 lks. N. of cor. to secs.
previously set by me.

13-18-19-20 from which corner, I run

N. 89° 47' E. on a true line, between sections 18-19.

Variation 13° 30' East.

42.91 Set a sand stone 33 x 14 x 9 ins., 25
ins. in the ground, for $\frac{1}{4}$ Sec. Cor., marked $\frac{1}{4}$ on N.
face, and raised a mound of stone alongside. Pits
impracticable.

82.91 The corner to sections 17-18-19-20.

Land rolling.

Soil

3rd rate

Timber of

Pine & Juniper

Vegetation,

Bunchgrass.

Township 13 N. Range 18 E.
K 32 Gila and Salt River Meridian.

Chains North, between Sections 17 and 18.
Variation 13° 30' East.

Ascend.

19.66 Top of Ridge, bears N. 1/2 W. 2 1/2 E. and descend.
40.00 Set a Sand stone 21 x 13 x 9 ins., 16
ins. in the ground, for 1/4 Sec. Cor., marked 1/4 on N.
face, and raised a mound of stone alongside. Pits

impracticable. from which
A Juniper 12 ins. diam. bears N. 79° E., 17 lks. dist.
marked 1/4 S. B. F.

No other trees within limits.

78.91 Foot of descent and ascend

80.00 Set a post 4 ft. long, 4 ins. square, with marked stone
12 ins. in the ground, for Cor. to Secs, 7-8-17-18,
marked T, 13 N. S. 8, on N, E, R, 18 E, S. 17
on S, E, S, 18 on S, W, and S, 7 on N, W, face
with 4 notches on S, and 5 notches on E, edges,
 dug pits 18 x 18 x 12 ins, in each Sec., 5 1/2 ft. dist.,
 and raised a mound of earth 2 ft. high, 4 1/2 ft. base
 around post.

Land mountainous

Soil 2nd & 3rd rate

Timber of Juniper.

Vegetation, Bunchgrass.

I carefully examined the adjustments of my solar
compass to-day, particularly the latitude and revers-
ing apparatus, and found them correct. Apr. 14, 1883.

Township

13 N.

Range

18 E.

Gila and Salt River Meridian.

Chains

BOK 134

Run on a random line between Sections 8 and 17.

Variation $13^{\circ}30'$ East.

Descend.

2.40 Foot of Hill, bears $N. 47^{\circ} E. 91.547 m.$ and descend gradually.40.00 Set temporary $\frac{1}{2}$ Sec. Cor.

41.00 Ascend.

80.59 Intersect N. & S. line, 65 lks. South of cor. to secs.

S 9-16-17 from which corner, I run

S. $89^{\circ}32' W.$ on a true line between sections 8-17.Variation $13^{\circ}30'$ East

40.30 Set a post 3 ft. long, 3 ins. diam. with marked stone

12 ins. in the ground, for $\frac{1}{2}$ Sec. Cor., marked $\frac{1}{2}$ S. on

N. face, dug pits, 18 x 18 x 12 ins., E. and W. of

post $5\frac{1}{2}$ ft. dist., and raised a mound of earth $1\frac{1}{2}$ ft.high, $3\frac{1}{2}$ ft. base around post. from whichA Juniper 10 ins. diam. bears $S. 5^{\circ} E.$, 30 lks. dist.marked $\frac{1}{2}$ S. B. T.

No other trees within limits.

80.59 The corner to sections 7-8-17-18.

Land rolling.

Soil 2^{nd} 3^{rd} rate

Timber of Juniper.

Vegetation, Bunchgrass.

Township

13 N.

Range

18 E.

56

E. S. 1 32

Gila and Salt River

Meridian.

Chains

West, on a random line between Sections 7 and 18.

Variation

13°30'

East.

Ascend.

26.40 Top of Ridge, bears N. & S. and descend.

40.00 Set temporary $\frac{1}{4}$ Sec. Cor.54.15 Cross Wash, - 40 lks. wide, Course *North* and ascend.83.68 Intersect *N. B. of Td. 36* lks. *North* of cor. to secs.
previously set by me.

7-12-13-18 from which corner, I run

N. 89°45' E. on a true line, between sections 7-18,

Variation 13°30' East.

43.68 Set a *Sand* stone 17 x 10 x 7 ins., 11
ins. in the ground, for $\frac{1}{4}$ Sec. Cor., marked $\frac{1}{4}$ on N,
face, and raised a mound of stone alongside. Pits
impracticable.

83.68 The corner to sections 7-8-17-18.

Land mountainous.

Soil 2nd & 3rd rate

Vegetation,

Bunchgrass.

Township 13 N., Range 18 E.,
Gila and Salt River Meridian.

BOOK 132

Chains North, between Sections 7 and 8.

Variation 13° 30' East.

Ascend.

22.00 Top of Ridge, bears N. 75° W. 8 S. 75° E. and descend.
40.00 Set a *lime* stone 16 x 8 x 6 ins., 11
ins. in the ground, for 1/4 Sec. Cor., marked 1/4 on *N.*
face, and raised a mound of stone alongside. Pits
impracticable. from which
1 Cedar 6 ins, diam, bears S. 21° W., 46 lks, dist,
marked 1/4 S. B. T.

No other trees within limits.

42.00 Cross Wash, 8 lks. wide, Course S. 70° W. and ascend.

71.23 Top of Spur, bears E. & W. and descend.

80.00 Set a post 4 ft. long, 4 ins. square, with marked stone
12 ins. in the ground, for Cor. to Secs, 5-6-7-8,
marked T. 13 N. S. 5, on N, E, R, 18 E, S. 8,
on S, E, S, 7 on S, W, and S, 6 on N, W, face
with 5 notches on S, and 5 notches on E, edges,
aug pits 18 x 18 x 12 ins, in each Sec., 5 1/2 ft, dist.,
and raised a mound of earth 2 ft, high, 4 1/2 ft, base
around post.

Land mountainous

Soil 3rd rate

Timber of Juniper, & Pine.

Vegetation., Bunchgrass.

Township

K

13 N,

Range

18 E.

58

Gila and Salt River Meridian.

Chains

East, on a random line between Sections 5 and 8.

Variation

13° 30'

East.

Ascend.

33.00 Top of Ridge, bears N.W. & S.E. and descend.

40.00 Set temporary $\frac{1}{4}$ Sec. Cor.61.00 Cross head of Wash, ^{N. 20° E.} ~~Causeway~~ ascend80.17 Intersect N. & S. line, 27 lks. ^{South} of cor. to secs.

4-5-8-9 from which corner, I run

S. 89° 48' W. on a true line between sections 5-8,

Variation 13° 30' East

40.09 Set a post 3 ft. long, 3 ins. diam. with marked stone
 12 ins. in the ground, for $\frac{1}{4}$ Sec. Cor., marked $\frac{1}{4}$ S. on
 N. face, dug pits, 18 x 18 x 12 ins., E. and W. of
 post $5\frac{1}{2}$ ft. dist., and raised a mound of earth $1\frac{1}{2}$ ft.
 high, $3\frac{1}{2}$ ft. base around post.

80.17 The corner to sections 5-6-7-8.

Land mountainous.

Soil

3rd rate

Vegetation, Bunchgrass.

Township

13 N,

Range

18 E,

BOOK 133

Gila and Salt River Meridian.

Chains

West, on a random line between Sections 6 and 7.

Variation

13°30'

East.

Descend.

40.00 Set temporary $\frac{1}{4}$ Sec. Cor.

59.14 Cross Creek 35 lks. wide, Course N25°W and ascend.

84.31 Intersect N.B. of Tp. 51 lks. North of cor. to secs.
previously set by me.

1-6-7-12 from which corner, I run

77.89°38' E on a true line, between sections 6-7.

Variation 13°30' East.

44.31 Set a sand stone 27 x 13 x 9 ins., 19
ins. in the ground, for $\frac{1}{4}$ Sec. Cor., marked $\frac{1}{4}$ on N,
face, and raised a mound of stone alongside. Pits
impracticable.

84.31 The corner to sections 5-6-7-8.

Land rolling.

Soil

3rd rate

Vegetation,

Brome grass.

Township 13 N, Range 18 E,
Gila and Salt River Meridian.

132

Chains North, on a random line between Sections 5 and 6.
Variation * 13° 30' East.

Descend.

16.00 Cross Wash, 9 lks. wide, Course S. 60° W and ascend.

40.00 Set temporary $\frac{1}{4}$ Sec. Cor.

58.00 Top of Ridge, bears N. 50° W. & S. 50° E and descend.

80.30 Intersect N. B. of T. 36 lks. West of cor. to secs.
5-6-31-32 ^{previously set by me.} from which corner, I run
S. 15° W on a true line, between sections 5-6.
Variation 13° 50' East.

40.30 Set a post 3 ft. long. 3 ins. diam. with marked stone
12 ins. in the ground, for $\frac{1}{4}$ Sec. Cor., marked $\frac{1}{4}$ S. on
W. face, dug pits, 18 x 18 x 12 ins., N. and S. of
post $5\frac{1}{2}$ ft. dist., and raised a mound of earth $1\frac{1}{2}$ ft.
high, $3\frac{1}{2}$ ft. base around post.

80.30 The corner to sections 5-6-7-8,

Land mountainous.

Soil 3rd rate

Vegetation, Bunchgrass.

Apr. 16, 1883.

GENERAL DESCRIPTION.

BOOK 132

This Township consists of mountainous and rolling country, covered for the most part with timber of Pine, Juniper & Cedar. The vegetation is bunchgrass affording good grazing land. The soil is 2nd and 3rd rate. A wide wash extends from the southern to the north-eastern part of the Tp. and Phoenix Park wash through the western part.

There is a cabin in Sec. 13. belonging to Frank O. Duke, who has also a stable, corral and about 5 acres fenced value, about \$250.

For Trial Oaths see book No. 14.

62

U. S. Surveyor General's Office,

TUCSON, ARIZONA, July 31, 1883,

The foregoing Field Notes of the Survey of the

Sub division lines of
Township 13 N. R. 18th East

Of the Gila and Salt River Base and Meridian, Arizona, execu-
ted by H. A. Coe

Deputy Surveyor, under his contract of the 25th
day of July, 1882, having been

critically examined and the necessary corrections and explana-
tions made, the said Field Notes and the surveys they describe
are hereby approved.

J. M. Robinson
Surveyor General.