

Book No. 7.

No - 134

Field Notes

OF THE SURVEY OF THE

Subdivision Lines

-OF-

Township *13 N.* Range *20 E*

Gila and Salt River Base and Meridian

ARIZONA.

By *M. N. Grant*, D.S.

Under contract dated *Aug 7th* 1882

Survey commenced *May 28th* 1883

Survey completed *May 31st* 1883

No - 134

*Plotted
Indexed
Compared*

134

1A

INDEX DIAGRAM.

Township 13 North,

Range 20 East.

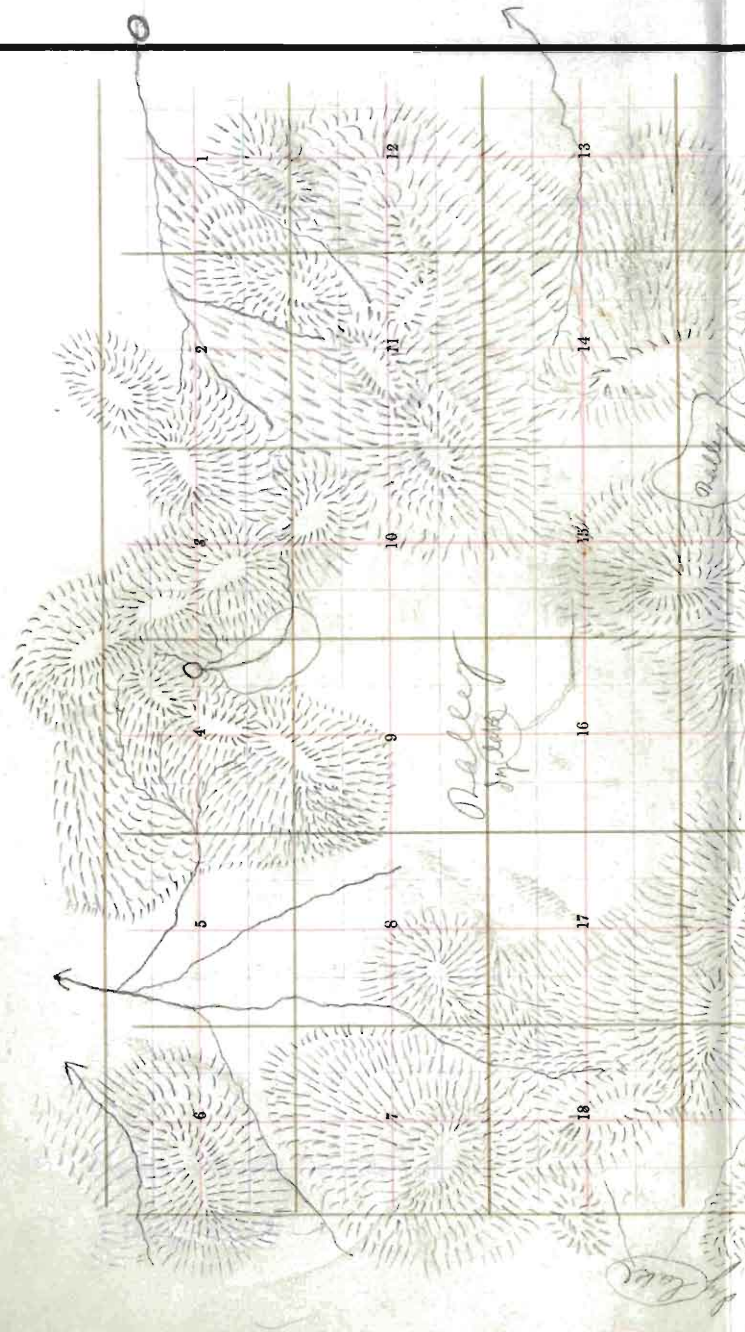
6	69	5	26	4	38	3	25	2	12	1
68		66		49		37		24		11
7	65	8	48	9	35	10	28	11	10	12
64		63		41		34		31		9
18	62	17	46	16	33	15	20	14	8	13
61		60		45		32		19		7
19	59	20	44	21	31	22	18	23	5	24
58		57		43		30		17		4
30	55	29	42	28	28	27	16	26	3	25
54		53		41		27		15		2
31	52	32	39	33	26	34	13	35	1	36

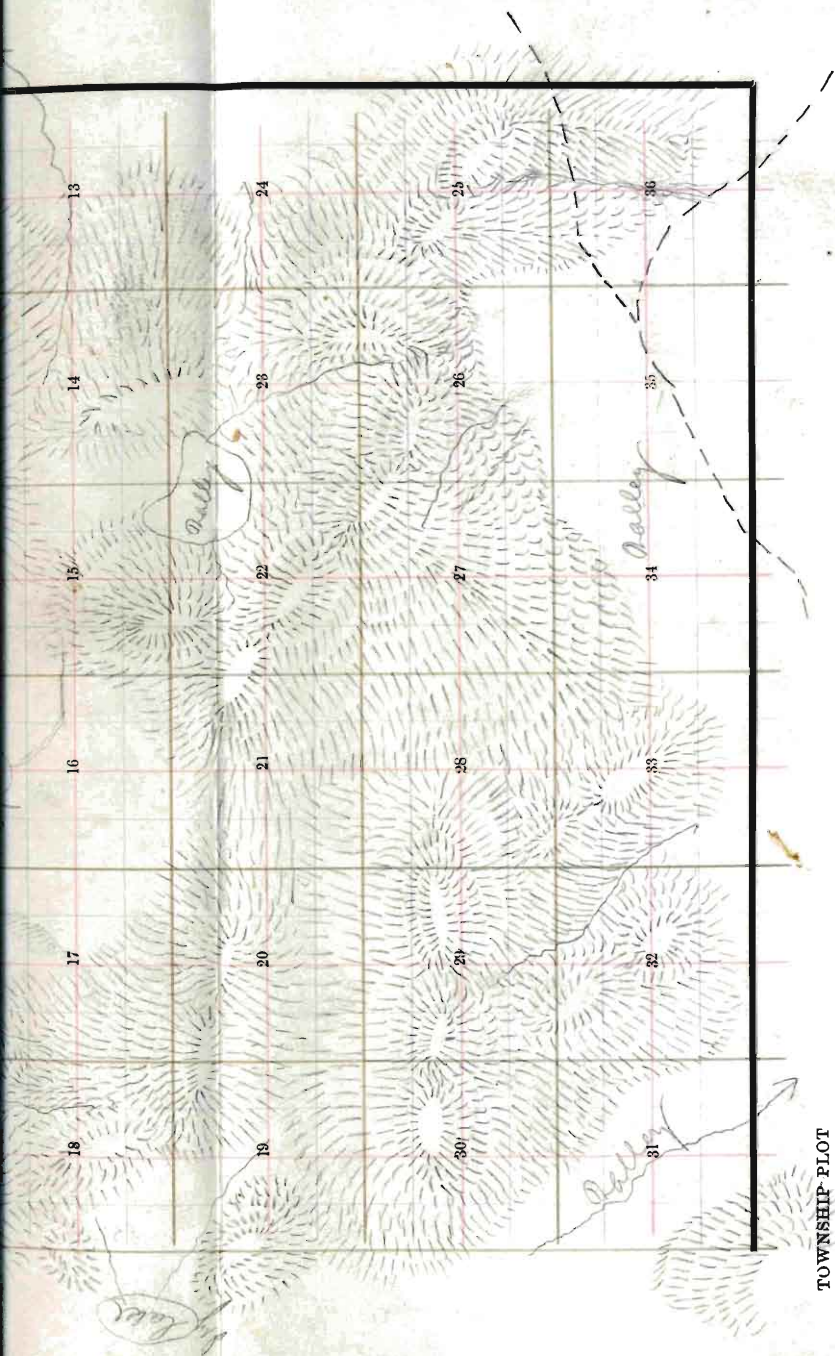
Gila and Salt River, Arizona.

ARIZONA.

7

Township No. 13 N Range No. 20 E 7th Meridian.





TOWNSHIP PLOT

Meridian Line,

Base Line,

Standard Line,

For description of instrument
and preliminary work: see
Vol. No. 1.

Survey commenced May 28th 1883
Survey completed May 31st 1883

10
BOOK 134

Tp. 13 N., R. 20 E.

Gila + Salt River Meridian

From Stand Cor. to Secs. 35-36 on 3rd
Standard North previously reestablished by

me

I run

N. 30' West bet. Secs. 35 + 36,

Pa. 140 E.

Descend.

40.00

Set a post 3 ft. long 3 ins. diam with marked
stone, 12 ins. in the ground for $\frac{1}{4}$ Sec. Cor.
marked $\frac{1}{4}$ S. on ^{W.} face, dug pits 18 x 18 x 12
ins. N. and S. of post 5 $\frac{1}{2}$ ft. dist. and raised
a mound of earth 1 $\frac{1}{2}$ ft. high. 3 $\frac{1}{2}$ ft. base around
post.

Ascend gradually

42.25

Cross Road brs. S 68° E.

55.60

Cross Road brs. N 45° E.

80.00

Set a Sand stone 17 x 13 x 10 ins 12
ins. in the ground for Cor. to Secs.
25-26-35 + 36. Marked with 1 notch
on S. and E. edges. and raised
a mound of stone alongside.
Pits impracticable.

B-1-134

Tp. 13 N. R. 20. E.

G. + S. R. M.

Surface nearly level + rolling
Soil 2^d rate.
Good grazing

East, on a random line bet. Secs 25-36.
Va. 14° E,

- 8.00 Foot of Hill brs. N. + S. + ascend.
- 20.00 Top of Spur brs. S. + descend.
- 40.00 Set temporary 1/4 Sec. Cor.
- 43.15 Cross low Sag Co. S. + ascend.
- 67.09 Top of Spur. Brs. S. + descend.
- 80.50 Intense E. B. of Tp. 67 lks. S. of Cor.
to Secs. 25-30-31+36. previously reestablished
by me. Thence I run
S. 89° 31' N. on a true line bet. Secs. 25-36.

40.25 Set a post 3 ft. long 3 ins. diam with marked
stone, 12 ins, in the ground for 1/4 Sec. Cor.
marked 1/4 S. on W. face, dug pits 18 x 18 x 12
ins. E. and N. of post 5 1/2 ft. dist. and raised
a mound of earth 1 1/2 ft. high. 3 1/2 ft. base. around

Sp. 13 N. R. 20 E.

G + S. R. M.

80.50 post.
 The Cor. to Secs. 25-26-35+36.
 Surface rolling & hilly
 Soil 3rd rate
 Some grass.
Trunks of thick Juniper brush.

North 30th. bet Secs. 25 + 26
 Va 140° E.

Ascend gradually
 38.94 Foot of Hill brs. S, 19° E. & ascend.

40.00 Sit a Sand Stone 18 x 10 x 9 ins. 12
 ins. in the ground for 1/4 Sec. Cor.
 Marked 1/4 on N. face, and raise
 a mound of stones alongside.
 Pits impracticable.

80.00 Set a post 4 ft. long 4 ins. square, with marked
 stones, 1 1/2 ins. in the ground for Cor. to Secs,
 25, 24, 25 + 26 marked T. 13 N. S. 24 on
 N. E. R. 20 S. 25 on S. E. S. 26 on

Sp. 13 N. R. 20 E.

G. + S. R. M.

S, W, and S, 23 on N, W, face, with 2 notches
 on S, and 1 notch on E. edges, dug
 pits 18 x 18 x 12 ins. in each Sec., 5 1/2 ft. dist.
 and raised a mound of earth 2 ft. high, 4 1/2 ft.

base. around post.

from which

a Juniper 10 ins. diam. brs. N. 19° E. 116 lks.
 dist. Marker T. 13 N. R. 20 E. S 24 B. T.

a Juniper 19 ins. diam. brs. N 20° N. 123 lks.
 dist. Marker T. 13 N. R. 20 E. S. 23. B. T.

Land rolling

Soil 2^d rate.

Fair grazing

Traces of thick growth of Juniper.

Cont. on a random line bet. Secs. 24-25
 Va. 14° E.

Descend gradually

40.00 Set temporary 1/4 Sec. Cor.

80.23 returned E. B. of Sp. 45 lks. S. of Ar.
 to Secs. 19-24-25-30, previously on-

BOOK 134

Sp 13 N. R. 20 E.

Ch

G. + S. R. M.

established by me. Thence Iron
S. $89^{\circ}41'N$. on a true line bet Secs. 24-25.
Va $14^{\circ}E$.

40.11

Set a post 3 ft. long 3 ins. diam with marked
stone, 12 ins. in the ground for $\frac{1}{4}$ Sec Cor.
marked $\frac{1}{4}$ S. on N. face, dug pits 18 x 18 x 12
ins. E and W of post $5\frac{1}{2}$ ft. dist. and raised
a mound of earth $1\frac{1}{2}$ ft. high $3\frac{1}{2}$ ft. base. around
post.

80.23

The Cor. to Secs. 23-24-25-26.

Land rolling

Soil 3^d rate

Some grass.

Scattering Juniper.

North 30' N. bet. Secs. 23 + 24.

Va. $14^{\circ}E$,

Ascend gradually

2.83

Top of Spur Crs. E + W. and
descend.

Twp. 13 N. R. 20 E.

cks

G. + S. R. M.

40.00

Set a post 3 ft. long 3 ins. diam with marked stone, 12 ins, in the ground for $\frac{1}{4}$ Sec, Cor, marked $\frac{1}{4}$ S. on N. face, dug pits 18 x 18 x 12 ins. N. and S. of post $5\frac{1}{4}$ ft. dist. and raised a mound of earth $1\frac{1}{4}$ ft. high. $3\frac{1}{4}$ ft. base. around post.

46.11

Cross low Sag brs. E. + ascend.

80.00

Set a Sand stone $23 \times 13 \times 7$ ins, 18 ins. in the ground for Cor, to Secs, 13-14, 23+24 marked with 3 notches on S. and 1 notch on E. edges, dug pits 18 x 18 x 12 ins. in each Sec., $5\frac{1}{4}$ ft. dist. and raised a mound of earth 2 ft. high, $4\frac{1}{4}$ ft. base. alongside.

from which
a Juniper 7 ins. diam. brs. S. 80° E. 46 cks.
dist. Marker T. 13 N. R. 20 E. S. 24 B. T.

Land gently rolling

Soil 3^d rate

Good grass.

Scattering Juniper.

7
BOOK 134

Sp. 13 N. R. 20 E.

cho

G. + S. R. M.

East, on a random line bet. Secs. 13 + 24.

Va. 14° E.

Descend gradually

40.00 Set temporary $\frac{1}{4}$ Sec. Cor.

80.49 Interset E. B. of Th. 59 lbs. S. of Cor.

to Secs. 13-18-19+24 previously re-established by me. Thence I run

S. 89° 35' W. on a true line bet. Secs. 13-24.

Va 14° E.

40.24 Set a Sand Stone 26 x 17 x 5 ins. 20

ins. in the ground, for $\frac{1}{4}$ Sec. Cor.

Marked $\frac{1}{4}$ on N. face, and raised

a mound of Stone alongside -

80.49

Pits impracticable
the cor. to Secs. 13-14-23-24.

Land gently rolling

Soil 4th rate

Some grass.

Finer thick growth of
Juniper -

Sp. 13 N. R. 20 E.

Ch's

G. + S. R. M.

North 30' N. Oct. Secs. 13 + 14.

Va. 14° E.

Ascend.

6.50 Top of Spur br. E + N. + descend.

40.00

Set a post 3 ft. long 3 ins. diam with marked stone, 12 ins. in the ground for $\frac{1}{4}$ Sec, Cor, marked $\frac{1}{4}$ S. on N. face, dug pits 18 x 18 x 12 ins. N. and S. of post 5 $\frac{1}{2}$ ft. dist. and raised a mound of earth 1 $\frac{1}{2}$ ft. high. 3 $\frac{1}{2}$ ft. base. around post.

40.30

Cross low Sag, br. E. + ascend.

80.00

Set a Sand stone 27 x 11 x 9 ins. 2' ins. in the ground for Cor, to Secs. 11-12-13+14. marked with 4 notches on S. and 1 notch on E. edges, dug pits 18 x 18 x 12 ins. in each Sec., 5 $\frac{1}{2}$ ft. dist. and raised a mound of earth 2 ft. high. 4 $\frac{1}{2}$ ft. base. alongside.

Land gently rolling

Soil 4-rate

Some grass.

Trunks of thick growth of Juniper.

Tp. 13 N. R. 20 E.

chs

G. S. R. M.

Eas. on a random line bet. Secs. 12+13.

Va. 14° E.

Descend gradually

40.00 Set temporary $\frac{1}{4}$ Sec. Cor.80.13 Intersect E. B. of Tr. 80. lks. S. of Cor.
to Secs. 7-12-13+18 previously re-
established by me, Thence I run
S. $89^{\circ}26'$ N. on a true line bet. Secs. 12-13.Va. 14° E.40.06 Set a sand stone $29 \times 16 \times 8$ ins 23
ins. in the ground for $\frac{1}{4}$ Sec. Cor.
Marker $\frac{1}{4}$ on N. face and raised
a mound of stone alongside.
Pits impracticable.

80.13 The Cor. to Secs. 11-12-13 & 14.

Land gently rolling

Soil 2^o & 3^o rate

good grass

Scattering Juniper.

Sp. 13 N. R. 20 E.

Chs

G. S. R. M.

North 30° N. lat. Secs. 11 + 12.

Va. 14° E.

Ascend gently.

33.12 Cross low Ridge 80 ft. high br N. 70° E. + descend.

40.00 Set Sand stone 21 x 12 x 8 ins. 16 ins.
in the ground for $\frac{1}{4}$ Sec. Cor.Marker $\frac{1}{4}$ on N. face, andraised a mound of stone along-
side - Pits impracticable.

65.52 Cross Wash 10 Chs. Mid. C. N. E. + ascend.

80.00 Set a Sand stone 5 x 2 x 6 ins. 8 ins. in
the ground for Cor. to Secs. 1-2-11-12 marked
with 5 notches on S. and 1 notch on E. edges,
dug pits 18 x 18 x 12 ins. in each Sec., 5 $\frac{1}{2}$ ft.
dist. and raised a mound of earth 2 ft. high,
4 $\frac{1}{2}$ ft. base. alongside.

Land rolling

Soil 2^d + 3^d rate

Good grass.

Scalting Juniper.

Sp. 13 N. R. 20 E.

chs

G. S. R. M.

+

East. on a random line bet. Secs. 11 & 12.
Va 14° E.

Descend gradually

- 1030 Cross Wash 14 lks. W. Co. N 39° E & ascend.
33.70 Cross low Ridge 75 ft. high hrs: N.E. & descend.
40.00 Set temporary $\frac{1}{4}$ Sec. Cor.
79.92 Interval E. P. of Sp. 70 lks S. of
Cor. to Secs. 1-6-7 & 12, previously
reestablished by me. Thru I run
S. 89° 30' N. on a true line bet. Secs. 1-12,
Va 14° E.

39.96

Set a post 3 ft. long 3 ins. diam with marked
stone, 12 ins. in the ground for $\frac{1}{4}$ Sec. Cor,
marked $\frac{1}{4}$ S. on N. face, dug pits 18 x 18 x 12
ins. E. and W. of post 5 $\frac{1}{2}$ ft. dist. and raised
a mound of earth 1 $\frac{1}{2}$ ft. high. 3 $\frac{1}{2}$ ft. base. around
post.

79.92

The Cor to Secs. 1-2-11 & 12
Land rolling
Soil 2^d or 3^d date
good grass
Scattering Imper

Tr. 13 N. R. 20 E.

cks G. & S. R. M.

North 30' N. on a random line bet Secs. 1 + 2.

Va. 14° E.

Ascend.

26.50 Cross low spur. brs N. E. + descend.

40.00 Set temporary $\frac{1}{4}$ Sec. Cor.

56.33 Cross Wash 17 Cks. Wide Co. N 85° E.

79.35 Interset N. B. of Tr. 40 Cks. E. of

Cor. to Secs. 1-2-35 + 36 recently es-

ablished by me. James Iron

S 47° E. on a true line bet Secs. 1 + 2.

Va. 14° E.

39.35 **Set** a post 3 ft. long 3 ins. diam with marked stone, 12 ins, in the ground for $\frac{1}{4}$ Sec, Cor, marked $\frac{1}{4}$ S. on N. face, dug pits 18 x 18 x 12 ins. N. and S. of post $5\frac{1}{2}$ ft. dist. and raised a mound of earth $1\frac{1}{2}$ ft. high. $3\frac{1}{2}$ ft. base. around post.

79 35 The Cor to Secs. 1-2-11-12.

Land rolling

Soil 2^o rate.

Good grass.

Scattering Juniper.

Tp 13 N. R. 20 E.

Chas

G. & S. R. M.

I carefully examined the adjustments of my Solar Compass today, particularly the latitude & reversing apparatus, and found them correct.

M. N. Grant. May 28, 1883.

From Stand. Cor. to Secs. 34 + 35 on
3rd Standard north previously reestablished
by one. From
North 30' N. bet. Secs. 34 + 35
Va 14° E.

- 11.50 Cross Road bet N 60° E.
40.00 Set a Sandstone 17 x 10 x 5 ins.
12 ins. in the ground, for $\frac{1}{4}$ Sec.
Cor. Marked $\frac{1}{4}$ on N. face, and
raised a mound of stone along-
side. Pits impracticable, from which
a Juniper 7 ins. diam. bet. S. 35° E, 31 Chs.
dist. marked $\frac{1}{4}$ S. B. T.

Sp. 13 N. R. 20 E.

Chs G. & S. R. M.

A Juniper 9 ins. diam. brs. S 30° N. 46 lks.
 dist. Marker 4 S. B. T.

\$0.00 Set a Sand Stone 18x12x9 ins.
 13 ins. in the ground for Cor. to Sec.
 26-27-34+35. Marker with 1 notch
 on S. and 2 notches on E. edges.
 and raised a mound of Stone alongside.
 Pits impracticable. from which

A Juniper 14 ins. diam. brs. N. 40° E. 12 lks.
 dist. Marker 5. 13 N. R. 20 E. S. 26 B. T.

A Juniper 7 ins. diam. brs. S. 46° E. 6 lks.
 dist. Marker 5. 13 N. R. 20 E. S. 35 B. T.

Land gently rolling

Soil 2^o rate.

Good grass.

Scattering Juniper.

T_p 13 N. R. 20 E.

Chs

G. & S. R. M.

+

East, on a random line bet. Secs 26 + 35
 Va. 14° E.

Almost level

40.00 Set temporary $\frac{1}{4}$ Sec. Cor.

80.14 Inured N. & S. line 27 lks S. of cor.
 to Secs 25-26-35 + 36. Thence Iron
 S. 89° 48' N. on a true line bet. Secs. 26 + 35
 Va 14° E.

40.07

Set a Sand stone, 8 x 10 x 6 ins. 12 ins
 in the ground for $\frac{1}{4}$ Sec, Cor, marked $\frac{1}{4}$ on N.
 face, dug pits 18 x 18 x 12 ins. E. and N.
 of stone 5 $\frac{1}{2}$ ft. dist. and raised a mound of earth
 1 $\frac{1}{2}$ ft. high, 3 $\frac{1}{2}$ ft. base. alongside.

80.14 Th_p Cor. to Secs. 26-27-34-35.

Level Valley

Soil 2^d rate

Good grass.

Scattering Juniper.

Twp. 13 N. R. 20 E.

chs G. + S. R. M.

North 50' W. bet. Secs. 26 + 27.

Va 14° E.

Ascend gradually

- 3.64 Foot of Hill 25 ft. high N 61° E. + ascend.
- 25.00 Spur bet. S. E. 25 ft. high.
- 40.00 Set a Sand stone, 15 x 9 x 4 ins, 10 ins. in the ground for $\frac{1}{4}$ Sec. Cor. marked $\frac{1}{4}$ on W. face, dug pits 18 x 18 x 12 ins. N. and S. of stone 5 $\frac{1}{2}$ ft. dist. and raised a mound of earth 1 $\frac{1}{2}$ ft. high. 3 $\frac{1}{2}$ ft. base. alongside.
- 43.20 Cross Draw. Co. S 40° E.
- 77.12 Top of Ridge 160 ft. high bet. S 60° E. + descend.
- 80.00 Set a Sand stone 18 x 14 x 4 ins. 12 ins. in the ground for Cor. to Secs. 22-23-26+27. Marked with 2 Notches on S + E. edges, and raised a mound of stone along side. Pits impracticable, from which a Pinon 10 ins. diam. bet. S 63° W. 23 Chs. dist. Marker T. 13 N. R. 20 E. S. 26 B. T.
- A Pinon 3 ins diam. bet. S 28° E. 28 Chs. dist. Marker T. 13 N. R. 20 E. S. 26 B. T.

BOOK 134

T_p 13 N. R. 20 E.

chs

G. & S. R. M.

Lands rolling
Soil 2^d rate
Juniper Brush.

East, on a random line bet. Secs. 23-26.
Va. 14° E.

Descend gradually.

40.00 Set temporary $\frac{1}{4}$ Sec. Cor.

44.00 Cross Wash 17 lks. wide Co. N + ascent.

60.30 Top of Hill (vs N. + descend.

80.58 Intersect N. + S. line 10 lks. S. of Cor.

to Secs. 23-24 25-26. Since I run
S. 89° 56' N. on a true line bet. Secs. 23 + 26.

Va 14° E.

40.29

Set a Sand stone, 14 x 11 x 5 ins., 9 ins.
in the ground for $\frac{1}{4}$ Sec, Cor, marked $\frac{1}{4}$ on N.
face, dug pits 18 x 18 x 12 ins. E. and N,
of stone 5 $\frac{1}{2}$ ft. dist. and raised a mound of earth
1 $\frac{1}{2}$ ft. high. 3 $\frac{1}{2}$ ft. base. alongside.

from which

T. p. 13. N. Q. 20 E.

chs

G. & S. R. M.

A Cedar 12 ins. diam. br. S 15° E. 12 lbs.
 dist. Marked $\frac{1}{4}$ S. B. T.

80.58 The Cor. E. Secs. 22-23-26 & 27.

Land rolling

Soil 2^d rate

Good grass.

Trunk of Juniper Brush.

North 30° W. bet. Secs 22 + 23.
 Va. 14° E.

Descends gradually.

40.00 Set a Sand Stone 20-15-7 in 15 ins.
 in the ground for $\frac{1}{4}$ Sec. Cor. Marked
 $\frac{1}{4}$ on N. face, and raised a
 mound of stone alongside
 Pits impracticable.

47.60 Enter Valley

76.00 Leave Valley & ascends gradually

80.00 Set a Sand Stone 24 x 11 x 6 ins.

Top. 13 N. R. 20 E.

Chs

G. + S. R. M.

18 pins in the ground for Cor to Sec.
 14-15-22+23. Marked with 3 notches
 on the S. and 2 notches on E. edges.
 and raised a mound of stones along-
 side - Pits impracticable
 South 1/2 rolling + rocky
 North 1/2 level valley
 Light grass + good grass.
 Soil 2° or 3° rate.

East, on a random line bet. Secs. 14 + 23.
 Va. 18° 30' E.

Ascend gradually

36.97 Commence to descent.

40.00 Set temporary 1/4 Sec. Cor.

80.83 Intersect N. & S. line 8 lks. N.

of Cor. to Secs 13-14-23+24. Thence from
 N. 89° 57' N. on a true line bet. Secs. 14 + 23.

Va. 18° 30' E.

T_p 13 N. Q. 20 E.

Chs G. + S. R. M.

40.41

Set a post 3 ft. long 2 ins. diam with marked stone, 12 ins, in the ground for $\frac{1}{4}$ Sec. Cor, marked $\frac{1}{4}$ S. on N. face, dug pits 18 x 18 x 12 ins. E. and W. of post 5 $\frac{1}{2}$ ft. dist. and raised a mound of earth 1 $\frac{1}{2}$ ft. high. 3 $\frac{1}{2}$ ft. base around post.

80.83

The Cor. to Ties. 14-15-22023.

Surface gently rolling

Soil 2 $^{\circ}$ + 3 $^{\circ}$ rate

good grass

North 30' N. bet. Ties. 14 + 15.

N. 13 $^{\circ}$ 30' E.

Ascent gradually

40.00

Set a Sand stone, 20 x 11 x 5 ins., 15 ins. in the ground for $\frac{1}{4}$ Sec. Cor, marked $\frac{1}{4}$ on N. face, dug pits 18 x 18 x 12 ins. N. and S. of stone 5 $\frac{1}{2}$ ft. dist. and raised a mound of earth 1 $\frac{1}{2}$ ft. high. 3 $\frac{1}{2}$ ft base alongside.

80.00

Set a Sand Stone 22 x 10 x 9 ins. 16 ins.

BOOK 134
 5th N. 13 N. R. 20 E.

Chs

G. & S. R. M.

in the ground for Cor. to Secs. 10-
 11-14 & 15. Marker with 4 notches
 on S. and 2 notches on E. edge.
 and raised a mound of stone
 alongside. Pits impracticable
 from which

@ Juniper 8 ins. diam. brs. N. 82° W. 57 lbs.
 dist. Marker ↑ 13 N. R. 20 E. S. 10 B. ↑

@ Juniper 9 ins. diam. brs. N. 79° E. 75 lbs.
 dist. Marker ↑ 13 N. R. 20 E. S. 11 B. ↑

Sand rolling

Soil Sandy 3rd rate

Scattering Juniper Brush-

Each on a random line bet Secs. 11 & 14.
 Va. 1330' E.

Descent gradually

40.00 Set temporary 4 line Cor.

80.64 Intersub N-S line 21 lbs. S. of

BOOK 134
T. 13 N. R. 20 E.

Chs G + S. R. M.

Cor to Secs. 11-12-13-14, Thrice Iron
S. 89° 5' N. on a true line cut. Secs. 11-14
Va. 13° 30' E,

40.34 Set a post 3 ft. long 3 ins. diam with marked
stone, 12 ins, in the ground for $\frac{1}{4}$ Sec. Cor.
marked $\frac{1}{4}$ S. on N. face, dug pits 18 x 18 x 12
ins. E. and W. of post 5 $\frac{1}{2}$ ft. dist. and raised
a mound of earth 1 $\frac{1}{2}$ ft. high. 3 $\frac{1}{2}$ ft. base. around
post.

80.64 The Cor. to Secs. 10-11-14 & 15.
Land rolling slopes to South.
Soil 3rd rate
Good grass.

BOOK 134

T. 13 N. R. 20 E.

Chs

G. + S. R. M.

North 55' W. bet Secs. 10-11

Va 14° E.

Ascent.

20.00 Top of Ridge bro. N 46° E & descend.

40.00 Set a post 3 ft. long 3 ins. diam with marked stone, 12 ins, in the ground for $\frac{1}{4}$ Sec. Cor, marked $\frac{1}{4}$ S. on N. face, dug pits 18 x 18 x 12 ins. N. and S. of post 5 $\frac{1}{2}$ ft. dist. and raised a mound of earth 1 $\frac{1}{2}$ ft, high. 3 $\frac{1}{2}$ ft. base. around post.80.00 Set a post 4 ft. long 4 ins. square, with marked stone, 12 ins, in the ground for Cor. to Secs, 2-5-10 & 11 marked T. 13 N S. 2 on N. E. R. 20 E. S. 11 on S. E. S. 10 on S. W. and S. 3 on N. W. face, with 5 notch 20 on S, and 2 notch 20 on N. edges, dug pits 18 x 18 x 12 ins. in each Sec. $\frac{1}{4}$ ft. dist. and raised a mound of earth 2 ft, high. 4 $\frac{1}{2}$ ft. base. around post.

Surface rolling hills

Soil 2' + 3' rate

Poor grass &
scattered Juniper

S. 13 m. R. 20 E.

chs

G. + S. R. M.

44

45

Cash, on a random line bet. Secs. 2 + 11,
 Va. 14° E,

descent.

- 40.00 Set temporary $\frac{1}{4}$ Sec. Cor.
 45.31 Cross Wash 14 lks. wide Co. N. 10° E. + ascent
 68.16 Top of Ridge 70 ft. high. br. N 20° E + descent.
 80.31 Intersect N. + S. line 48 lks. S. of Cor.
 to Secs. 1-2-11-12. Thence I run
 S. $89^{\circ} 42'$ N. on a true line bet. Secs. 2 + 11.
 Va. 14° E,

- 40.15 Set a Sand Stone $38 \times 20 \times 9$ ins. 30
 ins. in the ground for $\frac{1}{4}$ Sec. Cor.
 Marked $\frac{1}{4}$ on N. face, and raised
 a mound of stones alongside.

Pits impracticable

- 80.31 The Cor. to Secs. 2-3-10-11.

Surface rolling - open country
 Soil 2^d rate
 Good grass
 Scattering Juniper.

Tp. 13 N. R. 20 E.

Chs

G. S. R. M.

North 36' N. on a random line bet Secs. 2 + 3,
Va, 14° E.

Ascend.

40.00 Set temporary $\frac{1}{4}$ Sec. Cor.56.90 Top of Ridge bet N. 34° E. 150 ft high
and descend.

79.64 Interval N. B. of Tp. 12 N. of
Cor. to Secs. 2-3-34 + 35 previously
established by one, ~~then I run~~
S. 25' N. on a true line bet Secs. 2 + 3.
Va, 14° E.

59.64

Set a post 3 ft. long 3 ins. diam with marked
stone, 12 ins, in the ground for $\frac{1}{4}$ Sec. Cor,
marked $\frac{1}{4}$ S. on N. face, dug pits 18 x 18 x 12
ins. N. and S. of post 5 $\frac{1}{2}$ ft. dist. and raised
a mound of earth 1 $\frac{1}{2}$ ft. high. 3 $\frac{1}{2}$ ft. base around
post.

79.64

The Cor. to Secs. 2-3-10 + 11,
Surface rolling Hills.

Soil Sandy 2° + 3° rate
Good Grass.
Scattering Juniper.

Sp. 13 N. R. 20 E.

chs G. + S. R. M.

I Carefully examined the adjustments of my Solar Compass today, particularly the latitude and reversing apparatus, and found them correct.

A. H. Arnold: Compassman
May 28, 1883.

From Stand Cor. to Sec. 33 or 34
on 3rd Standard North
recently reestablished by me. From
North 30' N. lat. Sec. 33 or 34
Va. 3° 30' E.

Ascent.

40.00

Set a post 3 ft. long 3 ins. diam with marked stone, 12 ins, in the ground for 1/4 Sec, Cor, marked 1/4 S. on N. face, dug pits 18 x 18 x 12 ins. N. and S. of post 5 1/2 ft. dist. and raised a mound of earth 1 1/2 ft. high. 3 1/2 ft. base. around post.

Sp. 13 N. R. 20 E.

Chs'

G. + S. R. M.

80.00

Set a Sand stone $24\frac{1}{2} \times 6 \times 9$ ins. 18 ins. in the ground for Cor, to Secs, 27-28-33-34 marked with 1 notch on S. and 3 notches on E. edges, dug pits 18 x 18 x 12 ins. in each Sec., 5 $\frac{1}{2}$ ft. dist. and raised a mound of earth 2 ft. high, 4 $\frac{1}{2}$ ft. base. alongside.

Sand rolling Hills

Soil 3^d rate

Good grass

Scattering Juniper.

✱

East, on a random line bet. Secs. 27 + 34
Va. 13^o 30' E.

descends gently

40.00 Set temporary $\frac{1}{2}$ Sec. Cor.

80.78 Intersut N. + S. line 76 lbs. S. of Cor.
to Secs. 26-27-34 + 35. Thence I run
S 89^o 26' N. on a true line bet. Secs. 27 + 34
Va. 13^o 30' E.

N. 13 N. R. 20 E.

Chs. G. + S. R. M.

40.39 Set a Sand stone, 22 x 13 x 7 ins., 16 ins. in the ground for $\frac{1}{4}$ Sec, Cor, marked $\frac{1}{4}$ on N. face, dug pits 18 x 18 x 12 ins. E. and W. of stone 5 $\frac{1}{2}$ ft. dist. and raised a mound of earth 1 $\frac{1}{2}$ ft. high. 3 $\frac{1}{2}$ ft. base. alongside.

80.78 The Cor. to Secs. 27-28-33 + 34.

Sand rolling & stilly

Soil 3^d. rate

Good grass.

Scattering Juniper.

North 30' N. bet. Secs. 27 & 28.

va. 13° 30' E.

Descent gradually

40.00 Set Sand stone 26 x 13 x 7 ins. 20 ins. in the ground for $\frac{1}{4}$ Sec. Cor. marker $\frac{1}{4}$ Sec. on N. face, and

raised a mound of stone alongside

+ Pits impracticable from which a Juniper 10 ins. diam. br. S. 67° N. 60 lbs.

N 13 N. R. 20 E.
 chs G. + S. R. M.

dist Marker $\frac{1}{2}$ S. B. T.
 80.00 Sit on Sand Stone 16x10x8 ins. 11.
 ins. in the ground for Cor. to Sec.
 21-22-27+28. Marker with 2.
 Notches on S. and 3 notches on
 E. edge, and raised a mound of
 stone alongside. Pits impracticable
 from which
 a Juniper 8 ins. diam bro. N 11° E. 36. Uks.
 dist. Marker T. 13 N. R. 20 E. S. 22 B. T.
 a Juniper 7 ins. diam bro. N 60° W. 12 Uks.
 dist. Marker T. 13 N. R. 20 E. 21 B. T.
 Sand rolling + stilly
 Soil 3° rate
 Good grass.
 Thick Juniper Brush.

Sp 13 N. R. 20 E.

Chs G. & S. R. M.

East, on a random line bet Secs. 22 + 27.

Va. $13^{\circ}30' \Sigma$,

Ascend.

40.00 Set temporary $\frac{1}{4}$ Sec. Cor.

64.60 Top of Ridge 180 ft. high. brs. N. 53° N.
Ascend.

80.77 Intersect N & S. line. 60 Chs S. of Cor
to Secs. 22-23-26+27. Thence I run
S. $89^{\circ}34'$ N. on a true line bet. Secs. 22-27.

Va. $13^{\circ}30' \Sigma$.

40.38 Set a Sand Stone $19 \times 14 \times 10$ ins. 18 ins.
in the ground for $\frac{1}{4}$ Sec. Cor. Mark
 $\frac{1}{4}$ S. on N. face and raise a
mound of stone alongside -
Pits impracticable. From other
a Juniper 12 ins. diam. brs. S. 36° E. 40 Chs.
dist. Marked $\frac{1}{4}$ S. B. T.

80.77 The Cor. to Secs. 21-22-27-28.

Low valley hills.

Soil 3° rate.

Good grass & Thick Juniper Bush.

Apr 13. N. R. 20 E,

Chs G. + S. R. M.

North 30° N. bet. Secs. 21 + 22.

Var. 13° 30' E,

Assent.

- 40.00 Set a Sand Stone 19 x 12 x 9 ins.
13 ins in the ground for $\frac{1}{4}$ Sec. Cor.
Marker $\frac{1}{4}$ in N. face, and
raised a Mound of Stone along-
side. Pits impracticable. from which
a Juniper 12 ins. diam. br. S. 53° N. 29 lbs.
det. Marker $\frac{1}{4}$ S. B. T.
a Juniper 8 ins. diam. br. N 35° W. 38 lbs.
det. Marker $\frac{1}{4}$ S. B. T.

52.30 Top of Ridge 127 ft high on N. W. + descent.

- 80.00 Set Sand Stone 10 x 15 x 5 ins. 30
ins. in the ground for Cor. to Secs.
15-16-21+22. Marker with 3 notches
S + E. edges, and raised a
Mound of Stone alongside. Pits
impracticable
from which

Sp. 13 N. R. 20 E.

cks G. + S. R. M.

A Juniper 8 ins. diam. No. S. 75° W. 32 Lks.

sect. Marked T, 13 N. R. 20 E. S. 21 B. T.

A Juniper 11 ins. diam. No. S. 70° E. 22 Lks.

sect. Marked T, 13 N. R. 20 E. S. 22 B. T.

Lands rolling

Soil sandy & rate

good grass.

Scattering Juniper

East. on a 7 and 8 mile line bet. Secs. 15 + 22.

va. 13° 30' E.

ascend.

24.70 Top of Ridge 90 ft. high No. N. + descend.

40.00 Set temporary 1/4 Sec. Cor.

57.00 Foot of Hill No. N.

80.42 Intersect N. + S. line 80. Lks. S. of Cor.

to Secs. 14-15-22 + 23. Thence I run

S. 89° 24' N. on a true line bet. Secs. 15 + 22.

va. 13° 30' E.

Tp 13 N. Q. 20 E.

chs G. + S. R. M.

40.21 Set a Same Stone 17x12x6 ins. 12
ins. in the ground for 1/2 Sec. Cor.
Marked 1/4 SW N. face, and
raised a mound of Stone along side.
Pits impracticable.

80.42 The Cor. to Secs. 15-16-21+22.
Sand rolling.
Soil Sandy + 3% rate
Good grass.
Scattering Junciper.

North 30' N. bet. Secs. 15 + 16.
N a. 13° 30' E.

Desert.

40.00 Set Same Stone 18x10x7 ins. 12 ins.
in the ground for 1/2 Sec. Cor. Marked
1/4 on N. face and raised a mound
of Stone along side. Pits in-
practicable.

T_p 13 N. R. 20 E.

chs. G. & J. R. M.

44.17 Cross low Sag Co. N. & ascens.

80.00

Set a post 4 ft. long 4 ins. square, with marked stone, 12 ins. in the ground for Cor. to Secs. 9-10-15 & 16 marked T. 13 N. S. 10 on N. E. R. 20 E. S. 15 on S. E. S, 16 on S, W, and S, 9, on N, W, face, with 4 notch 20 on S, and 3 notch 20 on E. edges, dug pits 18 x 18 x 12 ins. in each Sec., 5½ ft. dist. and raised a mound of earth 2 ft. high. 4½ ft. base. around post.

Lans rolling Hills.

Soil Sand & 4th rate.

Graying fair

Scattering Juniper

Each on a random line bet. Secs. 10 & 15.

Ta. 13 30 E.

Ascens gently

40.00 Set temporary 4 Sec. Cor.

60.00 Descens gradually

Sp 13 N. R. 20 E,
chs G. + S. R. M.

80.16 Intense N.S. line 70. lbs. S. of
Cor. to Secs. 10-11-14+15. Three Iron
S. 89° 30' N. on a true line bet. Secs. 10+15.
Va. 13° 30' E.

40.08 Set a Sand Stone 27x15x6 ins. 20
ins. in the ground for 1/2 dia.
Cor. marker 1/4 on N. face, and
against a mound of stone alongside.
Pity impracticable.

80.16 The Cor to Secs 9-10-15+16.
Sand rolling hills
Soil sandy + 4" rate.
Grazing fair
Scattering Juniper.

North 30' N. bet. Secs. 9+10.
Va. 13° 30' E.

Ascend over rolling ground
40.00 Set a Sand Stone 19x17x 7 1/2 ins.

T_p 13 N. R. 20 E.

Cho G. + S. R. M.

in the ground for $\frac{1}{4}$ Sec. Cor. Marked
 $\frac{1}{4}$ on N. face, and raised a
 Mound of Stone alongside. Pits
 impracticable.

41.66 Commence to descend.

70.11 Enter dry Lake

84.00 Set a post 4 ft. long 4 ins. square, with marked
 stone, 12 ins, in the ground for Cor. to Secs.
 3-4-9 & 10 marked T. 13 N. S. 3 on
 N. E. R. 20 E. S. 10 on S. E, S, 9 on
 S, W, and S, 4 on N, W, face, with 5 notch
 on S, and 3 notch on E. edges, dug
 pits 18 x 18 x 12 ins. in each Sec., 5 $\frac{1}{2}$ ft. dist.
 and raised a mound of earth 2 ft, high. 4 $\frac{1}{2}$ ft.
 base. around post.

Low rolling valley
 Good grazing

Sp 13 N. R. 20 E,
Chs G. + S. R. M.

- East, on a random line bet. Secs. 3 + 10.
Va. 13° 30' E,
- 11.33 Leave dry Lake on N. 40° W. + ascend,
401.00 Set temporary $\frac{1}{4}$ Sec. Cor,
43.88 Cross Ridge 250 ft high N 20° W +
descent.
- 80.60 Intersub N. of line 77 lks S. of Cor.
to Secs. 2-3-4-9 + 10. Thence I run
58° 26' N. on a true line bet. Secs. 3-10.
Va. 13° 30' E,
- 4030 Set a post 3 ft. long 3 ins. diam with marked
stone, 12 ins, in the ground for $\frac{1}{4}$ Sec, Cor,
marked $\frac{1}{4}$ S. on N. face, dug pits 18 x 18 x 12
ins. E. and W. of post 5 $\frac{1}{2}$ ft. dist. and raised
a mound of earth 1 $\frac{1}{2}$ ft, high. 3 $\frac{1}{2}$ ft. base. around
post.
- 80.60 The Cor, to Secs. 3-4-9+10
Lans Rock + rough Hills
Soil Sandy + Vats
Grazing poor
since Juniper brush

Tp. 13 N. R. 20 E.

Chs G + S, R. M.

North 30' N. on a random line bet. Secs. 3 + 4

Va. 1 33 32.

14.37 Grass Wash 12 lks. W. Co. N 12° W.

17.20 Lean dry lake N 30° W. + ascent.

40.00 Set temporary $\frac{1}{4}$ Sec. Cor.

79.88 Mineral N. E. of Tp. 14 lks. W. of

Cor. to Secs. 3-4-33 34 previously es-

tablished by me. Same Iron

S. 24' N. on a true line bet. Secs. 3-4,

Va. 1 33 30 E.

39.88 Set a Sand Stone 20 x 12 x 9 ins.

15 ins. in the ground for $\frac{1}{4}$ Sec.Cor. Marked $\frac{1}{4}$ on N. face and

raised a mound of stone along-

ridge - Pits impracticable.

79.88 The Cor. to Secs. 3-4-9-10.

Sand rough Hills.

Scrub Sand, + 4" rate

Little grass.

Juniper Brush.

Sp 13 BOOK 134 N. R. 20 E.

Chs G. + S. R. M.

I carefully examined the adjustments of my Solar Compass today, particularly the latitude and reversing apparatus.

M. N. Grant May 29 1873.

From Stand. Coy to Sec. 32 + 33.
 on 3^d standard parallel, North
 recently established by me. From
 North 30' N. bet Secs. 32 + 33
 Va. 13° 30' E.

Descent gradually

40.00

Set a post 3 ft. long 3 ins. diam with marked stone, 12 ins. in the ground for $\frac{1}{4}$ Sec. Cor., marked $\frac{1}{4}$ S. on N. face, dug pits 18 x 18 ins. E. and W of post 5 $\frac{1}{2}$ ft. dist. and raised a mound of earth 1 $\frac{1}{2}$ ft. high. 3 $\frac{1}{2}$ ft. base. around post.

47.50

Cross Draw. 30 fthonds A. S. 50° E,
 ascent gradually

T. 13 N. R. 20 E.

cks

G. + S. R. M.

80.00

Set a post 4 ft. long 4 ins. square, with marked
stone, 12 ins, in the ground for Cor. to Secs.
28-29-32+33 marked T. 13 N. S. 28 on
N. E. R. 20 E. S. 33. on S. E. S, 32 on
S, W, and S, 29 on N, W, face, with 1 notch
on S, and 4 notches on E. edges, dug
pits 18 x 18 x 12 ins. in each Sec., 5 1/2 ft. dist.
and raised a mound of earth 2 ft. high 4 1/2 ft.
base. around post.

from which

a Juniper 12 ins. diam. brs. N 49° W. 33 cks.

dist. marker T. 13 N. R. 20 E. S. 29 B. 1,

a Juniper 8 ins. diam. brs. N 50° E. 26 cks.

dist. marker T. 13 N. R. 20 E. S. 28 B. 9.

a Juniper 8 ins. diam. brs. S 71° E. 50 cks.

dist. marker T. 13 N. R. 20 E. S. 32 B. 1,

No other trees within limits.

Sand rolling

Soil 3^d rate

Good grass.

Trunks of Juniper & Cedar Brush

BOOK 134

Tp 13 N. R. 20 E.

chs

G. & S. R. M.

+

East. on a random line bet. Secs. 28 + 33,
 Va. $13^{\circ} 45' E$,

Occurs.

10.04 Top of Ridge 25 ft. high bet. S.E. + down.

40.00 Set Temporary $\frac{1}{4}$ Sec. Cor.

80.46 Intersect N. & S. line. 50 Chs. S. of
 Cor. to Secs. 27-28-33 + 34. Thence down

S. $89^{\circ} 57' N$. on a true line bet. Secs. 28-33.

Va. $13^{\circ} 40' E$,

4023

Set a Saut stone, $16 \times 10 \times 8$ ins., $1 \frac{1}{2}$ ins.
 in the ground for $\frac{1}{4}$ Sec. Cor, marked $\frac{1}{4}$. on N.
 face, dug pits $18 \times 18 \times 12$ ins. E. and W.
 of stone $5 \frac{1}{2}$ ft. dist. and raised a mound of earth
 $1 \frac{1}{2}$ ft. high. $3 \frac{1}{2}$ ft. base. alongside.

80.46 The Cor. to Secs. 28-29-32-33

Met $\frac{1}{2}$ Saut rolling

Near Juniper + Piñon brush

East $\frac{1}{2}$ Saut open

Good grazing

Tp 13 N. R. 20 E.

cks G. + S. R. M.

North 30 N. Int Secs. 28 & 29.
Va. 13⁰ 45' E.

ascend.

40.00

Set a post 3 ft. long 3 ins. diam with marked stone, 12 ins, in the ground for $\frac{1}{4}$ Sec. Cor, marked $\frac{1}{4}$ S. on N. face, dug pits 18 x 18 x 12 ins. N. and S. of post 5 $\frac{1}{2}$ ft. dist. and raised a mound of earth 1 $\frac{1}{2}$ ft. high. 3 $\frac{1}{2}$ ft. base. around post. a Juniper 8 ins. diam. bro. N. 26 $\frac{1}{2}$ N. 60 cks dist. marked $\frac{1}{4}$ S. B. T.

5390

Top of Ridge 100 ft. high. Dns N. 84 $^{\circ}$ E. + descend.

80.00

Set a Sand Stone 27 x 13 x 11 ins. 20 ins. in the ground for Cor. to Secs. 20-21-28 & 29. Marked with 2 notches on S. + 4 notches on E. edges. and raised a mound of stone alongside. Pits impracticable - from which a Juniper 6 ins. diam. bro. S. 5 $^{\circ}$ N. 54 cks dist. Marked T. 13 N. R. 20 E. S. 29 B. T.

a Juniper 8 ins. diam. bro. S. 55 $^{\circ}$ E. 56 cks.

dist. Marked T. 13 N. R. 20 E. S. 28 B. T.

Some mallee - } soil of note.
grazing fair } Thick scrubby Juniper

BOOK 134

Twp 13 N. R. 20 E.

chs G. + S. R. M.

East, on a random line bet. Secs. 21 + 28.

Va. $13^{\circ}30' E$.

Descend gradually

40.00 Set temporary $\frac{1}{4}$ Sec. Cor. and
Asand80.28 Intersect N. & S. Line 65 Chs. S. of Cor.
to Secs. 21-22-27 + 28. Thence down
S. $89^{\circ}32'$ N. on a true line bet. Secs. 21 + 28.Va. $13^{\circ}30' E$.40.14 Set a Sand Stone $17 \times 15 \times 8$ ins. 12
ins. in the ground for $\frac{1}{4}$ Sec. Cor.
Marked $\frac{1}{4}$ on N. face, and raised
a mound of earth alongside.

Pits impracticable

80.28 The Cor. to Secs. 20-21-28-29

Law rolling hills

Soil 3' + 4' - Pale

Some grass.

Scattering Juniper Bush

Sp. 13 N. R. 20 E.

chs G. + S. R. M.

X

North 30° N. bet. Sues 20 + 21.

Va. 1330' E.

Descent gradually

27.44 Ascent.

40.00 Sit a Sand Stone 18x10x10 ins. 12 ins. in the ground for 1/4 Sec. Cor.

Marked 1/4 on N. face, and raised a mound of Stone alongside.

Pits impracticable, from which @ 1/2 m. diam. to N. 38° N. 27 lks. dist. Marked 1/4 S. B. T.

59.77 Commence to descend.

80.00 Sit a Sand Stone 28x15x5 ins.

20 ins. in the ground, for Cor. to Sues. 16-17-20 + 21. Marked with

3 Notetis on S. and 4 Notetis on E. edges, and raised a mound of Stone alongside. Pits impracticable.

from which,

Sp. 13 N. R. 20 E.
Chs. G. r S. R. M.

a Juniper 9 ins. diam. No. N. 66° W. 23 Ues.
dist. Marker \hat{T} . 13 N. R. 20 E. S. 17 B. \hat{T} .

a Juniper 8 ins. diam. No. S. 7° W. 7 Ues.
dist. Marker \hat{T} . 13 N. R. 20 E. S. 20 B. \hat{T} .

Land rolling Hills

Soil 3. & 4. rate

growing poor.

Thick Juniper Brush.

East, on a random line bet. Sec. 16-21,
Va. 13° 30' E.

Assum.

40.00 Set temporary $\frac{1}{4}$ Sec. Cor.

80.12. Interval N. & S. lines 76 Ues. S. of Cor.
Chas. 15-16-21 & 22. Thence I run
889, 27° N. on a true line bet. Cos. 16 & 21

Va. 13° 30' E.

40.06 Set a Land Stone 23 x 10 x 7 ins. 17 ins.
in the ground for $\frac{1}{4}$ Sec. Cor. Marked.

Sp. 13ⁿ. R. 20 E.

chs G. + S. R. M.

1/4 on N. face and raised mound
of stone alongside pits im-
practicable.

80.12 The Cor. to Secs. 16-17-20 + 21

Rolling Hills.

Soil Sandy + 2^o + 3^o rate.

Grazing fair.

Scattered Juniper.

North 30ⁿ. lat. Secs. 16 + 17.

Na. 13^o 30' E.

Over rolling surface

40.00 Set a Sand Stone 23x9x9 ins. 17

ins. in the ground for 1/4 Sec. Cor.

Mark 1/4 on N. face, and raise
a mound of Stone alongside.

Pits impracticable

80.00 Set a Sand Stone 15x10x7 ins.

10 ins. in the ground for Cor. to.

BOOK 134

Tr. 13 N. R. 20 E.

chs G. & S. R. M.

Secs. 8-9-16+17. Marked with
4 Notches on S. & E. edges, and
raised a mound of Stone along
side. Pits impracticable.

Same rolling

Soil sandy & 3^d rate

Scattering Juniper Bush.

East, on a random line bet. Secs. 9-16.
Va. 13^o 30' E.

Over rolling surface.

40.00

Set temporary $\frac{1}{4}$ Sec. Cor.

80.34

Intersect N. & S. line 68. S. of Cor. to

Secs. 9-10-15-16 Thence I run

S. 89.31' N. on a true line bet. Secs. 9+16

Va. 13^o 30' E

40.17

Set a Sand Stone 21x10x9 ins. 16 ins.

in the ground for $\frac{1}{2}$ Sec. Cor. Marked

$\frac{1}{4}$ on N. face & raised a mound

Tr. 13 n. Q. 20 E.

cké G. + S. R. M.

of stone alongside. - Pts unpracticable.
In dry lake =

80.34 The Cor. to Sec. 8-9-16 + 17.

Rolling valley

Soil 3rd rate

Grows grass

North 30' N. cut. Sec. 8 + 9.

Va. 13' 30' E

over rolling valley

40.00

Set a post 3 ft. long 3 ins. diam with marked
stone, 12 ins, in the ground for $\frac{1}{2}$ Sec. Cor,
marked $\frac{1}{2}$ S. on N. face, dug pits 18 x 18 x 12
ins. N. and S. of post 5 $\frac{1}{2}$ ft. dist. and raised
a mound of earth 1 $\frac{1}{2}$ ft, high. 3 $\frac{1}{2}$ ft. base around
post.

42.19 Foot of Hill Crs. N 80° N + S.
10° E. + ascend

73.00 Top of Spur. S. 50° E. and
descend.

T^h 13 N. R. 20 E.

chs G. & S. R. M.

30.00

Set a post 4 ft. long 4 ins. square, with marked stone, 12 ins. in the ground for Cor. to Secs. 4-5-8 & 9 marked T. 13 N. S. 4 on N. E. R. 20 E. S. 9 on S. E. S. 8 on S. W. and S. 5 on N. W. face, with 5 notches on S. and 4 notches on E. edge. dug pits 18 x 18 x 12 ins. in each Sec. 4, 5, 8, 9 and raised a mound of earth 2 ft. high 4 1/2 ft. base. around post.

Surface rolling

Soil 2^d + 3^d rate

Grazing poor.

Scattering brush last 1/2 mile

East. on a random line bet. Secs. 4 & 9.
 Va 13° 30' E.

Ascend.

35.50 Top of Hill 200. ft high N. 27° E.

Ascend.

40.00 Set temporary 1/4 Sec. Cor.

T_p. 13 N. R. 20 E.

Chs G. + S. R. M.

- 6840 Foot of Hill bet N 13° E. + enter on Lake
- 8043 Intersect N. + S. line 64 lks. S. of
Cor. to Secs. 3-4-9+10. Thence Iron
S. 89° 33' N. on a true line bet. Secs. 4 + 9.
Va 13° 30' E.
- 4021 Set a Sand stone, 30 x 16 x 5 ins., 22 ins.
in the ground for $\frac{1}{4}$ Sec, Cor, marked $\frac{1}{4}$. on N.
face, dug pits 18 x 18 x 12 ins. E. and W.
of stone 5 $\frac{1}{2}$ ft. dist. and raised a mound of earth
1 $\frac{1}{2}$ ft. high. 3 $\frac{1}{2}$ ft. base. alongside.
- 8043 The Cor. to Secs. 4-5-8+9.
Surface rough + Hilly
Soil Sandy + 4. rate
grazing poor.
Scattered Juniper Brush.
- North 30' N. on a random line bet Secs. 4 + 5,
Va 13° 30' E.
- Desend.
- 40.00 Set temporary $\frac{1}{4}$ Sec. Cor.

Tp. 13 N. R. 20 E.

chs

41.00 Cross wash 13 lks. wide C. N. + ascent.
 80.13 Intusub N. B. of Tp. 30 lks. N.
 of Cor to Secs. 4-5-82 + 83. re-
 cently established by Mr. James Brown
 S. 17' N. on a true line bet. Secs. 4 + 5.
 Va 13 30, E.

40.13 Set a Sand Stone 33 x 10 x 8 ins.
 24 ins. in the ground for $\frac{1}{2}$ sec.
 Cor. marked $\frac{1}{4}$ on N. face +
 raised a mound of stone along -
 side - Pits impracticable.

80.13 The Cor. to Secs. 4-5-8 + 9.
 Surface rough + rocky
 Soil 2^o + 3^o rate
 Good grass.

Juniper Bush - No water -
 I carefully examined the adjustments of my
 Solar Compass today, particularly the Latitude
 and leveling apparatus, and found them correct
 A. H. Arnold Compassman May 29. 1883

Tr 13 N. R. 20 E.
chs G. + S. R. M.

From Stand. Cor. to Secs. 31 + 32
recently established by me, from
North 30' N. bet. Secs. 31 + 32.
Va 1330' E.

Ascent grad.

17.46
40.00

Foot of Hill brs. N 14° E. + Ascent.

Set a post 3 ft. long 3 ins. diam with marked
stone, 12 ins. in the ground for $\frac{1}{4}$ Sec. Cor,
marked $\frac{1}{4}$ S. on N. face, dug pits 18 x 18 x 12
ins. N. and S of post 5 $\frac{1}{2}$ ft. dist. and raised
a mound of earth 1 $\frac{1}{2}$ ft. high. 3 $\frac{1}{2}$ ft. base. around
post.

80.00

Set a post 4 ft. long 4 ins. square, with marked
stone, 12 ins. in the ground for Cor. to Secs.
29-30-31+32 marked T. 13 N S. 29 on
N. E. R. 20 E. S. 32 on S. E. S. 31 on
S. W. and S. 30 on N. W. face, with 1 notch
on S, and 5 notches as on E. edge, dug
pits 18 x 18 x 12 ins. in each Sec., 5 $\frac{1}{2}$ ft. dist.
and raised a mound of earth 2 ft. high. 4 $\frac{1}{2}$ ft.
base. around post.

Surface rolling

Sail 3^d rate

Good grass + some Juniper Brush

BOOK 134
 T^r 13 N. R. 20 E.

chs G. S. R. M.

East on a random line bet. Secs. 29 & 32.
 Va. 13° 30' E.

Ascend gradually

16.00 Top of Ridge 30 ft. high. br. S 87° E, + deans grad.

40.00 Set temporary $\frac{1}{4}$ Sec. Cor.

51.11 Cross draw 2nd Wide Co. S. E. + asen grad.

79.90 Intersect N. S. line 48 lks. S. of Cor.

to Secs. 28-29-31 & 32. Thence I run
 S. 89° 39' N. on a true line bet. Secs. 29 & 32

Va. 13° 30' E.

39.95 Set a post 3 ft. long 3 ins. diam with marked
 stone, 12 ins. in the ground for $\frac{1}{4}$ Sec. Cor,
 marked $\frac{1}{4}$ S. on N. face, dug pits 18 x 18 x 12
 ins. E. and W. of post 5 $\frac{1}{2}$ ft. dist. and raised
 a mound of earth 1 $\frac{1}{2}$ ft. high. 3 $\frac{1}{2}$ ft. base. around
 post.

from which

a Pinon 8 ins. diam. br. S 69° W. 36 lks.
 dist. marked $\frac{1}{4}$ S. B. T.

a Pinon 6 ins. diam. br. N. 25° E. 76 lks.
 dist. marked $\frac{1}{4}$ S. B. T.

79.90 The Cor. to Secs. 29-30-31 & 32

7 1/2 N. R. 20 E.
cho G. S. R. M.

Surface rolling

Soil 3? rate

Good grass.

Some Juniper Brush.

M. N. Grant May 30 2883.

Mesh, on a random line bet. Secs. 30 & 31.
Va. 13° 30' E.

descent.

40.00 Lot temporary 1/2 Sec. Cor.

47.17 Foot of Hill bet. N.W. & S.W.

77.10 Cross Draw 18 lks. wide Co. S. 37° E.

79.94 Interval N. B. of Sp. 75 lks. N. of

Cor. to Secs. 25-30-31 & 36. recently es-
tablished by me. Thence I run

N 89° 28' E. on a true line

cut. Secs. 30 & 31.

Va. 13° 30' E.

Twp. 13 N. R. 20 E.

Chs. G. & S. R. M.

39.94

Set a post 3 ft. long 3 ins. diam with marked
stone, 12 ins. in the ground for $\frac{1}{2}$ Sec. Cor.
marked $\frac{1}{4}$ S. on N. face, dug pits 18 x 18 x 12
ins. E. and W of post 5 $\frac{1}{2}$ ft. dist. and raised
a mound of earth 1 $\frac{1}{2}$ ft. high. 3 $\frac{1}{2}$ ft. base around
post.

from which
a Piñon 60 ins. diam. br. S. 62° W. 92 lbs.
dist. Marker $\frac{1}{4}$ S. B. T.

a Piñon 6 ins. diam. br. S. 71° E. 77 lbs.
dist. Marker $\frac{1}{4}$ S. B. T.

79.94 The cor. to Secs. 29-30-31 & 32.

Surface rolling

Soil 3" rate

Good grass

Some Juniper Bush

+ North 30' N. Cut. Secs. 29 & 30.
Va. 13° 30' E.

asent

Sp 13 N. R. 20 E.
chs G, + S, R. M.

- 40.00 Set a post 3 ft. long 3 ins. diam with marked stone, 12 ins, in the ground for $\frac{1}{4}$ Sec, Cor, marked $\frac{1}{4}$ S. on N. face, dug pits 18 x 18 x 12 ins. N. and S, of post $5\frac{1}{2}$ ft. dist. and raised a mound of earth $1\frac{1}{2}$ ft, high. $3\frac{1}{2}$ ft. base. around post.
- 55.10 Top of Ridge 150 ft high Cor. E. + N. + descend.
- 80.00 Set a post 4 ft. long 4 ins. square, with marked stone, 12 ins, in the ground for Cor, to Secs, 19-20-29+30 marked T. 13 N S. 20 on N. E. R. 20 E. S. 29 on S. E/S, 30 on E, W, and S, 19 on N, W, face, with 2 notches on S, and 5 notches on E. edges, dug pits 18 x 18 x 12 ins. in each Sec., $5\frac{1}{2}$ ft. dist. and raised a mound of earth 2 ft, high. $4\frac{1}{2}$ ft. base. around post.
- A Juniper 13 ins. diam. br. ^{from which} N. 66° W. 63 lks. dist. Marked T. 13 N. R. 20 E. S. 19 B. T.
- A Juniper 9 ins. diam. br. S. 35° E. 89 lks. dist. Marked T. 13 N. R. 20 E. S. 29 B. T. +
- A Piñon 6 ins. diam. br. N 88° E. 40 lks. dist. Marked T. 13 N. R. 20 E. S. 20 B. T.
- Surface rolling hills
Soil 3 + 4: rate
Some grass + Juniper Brush

BOOK 134

1/4 Sec. 13 N. R. 20 E.

Chs. G. + S. R. M.

Each on a random line bet Secs. 20 + 29
Va. 13° 30' E.

Over rolling ground.

40.00 Set temporary 1/4 Sec. Cor.

80.13 Intersect N. of S. line 31 Chs. S. of Cor.
to Secs. 20-21-28 + 29. Thence from
S. 89° 47' N. on a true line bet. Secs. 20 + 29
Va. 13° 30' E.

40.06 Set a post 3 ft. long 3 ins. diam with marked
stone, 12 ins. in the ground for 1/4 Sec. Cor,
marked 1/4 S. on N. face, dug pits 18 x 18 x 12
ins. E. and W. of post 5 1/2 ft. dist. and raised
a mound of earth 1 1/2 ft. high, 3 1/2 ft. base. around
post. from which

a Juniper 10 in. diam. brs. S. 37° N. 73 Chs.
dist. marker 1/4 S. B. T.

80.13 The Cor. to Secs. 19-20-29 or so
Generally rolling hills
Soil 4 1/2" rats
Some grass.
Juniper Bush.
M. N. Prout May 30, 1883.

AS, 1883

Sp. 13 on R. 20 E.

Chs G. + S. R. M.

Post on a random line bet. Secs. 19 + 20.

Va. 13° 30' E.

Ascend.

40.00 Set temporary $\frac{1}{4}$ Sec. Cor.

41.72 descend gradually

79.97 Mineral N. B. of Twp. 54 lks N. of
Cor. to Secs. 19-24-25 13. recently
established by me. Hence Iron

N. 89° 32' E. on a true line bet. Secs. 19 + 20

Va. 13° 30' E.

39.97

Set a post 3 ft. long 3 ins. diam. with marked
alone, 12 ins. in the ground for $\frac{1}{4}$ Sec. Cor.
marked $\frac{1}{4}$ S. on N. face, dug pits 18 x 18 x 12
ins. E. and W. of post $5\frac{1}{2}$ ft. dist. and raised
a mound of earth $1\frac{1}{2}$ ft. high. $3\frac{1}{2}$ ft. base. around
post. from which

a Pinus 10 ins. diam. br. S. 5° E. 17 lks. dist.

29.97

marker $\frac{1}{4}$ S. B. T. $\frac{1}{4}$ Sec. 19, 20, 29 + 30
same gently rolling hills.
Soils 2' + 8" rate.
low grass.
Juniper brush.

A. H. Arnold. Compaesman, May 30 1883.

BOOK

134

T. 13 N. R. 20 E.

Chs.

G. & S. R. M.

North 30° N. bet. Secs. 19 & 20.

Va. 13° 30' E.

Descend.

40.00

Set a post 3 ft. long 3 ins. diam with mark
stone, 12 ins. in the ground for $\frac{1}{4}$ Sec. Cor.
marked $\frac{1}{4}$ S. on \overline{W} face, diameter 18 x 18 x 18
ins. \overline{N} and \overline{S} of post 5 $\frac{1}{2}$ ft. dist. and raised
a mound of earth 1 $\frac{1}{2}$ ft. high. 3 $\frac{1}{2}$ ft. base. around
post. from which

A Pinon 7 ins. diam. brs. S. 33° N. 94 lbs.
dist. Marked $\frac{1}{4}$ S. P. T.

A Juniper 10 ins. diam. brs. S 20° E. 65 lbs.
dist. Marked $\frac{1}{4}$ S. P. T. & ascended.

69.51 Top of Ridge 100 ft. high brs. E & N. & descend

80.00 Set a Sand stone 30 x 18 x 10 ins. 20 ins.

in the ground for Cor to Secs. 17-18-19 &
20. Marked with 3 Notches on S and
5 Notches on E. edges. and raised a

Mound of Stone alongside. Pits impracticable
Sand rolling hills
Soil 4" rate
very little grass
thick Juniper

Tr. 13 N. R. 20 E.
chs G. + S. R. M.

Earth, on a random line bet. Secs. 17 + 20.
Va. 13° 30' E.

rescues over rolling ground.

40.00 Set temporary $\frac{1}{4}$ Sec. Cor.
79.76 Intersub N. & S. line 76 lks. S. of
Cor. to Secs. 16-17-20+21. Thence down
S. 89° 27' N. on a true line bet. Secs. 17 + 20.
Va. 13° 30' E.

39.88 Set a post 3 ft. long 3 ins. diam with marked
stone, 12 ins. in the ground for $\frac{1}{4}$ Sec. Cor.
marked $\frac{1}{4}$ S. on N. face, dug pits 18 x 18 x 12
ins. E. and W. of post 5 $\frac{1}{2}$ ft. dist. and raised
a mound of earth 1 $\frac{1}{2}$ ft. high. 3 $\frac{1}{2}$ ft. base around
post.

79.76 The Cor. to Secs. 17-18-19+20.
Land gently rolling, slopes N. E.
Soil 2^o rate
Good grazing
M. N. Grant May 31. 1883.

Sp. 13 n. R. 20 E.
chs G. + S. R. m.

Met. on a random line bet. Secs. 18 + 19.
Va. 13°30' E.

Occurs.

30.40 Top of Ridge 170 ft high br. N. N. + descant.

40.00 Set temporary $\frac{1}{4}$ Sec. Cor.

42.90 Foot of Hill br. N. 23° W.

80.20 Interset N. B. of Sp. 68 lks. N. of

Cor. to Secs. 13-18-19+24. previously es-

tablished by me. Thence I run

N. 89°31' E. on a true line bet. Secs. 18 + 19.

Va. 13°30' E.

40.20 Set a Sand Stone 17x15x5 ins. 12 ins.

in the ground for $\frac{1}{4}$ Sec. Cor. Marked
 $\frac{1}{4}$ on N. face and raised a mound
of stone along side. Pits impracticable.

80.20 The Cor. to Secs. 17, 18, 19 + 20.

East $\frac{1}{4}$ hilly rocky
meat $\frac{1}{4}$ nearly level slopes to the W.
Soil 2° + 3° rate
some grass.

Juniper Brush

A. H. Arnold Comptroller May 31, 1888.

Sp. 137. R. 20 E.

chs G. + S.R. M.

North 30° N. Cut. Secs. 17 + 18.

wa. 1330' E.

Descend.

40.00 Set a Sand Stone 21x11x6 ins. 14 ins. in the ground for $\frac{1}{4}$ Sec. Cor. Marked $\frac{1}{4}$ on N. face, and raised a mound of stone alongside. Pit impracticable from which

a Pinon 7 ins. diam. br. S 60° W. 100 lks. dist. Marked $\frac{1}{4}$ S. B. T.

61.15 Continue to ascend.

80.00 Set a post $\frac{1}{2}$ ft. long $\frac{1}{2}$ ins. square, with marker stone 12 ins. in the ground for Cor. to Secs. 7-8-17 + 18 marked T. 137. S. 8 on N. E. R. 20 E., S. 17 on S. E., S. 18 on S. W., and S. 7 on N. W. face, with 4 notches on S, and 5 notches on E. edges, dug pits 18 x 18 x 12 ins. in each Sec., $5\frac{1}{2}$ ft. dist. raised a mound of earth 2 ft. high. 4 ft.

base. ground post.

Sand rolling Hills
Soil 3° or 4° salt
Poor grass
Scattering Juniper Bush

Sp. 13 N. R. 20 E.

Chs

+

East, on a random line bet. Secs. 8 & 17.

va. 1330' E.

Descend gradually

40.00 Set temporary $\frac{1}{4}$ Sec. Cor.

80.10 Intersect N. & S. line 80 lks. S. of
Cor. to Secs. 8-9-16+17, Thence I run
S. 89° 26' W. on a true line bet. Secs. 8 & 17.

va. 1330' E.

40.05

Set a post 3 ft. long 3 ins. diam with marked
stone, 12 ins. in the ground for $\frac{1}{4}$ Sec. Cor.
marked $\frac{1}{4}$ S. on N. face, dug pits 18 x 18 x 12
ins. E. and W. of post 5 $\frac{1}{2}$ ft. dist. and raised
a mound of earth 1 $\frac{1}{2}$ ft. high. 3 $\frac{1}{2}$ ft. base. around
post.

80.10

The Cor. to Secs. 7-8-17 & 18.

Land rolling valley

Soil 2^o rate

Good pasture land.

M. N. Grant May 31. 1888.

Sp. 13 N. Q. 20 E,
Chs G. + S. R. M.

Met. on a random line bet. Secs. 7 + 18.
Va. 13°30' E.

Descend.

18.07 Cross Dash 12 lbs. wide Co. N 16° E. + ascent.

40.00 Set temporary $\frac{1}{4}$ Sec. Cor.

80.04 Intersect N. P. of Sp. 60 lbs. N. of
Cor. to Secs. 7-12-13+18. Previously
established by me. Thence I run
N. 89°34' E. on a true line bet. Secs. 7 + 18.
Va. 13°30' E.

40.04 Set a Sand Stone 27 x 14 x 8 ins. 18 ins.
in the ground for $\frac{1}{4}$ Sec. Cor. marked
 $\frac{1}{4}$ on N. face and raised a mound
of Stone alongside. Pits impracticable.

80.04 The Cor. to Secs. 7-8-17+18.

Rolling Sand Stone Hills.

Soil 3^d + 4th rate

grazing fair

A. H. Arnold Compass-man

May 31, 1893.

BOOK 134

✓ N. 13 N. R. 20 E.
 Cho G. + S. R. M.

North 30' N. bet. Secs 7 & 8.

Ascend, Va. 13³⁰ E.

74.0 Low Spur. bet. N. 30' E. & descend.

26.31 Cross Track 14 lks. wide Co. N. 9° E.

and continue to descend.

40.00

Set a post 3 ft. long 3 ins. diam with marked stone, 12 ins, in the ground for $\frac{1}{4}$ Sec, Cor, marked $\frac{1}{4}$ S. on N. face, dug pits 18 x 18 x 12 ins. N. and S. of post 5 $\frac{1}{2}$ ft. dist. and raised a mound of earth 1 $\frac{1}{2}$ ft. high. 3 $\frac{1}{2}$ ft. base. around post.

80.00

Set a post 4 ft. long 4 ins. square, with marked stone 12 ins, in the ground for Cor, to Secs, 5-6-7 & 8 marked T. 13 N. S. 5 on N. E. 20 E. S. 8 on S. E, S, 7 on S, W, and S, 6 on N, W, face, with 5 notch on S, and 5 notch on E. edges, dug pits 18 x 18 x 12 ins. in each Sec., 5 $\frac{1}{2}$ ft. dist. and raised a mound of earth 2 ft. high 4 $\frac{1}{2}$ ft. base around post.

levelly rolling and slopes N. E.
 grows grass,
 Soil 2^o. rate

Sp. 13 N. R. 20 E.

Chs G. + S. R. M.

East, on a random line bet. Secs. 5 + 8.
 Va. 133° 0' E.

Descends gradually

13.44 Cross Wash 16 Ets. side Co. N.

40.00 Set temporary $\frac{1}{4}$ Sec. Cor.

51.40 Cross Wash 23 Ets. side. Co. N. 16° N.

67.39 Foot of Hill bet. N. 9° N. + ascent.

79.94 Interval N. + S. line 45 Ets. S. of
 Cor. to Secs. 4-5-8+9. Thence I run
 S. 89° 40' N. on a true line bet. Secs. 5 + 8.

Va. 133° 0' E.

39.97 Set a post 3 ft. long 3 ins. diam with marked
 stone, 12 ins. in the ground for $\frac{1}{4}$ Sec. Cor,
 marked $\frac{1}{4}$ S. on N. face, dug pits 18 x 18 x 12
 ins. E. and N. of post 5 $\frac{1}{2}$ ft. dist. and raised
 a mound of earth 1 $\frac{1}{2}$ ft, high. 3 $\frac{1}{2}$ ft. base. around
 post.

79.94 The Cor. to Secs. 5-6-7 + 8.

Land rolling valley

Soil 2^d rate

Good grass.

BOOK 134

p. 13 N. R. 20 E.

chs

G. + S. R. M.

Thoroughly examined the adjustments of my Solar Compass today, particularly the latitude and reversing apparatus, and found them correct.

M. N. Grant May 31-1883.

Tp. 13 N. R. 20 E.

chs G. + S. R. M.

Met. on a random line bet. Secs. 6 + 7.

Va. $13^{\circ}30' E$.

Ascend gradually

14.10 Foot of Hill bro. N. + S. + ascend.

32.80 Cross low Spur. bro N. $41^{\circ} E$. + descend.40.00 Set temporary $\frac{1}{4}$ Sec. Cor.63.84 Cross Wash 14 lks. wide Co. N. $61^{\circ} E$. + ascend.80.13 Intersect N. B. of Tp. 76 lks. N. of
Cor. to Secs. 1-6-7 + 12. recently estab-
lished by me. Since. Iron
N. $89^{\circ}26' E$. on a true line bet. Secs. 6 + 7.Va. $13^{\circ}30' E$.40.13 Set a Sand stone, $27 \times 12 \times 9$ ins., 20 ins
in the ground for $\frac{1}{4}$ Sec, Cor, marked $\frac{1}{4}$ on N.
face, dug pits $18 \times 18 \times 12$ ins. E, and W.
of stone $5\frac{1}{2}$ ft. dist. and raised a mound of earth
 $1\frac{1}{2}$ ft, high. $3\frac{1}{2}$ ft. base. alongside.

80-13 The Cor. to Secs. 5-6-7 + 8.

Sand gently rolling + slopes to N. E.
Soil 3" Rate
Grown grass

N. 13 N. R. 20 E.

Chs. G. + S. R. M.

North 30' N. on a random line bet. Secs. 5 + 6.

Va. 13° 30' E.

Descend gradually

35.83 Cross creek 16 lks. wide C. N. 47 E. + descend.

40.00 Sit temporary $\frac{1}{4}$ Sec. Cor.

80.19 Intersub N. B. of T p. 4 lks. N. of Cor.

to Secs. 5-6-31 + 32, recently
established by me. Thence I run

S 28' N. on a true line bet. Secs. 5 + 6.

Va. 13° 30' E.

40.19

Set a post 3 ft. long 3 ins. diam with marked
stone, 12 ins. in the ground for $\frac{1}{4}$ Sec, Cor,
marked $\frac{1}{4}$ S. on N. face, dug pits 18 x 18 x 12
ins. N. and S. of post 5 $\frac{1}{2}$ ft. dist. and raised
a mound of earth 1 $\frac{1}{2}$ ft. high. 3 $\frac{1}{2}$ ft. base. around
post.

80.19 The Cor. to Secs. 5-6-7-8.

Low valley
Fine grazing

Sp. 13 N. R. 20 E.

chs G. + S. R. M.

I carefully examined the adjustments of my Solar Compass, to day, particularly, the latitude and reversing apparatus, and found them correct.

A. H. Arnold Compassman

May 31, 1883.

T_p. 13 N. R. 20 E.

G. + S. R. M.

General Description

All of this T_p. is high rolling land being somewhat rough near the summits of the divides.

Very heavy growth of Juniper in nearly all parts of T_p.

Some open Valley-like basins where there is a fine growth of Sycamore, Bunch and other grasses.

Soil 2° to 3° rate

A Cabin on Sec. 16.

For final oaths see
Book No 13.

U. S. Surveyor General's Office,

at Tucson, Arizona, July 17, 1884

The foregoing Field Notes of the Survey of the

Subdivision lines of
Township 13 North
Range 20 East

Of the Gila and Salt River Base and Meridian, Arizona, executed by M. N. Grant

Deputy Surveyor, under his contract of the Seventh day of August, 1882, having been

critically examined and the necessary corrections and explanations made, the said Field Notes and the surveys they describe are hereby approved

Royce Johnson
Surveyor General.