

1. and
by compare
books

Book No. 10.

No-164

Field Notes

OF THE SURVEY OF THE

Subdivision Lines

-OF-

Township *14 N* Range *20 E*

Gila and Salt River Base and Meridian

164

ARIZONA.

By *M. N. Grant* D.S.

Under contract dated *Aug 5th* 1882.

Survey commenced *June 11th* 1883.

Survey completed *June 13th* 1883.

No-164

1A

BOOK 164

INDEX DIAGRAM.

Township 14 N

Range 20 E

6	60	5	44	4	33	3	22	2	11	1
59		68		43		32		21		10
7	57	8	42	9	31	10	20	11	9	12
56		55		41		30		19		8
18	54	17	40	16	29	15	18	14	5	13
53		52		39		28		17		6
19	51	20	38	21	27	22	16	23	5	24
50		49		37		26		15		4
30	48	29	36	28	25	27	14	26	3	25
47		46		35		24		13		2
31	45	32	34	33	23	34	12	35	1	36

Gila and Salt River, Arizona.

ARIZONA.

15
No-164

For preliminary oaths see
Book No 1.

Survey commenced June 11th 1883
Survey completed June 13th 1883

Survey made with Burt's Improved
Solar Compasses, newly run and in
first rate order. Made by
Otto Feunel of Cassel Germany
in 1881.

Tp 14 N. R. 20 E.

Ch Gila + Salt River Meridian

From the Cor. to Secs. ^{1, 2,} 35 + 36 on S. B. of T^r. recently set by me. Thence from North, bet Secs. 35 + 36.

Va 1330 E.

Descent gradually

40.00 Set a Sand Stone 18x12x5 ins. 12 ins. in the ground for $\frac{1}{2}$ Sec. Cor. Marked $\frac{1}{2}$ on N. face, and raised a mound of Stone alongside. Pits impracticable

50.00

Set a post 4 ft. long 4 ins. square, with marked stone, 12 ins. in the ground for Cor. to Secs, 25-26-35+36 marked T. 14 N. S. 25 on N. E. R. 20 E. S. 36 on S. E. S, 35 on S, W, and S, 26 on N, W, face, with 1 notch on S, and 1 notch on E. edges, dug pits 18 x 18 x 12 ins. in each Sec., 5 1/2 ft. dist. and raised a mound of earth 2 ft. high. 4 1/2 ft. base. around post.

Surface rolling
Soil 2^d. rate
Grass good.

Th 14 N. R. 20 E,
 Chs G. + S. R. 2m.

East, on a random line bet. Secs. 25 + 36
 Va. 1330' E.

Descend gradually

20.70 Cross Wash 22 Eks. Wide Co. N. 28° E + descend
 gradually

40.00 Set temporary $\frac{1}{2}$ Sec. Cor. + descend
 gradually

79.79 Intersect E. B. of Tp. 68 Eks. S. of Cor.
 to Secs. 25-30-31 + 36. Recently re-
 established by me *James Irvine*
 S. 89° 31' N. on a true line bet. Secs. 25 + 36
 Va 1330' E.

39.90 **Set a post** 3 ft. long 3 ins. diam with marked
 stone, 12 ins. in the ground for $\frac{1}{4}$ Sec, Cor,
 marked $\frac{1}{4}$ S. on N. face, dug pits 18 x 18 x 12
 ins. E. and N. of post 5 $\frac{1}{2}$ ft. dist. and raised
 a mound of earth 1 $\frac{1}{2}$ ft, high. 3 $\frac{1}{2}$ ft. base. around
 post.

79.79 Th Cor. to Secs. 25-26-35 + 36.
 Sec. 36. is rolling
 Soil 2° rate.
 Poor grass
 Scattered Juniper Bush.

T_h. 14 N. R. 19 E.

Chs.

G. + S. R. M.

North bet. Secs. 25 + 26.

T_a. 13³⁰ E.

Ascend gradually

9.76 Cross low Spur N40°E + descend gradually

40.00

Set a post 3 ft. long 3 ins. diam with marked stone, 12 ins. in the ground for $\frac{1}{4}$ Sec. Cor, marked $\frac{1}{4}$ S. on N. face, dug pits 18 x 18 x 12 ins. N. and S. of post 5 $\frac{1}{2}$ ft. dist. and raised a mound of earth 1 $\frac{1}{2}$ ft. high, 3 $\frac{1}{2}$ ft. base around post.

80.00

Set a post 4 ft. long 4 ins. square, with marked stone, 12 ins. in the ground for Cor, to Secs, 23-24-25+26 marked T. 14 N. S. 20 on N. E. R. 202, S. 25 on S. E, S, 26 on S, W, and S, 23 on N. W. face, with 2 notch es on S, and 1 notch on E. edges, dug pits 18 x 18 x 12 ins. in each Sec., 5 $\frac{1}{2}$ ft. dist. and raised a mound of earth 2 ft. high, 4 $\frac{1}{2}$ ft. base. around post.

Surface rolling

Soil 2^d. rate

From good.

Tr. 14 N. R. 20 E.

ab G. + J. R. M.

East, on a random line bet. Secs. 24 + 25.
Va. $13^{\circ}30' E$.

3 as and gradually

30.16 Top low Spur 25 ft high brs N $33^{\circ} E$. + descend

40.00 Set temporary $\frac{1}{4}$ Sec. Cor.

58.11 Cross Wash 11 lks. N side Co. N $50^{\circ} E$. + ascend

80.10 Interset E. B. of Tr. 31 lks. S. of Cor.
to Secs. 19-24-25 + 30. recently re-
established by me. Thence I run
S. $89^{\circ} 4'$ N. on a true line bet Secs. 24 + 25
Va. $13^{\circ}30' E$.

40.05 Set a post 3 ft. long 3 ins. diam with marked
stone, 12 ins. in the ground for $\frac{1}{4}$ Sec. Cor.
marked $\frac{1}{4}$ S. on N. face, dug pits 18 x 18 x 12
ins. E. and N. of post $5\frac{1}{2}$ ft. dist. and raised
a mound of earth $1\frac{1}{2}$ ft. high. $3\frac{1}{2}$ ft. base. around
post.

50.10 The Cor. to Secs. 23-24-25 + 26.

Sec. 25 is a rolling Mesa
soil 2^d rate.
good grazing
No brush.

57

BOOK 164

14 N. R. 20 E.
G. + S. R. 9m.

North lot, Secs. 23 + 24
T₁N. 13° 30' E.

Descend gradually

- 18.19 Foot of Hill bro. E + N.
- 18.80 Cross Wash 80 lks. wide Co. N. 41° E. + ascent grad.
- 40.00

Set a post 3 ft. long 3 ins. diam with marked stone, 12 ins. in the ground for 1/4 Sec. Cor. marked 1/4 S. on N. face, dug pits 18 x 18 x 12 ins. N. and S. of post 5 1/2 ft. dist. and raised a mound of earth 1 1/2 ft. high. 3 1/2 ft. base. around post.

- 43.16 Cross draw 10 lks wide Co. S 35 E. + ascent
- 80.00 Set a sand stone 19 x 14 8 ins. 12 ins. in the ground for Cor. to Secs. 13-14-23+24 marked with 3 notches on S. and 1 notch on E. edges, dug pits 18 x 18 x 12 ins. in each Sec., 5 1/2 ft. dist. and raised a mound of earth 2 ft. high. 4 1/2 ft. base. alongside.

Surface rolling
Soil 3' rate
Grass good.

Sp. 14 N. R. 20 E.
G. + S. R. 9m.

Ext. on a random line bet. Secs. 13 & 24
wa. 13° 30' E.

Over slightly rolling land

40.00 Set temporary $\frac{1}{4}$ Sec. Cor.

79.88 Intersub Σ . B. of Sp. 54 lks. S. of
Cor. to Secs. 13-18-19 & 24 recently
re-established by me. Thence I run
S. 89° 37' N. on a true line bet. Secs. 13 & 24
wa. 13° 30' E.

39.94

Set a post 3 ft. long 3 ins. diam with marked
stone, 12 ins, in the ground for $\frac{1}{4}$ Sec. Cor,
marked $\frac{1}{4}$ S. on N. face, dug pits 18 x 18 x 12
ins. Σ . and N. of post 5 $\frac{1}{2}$ ft. dist. and raised
a mound of earth 1 $\frac{1}{2}$ ft. high. 3 $\frac{1}{2}$ ft. base. around
post.

79.88

The Cor. to Secs. 13-14-23 & 24
Sec. 24. is a rolling mesa
Soil 3^d rate
Good grass.
Scattering Juniper.

9
BOOK 164

Sp. 14 N. R. 20 E.

Ch. G. + S. R. M.

North lot. Secs. 13 + 14

va. 1330' E.

Ascend gradually

40.00

Set a Sand stone, 19 x 8 x 4 ins., 12 ins. in the ground for $\frac{1}{4}$ Sec, Cor, marked $\frac{1}{4}$ on N. face, dug pits 18 x 18 x 12 ins. N and S, of stone 5 $\frac{1}{2}$ ft. dist. and raised a mound of earth 1 $\frac{1}{2}$ ft, high. 3 $\frac{1}{2}$ ft. base. alongside.

52.00

Begin descent. gradually

80.00

Set a Sand stone 16 x 9 x 3 ins., 10 ins. in the ground for Cor, to Secs, 11-12-13-14 marked with 4 notches on S. and 1 notch on E. edges, dug pits 18 x 18 x 12 ins. in each Sec., 5 $\frac{1}{2}$ ft. dist. and raised a mound of earth 2 ft, high. 4 $\frac{1}{2}$ ft. base. alongside.

Surface rolling

Soil 3rd rate

Grass good.

Scattered Juniper Bush.

Tp. 14 N. R. 20 E.
 Ch. G. + S. R. M.

East. on a random line bet. Secs. 12 + 13.

va. $13^{\circ}45'$ E.

ascent gradually

12.00 Top of Spur, 30 ft. high. brs N. + descent

40.00 Set temporary $\frac{1}{4}$ Sec. Cor.

79.82 Intersub E. B. of Tp. 78 lks. S. of Cor.

to Secs. 7-12-13 + 18 north re-
 established by me. Three Iron

S. $89^{\circ}27'$ N. on a true line bet. Secs 12 + 13.

va. $13^{\circ}45'$ E.

39.91

Set a Sawt stone, $19 \times 10 \times 3$ ins., 12 ins.

in the ground for $\frac{1}{4}$ Sec. Cor, marked $\frac{1}{4}$ on N.

face. dug pits $18 \times 18 \times 12$ ins. E. and W
 of stone. $\frac{1}{2}$ ft. dist. and raised a mound of earth
 $1\frac{1}{2}$ ft. high. $3\frac{1}{2}$ ft. base. alongside.

79.82

The Cor. to Secs. 11-12-13 + 14

Sec. 13 is a rolling Mesa

Soil 3^d rate

Grass fair

Scattering Juniper Bush.

Tr 14 N. R. 20 E.
T. 9. + S. R. M.

Chs

North bet. Secs 11 + 12,
Va., 34 5 E.

descends gradually

40.00

Set a post 3 ft. long 3 ins. diam with marked stone, 12 ins, in the ground for $\frac{1}{2}$ Sec, Cor, marked $\frac{1}{4}$ S. on N. face, dug pits 18 x 18 x 12 ins. N. and S. of post 5 $\frac{1}{2}$ ft. dist. and raised a mound of earth 1 $\frac{1}{2}$ ft, high. 3 $\frac{1}{2}$ ft. base. around post.

80.00

Set a Sand stone $1\frac{1}{2}$ x $1\frac{1}{2}$ x 1 ins, 12 ins. in the ground for Cor, to Secs, 12-11-12 marked with 5 notches on S. and 1 notch on E. edges, dug pits 18 x 18 x 12 ins. in each Sec., 5 $\frac{1}{2}$ ft. dist. and raised a mound of earth 2 ft, high. 4 $\frac{1}{2}$ ft. base. alongside.

Surface nearly level
Soil 3 $\frac{1}{2}$ rate
Grass good.

Tr. 14 N. R. 20 E.
 Chs G. + S. R. M.

East on a random line bet. Secs. 1 + 12.
 Va. 1345' E.

Over level land

40.00 Set temporary $\frac{1}{4}$ Sec. Cor.

79.46 Interset Σ . B. of Tr. 68 lks. S. of
 Cor. to Secs. 1-6-7-12, recently
 re-established by me. Thence I run
 S89°31'W. on a true line bet. Secs. 1+12.
 Va. 1345' E.

39.73 Set a sand stone, 6 x 9 x 3 ins., 11 ins.
 in the ground for $\frac{1}{4}$ Sec, Cor, marked $\frac{1}{4}$ on N,
 face, dug pits 18 x 18 x 12 ins. Σ . and N.
 of stone 5 $\frac{1}{2}$ ft. dist. and raised a mound of earth
 1 $\frac{1}{2}$ ft. high. 3 $\frac{1}{2}$ ft. base. alongside.

79.46 The Cor. to Secs. 1-2-11+12
 Sec. 12, is a level Mesa
 Soil 2^d rate
 poor grass
 No timber or brush

Chs

Tr. 14 N. R. 20 E,
G. + S. R. M.

North, on a random line bet. Secs. 1 + 2.
va. 13° 45' E,

Over level Mesa

40.00 Set temporary $\frac{1}{4}$ Sec. Cor.

49.19 Ascend gradually

79.72 Intense N. B. of Tr. 46 lks E. of
Cor. to Secs. 1-2-35 + 36. Recently
established by me. True Iron
S. 20' E. on a true line bet. Secs. 1 + 2,
va. 13° 45' E.

89.92 Set a Sand stone, 17 x 9 x 5 ins., 12 ins.
in the ground for $\frac{1}{4}$ Sec, Cor, marked $\frac{1}{4}$ on N.
face, dug pits 18 x 18 x 12 ins. N. and S.
of stone 5 $\frac{1}{2}$ ft. dist. and raised a mound of earth
1 $\frac{1}{2}$ ft. high. 3 $\frac{1}{2}$ ft. base. alongside.

79.92 The Cor. to Secs. 1-2-11 + 12

Sec 1. is almost level

Soil 2^d. rate
Good grass, No timber or brush
I carefully examined the adjustments of my
Solor Compass to-day, particularly the
latitude and several apparatus, and
found them correct

M. N. Grant June 11, 1887.

Tp. 14 N. R. 20 E.
Chs G. + S. R. M.

From the Cor. to Secs. ²³ 34 + 35 S. B. of Tp.
North set by me. From
North bet. Secs. 34 + 35.
Decent. Va. 13° 30' E.

38.20 Cross Wash Solks. Wide Co. N35°E. + as cont. grad.
40.00 Set a post 3 ft. long 3 ins. diam with marked
stone, 12 ins. in the ground for 1/4 Sec. Cor,
marked 1/4 S. on N. face, dug pits 18 x 18 x 12
ins. N. and S. of post 5 1/2 ft. dist. and raised
a mound of earth 1 1/2 ft. high. 3 1/2 ft. base. around
post.

50.00 Set a post 4 ft. long 4 ins. square, with marked
stone, 12 ins. in the ground for Cor, to Secs,
26-27-34+35 marked T. 14 N. S. 26 on
N. E. R. 20 E. S. 35 on S. E, S, 34 on
S, W, and S, 27 on N, W, faces with 1 notch
on S, and 2 notches on E. edges, dug
pits 18 x 18 x 12 ins. in each Sec., 5 1/2 ft. dist.
and raised a mound of earth 2 ft. high. 4 1/2 ft.
base. around post.

Surface rolling
Soil 3^d rate
Grass good.

Th. 14 N. R. 20 E.
 Ch. G. + S. R. M.

East. on a random line bet. Secs. 26 + 35.
 Va. 1330 E.

Descent gradually

35.00 Cross track 17 lks. wide C. N. 38° E. and
 across over low rolling hills

40.00 Set temporary $\frac{1}{4}$ Sec. Cor.

67.17 Spur 25 ft high br. N. 40° E. + descent grad

80.13 Intersect N. + S. line 40 lks. S. of Cor.
 to Secs. 25 - 26 - 35 + 36. Thence I run
 S. 89 $\frac{1}{2}$ ° W. on a true line bet. Secs. 26 + 35.
 Va. 1330 E.

40.06 Set a post 3 ft. long 3 ins. diam with marked
 stone, 12 ins, in the ground for $\frac{1}{4}$ Sec, Cor,
 marked $\frac{1}{4}$ S. on N. face, dug pits 18 x 18 x 12
 ins. E. and N. of post $5\frac{1}{2}$ ft. dist. and raised
 a mound of earth $1\frac{1}{2}$ ft. high. $3\frac{1}{2}$ ft. base. around
 post.

80.13 The Cor. to Secs. 26 - 27 - 34 + 35
 Sec. 13. is low rolling hills
 Soil 2 $\frac{1}{2}$ rate
 good grass
 Very little brush.

Tp. 14 N. R. 20 E.
G. + S. R. M.

North. lot. Secs. 26 + 27.
Va. 1830' E.

Descent gradually

40.00 Set a post 3 ft. long 3 ins. diam with marked stone, 12 ins, in the ground for $\frac{1}{4}$ Sec. Cor. marked $\frac{1}{4}$ S. on N. face, dug pits 18 x 18 x 12 ins. N. and S. of post $5\frac{1}{2}$ ft. dist. and raised a mound of earth $1\frac{1}{2}$ ft. high. $3\frac{1}{2}$ ft. base. around post.

71.00 Cross Rock 40 lbs. wide C. N. 40° E. 100 yds.

80.00 Set a Sand Stone $40 \times 16 \times 4$ ins. 24 ins. in the ground for Cor. to Secs. 23-24-25+26 marked with 2 notches on S + E. edges, and raised a mound of stone alongside. Pits impracticable
Surface falling
Soil 3? slate
Grass grow.

BOOK 184

Tp. 14 N. R. 20 E.

Chs G. + S. R. M.

East on a random line bet. Secs. 23 + 26.

va. 13° 3' 0" E.

Descend gradually

9.00 Cross Wash 30 Chs. Wide N 46° E. + descend.

40.00 Set temporary 1/4 Sec. Cor.

75.80 Cross Wash 20 Chs. Wide Co. N. + descend.

80.32 Intersect N. + S. line 60 Chs. S. of Cor.
to Secs. 23-24-25 + 26. Thence I run

S. 89° 34' N. on a true line bet. Secs. 23 + 26.

va. 13° 3' 0" E.

40.16

Set a post 3 ft. long 3 ins. diam with marked
stone, 12 ins, in the ground for 1/4 Sec, Cor,
marked 1/4 S. on N. face, dug pits 18 x 18 x 12
ins. E. and W. of post 5 1/2 ft. dist. and raised
a mound of earth 1 1/2 ft. high. 3 1/2 ft. base. around
post.

80.32

At Cor. to Secs. 22-23-26 + 27

Sec. 26 is a rolling Mesa
Soil 2^d rate
Good grass
No Timber or Brush

Tr. 14 N. R. 20 E.
 Chs G. & S. R. M.

North lot, Secs. 22 & 23.
 Va. $13^{\circ}30' E$,

Ascent gradually

13.00 Top of Spur 50 ft. high bro. E. + descent.

33.90 Foot of Hill N. $76^{\circ} W$.

34.12 Cross Draw Co. E. + ascent gradually

40.00

Set a post 3 ft. long 3 ins. diam with marked stone, 12 ins, in the ground for $\frac{1}{4}$ Sec, Cor. marked $\frac{1}{4}$ S. on N. face, dug pits 18 x 18 x 12 ins. N and S. of post $5\frac{1}{2}$ ft. dist. and raised a mound of earth $1\frac{1}{2}$ ft, high. $3\frac{1}{2}$ ft. base. around post.

80.00

Set 5 sand stones 18 x 14 x 4 ins. 12 ins. in the ground for Cor. to Secs. 14-15. 22 & 23 Markers with 3 notches on S. and 2 notches on E. edges. and raised a mound of stone alongside. Pits impracticable.

Surface rolling
 Soil 3^d. rate
 Grass good.

BOOK 164

Tⁿ 14 N. R. 20 E.

Chs

G & S. R. M.

East on a random line bet. Secs. 14 & 23.

Na. 133° 0' E.

Overrolling land.

40.00 Set temporary $\frac{1}{4}$ Sec. Cor.

80.19 Return N. & S. line 80 S. of Cor. to Secs. 13-14-23 & 24. Then I run S. 89° 26' N. on a true line bet. Secs. 14 & 23.

Na. 133° 0' E.

40.09

Set a post 3 ft. long 3 ins. diam with marked stone, 12 ins, in the ground for $\frac{1}{4}$ Sec. Cor, marked $\frac{1}{4}$ S. on N. face, dug pits 18 x 18 x 12 ins. E. and W of post 5 $\frac{1}{2}$ ft. dist. and raised a mound of earth 1 $\frac{1}{2}$ ft. high. 3 $\frac{1}{2}$ ft. base. around post.

80.19

Cor to sec 13/14. 22. 23
Sec 23. is a rolling mesa.

Soil 3rd Rate

Grass fair

Some Juniper Brush

Ch
 7/14 N. Q. 20 E.
 G. & S. R. M.

North lot Secs. 14 + 15.
 Va 13 30 E.

Ascend gradually

40.00 Set a Sand stone, $17 \times 8 \times 4$ ins., 12 ins.
 in the ground for $\frac{1}{4}$ Sec, Cor, marked $\frac{1}{4}$ on W.
 face, dug pits $18 \times 18 \times 12$ ins. N. and S.
 of stone $5\frac{1}{2}$ ft. dist. and raised a mound of earth
 $1\frac{1}{2}$ ft. high. $3\frac{1}{2}$ ft. base. alongside.

51.00 Begin descent

80.00 Set a post 4 ft. long 4 ins. square, with marked
 stone, 12 ins, in the ground for Cor, to Secs,
 10-11-14+15 marked T. 14/2. S. 11 on
 N. E. R. 20 E. S. 14 on S. E. S, 15 on
 S, W, and S, 10 on N, W, face, with 4 notch
 00 on S, and 2 notch 00 on E. edges, dug
 pits $18 \times 18 \times 12$ ins. in each Sec., $5\frac{1}{2}$ ft. dist.
 and raised a mound of earth 2 ft. high. $4\frac{1}{2}$ ft.
 base. around post.

Surface rolling
 Soil $3\frac{1}{2}$ rate
 Grass fair

Tp. 14 N. R. 20 E.
G + S. R. M.

Chs

East. on a random line bet Secs. 11-14.
Va. 13° 30' E

Ascent gradually

21.00 Foot of Butte Crs. N.S. ascent.
33.00 Top of Butte 225 ft. high Crs. N.S. + descent.

40.00 Set temporary $\frac{1}{4}$ Sec. Cor.

57.16 Foot of Butte Crs N.S. Enter Flat.

79.91 Intersect N.S. line 48 lks. S. of Cor.

to Secs. 11-12-13 + 14 Thence I run
S. 89° 39' W. on true line bet. Secs. 11 + 14
Va. 13° 30' E.

79.95 Set a sand stone, 18 x 18 x 12 ins., 12 ins.
in the ground for $\frac{1}{4}$ Sec. Cor, marked $\frac{1}{4}$ on N.
face, dug pits 18 x 18 x 12 ins. E. and W.
of stone 5 $\frac{1}{2}$ ft. dist. and raised a mound of earth
1 $\frac{1}{2}$ ft. high. 3 $\frac{1}{2}$ ft. base. alongside.

79.91 The Cor. to Secs. 10-11-14 + 15.
Sec. 14 is a slight rolling mesa, with
stige butte in northern part.
Soil 2^o or 3^o rate
Good grazing
Scattering Juniper brush.

T. 14 N. R. 20 E.
 Chs G. + S. R. M.

North lot, Secs. 10 & 11.
 Va. $13^{\circ}30' E$.

Descend gradually

38.00

Begin to ascend gradually

40.00

Set a post 3 ft. long 3 ins. diam with marked stone, 12 ins, in the ground for $\frac{1}{4}$ Sec, Cor, marked $\frac{1}{4}$ S. on N. face, dug pits 18 x 18 x 12 ins. N. and S. of post $5\frac{1}{2}$ ft. dist. and raised a mound of earth $1\frac{1}{2}$ ft. high. $3\frac{1}{2}$ ft. base. around post.

50.00

Set a post 4 ft. long 4 ins. square, with marked stone, 12 ins, in the ground for Cor, to Secs. 2-3-1A+11 marked T. 14 N. S. 2 on N. E. R. ~~20~~ E. S. 11 on S. E, S, 10 on S, W, and S, 3 on N, W, face, with \checkmark notch ∞ on S, and 2 notch ∞ on E. edges, dug pits 18 x 18 x 12 ins. in each Sec., $5\frac{1}{2}$ ft. dist. and raised a mound of earth 2 ft. high. $4\frac{1}{2}$ ft. base. around post.

Surface rolling
 Soil 3' rate
 Grass good.

Tr. 14 N. R. 20 E,
 Ch. G. + S. R. M. 15

East. on a random line bet. Secs. 2 + 11.
 Va. $13^{\circ}45' E$,

Nearly level

410.00 Set temporary $\frac{1}{4}$ Sec. Cor.

79.82 Intersect N. & S. line 107 lbs. S. of
 Cor. to Secs. 1-2-11 + 12. Thence Down
 S. $89^{\circ}31' N$. on a true line bet. Secs. 2 + 11.
 Va. $13^{\circ}45' E$,

3991 Set a Sand stone, $14 \times 11 \times 4$ ins., 9 ins.
 in the ground for $\frac{1}{4}$ Sec, Cor, marked $\frac{1}{4}$. on N.
 face, dug pits $18 \times 18 \times 12$ ins. E. and W.
 of stone $5\frac{1}{2}$ ft. dist. and raised a mound of earth
 $1\frac{1}{2}$ ft. high. $3\frac{1}{2}$ ft. base. alongside.

79.82 The Cor. to Secs. 2-3-10 + 11.
 Sec 11. is an almost level Mesa.
 Soil 3rd rate
 Good grass
 Scattering Juniper Bush

Tr. 14 N. R. 20 E.
Chs G. & S. R. M.

North on a random line bet. Secs. 2 & 3.

va. $13^{\circ}45' E$.

Ascend gradually

40.00 Set temporary $\frac{1}{4}$ Sec. Cor.

80.16 Intersect N. B. of Tr. 30 Chs. E.

of Cor. to Secs. 2-3-34 & 35. recently established by me. Thence I run

S. $13^{\circ} E$. on a true line bet. Secs. 2 & 3.

va. $13^{\circ}45' E$.

40.16

Set a post 3 ft. long 3 ins. diam with marked stone, 12 ins, in the ground for $\frac{1}{4}$ Sec. Cor, marked $\frac{1}{4}$ S. on N. face, dug pits 18 x 18 x 12 ins. S and N. of post $5\frac{1}{2}$ ft. dist. and raised a mound of earth $1\frac{1}{2}$ ft. high. $3\frac{1}{2}$ ft. base. around

80.16

~~post~~
In Cor. to Secs. 2-3-10 & 11.

Sec. 2, is rolling

Soil 2^d rate

Good grass.

Sealing Juniper Brush

I carefully examined the adjustments of my Solar Compass today, particularly the latitude and revolving apparatus, and found them correct. Ast. Arnold Compassman June 11. 1883.

Tr. 14 N. R. 20 E.
 Sec. 33 & 34, T. 14 N. R. 20 E.

From the Cor. to Secs. ^{34.} 33 & 34 on
 S. P. Tr. recently established by me, from
 North bet. Secs 33 & 34,
 Va. 1030 E.

ascend.

10.00 Top of Ridge 60 ft high bet. N.W. + descend

40.00 Set a Sand Stone 24 x 12 x 4 ins.

16 ins. in the ground for $\frac{1}{4}$ Sec. Cor.

Marked $\frac{1}{4}$ on N. face, and

raised a mound of straw alongside

Pits impracticable.

80.00

Set a post 4 ft. long 4 ins. square, with marked
 stone, 12 ins. in the ground for Cor. to Secs,

17-28-33-34 marked T. 14 N. S. 27 on

N. E. R. 20 E. S. 34 on S. E. S. 33 on

S, W, and S, 28 on N, W, face, with 1 notch

on S, and 3 notches on E. edges, dug

pits 18 x 18 x 12 ins. in each Sec., 5 $\frac{1}{2}$ ft. dist.

and raised a mound of earth 2 ft. high 4 $\frac{1}{2}$ ft.

base. around post.

Surface rolling

Soil 4th Rate

Grass fair.

Tp. 14 N. R. 20 E.
 G. & S. R. M.

East, on a random line bet Secs. 27 & 34
 Va. $13^{\circ}30'$ E.

Over low rolling Hills

40.00 Set temporary $\frac{1}{4}$ Sec. Cor.

79.84 Intersubst. Nat. S. line 72 lbs. S. of
 Cor. to Secs. 26-27-34 & 35. Thence Iron
 S. $89^{\circ}29'$ W. on a true line bet. Secs. 27 & 34

Va. $13^{\circ}30'$ E.

39.92 Set a post 3 ft. long 3 ins. diam with marked
 stone, 12 ins. in the ground for $\frac{1}{4}$ Sec. Cor.
 marked $\frac{1}{4}$ S. on N. face, dug pits 18 x 18 x 12
 ins. E. and S. of post $5\frac{1}{2}$ ft. dist. and raised
 a mound of earth $1\frac{1}{2}$ ft. high. $3\frac{1}{2}$ ft. base. around
 post.

79.84 The Cor. to Secs. 27-28-33 & 34

Sec. 34 is rolling

Soil 4th rate

Good grass

Scattering Juniper Bush.

April 14 N. R. 20 E.

Ch G. & S. R. M.

North, Ant. Secs. 27 & 28.

Na. $15^{\circ}30' E$.

Descent gradually

25.15 Cross track 2 1/2 mls. wide Co. N. $60^{\circ} E$. to secant.

40.00 Set a post 3 ft. long 3 ins. diam with marked stone, 12 ins, in the ground for $\frac{1}{4}$ Sec, Cor, marked $\frac{1}{4}$ S. on N. face, dug pits 18 x 18 x 12 ins. N. and S of post $5\frac{1}{2}$ ft. dist. and raised a mound of earth $1\frac{1}{2}$ ft. high. $3\frac{1}{2}$ ft. base. around post.

67.10 Spur 150 ft high, brs. E. & descent.

80.00 Set a post 4 ft. long 4 ins. square, with marked stone, 12 ins, in the ground for Cor, to Secs, 21-22-27 & 28 marked T. 14 N. S. 22 on N. E. R. 20 E. S. 27 on S. E, S, 28 on S, W, and S, 21 on N, W, face, with 2 notch 20 on S, and 3 notch 20 on E. edges, dug pits 18 x 18 x 12 ins. in each Sec., $5\frac{1}{2}$ ft. dist. and raised a mound of earth 2 ft. high. $4\frac{1}{2}$ ft. base. around post.

Surface falling
fast 3" rate
grass fair

N. 14 N. R. 20 E.

Chs G. S. R. M.

East. on a random line bet. Secs. 22 & 27

Va. 133° 0' E

Descend gradually

40.00 Set temporary $\frac{1}{4}$ Sec. Cor.

79.60 Interval N. & S. line 49 lbs. S. of Cor. to
Secs. 22-23-26 & 27. Thence I run

S. 89° 39' N. on a true line bet. Secs. 22 & 27

Va. 133° 0' E.

39.80

Set a Lime stone, 14 x 6 x 11 ins., 9 ins.
in the ground for $\frac{1}{4}$ Sec, Cor, marked $\frac{1}{4}$ on N.
face, dug pits 18 x 18 x 12 ins. S. and N.
of stone 5 $\frac{1}{2}$ ft. dist. and raised a mound of earth
1 $\frac{1}{2}$ ft. high. 3 $\frac{1}{2}$ ft. base. alongside.

79.60

The Cor. to Secs. 21-22-27 & 28

Sec 27 is slightly rolling

Soil 2^o rate

Grass good

No timber

BOOK 164

T_h. 14 N. R. 20 E.

Cks

G. + S. R. M.

North bet. Secs. 21 + 22.

Va, 830' E.

Descend gradually

10.50 Head of Wash Co. E. + ascend along Hillside

40.00 Set a post 3 ft. long 3 ins. diam with marked stone, 12 ins. in the ground for $\frac{1}{4}$ Sec. Cor. marked $\frac{1}{4}$ S. or N. face, dug pits 18 x 18 x 12 ins. N. and S of post $5\frac{1}{2}$ ft. dist. and raised a mound of earth $1\frac{1}{2}$ ft. high. $3\frac{1}{2}$ ft. base. around~~post.~~

76.15 Begin descend.

80.00 Set a Sand stone $14 \times 9 \times 3$ ins, 9 ins. in the ground for Cor. to Secs 15-16-21+22 marked with 3 notches on S. and 3 notches on E. edges, dug pits 18 x 18 x 12 ins. in each Sec., $5\frac{1}{2}$ ft. dist. and raised a mound of earth 2 ft. high. $4\frac{1}{2}$ ft. base. alongside.Surface rolling
Soil 3rd mate
Grass good

Twp. 14 N. R. 20 E.

Chs G. + S. R. M.

East on a random line bet. Secs. 15 + 22

Ra. $13^{\circ}30'$ E.

Descend over rolling Hills.

16.12 Foot of Hill bet. N.W.

40.00 Set temporary $\frac{1}{4}$ Sec. Cor.

79.93 Intersect N. & S. line 70 Chs. S. of Cor.

to Secs. 14-15-22-23. Thence Iron

S. $89^{\circ}30'$ N. on a true line bet. Secs. 15 + 22.Ra. $13^{\circ}30'$ E.

39.76

Set a post 3 ft. long 3 ins. diam with marked stone, 12 ins, in the ground for $\frac{1}{4}$ Sec, Cor, marked $\frac{1}{4}$ S. on N. face, dug pits 18 x 18 x 12 ins. E. and N. of post $5\frac{1}{2}$ ft. dist. and raised a mound of earth $1\frac{1}{2}$ ft. high. $3\frac{1}{2}$ ft. base. around post.

79.93

The Cor. to Secs. 15-16-21+22.

Sec. 22. is a rolling Mesa.

Soil 3^d rate

Grass fair

Scattering Juniper Brush

Tr. 14 N. R. 20 E.

Chs

G. + S. R. M.

North cut. Secs. 15 + 16

Va. 1330' E.

Descend gradually

29.61

40.00

Foot of Hill brs. N. 42° W.

Set a post 3 ft. long 3 ins. diam with marked stone, 12 ins, in the ground for $\frac{1}{4}$ Sec, Cor, marked $\frac{1}{4}$ S. on N. face, dug pits 18 x 18 x 12 ins. N. and S. of post 5 $\frac{1}{2}$ ft. dist. and raised a mound of earth 1 $\frac{1}{2}$ ft, high. 3 $\frac{1}{2}$ ft. base. around post.

78.18

80.00

Begin to ascend.

Set a Sand stone 6 x 9 x 1 ins, 11 ins. in the ground for Cor, to Secs. 9-10-15+16 marked with 4 notches on S. and 3 notches on E. edges, dug pits 18 x 18 x 12 ins. in each Sec., 5 $\frac{1}{2}$ ft. dist. and raised a mound of earth 2 ft, high. 4 $\frac{1}{2}$ ft. base. alongside.

Surface nearly level
Soil 3 $\frac{1}{2}$ rate
Grass fair

T_p. 14 N. R. 20 E.

Chs G. & S. R. M.

Each on a random line bet. Secs. 10 + 15
 Va. 14° 00' E.

Descend gradually

40.00 Set temporary $\frac{1}{4}$ Sec. Cor.

46.11 Begin to ascend

79.77 Intersect N. + S. line 53 lks. S. of Cor.
 to Secs. 10-11-14 + 15 Thence course
 S. 89° 37' W. on a true line bet. Secs. 10 + 15
 Va. 14° 00' E.

39.88 Set a Sand stone, 16 x 8 x 3 ins., 11 ins.
 in the ground for $\frac{1}{4}$ Sec, Cor, marked $\frac{1}{4}$ on N.
 face, dug pits 18 x 18 x 12 ins. E. and W.
 of stone 5 $\frac{1}{2}$ ft. dist. and raised a mound of earth
 1 $\frac{1}{2}$ ft. high. 3 $\frac{1}{2}$ ft. base. alongside.

79.77 The Cor. to Secs. 9-10-15 + 16.
 Sec. 15 almost level Mesa
 Soil 2°. rate
 Fine grass.
 Scattering Juniper Brush

Sp. 14 N. R. 20 E.

Ch

G. S. R. M.

North Cut. Secs. 9 + 10
wa. 14° E.

Ascend gradually

4000

Set a Sand stone, 18 x 10 x 3 ins., 12 ins. in the ground for $\frac{1}{4}$ Sec, Cor, marked $\frac{1}{4}$ on W face, dug pits 18 x 18 x 12 ins. N. and S of stone 5 $\frac{1}{2}$ ft. dist. and raised a mound of earth 1 $\frac{1}{2}$ ft. high, 3 $\frac{1}{2}$ ft. base. alongside.

8000

Set a Sand stone, 6 x 8 x 5 ins., 11 ins. in the ground for Cor, to Secs, 3-4-9+10 marked with 5 notches on S. and 3 notches on E. edges, and raised a mound of stone alongside. Pits impracticable

Surface rolling

Sail 3 $\frac{1}{2}$ ft. at

Grass goat.

N. 14 N. R. 20 E.
Chs G. + J. R. M.

East. on a random line bet. Secs. 3+10.
Va. 1345' E.

Descent gradually

40.00 Set temporary $\frac{1}{4}$ Sec. Cor.

80.40 Intsect N-S. line 3 1/2 Secs. S. of Cor.

to Secs. 2-3-10-11. Then I run
S 89° 47' N. on a true line bet. Secs. 3+10.

Va. 1345' E.

40.20 Set a sand stone 21x10x4 ins. 15
ins. in the ground for $\frac{1}{4}$ Sec. Cor.

Marked $\frac{1}{4}$ on N. face, and raised
a mound of stone alongside.

Pits impracticable.

80.40 For Cor. to Secs. 3-4-9-10

Sec. 10 is a rolling Mesa, slopes East

Soil 3^d rats

Fine grass

Scattered Juniper bush

Tr. 14 N. R. 20 E.
Chs G. + S. R. M.

North on a random line bet. Secs. 3 & 4.
Va. 13° 45' E.

Desand gradually

40.00 Set temporary $\frac{1}{4}$ Sec. Cor.

79.80 Intersect N. B. of Tr. 21 lks E. of Cor.
to Secs. 3-4-33+34 recently set by me. Hence I ran
S. 9° E. on a true line bet Secs. 3 + 4 ^{va 13° 45' E}

59.80 Set a sand stone 18x10x6 ins. 12 ins. in
the ground for $\frac{1}{4}$ Sec. Cor. Marked $\frac{1}{4}$ on
N. face, and raised a mound of stone
alopside. Pits unpracticable.

79.80 The Cor. to Secs. 3-4-9+10.

Sec. 3. a rolling Mesa. Sloping to North
Soil 3^d rate
Good grass.

Scattering Juniper Bush.

I carefully examined the adjustments of my
Solar Compass today. particularly
the latitude and reversing apparatus,
and found them correct.

M. N. Grant, June 12. 1883.

Tp. 14 N. R. 20 E.

Chs G. T. S. R. M.

- 4.5-
- From the Cor. to Secs. 32 + 33. on S. P. of
 Tp. recently established by me. From
 North. bet. Secs. 32 + 33,
 runs gradually. Va, 1330' E.
- 23.17 Top of Spur. bet E + N. + descend.
- 40.00 Set a Sand stone 18x10x6 ins. 12 ins.
 in the ground for $\frac{1}{4}$ Cor. Marked
 $\frac{1}{4}$ on N. face and raised a mound of
 Stone alongside. Pits impracticable.
- 80.00 Set a Sand Stone 28x12x4 ins 20 ins. in
 the ground for Cor. to Secs. 28-29-32+33.
 Marked with 1 Notch on S. and 4 Notches
 on E. edges. and raised a mound of
 Stone alongside. Pits impracticable.

Surface rolling
 Soil 3rd rate
 Grass good.

Sp. 14 N. R. 20 E.
 Chs G. & S. R. M.

East, on a random line bet. Secs. 28 + 29.
 Va. 1330' E.

ascends gradually

8.00 Cross track 10 lks. wide Co. N. 14° N. + ascent.

36.16 Ridge 280 ft. high bet. N. 20° W. + descent.

40.00 Set temporary $\frac{1}{4}$ Sec. Cor.

51.80 Cross track 60 lks. wide Co. N. 10° E. + ascent.

74.14 Spr. 180 ft. high N. 10° E. + descent.

80.22 Intersect N. S. line 53 lks. S. of Cor.
 to Secs. 27-28-33 + 34. Thence I run
 S. 89° 37' N. on a true line bet. Secs. 28 + 29.

Va. 1330' E.

40.11 Set a Saw Stone 16 x 11 x 9 ins. 11 ins. in
 the ground for $\frac{1}{4}$ Sec. Cor. Marked
 $\frac{1}{4}$ on N. face, and raised a mound
 of stone alongside. Pits impracticable
 the Cor. to Secs. 28-29-32 + 33
 Sec 33. is rolling

80.22

Soil 2^d + 3^d rate

Good grass.

Scattering Juniper

Sp. 14 N. R. 20 E.

Ch. G. + S. R. M.

North Int. Secs. 28 + 29

va. 1330' E.

Descent Prokes

20.10 Cross Wash 13 lks. Ind. Co. N.W. + Con. descent.

40.00 Set a Sand stone 15 x 11 x 6 ins. 10 ins.

in the ground for $\frac{1}{4}$ Sec. Cor. Marked $\frac{1}{4}$ on N. face, and raised a mound of stone alongside. Pits impracticable.

64.50 Foot of Hill brs. N. 11° E.

80.00 Set a Sand stone 18 x 12 x 10 ins. 12 ins.

in the ground for Cor. to Secs. 20-21-28 + 29. Marked with 2 Notches on S. and 4 Notches on E. edges, and raised a mound of stone alongside. Pits impracticable.

Surface rolling

Soil 3' rate

Grass fair

Chs

Sp. 14 N. R. 20 E.

T. S. R. M.

East on a random line bet. Secs. 21 & 28,
 Va. 13° 30' E.

Over level valley land.

- 1.50 Leave Valley & begin ascent bro. N. 10° E.
 21.50 Edge of Bluff 150 ft high bro. N. 0 S. & ascent
 40.00 Set temporary $\frac{1}{4}$ Sec. Cor.
 43.77 Top of Ridge bro N. 23° E. & descent.
 80.09 Intersect N. & S. line 19 lks. S. of Cor.
 to Secs. 21-22-27 & 28. Hence I run
 S. 89° 52' N. on a true line bet. Secs. 21 & 28.
 Va. 13° 30' E.

- 40.05 Set a Sand stone 14 x 10 x 6 ins. 9 ins.
 in the ground for $\frac{1}{4}$ Sec. Cor. Marked
 $\frac{1}{4}$ on N. face, and raised a mound
 of stones alongside. Pit impracticable
 80.09 See Cor. to Secs. 20-21-28 & 29.
 Sec. 28 is rough & rocky
 Soil 4' rate,
 Grass poor
 Thick Juniper Brush.

Sp. 14 N. R. 20 E.

Ch. G. + S. R. M.

North lot Secs. 20 + 21,

Na. 13°30' E.

Overland Valley Land.

- 40.00 Set a Sand Stone 18x10x4 ins. 12 ins.
in the ground for $\frac{1}{4}$ Sec. Cor. Marked
 $\frac{1}{4}$ on N. face, and raised a mound
of Stone alongside. Pits impracticable.
- 72.25 Foot of Bluff bet. E. & N. + across
- 80.00 Set a Sand Stone 18x10x6 ins. 12 ins.
in the ground for Cor. to Secs. 16-17-20 + 21,
Marked with 3 Notches on S. and 4 Notches
on E. edges, and raised a mound of Stone
alongside. Pits impracticable

Surface rolling

Soil 4 Rate

Grass poor

Heavy Juniper Brush

Tp. 14 N. R. 20 E.

Chs

by S. R. M.

East on a random line bet. Secs. 16 + 21

va. 10° 30' E.

ascends along side of rocky bluff.

40.40 Set temporary $\frac{1}{4}$ Sec. Cor.

68.19 Ridge 160 ft. high bet N. + E. above Cor.

79.79 Intersect N. + S. line 38 lks. S. of Cor.

to Secs. 15-16-21 + 22. Thence Iron

S. 89° 44' N. on a true line bet. Secs. 16 + 21

va. 10° 30' E.

39.89

Set a post 3 ft. long 3 ins. diam with marked stone, 12 ins. in the ground for $\frac{1}{4}$ -Sec. Cor. marked $\frac{1}{4}$ S. on N. face, dug pits 18 x 18 x 12 ins. E and W. of post 5 $\frac{1}{2}$ ft. dist. and raised a mound of earth 1 $\frac{1}{2}$ ft. high. 3 $\frac{1}{2}$ ft. base around post.

79.79

The Cor. to Secs. 16-17-20 + 21.

Sec 21 is Valley in the West. Diverging + Broken in the East.

Soil 2^o + 3^o rate

Graying fair

Some Juniper

T. 14 N. R. 20 E.

Chs G. & S. R. M.

North Int. Secs. 16 + 17.

va. 1330' E.

asant.

12.00

Top of Rocky Bluff - descend.

40.00

Set a post 3 ft. long 3 ins. diam with marked stone, 12 ins, in the ground for $\frac{1}{4}$ Sec, Cor, marked $\frac{1}{4}$ S. on N. face, dug pits 18 x 18 x 12 ins. N. and S. of post $5\frac{1}{2}$ ft. dist. and raised a mound of earth $1\frac{1}{2}$ ft. high. $3\frac{1}{2}$ ft. base. around post.

80.00

Set a post 4 ft. long 4 ins. square, with marked stone, 12 ins, in the ground for Cor, to Secs, 8-9-16 & 17 marked T. 14 N. S. 9 on N. E. R. 20 E. S. 16 on S. E., S, 17 on S, W, and S, 8 on N. W, face, with 4 notches on S, and 4 notches on E. edges, dug pits 18 x 18 x 12 ins. in each Sec., $5\frac{1}{2}$ ft. dist. and raised a mound of earth 2 ft, high. $4\frac{1}{2}$ ft. base. around post.

Surface rolling
Soil 3? rate
Grass fair

B10K 764

Tr. 14 N. R. 20 E,

Chs

G. S. R. M.

Cast on a random line bet. Secs. 9 + 16
 Va. 18° 30' E.

Descend gradually

40.00 Set temporary $\frac{1}{4}$ Sec. Cor.

51.60 Cross Wash 15 Cks. Wide Co. N.

80.30 Intersect N. + S. line 31 Cks. S. of Cor.
 to Secs. 9-10-15 + 16. Thence I run
 S. 89° 47' N. on a true line bet. Secs. 9 + 16.

Va 18° 30' E.

40.15

Set a post 3 ft. long 3 ins. diam with marked
 stone, 12 ins, in the ground for $\frac{1}{4}$ Sec. Cor,
 marked $\frac{1}{4}$ S. on N. face, dug pits 18 x 18 x 12
 ins. E. and N. of post 5 $\frac{1}{2}$ ft. dist. and raised
 a mound of earth 1 $\frac{1}{2}$ ft, high. 3 $\frac{1}{2}$ ft. base. around
 post.

80 30 In Cor. to Secs. 8-9-16 + 17

Sec. 16 is rolling

Soil 2^o rate

Good grass

No brush

Tp. 14 N. R. 20 E.

Chs G. + S. R. M.

North. Int. Secs. 8 + 9.

Va. 1330' E

Descend gradually

44.00

40.00

Foot of Hill No. N. 83° E, + as usual gradually

Set a post 3 ft. long 3 ins. diam with marked stone, 12 ins, in the ground for $\frac{1}{4}$ Sec, Cor, marked $\frac{1}{4}$ S. or N. face, dug pits 18 x 18 x 12 ins N and S of post $5\frac{1}{2}$ ft. dist. and raised a mound of earth $1\frac{1}{2}$ ft, high. $3\frac{1}{2}$ ft. base. around post.

80.00

Set a post 4 ft. long 4 ins. square, with marked stone, 12 ins, in the ground for Cor, to Secs, 4-5-8+9 marked T. 14 N. S. 4 on N. E. R. 20 E, S. 9 on S. E, S, 8 on S, W, and S, 5 on N, W, face, with 5 notch ∞ on S. and 4 notch ∞ on E. edges, dug pits 18 x 18 x 12 ins. in each Sec., $5\frac{1}{2}$ ft. dist. and raised a mound of earth 2 ft, high. $4\frac{1}{2}$ ft. base. around post.

Surface rolling
Soil 3rd rate
Grass good.

Th. 14 N. R. 20 E.

Cfs

S. & S. R. M.

East on a random line bet. Secs. 4 + 9.

va. $13^{\circ}30' E$.

ascend over rolling Hills.

29.88 Descend gradually

40.00 Set temporary $\frac{1}{4}$ Sec. Cor.

69.50 Cross Dash 19 lks. wide Co. N. + ascend.

77.00 Begin to descend gradually

80.16 Intusuel N + S. line 5 to lks. S. of cor.

to Secs. 3-4-9+10. Thence I run
S. $89^{\circ}36' N$. on a true line bet Secs. 4 + 9.

va. $13^{\circ}30' E$.

40.08

Set a post 3 ft. long 3 ins. diam with marked
stone, 12 ins, in the ground for $\frac{1}{4}$ Sec. Cor,
marked $\frac{1}{4}$ S. on N. face, dug pits 18 x 18 x 12
ins. E. and N. of post $5\frac{1}{2}$ ft. dist. and raised
a mound of earth $1\frac{1}{2}$ ft, high. $3\frac{1}{2}$ ft. base. around
post.

80.16

The Cor. to Secs. 4-5-8+9

Sec. 9 is rolling

Soil 3rd rate

Graying fair

Scatting Juniper Brush

Sp. 14 N. R. 20 E.
Ch. G. & S. R. M.

North on a random line bet. Secs. 4 + 5.
Descends gradually $va. 13^{\circ}30' E.$

34.48 Cross Wash 16 Cks. Wade Co. N. $15^{\circ} W.$

40.00 Set temporary $\frac{1}{4}$ Sec. Corner

80.30 Intercept N. B. of Sp. 13 Prof. Cor. to
Secs. 45-32 & 33. Since I have
recently relinquished by me

S. 6' N. on a true line bet. Secs 4 + 5.

40.30 Set a Sand Stone $12 \times 9 \times 5$ ins. 7 ins. in the
 $va. 13^{\circ}30' E.$
ground for $\frac{1}{4}$ Sec. Cor. marked $\frac{1}{4}$ on N.
face and raised a mound of stone
alongside. Pits impracticable.

8030 In Cor. to Secs. 4-5-8 & 9.

Sec. 4. Slopes gradually to North
Soil 2^d rate

Good grass.

Some Juniper Brush

I carefully examined the adjustments of my Solar
Compass to-day, particularly the Latitude and
reversing apparatus, and found them correct.
A. H. Arnold Compassman June 12, 1883.

T. 14 N. R. 20 E.
 Chs G. S. R. M.

From Cor. to Secs 31, 32 & 33 on N. P. of
 T. recently set by me. Iron
 North cut. Secs. 31 & 32.
 Va. 1336' E

Descend gradually

40.00

Set a sand stone, 18 x 12 x 4 ins., 12 ins.
 in the ground for $\frac{1}{4}$ Sec, Cor, marked $\frac{1}{4}$ on N.
 face, and raised a mound of stone
 alongside. Pits imprac-
 ticable.

42.31

Cross Draw C. N. E. 1 into Valley

80.00

Set a post 4 ft. long 4 ins. square, with marked
 stone, 12 ins. in the ground for Cor, to Secs,
 29-30-31 & 32 marked T. 14 N. S. 29 on
 N. E. R. 20 E. S. 32 on S. E. S, 31 on
 S, W, and S, 31 on N, W, face, with 1 notch
 on S, and 5 notch 20 on E. edges, dug
 pits 18 x 18 x 12 ins. in each Sec. 5 ft. dist.
 and raised a mound of earth 2 ft. high 4 ft.
 base. around post.

Surface rolling
 Soil 3^d rate
 Grass fair.

Sp. 14 N. R. 20 E.

Ch

G. + S. R. M.

Each on a random line bet. Secs. 29 + 32,
Va. 13° 30' E.

Over level Valley

- 16.30 Cross low Sag bro. N. 10° E.
- 17.00 Leave Valley bro. N. S. + ascent.
- 40.00 Set temporary $\frac{1}{4}$ Sec. Cor.
- 80.43 Intusub N. S. line 29 lks. S. of Cor.
to Secs. 28-29-32 + 33. Then I run
S. 89° 48' W. on a true line bet. Secs. 29 + 32.
Va. 13° 30' E.
- 110.21 Set a Sand stone 18 x 12 x 10 ins. 12 ins.
in the ground for $\frac{1}{4}$ Sec. Cor. marked
 $\frac{1}{4}$ on N. face, and raised a mound
of stone alongside. Pitts impracticable.
- 80.43 The Cor. to Secs. 29-30-31 + 32,
Sec 32, is slightly rolling
Soil 2^d rate
Good grass.
Scattering Juniper
N. N. Frank June 13, 1883.

Tr 14 N. R. 20 E.
Chs G. + S. R. M.

Not on a random line bet. Secs. 30 + 31.
Va. 13° 30' E.

Over level valley land

- 24.51 Leave Valley + ascend
40.00 Set temporary $\frac{1}{4}$ Sec. Cor.
79.90 Intervals N. B. of Tr. 4 3/4 Secs. N.
of Cor. to Secs. 25-30-31 + 36. Recently
established by me. Since I run
N 89° 42' E. on a true line bet Secs 30 + 31.
Va. 13° 30' E.

- 39.90 Set a Sand Stone 25 x 12 x 4 ins 18
ins. in the ground for $\frac{1}{4}$ Sec. Cor.
Marker $\frac{1}{4}$ on N. face and raised
a mound of stone alongside.

Pits impracticable

- 79.90 The Cor. to Secs. 29-30-31 + 32
Sec 31 is slightly rolling
Soil 2^d rate
Good grass.
Scattering Juniper
A. H. Arnold Compassman June 13/1883.

Tr. 14 N. R. 20 E.
Chs G. S. R. M.

North. cut. Secs. 29 & 30.

Na. 13°30' E.

Over level Valley land.

40.00

Set a post 3 ft. long 3 ins. diam with marked stone, 12 ins, in the ground for $\frac{1}{4}$ Sec, Cor, marked $\frac{1}{4}$ S. on N. face, dug pits 18 x 18 x 12 ins. N. and S. of post 5 $\frac{1}{2}$ ft. dist. and raised a mound of earth 1 $\frac{1}{2}$ ft. high. 3 $\frac{1}{2}$ ft. base. around post.

76.411 Foot of Hill W. 2 & N. + ascent

50.00 Set a sand stone 30 x 18 x 5 ins. 20 ins. in the ground for Cor. to Secs. 19-20-29 & 30. Marker with 2 Notches on S. and 5 Notches on E. edge. and raised a mound of stone alongside. Pits impracticable

On face rolling
Soil 2^d. rate
Grass good.

Tr. 14 N. R. 20 E.
 Ch. G. + S. R. M.

East. on a random line bet. Secs. 20 + 29
 Va. 13° 30' E.

Asans.

- 9.00 Top Spur 60 ft. high Crs. N. + desans.
- 16.16 Enter level Valley Crs. N. + S.
- 40.00 Set temporary $\frac{1}{4}$ Sec. Cor.
- 80.17 Intersect N. + S. line + 1 lks. S. of cor.

to Secs. 20-21-28 + 29. Then Iron
 S 89° 42' N. on a true line bet. Secs. 20 + 29
 Va. 13° 30' E.

- 40.08 Set a Sand stone 24 x 18 x 6 ins. 18 ins.
 in the ground for $\frac{1}{4}$ Sec. Cor. Marked
 4 on N. face, and raised a mound

of stone alongside. *Pits impracticable*
 for Cor. to Secs. 19-20-29 + 30.
 Sec 29, Rough + rocky in the S. E.
 Just level valley in N. + N.

Soil 2.5 to 4 in. rate

Good grass in valley + poor on hills.

Thick Juniper brush

M. N. Grant June 13th 1883.

Tr. 14 N. R. 20 E.
Chs G. & S. R. M.

Met. on a random line bet. Secs. 19 & 30
Va. 18° 30' E.

Ascent over rocky hills.

38.50 ascent

40.00 Set temporary $\frac{1}{4}$ Sec. Cor.

80.36 Intusuch N. B. of Tr. 80 lks N. of Cor.

to Secs. 19-24-25 & 30. Recently
established by me. James Iron

N. 89° 26' E. on a true line bet Secs. 19 & 30.

Va. 18° 30' E.

4036 Set a Sawd Straw 24 x 12 x 4 ins 18 ins. in
the ground for $\frac{1}{4}$ Sec. Cor. Marked $\frac{1}{4}$ on N.
face, and raised a mound of straw
alongside. Pits impracticable.

80.36 The Cor. to Secs. 19-20-29 & 30.

Sec. 30 is rolling & rocky
Soil 3" to 4" to top

Grass fair

Thick bunches of Juniper

A. H. Arnold Comptroller June 13, 1883.

Tr. 14 N. Q. 20 E.
 Chi G. S. Q. M.

North. lot, Secs. 19 + 20
 Va. 1330' E.

Descend gradually

40.00 Set a Sand Stone 18x10x6 ins. 12
 ins. in the ground for $\frac{1}{4}$ Sec. Cor.
 Mark $\frac{1}{4}$ on N. face, and raise
 a mound of stone alongside.

Pits impracticable

80.00 Set a Sand Stone 36x18x6 ins.
 24 ins. in the ground, for Cor.
 to Secs. 17 + 18 - 19 + 20. Mark
 with 3 notches on S. and 5 notches
 on E. edge, and raise a mound
 of stone alongside. Pits impracticable

Surface rolling
 Soil 3^d rate
 grass good.

N. 14 N. R. 20 E.
Chs G. + S. R. M.

East, on a random line bet. Secs. 17 + 20.
va. 1330 E.

descend gradually

27.00 along edge of Flat.

40.00 Set temporary $\frac{1}{4}$ Sec. Cor. + ascent

70.00 Bluff 125 ft. high E. N. 20° E. + descent

80.60 Intersect N. of line 63 W. S. of Cor. to Sec.

16-17-20 + 21. Thence I run

S. 89° 33' N. on a true line bet. Secs. 17 + 20.

va. 1330 E.

40.30

Set a post 3 ft. long 3 ins. diam with marked stone, 12 ins, in the ground for $\frac{1}{4}$ Sec. Cor, marked $\frac{1}{4}$ S. on N. face, dug pits 18 x 18 x 12 ins. E. and W. of post 5 $\frac{1}{2}$ ft. dist. and raised a mound of earth 1 $\frac{1}{2}$ ft. high. 3 $\frac{1}{2}$ ft. base. around

80.60

post
N. Cor. to Secs. 17-18-19 + 20

Sec 20. is rolling
Soil 2' + 3' sate

grass fair.

Some Juniper Bush.

I carefully examined the adjustments of my Solar
Compass today, particularly the Latitude and
sighting apparatus, and find them correct.

M. M. Grant June 13/88.

Chs Tp. 14 N. R. 20 E,
G. & S. R. M.

Nest, on a random line bet. Secs. 18 & 19.
Va. 1330' E,
Asound gradually

40.00 Set temporary $\frac{1}{4}$ Sec. Cor.

80.50 Intersect N. B. of Tp. 51 lks. N. of
Cor. to Secs. 13-18-19 & 24. Recently
established by me. True S run
N. 89.38' E. on a true line bet. Secs. 18 & 19
Va. 1330' E.

40.50 Set a post 3 ft. long 3 ins. diam with marked
stone, 12 ins. in the ground for $\frac{1}{4}$ Sec. Cor,
marked $\frac{1}{4}$ S. on N. face, dug pits 18 x 18 x 12
ins. 2. and N. of post 5 $\frac{1}{2}$ ft. dist. and raised
a mound of earth 1 $\frac{1}{2}$ ft. high. 3 $\frac{1}{2}$ ft. base. around
post.

80.50 The Cor. to Secs. 17-18-19 & 20.

Sec 19 is rolling

Soil 2^d rate

Good grass

Some Juniper brush.

I carefully examined the adjustments of my
Solar Compass today, particularly the
latitudes and leveling apparatus, and
found them correct.

A. H. Arnold, Assessor, June 13 1883.

Tr. 14 N. R. 19 E.

Ch G. S. R. M.

North bet. Secs. 17 & 18

va. 13° 30' E

Over level Flat

- 40.00 Set a Sand stone, 19 x 12 x 6 ins., 12 ins. in the ground for $\frac{1}{4}$ Sec, Cor, marked $\frac{1}{4}$. on N. face, dug pits 18 x 18 x 12 ins. N. and S. of stone 5 $\frac{1}{2}$ ft. dist. and raised a mound of earth 1 $\frac{1}{2}$ ft. high. 3 $\frac{1}{2}$ ft. base. alongside.
- 57.00 Level Flat bet. Sec. E & N. & across.
- 74.20 Top Rocky Bluff 100 ft. high. bet. E & N. over rolling Mesa.
- 80.00 Set a Sand Stone 18 x 10 x 6 ins., 12 ins. in the ground for Cor. to Secs. 7-8-17 & 18 Markers with 4 Notches on S. and 5 Notches on E. & opp. and raised a mound of stone alongside. Pits impracticable.
- Surface rolling
Soil 3^d rate
Grass fair

Sh. 14 N. R. 20 E.

Ch

G. & S. R. M.

East on a random line bet Secs. 8 & 17.

Va. 13° 30' E.

ascend gradually

36.75 descend

40.00 Set temporary $\frac{1}{4}$ Sec. Cor.

80.03 Intersect N. T. S. line 75 Yds. S. of Cor.
to Secs. 8-9-16 & 17. Thence I run
S 89° 28' N. on a true line bet. Secs. 8 & 17.

Va 13° 30' E.

40.02 Set a post 3 ft. long 3 ins. diam with marked
stone, 12 ins, in the ground for $\frac{1}{4}$ Sec. Cor,
marked $\frac{1}{4}$ S. on N. face, dug pits 18 x 18 x 12
ins. E. and W. of post 5 $\frac{1}{2}$ ft. dist. and raised
a mound of earth 1 $\frac{1}{2}$ ft. high. 3 $\frac{1}{2}$ ft. base. around
post.

80.03 The Cor. to Secs. 7-8-17 & 18.

Sec. 17. is rolling in N & E. and
level basin in S. W.

Soil 2 or 3" - red

Good grass

Some Juniper Bush

M. M. Crank June 13. 1883.

Tr. 14 N. R. 20 E.
Chs G. S. R. M.

Mesh. on a random line bet. Secs. 7 & 18.
Va. 13° 30' E

Ascent over rolling Sand Hills

30.50 Ridge top fl. high br. N. 15° N. + descent.

40.00 Set temporary $\frac{1}{4}$ Sec. Cor.

80.35 Intersect N. P. of Tr. 14 Ws. N. of Cor.

to Secs. 7-12-13 + 18, recently
established by me. Hence I run
N. 89° 54' E on a true line bet. Secs. 7 + 18.
Va. 13° 30' E.

40.35 Set a Sand Stone 14x10x7 ins. of size.
in the ground for $\frac{1}{4}$ Sec. Cor. Marked
 $\frac{1}{4}$ Sec. N. face, and raised a mound
of stone alongside, but impracticable

80.35 The Cor. to Secs. 7-8-17 + 18,

Sec. 18, is rolling

Soil Sandy + 4 Feet

Grass poor.

Thick Juniper brush

A. H. Arnold Compassman June 13, 1883.

No. 14 N. R. 20 E.

Chs

G. & J. R. M.

North lot. Secs 7 & 8.

Va. 330' E.

Decurs gradually

1.50 Cross Wash 10 lks. Wide Co. N. road.

40.00

Set a post 3 ft. long 3 ins. diam with marked stone, 12 ins. in the ground for $\frac{1}{4}$ Sec, Cor, marked $\frac{1}{4}$ S. on N. face, dug pits 18 x 18 x 12 ins. N. and S. of post $5\frac{1}{2}$ ft. dist. and raised a mound of earth $1\frac{1}{2}$ ft. high. $3\frac{1}{2}$ ft. base. around post.

5735 Decurs.

8000

Set a Sand stone $24\frac{1}{2} \times 4$ ins, 18 ins. in the ground for Cor, to Secs, 5-6-7 & 8 marked with 5 notches on S. and 5 notches on E. edges, dug pits 18 x 18 x 12 ins. in each Sec., $5\frac{1}{2}$ ft. dist. and raised a mound of earth 2 ft. high. $4\frac{1}{2}$ ft. base. alongside.

Surface rolling
Soil 4' rate
Grass poor.

Th. 14 N. R. 20 E.

Ch's

G. & S. R. M.

East, on a random line bet. Secs. 5 & 8.

Va. 1330' E.

Ascend gradually

- 6.50 Top Spur 28 ft. high br. N. 28° E. + descend.
 40.00 Set temporary $\frac{1}{4}$ Sec. Cor.
 73.00 Cross track 18 lks. wide cor N. random grade
 80.19 Intusack N. + S. line 33 lks. S. of Cor.
 to Secs. 4-5-8-9. Thence I run
 S. 89° 46' N. on a true line bet. Secs. 5 & 8.

Va. 1330' E.

40.10

Set a post 3 ft. long 3 ins. diam with marked
 stone, 12 ins. in the ground for $\frac{1}{4}$ Sec. Cor,
 marked $\frac{1}{4}$ S. on N. face, dug pits 18 x 18 x 12
 ins. E. and W. of post 5 $\frac{1}{2}$ ft. dist. and raised
 a mound of earth 1 $\frac{1}{2}$ ft. high. 3 $\frac{1}{2}$ ft. base. around
 post.

80.19. To Cor. to Secs. 5-6-7 & 8.

Sec. 8. is rolling

Soil 2° Rate

Wood grass

Some Juniper Bush

M. N. Grant. June 13. 74 + 83.

BOOK 164

Tr. 14 N. R. 20 E.

Chis

G. + S. R. M.

Met. on a random line bet. Secs. 6 + 7.
 Va. $13^{\circ}30' E.$

Descend gradually

40.00 Set temporary $\frac{1}{4}$ Sec. Cor.

64.37 Head of track bet. N. $7^{\circ} E.$ + assent.

80.92 Intersect N. 13. of Tr. 39 W. N. 1/2
 Cor. to Secs. 1-6-7 + 12. ^{recently Dist. (B. L. P.) by 1/2} ~~Three~~ ^{Three} Traces
 N. $89^{\circ}43' E.$ on a true line bet. Secs. 6 + 7.

Va. $13^{\circ}30' E.$

40.92

Set a post 3 ft. long 3 ins. diam with marked
 stone, 12 ins, in the ground for $\frac{1}{4}$ Sec. Cor.
 marked $\frac{1}{4}$ S. on N. face, dug pits 18 x 18 x 12
 ins. E, and N, of post $5\frac{1}{2}$ ft. dist. and raised
 a mound of earth $1\frac{1}{2}$ ft. high. $3\frac{1}{2}$ ft. base. around
 post.

80.92

The Cor. to Secs. 5-6-7 + 8.

Sec. 7. is rolling

Soil 2^d rate

Good grass

Scattering Juniper Bushes

M. 14 N. R. 19 E.,
 Chs G. + S. R. 9m.

Northern random line bet. Secs. 5 + 6.
 Va. 13° 30' E.

Dissent gradually

- 3.55 Cross Wash 16 lks. wide Co. N. 35° E. + ascend.
- 15.20 Top of low Ridge bet N 28° E. + descent.
- 40.00 Set temporary $\frac{1}{4}$ Sec. Cor.
- 80.11 Intusub N. B. of Tr. 58 lks. N. of
 Cor. to Secs. 5-6-31° 32'. recently
 established by me. Thence down
 S. 25' N. on a true line bet. Secs. 5 + 6.
 Va. 13° 30' E.

- 40.11 Set a post 3 ft. long 3 ins. diam with marked
 stone, 12 ins, in the ground for $\frac{1}{4}$ Sec, Cor,
 marked $\frac{1}{4}$ S. on N. face, dug pits 18 x 18 x 12
 ins. N and S. of post 5 $\frac{1}{2}$ ft. dist. and raised
 a mound of earth 1 $\frac{1}{2}$ ft. high. 3 $\frac{1}{2}$ ft. base around
 post.

- 80.11 The Cor. to Secs. 5-6-7 & 8
 Secs. 5, + 6. are rolling
 Soil 2 $\frac{1}{2}$ in rate
 good grass
 some scattering shrubs
 Ast. Arnold Campman June 13th 1883.

BOOK 164

T. 14 N. R. 20 E,
 G. & S. R. M.

General Description.

The greater part of this Township is a high rolling Mesa. There is a little valley-land in the West + S.W. part.

There are several deep rocky basins in this Township. + several high Buttes in the Northern part.

The Soil is sand and gravel mixed in most places, along the Bluff it is rock and runs from 2nd to 4th rate.

The Grass is good in the greater part of of the T.

The Timber consists of scrubby Juniper + Piñon, Pine brush and some Sage brush.

Sand stone along the Bluff.

Your final paths see Book
710 13.

U. S. Surveyor General's Office,

Tucson, Arizona, July 17, 1884,

The foregoing Field Notes of the Survey of the

Subdivision Lines of
Township 14 North
Range 20 East

Of the Gila and Salt River Base and Meridian, Arizona, execu-
ted by M. N. Grant

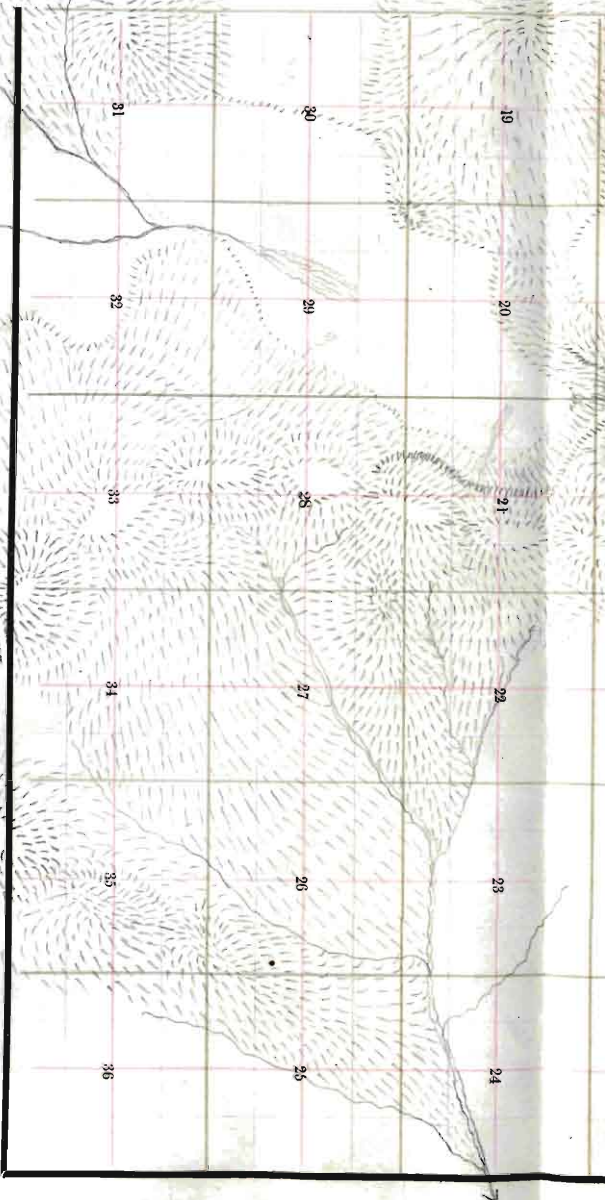
Deputy Surveyor, under his contract of the Seventh

day of August, 1884, having been

critically examined and the necessary corrections and explana-
tions made, the said Field Notes and the surveys they describe

are hereby approved

Royce Johnson
Surveyor General.



TOWNSHIP PLOT

Meridian Line,

Base Line,

Standard Line,

Township Lines,

Section Lines,

Meander Lines,

Office Work.

Township No. 14 N Range No. 200 E 1st 6th Prairie Meridian.

Edward Deery & Co., Stationers and Printers, Printing Material, Box 612 Sacto, St., S. F.

~~OK~~

