

~~Book No. 13~~

BOOK

203

Compared

Henry Meyrick Jr Deputy Surveyor.

R.

19 E.

Gila and Salt River Meridian.

No-203

FIELD NOTES

OF

THE SUBDIVISION LINES OF

Township *15 A* Range *19 E.*

Gila and Salt River Meridian.

BY

Henry Meyrick Jr Deputy Surveyor.

Under his Contract of *July 28th* 188*2*

Survey Commenced *May 28th* 188*3*

Survey Completed *May 31st* 188*3*

No-203

Platted,

Copied for Washington,

Copied for Register,

Edward Denny & Co., Stationers & Printers, S. F. Cal.

Copyright Secured,

Entered according to Act of Congress, in the Clerk's Office of the Librarian of Congress at Washington, D. C., in the year 1880.

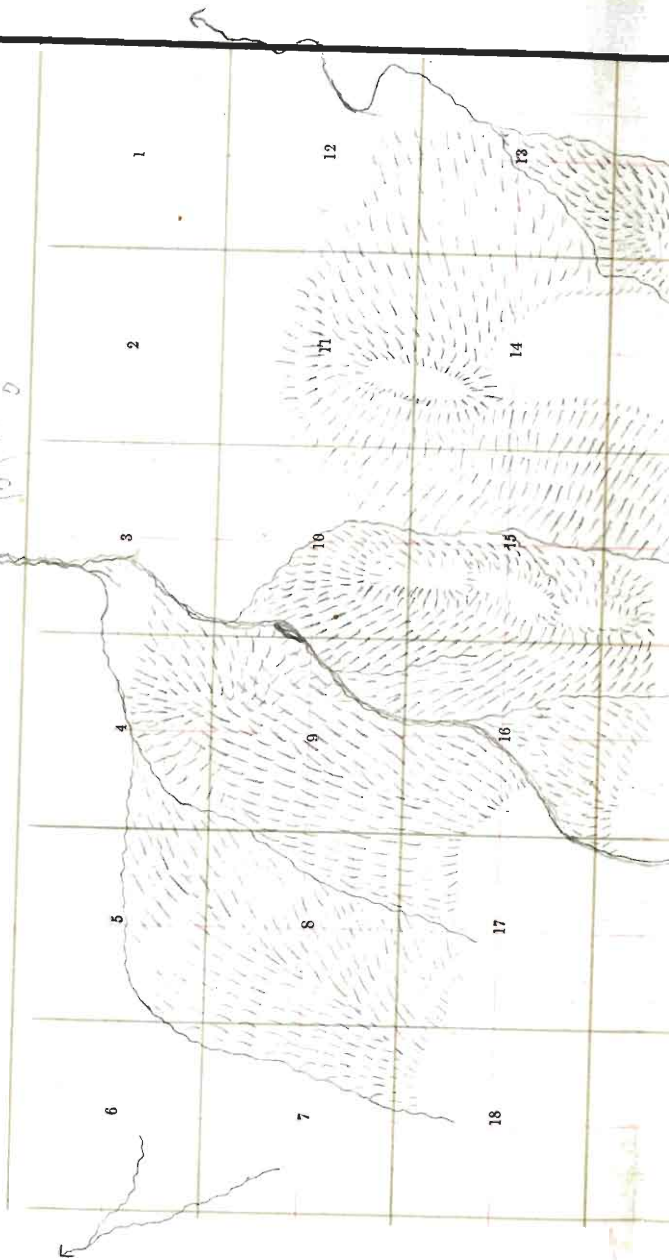
203

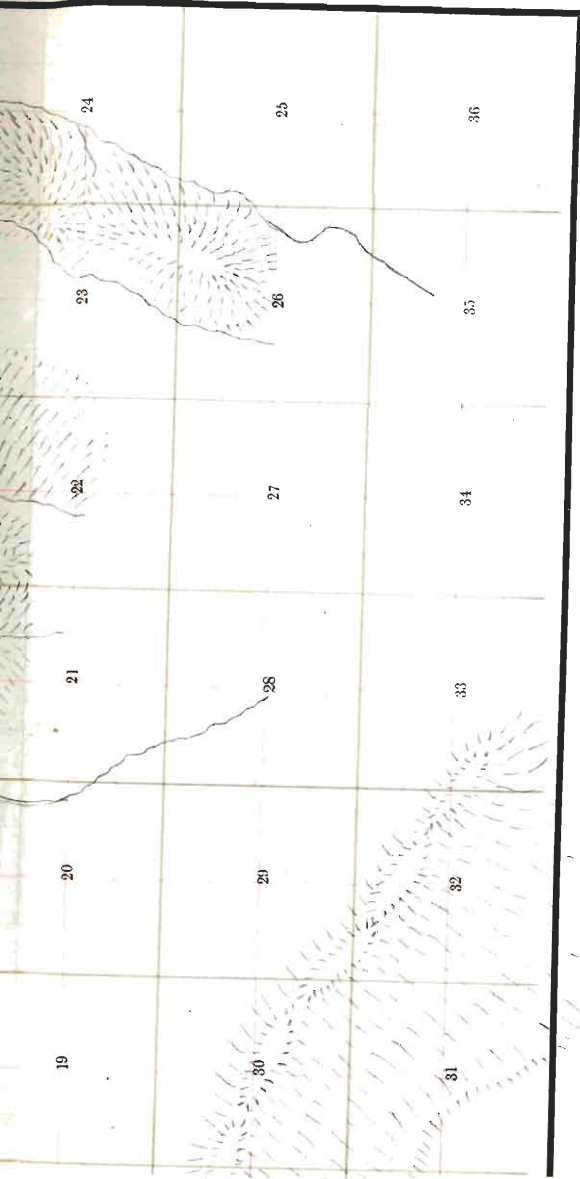
Edward Denny & Co., Stationers and Printers, Drawing Material, Etc. 512 Sac'to. St. S. F.

Township No. 15 N Range No. 15 E Salt River Meridian.

1

10 60
 13 30
 14 30
 15 30
 16 30
 17 30
 18 30
 19 30
 20 30
 21 30
 22 30
 23 30
 24 30
 25 30
 26 30
 27 30
 28 30
 29 30
 30 30
 31 30
 32 30
 33 30
 34 30
 35 30
 36 30
 37 30
 38 30
 39 30
 40 30
 41 30
 42 30
 43 30
 44 30
 45 30
 46 30
 47 30
 48 30
 49 30
 50 30
 51 30
 52 30
 53 30
 54 30
 55 30
 56 30
 57 30
 58 30
 59 30
 60 30
 61 30
 62 30
 63 30
 64 30
 65 30
 66 30
 67 30
 68 30
 69 30
 70 30
 71 30
 72 30
 73 30
 74 30
 75 30
 76 30
 77 30
 78 30
 79 30
 80 30
 81 30
 82 30
 83 30
 84 30
 85 30
 86 30
 87 30
 88 30
 89 30
 90 30
 91 30
 92 30
 93 30
 94 30
 95 30
 96 30
 97 30
 98 30
 99 30
 100 30





TOWNSHIP PLOT

Meridian Line,

Base Line,

Standard Line,

Township Lines,

Section Lines,

Meander Lines,

Office Work.

1800
1180
719

BOOK 203

Henry Meyrick Jr. Deputy Surveyor.

T. 15 N. R. 19 E.

Gila and Salt River Meridian.

No. 203

FIELD NOTES

OF

THE SUBDIVISION LINES OF

Township 15 N. Range 19 E.

Gila and Salt River Meridian.

BY

Henry Meyrick Jr. Deputy Surveyor.

Under his Contract of July 28th 1882

Survey Commenced May 28th 1883

Survey Completed May 31st 1883

Platted,
Copied for Washington,
Copied for Register,

Township 15 North Range 19 East
Gila and Salt River Base and Meridian.

6	60	5	44	4	33	3	22	2	11	1
59		58		43		32		21		10
7	57	8	42	9	31	10	20	11	9	12
53		55		41		30		19		8
18	54	17	40	16	29	15	18	14	7	13
53		52		39		28		17		6
19	51	20	38	21	27	22	16	23	5	24
50		49		37		26		15		4
30	48	29	36	28	25	27	14	26	3	25
47		46		35		24		13		2
31	45	32	34	33	23	34	12	35	1	36

O.K.

Edward Denny & Co., Stationers & Printers, S. F., Cal.

Copyright Secured,

Entered according to Act of Congress, in the Clerk's Office of the Librarian of Congress at Washington, D. C., in the year 1880.

Township.....

Range.....

Meridian.

No-203

For Preliminary Oaths
and description of
instrument see
Book No. 1.

Survey made with Burt's Patent Improved Solar
Compass, nearly new, and in first rate order. Made
by Otto Fennel of Cassel
Germany 1881

D Township 15 N. Range 19 E.
 (See previous page.)

Gila and Salt River Meridian.

Chains

From the corner to Sections 35, 36, 1 and 2 on the South boundary, *Sp.*

Which is a sand stone
 $21 \times 13 \times 4$ ins. 15 ins. in the
 ground, marked with 1 notch
 on E. and 5 notches on
 W. edge, with pits $18 \times 18 \times 12$ ins. in
 each sec. $5\frac{1}{2}$ ft. dist. and a mound
 of earth 2 ft. high $4\frac{1}{2}$ ft. base alongside.

From North between sections 35 & 36.

Variation $13^{\circ} 45'$ East.

Ascend.

40.00

Set a post 3 ft. long. 3 ins. diam. with marked stone
 12 ins. in the ground, for $\frac{1}{4}$ Sec. Cor., marked $\frac{1}{4}$ S. on
 W. face, dug pits, $18 \times 18 \times 12$ ins., N. and S. ~~post~~
 post $5\frac{1}{2}$ ft. dist., and raised a mound of earth $1\frac{1}{2}$ ft.
 high, $3\frac{1}{2}$ ft. base around post.

60.00

Descend.

80.00

Set a sand stone $24 \times 20 \times 6$ ins. 18 ins. in
 the ground for Cor. to Secs. 25, 26, 35 & 36 marked
 with 1 notch on S. and 1 notch on E. edges and
 raised a mound of stone alongside. Pits impracticable.

Land rolling.

Soil - 3rd rate

Vegetation sage & grass.

Township 15 N Range 19 E

Gila and Salt River Meridian.

Chains

East, on a random line between Sections 25 and 36.

Variation 13° 30' East.

Ascend.

40.00 Set temporary 1/4 Sec. Cor.

80.25 Intersect E. B. of Tp. 14 lks. N. of cor. to secs. 25, 30, 31 & 36

Which is a post 4 ft. long, 4 ins. dia. 12 ins. in the ground, marked T. 15 N, S. 30 on N.E. R. 20 E., S. 31 on S.E. R. 19 E., S. 36 on S.W. and S 25 on N.W. faces, with notch on S. and 5 notches on N. edge, with pits 18 x 18 x 12 ins. in each sec, 5 1/2 ft. dist, and a mound of earth 2 ft. high, 4 1/2 ft. base from which corner, I run

N. 89° 54' W. on a true line, between sections 25 & 36
Variation 13° 30' East.

40.12 Set a post 3 ft. long. 3 ins. diam. with marked stone 12 ins. in the ground, for 1/4 Sec. Cor., marked 1/4 S. on N. face, dug pits, 18 x 18 x 12 ins., E. and W. of post 5 1/2 ft. dist., and raised a mound of earth 1 1/2 ft. high, 3 1/2 ft. base around post.

80.25 The corner to sections 25, 26, 35 & 36

Land rolling.

Soil 2nd rate

Heavy timber of juniper.

Vegetation grass & sage.

Township 15 N Range 19 E

Gila and Salt River Meridian.

Chains

North, between Sections 25 and 26.

Variation 13° 30' East.Descend. gradually.

40.00

Set a Sand stone 30 x 12 x 0 ins., 21 ins. in the ground, for $\frac{1}{4}$ Sec. Cor., marked $\frac{1}{4}$ on W. face, and raised a mound of stone alongside. Pits impracticable.

50.00

Cross Wash, 30 fks. wide, Course NE. and ascend.

80.00

Set a Sand stone 18 x 16 x 0 ins. 12 ins. in the ground for Cor. to Secs. 23. 24. 25 & 26 marked with 2 notches on S. and 1 notch on E. edges and raised a mound of stone alongside. Pits impracticable.

Land rolling.Soil 3rd rateVegetation grass.

Township 15 N. Range 19 E.

Gila and Salt River Meridian.

Chains

East, on a random line between Sections 24 and 25.

Variation $13^{\circ} 30'$ East.*Descend gradually.*9.50 Cross Wash, 30 lks. wide, Course $N. 40^{\circ}$ and ascend.40.00 Set temporary $\frac{1}{2}$ Sec. Cor.

79.81 Intersect E. B. of Tp. 18 lks. S. of cor. to secs.

19, 24, 25 & 30

Which is a sand stone $15 \times 10 \times 3$ ins.
 10 ins. in the ground, marked with
 2 notches on S. and 4 notches
 on N. edges with *feils* $18 \times 18 \times 12$ ins.
 in each sec. $6\frac{1}{2}$ ft. dist. and a mound of
 earth 2 ft. high, $4\frac{1}{2}$ ft. base alongside.

from which corner, I run

 $S. 89^{\circ} 52' W.$ on a true line, between sections 24 & 25.Variation $13^{\circ} 30'$ East.

39.90 Set a post 3 ft. long, 3 ins. diam. with marked stone
 12 ins. in the ground, for $\frac{1}{2}$ Sec. Cor., marked $\frac{1}{2}$ S. on
 N. face, dug pits, $18 \times 18 \times 12$ ins., E. and W. of
 post $5\frac{1}{2}$ ft. dist., and raised a mound of earth $1\frac{1}{2}$ ft.
 high, $3\frac{1}{2}$ ft. base around post.

79.81 The corner to sections 23, 24, 25 & 26

Land rolling.

Soil 3rd rate

Undergrowth of juniper.

Chains

North, between Sections 23 and 24.

Variation

13° 30'

East.

Descend.

40.00

Set a post 3 ft. long. 3 ins. diam. with marked stone 12 ins. in the ground, for $\frac{1}{4}$ Sec. Cor., marked $\frac{1}{4}$ S. on W. face, dug pits, 18 x 18 x 12 ins., N. and S. of post $5\frac{1}{2}$ ft. dist., and raised a mound of earth $1\frac{1}{2}$ ft. high, $3\frac{1}{2}$ ft. base around post.

60.00

Top of Spur, bears N 26° E. & S 26° W and descend.

80.00

Set a sand stone 22 x 12 x 4 ins. 10 ins. in the ground for Cor. to Secs. 13. 14. 23 & 24 marked with 3 notches on S. and 1 notch on E. edges and raised a mound of stone alongside. Pits impracticable.

*Land rolling.**Soil 3rd rate**Undergrowth of juniper.*

Henry Meyrick May 28. 1893

Township 15 N. Range 19 E.

Gila and Salt River Meridian.

Chains

East, on a random line between Sections 13 and 24.

Variation $13^{\circ} 30'$ East.*Ascend.*25.00 Top of Spur, bears $N. 30^{\circ} E. S. 30^{\circ} W$ and descend.40.00 Set temporary $\frac{1}{4}$ Sec. Cor.

46.50 Cross Wash, 30 lks. wide, Course N. and ascend.

80.16 Intersect E. B. of Tp. 110 lks. S. of cor. to secs.

13, 18, 19 & 24

Which is a sand stone $23 \times 10 \times 6$ ins.
18 ins. in the ground, marked with
3 notches on S. and 3 notches on
N. edges, and a mound of stone
alongside.

from which corner, I run

 $S. 89^{\circ} 43' E.$ on a true line, between sections 13 & 24Variation $13^{\circ} 30'$ East.

4008 Set a Sand stone $19 \times 16 \times 5$ ins., 12
ins. in the ground, for $\frac{1}{4}$ Sec. Cor., marked $\frac{1}{4}$ on N.
face, and raised a mound of stone alongside. Pits
impracticable.

80.16 The corner to sections 13, 14, 23 & 24

Land rolling.

Soil 3rd rate.

Undergrowth of juniper.

7 Township 15 N. Range 19 E.
Gila and Salt River Meridian.

Chains

North, between Sections 13 and 14.

Variation $13^{\circ} 30'$ East.*Descend.*

200

Cross Wash, 60 lks. wide, Course $N. 40^{\circ} E.$ and ascend.

4000

Set a sand stone $24 \times 12 \times 6$ ins., 18 ins. in the ground, for $\frac{1}{2}$ Sec. Cor., marked $\frac{1}{2}$ on W face, and raised a mound of stone alongside. Pits impracticable.

80.00

Set a post 4 ft. long, 4 ins. square, with marked stone 12 ins. in the ground, for Cor. to Secs, 11, 12, 13 & 14 marked T, 15 N. S. 12, on N, E, R, 19 E., S. 13 on S, E, S, 14 on S, W, and S, 11 on N, W, face with 4 notches on S, and 1 notch on E, edges, dug pits $18 \times 18 \times 12$ ins, in each Sec., $5\frac{1}{2}$ ft. dist., and raised a mound of earth 2 ft. high, $4\frac{1}{2}$ ft. base around post.

*Land rolling.**Soil 3rd rate**Undergrowth of juniper.*

Township 15 N. Range 19 E.

Gila and Salt River Meridian.

Chains

East, on a random line between Sections 12 and 13.

Variation 13° 30' East.

Descend gradually.

40.00 Set temporary $\frac{1}{4}$ Sec. Cor.75.00 Cross Wash, 140 yds. wide, Course N. $2\frac{1}{2}^{\circ}$ E. and ascend.

79.90 Intersect E. B. of Tp. 9 yds. N. of cor. to secs.

7. 12. 13 & 14

Which is a post 4 ft. long, 4 ins. sq.
 12 ins. in the ground, marked T. 15 N.
 S. 7 on N. E. R. 20 E., S. 18 on S. E. R. 19 E.
 S. 13 on S. W. and S. 12 on N. W. face,
 with 4 notches on S. and 2 notches
 on N. edges, with pits 18 x 18 x 12 ins. in each
 sec. 57 ft. dist. and a mound of earth 2 ft. high
 4 1/2 ft. base ^{in a post} from which corner, I run

N. 89° 56' W. on a true line, between sections 12 & 13

Variation 13° 30' East.

3995- Set a Sand stone 24 x 18 x 4 ins., 18
 ins. in the ground, for $\frac{1}{4}$ Sec. Cor., marked $\frac{1}{4}$ on N.
 face, and raised a mound of stone alongside. Pits
 impracticable.

79.90 The corner to sections 11. 12. 13 & 14

Land rolling.

Soil 3rd rate

Undergrowth of juniper.

9 Township 15 N. Range 19 E.

Gila and Salt River Meridian.

Chains

North, between Sections 11 and 12.

Variation $13^{\circ} 30'$ East.*Ascend. gradually.*

3.10 Top of Spur, bears *E. & W.* and descend.

40.00 Set a post 3 ft. long, 3 ins. diam. with marked stone
12 ins. in the ground, for $\frac{1}{4}$ Sec. Cor., marked $\frac{1}{4}$ S. on
W. face, dug pits, 18 x 18 x 12 ins., N. and S. of
post $5\frac{1}{2}$ ft. dist., and raised a mound of earth $1\frac{1}{2}$ ft.
high, $3\frac{1}{2}$ ft. base around post.

80.00 Set a post 4 ft. long, 4 ins. square, with marked stone
12 ins. in the ground, for Cor. to Secs, 1, 2, 11 & 12
marked T, 15 N. S. 1, on N, E, R, 19 E., S. 12
on S, E, S, 11 on S, W, and S, 2 on N, W, face
with 5 notches on S, and 1 notch on E, edges,
dug pits 18 x 18 x 12 ins, in each Sec., $5\frac{1}{2}$ ft. dist.,
and raised a mound of earth 2 ft. high, $4\frac{1}{2}$ ft. base
around post.

*Land rolling.**Soil 3rd rate**Undergrowth of juniper.*

Township 15 N. Range 19 E.

Gila and Salt River Meridian.

Chains

East, on a random line between Sections 1 and 12.

Variation $13^{\circ} 30'$ East.

Descend.

40.00 Set temporary $\frac{1}{4}$ Sec. Cor.

79.63 Intersect E. B. of Tp. 40 lks. S. of cor. to secs.

1.6. 7 e 12

Which is a sand stone $19 \times 10 \times 4$ ins.
 12 ins. in the ground marked
 with 5 notches on S. and
 1 notch on N. edges, and a
 mound of stone alongside.

from which corner, I run

S $89^{\circ} 43'$ W. on a true line, between sections 1 e 12Variation $13^{\circ} 30'$ East.

39.81 Set a post 3 ft. long. 3 ins. diam. with marked stone
 12 ins. in the ground, for $\frac{1}{4}$ Sec. Cor., marked $\frac{1}{2}$ S. on
 N. face, dug pits, $18 \times 18 \times 12$ ins., E. and W. of
 post $5\frac{1}{2}$ ft. dist., and raised a mound of earth $1\frac{1}{2}$ ft.
 high, $3\frac{1}{2}$ ft. base around post.

79.63 The corner to sections 1. 2. 11 e 12

Land rolling.

Soil 3rd rate

Undergrowth of. juniper.

Township 15 N Range 19 E

Gila and Salt River Meridian.

Chains

North, on a random line between Sections 1 and 2.

Variation 13° 30' East.

Descend gradually.

40.00 Set temporary $\frac{1}{2}$ Sec. Cor.80.03 Intersect N. B. of Tp. 40 lks. E. of cor. to secs.

1, 2, 35 & 36

Which is a sand stone
 19 x 14 x 6 ins., 12 ins. in the
 ground, marked with 1 notch on
 E. and 5 notches on W. edge,
 with pits 18 x 18 x 12 ins. in each Sec. $5\frac{1}{2}$ ft.
 dist., and a mound of earth 2 ft. high,
 $4\frac{1}{2}$ ft. base along side
 from which corner, I run

S. N. E. on a true line, between sections 1 & 2Variation 13° 30' East.

40.03 Set a post 3 ft. long, 3 ins. diam. with marked stone
 12 ins. in the ground, for $\frac{1}{2}$ Sec. Cor., marked $\frac{1}{2}$ S. on
 W. face, dug pits, 18 x 18 x 12 ins., N. and S. of
 post $5\frac{1}{2}$ ft. dist., and raised a mound of earth $1\frac{1}{2}$ ft.
 high, $3\frac{1}{2}$ ft. base around post.

80.03 The corner to sections 1, 2, 11 & 12

Land rolling.

Soil 3rd rate

Undergrowth of Juniper.
 I carefully examined the adjustments of my solar
 compass to-day, particularly the latitude and revers-
 ing apparatus, and found them correct.

Henry Meyuek May 29. 1883

Township 15 N. Range 19 E.

Gila and Salt River Meridian.

Chains

From the corner to sections, 2, 3, 34 & 35

on S. by 1/2 Sec
 Which is a sand stone
 19 x 10 x 4 ins. 12 ins. in the
 ground, marked with
 2 notches on E. and 4 notches
 on W. edges, with pits 18 x 18 x 12 ins.
 in each Sec, 5 1/2 ft. dist; and a
 mound of earth 2 ft. high, 4 1/2 ft. base along side
 North between sections 34 & 35

Variation 13° 45' East.

Ascend.

40.00

Set a post 3 ft. long. 3 ins. diam. with marked stone
 12 ins. in the ground, for 1/2 Sec. Cor., marked 1/2 S. on
 W. face, dug pits, 18 x 18 x 12 ins., N. and S. of
 post 5 1/2 ft. dist., and raised a mound of earth 1 1/2 ft.
 high, 3 1/2 ft. base around post.

80.00

Set a post 4 ft. long. 4 ins. square, with marked stone
 12 ins. in the ground, for Cor. to Secs, 26, 27, 34 & 35
 marked T, 15 N. S, 26, on N, E, R, 19 E., S. 35-
 on S, E, S, 34 on S, W, and S, 27 on N, W, face
 with 1 notch on S, and 2 notches on E, edges,
 dug pits 18 x 18 x 12 ins, in each Sec,, 5 1/2 ft. dist.,
 and raised a mound of earth 2 ft, high, 4 1/2 ft, base
 around post.

Land rolling.

Soil 3rd rate

Undergrowth of Juniper.

Township 15 N. Range 19 E.

Gila and Salt River Meridian.

Chains

East, on a random line between Sections 26 and 35.

Variation $13^{\circ} 30'$ East.*Descend gradually.*40.00 *Set temporary $\frac{1}{2}$ Sec. Cor.*61.50 *Cross Wash, 30 lks. wide, Course N.E. and ascend.*78.00 *Descend.*80.12 *Intersect N. & S. line, 30 lks. N. of cor. to secs.**25, 26, 35 & 36 from which corner, I run* *$S 89^{\circ} 48' W.$ on a true line between sections 26 & 35**Variation $13^{\circ} 30'$ East*

40.06 *Set a post 3 ft. long, 3 ins. diam. with marked stone
12 ins. in the ground, for $\frac{1}{2}$ Sec. Cor., marked $\frac{1}{2}$ S. on
N. face, dug pits, 18 x 18 x 12 ins., E. and W. of
post $5\frac{1}{2}$ ft. dist., and raised a mound of earth $1\frac{1}{2}$ ft.
high, $3\frac{1}{2}$ ft. base around post.*

80.12 *The corner to sections 26, 27, 34 & 35**Land rolling.**Soil 3rd rate**Undergrowth of juniper.*

Township 15 N. Range 15 E.

Gila and Salt River Meridian.

Chains

North, between Sections 26 and 27.

Variation $13^{\circ} 30'$ East.

Over rolling land.

4000

A. Pine 10 in. diam. which I marked $\frac{1}{4}$ S. on W. face, for $\frac{1}{4}$ sec. cor., dug pits, 18 x 18 x 12 ins. N. and S. of tree, $5\frac{1}{2}$ ft. dist. and raised a mound of earth around tree.

80.00

Set a post 4 ft. long, 4 ins. square, with marked stone 12 ins. in the ground, for Cor. to Secs. 22, 23, 26 & 27 marked T, 15 N. S. 23, on N, E, R, 19 E., S. 26 on S, E, S, 27 on S, W, and S, 22 on N, W, face with 2 notches on S, and 2 notches on E, edges, dug pits 18 x 18 x 12 ins, in each Sec., $5\frac{1}{2}$ ft. dist., and raised a mound of earth 2 ft. high, $4\frac{1}{2}$ ft. base around post.

Land rolling.

Soil 3rd rate

Undergrowth of juniper.

Township

15 N.

Range

19 E.

Gila and Salt River Meridian.

Chains

East, on a random line between Sections 23 and 26.

Variation $13^{\circ} 30'$ East.*Descend. gradually.*37.25 Cross Wash, 30 lks. wide, Course $N. 39^{\circ} E.$ and ascend.40.00 Set temporary $\frac{1}{4}$ Sec. Cor.60.00 Top of Hill bears $N. 25^{\circ} E.$ & $S. 25^{\circ} W.$ and descend.

79.80 Intersect N. & S. line, 30 lks. N. of cor. to secs.

23, 24, 25 & 26 from which corner, I run

 $N. 89^{\circ} 47' W.$ on a true line between sections 23 & 26Variation $13^{\circ} 30'$ East

39.93 Set a sand stone $18 \times 12 \times 10$ ins., 12
ins. in the ground, for $\frac{1}{4}$ Sec. Cor., marked $\frac{1}{4}$ on N,
face, and raised a mound of stone alongside. Pits
impracticable.

79.80 The corner to sections 22, 23, 26 & 27

Land hilly.

Soil 3rd rate

Undergrowth of juniper.

I carefully examined the adjustments of my solar
compass to-day, particularly the latitude and revers-
ing apparatus, and found them correct.

Township 15 N. Range 19 E.

Gila and Salt River Meridian.

Chains

North, between Sections 22 and 23.

Variation 13° 30' East.*Descend gradually.*

40.00

Set a *Sand* stone $16 \times 13 \times 6$ ins., 10 ins. in the ground, for $\frac{1}{4}$ Sec. Cor., marked $\frac{1}{4}$ on W. face, dug pits $18 \times 18 \times 12$ ins., N and S. of stone $5\frac{1}{2}$ ft. dist., and raised a mound of earth $1\frac{1}{2}$ ft. high, $3\frac{1}{2}$ ft. base alongside.

80.00

Set a post 4 ft. long, 4 ins. square, with marked stone 12 ins. in the ground, for Cor. to Secs, 14, 15, 22 & 23 marked T, 15 N. S. 14, on N, E, R, $19\frac{1}{2}$ S. 23 on S, E, S, 22 on S, W, and S, 15 on N, W, face with 3 notches on S, and 2 notches on E, edges, dug pits $18 \times 18 \times 12$ ins, in each Sec., $5\frac{1}{2}$ ft. dist., and raised a mound of earth 2 ft. high, $4\frac{1}{2}$ ft. base around post.

from which

A Juniper 6 ins. diam. bears S. 52° E. 63 lks. dist. marked T. 15 N. R. $19\frac{1}{2}$ S., 23 B. T.

A Juniper 5 ins. diam. bears S. 13° W. 40 lks. dist. marked T. 15 N. R. $19\frac{1}{2}$ S., 22 B. T.

*No other trees within limits.**Land rolling.**Soil 3rd rate**Timber of juniper.**Undergrowth of juniper.**G. W. Peabon, Comptroller May 28, 1883*

17

Township

15 N.

Range

19 E.

Gila and Salt River Meridian.

Chains

East, on a random line between Sections 14 and 23.

Variation $13^{\circ} 30'$ East.*Ascend gradually.*

40.00

Set temporary $\frac{1}{2}$ Sec. Cor.

75.

Cross wash Co N.

79.46

Intersect N. & S. line, 19 lks. S. of cor. to secs.

13. 14. 23 & 24 from which corner, I run

189.52' W. on a true line between sections 14 & 23

Variation $13^{\circ} 30'$ East

39.73

Set a post 3 ft. long, 3 ins. diam. with marked stone

12 ins. in the ground, for $\frac{1}{2}$ Sec. Cor., marked $\frac{1}{2}$ S. on

N. face, dug pits, 18 x 18 x 12 ins., E. and W. of

post $5\frac{1}{2}$ ft. dist., and raised a mound of earth $1\frac{1}{2}$ ft.high, $3\frac{1}{2}$ ft. base around post.

79.46

The corner to sections 14. 15. 22 & 23

Land rolling.

Soil 3rd rate

Undergrowth of juniper.

Township 15 N. Range 19 E.

Gila and Salt River Meridian.

Chains

North, between Sections 14 and 15.

Variation 13° 30' East.*Descend.*

40.00

Set a post 3 ft. long, 3 ins. diam. with marked stone 12 ins. in the ground, for $\frac{1}{4}$ Sec. Cor., marked $\frac{1}{4}$ S. on W. face, dug pits, 18 x 18 x 12 ins., N. and S. of post $5\frac{1}{2}$ ft. dist., and raised a mound of earth $1\frac{1}{2}$ ft. high, $3\frac{1}{2}$ ft. base around post.

80.00

Set a post 4 ft. long, 4 ins. square, with marked stone 12 ins. in the ground, for Cor. to Secs, 10, 11, 14 & 15 marked T, 15 N. S. 11, on N, E, R, 19 E., S. 11 on S, E, S, 15 on S, W, and S, 10 on N, W, face with 4 notches on S, and 2 notches on E, edges, dug pits 18 x 18 x 12 ins, in each Sec., $5\frac{1}{2}$ ft. dist., and raised a mound of earth 2 ft, high, $4\frac{1}{2}$ ft, base around post.

*Land rolling.**Soil 3rd rate**Undergrowth of Juniper.*

19 Township 15 N. Range 19 E.

Gila and Salt River Meridian.

Chains East, on a random line between Sections 11 and 14.

Variation $13^{\circ} 30'$ East.*Ascend gradually.*33.00 Top of Hill bears $N. 40^{\circ} E.$ & $S. 40^{\circ} W.$ and descend.40.00 Set temporary $\frac{1}{4}$ Sec. Cor.

80.19 Intersect N. & S. line, 33 lks. S. of cor. to secs.

11, 12, 13 & 14 from which corner, I run *$S. 89^{\circ} 46' W.$ on a true line between sections 11 & 14**Variation $13^{\circ} 30'$ East*

40.09 Set a post 3 ft. long, 3 ins. diam. with marked stone
 12 ins. in the ground, for $\frac{1}{4}$ Sec. Cor., marked $\frac{1}{4}$ S. on
 N. face, dug pits, 18 x 18 x 12 ins., E. and W. of
 post $5\frac{1}{2}$ ft. dist., and raised a mound of earth $1\frac{1}{2}$ ft.
 high, $3\frac{1}{2}$ ft. base around post.

80.19 The corner to sections 10, 11, 14 & 15

*Land hilly.**Soil 3rd rate**Undergrowth of juniper.*

Township 15 N Range 19 E.

Gila and Salt River Meridian.

Chains

North, between Sections 10 and 11.

Variation 13° 30' East.

Descend gradually.

40.00

Set a sand stone 14 x 9 x 6 ins., 10 ins. in the ground, for $\frac{1}{4}$ Sec. Cor., marked $\frac{1}{4}$ on W. face, dug pits 18 x 18 x 12 ins., N and S. of stone 5 $\frac{1}{2}$ ft. dist., and raised a mound of earth 1 $\frac{1}{2}$ ft. high, 3 $\frac{1}{2}$ ft. base alongside.

80.00

Set a sand stone 20 x 10 x 3 ins. 15 ins. in the ground for Cor. to Secs. 2, 3, 10 & 11 marked with 5 notches on S. and 2 notches on E. edges and raised a mound of stone alongside. Pits impracticable.

Land rolling.

Soil 3rd rate

Vegetation grass & sage.

Township 15 N. Range 19 E.

Gila and Salt River Meridian.

- Chains East, on a random line between Sections 2 and 11.
Variation $13^{\circ} 30'$ East.
- Over level land
- 40.00 Set temporary $\frac{1}{4}$ Sec. Cor.
- 80.24 Intersect N. & S. line, 69 lks. S. of cor. to secs. 1, 2, 11 & 12 from which corner, I run $S. 89^{\circ} 48' W.$ on a true line between sections 2 & 11
Variation $13^{\circ} 30'$ East
- 40.12 Set a sand stone $17 \times 9 \times 3$ ins., 12 ins. in the ground, for $\frac{1}{4}$ Sec. Cor., marked $\frac{1}{4}$ on N. face, dug pits $18 \times 18 \times 12$ ins., E. and W. of stone $5\frac{1}{2}$ ft. dist., and raised a mound of earth $1\frac{1}{2}$ ft. high, $3\frac{1}{2}$ ft. base alongside.
- 80.24 The corner to sections 2, 3, 10 & 11
Land level.
Soil 3rd rate
Undergrowth of juniper.

Township 15 N Range 19 E

Gila and Salt River Meridian.

Chains

North, on a random line between Sections 2 and 3.

Variation $13^{\circ} 30'$ East.

Descend.

40.00 Set temporary $\frac{1}{4}$ Sec. Cor.80.25 Intersect N.B. of Tp. 28 lks. W. of cor. to secs.
2, 3, 34 & 35

Which is a Sand Stone
21 x 13 x 5 ins. 15 ins. in
the ground marked
with 2 notches on E. and
4 notches on W. edges,
and a mound of stone
alongside.

from which corner, I run

S. 12' W. on a true line, between sections 2 & 3
Variation $13^{\circ} 30'$ East.

40.26 Set a post 3 ft. long. 3 ins. diam. with marked stone
12 ins. in the ground, for $\frac{1}{4}$ Sec. Cor., marked $\frac{1}{4}$ S. on
W. face, dug pits, 18 x 18 x 12 ins., N. and S. of
post $5\frac{1}{2}$ ft. dist., and raised a mound of earth $1\frac{1}{2}$ ft.
high, $3\frac{1}{2}$ ft. base around post.

80.25 The corner to sections 2, 3, 10 & 11.

Land rolling.

Soil 3° rate

Undergrowth of juniper.

Timber of juniper.

G. W. Pearson Compassman, May 29, 1853

Township

15 N.

Range

19 E.

Gila and Salt River Meridian.

Chains

From the corner to sections, 3. ^{on South Ry. R.R.} 4, 33 & 34 1

Which is a post 4 ft. long, 4 ins. square,
12 ins. in the ground marked T, 15 N., S.
34 on N.E., R. 19 E., S. 3 on S.E., S. 14 N., S. 4 on
S.W. and S. 33 on N.W. face, with 3
notches on E, and 3 notches on W. edges,
with ^{7/16} 18 x 18 x 12 ins. in each Sec. 5 1/2 ft. dist. and
a mound of earth 2 ft. high, 4 1/2 ft. base around post.
Some North between sections 33 & 34

Variation 13° 45' East.

Over rolling land.

40.00

Set a Sand stone 10 x 10 x 4 ins., 10
ins. in the ground, for 1/2 Sec. Cor., marked 1/2 on W.
face, and raised a mound of stone alongside. Pits
impracticable.

80.00

Set a post 4 ft. long, 4 ins. square, with marked stone
12 ins. in the ground, for Cor. to Secs, 27, 28, 33 & 34
marked T, 15 N. S., 27, on N, E, R, 19 E., S. 34
on S, E, S, 33 on S, W, and S, 28 on N, W, face
with 1 notch on S, and 3 notches on E, edges,
aug. pits 18 x 18 x 12 ins, in each Sec., 5 1/2 ft. dist.,
and raised a mound of earth 2 ft. high, 4 1/2 ft. base
around post.

Land rolling.

Soil 3rd rate

Undergrowth of juniper.

Township 15 N Range 19 E

Gila and Salt River Meridian.

- | | |
|--------|--|
| Chains | East, on a random line between Sections 27 and 34.
Variation 13° 30' East. |
| | Over rolling land. |
| 40.00 | Set temporary $\frac{1}{4}$ Sec. Cor. |
| 80.40 | Intersect N. & S. line, 31 lks. S. of cor. to secs.
20.27, 34 & 36 from which corner, I run
89° 47' W. on a true line between sections 27 & 34
Variation 13° 30' East |
| 40.20 | Set a post 3 ft. long, 3 ins. diam. with marked stone
12 ins. in the ground, for $\frac{1}{4}$ Sec. Cor., marked $\frac{1}{4}$ S. on
N. face, dug pits, 18 x 18 x 12 ins., E. and W. of
post $5\frac{1}{2}$ ft. dist., and raised a mound of earth $1\frac{1}{2}$ ft.
high, $3\frac{1}{2}$ ft. base around post. |
| 80.40 | The corner to sections 27, 28, 33 & 34
Land rolling.
Soil 3 rd rate
Undergrowth of juniper. |

Township 15 N Range 19 E

Gila and Salt River Meridian.

Chains

North, between Sections 27 and 28.

Variation $13^{\circ} 30'$ East.

Nearly level.

25.00

Descend.

40.00

Set a post 3 ft. long. 3 ins. diam. with marked stone 12 ins. in the ground, for $\frac{1}{4}$ Sec. Cor., marked $\frac{1}{4}$ S. on W. face, dug pits, 18 x 18 x 12 ins., N. and S. of post $5\frac{1}{2}$ ft. dist., and raised a mound of earth $1\frac{1}{2}$ ft. high, $3\frac{1}{2}$ ft. base around post.

80.00

Set a *Some* stone 18 x 10 x 6 ins. 12 ins. in the ground for Cor. to Secs. 21, 22, 27 & 28 marked with 2 notches on S. and 3 notches on E. edges, dug pits 18 x 18 x 12 ins. in each Sec., $5\frac{1}{2}$ ft. dist. and raised a mound of earth 2 ft. high, $4\frac{1}{2}$ ft. base. alongside.

Land rolling.

Soil 3rd rate

Undergrowth of juniper.

Township 15 N. Range 19 E.

Gila and Salt River Meridian.

Chains

East, on a random line between Sections 22 and 27.

Variation $13^{\circ} 30'$ East.*Over rolling land.*40.00 Set temporary $\frac{1}{2}$ Sec. Cor.

80.20 Intersect N. & S. line, 24 lks. S, of cor. to secs.

22, 23, 26 & 27 from which corner, I run

S. $89^{\circ} 50'$ W. on a true line between sections 22 & 27Variation $13^{\circ} 30'$ East

40.13 Set a post 3 ft. long, 3 ins. diam. with marked stone
 12 ins. in the ground, for $\frac{1}{2}$ Sec. Cor., marked $\frac{1}{2}$ S. on
 N. face, dug pits, 18 x 18 x 12 ins., E. and W. of
 post $5\frac{1}{2}$ ft. dist., and raised a mound of earth $1\frac{1}{2}$ ft.
 high, $3\frac{1}{2}$ ft. base around post.

80.20 The corner to sections 21, 22, 27 & 28

Land rolling.

Soil 3rd rate

Undergrowth of juniper.

Township

15 N.

Range

19 E.

Gila and Salt River Meridian.

Chains

North, between Sections 21 and 22.

Variation

13° 30'

East.

Descend gradually.

40.00

Set a post 3 ft. long. 3 ins. diam. with marked stone 12 ins. in the ground, for $\frac{1}{4}$ Sec. Cor., marked $\frac{1}{4}$ S. on W. face, dug pits, 18 x 18 x 12 ins., N. and S. of post $5\frac{1}{2}$ ft. dist., and raised a mound of earth $1\frac{1}{2}$ ft. high, $3\frac{1}{2}$ ft. base around post.

80.00

Set a Sand stone 18 x 12 x 3 ins. 12 ins. in the ground for Cor. to Secs. 15, 16, 21 & 22 marked with 3 notches on S. and 3 notches on E. edges, dug pits 18 x 18 x 12 ins. in each Sec., $5\frac{1}{2}$ ft. dist. and raised a mound of earth 2 ft. high, $4\frac{1}{2}$ ft. base. alongside.

*Land rolling.**Soil 3rd rate**Undergrowth of juniper.*

Township 15 N Range 19 E

Gila and Salt River Meridian.

Chains

East, on a random line between Sections 15 and 22.

Variation 13° 30' East.*Ascend.*6.70 Top of Ridge, bears N. 30° E. & Soil and descend.38.70 Cross Wash, 10 lks. wide, Course N. 20° E and ascend.40.00 Set temporary $\frac{1}{2}$ Sec. Cor.79.69 Intersect N. & S. line, 38 lks. N. of cor. to secs.

14. 15. 22 & 23 from which corner, I run

N. 89° 44' W. on a true line between sections 15 & 22Variation 13° 30' East39.84 Set a sand stone 21 x 15 x 5 ins., 16
ins. in the ground, for $\frac{1}{2}$ Sec. Cor., marked $\frac{1}{2}$ on N.
face, and raised a mound of stone alongside. Pits
impracticable.

79.69 The corner to sections 15. 10. 21 & 22

Land mountainous.

Soil 3rd rateUndergrowth of juniper.

Township 15 N. Range 19 E.

Gila and Salt River Meridian.

Chains

North, between Sections 15 and 16.

Variation $\cdot 13^{\circ} 30'$ East.Ascend *gradually.*

17.00

Descend.

40.00

Set a post 3 ft. long, 3 ins. diam. with marked stone 12 ins. in the ground, for $\frac{1}{2}$ Sec. Cor., marked $\frac{1}{2}$ S. on W. face, dug pits, 18 x 18 x 12 ins., N. and S. of post $5\frac{1}{2}$ ft. dist., and raised a mound of earth $1\frac{1}{2}$ ft. high, $3\frac{1}{2}$ ft. base around post.

80.00

Set a post 4 ft. long, 4 ins. square, with marked stone 12 ins. in the ground, for Cor. to Secs, 9, 10, 15 & 10 marked T. 15 N. S. 10, on N, E, R, 19 E., S. 15 on S, E, S, 16 on S, W, and S, 9 on N, W, face with 4 notches on S, and 3 notches on E, edges, dug pits 18 x 18 x 12 ins, in each Sec., $5\frac{1}{2}$ ft, dist., and raised a mound of earth 2 ft, high, $4\frac{1}{2}$ ft, base around post.

from which

A Juniper 10 ins. diam. bears N. 57° E. 51 lks. dist. marked T. 15 N. R. 19 E. S., 10 B. T.

A Pine 8 ins, diam. bears N. 22° W. 63 lks. dist. marked T. 15 N. R. 19 E. S., 9 B. T.

No other trees within limits.

Land rolling.

Soil 3^d rateTimber of *pine & juniper.*Undergrowth of *juniper.*

Township 15 N Range 19 E

Gila and Salt River Meridian.

Chains East, on a random line between Sections 10 and 15.

Variation 13° 30' East.

Ascend.

28.16 Top of Ridge, bears N. e S. and descend.

40.00 Set temporary $\frac{1}{4}$ Sec. Cor.

44. cross wash to W.

79.83 Intersect N. & S. line, 10 lks. N. of cor. to secs.

10.11.14 & 15 from which corner, I run

N. 89° 56' W. on a true line between sections 10 & 15

Variation 13° 30' East

39.91 Set a Sand stone 18 x 12 x 6 ins., 12 ins.
in the ground, for $\frac{1}{4}$ Sec. Cor., marked $\frac{1}{4}$ on N. face,
dug pits 18 x 18 x 12 ins., E and W. of stone $5\frac{1}{2}$
ft. dist., and raised a mound of earth $1\frac{1}{2}$ ft. high, $3\frac{1}{2}$
ft. base alongside.

79.83 The corner to sections 9. 10. 15 & 16

Land mountainous.

Soil 3rd rate

Undergrowth of juniper.

Township 15 N. Range 19 E.

Gila and Salt River Meridian.

Chains

North, between Sections 9 and 10.

Variation 13° 30' East.

Descend from corner.

40.00

Set a Sand stone 30 x 12 x 5 ins., 27 ins. in the ground, for $\frac{1}{4}$ Sec. Cor., marked $\frac{1}{4}$ on W. face, and raised a mound of stone alongside. Pits impracticable. *from which*

40.25

A Live Oak 7 ins. diam. bears 76° E., 27 lbs. dist. marked $\frac{1}{4}$ S. E. *No other pits marked.*
Enter at ash course N. and ascend
Leave at ash, 70 lbs. wide course N. 80° E.
Descend.

42.50

57.18

64.00

Ascend.

80.00

Set a Sand stone 20 x 10 x 6 ins. 15 ins. in the ground for Cor. to Secs. 3, 4, 9 & 10 marked with 5 notches on S. and 3 notches on E. edges and raised a mound of stone alongside. Pits impracticable.

Land rolling.

Soil 3rd rate

Undergrowth of Juniper.

Township 15 N. Range 19 E.

Gila and Salt River Meridian.

Chains

East, on a random line between Sections 3 and 10.

Variation $13^{\circ} 30'$ East.*Descend.*3.60 Cross Wash, 60 lks. wide, Course $N. 37^{\circ} E$ and ascend. ~~xxxx~~40.00 Set temporary $\frac{1}{2}$ Sec. Cor.

79.90 Intersect N. & S. line, 58 lks. S. of cor. to secs.

2, 3, 10 & 11 from which corner, I run

 $S. 89^{\circ} 35' W.$ on a true line between sections 3 & 10Variation $13^{\circ} 30'$ East

39.96 Set a post 3 ft. long, 3 ins. diam. with marked stone
12 ins. in the ground, for $\frac{1}{2}$ Sec. Cor., marked $\frac{1}{2}$ S. on
N. face, dug pits, 18 x 18 x 12 ins., E. and W. of
post $5\frac{1}{2}$ ft. dist., and raised a mound of earth $1\frac{1}{2}$ ft.
high, $3\frac{1}{2}$ ft. base around post.

79.90 The corner to sections 3, 4, 9 & 10

Land rolling.

Soil 3rd rate

Undergrowth of juniper & pine.

I carefully examined the adjustments of my solar
compass to-day, particularly the latitude and revers-
ing apparatus, and found them correct.

Township 15 N Range 19 E,
Gila and Salt River Meridian.

Chains North, on a random line between Sections 3 and 4.
Variation $13^{\circ} 30'$ East.

Ascend.

3079 Top of Spur, bears E. & W. and descend.

40.00 Set temporary $\frac{1}{4}$ Sec. Cor.

42.11 Cross Wash, 60 lks. wide, Course $N. 18^{\circ} E.$ and ascend.

80.40 Intersect N.B. of Tp. 19 lks. E. of cor. to secs.

3. 4. 33 & 34

Which is a sand stone
24 x 10 x 6 ins., 18 ins. in
the ground, marked with 3 notches
on E. and 3 notches on W. edges,
and a mound of stone alongside,
from which corner, I run

S. & E. on a true line, between sections 3 & 4
Variation $13^{\circ} 30'$ East.

40.40 Set a Sand stone 10 x 9 x 5 ins., 10
ins. in the ground, for $\frac{1}{4}$ Sec. Cor., marked $\frac{1}{4}$ on W.
face, and raised a mound of stone alongside. Pits
impracticable.

80.40 The corner to sections 3. 4. 9 & 10

Land mountainous

Soil 3° rate

Timber of Juniper.

Undergrowth of Juniper.

Henry Meyrick, May 30. 1883

Township 15 N. Range 19 E.

Gila and Salt River Meridian.

Chains	<p><i>in S. 15 N. Township</i> <i>From the corner to sections, 4, 5, 32 & 33</i> <i>Which is a post 4 ft. long, 4 ins. square</i> <i>2 ins. in the ground, marked T. 15 N.</i> <i>S. 33 on N. E. R. 19 E., S. 40 on E., T. 14 E.,</i> <i>S. 5 on S. W. and S. 32 on N. W. face, with</i> <i>4 notches on E. and 2 notches on W. edges,</i> <i>with pits 18 x 18 x 12 ins. in each Sec., 5 1/2 ft.</i> <i>dist. and a mound of earth 2 ft.</i> <i>high, 4 1/2 ft. base around post. Iron</i> <i>North between sections 32 & 33</i></p>
	Variation 13° 45' East.
	Ascend gradually.
31.10	Top of Ridge, bears N. 64° E. & S. 41 W. and descend.
40.00	<p>Set a post 3 ft. long, 3 ins. diam. with marked stone 12 ins. in the ground, for 1/2 Sec. Cor., marked 1/2 S. on W. face, dug pits, 18 x 18 x 12 ins., N. and S. of post 5 1/2 ft. dist., and raised a mound of earth 1 1/2 ft. high, 3 1/2 ft. base around post.</p>
80.00	<p>Set a post 4 ft. long, 4 ins. square, with marked stone 12 ins. in the ground, for Cor. to Secs, 28: 29, 32 & 33 marked T, 15 N. S, 28, on N, E, R, 19 E., S. 33 on S, E, S, 32 on S, W, and S, 29 on N, W, face with 2 notches on S, and 4 notches on E, edges, dug pits 18 x 18 x 12 ins. in each Sec., 5 1/2 ft. dist., and raised a mound of earth 2 ft. high, 4 1/2 ft. base around post. Soil ^{3rd} rate Land mountainous. Undergrowth of juniper</p>

Township

15 N

Range

19 E

Gila and Salt River Meridian.

Chains

East, on a random line between Sections 28 and 33.

Variation $13^{\circ} 30'$ East.*Over rolling land.*40.00 Set temporary $\frac{1}{4}$ Sec. Cor.

79.72 Intersect N. & S. line, 22 lks. S, of cor. to secs.

27, 28, 33 & 34 from which corner, I run

 $189^{\circ} 51'$ W. on a true line between sections 28 & 33Variation $13^{\circ} 30'$ East

39.86 Set a sand stone $18 \times 9 \times 4$ ins., 12 ins. in the ground, for $\frac{1}{4}$ Sec. Cor., marked $\frac{1}{4}$ on N. face, dug pits $18 \times 18 \times 12$ ins., E. and W. of stone $5\frac{1}{2}$ ft. dist., and raised a mound of earth $1\frac{1}{2}$ ft. high, $3\frac{1}{2}$ ft. base alongside.

79.72 The corner to sections 28, 29, 32 & 33

Land rolling.

Soil 3rd rate

Undergrowth of juniper.

Township 15 N. Range 19 E.Gila and Salt River Meridian.

Chains North, between Sections 28 and 29.

Variation 19° 30' East.*Descend.*

40.00 Set a post 3 ft. long. 3 ins. diam. with marked stone 12 ins. in the ground, for $\frac{1}{4}$ Sec. Cor., marked $\frac{1}{4}$ S. on W. face, dug pits, 18 x 18 x 12 ins., N. and S. of post $5\frac{1}{2}$ ft. dist., and raised a mound of earth $1\frac{1}{2}$ ft. high, $3\frac{1}{2}$ ft. base around post.

80.00 Set a sand stone 24 x 18 x 4 ins. 18 ins. in the ground for Cor. to Secs. 20. 21. 28 & 29 marked with 2 notches on S. and 4 notches on E. edges and raised a mound of stone alongside. Pits impracticable.

*Land rolling.*Soil 3rd rateUndergrowth of *juniper*.

37 Township 15 N. Range 19 E.
Gila and Salt River Meridian.

Chains East, on a random line between Sections 21 and 28.
Variation $13^{\circ} 30'$ East.

Descend.

18.54 Cross Wash, 17 lks. wide. Course N 22° W and ascend.

40.00 Set temporary $\frac{1}{2}$ Sec. Cor.

80.02 Intersect N. & S. line, 11 lks. S. of cor. to secs.

21, 22, 27 & 28 from which corner, I run

$S 89^{\circ} 55' W.$ on a true line between sections 21 & 28

Variation $13^{\circ} 30'$ East

40.01 Set a post 3 ft. long, 3 ins. diam. with marked stone
12 ins. in the ground, for $\frac{1}{2}$ Sec. Cor., marked $\frac{1}{2}$ S. on
N. face, dug pits, 18 x 18 x 12 ins., E. and W. of
post $5\frac{1}{2}$ ft. dist., and raised a mound of earth $1\frac{1}{2}$ ft.
high, $3\frac{1}{2}$ ft. base around post.

80.02 The corner to sections 20, 21, 28 & 29

Land rolling.

Soil 3rd rate

Undergrowth of juniper & pine.

Township 15 N. Range 19 E.

Gila and Salt River Meridian.

Chains

North, between Sections 20 and 21.

Variation $13^{\circ} 30'$ East.*Descend gradually.*

38.33

Cross Wash, 31 fks. wide, Course $N. 16^{\circ} W$ and ascend.

40.00

Set a Sand stone $22 \times 10 \times 7$ ins., 15 ins. in the ground, for $\frac{1}{4}$ Sec. Cor., marked $\frac{1}{4}$ on W. face, and raised a mound of stone alongside. Pits impracticable.

80.00

Set a Sand stone $24 \times 14 \times 3$ ins. 18 ins. in the ground for Cor. to Secs. 16, 17, 20, 21 marked with 3 notches on S. and 4 notches on E. edges and raised a mound of stone alongside. Pits impracticable.

*Land rolling.**Soil 3rd rate**Undergrowth of juniper.*

Township

15 N.

Range

19 E.

Gila and Salt River Meridian.

Chains

East, on a random line between Sections 16 and 21.

Variation $13^{\circ} 30'$ East.*Ascend.*34.70 Top of Spur, bears $N 20^{\circ} E$ & $S 20^{\circ} W$ and descend.40.00 Set temporary $\frac{1}{2}$ Sec. Cor.59.79 Cross Wash, 18 lks. wide, Course $N 8^{\circ} E$ and ascend.

80.29 Intersect N. & S. line, 20 lks. S. of cor. to secs.

15. 16. 21 & 22 from which corner, I run

 $S 89^{\circ} 49' W$. on a true line between sections 16 & 21Variation $13^{\circ} 30'$ East

40.16 Set a post 3 ft. long. 3 ins. diam. with marked stone
12 ins. in the ground, for $\frac{1}{2}$ Sec. Cor., marked $\frac{1}{2}$ S. on
N. face, dug pits, 18 x 18 x 12 ins., E. and W. of
post $5\frac{1}{2}$ ft. dist., and raised a mound of earth $1\frac{1}{2}$ ft.
high, $3\frac{1}{2}$ ft. base around post.

80.33 The corner to sections 16. 17. 20 & 21

Land mountainous.

Soil 3rd rate

Undergrowth of juniper.

Township 15 N Range 19 E

Gila and Salt River Meridian.

Chains

North, between Sections 16 and 17.

Variation $13^{\circ} 30'$ East.

Descend.

8.40 Cross Canon, 25 lks. wide, Course $N 8^{\circ} E$ and ascend
 40.00 Set a sand stone $23 \times 14 \times 0$ ins., 18
 ins. in the ground, for $\frac{1}{2}$ Sec. Cor., marked $\frac{1}{2}$ on W
 face, and raised a mound of stone alongside. Pits
 impracticable.

47.50 Descend. gradually

80.00. Set a post 4 ft. long, 4 ins. square, with marked stone
 12 ins. in the ground, for Cor. to Secs, 8, 9, 16 & 17
 marked T, 15 N. S. 9, on N, E, R, 19 E, S. 16
 on S, E, S, 17 on S, W, and S, 8 on N, W, face
 with 4 notches on S, and 4 notches on E, edges,
 dug pits $18 \times 18 \times 12$ ins, in each Sec., $5\frac{1}{2}$ ft. dist.,
 and raised a mound of earth 2 ft. high, $4\frac{1}{2}$ ft. base
 around post.

Land rolling.

Soil 3^{rd} rate

Undergrowth of juniper.

Township 15 N. Range 19 E.

Gila and Salt River Meridian.

Chains

East, or a random line between Sections 9 and 16.

Variation $13^{\circ} 30'$ East.

Descend.

40.00 Set temporary $\frac{1}{4}$ Sec. Cor.40.50 Cross Wash, 18 lks. wide, Course $N. 10^{\circ} E$ and ascend.

54.00 Top of Spur, bears N. & S. and descend.

69.18 Cross Wash, 17 lks. wide, Course N. and ascend.

79.94 Intersect N. & S. line, 31 lks. N. of cor. to secs,

9, 10, 15 & 16 from which corner, I run

 $N. 89^{\circ} 47' W.$ on a true line between sections 9 & 16Variation $13^{\circ} 30'$ East

39.97 Set a sand stone 18 x 11 x 5 ins., 12
ins. in the ground, for $\frac{1}{4}$ Sec. Cor., marked $\frac{1}{4}$ on N.
face, and raised a mound of stone alongside. Pits
impracticable.

79.94 The corner to sections 8, 9, 10 & 17

Land mountainous.

Soil 3rd rate

Undergrowth of yew.

Timber of juniper.

Township 15 N. Range 19 E.

Gila and Salt River Meridian.

Chains

North, between Sections 8 and 9.

Variation $13^{\circ} 30'$ East.

Descend gradually.

40.00 Set a Sand stone $17 \times 10 \times 4$ ins., 12 ins. in the ground, for $\frac{1}{4}$ Sec. Cor., marked $\frac{1}{4}$ on W. face, and raised a mound of stone alongside. Pits impracticable.

62.10 Cross Wash, 19 lks. wide, Course $N. 60^{\circ} E.$ and ascend.

80.00 Set a Sand stone $18 \times 14 \times 13$ ins. 12 ins. in the ground for Cor. to Secs. 11, 5, 8 & 9 marked with 5 notches on S. and 4 notches on E. edges, dug pits $18 \times 18 \times 12$ ins. in each Sec., $5\frac{1}{2}$ ft. dist. and raised a mound of earth 2 ft. high, $4\frac{1}{2}$ ft. base. alongside.

Land rolling.

Soil 3° rate

Undergrowth of Juniper.

Township 15 N Range 19 E

Gila and Salt River Meridian.

Chains

East, on a random line between Sections 4 and 9.

Variation $13^{\circ} 30'$ East.

Descend.

7.60 Cross Wash, 10 lks. wide, Course $N. 34^{\circ} E$ and ascend.40.00 Set temporary $\frac{1}{4}$ Sec. Cor.50.30 Top of Spur, bears $N. E. \& S. W.$ and descend.

80.30 Intersect N. & S. line, 18 lks. S. of cor. to secs.

3, 4, 9 & 10 from which corner, I run

 $89^{\circ} 52'$ W. on a true line between sections 4 & 9Variation $13^{\circ} 30'$ East

40.15 Set a post 3 ft. long, 3 ins. diam. with marked stone
 12 ins. in the ground, for $\frac{1}{4}$ Sec. Cor., marked $\frac{1}{4}$ S. on
 N. face, dug pits, 18 x 18 x 12 ins., E. and W. of
 post $5\frac{1}{2}$ ft. dist., and raised a mound of earth $1\frac{1}{2}$ ft.
 high, $3\frac{1}{2}$ ft. base around post.

80.30 The corner to sections 4, 5, 8 & 9

Land rolling.

Soil 3° rate

Undergrowth of juniper.

I carefully examined the adjustments of my solar
 compass to-day, particularly the latitude and revers-
 ing apparatus, and found them correct.

Township 15 N. Range 19 E.

Gila and Salt River Meridian.

Chains

North, on a random line between Sections 4 and 5.

Variation $13^{\circ} 30'$ East.*Descend. gradually.*

37.64 Cross Wash, 20 lks. wide, Course E.

40.00 Set temporary $\frac{1}{2}$ Sec. Cor.

80.18 Intersect N. B. of Tp. 16 lks. E. of cor. to secs.

4. 5. 32 & 33

Which is a sand stone, $18 \times 13 \times 6$ ins.
 12 ins. in the ground, marked
 with 4 notches on \odot and 2 notches
 on W edges, with pits $18 \times 18 \times 12$ ins, in
 each Sec., $5\frac{1}{2}$ ft. dist, and a mound of
 earth 2 ft. high, $4\frac{1}{2}$ ft. base alongside.
 from which corner, I run

S. 7. E. on a true line, between sections 4 & 5

Variation $13^{\circ} 30'$ East.

40.18 Set a post 3 ft. long. 3 ins. diam. with marked stone
 12 ins. in the ground, for $\frac{1}{2}$ Sec. Cor., marked $\frac{1}{2}$ S. on
 W . face, dug pits, $18 \times 18 \times 12$ ins. N . and S . of
 post $5\frac{1}{2}$ ft. dist., and raised a mound of earth $1\frac{1}{2}$ ft.
 high, $3\frac{1}{2}$ ft. base around post.

80.18 The corner to sections 4. 5. 8 & 9

Land rolling. ~~Time~~ ofSoil 3° rate Undergrowth of juniper.

E. W. Pearson, Comptroller, May 30. 1883

X

Township 15 N.

Range 19 E.

Gila and Salt River Meridian.

Chains

From the corner to sections, 5. 6. 31 & 32 ^{on S. Ry, 2 1/2}
 Which is a post: 4 ft. long, 4 ins. square, 12 ins. in the ground marked T. 15 N., S. 32 on N. E., R. 19 E., S. 5 on S. E., T. 14 N. S. 0 on S. W. and S. 31 on N. W. face with 5 notches on E. and 1 notch on W. edges with pits 18 x 18 x 12 ins. in each Sec, 5 1/2 ft. dist., and a mound of earth 2 ft. high, 4 1/2 ft. base around post.
 North between sections 31 & 32

Variation 13° 45' East.

Ascend.

40.00

Set a post 3 ft. long, 3 ins. diam. with marked stone 12 ins. in the ground, for 1/2 Sec. Cor., marked 1/2 S. on W. face, dug pits, 18 x 18 x 12 ins. N. and S. of post 5 1/2 ft. dist., and raised a mound of earth 1 1/2 ft. high, 3 1/2 ft. base around post.

80.00

Set a post 4 ft. long, 4 ins. square, with marked stone 12 ins. in the ground, for Cor. to Secs, 29, 30, 31 & 32 marked T. 15 N. S. 29, on N, E, R, 19 E., S. 32 on S, E, S, 31 on S, W, and S, 30 on N, W, face with 1 notch on S, and 5 notches on E, edges, dug pits 18 x 18 x 12 ins, in each Sec., 5 1/2 ft. dist., and raised a mound of earth 2 ft. high, 4 1/2 ft. base around post.

Land rolling.

Soil 3rd rate

Undergrowth of

juniper.

Township 15 N. Range 19 E.

Gila and Salt River Meridian.

Chains

East, on a random line between Sections 29 and 32.

Variation $13^{\circ} 30'$ East.*Ascend gradually.*16.00 Top of Ridge, bears $N. 54^{\circ} W. 254'$ and descend.40.00 Set temporary $\frac{1}{4}$ Sec. Cor.

79.48 Intersect N. & S. line, 8 lks. N. of cor. to secs.

28, 29, 32 & 33 from which corner, I run

 $N. 89^{\circ} 57' W.$ on a true line between sections 29 & 32Variation $13^{\circ} 30'$ East

39.74 Set a post 3 ft. long, 3 ins. diam. with marked stone
12 ins. in the ground, for $\frac{1}{4}$ Sec. Cor., marked $\frac{1}{4}$ S. on
N. face, dug pits, 18 x 18 x 12 ins., E. and W. of
post $5\frac{1}{2}$ ft. dist., and raised a mound of earth $1\frac{1}{2}$ ft.
high, $3\frac{1}{2}$ ft. base around post.

79.48 The corner to sections 29, 30, 31 & 32

Land mountainous.

Soil 3rd rate

Undergrowth of Juniper

Henry Meisick May 31. 1883

Township

15 N.

Range

19 E.

Gila and Salt River Meridian.

Chains

West, on a random line between Sections 30 and 31.

Variation $13^{\circ} 30'$ East.

Descend. gradually.

40.00 Set temporary $\frac{1}{2}$ Sec. Cor.81.20 Intersect W. B. of Tp. 11 lks. N. of cor. to secs.
previously set by me.

25.30.31 & 30 from which corner, I run

N. $89^{\circ} 55'$ E. on a true line, between sections 30 & 31Variation $13^{\circ} 30'$ East.

41.20 Set a post 3 ft. long, 3 ins. diam. with marked stone
12 ins. in the ground, for $\frac{1}{2}$ Sec. Cor., marked $\frac{1}{2}$ S. on
N. face, dug pits, 18 x 18 x 12 ins., E. and W. of
post $5\frac{1}{2}$ ft. dist., and raised a mound of earth $1\frac{1}{2}$ ft.
high, $3\frac{1}{2}$ ft. base around post.

81.20 The corner to sections 29, 30, 31 & 32

Land rolling.

Soil 3rd rate

Undergrowth of juniper.

G. W. Pearson, Compassman, May 31, 1883

Township 15 N Range 19 E.

Gila and Salt River Meridian.

Chains

North, between Sections 29 and 30.

Variation $13^{\circ} 30'$ East.

Ascend gradually.

13.00 Top of Ridge, bears $N 50^{\circ} W$ & $S 50^{\circ} E$ and descend.

40.00 Set a post 3 ft. long, 3 ins. diam. with marked stone
 12 ins. in the ground, for $\frac{1}{2}$ Sec. Cor., marked $\frac{1}{2}$ S. on
 W. face, dug pits, 18 x 18 x 12 ins. N. and S. of
 post $5\frac{1}{2}$ ft. dist., and raised a mound of earth $1\frac{1}{2}$ ft.
 high, $3\frac{1}{2}$ ft. base around post.

80.00 Set a Sand stone 15 x 8 x 3 ins. 10 ins.
 in the ground for Cor. to Secs. 19, 20, 29 & 30 marked
 with 2 notches on S. and 5 notches on E. edges,
 dug pits 18 x 18 x 12 ins. in each Sec., $5\frac{1}{2}$ ft. dist. and
 raised a mound of earth 2 ft. high, $4\frac{1}{2}$ ft. base, alongside.

Land mountainous.

Soil 3rd rate

Undergrowth of Juniper.

Township

15 N

Range

19 E

Gila and Salt River Meridian.

Chains

East, on a random line between Sections 20 and 29.

Variation $13^{\circ} 30'$ East.

Descend.

40.00 Set temporary $\frac{1}{2}$ Sec. Cor.49.60 Intersect N. & S. line, 17 lks. S. of cor. to secs.
20, 21, 28 & 29 from which corner, I run.S 89° 58' W. on a true line between sections 20 & 29
Variation $13^{\circ} 30'$ East3980 Set a post 3 ft. long, 3 ins. diam. with marked stone
12 ins. in the ground, for $\frac{1}{2}$ Sec. Cor., marked $\frac{1}{2}$ S. on
N. face, dug pits, 18 x 18 x 12 ins., E. and W. of
post $5\frac{1}{2}$ ft. dist., and raised a mound of earth $1\frac{1}{2}$ ft.
high, $3\frac{1}{2}$ ft. base around post.

7.60

The corner to sections 19, 20, 29 & 30
Land rolling.Soil 3rd rateUndergrowth of juniper
Henry Meyrick May 31, 1883

Township 15 N. Range 19 E.

Gila and Salt River Meridian.

Chains West, on a random line between Sections 19 and 30.
 Variation $13^{\circ} 30'$ East.

Over rolling land.

40.00 Set temporary $\frac{1}{4}$ Sec. Cor.

80.85 Intersect W. B. of Tp. 38 lks. S. of cor. to secs.
 previously set by me.
 19, 24, 25 & 30 from which corner, I run

$S. 89^{\circ} 44' E.$ on a true line, between sections 19 & 30
 Variation $13^{\circ} 30'$ East.

40.85 Set a Sand stone $20 \times 14 \times 4$ ins., $1\frac{1}{2}$ ins.
 in the ground, for $\frac{1}{4}$ Sec. Cor., marked $\frac{1}{4}$ on N. face,
 dug pits $18 \times 18 \times 12$ ins., E. and W. of stone $5\frac{1}{2}$
 ft. dist., and raised a mound of earth $1\frac{1}{2}$ ft. high, $3\frac{1}{2}$
 ft. base alongside.

80.85 The corner to sections 19, 20, 29 & 30

Land rolling.

Soil 3rd rate

Undergrowth of juniper.

G. W. Pearson, Comptroller May 31, 1888

Township 15 N Range 19 E

Gila and Salt River Meridian.

Chains

North, between Sections 19 and 20.

Variation $13^{\circ} 30'$ East.*Descend gradually.*

40.00

Set a *Sand* stone $22 \times 13 \times 3$ ins., 10 ins. in the ground, for $\frac{1}{4}$ Sec. Cor.; marked $\frac{1}{4}$ on *W.* face, dug pits $18 \times 18 \times 12$ ins., *N.* and *S.* of stone $5\frac{1}{2}$ ft. dist., and raised a mound of earth $1\frac{1}{2}$ ft. high, $3\frac{1}{2}$ ft. base alongside.

80.00

Set a *Sand* stone $10 \times 12 \times 4$ ins. 10 ins. in the ground for Cor. to Secs. *17*, *18*, *19* & *20* marked with 3 notches on *S.* and 5 notches on *E.* edges, dug pits $18 \times 18 \times 12$ ins. in each Sec., $5\frac{1}{2}$ ft. dist. and raised a mound of earth 2 ft. high, $4\frac{1}{2}$ ft. base alongside.

*Land rolling.*Soil 3^2 rate*Undergrowth of juniper.*

Township 15 N Range 19 E

Gila and Salt River Meridian.

Chains

East, on a random line between Sections 17 and 20.

Variation $13^{\circ} 30'$ East.

Descend gradually.

40.00 Set temporary $\frac{1}{4}$ Sec. Cor.77.85 Cross Cañon, 50 lks. wide. Course N. 16 $^{\circ}$ E and ascend

79.83 Intersect N. & S. line, 48 lks. S. of cor. to secs.

16, 17, 20 & 21 from which corner, I run

S. $89^{\circ} 39'$ W. on a true line between sections 17 & 20Variation $13^{\circ} 30'$ East

39.91 Set a sand stone $15 \times 8 \times 4$ ins., 10 ins. in the ground, for $\frac{1}{4}$ Sec. Cor., marked $\frac{1}{4}$ on N. face, dug pits $18 \times 18 \times 12$ ins., E. and W. of stone $5\frac{1}{2}$ ft. dist., and raised a mound of earth $1\frac{1}{2}$ ft. high, $3\frac{1}{2}$ ft. base alongside.

79.88 The corner to sections 17, 18, 19 & 20

Land rolling.

Soil 3rd rate

Undergrowth of juniper.

Henry Meyrick May 31, 1883

Township 15 N. Range 19 E.

Gila and Salt River Meridian.

Chains

West, on a random line between Sections 18 and 19.

Variation $13^{\circ} 30'$ East.*Ascend. gradually.*40.00 Set temporary $\frac{1}{4}$ Sec. Cor.80.18 Intersect *W. B. of Tp. 19 lks. S. of cor. to secs.*
previously set by me.
18, 18, 19 & 24 from which corner, I run $S. 89^{\circ} 52' E.$ on a true line, between sections 18 & 19Variation $13^{\circ} 30'$ East.40.18 Set a sand stone $18 \times 10 \times 11$ ins., 12 ins.
in the ground, for $\frac{1}{4}$ Sec. Cor., marked $\frac{1}{4}$ on N. face,
dug pits $18 \times 18 \times 12$ ins., E and W. of stone $5\frac{1}{2}$
ft. dist., and raised a mound of earth $1\frac{1}{2}$ ft. high, $3\frac{1}{2}$
ft. base alongside.

80.18 The corner to sections 17, 18, 19 & 20

Land rolling.

Soil 3rd rate

Undergrowth of juniper.

G. W. Pearson Compassman May 31st 1883

Township

15 N

Range

19 E

Gila and Salt River Meridian.

Chains

North, between Sections 17 and 18.

Variation

13° 30'

East.

Descend. gradually.

40.00

Set a sand stone 18 x 12 x 3 ins., 12 ins. in the ground, for $\frac{1}{4}$ Sec. Cor., marked $\frac{1}{4}$ on N. face, dug pits 18 x 18 x 12 ins., N. and S. of stone $5\frac{1}{2}$ ft. dist., and raised a mound of earth $1\frac{1}{2}$ ft. high, $3\frac{1}{2}$ ft. base alongside.

80.00

Set a post 4 ft. long, 4 ins. square, with marked stone 12 ins. in the ground, for Cor. to Secs. 17, 8, 17 & 18 marked T, 15 N. S. 8, on N. E. R. 19 E., S. 17 on S. E. S., 18 on S. W., and S., 7 on N. W. face with 4 notches on S, and 5 notches on E, edges, dug pits 18 x 18 x 12 ins, in each Sec., $5\frac{1}{2}$ ft. dist., and raised a mound of earth 2 ft. high, $4\frac{1}{2}$ ft. base around post.

*Land rolling.**Soil 3rd rate**Undergrowth of juniper.*

Township

15

N.

Range

19

E.

Gila and Salt River Meridian.

Chains

East, on a random line between Sections 8 and 17.

Variation $13^{\circ} 30'$ East.*Descend gradually.*40.00 Set temporary $\frac{1}{4}$ Sec. Cor.

80.40 Intersect N. & S. line, 6 lks. S. of cor. to sec.

S. 9. 16 & 17 from which corner, I run

S. 89. 57' W. on a true line between sections 8 & 17

Variation $13^{\circ} 30'$ East

40.20 Set a Sand stone $18 \times 11 \times 4$ ins., 12 ins. in the ground, for $\frac{1}{4}$ Sec. Cor., marked $\frac{1}{4}$ on N. face, dug pits $18 \times 18 \times 12$ ins., E. and W. of stone $5\frac{1}{2}$ ft. dist., and raised a mound of earth $1\frac{1}{2}$ ft. high, $3\frac{1}{2}$ ft. base alongside.

80.40 The corner to sections 7, 8, 17 & 18

Land rolling.

Soil 3rd rate

Undergrowth of Juniper.

Henry Meyrick, May 31st 1883

Township 15 N. Range 19 E.

Gila and Salt River Meridian.

Chains

West, on a random line between Sections 7 and 18.

Variation $13^{\circ} 30'$ East.

Ascend gradually.

4.00 Top of Ridge, bears N. E. & S. W. and descend.

35.00 Cross flat; Course N. 40° E. & ascend gradually40.00 Set temporary $\frac{1}{4}$ Sec. Cor.79.72 Intersect W. B. of Tp. 10 lks. S. of cor. to secs.
previously set by me.

7. 12. 13 & 18 from which corner, I run

 $89^{\circ} 56'$ E. on a true line, between sections 7 & 18Variation $13^{\circ} 30'$ East.

89.72 Set a post 3 ft. long. 3 ins. diam. with marked stone
12 ins. in the ground, for $\frac{1}{4}$ Sec. Cor., marked $\frac{1}{4}$ S. on
N. face, dug pits, 18 x 18 x 12 ins., E. and W. of
post $5\frac{1}{2}$ ft. dist., and raised a mound of earth $1\frac{1}{2}$ ft.
high, $3\frac{1}{2}$ ft. base around post.

79.72 The corner to sections 7. 8. 17 & 18

Land mountainous.

Soil 3rd rate

Undergrowth of Juniper.

- G. W. Pearson Comptroller May 31, 1883

Township 15 N. Range 19 E.
Gila and Salt River Meridian.

Chains

North, between Sections 7 and 8.

Variation 13° 30' East.*Ascend.*4.00 Top of Spur, bears N. E. S. W. and descend.

40.00 Set a Sand stone 22 x 11 x 5 ins., 15 ins.
in the ground, for $\frac{1}{4}$ Sec. Cor., marked $\frac{1}{4}$ on W. face,
dug pits 18 x 18 x 12 ins., N. and S. of stone 5 $\frac{1}{2}$
ft. dist., and raised a mound of earth 1 $\frac{1}{2}$ ft. high, 3 $\frac{1}{2}$
ft. base alongside.

80.00 Set a post 4 ft. long. 4 ins. square, with marked stone
12 ins. in the ground, for Cor. to Secs, 5, 6, 7 & 8
marked T, 15 N. S. 5, on N, E, R, 19 E, S. 8
on S, E, S, 7 on S, W, and S, 6 on N, W, face
with 5 notches on S, and 5 notches on E, edges,
dug pits 18 x 18 x 12 ins, in each Sec., 5 $\frac{1}{2}$ ft. dist.,
and raised a mound of earth 2 ft. high, 4 $\frac{1}{2}$ ft. base
around post.

*Land rolling.**Soil 3rd rate**Undergrowth of juniper.*

Township 15 N Range 19 E

Gila and Salt River Meridian.

Chains

East, on a random line between Sections 5 and 8.

Variation $13^{\circ} 30'$ East.

Ascend gradually.

40.00 Set temporary $\frac{1}{4}$ Sec. Cor.

42.00 Top of Spur, bears N. & S. and descend.

79.72 Intersect N. & S. line, 29 lks. S. of cor. to secs.

45.86 9 from which corner, I run

S. 89.48' W. on a true line between sections 5 & 8

Variation $13^{\circ} 30'$ East

3986 Set a post 3 ft. long, 3 ins. diam. with marked stone
12 ins. in the ground, for $\frac{1}{4}$ Sec. Cor., marked $\frac{1}{4}$ S. on
N. face, dug pits, 18 x 18 x 12 ins., E. and W. of
post $5\frac{1}{2}$ ft. dist., and raised a mound of earth $1\frac{1}{2}$ ft.
high, $3\frac{1}{2}$ ft. base around post.

79.72 The corner to sections 5, 6, 7 & 8

Land rolling.

Soil 3rd rate

Vegetation grass.

I carefully examined the adjustments of my solar
compass to-day, particularly the latitude and revers-
ing apparatus, and found them correct.

Henry Meyrick May 31st 1883

Township 15 N. Range 19 E.

Gila and Salt River Meridian.

Chains

West, on a random line between Sections 6 and 7.

Variation $13^{\circ} 30'$ East.*Descend gradually.*8.00 Leave Flat bears $N. 40^{\circ} E.$ $S. 40^{\circ} W.$ and ascend.20.10 Top of Ridge, bears $N. \& S.$ and descend.40.00 Set temporary $\frac{1}{4}$ Sec. Cor.78.00 Cross Wash, 111 lks. wide, Course $N. 34^{\circ} W.$ and ascend.79.00 Intersect $W. B.$ of Tp. 31 lks. $N.$ of cor. to secs.16. $7 \& 12$ ^{previously set by me,} from which corner, I run $N. 89^{\circ} 47' E.$ on a true line, between sections 6 & 7Variation $13^{\circ} 30'$ East.

39.00 Set a post 3 ft. long, 3 ins. diam. with marked stone
12 ins. in the ground, for $\frac{1}{4}$ Sec. Cor., marked $\frac{1}{2}$ S. on
 $N.$ face, dug pits, 18 x 18 x 12 ins., $E.$ and $W.$ of
post $5\frac{1}{2}$ ft. dist., and raised a mound of earth $1\frac{1}{2}$ ft.
high, $3\frac{1}{2}$ ft. base around post.

79.00 The corner to sections 5, 6, 7 & 8
Land mountainous.

Soil 3^{rd} rate

Vegetation grass & sage.

I carefully examined the adjustments of my solar
compass to-day, particularly the latitude and revers-
ing apparatus, and found them correct.

Township 15 N Range 19 E

Gila and Salt River Meridian.

Chains

North, on a random line between Sections 5 and 6.

Variation $13^{\circ} 30'$ East.

Descend.

17.50 Cross Wash, 20 lks. wide, Course $N. 30^{\circ} E$ and ascend.40.00 Set temporary $\frac{1}{4}$ Sec. Cor.

80.05 Intersect N. B. of Tp. 53 lks. E. of cor. to secs.

5. 6. 31 & 32 T. 15 N. R. 19 E.,

Which is a sand stone $20 \times 12 \times 8$ ins.,
 15 ins. in the ground, marked with
 4 notches on E. and 2 notches on
 W. edges with pits $18 \times 18 \times 12$ ins., in
 each Sec., $5\frac{1}{2}$ ft. dist., and a mound
 of earth 2 ft. high $4\frac{1}{2}$ ft. base alongside
 from which corner, I run

S. $23^{\circ} E$, on a true line, between sections 5 & 6Variation $13^{\circ} 30'$ East.

40.05 Set a post 3 ft. long, 3 ins. diam. with marked stone
 12 ins. in the ground, for $\frac{1}{4}$ Sec. Cor., marked $\frac{1}{4}$ S. on
 W. face, dug pits, $18 \times 18 \times 12$ ins., N. and S. of
 post $5\frac{1}{2}$ ft. dist., and raised a mound of earth $1\frac{1}{2}$ ft.
 high, $3\frac{1}{2}$ ft. base around post.

80.05 The corner to sections 5. 6. 7 & 8

Land rolling.

Soil 3⁰⁰ rate

Vegetation grass & sage.

G. W. Pearson, Comptroller May 31, 1883

GENERAL DESCRIPTION.

The surface of this Tp. is rolling in the South and North and rocky in the center.

The soil is 3rd rate.

There is some good grass in the North, but very little in the East of the Tp.

There is plenty of thick juniper in all parts; the extreme East and North west.

The only water is in Sec. 9 in a deep rocky canon.

For Final Oaths
see Book No. 19.

U. S. Surveyor General's Office,

Tucson, Arizona, July 5, 1884

The foregoing Field Notes of the Survey of the

Subdivision of the
Township 15 North
Range 19 East

Of the Gila and Salt River Base and Meridian, Arizona, execu-

ted by Wm. Weyrick

Deputy Surveyor, under his contract of the 28th

day of July, 1882 having been

critically examined and the necessary corrections and explana-

tions made, the said Field Notes and the surveys they describe

are hereby approved

Royal Johnson
Surveyor General.