

*Platted
Surveyed
Cim/rom*

Henry Meyrick Jr. Deputy Surveyor.

T. *10 N.* R. *17 E.*

Gila and Salt River Meridian.

No-228

FIELD NOTES •

OF

THE SUBDIVISION LINES OF

Township *10 N.* Range *17 E.*

Gila and Salt River Meridian.

BY

Henry Meyrick Jr. Deputy Surveyor.

Under his Contract of *July 28th* 1882

Survey Commenced *July 3rd* 1883

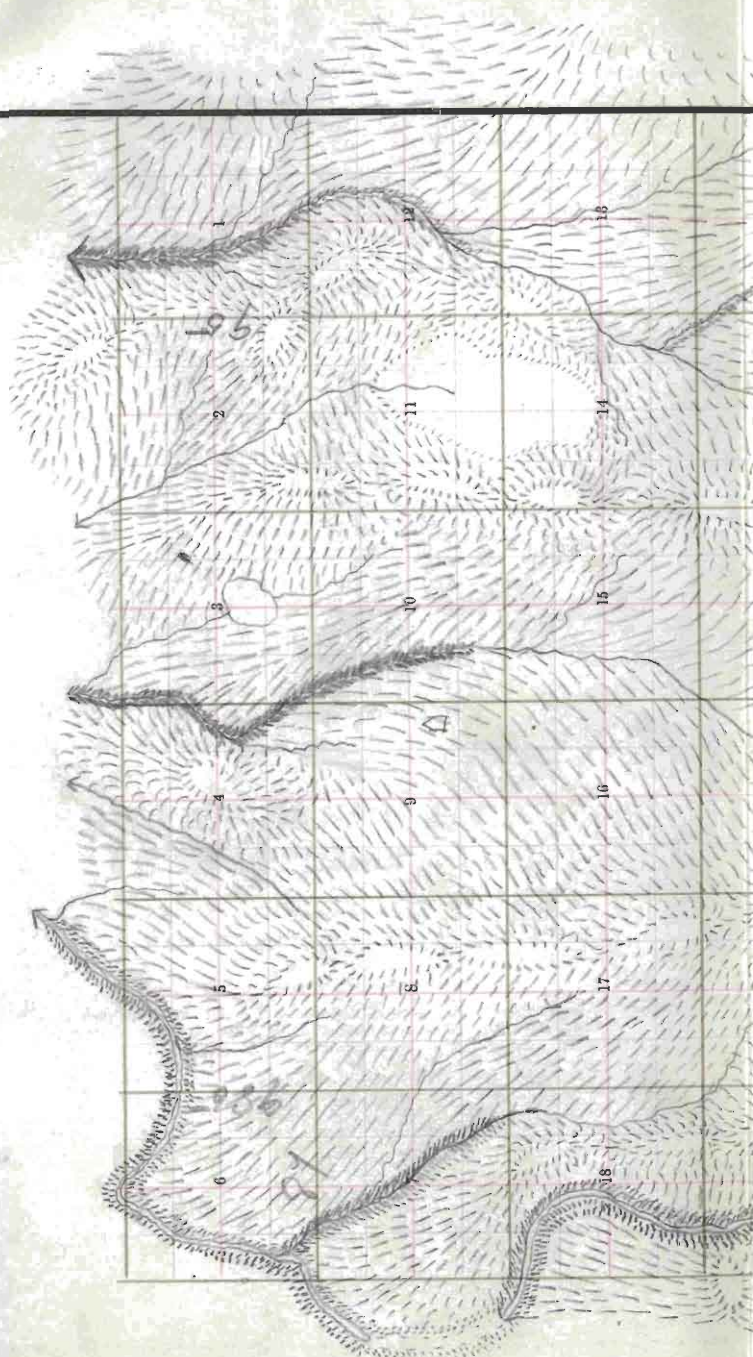
Survey Completed *July 5th* 1883

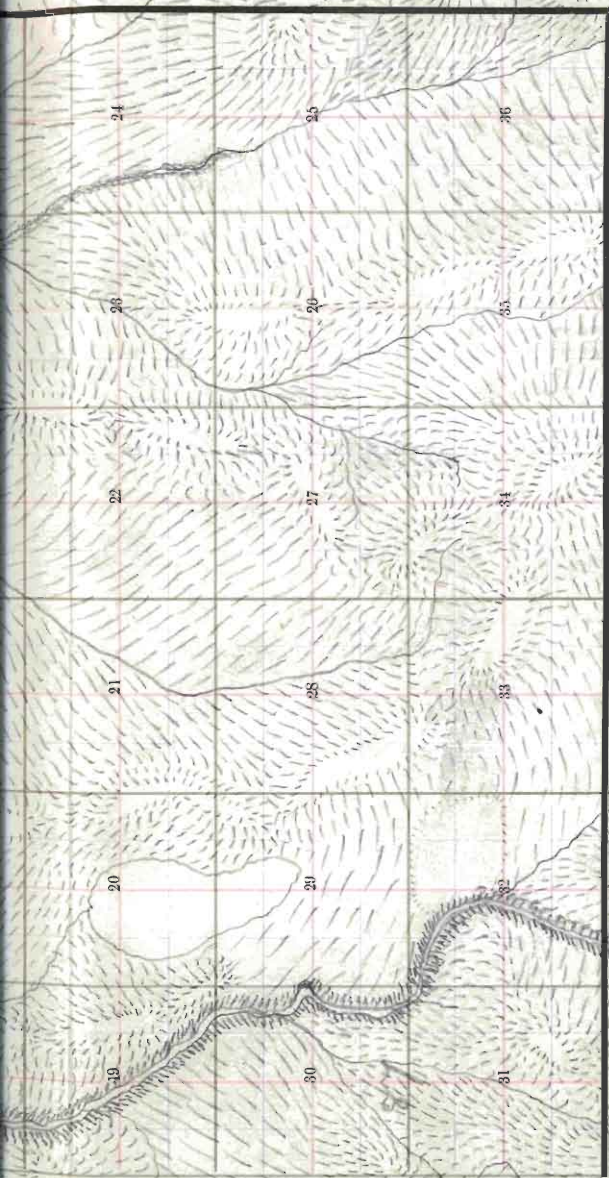
No-228

*Platted,
Copied for Washington,
Copied for Register,*

228

Township No. 16 N Range No. 17 E. 6th Satt'win Meridian.





TOWNSHIP PLOT

- Meridian Line,
- Base Line,
- Standard Line,
- Township Lines,
- Section Lines,
- Meander Lines,

$\frac{10 \frac{1}{2}}{80} = 40$

Henry Meyrick Jr. Deputy Surveyor.
T. 10 N. R. 17 E.

Gila and Salt River Meridian.

No-228

FIELD NOTES

OF

THE SUBDIVISION LINES OF

Township 10 N. Range 17 E.

Gila and Salt River Meridian.

BY

Henry Meyrick Jr. Deputy Surveyor.

Under his Contract of July 28th 1882

Survey Commenced July 30th 1883

Survey Completed July 5th 1883

*Platted,
Copied for Washington,
Copied for Register,*

Township 16 North, Range 17 East,

Gila and Salt River Basal and Meridian.

6	00	5	44	4	33	3	22	2	11	1
59		58		43		32		21		10
7	57	8	42	9	31	10	20	11	9	12
53		55		41		30		19		8
18	54	17	40	16	29	15	18	14	7	13
53		52		39		28		17		6
19	51	20	38	21	27	22	16	23	5	24
50		49		37		26		15		4
30	48	29	36	28	25	27	14	26	3	25
47		46		35		24		13		2
31	45	32	34	33	23	34	12	35	1	36

OK

Edward Denny & Co., Stationers & Printers, S. F., Cal.

Copyright Secured,

Entered according to Act of Congress, in the Clerk's Office of the Librarian of Congress at Washington, D. C., in the year 1880.

Township

Range

Meridian.

For Preliminary Data
and description of
instrument used see
Book No. 1.

~~Survey made with Burt's Patent Improved Solar
Compass, nearly new, and in first rate order. Made
by Otto Fennel of Cassel
Germany 1881~~

Township
(See previous page.)

16 N.

Range

17 E.

Gila and Salt River Meridian.

Chains

From the corner to Sections 35, 36, 1 and 2 on the South boundary, ^{of 1/2} ~~1-rod~~, previously set by me, *John* North, between Sections 35 and 36

Variation 13° 30' East.

Descend.

40.00

Set a *lime* stone 22 x 19 x 4 ins., 10 ins. in the ground, for 1/4 Sec. Cor., marked 1/4 on *W.* face, and raised a mound of stone alongside. Pits impracticable.

80.00

Set a *sand* stone 20 x 20 x 4 ins., 15 ins. in the ground for Cor. to Secs. 25, 26, 35 & 36 marked with | notch on S. and | notch on E. edges and raised a mound of stone alongside. Pits impracticable.

Land rolling.

Soil 3rd rate

Undergrowth of *juniper*.

Timber of *cedar*.

Township 10 N Range 17 E

Gila and Salt River Meridian.

Chains

East, on a random line between Sections 25 and 36.

Variation 13° 30' East.*Descend gradually.*40.00 Set temporary $\frac{1}{4}$ Sec. Cor.59.08 Cross Gulch, 20 lks. wide, Course *N.* and ascend.79.58 Intersect *E. B. of Tp. 11 lks. S. of cor. to secs.*
previously set by me.

25. 30. 31 & 36 from which corner, I run

S. 89° 12' W. on a true line, between sections 25 & 36

Variation 14° 00' East.39.79 Set a post 3 ft. long, 3 ins. diam. with marked stone
12 ins. in the ground, for $\frac{1}{4}$ Sec. Cor., marked $\frac{1}{4}$ S. on
N. face, dug pits, 18 x 18 x 12 ins., *E.* and *W.* of
post $5\frac{1}{2}$ ft. dist., and raised a mound of earth $1\frac{1}{2}$ ft.
high, $3\frac{1}{2}$ ft. base around post.

79.58 The corner to sections 25, 26, 35 & 36

Land rolling.

Soil *3rd* rateUndergrowth of *juniper*.

Township 10 N Range 17 E
Gila and Salt River Meridian.

Chains North, between Sections 25 and 26.

Variation $13^{\circ} 30'$ East.

Descend gradually.

40.00 Set a Sand stone $20 \times 15 \times 4$ ins., 16 ins. in the ground, for $\frac{1}{4}$ Sec. Cor., marked $\frac{1}{4}$ on W. face, dug pits $18 \times 18 \times 12$ ins., N. and S. of stone $5\frac{1}{2}$ ft. dist., and raised a mound of earth $1\frac{1}{2}$ ft. high, $3\frac{1}{2}$ ft. base alongside.

80.00 Set a Sand stone $25 \times 23 \times 4$ ins. 18 ins. in the ground for Cor. to Secs. 23, 24, 25, 26 (marked with 2 notches on S. and 1 notch on E. edges, dug pits $18 \times 18 \times 12$ ins. in each Sec., $5\frac{1}{2}$ ft. dist. and raised a mound of earth 2 ft. high, $4\frac{1}{2}$ ft. base. alongside.

Land rolling.

Soil 3rd rate

Timber of cedar & juniper.

Undergrowth of juniper.

Township 10 N Range 17 E

Gila and Salt River Meridian.

Chains East, on a random line between Sections 24 and 25.
Variation 13° 30' East.*Descend gradually.*21.53 Cross Wash, 50 lks. wide, Course N 25° W and ascend.40.00 Set temporary $\frac{1}{2}$ Sec. Cor.49.81 Top of Spur, bears N. 20° W. & S. 20° E and descend.79.90 Intersect E. B. of Tp, 80 lks. S. of cor. to secs.
*previously set by me.*19.24.25.30 from which corner, I runS. 89° 23' W. on a true line, between sections 24 & 25Variation 14° 00' East.39.98 Set a post 3 ft. long, 3 ins. diam. with marked stone12 ins. in the ground, for $\frac{1}{2}$ Sec. Cor., marked $\frac{1}{2}$ S. onN. face, dug pits, 18 x 18 x 12 ins., E and W, of
post $5\frac{1}{2}$ ft. dist., and raised a mound of earth $1\frac{1}{2}$ ft.high, $3\frac{1}{2}$ ft. base around post.79.90 The corner to sections 23. 24. 25 & 20

Land rolling.

Soil 3rd rateUndergrowth of juniper.

Township

16 N

Range

17 E

Gila and Salt River Meridian.

Chains

North, between Sections 23 and 24.

Variation $13^{\circ} 30'$ East.

Descend gradually.

40.00

Set a sand stone $15 \times 12 \times 4$ ins., 10 ins. in the ground, for $\frac{1}{2}$ Sec. Cor., marked $\frac{1}{2}$ on W. face, dug pits $18 \times 18 \times 12$ ins., N. and S. of stone $5\frac{1}{2}$ ft. dist., and raised a mound of earth $1\frac{1}{2}$ ft. high, $3\frac{1}{2}$ ft. base alongside.

78.75

Cross Gulch, 50 lks. wide, Course N. 5° W. and ascend.

80.00

Set a sand stone $34 \times 33 \times 4$ ins. 24 ins. in the ground for Cor. to Secs. 13. 14. 23. 24 marked with 3 notches on S. and 1 notch on E. edges and raised a mound of stone alongside. Pits impracticable.

Land rolling.

Soil 3rd rate

Timber of juniper.

Undergrowth of

Township 10 N Range 17 E
Gila and Salt River Meridian.

Chains

East, on a random line between Sections 13 and 24.

Variation $13^{\circ} 30'$ East.*Ascend gradually.*32.13 Top of Spur, bears *N. & S.* and descend.40.00 Set temporary $\frac{1}{2}$ Sec. Cor.58.05 Cross Gulch, 135 lks. wide, Course *S.* and ascend.80.15 Intersect *E. B. of Tp.* 135 lks. *S.* of cor. to secs.
previously set by me.

13. 18. 19. 24 from which corner, I run

*S. $89^{\circ} 2'$ W. on a true line, between sections 13 & 24*Variation $14^{\circ} 00'$ East.

40.07 Set a Sandstone $20 \times 10 \times 4$ ins., 15 ins.
in the ground, for $\frac{1}{2}$ Sec. Cor., marked $\frac{1}{2}$ on *N.* face,
dug pits $18 \times 18 \times 12$ ins., *E.* and *W.* of stone $5\frac{1}{2}$
ft. dist., and raised a mound of earth $1\frac{1}{2}$ ft. high, $3\frac{1}{2}$
ft. base alongside.

80.15 The corner to sections 13, 14, 23 & 24

Land mountainous.

Soil 3^{rd} rateUndergrowth of *Juniper*.

Township 10 N. Range 17 E.

Gila and Salt River Meridian.

Chains

North, between Sections 13 and 14.

Variation 13° 00' East.

Descend.

40.00

Set a Sand stone 16 x 10 x 6 ins., 10 ins. in the ground, for $\frac{1}{4}$ Sec. Cor., marked $\frac{1}{4}$ on W. face, and raised a mound of stone alongside. Pits impracticable.

43.10

Cross Wash, 20 lks. wide. Course N. E. and ascend.

78.59

Top of Hill bears N. 15° E. & S. 15° W. and descend.

30.00

Set a post 4 ft. long, 4 ins. square, with marked stone 12 ins. in the ground, for Cor. to Secs, 11, 12, 13 & 14 marked T, 16 N. S. 12, on N, E, R, 17 E, S. 13 on S, E, S, 14 on S, W, and S, 11 on N, W, face with 4 notches on S, and 1 notch on E, edges, dug pits 18 x 18 x 12 ins, in each Sec., 5 1/2 ft, dist., and raised a mound of earth 2 ft, high, 4 1/2 ft, base around post.

Land hilly.

Soil 3rd rate

Undergrowth of Juniper

Timber of Juniper.

Township 10 N. Range 17 E.

Gila and Salt River Meridian.

Chains East, on a random line between Sections 12 and 13.
Variation $13^{\circ} 00'$ East.*Ascend gradually.*

4.81 Top of Hill bears N. & S. and descend.

21.70 Cross Wash, 50 lks. wide, Course N.

36.40 Cross Wash, 45 lks. wide, Course N. and ascend.

40.00 Set temporary $\frac{1}{4}$ Sec. Cor.80.02 Intersect E. B. of T. of $\frac{1}{4}$ lks. S. of cor. to secs.
previously set by me.

7.12 13 & 18 from which corner, I run

S. $89^{\circ} 11' W.$ on a true line, between sections 12 & 13Variation $14^{\circ} 15'$ East.

40.01 Set a Sand stone 18 x 12 x 7 ins., 12

ins. in the ground, for $\frac{1}{4}$ Sec. Cor., marked $\frac{1}{4}$ on N.

face, and raised a mound of stone alongside. Pits

impracticable.

80.02 The corner to sections 11, 12, 13 & 14

Land hilly.

Soil 3rd rate

Undergrowth of juniper

Township 16 N Range 17 E
 Gila and Salt River Meridian.

Chains

North, between Sections 11 and 12.

Variation $13^{\circ} 30'$ East.*Descend.*

40.00

Set a post 3 ft. long, 3 ins. diam. with marked stone.
 12 ins. in the ground, for $\frac{1}{4}$ Sec. Cor., marked $\frac{1}{4}$ S. on
 W. face, and raised a mound of stone $1\frac{1}{2}$ ft. high,
 $3\frac{1}{2}$ ft. base around post. Pits impracticable.

41.15

Ascend.

80.00

Set a *Sand* stone $17 \times 14 \times 6$ ins. 12 ins.
 in the ground for Cor. to Secs. 1, 2, 11 & 12 marked
 with 3rd notches on S. and 1 notch on E. edges,
 dug pits $18 \times 18 \times 12$ ins. in each Sec., $5\frac{1}{2}$ ft. dist. and
 raised a mound of earth 2 ft. high, $4\frac{1}{2}$ ft. base. alongside.

Land hilly.

Soil $3\frac{1}{2}$ rateUndergrowth of *juniper*

Township 16 N Range 17 E

Gila and Salt River Meridian.

Chains

East, on a random line between Sections 1 and 12.

Variation $13^{\circ} 30'$ East.*Ascend.*12.52 Top of Ridge, bears $N. 17^{\circ} W.$ & $S. 17^{\circ} E.$ and descend.30.06 Cross Creek 34 lks. wide, Course $N. 60^{\circ} W.$ and ascend.40.00 Set temporary $\frac{1}{2}$ Sec. Cor.45.19 Top of Spur, bears $N. 31^{\circ} W.$ & $S. 31^{\circ} E.$ and descend.79.68 Intersect E. B. of Tp. 104 lks. S. of cor. to secs.
previously set by me.

10.70 12 from which corner, I run

 $S. 89^{\circ} 15' W.$ on a true line, between sections 1 & 12Variation $14^{\circ} 00'$ East.

39.84 Set a Sand stone 32 x 19 x 7 ins., 24

ins. in the ground, for $\frac{1}{2}$ Sec. Cor., marked $\frac{1}{2}$ on N.

face, and raised a mound of stone alongside. Pits

impracticable.

79.68 The corner to sections 1, 2, 11 & 12

Land mountainous.

Soil 3rd rate

Undergrowth of juniper.

I carefully examined the adjustments of my solar
compass to-day, particularly the latitude and revers-
ing apparatus, and found them correct.

Township 10 N Range 17 E

Gila and Salt River Meridian.

Chains North, on a ^{true.} line between Sections 1 and 2.
Variation 13° 30' East.

Ascend.

9.83 Top of Hill bears N. 50° W. & S. 50° E and descend.

40.00 Set a post 3 ft. long, 3 ins. diam. with marked stone 12 ins. in the ground, for 1/2 Sec. Cor., marked 1/2 S. on W. face, dug pits, 18 x 18 x 12 ins., N. and S. of post 5 1/2 ft. dist., and raised a mound of earth 1 1/2 ft. high, 3 1/2 ft. base around post.

95.43 Intersect the 4th Standard Parallel North at a point 18.00 chs. West of the Standard Cor. to Secs. 35 and 36. T. 17 N. R. 17 E.

Which is a sand stone 20 x 12 x 10 ins. 15 ins. in the ground, marked B.C. with 1 notch on E. and 5 notches on W. edges, with pits 18 x 18 x 12 ins. in each Sec. 5 1/2 ft. dist. and a mound of earth 2 ft. high, 4 1/2 ft. base alongside.

Set a post, 4 ft. long, 4 ins. square, 12 ins. in the ground, for ^{clearing} Cor. to Secs. 1 and 2 marked C. C. T. 16 N. R. 17 E., on S. S. 1 on E. and S. 2 on W. faces, with 1 notch on E. and 5 notches on W. faces, dug pits 18 x 18 x 12 ins. E. & W. of post, 5 1/2 ft. dist. and raised a mound of earth 2 ft. high, 4 1/2 ft. base around post.

Land hilly.

Soil 3.00 rate

Undergrowth of Juniper.

Howard Newick July 3, 1883

Township 10 N Range 17 E

Gila and Salt River Meridian.

From the corner to sections, 2, 3, 34 & 35 previously set by me.Chains Iron North, between Sections 34 and 35.Variation 13° 45' East.

Descend.

40.00 Set a post 3 ft. long, 3 ins. diam. with marked stone 12 ins. in the ground, for $\frac{1}{4}$ Sec. Cor., marked $\frac{1}{4}$ S. on W. face, dug pits, 18 x 18 x 12 ins., N. and S. of post $5\frac{1}{2}$ ft. dist., and raised a mound of earth $1\frac{1}{2}$ ft. high, $3\frac{1}{2}$ ft. base around post. from which

A Pine 10 ins. diam. bears N. 00° W. 32 lks. dist. marked $\frac{1}{4}$ S. B. T. No other trees within limits.

80.00 Set a lime stone 26 x 20 x 10 ins. 18 ins. in the ground for Cor. to Secs. 26, 27, 34 & 35 marked with 1 notch on S. and 2 notches on E. edges and raised a mound of stone alongside. Pits impracticable.

Land rolling

Soil 3rd rateUndergrowth of Juniper.Timber of cedar & juniper.

Township

16 N

Range

17 E

Gila and Salt River Meridian.

Chains

East, on a random line between Sections 26 and 35.

Variation $13^{\circ} 30'$ East.*Ascend.*

3.33 Top of Spur, bears N. & S. and descend.

25.77 Cross Wash, 30 lks. wide, Course N 14° E and ascend.40.00 Set temporary $\frac{1}{2}$ Sec. Cor.43.00 Top of Hill bears N 5° W & S 5° E and descend.

79.83 Intersect N. & S. line, 94 lks. S. of cor. to secs.

25.26.30.36 from which corner, I run

S $89^{\circ} 20'$ W. on a true line between sections 26 & 35Variation $13^{\circ} 30'$ East

39.91 Set a sand stone $14 \times 7 \times 5$ ins., 10 ins. in the ground, for $\frac{1}{2}$ Sec. Cor., marked $\frac{1}{2}$ on N. face, dug pits $18 \times 18 \times 12$ ins., E. and W. of stone $5\frac{1}{2}$ ft. dist., and raised a mound of earth $1\frac{1}{2}$ ft. high, $3\frac{1}{2}$ ft. base alongside.

79.83 The corner to sections 26.27.34 & 35

Land mountainous.

Soil 3^{rd} rate

Timber of juniper
Undergrowth of juniper

Township 10 N. Range 17 E.

Gila and Salt River Meridian.

Chains

North, between Sections 26 and 27.

Variation $13^{\circ} 30'$ East.*Descend.*

40.00

Set a Sand stone $15 \times 12 \times 7$ ins., 10 ins. in the ground, for $\frac{1}{4}$ Sec. Cor., marked $\frac{1}{4}$ on W. face, dug pits $18 \times 18 \times 12$ ins., N. and S. of stone $3\frac{1}{2}$ ft. dist., and raised a mound of earth $1\frac{1}{2}$ ft. high, $3\frac{1}{2}$ ft. base alongside.

50.50

Cross Wash, 20 fts. wide, Course N.E. and ascend.

80.00

Set a Limestone $25 \times 20 \times 8$ ins. 18 ins. in the ground for Cor. to Secs. 22, 23, 26 & 27 marked with 2 notches on S. and 2 notches on E. edges and raised a mound of stone alongside. Pits impracticable.

Land rolling.

Soil 3rd rate.

Timber of Juniper.

Undergrowth of Juniper.

Township

16 N.

Range

17 E.

Gila and Salt River Meridian.

Chains

East, on a random line between Sections 23 and 26.

Variation $13^{\circ} 30'$ East.*Descend gradually.*9.31 Cross Wash, 20 lks. wide, Course $N. 20^{\circ} E.$ and ascend.37.00 Top of Spur, bears $N. 20^{\circ} E. \& S. 20^{\circ} W.$ and descend.40.00 Set temporary $\frac{1}{4}$ Sec. Cor.

80.21 Intersect N. & S. line, 131 lks. S. of cor. to secs.

~~23, 24, 25 & 26~~ from which corner, I run $S. 89^{\circ} 11' W.$ on a true line between sections 23 & 26Variation $13^{\circ} 30'$ East

40.10 Set a post 3 ft. long. 3 ins. diam. with marked stone
 12 ins. in the ground, for $\frac{1}{4}$ Sec. Cor., marked $\frac{1}{2}$ S. on
 N. face, dug pits, 18 x 18 x 12 ins., E. and W. of
 post $5\frac{1}{2}$ ft. dist., and raised a mound of earth $1\frac{1}{2}$ ft.
 high, $3\frac{1}{2}$ ft. base around post.

80.21 The corner to sections 22, 23, 26 & 27

Land rolling.

Soil 3rd rate

Timber of juniper

Undergrowth of juniper.

Township 16 N Range 17 E
Gila and Salt River Meridian.

Chains

North, between Sections 22 and 23.

Variation $13^{\circ} 30'$ East.*Ascend.*

40.00

Set a Sand stone $10 \times 8 \times 4$ ins., 10 ins. in the ground, for $\frac{1}{4}$ Sec. Cor., marked $\frac{1}{4}$ on W. face, dug pits $18 \times 18 \times 12$ ins., N and S. of stone $5\frac{1}{2}$ ft. dist., and raised a mound of earth $1\frac{1}{2}$ ft. high, $3\frac{1}{2}$ ft. base. alongside.

60.00

Top of Hill bears N. 11° E. and descend.

80.00

Set a Sand stone $20 \times 20 \times 4$ ins. 15 ins. in the ground for Cor. to Secs. 14, 15, 22 & 23 marked with 3 notches on S. and 2 notches on E. edges, dug pits $18 \times 18 \times 12$ ins. in each Sec., $5\frac{1}{2}$ ft. dist. and raised a mound of earth 2 ft. high, 4 ft. base. alongside.

Land hilly.

Soil 3^{rd} rate

Timber of juniper.

Undergrowth of juniper.

Township

16 N.

Range

17 E.

Gila and Salt River Meridian.

Chains

East, on a random line between Sections 14 and 23.

Variation $13^{\circ} 30'$ East.*Descend gradually.*40.00 Set temporary $\frac{1}{4}$ Sec. Cor.07.85 Cross Wash, 13 lks. wide, Course N. 20° E.79.45 Cross Gulch, 50 lks. wide, Course N. 3° and ascend.

79.94 Intersect N. & S. line, 103 lks. S. of cor. to secs.

13. 14. 23 & 24 from which corner, I run

S $89^{\circ} 16'$ W. on a true line between sections 14 & 23Variation $13^{\circ} 30'$ East

39.97 Set a sand stone $20 \times 20 \times 4$ ins., 15 ins. in the ground, for $\frac{1}{4}$ Sec. Cor., marked $\frac{1}{4}$ on N. face, and raised a mound of stone alongside. Pits impracticable.

79.94 The corner to sections 14. 15. 22 & 23
Land rolling.

Soil 3^{rd} rateTimber of *juniper*.Undergrowth of *juniper*.

Township 10 N Range 17 E

Gila and Salt River Meridian.

Chains

North, between Sections 14 and 15.

Variation

13° 30'

East.

*Descend.*40.00

Set a post 3 ft. long, 3 ins. diam. with marked stone 12 ins. in the ground, for $\frac{1}{2}$ Sec. Cor., marked $\frac{1}{2}$ S. on W. face, dug pits, 18 x 18 x 12 ins., N. and S. of post $5\frac{1}{2}$ ft. dist., and raised a mound of earth $1\frac{1}{2}$ ft. high, $3\frac{1}{2}$ ft. base around post.

20.00

Set a post 4 ft. long, 4 ins. square, with marked stone 12 ins. in the ground, for Cor. to Secs, 10, 11, 14 & 15 marked T, 10 N. S. 11, on N, E, R, 17 E. S. 14 on S, E, S, 15 on S, W, and S, 10 on N. W. face with 4 notches on S, and 2 notches on E, edges dug pits 18 x 18 x 12 ins, in each Sec., $5\frac{1}{2}$ ft. dist, and raised a mound of earth 2 ft, high, $4\frac{1}{2}$ ft. base around post.

Top of Ridge, bears N. E. & S. W. and descend.

Land mountainous

Soil 3rd rate

Timber of juniper.

Undergrowth of juniper.

Township 16 N. Range 17 E

Gila and Salt River Meridian.

Chains East, on a random line between Sections 11 and 14.
 Variation $13^{\circ} 30'$ East.

Ascend.

295 Top of Ridge, bears N e S. and descend.

35.00 Enter Flat bears N.

40.00 Set temporary $\frac{1}{2}$ Sec. Cor.

62.84 Leave Flat bears N. and ascend.

80.30 Intersect N. & S. line, 97 lks. S. of cor. to secs.

11, 12, 13, 14 from which corner, I run

S. $89^{\circ} 18'$ W. on a true line between sections 11 & 14Variation $13^{\circ} 30'$ East

40.15 Set a post 3 ft. long, 3 ins. diam. with marked stone
 12 ins. in the ground, for $\frac{1}{2}$ Sec. Cor., marked $\frac{1}{2}$ S. on
 N. face, dug pits, 18 x 18 x 12 ins., E. and W. of
 post $5\frac{1}{2}$ ft. dist., and raised a mound of earth $1\frac{1}{2}$ ft.
 high, $3\frac{1}{2}$ ft. base around post.

80.30 The corner to sections 10, 11, 14 & 15

Land mountainous ~~level~~.Soil 3° rate

Timber of juniper

Undergrowth of juniper.

Township 16 N. Range 17 E.
Gila and Salt River Meridian.

Chains

North, between Sections 10 and 11.

Variation

13° 30'

East.

Descend.

40.00

Set a sand stone 15 x 10 x 4 ins., 10 ins. in the ground, for $\frac{1}{4}$ Sec. Cor., marked $\frac{1}{4}$ on W. face, dug pits 18 x 18 x 12 ins., N. and S. of stone 5 $\frac{1}{2}$ ft. dist., and raised a mound of earth 1 $\frac{1}{2}$ ft. high, 3 $\frac{1}{2}$ ft. base alongside.

80.00

Set a post 4 ft. long, 4 ins. square, with marked stone 12 ins. in the ground, for Cor. to Secs, 2, 3, 10 & 11 marked T, 16 N. S. 2, on N, E, R, 17 E, S. 11 on S, E, S, 10 on S, W, and S, 3 on N, W, face with 5 notches on S, and 3 notches on E, edges, dug pits 18 x 18 x 12 ins., in each Sec., 5 $\frac{1}{2}$ ft. dist., and raised a mound of earth 2 ft. high, 4 $\frac{1}{2}$ ft. base around post.

Land rolling.

Soil 3rd rateTimber of Cedar & juniper.Undergrowth of juniper.

Township

10 N

Range

17 E

Gila and Salt River Meridian

Chains

East, on a random line between Sections 2 and 11.

Variation $13^{\circ} 30'$ East.*Ascend.*11.60 Top of Hill bears N. 10° W. & S. 10° E. and descend.40.00 Set temporary $\frac{1}{4}$ Sec. Cor.

57.50 Cross Wash, 15 lks. wide, Course N.W. and ascend.

79.87 Intersect N. & S. line, 137 lks. S. of cor. to secs.

12. 11 & 12 from which corner, I run

S. $89^{\circ} 1'$ W. on a true line between sections 2 & 11.Variation $13^{\circ} 30'$ East

89.93 Set a Sand stone $19 \times 11 \times 7$ ins., 12 ins. in the ground, for $\frac{1}{4}$ Sec. Cor., marked $\frac{1}{4}$ on N. face, and raised a mound of stone alongside. Pits impracticable.

79.87 The corner to sections 2, 3, 10 & 11

Land hilly.

Soil 3^m rateTimber of *juniper*.Undergrowth of *juniper*.

I carefully examined the adjustments of my solar compass to-day, particularly the latitude and reversing apparatus, and found them correct.

Township 16 N Range 17 E
Gila and Salt River Meridian.

Chains

North, on a ~~random~~ ^{line} line between Sections 2 and 3.

Variation 13° 30' East.

Descend.

40.00 Set a post 3 ft. long, 3 ins. diam. with marked stone 12 ins. in the ground, for $\frac{1}{2}$ Sec. Cor., marked $\frac{1}{2}$ S. on W. face, dug pits, 18 x 18 x 12 ins., N. and S. of post $5\frac{1}{2}$ ft. dist., and raised a mound of earth $1\frac{1}{2}$ ft. high, $3\frac{1}{2}$ ft. base around post.

96.22 Intersect the 11th Standard Parallel North at a point 17.68 chs. West- of the Standard Cor. to Secs. 34 and 35. T. 17 N. R. 17 E.

Which is a sand stone 10 x 12 x 0.5 ins. in the ground, marked with 2 notches on E. and 4 notches on W. edges, and a mound of stone alongside.

Set a post, 4 ft. long, 4 ins. square, ^{with marked stone} 12 ins. in the ground, for ^{clearing} Cor. to Secs. 2 and 3 marked C. C. T. 16 N. R. 17 E., on S. 2 on E. and S. 3 on W. faces, with 2 notches on E. and 4 notches on W. faces, dug pits 18 x 18 x 12 ins. S. E. & W. of post, $5\frac{1}{2}$ ft. dist. and raised a mound of earth 2 ft. high, $4\frac{1}{2}$ ft. base around post.

Land rolling. Timber of

Soil 3rd rate Undergrowth of juniper
E. W. Pearson, Comptroller July 3, 1883

Township 16 N. Range 17 E

Gila and Salt River Meridian.

From the corner to sections, 3, 4, 33 & 34, previously set by me.
 Chains *run* North, between Sections 33 and 34. *By D.*

Variation 14° 00' East.

Ascend gradually.

34.00 Top of Ridge, bears N.W. & S.E. and descend.

40.00 Set a *lime* stone 16 x 7 x 7 ins., 10 ins. in the ground, for $\frac{1}{4}$ Sec. Cor., marked $\frac{1}{4}$ on W. face, dug pits 18 x 18 x 12 ins., N. and S. of stone $5\frac{1}{2}$ ft. dist., and raised a mound of earth $1\frac{1}{2}$ ft. high, $3\frac{1}{2}$ ft. base alongside.

69.54 Cross Wash, 18 lks. wide, Course N. 89° W. and ascend.

80.00 Set a post 4 ft. long, 4 ins. square, with marked alone 12 ins. in the ground, for Cor. to Secs, 27, 28, 33 & 34 marked T, 16 N. S, 27, on N, E, R, 17 E, S, 34 on S, E, S, 33 on S, W, and S, 28 on N, W, face with 1 notch on S, and 3 notches on E, edges, dug pits 18 x 18 x 12 ins, in each Sec., $5\frac{1}{2}$ ft, dist., and raised a mound of earth 2 ft, high, $4\frac{1}{2}$ ft, base around post.

Land mountainous

Soil 3rd red

Timber of juniper.

Undergrowth of juniper.

Township

16 N

Range

17 E

Gila and Salt River Meridian.

Chains

East, on a random line between Sections 27 and 34.

Variation $13^{\circ} 30'$ East.*Ascend gradually.*27.13 Top of Ridge, bears $N. 69^{\circ} W. \text{ and } 69^{\circ} E.$ and descend.40.00 Set temporary $\frac{1}{4}$ Sec. Cor.60.75 Cross Wash, 20 lks. wide, Course $N. 7^{\circ} E.$ and ascend.

79.95 Intersect N. & S. line, 56 lks. S. of cor. to secs.

26.27.34 = 35 from which corner, I run

 $S. 89^{\circ} 36' W.$ on a true line between sections 27 & 34Variation $13^{\circ} 30'$ East

3997 Set a Sand stone $15 \times 16 \times 4$ ins., 10 ins. in the ground, for $\frac{1}{4}$ Sec. Cor., marked $\frac{1}{4}$ on N. face, dug pits $18 \times 18 \times 12$ ins., E. and W. of stone $5\frac{1}{2}$ ft. dist., and raised a mound of earth $1\frac{1}{2}$ ft. high, $3\frac{1}{2}$ ft. base alongside.

79.95 The corner to sections 27, 28, 33 & 34

Land mountainous

Soil 3^{rd} rate

Timber of juniper

Undergrowth of juniper

Township 16 N. Range 17 E.

Gila and Salt River Meridian.

Chains

North, between Sections 27 and 28.

Variation 13° 30' East.

Descend.

40.00

Set a *lime* stone 20 x 15 x 7 ins., 15 ins. in the ground, for $\frac{1}{4}$ Sec. Cor., marked $\frac{1}{4}$ on W face, dug pits 18 x 18 x 12 ins., N and S. of stone $5\frac{1}{2}$ ft. dist., and raised a mound of earth $1\frac{1}{2}$ ft. high, $3\frac{1}{2}$ ft. base, alongside.

80.00

Set a *lime* stone 20 x 15 x 10 ins., 15 ins. in the ground for Cor. to Secs. 21, 22, 27, 28 marked with 2 notches on S. and 3 notches on E. edges, dug pits 18 x 18 x 12 ins. in each Sec., $5\frac{1}{2}$ ft. dist. and raised a mound of earth 2 ft. high, $4\frac{1}{2}$ ft. base, alongside.

*Land rolling.**Soil 3⁰⁰ rate**Undergrowth of juniper.*

Township

10 N.

Range

17 E.

Gila and Salt River Meridian.

Chains

East, on a random line between Sections 22 and 27.

Variation

13° 30'

East.

*Ascend.*40.00 Set temporary $\frac{1}{4}$ Sec. Cor.

62.12 Top of Ridge, bears N 20° E. S. 20° W. and descend.

79.72 Intersect N. & S. line, 68 lks. S. of cor. to secs.

22, 23, 26 & 27 from which corner, I run

S 89° 31' W. on a true line between sections 22 & 27

Variation 13° 30' East

39.80

Set a post 3 ft. long, 3 ins. diam. with marked stone
 12 ins. in the ground, for $\frac{1}{4}$ Sec. Cor., marked $\frac{1}{4}$ S. on
 N. face, dug pits, 18 x 18 x 12 ins., E. and W. of
 post $5\frac{1}{2}$ ft. dist., and raised a mound of earth $1\frac{1}{2}$ ft.
 high, $3\frac{1}{2}$ ft. base around post.

79.72

The corner to sections 21, 22, 27 & 28

Land mountainous

Soil 3rd rate

Timber of juniper.

Undergrowth of juniper.

Township

10 N.

Range

17 E.

Gila and Salt River Meridian.

Chains

North, between Sections 21 and 22.

Variation $13^{\circ} 30'$ East.*Descend.*

110.00

Set a Sand stone $14 \times 10 \times 4$ ins., $1/2$ ins. in the ground, for $1/4$ Sec. Cor., marked $1/4$ on W. face, dug pits $18 \times 18 \times 12$ ins., N and S. of stone $5\frac{1}{2}$ ft. dist., and raised a mound of earth $1\frac{1}{2}$ ft. high, $3\frac{1}{2}$ ft. base alongside.

79.40

Cross Wash, 24 lks. wide, Course $N. 37^{\circ} E$ and ascend.

80.00

Set a Limestone $20 \times 20 \times 10$ ins. 15 ins. in the ground for Cor. to Secs. 15, 16, 21 & 22 marked with 3 notches on S. and 3 notches on E. edges and raised a mound of stone alongside. Pits impracticable.

*Land rolling.*Soil 3rd rate

Timber of cedar & juniper.

Undergrowth of juniper.

Township 16 N Range 17 E
 Gila and Salt River Meridian.

Chains East, on a random line between Sections 15 and 22.
 Variation 13° 30' East.

Descend.

72 Cross Wash, 20 lks. wide, Course N36°E and ascend.
 40.00 Set temporary $\frac{1}{4}$ Sec. Cor.

80.35 Intersect N. & S. line, 39 lks. S. of cor. to secs.

14.15.22 & 23 from which corner, I run

S89° 43' W. on a true line between sections 15 & 22

Variation 13° 30' East

40.17 Set a post 3 ft. long, 3 ins. diam. with marked stone
 12 ins. in the ground, for $\frac{1}{4}$ Sec. Cor., marked $\frac{1}{4}$ S. on
 N. face, dug pits, 18 x 18 x 12 ins., E. and W. of
 post $5\frac{1}{2}$ ft. dist., and raised a mound of earth $1\frac{1}{2}$ ft.
 high, $3\frac{1}{2}$ ft. base around post.

80.85 The corner to sections 15.10.21 & 22

Land rolling.

Soil 3rd rate

Timber of juniper.

Undergrowth of juniper.

Township 16 N Range 17 E

Gila and Salt River Meridian.

Chains

North, between Sections 15 and 16.

Variation 13° 30' East.*Ascend gradually.*

40.00 Set a band stone 14 x 12 x 4 ins., 10
 ins. in the ground, for $\frac{1}{4}$ Sec. Cor., marked $\frac{1}{4}$ on W.
 face, and raised a mound of stone alongside. Pits
 impracticable.

80.00 Set a square stone 20 x 20 x 5 ins. 15 ins. in
 the ground for Cor. to Secs. 9, 10, 15 & 10 marked
 with 4 notches on S. and 3 notches on E. edges and
 raised a mound of stone alongside. Pits impracticable.

*Land rolling.*Soil 3rd rateTimber of juniper.Undergrowth of juniper.

Township 10 N. Range 17 E.

Gila and Salt River Meridian.

Chains

East, on a random line between Sections 10 and 15.

Variation $13^{\circ} 30'$ East.*Descend.*21.10 Cross Wash, 30 lks. wide, Course *N.* and ascend.40.00 Set temporary $\frac{1}{4}$ Sec. Cor.80.56 Intersect N. & S. line, 84 lks. *S.* of cor. to secs.

10, 11, 14, & 15 from which corner, I run

 $89^{\circ} 24'$ W. on a true line between sections 10 & 15Variation $13^{\circ} 30'$ East

40.28 Set a Sand stone 31 x 15 x 5 ins., 24

ins. in the ground, for $\frac{1}{4}$ Sec. Cor., marked $\frac{1}{4}$ on *N.*

face, and raised a mound of stone alongside. Pits

impracticable.

80.56 The corner to sections 9, 10, 15 & 16

Land rolling.

Soil 3rd rate

Undergrowth of juniper.

Township 16 N. Range 17 E.

Gila and Salt River Meridian.

Chains

North, between Sections 9 and 10.

Variation 13° 30' East.*Descend.*

30.00 A log cabin bears W about 1000 chs

110.00 Set a Sand stone 20 x 15 x 4 ins., 15
ins. in the ground, for $\frac{1}{4}$ Sec. Cor., marked $\frac{1}{4}$ on W
face, and raised a mound of stone alongside. Pits
impracticable.80.00 Set a Sand stone 30 x 25 x 4 ins. 22 ins. in
the ground for Cor. to Secs. 3, 4, 9 & 10 marked
with 3 notches on S. and 3 notches on E. edges and
raised a mound of stone alongside. Pits impracticable.

Land rolling.

Soil 3rd rateTimber of cedar.Undergrowth of juniper.

Township 16 N. Range 17 E.
Gila and Salt River Meridian.

Chains East, on a random line between Sections 3 and 10.
Variation 13° 30' East.

Descend.

3.32 Cross Gulch, 12 lks. wide, Course N. 29° W. and ascend.

21.15 Top of Ridge, bears N. 13° W. & S. 18° E. and descend.

40.00 Set temporary $\frac{1}{4}$ Sec. Cor.

44.07 Cross Wash, 20 lks. wide, Course N. and ascend.

80.32 Intersect N. & S. line, 96 lks. S. of cor. to secs.

2, 8, 10 & 11 from which corner, I run

S. 89° 19' W. on a true line between sections 3 & 10

Variation 13° 30' East

4010 Set a sand stone 16 x 12 x 5 ins., 10 ins. in the ground, for $\frac{1}{4}$ Sec. Cor., marked $\frac{1}{4}$ on N. face, dug pits 18 x 18 x 12 ins., E. and W. of stone 5 $\frac{1}{2}$ ft. dist., and raised a mound of earth 1 $\frac{1}{2}$ ft. high, 3 $\frac{1}{2}$ ft. base alongside.

80.32 The corner to sections 3, 4, 9 & 10

Land mountainous

Soil 3rd rate

Timber of juniper.

Undergrowth of juniper.

I carefully examined the adjustments of my solar compass to-day, particularly the latitude and reversing apparatus, and found them correct.

Township 16 N. Range 17 E.

Gila and Salt River Meridian.

Chains

North, on a ~~random~~ ^{line} line between Sections 3 and 4.

Variation 13° 30' East.

Descend.

10.50 Cross Gulch, 40 lks. wide, Course N. 30° W.

40.00 Set a sand stone 14 x 8 x 4 ins., 10 ins. in the ground, for 1/2 Sec. Cor., marked 1/2 on W. face, dug pits 18 x 18 x 12 ins., N. and S. of stone 5 1/2 ft. dist., and raised a mound of earth 1 1/2 ft. high, 3 1/2 ft. base, alongside.

50.76 Cross Gulch, 47 lks. wide, Course N. 3° E

97.25 Intersect the 4th Standard Parallel North at a point 18.15 chs. West- of the Standard Cor. to Secs. 33 and 34 T. 17 N. R. 17 E.

Which is a sand stone 18 x 9 x 8 ins. 2 ins. in the ground marked with 3 notches on E. and 3 notches on W. edges, with pits 18 x 18 x 12 ins. in each Sic, 5 1/2 ft. dist. and a mound of earth 2 ft. high, 2 1/2 ft. base alongside.

Set a post, 4 ft. long, 4 ins. square, 12 ins. in the ground, for ^{closing} Cor. to Secs. 3 and 4 marked C. C.

T. 16 N. R. 17 E., on S. S. 3 on E. and S. 4 on W. faces, with 3 notches on E. and 3 notches on W. faces, dug pits 18 x 18 x 12 ins. E. & W. of post, 5 1/2 ft. dist. and raised a mound of earth 2 ft. high, 4 1/2 ft. base around post.

Land rolling. Soil 3rd rate

Undergrowth of Juniper
Gland Murbach July 24 1883

Township 10 N Range 17 E

Gila and Salt River Meridian.

From the corner to sections, 4, 5, 32 & 33, ^{S. by T.} previously set by me.Chains ^{run} North, between Sections 32 and 33.Variation $14^{\circ} 15'$ East.

Descend.

30.57 Center level bottom.

140.00 Set a post 3 ft. long, 3 ins. diam. with marked stone 12 ins. in the ground, for $\frac{1}{4}$ Sec. Cor., marked $\frac{1}{2}$ S. on W. face, dug pits, 18 x 18 x 12 ins., N. and S. of post $5\frac{1}{2}$ ft. dist., and raised a mound of earth $1\frac{1}{2}$ ft. high, $3\frac{1}{2}$ ft. base around post.

80.00 Set a sand stone 15 x 10 x 5 ins. 10 ins. in the ground for Cor. to Secs. 38, 29, 32 & 33 marked with / notch on S. and 4 notch ~~12~~ on E. edges, dug pits 18 x 18 x 12 ins. in each Sec., $5\frac{1}{2}$ ft. dist. and raised a mound of earth 2 ft. high, $4\frac{1}{2}$ ft. base. alongside.

Land rolling.

Soil 3rd rate

Timber of cedar & juniper.

Undergrowth of juniper.

Township 10 N. Range 17 E

Gila and Salt River Meridian.

Chains East, on a random line between Sections 28 and 33.
Variation $13^{\circ} 30'$ East.

On level Valley.

13.00 Leave Valley, and begin to ascend.

24.06 Top of Ridge, bears N.W. & S.E. and descend.

40.00 Set temporary $\frac{1}{2}$ Sec. Cor.

60.00 Cross wash course north

80.62 Intersect N. & S. line, 75 lks. S. of cor. to secs.

27.28.33 & 34 from which corner, I run

$189^{\circ} 28'$ W. on a true line between sections 28 & 33

Variation $13^{\circ} 30'$ East

40.31 Set a post 3 ft. long. 3 ins. diam. with marked stone

12 ins. in the ground, for $\frac{1}{2}$ Sec. Cor., marked $\frac{1}{2}$ S. on

N. face, dug pits, 18 x 18 x 12 ins., E. and W. of

post $5\frac{1}{2}$ ft. dist., and raised a mound of earth $1\frac{1}{2}$ ft.

high, $3\frac{1}{2}$ ft. base around post.

80.62 The corner to sections 28. 29. 32 & 33

Land mountainous

Soil 3rd rate

Timber of cedar & juniper.

Undergrowth of juniper.

Township 16 N. Range 17 E.
Gila and Salt River Meridian.

Chains North, between Sections 28 and 29.

Variation $13^{\circ} 30'$ East.

Ascend.

40.00 Set a post 3 ft. long, 3 ins. diam. with marked stone
12 ins. in the ground, for $\frac{1}{4}$ Sec. Cor., marked $\frac{1}{4}$ S. on
W. face, dug pits, 18 x 18 x 12 ins., N. and S. of
post $5\frac{1}{2}$ ft. dist., and raised a mound of earth $1\frac{1}{2}$ ft.
high, $3\frac{1}{2}$ ft. base around post.

57.15 Top of Ridge, bears $N. 10^{\circ} W. S. 10^{\circ} E.$ and descend.

63.00 Ascend.

80.00 Set a *lime* stone 25 x 20 x 12 ins. 18 ins. in
the ground for Cor. to Secs. 20, 21, 28 & 29 marked
with 2 notches on S. and 4 notches on E. edges and
raised a mound of stone alongside. Pits impracticable.

Land mountainous.

Soil 3^{rd} rate

Undergrowth of *juniper*.

Township 16 N. Range 17 E.

Gila and Salt River Meridian.

Chains

East, on a random line between Sections 21 and 28.

Variation $13^{\circ} 30'$ East.*Descend.*40.00 Set temporary $\frac{1}{4}$ Sec. Cor.42.05 Cross Wash, 17 lks. wide, Course $N. 8^{\circ} W.$ and ascend.

80.17 Intersect N. & S. line, 112 lks. S. of cor. to secs.

21, 22, 27 & 28 from which corner, I run

 $S. 89^{\circ} 12' W.$ on a true line between sections 21 & 28Variation $13^{\circ} 30'$ East

40.08 Set a Sand stone 24 x 18 x 9 ins., 18

ins. in the ground, for $\frac{1}{4}$ Sec. Cor., marked $\frac{1}{4}$ on N.

face, and raised a mound of stone alongside. Pits

impracticable.

80.17 The corner to sections 20, 21, 28 & 29

Land rolling.

Soil 3^d rate

Undergrowth of juniper.

Township 16 N. Range 17 E.

Gila and Salt River Meridian.

Chains North, between Sections 20 and 21.
Variation 13° 30' East.*Ascend gradually.*

20.00

Top of Ridge, bears N10° W. S10° E. and descend.

40.00

Set a Sand stone 16 x 8 x 4 ins., 10 ins. in the ground, for $\frac{1}{4}$ Sec. Cor., marked $\frac{1}{4}$ on W. face, dug pits 18 x 18 x 12 ins., N and S. of stone 5 $\frac{1}{2}$ ft. dist., and raised a mound of earth 1 $\frac{1}{2}$ ft. high, 3 $\frac{1}{2}$ ft. base alongside.

80.00

Set a Sand stone 27 x 16 x 4 ins. 2 ins. in the ground for Cor. to Secs. 16, 17, 20 x 21 marked with 3 notches on S. and 4 notches on E. edges and raised a mound of stone alongside. Pits impracticable.

Land mountainous.

Soil 3rd rateTimber of Juniper.Undergrowth of Juniper.

Township 16 N Range 17 E

Gila and Salt River Meridian.

Chains East, on a random line between Sections 16 and 21.
Variation 13° 30' East.*Descend gradually.*40.00 Set temporary $\frac{1}{4}$ Sec. Cor.

79.84 Intersect N. & S. line, 127 lks. S. of cor. to secs.

15, 16, 21-22 from which corner, I run

S. 89° 6' W. on a true line between sections 10 & 21

Variation 13° 30' East39.92 Set a post 3 ft. long, 3 ins. diam. with marked stone
12 ins. in the ground, for $\frac{1}{4}$ Sec. Cor., marked $\frac{1}{4}$ S. on
N. face, dug pits, 18 x 18 x 12 ins., E. and W. of
post $5\frac{1}{2}$ ft. dist., and raised a mound of earth $1\frac{1}{2}$ ft.
high, $3\frac{1}{2}$ ft. base around post.

79.84 The corner to sections 10, 17, 20 & 21

Land rolling.

Soil 3rd rate

Undergrowth of juniper.

Township 10 N Range 17 E

Gila and Salt River Meridian.

Chains

North, between Sections 16 and 17.

Variation 13° 30' East.*Descend.*

40.00

Set a *lime* stone 28 x 20 x 4 ins., 21
 ins. in the ground, for $\frac{1}{4}$ Sec. Cor., marked $\frac{1}{4}$ on W
 face, and raised a mound of stone alongside. Pits
 impracticable.

30.00

Set a *sand* stone 25 x 18 x 12 ins. 18 ins. in
 the ground for Cor. to Secs. 8, 9, 16 & 17 marked
 with 4 notches on S. and 4 notches on E. edges and
 raised a mound of stone alongside. Pits impracticable.

*Land rolling.*Soil 3rd rate*Undergrowth of juniper.*

Township 10 N. Range 17 E.

Gila and Salt River Meridian.

Chains

East, on a random line between Sections 9 and 16.

Variation $13^{\circ} 30'$ East.

Descend gradually.

40.00 Set temporary $\frac{1}{4}$ Sec. Cor.

79.48 Intersect N. & S. line, 93 lks. S. of cor. to secs.

9, 10, 15 & 16 from which corner, I run

 $S. 89^{\circ} 20' W.$ on a true line between sections 9 & 16Variation $13^{\circ} 30'$ East

39.74 Set a *lime* stone $20 \times 15 \times 10$ ins., 16 ins. in the ground, for $\frac{1}{4}$ Sec. Cor., marked $\frac{1}{4}$ on N. face, dug pits $18 \times 18 \times 12$ ins., E and W. of stone $5\frac{1}{2}$ ft. dist., and raised a mound of earth $1\frac{1}{2}$ ft. high, $3\frac{1}{2}$ ft. base alongside.

79.48 The corner to sections 8, 9, 16 & 17

Land rolling.

Soil 3rd rateUndergrowth of *juniper*.

Township 16 N Range 17 E
 Gila and Salt River Meridian.

Chains

North, between Sections 8 and 9.

Variation 13° 30' East.*Descend gradually.*

40.00

Set a *lime* stone 20 x 15 x 10 ins., 15 ins. in the ground, for $\frac{1}{4}$ Sec. Cor., marked $\frac{1}{4}$ on *W.* face, dug pits 18 x 18 x 12 ins., *N.* and *S.* of stone 5 $\frac{1}{2}$ ft. dist., and raised a mound of earth 1 $\frac{1}{2}$ ft. high, 3 $\frac{1}{2}$ ft. base alongside.

80.00

Set a *lime* stone 21 x 15 x 4 ins. 15 ins. in the ground for Cor. to Secs. 4. 5. 8 & 9 marked with 5 notches on *S.* and 4 notches on *E.* edges and raised a mound of stone alongside. Pits impracticable.

*Land rolling.**Soil 3rd rate**Undergrowth of juniper.*

Township

16 N

Range

17 E

Gila and Salt River Meridian.

Chains

East, on a random line between Sections 4 and 9.

Variation $13^{\circ} 30'$ East.

Descend.

40.00 Set temporary $\frac{1}{4}$ Sec. Cor.

61.27 Head of Ravine, Course N. and ascend

79.75 Intersect N. & S. line, 46 lks. S. of cor. to secs.

3, 4, 9 & 10 from which corner, I run

 $S. 89^{\circ} 40' W.$ on a true line between sections 4 & 9Variation $13^{\circ} 30'$ East

3984

Set a sand stone $20 \times 15 \times 7$ ins., 15 ins. in the ground, for $\frac{1}{4}$ Sec. Cor., marked $\frac{1}{4}$ on N. face, dug pits $18 \times 18 \times 12$ ins., E and W. of stone $5\frac{1}{2}$ ft. dist., and raised a mound of earth $1\frac{1}{2}$ ft. high, $3\frac{1}{2}$ ft. base alongside.

79.75 The corner to sections 4, 5, 8 & 9

Land rolling.

Soil 3rd rate

Timber of cedar & juniper.

Undergrowth of juniper

I carefully examined the adjustments of my solar compass to-day, particularly the latitude and reversing apparatus, and found them correct.

Township 16 N Range 17 E

Gila and Salt River Meridian.

Chains

North, on a ^{true.} ~~run~~ line between Sections 4 and 5.Variation 13° 30' East.

Descend.

16.50

Head of Ravine, Course N. 38° E.

40.00

Set a Sand stone 33 x 14 x 8 ins., 24 ins.
in the ground, for $\frac{1}{2}$ Sec. Cor., marked $\frac{1}{2}$ on W. face,
dug pits 18 x 18 x 12 ins., N and S. of stone $5\frac{1}{2}$
ft. dist., and raised a mound of earth $1\frac{1}{2}$ ft. high, $3\frac{1}{2}$
ft. base, alongside.

97.90

Intersect the 4th Standard Parallel North at a
point 18.31 chs. West of the Standard Cor. to
Secs. 32 and 33, T. 17 N. R. 17 E.

Which is a sand stone
20 x 12 x 8 ins. 15 ins. in the
ground marked with 4 notches
on E. and 2 notches on
W. edges, and a mound
of stone alongside.

Set a post, 4 ft. long, 4 ins. square, ^{with marked stone} 12 ins. in the
ground, for ^{closing} Cor. to Secs. 4 and 5 marked C C
T. 16 N. R. 17 E., on S. S. 4 on E. and S. 5 on
W. faces, with 4 notches on E. and 2 notches
on W. faces, dug pits 18 x 18 x 12 ins. S. & W. of post,
 $5\frac{1}{2}$ ft. dist. and raised a mound of earth 2 ft. high, $4\frac{1}{2}$
ft. base around post.

Land rolling.

Soil 30th rate Undergrowth of Juniper
G. W. Pearson, Compassman, July 4, 188

Township 16 N. Range 17 E.

Gila and Salt River Meridian.

From the corner to sections, 5, 6, 31 & 32 ^{S 1/2} previously set by me.
Chains 1000 North, between Sections 31 and 32.Variation 14° 15' East.*Ascend.*37.21 Top of Spur, bears E. & W. and descend.40.00 Set a post 3 ft. long. 3 ins. diam. with marked stone 12 ins. in the ground, for $\frac{1}{4}$ Sec. Cor., marked $\frac{1}{4}$ S. on W. face, dug pits, 18 x 18 x 12 ins., N. and S. of post $5\frac{1}{2}$ ft. dist., and raised a mound of earth $1\frac{1}{2}$ ft. high, $3\frac{1}{2}$ ft. base around post.78.24 Cross Canon, 39 lks. wide, Course W. and ascend80.00 Set a kind stone 30 x 20 x 15 ins. 22 ins. in the ground for Cor: to Secs. 29, 30, 31 & 32 marked with 1 notch on S. and 6 notches on E. edges and raised a mound of stone alongside. Pits impracticable.

Land rolling.

Soil 3rd rateUndergrowth of juniper.

Township 10 N Range 17 E

Gila and Salt River Meridian.

Chains East, on a random line between Sections 29 and 32.
Variation 13° 30' East.*Over level land*40.00 Set temporary $\frac{1}{4}$ Sec. Cor.

80.10 Intersect N. & S. line, 120 lks. S. of cor. to secs.

28, 29, 32, 33 from which corner, I run189° 9' W. on a true line between sections 29 & 32Variation 13° 30' East40.08 Set a post 3 ft. long, 3 ins. diam. with marked stone
12 ins. in the ground, for $\frac{1}{4}$ Sec. Cor., marked $\frac{1}{4}$ S. on
N. face, dug pits, 18 x 18 x 12 ins., E. and W. of
post $5\frac{1}{2}$ ft. dist., and raised a mound of earth $1\frac{1}{2}$ ft.
high, $3\frac{1}{2}$ ft. base around post.80.10 The corner to sections 29, 30, 31 & 32

Land level.

Soil 3rd rateUndergrowth of JuniperHenry Meyrick July 5, 1883

Township

16 N

Range

17 E

Gila and Salt River Meridian.

Chains

West, on a random line between Sections 30 and 31.

Variation $13^{\circ} 30'$ East.

Descend.

- 2.45⁻ Cross Canon, 40 lks. wide. Course $N. 10^{\circ} W.$ and ascend
- 21.06⁻ Top of Spur, bears $N. \text{ \& } S.$ and descend.
- 35.07⁻ Cross Wash, 20 lks. wide, Course $N.$ and ascend.
- 40.00 Set temporary $\frac{1}{2}$ Sec. Cor.
- 49.33 Top of Spur, bears $N. 26^{\circ} E. \text{ \& } S. 26^{\circ} W.$ and descend.
- 68.74 Cross Wash, 30 lks. wide, Course $N. E.$ and ascend.
- 87.26 Intersect $W. B.$ of $Tp.$ $\frac{1}{2}$ 13 lks. $N.$ of cor. to secs.
^{previously set by me.}
 25.30.31 & 30 from which corner, I run
 $N. 89^{\circ} 12' E.$ on a true line, between sections 30 & 31
 Variation $14^{\circ} 20'$ East.
- 47.26 Set a post 3 ft. long, 3 ins. diam. with marked stone
 12 ins. in the ground, for $\frac{1}{2}$ Sec. Cor., marked $\frac{1}{2}$ S. on
 $N.$ face, dug pits, 18 x 18 x 12 ins., $E.$ and $W.$ of
 post $5\frac{1}{2}$ ft. dist., and raised a mound of earth $1\frac{1}{2}$ ft.
 high, $3\frac{1}{2}$ ft. base around post.
- 87.26 The corner to sections 29. 30. 31 & 32
 Land mountainous.
 Soil 3^{rd} rate
 Undergrowth of Juniper.
 G. W. Pearson, Compassman July 5. 1883

Township 16 N Range 17 E

Gila and Salt River Meridian.

Chains

North, between Sections 29 and 30.

Variation 13° 30' East.*Ascend.*

20.00

Top of Spur, bears E. & W. and descend.

40.00

Set a Sand - stone 17 x 10 x 6 ins., 12 ins. in the ground, for $\frac{1}{4}$ Sec. Cor., marked $\frac{1}{4}$ on W. face, and raised a mound of stone alongside. Pits impracticable.

46.70

Cross head of Canon Course NW.

80.00

Set a Sand stone 17 x 6 x 6 ins. 12 ins. in the ground for Cor. to Secs. 19, 20, 29, 30 marked with 2 notches on S. and 5 notches on E. edges, dug pits 18 x 18 x 12 ins. in each Sec., 5½ ft. dist. and raised a mound of earth 2 ft. high, 4½ ft. base. alongside.

Land rolling.

Soil 3rd rateUndergrowth of juniper.

Township 16 N Range 17 E

Gila and Salt River Meridian.

Chains

East, on a random line between Sections 20 and 29.

Variation $13^{\circ} 30'$ East.

Descend gradually.

28.51

Enter bottom.

40.00

Set temporary $\frac{1}{4}$ Sec. Cor.

46.22

Ascend.

77.17

Top of Ridge, bears S.W. & N.E. and descend.

80.28

Intersect N. & S. line, 82 lks. S. of cor. to secs.

30, 21, 28 & 29 from which corner, I run

S. $89^{\circ} 25'$ W. on a true line between sections 20 & 29Variation $13^{\circ} 30'$ East

40.14

Set a sand stone 20 x 20 x 5 ins., 15 ins. in the ground, for $\frac{1}{4}$ Sec. Cor., marked $\frac{1}{4}$ on N face, and raised a mound of stone alongside. Pits impracticable.

80.28

The corner to sections 19, 20, 29 & 30

Land mountainous

Soil 3rd rate

Timber of cedar.

Undergrowth of juniper.

Merry Melnick July 5. 1883

Township 10 N Range 17 E

Gila and Salt River Meridian.

Chains West, on a random line between Sections 19 and 30.
Variation $13^{\circ} 30'$ East.

Descend.

13.30 Cross Canon, 1.20 lks. wide. Course N. and ascend

40.00 Set temporary $\frac{1}{2}$ Sec. Cor.87.10 Intersect W. B. of Tp. 93 lks. N. of cor. to secs.
previously set by me.
19 24, 25 & 30 from which corner, I run

$1.89^{\circ} 20'$ E on a true line, between sections 19 & 30
Variation $14^{\circ} 15'$ East.

44.10 Set a sand stone $20 \times 12 \times 10$ ins., 10
ins. in the ground, for $\frac{1}{4}$ Sec. Cor., marked $\frac{1}{4}$ on N.
face, and raised a mound of stone alongside. Pits
impracticable.

87.10 The corner to sections 19, 20, 29 & 30
Land rolling.

Soil 3° rate

Undergrowth of

Juniper
G. W. Pearson, Compassman July 5, 1883

Township

16 N.

Range

17 E.

Gila and Salt River Meridian.

Chains

North, between Sections 19 and 20.

Variation $13^{\circ} 30'$ East.*Descend.*

40.00

Set a post 3 ft. long 3 ins. diam. with marks along ¹² ins. in the ground, for $\frac{1}{4}$ Sec. Cor., marked $\frac{1}{4}$ on W. face, dug pits 18 x 18 x 12 ins., N. and S. of stone $5\frac{1}{2}$ ft. dist., and raised a mound of earth $1\frac{1}{2}$ ft. high, $3\frac{1}{2}$ ft. base. alongside.

73.20

Cross Canon, 120 ft. wide, Course NW, and ascend

80.00

Set a *lime* stone 36 x 10 x 10 ins. 27 ins. in the ground for Cor. to Secs. 17, 18, 19 & 20 marked with 3 notches on S. and 5 notches on E. edges and raised a mound of stone alongside. Pits impracticable.

Land hilly.

Soil 3rd rate

Undergrowth of juniper.

Township 10 N Range 17 E

Gila and Salt River Meridian.

Chains

East, on a random line between Sections 17 and 20.

Variation $13^{\circ} 30'$ East.*Ascend.*40.00 Set temporary $\frac{1}{4}$ Sec. Cor.71.27 Top of Ridge, bears *N. & S.* and descend.79.91 Intersect N. & S. line, 66 lks. *S.* of cor. to secs.*16, 17, 20, 21* from which corner, I run $189^{\circ} 32'$ W. on a true line between sections *17 & 20*Variation $13^{\circ} 30'$ East

39.96 Set a post 3 ft. long, 3 ins. diam. with marked stone
 12 ins. in the ground, for $\frac{1}{4}$ Sec. Cor., marked $\frac{1}{4}$ S. on
 N. face, dug pits, 18 x 18 x 12 ins., E. and W. of
 post $5\frac{1}{2}$ ft. dist., and raised a mound of earth $1\frac{1}{2}$ ft.
 high, $3\frac{1}{2}$ ft. base around post.

79.91 The corner to sections *17, 18, 19 & 20*

Land mountainous

Soil *3rd* rateTimber of *juniper*Undergrowth of *juniper*

Henry Meyrick July 5, 1883

Township 16 N. Range 17 E

Gila and Salt River Meridian.

Chains West, on a random line between Sections 18 and 19.

Variation $13^{\circ} 30'$ East.

Descend.

5.31 Cross Wash, 18 lks. wide, Course N. 9° W and ascend.

24.63 Top of Ridge, bears N. e. S. and descend.

40.00 Set temporary $\frac{1}{2}$ Sec. Cor.

60.13 Cross Canon, 20 lks. wide, Course N, and ascend

87.32 Intersect W. B. of Tp. 27 lks. N. of cor. to secs.
previously set by me.

1378. 196 24 from which corner, I run

N. 89° 10' E on a true line, between sections 18 & 19

Variation $14^{\circ} 20'$ East.

47.32 Set a sand stone 24 x 13 x 7 ins., 18

ins. in the ground, for $\frac{1}{2}$ Sec. Cor., marked $\frac{1}{2}$ on N.
face, and raised a mound of stone alongside. Pits

impracticable.

87.32 The corner to sections 17, 18, 19 & 20

Land mountainous

Soil 3rd rate

Timber of juniper.

Undergrowth of juniper.

G. W. Pearson Compassman July 5. 1883

Township 16 N. Range 17 E.

Gila and Salt River Meridian.

Chains

North, between Sections 17 and 18.

Variation 13° 30' East.*Ascend.*

40.00

Set a *lime* stone $26 \times 11 \times 7$ ins., 18 ins. in the ground, for $\frac{1}{4}$ Sec. Cor., marked $\frac{1}{4}$ on *W.* face, dug pits $18 \times 18 \times 12$ ins., *N.* and *S.* of stone $5\frac{1}{2}$ ft. dist., and raised a mound of earth $1\frac{1}{2}$ ft. high, $3\frac{1}{2}$ ft. base, alongside.

40.00

Top of Spur, bears *N. 60° W. & S. 60° E.* and descend.

80.00

Set a *lime* stone $20 \times 10 \times 0$ ins., 15 ins. in the ground for Cor. to Secs. *7, 8, 17 & 18* marked with *4* notches on *S.* and *5* notches on *E.* edges and raised a mound of stone alongside. Pits impracticable.

Land mountainous

Soil *3rd* rateTimber of *juniper*.Undergrowth of *juniper*.

Township 16 N Range 17 E

Gila and Salt River Meridian.

Chains

East, on a random line between Sections 8 and 17.

Variation 13° 30' East.*Ascend.*7.00 *Descend gradually.*23.74 *Cross Wash, 17 lks. wide, Course N. 23° W and ascend.*40.00 *Set temporary $\frac{1}{4}$ Sec. Cor.*56.91 *Top of Ridge, bears N. & S., and descend.*79.79 *Intersect N. & S. line, 74 lks. S. of cor. to secs.*8.9.16 & 17 *from which corner, I run*89° 28' W. *on a true line between sections 8 & 17*
Variation 13° 30' East39.89 *Set a post 3 ft. long, 3 ins. diam. with marked stone*
12 ins. in the ground, for $\frac{1}{4}$ Sec. Cor., marked $\frac{1}{4}$ S. on
N. face, dug pits, 18 x 18 x 12 ins., E. and W. of
post $5\frac{1}{2}$ ft. dist., and raised a mound of earth $1\frac{1}{2}$ ft.
*high, $3\frac{1}{2}$ ft. base around post.*79.79 *The corner to sections 7, 8, 17 & 18**Land mountainous.**Soil 3rd rate**Undergrowth of juniper.**Henry Meyrick July 5. 1883*

Township 10 N Range 17 E

Gila and Salt River Meridian.

Chains

West, on a random line between Sections 7 and 18.

Variation $14^{\circ} 15'$ East.

Descend.

12.40 Cross Wash, 50 lks. wide. Course $N 20^{\circ} W$ and ascend.40.00 Set temporary $\frac{1}{4}$ Sec. Cor.41.07 Top of Spur, bears $N 47^{\circ} W$ and $47^{\circ} E$ and ascend:86.84 Intersect $W. B.$ of Top 79 lks. $N.$ of cor. to secs.previously set by me.
7, 12, 13 & 18 from which corner, I run $N. 89^{\circ} 29' E$ on a true line, between sections 7 & 18Variation $14^{\circ} 15'$ East.416.84 Set a Stone stone 17 x 15 x 5 ins., 12
ins. in the ground, for $\frac{1}{4}$ Sec. Cor., marked $\frac{1}{4}$ on $N.$
face, and raised a mound of stone alongside. Pits
impracticable.

86.84 The corner to sections 7, 8, 17 & 18

Land mountainous.

Soil 3^{rd} rateUndergrowth of juniper.

G. W. Pearson, Comptroller, July 5, 1883

57 Township 16 N Range 17 E

Gila and Salt River Meridian.

Chains North, between Sections 7 and 8.

Variation 13° 30' East.

Descend. gradually.

33.75 Cross Wash, 6 lks. wide, Course N. 50° W. and ascend.

40.00 Set a *lime* stone 16 x 12 x 6 ins., 10 ins. in the ground, for 1/4 Sec. Cor., marked 1/4 on W. face, dug pits 18 x 18 x 12 ins., N. and S. of stone 3 1/2 ft. dist., and raised a mound of earth 1 1/2 ft. high, 3 1/2 ft. base alongside.

73.00 Top of Spur, bears N. 50° W. & S. 50° E. and descend.

80.00 Set a *lime* stone 24 x 12 x 8 ins. 1 1/2 ins. in the ground for Cor. to Secs. 5, 6, 7 & 8 marked with 5 notches on S. and 5 notches on E. edges and raised a mound of stone alongside. Pits impracticable.

Land rolling.

Soil 3rd rate

Undergrowth of *Juniper*.

Timber of *Cedar*.

Township 16 N. Range 17 E.

Gila and Salt River Meridian.

Chains East, on a random line between Sections 5 and 8.
Variation $13^{\circ} 30'$ East.

Descend.

30.00 Cross Wash, 20 fks. wide, Course $N. 12^{\circ} W.$ and ascend.40.00 Set temporary $\frac{1}{4}$ Sec. Cor.59.00 Top of Ridge, bears $N.W. \& S.E.$ and descend.

80.24 Intersect N. & S. line, 88 fks. S. of cor. to secs.

4. 5. 8 & 9 from which corner, I run

 $S. 89^{\circ} 22' W.$ on a true line between sections 5 & 8Variation $13^{\circ} 30'$ East

40.12 Set a *lime* stone 30 x 12 x 8 ins., 15 ins. in the ground, for $\frac{1}{4}$ Sec. Cor., marked $\frac{1}{4}$ on N. face, and raised a mound of stone alongside. Pits impracticable.

80.24 The corner to sections 5, 6, 7 & 8

Land mountainous

Soil 3rd rate

Timber of cedar.

Undergrowth of juniper

I carefully examined the adjustments of my solar compass to-day, particularly the latitude and reversing apparatus, and found them correct.

Henry Meyrick July 5. 1883

Township 16 N. Range 17 E.

Gila and Salt River Meridian.

Chains West, on a random line between Sections 6 and 7.
Variation $13^{\circ} 30'$ East.

Descend. gradually.

40.00 Set temporary $\frac{1}{4}$ Sec. Cor.

57.11 Cross Canon, 2.12 lks. wide, Course $N. 24^{\circ} W.$ and ascend

70.00 Top of Spur, bears $N. e S.$ and descend.

87.00 Intersect $W. B.$ of $Tp.$ 7.12 lks. $N.$ of cor. to secs.
previously set by me.

16.1/2 12 from which corner, I run

$N. 89^{\circ} 16' E.$ on a true line, between sections 6 & 7
Variation $13^{\circ} 45'$ East.

47.00 Set a *lime* stone $13 \times 18 \times 9$ ins., 8
ins. in the ground, for $\frac{1}{4}$ Sec. Cor., marked $\frac{1}{4}$ on $N.$
face, and raised a mound of stone alongside. Pits
impracticable.

87.00 The corner to sections 5, 6, 7 & 8

Land rolling.

Soil 3rd rate

Undergrowth of *juniper*

I carefully examined the adjustments of my solar
compass to-day, particularly the latitude and revers-
ing apparatus, and found them correct.

Township 10 N. Range 17 E.

Gila and Salt River Meridian.

Chains

North, on a ^{true.} ~~range~~ line between Sections 5 and 6.Variation $13^{\circ} 30'$ East.

Descend gradually.

40.00

Set a lime stone $21 \times 16 \times 7$ ins., 15 ins. in the ground, for $\frac{1}{4}$ Sec. Cor., marked $\frac{1}{4}$ on

face, and raised a mound of stone alongside,

58.00

Cross Canon, $\frac{1}{2}$ Mks. wide, Course E. and ascend

98.56

Intersect the 4^{th} Standard Parallel North at a point 18.57 chs. West of the Standard Cor. to Secs. 31 and 32. T. 17 N. R. 17 E.Which is a sand stone $22 \times 11 \times 8$ ins. 15 ins. in the ground, marked with 5 notches on E. and 1 notch on W. edges, and a mound of stone alongside.Set a post, 4 ft. long, 4 ins. square, 12 ins. in the ground, for ^{closing} _A Cor. to Secs. 5 and 6 marked C. C.T. 16 N. R. 17 E., on S. 5 on E. and S. 6 on W. faces, with 5 notches on E. and 1 notchon W. faces, dug pits $18 \times 18 \times 12$ ins. S. E. W. of post, $5\frac{1}{2}$ ft. dist. and raised a mound of earth 2 ft. high, $4\frac{1}{2}$ ft. base around post.

Land rolling.

Soil 3^{rd} rate

Undergrowth of juniper.

G. W. Pearson. Compassman July 5. 1883

GENERAL DESCRIPTION.

This Sp. is rolling grazing land, it is mostly covered with juniper & cedar.

Sections 8, 9, 16 & 17 are more open with but scattering juniper.

The N. E. & Western parts are considerably broken by canons and creeks.

There is a large basin in 20 & 29 which has fine fertile soil well adapted for agricultural purposes.

Nearly all the creeks have water in them.

Soil varies from 1st rate of the basin of Sec. 20 & 29 to 3 rate on and along the canons.

There is a log Cabin situated in S E. quarter of Sec. 9.

For Trial Oaths
see Book 19

U. S. Surveyor General's Office,

Tucson, Arizona, July 5, 1884

The foregoing Field Notes of the Survey of the

Subdivision Line of
Township 16 North
Range 17 East

Of the Gila and Salt River Base and Meridian, Arizona, executed by Henry Meyrick Jr.

Deputy Surveyor, under his contract of the 25th

day of July, 1884, having been

critically examined and the necessary corrections and explanations made, the said Field Notes and the surveys they describe

are hereby approved

Royal Johnson
Surveyor General.