

Henry Meyrick Jr. Deputy Surveyor. 1A
 T. 10 N. R. 18 E.

Gila and Salt River Meridian.

No-229
FIELD NOTES

OF

THE SUBDIVISION LINES OF

Township 10 N. Range 18 E.

Gila and Salt River Meridian.

BY

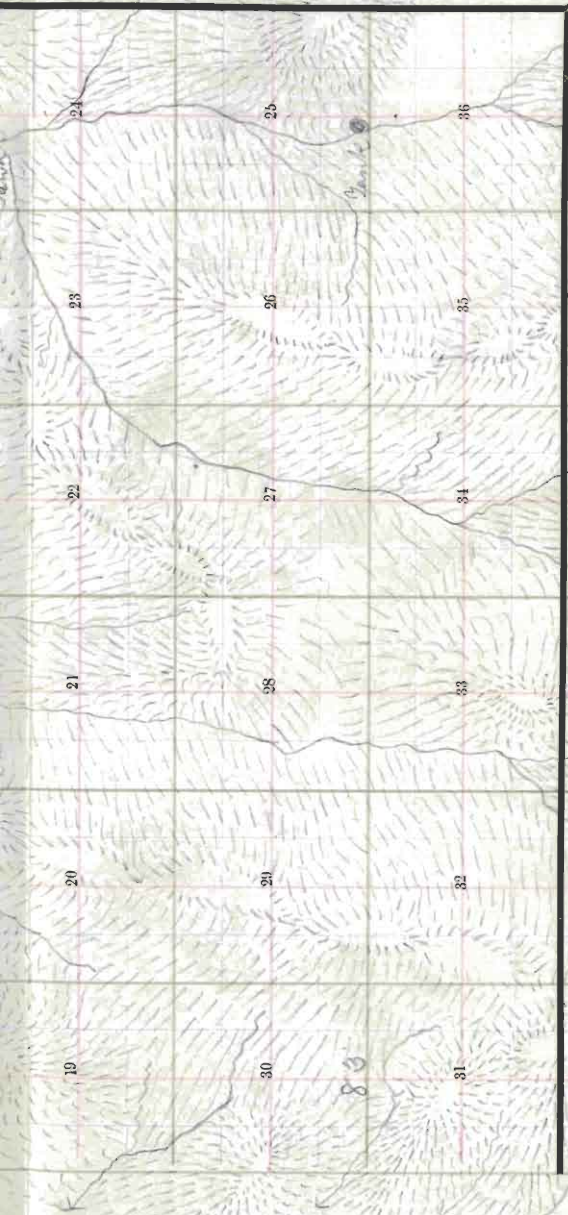
Henry Meyrick Jr. Deputy Surveyor.
 Under his Contract of July 28th 1882
 Survey Commenced June 28th 1883
 Survey Completed June 20th 1883

*Platted,
 Copied for Washington,
 Copied for Register,*

Township No. 16 N Range No. 18 E 8th Meridian

98	24
14	30
<hr/>	
83	94





TOWNSHIP PLOT

Meridian Line,

Base Line,

Standard Line,

Township Lines,

Section Lines,

Meander Lines,

Office Work.

$$\begin{array}{r} 2.16 \\ 14 \overline{) 1696} \\ \underline{14} \\ 296 \end{array}$$

+

1B

Township *N 16 North*, Range *18 East*,
Gila and Salt River Basins Meridian.

6	60	5	44	4	33	3	22	2	11	1
59		58		43		32		21		10
7	57	8	42	9	31	10	20	11	9	19
53		55		41		30		19		8
18	54	17	40	16	29	15	18	14	7	13
53		52		39		28		17		6
19	51	20	38	21	27	22	16	23	5	24
50		49		37		26		15		4
30	48	29	36	28	25	27	14	26	3	25
47		46		35		24		13		2
31	45	32	34	33	23	34	12	35	1	36

OK

Edward Denny & Co., Stationers & Printers, S. F., Cal.

Copyright Secured,

Entered according to Act of Congress, in the Clerk's Office of the Librarian of Congress at Washington, D. C., in the year 1880.

Township

BOOK 229
Range

Meridian.

For Preliminary Notes
and description of instrument
used see Book No. 1.

~~Survey made with Burt's Patent Improved Solar
Compass, nearly new, and in first rate order. Made
by Otto Krenel of Cassel
Germany 1881~~

1 C

Township

16. N

Range

18 E

(See previous page.)

Gila and Salt River Meridian.

Chains

From the corner to Sections 35, 36, 1 and 2 on the South boundary, ^{2 1/2} previously set by me. ^{Iron} North, between Sections 35 and 36

Variation 13° 30' East.

Descend gradually.

40.00

Set a post 3 ft. long, 3 ins. diam. with marked stone 12 ins. in the ground, for 1/2 Sec. Cor., marked 1/2 S. on W. face, dug pits, 18 x 18 x 12 ins., N. and S. of post 5 1/2 ft. dist., and raised a mound of earth 1 1/2 ft. high, 3 1/2 ft. base around post.

20.00

Set a post 4 ft. long, 4 ins. square, with marked stone 12 ins. in the ground, for Cor. to Secs. 25, 26, 35 & 36 marked T, 16 N, S, 26, on N, E, R, 18 S, S. 36 on S, E, S, 35 on S, W, and S, 26 on N, W, face with | notch on S, and | notch on E, edges, dug pits 18 x 18 x 12 ins, in each Sec., 5 1/2 ft. dist., and raised a mound of earth 2 ft. high, 4 1/2 ft. base around post.

Land rolling.

Soil 3rd rate

Timber of Juniper.

Vegetation. Sage.

Township 10 N Range 18 E

Gila and Salt River Meridian.

Chains

East, on a random line between Sections 25 and 36.

Variation 13° 30' East.

Descend.

30.75 Cross Wash, 60 yds. wide, Course N. 5° W. and ascend.

30.80 Tank 1.2 $\frac{1}{2}$ N. with good water.40.00 Set temporary $\frac{1}{4}$ Sec. Cor.

80.49 Intersect E. B. of Tp. 71 yds. S. of cor. to secs.

25.30.31 & 36 T. 16 N. R. 18 E.

Which is a post 4 ft. long, 4 ins. square with marked stone, 12 ins. in the ground, marked T. 16 N. S. 30 on N. E., R. 19 E., S. 31 on S. E., R. 18 E., S. 36 on S. E. S. 25 on N. W. face with notch on S and notches N. edges, with pits 18 x 18 x 12 ins. in each Sec. 5 ft. dist. and around of earth 2 ft. high, $\frac{1}{2}$ ft. base around post; from which corner, I run

S. 89° 30' W. on a true line, between sections 25 & 36

Variation 14° 00' East.

40.24 Set a Sand stone 20 x 12 x 10 ins., 10

ins. in the ground, for $\frac{1}{4}$ Sec. Cor., marked $\frac{1}{4}$ on N.

face, and raised a mound of stone alongside. Pits

impracticable.

80.49 The corner to sections 25.20.35 & 36

Land rolling.

Soil 3rd rate

Undergrowth of Juniper.

Township 16 N Range 18 E
 Gila and Salt River Meridian.

Chains

North, between Sections 25 and 26.

Variation 13° 30' East.*Descend.*

5.60 Cross Wash, 10 lks. wide, Course N. E. and ascend.

40.00 Set a post 3 ft. long, 3 ins. diam. with marked stone
 12 ins. in the ground, for $\frac{1}{4}$ Sec. Cor., marked $\frac{1}{4}$ S. on
 W. face, dug pits, 18 x 18 x 12 ins., N. and S. of
 post $5\frac{1}{2}$ ft. dist., and raised a mound of earth $1\frac{1}{2}$ ft.
 high, $3\frac{1}{2}$ ft. base around post.

30.00 Set a post 4 ft. long, 4 ins. square, with marked stone
 12 ins. in the ground, for Cor. to Secs, 23, 24, 25, 26
 marked T, 16 N. S., 24, on N, E, R, 18 E., S. 25
 on S, E, S, 26 on S, W, and S, 23 on N, W, face
 with 2 notches on S, and 1 notch on E, edges,
 dug pits 18 x 18 x 12 ins. in each Sec., $5\frac{1}{2}$ ft. dist.,
 and raised a mound of earth 2 ft. high, $4\frac{1}{2}$ ft. base
 around post.

Land rolling.

Soil 3rd rateUndergrowth of Juniper.

Township 16 N. Range 18 E.

Gila and Salt River Meridian.

Chains

East, on a random line between Sections 24 and 25.

Variation 13° 30' East.

Descend gradually.

40.00 Set temporary 1/4 Sec. Cor.

44.70 Cross Wash, 15 lks wide, Course N. 10° W and ascend.

50.80 A. Pank 50 lks S. of cor. to secs.

79.92 Intersect E. B. of Tp. 44 lks. S. of cor. to secs.
19.24. 25 & 30 S 16 N. R. 18 E.

Which is a sand stone 20 x 20 x 6 ins
15 ins in the ground marked with
3 notches on S. and 4 notches on N. edge.
with bits 18 x 18 x 12 ins. in each Sec. 5 1/2 ft.
dist. and a mound of earth 2 ft. high, 4 1/2 ft.
base alongside
from which corner, I run

S. 89° 41' W. on a true line, between sections 24 & 25

Variation 13° 45' East.

39.90 Set a sand stone 18 x 11 x 7 ins., 12

ins. in the ground, for 1/4 Sec. Cor., marked 1/2 on N. face, and raised a mound of stone alongside. Pits impracticable.

79.92 The corner to sections 23. 24. 25 & 26

Land rolling.

Soil 3rd rate

Undergrowth of Juniper.

Timber of Pine.

Township 16 N. Range 18 E

Gila and Salt River Meridian.

Chains

North, between Sections 23 and 24.

Variation 13° 30' East.

Descend.

40.00

Set a sand stone 21 x 20 x 5 ins., 15
 ins. in the ground, for $\frac{1}{4}$ Sec. Cor., marked $\frac{1}{4}$ on W.
 face, and raised a mound of stone alongside. Pits

impracticable.

70.00

cross wash course N 60° E

80.00

Set a post 4 ft. long, 4 ins. square, with marked stone
 12 ins. in the ground, for Cor. to Secs, 13, 14, 23 & 24
 marked T, 16 N.S., 13, on N, E, R, 18 E., S. 24
 on S, E, S, 23 on S, W, and S, 14 on N, W, face
 with 3 notches on S, and 1 notch on E, edges,
 dug pits 18 x 18 x 12 ins, in each Sec., $5\frac{1}{2}$ ft, dist.,
 and raised a mound of earth 2 ft, high, $4\frac{3}{4}$ ft, base
 around post.

Land rolling.

Soil 3rd rateTimber of pine.Undergrowth of juniper.

Township

16 N

Range

18 E

Gila and Salt River Meridian.

Chains

East, on a random line between Sections 13 and 24.

Variation $13^{\circ} 30'$ East.

Descend gradually.

28.99 Tank of water.

30.00 Cross Wash, 19 lks. wide, Course N. and ascend.

40.00 Set temporary $\frac{1}{4}$ Sec. Cor.

79.83 Intersect E. B. of Tp. 18 lks. S. of cor. to secs.

13. 18. 19 & 24 T. 16 N. R. 18 E.

Which is a post-4 ft. long, 4 in. square, with marked stone, 12 in. in the ground, marked E. 16 N. S. 18 on N. E. R. 19 E. S. 19 on S. E. R. 18 E. S. 24 on S. W. S. 13 on N. W. faces, with 3 notches on S. and 3 notches on N. edges; with pits 6 in. in each Sec. 5 ft. dist. and a mound of earth 2 ft. high, $4\frac{1}{2}$ ft. base around post. from which corner, I run

S $89^{\circ} 02'$ W. on a true line, between sections 13 & 24Variation $13^{\circ} 30'$ East.

39.91

Set a sound stone $20 \times 20 \times 4$ ins., 15 ins. in the ground, for $\frac{1}{4}$ Sec. Cor., marked $\frac{1}{4}$ on N. face, dug pits $18 \times 18 \times 12$ ins., E. and W. of stone $5\frac{1}{2}$ ft. dist., and raised a mound of earth $1\frac{1}{2}$ ft. high, $3\frac{1}{2}$ ft. base alongside.

79.83

The corner to sections 13. 14. 23 & 24

Land rolling.

Soil 3rd rate Undergrowth of juniper

Timber of pine

7 Township 16 N Range 18 E

Gila and Salt River Meridian.

Chains North, between Sections 13 and 14.

Variation 13° 30' East.

Ascend.

22.85 Top of Spur, bears N. 10° E. & S. 10° W. and descend.

40.00 Set a Sand stone 10 x 12 x 0 ins., 10 ins. in the ground, for $\frac{1}{4}$ Sec. Cor., marked $\frac{1}{4}$ on W. face, and raised a mound of stone alongside. Pits inpracticable.

80.00 Set a Sand stone 20 x 20 x 0 ins. 15 ins. in the ground for Cor. to Secs. 11, 12, 13 & 14 marked with 4 notches on S. and 1 notch on E. edges, dug pits 18 x 18 x 12 ins. in each Sec., 5½ ft. dist. and raised a mound of earth 2 ft. high, 4½ ft. base.

Land rolling.

Soil 3rd rate

Timber of juniper.

Undergrowth of sage.

Township 16 N. Range 18 E.

Gila and Salt River Meridian.

Chains

East, on a random line between Sections 12 and 13.

Variation 13° 30' East.

Ascend.

20.00 Top of Spur, bears N. E. & S. W. and descend.

39.50 Cross Wash, 30 lks. wide, Course N. and ascend.

40.00 Set temporary $\frac{1}{4}$ Sec. Cor.

80.10 Intersect E. B. of Tp. 36 lks. S. of cor. to secs.

7, 12, 13 & 18 T. 10. N. R. 18 E.

Which is a post- 4 ft. long, 4 in. square with marked stone, 12 ins. in the ground, marked $\frac{1}{16}$ N. S. 7 on N. E. R. 19 E. S. 18 on S. E. R. 18 E. S. 13 on S. W. and S. 12 on N. W. faces with 4 notches on S. and 2 notches on N. edges with pits 18 x 18 x 12 ins. in each Sec. $5\frac{1}{2}$ ft. dist. and a mound of earth 2 ft. high $4\frac{1}{2}$ ft. base around post. I run

S. 89° 45' W. on a true line, between sections 12 & 13

Variation 14° 00' East.

40.08 Set a Sand stone 35 x 20 x 10 ins., 26

ins. in the ground, for $\frac{1}{4}$ Sec. Cor., marked $\frac{1}{4}$ on N. face, and raised a mound of stone alongside. Pits impracticable.

80.16 The corner to sections 11, 12, 13 & 14

Land rolling.

Soil 3rd rate

Timber of juniper.
Undergrowth of Sage.

Township 16 N. Range 18 E.

Gila and Salt River Meridian.

Chains

North, between Sections 11 and 12.

Variation 13° 30' East.*Descend.*

40.00 Set a sand stone 20 x 15 x 4 ins., 15
 ins. in the ground, for $\frac{1}{4}$ Sec. Cor., marked $\frac{1}{4}$ on W.
 face, and raised a mound of stone alongside. Pits
 impracticable.

30.00 Set a post 4 ft. long, 4 ins. square, with marked stone
 12 ins. in the ground, for Cor. to Secs. 1, 2, 11 & 12
 marked T, 16 N. S. 1, on N, E, R, 18 E., S. 12
 on S, E, S. 11 on S, W, and S. 2 on N, W, face
 with 5 notches on S, and 1 notch on E, edges,
 dug pits 18 x 18 x 12 ins., in each Sec., 5½ ft. dist.,
 and raised a mound of earth 2 ft. high, 4½ ft. base
 around post.

*Land rolling.*Soil 3rd rateTimber of juniperUndergrowth of sage.

I carefully examined the adjustments of my solar
 compass to-day, particularly the latitude and revers-
 ing apparatus, and found them correct.

Township 10 N. Range 18 E.

Gila and Salt River Meridian.

Chains

East, on a random line between Sections 1 and 12.

Variation $13^{\circ} 30'$ East.*Ascend gradually.*20.00 Top of Spur, bears *N. 1/2 S.* and descend.30.00 Cross Wash, 30 lks. wide, Course *N.W.* and ascend.40.00 Set temporary $\frac{1}{2}$ Sec. Cor.70.10 Top of Hill bears *N. 20° W.* and descend.

80.30 Intersect E. B. of Tp. 63 lks. S. of cor. to secs.

10 7 & 12 E. 16 N. R. 18 E.

Which is a post 4 ft. long, 4 ins. square, with marked stone, 12 ins. in the ground marked *E. 10 N. S. Cor. N. E. R. 19 E. S. 7 on S. E. R. 18 E. S. 12 on S. W. and S. 1 on N. W. face with notch on N. and 6 inches space, with pits 18 x 18 x 12 ins. in each Sec. 5 1/2 ft. dist. and a mound of earth 2 ft. high, 4 1/2 ft. base around post - from which corner, I run*

*S. 89° 33' W. on a true line, between sections 1 & 12*Variation $14^{\circ} 00'$ East.

40.17 Set a post 3 ft. long, 3 ins. diam. with marked stone 12 ins. in the ground; for $\frac{1}{2}$ Sec. Cor., marked $\frac{1}{2}$ S. on N. face, dug pits, 18 x 18 x 12 ins., E. and W. of post 5 1/2 ft. dist., and raised a mound of earth 1 1/2 ft. high, 3 1/2 ft. base around post.

82.30 The corner to sections *1, 2, 11 & 12*
Land rolling. Timber of *juniper*.
Soil *3rd* rate Undergrowth of *sage*.

Township

16 N

Range

18 E

Gila and Salt River Meridian

Chains

North, on a ^{true} random line between Sections 1 and 2.

Variation

13° 30'

East.

Descend.

40.00

Set a post 3 ft. long, 3 ins. diam. with marked stone
12 i. s. in the ground, for $\frac{1}{4}$ Sec. Cor., marked $\frac{1}{4}$ S. on
W. face, dug pits, 18 x 18 x 12 ins., N. and S. of
post $5\frac{1}{2}$ ft. dist., and raised a mound of earth $1\frac{1}{2}$ ft.
high, $3\frac{1}{2}$ ft. base around post.

60.00

cross west course East

89.68

Intersect the 4th Standard Parallel North at a
point 14.22 chs. West of the Standard Cor. to
Secs. 35 and 36 T. 17 N. R. 18 E.

Which is a sand stone 20 x 12 x 6
ins. 15 ins. in the ground
marked ^S with 1 notch on E.
and 5 notches on W. edges
and a mound of stone
alongside.

Set a post, 4 ft. long, 4 ins. square, 12 ins. in the
ground, for ^{closing} Cor. to Secs. 1 and 2 marked
T. 16 N. R. 18 E., on S. S. 1 on E., and S. 2 on
W. faces; with 1 notch E. on and 5 notches
on W. faces, dug pits 18 x 18 x 12 ins. S. E. W. of post,
 $5\frac{1}{2}$ ft. dist. and raised a mound of earth 2 ft. high, $4\frac{1}{2}$
ft. base around post.

6 to

Land rolling. Timber of juniper.

Soil 3rd rate

Undergrowth of sage. Henry Myrick June 28. 1883

Township 10 N Range 18 E

Gila and Salt River Meridian.

From the corner to sections, 23, 34 & 35 ^{on Sec. 26} previously set by me.
Chains Iron North, between Sections 34 and 35.Variation 13° 45' East.*Ascend.*

40.00

Set a post 3 ft. long, 3 ins. diam. with marked stone 12 ins. in the ground, for $\frac{1}{4}$ Sec. Cor., marked $\frac{1}{4}$ S. on W. face, dug pits, 18 x 18 x 12 ins., N. and S. of post $5\frac{1}{2}$ ft. dist.; and raised a mound of earth $1\frac{1}{2}$ ft. high, $3\frac{1}{2}$ ft. base around post.

80.00

Set a post 4 ft. long, 4 ins. square, with marked stone 12 ins. in the ground, for Cor. to Secs. 26, 27, 34 & 35 marked T, 16 N. S. 26, on N, E, R, 18 E, S. 30 on S, E, S, 34 on S, W, and S, 27 on N, W, face with 1 notch on S, and 2 notches on E, edges, dug pits 18 x 18 x 12 ins, in each Sec., $5\frac{1}{2}$ ft. dist., and raised a mound of earth 2 ft. high, $4\frac{1}{2}$ ft. base around post.

Land rolling.

Soil 3rd rateTimber of Yew, cedar & juniper.Undergrowth of sage.

Township

16

N

Range

18 E

Gila and Salt River Meridian

Chains

East, on a random line between Sections 26 and 35.

Variation

13° 30'

East.

Ascend.

19.31 Top of Ridge, bears N. & S. and descend,

40.00 Set temporary $\frac{1}{4}$ Sec. Cor.

79.75 Intersect N. & S. line, 13 lks. S. of cor. to secs.

26, 26, 35 & 36 from which corner, I run

S 89° 54' W. on a true line between sections 26 & 35

Variation

13° 30'

East

39.87

Set a post 3 ft. long, 3 ins. diam. with marked stone

12 ins. in the ground, for $\frac{1}{4}$ Sec. Cor., marked $\frac{1}{4}$ S. on

N. face, dug pits, 18 x 18 x 12 ins., E. and W. of

post $5\frac{1}{2}$ ft. dist., and raised a mound of earth $1\frac{1}{2}$ ft.high, $3\frac{1}{2}$ ft. base around post.

79.75

The corner to sections 26, 27, 34 & 35

Land mountainous.

Soil *2nd rate*Timber of *Juniper*Undergrowth of *Sage*

Township 10 N. Range 18 E.

Gila and Salt River Meridian.

Chains

North, between Sections 26 and 27.

Variation 13° 30' East.*Descend.*

40.00

Set a post 3 ft. long, 3 ins. diam. with marked stone 12 ins. in the ground, for $\frac{1}{2}$ Sec. Cor., marked $\frac{1}{2}$ S. on W. face, dug pits, 18 x 18 x 12 ins., N. and S. of post $5\frac{1}{2}$ ft. dist., and raised a mound of earth $1\frac{1}{2}$ ft. high, $3\frac{1}{2}$ ft. base around post.

30.00

Set a *Sand* stone 18 x 12 x 5 ins. 12 ins. in the ground for Cor. to Secs. 22, 23, 26 & 27 marked with 2 notches on S. and 2 notches on E. edges, dug pits 18 x 18 x 12 ins. in each Sec., $5\frac{1}{2}$ ft. dist. and raised a mound of earth 2 ft. high, $4\frac{1}{2}$ ft. base. alongside.

*Land rolling.*Soil 3rd rateTimber of *juniper.*Undergrowth of *sage.*

Township

10

N.

Range

18 E.

Gila and Salt River Meridian.

Chains

East, on a random line between Sections 23 and 26.

Variation

13° 30'

East.

Ascend.

40.00

Set temporary $\frac{1}{4}$ Sec. Cor.,

44.53

Top of Spur, bears N. 36° E. & S. 36° W. and descend.

79.96

Intersect N. & S. line, 20 lks. N. of cor. to secs.

23, 24, 25 & 26 from which corner, I run

N. 89° 51' W. on a true line between sections 23 & 26

Variation

13° 30'

East

39.98

Set a post 3 ft. long, 3 ins. diam. with marked stone

12 ins. in the ground, for $\frac{1}{4}$ Sec. Cor., marked $\frac{1}{4}$ S. on

N. face, dug pits, 18 x 18 x 12 ins., E. and W. of

post $5\frac{1}{2}$ ft. dist., and raised a mound of earth $1\frac{1}{2}$ ft.high, $3\frac{1}{2}$ ft. base around post.

79.96

The corner to sections 22, 23, 26 & 27

Land rolling.

Soil 3rd rate

Undergrowth of sage.

Timber of juniper.

Township 16 N Range 18 E

Gila and Salt River Meridian.

Chains

North, between Sections 22 and 23.

Variation 13° 30' East.*Descend gradually.*24.65 Cross Wash, 40 lks. wide, Course N. E. and ascend.40.00 Set a Sand stone 40 x 13 x 11 ins., 30 ins. in the ground, for $\frac{1}{4}$ Sec. Cor., marked $\frac{1}{4}$ on W. face, and raised a mound of stone alongside. Pits impracticable.60.50 Top of Ridge, bears N. E. & S. W. and descend.80.00 Set a Sand stone 16 x 12 x 9 ins. 10 ins. in the ground for Cor. to Secs. 14, 15, 22, 23 marked with 3 notches on S. and 3 notches on E. edges, dug pits 18 x 18 x 12 ins. in each Sec., 5 $\frac{1}{2}$ ft. dist. and raised a mound of earth 2 ft. high, 4 $\frac{1}{2}$ ft. base. alongside.

Land mountainous.

Soil 3rd rate.Timber of juniper.Undergrowth of page.

Township

16 N

Range

18 E

Gila and Salt River Meridian

Chains

East, on a random line between Sections 14 and 23.

Variation

13° 30'

East.

*Ascend.*40.00 Set temporary $\frac{1}{4}$ Sec. Cor.

60.00 Top of Spur, bears N. E. & S. W. and descend.

80.19 Intersect N. & S. line, 31 lks. N. of cor. to secs.
13. 14. 23 & 24 from which corner, I runN. 89° 47' W. on a true line between sections 14 & 23
Variation 13° 30' East40.09 Set a post 3 ft. long. 3 ins. diam. with marked stone
12 ins. in the ground, for $\frac{1}{4}$ Sec. Cor., marked $\frac{1}{4}$ S. on
N. face, dug pits, 18 x 18 x 12 ins., E. and W. of
post $5\frac{1}{2}$ ft. dist., and raised a mound of earth $1\frac{1}{2}$ ft.
high, $3\frac{1}{2}$ ft. base around post.

80.19 The corner to sections 14. 15. 22 & 23

Land rolling.

Soil 3rd rate

Undergrowth of sage.

Timber of juniper.

Township 10 N Range 18 E

Gila and Salt River Meridian.

Chains

North, between Sections 14 and 15.

Variation 13° 30' East.

Descend.

40.00 Set a sand stone 20 x 13 x 5 ins., 15 ins. in the ground, for $\frac{1}{4}$ Sec. Cor., marked $\frac{1}{4}$ on W. face, and raised a mound of stone alongside. Pits impracticable.

57.08 Cross Wash, 30 lks. wide, Course N. E. and ascend.

80.00 Set a sand stone 16 x 10 x 7 ins. 10 ins. in the ground for Cor. to Secs. 10, 11, 14 & 15 marked with 4 notches on S. and 2 notches on E. edges, dug pits 18 x 18 x 12 ins. in each Sec., $5\frac{1}{2}$ ft. dist. and raised a mound of earth 2 ft. high, $4\frac{1}{2}$ ft. base. alongside.

*Land rolling.**Soil 3rd rate**Undergrowth of sage.**Timber of juniper.*

19 Township 16 N Range 18 E
Gila and Salt River Meridian.

Chains East, on a random line between Sections 11 and 14.
Variation 13° 30' East.

Descend gradually.

19.15 Cross Wash, 20 lks. wide, Course N. E., and ascend.

40.00 Set temporary $\frac{1}{2}$ Sec. Cor.

79.84 Intersect N. & S. line, 8 lks. N. of cor. to secs.

11.12 13 & 14 from which corner, I run

N. 89° 57' W. on a true line between sections 11 & 14
Variation 13° 30' East

39.92 Set a Sand stone 10 x 11 x 7 ins., 10 ins.
in the ground, for $\frac{1}{2}$ Sec. Cor., marked $\frac{1}{2}$ on N. face,
dug pits 18 x 18 x 12 ins., E. and W. of stone 5 $\frac{1}{2}$
ft. dist., and raised a mound of earth 1 $\frac{1}{2}$ ft. high, 3 $\frac{1}{2}$
ft. base alongside.

79.84 The corner to sections 10. 11. 14 & 15

Land rolling.

Soil 3rd rate

Undergrowth of sage.

Timber of juniper.

Township 10 N. Range 18 E.

Gila and Salt River Meridian.

Chains North, between Sections 10 and 11.
Variation $13^{\circ} 30'$ East.

Descend gradually.

30.70 Cross Wash, 18 lks. wide, Course N. E. and ascend.

40.00 Set a Sand stone $10 \times 10 \times 4$ ins., 10 ins. in the ground, for $\frac{1}{4}$ Sec. Cor., marked $\frac{1}{4}$ on W. face, dug pits $18 \times 18 \times 12$ ins., N. and S. of stone $3\frac{1}{2}$ ft. dist., and raised a mound of earth $1\frac{1}{2}$ ft. high, $3\frac{1}{2}$ ft. base, alongside.80.00 Set a Sand stone $20 \times 20 \times 16$ ins. 15 ins. in the ground for Cor. to Secs. 2, 3, 10 & 11 marked with 5 notches on S. and 2 notches on E. edges and raised a mound of stone alongside. Pits impracticable.

Top of Spur, bears N. E. & S. W. and descend.

Land rolling.

Soil 3rd rate

Undergrowth of sage.

Timber of juniper.

Township

16 N.

Range

18 E.

Gila and Salt River Meridian.

Chains

East, on a random line between Sections 2 and 11.

Variation $13^{\circ} 30'$ East.*Descend.*

26.60 Cross Wash, 15 lks. wide, Course N. and ascend.

35.00 Top of Spur, bears N. & S. and descend.

40.00 Set temporary $\frac{1}{4}$ Sec. Cor.

55.60 Cross Wash, 13 lks. wide, Course N. E. and ascend.

79.68 Intersect N. & S. line, 12 lks. S. of cor. to secs.

12. 11 & 12 from which corner, I run

 $S 89^{\circ} 55' W.$ on a true line between sections 2 & 11Variation $13^{\circ} 30'$ East

39.84 Set a Sand stone $20 \times 15 \times 4$ ins., 16 ins. in the ground, for $\frac{1}{4}$ Sec. Cor., marked $\frac{1}{4}$ on N. face, and raised a mound of stone alongside. Pits impracticable.

79.68 The corner to sections 2, 3, 10 & 11

Land rolling.

Soil 3rd rate

Undergrowth of sage

Timber of juniper.

I carefully examined the adjustments of my solar compass to-day, particularly the latitude and reversing apparatus, and found them correct.

Township

10 N

Range

18 E

Gila and Salt River Meridian.

Chains

North, on a random line between Sections 2 and 3.

Variation

13° 30'

East.

Descend gradually.

24.55 Cross Wash, 21 - lks. wide, Course N. 55° E and ascend.

40.00

Set a post 3 ft. long, 3 ins. diam. with marked stone 12 ins. in the ground, for $\frac{1}{4}$ Sec. Cor., marked $\frac{1}{4}$ S. on W. face, dug pits, 18 x 18 x 12 ins. N. and S. of post $5\frac{1}{2}$ ft. dist., and raised a mound of earth $1\frac{1}{2}$ ft. high, $3\frac{1}{2}$ ft. base around post.

90.39

Intersect the 4th Standard Parallel North at a point 13.98 chs. West of the Standard Cor. to Secs. 34 and 35 - T. 10 N. R. 18 E.

Which is a post 4 ft. long 4 ins. sq. with marked stone, 12 ins. in the ground marked ^{S. Cor.} T. 17 N. S. 35 on N. E. R. 18 E., S. 2 on S. E., T. 10 N. S. 30 on W., S. 34 on N. W. face with 2 notches on E. and 4 notches on W. edge with pits 18 x 18 x 12 ins. in each, Sec. $5\frac{1}{2}$ ft. dist; and a mound of earth 2 ft. high, $4\frac{1}{2}$ ft. base around post.

Set a post, 4 ft. long, 4 ins. square, 12 ins. in the ground, for ^{Corner} Cor. to Secs. 2 and 3 marked

C. C.

T. 10 N. R. 18 E., on S. S. 2 on E. and S. 3 on W. faces, with 2 notches on E. and 4 notches on W. faces, dug pits 18 x 18 x 12 ins. S. E. & W. of post, $5\frac{1}{2}$ ft. dist. and raised a mound of earth 2 ft. high, $4\frac{1}{2}$ ft. base around post.

Land rolling. Timber of juniper.

Undergrowth of sage.

Soil 2nd 3rd rate G. W. Pearson Comptroller, June 28, 1883

Township 16 N. Range 18 E.

Gila and Salt River Meridian.

From the corner to sections, 34, 33 or 34 ^{on 13th 1/2th of} previously set by me.
 Chains ^{1/2} mile North, between Sections 33 and 34.

Variation 13° 45' East.

Descend.

40.00 Set a post 3 ft. long, 3 ins. diam. with marked stone
 12 ins. in the ground, for $\frac{1}{4}$ Sec. Cor., marked $\frac{1}{4}$ S. on
 W. face, dug pits, 18 x 18 x 12 ins., N. and S. of
 post $5\frac{1}{2}$ ft. dist., and raised a mound of earth $1\frac{1}{2}$ ft.
 high, $3\frac{1}{2}$ ft. base around post.

80.00 Set a sand stone 20 x 12 x 9 ins., 16 ins.
 in the ground for Cor. to Secs. 27, 28, 33, 34 marked
 with / notch on S. and 3 notches on E. edges,
 dug pits 18 x 18 x 12 ins. in each Sec., $5\frac{1}{2}$ ft. dist. and
 raised a mound of earth 2 ft. high, $4\frac{1}{2}$ ft. base, alongside.
 from which

A Pine 10 ins, diam. bears S. 40° E. 50 lks. dist.
 marked T. 16 N. R. 18 E. S., 34 B. T.

No other trees within limits.

Land rolling.

Soil 3rd rate

Undergrowth of sage.

Timber of juniper.

Township 16 N Range 18 E

Gila and Salt River Meridian.

Chains East, on a random line between Sections 27 and 34.
Variation $13^{\circ} 30'$ East.

Descend.

40.00 Set temporary $\frac{1}{4}$ Sec. Cor.

44.50 Cross Wash, 18 lks. wide, Course N. and ascend.

79.88 Intersect N. & S. line, 10 lks. N. of cor. to secs.

26.27.34 & 33 From which corner, I run

N. $89^{\circ} 53' W.$ on a true line between sections 27 & 34

Variation $13^{\circ} 30'$ East

39.94 Set a Sand stone $25 \times 10 \times 4$ ins., 18 ins. in the ground, for $\frac{1}{4}$ Sec. Cor., marked $\frac{1}{4}$ on N. face, dug pits $18 \times 18 \times 12$ ins., E and W. of stone $5\frac{1}{2}$ ft. dist., and raised a mound of earth $1\frac{1}{2}$ ft. high, $3\frac{1}{2}$ ft. base alongside.

79.88 The corner to sections 27. 28. 33 & 34

Land rolling.

Soil 3° rate

Undergrowth of sage.

Timber of juniper.

Township

16 N.

Range

18 E

Gila and Salt River Meridian

Chains

North, between Sections 27 and 28.

Variation $13^{\circ} 30'$ East.*Ascend.*

40.00

Set a post 3 ft. long, 3 ins. diam. with marked stone 12 ins. in the ground, for $\frac{1}{4}$ Sec. Cor., marked $\frac{1}{4}$ S. on W. face, dug pits, 18 x 18 x 12 ins., N. and S. of post $5\frac{1}{2}$ ft. dist., and raised a mound of earth $1\frac{1}{2}$ ft. high, $3\frac{1}{2}$ ft. base around post.

66.00

Top of Ridge, bears N.E. & S.W. and descend.

90.00

Set a post 4 ft. long, 4 ins. square, with marked stone 12 ins. in the ground, for Cor. to Secs. 21, 22, 27 & 28 marked T, 16 N.S. 22, on N, E, R, 18 E, S. 27 on S, E, S, 28 on S, W, and S, 21 on N, W, face with 2 notches on S, and 3 notches on E, edges, dug pits 18 x 18 x 12 ins, in each Sec., $5\frac{1}{2}$ ft. dist., and raised a mound of earth 2 ft. high, $4\frac{1}{2}$ ft. base around post.

Land mountainous.

Soil 3rd rate

Undergrowth of sage.

Timber of juniper.

Township 10 N Range 18 E

Gila and Salt River Meridian.

Chains East, on a random line between Sections 22 and 27.
 Variation $13^{\circ} 30'$ East.

Ascend. gradually.

12.00 Top of Ridge, bears *N. E. & S. W.* and descend.

40.00 Set temporary $\frac{1}{4}$ Sec. Cor.

64.20 Cross Wash, 29 lks. wide, Course *N. E.* and ascend.

80.30 Intersect N. & S. line, 37 lks. *N.* of cor. to secs.

22, 23, 26 & 27 from which corner, I run

N. 89.44' W. on a true line between sections 22 & 27

Variation $13^{\circ} 30'$ East

40.15 Set a Sand stone 30 x 13 x 12 ins., 22
 ins. in the ground, for $\frac{1}{4}$ Sec. Cor., marked $\frac{1}{4}$ on *N.*
 face, and raised a mound of stone alongside. Pits
 impracticable.

80.30 The corner to sections 21, 22, 27 & 28

Land mountainous

Soil 3rd rate

Timber of juniper.

Undergrowth of sage.

Township

16 N

Range

18 E

Gila and Salt River Meridian.

Chains

North, between Sections 21 and 22.

Variation

13° 30'

East.

Descend.

40.00

Set a post 3 ft. long, 3 ins. diam. with marked stone 12 ins. in the ground, for $\frac{1}{4}$ Sec. Cor., marked $\frac{1}{4}$ S. on W. face, dug pits, 18 x 18 x 12 ins., N. and S. of post $5\frac{1}{2}$ ft. dist., and raised a mound of earth $1\frac{1}{2}$ ft. high, $3\frac{1}{2}$ ft. base around post.

80.00

Set a sand stone 20 x 20 x 20 ins. 16 ins. in the ground for Cor. to Secs. 15, 16, 21 & 22 marked with 3 notches on S. and 3 notches on E. edges and raised a mound of stone alongside. Pits impracticable.

*Land hilly.**Soil 3rd rate**Undergrowth of Juniper.*

Township 10 N. Range 18 E

Gila and Salt River Meridian.

Chains East, on a random line between Sections 15 and 22.

Variation 13° 30' East.*Ascend.*40.00 Set temporary $\frac{1}{4}$ Sec. Cor.

80.05 Intersect N. & S. line, 5 lks. S. of cor. to secs.

14, 15, 22 & 23 from which corner, I runS. 89° 58' W. on a true line between sections 15 & 22Variation 13° 30' East

40.02 Set a post 3 ft. long. 3 ins. diam. with marked stone

12 ins. in the ground, for $\frac{1}{4}$ Sec. Cor., marked $\frac{1}{4}$ S. onN. face, dug pits, 18 x 18 x 12 ins., E. and W. of post $5\frac{1}{2}$ ft. dist., and raised a mound of earth $1\frac{1}{2}$ ft.high, $3\frac{1}{2}$ ft. base around post.80.05 The corner to sections 15, 16, 21 & 22

Land rolling.

Soil 3rd rateUndergrowth of juniper.

Township 16 N Range 18 E

Gila and Salt River Meridian.

Chains North, between Sections 15 and 16.

Variation 13° 30' East.*Descend.*

- 34.14 Cross Wash, 11 lks. wide, Course N. 60° E and ascend.
- 40.00 Set a Sand stone 14 x 10 x 4 ins., 10
ins. in the ground, for $\frac{1}{4}$ Sec. Cor., marked $\frac{1}{4}$ on W.
face, and raised a mound of stone alongside. Pits
impracticable.
- 49.33 Top of Spur, bears N. E. & S. W. and descend.
- 58.47 Cross Wash, 15 lks. wide, Course N. 66° E and ascend.
- 80.00 Set a Sand stone 26 x 20 x 12 ins. 18 ins. in
the ground for Cor. to Secs. 9, 10, 15 & 10 marked
with 4 notches on S. and 3 notches on E. edges and
raised a mound of stone alongside. Pits impracticable.

Land mountainous

Soil 3rd rateTimber of juniperUndergrowth of sage-grass.

Township 16 N Range 18 E

Gila and Salt River Meridian.

Chains East, on a random line between Sections 10 and 15.
Variation 13° 30' East.

Descend.

33.19 Cross Wash, 32 lks. wide. Course N. 13° E and ascend.40.00 Set temporary $\frac{1}{2}$ Sec. Cor.79.63 Intersect N. & S. line, 40 lks. S. of cor. to secs.

10, 11, 14 & 15 from which corner, I run

S. 89° 40' W. on a true line between sections 10 & 15Variation 13° 30' East39.81 Set a post 3 ft. long, 3 ins. diam. with marked stone
12 ins. in the ground, for $\frac{1}{2}$ Sec. Cor., marked $\frac{1}{2}$ S. on
N. face, dug pits, 18 x 18 x 12 ins., E. and W. of
post $5\frac{1}{2}$ ft. dist., and raised a mound of earth $1\frac{1}{2}$ ft.
high, $3\frac{1}{2}$ ft. base around post.

79.63 The corner to sections 9, 10, 15 & 16

Land rolling.

Soil 3rd rateUndergrowth of sage.

7 31 Township 16 N

Range 18 E

Gila and Salt River Meridian.

Chains North, between Sections 9 and 10.

Variation $13^{\circ} 30'$ East.*Ascend.*

39.03 Top of Ridge, bears N. E. & S. W. and descend.

40.00 Set a Sand stone $20 \times 16 \times 4$ ins., 15 ins. in the ground, for $\frac{1}{4}$ Sec. Cor., marked $\frac{1}{4}$ on W. face, and raised a mound of stone alongside. Pits impracticable.80.00 Set a Sand stone $23 \times 13 \times 9$ ins. 18 ins. in the ground for Cor. to Secs. 3, 4, 9 & 10 marked with 5 notches on S. and 3 notches on E. edges and raised a mound of stone alongside. Pits impracticable.

Land mountainous.

Soil 3rd rate

Undergrowth of sage.

Township 16 N. Range 18 E

Gila and Salt River Meridian.

Chains

East, on a random line between Sections 3 and 10.

Variation $13^{\circ} 30'$ East.*Descend.*40.00 Set temporary $\frac{1}{4}$ Sec. Cor.54.41 Cross Wash, 30 fks. wide, Course $N. 34^{\circ} E$ and ascend.

79.96 Intersect N. & S. line, 20 fks. S. of cor. to secs.

2, 3, 10 & 11 from which corner, I run

 $S. 89^{\circ} 49' W.$ on a true line between sections 3 & 10Variation $13^{\circ} 30'$ East

39.98 Set a post 3 ft. long, 3 ins. diam. with marked stone
12 ins. in the ground, for $\frac{1}{4}$ Sec. Cor., marked $\frac{1}{4}$ S. on
N. face, dug pits, 18 x 18 x 12 ins., E. and W. of
post $5\frac{1}{2}$ ft. dist., and raised a mound of earth $1\frac{1}{2}$ ft.
high, $3\frac{1}{2}$ ft. base around post.

79.96 The corner to sections 3, 4, 9 & 10

Land rolling.

Soil 3rd rate

Undergrowth of sage.

I carefully examined the adjustments of my solar
compass to-day, particularly the latitude and revers-
ing apparatus, and found them correct.

Township

16 N

Range

18 E

Gila and Salt River Meridian.

Chains

North, on a ^{true} random line between Sections 3 and 4.

Variation

13° 30'

East.

Descend.

30.11

Cross Wash. 30 fks. wide, Course $N. 60^{\circ} E$ and ascend.

40.00

Set a sand stone $17 \times 10 \times 5$ ins., 12 ins. in the ground, for $\frac{1}{4}$ Sec. Cor., marked $\frac{1}{4}$ on W. face, dug pits $18 \times 18 \times 12$ ins., N. and S. of stone $5\frac{1}{2}$ ft. dist., and raised a mound of earth $1\frac{1}{2}$ ft. high, $3\frac{1}{2}$ ft. base alongside.

45.10
61.28

Begin to descend.
Intersect the 4th Standard Parallel North at a point 13.71 chs. West - of the Standard Cor. to Secs. 33 and 34. T. 17 N. R. 18 E.

Which is a sand stone $36 \times 12 \times 6$ ins. 27 ins. in the ground marked with 3 notches on E. and 3 notches on W. edges and a mound of stone alongside.

Set a post, 4 ft. long, 4 ins. square, 12 ins. in the ground, for ^{closing} Cor. to Secs. 3 and 4 marked

67.6

T. 16 N. R. 18 E., on S. S. 3 on E. and S. 4 on W. faces, with 3 notches on E. and 3 notches on W. faces, dug pits $18 \times 18 \times 12$ ins. S. E. W. of post, $5\frac{1}{2}$ ft. dist. and raised a mound of earth 2 ft. high, $4\frac{1}{2}$ ft. base around post.

Land rolling.

Soil

3rd

rate

Undergrowth of Sage.

Henry Meyrick June 29, 1883

Township 10 N. Range 18 E.

Gila and Salt River Meridian.

From the corner to sections, 4, 5, 32, 33 ^{m c 187 210} previously set by me.
 Chains ^{1/2} mile North, between Sections 32 and 33.

Variation 14° 00' East.

Descend gradually.

7.41 Cross Wash, 14 lks. wide, Course N. E. and ascend.

40.00 Set a post 3 ft. long, 3 ins. diam. with marked stone
 12 ins. in the ground, for $\frac{1}{2}$ Sec. Cor., marked $\frac{1}{2}$ S. on
 W. face, dug pits, 18 x 18 x 12 ins. N. and S. of
 post $5\frac{1}{2}$ ft. dist., and raised a mound of earth $1\frac{1}{2}$ ft.
 high, $3\frac{1}{2}$ ft. base around post.

from which

A Pine 10 ins. diam. bears S. 21° E. 1.08 lks. dist.
 marked $\frac{1}{2}$ S. B. T. No other trees within limits.

20.00 Set a post 4 ft. long, 4 ins. square, with marked stone
 12 ins. in the ground, for Cor. to Secs, 28, 29, 32 & 33
 marked T, 16 N. S, 28, on N, E, R, 18 E., S. 33
 on S, E, S, 32 on S, W, and S, 29 on N, W, face
 with 1 notch on S, and 4 notches on E, edges,
 dug pits 18 x 18 x 12 ins, in each Sec., $5\frac{1}{2}$ ft. dist.,
 and raised a mound of earth 2 ft. high, $4\frac{1}{2}$ ft. base
 around post.

Land rolling.

Soil 3rd rate

Timber of Juniper.

Undergrowth of Sage.

Township 16 N. Range 18 E
Gila and Salt River Meridian.

- Chains East, on a random line between Sections 28 and 33.
Variation $13^{\circ} 30'$ East.
- Descend.*
- 19.04 Cross Wash, 15' lks. wide, Course N. and ascend.
- 40.00 Set temporary $\frac{1}{2}$ Sec. Cor.
- 80.21 Intersect N. & S. line, 52 lks. S. of cor. to secs.
27, 28, 33 & 34 from which corner, I run
 $89^{\circ} 38'$ W. on a true line between sections 28 & 33
Variation $13^{\circ} 30'$ East
- 40.10 Set a post 3 ft. long, 3 ins. diam. with marked stone
12 ins. in the ground, for $\frac{1}{2}$ Sec. Cor., marked $\frac{1}{2}$ S. on
N. face, dug pits, 18 x 18 x 12 ins., E. and W. of
post $5\frac{1}{2}$ ft. dist., and raised a mound of earth $1\frac{1}{2}$ ft.
high, $3\frac{1}{2}$ ft. base around post.
- 80.21 The corner to sections 28, 29, 32 & 33;
Land rolling.
Soil 3rd rate
Undergrowth of sage.
Timber of juniper.

Township

16 N.

BOOK 229

Range

18 E.

36

Gila and Salt River Meridian.

Chains

North, between Sections 28 and 29.

Variation

13° 30'

East.

Descend.

40.00

Set a Sand stone 20 x 8 x 4 ins., 16 ins. in the ground, for $\frac{1}{4}$ Sec. Cor., marked $\frac{1}{4}$ on W face, and raised a mound of stone alongside. Pits impracticable.

30.00

Set a post 4 ft. long, 4 ins. square, with marked stone 12 ins. in the ground, for Cor. to Secs. 20, 21, 28 & 29 marked T, 16 N. S. 21, on N, E, R, 18 E., S. 28 on S, E, S, 29 on S, W, and S, 20 on N, W, face with 2 notches on S, and 4 notches on E, edges, dug pits 18 x 18 x 12 ins. in each Sec., 5 $\frac{1}{2}$ ft. dist., and raised a mound of earth 2 ft. high, 4 $\frac{1}{2}$ ft. base around post.

*Land rolling.*Soil 3rd rate

Timber of juniper & pine.

Undergrowth of sage.

Township

16 N

Range

18 E

Gila and Salt River Meridian.

Chains

East, on a random line between Sections 21 and 28.

Variation $13^{\circ} 30'$ East.*Descend. gradually.*27.13 *Cross Wash, 45 lks. wide, Course N. and ascend.*40.00 *Set temporary $\frac{1}{2}$ Sec. Cor.*45.18 *Top of Spur, bears N. 10° E. & S. 10° W and descend.*75.00 *Head of Ravine, Course N. and ascend*79.78 *Intersect N. & S. line, 68 lks. S. of cor. to secs.**21.22.27 & 28 from which corner, I run**S. $89^{\circ} 31' W.$ on a true line between sections 21 & 28**Variation $13^{\circ} 30'$ East*

39.89 *Set a post 3 ft. long. 3 ins. diam. with marked stone
12 ins. in the ground, for $\frac{1}{2}$ Sec. Cor., marked $\frac{1}{2}$ S. on
N. face, dug pits, 18 x 18 x 12 ins., E. and W of
post $5\frac{1}{2}$ ft. dist., and raised a mound of earth $1\frac{1}{2}$ ft.
high, $3\frac{1}{2}$ ft. base around post.*

79.78 *The corner to sections 20, 21, 28 & 29**Land rolling.**Soil 3rd rate**Undergrowth of sage.**Timber of Juniper.*

Township 16 N. Range 18 E.

Gila and Salt River Meridian.

Chains

North, between Sections 20 and 21.

Variation

 $13^{\circ} 30'$

East.

Ascend.

40.00

Set a Sand stone $14 \times 16 \times 6$ ins., 33 ins. in the ground, for $\frac{1}{4}$ Sec. Cor., marked $\frac{1}{4}$ on W. face, and raised a mound of stone alongside. Pits impracticable.

80.00

Set a Sand stone $20 \times 12 \times 4$ ins. 15 ins. in the ground for Cor. to Secs. 10, 17, 20, 2 marked with 3 notches on S. and 4 notches on E. edges, dug pits $18 \times 18 \times 12$ ins. in each Sec., $5\frac{1}{2}$ ft. dist. and raised a mound of earth 2 ft. high, $4\frac{1}{2}$ ft. base. alongside.

Land rolling.

Soil 3rd rate

Undergrowth of sage.

Timber of juniper.

Township 16 N. Range 18 E.

Gila and Salt River Meridian.

Chains

East, on a random line between Sections 16 and 21.

Variation $13^{\circ} 30'$ East.*Descend.*

39.01 Cross Wash, 20 lks. wide, Course N. E. and ascend.

40.00 Set temporary $\frac{1}{4}$ Sec. Cor.

60.00 Top of Spur, bears N. E. & S. W. and descend.

72.13 Cross Wash, 15 lks. wide, Course N. 87° E. and ascend.

79.45 Intersect N. & S. line, 19 lks. S. of cor. to secs.

15.16.21 & 22 from which corner, I run

S. 89° 52' W. on a true line between sections 16 & 21

Variation $13^{\circ} 30'$ East

39.72 Set a sand stone $14 \times 8 \times 6$ ins., 10 ins. in the ground, for $\frac{1}{4}$ Sec. Cor., marked $\frac{1}{4}$ on N. face, dug pits $18 \times 18 \times 12$ ins., E and W. of stone $5\frac{1}{2}$ ft. dist., and raised a mound of earth $1\frac{1}{2}$ ft. high, $3\frac{1}{2}$ ft. base alongside.

79.45 The corner to sections 16. 17. 20 & 21

Land rolling.

Soil 3rd rate

Undergrowth of sage.

Timber of juniper.

Township, 10 N. Range 18 E.
Gila and Salt River Meridian.

Chains

North, between Sections 16 and 17.

Variation $13^{\circ} 30'$ East.*Ascend.*

0.57 Top of Ridge, bears *N. 30° S. W.* and descend.
40.00 Set a post 3 ft. long, 3 ins. diam. with marked stone
12 ins. in the ground, for $\frac{1}{2}$ Sec. Cor., marked $\frac{1}{4}$ S. on
W. face, dug pits, 18 x 18 x 12 ins., N. and S. of
post $5\frac{1}{2}$ ft. dist., and raised a mound of earth $1\frac{1}{2}$ ft.
high, $3\frac{1}{2}$ ft. base around post.

69.71 Cross Wash, 20 lks. wide, Course *N. 36° E.* and ascend.
80.00 Set a post 4 ft. long, 4 ins. square, with marked stone
12 ins. in the ground, for Cor. to Secs. 8, 9, 10 & 17
marked T. 16 N. S. 9, on N. E., R. 18 E., S. 10
on S. E., S. 17 on S. W, and S. 8 on N. W. face,
with 4 notches on S. and 4 notches on E. edges;
and raised a mound of stone 2 ft. high, $4\frac{1}{2}$ ft. base
around post. Pits impracticable.

Land mountainous

Soil 3rd rate

Timber of Juniper.

Undergrowth of Sage.

Township 16 N. Range 18 E.

Gila and Salt River Meridian.

Chains

East, on a random line between Sections 9 and 16.

Variation $13^{\circ} 30'$ East.

Descend.

9.50 Cross Wash, 22 lks. wide, Course N. 11 E. and ascend.

40.00 Set temporary $\frac{1}{2}$ Sec. Cor.

69.94 Top of Ridge, bears N. 50 E. & S. 50 W. and descend.

79.96 Intersect N. & S. line, 11 lks. S. of cor. to secs.

9.10. 15 & 10 from which corner, I run

S. $89^{\circ} 55' W.$ on a true line between sections 9 & 10Variation $13^{\circ} 30'$ East

39.98 Set a post 3 ft. long, 3 ins. diam. with marked stone
12 ins. in the ground, for $\frac{1}{2}$ Sec. Cor., marked $\frac{1}{2}$ S. on
N. face, dug pits, 18 x 18 x 12 ins., E. and W. of
post $5\frac{1}{2}$ ft. dist., and raised a mound of earth $1\frac{1}{2}$ ft.
high, $3\frac{1}{2}$ ft. base around post.

79.96 The corner to sections 8. 9. 10 & 17
Land mountainous

Soil 3rd rate

Timber of Juniper.

Undergrowth of Sage.

Township 16 N. Range 18 E.

Gila and Salt River Meridian.

Chains North, between Sections 8 and 9.

Variation 13° 30' East.

Ascend.

38.00 Top of Spur, bears N. 12° E. 12 W. and descend.

40.00 Set a Sand stone 18 x 13 x 6 ins., 12 ins. in the ground, for $\frac{1}{4}$ Sec. Cor., marked $\frac{1}{4}$ on W. face, and raised a mound of stone alongside. Pits impracticable.

80.00 Set a Sand stone 30 x 24 x 6 ins. 27 ins. in the ground for Cor. to Secs. 4, 5, 8 & 9 marked with 5 notches on S. and 4 notches on E. edges and raised a mound of stone alongside. Pits impracticable.

*Land rolling.*Soil 3rd rate

Timber of juniper.

Undergrowth of sage.

Township 16 N Range 18 E

Gila and Salt River Meridian.

Chains

East, on a random line between Sections 4 and 9.

Variation $13^{\circ} 30'$ East.

Descend.

9.75 Cross Wash, 25 lks. wide, Course N. 10° E and ascend.40.00 Set temporary $\frac{1}{4}$ Sec. Cor.

79.72 Intersect N. & S. line, 38 lks. S. of cor. to secs.

3, 4, 9 & 10 from which corner, I run

S. 89.44' W. on a true line between sections 4 & 9

Variation $13^{\circ} 30'$ East

39.86 Set a Sand stone 40 x 24 x 5 ins., 30
 ins. in the ground, for $\frac{1}{4}$ Sec. Cor., marked $\frac{1}{4}$ on N.
 face, and raised a mound of stone alongside. Pits
 impracticable.

79.72 The corner to sections 4, 5, 8 & 9
 Land rolling.

Soil 3rd rate

Timber of pine & juniper.

Undergrowth of sage.

I carefully examined the adjustments of my solar
 compass to-day, particularly the latitude and revers-
 ing apparatus, and found them correct.

Township 16 N. Range 18 E.

Gila and Salt River Meridian.

Chains

North, on a ^{true} random line between Sections 4 and 5.Variation 13° 30' East.

Ascend.

10.34 Top of Hill ~~to~~ descend.

40.00 Set a sand stone 80 x 25 x 12 ins., 22 ins. in the ground, for $\frac{1}{4}$ Sec. Cor., marked $\frac{1}{4}$ on W. face, and raised a mound of stone alongside. Pits impracticable.

42.29 Intersect the 11th Standard Parallel North at a point 13.86 chs. West of the Standard Cor. to Secs. 32 and 33. T. 17 N. R. 18 E.

Which is a sand stone 20 x 16 x 7 in. 15 in. in the ground marked with 4 notches on E. and 2 notches on W. edges and a mound of stone alongside.

Set a post, 4 ft. long, 4 ins. square, 12 ins. in the ground, for ^{1/4} Sec. Cor. to Secs. 4 and 5, marked

66. T. 16 N. R. 18 E., on S. S. 4 on E and S. 5 on W. faces, with 4 notches on E and 2 notches on W. faces, dug pits 18 x 18 x 12 ins. S. E. W. of post, 5 1/2 ft. dist. and raised a mound of earth 2 ft. high, 4 1/2 ft. base around post.

Land hilly.

Soil 3rd rate

Undergrowth of

sage. G.W. Pearson, Compassman
June 29, 1883

Township 16 N Range 18 E

Gila and Salt River Meridian.

From the corner to sections, 5, 6, 3/4 & 32 ^{on S. B. T. - 20'} previously set by me.
 Chains ^{Iron} North, between Sections 31 and 32.

Variation 14° 00' East.

Ascend gradually.

18.73 Top of Ridge, bears N. 9° E. & S. 9° W. and descend.

40.00 Set a sand stone 15 x 13 x 3 ins., 10 ins. in the ground, for 1/4 Sec. Cor., marked 1/4 on W. face, dug pits 18 x 18 x 12 ins., N. and S. of stone 5 1/2 ft. dist., and raised a mound of earth 1 1/2 ft. high, 3 1/2 ft. base alongside.

from which

A Pine 10 ins, diam. bears N. 00° W. 20 lks. dist. marked 1/4 S. B. T. No other trees within limits.

80.00 Set a sand stone 26 x 26 x 4 ins. 18 ins. in the ground for Cor. to Secs. 29, 30, 31 & 32 marked with / notch on S. and 5 notches on E. edges, dug pits 18 x 18 x 12 ins. in each Sec., 5 1/2 ft. dist. and raised a mound of earth 2 ft. high, 4 1/2 ft. base, alongside.

Land mountainous.

Soil 3rd rate

Undergrowth of sage.

Timber of juniper.

X

Township 16 N Range 18 E

Gila and Salt River Meridian.

Chains East, on a random line between Sections 29 and 32.
Variation 13° 30' East.

Over rolling land, and ascend

20.00 Top of Ridge, bears N. & S. and descend.

40.00 Set temporary $\frac{1}{2}$ Sec. Cor.

79.93 Intersect N. & S. line, 33 lks. S. of cor. to secs.

28.29.32 & 33 from which corner, I run

S. 89° 46' W. on a true line between sections 29 & 32

Variation 13° 30' East

39.90 Set a post 3 ft. long, 3 ins. diam. with marked stone

12 ins. in the ground, for $\frac{1}{2}$ Sec. Cor., marked $\frac{1}{2}$ S. on

N. face, dug pits, 18 x 18 x 12 ins., E. and W. of

post 5 ft. dist., and raised a mound of earth 1 ft.

high, 3 ft. base around post.

79.93 The corner to sections 29. 30. 31 & 32

Land rolling.

Soil 3rd rate

Undergrowth of sage.

Timber of juniper.

Henry Meyrick June 30. 1883

Township 16 N Range 18 E

Gila and Salt River Meridian.

Chains

West, on a random line between Sections 30 and 31.

Variation 13° 30' East.

Over rolling land.

40.00 Set temporary $\frac{1}{4}$ Sec. Cor.

70.38 Cross Wash, 75 lks. wide, Course N. 36° W and ascend.

83.00 Intersect W. B. of Tp. 40 lks. N. of cor. to secs.
previously set by me.

25.30, 31 & 30 from which corner, I run

N. 89° 46' On a true line, between sections 30 & 31
Variation 14° 00' East.

43.00 Set a Sand stone 16 x 12 x 7 ins., 10
ins. in the ground, for $\frac{1}{4}$ Sec. Cor., marked $\frac{1}{4}$ on N.
face, and raised a mound of stone alongside. Pits
impracticable.

83.00 The corner to sections 29, 30, 31 & 32

Land rolling.

Soil 3rd rate

Undergrowth of juniper.

Timber of juniper.

G. W. Pearson Compassman. June 30, 1883

Township 10 N Range 18 E

Gila and Salt River Meridian.

Chains North, between Sections 29 and 30.

Variation 13° 30' East.*Descend.*

40.00

Set a post 3 ft. long, 3 ins. diam. with marked stone 12 ins. in the ground, for $\frac{1}{4}$ Sec. Cor., marked $\frac{1}{4}$ S. on W. face, dug pits, 18 x 18 x 12 ins., N. and S. of post $5\frac{1}{2}$ ft. dist., and raised a mound of earth $1\frac{1}{2}$ ft. high, $3\frac{1}{2}$ ft. base around post.

30.00

Set a post 4 ft. long, 4 ins. square, with marked stone 12 ins. in the ground, for Cor. to Secs, 19, 20, 29, 30 marked T, 16 N, S, 20, on N, E, R, 18 E, S, 29 on S, E, S, 30 on S, W, and S, 19 on N, W, face with 2 notches on S, and 5 notches on E, edges, dug pits 18 x 18 x 12 ins, in each Sec., $5\frac{1}{2}$ ft. dist., and raised a mound of earth 2 ft, high, $4\frac{1}{2}$ ft, base around post.

Land rolling.

Soil 2nd & 3rd rateUndergrowth of Sage.Timber of Juniper.

Township

10 N.

Range

18 E.

Gila and Salt River Meridian.

Chains

East, on a random line between Sections 20 and 29.

Variation $13^{\circ} 30'$ East.*Over rolling land and ascend*40.00 Set temporary $\frac{1}{2}$ Sec. Cor.

53.15 Top of Ridge, bears N. & S. and descend.

80.26 Intersect N. & S. line, 18 lks. S. of cor. to secs.

20.21.28 & 29 from which corner, I run

S. $89^{\circ} 52'$ W. on a true line between sections 20 & 29
Variation $13^{\circ} 30'$ East40.13 Set a post 3 ft. long, 3 ins. diam. with marked stone
12 ins. in the ground, for $\frac{1}{2}$ Sec. Cor., marked $\frac{1}{2}$ S. on
N. face, dug pits, 18 x 18 x 12 ins., E. and W. of
post $5\frac{1}{2}$ ft. dist., and raised a mound of earth $1\frac{1}{2}$ ft.
high, $3\frac{1}{2}$ ft. base around post.

80.20 The corner to sections 19, 20, 29 & 30

Land rolling.

Soil 3rd rate

Undergrowth of sage.

Timber of juniper.

Henry Meyrick, June 30, 1883

Township 16 N. Range 18 E

Gila and Salt River Meridian.

Chains West, on a random line between Sections 19 and 30.
Variation $13^{\circ} 30'$ East.

Descend. Gradually.

40.00 Set temporary $\frac{1}{2}$ Sec. Cor.

04.70 Cross Wash, 17 lks. wide, Course N. 23° W and ascend.

83.52 Intersect W.B. of Tp. 25 lks. N. of cor. to secs.
previously set by me.

19. 24. 25 & 30 from which corner, I run

N. 89° 51' W on a true line, between sections 19 & 30

Variation $14^{\circ} 00'$ East.

43.52 Set a Sand stone $14 \times 8 \times 5$ ins., 10 ins.
in the ground; for $\frac{1}{2}$ Sec. Cor., marked $\frac{1}{2}$ on N. face,
dug pits $18 \times 18 \times 12$ ins., E and W. of stone $5\frac{1}{2}$
ft. dist., and raised a mound of earth $1\frac{1}{2}$ ft. high, $3\frac{1}{2}$
ft. base alongside.

83.52 The corner to sections 19. 20. 29 & 30

Land rolling.

Soil 3rd rate

Timber of Juniper.

Undergrowth of sage.

G. W. Pearson, Compassman June 30. 1883

Township

16 N

Range

18 E

Gila and Salt River Meridian.

Chains

North, between Sections 19 and 20.

Variation

13° 30'

East.

Descend.

40.00

Set a post 3 ft. long, 3 ins. diam. with marked stone 12 ins. in the ground, for $\frac{1}{2}$ Sec. Cor., marked $\frac{1}{2}$ S. on W. face; dug pits, 18 x 18 x 12 ins., N. and S. of post $5\frac{1}{2}$ ft. dist., and raised a mound of earth $1\frac{1}{2}$ ft. high, $3\frac{1}{2}$ ft. base around post.

80.00

Set a sand stone 2' x 12 x 6 ins. 2' ins. in the ground for Cor. to Secs. 17, 18, 19 & 20 marked with 3 notches on S. and 3 notches on E. edges and raised a mound of stone alongside. Pits impracticable.

*Land rolling.**Soil 3rd rate**Timber of juniper.**Undergrowth of sage.*

Township 16 N. Range 18 E.

Gila and Salt River Meridian.

Chains

East, on a random line between Sections 17 and 20.

Variation $13^{\circ} 30'$ East.

Descend.

36.04 Cross Wash, 28 lks. wide, Course $N. 38^{\circ}$ East and ascend.40.00 Set temporary $\frac{1}{2}$ Sec. Cor.78.33 Top of Ridge, bears $N. 40^{\circ} E.$ & $S. 40^{\circ} W.$ and descend.

79.87 Intersect N. & S. line, 26 lks. N. of cor. to secs.

16.17.20-21 from which corner, I run

 $N. 89^{\circ} 49' W.$ on a true line between sections 17 & 20Variation $13^{\circ} 30'$ East

39.93 Set a post 3 ft. long, 3 ins. diam. with marked stone
 12 ins. in the ground, for $\frac{1}{2}$ Sec. Cor., marked $\frac{1}{2}$ S. on
 N. face, dug pits, 18 x 18 x 12 ins., E. and W. of
 post $5\frac{1}{2}$ ft. dist., and raised a mound of earth $1\frac{1}{2}$ ft.
 high, $3\frac{1}{2}$ ft. base around post.

79.87 The corner to sections 17, 18, 19 & 20.

Land rolling.

Soil 3rd rate

Timber of juniper.

Undergrowth of sage.

Henry Meyrick June 30, 1883

Township

16 N.

Range

18 E.

Gila and Salt River Meridian.

Chains

West, on a random line between Sections 18 and 19.

Variation

14° 30' East.

Ascend.

25.94 Top of Hill bears N. 21° E. & S. 21° W. and descend.

40.00 Set temporary $\frac{1}{2}$ Sec. Cor.83.47 Intersect W. B. of Tp. 33 lks. N. of cor. to secs.
previously set by me.13.18. 19. 24_N from which corner, I run

N. 89° 38' E. on a true line, between sections 18 & 19

Variation

14° 00'

East.

43.47 Set a post 3 ft. long, 3 ins. diam. with marked stone
12 ins. in the ground, for $\frac{1}{2}$ Sec. Cor., marked $\frac{1}{2}$ S. on
N. face, dug pits, 18 x 18 x 12 ins., E. and W. of
post 5 $\frac{1}{2}$ ft. dist., and raised a mound of earth 1 $\frac{1}{2}$ ft.
high, 3 $\frac{1}{2}$ ft. base around post.

83.47

The corner to sections 17, 18, 19, 20

Land hilly.

Soil 3rd rate

Timber of juniper

Undergrowth of sage

G. W. Pearson Compassman, June 30, 1880

Township 16 N Range 18 E

Gila and Salt River Meridian.

Chains North, between Sections 17 and 18. Variation 13° 30' East.

Ascend.

39.10 Top of Ridge, bears N. 41° E. & S. 41° W. and descend.

40.00 Set a Sand stone 28 x 10 x 7 ins., 21 ins. in the ground, for 1/4 Sec. Cor., marked 1/4 on W. face, and raised a mound of stone alongside. Pits impracticable.

80.00 Set a Sand stone 33 x 16 x 12 ins. 24 ins. in the ground for Cor. to Secs. 17, 8, 17, 18 marked with 4 notches on S. and 5 notches on E. edges and raised a mound of stone alongside. Pits impracticable.

Land mountainous.

Soil 3rd rate

Undergrowth of grass.

Township

16 N.

Range

18 E.

Gila and Salt River Meridian.

Chains

East, on a random line between Sections 8 and 17.

Variation

13° 30'

East.

36.00 Ascend.

40.00 Set temporary $\frac{1}{4}$ Sec. Cor.

53.98 Top of Ridge, bears N. E. & S. W. and descend.

80.48 Intersect N. & S. line, 7 lks. S. of cor. to secs.

8, 9, 16 & 17 from which corner, I run

S. 89° 57' W. on a true line between sections 8 & 17

Variation

13° 30'

East

40.24

Set a Sand stone 19 x 13 x 11 ins., 12
 ins. in the ground, for $\frac{1}{4}$ Sec. Cor., marked $\frac{1}{4}$ on N
 face, and raised a mound of stone alongside. Pits
 impracticable.

80.48

The corner to sections 7, 8, 17 & 18

Land mountainous.

Soil ^{good} rate

Undergrowth of sage

Henry Meyrick June 30, 1883

Township

10 N

BOOK 229

Range

18 E

Gila and Salt River Meridian.

Chains

West, on a random line between Sections 7 and 18.

Variation

13° 30'

East.

Descend.

40.00 Set temporary 1/4 Sec. Cor.

83.85 Intersect N. B. of Tp. 10 N. of cor. to secs.

7. 12. 13. 18 from which corner, I run

N. 89° 35' E. on a true line, between sections 7 & 18

Variation

14° 15'

East.

43.85 Set a Sand stone 20 x 20 x 4 ins., 1/4

ins. in the ground, for 1/4 Sec. Cor., marked 1/4 on N.

face, and raised a mound of stone alongside. Pits
unpracticable.

83.85 The corner to sections. 7. 8. 17 & 18

Land rolling.

Soil 3rd rate

Timber of pine & juniper.

Undergrowth of sage.

G. W. Parson Compassman June 20. 1883

Township

10 N.

Range

18 E.

Gila and Salt River Meridian.

Chains

North, between Sections 7 and 8.

Variation

13° 30'

East.

Ascend.

40.00

Set a Sand stone 19 x 14 x 5 ins., 12 ins. in the ground, for $\frac{1}{4}$ Sec. Cor., marked $\frac{1}{4}$ on W. face, dug pits 18 x 18 x 12 ins., N. and S. of stone 5 $\frac{1}{2}$ ft. dist., and raised a mound of earth 1 $\frac{1}{2}$ ft. high, 3 $\frac{1}{2}$ ft. base alongside.

44.00

Top of Hill bears N. 63° W. S. 63° E. and descend.

80.00

Set a Sand stone 20 x 13 x 7 ins. 19 ins. in the ground for Cor. to Secs. 5, 6, 7 & 8 marked with ζ notch on S. and ζ notch on E. edges and raised a mound of stone alongside. Pits impracticable.

*Land hilly.**Soil 3rd rate**Undergrowth of sage.*

Township 16 N Range 18 E

Gila and Salt River Meridian.

Chains

East, on a random line between Sections 5 and 8.

Variation 13° 30' East.

Ascend.

- 11.23 Top of Spur, bears N. 10° E. & S. 10° W. and descend.
- 23.17 Cross Wash, 20 lks. wide, Course N. 30° E. and ascend.
- 32.24 Top of Spur, bears N. & S. and descend.
- 40.00 Set temporary $\frac{1}{4}$ Sec. Cor.
- 55.77 Cross Wash, 20 lks. wide, Course N. 20° E. and ascend.
- 77.40 Top of Spur, bears N. 31° E. & S. 31° W. and descend.
- 80.23 Intersect N. & S. line, 45 lks. S. of cor. to secs.
 5, 6, 7 & 8 from which corner, I run
 S. 89° 41' W. on a true line between sections 5 & 8
 Variation 13° 30' East
- 40.11 Set a Sand stone 18 x 12 x 10 ins., 12
 ins. in the ground, for $\frac{1}{4}$ Sec. Cor., marked $\frac{1}{4}$ on N.
 face, and raised a mound of stone alongside. Pits
 impracticable.
- 80.23 The corner to sections 5, 6, 7 & 8
 Land mountainous.
 Soil 3rd rate
 Undergrowth of Grass.
- I carefully examined the adjustments of my solar
 compass to-day, particularly the latitude and revers-
 ing apparatus, and found them correct.

Henry Meyrick June 30. 1883

Township

10 N

Range

18 E

Gila and Salt River Meridian.

Chains

West, on a random line between Sections 6 and 7.

Variation $13^{\circ} 30'$ East.

Descend.

12.12 Head of Ravine, Course N. and ascend

40.00 Set temporary $\frac{1}{4}$ Sec. Cor.

40.19 Top of Ridge, bears N.W. & S. E. and descend.

76.08 Cross Wash, 30 lks. wide, Course N. $71^{\circ} 11'$ and ascend.84.19 Intersect W. B. of Tp. 30 lks. N. of cor. to secs.
previously set by me.

1.6. 7 & 12 from which corner, I run

N. $89^{\circ} 48'$ E. on a true line, between sections 6 & 7Variation $14^{\circ} 00'$ East.44.19 Set a Sand stone $10 \times 8 \times 7$ ins., 10
ins. in the ground, for $\frac{1}{4}$ Sec. Cor., marked $\frac{1}{4}$ on N.
face, and raised a mound of stone alongside. Pits

impracticable.

84.19 The corner to sections 5. 6. 7 & 8
Land mountainous.Soil 3rd rate

Undergrowth of sage.

I carefully examined the adjustments of my solar
compass to-day, particularly the latitude and revers-
ing apparatus; and found them correct.

Township 16 N Range 18 E

Gila and Salt River Meridian.

Chains

North, on a ^{true} random line between Sections 5 and 6.

Variation 13° 30' East.

Descend.

32.11 Cross Wash, 15 lks. wide, Course N. 24° E.
 40.00 Set a Sand stone 30 x 10 x 10 ins., 22 ins. in the ground, for 1/4 Sec. Cor., marked 1/4 on W. face, and raised a mound of stone alongside. Pits impracticable.

93.53 Intersect the 4th Standard Parallel North at a point 14.30 chs. West of the Standard Cor. to Secs. 31 and 32. T. 17 N. R. 18 E. a. Which is a sand stone 24 x 10 x 6 ins. 18 ins. in the ground marked with 5 notches on E. and 1 notch on W. edges and a mound of stone alongside.

Set a post, 4 ft. long, 4 ins. square, 12 ins. in the ground, for ^{corner} Cor. to Secs. 5 and 6 marked E. C. T. 16 N. R. 18 E., on S. S. 5 on E and S. 6 on W. faces, with 5 notches on and 1 notch on W. faces, dug pits 18 x 18 x 12 ins. S. E. W. of post, 5 1/2 ft. dist. and raised a mound of earth 2 ft. high, 4 1/2 ft. base around post.
 Land rolling.

Soil g.^o rate
 Undergrowth of sage. E. W. Clawson, ^{Compassman} June 30. 1883

GENERAL DESCRIPTION.

The land in this Township is rolling, with good grazing and considerable Cedar and Juniper.

The general slope is to the N. E. It is better adapted to grazing than for agricultural purposes.

There is water in tanks in the East and South Eastern parts of this Tp.

A Cabin is in the center of ~~the Tp.~~ Sec 11

Soil varies from 2nd to 3rd rate.

For Trial Notes
see Book No 19.

U. S. Surveyor General's Office,

Tucson, Arizona,

Feb. 5, 1884

The foregoing Field Notes of the Survey of the

Subdivision Lines of
 Township 16 North
 Range 18 East

Of the Gila and Salt River Base and Meridian, Arizona, executed by Henry Murphy Jr.

Deputy Surveyor, under his contract of the 28th

day of July, 1882, having been

critically examined and the necessary corrections and explanations made, the said Field Notes and the surveys they describe

are hereby approved

Royal Johnson
 Surveyor General.