

x Platted No 240 1

Contract No 58

Approved by G.L.O.

July 14, 1890.

~~4-671~~  
BOOK 240 No 240

FIELD NOTES

BOOK 240

GENERAL LAND OFFICE

of the survey of the subdivision lines

of Township 10 N. Range 6 East

City and Counties of Cass and Madison

Arizona

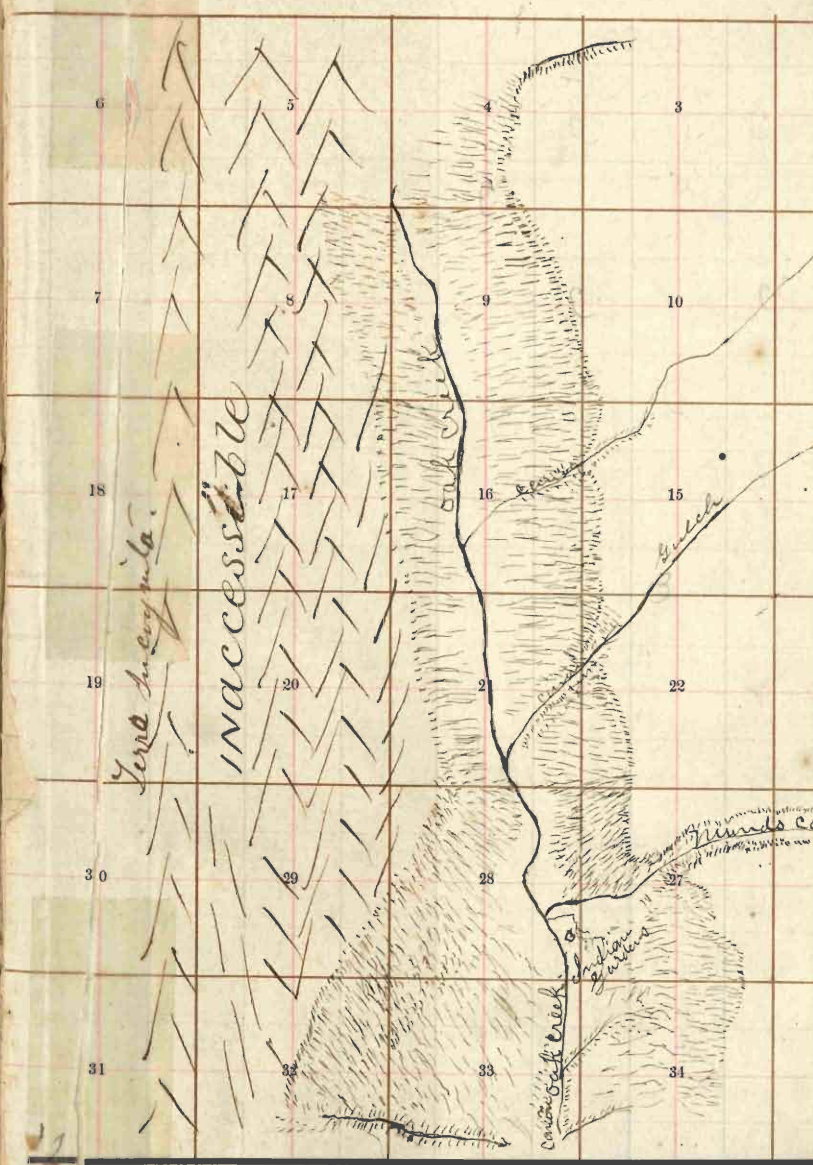
By Hodge C. Powell S.S.

Field Notes dated Feb 27 1890

Survey commenced July 8 1890

" completed July 15 1890

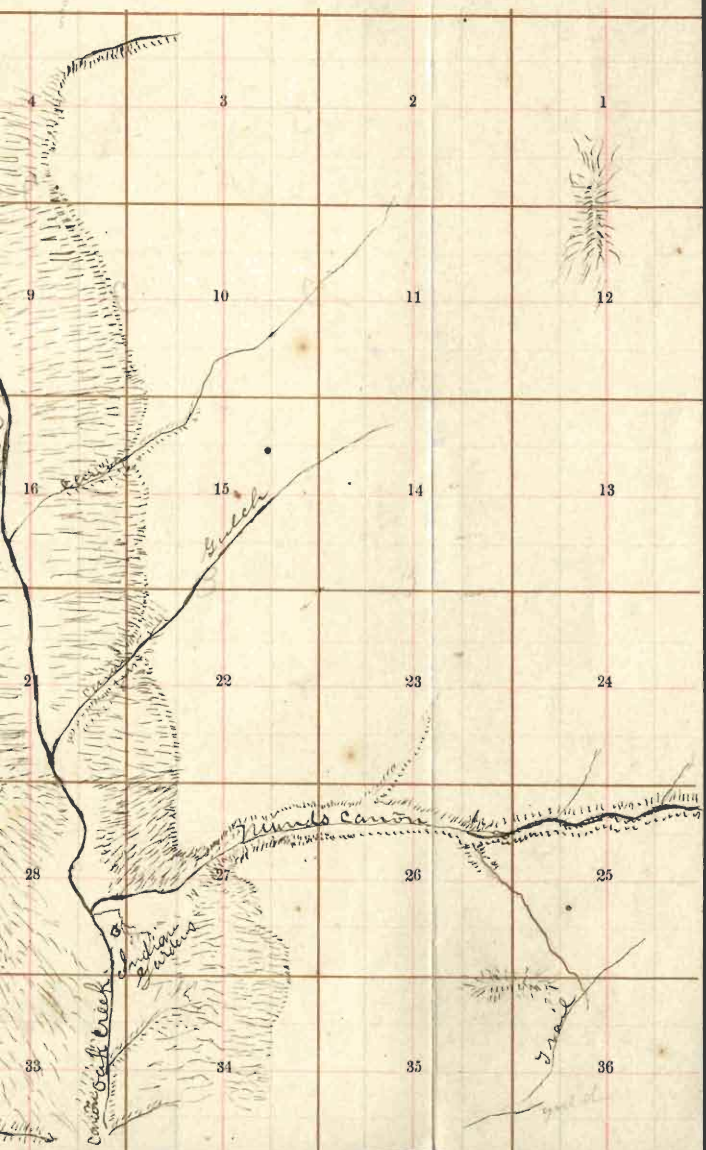
240



J. H. N. R. G. Co.

BOOK 240

1A





Index

BOOK 240

6	5	4	52	3	35	2	20	1
			53		51		34	18
7	8	9	49	10	32	11	16	12
				48		31		14
18	17	16	47	15	30	14	13	13
				45		29		11
19	20	21	22	27	23	10	24	
						26		8
30	29	28	39	27	24	26	7	25
			43		38		23	4
31	32	42	33	37	34	22	35	36

General Remarks pages 55, 56, 57  
 For preliminary notes of assistants  
 see book No. 71

Sub-division T. 15. N. R. 6. E

Preliminary to commencing the Survey of this Township I ran N.  $89^{\circ} 43'$  W on a blank line on the S. boundary of Sec 36 and at 40.09 chs found the  $\frac{1}{4}$  Sec Cor and at 80.05 chs found the Sec Cor. I also ran W on the E boundary bet Secs 31 & 36 and at 39.97 chs found  $\frac{1}{4}$  Sec Cor and at 50.00 chs found the Sec Cor. My instrument will therefore run the same lines with the exterior boundaries, and the chaining practically agrees.

Survey commenced July 8<sup>th</sup> 1886 with a Transit with Solar Attachment manufactured by W. and L. E. Gurley of Troy N. Y.

I commenced at the Cor to Secs. 1, 7, 35 and 36 on the S

## Subdivisions T18 N R 6 E continued

Chs boundary of the Gp previously described by me. Thence I run North bet - Secs 35 and 36

ca  $140^{\circ} 05' E$

Over high rolling ground

24.00 Cross prairie 15 chs side Course N

25.00 Cross Mounds trail bet E & W.

40.00 Set malpais rock  $12 + 10 + 6$  ins  
8 ins in the ground for  $\frac{1}{4}$  Secs,  
marked  $\frac{1}{4}$  on W face and raised  
a mound of stone along side.

At end slope

78.00 Top of ridge 70 feet high bet E & W

80.00 Set malpais rock  $15 + 12 + 8$  ins  
10 ins in the ground for Cists  
Secs, 25, 26, 35 and 36 marked  
with 1 notch on the S and E  
edges and raised a mound of  
stone along side. From which

Subdivision T18 N R6 E Contn  
chs

An oak 10 ins diam hrs N 28° E 120 lbs  
dist marked T18 N R6 E S 25 B. Y.

A Pine 30 ins diam hrs S 10° W 70 lbs  
dist marked T18 N R6 E S 35 B. Y.

An Oak 6 ins diam hrs N 65° W 90 lbs  
dist marked T18 N R6 E S 26 B. Y.

No brig tree within limits in Sec 36.

Land mountainous.

Soil rocky - 4<sup>th</sup> rate -

Timber Pine Oak & Juniper.

S 87° 45'

E. on a random line bet Secs 25 & 36

700 140° 08' E

Over mountainous ground

12.00 Top of E end of ridge hrs E & W

descend E slope of same

30.00 Cross ravine 60 feet below top of

ridge rocks with course NW

33.50 Cross Mounds trail hrs N E & S W



~~Sub divisions T. 15 N. R. 6 E. Contain~~  
 Chs

40.00 Set temporary  $\frac{1}{4}$  Sec Cor

80.00 Subdivided E. boundary of T<sup>h</sup> 27  
 lks N of the Cor to Secs 25, 30, 31  
 and 36 which is a Malpais rock  
 10 + 4 inches marked with 1 notch on  
 S and 5 notches on N edges. &  
 mound of stone along side. From which  
 An Oak 4 ins diam lies N 60° E 3 lks  
 dist marked T. 15 N. R. 6 E S 30 B. T.  
 An Oak 10 ins diam lies S 70° E 10 lks  
 dist marked T. 15 N. R. 6 E S 31 B. T.  
 A Pine 20 ins diam lies S 40° W 55 lks  
 dist marked T. 15 N. R. 6 E S 35 B. T.

Then a run

N. 89° 31' W. on a true line bet Secs 25 & 36

with same rd

110.00 Set Malpais rock 14 + 10 + 8 ins  
 10 ins in the ground for  $\frac{1}{4}$  Sec  
 Cor marked  $\frac{1}{4}$  on N face and



Sub divisions T. S. A. R. 6 E Continued  
Chs

raised a mound of stone along side

From which - A Pine 18 ins diameter S  
40° N 95° E 45 dist marked 1/4 S. B. T.

No other bearing tree within limits.

80.00 Cor to Secs 24, 25, 35 and 36

Land mountainous

Soil rocky - 4<sup>th</sup> rate

Timber, Pine, oak & Juniper.

North bet Secs 25 and 26

Cor 110° 08' E

Over high broken ground

38.00 Cross roome 30 Ets wide Course N. W.

40.00 Set Malpais rock 12 + 10 + 4 ins

8 ins in the ground for 1/4 Sec Cor

marked 1/4 on N face and raised a  
mound of stone along side. From which

A Juniper 15 ins diameter S 30° N  
24 Ets dist marked 1/4 S. B. T.

Sub divisions T 18 N R 6 E Co. Carter  
Chs

No other bearing true within limits

60.30 S. edge of Munds Cañon about  
200 feet deep Course S 85° W.

65.00 West bank of Munds Cañon

80.00 Set malpais rock 12 + 10 + 7 ins 8 ins  
in the ground for Cor to Secs 23, 24

25 and 26 marked with 2 notches on  
Sand 1 notch on E edge and  
raised a mound of stone along side

Land broken mountainous

Soil rocky - 4th rate -

Timber scattering pine & juniper

S 89° 43' E on a random line bet Secs 24<sup>+</sup> & 25<sup>+</sup>

7a 140° 08' E

Over mountainous ground

27.00 Cross rocky gulch 15-20 ft wide  
35-foot deep course S. W.

40.00 Set temporary 1/4 Sec Cor.

Subdivisions T. 8. N. R. 6. E. Cont.  
 chs

67.00 Cross gulch 30 feet deep 30 chs  
 wide course S. 17.

80.00 Intersect E. boundary at the  
 Cor. to Secs. 19, 24, 25 and 30 which  
 is a rock in place 5 + 4 + 3 feet  
 above ground marked with a (H)  
 cross at the exact Cor point with  
 2 notches <sup>on S</sup> and 4 notches <sup>on</sup> at edges  
 and mound of stone alongside.

Thence I run

N 89° 43' W. on a true line bet Secs 24 and 25  
 with same ra

40.00 Set Malpais rock 12 + 8 + 7 ins 8 ins  
 in the ground for  $\frac{1}{4}$  Sec Cor marked  
 $\frac{1}{4}$  on N face and raised a  
 mound of stone alongside. From which  
 A Pine 18 ins diam hrs N 75° W 43  
 chs dist. marked  $\frac{1}{4}$  S. 13. T.  
 A Pine 14 ins diam hrs S 13° E 60

Sub divisions T 15 to R 6 E Center  
cho

80.00 lks dist marked  $\frac{1}{4}$  S B. T.  
Cor to Secs 23, 24, 25 and 26  
Land broken mountainous  
Soil rocky - 4<sup>th</sup> rate  
Timber Pine and oak,

North bet Secs 23 and 24  
Tn 14208' Ee

Over high rolling surface

40.00 Set malpais rock 12 + 8 + 7 ins  
8 ins in the ground for  $\frac{1}{4}$  Sec Cor  
marked  $\frac{1}{4}$  on N face and raised  
a mound of stone along side  
from which A. Jumper 8 ins chain has  
N 70° W 90 lks dist marked  $\frac{1}{4}$  S B. T.  
A. Jumper 8 ins chain has S.E. 120 lks  
dist marked  $\frac{1}{4}$  S B. T.

80.00 Set malpais rock 12 + 12 + 8 ins  
8 ins in the ground for Cor to



Supervisor's T. 8. N. R. 6. E Cont.

Secs. 13, 14, 23 and 24 marked  
with 3 notches on S and 1 notch  
on E edges and raised a mound  
of stone along side. From which  
A jump 20 ins diameter N 80° E  
80 cks dist marked T. 8. N. R. 6. E S 13 B. T.  
A jump 22 ins diameter S 78° E 140 cks  
dist marked T. 8. N. R. 6. E S 24 B. T.  
A pine 8 ins diameter N 75° W 120 cks  
dist marked T. 8. N. R. 6. E S 14 B. T.  
No other bearing tree within limits.

Land high rolling  
Soil rocky - 4<sup>th</sup> rate  
Timber, Juniper, Pine and Oak.

S 89° 43' E on a pendan line bet Secs 13 & 24  
to 140 08' E

Over high rolling ground  
40.00 Per temporary 1/4 Sec Cor

Sub divisions T 18 N R 6 E Continued  
 ch

79.88 Entered - E boundary of T<sub>18</sub>  
 48 cks S of the Cor to Secs 13, 18, 19  
 and 24 which is a malpais rock  
 10 + 14 in, marked with 3 notches  
 on S and N edges and mound  
 of stone along side. From which  
 A Pine 14 in drain has N 80° E 113 cks  
 dist marked T 18 N R 6 E S 18 13, T.

Thence I run

S 59° 56' N. on a true line bet Secs 13 and 24

with same run

39.94 Set malpais rock 12 + 10 + 6 in  
 8 in in the ground for 1/4 Sec Cor  
 marked 1/4 on N face and raised  
 a mound of stone along side. From which  
 A Pine 15 in drain has S 70° E  
 dist marked 1/4 S 13, T.

A Pine 6 in drain has N 75° W  
 85 cks dist marked 1/4 S 13, T.

Subdivision T 15. S R 6. E. *Continued*  
 Ch<sup>s</sup>

79.88 Cor to Secs 13, 14, 23 and 24

Land high rolling

Soil rocky - wt. red

Timber Pine, oak & juniper.

July 9<sup>th</sup>, 1886.

North bet Secs 13 and 14

7<sup>th</sup> 14<sup>th</sup> 08<sup>th</sup> E

Over high rolling ground

Through heavy pine & oak timber

40.00 Set mulpuris rock 12 + 9 + 6 ins

8 ins in the ground for  $\frac{1}{4}$  sec Cor

marked 4 on N. face and raised

a mound of stone alongside from

which. A Pine 10 ins diam bet N 75° E

socks dist marked  $\frac{1}{4}$  S T. T.

A Pine 14 ins diam bet N. T. 100 cks

dist marked  $\frac{1}{4}$  S T. T.

80.00 Set mulpuris rock 12 + 12 + 10

sub divisions T. 18. N. R. 6. E. Contn  
 etc.

8 ins in the ground for as to Secs  
 11, 12, 13 and 14 marked with 42 notches  
 on Sand 1 notches on E edges and  
 raised a mound of stone along side  
 from which A Pine is, diam has N 15° E 105 lbs  
 dist marked T. 18. N. R. 6. E. S. 14 B. 7.  
 An oak 8 ins diam has S 52° E 88 lbs  
 dist marked T. 18. N. R. 6. E. S. 13 B. 7  
 An oak 15 ins diam has N 40° W 36 lbs  
 dist marked T. 18. N. R. 6. E. S. 11 B. 7  
 A Pine 14 ins diam has S 74° E 40 lbs dist  
 marked T. 18. N. R. 6. E. S. 11 B. 7.  
 Land high rolling  
 Soil rocky - 4000 ft -  
 Timber heavy pine oak & juniper.

S 89° 43' E on a random line bet Secs 12 & 13

700 14° 08' E

Over high rolling timbered land,



sub divisions T. 18 N. R. 6 E. Continued  
 C. 10

40.00 Set temporary  $\frac{1}{4}$  Sec Cor

80.00 Intersect the E boundary of T. 18  
 at the Cor to Secs. 7, 12, 13 and 18

which is a malpais rock 14 + 10  
 ins marked with 4 notches on S

and 2 notches on N edges and a  
 mound of stone along with from which.

A Pine 20 ins diam has N  $40^{\circ}$  E 27 lbs dist  
 marked T. 18 N. R. 6 E S. 7 B. 7.

A Pine 20 ins diam has S  $89^{\circ}$  E 27 lbs dist  
 marked T. 18 N. R. 6 E S. 18 B. 7.

A Pine 24 ins diam has N  $47^{\circ}$  W 100  
 lbs dist marked T. 18 N. R. 6 E S. 12 B. 7.

Thence I run

N  $87^{\circ}$  43' W on a true line bet Secs 12 + 13

with same run

40.00 Set malpais rock 10 + 8 + 7 ins

7 ins in the ground for  $\frac{1}{4}$  Sec Cor  
 marked  $\frac{1}{4}$  on N face and raised

Sub-divisions T 18 & R 6 E Contin  
chs

a mound of stone alongside from which  
A Pine 16 is diam has S 75° 00' W  
dist marked  $\frac{1}{4}$  S. B. T.

A Pine 18 is diam has S 86° 17' 90  
the dist marked  $\frac{1}{4}$  S. B. T.

80.00 Cor to Secs 11, 12, 13 and 14

Land high rolling  
Soil rocky - 3d rate  
Timber - Pine and oak,

Set bet Secs 11 and 12

on 140° 08' E

Over high rolling ground

14.52 Pine 14 is diam

40.00 Set mulpur's rock 16 + 12 + 8

ins 12 ins in the ground for  
 $\frac{1}{4}$  Sec Cor marked  $\frac{1}{4}$  on N face  
and raised a mound of stone  
alongside. From which

Subdivisions T. 18 N. R. 6 E. Conty,  
chs

A Pine 16 ins diam bes S 6° E  
95 ecks dist marked T. 18 N. R. 6 E.

An Oak 8 ins diam bes S 10° W  
ecks dist marked T. 18 N. R. 6 E.

80.00 Set malpais rock 10 + 10 + 7 ins  
7 ins in the ground for C. to  
Secs 1, 2, 11 and 12 marked  
with 5 notches on S and 1 notch  
on E edges and raised a mound  
of stone alongside. From which  
A Pine 15 ins diam bes N. E., 50 ecks  
dist marked T. 18 N. R. 6 E. S. 1 B. Y.  
A Pine 17 ins diam bes S E 50 ecks dist  
marked T. 18 N. R. 6 E. S. 12 B. Y.  
A Pine 16 ins diam bes S W 62 ecks  
dist marked T. 18 N. R. 6 E. S. 11 B. Y.  
A Pine 8 ins diam bes N 89° W 60  
ecks dist marked T. 18 N. R. 6 E. S. 2 B. Y.  
Sand high rolling.

Subdivisions T. 18 N. R. 6 E. Cont.  
 cas

Soil rocky - 4<sup>th</sup> rate  
 Timber heavy Pine & oak.

S. 89° 43' E. on a random line bet Secs 1 & 12

7<sup>th</sup> 14° 05' Ee

Over high rolling ground

32.00 Commence to ascend slope

37.00 Top of ridge about 50 feet high to <sup>S.</sup>

40.00 Set temporary 1/4 Sec Cor

79.76 Intersect E boundary of 1/2  
 4<sup>th</sup> Ecs N of the Cor to Secs 1, 6, 7  
 and 12 which is a malpais rock  
 10 + 6 ins marked with 5 notches  
 on S and 1 notch on N edge is  
 and a record of stone along side  
 From which a Pine 20 ins diam brs S 89° E  
 27 Ecs dist marked T. 18 N. R. 6 E. S. 7 B. 1  
 A Pine 20 ins diam brs N 40° E 55 Ecs dist  
 marked T. 18 N. R. 6 E. S. 6 B. 1.



Subdivisions T. 18 N. R. 26 E. Contn  
chs

A Pine 24 in diameter bet  $N 47^{\circ} W$  100 yds  
dist marked T. 18 N. R. 26 E. S. 1 B. T.

Thence I ran  
 $N 89^{\circ} 25' W$  on a true line bet Secs 1 & 12  
with same 20

39.76 Set mulpais rock 12 + 10 + 5 in's dia's  
in the ground for  $\frac{1}{4}$  Sec Cor marked  
 $\frac{1}{4}$  on N face and raised a mound  
of stone alongside from which  
A Pine 12 in's diameter bet  $N 41^{\circ} W$  28  
cks dist marked  $\frac{1}{4}$  S B. T.  
An oak 10 in's diameter bet  $N 30^{\circ} E$   
37 cks dist marked  $\frac{1}{4}$  S B. T.

<sup>then</sup> 74.76 Cor to Secs 1, 2, 11 and 12

Land high rolling  
Soil rocky 3d rate  
Timber heavy pine & oak.

Sub division T 18 N R 6 E Continued  
cls

North on a random line bet Secs 1 and 2  
2a 140° 05' E

Ored high rolling ground

40.00 Set temporary 1/4 Sec Cor

79.84 Intersect N boundary of the  
1/4 Sec E of the Cor to Secs 1, 2  
35 and 36 which is a maples  
rock 16 + 4 ins marked with 1  
notch on E and 5 notches on W edge  
and mound of stone along side. From this  
N Pin 14 ins diam bet N 60° E 170 lks  
dist marked T 18 N R 6 E S 36 B, Y  
N Pin 14 ins diam bet S 85° E 105 lks  
dist marked T 18 N R 6 E S 1 B, Y,  
N Pin 12 ins diam bet S 118° E 185 lks dist  
marked T 18 N R 6 E S 2 B, Y,  
N Pin 7 ins diam bet N 180° W 95 lks  
dist marked T 18 N R 6 E S 35 B, Y  
Thence I run

Sub divisions T. E. N. R. 6. E. Cont.

S 0° 21' E. on true line bet Sec 1 & 2  
with same ra

39.84 Set malpais rock 10 + 10 + 6 ins  
7 ins in the ground for 1/4 Sec Cor  
marked 1/4 on the face and raised  
a mound of stone along side than  
whit. An Oak 10 ins diameter. N 12°  
E 80 lks dist marked 1/4 S. B. T.  
A Pine 14 ins diameter N 2° W 100 lks  
dist marked 1/4 S. B. T.

79.84 The Cor to Secs 1, 2, 11 and 12  
Land high rolling  
Soil rocky - 3d rate -  
Timber heavy pine & oak.

Examined my instrument  
today and found it to be in  
perfect adjustment

July 10th 1856.

Sub divisions T 18 N R 6 E Continued

etc.

From the Cor to Secs 2, 3, 34 and  
35 on the S boundary of the T<sup>h</sup> which  
is a Malpais rock 10 + 6 is  
marked with 1 notch on E and  
5 notches on W edges and a  
mound of stone alongside I run  
north bet Secs 34 and 35 -

To 14° 08' E

over broken ground

40.00 Set Malpais rock 13 + 8 + 7 in  
grooves in the ground for  $\frac{1}{4}$  Sec Cor  
marked  $\frac{1}{4}$  on W face and raised  
a mound of stone alongside

80.00 Rock in place 3 + 3 + 2 feet -  
above ground which I mark  
with a cross at the exact Cor  
point for Cor to Secs 26, 27  
34 and 35 - marked with 1 notch  
S and 2 notches E of cross



Sub divisions T. 18. N. R. 16. E. Contn-  
cls

And raised a mound of stone  
along side.

17 cls N. of this Cor the mesa  
breaks off towards Oak Creek  
descending precipitously about  
1200 feet.

Land mountain mesa

Soil rocky - 4<sup>th</sup> rate

Timber scattering pine oak

Secese brush

S 89° 43' E on a random line bet Sec 26. 35

7a 140° 05' Ee

Over high mountain mesa,

40.00 Set temporary 1/4 Sec Cor

42.00 Commence to ascend ridge

50.00 Top of ridge extends E. to

80.12 Intersect N. & S line at the Cor  
to Secs 25, 26, 35 and 36

Sub divisions T 18 N R 6 E Cont  
Chs

Thence I run

N  $89^{\circ}43'$  W on a true line bet Secs 26 & 33

with same run,

40.06 Set malpais rock 12 + 10 + 4 ins  
8 ins in the ground for  $\frac{1}{4}$  Sec Cor  
marked  $\frac{1}{4}$  on N face and raised  
a mound of stone along side

80.12 Cor to Secs 26, 27, 34 and 35 -

Land high mountain mesa,

Soil rocky - 4<sup>th</sup> rate

Timber Pine and oak &  
saw brush.

North bet Secs 26 and 27

$74^{\circ}05'$  Ee

Over high mountain mesa

40.00 Set malpais rock 11 + 9 + 8 ins

8 ins in the ground for  $\frac{1}{4}$  Sec

Cor marked  $\frac{1}{4}$  on W face

Sub division J. 8. N R. 6. E. Canon  
160

and raised a mound of stone dayside  
from which A jumper 10 is chain bes  
N 10° W 60 lks dist marked 14. S. B. T.

No other bearing tree within limits

59.00 Edge of S. bank of Mounds Canon

Canon about 500 feet deep course S 80° W

74.00 N. bank 500 feet above bottom of Canon

80.00 Set mulpais rock 20 + 8 + 4 is

15 is in the ground for Cor to Secs

22, 23, 26 and 27 marked with

2 notches on S and E edges and

raised a mound of stone dayside

from which A jumper 5 is chain bes N 43° E

20 lks dist marked J. 8. N R. 6. E S 23 B. T.

A jumper 8 is chain bes S E 40 lks dist

marked J. 8. N R. 6. E S 26 B. T.

A jumper 20 is chain bes S 10 lks dist

marked J. 8. N R. 6. E S 27 B. T.

No other bearing tree within limits

Subdivisions T. 8. R. 6. E. Continued

cls

Sand prominent

Soil rocky - 4<sup>th</sup> sec

Timber juniper, Pine & oak. Some brush

S 84° 43' E on a random line bet Secs 23 & 26

7 1/4 140° 08' E

Over broken ground

28.00 Cross rocky gulch 70 feet deep 60  
ft wide at bottom Course S 10°

40.00 Set temporary 1/4 Sec Cor

80.10 Intersect at S line 27 ft N  
of the Cor to Secs 23, 24, 25 and 26

Thence I run

N 84° 31' W on a true line bet Secs 23 & 26

with same run

40.00 Set malpais rock 12 + 8 + 7 in  
8 in in the ground for 1/4 Sec Cor  
marked 1/4 on N face and raised  
a mound of stone along side



Subdivisions T. 18. N. R. 6. E. Cont.

80.10 <sup>th</sup> Cor. to Secs 22, 23, 26 & 27

Land broken

Soil rocky - 4<sup>th</sup> rock

Timber juniper, oak & Pine

Scrub brush.

North bet Secs 22 and 23

va  $14^{\circ} 08' E$

Over high broken ground

40.00 Set malpais rock 16 + 14 + 5 ins

12 ins in the ground for  $\frac{1}{4}$  Sec

Cor marked  $\frac{1}{4}$  on N face and

raised a mound of stone along side

from which. A Juniper 25 ins diam bet

S  $22^{\circ} E$  103 cks dist marked  $\frac{1}{4}$  S. B. 7.

No other bearing tree within limits

80.00 Set malpais rock 12 + 10 + 7 ins

5 ins in the ground for Cor to

Secs 14, 15, 22 and 23 marked

Suppositions T 18 N R 6 E Cont<sup>d</sup>

with 3 notches on S and 2 notches  
 on E edges and raised a mound  
 of stone alongside. From which  
 A Pine 14 ins diam brs N 62° E 58 lks dis  
 marked T 18 N R 6 E S 14 B. T.  
 A Pine 12 ins diam brs S 72° E 65 lks  
 dist marked T 18 N R 6 E S 23 B. T.  
 A Pine 28 ins diam brs S 30° N 30 lks  
 dist marked T 18 N R 6 E S 22 B. T.  
 A Juniper 18 ins diam brs N 50° W 60 lks  
 dist marked T 18 N R 6 E S 15 B. T.

Land high rolling  
 Soil rocky - 3d rate -  
 Timber heavy pine, oak & juniper.

I examined my instrument  
 to-day and found it to be in  
 perfect adjustment

July 12, 1886.

sub-divisions T. 18. & R. 6. E. Cont.  
cls

S 89° 43' E on a random line bet Secs 14 and 23

ra 140 0.5 E,

Over high rolling ground

40.00 Set temporary  $\frac{1}{4}$  Sec cor

80.16 Intersect N + S line 17th S of Co to  
Secs 13, 14, 23 and 24. Thence I run

N 84° 50' W on a true line bet Secs 14 + 23

with same ra

40.08 Set walpais rock 12 + 10 + 8 ins, 8 ins  
in the ground for  $\frac{1}{4}$  Sec Cor marked  
H on N face and raised a mound  
of stone along side from which  
A Juniper 8 ins, diam bet N E 75° W  
dist marked  $\frac{1}{4}$  S B. T.

A Pine 15 ins, diam bet S 70° W  
2 rocks dist marked  $\frac{1}{4}$  S B. T.

80.16 Co to Secs 14, 15, 22 and 23

Land high rolling  
soil rocky - 4 + 4 ft  
Timber Pine, Juniper rock

Sub divisions T18 N R 6 E Contine  
chs

Northe bet Secs 14 and 15

2a 140 05' E

Over high rolling ground

40.00 Set Malpais rock 10 + 10 + 7 ins  
7 ins in the ground for  $\frac{1}{4}$  Sec  
Cor marked  $\frac{1}{4}$  on N. Face and  
raised a mound of stone  
along side. From which  
A Pin 22 ins diameter at  $75^{\circ}$  N  
120 lbs dist marked  $\frac{1}{4}$  S 13. T.  
A Pin 23 ins diameter S  $70^{\circ}$  E 80  
lbs dist. marked  $\frac{1}{4}$  S 13. T.

54.00 Cross gulch 18 lbs wide course S.

80.00 Set Malpais rock 12 + 10 + 5 ins  
5 ins in the ground for Cor to Secs  
10, 11, 14 and 15 marked in the  
4 notches on S and 2 notches on  
E edges and raised a mound of  
stone along side. From which



Sub divisions T. 8. N. R. 6. E. Cont'd

An oak 14 ins diam bet N 20° E 30 cks  
dist marked T. 8. N. R. 6. E. S. 11 B. T.

An oak 12 ins diam bet S 18° E 4 cks  
dist marked T. 8. N. R. 6. E. S. 14 B. T.

An oak 6 ins diam bet S 17 58 cks dist  
marked T. 8. N. R. 6. E. S. 15 B. T.

An oak 8 ins diam bet N 87° W 40  
cks dist marked T. 8. N. R. 6. E. S. 10 B. T.

Land high rolling

Soil rocky - 4<sup>th</sup> rate

Timber - heavy pine & oak.

S. 89° 43' E on a random line bet Secs 11 & 14

7<sup>th</sup> 14° 05' E

Over high rolling ground

6.10 Pine tree 10 ins diam

80.10 Intersect N & S line at the Cr  
to Secs 11, 12, 13 and 14 thence open

N 89° 43' W on a true line bet Secs 11 & 14

Subdivisions T. 18. S. R. 6. E. Contine  
 Chs

with same ra

- 40.05 Set malpais rock 12 + 10 + 5 ins  
 8 ins in the ground for  $\frac{1}{4}$  Sec  
 marked  $\frac{1}{4}$  on N face and raised a  
 mound of stone along side from which  
 An oak 8 ins diam bers N 75 00  
 dist marked  $\frac{1}{4}$  S B. T.  
 A Pine 18 ins diam bers S 70 00  
 100 yds dist. marked  $\frac{1}{4}$  S B. T.  
 80.10 Cor to Secs 10, 11, 14 and 15  
 Sand high rolling  
 Soil rocky - 4<sup>th</sup> rate  
 Timber heavy pine & oak.

North bet Secs 10 and 11

70 14 05' E

Over high rolling ground

- 40.00 Set malpais rock 17 + 10 + 7 ins  
 8 ins in the ground for  $\frac{1}{4}$  Sec

sub divisions T. 8 N. R. 6 E. Cont'd

Cor marked  $\frac{1}{4}$  in N face and  
raised a mound of stone along side. From  
which An oak 8 ins diam brs N  $15^{\circ}$  W  
80 cks dist marked  $\frac{1}{4}$  S B. T.  
An oak 6 ins diam brs S  $6^{\circ}$  E 16 cks  
dist marked  $\frac{1}{4}$  S B. T.

48.00 Grass prairie 15 cks wide Course S. W.

80.00 Set malpais rock 10 + 10 + 6 ins pins  
in the ground for Cor to Sec 2,  
3, 10 and 11 marked with

5 notches on S and 2 notches on  
E edges and raised a mound  
of stone along side. From which  
A Pine 26 ins diam brs N  $20^{\circ}$  E 120 cks  
dist marked T. 8 N. R. 6 E S 2 B. T.

A Pine 25 ins diam brs S  $40^{\circ}$  E 30  
cks dist marked T. 8 N. R. 6 E S 11 B. T.

A Pine 20 ins diam brs S  $10^{\circ}$  W 130 cks  
dist marked T. 8 N. R. 6 E S 10 B. T.

Sub division T 18 N R 6 E Continued  
Cho

A pine 18 ins diam bet  $N 85^{\circ} W$  140 yds  
dist marked T 18 N R 6 E S 3 B. T.  
Ground high rolling  
Soil rocky - 3 d rate  
Timber heavy pine and oak.

S.  $84^{\circ} 43' E$ . on a pseudo line bet Secs 2 & 11  
to  $140^{\circ} 05' E$

Over high rolling ground

37.30 Cross Narvin 20 yds wide Cause  $S. 85^{\circ} W$

79.84 Intersect N & S line 32 yds N of the  
Cor to Secs 1, 2, 11 and 12. There I ran  
 $N 89^{\circ} 29' W$  on a true line bet Secs 2 & 11

with same 20

39.92 Set malpais rock 10 + 9 + 7 ins  
7 ins in the ground for  $1/4$  Sec Cor  
marked  $1/4$  on N face and raised a  
mound of stone always side from which  
A pine 29 ins diam bet  $N 10^{\circ} E$  30



Sgt divisions T. H. R. 6 & 9 Contn  
 Chs

cks dist marked 74 S. B. T.

A Pine 16 ins diam bet S 60° W 75-

cks dist marked 74 S. B. T.

79.84 Cor to Secs 2, 3, 10 & 11

Land high rolling

Soil rocky - 3rd rate

Timber heavy pine & oak.

A. on a random line bet Secs 2 and 3

70° 11' 05" E

Over high rolling land

79.79 Subsect A boundary of T. P. 58

cks W. of the Cor to Secs 2, 3, 34

and 35 which is a mafic rock

12 + 4 marked with 2 notches on

the 2 or 4 notches or W edge and

mound of stone clay side from which

A Pine 16 ins diam bet S 60° E

59 cks dist marked 74 S. B. T. S. 35 B. T.

Sub divisions, T. 15. N. R. 6. E. Continued  
 Chs

A Pine 12 ins diam hrs S 56° E galls dis  
 marked 1/8 N R 6 E S 2 B. T.

A Pine 14 ins diam hrs S 40° W 120 cks  
 dis marked 1/8 N R 6 E S 3 B. T.

Thence I run

S. 0° 25' W on a true line bet Secs 2 & 3  
 with same run

39779 Set mulpair pick 10 + 10 + 6 ins 7 ins  
 in the ground for 1/4 Sec Cor  
 marked 1/4 on N face and raised  
 a mound of stone along side it from which

A Pine 36 ins diam hrs N W 85 cks  
 dis marked 1/4 S B. T.

A Pine 12 ins diam hrs S 60° E, 110 cks  
 dis marked 1/4 S B. T.

40  
 79779 Cor to Secs 2, 3, 10 & 11

Said high rolling  
 Soil rocky - 3d rate  
 Timber heavy Pine & oak.

July 13<sup>th</sup>, 1886.

Sub divisions 718 at R. 6 E. Continued

Chs

From the Cor to Secs 3, 11, 33 + 34  
on the S. boundary of the T<sub>2</sub> which  
is a sandstone in place 10 + 10 + 10 feet  
above ground marked with a (+)  
cross at the exact Cor point with  
3 notches E and W of cross and  
mound of stone alongside. Then  
North bet Secs 33 and 34

7a 140 05' E

Over rugged ground

18.00 Cross rocky gulch 20 lks wide <sup>3 ft</sup> <sup>wide</sup>

40.00 Set malpais rock 10 + 10 + 8 ins  
pins in the ground for 1/4 Sec Cor  
marked 1/4 on W. face and raised  
a mound of stone alongside  
thence along W slope of Oak Creek  
Canyon

116.00 Cross rocky gulch 30 lks wide <sup>3 ft</sup> <sup>wide</sup>

73.00 Set cond caplet into oak creek bottom.

Sub divisions T. 18. N. R. 6. E. Cont'd

cks

80.00 Set sulphur rock. 10+10+8 in  
7 in in the ground for Cor to Sec  
27, 28, 33 and 34 marked with  
1 notch on S and 3 notches on E  
edges and raised a mound of stone  
along side.

Land rough broken  
Soil rocky - 4<sup>th</sup> rate  
No timber. Scarcely brush.

As it is impracticable to establish  
the entire line bet Secs 27 & 34  
on account of obstacles I run  
S 89° 04' 3" E on a true line bet Secs 27 & 34

Over rugged ground  
5.00 { Leave Indian Gardens and  
commence to ascend rocky slope  
40.00 About 200 feet above Sec Cor  
Rock in place 2+2+2 feet  
above ground which I mark



Sub-divisions T. 8. N. R. 6. E. Continued  
chs

with a (+) cross at the exact Cor  
front for 1/4 Sec Cor with 1/4  
marked N of cross

From this Cor the side of the  
Canyon to the E. rises abruptly  
about 1000 feet and it is  
impossible to proceed with the line.

Sand steep mountains  
Soil rocky - 40% water.  
No timber. Some brush

Starts bet Sec 27 and 28

70° 14' 05" E

Through "Indian Gardens"

- 5.00 Enter cultivated grounds  
10.00 Leave same  
10.50 Cross Spring Run 6 cks wide Course W  
12.00 " " " 8 cks wide Course S W  
18.00 Leave Oak Creek bottom for N W 087° E

Sub divisions T, S, R, Q, P, O, N, M, L, K, J, I, H, G, F, E continue  
cls

- and ascend slope. From this point  
Thompsons House has 10.5 chs dist.
- 26.00 Top of ridge 30 feet high projects W  
ascend. slope of ridge
- 33.00 Enter Mounds Creek, west Course W
- 37.00 Leave same and ascend slope
- 40.00 Set mulpais rock 12 + 10 + 8 in 8 in  
in the ground for 4 side Cor marked  
1/4 on W face and raised a mound  
of stone along side. From which  
An oak 10 ins diam has Str 70 lbs  
dist marked 1/4 S. B. 7,  
No other bearing tree with limits
- 80.00 About 300 feet above Mounds Creek  
on E side of oak Creek Cañon  
Rock in place 3 + 2 + 2 feet  
above ground which I mark  
with a (+) cross at the exact  
Cor point for Cor to des 21, 22

Sub divisions T 18 N P 6 E Contine  
cls

27 and 28 with 2 notches S and  
3 notches E of cross

Low Mountains

Soil 18 chs 1st note but 3d note

Timber oak & dense brush.

On account of the rugged  
sides of the Cañon and Mountain  
E. and N. of the Cr. just  
established I am unable to  
proceed in either direction

I examined my instrument  
to day and found it to be  
in perfect adjustment.

July 14<sup>th</sup>, 1886.

Sub divisions T. 18. N. R. 6. E. Continued  
 Clos

From the Car to Secs 4, 5, 32 and 33  
 on the S. Boundary of the Lh. previously  
 described by me. I run  
 North bet Secs 32 and 33

70° 14' 05" E

Over broken ground

10.00 Descend slope

20.00 Cross Wilsons Cañon 100 ft wide  
 70 feet deep Course East-

52.00 Ascend abruptly mountain to NE side

80.00 About 500 feet above Wilsons Cañon  
 Rock in place 20 + 20 + 10 ins  
 above ground which I mark  
 with a (+) Cross at the exact  
 Car point for Car to Secs 28, 29  
 32 and 33 marked with 1 notch  
 3 and 4 notches E of (+) Cross  
 And raised a mound of stone  
 along side



Sub-divisions T18N N6E Contine  
cls

Land mountainous  
Soil rocky - 4<sup>th</sup> rate  
Scrub Cedar & dense brush.

S. 89° 43' E on expansion line bet Secs 28 & 33  
72 14° 05' E

Over rugged ground  
Descend W. side of Oak Creek Cañon

- 40.00 Set temporary 1/4 sec Cor
- 75.00 Cross oak Creek 120 yds wide  
about 800 feet below Sec Cor  
Course S 10° E and enter  
Cultivated lands of "Indian Gardens"
- 77.85 Leave cultivated lands
- 79.70 Intersect N & S line at the Cor  
to Secs 28, 29, 32 and 33 Then Apr  
N 89° 43' W on a true line bet Secs 28 & 33  
with same 72
- 39.85 - Rock in place 22 + 15 + 10 =

Sub divisions T 15 N R 6 E Cont.

chs

a base ground which I mark  
with a (+) cross at the exact Cor  
point for  $\frac{1}{4}$  Sec. Cor marked with  
 $\frac{1}{4}$  of cross

79.70 Cor to Sec 28, 29, 32 and 33

Land rugged mountainous  
Soil rocky - no rut  
No timber. dense brush.

On account of the rugged  
mountainous character of  
the ground rising several  
hundred feet in places nearly  
perpendicularly, I am  
unable to proceed further  
North from the Sec. Cor  
last established.

Sub-division T 18 N R 6 E Co. Carter  
 chs

Proceeding to the Cor. to Secs  
 14, 15, 22 and 23 upon the  
 Mogallow Mountain Mesa, and  
 having been unable to  
 establish the Cor. to Secs 15,  
 16, 21 and 22 from the S.  
 or West on account of  
 the steep side of Oak Creek  
 Cañon:— I run  
 $N 89^{\circ} 43' W$ , on a true line bet Secs 15 & 22

$4 \frac{1}{2}$  or  $14^{\circ} 05' E$

Over high rolling ground  
 40.00 Set malpais rock 12 + 9 + 7 ins  
 8 ins in the ground for  $\frac{1}{4}$  Sec Cor  
 marked  $\frac{1}{4}$  on N face and  
 raised a mound of stone  
 alongside; From which  
 A Pine 22 ins diam bet S 80° W  
 rocks dist marked  $\frac{1}{4}$  S B. T.

Subdivisions T. 18 N. R. 6 E. Cont.

- Chs  
 Apr 25 in dinner at 7:00 P.M. 123 -  
 lks dist marked 1/4 S B. Y  
 50.00 Cross rocky gulch 15 lks wide Causeway  
 74.60 Edge of Mesa + oak Creek Cañon  
 descend abruptly  
 80.00 About 740 feet below edge  
 of mesa. Rock in place  
 3 + 2 + 2 feet above ground  
 which I mark with a (+) cross  
 at the exact Cor point for  
 Cor to Secs. 15, 16, 21 and 22  
 marked with 3 notches S and E  
 of cross.

Oak Creek has it about  
 40.00 Chs dist and 1000 feet  
 below this Cor.

Land monotonous

Soil rocky - 4<sup>th</sup> rock  
 Timber Pine + oak.



~~Out claimers T 18 N. R. 6 E. Contn~~  
 chs

I am unable to establish a  
 direct line N. bet Secs 15 and 16  
 on account of the rugged  
 character of the ground  
 therefore I offset as follows  
 From the Sec Cor just established

Run  $S 89^{\circ} 43' E$  bet Secs 15 and 22  
 70 140 05' E

20.00 chs; thence N 80.00 chs  
 thence N  $89^{\circ} 43' W$  20.00 chs to line  
 80.00 N of starting point

Rock in place 40 + 30 + 25  
 ins above ground which I mark  
 with a cross (+) at the exact  
 Cor point for Cor to Secs 9  
 10, 15 and 16 with 4 notches  
 S, and 3 notches E of cross

Land mountainous  
 Soil rocky - 4<sup>th</sup> rate  
 no timber, dense brush

Sub-division T. 15 N. R. 6 E. Contn  
chs

S.  $89^{\circ}43'$  E. on a random line bet Secs 10 & 15 -  
7a  $14^{\circ}05'$  E

Over high broken ground  
Ascend side of Oak Creek Canon

9.00 Edge of Mesa about 75 feet above  
Sec. Cor bet N & S

27.12 Cross gulch 15-20 ft wide course  $S 35^{\circ} W$

40.00 Set temporary  $\frac{1}{4}$  Sec Cor.

80.12 Intersect N & S line 31 2/3 ft S of  
the Cor to Secs 10, 11, 14 and 15 -

Thence I run

N  $89^{\circ}30'$  W on a true line bet Secs 10 & 15 -

with some ve

40.06 Set malpais rock 10 x 10 x 6 ins

7 ins in the ground for  $\frac{1}{4}$  Sec Cor  
marked  $\frac{1}{4}$  in it pins and raised  
a mound of stone along side?

From which: A Pine 14 ins diam bet N  
 $15^{\circ}$  E 14 2/3 ft marked  $\frac{1}{4}$  S. B. T.

Subdivisions T 15 & R 6 E Contine  
cls

A Pine 14 ins diam has S 54 49 W  
15-cls dist marked  $\frac{1}{4}$  of 13.9,  
80.12 Cor to Secs 9, 10, 15 and 16  
Land Mountainous  
Soil rocky - 4<sup>th</sup> rate  
Timber Pine & oak

July 15<sup>th</sup>, 1886.

North bet Secs 9 and 10  
ra 110° 05' E

It being impracticable to  
run directly N bet these  
secs. I offset as follows:—

S 89° 43' E bet Secs 10 and 15, 20.00  
cls; thence N. 20.00 cls,

thence N 89° 43' W 20.00 cls to  
20.00 line (20.00 ch) N. of starting point  
40.00 Set mulpur's rock 10 + 10 + 7  
ins 7 ins in the ground

Sub divisions T. 18. N. R. 6. E. Contn  
chs

For 1/4 Sec Cor marked 1/4 on N. face  
and raised a mound of stone along side of same

A Pine 15 ins diam hrs N 13° E 210 lbs  
dist marked 1/4 S. B. T.

A Oak 8 ins diam hrs S 60° E  
43 lbs dist marked 1/4 S. B. T.

80.00 Set mulpair's rock 13+8+8 ins  
9 ins in the ground for Cor to Secs

3. 4. 9 and 10 marked with 5-  
notches on the Sand 3 notches on E

edges and raised a mound of  
stone along side; - From which

An oak 10 ins diam hrs N 80° E 200  
lbs dist marked T. 18. N. R. 6. E. S. 3. B. T.

An oak 7 ins diam hrs S 75° E 200 lbs  
dist marked T. 18. N. R. 6. E. S. 10. B. T.

A Pine 16 ins diam hrs S 30° W. 60 lbs  
dist marked T. 18. N. R. 6. E. S. 9. B. T.

An oak 6 ins diam hrs N 15° W



Subdivision T18 N R 6 E Contain  
 clos

95 cks dist marked 418 N R 6 E S 4 B 7

Land Mountain Mesa

Soil rocky - 3d rate

Timber Pine and oak.

S 89° 43' E. on a random line bet Secs 3 & 10

7a 140 05' Ee

Over high rolling ground

40.00 Set temporary 1/4 Sec Cor

79.87 Intersect N + S line 30 cks N of the cor

to Secs 2, 3, 10 & 11. Thence I run

N 89° 37' W on a true line bet Secs 3 & 10

with same ra

39.94 Set mulpais rock 10 + 10 + 6 ins

7 ins in the ground for 1/4 Sec Cor

marked 1/4 on N face and raised

a mound of stone alongside. From

which A Pine 1 1/2 ins diam bet N 85° E

100 cks dist marked 1/4 S 13.7,

Sub divisions T 18 N R 6 E Contn  
chs

A Pine 15 ins diam hrs N 15° W 85 lbs  
dist marked 1/4 S B. T.

79.87 for to Secs. 3, 4, 9 and 10

Land high rolling

Soil rocky - 3d rate

Timber - heavy Pine & oak.

It being impossible to establish  
the entire line on account of impassible  
barriers; I run

N. on a true line bet Secs 3 and 4

To 140° 05' E

Over high rolling ground

40.00 Set malpais rock 12 + 10 + 6 ins

8 ins in the ground for 1/4 Sec

Cor marked 1/4 on N face and

raised mound of stone alongside. From

whch: - A Pine 10 ins diam hrs N 20°

W. 15 lbs dist marked 1/4 S B. T.

Sub divisions. T. 5 N. R. 6 E. Contine  
cls

An oak 8 ins diam bet N 15° E 100  
cls dist marked 74 8 13, 7,

From this Cor an impossible  
rocky Cañon about 800 feet deep  
brs. N

20.30 cls dist. Course S 85° W

Land mountains

Soil rocky - 4<sup>th</sup> rate

Timber Pine and oak.

It being impossible to establish  
the line bet - Secs 4 and 9 from the  
Map on account of the rugged walls  
of Oak Creek Cañon - From the  
Sec. Cor last established: I run  
N 87° 43' W. on a true line bet Secs 4 & 9

7/4 140 05' E

Over mountainous ground

30.00 Commenced to descend

40.00 Set malpais rock 10 + 10 + 6 ins

Sub-divisions T. 18. N. R. 6. E. Contine  
chs

pins in the ground for  $\frac{1}{4}$  Sec Cor  
marked  $\frac{1}{4}$  on N face, and raised a  
row of stone along side; from which  
An oak 14 ins diam brs N E 140  
chs dist marked  $\frac{1}{4}$  S 13. 7.  
An oak 5 ins diam brs N W 50 chs  
dist marked  $\frac{1}{4}$  S 13. 7.

From this Cor the E. wall  
of oak Creek Common brs W  
600 chs dist, descending  
(in places nearly perpendicular)  
about 1400 feet to oak Creek,  
dist, about 30. chs.

Land mountains

Soil rocky - 400 rods

Timber Pine and oak

Examined my instrument to day  
and found it in good adjustment  
July 16<sup>th</sup>, 1886.



Subdivisions T. 18. N. R. 6 E. continued

class

The west side of Oak Creek (Cannon) being higher and more precipitous than the East one, and the Mountains on the West side being higher and much more broken and cut by deep rocky gulches and Canyons, it is impracticable to proceed further with the subdivision of this Township.

General Remarks.

The portions of this Township suited to agriculture are confined to narrow strips of land along Oak Creek.

The largest amount in any one place is known as "Indian Gardens" in Secs 27 and 28 - very fertile

General Remarks, Continued.

land but not exceeding 80 acres in amount. - It is claimed by Mr Thompson who has a Coy Cabin and other improvements in the S E 1/4 of Sec 28.

The Eastern portion of the H. contains much good grass and browse; and herds of cattle range over it during the Summer months. That portion of the township lying West of Oak Creek is cut by deep canyons and gulches and is practically worthless for any purpose.

The formation on the West side is mostly Red sandstone while that on the East side

of the creek is volcanic lava.  
The average depth of the Creek  
below the mountain mesa's  
on either side is about 7500 feet.

R. L. Powers  
U.S. Geol. Survey

BOOK 240

BOOK 240

58

U. S. Surveyor-General's Office,

TUCSON, A. T. June 24 1889

The foregoing Field Notes of the Surveys of  
the subdivision lines

of  
T 18 N - R 6 E.

Gila and Salt River Meridian  
in Arizona executed by

Rudgley C. Powers.

U. S. Deputy Surveyor, under his contract dated

Feb. 21<sup>st</sup> 1885.

having been critically examined, the necessary corrections and explanations made, the said Field Notes and the surveys they describe are hereby approved.

John Wise  
U. S. Surveyor-General  
for the Territory of Arizona.