

*Henry Meppick Jr.* Deputy Surveyor.  
**T.** *16 N.* **R.** *20 E.*

Gila and Salt River Meridian.

*No. 246*  
**FIELD NOTES**

OF

THE SUBDIVISION LINES OF

Township *16 N.* Range *20 E.*

Gila and Salt River Meridian.

BY

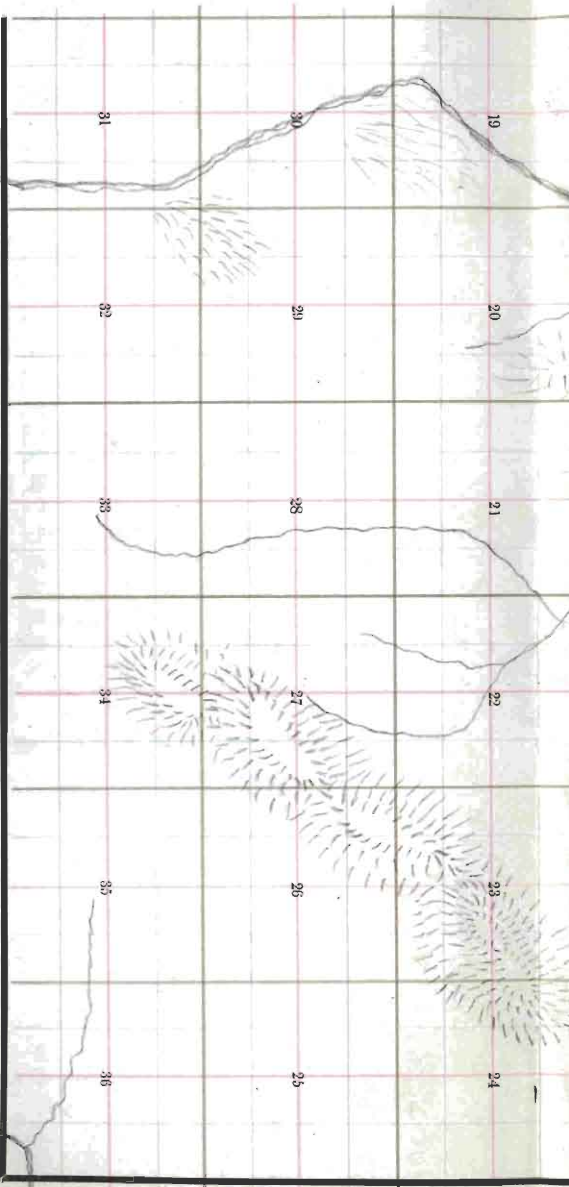
*Henry Meppick Jr.* Deputy Surveyor.

Under his Contract of *July 28<sup>th</sup>* 188*2*

Survey Commenced *June 28<sup>th</sup>* 188*3*

Survey Completed *June 20<sup>th</sup>* 188*3*

*Platted,  
 Copied for Washington,  
 Copied for Register,*



TOWNSHIP PLOT

Meridian Line,

Base Line,

Standard Line,

Township Lines,

Section Lines,

Meander Lines,

Office Work.

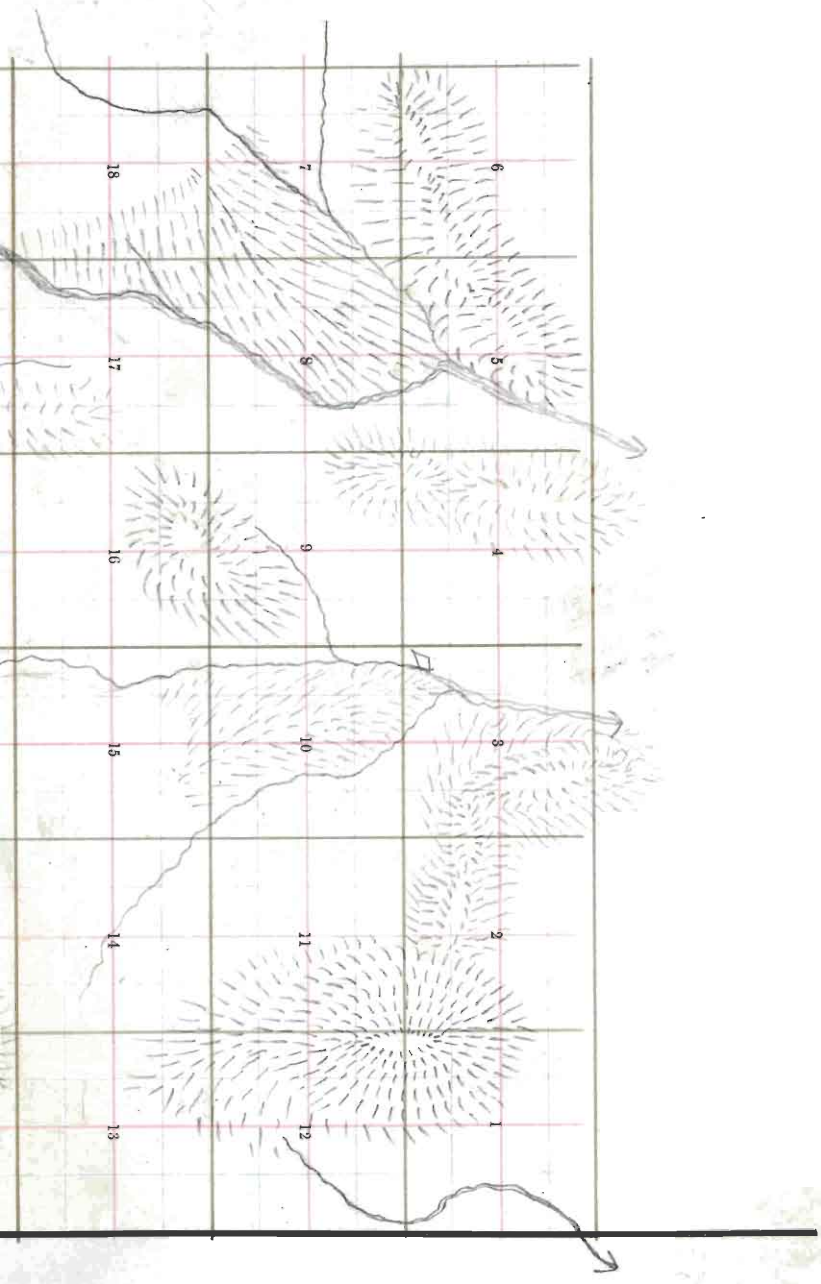
$$\begin{array}{r} 93.64 \\ 12.97 \\ \hline 80.67 \end{array}$$

$$\begin{array}{r} 847 \\ 816 \\ \hline 594 \\ 31 \\ \hline 628 \end{array}$$

$$\begin{array}{r} 93.06 \\ 12.97 \\ \hline 80.09 \end{array}$$

Township No. 16 N Range No. 218 E 4th 6th Meridian.

Edward Denny & Co., Stationers and Printers, Drawing Material, Etc. 313 So. 7th St., S. F.



X

1A

## BOOK 246

Township 16 North Range 20 East  
Gila and Salt River Base and Meridian.

6	60	5	44	4	33	3	22	2	11	1
59		58		43		32		21		10
7	57	8	42	9	31	10	20	11	9	12
56		55		41		30		19		8
18	54	17	40	16	29	15	18	14	7	13
53		52		39		28		17		6
19	51	20	38	21	27	22	16	23	5	24
50		49		37		26		15		4
30	48	29	36	28	25	27	14	26	3	25
47		46		35		24		13		2
21	45	32	34	33	23	34	12	35	1	36

OK.

Edward Denny &amp; Co., Stationers &amp; Printers, S. F., Cal.

Copyright Secured,

Entered according to Act of Congress, in the Clerk's Office of the Librarian of Congress  
 at Washington, D. C., in the year 1880.

Township .....

Range .....

Meridian.

No-246

For Preliminary Oaths  
and description of instrument  
see book No. 1

Survey made with Burt's Patent Improved Solar  
Compass, <sup>is</sup> nearly new, and in first rate order. Made  
by Otto Fennel of Cassel  
Germany in 1881

Before proceeding to subdivide this Tp., I made a  
change of  $\frac{1}{2}$  minutes in the latitude arc of my  
solar compass by subtracting same from  
the reading previously given, and at noon verified  
and corrected same by observation on the sun. I also  
further tested instrument by reversing.

1C Township  
(Sec. previous page.)

16 N. Range 20 E.

Gila and Salt River Meridian.

Chains

From the corner to Sections 35, 36, 1 and 2 on the South boundary. 240

Which is a sand stone, 20 x 12 x 8 ins., 15 ins. in the ground, marked with 1 notch on E, and 5 notches on W. edge, and a mound of stone alongside.

North between sections 35 & 36

Variation 13° 30' East.

Descend.

39.50

Cross Wash, 15 lks. wide, Course E and ascend.

40.00

Set a post 3 ft. long, 3 ins. diam. with marked stone 12 ins. in the ground, for 1/4 Sec. Cor., marked 1/4 S. on W. face, dug pits, 18 x 18 x 12 ins., N. and S. of post 5 1/2 ft. dist., and raised a mound of earth 1 1/2 ft. high, 3 1/2 ft. base around post.

80.00

Set a post 4 ft. long, 4 ins. square, with marked stone 12 ins. in the ground, for Cor. to Secs, 25, 26, 35 & 36 marked T, 10 N. S, 25, on N, E, R, 20 E, S, 30 on S, E, S, 35 on S, W, and S, 20 on N, W, face with 1 notch on S, and 1 notch on E, edges, dug pits 18 x 18 x 12 ins, in each Sec., 5 1/2 ft. dist., and raised a mound of earth 2 ft. high, 4 1/2 ft. base around post.

Land rolling.

Soil 3<sup>rd</sup> rate Vegetation grass & sage.

Township 16 N. Range 20 E.

Gila and Salt River Meridian.

Chains

East, on a random line between Sections 25 and 36.

Variation  $13^{\circ} 30'$  East.Descend *gradually.*40.00 Set temporary  $\frac{1}{4}$  Sec. Cor.80.10 Intersect E. B. of Tp. 126 lks., S. of cor. to secs.  
previously set by me.  
25.30.31 & 30 from which corner, I run $S. 89^{\circ} 6' W.$  on a true line between sections 25 & 36Variation  $13^{\circ} 57'$  East40.08 Set a post 3 ft. long. 3 ins. diam. with marked stone  
12 ins. in the ground, for  $\frac{1}{4}$  Sec. Cor., marked  $\frac{1}{4}$  S. on  
N. face, dug pits, 18 x 18 x 12 ins., E. and W. of  
post  $5\frac{1}{2}$  ft. dist., and raised a mound of earth  $1\frac{1}{2}$  ft.  
high,  $3\frac{1}{2}$  ft. base around post.

80.10 The corner to sections 25. 20. 35 &amp; 36

Land rolling.

Soil  $3^{\text{rd}}$  rate

Vegetation grass &amp; sage.

Township 16 N. Range 20 E.

Gila and Salt River Meridian.

Chains

North, between Sections 25 and 26.

Variation  $13^{\circ} 30'$  East.*Ascend gradually.*

40.00

Set a post 3 ft. long, 3 ins. diam. with marked stone 12 ins. in the ground, for  $\frac{1}{4}$  Sec. Cor., marked  $\frac{1}{4}$  S. on W. face, dug pits, 18 x 18 x 12 ins., N. and S. of post  $5\frac{1}{2}$  ft. dist., and raised a mound of earth  $1\frac{1}{2}$  ft. high,  $3\frac{1}{2}$  ft. base around post.

80.00

Set a post 4 ft. long, 4 ins. square, with marked stone 12 ins. in the ground, for Cor. to Secs. 23, 24, 25 & 26 marked T, 1/6 N. S. 24, on N, E, R, 20 E, S. 26 on S, E, S, 26 on S, W, and S, 23 on N, W, face with 2 notches on S, and 1 notch on E, edges, dug pits 18 x 18 x 12 ins. in each Sec.,  $5\frac{1}{2}$  ft. dist., and raised a mound of earth 2 ft. high,  $4\frac{1}{2}$  ft. base around post.

Land rolling.

Soil 3<sup>rd</sup> rate

Vegetation grass &amp; sage.



Township

16 N.

Range

20 E.

Gila and Salt River Meridian.

Chains

East, on a random line between Sections 24 and 25.

Variation  $13^{\circ} 30'$  East.*Ascend gradually.*40.00 Set temporary  $\frac{1}{4}$  Sec. Cor.

80.40 Intersect E. B. of Tp. 88 lks. S. of cor. to secs.

*previously set by me.*  
19.24.25 & 30 from which corner, I runS.  $89^{\circ} 22' W$  on a true line, between sections 24 & 25Variation  $13^{\circ} 57'$  East.40.20 Set a post 3 ft. long. 3 ins. diam. with marked stone  
12 ins. in the ground, for  $\frac{1}{4}$  Sec. Cor., marked  $\frac{1}{4}$  S. on  
N. face, dug pits, 18 x 18 x 12 ins., E. and W. of  
post  $5\frac{1}{2}$  ft. dist., and raised a mound of earth  $1\frac{1}{2}$  ft.  
high,  $3\frac{1}{2}$  ft. base around post.

80.40 The corner to sections 23, 24, 25 &amp; 20

Land rolling.

Soil  $3^{\circ}$  rate

Vegetation grass &amp; sage.

Chains

North, between Sections 23 and 24.

Variation 13° 30' East.

Ascend gradually.

40.00

Set a post 3 ft. long, 3 ins. diam. with marked stone 12 ins. in the ground, for 1/4 Sec. Cor., marked 1/4 S. on W. face, dug pits, 18 x 18 x 12 ins., N. and S. of post 5 1/2 ft. dist., and raised a mound of earth 1 1/2 ft. high, 3 1/2 ft. base around post.

47.29

Top of Ridge, bears N. E. & S. W. and descend.

80.00

Set a post 4 ft. long, 4 ins. square, with marked stone 12 ins. in the ground, for Cor. to Secs, 13, 14, 23 & 24 marked T, 16 N. S, 13, on N, E, R, 20 E., S. 24 on S, E, S, 23 on S, W, and S, 14 on N, W, face with 3 notches on S, and 1 notch on E, edges, dug pits 18 x 18 x 12 ins, in each Sec., 5 1/2 ft. dist., and raised a mound of earth 2 ft. high, 4 1/2 ft. base around post.

Land mountainous.

Soil 3<sup>rd</sup> rate

Vegetation grass & sage.

Township 10 N Range 20 E

Gila and Salt River Meridian.

Chains

East, on a random line between Sections 13 and 24.

Variation  $13^{\circ} 30'$  East.*Ascend.*40.00 Set temporary  $\frac{1}{4}$  Sec. Cor.7997 Intersect E. B. of Tp. 61 lks. S. of cor. to secs.  
previously set by me.  
13, 18, 19, 24 from which corner, I runS.  $89^{\circ} 34' W.$  on a true line, between sections 13 & 24Variation  $13^{\circ} 57'$  East.39.98 Set a post 3 ft. long. 3 ins. diam. with marked stone  
12 ins. in the ground, for  $\frac{1}{4}$  Sec. Cor., marked  $\frac{1}{4}$  S. on  
N. face, dug pits, 18 x 18 x 12 ins., E. and W. of  
post  $5\frac{1}{2}$  ft. dist., and raised a mound of earth  $1\frac{1}{2}$  ft.  
high,  $3\frac{1}{2}$  ft. base around post.

7997 The corner to sections 13, 14, 23 &amp; 24

Land rolling.

Soil 3<sup>rd</sup> rate

Vegetation grass &amp; sage.

Township 16 N Range 20 E

Gila and Salt River Meridian.

Chains North, between Sections 13 and 14.

Variation 13° 30' East.Descend gradually25.50 Ascend.

40.00 Set a post 3 ft. long, 3 ins. diam. with marked stone 12 ins. in the ground, for  $\frac{1}{4}$  Sec. Cor., marked  $\frac{1}{4}$  S. on W. face, dug pits, 18 x 18 x 12 ins., N. and S. of post  $5\frac{1}{2}$  ft. dist., and raised a mound of earth  $1\frac{1}{2}$  ft. high,  $3\frac{1}{2}$  ft. base around post.

80.00 Set a post 4 ft. long, 4 ins. square, with marked stone 12 ins. in the ground, for Cor. to Secs. 11, 12, 13 & 14 marked T, 16 N, S, 12, on N, E, R, 20 E, S, 13 on S, E, S, 14 on S, W, and S, 11 on N, W, face with 4 notches on S, and 1 notch on E, edges, dug pits 18 x 18 x 12 ins. in each Sec.,  $5\frac{1}{2}$  ft. dist., and raised a mound of earth 2 ft. high,  $4\frac{1}{2}$  ft. base around post.

Land rolling.

Soil 3<sup>rd</sup> rateVegetation grass & sage.

Township 16 N Range 20 E

Gila and Salt River Meridian.

Chains East, on a random line between Sections 12 and 13.  
Variation  $13^{\circ} 30'$  East.*Ascend gradually.*9.00 *Descend.*40.00 *Set temporary  $\frac{1}{4}$  Sec. Cor.*79.84 *Intersect E. B. of Tn. 92 lks. S. of cor. to secs. previously set by me.*7. 12. 13 & 18 *from which corner, I run* $89^{\circ} 21' W.$  *on a true line, between sections 12 & 13*Variation  $13^{\circ} 57'$  East.39.92 *Set a post 3 ft. long. 3 ins. diam. with marked stone 12 ins. in the ground, for  $\frac{1}{4}$  Sec. Cor., marked  $\frac{1}{4}$  S. on N. face, dug pits, 18 x 18 x 12 ins., E. and W. of post  $5\frac{1}{2}$  ft. dist., and raised a mound of earth  $1\frac{1}{2}$  ft. high,  $3\frac{1}{2}$  ft. base around post.*79.84 *The corner to sections 11. 12. 13 & 14**Land rolling.**Soil 3<sup>rd</sup> rate**Vegetation grass & sage.*

Chains

North, between Sections 11 and 12.

Variation  $13^{\circ} 30'$  East.*Ascend. gradually.*

40.00

Set a post 3 ft. long, 3 ins. diam. with marked stone 12 i.s. in the ground, for  $\frac{1}{2}$  Sec. Cor., marked  $\frac{1}{2}$  S. on W. face, dug pits, 18 x 18 x 12 ins., N. and S. of post  $5\frac{1}{2}$  ft. dist., and raised a mound of earth  $1\frac{1}{2}$  ft. high,  $3\frac{1}{2}$  ft. base around post.

80.00

Set a post 4 ft. long, 4 ins. square, with marked stone 12 ins. in the ground, for Cor. to Secs, 1, 2, 11 & 12 marked T, 10 N. S, 1, on N, E, R, 20 E, S, 12 on S, E, S, 11 on S, W, and S, 2 on N, W, face with 5 notches on S, and 1 notch on E, edges, dug pits 18 x 18 x 12 ins, in each Sec.,  $5\frac{1}{2}$  ft. dist., and raised a mound of earth 2 ft, high,  $4\frac{1}{2}$  ft, base around post.

Land rolling.

Soil 3<sup>rd</sup> rate

Vegetation - grass &amp; sage.

Township 16 N. Range 20 E.

Gila and Salt River Meridian.

Chains

East, on a random line between Sections 1 and 12.

Variation  $13^{\circ} 30'$  East.*Ascend gradually.*8.00 Top of Hill bears *N. & S.* and descend.40.00 Set temporary  $\frac{1}{4}$  Sec. Cor.73.00 Cross Wash, 12 lks. wide, Course  $N. 10^{\circ} E.$  and ascend.

80.15 Intersect E. B. of Tp. 120 lks. S. of cor. to secs.

*previously set by me.*  
16.  $7 \times 12$  from which corner, I run $S. 89^{\circ} 9' W.$  on a true line, between sections *1 & 12*Variation  $13^{\circ} 57'$  East.40.07 Set a sand stone  $14 \times 9 \times 4$  ins., 10 ins. in the ground, for  $\frac{1}{4}$  Sec. Cor., marked  $\frac{1}{4}$  on N. face, dug pits  $18 \times 18 \times 12$  ins., E and W. of stone  $5\frac{1}{2}$  ft. dist., and raised a mound of earth  $1\frac{1}{2}$  ft. high,  $3\frac{1}{2}$  ft. base alongside.80.15 The corner to sections *1, 2, 11 & 12*

Land hilly.

Soil *3<sup>rd</sup>* rateVegetation *grass & sage.*

Township

16 N

Range

20 E

Gila and Salt River Meridian.

Chains

North, on a <sup>true.</sup> ~~ra~~ line between Sections 1 and 2.

Variation  $13^{\circ} 30'$  East.

Descend gradually.

40.00

Set a sand stone  $14 \times 9 \times 3$  ins., 10 ins. in the ground, for  $\frac{1}{4}$  Sec. Cor., marked  $\frac{1}{4}$  on W. face. dug pits  $18 \times 18 \times 12$  ins., N. and S. of stone  $5\frac{1}{2}$  ft. dist., and raised a mound of earth  $1\frac{1}{2}$  ft. high,  $3\frac{1}{2}$  ft. base alongside.

81.10

Intersect the  $4^{th}$  Standard Parallel North at a point 12.83 chs. West- of the Standard Cor. to Secs. 35 and 36. T. 17 N. R. <sup>previously described by me</sup> 20 E<sub>A</sub> at which point I.

Set a post, 4 ft. long, 4 ins. square, 12 ins. in the ground, for <sup>Closure</sup> Cor. to Secs. 1 and 2 marked 16.6 T. 16 N. R. 20 E., on S. S. 1 on E. and S. 2 on W. faces, with 1 notch on E. and 5 notches on W. faces, dug pits  $18 \times 18 \times 12$  ins. S. E. W. of post,  $5\frac{1}{2}$  ft. dist. and raised a mound of earth 2 ft. high,  $4\frac{1}{2}$  ft. base around post.

Land rolling.

Soil 3<sup>rd</sup> rate

Vegetation grass.

Henry Meyrick June 23, 1883



Township 16 N Range 20 E

Gila and Salt River Meridian.

Chains

From the corner to sections, 2, 3, 34 & 35 *in S by 2/3*

Which is a sand stone  
 $20 \times 12 \times 8$  ins. 15 ins. in the  
 ground, marked with 2 notches  
 on E. and 5 notches on W.  
 edges with pits  $18 \times 18 \times 12$  ins. in  
 each Sec.  $5\frac{1}{2}$  ft. dist. and a  
 mound of earth 2 ft. high,  $4\frac{1}{2}$  ft.  
 base alongside. Iron

North between sections 34 &amp; 35

Variation  $13^{\circ} 30'$  East.

Over rolling land.

40.00

Set a Sand stone  $20 \times 9 \times 4$  ins., 15 ins.  
 in the ground, for  $\frac{1}{4}$  Sec. Cor., marked  $\frac{1}{4}$  on W. face,  
 dug pits  $18 \times 18 \times 12$  ins., N. and S. of stone  $5\frac{1}{2}$   
 ft. dist., and raised a mound of earth  $1\frac{1}{2}$  ft. high,  $3\frac{1}{2}$   
 ft. base alongside.

80.00

Set a Sand stone  $16 \times 12 \times 5$  ins. 10 ins.  
 in the ground for Cor. to Secs. 20, 27, 34 & 35 marked  
 with 1 notch on S. and 2 notches on E. edges,  
 dug pits  $18 \times 18 \times 12$  ins. in each Sec.,  $5\frac{1}{2}$  ft. dist. and  
 raised a mound of earth 2 ft. high,  $4\frac{1}{2}$  ft. base. alongside.

Land rolling.

Soil 3<sup>rd</sup> rate

Vegetation grass &amp; sage.

Township 10 N. Range 20 E.  
Gila and Salt River Meridian.

Chains

East, on a random line between Sections 26 and 35.

Variation  $13^{\circ} 30'$  East.*Over rolling land.*40.00 Set temporary  $\frac{1}{4}$  Sec. Cor.

80.31 Intersect N. &amp; S. line, 51 lks. S. of cor. to secs.

26, 26, 35 &amp; 36 from which corner, I run

189.38' W. on a true line between sections 20 &amp; 35-

Variation  $13^{\circ} 30'$  East

40.16 Set a post 3 ft. long, 3 ins. diam. with marked stone  
12 ins. in the ground, for  $\frac{1}{4}$  Sec. Cor., marked  $\frac{1}{4}$  S. on  
N. face, dug pits, 18 x 18 x 12 ins., E. and W. of  
post  $5\frac{1}{2}$  ft. dist., and raised a mound of earth  $1\frac{1}{2}$  ft.  
high,  $3\frac{1}{2}$  ft. base around post.

80.31 The corner to sections 20, 27, 34 &amp; 35-

Land rolling.

Soil  $3^{\text{rd}}$  rate

Vegetation - grass &amp; sage.

Township 10 N Range 20 E

Gila and Salt River Meridian.

Chains

North, between Sections 26 and 27.

Variation 13° 30' East.

Ascend gradually.

40.00

Set a Sand stone 20 x 14 x 2 ins., 15 ins. in the ground, for  $\frac{1}{4}$  Sec. Cor., marked  $\frac{1}{4}$  on W. face, dug pits 18 x 18 x 12 ins., N. and S. of stone  $5\frac{1}{2}$  ft. dist., and raised a mound of earth  $1\frac{1}{2}$  ft. high,  $3\frac{1}{2}$  ft. base alongside.

Top of Ridge, bears N. E. &amp; S. W. and descend.

80.00

Set a Sand stone 18 x 6 x 4 ins. 12 ins. in the ground for Cor. to Secs. 22, 23, 26 & 27 marked with 2 notches on S. and 2 notches on E. edges, dug pits 18 x 18 x 12 ins. in each Sec.,  $5\frac{1}{2}$  ft. dist. and raised a mound of earth 2 ft. high,  $4\frac{1}{2}$  ft. base alongside.

Land mountainous.

Soil 3<sup>rd</sup> rate

Vegetation grass &amp; sage.

Township

16 N.

Range

20 E.

Gila and Salt River Meridian.

Chains

East, on a random line between Sections 23 and 26.

Variation  $13^{\circ} 30'$  East.*Ascend gradually.*20.00 Top of Ridge, bears  $N. 40^{\circ} E.$   $S. 40^{\circ} W.$  and descend.40.00 Set temporary  $\frac{1}{4}$  Sec. Cor.

80.11 Intersect N. &amp; S. line, 32 lks. S. of cor. to secs.

23, 24, 25 &amp; 26 from which corner, I run

 $S. 89^{\circ} 46' W.$  on a true line between sections 23 & 26Variation  $13^{\circ} 30'$  East

40.06 Set a post 3 ft. long, 3 ins. diam. with marked stone

12 ins. in the ground, for  $\frac{1}{4}$  Sec. Cor., marked  $\frac{1}{4}$  S. on

N. face, dug pits, 18 x 18 x 12 ins., E. and W. of

post  $5\frac{1}{2}$  ft. dist., and raised a mound of earth  $1\frac{1}{2}$  ft.high,  $3\frac{1}{2}$  ft. base around post.

80.11 The corner to sections 22, 23, 26 &amp; 27

Land mountainous.

Soil  $3^{rd}$  rate

Vegetation grass &amp; sage:

Township

10 N.

Range

20 E.

Gila and Salt River Meridian.

Chains

North, between Sections 22 and 23.

Variation  $13^{\circ} 30'$  East.*Over level land*

40.00

Set a post 3 ft. long, 3 ins. diam. with marked stone 12 ins. in the ground, for  $\frac{1}{4}$  Sec. Cor., marked  $\frac{1}{4}$  S. on W. face, dug pits, 18 x 18 x 12 ins., N. and S. of post  $5\frac{1}{2}$  ft. dist., and raised a mound of earth  $1\frac{1}{2}$  ft. high,  $3\frac{1}{2}$  ft. base around post.

80.00

Set a post 4 ft. long, 4 ins. square, with marked stone 12 ins. in the ground, for Cor. to Secs, 14, 15, 22 & 23 marked T, 16 N. S. 14, on N, E, R, 20 E., S. 23 on S, E, S, 22 on S, W, and S, 15 on N, W, face with 3 notches on S, and 2 notches on E, edges, dug pits 18 x 18 x 12 ins. in each Sec.,  $5\frac{1}{2}$  ft. dist., and raised a mound of earth 2 ft. high,  $4\frac{1}{2}$  ft. base around post.

*Land rolling.*Soil 3<sup>rd</sup> rate

Vegetation grass &amp; sage.

Township 16 N. Range 20 E.

Gila and Salt River Meridian.

Chains East, on a random line between Sections 14 and 23.  
Variation  $13^{\circ} 30'$  East.

*Ascend.*40.00 Set temporary  $\frac{1}{4}$  Sec. Cor.

79.86 Intersect N. &amp; S. line, 85 lks. S. of cor. to secs.

13, 14, 23 &amp; 24 from which corner, I run

S. 89.22' W. on a true line between sections 14 &amp; 23

Variation  $13^{\circ} 30'$  East

39.93 Set a post 3 ft. long, 3 ins. diam. with marked stone  
12 ins. in the ground, for  $\frac{1}{4}$  Sec. Cor., marked  $\frac{1}{4}$  S. on  
N. face, dug pits, 18 x 18 x 12 ins., E and W of  
post  $5\frac{1}{2}$  ft. dist., and raised a mound of earth  $1\frac{1}{2}$  ft.  
high,  $3\frac{1}{2}$  ft. base around post.

79.80 The corner to sections 14, 15, 22 &amp; 23

Land rolling.

Soil  $3^{\circ}$  rate

Vegetation grass &amp; sage.

Township

16 N

Range

20 E

Gila and Salt River Meridian.

Chains

North, between Sections 14 and 15.

Variation

13° 30'

East.

Descend gradually.

46.00

Set a post 3 ft. long, 3 ins. diam. with marked stone 12 ins. in the ground, for  $\frac{1}{4}$  Sec. Cor., marked  $\frac{1}{4}$  S. on W. face, dug pits, 18 x 18 x 12 ins., N. and S. of post  $5\frac{1}{2}$  ft. dist., and raised a mound of earth  $1\frac{1}{2}$  ft. high,  $3\frac{1}{2}$  ft. base around post.

77.80

Cross Wash, 25 lks. wide, Course N. 10° W.

30.00

Set a sand stone 10 x 10 x 7 ins. 10 ins. in the ground for Cor. to Secs. 10, 11, 14 & 15 marked with 4 notches on S. and 2 notches on E. edges, dug pits 18 x 18 x 12 ins. in each Sec.,  $5\frac{1}{2}$  ft. dist. and raised a mound of earth 2 ft. high,  $4\frac{1}{2}$  ft. base. alongside.

Land rolling.

Soil 3<sup>rd</sup> rate

Vegetation grass &amp; sage.

19 Township 10 N. Range 20 E.  
Gila and Salt River Meridian.

Chains

East, on a random line between Sections 11 and 14.

Variation  $13^{\circ} 30'$  East.*Ascend.*40.00 Set temporary  $\frac{1}{2}$  Sec. Cor.

80.20 Intersect N. &amp; S. line, 1.09 lks. S. of cor. to secs.

11, 12, 13 &amp; 14 from which corner, I run

 $S. 89^{\circ} 13'$  W. on a true line between sections 11 & 14Variation  $13^{\circ} 30'$  East

410.10 Set a post 3 ft. long, 3 ins. diam. with marked stone  
12 ins. in the ground, for  $\frac{1}{2}$  Sec. Cor., marked  $\frac{1}{2}$  S. on  
N. face, dug pits, 18 x 18 x 12 ins., E. and W. of  
post  $5\frac{1}{2}$  ft. dist., and raised a mound of earth  $1\frac{1}{2}$  ft.  
high,  $3\frac{1}{2}$  ft. base around post.

80.20 The corner to sections 10, 11, 14 &amp; 15

Land rolling.

Soil  $3^{\text{rd}}$  rate

Vegetation grass &amp; sage.



Township 16 N Range 20 E

Gila and Salt River Meridian.

Chains

North, between Sections 10 and 11.

Variation 13° 30' East.

*Descend gradually.*

40.00

Set a post 3 ft. long, 3 ins. diam. with marked stone 12 ins. in the ground, for  $\frac{1}{4}$  Sec. Cor., marked  $\frac{1}{4}$  S. on W. face, dug pits, 18 x 18 x 12 ins., N. and S. of post  $5\frac{1}{2}$  ft. dist., and raised a mound of earth  $1\frac{1}{2}$  ft. high,  $3\frac{1}{2}$  ft. base around post.

80.00

Set a *lime* stone 18 x 10 x 6 ins. 12 ins. in the ground for Cor. to Secs. 2, 3, 10 & 11 marked with 5 notches on S. and 2 notches on E. edges, dug pits 18 x 18 x 12 ins. in each Sec.,  $5\frac{1}{2}$  ft. dist. and raised a mound of earth 2 ft. high,  $4\frac{1}{2}$  ft. base. alongside.

Land rolling.

Soil 3<sup>rd</sup> rate

Vegetation *grass & sage.*

Township 16 N.

Range 20 E.

Gila and Salt River Meridian.

Chains

East, on a random line between Sections 2 and 11.

Variation  $13^{\circ} 30'$  East.*Ascend. gradually.*40.00 Set temporary  $\frac{1}{4}$  Sec. Cor.

79.89 Intersect N. &amp; S. line, 80 lks. S. of cor. to secs.

12.11 &amp; 12 from which corner, I. run

 $S 89^{\circ} 23' W.$  on a true line between sections 2 & 11Variation  $13^{\circ} 30'$  East

39.94 Set a sand stone  $19 \times 9 \times 4$  ins., 12 ins. in the ground, for  $\frac{1}{4}$  Sec. Cor., marked  $\frac{1}{4}$  on N. face, dug pits  $18 \times 18 \times 12$  ins., E. and W. of stone  $5\frac{1}{2}$  ft. dist., and raised a mound of earth  $1\frac{1}{2}$  ft. high,  $3\frac{1}{2}$  ft. base alongside.

79.89 The corner to sections 2, 3, 10 &amp; 11

Land rolling.

Soil 3<sup>rd</sup> rate

Vegetation Grass &amp; Sage.

Township 16 N Range 20 E

Gila and Salt River Meridian.

Chains

true.  
North, on a ~~run~~ line between Sections 2 and 3.Variation  $13^{\circ} 30'$  East.*Ascend gradually.*

28.00

Top of Ridge, bears *E. & W.* and descend.

40.00

Set a post 3 ft. long. 3 ins. diam. with marked stone 12 ins. in the ground, for  $\frac{1}{4}$  Sec. Cor., marked  $\frac{1}{4}$  S. on W. face, dug pits, 18 x 18 x 12 ins., N. and S. of post  $5\frac{1}{2}$  ft. dist., and raised a mound of earth  $1\frac{1}{2}$  ft. high,  $3\frac{1}{2}$  ft. base around post.

82.00

Intersect the 14<sup>th</sup> Standard Parallel North at a point 12.54 chs. West- of the Standard Cor. to Secs. 34 and 35. T. 17 N. R. 20 E.Previously described, <sup>by me</sup> and Set a Sand stone 19 x 16 x 6 ins. 12 ins. in the ground for Closing Cor. to Secs. 2 and 3 marked C. C. with 2 notches on E. and 4 notches on W. edges and raised a mound of stone. alongside.

Pits impracticable.

Land mountainous.

Soil 3<sup>rd</sup> rate

Vegetation Grass &amp; Sage.

G. W. Pederson, Compassman June 23, 1883

Township 16 N. Range 20 E.

Gila and Salt River Meridian.

Chains

From the corner to sections, 3, 4, 33 & 34, on E. by 2 1/2'

Which is a sand stone  
19 x 7 x 8 ins., 12 ins. in the ground  
marked with 3 notches on E.,  
and 3 notches on W. edges,  
with pits 18 x 18 x 12 ins., in each  
Sec., 5 1/2 ft. dist., and a mound  
of earth 2 ft. high, 4 1/2 ft. base  
alongside. Iron

North between sections 33 & 34

Variation 13° 30' East.

Ascend.

40.00

Set a post 3 ft. long, 3 ins. diam. with marked stone  
12 ins. in the ground, for 1/2 Sec. Cor., marked 1/2 S. on  
W. face, dug pits, 18 x 18 x 12 ins., N. and S. of  
post 5 1/2 ft. dist., and raised a mound of earth 1 1/2 ft.  
high, 3 1/2 ft. base around post.

69.00

Descend.

80.00

Set a post 4 ft. long, 4 ins. square, with marked stone  
12 ins. in the ground, for Cor. to Secs. 27, 28, 33 & 34  
marked T, 16 N. S. 27, on N, E, R, 20 E., S. 34  
on S, E, S, 33 on S, W, and S, 28 on N, W, face  
with 1 notch on S, and 3 notches on E, edges,  
dug pits 18 x 18 x 12 ins., in each Sec., 5 1/2 ft. dist.,  
and raised a mound of earth 2 ft. high, 4 1/2 ft. base  
around post.

Land rolling.

rate

Soil 3<sup>rd</sup>

Vegetation Grass & Sage

Township

16 N

Range

20 E

Gila and Salt River Meridian.

Chains

East, on a random line between Sections 27 and 34.

Variation

13° 30'

East.

*Ascend gradually.*

40.00

Set temporary  $\frac{1}{4}$  Sec. Cor.

43.00

Top of Ridge, bears N.  $\frac{1}{2}$  E. & S. W. and descend.

80.07

Intersect N. &amp; S. line, 94 lks. S. of cor. to secs.

20, 27, 34 &amp; 35 from which corner, I run

S 89° 20' W. on a true line between sections 27 &amp; 34

Variation

13° 30'

East

40.03

Set a post 3 ft. long, 3 ins. diam. with marked stone

12 ins. in the ground, for  $\frac{1}{4}$  Sec. Cor., marked  $\frac{1}{4}$  S. on

N. face, dug pits, 18 x 18 x 12 ins., E and W of

post  $5\frac{1}{2}$  ft. dist., and raised a mound of earth  $1\frac{1}{2}$  ft.high,  $3\frac{1}{2}$  ft. base around post.

80.07

The corner to sections 27, 28, 33 &amp; 34

Land mountainous.

Soil

3<sup>rd</sup>

rate

Vegetation

grass &amp; sage.

Township

16 N.

Range

20 E.

Gila and Salt River Meridian.

Chains

North, between Sections 27 and 28.

Variation  $13^{\circ} 30'$  East.*Descend gradually*

46.00

Set a post 3 ft. long, 3 ins. diam. with marked stone 12 ins. in the ground, for  $\frac{1}{4}$  Sec. Cor., marked  $\frac{1}{4}$  S. on W. face, dug pits, 18 x 18 x 12 ins., N. and S. of post  $5\frac{1}{2}$  ft. dist., and raised a mound of earth  $1\frac{1}{2}$  ft. high,  $3\frac{1}{2}$  ft. base around post.

80.00

Set a post 4 ft. long, 2 ins. square, with marked stone 12 ins. in the ground, for Cor. to Secs. 21, 22, 27 & 28 marked T, 16 N. S. 22, on N, E, R, 20 E, S. 27 on S, E, S, 28 on S, W, and S, 21 on N, W, face with 2 notches on S, and 3 notches on E, edges, dug pits 18 x 18 x 12 ins, in each Sec.,  $5\frac{1}{2}$  ft. dist., and raised a mound of earth 2 ft. high,  $4\frac{1}{2}$  ft. base around post.

Land rolling.

Soil 3<sup>rd</sup> rate

Vegetation grass &amp; sage.

Township 16 N. Range 20 E.

Gila and Salt River Meridian.

Chains East, on a random line between Sections 22 and 27.  
Variation  $13^{\circ} 30'$  East.

*Descend gradually.*

20.00 Cross Wash, 40 lks. wide, Course  $N. 30^{\circ} E.$

40.00 Set temporary  $\frac{1}{4}$  Sec. Cor.

59.13 Cross Wash, 15 lks. wide, Course  $N.$  and ascend.

79.78 Intersect N. & S. line, 1.14 lks. S. of cor. to secs.

22, 23, 26 & 27 from which corner, I run

$S. 89^{\circ} 11' W.$  on a true line between sections 22 & 27

Variation  $13^{\circ} 30'$  East

39.89 Set a post 3 ft. long, 3 ins. diam. with marked stone  
12 ins. in the ground, for  $\frac{1}{4}$  Sec. Cor., marked  $\frac{1}{4}$  S. on  
N. face, dug pits, 18 x 18 x 12 ins., E and W. of  
post  $5\frac{1}{2}$  ft. dist., and raised a mound of earth  $1\frac{1}{2}$  ft.  
high,  $3\frac{1}{2}$  ft. base around post.

79.78 The corner to sections 21, 22, 27 & 28

Land rolling.

Soil 3<sup>rd</sup> rate

Vegetation grass & sage.

Township

16 N.

Range

20 E.

Gila and Salt River Meridian.

Chains

North, between Sections 21 and 22.

Variation  $13^{\circ} 30'$  East.

Descend gradually.

40.00

Set a post 3 ft. long, 3 ins. diam. with marked stone 12 ins. in the ground, for  $\frac{1}{4}$  Sec. Cor., marked  $\frac{1}{4}$  S. on W. face, dug pits, 18 x 18 x 12 ins., N. and S. of post  $5\frac{1}{2}$  ft. dist., and raised a mound of earth  $1\frac{1}{2}$  ft. high,  $3\frac{1}{2}$  ft. base around post.

60.00

Cross Wash, 21 fms. wide, Course N. 41 $^{\circ}$  E.

80.00

Set a sand stone 20 x 14 x 2 ins. 15 ins. in the ground for Cor. to Secs. 15, 16, 21 & 22 marked with 3 notches on S. and 3 notches on E. edges, dug pits 18 x 18 x 12 ins. in each Sec.,  $5\frac{1}{2}$  ft. dist. and raised a mound of earth 2 ft. high,  $4\frac{1}{2}$  ft. base. alongside.

Land rolling.

Soil 3 $^{\text{rd}}$  rate

Vegetation grass &amp; sage



Township

10 N

Range

20 E

Gila and Salt River Meridian.

Chains

East, on a random line between Sections 15 and 22.

Variation

13° 30'

East.

*Descend gradually.*

4.46 Cross Wash, 10 lks. wide, Course N. and ascend.

40.00 Set temporary  $\frac{1}{4}$  Sec. Cor.

80.20 Intersect N. &amp; S. line, 1.35 lks. S. of cor. to secs.

14, 15, 22 &amp; 23 from which corner, I run

S. 89° 2' W. on a true line between sections 15 &amp; 22

Variation

13° 30'

East

40.13 Set a post 3 ft. long, 3 ins. diam. with marked stone

12 ins. in the ground, for  $\frac{1}{4}$  Sec. Cor., marked  $\frac{1}{4}$  S. on

N. face, dug pits, 18 x 18 x 12 ins., E. and W. of

post  $5\frac{1}{2}$  ft. dist., and raised a mound of earth  $1\frac{1}{2}$  ft.high,  $3\frac{1}{2}$  ft. base around post.

80.20 The corner to sections 15, 10, 21 &amp; 22

Land rolling.

Soil 3<sup>rd</sup> rate

Vegetation grass &amp; sage

Township 16 N Range 20 E

Gila and Salt River Meridian.

Chains North, between Sections 15 and 16.

Variation 13° 30' East.

Descend. gradually

40.00 Set a post 3 ft. long. 3 ins. diam. with marked stone 12 ins. in the ground, for  $\frac{1}{4}$  Sec. Cor., marked  $\frac{1}{4}$  S. on W. face, dug pits, 18 x 18 x 12 ins., N. and S. of post  $5\frac{1}{2}$  ft. dist., and raised a mound of earth  $1\frac{1}{2}$  ft. high,  $3\frac{1}{2}$  ft. base around post.

30.00 . Set a Sand stone 18 x 12 x 0 ins. 12 ins. in the ground for Cor. to Secs. 9, 10, 15 & 10 marked with 4 notches on S. and 3 notches on E. edges, dug pits 18 x 18 x 12 ins. in each Sec.,  $5\frac{1}{2}$  ft. dist. and raised a mound of earth 2 ft. high,  $4\frac{1}{2}$  ft. base. alongside.

Land rolling.

Soil 3<sup>rd</sup> rate

Vegetation grass & sage

Township

16 N

Range

20 E

Gila and Salt River Meridian.

Chains

East, on a random line between Sections 10 and 15.

Variation  $13^{\circ} 30'$  East.

Descend gradually.

9.00 Cross Wash, 20 lks. wide, Course N, and ascend.

40.00 Set temporary  $\frac{1}{4}$  Sec. Cor.

46.00 Top of Spur, bears N. 10° W. &amp; S. 10° E. and descend.

79.00 Cross Wash, 30 lks. wide, Course N. 8° W. and ascend.

80.04 Intersect N. &amp; S. line, 80 lks. S. of cor. to secs.

10, 11, 14 &amp; 15 from which corner, I run

S.  $89^{\circ} 23'$  W. on a true line between sections 10 & 15Variation  $13^{\circ} 30'$  East

40.02 Set a post 3 ft. long, 3 ins. diam. with marked stone  
12 ins. in the ground, for  $\frac{1}{4}$  Sec. Cor., marked  $\frac{1}{4}$  S. on  
N. face, dug pits, 18 x 18 x 12 ins., E. and W. of  
post  $5\frac{1}{2}$  ft. dist., and raised a mound of earth  $1\frac{1}{2}$  ft.  
high,  $3\frac{1}{2}$  ft. base around post.

80.04 The corner to sections 9, 10, 15 &amp; 16

Land mountainous.

Soil 3<sup>rd</sup> rate

Vegetation grass &amp; sage

31 Township 16 N. Range 20 E.  
Gila and Salt River Meridian.

Chains

North, between Sections 9 and 10.

Variation  $13^{\circ} 30'$  East.

Descend. gradually.

40.00

Set a post 3 ft. long, 3 ins. diam. with marked stone  
12 ins. in the ground, for  $\frac{1}{4}$  Sec. Cor., marked  $\frac{1}{4}$  S. on  
W. face, dug pits, 18 x 18 x 12 ins., N. and S. of  
post  $5\frac{1}{2}$  ft. dist., and raised a mound of earth  $1\frac{1}{2}$  ft.  
high,  $3\frac{1}{2}$  ft. base around post.

48.00

Cross Wash, 17 fms. wide, Course N.  $64^{\circ}$  E.

80.00

Set a sand stone 18 x 12 x 6 ins. 12 ins. in  
the ground for Cor. to Secs. 3, 4, 9 & 10 marked  
with 5 notches on S. and 3 notches on E. edges and  
raised a mound of stone alongside. Pits impracticable.

Land rolling.

Soil 3<sup>rd</sup> rate

Vegetation grass &amp; sage.

Township 16 N. Range 20 E.

Gila and Salt River Meridian.

Chains East, on a random line between Sections 3 and 10.  
Variation  $13^{\circ} 30'$  East.

Descend. gradually.

8.00 To a point - 4.50. <sup>chain</sup> N. of cabin, also water tank at place of same.

11.50 Cross Wash, 25 lks. wide, Course N. E. and ascend.

20.00 Top of Spur, bears N. & S. and descend.

38.90 Cross Wash, 20 lks. wide, Course N. and ascend.

40.00 Set temporary  $\frac{1}{2}$  Sec. Cor.

79.66 Intersect N. & S. line, 48 lks. S. of cor. to secs.

2, 3, 10 & 11 from which corner, I run

$S 89^{\circ} 39' W.$  on a true line between sections 3 & 10

Variation  $13^{\circ} 30'$  East

39.83 Set a Sand stone  $36 \times 16 \times 5$  ins., 27 ins. in the ground, for  $\frac{1}{2}$  Sec. Cor., marked  $\frac{1}{2}$  on N. face, and raised a mound of stone alongside. Pits impracticable.

79.66 The corner to sections 3, 4, 9 & 10

Land rolling.

Soil 3<sup>rd</sup> rate

Vegetation Grass.

Timber of Juniper.

Township *16 N.* Range *20 E.*  
Gila and Salt River Meridian.

Chains *true.*  
North, on a ~~red~~ line between Sections 3 and 4.  
Variation *13° 30'* East.

*Descend.*

*40.00* Set a *Sand* stone *14 x 10 x 6 ins.*, *10*  
*ins.* in the ground, for  $\frac{1}{4}$  Sec. Cor., marked  $\frac{1}{4}$  on *W.*  
face, and raised a mound of stone alongside. *Pits*  
*impracticable.*

*82.68* Intersect the *4<sup>th</sup>* Standard Parallel *North* at a  
point *12.16* chs. *West-* of the Standard Cor. to  
Secs. *33* and *34*. *T. 17 N. R. 20 E.*

*66* *previously* described, and  
Set a post, 4 ft. long, 4 ins. square, 12 ins. in the  
ground, for <sup>*clearing*</sup> Cor. to Secs. 3 and 4 marked  
*T. 16 N. R. 20 E.*, on *S. 3* on *E.* and *S. 4* on  
*W.* faces, with 3 notches on *E.* and 3 notches  
on *W.* faces, dug pits *18 x 18 x 12 ins.* *S. E. & W.* of post,  
*5½* ft. dist. and raised a mound of earth 2 ft. high, *4½*  
ft. base around post.

*Land rolling.*

*Soil 3<sup>rd</sup> rate*

*Vegetation Grass.*

*Timber of Juniper.*

*I carefully examined the adjustments of my solar  
compass to-day, particularly the latitude and revers-  
ing apparatus, and found them correct.*

*Henry Meyrick June 25. 1883*

Township 16 N Range 20 E.

Gila and Salt River Meridian.

Chains

From the corner to sections, 4, 5, 32 & 33. <sup>the south of</sup> on the  
 Which is a sand, stone:  
 17 x 11 x 3 ins, 12 ins. in the  
 ground, marked with 4 notches  
 on E, and 2 notches on W edges  
 with pits 18 x 18 x 12 ins, in each  
 Sec, 5 1/2 ft. dist, and a mound  
 of earth 2 ft. high, 4 1/2 ft. base  
 alongside. Draw

North between sections 32 &amp; 33

Variation 13° 30' East.

Descend.

40.00

Set a post 3 ft. long, 3 ins. diam. with marked stone  
 12 ins. in the ground, for 1/2 Sec. Cor., marked 1/2 S. on  
 W. face, dug pits, 18 x 18 x 12 ins., N. and S. of  
 post 5 1/2 ft. dist., and raised a mound of earth 1 1/2 ft.  
 high, 3 1/2 ft. base around post.

80.00

Set a post 4 ft. long, 4 ins. square, with marked stone  
 12 ins. in the ground, for Cor. to Secs, 28, 29, 32 & 33  
 marked T, 16 N. S. 28, on N, E, R, 20 E., S. 33  
 on S, E, S, 32 on S, W, and S, 29 on N, W, face  
 with 1 notch on S, and 4 notches on E, edges,  
 dug pits 18 x 18 x 12 ins, in each Sec., 5 1/2 ft. dist.,  
 and raised a mound of earth 2 ft, high, 4 1/2 ft, base  
 around post.

Land rolling.

Soil 3<sup>rd</sup> rate

Vegetation Grass &amp; Sage.

Township

16 N.

Range

20 E.

Gila and Salt River Meridian.

Chains

East, on a random line between Sections 28 and 33.

Variation  $13^{\circ} 30'$  East.

Descend gradually.

40.00 Set temporary  $\frac{1}{4}$  Sec. Cor.

60.16 Cross Wash, 18 lks. wide. Course N. and ascend.

79.79 Intersect N. &amp; S. line, 83 lks. S. of cor. to secs.

27, 28, 33 &amp; 34 from which corner, I run

 $189^{\circ} 24'$  W. on a true line between sections 28 & 33Variation  $13^{\circ} 30'$  East

39.89 Set a post 3 ft. long, 3 ins. diam. with marked stone  
12 ins. in the ground, for  $\frac{1}{4}$  Sec. Cor., marked  $\frac{1}{4}$  S. on  
N. face, dug pits, 18 x 18 x 12 ins., E. and W. of  
post  $5\frac{1}{2}$  ft. dist., and raised a mound of earth  $1\frac{1}{2}$  ft.  
high,  $3\frac{1}{2}$  ft. base around post.

79.79 The corner to sections 28, 29, 32 &amp; 33

Land rolling.

Soil 3<sup>rd</sup> rate

Vegetation grass &amp; sage.



Township 16 N Range 20 E

Gila and Salt River Meridian.

Chains North, between Sections 28 and 29.

Variation 13° 30' East.Descend gradually.

46.00 Set a post 3 ft. long, 3 ins. diam. with marked stone 12 ins. in the ground, for  $\frac{1}{4}$  Sec. Cor., marked  $\frac{1}{4}$  S. on W. face, dug pits, 18 x 18 x 12 ins., N and S. of post  $5\frac{1}{2}$  ft. dist., and raised a mound of earth  $1\frac{1}{2}$  ft. high,  $3\frac{1}{2}$  ft. base around post.

80.00 Set a post 4 ft. long, 4 ins. square, with marked stone 12 ins. in the ground, for Cor. to Secs. 20, 21, 28 & 29 marked T, 16 N. S. 21, on N, E, R, 18 E, S. 28 on S, E, S, 29 on S, W, and S, 20 on N, W, face with 2 notches on S, and 4 notches on E, edges, dug pits 18 x 18 x 12 ins. in each Sec.,  $5\frac{1}{2}$  ft. dist., and raised a mound of earth 2 ft. high,  $4\frac{1}{2}$  ft. base around post.

Land rolling.

Soil 3<sup>rd</sup> rateVegetation grass & sage

Township

16 N.

Range

20 E.

Gila and Salt River Meridian.

Chains

East, on a random line between Sections 21 and 28.

Variation  $13^{\circ} 30'$  East.

Descend gradually.

40.00 Set temporary  $\frac{1}{4}$  Sec. Cor.

50.11 Cross Wash, 19 lks. wide, Course N. and ascend.

79.91 Intersect N. &amp; S. line, 95 lks. S. of cor. to secs.

21.22 27 &amp; 28 from which corner, I run

 $S 89^{\circ} 19' W.$  on a true line between sections 21 & 28Variation  $13^{\circ} 30'$  East

39.95 Set a post 3 ft. long. 3 ins. diam. with marked stone

12 ins. in the ground, for  $\frac{1}{4}$  Sec. Cor., marked  $\frac{1}{4}$  S. on

N. face, dug pits, 18 x 18 x 12 ins., E. and W. of

post  $5\frac{1}{2}$  ft. dist., and raised a mound of earth  $1\frac{1}{2}$  ft.high,  $3\frac{1}{2}$  ft. base around post.

79.91 The corner to sections 20. 21. 28 &amp; 29

Land rolling.

Soil 3<sup>rd</sup> rate

Vegetation grass &amp; sage,

Township

16 N.

Range

20 E.

Gila and Salt River Meridian.

Chains

North, between Sections 20 and 21.

Variation 13° 30' East.

Descend gradually.

40.00

Set a Sand stone 18 x 10 x 6 ins., 12 ins. in the ground, for  $\frac{1}{4}$  Sec. Cor., marked  $\frac{1}{4}$  on W. face, and raised a mound of stone alongside. Pits impracticable.

80.00

Set a post 4 ft. long, 4 ins. square, with marked stone 12 ins. in the ground, for Cor. to Secs, 16, 17, 20 & 21 marked T, 16 N. S, 16, on N, E, R, 20 E., S. 21 on S, E, S, 20 on S, W, and S, 17 on N, W, face with 3 notches on S, and 4 notches on E, edges, dug pits 18 x 18 x 12 ins, in each Sec., 5 $\frac{1}{2}$  ft, dist., and raised a mound of earth 2 ft, high, 4  $\frac{1}{2}$  ft, base around post.

Land rolling.

Soil 30° rate

Vegetation grass &amp; sage.

Township

16 N

Range

20 E

Gila and Salt River Meridian.

Chains

East, on a random line between Sections 16 and 21.

Variation

 $13^{\circ} 30'$ 

East.

*Ascend. gradually.*40.00 Set temporary  $\frac{1}{4}$  Sec. Cor.

80.41 Intersect N. &amp; S. line, 68 lks. S. of cor. to secs.

15. 16. 21 &amp; 22 from which corner, I run

 $89^{\circ} 31'$  W. or a true line between sections 16 & 21Variation  $13^{\circ} 30'$ 

East

40.20

Set a Sand stone  $12 \times 8 \times 3$  ins., 8 ins. in the ground, for  $\frac{1}{4}$  Sec. Cor., marked  $\frac{1}{4}$  on N. face, dug pits  $18 \times 18 \times 12$  ins., E. and W. of stone  $5\frac{1}{2}$  ft. dist., and raised a mound of earth  $1\frac{1}{2}$  ft. high,  $3\frac{1}{2}$  ft. base alongside.

80.41

The corner to sections 16. 17. 20 &amp; 21

Land rolling.

Soil  $3^{\text{rd}}$  rate

Vegetation grass &amp; sage.

Township

16 N.

Range

20 E.

Gila and Salt River Meridian.

Chains

North, between Sections 16 and 17.

Variation

13° 30'

East.

Descend gradually.

40.00

Set a post 3 ft. long, 3 ins. diam. with marked stone 12 ins. in the ground, for  $\frac{1}{4}$  Sec. Cor., marked  $\frac{1}{4}$  S. on W. face, dug pits, 18 x 18 x 12 ins., N. and S. of post  $5\frac{1}{2}$  ft. dist., and raised a mound of earth  $1\frac{1}{2}$  ft. high,  $3\frac{1}{2}$  ft. base around post.

80.00

Set a post 4 ft. long, 4 ins. square, with marked stone 12 ins. in the ground, for Cor. to Secs. 8, 9, 16 & 17 marked T, 16 N. S. 9, on N, E, R, 20 E., S. 16 on S, E, S, 17 on S, W, and S, 8 on N, W, face with 4 notches on S, and 4 notches on E, edges, dug pits 18 x 18 x 12 ins. in each Sec.,  $5\frac{1}{2}$  ft. dist., and raised a mound of earth 2 ft. high,  $4\frac{1}{2}$  ft. base around post.

Land rolling.

Soil 3<sup>rd</sup> rate

Vegetation

Grass &amp; sage.

41 Township 10 N. Range 20 E.  
Gila and Salt River Meridian.

Chains

East, on a random line between Sections 9 and 16.

Variation  $13^{\circ} 30'$  East.*Ascend gradually.*40.00 *Set temporary  $\frac{1}{4}$  Sec. Cor.**Descend.*80.26 *Intersect N. & S. line, 400 lks. S. of cor. to secs.**9, 10, 15 & 16 from which corner, I run**S.  $89^{\circ} 15' W.$  on a true line between sections 9 & 16**Variation  $13^{\circ} 30'$  East*

40.13

*Set a post 3 ft. long, 3 ins. diam. with marked stone**12 ins. in the ground, for  $\frac{1}{4}$  Sec. Cor., marked  $\frac{1}{4}$  S. on**N. face, dug pits, 18 x 18 x 12 ins., E. and W. of**post  $5\frac{1}{2}$  ft. dist., and raised a mound of earth  $1\frac{1}{2}$  ft.**high,  $3\frac{1}{2}$  ft. base around post.*

80.26

*The corner to sections 8, 9, 16 & 17**Land rolling.**Soil 3<sup>rd</sup> rate**Vegetation grass & sage.*

Township

16 N.

Range

20 E.

Gila and Salt River Meridian.

Chains

North, between Sections 8 and 9.

Variation

13° 30'

East.

Descend. gradually.

44.00

Set a post 3 ft. long, 3 ins. diam. with marked stone 12 ins. in the ground, for  $\frac{1}{4}$  Sec. Cor., marked  $\frac{1}{2}$  S. on W. face, dug pits, 18 x 18 x 12 ins., N. and S. of post  $5\frac{1}{2}$  ft. dist., and raised a mound of earth  $1\frac{1}{2}$  ft. high,  $3\frac{1}{2}$  ft. base around post.

60.00

Descend.

80.00

Set a sand stone 10 x 9 x 4 ins. 10 ins. in the ground for Cor. to Secs. 4, 5, 8 & 9 marked with 5 notches on S. and 4 notches on E. edges and raised a mound of stone alongside. Pits impracticable.

Land rolling.

Soil 3<sup>rd</sup> rate

Vegetation grass &amp; sage.

Township

16 N

Range

20 E

Gila and Salt River Meridian.

Chains

East, on a random line between Sections 4 and 9.

Variation  $13^{\circ} 30'$  East.*Ascend. gradually.*

8.00 Top of Ridge, bears N. &amp; S. and descend.

40.00 Set temporary  $\frac{1}{2}$  Sec. Cor.

80.34 Intersect N. &amp; S. line, 1.31 lks. S. of cor. to secs.

2, 4, 9 &amp; 10 from which corner, I run

 $S. 89^{\circ} 44' W.$  on a true line between sections 4 & 9Variation  $13^{\circ} 30'$  East

40.17 Set a Sand stone  $14 \times 10 \times 5$  ins., 10 ins. in the ground, for  $\frac{1}{2}$  Sec. Cor., marked  $\frac{1}{2}$  on N. face, dug pits  $18 \times 18 \times 12$  ins., E and W. of stone  $5\frac{1}{2}$  ft. dist., and raised a mound of earth  $1\frac{1}{2}$  ft. high,  $3\frac{1}{2}$  ft. base alongside.

80.34 The corner to sections 4, 5, 8 &amp; 9

Land mountainous.

Soil 3<sup>rd</sup> rate

Vegetation grass &amp; sage.



Township 16 N Range 20 E

Gila and Salt River Meridian.

Chains <sup>true.</sup> North, on a ~~random~~ line between Sections 4 and 5.  
Variation  $13^{\circ} 30'$  East.

Descend gradually.

40.00 Set a Sand stone  $18 \times 10 \times 6$  ins., 12 ins. in the ground, for  $\frac{1}{4}$  Sec. Cor., marked  $\frac{1}{4}$  on W. face, dug pits  $18 \times 18 \times 12$  ins., N. and S. of stone  $5\frac{1}{2}$  ft. dist., and raised a mound of earth  $1\frac{1}{2}$  ft. high,  $3\frac{1}{2}$  ft. base alongside.

83.92 Intersect the  $11^{\text{th}}$  Standard Parallel North at a point 12.60 chs. West of the Standard Cor. to Secs. 32 and 33. T. 17 N. R. 20 E. <sup>at</sup> ~~the~~

as previously described, <sup>by me</sup> and Set a Sand stone  $20 \times 15 \times 6$  ins. 15 ins. in the ground for Closing Cor. to Secs. 14 and 5 marked C. C. with 4 notches on E. and 2 notches on W. edges and raised a mound of stone. alongside.

Pits impracticable.

Land rolling

Soil  $3^{\text{rd}}$  rate

Vegetation Grass.

I carefully examined the adjustments of my solar compass to-day, particularly the latitude and reversing apparatus, and found them correct.

G. W. Pearson, Compassman June 25, 1883

Chains

From the corner to sections, 5, 6, 31 & 32 on S. 29, 30  
 Which is a post 4 ft. long,  
 4 ins. square, 12 ins. in the  
 ground marked S. 16 N., S. 32 on  
 N. E. R. 20 E., S. 5 on S. E. T. 15 N.  
 S. 6 on S. W. and S. 31 on N. W.  
 faces, with 5 notches on E. and 1 notch on  
 W. face, with pits 18 x 18 x 12 ins. in each  
 Sec. 5 1/2 ft. dist., and a mound of earth 2 ft. high, 4 1/2  
 ft. base around post.  
 North between sections 31 & 32

Variation 13° 30' East.

Ascend.

40.00

Set a post 3 ft. long, 3 ins. diam. with marked stone  
 12 ins. in the ground, for 1/4 Sec. Cor., marked 1/4 S. on  
 W. face, dug pits, 18 x 18 x 12 ins., N. and S. of  
 post 5 1/2 ft. dist., and raised a mound of earth 1 1/2 ft.  
 high, 3 1/2 ft. base around post.

80.00

Set a post 4 ft. long, 4 ins. square, with marked stone  
 12 ins. in the ground, for Cor. to Secs, 29, 30, 31 & 32  
 marked T, 16 N. S., 29, on N, E, R, 20 E., S. 32  
 on S, E, S, 31 on S, W, and S, 30 on N, W, face  
 with 1 notch on S, and 5 notches on E, edges,  
 dug pits 18 x 18 x 12 ins. in each Sec., 5 1/2 ft. dist.,  
 and raised a mound of earth 2 ft. high, 4 1/2 ft. base  
 around post.  
 Land rolling.

Soil

3<sup>d</sup>

rate

Vegetation

Grass &amp; sage.

Township

16 N

Range

20 E

Gila and Salt River Meridian.

Chains

East, on a random line between Sections 29 and 32.

Variation  $13^{\circ} 30'$  East.*Ascend gradually.*5.25 Top of Spur, bears  $N. 25^{\circ} E. 2.25$  and descend.40.00 Set temporary  $\frac{1}{2}$  Sec. Cor.

79.67 Intersect N. &amp; S. line, 69 lks. S. of cor. to secs.

28, 29, 32 &amp; 33 from which corner, I run

 $S 89^{\circ} 30' W.$  on a true line between sections 29 & 32Variation  $13^{\circ} 30'$  East

39.83 Set a Sand stone  $16 \times 9 \times 14$  ins., 10 ins. in the ground, for  $\frac{1}{2}$  Sec. Cor., marked  $\frac{1}{2}$  on N. face, dug pits  $18 \times 18 \times 12$  ins., E and W. of stone  $5\frac{1}{2}$  ft. dist., and raised a mound of earth  $1\frac{1}{2}$  ft. high,  $3\frac{1}{2}$  ft. base alongside.

79.67 The corner to sections 29, 30, 31 &amp; 32

Land rolling.

Soil 3<sup>rd</sup> rate

Vegetation Grass &amp; sage.

Henry Meyrick June 20, 1883

Township 16 N Range 20 E

Gila and Salt River Meridian.

Chains

West, on a random line between Sections 30 and 31.

Variation  $13^{\circ} 30'$  East.*Descend gradually.*12.00 Cross Wash, 25 lks. wide, Course  $N. 20^{\circ} W$  and ascend.40.00 Set temporary  $\frac{1}{2}$  Sec. Cor.

79.48 Intersect W. B. of Tp. 1.29 lks. N. of cor. to secs.

29.30. 31 &amp; 30

Which is a sand stone  
 $20 \times 8 \times 3$  ins., 15 ins. in the  
 ground marked with 1 notch  
 on S. and 5 notches on W. edges  
 and a mound of stone alongside.  
 from which corner, I run

 $N. 89^{\circ} 5' E.$  on a true line, between sections 30 & 31Variation  $13^{\circ} 30'$  East.

39.48 Set a post 3 ft. long, 3 ins. diam. with marked stone  
 12 ins. in the ground, for  $\frac{1}{2}$  Sec. Cor., marked  $\frac{1}{2}$  S. on  
 N. face, dug pits,  $18 \times 18 \times 12$  ins., E. and W. of  
 post  $5\frac{1}{2}$  ft. dist., and raised a mound of earth  $1\frac{1}{2}$  ft.  
 high,  $3\frac{1}{2}$  ft. base around post.

79.48 The corner to sections 29. 30. 31 &amp; 32

Land rolling.

Soil 3<sup>rd</sup> rate

Vegetation grass &amp; sage.

G. W. Pearson, Comptroller June 26. 1895

Township 10 N Range 20 E

Gila and Salt River Meridian.

Chains

North, between Sections 29 and 30.

Variation 13° 30' East.*Descend gradually.*

40.00

Set a post 3 ft. long, 3 ins. diam. with marked stone 12 ins. in the ground, for  $\frac{1}{4}$  Sec. Cor., marked  $\frac{1}{4}$  S. on W. face, dug pits, 18 x 18 x 12 ins., N. and S. of post  $5\frac{1}{2}$  ft. dist., and raised a mound of earth  $1\frac{1}{2}$  ft. high,  $3\frac{1}{2}$  ft. base around post.

80.00

Set a sand stone  $14 \times 6 \times 4$  ins. 10 ins. in the ground for Cor. to Secs. 19, 20, 29 & 30 marked with 2 notches on S. and 5 notches on E. edges, dug pits 18 x 18 x 12 ins. in each Sec.,  $5\frac{1}{2}$  ft. dist. and raised a mound of earth 2 ft. high,  $4\frac{1}{2}$  ft. base. alongside.

Land rolling.

Soil 3<sup>rd</sup> rate

Vegetation grass &amp; sage.

Township

16 N.

Range

20 E.

Gila and Salt River Meridian.

Chains

East, on a random line between Sections 20 and 29.

Variation  $13^{\circ} 30'$  East.

Descend gradually.

40.00 Set temporary  $\frac{1}{4}$  Sec. Cor.

50.00 Descend.

80.14 Intersect N. &amp; S. line, 111 lks. S. of cor. to secs.

20, 21, 28, &amp; 29 from which corner, I run

889° 45' W. on a true line between sections 20 &amp; 29

Variation  $13^{\circ} 30'$  East

40.08 Set a Sand stone  $25 \times 14 \times 4$  ins., 18  
ins. in the ground, for  $\frac{1}{4}$  Sec. Cor., marked  $\frac{1}{4}$  on N.  
face, and raised a mound of stone alongside. Pits  
impracticable.

80.16 The corner to sections 19, 20, 29, &amp; 30

Land rolling.

Soil  $3^{\text{rd}}$  rate

Vegetation grass &amp; sage.

Henry Meyrick, June 20, 1883

Township 10 N. Range 20 E.

Gila and Salt River Meridian.

Chains

West, on a random line between Sections 19 and 30.

Variation 13° 30' East.*Ascend gradually.*20.00 Top of Spur, bears N. 70° E. & S. 10° W. and descend.40.00 Set temporary  $\frac{1}{4}$  Sec. Cor.43.00 Cross Wash, 17 lks. wide, Course N. 10° W. and ascend.79.17 Intersect W. B. of Tp. 1.17 lks. N. of cor. to secs.19. 24. 25 & 30*Which is a sand stone  
24 x 10 x 0 ins., 18 ins. in the  
ground marked with 2 notches  
on S. and 4 notches on N. edges,  
and a mound of stone alongside,  
from which corner, I run*N. 89° 10' E. on a true line, between sections 19 & 30Variation 13° 30' East.39.17 Set a Sand stone 10 x 10 x 5 ins., 10  
ins. in the ground, for  $\frac{1}{4}$  Sec. Cor., marked  $\frac{1}{4}$  on N.  
face, and raised a mound of stone alongside. Pits  
impracticable.79.17 The corner to sections 19. 20. 29 & 30*Land rolling.*Soil 3<sup>rd</sup> rateVegetation grass & sage.G. W. Pearson, Compassman June 20, 1853

Township 16 N Range 20 E

Gila and Salt River Meridian.

Chains

North, between Sections 19 and 20.

Variation  $13^{\circ} 30'$  East.

Descend. gradually

40.00 Set a Sand stone  $15 \times 10 \times 6$  ins., 10 ins. in the ground, for  $\frac{1}{4}$  Sec. Cor., marked  $\frac{1}{4}$  on W face, and raised a mound of stone alongside. Pits impracticable.

80.00 Set a Sand stone  $24 \times 13 \times 5$  ins. 18 ins. in the ground for Cor. to Secs. 17, 18, 19 & 20 marked with 3 notches on S. and 5 notches on E. edges and raised a mound of stone alongside. Pits impracticable.

Land rolling.

Soil  $3^{\text{rd}}$  rate

Vegetation grass &amp; sage.



Township

10 N.

Range

20 E.

Gila and Salt River Meridian.

Chains

East, on a random line between Sections 17 and 20.

Variation

13° 30'

East.

Descend. gradually.

40.00 Set temporary  $\frac{1}{4}$  Sec. Cor.

40.10 Cross Wash, 11 lks. wide, Course N. and ascend.

61.10 Top of Ridge, bears N. &amp; S. and descend.

79.88 Intersect N. &amp; S. line, 73 lks. S. of cor. to secs.

16. 17. 20 &amp; 21 from which corner, I run

S. 89° 29' W. on a true line between sections 17 &amp; 20

Variation

13° 30'

East

39.94 Set a post 3 ft. long. 3 ins. diam. with marked stone

12 ins. in the ground, for  $\frac{1}{4}$  Sec. Cor., marked  $\frac{1}{4}$  S. on

N. face, dug pits, 18 x 18 x 12 ins., E. and W. of

post  $5\frac{1}{2}$  ft. dist., and raised a mound of earth  $1\frac{1}{2}$  ft.high,  $3\frac{1}{2}$  ft. base around post.

79.88 The corner to sections 17. 18. 19 &amp; 20

Land mountainous.

Soil

3<sup>rd</sup>

rate

Vegetation grass &amp; sage.

Henry Meyrick June 20. 1883

Township 16 N.

Range 20 E.

Gila and Salt River Meridian.

Chains

West, on a random line between Sections 18 and 19.

Variation  $13^{\circ} 30'$  East.

Descend.

.08 Cross Wash, 10 lks. wide, Course  $N. 13^{\circ} E.$  and ascend.

37.50 Descend. gradually.

40.00 Set temporary  $\frac{1}{2}$  Sec. Cor.

'78.90 Intersect W. B. of Tp. 79 lks. N. of cor. to secs.

13, 18, 19 &amp; 24 T. 16 N. R. 20 E.

Which is a sand stone,  $10 \times 10 \times 3$  ins.,  
 10 ins. in the ground, marked  
 with 3 notches in S. and 3 notches  
 on N. edges with pits  $18 \times 18 \times 12$  ins.,  
 in each Sec.,  $5\frac{1}{2}$  ft. dist., and a  
 mound of earth 2 ft. high,  $4\frac{1}{2}$  ft. base  
 along side - from which corner, I run

$N. 89^{\circ} 20' E.$  on a true line, between sections 18 & 19

Variation  $13^{\circ} 30'$  East.

38.90 Set a sand stone  $15 \times 10 \times 4$  ins., 10 ins.  
 in the ground, for  $\frac{1}{2}$  Sec. Cor., marked  $\frac{1}{2}$  on N. face,  
 dug pits  $18 \times 18 \times 12$  ins., E. and W. of stone  $5\frac{1}{2}$   
 ft. dist., and raised a mound of earth  $1\frac{1}{2}$  ft. high,  $3\frac{1}{2}$   
 ft. base alongside.

78.90 The corner to sections 17, 18, 19 &amp; 20

Land rolling.

Soil 3<sup>rd</sup> rate

Vegetation grass &amp; sage.

G. W. Pearson, Comptroller June 26, 1883

Chains

North, between Sections 17 and 18.

Variation

13° 30'

East.

Descend gradually.

1.20 Cross Wash, 12 lks. wide, Course N. 20° E. and ascend.

24.00 Top of Spur, bears N. 70° E. &amp; S. 70° W. and descend.

40.00 Set a post 3 ft. long, 3 ins. diam. with marked stone  
 12 ins. in the ground, for  $\frac{1}{4}$  Sec. Cor., marked  $\frac{1}{4}$  S. on  
 W. face, dug pits, 18 x 18 x 12 ins., N. and S. of  
 post  $5\frac{1}{2}$  ft. dist., and raised a mound of earth  $1\frac{1}{2}$  ft.  
 high,  $3\frac{1}{2}$  ft. base around post.

55.10 Cross Wash, 12 lks. wide, Course N. E. and ascend.

80.00 Set a Sand stone 18 x 10 x 4 ins. 12 ins. in  
 the ground for Cor. to Secs. 7, 8, 17 & 18 marked  
 with 4 notches on S. and 5 notches on E. edges and  
 raised a mound of stone alongside. Pits impracticable.

Land rolling.

Soil 3<sup>rd</sup> rate

Vegetation grass &amp; sage.

Township

16 N

Range

20 E

Gila and Salt River Meridian.

Chains

East, on a random line between Sections 8 and 17.

Variation  $13^{\circ} 30'$  East.*Descend gradually.*32.10 Cross Wash, 60 lks. wide, Course  $N. 38^{\circ} E$  and ascend.40.00 Set temporary  $\frac{1}{4}$  Sec. Cor.

79.91 Intersect N. &amp; S. line, 82 lks. S. of cor. to secs.

8, 9, 10 &amp; 17 from which corner, I run

 $S. 89^{\circ} 25' W.$  on a true line between sections 8 & 17Variation  $13^{\circ} 30'$  East

39.95 Set a post 3 ft. long, 3 ins. diam. with marked stone  
12 ins. in the ground, for  $\frac{1}{4}$  Sec. Cor., marked  $\frac{1}{4}$  S. on  
N. face, dug pits, 18 x 18 x 12 ins., E. and W. of  
post  $5\frac{1}{2}$  ft. dist., and raised a mound of earth  $1\frac{1}{2}$  ft.  
high,  $3\frac{1}{2}$  ft. base around post.

79.91 The corner to sections 7, 8, 17 &amp; 18

Land rolling.

Soil 3<sup>rd</sup> rate

Vegetation grass &amp; sage.

Henry Meyrick June 20. 1883

Township 10 N Range 20 E

Gila and Salt River Meridian.

Chains

West, on a random line between Sections 7 and 18.

Variation

13° 30'

East.

*Ascend gradually.*

30.00 Top of Spur, bears N. 37° E. 37 W and descend.

40.00 Set temporary  $\frac{1}{4}$  Sec. Cor.

62.80 Cross Wash, 25 yds. wide, Course N. 28° E and ascend.

78.39 Intersect W. B. of Tp. 98 yds. N. of cor. to secs.

7. 12. 13 &amp; 18 T. 10 N. R. 20 E,

Which is a Sand stone 20 x 9 x 4 ins.  
 15 ins. in the ground marked with  
 4 notches on E. and 2 notches on  
 N. edges, with fels 18 x 18 x 12 ins. in  
 each Sec. 5  $\frac{1}{2}$  ft. dist, and a mound of  
 earth 2 ft. high, 4  $\frac{1}{2}$  ft. base alongside.  
 from which corner, I run

N. 89° 18' E on a true line, between sections 7 &amp; 18

Variation

13° 30'

East.

38.89 Set a post 3 ft. long. 3 ins. diam. with marked stone  
 12 ins. in the ground, for  $\frac{1}{4}$  Sec. Cor., marked  $\frac{1}{4}$  S. on  
 N. face, dug pits, 18 x 18 x 12 ins., E. and W. of  
 post 5  $\frac{1}{2}$  ft. dist., and raised a mound of earth 1  $\frac{1}{2}$  ft.  
 high, 3  $\frac{1}{2}$  ft. base around post.

78.39 The corner to sections 7. 8. 17 &amp; 18

Land rolling.

Soil 3<sup>rd</sup> rate

Vegetation Grass &amp; Sage.

G. W. Pearson, Comptroller June 26, 1883

Township

16 N

Range

20 E

Gila and Salt River Meridian.

Chains

North, between Sections 7 and 8.

Variation 13° 30' East.

Ascend gradually.

14.50 Top of Spur, bears N. 60° E. S. 60° W. and descend.

40.00 Set a post 3 ft. long, 3 ins. diam. with marked stone  
12 ins. in the ground, for  $\frac{1}{2}$  Sec. Cor., marked  $\frac{1}{2}$  S. on  
W. face, dug pits, 18 x 18 x 12 ins., N. and S. of  
post  $5\frac{1}{2}$  ft. dist., and raised a mound of earth  $1\frac{1}{2}$  ft.  
high,  $3\frac{1}{2}$  ft. base around post.

68.00 Cross Wash, 20 fks. wide, Course N. E. and ascend.

80.00 Set a post 4 ft. long, 4 ins. square, with marked stone  
12 ins. in the ground, for Cor. to Secs, 5. 0. 7 & 8  
marked T, 16 N. S, 5, on N, E, R, 20 E., S. 8  
on S, E, S, 7 on S, W, and S, 4 on N, W, face  
with 5 notches on S, and 5 notches on E, edges,  
dug pits 18 x 18 x 12 ins, in each Sec.,  $5\frac{1}{2}$  ft, dist.,  
and raised a mound of earth 2 ft, high,  $4\frac{1}{2}$  ft, base  
around post.

Land rolling.

Soil 3<sup>rd</sup> rate

Vegetation grass &amp; sage

Township 16 N. Range 20 E.

Gila and Salt River Meridian.

Chains

East, on a random line between Sections 5 and 8.

Variation  $13^{\circ} 30'$  East.

Descend gradually.

14.26 Cross Wash, 20 lks. wide, Course  $N. 40^{\circ} E$  and ascend.37.00 Top of Spur, bears  $N. 10^{\circ} E$  &  $S. 10^{\circ} W$ , and descend.40.00 Set temporary  $\frac{1}{4}$  Sec. Cor.55.30 Cross Wash, 30 lks. wide, Course  $N. 27^{\circ} W$  and ascend.

80.27 Intersect N. &amp; S. line, 62 lks. S. of cor. to secs.

4. 5. 8 &amp; 9 from which corner, I run

 $U. 89^{\circ} 33' W$ . on a true line between sections 5 & 8Variation  $13^{\circ} 30'$  East

40.13 Set a post 3 ft. long, 3 ins. diam. with marked stone  
12 ins. in the ground, for  $\frac{1}{4}$  Sec. Cor., marked  $\frac{1}{4}$  S. on  
N. face, dug pits, 18 x 18 x 42 ins., E. and W. of  
post  $5\frac{1}{2}$  ft. dist., and raised a mound of earth  $1\frac{1}{2}$  ft.  
high,  $3\frac{1}{2}$  ft. base around post.

80.27 The corner to sections 5. 6. 7 &amp; 8

Land rolling.

Soil 3<sup>d</sup> rate

Timber of juniper.

Vegetation. grass &amp; sage.

I carefully examined the adjustments of my solar  
compass to-day, particularly the latitude and revers-  
ing apparatus, and found them correct.

Henry Meyrick June 20. 1883

Township

16 N

Range

20 E

Gila and Salt River Meridian.

Chains

West, on a random line between Sections 6 and 7.

Variation  $13^{\circ} 30'$  East.

Ascend gradually.

40.00 Set temporary  $\frac{1}{4}$  Sec. Cor.

78.30 Intersect W. B. of Tp. 128 lks. N. of cor. to secs.

1. 0. 7. 12 E. 16 N. R. 20 E.

Which is a sand stone  $14 \times 6 \times 3$  ins.,  
 $10$  ins. in the ground marked  
 with 5 matches on S. and 1 match  
 on N. edges with jets  $18 \times 18 \times 12$  ins.  
 in each Sec.  $5\frac{1}{2}$  ft. dist., and a  
 mound of earth 2 ft. high,  $4\frac{1}{2}$  ft. base  
 along side. from which corner, I run

N.  $89^{\circ} 14'$  E. on a true line, between sections 6 & 7Variation  $13^{\circ} 30'$  East.

38.30 Set a post 3 ft. long, 3 ins. diam. with marked stone  
 12 ins. in the ground, for  $\frac{1}{4}$  Sec. Cor., marked  $\frac{1}{4}$  S. on  
 N. face, dug pits,  $18 \times 18 \times 12$  ins., E. and W. of  
 post  $5\frac{1}{2}$  ft. dist., and raised a mound of earth  $1\frac{1}{2}$  ft.  
 high,  $3\frac{1}{2}$  ft. base around post.

78.30 The corner to sections 5. 6. 7 &amp; 8

Land rolling.

Soil 3<sup>rd</sup> rate

Vegetation grass &amp; sage



Township 10 N Range 20 E

Gila and Salt River Meridian.

Chains

North, on a ~~random~~<sup>true.</sup> line between Sections 5 and 6.

Variation 13° 30' East.

Ascend gradually.

24.00 Top of Ridge, bears N. 10° E S. W. and descend.

40.00 Set a Sand stone 14 x 10 x 3 ins., 10 ins. in the ground, for 1/4 Sec. Cor., marked 1/4 on W. face, dug pits 18 x 18 x 12 ins., N. and S. of stone 5 1/2 ft. dist., and raised a mound of earth 1 1/2 ft. high, 3 1/2 ft. base alongside.

84.75 Intersect the 11<sup>th</sup> Standard Parallel North at a point 12.97 chs. West of the Standard Cor. to Secs. 31 and 32. T. 17 N. R. 20 E.

Uniformly described, <sup>by me</sup> and

b.c.

Set a post, 4 ft. long, 4 ins. square, 12 ins. in the ground, for <sup>Closure</sup> Cor. to Secs. 5 and 6 marked T. 16 N. R. 20 E., on S. S. 5 on E. and S. 6 on W. faces, with 5 notches on E. and 1 notch on W. faces, dug pits 18 x 18 x 12 ins. S. E. of post, 5 1/2 ft. dist. and raised a mound of earth 2 ft. high, 4 1/2 ft. base around post.

Land mountainous.

Soil 3<sup>rd</sup> rate

Undergrowth of Juniper.

I carefully examined the adjustments of my solar compass to-day, particularly the latitude and reversing apparatus, and found them correct.

C. W. Pearson Compassman June 26. 1883

## GENERAL DESCRIPTION.

The surface of this Township is rolling, with the general slope towards the North.

There is plenty of good sand stone along the washes.

The soil is sandy, and varies from 2<sup>nd</sup> to 3<sup>rd</sup> rate, and is covered with a fine growth of grass.

There is a few scattering panypens along the washes.

Some water in Sec. 10 also a cabin in same section.

---

For Final Notes  
see Book No. 19.

## U. S. Surveyor General's Office,

Tucson, Arizona, Feb'y, 5, 1884.

The foregoing Field Notes of the Survey of the

Subdivision Lines of  
Township 16 North  
Range 20 East

Of the Gila and Salt River Base and Meridian, Arizona, executed by

Henry Meyrick Jr.

Deputy Surveyor, under his contract of the

28<sup>th</sup>

day of

July

, 1882, having been

critically examined and the necessary corrections and explanations made, the said Field Notes and the surveys they describe are hereby approved

Repaal Johnson  
Surveyor General.