

P. 1 13  
Book No. 262  
BOOK 262

# Field Notes

No-262

OF THE SURVEY OF THE

Subdivision. Lewis.

BOOK 262

-OF-

Township 17 N. Range 17 E.

Gila and Salt River Base and Meridian

No-262

ARIZONA.

By M. W. Grant D.S.

Under contract dated Aug 9th 1882.

Survey commenced June 28th 1883.

Survey completed June 30th 1883.

Copy  
Platted  
Indexed  
Embossed

262

1A

## BOOK 262

## INDEX DIAGRAM.

Township

17 N.

Range

17 E.

6	78	5	58	4	43	3	28	2	13	1
77		75		36		41		27		12
7	74	8	55	9	40	10	25	11	11	12
73		72		54		38		24		10
18	71	17	53	16	37	15	23	14	8	13
69		68		52		36		21		7
19	67	20	51	21	35	22	20	23	6	24
66		66		50		34		19		5
30	63	29	48	28	53	27	17	26	4	25
63		61		47		32		16		2
31	60	32	45	33	50	34	15	35	1	36

Gila and Salt River, Arizona.

ARIZONA.

For description of instrument  
and preliminary paths  
see Book No. 1.

Survey commenced June 28<sup>th</sup> 1883  
Survey completed June 30<sup>th</sup> 1883

No-262

J. 17 N. R 17 E

Chis

From the Standard Cor to sec's 35-  
and 36. on the 4<sup>th</sup> Standard Parallel  
North, recently established  
by me.

From

N. 0° 08' N. bet sec's 35 and 36.

To 14° 45' E.

Descend gradually.

40.00

Set a Sandstone 22 + 15 + 7 1/2  
17 ins in the ground for  
44 sec cor marked, 11 in  
N. face, and raised a  
mound stone along side  
it's impunctable.

63.77

Cross wash 20 lbs with  
Co N. 22° E. and continue  
to descend.

64.10

Cabin bears 1.90 ch's to West

72.30

Corral .. N. about 240 ch's  
distant

of 17 N. R 17 E

chi

80.00 Set a Sand stone  $26 \times 16 \times 7$  ins. 19 ins. in the ground for Cor. to Secs. 25, 26, 35 & 36 marked with 1 notch on S. and 1 notch on E. edges, dug pits  $18 \times 18 \times 12$  ins. in each Sec.,  $5\frac{1}{2}$  ft. dist. and raised a mound of earth 2 ft. high.  $4\frac{1}{2}$  ft. base, alongside.

Sand Rocky and broken Soil, 3rd rate.

Timber, Scattering Juniper

East on a random line bet-  
sees 25 and 36.

to 13:35 E

Descend

7.21 Cross wash 25 lbs with Co  
N. 10° E. and ascend.

40.00 Set a temporary 4 sec cor  
and descend gradually.

Tf. 17. N. R 17 E.

Chs G<sup>and</sup> S. R. W

- 78.96 Cross mark 24 lbs mid co  
N<sup>and</sup> asced →
- 79.74 Intersect E Bdy of Tf 37 lbs  
So far to see 25-30. 31<sup>and</sup> 36.  
recently established by me  
thence I run.  
S 89° 44' N. on a true line  
let see 25<sup>and</sup> 36 same rd.
- 79.87 Set a Sandstone 18+15+11 in  
12 in in the ground for  
W see cor marked 14  
on N. face and raised  
a mound stone along side  
Pis - impracticable.
- 79.74 To cor to see 25, 26, 35<sup>and</sup> 36  
Sand. See 36 is mostly rough  
and broken some good fragments  
N.E. 14.  
Soil. 3rd rate. rocky

Sp. 19 N. R 19, E.  
 cis G. & R. W.

North 8' Notches 25<sup>and 26</sup>

Do 13: 35' E

- 46.00 Set a Sandstone 17+15+11ms  
 11 ms in the ground for. 14 sec  
 cor marked 14 on W. face  
 and raised a mound of stone  
 alongside. Pits impracticable
- 61.30 Cañon len N. 19° W. 70 lbs N 10  
 and ascend?
- 80.00 Set a Sandstone 17+14+11ms  
 11 ms in the ground for  
 the cor to see's 23, 24, 25<sup>and 26</sup>  
 marked with 2 notches on S  
 and 1 notch on E. edges and  
 raised a mound of stone  
 alongside. Pits, impracticable  
 Sand Rough <sup>and</sup> broken sand  
 rocky along cañons  
 Soil, 3rd & 4th rate.  
~~Light~~. Some brush

Tp. 17 N. R 19 E

chis G and S. R. M

East on a random line bet-  
sees 24 <sup>and</sup> 25-

to 13° 32' E

40.00 Set a temporary 1/4 sec  
cor.

80.12 Intersect E Bdry Tp  
14 lbs S of cor to sees 19 24  
25 <sup>and</sup> 30, recently established  
by me. Thence run  
889° 5' 4" Mon a true line bet-  
sees 24 <sup>and</sup> 25; same as

40.00 Set a Sandstone, 19 x 12 x 8 ins., 12 ins.  
in the ground for 1/4 Sec, Cor, marked 1/4 on N  
face, dug pits 18 x 18 x 12 ins. E and W  
of stone 5 1/2 ft. dist. and raised a mound of earth  
7 1/2 ft. high, 3 1/2 ft. base, alongside.

80.12 To cor to sees 23 24, 25 <sup>and</sup> 26  
Sand. See 25 on West is  
rough <sup>and</sup> rocky, poor grazing.  
Soil, good tal. some brush.



Tf. 17 N. R 19 E.

chs G and S. R. Meridian

on East is more open and  
good grazing

North 8' N. lot sec's 23<sup>and</sup> 24  
Ra 13° 32' E

Observed naturally.

40.00 Set a Sandstone 16+14+7 in  
10 in in the ground for 14 sec  
cor marked 14 on N face  
and raised a mound of  
stone alongside. Pits impractical

76.80 Cross Cañon 110 ft with Co  
N. E. and secured.

80.50 Set a Sandstone 30+15+5 in  
22 in in the ground for  
the cor to sec's 13, 14, 23<sup>and</sup> 24  
marked with 3 notches on S  
and 1 notch on E edges and  
raised a mound of stone alongside

S. 17 N. R 17 E

chs G<sup>and</sup> S. R. 5M

Rls impracticable  
Land. Rough <sup>and</sup> broken  
Soil. 4<sup>th</sup> rate sandstone rocks  
Good grazing

East on a random line bet-  
secs 13<sup>and</sup> 14.

Pa 13° 30' E

4.00 Descend gradually  
Cross cañon 40 lbs wide  
to N <sup>and</sup> ascend.

26.10 Top of spur has N N 40ft high  
and descend.

40.00 Set a temporary 1/4 sec cor

45.00 Cañon 30 lbs wide to N N.

79.90 Intersect 8' Bonj Sp 22 lbs  
N of cor to secs 13, 18, 19 <sup>and</sup> 24.  
recently established  
by me. Thence I run

J 17 N. R 17 E.

chs G. and S. R. W.

N. 89° 31' W on a true line be-  
see's 13 <sup>and 24</sup> f. same as

39.95 Set a Sand<sup>d</sup> stone, 18 x 10 x 6 ins 12 ins.  
in the ground for  $\frac{1}{4}$  Sec, Cor, marked  $\frac{1}{4}$  on N  
face, dug pits 18 x 18 x 12 ins. E and W  
of stone  $5\frac{1}{2}$  ft. dist. and raised a mound of earth  
14 ft. high  $3\frac{1}{2}$  ft. base. alongside.

79.90 To cor to sees 13, 14, 23 <sup>and 24</sup>.  
Sand. See 24 is very rough and  
broken in N + E. S. W. but E  
& N. E. is fine graining.  
Soil, red sand.

N. 8° W bet sees 15 <sup>and 14</sup>.  
To 13° 30' E

26.20 Cross wash 16 lbs m<sup>o</sup> le on  
43° W. and ascend gradually.  
(over)

T13 N. R17 E

G W S. R. M.

40.00

Set a post 3 ft. long 3 ins. diam with marked stone, 12 ins, in the ground for  $\frac{1}{2}$  Sec, Cor, marked  $\frac{1}{2}$  S. on W face, dug pits 18 x 18 x 12 ins. N and S of post  $5\frac{1}{2}$  ft. dist. and raised a mound of earth  $1\frac{1}{2}$  ft. high.  $3\frac{1}{2}$  ft. base. around post.

80.00

Set a post 4 ft. long 4 ins. square, with marked stone, 12 ins, in the ground for Cor, to Secs, 11, 12, 13 <sup>and</sup> 14 marked T. 13 N S. 12 on N. E. R. 17 E. S. 13 on S. E, ~~14~~ S 14 on S, W, and S, 11 on N, W, face, with  $\frac{1}{4}$  notch  $\infty$  on S, and  $\frac{1}{4}$  notch on E. edges, dug pits 18 x 18 x 12 ins. in each Sec.,  $5\frac{1}{2}$  ft. dist. and raised a mound of earth 2 ft, high.  $4\frac{1}{2}$  ft. base. around post.

Sand Rolling.

Soil, ~~red~~ soil is poor  
Some Scattering Juniper

T 17 N. R 17 E.  
 G and S R. W.

East on arround line at  
 sec's 12 and 13.

Pa 13:30 E

Ascend gradually.

46.00 Set a temporary 1/4 sec cor

46.00 Top of ridge 45 ft high bears  
 N. and descend gradually.

80.26 Intersect E. B. line of. Old

S of cor to sec's 7, 12, 13 and 18  
 recently established by

by me. Hence I ran  
 S 89° 57' N on a true line at.

Sec's 12 and 13. same rd.

40.13 Set a post 3 ft. long 3 ins. diam with marked  
 stone, 12 ins, in the ground for 1/4 Sec. Cor,  
 marked 1/4 S. on N face, dug pits 18 x 18 x 12  
 ins. E and W of post 5 1/2 ft. dist. and raised  
 a mound of earth 1 1/2 ft. high. 3 1/2 ft. base. around  
 post.

80.26 To cor to sec's 11, 12, 13 and 14,  
 surface. See 13 is rolling

S. 17 N. R. 17 E

Chs G and S. R. W

Soil. 3<sup>rd</sup> sale: good Spring

N. 8° W. bet. secs 11 and 12

In 13:30' E

Descend gradually

40.00

Set a post 3 ft. long 3 ins. diam with marked stone, 12 ins, in the ground for  $\frac{1}{4}$  Sec, Cor, marked  $\frac{1}{4}$  S. on W face, dug pits 18 x 18 x 12 ins. N and S of post 5  $\frac{1}{2}$  ft. dist. and raised a mound of earth 1  $\frac{1}{2}$  ft, high. 3  $\frac{1}{2}$  ft. base. around post.

80.00

Set a post 4 ft. long 4 ins. square, with marked stone, 12 ins, in the ground for Cor, to Secs, 1, 2, 11 and 12 marked T. 17 N. S. 1 on N. E. R. 17 E. S. 12 on S. E, S, 11 on S, W, and S, 2 on N, W, face, with 6 notches on S, and 1 notch on E. edges, dug pits 18 x 18 x 12 ins. in each Sec., 5  $\frac{1}{2}$  ft. dist. and raised a mound of earth 2 ft, high. 4  $\frac{1}{2}$  ft. base. around post.

S. 17 N. R. 17 E.

chs by <sup>and</sup> S. R. M.

Land Rolling.

Soil: - 8<sup>th</sup> rate for grazing.

East on a random line to  
see's 1 <sup>and</sup> 12.

to 13° 31' E

Over rolling ground →

17.40 Top of Davis's lease N.T.S  
and observed.

40.00 Set a temporary 1/4 sec cor

71.10 Cross creek 21 lks with to  
N 14° W.

80.38 Intersect E Body of 62 lks

S of cor to see's 1, 6, 7 <sup>and</sup> 12  
recently established by

me. Thence I run

S 89° 33' W on a true line

to see's 1 <sup>and</sup> 12 same w

(over)

T. 17 N. R. 17 E

G<sup>and</sup> S. P. Meridian

40.19 Set a post 3 ft. long 3 ins. diam with marked stone, 12 ins, in the ground for  $\frac{1}{4}$  Sec, Cor, marked  $\frac{1}{4}$  S. on N face, dug pits 18 x 18 x 12 ins. E and W of post 5 $\frac{1}{2}$  ft. dist. and raised a mound of earth 1 $\frac{1}{2}$  ft. high. 3 $\frac{1}{2}$  ft. base. around post.

80.38 To cor to sec's 1, 2, 11<sup>and</sup> 12  
Land Rolling  
Soil - 2nd rate.  
Good grazing.

N 8' W. on a random line  
bet sec's 1<sup>and</sup> 2.

20 131-30' E

ascend along side of ridge -

40.00 Set a temporary  $\frac{1}{4}$  sec cor

79.18 Intersect N Bdry of 13 lks  
E. of cor to sec's 1, 2, 35<sup>and</sup> 36.  
recently<sup>22</sup> established by me  
Thence down



T17 N. R17 E  
 S and S. R. W.

S.  $0^{\circ} 14' E$  on a true line bet  
 secs 1<sup>st</sup> & 2. same ea

39.18 Set a post 3 ft. long 3 ins. diam with marked  
 stone, 12 ins, in the ground for  $\frac{1}{4}$  Sec, Cor.  
 marked  $\frac{1}{4}$  S. on W face, dug pits 18 x 18 x 12  
 ins. N and S of post  $5\frac{1}{2}$  ft. dist. and raised  
 a mound of earth  $1\frac{1}{2}$  ft, high.  $3\frac{1}{2}$  ft. base. around  
 post.

39.18 To cor to secs 1, 2, 71 and 12  
 Land. Rolling

Soil; 2<sup>nd</sup> soil; good grazing

I carefully examined the adjustment  
 of my solar compass today.  
 particularly the latitude  
 and reversing apparatus and  
 found them correct

M. W. Grant.

June 28<sup>th</sup> 1883.

T. 19 N. R. 13 E.

chs G<sup>and</sup> S. R. M

From the Standard Cor  
to see's 3 & 4<sup>and</sup> 35 on the  
4<sup>th</sup> Standard Parallel  
North recently established  
by Mr. J. run  
N. 8° N. bet see's 3 & 4<sup>and</sup> 35-

lat 14° 15' E

Resecond

400 Cross wash 21 lbs with lee  
N. 66° N.

40.00 Set a Sandstone 18+16+7 in  
12 ins in the ground for 14  
see cor marked 14 in N.  
face and raised a mound  
of stone alongside.

Pils impracticable

80.00 Set a Sandstone 18+16+11  
ins 12 ins in the ground for  
the cor & see's 26. 27. 34<sup>and</sup>

P 17 N. R. 17 E.

chs G <sup>and</sup> S. R. W.

35. marked with 1 notch  
W of S and 2 notches on E  
Edges and raised a mound  
of stone along side. Pile  
impracticable.  
Land. Rolling. Soil. good  
rate. good grazing.

East on a random line bet-  
weens 26 <sup>and</sup> 35.

Lat 13° 30' E

36.20 Cross Cañon 34 E. km. mid-  
les N. and ascend

40.00 Set a temporary W sec  
cor.

60.00 Commenced to descend, gradually

79.80 Intersect N. T. S. line 10 E. km  
S of cor to sees 25. 26. 35 <sup>and</sup>  
36. Thence down

G 17 N. R 17 E  
 chs G and S R. M

- 889° 56' N. on a true line  
 bet sees 26 and 35 same rd
- 39.91 Set a Sand Stone 23+13+10  
 in 19 ins in the ground for  
 1/4 sec cov. marked 1/4 on  
 N. face. and raised a mound  
 of stone along sid. Pit  
 impracticable.
- 39.82 To cov to sees 26. 27. 34 and 35.  
 Sand. Rolling and covered with sand  
 Soil. 4<sup>th</sup> rate.  
 Scattering ferns

418' N. bet sees 26 and 27

Pa 13° 30' E

Descend gradually.

- 40.00 Set a Sandstone 22+12+6  
 in 16 ins in the ground

517 N. R 17 E

Chs 4<sup>th</sup> S. R W

For "4 see cor marked "4 W  
N. face, and raised a mound  
of stone along side. It's impracticable

69.28 Cross Wash 60 lks N. E. Co  
N. E. and ascend.

80.00 Set a Sandstone 21 + 16 + 9 ins  
13 ins in the ground for the  
cor to see's 22, 23, 26 <sup>and 27</sup>,  
marked with 2 notches on  
S<sup>th</sup> & E. edges, and raised  
a mound of stone along side  
It's impracticable  
Land: Rough <sup>and</sup> Broken  
covered with sandstone.  
Soil - 4<sup>th</sup> de soil.  
Some Cedar Brush

T 17 N. R 17 E

chs G <sup>and</sup> S. P. W

East on a random line let  
see's 23 <sup>and</sup> 26.

to 13° 40' E

↓ descend.

81.30 Cross wash 47 lbs with  
leo N, and continue to descend

21.18 Cross wash 36-lbs with leo N.W.  
↓ descend.

40.00 Set a temporary 1/4 sec cor

72.31 Cross barrow 65-lbs with  
leo N.E. and ascend.

79.68 Intersect N.T.S line 28  
lbs N of cor to see's 23-24.  
25 <sup>and</sup> 26. Thence down  
N 89° 48' W on a true line  
let see's 23 <sup>and</sup> 26. same w

39.84 Set a Sandstone 16 + 14 + 10 ins.  
10 ins in the ground for  
1/4 sec cor marked 1/4 in  
N. face and raised

G. 17 N. R. 17 E

chs. G<sup>nd</sup> S R W

a mound of stone along side  
Pts impracticable.

99.68 To Cor to see's 22-23-26 <sup>9/27</sup>

Land. See 26. rough & broken  
covered with sandstone  
Soil 1/2 in. deep.

Some Cedar Bush

71.80 To Cor to see's 22 <sup>9/27</sup> 23

Pa 13° 40' E

Descent

40.00 Set a Sandstone 24+18+4 <sup>9/27</sup>

18 ins in the ground for 14  
see cor marked 14 on  
W face and raised a mound  
of stone along side. Pts  
impracticable.

80.00 Set a Sandstone 18+16+9 ins  
12 ins in the ground for the cor

S. 17 N. R 97 E.

chs G<sup>and</sup> S R. W.

to seas 14. 15. 22 <sup>and</sup> 23,  
 marked with 3 notches on  
 S and 2 notches on E  
 edges and raised a mound  
 of stone along seab. Pits  
 impracticable.  
 Sand Rough <sup>and</sup> Broken  
 Soil. Rocky.  
 Some Cedar Bush

Left on a random line  
 bet seas 14 <sup>and</sup> 23.

Ja 13° 45' E

Ascend<sup>d</sup>

- 23.50 Cross point of spur trail  
 N 15° E. and descend  
 38.21 Cross wash 20 lbs mid  
 le. N 20° E. and ascend  
 40.00 Set a temporary 1/4 sec cor



T. 17 N. R 17 E

chs 4<sup>and</sup> S. R. W.

80-21 Intersect N<sup>and</sup> S line 13  
lbs S of cor to sees 13.14  
23<sup>and</sup> 24. These run,  
S 89° 4' W on a true line bet.  
sees 14<sup>and</sup> 23. same va

40-10 Set a Sandstone 31 + 17 + 8 ins  
22 ins in the ground for  
1/4 sec cor. marked 14 on  
N. face. and raised a

80-20 mound of stone along side  
To cor to sees 14, 15, 22<sup>and</sup> 23  
Its impenetrable.  
Sand. Sec. 23. Rough<sup>and</sup> Rocky  
Sandstone formation.  
Some Cedar Bush  
Soil 4 1/4 rats

71.8' N bet sees 14<sup>and</sup> 15  
20 13° 45' E

Descend.

1.12 Cross road 40 lbs wide 60

T. 17 N. R. 17 E

chs G<sup>nd</sup> S. R. Meridian

- 16.30 N 30° E and ascend  
Top of Spur bears N. 10° E  
and descend.
- 40.00 Set a Sandstone 25+19+7m  
15ins in the ground for 1/4  
see cor. marked 1/4 on  
N. face and raised a  
mound of stone along side  
Pils impracticable.
- 57.11 Cross wash 26 lbs wide 65 N 45° E  
and ascend.
- 80.00 Set a Sandstone 15+11+6m  
10ins in the ground for the  
see to see 10. 11. 14<sup>th</sup> 15.  
marked with 4 notches on  
S and 2 notches on E  
edges. and raised a  
mound of stone along side  
Pils impracticable.

T17 N. R17 E  
chs 6 and 8. R. M.

Land Rough and Rocky  
Soil. 5<sup>th</sup> rate. stony.  
Some Scattering Juniper

East on a random line  
bet sees 11 and 14  
to 13°-15° E

Descend Gradually.

11.64 Cross Cañon 200 ft deep  
to N and ascend Gradually

40.00 Set a temporary 74 sec cor

80.64 Intersect U. S line 39 lb

S of cor to sees 11. 12. 13 and 14

Thence Drum

S 89° 43' W on a true line

bet sees 11 and 14. same as

40.25 Set a post 3 ft. long 3 ins. diam with marked

stone, 12 ins, in the ground for 1/4 Sec, Cor,

marked 1/4 S. on N face, dug pits 18 x 18 x 12

ins. E and W of post 5 1/2 ft. dist. and raised

T 19 N. R 19 E

chs G<sup>and</sup> S R W.

a mound of earth  $1\frac{1}{2}$  ft. high.  $3\frac{1}{2}$  ft. base. around  
post.

80.54 To cor to sees 10, 11, 14<sup>and</sup> 15-

Land. Rolling  
Soil, 3rd rate.  
Good grazing.

71.8' West sees 10<sup>and</sup> 11  
to 13° 45' E

Descend

11.34 Cross canon 300 ft wide  
to 51 50° E and ascend

40.00 Set a Sandstone 19+14+7 ins

12 ins in the ground for  
1/4 see cor. marked 1/4 on  
N. face and. raised a  
mound of stone alongside  
Pits impracticable.

T 17 N. R 17 E

chs G<sup>nd</sup> S. R. W.

72.00

South bank of cañon 300ft deep. Co N. build stone mid for witness point. from this point I measure a base 2.96 chs East. from which a point on line on N bank of cañon. bears N. 25° W. which by calculation gives 6.34<sup>chs</sup> for width of cañon. ascert.

80.00

Set a Sandstone 24x18x3ins 18ins in the ground for the cor to see 2.3.10<sup>and</sup> 11. marked with 5 notches on Sand 2 notches on E edges and raised a mound of stone along side. It's impracticable. Land Rough <sup>and</sup> Rolling. Soil. 3<sup>rd</sup> acc. Good Grazing.

T17 N. R19 E

chs G<sup>and</sup> S.P. 3rd

East on a random line  
bet sees 2<sup>and</sup> 11.

ba 13° 30' E

Descend gradually.

40.00

Set a temporary 1/4 sec  
cor.

80.18

Intersect N<sup>and</sup> S line  
5.4 lbs S. of cor to sees 1, 2, 11  
<sup>and</sup> 12. Thence I run

S 89° 37' W on a true line  
bet sees 2<sup>and</sup> 11. same as

40.09

Set a Sandstone 184126 in  
12 ins in the ground for 1/4  
sec cor. marked 1/4 on  
N face, and raised a  
mound of stone alongside  
It's impracticable

80.18

To cor to sees 2, 3, 10<sup>and</sup> 11  
Land. See 11 is slightly rolling  
Soil. 8<sup>th</sup> rate

ch: T19 N. R19 E  
S<sup>and</sup> S R. W.

Good Faging

N. 8' W. on a random line  
bet-sec's 2<sup>and</sup> 3.

To 14' 00' E

Ascend gradually.

20.00 Top of N side 95-ft high  
bears N 28° W. and descended  
gradually.

40.00 Set a temporary 1/4 sec cor  
38.84 Intersect N Bony T<sub>p</sub> 34  
tho W. of cor to sec's 2.3-34<sup>and</sup> 35-  
recently re-established  
by me. Thence I ran  
80° 7' W on a true line bet.  
sec's 2<sup>and</sup> 3. same val.

38.84 Set a Sandstone 20+14+5 ms  
15 ms in the ground for 1/4 sec  
cor. marked 1/4 on W. face





T 17 N. R 17 E

ch. G. S. R. M.

From the Standard box  
to sees 33 <sup>and</sup> 34, in the 4<sup>th</sup>  
standard parallel with  
recently established by me  
I run

N. 8' W. bet sees 33 <sup>and</sup> 34

to 14°. 20' 8"

Descend gradually.

40.00 Set a Sandstone 24 + 10 + 8 in  
18 in in the ground for 1/4 see  
con marked 44 on N. face  
and raised a mound of  
stone alongside. This  
impracticable

41.10 To South Bank of canon  
100 ft deep. to N 60° W.  
From this point I send flag  
across, to N. Bank of canon  
and set it on line bet sees  
33. <sup>and</sup> 34. I then run a baseline

T. 17 N. R. 17 E

Chs G<sup>and</sup> S R. W.

3.50 chs east to a point  
whence, flag, bears N  
17° 30' W, which gives for  
distance across canon  
9.50 chs by calculation.

50.61

Across canon and ascent  
gradual.

8000

Set a Sandstone 20 + 12 + 10  
ins, 15 ins in the ground  
for the corals sees 27. 28. 33  
and 34, marked with 1 notch  
on S and 3 notches on E  
edges and raised a mound  
of stone along side. Delic-  
-practicable.

Sand. Rolling  
Soil. Stony if the soil.  
Some better Bush

S. 17 N. R 19 E

Chs 1/2 <sup>and</sup> S R. 7W

East on a sandstone line bet  
sees 27 <sup>and</sup> 34.

W 139° 30' E

Descend

40.10 Set a temporary 1/4 sec cor  
5° 4.30 to cross wash 60 lbs with Co  
N. 27° W. and ascend

80.32 Intersect N <sup>and</sup> S line 23 lbs  
N face to sees 26. 27. 34 <sup>and</sup> 35.  
Thence down.

40.16 N 89° 50' W on a true line bet  
sees 27 <sup>and</sup> 34 same cor,  
Set a Sandstone 27 + 13 lbs in  
20 ins in the ground for 1/4  
sec cor marked 1/4 on N  
face and raised a mound  
of stones alongside. Pet's  
impracticable

80.39 To cor to sees 27. 28. 33 <sup>and</sup> 34  
sand. See 34 is very rough <sup>and</sup>

T 17 N. R 17 E.  
 S 45 S. R. 4 N

and broken

Soil. Sandstone formation.  
 Some cedar Bush.

N 8' W bet sees 27 <sup>and</sup> 28  
 W 13:30' E

Was and gradually.

40.00

Set a Sandstone 24 + 18 + 27 in  
 18 in in the ground for  $\frac{1}{4}$   
 see cor. marked  $\frac{1}{4}$  in  
 W face and raised a  
 mound of stone along side  
 it's impracticable.

80.00

Set a Sandstone 37 + 20 + 9 in  
 28 in in the ground for  
 the cor to sees 21, 22, 27 <sup>and</sup> 28  
 marked with 2 notches on  
 Sand 3 notches on E  
 Edges and raised a

T 17 N. R 17 E

Chs S and S. R. W.

ground of stone alongside  
Pit impracticable.  
Land? Rough and Rocky.  
Soil, 4th rate.

East on a random line bet-  
sees 22 and 27.

to 132.30' E

Over rolling surface

40.00 Set a temporary 1/4 sec cor

7998 Intersect N and S line 5 lbs  
N of cor to sees 22, 23, 26 and 27.

Thence I run

N 89° 58' W on a true line bet-  
sees 22 and 27. same as

39.99 Set a Sandstone 22 + 17 + 26 is  
17 in in the ground for 1/4  
sec cor, marked 1/4 on  
N face, and raised a

T17 N. R 17 E

chs G and S. R. W.

- mound of stone alongside  
Pits - impracticable
- 79.98 To cor to sees 21.22.27 <sup>and 28</sup>  
Sand Rolling.  
Soil. 8<sup>th</sup> rate grazing good
- N 1.8' N bet sees 21 <sup>and 22</sup>  
In 13° 31' E
- Descend?
- 80.06 Cross Cañon 150 lbs mid  
to N 21° E. and Descend?
- 40.00 Set a Sandstone 16 + 15 + 3 in  
11 in in the ground for 1/4 sec  
cor. marked 1/4 on N. face  
and raised a mound of stone  
alongside. Pits - impracticable
- 80.00 Set a Sandstone 16 + 15 + 5 in  
11 in in the ground for the  
cor to sees 15, 16, 21 <sup>and 22,</sup>

T17 N. R 17 E

chs G<sup>and</sup> S. R W.

marked with 3 notches on S<sup>and</sup> E edges and raised a mound of stone alongside Pit's impracticable.

Land: Broken and rocky some good grazing slopes east Some Scattering boulders

Set on a random line bet seas 15<sup>and</sup> 22.

W 13°-30' E.

Descend.

1309 Cross rocky bank 23 lbs m's  
to N10° E. 22<sup>s</sup> deep, and ascend

40.00 Set a temporary 14 sec cor.

59.76 Intersect N. <sup>and</sup> S. line. 26 lbs  
N. of cor. to seas 14, 15, 22<sup>and</sup> 28

Thence down

N 89° 45' W on a true line bet.

T. 17 N. R. 17 E

Chs G and S R. M

secs 15 and 22, same val.

3988 Set a Sand stone,  $19 \times 12 \times 6$  ins., 12 ins. in the ground for  $\frac{1}{4}$  Sec, Cor, marked  $\frac{1}{4}$ . on N face, dug pits  $18 \times 18 \times 12$  ins. S and W of stone  $5\frac{1}{2}$  ft. dist. and raised a mound of earth  $1\frac{1}{2}$  ft. high.  $3\frac{1}{2}$  ft. base. alongside.

4976 To cor holes 15, 16, 21 and 22 Sand. Sec 22. is very rough and cut up with canions in East, some good? S on N. Soil 2<sup>nd</sup> rate

N. 8' N. bet secs 15<sup>and</sup> 16

W 13° 30' E

Descent

40.00 Set a Sandstone  $17 \times 14 \times 7$  ins 11 ins in the ground for  $\frac{1}{4}$  sec cor marked  $\frac{1}{4}$  on N face



T 19 N. R 19 E

chis 6<sup>and</sup> S. R. Meridian.

and raised a mound of stone  
 alongside. It's impracticable  
 42.70 Commence to ascend?  
 80.00 Set a sandstone. 27+17+9ms  
 20 ins in the ground for the  
 cor to see 9. 10. 15<sup>and</sup> 16. marked  
 with 4 notches on S. and 3  
 notches on E. edges and raised  
 a mound of stone alongside  
 it's impracticable.  
 Land Rolling hills.  
 Soil. 3<sup>rd</sup> rates.  
 Good grazing

East on a random line let  
 see 10<sup>and</sup> 15

to 13. 5' 6" E

Ascend gradually.

40.00 Set a temporary 1/4 see cor

T 17 N. R. 17 E

Chs by <sup>and</sup> S. R. W.

- |       |  |
|-------|--|
| 68.20 | <p style="text-align: center;"><i>Chavelon</i></p> <p>To N. edge of Chavelon's Fort<br/>30 chs wide in cañon 300 ft deep<br/>Co N. <math>10^{\circ}</math> E. From this point<br/>I send flag across cañon<br/>and set it on line to see's<br/>10<sup>and</sup> 15. I then run a base<br/>line 2.50 chs N. to a point<br/>whence flag bears S <math>60^{\circ}</math> E.<br/>which gives for distance across<br/>cañon 4.33 chs by calculation</p> |
| 72.53 | Resume line.   |
| 79.58 | <p>Intersect N<sup>and</sup> S line 12 chs<br/>N of cor to see's 10-11-14<sup>and</sup> 15-<br/>Thence I run<br/>N <math>89^{\circ} 55'</math> on a true line.<br/>to see's 10<sup>and</sup> 15. same as</p>   |
| 89.79 | <p>Set a Sand stone, 20 x 10 x 4 ins. 15<sup>ins.</sup><br/>in the ground for <math>\frac{1}{2}</math> Sec, Cor, marked <math>\frac{1}{2}</math>. on N<br/>face, dug pits 18 x 18 x 12 ins. E and W.<br/>of stone <math>5\frac{1}{2}</math> ft. dist. and raised a mound of earth<br/><math>1\frac{1}{2}</math> ft. high. <math>3\frac{1}{2}</math> ft. base. alongside.</p>   |

T 17 N. R 17 E

Cps G<sup>and</sup> S R. MW.

4958 To cor trees 9.10.15<sup>and</sup> 6.  
 Land Sec 15-<sup>is</sup> rough <sup>and</sup>  
 rocky. plenty of running water  
 in cañon but almost impossible  
 to reach.

Soil. 8<sup>th</sup> soil.

Some scattering Cedars

N 8' W 1/4 Sec 9<sup>and</sup> 10

In 13° 35' E

Ascent Gradual.

13.15 Top of hill bears N 80° E 4 ft.  
 high and descend.

40.00 Set a Sandstone 20 x 10 x 4 ins., 15 ins.  
 in the ground for 1/4 Sec, Cor, marked 1/4. on N  
 face, dug pits 18 x 18 x 12 ins. N and S  
 of stone 5 1/2 ft. dist. and raised a mound of earth  
 1 1/2 ft. high. 3 1/2 ft. base. alongside.

80 00 Set a Sandstone 20 x 10 x 4 ins

T 17 N. R 17 E

Chis G<sup>and</sup> S. R. M.

15' in the ground for the  
 cor to sees 3, 4, 9<sup>and</sup> 10,  
 marked with 5 notches  
 on S. and 3 notches on  
 E edges and raised a mound  
 of stone alongside. Pils  
 impracticable  
 Land, Rolling  
 Soil, 3<sup>rd</sup> rate  
 Grade Grazing

East on a random line bet -  
 sees 3<sup>and</sup> 10.

lat 13° 36' 8"

Deseeds.

40.00 Set a temporary 1/4 sec  
 cor.

47.00 Meet Banks of canon bet N 20° W  
 300 ft deep. From this point

T 17 N. R. 17 E  
 Chs G<sup>nd</sup> S. R. M.

I send flag across cañon  
 and set it on line bet-  
 sees 3<sup>rd</sup> & 10. I then measure  
 a base line 3.00 chs South  
 to a point whence flag bears  
 N 60° E. which gives for  
 distance across cañon  
 6:20 chs, by calculation;

- 52.20 Resume Line,
- 49.86 Intersect N<sup>th</sup> & S line. 17 chs  
 N of cor to sees 2, 3, 9<sup>th</sup> & 10  
 Thence I run,  
 N. 89° 53' N on a true line to  
 sees 3<sup>rd</sup> & 10. same val
- 39.93 Set a Sandstone set 10 + 10  
 18 ins in the ground for 44 see  
 cor. marked. 1/4 in. N. face  
 and raised a mound of stone  
 along see. It is impracticable
- 49.86 To cor to sees 3, 4, 9<sup>th</sup> & 10

T. 17 N. R 17 E

Chs. G<sup>and</sup> S. R. M.

Land. See 10 in rough <sup>and rocky</sup>  
Soil; 8<sup>th</sup> rate for grazing

N. 8' W on a random line to  
secs 3 <sup>and</sup> 4.

at 13° 35' E

Descend gradually.

40.00 Set a temporary 1/4 sec  
cor.

58.56 Intersect N. Boundary of Gp  
recently re-established  
by one, 22 lks N. of cor to  
secs 3, 4, 33 <sup>and</sup> 34.

Thence I run.

S. 0° 9' W. on a true line to secs  
3 <sup>and</sup> 4. Same run.

38.56 Set a Sandstone 18 + 9 + 8 in  
12 in in the ground for 1/4  
sec cor. marked 1/4 on N

9.17 N. R 17 E

chs G and S R. M.

and raised a mound, d  
stone along side Pis

practically

70. 5-6

To Cor W Sec 8-4-9-10  
Land. Sec 4 is Rough and Rocky  
Soil. 3<sup>rd</sup> rate, poor grass

I carefully examined the  
adjustments of my solar  
compass to day particularly  
the latitude and reversing  
apparatus and found them  
correct.

M. M. Grant.

June 29<sup>th</sup> 1883

T. of N. R 17 E  
 Chs. S. and S. R. W.

From the Standard Cor  
 to sees 32 and 33. on the  
 4<sup>th</sup> Standard Parallel  
 North, recently established  
 by me. I. run

North 8° W bet sees 32 and 33

on 14° 30' E

Descend.

30.25 Cross wash 20 lbs wide

Co N. 20° W. and continue  
 to descend gradually.

40.00 Set a Sandstone 24+10+8 in  
 18 in in the ground for 1/4  
 see cor marked 1/4 on W

face. and, raised a mound  
 of stone along side. Pits  
 impracticable.

46.00 South Bank of canon Co

N 60° E. 300 ft deep. 4 in.

Stone mid 3 ft high for witness point



T 17 N. R. 17 E.

chs G and S. R. W.

From this point I send flag across cañon and set it on line between B and 10.

I then measure a base line 2.02 chs East to a point; whence; flag bears  $N 11^{\circ} 15' W$ . which gives for distance across cañon 10.16 chs by calculation.

36.16 Resume line and continue North.

80.00 Set a sandstone  $16 + 14 + 12$  is 11 ins in the ground for the cor base is 28.29.32 <sup>and</sup> 33 marked with 1 notch on S and 4 notches on E edges and raised a mound of stone along it. It's impracticable to set a monument here. Sand: very rough and broken Soil, 8th rate. no grass.

T17 N R 17 E

chs. G<sup>and</sup> S. R. M

Some scattering Cedar Bush

East on a random line bet-  
secs 28<sup>and</sup> 33.

In 130° 30' E

descend,

40.00 Set a temporary 1/4 sec cor  
62.25 To West Bank of Canon Co  
N. 300 ft deep. From this  
point I send flag across  
canon and set it on line  
bet secs 28<sup>and</sup> 33. I then measure  
a base. 300 South to a point  
whence flag bears N 65° 35' E  
which gives for distance  
across canon 6.32 lks by  
calculation.

68 57 Resume line &amp; continue East

T17 N. R17 E

G<sup>and</sup> S. R. NW.

29.94 Intersect N + S line 47 lbs  
N of cor to sees 27.28.33<sup>and</sup>  
34. Hence Iron.

N 89° 40' Non a Incline at  
sees 28<sup>and</sup> 33. Same as

39.94 Set a Sandstone 30 + 15 + 10 in  
22 in in the ground for  
44 see cor marked 44  
N face and raised a mound  
of stone alongside. It's

79.94 3/4 cor to sees 28.29.32<sup>and</sup> 33  
Land. Very rough and rocky  
sandstone formation  
Some scattering below,

N. 8' N. Set sees 28<sup>and</sup> 29

2a 13° 30' E

Descend. Gradually.

40.00 Set a Sandstone 30 + 15 + 4 in

T 17 N. R. 17 E

chs G<sup>4</sup> S. R. W.

22 ins in the ground for  
 74 see cor marked 74 on  
 W face and raised a mound  
 of stone along side. Pits in-  
 practicable.

60.50 Commenced to ascend.

80.00 Set a sandstone 28 1/4 28 ins  
 21 ins in the ground for the  
 cor to sees. 20.21.28<sup>and</sup> 29.  
 marked with 2 notches on  
 S and 4 notches on E<sup>edges</sup>  
 and raised a mound of stone  
 along side. Pits in practicable.  
 Sand. Rough <sup>and</sup> rocky in places  
 Soil. <sup>at</sup> rate. some good grass  
 Timber - Scattering cedar

T17 N. R17 E.

chs by <sup>and</sup> S. R. Meridian.

East on a random line bet sees  
21 <sup>and</sup> 28.

to 13° 30' E

Descend.

40.00 Set a temporary 1/4 sec cor

66.94 Cross canon 300 chs wide

160 ft deep. to N 23° E. and  
Ascend. gradually.

80.16 Intersect N <sup>and</sup> S line 14 chs

N. of cor to sees 21. 22. 27 <sup>and</sup> 28

Then ascend

N 89° 00' W on a true line bet  
sees 21 <sup>and</sup> 28. same ea

40.08 Set a Sandstone 19 + 12 + 7 ins

12 ins in the ground for 1/4 sec

cor marked 1/4 on N. face  
and raised a mound of stone

80.16 along side. Pits impracticable  
bet sees 20. 21. 28. 29.

East rough & overgrown, some grass  
soil 8' deep. Scattering <sup>beds</sup>

T17 N. R 17 E.

chs G<sup>and</sup> S R W

N. 8' W lat-secs 20<sup>and</sup> 21  
W 130.30' E

Ascend

20.00 Top of hill bears N 37° E and  
descends

40.00 Set a Sandstone 24 x 9 x 8 ins  
18 ins in the ground for  
1/4 sec cor marked 1/4 on  
N face and raised a  
mound of stone along side  
Pits impracticable.

80.00 Set a Sand stone 25 x 7 x 9 ins, 18 ins. in  
the ground for Cor. to Secs. 16-17-20<sup>and</sup> 21 marked  
with 3 notches on S. and 4 notches on E. edges,  
dug pits 18 x 18 x 12 ins. in each Sec., 5 1/2 ft.  
dist. and raised a mound of earth 2 ft. high,  
4 1/2 ft. base. alongside.

Sand Rolling <sup>and</sup> Hoisting in place  
Soil - good & 1/4 to 1/2  
Good, pass

T17 N R17 E.

Chs by S. R. W

East on a random line bet  
secs 16 and 21Lat  $13^{\circ} 30' E$ 

Ascend.

38.00 Reach point of hill base  
N  $17^{\circ} E$ . and descend.

40.00 Set a temporary 1/4 sec cor

79.88 Intersect N 1/2 line 9 lbs S  
of cor to secs 15, 16, 21 and 22  
Thence & run.889.86' N on a true line bet  
secs 16 and 21. same as89.94 Set a post 3 ft. long 3 ins. diam with marked  
stone, 12 ins, in the ground for 1/4 Sec, Cor,  
marked 1/2 S. on N face, dug pits 18 x 18 x 12  
ins. E and W of post 5 1/2 ft. dist. and raised  
a mound of earth 1 1/2 ft. high. 3 1/2 ft. base. around  
post.

79.88 To cor &amp; secs 16, 17, 20 and 21.

Sand. Rolling. Sandstone  
in places

T 17 N. R 17 E  
 Ch<sup>s</sup> G<sup>ms</sup> S. R M.

Soil. 3rd & 4<sup>th</sup> rate  
 Grazing Good?

70.8' W ~~Sec~~ Secs 16 and 19  
 Ia 13° 30' E

Descend

26.12 Cross mark 24 lbs mis 60  
 N. E. and ascend.

40.00 Set a Sandstone 21 + 17 + 6 ins  
 18' mis in the ground for 1/4  
 see cor marked 1/4 on W  
 face and raised a mound  
 of stone along side. Pits  
 impracticable

49.80 Top of Ridge 40 ft high bears  
 N 80° E. and descend,

80.00 Set a Sand stone 20 x 8 x 4 ins, 15' ins. in  
 the ground for Cor. to Secs. 19, 16 and 17 marked  
 with 4 notches on S. and 4 notches on E. edges,  
 dug pits 18 x 18 x 12 ins. in each Sec. 51 ft



T 17 N. R 17 E

Ch<sup>s</sup> G<sup>and</sup> S. R. M.

dist. and raised a mound of earth 2 ft. high.  
4½ ft. base. alongside.

Land. Rolling. ~~xxxx~~  
Soil. 3<sup>rd</sup> class.  
Ground freezing.

East on a random line bet-  
sees 9<sup>and</sup> 16.

Pa 18° 35' E

Ascend

18.73

Top of Ridge has N 62° E  
and descend.

37.46

cross wash 32 lks with Co  
N<sup>and</sup> ascend.

40.00

Set a temporary 1/4 sec cor

80.30

Intersect N S line 26

lks S of cor to sees 9, 10, 15  
and 16. thence I run  
(over)

T 17 N. R 17 E

Chs G and S. R. W

40.15 - S 89° 49' W in a true line  
bet sees 9<sup>th</sup> and 16, same rd  
Set a Sandstone 34 + 10 + 9 in  
26 in's in the ground for  
1/4 sec cor marked 1/4 on  
N face and raised a mound  
of stone along side of it on  
- practicable.

80.30 To cor to sees 8, 9, 16 and 17,  
Sand Rolling <sup>and</sup> rocky  
Soil, 500 rate.  
Road paving

N. 8° W bet sees 2<sup>nd</sup> and 9.

Dip, 13° 35' E

20 sec end.

40.00 Set a Sandstone 30 + 6 + 6 in  
22 in's in the ground for  
1/4 sec cor. marked 1/4 on

T17 N. R17 E  
 Chs G. S. R. W.

W. face, and raised a  
 mound of stone along side  
 Pit - impracticable.

84.00 Set a Sandstone 20 x 18 x 10 in  
 15' in in the ground for  
 the cor trees 4, 5, 8 and 9  
 marked with 6 notches on  
 Sand? 4 notches on E edge  
 and raised a mound of  
 stone along side Pit -  
 impracticable.  
 Sand? Rolling top  
 Soil, 3rd rate. Good foraging

East in a random line  
 bet sees 4 and 9.

W 13° 30' E

Descend?

41.28

Cross Wash 15-lbs in 8 Co

67

T 17 N. R 17 E

Chs G<sup>and</sup> S. R. W

- N. and ascend.
- 18115 Top of Spur 20 ft high base  
N<sup>and</sup> descend.
- 40.00 Set a temporary 14 see on
- 45117 Cross wash 10 lbs wide Co N.E.  
and ascend.
- 62000 Top of Spur 30 ft high base  
N.E. and descend.
- 79.74 Intersect N. & S line 11 lb  
N of cor to sees 3, 4, 9<sup>and</sup> 10  
Thence I run  
N. 89° 55' - Non a true line bet  
sees 4<sup>and</sup> 9. same as
- 39.87 Set a sand stone, 20 x 20 x 11 ins., 15 ins.  
in the ground for 1/4 See, Cor, marked 1/4 on N  
face, dug pits 18 x 18 x 12 ins. E and W  
of stone 5 1/2 ft. dist. and raised a mound of earth  
1 1/2 ft. high. 3 1/2 ft. base. alongside.
- 79.74 To cor to sees 4, 5, 8<sup>and</sup> 9.  
Sand. Rolling<sup>and</sup> rough

T 17 N. R. 17 E

chs G<sup>nd</sup> S. R. MSoil 4<sup>th</sup> rate.

Good grazing.

N. 8' W for a random line  
trees, 4<sup>th</sup> 5'

W 13'-30' E

Descend

37.00 Cross creek 20 lks more  
to N. E. and ascend.40.00 Set a temporary 1/4 sec  
cor48.70 Intersect N B by Sp. 9 lks  
east of the cor & see 4.  
5:32<sup>nd</sup> 33. recently re-  
established by me.

Thence down

S 0:12' E on a true line 41-  
see 4<sup>th</sup> 5'. same var.

38.70 Set a sandstone 18+10+4 in

T 17 N. R 17 E  
 G<sup>nd</sup> S. R W

12 ins in the ground for  $\frac{1}{4}$   
 see cor marked  $\frac{1}{4}$  in W  
 face and raised a  
 mound of stone along side  
 Pits impracticable.

78.70 Go cor to sees 4, 5, 8<sup>and</sup> 9.

Sand Rolling & open  
 Soil, 3<sup>rd</sup> rate, good paying  
 I carefully examined the  
 adjustments of my solar  
 compass to see particularly  
 the latitude and nooning  
 apparatus and found  
 them correct.

A. H. Arnold Compassman  
 June 29<sup>th</sup> 1883.

Chs

T 17 N. R 17 E

G<sup>and</sup> S. R. W.

From the standard cor to  
 sees 31. <sup>and</sup> 32 on the ~~St. C.~~  
 Standard <sup>Parallel</sup> North recently  
 established by me.

From

N. 8° W between 31 <sup>and</sup> 32

To 13° 45' E.

~~Ascend~~ Gradually.

40.00

Set a post 3 ft. long 3 ins. diam with marked  
 stone, 12 ins, in the ground for  $\frac{1}{2}$  Sec, Cor,  
 marked  $\frac{1}{2}$  S. on W face, dug pits 18 x 18 x 12  
 ins. N and S of post 5  $\frac{1}{2}$  ft. dist. and raised  
 a mound of earth 1  $\frac{1}{2}$  ft. high. 3  $\frac{1}{2}$  ft. base. around  
 post.

42.77

Top of E point of hill bears  
 S. W. and descend.

80.00

Set a sandstone 44 + 16 + 4 in  
 30 in in the ground for  
 the cor to sees 29. 30. 31 <sup>and</sup> 32  
 marked. with 1 notch on S  
 and 5 notches on E edges

T 17 N. R 19 E  
 chs G & S. R W

and raised a mound of stone  
 alongside Pitt's impracticable.  
 Land Rolling & open,  
 rocky in some places.  
 Soil. ~~not~~ rate good grass

Set on a random line bet  
 sees 29<sup>th</sup> & 32.

W 13° 45' E

Resecond gradually

40.00 Set a temporary 1/4 sec cor

80.46 Intersect N<sup>th</sup> & S line 32 lbs

Set cor to sees 28. 29. 32<sup>nd</sup> & 33

Thened Drun.

589. 46' W on a true line bet  
 sees 29<sup>th</sup> & 32. same as

40.28 Set a post 3 ft. long 3 ins. diam with marked  
 stone, 12 ins, in the ground for 1/4 Sec. Cor,  
 marked 1/4 S. on N<sup>th</sup> face, dug pits 18 x 18 x 12  
 ins. E and W of post 51 ft. dist. and raised



ch<sup>s</sup> T 17 N. R 17 E  
 S<sup>45</sup> and S. R M.

a mound of earth 14 ft. high, 3 1/2 ft. base around  
 post.

8046 To cor to sees 29, 30-31<sup>and 32</sup>  
 Land: See 32. is rolling and  
 broken on E and rolling on  
 W, good grazing.  
 Soil. 3<sup>rd</sup> rate.

M. W. Grant.

June 30<sup>th</sup> 1882

Went on a random line bet-  
 sees 30<sup>and 31</sup>.

To 13° 45' E

Accred gradually.

40.00 Set a temporary 1/4 sec cor

5988 Intersect N. Body Sp. 16 lbs

N of the cor to sees 25-30-31

<sup>and 36</sup>. recently established by me

Placed run

T 17 N. R 17 E

chs E and S. R. W

39.88 189° 53'  $\odot$  on a true line  
 bet sees 20<sup>and</sup> 31 same rot  
 Set a Sand stone, 14 x 8 x 7 ins., 9 ins.  
 in the ground for  $\frac{1}{4}$  Sec, Cor, marked  $\frac{1}{4}$ . on N  
 face, dug pits 18 x 18 x 12 ins. E and W  
 of stone 5 $\frac{1}{2}$  ft. dist. and raised a mound of earth  
 1 $\frac{1}{2}$  ft. high 3 $\frac{1}{2}$  ft. base alongside.

39.88 To cor to sees 29-30-31<sup>and</sup> 32  
 Land See 31 is rolling  
 Soil. 8<sup>th</sup> rate good prairie  
 A. B. Arnold Comptroller  
 June 20. 1883.

N. 8' W bet sees 29<sup>and</sup> 30  
 Ea 13° 45' E

40.00 Descend gradually.  
 Set a Sand stone, 14 x 8 x 6 ins., 9 ins.  
 in the ground for  $\frac{1}{4}$  Sec, Cor, marked  $\frac{1}{4}$ . on N  
 face, dug pits 18 x 18 x 12 ins. N and S  
 of stone 5 $\frac{1}{2}$  ft. dist. and raised a mound of earth  
 1 $\frac{1}{2}$  ft. high 3 $\frac{1}{2}$  ft. base alongside.

P 17 N. R 17 E

G and S. R. W.

78.80 Cross wash 25 lbs wide to  
N.E. 30 ft below cor and ascend

80.00 Set a sandstone 26 ft x 6 in  
20 in in the ground for  
the cor to see 19-20-29 <sup>and 30</sup>  
marked with 2 notches on  
S and 5 notches on E edges  
and raised a mound of stone  
along side. Pit is impracticable  
Sand: Rollup. & broken  
Soil. Stony 3/4 ft deep

East on a random line  
between 20 <sup>and</sup> 29.

Da 13° 35' E

1.00 Descend gradually.  
Cross wash 13 lbs wide  
to N.E. and ascend  
gradually.

T. 17 N. R. 17 E

Chs G and S. R. W.

- 40.00 Set a temporary  $1/4$  sec cor
- 61.91 Top <sup>of ridge</sup> & descend S.E. slope
- 80.10 Intersect N and S line  
49 lbs S of cor to see's 20.21  
28 and 29. Thence I run  
S 89° 39' N on a true line  
let see's 20 and 29 same on
- 40.03 Set a Sandstone 14+10+5' in  
9' in the ground for  $1/4$   
sec cor marked  $1/4$  on  
N face and raised a  
mound of stone alongside  
Pit impracticable.
- 80.10 P. cor to see's 19. 20. 29 and 30  
Sand. See 29 is rolling and  
open good grazing  
Soil 2<sup>nd</sup> rate.  
M. N. Grant. June 30<sup>th</sup> 1888.

T 17 N. R 17 E

chs E of S. R. M.

Section a or on line

bet sees 19<sup>and</sup> 30

2a 13° 35' E

38.40

Cross wash at lks mid<sup>ts</sup>to N. 48° E. and ascend  
gradually.

40.00

Set a temporary 1/4 sec cor

80.30

Intersect N<sup>and</sup> S line 24lks S of cor to sees 19. 24. 25<sup>and</sup>  
30. recently established

by me. Thence I run

S 89° 50' E on a true line

bet sees. 19. <sup>and</sup> 30. same 2a

40.30

Set a Sand stone, 14 x 8 x 6 ins., 9 ins.  
in the ground for 1/4 Sec, Cor, marked 1/4 on N  
face, dug pits 18 x 18 x 12 ins. E and W  
of stone 5 1/2 ft. dist. and raised a mound of earth  
1 1/2 ft. high. 3 1/2 ft. base. alongside.

80.30

To cor to sees 19. 21. 29<sup>and</sup> 30

Land. See 30. Rolling Sloping

T 17 N. R 17 E

chs G and S. R. M.

to the W.

Soil. rocky 3<sup>rd</sup> 4<sup>th</sup> rate

Good pass

B H Arnold, Comptroller

June 30<sup>th</sup> 1883

N. 8' N lat-sec 19<sup>th</sup> 20

to 13'-30' E

Ascend gradually.

19.00

Top of low hill bears N 40° E

and descend gradually.

35.60

cross wash 21 lbs mib Co N. E.

and ascend gradually

40.00

Set a Sand stone, 8 x 12 x 4 ins., 12 ins.

in the ground for 1/4 Sec, Cor, marked 1/4 on N

face, dug pits 18 x 18 x 12 ins. N and S

of stone 5 1/2 ft. dist. and raised a mound of earth

1 1/2 ft, high, 3 1/2 ft. base. alongside.

T 17 21. R 17 E  
 chs G and S. R. M.

80.00 Set a sand stone  $17 \times 14 \times 3$  ins. 11 ins. in the ground for Cor, to Sees. 17-18-19 & 20 marked with G notches on S. and S notches on E. edges, dug pits  $18 \times 18 \times 12$  ins. in each See.,  $5\frac{1}{2}$  ft. dist. and raised a mound of earth 2 ft. high.  $4\frac{1}{2}$  ft. base. alongside.

Sand. Rolling and open Soil; 2<sup>nd</sup> rate. good grazing.

East on a random line bet-  
 sees 17 and 20.

To  $130^{\circ} 45' E$

Descend gradually.

40.00 Set a temporary  $\frac{1}{4}$  sec cor

61.15- Cross mark 28 lbs ridge

to  $N. 35^{\circ} E$ . and ascend

gradually.

80.28 Intersect N. 7.5 line 15 lbs  
 N of cor to sees 16. 17. 20 and 21

T 17 N. R 17 E

Ch<sup>c</sup> G<sup>and</sup> S. R. W.

Thence I run  
N 89° 54' W. on a true line  
bet sees. 17<sup>and</sup> 20 same as

40.14 Set a sand stone, 14 x 14 x 4 ins., 9 ins.  
in the ground for  $\frac{1}{2}$  Sec, Cor, marked  $\frac{1}{2}$ . on N  
face, dug pits 18 x 18 x 12 ins. E and W  
of stone 5 $\frac{1}{2}$  ft. dist. and raised a mound of earth  
1 $\frac{1}{2}$  ft. high. 3 $\frac{1}{2}$  ft. base. alongside.

80.28 To cor to sees 17, 18, 19<sup>and</sup> 20  
Sand? See 20 is Rough & Rocky  
Soil, 3<sup>rd</sup> rate good grass,  
Timber. Some Juniper.  
M. W. Grant.  
June 30<sup>th</sup> 1883

Next on a random line bet  
sees 18<sup>and</sup> 19.

to 13° 45' E  
Ascend gradually



P 17 N. R 17 E

cl's G<sup>my</sup> S. R. W.

40.00 Set a temporary 1/4 sec cor

80.56 Intersect N. Riv<sup>g</sup> of 40 lks  
S of cor to sec's 13, 18, 19<sup>and</sup> 24  
recently established by me  
Thence run.

S 89° 43' E on a true line  
bet sec's 18<sup>and</sup> 19 same as

40.56 Set a sand stone, 14 x 12 x 4 ins., 9 ins.  
in the ground for 1/4 Sec, Cor, marked 1/4. on N  
face, dug pits 18 x 18 x 12 ins. E and W  
of stone 5 1/2 ft. dist. and raised a mound of earth  
1 1/2 ft. high. 3 1/2 ft. base. alongside.

80.56 To cor to sec's 19, 18, 19<sup>and</sup> 20  
Sand. Sec 19 is rolling & open  
rocks in places good grazing  
Point. Scattered below  
A H Arnold

Compass Man  
June 30<sup>th</sup> 1883

T19 N. R19 E.

chs by <sup>and</sup> S. R. M.N 8' N set sees: 17 <sup>and</sup> 18

Ra 13° 45' E

40.00

Set a *Sand* stone, 15 x 10 x 2 ins., 10 ins. in the ground for  $\frac{1}{2}$  Sec, Cor, marked  $\frac{1}{2}$ . on *N* face, dug pits 18 x 18 x 12 ins. *N* and *S* of stone 5 $\frac{1}{2}$  ft. dist. and raised a mound of earth 1 $\frac{1}{2}$  ft. high. 3 $\frac{1}{2}$  ft. base. alongside.

80.00

Set a *Lime* stone 6 x 2 x 5 ins., 10 ins. in the ground for Cor, to Sees, 7, 8, 17 <sup>and</sup> 18 marked with 4 notches on *S.* and 5 notches on *E.* edges, dug pits 18 x 18 x 12 ins. in each Sec., 5 $\frac{1}{2}$  ft. dist. and raised a mound of earth 2 ft. high. 4 $\frac{1}{2}$  ft. base. alongside.

*Sand* Rolling fine grazing  
Soil. 8<sup>th</sup> rate

T17 N. R 17 E

Chs G and S. R. M

East on a random line  
bet sees 8<sup>and</sup> 17.

on  $13^{\circ} 55' E$

Ascend gradually.

40.00 Set a temporary  $\frac{1}{4}$  sec  
cor.

79.96 Intersect N<sup>and</sup> S line & lks  
S of cor to sees 8, 9, 16<sup>and</sup> 17

Thence Iron.

S  $89^{\circ} 57' N$  on a true line  
bet sees 8<sup>and</sup> 17. same as

39.98 Set a sand stone,  $14 \times 8 \times 6$  ins., 9 ins.  
in the ground for  $\frac{1}{4}$  Sec, Cor, marked  $\frac{1}{4}$  on N  
face, dug pits  $18 \times 18 \times 12$  ins. S and W.  
of stone  $5\frac{1}{2}$  ft. dist. and raised a mound of earth  
 $1\frac{1}{2}$  ft. high,  $3\frac{1}{2}$  ft. base. alongside.

79.96 To cor to sees 7, 8, 17<sup>and</sup> 18  
Sand. Rolling good paying  
Soil. red water, ~~open~~  
M. W. Grant, June 3, 1883

T 17 N. R 17 E

Chs G<sup>ms</sup> S. R. M.

Section a random line  
bet sees 7<sup>ms</sup> and 18.

D<sub>a</sub> 13° 30' 52"D<sub>e</sub> descend gradually

40.00 Set a temporary 1/4 sec cor

59.00 Cross mark 17 lks mid<sup>s</sup> Co 21  
and ascend gradually.80.40 Intersect M. B<sup>dy</sup> Sp. 19 lks  
S of cor to sees 7. 12. 13<sup>ms</sup> and 18  
recently established by me  
Thence I run.S 89° 32' E. on a true line  
bet sees 7<sup>ms</sup> and 18 same ea.40.40 Set a sandstone, 14 x 8 x 6 ins., 9 ins.  
in the ground for 1/4 Sec, Cor, marked 1/4" on N  
face, dug pits 18 x 18 x 12 ins. E and W  
of stone 5 1/2 ft. dist. and raised a mound of earth  
1 1/2 ft. high. 3 1/2 ft. base. alongside.80.40 To cor to sees 7. 8. 17<sup>ms</sup> and 18  
Sandst. Sec 18 as rolling

T 17 N. R 17 E

chs G and S. R W.

Sloping northward.  
good grazing, no water.  
Soil - 2<sup>nd</sup> rate.

N. 8° W set sec's 7<sup>and 8</sup>  
in 13. 26 E

Ascend gradually,  
 24.65 Top of ridge bears N. E. <sup>and S. W.</sup>  
 30 ft high and descend?  
 40.00 Set a sandstone 20 + 18 + 6a's  
 15' vis in the ground for 1/4  
 sec cor. marked. 14 on  
 N. face, and raised  
 a mound of feline along  
 side pits impracticable  
 79.81 Cross wash 20 lbs wide Co  
 N. E. and ascend.  
 (over)

T 17 N. R 17 E  
 etc. G<sup>1/2</sup> of S.R. M

80.00 Set a sand stone  $22 \times 18 \times 5$  ins, 19 ins. in the ground for Cor. to Secs. 56. 748, marked with 6 notches on S. and 5 notches on E. edges, dug pits 18 x 18 x 12 ins. in each Sec., 5 1/2 ft. dist. and raised a mound of earth 2 ft. high. 4 1/2 ft. base. alongside.

Land Rolling Rocks in places  
 Soil, - 3<sup>rd</sup> rate. Good grazing

East on a random line let  
 Secs 6<sup>th</sup> N. E.

to 130° 35' E

Descent.

.94 Cross road 20 lbs m<sup>o</sup>  
 to N. E. and ascent.

22.21 Top of Spur has N. E. 20 ft.  
 high cut descent.

45.00 Set a temporary 1/4 sec  
 cor.

T17 N. R 17 E

chs C<sup>and</sup> S R. M.4300 Cross mark 18 chs mark  
bet N-E and arcued,80.42 Interest N+S line,  
47. lbs Sof cor to sees 4.5-  
8<sup>and</sup> 9. Thence down  
S 89° 40' N, on a true line  
bet sees 5<sup>and</sup> 8. same rd40.21 Set a sandstone 221 20+100  
ins. 16 ins in the ground  
for 1/4 see cor marked 1/4  
on N face and raised  
a mound of stone  
alongside it impracticable80.42 P. cor to sees 5b. 7<sup>and</sup> 8.  
Land. See 8. Smooth rolling  
on N 1/2. rough track on 1/2  
good grass  
Soil. 3rd sale  
I carefully examined

T 17 N. R 17 E

oh's G<sup>and</sup> S. R M

the adjustments of my  
solar compass today  
Particularly the latitude  
and reversing apparatus  
and found them correct -  
M N Grant, June 30  
1883

Went on a random line  
bet sees 6<sup>and</sup> 7.

W 13° 35' E

Ascend gradually -

40.00 Set a temporary 1/4 sec cor.

80.26 Interest N Bdy Sp 30

lbs N. of cor to sees 1, 6, 7

and 12, recently established  
by me. Thence I run

N 89° 31' E on a true line

bet sees 6<sup>and</sup> 7. same ea



T17 N. R. 17 E

chs G<sup>and</sup> S R. M

40.26 Set a sand stone, 20x 10x 4 ins., 15 ins. in the ground for  $\frac{1}{2}$  Sec, Cor, marked  $\frac{1}{2}$ . on N face, dug pits 18 x 18 x 12 ins. S and W of stone 5 $\frac{1}{2}$  ft. dist. and raised a mound of earth 1 $\frac{1}{2}$  ft. high, 3 $\frac{1}{2}$  ft. base. alongside.

80.26 To cor w sees 6.6. 7<sup>and</sup> 8.  
Sand. Rolling slopes North.  
Soil. 3<sup>rd</sup> rate good grazing

N. 8.° W on a random line bet  
sees 6<sup>and</sup> 6.

to 13° 35' E

Ascend gradually.

32.00 Top of 2<sup>nd</sup> peak bears N 30° E  
25-ft high and descend

40.00 Set a temporary  $\frac{1}{4}$  sec for

46.00 cross wash 10 ch. wide

by E. and ascend gradually

78.61 Intersect N 13° E Sp. 52 ch

T 17 N. R 17 E

cls G<sup>nd</sup> S. R. W

E of the cor to sees 6. 6-31  
 and 32. recently reestablished  
 by me. Thence down  
 S. 0. 90' E on a true line  
 to sees 5<sup>and</sup> 6. same val

98. 61 Set a sand stone, 15 x 10 x 4 ins., 10 ins.  
 in the ground for  $\frac{1}{4}$  Sec, Cor, marked  $\frac{1}{4}$ . on N  
 face, dug pits 18 x 18 x 12 ins. N and S  
 of stone 5 $\frac{1}{2}$  ft. dist. and raised a mound of earth  
 1 $\frac{1}{2}$  ft. high 3 $\frac{1}{2}$  ft. base. alongside.

98. 61 To cor to sees 5. 6. 7<sup>and</sup> 8.  
 Land. Sees 6<sup>and</sup> 6. rolling  
 soil. ~~8<sup>and</sup> 2000~~  
 good grazing.  
 Timber. Scattering cedars  
 Carefully examined the  
 adjustments of my solar  
 compass to day, particularly  
 the latitude, and reversing  
 apparatus and found them  
 correct.

T 17 N. R. 17 E.

ls and S. R. W.

A. H. Arnold

Compassman

June 30<sup>th</sup> 1883

S 19 N R 19 E

BOOK

262

## General Description

The South half of this T<sub>p</sub> is rolling surface very rocky with a scattering growth of Juniper Bush.

Remainder of T<sub>p</sub> is not so rocky, <sup>except</sup> along or near the Canon "Cherlono's Fort" in which there is plenty of living water. But almost inaccessible, on account of the abrupt banks of canon. Cottonwood banks, a cabin, and corrals are in sec 13.

Sandstone formation throughout the T<sub>p</sub>.

# Final Oaths for Surveys.

## LIST OF NAMES.

List of the names of the individuals employed by \_\_\_\_\_

*W. A. Grant*, United States  
 Deputy Surveyor, to assist in running, measuring, and marking  
 the lines and corners described in the foregoing field-notes of the  
 survey of ~~the 3rd Stand. Parcel North along S.B. T. 13 N~~  
 R 20 E, ~~The 4th Stand. Parcel North along S.B. T. 17~~  
 S. R. 17, 18 + 19 E, ~~The 4th Auxiliary Guide~~  
 Mer. ~~West~~ along N.B. T. 17 S. R. 17 E, ~~The 5th~~  
 Auxiliary Guide Mer. ~~West~~ along N.B. T. 12, 13, 14  
 + 15 S. R. 21 E, The Exterior and subdivision lines  
 of T. 17 S. R. 17 E, T. 13, 14 + 16 S. R. 19 E, T. 12, 13, 14  
 + 15 S. R. 20 E, and T. 12 S. R. 22 E G. + S. R. 20 E

showing the respective capacities in which they acted.

- A. A. Arnold*, Compassman.
- L. M. Conklin*, Chainman.
- David Blayton*, Chainman.
- James W. Peckham*, Chainman.
- Patrick Leary*, Chainman.
- C. A. Wilkinson*, Axeman.
- Thomas Morris*, Axeman.
- Thomas Morris*, Flagman.

11, 11, 11, 11, 11

## Final Oaths of Assistants.

We hereby certify that we assisted

*M. A. Grant*  
 \_\_\_\_\_, United States Deputy Surveyor,  
 in surveying all those parts or portions of the <sup>3rd Stand. Par.</sup> ~~3rd Stand. Par.~~  
 South along S. B. T. 13 N. R. 20 E., The 4th Auxiliary  
 Guide Mer. West along W. B. Tps 17 N. R. 17 E., The  
 4th Stand. Par. North along S. B. Tps 17 N. R. 17, 18 &  
 19 E., The 5th Auxiliary Guide Mer. West along  
 W. B. Tps 12, 13, 14 & 15 N. R. 21 E., The Eastern  
 and Sub. lines of T. 17 N. R. 17 E., Tps 13, 14 & 16 N. R.  
 19 E., Tps 12, 13, 14 & 15 N. R. 20 E. and Tps 12 N. R. 22 E.  
 of the Gila Salt River base and  
 Meridian, Territory of Arizona, as are

represented in the foregoing field-notes as having been surveyed by  
 him and under his direction; and that said survey has been in all  
 respects, to the best of our knowledge and belief, well and faith-  
 fully surveyed, and the corner monuments established according  
 to the instructions furnished by the United States Surveyor-Gen-  
 eral for

*A. H. Arnold*, Compassman.  
*L. M. Conklin*, Chainman.  
*David Clayton*, Chainman.  
*James W. Peckham*, Chainman.  
*Patrick Leary*, Chainman.  
*W. N. Wilkinson*, Axeman.  
*Thomas Morris*, Flagman.

Subscribed and sworn to before me this <sup>1st</sup>  
 day of *July*, 1883.

*A. E. Shoemaker*  
 U. S. Commissioner, 3d Judicial District,  
 Arizona Territory.

## Final Oath of United States Deputy Surveyor.

I, Mortimer J. Grant,United States Deputy Surveyor, do solemnly swear that in pur-  
suance of instructions received from JohnW. Robbins, United States Surveyor-General  
for Arizona, bearing date of the9<sup>th</sup> day of August, 1882,I have well, faithfully, and truly, in my own proper person, and  
in strict conformity with the instructions furnished by the United  
States Surveyor-General for Arizona,the surveying manual, and the laws of the United States; sur-  
veyed all those parts or portions of the 3<sup>rd</sup> Stand. Par<sup>l</sup> Northalong T. 13 N. R 20 E. The 4<sup>th</sup> Stand Par<sup>l</sup>  
South along S. 13. Tps 17 N. R's 17, 18 + 19 E,  
The 4<sup>th</sup> Auxiliary Guide Mer. West along N. 13.  
Tps 17 N. R 17 E. The 5<sup>th</sup> Auxiliary Guide  
Mer. W along N. 13 Tps 12, 13, 14 + 15 N R  
21 E. The Exterior and subdivision lines of T.  
17 N. R 17 E. Tps 13, 14 + 16 N R 19 E. Tps  
12, 13, 14 + 15 N R 20 E and T. 12 N. R  
22 Eof the Gila & Salt River base and

Meridian in the

Territory of Arizonaas represented in the foregoing field-notes as having been surveyed  
by me and under my directions; and I do further solemnly swear

that all the corners of said survey have been established and perpetuated in strict accordance with the surveying manual, printed instructions, the special written instructions of the United States Surveyor-General for *Arizona*, and in the specific manner described in the field-notes, and that the foregoing are the true field-notes of such survey; and, should any fraud be detected, I will suffer the penalty of perjury, under the provisions of an Act of Congress, approved August 8, 1846.

*Mortimer N. Grand*

United States Deputy Surveyor.

Subscribed and sworn to before me this *5<sup>th</sup>*  
day of *July*, 188*3*

*J. K. Carter*  
Commissioner for  
*Arizona in fact*  
*de facto, California*





## U. S. Surveyor General's Office,

Tucson, Arizona,

July 17 1884,

The foregoing Field Notes of the Survey of the

Subdivision Lines of  
Township 17 North  
Range 17 East

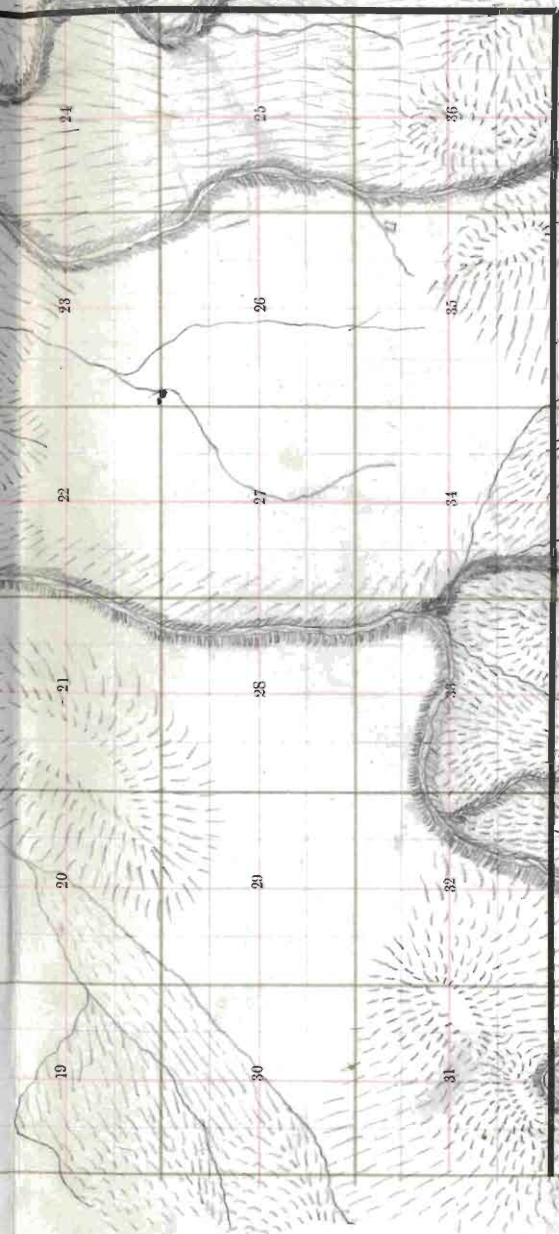
Of the Gila and Salt River Base and Meridian, Arizona, executed by W. N. Grant

Deputy Surveyor, under his contract of the Seventh  
day of August, 1884, having been

critically examined and the necessary corrections and explanations made, the said Field Notes and the surveys they describe are hereby approved.

Royall Johnson  
Surveyor General.





**TOWNSHIP PLOT**

*Meridian Line,*

*Base Line,*

*Standard Line,*

*Township Lines,*

*Section Lines,*

*Meander Lines,*

*Office Work.*