

*Platted
compared
Indexed*

~~Book No. 15~~ *Copied*

BOOK 264

Deputy Surveyor.

R.

19 E.

Gila and Salt River Meridian.

No-264

FIELD NOTES

BOOK 264

OF

THE SUBDIVISION LINES OF

Township *17 N* Range *19 E*

Gila and Salt River Meridian.

BY

Deputy Surveyor.

Under his Contract of *July 28th* 1882

Survey Commenced *June 20th* 1883

Survey Completed *June 22nd* 1883

No-264

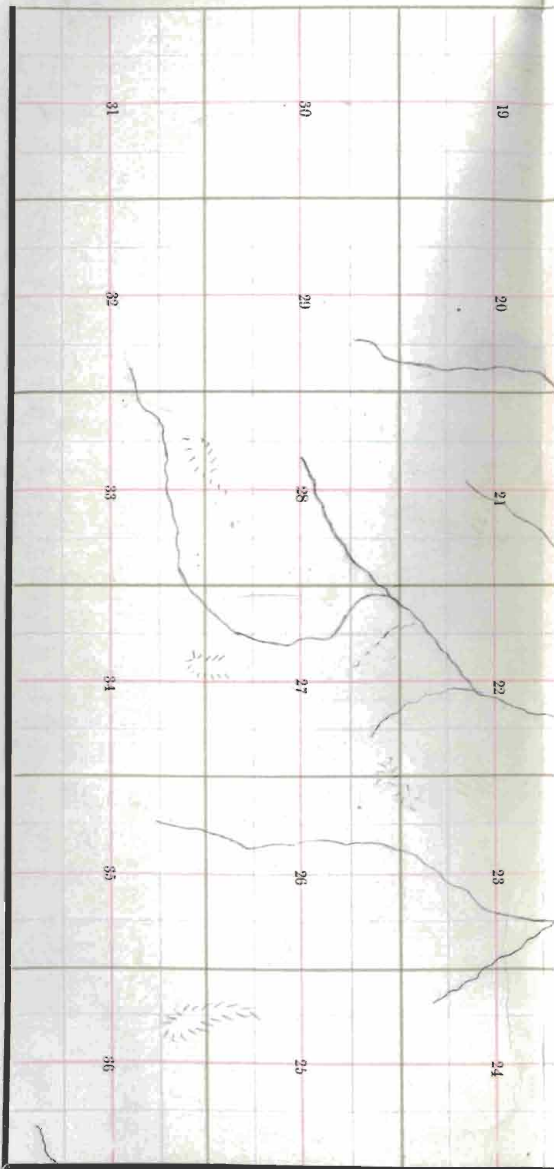
*Platted,
Copied for Washington,
Copied for Register,*

264

Edward Denny & Co., Stationers & Printers, S. F. Cal.

Copyright Secured,

Entered according to Act of Congress, in the Clerk's Office of the Librarian of Congress at Washington, D. C., in the year 1880.



TOWNSHIP PLOT

Meridian Line,

Base Line,

Standard Line,

Township Lines,

Section Lines,

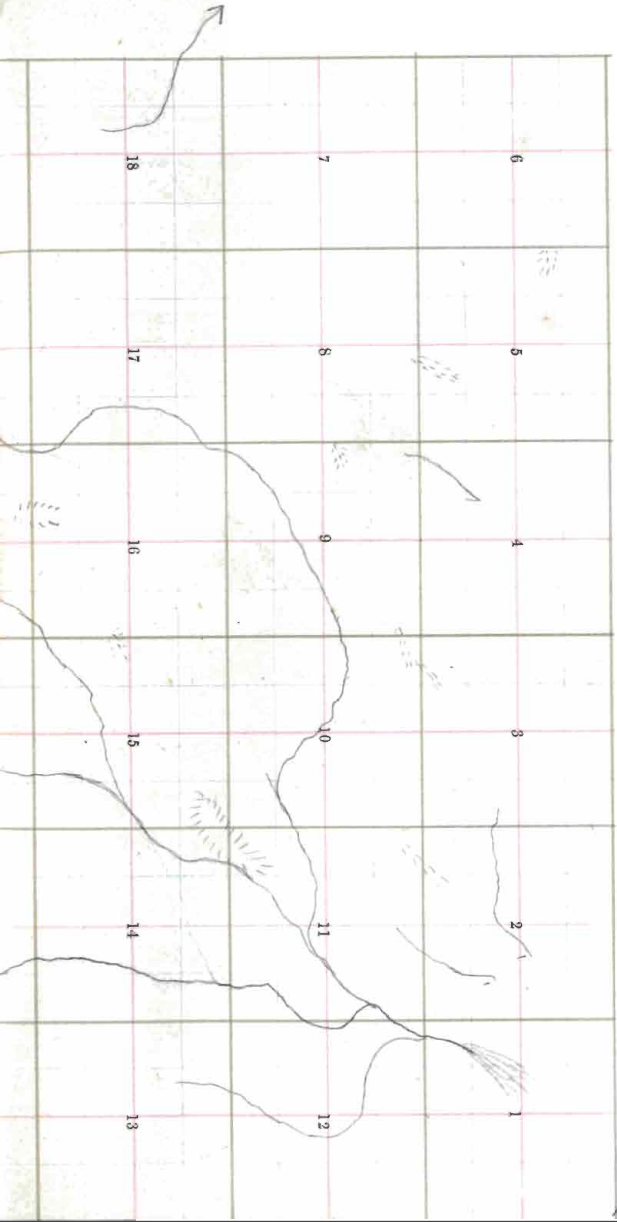
Meander Lines,

Office Work.

$$\begin{array}{r}
 70 \\
 188 \\
 258 \\
 68 \\
 \hline
 142 \\
 18 \quad 41 \\
 \quad \quad 2 \\
 \hline
 18 \quad 1 \quad 42
 \end{array}$$

Township No. 17 N Range No. 14 E 6th Principal Meridian.

Edward Denny & Co., Stationers and Printers, Drawing Material, Box 312 Sask'oon, S. S. P.



1A

Township *17 North*, Range *19 East*,
Gila and Salt River Base and Meridian.

6	60	5	44	4	33	3	22	2	11	1
59		58		43		32		21		10
7	57	8	42	9	31	10	20	11	9	12
53		55		41		30		19		8
18	54	17	40	16	29	15	18	14	7	13
53		52		39		28		17		6
19	51	20	38	21	27	22	16	23	5	24
50		49		37		26		15		4
30	48	29	36	28	25	27	14	26	3	25
47		46		35		24		13		2
31	45	32	34	33	23	34	12	35	1	36

OK

Edward Denny & Co., Stationers & Printers, S. F., Cal.

Copyright Secured.

Entered according to Act of Congress, in the Clerk's Office of the Librarian of Congress at Washington, D. C., in the year 1880.

Township

Range

BOOK 264

1B

Meridian.

No-264

For Preliminary
Oaths and description
of instrument used
See Book No. 1.

Survey made with Burt's Patent Improved Solar
Compass, nearly new, and in first rate order. Made
by Otto Gennel of Cassel
Germany in 1881

Before proceeding to subdivide this Tp., I made a
change of 5 minutes in the latitude arc of my
solar compass by subtracting same from
the reading previously given, and at noon verified
and corrected same by observation on the sun. I also
further tested instrument by reversing.

10 Township

17 N

Range

19 E

(See previous page.)

Gila and Salt River Meridian.

Chains

Standard

From the corner to Sections 35 and 36 on the South boundary, Township

Which is a sand stone
24 x 12 x 4 ins. 18 ins. in the
ground marked S.E. with 1
notch on E. and 5 notches
on W. edges, with a mound
of stone alongside.
Prism

North between sections 35 & 36

Variation 14° 15' East.

Descend. gradually.

40.00

Set a Sand stone 10 x 10 x 4 ins., 10
ins. in the ground, for 1/4 Sec. Cor., marked 1/4 on W.
face, and raised a mound of stone alongside. Pits
impracticable.

80.00

Set a Sand stone 28 x 14 x 4 ins. 21 ins.
in the ground for Cor. to Secs. 25, 26, 35 & 36 marked
with 1 notch on S. and 1 notch on E. edges,
dig pits 18 x 18 x 12 ins. in each Sec., 5 1/2 ft. dist. and
raised a mound of earth 2 ft. high, 4 1/2 ft. base. alongside.

Land rolling.

Soil 3rd rate

Undergrowth of juniper.

Township 17 N Range 19 E

Gila and Salt River Meridian.

Chains

East, on a random line between Sections 25 and 36.

Variation $13^{\circ} 30'$ East.*Ascend. gradually.*40.00 Set temporary $\frac{1}{4}$ Sec. Cor.53.00 Top of Ridge, bears $N. 6^{\circ} W.$ & $S. 6^{\circ} E.$ and descend.80.45 Intersect $E. B.$ of Tp. 19 lks. $S.$ of cor. to secs.25, 30, 31 & 36 ^{meridionally described} from which corner, I run $S 89^{\circ} 52' W.$ on a true line, between sections 25 & 36Variation $13^{\circ} 32'$ East.

40.22 Set a Sand stone $16 \times 10 \times 5$ ins., 10 ins. in the ground, for $\frac{1}{4}$ Sec. Cor., marked $\frac{1}{4}$ on $N.$ face, dug pits $18 \times 18 \times 12$ ins., $E.$ and $W.$ of stone $5\frac{1}{2}$ ft. dist., and raised a mound of earth $1\frac{1}{2}$ ft. high, $3\frac{1}{2}$ ft. base alongside.

80.46 The corner to sections 25, 26, 35 & 36

Land mountainous.

Soil 3° rate

Undergrowth of juniper.

Township

17 N.

Range

19 E

Gila and Salt River Meridian.

Chains

North, between Sections 25 and 26.

Variation

13° 30'

East.

Descend gradually

40.00

Set a Sand stone 18 x 10 x 9 ins., 12 ins. in the ground, for $\frac{1}{2}$ Sec. Cor., marked $\frac{1}{2}$ on W. face, dug pits 18 x 18 x 12 ins., N. and S. of stone 5 $\frac{1}{2}$ ft. dist., and raised a mound of earth 1 $\frac{1}{2}$ ft. high, 3 $\frac{1}{2}$ ft. base alongside.

80.00

Set a Sand stone 18 x 12 x 4 ins. 12 ins. in the ground for Cor. to Secs. 23, 24, 25 & 26 marked with 2 notches on S. and 1 notch on E. edges and raised a mound of stone alongside. Pits impracticable.

Land rolling.

Soil 3rd rate

Undergrowth of Juniper.

Township

17 N.

Range

19 E.

Gila and Salt River Meridian.

Chains

East, on a random line between Sections 24 and 25.

Variation $13^{\circ} 30'$ East.*Ascend.*40.00 Set temporary $\frac{1}{4}$ Sec. Cor.80.11 Intersect E. B. of Tp. 31 Nks. N. of cor. to secs.
minutely described by me
19.24.25 & 30 from which corner, I runN. $89^{\circ} 47' W$ on a true line, between sections 24 & 25
Variation $13^{\circ} 31'$ East.40.05 Set a Sand stone $16 \times 10 \times 6$ ins., 10 ins.
in the ground, for $\frac{1}{4}$ Sec. Cor., marked $\frac{1}{4}$ on N. face,
dug pits $18 \times 18 \times 12$ ins., E. and W. of stone $5\frac{1}{2}$
ft. dist., and raised a mound of earth $1\frac{1}{2}$ ft. high, $3\frac{1}{2}$
ft. base alongside.

Top of Ridge, bears N. & S. and descend.

80.11 The corner to sections 23.24.25 & 26.

Land mountainous

Soil 3rd rate

Timber of juniper

Vegetation. grass.

Township

17 N.

Range

19 E.

Gila and Salt River Meridian.

Chains

North, between Sections 23 and 24.

Variation

13° 30'

East.

Descend gradually.

37.64

Cross Wash, 10 lks. wide, Course N. 10° W.

40.00

Set a sand stone 15 x 8 x 6 ins., 10 ins. in the ground, for $\frac{1}{4}$ Sec. Cor., marked $\frac{1}{4}$ on W. face, dug pits 18 x 18 x 12 ins., N. and S. of stone $5\frac{1}{2}$ ft. dist., and raised a mound of earth $1\frac{1}{2}$ ft. high, $3\frac{1}{2}$ ft. base alongside.

80.00

Set a sand stone 10 x 10 x 3 ins. 10 ins. in the ground for Cor. to Secs. 13, 14, 23 & 24 marked with 3 notches on S. and 1 notch on E. edges, dug pits 18 x 18 x 12 ins. in each Sec., $5\frac{1}{2}$ ft. dist. and raised a mound of earth 2 ft. high, $4\frac{1}{2}$ ft. base. alongside.

Land rolling.

Soil 3rd rate

Vegetation grass

Township 17 N Range 19 E

Gila and Salt River Meridian.

Chains East, on a random line between Sections 13 and 24.
Variation $13^{\circ} 30'$ East.

Ascend.

40.00 Set temporary $\frac{1}{4}$ Sec. Cor.

79.84 Intersect E. B. of Tp. 5 lks. S. of cor. to secs.
13, 18, 19 & 24 ^{previously described by me} from which corner, I run

$S. 89^{\circ} 58' W.$ on a true line, between sections 13 & 24

Variation $13^{\circ} 31'$ East.

39.92 Set a Sand stone $18 \times 10 \times 6$ ins., 12 ins.
in the ground, for $\frac{1}{4}$ Sec. Cor., marked $\frac{1}{4}$ on N. face,
dug pits $18 \times 18 \times 12$ ins., E. and W. of stone $5\frac{1}{2}$
ft. dist., and raised a mound of earth $1\frac{1}{2}$ ft. high, $3\frac{1}{2}$
ft. base alongside.

79.84 The corner to sections 13, 14, 23, & 24

Land rolling.

Soil 3rd rate

Vegetation grass.

Township

17 N.

Range

19 E

Gila and Salt River Meridian.

Chains

North, between Sections 13 and 14.

Variation $13^{\circ} 30'$ East.

Descend.

40.00

Set a sand stone $14 \times 9 \times 3$ ins., 10 ins. in the ground, for $\frac{1}{2}$ Sec. Cor., marked $\frac{1}{2}$ on W. face, dug pits $18 \times 18 \times 12$ ins., N. and S. of stone $5\frac{1}{2}$ ft. dist., and raised a mound of earth $1\frac{1}{2}$ ft. high, $3\frac{1}{2}$ ft. base alongside.

80.00

Set a sand stone $27 \times 16 \times 3$ ins. 21 ins. in the ground for Cor. to Secs. 11, 12, 13 & 14 marked with 4 notches on S. and 1 notch on E. edges and raised a mound of stone alongside. Pits impracticable.

Land rolling.

Soil 3rd rate

Vegetation grass.

Township

17 N.

Range

19 E.

Gila and Salt River Meridian.

Chains

East, on a random line between Sections 12 and 13.

Variation $13^{\circ} 30'$ East.*Ascend.*40.00 Set temporary $\frac{1}{4}$ Sec. Cor.

79.91 Intersect E. B. of Tp. 16 lks. N. of cor. to secs.

7. 12. 13 ^{irregularly described by me} from which corner, I runN. $89^{\circ} 03'$ W. on a true line, between sections 12 & 13Variation $13^{\circ} 31'$ East.

39.96 Set a Sand stone $19 \times 10 \times 5$ ins., 12 ins. in the ground, for $\frac{1}{4}$ Sec. Cor., marked $\frac{1}{4}$ on N. face, dug pits $18 \times 18 \times 12$ ins., E. and W. of stone $5\frac{1}{2}$ ft. dist., and raised a mound of earth $1\frac{1}{2}$ ft. high, $3\frac{1}{2}$ ft. base alongside.

79.91 The corner to sections 11. 12. 13 & 14

Land rolling.

Soil 3° rate

Vegetation grass.

9 Township 17 N Range 19 E
 Gila and Salt River Meridian.

Chains

North, between Sections 11 and 12.

Variation 13° 30' East.

Descend.

32.60 Cross Wash, 12 lks. wide, Course N. 12° E.
 40.00 Set a sand stone 30 x 10 x 4 ins., 21 ins. in the ground, for 1/4 Sec. Cor., marked 1/4 on W. face, and raised a mound of stone alongside. Pits impracticable.

53.10 Cross Wash, 14 lks. wide, Course N. 13° W.

67.35 Cross Wash, 14 lks. wide, Course N. 9° E.

80.00 Set a sand stone 18 x 10 x 4 ins. 12 ins. in the ground for Cor. to Secs. 1, 2, 11 & 12 marked with 5 notches on S. and 1 notch on E. edges and raised a mound of stone alongside. Pits impracticable.

Land rolling.

Soil 3rd rate

Vegetation grass

Township

17 N

Range

19 E

Gila and Salt River Meridian.

Chains

East, on a random line between Sections 1 and 12.

Variation $13^{\circ} 30'$ East.

Over level land

6.10 Cross Wash, 12 lks. wide, Course N. 18 E and ascend.

40.00 Set temporary $\frac{1}{2}$ Sec. Cor.

47.00 Descend.

79.79 Intersect E. B. of Tp. 54 lks. N. of cor. to secs.

1.6. 7 & 12 ^{previously described by ml} from which corner, 1 runN. $89^{\circ} 37' W.$ on a true line, between sections 1 & 12Variation $13^{\circ} 31'$ East.

39.89 Set a sand stone $22 \times 13 \times 4$ ins., 16 ins. in the ground, for $\frac{1}{2}$ Sec. Cor., marked $\frac{1}{2}$ on N. face, dug pits $18 \times 18 \times 12$ ins., E. and W. of stone $5\frac{1}{2}$ ft. dist., and raised a mound of earth $1\frac{1}{2}$ ft. high, $3\frac{1}{2}$ ft. base alongside.

79.79 The corner to sections 1, 2, 11 & 12

Land level. rolling.

Soil 3rd rate

Vegetation grass.

Township

17 N.

Range

19 E.

Gila and Salt River Meridian.

Chains

North on a random line between Sections 1 and 2.

Variation 13° 40' East.

Descend.

40.00 Set temporary $\frac{1}{4}$ Sec. Cor.

83.35 Intersect N. B. of Tp. 23 lks. E. of cor. to secs.

1, 2, 3 & 30 ^{meridially described by me} from which corner, I run

S. ^{10'} E. on a true line, between sections 1 & 2

Variation 13° 30' East.

43.35 Set a sand stone 23 x 12 x 3 ins., 18 in. in the ground, for $\frac{1}{4}$ Sec. Cor., marked $\frac{1}{4}$ on W. face, dug pits 18 x 18 x 12 ins., N. and S. of stone 5 $\frac{1}{2}$ ft. dist., and raised a mound of earth 1 $\frac{1}{2}$ ft. high, 3 $\frac{1}{2}$ ft. base alongside.

83.35 The corner to sections 1, 2, 11 & 12.

Land rolling.

Soil 3rd rate

Vegetation grass.

I carefully examined the adjustments of my solar compass to-day, particularly the latitude and reversing apparatus, and found them correct.

Henry Meyrick June 20. 1883.

Township

17 N.

Range

19 E.

Gila and Salt River Meridian.

Chains

Standard
 From the corner to sections, 34 & 35 on S. By 96'
 Which is a Sand stone
 20 x 12 x 10 ins. 15 ins. in
 the ground marked S.E.
 with 2 notches on E. and
 4 notches on W. edges and
 a mound of stone alongside. Run
 North between sections 34 & 35

Variation 14° 00' East.

Descend.

4000

Set a Sand stone 18 x 10 x 0 ins., 12 ins.
 in the ground, for $\frac{1}{2}$ Sec. Cor., marked $\frac{1}{2}$ on W. face.
 dug pits 18 x 18 x 12 ins., N. and S. of stone $5\frac{1}{2}$
 ft. dist., and raised a mound of earth $1\frac{1}{2}$ ft. high, $3\frac{1}{2}$
 ft. base alongside.

89.00

Set a post 4 ft. long, 4 ins. square, with marked stone
 12 ins. in the ground, for Cor. to Secs. 26, 27, 34 & 35
 marked T, 17 N-S, 26, on N, E, R, 19 E., S. 35
 on S, E, S, 34, on S, W, and S, 27 on N, W, face
 with 1 notch on S, and 2 notches on E, edges,
 dug pits 18 x 18 x 12 ins. in each Sec., $5\frac{1}{2}$ ft. dist.,
 and raised a mound of earth 2 ft. high, $4\frac{1}{2}$ ft. base
 around post.

Land rolling.

Soil 3rd rate

Vegetation grass.

Township

17 N

Range

19 E

Gila and Salt River Meridian.

Chains

East, on a random line between Sections 26 and 35.

Variation $13^{\circ} 30'$ East.*Descend gradually,*23.12 Cross Wash, 30 lks. wide, Course $N. 8^{\circ} E$ and ascend.40.00 Set temporary $\frac{1}{4}$ Sec. Cor.

79.83 Intersect N. & S. line, 12 lks. S. of cor. to secs.

26, 27, 34 & 35 from which corner, I run

 $S. 89^{\circ} 55' W.$ on a true line between sections 26 & 35Variation $13^{\circ} 30'$ East

39.91 Set a sand stone $10 \times 10 \times 6$ ins., 10 ins. in the ground, for $\frac{1}{4}$ Sec. Cor., marked $\frac{1}{4}$ on N. line, dug pits $18 \times 18 \times 12$ ins., E. and W. of stone $5\frac{1}{2}$ ft. dist., and raised a mound of earth $1\frac{1}{2}$ ft. high, $3\frac{1}{2}$ ft. base alongside.

79.83 The corner to sections 26, 27, 34 & 35

Land rolling.

Soil 3rd rate

Undergrowth of juniper

Township 17 N. Range 19 E.
Gila and Salt River Meridian.

Chains

North, between Sections 26 and 27.

Variation 13° 30' East.*Ascend. gradually.*

40.00

Set a Sand stone 18 x 12 x 6 ins., 12 ins. in the ground, for $\frac{1}{4}$ Sec. Cor., marked $\frac{1}{4}$ on W. face, and raised a mound of stone alongside. Pits impracticable.

78.50

Top of Ridge, bears N. 10° E. & S. 10° W. and descend.

80.00

Set a Sand stone 16 x 8 x 6 ins. 10 ins. in the ground for Cor. to Secs. 22, 23, 26 & 27 marked with 2 notches on S. and 2 notches on E. edges, dug pits 18 x 18 x 12 ins. in each Sec., 5 $\frac{1}{2}$ ft. dist. and raised a mound of earth 2 ft. high, 4 $\frac{1}{2}$ ft. base. alongside.

Land mountainous.

Soil 3rd rateUndergrowth of juniper.

Chains

East, on a random line between Sections 23 and 26.

Variation $13^{\circ} 30'$ East.

Descend.

36.50 Cross Wash, 30 lks. wide, Course $N 9^{\circ}$ and ascend.40.00 Set temporary $\frac{1}{4}$ Sec. Cor.

79.68 Intersect N. & S. line, 22 lks. N. of cor. to secs.

23.24.25.26 from which corner, I run

 $N. 89^{\circ} 51'$ W. on a true line between sections 23 & 26Variation $13^{\circ} 30'$ East39.84 Set a Sand stone $18 \times 10 \times 6$ ins., 12
ins. in the ground, for $\frac{1}{4}$ Sec. Cor., marked $\frac{1}{4}$ on N.
face, and raised a mound of stone alongside. Pits
impracticable.79.68 The corner to sections 22.23.26 & 27
Land rolling.Soil 3rd rate

Vegetation Grass.

Township

17 N.

Range

19 E.

Gila and Salt River Meridian.

Chains

North, between Sections 22 and 23.

Variation

 $13^{\circ} 30'$

East.

Descend.

40.00

Set a post 3 ft. long, 3 ins. diam. with marked stone 12 ins. in the ground, for $\frac{1}{4}$ Sec. Cor., marked $\frac{1}{4}$ S. on W. face, dug pits, 18 x 18 x 12 ins., N. and S. of post $5\frac{1}{2}$ ft. dist., and raised a mound of earth $1\frac{1}{2}$ ft. high, $3\frac{1}{2}$ ft. base around post.

80.00

Set a Sand stone 16 x 11 x 3 ins. 10 ins. in the ground for Cor. to Secs. 14, 15, 22 & 23 marked with 3 notches on S. and 2 notches on E. edges, dug pits 18 x 18 x 12 ins. in each Sec., $5\frac{1}{2}$ ft. dist. and raised a mound of earth 2 ft. high, $4\frac{1}{2}$ ft. base. alongside.

*Land rolling.*Soil 3rd rate

Vegetation grass.

Chains

East, on a random line between Sections 14 and 23.

Variation $13^{\circ} 30'$ East.*Ascend.*10.00 *Descend.*40.00 *Set temporary $\frac{1}{4}$ Sec. Cor.*67.30 *Cross Wash, 10 lks. wide, Course $N. 2^{\circ} E$ and ascend.*80.07 *Intersect N. & S. line, 63 lks. N. of cor. to secs.**13. 14. 23 & 24 from which corner, I run* *$N. 89^{\circ} 37' W.$ on a true line between sections 14 & 23**Variation $13^{\circ} 30'$ East*

40.03 *Set a sand stone $18 \times 11 \times 7$ ins., 12 ins. in the ground, for $\frac{1}{4}$ Sec. Cor., marked $\frac{1}{4}$ on N. face, dug pits $18 \times 18 \times 12$ ins., E. and W. of stone $5\frac{1}{2}$ ft. dist., and raised a mound of earth $1\frac{1}{2}$ ft. high, $3\frac{1}{2}$ ft. base alongside.*

80.07 *The corner to sections 14. 15. 22 & 23**Land rolling.**Soil 3rd rate**Vegetation grass.*

Township

17 N

Range

19 E

Gila and Salt River Meridian.

Chains

North, between Sections 14 and 15.

Variation

13° 30'

East.

Descend.

40.00

Set a Sand stone $14 \times 10 \times 9$ ins., 10 ins. in the ground, for $\frac{1}{4}$ Sec. Cor., marked $\frac{1}{4}$ on W. face, dug pits $18 \times 18 \times 12$ ins., N. and S. of stone $5\frac{1}{2}$ ft. dist., and raised a mound of earth $1\frac{1}{2}$ ft. high, $3\frac{1}{2}$ ft. base alongside.

41.50

Cross Wash, 25 lks. wide, Course N. 40° E and ascend.

78.00

Top of Spur, bears N. 40° E $\frac{1}{4}$ Sec. and descend.

80.00

Set a Sand stone $26 \times 14 \times 3$ ins. 18 ins. in the ground for Cor. to Secs. 10, 11, 14 & 15 marked with 4 notches on S. and 2 notches on E. edges, dug pits $18 \times 18 \times 12$ ins. in each Sec., $5\frac{1}{2}$ ft. dist. and raised a mound of earth 2 ft. high, $4\frac{1}{2}$ ft. base alongside.

*Land rolling.*Soil 3rd rate

Vegetation grass.

Township

17 N.

Range

19 E.

Gila and Salt River Meridian.

Chains

East, on a random line between Sections 11 and 14.

Variation $13^{\circ} 30'$ East.

Ascend.

4.25 Top of Spur, bears $N. 40^{\circ} E.$ & $S. 40^{\circ} W.$ and descend.13.25 Cross Wash, 27 lks. wide, Course $N. 6^{\circ} E.$ and ascend.40.00 Set temporary $\frac{1}{4}$ Sec. Cor.⁶⁰ Cross wash course south

80.21 Intersect N. & S. line, 32 lks. N. of cor. to secs.

11. 12. 13 & 14 from which corner, I run

 $N. 89^{\circ} 46' W.$ on a true line between sections 11 & 14Variation $13^{\circ} 30'$ East

40.10. Set a sand stone $14 \times 7 \times 3$ ins., 10 ins. in the ground, for $\frac{1}{4}$ Sec. Cor., marked $\frac{1}{4}$ on N. face, dug pits $18 \times 18 \times 12$ ins., E. and W. of stone $5\frac{1}{2}$ ft. dist., and raised a mound of earth $1\frac{1}{2}$ ft. high, $3\frac{1}{2}$ ft. base alongside.

80.21 The corner to sections 10. 11. 14 & 16

Land rolling.

Soil 2^{nd} rate

Vegetation grass.

Township

17 N.

Range

19 E.

Gila and Salt River Meridian.

Chains

North, between Sections 10 and 11.

Variation

13° 30'

East.

Descend.

28.00

Cross Wash, 15 lks. wide, Course N. E.

40.00

Set a Sand stone 12 x 7 x 3 ins., 8 ins. in the ground, for $\frac{1}{2}$ Sec. Cor., marked $\frac{1}{2}$ on W. face, dug pits 18 x 18 x 12 ins., N. and S. of stone $5\frac{1}{2}$ ft. dist., and raised a mound of earth $1\frac{1}{2}$ ft. high, $3\frac{1}{2}$ ft. base alongside.

80.00

Set a Sand stone 14 x 7 x 3 ins. 10 ins. in the ground for Cor. to Secs. 2, 3, 10 & 11 marked with 5 notches on S. and 2 notches on E. edges, dug pits 18 x 18 x 12 ins. in each Sec., $5\frac{1}{2}$ ft. dist. and raised a mound of earth 2 ft. high, $4\frac{1}{2}$ ft. base. alongside.

Land rolling.

Soil 3rd rate

Vegetation grass.

Township 17 N

Range 19 E

Gila and Salt River Meridian.

Chains

East, on a random line between Sections 2 and 11.

Variation 13° 30' East.

Ascend.

10.50 Top of Spur, bears N. 40° E. & S. 40° W. and descend.

40.00 Set temporary 1/4 Sec. Cor.

57.60 Cross Wash, 30 lks. wide, Course N. 33° E. and ascend.

80.40 Intersect N. & S. line, 20 lks. N. of cor. to secs.

12.11 & 12 from which corner, I run

N. 89° 51' W. on a true line between sections 2 & 11

Variation 13° 30' East

40.23 Set a post 3 ft. long, 3 ins. diam. with marked stone 12 ins. in the ground, for 1/4 Sec. Cor., marked 1/4 S. on

N. face, dug pits, 18 x 18 x 12 ins., E. and W. of post 5 1/2 ft. dist., and raised a mound of earth 1 1/2 ft. high, 3 1/2 ft. base around post.

80.40 The corner to sections 2, 3, 10 & 11

Land rolling.

Soil 3rd rate

Vegetation grass.

Township

17 N

Range

19 E

Gila and Salt River Meridian.

Chains

North, on a random line between Sections 2 and 3.

Variation $14^{\circ} 00'$ East.

Descend.

30.70 Cross Wash, 25' lks. wide, Course N. 70° E and ascend.40.00 Set temporary $\frac{1}{4}$ Sec. Cor.70.50 Top of Spur, bears N. 75° E. & S. 75° W and descend.

82.13 Intersect N. B. of Tp. 19 lks. W. of cor. to secs.

2, 3, 34 & 35 ^{merely described by me.} from which corner, I runS. ~~20~~ ⁸ W. on a true line, between sections 2 & 3Variation $13^{\circ} 30'$ East.

42.13 Set a post 3 ft. long, 3 ins. diam. with marked stone
12 ins. in the ground, for $\frac{1}{4}$ Sec. Cor., marked $\frac{1}{4}$ S. on
W. face, dug pits, 18 x 18 x 12 ins., N. and S. of
post $5\frac{1}{2}$ ft. dist., and raised a mound of earth $1\frac{1}{2}$ ft.
high, $3\frac{1}{2}$ ft. base around post.

82.13 The corner to sections 2, 3, 10. & 11

Land rolling.

Soil 3rd rate

Vegetation grass.

I carefully examined the adjustments of my solar
compass to-day, particularly the latitude and revers-
ing apparatus, and found them correct.

G. W. Pearson. Compassman, June 20, 1885

Township

17 N

Range

19 E

Gila and Salt River Meridian.

Chains

Standard

From the corner to sections, 33 & 34 on S. 1/2 Sec. 27
 Which is a sand stone 30 x 10 x 6 ins.
 27 ins. in the ground marked S.E.
 with 3 notches on E. and
 3 notches on W. edges with pits
 18 x 18 x 12 ins. N.E. & W. of stone 5 1/2 ft.
 dist. and a mound of earth 2 ft.
 high, 4 1/2 ft. base alongside. Iron
 North between sections 33 & 34

Variation 14: 5' East.

Descend.

40.00

Set a Sand stone 15 x 12 x 4 ins., 10 ins.
 in the ground, for 1/4 Sec. Cor., marked 1/4 on W. face,
 dug pits 18 x 18 x 12 ins., N. and S. of stone 5 1/2
 ft. dist., and raised a mound of earth 1 1/2 ft. high, 3 1/2
 ft. base alongside.

78.00

Cross low Sag and ascend.

80.00

Set a Sand stone 24 x 9 x 4 ins. 1 1/2 ins. in
 the ground for Cor. to Secs. 27, 28, 33 & 34 marked
 with 1 notch on S. and 3 notches on E. edges and
 raised a mound of stone alongside. Pits impracticable.

Land rolling.

Soil 3rd rate

Vegetation grass.

Township 17 N. Range 19 E.

Gila and Salt River Meridian.

Chains East, on a random line between Sections 27 and 34.
 Variation $13^{\circ} 30'$ East.

Ascend gradually.

38.16 Top of Ridge, bears N. & S. and descend.

40.00 Set temporary $\frac{1}{2}$ Sec. Cor.

80.11 Intersect N. & S. line, 26 lks. N. of cor. to secs.

26. 27. 34 & 36 from which corner, I run

N. $89^{\circ} 49' W.$ on a true line between sections 27 & 34

Variation $13^{\circ} 30'$ East

40.55 Set a post 3 ft. long. 3 ins. diam. with marked stone
 12 ins. in the ground, for $\frac{1}{2}$ Sec. Cor., marked $\frac{1}{2}$ S. on
 N. face, dug pits, 18 x 18 x 12 ins., E. and W. of
 post $5\frac{1}{2}$ ft. dist., and raised a mound of earth $1\frac{1}{2}$ ft.
 high, $3\frac{1}{2}$ ft. base around post.

80.11 The corner to sections 27. 28. 33 & 34

Land mountainous.

Soil 3rd rate

Undergrowth of juniper.

Township

17 N

Range

19 E

Gila and Salt River Meridian.

Chains

North, between Sections 27 and 28.

Variation 13° 30' East.

10.
40.00

Descend.

cross wash course W E
Set a Sand stone 14 x 9 x 7 ins., 10 ins.
in the ground, for $\frac{1}{4}$ Sec. Cor., marked $\frac{1}{4}$ on W. face,
dug pits 18 x 18 x 12 ins., N. and S. of stone 5 $\frac{1}{2}$
ft. dist., and raised a mound of earth 1 $\frac{1}{2}$ ft. high, 3 $\frac{1}{2}$
ft. base alongside.

74.15
80.00

Cross Wash, 11 lks. wide, Course N 23° E and ascend.
Set a Sand stone 35 x 15 x 11 ins. 24 ins. in
the ground for Cor. to Secs. 21, 22, 27 & 28 marked
with 2 notches on S. and 3 notches on E. edges and
raised a mound of stone alongside. Pits impracticable.

Land rolling.

Soil 3rd rate

Vegetation grass.

Township

17 N.

Range

19 E.

Gila and Salt River Meridian.

Chains

East, on a random line between Sections 22 and 27.

Variation $13^{\circ} 30'$ East.*Ascend gradually.*27.13 Top of Ridge, bears $N 4^{\circ} W$ & $S 4^{\circ} E$ and descend.40.00 Set temporary $\frac{1}{2}$ Sec. Cor.55.16 Cross Wash, 20 lks. wide, Course $N 20^{\circ} W$ and ascend.

80.20 Intersect N. & S. line, 9 lks. S. of cor. to secs.

22.23.26 & 27 from which corner, I run

 $S 89^{\circ} 56' W$. on a true line between sections 22 & 27Variation $13^{\circ} 30'$ East

40.13 Set a Sand stone $18 \times 10 \times 4$ ins., 12 ins. in the ground, for $\frac{1}{2}$ Sec. Cor., marked $\frac{1}{2}$ on N. S. E., dug pits $18 \times 18 \times 12$ ins., \odot and \cup . of stone $5\frac{1}{2}$ ft. dist., and raised a mound of earth $1\frac{1}{2}$ ft. high, $3\frac{1}{2}$ ft. base alongside.

80.26 The corner to sections 21.22.27 & 28

Land mountainous.

Soil 3rd rate

Undergrowth of juniper

Township

17 N

Range

19 E

Gila and Salt River Meridian.

Chains

North, between Sections 21 and 22.

Variation $13^{\circ} 30'$ East.*Descend.*

40.00

Set a Sand stone $15 \times 10 \times 4$ ins., 10 ins. in the ground, for $\frac{1}{4}$ Sec. Cor., marked $\frac{1}{4}$ on W. face, dug pits $18 \times 18 \times 12$ ins., N and S. of stone $5\frac{1}{2}$ ft. dist., and raised a mound of earth $1\frac{1}{2}$ ft. high, $3\frac{1}{2}$ ft. base alongside.

80.00

Set a Sand stone $20 \times 10 \times 3$ ins. 15 ins. in the ground for Cor. to Secs. 15, 16, 21 & 22 marked with 3 notches on S. and 3 notches on E. edges and raised a mound of stone alongside. Pits impracticable.

*Land rolling.*Soil 3rd rate*Undergrowth of juniper.*

Township

17 N

Range

19 E

Gila and Salt River Meridian.

Chains

East, on a random line between Sections 15 and 22.

Variation $13^{\circ} 30'$ East.

Descend gently.

40.00 Set temporary $\frac{1}{4}$ Sec. Cor.

60.28 Cross Wash, 20 lks. wide, Course N. and ascend.

80.42 Intersect N. & S. line, 41 lks. S, of cor. to secs.

14. 15. 22 & 23 from which corner, I run

S. 89.42' W. on a true line between sections 15 & 22

Variation $13^{\circ} 30'$ East

40.21 Set a Sand stone 22 x 10 x 5 ins., 15 ins. in the ground, for $\frac{1}{4}$ Sec. Cor., marked $\frac{1}{4}$ on N. face, and raised a mound of stone alongside. Pits impracticable.

80.42 The corner to sections 15. 16. 21 & 22

Land rolling.

Soil 3rd rate

Undergrowth of juniper.

Township 17 N.

Range 19 E.

Gila and Salt River Meridian.

C Chains North, between Sections 15 and 16.

Variation 13° 30' East.

Descend.

1.20 Cross Wash, 30 lks. wide, Course N. E. and ascend.

30.50 Top of Spur, bears N. E. & S. W. and descend.

40.00 Set a post 3 ft. long, 3 ins. diam. with marked stone 12 ins. in the ground, for 1/4 Sec. Cor., marked 1/4 S. on W. face, dug pits, 18 x 18 x 12 ins., N. and S. of post 5 1/2 ft. dist., and raised a mound of earth 1 1/2 ft. high, 3 1/2 ft. base around post.

In Wash, 20 lks. wide, Course E. and ascend.

80.00 Set a post 4 ft. long, 4 ins. square, with marked stone 12 ins. in the ground, for Cor. to Secs, 9, 10, 15 & 16. marked T, 17 N. S. 10, on N, E, R, 19 E, S. 15 on S, E, S, 16 on S, W, and S, 9 on N, W, face with 4 notches on S, and 3 notches on E, edges, dug pits 18 x 18 x 12 ins, in each Sec., 5 1/2 ft, dist., and raised a mound of earth 2 ft, high, 4 1/2 ft, base around post.

Top of Spur, bears N. 46° E. & S. 46° W. and descend.

Land mountainous.

Soil 3rd rate

Undergrowth of juniper

Township

17 N.

Range

19 E.

Gila and Salt River Meridian.

Chains

East, on a random line between Sections 10 and 15.

Variation

13° 30'

East.

*Ascend.*40.00 Set temporary $\frac{1}{4}$ Sec. Cor.

79.93 Intersect N. & S. line, 10 lks. S. of cor. to secs.

10. 11. 14 & 15 from which corner, I run

S 89° 56' W. on a true line between sections 10 & 15

Variation

13° 30'

East

39.90

Set a post 3 ft. long. 3 ins. diam. with marked stone

12 ins. in the ground, for $\frac{1}{4}$ Sec. Cor., marked $\frac{1}{4}$ S. on

N. face, dug pits, 18 x 18 x 12 ins., E. and W. of

post $5\frac{1}{2}$ ft. dist., and raised a mound of earth $1\frac{1}{2}$ ft.high, $3\frac{1}{2}$ ft. base around post.

79.93

The corner to sections 9. 10. 15 & 16

Land rolling.

Soil 3° rate

Undergrowth of juniper.

Township

17 N.

Range

19 E.

Gila and Salt River Meridian.

Chains

North, between Sections 9 and 10.

Variation

13° 30'

East.

Descend.

40.00 Set a post 3 ft. long, 3 ins. diam. with marked stone 12 ins. in the ground, for $\frac{1}{4}$ Sec. Cor., marked $\frac{1}{4}$ S. on W. face, dug pits, 18 x 18 x 12 ins., N. and S. of post $5\frac{1}{2}$ ft. dist., and raised a mound of earth $1\frac{1}{2}$ ft. high, $3\frac{1}{2}$ ft. base around post.

46.50 Cross Wash, 15' lks. wide, Course N. 52° E. and ascend.

75.00 Top of Spur, bears N. 60° E. & S. 60° W. and descend.

80.00 Set a sand stone 23 x 14 x 4 ins. 18 ins. in the ground for Cor. to Secs. 3, 4, 9 & 10 marked with 5 notches on S. and 3 notches on E. edges, dug pits 18 x 18 x 12 ins. in each Sec., $5\frac{1}{2}$ ft. dist. and raised a mound of earth 2 ft. high, $4\frac{1}{2}$ ft. base.

Land rolling.

Soil 3rd rate

Undergrowth of juniper.

Township

17 N.

Range

19 E.

Gila and Salt River Meridian.

Chains

East, on a random line between Sections 3 and 10.

Variation $13^{\circ} 30'$ East.*Ascend.*7.00 Top of Spur, bears $N. 55^{\circ} E. \& S. 55^{\circ} W$ and descend.40.00 Set temporary $\frac{1}{4}$ Sec. Cor.

80.29 Intersect N. & S. line, 37 lks. N. of cor. to secs.

2, 3, 10 & 11 from which corner, I run

 $N. 89^{\circ} 44' W.$ on a true line between sections 3 & 10Variation $13^{\circ} 30'$ East

40.14 Set a post 3 ft. long. 3 ins. diam. with marked stone
12 ins. in the ground, for $\frac{1}{4}$ Sec. Cor., marked $\frac{1}{4}$ S. on
N. face, dug pits, 18 x 18 x 12 ins., E. and W. of
post $5\frac{1}{2}$ ft. dist., and raised a mound of earth $1\frac{1}{2}$ ft.
high, $3\frac{1}{2}$ ft. base around post.

80.29 The corner to sections 3, 4, 9 & 10

Land rolling.

Soil 3rd rate

Undergrowth of juniper.

Township

17 N.

Range

19 E

Gila and Salt River Meridian.

Chains

North, on a random line between Sections 3 and 4.

Variation $13^{\circ} 45'$ East.*Descend.*40.00 Set temporary $\frac{1}{2}$ Sec. Cor.80.90 Intersect N. B. of Tp. 33 2ks. E. of cor. to secs.
previously described by me
3, 4, 33 & 34 from which corner, I runS. ~~4~~ E. on a true line, between sections 3 & 4Variation $13^{\circ} 30'$ East.40.90 Set a post 3 ft. long. 3 ins. diam. with marked stone
12 ins. in the ground, for $\frac{1}{2}$ Sec. Cor., marked $\frac{1}{2}$ S. on
W. face, dug pits, 18 x 18 x 12 ins., N. and S. of
post $5\frac{1}{2}$ ft. dist., and raised a mound of earth $1\frac{1}{2}$ ft.
high, $3\frac{1}{2}$ ft. base around post.

80.90 The corner to sections 3, 4, 9 & 10

Land rolling.

Soil 3rd rate

Undergrowth of juniper.

I carefully examined the adjustments of my solar
compass to-day, particularly the latitude and revers-
ing apparatus, and found them correct.

Henry Meyrick June 21. 1883

82 13
80.90
1153

Township

17 N.

Range

19 E.

Gila and Salt River Meridian.

Chains

From the ^{Standard} corner to sections, 32 & 33 on S. By. Sp.
 Which is a post 4 ft. long, 4 ins. sq.,
 12 ins. in the ground unmarked S. 17 N.
 1. 33 on N. E. R. 19 E. S. 4 on S. E.
 T. 16 N. S. 5 on S. W. and S.
 32 on N. W. face, with 4 notches
 on E. and 2 notches on
 N. edge with pits 18 x 18 x 12 ins. N. E. - W. a post
 5 1/2 ft. dist. and a mound of earth 2 ft. high, 4 1/2 ft.
 base around post. Iron
 North between sections 32 & 33,

Variation 14° 00' East.

Descend.

40.00

Set a sand stone 24 x 16 x 6 ins., 18 ins.
 in the ground, for 1/2 Sec. Cor., marked 1/2 on W. face,
 dug pits 18 x 18 x 12 ins., N. and S. of stone 5 1/2
 ft. dist., and raised a mound of earth 1 1/2 ft. high, 3 1/2
 ft. base alongside.

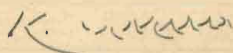
48.26

Cross Wash, 16 lks. wide, Course N. 41° E and ascend.

80.00

Set a sand stone 16 x 10 x 4 ins. 10 ins.
 in the ground for Cor. to Secs. 28, 29, 32 & 33 marked
 with 1 notch on S. and 4 notches on E. edges,
 dug pits 18 x 18 x 12 ins. in each Sec., 5 1/2 ft. dist. and
 raised a mound of earth 2 ft. high, 4 1/2 ft. base. alongside.

Land rolling.

Soil 3rd rateK. 

Undergrowth of juniper.

Township

17 N

Range

19 E

Gila and Salt River Meridian

Chains

East, on a random line between Sections 28 and 33.

Variation $13^{\circ} 30'$ East.*Over level land*40.00 Set temporary $\frac{1}{4}$ Sec. Cor.

79.62 Intersect N. & S. line, 52 lks. S. of cor. to secs.

27, 28, 33, 34 from which corner, I run

 $S. 89^{\circ} 38'$ W. on a true line between sections 28 & 33Variation $13^{\circ} 30'$ East

3981 Set a sand stone $16 \times 10 \times 3$ ins., 10 ins. in the ground, for $\frac{1}{4}$ Sec. Cor., marked $\frac{1}{4}$ on N. face, dug pits $18 \times 18 \times 12$ ins., E and W. of stone $5\frac{1}{2}$ ft. dist., and raised a mound of earth $1\frac{1}{2}$ ft. high, $3\frac{1}{2}$ ft. base alongside.

79.62 The corner to sections 28, 29, 32 & 33

Land level.

Soil 3rd rate

Vegetation grass.

Township 17 N Range 19 E

Gila and Salt River Meridian.

Chains North, between Sections 28 and 29.

Variation 13° 30' East.*Ascend gradually.*34.76 Top of Ridge, bears N. 20° E. & S. 50° W. and descend.40.00 Set a post 3 ft. long, 3 ins. diam. with marked stone 12 ins. in the ground, for $\frac{1}{4}$ Sec. Cor., marked $\frac{1}{4}$ S. on W. face, dug pits, 18 x 18 x 12 ins. N. and S. of post $5\frac{1}{2}$ ft. dist., and raised a mound of earth $1\frac{1}{2}$ ft. high, $3\frac{1}{2}$ ft. base around post.80.00 Set a post 4 ft. long, 4 ins. square, with marked stone 12 ins. in the ground, for Cor. to Secs. 20, 21, 28 & 29 marked T, 17 N. S., 21, on N, E, R, 19 E., S. 28 on S, E, S, 29 on S, W, and S, 20 on N, W, face with 2 notches on S, and 4 notches on E, edges, dug pits 18 x 18 x 12 ins, in each Sec., $5\frac{1}{2}$ ft. dist., and raised a mound of earth 2 ft. high, $4\frac{1}{2}$ ft. base around post.

Land mountainous.

Soil 3rd rateVegetation grass.

Township

17 N

Range

19 E

Gila and Salt River Meridian.

Chains

East, on a random line between Sections 21 and 28.

Variation $18^{\circ} 30'$ East.

Descend. gradually.

40.00 Set temporary $\frac{1}{4}$ Sec. Cor.

76.50 Cross Wash, 27 lks. wide. Course N. and ascend.

79.45 Intersect N. & S. line, 28 lks. S. of cor. to secs.

21, 22, 27, 28 from which corner, I run

 $89^{\circ} 38'$ W. on a true line between sections 21 & 28Variation $13^{\circ} 30'$ East

39.72 Set a Sand stone $16 \times 14 \times 7$ ins., 10 ins. in the ground, for $\frac{1}{4}$ Sec. Cor., marked $\frac{1}{4}$ on N. face, dug pits $18 \times 18 \times 12$ ins., E. and W. of stone $5\frac{1}{2}$ ft. dist., and raised a mound of earth $1\frac{1}{2}$ ft. high, $3\frac{1}{2}$ ft. base alongside.

79.45 The corner to sections 20, 21, 28 & 29

Land rolling.

Soil 3rd rate

Vegetation grass.

Township

17 N.

Range

19 E.

Gila and Salt River Meridian.

Chains

North, between Sections 20 and 21.

Variation

13° 30'

East.

Descend gradually

40.00

Set a post 3 ft. long, 3 ins. diam. with marked stone 12 ins. in the ground, for $\frac{1}{2}$ Sec. Cor., marked $\frac{1}{2}$ S. on W. face, dug pits, 18 x 18 x 12 ins., N. and S. of post $5\frac{1}{2}$ ft. dist., and raised a mound of earth $1\frac{1}{2}$ ft. high, $3\frac{1}{2}$ ft. base around post.

60

80.00

Cross Wash course N 10° E

Set a post 4 ft. long, 4 ins. square, with marked stone 12 ins. in the ground, for Cor. to Secs, 10, 17, 20 & 21 marked T, 17 N. S. 10, on N, E, R, 19 E., S. 21 on S, E, S, 20 on S, W, and S, 17 on N, W, face with S notches on S, and 4 notches on E, edges, dug pits 18 x 18 x 12 ins, in each Sec., $5\frac{1}{2}$ ft. dist., and raised a mound of earth 2 ft, high, $4\frac{1}{2}$ ft, base around post.

Land rolling.

Soil 3rd rate

Vegetation grass.

Township 17 N Range 19 E

Gila and Salt River Meridian.

Chains East, on a random line between Sections 16 and 21.
 Variation $13^{\circ} 30'$ East.

Descend.

- 75 Cross Wash, 20 lks. wide, Course $N 5^{\circ} E$ and ascend.
 30.00 Top of Ridge, bears $N. \& S.$ and descend.
 40.00 Set temporary $\frac{1}{2}$ Sec. Cor.
 78.11 Cross Wash, 30 lks. wide, Course $N. E.$ and ascend.
 79.81 Intersect $N. \& S.$ line, 11 lks. $S.$ of cor. to secs.
 16, 17, 20 & 21 from which corner, I run
 $S 89^{\circ} 55' W.$ on a true line between sections 16 & 21
 Variation $13^{\circ} 30'$ East
 39.90 Set a post 3 ft. long, 3 ins. diam. with marked stone
 12 ins. in the ground, for $\frac{1}{2}$ Sec. Cor., marked $\frac{1}{2}$ S. on
 $N.$ face, dug pits, 18 x 18 x 12 ins., $E.$ and $W.$ of
 post $5\frac{1}{2}$ ft. dist., and raised a mound of earth $1\frac{1}{2}$ ft.
 high, $3\frac{1}{2}$ ft. base around post.
 79.81 The corner to sections 16, 17, 20 & 21
 Land mountainous.
 Soil 3° rate
 Vegetation grass.

Township

17 N.

Range

19 E.

Gila and Salt River Meridian.

Chains

North, between Sections 16 and 17.

Variation

13° 30' East.

Descend. gradually.

13.40 Cross Wash, 20 lks. wide, Course N.W.

40.00 Set a Sand stone 18 x 10 x 6 ins., 12 ins. in the ground, for $\frac{1}{4}$ Sec. Cor., marked $\frac{1}{4}$ on W. face, and raised a mound of stone alongside. Pits impracticable.

77.50 Cross Wash, 5 lks. wide, Course N. 15° E. and ascend.

80.00 Set a Sand stone 27 x 16 x 5 ins. 21 ins. in the ground for Cor. to Secs. 8, 9, 16 & 17 marked with 4 notches on S. and 4 notches on E. edges and raised a mound of stone alongside. Pits impracticable.

Land rolling.

Soil 3rd rate

Vegetation grass.

Township

17 N.

Range

19 E.

Gila and Salt River Meridian.

Chains

East, on a random line between Sections 9 and 16.

Variation $13^{\circ} 30'$ East.

Descend.

1.50 Cross Wash, 50 yds. wide, Course $N. 14^{\circ} E$ and ascend.40.00 Set temporary $\frac{1}{4}$ Sec. Cor.

80.13 Intersect N. & S. line, 25 yds. S. of cor. to secs.

9, 10, 15 & 16 from which corner, I run

 $S. 89^{\circ} 49' W.$ on a true line between sections 9 & 16Variation $13^{\circ} 30'$ East.

40.00 Set a post 3 ft. long, 3 ins. diam. with marked stone
12 ins. in the ground, for $\frac{1}{4}$ Sec. Cor., marked $\frac{1}{2}$ S. on
N. face, dug pits, 18 x 18 x 12 ins., E and W of
post $5\frac{1}{2}$ ft. dist., and raised a mound of earth $1\frac{1}{2}$ ft.
high, $3\frac{1}{2}$ ft. base around post.

80.13 The corner to sections 8, 9, 16 & 17

~~80.13~~ Land rolling.Soil 3rd rate

Vegetation grass.

Township

17 N

Range

19 E

Gila and Salt River Meridian.

Chains

North, between Sections 8 and 9.

Variation

13° 30'

East.

Descend.

40.00

Set a Sand stone 48 x 24 x 6 ins., 30 ins. in the ground, for $\frac{1}{4}$ Sec. Cor., marked $\frac{1}{4}$ on N. face, and raised a mound of stone alongside. Pits impracticable.

42.00

Top of Spur, bears N. 85° E. & S. 85° W. and descend.

87.00

Set a post 4 ft. long. 4 ins. square, with marked stone 12 ins. in the ground, for Cor. to Secs. 4, 5, 8 & 9 marked T, 17 N.S. 4, on N, E, R, 19 E, S. 9 on S, E, S, 8 on S, W, and S, 5 on N, W, face with 5 notches on S, and 4 notches on E, edges, dug pits 18 x 18 x 12 ins, in each Sec., 5½ ft. dist., and raised a mound of earth 2 ft. high, 4½ ft. base around post.

Land rolling.

Soil 3rd rate

Vegetation grass.

Chains

East, on a random line between Sections 4 and 9.

Variation $13^{\circ} 30'$ East.*Descend.*6.00 Cross Wash, 20 lks. wide, Course $N. 10^{\circ} E$ and ascend.40.00 Set temporary $\frac{1}{2}$ Sec. Cor.

79.98 Intersect N. & S. line, 13 lks. N. of cor. to secs.

3.49 & 10 from which corner, I run

 $N. 89^{\circ} 54' W.$ on a true line between sections 4 & 9Variation $13^{\circ} 30'$ East

39.99 Set a post 3 ft. long, 3 ins. diam. with marked stone

12 ins. in the ground, for $\frac{1}{2}$ Sec. Cor., marked $\frac{1}{2}$ S. onN. face, dug pits, 18 x 18 x 12 ins., E. and W. of post $5\frac{1}{2}$ ft. dist., and raised a mound of earth $1\frac{1}{2}$ ft.high, $3\frac{1}{2}$ ft. base around post.

79.98 The corner to sections 4, 5, 8 & 9

Land rolling.

Soil 3rd rate

Vegetation grass.

Township

17 N.

Range

19 E.

Gila and Salt River Meridian.

Chains

North, on a random line between Sections 4 and 5.

Variation $13^{\circ} 40'$ East.*Descend.*40.00 Set temporary $\frac{1}{4}$ Sec. Cor.

79.88 Intersect N. B. of Tp. 68 lks. E. of cor. to secs.

4.5. 32 & 33, from which corner, I run

S. ~~29'~~ ^{29'} E. on a true line, between sections 4 & 5.Variation $18^{\circ} 30'$ East.

39.88 Set a post 3 ft. long, 3 ins. diam. with marked stone
12 ins. in the ground, for $\frac{1}{4}$ Sec. Cor., marked $\frac{1}{4}$ S. on
W. face, dug pits, 18 x 18 x 12 ins., N. and S. of
post $5\frac{1}{2}$ ft. dist., and raised a mound of earth $1\frac{1}{2}$ ft.
high, $3\frac{1}{2}$ ft. base around post.

79.88 The corner to sections 4, 5, 8, & 9

Land rolling.

Soil 3rd rate

Vegetation grass.

I carefully examined the adjustments of my solar
compass to-day, particularly the latitude and revers-
ing apparatus, and found them correct.

G. W. Pearson, Compassman June 21, 1883

Chains *Standard*
 From the corner to sections, 31 & 32 on S. 13y. $\frac{3}{4}$ p.,
 which is a post 4 ft. long, 4 ins.
 sq. with marked stone, 12 ins. in
 the ground marked ^{S. 2} T. 17 N. S. 32 on
 N. E. R. 19 E. S. 5 on S. E. T. 16 N. S. 6 on
 S. W. and S. 31 on W. W. face, with 5
 notches on E. and 1 notch on W. edge
 with pits N. E. & W. of post 5 $\frac{1}{2}$ ft. dist. and
 mound of earth 2 ft. high, 4 $\frac{1}{2}$ ft. base around post.
^{From}
 North between sections 31 & 32

Variation 14° 15' East.

Over rolling land.

40.00

Set a post 3 ft. long, 3 ins. diam. with marked stone
 12 ins. in the ground, for $\frac{1}{4}$ Sec. Cor., marked $\frac{1}{4}$ S. on
 W. face, dug pits, 18 x 18 x 12 ins., N. and S. of
 post 5 $\frac{1}{2}$ ft. dist., and raised a mound of earth 1 $\frac{1}{2}$ ft.
 high, 3 $\frac{1}{2}$ ft. base around post.

80.00

Set a post 4 ft. long, 4 ins. square, with marked stone
 12 ins. in the ground, for Cor. to Secs, 29, 30, 31 & 32
 marked T, 17 N. S. 29, on N, E, R, 19 E, S. 32
 on S, E, S, 31 on S, W, and S, 30 on N, W, face
 with 1 notch on S, and 5 notches on E, edges,
 dug pits 18 x 18 x 12 ins, in each Sec., 5 $\frac{1}{2}$ ft. dist.,
 and raised a mound of earth 2 ft, high, 4 $\frac{1}{2}$ ft, base
 around post.

Land rolling.

Soil 8th rate Vegetation grass.

Township 17 N Range 19 E

Gila and Salt River Meridian.

Chains East, on a random line between Sections 29 and 32.
Variation $13^{\circ} 30'$ East.

*Descend.*40.00 Set temporary $\frac{1}{4}$ Sec. Cor.

79.87 Intersect N. & S. line, 30 lks. N. of cor. to secs.

28, 29, 32 & 33 from which corner, I run

N. $89^{\circ} 47' W.$ on a true line between sections 29 & 32Variation $13^{\circ} 30'$ East

39.93 Set a post 3 ft. long, 3 ins. diam. with marked stone
12 ins. in the ground, for $\frac{1}{4}$ Sec. Cor., marked $\frac{1}{4}$ S. on
N. face, dug pits, 18 x 18 x 12 ins., E. and W. of
post $5\frac{1}{2}$ ft. dist., and raised a mound of earth $1\frac{1}{2}$ ft.
high, $3\frac{1}{2}$ ft. base around post.

79.87 The corner to sections 29, 30, 31 & 32

Land rolling.

Soil 3rd rate

Vegetation grass.

Henry Meyrick June 22 1883

Township

17 N.

Range

19 E.

Gila and Salt River Meridian.

Chains

West, on a random line between Sections 30 and 31.

Variation $13^{\circ} 30'$ East.*Ascend.*40.00 Set temporary $\frac{1}{4}$ Sec. Cor.79.58 Intersect W. B. of Tp. 17 lks. N. of cor. to secs.
previously set by me,
25.30.31 & 30 from which corner, I runN. $89^{\circ} 53'$ E on a true line, between sections 30 & 31
Variation $13^{\circ} 36'$ East.39.58 Set a post 3 ft. long. 3 ins. diam. with marked stone
12 ins. in the ground, for $\frac{1}{4}$ Sec. Cor., marked $\frac{1}{4}$ S. on
N. face, dug pits, 18 x 18 x 12 ins., E. and W. of
post $5\frac{1}{2}$ ft. dist., and raised a mound of earth $1\frac{1}{2}$ ft.
high, $3\frac{1}{2}$ ft. base around post.

79.58 The corner to sections 29.30.31 & 32

Land rolling.

Soil 3rd rate

Undergrowth of juniper.

G. W. Pearson Compassman - June 22, 1883

Township 17 N Range 19 E

Gila and Salt River Meridian.

Chains

North, between Sections 29 and 30.

Variation 13° 30' East.

40.00

Set a post 3 ft. long, 3 ins. diam. with marked stone 12 ins. in the ground, for $\frac{1}{4}$ Sec. Cor., marked $\frac{1}{4}$ S. on W. face, dug pits, 18 x 18 x 12 ins., N. and S. of post $5\frac{1}{2}$ ft. dist., and raised a mound of earth $1\frac{1}{2}$ ft. high, $3\frac{1}{2}$ ft. base around post.

88.00

Set a post 4 ft. long, 4 ins. square, with marked stone 12 ins. in the ground, for Cor. to Secs, 19, 20, 29 & 30 marked T, 17 N.S. 20, on N, E, R, 19 E, S. 29 on S, E, S, 30 on S, W, and S, 19 on N, W, face with 2 notches on S, and 5 notches on E, edges, dug pits 18 x 18 x 12 ins, in each Sec., $5\frac{1}{2}$ ft, dist., and raised a mound of earth 2 ft, high, $4\frac{1}{2}$ ft, base around post.

Land rolling.

Soil 3rd rateVegetation grass.

49 Township 17 N. Range 19 E.

Gila and Salt River Meridian.

Chains East, on a random line between Sections 20 and 29.
Variation $13^{\circ} 30'$ East.

Ascend.

30.11 Descend.

40.00 Set temporary $\frac{1}{4}$ Sec. Cor.68.17 Cross Wash, 20 lks. wide, Course $N. 10^{\circ} E$ and ascend.

79.96 Intersect N. & S. line, 14 lks. N, of cor. to secs.

20. 21. 28. 29 from which corner, I run

 $N. 89^{\circ} 54' W.$ on a true line between sections 20 & 29Variation $13^{\circ} 30'$ East

39.98 Set a post 3 ft. long. 3 ins. diam. with marked stone
12 ins. in the ground, for $\frac{1}{4}$ Sec. Cor., marked $\frac{1}{4}$ S. on
N. face, dug pits, 18 x 18 x 12 ins., E. and W. of
post $5\frac{1}{2}$ ft. dist., and raised a mound of earth $1\frac{1}{2}$ ft.
high, $3\frac{1}{2}$ ft. base around post.

79.96 The corner to sections 19. 20. 29 & 30

Land rolling.

Soil 3rd rate

Vegetation grass.

Henry Meyrick June 22. 1883

Township 17 N. Range 19 E.
Gila and Salt River Meridian.

Chains West, on a random line between Sections 19 and 30.
Variation $13^{\circ} 30'$ East.

Descend.

40.00 Set temporary $\frac{1}{4}$ Sec. Cor.

79.32 Intersect W. B. of Tp. 8 lks. S. of cor. to secs.
previously set by me,
19. 24. 25 & 30 from which corner, I run

$S. 89^{\circ} 57' E$ on a true line, between sections 19 & 30

Variation $13^{\circ} 30'$ East.

39.32 Set a post 3 ft. long. 3 ins. diam. with marked stone
12 ins. in the ground, for $\frac{1}{4}$ Sec. Cor., marked $\frac{1}{4}$ S. on
N. face, dug pits, 18 x 18 x 12 ins., E. and W. of
post $5\frac{1}{2}$ ft. dist., and raised a mound of earth $1\frac{1}{2}$ ft.
high, $3\frac{1}{2}$ ft. base around post.

79.32 The corner to sections 19. 20. 29 & 30

Land rolling.

Soil 3^{rd} rate

Timber of

Undergrowth of juniper:

G. W. Pearson Comptroller. June 22 1883

Township

17 N.

Range

19 E.

Gila and Salt River Meridian.

Chains

North, between Sections 19 and 20.

Variation $13^{\circ} 30'$ East.*Descend.*

40.00

Set a post 3 ft. long, 3 ins. diam. with marked stone 12 ins. in the ground, for $\frac{1}{4}$ Sec. Cor., marked $\frac{1}{4}$ S. on W. face, dug pits, 18 x 18 x 12 ins., N. and S. of post $5\frac{1}{2}$ ft. dist., and raised a mound of earth $1\frac{1}{2}$ ft. high, $3\frac{1}{2}$ ft. base around post.

80.00

Set a Sand stone 22 x 16 x 8 ins. 10 ins. in the ground for Cor. to Secs. 17, 18, 19 & 20 marked with 3 notches on S. and 5 notches on E. edges and raised a mound of stone alongside. Pits impracticable.

Top of Ridge, bears N. 33° E. & S. 33° W. and descend.

Land mountainous.

Soil 3rd rate

Vegetation grass.

Township

17 N

Range

19 E

Gila and Salt River Meridian.

Chains

East, on a random line between Sections 17 and 20.

Variation $13^{\circ} 30'$ East.

Ascend.

40.00

Set temporary $\frac{1}{2}$ Sec. Cor.

79.74

Intersect N. & S. line, 10 lks. N. of cor. to secs. 16, 17, 20, 21 from which corner, I run

N. $89^{\circ} 53' W.$ on a true line between sections 17 & 20

Variation $13^{\circ} 30'$ East

39.87

Set a post 3 ft. long, 3 ins. diam. with marked stone 12 ins. in the ground, for $\frac{1}{2}$ Sec. Cor., marked $\frac{1}{2}$ S. on N. face, dug pits, 18 x 18 x 12 ins., E. and W. of post $5\frac{1}{2}$ ft. dist., and raised a mound of earth $1\frac{1}{2}$ ft. high, $3\frac{1}{2}$ ft. base around post.

79.74

The corner to sections 17, 18, 19 & 20

Land rolling.

Soil 3rd rate

Vegetation grass

Henry Meyrick June 22 1883

Township 17 N. Range 19 E

Gila and Salt River Meridian.

Chains West, on a random line between Sections 18 and 19.

Variation $13^{\circ} 30'$ East.*Descend.*40.00 Set temporary $\frac{1}{4}$ Sec. Cor.79.45 Intersect W. B. of Twp. 29 lks. N. of cor. to secs.
B. 18. 19 & 24 ^{previously set by me.} from which corner, I run $N. 89^{\circ} 45' E$ on a true line, between sections 18 & 19.Variation $13^{\circ} 30'$ East.39.45 Set a post 3 ft. long. 3 ins. diam. with marked stone
12 ins. in the ground, for $\frac{1}{4}$ Sec. Cor., marked $\frac{1}{4}$ S. on
N. face, dug pits, 18 x 18 x 12 ins., E. and W. of
post $5\frac{1}{2}$ ft. dist., and raised a mound of earth $1\frac{1}{2}$ ft.
high, $3\frac{1}{2}$ ft. base around post.

79.45 The corner to sections 17. 18. 19 & 20

Land rolling.

Soil 3rd rate

Vegetation grass.

G. W. Pearson. Compeasemen June 22 1882

Township

17 N.

BOOK 264

Range

19 E.

54

Gila and Salt River Meridian.

Chains

North, between Sections 17 and 18.

Variation

13° 30'

East.

Descend. gradually.

40.00

Set a sand stone $20 \times 9 \times 4$ ins., 15 ins. in the ground, for $\frac{1}{4}$ Sec. Cor., marked $\frac{1}{4}$ on W. face, dug pits $18 \times 18 \times 12$ ins., N. and S. of stone $5\frac{1}{2}$ ft. dist., and raised a mound of earth $1\frac{1}{2}$ ft. high, $3\frac{1}{2}$ ft. base alongside.

80.00

Set a sand stone $20 \times 18 \times 4$ ins. 15 ins. in the ground for Cor. to Secs. 7, 8, 17 & 18 marked with 4 notches on S. and 5 notches on E. edges, dug pits $18 \times 18 \times 12$ ins. in each Sec., $5\frac{1}{2}$ ft. dist. and raised a mound of earth 2 ft. high, $4\frac{1}{2}$ ft. base. alongside.

Land rolling.

Soil 3rd rate

Vegetation grass.

Township

17 N

Range

19 E

Gila and Salt River Meridian.

Chains

East, on a random line between Sections 8 and 17.

Variation $13^{\circ} 30'$ East.*Ascend gradually.*40.00 Set temporary $\frac{1}{4}$ Sec. Cor.

80.30 Intersect N. & S. line, 18 lks. S. of cor. to secs.

8, 9, 16 & 17 from which corner, I run

S. $89^{\circ} 52' W.$ on a true line between sections 8 & 17Variation $13^{\circ} 30'$ East40.18 Set a sand stone $18 \times 10 \times 9$ ins., 12ins. in the ground, for $\frac{1}{4}$ Sec. Cor., marked $\frac{1}{4}$ on N.
face, and raised a mound of stone alongside. Pits
impracticable.

80.30 The corner to sections 7, 8, 17 & 18

Land rolling.

Soil 3rd rate

Vegetation grass

Henry Meyrick June 22, 1883

Township 17 N Range 19 E

Gila and Salt River Meridian.

Chains

West, on a random line between Sections 7 and 18.

Variation $13^{\circ} 30'$ East.

Descend gradually.

40.00 Set temporary $\frac{1}{4}$ Sec. Cor.79.69 Intersect *W. B. of Tp. 13* *Wks. S. of cor. to secs.*
previously set by me.

7. 12. 13 & 18 from which corner, I run

 $S. 89^{\circ} 54' E$ on a true line, between sections 7 & 18Variation $13^{\circ} 34'$ East.39.69 Set a post 3 ft. long, 3 ins. diam. with marked stone
12 ins. in the ground, for $\frac{1}{4}$ Sec. Cor., marked $\frac{1}{4}$ S. on
N. face, dug pits, 18 x 18 x 12 ins., E. and W. of
post $5\frac{1}{2}$ ft. dist., and raised a mound of earth $1\frac{1}{2}$ ft.
high, $3\frac{1}{2}$ ft. base around post.

79.69 The corner to sections 7, 8, 17 & 18

Land rolling.

Soil 3^{rd} rate

Vegetation grass.

G. W. Pearson Compeaseman June 22, 1883

Township 17 N. Range 19 E.

Gila and Salt River Meridian.

Chains

North, between Sections 7 and 8.

Variation 13° 30' East.Descend gradually.

40.00

Set a post 3 ft. long, 3 ins. diam. with marked stone
12 ins. in the ground, for $\frac{1}{4}$ Sec. Cor., marked $\frac{1}{4}$ S. on
W. face, dug pits, 18 x 18 x 12 ins., N. and S. of
post $5\frac{1}{2}$ ft. dist., and raised a mound of earth $1\frac{1}{2}$ ft.
high, $3\frac{1}{2}$ ft. base around post.

80.00

Set a post 4 ft. long, 4 ins. square, with marked stone
12 ins. in the ground, for Cor. to Secs. 5, 6, 7 & 8
marked T, 7 N. S. 5, on N, E, R, 19 E., S. 8
on S, E, S, 7 on S, W, and S, 6 on N, W, face
with 5 notches on S, and 5 notches on E, edges,
dug pits 18 x 18 x 12 ins. in each Sec., $5\frac{1}{2}$ ft. dist.,
and raised a mound of earth 2 ft. high, $4\frac{1}{2}$ ft. base
around post.

Wash, 10 lks. wide, Course N 70° E and ascend.

Land rolling.

Soil 3rd rateVegetation grass.

Township 17 N. Range 19 E.

Gila and Salt River Meridian.

Chains

East, on a random line between Sections 5 and 8.

Variation 13° 30' East.

Ascend gradually.

40.00 Set temporary $\frac{1}{4}$ Sec. Cor.

46.25 Top of Spur, bears N. 20° E. & 20° W. and descend.

80.12 Intersect N. & S. line, 44 lks. S, of cor. to secs.

4. 5. 8 & 9 from which corner, I run

S 89° 41' W. on a true line between sections 5 & 8

Variation 13° 30' East

4000 Set a post 3 ft. long, 3 ins. diam. with marked stone

12 ins. in the ground, for $\frac{1}{4}$ Sec. Cor., marked $\frac{1}{4}$ S. on

N. face, dug pits, 18 x 18 x 12 ins., E. and W. of

post $5\frac{1}{2}$ ft. dist., and raised a mound of earth $1\frac{1}{2}$ ft.

high, $3\frac{1}{2}$ ft. base around post.

80.13 The corner to sections 5, 6, 7 & 8

Land rolling.

Soil 3rd rate

Vegetation grass.

Henry Meyrick June 22, 1883

Township

17 N

Range

19 S

Mount Diablo Meridian.

Chains

West, on a random line between Sections 6 and 7.

Variation

13° 30'

East.

*Ascend gradually.*40.00 Set temporary $\frac{1}{4}$ Sec. Cor.79.54 Intersect W. B. of Tp. 30 lks. S. of cor. to secs.
previously set by me.

1.67 & 12' from which corner, I run

S 89° 45' E, on a true line, between sections

Variation

13° 45'

East.

39.54

Set a post 3 ft. long, $\frac{3}{4}$ ins. diam. with marked stone12 ins. in the ground, for $\frac{1}{4}$ Sec. Cor., marked $\frac{1}{4}$ S. on

N. face, dug pits, 18 x 18 x 12 ins., E. and W. of

post $5\frac{1}{2}$ ft. dist., and raised a mound of earth $1\frac{1}{2}$ ft.high, $3\frac{1}{2}$ ft. base around post.

79.54

The corner to sections 5, 6, 7 & 8

Land rolling.

Soil 3rd rate

Vegetation grass.

Township

17 N

Range

19 E

Gila and Salt River Meridian.

Chains

North, on a random line between Sections 5 and 6.

Variation $13^{\circ} 33'$ East.*Ascend gradually.*40.00 Set temporary $\frac{1}{4}$ Sec. Cor.55.00 Top of Spur, bears $E. \& W.$ and descend.

79.31 Intersect N. B. of Tp. 46 lks. E. of cor. to sec.

minutely described by me
5.6 31° 32° from which corner, I runS. 12° E. on a true line, between sections 5 & 6Variation $13^{\circ} 30'$ East.

39.31 Set a post 3 ft. long, 3 ins. diam. with marked stone
12 ins. in the ground, for $\frac{1}{4}$ Sec. Cor., marked $\frac{1}{4}$ S. on
W. face, dug pits, 18 x 18 x 12 ins., N. and S. of
post $5\frac{1}{2}$ ft. dist., and raised a mound of earth $1\frac{1}{2}$ ft.
high, $3\frac{1}{2}$ ft. base around post.

79.31 The corner to sections 5, 6, 7 & 8

Land rolling.

Soil 3^{rd} rate

Vegetation grass.

G. W. Pearson, Comptroller, June 22, 1883

GENERAL DESCRIPTION.

The surface of this Township is broken and rocky in the South East and fine rolling prairie in North and West.

The surface is covered with a fine growth of grass.

There is some scattering juniper in the Southern part.

There is plenty of good sand stone along the washes. Soil is sandy and rocky in the South 3rd rate.

In the North it is 2nd rate.

There is a Cabin in Sec. 22
Water in tanks.

For Final Notes
see Book No. 17.

U. S. Surveyor General's Office,

Tucson, Arizona, Feby. 5. 1884,

The foregoing Field Notes of the Survey of the

Subdivision
Township 17 North
Range 19 East

Of the Gila and Salt River Base and Meridian, Arizona, executed by Henry Alsup, Jr.

Deputy Surveyor, under his contract of the 28th

day of July, 1882, having been

critically examined and the necessary corrections and explanations made, the said Field Notes and the surveys they describe

are hereby approved

Rayce Johnson
Surveyor General.