

Platted

Book No. 377

Copied
Compared

W. R. Fitzgerald Deputy Surveyor.

T. *21 North* R. *2 East*

Gila and Salt River Meridian.

No-377

Field Notes

OF BOOK 377

THE SUBDIVISION LINES OF

Township *21 North* Range *2 East*

Gila and Salt River Meridian.

BY

W. R. Fitzgerald Deputy Surveyor.

Under his Contract of *July 27th* 188*2*

Survey Commenced *March 5th* 188*3*

Survey Completed *March 9th* 188*3*

377

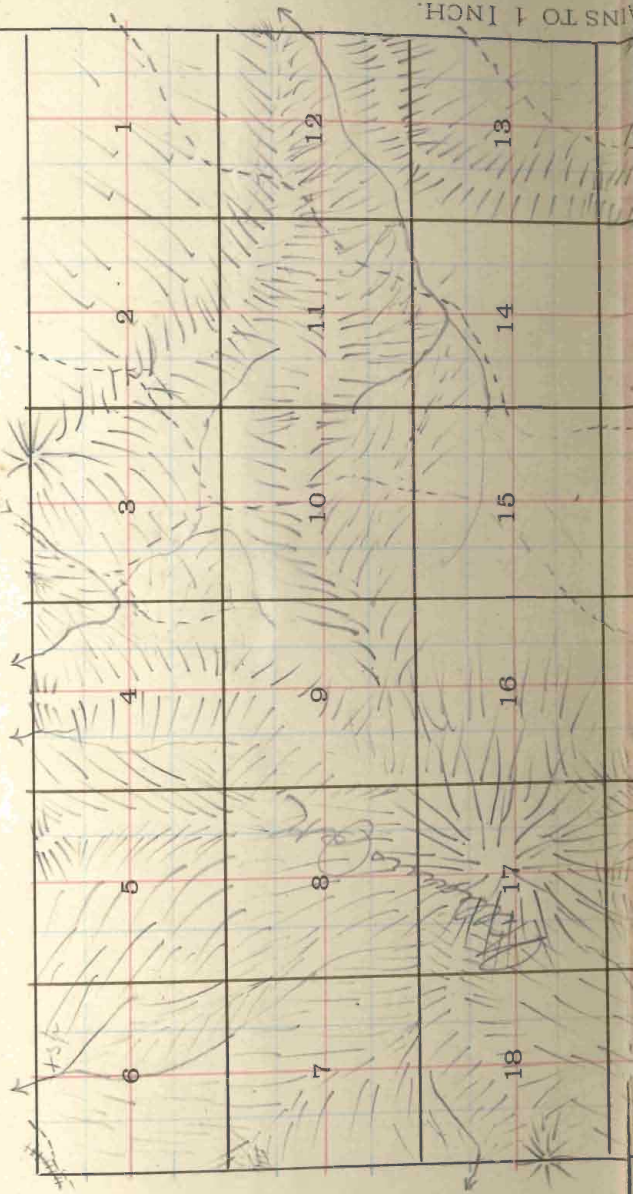
No-377

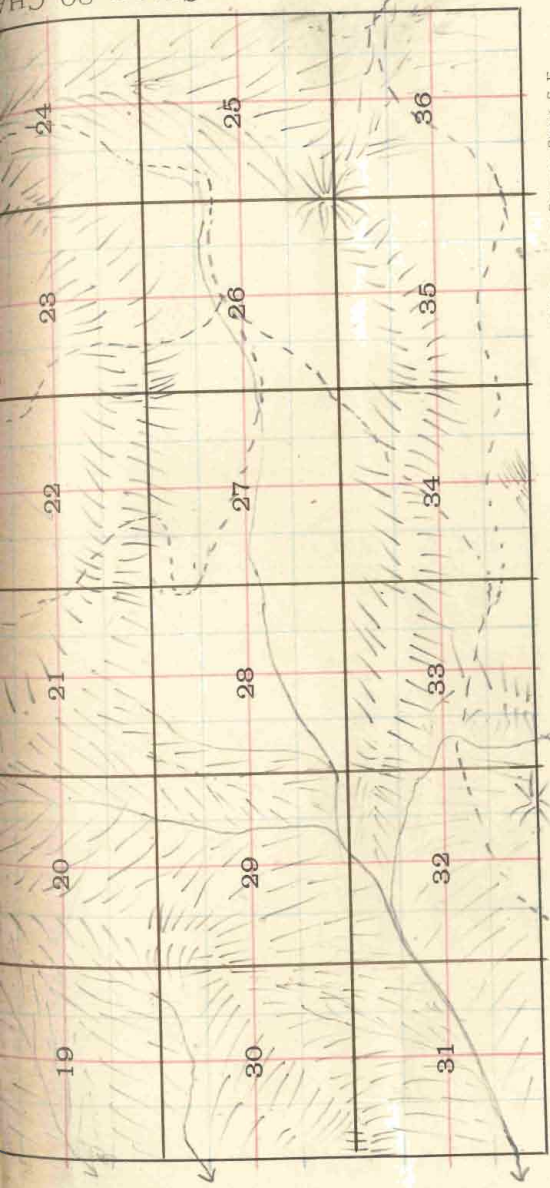
Platted,
Copied for Washington,
Copied for Register,

A. J. LEARY,
Printer, Publisher and Stationer,
402-404 Sansome Street, S. F.

Township No. 21 N. Range No. 2. E. 8 & J. R. Meridian.

BOOK 377



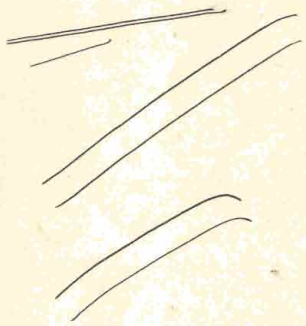


TOWNSHIP PLAT.

- Meridian Line,*
- Base Line,*
- Standard Line,*
- Township Lines,*
- Section Lines,*
- Meander Lines,*
- Office Work.*

A. J. LEARY, Manufacturing Stationer and Printer, 402-404 Sansome Street, S. F.

BOOK 877



W. P. Fitzgerald Deputy Surveyor.

T. *21 N.* **R.** *2 E.*

Gila and Salt River Meridian.

No-377
Field Notes

OF

THE SUBDIVISION LINES OF

Township *21 N.* Range *2 E.*

Gila and Salt River Meridian.

BY

W. P. Fitzgerald Deputy Surveyor.

Under his Contract of *July 21* 188 *2*

Survey Commenced *March 5* 188 *3*

Survey Completed *March 9* 188 *3*

*Platted,
 Copied for Washington,
 Copied for Register,*

1A

Township 21 North, Range 2 East,

Gibson and Salt River Meridian.

BOOK 377

INDEX.

6	60	5	44	4	33	3	22	2	11	1
59		58		43		32		21		10
7	57	8	42	9	31	10	20	11	9	12
56		55		41		30		19		8
18	54	17	40	16	29	15	18	14	7	13
53		52		39		28		17		6
19	51	20	38	21	27	22	16	23	5	24
50		49		27		26		15		4
30	48	29	36	28	25	27	14	26	3	25
47		46		35		24		13		2
31	45	32	34	33	23	34	12	35	1	36

OK

Township.....

Range.....

Meridian.

BOOK 377

For Preliminary Notes re,
 Book No 1
 and description of instrument
 Survey made with Burt's Patent Improved Solar
 Compass, nearly new, and in first rate order. Made
 by Otto Kernul of Gabel
 Germany in 1881

Before proceeding to subdivide this Tp., I made a
 change of 5 minutes in the latitude arc of my
 solar compass by subtracting same from
 the reading previously given, and at noon verified
 and corrected same by observation on the sun. I also
 further tested instrument by reversing.

Gila and Salt River Meridian.

Chains *Standard*
From the Corner to Sections 1, 2, 35 & 36 on the South boundary *π/7*
previously set by me.

Iron North, between Sections 35 and 36.

Variation *11° 15'* East.

Ascend. very gradually.

800 Cross Road, bears *57° 0' N. 100° 0' E.*

400.00 Set a post 3 ft. long, 3 ins. diam. with marked stone

12 ins. in the ground, for $\frac{1}{4}$ Sec. Cor., marked $\frac{1}{4}$ S. on

W. face, and raised a mound of stone $1\frac{1}{2}$ ft. high,

$3\frac{1}{2}$ ft. base around post. Pits impracticable.

from which

A Yellow Pine *24* ins diam. bears *110° 1/4 W.* 10 lks. dist.

marked $\frac{1}{2}$ S. B. T.

No other trees within limits.

80 00 Set a post 4 ft. long, 4 ins. square, with marked stone.

12 ins. in the ground, for Cor. to Secs. 25, 26, 35 & 36

marked T. 21 N. R. 2 E. S. 25, on N. E., R. 2 E., S. 26

on S. E., S. 25 on S. W, and S. 26 on N. W. face,

with | notch on S. and | notch on E. edges;

and raised a mound of stone 2 ft. high, $4\frac{1}{2}$ ft. base

around post. Pits impracticable.

from which

A White Oak *14* ins. diam. bears *110° W.* 50 lks. dist.

marked T. 21 N. R. 2 E. S., 26 B. T.

A White Oak *15* ins. diam. bears *110° W.* 58 lks. dist.

marked T. 21 N. R. 2 E. S., 25 B. T.

A Yellow Pine *20* ins diam. bears *115° E.* 62 lks. dist.

marked T. 21 N. R. 2 E. S., 26 B. T.

No other trees within limits.

Land mountainous

Soil *3rd* rate *Vegetation.*

Timber of *pine & oak*

Gum & sage

Township 21 N Range 3 E

Gila and Salt River Meridian.

Chains

East, on a random line between Sections 25 and 36.

Variation $H^{\circ} 45'$ East.Descend. *gradually.*40.00 Set temporary $\frac{1}{4}$ Sec. Cor.80.20 Intersect E. B. of T_p 32 Ws. S. of cor. to secs.
previously described. 2nd run

25.30.31 & 30 from which corner, I run

3.89.46 W. on a true line, between sections 25 & 30

Variation $H^{\circ} 45'$ East.

40.13 Set a post 3 ft. long, 3 ins. diam. with marked stone,

12 ins. in the ground, for $\frac{1}{4}$ Sec. Cor., marked $\frac{1}{4}$ S. onN. face, and raised a mound of stone $1\frac{1}{2}$ ft. high, $3\frac{1}{2}$ ft. base around post. Pits impracticable. from whichA Yellow Pine 20 ins diam. bears $S. 15^{\circ} E.$ 28 lks. dist.marked $\frac{1}{4}$ S. B. T.

No other trees within limits.

80.20 The corner to sections 25.26.25 & 30

Land mountainous

Soil *grnd* rateTimber of *pine.*Vegetation. *grass & sage.*

Township 21 N. Range 9 E.

Gila and Salt River Meridian.

Chains

North, between Sections 25 and 26.

Variation $14^{\circ} 15'$ East.

Ascend.

5.00

Top of Beetle.

40.00

Set a Round stone $10 \times 10 \times 6$ ins., 10 ins. in the ground, for $\frac{1}{4}$ Sec. Cor., marked $\frac{1}{4}$ on W. face, and raised a mound of stone alongside.

impracticable.

Pits

from which

A Yellow Pine 30 ins diam. bears $N 45^{\circ} W$. 08 lks. dist. marked $\frac{1}{4}$ S. B. T. No other trees within limits.

57.00

Cross Road, near E. & W.

57.00

Cross Wash, 40 lks. wide, Course W. and ascend.

80.00

Set a post 4 ft. long, 4 ins. square, with marked stone 12 ins. in the ground, for Cor. to Secs. 23, 24, 25 & 26 marked T. 21 N. S. 24, on N. E., R. 2 E., S. 25 on S. E., S. 26 on S. W., and S. 23 on N. W. with 2 notches on S. and 1 notch on E. edge, and raised a mound of stone 2 ft. high, 4 $\frac{1}{2}$ ft. base around post. Pits impracticable.

from which

A Yellow Pine 20 ins diam. bears $N 20^{\circ} W$. 1.2 lks. dist. marked T. 21 N. R. 2 E., S. 23 B. T.

A Yellow Pine 36 ins diam. bears $S 10^{\circ} E$. 46 lks. dist. marked T. 21 N. R. 2 E., S. 25 B. T. No other trees within limits.

Land mountainous

Soil 3^{rd} rate

Timber of pine

Vegetation. grass & sage.

Township 21 N Range 2 E

Gila and Salt River Meridian.

Chains

East, on a random line between Sections 24 and 25.

Variation 11° 15' East.*Ascend.*12.00 Cross Road, bears, N. 15° E. & S. 15° W.40.00 Set temporary $\frac{1}{4}$ Sec. Cor.45.00 Top of Ridge, bears N. & N. and descend.79.84 Intersect E. R. of Twp. 8 1/2 N. of cor. to secs.
previously described. by me
P. 24, 25 & 30, from which corner, I runN. 89° 57' W on a true line, between sections 24 & 25
Variation 11° 15' East.80.12 Set a post 3 ft. long, 3 ins. diam. with marked stone12 ins. in the ground, for $\frac{1}{4}$ Sec. Cor., marked $\frac{1}{4}$ S. onN. face, and raised a mound of stone 1 1/2 ft. high,3 1/2 ft. base around post. Pits impracticable.

from which

A Yellow Pine 12 ins diam. bears S. 5 1/2° W. 11 1/2 lks. dist.marked $\frac{1}{4}$ S. B. T. No other trees within limits.79.84 The corner to sections 23, 24, 25 & 26

Land mountainous

Soil 30²⁰ rateTimber of pineVegetation. grass & sage.

Township 21 N Range 2 EGila and Salt River Meridian.

Chains

North, between Sections 23 and 24.

Variation 4° 45' East.*Ascend.*

40.00

Set a post 3 ft. long, 3 ins. diam. with marked stone
12 ins. in the ground, for $\frac{1}{4}$ Sec. Cor., marked $\frac{1}{4}$ S. on
W. face, dug pits, 18 x 18 x 12 ins., N. and S. of
post $5\frac{1}{2}$ ft. dist., and raised a mound of earth $1\frac{1}{2}$ ft.
high, $3\frac{1}{2}$ ft. base around post. from which

A Yellow Pine 20 ins diam. bears N. 75° W. .03 lks. dist.
marked $\frac{1}{4}$ S. B. T. No other trees within limits.

43.00

Top of Ridge, bears N. 15° E. & S. 15° W. and descend.

80.00

Set a post 4 ft. long, 4 ins. square, with marked stone
12 ins. in the ground, for line to Secs. 13, 14, 23 & 24
marked T. 21 N. S. 13, on N. E. R. 2 E. S. 24
on S. E. S. 23 on S. W. and S. 24 on N. W. face
with 3 notches on S. and 1 notch on E. edges,
dug pits 18 x 18 x 12 ins. in each Sec., $5\frac{1}{2}$ ft. dist.,
and raised a mound of earth 2 ft. high, $4\frac{1}{2}$ ft. base
around post. from which

A Yellow Pine 20 ins diam. bears S. 76° W. .71 lks. dist.
marked T. 21 N. R. 2 E. S. 23 B. T.

A White Oak 18 ins. diam. bears N. 30° W. .33 lks. dist.
marked T. 21 N. R. 2 E. S. 24 B. T.

A White Oak 14 ins. diam. bears N. 44° E. .51 lks. dist.
marked T. 21 N. R. 2 E. S. 23 B. T.
No other trees within limits.

Land mountainous

Soil 3rd rateTimber of pine & oakVegetation. grass & sage.

Township 21 N Range 2 EGila and Salt River Meridian.

Chains

East, on a random line between Sections 13 and 24.

Variation $11^{\circ} 25'$ East.*Ascend.*12.00 Top of Ridge, bears S. $20^{\circ} 11'$ E. $12.28'$ and descend.32.00 ^{Intersect} Cross Road, bears N. $20^{\circ} 11'$ E. $32.28'$ 40.00 Set temporary $\frac{1}{4}$ Sec. Cor.79.68 Intersect E. B. of T₂. 11° Ws. N. of cor. to sec.
previously described, *same*
18.18 19° $24'$ from which corner, I run $N. 87^{\circ} 32' W.$ on a true line, between sections 13 & 24Variation $11^{\circ} 25'$ East.

34.54 Set a post 3 ft. long, 3 ins. diam. with marked stone

12 lbs. in the ground, for $\frac{1}{4}$ Sec. Cor., marked $\frac{1}{4}$ S. onN. face, and raised a mound of stone $1\frac{1}{2}$ ft. high, $3\frac{1}{2}$ ft. base around post. Pits impracticable.

from which

1 White Oak 11 ins. diam. bears N. 11° Ws. dist.marked $\frac{1}{4}$ S. B. T. No other trees within limits.

Ca. set on N. slope of hill.

79.68 The corner to sections 13, 14, 23 & 24

Land mountainous

Soil 2° rate

Timber of Pine & oak.

Vegetation grass & sage.

Township 21 N Range 2 E

Gila and Salt River Meridian.

Chains

North, between Sections 13 and 14.

Variation $11^{\circ} 15'$ East.

Along N. slope.

11.00 Set a level stone 15 x 10 x 5 ins., 12 ins. in the ground, for $\frac{1}{4}$ Sec. Cor., marked $\frac{1}{2}$ on face, and raised a mound of stone alongside. Pits impracticable.

A Yellow Pine 30 ins diam. bears N. 7° W. 10 lks. dist. marked $\frac{1}{2}$ S. B. T.

A Yellow Pine 10 ins diam. bears S. 50° E. 3 lks. dist. marked $\frac{1}{2}$ S. B. T.

80.00 Set a level stone 20 x 15 x 10 ins. 15 ins. in the ground for Cor. to Secs. 11, 12, 13 & 14 marked with 2 notches on S. and 1 notch on E. edges and raised a mound of stone alongside. Pits impracticable.

A Yellow Pine 10 ins diam. bears N. 10° E. 60 lks. dist. marked T. 21 N. R. 2 E. S., 12 B. T.

A Yellow Pine 15 ins diam. bears N. 15° W. 51 lks. dist. marked T. 21 N. R. 2 E. S., 11 B. T.

A Yellow Pine 15 ins diam. bears S. 50° E. 92 lks. dist. marked T. 21 N. R. 2 E. S., 13 B. T.

A Yellow Pine 20 ins diam. bears S. 25° W. 40 lks. dist. marked T. 21 N. R. 2 E. S., 14 B. T.

Land mountainous

Soil 3rd rate

Heavy timber of pine.

Vegetation. grass & sage

Township 21 N Range 2 E

Gila and Salt River Meridian.

Chains

East, on a random line between Sections 12 and 13.

Variation 4° 45' East.

Ascend.

30.00 Top of Ridge, bears N. 50° E. 3.50 W. and descend.

40.00 Set temporary $\frac{1}{4}$ Sec. Cor.

7290 Intersect E. B. of Twp. 25 lks. S. of cor. to secs. 12, 13 & 14 from which corner, I run

159° 45' W. on a true line, between sections 12 & 13

Variation 11° 45' East.

3995 Set a sand stone 12 x 10 x 6 ins.,
 ins. in the ground, for $\frac{1}{4}$ Sec. Cor., marked $\frac{1}{4}$ on
 face, and raised a mound of stone alongside. Pits
 impracticable. from which

A Yellow Pine 10 ins diam. bears S. 10° W. 2 1/2 lks. dist.
 marked $\frac{1}{4}$ S. B. T.

A Yellow Pine 11 ins diam. bears N. 5° W. 2 1/2 lks. dist.
 marked $\frac{1}{4}$ S. B. T.

7290 The corner to sections 11, 12, 13 & 14

Land mountainous

Soil 3rd rate

Timber of pine.

Vegetation. grass & sage.

Township 21 N Range 1 E

Gila and Salt River Meridian.

Chains North, between Sections 11 and 12. Variation 14° 15' East.

Descend.

2.50 Cross Wash, 10 lks. wide, Course N. 50° E and ascend.

40.00 Set a Sand stone 10 x 14 x 5 ins., 10 ins. in the ground, for $\frac{1}{4}$ Sec. Cor., marked $\frac{1}{4}$ on W face, and raised a mound of stone alongside. Pits impracticable. from which

A Yellow Pine 30 ins diam. bears S. 55° W. 18 lks. dist. marked $\frac{1}{4}$ S. B. T. No other trees within limits.

40.00 Cross Road, bears, N. 70° E. 1.50 W.

17.00 Top of Ridge, bears E. 2° W. and descend.

80.00 Set a Sand stone 20 x 20 x 15 ins. 15 ins. in the ground for Cor. to Secs. 1, 2, 11 & 12, marked with 5 notches on S. and 1 notch on E. edges and raised a mound of stone alongside. Pits impracticable. from which

A Yellow Pine 8 ins diam. bears N. 30° E. 05 lks. dist. marked T. 21 N. R. 2 E. S., 1 B. T.

A Yellow Pine 18 ins diam. bears N. 30° W. 20 lks. dist. marked T. 21 N. R. 2 E. S., 2 B. T.

A Yellow Pine 24 ins diam. bears S. 85° W. 10 lks. dist. marked T. 21 N. R. 2 E. S., 11 B. T.

A Yellow Pine 10 ins diam. bears S. 20° E. 28 lks. dist. marked T. 21 N. R. 2 E. S., 12 B. T. Land Mountainous.

Soil 3rd rate

Vegetation grass & sage.

Heavy timber of pine.

Township 21 N Range 2 E

Gila and Salt River Meridian.

Chains

East, on a random line between Sections 1 and 12.

Variation $11^{\circ} 21' 5''$ East.

Descend.

17.50 Cross Road, bears $N. 15^{\circ} E.$ & $S. 15^{\circ} W.$ and ascend40.00 Set temporary $\frac{1}{4}$ Sec. Cor.70.00 Top of Spur, bears $S. 7^{\circ} E.$ & $N. 7^{\circ} W.$ and descend.82.15 Intersect $E. B.$ of Tp. 1st 1ks. S. of cor. to secs.*previously described. by me*
1. C. 7 & 12 from which corner, I run $S. 59^{\circ} 53' W.$, on a true line, between sections 1 & 12Variation $11^{\circ} 21' 5''$ East.

40.07 Set a post 3 ft. long, 3 ins. diam 24 ins. in the ground.

for $\frac{1}{4}$ Sec. Cor., marked $\frac{1}{4}$ S. on $N.$ face; from whichA Yellow Pine 20 ins diam. bears $N. 20^{\circ} E.$ 30 lks. dist.
marked $\frac{1}{4}$ S. B. T.A Yellow Pine 20 ins diam. bears $S. 50^{\circ} W.$ 50 lks. dist.
marked $\frac{1}{4}$ S. B. T.

80.15 The corner to sections 1, 9, 11 & 12

Land mountainous

Soil 2^{nd} rate

Timber of pine.

Vegetation. grass & weeds.

Township 21 - N Range 2 E

Gila and Salt River Meridian.

Chains

North, on a random line between Sections 1 and 2.

Variation $141^{\circ} 45'$ East.

Descend.

40.00 Set temporary $\frac{1}{4}$ Sec. Cor.SC 216 Intersect N. B. of Tp. 21 1/2 Wks. E. of cor. to secs.
previously set by me.

1. 2. 35 & 36 from which corner, I run

S. 12' E. on a true line, between sections 1 & 2.

Variation $111^{\circ} 45'$ East.2/0. 216 Set a post 3 ft. long, 3 ins. diam 24 ins. in the ground,
for $\frac{1}{4}$ Sec. Cor., marked $\frac{1}{4}$ S. on W. face; from which
A Yellow Pine 35 ins diam. bears N 11° E. 45 lks. dist.
marked $\frac{1}{4}$ S. B. T.A Yellow Pine 22 ins diam. bears N 16° W 18 lks. dist.
marked $\frac{1}{4}$ S. B. T.

SC 40 The corner to sections 1, 2, 11 & 12

Land mountainous

Soil 3rd rate

Timber of pine.

Vegetation. grass & sage.

W. R. Fitzgerald Mar. 5. 1883

Township 21 N Range 2 E

Gila and Salt River Meridian.

Chains *Standard*
From the Corner to Sections 2, 3, 34 & 35 on the South boundary *J J*
previously set by me.

Iron North, between Sections 34 and 35.

Variation $41^{\circ} 15'$ East.

Ascend. *gradually.*

1200 Cross Road, bears $E \ 2 \ W$.

4000 Set a *square* stone $10 \times 10 \times 6$ ins., 10
ins. in the ground, for $\frac{1}{4}$ Sec. Cor., marked $\frac{1}{4}$ on W .
face, and raised a mound of stone alongside. Pits

impracticable. from which

A Yellow Pine 20 ins diam. bears $120^{\circ} E$. 11 lks. dist.
marked $\frac{1}{4}$ S. B. T. No other trees within limits.

4000 Top of Ridge, bears $E \ 2 \ W$. and descend.

8000 Set a post 4 ft. long, 4 ins. square, with marked stone

12 ins. in the ground, for Cor. to Secs. $26, 27, 34, 35$

marked $T \ 2 \ N. \ S. \ 90^{\circ}$, on $N. \ E., R. \ 2 \ E., S. \ 30^{\circ}$

on $S. \ E., S. \ 34$ on $S. \ W$, and $S. \ 27$ on $N. \ W$. face.

with 1 notch on $S.$ and 2 notches on $E.$ edges;

and raised a mound of stone 2 ft. high, $4\frac{1}{2}$ ft. base

around post. Pits impracticable. from which

A Yellow Pine 21 ins diam. bears $N \ 13^{\circ} W$. $3\frac{1}{2}$ lks. dist.
marked $T \ 2 \ N. \ R. \ 2 \ E. \ S. \ 27 \ B. \ T.$

A Yellow Pine 20 ins diam. bears $S \ 15^{\circ} W$. $3\frac{1}{2}$ lks. dist.
marked $T \ 2 \ N. \ R. \ 2 \ E. \ S. \ 31 \ B. \ T.$

No other trees within limits.

Land mountainous

Soil 3^{rd} rate Vegetation. grass & sage

Timber of pine & oak.

Township 17 N. Range 2 E.

Gila and Salt River Meridian.

Chains

East, on a random line between Sections 26 and 35.

Variation $11^{\circ} 45'$ East.*Ascend.*40.00 Set temporary $\frac{1}{4}$ Sec. Cor.

79.79 Intersect N. & S. line. 22 1ks. N. of cor. to secs.

25.36 35.30 from which corner, I run

N. $89^{\circ} 01'$ W. on a true line between sections 26 & 35Variation $11^{\circ} 45'$ East

39.89 Set a post 3 ft. long, 3 ins. diam. with marked stone

12 ins. in the ground, for $\frac{1}{4}$ Sec. Cor., marked $\frac{1}{4}$ S. onN. face, and raised a mound of stone $1\frac{1}{2}$ ft. high, $3\frac{1}{2}$ ft. base around post. Pits impracticable.

from which

2 Yellow Pine 41 ins diam. bears N. 7° E. 48 kls. dist.
marked $\frac{1}{4}$ S. B. T. No other trees within limits.

79.79 The corner to sections 26, 27, 34 & 35

Land mountainous

Soil 3rd rate

Timber of pine & oak.

Vegetation. grass & sage.

Township 21 N Range 2 EGila and Salt River Meridian.

Chains North, between Sections 26 and 27.

Variation N 45' East.Descend. by gully way.74.50 Cross Road, bears, N. 30° E. 2 S. 30° W.34.50 Cross Road, bears, E. 2 W.35.00 Cross Wash, 144 lks. wide, Course S. 70° W and ascend.40.00 Set a post 3 ft. long, 3 ins. diam. with marked stone
12 ins. in the ground, for $\frac{1}{2}$ Sec. Cor., marked $\frac{1}{2}$ S. onN. face, dug pits, 18 x 18 x 12 ins., N. and S. of
post $5\frac{1}{2}$ ft. dist., and raised a mound of earth $1\frac{1}{2}$ ft.
high, $3\frac{1}{2}$ ft. base around post. from whicha Yellow Pine 20 ins diam. bears S. 70° W. 53 lks. dist.
marked $\frac{1}{2}$ S. B. T. No other trees within limits.80.00 Set a post 4 ft. long, 4 ins. square, with marked stone12 ins. in the ground, for Cor. to Secs. 22. 23. 26. 27marked T. 21 N. S. 23, on N. E., R. 2 E., S. 20on S. E., S. 27 on S. W. and S. 22 on N. W. face,with 2 notch 2 on S. and 2 notch 2 on E. edges;and raised a mound of stone 2 ft. high, $4\frac{1}{2}$ ft. basearound post. Pits impracticable. from whicha Yellow Pine 20 ins diam. bears S. 70° E. 96 lks. dist.
marked T. 21 N. R. 2 E S. 20 B. T.A Yellow Pine 22 ins diam. bears S. 50° W. 32 lks. dist.
marked T. 21 N. R. 2 E S. 27 B. T.

No other trees within limits.

Land mountainous

Soil 3rd rate Vegetation. grass & sage.Timber of pine & oak

Township 21 N Range 9 E

Gila and Salt River Meridian.

Chains

East, on a random line between Sections 23 and 26.

Variation

N 1° 45'

East.

Descend. mountainy.

20.00 Cross Road, bears N. & S.

40.00 Set temporary $\frac{1}{2}$ Sec. Cor.

50.13 Intersect N. & S. line, 30 lks. N. of cor. to secs.

22, 24, 25 & 26 from which corner, I run

N. 89° 45' W. on a true line between sections 23 & 26

Variation

N 1° 45'

East

40.00 Set a Sand stone 10 x 10 x 11 ins., 10 ins. in the ground, for $\frac{1}{2}$ Sec. Cor., marked $\frac{1}{2}$ on N.

face, and raised a mound of stone alongside. Pits

impracticable.

from which

A Fir 12 ins. diam. bears S 30° E 43 lks. dist. marked $\frac{1}{2}$ S. B. T.

A Yellow Pine 20 ins diam. bears N 10° W. 40 lks. dist.

marked $\frac{1}{2}$ S. B. T.

50.13 The corner to sections 22, 23, 26 & 27

Land mountainous

Soil 3rd rate

Timber of Pine & Oak.

Vegetation. grass & sage.

Township 21 N Range 9 E

Gila and Salt River Meridian.

Chains

North, between Sections 22 and 23.

Variation 11° 45' East.

Descend.

46.00 Set a post 3 ft. long, 3 ins. diam. with marked stone 12 ins. in the ground, for $\frac{1}{4}$ Sec. Cor., marked $\frac{1}{4}$ S. on N. face, and raised a mound of stone $1\frac{1}{2}$ ft. high, $3\frac{1}{2}$ ft. base around post. Pits impracticable.

from which

A Yellow Pine 10 ins diam. bears $N. 10^{\circ} W.$ 21 lks. dist. marked $\frac{1}{4}$ S. B. T. No other trees within limits.

48.00 Cross Road, bears N.W. & S.E.

80.00 Set a Round stone 10 x 14 x 5 ins. 10 ins. in the ground for Cor. to Secs. 14, 15, 22 & 23 marked with 3 notches on S. and 2 notches on E. edges and raised a mound of stone alongside. Pits impracticable.

from which

A Yellow Pine 20 ins diam. bears $N. 18^{\circ} E.$ 65 lks. dist. marked T. 21 N. R. 2 E. S., 11 B. T.

A Yellow Pine 30 ins diam. bears $S. 73^{\circ} E.$ 49 lks. dist. marked T. 21 N. R. 2 E. S., 23 B. T.

A Yellow Pine 15 ins diam. bears $S. 50^{\circ} W.$ 1.19 lks. dist. marked T. 21 N. R. 2 E. S., 22 B. T.

No other trees within limits.

Land mountainous

Soil 3rd rate

Heavy timber of pine

Vegetation. grasses sage

Township 21 N Range 9 E

Gila and Salt River Meridian.

Chains

East, on a random line between Sections 14 and 23.

Variation $11^{\circ} 45'$ East.*Ascend.*40.00 Set temporary $\frac{1}{4}$ Sec. Cor.

80.25 Intersect N. & S. line, 11 lks. S. of cor. to secs.

13, 14, 23 & 24 from which corner, I run

S. $89^{\circ} 55' W.$ on a true line between sections 14 & 23Variation $11^{\circ} 45'$ East

40.13

Set a post 3 ft. long, 3 ins. diam. 24 ins. in the ground,
for $\frac{1}{4}$ Sec. Cor., marked $\frac{1}{4}$ S. on N. face; from whichA Yellow Pine 14 ins diam. bears S. $57^{\circ} W.$ 21 lks. dist.
marked $\frac{1}{4}$ S. B. T.A Yellow Pine 13 ins diam. bears S. $50^{\circ} E.$ 33 lks. dist.
marked $\frac{1}{4}$ S. B. T.

80.27

The corner to sections 14, 15, 22 & 23

Land rolling.

Soil 3rd rate

Timber of pine & oak.

Vegetation. grass & sage.

Township 21 N Range 2 E

Gila and Salt River Meridian.

Chains

North, between Sections 14 and 15.

Variation 11° 45' East.

Ascend.

40.00

Set a red stone 15 x 10 x 5 ins., 12 ins. in the ground, for $\frac{1}{4}$ Sec. Cor., marked $\frac{1}{4}$ on N. face, and raised a mound of stone alongside.

Pits

impracticable.

from which

A Yellow Pine 30 ins diam. bears N. 7° W. 10 lks. dist. marked $\frac{1}{4}$ S. B. T.

A Yellow Pine 15 ins diam. bears S. 50° E. 2 1/2 lks. dist. marked $\frac{1}{4}$ S. B. T.

40.79

Cross Road, bears, E. 20° W.

52.11

Cross Wash, 10 lks. wide, Course E.

80.00

Set a red stone 20 x 15 x 12 ins. 15 ins. in the ground for Cor. to Secs. 10. 11. 14 & 15 marked with 1 notch 2 on S. and 2 notches 2 on E. edges and raised a mound of stone alongside. Pits impracticable.

from which

A Yellow Pine 10 ins diam. bears N. 20° E. 1 1/2 lks. dist. marked T. 2 N. R. 2 E. S., 11 B. T.

A Yellow Pine 15 ins diam. bears N. 75° E. 1 1/2 lks. dist. marked T. 2 N. R. 2 E. S., 11 B. T.

An Oak 15 ins. diam. bears S. 30° W. 1 1/2 lks. dist. marked T. 2 N. R. 2 E. S., 10 B. T.

No other trees within limits.

Land mountainous

Soil 3rd rate

Timber of Yell Pine & Oak.

Vegetation. grass & sage.

Township 21 N. Range 8 E

Gila and Salt River Meridian.

Chains

East, on a random line between Sections 11 and 14.

Variation $14^{\circ} 15'$ East.

Descend.

- 15.10 Cross Ravine, Course N. E. and ascend
 39.00 Top of Spur, bears N. & S. and descend.
 40.00 Set temporary $\frac{1}{4}$ Sec. Cor.
 50.00 Cross Road, bears N. E. & S. W.
 60.00 Cross Ravine, Course ^{20 lks. N. E.} N. 80° E. and ascend
 80.14 Intersect N. & S. line, 17 lks. N. of cor. to secs.
 11, 12, 13 & 14 from which corner, 1 run
 N. $89^{\circ} 53'$ W. on a true line between sections 11 & 14
 Variation $14^{\circ} 45'$ East
 40.00 Set a Sand stone 14 x 10 x 6 ins., 10
 ins. in the ground, for $\frac{1}{4}$ Sec. Cor., marked $\frac{1}{4}$ on N.
 face, and raised a mound of stone alongside. Pits
 impracticable. from which
 1 Yellow Pine 6 ins diam. bears S. 50° W. 33 lks. dist.
 marked $\frac{1}{4}$ S. B. T.
 1 Yellow Pine 7 ins diam. bears N. 85° E. 31 lks. dist.
 marked $\frac{1}{4}$ S. B. T.
 80.14 The corner to sections 10, 11, 14 & 15
 Land mountainous
 Soil 3rd rate
 Timber of Pine.
 Vegetation. grass & sage.

Township 21 NRange 2 EGila and Salt River Meridian.

Chains

North, between Sections 10 and 11.

Variation

N 15'

East.

Descend.

2.5'

Cross Ravine, Course } and ascend

15.00

Set a post 3 ft. long, 3 ins. diam 24 ins. in the ground,
for $\frac{1}{2}$ Sec. Cor., marked $\frac{1}{2}$ S. on W. face: from whichA Yellow Pine 20 ins diam. bears S 80° W. .03 lks. dist.
marked $\frac{1}{2}$ S. B. T.A Yellow Pine 30 ins diam. bears N. 10° E. .09 lks. dist.
marked $\frac{1}{2}$ S. B. T.

80.00

Set a Sand stone 10 x 11 x 10 ins. 10 ins. in
the ground for Cor. to Secs. 2, 3, 10 & 11 marked
with 5 notches on S. and 2 notches on E. edges and
raised a mound of stone alongside. Pits impracticable.A Yellow Pine 10 ins diam. bears N. 50° E. ^{from which} 9 lks. dist.
marked T. 21 N. R. 2 E. S., 9 B. T.A White Oak 12 ins. diam. bears S. 80° W. .07 lks. dist.
marked T. 21 N. R. 2 E. S., 10 B. T.

No other trees within limits.

Land mountainous

Soil 2nd rate

Heavy timber of pine & oak.

Vegetation. grass & sage.

Township

21

N

Range

9

E

Gila and Salt River Meridian.

Chains

East, on a random line between Sections 2 and 11.

Variation

14° 45'

East.

Ascend.

40.00 Set temporary $\frac{1}{4}$ Sec. Cor.

30.00 Top of Ridge, bears N. 32° W. 1.30 and descend.

77.48 Intersect N. & S. line, 28 lks. N. of cor. to secs.

1.2. 11 & 2 from which corner, I run

1.50 18' W. on a true line between sections 2 & 11

Variation

14° 45'

East

30.00

Set a post 3 ft. long, 3 ins. diam 24 ins. in the ground,
for $\frac{1}{4}$ Sec. Cor., marked $\frac{1}{4}$ S. on N. face; from whichA Yellow Pine 10 ins diam. bears N. 5° E. 77 lks. dist.
marked $\frac{1}{4}$ S. B. T.An Oak 6 ins. diam. bears S 18 lks. dist.
marked $\frac{1}{4}$ S. B. T.

77.98

The corner to sections 2, 3, 10 & 11.

Land mountainous

Soil 370 rate

Timber of pine & oak.

Vegetation. Yucca & sage.

Township 21 N Range 9 E

Gila and Salt River Meridian.

Chains

North, on a random line between Sections 2 and 3.

Variation 11° 15' East.

Ascend.

24.30 Cross Road, bears N. 6° E. 1/2 M.

40.00 Set temporary 1/4 Sec. Cor.

43.56 Top of Ridge, bears N. 31° W. 2.30 and descend.

86.2' Intersect S. B. of Tp. 19 lks. 1' of cor. to secs. previously set by me.

23.27, 23 from which corner, I run

S. 8° 40' on a true line, between sections 2 & 3

Variation 14° 40' East.

40.27 Set a round stone 15 x 12 x 8 ins.,

ins. in the ground, for 1/4 Sec. Cor., marked 1/4 on

face, and raised a mound of stone alongside. Pits

unpracticable. from which

A Yellow Pine 15 ins diam. bears N. 25° E. 2 1/2 lks. dist. marked 1/4 S. B. T.

A White Oak 3 ins. diam. bears N. 50° E. 1 1/2 lks. dist. marked 1/4 S. B. T.

80.27 The corner to sections 2, 3, 10 & 11

Land mountainous

Soil 3rd rate

Timber of Yellow Pine & Oak.

Vegetation. Grass & sage.

I carefully examined the adjustments of my solar compass to-day, particularly the latitude and reversing apparatus, and found them correct.

J. C. Cape Compassman Mar. 9. 1883

Gila and Salt River Meridian.

Chains *Standard*
 From the Corner to Sections 3, 4, 33 & 34 on the South boundary
previously set by me.
 Iron North, between Sections 33 and 34.
 Variation *14° 45'* East.

Ascend. *gradually.*

11.00 Cross Road, bears *N. 60° E. 1.00 C.*
18.70 Cross Road, bears *E. 20° S. 1.00 C.*
40.00 Set a post 3 ft. long, 3 ins. diam. with marked stone
 12 ins. in the ground, for $\frac{1}{4}$ Sec. Cor., marked $\frac{1}{4}$ S. on
 N. face, and raised a mound of stone $1\frac{1}{2}$ ft. high,
 $3\frac{1}{2}$ ft. base around post. Pits impracticable. *from which*
1 Yellow Pine 30 ins diam. bears N. 60° E. 53 lks. dist.
 marked $\frac{1}{4}$ S. B. T. *No other trees within limits.*

50.00 Top of Ridge, bears *N. 60° E. 1.00 C. S. 60° W. and descend.*
80.00 Set a post 4 ft. long, 4 ins. square, with marked stone
 12 ins. in the ground, for Cor. to Secs. *27, 28, 33 & 34*
 marked T, $2\frac{1}{4}$ N. S. $2\frac{1}{4}$ on N, E, R, $2\frac{1}{4}$ E, S. $3\frac{1}{4}$
 on S, E, S, $3\frac{1}{4}$ on S, W, and S, $2\frac{1}{4}$ on N, W, face
 with 2 notches on S, and 3 notches on E, sides,
 dug pits $18 \times 18 \times 12$ ins, in each Sec., $5\frac{1}{2}$ ft. dist.,
 and raised a mound of earth 2 ft. high, $4\frac{1}{2}$ ft. base
 around post. *from which*

1 Yellow Pine 4 1/2 ins diam. bears N. 25° E. 1.07 lks. dist.
 marked T, $2\frac{1}{4}$ N. R. $2\frac{1}{4}$ E. S., $3\frac{1}{4}$ B. T.
Yellow Pine 30 ins diam. bears N. 60° E. 1.25 lks. dist.
 marked T, $2\frac{1}{4}$ N. R. $2\frac{1}{4}$ E. S., $2\frac{1}{4}$ B. T.
Quadrup. asp. 12 ins diam. bears N. 30° W. 1.35 lks. dist.
 marked T, $2\frac{1}{4}$ N. R. $2\frac{1}{4}$ E. S., $3\frac{1}{4}$ B. T.
No other trees within limits.

Land mountainous
 Soil *G.P.*
 rate
 Timber of *Pine & Quaker. asp.*
 Vegetation *Grass & Sage*

Township 21 N Range 2 E

Gila and Salt River Meridian.

Chains

East, on a random line between Sections 27 and 34.

Variation $44^{\circ} 45'$ East.

40.00 Set temporary $\frac{1}{4}$ Sec. Cor.

70.00 Spring, bears N. 240 lks. dist.

75.00 Cross Road, bears $N 20^{\circ} E$ & $S 20^{\circ} W$.

Spring, bears $S 45^{\circ} E$ 53 lks. dist.

Chains 100 & 150 lks. dist.

80.12 Intersect N. & S. line, 13 lks. S. of cor. to secs.

From which corner, I run

$S 51^{\circ} 54' W$. on a true line between sections 27 & 34 .

Variation $41^{\circ} 45'$ East

40.00 Set a 12 inch stone 14 x 12 x 6 ins., 1 ins. in the ground, for $\frac{1}{4}$ Sec. Cor., marked $\frac{1}{4}$ on N. face, and raised a mound of stone alongside. Pits impracticable. from which

White Oak 30 ins. diam. bears $N 30^{\circ} W$. 40 lks. dist. marked $\frac{1}{4}$ S. B. T. No other trees within limits.

80.12 The corner to sections 27 , 28 , 33 & 34

Land rolling.

Soil 2^{nd} rate

Timber of oak.

Vegetation. grass & sage

Township

31 N Range 3 E

Gila and Salt River Meridian.

Chains

North, between Sections 27 and 28.

Variation

P^o 45'

East.

Descend. graduation.

32.00

Spring, bears S. 70° W.

32.68

Cross Fence bears, S. 50° W. & N. 50° E.

40.00

Set a post 3 ft. long, 3 ins. diam. with marked stone 12 ins. in the ground, for 1/4 Sec. Cor., marked 1/4 S. on N. face, dug pits, 18 x 18 x 12 ins., N. and S. of post 5 1/2 ft. dist., and raised a mound of earth 1 1/2 ft. high, 3 1/2 ft. base around post.

from which

1 Yellow Pine 24 ins diam. bears N. 30° E. 1.04 kls. dist. marked 1/4 S. B. T. No other trees within limits.

Corner set in Chinchónge Field.

41.90

Cross Fence bears, E. & W.

60.00

Cross Road, bears, N. 50° W. & S. 50° E.

68.20

Cross Road, bears, E. & W.

80.00

Set a post 4 ft. long, 4 ins. square, with marked stone 12 ins. in the ground, for Cor. to Secs. 21, 22, 27 & 28

marked T. 21 N. S. 22, on N. E., R. 3 E., S. 27 on S. E., S. 28 on S. W, and S. 21 on N. W. face, with 2 notches on S. and 3 notches on E. edges; and raised a mound of stone 2 ft. high, 4 1/2 ft. base

around post. Pits impracticable.

1 Yellow Pine 30 ins diam. bears S. 45° E. from which 1.41 kls. dist. marked T. 21 N. R. 3 E. S. 27 B. T.

1 Yellow Pine 20 ins diam. bears N. 30° W. 1.50 kls. dist. marked T. 21 N. R. 3 E. S. 27 B. T.

1 Yellow Pine 18 ins diam. bears N. 56° E. 1.46 kls. dist. marked T. 21 N. R. 3 E. S. 27 B. T.

No other trees within limits.

Land mountains

Soil rate

Timber of yellow pine

1 acre to 1000

Township 21 - N Range 7 - E

Gila and Salt River Meridian.

Chains

East, on a random line between Sections 22 and 27.

Variation 74° 45' East.

Over rolling land.

28.00 Cross Road, bears N. 10° E.

40.00 Set temporary 1/2 Sec. Cor.

72.00 Intersect N. & S. line, 13 lks. N. of cor. to secs.

from which corner, I run

N. 99° 24' W. on a true line between sections 22 & 27

Variation 74° 45' East

39.50 Set a sand stone 15 x 12 x 1 ins., 12 ins. in the ground, for 1/2 Sec. Cor., marked 1/2 on N. five, and raised a mound of stone alongside. Pits

impracticable. from which

A Yellow Pine 12 ins diam. bears N. 50° W. 50 lks. dist. marked 1/2 S. B. T.

A Yellow Pine 13 ins diam. bears N. 30° E. 14 lks. dist. marked 1/2 S. B. T.

79.00 The corner to sections 21 22, 27 & 28

Land rolling.

Soil 3rd rate

Timber of pine & oak

Vegetation. grass & sage

Township 21 N Range 2 E

Gila and Salt River Meridian.

Chains North, between Sections 21 and 22.

Variation $11^{\circ} 45'$ East.

Ascend. gradually.

16.00 Top of Ridge, bears $2^{\circ} E$ a $1/2$ and descend.39.00 Cross Road, bears $1.20^{\circ} E$ a $1/2$ S. $20^{\circ} W$.46.00 Set a post 3 ft. long, 3 ins. diam 24 ins. in the ground, for $1/2$ Sec. Cor., marked $1/2$ S. on N. face; from whichA Yellow Pine 30 ins diam. bears $2^{\circ} E$ a $1/2$ S. 73 lks. dist. marked $1/2$ S. B. T.A Yellow Pine 178 ins diam. bears $1.45^{\circ} E$ a $1/2$ S. 70 lks. dist. marked $1/2$ S. B. T.

80.00 Set a post 4 ft. long, 4 ins. square, with marked stone 12 ins. in the ground, for Cor. to Secs. 15, 16, 21 & 22 marked T. 21 N. S. 15, on N, E., R. 2 E., S. 22 on S. E., S. 21 on S. W, and S. 16 on N. W. face, with 3 notches on S. and 3 notches on E. edges; and raised a mound of stone 2 ft. high, $4\frac{1}{2}$ ft. base around post. Pits impracticable. from which

A Yellow Pine 40 ins diam. bears $1.70^{\circ} E$ a $1/2$ S. 78 lks. dist. marked T. 21 N. R. 2 E. S. 16 B. T.A Yellow Pine 24 ins diam. bears $1.44^{\circ} E$ a $1/2$ S. 77 lks. dist. marked T. 21 N. R. 2 E. S. 15 B. T.A Yellow Pine 30 ins diam. bears $1.55^{\circ} E$ a $1/2$ S. 89 lks. dist. marked T. 21 N. R. 2 E. S. 12 B. T.
No other trees within limits.

Land mountainous

Soil 3° rate

Timber of yellow pine & oak.

Vegetation. grass & sage.

H. P. Fitzgerald
Mar. 17 1883

Township 31 N Range 2 EGila and Salt River Meridian.

Chains

East, on a random line between Sections 15 and 22.

Variation 41° 45' East.*Over rolling land.*40.00 Set temporary $\frac{1}{2}$ Sec. Cor.72.50 Cross Road, bears S. 20° E. 200 ft.

79.89 Intersect N. & S. line, 14 lks. N. of cor. to secs.

14, 15, 22 & 23 from which corner, I run

N. 57° 54' W. on a true line between sections 15 & 22

Variation 41° 45' East39.94 Set a post 3 ft. long, 3 ins. diam 24 ins. in the ground.
for $\frac{1}{2}$ Sec. Cor., marked $\frac{1}{2}$ S. on N. face; from whichA Yellow Pine 24 ins diam. bears S. 50° W. 44 lks. dist.
marked $\frac{1}{2}$ S. B. T.A Yellow Pine 20 ins diam. bears N. 57° E. 65 lks. dist.
marked $\frac{1}{2}$ S. B. T.

79.89 The corner to sections 15, 16, 21 & 22

*Land rolling.*Soil 3rd rateTimber of pine & oakVegetation. grass & sage.

Township 21 N. Range 2 E

Gila and Salt River Meridian.

Chains North, between Sections 15 and 16.

Variation $141^{\circ} 45'$ East.*Ascend.*

- 13.60 Cross Road, bears $N. E. \& S. W.$
- 40.00 Set a sand stone $24 \times 15 \times 12$ ins., 18 ins. in the ground, for $\frac{1}{4}$ Sec. Cor., marked $\frac{1}{4}$ on W. face, and raised a mound of stone alongside. Pits impracticable. from which
- $\frac{1}{2}$ Yellow Pine 10 ins diam. bears $S. 87^{\circ} W.$ 31 lks. dist. marked $\frac{1}{2}$ S. B. T.
- An Oak 11 ins. diam. bears $N. 45^{\circ} E.$ 28 lks. dist. marked $\frac{1}{2}$ S. B. T.
- 80.00 Set a post 4 ft. long, 4 ins. square, with marked stone 12 ins. in the ground, for Cor. to Secs. 9, 10, 15 & 16 marked T. 2) N. S. 10, on N, E., R. 2 E, S. 15 on S. E., S. 16 on S. W, and S. 9 on N. W. face, with 4 notches on S. and 3 notches on E. edges; and raised a mound of stone 2 ft. high, $4\frac{1}{2}$ ft. base ground post. Pits impracticable. from which
- $\frac{1}{2}$ Yellow Pine 18 ins diam. bears $S. 175^{\circ} E.$ 23 lks. dist. marked T. 2) N. R. 2 E, S. 15 B. T.
- $\frac{1}{2}$ Yellow Pine 12 ins diam. bears $S. 53^{\circ} W.$ 21 lks. dist. marked T. 2) N. R. 2 E, S. 16 B. T.
- $\frac{1}{2}$ Yellow Pine 15 ins diam. bears $N. 44\frac{1}{4}^{\circ} W.$ 24 lks. dist. marked T. 2) N. R. 2 E, S. 9 B. T.
- No other trees within limits.

Land rolling.

Soil 3^{rd} rate Heavy timber of yellow pine.

Vegetation grass & sage.

Township 21 N Range 2 EGila and Salt River Meridian.Chains East, on a random line between Sections 10 and 15.
Variation 41° 45' East.*Ascend.*40.00 Set temporary $\frac{1}{4}$ Sec. Cor.48.17 Cross Road, bears N. 2 S68.00 Top of spur, bears S. 70° E. 200 and descend.80.31 Intersect N. & S. line, 10 lks. N. of cor. to secs.

10. 11. 14 & 15 from which corner, I run

N. 89° 56' W. on a true line between sections 10 & 15Variation 41° 45' East40.15 Set a sand stone 10 x 10 x 5 ins., 10 ins. in the ground, for $\frac{1}{4}$ Sec. Cor., marked $\frac{1}{4}$ on N. face, dug pits 18 x 18 x 12 ins., E. and W. of stone 5 $\frac{1}{2}$ ft. dist., and raised a mound of earth 1 $\frac{1}{2}$ ft. high, 3 $\frac{1}{2}$ ft. base alongside.

from which

A Yellow Pine 10 ins diam. bears N. 89° E. 17 lks. dist. marked $\frac{1}{4}$ S. B. T.A Yellow Pine 4 ins diam. bears S. 10 $\frac{1}{2}$ ° W. 28 lks. dist. marked $\frac{1}{4}$ S. B. T.80.31 The corner to sections 9, 10, 15 & 16
Land mountainousSoil 3^o rateTimber of pine.Vegetation. grass & sage.

Township 21 N Range 2 E

Gila and Salt River Meridian.

Chains

North, between Sections 9 and 10.

Variation 41° 45' East.

Ascend.

Top of Ridge, bears S. 1/2 E. 1/2 W. and descend.

Set a small stone 24 x 10 x 6 ins., 18 ins. in the ground, for 1/2 Sec. Cor., marked 1/2 on W. face, and raised a mound of stone alongside. Pits impracticable.

A Yellow Pine 18 ins diam. bears S. 45° E. 46 lks. dist. marked 1/2 S. B. T.

A Yellow Pine 15 ins diam. bears N. 45° W. 42 lks. dist. marked 1/2 S. B. T.

Cross Wash, 20 lks. wide, Course N. 70° E. and ascend.

Set a small stone 20 x 10 x 8 ins. 15 ins. in the ground for Cor. to Secs 3, 4, 9 & 10 marked with 5 notches on S. and 3 notches on E. edges and raised a mound of stone alongside. Pits impracticable.

A Yellow Pine 12 ins diam. bears S. 5° E. 23 lks. dist. marked T. 21 N. R. 2 E. S., 10 B. T.

A Yellow Pine 10 ins diam. bears S. 27° W. 30 lks. dist. marked T. 21 N. R. 2 E. S., 9 B. T.

A Yellow Pine 10 ins diam. bears N. 6 1/2° E. 60 lks. dist. marked T. 21 N. R. 2 E. S., 3 B. T.

No other trees within limits. Land mountainous

Soil 3rd rate

Timber of pine.

Vegetation. grass & sage. See below in near the corner of sec. 10

Township 21 N Range 2 E

Gila and Salt River Meridian.

Chains

East, on a random line between Sections 3 and 10.

Variation 41° 45' East.

Descend.

30.00 Cross Ravine, Course N. 10° E and ascend

38.00 Cross Road, bears, N. 10° E & S. 11° W.

40.00 Set temporary $\frac{1}{2}$ Sec. Cor.

80.62 Intersect N. & S. line, 50 lks. S. of cor. to secs.

2-2-10 & 11 from which corner, I run

N. 87° 34' W. on a true line between sections 3 & 11

Variation 41° 45' East

40.26 Set a post 3 ft. long, 3 ins. diam 24 ins. in the ground.

for $\frac{1}{2}$ Sec. Cor., marked $\frac{1}{2}$ S. on N. face; from which

* Yellow Pine 10 ins diam. bears S 60° E 11 lks. dist.

marked $\frac{1}{2}$ S. B. T.

* Yellow Pine 20 ins diam. bears N. 10° W. 11 lks. dist.

marked $\frac{1}{2}$ S. B. T.

80.62 The corner to sections 3, 4, 9 & 10

Land mountainous

Soil 3rd rate

Timber of pine.

Vegetation. grass & sage.

Township 21 N Range 2 E

Gila and Salt River Meridian.

Chains

North, on a random line between Sections 3 and 4.

Variation N 71° 48' East.

Ascend. gradually.

- 30.00 A Spring, bears West of line 16.50 chs.
- 31.00 A Cabin bears West of line 11.34 chs.
- 32.50 A Spring, bears West of line 11.50 chs.
- 33.00 Top of Spur, bears S. 70° E. & S. 76° N. and descend.

35.00 Cross Road, bears, N. 5° E. & S. 75° W.

40.00 Set temporary 1/4 Sec. Cor.

42.00 Cross Wash, 50 fks. wide, Course N. 80° W. and ascend.

44.00 Intersect N. B. of Tp. 25 fks. W. of cor. to secs.

^{measurably set by me,}
3. 24 33 x 34 1/2 from which corner, I run

S. 16° W. on a true line, between sections 3 & 4

Variation N 71° 45' East.

39.94 Set a Sand stone 20 x 10 x 1/2 ins., 15

ins. in the ground, for 1/4 Sec. Cor., marked 1/4 on W.

face, and raised a mound of stone alongside. Pits

impracticable.

from which

Yellow Pine 38 ins diam. bears N. 90° W. 1.13 fks. dist.
marked 1/4 S. B. T.

A Yellow Pine 12 ins diam. bears N. 50° E. 53 fks. dist.
marked 1/4 S. B. T.

79.74 The corner to sections 3. 11. 9 & 10

Land mountainous

Soil 3rd rate

Timber of yellow pine & oak

Vegetation.

grass & sage W.P. Fitzgerald
Mar. 8, 1888

Township 21 N Range 3 E

Gila and Salt River Meridian.

Chains

Standard
From the Corner to Sections 4-5, 32 & 33 on the South boundary *SP*
previously set by me.

Run North, between Sections 32 and 33.

Variation *N 1° 45'* East.

Descend. *400 ft.*

31.00
40.00

Cross Road, *Course S. 60° W. & S. 60° E.*
Set a post 3 ft. long, 3 ins. diam. with marked stone
12 ins. in the ground, for $\frac{1}{4}$ Sec. Cor., marked $\frac{1}{4}$ S. on
N. face, and raised a mound of stone $1\frac{1}{2}$ ft. high,
 $3\frac{1}{2}$ ft. base around post. *Pits impracticable.*

from which

A White Oak 12 ins. diam. bears *S 53° E.* 69 lks. dist.
marked $\frac{1}{4}$ S. B. T. *No other trees within limits.*

45.00
70.00

Cross Wash, 30 lks. wide, Course *SW* and ascend.
Top of Ridge, bears *E. & N.* and descend.

80.00

Set a post 4 ft. long, 4 ins. square, with marked stone
12 ins. in the ground, for Cor to Secs. *28, 29, 32 & 33*
marked T. $2\frac{1}{4}$ N. S. 28 , on N, E., R. 2 E., S. 32
on S. E., S. 32 on S. W, and S. 29 on N. W. face,
with 1 notch on S. and $1\frac{1}{4}$ notches on E. edges;
and raised a mound of stone 2 ft. high, $4\frac{1}{2}$ ft. base
around post. *Pits impracticable.*

from which

A Yellow Pine 36 ins diam. bears *S 110° W.* 66 lks. dist.
marked T. $2\frac{1}{4}$ N. R. 2 E. S., 3 B. T.

A Yellow Pine $1\frac{1}{4}$ ins diam. bears *S. 50° E.* 1.37 lks. dist.
marked T. $2\frac{1}{4}$ N. R. 2 E. S., 3 B. T.
No other trees within limits.

Soil *red*
rate
Timber of *yellow pine & oak*
Vegetation. *grass & sage*

Gila and Salt River Meridian.

Chains East, on a random line between Sections 28 and 33.
 Variation 21° 45' East.

Water N. Slope.

40.00 Set temporary $\frac{1}{4}$ Sec. Cor.

80.25 Intersect N. & S. line. 46 lks. $\frac{1}{4}$ of cor. to secs.
 28, 32 & 33 from which corner, I run
 89° 46' W. on a true line between sections 28 & 32
 Variation 1° 45' East

40.15 Set a Gravel stone 24 x 12 x 6 ins., 10
 ins. in the ground, for $\frac{1}{4}$ Sec. Cor., marked $\frac{1}{4}$ on S. E.
 face, and raised a mound of stone alongside. Pits
 impracticable. from which
 a Yellow Pine 40 ins diam. bears S. 15° E. 35 lks. dist.
 marked $\frac{1}{4}$ S. B. T. No other trees within limits.

80.37 The corner to sections 28, 32 & 33
 Land mountainous
 Soil st rate
 Timber of yellow pine & oak
 Vegetation. grass & sage

Township 21 N Range 2 E

Gila and Salt River Meridian.

Chains North, between Sections 28 and 29.

Variation 11° 45' East.

Descend.

4.00 Cross Wash, 80 lks. wide, Course S. W. and ascend.

210.00 Set a post 3 ft. long, 3 ins. diam. with marked stone 12 ins. in the ground, for 1/4 Sec. Cor., marked 1/4 S. on N. face, and raised a mound of stone 1 1/2 ft. high, 3 1/2 ft. base around post. Pits impracticable.

from which

A Yellow Pine 30 ins diam. bears N. 60° W. 2 lks. dist. marked 1/4 S. B. T. No other trees within limits.

60.00 Top of Spur, bears S. E. & S. W. and descend.

80.00 Set a post 4 ft. long, 4 ins. square, with marked stone 12 ins. in the ground, for Cor to Secs. 20, 21, 25 & 27

marked T. 21 N. S. 21, on N, E., R. 2 E.; S. 26 on S. E., S. 29 on S. W. and S. 26 on N. W. face, with 2 notches on S. and 4 notches on E. edges; and raised a mound of stone 2 ft. high, 4 1/2 ft. base around post. Pits impracticable.

from which

A White Oak 13 ins. diam. bears N. 75° W. 30 lks. dist. marked T. 21 N. R. 2 E. S. 26 B. T.

A White Oak 7 ins. diam. bears S. 70° E. 13 lks. dist. marked T. 21 N. R. 2 E. S. 28 B. T.

A White Oak 8 ins. diam. bears S. 30° W. 13 lks. dist. marked T. 21 N. R. 2 E. S. 29 B. T. No other trees within limits.

Land Mountainous.

Soil rate Heavy timber of yellow pine & oak

Vegetation grass & sage

Township 21 N. Range 2 E

Gila and Salt River Meridian.

Chains

East, on a random line between Sections 21 and 28.

Variation 14° 45' East.

Ascend. gradually.

0.00 Top of Spur, bears S. 15° W. & N. 15° E and descend.

25.00 Cross Wash, 70 lks. wide, Course S. 20° W and ascend

40.00 Set temporary $\frac{1}{4}$ Sec. Cor.

80.21 Intersect N. & S. line, 63 lks. S. of cor. to secs.

21, 22, 23 & 24 from which corner, I run

39° 30' W. on a true line between sections 21 & 25

Variation 14° 45' East

40.12 Set a post 3 ft. long, 3 ins. diam. with marked stone

12 ins. in the ground, for $\frac{1}{4}$ Sec. Cor., marked $\frac{1}{4}$ S. on

N. face, and raised a mound of stone 1 1/2 ft. high,

3 1/2 ft. base around post. Pits impracticable.

from which

a Yellow Pine 30 ins diam. bears S. 60° E 27 lks dist.

marked $\frac{1}{4}$ S. B. T. No other trees within limits.

90.21 The corner to sections 20, 21, 25 & 24

Land mountainous

Soil stony rate

Timber of Yellow pine & oak

Vegetation. grass & sage.

Township 21 Range 2 E

Gila and Salt River Meridian.

Chains

North, between Sections 20 and 21.

Variation $11^{\circ} 45'$ East.

Ascend. *Very gradually.*

40.00

Set a post 3 ft. long, 3 ins. diam. with marked stone, 12 ins. in the ground, for $\frac{1}{4}$ Sec. Cor., marked $\frac{1}{4}$ S. on face, and raised a mound of stone $1\frac{1}{2}$ ft. high, $3\frac{1}{2}$ ft. base around post. Pits impracticable. from which

A Yellow Pine 8 ins diam. bears $N 25^{\circ} W$. 11 lks. dist. marked $\frac{1}{4}$ S. B. T. No other trees within limits.

72.00

Top of Ridge, bears $S 20^{\circ} E$, $N 20^{\circ} W$ and descend.

80.00

Set a sand stone $24 \times 15 \times 10$ ins. 18 ins. in the ground for Cor. to Secs. 16, 17, 20 & 21 marked with 2 notches on S. and 1 notch on E. edges and raised a mound of stone alongside. Pits impracticable.

A Yellow Pine 10 ins diam. bears $N 65^{\circ} W$. 28 lks. dist. marked T. 21 N. R. 2 E. S. 17 B. T. from which

A Yellow Pine 12 ins diam. bears $S 19^{\circ} W$. 59 lks. dist. marked T. 21 N. R. 2 E. S. 20 B. T.

A Pine 5 ins, diam. bears $N 7^{\circ} E$. 12 lks. dist. marked T. 21 N. R. 2 E. S. 14 B. T.

No other trees within limits.

Land mountainous

Soil 3rd rate

Heavy timber of yellow pine.

Vegetation. Grass - 2000 ft. high.

J. C. Capp, Compassman Nov. 7. 1883

Township 11 N Range 2 EGila and Salt River Meridian.

Chains

East, on a random line between Sections 16 and 21.

Variation $41^{\circ} 45'$ East.Descend. *E. Slope of Williams Mountain.*40.00 Set temporary $\frac{1}{4}$ Sec. Cor.70.55 Cross Road, bears $N. 30^{\circ} E. \times S. 20^{\circ} W.$ 71.72 Intersect N. & S. line, $1\frac{1}{2}$ mks. *W. of cor. to secs.**B. 16. 17. 20 & 21 from which corner, I run**W. on a true line between sections 16 & 21*Variation $41^{\circ} 45'$ East72.74 Set a *level* stone $20 \times 10 \times 4$ ins., $15'$
ins. in the ground, for $\frac{1}{4}$ Sec. Cor., marked $\frac{1}{4}$ on *N.*
face, and raised a mound of stone alongside. Pitsimpracticable. *from which*A Yellow Pine 20 ins diam. bears $N. 10^{\circ} W.$ $11\frac{1}{2}$ mks. dist.
marked $\frac{1}{4}$ S. B. T. *No other trees within limits.*

79.72 The corner to sections 16. 17. 20 & 21

Land mountainous

Soil $2:1$ rateTimber of *Yellow pine & oak*Vegetation. *grass & sage*

Township 11 N Range 2 E

Gila and Salt River Meridian.

Chains

North, between Sections 16 and 17.

Variation 91° 25' East.

Ascend. Wagon Co. slope.

40.00 Set a limestone stone 12 x 12 x 10 ins., 5
ins. in the ground, for 1/4 Sec. Cor., marked 1/4 on W.
face, and raised a mound of stone alongside. Pits

impracticable. from which
A Yellow Pine 11 ins diam. bears N. 11° W. 88 lks. dist.
marked 1/4 S. B. T. No other trees within limits.

80.00 Set a limestone stone 20 x 18 x 10 ins. 22 ins. in
the ground for Cor. to Secs. 9, 10 & 11 marked
with 1/4 notch on S. and 1/4 notch on E. edges and
raised a mound of stone alongside. Pits impracticable.

A Yellow Pine 20 ins diam. bears N. 30° E. 43 lks. dist.
marked T. 21 N. R. 2 E. S. 7 B. T. from which

A Yellow Pine 22 ins diam. bears N. 35° W. 37 lks. dist.
marked T. 21 N. R. 2 E. S. 8 B. T.

A Yellow Pine 19 ins diam. bears S. 79° E. 24 lks. dist.
marked T. 21 N. R. 2 E. S. 10 B. T.

No other trees within limits.

Land mountainous

Soil 3rd rate

Timber of yellow pine & oak.

Vegetation. grass & sage.

Township 31 N. Range 3 E.Gila and Salt River Meridian.

Chains

East, on a random line between Sections 9 and 16.

Variation $4^{\circ} 45'$ East.

Descend. gradually.

40.00 Set temporary $\frac{1}{4}$ Sec. Cor.80.13 Intersect N. & S. line. 19 lks. $\frac{1}{2}$ of cor. to secs.

9, 10, 15 & 16 from which corner, I run

157' 52" W. on a true line between sections 9 & 16

Variation $10^{\circ} 45'$ East

40.00

Set a post 3 ft. long, 3 ins. diam. with marked stone.

12 ins. in the ground, for $\frac{1}{4}$ Sec. Cor., marked $\frac{1}{4}$ S. onN. face, and raised a mound of stone $1\frac{1}{2}$ ft. high, $3\frac{1}{2}$ ft. base around post. Pits impracticable. from whichA Yellow Pine 30 ins diam. bears 30° . 4 lks. dist.marked $\frac{1}{4}$ S. B. T. No other trees visible.

80.13

The corner to sections 8, 9, 10 & 17

Land mountainous

Soil 2^{nd} rate

Timber of Yellow Pine

Vegetation. grass sage.

Township 21 N Range 2 E

Gila and Salt River Meridian.

Chains

North, between Sections 8 and 9.

Variation 14° 45' East.

Ascend.

7.00

Top of Ridge, bears N. 20° E. 200 and descend.

40.00

Set a Sand stone 20 x 10 x 7 ins., 15 ins. in the ground, for $\frac{1}{4}$ Sec. Cor., marked $\frac{1}{4}$ on W. face, and raised a mound of stone alongside. Pits impracticable.

from which

A Yellow Pine 17 ins diam. bears N. 37° W. 31 lks. dist. marked $\frac{1}{4}$ S. B. T. No other trees within limits.

80.00

Set a Sand stone 21 x 10 x 7 ins., 15 ins. in the ground for Cor. to Secs. 17, 18, 8 & 9 marked with 3 notches on S. and 4 notches on E. edges and raised a mound of stone alongside. Pits impracticable.

from which

A Yellow Pine 30 ins diam. bears N. 60° W. 33 lks. dist. marked 1. 2. 3 E. S., 3 B. T.

A Yellow Pine 30 ins diam. bears N. 44° E. 30 lks. dist. marked 1. 2. 3 E. S., 4 B. T.

A Quercus 16 ins diam. bears S. 20° W. 12 lks. dist. marked 1. 2. 3 E. S., 3 B. T.

No other trees within limits.

Land mountainous

Soil 3rd rate

Timber of Yellow pine & Quercus asp.

Vegetation. grass & sage.

Township 31 N Range 9 E

Gila and Salt River Meridian.

Chains

East, on a random line between Sections 4 and 9.

Variation $14^{\circ} 45'$ East.*Descend.*18.55 Cross Ravine, Course N. and ascend40.00 Set temporary $\frac{1}{2}$ Sec. Cor.44.75 Top of Ridge, bears N. 2° E and descend.72.53 Intersect N. & S. line, 7 lks. E. of cor. to secs.274.7 & 20 from which corner, 1 run3.57 56' W. on a true line between sections 11 & 9Variation $11^{\circ} 45'$ East37.50 Set a post 3 ft. long, 3 ins. diam. with marked stone12 ins. in the ground, for $\frac{1}{2}$ Sec. Cor., marked $\frac{1}{2}$ S. onN. face, dug pits, 18 x 18 x 12 ins., E. and W. ofpost 5 $\frac{1}{2}$ ft. dist., and raised a mound of earth 1 $\frac{1}{2}$ ft.high, 3 $\frac{1}{2}$ ft. base around post. from which2 White Oak 2 ins. diam. bears 1.25° E. 9 lks. dist.marked $\frac{1}{2}$ S. B. T. No other trees within limits.The corner to sections 11, 5, 8 & 9

Land mountainous

Soil 3rd rateTimber of White OakVegetation. grass & sage.

Township 21 N Range 2 E

Gila and Salt River Meridian.

Chains

North, on a random line between Sections 4 and 5.

Variation $11^{\circ} 45'$ East.

Descend. *Slope of Williams Mountain*

40.00 Set temporary $\frac{1}{4}$ Sec. Cor.

80.22 Intersect N.B. of Tp. 16 lks. W. of cor. to secs.

previously set by me.
4. 5. 8 & 9 from which corner, I run

37' N. on a true line, between sections 4 & 5

Variation $11^{\circ} 46'$ East.

40.22 Set a sand stone $20 \times 10 \times 10$ ins., 15

ins. in the ground, for $\frac{1}{4}$ Sec. Cor., marked $\frac{1}{4}$ on N.

face, and raised a mound of stone alongside. Pits

impracticable. from which

a Yellow Pine 20 ins diam. bears $25^{\circ} E$. 2 lks. dist.

marked $\frac{1}{4}$ S. B. T. No other trees within limits.

86.22 The corner to sections 4. 5. 8 & 9

Land mountainous

Soil *3rd* rate

Timber of *Yellow pine & oak.*

Vegetation *grass & sage.*

I carefully examined the adjustments of my solar
compass to-day, particularly the latitude and solar
ing apparatus, and found them correct.

J. O. Calk, Comptroler Nav. 8, 1853

Township 31 N Range 7 E

Gila and Salt River Meridian.

Chains

Standard
From the Corner to Sections 5, 6, 31 & 32 on the South boundary of *57*
previously set by me.

Run North, between Sections 31 and 32.

Variation *11° 15'* East.

Descend.

40.00 Set a post 3 ft. long, 3 ins. diam. with marked stone.
42.00 in the ground, for $\frac{1}{2}$ Sec. Cor., marked $\frac{1}{2}$ S. 24
 and raised a mound of stone $1\frac{1}{2}$ ft. high,
 $3\frac{1}{2}$ ft. base around post. Pits impracticable. from which
 A Yellow Pine 30 ins diam. bears $S. 70^{\circ} W.$ 24 lks. dist.
 marked $\frac{1}{2}$ S. B. T. No other trees within limits.

52.00 Cross Wash. 100 lks. wide. Course *S. W.* and ascend.

80.00 Set a *concrete* stone 18 x 10 x 5 ins. 12 ins. in
 the ground for Cor. to Secs. 29, 30, 31 & 32 marked
 with 1 notch on S. and 5 notches on E. edges and
 raised a mound of stone alongside. Pits impracticable.

from which

A Yellow Pine 15 ins diam. bears $N. 7^{\circ} E.$ 53 lks. dist.
 marked T. 21 N. R. 2 E. S., 29 B. T.

A Yellow Pine 11 ins diam. bears $N. 36^{\circ} W.$ 41 lks. dist.
 marked T. 31 N. R. 2 E. S., 30 B. T.

A Yellow Pine 10 ins diam. bears $S. 15^{\circ} E.$ 20 lks. dist.
 marked T. 21 N. R. 2 E. S., 32 B. T.

No other trees within limits.

Land mountainous

Soil *3rd* rate

Timber of Yellow Pine,

Vegetation. Grass - Sage.

Township 21 N Range 3 E
 Gila and Salt River Meridian.

Chains

East, on a random line between Sections 29 and 32.

Variation 11° 15' East.

Descend.

40.00 Set temporary $\frac{1}{4}$ Sec. Cor.^s

42.00 Cross Wash, $\frac{1}{2}$ lks. wide, Course S. 71° and ascend.

79.55 Intersect N. & S. line, 35 lks. N. of cor. to secs.

29, 30, 31 & 32 from which corner, I run

N. 89° 11' W. on a true line between sections 29 & 32.

Variation 11° 15' East

79.94

Set a post 3 ft. long, 3 ins. diam. with marked stone.

12 ins. in the ground, for $\frac{1}{4}$ Sec. Cor., marked $\frac{1}{4}$ S. on

S. face, and raised a mound of stone $1\frac{1}{2}$ ft. high,

$3\frac{1}{2}$ ft. base around post. Pits impracticable. from which

a Yellow Pine 46 ins diam. bears S. 71° E. $\frac{3}{4}$ lks. dist.
 marked $\frac{1}{4}$ S. B. T. No other trees within limits.

79.88

The corner to sections 29, 30, 31 & 32

Land mountainous

Soil 3rd rate

Timber of yellow p

Vegetation grass & sage

W. R. Fitzgerald Mar. 9, 1853

47 BOOK 377
Township 21 N Range 2 E

Gila and Salt River Meridian.

Chains

West, on a random line between Sections 30 and 31.

Variation 11° 15' East.

Descend.

32.70 Cross Wash, 60 fks. wide, Course S. 45° E and ascend.

40.00 Set temporary $\frac{1}{2}$ Sec. Cor.

100.00 Top of Ridge, bears S. 60° E and descend.

170.16 Intersect N. B. of Tp. 11 fks. S. of cor. to secs.

22.50 31.00 30 31 30 31 30 31
22.50 31.00 30 31 30 31 30 31
previously set by me.
from which corner, I run

N. 87° 35' E, on a true line, between sections 30 & 31

Variation 11° 15' East.

29.16 Set a granite stone 15 x 12 x 11 ins., 16

ins. in the ground, for $\frac{1}{2}$ Sec. Cor., marked $\frac{1}{2}$ on N.

face, and raised a mound of stone alongside. Pits

impracticable.

from which

2 Yellow Pine 10 ins diam, bears N. 50° W. 77 fks. dist.

marked $\frac{1}{2}$ S. B. T.

2 Yellow Pine 14 ins diam, bears S. 10° E. 75 fks. dist.

marked $\frac{1}{2}$ S. B. T.

170.16 The corner to sections 29, 30, 31 & 32

Land mountainous

Soil st. rate

Timber of yellow pine & oak.

Vegetation. grass & shrubs

S. C. Cape, Compassman, Mar. 9, 1883

Township 21 N Range 1 E

Gila and Salt River Meridian.

Chains

North, between Sections 29 and 30.

Variation $14^{\circ} 45'$ East.

Ascend. *gradually.*

40.00

Set a post 3 ft. long, 3 ins. diam. with marked stone, 12 ins. in the ground, for $\frac{1}{2}$ Sec. Cor., marked $\frac{1}{2}$ S. on N. face, and raised a mound of stone 1 $\frac{1}{2}$ ft. high, 3 $\frac{1}{2}$ ft. base around post. Pits impracticable. from which

a White Oak 2 ins. diam. bears $N. 56^{\circ} W.$ 35 lks. dist. marked $\frac{1}{2}$ S. B. T.

a Yellow Pine 19 ins diam. bears $S. 45^{\circ} E.$ 6 lks. dist. marked $\frac{1}{2}$ S. B. T.

50.00

Top of Ridge, bears $S. 45^{\circ} E. S. 45^{\circ} W.$ and descend.

80.00

Set a *square* stone 21 x 10 x 11 ins. 15 ins. in the ground for Cor. to Secs. 29, 30, 29 & 30 marked with 2 notches on S. and 3 notches on E. edges and raised a mound of stone alongside. Pits impracticable.

a Yellow Pine 20 ins diam. bears $N. 20^{\circ} W.$ 51 lks. dist. from which marked T. 21 N. R. 2 E. S., 19 B. T.

a Yellow Pine 26 ins diam. bears $N. 12^{\circ} E.$ 51 lks. dist. marked T. 21 N. R. 2 E. S., 20 B. T.

a Yellow Pine 20 ins diam. bears $S. 30^{\circ} E.$ 26 lks. dist. marked T. 21 N. R. 2 E. S., 24 B. T.

No other trees within limits.

Land mountainous

Soil *loam* rate

Timber of *Yellow Pine & Oak*

Vegetation. *Yucca & Sage*

Township

Range

Gila and Salt River Meridian.

Chains

East, on a random line between Sections 20 and 29.

Variation

14° 45'

East.

Ascend.

15.00 Top of Ridge, bears N 10° W, 1/2 S. 1/2 E and descend.

40.00 Set temporary 1/4 Sec. Cor.

60.00 Cross Wash, 50 lks. wide, Course S 20° W and ascend.

79.75 Intersect N. & S. line, 20 lks. N. of cor. to secs.

20.21.28 = 29 from which corner, I run

N. 85° 51' W. on a true line between sections 20 & 29

Variation 14° 45' East

87.9

Set a Sand stone 14 x 12 x 4 ins., 10
ins. in the ground, for 1/4 Sec. Cor., marked 1/4 on
face, and raised a mound of stone alongside. Pits

impracticable.

from which

A Yellow Pine 20 ins diam. bears S. 45° E, 62 lks. dist
marked 1/4 S. B. T. No other trees within limits.

79.75

The corner to sections 20. 21. 28 & 29

Land mountainous

Soil rate

Timber of yellow pine & oak

Vegetation sparse & scrub.

W. R. Fitzgerald Mar. 9, 1883

Township 21 N Range 2 E

Gila and Salt River Meridian.

Chains

West, on a random line between Sections 19 and 30.

Variation $14^{\circ} 45'$ East.

Descend.

16.00 Cross Wash, 50 lks. wide, Course $S. 15^{\circ} W$ and ascend.

40.00 Set temporary $\frac{1}{4}$ Sec. Cor.

79.23 Intersect N.B. of Tp. 56 lks. S. of cor. to secs. previously set by me.

N. 27.26 = 30 from which corner, I run

N. 54.26' on a true line, between sections 19 & 30

Variation $11^{\circ} 45'$ East.

39.23 Set a round stone $24 \times 10 \times 3$ ins., 15 lbs. in the ground, for $\frac{1}{4}$ Sec. Cor., marked $\frac{1}{4}$ on S. line, and raised a mound of stone alongside. Pits impracticable.

from which

A Yellow Pine 20 ins diam. bears $S. 30^{\circ} W$. - 30 lks. dist. marked $\frac{1}{4}$ S. B. T. No other trees within limits.

79.23 The corner to sections 19, 20, 29 & 30

Land mountainous

Soil 3° rate

Timber of Willow ferns.

Vegetation. - grass & Sage-

J. C. Case, Compassman Mar. 9, 1883

Township

21

N

Range

3

E

Gila and Salt River Meridian.

Chains

North, between Sections 19 and 20.

Variation

14° 45'

East.

Ascend.

mountainous

40

Set a *Granite* stone 10 x 10 x 5 ins., 10 ins. in the ground, for $\frac{1}{4}$ Sec. Cor., marked $\frac{1}{4}$ on W.

face, and raised a mound of stone alongside. Pits impracticable.

50.00

Top of Spur, bears S. 60° E. 1/2 N. and descend.

80.00

Set a *Granite* stone 15 x 12 x 6 ins. 12 ins. in the ground for Cor. to Secs. 19, 18, 17 & 16 marked with 2 notches on S. and 5 notches on E. edges and raised a mound of stone alongside. Pits impracticable.

from which

A Yellow Pine 14 ins diam. bears S. 30° E. 30 kts. dist. marked T. 2/4 N. R. 2 E. S., 1/4 B. T.

A Yellow Pine 20 ins diam. bears S 83° W. 30 kts. dist. marked T. 2/4 N. R. 2 E. S., 1/4 B. T.

A Yellow Pine 11 ins diam. bears S. 11 1/2° E. 30 kts. dist. marked T. 2/4 N. R. 2 E. S., 2/4 B. T.

No other trees within limits.

Land mountainous

Soil *clay* rateTimber of *Yellow pine & oak.*Vegetation. *grass & alfalfa*

Township 21 N Range 9 E

Gila and Salt River Meridian.

Chains

East, on a random line between Sections 17 and 20.

Variation $14^{\circ} 45'$ East.

Descend. *unintelligible*

30.00 Cross Ravine, Course $S. 75^{\circ} W.$ and ascend

35.00 Top of Ridge, bears $N. 35^{\circ} E$ or $S. 30^{\circ} W.$ and descend.

40.00 Set temporary $\frac{1}{4}$ Sec. Cor.

65.00 Cross Ravine, Course $S. 26^{\circ} E.$ and ascend

77.00 Top of Ridge, bears $S. 15^{\circ} W.$ or $S. 46^{\circ} E.$ and descend.

86.20 Intersect N. & S. line, 13 lks. E of cor. to secs.

16. 17, 20, 21 from which corner, I run

$S. 89^{\circ} 54' W.$ on a true line between sections 17 & 20

Variation $14^{\circ} 45'$ East

40.10 Set a sand stone $24 \times 20 \times 12$ ins., 18

ins. in the ground, for $\frac{1}{4}$ Sec. Cor., marked $\frac{1}{4}$ on N. face, and raised a mound of stone alongside. Pits

impracticable. from which

A Fir 12 ins. diam. bears $N. 44^{\circ} E.$ 13 lks. dist. marked $\frac{1}{4}$ S. B. T.

A Yellow Pine 14 ins diam. bears $S. 36^{\circ} E.$ 76 lks. dist. marked $\frac{1}{4}$ S. B. T.

80.20 The corner to sections 17, 18, 19 & 20

Land mountainous

Soil 3rd rate

Timber of yellow pine, oak & fir.

Vegetation grass & sage.

W. F. Fitzgerald Mar. 9, 1853

Township 91 N. Range 9 E.

Gila and Salt River Meridian.

Chains

West, on a random line between Sections 18 and 19.

Variation $11^{\circ} 45'$ East.Ascend. *Almately*25.00 Top of Spur, bears $N. 15^{\circ} E. 2.45$ Mts descend.40.00 Set temporary $\frac{1}{4}$ Sec. Cor.100.21 Intersect *W. B.* of Tp. 9 *Wks. S.* of cor. to secs.
previously set by me.
13. 18. 19 & 21 from which corner, I run $1.5^{\circ} 30' E.$ on a true line, between sections 18 & 19Variation $11^{\circ} 45'$ East.39.31 Set a *Small* stone $16 \times 12 \times 9$ ins., 10
ins. in the ground, for $\frac{1}{4}$ Sec. Cor., marked $\frac{1}{4}$ on *N.*
face, and raised a mound of stone alongside. Pits

impracticable.

from which

a Yellow Pine 20 ins diam. bears $S. 28^{\circ} W.$ 90ks. dist.
marked $\frac{1}{4}$ S. B. T. No other trees within limits.

109.31 The corner to sections 13. 18. 19 & 20

Land mountainous

Soil *32'* rateTimber of *yellow pine & oak.*Vegetation. *grass & weeds.*

J. O. Baker Compassman Mar. 9, 1883

Township 21 N Range 9 E
 Gila and Salt River Meridian.

Chains

North, between Sections 17 and 18.

Variation 11° 15' East.

Ascend. unpracticable.

20.00

Set a Sand stone 15 x 10 x 6 ins., 10
ins. in the ground, for $\frac{1}{4}$ Sec. Cor., marked $\frac{1}{4}$ on N.
face, and raised a mound of stone alongside. Pits

impracticable. from which

A Fir 12 ins. diam. bears N. 8° W. 2 wks. dist:
 marked $\frac{1}{4}$ S. B. T. No other trees within limits.

62.00

Top of Ridge, bears N. 60° W. & S. 60° E and descend.

80.00

A Fir 12 ins. diam. which I marked
T. 21 N. S. &, on N. E. R. 2 E. S. 17 on
S. E. S. 15, on S. W. and S. 17 on N. W. faces,
 with $\frac{1}{2}$ notch on S. and $\frac{1}{2}$ notch on E. edges,
 and pits 8 x 18 x 12 ins. in each sec $\frac{1}{2}$ ft. dist. and
 raised a mound of earth around trees, for cor. to sec.

7. 8. 17 & 18 from which

A Quaker 12 ins. diam. bears N. 10° E. 16 wks. dist:
 marked T. 21 N. R. 2 E. S., S. B. T.

A Fir 10 ins. diam. bears S. 95° W. 17 wks. dist:
 marked T. 21 N. R. 2 E. S., 15 B. T.

A Fir 12 ins. diam. bears S. 20° E. 9 wks. dist:
 marked T. 21 N. R. 2 E. S., 17 B. T.
 No other trees within limits.

Land mountainous

Soil 3rd rate

Timber of pine, fir & Quaker-asp.
 Vegetation. grass & sage.

Township

21 N

Range

9 E

Gila and Salt River Meridian.

Chains

East, on a random line between Sections 8 and 17.

Variation $14^{\circ} 45'$ East.

Descend. Absolutely.

11.30 Cross Ravine, Course $10^{\circ} W$, and ascend40.00 Set temporary $\frac{1}{4}$ Sec. Cor.

19.65 Intersect N. & S. line, 142 lks. S. of cor. to secs.

8.17.66 1' from which corner, I run

S. $89^{\circ} 42' W$ on a true line between sections S. 2 1'Variation $14^{\circ} 45'$ East

39.821 Set a wood stone 18 x 14 x 6 ins., 12
 ins. in the ground, for $\frac{1}{4}$ Sec. Cor., marked $\frac{1}{4}$ on S.
 face, and raised a mound of stone alongside. Pits
 impracticable.

12.65 The corner to sections 8, 16, 17, & 18
 Land mountainous

Soil 20' rateTimber of pine & firVegetation. grass & sage

W. R. Fitzgerald May. 9. 1883

Township 21 N Range 2 E
Gila and Salt River Meridian.

Chains

West, on a random line between Sections 7 and 18.

Variation 91° 15' East.

Ascend. at

30.00 Top of Spur, bears N. 25° W. 200 and descend.

40.00 Set temporary $\frac{1}{2}$ Sec. Cor.

78.89 Intersect S. B. of Tp. 10 7ks. S. of cor. to sect.
previously set by me.

1.12.12 from which corner, I run

3.81° 52' E, on a true line, between sections 12 & 18

Variation 111° 15' East.

38.89 Set a stone 10 x 14 x 8 ins., 10

ins. in the ground, for $\frac{1}{2}$ Sec. Cor., marked $\frac{1}{2}$ on S.

face, and raised a mound of stone alongside. Pits

impracticable.

from which

A Fir 22 ins. diam. bears N. 50° E. 80 7ks. dist:

marked $\frac{1}{2}$ S. B. T.

No other trees within limits.

78.89 The corner to sections 12 & 18

Land mountainous

Soil 37 rate

Timber of fir, pine & Gambel's maple.

Vegetation grass & sage.

J. C. Capef compassman Nov. 9, 1883

Township 21 N Range 2 EGila and Salt River Meridian.

Chains

North, between Sections 7 and 8.

Variation 14° 15' East.Descend. to creek top.

40.00

Set a post 3 ft. long, 3 ins. diam 24 ins. in the ground, for $\frac{1}{4}$ Sec. Cor., marked $\frac{1}{4}$ S. on W. face; from whichA hackberry 12 ins. diam. bears N. 30° W. 5³ lks. dist. marked $\frac{1}{4}$ S. B. T.A hackberry 12 ins. diam. bears S. 55° E. 3³ lks. dist. marked $\frac{1}{4}$ S. B. T.

42.55

Cross Wash, 100 lks. wide, Course N. 25° W and ascend.

68.55

Top of Spur, bears N. 20° W. & S. 20° E and descend.

80.00

Set a granite stone 26 x 16 x 16 ins. 15 ins. in the ground for Cor. to Secs. 5, 6, 7 & 8 marked with 5" notches on S. and 5" notches on E. edges and raised a mound of stone alongside. Pits impracticable.

from which

A Yellow Pine 12 ins diam. bears N. 25° E. 25 lks. dist. marked T. 21 N. R. 2 E. S., 5" B. T.A Yellow Pine 15 ins diam. bears N. 57° W. 38 lks. dist. marked T. 21 N. R. 2 E. S., 7" B. T.A Yellow Pine 11 ins diam. bears S. 10° E. 41 lks. dist. marked T. 21 N. R. 2 E. S., 5" B. T.

No other trees within limits.

Land mountainous.

Soil 2nd rateTimber of yellow pine, etc.
Vegetation. grass & shrubs.

Township 21 N Range 3 E

Gila and Salt River Meridian.

Chains East, on a random line between Sections 5 and 8.
Variation 112° 15' East.*Ascend.*40.00 Set temporary $\frac{1}{4}$ Sec. Cor.60.00 Top of Ridge, bears $S. 30^{\circ} E. 30'$ and descend.

79.94 Intersect N. & S. line, 16 lks. S. of cor. to secs.

45.529 from which corner, I run

N. 89° 53' W. on a true line between sections 5 & 8

Variation 111° 15' East79.97 Set a small stone 10 x 12 x 6 ins., 10
ins. in the ground, for $\frac{1}{4}$ Sec. Cor., marked $\frac{1}{4}$ on
face, and raised a mound of stone alongside. Pits
impracticable. from whichA Yellow Pine 15 ins diam. bears $S. 19^{\circ} W.$ $S. 1/2$ lks. dist.
marked $\frac{1}{4}$ S. B. T. No other trees within limits.

79.94 The corner to sections 5, 6, 7 & 8

Land mountainous

Soil 2.5 rateTimber of Alnus, Pinus, Quercus & Cast.Vegetation Grass & brush.I carefully examined the adjustments of my
compass to-day, particularly the latitude and measur-
ing apparatus, and found them correct.

W. B. Fitzgerald Mar. 9, 1853

Township 21 N Range 23 E

Gila and Salt River Meridian.

Chains

West, on a random line between Sections 6 and 7.

Variation 12° 15' East.

Ascend.

10.00 Top of Spur, bears N. 11° E. and descend.

22.00 Cross Wash, 50 fks. wide, Course N. 36° W and ascend.

40.00 Set temporary 1/4 Sec. Cor.

42.94 Intersect N. B. of Tp. 115 fks. S. of cor. to sec. previously set by me.

from which corner, I run

1.37 11' E. on a true line, between sections

Variation 12° 15' East.

45.00 Set a round stone 20 x 10 x 7 ins., 15

ins. in the ground, for 1/4 Sec. Cor., marked 1/4 on N.

side, and raised a mound of stone alongside. Pits

impracticable.

from which

A Quaker 10 ins. diam. bears N. 15° E. 42 fks. dist. marked 1/4 S. B. T.

A Quaker 8 ins. diam. bears S. 17° W. 64 fks. dist. marked 1/4 S. B. T.

78.96 The corner to sections 5, 6, 7 & 8

Land mountainous

Soil 3rd rate

Timber of fir, pine & Quaker oak.

Vegetation. Grass & Sage.

Township _____ Range _____

Gila and Salt River Meridian.

Chains North, on a random line between Sections 5 and 6.
Variation 14° 21' 30" East.

Descend. gradually.

40.00 Set temporary 1/4 Sec. Cor.

79.83 Intersect S. B. of Twp. 50 N. of cor. to secs. previously set by me.

S. 21' 30" on a true line, between sections 5 & 6
Variation 14° 21' 30" East.

32.83 Set a small stone 10 x 10 x 10 ins., 2 ins. in the ground, for 1/4 Sec. Cor., marked 1/4 on N. face, and raised a mound of stone alongside. Pits impracticable.

A Yellow Pine 26 ins diam. bears S. 30° E. 37 yds. dist. marked 1/4 S. B. T.

A Yellow Pine 15 ins diam. bears S. 30° W. 53 yds. dist. marked 1/4 S. B. T.

79.83 The corner to sections S. E. 1/4 2 8
Land mountainous

Soil 3/4 rate

Timber of *Quercus* *gracilis* & *alba*
Vegetation. *grasses* & *shrubs*.

I carefully examined the adjustments of my solar compass to-day, particularly the latitude and leveling apparatus, and found them correct.

J. C. Cape, Compassman Mar. 9. 1883

61

GENERAL DESCRIPTION.

The land in this Township
is generally mountainous.
Soil is rich.
Vegetation grass & sage.
Timber consists mostly of
Yellow Pine with scattering Oak,
Quaker Oak and Fir.
The land in the Township is
well adapted to grazing.

For Final Act see Book 274/187

BOOK 377

U. S. Surveyor General's Office,

Tucson, Arizona, February 25, 1884

The foregoing Field Notes of the Survey of the

Subdivision Lines of
 Township 2 North
 Range 2 East

Of the Gila and Salt River Base and Meridian, Arizona, execu-

ted by

W. R. Fitzgerald

Deputy Surveyor, under his contract of the

day of

July

1882, having been

critically examined and the necessary corrections and explana-

tions made, the said Field Notes and the surveys they describe

are hereby approved

Royal A. Johnson
 Surveyor General.